

PENN STATE



2013-14 LADY LION BASKETBALL

Penn State Athletic Communications: 101D Bryce Jordan Center, University Park, PA 16802 Office: 814-865-1757 Fax: 814-863-3165
 Women's Basketball Contact: Kristina Petersen Twitter: @ladylionsid Website: www.GoPSUsports.com Email: kap18@psu.edu Cell: 814-883-4581 Office: 814-865-1757

SCHEDULE/RESULTS

OCTOBER	
Sun. 27	LOCK HAVEN (ex.)..... W, 102-51
NOVEMBER	
Fri. 8	ST. FRANCIS (PA.)..... W, 117-77
Sun. 10	FORDHAM W, 78-61
Sun. 17	#1/1 CONNECTICUT (BTN) ... L, 52-71
Wed. 20	BUCKNELL (BTDN) W, 92-49
Junkanoo Jam (Grand Island, Bahamas)	
Fri. 29	vs. Oregon State..... W, 61-56
Sat. 30	vs. Illinois State..... W, 72-60
DECEMBER	
Big Ten/ACC Challenge	
Wed. 4	#5/4 NOTRE DAME (BTN) L, 67-77
Sun. 8	at Georgetown W, 77-68
Wed. 11	at South Dakota State L, 79-83
Sun. 15	#20/24 TEXAS A&M (BTDN) 2 p.m.
Sun. 22	ALCORN STATE 11 a.m.
Sun. 29	HARTFORD (BTDN) 2 p.m.
JANUARY	
Sun. 5	at Iowa * 3 p.m.
Thurs. 9	at Illinois * (BTN)..... 9 p.m.
Sun. 12	PURDUE * (ESPN2)..... 2 p.m.
Thurs. 16	OHIO STATE * (BTN)..... 7 p.m.
Sun. 19	at Michigan State * (ESPN2) 5 p.m.
Wed. 22	INDIANA * (BTDN)..... 7 p.m.
Sun. 26	MINNESOTA * (CBS)..... 1 p.m.
Thurs. 30	at Purdue * (BTN) 6 p.m.
FEBRUARY	
Sun. 2	at Northwestern * (BTDN) 2 p.m.
Thurs. 6	IOWA * (BTN)..... 6 p.m.
Sun. 9	at Ohio State * (ESPN2)..... 2 p.m.
Thurs. 13	at Indiana * (BTDN) 7 p.m.
Eighth Annual Pink Zone at Penn State	
Sun. 16	WISCONSIN * (ESPN2)..... 1 p.m.
Thurs. 20	NORTHWESTERN * (BTN) 7 p.m.
Mon. 24	at Nebraska * (ESPN2)..... 7 p.m.
MARCH	
Sat. 1	MICHIGAN * (BTN) 3:30 p.m.
Th.-Su. 6-9 Big Ten Tournament (Indianapolis, Ind.)	
Sa.-Tu. 22-25 .NCAA Tournament 1st & 2nd Round	
..... (University Park, Pa.)	
Sa.-Tu. 29-Apr. 1.....NCAA Tournament Regionals	
APRIL	
Su./Tu. 6/8NCAA Final Four (Nashville, Tenn.)	

BOLD CAPS indicates home game.
 * - indicates Big Ten game.
 All times are Eastern Time.
 BTN - Big Ten Network
 BTDN - BigTenNetwork.com
 Schedule subject to change. Please visit www.GoPSUsports.com for up-to-date tip times.

Game #10: #20/24 Texas A&M at #12/12 Penn State Sun., Dec. 15 ▶ 2 p.m. ▶ Bryce Jordan Center ▶ University Park, Pa.

		SETTING THE SCENE
Penn State Lady Lions	Texas A&M Aggies	The Texas A&M Game
Record: 6-3, 0-0 Big Ten Last Game: S. Dakota St. 83, PSU 79 (12/11) Head Coach: Coquese Washington Career Record: 124-76 (7th yr.) Record at PSU: 124-76 (7th yr.)	Record: 5-2, 0-0 SEC Last Game: TAMU 72, San Diego St. 35 (12/3) Head Coach: Gary Blair Career Record: 651-265 (28th yr.) Record at TAMU: 243-102 (11th yr.)	Series: Series tied 1-1 Last Meeting: PSU 63, TAMU 58 (11/14) Streak: Penn State - 1 win Television: none Radio: The game is on the Penn State Sports Network and WRSC 1390 locally with Jerry Fisher and Julia Trogele calling the action. The audio feed is available at www.GoPSUsports.com . Webstream: GoPSUsports.com Live Stats: GoPSUsports.com
Statistical Leaders Points Maggie Lucas (21.1) Rebounds Talia East (6.8) Assists Dara Taylor (5.0)	Statistical Leaders Points Courtney Walker (14.0) Rebounds Karla Gilbert (8.9) Assists Jordan Jones (5.4)	

GAME DAY INFORMATION

SCOUTING TEXAS A&M

The Aggies are ranked 20th in the Coaches' poll and 24th in the AP poll with a 5-2 record on the season. Courtney Walker leads three Aggies averaging double figures with a 14.0 scoring average. Karla Gilbert is Texas A&M's force on the interior, accounting for 11.3 points and 8.9 rebounds per game. She also has a team-best 10 blocks. Achiri Ade chips in 10.1 points and 6.9 rebounds per outing to round out A&M's double figure scorers.

ALL-TIME VERSUS THE AGGIES

The Lady Lions and Texas A&M have split two all-time meetings. This will be the first time the squads have squared off in Happy Valley. A&M won the first match-up between the teams with a 61-57 victory in Malibu at the Timeout 4 HIV/AIDS Tournament on Nov. 2, 2008.

LAST TIME VS. A&M

The Lady Lions held the Aggies to just two points in the final 6:23 en route to a 63-58 win in College Station on Nov. 14, 2013. **Alex Bentley** battled foul trouble in the first half, but rebounded in the second half to score 14 of her game-high 21 points. She also accounted for four assists and four steals in the win. **Maggie Lucas** added 18 points with four rebounds.

STORYLINES

- ✓ Senior guard **Maggie Lucas** became the fifth player in Penn State history and 18th player in Big Ten history to amass 2,000 career points with a 30-point outing at Georgetown.
- ✓ Seniors **Ariel Edwards** (24) and **Dara Taylor** (19) each had career-high scoring performances at South Dakota State.
- ✓ Junior **Tori Waldner** has blocked a shot in each of the last eight games. She ranks 19th in school history in blocks.
- ✓ Lucas is in fourth place on Penn State's career scoring list (2,028).
- ✓ Lucas is among players named to the "Wade Watch" list for the State Farm® Wade Trophy, the Wooden Award Top 30 and the Naismith Early Season Watch List.
- ✓ The Lady Lions slipped two spots to 12th in the Dec. 9 AP and dropped a spot to 12th in the Dec. 10 USA Today Sports/ESPN Coaches' poll.

UP NEXT

The Lady Lions take a break for a week for exams before returning to the court to take on Alcorn State on Sunday, Dec. 22 at 11 a.m. as part of a men's and women's doubleheaders. Tickets are just \$5 and will gain the holder access to both games. The Nittany Lions face Mount St. Mary's at 2 p.m.



2013-14 ROSTERS

PENN STATE LADY LIONS

No.	Name	Pos.	Cl./Elg.	Ht.	Hometown/High School/Previous School
1	Candice Agee *	C	So./So.	6-6	Victorville, Calif./Silverado
2	Dara Taylor *	G	5th/Sr.	5-8	Wilmington, Del./Caravel Academy (Maryland)
5	Talia East ***	F/C	Sr./Sr.	6-3	Philadelphia, Pa./Friends' Central School
10	Keke Sevillian	G	Fr./Fr.	5-7	Goodrich, Mich./Goodrich
11	Alex Harris	F	Fr./Fr.	6-3	Lorain, Ohio/Lorain
12	Lindsey Spann	G	Fr./Fr.	5-6	Laurel, Md./Good Counsel
15	Kaliyah Mitchell	G/F	Fr./Fr.	6-2	Stone Mountain, Ga./Stephenson
20	Infiniti Alston	C	Fr./Fr.	6-6	Baltimore, Md./Digital Harbor
23	Ariel Edwards ***	G/F	Sr./Sr.	6-3	Elmont, N.Y./Christ the King
25	Peyton Whitted	G/F	Fr./Fr.	6-3	Suwanee, Ga./North Gwinnett
33	Maggie Lucas ***	G	Sr./Sr.	5-10	Narberth, Pa./Germantown Academy
35	Sierra Moore	G	So./--^	5-11	Hanover, Pa./Delone Catholic (Duke)
41	Jenny DeGraaf	G/F	Fr./Fr.	6-1	Springboro, Ohio/Springboro
44	Tori Waldner **	F	Jr./Jr.	6-5	Milton, Ga./Milton

Head Coach: Coquese Washington/Notre Dame '92)

Assistant Coaches: Fred Chmiel, Kia Damon, Maren Walseth

Captains: Talia East, Ariel Edwards, Maggie Lucas, Dara Taylor

* Indicates letters earned

TEXAS A&M AGGIES

No.	Name	Pos.	Cl.	Ht.	Hometown/High School (Previous School)
1	Courtney Williams	F/G	So.	6-1	Houston, Texas/North Shore
3	Taylor Cooper	F	So.	6-0	Shawnee, Okla./Shawnee (Oral Roberts)
5	Cristina Sanchez-Quintanar	G	Sr.	5-7	Campo de Criptana, Spain/Ministry of Science, Education (Maryland)
10	Allison Chu	G	Jr.	5-6	Plano, Texas/Plano
11	Curtyce Knox	G	R-Fr.	5-7	Humble, Texas/Atascocita
12	Jada Terry	C	Fr.	6-3	Cedar Hill, Texas/Cedar Hill
13	Chelsea Jennings	G	So.	5-9	Fort Worth, Texas/North Crowley
14	Kristen Grant	G	Sr.	5-9	Arlington, Texas/Lamar
15	Tori Scott	G	Jr.	5-10	Marrero, La./John Ehret
23	Rachel Mitchell	C	R-So.	6-7	Houston, Texas/Atascocita
24	Jordan Jones	G	So.	5-6	DeSoto, Texas/DeSoto
32	Tavarsha Scott-Williams	F	Jr.	6-0	Ringgold, La./Ringgold (NW Florida St. College)
33	Courtney Walker	G	So.	5-8	Edmond, Okla./Edmond Santa Fe
34	Karla Gilbert	C	Sr.	6-5	College Station, Texas/A&M Consolidated
35	Achiri Ade	F	Jr.	6-1	Baltimore, Md./Seton Keough (Midland J.C.)

Head Coach: Gary Blair

Associate Head Coach: Kelly Bond-White

Assistant Coaches: Bob Starkey, Amy Wright

TEAM COMPARISON

PENN STATE		TEXAS A&M	
Lucas (21.3)	Scoring Leader	Walker (14.0)	
Harris & East (6.8)	Rebounding Leader	Gilbert (8.9)	
Taylor (5.0)	Assist Leader	Jones (5.4)	
Taylor (3.1)	Steals Leader	Jones (2.1)	
Waldner (1.4)	Blocks Leader	Gilbert (1.4)	
77.0	Scoring Offense	66.9	
64.9	Scoring Defense	52.4	
+12.1	Scoring Margin	+14.4	
46.0	Rebounds Per Game	42.4	
+6.6	Rebound Margin	+6.6	
14.4	Assists Per Game	14.6	
9.9	Steals Per Game	7.7	
.417	Field Goal Pct.	.426	
.337	FG Defense Pct.	.333	
.296	3-pt. FG Pct.	.271	
.308	3-pt. FG Pct. Def.	.283	
.781	Free Throw Pct.	.705	
0.7	Assist/Turnover	0.9	
Won 1	W/L Streak	Won 1	

SERIES HISTORY

Overall:	Series tied, 1-1
Last meeting:	Nov. 14, 2012
Last result:	PSU, 63-58
Current streak:	PSU - 1 win
Last 10:	Tied, 1-1
Last 10 meetings:	
11/28/08	N TAMU, 57-61
11/14/12	A PSU, 63-58

QUICK FACTS

THE UNIVERSITY

Location: University Park, Pa.
 Founded: 1855
 Enrollment: 42,294
 Colors: Blue & White
 Nickname: Lady Lions
 Conference: Big Ten
 President: Dr. Rodney Erickson
 Director of Athletics: Dr. David Joyner
 Senior Woman Administrator: Charmelle Green
 Facility (cap.): Bryce Jordan Center (15,104)
 All-Time Record at BJC: 204-51 (19 seasons)

ATHLETIC COMMUNICATIONS

WBB Contact: Kristina Petersen
 Phone/Fax: (814) 865-1757/(814) 863-3165
 E-mail: kap18@psu.edu
 Press Row Phone: 814-863-3294
 Website: www.GoPSUsports.com
 Twitter: @ladylionsid

TEAM INFORMATION

2013-14 Record: 6-3
 Home: 3-2 Away: 1-1 Neutral: 2-0
 Big Ten Record (finish): 0-0
 Home: 0-0 Away: 0-0
 Letterwinners Returning/Lost: 6/5
 Starters Returning/Lost: 2/3
 Big Ten Tournament: Semifinals
 Postseason: NCAA Second Round

THE HISTORY

First Year of Women's Basketball: 1965
 All-Time Record: 863-389 (50 seasons)
 All-Time Big Ten Rec.: 231-119 (22 seasons)
 NCAA Tournament Appearances: 24
 NCAA Tournament Record: 30-24

WOMEN'S BASKETBALL

Head Coach: Coquese Washington
 Alma Mater: Notre Dame '92
 Overall Record: 124-76 (seventh season)
 School Record: 124-76 (seventh season)
 Twitter: @coquesewashing
 Best Time To Reach Coach: Through SID
 Assistant Coaches (Alma Mater):
 Fred Chmiel (Excelsior College)
 Kia Damon (Millersville '97)
 Maren Walseth (Penn State '02)
 Twitter: @pennstatewbb
 Facebook: facebook.com/pennstateladylions
 YouTube: YouTube.com/pennstateladylions
 Instagram: pennstatewbb

PRONUNCIATIONS

Coquese	ko-KWEES
Chmiel	shuh-MEAL
Maren Walseth	MARR-en WALL-seth
Talia	tah-LEE-uh
Ariel	AIR-e-l
Dara	DAR-uh
Agee	AYE-gee
Kaliyah	kah-LEE-uh
Sevillian	civilian
Whitted	WIT-tid





STANDINGS (as of 12/12)

Team	Big Ten			Overall		
	W	L	Pct.	W	L	Pct.
Indiana	0	0	.000	10	0	1.000
Iowa	0	0	.000	10	2	.833
Minnesota	0	0	.000	9	2	.818
Nebraska	0	0	.000	7	2	.778
Northwestern	0	0	.000	6	2	.750
Purdue	0	0	.000	6	2	.750
Michigan	0	0	.000	7	3	.700
PENN STATE	0	0	.000	6	3	.667
Wisconsin	0	0	.000	6	3	.667
Michigan State	0	0	.000	5	4	.556
Illinois	0	0	.000	6	5	.545
Ohio State	0	0	.000	6	5	.545

BIG TEN SCHEDULE

DECEMBER 9

at Illinois 71, Seton Hall 70

DECEMBER 10

Gonzaga 70, at Wisconsin 55

DECEMBER 11

at Indiana 87, Milwaukee 68
at Michigan 89, Eastern Michigan 75
at South Dakota State 83, Penn State 79

DECEMBER 12

at Iowa State 83, Iowa 70

DECEMBER 13

Army at Ohio State 7 p.m.
Wisconsin at Washington 10:30 p.m.

DECEMBER 14

Notre Dame at Michigan 7 p.m.
Northwestern at Loyola 3 p.m.

DECEMBER 15

Indiana at IUPUI 2 p.m.
Oakland at Michigan State 2 p.m.
Ohio State at Cincinnati 2 p.m.
Texas A&M at Penn State 2 p.m.
Purdue at Kansas 3 p.m.

All times are Eastern

PROJECTED STARTERS



2 DARA TAYLOR G
Sr., 5-8, Wilmington, Del.
11.6 ppg, 5.0 apg, 3.0 spg, .774 FT%

Notes: Notched a career-high 19 pts. with 5 assts. at SDSU (12/11) ... Tallied 12 pts. & 6 assts. at Georgetown (12/8) ... Had 14 pts. & 6 assts. vs. Notre Dame (12/4) ... Named to Junkanoo Jam All-Tournament team.



5 TALIA EAST F/C
Sr., 6-3, Philadelphia, Pa.
6.6 ppg, 6.8 rpg, .523 FG%, .929 FT%

Notes: Had 10 pts. and five rebs. at Georgetown (12/8) ... Notched a career-high 12 pts. with 8 rebs. vs. Notre Dame (12/4) ... Pulled in 11 rebs. vs. Illinois St. (11/30) ... Had 9 pts. & 6 rebs. vs. Oregon St. (11/29).



23 ARIEL EDWARDS G/F
Sr., 6-3, Elmont, N.Y.
14.0 ppg, 4.7 rpg, .511 FG%, .844 FT%

Notes: Tied her career high with 24 pts. for 3rd career 20-pt. game at SDSU (12/11) ... Had 12 pts. & 6 rebs. at Georgetown (12/8) ... Was 7-for-12 from the field for 18 pts. vs. Notre Dame (12/4).



33 MAGGIE LUCAS G
Sr., 5-10, Narberth, Pa.
21.1 ppg, 3.4 rpg, .373 3FG%, .966 FT%

Notes: Had 51st career 20-pt. game with 20 at SDSU (12/11) ... 5th player at PSU & 18th in Big Ten with 2,000 points ... 4th on PSU's career scoring list (2,028) ... 2nd in PSU & Big Ten history in 3-pointers (314).



44 TORI WALDNER F/C
Jr., 6-5, Milton, Ga.
5.0 ppg, 5.3 rpg, 1.3 bpg, .436 FG%

Notes: Had 8 pts., 9 rebs. & 2 blks. at SDSU (12/11) ... Tied her career high with 10 rebs. at Georgetown (12/8) ... Had 6 rebs. & 5 assts. vs. Illinois St. (11/29) ... Ranks 19th on PSU's all-time blocks list (63).

LAST TIME OUT

- The Lady Lions rallied from a 23-point deficit and got within one point with 1:17 left, but South Dakota State secured the 83-79 win Wednesday in Brookings.
- Senior guard/forward **Ariel Edwards** keyed the Lions' late drive and tied her career high with 24 points off of a 9-for-12 effort from the field to lead Penn State. She also pulled in seven rebounds, blocked a career-best four shots, nabbed four steals and dished out a pair of assists
- Maggie Lucas** posted her 51st career 20-point game with 20 tallies, while fellow senior **Dara Taylor** had a personal-best 19 tallies on 8-for-14 shooting to go with five assists and two steals.
- Tori Waldner** also had a solid game with eight points, nine rebounds and two blocks.

SCOUTING TEXAS A&M

- The Aggies are ranked 20th in the Coaches' poll and 24th in the AP poll with a 5-2 record on the season.
- Courtney Walker leads three Aggies averaging double figures with a 14.0 scoring average. She also dishes out 3.0 assists per game.
- Karla Gilbert is Texas A&M's force on the interior, accounting for 11.3 points and 8.9 rebounds per game. She also has a team-best 10 blocks.
- Achiri Ade chips in 10.1 points and 6.9 rebounds per outing to round out A&M's double figure scorers.

ALL-TIME VERSUS THE AGGIES

- The Lady Lions and Texas A&M have split two all-time meetings.
- This will be the first time the squads have squared off in Happy Valley.
- A&M won the first match-up between the teams with a 61-57 victory in Malibu at the Timeout 4 HIV/AIDS Tournament on Nov. 2, 2008.
- Last season, the Lady Lions claimed a 63-58 victory in College Station to even the series at one apiece.

WHAT'S AT STAKE

A Penn State Win Would:

- Make PSU 7-3 on the season.
- Make the Lady Lions 2-1 all-time against Texas A&M.
- Improve Penn State to 22-27 all-time against current SEC members.
- Mark Penn State's fifth-straight season with a win over a ranked opponent.
- Be Coquese Washington's 125th career win.

LAST TIME VS. TEXAS A&M NOV. 14, 2012 • COLLEGE STATION, TEXAS

Penn State 63 • 2-0													
#	Player	FG	FGA	FT	FTA	Rebounds	PF	TP	A	TO	Blk	Stl	
		Total	3-Pr			Off	Def	Total					
20	Bentley, Alex	7-15	2-3	5-6	0-2	2	4	21	4	0	0	4	
23	Edwards, Ariel	0-3	0-0	0-0	0-4	1	0	0	4	1	0	17	
24	Nickson, Mia	2-10	0-0	2-6	5-6	11	2	6	2	2	1	34	
33	Lucas, Maggie	7-16	1-6	3-3	0-4	2	18	1	4	0	1	38	
54	Greene, Nikki	4-6	0-0	2-5	7-7	4	8	0	1	0	1	20	
01	Agee, Candice	0-2	0-0	0-0	1-2	3	1	0	0	1	0	11	
02	Taylor, Dara	4-8	0-1	0-0	0-3	4	8	3	5	0	5	29	
05	East, Talia	0-2	0-0	0-0	0-1	1	3	0	0	2	0	9	
25	Studevent, Gizelle	0-1	0-0	0-0	0-0	0	0	0	0	0	0	10	
44	Waldner, Tori	1-2	0-0	0-0	3-3	0	3	0	2	0	1	0	
Team		2-5		4-4		4		0		0		6	
Totals		25-65	3-10	10-15	15-27	42	21	63	10	19	4	12	
FG % 1st Half: 11-29 37.9%		2nd half: 14-36 38.9%		Game: 25-65 38.5%		3FG % 1st Half: 2-5 40.0%		2nd half: 1-5 20.0%		Game: 3-10 30.0%		Deadball Rebounds: 1	
FT % 1st Half: 4-6 66.7%		2nd half: 6-9 66.7%		Game: 10-15 66.7%									
Texas A&M 58 • 0-2													
#	Player	FG	FGA	FT	FTA	Rebounds	PF	TP	A	TO	Blk	Stl	
		Total	3-Pr			Off	Def	Total					
03	Kelsey Bone	7-11	0-0	2-4	6-9	9	2	16	3	5	0	1	
05	Kristi Bellock	3-6	0-0	0-0	3-7	10	3	6	2	4	0	18	
10	Alexia Standish	1-5	0-1	3-3	0-0	4	5	2	4	0	0	28	
18	Tori Scott	4-8	0-1	1-2	1-0	1	1	1	4	0	2	0	
33	Courtney Walker	3-14	0-0	1-1	3-2	5	3	6	1	2	0	4	
01	Courtney Williams	1-7	0-0	1-1	1-1	2	1	3	0	0	0	15	
20	Peyton Little	2-7	2-5	0-0	0-1	1	0	6	0	1	0	13	
24	Jordan Jones	1-3	1-1	0-0	1-0	1	0	0	3	0	2	0	
32	Adrienne Pratcher	1-4	0-1	0-0	1-1	0	1	0	2	4	0	14	
34	Karla Gilbert	3-5	0-0	4-8	3-3	6	3	10	1	3	2	17	
Team		2-5		7-7		5		7		0		3	
Totals		22-64	3-9	11-19	20-29	49	17	58	13	23	2	8	
FG % 1st Half: 12-35 34.3%		2nd half: 10-29 34.5%		Game: 22-64 34.4%		3FG % 1st Half: 2-6 33.3%		2nd half: 1-3 33.3%		Game: 3-9 33.3%		Deadball Rebounds: 3	
FT % 1st Half: 7-13 53.8%		2nd half: 4-6 66.7%		Game: 11-19 57.9%									
Officials: Bob Trammel, Tina Napier, Jesse Dickerson Technical fouls: Penn State-None, Texas A&M-None. Attendance: 4756													
Score by periods													
		1st	2nd	Total			Points	In	Off	2nd	Fast	Bench	
Penn State		28	35	63	Points		PSU	28	16	19	16	10	
Texas A&M		33	25	58	Points		TAMU	28	20	16	6	24	
Last FG - PSU 2nd-00:49, TAMU 2nd-06:24. Largest lead - PSU by 5 1st-09:44, TAMU by 7 2nd-18:46. Score tied - 6 times. Lead changed - 7 times.													



PRESS CONFERENCE SCHEDULE

Coquese Washington will hold a weekly press conference and the Lady Lions will have media availability on a weekly basis throughout the season. All press conferences will begin at 2:30 p.m. (unless otherwise noted) and go for approximately 15-20 minutes, followed by a 15-minute open media session prior to practice. Press conference will be held in the Media Room at the Bryce Jordan Center (unless otherwise noted).

Press Conference Dates

Wednesday, Dec. 18 (11:30 a.m.)	Wednesday, Feb. 5
Wednesday, Jan. 1 (Time TBD)	Wednesday, Feb. 12
Wednesday, Jan. 8 (Time TBD)	Wednesday, Feb. 19
Wednesday, Jan. 15	Wednesday, Feb. 26
Tuesday, Jan. 21	Tuesday, March 4 or Wednesday, March 5 (pending BTT travel plans)
Wednesday, Jan. 29	

LADY LIONS GET SOCIAL: The Lady Lions are on several social media sites, including Twitter, Instagram and Facebook. Follow the Lady Lions and assistant coaches (@pennstatewbb), head coach Coquese Washington (@coquesewashing) and sports information contact Kris Petersen (@ladylionsid) on Twitter to get the inside scoop. The Lady Lions are also on Instagram (@pennstatewbb) and Facebook at www.facebook.com/pennstateladylions.



MAGGIE MARCHING UP CAREER SCORING LIST

- Senior guard **Maggie Lucas** moved into fourth place on Penn State's all-time scoring chart with her 20-point night at South Dakota State on Dec. 11.
- With 2,028 points, Lucas moved past Kahadeejah Herbert (2,025; 1982-85) for fourth place.
- Lucas needs 16 points to tie Tyra Grant (2,044; 2007-10) for third place.
- With 30 tallies at Georgetown on Dec. 8, Lucas moved into a tie for second place with Herbert on Penn State's all-time 30-point games chart with her sixth career contest with 30 or more tallies.

SENIOR DUO HAS CAREER NIGHT

- Seniors **Ariel Edwards** and **Dara Taylor** each turned in career nights at South Dakota State on Dec. 11.
- Edwards tied her career mark with 24 points on 9-for-12 shooting against the Jacks. She also had 24 points against Detroit on Nov. 23, 2012 in the Cal State Northridge Tournament.
- Edwards also had personal bests in blocks (4) and steals (4). Her previous career mark in blocks was two, which has occurred three times. Edwards' previous career high in steals was three against St. Francis (Pa.) this season and Texas Tech in 2011.
- Taylor tallied a career-best 19 points on 8-of-14 shooting to surpass her previous high of 18 points set at Michigan State on Jan. 6, 2013.
- The senior guard trio of Edwards, Taylor and Maggie Lucas led the Lady Lion comeback at SDSU as the trio combined for 39 of Penn State's 44 second-half points.

LAST TIME VS. A&M

- The Lady Lions held the Aggies to just two points in the final 6:23 en route to a 63-58 win in College Station on Nov. 14, 2013.
- The loss was the first non-conference home loss for Texas A&M since Dec. 30, 2003, a string of 58 games.
- Alex Bentley** battled foul trouble in the first half, but rebounded in the second half to score 14 of her game-high 21 points. She also accounted for four assists and four steals in the win.
- Maggie Lucas** added 18 points with four rebounds, while **Nikki Greene** scored all eight of her points and had six of her seven rebounds in the second half.
- Dara Taylor** was a defensive presence, notching five of Penn State's 12 steals on the game.

LUCAS EARNING SPOT ON BIG TEN SCORING LIST

- Lucas became the 18th player in Big Ten history to reach 2,000 points at Georgetown on Dec. 8.
- With 20 tallies at South Dakota State on Dec. 11, Lucas moved into 16th place on the Big Ten's career scoring list with 2,028 points.
- Lucas passed Ohio State's Samantha Prahalis (2,010; 2009-12) for 17th spot and OSU's Tayler Hill (2,015; 2010-13) to move into 16th place in conference history.
- Lucas needs 16 points to tie Minnesota's Laura Coenen (2,044; 1982-85) and fellow Penn Stater Tyra Grant (2,044; 2007-10) for 14th spot.

DUO BLOCKING THE LANE

- Senior center **Talia East** and junior center **Tori Waldner** have made it tough for opponents to find success in the lane as the pair have moved into the Top 20 in school history in blocks.
- East moved into a tie for 16th place in program history with one rejections at South Dakota State on Dec. 11 to bring her career total to 67.
- East is tied with Janessa Wolff (67; 2008-10) for the 16th spot.
- East needs one rejection to move into a tie for 15th place with Kelly Mazzante (68; 2001-04).
- With two blocks at South Dakota State on Dec. 11, Waldner moved into sole possession of 19th place, breaking the tie with Tanisha Wright (61; 2002-05), on the Lady Lions' career blocks list with 63 rejections.
- She needs three rejections to move into a tie for 17th place with East and Adrie DeVries (66; 1987-90).

PENN STATE'S OVERALL/BIG TEN YEAR-BY-YEAR REVIEW

Year	Overall	Big Ten	Home	BT Home	Road	BT Road	Neutral
1992-93	22-6	14-4	12-2	9-0	9-4	5-4	0-0
1993-94	28-3	16-2	14-0	9-0	11-2	7-2	3-1
1994-95	26-5	13-3	14-2	8-0	9-3	5-3	3-0
1995-96*	27-7	13-3	14-2	8-0	8-4	5-3	5-1
1996-97	15-12	8-8	9-3	5-3	5-6	3-5	1-3
1997-98	21-13	8-8	10-5	4-4	6-6	4-4	5-2
1998-99	22-8	12-4	9-2	6-2	9-4	6-2	4-2
1999-00	30-5	15-1	14-0	8-0	9-2	7-1	7-3
2000-01	19-10	11-5	11-2	7-1	6-5	4-4	2-3
2001-02	23-12	11-5	10-4	6-2	9-5	5-3	4-3
2002-03	26-9	13-3	16-0	8-0	7-7	5-3	2-2
2003-04	28-6	15-1	12-1	8-0	9-3	7-1	6-2
2004-05	19-11	13-3	12-0	8-0	6-9	5-3	1-2
2005-06	13-16	6-10	8-6	5-3	3-8	1-7	2-2
2006-07	15-16	7-9	12-1	7-1	2-12	0-7	1-3
2007-08	13-18	4-14	10-6	3-6	3-11	1-8	0-1
2008-09	11-18	6-12	8-6	4-5	2-9	2-7	1-3
2009-10	17-14	8-10	9-6	5-4	5-7	3-6	3-1
2010-11	25-10	11-5	14-4	6-2	7-4	5-3	4-2
2011-12	26-7	13-3	12-2	6-2	11-3	7-1	3-2
2012-13	26-6	14-2	14-0	8-0	9-5	6-2	3-1
2013-14	6-3	0-0	3-2	0-0	1-1	0-0	2-0

* First season at the Bryce Jordan Center



NCAA STATS

TEAM	SINGLE GAME
Scoring Offense.....53rd (77.0)	Points..... T-10th - 117 (vs. St. Francis (Pa.))
Scoring Margin51st (+12.1)	FT Pct..... T-25th - .909 (20-22) (vs. Notre Dame)
Field Goal Percentage Defense.....26th (.337)	Attendance24th - 8,194 (vs. UConn)
Free Throw Percentage.....11th (.781)	FT Pct.. T-1st - Maggie Lucas (16-16 vs. St. Francis)
Rebounding Margin.....60th (+6.6)	
Win-Loss Percentage.....55th (.750)	ACTIVE CAREER LEADERS (all div./DI)
Blocked Shots.....17th (5.5)	Points..... 4th/4th - Maggie Lucas (2,008)
Steals.....63rd (9.9)	Scoring Average 13th/6th - Maggie Lucas (18.6)
Attendance16th (.5077)	3FG Made3rd/3rd - Maggie Lucas (312)
	3FG Per Game.....3rd/2nd - Maggie Lucas (2.89)
	3FG Percentage.....5th/3rd - Maggie Lucas (.429)
	FT Percentage.....1st/1st - Maggie Lucas (.896)
	FG Made12th/12th - Maggie Lucas (641)
	FG Attempts10th/9th - Maggie Lucas (1,493)
	3FG Attempts5th/5th - Maggie Lucas (727)
	FT Made17th/11th - Maggie Lucas (414)
	FT Attempts.....40th/22nd - Maggie Lucas (462)

NCAA Statistics as of 12/9

NEWEST 2,000-POINT CLUBBER

- Senior **Maggie Lucas** became the fifth player in Penn State history to score 2,000 career points with a 30-point performance at Georgetown on Dec. 8.
- Lucas joins Kelly Mazzante (2,919; 2001-04), Susan Robinson (2,253; 1989-92), Tyra Grant (2,044; 2007-10) and Kahadeejah Herbert (2,025; 1982-85) in the program's 2,000-point club.
- The Narberth, Pa. native is the second 2,000-point scorer in Penn State history to play under Coquese Washington (Grant).

SOLID ON THE BOARDS IN DC

- The Lady lions were solid on the glass in the win at Georgetown on Dec. 8, outrebounding the Hoyas, 46-41.
- Junior forward/center **Tori Waldner** tied her career high with 10 rebounds, matching her previous personal best set against Wagner as a freshman on Dec. 18, 2011.
- All five starters had at least five rebounds against the Hoyas, marking the first time since Nov. 18, 2012 against Lafayette that Penn State has accomplished that feat.

OF NOTE

- Senior guard **Dara Taylor** surpassed the 300-point mark from her Penn State career with 12 tallies at Georgetown on Dec. 8.
- Senior forward/center **Talia East** was 4-for-5 from the field a perfect 4-for-4 from the free throw line en route to a career-high 12 points against #5/4 Notre Dame on Dec. 4. She passes her previous career mark of 11 set against Fairleigh Dickinson on Dec. 2, 2012.
- Sophomore **Candice Agee** doubled her career high with 16 points in the win over Bucknell Nov. 20. She surpassed her previous career mark of eight, which she accomplished four times in her career.
- The Lady Lions had five players with double figures (17, Maggie Lucas; 16, Candice Agee; 14, Ariel Edwards; 14, Kaliyah Mitchell; 10, Tori Waldner) against Bucknell Nov. 20 for the first time since the win over Fairleigh Dickinson on Dec. 2, 2012 when Lucas (24), Edwards (18), Dara Taylor (15), Talia East (11) and Nikki Greene (10) each scored more than 10 points.
- The Lady Lions have started the season 2-0 for each of the last eight seasons.
- Penn State is 7-0 in season openers under head coach **Coquese Washington**.
- Junior forward/center **Tori Waldner** had a career-high 11 points on 4-of-7 shooting against #1 UConn Nov. 17, surpassing her previous career mark of seven points set against Fairleigh Dickinson on Dec. 2, 2012.
- Agee and Waldner made their first career starts in the season opener against St. Francis (Pa.) on Nov. 8.
- The Lady Lions found themselves at the free throw line frequently against the Red Flash (11/8). PSU was 37-for-43 from the line, marking the first time since Nov. 11, 2007 against Pitt that the Lady Lions have made 30 or more free throws and attempted 40 or more freebies in a game.
- Penn State's 117 points scored against St. Francis (Pa.) (11/8) were the most points scored in a Division I game on opening night (123 games).

POLLING AROUND

- The Lady Lions are 12th in the Dec. 10 USA Today Sports Coaches' Poll.
- Penn State dropped two spots in the Dec. 9 Associated Press Poll to 12th in the country.
- This is the third-straight season that the Lady Lions have started the season ranked.

PENN STATE'S RECORD WHEN...

Playing at home	3-2
Playing on the road	1-1
Playing at a neutral site	2-0
vs. Top 10 teams	0-2
vs. Top 25 teams	0-2
Games decided by 3 points or less	0-0
Games decided by 4-10 points	2-2
Games decided by 11-19 points	2-1
Games decided by 20 points or more	2-0
Leading at the half	5-0
Tied at the half	0-0
Trailing at the half	1-3
Leading with 5:00 remaining	6-0
Trailing with 5:00 remaining	0-3
Tied with 5:00 remaining	0-0
In overtime	0-0
PSU scores 40-49 points	0-0
PSU scores 50-59 points	0-1
PSU scores 60-69 points	1-1
PSU scores 70-79 points	3-1
PSU scores 80 points or more	2-0
PSU shoots 45% or better	3-0
PSU shoots less than 45%	3-3
PSU shoots better than opponent	6-2
Opponent shoots better than PSU or tied	0-1
Opponent scores less than 39 points	0-0
Opponent scores 40-49 points	1-0
Opponent scores 50-59 points	1-0
Opponent scores 60-69 points	3-0
Opponent scores more than 70 points	1-3
Opponent shoots better than 45%	0-0
Opponent shoots less than 45%	6-3
PSU outrebounds opponent	6-0
Opponent outrebounds PSU or tied	0-3
PSU commits 14 or less turnovers	1-1
PSU commits 15 or more turnovers	5-2
PSU makes at least 5 3-pointers	2-1
PSU makes four 3-pointers or less	4-2
Recording 7 or more steals	5-3
Recording 6 or less steals	1-0
Wearing white uniforms	5-2
Wearing blue uniforms	1-1
Wearing white and pink uniforms	0-0
Penn State wins the tip	4-2
Penn State loses the tip	2-1
Penn State scores first	4-3
Opponent scores first	2-0
Playing during the day (before 5 p.m.)	4-1
Playing at night	2-2
On Monday	0-0
On Tuesday	0-0
On Wednesday	1-2
On Thursday	0-0
On Friday	2-0
On Saturday	1-0
On Sunday	2-1
In November	5-1
In December	1-2
In January	0-0
In February	0-0
In March	0-0



LIONS IN THE BIG TEN STATS

A breakdown of where Penn State ranks in the Big Ten's overall statistical categories. Through games of Dec. 12.

TEAM	
Scoring Offense.....	T-3rd (77.2)
Scoring Defense.....	9th (66.9)
Scoring Margin.....	5th (+10.3)
Free Throw Percentage.....	2nd (.787)
FG Percentage.....	8th (.418)
FG Percentage Defense.....	3rd (.341)
3-point FG Percentage.....	11th (.286)
3-point FG Pct. Defense.....	9th (.314)
3-point FG Made.....	12th (3.8)
Rebounding Offense.....	1st (45.6)
Rebounding Defense.....	10th (40.9)
Rebounding Margin.....	6th (+4.7)
Offensive Rebounds.....	2nd (14.3)
Defensive Rebounds.....	2nd (31.2)
Blocked Shots.....	2nd (6.0)
Assists.....	9th (13.7)
Steals.....	3rd (9.8)
Turnover Margin.....	7th (+0.4)
Assist to Turnover Ratio.....	11th (0.7)

INDIVIDUAL	
Scoring.....	3rd - Maggie Lucas (21.1)
.....	15th - Ariel Edwards (14.0)
.....	30th - Dara Taylor (11.6)
Rebounding.....	15th - Talia East (6.8)
.....	T-19th - Alex Harris (6.3)
FG Percentage.....	T-12th - Ariel Edwards (.511)
Assists.....	5th - Dara Taylor (5.0)
FT Percentage.....	T-1st - Maggie Lucas (.966)
.....	11th - Ariel Edwards (.844)
Steals.....	T-1st - Dara Taylor (3.0)
.....	9th - Maggie Lucas (2.0)
.....	13th - Ariel Edwards (1.7)
3FG Made.....	4th - Maggie Lucas (2.4)
Blocked Shots.....	8th - Tori Waldner (1.4)
.....	11th - Talia East (1.1)
.....	T-13th - Alex Harris (1.0)
Assist-to-TO Ratio.....	12th - Dara Taylor (1.3)
Off. Reb.	T-3rd - Talia East (2.9)
.....	14th - Alex Harris (2.1)
Def. Reb.	14th - Tori Waldner (4.7)

FEELING CHARITABLE

- Senior guard **Maggie Lucas** had her string of 30 consecutive free throws made snapped with a miss against Georgetown on Dec. 8.
- She is hitting on 96.6% of her shots from the free throw line, which is second in NCAA Division I.
- Lucas tied the school record for free throw percentage in a game (min. 15 attempts) with a perfect 16-for-16 mark from the line against St. Francis (Pa.) in the home opener Nov. 8.
- She equaled the mark also held by Jess Strom (15-15; Minnesota, 1/30/05) and Brianne O'Rourke (15-15; Duke, 12/2/07).
- Lucas' 16 freebies are a Bryce Jordan Center record, breaking the record of 15 held by Strom and O'Rourke.
- Lucas made her first 21 free throws of the season and had an overall streak of 30 consecutive freebies made before missing her first free throw against UConn.

LIONS CLAIM TOURNEY TITLE

- The Lady Lions won the Freeport Division of the Junkanoo Jam with wins over Oregon State (61-56) and Illinois State (72-60).
- It is the second Junkanoo Jam title for the Lady Lions with the first coming in 2003.
- Maggie Lucas** was selected as the Tournament MVP and **Dara Taylor** was named to the All-Tournament team.
- Lucas had 17 points and five rebounds against the Beavers and 25 points, three assists and two steals against the Redbirds.
- Taylor accounted for 10 points, six assists and three steals versus OSU and followed that up with 12 points, three assists and three steals against ISU.

LUCAS LOOKING FOR LONG RANGE RECORD

- Senior guard **Maggie Lucas** ranks second in Big Ten and Penn State history in three-point field goals made.
- Lucas has 314 triples in her collegiate career, trailing only Kelly Mazzante's Big Ten and Penn State record of 357 three-pointers.
- Lucas is just the second player in Big Ten history and 45th player in NCAA Division I history with 300 career three-pointers.
- With four triples against Fordham on Nov. 10, Lucas passed Michigan State's Lindsey Bowen (294) for second place on the Big Ten's career chart.
- Last season, Lucas tied the NCAA record for consecutive games with a made three-pointer in a season with 32.
- Lucas has made a triple in each of her last 42 contests, which is a school record.
- For her career, Lucas has connected on 42.8% of her shots from downtown, which ranks second in school history overall and first among Lady Lions with 75 or more career attempts.

DEFENSE SOLID VS. #1

- The Lady Lion defense had a solid showing against top-ranked UConn on Nov. 17.
- Penn State held the Huskies to their second-lowest post total of the season (71) and forced a season-high 17 UConn turnovers.
- Additionally, the 11 steals by the Lady Lions totaled more steals than UConn opponents had combined in the first three games of the season (8 - Hartford, 2; Stanford, 2; Maryland, 4).

LUCAS LOADING UP THE RECORD BOOKS

- In addition to her scoring and three-point prowess, senior guard **Maggie Lucas** has also etched her name on several other career charts for the Lady Lions.
- The Narberth, Pa. native sits atop the career free throw percentage list with an .897 mark.
- Lucas is also seventh in program history in free throws made with 419 shots made from the charity stripe.
- She needs 20 makes from the free throw line to tie Tanisha Wright (439; 2002-05) for sixth place all-time.
- Lucas has also moved up the career steals list. With one steal against Bucknell on Nov. 20, Lucas moved into sole possession of 15th place, passing Annie Troyan (187; 1981-83) with 194 career thefts.
- She needs two thefts to move into a tie for 16th with Brianne O'Rourke (196; 2006-09).

BJC STREAK SNAPPED

- The Lady Lions had their 22 game home court winning streak snapped at the hands of #1 Connecticut on Nov. 17. At the time of the loss, the winning streak was tied for the third-longest active streak in NCAA Division I, behind Baylor and Tennessee-Chattanooga.
- The loss marked Penn State's first home loss since Jan. 7, 2012 to Michigan State.
- The 22 game home court win streak is tied for the fourth-longest in school history.
- Additionally, Penn State had won its last 15 non-conference home games, dating back to Dec. 28, 2010, which was tied for the second-longest string in program history.



THE LAST TIME PENN STATE...

SCORING

Player scored 20 points: at South Dakota State (24, Ariel Edwards; 20, Maggie Lucas), 12/11/13
 Player scored 25 points: at Georgetown (30, Maggie Lucas), 12/8/13
 Player scored 30 points: at Georgetown (30, Maggie Lucas), 12/8/13
 Player scored 35 points: vs. Georgetown (39, Maggie Lucas), 12/9/12
 Player scored 40 points: vs. Minnesota (49, Kelly Mazzante), 12/28/01
 Two players scored 20 points: at South Dakota State (24, Ariel Edwards; 20, Maggie Lucas), 12/11/13
 Three players scored 20 pts.: at Nevada (26, Maggie Lucas; 23, Alex Bentley; 21, Zhaque Gray), 11/26/11
 Two players scored 25 points: at Boston College (28, Alex Bentley; 28, Maggie Lucas), 12/2/10
 Player scored 25 points/3 consecutive games: Kelly Mazzante (31, vs. Baylor, 12/9/03; 31, vs. Pittsburgh, 12/14/03; 29, Louisiana Tech, 12/21/03)
 Five in double figures: vs. Bucknell (17, Maggie Lucas; 16, Candice Agee; 14, Ariel Edwards; 14, Kaliyah Mitchell; 10, Tori Waldner), 11/20/13
 Six in double figures: at Oakland (15, Alex Bentley; 16, Ariel Edwards; 16, Zhaque Gray; 13, Maggie Lucas; 10, Mia Nickson; 10, Gizelle Studevent; 10, Julia Trogele), 11/18/10
 Seven in double figures: at Oakland (15, Alex Bentley; 16, Ariel Edwards; 16, Zhaque Gray; 13, Maggie Lucas; 10, Mia Nickson; 10, Gizelle Studevent; 10, Julia Trogele), 11/18/10
 PSU scored 50 points in a half: vs. Bucknell (53, first half), 11/20/13
 PSU scored 50 points in both halves: vs. St. Francis (Pa.) (55, first half; 62, second half), 11/8/13
 PSU scored 55 points in a half: vs. St. Francis (Pa.) (55, first half; 62, second half), 11/8/13
 PSU scored 60 points in a half: vs. St. Francis (Pa.) (62, second half), 11/8/13
 PSU scored 100 points: vs. St. Francis (Pa.) (W, 117-77), 11/8/13
 PSU scored 100 points in Big Ten game: vs. Illinois (W, 101-80), 2/15/01
 PSU scored 100 points in a home game: vs. St. Francis (Pa.) (W, 117-77), 11/8/13
 PSU scored fewer than 15 points in a half: vs. Wisconsin (13, first half), 2/25/10
 PSU scored fewer than 20 points in a half: vs. Michigan State (19, first half), 3/9/13
 PSU scored fewer than 40 points in a game: vs. Wisconsin (L, 39-71), 2/25/10
 PSU scored fewer than 50 points in a game: vs. Michigan State (L, 46-54), 3/9/13
 PSU scored fewer than 50 points in a Big Ten game: vs. Purdue (L, 49-60), 2/24/11
 OPP scored 50 points in a half: at South Dakota State (55, first half), 12/11/13
 OPP scored 100 points: at Boston College (Lot, 113-104), 12/2/10
 OPP scored fewer than 20 points in a game: at Dickinson (W, 57-16), 3/6/71
 OPP scored fewer than 30 points in a game: vs. Virginia Tech (W, 66-28), 12/6/11
 OPP scored fewer than 40 points in a game: vs. Wisconsin (W, 84-40), 1/17/13
 OPP scored fewer than 50 points in a game: vs. Bucknell (W, 92-49), 11/20/13
 OPP scored fewer than 50 points in a Big Ten game: at Michigan (W, 59-49), 1/21/13

FIELD GOAL SHOOTING

Player made every shot from the field (min. 7): vs. Michigan St. (Amanda Brown, 8-8), 1/25/07
 PSU shot 55% in a game: vs. Illinois (.611), 2/20/13
 PSU shot 55% in consecutive games: vs. Northwestern (.682), 3/2/96; vs. Ohio St. (.585), 3/3/96
 PSU shot 60% in a game: vs. Illinois (.611), 2/20/13
 PSU shot below 25% in a game: vs. Michigan State (.224), 3/9/13
 PSU shot below 30% in a game: vs. Michigan State (.224), 3/9/13
 PSU shot below 35% in a game and won: vs. Oregon State (.313), 11/30/13
 PSU shot below 30% in a game and won: vs. Northwestern (.299), 1/3/13
 PSU shot 55% in a half: at Georgetown (.680, second half), 12/8/13
 PSU shot 60% in a half: at Georgetown (.680, second half), 12/8/13
 PSU shot 65% in a half: at Georgetown (.680, second half), 12/8/13
 PSU shot 70% in a half: vs. Virginia Tech (.714, second half), 12/6/11
 PSU shot 55% in both halves: vs. Illinois (.586, first half; .640, second half), 2/20/13
 PSU shot 20% or below in a half: vs. Michigan State (.200, first half), 3/9/13
 PSU shot below 25% in a half: at Georgetown (.206, first half), 12/8/13

THREE-POINT SHOOTING

Player made every shot from the field (min. 4): at Bucknell (4-4, Maggie Lucas), 12/21/11
 Player made 4 three-pointers in a half: vs. Connecticut (4 in the second, Maggie Lucas), 11/17/13
 Player made 5 three-pointers in a half: vs. Michigan State (5 in the second, Maggie Lucas), 3/9/13
 Player made 6 three-pointers in a half: vs. Michigan State (5 in the second, Maggie Lucas), 3/9/13
 Player made 5 three-pointers in a game: at Georgetown (5, Maggie Lucas), 12/8/13
 Player made 6 three-pointers in a game: vs. Michigan State (7, Maggie Lucas), 3/9/13
 Player made 7 three-pointers in a game: vs. Michigan State (7, Maggie Lucas), 3/9/13
 Player made 8 three-pointers in a game: at Nebraska (8, Maggie Lucas), 3/3/13
 Player attempted 10 three-pointers in a game: at Georgetown (12, Maggie Lucas), 12/8/13
 PSU made 10 three-pointers: vs. North Carolina (14), 11/30/11
 PSU did not make a three-pointer: at South Carolina (0-6), 11/20/11
 PSU attempted 20 three-pointers: vs. Connecticut (21), 11/17/13
 PSU shot 60% 3FG (min. 5 att.): vs. Illinois (.667; 6-9), 2/20/13

FREE THROW SHOOTING

Player made every shot from FT line (min. 10): vs. St. Francis (Pa.) (16-16, Maggie Lucas), 11/8/13
 PSU shot 90% (min. 10 att.): vs. Notre Dame (20-22, .909), 12/4/13
 PSU shot below 50% (min. 10 att.): vs. Holy Cross (9-20, .450), 11/28/09
 PSU made 30 free throws: vs. St. Francis (Pa.) (37), 11/8/13
 PSU made fewer than five FTs: at Michigan (3), 2/3/11
 PSU attempted 40 free throws: vs. St. Francis (Pa.) (43), 11/8/13
 PSU attempted fewer than five FTs: at Michigan (4), 2/3/11

REBOUNDS

Player had 15 rebounds: at LSU (16, Nikki Greene), 3/26/13
 Player had 20 rebounds: at Cal State Northridge (20, Nikki Greene), 11/24/12
 Two players with double-digit rebs.: vs. Illinois State (11, Alex Harris; 11, Talia East), 11/30/13
 Three players had double-digit rebounds: vs. Ohio State (15, Nikki Greene; 15, Mia Nickson; 10, Maggie Lucas), 2/20/12
 PSU had 60 rebounds: vs. Ohio State (60), 2/20/12
 PSU had 50 rebounds: vs. Bucknell (56), 11/20/13
 PSU had 20 or fewer rebounds: vs. Michigan State (20), 1/19/03
 OPP had 20 or fewer rebounds: at Indiana (20), 2/13/11
 PSU had 20 offensive rebounds: vs. Fordham (21), 11/10/13
 PSU had 25 offensive rebounds: vs. Ohio State (29), 2/20/12

ASSISTS

Player had 10 assists: vs. North Carolina (15, Alex Bentley), 11/30/11
 Player had 10 assists/consecutive games: Helen Darling (12 at LaSalle, 12/8/99; 11 vs. Auburn, 12/11/99; 10 vs. Clemson, 12/19/99)
 Player had 15 assists: vs. North Carolina (15, Alex Bentley), 11/30/11
 PSU had 30 assists: vs. St. Francis (Pa.) (32), 12/2/99
 PSU had fewer than 10 assists: vs. Notre Dame (9), 12/4/13
 PSU had fewer than 5 assists: at Michigan State (4), 2/4/10

BLOCKED SHOTS

Player blocked 5 shots: vs. Minnesota (5, Tori Waldner), 1/24/13
 Player blocked 6 shots: at South Carolina (7, Talia East), 11/20/11
 PSU blocked 10 shots: at South Dakota State (10), 12/11/13
 PSU blocked 0 shots: vs. Purdue, 2/19/09

STEALS

Player had 7 steals: vs. Northwestern (7, Dara Taylor), 1/3/13
 Player had 8 steals: vs. NJIT (8, Alex Bentley), 12/23/12
 PSU had 20 steals: vs. Bucknell (21), 12/28/10

TURNOVERS

PSU committed 25 or more: vs. St. Francis (Pa.) (27), 11/8/13
 PSU committed 25 or more and won: vs. St. Francis (Pa.) (27), 11/8/13
 PSU committed 10 or fewer: vs. Michigan State (8), 3/9/13
 PSU committed 10 or fewer in consecutive games: vs. Minnesota (9), 1/22/04; at Ohio St. (9), 1/25/04
 OPP committed 25 or more: vs. Oregon State (26), 11/30/13

DOUBLE-DOUBLES

Points & rebounds: at LSU (Nikki Greene, 16 pts., 16 rebs), 3/26/13
 Points & rebounds/consecutive games: Nikki Greene (12 points, 10 rebounds vs. Ohio State, 1/30/11; 16 points, 14 rebounds at Illinois, 1/27/11)
 Points & rebounds/3 consecutive games: Amanda Brown (19 pts., 17 rebs. at Northwestern, 2/11/07; 14 pts., 10 rebs. vs. Minnesota, 2/15/07; 14 pts., 11 rebs. at Iowa, 2/18/07)
 Points & rebounds/4 consecutive games: Angie Potthoff (vs. Northwestern, 1/31/97; at Illinois, 2/2/97; vs. Michigan, 2/7/97; vs. Indiana, 2/9/97; vs. Iowa, 2/16/97; vs. Michigan State, 2/21/97)
 Points & rebounds/5 consecutive games: Angie Potthoff (vs. Northwestern, 1/31/97; at Illinois, 2/2/97; vs. Michigan, 2/7/97; vs. Indiana, 2/9/97; vs. Iowa, 2/16/97; vs. Michigan State, 2/21/97)
 Points & assists: vs. North Carolina (Alex Bentley; 15 points, 15 assists), 11/30/11
 Points & assists/consecutive games: Helen Darling (12 pts., 12 assts. at La Salle, 12/8/99; 10 pts., 11 assts. vs. Auburn, 12/11/99)
 Two players had double-doubles: vs. Ohio State (Nikki Greene, 25 pts., 15 rebs.; Mia Nickson, 18 pts., 15 rebs.; Maggie Lucas, 12 pts., 10 rebs.), 2/20/12
 Three players had double-doubles: vs. Ohio State (Nikki Greene, 25 pts., 15 rebs.; Mia Nickson, 18 pts., 15 rebs.; Maggie Lucas, 12 pts., 10 rebs.), 2/20/12
 15 points & 15 rebounds: at LSU (Nikki Greene, 16 pts., 16 rebs), 3/26/13
 20 points and 10 rebounds: vs. Wisconsin (Nikki Greene, 23 pts., 14 rebs.), 1/17/13

MARGIN OF VICTORY

PSU won by 20-30 points: vs. Bucknell (43), 11/20/13
 PSU won by 20-30 points in a Big Ten game: vs. Illinois (33), 2/20/13
 PSU won consecutive Big Ten games by 20+ pts.: vs. Wisconsin (44), 1/17/13; vs. Nebraska (22), 1/13/13; at Michigan St. (21), 1/6/13
 PSU won by 31-40 points: vs. Bucknell (43), 11/20/13
 PSU won by 41-50 points: vs. Bucknell (43), 11/20/13
 PSU won by 51+ points: vs. Fairleigh Dickinson (57), 12/2/12
 PSU lost by 20-30 points: at Ohio State (22), 2/17/11
 PSU lost by 20-30 points in a Big Ten game: at Ohio State (22), 2/17/11
 PSU lost by 31+ points: vs. Wisconsin (32), 2/25/10

MISCELLANEOUS

Led PSU in points/rebounds/assists: Tyra Grant vs. Michigan (25 pts., 9 rebs., 4 ast.), 2/18/10
 Hit "final seconds" (under 10 seconds) game-winning shot: Julia Trogele at Illinois (9 sec.), 1/27/11
 Hit "final minute" game-winning shot: Alex Bentley at Minnesota (3-pt. with :38.9 remaining), 2/5/12
 Player played every minute: at LSU (Maggie Lucas), 3/26/13
 Player played more than 40 min.: at Dayton (Alex Bentley, 46; Zhaque Gray, 44; Mia Nickson, 41), 11/12/10
 Committed 10 or fewer fouls: vs. Virginia Tech (9), 12/6/11
 Committed 30 or more fouls: vs. Iowa State (32), 11/25/11
 PSU rallied from a 10-pt. deficit to win: at Ohio State (down by 11 at 19:10 in 2nd half, won 155-73), 1/27/13
 PSU rallied from a 15-pt. deficit to win: at CS-Northridge (down by 17 at 5:52 in 1st half, won 85-73), 11/24/12
 PSU had a 5-game winning streak: 6 games, 2/4/13 - 2/24/13
 PSU had a 10-game winning streak: 11 games, 12/9/12 - 1/27/13
 PSU had a 5-game losing streak: 6 games, 1/28/10 - 2/14/10
 PSU went undefeated at home: 2012-13 season
 PSU sold out the BJC: Purdue, 2/29/04

OVERTIME

PSU played an OT game: at Boston College (L, 113-104), 12/2/10
 PSU won an OT game: at Oakland (96-89), 11/18/10
 PSU lost an OT game: at Boston College (L, 113-104), 12/2/10
 PSU played two or more OT games in a season: 2010-11 season (three)
 PSU won two or more OT games in a season: 2010-11 season (two)

RANKINGS

Played the No. 1 team in the AP poll: vs. Connecticut (L, 71-52), 11/17/13
 Played the No. 1 team in the Coaches poll: vs. Connecticut (L, 71-52), 11/17/13
 Defeated the No. 1 team in the AP poll: at Virginia (73-71), 1/3/91
 Defeated Top 10 opponent: vs. #8/11 Ohio State (84-66), 2/20/12
 Defeated Top 10 opponent on the road: at #7 Purdue (47-42), 1/2/04
 Defeated Top 10 opponent by double digits: vs. #8/11 Ohio State (84-66), 2/20/12
 Played consecutive Top 10 teams: at #2/3 Texas 11/14/04, at #6/6 Duke 11/19/04
 Defeated Top 25 opponent: at #20/25 Nebraska (82-67), 3/3/13
 Defeated Top 25 opponent on the road: at #20/25 Nebraska (82-67), 3/3/13
 Defeated Top 25 opponent by double digits: at #20/25 Nebraska (82-67), 3/3/13



2013-14 GAME-BY-GAME STARTING LINEUPS

Date	Opponent	Pt Guard	Guard	Guard	Forward	Center
10/27	LOCK HAVEN (exhib.)	Taylor	Lucas	Edwards	Waldner	Agee
11/8	ST. FRANCIS (PA.)	Taylor	Lucas	Edwards	Waldner	Agee
11/10	FORDHAM	Taylor	Lucas	Edwards	Waldner	Agee
11/17	CONNECTICUT	Taylor	Lucas	Edwards	Waldner	Agee
11/20	BUCKNELL	Taylor	Lucas	Edwards	Waldner	East
11/29	vs. Oregon State	Taylor	Lucas	Edwards	Waldner	East
11/30	vs. Illinois State	Taylor	Lucas	Edwards	Waldner	East
12/4	NOTRE DAME	Taylor	Lucas	Edwards	Waldner	East
12/8	at Georgetown	Taylor	Lucas	Edwards	Waldner	East
12/11	at South Dakota State	Taylor	Lucas	Edwards	Waldner	East

SCORE-O IN THE SEASON OPENER

- The Lady Lions broke the Bryce Jordan Center scoring record in the season-opening 117-77 win over St. Francis (Pa.) Nov. 8.
- The previous BJC record was 114 points by the Lady Lions against Northwestern on Jan. 2, 2000.
- The 117 points are the fourth-highest point total in school history (118, three times).
- The 117 points scored are the most for a Lady Lion team since Penn State had 118 points against Morgan State (Dec. 29, 1991).
- Penn State scored 62 points in the second half, marking the first time since Jan. 2, 2000 that the Lady Lions have scored 60 or more points in a half. In that game, PSU scored 65 points in the first half against Northwestern.

BIG TEN PRESEASON HONORS

- Senior guard **Maggie Lucas** was selected as the Big Ten Preseason Player of the Year by both the league's coaches and media.
- Lucas was a unanimous selection to the preseason All-Big Ten first team by both the coaches and media.
- This is the second-straight season that Lucas has been named to the preseason All-Big Ten first team.
- The Lady Lions were picked to finish second in the conference by both groups.

"WATCHING" LUCAS

- Senior guard **Maggie Lucas** is among the 25 players that have been named to the preseason WBCA's Wade Watch list for National Player of the Year.
- Additionally, Lucas is among the honorees on the John R. Wooden Award preseason Top 30 list and the Naismith Award Early Season List, which consists of 50 players.
- Lucas was a finalist for both the WBCA's Wade Trophy and the John R. Wooden Award as a junior.
- The Narberth, Pa. native is also among the 30 candidates for the Senior CLASS Award, which recognizes student-athletes that have notable achievements in four areas of excellence – community, classroom, character and competition.

LADY LIONS ON TV

- The Lady Lions will make at least 14 appearances on national television this season.
- The Lady Lions will appear on CBS once, ESPN2 five times and the Big Ten Network eight times during the 2013-14 slate.
- The 14 regular-season national TV appearances are the most in program history.
- Penn State's first TV game of the season will air on the Big Ten Network when the Lady Lions host defending National Champion UConn on Sun., Nov. 17 at noon.
- The Lady Lions will have a game on CBS for the second time in three years when they host Minnesota on Jan. 26 at 1 p.m.
- Additionally, the Eighth Annual Pink Zone at Penn State will air on ESPN2 when the Lady Lions host Wisconsin on Sun., Feb. 16 at 1 p.m.

PRESEASON HONORS

- The Lady Lions are ranked in several preseason publications heading into the 2013-14 campaign.
- Penn State is 14th in the Lindy's preview, 16th by USA Today Sports, 18th by the Sporting News and 21st by Athlon Sports.
- Senior guard **Maggie Lucas** was selected to the All-America first team in the Lindy's, Athlon Sports and Sporting News publications (USA Today Sports did not have an All-America team).
- For the second-straight season, Lucas was among the players receiving votes for the five-player Associated Press Preseason All-America team.

MILESTONE WATCH

Milestone Watch		
Milestone	Player	Current Total
2,100 points	Maggie Lucas	2,028
700 points	Ariel Edwards	677
500 points	Dara Taylor (career)	569
400 points	Dara Taylor (PSU)	327
300 points	Talia East	253
200 points	Tori Waldner	159
100 points	Candice Agee	96
500 rebounds	Maggie Lucas	437
400 rebounds	Talia East	350
	Ariel Edwards	331
300 rebounds	Dara Taylor (career)	271
	Tori Waldner	203
100 rebounds	Candice Agee	78
400 assists	Dara Taylor (career)	395
250 assists	Maggie Lucas	232
200 assists	Dara Taylor (PSU)	153
100 assists	Ariel Edwards	91
200 steals	Maggie Lucas	194
	Dara Taylor (career)	179
150 steals	Dara Taylor (PSU)	104
100 steals	Ariel Edwards	56
75 blocks	Talia East	67
	Tori Waldner	63
350 3-pointers	Maggie Lucas	314
50 3-pointers	Ariel Edwards	33
Milestone Reached		
Milestone	Player	Reached
200 rebounds	Tori Waldner	12/11
2,000 points	Maggie Lucas	12/8
300 points	Dara Taylor (PSU)	12/8
100 steals	Dara Taylor (PSU)	12/4
50 steals	Ariel Edwards	12/4
600 points	Ariel Edwards	11/20
500 points	Dara Taylor (career)	11/20
300 rebounds	Ariel Edwards	11/20
1,900 points	Maggie Lucas	11/17
300 rebounds	Talia East	11/17
300 3-pointers	Maggie Lucas	11/17
200 points	Talia East	11/8



RECORD BOOK

CAREER SCORING

1.	2,919	Kelly Mazzante, 2001-04
2.	2,253	Susan Robinson, 1989-92
3.	2,044	Tyra Grant, 2007-10
4.	2,028	Maggie Lucas, 2011-pres.
5.	2,025	Kahadeejah Herbert, 1982-85
6.	1,995	Tanisha Wright, 2002-05
7.	1,897	Suzie McConnell, 1985-88
8.	1,786	Alex Bentley, 2010-13
9.	1,725	Angie Potthoff, 1993-97
10.	1,663	Lisa Shepherd, 1998-01
11.	1,619	Andrea Garner, 1997-00
12.	1,538	Tanya Garner, 1988-91
13.	1,514	Vicki Link, 1984-87
14.	1,466	Jess Strom, 2002-05
15.	1,463	Katina Mack, 1992-96
16.	1,428	Jen Bednarek, 1977-80
17.	1,328	Maren Walseth, 1998-01
18.	1,320	Cheryl Ellison, 1980-83
19.	1,295	Kathy Phillips, 1989-92
20.	1,294	Helen Darling, 1997-00
21.	1,288	Carol Walderman, 1981-83
22.	1,280	Louise Leimkuhler, 1980-82
23.	1,240	Tina Nicholson, 1993-96
24.	1,238	Kam Gissendanner, 2006-08
25.	1,233	Amanda Brown, 2004-07
26.	1,186	Bethany Collins, 1985-88
27.	1,162	Lisa Faloon, 1984-87
28.	1,142	Jess Brungo, 2001-04
29.	1,135	Sue Martin, 1976-80
30.	1,132	Nikki Greene, 2010-13
31.	1,106	Missy Masley, 1992-95
32.	1,084	Brianne O'Rourke, 2005-09
33.	1,061	Nancy Kuhl, 1975-79
34.	1,024	Rashana Barnes, 1999-02
35.	1,022	Helen Holloway, 1991-94

CAREER 3-POINT FIELD GOALS MADE

1.	357	Kelly Mazzante, 2001-04
2.	314	Maggie Lucas, 2011-pres.
3.	230	Lisa Shepherd, 1998-01
4.	191	Jess Strom, 2002-05
5.	179	Tyra Grant, 2007-10

CAREER 3-POINT FGS ATTEMPTED

1.	1,019	Kelly Mazzante, 2001-04
2.	734	Maggie Lucas, 2011-pres.
3.	583	Lisa Shepherd, 1998-01
4.	531	Tyra Grant, 2007-10
5.	525	Jess Strom, 2002-05

CAREER BLOCKS

1.	268	Kim Calhoun, 1993-96
2.	215	Nikki Greene, 2010-13
3.	192	Mary Donovan, 1977-81
4.	189	Rashana Barnes, 1999-02
5.	185	Andrea Garner, 1997-00
6.	172	Amanda Brown, 2004-07
7.	140	Tina Henry, 1990-93
8.	94	Jess Brungo, 2001-04
9.	92	Bethany Collins, 1985-88
10.	89	Kathy Phillips, 1989-92
11.	87	Reicina Russell, 2003-04
	87	Vicki Link, 1984-87
13.	81	Kahadeejah Herbert, 1982-85
14.	75	Tyra Grant, 2007-10
15.	68	Kelly Mazzante, 2001-04
16.	67	Talia East, 2011-pres.
	67	Janessa Wolff, 2008-10
18.	66	Adrie DeVries, 1987-90
19.	63	Tori Waldner, 2012-pres.
20.	61	Tanisha Wright, 2002-05

CAREER FIELD GOALS ATTEMPTED

1.	2,430	Kelly Mazzante, 2001-04
2.	1,755	Tyra Grant, 2007-10
3.	1,685	Alex Bentley, 2010-13
4.	1,672	Susan Robinson, 1989-92
5.	1,667	Tanisha Wright, 2002-05
6.	1,526	Suzie McConnell, 1985-88
7.	1,514	Maggie Lucas, 2011-pres.
8.	1,365	Andrea Garner, 1997-00
9.	1,347	Kahadeejah Herbert, 1982-85
10.	1,329	Jen Bednarek, 1977-80

CAREER FREE THROWS MADE

1.	512	Kahadeejah Herbert, 1982-85
2.	491	Tyra Grant, 2007-10
3.	487	Susan Robinson, 1989-92
4.	478	Helen Darling, 1997-00
5.	460	Kelly Mazzante, 2001-04
6.	439	Tanisha Wright, 2002-05
7.	418	Maggie Lucas, 2011-pres.
8.	387	Jess Strom, 2002-05
	387	Lisa Shepherd, 1998-01
10.	371	Suzie McConnell, 1985-88

CAREER STEALS

1.	507	Suzie McConnell, 1985-88
2.	325	Alex Bentley, 2010-13
3.	314	Helen Darling, 1997-00
4.	310	Jess Strom, 2002-05
5.	293	Tina Nicholson, 1993-96
6.	289	Kelly Mazzante, 2001-04
7.	267	Tanisha Wright, 2002-05
8.	257	Nancy Kuhl, 1975-79
9.	247	Corinne Gulas, 1980-81
10.	224	Kahadeejah Herbert, 1982-85
11.	223	Tanya Garner, 1978-91
12.	217	Carol Walderman, 1981-83
13.	215	Sue Martin, 1976-80
14.	196	Brianne O'Rourke, 2006-09
15.	194	Maggie Lucas, 2011-pres.
16.	187	Annie Troyan, 1981-83
17.	182	Dana Eikenberg, 1989-92
	182	Vanessa Paynter, 1984-87
19.	180	Susan Robinson, 1989-92
20.	174	Angie Potthoff, 1993-97

as of Dec. 11, 2013

BIG TEN CAREER RECORDS

SCORING - CAREER

1.	2,919	Kelly Mazzante, PSU	2001-04
2.	2,818	Jantel Lavender, OSU	2008-11
3.	2,578	Katie Smith, OSU	1993-96
4.	2,405	MaChelle Joseph, PUR	1989-92
5.	2,312	Jolene Anderson, WIS	2005-08
6.	2,307	Anucha Browne, NU	1982-85
7.	2,303	Jessica Davenport, OSU	2004-07
8.	2,285	Lindsay Whalen, MINN	2001-04
9.	2,251	Shereka Wright, PUR	2001-04
10.	2,182	Stephanie White, PUR	1996-99
11.	2,160	Jenna Smith, ILL	2007-10
12.	2,097	Carol Ann Shudlick, MINN	1991-94
13.	2,089	Ashley Berggren, ILL	1995-98
14.	2,044	Laura Coenen, MINN	1982-85
	2,044	Tyra Grant, PSU	2007-10
16.	2,028	Maggie Lucas, PSU	2011-pres.

THREE-POINT FIELD GOALS - CAREER

1.	357	Kelly Mazzante, PSU	2001-04
2.	314	MAGGIE LUCAS, PSU	2011-pres.
3.	294	Lindsay Bowen, MSU	2003-06
4.	270	Caity Matter, OSU	2001-05
5.	261	Lindsey Meder, IOWA	1999-02

3-POINT FIELD GOAL PERCENTAGE - CAREER

1.	.428	MAGGIE LUCAS, PSU	2011-pres.
2.	.428	Brittany Johnson, OSU	2008-11
3.	.425	Jodi Howell, PUR	2006-10
4.	.411	Caity Matter, OSU	2001-05
5.	.407	Wendy Ausdemore, IOWA	2006-09
		Kristi Smith, IOWA	2006-09

FREE THROW PERCENTAGE - CAREER

1.	.900	Courtney Moses, PUR	2011-pres.
2.	.897	MAGGIE LUCAS, PSU	2011-pres.
3.	.892	Wendy Ausdemore, IOWA	2006-09
4.	.890	Jamie Printy, IOWA	2010-13
5.	.881	Cyndi Valentin, IND	2003-06



NATIONAL POLLS

ASSOCIATED PRESS (DEC. 9)

No.	Team (1st)	Rec.	Pts.	LW
1.	Connecticut (36)	10-0	900	1
2.	Duke	10-0	864	2
3.	Tennessee	8-0	804	3
4.	Notre Dame	8-0	774	4
5.	Kentucky	9-0	765	5
6.	Stanford	7-1	728	6
7.	Louisville	9-1	678	7
8.	Maryland	8-1	646	8
9.	Baylor	7-1	628	9
10.	South Carolina	9-0	507	12
11.	Colorado	8-0	505	11
12.	PENN STATE	6-2	496	10
13.	LSU	7-1	459	13
14.	Oklahoma State	7-0	395	14
15.	North Carolina	7-2	360	18
16.	Georgia	8-0	304	19
17.	Iowa State	8-0	293	20
18.	Purdue	6-2	260	16
19.	Nebraska	7-2	237	15
20.	Oklahoma	6-3	211	17
21.	Iowa	10-1	189	25
22.	California	6-2	187	21
23.	Gonzaga	7-1	141	24
24.	Texas A&M	6-2	123	23
25.	Syracuse	8-1	85	22

Others Receiving Votes: Florida State 69; Arizona State 33; Arkansas 14; Texas 10; West Virginia 8; UTEP 6; Georgia Tech 6; **Michigan State 5**; San Diego 3; BYU 3; Middle Tennessee State 2; St. Joseph's 1; Bowling Green 1.

USA TODAY COACHES' TOP 25 (DEC. 10)

No.	Team (1st)	Rec.	Pts.	LW
1.	Connecticut (32)	10-0	800	1
2.	Duke	10-0	763	2
3.	Tennessee	8-0	715	3
4t.	Notre Dame	8-0	685	5
4t.	Stanford	7-1	685	4
6.	Kentucky	9-0	662	6
7.	Louisville	9-1	610	7
8.	Maryland	9-1	575	8
9.	Baylor	7-1	518	9
10.	South Carolina	9-0	502	10
11.	Iowa State	8-0	443	12
12.	PENN STATE	6-2	405	11
13.	LSU	7-1	385	14
14.	North Carolina	7-2	365	16
15.	Colorado	8-0	337	17
16.	Nebraska	7-2	285	13
17.	Georgia	8-0	277	18
18.	Oklahoma State	7-0	270	19
19.	Oklahoma	6-3	266	15
20.	Texas A&M	6-2	183	20
21.	California	6-2	143	21
22.	Gonzaga	7-1	126	24
23.	Purdue	6-2	111	22
24.	Iowa	10-1	77	NR
25.	Florida State	8-1	60	NR

Others Receiving Votes: Syracuse 43; BYU 29; UTEP 12; Arkansas 11; San Diego 10; Vanderbilt 10; Texas 9; Georgia Tech 7; Bowling Green 7; DePaul 5; Arizona State 5; Kansas 3; Dayton 1.

* Bold type indicates 2013-14 Penn State opponent

FOUR McDONALD'S ALL-AMERICANS

- The Lady Lions tout four McDonald's High School All-Americans on their roster this season in **Maggie Lucas, Dara Taylor, Candice Agee** and **Sierra Moore**.
- Taylor played in the 2009 game, Lucas was in the 2010 contest and Agee and Moore were in the 2012 game.
- Lucas won the Powerade Three-Point Shootout as part of the McDonald's All-America celebration in 2010.
- Prior to **Coquese Washington** taking over the reigns, the Lady Lions only had one McDonald's High School All-American in program history.

HOOPIN' FOR THE USA

- Head coach **Coquese Washington** and sophomore center **Candice Agee** spent their summers winning gold medals with USA Basketball.
- Washington was an assistant coach on the USA Basketball Women's World University Games Team, serving under head coach Sherri Coale of Oklahoma.
- The United States took home the gold medal at the World University Games, which took place in Kazan, Russia July 8-15.
- Agee claimed her second gold medal as a member of USA Basketball, earning it at the FIBA U19 World Championship. She previously won a gold medal at the U18 FIBA Americas in the summer of 2012.

THE NCAA TOURNEY RETURNS TO THE BJC

- Penn State has been selected as one of 16 universities to host the 2014 NCAA Women's Basketball Championship First and Second Round games.
- The First Round will take place on Sunday, March 23 at 12:30 and 3 p.m., while the Second Round game will be played on Tuesday, March 25 at 7 p.m.
- This will be Penn State's 15th time hosting the NCAA First and Second Rounds.
- Penn State last hosted the First and Second Rounds in 2011 when the Lady Lions, DePaul, Dayton and Navy competed in the Bryce Jordan Center.
- The Lady Lions have won nine of its last 10 home NCAA Tournament games, posting a 17-5 overall record.

2014 PINK ZONE AT PENN STATE

- The Eighth Annual Pink Zone at Penn State will be held Sunday, Feb. 16 in the Bryce Jordan Center at 1 p.m. when the Lady Lions take on Wisconsin.
- Last year, the Lady Lions donated a record \$260,000 to breast cancer causes.
- All totalled, the Lady Lions have donated more than \$825,300 for breast cancer research and awareness in the first seven years.
- This year's fundraising efforts will benefit the Mount Nittany Medical Center, Penn State Hershey Cancer Institute, Pennsylvania Breast Cancer Coalition, the Kay Yow Cancer Fund, J.C. Blair Memorial Hospital and Lewistown Hospital.
- For more information on the Pink Zone at Penn State, visit the official Pink Zone website at www.pennsylvaniapinkzone.org.

14TH-RANKED RECRUITING CLASS JOINS LIONS

- The Lady Lions welcome eight newcomers to the fold this season in freshmen **Infiniti Alston, Jenny DeGraaf, Alex Harris, Kaliyah Mitchell, Keke Sevilian, Lindsey Spann** and **Peyton Whitted** and as well as Duke transfer **Sierra Moore**.
- The recruiting class was ranked 14th by ESPN/HoopGuriz.
- Spann was the highest ranked player in the class as she was the 22nd-rated recruit by Collegiate Girls Basketball.
- Harris was also in the Top 50, ranking 49th by both Collegiate Girls Basketball and All-Star Girls Report.
- Moore will have to sit out the 2013-14 season due to NCAA Transfer Rules, while Spann will likely miss the 2013-14 campaign after tearing her right ACL during a summer practice.

FANTASTIC NON-CONFERENCE SLATE

- The Lady Lions have put together arguably one of the best non-conference schedules in Bryce Jordan Center history with previous National Champions Connecticut, Notre Dame and Texas A&M slated to visit Happy Valley this season.
- Penn State's non-conference opponents have a combined 109 NCAA Tournament appearances, 20 Final Four appearances and 10 National Championships.
- Every PSU non-conference foe has made at least one NCAA Tournament appearance in their program history.
- Entering 2013-14, the Lady Lions are 33-11 all-time against their 2013 non-conference opponents for a 75% winning percentage.

PSU IN THE POLLS

Week of	AP	Coaches
Preseason	13	15
Nov. 11	13	15
Nov. 18	14	15
Nov. 25	13	14
Dec. 2	10	11
Dec. 9	12	12



2013-14 SINGLE GAME HIGHS & LOWS

Team Superlatives

Penn State High	Penn State Low	Category	Opponent High	Opponent Low
117, vs. St. Francis (Pa.) (11/8)	52, vs. Connecticut (11/17)	Points/Game	83, South Dakota State (12/11)	49, Bucknell (11/20)
62, vs. St. Francis (Pa.) (11/8)	22, vs. Connecticut (11/17)	Points/Half	55, South Dakota State (12/11)	25, Georgetown (12/8)
39, vs. St. Francis (Pa.) (11/8)	18, vs. Connecticut (11/17)	Field Goals Made	27, Notre Dame (12/4)	14, Bucknell (11/20)
73, vs. St. Francis (Pa.) (11/8)	54, vs. Notre Dame (12/4)	Field Goal Attempts	75, St. Francis (Pa.) (11/8)	55, Bucknell (11/20)
.534, vs. St. Francis (Pa.) (11/8)	.300, vs. Connecticut (11/17)	FG Percentage	.439, Connecticut (11/17)	.255, Bucknell (11/20)
8, vs. Fordham (11/10)	2, 4x (MR: at S. Dakota St., 12/11)	3-pt. FG Made	10, St. Francis (Pa.) (11/8)	4, twice (MR: Notre Dame, 12/4)
21, vs. Connecticut (11/17)	6, vs. Oregon State (11/29)	3-pt. FG Attempts	42, St. Francis (Pa.) (11/8)	11, Notre Dame (12/4)
.500, vs. Fordham (11/10)	.111, vs. Bucknell (11/20)	3-pt. FG Percentage	.429, Illinois State (11/30)	.182, Bucknell (11/20)
37, vs. St. Francis (Pa.) (11/8)	10, vs. Connecticut (11/17)	Free Throws Made	22, South Dakota State (12/11)	12, Connecticut (11/17)
43, vs. St. Francis (Pa.) (11/8)	13, vs. Connecticut (11/17)	Free Throw Attempts	33, South Dakota State (12/11)	18, Fordham (11/10)
.909, vs. Notre Dame (12/4)	.692, vs. Illinois State (11/30)	Free Throw Percentage	.864, Notre Dame (12/4)	.542, Illinois State (11/30)
57, vs. St. Francis (Pa.) (11/8)	36, vs. Notre Dame (12/4)	Rebounds	53, South Dakota State (12/11)	32, Bucknell (11/20)
20, vs. Bucknell (11/20)	8, at South Dakota State (12/11)	Assists	17, twice (MR: Notre Dame, 12/4)	10, Bucknell (11/20)
19, vs. St. Francis (Pa.) (11/8)	6, vs. Fordham (11/10)	Steals	13, Connecticut (11/17)	6, South Dakota State (12/11)
10, at South Dakota State (12/11)	2, vs. Oregon State (11/29)	Blocked Shots	8, Connecticut (11/17)	1, Illinois State (11/30)
27, vs. St. Francis (Pa.) (11/8)	11, at South Dakota State (12/11)	Turnovers	30, St. Francis (Pa.) (11/8)	14, South Dakota St. (12/11)
26, vs. Bucknell (11/20)	18, vs. Oregon State (11/29)	Fouls	32, St. Francis (Pa.) (11/8)	13, Connecticut (11/17)

Individual Superlatives

	Penn State	Opponent
Points	33, Maggie Lucas vs. St. Francis (Pa.) (11/8)	29, Bria Hartley, Connecticut (11/17)
Field Goals Made	10, Maggie Lucas at Georgetown (12/8)	10, Bria Hartley, Connecticut (11/17)
Field Goal Attempts	21, twice (MR: Maggie Lucas at South Dakota State, 12/11)	22, Alexis Foley, Illinois State (11/30)
Field Goal Pct. (min. 5 made)	.833, Tori Waldner vs. Bucknell (11/20)	.833, Samiah Bethel, St. Francis (Pa.) (11/8)
3-pt. Field Goals Made	5, Maggie Lucas at Georgetown (12/8)	6, twice (MR: Alexis Foley, Illinois State, 11/30)
3-pt. Field Goal Attempts	12, Maggie Lucas at Georgetown (12/8)	13, Katie McCormick, Georgetown (12/8)
3-pt. Field Goal Pct. (min. 2 made)	.667, Maggie Lucas vs. Fordham (11/10)	1.000, Bridget Murphy, St. Francis (Pa.) (11/8)
Free Throws Made	16, Maggie Lucas vs. St. Francis (Pa.) (11/8)	8, Erin Rooney, Fordham (11/10)
Free Throw Attempts	16, Maggie Lucas vs. St. Francis (Pa.) (11/8)	11, twice (MR: Mariah Clarin, South Dakota St., 12/11)
Free Throw Percentage (min. 3 made)	1.000, 16x (MR: Edwards/Lucas at South Dakota State, 12/11)	1.000, 6x (MR: Gabby Boever, South Dakota St., 12/11)
Rebounds	11, 3x (MR: Harris/East vs. Illinois State, 11/30)	12, Audrey Dotson, Bucknell (11/20)
Assists	7, Dara Taylor vs. Bucknell (11/20)	7, Abigail Corning, Fordham (11/10)
Steals	6, Dara Taylor vs. Bucknell (11/20)	7, Andrea White, Georgetown (12/8)
Blocked Shots	4, twice (MR: Ariel Edwards at South Dakota State, 12/11)	5, Breanna Stewart, Connecticut (11/17)
Turnovers	5, 5x (MR: Dara Taylor at Georgetown, 12/8)	8, Erin Blaine, St. Francis (Pa.) (11/8)



MISCELLANEOUS STATS

LEADING SCORER Maggie Lucas 7 Ariel Edwards 2	20-POINT SCORING GAMES Penn State 7 Opponents 5	BENCH POINTS Penn State 173 (19.2 ppg) Opponents 165 (18.3 ppg)	LARGEST LEAD GIVEN UP IN LOSS 6, vs. Notre Dame (14:09 in 1st half) (12/4)																																																												
LEADING REBOUNDER Alex Harris 3 Talia East 3 Tori Waldner 2 Candice Agee 1 Ariel Edwards 1	Maggie Lucas 5 Ariel Edwards 2 30-POINT SCORING GAMES Penn State 2 Opponents 0 Maggie Lucas 2	JUMP BALLS CONTROLLED Penn State 6 Opponents 3	LARGEST WIN 43, vs. Bucknell (92-49) (11/20)																																																												
LEADER IN ASSISTS Dara Taylor 7 Ariel Edwards 1 Tori Waldner 1	TECHNICAL FOULS Penn State 0 Opponents 0	FIRST SCORE Penn State 7 Opponents 2 Dara Taylor 3 Maggie Lucas 2 Ariel Edwards 1 Tori Waldner 1	LARGEST DEFEAT 19, vs. Connecticut (71-52) (11/17)																																																												
LEADER IN STEALS Dara Taylor 5 Maggie Lucas 3 Ariel Edwards 2	FOUR-POINT PLAYS Penn State 0 Opponents 0	RUNS OF 10-0 OR BETTER Penn State 3 Opponents 2	MOST CONSECUTIVE POINTS 13, vs. Bucknell (15:02 to 11:59) (11/20)																																																												
LEADER IN BLOCKS Alex Harris 4 Talia East 4 Tori Waldner 4 Candice Agee 2 Dara Taylor 1 Peyton Whitted 1 Ariel Edwards 1	THREE-POINT PLAYS Penn State 16 Opponents 14 Dara Taylor 5 Ariel Edwards 4 Maggie Lucas 3 Candice Agee 1 Talia East 1 Alex Harris 1 Kaliyah Mitchell 1	LARGEST HALFTIME LEAD 30, vs. Bucknell (53-23) (11/20)	LONGEST WINNING STREAK 3, twice (MR: 11/20-11/30)																																																												
GAMES STARTED Ariel Edwards 9 Maggie Lucas 9 Dara Taylor 9 Tori Waldner 9 Talia East 6 Candice Agee 3	PSU'S FIRST SUBSTITUTION Candice Agee 4 Talia East 3 Kaliyah Mitchell 3 Keke Sevillian 1 Jenny DeGraaf 1	LARGEST HALFTIME DEFICIT 20, at South Dakota St. (55-35) (12/11)	LONGEST LOSING STREAK 1, 3x (MR: 12/11-present)																																																												
LADY LIONS EXCELLING AT THE NEXT LEVEL <ul style="list-style-type: none"> • Former Penn State Lady Lions Alex Bentley and Tanisha Wright were among the players honored by the WNBA this season. Bentley was part of the five-player WNBA All-Rookie Team, while Wright took home her fourth WNBA All-Defensive first team selection. • In her first season in the WNBA, Bentley averaged 8.3 points, 2.8 assists and 1.0 steals per game for the Atlanta Dream. • Bentley ranked third in the league in assists per turnover (2.4), 18th in total assists (95) and 19th in three-point field goal percentage (.329). • Earlier in the season, Bentley broke the WNBA record for consecutive three-pointers made with 10. • Wright, who finished her ninth season in the Seattle Storm, accounted for 11.9 points, 4.1 assists, 3.7 rebounds and 1.1 steals per game. • She was eight in the league in total assists (130), sixth in total minutes played (1,016) and 10th in assists per game and 14th in free throw percentage (.855). • Wright surpassed the 2,000-point mark for her WNBA career earlier in the season. 		LARGEST LEAD 44, Bucknell (11/20)	CLUTCH FREE THROWS (FINAL 5 MIN. & OT) Keke Sevillian 4-4 1.000 Tori Waldner 2-2 1.000 Peyton Whitted 2-2 1.000 Dara Taylor 11-13 .846 Maggie Lucas 6-7 .857 Kaliyah Mitchell 4-5 .800 Ariel Edwards 9-13 .692 Candice Agee 1-4 .250 Alex Harris 1-4 .250																																																												
SPANN TEARS ACL <ul style="list-style-type: none"> • Freshman guard Lindsey Spann will be sidelined after tearing her right anterior cruciate ligament (ACL) during a workout during the summer. • Spann had successful surgery to repair her knee in July. • A timetable for Spann's return has not been set. 		LARGEST DEFICIT 23, twice (MR: at at S. Dakota St., 12/11)	NOTE: Totals may not add up to games played due to ties.																																																												
LARGEST DEFICIT OVERCOME TO WIN 9, vs. Oregon State (8:04 in 1st half) (11/29)		<table border="1" style="width: 100%; border-collapse: collapse;"> <thead> <tr> <th style="text-align: left;">SPECIALITY STATS (PSU/OPP)</th> <th>Paint</th> <th>Off TO</th> <th>2nd</th> <th>FastBr</th> <th>Bench</th> </tr> </thead> <tbody> <tr><td>St. Francis (Pa.)</td><td>66/24</td><td>31/21</td><td>19/8</td><td>24/12</td><td>37/30</td></tr> <tr><td>Fordham</td><td>22/16</td><td>17/13</td><td>13/9</td><td>11/4</td><td>16/15</td></tr> <tr><td>Connecticut</td><td>20/24</td><td>6/19</td><td>15/5</td><td>5/10</td><td>12/18</td></tr> <tr><td>Bucknell</td><td>48/20</td><td>25/4</td><td>25/4</td><td>16/2</td><td>45/15</td></tr> <tr><td>Oregon State</td><td>26/16</td><td>18/20</td><td>11/10</td><td>6/2</td><td>12/25</td></tr> <tr><td>Illinois State</td><td>34/18</td><td>17/18</td><td>12/7</td><td>8/2</td><td>25/0</td></tr> <tr><td>Notre Dame</td><td>28/38</td><td>17/13</td><td>12/20</td><td>8/10</td><td>9/21</td></tr> <tr><td>Georgetown</td><td>28/20</td><td>19/19</td><td>13/14</td><td>14/2</td><td>9/18</td></tr> <tr><td>South Dakota St.</td><td>40/30</td><td>22/12</td><td>10/21</td><td>24/4</td><td>8/23</td></tr> </tbody> </table>		SPECIALITY STATS (PSU/OPP)	Paint	Off TO	2nd	FastBr	Bench	St. Francis (Pa.)	66/24	31/21	19/8	24/12	37/30	Fordham	22/16	17/13	13/9	11/4	16/15	Connecticut	20/24	6/19	15/5	5/10	12/18	Bucknell	48/20	25/4	25/4	16/2	45/15	Oregon State	26/16	18/20	11/10	6/2	12/25	Illinois State	34/18	17/18	12/7	8/2	25/0	Notre Dame	28/38	17/13	12/20	8/10	9/21	Georgetown	28/20	19/19	13/14	14/2	9/18	South Dakota St.	40/30	22/12	10/21	24/4	8/23
SPECIALITY STATS (PSU/OPP)	Paint	Off TO	2nd	FastBr	Bench																																																										
St. Francis (Pa.)	66/24	31/21	19/8	24/12	37/30																																																										
Fordham	22/16	17/13	13/9	11/4	16/15																																																										
Connecticut	20/24	6/19	15/5	5/10	12/18																																																										
Bucknell	48/20	25/4	25/4	16/2	45/15																																																										
Oregon State	26/16	18/20	11/10	6/2	12/25																																																										
Illinois State	34/18	17/18	12/7	8/2	25/0																																																										
Notre Dame	28/38	17/13	12/20	8/10	9/21																																																										
Georgetown	28/20	19/19	13/14	14/2	9/18																																																										
South Dakota St.	40/30	22/12	10/21	24/4	8/23																																																										



Player Performance Charts

#1 CANDICE AGEE

CAREER HIGHS

Points	16 vs. Bucknell (11/20/13)
Rebs	9 vs. Fairleigh Dickinson (12/2/12)
Assists	1 (5x) last vs. Oregon State (11/29/13)
Steals	2 vs. NJIT (12/23/12)
Blocks	3 vs. Illinois (2/20/13)
Minutes	21 vs. Bucknell (11/20/13)
FGM	7 vs. Bucknell (11/20/13)
FGA	10 vs. Bucknell (11/20/13)
FG%	1.000 (1-1) at Ohio State (1/27/13)
	1.000 (1-1) at Miami (11/29/12)
3FGM	n/a
3FGA	n/a
3PT%	n/a
FTM	4 vs. Illinois (2/20/13)
FTA	8 vs. Illinois (2/20/13)
FT%	1.000 (4x) last vs. Oregon State (2-2) (11/29/13)
Career Double-Doubles	n/a
Career 20-point games	n/a

SEASON HIGHS

Points	16 vs. Bucknell (11/20/13)
Rebs	7 vs. Fordham (11/10/13)
Assists	1 (3x) last vs. Oregon State (11/29/13)
Steals	1 vs. St. Francis (Pa.) (11/8/13)
Blocks	2 (3x) last vs. Illinois State (11/30/13)
Minutes	21 vs. Bucknell (11/20/13)
FGM	7 vs. Bucknell (11/20/13)
FGA	10 vs. Bucknell (11/20/13)
FG%	.700 (7-10) vs. Bucknell (11/20/13)
3FGM	n/a
3FGA	n/a
3PT%	n/a
FTM	2 (4x) last at Georgetown (12/8/13)
FTA	6 vs. Fordham (11/10/13)
FT%	1.000 (3x) last vs. Oregon State (2-2) (11/29/13)
Double-Doubles	n/a
20-point games	n/a

BIG TEN CONFERENCE CAREER HIGHS

Points	8 vs. Illinois (2/20/13)
Rebs	3 at Ohio State (1/27/13)
Assists	n/a
Steals	n/a
Blocks	3 vs. Illinois (2/20/13)
Minutes	16 vs. Illinois (2/20/13)
FGM	2 (3x) last vs. Illinois (2/20/13)
FGA	4 (3x) last vs. Illinois (2/20/13)
FG%	1.000 (1-1) at Ohio State (1/27/13)
3FGM	n/a
3FGA	n/a
3PT%	n/a
FTM	4 vs. Illinois (2/20/13)
FTA	8 vs. Illinois (2/20/13)
FT%	.500 (4-8) vs. Illinois (2/20/13)
	.500 (1-2) at Iowa (2/14/13)
Double-Doubles	n/a
20-point games	n/a

#2 DARA TAYLOR

CAREER HIGHS

Points	19 at South Dakota State (12/11/13)
Rebs	8 vs. East Carolina (3/21/10)
Assists	11 at American (12/20/09)
	11 at Virginia (1/11/10)
Steals	7 vs. Northwestern (1/13/13)
Blocks	1 (8x) last vs. Fordham (11/10/13)
Minutes	38 vs. Notre Dame (12/4/13)
	38 at American (12/20/09)
FGM	8 at South Dakota State (12/11/13)
FGA	15 vs. Notre Dame (12/4/13)
FG%	1.000 (3x) last vs. N.C. State (2-2) (2/6/11)
3FGM	3 at Michigan State (1/6/13)
	3 at Virginia Tech (12/12/12)
3FGA	6 at Virginia Tech (12/12/12)
3PT%	1.000 (8x) last vs. Cal Poly (1-1) (3/24/13)
FTM	7 at Wake Forest (2/11/10)
FTA	10 at Wake Forest (2/11/10)
	10 vs. North Carolina (3/4/10)
FT%	1.000 (15x) last at Georgetown (6-6) (12/8/13)
Career Double-Doubles	1
Career 20-point games	n/a

SEASON HIGHS

Points	19 at South Dakota State (12/11/13)
Rebs	5 at Georgetown (12/8/13)
Assists	7 vs. Bucknell (11/20/13)
Steals	6 vs. Bucknell (11/20/13)
Blocks	1 vs. Fordham (11/10/13)
	1 vs. St. Francis (Pa.) (11/8/13)
Minutes	38 vs. Notre Dame (12/4/13)
FGM	8 at South Dakota State (12/11/13)
FGA	15 vs. Notre Dame (12/4/13)
FG%	.571 (8-14) at South Dakota St. (12/11/13)
3FGM	2 vs. Fordham (11/10/13)
3FGA	4 vs. Connecticut (11/17/13)
	4 vs. Fordham (11/10/13)
3PT%	.500 (1-2) vs. Notre Dame (12/4/13)
	.500 (2-4) vs. Fordham (11/10/13)
FTM	6 at Georgetown (12/8/13)
FTA	6 vs. St. Francis (Pa.) (11/8/13)
	8 vs. St. Francis (Pa.) (11/8/13)
FT%	1.000 (3x) last at Georgetown (6-6) (12/8/13)
Double-Doubles	n/a
20-point games	n/a

BIG TEN CONFERENCE CAREER HIGHS

Points	18 at Michigan State (1/6/13)
Rebs	7 at Iowa (2/14/13)
	7 vs. Wisconsin (1/17/13)
Assists	8 vs. Nebraska (1/13/13)
Steals	7 vs. Northwestern (1/13/13)
Blocks	1 vs. Minnesota (1/24/13)
	1 vs. Nebraska (1/13/13)
Minutes	34 at Michigan State (1/6/13)
FGM	7 at Michigan State (1/6/13)
FGA	12 vs. Northwestern (1/13/13)
FG%	.700 (7-10) at Michigan State (1/6/13)
3FGM	3 at Michigan State (1/6/13)
3FGA	4 at Michigan State (1/6/13)
3PT%	1.000 (4x) last at Iowa (1-1) (2/14/13)
FTM	2 at Indiana (2/7/13)
	2 vs. Purdue (2/4/13)
FTA	4 at Indiana (2/7/13)
FT%	1.000 (3x) last at Ohio State (1-1) (1/27/13)
Double-Doubles	n/a
20-point games	n/a

#5 TALIA EAST

CAREER HIGHS

Points	12 vs. Notre Dame (12/4/13)
Rebs	15 at South Carolina (11/20/11)
Assists	2 (6x) last at Georgetown (12/8/13)
Steals	2 (7x) last vs. Connecticut (11/17/13)
Blocks	7 at South Carolina (11/20/11)
Minutes	29 (3x) last vs. Notre Dame (12/4/13)
FGM	4 (6x) last at Georgetown (12/8/13)
FGA	10 vs. Fairleigh Dickinson (12/2/12)
FG%	1.000 (12x) last at Nebraska (1-1) (3/3/13)
3FGM	n/a
3FGA	n/a
3PT%	n/a
FTM	5 vs. Purdue (2/4/13)
FTA	7 vs. Purdue (2/4/13)
FT%	1.000 (13x) last at Georgetown (2-2) (12/8/13)
Career Double-Doubles	n/a
Career 20-point games	n/a

SEASON HIGHS

Points	12 vs. Notre Dame (12/4/13)
Rebs	11 vs. Illinois State (11/30/13)
Assists	2 at Georgetown (12/8/13)
	2 vs. Fordham (11/10/13)
Steals	2 vs. Connecticut (11/17/13)
Blocks	4 vs. Connecticut (11/17/13)
Minutes	29 vs. Notre Dame (12/4/13)
	29 vs. Connecticut (11/17/13)
FGM	4 (3x) last at Georgetown (12/8/13)
FGA	8 at Georgetown (12/8/13)
FG%	.800 (4-5) vs. Notre Dame (12/4/13)
3FGM	n/a
3FGA	n/a
3PT%	n/a
FTM	4 vs. Notre Dame (12/4/13)
FTA	4 vs. Notre Dame (12/4/13)
FT%	1.000 (6x) last at Georgetown (2-2) (12/8/13)
Double-Doubles	n/a
20-point games	n/a

BIG TEN CONFERENCE CAREER HIGHS

Points	9 vs. Purdue (2/4/13)
	9 vs. Indiana (2/2/12)
Rebs	10 at Northwestern (2/12/12)
Assists	2 vs. Minnesota (2/26/12)
Steals	2 (3x) last at Indiana (2/7/13)
Blocks	3 at Nebraska (1/15/12)
Minutes	24 vs. Indiana (2/2/12)
FGM	4 vs. Indiana (2/2/12)
FGA	7 vs. Indiana (2/2/12)
FG%	1.000 (11x) at Nebraska (1-1) (3/3/13)
3FGM	n/a
3FGA	n/a
3PT%	n/a
FTM	5 vs. Purdue (2/4/13)
FTA	7 vs. Purdue (2/4/13)
FT%	1.000 (3x) last at Iowa (2-2) (2/14/13)
Double-Doubles	n/a
20-point games	n/a



Player Performance Charts

#10 KEKE SEVILLIAN

CAREER HIGHS

Points.....	8 vs. St. Francis (Pa.) (11/8/13)
Rebs.....	3 vs. St. Francis (Pa.) (11/8/13)
Assists.....	1 (4x) last vs. Illinois State (11/30/13)
Steals.....	4 vs. St. Francis (Pa.) (11/8/13)
Blocks.....	n/a
Minutes.....	18 vs. St. Francis (Pa.) (11/8/13)
FGM.....	2 vs. Illinois State (11/30/13)
.....	2 vs. St. Francis (Pa.) (11/8/13)
FGA.....	6 vs. St. Francis (Pa.) (11/8/13)
FG%.....	1.000 (2-2) at Georgetown (10/8/13)
3FGM.....	1 (3x) last vs. Illinois State (11/30/13)
3FGA.....	3 vs. Bucknell (11/20/13)
.....	3 vs. Fordham (11/10/13)
3PT%.....	1.000 (1-1) vs. Illinois State (11/30/13)
FTM.....	4 vs. St. Francis (Pa.) (11/8/13)
FTA.....	4 vs. St. Francis (Pa.) (11/8/13)
FT%.....	1.000 (3x)
.....	last vs. Notre Dame (2-2) (12/4/13)
Double-Doubles.....	n/a
20-point games.....	n/a

SEASON HIGHS

Points.....	8 vs. St. Francis (Pa.) (11/8/13)
Rebs.....	3 vs. St. Francis (Pa.) (11/8/13)
Assists.....	1 (4x) last vs. Illinois State (11/30/13)
Steals.....	4 vs. St. Francis (Pa.) (11/8/13)
Blocks.....	n/a
Minutes.....	18 vs. St. Francis (Pa.) (11/8/13)
FGM.....	2 vs. Illinois State (11/30/13)
.....	2 vs. St. Francis (Pa.) (11/8/13)
FGA.....	6 vs. St. Francis (Pa.) (11/8/13)
FG%.....	1.000 (2-2) at Georgetown (10/8/13)
3FGM.....	1 (3x) last vs. Illinois State (11/30/13)
3FGA.....	3 vs. Bucknell (11/20/13)
.....	3 vs. Fordham (11/10/13)
3PT%.....	1.000 (1-1) vs. Illinois State (11/30/13)
FTM.....	4 vs. St. Francis (Pa.) (11/8/13)
FTA.....	4 vs. St. Francis (Pa.) (11/8/13)
FT%.....	1.000 (3x)
.....	last vs. Notre Dame (2-2) (12/4/13)
Double-Doubles.....	n/a
20-point games.....	n/a

BIG TEN CONFERENCE CAREER HIGHS

Points.....	n/a
Rebs.....	n/a
Assists.....	n/a
Steals.....	n/a
Blocks.....	n/a
Minutes.....	n/a
FGM.....	n/a
FGA.....	n/a
FG%.....	n/a
3FGM.....	n/a
3FGA.....	n/a
3PT%.....	n/a
FTM.....	n/a
FTA.....	n/a
FT%.....	n/a
Double-Doubles.....	n/a
20-point games.....	n/a

#11 ALEX HARRIS

CAREER HIGHS

Points.....	8 vs. Bucknell (11/20/13)
Rebs.....	11 vs. Illinois State (11/30/13)
.....	11 vs. Bucknell (11/20/13)
Assists.....	2 vs. Illinois State (11/30/13)
Steals.....	1 (3x) last vs. Oregon State (11/29/13)
Blocks.....	3 vs. St. Francis (Pa.) (11/8/13)
Minutes.....	22 vs. Fordham (11/10/13)
FGM.....	3 vs. Bucknell (11/20/13)
FGA.....	5 vs. Oregon State (11/29/13)
FG%.....	1.000 (2-2) at South Dakota St. (12/11/13)
.....	1.000 (3-3) vs. Bucknell (11/20/13)
3FGM.....	n/a
3FGA.....	n/a
3PT%.....	n/a
FTM.....	2 (5x) last vs. Notre Dame (12/4/13)
FTA.....	5 vs. Bucknell (11/20/13)
FT%.....	1.000 (3x)
.....	last vs. Notre Dame (2-2) (12/4/13)
Double-Doubles.....	n/a
20-point games.....	n/a

SEASON HIGHS

Points.....	8 vs. Bucknell (11/20/13)
Rebs.....	11 vs. Illinois State (11/30/13)
.....	11 vs. Bucknell (11/20/13)
Assists.....	2 vs. Illinois State (11/30/13)
Steals.....	1 (3x) last vs. Oregon State (11/29/13)
Blocks.....	3 vs. St. Francis (Pa.) (11/8/13)
Minutes.....	22 vs. Fordham (11/10/13)
FGM.....	3 vs. Bucknell (11/20/13)
FGA.....	5 vs. Oregon State (11/29/13)
FG%.....	1.000 (2-2) at South Dakota St. (12/11/13)
.....	1.000 (3-3) vs. Bucknell (11/20/13)
3FGM.....	n/a
3FGA.....	n/a
3PT%.....	n/a
FTM.....	2 (5x) last vs. Notre Dame (12/4/13)
FTA.....	5 vs. Bucknell (11/20/13)
FT%.....	1.000 (3x)
.....	last vs. Notre Dame (2-2) (12/4/13)
Double-Doubles.....	n/a
20-point games.....	n/a

BIG TEN CONFERENCE CAREER HIGHS

Points.....	n/a
Rebs.....	n/a
Assists.....	n/a
Steals.....	n/a
Blocks.....	n/a
Minutes.....	n/a
FGM.....	n/a
FGA.....	n/a
FG%.....	n/a
3FGM.....	n/a
3FGA.....	n/a
3PT%.....	n/a
FTM.....	n/a
FTA.....	n/a
FT%.....	n/a
Double-Doubles.....	n/a
20-point games.....	n/a

#15 KALIYAH MITCHELL

CAREER HIGHS

Points.....	14 vs. Bucknell (11/20/13)
Rebs.....	8 vs. Bucknell (11/20/13)
Assists.....	1 (5x) last vs. Illinois State (11/30/13)
Steals.....	3 vs. Notre Dame (12/4/13)
Blocks.....	1 vs. St. Francis (Pa.) (11/8/13)
Minutes.....	21 vs. Fordham (11/10/13)
FGM.....	5 vs. St. Francis (Pa.) (11/8/13)
FGA.....	8 vs. St. Francis (Pa.) (11/8/13)
FG%.....	1.000 (2-2) vs. Illinois State (11/30/13)
3FGM.....	1 vs. Illinois State (11/30/13)
3FGA.....	1 vs. Illinois State (11/30/13)
3PT%.....	1.000 (1-1) vs. Illinois State (11/30/13)
FTM.....	6 vs. Bucknell (11/20/13)
FTA.....	7 vs. Bucknell (11/20/13)
FT%.....	1.000 (4-4) vs. Oregon State (11/29/13)
.....	1.000 (2-2) vs. Connecticut (11/17/13)
Double-Doubles.....	n/a
20-point games.....	n/a

SEASON HIGHS

Points.....	14 vs. Bucknell (11/20/13)
Rebs.....	8 vs. Bucknell (11/20/13)
Assists.....	1 (5x) last vs. Illinois State (11/30/13)
Steals.....	3 vs. Notre Dame (12/4/13)
Blocks.....	1 vs. St. Francis (Pa.) (11/8/13)
Minutes.....	21 vs. Fordham (11/10/13)
FGM.....	5 vs. St. Francis (Pa.) (11/8/13)
FGA.....	8 vs. St. Francis (Pa.) (11/8/13)
FG%.....	1.000 (2-2) vs. Illinois State (11/30/13)
3FGM.....	1 vs. Illinois State (11/30/13)
3FGA.....	1 vs. Illinois State (11/30/13)
3PT%.....	1.000 (1-1) vs. Illinois State (11/30/13)
FTM.....	6 vs. Bucknell (11/20/13)
FTA.....	7 vs. Bucknell (11/20/13)
FT%.....	1.000 (4-4) vs. Oregon State (11/29/13)
.....	1.000 (2-2) vs. Connecticut (11/17/13)
Double-Doubles.....	n/a
20-point games.....	n/a

BIG TEN CONFERENCE CAREER HIGHS

Points.....	n/a
Rebs.....	n/a
Assists.....	n/a
Steals.....	n/a
Blocks.....	n/a
Minutes.....	n/a
FGM.....	n/a
FGA.....	n/a
FG%.....	n/a
3FGM.....	n/a
3FGA.....	n/a
3PT%.....	n/a
FTM.....	n/a
FTA.....	n/a
FT%.....	n/a
Double-Doubles.....	n/a
20-point games.....	n/a



Player Performance Charts

#20 INFINITI ALSTON

CAREER HIGHS

Points.....	n/a
Rebs.....	n/a
Assists.....	n/a
Steals.....	n/a
Blocks.....	n/a
Minutes.....	4 vs. Bucknell (11/20/13)
FGM.....	n/a
FGA.....	1 at Georgetown (12/8/13)
FG%.....	n/a
3FGM.....	n/a
3FGA.....	n/a
3PT%.....	n/a
FTM.....	n/a
FTA.....	n/a
FT%.....	n/a
Double-Doubles.....	n/a
20-point games.....	n/a

SEASON HIGHS

Points.....	n/a
Rebs.....	n/a
Assists.....	n/a
Steals.....	n/a
Blocks.....	n/a
Minutes.....	4 vs. Bucknell (11/20/13)
FGM.....	n/a
FGA.....	1 at Georgetown (12/8/13)
FG%.....	n/a
3FGM.....	n/a
3FGA.....	n/a
3PT%.....	n/a
FTM.....	n/a
FTA.....	n/a
FT%.....	n/a
Double-Doubles.....	n/a
20-point games.....	n/a

BIG TEN CONFERENCE CAREER HIGHS

Points.....	n/a
Rebs.....	n/a
Assists.....	n/a
Steals.....	n/a
Blocks.....	n/a
Minutes.....	n/a
FGM.....	n/a
FGA.....	n/a
FG%.....	n/a
3FGM.....	n/a
3FGA.....	n/a
3PT%.....	n/a
FTM.....	n/a
FTA.....	n/a
FT%.....	n/a
Double-Doubles.....	n/a
20-point games.....	n/a

#23 ARIEL EDWARDS

CAREER HIGHS

Points.....	24 at South Dakota State (12/11/13)
Rebs.....	24 vs. Detroit (11/23/12)
Assists.....	11 vs. Iowa (1/22/12)
Steals.....	5 vs. Bucknell (11/20/13)
Blocks.....	4 at South Dakota State (12/11/13)
Minutes.....	38 at Delaware (11/17/11)
FGM.....	11 vs. Detroit (11/23/12)
FGA.....	16 vs. Detroit (11/23/12)
FG%.....	1.000 (3x) last DePaul (1-1) (3/21/11)
3FGM.....	2 (3x) last at Michigan State (1/6/13)
3FGA.....	4 vs. Army (12/8/10)
3PT%.....	4 vs. Hartford (11/27/10)
FTM.....	1.000 (12x) last vs. St. Francis (Pa.) (1-1) (11/8/13)
FTA.....	9 vs. Iowa (1/22/12)
FT%.....	10 vs. Iowa (1/22/12)
Double-Doubles.....	1.000 (25x) last at South Dakota State (6-6) (12/11/13)
Career Double-Doubles.....	1
Career 20-point games.....	3

SEASON HIGHS

Points.....	24 at South Dakota State (12/11/13)
Rebs.....	8 vs. Oregon State (11/29/13)
Assists.....	5 vs. Bucknell (11/20/13)
Steals.....	4 at South Dakota State (12/11/13)
Blocks.....	4 at South Dakota State (12/11/13)
Minutes.....	37 at South Dakota State (12/11/13)
FGM.....	9 at South Dakota State (12/11/13)
FGA.....	9 vs. St. Francis (Pa.) (11/8/13)
FG%.....	.818 (9-11) vs. St. Francis (Pa.) (11/8/13)
3FGM.....	1 (3x) last vs. Notre Dame (12/4/13)
3FGA.....	3 vs. Connecticut (11/17/13)
3PT%.....	1.000 (1-1) vs. St. Francis (Pa.) (11/8/13)
FTM.....	6 at South Dakota State (12/11/13)
FTA.....	6 at South Dakota State (12/11/13)
FT%.....	1.000 (5x) last at South Dakota State (6-6) (12/11/13)
Double-Doubles.....	n/a
20-point games.....	2

BIG TEN CONFERENCE CAREER HIGHS

Points.....	17 vs. Iowa (1/22/12)
Rebs.....	11 vs. Iowa (1/22/12)
Assists.....	4 at Wisconsin (1/2/12)
Steals.....	2 vs. Nebraska (12/30/11)
Blocks.....	2 vs. Indiana (1/23/11)
Minutes.....	34 vs. Iowa (1/22/12)
FGM.....	6 vs. Nebraska (1/13/13)
FGA.....	6 vs. Wisconsin (2/9/12)
FG%.....	1.000 (5x) last vs. Northwestern (1/3/13)
3FGM.....	1.000 (5x) last vs. Michigan (2-2) (2/24/13)
3FGA.....	2 vs. Michigan (2/24/13)
3PT%.....	2 at Michigan State (1/6/13)
FTM.....	3 vs. Wisconsin (2/9/12)
FTA.....	3 vs. Wisconsin (2/9/12)
FT%.....	1.000 (5x) last vs. Michigan (2-2) (2/24/13)
Double-Doubles.....	9 vs. Iowa (1/22/12)
20-point games.....	10 vs. Iowa (1/22/12)
Double-Doubles.....	1.000 (9x) last at Minnesota (2-2) (2/28/13)
20-point games.....	1
20-point games.....	n/a

#25 PEYTON WHITTED

CAREER HIGHS

Points.....	4 vs. St. Francis (Pa.) (11/8/13)
Rebs.....	4 vs. Bucknell (11/20/13)
Assists.....	1 vs. Connecticut (11/17/13)
Steals.....	1 at South Dakota State (12/11/13)
Blocks.....	1 vs. Bucknell (11/20/13)
Minutes.....	3 at South Dakota State (12/11/13)
FGM.....	13 vs. Bucknell (11/20/13)
FGA.....	2 vs. St. Francis (Pa.) (11/8/13)
FG%.....	3 (3x) last at South Dakota State (12/11/13)
3FGM.....	.667 (2-3) vs. St. Francis (Pa.) (11/8/13)
3FGA.....	n/a
3PT%.....	3 vs. Bucknell (11/20/13)
FTM.....	n/a
FTA.....	3 vs. Fordham (11/10/13)
FT%.....	4 vs. Fordham (11/10/13)
Double-Doubles.....	1.000 (2-2) at Georgetown (12/8/13)
20-point games.....	n/a

SEASON HIGHS

Points.....	4 vs. St. Francis (Pa.) (11/8/13)
Rebs.....	4 vs. Bucknell (11/20/13)
Assists.....	1 vs. Connecticut (11/17/13)
Steals.....	1 at South Dakota State (12/11/13)
Blocks.....	1 vs. Bucknell (11/20/13)
Minutes.....	3 at South Dakota State (12/11/13)
FGM.....	13 vs. Bucknell (11/20/13)
FGA.....	2 vs. St. Francis (Pa.) (11/8/13)
FG%.....	3 (3x) last at South Dakota State (12/11/13)
3FGM.....	.667 (2-3) vs. St. Francis (Pa.) (11/8/13)
3FGA.....	n/a
3PT%.....	3 vs. Bucknell (11/20/13)
FTM.....	n/a
FTA.....	3 vs. Fordham (11/10/13)
FT%.....	4 vs. Fordham (11/10/13)
Double-Doubles.....	1.000 (2-2) at Georgetown (12/8/13)
20-point games.....	n/a

BIG TEN CONFERENCE CAREER HIGHS

Points.....	n/a
Rebs.....	n/a
Assists.....	n/a
Steals.....	n/a
Blocks.....	n/a
Minutes.....	n/a
FGM.....	n/a
FGA.....	n/a
FG%.....	n/a
3FGM.....	n/a
3FGA.....	n/a
3PT%.....	n/a
FTM.....	n/a
FTA.....	n/a
FT%.....	n/a
Double-Doubles.....	n/a
20-point games.....	n/a



Player Performance Charts

#33 MAGGIE LUCAS

CAREER HIGHS

Points.....	39 vs. Georgetown (12/9/12)
Rebs.....	10 vs. Ohio State (2/20/12)
Assists.....	8 vs. Minnesota (2/26/12)
Steals.....	6 vs. Georgetown (12/9/12)
Blocks.....	4 vs. South Dakota St. (12/16/12)
Minutes.....	40 (5x) last at LSU (3/26/13)
FGM.....	11 at Nebraska (3/3/13)
.....	11 vs. Georgetown (12/9/12)
FGA.....	24 at Minnesota (2/28/13)
FG%.....	.778 (7-9) at Virginia Tech (12/12/12)
3FGM.....	8 at Nebraska (3/3/13)
3FGA.....	13 (5x)
.....	last vs. Michigan State (3/9/13)
3PT %.....	1.000 (3-3) vs. Michigan St. (2/10/13)
.....	1.000 (4-4) at Bucknell (12/21/11)
FTM.....	16 vs. St. Francis (Pa.) (11/8/13)
FTA.....	16 vs. St. Francis (Pa.) (11/8/13)
FT %.....	1.000 (59x)
.....	last at South Dakota State (4-4) (12/11/13)
Career Double-Doubles.....	1
Career 20-point games.....	51
Career 30-point games.....	6

SEASON HIGHS

Points.....	33 vs. St. Francis (Pa.) (11/8/13)
Rebs.....	8 vs. St. Francis (Pa.) (11/8/13)
Assists.....	5 vs. St. Francis (Pa.) (11/8/13)
Steals.....	5 vs. Connecticut (11/17/13)
.....	5 vs. St. Francis (Pa.) (11/8/13)
Blocks.....	1 vs. Notre Dame (12/4/13)
Minutes.....	38 vs. Connecticut (11/17/13)
FGM.....	10 at Georgetown (12/8/13)
FGA.....	21 at South Dakota State (12/11/13)
.....	21 at Georgetown (12/8/13)
FG%.....	.500 (7-14) vs. Fordham (11/10/13)
3FGM.....	5 at Georgetown (12/8/13)
3FGA.....	12 at Georgetown (12/8/13)
3PT%.....	.667 (4-6) vs. Fordham (11/10/13)
FTM.....	16 vs. St. Francis (Pa.) (11/8/13)
FTA.....	16 vs. St. Francis (Pa.) (11/8/13)
FT%.....	1.000 (6x)
.....	last at South Dakota State (4-4) (12/11/13)
Double-Doubles.....	n/a
20-point games.....	5
30-point games.....	2

BIG TEN CONFERENCE CAREER HIGHS

Points.....	34 at Nebraska (3/3/13)
Rebs.....	10 vs. Ohio State (2/20/12)
Assists.....	8 vs. Minnesota (2/26/12)
Steals.....	5 vs. Northwestern (1/3/13)
Blocks.....	2 (3x) last vs. Northwestern (1/3/13)
Minutes.....	40 at Nebraska (3/3/13)
.....	40 at Michigan State (1/29/12)
FGM.....	11 at Nebraska (3/3/13)
FGA.....	24 at Minnesota (2/28/13)
FG%.....	.769 (10-13) at Michigan (1/26/12)
3FGM.....	8 at Nebraska (3/3/13)
3FGA.....	13 at Nebraska (3/3/13)
.....	13 vs. Michigan State (1/7/12)
3PT%.....	1.000 (3-3) vs. Michigan State (2/10/13)
FTM.....	9 vs. Northwestern (1/3/13)
FTA.....	12 vs. Northwestern (1/3/13)
FT%.....	1.000 (20x) last at Nebraska (4-4) (3/3/13)
Double-Doubles.....	1
20-point games.....	21
30-point games.....	2

#41 JENNY DeGRAAF

CAREER HIGHS

Points.....	2 vs. Bucknell (11/20/13)
Rebs.....	2 vs. Fordham (11/10/13)
.....	2 vs. St. Francis (Pa.) (11/8/13)
Assists.....	2 vs. Bucknell (11/20/13)
.....	2 vs. St. Francis (Pa.) (11/8/13)
Steals.....	n/a
Blocks.....	n/a
Minutes.....	11 vs. Bucknell (11/20/13)
FGM.....	1 vs. Bucknell (11/20/13)
FGA.....	3 vs. Bucknell (11/20/13)
FG%.....	.333 (1-3) vs. Bucknell (11/20/13)
3FGM.....	n/a
3FGA.....	2 vs. Bucknell (11/20/13)
3PT%.....	n/a
FTM.....	n/a
FTA.....	n/a
FT%.....	n/a
Double-Doubles.....	n/a
20-point games.....	n/a

SEASON HIGHS

Points.....	2 vs. Bucknell (11/20/13)
Rebs.....	2 vs. Fordham (11/10/13)
.....	2 vs. St. Francis (Pa.) (11/8/13)
Assists.....	2 vs. Bucknell (11/20/13)
.....	2 vs. St. Francis (Pa.) (11/8/13)
Steals.....	n/a
Blocks.....	n/a
Minutes.....	11 vs. Bucknell (11/20/13)
FGM.....	1 vs. Bucknell (11/20/13)
FGA.....	3 vs. Bucknell (11/20/13)
FG%.....	.333 (1-3) vs. Bucknell (11/20/13)
3FGM.....	n/a
3FGA.....	2 vs. Bucknell (11/20/13)
3PT%.....	n/a
FTM.....	n/a
FTA.....	n/a
FT%.....	n/a
Double-Doubles.....	n/a
20-point games.....	n/a

BIG TEN CONFERENCE CAREER HIGHS

Points.....	n/a
Rebs.....	n/a
Assists.....	n/a
Steals.....	n/a
Blocks.....	n/a
Minutes.....	n/a
FGM.....	n/a
FGA.....	n/a
FG%.....	n/a
3FGM.....	n/a
3FGA.....	n/a
3PT%.....	n/a
FTM.....	n/a
FTA.....	n/a
FT%.....	n/a
Double-Doubles.....	n/a
20-point games.....	n/a

#44 TORI WALDNER

CAREER HIGHS

Points.....	11 vs. Connecticut (11/17/13)
Rebs.....	10 at Georgetown (12/8/13)
.....	10 vs. Wagner (12/18/11)
Assists.....	5 vs. Illinois State (11/30/13)
Steals.....	3 vs. Michigan State (2/10/13)
Blocks.....	5 vs. Minnesota (1/24/13)
Minutes.....	30 at Georgetown (12/8/13)
FGM.....	5 vs. Bucknell (11/20/13)
FGA.....	10 vs. Lafayette (11/18/12)
FG%.....	1.000 (8x)
.....	last vs. Michigan State (1-1) (3/9/13)
3FGM.....	1 vs. Connecticut (11/17/13)
3FGA.....	2 vs. Connecticut (11/17/13)
3PT %.....	.500 (2-2) vs. Connecticut (11/17/13)
FTM.....	6 vs. Howard (11/11/12)
FTA.....	6 vs. Howard (11/11/12)
FT %.....	1.000 (5x)
.....	last at South Dakota State (2-2) (12/11/13)
Career Double-Doubles.....	n/a
Career 20-point games.....	n/a

SEASON HIGHS

Points.....	11 vs. Connecticut (11/17/13)
Rebs.....	10 at Georgetown (12/8/13)
Assists.....	5 vs. Illinois State (11/30/13)
Steals.....	1 (3x)
.....	last at South Dakota State (12/11/13)
Blocks.....	3 at Georgetown (12/8/13)
Minutes.....	30 at Georgetown (12/8/13)
FGM.....	5 vs. Bucknell (11/20/13)
FGA.....	8 at South Dakota State (12/11/13)
FG%.....	.833 (5-6) vs. Bucknell (11/20/13)
3FGM.....	1 vs. Connecticut (11/17/13)
3FGA.....	2 vs. Connecticut (11/17/13)
3PT%.....	.500 (1-2) vs. Connecticut (11/17/13)
FTM.....	2 vs. Connecticut (11/17/13)
FTA.....	4 vs. Connecticut (11/17/13)
FT%.....	1.000 (2-2) at South Dakota St. (12/11/13)
Double-Doubles.....	n/a
20-point games.....	n/a

BIG TEN CONFERENCE CAREER HIGHS

Points.....	6 (3x) last at Minnesota (2/5/12)
Rebs.....	8 vs. Illinois (2/20/13)
Assists.....	4 vs. Indiana (2/2/12)
Steals.....	3 vs. Michigan State (2/10/13)
Blocks.....	5 vs. Minnesota (1/24/13)
Minutes.....	17 vs. Wisconsin (1/17/13)
FGM.....	3 at Minnesota (2/5/12)
.....	3 at Wisconsin (1/2/12)
FGA.....	5 at Minnesota (2/5/12)
.....	5 at Illinois (1/19/12)
FG%.....	1.000 (6x) last vs. Purdue (1-1) (2/4/13)
3FGM.....	n/a
3FGA.....	1 vs. Wisconsin (1/17/13)
3PT%.....	n/a
FTM.....	2 (3x) last vs. Illinois (2/20/13)
FTA.....	3 at Michigan State (1/6/13)
FT%.....	1.000 (3x) last vs. Illinois (2-2) (2/20/13)
Double-Doubles.....	n/a
20-point games.....	n/a





COQUESE WASHINGTON

Head Coach
7th Season

PENN STATE LADY LION BASKETBALL

Coquese Washington was introduced as the fifth head coach of the Penn State women's basketball program on April 23, 2007. Washington is the first female African-American head coach in Penn State history.

The Lady Lions continued their return to the national spotlight in 2012-13 as they collected their second-straight Big Ten regular-season title and seventh overall with a 26-6 overall record and 14-2 mark in conference play. In each of Washington's first six years, Penn State has improved their Big Ten win total. The Lady Lions posted their third consecutive 25-win season, joining the 1993-94, 1994-95 and 1995-96 squads as the only teams in program history to accomplish the feat. Penn State also advanced to the second round of the NCAA Tournament with a win over Cal Poly. The Lady Lions were consistently ranked in the Top 10 for most of the season and finished eighth in the Associated Press Top 25 and 12th in the USA Today Sports Coaches' Poll.

With another stellar campaign, the accolades continued to roll in for the Lady Lions. Washington was selected as

the Big Ten Coach of the Year by the media for the second-straight season and became just the fifth mentor in Big Ten history to win back-to-back Coach of the Year accolades. She was also the WBCA Region 6 Coach of the Year and a finalist for WBCA National Coach of the Year for the second-straight season. The awards also piled up for Penn State's dynamic backcourt of Maggie Lucas and Alex Bentley. Lucas was selected as the Big Ten Player of the Year, was a Wade Trophy Finalist and was an All-America choice by four outlets, including the WBCA (honorable mention), Associated Press (second team), USBWA (first team) and Full Court (second team). She is just the third Lady Lion in program history to win Big Ten Player of the Year honors, joining Helen Darling and Kelly Mazzante. Bentley earned her third-straight first team All-Big Ten award and honorable mention All-America bids from the WBCA and Associated Press. She was also selected as the 2013 recipient of the Frances Pomeroy Naismith Award, which is presented to the nation's outstanding female collegian 5-8 and under. Bentley is the third Lady Lion to win the honor, joining Darling and Suzie McConnell. Nikki Greene also capped a stellar career for the Lady Lions with third team All-Big Ten accolades. She also became the first player in school history to accumulate 1,000 points, 900 rebounds and 200 blocks.

Both Bentley and Greene heard their names called on WNBA Draft night. Bentley was selected with the 13th overall pick by the Atlanta Dream to become the highest draft pick for the Lady Lions since Tanisha Wright (12th) in 2005. Greene was the 26th overall selection by the Phoenix Mercury to give Penn State two draft picks for the first time since 2004 (Mazzante, Jess Brungo).

With five graduating seniors in 2012-13, Penn State was stout on the recruiting trail, bringing in a seven-member class that was ranked 14th by ESPN/HoopGurtz. The Lady Lions also added transfer Sierra Moore from Duke to complete the eight-player class. The addition of Moore gives the Lady Lions four McDonald's All-Americans on the roster heading into the 2013-14 campaign, joining Dara Taylor (2009), Lucas (2010) and Candice Agee (2012).

Washington returned the Lady Lions to Big Ten prominence in her fifth season as she guided Penn State to the Big Ten regular-season title with a 13-3 record in conference play. Additionally, the Lady Lions advanced to the NCAA Tournament Sweet Sixteen with wins over UTEP and LSU en route to a 26-7 overall record. The Lady Lions posted back-to-back 20-win seasons for the first time since 2002-03 and 2003-04. It was also the first Big Ten crown and Sweet Sixteen berth for the Lady Lions since 2003-04. The Lady Lions were ranked throughout the season and finished ninth in the ESPN/USA Today Coaches' Poll and 11th in the Associated Press Top 25.

For her efforts in rebuilding the Penn State program, Washington was honored as the Big Ten Coach of the Year and the WBCA Region 6 Coach of the Year, making her a finalist for WBCA National Coach of the Year. The accolades were not just limited to Washington; all five Lady Lion starters

Washington's Coaching Record vs. Opponents

Arizona.....	1-0	Michigan.....	9-3
Army.....	1-0	Michigan State.....	4-8
Boston College.....	0-1	Middle Tennessee.....	1-0
Bucknell.....	6-0	Minnesota.....	6-7
Buffalo.....	1-0	Mississippi.....	1-0
Cal Poly.....	1-0	Monmouth.....	1-0
CS-Northridge.....	1-0	Nebraska.....	3-1
Charlotte.....	1-0	Nevada.....	1-0
Connecticut.....	0-4	NJIT.....	2-0
Coppin State.....	1-0	North Carolina.....	1-0
Dayton.....	2-1	Notre Dame.....	0-1
Delaware.....	1-1	Northwestern.....	7-1
DePaul.....	0-1	Oakland.....	2-0
Detroit.....	1-0	Ohio State.....	4-6
Drexel.....	2-1	Old Dominion.....	0-1
Duke.....	1-0	Oregon State.....	1-0
Fair, Dickinson.....	1-0	Pittsburgh.....	2-1
Fordham.....	1-0	Prairie View A&M.....	1-0
Florida State.....	0-1	Purdue.....	3-8
Georgetown.....	3-0	Rider.....	1-0
Georgia Tech.....	0-1	St. Francis (Pa.).....	1-0
Hartford.....	1-0	South Carolina.....	4-1
Hofstra.....	0-1	South Dakota St.....	1-1
Holy Cross.....	1-0	Stony Brook.....	1-0
Howard.....	1-0	Syracuse.....	0-1
Illinois.....	9-3	Texas A&M.....	1-1
Illinois State.....	1-0	UTEP.....	1-0
Indiana.....	5-4	Texas Tech.....	1-1
Iowa.....	6-5	Utah.....	1-0
Iowa State.....	1-0	Virginia Tech.....	2-0
Lafayette.....	1-0	Wagner.....	1-0
LSU.....	1-1	Washington State.....	1-0
Maine.....	1-0	Wisconsin.....	5-6
UMES.....	1-0	UW-Green Bay.....	0-1
Miami (Fla.).....	0-1	Xavier.....	0-1

THE WASHINGTON FILE

COACHING RESUME

2007-pres. - Head Coach, Penn State
 2013 - Asst. Coach, USA Basketball World U. Games
 2013-pres. - Vice President/President-Elect, WBCA
 2012-pres. - Kay Yow Cancer Fund Board of Directors
 2011-pres. - NCAA WBB Issues Committee
 2010-13 - Treasurer, WBCA Executive Committee
 2008-pres. - WBCA Board of Directors
 2009-12 - USA Basketball Women's Jr. National Committee
 2005-07 - Associate Head Coach, Notre Dame
 1999-05 - Assistant Coach, Notre Dame

PLAYING EXPERIENCE

2002-03 - WNBA's Indiana Fever
 2000-02 - WNBA's Houston Comets
 1998-99 - WNBA's New York Liberty
 1997-98 - ABL's Portland Power
 1989-93 - University of Notre Dame

EDUCATION

Notre Dame '92, B.A. History
 Notre Dame Law School '97, Juris Doctorate

AWARDS

- ❖ 2012, 2013 Big Ten Coach of the Year
- ❖ 2012, 2013 WBCA Region 6 Coach of the Year
- ❖ 2012, 2013 WBCA National Coach of the Year Finalist
- ❖ 2011, 2013 BCA Female Coach of the Year
- ❖ 2009 Greater Flint Hall of Fame Inductee
- ❖ 2008 WBCA "Rising Star" Award Winner

FAMILY

Husband: Raynell Brown
 Children: Quenton (8), Rhaiyna (4)

earned All-Big Ten recognition, including first team bids for Bentley and Lucas. Both Bentley and Lucas also garnered honorable mention All-America honors from the WBCA and Associated Press, respectively. Bentley became the 33rd player in school history to reach the 1,000-point plateau and just the 15th junior to reach the milestone. Lucas also joined the 1,000-point club in 2011-12, becoming just the third sophomore in program history to accomplish the feat.

On the recruiting trail, the Lady Lions' 2012 class earned a Top 20 class from Dan Olson's Collegiate Girls Basketball Report. The class included transfer Taylor, who sat out the 2011-12 season due to NCAA transfer rules, and McDonald's High School All-American Agee from California. Additionally, Agee earned a gold medal with the USA Basketball U18 National Team Trials at the 2012 FIBA Americas Championship in August.

Washington came to Happy Valley after eight seasons as an associate head coach and assistant coach under Muffet McGraw at Notre Dame, her alma mater. During Washington's eight years on the bench, Notre Dame amassed a 188-69 record with eight NCAA Tournament appearances, including four Sweet Sixteen runs and a National Championship in 2001.

Washington was a four-year starting point guard for Notre Dame under McGraw and was the team captain on Notre Dame's first-ever NCAA Tournament team. She was a two-time All-Midwestern Collegiate Conference (MCC) selection and led Notre Dame to three MCC Tournament titles.

The epitome of a student-athlete, Washington graduated from Notre Dame in 1992, a full year ahead of schedule, with a bachelor's degree in history. She went on to attain "Double Domer" status in 1997 after earning her Juris Doctorate from the Notre Dame Law School.

A native of Flint, Mich., Washington and her husband, Raynell Brown, have a son, Quenton (8), and a daughter, Rhaiyna (4). They reside in Port Matilda, Pa.





#1 Candice Agee

So. * F/C * 6-6 * Victorville, Calif./Silverado

2013-14 Season Highlights:

- Made her first career start in the season-opener against St. Francis (Pa.) (11/8).

2013-14 Season Notes:

- Recorded six points, four rebounds and two blocks in the Junkanoo Jam title game win over Illinois State (11/30).
- Notched six points and five rebounds in 16 minutes against Oregon State (11/29).
- Registered a career-high 16 points to go along with six rebounds and two blocks versus Bucknell (11/20).
- Tallied two points, two rebounds and two blocks against top-ranked Connecticut (11/17).
- Had eight points to go along with seven rebounds in 15 minutes against Fordham (11/10).
- Was 3-for-5 from the field en route to seven points and three rebounds in the season-opening win over St. Francis (Pa.) (11/8).
- Posted six points and eight rebounds in the exhibition win over Lock Haven (10/27).

13-14 GAME-BY-GAME

OPPONENT	Min.	FG	3FG	FT	O-D-R	PF	A	TO	B	S	Pts
ST. FRANCIS	11	3-5	0-0	1-1	2-1-3	3	1	3	0	1	7
FORDHAM	15	3-5	0-0	2-6	2-5-7	2	0	2	0	0	8
UCONN	16	1-4	0-0	0-0	1-1-2	3	0	0	2	0	2
BUCKNELL	21	7-10	0-0	2-2	5-1-6	2	1	1	2	0	16
vs. Oregon St.	16	2-8	0-0	2-2	3-2-5	4	1	0	1	0	6
vs. Illinois St.	16	2-3	0-0	2-5	0-4-4	3	0	3	2	0	6
NOTRE DAME	6	0-2	0-0	0-0	0-0-0	0	0	0	0	1	0
at Georgetown	14	0-4	0-0	2-4	2-1-3	4	0	1	1	0	2
at S. Dakota St.	3	0-1	0-0	0-0	0-0-0	0	0	0	0	0	0
TEXAS A&M											
ALCORN ST.											
HARTFORD											
at Iowa											
at Illinois											
PURDUE											
OHIO ST.											
at Michigan St.											
INDIANA											
MINNESOTA											
at Purdue											
at Northwestern											
IOWA											
at Ohio State											
at Indiana											
WISCONSIN											
NORTHWESTERN											
at Nebraska											
MICHIGAN											



#2 Dara Taylor

Sr. * G * 5-8 * Wilmington, Del./Caravel Academy (Maryland)

2013-14 Season Highlights:

- Reached the 300 point milestone for her Lady Lion career (308) against Georgetown (12/8).
- Named to Junkanoo Jam All-Tournament team after averaging 11.0 points, 4.5 assists and 3.0 steals in two wins for the Lady Lions.

2013-14 Season Notes:

- Poured in a career-high 19 points on 8-of-14 shooting from the field and added five assists, two steals and two rebounds at South Dakota State (12/11).
- Scored 12 points and added six assists, five rebounds and a steal in the win over Georgetown (12/8).
- Posted 14 points, six assists, three rebounds and three steals against #4/5 Notre Dame (12/4).
- Registered 12 points with three assists and three steals in the Junkanoo Jam final against Illinois State (11/30).
- Recorded 10 points, six assists and three steals in the comeback win over Oregon State (11/29).
- Dished out seven assists and nabbed six steals against Bucknell (11/20).
- Tallied 12 points with two assists and two steals in the win over Fordham (11/10).
- Started the season in style with 14 points, six assists and three steals in the season opener against St. Francis (Pa.) (11/8).
- Dished six assists to go along with nine points, six rebounds and two steals in the exhibition win over Lock Haven (10/27).

13-14 GAME-BY-GAME

OPPONENT	Min.	FG	3FG	FT	O-D-R	PF	A	TO	B	S	Pts
ST. FRANCIS	22	4-8	0-1	6-8	0-1-1	2	6	3	1	3	14
FORDHAM	22	5-14	2-4	0-0	0-2-2	5	2	2	1	2	12
UCONN	35	3-10	1-4	0-0	1-2-3	4	4	5	0	4	7
BUCKNELL	25	2-9	0-2	0-1	0-1-1	1	7	4	0	6	4
vs. Oregon St.	29	4-10	0-0	2-2	0-1-1	3	6	5	0	3	10
vs. Illinois St.	31	4-9	0-3	4-7	0-1-1	3	3	4	0	3	12
NOTRE DAME	38	5-15	1-2	3-3	3-0-3	2	6	5	0	3	14
at Georgetown	33	3-8	0-1	6-6	1-4-5	0	6	5	0	1	12
at S. Dakota St.	37	8-14	0-2	3-4	1-1-2	2	5	1	0	2	19
TEXAS A&M											
ALCORN ST.											
HARTFORD											
at Iowa											
at Illinois											
PURDUE											
OHIO ST.											
at Michigan St.											
INDIANA											
MINNESOTA											
at Purdue											
at Northwestern											
IOWA											
at Ohio State											
at Indiana											
WISCONSIN											
NORTHWESTERN											
at Nebraska											
MICHIGAN											





#5 Talia East

Sr. * F/C * 6-3 * Philadelphia, Pa./Friends' Central School

2013-14 Highlights:

- Tied for 16th in Penn State history in blocked shots (67).

2013-14 Season Notes:

- Posted 10 points, five rebounds, two assists and a steal in the road victory against Georgetown (12/8).
- Scored a career-high 12 points and hauled in eight rebounds, while adding a trio of blocks and a steal against #4/5 Notre Dame (12/4).
- Pulled in 11 rebounds to go along with four points and two blocks in versus Illinois State (11/30).
- Was 4-for-6 from the field en route to nine points and six rebounds against Oregon State (11/29).
- Made her second career start against Bucknell (11/20).
- Had a solid outing with eight points, 10 rebounds, four blocks and two steals against #1 Connecticut (11/17).
- Accounted for six points and two assists against Fordham (11/10).
- Pitched in eight points and eight rebounds off of the bench in the win over St. Francis (Pa.) (11/8).
- Was 3-for-4 from the field en route to seven points in 13 minutes in the exhibition win over Lock Haven (10/27).

13-14 GAME-BY-GAME

OPPONENT	Min.	FG	3FG	FT	O-D-R	PF	A	TO	B	S	Pts
ST. FRANCIS	17	3-6	0-0	2-2	2-6-8	4	0	1	0	1	8
FORDHAM	17	2-3	0-0	2-2	2-0-2	2	2	1	0	0	6
UCONN	29	3-5	0-0	2-2	7-3-10	3	1	3	4	2	8
BUCKNELL	10	1-3	0-0	0-0	2-2-4	5	1	3	0	0	2
vs. Oregon St.	24	4-6	0-0	1-1	3-3-6	1	1	2	0	0	9
vs. Illinois St.	28	2-4	0-0	0-1	4-7-11	3	1	4	2	1	4
NOTRE DAME	29	4-5	0-0	4-4	3-5-8	4	0	4	3	1	12
at Georgetown	19	4-8	0-0	2-2	2-3-5	4	2	1	0	1	10
at S. Dakota St.	12	0-4	0-0	0-0	1-6-7	1	1	3	1	0	0
TEXAS A&M											
ALCORN ST.											
HARTFORD											
at Iowa											
at Illinois											
PURDUE											
OHIO ST.											
at Michigan St.											
INDIANA											
MINNESOTA											
at Purdue											
at Northwestern											
IOWA											
at Ohio State											
at Indiana											
WISCONSIN											
NORTHWESTERN											
at Nebraska											
MICHIGAN											



#10 Keke Sevillian

Fr. * G * 5-7 * Goodrich, Mich./Goodrich

2013-14 Season Notes:

- Went 2-for-2 from the free throw line for two points and grabbed a rebound against #4/5 Notre Dame (12/4).
- Tallied five points, one assist and one steal in the win over Illinois State (11/30) to claim the Junkanoo Jam title.
- Knocked down a three-pointer and made both of her free throw attempts en route to five points against Bucknell (11/20).
- Had three points, two rebounds and an assist in the win over Fordham (11/10).
- Provided a defensive spark with four steals with eight points and three rebounds in her first career game against St. Francis (Pa.) (11/8).
- Had four points and two assists against Lock Haven (10/27).

13-14 GAME-BY-GAME

OPPONENT	Min.	FG	3FG	FT	O-D-R	PF	A	TO	B	S	Pts
ST. FRANCIS	18	2-6	0-2	4-4	0-3-3	3	1	4	0	4	8
FORDHAM	17	1-4	1-3	0-0	0-2-2	3	1	2	0	0	3
UCONN											
BUCKNELL	9	1-3	1-3	2-2	0-1-1	1	1	0	0	0	5
vs. Oregon St.	0+	0-0	0-0	0-0	0-0-0	0	0	0	0	0	0
vs. Illinois St.	10	2-4	1-1	0-0	0-1-1	1	1	1	0	1	5
NOTRE DAME	4	0-0	0-0	2-2	0-1-1	0	0	0	0	0	2
at Georgetown	5	1-1	0-0	0-0	0-0-0	0	0	2	0	0	2
at S. Dakota St.	13	0-3	0-0	0-0	0-0-0	4	0	0	0	1	0
TEXAS A&M											
ALCORN ST.											
HARTFORD											
at Iowa											
at Illinois											
PURDUE											
OHIO ST.											
at Michigan St.											
INDIANA											
MINNESOTA											
at Purdue											
at Northwestern											
IOWA											
at Ohio State											
at Indiana											
WISCONSIN											
NORTHWESTERN											
at Nebraska											
MICHIGAN											





#11 Alex Harris

Fr. * F * 6-3 * Lorain, Ohio/Lorain

2013-14 Season Notes:

- ♦ Scored five points on a perfect 2-for-2 shooting performance from the field and grabbed three rebounds at South Dakota State (12/11).
- ♦ Hauled in five rebounds, while adding a blocked shot and two made free throws against #4/5 Notre Dame (12/4).
- ♦ Tallied six points, a game-high 11 rebounds and two blocked shots in the win over Illinois State (11/30) to win the Junkanoo Jam.
- ♦ Was a perfect 3-for-3 from the field and finished with eight points, 11 rebounds and two blocks in the win over Bucknell (11/20).
- ♦ Grabbed six rebounds and blocked a shot in the win over Fordham (11/10).
- ♦ Snagged 10 rebounds to go along with six points and three blocked shots in her first collegiate game against St. Francis (Pa.) (11/8).
- ♦ Pulled in seven rebounds and blocked two shots in the exhibition game against Lock Haven (10/27).

13-14 GAME-BY-GAME

OPPONENT	Min.	FG	3FG	FT	O-D-R	PF	A	TO	B	S	Pts
ST. FRANCIS	17	2-4	0-0	2-4	5-5-10	4	0	3	3	1	6
FORDHAM	22	0-2	0-0	0-0	0-6-6	1	1	2	1	1	0
UCONN	8	0-2	0-0	2-2	2-0-2	1	0	1	0	0	2
BUCKNELL	20	3-3	0-0	2-5	3-8-11	3	0	1	2	0	8
vs. Oregon St.	18	1-5	0-0	0-4	2-4-6	1	0	2	0	1	2
vs. Illinois St.	18	2-4	0-0	2-2	5-6-11	3	2	1	2	0	6
NOTRE DAME	13	0-2	0-0	2-2	1-4-5	2	0	3	1	0	2
at Georgetown	9	0-1	0-0	1-2	1-2-3	1	0	0	0	0	1
at S. Dakota St.	7	2-2	0-0	1-2	0-3-3	2	0	0	0	0	5
TEXAS A&M											
ALCORN ST.											
HARTFORD											
at Iowa											
at Illinois											
PURDUE											
OHIO ST.											
at Michigan St.											
INDIANA											
MINNESOTA											
at Purdue											
at Northwestern											
IOWA											
at Ohio State											
at Indiana											
WISCONSIN											
NORTHWESTERN											
at Nebraska											
MICHIGAN											



#12 Lindsey Spann

Fr. * G * 5-6 * Laurel, Md./Good Counsel

2013-14 Season Notes:

- ♦ Will miss 2013-14 campaign after tearing her right ACL in a practice during the summer.





#15 Kaliyah Mitchell

Fr. * G/F * 6-2 * Stone Mountain, Ga./Stephenson

2013-14 Season Notes:

- ♦ Scored five points to go along with five rebounds and a career-high three steals against #4/5 Notre Dame (12/4).
- ♦ Was perfect from the field (2-for-2) and finished with six points in the victory over Illinois State (11/30).
- ♦ Grabbed six rebounds to compliment four points and an assists against Oregon State (11/29).
- ♦ Tallied 14 points to go along with eight rebounds and a steal in the win over Bucknell (11/20).
- ♦ Accounted for four points and six rebounds, including five on the offensive glass, versus Fordham (11/10).
- ♦ Connected five of her eight shots from the field on the way to 11 points with six rebounds and a steal in the win over St. Francis (Pa.) (11/8).
- ♦ Nearly posted a double-double with nine points and 10 rebounds in the exhibition win over Lock Haven (10/27).

13-14 GAME-BY-GAME

OPPONENT	Min.	FG	3FG	FT	O-D-R	PF	A	TO	B	S	Pts
ST. FRANCIS	17	5-8	0-0	1-2	1-5-6	1	1	1	1	1	1
FORDHAM	21	1-4	0-0	2-4	5-1-6	0	1	1	0	0	4
UCONN	9	0-1	0-1	2-2	0-3-3	2	0	1	0	0	2
BUCKNELL	20	4-7	0-1	6-7	3-5-8	2	1	1	0	1	14
vs. Oregon St.	17	0-6	0-0	4-4	3-3-6	3	1	3	0	0	4
vs. Illinois St.	12	2-2	1-1	1-2	0-1-1	1	1	0	0	0	6
NOTRE DAME	20	2-4	0-1	1-2	1-4-5	3	0	1	0	3	5
at Georgetown	16	1-2	0-1	0-0	0-3-3	1	0	1	0	1	2
at S. Dakota St.	20	1-3	0-0	1-2	1-2-3	5	0	1	0	0	3
TEXAS A&M											
ALCORN ST.											
HARTFORD											
at Iowa											
at Illinois											
PURDUE											
OHIO ST.											
at Michigan St.											
INDIANA											
MINNESOTA											
at Purdue											
at Northwestern											
IOWA											
at Ohio State											
at Indiana											
WISCONSIN											
NORTHWESTERN											
at Nebraska											
MICHIGAN											



#20 Infiniti Alston

Fr. * F/C * 6-6 * Baltimore, Md./Digital Harbor

2013-14 Season Notes:

- ♦ Saw her first action of her collegiate career, playing three minutes against Fordham (11/10).
- ♦ Had four points, three rebounds and two blocks in seven minutes against Lock Haven (10/27).

13-14 GAME-BY-GAME

OPPONENT	Min.	FG	3FG	FT	O-D-R	PF	A	TO	B	S	Pts
ST. FRANCIS											
FORDHAM	3	0-0	0-0	0-0	0-0-0	1	0	1	0	0	0
UCONN											
BUCKNELL	4	0-0	0-0	0-0	0-0-0	0	0	1	0	0	0
vs. Oregon St.											
vs. Illinois St.											
NOTRE DAME											
at Georgetown	2	0-1	0-0	0-0	0-0-0	2	0	0	0	0	0
at S. Dakota St.											
TEXAS A&M											
ALCORN ST.											
HARTFORD											
at Iowa											
at Illinois											
PURDUE											
OHIO ST.											
at Michigan St.											
INDIANA											
MINNESOTA											
at Purdue											
at Northwestern											
IOWA											
at Ohio State											
at Indiana											
WISCONSIN											
NORTHWESTERN											
at Nebraska											
MICHIGAN											





#23 Ariel Edwards

Sr. * G/F * 6-3 * Elmont, N.Y./Christ the King

2013-14 Season Notes:

- ♦ Matched a career-high with 24 points and set personal bests in blocks (4) and steals (4), while grabbing seven boards and dishing out two assists at South Dakota State (12/11).
- ♦ Reached double digits in scoring for the sixth time in eight games with 12 points and completed her performance with six rebounds, four assists and a steal in the win at Georgetown (12/8).
- ♦ Led the team with in scoring with 18 points on 7-of-12 shooting and chipped in three boards, two steals, an assist and a block against #4/5 Notre Dame (12/4).
- ♦ Nearly earned a double-double with 10 points and eight rebounds against Oregon State (11/29) in the Bahamas.
- ♦ Had 14 points to compliment seven rebounds and a career-high five assists in 21 minutes against Bucknell (11/20).
- ♦ Was 7-for-12 from the field en route to 17 points with four rebounds, four assists and two steals in the win over Fordham (11/10).
- ♦ Matched her uniform number with 23 points on 9-of-11 shooting from the field and added three steals and two assists in the season opener against St. Francis (Pa.) (11/8).
- ♦ Drained 7-of-10 shots from the field and was a perfect 7-for-7 from the free throw line en route to a game-high 21 points in the exhibition win over Lock Haven (10/27).

13-14 GAME-BY-GAME

OPPONENT	Min.	FG	3FG	FT	O-D-R	PF	A	TO	B	S	Pts
ST. FRANCIS	29	9-11	1-1	4-4	0-3-3	1	2	3	1	3	23
FORDHAM	22	7-12	1-2	2-2	3-1-4	2	4	1	0	2	17
UCONN	30	1-13	0-3	0-0	0-2-2	4	2	2	0	0	2
BUCKNELL	21	5-7	0-0	4-4	3-4-7	1	5	1	0	1	14
vs. Oregon St.	36	4-12	0-0	2-4	2-6-8	2	2	3	0	1	10
vs. Illinois St.	25	3-9	0-0	0-0	0-2-2	1	1	1	0	1	6
NOTRE DAME	36	7-12	1-4	3-3	0-3-3	2	1	1	1	2	18
at Georgetown	30	3-3	0-2	6-9	4-2-6	2	4	2	0	1	12
at S. Dakota St.	37	9-12	0-1	6-6	1-6-7	1	2	1	4	4	24
TEXAS A&M											
ALCORN ST.											
HARTFORD											
at Iowa											
at Illinois											
PURDUE											
OHIO ST.											
at Michigan St.											
INDIANA											
MINNESOTA											
at Purdue											
at Northwestern											
IOWA											
at Ohio State											
at Indiana											
WISCONSIN											
NORTHWESTERN											
at Nebraska											
MICHIGAN											



#25 Peyton Whitted

Fr. * G/F * 6-3 * Suwanee, Ga./North Gwinnett

2013-14 Season Notes:

- ♦ Swatted a career-high three shots, hauled in three rebounds and added a steal at South Dakota State (12/11).
- ♦ Went 2-for-2 from the free throw line for two points and grabbed a defensive rebound in the win over Georgetown (12/8).
- ♦ Scored two points on an offensive rebound and reverse layup against Illinois State (11/30).
- ♦ Had three points and three rebounds against Fordham (11/10).
- ♦ Chipped in four points and three rebounds in the win over St. Francis (Pa.) (11/8).
- ♦ Connected on 4-of-7 shots from the field en route to 11 points in exhibition action against Lock Haven (10/27).

13-14 GAME-BY-GAME

OPPONENT	Min.	FG	3FG	FT	O-D-R	PF	A	TO	B	S	Pts
ST. FRANCIS	12	2-3	0-1	0-0	1-2-3	1	0	1	0	0	4
FORDHAM	10	0-2	0-1	3-4	2-1-3	3	0	0	1	0	3
UCONN	7	0-1	0-1	0-0	0-0-0	0	1	2	0	0	0
BUCKNELL	13	0-3	0-3	0-0	0-4-4	2	0	0	0	1	0
vs. Oregon St.											
vs. Illinois St.	9	1-2	0-1	0-0	1-0-1	2	0	1	0	0	2
NOTRE DAME	4	0-0	0-0	0-0	0-0-0	1	0	1	0	0	0
at Georgetown	5	0-1	0-1	2-2	0-1-1	0	0	0	0	0	2
at S. Dakota St.	11	0-3	0-1	0-0	1-2-3	3	0	0	3	1	0
TEXAS A&M											
ALCORN ST.											
HARTFORD											
at Iowa											
at Illinois											
PURDUE											
OHIO ST.											
at Michigan St.											
INDIANA											
MINNESOTA											
at Purdue											
at Northwestern											
IOWA											
at Ohio State											
at Indiana											
WISCONSIN											
NORTHWESTERN											
at Nebraska											
MICHIGAN											





#33 Maggie Lucas

Sr. * G * 5-10 * Narberth, Pa./Germantown Academy

2013-14 Highlights:

- ♦ 2013 Big Ten Preseason Player of the Year.
- ♦ On the Wade Trophy, Wooden Award and Naismith Trophy Watch Lists.
- ♦ Named to Big Ten Weekly Honor Roll (Nov. 12).
- ♦ Named preseason All-America second team by the Associated Press and espnW.
- ♦ Is the fifth player in Penn State history to score 2,000 career points, joining Kelly Mazzante, Susan Robinson, Tyra Grant and Kahadeejah Herberth on the elite list.
- ♦ Is the 18th player in Big Ten history to reach the 2,000-point milestone.
- ♦ Fourth in school history and 15th in Big Ten history in scoring (2,028).
- ♦ Second in Big Ten and Penn State history in three-point field goals made (314).
- ♦ Just the second player in Big Ten history and 45th player in NCAA Division I history with 300 career three-pointers.
- ♦ 15th in program history in steals (194).
- ♦ Has hit a three-pointer in 44 consecutive game, which is a school record.
- ♦ Tied the school record for free throw percentage (min. 15 att.) in a game with a 16-for-16 night at the charity stripe against St. Francis (Pa.) (11/8). Ties the mark set by Jess Strom (15-15; Minnesota, 1/30/05) and Brianne O'Rourke (15-15; Duke, 12/2/07). It is the most attempts in school history by someone with a perfect percentage from the free throw line.
- ♦ Named Junkanoo Jam MVP after averaging 21.0 points, 1.5 assists and 1.5 steals in two wins.

2013-14 Season Notes:

- ♦ Scored 20 points and grabbed two rebounds at South Dakota State (12/11).
- ♦ Scored a game-high 30 points, hauled in five rebounds, dished out four assists and had three steals in the road victory over Georgetown (12/8).
- ♦ Chipped in a game-high 25 points to go along with three assists in the win over Illinois State (11/30).
- ♦ Tallied 18 points, including 14 in the second half, with five steals against top-ranked UConn (11/17).
- ♦ Hit four three-pointers and finished with 23 points with five rebounds against Fordham (11/10).
- ♦ Connected on all 16 of her free throws en route to a game-high 33 points in the win over St. Francis (Pa.) (11/8). Also had eight rebounds, five assists and five steals in 31 minutes of action.
- ♦ Had 19 points, four assists and three steals in the exhibition win over Lock Haven (10/27).

13-14 GAME-BY-GAME

OPPONENT	Min.	FG	3FG	FT	O-D-R	PF	A	TO	B	S	Pts
ST. FRANCIS	31	8-18	1-2	16-16	1-7-8	2	5	3	0	5	33
FORDHAM	29	7-14	4-6	5-5	1-4-5	2	1	1	0	1	23
UCONN	38	6-17	4-10	2-3	0-0-0	2	1	4	0	5	18
BUCKNELL	25	6-17	1-7	4-4	1-3-4	1	1	2	0	1	17
vs. Oregon St.	35	4-13	2-6	7-7	0-5-5	0	0	5	0	1	17
vs. Illinois St.	29	7-15	2-7	9-9	0-1-1	3	3	4	0	2	25
NOTRE DAME	29	1-8	1-2	4-4	0-1-1	5	1	4	1	0	29
at Georgetown	37	10-21	5-12	5-6	1-4-5	2	4	4	0	3	30
at S. Dakota St.	32	7-21	2-7	4-4	0-2-2	3	0	3	0	0	20
TEXAS A&M											
ALCORN ST.											
HARTFORD											
at Iowa											
at Illinois											
PURDUE											
OHIO ST.											
at Michigan St.											
INDIANA											
MINNESOTA											
at Purdue											
at Northwestern											
IOWA											
at Ohio State											
at Indiana											
WISCONSIN											
NORTHWESTERN											
at Nebraska											
MICHIGAN											





#35 Sierra Moore

RS-So. * G * 5-11 * Hanover, Pa./Delone Catholic (Duke)

2013-14 Season Notes:

- ♦ Will sit out the 2013-14 season due to NCAA transfer rules after transferring from Duke.

2012-13 Season (at Duke):

- ♦ Played in 25 games in her rookie campaign and averaged 2.5 points and 1.0 rebounds per game for the Blue Devils.
- ♦ Tallied 12 assists and 11 blocks in 2012-13 .. Shot 44.8% (26-58) from the field.
- ♦ Chipped in five points, two rebounds and an assists against Clemson (1/10).
- ♦ Notched four points and a rebound in her first career ACC game against Boston College (1/6).
- ♦ Had eight points and two assists versus Monmouth (12/30).
- ♦ Posted a 10-point, three-assist effort against Cal State-Bakersfield (12/21).
- ♦ Made all three of her shots from the field en route to six points with a block versus Xavier (11/25).
- ♦ Scored six points and had two rebounds in the win over Valparaiso (11/23).
- ♦ Tallied seven points and five rebounds against Iona (11/18).
- ♦ Accounted for six points, three rebounds and a pair of steals in her first collegiate game against Presbyterian (11/17).

High School:

- ♦ Was the 21st-rated player by Blue Star Report, 26th by Peach State Hoops and 49th by ESPN HoopGurlz as a senior in high school.
- ♦ Garnered Gatorade Player of the Year and Associated Press Class AA Player of the Year honors in the state of Pennsylvania as a high school senior year.
- ♦ Was a McDonald's High School All-American in 2011-12.
- ♦ Took home *Parade Magazine* All-America honors as a senior.
- ♦ Four-time *Gettysburg Times* All-Area Player of the Year.
- ♦ Was first team All-State in 2011 and 2010 and was a third team honoree in 2009.
- ♦ Holds the York-Adams Interscholastic Athletic Association (YAIAA) scoring record with 2,595 points at Delone Catholic.
- ♦ Accounted for 1,031 rebounds, 432 assists, 360 steals and 150 blocks for the Squirettes.
- ♦ As a senior, averaged 24.7 points, 3.9 assists, 9.4 rebounds, 2.6 steals and 1.2 blocks to lead Delone Catholic to a 23-6 record and an appearance in the PIAA state quarterfinals.
- ♦ Was also a track standout, finishing in the Top 10 in the State Championships in the 200-meters (7th in 2009 and 2010) and 4x100 relay (4th in 2009).

Personal:

- ♦ Full name is Sierra Grace Moore.
- ♦ Born January 23, 1994 in Ellicott City, Maryland.
- ♦ Parents are Edwin and Jillda Moore.
- ♦ Has one brother, Devon (16).
- ♦ Father, Edwin, played basketball at Millersville (Pa.) from 1984-87.
- ♦ Mother, Jillda, coached the Delone Catholic High School girls' basketball team from 2003-05.
- ♦ Aunt, Jodi, attended Penn State.





#41 Jenny DeGraaf

Fr. * G/F * 6-1 * Springboro, Ohio/Springboro

2013-14 Season Notes:

- ♦ Scored her first collegiate points on a jumper from the corner against Bucknell (11/20).
- ♦ Also had two assists against the Bison.
- ♦ Pulled in two rebounds against Fordham (11/10).
- ♦ Had two rebounds against St. Francis (Pa.) (11/8).
- ♦ Scored four points and had two blocks in the exhibition game against Lock Haven (10/27).

13-14 GAME-BY-GAME

OPPONENT	Min.	FG	3FG	FT	O-D-R	PF	A	TO	B	S	Pts
ST. FRANCIS	8	0-2	0-1	0-0	1-1-2	1	2	0	0	0	0
FORDHAM	9	0-1	0-0	0-0	0-2-2	0	0	0	0	0	0
UCONN	Did Not Play										
BUCKNELL	11	1-3	0-2	0-0	0-1-1	2	2	1	0	0	2
vs. Oregon St.	Did Not Play										
vs. Illinois St.	4	0-1	0-0	0-0	0-0-0	1	0	1	0	0	0
NOTRE DAME	Did Not Play										
at Georgetown	Did Not Play										
at S. Dakota St.	Did Not Play										
TEXAS A&M											
ALCORN ST.											
HARTFORD											
at Iowa											
at Illinois											
PURDUE											
OHIO ST.											
at Michigan St.											
INDIANA											
MINNESOTA											
at Purdue											
at Northwestern											
IOWA											
at Ohio State											
at Indiana											
WISCONSIN											
NORTHWESTERN											
at Nebraska											
MICHIGAN											



#44 Tori Waldner

Jr. * F * 6-5 * Milton, Ga./Milton

2013-14 Highlights:

- ♦ 19th in program history in blocked shots (63).
- ♦ Has an active streak of eight-straight games with at least one block.
- ♦ Reached the 200-rebound milestone for her career at South Dakota State (12/11).
- ♦ Made her first career start in the season-opener against St. Francis (Pa.) (11/8).

2013-14 Season Notes:

- ♦ Led the team in rebounding with nine boards and added eight points, two blocks and a steal at South Dakota State (12/11).
- ♦ Grabbed a season-high 10 rebounds, leading the team in the category for the first time this season. Added four points, three blocks and an assist in the win over Georgetown (12/8).
- ♦ Tallied seven points, three rebounds, an assist, a block and a steal against Notre Dame (12/4).
- ♦ Dished out a career-high five assists against Illinois State (11/30).
- ♦ Was 5-for-7 from the field and finished with 10 points for her second career and second-straight double-digit scoring performance in the win over Bucknell (11/20).
- ♦ Had a career-high 11 points to go along with seven rebounds and two blocked shots in a personal-best 28 minutes against #1 Connecticut (11/17).
- ♦ Tallied two points, three rebounds and a block versus Fordham (11/10).
- ♦ Notched three points and three rebounds in the season-opening win over St. Francis (Pa.) (11/8).
- ♦ Had six points and six boards against Lock Haven in exhibition action (10/27).

13-14 GAME-BY-GAME

OPPONENT	Min.	FG	3FG	FT	O-D-R	PF	A	TO	B	S	Pts
ST. FRANCIS	18	1-2	0-0	1-2	1-2-3	3	0	3	0	0	3
FORDHAM	13	1-6	0-0	0-0	1-2-3	0	0	0	1	0	2
UCONN	28	4-7	1-2	2-4	2-5-7	3	1	1	2	0	11
BUCKNELL	21	5-7	0-0	0-0	0-6-6	2	1	1	2	0	10
vs. Oregon St.	25	1-4	0-0	1-2	1-3-4	2	1	0	1	1	3
vs. Illinois St.	18	0-2	0-0	0-0	1-5-6	1	5	1	1	0	0
NOTRE DAME	21	3-6	0-0	1-2	0-3-3	4	1	1	1	1	7
at Georgetown	30	2-6	0-0	0-1	1-9-10	3	1	2	3	0	4
at S. Dakota St.	28	3-8	0-0	2-2	2-7-9	3	0	2	2	1	8
TEXAS A&M											
ALCORN ST.											
HARTFORD											
at Iowa											
at Illinois											
PURDUE											
OHIO ST.											
at Michigan St.											
INDIANA											
MINNESOTA											
at Purdue											
at Northwestern											
IOWA											
at Ohio State											
at Indiana											
WISCONSIN											
NORTHWESTERN											
at Nebraska											
MICHIGAN											



#15/13 Penn State 102, Lock Haven 51

Exhibition Game * Oct. 27, 2013 * University Park, Pa.

Lock Haven 51 • 0-0

#	Player	Total		3-Ptr		Rebounds			PF	TP	A	TO	Blk	Stl	Min
		FG-FGA	FG-FGA	FT-FTA	Off	Def	Tot								
15	LANE, Sami	* 3-14	1-3	1-2	0	1	1	2	8	2	5	0	1	34	
21	McDANIEL, Syvae	* 1-2	0-0	1-2	5	2	7	3	3	1	0	0	0	29	
24	MOYER, Marrysa	* 5-14	2-4	1-2	1	6	7	3	17	2	3	0	0	37	
30	McDANIEL, Rachael	* 3-11	1-5	0-0	0	1	1	2	7	0	4	1	0	19	
32	GILDEA, Hannah	* 1-6	0-1	2-4	1	2	3	4	0	1	0	0	0	26	
01	HEYWARD, Shaleta	* 0-1	0-1	0-0	0	0	0	1	0	0	0	0	0	3	
02	RYAN, Kelsey	* 0-0	0-0	2-2	2	0	2	1	2	1	0	0	0	4	
04	WARD, Marissa	* 0-2	0-0	0-0	1	0	1	0	0	0	1	0	0	2	
23	HILLIARD, JJ	* 1-2	0-3	8-9	1	0	1	4	10	0	3	0	0	15	
25	BREHONY, Alex	* 0-2	0-0	0-0	0	1	1	0	0	1	0	0	0	14	
40	MORSE, Sydney	* 0-2	0-0	0-2	0	2	2	4	0	0	1	0	0	13	
44	FARMERY, Dakota	* 0-0	0-0	0-0	0	1	1	1	0	0	0	0	0	4	
	Team				5	4	9			1					
	Totals	14-60	4-17	19-31	16	20	36	24	51	7	19	1	1	200	

FG % 1st Half: 7-27 25.9% 2nd half: 7-33 21.2% Game: 14-60 23.3%
 3FG % 1st Half: 0-2 0.0% 2nd half: 4-15 26.7% Game: 4-17 23.5%
 FT % 1st Half: 1-19 5.3% 2nd half: 8-12 66.7% Game: 19-31 61.3%

Penn State 102 • 0-0

#	Player	Total		3-Ptr		Rebounds			PF	TP	A	TO	Blk	Stl	Min
		FG-FGA	FG-FGA	FT-FTA	Off	Def	Tot								
01	Agee, Candice	* 3-9	0-0	0-0	6	2	8	2	6	0	3	1	0	17	
02	Taylor, Dara	* 4-10	0-2	1-1	3	3	6	2	9	6	1	0	2	27	
23	Edwards, Ariel	* 7-10	0-0	7-7	1	4	5	0	21	2	1	0	2	23	
33	Lucas, Maggie	* 4-11	3-8	8-8	0	4	4	0	19	4	1	1	3	21	
44	Waldner, Tori	* 2-4	0-0	2-2	5	1	6	3	6	0	2	1	0	12	
05	East, Talia	* 3-4	0-0	1-2	1	2	3	1	7	0	1	0	0	13	
10	Sevillian, Keke	* 1-6	0-1	2-2	0	0	0	3	4	2	1	0	1	16	
11	Harris, Alex	* 0-1	0-0	2-3	1	6	7	2	2	1	1	2	0	17	
15	Mitchell, Kaliyah	* 3-5	0-1	3-6	3	7	10	4	9	1	3	1	2	15	
20	Alston, Infinity	* 2-2	0-0	0-1	2	1	3	2	4	0	1	2	0	7	
25	Whitted, Peyton	* 4-7	1-3	2-2	1	1	2	1	11	1	0	0	2	19	
41	DeGraaf, Jenny	* 2-6	0-0	0-0	0	2	2	1	4	0	0	2	0	13	
	Team				2	1	3								
	Totals	35-75	4-15	28-34	25	34	59	21	102	17	15	10	12	200	

FG % 1st Half: 17-43 39.5% 2nd half: 18-32 56.3% Game: 35-75 46.7%
 3FG % 1st Half: 3-10 30.0% 2nd half: 1-5 20.0% Game: 4-15 26.7%
 FT % 1st Half: 16-17 94.1% 2nd half: 12-17 70.6% Game: 28-34 82.4%

Officials: Michael McConnell, Shannon Feck, Kathy Ridilla
 Technical fouls: Lock Haven-McDANIEL, Syvae. Penn State-None.
 Attendance: 3443

Notable

- Senior guard/forward **Ariel Edwards** registered 21 points to pace the Lady Lions. She scored 14 of her game-best 21 points in the first half.
- Freshman **Peyton Whitted** also reached double figures with 11 points on 4-for-7 shooting.
- Fellow freshman **Kaliyah Mitchell** nearly tallied a double-double with nine points and 10 boards in 15 minutes of action.

#15/13 Penn State 78, Fordham 61

Game #2 * Nov. 10, 2013 * University Park, Pa.

Fordham 61 • 1-1

#	Player	Total		3-Ptr		Rebounds			PF	TP	A	TO	Blk	Stl	Min
		FG-FGA	FG-FGA	FT-FTA	Off	Def	Tot								
01	Rooney, Erin	* 5-14	2-4	8-10	1	5	6	4	20	3	4	0	1	40	
11	Tapio, Emily	* 2-3	0-0	2-2	0	2	2	3	6	0	2	0	0	15	
24	Clark, Samantha	* 4-10	2-4	0-0	1	2	3	4	10	3	0	2	0	22	
25	Missry, Hannah	* 2-8	2-8	0-0	1	3	4	2	6	1	0	0	0	19	
42	Corring, Abigail	* 2-9	0-2	0-0	4	6	10	5	4	7	7	0	2	37	
03	Gjerkes, Alina	* 1-4	0-1	3-4	1	1	2	0	5	0	1	0	1	15	
12	Nwachukwu, Mary	* 2-3	0-0	2-2	1	1	2	1	6	0	1	0	0	16	
14	Padovano, Danielle	* 2-4	0-1	0-0	0	1	1	0	4	0	1	0	1	18	
22	Burns, Danielle	* 0-4	0-0	0-0	1	1	2	3	0	0	0	0	2	16	
23	Gibson, Khadijah	* 0-0	0-0	0-0	0	0	0	0	0	0	0	0	0	2	
	Team				3	2	5								
	Totals	20-59	6-20	15-18	13	24	37	22	61	14	16	2	7	200	

FG % 1st Half: 9-27 33.3% 2nd half: 11-32 34.4% Game: 20-59 33.9%
 3FG % 1st Half: 3-11 27.3% 2nd half: 3-9 33.3% Game: 6-20 30.0%
 FT % 1st Half: 7-8 87.5% 2nd half: 8-10 80.0% Game: 15-18 83.3%

Penn State 78 • 2-0

#	Player	Total		3-Ptr		Rebounds			PF	TP	A	TO	Blk	Stl	Min
		FG-FGA	FG-FGA	FT-FTA	Off	Def	Tot								
01	Agee, Candice	* 3-5	0-0	2-6	2	5	7	2	8	0	2	0	0	15	
02	Taylor, Dara	* 5-14	2-4	0-0	0	2	2	5	12	2	2	1	2	22	
23	Edwards, Ariel	* 7-12	1-2	2-2	3	1	4	2	17	4	1	0	2	22	
33	Lucas, Maggie	* 7-14	4-6	5-5	1	4	5	2	23	1	1	0	1	29	
44	Waldner, Tori	* 1-6	0-0	0-0	1	2	3	0	2	0	0	1	0	13	
05	East, Talia	* 2-3	0-0	2-2	2	0	2	2	6	2	1	0	0	17	
10	Sevillian, Keke	* 1-4	1-3	0-0	0	2	2	3	3	1	2	0	0	17	
11	Harris, Alex	* 0-2	0-0	0-0	0	6	6	1	0	1	2	1	1	22	
15	Mitchell, Kaliyah	* 1-4	0-0	2-4	5	1	6	0	4	1	1	0	0	21	
20	Alston, Infinity	* 0-0	0-0	0-0	0	0	0	1	0	0	1	0	0	3	
25	Whitted, Peyton	* 0-2	0-1	3-4	2	1	3	3	3	0	0	1	0	10	
41	DeGraaf, Jenny	* 0-1	0-0	0-0	0	2	2	0	0	0	0	0	0	9	
	Team				5	1	6			1					
	Totals	27-67	8-16	16-23	21	27	48	21	78	12	14	4	6	200	

FG % 1st Half: 14-32 43.8% 2nd half: 13-35 37.1% Game: 27-67 40.3%
 3FG % 1st Half: 5-10 50.0% 2nd half: 3-6 50.0% Game: 8-16 50.0%
 FT % 1st Half: 5-6 83.3% 2nd half: 11-17 64.7% Game: 16-23 69.6%

Officials: Bryan Enterline, Rachelle Jones, Joe Vaszily
 Technical fouls: Fordham-None. Penn State-None.
 Attendance: 3834

Score by periods	1st	2nd	Total
Fordham	28	33	61
Penn State	38	40	78

Last FG - FOR 2nd-01:32, PSU 2nd-05:01.
 Largest lead - FOR None, PSU by 27 2nd-05:01.

Notable

- Maggie Lucas** passes Michigan State's Lindsay Bowen (2003-06) for second place on the Big Ten's career three-pointers list (297).
- Sophomore center **Candice Agee** tied her career high with eight points.
- This is the eighth consecutive 2-0 start for the Lady Lions.
- PSU extended its non-con home court to 15 games, tied for the 2nd-longest streak in program history.

#15/13 Penn State 117, St. Francis (Pa.) 77

Game #1 * Nov. 8, 2013 * University Park, Pa.

St. Francis (Pa.) 77 • 0-1

#	Player	Total		3-Ptr		Rebounds			PF	TP	A	TO	Blk	Stl	Min
		FG-FGA	FG-FGA	FT-FTA	Off	Def	Tot								
10	TAYLOR, Brooklyn	* 1-11	1-11	1-2	0	5	5	4	4	3	2	0	0	25	
12	BROCK, Aisha	* 3-9	0-4	3-3	1	1	2	3	9	5	3	0	0	22	
23	HAYWARD, Alexa	* 7-14	6-12	0-0	1	1	2	4	20	1	1	0	1	18	
40	WILLIAMS, Alli	* 3-16	1-6	7-11	2	3	5	2	14	0	2	0	4	32	
45	PHILLIPS, Hope	* 0-2	0-2	0-2	1	2	3	4	0	0	1	1	0	16	
02	BLAINE, Erin	* 3-4	0-1	4-6	0	0	0	3	10	0	8	0	2	17	
11	STOKES, Shaqela	* 0-5	0-1	0-0	0	1	1	4	0	0	1	0	1	16	
14	ALLISON, Taylor	* 0-2	0-2	0-0	0	0	0	1	0	0	0	0	0	2	
20	MURPHY, Bridget	* 2-4	2-2	0-0	0	1	1	2	6	1	6	0	1	16	
24	THOMPSON, Allison	* 0-1	0-0	0-0	0	0	0	1	0	0	0	0	0	4	
31	KEEGAN, Rebecca	* 1-1	0-0	0-0	1	3	4	1	2	0	0	0	0	13	
50	BETHEL, Samiah	* 5-6	0-1	2-5	2	1	3	3	12	2	6	1	1	19	
	Team				6	1	7								
	Totals	25-75	10-42	17-29	14	19	33	32	77	12	30	2	10	200	

FG % 1st Half: 12-35 34.3% 2nd half: 13-40 32.5% Game: 25-75 33.3%
 3FG % 1st Half: 4-20 20.0% 2nd half: 6-22 27.3% Game: 10-42 23.8%
 FT % 1st Half: 10-18 55.6% 2nd half: 7-11 63.6% Game: 17-29 58.6%

Penn State 117 • 1-0

#	Player	Total		3-Ptr		Rebounds			PF	TP	A	TO	Blk	Stl	Min
		FG-FGA	FG-FGA	FT-FTA	Off	Def	Tot								
01	Agee, Candice	* 3-5	0-0	1-1	2	1	3	3	7	1	3	0	1	11	
02	Taylor, Dara	* 4-8	0-1	6-8	0	1	1	2	14	6	3	1	3	22	
23	Edwards, Ariel	* 9-11	1-1	4-4	0	3	3	1	23	2	3	1	3	29	
33	Lucas, Maggie	* 8-18	1-2	16-16	1	7	8	2	33	5	3	0	5	31	
44	Waldner, Tori	* 1-2	0-0	1-2	1	2	3	3	0	3	0	0	0	18	
05	East, Talia	* 3-6	0-0	2-2	2	6	8	4	8	0	1	0	1	17	
10	Sevillian, Keke	* 2-6	0-2	4-4	0	3	3	3	8	1	4	0	4	18	
11	Harris, Alex	* 2-4	0-0	2-4	5	5	10	4	6	0	3	3	1	17	
15	Mitchell, Kaliyah	* 5-8	0-0	1-2	5	5	6	1	11	1	1	1	1	17	
25	Whitted, Peyton	* 2-3	0-1	0-0	1	2	3	1	4	0	1	0	0	12	
41	DeGraaf, Jenny	* 0-2	0-1	0-0	1	1	2	1	0	2	0	0	0	8	
	Team				3	4	7								
	Totals	39-73	2-8	37-43	17	40	57	25	117	18	27	6	19	200	

FG % 1st Half

#15/14 Penn State 92, Bucknell 49

Game #4 * Nov. 20, 2013 * University Park, Pa.

Bucknell 49 • 1-3

#	Player	Total		3-Ptr		Rebounds			PF	TP	A	TO	Blk	Stl	Min
		FG-FGA	FT-FTA	FG-FGA	FT-FTA	Off	Def	Tot							
11	McGurk, Megan	* 2-11	2-7	3-4	0	2	2	2	9	2	4	0	0	0	27
12	DeBoer, Claire	* 4-4	2-4	0-0	2	2	3	4	1	0	1	1	1	31	
15	Romine, Shelby	* 3-10	0-5	0-0	2	3	5	3	6	3	6	0	2	31	
34	Jones, Sheaira	* 1-3	0-1	0-0	0	0	0	3	2	2	0	0	2	15	
44	Dotson, Audrey	* 3-9	1-4	6-6	6	6	12	4	13	2	0	0	3	35	
04	O'Bryan, Claire Maree	0-3	0-1	1-3	0	3	3	5	1	0	3	1	1	14	
10	Henning, Alex	4-9	1-2	1-1	1	1	2	1	9	0	1	0	1	22	
13	Sneed, Jordan	0-0	0-0	0-0	0	0	0	0	0	0	0	0	0	1	
23	Wilk, Tara	0-1	0-0	0-0	0	0	0	1	0	0	0	0	0	2	
31	Harris, Katherine	0-2	0-1	0-0	0	0	0	0	0	0	2	0	0	9	
35	Impellizzeri, Micki	0-2	0-0	2-4	0	0	0	2	0	0	0	0	0	8	
41	Swart, Sune	0-0	0-0	3-6	0	1	1	2	0	1	0	0	0	3	
50	Purnell, Stephanie	0-1	0-1	0-0	1	0	1	0	0	0	0	0	0	2	
	Team			1	3	4				3					
	Totals	14-55	4-22	17-28	11	21	32	24	49	10	20	2	9	200	

FG % 1st Half: 5-25 20.0% 2nd half: 9-30 30.0% Game: 14-55 25.5%
 3FG % 1st Half: 1-7 14.3% 2nd half: 3-15 20.0% Game: 4-22 18.2%
 FT % 1st Half: 12-15 80.0% 2nd half: 5-13 38.5% Game: 17-28 60.7%

Penn State 92 • 3-1

#	Player	Total		3-Ptr		Rebounds			PF	TP	A	TO	Blk	Stl	Min
		FG-FGA	FT-FTA	FG-FGA	FT-FTA	Off	Def	Tot							
02	Taylor, Dara	* 2-9	0-2	0-1	0	1	1	1	4	7	4	0	6	25	
05	East, Talia	* 1-3	0-0	0-0	2	2	4	5	2	1	3	0	0	10	
23	Edwards, Ariel	* 5-7	0-0	4-4	3	4	7	1	14	5	1	0	1	21	
33	Lucas, Maggie	* 6-17	1-7	4-4	1	3	4	1	17	1	2	0	1	25	
44	Waldner, Tori	* 5-6	0-0	0-0	0	6	6	5	10	1	2	0	0	21	
01	Agee, Candice	7-10	0-0	2-2	5	1	6	2	16	1	1	2	0	21	
10	Sevillan, Keke	1-3	1-3	2-2	0	1	1	1	5	1	0	0	0	9	
11	Harris, Alex	3-3	0-0	2-5	3	8	11	3	8	0	1	2	0	20	
15	Mitchell, Kaliyah	4-7	0-1	6-7	3	5	8	2	14	1	1	0	1	20	
20	Alston, Infiniti	0-0	0-0	0-0	0	0	0	1	0	0	0	0	0	4	
25	Whitted, Peyton	0-3	0-3	0-0	0	4	4	2	0	0	0	1	1	13	
41	DeGraaf, Jenny	1-3	0-2	0-0	0	1	1	2	2	2	1	0	0	11	
	Team			1	2	3									
	Totals	35-71	2-18	20-25	18	38	56	26	92	20	16	6	10	200	

FG % 1st Half: 22-39 56.4% 2nd half: 13-32 40.6% Game: 35-71 49.3%
 3FG % 1st Half: 1-8 12.5% 2nd half: 1-10 10.0% Game: 2-18 11.1%
 FT % 1st Half: 8-11 72.7% 2nd half: 12-14 85.7% Game: 20-25 80.0%

Officials: John Whitson, Jennifer Rezac, Kevin Pethel
 Technical fouls: Bucknell-None. Penn State-None.
 Attendance: 3646

Score by periods	1st	2nd	Total
Bucknell	23	26	49
Penn State	53	39	92

Points in Paint: BUCKNELL 48, PENN STATE 25
 Off 2nd Fast Break: BUCKNELL 25, PENN STATE 16
 Bench: BUCKNELL 45, PENN STATE 15

Score tied - 1 time. Lead changed - 0 times.

Technical fouls: Bucknell-None, PSU by 44 2nd-00:55.
 Largest lead - BUCKNELL None, PSU by 44 2nd-00:55.

Notable

- Sophomore center **Candice Agee** had a career-high 16 points, surpassing her previous personal mark of eight points, which happened on four occasions.
- Penn State had five double figure scorers for the first time since Dec. 2, 2013 against Fairleigh Dickinson.
- The 43-point margin of victory is the largest since defeating Wisconsin by 44 on Jan. 17, 2013.

#14/13 Penn State 72, Illinois State 60

Game #6 * Nov. 30, 2013 * Freepoort, Bahamas

Illinois State 60 • 1-4

#	Player	Total		3-Ptr		Rebounds			PF	TP	A	TO	Blk	Stl	Min
		FG-FGA	FT-FTA	FG-FGA	FT-FTA	Off	Def	Tot							
03	CRUMP, Octavia	* 4-9	0-0	5-8	4	5	9	4	13	2	3	0	3	26	
04	NELSON, Chloe	* 2-13	1-6	5-8	0	1	1	4	10	5	5	0	2	38	
11	HALL, Stekara	* 2-8	2-3	0-4	1	2	3	5	6	1	4	0	0	27	
14	FOLEY, Alexis	* 9-22	6-12	0-0	1	3	4	4	24	1	3	1	1	37	
35	PUNI, Brianna	* 2-5	0-0	3-4	5	6	11	4	7	0	1	0	1	33	
21	BESS, Zenobia	0-1	0-0	0-0	2	1	3	0	0	1	2	0	1	14	
22	SEBERGER, Alison	0-0	0-0	0-0	0	0	0	0	0	0	0	0	0	3	
34	STEWART, Taylor	0-4	0-0	0-0	0	2	2	1	0	3	1	0	0	18	
32	GEHARDT, Kalyn	0-0	0-0	0-0	0	1	1	0	0	0	1	0	0	4	
	Team			5	3	8									
	Totals	19-62	9-21	13-24	18	24	42	22	60	13	20	1	8	200	

FG % 1st Half: 11-31 35.5% 2nd half: 8-31 25.8% Game: 19-62 30.6%
 3FG % 1st Half: 7-13 53.8% 2nd half: 2-8 25.0% Game: 9-21 42.9%
 FT % 1st Half: 5-6 83.3% 2nd half: 8-18 44.4% Game: 13-24 54.2%

Penn State 72 • 5-1

#	Player	Total		3-Ptr		Rebounds			PF	TP	A	TO	Blk	Stl	Min
		FG-FGA	FT-FTA	FG-FGA	FT-FTA	Off	Def	Tot							
02	Taylor, Dara	* 4-9	0-3	4-7	0	1	1	3	12	3	4	0	3	31	
05	East, Talia	* 2-4	0-0	0-1	4	7	11	3	4	1	4	2	1	28	
23	Edwards, Ariel	* 3-9	0-0	0-0	0	2	2	1	6	1	1	0	1	25	
33	Lucas, Maggie	* 7-15	2-7	9-9	0	1	1	3	25	3	4	0	2	29	
44	Waldner, Tori	* 0-2	0-0	0-0	1	5	6	1	0	5	1	1	0	18	
01	Agee, Candice	2-3	0-0	2-5	0	4	4	3	0	3	2	0	1	16	
10	Sevillan, Keke	2-4	1-1	0-0	0	1	1	1	5	0	1	0	1	10	
11	Harris, Alex	2-4	0-0	2-2	5	6	11	3	6	2	1	2	0	18	
15	Mitchell, Kaliyah	2-2	1-1	2-2	0	1	1	1	6	1	0	0	0	12	
25	Whitted, Peyton	1-2	0-1	0-0	1	0	1	2	2	0	1	0	0	9	
41	DeGraaf, Jenny	0-1	0-0	0-0	0	0	0	1	0	0	1	0	0	4	
	Team			1	3	4									
	Totals	25-55	4-13	18-26	12	31	43	22	72	17	22	7	8	200	

FG % 1st Half: 19-33 57.6% 2nd half: 6-22 27.3% Game: 25-55 45.5%
 3FG % 1st Half: 2-7 28.6% 2nd half: 2-6 33.3% Game: 4-13 30.8%
 FT % 1st Half: 4-9 44.4% 2nd half: 14-17 82.4% Game: 18-26 69.2%

Officials: Kathy Lynch, Angela Lewis, Tiffany Bird
 Technical fouls: Illinois State-None. Penn State-None.
 Attendance: 236

Score by periods	1st	2nd	Total
Illinois State	34	26	60
Penn State	44	28	72

Points in Paint: ILS 18, PSU 34
 Off 2nd Fast Break: ILS 7, PSU 8
 Bench: ILS 2, PSU 25

Score tied - 1 time. Lead changed - 1 time.

Technical fouls: ILS 2nd-01:26, PSU 2nd-01:26.
 Largest lead - ILS by 2 1st-10:26, PSU by 12 2nd-05:50.

Notable

- The Lady Lions won their second Junkanoo Jam championship with the first coming in 2003.
- Maggie Lucas** was selected as the Tournament MVP after averaging 21.0 points, 1.5 assists and 1.5 steals in two games.
- Dara Taylor** was named to the All-Tournament team.
- Tori Waldner** dished out a career-high five assists.

#14/13 Penn State 61, Oregon State 56

Game #5 * Nov. 29, 2013 * Freepoort, Bahamas

Oregon State 56 • 4-0

#	Player	Total		3-Ptr		Rebounds			PF	TP	A	TO	Blk	Stl	Min
		FG-FGA	FT-FTA	FG-FGA	FT-FTA	Off	Def	Tot							
14	Gibson, Ali	* 2-6	0-2	4-6	1	1	2	5	8	0	5	0	2	25	
15	Weisner, Jamie	* 4-16	3-7	3-3	5	5	10	4	14	1	3	0	1	29	
21	Wiese, Sydney	* 1-6	1-5	1-2	0	1	1	3	4	6	3	0	2	34	
32	Hunter, Devyn	* 0-2	0-1	0-1	1	4	5	0	0	2	0	1	1	14	
44	Hamblin, Ruth	* 0-2	0-0	1-4	3	5	8	3	5	0	1	3	0	28	
02	Toure, Khadija	0-2	0-0	0-0	0	2	2	0	0	1	1	0	2	10	
04	Brown, Breanna	0-1	0-0	0-1	2	1	3	3	0	0	1	2	1	11	
05	Siegner, Samantha	5-11	2-3	2-2	2	5	7	0	14	3	3	1	1	25	
11	Hanson, Gabriella	1-1	0-0	0-0	1	0	1	0	2	0	1	0	0	1	
12	Orum, Kolbie	0-1	0-0	0-0	0	1	1	0	0	0	0	0	0	2	
24	Martin, Alyssa	3-8	1-5	2-3	0	2	2	0	9	2	5	0	0	21	
	Team			1	1	2									
	Totals	18-58	7-23	13-22	16	28	44	23	56	13	26	6	10	200	

FG % 1st Half: 9-31 29.0% 2nd half: 9-27 33.3% Game: 18-58 31.0%
 3FG % 1st Half: 4-14 28.6% 2nd half: 3-9 33.3% Game: 7-23 30.4%
 FT % 1st Half: 5-7 71.4% 2nd half: 8-15 53.3% Game: 13-22 59.1%

Penn State 61 • 3-1

#	Player	Total		3-Ptr		Rebounds			PF	TP	A	TO	Blk	Stl	Min
		FG-FGA	FT-FTA	FG-FGA	FT-FTA	Off	Def	Tot							
02	Taylor, Dara	* 4-10	0-0	2-2	0	1	1	4	10	6	5	0	3	29	
05	East, Talia	* 4-6	0-0	1-1	3	3	6	1	9	1	2	0	0	24	
23	Edwards, Ariel	* 4-12	0-0	2-4	2	6	8	2	10	2	3	0	1	36	
33	Lucas, Maggie	* 4-13	2-6	7-7	0	5	5	0	17	0	5	0	1	35	
44	Waldner, Tori	* 1-4	0-0	1-2	1	3	4	3	3	1	0	1	1	25	
01	Agee, Candice	2-8	0-0	2-2	3	2	5	4	6	1	0	1	0	16	
10	Sevillan, Keke	0-0	0-0	0-0	0	0	0	0	0	0	0	0	0	0	
11	Harris, Alex	1-5	0-0	0-4	2	4	6	1	2	0	2	0	1	18	
15	Mitchell, Kaliyah	0-6	0-0	4-4	3	3	6	3	4	1	3	0	0	17	
	Team			2	2	4									
	Totals	20-64	2-6	19-26	16	29	45	18	61	12</					

#11/10 Penn State 77, Georgetown 68

Game #8 * Dec. 8, 2013 * Washington, D.C.

Penn State 77 • 6-2

##	Player	Total		3-Ptr	Rebounds			PF	TP	A	TO	Blk	Stl	Min
		FG-FGA	FG-FGA		FT-FTA	Off	Def							
02	Taylor, Dara	* 3-8	0-1	6-6	1	4	5	0	12	6	5	0	1	33
05	East, Talia	* 4-8	0-0	2-2	2	3	5	4	10	2	1	0	1	19
23	Edwards, Ariel	* 3-6	0-2	6-9	4	2	6	2	12	4	2	0	1	30
33	Lucas, Maggie	* 10-21	5-12	5-6	1	4	5	2	30	4	4	0	3	37
44	Waldner, Tori	* 2-6	0-0	0-1	1	9	10	3	4	1	2	3	0	30
01	Agee, Candice	0-4	0-0	2-4	2	1	3	4	2	0	1	1	0	14
10	Sevillian, Keke	1-1	0-0	0-0	0	0	0	0	2	0	0	0	0	5
11	Harris, Alex	0-1	0-0	1-2	1	2	3	1	1	0	0	0	0	9
15	Mitchell, Kaliyah	1-2	0-1	0-0	0	3	3	1	2	0	1	0	1	16
20	Alston, Infiniti	0-1	0-0	0-0	0	0	0	2	0	0	0	0	0	2
25	Whitted, Peyton	0-1	0-1	2-2	0	1	1	0	2	0	0	0	0	5
	Team				0	5	5							
	Totals	24-59	5-17	24-32	12	34	46	19	77	17	19	4	7	200

FG % 1st Half: 7-34 20.6% 2nd half: 17-25 68.0% Game: 24-59 40.7%
 3FG % 1st Half: 3-14 21.4% 2nd half: 2-3 66.7% Game: 5-17 29.4%
 FT % 1st Half: 11-15 73.3% 2nd half: 13-17 76.5% Game: 24-32 75.0%

Georgetown 68 • 5-3

##	Player	Total		3-Ptr	Rebounds			PF	TP	A	TO	Blk	Stl	Min
		FG-FGA	FG-FGA		FT-FTA	Off	Def							
01	MCCORMICK, Katie	* 6-20	5-13	0-0	1	2	3	3	17	2	2	0	2	36
11	WHITE, Andrea	* 3-11	0-0	1-4	5	3	8	7	5	3	0	0	7	33
23	POWELL, Samisha	* 1-5	0-3	2-2	1	2	3	3	4	1	1	0	0	25
24	WOODARD, Faith	* 3-13	0-2	4-6	3	2	5	4	10	3	1	2	0	33
51	BUTLER, Natalie	* 4-8	0-0	4-7	0	9	9	4	12	1	6	0	0	33
03	KING, Tyshell	1-4	1-2	2-2	2	1	3	1	5	1	3	0	0	18
12	FREEDMAN, Kelyn	1-2	0-0	0-0	0	0	0	1	2	0	0	0	0	2
13	MARTIN, Jade	2-3	2-3	0-0	1	2	3	2	6	1	1	0	0	8
35	VITALIS, Dominique	2-3	0-0	1-1	2	1	3	1	5	1	1	0	0	12
	Team				1	3	4							
	Totals	23-69	8-23	14-22	16	25	41	24	68	15	18	2	9	200

FG % 1st Half: 7-30 23.3% 2nd half: 16-39 41.0% Game: 23-69 33.3%
 3FG % 1st Half: 2-6 33.3% 2nd half: 6-17 35.3% Game: 8-23 34.8%
 FT % 1st Half: 9-15 60.0% 2nd half: 5-7 71.4% Game: 14-22 63.6%

Officials: Dee Kantner, Angela Lewis, Tiara Cruise
 Technical fouls: Penn State-None. Georgetown-None.
 Attendance: 529

Score by periods	1st	2nd	Total
Penn State	28	49	77
Georgetown	25	43	68

Last FG - PSU 2nd-01:55, GU 2nd-00:18.
 Largest lead - PSU by 19 2nd-10:54, GU by 1 1st-12:10.

Points	In	Off	2nd	Fast	Bench
PSU	28	19	13	14	9
GU	20	19	14	2	18

Score tied - 1 time.
 Lead changed - 2 times.

Notable

- Maggie Lucas became the fifth player in Penn State history to score 2,000 career points, joining Kelly Mazzante, Susan Robinson, Tyra Grant and Kahadeejah Herbert on the elite list.
- Lucas is also the 17th player in Big Ten history to reach 2,000 points.
- Tori Waldner tied her career high with 10 rebounds.
- Lucas passed Tanisha Wright for fifth place on Penn State's career scoring list.

South Dakota State 83, #12/12 Penn State 79

Game #9 * Dec. 11, 2013 * Brookings, S.D.

Penn State 79 • 6-3

##	Player	Total		3-Ptr	Rebounds			PF	TP	A	TO	Blk	Stl	Min
		FG-FGA	FG-FGA		FT-FTA	Off	Def							
02	Taylor, Dara	* 8-14	0-2	3-4	1	1	2	2	19	5	1	0	2	37
05	East, Talia	* 0-4	0-0	0-0	1	6	7	1	0	1	3	1	0	12
23	Edwards, Ariel	* 9-12	0-1	6-6	1	6	7	1	24	2	1	4	4	37
33	Lucas, Maggie	* 7-21	2-7	4-4	0	2	2	3	20	0	3	0	0	32
44	Waldner, Tori	* 3-8	0-0	2-2	2	7	9	3	8	0	2	2	1	28
01	Agee, Candice	0-1	0-0	0-0	0	0	0	0	0	0	0	0	0	3
10	Sevillian, Keke	0-3	0-0	0-0	0	0	0	4	0	0	0	0	1	13
11	Harris, Alex	2-2	0-0	1-2	0	3	3	2	5	0	0	0	0	7
15	Mitchell, Kaliyah	1-3	0-0	1-2	1	2	3	5	3	0	1	0	0	20
25	Whitted, Peyton	0-3	0-1	0-0	1	2	3	3	0	0	0	3	1	11
	Team				2	4	6							
	Totals	30-71	2-11	17-20	9	33	42	24	79	8	11	10	9	200

FG % 1st Half: 12-33 36.4% 2nd half: 18-38 47.4% Game: 30-71 42.3%
 3FG % 1st Half: 0-4 0.0% 2nd half: 2-7 28.6% Game: 2-11 18.2%
 FT % 1st Half: 11-12 91.7% 2nd half: 6-8 75.0% Game: 17-20 85.0%

South Dakota State 83 • 7-4

##	Player	Total		3-Ptr	Rebounds			PF	TP	A	TO	Blk	Stl	Min
		FG-FGA	FG-FGA		FT-FTA	Off	Def							
14	STROP, Hannah	f 1-5	0-4	2-2	0	7	7	1	4	3	1	0	0	32
24	WAYTASHEK, Megan	f 5-14	4-9	4-5	2	6	8	3	18	2	2	0	1	31
04	BOEVER, Gabby	g 2-5	1-1	2-2	1	1	2	1	7	4	2	1	3	29
15	PALUCH, Steph	g 5-12	2-3	6-6	0	2	2	1	18	2	2	0	0	32
40	CLARIN, Mariah	g 4-8	0-0	5-11	4	4	8	4	13	0	2	1	0	20
00	STEVENS, Chynna	0-0	0-0	0-1	0	1	1	0	0	0	0	0	0	1
03	STUART, Megan	0-1	0-0	0-0	0	0	0	1	0	0	0	0	0	2
10	YOUNG, Kerri	3-6	0-1	0-0	0	0	0	2	6	1	2	0	2	11
12	HEISER, Tara	2-7	0-2	3-6	5	2	7	2	7	1	2	0	0	20
21	OBBER, Clarissa	3-10	2-4	0-0	3	5	8	1	8	1	0	2	0	18
22	CORNEMANN, Chloe	0-0	0-0	0-0	0	0	0	1	0	1	0	0	0	2
23	WALTERS, Rachel	1-2	0-1	0-0	0	0	0	0	2	0	0	0	0	2
	Team				4	6	10							
	Totals	26-70	9-25	22-33	19	34	53	17	83	14	14	4	6	200

FG % 1st Half: 19-37 51.4% 2nd half: 7-33 21.2% Game: 26-70 37.1%
 3FG % 1st Half: 8-16 50.0% 2nd half: 1-9 11.1% Game: 9-25 36.0%
 FT % 1st Half: 9-12 75.0% 2nd half: 13-21 61.9% Game: 22-33 66.7%

Officials: Amy Bonner, Missy Brooks, Katie Lukanich
 Technical fouls: Penn State-None. South Dakota State-None.
 Attendance: 1713
 SDSU's first win over a ranked opponent, Nov. 18, 2012 (#15 Nebraska)
 Penn State entered game ranked 12/12 - highest ranked opponent SDSU has beaten

Score by periods	1st	2nd	Total
Penn State	35	44	79
South Dakota State	55	28	83

Last FG - PSU 2nd-00:04, SDSU 2nd-00:55.
 Largest lead - PSU by 2 1st-19:10, SDSU by 23 2nd-18:44.

Points	In	Off	2nd	Fast	Bench
PSU	40	22	10	24	8
SDSU	30	12	21	4	23

Score tied - 1 time.
 Lead changed - 3 times.

Notable

- Senior guard Maggie Lucas moved up to 16th place on the Big Ten all-time career scoring list by netting 20 points, moving her career total to 2,028.
- Ariel Edwards tied her career high with 24 points and also had personal bests in steals (4) and blocks (5).
- Dara Taylor scored a career-high 19 points in the game.



2013-14 RADIO/TV CHART



#1

Candice Agee
6-6 * So./So. * F/C
Victorville, Calif.
Silverado



#2

Dara Taylor
5-8 * 5th-Sr./Sr. * G
Wilmington, Del.
Caravel Academy
(Maryland)



#5

Talia East
6-3 * Sr./Sr. * F/C
Philadelphia, Pa.
Friends' Central School



#10

Keke Sevillian
5-7 * Fr./Fr. * G
Goodrich, Mich.
Goodrich



#11

Alex Harris
6-3 * Fr./Fr. * F
Lorain, Ohio
Lorain Southview



#12

Lindsey Spann
5-6 * Fr./Fr. * G
Laurel, Md.
Good Counsel



#15

Kaliyah Mitchell
6-2 * Fr./Fr. * G/F
Stone Mountain, Ga.
Stephenson



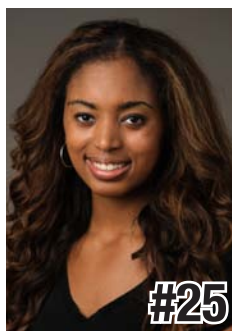
#20

Infiniti Alston
6-6 * Fr./Fr. * C
Baltimore, Md.
Digital Harbor



#23

Ariel Edwards
6-3 * Sr./Sr. * G/F
Elmont, N.Y.
Christ the King



#25

Peyton Whitted
6-3 * Fr./Fr. * G/F
Suwanee, Ga.
North Gwinnett



#33

Maggie Lucas
5-9 * Sr./Sr. * G
Narberth, Pa.
Germantown Academy



#35

Sierra Moore
5-11 * So./-- * G
Hanover, Pa.
Delone Catholic
Duke



#41

Jenny DeGraaf
6-1 * Fr./Fr. * G/F
Springboro, Ohio
Spring Boro



#44

Tori Waldner
6-5 * Jr./Jr. * F/C
Milton, Ga.
Milton



HC

Coquese Washington
Head Coach
Notre Dame '92
Seventh Season



AC

Fred Chmiel
Assistant Coach
Excelsior College
Fourth Season



AC

Kia Damon
Assistant Coach
Millersville '97
Seventh Season



AC

Maren Walseth
Assistant Coach
Penn State '02
Seventh Season

Nine-Time Big Ten Champions • Two-Time Big Ten Tournament Champions • 2000 NCAA Final Four • 24 NCAA Tournament Appearances





2013-14 Penn State Women's Basketball
Penn State Combined Team Statistics (as of Dec 12, 2013)
All games



RECORD:	OVERALL	HOME	AWAY	NEUTRAL
ALL GAMES	6-3	3-2	1-1	2-0
CONFERENCE	0-0	0-0	0-0	0-0
NON-CONFERENCE	6-3	3-2	1-1	2-0

##	Player	gp-gs	min	avg	Total		3-Point		F-Throw		Rebounds				pf	dq	a	to	blk	stl	pts	avg
					fg-fga	fg%	3fg-fga	3fg%	ft-fa	ft%	off	def	tot	avg								
33	Lucas, Maggie	9-9	285	31.7	56-144	.389	22-59	.373	56-58	.966	4	27	31	3.4	20	1	16	30	1	18	190	21.1
23	Edwards, Ariel	9-9	266	29.6	48-94	.511	3-13	.231	27-32	.844	13	29	42	4.7	16	0	23	15	6	15	126	14.0
02	Taylor, Dara	9-9	272	30.2	38-97	.392	4-19	.211	24-31	.774	6	13	19	2.1	23	1	45	34	2	27	104	11.6
05	East, Talia	9-6	185	20.6	23-44	.523	0-0	.000	13-14	.929	26	35	61	6.8	27	1	9	22	10	6	59	6.6
15	Mitchell, Kaliyah	9-0	152	16.9	16-37	.432	1-5	.200	18-25	.720	14	27	41	4.6	18	1	5	10	1	6	51	5.7
44	Waldner, Tori	9-9	202	22.4	20-47	.426	1-2	.500	7-13	.538	9	42	51	5.7	25	1	10	12	13	3	48	5.3
01	Agee, Candice	9-3	118	13.1	18-42	.429	0-0	.000	11-20	.550	15	15	30	3.3	21	0	3	10	8	2	47	5.2
11	Harris, Alex	9-0	132	14.7	10-25	.400	0-0	.000	12-23	.522	19	38	57	6.3	18	0	3	13	9	3	32	3.6
10	Sevillian, Keke	8-0	76	9.5	7-21	.333	3-9	.333	8-8	1.000	0	8	8	1.0	12	0	4	9	0	6	25	3.1
25	Whitted, Peyton	8-0	71	8.9	3-15	.200	0-9	.000	5-6	.833	5	10	15	1.9	12	0	1	5	4	2	11	1.4
41	DeGraaf, Jenny	4-0	32	8.0	1-7	.143	0-3	.000	0-0	.000	1	4	5	1.3	4	0	4	2	0	0	2	0.5
20	Alston, Infiniti	3-0	9	3.0	0-1	.000	0-0	.000	0-0	.000	0	0	0	0.0	4	0	0	1	0	0	0	0.0
Team											17	33	50				9					
Total.....		9	1800		240-574	.418	34-119	.286	181-230	.787	129	281	410	45.6	200	5	123	172	54	88	695	77.2
Opponents.....		9	1800		197-578	.341	66-210	.314	142-218	.651	140	228	368	40.9	198	6	125	176	30	83	602	66.9

TEAM STATISTICS	PSU	OPP	Date	Opponent	Score	Att.
SCORING	695	602	11/8/13	ST. FRANCIS (PA.)	w 117-77	3908
Points per game	77.2	66.9	11/10/13	FORDHAM	w 78-61	3834
Scoring margin	+10.3	-	11/17/13	CONNECTICUT	L 52-71	8194
FIELD GOALS-ATT	240-574	197-578	11/20/13	BUCKNELL	w 92-49	3646
Field goal pct	.418	.341	11-29-13	vs Oregon State	w 61-56	0
3 POINT FG-ATT	34-119	66-210	11-30-13	vs Illinois State	w 72-60	236
3-point FG pct	.286	.314	12/4/13	NOTRE DAME	L 67-77	5805
3-pt FG made per game	3.8	7.3	12/08/13	at Georgetown	w 77-68	529
FREE THROWS-ATT	181-230	142-218	12/11/13	at South Dakota State	L 79-83	1713
Free throw pct	.787	.651				
F-Throws made per game	20.1	15.8				
REBOUNDS	410	368				
Rebounds per game	45.6	40.9				
Rebounding margin	+4.7	-				
ASSISTS	123	125				
Assists per game	13.7	13.9				
TURNOVERS	172	176				
Turnovers per game	19.1	19.6				
Turnover margin	+0.4	-				
Assist/turnover ratio	0.7	0.7				
STEALS	88	83				
Steals per game	9.8	9.2				
BLOCKS	54	30				
Blocks per game	6.0	3.3				
ATTENDANCE	25387	2478				
Home games-Avg/Game	5-5077	2-1121				
Neutral site-Avg/Game	-	2-118				

* - Conference game

Score by Periods	1st	2nd	Totals
Penn State	329	366	695
Opponents	309	293	602



2013-14 Penn State Women's Basketball
Penn State Category Leaders (as of Dec 12, 2013)
All games



Points	G	Pts	Pts/G
Lucas, Maggie	9	190	21.1
Edwards, Ariel	9	126	14.0
Taylor, Dara	9	104	11.6
East, Talia	9	59	6.6
Mitchell, Kaliyah	9	51	5.7
Waldner, Tori	9	48	5.3
Agee, Candice	9	47	5.2
Harris, Alex	9	32	3.6
Sevillian, Keke	8	25	3.1
Whitted, Peyton	8	11	1.4
DeGraaf, Jenny	4	2	0.5

Scoring Average	G	Pts	Avg/G
Lucas, Maggie	9	190	21.1
Edwards, Ariel	9	126	14.0
Taylor, Dara	9	104	11.6
East, Talia	9	59	6.6
Mitchell, Kaliyah	9	51	5.7
Waldner, Tori	9	48	5.3
Agee, Candice	9	47	5.2
Harris, Alex	9	32	3.6
Sevillian, Keke	8	25	3.1
Whitted, Peyton	8	11	1.4
DeGraaf, Jenny	4	2	0.5
Alston, Infiniti	3	0	0.0

FG Percentage	FG	Att	Pct
East, Talia	23	44	.523
Edwards, Ariel	48	94	.511
Mitchell, Kaliyah	16	37	.432
Agee, Candice	18	42	.429
Waldner, Tori	20	47	.426
Harris, Alex	10	25	.400
Taylor, Dara	38	97	.392
Lucas, Maggie	56	144	.389
Sevillian, Keke	7	21	.333
Whitted, Peyton	3	15	.200
DeGraaf, Jenny	1	7	.143
Alston, Infiniti	0	1	.000

Field Goal Attempts	G	Att	Att/G
Lucas, Maggie	9	144	16.0
Taylor, Dara	9	97	10.8
Edwards, Ariel	9	94	10.4
Waldner, Tori	9	47	5.2
East, Talia	9	44	4.9

Field Goals Made	G	Made	Made/G
Lucas, Maggie	9	56	6.2
Edwards, Ariel	9	48	5.3
Taylor, Dara	9	38	4.2
East, Talia	9	23	2.6
Waldner, Tori	9	20	2.2

3-Point Percentage	3FG	Att	Pct
Waldner, Tori	1	2	.500
Lucas, Maggie	22	59	.373
Sevillian, Keke	3	9	.333
Edwards, Ariel	3	13	.231
Taylor, Dara	4	19	.211
Mitchell, Kaliyah	1	5	.200
DeGraaf, Jenny	0	3	.000
Whitted, Peyton	0	9	.000

3-Point FG Attempts	G	Att	Att/G
Lucas, Maggie	9	59	6.6
Taylor, Dara	9	19	2.1
Edwards, Ariel	9	13	1.4
Sevillian, Keke	8	9	1.1
Whitted, Peyton	8	9	1.1

3-Point FG Made	G	Made	Made/G
Lucas, Maggie	9	22	2.4
Taylor, Dara	9	4	0.4
Edwards, Ariel	9	3	0.3
Sevillian, Keke	8	3	0.4
Mitchell, Kaliyah	9	1	0.1
Waldner, Tori	9	1	0.1

Free Throw Percent	FG	Att	Pct
Sevillian, Keke	8	8	1.000
Lucas, Maggie	56	58	.966
East, Talia	13	14	.929
Edwards, Ariel	27	32	.844
Whitted, Peyton	5	6	.833
Taylor, Dara	24	31	.774
Mitchell, Kaliyah	18	25	.720
Agee, Candice	11	20	.550
Waldner, Tori	7	13	.538
Harris, Alex	12	23	.522

Free Throw Attempts	G	Att	Att/G
Lucas, Maggie	9	58	6.4
Edwards, Ariel	9	32	3.6
Taylor, Dara	9	31	3.4
Mitchell, Kaliyah	9	25	2.8
Harris, Alex	9	23	2.6

Free Throws Made	G	Made	Made/G
Lucas, Maggie	9	56	6.2
Edwards, Ariel	9	27	3.0
Taylor, Dara	9	24	2.7
Mitchell, Kaliyah	9	18	2.0
East, Talia	9	13	1.4



**2013-14 Penn State Women's Basketball
Penn State Category Leaders (as of Dec 12, 2013)
All games**



Rebounds	G	Reb	Reb/G
East, Talia	9	61	6.8
Harris, Alex	9	57	6.3
Waldner, Tori	9	51	5.7
Edwards, Ariel	9	42	4.7
Mitchell, Kaliyah	9	41	4.6

Assists	G	No.	Ast/G
Taylor, Dara	9	45	5.0
Edwards, Ariel	9	23	2.6
Lucas, Maggie	9	16	1.8
Waldner, Tori	9	10	1.1
East, Talia	9	9	1.0

Rebound Average	G	Reb	Avg/G
East, Talia	9	61	6.8
Harris, Alex	9	57	6.3
Waldner, Tori	9	51	5.7
Edwards, Ariel	9	42	4.7
Mitchell, Kaliyah	9	41	4.6

Steals	G	No.	Stl/G
Taylor, Dara	9	27	3.0
Lucas, Maggie	9	18	2.0
Edwards, Ariel	9	15	1.7
Mitchell, Kaliyah	9	6	0.7
East, Talia	9	6	0.7
Sevillian, Keke	8	6	0.8

Offensive Rebounds	G	No.	Avg/G
East, Talia	9	26	2.9
Harris, Alex	9	19	2.1
Agee, Candice	9	15	1.7
Mitchell, Kaliyah	9	14	1.6
Edwards, Ariel	9	13	1.4

Blocked Shots	G	No.	Blk/G
Waldner, Tori	9	13	1.4
East, Talia	9	10	1.1
Harris, Alex	9	9	1.0
Agee, Candice	9	8	0.9
Edwards, Ariel	9	6	0.7

Defensive Rebounds	G	No.	Avg/G
Waldner, Tori	9	42	4.7
Harris, Alex	9	38	4.2
East, Talia	9	35	3.9
Edwards, Ariel	9	29	3.2
Mitchell, Kaliyah	9	27	3.0
Lucas, Maggie	9	27	3.0

Minutes	G	No.	Min/G
Lucas, Maggie	9	285	31.7
Taylor, Dara	9	272	30.2
Edwards, Ariel	9	266	29.6
Waldner, Tori	9	202	22.4
East, Talia	9	185	20.6

Fouls	G	No.	Per/G
East, Talia	9	27	3.0
Waldner, Tori	9	25	2.8
Taylor, Dara	9	23	2.6
Agee, Candice	9	21	2.3
Lucas, Maggie	9	20	2.2

Turnovers	G	No.	TO/G
Taylor, Dara	9	34	3.8
Lucas, Maggie	9	30	3.3
East, Talia	9	22	2.4
Edwards, Ariel	9	15	1.7
Harris, Alex	9	13	1.4

Foulsouts	G	No.
Taylor, Dara	9	1
East, Talia	9	1
Mitchell, Kaliyah	9	1
Lucas, Maggie	9	1
Waldner, Tori	9	1



2013-14 Penn State Women's Basketball
Penn State Team Game-by-Game Comparison (as of Dec 12, 2013)
All games



Opponent	1st	2nd	Score	Mar	Total FG	FG Pct	3-Pointers	3FG Pct	Free Throws	FT Pct	Rebounds	Assist	T/Over	Block	Steal	Fouls
ST. FRANCIS (PA.)	55/38	62/39	117-77	+40	39-73/25-75	.534/.333	2-8/10-42	.250/.238	37-43/17-29	.860/.586	57/33 +24	18/12	27/30	6/2	19/10	25/32
FORDHAM	38/28	40/33	78-61	+17	27-67/20-59	.403/.339	8-16/6-20	.500/.300	16-23/15-18	.696/.833	48/37 +11	12/14	14/16	4/2	6/7	21/22
CONNECTICUT	22/37	30/34	52-71	(19)	18-60/25-57	.300/.439	6-21/9-23	.286/.391	10-13/12-20	.769/.600	37/42 (5)	10/17	20/17	8/8	11/13	22/13
BUCKNELL	53/23	39/26	92-49	+43	35-71/14-55	.493/.255	2-18/4-22	.111/.182	20-25/17-28	.800/.607	56/32 +24	20/10	16/20	6/2	10/9	26/24
Oregon State	26/27	35/29	61-56	+5	20-64/18-58	.313/.310	2-6/7-23	.333/.304	19-26/13-22	.731/.591	45/44 +1	12/13	21/26	2/6	7/10	18/23
Illinois State	44/34	28/26	72-60	+12	25-55/19-62	.455/.306	4-13/9-21	.308/.429	18-26/13-24	.692/.542	43/42 +1	17/13	22/20	7/1	8/8	22/22
NOTRE DAME	28/42	39/35	67-77	(10)	22-54/27-73	.407/.370	3-9/4-11	.333/.364	20-22/19-22	.909/.864	36/44 (8)	9/17	22/15	7/3	11/11	23/21
Georgetown	28/25	49/43	77-68	+9	24-59/23-69	.407/.333	5-17/8-23	.294/.348	24-32/14-22	.750/.636	46/41 +5	17/15	19/18	4/2	7/9	19/24
South Dakota State	35/55	44/28	79-83	(4)	30-71/26-70	.423/.371	2-11/9-25	.182/.360	17-20/22-33	.850/.667	42/53 (11)	8/14	11/14	10/4	9/6	24/17

Note: Game totals are displayed in the format TEAM/OPPONENT for each category