

# PENN STATE

## SOFTBALL



2014

GoPSUsports.com | ONE TEAM

### 2014 SCHEDULE

#### FEBRUARY

Fri. 7	!	vs. Oregon State	L, 12-10
	!	vs. Appalachian State	W, 10-6
Sat. 8	!	vs. Bradley	W, 5-3
	!	at No. 7 Arizona State	L, 9-1 [6]
Sun. 9	!	vs. Seattle	W, 6-1
Sun. 16	@	vs. George Washington	W, 9-1 [5]
	@	vs. Northwestern	L, 11-1 [5]
Mon. 17	@	at No. 21 LSU (DH)	L, 11-3 [5]
	@	at No. 21 LSU (DH)	W, 6-5
Fri. 21	#	vs. Kentucky	L, 5-0
	#	at Florida Atlantic	L, 3-2 (8)
Sat. 22	#	vs. Pitt	L, 3-1
	#	at Florida Atlantic	L, 3-2
Sun. 23	#	vs. Kentucky	L, 8-1

#### MARCH

Sat. 1	\$	vs. Kent State	L, 9-1 [5]
	\$	vs. Dartmouth	L, 6-3
Sun. 2	\$	vs. Fairfield	Cancelled
	\$	at James Madison	Cancelled
Fri. 14	%	vs. Rutgers	L, 4-3
	%	vs. Central Connecticut St.	L, 1-0
Sat. 15	%	vs. Wagner	L, 4-2
	%	vs. Yale	W, 5-0
	%	vs. Baylor	L, 8-1
Fri. 21	*	PURDUE	L, 10-3
Sat. 22	*	PURDUE	L, 9-2
	*	PURDUE	L, 13-4 [5]
Fri. 28	*	No. 6 MICHIGAN	L, 6-0
Sat. 29	*	No. 6 MICHIGAN	L, 22-0 [5]
Sun. 30	*	No. 6 MICHIGAN	L, 12-4 [5]

#### APRIL

Wed. 2		SAINT FRANCIS (Pa.) (DH)	L, 4-2 (8)
		SAINT FRANCIS (Pa.) (DH)	W, 9-1 [6]
Fri. 4	*	at Michigan State	W, 9-3
Sat. 5	*	at Michigan State	W, 7-3
Sun. 6	*	at Michigan State	W, 6-0
Fri. 11	*	at Indiana	W, 4-1
Sat. 12	*	at Indiana	W, 2-1
Sun. 13	*	at Indiana	L, 8-7 (8)
Wed. 16	*	BUCKNELL (DH)	W, 6-3
	*	BUCKNELL (DH)	W, 10-5
Fri. 18	*	WISCONSIN	L, 6-3
Sat. 19	*	WISCONSIN (DH)	L, 4-0
	*	WISCONSIN (DH)	L, 5-2
Wed. 23	*	at Ohio State (DH)	5 p.m.
	*	at Ohio State (DH)	7 p.m.
Fri. 25	*	at Minnesota	7 p.m.
Sat. 26	*	at Minnesota	4 p.m.
Sun. 27	*	at Minnesota	2 p.m.
Wed. 30	*	PITT (DH)	5 p.m.
	*	PITT (DH)	7 p.m.

#### MAY

Fri. 2	*	ILLINOIS	6 p.m.
Sat. 3	*	ILLINOIS	3 p.m.
Sun. 4	*	ILLINOIS	10:30 a.m.
8-11		Big Ten Tournament	TBA

! Kajikawa Classic, Tempe, Ariz.  
 @ Tiger Invitational, Baton Rouge, La.  
 # FAU Tournament, Boca Raton, Fla.  
 \$ JMU Tournament, Harrisonburg, Va.  
 % USF Tournament, Clearwater, Fla.  
 \* Big Ten contest | All times Eastern

Home games in CAPS at Nittany Lion Softball Park

### PENN STATE NITTANY LIONS

(14-26, 5-10 B1G)

### OHIO STATE BUCKEYES

(20-23, 6-9 B1G)



Games 41-42 • April 23 • Buckeye Field • Columbus, Ohio

#### SERIES INFORMATION

##### VENUE

Buckeye Field  
Big Ten Network

##### COVERAGE

GoPSUsports.com (GameTracker)

##### SERIES RECORD

Penn State trails 29-45

##### LAST MEETING

April 14, 2013, OSU won 4-3 (8)

##### NEXT SERIES

April 25-27 at Minnesota

#### SERIES NOTES

- Penn State drops series to Wisconsin
- The Blue and White hit the road for a midweek DH at Ohio State
- Penn State trails Ohio State 29-45 in the all-time series
- The Lions last defeated OSU, 6-5, on May 11, 2012 at home in eight innings
- The Blue and White are 12-25 all-time in games played at Ohio State
- PSU's last win at Ohio State came on May 11, 2011 in a 5-3 decision
- The Buckeyes have lost four consecutive contests
- The Lions are currently 9th in the Big Ten standings while Ohio State is 7th
- Penn State leads the Big Ten in triples with 15
- Kasie Hatfield is tied for 9th in single-season doubles in the PSU record books with 12
- Hatfield is also tied for 5th in the Big Ten standings in doubles
- Lexi Knief leads the Big Ten & is second in the NCAA with six triples
- Knief also ranks in the top 10 in the league in batting average (10th, .383), on base pct. (11th, .463) and runs (8th, 36)

#### 2014 STAT LEADERS

##### RUNS

Lexi Knief	36
Alyssa Sovereign	22
Macy Jones	21

##### WALKS

Macy Jones	24
Lexi Knief	19
Reina Furuya	18

##### HITS

Lexi Knief	49
Kasie Hatfield	40
Karlie Habitz	37

##### ERA

Marlaina Laubach	3.32
Macy Jones	5.75
Christy Von Pusch	6.60

##### RBI

Karlie Habitz	32
Kasie Hatfield	26
Macy Jones	21

##### STRIKEOUTS

Marlaina Laubach	64
Macy Jones	36
Marissa Diescher	29

##### BATTING AVG (2.0 AB/Game)

Lexi Knief	.383
Kasie Hatfield	.345
Shelby Miller	.340

##### INNINGS PITCHED

Marlaina Laubach	114.0
Macy Jones	59.2
Christy Von Pusch	46.2



## QUICK FACTS

### ATHLETIC COMMUNICATIONS

Softball Contact ..... Kellie O'Brien  
 Office Phone ..... 814-863-1377  
 Cell Phone ..... 814-321-5119  
 Email ..... kbo2@psu.edu  
 Fax ..... 814-863-3165  
 Mailing Address ..... 101 Bryce Jordan Center  
 University Park, Pa. 16802

### COACHING STAFF

Head Coach ..... Amanda Lehotak (1st Year)  
 Alma Mater ..... Nebraska-Omaha '03  
 Overall Record ..... 188-206 (.477)  
 Record at Penn State ..... 0-0 (.000)  
 Email ..... ajl22@psu.edu  
 Assistant Coach ..... Megan Gibson (1st Year)  
 Alma Mater ..... Texas A&M '08  
 Email ..... mlg36@psu.edu  
 Assistant Coach ..... Joe Guthrie (First Year)  
 Alma Mater ..... Alabama '01  
 Email ..... jwg23@psu.edu  
 Office Phone ..... (814) 865-0936  
 Office Fax ..... (814) 863-8120  
 Office ..... 302 Nittany Lion Softball Park  
 Park Avenue  
 University Park, Pa. 16802

### TEAM INFORMATION

2013 Overall Record ..... 16-34  
 2013 Big Ten Record (Finish) ..... 5-17 (11th)  
 Starters Returning/Lost ..... 4/5  
 Position Players Returning/Lost ..... 10/7  
 Pitchers Returning/Lost ..... 3/2  
 Letterwinners Returning/Lost ..... 14/8  
 Newcomers ..... 5  
 Facebook ..... PennStateSoftball  
 Twitter/Instagram ..... @PennStateSB

### PROGRAM HISTORY

First Varsity Year ..... 1965  
 All-Time Record ..... 921-877-3 (.512)  
 All-Time Big Ten Record ..... 173-299-1 (.348)  
 NCAA Postseason Appearances ..... 10  
 All-Time NCAA Tournament Record ..... 12-20  
 NFCA All-Americans ..... 4  
 Academic All-Americans ..... 13  
 First Team All-Big Ten Selections ..... 10  
 Second Team All-Big Ten Selections ..... 20  
 Third Team All-Big Ten Selections ..... 22

### PENN STATE UNIVERSITY

Location ..... University Park, Pa.  
 Founded ..... 1855  
 Enrollment ..... 44,679  
 Nickname ..... Nittany Lions  
 Colors ..... Blue and White  
 Conference ..... Big Ten Conference  
 Home Facility ..... Nittany Lion Softball Park (1,084)  
 President ..... Dr. Rodney Erickson  
 Director of Athletics ..... Dr. Dave Joyner  
 Senior Women's Administrator ..... Charmelle Green  
 Faculty Representative ..... Dr. Linda Caldwell  
 Athletics Website ..... www.GoPSUsports.com

### UP TO BAT

Penn State softball opens up a five-game road swing on Wednesday with a doubleheader at Ohio State. The Nittany Lions look to pick up a pair of crucial wins, entering the contest at No. 9 while the Buckeyes are just ahead at No. 7.

PSU and OSU take the field at 4 p.m. for game one while the nightcap is slated for a 6 p.m.start. Wednesday's doubleheader will air live on the Big Ten Network with Lisa Byington and Garland Cooper on the call.

### ON DECK

PSU continues its road trip with a three-game bout at No. 12 Minnesota this weekend. The Lions and the Golden Gophers open the series on Friday at 7 p.m. (ET) and continue play on Saturday at 4 p.m. and Sunday at 2 p.m. Saturday's contest will air live on the Big Ten Network with Wayne Randazzo and Brooke Weisbrod on the call.

### SERIES HISTORY vs. OHIO STATE

The Nittany Lions trail the Buckeyes 29-45 in the all-time series. Penn State last defeated OSU at Nittany Lion Softball Park on May 11, 2012, winning 6-5 in eight innings. PSU has not defeated Ohio State in Columbus since taking a 5-3 decision on May 11, 2011.

The Buckeyes swept Penn State in the most recent series between the two teams, taking three straight games in Columbus in last year.

### EYEING OHIO STATE

Ohio State enters the weekend at 20-23 overall and has dropped four consecutive contests. The Buckeyes are 6-9 in Big Ten play with wins over Purdue, Indiana and Michigan State.

Senior Evelyn Carrillo and junior Caitlin Conrad have led the offensive strike for OSU in 2014. Carrollo is hitting at a team-best clip of .356 with 47 hits and 29 RBI while Mueller is batting .344 with 44 hits, including six home runs, and 27 RBI.

The OSU pitching staff has combined for 198 strikeouts this season and owns an ERA of 4.20. Junior Olivia O'Reilly has done most of the work for OSU, registering nine of the Buckeye's wins. O'Reilly has struck out 73 opponents and has an ERA of 3.15 through 111 innings.

### LAST TIME OUT

Penn State was swept for the third time this season in a three-game series as Wisconsin took all three games this past weekend. PSU failed to put numbers up offensively and committed costly errors on defense, leading to a 6-3 defeat on Friday and 4-0 and 5-2 losses on Saturday. The Badgers limited PSU to just 13 hits through all three games and scored seven unearned runs on four Penn State errors.

### TRIPLES CROWN

The Nittany Lions lead the Big Ten in triples with 15 on the year. PSU has registered three more than the No. 2 team, Northwestern, and six more than the next two teams.

The Lions trailed the Wildcats until posting five triples in the doubleheader vs. Bucknell (4/16).

Lexi Knief has set the pace for PSU, turning in six triple thus far. She needs just one more to enter the Penn State single season record books.

### MAKING CONTACT

Sophomore Lexi Knief is the top hitter for PSU through the first 40 outings. The outfielder is 49-for-128 at the plate for a team-best batting average of .383 and has scored a team-high 36 runs. She leads the league and ranks second in the nation in triples with six and has also posted six doubles on the year. She needs just one more triple to enter the PSU single season record books.

The Ramsey, N.J. product leads the Lions and is 11th in the conference with an on-base percentage of .463.

### DOUBLING UP

Senior Kasie Hatfield officially earned a spot in the Penn State record books in the series finale at Indiana (4/13) after registering her 12th double of the year, tying for No. 9 on the single-season doubles list.

The Tampa, Fla. product is currently tied for fifth in the league in doubles and ranks 78th in the nation in doubles per game at 0.30.



## LAU OF THE LAND

Freshman pitcher Marlaina Laubach has done the bulk of the work in the circle for Penn State, earning wins in nine of PSU's 14 victories, including a signature win over No. 21 LSU and three conference wins. The Northampton, Pa. native has a team-best ERA of 3.32 through 114 innings. She has thrown 64 strikeouts on the season, including a season-high six vs. FAU (2/21), MSU (4/4) and Bucknell (4/16).

## FORMING GOOD HABITZ

Sophomore Karlie Habitz has proven to be one of the top hitters for PSU all-season and is currently fourth on the team with a batting average of .330. The Newhall, Calif. product leads the Lions with 32 RBI and owns a slugging percentage of .500. She has registered seven doubles and a team-best four home runs. The catcher broke up two no-hitters vs. No. 6 Michigan and went 4-for-8 at the dish.

Habitz also posted six RBI in the season opener vs. Oregon State (2/7), a mark that ties for the second most in program history.

## MAGNIFICENT MILLER

Shelby Miller has turned in an impressive rookie campaign thus far for Penn State. The freshman has the third best batting average on the team at .340 and has been churning out the hits, posting a 32-for-94 mark at the dish through 34 games.

Miller has five extra-base hits under her belt with two doubles and three triples.

## BREAKING BUCKNELL

The Nittany Lions returned to the win column on Wednesday, claiming a doubleheader sweep of Bucknell. PSU defeated the Bison 6-3 in the first game before taking a 10-5 victory in the nightcap.

Freshman Shelby Miller led the Nittany Lion offense with a 5-for-6 effort at the plate, driving in five runs and scoring once with a triple and four base hits. Lexi Knief also turned in an impressive performance, registering four hits, including two triples, with one RBI and three runs scored.

Freshman pitcher Marlaina Laubach earned the win in the early game, tying her season-high with six strikeouts while giving up just one walk in her eighth complete game to improve to 9-10 on the season. Macy Jones picked up her first win of the year in game two after striking out three opponents in 3.1 innings.

## B1G WINS IN BLOOMINGTON

Penn State found success for the second straight weekend, taking two of three games to claim the series at Indiana from April 11-13. The Nittany Lions defeated the Hoosiers, 4-1, in the series opener on Friday and won 2-1 on Saturday before falling in, 8-7, in eight innings in the series finale on Sunday.

Kasie Hatfield paced PSU's offensive strike, going 7-for-10 at the plate with two doubles and her first home run of the year. The senior drove in seven runs and scored twice over the weekend.

## SERIES HISTORY vs. OHIO STATE

All-Time Series		PSU trails 29-45	
PSU Streak			L4
First Meeting		5/10/75, W	12-4
Last Meeting		4/14/13, L	3-4 (8)
Last PSU Win		5/11/13, 6-5	(8)
Previous Five Meetings			
4/14/13	A	L	3-4 (8)
4/13/13	A	L	7-16 (5)
4/12/13	A	L	0-2
5/12/13	H	L	1-4
5/11/13	H	W	6-5 (8)

## B1G RECOGNITION

Center fielder Lexi Knief pulled in the first Big Ten honor of her career on April 7 as she was named the conference's Player of the Week for her efforts on the field. The sophomore went 10-for-18 at the plate through five games last week, registering seven runs, three RBI, a double, a triple and her first collegiate home run to help the Nittany Lions to four straight wins.

Knief posted at least one hit in all five games and multiple hits in four of the contests against Saint Francis (Pa.) and conference foe Michigan State, helping the Blue and White to a 4-for-5 effort on the week and a series sweep of the Spartans. She was a single away from hitting for the cycle in the final game at MSU as she turned in each of her extra-base hits in one contest.

## LIONS IN THE B1G/NCAA (thru 4/19 games)

STAT	Total	B1G	NCAA (Top 100)	PLAYER	STAT	TOTAL	B1G	NCAA (Top 100)
» Batting Average	.257	9th	--	» K. Brackpool	SacFlies	3	2nd	--
» Slugging Pct.	.357	9th	--	» Reina Furuya	SacBunts	10	3rd	--
» On-Base Pct.	.342	9th	--		SacHits/Game	0.25	3rd	34th
» Runs Scored	152	9th	--	» Lexi Knief	BattingAvg	.383	10th	--
» Hits	262	10th	--		OnBasePct	.463	11th	--
» Runs Batted In	146	9th	--		RunsScored	36	8th	--
» Doubles	39	10th	--		RunsPG	0.90	7th	83rd
» Triples	15	1st	--		Triples	6	1st	2nd
» Triples/game	.048	1st	4th		TriplesPG	0.15	1st	2nd
» Home Runs	11	12th	--	» Kasie Hatfield	Doubles	12	5th	--
» Total Bases	364	10th	--		DoublesPG	0.30	4th	78th
» Walks	115	7th	--		ToughestToK	16.6	2nd	93rd
» Stolen Bases	19	12th	--		Triples	3	4th	56th
» Earned Run Avg.	5.24	12th	--		TriplesPG	0.08	6th	91st
» Opposing Batting Avg.	.319	12th	--	» Macy Jones	Triples	3	4th	56th
» Batters Struck Out	155	9th	--		TriplesPG	0.08	6th	91st
» Runs Allowed	227	10th	--		WlksAllwd/7Inn.	1.53	3rd	70th
» Earned Runs Allowed	193	11th	--	» Shelby Miller	Triples	3	4th	56th
» Walks Allowed	135	8th	--		TriplesPG	0.09	4th	61st
» Home Runs Allowed	35	10th	--					
» Fielding Percentage	.963	6th	81st					





# 2014 PENN STATE SOFTBALL



## SWEEPING THE SPARTANS

Penn State posted its first series sweep since 2012 last weekend with three-game sweep of Michigan State. The Lions opened the series with a 9-3 victory on Friday and followed with a 7-3 win on Saturday and a 6-0 shutout win on Sunday.

Freshman pitcher Marlaina Laubach picked up wins for Friday and Sunday's contest while sophomore Marissa Diescher earned the W for Saturday's victory.

Lexi Knief led the charge for PSU offensively, posting multiple hits in each of the games. She was a single away from hitting for the cycle in the series finale, turning in a double, a triple and her first collegiate home run.

## IN-STATE SPLIT

The Nittany Lions gained their first home win of the season on April 2 as they turned in a split effort vs. Saint Francis (Pa.). After failing to take game one, Penn State roared back in the late game to best the Red Flash, 9-1, in six innings.

Senior Alyssa Sovereign led the PSU offense with a 4-for-8 effort at the plate and scored one run. Freshman Shelby Miller also gave the Lions a spark, going a perfect 3-for-3 in the second game with a single, a two-RBI double and two runs.

## TAKING DOWN THE TIGERS

The Nittany Lions earned their biggest win of the season on Feb. 17 as they took down No. 21 LSU in the second game of a doubleheader. Sophomore Macy Jones posted two RBI and one run in the win and freshman Shelby Miller went 2-for-4 at the plate with one run to lead Penn State to a 6-5 victory over the Tigers.

Pitcher Marlaina Laubach also played a significant role in the victory, recording three strikeouts in her third complete game for PSU. The freshman moved to a perfect 4-0 on the season with the win.

## WALK IT OUT

Penn State registered a new single-game record in the win over George Washington on Feb. 16 as the Lions were walked a total of 15 times in just five innings.

The 15 walks crushed the previous record of 11 free passes set last season against Northwestern (4/20). Penn State has already amassed 60 walks in 14 games this season, more than one third of the total from 2013 (151).

## FIERCE COMPETITION

Six of Penn State's 2014 opponents are listed in the current USA Today/NFCA poll, including No. 3 Michigan. Other opponents include Arizona State (No. 5), Kentucky, (No. 9), Minnesota (No. 12) Baylor (No. 14) and Northwestern (No. 25) while LSU has received votes. All six programs are also represented in the current ESPN.com/USA Softball rankings.

## 2014 PENN STATE RECORDS

(As of 4/19/14)

Total	14-26
Conference	5-10
Non-Conf	9-16
Home	3-10
Away	6-5
Neutral	5-11
Day	8-18
Night	6-8
vs Left	2-6
vs Right	12-20
1-Run games	2-5
2-Run games	1-4
5+Run games	8-13
Extra inns	0-3
Shutouts	2-5
Scoring 0-2 runs	1-17
Scoring 3-5 runs	3-7
Scoring 6-9 runs	8-1
Scoring 10+ runs	2-1
Opponent 0-2 runs	7-1
Opponent 3-5 runs	7-9
Opponent 6-9 runs	0-9
Opponent 10+ runs	0-7
Scored in 1st inning	8-9
Scores first	11-7
Opp. scores first	3-19
After 4 leading	11-5
After 4 trailing	3-18
After 4 tied	0-3
After 5 leading	11-3
After 5 trailing	2-14
After 5 tied	0-3
After 6 leading	12-1
After 6 trailing	0-16
After 6 tied	0-2
Hit 0 home runs	10-20
Hit 1 home run	3-6
Hit 2+ home runs	1-0
Opponent 0 home runs	10-9
Opponent 1 home run	2-8
Opponent 2+ HRs	2-9
Made 0 errors	7-8
Made 1 error	5-9
Made 2+ errors	2-9
Opp. made 0 errors	4-11
Opp. made 1 error	6-11
Opp. made 2+ errors	4-4
Out-hit opponent	10-4
Out-hit by opponent	2-21
Hits are tied	2-1

vs. AAC	0-1
vs. ACC	0-1
vs. Atlantic 10	1-0
vs. Big 12	0-1
vs. Big East	0-0
vs. Big Ten	5-10
vs. Conference USA	0-2
vs. Ivy	1-1
vs. Mid-American	0-1
vs. Missouri Valley	1-0
vs. Mountain West	0-0
vs. North East Conference	1-3
vs. Pac-12	0-2
vs. Patriot League	2-0
vs. SEC	1-3
vs. Southern	1-0
vs. WAC	1-0

Monday	1-1
Wednesday	3-1
Friday	3-9
Saturday	4-11
Sunday	3-4

## BIG TEN STANDINGS

As of April 21

Team	Big Ten				Overall			
	W	L	T	Pct	W	L	T	Pct
MICHIGAN	14	1	0	.933	36	7	0	.837
NEBRASKA	11	4	0	.733	33	13	0	.717
PURDUE	11	4	0	.733	24	21	1	.533
MINNESOTA	11	5	0	.688	33	8	0	.805
WISCONSIN	9	5	0	.643	27	15	0	.643
NORTHWESTERN	9	6	0	.600	27	11	0	.711
OHIO STATE	6	9	0	.400	20	23	0	.465
IOWA	6	11	0	.353	13	25	0	.342
PENN STATE	5	10	0	.333	14	26	0	.350
MICHIGAN STATE	4	13	0	.235	12	29	0	.293
INDIANA	4	13	0	.235	13	33	1	.287
ILLINOIS	3	12	0	.200	19	21	0	.475



# 2014 PENN STATE SOFTBALL



## USA TODAY/NFCA April 22, 2014

No.	Team	Record	Last
1	Oregon (32)	40-5	1
2	UCLA	39-4	2
3	Florida	40-8	5
<b>4</b>	<b>Michigan</b>	<b>36-7</b>	<b>3</b>
<b>5</b>	<b>Arizona State</b>	<b>39-7</b>	<b>6</b>
6	Florida State	44-6	9
7	Alabama	39-8	7
8	Tennessee	36-8	4
<b>9</b>	<b>Kentucky</b>	<b>38-9</b>	<b>8</b>
10	Arizona	34-9	10
11	Washington	25-12	11
<b>12</b>	<b>Minnesota</b>	<b>33-8</b>	<b>12</b>
13	Georgia	38-9	15
<b>14</b>	<b>Baylor</b>	<b>32-10</b>	<b>14</b>
15	Missouri	35-12	13
16	Louisiana-Lafayette	33-7-1	17
17	Oklahoma	34-10	16
18	Tulsa	41-5	18
19	Nebraska	33-13	20
20	South Alabama	34-9	19
21	Notre Dame	29-9	22
22	Auburn	33-14-1	23
23	Texas A&M	29-17	21
24	USC Upstate	40-5	24
<b>25</b>	<b>Northwestern</b>	<b>27-11</b>	<b>25</b>

RV: Mississippi (31), DePaul (23), **LSU** (8), USF (6), James Madison (5), Houston (2), Virginia Tech (2), **Wisconsin** (2), IPFW (1), Long Beach State (1)

## ESPN.COM/USA SOFTBALL April 15, 2014

No.	Team	Record	Last
1	Oregon (20)	40-5	1
2	UCLA	39-4	2
<b>3</b>	<b>Michigan</b>	<b>36-7</b>	<b>3</b>
<b>4</b>	<b>Arizona State</b>	<b>39-7</b>	<b>5</b>
5	Florida	40-8	7
6	Florida State	44-6	8
7	Alabama	39-8	6
8	Tennessee	36-8	4
9	Arizona	34-9	9
<b>10</b>	<b>Kentucky</b>	<b>38-9</b>	<b>10</b>
11	Washington	25-12	11
12	Oklahoma	34-10	12
<b>13</b>	<b>Minnesota</b>	<b>33-8</b>	<b>13</b>
<b>14</b>	<b>Baylor</b>	<b>32-10</b>	<b>14</b>
15	Tulsa	41-5	16
16	Louisiana-Lafayette	33-7-1	17
17	Missouri	35-12	15
18	Georgia	38-9	18
19	Nebraska	33-13	19
20	South Alabama	34-9	20
21	Notre Dame	29-9	21
22	Auburn	33-14-1	23
23	Texas A&M	29-17	22
<b>24</b>	<b>LSU</b>	<b>27-20</b>	<b>24</b>
25	USC Upstate	40-5	25

RV: Northwestern, Mississippi State, USF, NC State, DePaul, Houston, Texas, Stetson, **Wisconsin**, Virginia Tech, **Purdue**

**Bold** indicates 2014 opponent

## PENN STATE SEASON RECORD BOOK WATCH

### BATTING AVERAGE (Min. 90 At-Bats)

1. Cassidy Bell	.456	2013
2. Cassidy Bell	.423	2012
3. Nan Sichler	.413	1988
4. Ashley Esparza	.402	2005
5. Karen Gulini	.400	2000
6. Geri Saya	.386	1983
7. Nan Sichler	.385	1987
<b>8. Lexi Knief</b>	<b>.383</b>	<b>2014</b>
9. Michelle Turk	.381	1984

### HITS

1. Nan Sichler	74	1988
2. Jen Acunto	72	2005
3. Ashley Esparza	70	2005
4. Gina Bianchini	67	2002
5. Jen Williams	66	2004
6. Karen Gulini	65	2001
7. Karen Gulini	64	2000
8. Erin Norton	63	2002
9. Cassidy Bell	62	2013
Allison Medellin	62	2001
Jodi Ricciardi	62	1999
<b>Lexi Knief</b>	<b>49</b>	<b>2014</b>

### RUNS BATTED IN

1. Jennifer Tripken	49	2002
Nan Sichler	49	1988
3. Michelle Turk	43	1984
4. Cassidy Bell	42	2013
5. Jen Acunto	38	2005
Shannon Salsburg	38	1996
7. Kelley Galigher	37	2003
8. Hollee Haines	36	2005
Joyce Tinner	36	1990
Val Serpico	36	1995
<b>Karlie Habitz</b>	<b>32</b>	<b>2014</b>
<b>Kasie Hatfield</b>	<b>26</b>	<b>2014</b>

### RUNS SCORED

1. Cassidy Bell	55	2013
2. Jennifer Tripken	45	2002
3. Gina Bianchini	44	2002
Deb Bryan	44	1988
5. Nan Sichler	40	1988
6. Gina Bianchini	39	2000
<b>Lexi Knief</b>	<b>36</b>	<b>2014</b>

### DOUBLES

1. Danielle Kinley	18	2007
Jen Acunto	18	2005
3. Cassidy Bell	15	2011
Megan Humphrey	15	2001
5. Ashley Esparza	14	2005
6. Cassidy Bell	13	2014
Danielle Kinley	13	2008
Erin Norton	13	2002
Joyce Tinner	13	1990
<b>9. Kasie Hatfield</b>	<b>12</b>	<b>2014</b>
Seven tied	12	

### TRIPLES

1. Carol Fultz	9	1983
2. Donna Devanney	8	1988
Donna Devanney	8	1985
Nan Schiler	8	1985
5. Michelle Turk	7	1981
Nan Schiler	7	1988
<b>Lexi Knief</b>	<b>6</b>	<b>2014</b>



# 2014 PENN STATE SOFTBALL



## 2014 PENN STATE SOFTBALL NUMERICAL ROSTER

No.	Name	Pos.	Year	Height	B/T	Hometown	High School
2	Taylor Abeyta	OF	So.	5-6	L/R	San Diego, Calif.	Mt. Carmel
3	Liz Presto	INF	Sr.	5-7	R/R	Bethlehem, Pa.	Bethlehem Catholic
4	Marissa Diescher	P	Jr.	5-10	R/R	Livingston Manor, N.Y.	Livingston Manor Central
5	Christy Von Pusch	P	So.	5-10	R/R	Bryn Mawr, Pa.	Radnor
7	Kasie Hatfield	C/INF	Sr.	5-5	R/R	Tampa, Fla.	Chamberlain
8	Reina Furuya	INF	So.	5-7	R/R	Waipahu, Hawaii	Punahou
10	Lexi Knief	INF/OF	So.	5-6	L/R	Ramsey, N.J.	Ramsey
11	Sam Shanahan	INF	Fr.	5-5	R/R	Seattle, Wash.	Bishop Blanchet
12	Macy Jones	OF/P	So.	5-4	L/L	Ashburn, Va.	Briar Woods
13	Maegan Tupinio	INF/OF	So.	5-4	L/R	Wahiawa, Hawaii	Leilehua
17	Marlaina Laubach	P	Fr.	5-8	R/R	Northampton, Pa.	Northampton
18	Alicia Walker	UTL	Jr.	5-6	R/R	Los Alamitos, Calif.	Los Alamitos
22	Alyssa Sovereign	OF	Sr.	5-5	L/R	La Canada, Calif.	Crescenta Valley
24	Mary Ward	OF	Fr.	5-3	L/L	Greencastle, Pa.	Greencastle-Antrim
25	Meghan Bradley	OF	Jr.	5-7	L/L	Santa Monica, Calif.	Santa Monica
28	Shannon Good	OF	So.	5-7	R/R	Horseheads, N.Y.	Horseheads
30	Karlie Habitz	C	So.	5-11	R/R	Newhall, Calif.	Valencia
52	Kristina Brackpool	OF/INF	Fr.	5-8	R/R	Valencia, Calif.	Valencia
77	Shelby Miller	INF	Fr.	5-8	L/R	Sugar Land, Texas	Kempner

**Head Coach:** Amanda Lehotak (First Season)  
**Assistant Coach:** Megan Gibson (First Season)  
**Assistant Coach:** Joe Guthrie (First Season)

## 2014 PENN STATE SOFTBALL ALPHABETICAL ROSTER

No.	Name	Pos.	Year	Height	B/T	Hometown	High School
20	Taylor Abeyta	OF	So.	5-6	L/R	San Diego, Calif.	Mt. Carmel
52	Kristina Brackpool	OF/INF	Fr.	5-8	R/R	Valencia, Calif.	Valencia
25	Meghan Bradley	OF	Jr.	5-7	L/L	Santa Monica, Calif.	Santa Monica
4	Marissa Diescher	P	Jr.	5-10	R/R	Livingston Manor, N.Y.	Livingston Manor
8	Reina Furuya	INF	So.	5-7	R/R	Waipahu, Hawaii	Punahou
28	Shannon Good	OF	So.	5-7	R/R	Horseheads, N.Y.	Horseheads
30	Karlie Habitz	C	So.	5-11	R/R	Newhall, Calif.	Valencia
7	Kasie Hatfield	C/INF	Sr.	5-5	R/R	Tampa, Fla.	Chamberlain
12	Macy Jones	OF/P	So.	5-4	L/L	Ashburn, Va.	Briar Woods
10	Lexi Knief	INF/OF	So.	5-6	L/R	Ramsey, N.J.	Ramsey
17	Marlaina Laubach	P	Fr.	5-8	R/R	Northampton, Pa.	Northampton HS
77	Shelby Miller	INF	Fr.	5-8	L/R	Sugar Land, Texas	Kempner
3	Liz Presto	INF	Sr.	5-7	R/R	Bethlehem, Pa.	Bethlehem Catholic
11	Sam Shanahan	INF	Fr.	5-5	R/R	Seattle, Wash.	Bishop Blanchet
22	Alyssa Sovereign	OF	Sr.	5-5	L/R	La Canada, Calif.	Crescenta Valley
13	Maegan Tupinio	INF/OF	So.	5-4	L/R	Wahiawa, Hawaii	Leilehua
5	Christy Von Pusch	P	So.	5-10	R/R	Bryn Mawr, Pa.	Radnor
18	Alicia Walker	UTL	Jr.	5-6	R/R	Los Alamitos, Calif.	Los Alamitos
24	Mary Ward	OF	Fr.	5-3	L/L	Greencastle, Pa.	Greencastle-Antrim

### PRONUNCIATION GUIDE

<b>Taylor Abeyta</b>	uh-BAY-teh
<b>Marissa Diescher</b>	DEE-sheer
<b>Reina Furuya</b>	RAIN-eh fa-ROO-yah
<b>Kasie Hatfield</b>	KAY-see
<b>Lexi Knief</b>	kuh-NEEF
<b>Marlaina Laubach</b>	LAW-bok
<b>Lehotak</b>	leh-HOE-tack
<b>M. Tupinio</b>	two-PEEN-ee-yo
<b>C. Von Pusch</b>	von POOSH

### LIONS BY ELIGIBILITY

**Seniors (3):** Hatfield, Presto, Sovereign  
**Juniors (3):** Bradley, Diescher, Walker  
**Sophomores (8):** Abeyta, Furuya, Good, Habitz, Jones, Knief, Tupinio, Von Pusch  
**Freshmen (5):** Brackpool, Laubach, Miller, Shanahan, Ward

### LIONS BY POSITION

**Catchers (3):** Habitz, Hatfield, Presto  
**Infielders (9):** Brackpool, Furuya, Habitz, Hatfield, Knief, Miller, Shanahan, Tupinio  
**Outfielders (9):** Abeyta, Brackpool, Bradley, Good, Jones, Knief, Sovereign, Tupinio, Ward  
**Pitchers (5):** Diescher, Jones, Laubach, Shanahan, Von Pusch  
**Utility Players (1):** Walker

### LIONS BY STATE

**California (6):** Abeyta, Brackpool, Bradley, Habitz, Sovereign, Walker  
**Florida (1):** Hatfield  
**Hawaii (2):** Furuya, Tupinio  
**New Jersey (1):** Knief  
**New York (2):** Diescher, Good  
**Pennsylvania (4):** Laubach, Presto, Von Pusch, Ward  
**Texas (1):** Miller  
**Virginia (1):** Jones  
**Washington (1):** Shanahan



# 2014 PENN STATE SOFTBALL



## 2014 Penn State Softball Overall Statistics for Penn State (as of Apr 19, 2014) (All games Sorted by Batting avg)

Record: 14-26 Home: 3-10 Away: 6-5 Neutral: 5-11 Big Ten: 5-10

Player	avg	gp-gs	ab	r	h	2b	3b	hr	rbi	tb	slg%	bb	hp	so	gdp	ob%	sf	sh	sb-att	po	a	e	fld%
10 Knief, Lexi	.383	40-40	128	36	49	6	6	1	11	70	.547	19	0	11	0	.463	0	2	2-2	55	5	0	1.000
7 Hatfield, Kasie	.345	40-39	116	11	40	12	3	1	26	61	.526	10	5	7	0	.420	0	4	2-3	173	15	5	.974
77 Miller, Shelby	.340	35-34	94	12	32	2	3	0	15	40	.426	6	0	15	0	.380	0	0	2-2	50	52	6	.944
30 Habitz, Karlie	.330	39-38	112	10	37	7	0	4	32	56	.500	11	2	12	0	.397	1	1	0-0	105	11	3	.975
12 Jones, Macy	.250	40-39	104	21	26	1	3	3	21	42	.404	24	2	21	0	.394	2	1	6-7	61	15	3	.962
18 Walker, Alicia	.217	30-19	46	4	10	1	0	0	8	11	.239	3	3	7	0	.308	0	1	1-1	10	0	0	1.000
22 Sovereign, Alyssa	.211	40-40	114	22	24	4	0	0	9	28	.246	13	1	12	0	.295	1	3	0-0	83	30	1	.991
8 Furuya, Reina	.196	40-40	97	16	19	1	0	0	10	20	.206	18	4	25	0	.342	1	10	6-6	41	89	11	.922
52 Brackpool, Kristina	.188	26-23	69	1	13	4	0	1	12	20	.290	1	1	17	1	.203	3	0	0-0	140	3	2	.986
11 Shanahan, Sam	.111	34-29	54	5	6	1	0	0	1	7	.130	3	0	14	0	.158	0	0	0-0	33	41	5	.937
25 Bradley, Meghan	.100	13-5	20	0	2	0	0	0	0	2	.100	0	0	8	0	.100	0	0	0-0	1	0	0	1.000
3 Presto, Liz	.086	18-14	35	2	3	0	0	1	1	6	.171	7	1	9	0	.256	0	4	0-0	13	16	1	.967
13 Tupinio, Maegan	.083	18-2	12	7	1	0	0	0	0	1	.083	0	0	5	0	.083	0	0	0-0	0	0	0	.000
28 Good, Shannon	.000	6-1	8	0	0	0	0	0	0	0	.000	0	1	2	0	.111	0	0	0-0	0	0	0	.000
2 Abeyta, Taylor	.000	15-5	6	1	0	0	0	0	0	0	.000	0	0	4	0	.000	0	0	0-0	3	0	1	.750
24 Ward, Mary	.000	20-1	4	4	0	0	0	0	0	0	.000	0	1	2	0	.200	0	0	0-0	0	1	0	1.000
5 Von Pusch, Christy	.000	1-1	0	0	0	0	0	0	0	0	.000	0	0	0	0	.000	0	0	0-0	1	14	1	.938
Totals	.257	40	1019	152	262	39	15	11	146	364	.357	115	21	171	1	.342	8	26	19-21	774	334	42	.963
Opponents	.319	40	1063	227	339	55	7	35	203	513	.483	135	30	155	2	.407	11	32	31-44	780	330	35	.969

LOB - Team (258), Opp (271). DPs turned - Team (8), Opp (11). IBB - Team (3), Knief 1, Habitz 1, Jones 1, Opp (2).

## (All games Sorted by Earned run avg)

Player	era	w-l	app	gs	cg	sho	sv	ip	h	r	er	bb	so	2b	3b	hr	b/avg	wp	hp	bk	sfa	sha
17 Laubach, Marlaina	3.32	9-12	24	18	10	0/1	1	114.0	138	68	54	40	64	17	0	14	.307	2	4	1	5	19
12 Jones, Macy	5.75	1-9	16	9	4	0/0	2	59.2	80	55	49	13	36	9	5	12	.317	1	14	0	2	4
5 Von Pusch, Christy	6.60	2-1	19	6	2	1/1	0	46.2	62	53	44	45	26	15	1	6	.323	12	6	0	3	6
4 Diescher, Marissa	8.73	2-4	16	7	0	0/0	1	37.2	59	51	47	37	29	14	1	3	.349	6	6	1	1	3
Totals	5.26	14-26	40	40	16	2/1	4	258.0	339	227	194	135	155	55	7	35	.319	21	30	2	11	32
Opponents	3.50	26-14	40	40	24	5/0	0	260.0	262	152	130	115	171	39	15	11	.257	8	21	0	8	26

PB - Team (14), Habitz 9, Hatfield 5, Opp (8). Pickoffs - Team (2), Laubach 1, Hatfield 1. SBA/ATT - Habitz (20-25), Hatfield (11-18), Laubach (9-15), Von Pusch (8-12), Jones (8-9), Diescher (6-8).





# 2014 PENN STATE SOFTBALL



## 2014 RESULTS

14-26 OVERALL • 5-10 BIG TEN • 3-10 HOME • 1-4 AWAY • 6-5 • 5-11 NEUTRAL

Date	Event	Opponent	W/L/T	Score	R-H-E	R-H-E	Inn.	Overall	Big Ten	Pitcher (Record)	Attend.	Time
2/7	!	vs. Oregon State	L	10-12	10-11-0	12-12-1	7	0-1	0-0	Jones (L 0-1)	-	2:20
2/7	!	vs. Appalachian St.	W	10-4	10-10-2	4-10-2	7	1-1	0-0	Diescher (W 1-0)	210	1:30
2/8	!	vs. Bradley	W	5-3	5-10-0	3-7-1	7	2-1	0-0	Laubach (W 1-0)	397	2:00
2/8	!	at No. 7 Arizona St.	L	1-9	1-5-1	9-14-1	[6]	2-2	0-0	Jones (L 0-2)	943	1:55
2/9	!	vs. Seattle	W	6-1	6-11-1	1-4-0	7	3-2	0-0	Laubach (W 2-0)	209	1:30
2/16	@	vs. George Washington	W	9-1	9-8-0	1-4-1	[5]	4-2	0-0	Laubach (W 3-0)	-	1:53
2/16	@	vs. Northwestern	L	1-11	1-2-2	11-10-1	[5]	4-3	0-0	Diescher (L 1-1)	-	1:51
2/17	@	at No. 21 LSU	L	3-11	3-2-0	11-12-0	[5]	4-4	0-0	Jones (L 0-3)	1071	1:42
2/17	@	at No. 21 LSU	W	6-5	6-8-0	5-12-1	7	5-4	0-0	Laubach (W 4-0)	1071	2:18
2/21	#	vs. No. 5 Kentucky	L	5-0	0-2-3	5-6-0	7	5-5	0-0	Diescher (L 1-2)	319	1:49
2/21	#	vs. FAU	L	3-2	2-8-1	3-9-0	(8)	5-6	0-0	Laubach (L 4-1)	319	2:00
2/22	#	vs. Pitt	L	3-1	1-9-1	3-9-1	7	5-7	0-0	Laubach (L 4-2)	346	1:46
2/22	#	at FAU	L	3-2	2-7-0	3-5-0	7	5-8	0-0	Diescher (L 1-3)	346	1:47
2/23	#	vs. No. 5 Kentucky	L	8-1	1-4-1	8-13-1	7	5-9	0-0	Laubach (L 4-3)	358	2:02
3/1	\$	vs. Kent State	L	9-1	1-4-1	9-8-2	[5]	5-10	0-0	Laubach (L 4-4)	65	1:42
3/1	\$	vs. Dartmouth	L	6-3	3-10-3	6-9-0	7	5-11	0-0	Von Pusch (L 0-1)	65	1:51
3/14	%	vs. Rutgers	L	4-3	3-7-1	4-5-1	7	5-12	0-0	Jones (L, 0-4)	33	1:55
3/14	%	vs. Central Conn. St.	L	1-0	0-4-0	1-7-1	7	5-13	0-0	Laubach (L, 4-5)	53	2:00
3/15	%	vs. Wagner	L	4-2	2-5-3	4-8-0	7	5-14	0-0	Laubach (L, 4-6)	85	2:15
3/15	%	vs. Yale	W	5-0	5-5-0	0-1-0	7	6-14	0-0	Von Pusch (W, 1-1)	90	1:20
3/16	%	vs. No. 12 Baylor	L	8-1	1-5-3	8-12-0	7	6-15	0-0	Diescher (L, 1-4)	100	1:40
3/21	*	Purdue	L	10-3	3-9-2	10-10-2	7	6-16	0-1	Laubach (L, 4-7)	170	2:40
3/22	*	Purdue	L	9-2	2-4-1	9-10-0	7	6-17	0-2	Jones (L, 0-5)	427	1:53
3/22	*	Purdue	L	13-4	4-5-0	13-15-3	[5]	6-18	0-3	Laubach (L, 4-8)	427	2:04
3/28	*	No. 6 Michigan	L	6-0	0-1-1	6-8-0	7	6-19	0-4	Jones (L, 0-6)	181	1:30
3/28	*	No. 6 Michigan	L	22-0	0-4-2	22-16-0	[5]	6-20	0-5	Laubach (L, 4-9)	181	1:57
3/29	*	No. 6 Michigan	L	12-4	4-3-2	12-15-2	[5]	6-21	0-6	Jones (L, 0-7)	310	1:56
4/2		Saint Francis (Pa.)	L	4-2	2-7-0	4-5-1	(8)	6-22	0-6	Jones (L, 0-8)	328	2:00
4/2		Saint Francis (Pa.)	W	9-1	9-10-0	1-3-3	[6]	7-22	0-6	Laubach (W, 5-9)	328	1:23
4/4	*	at Michigan State	W	9-3	9-9-0	3-7-2	7	8-22	1-6	Laubach (W, 6-9)	138	2:20
4/5	*	at Michigan State	W	7-3	7-9-1	3-6-1	7	9-22	2-6	Diescher (W, 2-4)	289	2:17
4/6	*	at Michigan State	W	6-0	6-9-1	0-3-1	7	10-22	3-6	Laubach (W, 7-9)	766	1:37
4/11	*	at Indiana	W	4-1	4-7-1	1-7-2	7	11-22	4-6	Laubach (W, 8-9)	306	1:48
4/12	*	at Indiana	W	2-1	2-4-0	1-9-0	7	12-22	5-6	Von Pusch (W, 2-1)	487	2:02
4/13	*	at Indiana	L	8-7	7-11-0	8-13-1	(8)	12-23	5-7	Laubach (L, 8-10)	415	2:27
4/16		Bucknell	W	6-3	6-9-1	3-8-0	7	13-23	5-7	Laubach (W, 9-10)	236	2:02
4/16		Bucknell	W	10-5	10-11-3	5-7-1	7	14-23	5-7	Jones (W, 1-8)	236	2:05
4/18	*	Wisconsin	L	6-3	3-5-1	6-9-0	7	14-24	5-8	Laubach (L, 9-11)	548	1:53
4/19	*	Wisconsin	L	4-0	0-3-0	4-5-1	7	14-25	5-9	Jones (L, 1-9)	723	1:51
4/19	*	Wisconsin	L	5-2	2-5-3	5-6-1	7	14-26	5-10	Laubach (L, 9-12)	723	1:43

! Kajakawa Classic, Tempe, Ariz. | @ Tiger Invitational, Baton Rouge, La. | # FAU Invitational, Boca Raton, Fla. |  
 \$ JMU Invitational, Harrisonburg, Va. | % Michele Smith Spring Break Tournament, Clearwater, Fla. | \* Big Ten Game  
 ( ) Extra inning game | [ ] Shortened game (eight-run rule)





# 2014 PENN STATE SOFTBALL



## 2014 Defensive Lineup by Game

Date	Opponent	Pitcher	Catcher	First	Second	Third	Short	Left	Center	Right	DP
2/7	Oregon State	Jones	Habitz	Brackpool	Sovereign	Shanahan	Furuya	Walker	Knief	Good	Miller
2/7	Appalachian State	Diescher	Habitz	Brackpool	Sovereign	Shanahan	Furuya	Jones	Knief	Walker	Hatfield
2/8	Bradley	Laubach	Habitz	Hatfield	Sovereign	Shanahan	Furuya	Jones	Knief	Walker	Bradley
2/8	at Arizona State	Jones	Habitz	Hatfield	Sovereign	Shanahan	Furuya	Abeyta	Knief	Walker	Bradley
2/9	Seattle	Laubach	Hatfield	Brackpool	Sovereign	Shanahan	Furuya	Jones	Knief	Walker	Habitz
2/16	George Washington	Laubach	Habitz	Hatfield	Sovereign	Presto	Furuya	Jones	Knief	Miller	Brackpool
2/16	Northwestern	Diescher	Habitz	Hatfield	Sovereign	Shanahan	Furuya	Jones	Knief	Miller	Presto
2/17	at LSU	Jones	Habitz	Hatfield	Sovereign	Shanahan	Furuya	Abeyta	Knief	Miller	Presto
2/17	at LSU	Laubach	Habitz	Hatfield	Sovereign	Shanahan	Furuya	Jones	Knief	Miller	Walker
2/21	Kentucky	Diescher	Habitz	Hatfield	Sovereign	Shanahan	Furuya	Jones	Knief	Miller	Walker
2/21	at FAU	Laubach	Hatfield	Brackpool	Sovereign	Presto	Furuya	Jones	Knief	Abeyta	Habitz
2/22	Pitt	Laubach	Hatfield	Brackpool	Sovereign	Shanahan	Furuya	Jones	Knief	Miller	Habitz
2/22	at FAU	Diescher	Habitz	Brackpool	Sovereign	Shanahan	Furuya	Jones	Knief	Miller	Hatfield
2/23	Kentucky	Laubach	Habitz	Brackpool	Sovereign	Shanahan	Furuya	Jones	Knief	Miller	Hatfield
3/1	Kent State	Laubach	Habitz	Hatfield	Sovereign	Shanahan	Furuya	Jones	Knief	Miller	Walker
3/1	Dartmouth	Von Pusch	Habitz	Hatfield	Sovereign	Shanahan	Furuya	Abeyta	Knief	Ward	Presto
3/14	Rutgers	Jones	Habitz	Brackpool	Miller	Shanahan	Furuya	Sovereign	Knief	Walker	Hatfield
3/14	Central Conn. St.	Laubach	Habitz	Brackpool	Miller	Presto	Furuya	Sovereign	Knief	Jones	Hatfield
3/15	Wagner	Diescher	Hatfield	Brackpool	Miller	Presto	Furuya	Sovereign	Knief	Jones	Habitz
3/15	Yale	Von Pusch	Hatfield	Brackpool	Miller	Shanahan	Furuya	Sovereign	Knief	Jones	Habitz
3/16	Baylor	Diescher	Hatfield	Brackpool	Miller	Shanahan	Furuya	Sovereign	Knief	Jones	Habitz
3/21	PURDUE	Laubach	Habitz	Hatfield	Miller	Shanahan	Furuya	Sovereign	Knief	Jones	Brackpool
3/22	PURDUE	Jones	Hatfield	Brackpool	Miller	Shanahan	Furuya	Sovereign	Knief	Abeyta	Habitz
3/22	PURDUE	Laubach	Hatfield	Brackpool	Miller	Shanahan	Furuya	Sovereign	Knief	Jones	Habitz
3/28	MICHIGAN	Jones	Habitz	Brackpool	Miller	Shanahan	Furuya	Sovereign	Knief	Abeyta	Hatfield
3/28	MICHIGAN	Laubach	Habitz	Brackpool	Miller	Shanahan	Furuya	Sovereign	Knief	Jones	Hatfield
3/28	MICHIGAN	Jones	Habitz	Hatfield	Miller	Shanahan	Furuya	Sovereign	Knief	Walker	Brackpool
4/2	SAINT FRANCIS	Jones	Hatfield	Brackpool	Miller	Presto	Furuya	Sovereign	Knief	Walker	Habitz
4/2	SAINT FRANCIS	Laubach	Hatfield	Jones	Miller	Presto	Furuya	Sovereign	Knief	Walker	Tupinio
4/4	at Michigan State	Laubach	Hatfield	Jones	Miller	Presto	Furuya	Sovereign	Knief	Walker	Tupinio
4/5	at Michigan State	Von Pusch	Hatfield	Brackpool	Miller	Shanahan	Furuya	Sovereign	Knief	Jones	Habitz
4/6	at Michigan State	Von Pusch	Hatfield	Brackpool	Miller	Shanahan	Furuya	Sovereign	Knief	Jones	Habitz
4/11	at Indiana	Laubach	Hatfield	Brackpool	Miller	Shanahan	Furuya	Sovereign	Knief	Jones	Habitz
4/12	at Indiana	Diescher	Habitz	Hatfield	Miller	Presto	Furuya	Sovereign	Knief	Jones	Walker
4/13	at Indiana	Von Pusch	Hatfield	Jones	Miller	Presto	Furuya	Sovereign	Knief	Walker	Habitz
4/16	BUCKNELL	Laubach	Habitz	Hatfield	Miller	Presto	Furuya	Sovereign	Knief	Jones	Walker
4/16	BUCKNELL	Von Pusch	Habitz	Hatfield	Miller	Presto	Furuya	Sovereign	Knief	Jones	Bradley
4/18	WISCONSIN	Laubach	Hatfield	Jones	Miller	Shanahan	Furuya	Sovereign	Knief	Walker	Habitz
4/19	WISCONSIN	Jones	Habitz	Hatfield	Miller	Shanahan	Furuya	Sovereign	Knief	Walker	Bradley
4/19	WISCONSIN	Laubach	Hatfield	Jones	Miller	Shanahan	Furuya	Sovereign	Knief	Walker	Habitz



## AMANDA LEHOTAK

Head Coach • First Year  
NEBRASKA-OMAHA '03

**RECORD: 202-232 (.465)**

Amanda Lehotak enters her first season as the Penn State softball head coach. She was named the seventh coach in program history on July 22, 2013. Lehotak comes to Penn State with seven years of head coaching experience under her belt, including the last two seasons at Texas-San Antonio.

Lehotak guided the Roadrunners to a 27-26 overall record in 2013 to give the program just their second winning overall record in the last seven years. She also led the team to a fifth-place finish and a berth in the WAC Tournament in UTSA's first season in the conference. Additionally, Darian Blake was named to the All-WAC first team.

In her first season at UTSA, Lehotak and the Roadrunners posted a 24-28 overall record and 12-8 mark in Southland Conference play en route to a third-place finish, which was the program's highest finish since 2009. She had five players earn All-Southland honors in 2012, including Freshman of the Year Megan Low.

Prior to her time at UTSA, Lehotak spent six seasons at Jacksonville University, including five as the head coach. The Dolphins improved their win total each of Lehotak's five seasons at the helm, culminating in a 44-16 overall record and 18-2 conference mark in 2011.

That season, Jacksonville won the Atlantic Sun regular-season and tournament titles on its way to the first NCAA Tournament appearance in school history. Lehotak was selected as the 2011 Atlantic Sun Coach of the Year as her squad set school records for home runs, earned run average, shutouts and fielding percentage. Lehotak left Jacksonville with a school-record 137 wins.

In 2010, Lehotak led the Dolphins to a then-second-best win total in program history with a 33-23 overall record. Additionally, a then-program-record five student-athletes earned All-Atlantic Sun recognition under her guidance in 2010.

Lehotak owns a 188-206 record in seven seasons as a collegiate head coach at UTSA and Jacksonville. In addition to her one season as an assistant coach at Jacksonville, Lehotak was also an assistant coach at Missouri Western State for one season where she was responsible for recruiting, working with the outfielders, hitting instruction, coordinating camps and clinics, as well as managing the team's travel schedule.

She also served as an assistant coach at Daniel J. Gross High School in Bellevue, Neb. and was an interim assistant coach at College of Saint Mary in Omaha (2004).

A native of Omaha, Neb., Lehotak played collegiately at the University of Mississippi for two seasons (2000-01) before finishing her career at Nebraska-Omaha (2002-03). She set the single-season hits record in 2001 at Ole Miss and was a third team All-American at UNO with a pair of first team All-North Central Conference selections. Lehotak earned her bachelor's degree in family science from Nebraska-Omaha in 2003.

### LEHOTAK'S COLLEGIATE RÉSUMÉ

<b>Head Coach</b>	
Penn State	2014
Texas-San Antonio	2012-13
Jacksonville	2007-11
<i>2011 Atlantic Sun Coach of the Year</i>	
<b>Assistant Coach</b>	
Jacksonville	2006
Missouri Western State	2005
College of St. Mary (Neb.)	2004
<b>Student-Athlete</b>	
Nebraska-Omaha	2002-03
Mississippi	2000-01

### CAREER RECORD

Season	School	Overall Record	Pct.	Conf. Record	Pct.	Finish	NCAA
2014	Penn State	14-26	.350	5-10	.333	--	--
2013	Texas-San Antonio	27-26	.509	9-12	.429	5th	--
2012	Texas-San Antonio	24-28	.462	12-8	.600	T3rd	--
2011	Jacksonville	44-16	.733	18-2	.900	1st	Regionals
2010	Jacksonville	33-23	.589	10-10	.500	6th	--
2009	Jacksonville	24-31	.436	7-13	.350	7th	--
2008	Jacksonville	21-39	.350	5-17	.227	11th	--
2007	Jacksonville	15-43	.259	4-14	.222	10th	--



# 2014 PENN STATE SOFTBALL



## #2 TAYLOR ABEYTA



OF • So. • San Diego, Calif. Mt. Carmel

- Has seen action in 14 games in 2014
- Has started five contests at right field
- Earned her first at-bat of the season vs. Oregon St. (2/7)

### ABEYTA'S CAREER HIGHS

AT BATS	4	vs. South Carolina	3/10/13
RUNS	1	6x, last vs. Northwestern	2/16/14
HITS	2	vs. DePaul	3/16/13
RBI	3	2x, last vs. DePaul	3/16/13
WALKS	3	vs. Missouri-KC	2/17/13
STOLEN BASES	1	3x, last vs. Maine	3/9/13
TOTAL BASES	2	vs. Ohio State	5/11/12

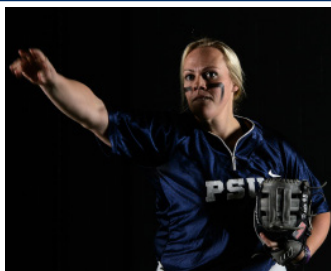
### 2014 SEASON HIGHS

AT BATS	2	vs. Dartmouth	3/1/14
RUNS	-	-	-
HITS	-	-	-
RBI	-	-	-
WALKS	-	-	-
STOLEN BASES	-	-	-
TOTAL BASES	-	-	-

### CAREER HITTING STATISTICS

Year	AVG.	GP-GS	AB	R	H	2B	3B	HR	RBI	TB	SLG	BB	HBP	SO	GDP	OBP	SF-SH	SB-ATT	PO-A-E	FLD%
2013	.229	36-14	35	5	8	1	0	1	7	23	.343	3	0	14	0	.289	0-0	3-3	55-2-2	.966
2014	.000	15-5	6	1	0	0	0	0	0	0	.000	0	0	4	0	.000	0-0	0-0	3-0-1	.750
<b>Total</b>	<b>.195</b>	<b>51-19</b>	<b>41</b>	<b>6</b>	<b>8</b>	<b>1</b>	<b>0</b>	<b>1</b>	<b>7</b>	<b>12</b>	<b>.293</b>	<b>3</b>	<b>0</b>	<b>18</b>	<b>0</b>	<b>.250</b>	<b>0-0</b>	<b>3-3</b>	<b>58-2-3</b>	<b>.952</b>

## #3 LIZ PRESTO



C • Sr. • Bethlehem, Pa. Bethlehem Catholic

- Has seen action in 18 games in 2014, starting 14
- Notched her first HR of the season vs. Saint Francis (4/2)
- Posted her first hit of the season at FAU (2/21)
- Earned her first start of the season vs. George Washington (2/16)
- Registered two walks vs. George Washington

### PRESTO'S CAREER HIGHS

AT BATS	4	2x, last vs. Minnesota	4/28/12
RUNS	2	vs. Michigan State	4/7/12
HITS	3	vs. Michigan State	4/7/12
RBI	4	vs. Minnesota	4/28/12
WALKS	2	5x, last vs. George Washington	2/16/14
STOLEN BASES	-	-	-
TOTAL BASES	4	3x, last vs. Texas	3/15/13

### 2014 SEASON HIGHS

AT BATS	3	3x, last at Michigan State	4/4/14
RUNS	1	vs. Saint Francis	4/2/14
HITS	1	3x, last at Indiana	4/13/14
RBI	1	vs. Saint Francis	4/2/14
WALKS	2	vs. George Washington	2/16/14
STOLEN BASES	-	-	-
TOTAL BASES	4	vs. Saint Francis	4/2/14

### CAREER HITTING STATISTICS

Year	AVG.	GP-GS	AB	R	H	2B	3B	HR	RBI	TB	SLG	BB	HBP	SO	GDP	OBP	SF-SH	SB-ATT	PO-A-E	FLD%
2011	.067	16-4	15	4	1	1	0	0	1	2	.133	5	0	5	0	.300	0-0	0-0	0-0-0	.000
2012	.190	38-35	79	6	15	3	0	1	7	21	.266	20	2	18	1	.366	0-3	0-0	83-34-4	.967
2013	.222	17-5	18	1	4	0	0	1	3	7	.389	6	0	7	0	.417	0-0	0-0	0-1-0	1.000
2014	.086	18-14	35	2	3	0	0	1	1	6	.171	7	1	9	0	.256	0-4	0-0	13-16-1	.967
<b>Total</b>	<b>.156</b>	<b>89-58</b>	<b>147</b>	<b>13</b>	<b>23</b>	<b>4</b>	<b>0</b>	<b>3</b>	<b>12</b>	<b>36</b>	<b>.245</b>	<b>38</b>	<b>3</b>	<b>39</b>	<b>1</b>	<b>.340</b>	<b>0-7</b>	<b>0-0</b>	<b>96-51-5</b>	<b>.967</b>





# 2014 PENN STATE SOFTBALL



## #4 MARISSA DIESCHER



RHP • Jr. • Livingston Manor, N.Y. Livingston Manor Central

- Pitched a season-high 5.0 innings vs. Wagner (3/15) and No. 5 Kentucky (2/21)
- Started her first game of the year vs. Appalachian St. (2/7)
- Notched her first win of 2014 vs. Appalachian St.
- Registered her first save of the season vs. Bradley (2/8)
- Matched career-high with five strikeouts vs. Wagner in four innings
- Gave up just two walks in four innings vs. Bradley

### DIESCHER'S CAREER PITCHING HIGHS

INNINGS.....7.0 ..... 5x, last vs. Indiana ..... 4/15/12  
 STRIKEOUTS.....5 ..... vs. LIU-Brooklyn ..... 3/2/12  
 WALKS .....10 ..... at Michigan ..... 3/24/12

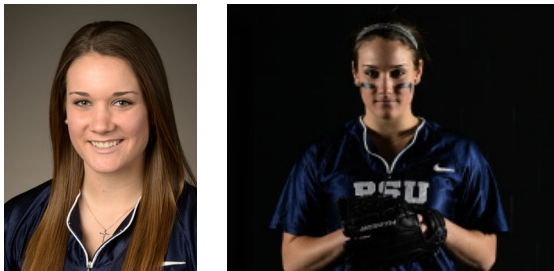
### 2014 SEASON PITCHING HIGHS

INNINGS.....5.0 ..... 2x, last vs. Wagner ..... 3/15/14  
 STRIKEOUTS.....5 ..... vs. Wagner ..... 3/15/14  
 WALKS .....5 ..... 2x, last vs. Kent State ..... 3/1/14

### CAREER PITCHING STATISTICS

Year	ERA	W-L	APP	GS	CG	SHO/C	SV	IP	H	R	ER	BB	SO	2B	3B	HR	BF	BAA	WP	HBP	BK	SFA	SHA
2012	5.52	5-9	22	19	6	1/0	0	78.2	94	76	62	88	33	8	0	7	429	.295	20	6	0	3	13
2013	10.21	1-7	17	11	0	0/0	0	36.1	37	57	53	69	21	4	0	2	225	.255	4	7	1	0	4
2014	8.73	2-4	16	7	0	0/0	1	37.2	59	51	47	37	29	14	1	3	216	.349	6	6	1	1	3
<b>Total</b>	<b>7.43</b>	<b>8-20</b>	<b>55</b>	<b>37</b>	<b>6</b>	<b>1/0</b>	<b>1</b>	<b>152.2</b>	<b>190</b>	<b>184</b>	<b>162</b>	<b>194</b>	<b>83</b>	<b>26</b>	<b>1</b>	<b>12</b>	<b>870</b>	<b>.300</b>	<b>30</b>	<b>19</b>	<b>2</b>	<b>4</b>	<b>20</b>

## #5 CHRISTY VON PUSCH



RHP • So. • Bryn Mawr, Pa. Radnor

- Doled out a career-high four strikeouts at MSU (4/5)
- Earned her first collegiate victory vs. Yale (3/14)
- Pitched her first complete game vs. Dartmouth (3/1)
- Made her first start of the season vs. Dartmouth
- Has seen action in 16 games in 2014
- Gave up just one walk in 2.2 innings vs. Arizona State

### VON PUSCH'S CAREER PITCHING BESTS

INNINGS.....7.0 ..... 2x, last vs. Yale ..... 3/14/14  
 STRIKEOUTS.....3 ..... vs. Kentucky ..... 2/23/14  
 WALKS .....11 ..... vs. Texas Tech ..... 2/16/13

### VON PUSCH'S 2014 SEASON PITCHING BESTS

INNINGS.....7.0 ..... 2x, last vs. Yale ..... 3/15/14  
 STRIKEOUTS.....4 ..... at Michigan State ..... 4/5/14  
 WALKS .....5 ..... vs. Purdue ..... 3/22/14

### CAREER PITCHING STATISTICS

Year	ERA	W-L	APP	GS	CG	SHO/C	SV	IP	H	R	ER	BB	SO	2B	3B	HR	BF	BAA	WP	HBP	BK	SFA	SHA
2013	17.02	0-6	12	7	0	0/1	0	19.1	34	54	47	50	2	4	1	3	141	.386	19	0	0	0	3
2014	6.60	2-1	19	6	2	1/1	0	46.2	62	53	44	45	26	15	1	6	252	.323	12	6	0	3	6
<b>Total</b>	<b>9.65</b>	<b>2-7</b>	<b>31</b>	<b>13</b>	<b>2</b>	<b>1/2</b>	<b>0</b>	<b>66.0</b>	<b>96</b>	<b>107</b>	<b>91</b>	<b>95</b>	<b>28</b>	<b>19</b>	<b>2</b>	<b>9</b>	<b>393</b>	<b>.343</b>	<b>31</b>	<b>6</b>	<b>0</b>	<b>3</b>	<b>9</b>





# 2014 PENN STATE SOFTBALL



## #7 KASIE HATFIELD



C/INF • Sr. • Tampa, Fla. Chamberlain

- Has started all but one game for PSU this season
- Leads the team and is tied for fifth in the Big Ten in doubles with 12
- Entered PSU's record books at No. 9 on the single season doubles list after posting her 12th double at IU on April 13
- Went 7-for-10 at the plate in the series at Indiana with seven RBI and two runs on two double and a HR
- Notched her first triple of the year at MSU (4/4)
- Drove in a season-high three runs vs. George Washington (2/16)

### HATFIELD'S CAREER HIGHS

AT BATS	7	vs. Fordham	5/21/11
RUNS	2	5x, last vs. Northwestern	4/20/13
HITS	4	vs. Michigan State	4/7/12
RBI	5	vs. Indiana	4/15/12
WALKS	2	2x, last vs. Bradley	2/8/14
STOLEN BASES	1	vs. Texas A&M	3/3/13
TOTAL BASES	8	vs. Ohio State	5/11/12

### 2014 SEASON HIGHS

AT BATS	4	6x, last vs. Bucknell	4/16/14
RUNS	1	11x, last vs. Wisconsin	4/19/14
HITS	3	2x, last at Indiana	4/11/14
RBI	3	2x, last at Indiana	4/13/14
WALKS	2	vs. Bradley	2/8/14
STOLEN BASES	--	--	--
TOTAL BASES	7	at Indiana	4/11/14

### CAREER HITTING STATISTICS

Year	AVG.	GP-GS	AB	R	H	2B	3B	HR	RBI	TB	SLG	BB	HBP	SO	GDP	OBP	SF-SH	SB-ATT	PO-A-E	FLD%
2011	.223	49-45	130	10	29	6	1	1	10	40	.308	6	3	23	2	.273	0-3	0-0	218-16-2	.992
2012	.252	48-48	131	16	33	8	0	5	26	56	.427	10	0	22	3	.305	0-2	0-1	156-45-6	.971
2013	.181	45-42	105	5	19	0	0	2	6	25	.238	5	0	21	0	.218	0-3	1-1	149-25-6	.967
2014	.345	40-39	116	11	40	12	3	1	26	61	.526	10	5	7	0	.420	0-4	2-3	173-15-5	.974
<b>Total</b>	<b>.251</b>	<b>182-174</b>	<b>482</b>	<b>42</b>	<b>121</b>	<b>26</b>	<b>4</b>	<b>9</b>	<b>68</b>	<b>182</b>	<b>.378</b>	<b>31</b>	<b>8</b>	<b>73</b>	<b>5</b>	<b>.307</b>	<b>0-12</b>	<b>3-5</b>	<b>696-101-19</b>	<b>.977</b>

## #8 REINA FURUYA



INF • So. • Waipahu, Hawaii Punahou

- Has started all 40 games for PSU in 2014 at SS
- Third in the Big Ten in sac bunts (10)
- Notched her first double of 2014 in game two vs. UW (4/19)
- Scored two runs and drove in two runs in the series at IU
- Went 2-for-5 at the plate in the series at MSU
- Third on team in walks with 18
- Tied for first on the team in stolen bases with six
- Went 2-for-2 at the plate vs. Appalachian State (2/7) with an RBI and two runs

### FURUYA'S CAREER HIGHS

AT BATS	4	9x, last vs. Saint Francis	4/2/14
RUNS	3	vs. Bucknell	4/16/14
HITS	2	8x, last vs. Bucknell	4/16/14
RBI	4	vs. Northwestern	4/20/13
WALKS	2	3x, last vs. George Washington	2/16/14
STOLEN BASES	1	8x, last vs. Bucknell	4/16/14
TOTAL BASES	5	at Pitt	4/10/13

### 2014 SEASON HIGHS

AT BATS	4	5x, last vs. Wisconsin	4/18/14
RUNS	3	vs. Bucknell	4/16/14
HITS	2	4x, last vs. Wisconsin	4/19/14
RBI	2	vs. Bucknell	4/16/14
WALKS	2	3x, last vs. George Washington	2/16/14
STOLEN BASES	1	6x, last vs. Bucknell	4/16/14
TOTAL BASES	3	vs. Wisconsin	4/19/14

### CAREER HITTING STATISTICS

Year	AVG.	GP-GS	AB	R	H	2B	3B	HR	RBI	TB	SLG	BB	HBP	SO	GDP	OBP	SF-SH	SB-ATT	PO-A-E	FLD%
2013	.224	43-41	107	8	24	5	0	4	20	41	.383	7	0	21	1	.270	1-4	2-2	50-66-8	.935
2014	.196	40-40	97	16	19	1	0	0	10	20	.206	18	4	25	0	.342	1-10	6-6	41-89-11	.922
<b>Total</b>	<b>.211</b>	<b>83-81</b>	<b>204</b>	<b>24</b>	<b>43</b>	<b>6</b>	<b>0</b>	<b>4</b>	<b>30</b>	<b>61</b>	<b>.299</b>	<b>25</b>	<b>4</b>	<b>46</b>	<b>1</b>	<b>.306</b>	<b>2-14</b>	<b>8-8</b>	<b>91-155-19</b>	<b>.928</b>



# 2014 PENN STATE SOFTBALL



## #10 LEXI KNIEF



CF • So. • Ramsey, N.J. Ramsey

- Leads team and ranks 8th in the Big Ten in runs with 36
- Team-best and B1G 10th best batting avg. of .383
- Leads the B1G and is second in the NCAA in triples with six
- Leads PSU and is 11th in the Big Ten with OBP of .463
- Named B1G Player of the Week on April 7 after stellar series at MSU
- Posted a double, a triple & first collegiate HR at MSU (4/6)
- Drove in career-best two runs at FAU (2/22)
- Scored career-high four runs vs. Oregon State (2/7)

### KNIEF'S CAREER HIGHS

AT BATS	4	.....	22x, last vs. Wisconsin	4/19/14
RUNS	4	.....	vs. Oregon State	2/7/14
HITS	3	.....	3x, last at Michigan State	4/2/13
RBI	2	.....	2x, last vs. Wisconsin	4/19/14
WALKS	2	.....	8x, last at Michigan State	4/2/14
STOLEN BASES	1	.....	3x, last vs. Purdue	3/22/13
TOTAL BASES	9	.....	at Michigan State	4/6/14

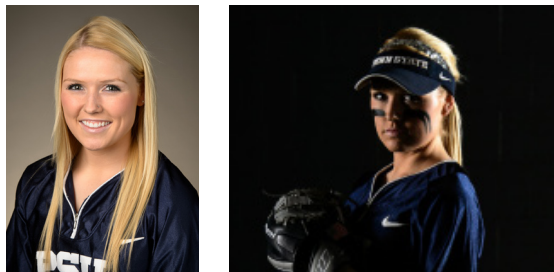
### 2014 SEASON HIGHS

AT BATS	4	.....	15x, last vs. Wisconsin	4/19/14
RUNS	4	.....	vs. Oregon State	2/7/14
HITS	3	.....	2x, last at Michigan State	4/6/14
RBI	2	.....	2x, last vs. Wisconsin	4/19/14
WALKS	2	.....	6x, last at Michigan State	4/4/14
STOLEN BASES	1	.....	2x, last vs. Purdue	3/22/14
TOTAL BASES	9	.....	at Michigan State	4/6/14

### CAREER HITTING STATISTICS

Year	AVG.	GP-GS	AB	R	H	2B	3B	HR	RBI	TB	SLG	BB	HBP	SO	GDP	OBP	SF-SH	SB-ATT	PO-A-E	FLD%
2013	.224	38-26	76	11	17	1	0	0	3	18	.237	10	4	15	1	.344	0-1	1-3	39-32-8	.899
2014	.383	40-40	128	36	49	6	6	1	11	70	.547	19	0	11	0	.463	0-2	2-2	55-50-0	1.000
<b>Total</b>	<b>.324</b>	<b>78-66</b>	<b>204</b>	<b>47</b>	<b>66</b>	<b>7</b>	<b>6</b>	<b>1</b>	<b>14</b>	<b>88</b>	<b>.431</b>	<b>29</b>	<b>4</b>	<b>26</b>	<b>1</b>	<b>.418</b>	<b>0-3</b>	<b>3-5</b>	<b>94-37-8</b>	<b>.942</b>

## #11 SAM SHANAHAN



3B • Fr. • Seattle, Wash. Bishop Blanchet

- Has started 29 games for PSU in 2014
- Turned in a 2-for-3 effort at the plate vs. Dartmouth (3/1)
- Registered her first collegiate double vs. Dartmouth
- Made first collegiate start in season-opener vs. Oregon State (2/7) and has started all but one game in 2014
- Recorded her first collegiate RBI at No. 21 LSU (2/17)
- Notched a season-high two runs vs. Oregon State
- Registered her first collegiate hit vs. Oregon State

### SHANAHAN'S 2014 SEASON HIGHS

AT BATS	3	.....	5x, last vs. Dartmouth	3/1/14
RUNS	2	.....	vs. Oregon State	2/7/14
HITS	2	.....	vs. Dartmouth	3/1/14
RBI	1	.....	at LSU	2/17/14
WALKS	1	.....	3x, last vs. Kentucky	2/23/14
STOLEN BASES	-	.....	-	-
TOTAL BASES	3	.....	vs. Dartmouth	3/1/14

### CAREER HITTING STATISTICS

Year	AVG.	GP-GS	AB	R	H	2B	3B	HR	RBI	TB	SLG	BB	HBP	SO	GDP	OBP	SF-SH	SB-ATT	PO-A-E	FLD%
2014	.111	34-29	54	5	6	1	0	0	1	7	.130	3	0	14	0	.158	0-0	0-0	33-41-5	.937
<b>Total</b>	<b>.111</b>	<b>34-29</b>	<b>54</b>	<b>5</b>	<b>6</b>	<b>1</b>	<b>0</b>	<b>0</b>	<b>1</b>	<b>7</b>	<b>.130</b>	<b>3</b>	<b>0</b>	<b>14</b>	<b>0</b>	<b>.158</b>	<b>0-0</b>	<b>0-0</b>	<b>33-41-5</b>	<b>.937</b>



# 2014 PENN STATE SOFTBALL



## #12 MACY JONES



OF/LHP • So. • Ashburn, Va. Briar Woods

- Has started all but one game for PSU in 2014
- Has allowed less walks than any other B1G pitcher (13)
- Tied for 4th in the B1G with 3 triples
- Notched a season-high 7 K's vs. SFU (4/2)
- Stole a career-best two bases vs. Saint Francis
- Notched HR's in back-to-back games vs. Wagner (3/15) and Yale (3/15)
- Posted her first HR of 2014 vs. Pitt (2/22)
- Posted 3-for-3 efforts vs. Seattle (2/9) and GWU (2/16)

JONES' CAREER HITTING HIGHS			
AT BATS	5	2x, last vs. Appalachian State	2/7/14
RUNS	3	at Pitt	4/10/13
HITS	3	3x, last vs. Saint Francis	4/9/13
RBI	6	at New Mexico State	2/16/13
WALKS	2	5x, last vs. Bucknell	4/16/14
STOLEN BASES	2	vs. Saint Francis	4/2/14
TOTAL BASES	7	2x, last vs. Yale	3/15/13
2014 HITTING HIGHS			
AT BATS	5	vs. Appalachian State	2/7/14
RUNS	2	2x, last vs. Bucknell	4/16/14
HITS	3	2x, last vs. George Washington	2/16/14
RBI	2	vs. Seattle	2/9/14
WALKS	2	4x, last vs. Bucknell	4/16/14
STOLEN BASES	2	vs. Saint Francis	4/2/14
TOTAL BASES	7	vs. Yale	3/15/14

JONES' CAREER PITCHING HIGHS			
INNINGS	8.0	vs. Saint Francis	4/2/14
STRIKEOUTS	12	vs. Maine	3/9/13
COMPLETE GAMES	18	last vs. Wisconsin	4/19/14
SHUTOUTS	1	vs. Maine	3/9/13
2014 PITCHING HIGHS			
INNINGS	8.0	vs. Saint Francis	4/2/14
STRIKEOUTS	7	vs. Saint Francis	4/2/14
WALKS	3	vs. Rutgers	3/14/14
COMPLETE GAMES	4	last vs. Wisconsin	4/19/14

CAREER PITCHING STATISTICS																							
Year	ERA	W-L	APP	GS	CG	SHO/C	SV	IP	H	R	ER	BB	SO	2B	3B	HR	BF	BAA	WP	HBP	BK	SFA	SHA
2013	3.84	13-17	36	22	14	1/1	1	175.0	196	111	96	60	000	40	3	29	785	.286	2	11	0	11	17
2014	5.75	1-9	16	9	4	0/0	2	59.2	80	55	49	13	36	9	5	12	285	.317	1	14	0	2	4
<b>Total</b>	<b>4.33</b>	<b>14-26</b>	<b>52</b>	<b>31</b>	<b>18</b>	<b>1/1</b>	<b>3</b>	<b>234.2</b>	<b>276</b>	<b>166</b>	<b>145</b>	<b>73</b>	<b>137</b>	<b>49</b>	<b>8</b>	<b>41</b>	<b>1070</b>	<b>.294</b>	<b>3</b>	<b>25</b>	<b>0</b>	<b>13</b>	<b>21</b>

CAREER HITTING STATISTICS																				
Year	AVG.	GP-GS	AB	R	H	2B	3B	HR	RBI	TB	SLG	BB	HBP	SO	GDP	OBP	SF-SH	SB-ATT	PO-A-E	FLD%
2013	.274	49-49	146	20	40	8	2	5	28	67	.459	13	5	38	0	.349	2-2	3-4	21-29-4	.926
2014	.250	40-39	104	21	26	1	3	3	21	42	.404	24	2	21	0	.394	2-1	6-7	61-15-3	.962
<b>Total</b>	<b>.264</b>	<b>89-88</b>	<b>250</b>	<b>41</b>	<b>66</b>	<b>9</b>	<b>5</b>	<b>8</b>	<b>49</b>	<b>109</b>	<b>.436</b>	<b>37</b>	<b>7</b>	<b>59</b>	<b>0</b>	<b>.369</b>	<b>4-3</b>	<b>9-11</b>	<b>82-44-7</b>	<b>.947</b>

## #13 MAEGAN TUPINIO



INF/OF • So. • Wahiawa, Hawaii Leilehua

- Has seen action in 18 games for PSU in 2014
- Earned her first start of the year vs. Saint Francis (4/2)
- Posted her first collegiate hit in the win over Saint Francis and scored her fourth run of the season
- Registered her first at-bat as a Nittany Lion at Florida Atlantic (2/22)
- Scored as a pinch runner vs. George Washington (2/16)
- Notched her first run of the season vs. Appalachian State (2/7) as a pinch runner

TUPINIO'S CAREER HIGHS			
AT BATS	3	vs. Saint Francis	4/2/14
RUNS	1	16x, last at Indiana	4/13/14
HITS	1	vs. Saint Francis	4/2/14
RBI	--	--	--
WALKS	--	--	--
STOLEN BASES	1	3x, last at Indiana	4/6/13
TOTAL BASES	1	vs. Saint Francis	4/2/14
TUPINIO'S 2014 SEASON HIGHS			
AT BATS	3	vs. Saint Francis	4/2/14
RUNS	1	7x, last at Indiana	4/13/14
HITS	1	vs. Saint Francis	4/2/14
RBI	--	--	--
WALKS	--	--	--
STOLEN BASES	--	--	--
TOTAL BASES	1	vs. Saint Francis	4/2/14

CAREER HITTING STATISTICS																				
Year	AVG.	GP-GS	AB	R	H	2B	3B	HR	RBI	TB	SLG	BB	HBP	SO	GDP	OBP	SF-SH	SB-ATT	PO-A-E	FLD%
2013	.000	24-1	0	9	0	0	0	0	0	0	.000	0	0	0	0	.000	0-0	3-3	0-0-0	.000
2014	.083	18-2	12	7	1	0	0	0	0	1	.083	0	0	5	0	.083	0-0	0-0	0-0-0	.000
<b>Total</b>	<b>.083</b>	<b>42-3</b>	<b>12</b>	<b>16</b>	<b>1</b>	<b>0</b>	<b>0</b>	<b>0</b>	<b>0</b>	<b>1</b>	<b>.083</b>	<b>0</b>	<b>0</b>	<b>5</b>	<b>0</b>	<b>.083</b>	<b>0-0</b>	<b>3-3</b>	<b>0-0-0</b>	<b>.000</b>



# 2014 PENN STATE SOFTBALL



## #17 MARLAINA LAUBACH



RHP • Fr. • Northampton, Pa. Northampton

- Has thrown a season-high six K's three times, vs. Bucknell (4/16), at MSU (4/4) and at FAU (2/21)
- Pitched a season-high eight innings at FAU (2/21)
- Earned her first collegiate save in game two at Indiana (4/12)
- Led the Nittany Lions to a win over No. 21 LSU (2/17)
- Allowed just four hits and did not give up a single walk vs. George Washington (2/16)
- Picked up a win against Bradley (2/8) in her collegiate debut
- Pitched her first complete game as a Nittany Lion vs. Seattle (2/9)
- Allowed just four hits in seven innings vs. Seattle
- Struck out five Bradley hitters & four Seattle hitters

LAUBACH'S 2014 PITCHING HIGHS	
INNINGS.....	8.0.....at Florida Atlantic..... 2/21/14
STRIKEOUTS.....	6.....3x, last vs. Bucknell..... 4/16/14
WALKS.....	6.....vs. Purdue..... 3/21/14
COMPLETE GAMES	10.....last vs. Wisconsin..... 4/19/14

Year	CAREER HITTING STATISTICS																						
	ERA	W-L	APP	GS	CG	SHO/C	SV	IP	H	R	ER	BB	SO	2B	3B	HR	BF	BAA	WP	HBP	BK	SFA	SHA
2014	3.25	9-12	24	18	10	0/1	1	114.0	138	68	53	40	64	17	0	14	518	.307	2	4	1	5	19
<b>Total</b>	<b>3.25</b>	<b>9-12</b>	<b>24</b>	<b>18</b>	<b>10</b>	<b>0/1</b>	<b>1</b>	<b>114.0</b>	<b>138</b>	<b>68</b>	<b>53</b>	<b>40</b>	<b>64</b>	<b>17</b>	<b>0</b>	<b>14</b>	<b>518</b>	<b>.307</b>	<b>2</b>	<b>4</b>	<b>1</b>	<b>5</b>	<b>19</b>

## #18 ALICIA WALKER



UTL • Jr. • Los Alamitos, Calif. Los Alamitos

- Has started 19 games for the Nittany Lions in 2014
- Drove in two runs in the win over Saint Francis (4/2)
- Hit her first-career double vs. Oregon State (2/7)
- Drove in two runs vs. Appalachian State (2/7)
- Scored once vs. Appalachian State

WALKER'S CAREER HIGHS	
AT BATS.....	4.....vs. Appalachian State..... 2/7/14
RUNS.....	2.....vs. Western Michigan..... 3/8/13
HITS.....	2.....vs. Ohio State..... 5/11/12
RBI.....	2.....2x, last vs. Saint Francis..... 4/2/14
WALKS.....	1.....3x, last vs. Western Michigan..... 3/8/13
STOLEN BASES.....	2.....vs. Ohio State..... 5/12/12
TOTAL BASES.....	2.....2x, last vs. Oregon State..... 2/7/14

2014 SEASON HIGHS	
AT BATS.....	4.....vs. Appalachian State..... 2/7/14
RUNS.....	1.....3x, last vs. Bucknell..... 4/16/14
HITS.....	1.....10x, last vs. Wisconsin..... 4/19/14
RBI.....	2.....2x, last vs. Saint Francis..... 4/2/14
WALKS.....	1.....2x, last at Arizona State..... 2/8/14
STOLEN BASES.....	--.....--.....
TOTAL BASES.....	2.....vs. Oregon State..... 2/7/14

Year	CAREER HITTING STATISTICS																			
	AVG.	GP-GS	AB	R	H	2B	3B	HR	RBI	TB	SLG	BB	HBP	SO	GDP	OBP	SF-SH	SB-ATT	PO-A-E	FLD%
2012	.207	39-15	29	9	6	0	0	0	3	6	.207	1	2	9	0	.265	2-4	5-7	19-0-2	.905
2013	.059	38-4	17	17	1	0	0	0	0	1	.059	2	1	4	0	.200	0-1	6-7	2-0-0	1.000
2014	.217	30-19	46	4	10	1	0	0	8	11	.239	3	3	7	0	.308	0-1	1-1	10-0-0	1.000
<b>Total</b>	<b>.185</b>	<b>107-38</b>	<b>92</b>	<b>30</b>	<b>17</b>	<b>1</b>	<b>0</b>	<b>0</b>	<b>11</b>	<b>18</b>	<b>.196</b>	<b>6</b>	<b>6</b>	<b>20</b>	<b>0</b>	<b>.274</b>	<b>2-6</b>	<b>12-15</b>	<b>31-0-2</b>	<b>.939</b>





# 2014 PENN STATE SOFTBALL



## #22 ALYSSA SOVEREIGN



2B • Sr. • La Canada, Calif. Crescenta Valley

- Has started all 40 games for PSU in 2014
- Has registered a hit in 10 of the last 14 games
- Went 4-for-8 in the DH vs. Saint Francis (4/2)
- Drove in two runs vs. No. 6 Michigan with her second double of the year
- Third on team in at-bats (114)
- Scored two runs in the win over No. 21 LSU (2/17)
- Registered a career-high four hits in a 4-for-5 effort vs. Oregon State (2/7)

### SOVEREIGN'S CAREER HIGHS

AT BATS	7	vs. Fordham	5/21/11
HITS	4	vs. Oregon State	2/7/14
RUNS	3	vs. James Madison	2/26/12
RBI	3	vs. Northwestern	4/20/13
STOLEN BASES	1	2x, last vs. DePaul	3/16/13
WALKS	2	8x, last at LSU	2/17/14
TOTAL BASES	6	vs. LIU-Brooklyn	3/2/12

### 2014 SEASON HIGHS

AT BATS	5	vs. Oregon State	2/7/14
HITS	4	vs. Oregon State	2/7/14
RUNS	2	6x, last vs. Wisconsin	4/18/14
RBI	2	vs. No. 6 Michigan	3/29/14
STOLEN BASES	0		--
WALKS	2	3x, last at LSU	2/17/14
TOTAL BASES	4	vs. Oregon State	2/7/14

### CAREER HITTING STATISTICS

Year	AVG.	GP-GS	AB	R	H	2B	3B	HR	RBI	TB	SLG	BB	HBP	SO	GDP	OBP	SF-SH	SB-ATT	PO-A-E	FLD%
2011	.257	56-55	167	11	43	9	1	5	26	69	.413	9	2	38	1	.302	1-4	0-1	56-6-0	1.000
2012	.209	50-50	153	21	32	5	0	4	17	49	.320	19	0	27	0	.297	0-1	1-1	51-1-1	.981
2013	.248	42-35	109	15	27	8	0	0	11	35	.321	11	0	21	0	.314	1-0	1-1	53-7-1	.984
2014	.211	40-40	114	22	24	4	0	0	9	28	.246	13	1	12	0	.295	1-3	0-0	83-30-1	.991
<b>Total</b>	<b>.232</b>	<b>188-180</b>	<b>543</b>	<b>69</b>	<b>126</b>	<b>26</b>	<b>1</b>	<b>9</b>	<b>63</b>	<b>181</b>	<b>.333</b>	<b>52</b>	<b>3</b>	<b>98</b>	<b>1</b>	<b>.301</b>	<b>3-8</b>	<b>2-3</b>	<b>243-44-3</b>	<b>.990</b>

## #24 MARY WARD



OF • Fr. • Greencastle, Pa. Greencastle-Antrim

- Has seen action in 20 games in her rookie campaign
- Earned her first collegiate start vs. Dartmouth (3/1)
- Scored as a pinch runner vs. No. 6 Michigan (3/29)
- Scored one run vs. George Washington (2/16)
- Notched her first collegiate run vs. Oregon State (2/7) as a pinch runner
- Also crossed the plate once vs. Seattle (2/9)

### WARD'S SEASON HIGHS

AT BATS	1	4x, last vs. Michigan	3/28/14
RUNS	1	4x, last vs. Michigan	3/29/14
HITS	0		--
RBI	0		--
WALKS	0		--
STOLEN BASES	0		--
TOTAL BASES	0		--

### CAREER HITTING STATISTICS

Year	AVG.	GP-GS	AB	R	H	2B	3B	HR	RBI	TB	SLG	BB	HBP	SO	GDP	OBP	SF-SH	SB-ATT	PO-A-E	FLD%
2014	.000	20-1	4	4	0	0	0	0	0	0	.000	0	1	2	0	.200	0-0	0-0	0-1-0	1.000
<b>Total</b>	<b>.000</b>	<b>20-1</b>	<b>4</b>	<b>4</b>	<b>0</b>	<b>0</b>	<b>0</b>	<b>0</b>	<b>0</b>	<b>0</b>	<b>.000</b>	<b>0</b>	<b>1</b>	<b>2</b>	<b>0</b>	<b>.200</b>	<b>0-0</b>	<b>0-0</b>	<b>0-1-0</b>	<b>1.000</b>



# 2014 PENN STATE SOFTBALL



## #25 MEGHAN BRADLEY



OF • Jr. • Santa Monica, Calif. Santa Monica

- Has seen action in 13 games in 2014
- Registered her first hit as a Nittany Lion vs. Bradley (2/8)
- Put together a 2-for-4 effort vs. Bradley
- Earned her first collegiate start vs. Bradley as the DP

BRADLEY'S CAREER HIGHS		
AT BATS	4	vs. Bradley 2/8/14
RUNS	1	3x, last vs. Indiana 4/15/12
HITS	2	vs. Bradley 2/8/14
RBI	-	-
WALKS	-	-
STOLEN BASES	-	-
TOTAL BASES	2	vs. Bradley 2/8/14

2014 SEASON HIGHS		
AT BATS	4	vs. Bradley 2/8/14
RUNS	-	-
HITS	2	vs. Bradley 2/8/14
RBI	-	-
WALKS	-	-
STOLEN BASES	-	-
TOTAL BASES	2	vs. Bradley 2/8/14

CAREER HITTING STATISTICS																				
Year	AVG.	GP-GS	AB	R	H	2B	3B	HR	RBI	TB	SLG	BB	HBP	SO	GDP	OBP	SF-SH	SB-ATT	PO-A-E	FLD%
2012	.000	14-0	0	3	0	0	0	0	0	0	.000	0	1	0	0	1.000	0-0	0-0	0-0-0	.000
2013	.000	1-0	0	0	0	0	0	0	0	0	.000	0	0	0	0	.000	0-0	0-0	0-0-0	.000
2014	.100	13-5	20	0	2	0	0	0	0	2	.100	0	0	8	0	.100	0-0	0-0	1-0-0	1.000
<b>Total</b>	<b>.100</b>	<b>28-5</b>	<b>20</b>	<b>3</b>	<b>2</b>	<b>0</b>	<b>0</b>	<b>0</b>	<b>0</b>	<b>2</b>	<b>.100</b>	<b>0</b>	<b>1</b>	<b>8</b>	<b>0</b>	<b>.143</b>	<b>0-0</b>	<b>0-0</b>	<b>1-0-0</b>	<b>1.000</b>

## #28 SHANNON GOOD



OF • So. • Horseheads, N.Y. Horseheads

- Has seen action in six games in 2014
- Earned a start in the season opener vs. Oregon State (2/7)
- Registered four at-bats vs. the Beavers in her first appearance at th plate

GOOD'S CAREER HIGHS		
AT BATS	4	vs. Oregon State 2/7/14
RUNS	-	-
HITS	-	-
RBI	-	-
WALKS	-	-
STOLEN BASES	-	-
TOTAL BASES	-	-

2014 SEASON HIGHS		
AT BATS	4	vs. Oregon State 2/7/14
RUNS	-	-
HITS	-	-
RBI	-	-
WALKS	-	-
STOLEN BASES	-	-
TOTAL BASES	-	-

CAREER HITTING STATISTICS																				
Year	AVG.	GP-GS	AB	R	H	2B	3B	HR	RBI	TB	SLG	BB	HBP	SO	GDP	OBP	SF-SH	SB-ATT	PO-A-E	FLD%
2013	.000	8-5	0	0	0	0	0	0	0	0	.000	0	0	0	0	.000	0-0	0-0	0-0-0	.000
2014	.000	6-1	8	0	0	0	0	0	0	0	.000	0	1	2	0	.111	0-0	0-0	0-0-0	.000
<b>TOTAL</b>	<b>.000</b>	<b>14-6</b>	<b>8</b>	<b>0</b>	<b>0</b>	<b>0</b>	<b>0</b>	<b>0</b>	<b>0</b>	<b>0</b>	<b>.000</b>	<b>0</b>	<b>1</b>	<b>2</b>	<b>0</b>	<b>.111</b>	<b>0-0</b>	<b>0-0</b>	<b>0-0-0</b>	<b>.000</b>



# 2014 PENN STATE SOFTBALL



## #30 KARLIE HABITZ



C • So. • Newhall, Calif. Valencia

- Has started all but two games for PSU in 2014
- Leads team with 31 RBI
- Drove in five runs on four hits in the series at Michigan State
- Went 4-for-8 in the series vs. No. 6 Michigan
- Notched her fourth HR of 2014 vs. Purdue (3/22)
- Turned in a perfect 3-for-3 effort vs. Dartmouth
- Hit her first-career grand slam vs. Oregon State (2/7)
- Drove in a career-high six RBIs vs. Oregon State
- Went a perfect 3-for-3 at the plate vs. Bucknell (4/16) and Bradley (2/8)

### HABITZ'S CAREER HIGHS

AT BATS	4	11x, last vs. Bucknell	4/16/14
RUNS	2	vs. Yale	3/15/14
HITS	3	2x, last vs. Dartmouth	3/1/14
RBI	6	vs. Oregon State	2/7/14
WALKS	3	vs. George Washington	2/16/14
STOLEN BASES	---		
TOTAL BASES	7	vs. Dartmouth	3/1/14

### 2014 SEASON HIGHS

AT BATS	4	4x, last vs. Bucknell	4/16/14
RUNS	2	vs. Yale	3/15/14
HITS	3	3x, last vs. Bucknell	4/16/14
RBI	6	vs. Oregon State	2/7/14
WALKS	3	vs. George Washington	2/16/14
STOLEN BASES	---		
TOTAL BASES	7	vs. Dartmouth	3/1/14

### CAREER HITTING STATISTICS

Year	AVG.	GP-GS	AB	R	H	2B	3B	HR	RBI	TB	SLG	BB	HBP	SO	GDP	OBP	SF-SH	SB-ATT	PO-A-E	FLD%
2013	.210	36-32	100	4	21	7	0	3	16	37	.370	7	0	17	0	.259	1-1	0-0	60-4-1	.985
2014	.330	39-38	112	10	37	7	0	4	32	56	.500	11	2	12	0	.397	1-1	0-0	105-11-3	.975
<b>Total</b>	<b>.274</b>	<b>75-70</b>	<b>212</b>	<b>14</b>	<b>58</b>	<b>14</b>	<b>0</b>	<b>7</b>	<b>48</b>	<b>93</b>	<b>.439</b>	<b>18</b>	<b>2</b>	<b>29</b>	<b>0</b>	<b>.333</b>	<b>2-2</b>	<b>0-0</b>	<b>165-15-4</b>	<b>.978</b>

## #52 KRISTINA BRACKPOOL



1B • Fr. • Valencina, Calif. Valencia

- Has started 23 games for PSU in 2014
- Drove in five runs on five hits in the series at Michigan State
- Put together a 2-for-3 effort vs. Pitt (2/22)
- Drove in one run vs. George Washington (2/16)
- Notched her first hit as a Nittany Lion vs. Seattle (2/9)
- Hit her first-collegiate homerun vs. Seattle
- Drove in three runs vs. SU
- Went 2-for-3 at the plate vs. SU

### BRACKPOOL'S SEASON HIGHS

AT BATS	4	2x, last vs. George Washington	2/16/14
RUNS	1	vs. Seattle	2/9/14
HITS	2	2x, last vs. Pitt	2/22/14
RBI	3	vs. Seattle	2/7/14
WALKS	1	vs. Appalachian State	2/7/14
STOLEN BASES	---		
TOTAL BASES	5	vs. Seattle	2/9/14

### CAREER HITTING STATISTICS

Year	AVG.	GP-GS	AB	R	H	2B	3B	HR	RBI	TB	SLG	BB	HBP	SO	GDP	OBP	SF-SH	SB-ATT	PO-A-E	FLD%
2014	.188	26-23	69	1	13	4	0	1	12	20	.290	1	1	17	1	.203	3-0	0-0	140-3-2	.986
<b>Total</b>	<b>.188</b>	<b>26-23</b>	<b>69</b>	<b>1</b>	<b>13</b>	<b>4</b>	<b>0</b>	<b>1</b>	<b>12</b>	<b>20</b>	<b>.290</b>	<b>1</b>	<b>1</b>	<b>17</b>	<b>1</b>	<b>.203</b>	<b>3-0</b>	<b>0-0</b>	<b>140-3-2</b>	<b>.986</b>



# 2014 PENN STATE SOFTBALL



## #77 SHELBY MILLER



INF • Fr. • Sugar Land, Texas Kempner

- Has started 34 games for PSU in her rookie campaign
- Turned in a 5-for-6 performance at the dish in the DH vs. Bucknell (4/16)
- Drove in a season-best four runs in the second game vs. Bucknell
- Turned in a perfect 3-for-3 effort in the win over Saint Francis (4/2) with a double, two RBI and two runs
- Registered first collegiate triples in the series vs. Purdue
- Registered her first collegiate double vs. No. 12 Baylor (3/16)
- Went 2-for-3 at the plate vs. Baylor
- Turned in a 2-for-3 performance vs. Wagner (3/15)
- Put together a 2-for-3 effort vs. No. 5 Kentucky (2/23)

### MILLER'S SEASON HIGHS

AT BATS	4	4x, last at Michigan State	4/6/14
RUNS	2	vs. Saint Francis	4/2/14
HITS	3	2x, last vs. Bucknell	4/16/14
RBI	4	vs. Bucknell	4/16/14
WALKS	3	vs. George Washington	2/16/14
STOLEN BASES	1	2x, last vs. Yale	3/15/14
TOTAL BASES	3	6x, last vs. Bucknell	4/16/14

- Went 2-for-4 at the plate in the win over No. 21 LSU (2/17)
- Drove in two runs in game one at No. 21 LSU
- Registered her first collegiate hit in her first at-bat as a Nittany Lion vs. Seattle (2/9)

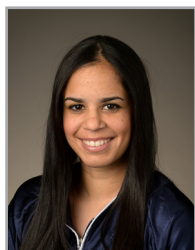
### CAREER HITTING STATISTICS

Year	AVG.	GP-GS	AB	R	H	2B	3B	HR	RBI	TB	SLG	BB	HBP	SO	GDP	OBP	SF-SH	SB-ATT	PO-A-E	FLD%
2014	.340	35-34	94	12	32	2	3	0	15	40	.426	6	0	15	0	.380	0-0	2-2	50-52-6	.944
<b>2014</b>	<b>.340</b>	<b>35-34</b>	<b>94</b>	<b>12</b>	<b>32</b>	<b>2</b>	<b>3</b>	<b>0</b>	<b>15</b>	<b>40</b>	<b>.426</b>	<b>6</b>	<b>0</b>	<b>15</b>	<b>0</b>	<b>.380</b>	<b>0-0</b>	<b>2-2</b>	<b>50-52-6</b>	<b>.944</b>





TV/RADIO ROSTER



**TAYLOR ABEYTA**  
Sophomore • OF  
*San Diego, Calif.*



**LIZ PRESTO**  
Senior • C  
*Bethlehem, Pa.*



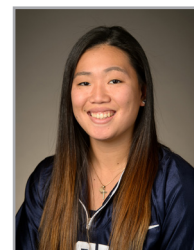
**MARISSA DIESCHER**  
Junior • RHP  
*Livingston Manor, N.Y.*



**CHRISTY VON PUSCH**  
Sophomore • RHP/INF  
*Bryn Mawr, Pa.*



**KASIE HATFIELD**  
Senior • C/INF  
*Tampa, Fla.*



**REINA FURUYA**  
Sophomore • INF  
*Waipahu, Hawaii*



**LEXI KNIEF**  
Sophomore • INF/OF  
*Ramsey, N.J.*



**SAM SHANAHAN**  
Freshman • INF  
*Seattle, Wash.*



**MACY JONES**  
Sophomore • OF/LHP  
*Ashburn, Va.*



**MAEGAN TUPINIO**  
Sophomore • INF/OF  
*Wahiawa, Hawaii*



**MARLAINA LAUBACH**  
Freshman • RHP  
*Northampton, Pa.*



**ALICIA WALKER**  
Junior • UTL  
*Los Alamitos, Calif.*



**ALYSSA SOVEREIGN**  
Senior • OF  
*La Canada, Calif.*



**MARY WARD**  
Freshman • OF  
*Greencastle, Pa.*



**MEGHAN BRADLEY**  
Junior • OF  
*Santa Monica, Calif.*



**SHANNON GOOD**  
Sophomore • OF  
*Horseheads, N.Y.*



**KARLIE HABITZ**  
Sophomore • C/INF  
*Newhall, Calif.*



**KRISTINA BRACKPOOL**  
Freshman • OF/INF  
*Valencia, Calif.*



**SHELBY MILLER**  
Freshman • INF  
*Sugar Land, Texas*



**AMANDA LEHOTAK**  
Head Coach



**MEGAN GIBSON**  
Assist Coach



**JOE GUTHRIE**  
Assistant Coach