



PENN STATE WOMEN'S SOCCER

2023 | THE 30TH SEASON

2015 NCAA CHAMPIONS | 5 NCAA COLLEGE CUPS | 9 BIG TOURNAMENT TITLES
20 BIG REGULAR SEASON TITLES | 2 MAC HERMANN TROPHY WINNERS

WE ARE PENN STATE

MATCH CAPSULE

THURSDAY, AUGUST 24, 2023 | 5 P.M.
PENN STATE AT WEST VIRGINIA
MORGANTOWN, W.VA.
DICK DLESK SOCCER STADIUM

WATCH LIVE

STREAMING ESPN+
MOBILE ESPN App
PXP Andrew Caridi
ANALYST Adam Zundell

LIVE STATS

ONLINE statbroadcast.com
MOBILE GoPSUsports App


MATCH 3

WATCH LIVE

ESPN+

PENN STATE NITTANY LIONS

BIG TEN CONFERENCE
UNIVERSITY PARK, PA.




RECORD 1-0-1 | 0-0-0 B1G
UNITED/TDS RANKINGS #8/#5
STREAK WON 1
LAST 5/LAST 10 3-1-1 | 6-2-2
HEAD COACH Erica Dambach
SEASON 21st Overall | 17th at PSU
CAREER RECORD 299-117-29
RECORD AT PSU 259-89-26

LEADING SCORER Julia Raich (5)
LEADING GOALS Linnehan / Raich (2)
LEADING ASSISTS Kate Wiesner (2)
LEADING SAVES Katherine Asman (2)

WEST VIRGINIA MOUNTAINEERS

BIG 12 CONFERENCE
MORGANTOWN, W.VA.



RECORD 1-1-0 | 0-0-0 B1G
UNITED/TDS RANKINGS RV/NR
STREAK WON 1
LAST 5/LAST 10 3-2-0 | 7-2-1
HEAD COACH Nikki Izzo-Brown
SEASON 29th Overall | 28th at WVU
CAREER RECORD 397-136-69
RECORD AT WVU 384-131-69

LEADING SCORER Four Players (3)
LEADING GOALS Nine Players (1)
LEADING ASSISTS Five Players (1)
LEADING SAVES Kayza Massey (3)

2023 PENN STATE WOMEN'S SOCCER SCHEDULE

| DATE | OPPONENT | TIME/RESULT |
|--------|--------------------|------------------|
| A 17 | NORTH CAROLINA (2) | T, 0-0 |
| A 20 | WEST CHESTER | W, 8-0 |
| A 24 | at West Virginia | 5 P.M. ESPN+ |
| A 27 | TCU | 1 P.M. B1G+ |
| A 31 | UCF | 7:30 P.M. B1G+ |
| S 3 | MONMOUTH | 1 P.M. B1G+ |
| S 7 | PRINCETON | 7:30 P.M. B1G+ |
| S 15 * | MARYLAND | 6 P.M. B1G+ |
| S 21 * | at Rutgers | 7 P.M. B1G+ |
| S 24 * | NEBRASKA | 1 P.M. B1G+ |
| S 28 * | at Michigan | 7 P.M. B1G+ |
| O 1 * | at Michigan State | Noon BTN |
| O 8 * | OHIO STATE | 1 P.M. B1G+ |
| O 12 * | at Purdue | 7 P.M. B1G+ |
| O 15 * | at Northwestern | 3 P.M. BTN |
| O 19 * | INDIANA | 7 P.M. B1G+ |
| O 22 * | WISCONSIN | Noon BTN |

BOLD indicates home match
* Big Ten Conference match
All times Eastern
Home matches played at Jeffrey Field

KICKIN' IT

- No. 8 Penn State women's soccer hits the road for the first time in the 2023 campaign on Thursday, as the Nittany Lions travel to face off against the West Virginia Mountaineers in a 5 p.m. matchup from Dick Dlesk Soccer Stadium. Streaming is available to authenticated subscribers worldwide via ESPN+.
- The Blue & White get back to work following a dominating 8-0 performance against the West Chester Golden Rams. PSU's eight-goal offensive tally marked the most Nittany Lion goals in a single match since defeating Iowa by an 8-0 score on Oct. 9, 2005.
- PSU is led by 21-year head coaching veteran Erica Dambach, who enters the third match of the 2023 season just one win away from her 300th career victory as a skipper. Dambach is 299-117-29 in her career and 259-89-26 in 17 years at PSU.
- Penn State saw a trio of student-athletes garner individual weekly accolades after the program's undefeated start to the 2023 season. Senior+ midfielder Cori Dyke was selected as the B1G Defensive Player of the Week, graduate goalkeeper Katherine Asman was named the B1G Co-Goalkeeper of the Week and senior defender Ellie Wheeler landed TopDrawerSoccer Honorable Mention National Team of the Week recognition.

WATCHING WEST VIRGINIA

- Under the direction of 29-year head coaching veteran and the only skipper in program history, Nikki Izzo-Brown, West Virginia enters Thursday's matchup with a 1-1-0 record. The Mountaineers are receiving votes in the most recent United Soccer Coaches poll, released on Tuesday, Aug. 22.
- West Virginia returns to work after booking a 9-0 victory over Saint Francis last week in the program's home-opening match. Before defeating Saint Francis, WVU suffered a 2-0 road defeat at the hands of then-No. 4 Duke on the road in Durham.
- The Mountaineers are led on the pitch by a balanced offensive attack, highlighted by nine different goal scorers in addition to five different student-athletes credited with assists.

STORY OF THE SERIES

- One of the most contentious rivalry series in women's college soccer, the Nittany Lions and Mountaineers prepare to square off in their 23rd all-time meeting. Penn State maintains a 12-7-3 record against WVU all-time, highlighted by a pair of victories in University Park a year ago. The Nittany Lions booked a 2-0 win on Jeffrey Field last August, and followed that with a 4-0 NCAA Tournament win to reach the Round of 16 on Nov. 18.
- PSU is unbeaten in its last six matches against West Virginia, publishing five wins and a draw dating to the Nittany Lions' last loss in the series in Morgantown during the 2017 regular season. Penn State eventually avenged that loss in the NCAA Tournament three months later.

PENN STATE WOMEN'S SOCCER STRATEGIC COMMUNICATIONS

Instagram/X @PennStateWSOC
Facebook /PSUWomensSoccer

Senior Associate AD Kristina Petersen
Assistant Director (Primary) Nick Whitley
Email wnw5033@psu.edu
Cell Phone (972) 832-0134
Office Phone (814) 865-1757
Fax (814) 863-3165
Student Assistants Jenny Addis, Gillian Todd
Website GoPSUsports.com
Mailing Address 101 Bryce Jordan Center
University Park, Pa. 16802

PENN STATE LAST MATCH STARTING XI

| NO. | NAME | POS. | YR. | HT. | HOMETOWN / CLUB TEAM |
|-----|---------------------|------|------|------|---|
| 6 | Kate Wiesner (C) | M | SR+ | 5-7 | Monrovia, Calif. / LAFC Slammers |
| 7 | Amelia White | F | SO | 5-3 | Fort Wayne, Ind. / Fort Wayne United |
| 10 | Cori Dyke (C) | M | SR+ | 5-6 | Littleton, Colo. / Colorado Rapids U19 ECNL |
| 12 | Payton Linnehan | F | SR+ | 5-6 | Douglas, Mass. / FC Stars |
| 16 | Ellie Wheeler | D | SR | 5-6 | Fairfax Station, Va. / FC Virginia |
| 23 | Eva Alonso | D | SR | 5-6 | Madrid, Spain / Rayo Vallecano |
| 25 | Mieke Schiemann | D | JR | 5-11 | Berlin, Germany / 1.FFC Turbine Potsdam |
| 26 | Katherine Asman (C) | GK | GR | 5-10 | Roswell, Ga. / NASA Tophat SC |
| 32 | Natalie Wilson | M | SR | 5-3 | Fairfax, Va. / McLean ECNL |
| 33 | Olivia Borgen | M | SO | 5-8 | Hanson, Mass. / South Shore Select GA |
| 35 | Riley Gleason | M | R-SO | 5-7 | Mission Viejo, Calif. / So Cal Blues |

PENN STATE UNIVERSITY

NITTANY LION WOMEN'S SOCCER

QUICK FACTS

GENERAL INFORMATION

| | |
|-------------------|-----------------------|
| LOCATION | University Park, Pa. |
| FOUNDED | 1855 |
| ENROLLMENT | 45,901 |
| NICKNAME | Nittany Lions |
| MASCOT | The Nittany Lion |
| FIGHT SONG | "Fight On State" |
| COLORS | Blue & White |
| CONFERENCE | Big Ten |
| PRESIDENT | Dr. Neeli Bendapudi |
| ATHLETIC DIRECTOR | Dr. Pat Kraft |
| SWA | Dr. Lauren Rhodes |
| FACULTY REP. | Dr. Peter Newman |
| SPORT ADMIN. | Brandi Stuart |
| STADIUM | Jeffrey Field (5,000) |

COACHING STAFF

| | |
|----------------|-----------------------------|
| HEAD COACH | Erica Dambach (17th Season) |
| ALMA MATER | William & Mary '97 |
| OVERALL RECORD | 299-117-29 (.705) |
| RECORD AT PSU | 259-89-26 (.727) |
| EMAIL | emw13@psu.edu |

| | |
|-------------------|------------------------|
| ASSOC. HEAD COACH | Ann Cook (17th Season) |
| ALMA MATER | William & Mary '97 |
| EMAIL | arc14@psu.edu |

| | |
|-------------------|---------------------------|
| ASSOC. HEAD COACH | Tim Wassell (14th Season) |
| ALMA MATER | Penn State Altoona '06 |
| EMAIL | tjw217@psu.edu |

| | |
|-----------------|-----------------------------|
| ASSISTANT COACH | Daniel Baker (First Season) |
| ALMA MATER | Indiana Wesleyan '22 |
| EMAIL | drb6040@psu.edu |

| | |
|------------------|-------------------------|
| DIRECTOR OF OPS. | Kara Cook (12th Season) |
| ALMA MATER | Southern Nazarene '97 |
| EMAIL | kdl163@psu.edu |

| | |
|-----------------|--|
| OFFICE PHONE | (814) 863-0842 |
| OFFICE FAX | (814) 863-6157 |
| MAILING ADDRESS | 259 Rec Hall University Park, Pa. 16802 |

TEAM INFORMATION

| | |
|------------------------|--|
| 2022 OVERALL RECORD | 15-5-3 |
| 2022 B1G RECORD | 5-3-2 |
| 2022 B1G TOURNAMENT | CHAMPION (def. MSU 3-2) |
| 2022 NCAA TOURNAMENT | Third Round |
| LETTERWINNERS RET/LOST | 22/11 |
| STARTERS RET/LOST | 7/4 |
| NEWCOMERS | 8 |
| CAPTAINS | Katherine Asman, Cori Dyke, Kate Wiesner |

PROGRAM HISTORY

| | |
|----------------------------------|-----------------------------|
| FIRST VARSITY SEASON | 1994 |
| ALL-TIME RECORD | 501-142-45 (.761) |
| ALL-TIME B1G RECORD | 229-43-18 (.821) |
| NCAA POSTSEASON APPS. | 28 |
| NCAA CHAMPIONSHIPS | 1 (2015) |
| NCAA COLLEGE CUP APPS. | 5 ('99, '02, '05, '12, '15) |
| ALL-TIME NCAA TOURN. REC. | 60-26-3 |
| ALL-AMERICA HONORS | 40 |
| FIRST TEAM ALL-AMERICA HONORS | 27 |
| MAC HERMANN TROPHY WINNERS | 2 |
| MAC HERMANN TROPHY FINALISTS | 9 |
| MAC HERMANN TROPHY SEMIFINALISTS | 20 |
| B1G PLAYER OF THE YEAR HONORS | 33 |
| FIRST-TEAM ALL-B1G HONORS | 80 |
| SECOND TEAM ALL-B1G HONORS | 53 |
| ALL-B1G FRESHMAN TEAM HONORS | 39 |



SQUAD GOALS (ON GOALS, ON GOALS...)

- Penn State utilized a dominant offensive outing and total team effort to book the program's first victory of the 2023 season, downing the West Chester Golden Rams by an 8-0 tally Sunday afternoon on Jeffrey Field. The Blue & White set single-match records for both shots and corner kick attempts in the contest.
- In the Nittany Lion attacking onslaught, the Blue & White unleashed 45 total shots coupled with 24 shots on goal overall. PSU's previous single-match record for shots in a contest was 45, set against the Michigan Wolverines on Nov. 7, 2010, during the Big Ten Tournament.
- The Blue & White also bested a nearly 22-year-old record for corner kicks, logging 20 in Sunday's match and surpassing the previous tally of 19 that was recorded on Sept. 28, 2001, in a match at Purdue.

HEADS CAROLINA, TAILS PENNSYLVANIA

- Penn State and then-No. 2 North Carolina battled each other and the elements on Thursday, August 17, as neither team managed to notch the lid-lifting goal in an eventual scoreless draw to open the 2023 campaign. Despite North Carolina running up a striking 19-5 overall advantage in total shots, the Nittany Lions managed to place more shots on target in the match, outshooting UNC by a 3-2 margin.
- Between the posts, Penn State captain and graduate goalkeeper Katherine Asman led the way with a two-save shutout, the 19th clean sheet of her already-storied collegiate career. Payton Linnehan, Eva Alonso and Kaitlyn MacBean each tallied shots on goal in the match.

THE DAMBACHERY

- Twenty-one year coaching veteran and 17-year Nittany Lion skipper Erica Dambach sits just one victory away from reaching the 300-mark in her illustrious career. A two-time National Coach of the Year and five-time B1G Coach of the Year, Dambach owns a 299-117-29 overall individual record.
- Over the course of her storied career in Happy Valley, Dambach has hauled in 16-consecutive NCAA Tournament bids, 11 B1G regular season titles, five B1G Tournament titles, two NCAA Women's College Cup nods and the 2015 National Championship.
- During the 2023 spring season, Dambach joined the fraternity of Penn State coaches to have a Coach's Burger listed on the menu of State College's staple restaurant, The Field Burger & Tap. The aptly named "Dambach-ery" features a Wagyu Beef patty coupled with elements of the globally-famous Philly Cheesesteak.

B1G WEEK. B1G BALLERS.

- Penn State saw a trio of student-athletes land weekly accolades, as senior+ midfielder Cori Dyke and graduate goalkeeper Katherine Asman garnered Big Ten Player of the Week honors, while senior defender Ellie Wheeler was named to the TopDrawerSoccer Honorable Mention National Team of the Week, the organizations announced Aug. 22.
- Dyke, Asman and Wheeler were instrumental in the Nittany Lions opening the program's 30th season undefeated through the first week of competition, just the 16th time PSU has accomplished that feat in school history. Both Dyke and Wheeler made their first career appearances on either a national or conference weekly award list, while Asman secured the fifth B1G Goalkeeper of the Week award in her career.

WEEZY BREEZY

- Senior+ midfielder Kate Wiesner returns for her fifth year in Happy Valley and her fourth season of on-field competition in 2023. The Monrovia, California, native was dominant in her first full season as a routine starter a year ago, finishing with two goals, 11 assists and 15 total points in 2022. Wiesner put together a remarkable performance against West Virginia in the second round of the NCAA Tournament, logging a career-high three assists in PSU's eventual 4-0 rout.
- Wiesner ranked at the top of the Big Ten Conference in both total assists (11) and assists per match (0.48) last year. She finished ranked ninth in the nation in total assists and 22nd nationally in assists per match. She garnered Big Ten Player to Watch accolades following a pre-season announcement from the league office on Aug. 15 and has already taken the top spot on PSU's assist leaderboard in 2023, dishing out a pair in the Nittany Lion win over West Chester.

PENN STATE RECORD WHEN...

2023 SITUATIONAL RECORDS

| Situation | W | L | D |
|--------------------|---|---|---|
| Home | 1 | 0 | 1 |
| Away | 0 | 0 | 0 |
| Neutral | 0 | 0 | 0 |
| vs. United Ranked | 0 | 0 | 1 |
| vs. United Top-10 | 0 | 0 | 1 |
| vs. United 11-25 | 0 | 0 | 0 |
| vs. Unranked | 1 | 0 | 0 |
| vs. B1G Opponent | 0 | 0 | 0 |
| vs. Non-Conference | 1 | 0 | 1 |
| Day | 1 | 0 | 0 |
| Night | 0 | 0 | 1 |
| Thursday | 0 | 0 | 1 |
| Friday | 0 | 0 | 0 |
| Sunday | 1 | 0 | 0 |
| August | 1 | 0 | 1 |
| September | 0 | 0 | 0 |
| October | 0 | 0 | 0 |

| Situation | W | L | D |
|---------------------|---|---|---|
| PSU Scores First | 1 | 0 | 0 |
| Opp Scores First | 0 | 0 | 0 |
| Neither Team Scores | 0 | 0 | 1 |
| Leading at Half | 1 | 0 | 0 |
| Trailing at Half | 0 | 0 | 0 |
| Tied at Half | 0 | 0 | 1 |
| PSU Outshoots Opp | 1 | 0 | 0 |
| Opp Outshoots PSU | 0 | 0 | 1 |
| Shot Attempts Level | 0 | 0 | 0 |
| PSU Leads Corners | 1 | 0 | 0 |
| Opp Leads Corners | 0 | 0 | 1 |
| Corner Kicks Level | 0 | 0 | 0 |
| One-Goal Matches | 0 | 0 | 0 |
| Two-Goal Matches | 0 | 0 | 0 |
| Three-Goal Matches | 0 | 0 | 0 |
| Four-Goal Matches | 0 | 0 | 0 |
| Five+ Goal Matches | 1 | 0 | 0 |



UNITED SOCCER COACHES NCAA DI WOMEN RANKINGS

Week One | August 22

| Rank | School (#1 Votes) | Prev. | Pts. |
|------|-----------------------|-------|------|
| 1 | UCLA (8) | 1 | 200 |
| 2 | Florida State | 6 | 192 |
| 3 | North Carolina | 2 | 183 |
| 4 | Duke | 4 | 172 |
| 5 | Virginia | 5 | 152 |
| 6 | Stanford | 11 | 148 |
| 7 | Alabama | 7 | 144 |
| 8 | PENN STATE | 10 | 138 |
| 9 | Texas | 15 | 135 |
| 10 | Arkansas | 8 | 131 |
| 11 | BYU | 13 | 115 |
| 12 | Notre Dame | 3 | 96 |
| 13 | Santa Clara | 19 | 90 |
| 14 | Michigan State | 17 | 84 |
| 15 | South Carolina | 12 | 79 |
| 16 | TCU | 9 | 78 |
| 17 | Memphis | 20 | 57 |
| | Xavier | RV | 57 |
| 19 | Clemson | 25 | 55 |
| 20 | Georgetown | 16 | 47 |
| 21 | Pittsburgh | 14 | 43 |
| 22 | UCF | 24 | 37 |
| 23 | Washington State | NR | 36 |
| 24 | USC | 22 | 35 |
| 25 | Tennessee | NR | 27 |

RV: West Virginia, Gonzaga, Wisconsin, Virginia Tech, Saint Louis, UC-Irvine, Northwestern, Harvard, NC State, Brown, Milwaukee

PSU in CAPS | Opponents Bolded

TOP DRAWER SOCCER.COM COLLEGE SOCCER NATIONAL RANKINGS

Week One | August 21

| Rank | School | Prev. |
|------|-----------------------|-------|
| 1 | UCLA | 1 |
| 2 | Florida State | 3 |
| 3 | North Carolina | 2 |
| 4 | Stanford | 4 |
| 5 | PENN STATE | 5 |
| 6 | Virginia | 6 |
| 7 | Duke | 8 |
| 8 | Alabama | 9 |
| 9 | Arkansas | 10 |
| 10 | Notre Dame | 7 |
| 11 | BYU | 12 |
| 12 | Texas | 13 |
| 13 | South Carolina | 11 |
| 14 | Pittsburgh | 15 |
| 15 | TCU | 14 |
| 16 | Michigan State | 19 |
| 17 | Saint Louis | 17 |
| 18 | Brown | 18 |
| 19 | Santa Clara | 21 |
| 20 | Georgetown | 20 |
| 21 | Northwestern | 16 |
| 22 | Harvard | 22 |
| 23 | Memphis | 23 |
| 24 | USC | 25 |
| 25 | Georgia | 24 |

PSU in CAPS | Opponents Bolded

PAYTON'S PLACES

- Senior+ forward Payton Linnehan enters her fifth year with the Blue & White and stands as the program's lead returning goal scorer from 2022. Linnehan participated in 19 matches a season ago, making 14 starts while amassing six goals scored and eight assists. The Douglas, Massachusetts, native set a career high for points scored in a single season with 20 and matched her single-season career high in assists with her eight dishes last year.
- Linnehan was chosen as one of three Penn State student-athletes as a Big Ten Player to Watch for the 2023 season, the league office announced on Tuesday, August 15. The fifth-year Nittany Lion lived up to the billing in PSU's 8-0 rout of West Chester, booking a brace in just 31 minutes of live action.

ASTOUNDING ASMAN

- Graduate captain and starting goalkeeper Katherine Asman enters her final season in the Blue & White in 2023. Asman earned two Big Ten Goalkeeper of the Week honors, appeared on the Big Ten All-Tournament Team and garnered recognition as the Big Ten Tournament's Defensive MVP in 2022.
- Asman owns 66 appearances for PSU and has started in 65 of those matches. She currently ranks as the fifth-most experienced goalkeeper in Penn State history with 5,738:30 minutes played. She trails Nittany Lion legends Emily Oleksiuk, Alyssa Naehner, Britt Eckerstrom and Amanda Dennis.
- The Roswell, Georgia, native is off to a dominant start in the 2023 campaign, boasting a pair of starts with a 0.00 goals-against average, one of just four Big Ten keepers to remain perfect between the posts after the first week of work. Her exemplary start to the season landed her as a B1G Co-Goalkeeper of the Week in the conference's Aug. 22 release.

CORI'S CORNER

- Senior+ midfielder and captain Cori Dyke is in the midst of her fifth and final season in Happy Valley coming off her most successful campaign with the Nittany Lions a year ago. The Littleton, Colorado, native appeared and earned the start in all 23 PSU matches, connecting on four goals with an assist to score nine total points in 2022.
- Dyke was named a Big Ten Player to Watch in 2023 in the conference office's pre-season release. She had also been previously named to the Big Ten Women's Soccer All-Tournament Team in 2022 in addition to securing B1G All-Freshman Team and Top-Drawer Soccer Freshman Best XI First Team recognition during her 2019 season.
- In recognition of her stellar weekend of work, Dyke was honored as the B1G Defensive Player of the Week in the B1G's most recent announcement on Aug. 22. She hauled in the first national or conference weekly honor of her accomplished collegiate career.

UNITED, WE RANKED

- Penn State debuted at the No. 10 position in the inaugural United Soccer Coaches poll of the 2023 season and climbed two spots to No. 8 nationally in the organization's release on Tuesday, August 22.
- The Blue & White stand as the highest-ranked team in the Big Ten Conference this week, leading a group of four programs that were either ranked or receiving votes. Defending Big Ten regular season champion Michigan State rose to the No. 14 position, while the Wisconsin Badgers and Northwestern Wildcats were both receiving votes in the poll. Penn State non-conference opponents North Carolina (3), TCU (16), UCF (22) and West Virginia (RV) round out the seven overall Nittany Lion challengers in and around the United Top-25.

2022 IN REVIEW

- Penn State finished the 2022 campaign with a 15-5-3 overall record paired with a 5-3-2 mark against Big Ten opposition. The Blue & White published four wins against nationally-ranked teams last year, highlighted by a 2-0 win at home over then-No. 4 Rutgers on Jeffrey Field. Penn State hauled in the program's ninth B1G Tournament Title and advanced to the third round of the NCAA Women's Soccer Tournament for the sixth consecutive season.
- Then-senior+ forward Ally Schlegel brought home First Team All-America honors from the United Soccer Coaches, while three athletes overall were recognized as All-Region choices.
- In January, the Nittany Lions saw a pair of student-athletes chosen in the 2023 NWSL Draft, with Penelope Hocking taken seventh followed by Schlegel at the No. 23 spot. Both Nittany Lion alumnae were drafted by the Chicago Red Stars.

BIG TEN CONFERENCE WOMEN'S SOCCER

2023 Preseason Coaches Poll

| Rank | School |
|------|-----------------------|
| 1 | PENN STATE |
| 2 | Northwestern |
| 3 | Rutgers |
| 4 | Michigan State |
| 5 | Wisconsin |
| 6 | Nebraska |
| 7 | Ohio State |
| 8 | Michigan |
| 9 | Minnesota |
| 10 | Iowa |
| 11 | Maryland |
| 12 | Purdue |
| 13 | Illinois |
| | Indiana |

2023 PSU B1G Opponents are BOLDED

NITTANY LION ACCOLADES 2023 WOMEN'S SOCCER

Season Awards & Watch Lists

Katherine Asman
Big Ten Co-Goalkeeper of the Week (08/22)

Rebecca Cooke
United Soccer Coaches Forward to Watch
MAC Hermann Trophy Watch List
TopDrawerSoccer.com Preseason Top-100

Cori Dyke
Big Ten Player to Watch
Big Ten Defensive Player of the Week (08/22)

Payton Linnehan
Big Ten Player to Watch

Ellie Wheeler
TopDrawerSoccer.com National Team of the Week (HM | 08/21)

Kate Wiesner
Big Ten Player to Watch
TopDrawerSoccer.com Preseason Top-100

BIG TEN CONFERENCE

WOMEN'S SOCCER

QUICK FACTS & MEDIA INFORMATION

GENERAL INFORMATION

Location Rosemont, Ill.
Founded 1896
Members 14 (18 in 2024)
Commissioner Tony Petitti
Website BigTen.org
Facebook /BigTenConference
Instagram @BigTen
X @BigTen

WOMEN'S SOCCER HISTORY

First Year 1994
2022 Reg. Seas. Champion Michigan State
2022 Tournament Champion Penn State
Most Reg. Seas. Championships Penn State (20)
Most Tournament Championships Penn State (9)

National Championships 1
Most Recent Penn State, 2015

Women's College Cups 8
Most Apps. Penn State (5)
Most Recent Rutgers, 2021

NCAA Tournament Apps. 171
Most Apps. Penn State (28)
Most Recent Five Teams, 2022

BRANDING & COMMUNICATIONS

Communications Liason David Howell
Email Address dhowell@bigten.org
Conference Office Phone (847) 696-1010
WSOC Website BigTen.org/Sports/WSOC
SOC Instagram @B1GSoccer
SOC X @B1GSoccer

TELEVISION

Network Big Ten Network (BTN)
TV App Fox Sports App
Streaming Service B1G+
Streaming App B1G+ App



BIG TEN CONFERENCE

WOMEN'S SOCCER

Weekly Schedule for Week Beginning 08/21

Thursday, August 24

Wisconsin at North Carolina... ACCNX 4 p.m.
 Penn State at West Virginia ... ESPN+ 5 p.m.
 Navy at Maryland B1G+ 6 p.m.
 Illinois at Xavier FLOFC 7 p.m.
 Rutgers at NC State ACCNX 7 p.m.
 Valparaiso at Purdue B1G+ 7 p.m.
 Nebraska at Eastern Washington... ESPN+ 7:30 p.m.
 Morehead St at Indiana B1G+ 8 p.m.
 Iowa State at Iowa B1G+ 8 p.m.
 Ohio State at Memphis ESPN+ 8 p.m.
 Minnesota at Milwaukee ESPN+ 8 p.m.
 Michigan at Virginia ACCNX 8 p.m.
 Oakland at Northwestern B1G+ 8:30 p.m.
 Michigan State at Northern Colorado... ESPN+ 9 p.m.

Sunday, August 27

Wisconsin at Duke ACCN Noon
 Wake Forest at Purdue B1G+ 1 p.m.
 Minnesota at Marquette FLOFC 1 p.m.
 Northwestern at Toledo ESPN+ 1 p.m.
 TCU at Penn State B1G+ 1 p.m.
 Illinois at Dayton ESPN+ 1 p.m.
 Michigan State at Colorado ... PAC12N 2 p.m.
 Maryland at James Madison ... ESPN+ 3 p.m.
 Nebraska at Gonzaga ESPN+ 4 p.m.
 Indiana at Evansville ESPN+ 8 p.m.
 Ohio State at Montana ESPN+ 8 p.m.

*All Times Eastern

POWER OF THE PORTAL

- Penn State welcomed a trio of transfer athletes out of the portal prior to the start of the 2023 season, with all three individuals immediately eligible to play for the Blue & White this season. PSU signed the nation's returning scoring leader in forward Rebecca Cooke from Quinnipiac, All-B1G Second Team midfielder Rowan Lapi out of Northwestern and defender Michela Agresti, a two-time team captain from Boston College.
- PSU's trio of transfers amassed a combined 160 starts in their collegiate careers prior to arriving at PSU, adding a variety of depth and experience to the Nittany Lion field position groups. The newest crop of Nittany Lions played a combined 13,862 minutes before arriving in Happy Valley.

RECRUITING ROUNDUP

- The 2023 Nittany Lion recruiting class ranked as the No. 9 squad in the nation according to TopDrawerSoccer, the organization announced on Monday, August 14. PSU welcomed a quintet of incoming freshmen student-athletes and bolstered its class with three Division I transfer performers.
- Penn State features a trio of incoming freshmen who were ranked inside the national top-150 by TopDrawerSoccer, highlighted by the No. 10 recruit in the country in Worcester, Massachusetts, native forward Nicollette Kiorpes. PSU also welcomed the nation's No. 20 prospect in Bolingbrook, Illinois, native defender Keegan Schmeiser as well as No. 148-ranked defender Kaelyn Wolfe out of West Chester, Pennsylvania. The Nittany Lion recruiting class also featured Chesterfield, Ohio, native forward Frankee Fleisher in addition to Downingtown, Pennsylvania, native defender Ava Rightmire.

THE B1G LEAGUES

- For the 21st year in a row, the Penn State women's soccer program was selected as the preseason favorite to win the Big Ten Conference regular season championship following a preseason poll of the league's coaches, the B1G announced on Tuesday, August 15.
- Northwestern took the No. 2 spot behind the Nittany Lions, with Rutgers and Michigan State rounding out the top four slots. Wisconsin, Nebraska, Ohio State and Michigan were selected as preseason favorites to complete the eight-team Big Ten Tournament field. Additionally, each school saw three players selected as Big Ten Players to Watch in 2023, with Cori Dyke, Payton Linnehan and Kate Wiesner earning the nods from PSU.
- Penn State has been selected as the preseason favorite by the Big Ten Conference's women's soccer coaches in every season since 2003. Since that inaugural selection in the early 2000s, the Nittany Lions have hauled in 15 Big Ten Regular Season Championships in addition to six Big Ten Tournament titles.

30 FOR 30

- The Penn State women's soccer program celebrates its 30th varsity season in the 2023 campaign. PSU began as a club team in the 1970s and blossomed, ultimately reaching varsity status for the first time in 1994, publishing a winning record in the squad's inaugural campaign. The following season in 1995, Penn State began its 28-year NCAA Tournament streak that survives to the present day while simultaneously managing a 29-year streak of overall winning seasons.
- Penn State has won 20 Big Ten Regular Season Championships, nine Big Ten Tournament Titles, participated in five NCAA Women's College Cups and took home the 2015 National Championship. The Blue & White have combined for 500 all-time victories, and look to build on that rich tradition in 2023.

UP NEXT

- No. 8 Penn State women's soccer returns home to Happy Valley to kick off a five-match homestand that will carry the Nittany Lions through the end of non-conference competition and the start of Big Ten Conference play. PSU squares off against the No. 16 TCU Horned Frogs in a top-25 test at Jeffrey Field on Sunday, Aug. 27, at 1 p.m. Streaming is available worldwide to authenticated subscribers via B1G+.

BIG TEN CONFERENCE WOMEN'S SOCCER

2023 League Standings

| Pl. | School | Conf. | Pts. | Ovr. |
|-----|----------------|-------|------|-------|
| 1 | Iowa | 0-0-0 | 0 | 2-0 |
| | Michigan State | 0-0-0 | 0 | 2-0 |
| | Minnesota | 0-0-0 | 0 | 2-0 |
| 4 | Illinois | 0-0-0 | 0 | 1-0 |
| 5 | Indiana | 0-0-0 | 0 | 1-0-1 |
| | Nebraska | 0-0-0 | 0 | 1-0-1 |
| | Northwestern | 0-0-0 | 0 | 1-0-1 |
| | PENN STATE | 0-0-0 | 0 | 1-0-1 |
| | Wisconsin | 0-0-0 | 0 | 1-0-1 |
| 10 | Ohio State | 0-0-0 | 0 | 1-1 |
| | Purdue | 0-0-0 | 0 | 1-1 |
| | Rutgers | 0-0-0 | 0 | 1-1 |
| 13 | Maryland | 0-0-0 | 0 | 0-1-1 |
| | Michigan | 0-0-0 | 0 | 0-1-1 |

BIG TEN CONFERENCE WOMEN'S SOCCER

Current Weekly Award Athletes

Offensive Player
 Megan Nemeč
 GR | F | Minnesota

Defensive Player
CORI DYKE
 SR+ | M | PENN STATE

Co-Goalkeepers
KATHERINE ASMAN
 GR | GK | PENN STATE

Erin McKinney
 GR | GK | Wisconsin

Freshman
 Ella Ottey
 FR | D | Wisconsin



THE LAST TIME

PENN STATE...

| | | |
|--|-----------------|--------------------------------|
| Scored 3 Goals..... | 11/06/2022..... | vs. #6 Michigan State (3-2) |
| Scored 4 Goals..... | 11/18/2022..... | vs. West Virginia (4-0) |
| Scored 5 Goals..... | 09/25/2022..... | vs. Illinois (5-0) |
| Scored 6 Goals..... | 04/03/2021..... | vs. Maryland (6-0) |
| Scored 7 Goals..... | 11/10/2017..... | vs. Stony Brook (7-0) |
| Scored 8 Goals..... | 08/20/2023..... | vs. West Chester (8-0) |
| Scored 9 Goals..... | 09/25/2001..... | vs. Bucknell (9-2) |
| Allowed 0 Goals..... | 08/20/2023..... | vs. West Chester (8-0) |
| Allowed 1 Goal..... | 11/13/2022..... | vs. Quinnipiac (4-1) |
| Allowed 2 Goals..... | 11/06/2022..... | vs. #6 Michigan State (3-2) |
| Allowed 3 Goals..... | 11/20/2022..... | vs. #11 Virginia (2-3) |
| Allowed 4 Goals..... | 10/20/2022..... | at Nebraska (2-4) |
| Allowed 5+ Goals..... | 08/30/2013..... | vs. Virginia (1-5) |
| Won in Overtime..... | 11/22/2019..... | vs. Arizona (4-3) |
| Lost in Overtime..... | 11/20/2022..... | vs. #11 Virginia (2-3) |
| Tied After Overtime..... | 11/19/2021..... | at #11 USC (2-2, 5-3 PKs) |
| Scoreless Tie After Overtime..... | 11/04/2018..... | vs. Minnesota (0-0, 4-5 PKs) |
| Won by Multiple Goals at Home..... | 08/20/2023..... | vs. West Chester (8-0) |
| Lost by Multiple Goals at Home..... | 10/30/2016..... | vs. Rutgers (0-2) |
| Was Ranked in the United Top-25..... | 08/22/2023..... | #8 |
| Was Ranked in the United Top-10..... | 08/22/2023..... | #8 |
| Played a United Top-10 Team..... | 08/17/2023..... | vs. #2 North Carolina (0-0) |
| Played a United Top-25 Team..... | 08/17/2023..... | vs. #2 North Carolina (0-0) |
| Defeated a United Top-Five Team..... | 09/22/2022..... | vs. #4 Rutgers (2-0) |
| Defeated a United Top-10 Team..... | 11/06/2022..... | vs. #6 Michigan State (3-2) |
| Defeated a United Top-25 Team..... | 11/06/2022..... | vs. #6 Michigan State (3-2) |
| Attempted Fewer than 10 Shots..... | 08/17/2023..... | 5 vs. #2 North Carolina (0-0) |
| Attempted 10-19 Shots..... | 11/20/2022..... | 12 vs. #11 Virginia (2-3) |
| Attempted 20-29 Shots..... | 11/13/2022..... | 24 vs. Quinnipiac (4-1) |
| Attempted 30-39 Shots..... | 04/28/2021..... | 35 vs. Alabama State (5-0) |
| Attempted 40+ Shots..... | 08/20/2023..... | 45 vs. West Chester (8-0) |
| Allowed Four-or-Fewer Shots..... | 08/20/2023..... | 2 vs. West Chester (8-0) |
| Allowed 5-9 Shots..... | 11/18/2022..... | 8 vs. West Virginia (4-0) |
| Allowed 10-15 Shots..... | 11/06/2022..... | 11 vs. #6 Michigan State (3-2) |
| Allowed 16+ Shots..... | 08/17/2023..... | 19 vs. #2 North Carolina (0-0) |
| Scored 15-24 Points..... | 08/20/2023..... | 22 vs. West Chester (8-0) |
| Scored 25+ Points..... | 09/25/2001..... | 26 vs. Bucknell (9-2) |
| Made 10-14 Saves..... | 11/19/2021..... | 11 at #11 USC (2-2, 5-3 PKs) |
| Made 15+ Saves..... | 09/02/1995..... | 17 vs. James Madison (4-2) |
| Had 10+ Corner Kicks..... | 08/20/2023..... | 20 vs. West Chester (8-0) |
| Allowed 10+ Corner Kicks..... | 11/20/2022..... | 11 vs. Virginia (2-3) |
| Tallied 5-7 Assists..... | 08/20/2023..... | 6 vs. West Chester (8-0) |
| Tallied 8+ Assists..... | 11/20/2015..... | 10 vs. Boston University (6-0) |
| Won an NCAA Tournament Match..... | 11/18/2022..... | vs. West Virginia (4-0) |
| Lost an NCAA Tournament Match..... | 11/20/2022..... | vs. #11 Virginia (2-3) |
| Won a Road NCAA Tournament Match..... | 11/19/2017..... | at #7 West Virginia (3-1) |
| Won a Neutral NCAA Tournament Match..... | 05/01/2021..... | vs. #16 Vanderbilt (2-0) |
| Won a Penalty Shootout..... | 11/19/2021..... | at #11 USC (2-2, 5-3 PKs) |
| Lost a Penalty Shootout..... | 11/04/2018..... | vs. Minnesota (0-0, 4-5 PKs) |

A PENN STATE PLAYER...

| | | |
|---------------------------------------|-----------------|--|
| Scored 2 Goals..... | 08/20/2023..... | Linnehan/Raich vs. West Chester (8-0) |
| Scored 3 Goals..... | 10/08/2021..... | Sam Coffey vs. Maryland (5-1) |
| Scored 4 Goals..... | 10/07/2001..... | Christie Welsh vs. Michigan (6-2) |
| Had 2 Assists..... | 08/20/2023..... | Kate Wiesner vs. West Chester (8-0) |
| Had 3 Assists..... | 11/18/2022..... | Kate Wiesner vs. West Virginia (4-0) |
| Had 4 Assists..... | 04/03/2021..... | Frankie Tagliaferri (4) vs. Maryland (6-0) |
| Had 5-9 Points..... | 8/20/2023..... | Julia Raich (5) vs. West Chester (8-0) |
| Had 10+ Points..... | 10/07/2001..... | Christie Welsh (10) vs. Michigan (6-2) |
| Attempted 10+ Shots..... | 11/11/2011..... | Christine Nairn (10) vs. Army (1-0) |
| Made 10-14 Saves..... | 11/19/2021..... | Katherine Asman (11) at #11 USC (2-2, 5-3 PKs) |
| Made 15+ Saves..... | 09/03/1994..... | Robin Van Praag (15) at Minnesota (3-2) |
| Scored in the Big Ten Tournament..... | 11/06/2022..... | Ally Schlegel vs. #6 Michigan State (3-2) |
| Had a Big Ten Tournament Shutout..... | 11/03/2022..... | Katherine Asman vs. #12 Northwestern (2-0) |
| Scored in the NCAA Tournament..... | 11/20/2022..... | Amelia White vs. #11 Virginia (2-3) |
| Had an NCAA Tournament Shutout..... | 11/18/2022..... | Asman/Messner vs. West Virginia (4-0) |

NEXT LEVEL NITTANY LIONS



NITTANY LIONS IN THE NWSL



Chicago Red Stars

Penelope Hocking
Alyssa Naeher
Ally Schlegel



Houston Dash

Emily Curran



Kansas City Current

Elizabeth Ball
Mallory Weber



NJ/NY Gotham FC

Ellie Jean
Ali Krieger



North Carolina Courage

Frankie Tagliaferri



Orlando Pride

Kerry Abello



Portland Thorns FC

Sam Coffey
Raquel Rodriguez



San Diego Wave FC

Kaleigh Riehl



Washington Spirit

Marissa Sheva

Fourteen Penn State women's soccer alumnae represent the program at the professional level in the National Women's Soccer League, the highest level of professional women's soccer in the world. PSU has alumnae on nine different franchises, including a program-best three former Nittany Lions with the Chicago Red Stars. The Penn State program's dominance within the Big Ten Conference also extends to its development of professional caliber student-athletes, as the Nittany Lions lead all Big Ten programs with 17 alumnae selected in NWSL Drafts since the inception of the practice in 2013. Seventeen draftees stands as the sixth-highest NWSL draft tally in all of collegiate soccer.

NITTANY LIONS AT THE 2023 FIFA WOMEN'S WORLD CUP



CANADA

Olivia Smith
Forward



COSTA RICA

Raquel Rodriguez
Forward



GERMANY

Laura Freigang
Midfielder



IRELAND

Marissa Sheva
Midfielder



UNITED STATES

Alyssa Naeher
Goalkeeper

The Penn State women's soccer program saw five program alumnae participate in the 2023 FIFA Women's World Cup in Australia and New Zealand. Those five individuals represented five different national teams, signifying the diverse array of talent that the Penn State program attracts. Canada's Olivia Smith, Costa Rica's Raquel Rodriguez, Germany's Laura Freigang, Ireland's Marissa Sheva and American Alyssa Naeher rounded out the five Nittany Lions to appear on senior women's national teams at the event.

Five selections to the 2023 FIFA Women's World Cup stands as a tie for the fourth most among all collegiate programs, and the most in the Big Ten Conference. The Nittany Lions have a long track record of preparing student-athletes for success on the international level, with Head Coach Erica Dambach having previously served as an assistant coach for the four-time World Cup Champion and reigning Olympic Bronze Medalist United States Women's National Team. Multiple program alumnae have made history at the event, including Alyssa Naeher's groundbreaking score in a Round of 16 PK shootout in 2023 that marked the first instance of a goalkeeper converting on a penalty kick attempt in ANY FIFA World Cup, men's or women's.

JEFFREY FIELD

THE HOME OF THE NITTANY LIONS



Jeffrey Field, the home of Nittany Lion soccer, was dedicated on Sept. 29, 1972. Located in the heart of the Penn State athletic facilities complex with a picturesque view of Mount Nittany, the stadium was named in honor of the late Bill Jeffrey, legendary head coach of the soccer program from 1926-52. Jeffrey Field has been the host site for numerous NCAA and conference contests in men's and women's soccer. Games are frequently televised from Jeffrey Field, allowing a nationwide audience to view Penn State in action. Widely regarded as one of the finest grass surfaces in the country, Jeffrey Field was honored as the 2006 Collegiate Soccer Field of the Year by the SportsTurf Managers Association.

TOP 10 JEFFREY FIELD WOMEN'S SOCCER CROWDS

| | Total Attendance | Opponent | Date |
|-----|------------------|-------------------|------------------------|
| 1. | 5,791 | #6 West Virginia | Aug. 19, 2016 (Opener) |
| 2. | 5,238 | #3 Stanford | Aug. 23, 2019 (Opener) |
| 3. | 5,117 | #1 Stanford | Aug. 24, 2012 |
| 4. | 4,207 | #21 Duke | Aug. 28, 2015 |
| 5. | 3,921 | #15 Virginia | Aug. 27, 2010 (Opener) |
| 6. | 3,570 | #8 BYU | Aug. 18, 2017 (Opener) |
| 7. | 3,208 | #2 UCLA | Aug. 25, 2006 (Opener) |
| 8. | 3,175 | Hofstra | Aug. 21, 2015 (Opener) |
| 9. | 3,126 | #9 West Virginia | Aug. 17, 2018 (Opener) |
| 10. | 3,102 | #2 North Carolina | Aug. 17, 2023 (Opener) |

JEFFREY FIELD YEAR-BY-YEAR ALL-TIME ATTENDANCE AND RECORDS

| YEAR | MATCHES | TOTAL ATT. | HIGH | AVERAGE ATT. | WINS | LOSSES | DRAWN | WIN PCT |
|--------------|------------|----------------|--------------|--------------|------------|-----------|-----------|--------------|
| 1994 | 8 | 2,453 | 640 | 307 | 7 | 1 | 0 | 0.875 |
| 1995 | 10 | 3,187 | 500 | 319 | 7 | 2 | 1 | 0.750 |
| 1996 | 7 | 1,976 | 637 | 281 | 7 | 0 | 0 | 1.000 |
| 1997 | 12 | 4,346 | 674 | 362 | 9 | 2 | 1 | 0.792 |
| 1998 | 13 | 6,849 | 693 | 527 | 13 | 0 | 0 | 1.000 |
| 1999 | 12 | 9,640 | 1,257 | 803 | 10 | 1 | 1 | 0.875 |
| 2000 | 12 | 6,131 | 1,050 | 511 | 11 | 1 | 0 | 0.917 |
| 2001 | 10 | 6,217 | 1,270 | 622 | 10 | 0 | 0 | 1.000 |
| 2002 | 9 | 4,394 | 702 | 488 | 9 | 0 | 0 | 1.000 |
| 2003 | 11 | 8,090 | 1,274 | 735 | 11 | 0 | 0 | 1.000 |
| 2004 | 10 | 9,284 | 2,366 | 928 | 9 | 1 | 0 | 0.900 |
| 2005 | 14 | 14,711 | 2,768 | 1,051 | 14 | 0 | 0 | 1.000 |
| 2006 | 16 | 12,969 | 3,208 | 811 | 14 | 1 | 1 | 0.906 |
| 2007 | 11 | 8,706 | 2,216 | 791 | 9 | 1 | 1 | 0.864 |
| 2008 | 10 | 10,964 | 2,963 | 1,096 | 6 | 4 | 0 | 0.600 |
| 2009 | 12 | 14,378 | 3,098 | 1,198 | 9 | 3 | 0 | 0.750 |
| 2010 | 9 | 10,702 | 3,921 | 1,189 | 5 | 3 | 1 | 0.611 |
| 2011 | 9 | 6,501 | 1,043 | 722 | 9 | 0 | 0 | 1.000 |
| 2012 | 13 | 20,811 | 5,117 | 1,601 | 10 | 1 | 2 | 0.846 |
| 2013 | 11 | 18,170 | 3,742 | 1,652 | 9 | 1 | 1 | 0.864 |
| 2014 | 14 | 19,034 | 3,007 | 1,360 | 13 | 1 | 0 | 0.929 |
| 2015 | 16 | 21,856 | 4,207 | 1,366 | 14 | 1 | 1 | 0.906 |
| 2016 | 13 | 17,274 | 5,791 | 1,329 | 9 | 2 | 2 | 0.769 |
| 2017 | 9 | 14,748 | 3,570 | 1,639 | 8 | 0 | 1 | 0.944 |
| 2018 | 11 | 18,999 | 3,126 | 1,727 | 10 | 3 | 0 | 0.769 |
| 2019 | 12 | 14,147 | 5,238 | 1,179 | 7 | 5 | 0 | 0.583 |
| 2020-21 | 6 | 1,256 | 307 | 209 | 5 | 1 | 0 | 0.833 |
| 2021 | 9 | 9,314 | 2,073 | 1,035 | 7 | 2 | 0 | 0.777 |
| 2022 | 12 | 10,577 | 1,596 | 881 | 9 | 2 | 1 | 0.792 |
| 2023 | 2 | 4,046 | 3,102 | 2,023 | 1 | - | 1 | 0.750 |
| TOTAL | 325 | 311,721 | 5,791 | 959 | 271 | 39 | 15 | 0.857 |

2023 PENN STATE ROSTER BREAKDOWN



NUMERICAL

| No. | Name | Pos. | Elig. | Ht. | Hometown/Club Team |
|-----|---------------------|------|-------|------|---|
| 00 | Amanda Poorbaugh | GK | R-SO | 5-7 | Westerville, Ohio / Ohio Premier ECNL |
| 1 | Mackenzie Gress | GK | R-FR | 5-9 | Lyndhurst, N.J. / STA Girls Academy |
| 2 | Molly Martin | D | R-FR | 5-6 | Acton, Mass. / FC Stars |
| 3 | Olivia Damico | M | R-JR | 5-4 | Victor, N.Y. / Western New York Flash ECNL |
| 5 | Keegan Schmeiser | D | FR | 5-7 | Bolingbrook, Ill. / Chicago FC United |
| 6 | Kate Wiesner (C) | M | SR+ | 5-7 | Monrovia, Calif. / LAFC Slammers |
| 7 | Amelia White | F | SO | 5-3 | Fort Wayne, Ind. / Fort Wayne United |
| 8 | Luciana Latino | M | R-FR | 5-7 | Norwood, N.J. / Player's Development Academy |
| 9 | Nicollette Kiorpes | F | FR | 5-6 | Worcester, Mass. / New England Futbol Club |
| 10 | Cori Dyke (C) | M | SR+ | 5-6 | Littleton, Colo. / Colorado Rapids U19 ECNL |
| 12 | Payton Linnehan | F | SR+ | 5-6 | Douglas, Mass. / FC Stars of MA |
| 14 | Kaitlyn MacBean | F | R-JR | 5-9 | Maple Grove, Minn. / Minnesota Thunder Academy |
| 15 | Devon Olive | M | SR+ | 5-4 | Brooklyn, N.Y. / PDA ECNL Blue 2001 |
| 16 | Ellie Wheeler | D | SR | 5-6 | Fairfax Station, Va. / FC Virginia |
| 17 | Ava Minnier | M | R-FR | 5-11 | Downingtown, Pa. / Penn Fusion Soccer Academy |
| 18 | Kaelyn Wolfe | D | FR | 5-4 | West Chester, Pa. / Penn Fusion Soccer Academy |
| 19 | Kara Ogden | D | R-SO | 5-10 | Coto de Caza, Calif. / Slammers ECNL |
| 20 | Michela Agresti | D | SR+ | 5-8 | Swampscott, Mass. / FC Stars |
| 21 | Frankee Flesher | F | FR | 5-5 | Chesterland, Ohio / Cleveland Force Soccer Club |
| 22 | Rowan Lapi | M | R-SR+ | 5-7 | Reinholds, Pa. / Penn Fusion Soccer Academy |
| 23 | Eva Alonso | D | SR | 5-6 | Madrid, Spain / Rayo Vallecano |
| 24 | Elle Kershner | F | SR | 5-8 | Limerick, Pa. / Penn Fusion Soccer Academy |
| 25 | Mieke Schiemann | D | JR | 5-11 | Berlin, Germany / 1.FFC Turbine Potsdam |
| 26 | Katherine Asman (C) | GK | GR | 5-10 | Roswell, Ga. / NASA Tophat Soccer Club |
| 27 | Rebecca Cooke | F | SR | 5-10 | Dublin, Ireland / Shelbourne FC |
| 28 | Ava Rightmire | D | FR | 5-6 | Downingtown, Pa. / FC Delco |
| 31 | Julia Raich | M | R-SO | 5-7 | Camp Hill, Pa. / Eagle FC |
| 32 | Natalie Wilson | M | SR | 5-3 | Fairfax, Va. / McLean ECNL |
| 33 | Olivia Borgen | M | SO | 5-8 | Hanson, Mass. / South Shore Select GA |
| 35 | Riley Gleason | M | R-SO | 5-7 | Mission Viejo, Calif. / So Cal Blues |

ALPHABETICAL

| No. | Name | Pos. |
|-----|--------------------|------|
| 20 | Michela Agresti | D |
| 23 | Eva Alonso | D |
| 26 | Katherine Asman | GK |
| 33 | Olivia Borgen | M |
| 27 | Rebecca Cooke | F |
| 3 | Olivia Damico | M |
| 10 | Cori Dyke | M |
| 21 | Frankee Flesher | F |
| 35 | Riley Gleason | M |
| 1 | Mackenzie Gress | GK |
| 24 | Elle Kershner | F |
| 9 | Nicollette Kiorpes | F |
| 22 | Rowan Lapi | M |
| 8 | Luciana Latino | M |
| 12 | Payton Linnehan | F |
| 14 | Kaitlyn MacBean | F |
| 2 | Molly Martin | D |
| 17 | Ava Minnier | M |
| 19 | Kara Ogden | D |
| 15 | Devon Olive | M |
| 00 | Amanda Poorbaugh | GK |
| 31 | Julia Raich | M |
| 28 | Ava Rightmire | D |
| 25 | Mieke Schiemann | D |
| 5 | Keegan Schmeiser | D |
| 16 | Ellie Wheeler | D |
| 7 | Amelia White | F |
| 6 | Kate Wiesner | M |
| 31 | Natalie Wilson | M |
| 18 | Kaelyn Wolfe | D |

BY LOCATION

California (3): Gleason, Ogden, Wiesner
Colorado (1): Dyke
Georgia (1): Asman
Illinois (1): Schmeiser
Indiana (1): White
Massachusetts (5): Agresti, Borgen, Kiorpes, Linnehan, Martin
Minnesota (1): MacBean
New Jersey (2): Gress, Latino
New York (2): Damico, Olive
Ohio (2): Flesher, Poorbaugh
Pennsylvania (6): Kershner, Lapi, Minnier, Raich, Rightmire, Wolfe
Virginia (2): Wheeler, Wilson
Germany (1): Schiemann
Ireland (1): Cooke
Spain (1): Alonso

BY ELIGIBILITY

Graduate (1): Asman
Senior+ (6): Agresti, Dyke, Lapi (RS), Linnehan, Olive, Wiesner
Seniors (5): Alonso, Cooke, Kershner, Wheeler, Wilson
Juniors (3): Damico (RS), MacBean (RS), Schiemann
Sophomores (6): Borgen, Gleason (RS), Ogden (RS), Poorbaugh (RS), Raich (RS), White
Freshmen (9): Flesher, Gress (RS), Kiorpes, Latino (RS), Martin (RS), Minnier (RS), Rightmire, Schmeiser, Wolfe

PRONUNCIATIONS

3 | Olivia Damico: Da-MEE-Co
6 | Kate Wiesner: WEEZ-ner
8 | Luciana Latino: LOO-Chee-Awn-Uh Lah-TEE-No
9 | Nicollette Kiorpes: Key-OR-Pess
17 | Ava Minnier: MINI-Er
22 | Rowan Lapi: Row-In Lap-Ee
25 | Mieke Schiemann: MEE-cuh SHE-mawn
26 | Katherine Asman: AZ-Min
31 | Julia Raich: Raych
HC | Erica Dambach: Dom-Bock



ERICA DAMBACH

HEAD COACH | 17TH SEASON AT PSU

BY THE NUMBERS

- 2015 NCAA Champion
- 259-89-26 Nittany Lion Career Record
- 16-Consecutive NCAA Tournament Appearances
- 11 Big Ten Regular Season Titles
- Two NCAA Women's College Cups
- Five Big Ten Tournament Titles
- 2012 and 2015 NSCAA Coach of the Year
- 2012 Soccer America National Coach of the Year
- Five-time Big Ten Coach of the Year
- One MAC Hermann Trophy Winner
- Two MAC Hermann Trophy Finalists
- 11 MAC Hermann Trophy Semifinalists
- 10 United Soccer Coaches First-Team All-Americans
- 20 NSCAA All-America Honors
- 17 United Soccer Coaches Scholar All-Americans
- 15 Big Ten Players of the Year



The leadership of Penn State women's soccer Head Coach Erica Dambach continues to produce incredible success season after season. While trophies, academic awards and international achievements line the walls as evidence of a championship program, her impact on Nittany Lion student-athletes stands as the truest testament to her teams' culture of excellence. Dambach enters her 17th season at the helm in University Park heading into the 2023 campaign, Penn State's 30th varsity season.

The numbers that document PSU's success are staggering. The Nittany Lions have accumulated 20 Big Ten championships, with 11 coming under Dambach's watch, in addition to five Big Ten Tournament crowns in the Dambach era.

A two-time National Coach of the Year and five-time Big Ten Coach of the Year, Dambach has led her teams to 16 NCAA Tournaments, 11 Big Ten titles, five Big Ten Tournament titles and the 2015 NCAA National Championship.

In 21 years as a head coach and 17 seasons leading the Nittany Lions, Dambach has accumulated 299 career wins with a .704 winning percentage, one of the most dominant marks in all of college athletics.

PENN STATE WOMEN'S SOCCER ASSISTANT COACHES

| | | |
|--|---|---|
| <p>AHC</p> | <p>ANN COOK</p> | <p>Associate Head Coach William & Mary '97 17th Season</p> |
|  | <p>COACH BIO</p> <p>Ann Cook enters her 17th season with the Nittany Lions in 2023. This will also be the 17th season that Cook will be coaching alongside former teammate and friend Erica Dambach. The two combined for numerous wins on the field together at William & Mary and have shown their prowess on the sidelines, as they led the Nittany Lions to the program's first NCAA title in 2015, two College Cup appearances, 11 Big Ten titles and 15 NCAA Tournament appearances.</p> <p>As an associate head coach, Cook is the director of player development and is in charge of the Nittany Lion attack. Since she has been with the Blue & White, Penn State has had one of the most prolific attacks in the country. Since 2011, Penn State has scored over 500 goals, placing third in the nation over that period. Under the guidance of Cook, five Nittany Lions have scored 100 or more points over the span of their careers. Maya Hayes finished her Nittany Lion career with 163 points (71g, 21a), which ranks third-best in school history.</p> | <p>As Director of Player Development, Cook has mentored 17 players to NWSL draft selection, making Penn State one of the top producers of pro talent.</p> <p>Throughout her time at Penn State, Cook has been involved in the organization Soccer Without Borders (SWB) and currently serves as a member of its advisory board. SWB's mission is to use soccer as a vehicle for positive change in the lives of under-served youth around the world and has project sites in the U.S. as well as in Africa and Central America. Cook's primary involvement has been with its project for girls in Granada, Nicaragua.</p> <p>As an early assistant project director for SWB, she helped establish what is now a thriving year-round program there. Cook has accompanied Penn State student-athletes there on multiple occasions and she took the team to Nicaragua for spring break 2018 to run camps and clinics for girls as well as coaches' clinics.</p> |
| <p>AHC</p> | <p>TIM WASSELL</p> | <p>Associate Head Coach Penn State Altoona '06 14th Season</p> |
|  | <p>COACH BIO</p> <p>Promoted to associate head coach in July 2021, Tim Wassell has contributed greatly to Penn State's success as the program's recruiting coordinator while simultaneously directing the team's goalkeepers and defensive unit. He enters his 14th season with the Nittany Lions in 2023, the program's 30th year at the varsity level overall.</p> <p>Wassell has attracted multiple nationally ranked recruiting classes to Happy Valley year after year with five top-5 classes since 2014 as ranked by Top Drawer Soccer, including the No. 1 recruiting class in 2019 and 2022. His reputation as one of the top recruiters in the sport, combined with the exceptional Penn State women's soccer experience, builds the aspirations of the program on those past successes. The Blue & White are fresh off signing yet another top-10 class under Wassell's direction, with the incoming 2023 corps ranked as the nation's No. 9 unit per Top Drawer.</p> | <p>Under Wassell's guidance, multiple goalkeepers have experienced high levels of success on the collegiate, professional and international levels. Amanda Dennis became the most recent Nittany Lion goalkeeper to enter the NWSL and signed with the Houston Dash following her senior season in 2019, helping the organization capture the 2020 NWSL Challenge Cup title in her rookie campaign. For Rose Chandler, she was a member of the U.S. U-20 WNT that won the 2015 CONCACAF U-20 World Cup Qualifying Tournament and was on the U.S. U-20 WNT at the 2016 FIFA U-20 Women's World Cup.</p> <p>As an elite collegiate goalkeeper at Penn State Altoona, Wassell was a two-time NSCAA Mid-Atlantic Region selection in 2004 and 2005 and a two-time All-AMCC first-team pick as well. In both 2004 and 2005, Wassell led the AMCC in save percentage, shutouts and goals-against average (GAA), completing his two-year tenure between the pipes with a school-record 0.71 GAA. For his efforts as a player and coach, Wassell was inducted in the Penn State Altoona Athletics inaugural Hall of Fame class in October 2021.</p> |
| <p>AC</p> | <p>DANIEL BAKER</p> | <p>Assistant Coach Indiana Wesleyan '22 First Season</p> |
|  | <p>COACH BIO</p> <p>Penn State women's soccer Head Coach Erica Dambach announced the promotion of volunteer assistant Daniel Baker to become the program's third full-time assistant coach for the upcoming 2023 season on Tuesday, July 25, 2023.</p> <p>Baker was elevated to the program's third full-time assistant position, joining Associate Head Coaches Ann Cook and Tim Wassell on Dambach's acclaimed staff. Baker joined the Nittany Lions as a volunteer assistant in February of 2023, aiding in internal video recording and review during PSU's spring activities. He was instrumental in the preparation and execution of Penn State's spring practices while aiding in the program's ID and summer camps in University Park.</p> | <p>Before arriving in Happy Valley, Baker served as the Director of Player Analysis for the Xavier Musketeers women's soccer program over the course of the 2022 fall campaign. He assisted with video analytics, travel coordination, opponent scouting and social outreach. Xavier published an unbeaten 2022 season in Big East Conference play with a 6-0-4 record, ultimately placing second in the league behind the Georgetown Hoyas. XU reached the 2022 NCAA Tournament with Baker on staff, winning its opening round test before falling to the Pittsburgh Panthers in the second round.</p> <p>While a student at his alma mater, Indiana Wesleyan, Baker assisted as a student coach for the university's women's soccer program. During his time with the Wildcats, Baker was responsible for developing and training the team's goalkeepers, including 2021 NAIA Honorable Mention All-American Hope Stacker. Baker also has experience as both a staff coach and soccer trainer with KingsHammer SC and X Factor Futbol, aiding young athletes in technical soccer development.</p> |
| <p>D OPS</p> | <p>KARA COOK</p> | <p>Director of Operations & Performance Leadership Southern Nazarene '97 12th Season</p> |
|  | <p>COACH BIO</p> <p>Kara Cook enters her 12th season with the Penn State women's soccer program in 2023, the program's 30th year at the varsity level. The 2023 campaign marks her ninth season in her current role as director of operations and performance leadership with the Blue & White. Cook served as the program's director of operations during her first three seasons at Penn State.</p> <p>Cook has been in a coaching or mentoring role in collegiate athletics for over 20 years, and her primary role with the women's soccer team includes directing the team culture, leadership and player development programming.</p> <p>Building a high-performance culture that can sustain success over time in a highly competitive environment takes a 360-degree approach. Establishing a culture that fosters growth and excellence begins with authenticity, vision, connection, ownership, and intentionality. Cook has built a unique approach to prioritizing team culture and periodizing effective leadership and player development programming throughout the year.</p> | <p>Since coming to Penn State 12 years ago, she has helped create an elite high-performance culture that has led to the highest team GPA at Penn State in program history, six Big Ten Regular Season Championships, four Big Ten Tournament Championships, nine NCAA Sweet 16s, five Elite 8s, two NCAA Women's College Cup berths and the 2015 NCAAW National Championship.</p> <p>Cook's other day-to-day roles at Penn State include assistance in managing daily operations of the program, helping to coordinate team travel and managing the logistics of PSU's nationally-acclaimed soccer youth camps.</p> |

NUMBER
00

**AMANDA
POORBAUGH**

GK | R-SO | 5-7
Westerville, Ohio
Ohio Premier ECNL



CAREER STATS

| YR | MP | MIN | GA | GA/AVG | SV | SV.PCT. | REC | SHO | SF |
|------|----|-------|----|--------|----|---------|-------|-----|----|
| F'21 | | | | | | DNP | | | |
| F'22 | | | | | | DNP | | | |
| '23 | 1 | 25:59 | 0 | 0.00 | 0 | 0.00 | 0-0-0 | 0 | 0 |
| TOT. | 1 | 25:59 | 0 | 0.00 | 0 | 0.00 | 0-0-0 | 0 | 0 |

CAREER HIGHS

| STAT | VALUE | DATE | OPPONENT |
|-------------|-------|------------|--------------|
| SAVES | | | |
| SHOTS FACED | | | |
| MINUTES | 25 | 08/20/2023 | West Chester |



NUMBER
1

**MACKENZIE
GRESS**

GK | R-FR | 5-9
Lyndhurst, N.J.
STA Girls Academy



CAREER STATS

| YR | MP | MIN | GA | GA/AVG | SV | SV.PCT. | REC | SHO | SF |
|------|----|-------|----|--------|----|---------|-------|-----|----|
| F'22 | | | | | | DNP | | | |
| '23 | 1 | 23:51 | 0 | 0.00 | 0 | 0.00 | 0-0-0 | 0 | 0 |
| TOT. | 1 | 23:51 | 0 | 0.00 | 0 | 0.00 | 0-0-0 | 0 | 0 |

CAREER HIGHS

| STAT | VALUE | DATE | OPPONENT |
|-------------|-------|------------|--------------|
| SAVES | | | |
| SHOTS FACED | | | |
| MINUTES | 24 | 08/20/2023 | West Chester |



NUMBER
2

**MOLLY
MARTIN**

D | R-FR | 5-6
Acton, Mass.
FC Stars



CAREER STATS

| YR | MP/S | G | A | PTS | SH | SOG | MWG | PK-ATT | MIN |
|------|------|---|---|-----|----|-----|-----|--------|-----|
| F'22 | | | | | | | | | DNP |
| '23 | 1/0 | 0 | 0 | 0 | 0 | 0 | 0 | 0-0 | 58 |
| TOT. | 1/0 | 0 | 0 | 0 | 0 | 0 | 0 | 0-0 | 58 |

CAREER HIGHS

| STAT | VALUE | DATE | OPPONENT |
|------------|-------|------------|--------------|
| SHOTS | | | |
| SH ON GOAL | | | |
| GOALS | | | |
| ASSISTS | | | |
| MINUTES | 58 | 08/20/2023 | West Chester |



NUMBER
3

**OLIVIA
DAMICO**

M | R-JR | 5-4
Victor, N.Y.
Western New York Flash ECNL
Da-MEE-co



CAREER STATS

| YR | MP/S | G | A | PTS | SH | SOG | MWG | PK-ATT | MIN |
|------|------|---|---|-----|----|-----|-----|--------|-----|
| S'21 | 11/0 | 1 | 0 | 2 | 4 | 2 | 0 | 0-0 | 259 |
| F'21 | 17/8 | 1 | 1 | 3 | 7 | 3 | 0 | 0-0 | 651 |
| F'22 | | | | | | | | | DNP |
| '23 | 1/0 | 1 | 1 | 3 | 1 | 1 | 0 | 0-0 | 58 |
| TOT. | 29/8 | 3 | 2 | 8 | 12 | 6 | 0 | 0-0 | 968 |

CAREER HIGHS

| STAT | VALUE | DATE | OPPONENT |
|------------|-------|------------|--------------|
| SHOTS | 2 | 08/22/2021 | La Salle |
| SH ON GOAL | 1 | 08/20/2023 | West Chester |
| GOALS | 1 | 08/20/2023 | West Chester |
| ASSISTS | 1 | 08/20/2023 | West Chester |
| MINUTES | 70 | 09/30/2021 | at Wisconsin |



NUMBER
5

**KEEGAN
SCHMEISER**

D | F-R | 5-7
Bolingbrook, Ill.
Chicago FC United



CAREER STATS

| YR | MP/S | G | A | PTS | SH | SOG | MWG | PK-ATT | MIN |
|------|------|---|---|-----|----|-----|-----|--------|-----|
| '23 | 1/0 | 0 | 0 | 0 | 0 | 0 | 0 | 0-0 | 58 |
| TOT. | 1/0 | 0 | 0 | 0 | 0 | 0 | 0 | 0-0 | 58 |

CAREER HIGHS

| STAT | VALUE | DATE | OPPONENT |
|------------|-------|------------|--------------|
| SHOTS | | | |
| SH ON GOAL | | | |
| GOALS | | | |
| ASSISTS | | | |
| MINUTES | 58 | 08/20/2023 | West Chester |



NUMBER
6

KATE WIESNER

CAPTAIN
M | SR+ | 5-7
Monrovia, Calif.
LAFC Slammers
WEEZ-ner



CAREER STATS

| YR | MP/S | G | A | PTS | SH | SOG | MWG | PK-ATT | MIN |
|------|-------|---|----|-----|----|-----|-----|--------|------|
| '19 | 8/8 | 1 | 0 | 2 | 7 | 5 | 0 | 0-0 | 633 |
| S'21 | | | | | | DNP | | | |
| F'21 | 19/9 | 1 | 2 | 4 | 13 | 4 | 1 | 0-0 | 935 |
| '22 | 23/22 | 2 | 11 | 15 | 25 | 12 | 1 | 0-0 | 1411 |
| '23 | 2/2 | 0 | 2 | 2 | 0 | 0 | 0 | 0-0 | 105 |
| TOT. | 52/41 | 4 | 15 | 23 | 45 | 21 | 2 | 0-0 | 3084 |

CAREER HIGHS

| STAT | VALUE | DATE | OPPONENT |
|------------|-------|------------|------------------|
| SHOTS | 4 | 09/29/2022 | Michigan State |
| SH ON GOAL | 2 | 11/13/2022 | Quinnipiac |
| GOALS | 1 | 11/13/2022 | Quinnipiac |
| ASSISTS | 3 | 11/18/2022 | West Virginia |
| MINUTES | 110 | 09/06/2019 | at West Virginia |

NUMBER
7

AMELIA WHITE

F | SO | 5-3
Fort Wayne, Ind.
Fort Wayne United



CAREER STATS

| YR | MP/S | G | A | PTS | SH | SOG | MWG | PK-ATT | MIN |
|------|-------|---|---|-----|----|-----|-----|--------|------|
| '22 | 23/9 | 2 | 5 | 9 | 25 | 14 | 0 | 0-0 | 1069 |
| '23 | 2/2 | 0 | 0 | 0 | 1 | 0 | 0 | 0-0 | 100 |
| TOT. | 25/11 | 2 | 5 | 9 | 26 | 14 | 0 | 0-0 | 1169 |

CAREER HIGHS

| STAT | VALUE | DATE | OPPONENT |
|------------|-------|------------|---------------|
| SHOTS | 6 | 09/18/2022 | at Indiana |
| SH ON GOAL | 4 | 09/18/2022 | at Indiana |
| GOALS | 1 | 11/20/2022 | Virginia |
| ASSISTS | 2 | 09/25/2022 | Illinois |
| MINUTES | 81 | 10/02/2022 | at Ohio State |

NUMBER
8

LUCIANA LATINO

M | R-FR | 5-7
Norwood, N.J.
Player's Development Academy
Loo-CHEE-awn-uh Lah-TEE-no



CAREER STATS

| YR | MP/S | G | A | PTS | SH | SOG | MWG | PK-ATT | MIN |
|------|------|---|---|-----|----|-----|-----|--------|-----|
| '22 | | | | | | DNP | | | |
| '23 | 1/0 | 0 | 0 | 0 | 4 | 1 | 0 | 0-0 | 36 |
| TOT. | 1/0 | 0 | 0 | 0 | 4 | 1 | 0 | 0-0 | 36 |

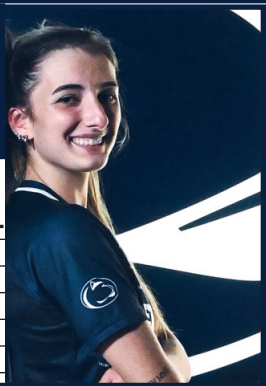
CAREER HIGHS

| STAT | VALUE | DATE | OPPONENT |
|------------|-------|-----------|--------------|
| SHOTS | 4 | 8/20/2023 | West Chester |
| SH ON GOAL | 1 | 8/20/2023 | West Chester |
| GOALS | | | |
| ASSISTS | | | |
| MINUTES | 36 | 8/20/2023 | West Chester |

NUMBER
9

NICOLLETTE KIORPES

F | FR | 5-6
Worcester, Mass.
New England Futbol Club
Key-OR-press



CAREER STATS

| YR | MP/S | G | A | PTS | SH | SOG | MWG | PK-ATT | MIN |
|------|------|---|---|-----|----|-----|-----|--------|-----|
| '23 | | | | | | DNP | | | |
| TOT. | | | | | | DNP | | | |

CAREER HIGHS

| STAT | VALUE | DATE | OPPONENT |
|------------|-------|------|----------|
| SHOTS | | | |
| SH ON GOAL | | | |
| GOALS | | | |
| ASSISTS | | | |
| MINUTES | | | |

NUMBER
10

CORI DYKE

CAPTAIN
M | SR+ | 5-6
Littleton, Colo.
Colorado Rapids U19 ECNL



CAREER STATS

| YR | MP/S | G | A | PTS | SH | SOG | MWG | PK-ATT | MIN |
|------|-------|---|---|-----|----|-----|-----|--------|------|
| '19 | 25/25 | 0 | 1 | 1 | 14 | 4 | 0 | 0-0 | 2112 |
| S'21 | 16/16 | 0 | 0 | 0 | 7 | 4 | 0 | 0-0 | 1274 |
| F'21 | 21/21 | 0 | 1 | 1 | 22 | 10 | 0 | 0-0 | 1832 |
| '22 | 23/23 | 4 | 1 | 9 | 14 | 10 | 1 | 1-1 | 1937 |
| '23 | 2/2 | 1 | 0 | 2 | 1 | 1 | 0 | 0-0 | 122 |
| TOT. | 87/87 | 5 | 3 | 13 | 58 | 29 | 1 | 1-1 | 7277 |

CAREER HIGHS

| STAT | VALUE | DATE | OPPONENT |
|------------|-------|------------|--------------------|
| SHOTS | 4 | 11/12/2021 | Monmouth |
| SH ON GOAL | 2 | 10/09/2022 | at Maryland |
| GOALS | 1 | 08/20/2023 | West Chester |
| ASSISTS | 1 | 11/06/2022 | vs. Michigan State |
| MINUTES | 110 | 11/20/2022 | Virginia |

NUMBER

12

PAYTON LINNEHAN

F | SR+ | 5-6
Douglas, Mass.
FC Stars

CAREER STATS

| YR | MP/S | G | A | PTS | SH | SOG | MWG | PK-ATT | MIN |
|------|-------|----|----|-----|-----|-----|-----|--------|------|
| '19 | 25/21 | 6 | 1 | 13 | 44 | 30 | 4 | 0-0 | 1480 |
| S'21 | 16/15 | 5 | 8 | 18 | 21 | 14 | 1 | 0-0 | 921 |
| F'21 | 11/8 | 7 | 3 | 17 | 23 | 12 | 2 | 0-0 | 717 |
| '22 | 19/14 | 6 | 8 | 20 | 43 | 27 | 3 | 0-0 | 1057 |
| '23 | 2/2 | 2 | 0 | 4 | 6 | 4 | 1 | 0-0 | 115 |
| TOT. | 73/60 | 26 | 20 | 72 | 137 | 87 | 11 | 0-0 | 4290 |

CAREER HIGHS

| STAT | VALUE | DATE | OPPONENT |
|------------|-------|------------|----------|
| SHOTS | 6 | 08/22/2021 | La Salle |
| SH ON GOAL | 4 | 08/22/2021 | La Salle |
| GOALS | 3 | 08/22/2021 | La Salle |
| ASSISTS | 2 | 08/19/2021 | UMass |
| MINUTES | 89 | 11/20/2022 | Virginia |



NUMBER

14

KAITLYN MACBEAN

F | R-JR | 5-9
Maple Grove, Minn.
Minnesota Thunder Academy

CAREER STATS

| YR | MP/S | G | A | PTS | SH | SOG | MWG | PK-ATT | MIN |
|------|------|---|---|-----|----|-----|-----|--------|-----|
| S'21 | | | | | | DNP | | | |
| F'21 | | | | | | DNP | | | |
| '22 | 19/0 | 3 | 1 | 7 | 16 | 10 | 0 | 0-0 | 612 |
| '23 | 2/0 | 0 | 0 | 0 | 3 | 3 | 0 | 0-0 | 90 |
| TOT. | 21/0 | 3 | 1 | 7 | 19 | 13 | 0 | 0-0 | 702 |

CAREER HIGHS

| STAT | VALUE | DATE | OPPONENT |
|------------|-------|------------|--------------------|
| SHOTS | 4 | 10/16/2022 | Michigan |
| SH ON GOAL | 2 | 08/20/2023 | West Chester |
| GOALS | 1 | 11/06/2022 | vs. Michigan State |
| ASSISTS | 1 | 09/25/2022 | Illinois |
| MINUTES | 56 | 08/17/2023 | North Carolina |



NUMBER

15

DEVON OLIVE

M | SR+ | 5-4
Brooklyn, N.Y.
PDA ECNL Blue 2001

CAREER STATS

| YR | MP/S | G | A | PTS | SH | SOG | MWG | PK-ATT | MIN |
|------|-------|---|---|-----|----|-----|-----|--------|------|
| '19 | 18/0 | 1 | 1 | 3 | 10 | 7 | 0 | 0-0 | 405 |
| S'21 | 15/6 | 0 | 1 | 1 | 5 | 1 | 0 | 0-0 | 627 |
| F'21 | 20/7 | 0 | 0 | 0 | 3 | 1 | 0 | 0-0 | 812 |
| '22 | 19/0 | 0 | 0 | 0 | 3 | 3 | 0 | 0-0 | 568 |
| '23 | | | | | | DNP | | | |
| TOT. | 72/13 | 1 | 2 | 4 | 21 | 12 | 0 | 0-0 | 2412 |

CAREER HIGHS

| STAT | VALUE | DATE | OPPONENT |
|------------|-------|------------|----------------|
| SHOTS | 4 | 10/13/2019 | at Purdue |
| SH ON GOAL | 3 | 10/13/2019 | at Purdue |
| GOALS | 1 | 09/22/2019 | Michigan State |
| ASSISTS | 1 | 04/03/2021 | Maryland |
| MINUTES | 101 | 11/19/2021 | at USC |



NUMBER

16

ELLIE WHEELER

D | SR | 5-6
Fairfax Station, Va.
FC Virginia

CAREER STATS

| YR | MP/S | G | A | PTS | SH | SOG | MWG | PK-ATT | MIN |
|------|-------|---|---|-----|----|-----|-----|--------|------|
| S'21 | 16/16 | 0 | 1 | 1 | 5 | 3 | 0 | 0-0 | 1427 |
| F'21 | 16/15 | 2 | 0 | 4 | 8 | 5 | 2 | 0-0 | 1276 |
| '22 | 23/23 | 0 | 3 | 3 | 13 | 4 | 0 | 0-0 | 1928 |
| '23 | 2/2 | 0 | 0 | 0 | 0 | 0 | 0 | 0-0 | 122 |
| TOT. | 57/56 | 2 | 4 | 8 | 26 | 12 | 2 | 0-0 | 4753 |

CAREER HIGHS

| STAT | VALUE | DATE | OPPONENT |
|------------|-------|------------|-------------------|
| SHOTS | 2 | 09/29/2022 | Michigan State |
| SH ON GOAL | 2 | 09/01/2022 | at Stanford |
| GOALS | 1 | 10/24/2021 | at Michigan State |
| ASSISTS | 2 | 10/16/2022 | Michigan |
| MINUTES | 110 | 11/20/2022 | Virginia |



NUMBER

17

AVA MINNIER

M | R-FR | 5-11
Downingtown, Pa.
Penn Fusion Soccer Academy
MINI-er

CAREER STATS

| YR | MP/S | G | A | PTS | SH | SOG | MWG | PK-ATT | MIN |
|------|------|---|---|-----|----|-----|-----|--------|-----|
| '22 | | | | | | DNP | | | |
| '23 | | | | | | DNP | | | |
| TOT. | | | | | | DNP | | | |

CAREER HIGHS

| STAT | VALUE | DATE | OPPONENT |
|------------|-------|------|----------|
| SHOTS | | | |
| SH ON GOAL | | | |
| GOALS | | | |
| ASSISTS | | | |
| MINUTES | | | |



NUMBER
18

KAELYN WOLFE

D I F R I 5-4
West Chester, Pa.
Penn Fusion Soccer Academy



CAREER STATS

| YR | MP/S | G | A | PTS | SH | SOG | MWG | PK-ATT | MIN |
|------|------|---|---|-----|----|-----|-----|--------|-----|
| '23 | 2/0 | 0 | 0 | 0 | 3 | 2 | 0 | 0-0 | 75 |
| TOT. | 2/0 | 0 | 0 | 0 | 3 | 2 | 0 | 0-0 | 75 |

CAREER HIGHS

| STAT | VALUE | DATE | OPPONENT |
|------------|-------|------------|--------------|
| SHOTS | 3 | 8/20/2023 | West Chester |
| SH ON GOAL | 2 | 8/20/2023 | West Chester |
| GOALS | | | |
| ASSISTS | | | |
| MINUTES | 58 | 08/20/2023 | West Chester |



NUMBER
19

KARA OGDEN

D I R-S O I 5-10
Coto de Caza, Calif.
Slammers ECNL

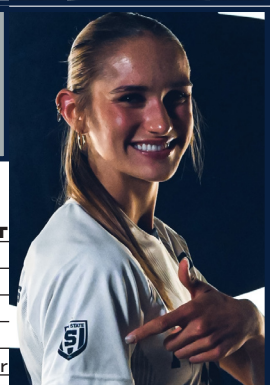


CAREER STATS

| YR | MP/S | G | A | PTS | SH | SOG | MWG | PK-ATT | MIN |
|------|------|---|---|-----|----|-----|-----|--------|-----|
| F'21 | 2/0 | 0 | 0 | 0 | 0 | 0 | 0 | 0-0 | 27 |
| '22 | | | | | | DNP | | | |
| '23 | 1/0 | 0 | 0 | 0 | 0 | 0 | 0 | 0-0 | 25 |
| TOT. | 3/0 | 0 | 0 | 0 | 0 | 0 | 0 | 0-0 | 52 |

CAREER HIGHS

| STAT | VALUE | DATE | OPPONENT |
|------------|-------|------------|--------------|
| SHOTS | | | |
| SH ON GOAL | | | |
| GOALS | | | |
| ASSISTS | | | |
| MINUTES | 25 | 08/20/2023 | West Chester |



NUMBER
20

MICHELA AGRESTI

D I S R+ I 5-8
Swampscott, Mass.
FC Stars



CAREER STATS

| YR | MP/S | G | A | PTS | SH | SOG | MWG | PK-ATT | MIN |
|-------|-------|---|---|-----|----|-----|-----|--------|------|
| '19* | 18/18 | 0 | 2 | 2 | 5 | 1 | 0 | 0-0 | 1642 |
| S'21* | 14/14 | 1 | 0 | 2 | 4 | 2 | 0 | 0-0 | 1217 |
| F'21* | 18/18 | 0 | 2 | 2 | 8 | 3 | 0 | 0-1 | 1577 |
| '22* | 17/17 | 0 | 0 | 0 | 13 | 6 | 0 | 0-0 | 1497 |
| '23 | 2/0 | 0 | 0 | 0 | 2 | 0 | 0 | 0-0 | 81 |
| TOT. | 69/67 | 1 | 4 | 6 | 32 | 12 | 0 | 0-1 | 6014 |

* - at Boston College

CAREER HIGHS

| STAT | VALUE | DATE | OPPONENT |
|------------|-------|------------|--------------|
| SHOTS | 3* | 08/28/2022 | Holy Cross |
| SH ON GOAL | 2* | 08/28/2022 | Holy Cross |
| GOALS | 1* | 03/21/2021 | Rhode Island |
| ASSISTS | 1* | 09/09/2021 | at Harvard |
| MINUTES | 110* | 09/09/2021 | at Harvard |



NUMBER
21

FRANKEE FLESHER

F I F R I 5-5
Chesterland, Ohio
Cleveland Force Soccer Club



CAREER STATS

| YR | MP/S | G | A | PTS | SH | SOG | MWG | PK-ATT | MIN |
|------|------|---|---|-----|----|-----|-----|--------|-----|
| '23 | | | | | | DNP | | | |
| TOT. | | | | | | DNP | | | |

CAREER HIGHS

| STAT | VALUE | DATE | OPPONENT |
|------------|-------|------|----------|
| SHOTS | | | |
| SH ON GOAL | | | |
| GOALS | | | |
| ASSISTS | | | |
| MINUTES | | | |



NUMBER
22

ROWAN LAPI

M I R-S R+ I 5-7
Reinholds, Pa.
Penn Fusion Soccer Academy
Row-In Lap-Ee



CAREER STATS

| YR | MP/S | G | A | PTS | SH | SOG | MWG | PK-ATT | MIN |
|-------|-------|---|---|-----|----|-----|-----|--------|------|
| '19* | 5/5 | 1 | 0 | 2 | 3 | 1 | 0 | 0-0 | 414 |
| S'21* | 13/7 | 1 | 0 | 2 | 8 | 3 | 0 | 0-0 | 627 |
| F'21* | 17/17 | 1 | 1 | 3 | 14 | 4 | 0 | 0-0 | 1347 |
| '22* | 23/23 | 6 | 3 | 15 | 27 | 12 | 4 | 3-3 | 1986 |
| '23 | 2/1 | 0 | 1 | 1 | 2 | 1 | 0 | 0-0 | 72 |
| TOT. | 60/53 | 9 | 5 | 23 | 54 | 21 | 4 | 3-3 | 4446 |

* - at Northwestern

CAREER HIGHS

| STAT | VALUE | DATE | OPPONENT |
|------------|-------|------------|--------------|
| SHOTS | 4* | 09/01/2022 | at DePaul |
| SH ON GOAL | 4* | 09/01/2022 | at DePaul |
| GOALS | 1* | 10/30/2022 | Rutgers |
| ASSISTS | 1* | 09/01/2022 | at DePaul |
| MINUTES | 110* | 04/11/2021 | at Wisconsin |



NUMBER
23

EVA ALONSO

DISR | 5-6
Madrid, Spain
Rayo Vallecano



CAREER STATS

| YR | MP/S | G | A | PTS | SH | SOG | MWG | PK-ATT | MIN |
|------|-------|---|---|-----|----|-----|-----|--------|------|
| S'21 | 16/16 | 1 | 0 | 2 | 4 | 2 | 0 | 0-0 | 1445 |
| F'21 | | | | | | DNP | | | |
| '22 | 17/2 | 0 | 0 | 0 | 0 | 0 | 0 | 0-0 | 490 |
| '23 | 2/2 | 0 | 0 | 0 | 1 | 1 | 0 | 0-0 | 118 |
| TOT. | 35/20 | 1 | 0 | 2 | 5 | 3 | 0 | 0-0 | 2053 |

CAREER HIGHS

| STAT | VALUE | DATE | OPPONENT |
|------------|-------|------------|----------------|
| SHOTS | 1 | 08/17/2023 | North Carolina |
| SH ON GOAL | 1 | 08/17/2023 | North Carolina |
| GOALS | 1 | 05/01/2021 | vs. Vanderbilt |
| ASSISTS | | | |
| MINUTES | 110 | 03/13/2021 | at Ohio State |

NUMBER
24

ELLE KERSHNER

FISR | 5-8
Limerick, Pa.
Penn Fusion Soccer Academy



CAREER STATS

| YR | MP/S | G | A | PTS | SH | SOG | MWG | PK-ATT | MIN |
|------|------|---|---|-----|----|-----|-----|--------|------|
| S'21 | 16/0 | 2 | 2 | 6 | 8 | 5 | 0 | 0-0 | 568 |
| F'21 | 20/4 | 0 | 2 | 2 | 12 | 5 | 0 | 0-0 | 706 |
| '22 | 17/0 | 2 | 0 | 4 | 16 | 10 | 0 | 0-0 | 255 |
| '23 | 1/0 | 1 | 0 | 2 | 3 | 1 | 0 | 1-1 | 46 |
| TOT. | 54/4 | 5 | 4 | 14 | 39 | 21 | 0 | 1-1 | 1575 |

CAREER HIGHS

| STAT | VALUE | DATE | OPPONENT |
|------------|-------|------------|--------------|
| SHOTS | 4 | 09/18/2022 | at Indiana |
| SH ON GOAL | 3 | 09/25/2022 | Illinois |
| GOALS | 1 | 08/20/2023 | West Chester |
| ASSISTS | 1 | 11/12/2021 | Monmouth |
| MINUTES | 90 | 09/05/2021 | at UCF |

NUMBER
25

MIEKE SCHIEMANN

DIR-FR | 5-11
Berlin, Germany
1.FFC Turbine Potsdam
MEE-Cuh SHE-mawn



CAREER STATS

| YR | MP/S | G | A | PTS | SH | SOG | MWG | PK-ATT | MIN |
|------|-------|---|---|-----|----|-----|-----|--------|------|
| F'21 | 17/16 | 0 | 0 | 0 | 3 | 2 | 0 | 0-0 | 1294 |
| '22 | 23/23 | 3 | 6 | 12 | 11 | 7 | 1 | 0-0 | 1922 |
| '23 | 2/2 | 0 | 0 | 0 | 0 | 0 | 0 | 0-0 | 99 |
| TOT. | 42/41 | 3 | 6 | 12 | 14 | 9 | 1 | 0-0 | 3315 |

CAREER HIGHS

| STAT | VALUE | DATE | OPPONENT |
|------------|-------|------------|---------------|
| SHOTS | 3 | 09/08/2022 | Liberty |
| SH ON GOAL | 2 | 09/08/2022 | Liberty |
| GOALS | 1 | 09/08/2022 | Liberty |
| ASSISTS | 2 | 11/18/2022 | West Virginia |
| MINUTES | 110 | 11/20/2022 | Virginia |

NUMBER
26

KATHERINE ASMAN

GK | GR | 5-10
Roswell, Ga.
NASA Tophat Soccer Club
AZ-Min



CAREER STATS

| YR | MP | MIN | GA | GA/AVG | SV | SV.PCT. | REC | SHO | SF |
|------|----|---------|----|--------|-----|---------|---------|-----|-----|
| '18 | | | | | DNP | | | | |
| '19 | 5 | 436:50 | 6 | 1.24 | 14 | 0.700 | 1-1-1 | 0 | 56 |
| S'21 | 15 | 1334:44 | 13 | 0.88 | 63 | 0.829 | 11-2-1 | 6 | 190 |
| F'21 | 21 | 1818:14 | 29 | 1.44 | 79 | 0.731 | 12-8-1 | 3 | 235 |
| '22 | 23 | 2019:17 | 22 | 0.98 | 84 | 0.792 | 15-5-3 | 9 | 228 |
| '23 | 2 | 130:10 | 0 | 0.00 | 2 | 1.000 | 1-0-1 | 1 | 21 |
| TOT. | 66 | 5738:30 | 70 | 1.10 | 242 | 0.776 | 40-16-7 | 19 | 730 |

CAREER HIGHS

| STAT | VALUE | DATE | OPPONENT |
|-------------|-------|------------|-------------------|
| SAVES | 11 | 11/19/2021 | at USC |
| SHOTS FACED | 32 | 05/05/2021 | vs. Florida State |
| MINUTES | 110 | 11/20/2022 | Virginia |

NUMBER
27

REBECCA COOKE

FISR | 5-10
Dublin, Ireland
Shelbourne FC



CAREER STATS

| YR | MP/S | G | A | PTS | SH | SOG | MWG | PK-ATT | MIN |
|-------|-------|----|----|-----|-----|-----|-----|--------|------|
| S'21* | 7/7 | 4 | 2 | 10 | 26 | 11 | 1 | 0-0 | 658 |
| F'21* | 18/18 | 13 | 2 | 28 | 71 | 34 | 3 | 0-0 | 1438 |
| '22* | 19/16 | 22 | 7 | 51 | 88 | 50 | 6 | 2-3 | 1459 |
| '23 | 2/0 | 1 | 0 | 2 | 9 | 6 | 0 | 0-0 | 76 |
| TOT. | 46/41 | 40 | 11 | 91 | 194 | 101 | 10 | 2-3 | 3631 |

* - at Quinnipiac

CAREER HIGHS

| STAT | VALUE | DATE | OPPONENT |
|------------|-------|------------|--------------|
| SHOTS | 11* | 11/06/2022 | Niagara |
| SH ON GOAL | 6 | 08/20/2023 | West Chester |
| GOALS | 4* | 09/28/2022 | Siena |
| ASSISTS | 2* | 10/19/2022 | Manhattan |
| MINUTES | 110* | 11/04/2021 | Siena |



NUMBER
28

AVA
RIGHTMIRE

D | FR | 5-6
Downingtown, Pa.
FC Delco



CAREER STATS

| YR | MP/S | G | A | PTS | SH | SOG | MWG | PK-ATT | MIN |
|------|------|---|---|-----|----|-----|-----|--------|-----|
| '23 | | | | | | DNP | | | |
| TOT. | | | | | | DNP | | | |

CAREER HIGHS

| STAT | VALUE | DATE | OPPONENT |
|------------|-------|------|----------|
| SHOTS | | | |
| SH ON GOAL | | | |
| GOALS | | | |
| ASSISTS | | | |
| MINUTES | | | |



NUMBER
31

JULIA
RAICH

M | R-SO | 5-7
Camp Hill, Pa.
Eagle FC
Raych



CAREER STATS

| YR | MP/S | G | A | PTS | SH | SOG | MWG | PK-ATT | MIN |
|------|------|---|---|-----|----|-----|-----|--------|-----|
| F'21 | 5/0 | 0 | 0 | 0 | 0 | 0 | 0 | 0-0 | 64 |
| '22 | 1/0 | 0 | 0 | 0 | 0 | 0 | 0 | 0-0 | 31 |
| '23 | 1/0 | 2 | 1 | 5 | 6 | 4 | 0 | 0-0 | 58 |
| TOT. | 7/0 | 2 | 1 | 5 | 6 | 4 | 0 | 0-0 | 153 |

CAREER HIGHS

| STAT | VALUE | DATE | OPPONENT |
|------------|-------|------------|--------------|
| SHOTS | 6 | 08/20/2023 | West Chester |
| SH ON GOAL | 4 | 08/20/2023 | West Chester |
| GOALS | 2 | 08/20/2023 | West Chester |
| ASSISTS | 1 | 08/20/2023 | West Chester |
| MINUTES | 58 | 08/20/2023 | West Chester |



NUMBER
32

NATALIE
WILSON

M | SR | 5-3
Fairfax, Va.
McLean ECNL



CAREER STATS

| YR | MP/S | G | A | PTS | SH | SOG | MWG | PK-ATT | MIN |
|------|-------|---|---|-----|----|-----|-----|--------|------|
| S'21 | 12/0 | 0 | 0 | 0 | 5 | 2 | 0 | 0-0 | 274 |
| F'21 | 20/11 | 0 | 0 | 0 | 8 | 3 | 0 | 0-0 | 981 |
| '22 | 23/23 | 1 | 3 | 5 | 11 | 4 | 1 | 0-0 | 1407 |
| '23 | 2/2 | 0 | 1 | 1 | 3 | 0 | 0 | 0-0 | 103 |
| TOT. | 57/36 | 1 | 4 | 6 | 27 | 9 | 1 | 0-0 | 2765 |

CAREER HIGHS

| STAT | VALUE | DATE | OPPONENT |
|------------|-------|------------|---------------|
| SHOTS | 4 | 04/28/2021 | Alabama St |
| SH ON GOAL | 2 | 04/28/2021 | Alabama St |
| GOALS | 1 | 10/09/2022 | at Maryland |
| ASSISTS | 1 | 11/18/2022 | West Virginia |
| MINUTES | 90 | 09/08/2022 | Liberty |



NUMBER
33

OLIVIA
BORGEN

M | SO | 5-8
Hanson, Mass.
South Shore Select GA



CAREER STATS

| YR | MP/S | G | A | PTS | SH | SOG | MWG | PK-ATT | MIN |
|------|------|---|---|-----|----|-----|-----|--------|-----|
| '22 | 14/0 | 0 | 0 | 0 | 8 | 6 | 0 | 0-0 | 328 |
| '23 | 2/2 | 0 | 0 | 0 | 4 | 2 | 0 | 0-0 | 96 |
| TOT. | 16/2 | 0 | 0 | 0 | 12 | 8 | 0 | 0-0 | 424 |

CAREER HIGHS

| STAT | VALUE | DATE | OPPONENT |
|------------|-------|------------|----------------|
| SHOTS | 4 | 08/20/2023 | West Chester |
| SH ON GOAL | 2 | 08/20/2023 | West Chester |
| GOALS | | | |
| ASSISTS | | | |
| MINUTES | 64 | 08/17/2023 | North Carolina |



NUMBER
35

RILEY
GLEASON

M | R-SO | 5-7
Mission Viejo, Calif.
So Cal Blues



CAREER STATS

| YR | MP/S | G | A | PTS | SH | SOG | MWG | PK-ATT | MIN |
|------|------|---|---|-----|----|-----|-----|--------|-----|
| F'21 | 11/0 | 1 | 0 | 2 | 1 | 1 | 0 | 0-0 | 314 |
| '22 | | | | | | DNP | | | |
| '23 | 2/1 | 0 | 0 | 0 | 1 | 0 | 0 | 0-0 | 87 |
| TOT. | 13/1 | 1 | 0 | 2 | 2 | 1 | 0 | 0-0 | 401 |

CAREER HIGHS

| STAT | VALUE | DATE | OPPONENT |
|------------|-------|------------|--------------|
| SHOTS | 1 | 08/20/2023 | West Chester |
| SH ON GOAL | 1 | 10/03/2021 | at Minnesota |
| GOALS | 1 | 10/03/2021 | at Minnesota |
| ASSISTS | | | |
| MINUTES | 62 | 10/08/2021 | Maryland |



PENN STATE ALL-TIME INDIVIDUAL RECORDS

SINGLE-MATCH OFFENSE

| SHOTS | | Opponent | Date |
|-------|----|--------------------------------|----------|
| 1. | 12 | Katie Schoepfer vs. Hofstra | 11/18/07 |
| | 12 | Katie Schoepfer vs. Ohio St. | 11/9/07 |
| | 12 | Christie Welsh vs. Michigan | 10/7/01 |
| 4. | 10 | Maya Hayes vs. Minnesota | 9/30/12 |
| | 10 | Christine Nairn at W. Virginia | 8/31/12 |
| | 10 | Christine Nairn vs. Army | 11/11/11 |
| | 10 | Heidi Drummond vs. Iowa | 9/21/04 |
| | 10 | Heidi Drummond vs. Santa Clara | 9/14/04 |
| | 10 | Christie Welsh vs. Texas A&M | 9/17/00 |
| | 10 | Kelly Convey at Rutgers | 10/21/98 |

| GOALS | | Opponent | Date |
|-------|---|------------------------------|----------|
| 1. | 4 | Christie Welsh vs. Michigan | 10/7/01 |
| | 4 | Courtney Lawson vs. Ohio St. | 10/22/99 |
| | 4 | Christie Welsh vs. JMU | 9/5/99 |

| ASSISTS | | Opponent | Date |
|---------|---|---------------------------------------|-----------------|
| 1. | 4 | Frankie Tagliaferri vs. Maryland | 4/3/21 |
| | 4 | Frankie Tagliaferri vs. Michigan St. | 9/22/19 |
| | 4 | Ali Krieger vs. Bucknell | 9/17/03 |
| 4. | 3 | Kate Wiesner vs. West Virginia | 11/18/22 |
| | 3 | Tiffany Weimer vs. Maryland | 10/27/14 |
| | 3 | Tani Costa at Okla. State | 9/13/13 |
| | 3 | Raquel Rodriguez at Bucknell | 9/10/13 |
| | 3 | Maya Hayes vs. Ohio St. | 9/29/11 |
| | 3 | Taylor Schram vs. W. Virginia | 8/26/11 |
| | 3 | Christine Nairn vs. Purdue | 11/1/09 |
| | 3 | Melissa Hayes at Bucknell | 9/19/07 |
| | 3 | Christie Welsh vs. Pittsburgh | 9/1/02 |
| | 3 | Joanna Lohman at Pittsburgh | 10/28/01 |
| | 3 | Christie Welsh at Ohio St. | 10/22/99 |
| | 3 | Jeannine Verdrager vs. Maryland | 9/4/98 |

| POINTS | | Opponent | Date |
|--------|----|----------------------------------|----------|
| 1. | 10 | Christie Welsh vs. Michigan | 10/7/01 |
| | 8 | Frankie Tagliaferri vs. Maryland | 4/3/21 |
| | 8 | Courtney Lawson at Ohio St. | 10/22/99 |
| | 8 | Christie Welsh vs. JMU | 9/5/99 |
| 5. | 7 | Sam Coffey vs. Maryland | 10/8/21 |
| | 7 | Katie Schoepfer vs. Illinois | 10/25/09 |
| | 7 | Tiffany Weimer vs. Texas A&M | 11/19/05 |
| | 7 | Tiffany Weimer vs. Maryland | 10/27/04 |
| | 7 | Tiffany Weimer vs. Wisconsin | 9/17/04 |
| | 7 | Christie Welsh vs. Duke | 9/7/01 |
| | 7 | Christie Welsh vs. Virginia | 10/29/99 |

SINGLE-MATCH GOALKEEPING

| SAVES | | Opponent | Date |
|-------|----|----------------------------------|----------|
| 1. | 15 | Robyn Van Praag vs. Minnesota | 10/9/94 |
| | 14 | Erin McNulty vs. Iowa | 10/31/12 |
| | 13 | Dara Christante vs. Michigan | 10/5/97 |
| | 13 | Robyn Van Praag vs. Cornell | 9/9/94 |
| 5. | 12 | Amanda Dennis at Stanford | 11/24/19 |
| | 12 | Dara Christante vs. George Mason | 10/4/96 |
| | 12 | Alyssa Naehar at Minnesota | 10/16/09 |

SINGLE-SEASON OFFENSE

| SHOTS | Matches | Year |
|--------|-----------------|---------|
| 1. 124 | Tiffany Weimer | 23 2004 |
| 2. 123 | Christie Welsh | 26 2001 |
| 3. 115 | Joanna Lohman | 25 2003 |
| 4. 114 | Christie Welsh | 24 2002 |
| 5. 104 | Katie Schoepfer | 24 2008 |
| 104 | Katie Schoepfer | 24 2007 |

| GOALS | Matches | Year |
|-------|----------------|---------|
| 1. 32 | Tiffany Weimer | 25 2005 |
| 2. 31 | Maya Hayes | 26 2011 |
| 3. 27 | Christie Welsh | 26 1999 |
| 4. 26 | Tiffany Weimer | 23 2004 |
| 5. 25 | Christie Welsh | 26 2001 |

| ASSISTS | Matches | Year |
|---------|-----------------|---------|
| 1. 18 | Christie Welsh | 26 2001 |
| 2. 14 | Joanna Lohman | 26 2001 |
| 3. 13 | Christine Nairn | 25 2011 |
| 13 | Christie Welsh | 24 2002 |
| 13 | Christie Welsh | 26 1999 |

| POINTS | Matches | Year |
|--------|----------------|---------|
| 1. 70 | Maya Hayes | 26 2011 |
| 2. 69 | Tiffany Weimer | 25 2005 |
| 3. 68 | Christie Welsh | 26 2001 |
| 4. 67 | Christie Welsh | 26 1999 |
| 5. 64 | Tiffany Weimer | 23 2004 |

| MATCH-WINNING GOALS | Matches | Year |
|---------------------|-----------------|---------|
| 1. 13 | Tiffany Weimer | 25 2005 |
| 2. 9 | Maya Hayes | 26 2011 |
| 9 | Christie Welsh | 26 1999 |
| 4. 8 | Joanna Lohman | 25 2003 |
| 5. 7 | Katie Schoepfer | 24 2007 |
| 7 | Christie Welsh | 21 2000 |
| 7 | Carole Dutchka | 26 1998 |

SINGLE-SEASON GOALKEEPING

| SAVES | Matches | Year |
|--------|-----------------|---------|
| 1. 132 | Emily Oleksiuk | 25 1998 |
| 2. 115 | Emily Oleksiuk | 26 1999 |
| 3. 109 | Robyn Van Praag | 17 1994 |
| 4. 107 | Dara Christante | 22 1997 |
| 107 | Dara Christante | 16 1995 |

| SHUTOUTS | Matches | Year |
|----------|------------------|---------|
| 1. 15.4 | Emily Oleksiuk | 24 2000 |
| 2. 12.3 | Britt Eckerstrom | 27 2015 |
| 3. 11 | Erin McLeod | 21 2004 |
| 4. 10.4 | Amanda Dennis | 25 2018 |
| 5. 10 | Amanda Brown | 23 2003 |
| 10 | Emily Oleksiuk | 25 2001 |

| MINUTES | Matches | Year |
|----------|------------------|---------|
| 1. 2,370 | Britt Eckerstrom | 27 2015 |
| 2. 2,232 | Emily Oleksiuk | 25 1998 |
| 3. 2,229 | Emily Oleksiuk | 26 1999 |
| 4. 2,223 | Emily Oleksiuk | 24 2000 |
| 5. 2,193 | Amanda Dennis | 25 2018 |

| WINS | Matches | Year |
|-------|------------------|---------|
| 1. 22 | Britt Eckerstrom | 27 2015 |
| 22 | Erin McLeod | 24 2005 |
| 3. 21 | Erin McNulty | 26 2011 |
| 21 | Emily Oleksiuk | 25 1999 |
| 5. 20 | Britt Eckerstrom | 24 2014 |
| 20 | Emily Oleksiuk | 26 2001 |
| 20 | Emily Oleksiuk | 26 2000 |
| 20 | Emily Oleksiuk | 25 1998 |

| WINNING PERCENTAGE | Record | Year |
|--------------------|-------------------------------|----------------|
| 1. .957 | Erin McLeod 22-0-2 | 2005 |
| 2. .875 | Erin McLeod 17-2-1 | 2004 |
| 3. .857 | Emily Oleksiuk 21-4-1 | 1999 |
| 4. .854 | Emily Oleksiuk 20-3-1 | 2000 |
| 5. .829 | Katherine Asman 11-3-1 | 2020-21 |

| GOALS AGAINST AVG. | Goals | GA | Year |
|--------------------|------------------|---------|------------|
| 1. 0.40 | Emily Oleksiuk | 2223:00 | 10 GA 2000 |
| 2. 0.43 | Erin McLeod | 1885:59 | 9 GA 2004 |
| 3. 0.46 | Britt Eckerstrom | 2370:34 | 12 GA 2015 |
| 4. 0.53 | Amanda Dennis | 2193:16 | 13 GA 2018 |
| 5. 0.62 | Alyssa Naehar | 2176:18 | 15 GA 2007 |

| FEWEST GOALS ALLOWED | Matches | Year |
|----------------------|------------------------|-------------------|
| 1. 9 | Erin McLeod | 21 2004 |
| 2. 10 | Emily Oleksiuk | 24 2000 |
| 3. 11 | Robyn Van Praag | 9 1995 |
| 4. 12 | Britt Eckerstrom | 27 2015 |
| 5. 13 | Katherine Asman | 15 2020-21 |
| 13 | Amanda Dennis | 25 2018 |

Bold denotes current Nittany Lion.

PENN STATE ALL-TIME INDIVIDUAL RECORDS

| CAREER OFFENSE | | | | CAREER OFFENSE | | | | CAREER MATCHES | | |
|----------------------------|-----------------|--------------|---------|----------------|------------------|--------------|-----------|---|-----------------|----------------|
| SHOTS | MP | YEARS | | ASSISTS | MP | YEARS | | PLAYED | | YEARS |
| 1. 431 | Christie Welsh | 97 | 1999-02 | 1. 52 | Christie Welsh | 97 | 1999-02 | 1. 104 | Bonnie Young | 1997-01 |
| 2. 381 | Katie Schoepfer | 92 | 2006-09 | 2. 41 | Christine Nairn | 94 | 2009-12 | 2. 103 | Megan Mills | 1998-01 |
| 3. 356 | Tiffany Weimer | 97 | 2002-05 | 3. 37 | Joanna Lohman | 101 | 2000-03 | 3. 101 | Kaleigh Riehl | 2015,17-19 |
| 4. 347 | Joanna Lohman | 101 | 2000-03 | 4. 32 | Tiffany Weimer | 97 | 2002-05 | 101 | Joanna Lohman | 2000-03 |
| 5. 317 | Rachel Hoffman | 87 | 1994-97 | 5. 31 | Rachel Hoffman | 87 | 1994-97 | 101 | Stephanie Smith | 2000-03 |
| 6. 314 | Christine Nairn | 94 | 2009-12 | 6. 30 | Sam Coffey | 62 | 2019-2021 | 6. 100 | Ellie Jean | 2015-19 |
| 7. 291 | Maya Hayes | 89 | 2010-13 | 7. 29 | Stephanie Smith | 101 | 2000-03 | 100 | Mallory Weber | 2012-15 |
| 8. 283 | Heidi Drummond | 98 | 2000-03 | 29 | Mallory Weber | 100 | 2012-15 | 100 | Whitney Church | 2011-14 |
| 9. 256 | Danielle Toney | 99 | 2007-10 | 9. 28 | Emily Hurd | 98 | 2010-14 | 100 | Emily Oleksiuk | 1998-01 |
| 10. 231 | Frannie Crouse | 92 | 2014-17 | 28 | Raquel Rodriguez | 93 | 2012-15 | 100 | Emily Ogle | 2014-18 |
| GOALS | | | | POINTS | | | | STARTED | | |
| 1. 91 | Tiffany Weimer | 97 | 2002-05 | 1. 216 | Christie Welsh | 97 | 1999-02 | 1. 103 | Megan Mills | 1997-01 |
| 2. 82 | Christie Welsh | 97 | 1999-02 | 2. 214 | Tiffany Weimer | 97 | 2002-05 | 103 | Bonnie Young | 1997-01 |
| 3. 71 | Maya Hayes | 89 | 2010-13 | 3. 163 | Maya Hayes | 89 | 2010-13 | 3. 101 | Kaleigh Riehl | 2015-19 |
| 4. 58 | Rachel Hoffman | 87 | 1994-97 | 4. 147 | Rachel Hoffman | 87 | 1994-97 | 101 | Joanna Lohman | 2000-03 |
| 5. 56 | Heidi Drummond | 98 | 2000-03 | 5. 138 | Heidi Drummond | 98 | 2000-03 | 101 | Stephanie Smith | 2000-03 |
| 6. 48 | Katie Schoepfer | 92 | 2006-09 | 6. 122 | Katie Schoepfer | 92 | 2006-09 | 6. 100 | Ellie Jean | 2015,17-19 |
| 7. 47 | Ally Schlegel | 85 | 2019-22 | 7. 119 | Joanna Lohman | 101 | 2000-03 | 100 | Emily Oleksiuk | 1998-01 |
| 8. 44 | Carole Dutchka | 87 | 1995-98 | 8. 114 | Ally Schlegel | 85 | 2019-22 | 100 | Emily Ogle | 2014-18 |
| 9. 41 | Joanna Lohman | 101 | 2000-03 | 8. 109 | Christine Nairn | 94 | 2009-12 | 9. 97 | Mallory Weber | 2012-15 |
| 10. 38 | Danielle Toney | 99 | 2007-10 | 9. 108 | Carole Dutchka | 87 | 1995-98 | 10. 96 | Heidi Drummond | 2000-03 |
| MATCH-WINNING GOALS | | | | | | | | 96 | Gillian Samuel | 1998-99, 01-02 |
| 1. 27 | Christie Welsh | 97 | 1999-02 | | | | | 96 | Luanne Strom | 1997-00 |
| 27 | Tiffany Weimer | 97 | 2002-05 | | | | | | | |
| 3. 19 | Heidi Drummond | 98 | 2000-03 | | | | | MINUTES PLAYED (Position Player) | | |
| 4. 18 | Katie Schoepfer | 92 | 2006-09 | | | | | 1. 8,847 | Kaleigh Riehl* | 2015,17-19 |
| 18 | Rachel Hoffman | 87 | 1994-97 | | | | | | | |
| 6. 17 | Carole Dutchka | 87 | 1995-98 | | | | | | | |
| 17 | Maya Hayes | 89 | 2010-13 | | | | | | | |
| 8. 15 | Ally Schlegel | 85 | 2019-22 | | | | | | | |
| 15 | Joanna Lohman | 101 | 2000-03 | | | | | | | |
| 10. 14 | Mallory Weber | 100 | 2012-15 | | | | | | | |

* – NCAA Record
Bold denotes current Nittany Lion.

ALL-TIME HAT TRICKS

| PLAYER | OPPONENT | DATE |
|----------------------------|---------------------|----------------|
| 1. Bonnie Young | vs. Maryland | 9/4/98 |
| 2. Christie Welsh* | vs. James Madison | 9/5/99 |
| 3. Kelly Convey | vs. Minnesota | 10/3/99 |
| 4. Christie Welsh | vs. Northwestern | 10/15/99 |
| 5. Courtney Lawson* | at Ohio State | 10/22/99 |
| 6. Christie Welsh | vs. Virginia | 10/29/99 |
| 7. Christie Welsh | at James Madison | 9/10/00 |
| 8. Christie Welsh | vs. Indiana | 9/22/00 |
| 9. Christie Welsh | vs. Duke | 9/7/01 |
| 10. Christie Welsh* | vs. Michigan | 10/7/01 |
| 11. Christie Welsh | at Pittsburgh | 10/28/01 |
| 12. Tiffany Weimer | vs. Indiana | 9/27/02 |
| 13. Heidi Drummond | vs. Illinois | 10/11/02 |
| 14. Tiffany Weimer | at Wisconsin | 9/17/04 |
| 15. Tiffany Weimer | vs. Washington | 8/26/05 |
| 16. Tiffany Weimer | vs. Texas A&M | 11/19/05 |
| 17. Katie Schoepfer | vs. Illinois | 10/25/09 |
| 18. Katie Schoepfer | vs. Colgate | 11/13/09 |
| 19. Tani Costa | vs. Indiana | 10/28/10 |
| 20. Maya Hayes | at Pittsburgh | 9/4/11 |
| 21. Laura Freigang | vs. Stony Brook | 11/10/17 |
| 22. Payton Linnehan | vs. La Salle | 8/22/21 |
| 23. Sam Coffey | vs. Maryland | 10/8/21 |

* Indicates four goals scored



PENN STATE ALL-TIME INDIVIDUAL RECORDS

CAREER GOALKEEPING

| Saves | | Matches | Years |
|------------------------|--------------|------------------------|-------------------|
| 1. | 416 | Emily Oleksiuk | 100 |
| 2. | 359 | Alyssa Naehler | 88 |
| 3. | 306 | Dara Christante | 55 |
| 4. | 255 | Britt Eckerstrom | 85 |
| 5. | 242 | Katherine Asman | 66 |
| | | | 2019-Pres. |
| Shutouts | | Matches | Years |
| 1. | 43.7 | Emily Oleksiuk | 100 |
| 2. | 30.2 | Alyssa Naehler | 88 |
| 3. | 24.9 | Britt Eckerstrom | 85 |
| 4. | 24 | Amanda Dennis | 72 |
| 5. | 21 | Amanda Brown | 52 |
| | 21 | Erin McLeod | 45 |
| Minutes Played | | Matches | Years |
| 1. | 8,853 | Emily Oleksiuk* | 100 |
| 2. | 7,961 | Alyssa Naehler | 88 |
| 3. | 6,966 | Britt Eckerstrom | 85 |
| 4. | 6,129 | Amanda Dennis | 72 |
| 5. | 5,739 | Katherine Asman | 65 |
| | | | 2019-Pres. |
| Wins | | Matches | Years |
| 1. | 81 | Emily Oleksiuk | 100 |
| 2. | 61 | Britt Eckerstrom | 85 |
| 3. | 59 | Alyssa Naehler | 88 |
| 4. | 45 | Amanda Dennis | 72 |
| 5. | 40 | Katherine Asman | 65 |
| | | | 2019-Pres. |
| Winning Percentage# | | Record | Years |
| 1. | .921 | Erin McLeod | 39-2-3 |
| 2. | .830 | Emily Oleksiuk | 81-15-4 |
| 3. | .801 | Britt Eckerstrom | 61-14-3 |
| 4. | .795 | Erin McNulty | 38-9-2 |
| | .795 | Amanda Brown | 37-8-4 |
| Goals Against Average# | | | Years |
| 1. | 0.64 | E. McLeod | 4,073 29 GA |
| 3. | 0.74 | E. Oleksiuk | 8,853 73 GA |
| 3. | 0.77 | A. Dennis | 6,129 53 GA |
| 4. | 0.80 | B. Eckerstrom | 6,967 62 GA |
| 5. | 0.90 | A. Naehler | 7,962 80 GA |

MISCELLANEOUS

| Consecutive Matches With A Goal | | |
|---|--------|---|
| 1. | 17 | Tiffany Weimer^ |
| 2. | 13 | Tiffany Weimer |
| 3. | 7 | Maya Hayes |
| | 7 | Katie Schoepfer |
| | 7 | Christie Welsh |
| Consecutive shutout minutes by a goalkeeper | | |
| 1. | 857:24 | Erin McLeod |
| 2. | 714:09 | Britt Eckerstrom |
| 3. | 518:45 | Emily Oleksiuk |
| Fastest First Goal | | |
| 1. | 0:48 | Maya Hayes (vs. Boston College) |
| 2. | 0:56 | Tani Costa (at Illinois) |
| | 0:56 | Tiffany Weimer (vs. USC) |
| 4. | 1:02 | Maddy Evans (vs. West Virginia) |
| 5. | 1:03 | Christine Nairn (at UConn) |
| Shortest Time Between Two PSU Goals | | |
| 1. | 0:15 | vs. Iowa |
| | | Joanna Lohman, Tiffany Weimer (76:16-76:31) |
| Shortest Time Between Goals By Same Player | | |
| 1. | 0:16 | Christie Welsh (vs. Indiana) |
| | | (75:57; 76:13) |
| Fastest First Goal By An Opponent | | |
| 1. | 0:21 | Kellie Phillips (Purdue) |
| 2. | 0:27 | Kristina Larsen (UCLA) |
| 3. | 0:46 | Brittany Barakat (UConn) |

* – NCAA Record
 ^ – Shares NCAA Record
 # – Minimum 20 matches/3,000 minutes
Bold denotes current Nittany Lion.



PENN STATE ALL-TIME TEAM RECORDS

| OFFENSE | GOALKEEPING | MISCELLANEOUS | OPPONENT RECORDS | |
|--|---|---|---|--|
| SHOTS | | | | |
| MATCH 45 vs. West Chester 08/20/23 | FEWEST GOALS ALLOWED SEASON 11 26 matches 2000 | WINNING PERCENTAGE .960 23-0-2 (25 matches) 2005 | SHOTS MOST IN A MATCH 35 (2x) at Stanford 11/24/19 at Northwestern 9/24/95 | |
| SEASON 499 26 matches 2000 | PER MATCH 0.42 11 GA (26 matches) 2000 | MOST WINS 23 23-0-2 (25 matches) 2005 | MOST IN A SEASON 402 27 matches 2012 | |
| PER MATCH 19.19 499 shots (26 matches) 2000 | MOST FOULS | | FEWEST IN A MATCH 0 vs. Ohio State 10/20/00 | |
| GOALS | | | | |
| MATCH 9 vs. Bucknell 9/25/01 | MATCH 29 at Michigan 11/3/05 | CONSECUTIVE WINS 19 8/26-10/30 2005 | FEWEST IN A SEASON 166 25 matches 2003 | |
| SEASON 83 26 matches 2001 | SEASON 342 26 matches 1999 | UNBEATEN STREAK 27 8/26/05 - 8/27/06 | GOALS | |
| PER MATCH 3.19 83 goals (26 matches) 2001 | PER MATCH 13.15 342 fouls (26 matches) 1999 | CONSECUTIVE HOME WINS 39 9/17/01 - 11/12/04 | MOST IN A MATCH 6 vs. Virginia 11/15/09 | |
| ASSISTS | | | | |
| MATCH 10 vs. Maryland 4/3/21 vs. Boston U. 11/20/15 | MATCH 1 vs. Connecticut 8/31/09 | HOME UNBEATEN STREAK 39 9/17/01 - 11/12/04 | MOST IN A SEASON 34 23 matches 1997 | |
| SEASON 86 26 matches 2011 | SEASON 93 16 matches 2020-21 125 21 matches 2016 | CONSECUTIVE ROAD WINS (excluding neutral site matches) 9 9/12/99 - 8/29/00 | FEWEST IN A SEASON 11 26 matches 2000 | |
| PER MATCH 3.31 86 assists (26 matches) 2011 | PER MATCH 5.81 16 matches 2020-21 5.95 21 matches 2016 | ASSISTS | | |
| POINTS | | | | |
| MATCH 26 vs. Bucknell 9/25/01 | MATCH 17 vs. James Madison 9/2/95 | BIG TEN REGULAR SEASON UNBEATEN STREAK 29 9/19/99 - 10/21/01 | MOST IN A MATCH 6 at Stanford 8/19/11 at Michigan 10/4/02 | |
| SEASON 233 83g-67a (26 matches) 2001 | SEASON 164 23 matches 1995 | CONSECUTIVE BIG TEN REGULAR SEASON WINS 20 9/24/99 - 9/23/01 | MOST IN A SEASON 30 23 matches 2013 | |
| PER MATCH 8.96 233 points (26 matches) 2001 | PER MATCH 7.13 164 saves (23 matches) 1995 | BIG TEN REGULAR SEASON UNBEATEN STREAK 29 9/19/99 - 10/21/01 | FEWEST IN A SEASON 10 26 matches 2000 | |
| CORNER KICKS | | | | |
| MATCH 20 vs. West Chester 08/20/23 | MATCH 17 26 matches 2000 | BEST START TO A SEASON 19-0-0 1.000 (19 matches) 2005 | POINTS | |
| SEASON 203 26 matches 2000 | SEASON 164 23 matches 1995 | CONSECUTIVE WINNING SEASONS 29 1994-present | MOST IN A MATCH 17 vs. Virginia 11/15/09 | |
| PER MATCH 7.81 203 CKs (26 matches) 2000 | PER MATCH 7.13 164 saves (23 matches) 1995 | CONSECUTIVE SHUTOUTS 10 10/1/04 - 11/4/04 | MOST IN A SEASON 90 23 matches 2013 | |
| MOST PENALTY KICKS ATTEMPTED IN A SEASON | | | | |
| 8 6 goals 2005 | SHUTOUTS | LARGEST MARGIN OF VICTORY | FEWEST IN A SEASON 32 26 matches 2000 | |
| 7 5 goals 2012 | SEASON 17 26 matches 2000 | 8 vs. Iowa (8-0) 10/9/05 | SAVES | |
| 5 2 goals 2022 | GOALS AGAINST AVERAGE | 8 at Iowa (8-0) 10/15/04 | MOST IN A MATCH 22 vs. Buffalo 9/29/95 | |
| 5 4 goals 2010 | SEASON 0.40 26 matches 2000 | 8 vs. Pittsburgh (8-0) 9/13/96 | MOST IN A SEASON 201 26 matches 2001 | |
| 5 3 goals 2003 | SHUTOUTS | LARGEST MARGIN OF DEFEAT | FEWEST IN A SEASON 81 16 matches 2020-21 107 24 matches 2017 | |
| 5 1 goal 2002 | SEASON 17 26 matches 2000 | 5 at Washington (0-5) 10/6/95 | SHUTOUTS | |
| 4 3 goals 2006 | GOALS IN A SEASON | MOST OVERTIME MATCHES | MOST IN A SEASON 5 25 matches 2018 5 24 matches 2017 5 23 matches 1995 | |
| 4 4 goals 1998 | 6 8 attempts 2005 | 7 3-0-4 2017 | FEWEST IN A SEASON | |
| 4 3 goals 1994 | 5 7 attempts 2012 | 6 4-1-1 2005 | 1 25 matches 2005 | |
| CORNER KICKS | 4 4 attempts 1998 | 5 2-0-3 2006 | 1 26 matches 2001 | |
| MOST IN A MATCH 12 vs. Florida State 5/5/21 at Florida State 9/4/09 | 4 5 attempts 2010 | 5 2-2-1 2010 | 1 23 matches 1997 | |
| MOST IN A SEASON 120 27 matches 2012 | 3 4 attempts 2006 | 5 0-1-4 2016 | 1 22 matches 1996 | |
| FEWEST IN A SEASON 62 16 matches 2021 24 matches 2017 | 3 5 attempts 2003 | | CORNER KICKS | |
| | 3 3 attempts 2017 | | MOST IN A MATCH 12 vs. Florida State 5/5/21 at Florida State 9/4/09 | |
| | | | MOST IN A SEASON 120 27 matches 2012 | |
| | | | FEWEST IN A SEASON 62 16 matches 2021 24 matches 2017 | |
| | | | FOULS | |
| | | | MOST IN A SEASON 299 26 matches 2006 | |
| | | | FEWEST IN A SEASON 112 16 matches 2020-21 126 21 matches 2021 | |



2023 PENN STATE BOX SCORES

M1 | #10 PENN STATE 0, #2 NORTH CAROLINA 0

AUGUST 17, 2023
UNIVERSITY PARK, PA
JEFFREY FIELD



Official Soccer Box Score - Final
North Carolina vs Penn St.
8/17/2023 Jeffrey Field, University Park, Pa.
2023 Penn State Women's Soccer

Match Time: 7:33 PM
Match Duration: 02:42
Attendance: 3102

Officials: Tim Dejarovan, Ashley Smyds, Bennett Sheker, Cody Hack

North Carolina (0-0-1) vs.
Penn St. (0-0-1)
Date: 8/17/2023 • Attendance: 3102

| Goals by period | 1 | 2 | Total |
|-----------------|---|---|-------|
| Tar Heels | 0 | 0 | 0 |
| Nittany Lions | 0 | 0 | 0 |

North Carolina

| Pos # | Player | Sh | SO | G | A | Fo | Min |
|-------------------|-------------------|----|----|---|---|----|-----|
| def 3 | Savvy King | - | - | - | - | - | 90 |
| 6 | Emerson Elgin | - | - | - | - | 1 | 73 |
| 8 | Emily Moxley | 1 | 1 | - | - | - | 90 |
| mid 10 | Sam Meza | 1 | - | - | - | 3 | 83 |
| def 15 | Avery Patterson | 1 | - | - | - | 1 | 78 |
| 18 | Bella Sembler | - | - | - | - | 1 | 42 |
| mid 19 | Emily Colton | 2 | - | - | - | 1 | 77 |
| def 21 | Ally Sentor | 5 | - | - | - | 2 | 80 |
| mid 24 | Talia Dellaperuta | 1 | 1 | - | - | - | 64 |
| def 25 | Maycee Bell | 2 | - | - | - | - | 90 |
| gk 32 | Emmie Allen | - | - | - | - | - | 90 |
| -- Substitutes -- | | | | | | | |
| 9 | Tori Dellaperuta | - | - | - | - | - | 10 |
| 13 | Isabel Cox | 1 | - | - | - | 1 | 21 |
| 16 | Melina Rebimbas | 4 | - | - | - | - | 28 |
| 20 | Olivia Thomas | 1 | - | - | - | - | 40 |
| 26 | Kate Faasse | - | - | - | - | - | 17 |
| 34 | Tessa Dallarosa | - | - | - | - | - | 17 |
| Totals | | 19 | 2 | - | - | 10 | |

| # | Goalkeepers | Dec | Min | GA | Saves |
|----|-------------|-----|-------|----|-------|
| 32 | Emmie Allen | T | 90:00 | 0 | 3 |

North Carolina-Allen, Emmie (0-0-1), Penn St.-Asman, Katherine (0-0-1).

Shots by period

| | 1 | 2 | Total |
|---------------|----|---|-------|
| Tar Heels | 10 | 9 | 19 |
| Nittany Lions | 2 | 3 | 5 |

Corner kicks

| | 1 | 2 | Total |
|---------------|---|---|-------|
| Tar Heels | 3 | 0 | 3 |
| Nittany Lions | 0 | 2 | 2 |

Scoring summary:

| No. | Time | Team | Goal scorer | Assist | Description |
|-----|------|------|-------------|--------|-------------|
|-----|------|------|-------------|--------|-------------|

Cautions and ejections:
YC - Tar Heels #24 69:41

Stadium: Jeffrey Field
Officials: Referee: Tim Dejarovan; Asst. Referee: Ashley Smyds; Bennett Sheker; Alt. Official: Cody Hack;
Officials: North Carolina 1, Penn St. 1.



M2 | #10 PENN STATE 8, WEST CHESTER 0

AUGUST 20, 2023
UNIVERSITY PARK, PA
JEFFREY FIELD



Official Soccer Box Score - Final
West Chester vs Penn St.
8/20/2023 Jeffrey Field, University Park, Pa.
2023 Penn State Women's Soccer

Match Time: 1:00 PM
Match Duration: 01:57
Attendance: 944

Officials: Sergio Gorzoko, Max Campbell, Kyle Petty, Sam Maha

West Chester (0-1-0) vs.
Penn St. (1-0-1)
Date: 8/20/2023 • Attendance: 944

| Goals by period | 1 | 2 | Total |
|-----------------|---|---|-------|
| Golden Rams | 0 | 0 | 0 |
| Nittany Lions | 3 | 5 | 8 |

West Chester

| Pos # | Player | Sh | SO | G | A | Fo | Min |
|-------------------|-------------------|----|----|---|---|----|-----|
| gk 00 | Grace Keen | - | - | - | - | - | 90 |
| def 3 | Jacqueline Graham | - | - | - | - | 65 | |
| def 4 | Jacqueline Hug | - | - | - | - | 49 | |
| def 6 | Abigail Edelman | - | - | - | - | 1 | 75 |
| mid 12 | Kaitlynn Haughey | - | - | - | - | 1 | 78 |
| def 13 | Alyson Cutter | 2 | - | - | - | - | 70 |
| def 15 | Faith Matter | - | - | - | - | 4 | 69 |
| mid 17 | Julia Raybold | - | - | - | - | 2 | 78 |
| mid 19 | Lauren Reimold | - | - | - | - | 1 | 59 |
| def 23 | Kiley Kergides | - | - | - | - | - | 90 |
| def 27 | Lauren Corless | - | - | - | - | 1 | 71 |
| -- Substitutes -- | | | | | | | |
| 5 | Meghan Riedel | - | - | - | - | - | 15 |
| 7 | Carley Stevin | - | - | - | - | - | 31 |
| 8 | Mia Amen | - | - | - | - | - | 18 |
| 9 | Kate Alexander | - | - | - | - | - | 16 |
| 16 | Paige Reali | - | - | - | - | - | 31 |
| 18 | Olivia Ancone | - | - | - | - | - | 12 |
| 20 | Alli Gold | - | - | - | - | - | 25 |
| 22 | Olivia Conroy | - | - | - | - | - | 13 |
| 25 | Olivia Myers | - | - | - | - | - | 15 |
| 29 | Kelli Collins | - | - | - | - | - | 20 |
| Totals | | 2 | - | - | - | 11 | |

| # | Goalkeepers | Dec | Min | GA | Saves |
|----|-------------|-----|-------|----|-------|
| 00 | Grace Keen | L | 90:00 | 8 | 16 |

Win-Asman, Katherine (1-0-1), Loss-Keen, Grace (0-1-0).

Shots by period

| | 1 | 2 | Total |
|---------------|----|----|-------|
| Golden Rams | 2 | 0 | 2 |
| Nittany Lions | 24 | 21 | 45 |

Corner kicks

| | 1 | 2 | Total |
|---------------|----|---|-------|
| Golden Rams | 0 | 1 | 1 |
| Nittany Lions | 13 | 7 | 20 |

Penn St.

| Pos # | Player | Sh | SO | G | A | Fo | Min | |
|-------------------|------------------|----|----|---|---|----|-----|----|
| mid 6 | Kate Wiesner | - | - | - | - | 2 | 1 | 32 |
| def 7 | Amelia White | 1 | - | - | - | - | 32 | |
| mid 10 | Cori Dyke | 1 | 1 | 1 | - | - | 32 | |
| def 12 | Payton Linnehan | 5 | 3 | 2 | - | - | 32 | |
| def 16 | Elle Wheeler | - | - | - | - | 1 | 32 | |
| def 23 | Eva Alonso | - | - | - | - | - | 32 | |
| def 25 | Mieka Schiemann | - | - | - | - | - | 42 | |
| gk 26 | Katherine Asman | - | - | - | - | - | 41 | |
| mid 32 | Natalie Wilson | 2 | - | - | - | 1 | 32 | |
| mid 33 | Olivia Borgen | 4 | 2 | - | - | - | 32 | |
| mid 35 | Riley Gleason | 1 | - | - | - | 1 | 32 | |
| -- Substitutes -- | | | | | | | | |
| 00 | Amanda Poorbaugh | - | - | - | - | - | 25 | |
| 1 | Mackenzie Gress | - | - | - | - | - | 24 | |
| 2 | Molly Martin | - | - | - | - | - | 58 | |
| 3 | Olivia Damico | 1 | 1 | 1 | 1 | - | 58 | |
| 5 | Keegan Schmeiser | - | - | - | - | - | 58 | |
| 8 | Luciana Latino | 4 | 1 | - | - | - | 36 | |
| 14 | Kaitlyn MacBean | 2 | 2 | - | - | 1 | 34 | |
| 18 | Kaelyn Wolfe | 3 | 2 | - | - | 1 | 58 | |
| 19 | Kara Ojden | - | - | - | - | - | 25 | |
| 20 | Michela Agresti | 1 | - | - | - | - | 48 | |
| 22 | Rowan Lapi | 2 | 1 | - | - | 1 | 33 | |
| 24 | Elle Kershner | 3 | 1 | 1 | - | 1 | 46 | |
| 27 | Rebecca Cooke | 9 | 6 | 1 | - | - | 58 | |
| 31 | Julia Raich | 6 | 4 | 2 | 1 | - | 58 | |
| Totals | | 45 | 24 | 8 | 6 | 8 | | |

| # | Goalkeepers | Dec | Min | GA | Saves |
|----|------------------|-----|-------|----|-------|
| 26 | Katherine Asman | W | 40:10 | 0 | 0 |
| 1 | Mackenzie Gress | ◆ | 23:51 | 0 | 0 |
| 00 | Amanda Poorbaugh | ◆ | 25:59 | 0 | 0 |

Saves by period

| | 1 | 2 | Total |
|---------------|---|---|-------|
| Golden Rams | 9 | 7 | 16 |
| Nittany Lions | 0 | 0 | 0 |

Fouls

| | 1 | 2 | Total |
|---------------|---|---|-------|
| Golden Rams | 5 | 6 | 11 |
| Nittany Lions | 4 | 4 | 8 |



2023 PENN STATE MATCH RESULTS

Team Results

| Date | Opponent | | Score | Overall | Conf | Att. | Goals Scored |
|------------|----------------|---|-------|---------|-------|------|--|
| 08/17/2023 | North Carolina | T | 0-0 | 0-0-1 | 0-0-0 | 3102 | - |
| 08/20/2023 | West Chester | W | 8-0 | 1-0-1 | 0-0-0 | 944 | Linnehan, Payton Linnehan, Payton Damico, Olivia Raich, Julia Raich, Julia Dyke, Cori Cooke, Rebecca Kershner, Elle |

| Team Record | W-L-T |
|-------------|-------|
| Overall: | 1-0-1 |
| Conference: | 0-0-0 |
| Home: | 1-0-1 |
| Away: | 0-0-0 |
| Neutral: | 0-0-0 |
| Overtime: | 0-0-0 |

| Attendance | Dates | Total | Avg. |
|------------|-------|-------|------|
| Total: | 2 | 4046 | 2023 |
| Home: | 2 | 4046 | 2023 |
| Away: | 0 | 0 | 0 |
| Neutral: | 0 | 0 | 0 |

2023 PENN STATE TEAM STATISTICS

Game Records

| Overall | Conference | Home | Away | Neutral |
|-----------|------------|-----------|-----------|-----------|
| 1 - 0 - 1 | 0 - 0 - 0 | 1 - 0 - 1 | 0 - 0 - 0 | 0 - 0 - 0 |

Team statistics

| | PSU | OPP |
|------------------------|--------|------|
| SHOT STATISTICS | | |
| Goals-Shot attempts | 8-50 | 0-21 |
| Goals scored per game | 4 | 0 |
| Shot pct. | .160 | .000 |
| Shots on goal-Attempts | 27-50 | 2-21 |
| SOG pct. | .540 | .095 |
| Shots/Game | 25 | 10.5 |
| Assists | 6 | 0 |
| GOAL BREAKDOWN | | |
| Total Goals | 8 | 0 |
| Penalty | 1 | 0 |
| Unassisted | - | - |
| Overtime | 0 | 0 |
| Goals scored average | 4 | 0 |
| CORNER KICKS | 22 | 4 |
| PENALTY KICKS | 1-1 | 0-0 |
| OFFSIDES | 2 | 1 |
| PENALTIES | | |
| Fouls | 15 | 21 |
| Yellow cards | 0 | 4 |
| Red cards | 0 | 0 |
| ATTENDANCE | | |
| Total | 4046 | 0 |
| Dates/Avg Per Date | 2/2023 | 0/0 |
| Neutral Site #/Avg | 0/0 | - |

Goals by Periods

| Team | 1st | 2nd | OT1 | OT2 | TOTAL |
|-----------|-----|-----|-----|-----|-------|
| PSU | 3 | 5 | 0 | 0 | 8 |
| Opponents | 0 | 0 | 0 | 0 | 0 |

Corners by Periods

| Team | 1st | 2nd | OT1 | OT2 | TOTAL |
|-----------|-----|-----|-----|-----|-------|
| PSU | 13 | 9 | 0 | 0 | 22 |
| Opponents | 3 | 1 | 0 | 0 | 4 |

Shots by Periods

| Team | 1st | 2nd | OT1 | OT2 | TOTAL |
|-----------|-----|-----|-----|-----|-------|
| PSU | 26 | 24 | 0 | 0 | 50 |
| Opponents | 12 | 9 | 0 | 0 | 21 |

Fouls by Periods

| Team | 1st | 2nd | OT1 | OT2 | TOTAL |
|-----------|-----|-----|-----|-----|-------|
| PSU | 7 | 8 | 0 | 0 | 15 |
| Opponents | 9 | 12 | 0 | 0 | 21 |

Saves by Periods

| Team | 1st | 2nd | OT1 | OT2 | TOTAL |
|-----------|-----|-----|-----|-----|-------|
| PSU | 1 | 1 | 0 | 0 | 2 |
| Opponents | 11 | 8 | 0 | 0 | 19 |

Offsides by Periods

| Team | 1st | 2nd | OT1 | OT2 | TOTAL |
|-----------|-----|-----|-----|-----|-------|
| PSU | 1 | 1 | 0 | 0 | 2 |
| Opponents | 1 | 0 | 0 | 0 | 1 |

2023 PENN STATE MATCH-BY-MATCH TEAM COMPARISON

| Date | Opponent | Score | Goals | Assists | Shots | On Goal | Corners | Fouls | YC | RC | Offsides |
|---------------|----------------|------------|------------|------------|--------------|-------------|-------------|--------------|------------|------------|------------|
| 08/17/2023 | North Carolina | 0-0 | 0/0 | 0/0 | 5/19 | 3/2 | 2/3 | 7/10 | 0/1 | 0/0 | 1/1 |
| 08/20/2023 | West Chester | 8-0 | 8/0 | 6/0 | 45/2 | 24/0 | 20/1 | 8/11 | 0/3 | 0/0 | 1/0 |
| Totals | | 8-0 | 8/0 | 6/0 | 50/21 | 27/2 | 22/4 | 15/21 | 0/4 | 0/0 | 2/1 |

Note: Game totals are displayed in the format TEAM/OPPONENT for each category

2023 PENN STATE CATEGORY LEADERS

| ## | Points | GP | G | A | Pts | Shots |
|----|------------------|----|---|---|-----|-------|
| 31 | Raich, Julia | 1 | 2 | 1 | 5 | 6 |
| 12 | Linnehan, Payton | 2 | 2 | 0 | 4 | 6 |
| 3 | Damico, Olivia | 1 | 1 | 1 | 3 | 1 |
| 10 | Dyke, Cori | 2 | 1 | 0 | 2 | 1 |
| 27 | Cooke, Rebecca | 2 | 1 | 0 | 2 | 9 |
| 24 | Kershner, Elle | 1 | 1 | 0 | 2 | 3 |

| ## | Shots | GP | G | A | Shots | Shot% |
|----|------------------|----|---|---|-------|-------|
| 27 | Cooke, Rebecca | 2 | 1 | 0 | 9 | .111 |
| 31 | Raich, Julia | 1 | 2 | 1 | 6 | .333 |
| 12 | Linnehan, Payton | 2 | 2 | 0 | 6 | .333 |
| 8 | Latino, Luciana | 1 | 0 | 0 | 4 | .000 |
| 33 | Borgen, Olivia | 2 | 0 | 0 | 4 | .000 |
| 32 | Wilson, Natalie | 2 | 0 | 1 | 3 | .000 |
| 18 | Wolfe, Kaelyn | 2 | 0 | 0 | 3 | .000 |
| 24 | Kershner, Elle | 1 | 1 | 0 | 3 | .333 |
| 14 | MacBean, Kaitlyn | 2 | 0 | 0 | 3 | .000 |
| 20 | Agresti, Michela | 2 | 0 | 0 | 2 | .000 |
| 22 | Lapi, Rowan | 2 | 0 | 1 | 2 | .000 |

| ## | Goals | GP | G | A | Pts | Shots |
|----|------------------|----|---|---|-----|-------|
| 31 | Raich, Julia | 1 | 2 | 1 | 5 | 6 |
| 12 | Linnehan, Payton | 2 | 2 | 0 | 4 | 6 |
| 10 | Dyke, Cori | 2 | 1 | 0 | 2 | 1 |
| 3 | Damico, Olivia | 1 | 1 | 1 | 3 | 1 |
| 27 | Cooke, Rebecca | 2 | 1 | 0 | 2 | 9 |
| 24 | Kershner, Elle | 1 | 1 | 0 | 2 | 3 |

| ## | Shots On Goal | GP | G | A | Shots | Sog | Sog% |
|----|------------------|----|---|---|-------|-----|-------|
| 27 | Cooke, Rebecca | 2 | 1 | 0 | 9 | 6 | .667 |
| 31 | Raich, Julia | 1 | 2 | 1 | 6 | 4 | .667 |
| 12 | Linnehan, Payton | 2 | 2 | 0 | 6 | 4 | .667 |
| 14 | MacBean, Kaitlyn | 2 | 0 | 0 | 3 | 3 | 1.000 |
| 33 | Borgen, Olivia | 2 | 0 | 0 | 4 | 2 | .500 |
| 18 | Wolfe, Kaelyn | 2 | 0 | 0 | 3 | 2 | .667 |
| 8 | Latino, Luciana | 1 | 0 | 0 | 4 | 1 | .250 |
| 10 | Dyke, Cori | 2 | 1 | 0 | 1 | 1 | 1.000 |
| 22 | Lapi, Rowan | 2 | 0 | 1 | 2 | 1 | .500 |
| 3 | Damico, Olivia | 1 | 1 | 1 | 1 | 1 | 1.000 |
| 24 | Kershner, Elle | 1 | 1 | 0 | 3 | 1 | .333 |
| 23 | Alonso, Eva | 2 | 0 | 0 | 1 | 1 | 1.000 |

| ## | Assists | GP | G | A | Pts | Shots |
|----|-----------------|----|---|---|-----|-------|
| 6 | Wiesner, Kate | 2 | 0 | 2 | 2 | 0 |
| 31 | Raich, Julia | 1 | 2 | 1 | 5 | 6 |
| 32 | Wilson, Natalie | 2 | 0 | 1 | 1 | 3 |
| 22 | Lapi, Rowan | 2 | 0 | 1 | 1 | 2 |
| 3 | Damico, Olivia | 1 | 1 | 1 | 3 | 1 |

2023 PENN STATE COMBINED STATISTICS

| Date | Opponent | | Score | Att. |
|------------|----------------|---|-------|------|
| 08/17/2023 | North Carolina | T | 0-0 | 3102 |
| 08/20/2023 | West Chester | W | 8-0 | 944 |

| Record | Overall | Home | Away | Neutral |
|----------------|---------|-------|-------|---------|
| All Games | 1-0-1 | 1-0-1 | 0-0-0 | 0-0-0 |
| Conference | 0-0-0 | 0-0-0 | 0-0-0 | 0-0-0 |
| Non-Conference | 1-0-1 | 1-0-1 | 0-0-0 | 0-0-0 |

Team statistics

| | PSU | OPP |
|------------------------|--------|------|
| SHOT STATISTICS | | |
| Goals-Shot attempts | 8-50 | 0-21 |
| Goals scored per game | 4 | 0 |
| Shot pct. | .160 | .000 |
| Shots on goal-Attempts | 27-50 | 2-21 |
| SOG pct. | .540 | .095 |
| Shots/Game | 25 | 10.5 |
| Assists | 6 | 0 |
| GOAL BREAKDOWN | | |
| Total Goals | 8 | 0 |
| Penalty | 1 | 0 |
| Unassisted | - | - |
| Overtime | 0 | 0 |
| Goals scored average | 4 | 0 |
| CORNER KICKS | 22 | 4 |
| PENALTY KICKS | 1-1 | 0-0 |
| OFFSIDES | 2 | 1 |
| PENALTIES | | |
| Fouls | 15 | 21 |
| Yellow cards | 0 | 4 |
| Red cards | 0 | 0 |
| ATTENDANCE | | |
| Total | 4046 | 0 |
| Dates/Avg Per Date | 2/2023 | 0/0 |
| Neutral Site #/Avg | 0/0 | - |

| # | Player | GP | G | A | PTS | SH | SH% | SOG | SOG% | GWG | PK-ATT |
|------------------|-------------------|----------|----------|----------|-----------|-----------|-------------|-----------|-------------|----------|------------|
| 31 | Raich, Julia | 1 | 2 | 1 | 5 | 6 | .333 | 4 | .667 | 0 | 0-0 |
| 12 | Linnehan, Payton | 2 | 2 | 0 | 4 | 6 | .333 | 4 | .667 | 1 | 0-0 |
| 3 | Damico, Olivia | 1 | 1 | 1 | 3 | 1 | 1.000 | 1 | 1.000 | 0 | 0-0 |
| 27 | Cooke, Rebecca | 2 | 1 | 0 | 2 | 9 | .111 | 6 | .667 | 0 | 0-0 |
| 24 | Kershner, Elle | 1 | 1 | 0 | 2 | 3 | .333 | 1 | .333 | 0 | 1-1 |
| 10 | Dyke, Cori | 2 | 1 | 0 | 2 | 1 | 1.000 | 1 | 1.000 | 0 | 0-0 |
| 6 | Wiesner, Kate | 2 | 0 | 2 | 2 | 0 | .000 | 0 | .000 | 0 | 0-0 |
| 32 | Wilson, Natalie | 2 | 0 | 1 | 1 | 3 | .000 | 0 | .000 | 0 | 0-0 |
| 22 | Lapi, Rowan | 2 | 0 | 1 | 1 | 2 | .000 | 1 | .500 | 0 | 0-0 |
| 33 | Borgen, Olivia | 2 | 0 | 0 | 0 | 4 | .000 | 2 | .500 | 0 | 0-0 |
| 8 | Latino, Luciana | 1 | 0 | 0 | 0 | 4 | .000 | 1 | .250 | 0 | 0-0 |
| 14 | MacBean, Kaitlyn | 2 | 0 | 0 | 0 | 3 | .000 | 3 | 1.000 | 0 | 0-0 |
| 18 | Wolfe, Kaelyn | 2 | 0 | 0 | 0 | 3 | .000 | 2 | .667 | 0 | 0-0 |
| 20 | Agresti, Michela | 2 | 0 | 0 | 0 | 2 | .000 | 0 | .000 | 0 | 0-0 |
| 35 | Gleason, Riley | 2 | 0 | 0 | 0 | 1 | .000 | 0 | .000 | 0 | 0-0 |
| 7 | White, Amelia | 2 | 0 | 0 | 0 | 1 | .000 | 0 | .000 | 0 | 0-0 |
| 23 | Alonso, Eva | 2 | 0 | 0 | 0 | 1 | .000 | 1 | 1.000 | 0 | 0-0 |
| 19 | Ogden, Kara | 1 | 0 | 0 | 0 | 0 | .000 | 0 | .000 | 0 | 0-0 |
| 26 | Asman, Katherine | 2 | 0 | 0 | 0 | 0 | .000 | 0 | .000 | 0 | 0-0 |
| 16 | Wheeler, Ellie | 2 | 0 | 0 | 0 | 0 | .000 | 0 | .000 | 0 | 0-0 |
| 1 | Gress, Mackenzie | 1 | 0 | 0 | 0 | 0 | .000 | 0 | .000 | 0 | 0-0 |
| 2 | Martin, Molly | 1 | 0 | 0 | 0 | 0 | .000 | 0 | .000 | 0 | 0-0 |
| 25 | Schiemann, Mieke | 2 | 0 | 0 | 0 | 0 | .000 | 0 | .000 | 0 | 0-0 |
| 5 | Schmeiser, Keegan | 1 | 0 | 0 | 0 | 0 | .000 | 0 | .000 | 0 | 0-0 |
| 00 | Poorbaugh, Amanda | 1 | 0 | 0 | 0 | 0 | .000 | 0 | .000 | 0 | 0-0 |
| Total | | 2 | 8 | 6 | 22 | 50 | .160 | 27 | .540 | - | 1-1 |
| Opponents | | 2 | 0 | 0 | 0 | 21 | .000 | 2 | .095 | - | 0-0 |

| ## | Goalie | GP | MIN. | GA | GA AVG | SAVES | PCT | W-L-T | SHO/CBO |
|------------------|-------------------|----------|---------------|----------|-------------|-----------|--------------|--------------|----------|
| 26 | Asman, Katherine | 2 | 130:10 | 0 | 0.00 | 2 | 1.000 | 1-0-1 | 1/1 |
| 1 | Gress, Mackenzie | 1 | 23:51 | 0 | 0.00 | 0 | .000 | 0-0-0 | 0/1 |
| 00 | Poorbaugh, Amanda | 1 | 25:59 | 0 | 0.00 | 0 | .000 | 0-0-0 | 0/1 |
| TM | TEAM | - | 00:00 | 0 | 0.00 | 0 | .000 | 0-0-0 | 1/0 |
| Total | | 2 | 179:60 | 0 | 0.00 | 2 | 1.000 | 1-0-1 | 2 |
| Opponents | | 2 | 179:60 | 8 | 4.00 | 19 | .704 | 0-1-1 | 1 |

Goals by Periods

| Team | 1st | 2nd | OT1 | OT2 | TOTAL |
|-----------|-----|-----|-----|-----|-------|
| PSU | 3 | 5 | 0 | 0 | 8 |
| Opponents | 0 | 0 | 0 | 0 | 0 |

Shots by Periods

| Team | 1st | 2nd | OT1 | OT2 | TOTAL |
|-----------|-----|-----|-----|-----|-------|
| PSU | 26 | 24 | 0 | 0 | 50 |
| Opponents | 12 | 9 | 0 | 0 | 21 |

Saves by Periods

| Team | 1st | 2nd | OT1 | OT2 | TOTAL |
|-----------|-----|-----|-----|-----|-------|
| PSU | 1 | 1 | 0 | 0 | 2 |
| Opponents | 11 | 8 | 0 | 0 | 19 |

Corners by Periods

| Team | 1st | 2nd | OT1 | OT2 | TOTAL |
|-----------|-----|-----|-----|-----|-------|
| PSU | 13 | 9 | 0 | 0 | 22 |
| Opponents | 3 | 1 | 0 | 0 | 4 |

Fouls by Periods

| Team | 1st | 2nd | OT1 | OT2 | TOTAL |
|-----------|-----|-----|-----|-----|-------|
| PSU | 7 | 8 | 0 | 0 | 15 |
| Opponents | 9 | 12 | 0 | 0 | 21 |

2023 PENN STATE WOMEN'S SOCCER ROSTER TV/RADIO SPEED CHART



00 | Amanda Poorbaugh
R-SO | GK
Westerville, Ohio



1 | Mackenzie Gress
R-FR | GK
Lyndhurst, N.J.



2 | Molly Martin
R-FR | D
Acton, Mass.



3 | Olivia Damico
R-JR | M
Victor, N.Y.
Da-MEE-Co



5 | Keegan Schmeiser
FR | D
Bolingbrook, Ill.



6 | Kate Wiesner
SR+ | M | Captain
Monrovia, Calif.
WEEZ-ner



7 | Amelia White
SO | F
Fort Wayne, Ind.



8 | Luciana Latino
R-FR | M
Norwood, N.J.
LOO-Chee-Awn-Uh Lah-TEE-No



9 | Nicollette Kiorpes
FR | F
Worcester, Mass.
Key-OR-Pess



10 | Cori Dyke
SR+ | M | Captain
Littleton, Colo.



12 | Payton Linnehan
SR+ | F
Douglas, Mass.



14 | Kaitlyn MacBean
R-JR | F
Excelsior, Minn.



15 | Devon Olive
SR+ | M
Brooklyn, N.Y.



16 | Ellie Wheeler
SR | D
Fairfax Station, Va.



17 | Ava Minnier
R-FR | M
Downingtown, Pa.
MINI-er



18 | Kaelyn Wolfe
FR | D
West Chester, Pa.



19 | Kara Ogden
R-SO | D
Coto de Caza, Calif.



20 | Michela Agresti
SR+ | D
Swampscott, Mass.



21 | Frankee Flesher
FR | F
Chesterland, Ohio



22 | Rowan Lapi
R-SR+ | M
Reinholds, Pa.
Row-In Lap-Ee



23 | Eva Alonso
SR | D
Madrid, Spain



24 | Elle Kershner
SR | F
Limerick, Pa.



25 | Mieke Schiemann
JR | D
Berlin, Germany
MEE-Cuh SHE-mawn



26 | Katherine Asman
GR | GK | Captain
Roswell, Ga.
AZ-Min



27 | Rebecca Cooke
SR | F
Dublin, Ireland



28 | Ava Rightmire
FR | D
Downingtown, Pa.



31 | Julia Raich
R-SO | M
Camp Hill, Pa.
Raych



32 | Natalie Wilson
SR | M
Fairfax, Va.



33 | Olivia Borgen
SO | M
Hanson, Mass.



35 | Riley Gleason
R-SO | M
Mission Viejo, Calif.



Erica Dambach
Head Coach
Dom-Bock



Ann Cook
Associate Head Coach



Tim Wassell
Associate Head Coach



Daniel Baker
Assistant Coach



Kara Cook
Director of Operations



Andra Thomas
Athletic Trainer