

PENN STATE



2013-14 LADY LION BASKETBALL

Penn State Athletic Communications: 101D Bryce Jordan Center, University Park, PA 16802 Office: 814-865-1757 Fax: 814-863-3165

Women's Basketball Contact: Kristina Petersen Twitter: @ladylionsid Website: www.GoPSUsports.com Email: kap18@psu.edu Cell: 814-883-4581 Office: 814-865-1757

SCHEDULE/RESULTS

OCTOBER

Sun. 27 LOCK HAVEN (ex.)..... W, 102-51

NOVEMBER

Fri. 8 ST. FRANCIS (PA.)..... W, 117-77

Sun. 10 FORDHAM..... W, 78-61

Sun. 17 #1/1 CONNECTICUT (BTN) noon

Wed. 20 BUCKNELL (BTDN)..... 7 p.m.

Junkanoo Jam (Grand Island, Bahamas)

Fri. 29 vs. Oregon State 3:15 p.m.

Sat. 30 vs. Florida/Illinois St.... 11:30 a.m./1:45 p.m.

DECEMBER

Big Ten/ACC Challenge

Wed. 4 NOTRE DAME (BTN)..... 7:30 p.m.

Sun. 8 at Georgetown..... 2 p.m.

Wed. 11 at South Dakota State 8 p.m.

Sun. 15 TEXAS A&M (BTDN)..... 2 p.m.

Sun. 22 ALCORN STATE 11 a.m.

Sun. 29 HARTFORD (BTDN) 2 p.m.

JANUARY

Sun. 5 at Iowa * 3 p.m.

Thurs. 9 at Illinois * (BTN) 9 p.m.

Sun. 12 PURDUE * (ESPN2) 2 p.m.

Thurs. 16 OHIO STATE * (BTN) 7 p.m.

Sun. 19 at Michigan State * (ESPN2) 5 p.m.

Wed. 22 INDIANA * (BTDN) 7 p.m.

Sun. 26 MINNESOTA * (CBS) 1 p.m.

Thurs. 30 at Purdue * (BTN) 6 p.m.

FEBRUARY

Sun. 2 at Northwestern * (BTDN) 2 p.m.

Thurs. 6 IOWA * (BTN) 6 p.m.

Sun. 9 at Ohio State * (ESPN2) 2 p.m.

Thurs. 13 at Indiana * (BTDN) 7 p.m.

Eighth Annual Pink Zone at Penn State

Sun. 16 WISCONSIN * (ESPN2) 1 p.m.

Thurs. 20 NORTHWESTERN * (BTN) 7 p.m.

Mon. 24 at Nebraska * (ESPN2) 7 p.m.

MARCH

Sat. 1 MICHIGAN * (BTN) 3:30 p.m.

Th.-Su. 6-9 Big Ten Tournament (Indianapolis, Ind.)

Sa.-Tu. 22-25.. NCAA Tournament 1st & 2nd Round

..... (University Park, Pa.)

Sa.-Tu. 29-Apr. 1 NCAA Tournament Regionals

APRIL

Su./Tu. 6/8 NCAA Final Four (Nashville, Tenn.)

BOLD CAPS indicates home game.

* - indicates Big Ten game.

All times are Eastern Time.

BTN - Big Ten Network

BTDN - BigTenNetwork.com

Schedule subject to change. Please visit www.

GoPSUsports.com for up-to-date tip times.

Game #3: #1/1 Connecticut at #15/13 Penn State

Sun., Nov. 17 ▶ noon ▶ Bryce Jordan Center ▶ University Park, Pa.

		SETTING THE SCENE
Penn State Lady Lions	Connecticut Huskies	The UConn Game
Record: 2-0, 0-0 Big Ten	Record: 2-0, 0-0 AAC	Series: Connecticut leads 8-3
Last Game: PSU 78, Fordham 61 (11/10)	Last Game: UC 76, Stanford 57 (11/11)	Last Meeting: UConn 67, PSU 52 (12/6/12)
Head Coach: Coquese Washington	Head Coach: Geno Auriemma	Streak: Connecticut - 8 wins
Career Record: 120-73 (7th yr.)	Career Record: 841-133 (28th yr.)	Television: BTN - Eric Collins (PBP) & Stephanie White (color)
Record at PSU: 120-73 (7th yr.)	Record at UConn: 841-133 (28th yr.)	Radio: The game is on the Penn State Sports Network and WRSC 1390 locally with Jerry Fisher and Julia Trogele calling the action. The audio feed is available at www.GoPSUsports.com.
Statistical Leaders	Statistical Leaders	Webstream: BTN2GO
Points Maggie Lucas (28.0)	Points Bria Hartley (13.0)	Live Stats: GoPSUsports.com
Rebounds Alex Harris (8.0)	Rebounds Kiah Stokes (10.0)	
Assists Dara Taylor (4.0)	Assists Bria Hartley (4.5)	

GAME DAY INFORMATION

SCOUTING CONNECTICUT

The Huskies are ranked #1 in both the AP and USA Today Sports Coaches' Poll after two wins to open the season, including a 19-point victory over #3 Stanford Monday. UConn visits Maryland Friday evening before coming to Penn State. The Huskies have four players averaging double figures, led by Bria Hartley at 13.0 tallies per outing. Hartley also dishes out 4.5 assists per contest. Stefanie Dolson accounts for 12.5 points and 5.5 rebounds per game, while Breanna Stewart averages 11.5 tallies.

ALL-TIME VERSUS THE HUSKIES

The Lady Lions are 3-8 all-time against Connecticut. After winning the first three games of the series, Penn State has lost its last four contests against the Huskies, including a 67-52 decision in Storrs last season. Penn State is 2-0 all-time against UConn in home games. This is the first time that the Lady Lions and Huskies have met in Happy Valley since Jan. 8, 1983.

LAST TIME VS. UCONN

The Lady Lions hung tough with the second-ranked Connecticut Huskies, but a 20-5 run late in the second half ended the Lady Lions' upset hopes on the way to a 67-52 loss at Gampel Pavilion on Dec. 6, 2012. **Maggie Lucas** had a team-best 15 points with four rebounds. **Ariel Edwards** added 10 points on 5-of-7 shooting.

STORYLINES

- ✓ Senior guard **Maggie Lucas** tied the school record for free throw percentage in a game after going 16-for-16.
- ✓ The Lady Lions are riding a 22-game home court winning streak, which is tied for the third-longest active streak in NCAA Division I.
- ✓ The Lady Lions are 13th in the Nov. 11 AP and 15 in the Nov. 12 USA Today Sports/ESPN Coaches' poll.
- ✓ Lucas is among players named to the "Wade Watch" list for the State Farm® Wade Trophy and the Wooden Award Top 30.
- ✓ Lucas is in seventh place on Penn State's career scoring list (1,894).
- ✓ Penn State's non-conference opponents have a combined 109 NCAA Tournament appearances, 20 Final Four appearances and 10 National Championships.

UP NEXT

The Lady Lions close out their season opening homestand against Bucknell Wednesday at 7 p.m. It will be Club Sports and Fitness Night in the BJC. The Lions will recognize those Club Sports athletes that compete for Penn State at halftime. Additionally, fans that show their fitness center membership card and get a ticket for \$5.



2013-14 ROSTERS

PENN STATE LADY LIONS

No.	Name	Pos.	Cl./Elg.	Ht.	Hometown/High School (Previous School)
1	Candice Agee *	C	So./So.	6-6	Victorville, Calif./Silverado
2	Dara Taylor *	G	5th/Sr.	5-8	Wilmington, Del./Caravel Academy (Maryland)
5	Talia East ***	F/C	Sr./Sr.	6-3	Philadelphia, Pa./Friends' Central School
10	Keke Sevillian	G	Fr./Fr.	5-7	Goodrich, Mich./Goodrich
11	Alex Harris	F	Fr./Fr.	6-3	Lorain, Ohio/Lorain
12	Lindsey Spann	G	Fr./Fr.	5-6	Laurel, Md./Good Counsel
15	Kalayah Mitchell	G/F	Fr./Fr.	6-2	Stone Mountain, Ga./Stephenson
20	Infiniti Alston	C	Fr./Fr.	6-6	Baltimore, Md./Digital Harbor
23	Ariel Edwards ***	G/F	Sr./Sr.	6-3	Elmont, N.Y./Christ the King
25	Peyton Whitted	G/F	Fr./Fr.	6-3	Suwanee, Ga./North Gwinnett
33	Maggie Lucas ***	G	Sr./Sr.	5-10	Narberth, Pa./Germantown Academy
35	Sierra Moore	G	So./--^	5-11	Hanover, Pa./Delone Catholic (Duke)
41	Jenny DeGraaf	G/F	Fr./Fr.	6-1	Springboro, Ohio/Springboro
44	Tori Waldner **	F	Jr./Jr.	6-5	Milton, Ga./Milton

Head Coach: Coquese Washington (Notre Dame '92)

Asst. Coaches: Fred Chmiel, Kia Damon, Maren Walseth

Captains: Talia East, Ariel Edwards, Maggie Lucas, Dara Taylor

* Indicates letters earned

CONNECTICUT HUSKIES

No.	Name	Pos.	Cl.	Ht.	Hometown/High School (Previous School)
3	Morgan Tuck	G	So.	6-2	Bolingbrook, Ill./Bolingbrook
4	Moriah Jefferson	G	So.	5-7	Glen Heights, Texas/Home Schooled
11	Briana Pulido	G	So.	5-7	Miami, Fla./Gulliver Prep
12	Saniya Chong	G	Fr.	5-8	Ossining, N.Y./Ossining
13	Brianna Banks	G	Jr.	5-9	Newnan, Ga./Fayette County
14	Bria Hartley	G	Sr.	5-8	North Babylon, N.Y./North Babylon
20	Tierney Lawlor	G	Fr.	5-7	Ansonia, Conn./Ansonia
23	Kaleena Mosqueda-Lewis	F	Jr.	6-0	Anaheim Hills, Calif./Mater Dei
30	Breanna Stewart	F	So.	6-4	Syracuse, N.Y./Cicero North
31	Stefanie Dolson	C	Sr.	6-5	Port Jervis, N.Y./Minisink Valley
41	Kiah Stokes	C	Jr.	6-3	Marion, Iowa/Linn-Mar

Head Coach: Geno Auriemma

Associate Head Coach: Chris Dailey

Assistant Coaches: Shea Ralph, Marisa Moseley

TEAM COMPARISON

PENN STATE		CONNECTICUT
Lucas (28.0)	Scoring Leader	Hartley (13.0)
Harris (8.0)	Rebounding Leader	Stokes (10.0)
Taylor (4.0)	Assist Leader	Hartley (4.5)
Lucas (3.0)	Steals Leader	Jefferson (1.5)
Harris (2.0)	Blocks Leader	Stokes (4.0)
97.5	Scoring Offense	82.5
69.0	Scoring Defense	45.5
+28.5	Scoring Margin	+37.0
52.5	Rebounds Per Game	38.5
+17.5	Rebound Margin	+6.5
15.0	Assists Per Game	18.5
12.5	Steals Per Game	8.0
.471	Field Goal Pct.	.496
.336	FG Defense Pct.	.317
.417	3-pt. FG Pct.	.333
.258	3-pt. FG Pct. Def.	.219
.803	Free Throw Pct.	.789
0.7	Assist/Turnover	2.1
Won 2	W/L Streak	Won 8

SERIES HISTORY

Overall:	UConn leads 8-3
Last meeting:	Dec. 6, 2012
Last result:	UConn, 67-52
Current streak:	UConn - 8 wins
Last 10:	UConn, 8-2
Last 10 meetings:	
12/1/81	A PSU, 71-66
1/8/83	H PSU, 98-58
11/25/89	N UC, 84-93 (OT)
12/5/99	N UC, 74-87
3/31/00	N UC, 67-89
3/23/02	N UC, 64-82
3/29/04	N UC, 49-66
12/14/08	N UC, 63-77
3/25/12	N UC, 59-77
12/6/12	A UC, 52-67

QUICK FACTS

THE UNIVERSITY

Location: University Park, Pa.
 Founded: 1855
 Enrollment: 42,294
 Colors: Blue & White
 Nickname: Lady Lions
 Conference: Big Ten
 President: Dr. Rodney Erickson
 Director of Athletics: Dr. David Joyner
 Senior Woman Administrator: Charmelle Green
 Facility (cap.): Bryce Jordan Center (15,104)
 All-Time Record at BJC: 203-49 (19 seasons)

ATHLETIC COMMUNICATIONS

WBB Contact: Kristina Petersen
 Phone/Fax: (814) 865-1757/(814) 863-3165
 E-mail: kap18@psu.edu
 Press Row Phone: 814-863-3294
 Website: www.GoPSUsports.com
 Twitter: @ladylionsid

TEAM INFORMATION

2013-14 Record: 2-0
 Home: 2-0 Away: 0-0 Neutral: 0-0
 Big Ten Record (finish): 0-0
 Home: 0-0 Away: 0-0
 Letterwinners Returning/Lost: 6/5
 Starters Returning/Lost: 2/3
 Big Ten Tournament: Semifinals
 Postseason: NCAA Second Round

THE HISTORY

First Year of Women's Basketball: 1965
 All-Time Record: 859-386 (50 seasons)
 All-Time Big Ten Rec.: 231-119 (22 seasons)
 NCAA Tournament Appearances: 24
 NCAA Tournament Record: 30-24

WOMEN'S BASKETBALL

Head Coach: Coquese Washington
 Alma Mater: Notre Dame '92
 Overall Record: 120-73 (six seasons)
 School Record: 120-73 (six seasons)
 Twitter: @coquesewashing
 Best Time To Reach Coach: Through SID
 Assistant Coaches (Alma Mater):
 Fred Chmiel (Excelsior College)
 Kia Damon (Millersville '97)
 Maren Walseth (Penn State '02)
 Twitter: @pennstatewbb
 Facebook: facebook.com/pennstateladylions
 YouTube: YouTube.com/pennstateladylions
 Instagram: pennstatewbb

PRONUNCIATIONS

Coquese	ko-KWEES
Chmiel	shuh-MEAL
Maren Walseth	MARR-en WALL-seth
Talia	tah-LEE-uh
Ariel	AIR-e-I
Dara	DAR-uh
Agee	AYE-gee
Kalayah	kah-LEE-uh
Sevillian	civilian
Whitted	WIT-tid





STANDINGS (as of 11/14)

Team	Big Ten			Overall		
	W	L	Pct.	W	L	Pct.
Iowa	0	0	.000	3	0	1.000
Ohio State	0	0	.000	3	0	1.000
Indiana	0	0	.000	2	0	1.000
Minnesota	0	0	.000	2	0	1.000
Nebraska	0	0	.000	2	0	1.000
Northwestern	0	0	.000	2	0	1.000
PENN STATE	0	0	.000	2	0	1.000
Purdue	0	0	.000	2	0	1.000
Wisconsin	0	0	.000	2	0	1.000
Illinois	0	0	.000	2	1	.667
Michigan State	0	0	.000	1	1	.500
Michigan	0	0	.000	1	2	.333

BIG TEN SCHEDULE

NOVEMBER 11

at Notre Dame 81, Michigan State 62
at Nebraska 62, Alabama 48

NOVEMBER 12

at Illinois 87, Valparaiso 59
Indiana 85, at IPFW 80

NOVEMBER 13

at Iowa 76, Arkansas Pine-Bluff 38
Xavier 79, at Michigan 75 (OT)
at Minnesota 90, Charlotte 55
at Northwestern 64, Chicago State 33
Purdue 76, at IUPUI 56

NOVEMBER 14

at Illinois 93, Mississippi Valley State 70
at Michigan State 102, Canisius 54
at Ohio State 83, VCU 71
Wisconsin 85, at Milwaukee 60

NOVEMBER 15

Indiana at Indiana State 7 p.m.
Nebraska at Utah 7:30 p.m.

NOVEMBER 16

Michigan at Detroit 2 p.m.
Minnesota at Creighton 2 p.m.

NOVEMBER 17

Alcorn State at Illinois 2 p.m.
Stony Brook at Iowa 2 p.m.
Dayton at Michigan State 2 p.m.
UNLV at Northwestern 5 p.m.
Ohio State at Georgia 2 p.m.
Connecticut at Penn State Noon
Purdue at Toledo 2 p.m.
Northern Illinois at Wisconsin 3 p.m.

All times are Eastern.

PROJECTED STARTERS



1 CANDICE AGEE C
So., 6-6, Victorville, Calif.
7.5 ppg, 5.0 rpg, .600 FG%

Notes: Tied her career high with 8 points & added 8 rebs. vs. Fordham (11/10) ... Had 7 points vs. St. Francis (11/8) ... Won a gold medal with the U19 USA Basketball team in the FIBA U19 World Championship.



2 DARA TAYLOR G
Sr., 5-8, Wilmington, Del.
13.0 ppg, 4.0 apg, 2.5 spg, .400 3FG%

Notes: Had 12 points against Fordham (11/10) ... Chipped in 14 points, 6 assists & 3 steals vs. the Red Flash (11/8) ... Big Ten All-Defensive team ... Ranks seventh in PSU history in career steals average (2.4).



23 ARIEL EDWARDS G/F
Sr., 6-3, Elmont, N.Y.
20.0 ppg, 3.5 rpg, .696 FG%, 1.000 FT%

Notes: Was 7-for-12 from the field en route to 17 pts. vs. Fordham (11/10) ... Matched her uni number with 23 points, 3 steals vs. St. Francis (11/8) ... Academic All-Big Ten selection.



33 MAGGIE LUCAS G
Sr., 5-10, Narberth, Pa.
28.0 ppg, 6.5 rpg, .625 3FG%, 1.000 FT%

Notes: Had 23 pts. vs. Fordham (11/10) ... Tied school record for free throw pct., going 16-16 vs. St. Francis (11/8) ... 7th on PSU's career scoring list (1,894) ... 2nd in PSU & Big Ten history in 3-pointers (297).



44 TORI WALDNER F/C
Jr., 6-5, Milton, Ga.
2.5 ppg, 3.0 rpg

Notes: Ranks 20th on Penn State's all-time blocked shots list (51) ... Pulled in a career-best 85 rebounds last season ... Blocked five shots vs. Minnesota (1/24/13) ... Academic All-Big Ten choice.

LAST TIME OUT

- Senior guard **Maggie Lucas** drained four three-pointer to lead the Lady Lions to a 78-61 victory over Fordham Sunday. With the quartet of three-pointers, Lucas moves into second place on the Big Ten's career three-pointers list (297), passing Michigan State's Lindsay Bowen.
- Lucas poured in 23 points with five rebounds and a steal.
- Senior guard/forward **Ariel Edwards** and senior guard **Dara Taylor** also reached double figures on the afternoon. Edwards scored 17 points on 7-of-12 shooting and added four rebounds and four assists to complete her day, while Taylor totaled 12 points and chipped in two rebounds and two assists.
- Sophomore center **Candice Agee** tied her career high with eight points and also pulled in seven rebounds.

SCOUTING CONNECTICUT

- The Huskies are ranked #1 in both the AP and USA Today Sports Coaches' Poll after two wins to open the season, including a 19-point victory over #3 Stanford Monday.
- UConn visits Maryland Friday evening before coming to Penn State.
- The Huskies have four players averaging double figures, led by Bria Hartley at 13.0 tallies per outing. Hartley also dishes out 4.5 assists per contest.
- Stefania Dolson accounts for 12.5 points and 5.5 rebounds per game, while Breanna Stewart averages 11.5 tallies.
- The Huskies will be without Kaleena Mosqueda-Lewis, who is out indefinitely after injuring her elbow in Monday's win over Stanford, and Morgan Tuck, who is out for 4-6 weeks after knee surgery.

WHAT'S AT STAKE

A Penn State Win Would:

- Make Penn State 3-0 for the seventh time in eight seasons.
- Be the Lady Lions' first win over UConn since Jan. 8, 1983.
- Snap an eight-game losing streak to the Huskies.
- Be Penn State's first win over the #1 ranked team in country since Jan. 3, 1991.
- Be the Lady Lions' second-ever win over a top-ranked team.
- Make PSU 4-8 all-time against UConn.
- Extend Penn State's non-conference home court winning streak to 16 games, which would tie for the longest streak in program history.
- Be the Lady Lions' 23rd consecutive home win, which is fourth in program history.

LAST TIME VS. CONNECTICUT

DEC. 6, 2012 • STORRS, CONN.

Penn State 52 • 6-2															
#	Player	FG	FGA	3-PT	3-PTA	FT	FTA	Rebounds	PF	TP	A TO	Blk	Stl	Min	
24	Nickson, Mia	f	4-7	0-0	0-0	2	6	8	4	8	2	6	0	3	
54	Greene, Nikki	f	1-6	0-0	0-2	2	5	7	4	2	1	3	0	1	
02	Taylor, Dara	g	3-14	0-2	2-4	2	2	4	1	8	2	4	0	1	
20	Bentley, Alex	g	1-11	1-5	4-4	1	4	5	4	7	1	4	1	0	
33	Lucas, Maggie	g	5-12	3-6	2-2	1	3	4	5	15	1	3	0	1	
05	East, Talia	g	1-2	0-0	0-0	1	0	1	3	2	0	1	0	1	
23	Edwards, Ariel	g	5-7	0-0	0-1	2	2	4	1	0	2	0	1	2	
25	Studeventer, Gizelle	g	0-0	0-0	0-0	0	0	0	0	0	0	0	0	0	
Team		4		1		5		3		3		3		2	
Totals		20-59		4-13		8-13		15		23		38		22 52	
FG % 1st Half:		9-30 30.0%		2nd half:		11-29 37.9%		Game:		20-59 33.9%		Deadball		Rebounds	
3FG % 1st Half:		2-8 25.0%		2nd half:		2-5 40.0%		Game:		1-13 38.8%		7		26	
FT % 1st Half:		2-2 100.0%		2nd half:		6-11 54.5%		Game:		8-13 61.5%		3		5	
UConn 67 • 8-0															
#	Player	FG	FGA	3-PT	3-PTA	FT	FTA	Rebounds	PF	TP	A TO	Blk	Stl	Min	
23	MOSQUEDA-Lewis, K.	f	8-13	4-7	5-5	2	3	5	5	25	1	6	0	4	
30	STEWART, Breanna	f	3-4	0-1	5-6	3	4	7	1	7	2	0	2	0	
11	DOLSON, Stefanie	c	3-8	0-0	0-0	0	3	5	3	6	1	3	0	1	
14	HARTLEY, Bria	g	3-10	1-5	1-2	1	4	5	2	8	3	2	1	0	
34	FARIS, Kelly	g	2-7	0-2	1-2	1	1	2	3	5	3	1	1	5	
03	TUCK, Morgan	g	0-1	0-0	2-4	0	3	3	0	2	0	0	0	1	
04	JEFFERSON, Moriah	g	2-5	0-0	0-0	0	0	0	1	4	0	2	0	2	
05	DOTY, Caroline	g	0-1	0-1	0-2	0	0	0	0	0	0	0	0	0	
13	BANKS, Brianna	g	4-7	0-1	2-2	1	1	2	1	10	1	2	0	2	
41	STOKES, Kiah	g	0-1	0-0	0-0	0	1	1	0	0	0	2	1	0	
Team		23-56		5-19		16-23		13		24		37		16 67	
Totals		23-56		5-19		16-23		13		24		37		16 67	
FG % 1st Half:		8-21 38.1%		2nd half:		15-35 42.9%		Game:		23-56 41.1%		Deadball		Rebounds	
3FG % 1st Half:		3-8 37.5%		2nd half:		2-11 18.2%		Game:		3-19 26.3%		28		10	
FT % 1st Half:		9-12 75.0%		2nd half:		7-11 63.6%		Game:		16-23 69.6%		6		12	
Technical fouls:		Penn State-None; UConn-TEAM.		Attendance:		8072		Points		PSU		28		20	
Score by periods:		1st		2nd		Total		Points		PSU		28		20	
Penn State		28		39		67		Paint		PSU		10		12	
UConn		28		39		67		Y/O		UConn		26		29	
Last FG - PSU 2nd-00:27, UConn 2nd-02:21.		Largest lead - PSU by 2 1st-10:46, UConn by 21 2nd-04:51.		Score tied - 3 times.		Lead changed - 2 times.									



PRESS CONFERENCE SCHEDULE

Coquese Washington will hold a weekly press conference and the Lady Lions will have media availability on a weekly basis throughout the season. All press conferences will begin at 2:30 p.m. (unless otherwise noted) and go for approximately 15-20 minutes, followed by a 15-minute open media session prior to practice. Press conference will be held in the Media Room at the Bryce Jordan Center (unless otherwise noted).

Press Conference Dates

Tuesday, Nov. 19	Wednesday, Jan. 29
Tuesday, Dec. 3	Wednesday, Feb. 5
Tuesday, Dec. 10	Wednesday, Feb. 12
Wednesday, Dec. 18 (Time TBD)	Wednesday, Feb. 19
Wednesday, Jan. 1 (Time TBD)	Wednesday, Feb. 26
Wednesday, Jan. 8 (Time TBD)	Tuesday, March 4 or Wednesday, March 5 (pending BTT travel plans)
Wednesday, Jan. 15	
Tuesday, Jan. 21	

LADY LIONS GET SOCIAL: The Lady Lions are on several social media sites, including Twitter, Instagram and Facebook. Follow the Lady Lions and assistant coaches (@pennstatewbb), head coach Coquese Washington (@coquesewashing) and sports information contact Kris Petersen (@ladylionsid) on Twitter to get the inside scoop. The Lady Lions are also on Instagram (@pennstatewbb) and Facebook at www.facebook.com/pennstateladylions.



SCORE-0 IN THE SEASON OPENER

- The Lady Lions broke the Bryce Jordan Center scoring record in the season-opening 117-77 win over St. Francis (Pa.) Nov. 8.
- The previous BJC record was 114 points by the Lady Lions against Northwestern on Jan. 2, 2000.
- The 117 points are the fourth-highest point total in school history (118, three times).
- The 117 points scored are the most for a Lady Lion team since Penn State had 118 points against Morgan State (Dec. 29, 1991).
- Penn State scored 62 points in the second half, marking the first time since Jan. 2, 2000 that the Lady Lions have scored 60 or more points in a half. In that game, PSU scored 65 points in the first half against Northwestern.

OF NOTE

- The Lady Lions have started the season 2-0 for each of the last eight seasons.
- Penn State is 7-0 in season openers under head coach **Coquese Washington**.
- Sophomore **Candice Agee** tied her career high with eight points in the win over Fordham Nov. 10. It is the fourth time in her career that she has scored eight points in a game.
- Agee and junior **Tori Waldner** made their first career starts in the season opener against St. Francis (Pa.) on Nov. 8.
- The Lady Lions found themselves at the free throw line frequently against the Red Flash (11/8). PSU was 37-for-43 from the line, marking the first time since Nov. 11, 2007 against Pitt that the Lady Lions have made 30 or more free throws and attempted 40 or more freebies in a game.
- Penn State's 117 points scored against St. Francis (Pa.) (11/8) were the most points scored in a Division I game on opening night (123 games).

ALL-TIME VERSUS THE HUSKIES

- The Lady Lions are 3-8 all-time against Connecticut.
- After winning the first three games of the series, Penn State has lost its last four contests against the Huskies, including a 67-52 decision in Storrs last season.
- Penn State is 2-0 all-time against UConn in home games.
- This is the first time that the Lady Lions and Huskies have met in Happy Valley since Jan. 8, 1983.
- PSU is 44-35 all-time against current American Athletic Conference members.

LAST TIME VS. UCONN

- The Lady Lions hung tough with the second-ranked Connecticut Huskies, but a 20-5 run late in the second half ended the Lady Lions' upset hopes on the way to a 67-52 loss at Gampel Pavilion on Dec. 6, 2012.
- Maggie Lucas** had a team-best 15 points with four rebounds.
- Ariel Edwards** added 10 points on 5-of-7 shooting, while **Mia Nickson** added eight points, eight rebounds, two assists and three steals.

VERSUS #1

- This will be the third time in program history the #1 team will visit Penn State.
- The previous visits by #1 were Jan. 21, 1984 vs. Louisiana Tech (L, 68-61) and Nov. 18, 2005 vs. Duke (L, 82-64).
- Penn State is 1-9 all-time against the #1 team in the country.
- The lone victory over a #1 foe was a 73-71 decision at Virginia on Jan. 3, 1991 that propelled the Lady Lions to their first #1 ranking in program history.
- The last time Penn State met the #1 team in the land was a 77-63 loss to UConn in the Maggie Dixon Classic in New York City on Dec. 14, 2008.

HOSTING A TOP 5 TEAM

- When the top-ranked Connecticut Huskies visit the BJC, it will mark the 20th time that a Top 5 team has come to Happy Valley.
- Sunday will be the first time since #1 Duke came to town on Nov. 18, 2005 that Penn State will host a Top 5 squad.
- The Lady Lions are 12-7 all-time in home games against Top 5 teams.

FEELING CHARITABLE

- Senior guard **Maggie Lucas** tied the school record for free throw percentage in a game (min. 15 attempts) with a perfect 16-16 mark from the line.
- She equals the mark also held by Jess Strom (15-15; Minnesota, 1/30/05) and Brienne O'Rourke (15-15; Duke, 12/2/07).
- Lucas' 16 freebies are a Bryce Jordan Center record, breaking the record of 15 held by Strom and O'Rourke.
- Lucas has made her last 30 free throws, dating back to last season.

PENN STATE'S OVERALL/BIG TEN YEAR-BY-YEAR REVIEW

Year	Overall	Big Ten	Home	BT Home	Road	BT Road	Neutral
1992-93	22-6	14-4	12-2	9-0	9-4	5-4	0-0
1993-94	28-3	16-2	14-0	9-0	11-2	7-2	3-1
1994-95	26-5	13-3	14-2	8-0	9-3	5-3	3-0
1995-96*	27-7	13-3	14-2	8-0	8-4	5-3	5-1
1996-97	15-12	8-8	9-3	5-3	5-6	3-5	1-3
1997-98	21-13	8-8	10-5	4-4	6-6	4-4	5-2
1998-99	22-8	12-4	9-2	6-2	9-4	6-2	4-2
1999-00	30-5	15-1	14-0	8-0	9-2	7-1	7-3
2000-01	19-10	11-5	11-2	7-1	6-5	4-4	2-3
2001-02	23-12	11-5	10-4	6-2	9-5	5-3	4-3
2002-03	26-9	13-3	16-0	8-0	7-7	5-3	2-2
2003-04	28-6	15-1	12-1	8-0	9-3	7-1	6-2
2004-05	19-11	13-3	12-0	8-0	6-9	5-3	1-2
2005-06	13-16	6-10	8-6	5-3	3-8	1-7	2-2
2006-07	15-16	7-9	12-1	7-1	2-12	0-7	1-3
2007-08	13-18	4-14	10-6	3-6	3-11	1-8	0-1
2008-09	11-18	6-12	8-6	4-5	2-9	2-7	1-3
2009-10	17-14	8-10	9-6	5-4	5-7	3-6	3-1
2010-11	25-10	11-5	14-4	6-2	7-4	5-3	4-2
2011-12	26-7	13-3	12-2	6-2	11-3	7-1	3-2
2012-13	26-6	14-2	14-0	8-0	9-5	6-2	3-1
2013-14	2-0	0-0	2-0	0-0	0-0	0-0	0-0

* First season at the Bryce Jordan Center



PENN STATE'S RECORD WHEN...

Playing at home	2-0
Playing on the road	0-0
Playing at a neutral site	0-0
vs. Top 10 teams	0-0
vs. Top 25 teams	0-0
Games decided by 3 points or less	0-0
Games decided by 4-10 points	0-0
Games decided by 11-19 points	1-0
Games decided by 20 points or more	1-0
Leading at the half	2-0
Tied at the half	0-0
Trailing at the half	0-0
Leading with 5:00 remaining	2-0
Trailing with 5:00 remaining	0-0
Tied with 5:00 remaining	0-0
In overtime	0-0
PSU scores 40-49 points	0-0
PSU scores 50-59 points	0-0
PSU scores 60-69 points	0-0
PSU scores 70-79 points	1-0
PSU scores 80 points or more	1-0
PSU shoots 45% or better	1-0
PSU shoots less than 45%	1-0
PSU shoots better than opponent	2-0
Opponent shoots better than PSU or tied	0-0
Opponent scores less than 39 points	0-0
Opponent scores 40-49 points	0-0
Opponent scores 50-59 points	0-0
Opponent scores 60-69 points	1-0
Opponent scores more than 70 points	1-0
Opponent shoots better than 45%	0-0
Opponent shoots less than 45%	2-0
PSU outrebounds opponent	2-0
Opponent outrebounds PSU or tied	0-0
PSU commits 14 or less turnovers	1-0
PSU commits 15 or more turnovers	1-0
PSU makes at least 5 3-pointers	1-0
PSU makes four 3-pointers or less	1-0
Recording 7 or more steals	1-0
Recording 6 or less steals	1-0
Wearing white uniforms	2-0
Wearing blue uniforms	0-0
Wearing white and pink uniforms	0-0
Penn State wins the tip	1-0
Penn State loses the tip	1-0
Penn State scores first	2-0
Opponent scores first	0-0
Playing during the day (before 5 p.m.)	1-0
Playing at night	1-0
On Monday	0-0
On Tuesday	0-0
On Wednesday	0-0
On Thursday	0-0
On Friday	1-0
On Saturday	0-0
On Sunday	1-0
In November	2-0
In December	0-0
In January	0-0
In February	0-0
In March	0-0

BIG TEN PRESEASON HONORS

- Senior guard **Maggie Lucas** was selected as the Big Ten Preseason Player of the Year by both the league's coaches and media.
- Lucas was a unanimous selection to the preseason All-Big Ten first team by both the coaches and media.
- This is the second-straight season that Lucas has been named to the preseason All-Big Ten first team.
- The Lady Lions were picked to finish second in the conference by both groups.

POLLING AROUND

- The Lady Lions begin the season ranked 15th in the Nov. 12 USA Today Sports Coaches' Poll.
- Penn State will also open the year ranked 13th in the Nov. 11 Associated Press Poll.
- This is the third-straight season that the Lady Lions have started the season ranked.

"WATCHING" LUCAS

- Senior guard **Maggie Lucas** is among the 25 players that have been named to the preseason WBCA's Wade Watch list for National Player of the Year.
- Additionally, Lucas is among the honorees on the John R. Wooden Award preseason Top 30 list.
- Lucas was a finalist for both the WBCA's Wade Trophy and the John R. Wooden Award as a junior.
- The Narberth, Pa. native is also among the 30 candidates for the Senior CLASS Award, which recognizes student-athletes that have notable achievements in four areas of excellence – community, classroom, character and competition.

PRESEASON HONORS

- The Lady Lions are ranked in several preseason publications heading into the 2013-14 campaign.
- Penn State is 14th in the Lindy's preview, 16th by USA Today Sports, 18th by the Sporting News and 21st by Athlon Sports.
- Senior guard **Maggie Lucas** was selected to the All-America first team in the Lindy's, Athlon Sports and Sporting News publications (USA Today Sports did not have an All-America team).
- For the second-straight season, Lucas was among the players receiving votes for the five-player Associated Press Preseason All-America team.

PROTECTING THE BJC

- The Lady Lions extended their home court winning streak to 22 games with the victory over Fordham Nov. 10. It is tied for the third-longest active streak in NCAA Division I, behind Baylor (58) and Tennessee-Chattanooga (28).
- Penn State last lost at home to Michigan State on Jan. 7, 2012.
- The home court win streak is tied for the fourth-longest in school history.
- Additionally, Penn State has won its last 15 non-conference home games, dating back to Dec. 28, 2010, which is tied for the second-longest string in program history.
- In 2012-13, the Lady Lions posted a perfect 14-0 record at home for the fourth unbeaten home campaign in BJC history.

LUCAS LOOKING FOR LONG RANGE RECORD

- Senior guard **Maggie Lucas** ranks second in Big Ten and Penn State history in three-point field goals made.
- Lucas has 297 triples in her collegiate career, trailing only Kelly Mazzante's Big Ten and Penn State record of 357 three-pointers.
- With four triples against Fordham on Nov. 10, Lucas passed Michigan State's Lindsey Bowen (294) for second place on the Big Ten's career chart.
- Last season, Lucas tied the NCAA record for consecutive games with a made three-pointer in a season with 32.
- Lucas has made a triple in each of her last 37 contests, which is a school record.
- For her career, Lucas has connected on 43.5% of her shots from downtown, which ranks second in school history overall and first among Lady Lions with 75 or more career attempts.

MAGGIE MARCHING UP CAREER SCORING LIST

- Senior guard **Maggie Lucas** starts her senior season seventh on Penn State's all-time scoring chart with 1,894 points.
- She needs three points to tie Suzie McConnell (1,897; 1985-88) for sixth place.
- Lucas needs 106 tallies to become the fifth player in school history with 2,000 points, joining Kelly Mazzante, Susan Robinson, Tyra Grant and Kahadeejah Herbert.
- With 33 tallies in the season opener against St. Francis (Pa.), Lucas moved into third place on Penn State's all-time 30-point games chart with her fifth career contest with 30 or more tallies.



LIONS IN THE BIG TEN STATS

A breakdown of where Penn State ranks in the Big Ten's overall statistical categories. Through games of Nov. 14.

TEAM	
Scoring Offense	1st (97.5)
Scoring Defense	9th (69.0)
Scoring Margin	1st (+28.5)
Free Throw Percentage	3rd (.803)
FG Percentage.....	5th (.471)
FG Percentage Defense	6th (.336)
3-point FG Percentage.....	2nd (.417)
3-point FG Pct. Defense.....	6th (.258)
3-point FG Made.....	T-7th (5.0)
Rebounding Offense	1st (52.5)
Rebounding Defense	3rd (35.0)
Rebounding Margin.....	1st (+17.5)
Offensive Rebounds	1st (19.0)
Defensive Rebounds.....	T-2nd (33.5)
Blocked Shots.....	T-5th (5.0)
Assists	T-7th (15.0)
Steals.....	4th (12.5)
Turnover Margin.....	T-5th (+2.5)
Assist to Turnover Ratio.....	11th (0.7)

INDIVIDUAL	
Scoring.....	1st - Maggie Lucas (28.0)
.....	6th - Alex Bentley (20.0)
.....	T-26th - Dara Taylor (13.0)
Rebounding.....	12th - Alex Harris (8.0)
FG Percentage.....	2nd - Ariel Edwards (.696)
.....	T-11th - Candice Agee (.600)
Assists	T-8th - Dara Taylor (4.0)
FT Percentage	T-1st - Maggie Lucas (1.000)
.....	T-1st - Ariel Edwards (1.000)
.....	T-1st - Keke Sevellian (1.000)
.....	T-1st - Talia East (1.000)
Steals.....	T-3rd - Maggie Lucas (3.0)
.....	T-10th - Ariel Edwards (2.5)
.....	T-10th - Dara Taylor (2.5)
3FG Percentage.....	T-3rd - Ariel Edwards (.667)
.....	6th - Maggie Lucas (.625)
3FG Made.....	T-2nd - Maggie Lucas (2.5)
Blocked Shots.....	T-4th - Alex Harris (2.0)
.....	T-12th - Dara Taylor (1.0)
Assist/TO Ratio	12th - Dara Taylor (1.6)
.....	T-13th - Maggie Lucas (1.5)
.....	T-13th - Ariel Edwards (1.5)
Off. Reb.	T-7th - Kaliyah Mitchell (3.0)
.....	T10th - Alex Harris (2.5)
Def. Reb.....	T-15th - Alex Harris (5.5)
.....	T-15th - Maggie Lucas (5.5)

LUCAS LOADING UP THE RECORD BOOKS

- In addition to her scoring and three-point prowess, senior guard **Maggie Lucas** has also etched her name on several other career charts for the Lady Lions.
- The Narberth, Pa. native sits atop the career free throw percentage list with an .893 mark.
- Lucas is also ninth in program history in free throws made with 383 shots made from the charity stripe.
- She needs four makes from the free throw line to tie Jess Strom (387; 2002-05) and Lisa Shepherd (387; 1998-01) for seventh place all-time.
- Lucas has also moved up the career steals list. With one steal against Fordham on Nov. 10, Lucas moved into a tie for 16th place with Dana Eikenberg (182; 1989-92) and Vanessa Paynter (182; 1984-87) with 182 career thefts.
- She needs five thefts to move into a tie for 15th with Annie Troyan (187; 1981-83).

LADY LIONS ON TV

- The Lady Lions will make at least 14 appearances on national television this season.
- The Lady Lions will appear on CBS once, ESPN2 five times and the Big Ten Network eight times during the 2013-14 slate.
- The 14 regular-season national TV appearances are the most in program history.
- Penn State's first TV game of the season will air on the Big Ten Network when the Lady Lions host defending National Champion UConn on Sun., Nov. 17 at noon.
- The Lady Lions will have a game on CBS for the second time in three years when they host Minnesota on Jan. 26 at 1 p.m.
- Additionally, the Eighth Annual Pink Zone at Penn State will air on ESPN2 when the Lady Lions host Wisconsin on Sun., Feb. 16 at 1 p.m.

FANTASTIC NON-CONFERENCE SLATE AWAITS

- The Lady Lions have put together arguably one of the best non-conference schedules in Bryce Jordan Center history with previous National Champions Connecticut, Notre Dame and Texas A&M slated to visit Happy Valley this season.
- Penn State's non-conference opponents have a combined 109 NCAA Tournament appearances, 20 Final Four appearances and 10 National Championships.
- Every PSU non-conference foe has made at least one NCAA Tournament appearance in their program history.
- The Lady Lions are 33-11 all-time against their 2013 non-conference opponents for a 75% winning percentage.
- Defending National Champion Connecticut will visit Penn State for Jan. 8, 1983, although the Huskies did play in the 2006 NCAA Tournament first and second rounds at the BJC.
- The non-conference slate will also mark the first time that head coach **Coquese Washington** will meet her mentor and former coach Muffet McGraw and Notre Dame in the Big Ten/ACC Challenge.

DUO BLOCKING THE LANE

- Senior center **Talia East** and junior center **Tori Waldner** have made it tough for opponents to find success in the lane as the pair have moved into the Top 20 in school history in blocks.
- East ranks 19th in program history with 57 career rejections.
- She needs four blocks to move into a tie for 18th place with Tanisha Wright (61; 2002-05).
- Waldner has 51 career blocks to sit 20th on the Lady Lions' career blocks list.
- She needs six rejections to tie East for 19th place.

FOUR McDONALD'S ALL-AMERICANS

- The Lady Lions tout four McDonald's High School All-Americans on their roster this season in **Maggie Lucas, Dara Taylor, Candice Agee** and **Sierra Moore**.
- Taylor played in the 2009 game, Lucas was in the 2010 contest and Agee and Moore were in the 2012 game.
- Lucas won the Powerade Three-Point Shootout as part of the McDonald's All-America celebration in 2010.
- Prior to **Coquese Washington** taking over the reigns, the Lady Lions only had one McDonald's High School All-American in program history.

HOOPIN' FOR THE USA

- Head coach **Coquese Washington** and sophomore center **Candice Agee** spent their summers winning gold medals with USA Basketball.
- Washington was an assistant coach on the USA Basketball Women's World University Games Team, serving under head coach Sherri Coale of Oklahoma.
- The United States took home the gold medal at the World University Games, which took place in Kazan, Russia July 8-15.
- Agee claimed her second gold medal as a member of USA Basketball, earning it at the FIBA U19 World Championship. She previously won a gold medal at the U18 FIBA Americas in the summer of 2012.



THE LAST TIME PENN STATE...

SCORING

Player scored 20 points: vs. Fordham (23, Maggie Lucas), 11/10/13
 Player scored 25 points: vs. St. Francis (Pa.) (33, Maggie Lucas), 11/8/13
 Player scored 30 points: vs. St. Francis (Pa.) (33, Maggie Lucas), 11/8/13
 Player scored 35 points: vs. Georgetown (39, Maggie Lucas), 12/9/12
 Player scored 40 points: vs. Minnesota (49, Kelly Mazzante), 12/28/01
 Two players scored 20 points: vs. St. Francis (Pa.) (33, Maggie Lucas; 23, Ariel Edwards), 11/8/13
 Three players scored 20 pts.: at Nevada (26, Maggie Lucas; 23, Alex Bentley; 21, Zhaque Gray), 11/26/11
 Two players scored 25 points: at Boston College (28, Alex Bentley; 28, Maggie Lucas), 12/2/10
 Player scored 25 points/3 consecutive games: Kelly Mazzante (31, vs. Baylor, 12/9/03; 31, vs. Pittsburgh, 12/14/03; 29, Louisiana Tech, 12/21/03)
 Five in double figures: vs. Fairleigh Dickinson (24, Maggie Lucas; 18, Ariel Edwards; 15, Dara Taylor; 11 Talia East; 10, Nikki Greene), 12/2/12
 Six in double figures: at Oakland (15, Alex Bentley; 16, Ariel Edwards; 16, Zhaque Gray; 13, Maggie Lucas; 10, Mia Nickson; 10, Gizelle Studevent; 10, Julia Trogele), 11/18/10
 Seven in double figures: at Oakland (15, Alex Bentley; 16, Ariel Edwards; 16, Zhaque Gray; 13, Maggie Lucas; 10, Mia Nickson; 10, Gizelle Studevent; 10, Julia Trogele), 11/18/10
 PSU scored 50 points in a half: vs. St. Francis (Pa.) (55, first half; 62, second half), 11/8/13
 PSU scored 55 points in a half: vs. St. Francis (Pa.) (55, first half; 62, second half), 11/8/13
 PSU scored 60 points in a half: vs. St. Francis (Pa.) (62, second half), 11/8/13
 PSU scored 100 points: vs. St. Francis (Pa.) (W, 117-77), 11/8/13
 PSU scored 100 points in Big Ten game: vs. Illinois (W, 101-80), 2/15/01
 PSU scored 100 points in a home game: vs. St. Francis (Pa.) (W, 117-77), 11/8/13
 PSU scored fewer than 15 points in a half: vs. Wisconsin (13, first half), 2/25/10
 PSU scored fewer than 20 points in a half: vs. Michigan State (19, first half), 3/9/13
 PSU scored fewer than 40 points in a game: vs. Wisconsin (L, 39-71), 2/25/10
 PSU scored fewer than 50 points in a game: vs. Michigan State (L, 46-54), 12/6/11
 PSU scored fewer than 50 points in a Big Ten game: vs. Purdue (L, 49-60), 2/24/11
 OPP scored 50 points in a half: at Minnesota (52, second half), 2/28/13
 OPP scored 100 points: at Boston College (Lot, 113-104), 12/2/10
 OPP scored fewer than 20 points in a game: at Dickinson (W, 57-16), 3/6/71
 OPP scored fewer than 30 points in a game: vs. Virginia Tech (W, 66-28), 12/6/11
 OPP scored fewer than 40 points in a game: vs. Wisconsin (W, 84-40), 1/17/13
 OPP scored fewer than 50 points in a game: at Michigan (W, 59-49), 1/21/13
 OPP scored fewer than 50 points in a Big Ten game: at Michigan (W, 59-49), 1/21/13

FIELD GOAL SHOOTING

Player made every shot from the field (min. 7): vs. Michigan St. (Amanda Brown, 8-8), 1/25/07
 PSU shot 55% in a game: vs. Illinois (.611), 2/20/13
 PSU shot 55% in consecutive games: vs. Northwestern (.682), 3/2/96; vs. Ohio St. (.585), 3/3/96
 PSU shot 60% in a game: vs. Illinois (.611), 2/20/13
 PSU shot below 25% in a game: vs. Michigan State (.224), 3/9/13
 PSU shot below 30% in a game: vs. Michigan State (.224), 3/9/13
 PSU shot below 35% in a game and won: vs. Northwestern (.299), 1/3/13
 PSU shot below 30% in a game and won: vs. Northwestern (.299), 1/3/13
 PSU shot 55% in a half: vs. St. Francis (Pa.) (.568, second half), 11/8/13
 PSU shot 60% in a half: vs. Ohio State (.625, second half), 3/8/13
 PSU shot 65% in a half: at Nebraska (.692, second half), 3/3/13
 PSU shot 70% in a half: vs. Virginia Tech (.714, second half), 12/6/11
 PSU shot 55% in both halves: vs. Illinois (.586, first half; .640, second half), 2/20/13
 PSU shot 20% or below in a half: vs. Michigan State (.200, first half), 3/9/13
 PSU shot below 25% in a half: vs. Michigan State (.200, first half; .243, second half), 3/9/13

THREE-POINT SHOOTING

Player made every shot from the field (min. 4): at Bucknell (4-4, Maggie Lucas), 12/21/11
 Player made 4 three-pointers in a half: vs. Michigan State (5 in the second, Maggie Lucas), 3/9/13
 Player made 5 three-pointers in a half: vs. Michigan State (5 in the second, Maggie Lucas), 3/9/13
 Player made 6 three-pointers in a half: vs. Michigan State (5 in the second, Maggie Lucas), 3/9/13
 Player made 5 three-pointers in a game: vs. Michigan State (7, Maggie Lucas), 3/9/13
 Player made 6 three-pointers in a game: vs. Michigan State (7, Maggie Lucas), 3/9/13
 Player made 7 three-pointers in a game: vs. Michigan State (7, Maggie Lucas), 3/9/13
 Player made 8 three-pointers in a game: at Nebraska (8, Maggie Lucas), 3/3/13
 Player attempted 10 three-pointers in a game: vs. Michigan State (13, Maggie Lucas), 3/9/13
 PSU made 10 three-pointers: vs. North Carolina (14), 11/30/11
 PSU did not make a three-pointer: at South Carolina (0-6), 11/20/11
 PSU attempted 20 three-pointers: vs. Michigan State (23), 3/9/13
 PSU shot 60% 3FG (min. 5 att.): vs. Illinois (.667; 6-9), 2/20/13

FREE THROW SHOOTING

Player made every shot from FT line (min. 10): vs. St. Francis (Pa.) (16-16, Maggie Lucas), 11/8/13
 PSU shot 90% (min. 10 att.): vs. North Carolina (13-14, .929), 11/30/11
 PSU shot below 50% (min. 10 att.): vs. Holy Cross (9-20, .450), 11/28/09
 PSU made 30 free throws: vs. St. Francis (Pa.) (37), 11/8/13
 PSU made fewer than five FTs: at Michigan (3), 2/3/11
 PSU attempted 40 free throws: vs. St. Francis (Pa.) (43), 11/8/13
 PSU attempted fewer than five FTs: at Michigan (4), 2/3/11

REBOUNDS

Player had 15 rebounds: at LSU (16, Nikki Greene), 3/26/13
 Player had 20 rebounds: at Cal State Northridge (20, Nikki Greene), 11/24/12
 Two players with double-digit rebs.: vs. Cal Poly (13, Mia Nickson; 12, Talia East), 3/24/13
 Three players had double-digit rebounds: vs. Ohio State (15, Nikki Greene; 15, Mia Nickson; 10, Maggie Lucas), 2/20/12
 PSU had 60 rebounds: vs. Ohio State (60), 2/20/12
 PSU had 50 rebounds: vs. St. Francis (Pa.) (57), 11/8/13
 PSU had 20 or fewer rebounds: vs. Michigan State (20), 1/19/03
 OPP had 20 or fewer rebounds: at Indiana (20), 2/13/11
 PSU had 20 offensive rebounds: vs. Fordham (21), 11/10/13
 PSU had 25 offensive rebounds: vs. Ohio State (29), 2/20/12

ASSISTS

Player had 10 assists: vs. North Carolina (15, Alex Bentley), 11/30/11
 Player had 10 assists/consecutive games: Helen Darling (12 at LaSalle, 12/8/99; 11 vs. Auburn, 12/11/99; 10 vs. Clemson, 12/19/99)
 Player had 15 assists: vs. North Carolina (15, Alex Bentley), 11/30/11
 PSU had 30 assists: vs. St. Francis (Pa.) (32), 12/2/99
 PSU had fewer than 10 assists: vs. Michigan State (8), 3/9/13
 PSU had fewer than 5 assists: at Michigan State (4), 2/4/10

BLOCKED SHOTS

Player blocked 5 shots: vs. Minnesota (5, Tori Waldner), 1/24/13
 Player blocked 6 shots: at South Carolina (7, Talia East), 11/20/11
 PSU blocked 10 shots: vs. Illinois (10), 2/20/13
 PSU blocked 0 shots: vs. Purdue, 2/19/09

STEALS

Player had 7 steals: vs. Northwestern (7, Dara Taylor), 1/3/13
 Player had 8 steals: vs. NJIT (8, Alex Bentley), 12/23/12
 PSU had 20 steals: vs. Bucknell (21), 12/28/10

TURNOVERS

PSU committed 25 or more: vs. St. Francis (Pa.) (27), 11/8/13
 PSU committed 25 or more and won: vs. St. Francis (Pa.) (27), 11/8/13
 PSU committed 10 or fewer: vs. Michigan State (8), 3/9/13
 PSU committed 10 or fewer in consecutive games: vs. Minnesota (9), 1/22/04; at Ohio St. (9), 1/25/04
 OPP committed 25 or more: vs. St. Francis (Pa.) (30), 11/8/13

DOUBLE-DOUBLES

Points & rebounds: at LSU (Nikki Greene, 16 pts., 16 rebs), 3/26/13
 Points & rebounds/consecutive games: Nikki Greene (12 points, 10 rebounds vs. Ohio State, 1/30/11; 16 points, 14 rebounds at Illinois, 1/27/11)
 Points & rebounds/3 consecutive games: Amanda Brown (19 pts., 17 rebs. at Northwestern, 2/11/07; 14 pts., 10 rebs. vs. Minnesota, 2/15/07; 14 pts., 11 rebs. at Iowa, 2/18/07)
 Points & rebounds/4 consecutive games: Angie Potthoff (vs. Northwestern, 1/31/97; at Illinois, 2/2/97; vs. Michigan, 2/7/97; vs. Indiana, 2/9/97; vs. Iowa, 2/16/97; vs. Michigan State, 2/21/97)
 Points & rebounds/5 consecutive games: Angie Potthoff (vs. Northwestern, 1/31/97; at Illinois, 2/2/97; vs. Michigan, 2/7/97; vs. Indiana, 2/9/97; vs. Iowa, 2/16/97; vs. Michigan State, 2/21/97)
 Points & assists: vs. North Carolina (Alex Bentley; 15 points, 15 assists), 11/30/11
 Points & assists/consecutive games: Helen Darling (12 pts., 12 assts. at La Salle, 12/8/99; 10 pts., 11 assts. vs. Auburn, 12/11/99)
 Two players had double-doubles: vs. Ohio State (Nikki Greene, 25 pts., 15 rebs.; Mia Nickson, 18 pts., 15 rebs.; Maggie Lucas, 12 pts., 10 rebs.), 2/20/12
 Three players had double-doubles: vs. Ohio State (Nikki Greene, 25 pts., 15 rebs.; Mia Nickson, 18 pts., 15 rebs.; Maggie Lucas, 12 pts., 10 rebs.), 2/20/12
 15 points & 15 rebounds: at LSU (Nikki Greene, 16 pts., 16 rebs), 3/26/13
 20 points and 10 rebounds: vs. Wisconsin (Nikki Greene, 23 pts., 14 rebs.), 1/17/13

MARGIN OF VICTORY

PSU won by 20-30 points: vs. St. Francis (Pa.) (40), 11/8/13
 PSU won by 20-30 points in a Big Ten game: vs. Illinois (33), 2/20/13
 PSU won consecutive Big Ten games by 20+ pts.: vs. Wisconsin (44), 1/17/13; vs. Nebraska (22), 1/13/13; at Michigan St. (21), 1/6/13
 PSU won by 31-40 points: vs. St. Francis (Pa.) (40), 11/8/13
 PSU won by 41-50 points: vs. Wisconsin (44), 1/17/13
 PSU won by 51+ points: vs. Fairleigh Dickinson (57), 12/2/12
 PSU lost by 20-30 points: at Ohio State (22), 2/17/11
 PSU lost by 20-30 points in a Big Ten game: at Ohio State (22), 2/17/11
 PSU lost by 31+ points: vs. Wisconsin (32), 2/25/10

MISCELLANEOUS

Led PSU in points/rebounds/assists: Tyra Grant vs. Michigan (25 pts., 9 rebs., 4 asst.), 2/18/10
 Hit "final seconds" (under 10 seconds) game-winning shot: Julia Trogele at Illinois (9 sec.), 1/27/11
 Hit "final minute" game-winning shot: Alex Bentley at Minnesota (3-ptr. with :38.9 remaining), 2/5/12
 Player played every minute: at LSU (Maggie Lucas), 3/26/13
 Player played more than 40 min.: at Dayton (Alex Bentley, 46; Zhaque Gray, 44; Mia Nickson, 41), 11/12/10
 Committed 10 or fewer fouls: vs. Virginia Tech (9), 12/6/11
 Committed 30 or more fouls: vs. Iowa State (32), 11/25/11
 PSU rallied from a 10-pt. deficit to win: at Ohio State (down by 11 at 19:10 in 2nd half, won 155-73), 1/27/13
 PSU rallied from a 15-pt. deficit to win: at CS-Northridge (down by 17 at 5:52 in 1st half, won 85-73), 11/24/12
 PSU had a 5-game winning streak: 6 games, 2/4/13 - 2/24/13
 PSU had a 10-game winning streak: 11 games, 12/9/12 - 1/27/13
 PSU had a 5-game losing streak: 6 games, 1/28/10 - 2/14/10
 PSU went undefeated at home: 2012-13 season
 PSU sold out the BJC: Purdue, 2/29/04

OVERTIME

PSU played an OT game: at Boston College (L, 113-104), 12/2/10
 PSU won an OT game: at Oakland (96-89), 11/18/10
 PSU lost an OT game: at Boston College (L, 113-104), 12/2/10
 PSU played two or more OT games in a season: 2010-11 season (three)
 PSU won two or more OT games in a season: 2010-11 season (two)

RANKINGS

Played the No. 1 team in the AP poll: vs. Connecticut (L, 77-63), 12/14/08
 Played the No. 1 team in the Coaches poll: vs. Connecticut (L, 77-63), 12/14/08
 Defeated the No. 1 team in the AP poll: at Virginia (73-71), 1/3/91
 Defeated Top 10 opponent: vs. #8/11 Ohio State (84-66), 2/20/12
 Defeated Top 10 opponent on the road: at #7 Purdue (47-42), 1/2/04
 Defeated Top 10 opponent by double digits: vs. #8/11 Ohio State (84-66), 2/20/12
 Played consecutive Top 10 teams: at #2/3 Texas 11/14/04, at #6/6 Duke 11/19/04
 Defeated Top 25 opponent: at #20/25 Nebraska (82-67), 3/3/13
 Defeated Top 25 opponent on the road: at #20/25 Nebraska (82-67), 3/3/13
 Defeated Top 25 opponent by double digits: at #20/25 Nebraska (82-67), 3/3/13



2013-14 GAME-BY-GAME STARTING LINEUPS

Date	Opponent	Pt Guard	Guard	Guard	Forward	Center
10/27	LOCK HAVEN (exhib.)	Taylor	Lucas	Edwards	Waldner	Agee
11/8	ST. FRANCIS (PA.)	Taylor	Lucas	Edwards	Waldner	Agee
11/10	FORDHAM	Taylor	Lucas	Edwards	Waldner	Agee

14TH-RANKED RECRUITING CLASS JOINS LIONS

- The Lady Lions welcome eight newcomers to the fold this season in freshmen **Infiniti Alston, Jenny DeGraaf, Alex Harris, Kaliyah Mitchell, Keke Sevillian, Lindsey Spann** and **Peyton Whitted** and as well as Duke transfer **Sierra Moore**.
- The recruiting class was ranked 14th by ESPN/HoopGuriz.
- Spann was the highest ranked player in the class as she was the 22nd-rated recruit by Collegiate Girls Basketball.
- Harris was also in the Top 50, ranking 49th by both Collegiate Girls Basketball and All-Star Girls Report.
- Moore will have to sit out the 2013-14 season due to NCAA Transfer Rules, while Spann will likely miss the 2013-14 campaign after tearing her right ACL during a summer practice.

THE NCAA TOURNEY RETURNS TO THE BJC

- Penn State has been selected as one of 16 universities to host the 2014 NCAA Women's Basketball Championship First and Second Round games.
- The First Round will take place on Sunday, March 23 at 12:30 and 3 p.m., while the Second Round game will be played on Tuesday, March 25 at 7 p.m.
- This will be Penn State's 15th time hosting the NCAA First and Second Rounds.
- Penn State last hosted the First and Second Rounds in 2011 when the Lady Lions, DePaul, Dayton and Navy competed in the Bryce Jordan Center.
- The Lady Lions have won nine of its last 10 home NCAA Tournament games, posting a 17-5 overall record.

2014 PINK ZONE AT PENN STATE

- The Eighth Annual Pink Zone at Penn State will be held Sunday, Feb. 16 in the Bryce Jordan Center at 1 p.m. when the Lady Lions take on Wisconsin.
- Last year, the Lady Lions donated a record \$260,000 to breast cancer causes.
- All totalled, the Lady Lions have donated more than \$825,300 for breast cancer research and awareness in the first seven years.
- This year's fundraising efforts will benefit the Mount Nittany Medical Center, Penn State Hershey Cancer Institute, Pennsylvania Breast Cancer Coalition, the Kay Yow Cancer Fund, J.C. Blair Memorial Hospital and Lewistown Hospital.
- For more information on the Pink Zone at Penn State, visit the official Pink Zone website at www.pennsylvaniapinkzone.org.

SPANN TEARS ACL

- Freshman guard Lindsey Spann will be sidelined after tearing her right anterior cruciate ligament (ACL) during a workout during the summer.
- Spann had successful surgery to repair her knee in July.
- A timetable for Spann's return has not been set.

LADY LIONS EXCELLING AT THE NEXT LEVEL

- Former Penn State Lady Lions Alex Bentley and Tanisha Wright were among the players honored by the WNBA this season. Bentley was part of the five-player WNBA All-Rookie Team, while Wright took home her fourth WNBA All-Defensive first team selection.
- In her first season in the WNBA, Bentley averaged 8.3 points, 2.8 assists and 1.0 steals per game for the Atlanta Dream.
- Bentley ranked third in the league in assists per turnover (2.4), 18th in total assists (95) and 19th in three-point field goal percentage (.329).
- Earlier in the season, Bentley broke the WNBA record for consecutive three-pointers made with 10.
- Wright, who finished her ninth season in the Seattle Storm, accounted for 11.9 points, 4.1 assists, 3.7 rebounds and 1.1 steals per game.
- She was eight in the league in total assists (130), sixth in total minutes played (1,016) and 10th in assists per game and 14th in free throw percentage (.855).
- Wright surpassed the 2,000-point mark for her WNBA career earlier this season.

The Lady Lions continued their return to national prominence last season with a second-straight Big Ten regular-season title and third straight NCAA Tournament berth. Here are some highlights from 2012-13:

BIG TEN CHAMPIONS

- The Lady Lions clinched the Big Ten regular-season title outright for the second-straight year with an 82-67 win at Nebraska on Mar. 3.
- The back-to-back titles are the first for the program since the 2002-03 and 2003-04 squads accomplished the feat.
- This is the fifth outright regular-season title for the Lady Lions (2000, 2003, 2004, 2012).
- PSU is the ninth team to claim consecutive championships in Big Ten history.
- Penn State has won seven overall regular season crowns (1994, 1995, 2000, 2003, 2004, 2012).
- Penn State's 14-2 Big Ten record is the best since the 2003-04 squad went 15-1.

THREE CONSECUTIVE 25-WIN SEASONS

- With a 76-66 win over Ohio State in the Big Ten Tournament quarterfinals, the Lady Lions notched their 25th win of the season.
- This is the third consecutive season that Penn State has reached the 25-win mark.
- It is the 13th 25-win campaign in program history.
- This is only the second time in program history that the Lady Lions have posted three consecutive 25-win seasons, joining the 1993-94, 1994-95 and 1995-96 campaigns.

MILESTONE WATCH

Milestone Watch				
Milestone	Player	Current Total		
1,900 points	Maggie Lucas	1,894	100 rebounds	Candice Agee 58
600 points	Ariel Edwards	591	400 assists	Dara Taylor (career) 358
500 points	Dara Taylor (career)	491	250 assists	Maggie Lucas 222
300 points	Dara Taylor (PSU)	249	200 assists	Dara Taylor (PSU) 116
	Talia East	208	100 assists	Ariel Edwards 74
200 points	Tori Waldner	116	200 steals	Maggie Lucas 182
100 points	Candice Agee	66		Dara Taylor (career) 157
500 rebounds	Maggie Lucas	419	100 steals	Dara Taylor (PSU) 82
300 rebounds	Talia East	299	50 steals	Ariel Edwards 46
	Ariel Edwards	296	75 blocks	Talia East 57
	Dara Taylor (career)	255		Tori Waldner 51
200 rebounds	Tori Waldner	158	300 3-pointers	Maggie Lucas 297
			50 3-pointers	Ariel Edwards 32

Milestone Reached

Milestone	Player	Reached
200 points	Talia East	11/8



RECORD BOOK

CAREER SCORING

1.	2,919	Kelly Mazzante, 2001-04
2.	2,253	Susan Robinson, 1989-92
3.	2,044	Tyra Grant, 2007-10
4.	2,025	Kahadeejah Herbert, 1982-85
5.	1,995	Tanisha Wright, 2002-05
6.	1,897	Suzie McConnell, 1985-88
7.	1,894	Maggie Lucas, 2011-pres.
8.	1,786	Alex Bentley, 2010-13
9.	1,725	Angie Potthoff, 1993-97
10.	1,663	Lisa Shepherd, 1998-01
11.	1,619	Andrea Garner, 1997-00
12.	1,538	Tanya Garner, 1988-91
13.	1,514	Vicki Link, 1984-87
14.	1,466	Jess Strom, 2002-05
15.	1,463	Katina Mack, 1992-96
16.	1,428	Jen Bednarek, 1977-80
17.	1,328	Maren Walseth, 1998-01
18.	1,320	Cheryl Ellison, 1980-83
19.	1,295	Kathy Phillips, 1989-92
20.	1,294	Helen Darling, 1997-00
21.	1,288	Carol Walderman, 1981-83
22.	1,280	Louise Leimkuhler, 1980-82
23.	1,240	Tina Nicholson, 1993-96
24.	1,238	Kam Gissendanner, 2006-08
25.	1,233	Amanda Brown, 2004-07
26.	1,186	Bethany Collins, 1985-88
27.	1,162	Lisa Faloon, 1984-87
28.	1,142	Jess Brungo, 2001-04
29.	1,135	Sue Martin, 1976-80
30.	1,132	Nikki Greene, 2010-13
31.	1,106	Missy Masley, 1992-95
32.	1,084	Brianne O'Rourke, 2005-09
33.	1,061	Nancy Kuhl, 1975-79
34.	1,024	Rashana Barnes, 1999-02
35.	1,022	Helen Holloway, 1991-94

CAREER BLOCKS

1.	268	Kim Calhoun, 1993-96
2.	215	Nikki Greene, 2010-13
3.	192	Mary Donovan, 1977-81
4.	189	Rashana Barnes, 1999-02
5.	185	Andrea Garner, 1997-00
6.	172	Amanda Brown, 2004-07
7.	140	Tina Henry, 1990-93
8.	94	Jess Brungo, 2001-04
9.	92	Bethany Collins, 1985-88
10.	89	Kathy Phillips, 1989-92
11.	87	Reicina Russell, 2003-04
	87	Vicki Link, 1984-87
13.	81	Kahadeejah Herbert, 1982-85
14.	75	Tyra Grant, 2007-10
15.	68	Kelly Mazzante, 2001-04
16.	67	Janessa Wolff, 2008-10
17.	66	Adrie DeVries, 1987-90
18.	61	Tanisha Wright, 2002-05
19.	57	Talia East, 2011-pres.
20.	51	Tori Waldner, 2012-pres.

CAREER FREE THROWS MADE

1.	512	Kahadeejah Herbert, 1982-85
2.	491	Tyra Grant, 2007-10
3.	487	Susan Robinson, 1989-92
4.	478	Helen Darling, 1997-00
5.	460	Kelly Mazzante, 2001-04
6.	439	Tanisha Wright, 2002-05
7.	387	Jess Strom, 2002-05
	387	Lisa Shepherd, 1998-01
9.	383	Maggie Lucas, 2011-pres.
10.	371	Suzie McConnell, 1985-88

CAREER STEALS

1.	507	Suzie McConnell, 1985-88
2.	325	Alex Bentley, 2010-13
3.	314	Helen Darling, 1997-00
4.	310	Jess Strom, 2002-05
5.	293	Tina Nicholson, 1993-96
6.	289	Kelly Mazzante, 2001-04
7.	267	Tanisha Wright, 2002-05
8.	257	Nancy Kuhl, 1975-79
9.	247	Corinne Gulas, 1980-81
10.	224	Kahadeejah Herbert, 1982-85
11.	223	Tanya Garner, 1978-91
12.	217	Carol Walderman, 1981-83
13.	215	Sue Martin, 1976-80
14.	196	Brianne O'Rourke, 2006-09
15.	187	Annie Troyan, 1981-83
16.	182	Maggie Lucas, 2011-pres.
	182	Dana Eikenberg, 1989-92
	182	Vanessa Paynter, 1984-87
19.	180	Susan Robinson, 1989-92
20.	174	Angie Potthoff, 1993-97

CAREER 3-POINT FIELD GOALS MADE

1.	357	Kelly Mazzante, 2001-04
2.	297	Maggie Lucas, 2011-pres.
3.	230	Lisa Shepherd, 1998-01
4.	191	Jess Strom, 2002-05
5.	179	Tyra Grant, 2007-10

CAREER 3-POINT FGS ATTEMPTED

1.	1,019	Kelly Mazzante, 2001-04
2.	683	Maggie Lucas, 2011-pres.
3.	583	Lisa Shepherd, 1998-01
4.	531	Tyra Grant, 2007-10
5.	525	Jess Strom, 2002-05

CAREER FIELD GOALS ATTEMPTED

1.	2,430	Kelly Mazzante, 2001-04
2.	1,755	Tyra Grant, 2007-10
3.	1,685	Alex Bentley, 2010-13
4.	1,672	Susan Robinson, 1989-92
5.	1,667	Tanisha Wright, 2002-05
6.	1,526	Suzie McConnell, 1985-88
7.	1,402	Maggie Lucas, 2011-pres.
8.	1,365	Andrea Garner, 1997-00
9.	1,347	Kahadeejah Herbert, 1982-85
10.	1,329	Jen Bednarek, 1977-80

as of Nov. 10, 2013

BIG TEN CAREER RECORDS

THREE-POINT FIELD GOALS - CAREER

1.	357	Kelly Mazzante, PSU	2001-04
2.	297	MAGGIE LUCAS, PSU	2011-pres.
3.	294	Lindsay Bowen, MSU	2003-06
4.	270	Caity Matter, OSU	2001-05
5.	261	Lindsey Meder, IOWA	1999-02

3-POINT FIELD GOAL PERCENTAGE - CAREER

1.	.435	MAGGIE LUCAS, PSU	2011-pres.
2.	.428	Brittany Johnson, OSU	2008-11
3.	.425	Jodi Howell, PUR	2006-10
4.	.411	Caity Matter, OSU	2001-05
5.	.407	Wendy Ausdemore, IOWA	2006-09
		Kristi Smith, IOWA	2006-09

FREE THROW PERCENTAGE - CAREER

1.	.900	Courtney Moses, PUR	2011-pres.
2.	.893	MAGGIE LUCAS, PSU	2011-pres.
3.	.892	Wendy Ausdemore, IOWA	2006-09
4.	.890	Jamie Printy, IOWA	2010-13
5.	.881	Cyndi Valentin, IND	2003-06



NATIONAL POLLS

ASSOCIATED PRESS (NOV. 11)

No.	Team (1st)	Rec.	Pts.	LW
1.	Connecticut (35)	1-0	899	1
2.	Duke (1)	1-0	862	2
3.	Stanford	1-0	804	3
4.	Tennessee	1-0	759	4
5.	Louisville	1-0	732	5
6.	Notre Dame	1-0	728	6
7.	Kentucky	2-0	691	7
8.	Maryland	2-0	676	8
9.	Baylor	1-0	590	9
10.	California	1-1	550	10
11.	Oklahoma	2-0	492	11
12.	North Carolina	1-0	476	12
13.	PENN STATE	2-0	446	13
14.	LSU	2-0	391	14
15.	Nebraska	1-0	390	15
16.	Texas A&M	0-0	366	16
17.	Colorado	0-0	259	17
18.	Purdue	1-0	249	18
19.	Michigan State	0-0	213	19
20.	Oklahoma State	2-0	198	20
21.	South Carolina	2-0	190	21
22.	Iowa State	1-0	124	22
23.	Dayton	1-1	104	23
24.	Georgia	1-0	102	24
25.	Gonzaga	2-0	99	25

Others Receiving Votes: Vanderbilt 68; DePaul 60; Green Bay 51; Chattanooga 33; Georgia Tech 30; Iowa 23; Texas 9; West Virginia 8; Middle Tennessee State 8; Ohio State 6; Florida State 4; UCLA 3; Creighton 3; Marist 2; Quinnipiac 1; James Madison 1.

USA TODAY COACHES' TOP 25 (NOV. 12)

No.	Team (1st)	Rec.	Pts.	LW
1.	Connecticut (32)	0-0	800	1
2.	Duke	1-0	757	2
3.	Tennessee	2-0	705	3
4.	Louisville	2-0	678	4
5.	Stanford	1-1	662	5
6.	Notre Dame	2-0	648	6
7.	Maryland	2-0	638	7
8.	Kentucky	3-0	593	8
9.	Baylor	1-0	495	9
10.	Nebraska	2-0	475	10
11.	California	1-1	458	11
12.	Texas A&M	2-0	414	12
13.	Oklahoma	2-0	394	13
14.	North Carolina	1-1	391	14
15.	PENN STATE	2-0	376	15
16.	LSU	2-0	286	16
17.	South Carolina	2-0	244	17
18.	Iowa State	2-0	226	18
19.	Colorado	1-0	190	19
20.	Michigan State	0-1	156	20
21.	Dayton	1-1	145	21
22.	Purdue	2-0	124	22
22.	Georgia	1-0	124	22
24.	Oklahoma State	2-0	111	24
25.	Vanderbilt	2-0	60	25

Others Receiving Votes: Gonzaga 43, Iowa 41, South Florida 34, DePaul 33, Kansas 17, UCLA 13, Green Bay 12, Middle Tennessee State 10, Georgia Tech 10, BYU 9, Florida State 6, Florida 6, St. Mary's 4, Marist 4, Syracuse 2, Rutgers 2, Minnesota 2, SMU 1, Ohio State 1.

*Bold type indicates 2013-14 Penn State opponent

STATISTICAL LEADERS

Check here throughout the season for a breakdown of how many times a player leads Penn State in the following statistical categories. (First number is solo, the second is shared.)

Points	Lucas (2)
Rebounds	Harris (1), Agee (1)
Assists	Taylor (1), Edwards (1)
Steals	Lucas (1), Taylor (-/1), Edwards (-/1)
Blocks	Harris (1/1), Taylor (-/1), Waldner (-/1), Whitted (-/1)
FG % (min. 4 attempts)	Edwards (2)
FT % (min 4 attempts)	Lucas (1/1), Edwards (-/1), Sevillian (-/1)
3FG % (min. 2 att.)	Lucas (2)

LUCAS = PLAYER OF THE YEAR

- **Maggie Lucas** was selected as the 2013 Big Ten Player of the Year by both the coaches and the media.
- Lucas is the third Lady Lion (Kelly Mazzante and Helen Darling) to win Player of the Year and the first since Kelly Mazzante won back-to-back honors in 2003 and 2004.
- Lucas is the first junior to win Player of the Year accolades since Ohio State's Jantel Lavender in 2010.

BACKCOURT NAMED TO FIRST TEAM

- **Maggie Lucas** and **Alex Bentley** were named to the All-Big Ten first team. Lucas was a unanimous selection by the coaches.
- Bentley garnered first team accolades for the third time in her career, making her the fifth player in program history to earn the honor three or more times.
- She joins Tina Nicholson (1994, 1995, 1996), Angie Potthoff (1995, 1996, 1997), Kelly Mazzante (2001, 2002, 2003, 2004) and Tanisha Wright (2003, 2004, 2005) as the only players to garner first team honors three or more times in their career.
- Lucas was the first unanimous selection for the Lady Lions since Tanisha Wright in 2005.
- Lucas was also the 10th Lady Lion to win first team accolades multiple times in a career.

MORE BIG TEN ACCOLADES

- Senior center **Nikki Greene** was selected third team All-Big Ten by the coaches and honorable mention All-Big Ten by the media.
- Guards **Alex Bentley** and **Dara Taylor** were named to the Big Ten All-Defensive team.
- It is Bentley's second consecutive berth on the defensive squad. PSU has had a representative on the team each of the last three seasons.
- Senior guard **Gizelle Studevent** was Penn State's Sportsmanship Award recipient.

DUO DRAFTED

- **Alex Bentley** and **Nikki Greene** were among the 36 players selected in the 2013 WNBA Draft presented by State Farm.
- Bentley, who was one of the 12 players in attendance at the WNBA Draft at ESPN Headquarters in Bristol, Conn., was the first to hear her name called by the Atlanta Dream with the 13th overall pick.
- Greene then added her name to the long line of Lady Lions to be selected in the WNBA Draft when she was selected 26th by the Phoenix Mercury.
- Bentley and Greene are the first tandem of Lady Lion players selected in the draft since 2004 (Jess Brungo and Kelly Mazzante).
- Additionally, Bentley's selection with the 13th choice is the highest pick for a Lady Lion since Tanisha Wright was the 12th overall selection by the Seattle Storm.
- Penn State has now had 14 players drafted by WNBA teams since 1997, the most in the Big Ten Conference.

COQUESE WINS COACH OF THE YEAR, AGAIN

- Penn State mentor **Coquese Washington** won her second consecutive Big Ten Coach of the Year award from the media.
- She is the first PSU coach to win back-to-back COY honors since Rene Portland won the award in 2003 and 2004.
- This is the fifth time in Big Ten history that a coach has won back-to-back Coach of the Year accolades.

PSU IN THE POLLS

Week of	AP	Coaches
Preseason	13	15
Nov. 11	13	15



Player Performance Charts

#1 CANDICE AGEE

CAREER HIGHS

Points	8 (4x)
Rebs.	last vs. Fordham (11/10/13)
Rebs.	9 vs. Fairleigh Dickinson (12/2/12)
Assists	1 (3x) last vs. St. Francis (Pa.) (11/8/13)
Steals	2 vs. NJIT (12/23/12)
Blocks	3 vs. Illinois (2/20/13)
Minutes	20 vs. Fair. Dickinson (12/2/12)
FGM	3 (5x) last vs. Fordham (11/10/13)
FGA	8 vs. NJIT (12/23/12)
FG%	1.000 (1-1) at Ohio State (1/27/13)
	1.000 (1-1) at Miami (11/29/12)
3FGM	n/a
3FGA	n/a
3PT %	n/a
FTM	4 vs. Illinois (2/20/13)
FTA	8 vs. Illinois (2/20/13)
FT %	1.000 (1-1) vs. St. Francis (Pa.) (11/8/13)
	1.000 (2-2) vs. NJIT (12/23/12)
Career Double-Doubles	n/a
Career 20-point games	n/a

SEASON HIGHS

Points	8 vs. Fordham (11/10/13)
Rebs.	7 vs. Fordham (11/10/13)
Assists	1 vs. St. Francis (Pa.) (11/8/13)
Steals	1 vs. St. Francis (Pa.) (11/8/13)
Blocks	n/a
Minutes	15 vs. Fordham (11/10/13)
FGM	3 vs. Fordham (11/10/13)
	3 vs. St. Francis (Pa.) (11/8/13)
FGA	5 vs. Fordham (11/10/13)
	5 vs. St. Francis (Pa.) (11/8/13)
FG%	.600 (3-5) vs. Fordham (11/10/13)
	.600 (3-5) vs. St. Francis (Pa.) (11/8/13)
3FGM	n/a
3FGA	n/a
3PT%	n/a
FTM	2 vs. Fordham (11/10/13)
FTA	6 vs. Fordham (11/10/13)
FT%	1.000 (1-1) vs. St. Francis (Pa.) (11/8/13)
Double-Doubles	n/a
20-point games	n/a

BIG TEN CONFERENCE CAREER HIGHS

Points	8 vs. Illinois (2/20/13)
Rebs.	3 at Ohio State (1/27/13)
Assists	n/a
Steals	n/a
Blocks	3 vs. Illinois (2/20/13)
Minutes	16 vs. Illinois (2/20/13)
FGM	2 (3x) last vs. Illinois (2/20/13)
FGA	4 (3x) last vs. Illinois (2/20/13)
FG%	1.000 (1-1) at Ohio State (1/27/13)
3FGM	n/a
3FGA	n/a
3PT%	n/a
FTM	4 vs. Illinois (2/20/13)
FTA	8 vs. Illinois (2/20/13)
FT%	.500 (4-8) vs. Illinois (2/20/13)
	.500 (1-2) at Iowa (2/14/13)
Double-Doubles	n/a
20-point games	n/a

#2 DARA TAYLOR

CAREER HIGHS

Points	18 at Michigan State (1/6/13)
Rebs.	8 vs. East Carolina (3/21/10)
Assists	11 at American (12/20/09)
	11 at Virginia (1/11/10)
Steals	7 vs. Northwestern (1/3/13)
Blocks	1 (8x) last vs. Fordham (11/10/13)
Minutes	38 at American (12/20/09)
FGM	7 at Michigan State (1/6/13)
	7 vs. Clemson (2/14/10)
FGA	14 (3x) last vs. Fordham (11/10/13)
FG%	1.000 (3x) last vs. N.C. State (2-2) (2/6/11)
3FGM	3 at Michigan State (1/6/13)
	3 at Virginia Tech (12/12/12)
3FGA	6 at Virginia Tech (12/12/12)
3PT %	1.000 (8x) last vs. Cal Poly (1-1) (3/24/13)
FTM	7 at Wake Forest (2/11/10)
FTA	10 at Wake Forest (2/11/10)
	10 vs. North Carolina (3/4/10)
FT %	1.000 (12x) last vs. Cal Poly (4-4) (3/24/13)
Career Double-Doubles	1
Career 20-point games	n/a

SEASON HIGHS

Points	14 vs. St. Francis (Pa.) (11/8/13)
Rebs.	2 vs. Fordham (11/10/13)
Assists	6 vs. St. Francis (Pa.) (11/8/13)
Steals	3 vs. St. Francis (Pa.) (11/8/13)
Blocks	1 vs. Fordham (11/10/13)
	1 vs. St. Francis (Pa.) (11/8/13)
Minutes	22 vs. Fordham (11/10/13)
	22 vs. St. Francis (Pa.) (11/8/13)
FGM	5 vs. Fordham (11/10/13)
FGA	14 vs. Fordham (11/10/13)
FG%	.500 (4-8) vs. St. Francis (Pa.) (11/8/13)
3FGM	2 vs. Fordham (11/10/13)
3FGA	4 vs. Fordham (11/10/13)
3PT%	.500 (2-4) vs. Fordham (11/10/13)
FTM	6 vs. St. Francis (Pa.) (11/8/13)
FTA	8 vs. St. Francis (Pa.) (11/8/13)
FT%	.750 (6-8) vs. St. Francis (Pa.) (11/8/13)
Double-Doubles	n/a
20-point games	n/a

BIG TEN CONFERENCE CAREER HIGHS

Points	18 at Michigan State (1/6/13)
Rebs.	7 at Iowa (2/14/13)
	7 vs. Wisconsin (1/17/13)
Assists	8 vs. Nebraska (1/13/13)
Steals	7 vs. Northwestern (1/3/13)
Blocks	1 vs. Minnesota (1/24/13)
	1 vs. Nebraska (1/13/13)
Minutes	34 at Michigan State (1/6/13)
FGM	7 at Michigan State (1/6/13)
FGA	12 vs. Northwestern (1/3/13)
FG%	.700 (7-10) at Michigan State (1/6/13)
3FGM	3 at Michigan State (1/6/13)
3FGA	4 at Michigan State (1/6/13)
3PT%	1.000 (4x) last at Iowa (1-1) (2/14/13)
FTM	2 at Indiana (2/7/13)
	2 vs. Purdue (2/4/13)
FTA	4 at Indiana (2/7/13)
FT%	1.000 (3x)
	last at Ohio State (1-1) (1/27/13)
Double-Doubles	n/a
20-point games	n/a

#5 TALIA EAST

CAREER HIGHS

Points	11 vs. Fairleigh Dickinson (12/2/12)
Rebs.	15 at South Carolina (11/20/11)
Assists	2 (5x)
	last vs. Fordham (11/10/13)
Steals	2 (6x) last at Indiana (2/7/13)
Blocks	7 at South Carolina (11/20/11)
Minutes	29 at South Carolina (11/20/11)
FGM	4 (3x)
	last vs. Fairleigh Dickinson (12/2/12)
FGA	10 vs. Fairleigh Dickinson (12/2/12)
FG%	1.000 (12x)
	last at Nebraska (1-1) (3/3/13)
3FGM	n/a
3FGA	n/a
3PT %	n/a
FTM	5 vs. Purdue (2/4/13)
FTA	7 vs. Purdue (2/4/13)
FT %	1.000 (9x)
	last vs. vs. Fordham (2-2) (11/10/13)
Career Double-Doubles	n/a
Career 20-point games	n/a

SEASON HIGHS

Points	8 vs. St. Francis (Pa.) (11/8/13)
Rebs.	8 vs. St. Francis (Pa.) (11/8/13)
Assists	2 vs. Fordham (11/10/13)
Steals	1 vs. St. Francis (Pa.) (11/8/13)
Blocks	n/a
Minutes	17 vs. Fordham (11/10/13)
	17 vs. St. Francis (Pa.) (11/8/13)
FGM	3 vs. St. Francis (Pa.) (11/8/13)
FGA	6 vs. St. Francis (Pa.) (11/8/13)
FG%	.667 (2-3) vs. Fordham (11/10/13)
3FGM	n/a
3FGA	n/a
3PT%	n/a
FTM	2 vs. Fordham (11/10/13)
	2 vs. St. Francis (Pa.) (11/8/13)
FTA	2 vs. Fordham (11/10/13)
	2 vs. St. Francis (Pa.) (11/8/13)
FT%	1.000 (2-2) vs. Fordham (11/10/13)
	1.000 (2-2) vs. St. Francis (Pa.) (11/8/13)
Double-Doubles	n/a
20-point games	n/a

BIG TEN CONFERENCE CAREER HIGHS

Points	9 vs. Purdue (2/4/13)
	9 vs. Indiana (2/2/12)
Rebs.	10 at Northwestern (2/12/12)
Assists	2 vs. Minnesota (2/26/12)
Steals	2 (3x) last at Indiana (2/7/13)
Blocks	3 at Nebraska (1/15/12)
Minutes	24 vs. Indiana (2/2/12)
FGM	4 vs. Indiana (2/2/12)
FGA	7 vs. Indiana (2/2/12)
FG%	1.000 (11x) at Nebraska (1-1) (3/3/13)
3FGM	n/a
3FGA	n/a
3PT%	n/a
FTM	5 vs. Purdue (2/4/13)
FTA	7 vs. Purdue (2/4/13)
FT%	1.000 (3x) last at Iowa (2-2) (2/14/13)
Double-Doubles	n/a
20-point games	n/a



Player Performance Charts

#10 KEKE SEVILLIAN

CAREER HIGHS

Points	8 vs. St. Francis (Pa.) (11/8/13)
Rebs.	3 vs. St. Francis (Pa.) (11/8/13)
Assists	1 vs. Fordham (11/10/13)
	1 vs. St. Francis (Pa.) (11/8/13)
Steals	4 vs. St. Francis (Pa.) (11/8/13)
Blocks	n/a
Minutes	18 vs. St. Francis (Pa.) (11/8/13)
FGM	2 vs. St. Francis (Pa.) (11/8/13)
FGA	6 vs. St. Francis (Pa.) (11/8/13)
FG%	.333 (2-6) vs. St. Francis (Pa.) (11/8/13)
3FGM	1 vs. Fordham (11/10/13)
3FGA	3 vs. Fordham (11/10/13)
3PT%	.333 (1-3) vs. Fordham (11/10/13)
FTM	4 vs. St. Francis (Pa.) (11/8/13)
FTA	4 vs. St. Francis (Pa.) (11/8/13)
FT%	1.000 (4-4) vs. St. Francis (Pa.) (11/8/13)
Double-Doubles	n/a
20-point games	n/a

SEASON HIGHS

Points	8 vs. St. Francis (Pa.) (11/8/13)
Rebs.	3 vs. St. Francis (Pa.) (11/8/13)
Assists	1 vs. Fordham (11/10/13)
	1 vs. St. Francis (Pa.) (11/8/13)
Steals	4 vs. St. Francis (Pa.) (11/8/13)
Blocks	n/a
Minutes	18 vs. St. Francis (Pa.) (11/8/13)
FGM	2 vs. St. Francis (Pa.) (11/8/13)
FGA	6 vs. St. Francis (Pa.) (11/8/13)
FG%	.333 (2-6) vs. St. Francis (Pa.) (11/8/13)
3FGM	1 vs. Fordham (11/10/13)
3FGA	3 vs. Fordham (11/10/13)
3PT%	.333 (1-3) vs. Fordham (11/10/13)
FTM	4 vs. St. Francis (Pa.) (11/8/13)
FTA	4 vs. St. Francis (Pa.) (11/8/13)
FT%	1.000 (4-4) vs. St. Francis (Pa.) (11/8/13)
Double-Doubles	n/a
20-point games	n/a

BIG TEN CONFERENCE CAREER HIGHS

Points	n/a
Rebs.	n/a
Assists	n/a
Steals	n/a
Blocks	n/a
Minutes	n/a
FGM	n/a
FGA	n/a
FG%	n/a
3FGM	n/a
3FGA	n/a
3PT%	n/a
FTM	n/a
FTA	n/a
FT%	n/a
Double-Doubles	n/a
20-point games	n/a

#11 ALEX HARRIS

CAREER HIGHS

Points	6 vs. St. Francis (Pa.) (11/8/13)
Rebs.	10 vs. St. Francis (Pa.) (11/8/13)
Assists	1 vs. Fordham (11/10/13)
	1 vs. Fordham (11/10/13)
Steals	1 vs. St. Francis (Pa.) (11/8/13)
Blocks	3 vs. St. Francis (Pa.) (11/8/13)
Minutes	22 vs. Fordham (11/10/13)
FGM	2 vs. St. Francis (Pa.) (11/8/13)
FGA	4 vs. St. Francis (Pa.) (11/8/13)
FG%	.500 (2-4) vs. St. Francis (Pa.) (11/8/13)
3FGM	n/a
3FGA	n/a
3PT%	n/a
FTM	2 vs. St. Francis (Pa.) (11/8/13)
FTA	4 vs. St. Francis (Pa.) (11/8/13)
FT%	.500 (2-4) vs. St. Francis (Pa.) (11/8/13)
Double-Doubles	n/a
20-point games	n/a

SEASON HIGHS

Points	6 vs. St. Francis (Pa.) (11/8/13)
Rebs.	10 vs. St. Francis (Pa.) (11/8/13)
Assists	1 vs. Fordham (11/10/13)
	1 vs. Fordham (11/10/13)
Steals	1 vs. St. Francis (Pa.) (11/8/13)
Blocks	3 vs. St. Francis (Pa.) (11/8/13)
Minutes	22 vs. Fordham (11/10/13)
FGM	2 vs. St. Francis (Pa.) (11/8/13)
FGA	4 vs. St. Francis (Pa.) (11/8/13)
FG%	.500 (2-4) vs. St. Francis (Pa.) (11/8/13)
3FGM	n/a
3FGA	n/a
3PT%	n/a
FTM	2 vs. St. Francis (Pa.) (11/8/13)
FTA	4 vs. St. Francis (Pa.) (11/8/13)
FT%	.500 (2-4) vs. St. Francis (Pa.) (11/8/13)
Double-Doubles	n/a
20-point games	n/a

BIG TEN CONFERENCE CAREER HIGHS

Points	n/a
Rebs.	n/a
Assists	n/a
Steals	n/a
Blocks	n/a
Minutes	n/a
FGM	n/a
FGA	n/a
FG%	n/a
3FGM	n/a
3FGA	n/a
3PT%	n/a
FTM	n/a
FTA	n/a
FT%	n/a
Double-Doubles	n/a
20-point games	n/a

#15 KALIYAH MITCHELL

CAREER HIGHS

Points	11 vs. St. Francis (Pa.) (11/8/13)
Rebs.	6 vs. Fordham (11/10/13)
	6 vs. St. Francis (Pa.) (11/8/13)
Assists	1 vs. Fordham (11/10/13)
	1 vs. St. Francis (Pa.) (11/8/13)
Steals	1 vs. St. Francis (Pa.) (11/8/13)
Blocks	1 vs. St. Francis (Pa.) (11/8/13)
Minutes	21 vs. Fordham (11/10/13)
FGM	5 vs. St. Francis (Pa.) (11/8/13)
FGA	8 vs. St. Francis (Pa.) (11/8/13)
FG%	.625 (5-8) vs. St. Francis (Pa.) (11/8/13)
3FGM	n/a
3FGA	n/a
3PT%	n/a
FTM	2 vs. Fordham (11/10/13)
FTA	4 vs. Fordham (11/10/13)
FT%	.500 (2-4) vs. Fordham (11/10/13)
	.500 (1-2) vs. St. Francis (Pa.) (11/8/13)
Double-Doubles	n/a
20-point games	n/a

SEASON HIGHS

Points	11 vs. St. Francis (Pa.) (11/8/13)
Rebs.	6 vs. Fordham (11/10/13)
	6 vs. St. Francis (Pa.) (11/8/13)
Assists	1 vs. Fordham (11/10/13)
	1 vs. St. Francis (Pa.) (11/8/13)
Steals	1 vs. St. Francis (Pa.) (11/8/13)
Blocks	1 vs. St. Francis (Pa.) (11/8/13)
Minutes	21 vs. Fordham (11/10/13)
FGM	5 vs. St. Francis (Pa.) (11/8/13)
FGA	8 vs. St. Francis (Pa.) (11/8/13)
FG%	.625 (5-8) vs. St. Francis (Pa.) (11/8/13)
3FGM	n/a
3FGA	n/a
3PT%	n/a
FTM	2 vs. Fordham (11/10/13)
FTA	4 vs. Fordham (11/10/13)
FT%	.500 (2-4) vs. Fordham (11/10/13)
	.500 (1-2) vs. St. Francis (Pa.) (11/8/13)
Double-Doubles	n/a
20-point games	n/a

BIG TEN CONFERENCE CAREER HIGHS

Points	n/a
Rebs.	n/a
Assists	n/a
Steals	n/a
Blocks	n/a
Minutes	n/a
FGM	n/a
FGA	n/a
FG%	n/a
3FGM	n/a
3FGA	n/a
3PT%	n/a
FTM	n/a
FTA	n/a
FT%	n/a
Double-Doubles	n/a
20-point games	n/a



Player Performance Charts

#20 INFINITI ALSTON

CAREER HIGHS

Points	n/a
Rebs.	n/a
Assists	n/a
Steals	n/a
Blocks	n/a
Minutes	3 vs. Fordham (11/10/13)
FGM	n/a
FGA	n/a
FG%	n/a
3FGM	n/a
3FGA	n/a
3PT%	n/a
FTM	n/a
FTA	n/a
FT%	n/a
Double-Doubles	n/a
20-point games	n/a

SEASON HIGHS

Points	n/a
Rebs.	n/a
Assists	n/a
Steals	n/a
Blocks	n/a
Minutes	3 vs. Fordham (11/10/13)
FGM	n/a
FGA	n/a
FG%	n/a
3FGM	n/a
3FGA	n/a
3PT%	n/a
FTM	n/a
FTA	n/a
FT%	n/a
Double-Doubles	n/a
20-point games	n/a

BIG TEN CONFERENCE CAREER HIGHS

Points	n/a
Rebs.	n/a
Assists	n/a
Steals	n/a
Blocks	n/a
Minutes	n/a
FGM	n/a
FGA	n/a
FG%	n/a
3FGM	n/a
3FGA	n/a
3PT%	n/a
FTM	n/a
FTA	n/a
FT%	n/a
Double-Doubles	n/a
20-point games	n/a

#23 ARIEL EDWARDS

CAREER HIGHS

Points	24 vs. Detroit (11/23/12)
Rebs.	11 vs. Iowa (1/22/12)
Assists	4 vs. Fordham (11/10/13)
	4 at Wisconsin (1/2/12)
Steals	3 vs. St. Francis (Pa.) (11/8/13)
	3 at Texas Tech (12/3/11)
Blocks	2 (3x) last vs. Nebraska (1/13/13)
Minutes	38 at Delaware (11/17/11)
FGM	11 vs. Detroit (11/23/12)
FGA	16 vs. Detroit (11/23/12)
FG%	1.000 (3x) last DePaul (1-1) (3/21/11)
3FGM	2 (3x) last at Michigan State (1/6/13)
3FGA	4 vs. Army (12/8/10)
	4 vs. Hartford (11/27/10)
3PT%	1.000 (12x)
	last vs. St. Francis (Pa.) (1-1) (11/8/13)
FTM	9 vs. Iowa (1/22/12)
FTA	10 vs. Iowa (1/22/12)
FT%	1.000 (22x)
	last vs. Fordham (2-2) (11/10/13)
Career Double-Doubles	1
Career 20-point games	2

SEASON HIGHS

Points	23 vs. St. Francis (Pa.) (11/8/13)
Rebs.	4 vs. Fordham (11/10/13)
Assists	4 vs. Fordham (11/10/13)
Steals	3 vs. St. Francis (Pa.) (11/8/13)
Blocks	1 vs. St. Francis (Pa.) (11/8/13)
Minutes	29 vs. St. Francis (Pa.) (11/8/13)
FGM	9 vs. St. Francis (Pa.) (11/8/13)
FGA	12 vs. Fordham (11/10/13)
FG%	.818 (9-11) vs. St. Francis (Pa.) (11/8/13)
3FGM	1 vs. Fordham (11/10/13)
	1 vs. St. Francis (Pa.) (11/8/13)
3FGA	2 vs. Fordham (11/10/13)
3PT%	1.000 (1-1) vs. St. Francis (Pa.) (11/8/13)
FTM	4 vs. St. Francis (Pa.) (11/8/13)
FTA	4 vs. St. Francis (Pa.) (11/8/13)
FT%	1.000 (2-2) vs. Fordham (11/10/13)
	1.000 (4-4) vs. St. Francis (Pa.) (11/8/13)
Double-Doubles	n/a
20-point games	1

BIG TEN CONFERENCE CAREER HIGHS

Points	17 vs. Iowa (1/22/12)
Rebs.	11 vs. Iowa (1/22/12)
Assists	4 at Wisconsin (1/2/12)
Steals	2 vs. Nebraska (12/30/11)
	2 vs. Indiana (1/23/11)
Blocks	2 vs. Nebraska (1/13/13)
Minutes	34 vs. Iowa (1/22/12)
FGM	6 vs. Nebraska (1/13/13)
	6 vs. Wisconsin (2/9/12)
FGA	11 vs. Northwestern (1/3/13)
FG%	1.000 (5x) last vs. Michigan (2-2) (2/24/13)
3FGM	2 vs. Michigan (2/24/13)
	2 at Michigan State (1/6/13)
3FGA	3 vs. Wisconsin (2/9/12)
3PT%	1.000 (5x) last vs. Michigan (2-2) (2/24/13)
FTM	9 vs. Iowa (1/22/12)
FTA	10 vs. Iowa (1/22/12)
FT%	1.000 (9x) last at Minnesota (2-2) (2/28/13)
Double-Doubles	1
20-point games	n/a

#25 PEYTON WHITTED

CAREER HIGHS

Points	4 vs. St. Francis (Pa.) (11/8/13)
Rebs.	3 vs. Fordham (11/10/13)
	3 vs. St. Francis (Pa.) (11/8/13)
Assists	n/a
Steals	n/a
Blocks	1 vs. Fordham (11/10/13)
Minutes	12 vs. St. Francis (Pa.) (11/8/13)
FGM	2 vs. St. Francis (Pa.) (11/8/13)
FGA	3 vs. St. Francis (Pa.) (11/8/13)
FG%	.667 (2-3) vs. St. Francis (Pa.) (11/8/13)
3FGM	n/a
3FGA	1 vs. St. Francis (Pa.) (11/8/13)
3PT%	n/a
FTM	3 vs. Fordham (11/10/13)
FTA	4 vs. Fordham (11/10/13)
FT%	.750 (3-4) vs. Fordham (11/10/13)
Double-Doubles	n/a
20-point games	n/a

SEASON HIGHS

Points	4 vs. St. Francis (Pa.) (11/8/13)
Rebs.	3 vs. Fordham (11/10/13)
	3 vs. St. Francis (Pa.) (11/8/13)
Assists	n/a
Steals	n/a
Blocks	1 vs. Fordham (11/10/13)
Minutes	12 vs. St. Francis (Pa.) (11/8/13)
FGM	2 vs. St. Francis (Pa.) (11/8/13)
FGA	3 vs. St. Francis (Pa.) (11/8/13)
FG%	.667 (2-3) vs. St. Francis (Pa.) (11/8/13)
3FGM	n/a
3FGA	1 vs. St. Francis (Pa.) (11/8/13)
3PT%	n/a
FTM	3 vs. Fordham (11/10/13)
FTA	4 vs. Fordham (11/10/13)
FT%	.750 (3-4) vs. Fordham (11/10/13)
Double-Doubles	n/a
20-point games	n/a

BIG TEN CONFERENCE CAREER HIGHS

Points	n/a
Rebs.	n/a
Assists	n/a
Steals	n/a
Blocks	n/a
Minutes	n/a
FGM	n/a
FGA	n/a
FG%	n/a
3FGM	n/a
3FGA	n/a
3PT%	n/a
FTM	n/a
FTA	n/a
FT%	n/a
Double-Doubles	n/a
20-point games	n/a



Player Performance Charts

#33 MAGGIE LUCAS

CAREER HIGHS

Points	39 vs. Georgetown (12/9/12)
Rebs.	10 vs. Ohio State (2/20/12)
Assists	8 vs. Minnesota (2/26/12)
Steals	6 vs. Georgetown (12/9/12)
Blocks	4 vs. South Dakota St. (12/16/12)
Minutes	40 (5x) last at LSU (3/26/13)
FGM	11 at Nebraska (3/3/13)
	11 vs. Georgetown (12/9/12)
FGA	24 at Minnesota (2/28/13)
FG%	.778 (7-9) at Virginia Tech (12/12/12)
3FGM	8 at Nebraska (3/3/13)
3FGA	13 (5x)
	last vs. Michigan State (3/9/13)
3PT %	1.000 (3-3) vs. Michigan St. (2/10/13)
	1.000 (4-4) at Bucknell (12/21/11)
FTM	16 vs. St. Francis (Pa.) (11/8/13)
FTA	16 vs. St. Francis (Pa.) (11/8/13)
FT %	1.000 (54x)
	last vs. Fordham (5-5) (11/10/13)
Career Double-Doubles	1
Career 20-point games	48
Career 30-point games	5

SEASON HIGHS

Points	33 vs. St. Francis (Pa.) (11/8/13)
Rebs.	8 vs. St. Francis (Pa.) (11/8/13)
Assists	5 vs. St. Francis (Pa.) (11/8/13)
Steals	5 vs. St. Francis (Pa.) (11/8/13)
Blocks	n/a
Minutes	31 vs. St. Francis (Pa.) (11/8/13)
FGM	8 vs. St. Francis (Pa.) (11/8/13)
FGA	18 vs. St. Francis (Pa.) (11/8/13)
FG%	.500 (7-14) vs. Fordham (11/10/13)
3FGM	4 vs. Fordham (11/10/13)
3FGA	6 vs. Fordham (11/10/13)
3PT%	.667 (4-6) vs. Fordham (11/10/13)
FTM	16 vs. St. Francis (Pa.) (11/8/13)
FTA	16 vs. St. Francis (Pa.) (11/8/13)
FT %	1.000 (5-5) vs. Fordham (11/10/13)
	1.000 (16-16) vs. St. Francis (Pa.) (11/8/13)
Double-Doubles	n/a
20-point games	2
30-point games	1

BIG TEN CONFERENCE CAREER HIGHS

Points	34 at Nebraska (3/3/13)
Rebs.	10 vs. Ohio State (2/20/12)
Assists	8 vs. Minnesota (2/26/12)
Steals	5 vs. Northwestern (1/3/13)
Blocks	2 (3x) last vs. Northwestern (1/3/13)
Minutes	40 at Nebraska (3/3/13)
	40 at Michigan State (1/29/12)
FGM	11 at Nebraska (3/3/13)
FGA	24 at Minnesota (2/28/13)
FG%	.769 (10-13) at Michigan (1/26/12)
3FGM	8 at Nebraska (3/3/13)
3FGA	13 at Nebraska (3/3/13)
	13 vs. Michigan State (1/7/12)
3PT%	1.000 (3-3) vs. Michigan State (2/10/13)
FTM	9 vs. Northwestern (1/3/13)
FTA	12 vs. Northwestern (1/3/13)
FT %	1.000 (20x) last at Nebraska (4-4) (3/3/13)
Double-Doubles	1
20-point games	21
30-point games	2

#41 JENNY DeGRAAF

CAREER HIGHS

Points	n/a
Rebs.	2 vs. Fordham (11/10/13)
	2 vs. St. Francis (Pa.) (11/8/13)
Assists	2 vs. St. Francis (Pa.) (11/8/13)
Steals	n/a
Blocks	n/a
Minutes	9 vs. Fordham (11/10/13)
FGM	n/a
FGA	2 vs. St. Francis (Pa.) (11/8/13)
FG%	n/a
3FGM	n/a
3FGA	1 vs. St. Francis (Pa.) (11/8/13)
3PT%	n/a
FTM	n/a
FTA	n/a
FT%	n/a
Double-Doubles	n/a
20-point games	n/a

SEASON HIGHS

Points	n/a
Rebs.	2 vs. Fordham (11/10/13)
	2 vs. St. Francis (Pa.) (11/8/13)
Assists	2 vs. St. Francis (Pa.) (11/8/13)
Steals	n/a
Blocks	n/a
Minutes	9 vs. Fordham (11/10/13)
FGM	n/a
FGA	2 vs. St. Francis (Pa.) (11/8/13)
FG%	n/a
3FGM	n/a
3FGA	1 vs. St. Francis (Pa.) (11/8/13)
3PT%	n/a
FTM	n/a
FTA	n/a
FT%	n/a
Double-Doubles	n/a
20-point games	n/a

BIG TEN CONFERENCE CAREER HIGHS

Points	n/a
Rebs.	n/a
Assists	n/a
Steals	n/a
Blocks	n/a
Minutes	n/a
FGM	n/a
FGA	n/a
FG%	n/a
3FGM	n/a
3FGA	n/a
3PT%	n/a
FTM	n/a
FTA	n/a
FT%	n/a
Double-Doubles	n/a
20-point games	n/a

#44 TORI WALDNER

CAREER HIGHS

Points	7 vs. Fairleigh Dickinson (12/2/12)
Rebs.	10 vs. Wagner (12/18/11)
Assists	4 vs. Indiana (2/2/12)
Steals	3 vs. Michigan State (2/10/13)
Blocks	5 vs. Minnesota (1/24/13)
Minutes	21 vs. UMES (12/11/11)
FGM	3 (5x)
	last vs. Fairleigh Dickinson (12/2/12)
FGA	10 vs. Lafayette (11/18/12)
FG%	1.000 (8x)
	last vs. Michigan State (1-1) (3/9/13)
3FGM	n/a
3FGA	1 vs. Wisconsin (1/17/13)
	1 at LSU (3/20/12)
3PT %	n/a
FTM	6 vs. Howard (11/11/12)
FTA	6 vs. Howard (11/11/12)
FT %	1.000 (4x)
	last vs. Illinois (2-2) (2/20/13)
Career Double-Doubles	n/a
Career 20-point games	n/a

SEASON HIGHS

Points	3 vs. St. Francis (Pa.) (11/8/13)
Rebs.	3 vs. Fordham (11/10/13)
	3 vs. St. Francis (Pa.) (11/8/13)
Assists	n/a
Steals	n/a
Blocks	1 vs. Fordham (11/10/13)
Minutes	18 vs. St. Francis (Pa.) (11/8/13)
FGM	1 vs. Fordham (11/10/13)
	1 vs. St. Francis (Pa.) (11/8/13)
FGA	6 vs. Fordham (11/10/13)
FG%	.500 (1-2) vs. St. Francis (Pa.) (11/8/13)
3FGM	n/a
3FGA	n/a
3PT%	n/a
FTM	1 vs. St. Francis (Pa.) (11/8/13)
FTA	2 vs. St. Francis (Pa.) (11/8/13)
FT%	.500 (1-2) vs. St. Francis (Pa.) (11/8/13)
Double-Doubles	n/a
20-point games	n/a

BIG TEN CONFERENCE CAREER HIGHS

Points	6 (3x) last at Minnesota (2/5/12)
Rebs.	8 vs. Illinois (2/20/13)
Assists	4 vs. Indiana (2/2/12)
Steals	3 vs. Michigan State (2/10/13)
Blocks	5 vs. Minnesota (1/24/13)
Minutes	17 vs. Wisconsin (1/17/13)
FGM	3 at Minnesota (2/5/12)
	3 at Wisconsin (1/2/12)
FGA	5 at Minnesota (2/5/12)
	5 at Illinois (1/19/12)
FG%	1.000 (6x) last vs. Purdue (1-1) (2/4/13)
3FGM	n/a
3FGA	1 vs. Wisconsin (1/17/13)
3PT%	n/a
FTM	2 (3x) last vs. Illinois (2/20/13)
FTA	3 at Michigan State (1/6/13)
FT%	1.000 (3x) last vs. Illinois (2-2) (2/20/13)
Double-Doubles	n/a
20-point games	n/a





COQUESE WASHINGTON

Head Coach
7th Season

PENN STATE LADY LION BASKETBALL

Coquese Washington was introduced as the fifth head coach of the Penn State women's basketball program on April 23, 2007. Washington is the first female African-American head coach in Penn State history.

The Lady Lions continued their return to the national spotlight in 2012-13 as they collected their second-straight Big Ten regular-season title and seventh overall with a 26-6 overall record and 14-2 mark in conference play. In each of Washington's first six years, Penn State has improved their Big Ten win total. The Lady Lions posted their third consecutive 25-win season, joining the 1993-94, 1994-95 and 1995-96 squads as the only teams in program history to accomplish the feat. Penn State also advanced to the second round of the NCAA Tournament with a win over Cal Poly. The Lady Lions were consistently ranked in the Top 10 for most of the season and finished eighth in the Associated Press Top 25 and 12th in the USA Today Sports Coaches' Poll.

With another stellar campaign, the accolades continued to roll in for the Lady Lions. Washington was selected as the Big Ten Coach of the Year by the media for the second-

straight season and became just the fifth mentor in Big Ten history to win back-to-back Coach of the Year accolades. She was also the WBCA Region 6 Coach of the Year and a finalist for WBCA National Coach of the Year for the second-straight season. The awards also piled up for Penn State's dynamic backcourt of Maggie Lucas and Alex Bentley. Lucas was selected as the Big Ten Player of the Year, was a Wade Trophy Finalist and was an All-America choice by four outlets, including the WBCA (honorable mention), Associated Press (second team), USBWA (first team) and Full Court (second team). She is just the third Lady Lion in program history to win Big Ten Player of the Year honors, joining Helen Darling and Kelly Mazzante. Bentley earned her third-straight first team All-Big Ten award and honorable mention All-America bids from the WBCA and Associated Press. She was also selected as the 2013 recipient of the Frances Pomeroy Naismith Award, which is presented to the nation's outstanding female collegian 5-8 and under. Bentley is the third Lady Lion to win the honor, joining Darling and Suzie McConnell. Nikki Greene also capped a stellar career for the Lady Lions with third team All-Big Ten accolades. She also became the first player in school history to accumulate 1,000 points, 900 rebounds and 200 blocks.

Both Bentley and Greene heard their names called on WNBA Draft night. Bentley was selected with the 13th overall pick by the Atlanta Dream to become the highest draft pick for the Lady Lions since Tanisha Wright (12th) in 2005. Greene was the 26th overall selection by the Phoenix Mercury to give Penn State two draft picks for the first time since 2004 (Mazzante, Jess Brungo).

With five graduating seniors in 2012-13, Penn State was stout on the recruiting trail, bringing in a seven-member class that was ranked 14th by ESPN/HoopGurtz. The Lady Lions also added transfer Sierra Moore from Duke to complete the eight-player class. The addition of Moore gives the Lady Lions four McDonald's All-Americans on the roster heading into the 2013-14 campaign, joining Dara Taylor (2009), Lucas (2010) and Candice Agee (2012).

Washington returned the Lady Lions to Big Ten prominence in her fifth season as she guided Penn State to the Big Ten regular-season title with a 13-3 record in conference play. Additionally, the Lady Lions advanced to the NCAA Tournament Sweet Sixteen with wins over UTEP and LSU en route to a 26-7 overall record. The Lady Lions posted back-to-back 20-win seasons for the first time since 2002-03 and 2003-04. It was also the first Big Ten crown and Sweet Sixteen berth for the Lady Lions since 2003-04. The Lady Lions were ranked throughout the season and finished ninth in the ESPN/USA Today Coaches' Poll and 11th in the Associated Press Top 25.

For her efforts in rebuilding the Penn State program, Washington was honored as the Big Ten Coach of the Year and the WBCA Region 6 Coach of the Year, making her a finalist for WBCA National Coach of the Year. The accolades were not just limited to Washington; all five Lady

Washington's Coaching Record vs. Opponents

Arizona	1-0	Michigan	9-3
Army	1-0	Michigan State	4-8
Boston College	0-1	Middle Tennessee	1-0
Bucknell	5-0	Minnesota	6-7
Buffalo	1-0	Mississippi	1-0
Cal Poly	1-0	Monmouth	1-0
CS-Northridge	1-0	Nebraska	3-1
Charlotte	1-0	Nevada	1-0
Connecticut	0-3	NJIT	2-0
Coppin State	1-0	North Carolina	1-0
Dayton	2-1	Northwestern	7-1
Delaware	1-1	Oakland	2-0
DePaul	0-1	Ohio State	4-6
Detroit	1-0	Old Dominion	0-1
Drexel	2-1	Pittsburgh	2-1
Duke	1-0	Prairie View A&M	1-0
Fair. Dickinson	1-0	Purdue	3-8
Fordham	1-0	Rider	1-0
Florida State	0-1	St. Francis (Pa.)	1-0
Georgetown	2-0	South Carolina	4-1
Georgia Tech	0-1	South Dakota St.	1-0
Hartford	1-0	Stony Brook	1-0
Hofstra	0-1	Syracuse	0-1
Holy Cross	1-0	Texas A&M	1-1
Howard	1-0	UTEP	1-0
Illinois	9-3	Texas Tech	1-1
Indiana	5-4	Utah	1-0
Iowa	6-5	Virginia Tech	2-0
Iowa State	1-0	Wagner	1-0
Lafayette	1-0	Washington State	1-0
LSU	1-1	Wisconsin	5-6
Maine	1-0	UW-Green Bay	0-1
UMES	1-0	Xavier	0-1
Miami (Fla.)	0-1		

THE WASHINGTON FILE

COACHING RESUME

2007-pres. - Head Coach, Penn State
 2013 - Asst. Coach, USA Basketball World U. Games
 2013-pres. - Vice President/President-Elect, WBCA
 2012-pres. - Kay Yow Cancer Fund Board of Directors
 2011-pres. - NCAA WBB Issues Committee
 2010-13 - Treasurer, WBCA Executive Committee
 2008-pres. - WBCA Board of Directors
 2009-12 - USA Basketball Women's Jr. National Committee
 2005-07 - Associate Head Coach, Notre Dame
 1999-05 - Assistant Coach, Notre Dame

PLAYING EXPERIENCE

2002-03 - WNBA's Indiana Fever
 2000-02 - WNBA's Houston Comets
 1998-99 - WNBA's New York Liberty
 1997-98 - ABL's Portland Power
 1989-93 - University of Notre Dame

EDUCATION

Notre Dame '92, B.A. History
 Notre Dame Law School '97, Juris Doctorate

AWARDS

- ❖ 2012, 2013 Big Ten Coach of the Year
- ❖ 2012, 2013 WBCA Region 6 Coach of the Year
- ❖ 2012, 2013 WBCA National Coach of the Year Finalist
- ❖ 2011, 2013 BCA Female Coach of the Year
- ❖ 2009 Greater Flint Hall of Fame Inductee
- ❖ 2008 WBCA "Rising Star" Award Winner

FAMILY

Husband: Raynell Brown
 Children: Quenton (8), Rhaiyna (4)

Lion starters earned All-Big Ten recognition, including first team bids for Bentley and Lucas. Both Bentley and Lucas also garnered honorable mention All-America honors from the WBCA and Associated Press, respectively. Bentley became the 33rd player in school history to reach the 1,000-point plateau and just the 15th junior to reach the milestone. Lucas also joined the 1,000-point club in 2011-12, becoming just the third sophomore in program history to accomplish the feat.

On the recruiting trail, the Lady Lions' 2012 class earned a Top 20 class from Dan Olson's Collegiate Girls Basketball Report. The class included transfer Taylor, who sat out the 2011-12 season due to NCAA transfer rules, and McDonald's High School All-American Agee from California. Additionally, Agee earned a gold medal with the USA Basketball U18 National Team Trials at the 2012 FIBA Americas Championship in August.

Washington came to Happy Valley after eight seasons as an associate head coach and assistant coach under Muffet McGraw at Notre Dame, her alma mater. During Washington's eight years on the bench, Notre Dame amassed a 188-69 record with eight NCAA Tournament appearances, including four Sweet Sixteen runs and a National Championship in 2001.

Washington was a four-year starting point guard for Notre Dame under McGraw and was the team captain on Notre Dame's first-ever NCAA Tournament team. She was a two-time All-Midwestern Collegiate Conference (MCC) selection and led Notre Dame to three MCC Tournament titles.

The epitome of a student-athlete, Washington graduated from Notre Dame in 1992, a full year ahead of schedule, with a bachelor's degree in history. She went on to attain "Double Domer" status in 1997 after earning her Juris Doctorate from the Notre Dame Law School.

A native of Flint, Mich., Washington and her husband, Raynell Brown, have a son, Quenton (8), and a daughter, Rhaiyna (4). They reside in Port Matilda, Pa.





#1 Candice Agee

So. * F/C * 6-6 * Victorville, Calif./Silverado

2013-14 Season Highlights:

- ♦ Made her first career start in the season-opener against St. Francis (Pa.) (11/8).

2013-14 Season Notes:

- ♦ Tied her career high eight points to go along with seven rebounds in 15 minutes against Fordham (11/10).
- ♦ Was 3-for-5 from the field en route to seven points and three rebounds in the season-opening win over St. Francis (Pa.) (11/8).
- ♦ Posted six points and eight rebounds in the exhibition win over Lock Haven (10/27).



#2 Dara Taylor

Sr. * G * 5-8 * Wilmington, Del./Caravel Academy (Maryland)

2013-14 Season Notes:

- ♦ Tallied 12 points with two assists and two steals in the win over Fordham (11/10).
- ♦ Started the season in style with 14 points, six assists and three steals in the season opener against St. Francis (Pa.) (11/8).
- ♦ Dished six assists to go along with nine points, six rebounds and two steals in the exhibition win over Lock Haven (10/27).





#5 Talia East

Sr. * F/C * 6-3 * Philadelphia, Pa./Friends' Central School

2013-14 Highlights:

- ♦ Ranks 19th in Penn State history in blocked shots (57).

2013-14 Season Notes:

- ♦ Accounted for six points and two assists against Fordham (11/10).
- ♦ Pitched in eight points and eight rebounds off of the bench in the win over St. Francis (Pa.) (11/8).
- ♦ Was 3-for-4 from the field en route to seven points in 13 minutes in the exhibition win over Lock Haven (10/27).



#10 Keke Sevillian

Fr. * G * 5-7 * Goodrich, Mich./Goodrich

2013-14 Season Notes:

- ♦ Had three points, two rebounds and an assist in the win over Fordham (11/10).
- ♦ Provided a defensive spark with four steals with eight points and three rebounds in her first career game against St. Francis (Pa.) (11/8).
- ♦ Had four points and two assists against Lock Haven (10/27).





#11 Alex Harris

Fr. * F * 6-3 * Lorain, Ohio/Lorain

2013-14 Season Notes:

- ♦ Grabbed six rebounds and blocked a shot in the win over Fordham (11/10).
- ♦ Snagged 10 rebounds to go along with six points and three blocked shots in her first collegiate game against St. Francis (Pa.) (11/8).
- ♦ Pulled in seven rebounds and blocked two shots in the exhibition game against Lock Haven (10/27).



#12 Lindsey Spann

Fr. * G * 5-6 * Laurel, Md./Good Counsel

2013-14 Season Notes:

- ♦ Will miss 2013-14 campaign after tearing her right ACL in a practice during the summer.





#15 Kaliyah Mitchell
Fr. * G/F * 6-2 * Stone Mountain, Ga./Stephenson

2013-14 Season Notes:

- ♦ Accounted for four points and six rebounds, including five on the offensive glass, versus Fordham (11/10).
- ♦ Connected of five of her eight shots from the field on the way to 11 points with six rebounds and a steal in the win over St. Francis (Pa.) (11/8).
- ♦ Nearly posted a double-double with nine points and 10 rebounds in the exhibition win over Lock Haven (10/27).



#20 Infiniti Alston
Fr. * F/C * 6-6 * Baltimore, Md./Digital Harbor

2013-14 Season Notes:

- ♦ Saw her first action of her collegiate career, playing three minutes against Fordham (11/10).
- ♦ Had four points, three rebounds and two blocks in seven minutes against Lock Haven (10/27).





#23 Ariel Edwards
 Sr. * G/F * 6-3 * Elmont, N.Y./Christ the King

2013-14 Season Notes:

- ♦ Was 7-for-12 from the field en route to 17 points with four rebounds, four assists and two steals in the win over Fordham (11/10).
- ♦ Matched her uniform number with 23 points on 9-of-11 shooting from the field and added three steals and two assists in the season opener against St. Francis (Pa.) (11/8).
- ♦ Drained 7-of-10 shots from the field and was a perfect 7-for-7 from the free throw line en route to a game-high 21 points in the exhibition win over Lock Haven (10/27).



#25 Peyton Whitted
 Fr. * G/F * 6-3 * Suwanee, Ga./North Gwinnett

2013-14 Season Notes:

- ♦ Had three points and three rebounds against Fordham (11/10).
- ♦ Chipped in four points and three rebounds in the win over St. Francis (Pa.) (11/8).
- ♦ Connected on 4-of-7 shots from the field en route to 11 points in exhibition action against Lock Haven (10/27).





#33 Maggie Lucas

Sr. * G * 5-10 * Narberth, Pa./Germantown Academy

2013-14 Highlights:

- ♦ 2013 Big Ten Preseason Player of the Year.
- ♦ On the Wade Trophy and Wooden Award Preseason Watch Lists.
- ♦ Named to Big Ten Weekly Honor Roll (Nov. 12).
- ♦ Named preseason All-America second team by the Associated Press and espnW.
- ♦ Seventh in school history in scoring (1,894).
- ♦ Second in Big Ten and Penn State history in three-point field goals made (297).
- ♦ Tied for 16th in program history in steals (182).
- ♦ Tied the school record for free throw percentage (min. 15 att.) in a game with a 16-for-16 night at the charity stripe against St. Francis (Pa.) (11/8). Ties the mark set by Jess Strom (15-15; Minnesota, 1/30/05) and Brianne O'Rourke (15-15; Duke, 12/2/07). It is the most attempts in school history by someone with a perfect percentage from the free throw line.

2013-14 Season Notes:

- ♦ Hit four three-pointers and finished with 23 points with five rebounds against Fordham (11/10).
- ♦ Connected on all 16 of her free throws en route to a game-high 33 points in the win over St. Francis (Pa.) (11/8). Also had eight rebounds, five assists and five steals in 31 minutes of action.
- ♦ Had 19 points, four assists and three steals in the exhibition win over Lock Haven (10/27).



#35 Sierra Moore

RS-So. * G * 5-11 * Hanover, Pa./Delone Catholic (Duke)

2013-14 Season Notes:

- ♦ Will sit out the 2013-14 season due to NCAA transfer rules after transferring from Duke.

2012-13 Season (at Duke):

- ♦ Played in 25 games in her rookie campaign and averaged 2.5 points and 1.0 rebounds per game for the Blue Devils.
- ♦ Tallied 12 assists and 11 blocks in 2012-13 .. Shot 44.8% (26-58) from the field.
- ♦ Chipped in five points, two rebounds and an assists against Clemson (1/10).
- ♦ Notched four points and a rebound in her first career ACC game against Boston College (1/6).
- ♦ Had eight points and two assists versus Monmouth (12/30).
- ♦ Posted a 10-point, three-assist effort against Cal State-Bakersfield (12/21).
- ♦ Made all three of her shots from the field en route to six points with a block versus Xavier (11/25).
- ♦ Scored six points and had two rebounds in the win over Valparaiso (11/23).
- ♦ Tallied seven points and five rebounds against Iona (11/18).
- ♦ Accounted for six points, three rebounds and a pair of steals in her first collegiate game against Presbyterian (11/17).

High School:

- ♦ Was the 21st-rated player by Blue Star Report, 26th by Peach State Hoops and 49th by ESPN HoopGurlz as a senior in high school.
- ♦ Garnered Gatorade Player of the Year and Associated Press Class AA Player of the Year honors in the state of Pennsylvania as a high school senior year.
- ♦ Was a McDonald's High School All-American in 2011-12.
- ♦ Took home *Parade Magazine* All-America honors as a senior.
- ♦ Four-time *Gettysburg Times* All-Area Player of the Year.
- ♦ Was first team All-State in 2011 and 2010 and was a third team honoree in 2009.
- ♦ Holds the York-Adams Interscholastic Athletic Association (YAIAA) scoring record with 2,595 points at Delone Catholic.
- ♦ Accounted for 1,031 rebounds, 432 assists, 360 steals and 150 blocks for the Squirettes.
- ♦ As a senior, averaged 24.7 points, 3.9 assists, 9.4 rebounds, 2.6 steals and 1.2 blocks to lead Delone Catholic to a 23-6 record and an appearance in the PIAA state quarterfinals.
- ♦ Was also a track standout, finishing in the Top 10 in the State Championships in the 200-meters (7th in 2009 and 2010) and 4x100 relay (4th in 2009).





#41 Jenny DeGraaf
Fr. * G/F * 6-1 * Springboro, Ohio/Springboro

2013-14 Season Notes:

- ♦ Pulled in two rebounds against Fordham (11/10).
- ♦ Had two rebounds against St. Francis (Pa.) (11/8).
- ♦ Scored four points and had two blocks in the exhibition game against Lock Haven (10/27).



#44 Tori Waldner
Jr. * F * 6-5 * Milton, Ga./Milton

2013-14 Highlights:

- ♦ 20th in program history in blocked shots (51).
- ♦ Made her first career start in the season-opener against St. Francis (Pa.) (11/8).

2013-14 Season Notes:

- ♦ Tallied two points, three rebounds and a block versus Fordham (11/10).
- ♦ Notched three points and three rebounds in the season-opening win over St. Francis (Pa.) (11/8).
- ♦ Had six points and six boards against Lock Haven in exhibition action (10/27).



#15/13 Penn State 102, Lock Haven 51 Exhibition Game * Oct. 27, 2013 * University Park, Pa.

Lock Haven 51 • 0-0

#	Player	Total			3-Ptr			Rebounds			PF	TP	A	TO	Blk	Stl	Min
		FG	FGA	FT	FTA	Off	Def	Off	Def	Tot							
15	LANE, Sami	* 3-14	1-3	1-2	0	1	1	2	8	2	5	0	1	34			
21	McDANIEL, Syvae	* 1-2	0-0	1-2	5	2	7	3	3	1	0	0	0	29			
24	MOYER, Marrysa	* 5-14	2-4	5-10	1	6	7	3	17	2	3	0	0	37			
30	McDANIEL, Rachael	* 3-11	1-5	0-0	0	1	1	2	7	0	4	1	0	19			
32	GILDEA, Hannah	* 1-6	0-1	2-4	1	2	3	4	0	1	0	0	0	26			
01	HEYWARD, Shaleta	0-1	0-1	0-0	0	0	0	1	0	0	0	0	0	3			
02	RYAN, Kelsey	0-0	0-0	2-2	2	0	2	1	2	1	0	0	0	4			
04	WARD, Marissa	0-2	0-0	0-0	1	0	1	0	0	1	0	0	0	2			
23	HILLIARD, JJ	1-6	0-3	8-9	1	0	1	4	10	0	3	0	0	15			
25	BREHONY, Alex	0-2	0-0	0-0	0	1	1	0	0	1	0	0	0	14			
40	MORSE, Sydney	0-2	0-0	0-2	0	2	2	4	0	0	1	0	0	13			
44	FARMERY, Dakota	0-0	0-0	0-0	0	1	1	1	0	0	0	0	0	4			
	Team				5	4	9										
	Totals	14-60	4-17	19-31	16	20	36	24	51	7	19	1	1	200			

FG % 1st Half: 7-27 25.9% 2nd half: 7-33 21.2% Game: 14-60 23.3% Deadball Rebounds 8
3FG % 1st Half: 0-2 0.0% 2nd half: 4-15 26.7% Game: 4-17 23.5%
FT % 1st Half: 11-19 57.9% 2nd half: 8-12 66.7% Game: 19-31 61.3%

Penn State 102 • 0-0

#	Player	Total			3-Ptr			Rebounds			PF	TP	A	TO	Blk	Stl	Min
		FG	FGA	FT	FTA	Off	Def	Off	Def	Tot							
01	Agee, Candice	* 3-9	0-0	0-0	6	2	8	2	6	0	3	1	0	17			
02	Taylor, Dara	* 4-10	0-2	1-1	3	3	6	2	9	6	1	0	2	27			
23	Edwards, Ariel	* 7-10	0-0	7-7	1	4	5	0	21	2	1	0	2	23			
33	Lucas, Maggie	* 4-11	3-8	8-8	0	4	4	0	19	4	1	1	3	21			
44	Waldner, Tori	* 2-4	0-0	2-2	5	1	6	3	6	0	2	1	0	12			
05	East, Talia	3-4	0-0	1-2	1	2	3	1	7	0	1	0	0	13			
10	Sevillian, Keke	1-6	0-1	2-2	0	0	0	3	4	2	1	0	1	16			
11	Harris, Alex	0-1	0-0	2-3	1	6	7	2	2	1	1	2	0	17			
15	Mitchell, Kaliyah	3-5	0-1	3-6	3	7	10	4	9	1	3	1	2	15			
20	Alston, Infiniti	2-2	0-0	0-1	2	1	3	2	4	0	1	2	0	7			
25	Whitted, Peyton	4-7	1-3	2-2	1	2	1	1	11	1	0	0	2	19			
41	DeGraaf, Jenny	2-6	0-0	0-0	0	2	2	1	4	0	0	2	0	13			
	Team				2	1	3										
	Totals	35-75	4-15	28-34	25	34	59	21	102	17	15	10	12	200			

FG % 1st Half: 17-43 39.5% 2nd half: 18-32 56.3% Game: 35-75 46.7% Deadball Rebounds 1
3FG % 1st Half: 3-10 30.0% 2nd half: 1-5 20.0% Game: 4-15 26.7%
FT % 1st Half: 16-17 94.1% 2nd half: 12-17 70.6% Game: 28-34 82.4%

Officials: Michael McConnell, Shannon Feck, Kathy Ridilla
Technical fouls: Lock Haven-McDANIEL, Syvae. Penn State-None.
Attendance: 3443

Notable

- Senior guard/forward **Ariel Edwards** registered 21 points to pace the Lady Lions. She scored 14 of her game-best 21 points in the first half.
- Freshman **Peyton Whitted** also reached double figures with 11 points on 4-for-7 shooting.
- Fellow freshman **Kaliyah Mitchell** narrowly tallied a double-double with nine points and 10 boards in 15 minutes of action.

#15/13 Penn State 78, Fordham 61 Game #2 * Nov. 10, 2013 * University Park, Pa.

Fordham 61 • 1-1

#	Player	Total			3-Ptr			Rebounds			PF	TP	A	TO	Blk	Stl	Min
		FG	FGA	FT	FTA	Off	Def	Off	Def	Tot							
01	Rooney, Erin	* 5-14	2-4	8-10	1	5	6	4	20	3	4	0	1	40			
11	Tapio, Emily	* 2-3	0-0	2-2	0	2	2	3	6	0	2	0	0	15			
24	Clark, Samantha	* 4-10	2-4	0-0	1	2	3	4	10	3	0	2	0	22			
25	Missry, Hannah	* 2-8	2-8	0-0	1	3	4	2	6	1	0	0	0	19			
42	Corning, Abigail	* 2-9	0-2	0-0	4	6	10	5	4	7	7	0	2	37			
03	Gjerkes, Alina	1-4	0-1	3-4	1	1	2	0	5	0	1	0	1	15			
12	Nwachukwu, Mary	2-3	0-0	2-2	1	1	2	1	6	0	1	0	0	16			
14	Padovano, Danielle	2-4	0-1	0-0	0	1	1	0	4	0	0	1	0	18			
22	Burns, Danielle	0-4	0-0	0-0	1	1	2	3	0	0	0	0	2	16			
23	Gibson, Khadijah	0-0	0-0	0-0	0	0	0	0	0	0	0	0	0	2			
	Team				3	2	5										
	Totals	20-59	6-20	15-18	13	24	37	22	61	14	16	2	7	200			

FG % 1st Half: 9-27 33.3% 2nd half: 11-32 34.4% Game: 20-59 33.9% Deadball Rebounds 2
3FG % 1st Half: 3-11 27.3% 2nd half: 3-9 33.3% Game: 6-20 30.0%
FT % 1st Half: 7-8 87.5% 2nd half: 8-10 80.0% Game: 15-18 83.3%

Penn State 78 • 2-0

#	Player	Total			3-Ptr			Rebounds			PF	TP	A	TO	Blk	Stl	Min
		FG	FGA	FT	FTA	Off	Def	Off	Def	Tot							
01	Agee, Candice	* 3-5	0-0	2-6	2	5	7	2	8	0	2	0	0	15			
02	Taylor, Dara	* 5-14	2-4	0-0	0	2	2	5	12	2	2	1	2	22			
23	Edwards, Ariel	* 7-12	1-2	2-2	3	1	4	2	17	4	1	0	2	22			
33	Lucas, Maggie	* 7-14	4-6	5-5	1	4	5	2	23	1	1	0	1	29			
44	Waldner, Tori	* 1-6	0-0	0-0	1	2	3	0	2	0	0	1	0	13			
05	East, Talia	2-3	0-0	2-2	2	0	2	2	6	2	1	0	0	17			
10	Sevillian, Keke	1-4	1-3	0-0	0	2	2	3	3	1	2	0	0	17			
11	Harris, Alex	0-2	0-0	0-0	0	6	6	1	0	1	2	1	1	22			
15	Mitchell, Kaliyah	1-4	0-0	2-4	5	1	6	0	4	1	1	0	0	21			
20	Alston, Infiniti	0-0	0-0	0-0	0	0	0	1	0	0	1	0	0	3			
25	Whitted, Peyton	0-2	0-1	3-4	2	1	3	3	0	0	1	0	1	10			
41	DeGraaf, Jenny	0-1	0-0	0-0	0	2	2	0	0	0	0	0	0	9			
	Team				5	1	6										
	Totals	27-67	8-16	16-23	21	27	48	21	78	12	14	4	6	200			

FG % 1st Half: 14-32 43.8% 2nd half: 13-35 37.1% Game: 27-67 40.3% Deadball Rebounds 2
3FG % 1st Half: 5-10 50.0% 2nd half: 3-6 50.0% Game: 8-16 50.0%
FT % 1st Half: 5-6 83.3% 2nd half: 11-17 64.7% Game: 16-23 69.6%

Score by periods	1st	2nd	Total
Fordham	28	33	61
Penn State	38	40	78

Points In Off 2nd Fast
FOR 16 13 9 4
PSU 22 17 13 11

Score tied -- 1 time.
Lead changed -- 0 times.

Notable

- Maggie Lucas** passes Michigan State's Lindsay Bowen (2003-06) for second place on the Big Ten's career three-pointers list (297).
- Sophomore center **Candice Agee** tied her career high with eight points.
- This is the eighth consecutive 2-0 start for the Lady Lions.
- PSU extended its non-con home court to 15 games, tied for the 2nd-longest streak in program history.

#15/13 Penn State 117, St. Francis (Pa.) 77 Game #1 * Nov. 8, 2013 * University Park, Pa.

St. Francis (Pa.) 77 • 0-1

#	Player	Total			3-Ptr			Rebounds			PF	TP	A	TO	Blk	Stl	Min
		FG	FGA	FT	FTA	Off	Def	Off	Def	Tot							
10	TAYLOR, Brooklyn	* 1-11	1-11	1-2	0	5	5	4	4	3	2	0	0	25			
12	BROCK, Aisha	* 3-9	0-4	3-3	1	1	2	3	9	5	3	0	0	22			
23	HAYWARD, Alexa	* 7-14	6-12	0-0	1	1	2	4	20	1	1	0	1	18			
40	WILLIAMS, Alli	* 3-16	1-6	7-11	2	3	5	2	14	0	2	0	0	32			
45	PHILLIPS, Hope	* 0-2	0-2	0-2	1	2	3	4	0	0	1	1	0	16			
02	BLAINE, Erin	3-4	0-1	4-6	0	0	0	3	10	0	8	0	2	17			
11	STOKES, Shaqela	0-5	0-1	0-0	0	1	1	4	0	0	1	0	1	16			
14	ALLISON, Taylor	0-2	0-2	0-0	0	0	0	1	0	0	0	0	0	2			
20	MURPHY, Bridget	2-4	2-2	0-0	0	1	1	2	6	1	6	0	1	16			
24	THOMPSON, Allison	0-1	0-0	0-0	0	0	0	1	0	0	0	0	0	4			
31	KEEGAN, Rebecca	1-1	0-0	0-0	1	3	4	1	2	0	0	0	0	13			
50	BETHEL, Samiah	5-6	0-1	2-5	2	1	3	3	12	2	6	1	1	19			
	Team				6	1	7										
	Totals	25-75	10-42	17-29	14	19	33	32	77	12	30	2	10	200			

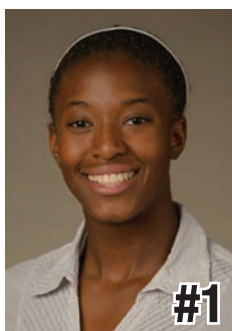
FG % 1st Half: 12-35 34.3% 2nd half: 13-40 32.5% Game: 25-75 33.3% Deadball Rebounds 8
3FG % 1st Half: 4-20 20.0% 2nd half: 6-22 27.3% Game: 10-42 23.8%
FT % 1st Half: 10-18 55.6% 2nd half: 7-11 63.6% Game: 17-29 58.6%

Penn State 117 • 1-0

#	Player	Total			3-Ptr			Rebounds			PF	TP	A	TO	Blk	Stl	Min
		FG	FGA	FT	FTA	Off	Def	Off	Def	Tot							
01	Agee, Candice	* 3-5	0-0	1-1	2	1	3	3	7	1	3	0	1	11			
02	Taylor, Dara	* 4-8	0-1	6-8	0	1	1	2	14	6	3	1	3	22			
23	Edwards, Ariel	* 9-11	1-1	4-4	0	3	3	1	23	2	3	1	3	29			
33	Lucas, Maggie	* 8-18	1-2	16-16	1	7	8	2	33	5	3	0	5	31			
44	Waldner, Tori	* 1-2	0-0	1-2	1	2	3	3	3	0	3	0	0	18			
05	East, Talia	3-6	0-0	2-2	2	6	8	4	8	0	1	0	1	17			
10	Sevillian, Keke	2-6	0-2	4-4	0	3	3	3	8	1	4	0	4	18			
11	Harris, Alex	2-4	0-0	2-4	5	5	10	4	6	0	3	3	1	17			
15	Mitchell, Kaliyah	5-8	0-0	1-2	1	5	6	1	11	1	1	1	1	17			
25	Whitted, Peyton	2-3	0-1	0-0	1	2	3	1	4	0	1	0	0	12			
41	DeGraaf, Jenny	0-2	0-1	0-0	1	1	2	1	0	2	0	0	0	8			
	Team				3	4	7										
	Totals	39-73	2-8	37-43	17	40	57	25	117	18	27	6	19	200			

FG % 1st Half: 18-3

2013-14 RADIO/TV CHART



Candice Agee
6-6 * So./So. * F/C
Victorville, Calif.
Silverado



Dara Taylor
5-8 * 5th-Sr./Sr. * G
Wilmington, Del.
Caravel Academy
(Maryland)



Talia East
6-3 * Sr./Sr. * F/C
Philadelphia, Pa.
Friends' Central School



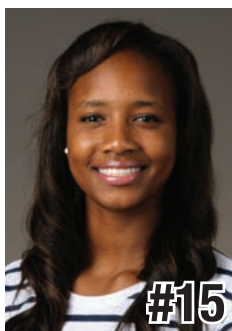
Keke Sevillian
5-7 * Fr./Fr. * G
Goodrich, Mich.
Goodrich



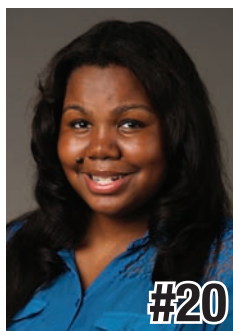
Alex Harris
6-3 * Fr./Fr. * F
Lorain, Ohio
Lorain Southview



Lindsey Spann
5-6 * Fr./Fr. * G
Laurel, Md.
Good Counsel



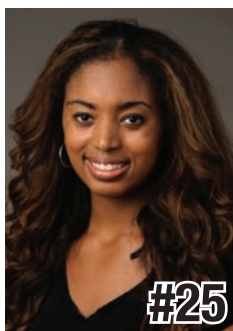
Kaliyah Mitchell
6-2 * Fr./Fr. * G/F
Stone Mountain, Ga.
Stephenson



Infiniti Alston
6-6 * Fr./Fr. * C
Baltimore, Md.
Digital Harbor



Ariel Edwards
6-3 * Sr./Sr. * G/F
Elmont, N.Y.
Christ the King



Peyton Whitted
6-3 * Fr./Fr. * G/F
Suwanee, Ga.
North Gwinnett



Maggie Lucas
5-9 * Sr./Sr. * G
Narberth, Pa.
Germantown Academy



Sierra Moore
5-11 * So./-- * G
Hanover, Pa.
Delone Catholic
Duke



Jenny DeGraaf
6-1 * Fr./Fr. * G/F
Springboro, Ohio
Spring Boro



Tori Waldner
6-5 * Jr./Jr. * F/C
Milton, Ga.
Milton



Coquese Washington
Head Coach
Notre Dame '92
Seventh Season



Fred Chmiel
Assistant Coach
Excelsior College
Fourth Season



Kia Damon
Assistant Coach
Millersville '97
Seventh Season



Maren Walseth
Assistant Coach
Penn State '02
Seventh Season





2013-14 Penn State Women's Basketball
 Penn State Combined Team Statistics (as of Nov 11, 2013)
 All games



RECORD:	OVERALL	HOME	AWAY	NEUTRAL
ALL GAMES	2-0	2-0	0-0	0-0
CONFERENCE	0-0	0-0	0-0	0-0
NON-CONFERENCE	2-0	2-0	0-0	0-0

##	Player	gp-gs	min	avg	Total		3-Point		F-Throw		Rebounds				pf	dq	a	to	blk	stl	pts	avg
					fg-fga	fg%	3fg-fga	3fg%	ft-fa	ft%	off	def	tot	avg								
33	Lucas, Maggie	2-2	60	30.0	15-32	.469	5-8	.625	21-21	1.000	2	11	13	6.5	4	0	6	4	0	6	56	28.0
23	Edwards, Ariel	2-2	51	25.5	16-23	.696	2-3	.667	6-6	1.000	3	4	7	3.5	3	0	6	4	1	5	40	20.0
02	Taylor, Dara	2-2	44	22.0	9-22	.409	2-5	.400	6-8	.750	0	3	3	1.5	7	1	8	5	2	5	26	13.0
15	Mitchell, Kaliyah	2-0	38	19.0	6-12	.500	0-0	.000	3-6	.500	6	6	12	6.0	1	0	2	2	1	1	15	7.5
01	Agee, Candice	2-2	26	13.0	6-10	.600	0-0	.000	3-7	.429	4	6	10	5.0	5	0	1	5	0	1	15	7.5
05	East, Talia	2-0	34	17.0	5-9	.556	0-0	.000	4-4	1.000	4	6	10	5.0	6	0	2	2	0	1	14	7.0
10	Sevillian, Keke	2-0	35	17.5	3-10	.300	1-5	.200	4-4	1.000	0	5	5	2.5	6	0	2	6	0	4	11	5.5
25	Whitted, Peyton	2-0	22	11.0	2-5	.400	0-2	.000	3-4	.750	3	3	6	3.0	4	0	0	1	1	0	7	3.5
11	Harris, Alex	2-0	39	19.5	2-6	.333	0-0	.000	2-4	.500	5	11	16	8.0	5	0	1	5	4	2	6	3.0
44	Waldner, Tori	2-2	31	15.5	2-8	.250	0-0	.000	1-2	.500	2	4	6	3.0	3	0	0	3	1	0	5	2.5
20	Alston, Infiniti	1-0	3	3.0	0-0	.000	0-0	.000	0-0	.000	0	0	0	0.0	1	0	0	1	0	0	0	0.0
41	DeGraaf, Jenny	2-0	17	8.5	0-3	.000	0-1	.000	0-0	.000	1	3	4	2.0	1	0	2	0	0	0	0	0.0
Team											8	5	13				3					
Total.....		2	400		66-140	.471	10-24	.417	53-66	.803	38	67	105	52.5	46	1	30	41	10	25	195	97.5
Opponents.....		2	400		45-134	.336	16-62	.258	32-47	.681	27	43	70	35.0	54	1	26	46	4	17	138	69.0

TEAM STATISTICS	PSU	OPP	Date	Opponent	Score	Att.
SCORING	195	138	11/8/13	ST. FRANCIS (PA.)	w 117-77	3908
Points per game	97.5	69.0	11/10/13	FORDHAM	w 78-61	3834
Scoring margin	+28.5	-	* - Conference game			
FIELD GOALS-ATT	66-140	45-134				
Field goal pct	.471	.336				
3 POINT FG-ATT	10-24	16-62				
3-point FG pct	.417	.258				
3-pt FG made per game	5.0	8.0				
FREE THROWS-ATT	53-66	32-47				
Free throw pct	.803	.681				
F-Throws made per game	26.5	16.0				
REBOUNDS	105	70				
Rebounds per game	52.5	35.0				
Rebounding margin	+17.5	-				
ASSISTS	30	26				
Assists per game	15.0	13.0				
TURNOVERS	41	46				
Turnovers per game	20.5	23.0				
Turnover margin	+2.5	-				
Assist/turnover ratio	0.7	0.6				
STEALS	25	17				
Steals per game	12.5	8.5				
BLOCKS	10	4				
Blocks per game	5.0	2.0				
ATTENDANCE	7742	0				
Home games-Avg/Game	2-3871	0-0				
Neutral site-Avg/Game	-	0-0				

Score by Periods	1st	2nd	Totals
Penn State	93	102	195
Opponents	66	72	138



2013-14 Penn State Women's Basketball
Penn State Category Leaders (as of Nov 11, 2013)
All games



Points	G	Pts	Pts/G
Lucas, Maggie	2	56	28.0
Edwards, Ariel	2	40	20.0
Taylor, Dara	2	26	13.0
Mitchell, Kaliyah	2	15	7.5
Agee, Candice	2	15	7.5
East, Talia	2	14	7.0
Sevillian, Keke	2	11	5.5
Whitted, Peyton	2	7	3.5
Harris, Alex	2	6	3.0
Waldner, Tori	2	5	2.5

Scoring Average	G	Pts	Avg/G
Lucas, Maggie	2	56	28.0
Edwards, Ariel	2	40	20.0
Taylor, Dara	2	26	13.0
Agee, Candice	2	15	7.5
Mitchell, Kaliyah	2	15	7.5
East, Talia	2	14	7.0
Sevillian, Keke	2	11	5.5
Whitted, Peyton	2	7	3.5
Harris, Alex	2	6	3.0
Waldner, Tori	2	5	2.5
Alston, Infiniti	1	0	0.0
DeGraaf, Jenny	2	0	0.0

FG Percentage	FG	Att	Pct
Edwards, Ariel	16	23	.696
Agee, Candice	6	10	.600
East, Talia	5	9	.556
Mitchell, Kaliyah	6	12	.500
Lucas, Maggie	15	32	.469
Taylor, Dara	9	22	.409
Whitted, Peyton	2	5	.400
Harris, Alex	2	6	.333
Sevillian, Keke	3	10	.300
Waldner, Tori	2	8	.250
DeGraaf, Jenny	0	3	.000

Field Goal Attempts	G	Att	Att/G
Lucas, Maggie	2	32	16.0
Edwards, Ariel	2	23	11.5
Taylor, Dara	2	22	11.0
Mitchell, Kaliyah	2	12	6.0
Agee, Candice	2	10	5.0
Sevillian, Keke	2	10	5.0

Field Goals Made	G	Made	Made/G
Edwards, Ariel	2	16	8.0
Lucas, Maggie	2	15	7.5
Taylor, Dara	2	9	4.5
Mitchell, Kaliyah	2	6	3.0
Agee, Candice	2	6	3.0

3-Point Percentage	3FG	Att	Pct
Edwards, Ariel	2	3	.667
Lucas, Maggie	5	8	.625
Taylor, Dara	2	5	.400
Sevillian, Keke	1	5	.200
Whitted, Peyton	0	2	.000
DeGraaf, Jenny	0	1	.000

3-Point FG Attempts	G	Att	Att/G
Lucas, Maggie	2	8	4.0
Taylor, Dara	2	5	2.5
Sevillian, Keke	2	5	2.5
Edwards, Ariel	2	3	1.5
Whitted, Peyton	2	2	1.0

3-Point FG Made	G	Made	Made/G
Lucas, Maggie	2	5	2.5
Edwards, Ariel	2	2	1.0
Taylor, Dara	2	2	1.0
Sevillian, Keke	2	1	0.5

Free Throw Percent	FG	Att	Pct
East, Talia	4	4	1.000
Edwards, Ariel	6	6	1.000
Lucas, Maggie	21	21	1.000
Sevillian, Keke	4	4	1.000
Whitted, Peyton	3	4	.750
Taylor, Dara	6	8	.750
Mitchell, Kaliyah	3	6	.500
Waldner, Tori	1	2	.500
Harris, Alex	2	4	.500
Agee, Candice	3	7	.429

Free Throw Attempts	G	Att	Att/G
Lucas, Maggie	2	21	10.5
Taylor, Dara	2	8	4.0
Agee, Candice	2	7	3.5
Mitchell, Kaliyah	2	6	3.0
Edwards, Ariel	2	6	3.0

Free Throws Made	G	Made	Made/G
Lucas, Maggie	2	21	10.5
Taylor, Dara	2	6	3.0
Edwards, Ariel	2	6	3.0
East, Talia	2	4	2.0
Sevillian, Keke	2	4	2.0



2013-14 Penn State Women's Basketball
 Penn State Category Leaders (as of Nov 11, 2013)
 All games



Rebounds	G	Reb	Reb/G
Harris, Alex	2	16	8.0
Lucas, Maggie	2	13	6.5
Mitchell, Kaliyah	2	12	6.0
East, Talia	2	10	5.0
Agee, Candice	2	10	5.0

Rebound Average	G	Reb	Avg/G
Harris, Alex	2	16	8.0
Lucas, Maggie	2	13	6.5
Mitchell, Kaliyah	2	12	6.0
Agee, Candice	2	10	5.0
East, Talia	2	10	5.0

Offensive Rebounds	G	No.	Avg/G
Mitchell, Kaliyah	2	6	3.0
Harris, Alex	2	5	2.5
Agee, Candice	2	4	2.0
East, Talia	2	4	2.0
Whitted, Peyton	2	3	1.5
Edwards, Ariel	2	3	1.5

Defensive Rebounds	G	No.	Avg/G
Harris, Alex	2	11	5.5
Lucas, Maggie	2	11	5.5
East, Talia	2	6	3.0
Agee, Candice	2	6	3.0
Mitchell, Kaliyah	2	6	3.0

Fouls	G	No.	Per/G
Taylor, Dara	2	7	3.5
Sevillian, Keke	2	6	3.0
East, Talia	2	6	3.0
Harris, Alex	2	5	2.5
Agee, Candice	2	5	2.5

Foulsouts	G	No.
Taylor, Dara	2	1

Assists	G	No.	Ast/G
Taylor, Dara	2	8	4.0
Lucas, Maggie	2	6	3.0
Edwards, Ariel	2	6	3.0
East, Talia	2	2	1.0
DeGraaf, Jenny	2	2	1.0
Mitchell, Kaliyah	2	2	1.0
Sevillian, Keke	2	2	1.0

Steals	G	No.	Stl/G
Lucas, Maggie	2	6	3.0
Taylor, Dara	2	5	2.5
Edwards, Ariel	2	5	2.5
Sevillian, Keke	2	4	2.0
Harris, Alex	2	2	1.0

Blocked Shots	G	No.	Blk/G
Harris, Alex	2	4	2.0
Taylor, Dara	2	2	1.0
Edwards, Ariel	2	1	0.5
Waldner, Tori	2	1	0.5
Whitted, Peyton	2	1	0.5
Mitchell, Kaliyah	2	1	0.5

Minutes	G	No.	Min/G
Lucas, Maggie	2	60	30.0
Edwards, Ariel	2	51	25.5
Taylor, Dara	2	44	22.0
Harris, Alex	2	39	19.5
Mitchell, Kaliyah	2	38	19.0

Turnovers	G	No.	TO/G
Sevillian, Keke	2	6	3.0
Agee, Candice	2	5	2.5
Harris, Alex	2	5	2.5
Taylor, Dara	2	5	2.5
Lucas, Maggie	2	4	2.0
Edwards, Ariel	2	4	2.0