

PENN STATE

SOFTBALL



2014

GoPSUsports.com | ONE TEAM

2014 SCHEDULE

FEBRUARY

Fri. 7	!	vs. Oregon State	L, 12-10
	!	vs. Appalachian State	W, 10-6
Sat. 8	!	vs. Bradley	W, 5-3
	!	at No. 7 Arizona State	L, 9-1 (6)
Sun. 9	@	vs. Seattle	W, 6-1
Sun. 16	@	vs. George Washington	W, 9-1 (5)
	@	vs. Northwestern	L, 11-1 (5)
Mon. 17	@	at No. 21 LSU (DH)	L, 11-3 (5)
	@	at No. 21 LSU (DH)	W, 6-5
Fri. 21	#	vs. No. 5 Kentucky	L, 12-0
	#	at Florida Atlantic	L, 3-2 (8)
Sat. 22	#	vs. Pitt	L, 3-1
	#	at Florida Atlantic	L, 3-2
Sun. 23	#	vs. No. 5 Kentucky	L, 8-1

MARCH

Sat. 1	\$	vs. Kent State	L, 9-1 (5)
	\$	vs. Dartmouth	L, 6-3
Sun. 2	\$	vs. Fairfield	Cancelled
	\$	at James Madison	Cancelled
Fri. 14	%	vs. Rutgers	4:30 p.m.
	%	vs. Central Connecticut St.	6:45 p.m.
Sat. 15	%	vs. Wagner	9:30 a.m.
	%	vs. Yale	11:45 a.m.
Sun. 16	%	vs. No. 12 Baylor	9 a.m.
Fri. 21	*	PURDUE	6 p.m.
Sat. 22	*	PURDUE	3 p.m.
Sun. 23	*	PURDUE	1 p.m.
Fri. 28	*	MICHIGAN	6 p.m.
Sat. 29	*	MICHIGAN	3 p.m.
Sun. 30	*	MICHIGAN	1 p.m.

APRIL

Wed. 2		SAINT FRANCIS (Pa.) (DH)	5 p.m.
		SAINT FRANCIS (Pa.) (DH)	7 p.m.
Fri. 4	*	at Michigan State	5 p.m.
Sat. 5	*	at Michigan State	1 p.m.
Sun. 6	*	at Michigan State	1 p.m.
Fri. 11	*	at Indiana	5 p.m.
Sat. 12	*	at Indiana	1 p.m.
Sun. 13	*	at Indiana	1 p.m.
Wed. 16		BUCKNELL (DH)	6 p.m.
		BUCKNELL (DH)	8 p.m.
Fri. 18	*	WISCONSIN	6 p.m.
Sat. 19	*	WISCONSIN (DH)	1 p.m.
	*	WISCONSIN (DH)	3 p.m.
Wed. 23	*	at Ohio State (DH)	5 p.m.
	*	at Ohio State	7 p.m.
Fri. 25	*	at Minnesota	7 p.m.
Sat. 26	*	at Minnesota	2 p.m.
Sun. 27	*	at Minnesota	2 p.m.
Wed. 30		PITT (DH)	5 p.m.
		PITT (DH)	7 p.m.

MAY

Fri. 2	*	ILLINOIS	6 p.m.
Sat. 3	*	ILLINOIS	3 p.m.
Sun. 4	*	ILLINOIS	10:30 a.m.
8-11		Big Ten Tournament	TBA

! Kajikawa Classic, Tempe, Ariz.
 @ Tiger Invitational, Baton Rouge, La.
 # FAU Invitational, Boca Raton, Fla.
 \$ JMU Invitational, Harrisonburg, Va.
 % Michele Smith Spring Break Tournament, Clearwater, Fla.
 * Big Ten contest | All times Eastern
 Home games in CAPS at Nittany Lion Softball Park

PENN STATE NITTANY LIONS

(5-11)



Games 15-18 • March 1-2 • Veterans Memorial Park • Harrisonburg, Va.



Series Record... 22-19	Series Record..... 0-1	Series Record..... 1-1	Series Record..... 0-0	Series Record..... 0-0
Last Mtg..... 3/11/12	Last Mtg..... 3/10/12	Last Mtg..... 2/6/09	Last Mtg..... N/A	Last Mtg..... N/A
Result..... L, 0-9	Result..... L, 3-4	Result..... L, 0-1	Results..... N/A	Results..... N/A
Site..... Tampa, Fla.	Site..... Tampa, Fla.	Site..... Tempe, Ariz.	Site..... N/A	Site..... N/A

TOURNAMENT INFORMATION

VENUE Eddie C. Moore Complex
COVERAGE GoPSUsports.com (Live Stats)
NEXT SERIES March 21-23 vs. Purdue, University Park, Pa.

TOURNAMENT NOTES

- Penn State goes 0-2 at the JMU Invitational
- Lions move to 5-11 on the season
- PSU travels to Clearwater, Fla. for the Michele Smith Spring Break Tournament
- Lions look to snap seven-game losing streak
- Sophomore Lexi Knief leads the team in runs (14) and hits (19)
- Senior Kasie Hatfield is tied for second in the Big Ten standings with seven doubles
- Hatfield ranks 25th in nation in doubles/game (0.44)
- Penn State opens weekend against future Big Ten foe Rutgers
- The Lions are 22-19 vs. Rutgers all-time
- Penn State will face both Yale and Baylor for the first time in program history

2014 STAT LEADERS

RUNS	Lexi Knief	14	WALKS	Lexi Knief	11
	Alyssa Sovereign	13		Reina Furuya	10
	Macy Jones	9		Macy Jones	9
HITS	Lexi Knief	19	ERA	Marlaina Laubach	3.18
	Kasie Hatfield	15		Christy Von Pusch	7.47
	Macy Jones	14		Marissa Diescher	8.65
RBIs	Karlie Habitz	16	STRIKEOUTS	Marlaina Laubach	25
	Macy Jones	12		Marissa Diescher	15
	Kasie Hatfield	8		Macy Jones	12
BATTING AVG (30 at-bat minimum)	Lexi Knief	.388	INNINGS PITCHED	Marlaina Laubach	44.0
	Kasie Hatfield	.341		Macy Jones	19.2
	Macy Jones	.333		Marissa Diescher	17.2



QUICK FACTS

ATHLETIC COMMUNICATIONS

Softball Contact Kellie O'Brien
 Office Phone 814-863-1377
 Cell Phone 814-321-5119
 Email kbo2@psu.edu
 Fax 814-863-3165
 Mailing Address 101 Bryce Jordan Center
 University Park, Pa. 16802

COACHING STAFF

Head Coach Amanda Lehotak (1st Year)
 Alma Mater Nebraska-Omaha '03
 Overall Record 188-206 (.477)
 Record at Penn State 0-0 (.000)
 Email ajl22@psu.edu
 Assistant Coach Megan Gibson (1st Year)
 Alma Mater Texas A&M '08
 Email mlg36@psu.edu
 Assistant Coach Joe Guthrie (First Year)
 Alma Mater Alabama '01
 Email jwg23@psu.edu
 Office Phone (814) 865-0936
 Office Fax (814) 863-8120
 Office 302 Nittany Lion Softball Park
 Park Avenue
 University Park, Pa. 16802

TEAM INFORMATION

2013 Overall Record 16-34
 2013 Big Ten Record (Finish) 5-17 (11th)
 Starters Returning/Lost 4/5
 Position Players Returning/Lost 10/7
 Pitchers Returning/Lost 3/2
 Letterwinners Returning/Lost 14/8
 Newcomers 5
 Facebook PennStateSoftball
 Twitter/Instagram @PennStateSB

PROGRAM HISTORY

First Varsity Year 1965
 All-Time Record 921-877-3 (.512)
 All-Time Big Ten Record 173-299-1 (.348)
 NCAA Postseason Appearances 10
 All-Time NCAA Tournament Record 12-20
 NFCA All-Americans 4
 Academic All-Americans 13
 First Team All-Big Ten Selections 10
 Second Team All-Big Ten Selections 20
 Third Team All-Big Ten Selections 22

PENN STATE UNIVERSITY

Location University Park, Pa.
 Founded 1855
 Enrollment 44,679
 Nickname Nittany Lions
 Colors Blue and White
 Conference Big Ten Conference
 Home Facility Nittany Lion Softball Park (1,084)
 President Dr. Rodney Erickson
 Director of Athletics Dr. Dave Joyner
 Senior Women's Administrator Charmelle Green
 Faculty Representative Dr. Linda Caldwell
 Athletics Website www.GoPSUsports.com

UP TO BAT

The Nittany Lions close out their tournament slate this weekend, traveling to Clearwater, Fla. to compete in USF's Michele Smith Spring Break Tournament. Penn State opens the weekend against future Big Ten member Rutgers and will face Central Connecticut State, Wagner, Yale and No. 12 Baylor over the three-day competition.

ON DECK

Penn State hosts Purdue for a three-game series in the Nittany Lions' Big Ten and home opener next weekend. The opener is slated for a 6 p.m. start on Friday at Nittany Lion Park and Beard Field.

LAST TIME OUT

The Nittany Lions dropped its only two contests at the JMU Invitational to Kent State and Dartmouth. PSU fell to Kent State, 9-1, in five innings before dropping a 6-3 decision to Dartmouth. Their final two games of the weekend were cancelled due to inclement weather.

IN THE ZONE

Sophomore Lexi Knief is the top hitter for the Nittany Lions so far this season, having recorded a team-high 19 hits on 49 at-bats for a .388 clip. She has totaled four RBIs, a team-best 14 runs and has two doubles and a triple to her name.

The center fielder has already surpassed her total of 11 runs from last season.

FORCE OF THE FROSH

Freshman Shelby Miller has proven to be a key player for the Lions both offensively and defensively. The Sugar Land, Texas native owns a batting average of .391 with a 9-for-23 mark at the plate. She has earned 10 starts in right field in her rookie campaign.

LAU OF THE LAND

Freshman pitcher Marlaina Laubach has taken over in the circle for Penn State, earning wins in four of PSU's five victories, including a signature win over No. 21 LSU.

The Northampton, Pa. native has a team-best ERA of 3.18 through 44.0 innings. She has thrown 25 strikeouts on the season, including a season-high six in last weekend's game vs. FAU (2/21).

DOUBLING UP

Senior Kasie Hatfield is currently tied for second in the league in doubles, having already notched seven this season. The Tampa, Fla. native is on pace to surpass her previous season-best of eight doubles from 2012.

REVIEWING RUTGERS

The Scarlet Knights enter the weekend at 5-7 overall and have lost their last two contests. Rutgers last defeated the College of Charleston, 11-3, on Feb. 23.

Senior Loren Williams and junior Jackie Bates have set the pace for the Knights offense the season and own batting averages of .455 and .324, respectively. Williams has gone 20-for-44 at the plate with 11 runs and seven RBIs while Bates has put together a 12-for-37 effort so far with six runs and 14 RBIs.

Junior Alyssa Landrith leads Rutgers' pitching efforts with an ERA of 2.33. The pitcher has thrown 47 strikeouts in 42.0 innings in the circle.

SCOUTING CCSU

The Blue Devils are 5-3 heading into the weekend and are on a three-game winning streak. Central Connecticut State defeated St. Bonaventure twice and Iona once in their last outing at the Hampton Tournament.

Kat Malcom and Alexis Debrosse are the top hitters for the Blue Devils. Malcom is hitting at a .385 clip for CCSU with a team-high 10 hits on 26 at-bats. Debrosse owns a .381 batting average with five runs and a team-best eight RBIs.

Laura Messina leads the Blue Devils in the circle with an ERA of 0.66. The junior has given up just three runs in 32.0 innings and has struck out 43 opponents.

STAKING OUT THE SEAHAWKS

Wagner comes into the tournament with a 4-8 record. The Seahawks went 2-2 in their last outing at George Washington's Colonials Tournament, defeating Howard twice and falling to Binghamton and GWU.

Junior Kelsey Parker and freshman Taylor Beeson are leading the charge for the Seahawks offensively. Parker is hitting at a .417 clip with 15 hits on 36 at-bats and had driven in 14 runs while Beeson owns a batting average of .361 and is 13-for-36 at the plate with 11 runs and eight RBIs.

McKaleigh Goodhale is the top pitcher for Wagner as she sports a 3.54 ERA. The freshman has thrown 21 strikeouts in 28 innings on the rubber.



ABOUT THE BULLDOGS

Yale sits at 1-6 on the year. The Bulldogs' lone victory came on Feb. 23 in a 4-1 decision against Farleigh Dickinson.

Tori Balta leads Yale at the plate with a batting average of .320. The senior has registered eight hits on 25 at-bats and has three doubles to her name.

The Bulldogs are led in the circle by freshman Lindsay Eddlandt. The rookie owns an ERA of 1.31 through 10.2 innings and has thrown 8 strikeouts.

BREAKING DOWN BAYLOR

The Bears enter the weekend as the No. 12 team in the country according to the latest NFCA poll and own a record of 17-4. They have not dropped a contest since losing to Louisiana-Lafayette on Feb. 28 in an 11-10 decision.

Junior Kaitlyn Thumann and redshirt sophomore Linsey Hays are the driving force behind Baylor's offense. Thumann is hitting at an impressive .485 clip with 33 hits on 68 at-bats. Hays owns a batting average of .380 and is 18-for-50 at the plate with eight runs and 18 RBIs.

The duo of Heather Stearns and Whitney Canion leads the Bears on the rubber with both holding ERAs under 2.0. Stearns has an ERA of 1.20 through 41.0 innings and has struck out 46 opponents while Canion owns an ERA of 1.57 through 71.1 innings with 89 strikeouts.

TAKING DOWN THE TIGERS

The Nittany Lions earned their biggest win of the season on Feb. 17 as they took down No. 21 LSU in the second game of a doubleheader. Sophomore Macy Jones posted two RBIs and one run in the win and freshman Shelby Miller went 2-for-4 at the plate with one run to lead Penn State to a 6-5 victory over the Tigers.

Pitcher Marlaina Laubach also played a significant role in the victory, recording three strikeouts in her third complete game for PSU. The freshman moved to a perfect 4-0 on the season with the win.

WALK IT OUT

Penn State registered a new single-game record in the win over George Washington on Feb. 16 as the Lions were walked a total of 15 times in just five innings.

The 15 walks crushed the previous record of 11 free passes set last season against Northwestern (4/20). Penn State has already amassed 60 walks in 14 games this season, more than one third of the total from 2013 (151).

HOT START

Penn State opened up the 2014 slate with a winning record for the first time since 2010. The Lions posted a 3-2 record in the opening weekend of action at the Kajikawa Classic in Tempe, Ariz.

PSU fell to Oregon State, 12-10, in the opener before taking back-to-back wins against Appalachian State (10-4) and Bradley (5-3). The Blue and White dropped a contest to No. 7 Arizona State, 9-1, but closed out the tournament on a high note, dominating Seattle in a 6-1 decision.

EYES ON THE PRIZE

The 2014 PSU squad looks to return to postseason action after missing out on the NCAA Tournament in 2012 and 2013. Seniors Alyssa Sovereign, Liz Presto and Kasie Hatfield will lead the charge while juniors Marissa Diescher, Alicia Walker and Meghan Bradley also add experience to the young team which features eight sophomores and five freshmen.

In the outfield, sophomore Lexi Knief has moved to the center field position while Walker, sophomores Taylor Abeyta and Shannon Good and freshman Mary Ward are battling for the right and left field starting positions.

New faces are abundant in the infield as well as Sovereign moves into the second base spot while freshman Kristina Brackpool takes over first base responsibilities. Sophomore Reina Furuya will return at shortstop and Presto and freshman Sam Shanahan are each looking strong for the third baseman spot.

Macy Jones returns as the top pitcher and hitter for the Blue and White. The sophomore spun 175.0 innings, turning a 3.84 ERA in her rookie season and finished with a 13-17 record. Jones hit at a .274 clip a season ago, driving in 28 runners on 40 hits.

FRESH FACES

The Nittany Lions welcome five freshmen for the 2014 season. Kristina Brackpool joins the Blue and White from Valencia, Calif., Shelby Miller hails from Sugar Land, Texas and Sam Shanahan has traveled to Happy Valley from Seattle, Wash. Marlaina Laubach and Mary Ward join the Lions as local additions from Northampton, Pa. and Greencastle, Pa., respectively.

SERIES HISTORIES

vs. RUTGERS			
All-Time Series			22-19
PSU Streak			L1
First Meeting			4/5/80, L 2-7
Last Meeting			3/11/12, L 0-9
Previous Five Meetings			
3/11/12	N	L	0-9
3/12/05	N	W	10-0
3/8/03	N	W	8-0
3/26/00	N	W	6-5
3/27/99	N	W	6-3
vs. CENTRAL CONN. STATE			
All-Time Series			0-1
PSU Streak			L1
First Meeting			3/10/12, L 3-4
Previous Meetings			
3/10/12	N	L	3-4
vs. WAGNER			
All-Time Series			1-1
PSU Streak			L1
First meeting			3/14/03, W 10-0
Previous Meetings			
2/6/09	N	L	0-1
3/14/03	N	W	10-0
vs. YALE			
All-Time Series			First Meeting
vs. BAYLOR			
All-Time Series			First Meeting

FIERCE COMPETITION

Six of Penn State's 2014 opponents are listed in the current USA Today/NFCA poll, including No. 8 Michigan. Other opponents include Arizona State (No. 7), Kentucky (No. 9), Baylor (No. 12), Minnesota (No. 18) and Northwestern (No. 25) while LSU has received votes. Six of the seven programs are also represented in the current ESPN.com/USA Softball rankings.

BRING IT HOME

The Nittany Lions open the 2014 season with a 24-game road swing. The home opener will double as the Big Ten opener as PSU is set to host Purdue for its first game at Nittany Lion Softball Park and Beard Field in on Friday, March 21. The first pitch is set for 6 p.m.



2014 PENN STATE SOFTBALL



USA TODAY/NFCA March 11, 2014

No.	Team	Record	Last
1.	Florida (27)	24-1	1
2.	Oregon (2)	18-2	2
3.	UCLA (3)	23-1	4
4.	Tennessee	21-2	3
5.	Washington	19-4	6
6.	Arizona	23-3	7
7.	Arizona State	26-3	10
8.	Michigan	16-6	5
9.	Kentucky	18-3	8
10.	Alabama	20-4	11
11.	Florida State	20-3	9
12.	Baylor	17-4	12
13.	Texas A&M	19-5	13
14.	South Alabama	19-3	14
15.	Georgia	21-2	18
16.	Missouri	13-5	15
17.	Nebraska	15-8	16
18.	Minnesota	17-3	17
19.	Oklahoma	17-6	19
20.	Tulsa	18-3	20
21.	Stanford	22-6	22
22.	Notre Dame	17-4	21
23.	Louisiana-Lafayette	15-5-1	23
24.	Auburn	19-4-1	RV
25.	Northwestern	15-5	RV

RV: LSU (25), DePaul (11), Mississippi State (11), USC Upstate (10), Hofstra (4), Arkansas (3), USF (3), Louisville (2), N.C. State (2), San Diego State (2), Fresno State (1), James Madison (1)

ESPN.COM/USA SOFTBALL March 11, 2014

No.	Team	Record	Last
1.	Florida (14)	24-1	1
2.	Tennessee (2)	21-2	2
3.	UCLA (4)	23-1	3
4.	Oregon	18-2	5
5.	Arizona State	26-3	7
6.	Washington	19-4	6
7.	Michigan	16-6	4
8.	Arizona	23-3	8
9.	Alabama	20-4	11
10.	Florida State	20-3	9
11.	Kentucky	18-3	10
12.	Baylor	17-4	12
13.	Oklahoma	17-6	13
14.	Nebraska	15-8	14
15.	Texas A&M	19-5	16
16.	South Alabama	19-3	15
17.	Georgia	21-2	19
18.	Missouri	13-5	18
19.	Stanford	22-6	17
20.	Tulsa	18-3	21
21.	Minnesota	17-3	20
22.	Notre Dame	17-4	22
23.	Auburn	19-4-1	RV
24.	Louisiana-Lafayette	15-5-1	24
25.	LSU	17-8	23

RV: USC Upstate, South Florida, **Northwestern**, Arkansas, Mississippi State, DePaul, San Diego State, Louisville, North Carolina

Bold indicates 2014 opponent

2014 PENN STATE RECORDS (As of 3/1/14)

Stat	Record
Overall	5-11
Conference	0-0
Non-Conf	5-11
Home	0-0
Away	1-4
Neutral	4-7
Day	3-9
Night	2-2
vs Left	1-1
vs Right	4-10
1-Run games	1-2
2-Run games	1-2
5+Run games	3-6
Extra inns	0-1
Shutouts	0-1
Scoring 0-2 runs	0-8
Scoring 3-5 runs	1-2
Scoring 6-9 runs	3-0
Scoring 10+ runs	1-1
Opponent 0-2 runs	2-0
Opponent 3-5 runs	3-4
Opponent 6-9 runs	0-4
Opponent 10+ runs	0-3
Scored in 1st inning	3-5
Scores first	4-4
Opp. scores first	1-7
After 4 leading	4-3
After 4 trailing	1-7
After 4 tied	0-1
After 5 leading	3-2
After 5 trailing	1-5
After 5 tied	0-1
After 6 leading	4-1
After 6 trailing	0-6
After 6 tied	0-0
Hit 0 home runs	4-8
Hit 1 home run	1-3
Hit 2+ home runs	0-0
Opponent 0 home runs	3-4
Opponent 1 home run	2-5
Opponent 2+ HRs	0-2
Made 0 errors	3-3
Made 1 error	1-5
Made 2+ errors	1-3
Opp. made 0 errors	1-5
Opp. made 1 error	3-5
Opp. made 2+ errors	1-1
Out-hit opponent	3-2
Out-hit by opponent	1-8
Hits are tied	1-1
vs. ACC	0-1
vs. America East	0-0
vs. Atlantic 10	1-0
vs. Big 12	0-0
vs. Big East	0-0
vs. Big South	0-0
vs. Big Ten	0-1
vs. Colonial	0-0
Conference USA	0-2
vs. Ivy	0-1
vs. Mid-American	0-1
vs. Missouri Valley	1-0
vs. Mountain West	0-0
vs. Northeastern	0-0
vs. Pacific Coast	0-0
vs. Pac-12	0-2
vs. SEC	1-3
vs. Southern	1-0
vs. Summit	0-0
vs. WAC	1-0
Monday	1-1
Friday	1-3
Saturday	1-5
Sunday	2-2



2014 PENN STATE SOFTBALL



2014 PENN STATE SOFTBALL NUMERICAL ROSTER

No.	Name	Pos.	Year	Height	B/T	Hometown	High School
1	Mary Ward	OF	Fr.	5-3	L/L	Greencastle, Pa.	Greencastle-Antrim
2	Taylor Abeyta	OF	So.	5-6	L/R	San Diego, Calif.	Mt. Carmel
3	Liz Presto	C	Sr.	5-7	R/R	Bethlehem, Pa.	Bethlehem Catholic
4	Marissa Diescher	P	Jr.	5-10	R/R	Livingston Manor, N.Y.	Livingston Manor Central
5	Christy Von Pusch	P/INF	So.	5-10	R/R	Bryn Mawr, Pa.	Radnor
7	Kasie Hatfield	C/INF	Sr.	5-5	R/R	Tampa, Fla.	Chamberlain
8	Reina Furuya	INF	So.	5-7	R/R	Waipahu, Hawaii	Punahou
10	Lexi Knief	INF/OF	So.	5-6	L/R	Ramsey, N.J.	Ramsey
11	Sam Shanahan	P/INF	Fr.	5-5	R/R	Seattle, Wash.	Bishop Blanchet
12	Macy Jones	OF/P	So.	5-4	L/L	Ashburn, Va.	Briar Woods
13	Maegan Tupinio	INF/OF	So.	5-4	L/R	Wahiawa, Hawaii	Leilehua
17	Marlaina Laubach	P	Fr.	5-8	R/R	Northampton, Pa.	Northampton
18	Alicia Walker	UTL	Jr.	5-6	R/R	Los Altimos, Calif.	Los Altimos
22	Alyssa Sovereign	OF	Sr.	5-5	L/R	La Canada, Calif.	Crescenta Valley
25	Meghan Bradley	OF	Jr.	5-7	L/L	Santa Monica, Calif.	Santa Monica
28	Shannon Good	OF	So.	5-7	R/R	Horseheads, N.Y.	Horseheads
30	Karlie Habitz	C/INF	So.	5-11	R/R	Newhall, Calif.	Valencia
52	Kristina Brackpool	OF/INF	Fr.	5-8	R/R	Valencia, Calif.	Valencia
77	Shelby Miller	INF	Fr.	5-8	L/R	Sugar Land, Texas	Kempner

Head Coach: Amanda Lehotak (First Season)
Assistant Coach: Megan Gibson (First Season)
Assistant Coach: Joe Guthrie (First Season)

2014 PENN STATE SOFTBALL ALPHABETICAL ROSTER

No.	Name	Pos.	Year	Height	B/T	Hometown	High School
20	Taylor Abeyta	OF	So.	5-6	L/R	San Diego, Calif.	Mt. Carmel
52	Kristina Brackpool	OF/INF	Fr.	5-8	R/R	Valencia, Calif.	Valencia
25	Meghan Bradley	OF	Jr.	5-7	L/L	Santa Monica, Calif.	Santa Monica
4	Marissa Diescher	P	Jr.	5-10	R/R	Livingston Manor, N.Y.	Livingston Manor
8	Reina Furuya	INF	So.	5-7	R/R	Waipahu, Hawaii	Punahou
28	Shannon Good	OF	So.	5-7	R/R	Horseheads, N.Y.	Horseheads
30	Karlie Habitz	C/INF	So.	5-11	R/R	Newhall, Calif.	Valencia
7	Kasie Hatfield	C/INF	Sr.	5-5	R/R	Tampa, Fla.	Chamberlain
12	Macy Jones	OF/P	So.	5-4	L/L	Ashburn, Va.	Briar Woods
10	Lexi Knief	INF/OF	So.	5-6	L/R	Ramsey, N.J.	Ramsey
17	Marlaina Laubach	P	Fr.	5-8	R/R	Northampton, Pa.	Northampton HS
77	Shelby Miller	INF	Fr.	5-8	L/R	Sugar Land, Texas	Kempner
3	Liz Presto	C	Sr.	5-7	R/R	Bethlehem, Pa.	Bethlehem Catholic
11	Sam Shanahan	P/INF	Fr.	5-5	R/R	Seattle, Wash.	Bishop Blanchet
22	Alyssa Sovereign	OF	Sr.	5-5	L/R	La Canada, Calif.	Crescenta Valley
13	Maegan Tupinio	INF/OF	So.	5-4	L/R	Wahiawa, Hawaii	Leilehua
5	Christy Von Pusch	P/INF	So.	5-10	R/R	Bryn Mawr, Pa.	Radnor
18	Alicia Walker	UTL	Jr.	5-6	R/R	Los Altimos, Calif.	Los Altimos
1	Mary Ward	OF	Fr.	5-3	L/L	Greencastle, Pa.	Greencastle-Antrim

PRONUNCIATION GUIDE

Taylor Abeyta	uh-BAY-teh
Marissa Diescher	DEE-sheer
Reina Furuya	RAIN-eh fa-ROO-yah
Kasie Hatfield	KAY-see
Lexi Knief	NEEF
Marlaina Laubach	LAW-bok
Lehotak	leh-HOE-tack
M. Tupinio	two-PEEN-ee-yo
C. Von Pusch	von POOSH

LIONS BY ELIGIBILITY

Seniors (3): Hatfield, Presto, Sovereign
Juniors (3): Bradley, Diescher, Walker
Sophomores (8): Abeyta, Furuya, Good, Habitz, Jones, Knief, Tupinio, Von Pusch
Freshmen (5): Brackpool, Laubach, Miller, Shanahan, Ward

LIONS BY POSITION

Catchers (3): Habitz, Hatfield, Presto
Infielders (9): Brackpool, Furuya, Habitz, Hatfield, Knief, Miller, Shanahan, Tupinio, Von Pusch
Outfielders (9): Abeyta, Brackpool, Bradley, Good, Jones, Knief, Sovereign, Tupinio, Ward
Pitchers (5): Diescher, Jones, Laubach, Shanahan, Von Pusch
Utility Players (1): Walker

LIONS BY STATE

California (6): Abeyta, Brackpool, Bradley, Habitz, Sovereign, Walker
Florida (1): Hatfield
Hawaii (2): Furuya, Tupinio
New Jersey (1): Knief
New York (2): Diescher, Good
Pennsylvania (4): Laubach, Presto, Von Pusch, Ward
Texas (1): Miller
Virginia (1): Jones
Washington (1): Shanahan



2014 PENN STATE SOFTBALL



2014 Penn State Softball Overall Statistics for Penn State (as of Mar 01, 2014) (All games Sorted by Batting avg)

Record: 5-11 Home: 0-1 Away: 1-4 Neutral: 4-6 Big Ten: 0-0

Player	avg	gp-gs	ab	r	h	2b	3b	hr	rbi	tb	slg%	bb	hp	so	gdp	ob%	sf	sh	sb-att	po	a	e	fld%
77 Miller, Shelby	.391	11-10	23	2	9	0	0	0	4	9	.391	3	0	5	0	.462	0	0	1-1	10	2	1	.923
10 Knief, Lexi	.388	16-16	49	14	19	2	1	0	4	23	.469	11	0	2	0	.500	0	0	0-0	17	2	0	1.000
7 Hatfield, Kasie	.341	16-15	44	4	15	7	0	0	8	22	.500	6	1	5	0	.431	0	1	0-1	70	1	2	.973
12 Jones, Macy	.333	16-15	42	9	14	1	1	1	12	20	.476	9	1	5	0	.444	2	0	2-2	23	6	2	.935
52 Brackpool, Kristina	.308	8-8	26	1	8	1	0	1	5	12	.462	1	1	9	1	.357	0	0	0-0	45	1	1	.979
30 Habitz, Karlie	.295	16-16	44	4	13	2	0	2	16	21	.477	7	1	5	0	.404	0	0	0-0	50	5	1	.982
18 Walker, Alicia	.261	11-8	23	1	6	1	0	0	2	7	.304	2	1	3	0	.346	0	1	0-0	4	0	0	1.000
8 Furuya, Reina	.225	16-16	40	4	9	0	0	0	3	9	.225	10	1	7	0	.392	0	2	3-3	15	33	5	.906
22 Sovereign, Alyssa	.213	16-16	47	13	10	1	0	0	4	11	.234	8	0	3	0	.327	0	2	0-0	33	29	0	1.000
11 Shanahan, Sam	.185	14-14	27	4	5	1	0	0	1	6	.222	3	0	2	0	.267	0	0	0-0	19	19	2	.950
25 Bradley, Meghan	.143	8-3	14	0	2	0	0	0	0	2	.143	0	0	4	0	.143	0	0	0-0	1	0	0	1.000
3 Presto, Liz	.091	6-5	11	0	1	0	0	0	0	1	.091	3	0	3	0	.286	0	1	0-0	2	2	0	1.000
28 Good, Shannon	.000	3-1	6	0	0	0	0	0	0	0	.000	0	0	2	0	.000	0	0	0-0	0	0	0	.000
2 Abeyta, Taylor	.000	8-3	5	0	0	0	0	0	0	0	.000	0	0	3	0	.000	0	0	0-0	2	0	1	.667
24 Ward, Mary	.000	12-1	3	3	0	0	0	0	0	0	.000	0	1	1	0	.250	0	0	0-0	0	1	0	1.000
13 Tupinio, Maegan	.000	6-0	2	2	0	0	0	0	0	0	.000	0	0	1	0	.000	0	0	0-0	0	0	0	.000
Totals	.273	16	406	61	111	16	2	4	59	143	.352	63	7	60	1	.379	2	7	6-7	295	124	16	.963
Opponents	.349	16	413	94	144	24	6	12	88	216	.523	52	6	63	1	.422	8	10	12-15	301	140	12	.974

LOB - Team (124), Opp (101). DPs turned - Team (3), Opp (3). IBB - Team (1), Habitz 1, Opp (1).

(All games Sorted by Earned run avg)

Player	era	w-l	app	gs	cg	sho	sv	ip	h	r	er	bb	so	2b	3b	hr	b/avg	wp	hp	bk	sfa	sha
17 Laubach, Marlaina	3.18	4-4	9	8	4	0/0	0	44.0	55	22	20	13	25	6	0	5	.325	1	1	1	4	6
5 Von Pusch, Christy	7.47	0-1	7	1	1	0/0	0	19.2	31	25	21	16	11	10	1	2	.352	5	1	0	1	0
4 Diescher, Marissa	8.65	1-3	7	4	0	0/0	1	17.0	22	24	21	19	15	5	0	0	.306	3	1	0	1	2
12 Jones, Macy	8.72	0-3	5	3	0	0/0	1	17.2	36	23	22	4	12	3	5	5	.429	0	3	0	2	2
Totals	5.98	5-11	16	16	5	0/0	2	98.1	144	94	84	52	63	24	6	12	.349	9	6	1	8	10
Opponents	3.84	11-5	16	16	11	1/0	0	100.1	111	61	55	63	60	16	2	4	.273	4	7	0	2	7

PB - Team (5), Habitz 5, Opp (7). SBA/ATT - Habitz (10-13), Von Pusch (4-6), Laubach (5-6), Hatfield (2-2), Jones (2-2), Diescher (1-1).



2014 PENN STATE SOFTBALL



2014 RESULTS 5-11 OVERALL • 0-0 BIG TEN • 0-0 HOME • 1-4 AWAY • 4-7 NEUTRAL

Date	Event	Opponent	W/L/T	Score	R-H-E	R-H-E	Inn.	Overall	Big Ten	Pitcher (Record)	Attend.	Time
2/7	!	vs. Oregon State	L	10-12	10-11-0	12-12-1	7	0-1	0-0	Jones (L 0-1)	-	2:20
2/7	!	vs. Appalachian St.	W	10-4	10-10-2	4-10-2	7	1-1	0-0	Diescher (W 1-0)	210	1:30
2/8	!	vs. Bradley	W	5-3	5-10-0	3-7-1	7	2-1	0-0	Laubach (W 1-0)	397	2:00
2/8	!	at No. 7 Arizona St.	L	1-9	1-5-1	9-14-1	[6]	2-2	0-0	Jones (L 0-2)	943	1:55
2/9	!	vs. Seattle	W	6-1	6-11-1	1-4-0	7	3-2	0-0	Laubach (W 2-0)	209	1:30
2/16	@	vs. George Washington	W	9-1	9-8-0	1-4-1	[5]	4-2	0-0	Laubach (W 3-0)	-	1:53
2/16	@	vs. Northwestern	L	1-11	1-2-2	11-10-1	[5]	4-3	0-0	Diescher (L 1-1)	-	1:51
2/17	@	at No. 21 LSU	L	3-11	3-2-0	11-12-0	[5]	4-4	0-0	Jones (L 0-3)	1071	1:42
2/17	@	at No. 21 LSU	W	6-5	6-8-0	5-12-1	7	5-4	0-0	Laubach (W 4-0)	1071	2:18
2/21	#	vs. No. 5 Kentucky	L	5-0	0-2-3	5-6-0	7	5-5	0-0	Diescher (L 1-2)	319	1:49
2/21	#	vs. FAU	L	3-2	2-8-1	3-9-0	[8]	5-6	0-0	Laubach (L 4-1)	319	2:00
2/22	#	vs. Pitt	L	3-1	1-9-1	3-9-1	7	5-7	0-0	Laubach (L 4-2)	346	1:46
2/22	#	at FAU	L	3-2	2-7-0	3-5-0	7	5-8	0-0	Diescher (L 1-3)	346	1:47
2/23	#	vs. No. 5 Kentucky	L	8-1	1-4-1	8-13-1	7	5-9	0-0	Laubach (L 4-3)	358	2:02
3/1	\$	vs. Kent State	L	9-1	1-4-1	9-8-2	[5]	5-10	0-0	Laubach (L 4-4)	65	1:42
3/1	\$	vs. Dartmouth	L	6-3	3-10-3	6-9-0	7	5-11	0-0	Von Pusch (L 0-1)	65	1:51

! Kajikawa Classic, Tempe, Ariz. | @ Tiger Invitational, Baton Rouge, La. | # FAU Invitational, Boca Raton, Fla. |
\$ JMU Invitational, Harrisonburg, Va.

() Extra inning game | [] Shortened game (eight-run rule)



2014 PENN STATE SOFTBALL



2014 Defensive Lineup by Game

Date	Opponent	Pitcher	Catcher	First	Second	Third	Short	Left	Center	Right	DP
2/7	Oregon State	Jones	Habitz	Brackpool	Sovereign	Shanahan	Furuya	Walker	Knief	Good	Miller
2/7	Appalachian State	Diescher	Habitz	Brackpool	Sovereign	Shanahan	Furuya	Jones	Knief	Walker	Hatfield
2/8	Bradley	Laubach	Habitz	Hatfield	Sovereign	Shanahan	Furuya	Jones	Knief	Walker	Bradley
2/8	Arizona State	Jones	Habitz	Hatfield	Sovereign	Shanahan	Furuya	Abeyta	Knief	Walker	Bradley
2/9	Seattle	Laubach	Hatfield	Brackpool	Sovereign	Shanahan	Furuya	Jones	Knief	Walker	Habitz
2/16	George Washington	Laubach	Habitz	Hatfield	Sovereign	Presto	Furuya	Jones	Knief	Miller	Brackpool
2/16	Northwestern	Diescher	Habitz	Hatfield	Sovereign	Shanahan	Furuya	Jones	Knief	Miller	Presto
2/17	LSU	Jones	Habitz	Hatfield	Sovereign	Shanahan	Furuya	Abeyta	Knief	Miller	Presto
2/17	LSU	Laubach	Habitz	Hatfield	Sovereign	Shanahan	Furuya	Jones	Knief	Miller	Walker
2/21	Kentucky	Diescher	Habitz	Hatfield	Sovereign	Shanahan	Furuya	Jones	Knief	Miller	Walker
2/21	FAU	Laubach	Hatfield	Brackpool	Sovereign	Presto	Furuya	Jones	Knief	Abeyta	Habitz
2/22	Pitt	Laubach	Hatfield	Brackpool	Sovereign	Shanahan	Furuya	Jones	Knief	Miller	Habitz
2/22	FAU	Diescher	Habitz	Brackpool	Sovereign	Shanahan	Furuya	Jones	Knief	Miller	Hatfield
2/23	Kentucky	Laubach	Habitz	Brackpool	Sovereign	Shanahan	Furuya	Jones	Knief	Miller	Hatfield
3/1	Kent State	Laubach	Habitz	Hatfield	Sovereign	Shanahan	Furuya	Jones	Knief	Miller	Walker
3/1	Dartmouth	Von Pusch	Habitz	Hatfield	Sovereign	Shanahan	Furuya	Abeyta	Knief	Ward	Presto



AMANDA LEHOTAK

Head Coach • First Year
NEBRASKA-OMAHA '03

RECORD: 193-217 (.471)

Amanda Lehotak enters her first season as the Penn State softball head coach. She was named the seventh coach in program history on July 22, 2013. Lehotak comes to Penn State with seven years of head coaching experience under her belt, including the last two seasons at Texas-San Antonio.

Lehotak guided the Roadrunners to a 27-26 overall record in 2013 to give the program just their second winning overall record in the last seven years. She also led the team to a fifth-place finish and a berth in the WAC Tournament in UTSA's first season in the conference. Additionally, Darian Blake was named to the All-WAC first team.

In her first season at UTSA, Lehotak and the Roadrunners posted a 24-28 overall record and 12-8 mark in Southland Conference play en route to a third-place finish, which was the program's highest finish since 2009. She had five players earn All-Southland honors in 2012, including Freshman of the Year Megan Low.

Prior to her time at UTSA, Lehotak spent six seasons at Jacksonville University, including five as the head coach. The Dolphins improved their win total each of Lehotak's five seasons at the helm, culminating in a 44-16 overall record and 18-2 conference mark in 2011.

That season, Jacksonville won the Atlantic Sun regular-season and tournament titles on its way to the first NCAA Tournament appearance in school history. Lehotak was selected as the 2011 Atlantic Sun Coach of the Year as her squad set school records for home runs, earned run average, shutouts and fielding percentage. Lehotak left Jacksonville with a school-record 137 wins.

In 2010, Lehotak led the Dolphins to a then-second-best win total in program history with a 33-23 overall record. Additionally, a then-program-record five student-athletes earned All-Atlantic Sun recognition under her guidance in 2010.

Lehotak owns a 188-206 record in seven seasons as a collegiate head coach at UTSA and Jacksonville. In addition to her one season as an assistant coach at Jacksonville, Lehotak was also an assistant coach at Missouri Western State for one season where she was responsible for recruiting, working with the outfielders, hitting instruction, coordinating camps and clinics, as well as managing the team's travel schedule.

She also served as an assistant coach at Daniel J. Gross High School in Bellevue, Neb. and was an interim assistant coach at College of Saint Mary in Omaha (2004).

A native of Omaha, Neb., Lehotak played collegiately at the University of Mississippi for two seasons (2000-01) before finishing her career at Nebraska-Omaha (2002-03). She set the single-season hits record in 2001 at Ole Miss and was a third team All-American at UNO with a pair of first team All-North Central Conference selections. Lehotak earned her bachelor's degree in family science from Nebraska-Omaha in 2003.

LEHOTAK'S COLLEGIATE RÉSUMÉ

Head Coach	
Penn State	2014
Texas-San Antonio	2012-13
Jacksonville	2007-11
<i>2011 Atlantic Sun Coach of the Year</i>	
Assistant Coach	
Jacksonville	2006
Missouri Western State	2005
College of St. Mary (Neb.)	2004
Student-Athlete	
Nebraska-Omaha	2002-03
Mississippi	2000-01

CAREER RECORD

Season	School	Overall Record	Pct.	Conf. Record	Pct.	Finish	NCAA
2014	Penn State	5-9	.357	--	--	--	--
2013	Texas-San Antonio	27-26	.509	9-12	.429	5th	--
2012	Texas-San Antonio	24-28	.462	12-8	.600	T3rd	--
2011	Jacksonville	44-16	.733	18-2	.900	1st	Regionals
2010	Jacksonville	33-23	.589	10-10	.500	6th	--
2009	Jacksonville	24-31	.436	7-13	.350	7th	--
2008	Jacksonville	21-39	.350	5-17	.227	11th	--
2007	Jacksonville	15-43	.259	4-14	.222	10th	--



2014 PENN STATE SOFTBALL



#2 TAYLOR ABEYTA



OF • So. • San Diego, Calif. Mt. Carmel

- Has seen action in eight games in 2014
- Made starts at Arizona State (2/8), at LSU (2/17) and vs. Dartmouth (3/1)
- Earned her first at-bat of the season vs. Oregon St. (2/7)

ABEYTA'S CAREER HIGHS

AT BATS	4	vs. South Carolina	3/10/13
RUNS	1	6x, last vs. Northwestern	2/16/14
HITS	2	vs. DePaul	3/16/13
RBI	3	2x, last vs. DePaul	3/16/13
WALKS	3	vs. Missouri-KC	2/17/13
STOLEN BASES	1	3x, last vs. Maine	3/9/13
TOTAL BASES	2	vs. Ohio State	5/11/12

2014 SEASON HIGHS

AT BATS	2	vs. Dartmouth	3/1/14
RUNS	-	-	-
HITS	-	-	-
RBI	-	-	-
WALKS	-	-	-
STOLEN BASES	-	-	-
TOTAL BASES	-	-	-

CAREER HITTING STATISTICS

Year	AVG.	GP-GS	AB	R	H	2B	3B	HR	RBI	TB	SLG	BB	HBP	SO	GDP	OBP	SF-SH	SB-ATT	PO-A-E	FLD%
2013	.229	36-14	35	5	8	1	0	1	7	23	.343	3	0	14	0	.289	0-0	3-3	55-2-2	.966
2014	.000	8-3	5	0	0	0	0	0	0	0	.000	0	0	3	0	.000	0-0	0-0	2-0-1	.667
Total	.200	44-17	40	5	8	1	0	1	7	12	.300	3	0	17	0	.256	0-0	3-3	57-2-3	.952

#3 LIZ PRESTO



C • Sr. • Bethlehem, Pa. Bethlehem Catholic

- Has seen action in six games in 2014
- Posted her first hit of the season at FAU (2/21)
- Earned her first start of the season vs. George Washington (2/16)
- Registered two walks vs. George Washington

PRESTO'S CAREER HIGHS

AT BATS	4	2x, last vs. Minnesota	4/28/12
RUNS	2	vs. Michigan State	4/7/12
HITS	3	vs. Michigan State	4/7/12
RBI	4	vs. Minnesota	4/28/12
WALKS	2	5x, last vs. George Washington	2/16/14
STOLEN BASES	-	-	-
TOTAL BASES	4	3x, last vs. Texas	3/15/13

2014 SEASON HIGHS

AT BATS	3	at Florida Atlantic	2/21/14
RUNS	-	-	-
HITS	1	at Florida Atlantic	2/21/14
RBI	-	-	-
WALKS	2	vs. George Washington	2/16/14
STOLEN BASES	-	-	-
TOTAL BASES	1	at Florida Atlantic	2/21/14

CAREER HITTING STATISTICS

Year	AVG.	GP-GS	AB	R	H	2B	3B	HR	RBI	TB	SLG	BB	HBP	SO	GDP	OBP	SF-SH	SB-ATT	PO-A-E	FLD%
2011	.067	16-4	15	4	1	1	0	0	1	2	.133	5	0	5	0	.300	0-0	0-0	0-0-0	.000
2012	.190	38-35	79	6	15	3	0	1	7	21	.266	20	2	18	1	.366	0-3	0-0	83-34-4	.967
2013	.222	17-5	18	1	4	0	0	1	3	7	.389	6	0	7	0	.417	0-0	0-0	0-1-0	1.000
2014	.091	6-5	11	0	1	0	0	0	0	1	.091	3	0	3	0	.286	0-1	0-0	2-2-0	1.000
Total	.171	77-49	123	11	21	4	0	2	11	31	.252	34	2	33	1	.358	0-4	0-0	85-37-4	.968



2014 PENN STATE SOFTBALL



#4 MARISSA DIESCHER



RHP • Jr. • Livingston Manor, N.Y. Livingston Manor Central

- Pitched a season-high 5.0 innings vs. No. 5 Kentucky (2/21)
- Started her first game of the year vs. Appalachian St. (2/7)
- Notched her first win of 2014 vs. Appalachian St.
- Registered her first save of the season vs. Bradley (2/8)
- Earned four strikeouts vs. Bradley in four innings
- Gave up just two walks in four innings vs. Bradley

DIESCHER'S CAREER PITCHING HIGHS

INNINGS.....7.0 5x, last vs. Indiana 4/15/12
 STRIKEOUTS.....5 vs. LIU-Brooklyn 3/2/12
 WALKS ALLOWED.....10 at Michigan 3/24/12

2014 SEASON PITCHING HIGHS

INNINGS.....5.0 vs. Kentucky 2/21/14
 STRIKEOUTS.....4 vs. Bradley 2/8/14
 WALKS5 vs. Kentucky 2/21/14

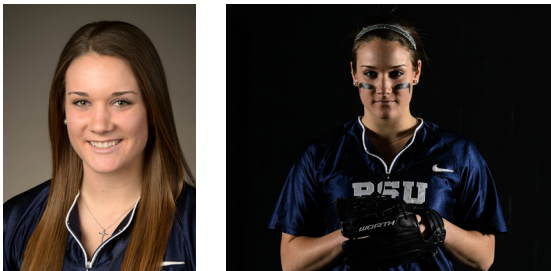
CAREER PITCHING STATISTICS

Year	ERA	W-L	APP	GS	CG	SHO/C	SV	IP	H	R	ER	BB	SO	2B	3B	HR	BF	BAA	WP	HBP	BK	SFA	SHA
2012	5.52	5-9	22	19	6	1/0	0	78.2	94	76	62	88	33	8	0	7	429	.295	20	6	0	3	13
2013	10.21	1-7	17	11	0	0/0	0	36.1	37	57	53	69	21	4	0	2	225	.255	4	7	1	0	4
2014	8.65	1-3	7	4	0	0/0	1	17.0	22	24	21	19	15	5	0	0	95	.306	3	1	0	1	2
Total	7.21	7-19	46	34	6	1/0	1	132.0	153	157	136	176	69	17	0	9	749	.285	27	14	1	4	19

CAREER FIELDING STATISTICS

Year	AVG.	GP-GS	AB	R	H	2B	3B	HR	RBI	TB	SLG	BB	HBP	SO	GDP	OBP	SF-SH	SB-ATT	PO-A-E	FLD%
2012	.000	6-5	0	0	0	0	0	0	0	0	.000	0	0	0	0	.000	0-0	0-0	1-22-1	.958
2013	.000	5-3	2	0	0	0	0	0	0	0	.000	0	0	2	0	.000	0-0	0-0	0-17-1	.944
2014	.000	0-0	0	0	0	0	0	0	0	0	.000	0	0	0	0	.000	0-0	0-0	0-3-1	.750
Total	.000	11-8	2	0	0	0	0	0	0	0	.000	0	0	0	0	.000	0-0	0-0	1-42-3	.935

#5 CHRISTY VON PUSCH



RHP • So. • Bryn Mawr, Pa. Radnor

- Pitched her first complete game vs. Dartmouth (3/1)
- Made her first start of the season vs. Dartmouth
- Has seen action in seven games in 2014
- Gave up just one walk in 2.2 innings vs. Arizona State

VON PUSCH'S CAREER PITCHING BESTS

INNINGS.....7.0 vs. Dartmouth 3/1/14
 STRIKEOUTS.....3 vs. Kentucky 2/23/14
 WALKS11 vs. Texas Tech 2/16/13

VON PUSCH'S 2014 SEASON PITCHING BESTS

INNINGS.....7.0 vs. Dartmouth 3/1/14
 STRIKEOUTS.....3 vs. Kentucky 2/23/14
 WALKS3 3x, last vs. Dartmouth 3/1/14

CAREER PITCHING STATISTICS

Year	ERA	W-L	APP	GS	CG	SHO/C	SV	IP	H	R	ER	BB	SO	2B	3B	HR	BF	BAA	WP	HBP	BK	SFA	SHA
2013	17.02	0-6	12	7	0	0-1	0	19.1	34	54	47	50	2	4	1	3	141	.386	19	0	0	0	3
2014	7.47	0-1	7	1	1	0/0	0	19.2	31	25	21	16	11	10	1	2	106	.352	5	1	0	1	0
Total	12.21	0-7	19	8	1	0/1	0	39.0	65	79	68	66	13	14	2	5	247	.369	24	1	0	1	3



2014 PENN STATE SOFTBALL



#7 KASIE HATFIELD



C/INF • Sr. • Tampa, Fla. Chamberlain

- Has started all but one game for PSU this season
- Leads the team and is tied for first in the Big Ten in doubles with seven
- Went 3-for-4 at the plate vs. FAU (2/21)
- Drove in a season-high three runs vs. George Washington (2/16)
- Put together a 2-for-3 performance vs. George Washington
- Went 2-for-3 vs. Appalachian St. (2/7) with a single, a double, two RBIs and a walk

HATFIELD'S CAREER HIGHS

AT BATS	7	vs. Fordham	5/21/11
RUNS	2	5x, last vs. Northwestern	4/20/13
HITS	4	vs. Michigan State	4/7/12
RBI	5	vs. Indiana	4/15/12
WALKS	2	2x, last vs. Bradley	2/8/14
STOLEN BASES	1	vs. Texas A&M	3/3/13
TOTAL BASES	8	vs. Ohio State	5/11/12

2014 SEASON HIGHS

AT BATS	4	at LSU	2/17/14
RUNS	1	2x, last at LSU	2/17/14
HITS	3	at Florida Atlantic	2/21/14
RBI	3	vs. George Washington	2/16/14
WALKS	2	vs. Bradley	2/8/14
STOLEN BASES	-	-	-
TOTAL BASES	4	at Florida Atlantic	2/21/14

CAREER HITTING STATISTICS

Year	AVG.	GP-GS	AB	R	H	2B	3B	HR	RBI	TB	SLG	BB	HBP	SO	GDP	OBP	SF-SH	SB-ATT	PO-A-E	FLD%
2011	.223	49-45	130	10	29	6	1	1	10	40	.308	6	3	23	2	.273	0-3	0-0	218-16-2	.992
2012	.252	48-48	131	16	33	8	0	5	26	56	.427	10	0	22	3	.305	0-2	0-1	156-45-6	.971
2013	.181	45-42	105	5	19	0	0	2	6	25	.238	5	0	21	0	.218	0-3	1-1	149-25-6	.967
2014	.341	16-15	44	4	15	7	0	0	8	22	.500	6	1	5	0	.431	0-1	0-1	70-1-1	.973
Total	.234	158-150	410	35	96	21	1	8	50	143	.349	27	4	71	5	.288	0-9	1-3	593-87-16	.977

#8 REINA FURUYA



INF • So. • Waipahu, Hawaii Punahou

- Has started all 16 games for PSU in 2014 at SS
- Second on team in walks with 10
- Leads team in stolen bases with three
- Turned in a 2-for-4 performance vs. Dartmouth (3/1)
- Went 2-for-2 at the plate vs. Appalachian State (2/7) with an RBI and two runs

FURUYA'S CAREER HIGHS

AT BATS	4	9x, last vs. Seattle	2/9/14
RUNS	2	vs. Appalachian State	2/7/14
HITS	2	6x, last vs. Appalachian State	2/7/14
RBI	4	vs. Northwestern	4/20/13
WALKS	2	3x, last vs. George Washington	2/16/14
STOLEN BASES	1	5x, last at LSU	2/17/14
TOTAL BASES	2	2x, last vs. Appalachian State	2/7/14

2014 SEASON HIGHS

AT BATS	4	3x, last vs. Dartmouth	3/1/14
RUNS	2	vs. Appalachian State	2/7/14
HITS	2	2x, last vs. Dartmouth	3/1/14
RBI	1	3x, last at LSU	2/17/14
WALKS	2	3x, last vs. George Washington	2/16/14
STOLEN BASES	1	3x, last at LSU	2/17/14
TOTAL BASES	2	vs. Appalachian State	2/7/14

CAREER HITTING STATISTICS

Year	AVG.	GP-GS	AB	R	H	2B	3B	HR	RBI	TB	SLG	BB	HBP	SO	GDP	OBP	SF-SH	SB-ATT	PO-A-E	FLD%
2013	.224	43-41	107	8	24	5	0	4	20	41	.383	7	0	21	1	.270	1-4	2-2	50-66-8	.935
2014	.225	16-16	40	4	9	0	0	0	3	9	.225	10	1	7	0	.392	0-2	3-3	15-33-5	.906
Total	.224	59-57	147	12	33	5	0	4	23	50	.340	17	1	28	1	.307	1-6	5-5	65-99-13	.927



2014 PENN STATE SOFTBALL



#10 LEXI KNIEF



CF • So. • Ramsey, N.J. Ramsey

- Has started all 16 games for PSU in 2014
- Leads team in runs with 14
- First on team with 11 walks
- Leads team in at-bats (49)
- Went a perfect 3-for-3 at the plate at Florida Atlantic (2/22)
- Got on base three times in the win over No. 21 LSU with one single and two walks
- Hit first career triple at No. 7 Arizona State (2/8)
- Scored career-high four runs vs. Oregon State (2/7)

KNIEF'S CAREER HIGHS

AT BATS	4	10x, last vs. Dartmouth	3/1/14
RUNS	4	vs. Oregon State	2/7/14
HITS	3	2x, last at Florida Atlantic	2/22/14
RBI	2	at Florida Atlantic	2/22/14
WALKS	2	6x, last at LSU	2/17/14
STOLEN BASES	1	vs. Nebraska	5/4/13
TOTAL BASES	4	at Florida Atlantic	2/22/14

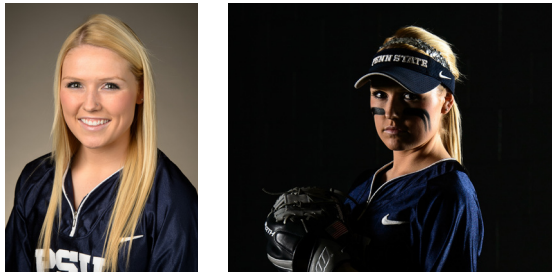
2014 SEASON HIGHS

AT BATS	4	6x, last vs. Dartmouth	3/1/14
RUNS	4	vs. Oregon State	2/7/14
HITS	3	at Florida Atlantic	2/22/14
RBI	2	at Florida Atlantic	2/22/14
WALKS	2	4x, last at LSU	2/17/14
STOLEN BASES	-	-	-
TOTAL BASES	4	at Florida Atlantic	2/22/14

CAREER HITTING STATISTICS

Year	AVG.	GP-GS	AB	R	H	2B	3B	HR	RBI	TB	SLG	BB	HBP	SO	GDP	OBP	SF-SH	SB-ATT	PO-A-E	FLD%
2013	.224	38-26	76	11	17	1	0	0	3	18	.237	10	4	15	1	.344	0-1	1-3	39-32-8	.899
2014	.388	16-16	49	14	19	2	1	0	4	23	.469	11	0	2	0	.500	0-0	0-0	17-2-0	1.000
Total	.288	54-42	125	25	36	3	1	0	7	41	.328	21	4	17	1	.407	0-1	1-3	56-34-8	.918

#11 SAM SHANAHAN



3B • Fr. • Seattle, Wash. Bishop Blanchet

- Has started all but two games for PSU in 2014
- Turned in a 2-for-3 effort at the plate vs. Dartmouth (3/1)
- Registered her first collegiate double vs. Dartmouth
- Made first collegiate start in season-opener vs. Oregon State (2/7) and has started all but one game in 2014
- Recorded her first collegiate RBI at No. 21 LSU (2/17)
- Notched a season-high two runs vs. Oregon State
- Registered her first collegiate hit vs. Oregon State

SHANAHAN'S 2014 SEASON HIGHS

AT BATS	3	5x, last vs. Dartmouth	3/1/14
RUNS	2	vs. Oregon State	2/7/14
HITS	2	vs. Dartmouth	3/1/14
RBI	1	at LSU	2/17/14
WALKS	1	3x, last vs. Kentucky	2/23/14
STOLEN BASES	-	-	-
TOTAL BASES	3	vs. Dartmouth	3/1/14

CAREER HITTING STATISTICS

Year	AVG.	GP-GS	AB	R	H	2B	3B	HR	RBI	TB	SLG	BB	HBP	SO	GDP	OBP	SF-SH	SB-ATT	PO-A-E	FLD%
2014	.185	14-14	27	4	5	1	0	0	1	6	.222	3	0	2	0	.267	0-0	0-0	19-19-2	.950
Total	.185	14-14	27	4	5	1	0	0	1	6	.222	3	0	2	0	.267	0-0	0-0	19-19-2	.950



2014 PENN STATE SOFTBALL



#12 MACY JONES



OF/LHP • So. • Ashburn, Va. Briar Woods

- Has started all but one game for PSU in 2014
- Posted her first HR of 2014 vs. Pitt (2/22)
- Put together a perfect 3-for-3 performance vs. GWU (2/16)
- Earned her first save of the season vs. Appalachian St. (2/7)
- Went a perfect 3-for-3 at the plate vs. Seattle (2/9)
- Registered five strikeouts vs. Oregon State (2/7)

JONES' CAREER HITTING HIGHS

AT BATS	5	2x, last vs. Appalachian State	2/7/14
RUNS	3	at Pitt	4/10/13
HITS	3	3x, last vs. Saint Francis (Pa.)	4/9/13
RBI	6	at New Mexico State	2/16/13
WALKS	2	at Pitt	4/10/13
STOLEN BASES	1	4x, last vs. George Washington	2/16/14
TOTAL BASES	7	at New Mexico State	2/16/13

2014 HITTING HIGHS

AT BATS	5	vs. Appalachian State	2/7/14
RUNS	2	vs. Seattle	2/9/14
HITS	3	2x, last vs. George Washington	2/16/14
RBI	2	vs. Seattle	2/9/14
WALKS	2	vs. Oregon State	2/7/14
STOLEN BASES	1	vs. George Washington	2/16/14
TOTAL BASES	4	vs. Seattle	2/9/14

JONES' CAREER PITCHING BESTS

INNINGS	7.2	at Ohio State	4/14/13
STRIKEOUTS	12	vs. Maine	3/9/13
COMPLETE GAMES	14	last vs. Illinois	5/9/13
SHUTOUTS	1	vs. Maine	3/9/13

2014 PITCHING BESTS

INNINGS	5.0	vs. Oregon State	2/7/14
STRIKEOUTS	5	vs. Oregon State	2/7/14
WALKS	2	vs. Oregon State	2/7/14

CAREER PITCHING STATISTICS

Year	ERA	W-L	APP	GS	CG	SHO/C	SV	IP	H	R	ER	BB	SO	2B	3B	HR	BF	BAA	WP	HBP	BK	SFA	SHA
2013	3.84	13-17	36	22	14	1/1	1	175.0	196	111	96	60	000	40	3	29	785	.286	2	11	0	11	17
2014	8.72	0-3	5	3	0	0/0	1	17.2	36	23	22	4	12	3	5	5	95	.429	0	3	0	2	2
Total	4.29	13-20	41	25	14	1/1	2	192.2	232	134	118	64	113	43	8	34	880	.301	2	14	0	13	19

CAREER HITTING STATISTICS

Year	AVG.	GP-GS	AB	R	H	2B	3B	HR	RBI	TB	SLG	BB	HBP	SO	GDP	OBP	SF-SH	SB-ATT	PO-A-E	FLD%
2013	.274	49-49	146	20	40	8	2	5	28	67	.459	13	5	38	0	.349	2-2	3-4	21-29-4	.926
2014	.333	16-15	42	9	14	1	1	1	12	20	.476	9	1	5	0	.444	2-0	2-2	23-6-2	.935
Total	.287	65-64	188	29	54	9	3	6	40	87	.463	22	6	43	0	.373	4-2	5-6	44-35-6	.929

#13 MAEGAN TUPINIO



INF/OF • So. • Wahiawa, Hawaii Leilehua

- Has seen action in six games for PSU in 2014
- Registered her first at-bat as a Nittany Lion at Florida Atlantic (2/22)
- Scored as a pinch runner vs. George Washington (2/16)
- Notched her first run of the season vs. Appalachian State (2/7) as a pinch runner

TUPINIO'S CAREER HIGHS

AT BATS	--	--	--
RUNS	1	10x, last vs. Appalachian State	2/7/14
HITS	--	--	--
RBI	--	--	--
WALKS	--	--	--
STOLEN BASES	1	3x, last at Indiana	4/6/13
TOTAL BASES	--	--	--

TUPINIO'S 2014 SEASON HIGHS

AT BATS	1	2x, last vs. Kentucky	2/23/14
RUNS	1	vs. Appalachian State	2/7/14
HITS	--	--	--
RBI	--	--	--
WALKS	--	--	--
STOLEN BASES	--	--	--
TOTAL BASES	--	--	--

CAREER HITTING STATISTICS

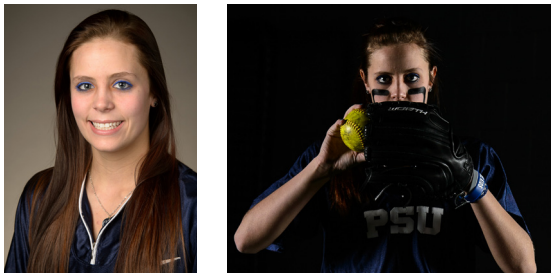
Year	AVG.	GP-GS	AB	R	H	2B	3B	HR	RBI	TB	SLG	BB	HBP	SO	GDP	OBP	SF-SH	SB-ATT	PO-A-E	FLD%
2013	.000	24-1	0	9	0	0	0	0	0	0	.000	0	0	0	0	.000	0-0	3-3	0-0-0	.000
2014	.000	6-0	2	2	0	0	0	0	0	0	.000	0	0	1	0	.000	0-0	0-0	0-0-0	.000
Total	.000	30-1	2	11	0	0	0	0	0	0	.000	0	0	0	0	.000	0-0	3-3	0-0-0	.000



2014 PENN STATE SOFTBALL



#17 MARLAINA LAUBACH



RHP • Fr. • Northampton, Pa. Northampton

- Has given up just 13 walks in 44 innings in the circle
- Spun a season-high six strikeouts at FAU (2/21)
- Pitched a season-high eight innings at FAU (2/21)
- Led the Nittany Lions to a win over No. 21 LSU (2/17)
- Allowed just four hits and did not give up a single walk vs. George Washington (2/16)
- Picked up a win against Bradley (2/8) in her collegiate debut
- Pitched her first complete game as a Nittany Lion vs. Seattle (2/9)
- Allowed just four hits in seven innings vs. Seattle
- Struck out five Bradley hitters & four Seattle hitters

LAUBACH'S 2014 PITCHING HIGHS			
INNINGS.....	8.0	at Florida Atlantic	2/21/14
STRIKEOUTS.....	6	at Florida Atlantic	2/21/14
WALKS.....	3	vs. Bradley	2/8/14
COMPLETE GAMES.....	4	last at Florida Atlantic	2/21/14

		CAREER HITTING STATISTICS																					
Year	ERA	W-L	APP	GS	CG	SHO/C	SV	IP	H	R	ER	BB	SO	2B	3B	HR	BF	BAA	WP	HBP	BK	SFA	SHA
2014	3.18	4-4	9	8	4	0/0	0	44.0	55	22	20	13	25	6	0	5	193	.325	1	1	1	4	6
Total	3.18	4-4	9	8	4	0/0	0	44.0	55	22	20	13	25	6	0	5	193	.325	1	1	1	4	6

#18 ALICIA WALKER



UTL • Jr. • Los Alamitos, Calif. Los Alamitos

- Has started eight games for the Nittany Lions in 2014
- Hit her first-career double vs. Oregon State (2/7)
- Drove in two runs vs. Appalachian State (2/7)
- Scored once vs. Appalachian State

WALKER'S CAREER HIGHS			
AT BATS.....	4	vs. Appalachian State	2/7/14
RUNS.....	2	vs. Western Michigan	3/8/13
HITS.....	2	vs. Ohio State	5/11/12
RBI.....	1	3x, last vs. Ohio State	5/11/12
WALKS.....	1	3x, last vs. Western Michigan	3/8/13
STOLEN BASES.....	2	vs. Ohio State	5/12/12
TOTAL BASES.....	2	vs. Ohio State	5/11/12

2014 SEASON HIGHS			
AT BATS.....	4	vs. Appalachian State	2/7/14
RUNS.....	1	vs. Appalachian State	2/7/14
HITS.....	1	3x, last at Arizona State	2/8/14
RBI.....	2	vs. Appalachian State	2/7/14
WALKS.....	1	2x, last at Arizona State	2/8/14
STOLEN BASES.....	--	--	--
TOTAL BASES.....	2	vs. Oregon State	2/7/14

		CAREER HITTING STATISTICS																		
Year	AVG.	GP-GS	AB	R	H	2B	3B	HR	RBI	TB	SLG	BB	HBP	SO	GDP	OBP	SF-SH	SB-ATT	PO-A-E	FLD%
2012	.207	39-15	29	9	6	0	0	0	3	6	.207	1	2	9	0	.265	2-4	5-7	19-0-2	.905
2013	.059	38-4	17	17	1	0	0	0	0	1	.059	2	1	4	0	.200	0-1	6-7	2-0-0	1.000
2014	.261	11-8	23	1	6	1	0	0	2	7	.304	2	1	3	0	.346	0-1	0-0	4-0-0	1.000
Total	.188	88-27	69	27	13	1	0	0	5	14	.203	5	4	16	0	.275	2-6	11-14	25-0-2	.926



2014 PENN STATE SOFTBALL



#22 ALYSSA SOVEREIGN



2B • Sr. • La Canada, Calif. Crescenta Valley

- Has started all 16 games for PSU in 2014
- Second on team in at-bats (47)
- Scored two runs in the win over No. 21 LSU (2/17)
- Registered a career-high four hits in a 4-for-5 effort vs. Oregon State (2/7)
- Scored twice vs. Oregon State and Bradley (2/8)

SOVEREIGN'S CAREER HIGHS

AT BATS	7	vs. Fordham	5/21/11
HITS	4	vs. Oregon State	2/7/14
RUNS	3	vs. James Madison	2/26/12
RBI	3	vs. Northwestern	4/20/13
STOLEN BASES	1	2x, last vs. DePaul	3/16/13
WALKS	2	8x, last at LSU	2/17/14
TOTAL BASES	6	vs. LIU-Brooklyn	3/2/12

2014 SEASON HIGHS

AT BATS	5	vs. Oregon State	2/7/14
HITS	4	vs. Oregon State	2/7/14
RUNS	2	4x, last at LSU	2/17/14
RBI	1	4x, last vs. Seattle	2/9/14
STOLEN BASES	--	--	--
WALKS	2	3x, last at LSU	2/17/14
TOTAL BASES	4	vs. Oregon State	2/7/14

CAREER HITTING STATISTICS

Year	AVG.	GP-GS	AB	R	H	2B	3B	HR	RBI	TB	SLG	BB	HBP	SO	GDP	OBP	SF-SH	SB-ATT	PO-A-E	FLD%
2011	.257	56-55	167	11	43	9	1	5	26	69	.413	9	2	38	1	.302	1-4	0-1	56-6-0	1.000
2012	.209	50-50	153	21	32	5	0	4	17	49	.320	19	0	27	0	.297	0-1	1-1	51-1-1	.981
2013	.248	42-35	109	15	27	8	0	0	11	35	.321	11	0	21	0	.314	1-0	1-1	53-7-1	.984
2014	.213	16-16	47	13	10	1	0	0	4	11	.234	8	0	3	0	.327	0-2	0-0	33-29-0	1.000
Total	.235	164-156	476	60	112	23	1	9	58	164	.345	47	2	89	1	.306	2-7	2-3	193-43-2	.992

#24 MARY WARD



OF • Fr. • Greencastle, Pa. Greencastle-Antrim

- Earned her first collegiate start vs. Dartmouth (3/1)
- Scored one run vs. George Washington (2/16)
- Notched her first collegiate run vs. Oregon State (2/7) as a pinch runner
- Also crossed the plate once vs. Seattle (2/9)

WARD'S SEASON HIGHS

AT BATS	1	3x, last vs. Dartmouth	3/1/14
RUNS	1	2x, last vs. Seattle	2/9/14
HITS	--	--	--
RBI	--	--	--
WALKS	--	--	--
STOLEN BASES	--	--	--
TOTAL BASES	--	--	--

CAREER HITTING STATISTICS

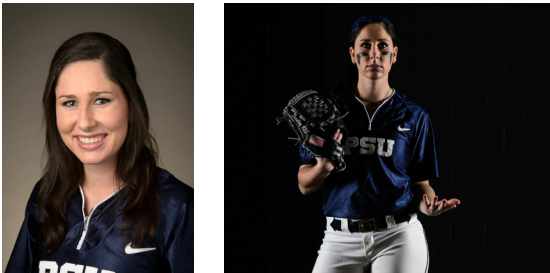
Year	AVG.	GP-GS	AB	R	H	2B	3B	HR	RBI	TB	SLG	BB	HBP	SO	GDP	OBP	SF-SH	SB-ATT	PO-A-E	FLD%
2014	.000	12-1	3	3	0	0	0	0	0	0	.000	0	1	1	0	.250	0-0	0-0	0-1-0	1.000
Total	.000	12-1	3	3	0	0	0	0	0	0	.000	0	1	1	0	.250	0-0	0-0	0-1-0	1.000



2014 PENN STATE SOFTBALL



#25 MEGHAN BRADLEY



OF • Jr. • Santa Monica, Calif. Santa Monica

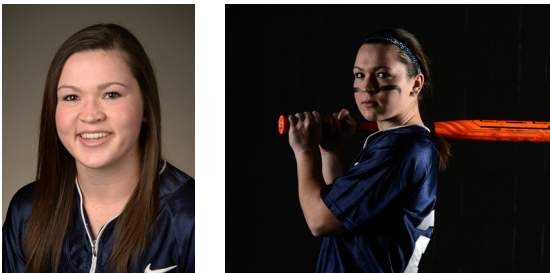
- Has seen action in eight games in 2014
- Registered her first hit as a Nittany Lion vs. Bradley (2/8)
- Put together a 2-for-4 effort vs. Bradley
- Earned her first collegiate start vs. Bradley as the DH

BRADLEY'S CAREER HIGHS		
AT BATS	4	vs. Bradley 2/8/14
RUNS	1	3x, last vs. Indiana 4/15/12
HITS	2	vs. Bradley 2/8/14
RBI	-	-
WALKS	-	-
STOLEN BASES	-	-
TOTAL BASES	2	vs. Bradley 2/8/14

2014 SEASON HIGHS		
AT BATS	4	vs. Bradley 2/8/14
RUNS	-	-
HITS	2	vs. Bradley 2/8/14
RBI	-	-
WALKS	-	-
STOLEN BASES	-	-
TOTAL BASES	2	vs. Bradley 2/8/14

CAREER HITTING STATISTICS																				
Year	AVG.	GP-GS	AB	R	H	2B	3B	HR	RBI	TB	SLG	BB	HBP	SO	GDP	OBP	SF-SH	SB-ATT	PO-A-E	FLD%
2012	.000	14-0	0	3	0	0	0	0	0	0	.000	0	1	0	0	1.000	0-0	0-0	0-0-0	.000
2013	.000	1-0	0	0	0	0	0	0	0	0	.000	0	0	0	0	.000	0-0	0-0	0-0-0	.000
2014	.143	8-3	14	0	2	0	0	0	0	2	.143	0	0	4	0	.143	0-0	0-0	1-0-0	1.000
Total	.143	23-3	14	3	2	0	0	0	0	2	.143	0	1	4	0	.200	0-0	0-0	1-0-0	1.000

#28 SHANNON GOOD



OF • So. • Horseheads, N.Y. Horseheads

- Has seen action in three games in 2014
- Earned a start in the season opener vs. Oregon State (2/7)
- Registered four at-bats vs. the Beavers in her first appearance at th plate

GOOD'S CAREER HIGHS		
AT BATS	4	vs. Oregon State 2/7/14
RUNS	-	-
HITS	-	-
RBI	-	-
WALKS	-	-
STOLEN BASES	-	-
TOTAL BASES	-	-

2014 SEASON HIGHS		
AT BATS	4	vs. Oregon State 2/7/14
RUNS	-	-
HITS	-	-
RBI	-	-
WALKS	-	-
STOLEN BASES	-	-
TOTAL BASES	-	-

CAREER HITTING STATISTICS																				
Year	AVG.	GP-GS	AB	R	H	2B	3B	HR	RBI	TB	SLG	BB	HBP	SO	GDP	OBP	SF-SH	SB-ATT	PO-A-E	FLD%
2013	.000	8-5	0	0	0	0	0	0	0	0	.000	0	0	0	0	.000	0-0	0-0	0-0-0	.000
2014	.000	3-1	6	0	0	0	0	0	0	0	.000	0	0	2	0	.000	0-0	0-0	0-0-0	.000
TOTAL	.000	11-6	6	0	0	0	0	0	0	0	.000	0	0	2	0	.000	0-0	0-0	0-0-0	.000



2014 PENN STATE SOFTBALL



#30 KARLIE HABITZ



C • So. • Newhall, Calif. Valencia

- Has started all 16 games for PSU in 2014
- Leads team in RBIs with 16
- Registered her second HR of the year vs. Dartmouth (3/1)
- Turned in a perfect 3-for-3 effort vs. Dartmouth
- Hit her first-career grand slam vs. Oregon State (2/7)
- Drove in a career-high six RBIs vs. Oregon State
- Went a perfect 3-for-3 at the plate vs. Bradley (2/8) with three RBIs

HABITZ'S CAREER HIGHS

AT BATS	4	10x, last vs. Oregon State	2/7/14
RUNS	1	5x, last vs. Appalachian State	2/7/14
HITS	3	vs. Bradley	2/8/14
RBI	6	vs. Oregon State	2/7/14
WALKS	3	vs. George Washington	2/16/14
STOLEN BASES	-	-	-
TOTAL BASES	7	vs. Dartmouth	3/1/14

2014 SEASON HIGHS

AT BATS	4	2x, last at LSU	2/17/14
RUNS	1	2x, last vs. Appalachian State	2/7/14
HITS	3	2x, last vs. Dartmouth	3/1/14
RBI	6	vs. Oregon State	2/7/14
WALKS	3	vs. George Washington	2/16/14
STOLEN BASES	-	-	-
TOTAL BASES	7	vs. Dartmouth	3/1/14

CAREER HITTING STATISTICS

Year	AVG.	GP-GS	AB	R	H	2B	3B	HR	RBI	TB	SLG	BB	HBP	SO	GDP	OBP	SF-SH	SB-ATT	PO-A-E	FLD%
2013	.210	36-32	100	4	21	7	0	3	16	37	.370	7	0	17	0	.259	1-1	0-0	60-4-1	.985
2014	.295	16-16	44	4	13	2	0	2	16	21	.477	7	1	5	0	.404	0-0	0-0	50-5-1	.982
Total	.236	52-48	144	8	34	9	0	5	32	58	.403	14	1	22	0	.306	1-1	0-0	110-9-2	.983

#52 KRISTINA BRACKPOOL



1B • Fr. • Valencia, Calif. Valencia

- Put together a 2-for-3 effort vs. Pitt (2/22)
- Drove in one run vs. George Washington (2/16)
- Notched her first hit as a Nittany Lion vs. Seattle (2/9)
- Hit her first-collegiate homerun vs. Seattle
- Drove in three runs vs. SU
- Went 2-for-3 at the plate vs. SU

BRACKPOOL'S SEASON HIGHS

AT BATS	4	2x, last vs. George Washington	2/16/14
RUNS	1	vs. Seattle	2/9/14
HITS	2	2x, last vs. Pitt	2/22/14
RBI	3	vs. Seattle	2/7/14
WALKS	1	vs. Appalachian State	2/7/14
STOLEN BASES	-	-	-
TOTAL BASES	5	vs. Seattle	2/9/14

CAREER HITTING STATISTICS

Year	AVG.	GP-GS	AB	R	H	2B	3B	HR	RBI	TB	SLG	BB	HBP	SO	GDP	OBP	SF-SH	SB-ATT	PO-A-E	FLD%
2014	.308	8-8	26	1	8	1	0	1	5	12	.462	1	1	9	1	.357	0-0	0-0	45-1-1	.979
Total	.308	8-8	26	1	8	1	0	1	5	12	.462	1	1	9	1	.357	0-0	0-0	45-1-1	.979



#77 SHELBY MILLER



INF • Fr. • Sugar Land

Kempner

- Has a team-high batting average of .391
- Put together a 2-for-3 effort vs. No. 5 Kentucky (2/23)
- Went 2-for-4 at the plate in the win over No. 21 LSU (2/17)
- Drove in two runs in game one at No. 21 LSU
- Got on base four times vs. George Washington (2/16) with one hit and three walks
- Registered her first collegiate hit in her first at-bat as a Nittany Lion vs. Seattle (2/9)
- Earned her first collegiate start vs. Oregon State (2/7)

MILLER'S SEASON HIGHS

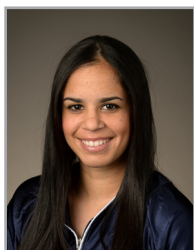
AT BATS	4	at LSU	2/17/14
RUNS	1	2x, last at LSU	2/17/14
HITS	2	2x, last vs. Kentucky	2/23/14
RBI	2	at LSU	2/17/14
WALKS	3	vs. George Washington	2/16/14
STOLEN BASES	1	vs. George Washington	2/16/14
TOTAL BASES	2	at LSU	2/17/14

CAREER HITTING STATISTICS

Year	AVG.	GP-GS	AB	R	H	2B	3B	HR	RBI	TB	SLG	BB	HBP	SO	GDP	OBP	SF-SH	SB-ATT	PO-A-E	FLD%
2014	.391	11-10	23	2	9	0	0	0	4	9	.391	3	0	5	0	.462	0-0	1-1	10-2-1	.923
Total	.391	11-10	23	2	9	0	0	0	4	9	.391	3	0	5	0	.462	0-0	1-1	10-2-1	.923



TV/RADIO ROSTER



TAYLOR ABEYTA
Sophomore • OF
San Diego, Calif.



LIZ PRESTO
Senior • C
Bethlehem, Pa.



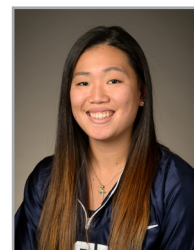
MARISSA DIESCHER
Junior • RHP
Livingston Manor, N.Y.



CHRISTY VON PUSCH
Sophomore • RHP/INF
Bryn Mawr, Pa.



KASIE HATFIELD
Senior • C/INF
Tampa, Fla.



REINA FURUYA
Sophomore • INF
Waipahu, Hawaii



LEXI KNIFF
Sophomore • INF/OF
Ramsey, N.J.



SAM SHANAHAN
Freshman • INF
Seattle, Wash.



MACY JONES
Sophomore • OF/LHP
Ashburn, Va.



MAEGAN TUPINIO
Sophomore • INF/OF
Wahiawa, Hawaii



MARLAINA LAUBACH
Freshman • RHP
Northampton, Pa.



ALICIA WALKER
Junior • UTL
Los Altos, Calif.



ALYSSA SOVEREIGN
Senior • OF
La Canada, Calif.



MARY WARD
Freshman • OF
Greencastle, Pa.



MEGHAN BRADLEY
Junior • OF
Santa Monica, Calif.



SHANNON GOOD
Sophomore • OF
Horseheads, N.Y.



KARLIE HABITZ
Sophomore • C/INF
Newhall, Calif.



KRISTINA BRACKPOOL
Freshman • OF/INF
Valencia, Calif.



SHELBY MILLER
Freshman • INF
Sugar Land, Texas



AMANDA LEHOTAK
Head Coach



MEGAN GIBSON
Assist Coach



JOE GUTHRIE
Assistant