

# PENN STATE WOMEN'S VOLLEYBALL

## 2013 PSU MATCH NOTES

Arielle Sargent, Assistant Dir. of Athletic Communications • O: 814-865-8139 • C: 814-321-8286 • ans26@psu.edu • @PennStateVBALL

### BIG TEN WEEK THREE: MATCH DETAILS



#### NO. 4 PSU VS. NO. 19 WISCONSIN

Saturday, Oct. 5  
7 p.m.  
Rec Hall  
University Park, Pa.



### PENN STATE VS. WISCONSIN

The Nittany Lions lead the all-time series against the Badgers 40-7 after recording a pair of sweeps in both meetings last season. In the last 10 years, PSU has built a 17-3 record against the Badgers, with the most recent loss against Wisconsin occurring in five sets, Nov. 6, 2011. Within the 10-year span, Penn State notched straight-set victories in 14 of its 17 wins against the Badgers.

### SCOUTING THE BADGERS

No. 19 Wisconsin enters this week looking to rebound off of a tough 3-2 loss at then-No. 10 Nebraska last weekend that snapped an eight-match winning streak. Despite the outcome, the Badgers are 14-2 overall this season and 3-1 in the conference. Defensively, Wisconsin is averaging 15.05 digs per set, which ranks third in the Big Ten. From the service line, the Badgers have tallied 90 aces, averaging 1.45 per set, which ranks fourth in the league.

Averaging 3.40 kills per set, Ellen Chapman is leading the offense, with 211 total kills, which ranks 10th in the conference. Hitting at a team-high .347 clip, Haleigh Nelson has also registered a squad-best 65 total blocks. Her hitting percentage is ninth in the Big Ten, while her 1.07 blocks per frame, ranks 10th. On the defensive side, five different Badgers have recorded at least 100 digs on the year, led by Taylor Morey, who is averaging 3.92 per set, which ranks fifth in the conference.

### PSU CLAIMS CLOSE 3-2 WIN AGAINST NO. 11 GOPHERS

Behind career high contributions from a trio of senior standouts, No. 4 Penn State rallied to a close 3-2 victory against No. 11 Minnesota. Senior Ariel Scott led the squad with a season-high 25 kills, while senior Katie Slay matched a career-high mark with 16 kills on .444 hitting. Slay logged a season-high 10 blocks for a double-double, which also moved her into eighth on the Penn State all-time list with 502 total blocks. Senior Deja McClendon rounded out the group with her fourth double-double of the season (14 kills, 16 digs), totaling four blocks, including two solo blocks.

Sophomore Megan Courtney notched a double-double, registering 10 kills and a career-high 22 digs, while also chipping in six blocks. Junior Micha Hancock dished out a career high 67 assists, adding four kills, eight digs and one block.

### ROSE HITS 1,104 WINS TO APPROACH HISTORIC MARK

The Penn State win against Yale marked head coach Russ Rose's 1,100th career victory. Following the 3-2 win against the Gophers, Rose is now 1,104-176 all-time, which puts him just two wins away from tying UCLA head coach, Andy Banachowski's mark of 1,106 for second on the all-time list, behind Hawaii head coach, Dave Shoji.

Earlier this season, Shoji surpassed Banachowski's mark, to become the all-time leader in the category. Shoji is presently at the top with 1,118 wins. With Banachowski no longer active, both Rose and Shoji will continue to go head-to-head, battling for the top spot.

### 2013 SCHEDULE

#### AUGUST

##### 30-31 Penn State Invitational

30	vs. Dabrowa (Exhibition)	W, 3-0
31	vs. No. 19 Louisville	W, 3-0
31	vs. Syracuse	W, 3-0

#### SEPTEMBER

##### 7-8 Nike Big Four Volleyball Classic

7	vs. No. 1 Texas	L, 3-2
8	vs. No. 9 Florida	W, 3-0

##### 13-14 Florida Gulf Coast Tournament

13	vs. Marquette	W, 3-0
14	vs. Central Arkansas	W, 3-0
14	vs. Florida Gulf Coast	W, 3-0

##### 20-21 Penn State Classic

20	vs. Albany	W, 3-0
21	vs. Eastern Kentucky	W, 3-0
21	vs. Yale	W, 3-0
27	vs. Michigan State*	L, 3-2
28	vs. Michigan*#	W, 3-1

#### OCTOBER

3	at Indiana*#	W, 3-0
5	at Purdue*	W, 3-2
9	vs. Minnesota*#	W, 3-2
12	vs. Wisconsin*	8:30 p.m.
18	at Illinois*#	8 p.m.
20	at Northwestern*	2 p.m.
23	vs. Ohio State*#	7 p.m.
26	vs. Iowa*	7 p.m.

#### NOVEMBER

1	at Michigan*#	8 p.m.
2	at Michigan State*#	8:30 p.m.
8	vs. Purdue*	7 p.m.
9	vs. Indiana*	7 p.m.
15	at Wisconsin*	8 p.m.
16	at Minnesota*	8 p.m.
22	vs. Northwestern*	7 p.m.
23	vs. Illinois*	7 p.m.
27	at Ohio State*#	8 p.m.
30	at Nebraska*#	8 p.m.

#### DECEMBER

6	NCAA First and Second Rounds	Campus Sites
7	NCAA First and Second Rounds	Campus Sites
13	NCAA Regionals	Campus Sites
14	NCAA Regionals	Campus Sites
20	NCAA National Championship	Seattle, WA.
21	NCAA National Championship	Seattle, WA.

Home matches played at Rec Hall in **bold** • All times ET and subject to change • \* Indicates Big Ten match • # indicates match will be aired on TV



# 2013 PENN STATE WOMEN'S VOLLEYBALL

## PSU AT A GLANCE

### THE UNIVERSITY

Location:.....University Park, Pa. 16802  
 Founded:..... 1855  
 Enrollment:.....44,112  
 Colors:..... Blue & White  
 Nickname:..... Nittany Lions  
 Conference:..... Big Ten  
 President:..... Dr. Rodney Erickson  
 Acting Director of Athletics:..... Dr. Dave Joyner  
 Assoc. A.D./SWA.....Charmelle Greene  
 Facility (capacity):.....Rec Hall (5,812)

### VOLLEYBALL STAFF

Head Coach:.....Russ Rose (35th season)  
 Alma Mater:.....George Williams, 1975  
 Overall Record (Yrs/Pct):.....1,091-175 (34/.862)  
 School Record:.....same  
 Asst. Coaches:..... Steve Aird (2nd season)  
 .....Kaleena Davidson (5th season)  
 Dir. of VB Operations:.. Adam Hughes (4th season)  
 Office Phone:.....(814) 863-7475 or (814) 863-7474  
 Office Fax:.....(814) 865-1746  
 Office Address:.....235 Rec Hall

### SEASON IN REVIEW

2012 Record:..... 33-3  
 Home: ..... 17-0  
 Away: ..... 10-1  
 Neutral: .....6-2  
 Big Ten record (finish):..... 19-1 (1st)  
 Home: 10-0..... Away: 9-1  
 Final AVCA Ranking:..... No. 3  
 Postseason Play:..... NCAA National Semifinals  
 First Round:..... def. Binghamton, 3-0  
 Second Round:..... def. Bowling Green, 3-0  
 Regional Semifinal:..... def. No. 16 Kentucky, 3-0  
 Regional Final..... def. No. 11 Minnesota, 3-1  
 National Semifinal:.....lost to No. 5 Oregon, 3-1

### NITTANY LION HISTORY

First Year of Volleyball:..... 1976  
 All-Time Record (Years):..... 1,142-218-4 (37)  
 All-Time Big Ten Record:..... 388-52  
 Years/Win Pct:..... 22/.882  
 Big Ten Titles: (14) '92, '93, '96, '97, '98, '99, '03,  
 ..... '04, '05, '06, '07, '08, '09, '10, '12)  
 NCAA Tournament Appearances:..... 32  
 NCAA Tournament Record:.....78-27  
 NCAA National Championships:.....5  
 (1999, 2007, 2008, 2009, 2010)

## 2013 PENN STATE NUMERICAL ROSTER

NO.	NAME	YR.	POS.	HT.	HOMETOWN/HIGH SCHOOL
1	Ariel Scott	Sr.	RS	6-4	Ridgewood, N.J.
2	Lara Caraway	So.	DS	5-4	Evans City, Pa
3	Kendall Pierce	So.	DS	5-6	Eden, N.Y.
4	Dominique Gonzalez	Jr.	L	5-6	San Antonio, Texas
6	Maddie Martin	Sr.	OH	6-1	Tampa, Fla.
7	Nia Grant	Jr.	OH	6-2	Warren, Ohio
8	Erica Denney	RS-Jr.	MH	6-5	Aurora, Colo.
9	Paulina Prieto Cerame	RS-Fr.	OH	6-2	Miami, Fla.
10	Carley Muller	Fr.	DS	5-7	Manhattan Beach, Calif.
12	Micha Hancock	Jr.	S	5-11	Edmond, Okla.
13	Taylor Krause	Fr.	DS/S	5-6	Allentown, Pa.
14	Aiyana Whitney	RS-So.	OH	6-5	Norwood, N.J.
15	Maggie Harding	Sr.	DS	5-6	State College, Pa.
16	Katie Slay	Sr.	MH	6-6	Raleigh, N.C.
17	Megan Courtney	So.	S/OH	6-2	Dayton, Ohio
18	Deja McClendon	Sr.	OH	6-1	Louisville, Ky
23	Kelly Robertson	Fr.	MH	6-0	Allentown, Pa./Parkland High
24	Laura Broerman	Fr.	DS	5-4	Colorado Springs, Colo.
33	Lacey Fuller	Jr.	DS	5-6	San Diego, Calif.

**Head Coach:** Russ Rose (George Williams, 1975), 35th year

**Assistant Coaches:** Steve Aird (Penn State, 2001), 2nd year

Kaleena Davidson (Penn State, 2006), 5th year

**Director of Volleyball Operations:** Adam Hughes (Penn State, 2006), 4th year

## ALPHABETICAL ROSTER

NO.	NAME	YR.	POS.	HT.	HOMETOWN/HIGH SCHOOL
24	Laura Broerman	Fr.	DS	5-4	Colorado Springs, Colo.
2	Lara Caraway	So.	DS	5-4	Evans City, Pa.
17	Megan Courtney	So.	S/OH	6-2	Dayton, Ohio
8	Erica Denney	RS-Jr.	MH	6-5	Aurora, Colo.
33	Lacey Fuller	Jr.	DS	5-6	San Diego, Calif.
4	Dominique Gonzalez	Jr.	L	5-6	San Antonio, Texas
7	Nia Grant	Jr.	OH	6-2	Warren, Ohio
12	Micha Hancock	Jr.	S	5-11	Edmond, Okla.
15	Maggie Harding	Sr.	DS	5-6	State College, Pa.
13	Taylor Krause	Fr.	DS/S	5-6	Allentown, Pa.
6	Maddie Martin	Sr.	OH	6-1	Tampa, Fla.
18	Deja McClendon	Sr.	OH	6-1	Louisville, Ky.
10	Carley Muller	Fr.	DS	5-7	Manhattan Beach, Calif.
3	Kendall Pierce	So.	DS	5-6	Eden, N.Y.
9	Paulina Prieto Cerame	RS-Fr.	OH	6-2	Miami, Fla.
23	Kelly Robertson	Fr.	MH	6-0	Allentown, Pa.
1	Ariel Scott	Sr.	RS	6-4	Ridgewood, N.J.
16	Katie Slay	Sr.	MH	6-6	Raleigh, N.C.
14	Aiyana Whitney	RS-So.	OH	6-5	Norwood, N.J.

## PRONUNCIATIONS

Aiyana.....	l-yahn-uh	Broerman.....	Bra-er-man
Ariel.....	Air-ee-el	Micha.....	Mike-uh
Aird.....	Air-d	Nia.....	Nee-uh
Kaleena.....	KA-lee-na	Muller.....	Muh-ler
Lacey.....	Lace-ee	Paulina.....	Paul-ee-na
Lara.....	Lar-uh	Prieto.....	Pre-eh-toe



# TV/RADIO ROSTER



**1** Ariel Scott  
Sr., RS, 6-4  
Ridgewood, N.J.



**2** Lara Caraway  
So., DS, 5-4  
Evans City, Pa.



**3** Kendall Pierce  
So., DS, 5-6  
Eden, N.Y.



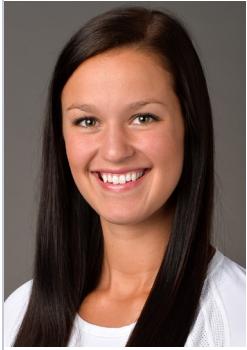
**4** Dominique Gonzalez  
Jr., DS, 5-6  
San Antonio, Texas



**6** Maddie Martin  
Sr., OH, 6-1  
Tampa, Fla.



**7** Nia Grant  
r., MH, 6-2  
Warren, Ohio



**8** Erica Denney  
RS-Jr., MH, 6-3  
Aurora, Colo.



**9** Paulina P. Cerame  
RS-Fr., OH, 6-2  
San Juan, Puerto Rico



**10** Carley Muller  
Fr., DS, 5-7  
Manhattan Beach, Calif.



**12** Micha Hancock  
Jr., S, 5-11  
Edmond, Okla.



**13** Taylor Krause  
Fr., DS/S, 5-6  
Allentown, Pa.



**14** Aiyana Whitney  
RS-So., OH, 6-4  
Norwood, N.J.



**15** Maggie Harding  
Sr., DS, 5-6  
State College, Pa.



**16** Katie Slay  
Sr., MH, 6-6  
Raleigh, N.C.



**17** Megan Courtney  
So., S/OH, 6-2  
Dayton, Ohio



**18** Deja McClendon  
Sr., OH, 6-1  
Louisville, Ky.



**23** Kelly Robertson  
Fr., MH, 6-0  
Allentown, Pa.



**24** Laura Broerman  
Fr., DS, 5-4  
Colorado Springs, Colo.



**33** Lacey Fuller  
Jr., DS, 5-6  
San Diego, Calif.



Russ Rose  
Head Coach



Steve Aird  
Assistant Coach



Kaleena Davidson  
Assistant Coach



Adam Hughes  
Director of  
Operations



JJ Goddu  
Volunteer  
Assistant Coach



## AROUND THE BIG TEN



### 2013 BIG TEN STANDINGS

Team	Big Ten Record	Overall Pct.	Record	Pct.
Michigan State	4-0	1.000	15-1	.938
Nebraska	4-0	1.000	11-2	.846
Penn State	4-1	.800	13-2	.867
Wisconsin	3-1	.750	14-2	.875
Minnesota	3-2	.600	15-3	.833
Ohio State	2-2	.500	14-2	.875
Illinois	2-2	.500	6-8	.429
Michigan	1-3	.250	11-4	.733
Purdue	1-3	.250	10-5	.667
Northwestern	1-3	.250	9-7	.562
Iowa	0-4	.000	9-7	.562
Indiana	0-4	.000	8-7	.533

### THIS WEEK IN THE BIG TEN

#### OCTOBER 9

MINNESOTA at PENN STATE - 7:30 p.m.

#### OCTOBER 11

ILLINOIS at PURDUE - 7 p.m.

NORTHWESTERN at INDIANA - 7 p.m.

IOWA at MICHIGAN STATE - 7 p.m.

NEBRASKA at MICHIGAN - 7 p.m.

WISCONSIN at OHIO STATE - 7 p.m.

#### OCTOBER 12

ILLINOIS at INDIANA - 8 p.m.

IOWA at MICHIGAN - 8 p.m.

NEBRASKA at MICHIGAN STATE - 8 p.m.

MINNESOTA at OHIO STATE - 8 p.m.

NORTHWESTERN at PURDUE - 8 p.m.

WISCONSIN at PENN STATE - 8:30 p.m.

### #BIG WEEKLY HIGHLIGHTS

Michigan State, Nebraska and Penn State Take Home Weekly Awards

#### Co-Players of the Week

Lauren Wicinski, Michigan State

Kelsey Robinson, Nebraska

#### Defensive Player of the Week

Meghan Haggerty, Nebraska

#### Freshman of the Week

Amber Rolfzen, Nebraska

#### Setter of the Week

Micha Hancock, Penn State

### LOOKING BACK AT LAST WEEKEND

Penn State hit the road last week, traveling to Indiana and Purdue for its first two Big Ten conference road matches of the year. The Nittany Lions posted a 2-0 record, sweeping Indiana before concluding the week with a close 3-2 win at No. 24 Purdue.

In the match against Indiana, the Nittany Lions posted a .507 hitting percentage against the Hoosiers, which is the highest PSU has hit against a league opponent so far this season. Penn State also held IU to just 45 total points across three sets, including just eight in the third frame, marking the least amount of points Penn State has surrendered to a Big Ten opponent in 2013.

### ALL ALONE AT THE TOP

Junior Micha Hancock is leading the nation in aces per set for the fifth straight week, according the latest NCAA DI stats release. With a total of 40 aces this season, Hancock is averaging 0.82 per frame, which ranks first in the Big Ten.

With four aces against Eastern Kentucky, Hancock notched her 200th career service ace. After recording six over the weekend, she improved to 212 aces, which puts her just 23 shy of tying Ellen Hensler (1983-86) for first on the PSU all-time list.

As a team, Penn State is averaging 1.57 aces per frame, which ranks second in the Big Ten and 26th nationally. Aside from Dominique Gonzalez has also recorded 11 aces, which ranks second on the squad.

### NITTANY LIONS RISE TO NO. 4 IN AVCA WEEKLY TOP 25 POLL

After capturing a pair of Big Ten road wins last weekend, Penn State improved to No. 4 in the latest AVCA Top 25 Coaches' Poll. The Nittany Lions have been ranked within the top five in every poll so far this season.

Last year, Penn State spent six weeks atop the standings, including five consecutive weeks from Sept. 24 to Oct.22, before earning the No. 1 overall seed in the NCAA Tournament, Nov. 9. The No. 1 ranking marks the 78th time in program history that Penn State has reached the top of the polls, having earned its first-ever No. 1 ranking Sept. 2, 1997.

### HANCOCK EARNS 7TH CAREER BIG SETTER OF THE WEEK NOD

After helping the Nittany Lions to a 2-0 weekend on the road, junior setter Micha Hancock earned Big Ten Setter of the Week honors. The weekly league selection is Hancock's first of the season and 11th of her career.

Leading the nation in aces per frame for the fourth straight week, Hancock concluded the weekend ranked second in the Big Ten in service aces, totaling six for a 0.75 average per set. She also finished fourth in assists, after dishing out 83 total assists, averaging 10.38 per set. At Indiana, Hancock directed the Penn State offense with a .507 hitting percentage in a 3-0 victory, while also adding four aces, seven digs, four blocks and three kills on 1.000 hitting. At No. 24 Purdue, she registered her first double-double of the season, tallying 45 assists and 13 digs.

### THAT'S SOME HEAVY HITTING

Senior Katie Slay continues to cement herself among the best in country. With a .461 hitting percentage on the year, Slay is currently ranked seventh nationally. Her mark also ranks second in the Big Ten conference. As a team, the Nittany Lions are hitting .329 which leads the Big Ten and ranks third in the nation.

### BLOCK IT UP

The Nittany Lions have combined for 133.0 total blocks in 2013, including 41 solo blocks. As a team, the 2.71 average per set ranks 22nd nationally and second in the league. Katie Slay is leading the PSU blocking effort with 1.44 per frame, which leads the Big Ten and ranks 11th nationally.

### SLAY JOINS 500 CLUB

With 10 blocks against No. 11 Minnesota, senior Katie Slay became the eighth member in Penn State program history to record more than 500 career total blocks. The 502 total career blocks ranks eighth on the all-time list.



# 2013 PENN STATE WOMEN'S VOLLEYBALL

## AVCA TOP 25 COACHES' POLL

As of Oct. 7 2013

NO.	SCHOOL	PTS.	RECORD	PW
1	USC (47)	1477	14-1	2
2	Florida (6)	1397	15-1	3
3	Texas (2)	1353	10-2	4
<b>4</b>	<b>PENN STATE</b>	<b>1305</b>	<b>12-2</b>	<b>5</b>
5	Hawai'i (4)	1282	15-1	6
6	Washington	1194	11-1	1
7	Michigan State (1)	1129	15-1	9
8	Stanford	1098	10-3	7
9	Nebraska	1046	11-2	10
10	North Carolina	942	15-0	11
11	Minnesota	900	15-2	8
12	San Diego	831	11-3	13
13	Colorado State	733	13-0	17
14	Ohio State	649	14-2	12
15	Kentucky	637	12-3	19
16	Arizona State	518	13-3	15
17	Michigan	499	11-4	14
18	Ohio	415	14-2	20
19	Wisconsin	361	14-2	23
20	Purdue	303	10-5	24
21	Florida State	242	10-5	18
22	Oregon	209	9-5	21
23	UCLA	191	9-5	16
24	BYU	126	12-3	NR
25	Missouri	111	18-0	NR

**RECEIVING VOTES:** Oklahoma 79; California 76; Duke 68; Western Kentucky 55; Colorado 53; Illinois 46; Kansas 42; Creighton 32; St. Mary's (CA) 32; Miami (FL) 26; Iowa State 16; Cal State Northridge 12; Kansas State 5; Butler 3

\*2013 opponents in *italics*

## PSU PRESENCE IN THE COACHES' POLL

Aug. 12: #2  
Sept. 2 #1  
Sept. 7 #3  
Sept. 9 #3  
Sept. 16 #1  
Sept. 23 #1  
Sept. 30 #5  
Oct. 7 #4  
Next Poll: Oct. 14

## PSU EARNS NO. 2 RANKING IN PRESEASON COACHES' POLL

The defending Big Ten Champion Nittany Lions enter the 2013 season with the No. 2 ranking, according to the 2013 AVCA Preseason Coaches' Poll. The Lions are among Big Ten teams to break into the top 10, with Minnesota and Michigan coming in at No. 6 and No. 7 and Nebraska at No. 10.

Defending NCAA Champion Texas nabbed the top spot, earning 55 of 60 possible first-place votes. The Nittany Lions received three first place votes, while third-ranked Stanford earned two. Rounding out the top five is USC and Washington, who are ranked fourth and fifth, respectively.

## PSU SPENDS TWO WEEKS AT NO. 1 IN TOP 25 RANKINGS

After posting two back-to-back undefeated weekends, PSU spent its second week at No. 1 in the AVCA weekly Top 25 Coaches' Poll last week, while also picking up top rankings in the RichKern.com and Volleyball Magazine polls. Last year, Penn State spent six weeks atop the standings, including five consecutive weeks from Sept. 24 to Oct. 22, before earning the No. 1 overall seed in the NCAA Tournament, Nov. 9. The No. 1 ranking marks the 78th time in program history that Penn State has reached the top of the polls, having earned its first-ever No. 1 ranking Sept. 2, 1997.

## TRIO EARNS PENN STATE CLASSIC ALL-TOURNAMENT HONORS

Seniors Katie Slay and Deja McClendon and junior Dominique Gonzalez all earned Penn State Classic all-tournament team honors for their performances on the court last weekend.

Slay earned her third all-tournament honor after combining for 27 kills on the weekend, posting a team-high .649 hitting clip. Slay highlighted the weekend with 11 kills against Eastern Kentucky. She also led the team in blocking with 13 total blocks, averaging 1.44 per set.

McClendon finished the weekend with 24 kills, 16 digs and seven blocks, while also hitting .300 or better. She posted double-digit kills against Eastern Kentucky (10) and ranked second on the team with nine kills against Yale. Gonzalez led the squad with 44 digs on the week, including a season-high 20 against ECU.

## SLAY EARNS HGIHS CLASSIC ALL-TOURNAMENT MVP HONORS

Senior Katie Slay earned her second all-tournament honor of the season after being selected as the MVP in the Hilton Garden Inn Homewood Suites Classic. Slay recorded two season-high marks in the 3-0 weekend, registering a team-high eight blocks against Central Arkansas and a squad-best .818 hitting percentage at FGCU. She also combined for 23 kills on the week, with only one error while leading the team with a .667 hitting percentage. Slay also averaged 1.78 blocks per set across all three matches and extended her streak to seven straight games with at least one block.

## COURTNEY AND HANCOCK NAB SPOTS ON ALL-TOURNAMENT TEAM

Junior Micha Hancock and sophomore Megan Courtney both earned spots on the all-tournament team last weekend. The honor was Hancock's second of the season.

Hancock dished out more than 30 assists in all three PSU victories this weekend, while pacing tournament MVP, Katie Slay to a season-high .818 hitting clip against FGCU. She notched three aces against both Central Arkansas and FGCU for an 0.67 average per frame on the week.

Courtney tied for first on the team in kills against Marquette and FGCU while leading the squad with double-digit kills (10) against Central Arkansas last weekend. She combined for 28 total kills in all three matches, adding 17 digs.

## HANCOCK TABBED PENN STATE INVITATIONAL MVP

Micha Hancock earned Penn State Invitational MVP honors for a pair of outstanding performances last weekend. Hancock tied for third on the squad in kills with five against Syracuse, on 556 hitting. She also dished out 30 assists, while pacing the team to a .313 hitting clip. Against Louisville, Hancock registered eight service aces, which is just two shy of her career-high mark of 10 that she set against Binghamton in the NCAA Tournament last season. She also tallied two kills and seven digs against the Cardinals to round out the weekend.

## PRIETO CERAME AND SLAY EARN PSU INVITE ALL-TOURNAMENT

Redshirt freshman Paulina Prieto Cerame and senior Katie Slay also earned Penn State Invitational All-Tournament team honors in the Penn State Invitational. In her first season in the blue and white, Prieto Cerame recorded a team-high nine kills against Syracuse and hit double-digits with 10 against No. 19 Louisville. Slay led the squad with a team-best five blocks against Syracuse, including two solo blocks. She also tied for third on the team with five kills. Against the Cardinals, she posted three blocks, including one solo block, adding three kills.



## DOUBLE - DOUBLES

### DEJA MCCLENDON (27 CAREER)

- at Texas, 9/7/13 (20 kills, 17 digs)
- vs. Michigan, 9/28/13 (15 kills, 13 digs)
- at Purdue, 10/5/13 (10 kills, 15 digs)
- vs. Minnesota, 10/9/13 (14 kills, 16 digs)

### MEGAN COURTNEY (6 CAREER)

- vs. Florida , 9/8/13 (11 kills, 12 digs)
- vs. Michigan State , 9/27/13 (15 kills, 14 digs)
- vs. Minnesota, 10/9/13 (10 kills, 22 digs)

### MICHA HANCOCK (21 CAREER)

- vs. Michigan, 9/28/13, (44 assists, 11 digs)
- at Purdue, 10/5/13 (45 assists, 13 digs)

### KATIE SLAY (1 CAREER)

- vs. Minnesota, 10/9/13, (16 kills, 10 blocks)

## 2013 HONORS

### DEJA MCCLENDON

- Preseason All-Big Ten
- Penn State Classic All-Tournament

### MEGAN COURTNEY

- Preseason All-Big Ten
- Hilton Garden Inn Homewood Suites All-Tournament

### MICHA HANCOCK

- Preseason All-Big Ten
- Penn State Invitational MVP
- Hilton Garden Inn Homewood Suites All-Tournament
- Penn State Classic All-Tournament
- Big Ten Setter of the Week (10/5)

### KATIE SLAY

- Preseason All-Big Ten
- Penn State Invitational All-Tournament
- Hilton Garden Inn Homewood Suites Classic MVP

### ARIEL SCOTT

- Unanimous Preseason All-Big Ten
- Senior CLASS Award candidate

### PAULINA PRIETO CERAME

- Penn State Invitational All-Tournament

### DOMINIQUE GONZALEZ

- Penn State Classic All-Tournament

## TWEET, TWEET!

### Nittany Lion News in 140 characters or less!

- After posting an 0-2 mark in 5-set matches, #PSUVB has recorded two straight 3-2 victories to even the record to 2-2 in 2013.
- 
- #PSUVB hit .507 at Indiana, which is the highest the Lions have hit vs. a #B1G opponent this year.
- 
- PSU also held IU to 45 pts in 3 sets, including 8 in the 3rd set, marking the least amount of pts PSU has surrendered to a #B1G team in 2013
- 
- With the win vs. Minnesota, #PSUVB HC Russ Rose has 1,104 career victories, which is two shy of tying for second on the all-time list
- 
- Posting 10 blocks vs. Minn., Katie Slay became the 8th member in PSU history to record more than 500 career total blocks with 502 all-time.

## NITTANY LIONS IMPROVE TO 29-6 IN SEASON-OPENERS

With a victory against Syracuse, Penn State improved to 29-6 all-time in season-openers. The win marks the second-straight season opening triumph for the Lions after knocking off Morehead State 3-0 in the first match of the 2012 season. Penn State has not lost a season-opener since Aug. 26, 2011, when PSU lost to Oregon, marking the first season-opening loss since 2005.

The Penn State Invitational also marked the first time the Nittany Lions opened the season at home in six years. The last time PSU opened at Rec Hall was in 2007, when Penn State defeated Texas, 3-1, on Aug. 24 and 25 to kick of the start of an eventual national championship campaign.

## SCOTT SELECTED AS CANDIDATE FOR SENIOR CLASS AWARD

Penn State women's volleyball senior Ariel Scott has been selected as a candidate for the 2013 Senior CLASS Award, as announced today. Scott is one of 30 to earn a spot on the ballot, along with four others from the Big Ten conference.

Scott, a unanimous Preseason All-Big Ten selection, helped guide PSU to a spot in the NCAA National Semifinals, picking up numerous honors along the way. The 2012 First Team AVCA

All-American and 2012 Big Ten Player of the Year returns to the court in 2013 for her final season after starting all 36 games last year. She led the squad with a team-best, 469 kills, averaging 3.75 per set with a .308 hitting clip. The NCAA West Lafayette Regional Championship MVP recorded double-digit kills in 24-of-26 matches.

## INTERNATIONAL INFLUENCE

Over the weekend, Dabrowa hit the court in Rec Hall, making its first stop on a tour throughout the United States. Dabrowa is a top professional team from Poland that reached the title match of the CEV Women's Volleyball Cup in 2010-11. The CEV is the governing body of 55 national federation teams from across Europe, and the highest level of competition for professional clubs. This year, Dabrowa captured the Polish Cup, qualifying the team for its fifth appearance in the CEV Women's Volleyball Cup since 2009. Dabrowa's lineup consists of athletes from four different countries including Belgium, Czech Republic, Italy and Poland.

Current player, Maja Tokarska also played on the 2012 Olympic team for Poland. The club will tour the United States for three weeks, taking on other collegiate

## SISTER, SISTER!

In Penn State's final matchup of the Penn State Invitational, three-time AVCA All-American Deja McClendon lined up against her sister, Maya McClendon, who is currently an outside hitter for the No. 19-ranked Louisville Cardinals. Deja led with a team-high 17 digs, while Maya led the Cards offense with eight kills.

## TRAVELING THE WORLD

During the summer, the Penn State women's volleyball team traveled to Europe for a week-long tour. The team traveled to Prague, Vienna and Slovenia touring the cities and playing some of the top professional teams from each country.



# 2013 PENN STATE WOMEN'S VOLLEYBALL

## DOUBLE FIGURE CLUB

	KILLS	DIGS	BLOCKS
# 1 Ariel Scott	1 (8/31) 2 (9/21) 3 (9/21) 4 (9/27) 5 (9/28) 6 (10/5) 7 (10/9)		
#9 Paulina Prieto Cerame	1 (8/31) 2 (9/7)		
#18 Deja McClendon	1 (9/7) 2 (9/21) 3 (9/28) 4 (10/3) 5 (10/5) 6 (10/9)	1 (8/31) 2 (9/7) 3 (9/28) 4 (9/27) 5 (10/5) 6 (10/9)	
#17 Megan Courtney	1 (9/8) 2 (9/14) 3 (9/21) 4 (9/27) 5 (9/28) 6 (10/3) 7 (10/9)	1 (9/8) 2 (9/14) 3 (9/27) 4 (10/9)	
#16 Katie Slay	1 (9/7) 2 (9/21) 3 (9/27) 4 (10/5) 5 (10/9)		1 (10/9)
#6 Maddie Martin		1 (9/7)	
#4 Dominique Gonzalez		1 (9/7) 2 (9/13) 3 (9/14) 4 (9/14) 5 (9/21) 6 (9/21) 7 (9/27) 8 (9/28) 9 (10/5) 10 (10/9)	
#12 Micha Hancock		1 (9/28) 2 (10/5) 3 (10/9)	

## NITTANY LIONS ON TV

There's no need to worry this year if you can't follow Penn State on the road or make it to every home match. As one of the nation's top volleyball programs, Penn State has earned regional and national exposure. This year, the Nittany Lions will be on television at least eight times between the Big Ten Network and ESPN. All other matches will be streamed live on GoPSUsports.com via All-Access or on BigTenNetwork.com. All schools will provide live scoring via the web, as well.

### PENN STATE WOMEN'S VOLLEYBALL TV SCHEDULE

Date	Opponent	Air Time
Sept. 28	vs. Michigan	BTN - live
Oct. 3	at Indiana	ESPN2 - live
Oct. 9	vs. Minnesota	BTN - live
Oct. 18	at Illinois	BTN - live
Oct. 23	vs. Ohio State	ESPN2 - delay
Nov. 1	at Michigan	BTN - live
Nov. 2	at Michigan State	BTN - live
Nov. 27	at Ohio State	BTN - live
Nov. 30	at Nebraska	BTN - live

## PENN STATE PICKED FIRST IN BIG PRESEASON POLL

PSU was picked as the Big Ten preseason favorite in the 2013 Preseason Coaches' Poll, marking the Lions' eighth first-place nod within the last nine years. Following Penn State in the No. 2 slot is Minnesota, followed by Michigan, Nebraska and Michigan State. Illinois rounds out the group, slated at sixth.

## FIVE EARN BIG TEN PRESEASON HONORS

Penn State dominated the Preseason All-Big Ten honors this year with five Nittany Lions earning honors. Ariel Scott led the group with a unanimous selection, marking her second straight appearance on the list. Deja McClendon earned her third consecutive nod, while Katie Slay also notched her second straight. Micha Hancock and Megan Courtney also earned spots on the list.

## ALL-BIG TEN PRESEASON POLL

1. Penn State
2. Minnesota
3. Michigan
4. Nebraska
5. Michigan State
6. Illinois

## ALL-BIG TEN TEAM

Name, School Yr. Pos.	Ashley Wittman, MINN
Jocelynn Birks, ILL	Stephanie Holthus, NU
Liz McMahon, ILL	Megan Courtney, PSU
Jennifer Cross, MICH	Micha Hancock, PSU
Lexi Dannemiller, MICH	Deja McClendon, PSU
Lexi Erwin, MICH	ARIEL SCOTT, PSU
LAUREN WICINSKI, MSU	Katie Slay, PSU
TORI DIXON, MINN	*Unanimous in all caps

## LEADER OF THE PACK

Team captains for the 2013-14 year include junior Dominique Gonzalez and senior Maggie Harding. Gonzalez is no stranger to the leadership role, having served as a team captain during the 2012-13 season.

## JUST LIONS, PLEASE

When referring to the Penn State women's volleyball team please use only the terms Nittany Lions or just Lions. Both Penn State and PSU are also acceptable.

## WHAT'S NEXT?

Penn State hits the road once again, traveling to Illinois and Northwestern for a pair of conference matches. The Nittany Lions will square off against the Fighting Illini, Friday, Oct. 18 at 8 p.m. ET live on the Big Ten Network. PSU will close out the weekend against Northwestern, taking on the Wildcats, Saturday, Oct. 20 at 2 p.m. ET

## PACKING REC HALL ONCE AGAIN

Penn State was among the national leaders in attendance in 2012. The Nittany Lions ranked fourth in the country (3,316) behind Hawaii, Nebraska and Minnesota. Overall, the Big Ten conference led the nation in attendance with all 12 teams averaging 2,290 across 181 events.



# 2013 PENN STATE WOMEN'S VOLLEYBALL

## RICKKERN.COM TOP 30

Poll #6 • Oct. 7, 2013

NO.	SCHOOL	POINTS
1	USC	578
2	Florida	565
3	Texas	562
<b>4</b>	<b>PENN STATE</b>	<b>541</b>
5	Hawaii	530
6	Michigan State	492
7	Stanford	484
8	Nebraska	469
9	Minnesota	418
10	Washington	414
11	San Diego	392
12	North Carolina	377
13	Ohio State	347
14	Michigan	306
15	Kentucky	284
16	Wisconsin	261
17	Arizona State	258
18	Colorado State	225
19	Oregon	223
20	Ohio	209
21	UCLA	191
22	Florida State	186
23	Purdue	144
24	Missouri	129
25	Cal	104
26	W. Kentucky	101
27	Iowa State	90
28	Creighton	76
29	BYU	71
30	Illinois	69

**Receiving Votes:** Kansas, Duke, Saint Mary's, Oklahoma, Colorado, Miami-FI, Texas A&M, Wichita State, Louisville

## VOLLEYBALL MAGAZINE TOP 20

Poll #5 • Oct. 7, 2013

NO.	SCHOOL	POINTS	PREVIOUS
1.	USC (7)	195	2
2.	Texas (1)	181	4
3.	Florida (1)	176	5
<b>4.</b>	<b>PENN STATE</b>	<b>175</b>	<b>3</b>
5.	Hawaii (1)	160	6
6.	Washington	145	1
7.	Stanford	138	7
8.	Michigan State	132	9
9.	Nebraska	123	10
10.	North Carolina	110	11
11.	Minnesota	109	8
12.	San Diego	80	14
13.	Ohio State	69	12
14.	Colorado State	66	17
15.	Michigan	53	13
16.	Kentucky	50	19
17.	Arizona State	39	15
18.	Wisconsin	18	20
19.	UCLA	13	16
20.	Florida State	12	18

**Receiving Votes:** Oregon, Missouri, BYU, Ohio, Iowa State, California, Miami (FL), Purdue, St. Mary's

## NITTANY LIONS BY MONTH

Penn State is 37-5 (.881) all-time during the month of August, including the pair of victories this weekend against Syracuse and No. 19 Louisville. Its first two losses came during the inaugural NACWAA in 1995 when Nebraska swept the Lions, and in the 1999 NACWAA when Florida outlasted Penn State, 3-2, in the opening round. Most recently, the Nittany Lions suffered a season opening loss to Oregon in 2011 before rebounding with a hard fought 3-2 win against nationally-ranked USC.

Penn State is 358-56-4 (.856) all-time during the month of September. The Lions are 183-17 (.915) during September dating back to the 1995 season and 41-8 (.837) within the last five years.

PSU is 382-67 (.851) all-time during the month of October. Penn State has posted a 82-11 (.882) mark in October across the last 10 seasons, a record of 46-3 (.939) in the last five years and did not lose a match during the month from 2007 to 2010.

Penn State is 275-57 (.828) all-time during the month of November, including a 77-8 (.918) mark over the last 10 seasons. The Lions had a six-year streak from 1995-2000 where they did not lose a match in the month, and in the last five seasons, Penn State has a 38-3 (.927) mark in November.

## QUICK SETS

From Oct. 16, 1996 to Nov. 9, 2001, Penn State won 139 consecutive matches when taking a 2-0 lead. Since joining the Big Ten in 1991, Penn State has played in 743 total matches, winning 656. Additionally, 520 of those 656 wins, or 88%, have been three-game sweeps. Across the last seven years, Penn State has won 195 of its 240 victories in three games (81%), including 37-of-38 (98%) in 2008 and 32-of-38 in 2009 (84%).

In the last 15 years, the Lions have lost only 58 matches. And of those 22 teams that defeated the Lions – BYU, Florida, Illinois, Indiana, Long Beach State, Michigan, Michigan State, Minnesota, Nebraska, Northwestern, Ohio State, Oregon, Oregon State, Purdue, USC, Stanford, Temple, Tennessee, Texas, UCLA, Washington and Wisconsin – only nine of these teams (Nebraska, Stanford, Ohio State, Illinois, Wisconsin, UCLA, Minnesota, Michigan State and Florida) have been able to beat Penn State a third time. The Lions have compiled a 277-56 mark in the last 15 years versus these teams.

vs. Michigan	28-2	vs. Stanford	5-5
vs. Northwestern	28-2	vs. Michigan State	26-3
vs. Wisconsin	24-6	vs. Ohio State	25-5
vs. Florida	4-2	vs. UCLA	3-3
vs. Nebraska	5-4	vs. Minnesota	26-6
vs. LBSU	0-1	vs. USC	2-1
vs. Illinois	26-5	vs. Temple	2-1
vs. Brigham Young	3-1	vs. Tennessee	0-1
vs. Purdue	31-1	vs. Indiana	30-1
vs. Washington	0-1	vs. Texas	9-2
		vs. Oregon	0-2
		vs. Oregon State	0-1

## PENN STATE BY THE NUMBERS

5	Number of NCAA National Championships (1999, 2007, 2008, 2009, 2010)
15	Number of Big Ten titles in 22 seasons in the league
21	Number of Conference Players of the Year
32	Number of NCAA Tournaments PSU has participated in, one of two to play in all 32
36	Number of consecutive 20-win seasons
37	Seasons of Penn State women's volleyball, which started in 1976 under Tom Tait
65	Longest Big Ten winning streak recorded by Penn State from 11/11/06 to 9/24/10
76	Number of polls in which Penn State was ranked No. 1
94	Number of consecutive home match wins from 9/1/06 to 12/11/10
109	Number of consecutive matches wins between 9/21/07 to 9/11/10
142	Number of Academic All-Big Ten honorees in 21 years
1,091	Number of wins by head coach Russ Rose prior to entering his 35th season in 2013
1,145	Number of wins in Penn State women's volleyball history





# 2013 PENN STATE WOMEN'S VOLLEYBALL

## RUSS ROSE AT A GLANCE ...

- 2007 AVCA Hall of Fame Inductee
- 2005 USA Volleyball All-Time Great Coach Honoree
- 2000 US Olympic Committee Coach of the Year
- Four-time AVCA Coach of the Year  
1997, 1999, 2007, 2008
- Six-time AVCA Mideast Region Coach of the Year  
1996, 2007, 2008, 2009, 2010, 2012
- Three-time Volleyball Monthly Coach of the Year  
1990, 1993, 1999
- Seven-time Mideast Region Coach of the Year  
1990, 1992, 1993, 1994, 2007, 2008, 2012
- Thirteen-time Big Ten Conference Coach of the Year  
1992, 1993, 1996, 1997 (co), 1998, 2003 (co),  
2005, 2006, 2007, 2008, 2009, 2010, 2012
- 1996 District II Coach of the Year
- Six-Time Atlantic 10 Coach of the Year
- Four-time Northeast Region Coach of the Year
- National Jewish Sports Hall of Fame
- 2010 USAV Leader in Volleyball

## BY THE NUMBERS ...

### 1999, 2007, 2008, 2009 & 2010

NCAA National Champions

### NO. 1

All-Time Winning Percentage (.862) among active DI coaches

### 1,091

Career wins in 34 seasons, the highest win total ever for a Penn State head coach

### 3

Number of active coaches in NCAA Division I history with 1,000 career wins

### 32

Straight NCAA Tournament appearances

### 15

Big Ten titles in 22 years

### 8

Consecutive Atlantic 10 titles

### 150

Academic All-Big Ten selections in 22 years

### 21

Conference Players of the Year in last 28 years

At least 1 All-American in 33-of-34 seasons

## THE LAST TIME A NITTANY LION...

Had 30 or more kills ..... 31 - Nicole Fawcett vs. Cal Poly (8/31/07)  
 Had 10 or more blocks..... 10 - Katie Slay vs. Minnesota (10/9/13)  
 Had five or more aces .....5 - Micha Hancock vs. Texas (9/7/13)  
 Had 25 or more digs ..... 35 - Alyssa D'Errico at Minnesota (11/27/10)  
 Had 80 or more assists.....82 - Samantha Spink vs. Illinois (11/24/95)  
 Hit .800 or better (min. 12 kills).929 (13-0-14) A. Wilson vs. St. Francis (9/19/09)

## THE LAST TIME PENN STATE...

### VS. NON-CONFERENCE OPPONENTS (REGULAR-SEASON MATCHES)

Won a match ..... vs. Yale, 9/21/13 (25-16, 25-17, 25-6)  
 Lost a match..... vs. Texas, 9/7/13 (27-25, 17-25, 25-1, 21-25, 10-15)  
 Won at home ..... vs. Yale, 9/21/13 (25-16, 25-17, 25-6)  
 Lost at home.....vs. Oregon, 8/26/11 (25-16, 25-21, 25-20, 25-22)  
 Won 3-0 at home ..... vs. Yale, 9/21/13 (25-16, 25-17, 25-6)  
 Lost 3-0 at home ..... vs. UC-Santa Barbara, 9/18/86 (1-15, 7-15, 13-15)  
 Won 3-0 on the road..... vs. FGCU, 9/14/13 (25-8, 25-15, 25-17)  
 Lost 3-0 on the road.....vs. Stanford, 9/11/10 (26-28, 12-25, 18-25)

### VS. BIG TEN OPPONENTS (REGULAR-SEASON MATCHES)

Won a match ..... vs. Minnesota, 10/9/13 (25-19, 23-25, 25-21, 22-25, 15-11)  
 Lost a match..... vs. Michigan State, 2/27/13 (23-25, 24-26, 25-19, 25-19, 9-15)  
 Won at home ..... vs. Minnesota, 10/9/13 (25-19, 23-25, 25-21, 22-25, 15-11)  
 Lost at home..... vs. Michigan State, 2/27/13 (23-25, 24-26, 25-19, 25-19, 9-15)  
 Won 3-0 at home ..... vs. Michigan State, 11/24/12 (25-13, 25-21, 25-15)  
 Lost 3-0 at home .....vs. Minnesota, 10/18/03 (26-30, 18-30, 21-30)  
 Won 3-0 on the road..... at Indiana, 10/3/13 (25-18, 25-19, 25-8)  
 Lost 3-0 on the road..... at Illinois, 11/11/11 (21-25, 23-25, 26-28)

### ALL MATCHES

Won a match ..... vs. Minnesota, 10/9/13 (25-19, 23-25, 25-21, 22-25, 15-11)  
 Lost a match..... vs. Michigan State, 2/27/13 (23-25, 24-26, 25-19, 25-19, 9-15)  
 Won at home ..... vs. Minnesota, 10/9/13 (25-19, 23-25, 25-21, 22-25, 15-11)  
 Lost at home..... vs. Michigan State, 2/27/13 (23-25, 24-26, 25-19, 25-19, 9-15)  
 Won 3-0 at home ..... vs. Yale, 9/21/13 (25-16, 25-17, 25-6)  
 Lost 3-0 at home .....vs. Minnesota, 10/18/03 (26-30, 18-30, 21-30)  
 Won 3-0 on the road..... vs. Indiana, 10/3/13 (25-18, 25-19, 25-8)  
 Lost 3-0 on the road.....vs. Stanford, 9/11/10 (26-28, 12-25, 18-25)

### STREAKS

Penn State holds the top three winning streaks in Big Ten history. Penn State's most recent streak of 65 consecutive matches began on Nov. 11, 2006 and ended on Sept. 24, 2010 at Illinois. It is the longest streak in league history. Penn State's other two conference winning streaks were 49 matches and 41. Illinois owns the fourth (40) and fifth (25) longest conference winning streaks.

### TOP FIVE BIG TEN STREAKS

- 65 - Penn State (11/11/06 - 9/18/10)  
- snapped at Illinois (9/24/10)
- 49 - Penn State (11/1/97 - 11/27/99)  
- snapped at Wisconsin (9/22/00)
- 41 - Penn State (10/22/04 - 10/21/06)  
- snapped at Wisconsin (10/27/06)
- 40 - Illinois (11/15/85 - 11/20/87)  
- snapped at Purdue (11/27/87)
- 25 - Illinois (10/2/92 - 10/9/93)  
- snapped vs. Penn State (10/15/93)



# 2013 PENN STATE WOMEN'S VOLLEYBALL

## 2013 PENN STATE SUPERLATIVES

<b>THREE SETS</b>	<b>INDIVIDUAL</b>	<b>TEAM</b>
Kills:	15 - Megan Courtney vs. Indiana (10/3)	45 - vs. Indiana (10/3)
Attacks:	26 - Ariel Scott vs. Louisville (8/31)	99, 2x last vs. Florida (9/8)
Attack Percentage*:	.833 (2x last (5-0-6) - Nia Grant vs. Eastern Kentucky (9/21)	.522 (40-4-69) - vs. Albany (9/20)
Assists:	38 - Micha Hancock vs. Indiana (10/3)	42 - vs. Indiana (10/3)
Aces:	8 - Micha Hancock vs. Syracuse (8/31)	9, 2x last vs. Florida (9/8)
Digs:	20 - Dominique Gonzalez vs. Eastern Kentucky (9/21)	47 - vs. Louisville (8/31)
Solo Blocks:	2, 3x, last Deja McClendon vs. FGCU (9/14)	6 - vs. Central Arkansas (9/14)
Block Assists:	6 - Katie Slay vs. Central Arkansas (9/14)	17 - vs. Indiana (10/3)
Total Blocks:	8 - Katie Slay vs. Central Arkansas (9/14)	15.0 - vs. FGCU (9/14)

<b>FOUR SETS</b>	<b>INDIVIDUAL</b>	<b>TEAM</b>
Kills:	15 - Ariel Scott and Deja McClendon vs. Michigan (9/28)	57 - vs. Michigan (9/28)
Attacks:	35 - Ariel Scott vs. Michigan (9/28)	131 - vs. Michigan (9/28)
Attack Percentage*:	.433 (15-2-30) - Deja McClendon vs. Michigan (9/28)	.313 (57-16-131) - vs. Michigan (9/28)
Assists:	44 - Micha Hancock vs. Michigan (9/28)	53 - vs. Michigan (9/28)
Aces:	4 - Micha Hancock vs. Michigan (9/28)	7 - vs. Michigan (9/28)
Digs:	13 - Deja McClendon vs. Michigan (9/28)	54 - vs. Michigan (9/28)
Solo Blocks:	2 - Deja McClendon and Megan Courtney vs. Michigan (9/28)	5 - vs. Michigan (9/28)
Block Assists:	8 - Katie Slay vs. Michigan (9/28)	9 - vs. Michigan (9/28)
Total Blocks:	9 - Katie Slay vs. Michigan (9/28)	14.5 - vs. Michigan (9/28)

<b>FIVE SETS</b>	<b>INDIVIDUAL</b>	<b>TEAM</b>
Kills:	25 - Ariel Scott vs. Minnesota (10/9)	76 - vs. Minnesota (10/9)
Attacks:	62 - Ariel Scott vs. Minnesota (10/9)	188 - vs. Minnesota (10/9)
Attack Percentage*:	.667 (9-1-12) - Nia Grant vs. Michigan State (9/27)	.307 (73-22-166) - vs. Michigan State (9/28)
Assists:	67 - Micha Hancock vs. Minnesota (10/9)	74 - vs. Minnesota (10/9)
Aces:	3 - Nia Grant at Texas (9/7)	6 - at Texas (9/7)
Digs:	22 - Megan Courtney vs. Minnesota (10/9)	80 - vs. Minnesota (10/9)
Solo Blocks:	2, 3x, last - Deja McClendon, vs. Minnesota (10/9)	5 - vs. Michigan State (9/27)
Block Assists:	10 - Katie Slay vs. Minnesota (10/9)	33 - vs. Minnesota (10/9)
Total Blocks:	10 - Katie Slay vs. Minnesota (10/9)	35.0 - vs. Minnesota (10/9)

## 2013 OPPONENT SUPERLATIVES

<b>THREE SETS</b>	<b>INDIVIDUAL</b>	<b>TEAM</b>
Kills:	13 - Autumn Bailey, Marquette (9/13)	35 - Central Arkansas (9/14)
Attacks:	37 - Jessica Nagy, Central Arkansas (9/14)	106 - Central Arkansas (9/14)
Attack Percentage*:	.350 (10-3-20) - Chloe Mann, Florida (9/8)	.194 (34-16-93) - Florida (9/8)
Assists:	30, 2x, last Marissa Collins, Central Arkansas (9/14)	34, 2x last Central Arkansas (9/14)
Aces:	1, 2x, last Caitlin Hansen, Indiana (10/3)	1, 2x, last - Indiana (10/3)
Digs:	15 - Shelbee Berringer, Central Arkansas (9/8)	39 - Florida (9/8)
Solo Blocks:	1, 5x, last Rachel Vick, Eastern Kentucky (9/21)	1, 5x last, Eastern Kentucky (9/21)
Block Assists:	2 - Awele Nwaeze, Indiana (10/3)	11 - Louisville (8/31)
Total Blocks:	2, 4x - last Awele Nwaeze (10/3)	9.0 - Syracuse (8/31)

<b>FOUR SETS</b>	<b>INDIVIDUAL</b>	<b>TEAM</b>
Kills:	19 - Molly Toon, Michigan (9/28)	51 - Michigan (9/28)
Attacks:	28 - Lexi Erwin, Michigan (9/28)	131 - Michigan (9/28)
Attack Percentage*:	.364 (11-3-22) - Jennifer Cross, Michigan (9/28)	.229 (51-21-131) - Michigan (9/28)
Assists:	43 - Lexi Dannemiller, Michigan (9/28)	49 - Michigan (9/28)
Aces:	1 - Molly Toon, Michigan (9/28)	1 - Michigan (9/28)
Digs:	12 - Lexi Dannemiller, Michigan (9/28)	53 - Michigan (9/28)
Solo Blocks:	2 - Molly Toon, Michigan (9/28)	3 - Michigan (9/28)
Block Assists:	5 - Abby Cole, Michigan (9/28)	12 - Michigan (9/28)
Total Blocks:	5 - Abby Cole, Michigan (9/28)	9.0 - Michigan (9/28)

<b>FIVE SETS</b>	<b>INDIVIDUAL</b>	<b>TEAM</b>
Kills:	21 - Lauren Wicinski, Michigan State (9/27)	61 - Michigan State (9/27)
Attacks:	55 - Lauren Wicinski, Michigan State (9/27)	160 - Michigan State (9/27)
Attack Percentage*:	.857 (6-0-7) Faye Adelaja, Purdue (10/5)	.262 (52-15-141) - Texas (9/7)
Assists:	46 - Alexandra Palmer (10/9)	59 - Minnesota (10/9)
Aces:	2 - Kristen Kelsay and Ryan Hubbard, Michigan State (9/27)	5 - Michigan State (9/27)
Digs:	22 - Ashley Wittman, Minnesota (10/9)	73 - Texas (9/7)
Solo Blocks:	2, 2x last, Hannah Tapp, Minnesota (10/9)	4, 2x, last, Minnesota (10/9)
Block Assists:	8 - Tori Dixon, Minnesota (10/9)	22 - Michigan State (9/27)
Total Blocks:	9 - Tori Dixon, Minnesota (10/9)	32.0 - Minnesota (10/9)



# 2013 PENN STATE WOMEN'S VOLLEYBALL

## WISCONSIN BADGERS, MADISON, WISC.

### QUICK FACTS

School..... University of Wisconsin  
 Location..... Madison, Wis.  
 Enrollment ..... 42,099  
 Nickname..... Badgers  
 Color..... Red & White  
 Affiliation..... NCAA Division I  
 Conference..... Big Ten  
 Arena ..... Wisconsin Fieldhouse  
 Capacity..... 10,600  
 President/Chancellor... Rebecca Blank  
 Athletics Director ..... Barry  
 Athletics Website: ...UWBadgers.com  
 Twitter ..... @BadgerVBall  
 Facebook..... /WisconsinVolleyball

### THE STATISTICAL STORY - AS OF 10/7/13

**WIS** .....vs.....**PSU**  
 14-2..... Record ..... 12-2  
 829 ..... Kills ..... 679  
 2225..... Total Attacks ..... 1504  
 .231 ..... Attack Percentage ..... 329  
 13.37..... Kills Per Set ..... 13.86  
 774 ..... Assists ..... 610  
 12.48..... Assists Per Set ..... 12.45  
 933 ..... Digs..... 636  
 15.05..... Digs Per Set..... 12.98  
 20..... Block Solos..... 41  
 232 ..... Block Assists..... 184  
 136.0..... Total Blocks ..... 133.0

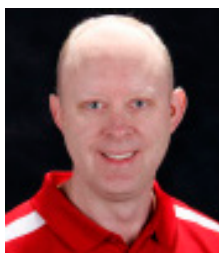
### LAST 10 VS. WISCONSIN

YEAR	LOCATION	RESULT	SCORE
2012	Neutral	W	3-1
2012	Home	W	3-1
2012	Away	W	3-0
2011	Away	W	3-2
2011	Home	W	3-0
2010	Away	L	3-2
2010	Home	W	3-1
2009	Home	W	3-0
2009	Away	W	3-0
2008	Home	W	3-0

NO.	NAME	POS.	HT.	YR.	HOMETOWN/PREVIOUS SCHOOL
1	Lauren Carlini	S/OH	6-2	FR	Aurora, Ill./West Aurora
2	Claire Raddatz	DS/L	5-11	SO	Mequon, Wis./Homestead
3	Courtney Thomas	S/OH	6-0	JR	DeKalb, Ill./DeKalb
4	Annemarie Hickey	DS/L	5-8	SR	Oswego, Ill./Joliet Catholic Academy
5	Taylor Fricano	OH/RS	6-4	FR	Palatine, Ill./Palatine
6	Taylor Morey	DS/L	5-6	SO	Muncie, Ind./Notre Dame
7	Deme Morales	OH/DS	5-7	JR	Amherst, Ohio/Steele
8	Victoria Ito	DS/L	5-5	SO	Buffalo Grove, Ill./Buffalo Grove
10	Tori Blake	MB	6-3	FR	Midland, Mich./Midland
11	Kt Kvas	DS/S	5-9	JR	Eagan, Minn./Eagan
12	Julie Mikaelson	RS	6-3	SR	Askim, Norway/Sand Vidaregåande School
13	Haleigh Nelson	MB	6-3	FR	Cary, N.C./Cardinal Gibbons
14	Dominique Thompson	MB	5-11	RS JR	Plymouth, Minn./Robbinsdale Armstrong
15	Crystal Graff	OH	6-3	JR	Madison, Wis./La Follette
16	Caroline Workman	DS/L	5-5	JR	Los Angeles, Calif./Marymount
20	Ellen Chapman	OH	6-4	JR	Glenview, Ill./Glenbrook South

### COACHING STAFF »

Head Coach..... Kelly Sheffield  
 Alma Mater..... Ball State  
 Overall Record ..... 273-112/12  
 Record at Wisconsin..... First year  
 Assistant Coach ..... Brittany Dildine  
 Alma Mater..... Purdue  
 Assistant Coach ..... Gary White  
 Alma Mater..... Penn State



**KELLY SHEFFIELD**  
HEAD COACH

### PLAYER TO WATCH »

Averaging 3.40 kills per set, Ellen Chapman is leading the Badger offense, with 211 total kills, which ranks 10th in the conference. Chapman has posted double-digit kills in 11 matches in 2013, including a season-high 23 at North Dakota State



**ELLEN CHAPMAN**  
JR - OH - 6-4



# 2013 PENN STATE WOMEN'S VOLLEYBALL

## 2013 SCHEDULE AND RESULTS

DATE	OPPONENT	W/L	SCORE	SET SCORES	SITE	ATT.	RECORD	TIME
Aug. 30	Dabrowa (EXHIB.)	W	3-0	28-26, 25-21, 25-20	University Park, Pa.	2246	---	1:39
Aug. 31	Syracuse	W	3-0	25-16, 25-15, 25-17	University Park, Pa.	3141	1-0	1:13
Aug. 31	Louisville	W	3-0	25-15, 25-16, 25-13	University Park, Pa.	3141	2-0	1:23
Sept. 7	Texas	L	3-2	27-25, 17-25, 25-13, 21-25, 10-15	Austin, Texas	4373	2-1	2:31
Sept. 8	Florida	W	3-0	25-18, 25-17, 25-20	Austin, Texas	---	3-1	1:32
Sept. 13	Marquette	W	3-0	25-17, 25-12, 25-17	Fort Myers, Fla.	127	4-1	1:20
Sept. 14	Central Arkansas	W	3-0	25-20, 25-22, 25-10	Fort Myers, Fla.	89	5-1	1:25
Sept. 15	FGCU	W	3-0	25-8, 25-15, 25-17	Fort Myers, Fla.	2,006	6-1	1:23
Sept. 20	Albany	W	3-0	25-8, 25-6, 25-4	University Park, Pa.	2,811	7-1	1:05
Sept. 21	Eastern Kentucky	W	3-0	25-10, 5-8, 25-19	University Park, Pa.	3,722	8-1	1:01
Sept. 21	Yale	W	3-0	25-16, 25-17, 25-6	University Park, Pa.	3,722	9-1	1:15
Sept. 27	Michigan State	L	3-2	23-25, 24-26, 25-19, 25-19, 9-15	University Park, Pa.	3,625	9-2	2:16
Sept. 28	Michigan	W	3-1	25-16, 20-25, 25-19, 25-17	University Park, Pa.	3,506	10-2	1:58
Oct. 3	Indiana	W	3-0	25-18, 25-19, 25-8	Bloomington, Ind.	1,026	11-2	1:18
Oct. 5	Purdue	W	3-2	16-25, 25-21, 25-16, 22-25, 15-8	West Lafayette, Ind.	2,819	12-2	2:15
Oct. 9	Minnesota	W	3-2	25-19, 23-25, 25-21, 22-25, 15-11	University Park, Pa.	2,067	13-2	2:40

## TEAM MATCH-BY-MATCH STAT COMPARISON

DATE	OPPONENT	SETS	KILLS	HITTING %	ACES	DIGS	TOTAL TEAM BLOCKS	TOTAL PTS SCORED*
Aug. 31	Syracuse/PSU	3	26/43	.102/.313	0/4	36/39	5.0/6.0	31.0/53.0
Aug. 31	Louisville/PSU	3	25/34	.020/.247	0/9	32/47	3.0/7.5	28.0/50.5
Sept. 7	Texas/PSU	5	52/69	.262/.246	3/6	73/65	22.0/15.0	68.0/83.0
Sept. 8	Florida/PSU	3	42/34	.194/.303	1/9	35/39	3.0/10.0	37.0/57.0
Sept. 13	Marquette/PSU	3	43/34	.163/.414	0/3	32/41	4.0/13.0	36.0/53.0
Sept. 14	UCA/PSU	3	35/39	.151/.247	0/8	36/37	5.0/18.0	38.0/59.0
Sept. 14	FGCU/PSU	3	24/39	.000/.381	0/4	33/42	3.0/15.0	26.0/53.0
Sept. 20	Albany/PSU	3	10/40	-.233/.522	5/1	22/33	2.0/11.5	13.0/56.5
Sept. 21	EKU/PSU	3	23/46	.045/.440	2/7	28/43	2.0/8.5	27.0/61.5
Sept. 21	Yale/PSU	3	23/54	.088/.427	0/4	31/45	0.0/8.0	23.0/66.0
Sept. 27	MSU/PSU	5	61/73	.244/.307	5/3	54/62	11.0/10.5	77.0/86.5
Sept. 28	Michigan/PSU	4	51/57	.229/.313	1/7	53/54	9.0/14.5	61.0/78.5
Oct. 3	Indiana/PSU	3	26/45	.071/.507	1/4	20/33	2.0/11.5	29.0/60.5
Oct. 5	Purdue/PSU	5	53/55	.162/.207	2/4	61/60	13.0/12.0	68.0/71.0
Oct. 9	Minnesota/PSU	5	61/76	.208/.245	0/2	80/71	18.0/18.5	79.0/96.5

\* indicates total points scored by a team (kills, aces, blocks), not the cumulative total game scores, which also take into account opponent errors



# 2013 PENN STATE WOMEN'S VOLLEYBALL

## INDIVIDUAL PLAYER MATCH-BY-MATCH LEADERS

DATE	OPPONENT	KILLS	ATTACKS	ASSISTS	DIGS	TOTAL BLOCKS
Aug. 31	Syracuse	Prieto Cerame - 9	Prieto Cerame - 17	Hancock - 30	Gonzalez - 7 Hancock - 7	Slay - 5
Aug. 31	Louisville	Scott - 11	Scott - 26	Hancock - 28	McClendon - 17	Grant - 3 Slay - 3 Prieto Cerame - 3
Sept. 7	Texas	McClendon - 20	McClendon - 46	Hancock - 51	McClendon - 17	Hancock - 4 Slay - 4
Sept. 8	Florida	Courtney - 11	McClendon - 25	Hancock - 29	Courtney - 12	Hancock - 3 Slay - 3
Sept. 13	Marquette	Courtney - 9 McClendon - 9	McClendon - 22	Hancock - 33	Gonzalez - 11	Courtney - 4
Sept. 14	FGCU	Slay - 9 Courtney - 9	McClendon - 15	Hancock - 31	Gonzalez - 11	Slay - 4
Sept. 14	Central Arkansas	Courtney - 10	Courtney - 21 McClendon - 21	Hancock - 30	Gonzalez - 14	Slay - 8
Sept. 20	Albany	Scott - 8 Slay - 8	Scott - 25	Hancock - 29	Gonzalez - 8	Scott - 4 Whitney - 4 McClendon - 4
Sept. 21	Eastern Kentucky	Slay - 11	McClendon - 22	Hancock - 29	Gonzalez - 20	Slay - 5
Sept. 21	Yale	Scott - 13	Courtney - 25	Hancock - 32	Gonzalez - 16	Slay - 5
Sept. 27	Michigan State	Scott - 18	Scott - 46	Hancock - 57	Courtney - 14 McClendon - 14	Slay - 6 Slay - 9
Sept. 28	Michigan	Scott - 15 McClendon - 15	Scott - 35	Hancock - 44	McClendon - 13	
Oct. 3	Indiana	Courtney - 15	McClendon - 24	Hancock - 38	Gonzalez - 8	Slay - 5
Oct. 5	Purdue	Scott - 15	Scott - 45	Hancock - 45	McClendon - 15	Slay - 8
Oct. 9	Minnesota	Scott - 25	Scott - 62	Hancock - 67	Courtney - 22	Slay - 10
<b>TOTALS (INCLUDING TIES)</b>		Prieto Cerame - 1 Scott - 7  McClendon - 3 Courtney - 5 Slay - 3	Prieto Cerame - 1  Scott - 6 McClendon - 7 Courtney - 2	Hancock - 15	Gonzalez - 8  Hancock - 1 McClendon - 5 Courtney - 3	Slay - 13  Hancock - 2 Grant - 1 Prieto Cerame - 1 Courtney - 1 Whitney - 1 McClendon - 1



# 2013 PENN STATE WOMEN'S VOLLEYBALL



**MAGGIE  
HARDING**

SENIOR  
STATE COLLEGE, PA.

DEFENSIVE SPECIALIST

## 2013 MATCH-BY-MATCH

OPP.	K	E	TA	PCT.	A	SA	D	TB
Louisville	0	0	0	.000	0	0	0	0
Central Arkansas	0	0	0	.000	1	0	0	0
Albany	0	0	0	.000	0	1	0	0
Eastern Kentucky	0	0	0	.000	0	0	0	0

**2013 (Senior):** One of two team captains ... Saw action on the court against No. 19 Louisville (8/31) ... Recorded one assist against Central Arkansas (9/14) ... Tallied one service ace against Albany (9/20) ... Saw action against Eastern Kentucky (9/21).

**2012 (Redshirt Sophomore):** Recipient of the Elite 89 Award ... Academic All-Big Ten ... Saw action in eight matches and eight sets as a serving and defensive specialist ... Made 2012 debut vs. Morehead State (8/24).

## HARDINGS CAREER STATS

SEASON	MP-SP	K	E	TA	PCT.	ASSISTS	ACES	DIGS	BS	BA	TB	KPS	APS	SAPS	DPS	BPS
2010	Redshirt season															
2011	4-4	0	0	0	.000	0	0	0	0	0	0	0.00	0.00	0.00	0.00	0.00
2012	9-9	0	0	0	.000	0	2	0	0	0	0	0.00	0.00	0.00	0.00	0.00
2013	4-5	0	0	0	.000	1	1	0	0	0	0	0.00	0.20	0.20	0.00	0.00
<b>CAREER</b>	<b>17-18</b>	<b>0</b>	<b>0</b>	<b>0</b>	<b>.000</b>	<b>1</b>	<b>2</b>	<b>0</b>	<b>0</b>	<b>0</b>	<b>0</b>	<b>0.00</b>	<b>0.06</b>	<b>0.06</b>	<b>0.00</b>	<b>0.00</b>

2013 SEASON HIGHS	CATEGORY	CAREER HIGH
N/A	Kills	N/A
N/A	Attacks	N/A
N/A	Hitting Percentage	N/A
1 vs. Central Arkansas (9/14)	Assists	1 vs. Central Arkansas (9/14)
1 vs. Albany (9/20)	Aces	1 vs. Albany (9/20)
N/A	Digs	N/A
N/A	Blocks	N/A



# 2013 PENN STATE WOMEN'S VOLLEYBALL



## MADDIE MARTIN

SENIOR  
TAMPA, FLA.

OUTSIDE HITTER

### 2013 MATCH-BY-MATCH

OPP.	K	E	TA	PCT.	A	SA	D	TB
Syracuse	1	0	6	.167	2	0	7	0
Louisville	0	0	0	.000	0	0	0	0
Texas	0	0	1	.000	0	1	10	0
Florida	0	0	0	.000	0	0	0	0
Marquette	0	0	0	.000	0	0	1	0
Central Arkansas	0	0	0	.000	0	0	0	0
FGCU	1	1	3	.000	0	0	1	0
Albany	2	0	4	.500	1	0	4	0
Eastern Kentucky	2	0	4	.500	0	0	1	0
MSU	0	0	0	.000	0	0	0	0
Michigan	0	0	0	.000	0	0	0	0
Indiana	0	0	0	.000	0	0	0	0
Purdue	1	1	3	.000	1	0	0	0

**2013 (Senior):** Recorded one kill, two assists and seven digs against Syracuse (8/31) ... Saw action on the court against No. 19 Louisville (8/31) ... Recorded 10 digs and a service ace against No. 6 Texas (9/7) ... Played against No. 8 Florida (9/8) ... Posted one dig against Marquette (9/13) ... Saw action against Central Arkansas (9/14) ... Tallied one kill and one dig at FGCU (9/14) ... Notched two kills, one assist and four digs against Albany (9/20) ... Tallied two kills and one dig against Eastern Kentucky (9/21) ... Saw action on the court against No. 10 Michigan (9/28) and Indiana (10/3) ... Recorded one kill and one assist at No. 24 Purdue (10/5).

**2012 (Junior):** Academic All-Big Ten ... Played in 30 matches and 62 sets at outside hitter ... Totaled 51 kills, 14 aces, 71 digs and eight blocks during the 2012 season ... Posted five kills and eight digs vs. Stanford (8/31) ... Pounded four kills and had seven digs vs. DePaul (9/8) ... Recorded five kills vs. Nebraska (9/19) ... Notched five kills at Northwestern (10/5) ... Tallied four kills and nine digs vs. Indiana (10/13) ... Had two aces at Ohio State (10/17) ... Registered an ace and five digs vs. Illinois (11/8).

### MARTIN'S CAREER STATS

SEASON	MP-SP	K	E	TA	PCT.	ASSISTS	ACES	DIGS	BS	BA	TB	KPS	APS	SAPS	DPS	BPS
2010	20-29	22	10	62	.194	1	3	15	0	6	6.0	0.76	0.03	0.10	0.52	0.21
2011	33-98	141	60	410	.198	20	17	156	5	34	39.0	1.44	0.20	0.17	1.59	0.40
2012	30-62	51	21	129	.233	3	14	71	0	8	8.0	0.82	0.05	0.23	1.15	0.13
2013	12-21	7	2	21	.238	4	1	24	0	0	0.0	0.33	0.19	0.05	1.14	0.00
<b>CAREER</b>	<b>95-210</b>	<b>221</b>	<b>93</b>	<b>622</b>	<b>.206</b>	<b>28</b>	<b>35</b>	<b>261</b>	<b>5</b>	<b>48</b>	<b>53.0</b>	<b>1.05</b>	<b>0.13</b>	<b>0.17</b>	<b>1.27</b>	<b>0.25</b>

2013 SEASON HIGHS	CATEGORY	CAREER HIGH
2, 2x last vs. Eastern Kentucky (9/21)	Kills	13 at Michigan State (11/26/11)
6 vs. Syracuse (8/31)	Attacks	44 at Stanford (9/9/11)
.500, 2x (2-0-4) last vs. Eastern Kentucky (9/21)	Hitting Percentage	.600 (6-0-10) at Indiana (10/9/10)
2 vs. Syracuse (8/31)	Assists	3 at Michigan State (11/26/11)
1 vs. Texas (9/7)	Aces	3 vs. Eastern Illinois (9/15/12)
10 vs. Texas (9/7)	Digs	14 vs. Iowa (10/28/11)
N/A	Blocks	5 at Michigan State (11/26/11)



# 2013 PENN STATE WOMEN'S VOLLEYBALL



## DEJA McCLENDON

SENIOR  
LOUISVILLE, KY.

OUTSIDE HITTER

**2013 (Senior):** Preseason All-Big Ten honoree ... Posted three kills, four digs and a solo block against Syracuse (8/31) ... Notched two kills, two assists, a block assist and a team-high 17 kills against No. 19 Louisville (8/31) ... Led the team with 20 kills and a squad-best 17 digs to match her season high mark at No. 6 Texas (9/7) ... Tallied five kills, five digs and a solo block against No. 8 Florida (9/8) ... Tied for team-best with nine kills against Marquette (9/13) on .318 hitting, adding two assists, five digs and two block assists ... Registered six kills, one assist, three digs and a season-high two solo blocks against Central Arkansas (9/14) ... Pounded five kills and recorded six digs and three blocks, including two solo stuffs at FGCU (9/15) ... Recorded six digs, five kills, two assists and four total blocks against Albany (9/20) ... Had ten kills, three digs and three blocks against Eastern Kentucky (9/21) ... Logged nine kills, two assists and seven digs against Yale (9/21) ... Tied for team leader with 14 digs against No. 15 Michigan State (9/27), adding seven kills, two assists and a block ... Recorded her second double-double of the season with 15 kills, 13 digs against No. 10 Michigan (9/28), adding three blocks, including two solo stuffs ... Tallied 13 kills on a season-high .500 hitting, adding five digs and four blocks at Indiana (10/3) ... Notched her third double-double of the season with 10 kills and 15 digs at No. 24 Purdue (10/5) adding two blocks ... Recorded a double-double with 14 kills and 16 digs, adding four blocks, including two solo stops.

### 2013 MATCH-BY-MATCH

OPP.	K	E	TA	PCT.	A	SA	D	TB
Syracuse	3	2	10	.100	0	0	4	1
Louisville	2	3	10	-.100	2	0	17	1
Texas	20	3	46	.370	0	0	17	0
Florida	5	4	25	.040	2	0	5	1
Marquette	3	2	22	.318	2	0	5	2
Central Arkansas	6	4	21	.095	1	0	3	2
FGCU	5	2	15	.200	0	0	6	3
Albany	5	0	14	.357	2	0	6	4
Eastern Kentucky	10	2	22	.364	1	0	3	3
Yale	9	3	20	.300	2	1	7	0
MSU	7	4	25	.120	2	0	14	1
Michigan	15	2	30	.433	2	0	13	3
Indiana	13	1	24	.500	1	0	5	4
Purdue	10	6	32	.125	1	0	15	2
Minnesota	14	7	33	.212	2	0	16	4

### CAREER HONORS

#### 2013

Preseason All-Big Ten  
Penn State Classic All-Tournament

#### 2012

AVCA Third Team All-America  
West Lafayette Regional All-Tournament  
AVCA Mid-east Region  
Unanimous All-Big Ten  
Preseason All-Big Ten  
Active Ankle Challenge All-Tournament  
Big Four Volleyball Classic  
All-Tournament  
Chicago Classic All-Tournament

#### 2011

AVCA First Team All-America  
NCAA Lexington Regional  
All-Tournament  
AVCA All-Mideast Region  
First Team All-Big Ten  
Big Ten Player of the Week (11/14)  
Nike Big Four All-Tournament Team  
Pittsburgh Invitational All-Tournament  
AVCA Showcase All-Tournament  
Unanimous Preseason All-Big Ten

#### 2010

AVCA DI National Freshman of the Year  
AVCA Second Team All-America  
NCAA Championship Most Outstanding Player  
NCAA Championship All-Tournament  
AVCA All-Mideast Region  
AVCA Mid-east Freshman of the Year  
Unanimous Big Ten All-Freshman  
First Team All-Big Ten  
Big Ten Freshman of the Year  
Five-time Big Ten Freshman of the Week  
Hampton Inn Classic All-Tournament  
Carolina Classic All-Tournament

### PSU ALL-TIME KILLS LEADERS

1.	2,282	Lori Barberich, 1981-84
2.	2,142	Megan Hodge, 2006-09
3.	1,944	Nicole Fawcett, 2005-08
4.	1,842	Terri Zemaitis, 1994-97
5.	1,750	Lauren Cacciamani, 1996-99
6.	1,573	JoAnn Elwell, 1987-90
7.	1,482	Marcia Leap, 1982-85
8.	1,468	Mishka Levy, 1999-02
9.	1,438	Noelle Zientara, 1987-90
10.	1,393	Elizabeth Ramirez, 1986-89
11.	1,372	Deja McClendon, 2010-pres.

### McCLENDON'S CAREER STATS

SEASON	MP-SP	K	E	TA	PCT.	ASSISTS	ACES	DIGS	BS	BA	TB	KPS	APS	SAPS	DPS	BPS
2010	37-122	418	112	925	.331	15	20	229	8	76	84	3.43	0.12	0.16	1.88	0.69
2011	33-122	432	144	1,090	.264	27	13	245	13	48	61	3.54	0.22	0.11	2.01	0.50
2012	36-124	403	131	1,106	.246	42	18	339	23	47	70	3.25	0.34	0.15	2.73	0.56
2013	15-53	133	45	349	.252	20	1	136	13	18	31	2.51	0.38	0.02	2.57	0.58
<b>CAREER</b>	<b>121-421</b>	<b>1,386</b>	<b>432</b>	<b>3,470</b>	<b>.273</b>	<b>104</b>	<b>52</b>	<b>949</b>	<b>57</b>	<b>189</b>	<b>246</b>	<b>3.18</b>	<b>0.25</b>	<b>0.13</b>	<b>2.29</b>	<b>0.58</b>

2013 SEASON HIGHS	CATEGORY	CAREER HIGH
20 vs. Texas (9/7)	Kills	25, 2x, last vs. Texas (9/10/11)
46, vs. Texas (9/7)	Attacks	64 at Nebraska (10/28/12)
.500 (13-1-24) vs. Indiana (10/3)	Hitting Percentage	.800 (12-0-15) vs. Binghamton (11/30/12)
2, 8x last vs. Minnesota (10/9)	Assists	4, 3x, last at Michigan (10/20/12)
1 vs. Eastern Kentucky (9/21)	ACES	3 vs. Wisconsin (9/30/11)
17, 2x s vs. Texas (9/7)	Digs	29 at Michigan (10/20/12)
4, 2x last vs. Minnesota (10/9)	Blocks	7 vs. Minnesota (12/8/12)





# 2013 PENN STATE WOMEN'S VOLLEYBALL



## ARIEL SCOTT

SENIOR  
RIDGEWOOD, N.J.

OUTSIDE HITTER

**2013 (Senior):** Unanimous Preseason All-Big Ten honoree ... Candidate for Senior CLASS Award ... Tied for third on the team with five kills against Syracuse (8/31) ... Notched her first double-digit kill performance of the season, recording a team-high 11 kills against No. 19 Louisville (8/31), adding two block assists ... Posted five kills and five digs at Texas (9/7) ... Had one dig against Marquette (9/13) ... Ranked second on the squad with eight kills, notching a season-high .412 hitting clip, adding an ace and a dig against Central Arkansas (9/14) ... Had one kill at FGCU (9/14) ... Recorded a season high four blocks along with eight kills and a dig against Albany (9/20) ... Logged 10 kills, two digs and a block against Eastern Kentucky (9/21) ... Set two season high marks with 13 kills and a .550 hitting percentage against Yale (9/21), adding two blocks ... Led the squad with 18 kills against No. 15 Michigan State (9/27), contributing eight digs and five blocks, including her first solo stop of the season ... Tied for team leader with 15 kills against No. 10 Michigan (9/28), while also tallying on dig and five blocks one dig. ... Notched six kills, two digs and an assist at Indiana (10/3) ... Led the team with 15 kills at No. 24 Purdue (10/5), adding three digs and six blocks, including one solo stuff ... Set a season high with 25 kills against No. 11 Minnesota (10/9), tallying four digs and seven total blocks.

### 2013 MATCH-BY-MATCH

OPP.	K	E	TA	PCT.	A	SA	D	TB
Syracuse	5	2	11	.273	0	0	0	0
Louisville	11	5	26	.231	0	0	6	2
Texas	5	7	23	-.087	0	0	5	0
Florida	0	0	0	.000	0	0	0	0
Marquette	0	1	3	-.333	0	0	1	0
Central Arkansas	8	1	17	.412	0	1	1	0
FGCU	1	1	7	.000	0	0	0	0
Albany	8	0	15	.533	0	0	1	4
Eastern Kentucky	10	1	19	.474	0	0	2	15
Yale	13	2	20	.550	0	0	0	2
MSU	18	7	46	.239	0	0	8	5
Michigan	15	3	35	.343	0	0	1	5
Indiana	6	3	12	.250	0	0	2	1
Purdue	15	4	45	.244	0	0	3	6
Minnesota	25	8	62	.274	0	0	4	7

### CAREER HONORS

#### 2013

Unanimous Preseason All-Big Ten  
Senior CLASS Award candidate

#### 2012

AVCA First Team All-America  
Big Ten Player of the Year  
Unanimous All-Big Ten  
West Lafayette Regional MVP  
AVCA Mid-east Region  
Preseason All-Big Ten  
Active Ankle Challenge MVP  
Big Four Volleyball Classic MVP  
Big Ten Player of the Week (11/5)

#### 2011

AVCA Third Team All-America  
AVCA All-Mideast Region  
Unanimous First Team All-Big Ten  
Hampton Inn Classic All-Tournament

### SCOTT'S CAREER STATS

SEASON	MP-SP	K	E	TA	PCT.	ASSISTS	ACES	DIGS	BS	BA	TB	KPS	APS	SAPS	DPS	BPS
2010	21-64	143	57	414	.208	0	0	29	3	40	43	2.23	0.00	0.00	0.45	0.67
2011	33-118	418	136	1,083	.260	14	8	143	5	81	86	3.54	0.12	0.07	1.21	0.73
2012	36-125	469	127	1,110	.308	12	3	105	11	91	102	3.75	0.10	0.02	0.84	0.82
2013	14-42	140	45	341	.279	0	1	34	2	31	33	3.33	0.00	0.02	0.81	0.79
<b>CAREER</b>	<b>104-386</b>	<b>1,170</b>	<b>365</b>	<b>2,948</b>	<b>.273</b>	<b>26</b>	<b>12</b>	<b>311</b>	<b>21</b>	<b>243</b>	<b>264</b>	<b>3.03</b>	<b>0.07</b>	<b>0.03</b>	<b>0.81</b>	<b>0.68</b>

2013 SEASON HIGHS	CATEGORY	CAREER HIGH
25 vs. Minnesota (10/9)	Kills	28 vs. Illinois (10/8/11)
62 vs. Minnesota (10/9)	Attacks	85 vs. Stanford (8/31/12)
.550 (13-2-20) vs. Yale (9/21)	Hitting Percentage	.571 (8-0-14) vs. Binghamton (11/30/12)
N/A	Assists	2, 3x, last vs. Illinois (10/8/11)
1 vs. Central Arkansas (9/14)	Aces	2, 2x, last at Ohio State (11/23/11)
8 vs. MSU (9/27)	Digs	13 vs. Northwestern (10/5/11)
7 vs. Minnesota (10/9)	Blocks	8 vs. Minnesota (11/4/11)



# 2013 PENN STATE WOMEN'S VOLLEYBALL



**KATIE  
SLAY**

SENIOR  
RALEIGH, N.C.

MIDDLE HITTER

**2013 (Senior):** Preseason All-Big Ten team ... Earned Penn State Invitational All-Tournament team honors ... Tied for second on the squad with five kills against Syracuse (8/31), while also recording a team-high five blocks, including two solo blocks ... Notched three kills against No. 19 Louisville (8/31), adding one dig and tying for first on the team with three blocks, including one solo block ... Recorded double-digit kills with 12 against No. 6 Texas (9/7) and tied for second on the team in blocking with four blocks, including one solo block. Had four kills, tallying a season-best .400 hitting clip, while tying for second on the squad with three blocks against No. 8 Florida (9/8) ... Ranked second on the team with eight kills and zero errors on .800 hitting against Marquette (9/13), adding one dig and a team-high four block assists ... Pounded six kills, two assists, one dig and a squad-best eight blocks, including two solo stuffs against Central Arkansas (9/14) ... Tied for first on the team with nine kills on 11 perfect swings for a season-high .818 hitting percentage against FGCU (9/14), while also tallying one assist and four blocks ... Tied for team leader with eight kills, adding three block assists against Albany (9/20) ... Led the squad in kills with 11 against Eastern Kentucky (9/21), recording one dig and five blocks ... Logged eight kills, two assists, two digs and five blocks against Yale (9/21) ... Totaled 11 kills, one assist, two digs and six blocks, including two solo stuffs against No. 15 Michigan State (9/27) ... Set a season-high with nine blocks against No. 10 Michigan (9/28), adding six kills, an assist and a dig ... Had five kills against Indiana (10/3), posting five blocks, including one solo block ... Notched 11 kills at No. 24 Purdue (10/5) as well as one dig and eight blocks, including two solo stops ... Matched a career high mark with 16 kills against No. 11 Minnesota (10/9), totaling two assists, three digs and a season-high 10 blocks for her first double-double of the season.

## 2013 MATCH-BY-MATCH

OPP.	K	E	TA	PCT.	A	SA	D	TB
Syracuse	5	1	12	.333	2	0	2	6
Louisville	3	1	7	.286	0	0	1	3
Texas	12	3	26	.346	0	0	0	5
Florida	4	0	10	.400	2	0	0	3
Marquette	8	0	10	.800	0	0	1	4
Central Arkansas	6	1	2	.417	2	0	1	8
FGCU	9	0	11	.818	1	0	0	4
Albany	8	1	10	.700	0	0	0	3
Eastern Kentucky	11	1	16	.625	0	0	1	5
Yale	8	1	11	.636	2	0	2	5
MSU	11	2	20	.450	1	0	2	6
Michigan	6	2	13	.308	1	0	1	9
Indiana	5	2	10	.300	3	0	0	5
Purdue	11	4	23	.304	0	0	1	8
Minnesota	16	4	27	.444	2	0	3	10

## PSU ALL-TIME HITTING %

1. Arielle Wilson, 2007-10	.468
2. Christa Harmotto, 2005-08	.433
3. Melissa Walbridge, 2004-07	.412
4. <b>KATIE SLAY, 2010-present</b>	<b>.410</b>
5. Lauren Cacciamani, 1996-99	.391
6. Lori Barberich, 1981-84	.386
7. JoAnn Elwell, 1987-1990	.385
8. Cara Smith, 2000-03	.367
9. Cassie Salyer 2003-06	.340
10. Alisha Glass 2006-2009	.336

## NCAA LEADERS: HITTING%

1. Whitney Little, Missouri	0.550
2. Chloe Mann, Florida	0.531
3. Carly Wopat, Stanford	0.494
4. Brea Muhle, Denver	0.471
5. Tori Dixon, Minnesota	0.463
6. Paige Wessel, W. Ky.	0.461
7. <b>KATIE SLAY, PSU</b>	<b>0.461</b>
8. Alexis Mathews, MSU	0.459
9. Delaina Sarden, UCF	0.452
10. Alexis Olgard, USC	0.452

## CAREER HONORS

### 2013

Preseason All-Big Ten  
Penn State Invitational All Tournament  
Hilton Garden Inn MVP  
Penn State Classic All Tournament

### 2012

AVCA Second Team All-America  
AVCA Midwest Region  
All-Big Ten  
Preseason All-Big Ten  
Active Ankle Challenge All-Tournament Team  
Big Ten Defensive Player of the Week (8/27, 10/8, 11/26)  
Penn State Classic MVP

### 2011

AVCA Second Team All-America  
AVCA All-Midwest Region  
Big Ten Defensive Player of the Year  
First Team All-Big Ten  
Academic All-Big Ten  
Two-time Big Ten Defensive Player of the Week  
Hampton Inn Classic MVP  
Preseason All-Big Ten

## SLAY'S CAREER STATS

SEASON	MP-SP	K	E	TA	PCT.	ASSISTS	ACES	DIGS	BS	BA	TB	KPS	APS	SAPS	DPS	BPS
2010	23-52	54	12	104	.404	7	0	5	9	74	83	1.04	0.13	0.00	0.10	1.60
2011	33-122	257	63	502	.386	14	2	44	27	146	173	2.11	0.11	0.02	0.36	1.42
2012	35-122	279	58	537	.412	9	0	15	19	145	164	2.29	0.07	0.00	0.12	1.34
2013	15-54	123	23	218	.459	16	0	15	13	69	82	2.28	0.30	0.00	0.28	1.52
<b>CAREER</b>	<b>108-349</b>	<b>713</b>	<b>156</b>	<b>1,358</b>	<b>.410</b>	<b>46</b>	<b>2</b>	<b>79</b>	<b>68</b>	<b>434</b>	<b>502</b>	<b>2.04</b>	<b>0.13</b>	<b>0.01</b>	<b>0.23</b>	<b>1.44</b>

2013 SEASON HIGHS	CATEGORY	CAREER HIGH
16 vs. Minnesota (10/9)	Kills	16, 2x last vs. Minnesota (10/9/13)
26 vs. Texas (9/8)	Attacks	28, 2x, last at Illinois (10/6/12)
.818 (9-0-11) at FGCU (9/14)	Hitting Percentage	.889 (8-0-9), 2x, last vs. Portland (9/14/12)
3 vs. Indiana (10/3)	Assists	3, 2x last vs. Indiana (10/3/13)
N/A	Aces	1, 2x, last vs. Wisconsin (9/30/11)
4 vs. Albany (9/21)	Digs	6 vs. Oregon (8/26/11)
10 vs. Minnesota (10/9)	Blocks	12 at Michigan (10/20/12)



## ERICA DENNEY

REDSHIRT JUNIOR  
AURORA, COLO.

MIDDLE HITTER

**2013 (Redshirt Junior):** Has not played in any matches this season.

**2012 (Redshirt Sophomore):** Academic All-Big Ten ... Appeared in six matches and nine sets ... Made her 2012 debut vs. Stanford (8/31) ... Recorded her first career start against DePaul (9/8) and had a team-best five blocks ... Posted a block vs. Northwestern (11/10).

### DENNEY'S CAREER STATS

SEASON	MP-SP	K	E	TA	PCT.	ASSISTS	ACES	DIGS	BS	BA	TB	KPS	APS	SAPS	DPS	BPS
2010	Redshirt season															
2011	2-2	1	1	6	.000	0	0	0	0	0	0	0.50	0.00	0.00	0.00	0.00
2012	6-9	7	1	13	.462	0	0	2	0	7	0	0.78	0.00	0.00	0.22	0.78
2013	0-0	0	0	0	-.000	0	0	0	0	0	0	0.00	0.00	0.00	0.00	0.00
<b>CAREER</b>	<b>8-11</b>	<b>8</b>	<b>2</b>	<b>19</b>	<b>.316</b>	<b>0</b>	<b>0</b>	<b>2</b>	<b>0</b>	<b>7</b>	<b>0</b>	<b>0.73</b>	<b>0.00</b>	<b>0.00</b>	<b>0.18</b>	<b>0.64</b>

2013 SEASON HIGHS	CATEGORY	CAREER HIGH
N/A	Kills	4 vs. DePaul (9/8/12)
N/A	Attacks	7 vs. DePaul (9/8/12)
N/A	Hitting Percentage	.600 (3-0-5) vs. Eastern Illinois (9/15/12)
N/A	Assists	N/A
N/A	Aces	N/A
N/A	Digs	1, 2x, last vs. Eastern Illinois (9/15/12)
N/A	Blocks	5 vs. DePaul (9/8/12)



# 2013 PENN STATE WOMEN'S VOLLEYBALL



## LACEY FULLER

JUNIOR  
SAN DIEGO, CALIF.

DEFENSIVE SPECIALIST

**2013 (Junior):** Recorded one ace and three digs against Syracuse (8/31) ... Notched four digs against No. 19 Louisville (8/31) ... Saw action on the court at No. 6 Texas (9/7) ... Had an assist, an ace and two digs against No. 8 Florida (9/8) ... Registered three digs against Marquette (9/13) ... Matched a career-high mark with two aces against Central Arkansas (9/14), adding a season-high seven digs ... Posted six digs against FGCU (9/14) ... Notched three digs against Albany (9/20) and Eastern Kentucky (9/21) ... Registered two digs against Yale (9/21) ... Saw action on the court against No. 15 Michigan State (9/27) ... Recorded seven digs, an assist and a service ace against Michigan (9/28) ... Tallied five digs at Indiana (10/3) and four at No. 24 Purdue (10/5) ... Totaled one assist and six digs against No. 11 Minnesota (10/9).

### 2013 MATCH-BY-MATCH

OPP.	K	E	TA	PCT.	A	SA	D	TB
Syracuse	0	0	0	.000	0	1	3	0
Louisville	0	0	0	.000	0	0	4	0
Texas	0	0	0	.000	0	0	0	0
Florida	0	0	0	.000	1	1	2	0
Marquette	0	0	0	.000	0	0	3	0
Central Arkansas	0	0	0	.000	0	2	7	0
FGCU	0	0	0	.000	0	0	6	0
Albany	0	0	0	.000	0	0	3	0
Eastern Kentucky	0	0	0	.000	0	0	3	0
Yale	0	0	0	.000	0	0	2	0
MSU	0	0	0	.000	0	0	0	0
Michigan	0	0	0	.000	1	1	7	0
Indiana	0	0	0	.000	0	0	5	0
Purdue	0	0	0	.000	0	0	4	0
Minnesota	0	0	0	.000	1	0	6	0

### FULLER'S CAREER STATS

SEASON	MP-SP	K	E	TA	PCT.	ASSISTS	ACES	DIGS	BS	BA	TB	KPS	APS	SAPS	DPS	BPS
2011	30-67	0	0	0	.000	4	7	59	0	0	0	0.00	0.06	0.10	0.88	0.00
2012	36-119	0	2	4	-.500	15	19	169	0	0	0	0.00	0.13	0.16	1.42	0.00
2013	15-47	0	0	0	.000	3	5	55	0	0	0	0.00	0.06	0.11	1.17	0.00
<b>CAREER</b>	<b>81-233</b>	<b>0</b>	<b>2</b>	<b>4</b>	<b>-.500</b>	<b>24</b>	<b>31</b>	<b>283</b>	<b>0</b>	<b>0</b>	<b>0</b>	<b>0.00</b>	<b>0.10</b>	<b>0.13</b>	<b>1.21</b>	<b>0.00</b>

2013 SEASON HIGHS	CATEGORY	CAREER HIGH
N/A	Kills	N/A
N/A	Attacks	1, 34x, last vs. Minnesota (12/8/12)
N/A	Hitting Percentage	N/A
1, 3x last vs. Minnesota (10/9)	Assists	2, 2x, last vs. Texas (9/1/12)
2 vs. Central Arkansas (9/22)	Aces	2, 4x, last vs. Bowling Green (12/1/12)
7, 2x last vs. Michigan (9/28)	Digs	13 vs. Texas (9/9/11)
N/A	Blocks	N/A



# 2013 PENN STATE WOMEN'S VOLLEYBALL



## DOMINIQUE GONZALEZ

JUNIOR  
SAN ANTONIO, TEXAS

DEFENSIVE SPECIALIST

### 2013 MATCH-BY-MATCH

OPP.	K	E	TA	PCT.	A	SA	D	TB
Syracuse	0	0	0	.000	1	0	3	0
Louisville	0	0	1	.000	0	0	9	0
Texas	0	0	2	.000	7	0	13	0
Florida	0	1	1	-1.00	2	1	11	0
Marquette	0	0	0	.000	4	2	11	0
Central Arkansas	0	0	0	.000	0	1	14	0
FGCU	0	0	1	.000	3	0	11	0
Albany	0	0	0	.000	2	1	8	0
Eastern Kentucky	0	0	0	.000	2	2	20	0
Yale	0	0	0	.000	5	2	16	0
MSU	0	0	0	.000	6	1	10	0
Michigan	0	0	0	.000	4	1	12	0
Indiana	0	0	1	.000	0	0	8	0
Purdue	0	0	0	.000	4	0	14	0
Minnesota	1	0	1	1.00	2	0	19	0

**2013 (Junior):** Tied for team-best with seven digs against Syracuse (8/31) ... Notched nine digs in her second start for the Lions against No. 19 Louisville (8/31) ... Ranked second on the team with 13 digs at No. 6 Texas (9/7) ... Posted 11 digs, an ace and two assists against No. 8 Florida (9/8) ... Logged four assists, two service aces and 11 digs against Marquette (9/13) ... Posted 14 digs adding a service ace against Central Arkansas (9/14) ... Registered 11 digs and three assists against FGCU (9/14) ... Tallied eight digs, two assists and one service ace against Albany (9/20) ... Reached a season-high mark with 20 digs against Eastern Kentucky, adding two assists and two aces (9/21) ... Totaled five assists, two aces and 16 digs against Yale (9/21) ... Notched eight digs at Indiana (10/3) ... Recorded 14 digs and four assists at No. 24 Purdue (10/5) ... Logged 19 digs and two assists against No. 11 Minnesota (10/9), chipping in one kill.

### CAREER HONORS

2013

Penn State Classic All-Tournament Team

2012

Chicago Classic All-Tournament Team

### GONZALEZ'S CAREER STATS

SEASON	MP-SP	K	E	TA	PCT.	ASSISTS	ACES	DIGS	BS	BA	TB	KPS	APS	SAPS	DPS	BPS
2011	29-84	0	0	4	.000	19	8	123	0	0	0	0.00	0.23	0.10	1.46	0.00
2012	36-125	5	1	14	.286	96	26	457	0	0	0	0.04	0.77	0.21	3.66	0.00
2013	15-54	1	1	1	.000	42	11	179	0	0	0	0.02	0.78	0.20	3.31	0.00
<b>CAREER</b>	<b>77-250</b>	<b>6</b>	<b>2</b>	<b>24</b>	<b>0.130</b>	<b>157</b>	<b>45</b>	<b>740</b>	<b>0</b>	<b>0</b>	<b>0</b>	<b>0.02</b>	<b>0.63</b>	<b>0.18</b>	<b>2.96</b>	<b>0.00</b>

2013 SEASON HIGHS	CATEGORY	CAREER HIGH
N/A	Kills	1, 4x, last at Purdue (11/17/12)
1, 3x last vs. Florida (9/8)	Attacks	2, 2x, last vs. DePaul (9/8/12)
N/A	Hitting Percentage	N/A
7 vs. Texas (9/7)	Assists	7, 2x last vs. Texas (9/7/13)
2, 3x last vs. Yale (9/22)	Aces	2, 7x last vs. Yale (9/22/13)
20 vs. Eastern Kentucky (9/22)	Digs	29 at Nebraska (10/29/12)
N/A	Blocks	N/A



# 2013 PENN STATE WOMEN'S VOLLEYBALL



**NIA  
GRANT**

JUNIOR  
WARREN, OHIO

MIDDLE HITTER

## 2013 MATCH-BY-MATCH

OPP.	K	E	TA	PCT.	A	SA	D	TB
Syracuse	6	1	16	.312	0	1	3	1
Louisville	5	2	11	.231	0	0	6	2
Texas	4	2	8	.250	0	3	4	4
Florida	8	3	16	.312	1	1	1	2
Marquette	5	1	9	.444	0	1	2	2
Central Arkansas	6	2	11	.364	0	1	3	1
FGCU	6	1	12	.417	0	0	1	2
Albany	0	0	0	.000	0	0	0	0
Eastern Kentucky	5	0	6	.833	1	1	0	3
Yale	8	2	13	.462	0	0	1	2
MSU	9	1	12	.667	1	0	2	2
Michigan	8	4	17	.235	0	0	1	1
Indiana	2	1	4	.250	0	0	3	4
Purdue	9	2	17	.412	0	2	1	2
Minnesota	4	2	12	.167	1	0	0	4

**2013 (Junior):** Ranked second on the team with six kills against Syracuse (8/31), adding one service ace and three digs ... Posted five kills, one assist, a service ace and three block assists against No. 19 Louisville (8/31) ... Tallied four kills, three aces, four digs and three block assists at No. 6 Texas (9/7) ... Ranked third on the squad with eight kills, one assist, an ace, one dig and a block against No. 8 Florida (9/8) ... Registered five kills, an ace, two digs and two blocks against Marquette (9/13) ... Tied for second on the team with six kills, while also tallying a service ace, three digs and a block against Central Arkansas (9/14) ... Logged six kills, one dig and one block at FGCU (9/14) ... Ranked third on the team with five kills against Eastern Kentucky (9/21) along with one assist, one service ace and three blocks ... Recorded eight kills, one dig and two blocks against Yale (9/21) ... Registered a season-high nine kills on .667 hitting against No. 15 Michigan State (9/27), adding one assist, two digs and two blocks ... Had eight digs, one dig and one block against No. 10 Michigan (9/28). ...Matched a season high in blocks at Indiana tallying four while also recording two kills and three digs (10/3) ... Matched a season-high mark with nine kills at No. 24 Purdue (10/5), adding one dig, two blocks and two service aces ... Tallied four kills, four digs and one service ace against No. 11 Minnesota (10/9).

## GRANT'S CAREER STATS

SEASON	MP-SP	K	E	TA	PCT.	ASSISTS	ACES	DIGS	BS	BA	TB	KPS	APS	SAPS	DPS	BPS
2011	32-117	151	44	309	.346	7	13	43	13	94	107	1.29	0.06	0.11	0.37	0.91
2012	36-124	205	52	407	.376	5	0	13	9	111	120	1.65	0.04	0.00	0.10	0.97
2013	14-47	85	24	164	.372	5	12	22	4	26	26	1.77	0.10	0.24	0.46	0.62
<b>CAREER</b>	<b>81-287</b>	<b>441</b>	<b>120</b>	<b>880</b>	<b>.365</b>	<b>17</b>	<b>25</b>	<b>78</b>	<b>26</b>	<b>231</b>	<b>247</b>	<b>1.54</b>	<b>0.06</b>	<b>0.09</b>	<b>0.27</b>	<b>0.86</b>

2013 SEASON HIGHS	CATEGORY	CAREER HIGH
9, 2x last vs. Purdue (10/5)	Kills	11, 2x, last vs. Iowa (9/22/12)
17, 2x last vs. Purdue (10/5)	Attacks	20 vs. Iowa (9/22/12)
.833, (5-0-6) vs. Eastern Kentucky (9/21)	Hitting Percentage	.818 (9-0-11) vs. Ohio State (10/19/11)
1, 3x last vs. MSU (9/27)	Assists	2 vs. Texas (9/10/11)
3 vs. Texas (9/7)	Aces	3 vs. Texas (9/7/13)
6 vs. Louisville (8/31)	Digs	6 vs. Louisville (8/31/13)
4, 2x last vs. Indiana (10/3)	Blocks	9 at Minnesota (11/4/11)



# 2013 PENN STATE WOMEN'S VOLLEYBALL



## MICHA HANCOCK

JUNIOR  
EDMOND, OKLA.

SETTER

**2013 (Junior):** Earned Penn State Invitational MVP honors ... Tied for third on the team with five kills against Syracuse (8/31), adding 30 assists a service ace and seven digs ... Also paced the squad to a .313 hitting clip against the Orange ... Recorded a team-high eight service aces against No. 19 Louisville (8/31), tallying two kills, 28 assists, seven digs and one block assist ... Hit .500 with four kills on eight errorless swings, while dishing out 51 assists and notching two aces, eight digs and four blocks at No. 6 Texas (9/7) ... Had five kills without a single error on .833 hitting, adding five aces, three digs and three blocks against No. 8 Florida (9/8) ... Paced the offense to a .303 hitting percentage against the Gators, including a .500 mark in the opening set ... Posted 33 assists while adding seven digs, three blocks and four kills against Marquette (9/13) ... Notched one kill, 30 assists, three service aces, five digs and one block against Central Arkansas (9/14) ... Logged two kills, 31 assists, three service aces, five digs and one block at FGCU (9/14) ... Posted three kills, 29 assists, two service aces, one dig and four blocks against Albany (9/20) ... Had 39 assists against Eastern Kentucky (9/21), adding two kills, four aces, four digs and three blocks ... Recorded three kills, 32 assists, one ace, six digs and one block against Yale (9/21) ... Set a career-high mark with nine kills against No. 15 Michigan State, while tallying a season-high 57 assists, adding a service ace and nine digs against MSU ... Served up four aces, two kills and a double-double (44 assists, 11 digs), adding two blocks against No. 10 Michigan (9/28) ... Distributed 38 assists, four service aces, three kills, four blocks and seven digs at Indiana (10/3), guiding the team to a .507 hitting percentage ... Tallied a double-double with 45 assists and 13 digs at No. 24 Purdue (10/5) while also recording three kills and two service aces on her way to the Big Ten Setter of the week honors ... Dished out a career-high 67 assists, posting four kills, eight digs and one block against No. 11 Minnesota (10/9).

### 2013 MATCH-BY-MATCH

OPP.	K	E	TA	PCT.	A	SA	D	TB
Syracuse	5	0	9	.556	30	1	7	0
Louisville	2	0	5	.400	28	8	7	1
Texas	4	0	8	.500	51	2	8	4
Florida	5	0	6	.833	29	5	3	4
Marquette	4	0	8	.500	33	0	7	3
Central Arkansas	1	2	7	-.143	30	3	5	1
FGCU	2	0	5	.400	31	3	5	1
Albany	3	0	3	1.00	29	2	1	4
Eastern Kentucky	2	2	4	.000	39	4	4	3
Yale	3	1	5	.400	32	1	6	1
MSU	9	2	13	.538	57	1	9	0
Michigan	2	2	9	.000	44	4	11	2
Indiana	3	0	3	1.00	38	4	7	4
Purdue	2	1	7	.143	45	2	13	0
Minnesota	4	0	12	.33	67	0	8	1

### NCAA LEADERS: ACES PER SET

1. MICHA HANCOCK, PSU	0.82
2. Betsi Metter, Loy.Marymt	0.73
3. Samantha Bricio, USC	0.71
4. Lindsey Gosh, Marquette	0.68
5. Corinne Bain, Harvard	0.61

### PSU ALL-TIME SERVICE ACES

1. 235	Ellen Hensler, 1983-86
2. 212	Michá Hancock 2011-pres.
3. 183	Vida Kernich, 1983-86
4. 175	Lori Barberich, 1981-84
5. 163	Michelle Jaworski, 1987-90

### CAREER HONORS

#### 2013

Big Ten Setter of the Week (10/5)  
Preseason All-Big Ten  
Penn State Invitational MVP  
Hilton Garden Inn All-Tournament

#### 2012

AVCA First Team All-American  
West Lafayette Regional All-Tournament  
AVCA Mideast Region  
Big Ten Setter of the Year  
First Team All-Big Ten  
Big Four Volleyball Classic All-Tournament  
Big Ten Player of the Week (9/3)  
Big Ten Setter of the Week (9/3, 9/24, 10/1, 10/22, 11/5, 11/19)  
AVCA National Player of the Week (11/6)

#### 2011

AVCA Mideast Region  
Freshman of the Year  
Unanimous Big Ten All-Freshman Team  
Big Ten Freshman of the Year  
Co-Big Ten Freshman of the Week (11/14, 11/21, 11/28)  
Pittsburgh Invitational MVP  
AVCA Showcase All Tournament

### HANCOCK'S CAREER STATS

SEASON	MP-SP	K	E	TA	PCT.	ASSISTS	ACES	DIGS	BS	BA	TB	KPS	APS	SAPS	DPS	BPS
2011	33-121	110	34	246	.309	1,275	91	279	5	54	59	0.91	10.54	0.75	2.31	0.49
2012	36-125	125	32	260	.358	1,403	81	298	8	68	76	1.00	11.22	0.65	2.38	0.61
2013	15-54	51	10	194	.394	583	40	106	2	24	26	0.94	10.80	0.74	1.96	0.48
<b>CAREER</b>	<b>90-300</b>	<b>286</b>	<b>76</b>	<b>600</b>	<b>.350</b>	<b>3,261</b>	<b>212</b>	<b>683</b>	<b>15</b>	<b>146</b>	<b>161</b>	<b>0.95</b>	<b>10.87</b>	<b>0.71</b>	<b>2.28</b>	<b>0.54</b>

### 2013 SEASON HIGHS ..... CATEGORY ..... CAREER HIGH

9 vs. MSU (9/27) ..... Kills ..... 9 vs. MSU (9/27/13)  
13 vs. MSU (9/27) ..... Attacks ..... 15 vs. Illinois (10/8/11)  
.833 (5-0-6) vs. Florida (9/8) ..... Hitting Percentage ..... .875 (7-0-8) vs. USC (8/27/11)  
67 vs. Minnesota (10/9) ..... Assists ..... 67 vs. Minnesota (10/9/13)  
8 vs. Louisville (8/31) ..... Aces ..... 10 vs. Binghamton (11/30/12)  
13 vs. Purdue (10/5) ..... Digs ..... 23 vs. Stanford (8/31/12)  
4, 3x last vs. Albany (9/20) ..... Blocks ..... 8 at Nebraska (10/28/12)



# 2013 PENN STATE WOMEN'S VOLLEYBALL



## AIYANA WHITNEY

REDSHIRT SOPHOMORE  
NORWOOD, N.J.

OUTSIDE HITTER

**2013 (Redshirt sophomore):** Tied for second on the team with six kills against Syracuse (8/31), tallying a .455 hitting clip and recording three digs and two block assists ... Had one kill against No. 19 Louisville (8/31) ... Recorded one kill and a block at No. 6 Texas (9/7) ... Recorded one kill against Marquette (9/13) ... Saw time on the court against Central Arkansas (9/14) ... Registered one kill, one dig and one block at FGCU (9/14) ... Set a season-high with seven kills against Albany (9/20), adding one dig and four blocks ... Notched two kills against Eastern Kentucky (9/21) and Yale (9/21) ... Saw action on the court against No. 15 Michigan State (9/27) ... Recorded two kills, one dig and two blocks against No. 11 Minnesota (10/9).

**2012 (Sophomore):** Redshirt season.

### 2013 MATCH-BY-MATCH

OPP.	K	E	TA	PCT.	A	SA	D	TB
Syracuse	6	1	11	.455	0	0	3	2
Louisville	1	0	2	.500	0	0	0	0
Texas	1	1	5	.000	1	0	7	1
Florida	0	0	0	.000	0	0	0	0
Marquette	1	0	1	1.000	0	0	0	0
Central Arkansas	0	0	0	.000	0	0	0	0
FGCU	1	0	3	.333	0	0	1	1
Albany	7	1	9	.667	1	0	1	4
Eastern Kentucky	2	1	4	.250	0	0	0	0
Yale	2	1	9	.111	0	0	0	0
MSU	0	0	1	.000	0	0	0	0
Michigan	0	0	0	.000	0	0	0	0
Indiana	0	0	0	.000	0	0	0	0
Purdue	0	0	0	.000	0	0	0	0
Minnesota	2	1	7	.143	0	0	1	2

### WHITNEY'S CAREER STATS

SEASON	MP-SP	K	E	TA	PCT.	ASSISTS	ACES	DIGS	BS	BA	TB	KPS	APS	SAPS	DPS	BPS
2011	24-65	113	51	320	.194	0	0	14	3	22	25	1.74	0.00	0.00	0.22	0.38
2012	Redshirt season															
2013	11-15	23	6	52	.327	1	0	6	0	10	10	1.53	0.07	0.00	0.40	0.67
<b>CAREER</b>	<b>35-80</b>	<b>136</b>	<b>57</b>	<b>372</b>	<b>.214</b>	<b>1</b>	<b>0</b>	<b>20</b>	<b>3</b>	<b>30</b>	<b>33</b>	<b>1.70</b>	<b>0.01</b>	<b>0.00</b>	<b>0.25</b>	<b>0.41</b>

2013 SEASON HIGHS	CATEGORY	CAREER HIGH
7 vs. Albany (9/20)	Kills	15 vs. Texas 9/10/11)
11 vs. Syracuse (8/31)	Attacks	30 vs. Texas (9/10/11)
.667 vs. Albany (9/20)	Hitting Percentage	.500 (8-0-16) vs. Delaware (12/3/11)
1 vs. Albany (9/20)	Assists	1 vs. Albany (9/20)
N/A	Aces	N/A
3 vs. Syracuse (8/31)	Digs	5 at Wisconsin (11/6/11)
4 vs. Albany (9/20)	Blocks	4 vs. Nebraska (10/29/11)





# 2013 PENN STATE WOMEN'S VOLLEYBALL



## LARA CARAWAY

SOPHOMORE  
EVANS CITY, PA.

DEFENSIVE SPECIALIST

### 2013 MATCH-BY-MATCH

OPP.	K	E	TA	PCT.	A	SA	D	TB
Syracuse	0	0	0	.000	0	0	0	0
Marquette	0	0	1	.000	0	0	1	0
Central Arkansas	0	0	0	.000	0	0	0	0
FGCU	0	0	0	.000	1	0	2	0
Albany	0	0	0	.000	0	0	0	0
Eastern Kentucky	0	0	0	.000	0	0	0	0
Yale	0	0	0	.000	0	0	2	0
MSU	0	0	0	.000	0	0	0	0
Michigan	0	0	0	.000	0	0	0	0
Indiana	0	0	0	.000	0	0	0	0
Minnesota	0	0	0	.000	0	0	0	0

**2013 (Sophomore):** Saw action on the court for the first time this season against Syracuse (8/31) ... Saw the court two more times against Marquette (9/13) and Central Arkansas (9/14) ... Notched one assist and two digs at FGCU (9/14) ... Saw action against Albany (9/20) ... Totaled two digs against Yale (9/21) ... Played against No. 15 Michigan State (9/27) and No. 10 Michigan (9/27) ... Saw action on the court at Indiana (10/3) and against No. 11 Minnesota (10/9).

**2012 (Freshman):** Made her collegiate debut vs. Morehead State (8/24) ...had an ace vs. DePaul (9/8) ... posted two digs vs. Iowa (9/22) ... recorded an ace vs. Minnesota (11/2).

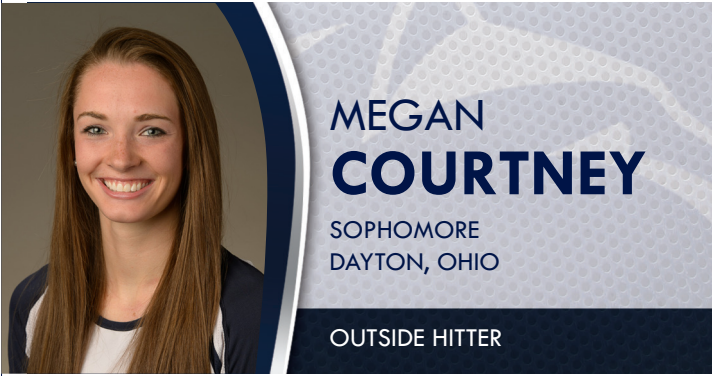
### CARAWAY'S CAREER STATS

SEASON	MP-SP	K	E	TA	PCT.	ASSISTS	ACES	DIGS	BS	BA	TB	KPS	APS	SAPS	DPS	BPS
2012	16-24	0	0	0	.000	1	3	5	0	0	0	0.00	0.04	0.12	0.21	0.00
2013	10-12	0	0	1	.000	1	0	4	0	0	0	0.00	0.09	0.00	0.36	0.00
<b>CAREER</b>	<b>26-36</b>	<b>0</b>	<b>0</b>	<b>1</b>	<b>.000</b>	<b>2</b>	<b>3</b>	<b>9</b>	<b>0</b>	<b>0</b>	<b>0</b>	<b>0.00</b>	<b>0.06</b>	<b>0.09</b>	<b>0.26</b>	<b>0.00</b>

2013 SEASON HIGHS	CATEGORY	CAREER HIGH
N/A	Kills	N/A
1 vs. Marquette (9/13)	Attacks	1 vs. Marquette (9/13)
N/A	Hitting Percentage	N/A
1 at FGCU (9/14)	Assists	, 2x last at FGCU (9/14)
N/A	Aces	1, 3x, last vs. Minnesota (11/2)
2, 2x last vs. Albany (9/20)	Digs	2, 3x last vs. Albany (9/20)
N/A	Blocks	N/A



# 2013 PENN STATE WOMEN'S VOLLEYBALL



## MEGAN COURTNEY

SOPHOMORE  
DAYTON, OHIO

OUTSIDE HITTER

**2013 (Sophomore):** Earned Preseason All-Big Ten honors ... Had three kills, three digs and a block assist against Syracuse (8/31) ... Recorded five kills, seven digs, one assist and one block assist against No. 6 Texas (9/7) ... Registered a double-double against No. 8 Florida (9/8) with 11 kills and 12 digs on .333 hitting, adding one block assist ... Tallied nine kills, one assist, ten digs and one block against Marquette (9/13) ... Registered 10 kills, two digs and five blocks against Central Arkansas (9/14) ... Notched nine kills, five digs, and one block at FGCU (9/14) ... Recorded two kills, one assist, three digs and two blocks against Albany (9/20) ... Posted four kills, six digs and three blocks against Eastern Kentucky ... Matched her season-high mark of 11 kills against Yale adding two assists, five digs and four blocks (9/21) ... Recorded her second double-double of the season with a career-high 15 kills and 14 digs against No. 15 Michigan State (9/27) ... Tallied 11 kills, eight digs and four blocks against No. 10 Michigan (9/28). ... Matched a career-high mark with 15 kills at Indiana (10/3) adding two digs and a block (10/3) ... Logged six kills, nine digs, and two blocks including one solo stop at No. 24 Purdue (10/5) ... Tallied a career-high 22 digs, posting 10 kills for a double-double, while also adding six blocks against No. 11 Minnesota (10/9).

### 2013 MATCH-BY-MATCH

OPP.	K	E	TA	PCT.	A	SA	D	TB
Syracuse	3	2	7	.143	0	0	3	2
Louisville	0	0	0	.000	0	0	0	0
Texas	5	1	14	.286	1	0	7	1
Florida	11	3	24	.333	0	0	12	1
Marquette	9	1	7	.471	1	0	10	1
Central Arkansas	10	2	21	.381	0	0	2	5
FGCU	9	0	14	.643	0	0	5	1
Albany	2	2	7	.000	1	0	3	2
Eastern Kentucky	4	2	9	.222	0	0	6	3
Yale	11	0	25	.440	2	0	5	4
MSU	15	4	39	.282	1	1	14	2
Michigan	11	3	26	.308	0	0	8	4
Indiana	15	0	20	.750	0	0	2	1
Purdue	6	5	21	.048	0	0	9	2
Minnesota	10	6	32	.125	0	0	22	6

### CAREER HONORS

#### 2013

Preseason All-Big Ten  
Hilton Garden Inn Homewood Suites Classic All-Tournament

#### 2012

AVCA Midwest Regional Freshman of the Year  
Unanimous Big Ten All-Freshman Team  
Big Ten Freshman of the Year  
Big Ten Co-Freshman of the Week (11/14, 11/21, 11/28)  
Pittsburgh Invitational MVP

### COURTNEY'S CAREER STATS

SEASON	MP-SP	K	E	TA	PCT.	ASSISTS	ACES	DIGS	BS	BA	TB	KPS	APS	SAPS	DPS	BPS
2012	36-120	240	88	632	.241	33	13	237	32	69	101	2.00	0.28	0.11	1.98	0.84
2013	14-47	110	31	244	.326	6	1	108	5	28	33	2.57	0.13	0.02	2.30	0.70
<b>CAREER</b>	<b>50-167</b>	<b>361</b>	<b>119</b>	<b>908</b>	<b>.272</b>	<b>39</b>	<b>14</b>	<b>345</b>	<b>37</b>	<b>97</b>	<b>134</b>	<b>2.16</b>	<b>0.23</b>	<b>0.08</b>	<b>2.06</b>	<b>0.80</b>

2013 SEASON HIGHS	CATEGORY	CAREER HIGH
15, 2x last vs. Indiana (10/3)	Kills	15, 2x last vs. Indiana (10/3/13)
39 vs. MSU (9/27)	Attacks	47 at Michigan (10/20/12)
.750 (15-0-20) vs. Indiana (10/3)	Hitting Percentage	.750 (15-0-20) vs. Indiana (10/3)
2 vs. Yale (9/21)	Assists	4 vs. Morehead State (8/24/12)
1 vs. MSU (9/27)	Aces	2, 3x, last at Purdue (11/17/12)
22 vs. Minnesota (10/9)	Digs	22 vs. Minnesota (10/9/13)
6 vs. Minnesota (10/9)	Blocks	8 at Michigan (10/20/12)



# 2013 PENN STATE WOMEN'S VOLLEYBALL



## PAULINA PRIETO CERAME

REDSHIRT FRESHMAN  
SAN JUAN, PUERTO RICO

OUTSIDE HITTER

### 2013 MATCH-BY-MATCH

OPP.	K	E	TA	PCT.	A	SA	D	TB
Syracuse	9	3	17	.353	0	0	2	0
Louisville	10	3	19	.368	0	0	3	3
Texas	18	8	47	.213	0	0	0	2
Florida	9	1	17	.471	0	0	1	1
Marquette	7	2	16	.312	1	0	0	1
Central Arkansas	2	3	8	-.125	0	0	1	1
FGCU	5	2	13	.231	1	0	2	3
Albany	2	0	2	1.00	0	0	0	0
Eastern Kentucky	0	0	0	.000	0	0	0	0
Yale	0	0	0	.000	0	0	0	0
MSU	4	2	10	.200	0	0	1	0
Michigan	0	0	1	.000	0	0	0	0
Indiana	1	0	1	1.00	0	0	1	1
Purdue	1	1	2	.000	0	0	0	0
Minnesota	0	2	2	-1.00	0	0	0	1

**2013 (Redshirt Freshman):** Earned Penn State Invitational All-Tournament Team honors for her performance against Syracuse and Louisville... Registered nine kills and two digs in her first collegiate appearance for the Nittany Lions against Syracuse (8/31) ... Hit double-digits against No. 19 Louisville (8/31), posting 10 kills, while also racking up three digs and three blocks, including one solo block ... Ranked second on the team with 18 kills at No. 6 Texas (9/8), adding two block assists ... Recorded nine kills on .471 hitting with one dig and a block assist against No. 8 Florida (9/8) ... Recorded seven kills, one assist and one block against Marquette (9/13) ... Totaled two kills, one dig and one block against Central Arkansas (9/14) ... Registered five kills, one assist, two digs and three blocks at FGCU (9/14) ... Tallied two kills against Albany (9/20) ... Pounded two kills and one dig against No. 15 Michigan State (9/27) ... Saw action on the court against Michigan (9/28). ... Recorded one kill, one dig and one block at Indiana (10/3) ... Notched one kill at No. 24 Purdue (10/5) ... Posted one block against No. 11 Minnesota (10/9)

**2012 (Freshman):** Redshirt Season.

### CAREER HONORS

2013

Penn State Invitational All-Tournament team

### PRIETO CERAME'S CAREER STATS

SEASON	MP-SP	K	E	TA	PCT.	ASSISTS	ACES	DIGS	BS	BA	TB	KPS	APS	SAPS	DPS	BPS
2012	Redshirt season															
2013	13-28	68	27	155	.265	2	0	11	4	9	13	2.43	0.07	0.00	0.39	0.46
<b>CAREER</b>	<b>13-28</b>	<b>68</b>	<b>27</b>	<b>155</b>	<b>.265</b>	<b>2</b>	<b>0</b>	<b>11</b>	<b>4</b>	<b>9</b>	<b>13</b>	<b>2.43</b>	<b>0.07</b>	<b>0.00</b>	<b>0.39</b>	<b>0.46</b>

2013 SEASON HIGHS	CATEGORY	CAREER HIGH
18 vs. Texas (9/7)	Kills	18 vs. Texas (9/7/13)
47 vs. Texas (9/7)	Attacks	47 vs. Texas (9/7/13)
.471 (9-1-17) vs. Florida (9/8)	Hitting Percentage	.471 (9-1-17) vs. Florida (9/8/13)
1, 2x last vs. FGCU (9/14)	Assists	1, 2x last vs. FGCU (9/14)
N/A	Aces	N/A
3 vs. Louisville (8/31)	Digs	3 vs. Louisville (8/31/13)
3, 2x last vs. FGCU (9/14)	Blocks	3, 2x last vs. FGCU (9/14)



# 2013 PENN STATE WOMEN'S VOLLEYBALL



## KENDALL PIERCE

SOPHOMORE  
EDEN, N.Y.

DEFENSIVE SPECIALIST

**2013 (Sophomore):** Recorded an ace against Syracuse (8/31) ... Saw action on the court against No. 19 Louisville (8/31) ... Had one dig against No. 6 Texas (9/7) ... Notched one service ace against No. 8 Florida (9/8) ... Saw the court in matches against Marquette (9/13) and Central Arkansas (9/14) ... Tallied one ace and two digs at FGCU (9/14) ... Picked up her fourth ace of the season against Albany (9/20) ... Registered a dig against Eastern Kentucky (9/21) ... Recorded three digs against Yale (9/21) ... Notched two digs against No. 15 Michigan State (9/27) and one service ace against No. 10 Michigan (9/28) ... Saw action on the court at Indiana (10/3) and at No. 24 Purdue (10/5). ... Recorded a service ace and one dig against No. 11 Minnesota (10/9).

### 2013 MATCH-BY-MATCH

OPP.	K	E	TA	PCT.	A	SA	D	TB
Syracuse	0	0	0	.000	0	1	0	0
Louisville	0	0	0	.000	0	0	0	0
Texas	0	0	0	.000	0	0	1	0
Florida	0	0	0	.000	0	1	0	0
Marquette	0	0	0	.000	0	0	0	0
Central Arkansas	0	0	0	.000	0	0	0	0
FGCU	0	0	0	.000	0	1	2	0
Albany	0	0	0	.000	0	1	0	0
Eastern Kentucky	0	0	0	.000	0	0	1	0
Yale	0	0	0	.000	0	0	3	0
MSU	0	0	0	.000	0	0	2	0
Michigan	0	0	0	.000	0	1	0	0
Indiana	0	0	0	.000	0	0	0	0
Purdue	0	0	0	.000	0	0	0	0
Minnesota	0	0	0	.000	0	1	1	0

### PIERCE'S CAREER STATS

SEASON	MP-SP	K	E	TA	PCT.	ASSISTS	ACES	DIGS	BS	BA	TB	KPS	APS	SAPS	DPS	BPS
2012	18-29	0	0	0	.000	2	9	7	0	0	0	0.00	0.07	0.31	0.24	0.00
2013	15-37	0	0	0	.000	0	6	10	0	0	0	0.00	0.00	0.16	0.27	0.00
<b>CAREER</b>	<b>33-66</b>	<b>0</b>	<b>0</b>	<b>0</b>	<b>.000</b>	<b>2</b>	<b>15</b>	<b>17</b>	<b>0</b>	<b>0</b>	<b>0</b>	<b>0.00</b>	<b>0.03</b>	<b>0.23</b>	<b>0.26</b>	<b>0.00</b>

2013 SEASON HIGHS	CATEGORY	CAREER HIGH
N/A	Kills	N/A
N/A	Attacks	N/A
N/A	Hitting Percentage	N/A
N/A	Assists	1, 2x, last vs. Binghamton (11/30/12)
1, 6x last vs. Minnesota (10/9)	Aces	1, 6x last vs. Minnesota (10/9)
3 vs. Yale (9/21)	Digs	3 vs. Yale (9/21/13)
N/A	Blocks	N/A



# 2013 PENN STATE WOMEN'S VOLLEYBALL



## LAURA BROERMAN

FRESHMAN  
COLORADO SPRINGS, COLO.

DEFENSIVE SPECIALIST

### 2013 MATCH-BY-MATCH

OPP.	K	E	TA	PCT.	A	SA	D	TB
Syracuse	0	0	0	.000	0	0	1	0
Louisville	0	0	0	.000	0	0	0	0
Texas	0	0	0	.000	0	0	0	0
Florida	0	0	0	.000	0	0	0	0
Marquette	0	0	0	.000	0	0	0	0
Central Arkansas	0	0	0	.000	0	0	0	0
FGCU	0	0	0	.000	0	0	0	0
Albany	0	0	0	.000	0	0	1	0
Eastern Kentucky	0	0	0	.000	0	0	0	0
Yale	0	0	0	.000	0	0	0	0

**2013 (Freshman):** Made her collegiate debut for the Nittany Lions against Syracuse (8/31), tallying one dig ... Saw action at FGCU (9/14) ... Totaled one dig against Albany (9/20).

### BROERMAN'S CAREER STATS

SEASON	MP-SP	K	E	TA	PCT.	ASSISTS	ACES	DIGS	BS	BA	TB	KPS	APS	SAPS	DPS	BPS
2013	3-3	0	0	0	.000	0	0	2	0	0	0	0.00	0.00	0.00	.67	0.00
<b>CAREER</b>	<b>3-3</b>	<b>0</b>	<b>0</b>	<b>0</b>	<b>.000</b>	<b>0</b>	<b>0</b>	<b>2</b>	<b>0</b>	<b>0</b>	<b>0</b>	<b>0.00</b>	<b>0.00</b>	<b>0.00</b>	<b>.67</b>	<b>0.00</b>

2013 SEASON HIGHS	CATEGORY	CAREER HIGH
N/A	Kills	N/A
N/A	Attacks	N/A
N/A	Hitting Percentage	N/A
N/A	Assists	N/A
N/A	Aces	N/A
1, 2x last vs. Albany (9/20)	Digs	1, 2x last vs. Albany (9/20/13)



# 2013 PENN STATE WOMEN'S VOLLEYBALL



## TAYLOR KRAUSE

FRESHMAN  
ALLENTOWN, PA.

DEFENSIVE SPECIALIST

### 2013 MATCH-BY-MATCH

OPP.	K	E	TA	PCT.	A	SA	D	TB
Syracuse	0	0	0	.000	0	0	1	0
Louisville	0	0	0	.000	0	0	0	0
Texas	0	0	0	.000	0	0	0	0
Florida	0	0	0	.000	0	0	0	0
Marquette	0	0	0	.000	0	0	0	0
Central Arkansas	0	0	0	.000	0	0	0	0
FGCU	0	0	0	.000	0	0	0	0
Albany	0	0	0	.000	0	0	0	0
Eastern Kentucky	0	0	0	.000	0	0	2	0
Yale	0	0	0	.000	0	0	1	0

**2013 (Freshman):** Made her collegiate debut for Penn State against Syracuse (8/31), notching on dig ... Saw action at FGCU (9/14) as well as against Albany (9/20) ... Tallied two digs against Eastern Kentucky (9/21) ... Registered one dig against Yale (9/21).

### KRAUSE'S CAREER STATS

SEASON	MP-SP	K	E	TA	PCT.	ASSISTS	ACES	DIGS	BS	BA	TB	KPS	APS	SAPS	DPS	BPS
2013	5-5	0	0	0	.000	0	0	4	0	0	0	0.00	0.00	0.00	0.80	0.00
<b>CAREER</b>	<b>5-5</b>	<b>0</b>	<b>0</b>	<b>0</b>	<b>.000</b>	<b>0</b>	<b>0</b>	<b>4</b>	<b>0</b>	<b>0</b>	<b>0</b>	<b>0.00</b>	<b>0.00</b>	<b>0.00</b>	<b>0.80</b>	<b>0.00</b>

### 2013 SEASON HIGHS ..... CATEGORY ..... CAREER HIGH

N/A	Kills	N/A
N/A	Attacks	N/A
N/A	Hitting Percentage	N/A
N/A	Assists	N/A
N/A	Aces	N/A
2 vs. Eastern Kentucky (9/21)	Digs	2 vs. Eastern Kentucky (9/21/13)
N/A	Blocks	N/A



# 2013 PENN STATE WOMEN'S VOLLEYBALL



## CARLEY MULLER

FRESHMAN  
MANHATTAN BEACH, CALIF.

DEFENSIVE SPECIALIST

### 2013 MATCH-BY-MATCH

OPP.	K	E	TA	PCT.	A	SA	D	TB
Syracuse	0	0	0	.000	0	0	0	0
Louisville	0	0	0	.000	0	0	0	0
Texas	0	0	0	.000	0	0	0	0
Florida	0	0	0	.000	0	0	0	0
Marquette	0	0	0	.000	0	0	0	0
Central Arkansas	0	0	0	.000	0	0	0	0
FGCU	0	0	0	.000	0	0	0	0
Albany	0	0	0	.000	0	0	0	0
Eastern Kentucky	0	0	0	.000	0	0	0	0
Yale	0	0	0	.000	0	0	0	0
Minnesota	0	0	0	.000	0	0	0	0

**2013 (Freshman):** Made her collegiate debut on the court against Syracuse (8/31) ... Played against Central Arkansas (9/14) and at FGCU (9/15) ... Saw action on the court against Eastern Kentucky (9/21) and Yale (9/21) ... Played against No. 11 Minnesota (10/9).

### MULLER'S CAREER STATS

SEASON	MP-SP	K	E	TA	PCT.	ASSISTS	ACES	DIGS	BS	BA	TB	KPS	APS	SAPS	DPS	BPS
2013	5-5	0	0	0	.000	0	0	0	0	0	0	0.00	0.00	0.00	0.00	0.00
<b>CAREER</b>	<b>5-5</b>	<b>0</b>	<b>0</b>	<b>0</b>	<b>.000</b>	<b>0</b>	<b>0</b>	<b>0</b>	<b>0</b>	<b>0</b>	<b>0</b>	<b>0.00</b>	<b>0.00</b>	<b>0.00</b>	<b>0.00</b>	<b>0.00</b>

2013 SEASON HIGHS	CATEGORY	CAREER HIGH
N/A	Kills	N/A
N/A	Attacks	N/A
N/A	Hitting Percentage	N/A
N/A	Assists	N/A
N/A	Aces	N/A
N/A	Digs	N/A
N/A	Blocks	N/A



# 2013 PENN STATE WOMEN'S VOLLEYBALL



## KELLY ROBERTSON

FRESHMAN  
ALLENTOWN, PA.

MIDDLE BLOCKER

### 2013 MATCH-BY-MATCH

OPP.	K	E	TA	PCT.	A	SA	D	TB
Syracuse	0	0	0	.000	0	0	0	0
Louisville	0	0	0	.000	0	0	0	0
Texas	0	0	0	.000	0	0	0	0
Florida	0	0	0	.000	0	0	0	0
Marquette	0	0	0	.000	0	0	0	0
Central Arkansas	0	0	0	.000	0	0	0	0
FGCU	0	0	0	.000	0	0	0	0
Albany	3	0	5	.600	0	0	0	2
Eastern Kentucky	0	0	0	.000	0	0	0	0
Yale	0	0	0	.000	0	0	0	0

**2013 (Freshman):** Made her collegiate debut for Penn State against Albany (9/20) notching three kills and two blocks.

### ROBERTSON'S CAREER STATS

SEASON	MP-SP	K	E	TA	PCT.	ASSISTS	ACES	DIGS	BS	BA	TB	KPS	APS	SAPS	DPS	BPS
2013	1-1	3	0	5	.600	0	0	0	0	2	2	3.00	0.00	0.00	0.80	2.00
<b>CAREER</b>	<b>1-1</b>	<b>3</b>	<b>0</b>	<b>5</b>	<b>.600</b>	<b>0</b>	<b>0</b>	<b>0</b>	<b>0</b>	<b>2</b>	<b>2</b>	<b>3.00</b>	<b>0.00</b>	<b>0.00</b>	<b>0.80</b>	<b>2.00</b>

2013 SEASON HIGHS	CATEGORY	CAREER HIGH
3 vs. Albany (9/20)	Kills	3 vs. Albany (9/20)
5 vs. Albany (9/20)	Attacks	5 vs. Albany (9/20)
N/A	Hitting Percentage	N/A
N/A	Assists	N/A
N/A	Aces	N/A
N/A	Digs	N/A
2 vs. Albany (9/20)	Blocks	2 vs. Albany (9/20)





# 2013 PENN STATE MATCH SUMMARIES



## PSU 3, SYRACUSE 0

University Park, Pa. (Rec Hall)  
Aug. 31, 2013

The No. 2 Penn State women's volleyball team officially opened 2013 with a 3-0 (25-16, 25-15, 25-17) victory against Syracuse in the Penn State Invitational. With the win, the Lions improve to 29-6 in season-openers under the guidance of head coach Russ Rose.

Following an early Penn State 4-1 lead, the Orange fought within two, 12-10, following a kill from junior Nicolette Serratore and an attacking error on senior Deja McClendon. The Lions regained momentum though, and increased its advantage to as many as nine points, 23-14, before a kill from junior Nia Grant sent McClendon to the service line for match point. Grant followed with a kill to secure the opening set, 25-16.

Tied at 6-all in set two, the Lions went on a 7-3 run and didn't relinquish control for the remainder of the set, finishing the frame with a kill from Prieto Cerame and an ace from Hancock to go up 2-0.

Syracuse made one final attempt to hold off PSU, 24-17, in set three following a kill by Monika Salkute, but an Orange service error ended the attack, giving the Lions a 25-17 win in set three and the victory.

### NO. 2 PENN STATE (1-0, 0-0)

Name	SP	K	E	TA	PCT	A	SA	SE	RE	D	BS	BA	BE
Grant	3	6	1	16	.312	0	1	1	0	3	0	0	1
P. Cerame	3	9	3	17	.353	0	0	0	0	2	0	0	0
Hancock	3	5	0	9	.556	30	1	2	0	7	0	0	0
Slay	3	5	1	12	.333	2	0	0	0	2	2	3	1
Courtney	1	3	2	7	.143	0	0	0	0	3	0	1	1
McClendon	2	3	2	10	.100	0	0	0	0	4	1	0	0
Scott	1	5	2	11	.273	0	0	1	0	0	0	0	0
Caraway	1	0	0	0	.000	0	0	0	0	0	0	0	0
Pierce	1	0	0	0	.000	0	1	0	0	0	0	0	0
Gonzalez	3	0	0	0	.000	1	0	1	0	3	0	0	0
Martin	2	1	0	6	.167	2	0	2	0	7	0	0	0
Krause	1	0	0	0	.000	0	0	0	0	1	0	0	0
Whitney	1	6	1	11	.455	0	0	0	0	3	0	2	0
Broerman	1	0	0	0	.000	0	0	0	0	1	0	0	0
Fuller	2	0	0	0	.000	0	1	1	0	3	0	0	0
<b>TOTALS</b>	<b>3</b>	<b>43</b>	<b>12</b>	<b>99</b>	<b>.313</b>	<b>35</b>	<b>4</b>	<b>8</b>	<b>0</b>	<b>39</b>	<b>3</b>	<b>6</b>	<b>3</b>

Set	K	E	TA	PCT	Sideout	PCT
1	16	4	29	.414	12-17	70%
2	12	4	34	.235	12-15	80%
3	15	4	36	.306	13-18	72%

Syracuse	16	15	17
Penn State	25	25	25

### SYRACUSE (0-1, 0-0)

Name	SP	K	E	TA	PCT	A	SA	SE	RE	D	BS	BA	BE
Wlasczuc	3	4	2	7	.286	4	0	3	2	8	1	0	2
Handley	3	4	3	14	.071	16	0	0	0	0	0	0	1
McCabe	3	3	4	11	-.091	0	0	0	0	0	0	0	2
Salkute	3	3	1	10	.200	0	0	1	0	3	0	2	0
Serratore	3	6	1	20	.250	0	0	2	1	7	0	3	1
Uattara	3	6	4	21	.095	1	0	1	0	5	0	0	1
Timberlake	3	0	0	1	.000	0	0	2	0	11	0	0	0
Clarey	1	0	0	0	.000	0	0	0	0	0	0	0	0
Shaipova	1	0	2	4	-.500	0	0	0	0	1	0	1	0
Humes	2	0	0	0	.000	1	0	0	0	1	0	0	0
Violas	3	0	0	0	.000	0	0	0	0	1	0	0	0
<b>TOTALS</b>	<b>3</b>	<b>26</b>	<b>17</b>	<b>88</b>	<b>.102</b>	<b>22</b>	<b>0</b>	<b>9</b>	<b>4</b>	<b>36</b>	<b>1</b>	<b>8</b>	<b>5</b>

Set	K	E	TA	PCT	Sideout	PCT
1	10	4	29	.207	11-24	45%
2	8	7	29	.034	12-25	47%
3	8	6	30	.067	12-24	50%

	1	2	3	Total
Tie Scores	1	4	2	7
Lead Changes	1	1	1	3



## PSU 3, LOUISVILLE 0

University Park, Pa. (Rec Hall)  
Aug. 31, 2013

In a matchup that featured sisters Deja and Maya McClendon on opposite sides of the net, No. 2 Penn State women's volleyball swept past No. 19 Louisville (1-1) in straight sets (25-15, 25-16, 25-13) in the finale of the Penn State Invitational. Hancock earned Penn State Invitational MVP honors for her efforts this weekend, while senior Katie Slay and Prieto Cerame joined her on the All-Tournament Team.

The Nittany Lions got out to a hot start against the Cardinals, using a 6-0 run to construct an early advantage. With a steady 19-12 lead, Hancock connected on two straight aces to increase the Nittany Lion advantage to 21-12. Penn State rallied to finish the frame, as Deja pounded one final kill to give PSU the first set, 25-15.

In set two, Hancock followed with her fifth ace of the match to give Penn State a 11-10 lead. Continuing the momentum, Penn State closed out the set on an 11-4 run to improve to 2-0 in the match. Penn State used a 5-0 spurt in the third set to secure a 13-5 lead. The Nittany Lions did not let the lead dip below 10 points for the rest of the match as Penn State cruised to a 25-13 victory in set three and a 2-0 record on the weekend.

### NO. 19 LOUISVILLE (1-1, 0-0)

Name	SP	K	E	TA	PCT	A	SA	SE	RE	D	BS	BA	BE
Mattingly	3	3	2	8	.125	0	0	0	0	0	1	0	0
Kvittle	3	1	0	4	.250	10	0	0	0	3	0	2	0
Juhl	3	7	5	28	.071	0	0	2	2	3	0	1	0
Pouliezos	3	0	0	0	.000	1	0	0	3	3	0	0	0
McClendon	3	8	9	36	-.028	0	0	3	1	8	0	0	0
Ewing	3	4	1	7	.429	0	0	0	1	0	2	0	0
Welch	3	0	0	0	.000	1	0	1	110	0	0	0	0
George	3	0	0	1	.000	10	0	0	4	0	0	0	0
Faucette	1	0	1	4	-.250	0	0	0	1	0	0	0	0
Sahagian	1	0	1	2	-.500	0	0	0	0	0	0	0	0
Jenkins	3	2	4	11	-.182	0	0	0	1	0	0	0	0
<b>TOTALS</b>	<b>3</b>	<b>25</b>	<b>23</b>	<b>101</b>	<b>.020</b>	<b>22</b>	<b>0</b>	<b>6</b>	<b>9</b>	<b>32</b>	<b>0</b>	<b>6</b>	<b>0</b>

Set	K	E	TA	PCT	Sideout	PCT
1	10	5	38	.132	9-25	36%
2	6	12	34	-.176	11-24	45%
3	9	6	29	.103	12-25	47%

Louisville	15	16	13
Penn State	25	25	25

### NO. 2 PENN STATE (2-0, 0-0)

Name	SP	K	E	TA	PCT	A	SA	SE	RE	D	BS	BA	BE
Scott	3	11	5	26	.231	0	0	0	0	6	0	2	0
Grant	3	5	2	11	.273	1	1	0	0	0	0	3	0
P. Cerame	3	10	3	19	.368	0	0	0	0	3	1	2	0
Hancock	3	2	0	5	.400	28	8	1	0	7	0	1	0
Slay	3	3	1	7	.286	0	0	0	0	1	1	2	0
McClendon	3	2	3	10	-.100	2	0	1	0	17	0	1	0
Pierce	1	0	0	0	.000	0	0	0	0	0	0	0	0
Gonzalez	3	0	0	1	.000	0	0	2	0	9	0	0	0
Martin	1	0	0	0	.000	0	0	0	0	0	0	0	0
Whitney	1	1	0	2	.500	0	0	0	0	0	0	0	0
Harding	1	0	0	0	.000	0	0	0	0	0	0	0	0
Fuller	3	0	0	0	.000	0	0	1	0	4	0	0	0
<b>TOTALS</b>	<b>3</b>	<b>34</b>	<b>14</b>	<b>81</b>	<b>.247</b>	<b>31</b>	<b>9</b>	<b>5</b>	<b>0</b>	<b>47</b>	<b>2</b>	<b>11</b>	<b>0</b>

Set	K	E	TA	PCT	Sideout	PCT
1	13	5	34	.235		
2	10	6	28	.143		
3	11	3	19	.421		

	1	2	3	Total
Tie Scores	0	5	2	7
Lead Changes	0	1	0	1



## TEXAS 3, PSU 2

Austin, Texas (Gregory Gym)  
Sept. 7, 2013

No. 1 Penn State women's volleyball came up just short in a close 3-2 loss to No. 6 Texas in the opening match of the Nike Big Four Classic.

Leading 11-9 in set one, PSU held on to a one-point advantage, until a Penn State attacking error and a kill from Texas put UT in front, 18-16. The set remained tight up until McClendon and Hancock fired back-to-back kills to secure a 27-25 victory in the first game.

After dropping set two, PSU came out of the locker room strong and opened set three on a 9-4 run. Later in the frame, Texas closed the gap to four, 14-10, helped out by two PSU serving aces, but the Lions closed out the set on an 11-3 streak to go up 2-1 in the match.

Heading into the fifth and final set after a loss in set four, both teams battled point-for-point. A Nittany Lion service ace and kill from Molly McCage put Texas up by three, 11-8, but PSU fought back within one, 11-10. From there, the Lions couldn't continue the momentum, as Texas capitalized on two PSU attacking errors, following with two kills to take the set, 15-10 and the match.

### NO. 6 TEXAS (0-1, 0-0)

Name	SP	K	E	TA	PCT	A	SA	SE	RE	D	BS	BA	BE
Bell	5	9	2	21	.333	1	0	0	0	1	3	0	0
Victoria	5	3	2	13	.077	3	0	1	2	9	1	3	1
Neal	5	10	2	23	.348	2	1	4	1	20	1	2	0
Eckerman	5	15	3	39	.308	0	1	1	0	4	0	2	0
Collins	5	0	0	0	.000	22	0	1	0	16	0	0	0
Webster	5	9	6	32	.094	0	0	0	0	6	0	3	0
McCage	5	6	0	13	.462	0	0	0	0	1	5	1	0
Brooks	1	0	0	0	.000	0	0	0	0	0	0	0	0
Allison	5	0	0	0	.000	19	0	0	0	5	0	0	1
Palmer	5	0	0	0	.000	2	1	2	0	12	0	0	0
<b>TOTALS</b>	<b>5</b>	<b>52</b>	<b>11</b>	<b>141</b>	<b>.262</b>	<b>49</b>	<b>9</b>	<b>6</b>	<b>7</b>	<b>3</b>	<b>4</b>	<b>18</b>	<b>3</b>

Set	K	E	TA	PCT	Sideout	PCT
1	13	3	35	.286	17-27	62%
2	12	4	28	.286	12-17	70%
3	7	5	28	.071	12-25	47%
4	14	3	35	.314	14-21	66%
5	6	0	15	.400	9-11	81%

Penn State	27	17	25	21	10
Texas	25	25	13	25	15

### NO. 1 PENN STATE (2-0, 0-0)

Name	SP	K	E	TA	PCT	A	SA	SE	RE	D	BS	BA	BE
Scott	4	5	7	23	-.087	0	0	0	0	5	0	0	0
Grant	5	4	2	8	.250	0	3	3	0	4	0	3	1
P. Cerame	5	18	8	47	.213	0	0	0	0	0	0	2	0
Hancock	5	4	0	8	.500	51	2	6	0	8	0	4	0
Slay	5	12	3	26	.346	0	0	0	0	0	1	3	1
McClendon	5	20	3	46	.370	0	0	3	0	17	0	0	0
Pierce	5	0	0	0	.000	0	0	0	0	1	0	0	0
Gonzalez	5	0	0	1	.000	7	0	2	0	13	0	0	0
Martin	5	0	0	1	.000	0	1	5	0	10	0	0	0
Whitney	2	11	5	0	.000	0	0	0	0	0	0	1	0
Courtney	5	5	1	14	.286	1	0	2					



# 2013 PENN STATE MATCH SUMMARIES



## PSU 3, FLORIDA 0 Austin, Texas (Gregory Gym) Sept. 8, 2013

No. 1 Penn State topped No. 8 Florida in straight sets in the final match of the Nike Big Four Classic Sunday afternoon. With the victory, the Nittany Lions improve to 8-3 all-time against the Gators and 2-0 in the event.

Late in the opening set, PSU used a 9-4 streak to construct a 19-12 advantage, forcing the Gators to call two timeouts. Following the break, UF used three consecutive kills and a service ace to attempt a comeback, 23-18, but was unable to mount a run as a Gator service error put Dominique Gonzalez at the line for set-point, 24-18. Gonzalez connected on an ace to seal the set, 25-18.

Penn State used an 11-1 stretch for a double-digit advantage, 19-9, in set two. The Gators couldn't find any momentum to regain control though, as a service error from Ziva Recek gave the Lions set two.

Knotted at 9-all in set three both teams continued to trade the lead throughout the remainder of the set before UF smacked a kill to put the Gators up by one, 20-19. Penn State responded with a 5-0 run to close out the third set, as Grant, Courtney and Hancock all pounded kills to secure a 25-20 victory.

### NO. 8 FLORIDA (5-0, 0-0)

Name	SP	K	E	TA	PCT	A	SA	SE	RE	D	BS	BA	BE
Mallette	3	67	19	.053	0	0	0	1	0	0	0	0	1
Brauneis	2	00	2	.000	14	1	2	0	4	0	1	1	1
Recek	3	71	24	.250	1	0	2	2	4	0	0	0	0
Mann	3	103	20	.350	0	0	0	0	1	0	0	0	0
Antwi	3	53	15	.133	0	0	0	0	1	1	1	1	0
Pole	3	00	0	.000	0	0	0	1	1	0	0	0	0
Holston	3	52	10	.300	0	0	0	1	1	0	0	0	0
Unroe	3	00	0	.000	2	0	0	3	14	0	0	0	0
Dagostino	3	10	3	.333	15	0	0	0	6	0	0	0	0
Monserrez	3	00	0	.000	0	0	0	0	4	0	0	0	0
O'Rourke	2	00	0	.000	0	0	1	1	3	0	0	0	0
<b>TOTALS</b>	<b>3</b>	<b>34</b>	<b>16</b>	<b>.93</b>	<b>19</b>	<b>432</b>	<b>1</b>	<b>5</b>	<b>9</b>	<b>39</b>	<b>1</b>	<b>2</b>	<b>2</b>

Set	K	E	TA	PCT	Sideout	PCT
1	14	5	31	.290	14-25	56%
2	6	5	27	.037	10-24	41%
3	14	6	35	.229	15-25	60%

Florida	18	17	20
Penn State	25	25	25

### NO. 1 PENN STATE (2-1, 0-0)

Name	SP	K	E	TA	PCT	A	SA	SE	RE	D	BS	BA	BE
Grant	3	83	16	.312	1	1	0	0	1	0	1	0	1
P.Cerame	3	91	17	.471	0	0	0	0	0	1	0	1	0
Hancock	3	50	6	.833	29	5	4	0	3	1	2	1	1
Slay	3	40	10	.400	2	0	0	0	0	0	3	0	0
Courtney	3	113	24	.333	0	0	1	0	12	0	1	0	0
McClendon	35	425	.040	2	0	0	0	5	1	0	1	0	0
Pierce	1	00	0	.000	0	1	0	0	0	0	0	0	0
Gonzalez	3	01	1	.000	2	1	0	0	11	0	0	0	0
Martin	1	00	0	.000	0	0	0	1	0	0	0	0	0
Fuller	3	00	0	.000	1	1	1	0	2	0	0	0	0
<b>TOTALS</b>	<b>3</b>	<b>2617</b>	<b>88</b>	<b>.102</b>	<b>22</b>	<b>0</b>	<b>9</b>	<b>4</b>	<b>36</b>	<b>1</b>	<b>8</b>	<b>5</b>	<b>5</b>

Set	K	E	TA	PCT	Sideout	PCT
1	14	2	24	.500	14-18	77%
2	15	7	37	.216	11-8	61%
3	13	3	38	.263	15-20	75%

Florida	1	2	3	<b>Total</b>
Penn State	4	7	13	24
Tie Scores	4	7	13	24
Lead Changes	1	4	3	8



## PSU 3, MARQUETTE 0 Fort Myers, Florida (Alico Arena) Sept. 13, 2013

No. 3 Penn State women's volleyball dismantled Marquette in straight sets in the opening match of the Hilton Garden Inn Homewood Suites Classic in Alico Arena.

Leading by three, 9-7, PSU held off the pressure, taking its largest lead of the set, 21-13, after a kill from McClendon. MU attempted to move ahead once more, using three straight points to make it 21-16, but PSU responded with a 4-1 streak to finish off the frame, 25-17.

After jumping out to a 7-3 start, the Nittany Lions bolstered the lead to as many as 10 points, 18-8. From there, PSU cruised to a 25-12 victory in the second set after closing out the period on a 7-4 run.

With the third set tied, 13-all, Penn State used a 3-0 spurt to secure a 17-13 advantage. Marquette notched one more kill before Penn State used a 4-0 stretch to go up by as many as seven points, 21-14.

Katie Slay, Deja McClendon and Paulina Prieto Cerame all combined for kills, to make it set-point, 24-17, before Aiyana Whitney smacked one final kill to secure the match.

### NO. 3 PENN STATE (3-1, 0-0)

Name	SP	K	E	TA	PCT	A	SA	SE	RE	D	BS	BA	BE
Grant	3	5	19	.444	0	1	0	0	2	0	2	0	0
P.Cerame	3	7	216	.312	1	0	1	0	0	1	0	0	0
Hancock	3	4	0	.500	33	0	0	0	7	0	3	0	0
Slay	3	8	0	.800	0	0	0	0	1	0	4	0	0
Courtney	3	9	117	.471	1	0	1	0	10	0	1	1	1
McClendon	9	222	.318	2	0	1	0	5	0	2	1	0	0
Scott	1	0	1	.333	0	0	0	0	1	0	0	0	0
Caraway	3	0	0	.000	0	0	0	0	0	0	0	0	0
Pierce	1	0	0	.000	0	0	0	0	0	0	0	0	0
Gonzalez	3	0	0	.000	4	2	0	0	11	0	0	0	0
Martin	2	0	0	.000	0	0	1	0	1	0	0	0	0
Whitney	1	1	0	1.000	0	0	0	0	0	0	0	0	0
Fuller	3	0	0	.000	0	0	1	0	3	0	0	0	0
<b>TOTALS</b>	<b>3</b>	<b>43</b>	<b>7</b>	<b>.87</b>	<b>.414</b>	<b>41</b>	<b>3</b>	<b>5</b>	<b>0</b>	<b>41</b>	<b>1</b>	<b>12</b>	<b>2</b>

Set	K	E	TA	Pct
1	14	3	30	.367
2	13	1	27	.444
3	16	3	30	.433

PSU	25	25	25
Marquette	17	12	17

### MARQUETTE (2-2, 0-0)

Name	SP	K	E	TA	PCT	A	SA	SE	RE	D	BS	BA	BE
Bailey	3	134	28	.321	0	1	0	4	0	0	0	1	0
Rauch	3	0	0	.000	0	0	0	1	4	0	0	0	0
Niemann	3	5	2	.231	0	0	0	0	0	0	1	0	0
Gosh	3	5	2	.214	30	0	3	0	1	0	0	0	0
Kocken	3	4	2	.167	2	0	4	0	0	0	1	1	0
Koberstien	3	0	1	.333	300	0	5	0	1	0	1	0	0
Lehman	3	7	6	.193	.531	0	0	0	1	0	1	0	1
Jezirowski	3	0	0	.000	1	0	1	1	9	0	0	0	0
Stier	3	0	1	.500	0	0	0	0	8	0	0	0	0
<b>TOTALS</b>	<b>3</b>	<b>34</b>	<b>1898</b>	<b>.163</b>	<b>34</b>	<b>0</b>	<b>9</b>	<b>3</b>	<b>32</b>	<b>0</b>	<b>4</b>	<b>2</b>	<b>2</b>

Set	K	E	TA	Pct
1	14	6	34	.235
2	9	9	35	.000
3	11	3	29	.276

Marquette	1	2	3	<b>Total</b>
PSU	2	1	10	13
Tie scores	2	1	10	13
Lead changes	1	0	5	6



## PSU 3, CENTRAL ARKANSAS 0 Fort Myers, Florida (Alico Arena) Sept. 14, 2013

The No. 3 Penn State women's volleyball team recorded its fifth straight-set victory of the season with a 3-0 win against Central Arkansas in the Hilton Garden Inn Homewood Suites Classic.

With the opening set knotted, 12-12, Penn State used a 6-1 run to move ahead by five, 18-13. After kills from Courtney and two more UCA attacking errors, the Nittany Lions looked to close out the set, 23-16. The Sugar Bears answered back with a 4-1 run to jump within four, 24-20, but Paulina Prieto Cerame halted the streak with a solo stuff to seal the opening set, 25-20 in favor of the Nittany Lions.

PSU got out to a hot start in the second set, using a 7-1 run to claim an early advantage. Later, Penn State used a 4-0 streak to go up by five, 19-14. PSU couldn't shake the Sugar Bears as they chipped away at the PSU lead, tying it 21-all following a 5-0 spurt. PSU answered with a 4-1 stretch to close out the second set, 25-22.

The Nittany Lions came out firing in the third set, using a 14-1 advantage for an early double-digit lead. Central Arkansas was unable to stop the offensive momentum, as PSU continued to dominate at the net, taking an eventual 25-10 victory in the final frame.

### CENTRAL ARKANSAS (5-0, 0-0)

Name	SP	K	E	TA	PCT	A	SA	SE	RE	D	BS	BA	BE
Collins	3	30	5	.600	30	0	0	0	8	0	0	0	0
Brooks	3	64	19	.105	2	0	2	2	6	0	1	0	0
Rogers	3	00	1	.000	0	0	0	2	4	0	0	0	0
Nagy	3	97	37	.054	0	0	0	0	0	0	1	0	0
Gantar	3	54	13	.077	0	0	0	0	1	1	0	0	0
Dittrich	3	53	11	.182	0	0	2	0	1	0	1	0	0
Petties	1	00	0	.000	0	0	0	0	0	0	0	0	0
Singleton	1	00	1	.000	0	0	1	0	0	0	0	0	0
Berringer	3	00	1	.000	2	0	2	1	15	0	0	0	0
South	2	00	0	.000	0	0	0	0	1	0	0	0	0
Schnars	3	71	17	.353	0	0	0	0	1	0	0	0	0
Hunt	3	00	1	.000	0	0	1	0	0	0	0	0	0
<b>TOTALS</b>	<b>3</b>	<b>3519</b>	<b>106</b>	<b>.151</b>	<b>34</b>	<b>0</b>	<b>8</b>	<b>8</b>	<b>36</b>	<b>1</b>	<b>4</b>	<b>0</b>	<b>0</b>

Set	K	E	TA	Pct
1	13	8	37	.135
2	15	4	39	.282
3	7	7	30	.000

Central Arkansas	20	22	10
Penn State	25	25	25

### NO. 3 PENN STATE (4-1, 0-0)

Name	SP	K	E	TA	PCT	A	SA	SE	RE	D	BS	BA	BE
Grant	3	62	11	.364	0	1	0	0	3	1	0	0	0
P.Cerame	1	23	8	.125	0	0	0	0	1	1	0	0	0
Hancock	3	12	7	.143	30	3	0	0	5	0	1	0	0
Slay	3	61	12	.417	2	0	0	0	1	2	6	0	0
Courtney	3	102	21	.381	0	0	0	0	2	0	5	4	0
McClendon	3	64	21	.095	1	0	0	0	3	2	0	0	0
Scott	2	81	17	.412	0	1	0	0	1	0	0	1	0
Caraway	1	00	0	.000	0	0	0	0	0	0	0	0	0
Pierce	2	00	0	.000	0	0	0	0	0	0	0	0	0
Gonzalez	3	00	0	.000	0	1	0	0	14	0	0	0	0
Martin	1	00	0	.000	0	0	0	0	0	0	0	0	0
Muller	1	00	0	.000	0	0	0	0	0	0	0	0	0
Whitney	1	00	0	.000	0	0	0	0	0	0	0	0	0
Harding	2	00	0	.000	1	0	0	0	0	0	0	0	0
Fuller	3	00	0	.000	0	2	1	0	7	0	0	0	0
<b>TOTALS</b>	<b>3</b>	<b>3915</b>	<b>97</b>	<b>.247</b>	<b>34</b>	<b>8</b>	<b>1</b>	<b>0</b>	<b>37</b>	<b>6</b>	<b>12</b>	<b>5</b>	<b>5</b>

Set	K
-----	---



# 2013 PENN STATE MATCH SUMMARIES



## PSU 3, FGCU 0

Fort Myers, Florida (Alico Arena)

Sept. 14, 2013

In front of a record crowd, the No. 3 Penn State women's volleyball team captured the Hilton Garden Inn Homewood Suites Classic title with a 3-0 victory against tournament host, FGCU in Alico Arena.

Penn State opened the match on a 13-2 streak, to build an early advantage. FGCU managed to halt the momentum with a pair of kills, but the spurt did not faze the Nittany Lions, as Nia Grant and Kendall Pierce answered back with a kill and an ace to make it 16-4. From there, PSU cruised to set point on a 9-1 stretch for a 25-8 win.

Both teams kept it close early in the second stanza. With the Eagles within one. 11-10, Penn State remained on top, before closing out the second set on an 8-0 run to go up 2-0 in the match.

After briefly trading the lead in the third set, FGCU managed to knot it up, 10-10. PSU rallied on, using a 5-1 spurt, led by two kills from Slay to take a 15-11 lead. Using a balanced attack, the Nittany Lions claimed a 25-17 victory in the final set to secure the straight-set victory.

### NO. 3 PENN STATE (5-1, 0-0)

Name	SP	K	E	TA	PCT	A	SA	SE	RE	D	BS	BA	BE
Grant	2	6	1	12	.417	0	0	0	0	1	1	1	0
P. Cerame	3	5	2	13	.231	1	0	0	0	2	1	2	0
Hancock	3	2	0	5	.400	31	3	2	0	5	0	1	0
Slay	3	9	0	11	.818	1	0	0	0	0	1	3	0
Courtney	3	9	0	14	.643	0	0	0	0	5	0	1	0
McClendon	3	5	2	15	.200	0	0	0	0	6	2	1	0
Scott	1	1	1	7	.000	0	0	0	0	0	0	0	0
Caraway	1	0	0	0	.000	1	0	1	0	2	0	0	0
Pierce	2	0	0	0	.000	0	1	1	0	2	0	0	0
Gonzalez	3	0	0	1	.000	3	0	1	0	11	0	0	0
Martin	1	1	1	3	.000	0	0	2	0	1	0	0	0
Krause	1	0	0	0	.000	0	0	0	0	0	0	0	0
Whitney	1	1	0	3	.333	0	0	0	0	1	0	1	0
Broerman	1	0	0	0	.000	0	0	0	0	0	0	0	0
Fuller	3	0	0	0	.000	0	0	1	0	6	0	0	0
<b>TOTALS</b>	<b>3</b>	<b>39</b>	<b>7</b>	<b>84</b>	<b>.381</b>	<b>37</b>	<b>4</b>	<b>8</b>	<b>0</b>	<b>42</b>	<b>5</b>	<b>10</b>	<b>0</b>

Set	K	E	TA	Pct
1	11	1	24	.417
2	14	2	35	.343
3	14	4	25	.400

Penn State	25	25	25
Florida Gulf Coast	8	15	17

### FLORIDA GULF COAST UNIVERSITY (1-9, 0-0)

Name	SP	K	E	TA	PCT	A	SA	SE	RE	D	BS	BA	BE
Mesner	3	2	5	11	-.273	0	0	0	0	0	0	1	0
Holm	3	4	8	22	-.182	0	0	0	0	0	0	0	1
Meyer	3	0	0	0	.000	20	0	1	0	6	0	0	1
Pinder	3	6	3	25	.120	1	0	0	2	14	0	0	0
Mambuca	3	3	0	10	.300	1	0	0	0	4	0	1	1
Barnes	3	9	7	31	.065	0	0	3	0	3	0	0	1
Moeller	2	0	0	0	.000	0	0	0	0	0	0	0	0
Jordan	1	0	0	0	.000	0	0	0	0	0	0	0	0
Masters	3	0	1	2	-.500	2	0	0	1	6	0	0	0
<b>TOTAL</b>	<b>3</b>	<b>24</b>	<b>24</b>	<b>101</b>	<b>.000</b>	<b>24</b>	<b>0</b>	<b>4</b>	<b>4</b>	<b>33</b>	<b>1</b>	<b>2</b>	<b>3</b>

Set	K	E	TA	Pct
1	5	12	33	-.212
2	10	5	41	.122
3	9	7	27	.074

Tie score	0	3	5	8
Lead changes	0	1	1	2



## PSU 3, ALBANY 0

University Park, Pa. (Rec Hall)

Sept. 20, 2013

The No. 1 Penn State women's volleyball team limited Albany to less than nine points in each set, cruising to a 3-0 victory against the Great Danes in the first PSU match of the Penn State Classic.

Penn State opened the contest with an early 6-0 run, 3-4, to grab a six-point advantage, 9-3. The Great Danes looked to spark momentum with a block following the break, but the Nittany Lions answered back with an 8-3 streak to secure a double-digit advantage, 17-7. PSU continued to pull away, delivering another 9-1 strike to secure the set.

The Nittany Lions continued the balanced attack in the second frame, jumping out to a 12-2 lead for an early advantage in the second frame. From there, Penn State allowed just four more points from the Great Danes, cruising to a 25-6 win to go up 2-0 in the match.

Penn State finished off the balance attack with 12-0 streak to capture the final frame, 25-4, notching the Nittany Lions' seventh sweep of the season. PSU was helped out by 27 Albany attacking errors as the Great Danes combined for a -.233 hitting percentage.

### NO. 1 PENN STATE (6-1, 0-0)

Name	SP	K	E	TA	PCT	A	SA	SE	RE	D	BS	BA	BE
Scott	3	8	0	15	.533	0	0	0	0	1	0	4	0
Hancock	3	3	0	31	.000	29	2	1	0	6	0	2	0
Whitney	2	7	1	9	.667	1	0	0	0	1	0	4	0
Slay	3	8	1	10	.700	0	0	0	0	0	0	3	0
Courtney	2	2	2	7	.000	1	0	0	0	3	1	1	0
McClendon	3	5	0	14	.357	2	0	0	1	6	1	3	0
Caraway	1	0	0	0	.000	0	0	0	0	0	0	0	0
Pierce	1	0	0	0	.000	0	1	0	0	0	0	0	0
Gonzalez	3	0	0	0	.000	2	1	1	0	8	0	0	0
Martin	1	2	0	4	.500	1	0	0	0	4	0	0	0
P. Cerame	1	2	0	21	.000	0	0	0	0	0	0	0	0
Harding	1	0	0	0	.000	0	1	0	0	0	0	0	0
Robertson	1	3	0	5	.600	0	0	0	0	0	0	2	0
Broerman	1	0	0	0	.000	0	0	0	0	1	0	0	0
Fuller	2	0	0	0	.000	0	0	0	0	3	0	0	0
<b>TOTALS</b>	<b>3</b>	<b>40</b>	<b>4</b>	<b>69</b>	<b>.522</b>	<b>36</b>	<b>5</b>	<b>2</b>	<b>1</b>	<b>33</b>	<b>2</b>	<b>19</b>	<b>0</b>

Set	K	E	TA	Pct
1	15	2	27	.481
2	12	1	21	.524
3	13	1	21	.571

PSU	25	25	25
Albany	8	6	4

### ALBANY (0-9, 0-0)

Name	SP	K	E	TA	PCT	A	SA	SE	RE	D	BS	BA	BE
Schonewise	3	2	9	16	-.438	1	0	2	0	4	0	1	0
Leindecker	3	0	0	0	.000	3	1	0	0	3	4	0	0
Jungsten	3	1	4	13	-.231	0	0	0	0	0	0	1	0
McCaughey	3	1	6	11	-.455	1	0	0	0	3	0	0	0
Rivera	3	0	1	1	1.000	3	0	0	0	4	0	0	0
Dolan	3	2	2	7	.000	0	0	0	0	0	0	1	0
Spreen	3	0	0	0	.000	1	0	0	0	6	0	0	0
Dardelet	3	0	1	9	-.111	0	0	0	0	1	0	0	1
Hunter	2	1	4	9	-.333	0	0	0	0	0	0	0	0
Stroilo	2	0	0	1	.000	0	0	0	2	0	0	0	0
Furlong	3	3	0	6	.500	1	0	0	0	0	0	1	1
<b>TOTALS</b>	<b>3</b>	<b>10</b>	<b>27</b>	<b>73</b>	<b>-.233</b>	<b>10</b>	<b>1</b>	<b>2</b>	<b>5</b>	<b>22</b>	<b>0</b>	<b>4</b>	<b>2</b>

Set	K	E	TA	Pct
1	5	7	24	-.083
2	3	10	23	-.304
3	2	10	26	-.308

Tie scores	1	2	0	3
Lead changes	0	0	0	0



## PSU 3, EASTERN KENTUCKY

University Park, Pa. (Rec Hall)

Sept. 21, 2013

Behind double-digit kill contributions from seniors Katie Slay, Deja McClendon and Ariel Scott, the top-ranked Penn State women's volleyball team knocked off Eastern Kentucky in three straight sets Saturday morning in the Penn State Classic.

Penn State bolted out to an early 13-4 lead helped out by a steady offensive momentum. The Nittany Lions continued to dominate at the net, embarking on an 8-2 run to make it 20-6. PSU continued to rally, taking a 25-10 win in the first set.

With the second frame tied up at 3-all, Scott, Grant and Martin lifted the Lions ahead with a trio of consecutive kills, 6-3. The Colonels answered back with a kill and an ace, but Penn State responded with an 8-2 stretch to double the advantage once more, 14-7. The Lions closed out the set on an 8-1 run for a 2-0 advantage in the match.

Both teams kept it tight early in the third set, with EKU moving ahead by one three times. With the game knotted, 12-12, Penn State pulled ahead with a kill from Slay and an ace from Gonzalez, 14-12. EKU still remained within range but PSU stayed in control, capturing a 25-10 win in the final period.

### EASTERN KENTUCKY (4-6, 0-0)

Name	SP	K	E	TA	PCT	A	SA	SE	RE	D	BS	BA	BE
Plagens	3	12	2	25	.400	0	0	1	1	0	0	1	0
Moffat	3	1	0	1	1.00	12	0	0	0	6	0	0	0
Boyer	3	3	7	16	.250	0	0	0	0	1	0	0	0
Vick	3	1	0	2	.500	0	0	0	1	0	1	1	0
Anderson	3	1	2	6	-.167	0	0	0	0	0	0	0	0
Edmond	3	3	3	25	.000	1	1	0	4	5	0	0	0
Off	3	0	0	1	.000	1	0	0	0	9	0	0	0
Mindlina	3	0	1	1	1.00	0	0	2	1	4	0	0	0
Cvelbar	3	0	0	0	.000	8	1	1	0	2	0	0	0
Tashenberg	3	2	4	12	-.167	0	0	0	0	0	1	1	0
<b>TOTALS</b>	<b>3</b>	<b>23</b>	<b>19</b>	<b>89</b>	<b>.045</b>	<b>22</b>	<b>2</b>	<b>3</b>	<b>7</b>	<b>28</b>	<b>1</b>	<b>2</b>	<b>2</b>

Set	K	E	TA	Pct
1	5	7	29	-.069
2	5	8	24	-.125
3	13	4	36	.250

Eastern Kentucky	10	8	19
Penn State	25	25	25

### NO. 1 PENN STATE (7-1, 0-0)

Name	SP	K	E	TA	PCT	A	SA	SE	RE	D	BS	BA	BE
Scott	3	10	1	19	.474	0	0	0	0	2	0	1	0
Grant	2	5	0	6	.833	1	1	0	0	0	0	3	0
Hancock	3	2	2	4	.000	39	4	0	0	4	0	3	0
Slay	3	11	1	16	.625	0	0	0	0	1	0	5	0
Courtney	2	4	2	9	.222	0	0	0	0	6	0	2	1
McClendon	3	10	2	22	.364	1	0	1	0	3	0	3	0
Pierce	1	0	0	0	.000	0	0	0	0	1	0	0	0
Gonzalez	3	0	0	0	.000	2	2	0	0	20	0	0	0
Martin	2	2	0	4	.500	0	0	0	2	1	0	0	0
Muller	1	0	0	0	.000	0	0	1	0	0	0	0	0
Krause	1	0	0	0	.000	0	0	0	0	2	0	0	0
Whitney	1	2	1	4	.250	0	0	0	0	0	0	1	0
Harding	1	0	0	0	.000	0	0	1	0	0	0	0	0
Fuller	2	0	0	0	.000	0	0	0	0	3	0	0	0



# 2013 PENN STATE MATCH SUMMARIES



## PSU 3, YALE 0

University Park, Pa. (Rec Hall)

Sept. 21, 2013

Senior Ariel Scott led the No. 1 Penn State women's volleyball team to the Penn State Classic title with a season-high 13 kills in a 3-0 victory against Yale on Saturday night in Rec Hall. Deja McClendon and Katie Slay and Dominique Gonzalez earned Penn State Classic All-Tournament team honors for their performances this weekend.

Capitalizing on a PSU serving error and three straight attacking errors, the Bulldogs climbed back within three, 17-14, in set one before the Lions called a timeout to regroup. PSU came out of the break firing, delivering an 8-2 streak to take a 25-16 win in the first.

Leading 12-10 in set two, PSU responded with a 12-2 stretch to put Gonzalez at the line for set-point, 24-12, after Courtney capped off the run with a kill. Yale attempted to stay in the game, using four kills and PSU attacking error to make it 24-17, but PSU closed out the set, 25-17.

Up by two in the match, the Nittany Lions got out to a hot start in the third set, using an 11-1 run to construct an early advantage before ultimately taking the set, 25-6.

### YALE (4-2, 0-0)

Name	SP	K	E	TA	PCT	A	SA	SE	RE	D	BS	BA	BE
Ebner	3	4	2	12	.167	0	0	0	0	0	0	0	1
Carter	2	1	1	5	.000	0	0	0	0	0	0	0	0
Rogers	3	6	0	28	.214	1	0	0	2	3	0	0	0
Johnson	3	4	4	12	.000	4	0	1	0	2	0	0	1
Polan	3	0	0	3	.000	14	0	0	0	8	0	0	0
Steinberg	3	4	5	18	-.056	0	0	1	1	6	0	0	1
Rudnick	3	0	0	0	.000	1	0	0	1	8	0	0	0
Reetz	1	0	0	0	.000	0	0	0	0	0	0	0	0
Shepherd	2	0	0	0	.000	1	0	0	0	2	0	0	0
Midzik	2	3	2	10	.100	0	0	0	0	2	0	0	1
Fuller	1	1	1	3	.000	0	0	0	0	0	0	0	0
<b>TOTALS</b>	<b>3</b>	<b>23</b>	<b>15</b>	<b>91</b>	<b>.088</b>	<b>21</b>	<b>0</b>	<b>2</b>	<b>4</b>	<b>31</b>	<b>0</b>	<b>0</b>	<b>4</b>

Set	K	E	TA	Pct
1	11	1	24	.417
2	14	2	35	.343
3	14	4	25	.400

Penn State	25	25	25
Yale	16	17	16

### NO.1 PENN STATE (8-1, 0-0)

Name	SP	K	E	TA	PCT	A	SA	SE	RE	D	BS	BA	BE
Scott	2	13	2	20	.550	0	0	0	0	0	0	0	2
Grant	3	8	2	13	.462	1	0	0	0	1	1	1	0
Hancock	3	3	1	5	.400	32	1	3	0	6	0	1	0
Slay	3	8	1	11	.636	2	0	0	0	2	0	5	1
Courtney	3	11	0	25	.440	2	0	0	0	5	1	3	0
McClendon	3	9	3	20	.300	2	1	0	0	7	0	0	1
Caraway	1	0	0	0	.000	0	0	0	0	2	0	0	0
Pierce	3	0	0	0	.000	0	0	1	0	3	0	0	0
Gonzalez	3	0	0	0	.000	5	2	1	0	16	0	0	0
Krause	1	0	0	0	.000	0	0	0	0	1	0	0	0
Whitney	1	2	1	9	.111	0	0	0	0	0	0	0	0
Fuller	2	0	0	0	.000	0	0	1	0	2	0	0	0
<b>TOTALS</b>	<b>3</b>	<b>54</b>	<b>10</b>	<b>103</b>	<b>.427</b>	<b>44</b>	<b>4</b>	<b>6</b>	<b>0</b>	<b>45</b>	<b>2</b>	<b>12</b>	<b>2</b>

Set	K	E	TA	Pct
1	21	5	36	.444
2	14	4	36	.278
3	19	1	31	.581

	1	2	3	Total
Tie score	1	3	0	4
Lead changes	1	2	0	3



## MICHIGAN STATE 3, PSU 2

University Park, Pa. (Rec Hall)

Sept. 27, 2013

Despite career high efforts from junior Micha Hancock and sophomore Megan Courtney, the No. 1 Penn State women's volleyball team lost a tough five-set battle to No. 15 Michigan State.

Leading by five, 20-15 in set one, MSU answered back with a 7-3 stretch, to come within one point of the lead 22-21. From there, MSU closed out the set on a 4-1 run to claim the opening frame.

With a slim, 23-19 PSU lead in set two, the Spartans stormed back with a kill and a pair of blocks to make it 23-22. Both clubs traded points before MSU grabbed set two, 26-24.

PSU used a 4-0 run early in the third frame, capped off by an ace from Gonzalez and a kill from Courtney to go up 6-2. The Nittany Lions did not relinquish control, securing a 25-19 win stay alive in the match. Building on the advantage in set four, PSU used a 7-3 streak to go up five. PSU didn't let MSU any closer than four points, rallying to a 25-19 win.

Trailing by two early in the fifth frame, Slay slammed a kill to put Penn State within one, but attacking errors hindered PSU from moving ahead, giving MSU the set 15-9, and the match.

### NO. 1 PENN STATE (9-1, 0-0)

Name	SP	K	E	TA	PCT	A	SA	SE	RE	D	BS	BA	BE
Scott	5	18	7	46	.239	0	0	1	0	8	1	4	0
Grant	5	9	1	12	.667	1	0	2	0	2	1	1	0
Hancock	5	9	2	13	.538	57	1	6	1	9	0	0	1
Slay	5	11	2	20	.450	1	0	0	0	2	2	4	1
Courtney	5	15	4	39	.282	1	1	0	2	14	0	2	0
McClendon	5	7	4	25	.120	2	0	0	2	14	1	0	0
Caraway	1	0	0	0	.000	0	0	1	0	0	0	0	0
Pierce	5	0	0	0	.000	0	0	0	0	2	0	0	0
Gonzalez	5	0	0	0	.000	6	1	1	0	10	0	0	0
P. Cerame	1	4	2	10	.200	0	0	1	0	1	0	0	0
Whitney	1	0	0	1	.000	0	0	0	0	0	0	0	0
Fuller	5	0	0	0	.000	0	0	1	0	0	0	0	0
<b>TOTALS</b>	<b>5</b>	<b>73</b>	<b>22</b>	<b>166</b>	<b>.307</b>	<b>68</b>	<b>3</b>	<b>13</b>	<b>5</b>	<b>62</b>	<b>5</b>	<b>11</b>	<b>2</b>

Set	K	E	TA	Pct
1	13	4	40	.225
2	18	7	45	.244
3	19	2	39	.436
4	17	3	27	.519
5	6	6	15	.000

MSU	25	26	19	19	15
Penn State	23	24	25	25	9

### NO. 15 MICHIGAN STATE (11-1, 0-0)

Name	SP	K	E	TA	PCT	A	SA	SE	RE	D	BS	BA	BE
Fitterer	5	8	4	16	.250	0	1	2	0	2	0	3	1
Galloway	5	10	3	29	.241	0	0	0	3	9	0	3	0
Reinig	5	12	5	31	.226	0	0	0	0	0	0	4	1
Kelsay	5	1	0	4	.250	27	0	0	0	0	11	0	0
Wicinski	5	21	7	55	.255	51	2	3	0	9	0	2	0
Mathews	5	4	2	13	.154	0	0	0	0	0	0	6	1
Moster	5	0	0	0	.000	3	0	0	0	18	0	0	0
Peterson	5	0	0	1	.000	26	0	3	0	4	0	0	0
Hubbard	5	0	0	0	.000	0	2	0	0	0	0	0	0
Kuipers	5	5	1	11	.364	0	0	0	0	1	0	4	0
<b>TOTALS</b>	<b>5</b>	<b>61</b>	<b>22</b>	<b>160</b>	<b>.244</b>	<b>57</b>	<b>5</b>	<b>8</b>	<b>3</b>	<b>54</b>	<b>0</b>	<b>22</b>	<b>3</b>

Set	K	E	TA	Pct
1	17	6	42	.262
2	16	4	42	.286
3	13	3	36	.278
4	9	6	26	.115
5	6	3	14	.214

	1	2	3	4	5	Total
Tie Scores	12	9	2	5	0	28
Lead Changes	6	2	0	1	0	9



## PSU 3, MICHIGAN 1

University Park, Pa. (Rec Hall)

Sept. 28, 2013

Deja McClendon and Ariel Scott led the top-ranked Penn State women's volleyball team to a Big Ten victory against No. 10 Michigan. With the 3-1 win, the Nittany Lions improve to 24-0 at home in Rec Hall against the Wolverines.

Leading by four in set one, Hancock, Grant and Courtney came out of the huddle with three consecutive kills to push Penn State ahead, 22-14. The Wolverines attempted to get back on top, but PSU answered back with two kills, and an ace to secure a 25-16 win in set one.

Down 19-15, Penn State stormed back with a 5-0 run to knot the score, 19-19. The Wolverines jumped back on top, capitalizing on a PSU attack error and four kills to make it set-point, 24-19 before, tying the match, 1-1 with a 25-20 win.

Penn State and Michigan kept it close in the third period before the Nittany Lions cracked open an 8-all tie with a 7-3 run to claim a four-point lead, 15-1 before capturing a 25-19 win to take a 2-1 lead in the match. PSU jumped out to a 10-6 advantage in set four and never looked back. Powering ahead, the Nittany Lions went on a 7-1 run for a double-digit lead, 17-7 before completing the set, 25-17 to secure the win.

### NO. 1 PENN STATE (9-2, 0-1)

Name	SP	K	E	TA	PCT	A	SA	SE	RE	D	BS	BA	BE
Scott	4	15	3	35	.343	0	0	0	0	1	0	5	2
Grant	4	8	4	17	.235	0	0	1	0	1	0	1	0
Hancock	4	2	2	9	.000	44	4	3	0	11	0	2	1
Slay	4	6	2	13	.308	1	0	0	0	1	1	8	0
Courtney	4	11	3	26	.308	0	0	1	0	8	2	2	0
McClendon	4	15	2	30	.433	2	0	0	0	13	2	1	0
Caraway	1	0	0	0	.000	0	0	0	0	0	0	0	0
Pierce	4	0	0	0	.000	0	1	0	0	0	0	0	0
Gonzalez	4	0	0	0	.000	4	1	3	1	12	0	0	0
Martin	1	0	0	0	.000	0	0	0	0	0	0	0	0
P. Cerame	1	0	0	1	.000	0	0	0	0	0	0	0	0
Fuller	4	0	0	0	.000	1	1	1	0	7	0	0	0
<b>TOTALS</b>	<b>4</b>	<b>57</b>	<b>16</b>	<b>131</b>	<b>.313</b>	<b>52</b>	<b>7</b>	<b>9</b>	<b>1</b>	<b>54</b>	<b>5</b>	<b>19</b>	<b>3</b>

Set	K	E	TA	Pct
1	16	4	36	.333
2	15	7	33	.242
3	12	4	30	.267
4	14	1	32	.406

Michigan	16	25	19	17
Penn State	25	20	25	25

### NO. 10 MICHIGAN (10-1, 0-1)

Name	SP	K	E	TA	PCT	A	SA	SE	RE	D	BS	BA	BE
Toon	4	19	7	41	.293	1	1	3	0	5	2	1	0
Cross	4	11	3	22	.364	0	0	1	0	7	1	1	0
Dannemiller	4	2	3	6	.167	43	0	2	0	12	0	0	1
Erwin	4	11	5	28	.214	1	0	0	2	9	0	2	0
Goode	4	6	3	20	.150	0	0	0	0	0	0	3	0
Sabol	4	0	0	1	.000	1	0	0	1	9	0	0	0
Lerg	2	0	0	0	.000	0	0	1	1	0	0	0	0
Morales	4	0	0	0	.000	3	0	1	3	10	0	0	0
Lee	1	0	0	0	.000	0	0	1	0	0	0	0	0
Cole	4	2	0	13	.154	0	0	0	0	1	0	5	1
<b>TOTALS</b>	<b>4</b>	<b>51</b>	<b>21</b>	<b>131</b>	<b>.229</b>	<b>49</b>	<b>1</b>	<b>9</b>	<b>7</b>	<b>53</b>	<b>3</b>	<b>12</b>	<b>2</b>

Set	K	E</
-----	---	-----

