



# 2012-13 PENN STATE LADY LION BASKETBALL

**WOMEN'S BASKETBALL CONTACT:**  
 Kristina Petersen  
 Twitter: @ladylionsid  
 Website: www.GoPSUsports.com  
 Email: kap18@psu.edu  
 Cell: 814-883-4581  
 Office: 814-865-1757

Penn State Athletic Communications: 101D Bryce Jordan Center, University Park, PA 16802 ♦ Office: 814-865-1757 ♦ Fax: 814-863-3165

## SCHEDULE/RESULTS

### NOVEMBER

Sat. 3	CALIFORNIA (PA.) (ex.).....	W, 95-39
Sun. 11	HOWARD (BTN.com).....	W, 72-61
Wed. 14	at #16/13 Texas A&M (FSN)....	W, 63-58
Sun. 18	LAFAYETTE (BTN.com).....	W, 75-34

### Radisson Hotel Chatsworth Thanksgiving Basketball Tournament

Fri. 23	vs. Detroit.....	W, 80-72
Sat. 24	vs. CS-Northridge.....	W, 85-73

### Big Ten/ACC Challenge

Thurs. 29	at Miami (Fla.).....	L, 65-69
-----------	----------------------	----------

### DECEMBER

Sun. 2	F. DICKINSON (BTN.com) ..	W, 101-44
Thurs. 6	at #2/2 Connecticut (SNY).....	L, 52-67
Sun. 9	GEORGETOWN (BTN).....	W, 97-74
Wed. 12	at Virginia Tech.....	W, 60-41
Sun. 16	SOUTH DAKOTA STATE .....	W, 60-50
Sun. 23	NJIT (BTN.com).....	W, 82-37

### JANUARY

Thurs. 3	N-WESTERN* (BTN.com).....	W, 73-69
Sun. 6	at Michigan State* (BTN).....	W, 76-55
Sun. 13	NEBRASKA* (ESPN2).....	W, 80-58
Thurs. 17	WISCONSIN* (BTN.com)....	W, 84-40
Mon. 21	at #25/RV Michigan* (BTN)...	6:30 p.m.
Thurs. 24	MINNESOTA* (BTN).....	6:30 p.m.
Sun. 27	at Ohio State* (BTN).....	1 p.m.
Thurs. 31	at Wisconsin* (BTN.com).....	8 p.m.

### FEBRUARY

Mon. 4	PURDUE* (ESPN2).....	7 p.m.
Thurs. 7	at Indiana* (BTN).....	6:30 p.m.
Sun. 10	MICHIGAN STATE* (ESPN2)...	2 p.m.
Thurs. 14	at Iowa* (BTN.com).....	8 p.m.
Wed. 20	ILLINOIS* (BTN.com).....	7 p.m.

### Seventh Annual Pink Zone at Penn State

Sun. 24	MICHIGAN* (BTN).....	1 p.m.
Thurs. 28	at Minnesota* (BTN-WC).....	TBA

### MARCH

Sun. 3	at Nebraska* (BTN-WC).....	TBA
Th.-Su. 7-10	..... Big Ten Tournament (BTN/ESPN2)	(Hoffman Estates, Ill.)
Sa.-Tu. 23-26	.....	NCAA 1st & 2nd Round
Sa.-Tu. 30-Apr. 2	.....	NCAA Regionals

### APRIL

Su./Tu. 7/9	...NCAA Final Four (New Orleans, La.)
-------------	---------------------------------------

**BOLD CAPS** indicates home game.

\* - indicates Big Ten game.

All times are Eastern Time.

BTN - Big Ten Network

BTN.com - BigTenNetwork.com

**Schedule subject to change. Please visit [www.GoPSUsports.com](http://www.GoPSUsports.com) for up-to-date tip times.**

## Game #17: #8/8 Penn State at #25/RV Michigan

Mon., Jan. 21 ▶ 6:30 p.m. ▶ Crisler Arena ▶ Ann Arbor, Mich.

		<b>SETTING THE SCENE</b>
<b>Penn State Lady Lions</b>	<b>Michigan Wolverines</b>	<b>The Michigan Game</b>
<b>Record:</b> 14-2, 4-0 Big Ten <b>Last Game:</b> PSU 84, Wisconsin 40 (1/13) <b>Head Coach:</b> Coquese Washington <b>Career Record:</b> 106-69 (6th yr.) <b>Record at PSU:</b> 106-69 (6th yr.)	<b>Record:</b> 15-2, 4-0 Big Ten <b>Last Game:</b> UM 67, Northwestern 53 (1/17) <b>Head Coach:</b> Kim Barnes Arico <b>Career Record:</b> 285-207 (17th yr.) <b>Record at UM:</b> 15-2 (1st yr.)	<b>Series:</b> Penn State leads 28-9 <b>Last Meeting:</b> PSU 77, UM 56 (1/26/12) <b>Streak:</b> Penn State - 4 wins <b>Television:</b> Big Ten Network - Lisa Byington - PBP; Stephanie White - color <b>Radio:</b> The game is on the Penn State Sports Network and ESPN Radio 1450 locally with Jerry Fisher calling the action. The audio feed is available at <a href="http://www.GoPSUsports.com">www.GoPSUsports.com</a> . <b>Webstream:</b> none <b>Live Stats:</b> <a href="http://GoPSUsports.com">GoPSUsports.com</a>
<b>Statistical Leaders</b> <b>Points</b> Maggie Lucas (19.8) <b>Rebounds</b> Nikki Greene (8.2) <b>Assists</b> Alex Bentley (3.9)	<b>Statistical Leaders</b> <b>Points</b> Kate Thompson (15.8) <b>Rebounds</b> Nicole Elmlblad (6.6) <b>Assists</b> Jenny Ryan (5.2)	

## GAME DAY INFORMATION

### SCOUTING MICHIGAN

The Wolverines are ranked 25th in this weeks AP poll after riding a 10-game winning streak to a 15-2 overall record and perfect 4-0 in Big Ten play. Kate Thompson paces the Wolverines with a 15.8 scoring average, including 66 three-pointers. Rachel Sheffer accounts for 12.4 points and 5.8 rebounds per game, while Jenny Ryan adds 11.4 points, 5.8 rebounds and 5.2 assists per game.

### ALL-TIME VS. THE WOLVERINES

The Lady Lions are 28-9 all-time against Michigan, including a current four-game winning streak. Penn State is 13-5 in road games versus the Wolverines. Penn State swept the season series last year with a 78-63 win at the BJC (Jan. 12) and a 77-56 victory in Ann Arbor (Jan. 16).

### LAST TIME VS. UM

The Lady Lions shot 56.1% from the field on the way to a dominating 77-56 win at Michigan Jan. 26, 2012. **Maggie Lucas** tallied 23 points via a 10-for-13 effort from the field. **Alex Bentley** had a solid all-around game with 18 points and eight assists, while **Nikki Greene** notched a double-double with 13 points and 11 rebounds.

## STORYLINES

- ✓ **Alex Bentley** tallied 14 points against Wisconsin Jan. 17 to move into the Top 10 on Penn State's career scoring list.
- ✓ Senior **Nikki Greene** needs 13 points to become the 35th player in school history with 1,000 points.
- ✓ Penn State's 44-point win over Wisconsin is the biggest margin of victory over a Big Ten foe since topping Michigan St. by 48 points Jan. 28, 2001.
- ✓ The Lady Lions open Big Ten play 4-0 for the first time since the 2004-05 season.
- ✓ **Maggie Lucas** is in sixth place on the Big Ten's career three-pointers list (246).
- ✓ For the first time since 2004-05, the Lady Lions have beaten a Big Ten opponent by 20-plus points in three consecutive games.
- ✓ Greene moved into second place on Penn State's career rejections chart after recording two rejections against Wisconsin.
- ✓ The Lady Lions are 8th in the Jan. 14 AP and the Jan. 15 USA Today Sports Coaches' poll.
- ✓ Bentley and Lucas are among players named to the "Wade Watch" list for the State Farm® Wade Trophy, the Naismith Early Season Watch List and the Wooden Award Top 30.

## UP NEXT

The Lady Lions return home to meet Minnesota on Thursday at 6:30 p.m. Fans can get their Gizelle Studevent wind-up walker at the gates. It is also Penn State Faculty/Staff Night and AT&T Night that include buy one, get one free ticket offers. Go to [www.GoPSUsports.com/promotions/wbb.html](http://www.GoPSUsports.com/promotions/wbb.html) for complete promotions information.



## 2012-13 ROSTER

### PENN STATE LADY LIONS

No.	Name	Pos.	Cl./Elg.	Ht.	Hometown/High School (Previous School)
1	Candice Agee	C	Fr./Fr.	6-6	Victorville, Calif./Silverado
2	Dara Taylor	G	Sr./Jr.	5-8	Wilmington, Del./Caravel Academy (Maryland)
5	Talia East **	F/C	Jr./Jr.	6-3	Philadelphia, Pa./Friends' Central School
20	Alex Bentley ***	G	Sr./Sr.	5-7	Indianapolis, Ind./Ben Davis
23	Ariel Edwards **	G/F	Jr./Jr.	6-3	Elmont, N.Y./Christ the King
24	Mia Nickson **	F	Gr./Sr.	6-2	Ashburn, Va./Notre Dame Acad. (Boston College)
25	Gizelle Studevent ***	G	Sr./Sr.	5-11	La Jolla, Calif./The Bishop's School
33	Maggie Lucas **	G	Jr./Jr.	5-10	Narberth, Pa./Germantown Academy
40	Marisa Wolfe ***	F	Sr./Sr.	6-2	Ford City, Pa./Ford City
44	Tori Waldner *	F	So./So.	6-5	Milton, Ga./Milton
54	Nikki Greene ***	F/C	Sr./Sr.	6-4	Diboll, Texas/Diboll

**Head Coach:** Coquese Washington (Notre Dame '92)

**Asst. Coaches:** Fred Chmiel, Kia Damon, Maren Walseth

**Captains:** Alex Bentley, Mia Nickson, Marisa Wolfe

\* Indicates letters earned

### MICHIGAN WOLVERINES

No.	Name	Pos.	Cl.	Ht.	Hometown/High School (Previous School)
1	Brenae Harris	G	So.	5-10	Marion, Ohio/Marion Harding
3	Kelsey Mitchell	F	Fr.	6-0	Detroit, Mich./Inkster
5	Madison Ristovski	G	Fr.	5-10	Sterling Heights, Mich./University Liggett
11	Sam Arnold	F	Sr.	6-4	Medinah, Ill./Lake Park
12	Kate Thompson	G	Sr.	6-4	Plymouth, Minn./Wayzata
14	Nicole Elmlad	G	So.	5-11	St. Ignace, Mich./LaSalle
21	Nya Jordan	F	Sr.	6-0	Detroit, Mich./Detroit Community
22	Cyeshia Goree	F	So.	6-3	Grand Rapids, Mich./Wyoming Park
24	Jenny Ryan	G	Sr.	5-9	Saginaw, Mich./Saginaw Nouvel Cath. Central
32	Rebecca Lyttle	F	Fr.	6-0	Miramar, Fla./Hollywood Christian
34	Val Driscoll	C/F	Jr.	6-4	Stoughton, Mass./Archbishop Williams
44	Rachel Sheffer	C/F	Sr.	6-1	Watervliet, Mich./Watervliet
54	Kendra Seto	F/C	RS Jr.	6-1	Oshawa, Ontario/Eastdale C.V.I

**Head Coach:** Kim Barnes Arico

**Asst. Coaches:** Melanie Moore, Chester Nichols, Joy McCorvey

### TEAM COMPARISON

PENN STATE		MICHIGAN	
Lucas (19.8)	Scoring Leader	Thompson (15.8)	
Greene (8.2)	Rebounding Leader	Elmlad (6.6)	
Bentley (3.9)	Assist Leader	Ryan (5.2)	
Bentley (4.1)	Steals Leader	Jordan (2.1)	
Greene (1.1)	Blocks Leader	Thompson (1.2)	
75.3	Scoring Offense	63.3	
56.4	Scoring Defense	50.5	
+18.9	Scoring Margin	+12.8	
43.6	Rebounds Per Game	36.4	
+6.1	Rebound Margin	+6.1	
13.8	Assists Per Game	15.1	
12.1	Steals Per Game	6.6	
.423	Field Goal Pct.	.465	
.337	FG Defense Pct.	.355	
.406	3-pt. FG Pct.	.395	
.275	3-pt. FG Pct. Def.	.281	
.743	Free Throw Pct.	.724	
0.8	Assist/Turnover	1.0	
Won 8	W/L Streak	Won 10	

### SERIES HISTORY

Overall:	PSU leads 28-9
Last meeting:	Jan. 26, 2012
Last result:	PSU, 77-56
Current streak:	PSU - 4 wins
Last 10:	PSU, 7-3
Last 10 meetings:	
1/20/08	H PSU, 68-57
2/7/08	A UM, 53-68
3/6/08	N UM, 54-64
1/4/09	H PSU, 76-58
2/9/09	A PSU, 64-56
1/31/10	A UM, 62-66
2/18/10	H PSU, 71-65 (OT)
2/3/11	A PSU, 81-63
1/12/12	H PSU, 78-63
1/26/12	A PSU, 77-56

## QUICK FACTS

### THE UNIVERSITY

Location: University Park, Pa.  
 Founded: 1855  
 Enrollment: 42,294  
 Colors: Blue & White  
 Nickname: Lady Lions  
 Conference: Big Ten  
 President: Dr. Rodney Erickson  
 Acting Athletics Director: Dr. David Joyner  
 Facility (cap.): Bryce Jordan Center (15,261)  
 All-Time Record at BJC: 196-49 (19th season)

### ATHLETIC COMMUNICATIONS

WBB Contact: Kristina Petersen  
 Phone/Fax: (814) 865-1757/(814) 863-3165  
 E-mail: kap18@psu.edu  
 Address: 101-D Bryce Jordan Center  
 University Park, Pa. 16802  
 Press Row Phone: 814-863-3294  
 Website: www.GoPSUsports.com  
 Twitter: @ladylionsid

### TEAM INFORMATION

2012-13 Record: 14-2  
 Home: 9-0 Away: 4-2 Neutral: 1-0  
 Big Ten Record: 4-0  
 Home: 3-0 Away: 1-0  
 Letterwinners Returning/Lost: 9/1  
 Starters Returning/Lost: 4/1  
 Big Ten Tournament: Semifinals  
 Postseason: NCAA Sweet Sixteen

### THE HISTORY

First Year of Women's Basketball: 1965  
 All-Time Record: 845-382 (48 seasons)  
 All-Time Big Ten Rec.: 221-117 (20 seasons)  
 NCAA Tournament Appearances: 23  
 NCAA Tournament Record: 29-23

### WOMEN'S BASKETBALL

Head Coach: Coquese Washington  
 Alma Mater: Notre Dame '92  
 Overall Record: 106-69 (6th season)  
 School Record: 106-69 (6th season)  
 Basketball Office Phone: 814-863-2672  
 Best Time To Reach Coach: Through SID  
 Assistant Coaches (Alma Mater):  
 Fred Chmiel (Excelsior College)  
 Kia Damon (Millersville '97)  
 Maren Walseth (Penn State '02)  
 Twitter: @pennstatewbb  
 Facebook: facebook.com/pennstateladylions  
 YouTube: YouTube.com/pennstateladylions  
 Instagram: pennstateladylions

### PRONUNCIATIONS

Agee	A-jee
Coquese	ko-KWEES
Chmiel	shuh-MEAL
Maren Walseth	MARR-en WALL-seth
Gizelle Studevent	juh-ZELL STEW-duh-vent
Talia	tah-LEE-uh
Ariel	AIR-e-I
Dara	DAR-uh



## STANDINGS (as of Jan. 17)

Team	Big Ten			Overall		
	W	L	Pct.	W	L	Pct.
Michigan	4	0	1.000	15	2	.882
Purdue	4	0	1.000	15	2	.882
<b>PENN STATE</b>	<b>4</b>	<b>0</b>	<b>1.000</b>	<b>14</b>	<b>2</b>	<b>.875</b>
Michigan State	3	1	.667	15	2	.882
Illinois	3	2	.600	10	7	.588
Iowa	2	2	.500	13	5	.722
Minnesota	2	2	.500	13	5	.722
Nebraska	2	3	.400	12	6	.667
Indiana	1	3	.250	10	7	.588
Ohio State	1	4	.200	11	7	.611
Northwestern	0	4	.000	8	9	.471
Wisconsin	0	5	.000	8	10	.444

## BIG TEN SCHEDULE

### JANUARY 17

at Penn State 84, Wisconsin 40  
Michigan 67, at Northwestern 53  
at Ohio State 68, Indiana 45  
at Purdue 75, Minnesota 67  
at Michigan State 65, Iowa 54  
Illinois 62, at Nebraska 52

### JANUARY 20

Michigan State at Indiana 2 p.m.  
Ohio State at Wisconsin 3 p.m.  
Purdue at Iowa 4 p.m.  
Nebraska at Minnesota 6 p.m.  
Northwestern at Illinois 3 p.m.

### JANUARY 21

Penn State at Michigan 6:30 p.m.

All times are Eastern.

## PROJECTED STARTERS



**2 DARA TAYLOR** G  
Jr., 5-8, Wilmington, Del.  
7.7 ppg, 3.5 rpg, 3.7 apg, 2.4 spg

**Notes:** Recorded 8 pts., 7 rebs., 6 assts., 4 steals vs. Wisconsin ... Had 7 pts., 8 assts., 3 steals vs. Nebraska ... Tallied career-high 18 pts. with 3 steals at MSU ... Registered 7 steals with 9 pts. vs. Northwestern.



**20 ALEX BENTLEY** G  
Sr., 5-7, Indianapolis, Ind.  
12.8 ppg, 3.9 apg, 4.1 spg, .385 FG%

**Notes:** Notched 19 pts., including a half-court shot, & 5 stls. vs. Nebraska ... Is 5th member of the Big Ten's 1,500 pt., 500 asst. & 250 steal club ... On 2013 Wade, Naismith and Wooden watch lists.



**24 MIA NICKSON** F  
Sr., 6-2, Ashburn, Va.  
8.4 ppg, 6.9 rpg, .427 FG%, 0.7 bpg

**Notes:** Joined PSU's 500-rebound club at MSU ... Earned her 3rd double-double with 14 pts. & 13 rebs. vs. Northwestern ... Posted her double-double with 10 pts. & 10 rebs. at Virginia Tech.



**33 MAGGIE LUCAS** G  
Jr., 5-10, Narberth, Pa.  
19.8 ppg, 4.3 rpg, .531 3FG%, .863 FT%

**Notes:** Had 19 pts. & 3 steals vs. Nebraska ... Tallied 24 points, 4 assts. & 5 steals vs. Northwestern ... USBWA National Player of the Week (Dec. 11) On 2013 Wade, Naismith and Wooden watch lists.



**54 NIKKI GREENE** C  
Sr., 6-4, Diboll, Texas  
8.7 ppg, 8.2 rpg, 1.1 bpg, .455 FG%

**Notes:** Recorded a double-double with 23 pts. & 13 rebs. vs. Wisconsin ... Notched 9 pts. & 10 rebs. vs. Nebraska ... Posted double-double with 14 pts. & 10 rebs. at MSU ... 2nd on PSU's career blocks list.

**LAST TIME OUT:** The Lady Lions jumped out to an 11-0 lead and never looked back in an 84-40 wire-to-wire victory over Wisconsin Thursday night. The 44-point victory is the largest for the Lady Lions in a Big Ten game since defeating Michigan State by 48 (97-49) on Jan. 28, 2001. Leading the way for the Lady Lions was senior **Nikki Greene**, who scored 23 points to go along with 14 rebounds for her 12th career double-double and fifth career 20-point game. Senior **Alex Bentley** was one of four Lady Lions who scored in double figures, as she chipped in 14 points to go along with six steals and five assists. Juniors **Maggie Lucas** and **Ariel Edwards** tallied 11 and 10 points, respectively.

**SCOUTING MICHIGAN:** The Wolverines are ranked 25th in this weeks AP poll after riding a 10-game winning streak to a 15-2 overall record and perfect 4-0 in Big Ten play. UM is ranked in the AP top 25 for the first time since Dec. 23, 2002 and is off to the best start in school history. Kate Thompson paces the Wolverines with a 15.8 scoring average, including 66 three-pointers. Rachel Sheffer accounts for 12.4 points and 5.8 rebounds per game, while Jenny Ryan adds 11.4 points, 5.8 rebounds and 5.2 assists per game.

**ALL-TIME VS. THE WOLVERINES:** The Lady Lions are 28-9 all-time against Michigan, including a current four-game winning streak. Penn State is 13-5 in road games versus the Wolverines. Penn State swept the season series last year with a 78-63 win at the BJC (Jan. 12) and a 77-56 victory in Ann Arbor (Jan. 16).

**LAST TIME VS. UM:** The Lady Lions shot 56.1% from the field, including 66.7% in the second half, on the way to a dominating 77-56 win at Michigan Jan. 26, 2012. **Maggie Lucas** tallied 23 points via a 10-for-13 effort from the field. She also pulled in eight rebounds with four assists and two steals. **Alex Bentley** had a solid all-around game with 18 points, eight assists, four rebounds and a steal, while **Nikki Greene** notched her first double-double of the season with 13 points and 11 rebounds.

## WHAT'S AT STAKE

A Penn State Win Would:

- Make Penn State 15-2 on the season and 5-0 in Big Ten play.
- Improve PSU to 29-9 all-time against Michigan.
- Make Penn State 14-5 in road game against the Wolverines.
- Extend the Lady Lions' winning streak to nine games, which would be tied for the 10th-longest streak in school history.
- Make Penn State 5-0 in Big Ten play for the first time since 2004-05.

## LAST TIME VS. MICHIGAN JAN. 26, 2012 • ANN ARBOR, MICH.

Penn State 77 • 16-4, 6-2

#	Player	FG		3-PT		Rebounds		PF	TP	A	T	B	S	Min.
		FGA	Pct.	FGA	Pct.	Off	Def							
24	Nickson, Mia	7	0-0	0-0	0-0	0	2	2	0	0	0	0	0	4
54	Greene, Nikki	5	4-4	0-0	0-0	4	7	11	4	13	0	1	1	18
12	Gray, Zhaque	0	2-7	2-5	0-0	0	3	3	6	0	0	0	0	1
20	Bentley, Alex	9	9-16	0-1	0-0	0	4	4	3	18	8	6	0	35
23	Lucas, Maggie	9	10-13	2-4	1-1	1	8	8	1	23	4	2	0	33
05	East, Talia	1	1-4	0-0	0-0	1	1	2	1	2	0	0	0	9
23	Edwards, Ariel	3	3-7	0-0	0-0	3	5	8	3	6	1	1	0	30
25	Studevert, Gzelle	1	2-5	0-0	1-2	1	1	2	2	3	1	0	0	10
40	Wolfe, Marisa	1	1-1	0-0	1-2	0	2	2	2	3	1	4	0	17
44	Waldner, Tori	0	0-0	0-0	1-2	0	1	1	3	1	0	1	0	7
Team														
Totals			32-57	4-10	9-12	10	35	45	22	77	15	19	1	6

FG % 1st Half: 16-33 48.5% 2nd Half: 16-24 66.7% Game: 32-57 56.1%  
3FG % 1st Half: 0-3 0.0% 2nd Half: 4-7 57.1% Game: 4-10 40.0%  
FT % 1st Half: 3-3 100.0% 2nd Half: 6-9 66.7% Game: 9-12 75.0%

Michigan 56 • 16-5, 5-3

#	Player	FG		3-PT		Rebounds		PF	TP	A	T	B	S	Min.
		FGA	Pct.	FGA	Pct.	Off	Def							
21	Jordan, Nya	7	3-11	1-2	3-7	7	5	12	1	10	4	1	0	38
44	Sheffer, Rachel	5	3-5	0-1	2-3	1	2	3	4	8	0	0	1	15
02	Boylan, Courtney	5	5-11	0-1	0-1	0	2	2	1	10	1	3	0	28
24	Ryan, Jenny	9	9-27	0-4	0-0	0	3	3	0	3	4	0	0	23
33	Reynolds, Carmen	9	2-8	1-4	0-0	1	0	1	1	5	0	0	0	18
01	Harris, Brenae	0	1-1	0-0	0-0	0	1	1	0	0	2	1	0	12
04	Hardley, Jamillya	1	1-1	0-0	0-0	0	0	0	0	3	0	0	0	2
11	Arnold, Sam	1	1-11	0-3	2-3	1	3	4	1	12	0	1	0	21
12	Thompson, Kate	1	1-4	0-2	0-0	0	0	0	0	2	0	0	0	9
14	Elmblad, Nicole	1	1-1	0-0	2-2	0	0	0	2	4	0	0	0	7
34	Orscolli, Val	1	1-1	0-0	0-0	0	0	0	0	2	0	0	0	4
54	Seto, Kendra	0	0-3	0-2	0-0	1	1	2	1	0	1	0	0	13
Team														
Totals			22-64	3-20	9-16	12	17	23	11	56	11	11	1	7

FG % 1st Half: 9-33 24.2% 2nd Half: 14-31 45.2% Game: 22-64 34.4%  
3FG % 1st Half: 0-11 0.0% 2nd Half: 3-9 33.3% Game: 3-20 15.0%  
FT % 1st Half: 3-6 50.0% 2nd Half: 6-10 60.0% Game: 9-16 56.3%

Officials: Tina Hepler, Kathleen Lynch, Kevin Dillard

Technical fouls: Penn State-None, Michigan-None

Attendance: 1072

Score by periods	1st	2nd	Total
Penn State	25	52	77
Michigan	19	37	56

Last FG - PSU 2nd-00:55, MICH 2nd-00:34.  
Largest lead - PSU by 31 2nd-06:13, MICH None.



## PRESS CONFERENCES

Coquese Washington will hold a weekly press conference and the Lady Lions will have media availability on a weekly basis throughout the season. All press conferences will begin at 2:45 p.m. (unless otherwise noted) and go for approximately 15 minutes, followed by a 15-minute open media session prior to practice. Press conference will be held in the Media Room at the Bryce Jordan Center (unless otherwise noted).

### Press Conference Dates

Wednesday, Jan. 23  
 Wednesday, Jan. 30  
 Wednesday, Feb. 6  
 Wednesday, Feb. 13  
 Monday, Feb. 18 (2:30)  
 Wednesday, Feb. 27  
 Monday, Mar. 4 (2:30)

**RACKING UP STEALS:** The Lady Lions have recorded at least 17 steals in four contests this year. By comparison, the season-high for steals in a game for last year's squad was 17. The four games with 17 or more steals are the most since the 1993-94 squad had six games with 17 or more thefts.

**NIKKI CLOSING IN ON 1,000 POINTS:** Senior center Nikki Greene is closing in on 1,000 career tallies after a 23-point performance against Wisconsin on Jan. 17. The Diboll, Texas native needs 13 points to become the 35th player in school history to eclipse the 1,000-point plateau.

**BIG BIG TEN WIN:** The Lady Lions claimed an 84-40 win over Wisconsin Jan. 17 to move to 4-0 in conference play. Penn State's 44-point win is the biggest margin of victory over a Big Ten opponent since topping Michigan State by 48 points (97-49) on Jan. 28, 2001. Additionally, the 44-point win also marked the first time that Penn State defeated a Big Ten opponent by 40 or more points since a 43-point win over Northwestern (91-48; 1/22/06). The margin of victory for the Lions also marked the worst loss for the Badgers since falling to Purdue (93-45) on March 6, 1994.

**NIKKI DOUBLES DOWN:** Senior center Nikki Greene recorded her 12th career double-double and her third double-double of the season with 23 points and 14 rebounds in the win over Wisconsin Jan. 17. Greene's 23 points are a season-high and mark her second 20-point game of the season and fifth of her career.

**DT DISHES OUT #300:** Redshirt junior guard Dara Taylor recorded her 300th career assist with six helpers in the win over Wisconsin Jan. 17. Taylor has 59 helpers as a Lady Lion, but accumulated 242 dimes at Maryland before transferring after her sophomore season.

**AB CLIMBS INTO SCORING TOP 10:** Senior point guard Alex Bentley tallied 14 points against Wisconsin Jan. 17 and in the process, moved into the Top 10 on Penn State's career scoring list, passing Tanya Garner (1,538; 1988-91) for the 10th spot. Bentley has 1,539 career points and needs 80 tallies to tie Andrea Garner (1,619; 1997-00) for ninth place.

**GREENE GOING FOR 1,000s:** Senior center Nikki Greene will have a shot at becoming just the fourth player in school history to be a part of an elite club with 1,000 points and 1,000 rebounds. The Diboll, Texas native needs 13 points to reach the 1,000-point mark and 146 rebounds for 1,000 career caroms. Greene would need to average 5.4 points and 9.2 rebounds in a 30-game season to accomplish the milestone. The members of the 1,000-1,000 club are Susan Robinson (2,253-1,070), Kahadeejah Herbert (2,025-1,103) and Andrea Garner (1,619-1,016).

**GREENE MOVES UP BLOCKS LIST:** Senior center Nikki Greene moved into second place on Penn State's career rejections chart after recording two rejections against Wisconsin Jan. 17. With 193 career blocks, Greene passes Mary Donovan (192; 1977-81) for second spot. Greene is 75 blocks away from Kim Calhoun's record of 268 set from 1993-96.

**20-POINT BIG TEN WINS:** With a 76-55 win over Michigan State Jan. 6, an 80-58 victory over Nebraska Jan. 13 and an 84-40 win over Wisconsin Jan. 17, the Lady Lions earned three consecutive Big Ten wins of 20 or more points for the first time since the 2004-05 season. In that season, the Lady Lions topped 76-41 win over Illinois (76-41; 1/13/05), Indiana (65-44; 1/16/05) and Purdue (77-54; 1/20/05).

**LADY LIONS ON TWITTER & FACEBOOK:** The Lady Lions are on Twitter. Follow the Lady Lions and assistant coaches (@pennstatewbb) and sports information contact Kris Petersen (@ladylionsid) to get the inside scoop. The Lady Lions are also on Facebook at [www.facebook.com/pennstateladylions](http://www.facebook.com/pennstateladylions).



**PICKING UP Ws IN THE BJC:** With the win over Wisconsin Jan. 17, the Lady Lions extended their home court winning streak to 15 games, which is the sixth-longest active streak in NCAA Division I and the ninth-longest streak in school history. The Lady Lions last lost at home Jan. 7, 2012 to Michigan State.

**BIG TEN START:** With an 84-40 win over Wisconsin Jan. 17, the Lady Lions moved to 4-0 in conference play. It was the first time since the 2004-05 season that Penn State has won its first four games. The 2004-05 squad opened league play with a 7-0 mark.

**LUCAS PASSES 1,500:** Junior guard Maggie Lucas surpassed the 1,500-point plateau for her career with 19 markers against Nebraska Jan. 13. Accomplishing the feat in 82 games, she is the third-fastest player in school history to reach the 1,500-point mark behind Kelly Mazzante (68 games) and Susan Robinson (80 games).

## PENN STATE'S OVERALL/BIG TEN YEAR-BY-YEAR REVIEW

Year	Overall	Big Ten	Home	BT Home	Road	BT Road	Neutral
1992-93	22-6	14-4	12-2	9-0	9-4	5-4	0-0
1993-94	28-3	16-2	14-0	9-0	11-2	7-2	3-1
1994-95	26-5	13-3	14-2	8-0	9-3	5-3	3-0
1995-96*	27-7	13-3	14-2	8-0	8-4	5-3	5-1
1996-97	15-12	8-8	9-3	5-3	5-6	3-5	1-3
1997-98	21-13	8-8	10-5	4-4	6-6	4-4	5-2
1998-99	22-8	12-4	9-2	6-2	9-4	6-2	4-2
1999-00	30-5	15-1	14-0	8-0	9-2	7-1	7-3
2000-01	19-10	11-5	11-2	7-1	6-5	4-4	2-3
2001-02	23-12	11-5	10-4	6-2	9-5	5-3	4-3
2002-03	26-9	13-3	16-0	8-0	7-7	5-3	2-2
2003-04	28-6	15-1	12-1	8-0	9-3	7-1	6-2
2004-05	19-11	13-3	12-0	8-0	6-9	5-3	1-2
2005-06	13-16	6-10	8-6	5-3	3-8	1-7	2-2
2006-07	15-16	7-9	12-1	7-1	2-12	0-7	1-3
2007-08	13-18	4-14	10-6	3-6	3-11	1-8	0-1
2008-09	11-18	6-12	8-6	4-5	2-9	2-7	1-3
2009-10	17-14	8-10	9-6	5-4	5-7	3-6	3-1
2010-11	25-10	11-5	14-4	6-2	7-4	5-3	4-2
2011-12	26-7	13-3	12-2	6-2	11-3	7-1	3-2
2012-13	14-2	4-0	9-0	1-0	4-2	1-0	1-0

\* First season at the Bryce Jordan Center



## PENN STATE'S RECORD WHEN...

Playing at home	9-0
Playing on the road	4-2
Playing at a neutral site	1-0
vs. Top 10 teams	0-1
vs. Top 25 teams	2-1
Games decided by 3 points or less	0-0
Games decided by 4-10 points	4-1
Games decided by 11-19 points	3-1
Games decided by 20 points or more	7-0
Leading at the half	10-0
Tied at the half	1-0
Trailing at the half	3-2
Leading with 5:00 remaining	11-0
Trailing with 5:00 remaining	3-2
Tied with 5:00 remaining	0-0
In overtime	0-0
PSU scores 40-49 points	0-0
PSU scores 50-59 points	0-1
PSU scores 60-69 points	3-1
PSU scores 70-79 points	4-0
PSU scores 80 points or more	7-0
PSU shoots 45% or better	5-0
PSU shoots less than 45%	9-2
PSU shoots better than opponent	12-0
Opponent shoots better than PSU or tied	2-2
Opponent scores less than 39 points	2-0
Opponent scores 40-49 points	3-0
Opponent scores 50-59 points	4-0
Opponent scores 60-69 points	2-2
Opponent scores more than 70 points	3-0
Opponent shoots better than 45%	0-0
Opponent shoots less than 45%	14-2
PSU outrebounds opponent	8-2
Opponent outrebounds PSU or tied	6-0
PSU commits 14 or less turnovers	8-0
PSU commits 15 or more turnovers	6-2
PSU makes at least 5 3-pointers	7-1
PSU makes four 3-pointers or less	7-1
Recording 7 or more steals	14-2
Recording 6 or less steals	0-0
Wearing white uniforms	10-0
Wearing blue uniforms	4-2
Wearing pink uniforms	0-0
Penn State wins the tip	11-1
Penn State loses the tip	3-1
Penn State scores first	7-0
Opponent scores first	7-2
Playing during the day (before 5 p.m.)	10-0
Playing at night	4-2
On Monday	0-0
On Tuesday	0-0
On Wednesday	2-0
On Thursday	2-2
On Friday	1-0
On Saturday	1-0
On Sunday	8-0
In November	5-1
In December	5-1
In January	4-0
In February	0-0
In March	0-0

**LUCAS MOVING UP BIG TEN THREES LIST:** With two three-pointers against Wisconsin Jan. 17, junior guard **Maggie Lucas** moved into sixth place on the Big Ten history in three-pointers list. She passed Northwestern's Michele Ratay (244; 1994-97). Lucas needs two triples to tie Wisconsin's Jolene Anderson (248; 2005-08) for fifth place. PSU's Kelly Mazzante holds the Big Ten record with 357 makes from beyond the arc.

### Big Ten Three-Point Field Goals Made

1. 357 Kelly Mazzante, PSU
2. 294 Lindsay Bowen, MSU
3. 270 Caitly Matter, OSU
4. 261 Lindsey Meder, Iowa
5. 248 Jolene Anderson, WIS
6. 246 **Maggie Lucas, PSU**

**BENTLEY IN GREAT COMPANY:** With 13 points at Michigan State Jan. 6, senior guard **Alex Bentley** surpassed the 1,500-point plateau and became the fifth player in Big Ten history and second player in Lady Lion history to accumulate 1,500 points, 500 assists and 250 steals. Bentley joins the Big Ten list that includes: Stephanie White, Purdue (1996-99; 2,182-578-277), Yvette Angel, Ohio State (1982-85; 1,563-562-326), Tamara Moore, Wisconsin (1999-02; 1,662-554-353) and Katie Douglas, Purdue (1998-01; 1,965-526-327). Additionally, Bentley joins Suzie McConnell (1985-88; 1,897-1,307-507) as the only Lady Lions to accomplish the feat. Bentley has 1,539 points, 518 assists and 282 steals in her career.

**MIA JOINS 500-BOARD CLUB:** Senior forward **Mia Nickson** became the 28th member of the Lady Lions' 500-rebound club with six caroms at Michigan State Jan. 26. She has accumulated 524 rebounds in her three seasons in the Blue & White since transferring from Boston College after her freshman season. Nickson needs two rebounds to tie Adrie DeVries (526; 1987-90) for 27th place and needs seven caroms to move into the Top 25.

**GREENE & TAYLOR LEAD LIONS:** Senior center **Nikki Greene** and junior guard **Dara Taylor** led the way for the Lady Lions in the road win at Michigan State Jan. 6. Greene posted her second double-double of the season and 11th of her career with 14 points, including 10 markers in the second half, and 10 rebounds. Taylor posted a career-high 18 points in the win, surpassing her previous mark of 17 vs. Clemson of Feb. 14, 2010 while she was with Maryland. Taylor was 7-for-10 from the field, including hitting three of her four attempts from three-point range.

**STRONG SENIOR CLASS:** Coquese Washington's first Top 25 recruiting class is now the Lady Lions' senior class. The grouping of **Alex Bentley, Nikki Greene, Mia Nickson, Gizelle Studevent** and **Marisa Wolfe** have been huge contributors in Penn State's return to national prominence. The quintet has accounted for 3,638 points and 2,010 rebounds with 299 starts in 480 games played. Last season, the five seniors accounted for 45.1% of the team's offense and 44.9% of its rebounds.

**GREENE CLIMBS BOARDS LIST:** Senior center **Nikki Greene** moved into sixth place on Penn State's career rebounding chart with 10 boards at Michigan State Jan. 6. With 854 career caroms, she passes Mag Strittmatter (820; 1975-78) for sixth position. Greene needs 64 rebounds to tie Angie Potthoff (918; 1993-97) for fifth place.

## LIONS IN THE BIG TEN STATS

A breakdown of where Penn State ranks in the Big Ten's statistical categories. Through game of Jan. 17.

TEAM	
Scoring Offense	1st (75.3)
Scoring Defense	3rd (56.4)
Scoring Margin	1st (+18.9)
Free Throw Percentage	6th (.743)
FG Percentage	6th (.423)
FG Percentage Defense	2nd (.337)
3-point FG Percentage	1st (.406)
3-point FG Pct. Defense	4th (.275)
3-point FG Made	9th (5.0)
Rebounding Offense	1st (43.6)
Rebounding Defense	8th (37.5)
Rebounding Margin	2nd (+6.1)
Offensive Rebounds	1st (15.6)
Defensive Rebounds	3rd (28.0)
Blocked Shots	3rd (5.2)
Assists	9th (13.8)
Steals	2nd (12.1)
Turnover Margin	1st (+4.8)
Assist to Turnover Ratio	9th (0.8)

INDIVIDUAL	
Scoring	3rd - Maggie Lucas (19.8)
	18th - Alex Bentley (12.8)
Rebounding	4th - Nikki Greene (8.2)
	11th - Mia Nickson (6.9)
FG Percentage	6th - Ariel Edwards (.496)
Assists	9th - Alex Bentley (3.9)
	10th - Dara Taylor (3.7)
FT Percentage	5th - Maggie Lucas (.863)
	11th - Alex Bentley (.800)
Steals	1st - Alex Bentley (4.1)
	5th - Maggie Lucas (2.6)
	8th - Dara Taylor (2.4)
3FG Percentage	1st - Maggie Lucas (.531)
3FG Made	2nd - Maggie Lucas (3.3)
Blocked Shots	11th - Nikki Greene (1.1)
	13th - Tori Waldner (1.0)
Assist/TO Ratio	2nd - Alex Bentley (1.9)
	13th - Dara Taylor (1.2)
Off. Reb.	2nd - Nikki Greene (3.5)
	3rd - Mia Nickson (3.4)
Def. Reb.	12th - Nikki Greene (4.7)



## MILESTONE WATCH

### Milestone Watch

Milestone	Player	Current Total
1,600 points	Alex Bentley	1,539
	Maggie Lucas	1,511
1,000 points	Nikki Greene	987
800 points	Mia Nickson (career)	742
700 points	Mia Nickson (PSU)	697
500 points	Ariel Edwards	438
400 points	Dara Taylor (career)	365
300 points	Marisa Wolfe	242
200 points	Gizelle Studevent	173
	Talia East	162
100 points	Tori Waldner	97
900 rebounds	Nikki Greene	854
600 rebounds	Mia Nickson (career)	581
	Mia Nickson (PSU)	524
400 rebounds	Alex Bentley	336
	Maggie Lucas	330
300 rebounds	Ariel Edwards	253
	Talia East	226
200 rebounds	Tori Waldner	115
100 rebounds	Gizelle Studevent	88
600 assists	Alex Bentley	518
400 assists	Dara Taylor (career)	301
200 assists	Maggie Lucas	186
300 steals	Alex Bentley	282
150 steals	Maggie Lucas	145
	Dara Taylor (career)	114
	Nikki Greene	107
200 blocks	Nikki Greene	193
50 blocks	Talia East	46
250 3-pt FGs	Maggie Lucas	246

### Milestone Reached

Milestone	Player	Reached
300 assists	Dara Taylor (career)	1/17/13
1,500 points	Maggie Lucas	1/13/13
1,500 points	Alex Bentley	1/6/13
500 rebounds	Mia Nickson (PSU)	1/6/13
100 steals	Dara Taylor (career)	1/3/13
400 points	Ariel Edwards	12/23/12
700 points	Mia Nickson (career)	12/16/12
500 assists	Alex Bentley	12/16/12
100 rebounds	Tori Waldner	12/16/12
1,400 points	Maggie Lucas	12/12/12
300 points	Dara Taylor (career)	12/9/12
800 rebounds	Nikki Greene	12/9/12
300 rebounds	Alex Bentley	12/9/12
300 rebounds	Maggie Lucas	12/9/12
900 points	Nikki Greene	12/6/12
1,400 points	Alex Bentley	11/24/12
1,300 points	Maggie Lucas	11/24/12
200 rebounds	Talia East	11/23/12
100 steals	Nikki Greene	11/23/12
600 points	Mia Nickson (PSU)	11/18/12
500 rebounds	Mia Nickson (career)	11/18/12
200 rebounds	Ariel Edwards	11/18/12
200 3-pt FGs	Maggie Lucas	11/18/12
1,200 points	Maggie Lucas	11/11/12
300 points	Ariel Edwards	11/11/12

### RACKING UP THE FREQUENT FLYER MILES:

The Lady Lions have racked up the frequent flyer miles since August. Including the team's trip to Europe, the non-conference slate and Big Ten play, Penn State will travel a total of 35,219 miles. Here is a breakdown of the Lions' travel:

European Tour:	10,711 miles
Texas A&M:	2,906 miles
Cal State Northridge:	5,884 miles
Miami:	2,522 miles
Storrs:	728 miles
Blacksburg:	760 miles
East Lansing:	906 miles
Ann Arbor:	780 miles
Columbus:	654 miles
Madison:	1,428 miles
Bloomington:	1,096 miles
Iowa City:	1,550 miles
Minneapolis:	1,944 miles
Lincoln:	2,146 miles
Hoffman Estates:	1,204 miles
<b>Total:</b>	<b>35,219 miles</b>

### LUCAS CLIMBS TWO MORE SPOTS IN CAREER

**SCORING:** Junior **Maggie Lucas** moved up two spots on Penn State's career scoring list with her 24-point performance against Northwestern Jan. 3. The 24 tallies push Lucas past Katina Mack (1,463; 1992-96) and Jess Strom (1,466; 2002-05). Lucas' career total is now at 1,511 points. Lucas needs three points to tie Vicki Link (1,514; 1984-87) for 12th place and she is chasing teammate Alex Bentley (1,539) for the 11th spot.

**THEFT BY A BENTLEY:** With a six-steal performance in the Big Ten opener against Northwestern Jan. 3, senior guard **Alex Bentley** moved into sixth place on Penn State's all-time steals chart, passing Tanisha Wright (267; 2002-05). Bentley has 282 career thefts and needs seven steals to tie Kelly Mazzante (289; 2001-04) for fifth sixth place all-time. On Dec. 23, Bentley registered a career high eight steals against NJIT. The eight thefts ties her career mark set against Nebraska Dec. 30, 2011.

**MAGS IN THE ESPNW BLOGOSPHERE:** Junior guard **Maggie Lucas** is a weekly contributing blogger for espnW. Lucas will be blogging about various topics all year long. Her blogs can be found at [espn.go.com/espnw/blog/category/maggie-lucas/](http://espn.go.com/espnw/blog/category/maggie-lucas/).

**NOW YOU SEE IT, NOW YOU DON'T:** The Lady Lions recorded a season-best 19 steals in the Big Ten opener against Northwestern. The 19 thefts are the most by the Lady Lions since registering 21 thefts against Bucknell Dec. 28, 2010. Junior guard **Dara Taylor** had seven of those steals to establish a personal best mark, surpassing her previous career mark of six thefts against N.C. Central (11/14/09) as a member of the Maryland Terrapins. Taylor also surpassed the 100-steal mark for her career against the Wildcats.

**MIA IS DOUBLE TROUBLE:** Senior forward **Mia Nickson** posted her third double-double of the season and 13th of her career with season-bests of 14 points and 13 rebounds in the win over Northwestern Jan. 3.

**FINDING A WAY TO WIN:** In the Big Ten opener against Northwestern Jan. 3, the Lady Lions shot just 29.9% (20-67) for the game, but managed to pull out the 73-69 win. It was the first time that Penn State has shot below 30% and won since shooting 22.4% (15-67) at Minnesota on Jan. 3, 1999.

**DOUBLE DIGITS IN NON-CON:** With a win over NJIT to close out the non-conference season Dec. 23, the Lady Lions secured double digit non-conference wins for the third-straight season.

**LUCAS PASSES SHEPHERD ON 3S CHART:** With five three-pointers against NJIT Dec. 23, **Maggie Lucas** passed Lisa Shepherd (230; 1998-01) for second place all-time in three-pointers made chart. With 246 career three-pointers made, Lucas now sets her sights on Kelly Mazzante, who holds the all-time three-pointers record with 357 career triples.

## NCAA STATS

### TEAM

Scoring Offense	14th (75.3)
Scoring Defense	66th (56.4)
Scoring Margin	13th (+18.9)
Field Goal Percentage	57th (.423)
Field Goal Percentage Defense	17th (.337)
Free Throw Percentage	33rd (.743)
Rebounding Margin	45th (+6.1)
3FG Percentage	3rd (.406)
3FG Percentage Defense	68th (.275)
Win-Loss Percentage	T-14th (.875)
Blocked Shots	24th (5.2)
Steals	28th (12.1)
Assist-to-Turnover Ratio	97th (0.84)
Turnover Margin	36th (4.81)

### INDIVIDUAL

Scoring	21st - Maggie Lucas (19.8)
Steals	2nd - Alex Bentley (4.13)
	96th - Maggie Lucas (2.56)
FT Percentage	31st - Maggie Lucas (.863)
	89th - Alex Bentley (.816)
3FG Percentage	1st - Maggie Lucas (.531)
3FG Made	7th - Maggie Lucas (3.25)
Assist-to-TO	41st - Alex Bentley (1.91)

### SINGLE GAME

Scoring	T-25th - vs. Fairleigh Dickinson (101)
Winning Streak	T-10th - 8 wins
Home Court Winning Streak	6th - 15 wins
Points	T-7th - Maggie Lucas (39 vs. G-town)
Rebounds	T-16th - Nikki Greene (20 at CSUN)
FT Pct.	T-18th - Nikki Greene (.929 at CSUN)
Steals	T-22nd - Alex Bentley (8 vs. NJIT)
3FG	T-14th - Maggie Lucas (7 vs. G-town)

NCAA Statistics as of 1/17



# THE LAST TIME PENN STATE...

## SCORING

**Player scored 20 points:** vs. Wisconsin (23, Nikki Greene), 1/17/13  
**Player scored 25 points:** vs. Georgetown (39, Maggie Lucas), 12/9/12  
**Player scored 30 points:** vs. Georgetown (39, Maggie Lucas), 12/9/12  
**Player scored 35 points:** vs. Georgetown (39, Maggie Lucas), 12/9/12  
**Player scored 40 points:** vs. Minnesota (49, Kelly Mazzante), 12/28/01  
**Two players scored 20 points:** vs. Georgetown (39, Maggie Lucas; 23, Alex Bentley), 12/9/12  
**Three players scored 20 pts.:** at Nevada (26, Maggie Lucas; 23, Alex Bentley; 21, Zhaque Gray), 11/26/11  
**Two players scored 25 points:** at Boston College (28, Alex Bentley; 28, Maggie Lucas), 12/2/10  
**Player scored 25 points/3 consecutive games:** Kelly Mazzante (31, vs. Baylor, 12/9/03; 31, vs. Pittsburgh, 12/14/03; 29, Louisiana Tech, 12/21/03)  
**Five in double figures:** vs. Fairleigh Dickinson (24, Maggie Lucas; 18, Ariel Edwards; 15, Dara Taylor; 11 Talia East; 10, Nikki Greene), 12/2/12  
**Six in double figures:** at Oakland (15, Alex Bentley; 16, Ariel Edwards; 16, Zhaque Gray; 13, Maggie Lucas; 10, Mia Nickson; 10, Gizelle Studevent; 10, Julia Trogele), 11/18/10  
**Seven in double figures:** at Oakland (15, Alex Bentley; 16, Ariel Edwards; 16, Zhaque Gray; 13, Maggie Lucas; 10, Mia Nickson; 10, Gizelle Studevent; 10, Julia Trogele), 11/18/10  
**PSU scored 50 points in a half:** vs. Georgetown (52, first half), 12/9/12  
**PSU scored 55 points in a half:** at Nebraska (55, second half), 1/15/12  
**PSU scored 60 points in a half:** vs. Northwestern (65 points, first half), 1/2/00  
**PSU scored 100 points:** vs. Fairleigh Dickinson (W, 101-44), 12/2/12  
**PSU scored 100 points in Big Ten game:** vs. Illinois (W, 101-80), 2/15/01  
**PSU scored 100 points in a home game:** vs. Fairleigh Dickinson (W, 101-44), 12/2/12  
**PSU scored fewer than 15 points in a half:** vs. Wisconsin (13, first half), 2/25/10  
**PSU scored fewer than 20 points in a half:** vs. Michigan State (18, first half), 2/10/11  
**PSU scored fewer than 40 points in a game:** vs. Wisconsin (L, 39-71), 2/25/10  
**PSU scored fewer than 50 points in a game:** vs. Purdue (L, 49-60), 2/24/11  
**PSU scored fewer than 50 points in a Big Ten game:** vs. Purdue (L, 49-60), 2/24/11  
**OPP scored 50 points in a half:** vs. Duke (50, second half), 1/18/05  
**OPP scored 100 points:** at Boston College (Lot, 113-104), 12/2/10  
**OPP scored fewer than 20 points in a game:** at Dickinson (W, 57-16), 3/6/71  
**OPP scored fewer than 30 points in a game:** vs. Virginia Tech (W, 66-28), 12/6/11  
**OPP scored fewer than 40 points in a game:** vs. Wisconsin (W, 84-40), 1/17/13  
**OPP scored fewer than 50 points in a game:** vs. Wisconsin (W, 84-40), 1/17/13  
**OPP scored fewer than 50 points in a Big Ten game:** vs. Wisconsin (W, 84-40), 1/17/13

## FIELD GOAL SHOOTING

**Player made every shot from the field (min. 7):** vs. Michigan St. (Amanda Brown, 8-8), 1/25/07  
**PSU shot 55% in a game:** at Michigan (.561), 1/26/12  
**PSU shot 55% in consecutive games:** vs. Northwestern (.682), 3/2/96; vs. Ohio St. (.585), 3/3/96  
**PSU shot 60% in a game:** vs. Michigan State (.608), 2/23/96  
**PSU shot below 25% in a game:** at Alabama (.230), 12/19/96  
**PSU shot below 30% in a game:** vs. Northwestern (.299), 1/3/13  
**PSU shot below 35% in a game and won:** vs. Northwestern (.299), 1/3/13  
**PSU shot below 30% in a game and won:** vs. Northwestern (.299), 1/3/13  
**PSU shot 55% in a half:** at Michigan State (.567, second half), 1/6/13  
**PSU shot 60% in a half:** at Michigan (.667, second half), 1/26/12  
**PSU shot 65% in a half:** at Michigan (.667, second half), 1/26/12  
**PSU shot 70% in a half:** vs. Virginia Tech (.714, second half), 12/6/11  
**PSU shot 55% in both halves:** vs. Iowa (.552, first half; .565, second half), 1/26/06  
**PSU shot below 20% in a half:** at Indiana (.231, first half), 2/28/10  
**PSU shot below 25% in a half:** vs. Nebraska (.233, second half), 12/30/11

## THREE-POINT SHOOTING

**Player made every shot from the field (min. 4):** at Bucknell (4-4, Maggie Lucas), 12/21/11  
**Player made 4 three-pointers in a half:** vs. Northwestern (4 in first, Maggie Lucas), 1/3/13  
**Player made 5 three-pointers in a half:** vs. Georgetown (5 in first, Maggie Lucas), 12/9/12  
**Player made 6 three-pointers in a half:** vs. Michigan State (6 in second, Maggie Lucas), 1/7/12  
**Player made 5 three-pointers in a game:** vs. NJIT (5, Maggie Lucas), 12/23/12  
**Player made 6 three-pointers in a game:** vs. Georgetown (7, Maggie Lucas), 12/9/12  
**Player made 7 three-pointers in a game:** vs. Georgetown (7, Maggie Lucas), 12/9/12  
**Player made 8 three-pointers in a game:** at Minnesota (8, Kelly Mazzante), 12/28/01  
**Player attempted 10 three-pointers in a game:** vs. Georgetown (13, Maggie Lucas), 12/9/12  
**PSU made 10 three-pointers:** vs. North Carolina (14), 11/30/11  
**PSU did not make a three-pointer:** at South Carolina (0-6), 11/20/11  
**PSU attempted 20 three-pointers:** vs. Michigan State (24), 1/7/12  
**PSU shot 60% 3FG (min. 5 att.):** vs. NJIT (7-10, .700), 12/23/12

## FREE THROW SHOOTING

**Player made every shot from FT line (min. 10):** vs. LSU (11-11, Maggie Lucas), 3/20/12  
**PSU shot 90% (min. 10 att.):** vs. North Carolina (14-24, .929), 11/30/11  
**PSU shot below 50% (min. 10 att.):** vs. Holy Cross (9-20, .450), 11/28/09  
**PSU made 30 free throws:** vs. Pittsburgh (34), 11/11/07  
**PSU made fewer than five FTs:** at Michigan (3), 2/3/11  
**PSU attempted 40 free throws:** vs. Pittsburgh (41), 11/11/07  
**PSU attempted fewer than five FTs:** at Michigan (4), 2/3/11

## REBOUNDS

**Player had 15 rebounds:** at Cal State Northridge (20, Nikki Greene), 11/24/12  
**Player had 20 rebounds:** at Cal State Northridge (20, Nikki Greene), 11/24/12  
**Two players with double-digit rebs.:** vs. Nebraska (11, Mia Nickson; 10, Nikki Greene), 1/13/13  
**Three players had double-digit rebounds:** vs. Ohio State (15, Nikki Greene; 15, Mia Nickson; 10, Maggie Lucas), 2/20/12  
**PSU had 60 rebounds:** vs. Ohio State (60), 2/20/12  
**PSU had 50 rebounds:** vs. Wisconsin (55), 1/17/13  
**PSU had 20 or fewer rebounds:** vs. Michigan State (20), 1/19/03  
**OPP had 20 or fewer rebounds:** at Indiana (20), 2/13/11  
**PSU had 20 offensive rebounds:** vs. Wisconsin (20), 1/17/13  
**PSU had 25 offensive rebounds:** vs. Ohio State (29), 2/20/12

## ASSISTS

**Player had 10 assists:** vs. North Carolina (15, Alex Bentley), 11/30/11  
**Player had 10 assists/consecutive games:** Helen Darling (12 at LaSalle, 12/8/99; 11 vs. Auburn, 12/11/99; 10 vs. Clemson, 12/19/99)  
**Player had 15 assists:** vs. North Carolina (15, Alex Bentley), 11/30/11  
**PSU had 30 assists:** vs. St. Francis (Pa.) (32), 12/2/99  
**PSU had fewer than 10 assists:** vs. Northwestern (9), 1/3/13  
**PSU had fewer than 5 assists:** at Michigan State (4), 2/4/10

## BLOCKED SHOTS

**Player blocked 5 shots:** at South Carolina (7, Talia East), 11/20/11  
**Player blocked 6 shots:** at South Carolina (7, Talia East), 11/20/11  
**PSU blocked 10 shots:** vs. Purdue (11), 1/28/10  
**PSU blocked 0 shots:** vs. Purdue, 2/19/09

## STEALS

**Player had 7 steals:** vs. Northwestern (7, Dara Taylor), 1/3/13  
**Player had 8 steals:** vs. NJIT (8, Alex Bentley), 12/23/12  
**PSU had 20 steals:** vs. Bucknell (21), 12/28/10

## TURNOVERS

**PSU committed 25 or more:** at Connecticut (26), 12/6/12  
**PSU committed 25 or more and won:** vs. Minnesota (26), 1/13/11  
**PSU committed 10 or fewer:** vs. Fairleigh Dickinson (8), 12/2/12  
**PSU committed 10 or fewer in consecutive games:** vs. Minnesota (9), 1/22/04; at Ohio St. (9), 1/25/04  
**OPP committed 25 or more:** vs. Lafayette (27), 11/18/12

## DOUBLE-DOUBLES

**Points & rebounds:** vs. Wisconsin (Nikki Greene, 23 pts., 14 rebs.), 1/17/13  
**Points & rebounds/consecutive games:** Nikki Greene (12 points, 10 rebounds vs. Ohio State, 1/30/11; 16 points, 14 rebounds at Illinois, 1/27/11)  
**Points & rebounds/3 consecutive games:** Amanda Brown (19 pts., 17 rebs. at Northwestern, 2/11/07; 14 pts., 10 rebs. vs. Minnesota, 2/15/07; 14 pts., 11 rebs. at Iowa, 2/18/07)  
**Points & rebounds/4 consecutive games:** Angie Potthoff (vs. Northwestern, 1/31/97; at Illinois, 2/2/97; vs. Michigan, 2/7/97; vs. Indiana, 2/9/97; vs. Iowa, 2/16/97; vs. Michigan State, 2/21/97)  
**Points & rebounds/5 consecutive games:** Angie Potthoff (vs. Northwestern, 1/31/97; at Illinois, 2/2/97; vs. Michigan, 2/7/97; vs. Indiana, 2/9/97; vs. Iowa, 2/16/97; vs. Michigan State, 2/21/97)  
**Points & assists:** vs. North Carolina (Alex Bentley; 15 points, 15 assists), 11/30/11  
**Points & assists/consecutive games:** Helen Darling (12 pts., 12 assts. at La Salle, 12/8/99; 10 pts., 11 assts. vs. Auburn, 12/11/99)  
**Two players had double-doubles:** vs. Ohio State (Nikki Greene, 25 pts., 15 rebs.; Mia Nickson, 18 pts., 15 rebs.; Maggie Lucas, 12 pts., 10 rebs.), 2/20/12  
**Three players had double-doubles:** vs. Ohio State (Nikki Greene, 25 pts., 15 rebs.; Mia Nickson, 18 pts., 15 rebs.; Maggie Lucas, 12 pts., 10 rebs.), 2/20/12  
**15 points & 15 rebounds:** at Cal State Northridge (Nikki Greene, 21 pts., 20 rebs.), 11/24/12  
**20 points and 10 rebounds:** vs. Wisconsin (Nikki Greene, 23 pts., 14 rebs.), 1/17/13

## MARGIN OF VICTORY

**PSU won by 20-30 points:** vs. Wisconsin (44), 1/17/13  
**PSU won by 20-30 points in a Big Ten game:** vs. Wisconsin (44), 1/17/13  
**PSU won consecutive Big Ten games by 20+ pts.:** vs. Wisconsin (44), 1/17/13; vs. Nebraska (22), 1/13/13; at Michigan St. (21), 1/6/13  
**PSU won by 31-40 points:** vs. Wisconsin (44), 1/17/13  
**PSU won by 41-50 points:** vs. Wisconsin (44), 1/17/13  
**PSU won by 51+ points:** vs. Fairleigh Dickinson (57), 12/2/12  
**PSU lost by 20-30 points:** at Ohio State (22), 2/17/11  
**PSU lost by 20-30 points in a Big Ten game:** at Ohio State (22), 2/17/11  
**PSU lost by 31+ points:** vs. Wisconsin (32), 2/25/10

## MISCELLANEOUS

**Led PSU in points/rebounds/assists:** Tyra Grant vs. Michigan (25 pts., 9 rebs., 4 asst.), 2/18/10  
**Hit "final seconds" (under 10 seconds) game-winning shot:** Julia Trogele at Illinois (9 sec.), 1/27/11  
**Hit "final minute" game-winning shot:** Alex Bentley at Minnesota (3-plt. with :38.9 remaining), 2/5/12  
**Player played every minute:** vs. Connecticut (Maggie Lucas), 3/25/12  
**Player played more than 40 min.:** at Dayton (Alex Bentley, 46; Zhaque Gray, 44; Mia Nickson, 41), 11/12/10  
**Committed 10 or fewer fouls:** vs. Virginia Tech (9), 12/6/11  
**Committed 30 or more fouls:** vs. Iowa State (32), 11/25/11  
**PSU rallied from a 10-pt. deficit to win:** at CS-Northridge (down by 17 at 5:52 in 1st half, won 85-73), 11/24/12  
**PSU rallied from a 15-pt. deficit to win:** at CS-Northridge (down by 17 at 5:52 in 1st half, won 85-73), 11/24/12  
**PSU had a 5-game winning streak:** 8 games, 12/9/12 - present  
**PSU had a 5-game losing streak:** 6 games, 1/28/10 - 2/14/10  
**PSU went undefeated at home:** 2004-05 season  
**PSU sold out the BJC:** Purdue, 2/29/04

## OVERTIME

**PSU played an OT game:** at Boston College (L, 113-104), 12/2/10  
**PSU won an OT game:** at Oakland (96-89), 11/18/10  
**PSU lost an OT game:** at Boston College (L, 113-104), 12/2/10  
**PSU played two or more OT games in a season:** 2010-11 season (three)  
**PSU won two or more OT games in a season:** 2010-11 season (two)

## RANKINGS

**Played the No. 1 team in the AP poll:** vs. Connecticut (L, 77-63), 12/14/08  
**Played the No. 1 team in the Coaches poll:** vs. Connecticut (L, 77-63), 12/14/08  
**Defeated the No. 1 team in the AP poll:** at Virginia (73-71), 1/3/91  
**Defeated Top 10 opponent:** vs. #8/11 Ohio State (84-66), 2/20/12  
**Defeated Top 10 opponent on the road:** at #7 Purdue (47-42), 1/2/04  
**Defeated Top 10 opponent by double digits:** vs. #8/11 Ohio State (84-66), 2/20/12  
**Played consecutive Top 10 teams:** at #2/3 Texas 11/14/04, at #6/6 Duke 11/19/04  
**Defeated Top 25 opponent:** vs. RV/#23 Nebraska (80-58), 1/13/13  
**Defeated Top 25 opponent on the road:** vs. #16/13 Texas A&M (63-58), 11/14/12  
**Defeated Top 25 opponent by double digits:** vs. RV/#23 Nebraska (22), 1/13/13



## 2012-13 GAME-BY-GAME STARTING LINEUPS

Date	Opponent	Pt Guard	Guard	Guard	Forward	Center
11/3	CALIFORNIA (Pa.)	Bentley	Lucas	Edwards	Nickson	Greene
11/11	HOWARD	Bentley	Lucas	Edwards	Nickson	Greene
11/14	at Texas A&M	Bentley	Lucas	Edwards	Nickson	Greene
11/18	LAFAYETTE	Bentley	Lucas	Edwards	Nickson	Greene
11/23	vs. Detroit	Bentley	Lucas	Edwards	Nickson	Greene
11/24	at Cal State Northridge	Bentley	Lucas	Edwards	Nickson	Greene
11/24	at Miami (Fla.)	Bentley	Lucas	Edwards	Nickson	Greene
12/2	FAIR. DICKINSON	Bentley	Lucas	Taylor	East	Greene
12/6	at Connecticut	Bentley	Lucas	Taylor	Nickson	Greene
12/9	GEORGETOWN	Bentley	Lucas	Taylor	Nickson	Greene
12/12	at Virginia Tech	Bentley	Lucas	Taylor	Nickson	Greene
12/16	SOUTH DAKOTA ST.	Bentley	Lucas	Taylor	Nickson	Greene
12/23	NJIT	Bentley	Lucas	Taylor	Nickson	Greene
1/3	NORTHWESTERN	Bentley	Lucas	Taylor	Nickson	Greene
1/6	Michigan State	Bentley	Lucas	Taylor	Nickson	Greene
1/13	NEBRASKA	Bentley	Lucas	Taylor	Nickson	Greene
1/17	WISCONSIN	Bentley	Lucas	Taylor	Nickson	Greene

**BENTLEY JOINS ELITE CLUB:** With five assists in the Dec. 16 win over South Dakota State, senior guard **Alex Bentley** became just the sixth player in program history to record 1,000 points, 500 assists and 250 steals in their career. Bentley joins Nancy Kuhl, Tina Nicholson, Jess Strom, Helen Darling and Suzie McConnell in the elite club. Additionally, Bentley became just the ninth player in school history to eclipse the 500-assist mark.

**NON-CON HOME WINNING STREAK:** The Lady Lions have won their last 13 non-conference home games, dating back to the 2010-11 season. The streak is the third-longest non-conference home court winning streak in school history. Penn State last lost a home non-conference game against Drexel on Dec. 21, 2010.

**PSU 8TH IN AP POLL:** The Penn State Lady Lions held steady in the eighth position in the Jan. 14 Associated Press poll. The Lady Lions peaked at sixth spot, the highest ranking in the AP poll for the Lady Lions since they were fifth in the final 2004 poll. The Lady Lions were ranked in the AP poll every week last season, finishing the year 11th.

**LIONS RANKED 8TH IN COACHES POLL:** The Lady Lions remained eighth in the Jan. 15 USA Today Sports coaches' poll. Penn State peaked at No. 7 on Nov. 27, tying the highest ranking in the Coaches' Poll for the Lady Lions since they were seventh in the final 2004 poll.

**WASHINGTON WINS #100:** Lady Lion head coach **Coquese Washington** earned her 100th career coaching win as Penn State topped Virginia Tech, 60-41, in Blacksburg Dec. 12. Washington is just the second coach in program history to accomplish the feat (Rene Portland; 606).

**TAYLOR EQUALS PSU CAREER HIGH:** Junior guard **Dara Taylor** matched her best scoring performance in a Penn State uniform with 15 points at Virginia Tech Dec. 12. She matched the mark she set against Fairleigh Dickinson Dec. 2. Taylor connected on a career-best three shots from beyond the arc, passing her previous mark of two three-pointers, set twice as a Maryland Terp.

**LUCAS WINS NATIONAL PLAYER OF THE WEEK:** Junior guard **Maggie Lucas** claimed the Dec. 11 Ann Meyers Drysdale National Player of the Week award from the USBWA. She is the first Lady Lion on record to win the award. Lucas poured in a career-high and Bryce Jordan Center record (men or women) 39 points to go along with a career-best six steals in the Dec. 9 win over Georgetown. Additionally, Lucas tallied 15 points in the loss at #2 UConn on Dec. 6.

**ANOTHER POW AWARD FOR MAGS:** Junior guard Maggie Lucas picked up her second Big Ten Player of the Week award of the season after averaging 27.0 points, 4.5 rebounds, 1.5 assists and 3.5 steals in a pair of games for the Lady Lions last week. Lucas shared the award for the week-ending Dec. 9 with Minnesota's Rachel Banham. Lucas is the first Lady Lion to garner multiple Player of the Week awards in a season since Amanda Brown won two weekly honors in the 2006-07 campaign.

**RECORD BREAKER IN THE BJC:** Junior guard **Maggie Lucas** was 11-for-21 from the field and 7-for-13 from three-point range en route to a career-high 39 points in the win over Georgetown Dec. 9. Her 39 tallies broke the Bryce Jordan Center record for points in a game (men's or women's), surpassing the previous mark of 38 points, set by Kelly Mazzante twice. Lucas is the first Lady Lion to break the 35-point mark since Kelly Mazzante had 35 against Wisconsin on March 2, 2003. Lucas' three career 30-point games are tied for the sixth-most by a Penn State player. Additionally, Lucas tied the women's BJC record for three-pointers in a game with seven triples, equaling the mark she set against Michigan State (1/7/12) and also held by Adrienne Squire, Kelly Mazzante and Iowa's Kamille Wahlin. Lucas was also stellar on the defensive end against the Hoyas, recording a career-high six steals.

**GREENE PULLS IN #800:** With 13 rebounds in the win over Georgetown Dec. 9, senior center **Nikki Greene** reached the 800-rebound mark for her career. She is the ninth player in school history to snag 800 caroms and is the first player to join the 800-rebound club since Amanda Brown in the 2006-07 season.

## LADY LIONS SEASON BESTS

Player	Points	Rebounds	Assists	Blocks	Steals
Candice Agee	8 (2X)	9 (FDU)	1 (2X)	1 (8X)	2 (NJIT)
Alex Bentley	23 (Georgetown)	9 (SDSU)	8 (2X)	1 (3X)	8 (NJIT)
Talia East	11 (FDU)	6 (NJIT)	2 (Georgetown)	3 (FDU)	1 (5X)
Ariel Edwards	24 (Detroit)	7 (FDU)	2 (2X)	2 (2X)	1 (4X)
Nikki Greene	23 (Wisconsin)	20 (CSUN)	3 (Detroit)	3 (Lafayette)	2 (NJIT)
Maggie Lucas	39 (Georgetown)	9 (Lafayette)	4 (2X)	4 (SDSU)	6 (Georgetown)
Mia Nickson	14 (2X)	13 (Nwestern)	3 (MSU)	2 (Texas A&M)	2 (2X)
Gizelle Studevent	7 (Lafayette)	3 (Wisconsin)	3 (Detroit)	1 (2X)	1 (3X)
Dara Taylor	18 (MSU)	7 (Wisconsin)	8 (2X)	1 (2X)	7 (Nwestern)
Tori Waldner	7 (FDU)	6 (2X)	2 (2X)	3 (SDSU)	2 (NJIT)
Marisa Wolfe	-	-	-	-	-

## PSU IN THE POLLS

Week of	AP	Coaches
Preseason	8	8
Nov. 12	9	9
Nov. 19	6	7
Nov. 26	6	7
Dec. 3	10	10
Dec. 10	11	10
Dec. 17	11	10
Dec. 24	10	10
Dec. 31	9	9
Jan. 7	8	8
Jan. 14	8	8





## NATIONAL POLLS

### ASSOCIATED PRESS (JAN. 14)

No.	Team (1st)	Rec.	Pts.	LW
1.	Baylor (34)	14-1	991	1
2.	Notre Dame (1)	14-1	948	2
3.	<b>Connecticut (2)</b>	<b>14-1</b>	<b>914</b>	<b>3</b>
4.	Duke (3)	15-0	907	4
5.	Kentucky	16-1	817	6
6.	Stanford	14-2	787	5
7.	California	13-2	755	7
8.	<b>PENN STATE</b>	<b>13-2</b>	<b>724</b>	<b>8</b>
9.	Tennessee	13-3	670	9
10.	Maryland	13-3	615	10
11.	North Carolina	17-1	590	11
12.	<b>Purdue</b>	<b>14-2</b>	<b>536</b>	<b>12</b>
13.	Georgia	15-2	519	13
14.	UCLA	13-2	468	14
15.	Louisville	14-3	422	15
16.	Oklahoma	14-2	410	16
17.	Oklahoma State	13-2	324	21
18.	Dayton	13-1	276	22
19.	South Carolina	14-3	256	18
20.	<b>Texas A&amp;M</b>	<b>13-5</b>	<b>233</b>	<b>20</b>
21.	Colorado	13-2	232	23
22.	Florida State	13-3	182	18
23.	Kansas	11-4	124	17
24.	Iowa State	12-2	88	25
25.	<b>Michigan</b>	<b>14-2</b>	<b>86</b>	<b>NR</b>

Others Receiving Votes: Syracuse 39; Vanderbilt 23; Nebraska 12; Michigan State 12; Miami (Fla.) 12; Villanova 8; UTEP 8; Iowa 5; Delaware 4; Arkansas 2; Creighton 1.

### USA TODAY/ESPN TOP 25 (JAN. 15)

No.	Team (1st)	Rec.	Pts.	LW
1.	Baylor (25)	14-1	767	1
2.	<b>Connecticut (3)</b>	<b>14-1</b>	<b>731</b>	<b>2</b>
3.	Notre Dame (1)	14-1	722	3
4.	Duke (2)	15-0	686	5
5.	Kentucky	16-1	631	6
6.	Stanford	14-2	628	4
7.	California	13-2	604	7
8.	<b>PENN STATE</b>	<b>13-2</b>	<b>546</b>	<b>8</b>
9.	Tennessee	13-3	526	9
10.	Maryland	13-3	485	10
11.	<b>Purdue</b>	<b>14-2</b>	<b>449</b>	<b>11</b>
12.	Georgia	15-2	431	12
13.	Louisville	14-3	366	13
14.	Oklahoma	14-2	355	14
15.	UCLA	13-2	328	15
16.	Oklahoma State	13-2	277	18
17.	Dayton	13-1	265	17
18.	South Carolina	14-3	262	16
19.	North Carolina	17-1	259	20
20.	<b>Texas A&amp;M</b>	<b>13-5</b>	<b>182</b>	<b>21</b>
21.	Kansas	11-4	102	19
22.	Iowa State	12-2	89	24
23.	Syracuse	14-1	83	NR
24.	Florida State	13-3	81	22
25.	Colorado	13-2	67	NR

Others Receiving Votes: Nebraska 52; Michigan 27; UTEP 22; DePaul 15; Vanderbilt 13; Villanova 11; Miami (Fla.) 6; Iowa 5; St. John's 1; Florida 1.

\*Bold type indicates 2012-13 Penn State opponent

## STATISTICAL LEADERS

Check here throughout the season for a breakdown of how many times a player leads Penn State in the following statistical categories. (First number is solo, the second is shared.)

<b>Points</b> .....	Lucas (10/2), Bentley (1/1), Greene (2), Taylor (1), Nickson (-/1)
<b>Rebounds</b> .....	Nickson (6), Greene (6), Lucas (2), Bentley (1), Agee (1)
<b>Assists</b> .....	Bentley (7), Taylor (6/2), Lucas (1/1), Nickson (-/1)
<b>Steals</b> .....	Bentley (9/1), Taylor (3), Nickson (1), Lucas (2/1)
<b>Blocks</b> .....	Greene (5/2), Edwards (2/1), Nickson (1/2), East (1/1), Lucas (1/1), Agee (-/2), Bentley (-/1), Waldner (1/2)
<b>FG % (min. 4 attempts)</b> .....	Edwards (5), Nickson (2), Greene (2), Lucas (3), Agee (1/1), Taylor (2), Studevent (-/1)
<b>FT % (min 4 attempts)</b> .....	Lucas (5/1), Greene (1), Waldner (1), Bentley (4), Nickson (3), Taylor (-/2), Edwards (-/1)
<b>3FG % (min. 2 att.)</b> .....	Lucas (12/1), Bentley (1), Edwards (1), Taylor (1/1)

## PENN STATE VS. THE BIG TEN

Illinois	Overall .....	28-14	Nebraska	Overall .....	4-1
	Big Ten Games .....	21-11		Big Ten Games .....	2-1
	Big Ten Tournament .....	4-2		Big Ten Tournament .....	0-0
	Home .....	15-2		Home .....	2-1
	Away .....	9-10		Away .....	1-0
	Neutral .....	4-2		Neutral .....	1-0
Indiana	Overall .....	28-9	Northwestern	Overall .....	31-7
	Big Ten Games .....	23-8		Big Ten Games .....	27-6
	Big Ten Tournament .....	3-1		Big Ten Tournament .....	2-0
	Home .....	16-2		Home .....	17-1
	Away .....	9-6		Away .....	12-5
	Neutral .....	3-1		Neutral .....	2-1
Iowa	Overall .....	24-17	Ohio State	Overall .....	32-21
	Big Ten Games .....	19-14		Big Ten Games .....	19-14
	Big Ten Tournament .....	2-1		Big Ten Tournament .....	4-5
	Home .....	14-5		Home .....	17-6
	Away .....	7-11		Away .....	11-9
	Neutral .....	3-1		Neutral .....	4-6
Michigan	Overall .....	28-9	Purdue	Overall .....	16-26
	Big Ten Games .....	26-7		Big Ten Games .....	14-19
	Big Ten Tournament .....	1-2		Big Ten Tournament .....	2-4
	Home .....	14-2		Home .....	9-8
	Away .....	13-5		Away .....	5-14
	Neutral .....	1-2		Neutral .....	2-4
Michigan State	Overall .....	25-13	Wisconsin	Overall .....	28-10
	Big Ten Games .....	22-12		Big Ten Games .....	25-10
	Big Ten Tournament .....	2-1		Big Ten Tournament .....	2-0
	Home .....	14-4		Home .....	17-2
	Away .....	9-8		Away .....	9-8
	Neutral .....	2-1		Neutral .....	2-0
Minnesota	Overall .....	25-11			
	Big Ten Games .....	22-11			
	Big Ten Tournament .....	2-0			
	Home .....	14-3			
	Away .....	9-8			
	Neutral .....	2-0			



# RECORD BOOK

## CAREER SCORING

1. 2,919 Kelly Mazzante, 2001-04
2. 2,253 Susan Robinson, 1989-92
3. 2,044 Tyra Grant, 2007-10
4. 2,025 Kahadeejah Herbert, 1982-85
5. 1,995 Tanisha Wright, 2002-05
6. 1,897 Suzie McConnell, 1985-88
7. 1,725 Angie Potthoff, 1993-97
8. 1,663 Lisa Shepherd, 1998-01
9. 1,619 Andrea Garner, 1997-00
10. **1,539 Alex Bentley, 2010-present**
11. 1,538 Tanya Garner, 1988-91
12. 1,514 Vicki Link, 1984-87
13. **1,511 Maggie Lucas, 2011-present**
14. 1,466 Jess Strom, 2002-05
15. 1,463 Katina Mack, 1992-96
16. 1,428 Jen Bednarek, 1977-80
17. 1,328 Maren Walseth, 1998-01
18. 1,320 Cheryl Ellison, 1980-83
19. 1,295 Kathy Phillips, 1989-92
20. 1,294 Helen Darling, 1997-00
21. 1,288 Carol Walderman, 1981-83
22. 1,280 Louise Leimkuhler, 1980-82
23. 1,240 Tina Nicholson, 1993-96
24. 1,238 Kam Gissendanner, 2006-08
25. 1,233 Amanda Brown, 2004-07
26. 1,186 Bethany Collins, 1985-88
27. 1,162 Lisa Faloon, 1984-87
28. 1,142 Jess Brungo, 2001-04
29. 1,135 Sue Martin, 1976-80
30. 1,106 Missy Masley, 1992-95
31. 1,084 Brianna O'Rourke, 2005-09
32. 1,061 Nancy Kuhl, 1975-79
33. 1,024 Rashana Barnes, 1999-02
34. 1,022 Helen Holloway, 1991-94

## CAREER BLOCKS

1. 268 Kim Calhoun, 1993-96
2. **193 Nikki Greene, 2010-present**
3. 192 Mary Donovan, 1977-81
4. 189 Rashana Barnes, 1999-02
5. 185 Andrea Garner, 1997-00
6. 172 Amanda Brown, 2004-07
7. 140 Tina Henry, 1990-93
8. 94 Jess Brungo, 2001-04
9. 92 Bethany Collins, 1985-88
10. 89 Kathy Phillips, 1989-92
11. 87 Reicina Russell, 2003-04
- 87 Vicki Link, 1984-87
13. 81 Kahadeejah Herbert, 1982-85
14. 75 Tyra Grant, 2007-10
15. 68 Kelly Mazzante, 2001-04
16. 67 Janessa Wolff, 2008-10
17. 66 Adrie DeVries, 1987-90
18. 61 Tanisha Wright, 2002-05
19. 48 Julia Trogele, 2008-11
20. 47 Jacquelynn Shook, 2001-02
- **45 Talia East, 2011-present**

## CAREER REBOUNDS

1. 1,103 Kahadeejah Herbert, 1982-85
2. 1,070 Susan Robinson, 1989-92
3. 1,016 Andrea Garner, 1997-00
4. 943 Vicki Link, 1984-87
5. 918 Angie Potthoff, 1993-97
6. **854 Nikki Greene, 2010-present**
7. 820 Mag Strittmatter, 1975-78
8. 818 Cheryl Ellison, 1980-83
9. 808 Amanda Brown, 2004-07
10. 773 Mary Donovan, 1978-81
11. 757 Bethany Collins, 1985-88
12. 728 Rashana Barnes, 1999-02
13. 721 Missy Masley, 1992-95
14. 719 Louise Leimkuhler, 1980-83
15. 717 Kathy Phillips, 1989-92
16. 690 Julia Trogele, 2008-11
17. 672 Helen Darling, 1997-00
18. 649 Jess Brungo, 2001-04
19. 645 Maren Walseth, 1998-01
20. 621 Tanisha Wright, 2002-05
21. 598 Helen Holloway, 1991-94
22. 595 Sue Martin, 1977-80
23. 583 Kim Calhoun, 1993-96
24. 563 Kelly Mazzante, 2001-04
25. 531 Lorraine McGirt, 1983-85
26. 530 Ashli Schwab, 2002-05
27. 526 Adrie DeVries, 1987-90
28. **524 Mia Nickson, 2011-present**

## CAREER THREE-POINT FIELD GOALS MADE

1. 357 Kelly Mazzante, 2001-04
2. **246 Maggie Lucas, 2011-present**
3. 230 Lisa Shepherd, 1998-01
4. 191 Jess Strom, 2002-05
5. 179 Tyra Grant, 2007-10

## CAREER THREE-POINT FIELD GOALS ATTEMPTED

1. 1,019 Kelly Mazzante, 2001-04
2. 583 Lisa Shepherd, 1998-01
3. **561 Maggie Lucas, 2011-present**
4. 531 Tyra Grant, 2007-10
5. 525 Jess Strom, 2002-05

## CAREER FIELD GOALS MADE

1. 1,051 Kelly Mazzante, 2001-04
2. 866 Susan Robinson, 1989-92
3. 771 Tanisha Wright, 2002-05
4. 757 Kahadeejah Herbert, 1982-85
5. 729 Suzie McConnell, 1985-88
6. 709 Angie Potthoff, 1993-97
7. 687 Tyra Grant, 2007-10
8. 668 Jen Bednarek, 1977-80
9. 660 Andrea Garner, 1997-00
10. **620 Alex Bentley, 2010-present**

## CAREER FIELD GOALS ATTEMPTED

1. 2,430 Kelly Mazzante, 2001-04
2. 1,755 Tyra Grant, 2007-10
3. 1,672 Susan Robinson, 1989-92
4. 1,667 Tanisha Wright, 2002-05
5. 1,526 Suzie McConnell, 1985-88
6. **1,440 Alex Bentley, 2010-present**
7. 1,365 Andrea Garner, 1997-00
8. 1,347 Kahadeejah Herbert, 1982-85
9. 1,329 Jen Bednarek, 1977-80
10. 1,260 Lisa Shepherd, 1999-01

## CAREER ASSISTS

1. 1,307\* Suzie McConnell, 1984-88
2. 826 Tina Nicholson, 1993-96
3. 791 Helen Darling, 1997-00
4. 776 Jess Strom, 2002-05
5. 632 Annie Troyan, 1981-83
6. 567 Dana Eikenberg, 1989-92
7. 560 Brianna O'Rourke, 2006-09
8. 528 Nancy Kuhl, 1975-79
9. **518 Alex Bentley, 2010-present**
10. 484 Tanisha Wright, 2002-05

## CAREER STEALS

1. 507 Suzie McConnell, 1985-88
2. 314 Helen Darling, 1997-00
3. 310 Jess Strom, 2002-05
4. 293 Tina Nicholson, 1993-96
5. 289 Kelly Mazzante, 2001-04
6. **282 Alex Bentley, 2010-present**
7. 267 Tanisha Wright, 2002-05
8. 257 Nancy Kuhl, 1975-79
9. 247 Corinne Gulas, 1980-81
10. 224 Kahadeejah Herbert, 1982-85

as of Jan. 17, 2013



## 2013 RECRUITING CLASS

Coquese Washington announced her 2013 recruiting class, which is ranked No. 6 by Collegiate Girls Basketball Report, No. 7 Blue Star Basketball and No. 9 by All-Star Girls Report. Guards **Lindsey Spann** (Laurel, Md./Good Counsel) and **KeKe Sevillian** (Goodrich, Mich./Goodrich), swing players **Jenny DeGraaf** (Springboro, Ohio/Springboro), **Kalayah Mitchell** (Stone Mountain, Ga./Stephenson), **Peyton Whitted** (Suwanee, Ga./North Gwinnett) and post players **Alex Harris** (Lorain, Ohio/Lorain Southview) and **Infiniti Alston** (Baltimore, Md./Digital Harbor) signed National Letters of Intent and will start their Lady Lion careers in 2013-14. The seven-player class is the largest in school history and includes six players that are in the Collegiate Girls Basketball Report Top 100.

Spann, who is the 22nd-ranked player by Collegiate Girls Basketball Report and 88th-rated player by Blue Star Basketball, led Good Counsel, to the 2012 Washington Catholic Athletic Conference (WCAC) Championship and became the first team in league history to finish with an undefeated record (18-0). The 5-6 guard averaged 15.0 points, 5.4 assists, 2.0 steals and 3.0 rebounds as a junior en route to first team All-WCAC honors. She was also a first team All-Gazette, All-Sentinel and All-DCSportsfan selection and was a second team All-Met honoree. Spann participated in USA Basketball's U16 Trials in May 2011. She played her AAU ball for the Maryland Lady Terps.

Sevillian is a two-time All-State point guard, who led Goodrich High School in Michigan to their first-ever Class B State Championship in 2011-12 with a perfect 28-0 record. Sevillian, a 5-6 guard, is a three-time first team all-conference choice for the Martians, who averaged 13.5 points and 3.6 assists per game during her junior season. She also snatched 107 steals in 28 contests a year ago. For her career, Sevillian has 916 points, 237 assists, 283 steals and 130 blocks. Sevillian is also an outstanding track athlete, earning four varsity letters at Goodrich. She holds the school record in the 300-meter hurdles and 200-meter dash and finished second in the state championships in the 300-meters hurdles her freshman and sophomore seasons. She was unable to compete last season due to an injury. She played AAU ball for the Michigan Crossover.

DeGraaf, 87th-rated recruit by Collegiate Girls Basketball Report, averaged 15.0 points, 6.1 rebounds and 1.9 blocks per game as she led Springboro to a 22-2 record. The 6-1 forward led the Greater Western Ohio Conference (GWOC) with a .548 field goal percentage and accounted for a .747 effort from the free throw line. DeGraaf was a first team All-GWOC, Dayton Daily News D-I All-Area team and first team Associated Press D-I All-Southwestern District honoree as a junior. Additionally, she garnered special mention All-Ohio accolades in 2011-12. As a sophomore, she averaged 9.3 points and 7.1 rebounds per game en route to All-GWOC South Division first team honors. DeGraaf is also a standout volleyball player for Springboro. She played her AAU ball for Sports City U.

Mitchell, who is the 54th-ranked recruit by Collegiate Girls Basketball Report and 40th-ranked recruit by All-Star Girls Report, accounted for 12.9 points, 8.3 rebounds, 3.2 steals, 4.0 assists and 2.0 blocks per game as a junior for Stephenson High School. The 6-2 forward shot 46% from the field and 68% from the free throw line last season on her way to All-DeKalb County accolades. Mitchell is a two-time All-Metro third team honoree, an Atlanta Journal Constitution DeKalb County second team choice and honorable mention All-State selection. She played her AAU ball for the Georgia Hoopstars Black.

Whitted is the 71st-ranked recruit by Collegiate Girls Basketball Report and 60th-ranked player by All-Star Girls Report after averaging 11.6 points and 6.3 rebounds per game for North Gwinnett her junior season. The 6-2 forward guided the Bulldogs to their first state semifinal appearance since 1963 as she averaged a double-double in state playoff games (14.8 pts., 10.0 rebs.). She was a second team All-County selection by the Daily Post. In two seasons at North Gwinnett, Whitted has 551 points, 279 rebounds and 89 steals. She also has experience on the national level, participating in USA Basketball's U16 Trials in May 2011.

Harris, who is the 49th-ranked recruit by Collegiate Girls Basketball Report and All-Star Girls Report, averaged a double-double for Lorain Southview in Ohio. The 6-3 forward tallied 12.1 points and 11.7 rebounds in 2011-12 as the Titans went 17-5. She also accounted for 5.0 blocks per game a year ago on her way to honorable mention All-State and first team All-County and All-District honors. She also earned honorable mention All-State accolades and first team All-Lorain County honors as a sophomore. In her freshman year, Harris was All-Lorain County first team and Lake Erie League first team while playing at Admiral King. In her high school career, Harris has 233 blocks and 741 rebounds as a defensive stalwart. She played her AAU ball for TNBA.

Alston is the 48th-ranked recruit by Collegiate Girls Basketball Report and 96th-rated recruit by All-Star Girls Report. The 6-5 center averaged 14.0 points, 11.0 rebounds, 3.0 blocks and 2.0 assists for Digital Harbor High School as a junior. She was a member of the Philly Belles AAU squad last summer and played for Boo Williams' top team as a freshman in high school. Alston participated in Nike Skills Academy in 2011.

**2013 WBCA PINK ZONE:** The 2013 Pink Zone at Penn State will take place on Sunday, Feb. 24 as the Lady Lions take on Michigan in the Bryce Jordan Center. Last year, the Lady Lions donated nearly \$203,000 for breast cancer causes. This year's fundraising efforts will benefit the Mount Nittany Medical Center, Penn State Hershey Cancer Institute, Pennsylvania Breast Cancer Coalition, the Kay Yow Cancer Fund, J.C. Blair Memorial Hospital and Lewistown Hospital. For more information on the Pink Zone at Penn State, visit the official Pink Zone website at [www.pennsylvaniapinkzone.org](http://www.pennsylvaniapinkzone.org).

**LEADING THE HUSKIES:** The Lady Lions led the second-ranked Connecticut Huskies on two occasions for a total of 31 seconds in their Dec. 6 game. To that point, the Huskies had only trailed for a total of 17 seconds in their season opener against College of Charleston. Penn State also forced UConn into a season-high 20 turnovers.

**GREENE GETS #900:** Senior center **Nikki Greene** surpassed the 900-point plateau at #2/2 Connecticut Dec. 6. Greene has 955 career tallies in the Blue & White. With 45 more tallies, she will be the 35th player in school history to reach 1,000 points.

**FIRST STARTS:** Juniors **Dara Taylor** and **Talia East** made their first career starts in a Penn State uniform against Fairleigh Dickinson on Dec. 2 and they both responded with their best days in the Blue & White. Taylor, who had 28 collegiate starts at Maryland, tallied 15 points against the Knights for her best scoring performance as a Lady Lion. East notched a career-best 11 points to go along with three blocks in her first career start.

**AB DISHING HER WAY UP THE ASSISTS CHART:** Senior guard **Alex Bentley** handed out eight assists in the win over FDU Dec. 2 to move into ninth place on Penn State's career helpers chart. With 518 career dimes, Bentley passed Tanisha Wright (484; 2002-05) for the ninth spot. Bentley needs 10 assists to tie Nancy Kuhl (528; 1975-79) for eighth place.

**POST DUO HITS CAREER MARKS:** Freshman **Candice Agee** and sophomore **Tori Waldner** each had career days in the win over Fairleigh Dickinson Dec. 2. Agee tallied personal bests of eight points, nine rebounds and 20 minutes played, while Waldner notched a career-high seven points with five rebounds and two blocks. Waldner's previous career high was six points, established three times, including twice this season.

**C-NOTE:** With a 101-44 win over Fairleigh Dickinson Dec. 2, Penn State surpassed the 100-point plateau for the first time since scoring 103 tallies against Wagner last season (12/18/11). It was the 47th time in program history that the Lions have scored 100 or more points. Additionally, the 57-point win was the biggest margin of victory since the 103-42 win over Wagner.



**LUCAS TABBED PLAYER OF THE WEEK:** Junior guard **Maggie Lucas** was selected as the Big Ten Player of the Week for the week-ending Nov. 25. It is the second career Big Ten Player of the Week award for Lucas; she also won it on Feb. 21, 2012. Lucas was named the Radisson Hotel Chatsworth Thanksgiving Tournament MVP after averaging 25.5 points, 3.5 rebounds, 3.0 assists and 2.5 steals in two games. The junior shot 53.3% (16-30) from the field with an amazing 75% (6-8) from long range.

**GOBBLING UP TOURNEY AWARDS:** Junior guard **Maggie Lucas** was selected as the Radisson Hotel Chatsworth Thanksgiving Tournament MVP, while senior center **Nikki Greene** was named to the All-Tournament team. Lucas averaged 25.5 points, 3.5 rebounds, 3.0 assists and 2.5 steals in two games, while Greene averaged a double-double with 13.5 points and 13.5 rebounds per game.

**20-20 VISION:** Senior center **Nikki Greene** posted her first double-double of the season and 10th of her career with 21 points and 20 rebounds in the win over Cal State Northridge on Nov. 24. The 20 boards tie Greene's career high, which she also set against Indiana on Jan. 23, 2011. She is just the third player in school history to have multiple 20-rebound games in her career, joining Mag Strittmatter (1975-78) and Mary Donovan (1978-81).

**CAREER DAY FOR ARI:** **Ariel Edwards** had a career day against Detroit on Nov. 23. The junior guard/forward tallied 24 points on 11-of-16 shooting in just 25 minutes of action. In fact, Edwards had 19 tallies in the first half, which eclipsed her previous career high of 17 points against Iowa on Jan. 22, 2012.

**5-0 UNDER COQUESE:** The Lady Lions started the season 5-0 for the second time under **Coquese Washington**. The mark equals the best start under Washington during the 2010-11 campaign.

**MAGS DRAINS #200 FROM DEEP:** Junior guard **Maggie Lucas** connected on her 200th career three-pointer in the win over Lafayette on Nov. 18. She is the third player in school history to reach 200 triples, joining Kelly Mazzante and Lisa Shepherd.

**AB REACHES 100 STARTS:** For the second time this season, the Lady Lions have had a player reach the century mark for starts. This time it was **Alex Bentley**, who earned the nod against Lafayette on Nov. 18, joining **Nikki Greene** among those Lady Lions with 100 or more starts. She is the 12th player in school history to accomplish the feat. She has started all but two of the games that she has played in the Blue & White.

**MIA MEETS MILESTONES:** In the Nov. 18 win over Lafayette, senior forward **Mia Nickson** reached a pair of milestones. The Ashburn, Va. native tallied 12 points to surpass the 600-point mark for her Penn State career. Additionally, Nickson snagged six rebounds to surpass the 500-carom mark for her collegiate career.

**RANKED NON-CON ROAD WIN:** Penn State picked up the 63-58 win over #16/13 Texas A&M in College Station Nov. 14 to give the Lady Lions their first road victory over a ranked non-conference opponent since defeating #19 Texas on December 21, 2001. In that game, the Lady Lions topped the Longhorns, 67-65.

**LIONS SNAP AGGIES' STREAK:** The Lady Lions picked up a 63-58 victory over #16/13 Texas A&M Nov. 14 to snap the Aggies' first 58-game non-conference home court winning streak. Texas A&M last lost a home non-conference game to Houston on Dec. 30, 2003.

**SEASON OPENING Ws:** Penn State has won its last seven season opener after a 72-61 decision over Howard on Nov. 11. The Lady Lions are a perfect 6-0 in the first game of the season under head coach Coquese Washington. Overall, Penn State is now 37-12 all-time in season openers.

**LUCAS HITS FOR 20 TO START THE YEAR:** Junior guard **Maggie Lucas** was 9-for-17 from the field en route to 25 points in the season-opening win over Howard. It was Lucas' 32nd game with 20 or more points in her career. Lucas also surpassed the 1,200-point mark in the win over the Bison.

**MIA DOUBLES UP:** Senior forward **Mia Nickson** notched her 11th career double-double with 14 points and 10 rebounds in the win over Howard Nov. 11. Nickson was 6-for-10 from the field and made both of her free throw attempts in the victory.

**GREENE HITS THE STARTS CENTURY MARK:** Senior center **Nikki Greene** made her 100th career start against Howard on Nov. 11. The Diboll, Texas native has started every game in her career and will have a chance to break Kelly Mazzante's school record of 130 starts. Greene is the 11th player in school history with 100 career starts.

**LUCAS EARNS VOTES FOR PRESEASON AP ALL-AMERICA:** Junior guard **Maggie Lucas** was among the players to receive votes for the Associated Press Preseason All-America team. She earned AP All-America honorable mention honors as a sophomore. She is one of three Big Ten players getting votes for the preseason honor, joining Ohio State's Tayler Hill and Nebraska's Jordan Hooper.

**PENN STATE BIG TEN FAVORITES:** With nine returning letterwinners from a team that claimed its sixth Big Ten regular-season title and advanced to the Sweet Sixteen for the first time since 2004, the Penn State Lady Lions were selected to finish first in the Big Ten Conference in a vote of the league's coaches and media. PSU finished ahead of Nebraska and Purdue in the coaches vote and Nebraska and Ohio State in the media poll.

## COURTSIDE WITH COQUESE

Courtside with Coquese, a show that follows the Penn State women's basketball team during the season and takes viewers on an all-access tour of the team. All episodes of Courtside with Coquese can also be viewed online on ladylions.com or youtube.com/pennstateladylions.

All episodes of Courtside with Coquese are available on BTN2GO and on Comcast on Demand in State College.

### Courtside with Coquese Air Dates

Ep. 1	Fri., 1/11	6:15 p.m.	PBS World
	Sun., 1/13	12:30 p.m.	WPSU
	Mon., 1/14	12 a.m.	WPSU
Ep. 2	Fri., 1/18	6:15 p.m.	PBS World
	Sun., 1/20	12:30 p.m.	WPSU
	Sun., 1/20	11:30 p.m.	WPSU
Ep. 3	Fri., 1/25	6:15 p.m.	PBS World
	Sun., 1/27	12:30 p.m.	WPSU
	Sun., 1/27	11:30 p.m.	WPSU
Ep. 4	Fri., 2/1	6:15 p.m.	PBS World
	Sun., 2/3	12:30 p.m.	WPSU
	Sun., 2/3	11:30 p.m.	WPSU
Ep. 5	Fri., 2/8	6:15 p.m.	PBS World
	Sun., 2/10	12:30 p.m.	WPSU
	Sun., 2/10	11:00 p.m.	WPSU
Ep. 6	Fri., 2/15	6:15 p.m.	PBS World
	Sun., 2/17	12:30 p.m.	WPSU
	Sun., 2/17	11:30 p.m.	WPSU
Ep. 7	Fri., 2/22	6:15 p.m.	PBS World
	Sun., 2/24	12:30 p.m.	WPSU
	Sun., 2/24	11:00 p.m.	WPSU
Ep. 8	TBA		
Ep. 9	TBA		

### BENTLEY & LUCAS WIN PRESEASON HONORS:

Senior point guard **Alex Bentley** was selected as the coaches' preseason Co-Player of the Year and to the preseason All-Big Ten first team by the media, while junior shooting guard **Maggie Lucas** was named to the All-Big Ten first team by both the coaches and media. Bentley shared Player of the Year accolades with Tayler Hill.

**BENTLEY AND LUCAS ON WATCH LISTS:** Senior point guard **Alex Bentley** and junior guard **Maggie Lucas** have been named to the three preseason watch lists for National Player of the Year: the Wade Trophy, Wooden Award and Naismith Trophy. Bentley and Lucas are among 25 players that have been named to the "Wade Watch" list for the State Farm® Wade Trophy. Additionally, the pair are among the 30 players listed on the Wooden Award preseason chart. To complete the trifecta, the duo was named to the Naismith Women's Early Season Watch List. Bentley and Lucas are two of the five Big Ten players on the preseason lists, which also includes Ohio State's Tayler Hill and the Nebraska duo of Jordan Hooper and Lindsey Moore.





# COQUESE WASHINGTON

Head Coach  
6th Season

PENN STATE  
LADY LION BASKETBALL

Coquese Washington, who helped lead Notre Dame to the 2001 NCAA Championship, was introduced as the fifth head coach of the Penn State women's basketball program on April 23, 2007. Washington is the first female African-American head coach in Penn State history.

Washington returned the Lady Lions to Big Ten prominence in her fifth season as she guided Penn State to the Big Ten regular-season title with a 13-3 record in conference play. Additionally, the Lady Lions advanced to the NCAA Tournament Sweet Sixteen with wins over UTEP and LSU en route to a 26-7 overall record. The Lady Lions posted back-to-back 20-win seasons for the first time since 2002-03 and 2003-04. It was also the first Big Ten crown and Sweet Sixteen berth for the Lady Lions since 2003-04. The Lady Lions were ranked throughout the season and finished ninth in the ESPN/USA Today Coaches' Poll and 11th in the Associated Press Top 25.

For her efforts in rebuilding the Penn State program, Washington was honored as the Big Ten Coach of the Year and the WBCA Region 6 Coach of the Year, making her a finalist for WBCA National Coach of the Year. The

accolades were not just limited to Washington; all five Lady Lion starters earned All-Big Ten recognition, including first team bids for Alex Bentley and Maggie Lucas. Both Bentley and Lucas also garnered honorable mention All-America honors from the WBCA and Associated Press, respectively. Bentley became the 33rd player in school history to reach the 1,000-point plateau and just the 15th junior to reach the milestone. Lucas also joined the 1,000-point club in 2011-12, becoming just the third sophomore in program history to accomplish the feat.

On the recruiting trail, the Lady Lions' 2012 class earned a Top 20 class from Dan Olson's Collegiate Girls Basketball Report. The class includes transfer Dara Taylor, who sat out the 2011-12 season due to NCAA transfer rules, and McDonald's High School All-American Candice Agee from California. The addition of Taylor, who was a 2009 McDonald's All-American, and Agee gives the Lady Lions three McDonald's All-Americans on the roster heading into the 2012-13 campaign, joining 2010 honoree Lucas. Additionally, Agee earned a gold medal with the USA Basketball U18 National Team Trials at the 2012 FIBA Americas Championship in August.

The Lady Lions returned to the national stage in Washington's fourth year with a second-place finish in the Big Ten regular season standings, a runner-up finish in the Big Ten Tournament and a berth in the NCAA Tournament. Penn State tallied its 23rd 20-win season with a 25-10 overall record and an 11-5 mark in conference play. The Lady Lions worked their way back to the "Big Dance" for the first time since 2004-05 and advanced to the second round for the first time in seven years with a win over Dayton in the first round in front of a raucous BJC crowd.

Penn State was a dominating force from the perimeter as the Lady Lions tied the school record with 228 three-pointers and led NCAA Division I from deep with a .415 three-point field goal percentage. Pacing the Lady Lions from downtown was Lucas, who broke the Big Ten three-pointers record with 112 triples to go along with a .426 shooting percentage. For her efforts, Lucas was selected as the Big Ten Freshman of the Year and Big Ten Sixth Player of the Year while breaking the Penn State freshman season scoring record (552 pts.). Additionally with Washington's guidance, Bentley became the 11th different player in school history to take home first team All-Big Ten accolades after finishing second in the conference in assists. After outstanding seasons, both Lucas and Bentley were invited to the USA Basketball World University Games Trials.

Washington's third season saw the Lady Lions return to the postseason for the first time since 2004-05 with a WNIT berth. The Lions earned their most overall wins (17) and conference wins (8) since the 2004-05 campaign en route to a sixth-place finish in the Big Ten. Penn State picked up a pair of wins over ranked opponents in #15/15 Pittsburgh and #20/23 Michigan State.

In Washington's second season, the Lady Lions moved up three positions in the Big Ten standings, finishing in a tie

## THE WASHINGTON FILE

### COACHING RESUME

2007-pres. - Head Coach, Penn State  
2012-pres. - Kay Yow Cancer Fund Board of Directors  
2011-pres. - NCAA WBB Issues Committee  
2010-pres. - Treasurer, WBCA Executive Committee  
2008-pres. - WBCA Board of Directors  
2009-12 - USA Basketball Women's Jr. National Committee  
2005-07 - Associate Head Coach, Notre Dame  
1999-05 - Assistant Coach, Notre Dame

### PLAYING EXPERIENCE

2002-03 - WNBA's Indiana Fever  
2000-02 - WNBA's Houston Comets  
1998-99 - WNBA's New York Liberty  
1997-98 - ABL's Portland Power  
1989-93 - University of Notre Dame

### EDUCATION

Notre Dame '92, B.A. History  
Notre Dame Law School '97, Juris Doctorate

### AWARDS

- ❖ 2012 Big Ten Coach of the Year
- ❖ 2012 WBCA Region 6 Coach of the Year
- ❖ 2012 WBCA National Coach of the Year Finalist
- ❖ 2011 BCA Female Coach of the Year
- ❖ 2009 Greater Flint Hall of Fame Inductee
- ❖ 2008 WBCA "Rising Star" Award Winner

### FAMILY

Husband: Raynell Brown  
Children: Quenton (7), Rhaiyna (3)

for seventh place. Under Washington's guidance in 2008-09, Grant became the 10th different player in school history to earn first team All-Big Ten honors. Grant was also a semifinalist for the Naismith Player of the Year award.

In her first season at the helm, Washington and the Lady Lions picked up two nationally-televised wins, downed two nationally-ranked foes and took home the 25th regular-season tournament crown in program history.

Washington came to Happy Valley after eight seasons as an associate head coach and assistant coach under Muffet McGraw at Notre Dame, her alma mater. During Washington's eight years on the bench, Notre Dame amassed a 188-69 record with eight NCAA Tournament appearances, including four Sweet Sixteen runs and a National Championship in 2001.

One of the top recruiters in the country, Washington was instrumental in helping the Irish to secure eight consecutive Top 25 recruiting classes, according to "Blue Star Index," a feat only accomplished by two other programs in the country (Connecticut and Tennessee).

Washington was a four-year starting point guard for Notre Dame under McGraw and was the team captain on Notre Dame's first-ever NCAA Tournament team. She was a two-time All-Midwestern Collegiate Conference (MCC) selection and led Notre Dame to three MCC Tournament titles.

The epitome of a student-athlete, Washington graduated from Notre Dame in 1992, a full year ahead of schedule, with a bachelor's degree in history. She went on to attain "Double Domer" status in 1997 after earning her Juris Doctorate from the Notre Dame Law School.

Washington is currently serving on the 29-member WBCA Board of Directors, where she is the Treasurer of the Executive Committee. Washington is also a member of the Kay Yow Cancer Fund Board of Directors and the NCAA Women's Basketball Issues Committee.

A native of Flint, Mich., Washington and her husband, Raynell Brown, have a son, Quenton (7), and a daughter, Rhaiyna (3). They reside in Port Matilda, Pa.

### Washington's Coaching Record vs. Opponents

Arizona .....	1-0	Michigan .....	7-3
Army .....	1-0	Michigan State.....	3-7
Boston College.....	0-1	Middle Tennessee ....	1-0
Bucknell.....	5-0	Minnesota.....	5-6
Buffalo .....	1-0	Mississippi.....	1-0
CS-Northridge.....	1-0	Monmouth.....	1-0
Charlotte.....	1-0	Nebraska.....	1-1
Connecticut.....	0-3	Nevada.....	2-0
Coppin State.....	1-0	NJIT.....	2-0
Dayton.....	2-1	North Carolina.....	1-0
Delaware.....	1-1	Northwestern.....	7-1
DePaul.....	0-1	Oakland.....	2-0
Detroit.....	1-0	Ohio State.....	2-6
Drexel.....	2-1	Old Dominion.....	0-1
Duke.....	1-0	Pittsburgh.....	2-1
Fair. Dickinson.....	1-0	Prairie View A&M.....	1-0
Florida State.....	0-1	Purdue.....	2-8
Georgetown.....	2-0	Rider.....	1-0
Georgia Tech.....	0-1	South Carolina.....	4-1
Hartford.....	1-0	South Dakota St. ....	1-0
Hofstra.....	0-1	Stony Brook.....	1-0
Holy Cross.....	1-0	Syracuse.....	0-1
Howard.....	1-0	Texas A&M.....	1-1
Illinois.....	8-3	UTEP.....	1-0
Indiana.....	4-4	Texas Tech.....	1-1
Iowa.....	5-5	Utah.....	2-0
Iowa State.....	1-0	Virginia Tech.....	2-0
Lafayette.....	1-0	Wagner.....	1-0
LSU.....	1-0	Washington State.....	1-0
Maine.....	1-0	Wisconsin.....	5-5
UMES.....	1-0	UW-Green Bay.....	0-1
Miami.....	0-1	Xavier.....	0-1





# #1 Candice Age

Fr. \* F/C \* 6-6 \* Victorville, Calif./Silverado

## 2012-13 Season Notes:

- Chipped in four points in the win at Michigan State (1/6).
- Notched four points and a blocked shot in the Big Ten opener against Northwestern (1/3).
- Tied her career high with eight points to go along with two rebounds and two steals in the win over NJIT (12/23).
- Connected on a pair of layups and finished with four points against South Dakota State (12/16).
- Pulled in six rebounds in 11 minutes off of the bench at Virginia Tech (12/12).
- Was solid with personal bests of eight points and nine rebounds in the win over Fairleigh Dickinson (12/2).
- Recorded two points, two rebounds and a blocked shot at Miami (11/29).
- Tallied two points and three rebounds in the win over Detroit (11/23).
- Accounted for seven points on 3-of-5 shooting, four rebounds and a blocked shot in the win over Lafayette (11/18).
- Snagged three rebounds with one blocked shot in the win at #16/13 Texas A&M (11/14).
- Recorded her first collegiate block against Howard (11/11), just 45 seconds after entering the game.

## CAREER HIGHS

Points.....	8 vs. NJIT (12/23/12)
.....	8 vs. Fairleigh Dickinson (12/2/12)
Rebs. ....	9 vs. Fairleigh Dickinson (12/2/12)
Assists .....	1 at Miami (11/29/12)
.....	1 vs. Detroit (11/23/12)
Steals.....	2 vs. NJIT (12/23/12)
Blocks .....	1 (8x)
.....	last vs. Northwestern (1/3/13)
Minutes .....	20 vs. Fair. Dickinson (12/2/12)
FGM.....	3 (3x) last vs. NJIT (12/23/12)
FGA .....	8 vs. NJIT (12/23/12)
FG% .....	1.000 (1.000) at Miami (11/29/12)
3FGM.....	n/a
3FGA .....	n/a
3PT % .....	n/a
FTM .....	2 vs. NJIT (12/23/12)
.....	2 vs. Fairleigh Dickinson (12/2/12)
FTA .....	3 vs. Fairleigh Dickinson (12/2/12)
FT % .....	1.000 (2-2) vs. NJIT (12/23/12)
Career Double-Doubles .....	n/a
Career 20-point games .....	n/a

## GAME-BY-GAME

	P	R	B
HOWARD	0	0	1
Texas A&M	0	3	1
LAFAYETTE	7	4	1
Detroit	2	3	0
CS-Northridge	0	0	0
Miami (Fla.)	2	2	1
FAIR. DICKINSON	8	9	1
Connecticut	DNP		
GEORGETOWN	0	1	0
Virginia Tech	0	6	1
SOUTH DAKOTA ST.	4	1	1
NJIT	8	2	0
NORTHWESTERN	4	1	1
Michigan State	4	0	0
NEBRASKA	0	0	0
WISCONSIN	DNP		
Michigan			
MINNESOTA			
Ohio State			
Wisconsin			
PURDUE			
Indiana			
MICHIGAN ST.			
Iowa			
ILLINOIS			
MICHIGAN			
Minnesota			
Nebraska			





# #2 Dara Taylor

Jr. \* G \* 5-8 \* Wilmington, Del./Caraval Acad. (Maryland)

## 2012-13 Season Highlights:

- Surpassed the 300-assist mark for her collegiate career with six helpers against Wisconsin (1/17).
- Registered a career-high 18 points via a 7-for-10 shooting night, including make three of her four attempts from downtown, in the win at Michigan State (1/6).
- Knocked down a career-high three shots from beyond the arc en route to 15 points, which ties her career high as a Penn Stater in the win at Virginia Tech (12/12).
- Had her biggest scoring output in a Penn State uniform with 15 points to go along with three rebounds and five assists in her first PSU start against FDU (12/2).

## 2012-13 Season Notes:

- Was 3-for-5 from the field, including 2-for-3 from three-point range, en route to eight points, a Penn State career-high seven rebounds, six assists and four steals against Wisconsin (1/17).
- Had seven points to go along with three rebounds, eight assists and a trio of steals in the win over Nebraska (1/13).
- Nabbed a career-high seven steals, which pushed her over the 100-steal mark for her career, to go along with nine points in the Big Ten opener against Northwestern (1/3).
- Recorded six points, two rebounds and a PSU career best eight assists in the win over NJIT (12/23).
- Chipped in seven points, five rebounds, five assists and two steals in the win over Georgetown (12/9).
- Tallied eight points, four rebounds and two assists at #2 Connecticut (12/6).
- Notched six points, six rebounds, three assists and a pair of steals in 33 minutes of action at Miami (11/29).
- Accounted for four points, two assists and three steals in the win over Detroit (11/23).
- Filled the stat sheet with three points, five rebounds, six assists and two steals against Lafayette (11/18).
- Was 4-for-8 from the field en route to eight points with three assists and five steals in the victory at #16/13 Texas A&M (11/14).
- Registered five points, four rebounds and three assists in her first game as a Lady Lion against Howard (11/11).

## CAREER HIGHS

Points.....	18 at Michigan State (1/6/13)
Rebs. ....	8 vs. East Carolina (3/21/10)
Assists .....	11 at American (12/20/09)
.....	11 at Virginia (1/11/10)
Steals.....	7 vs. Northwestern (1/3/13)
Blocks.....	1 (3x) last at St. Joseph's 1/2/11
Minutes.....	38 at American (12/20/09)
FGM.....	7 at Michigan State (1/6/13)
.....	7 vs. Clemson (2/14/10)
FGA.....	14 at Connecticut (12/6/12)
.....	14 at N.C. State (1/17/10)
FG% .....	1.000 (3x)
.....	last vs. N.C. State (2-2) (2/6/11)
3FGM.....	3 at Michigan State (1/6/13)
.....	3 at Virginia Tech (12/12/12)
3FGA.....	6 at Virginia Tech (12/12/12)
3PT %.....	1.000 (3x)
.....	last vs. NJIT (1-1) (12/23/12)
FTM.....	7 at Wake Forest (2/11/10)
FTA.....	10 at Wake Forest (2/11/10)
.....	10 vs. North Carolina (3/4/10)
FT % .....	1.000 (9x)
.....	last at Michigan State (1-1) (1/6/13)
Career Double-Doubles .....	1
Career 20-point games .....	n/a

## GAME-BY-GAME

	P	R	A
HOWARD	5	4	3
Texas A&M	8	3	3
LAFAYETTE	3	5	6
Detroit	4	0	2
CS-Northridge	2	3	0
Miami (Fla.)	6	6	3
FAIR. DICKINSON	15	3	5
Connecticut	8	4	2
GEORGETOWN	7	5	5
Virginia Tech	15	3	0
SOUTH DAKOTA ST.	2	4	3
NJIT	6	2	8
NORTHWESTERN	9	1	1
Michigan State	18	3	4
NEBRASKA	7	3	8
WISCONSIN	8	7	6
Michigan			
MINNESOTA			
Ohio State			
Wisconsin			
PURDUE			
Indiana			
MICHIGAN ST.			
Iowa			
ILLINOIS			
MICHIGAN			
Minnesota			
Nebraska			





# #5 Talia East

Jr. \* F/C \* 6-3 \* Philadelphia, Pa./Friends' Central

## 2012-13 Highlights:

- Made her first career start and responded with a career-high 11 points to go along with three blocks and a pair of rebounds in the win over Fairleigh Dickinson (12/2).

## 2012-13 Season Notes:

- Accounted for two points and four rebounds against Wisconsin (1/17).
- Tallied three points, two rebounds and a blocked shot in the win over Northwestern (1/3).
- Chipped in two points and three rebounds at Miami (11/29).
- Recorded four points and a blocked shot in the victory at Cal State Northridge (11/24).
- Was 2-for-3 from the field en route to five points and three rebounds in the win over Lafayette (11/18).
- Had two rebounds in the win over Howard (11/11).

## CAREER HIGHS

Points..	11 vs. Fairleigh Dickinson (12/2/12)
Rebs. ....	15 at South Carolina (11/20/11)
Assists .....	2 (3x)
.....last vs. Georgetown (12/9/12)	
Steals.....	2 (5x)
.....last vs. Connecticut (3/25/12)	
Blocks.....	7 at South Carolina (11/20/11)
Minutes.....	29 at South Carolina (11/20/11)
FGM.....	4 (3x)
.....last vs. Fairleigh Dickinson (12/2/12)	
FGA.....	10 vs. Fairleigh Dickinson (12/2/12)
FG% .....	1.000 (7x)
.....last vs. Georgetown (1-1) (12/9/12)	
3FGM.....	n/a
3FGA .....	n/a
3PT %.....	n/a
FTM.....	4 vs. Nebraska (12/30/11)
FTA.....	6 vs. Northwestern (1/3/13)
FT % .....	1.000 (6x)
.....last at Miami (2-2) (11/29/12)	
Career Double-Doubles .....	n/a
Career 20-point games .....	n/a

## GAME-BY-GAME

	P	R	B
HOWARD	0	2	0
Texas A&M	0	1	0
LAFAYETTE	5	3	0
Detroit	2	2	1
CS-Northridge	4	1	1
Miami (Fla.)	2	3	0
FAIR. DICKINSON	11	2	3
Connecticut	2	1	1
GEORGETOWN	2	2	2
Virginia Tech	0	2	0
SOUTH DAKOTA ST. DNP			
NJIT	3	6	0
NORTHWESTERN	3	2	1
Michigan State	0	3	1
NEBRASKA	0	0	1
WISCONSIN	2	4	0
Michigan			
MINNESOTA			
Ohio State			
Wisconsin			
PURDUE			
Indiana			
MICHIGAN ST.			
Iowa			
ILLINOIS			
MICHIGAN			
Minnesota			
Nebraska			







# #20 Alex Bentley

Sr. \* G \* 5-7 \* Indianapolis, Ind./Ben Davis

## 2012-13 Highlights:

- Is the fifth player in Big Ten history and second player in school history (Suzie McConnell) with 1,500 points, 500 assists and 250 steals.
- On 2013 preseason Wade Trophy Watch List, Wooden Award Top 30 and Naismith Early Season Watch List.
- 2013 Big Ten Preseason Co-Player of the Year (coaches); first team preseason All-Big Ten (coaches & media).
- Sixth in school history in steals (282).
- Ninth in PSU history in assists (518).
- 10th in program history in scoring (1,539).
- Is the ninth player in school history with 500 assists.
- Team captain

## 2012-13 Season Notes:

- Solid on both sides of the ball with 14 points, five assists and game-high six steals in the win over Wisconsin (1/17).
- Contributed a game-high 19 points to go along with five rebounds and five steals against Nebraska (1/13).
- Controlled the pace for the Lady Lions with 13 points, three rebounds and a steal at Michigan State (1/6).
- Tied her career high with eight steals in the victory over NJIT (12/23).
- Recorded 13 points to go along with a career-high nine rebounds, five assists and three steals in the win over South Dakota State (12/16).
- Notched 10 points, including eight in the second half, to go along with four assists and five steals at Virginia Tech (12/12).
- Registered 23 points via an 8-for-14 shooting performance with five rebounds, four assists and two steals against Georgetown (12/9).
- Had 14 points, two rebounds, two assists and four steals at Miami (11/29).
- Collected 19 points to go along with three rebounds, eight assists and three steals in the Cal State Northridge game (11/24).
- Scored 14 of her game-high 21 points in the second half after battling foul trouble in the opening frame at #16/13 Texas A&M (11/14). Also tallied four assists and four steals against the Aggies.
- Accounted for 14 points, six rebounds and seven steals in the season opening win over Howard (11/11).

## CAREER HIGHS

Points	28 at Boston College (12/2/10)
Rebs.	9 vs. South Dakota State (12/16/12)
Assists	15 vs. North Carolina (11/30/11)
Steals	8 vs. NJIT (12/23/12)
	8 vs. Nebraska (12/30/11)
Blocks	2 (3x) last vs. Drexel (12/21/10)
Minutes	46 at Dayton (11/12/10)
FGM	12 vs. Dayton (3/19/11)
	12 vs. Purdue (1/28/10)
FGA	28 vs. Dayton (3/19/11)
FG%	.833 (5-6) at Illinois (12/31/09)
3FGM	4 at Purdue (2/14/10)
3FGA	8 vs. Nebraska (1/13/13)
3PT %	1.000 (6x)
	last vs. Washington State (2-2) (11/11/11)
FTM	10 at Northwestern (1/6/11)
FTA	12 at Northwestern (1/6/11)
FT %	1.000 (31x)
	last vs. Northwestern (6-6) (1/3/13)
Career Double-Doubles	1
Career 20-point games	21

## GAME-BY-GAME

	P	R	A
HOWARD	14	6	4
Texas A&M	21	2	4
LAFAYETTE	8	5	2
Detroit	4	3	6
CS-Northridge	19	3	8
Miami (Fla.)	14	2	2
FAIR. DICKINSON	6	5	8
Connecticut	7	5	1
GEORGETOWN	23	5	4
Virginia Tech	10	3	4
SOUTH DAKOTA ST.	13	9	5
NJIT	10	5	6
NORTHWESTERN	9	6	3
Michigan State	13	3	0
NEBRASKA	19	5	1
WISCONSIN	14	1	5
Michigan			
MINNESOTA			
Ohio State			
Wisconsin			
PURDUE			
Indiana			
MICHIGAN ST.			
Iowa			
ILLINOIS			
MICHIGAN			
Minnesota			
Nebraska			





# #23 Ariel Edwards

Jr. \* G/F \* 6-3 \* Elmont, N.Y./Christ the King

## 2012-13 Season Highlights:

- Was 11-for-16 from the field en route to a career-high 24 points, including 19 tallies in the first half, against Detroit (11/23).

## 2012-13 Season Notes:

- Had 10 points on 5-of-9 shooting with three rebounds and an assist in the victory over Wisconsin (1/17).
- Was a spark off of the bench with 15 points on 6-of-8 shooting, six rebounds and a pair of blocks against Nebraska (1/13).
- Connected on both of her three-point attempts en route to six points, three rebounds, two assists and a block at Michigan State (1/6).
- Registered six points and four rebounds off of the bench versus Northwestern (1/3).
- Accounted for 10 points, four rebounds and a blocked shot against NJIT (12/23).
- Provided 11 points, two rebounds and an assist off of the bench in the win over Georgetown (12/9).
- Recorded 10 points on 5-of-7 shooting with four rebounds and a steal off the bench at #2 Connecticut (12/6).
- Scored all 18 of her points in the second half via a 7-for-10 shooting night against Fairleigh Dickinson (12/2).
- Tallied nine points with six rebounds and a blocked shot against Lafayette (11/18).
- Chipped in five points, five rebounds and tied her career high with two blocks in the win over Howard (11/11).

## CAREER HIGHS

Points.....	24 vs. Detroit (11/23/12)
Rebs.....	11 vs. Iowa (1/22/12)
Assists.....	4 at Wisconsin (1/2/12)
Steals.....	3 at Texas Tech (12/3/11)
Blocks.....	2 (3x)
.....	last vs. Nebraska (1/13/13)
Minutes.....	38 at Delaware (11/17/11)
FGM.....	11 vs. Detroit (11/23/12)
FGA.....	16 vs. Detroit (11/23/12)
FG%.....	1.000 (3x)
.....	last DePaul (1-1) (3/21/11)
3FGM.....	2 (3x)
.....	last at Michigan State (1/6/13)
3FGA.....	4 vs. Army (12/8/10)
.....	4 vs. Hartford (11/27/10)
3PT %.....	1.000 (9x)
.....	last vs. Nebraska (1-1) (1/13/13)
FTM.....	9 vs. Iowa (1/22/12)
FTA.....	10 vs. Iowa (1/22/12)
FT %.....	1.000 (14x)
.....	last vs. Nebraska (2-2) (1/13/13)
Career Double-Doubles.....	1
Career 20-point games.....	1

## GAME-BY-GAME

	P	R	A
HOWARD	5	5	1
Texas A&M	0	4	0
LAFAYETTE	9	6	1
Detroit	24	2	1
CS-Northridge	4	2	2
Miami (Fla.)	3	4	0
FAIR. DICKINSON	18	7	0
Connecticut	10	4	0
GEORGETOWN	11	2	1
Virginia Tech	4	4	0
SOUTH DAKOTA ST.	4	6	1
NJIT	10	4	0
NORTHWESTERN	6	4	0
Michigan State	6	3	2
NEBRASKA	15	6	1
WISCONSIN	10	3	1
Michigan			
MINNESOTA			
Ohio State			
Wisconsin			
PURDUE			
Indiana			
MICHIGAN ST.			
Iowa			
ILLINOIS			
MICHIGAN			
Minnesota			
Nebraska			





# #24 Mia Nickson

Sr. \* F \* 6-2 \* Ashburn, Va./Notre Dame Academy (B.C.)

## 2012-13 Highlights:

- Team captain for the third consecutive season.
- Became the 28th member of Penn State's 500-rebound club with six caroms at Michigan State (1/6).
- Registered a double-double with 14 points, including going 8-for-10 from the free throw line, and 13 rebounds in the win over Northwestern (1/3).
- Posted her second double-double of the season with 10 points and a game-high 10 rebounds at Virginia Tech (12/12).
- Recorded a double-double in the season-opener against Howard (11/11) with 14 points, including a 6-for-10 effort from the field, and 10 rebounds.

## 2012-13 Season Notes:

- Just missed out on a double-double with eight points and nine rebounds in the win over Wisconsin (1/17).
- Corralled a game-high 11 rebounds to go with seven points and a block in the win over Nebraska (1/13).
- Accounted for nine points, five rebounds and a steal against South Dakota State (12/16).
- Notched six points, three rebounds and a pair of assists in the win over Big East foe Georgetown (12/9).
- Found continued success against Connecticut with eight points, eight rebounds, two assists and three steals in Storrs (12/6).
- Tallied eight points, four rebounds and a block at Miami (11/29).
- Chipped in eight points and three rebounds in the win at Cal State Northridge (11/24).
- Had a game-high points 12 to go along with six rebounds, two assists a block and a steal against Lafayette (11/18).
- Accounted for six points, 11 rebounds and two blocks in the win at #16/13 Texas A&M (11/14).

## CAREER HIGHS

Points	26 vs. Texas Tech (12/5/10)
Rebs	17 vs. Indiana (1/23/11)
Assists	4 vs. Maine (12/12/10)
Steals	6 vs. Indiana (1/23/11)
	6 vs. Bucknell (12/28/10)
Blocks	3 vs. Purdue (3/3/12)
Minutes	41 at Dayton (11/12/10)
FGM	9 vs. Indiana (1/23/11)
FGA	16 vs. Indiana (1/23/11)
FG%	1.000 (4X)
	last vs. Minnesota (5-5) (1/13/11)
3FGM	n/a
3FGA	n/a
3PT %	n/a
FTM	10 (3x) last at Minnesota (2/5/12)
FTA	12 at Minnesota (2/5/12)
FT %	1.000 (23X)
	last vs. Wisconsin (2-2) (1/17/13)
Career Double-Doubles	13
Career 20-point games	5

## GAME-BY-GAME

	P	R	A
HOWARD	14	10	0
Texas A&M	6	11	2
LAFAYETTE	12	6	2
Detroit	6	4	2
CS-Northridge	8	3	0
Miami (Fla.)	8	4	1
FAIR. DICKINSON	DNP		
Connecticut	8	8	2
GEORGETOWN	6	3	2
Virginia Tech	10	10	2
SOUTH DAKOTA ST.	9	5	0
NJIT	4	1	2
NORTHWESTERN	14	13	0
Michigan State	6	6	3
NEBRASKA	7	11	0
WISCONSIN	8	9	1
Michigan			
MINNESOTA			
Ohio State			
Wisconsin			
PURDUE			
Indiana			
MICHIGAN ST.			
Iowa			
ILLINOIS			
MICHIGAN			
Minnesota			
Nebraska			





# #25 Gizelle Studevent

Sr. \* G \* 5-11 \* La Jolla, Calif./The Bishop's School

## 2012-13 Season Notes:

- Contributed five points, three rebounds and one steal off of the bench against Wisconsin (1/17).
- Registered four points and a blocked shot in 10 minutes of action against Nebraska (1/13).
- Went 3-for-5 from the field en route to six points and two rebounds against NJIT (12/23).
- Made both of her shots from the field en route to four points with one assist and one steal in eight minutes of action at Miami (11/29)
- Tallied four points against Cal State Northridge (11/24).
- Recorded two points and three assists in the win over Detroit (11/23).
- Was 3-for-5 from the field on the way to seven points in the win over Lafayette (11/18).
- Pulled in a rebound and blocked a shot against Howard (11/11).

## CAREER HIGHS

Points.....	10 vs. Indiana (2/2/12)
.....	10 at Oakland (11/18/10)
Rebs. ....	3 (9x) last vs. Wisconsin (1/17/13)
Assists.....	4 vs. Wagner (12/18/11)
Steals.....	2 vs. Virginia Tech (12/6/11)
.....	2 vs. Rider (11/14/10)
Blocks....	1 (4x) last vs. Nebraska (1/13/13)
Minutes.....	25 vs. Minnesota (2/26/12)
FGM.....	5 vs. Indiana (2/2/12)
FGA.....	9 vs. Detroit (11/23/12)
FG%.....	1.000 (4x)
.....	last at Miami (2-2) (11/29/12)
3FGM....	1 (4x) last vs. Minnesota (1/13/11)
3FGA.....	3 vs. Monmouth (12/9/09)
3PT%.....	1.000 (4x)
.....	last vs. Minnesota (1-1) (1/13/11)
FTM.....	3 vs. Maine (12/12/10)
.....	3 at Oakland (11/18/10)
FTA.....	4 vs. Maine (12/12/10)
.....	4 at Oakland (11/18/10)
FT%.....	1.000 (7x)
.....	last vs. Georgetown (2-2) (12/9/12)
Career Double-Doubles .....	n/a
Career 20-point games .....	n/a

## GAME-BY-GAME

	P	R	A
HOWARD	0	1	0
Texas A&M	0	0	0
LAFAYETTE	7	1	0
Detroit	2	0	3
CS-Northridge	4	0	0
Miami (Fla.)	4	1	1
FAIR. DICKINSON	2	0	2
Connecticut	0	0	0
GEORGETOWN	2	0	1
Virginia Tech	2	1	0
SOUTH DAKOTA ST.	0	2	0
NJIT	6	2	1
NORTHWESTERN	0	0	0
Michigan State	0	1	0
NEBRASKA	4	0	0
WISCONSIN	5	3	0
Michigan			
MINNESOTA			
Ohio State			
Wisconsin			
PURDUE			
Indiana			
MICHIGAN ST.			
Iowa			
ILLINOIS			
MICHIGAN			
Minnesota			
Nebraska			





# #33 Maggie Lucas

Jr. \* G \* 5-10 \* Narberth, Pa./Germantown Academy

## GAME-BY-GAME

	P	R	A
HOWARD	25	2	3
Texas A&M	18	4	1
LAFAYETTE	12	9	2
Detroit	28	4	3
CS-Northridge	23	3	3
Miami (Fla.)	20	5	3
FAIR. DICKINSON	24	6	4
Connecticut	15	4	1
GEORGETOWN	39	5	2
Virginia Tech	17	4	2
SOUTH DAKOTA ST.	9	5	2
NJIT	21	8	3
NORTHWESTERN	24	2	4
Michigan State	12	1	3
NEBRASKA	19	2	2
WISCONSIN	11	4	1
Michigan			
MINNESOTA			
Ohio State			
Wisconsin			
PURDUE			
Indiana			
MICHIGAN ST.			
Iowa			
ILLINOIS			
MICHIGAN			
Minnesota			
Nebraska			

### 2012-13 Highlights:

- ♦ Dec. 11 Ann Myers Drysdale National Player of the Week award winner, presented by the USBWA.
- ♦ Two-time Big Ten Player of the Week (Nov. 26, Dec. 10).
- ♦ On 2013 preseason Wade Trophy Watch List, Wooden Award Top 30 and Naismith Early Season Watch List.
- ♦ Second in Penn State history in three-point field goals made (246).
- ♦ Sixth in Big Ten history in three-point field goals made (246).
- ♦ 13th in program history in scoring (1,511).
- ♦ Third-fastest player in school history to reach 1,500 points (Kelly Mazzante and Susan Robinson).
- ♦ Became the third player in school history with 200 career three-pointers with a pair of triples against Lafayette (11/18).
- ♦ 2013 first team preseason All-Big Ten (coaches & media).
- ♦ Selected as the Radisson Chatsworth Thanksgiving Tournament MVP after averaging 25.5 points, 3.0 rebounds, 3.0 assists and 2.5 steals in two games.
- ♦ Broke the Bryce Jordan Center scoring record (men or women) with 39 points, including a BJC record-tying seven three-pointers, in the win over Georgetown (12/9).

### CAREER HIGHS

Points	39 vs. Georgetown (12/9/12)
Rebs.	10 vs. Ohio State (2/20/12)
Assists	8 vs. Minnesota (2/26/12)
Steals	6 vs. Georgetown (12/9/12)
Blocks	4 vs. South Dakota St. (12/16/12)
Minutes	40 (3x)
	last vs. Connecticut (3/25/12)
FGM	11 vs. Georgetown (12/9/12)
FGA	22 vs. Nebraska (12/30/11)
FG%	.778 (7-9) at Virginia Tech (12/12/12)
3FGM	7 (3x)
	last vs. Georgetown (12/9/12)
3FGA	13 (3x)
	last vs. Georgetown (12/9/12)
3PT %	1.000 (4-4) at Bucknell (12/21/11)
FTM	11 at LSU (3/20/12)
	11 vs. Washington State (11/11/11)
FTA	13 vs. Washington State (11/11/11)
FT %	1.000 (41x)
	last at Michigan State (7-7) (1/3/13)
Career Double-Doubles	1
Career 20-point games	39
Career 30-point games	3

### 2012-13 Season Notes:

- ♦ Eclipsed the 1,500-point plateau for her career in her 82nd career game with 19 tallies with two rebounds, two assists and three steals in the win over Nebraska (1/13).
- ♦ Knocked down five of her seven shots from beyond the arc en route to 24 points to compliment four assists, five steals and two blocks in the Big Ten opener against Northwestern (1/3).
- ♦ Collected 21 points via a 7-for-11 shooting effort, including a 5-for-8 mark from three-point range, on the way to 21 points with eight rebounds and three assists in the win over NJIT (12/23).
- ♦ Had the best shooting performance of her career, going 7-for-9 en route to 17 points with four rebounds and two assists at Virginia Tech (12/12).
- ♦ Recorded a BJC record 39 points via a 7-for-13 shooting night from three-point range and a career-best six steals in the win over Georgetown (12/9).
- ♦ Drained six of her nine three-point attempts and finished with a game-best 24 points with six rebounds, four assists and three steals in the win over FDU (12/2).
- ♦ Connected on four three-pointers en route to 20 points, five rebounds and three assists on her 21st birthday at Miami (11/29).
- ♦ Notched 23 points, three rebounds, three assists and pair of steals in the win at Cal State Northridge (11/24).
- ♦ Scored 23 of her game-high 28 points in the second half and added four rebounds, three assists and three steals in the win over Detroit (11/23).
- ♦ Tallied 18 points to go along with four rebounds and a steal at #16/13 Texas A&M (11/14).
- ♦ Posted her 32nd career 20-point game with a team-best 25 points on 9-of-17 shooting in the season-opening win over Howard (11/11). Also had three assists and three steals in the win.





# #40 Marisa Wolfe

Sr. \* F \* 6-2 \* Ford City, Pa./Ford City

## 2012-13 Highlights:

- ♦ Team captain for the second-straight season.
- ♦ Currently sidelined with concussion-like symptoms.

## CAREER HIGHS

Points.....	13 vs. Michigan (2/18/10)
Rebs. ....	7 vs. Wagner (12/18/11)
.....	7 vs. Green Bay (11/26/10)
Assists .....	1 (19x)
.....	last at Michigan (1/26/12)
Steals.....	3 vs. North Carolina (11/30/11)
.....	3 at Northwestern (1/3/10)
Blocks .....	2 (5x)
.....	last vs. UMES (12/11/11)
Minutes .....	30 vs. Green Bay (11/26/10)
FGM.....	5 vs. Michigan (2/18/10)
.....	5 at Northwestern (1/3/10)
FGA .....	8 vs. North Carolina (11/30/11)
FG% .....	1.000 (10x)
.....	last vs. UTEP (1-1) (3/18/12)
3FGM.....	2 vs. Illinois (1/24/10)
3FGA .....	3 vs. Illinois (1/24/10)
3PT%....	1.000 (1-1) vs. Ohio State (3/6/11)
FTM .....	4 vs. South Carolina (11/21/10)
FTA .....	4 (3x)
.....	last vs. Green Bay (11/26/10)
FT% .....	1.000 (18x)
.....	last vs. UTEP (1-1) (3/18/12)
Career Double-Doubles .....	n/a
Career 20-point games .....	n/a

## GAME-BY-GAME

	P	R	A
HOWARD	DNP		
Texas A&M	DNP		
LAFAYETTE	DNP		
Detroit	DNP		
CS-Northridge	DNP		
Miami (Fla.)	DNP		
FAIR. DICKINSON	DNP		
Connecticut	DNP		
GEORGETOWN	DNP		
Virginia Tech	DNP		
SOUTH DAKOTA ST.	DNP		
NJIT	DNP		
NORTHWESTERN	DNP		
Michigan State	DNP		
NEBRASKA	DNP		
WISCONSIN	DNP		
Michigan			
MINNESOTA			
Ohio State			
Wisconsin			
PURDUE			
Indiana			
MICHIGAN ST.			
Iowa			
ILLINOIS			
MICHIGAN			
Minnesota			
Nebraska			





# #44 Tori Waldner

So. \* F \* 6-5 \* Milton, Ga./Milton

## 2012-13 Highlights:

- Established a career-high with seven points to go along with five rebounds, two blocks and a steal in the win over Fairleigh Dickinson (12/2).

## 2012-13 Season Notes:

- Notched two points, four rebounds, one block and one steal in the win over Wisconsin (1/17).
- Recorded three points, five rebounds and two blocks at Michigan State (1/6).
- Accounted for two points, five rebounds, two assists and two steals in the win over NJIT (12/23).
- Tied her career high with three blocks against South Dakota State (12/16).
- Had two points and four rebounds in the win over Georgetown (12/9).
- Pulled down six rebounds and had two points against Detroit (11/23).
- Tallied six points with four rebounds and two assists in the win over Lafayette (11/18).
- Chipped in two points and three rebounds in the win over #16/13 Texas A&M (11/14).
- Notched six points, all of which came from the free throw line, and six rebounds in just 12 minutes in the season-opening win over Howard (11/11).

## CAREER HIGHS

Points	7 vs. Fairleigh Dickinson (12/2/12)
Rebs	10 vs. Wagner (12/18/11)
Assists	4 vs. Indiana (2/2/12)
Steals	2 (3x) .....last vs. NJIT (12/23/12)
Blocks	3 vs. South Dakota St. (12/16/12) .....3 vs. Wagner (12/18/11)
Minutes	21 vs. UMES (12/11/11)
FGM	3 (5x) .....last vs. Fairleigh Dickinson (12/2/12)
FGA	10 vs. Lafayette (11/18/12)
FG%	1.000 (5x) .....last at Michigan State (1-1) (1/6/13)
3FGM	n/a
3FGA	1 vs. Wisconsin (1/17/13) .....1 at LSU (3/20/12)
3PT %	n/a
FTM	6 vs. Howard (11/11/12)
FTA	6 vs. Howard (11/11/12)
FT %	1.000 (3x) .....last vs. Howard (6-6) (11/11/12)
Career Double-Doubles	n/a
Career 20-point games	n/a

## GAME-BY-GAME

	P	R	B
HOWARD	6	6	1
Texas A&M	2	3	0
LAFAYETTE	6	4	0
Detroit	2	6	1
CS-Northridge	DNP		
Miami (Fla.)	0	0	0
FAIR. DICKINSON	7	5	2
Connecticut	DNP		
GEORGETOWN	2	4	0
Virginia Tech	0	4	0
SOUTH DAKOTA ST.	2	1	3
NJIT	2	5	1
NORTHWESTERN	0	0	2
Michigan State	3	5	2
NEBRASKA	0	1	0
WISCONSIN	2	4	1
Michigan			
MINNESOTA			
Ohio State			
Wisconsin			
PURDUE			
Indiana			
MICHIGAN ST.			
Iowa			
ILLINOIS			
MICHIGAN			
Minnesota			
Nebraska			





# #54 Nikki Greene

Sr. \* F/C \* 6-4 \* Diboll, Texas/Diboll

## 2012-13 Season Highlights:

- Second in school history in blocked shots (193).
- Sixth in Penn State history in rebounding (854).
- Is just the third player in school history with multiple 20-rebound games in their career (Mary Donovan & Mag Strittmatter).

## CAREER HIGHS

Points	25 vs. Ohio State (2/20/12)
Rebs.	20 at CS-Northridge (11/24/12)
	20 vs. Indiana (1/23/11)
Assists	3 vs. Detroit (11/23/12)
	3 vs. Michigan (1/12/12)
Steals	4 (3x)
	last vs. Nebraska (12/30/11)
Blocks	7 vs. Purdue (1/28/10)
Minutes	37 at Boston College (12/2/10)
FGM	9 (3x)
	last vs. Wisconsin (1/17/13)
FGA	17 vs. Ohio State (2/20/12)
	17 at Dayton (11/12/10)
FG%	1.000 (4x)
	last vs. Northwestern (2-2) (1/3/13)
3FGM	n/a
3FGA	n/a
3PT%	n/a
FTM	13 at CS-Northridge (11/24/12)
FTA	14 at CS-Northridge (11/24/12)
	14 vs. Ohio State (2/20/12)
FT%	1.000 (16x)
	last vs. NJIT (2-2) (12/23/12)
Career Double-Doubles	12
Career 20-point games	5

## GAME-BY-GAME

	P	R	B
HOWARD	3	4	0
Texas A&M	8	7	0
LAFAYETTE	6	6	3
Detroit	6	7	2
CS-Northridge	21	20	2
Miami (Fla.)	6	7	0
FAIR. DICKINSON	10	6	2
Connecticut	2	7	0
GEORGETOWN	5	13	2
Virginia Tech	2	4	1
SOUTH DAKOTA ST.	17	6	0
NJIT	12	6	1
NORTHWESTERN	4	4	0
Michigan State	14	10	1
NEBRASKA	9	10	1
WISCONSIN	23	14	2
Michigan			
MINNESOTA			
Ohio State			
Wisconsin			
PURDUE			
Indiana			
MICHIGAN ST.			
Iowa			
ILLINOIS			
MICHIGAN			
Minnesota			
Nebraska			

## 2012-13 Season Notes:

- Posted her third double-double of the year with a season-best 23 points to go along with 14 points and two blocks versus Wisconsin (1/17).
- Just missed out on a double-double with nine points and 10 rebounds against Nebraska (1/13).
- Earned a double-double with 14 points, including 10 tallies in the second half, and 10 rebounds at Michigan State (1/6).
- Registered 12 points, six rebounds, two steals and one block in the win over NJIT (12/23).
- Accumulated a game-best 17 points on 7-of-11 shooting with six rebounds and a steal against South Dakota State (12/16).
- Snagged 13 rebounds in the win over Georgetown (12/9).
- Accounted for 10 points, six rebounds, two blocks and a steal in the win over Fairleigh Dickinson (12/2).
- Posted a 20-20 for her 10th career double-double and first of the season with 21 points and 20 boards in the win at Cal State Northridge (11/24).
- Was 13-for-14 from the free throw line, including 11-for-12 in the final five minutes, against the Matadors.
- Recorded six points, six rebounds and three blocks in just 10 minutes of action against Lafayette (11/18).
- Playing in front of several friends and family members, scored all eight of her points and pulled in six of her seven rebounds in the second half at #16/13 Texas A&M (11/14).
- Had three points and four rebounds in the win over Howard (11/11).





## No. 8/8 Penn State 95, California (Pa.) 39 Exhibition Game \* Nov. 3, 2012 \* University Park, Pa.

### California (Pa.) 39

#	Player	Total		3-Ptr		Rebounds			PF	TP	A	TO	Blk	Stl	Min
		FG-FGA	FG-FGA	FT-FTA	FT-FTA	Off	Def	Tot							
**	MAHADY, Emma	4-24	2-9	0-0	5	3	8	3	10	0	7	0	1	33	
03	MICHAEL, Stephanie	3-15	3-11	2-2	2	2	4	4	11	0	6	0	2	25	
12	SEBOHM, Kate	1-5	0-1	0-0	1	1	2	3	2	2	3	1	2	32	
22	KUKOLJ, Irina	1-3	0-1	0-0	0	1	1	1	2	1	4	1	1	16	
25	ANTONENKO, Elena	0-2	0-1	0-0	1	0	1	3	0	0	2	0	1	12	
05	McKNIGHT, Chelsea	3-9	1-4	2-2	4	2	6	1	9	1	1	0	1	16	
10	GADSON, Ryah	0-6	0-0	0-0	0	0	0	2	0	0	2	0	1	15	
11	HILL, Jasmine	0-0	0-0	0-0	0	0	0	0	0	0	0	0	0	2	
34	RICHARDSON, Ayonna	0-2	0-0	0-1	1	0	1	4	0	0	1	0	0	12	
45	HINES, Ashley	1-6	0-0	3-4	5	2	7	2	5	2	1	0	3	27	
	Team				4	5	9								
	Totals	13-72	6-27	7-9	23	16	39	23	39	6	27	2	12	200	

FG % 1st Half: 7-35 20.0% 2nd half: 6-37 16.2% Game: 13-72 18.1% Deadball Rebounds 0  
3FG % 1st Half: 4-12 33.3% 2nd half: 2-15 13.3% Game: 6-27 22.2%  
FT % 1st Half: 5-7 71.4% 2nd half: 2-2 100.0% Game: 7-9 77.8%

### Penn State 95

#	Player	Total		3-Ptr		Rebounds			PF	TP	A	TO	Blk	Stl	Min
		FG-FGA	FG-FGA	FT-FTA	FT-FTA	Off	Def	Tot							
**	Bentley, Alex	5-10	1-1	5-6	2	2	4	1	16	4	2	0	3	26	
23	Edwards, Ariel	4-6	0-0	4-6	1	6	7	1	12	2	1	0	4	24	
24	Nickson, Mia	4-7	0-0	1-3	1	6	7	0	9	3	3	0	2	20	
33	Lucas, Maggie	7-11	2-3	3-3	1	4	5	1	19	4	4	0	4	31	
54	Greene, Nikki	7-10	0-0	4-6	3	8	11	3	18	0	4	2	1	21	
02	Taylor, Dara	3-4	0-0	1-1	3	4	2	7	5	4	0	3	30		
05	East, Talia	1-3	0-0	0-3	3	1	4	1	2	1	4	3	0	15	
25	Studevent, Gizelle	3-6	0-0	2-3	0	2	2	1	8	0	1	1	1	21	
44	Waldner, Tori	2-3	0-0	0-0	1	2	3	2	4	1	2	0	1	12	
	Team				2	4	6								
	Totals	36-60	3-4	20-31	15	38	53	12	95	20	25	6	17	200	

FG % 1st Half: 16-28 57.1% 2nd half: 20-32 62.5% Game: 36-60 60.0% Deadball Rebounds 4  
3FG % 1st Half: 3-4 75.0% 2nd half: 0-0 0.0% Game: 3-4 75.0%  
FT % 1st Half: 13-17 76.5% 2nd half: 7-14 50.0% Game: 20-31 64.5%

Officials: Michael McConnell, Kathy Ridilla, Kevin Pethel  
Technical fouls: California (Pa.)-None. Penn State-None.  
Attendance: 475

Score by periods	1st	2nd	Total
California (Pa.)	23	16	39
Penn State	48	47	95

Points	In	Off	2nd	Fast	Bench
CAL	10	13	12	0	14
PSU	52	41	12	17	21

Last FG - CAL 2nd-00:33, PSU 2nd-00:49.  
Largest lead - CAL by 1 1st-19:41, PSU by 59 2nd-00:49.

Score tied - 1 time.  
Lead changed - 2 times.

### Notable

- Junior guard **Maggie Lucas** led the Lady Lions' offensive with 19 points on 7-for-11 shooting.
- Nikki Greene** notched a double-double with 18 points and 11 rebounds.
- The Vulcans are led by former Lady Lion Jess Strom, who is in her first season as head coach after serving in the interim role last season.

## No. 9/9 Penn State 63, No. 16/13 Texas A&M 58 Game #2 \* Nov. 14, 2012 \* College Station, Texas

### Penn State 63 • 2-0

#	Player	Total		3-Ptr		Rebounds			PF	TP	A	TO	Blk	Stl	Min
		FG-FGA	FG-FGA	FT-FTA	FT-FTA	Off	Def	Tot							
**	Bentley, Alex	7-15	2-3	5-6	0	2	2	4	21	4	0	0	0	17	
23	Edwards, Ariel	0-3	0-0	0-0	0	4	4	1	0	0	4	1	0	17	
24	Nickson, Mia	2-10	0-0	2-6	5	6	11	2	6	2	2	2	1	34	
33	Lucas, Maggie	7-16	1-6	3-3	0	4	4	2	18	1	4	0	1	38	
54	Greene, Nikki	4-6	0-0	0-0	2	5	7	4	8	0	1	0	1	20	
01	Agee, Candice	0-2	0-0	0-0	1	2	3	1	0	0	0	1	0	11	
02	Taylor, Dara	4-8	0-1	0-0	0	3	3	4	8	3	5	0	5	29	
05	East, Talia	0-2	0-0	0-0	0	1	1	3	0	0	2	0	0	9	
25	Studevent, Gizelle	0-1	0-0	0-0	0	0	0	0	0	0	0	0	0	10	
44	Waldner, Tori	1-2	0-0	0-0	3	0	3	0	2	0	1	0	0	6	
	Team				4	0	4								
	Totals	25-65	3-10	10-15	15	27	42	21	63	10	19	4	12	200	

FG % 1st Half: 11-29 37.9% 2nd half: 14-36 38.9% Game: 25-65 38.5% Deadball Rebounds 1  
3FG % 1st Half: 2-5 40.0% 2nd half: 1-5 20.0% Game: 3-10 30.0%  
FT % 1st Half: 4-6 66.7% 2nd half: 6-9 66.7% Game: 10-15 66.7%

### Texas A&M 58 • 0-2

#	Player	Total		3-Ptr		Rebounds			PF	TP	A	TO	Blk	Stl	Min
		FG-FGA	FG-FGA	FT-FTA	FT-FTA	Off	Def	Tot							
**	Kelsey Bone	7-11	0-0	2-4	6	9	15	2	16	3	5	0	1	36	
05	Kristi Bellock	3-6	0-0	0-0	3	7	10	3	6	2	4	0	0	18	
10	Alexia Standish	1-5	0-1	3-3	0	4	4	4	5	2	4	0	0	28	
15	Tori Scott	0-2	0-1	1-2	1	0	1	1	1	0	2	0	0	15	
33	Courtney Walker	3-14	0-0	0-1	3	2	5	3	6	1	2	0	4	39	
34	Courtney Williams	1-7	0-0	1-1	1	1	2	1	3	0	0	0	1	15	
20	Peyton Little	2-7	2-5	0-0	0	1	1	0	6	0	1	0	0	13	
24	Jordan Jones	1-3	1-1	0-0	1	0	1	0	3	0	2	0	0	5	
32	Adrienne Pratcher	1-4	0-1	0-0	0	1	1	0	2	4	0	0	1	14	
34	Karla Gilbert	3-5	0-0	4-8	3	3	6	3	10	1	3	2	1	17	
	Team				2	5	7								
	Totals	22-64	3-9	11-19	20	29	49	17	58	13	23	2	8	200	

FG % 1st Half: 12-35 34.3% 2nd half: 10-29 34.5% Game: 22-64 34.4% Deadball Rebounds 3  
3FG % 1st Half: 2-6 33.3% 2nd half: 1-3 33.3% Game: 3-9 33.3%  
FT % 1st Half: 7-13 53.8% 2nd half: 4-6 66.7% Game: 11-19 57.9%

Officials: Bob Trammel, Tina Napier, Jesse Dickerson  
Technical fouls: Penn State-None. Texas A&M-None.  
Attendance: 475

Score by periods	1st	2nd	Total
Penn State	28	35	63
Texas A&M	33	25	58

Points	In	Off	2nd	Fast	Bench
PSU	28	16	19	16	10
TAMU	28	20	16	6	24

Last FG - PSU 2nd-00:49, TAMU 2nd-06:24.  
Largest lead - PSU by 5 1st-09:44, TAMU by 7 2nd-18:46.

Score tied - 6 times.  
Lead changed - 7 times.

### Notable

- The Lady Lions earn their first victory over a ranked non-conference opponent on the road since defeating #19 Texas on December 21, 2001.
- The win snapped Texas A&M's 58-game non-conference home court winning streak, dating back to Dec. 30, 2003.
- With seven rebounds, **Nikki Greene** moves into 11th place all-time on PSU's rebounding chart (734).

## No. 8/8 Penn State 72, Howard 61 Game #1 \* Nov. 11, 2012 \* University Park, Pa.

### Howard 61 • 0-2

#	Player	Total		3-Ptr		Rebounds			PF	TP	A	TO	Blk	Stl	Min
		FG-FGA	FG-FGA	FT-FTA	FT-FTA	Off	Def	Tot							
**	CURLY-PAYNE, Cheyenn	2-8	0-3	0-2	0	2	2	4	4	4	3	3	0	35	
10	GORHAM, Jerrelle	2-10	0-2	1-2	0	6	6	4	5	4	10	1	4	36	
13	DOYLE, Saadia	9-21	1-1	17-23	1	5	6	2	36	1	2	0	3	39	
32	DETRVILLE, Nicole	1-2	0-0	1-2	2	0	2	5	3	0	0	0	1	21	
44	SMITH, Kara	3-6	1-1	0-0	2	2	4	3	7	0	1	0	1	22	
14	JOHNSON, Gabria	2-3	2-2	0-0	3	1	4	4	6	0	1	0	0	13	
24	BAILEY, Imani	0-2	0-1	0-0	0	0	0	0	0	2	1	1	2	14	
34	DETRVILLE, Portia	0-0	0-0	0-0	0	2	2	1	0	0	1	0	0	20	
	Team				2	3	5								
	Totals	19-52	4-10	19-29	10	21	31	23	61	10	19	2	14	200	

FG % 1st Half: 11-26 42.3% 2nd half: 8-26 30.8% Game: 19-52 36.5% Deadball Rebounds 5  
3FG % 1st Half: 3-6 50.0% 2nd half: 1-4 25.0% Game: 4-10 40.0%  
FT % 1st Half: 6-7 85.7% 2nd half: 13-22 59.1% Game: 19-29 65.5%

### Penn State 72 • 1-0

#	Player	Total		3-Ptr		Rebounds			PF	TP	A	TO	Blk	Stl	Min
		FG-FGA	FG-FGA	FT-FTA	FT-FTA	Off	Def	Tot							
**	Bentley, Alex	6-14	0-3	2-2	2	4	6	3	14	4	3	0	7	32	
23	Edwards, Ariel	2-6	0-2	1-2	1	4	5	5	5	1	0	2	0	23	
24	Nickson, Mia	6-10	0-0	2-2	5	5	10	1	14	0	4	1	0	30	
33	Lucas, Maggie	9-17	4-8	3-4	0	2	2	2	25	3	2	0	3	35	
54	Greene, Nikki	0-0	0-0	3-6	1	3	4	4	3	0	2	0	1	17	
01	Agee, Candice	0-3	0-0	0-1	0	0	0	2	0	0	1	1	0	7	
02	Taylor, Dara	2-4	0-1	1-2	1	3	4	4	5	3	3	0	0	21	
05	East, Talia	0-1	0-0	0-1	0	2	2	2	0	1	3	0	0	9	
25	Studevent, Gizelle	0-1	0-0	0-0	1	0	1	1	0	0	1	1	1	14	
44	Waldner, Tori	0-1	0-0	6-6	2	4	6	2	6	0	1	1	1	12	
	Team				2	0	2								
	Totals	25-57	4-14	18-26	15	27	42	26	72	12	20	6	12	200	

FG % 1st Half: 14-29 48.3% 2nd half: 11-28 39.3% Game: 25-57 43.9% Deadball Rebounds 4  
3FG % 1st Half: 2-8 25.0% 2nd half: 2-6 33.3% Game: 4-14 28.6%  
FT % 1st Half: 9-15 60.0% 2nd half: 9-11 81.8% Game: 18-26 69.2%

Officials: Dennis Brooks, Frank Steratore, Bruce Morris  
Technical fouls: Howard-None. Penn State-None.  
Attendance: 3655

Score by periods	1st	2nd	Total
Howard	31	30	61
Penn State	39	33	72

Points	In	Off	2nd	Fast	Bench
HOW	16	24	9	15	21
PSU	26	24	15	21	11

Last FG - HOW 2nd-00:24, PSU 2nd-01:17.  
Largest lead - HOW by 6 1st-17:02, PSU by 19 2nd-04:18.

Score tied - 4 times.  
Lead changed - 4 times.

### Notable

- Penn State wins its seventh consecutive season opener and sixth

## No. 6/7 Penn State 80, Detroit 72 Game #4 \* Nov. 23, 2012 \* Northridge, Calif.

### Detroit 72 • 2-2

#	Player	Total			3-Ptr			Rebounds			PF	TP	A	TO	Blk	Stl	Min
		FG-FGA	FG-FGA	FT-FTA	FG-FGA	FG-FGA	FT-FTA	Off	Def	Tot							
20	HATTER, Megan	f	1-4	0-2	0-0	0	4	1	5	1	2	2	2	0	1	21	
24	BROWN, Shareta	f	3-7	0-0	10-12	6	9	15	3	16	0	2	0	1	34		
25	SHAYOK, Yar	f	2-5	1-1	2-2	1	9	10	2	7	2	2	0	0	30		
11	REYNOLDS, Rosanna	g	4-9	1-2	1-2	0	1	1	5	10	6	7	0	1	39		
21	MATTESON, Audrey	g	7-16	4-11	2-2	0	5	5	3	20	4	7	0	2	40		
12	FAMBRO, Demeisha	g	6-13	2-3	3-4	1	5	6	3	17	2	5	0	0	35		
33	LAVITA-STEPHENS, De	g	0-0	0-0	0-0	0	0	0	0	0	0	0	0	0	1		
	Team					4	0	4	0								
	Totals		23-54	8-19	18-22	16	30	46	17	72	16	25	0	5	200		

FG % 1st Half: 12-28 42.9% 2nd half: 11-26 42.3% Game: 23-54 42.6% Deadball Rebounds  
 3FG % 1st Half: 4-9 44.4% 2nd half: 4-10 40.0% Game: 8-19 42.1%  
 FT % 1st Half: 10-10 100.0 2nd half: 8-12 66.7% Game: 18-22 81.8%

### Penn State 80 • 4-0

#	Player	Total			3-Ptr			Rebounds			PF	TP	A	TO	Blk	Stl	Min
		FG-FGA	FG-FGA	FT-FTA	FG-FGA	FG-FGA	FT-FTA	Off	Def	Tot							
24	Nickson, Mia	f	2-7	0-0	2-2	3	4	4	3	6	2	1	0	1	21		
54	Greene, Nikki	f	2-7	0-0	2-2	3	4	7	3	6	3	2	2	1	28		
20	Bentley, Alex	g	2-4	0-0	0-0	1	2	3	0	4	6	0	0	4	35		
23	Edwards, Ariel	g	11-16	1-2	1-1	1	1	2	2	24	1	0	0	0	25		
33	Lucas, Maggie	g	8-14	3-4	9-10	0	4	4	3	28	3	5	1	3	34		
01	Agee, Candice	g	1-3	0-0	0-0	1	2	3	2	1	0	0	0	0	11		
02	Taylor, Dara	g	1-8	0-5	2-3	0	0	0	3	4	2	0	0	3	14		
05	East, Talia	g	1-2	0-0	0-0	0	0	0	2	1	2	0	0	1	8		
25	Studevent, Gizelle	g	1-9	0-1	0-0	0	0	0	1	2	3	0	0	0	13		
44	Waldner, Tori	g	1-2	0-0	0-0	3	3	6	0	2	0	2	0	1	11		
	Team					0	0	0	0								
	Totals		30-72	4-12	16-18	14	17	31	18	80	23	10	4	14	200		

FG % 1st Half: 17-40 42.5% 2nd half: 13-32 40.6% Game: 30-72 41.7% Deadball Rebounds  
 3FG % 1st Half: 2-7 28.6% 2nd half: 2-5 40.0% Game: 4-12 33.3%  
 FT % 1st Half: 6-6 100.0 2nd half: 10-12 83.3% Game: 16-18 88.9%

Officials: Melissa Holt, Norma Leibfried, Janetta Graham  
 Technical fouls: Detroit-None. Penn State-None.  
 Attendance: 479  
 Game 1 of Radisson Hotel Chatsworth Thanksgiving Basketball Classic 2012

Score by periods	1st	2nd	Total
Detroit	38	34	72
Penn State	42	38	80

Points	In	Off	2nd	Fast	Bench
DETROIT	28	9	16	7	17
PSU	32	25	15	17	12

Last FG - DETROIT 2nd-01:14, PSU 2nd-01:31.  
 Largest lead - DETROIT by 5 1st-05:13, PSU by 14 2nd-03:39.

Score tied - 4 times.  
 Lead changed - 4 times.

### Notable

- Junior Ariel Edwards had a career-high 24 points, surpassing her previous personal best of 17 points set against Iowa on Jan. 22, 2012.
- With two blocks, senior center Nikki Greene moved into a tie for fourth place on Penn State's career rejections list with Andrea Garner (185; 1997-00).
- Penn State starts 4-0 for the second time under Coquese Washington.

## Miami 69, No. 6/7 Penn State 65 Game #6 \* Nov. 29, 2012 \* Coral Gables, Fla.

### Penn State 65 • 5-1

#	Player	Total			3-Ptr			Rebounds			PF	TP	A	TO	Blk	Stl	Min
		FG-FGA	FG-FGA	FT-FTA	FG-FGA	FG-FGA	FT-FTA	Off	Def	Tot							
23	Edwards, Ariel	f	1-3	1-1	0-0	0	4	4	0	3	0	3	0	1	15		
24	Nickson, Mia	f	3-10	0-0	2-4	2	2	4	3	8	1	1	1	0	32		
54	Greene, Nikki	c	3-9	0-0	0-0	2	5	7	4	6	0	4	0	0	20		
20	Bentley, Alex	g	6-13	0-3	2-3	0	2	2	4	14	2	5	0	4	26		
33	Lucas, Maggie	g	7-13	4-6	2-2	1	4	5	2	20	3	4	0	0	40-		
01	Agee, Candice	g	1-1	0-0	0-0	0	2	2	1	2	1	0	1	0	3		
02	Taylor, Dara	g	3-11	0-1	0-0	2	4	6	0	6	3	6	0	2	33		
05	East, Talia	g	0-1	0-0	2-2	0	3	3	0	2	0	3	0	0	7		
25	Studevent, Gizelle	g	2-2	0-0	0-0	0	1	1	0	4	1	0	0	1	8		
44	Waldner, Tori	g	0-0	0-0	0-0	0	0	0	1	0	0	0	0	0	3		
	Team					10	1	11	0	2							
	Totals		26-63	5-11	8-11	17	28	45	15	65	11	29	2	8	200		

FG % 1st Half: 11-25 44.0% 2nd half: 15-38 39.5% Game: 26-63 41.3% Deadball Rebounds  
 3FG % 1st Half: 3-5 60.0% 2nd half: 2-6 33.3% Game: 5-11 45.5%  
 FT % 1st Half: 4-4 100.0 2nd half: 4-7 57.1% Game: 8-11 72.7%

### Miami 69 • 5-1

#	Player	Total			3-Ptr			Rebounds			PF	TP	A	TO	Blk	Stl	Min
		FG-FGA	FG-FGA	FT-FTA	FG-FGA	FG-FGA	FT-FTA	Off	Def	Tot							
32	Morgan Stroman	f	6-8	0-0	3-4	1	3	4	3	15	0	6	1	5	29		
50	Maria Brown	f	0-4	0-0	2-2	3	3	6	3	2	1	1	1	1	27		
03	Stefanie Yderstrom	g	6-15	1-3	0-0	1	0	1	2	13	7	1	0	4	34		
10	Michelle Woods	g	3-8	0-2	5-6	0	5	5	1	11	1	5	2	4	32		
33	Suriya McGuire	g	4-10	0-0	0-0	0	1	1	1	8	2	2	1	2	23		
01	Caprice Dennis	g	2-4	0-1	0-0	0	0	0	1	4	0	0	0	1	11		
12	Krystal Saunders	g	3-7	1-5	1-1	1	1	2	1	8	1	0	0	1	21		
20	Keyona Hayes	g	2-5	0-0	0-0	0	6	6	1	4	0	3	1	1	15		
25	Jessica Capers	g	1-1	0-0	0-0	0	1	1	0	2	0	0	0	0	1		
40	Shawnice Wilson	g	1-2	0-0	0-0	1	1	2	1	2	0	0	0	0	7		
	Team					3	1	4	1								
	Totals		28-64	2-11	11-13	10	22	32	14	69	12	21	6	19	200		

FG % 1st Half: 15-36 41.7% 2nd half: 13-28 46.4% Game: 28-64 43.8% Deadball Rebounds  
 3FG % 1st Half: 1-7 14.3% 2nd half: 1-4 25.0% Game: 2-11 18.2%  
 FT % 1st Half: 5-6 83.3% 2nd half: 6-7 85.7% Game: 11-13 84.6%

Officials: Denise Brooks, Susan Blauch, Karen Preato  
 Technical fouls: Penn State-None. Miami-None.  
 Attendance: 1286  
 2012 ACC/Big Ten Challenge

Score by periods	1st	2nd	Total
Penn State	29	36	65
Miami	36	33	69

Points	In	Off	2nd	Fast	Bench
PSU	26	19	12	6	14
UM	44	23	13	12	20

Last FG - PSU 2nd-00:23, UM 2nd-00:14.  
 Largest lead - PSU by 4 2nd-08:21, UM by 10 1st-10:39.

Score tied - 6 times.  
 Lead changed - 2 times.

### Notable

- Penn State is now 2-4 in ACC/Big Ten Challenge games and 0-3 in Challenge road games.
- Junior guard Maggie Lucas moved into a tie for 17th place on Penn State's career scoring list with Cheryl Ellison (1980-83) at 1,320 career points.
- Senior center Nikki Greene moved into ninth place on Penn State's career rebounding list, passing Mary Donovan (1978-81) with 774 career caroms.

## No. 6/7 Penn State 85, Cal State Northridge 73 Game #5 \* Nov. 24, 2012 \* Northridge, Calif.

### Penn State 85 • 5-0

#	Player	Total			3-Ptr			Rebounds			PF	TP	A	TO	Blk	Stl	Min
		FG-FGA	FG-FGA	FT-FTA	FG-FGA	FG-FGA	FT-FTA	Off	Def	Tot							
24	Nickson, Mia	f	4-7	0-0	0-0	1	2	3	5	8	0	3	0	1	20		
54	Greene, Nikki	f	4-9	0-0	13-14	10	10	20	3	21	0	1	2	1	24		
20	Bentley, Alex	g	8-18	2-4	1-2	0	3	3	3	19	8	2	1	3	33		
23	Edwards, Ariel	g	1-6	0-0	2-2	0	2	2	1	4	2	2	0	0	32		
33	Lucas, Maggie	g	8-16	3-4	4-5	1	2	3	1	23	3	4	0	2	35		
01	Agee, Candice	g	0-0	0-0	0-0	0	0	0	0	0	0	0	0	0	3		
02	Taylor, Dara	g	1-4	0-0	0-0	1	2	3	2	2	0	3	1	2	24		
05	East, Talia	g	1-1	0-0	2-2	0	1	1	0	4	1	0	1	0	14		
25	Studevent, Gizelle	g	2-4	0-0	0-0	0	0	0	0	4	0	1	0	0	15		
	Team					3	4	7									
	Totals		29-65	5-8	22-27	16	26	42	15	85	14	16	5	9	200		

FG % 1st Half: 13-33 39.4% 2nd half: 16-32 50.0% Game: 29-65 44.6% Deadball Rebounds  
 3FG % 1st Half: 3-5 60.0% 2nd half: 2-3 66.7% Game: 5-8 62.5%  
 FT % 1st Half: 6-7 85.7% 2nd half: 16-20 80.0% Game: 22-27 81.5%

### Cal State Northridge 73 • 3-2

#	Player	Total			3-Ptr			Rebounds			PF	TP	A	TO	Blk	Stl	Min
		FG-FGA	FG-FGA	FT-FTA	FG-FGA	FG-FGA	FT-FTA	Off	Def	Tot							
23	Alama, Violet	f	5-8	0-1	1-2	2	2	4	4	11	1	1	0	0	34		
04	Mahiknecht, Camille	c	3-9	1-2	1-2	2	11	13	5	8	2	2	2	2	32		
05	Guay, Ashlee	g	6-15	0-1	3-4	2	3	5	3	15	5	0	3	3	37		
22	Friess, Randi	g	3-6	3-6	1-2	0	1	1	1	10	3	3	0	1	34		
24	Masoni, Marta	g	7-18	5-14	3-5	1	2	3	2	22	2	3	2	0	37		
00	Alexander, Breyon	g	0-0	0-0	0-0	0	0	0	0	0	0	0	0	0	3		
02	White, Haley	g	1-2	1-1	2-0	1	1	1	1	5	2	3	0	1	9		
21	Jackson, Jianni	g	1-4	0-1	0-0	2	2	4	1	2	1	0	0	1	12		
32	Walker, Felicia	g	0-0	0-0	0-0	0	0	0	1	0	0	0	1	0	2		
	Team					2	1	3									
	Totals		26-62	10-26	11-18	12	23	35	18	73	23	18	5	8	200		

FG % 1st Half: 16-31 51.6% 2nd half: 10-31 32.3% Game: 26-62 41.9% Deadball Rebounds  
 3FG % 1st Half: 5-14 35.7% 2nd half: 5-12 41.7% Game: 10-26 38.5%  
 FT % 1st Half: 4-7 57.1% 2nd half: 7-11 63.6% Game: 11-18 61.1%

Officials: Melissa Banal Hoyt, Mark Penafior, Betty Cardenas  
 Technical fouls: Penn State-TEAM. Cal State Northridge-None.

## No. 2/2 Connecticut 67, No. 10/10 Penn State 52 Game #8 \* Dec. 6, 2012 \* Storrs, Conn.

### Penn State 52 • 6-2

#	Player	Total			3-Ptr			Rebounds			PF	TP	A	TO	Blk	Stl	Min
		FG-FGA	FG-FGA	FT-FTA	FG-FGA	FG-FGA	FT-FTA	Off	Def	Tot							
24	Nickson, Mia	f	4-7	0-0	0-0	2	6	8	4	8	2	6	0	3	34		
54	Greene, Nikki	f	1-6	0-0	0-2	2	5	7	4	2	1	3	0	1	25		
02	Taylor, Dara	g	3-14	0-2	2-4	2	2	4	1	8	2	4	0	1	34		
20	Bentley, Alex	g	1-11	1-5	4-4	1	4	5	4	7	1	4	0	0	28		
33	Lucas, Maggie	g	5-12	3-6	2-2	1	3	4	5	15	1	3	0	1	39		
05	East, Talia	g	1-2	0-0	0-0	1	0	1	3	2	0	1	1	0	15		
23	Edwards, Ariel	g	5-7	0-0	0-1	2	2	4	1	10	0	2	0	1	23		
25	Studevent, Gizelle	g	0-0	0-0	0-0	0	0	0	0	0	0	0	0	0	2		
Team						4	1	5			3						
Totals			20-59	4-13	8-13	15	23	38	22	52	7	26	2	7	200		

FG % 1st Half: 9-30 30.0% 2nd half: 11-29 37.9% Game: 20-59 33.9%  
 3FG % 1st Half: 2-8 25.0% 2nd half: 2-5 40.0% Game: 4-13 30.8%  
 FT % 1st Half: 2-2 100.0% 2nd half: 6-11 54.5% Game: 8-13 61.5%

### UCONN 67 • 8-0

#	Player	Total			3-Ptr			Rebounds			PF	TP	A	TO	Blk	Stl	Min
		FG-FGA	FG-FGA	FT-FTA	FG-FGA	FG-FGA	FT-FTA	Off	Def	Tot							
23	MOSQUEDA-Lewis, K.	f	8-13	4-7	5-5	2	3	5	5	25	1	6	0	4	35		
30	STEWART, Breanna	f	1-3	0-1	5-6	3	4	7	1	7	2	0	2	0	20		
31	DOLSON, Stefanie	c	3-8	0-0	0-0	3	2	5	3	6	1	3	0	1	30		
14	HARTLEY, Bria	g	3-10	1-5	1-2	1	4	5	2	8	3	2	1	0	28		
34	FARIS, Kelly	g	2-7	0-2	1-2	1	1	2	3	5	3	1	1	5	36		
04	TUCK, Morgan	g	0-1	0-0	2-4	0	3	3	0	2	0	0	0	1	6		
03	JEFFERSON, Moriah	g	2-5	0-2	0-0	0	0	0	1	4	0	2	0	2	12		
05	DOTY, Caroline	g	0-1	0-1	0-2	0	0	0	0	0	0	2	0	0	7		
13	BANKS, Brianna	g	4-7	0-1	2-2	1	1	2	1	10	1	2	0	2	18		
41	STOKES, Kiah	g	0-1	0-0	0-0	0	1	1	0	0	0	2	1	0	8		
Team						2	5	7			2						
Totals			23-56	5-19	16-23	13	24	37	16	67	11	20	5	15	200		

FG % 1st Half: 8-21 38.1% 2nd half: 15-35 42.9% Game: 23-56 41.1%  
 3FG % 1st Half: 3-8 37.5% 2nd half: 2-11 18.2% Game: 5-19 26.3%  
 FT % 1st Half: 9-12 75.0% 2nd half: 7-11 63.6% Game: 16-23 69.6%

Officials: Barbara Jo Smith, Bryan Enterline, Jesse Dickerson  
 Technical fouls: Penn State-None. UCONN-Team.  
 Attendance: 8072

Score by periods	1st	2nd	Total
Penn State	22	30	52
UCONN	28	39	67

Points	In	Off	2nd	Fast	Bench
PSU	Paint	T/O	Chance	Break	
UCONN	28	20	12	8	12
UCONN	26	20	16	6	16

Last FG - PSU 2nd-00:27, UCONN 2nd-02:21.  
 Largest lead - PSU by 2 1st-10:46, UCONN by 21 2nd-04:51.

Score tied - 3 times.  
 Lead changed - 2 times.

### Notable

- Senior center **Nikki Greene** scored her 900th career point.
- The Lady Lions forced 20 UConn turnovers, a season-high for the Huskies. Previously, UConn had 17 turnovers against #9/10 Maryland and #16/13 Texas A&M.
- Penn State led the Huskies on two occasions for a total of 31 seconds, UConn had previously trailed for just 17 seconds in the season opener vs. College of Charleston.

## No. 11/10 Penn State 60, Virginia Tech 41 Game #10 \* Dec. 12, 2012 \* Blacksburg, Va.

### Penn State 60 • 8-2

#	Player	Total			3-Ptr			Rebounds			PF	TP	A	TO	Blk	Stl	Min
		FG-FGA	FG-FGA	FT-FTA	FG-FGA	FG-FGA	FT-FTA	Off	Def	Tot							
24	Nickson, Mia	f	2-5	0-0	6-9	5	5	10	1	10	2	0	1	1	31		
54	Greene, Nikki	f	1-6	0-0	0-0	2	2	4	2	2	0	2	1	0	18		
02	Taylor, Dara	g	6-10	3-6	0-0	0	3	3	4	15	0	3	1	1	29		
20	Bentley, Alex	g	4-13	0-4	2-2	1	2	3	2	10	4	2	0	5	32		
33	Lucas, Maggie	g	7-9	1-2	2-2	0	4	4	1	17	2	1	0	0	33		
01	Agee, Candice	g	0-1	0-0	0-0	2	4	6	1	0	0	2	1	0	11		
05	East, Talia	g	0-1	0-0	0-0	0	2	2	0	0	0	1	0	1	9		
23	Edwards, Ariel	g	2-9	0-0	0-0	1	3	4	1	4	0	3	0	0	20		
25	Studevent, Gizelle	g	1-5	0-0	0-0	0	1	1	0	2	0	1	0	0	8		
44	Waldner, Tori	g	0-1	0-0	0-0	1	3	4	1	0	0	1	0	0	9		
Team						4	4	8			1						
Totals			23-60	4-12	10-13	16	33	49	13	60	8	17	3	8	200		

FG % 1st Half: 11-32 34.4% 2nd half: 12-28 42.9% Game: 23-60 38.3%  
 3FG % 1st Half: 1-7 14.3% 2nd half: 3-5 60.0% Game: 4-12 33.3%  
 FT % 1st Half: 5-6 83.3% 2nd half: 5-7 71.4% Game: 10-13 76.9%

### Virginia Tech 41 • 4-4

#	Player	Total			3-Ptr			Rebounds			PF	TP	A	TO	Blk	Stl	Min
		FG-FGA	FG-FGA	FT-FTA	FG-FGA	FG-FGA	FT-FTA	Off	Def	Tot							
21	Alex Kiss-Rusk	f	3-14	2-4	0-0	1	2	3	3	8	0	1	3	1	37		
22	Porschia Hadley	c	1-5	0-1	0-0	1	2	3	0	2	0	1	1	1	25		
10	Lauren Evans	g	2-3	0-1	0-0	0	2	2	3	4	0	1	1	1	26		
13	Alyssa Fenyn	g	1-5	0-1	0-0	1	5	6	1	2	1	4	1	0	21		
31	Monet Tellier	g	5-14	0-1	8-9	2	3	5	1	18	2	2	0	1	38		
03	Aerial Wilson	g	0-3	0-1	2-2	1	2	3	1	2	3	4	0	1	20		
20	Nia Evans	g	0-4	0-0	0-0	0	1	1	4	0	0	1	0	1	19		
23	Larryqua Hall	g	0-0	0-0	0-0	0	0	0	0	0	0	0	0	0	1		
32	Alexis Lloyd	g	2-6	1-3	0-1	0	1	1	0	5	1	2	0	1	13		
Team						3	3	6									
Totals			14-54	3-12	10-12	9	21	30	13	41	7	16	6	7	200		

FG % 1st Half: 9-27 33.3% 2nd half: 5-27 18.5% Game: 14-54 25.9%  
 3FG % 1st Half: 1-3 33.3% 2nd half: 2-9 22.2% Game: 3-12 25.0%  
 FT % 1st Half: 2-3 66.7% 2nd half: 8-9 88.9% Game: 10-12 83.3%

Officials: Brian Enterline, Wesley Dean, Timothy Bryant  
 Technical fouls: Penn State-None. Virginia Tech-None.  
 Attendance: 3587  
 Penn State is ranked #11 in the AP and #10 in the Coaches' Poll.

Score by periods	1st	2nd	Total
Penn State	28	32	60
Virginia Tech	21	20	41

Points	In	Off	2nd	Fast	Bench
PSU	Paint	T/O	Chance	Break	
VT	16	10	8	9	5
VT	10	8	9	5	7

Last FG - PSU 2nd-01:41, VT 2nd-00:54.  
 Largest lead - PSU by 23 2nd-01:41, VT by 4 1st-17:33.

Score tied - 0 times.  
 Lead changed - 1 time.

### Notable

- Coque Washington** earned her 100th victory as a head coach, becoming the second coach in program history to accomplish the feat (Rene Portland; 606).
- Maggie Lucas** eclipsed the 1,400-point mark with her 17 points, giving her 1,415 for her career.
- Dara Taylor** matched her best scoring performance in a Penn State uniform with 15 points. Taylor connected on a career-best three shots from beyond the arc.

## No. 10/10 Penn State 97, Georgetown 74 Game #9 \* Dec. 9, 2012 \* University Park, Pa.

### Georgetown 74 • 7-3

#	Player	Total			3-Ptr			Rebounds			PF	TP	A	TO	Blk	Stl	Min
		FG-FGA	FG-FGA	FT-FTA	FG-FGA	FG-FGA	FT-FTA	Off	Def	Tot							
11	WHITE, Andrea	**	2-10	0-0	2-2	4	2	6	4	6	1	4	0	3	25		
13	WILSON, Sydney	**	4-10	0-0	3-4	2	6	8	3	11	0	1	0	0	30		
14	RODGERS, Sugar	**	8-22	3-9	5-6	3	4	7	3	24	3	3	1	1	35		
23	POWELL, Samisha	**	3-8	0-2	1-1	1	1	2	3	7	0	2	0	0	25		
42	Moore, Vanessa	**	0-1	0-0	0-0	1	0	1	1	0	0	0	0	0	22		
00	RAFIU, Ki-Ke	**	0-1	0-0	0-0	1	0	1	0	0	0	0	0	0	1		
21	JACKSON, Jasmine	**	3-12	1-3	3-5	1	0	1	0	12	0	2	0	2	17		
22	BATTLE, Logan	**	2-4	0-0	3-5	1	2	3	1	7	0	1	0	2	13		
33	HORNE, Brittany	**	0-4	0-2	3-4	2	1	3	2	3	1	4	1	1	22		
35	VITALIS, Dominique	**	1-1	0-0	4-4	0	1	1	1	6	0	0	0	1	10		
Team						2	3	5									
Totals			23-73	4-16	24-31	18	20	38	21	74	8	17	2	13	200		

FG % 1st Half: 9-34 26.5% 2nd half: 14-39 35.9% Game: 23-73 31.5%  
 3FG % 1st Half: 3-11 27.3% 2nd half: 1-5 20.0% Game: 4-16 25.0%  
 FT % 1st Half: 4-5 80.0% 2nd half: 20-26 76.9% Game: 24-31 77.4%

### Penn State 97 • 7-2

#	Player	Total			3-Ptr			Rebounds			PF	TP	A	TO	Blk	Stl	Min
		FG-FGA	FG-FGA	FT-FTA	FG-FGA	FG-FGA	FT-FTA	Off	Def	Tot							
02	Taylor, Dara	**	2-4	0-0	3-4	1	4	5	3	7	5	6	0	2	27		
20	Bentley, Alex	**	8-14	0-0	7-7	2	3	5	2	23	4	5	0	2	34		
24	Nickson, Mia	**	1-2														

## No. 11/10 Penn State 82, NJIT 37

### Game #12 \* Dec. 23, 2012 \* University Park, Pa.

#### NJIT 37 • 6-7

#	Player	Total		3-Ptr		Rebounds			PF	TP	A	TO	Blk	Stl	Min
		FG	FGA	FG	FGA	Off	Def	Tot							
04	Sarah Olson	1-5	1-5	0-0	1	0	1	0	3	0	3	0	0	0	23
50	Uju Nwankwo	f	1-3	0-0	5-7	3	5	8	5	7	1	5	3	0	31
05	Rayven Johnson	g	2-16	0-1	0-1	1	2	3	2	4	0	0	1	1	36
10	Melanie Griffin	g	3-8	1-2	3-3	0	2	2	4	10	2	3	0	1	30
12	Kimberly Dweck	g	3-4	0-0	0-0	0	1	1	2	6	0	3	0	0	16
02	Kim Tullis	g	0-1	0-1	0-0	0	2	2	0	0	1	0	0	0	6
03	Alyssa Albanese	g	1-2	0-0	0-0	0	3	3	1	2	2	2	0	0	22
11	Nicole Maticka	g	2-3	0-0	0-0	0	0	0	4	0	2	3	0	0	15
13	Denisa Domiterova	g	0-0	0-0	0-0	0	0	0	0	0	1	0	0	0	2
14	Martina Matejckikova	g	0-3	0-2	1-2	0	5	2	1	0	3	0	0	0	14
15	Jelena Zoric	g	0-0	0-0	0-0	0	0	0	0	0	0	0	0	0	2
22	Nyasia Davis	g	0-1	0-0	0-0	0	0	0	0	0	2	0	0	0	3
Team															
Totals			13-47	2-12	9-13	7	21	28	16	37	6	24	7	2	200
FG % 1st Half:		4-23	17.4%	2nd half:	9-24	37.5%	Game:		13-47	27.7%	Deadball				Rebounds
3FG % 1st Half:		1-7	14.3%	2nd half:	1-5	20.0%	Game:		2-12	16.7%	Rebounds				4
FT % 1st Half:		0-1	0.0%	2nd half:	9-12	75.0%	Game:		9-13	69.2%	Rebounds				0,1

#### Penn State 82 • 10-2

#	Player	Total		3-Ptr		Rebounds			PF	TP	A	TO	Blk	Stl	Min
		FG	FGA	FG	FGA	Off	Def	Tot							
24	Nickson, Mia	f	1-3	0-0	2-2	1	0	1	2	4	2	2	0	1	18
54	Greene, Nikki	c	5-9	0-0	2-2	3	3	6	3	12	0	2	1	2	19
02	Taylor, Dara	g	1-2	1-1	3-4	0	2	2	4	6	2	0	0	0	24
20	Bentley, Alex	g	3-9	0-0	4-5	0	5	0	10	6	0	0	8	24	
33	Lucas, Maggie	g	7-11	5-8	2-2	2	6	8	0	21	3	1	0	1	26
01	Agee, Candice	g	3-8	0-0	2-2	0	2	2	2	8	0	0	0	2	12
05	East, Talia	g	1-4	0-0	1-2	2	4	6	2	3	0	2	0	1	14
23	Edwards, Ariel	g	3-6	1-1	3-4	2	2	4	3	10	0	0	1	0	27
25	Studevent, Gizelle	g	3-5	0-0	0-0	0	2	2	0	6	1	0	0	0	19
44	Waldner, Tori	g	1-4	0-0	0-0	0	5	5	2	2	2	1	1	2	17
Team															
Totals			28-61	7-10	19-24	11	31	42	18	82	22	11	3	17	200
FG % 1st Half:		16-33	48.5%	2nd half:	12-28	42.9%	Game:		28-61	45.9%	Deadball				Rebounds
3FG % 1st Half:		4-6	66.7%	2nd half:	3-4	75.0%	Game:		7-10	70.0%	Rebounds				5
FT % 1st Half:		8-10	80.0%	2nd half:	11-14	78.6%	Game:		19-24	79.2%	Rebounds				5

Officials: Denise Brooks, Michael McConnell, Shannon Feck  
 Technical fouls: NJIT-None, Penn State-None.  
 Attendance: 7852

Score by periods	1st	2nd	Total
NJIT	9	28	37
Penn State	44	38	82

Last FG - NJIT 2nd-00:28, PSU 2nd-02:13.  
 Largest lead - NJIT None, PSU by 49 2nd-02:13.

Score tied - 0 times.  
 Lead changed - 0 times.

#### Notable

- Penn State held NJIT to nine first half points, the fewest allowed by the Lady Lions in a half since giving up seven to Rider back on Nov. 14, 2010.
- With 21 points, **Maggie Lucas** moved into 15th place on Penn State's career scoring chart (1,445).
- Lucas passed Lisa Shepherd for second place all-time in three-pointers made (234).
- **Nikki Greene's** block moved her into a tie for third on Penn State's all-time blocks chart (189).

## No. 9/9 Penn State 76, Michigan State 55

### Game #14 \* Jan. 6, 2013 \* East Lansing, Mich.

#### Penn State 76 • 12-2, 2-0

#	Player	Total		3-Ptr		Rebounds			PF	TP	A	TO	Blk	Stl	Min
		FG	FGA	FG	FGA	Off	Def	Tot							
02	Taylor, Dara	*	7-10	3-4	1-1	0	3	3	0	18	4	2	0	3	34
20	Bentley, Alex	*	6-14	1-2	0-2	0	3	3	2	13	0	2	0	1	31
24	Nickson, Mia	*	3-7	0-0	0-0	1	5	6	2	6	3	0	1	2	28
33	Lucas, Maggie	*	2-7	1-4	7-7	1	0	1	4	12	3	1	1	1	28
54	Greene, Nikki	*	6-9	0-0	2-3	4	6	10	3	14	1	1	1	0	21
01	Agee, Candice	*	2-4	0-0	0-0	0	0	0	2	4	0	1	0	0	10
05	East, Talia	*	0-0	0-0	0-0	0	3	3	5	0	0	2	1	0	8
23	Edwards, Ariel	*	2-4	2-2	0-0	1	2	3	1	6	2	3	1	0	20
25	Studevent, Gizelle	*	0-0	0-0	0-0	0	1	1	0	0	0	0	0	0	9
44	Waldner, Tori	*	1-1	0-0	1-3	1	4	5	2	3	0	1	2	0	11
Team															
Totals			29-56	7-12	11-16	8	28	36	21	76	13	13	7	7	200
FG % 1st Half:		12-26	46.2%	2nd half:	17-30	56.7%	Game:		29-56	51.8%	Deadball				Rebounds
3FG % 1st Half:		3-6	50.0%	2nd half:	4-6	66.7%	Game:		7-12	58.3%	Rebounds				1
FT % 1st Half:		7-7	100.0	2nd half:	4-9	44.4%	Game:		11-16	68.8%	Rebounds				1

#### Michigan State 55 • 13-2, 1-1

#	Player	Total		3-Ptr		Rebounds			PF	TP	A	TO	Blk	Stl	Min
		FG	FGA	FG	FGA	Off	Def	Tot							
01	Thomas, Jasmine	*	2-8	0-0	0-1	5	3	8	2	4	3	2	0	1	34
11	Pickrel, Annalise	*	2-6	1-4	0-0	1	4	5	1	5	2	1	0	0	31
21	Bell, Klarissa	*	3-9	0-2	2-3	5	4	9	3	8	3	2	0	0	36
24	Schiffauer, Courtney	*	1-6	0-3	0-0	1	1	2	5	2	2	1	0	0	15
52	Mills, Becca	*	5-16	3-8	4-6	0	5	5	2	17	1	0	1	1	34
00	Johnson, Kiana	*	1-5	0-1	5-6	2	3	5	0	7	1	5	0	1	27
04	Hines, Jasmine	*	3-8	0-0	6-10	3	2	5	4	12	0	3	0	1	23
Team															
Totals			17-58	4-18	17-26	18	23	41	17	55	12	14	1	4	200
FG % 1st Half:		8-23	34.8%	2nd half:	9-35	25.7%	Game:		17-58	29.3%	Deadball				Rebounds
3FG % 1st Half:		3-7	42.9%	2nd half:	1-11	9.1%	Game:		4-18	22.2%	Rebounds				4
FT % 1st Half:		6-8	75.0%	2nd half:	11-18	61.1%	Game:		17-26	65.4%	Rebounds				4

Officials: Barb Smith, Bryan Enterline, Kevin Dillard  
 Technical fouls: Penn State-None, Michigan State-None.  
 Attendance: 6818

Score by periods	1st	2nd	Total
Penn State	34	42	76
Michigan State	25	30	55

Last FG - PSU 2nd-01:23, MSU 2nd-01:04.  
 Largest lead - PSU by 26 2nd-04:29, MSU None.

Score tied - 0 times.  
 Lead changed - 0 times.

#### Notable

- The Lady Lions open Big Ten play 2-0 for the first time since the 2004-05 season.
- With 12 points, **Alex Bentley** became the fifth player in Big Ten history with 1,500 points, 500 assists and 250 steals. She is the second Lady Lion to accomplish the feat.
- **Mia Nickson** became the 28th member of the Lady Lions' 500-rebound club with six caroms.
- **Dara Taylor** posted a career-high 18 points, surpassing her previous mark of 17 at Maryland.

## No. 9/9 Penn State 73, Northwestern 69

### Game #13 \* Jan. 3, 2013 \* University Park, Pa.

#### Northwestern 69 • 8-6, 0-1 B1G

#	Player	Total		3-Ptr		Rebounds			PF	TP	A	TO	Blk	Stl	Min
		FG	FGA	FG	FGA	Off	Def	Tot							
04	Hackney, Kendall	*	4-7	2-4	2-2	0	11	11	5	12	3	2	0	1	27
11	Douglas, Lauren	*	3-12	0-4	1-2	0	6	6	4	7	1	4	0	2	37
25	Lyon, Maggie	*	3-16	0-4	1-2	3	4	7	4	7	3	3	0	2	38
31	Diamant, Dannielle	*	3-6	1-2	2-2	2	5	7	5	9	1	5	3	0	20
02	Roser, Karly	*	5-7	0-0	6-10	0	2	2	3	16	3	9	0	1	39
05	Cohen, Alex	*	3-3	1-1	2-2	2	5	7	1	9	0	1	1	1	18
13	Kedern, Nef	*	0-0	0-0	0-0	0	0	0	0	0	0	0	0	0	1
33	Brookshire, Devon	*	0-0	0-0	0-0	0	1	1	0	0	0	1	0	0	4
40	Popovec, Kate	*	4-5	0-0	1-1	1	1	2	3	9	0	3	0	1	16
Team															
Totals			25-56	4-15	15-21	11	39	50	25	69	11	28	4	8	200
FG % 1st Half:		15-29	51.7%	2nd half:	10-27	37.0%	Game:		25-56	44.6%	Deadball				Rebounds
3FG % 1st Half:		3-8	37.5%	2nd half:	1-7	14.3%	Game:		4-15	26.7%	Rebounds				4
FT % 1st Half:		5-7	71.4%	2nd half:	10-14	71.4%	Game:		15-21	71.4%	Rebounds				4

#### Penn State 73 • 11-2, 1-0 B1G

#	Player	Total		3-Ptr		Rebounds			PF	TP	A	TO	Blk	Stl	Min
		FG	FGA	FG	FGA	Off	Def	Tot							
02	Taylor, Dara	*	4-12	0-3	1-3	0	1	1	3	9	1	4	0	7	26
20	Bentley, Alex	*	1-11	1-3	6-6	0	6	6	0	9	3	1	0	6	34
24	Nickson, Mia	*	3-8	0-0	8-10	7	6	13	2	14	0	1	1	0	34
54	Greene, Nikki	*	5-16	5-7	9-12	1	1	2	3	24	4	2	2	5	38
24	Lucas, Maggie	*	2-2	0-0	0-0	2	2	4	5	4	0	1	0	0	9
01	Agee, Candice	*	2-4	0-0	0-0	1	0	1	2	4	0	0	1	0	8
05	East, Talia	*	0-1	0-0	3-6	0	2	2	3	3	0	1	1	0	20
23	Edwards, Ariel	*	3-11	0-1	0-0	1	3	4	2	6	0	1	0	1	20
25	Studevent, Gizelle	*	0-1	0-1	0-0	0	0	0	0	0	0	0	0	0	4
44	Waldner, Tori	*	0-1	0-0	0-0	0	0	0							

# No. 8/8 Penn State 84, Wisconsin 40

## Game #16 \* Jan. 17, 2013 \* University Park, Pa.

### Wisconsin 40 • 8-10, 0-5

#	Player	Total		3-Ptr		Rebounds			PF	TP	A	TO	Blk	Stl	Min
		FG-FGA	FG-FGA	FT-FTA	Off	Def	Tot								
04	Bauman, Nicole	* 2-6	2-4	0-0	0	1	1	3	6	0	4	0	1	27	
05	Paige, Morgan	* 5-15	2-11	2-2	0	1	1	1	14	0	4	0	0	34	
24	Stephen, Tiera	* 1-7	0-1	2-4	2	5	7	2	4	7	8	0	3	36	
35	Gulczynski, Jacki	* 3-13	2-6	2-2	1	9	10	2	10	1	2	0	1	40-	
43	Rochel, Cassie	* 2-5	0-0	0-0	1	5	6	4	4	1	3	3	1	31	
00	Malone, Shannon	0-0	0-0	0-0	0	0	0	0	0	0	0	0	0	0+	
10	Whyte, Dakota	1-6	0-2	0-0	0	1	1	3	2	1	3	0	2	22	
22	Cichy, Tessa	0-0	0-0	0-0	0	0	0	0	0	0	0	0	0	1	
23	Kryuchkova, Daria	0-1	0-0	0-0	0	0	0	2	0	0	0	1	0	9	
Team					2	3	5								
Totals		14-53	6-24	6-8	6	25	31	17	40	10	24	4	8	200	
FG % 1st Half: 7-23 30.4%		2nd half: 7-30 23.3%		Game: 14-53 26.4%		Deadball									
3FG % 1st Half: 3-11 27.3%		2nd half: 3-13 23.1%		Game: 6-24 25.0%		Rebounds									
FT % 1st Half: 4-5 80.0%		2nd half: 2-3 66.7%		Game: 6-8 75.0%		0									

### Penn State 84 • 14-2, 4-0

#	Player	Total		3-Ptr		Rebounds			PF	TP	A	TO	Blk	Stl	Min
		FG-FGA	FG-FGA	FT-FTA	Off	Def	Tot								
02	Taylor, Dara	* 3-5	2-3	0-0	2	5	7	3	8	6	5	0	4	22	
20	Bentley, Alex	* 5-14	0-2	4-6	0	1	1	2	14	5	1	0	6	25	
24	Nickson, Mia	* 3-6	0-0	2-2	5	4	9	3	8	1	0	0	2	25	
33	Lucas, Maggie	* 3-11	2-4	3-4	0	4	4	1	11	1	4	0	3	31	
54	Greene, Nikki	* 9-16	0-0	5-7	7	7	14	2	23	0	1	2	0	27	
05	East, Talia	1-3	0-0	1-2	2	2	4	5	3	0	1	0	0	12	
23	Edwards, Ariel	5-9	0-0	0-0	0	3	3	0	10	1	0	0	0	26	
25	Studevent, Gizelle	2-5	0-0	1-2	0	3	3	0	5	0	1	0	1	15	
44	Waldner, Tori	1-4	0-1	0-0	2	2	4	1	2	1	0	1	1	17	
Team					2	4	6								
Totals		32-73	4-10	16-23	20	35	55	17	84	15	13	3	17	200	
FG % 1st Half: 16-37 43.2%		2nd half: 16-36 44.4%		Game: 32-73 43.8%		Deadball									
3FG % 1st Half: 4-7 57.1%		2nd half: 0-3 0.0%		Game: 4-10 40.0%		Rebounds									
FT % 1st Half: 10-13 76.9%		2nd half: 6-10 60.0%		Game: 16-23 69.6%		3									

Officials: Lisa Mattingly, Cameron Inouye, Jesse Dickerson  
 Technical fouls: Wisconsin-None. Penn State-None.  
 Attendance: 3848

Score by periods	1st	2nd	Total
Wisconsin	21	19	40
Penn State	46	38	84

Points	In Paint	Off T/O	2nd Chance	Fast Break	Bench
WIS	10	8	0	5	2
PSU	52	29	15	20	20

Last FG - WIS 2nd-05:11, PSU 2nd-00:00.  
 Largest lead - WIS None, PSU by 44 2nd-00:00.

Score tied - 0 times.  
 Lead changed - 0 times.

### Notable

- Penn State's 44-point win is the biggest margin of victory over a Big Ten opponent since topping Michigan State by 48 points (97-49) on Jan. 28, 2001.
- PSU has earned 3-straight wins in Big Ten play by 20 or more points for the first time since 2004-05.
- Alex Bentley passed Tanya Garner for 10th place on PSU's career scoring list with 1,539 tallies.
- Nikki Greene passed Mary Donovan for second in school history for career blocks with 193.



# 2012-13 RADIO/TV CHART



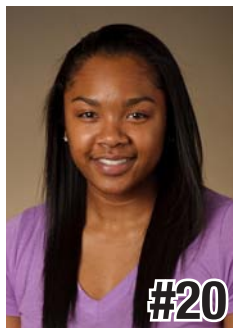
**#1**  
**Candice Agee**  
 6-6 \* Fr./Fr. \* F/C  
 Victorville, Calif.  
 Silverado



**#2**  
**Dara Taylor**  
 5-8 \* Sr./Jr. \* G  
 Wilmington, Del.  
 Caravel Academy  
 (Maryland)



**#5**  
**Talia East**  
 6-3 \* Jr./Jr.\* F/C  
 Philadelphia, Pa.  
 Friends' Central School



**#20**  
**Alex Bentley**  
 5-7 \* Sr./Sr. \* G  
 Indianapolis, Ind.  
 Ben Davis



**#23**  
**Ariel Edwards**  
 6-3 \* Jr./Jr. \* F  
 Elmont, N.Y.  
 Christ the King



**#24**  
**Mia Nickson**  
 6-2 \* Gr./Sr. \* F  
 Ashburn, Va.  
 Notre Dame Academy  
 (Boston College)



**#25**  
**Gizelle Studevent**  
 5-11 \* Sr./Sr. \* G  
 La Jolla, Calif.  
 The Bishop's School



**#33**  
**Maggie Lucas**  
 5-10 \* Jr./Jr. \* G  
 Narberth, Pa.  
 Germantown Academy



**#40**  
**Marisa Wolfe**  
 6-2 \* Sr./Sr. \* F  
 Ford City, Pa.  
 Ford City



**#44**  
**Tori Waldner**  
 6-5 \* So./So. \* F/C  
 Milton, Ga.  
 Milton



**#54**  
**Nikki Greene**  
 6-4 \* Sr./Sr. \* F/C  
 Diboll, Texas  
 Diboll



**HC**  
**Coquese Washington**  
 Head Coach  
 Notre Dame '92  
 Sixth Season



**AC**  
**Fred Chmiel**  
 Assistant Coach  
 Excelsior College  
 Third Season



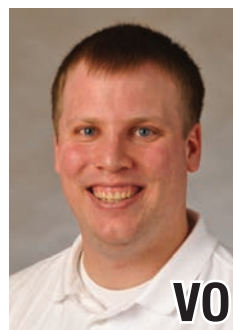
**AC**  
**Kia Damon**  
 Assistant Coach  
 Millersville '97  
 Sixth Season



**AC**  
**Maren Walseth**  
 Assistant Coach  
 Penn State '02  
 Sixth Season



**DO**  
**Ethan Gelfand**  
 Director of Basketball  
 Operations  
 Second Season



**VO**  
**Mike Miller**  
 Director of Video &  
 Technology Operations  
 Eighth Season

Six-Time Big Ten Champions • Two-Time Big Ten Tournament Champions • 2000 NCAA Final Four • 23 NCAA Tournament Appearances



2012-13 Penn State Lady Lions  
Penn State Combined Team Statistics (as of Jan 17, 2013)  
All games

RECORD:	OVERALL	HOME	AWAY	NEUTRAL
ALL GAMES	14-2	9-0	4-2	1-0
CONFERENCE	4-0	3-0	1-0	0-0
NON-CONFERENCE	10-2	6-0	3-2	1-0

##	Player	gp-gs	min	avg	Total		3-Point		F-Throw		Rebounds				pf	dq	a	to	blk	stl	pts	avg			
					fg-fga	fg%	3fg-fga	3fg%	ft-fta	ft%	off	def	tot	avg											
33	Lucas, Maggie	16-16	534	33.4	98-221	.443	52-98	.531	69-80	.863	10	58	68	4.3	35	1	39	42	8	41	317	19.8			
20	Bentley, Alex	16-16	485	30.3	75-195	.385	10-44	.227	44-55	.800	8	60	68	4.3	32	0	63	33	4	66	204	12.8			
54	Greene, Nikki	16-16	327	20.4	56-123	.455	0-0	.000	36-51	.706	56	75	131	8.2	50	1	6	31	17	11	148	9.3			
23	Edwards, Ariel	16-6	357	22.3	58-117	.496	8-17	.471	15-21	.714	15	51	66	4.1	31	2	11	25	8	5	139	8.7			
24	Nickson, Mia	15-15	414	27.6	44-103	.427	0-0	.000	38-53	.717	51	53	104	6.9	36	1	19	27	10	14	126	8.4			
02	Taylor, Dara	16-10	427	26.7	47-114	.412	10-34	.294	19-31	.613	14	42	56	3.5	40	0	59	51	2	39	123	7.7			
01	Agee, Candice	14-0	138	9.9	17-44	.386	0-0	.000	5-8	.625	13	19	32	2.3	19	0	2	7	8	3	39	2.8			
05	East, Talia	15-1	194	12.9	12-32	.375	0-0	.000	13-22	.591	10	24	34	2.3	31	2	6	17	10	5	37	2.5			
44	Waldner, Tori	14-0	149	10.6	13-38	.342	0-1	.000	8-11	.727	20	28	48	3.4	18	0	7	11	14	7	34	2.4			
25	Studevent, Gizelle	16-0	175	10.9	17-46	.370	0-3	.000	4-6	.667	2	10	12	0.8	5	0	8	10	2	3	38	2.4			
Team											50	28	78												8
Total.....		16	3200		437-1033	.423	80-197	.406	251-338	.743	249	448	697	43.6	297	7	220	262	83	194	1205	75.3			
Opponents.....		16	3200		313-928	.337	71-258	.275	205-290	.707	210	390	600	37.5	284	8	176	339	64	133	902	56.4			

TEAM STATISTICS	PSU	OPP	Date	Opponent	Score	Att.
SCORING	1205	902	11/11/12	HOWARD	w 72-61	3655
Points per game	75.3	56.4	11/14/12	at Texas A&M	w 63-58	4756
Scoring margin	+18.9	-	11/18/12	LAFAYETTE	w 75-34	3700
FIELD GOALS-ATT	437-1033	313-928	11/23/12	vs Detroit	w 80-72	479
Field goal pct	.423	.337	11/24/12	at Cal State Northridge	w 85-73	568
3 POINT FG-ATT	80-197	71-258	11/29/12	at Miami	L 65-69	1286
3-point FG pct	.406	.275	12/2/12	FAIRLEIGH DICKINSON	w 101-44	4072
3-pt FG made per game	5.0	4.4	12-06-12	at UCONN	L 52-67	8072
FREE THROWS-ATT	251-338	205-290	12/9/12	GEORGETOWN	w 97-74	4059
Free throw pct	.743	.707	12/12/12	at Virginia Tech	w 60-41	3587
F-Throws made per game	15.7	12.8	12/16/12	SOUTH DAKOTA STATE	w 60-50	4747
REBOUNDS	697	600	12/23/12	NJIT	w 82-37	7852
Rebounds per game	43.6	37.5	* 1/3/13	NORTHWESTERN	w 73-69	3863
Rebounding margin	+6.1	-	* 01/06/13	at Michigan State	w 76-55	6818
ASSISTS	220	176	* 1/13/13	NEBRASKA	w 80-58	6098
Assists per game	13.8	11.0	* 1/17/13	WISCONSIN	w 84-40	3848
TURNOVERS	262	339	* - Conference game			
Turnovers per game	16.4	21.2				
Turnover margin	+4.8	-				
Assist/turnover ratio	0.8	0.5				
STEALS	194	133				
Steals per game	12.1	8.3				
BLOCKS	83	64				
Blocks per game	5.2	4.0				
ATTENDANCE	41894	25566				
Home games-Avg/Game	9-4655	6-4181				
Neutral site-Avg/Game	-	1-479				

Score by Periods	1st	2nd	Totals
Penn State	589	616	1205
Opponents	433	469	902

2012-13 Penn State Lady Lions  
Penn State Category Leaders (as of Jan 17, 2013)  
All games

Points	G	Pts	Pts/G
Lucas, Maggie	16	317	19.8
Bentley, Alex	16	204	12.8
Greene, Nikki	16	148	9.3
Edwards, Ariel	16	139	8.7
Nickson, Mia	15	126	8.4
Taylor, Dara	16	123	7.7
Agee, Candice	14	39	2.8
Studevent, Gizelle	16	38	2.4
East, Talia	15	37	2.5
Waldner, Tori	14	34	2.4

FG Percentage	FG	Att	Pct
Edwards, Ariel	58	117	.496
Greene, Nikki	56	123	.455
Lucas, Maggie	98	221	.443
Nickson, Mia	44	103	.427
Taylor, Dara	47	114	.412
Agee, Candice	17	44	.386
Bentley, Alex	75	195	.385
East, Talia	12	32	.375
Studevent, Gizelle	17	46	.370
Waldner, Tori	13	38	.342

3-Point Percentage	3FG	Att	Pct
Lucas, Maggie	52	98	.531
Edwards, Ariel	8	17	.471
Taylor, Dara	10	34	.294
Bentley, Alex	10	44	.227
Studevent, Gizelle	0	3	.000
Waldner, Tori	0	1	.000

Free Throw Percent	FG	Att	Pct
Lucas, Maggie	69	80	.863
Bentley, Alex	44	55	.800
Waldner, Tori	8	11	.727
Nickson, Mia	38	53	.717
Edwards, Ariel	15	21	.714
Greene, Nikki	36	51	.706
Studevent, Gizelle	4	6	.667
Agee, Candice	5	8	.625
Taylor, Dara	19	31	.613
East, Talia	13	22	.591

Scoring Average	G	Pts	Avg/G
Lucas, Maggie	16	317	19.8
Bentley, Alex	16	204	12.8
Greene, Nikki	16	148	9.3
Edwards, Ariel	16	139	8.7
Nickson, Mia	15	126	8.4
Taylor, Dara	16	123	7.7
Agee, Candice	14	39	2.8
East, Talia	15	37	2.5
Waldner, Tori	14	34	2.4
Studevent, Gizelle	16	38	2.4

Field Goal Attempts	G	Att	Att/G
Lucas, Maggie	16	221	13.8
Bentley, Alex	16	195	12.2
Greene, Nikki	16	123	7.7
Edwards, Ariel	16	117	7.3
Taylor, Dara	16	114	7.1

Field Goals Made	G	Made	Made/G
Lucas, Maggie	16	98	6.1
Bentley, Alex	16	75	4.7
Edwards, Ariel	16	58	3.6
Greene, Nikki	16	56	3.5
Taylor, Dara	16	47	2.9

3-Point FG Attempts	G	Att	Att/G
Lucas, Maggie	16	98	6.1
Bentley, Alex	16	44	2.8
Taylor, Dara	16	34	2.1
Edwards, Ariel	16	17	1.1
Studevent, Gizelle	16	3	0.2

3-Point FG Made	G	Made	Made/G
Lucas, Maggie	16	52	3.3
Bentley, Alex	16	10	0.6
Taylor, Dara	16	10	0.6
Edwards, Ariel	16	8	0.5

Free Throw Attempts	G	Att	Att/G
Lucas, Maggie	16	80	5.0
Bentley, Alex	16	55	3.4
Nickson, Mia	15	53	3.5
Greene, Nikki	16	51	3.2
Taylor, Dara	16	31	1.9

Free Throws Made	G	Made	Made/G
Lucas, Maggie	16	69	4.3
Bentley, Alex	16	44	2.8
Nickson, Mia	15	38	2.5
Greene, Nikki	16	36	2.3
Taylor, Dara	16	19	1.2



2012-13 Penn State Lady Lions  
Penn State Category Leaders (as of Jan 17, 2013)  
All games

<u>Rebounds</u>	<u>G</u>	<u>Reb</u>	<u>Reb/G</u>
Greene, Nikki	16	131	8.2
Nickson, Mia	15	104	6.9
Bentley, Alex	16	68	4.3
Lucas, Maggie	16	68	4.3
Edwards, Ariel	16	66	4.1

<u>Assists</u>	<u>G</u>	<u>No.</u>	<u>Ast/G</u>
Bentley, Alex	16	63	3.9
Taylor, Dara	16	59	3.7
Lucas, Maggie	16	39	2.4
Nickson, Mia	15	19	1.3
Edwards, Ariel	16	11	0.7

<u>Rebound Average</u>	<u>G</u>	<u>Reb</u>	<u>Avg/G</u>
Greene, Nikki	16	131	8.2
Nickson, Mia	15	104	6.9
Lucas, Maggie	16	68	4.3
Bentley, Alex	16	68	4.3
Edwards, Ariel	16	66	4.1

<u>Steals</u>	<u>G</u>	<u>No.</u>	<u>Stl/G</u>
Bentley, Alex	16	66	4.1
Lucas, Maggie	16	41	2.6
Taylor, Dara	16	39	2.4
Nickson, Mia	15	14	0.9
Greene, Nikki	16	11	0.7

<u>Offensive Rebounds</u>	<u>G</u>	<u>No.</u>	<u>Avg/G</u>
Greene, Nikki	16	56	3.5
Nickson, Mia	15	51	3.4
Waldner, Tori	14	20	1.4
Edwards, Ariel	16	15	0.9
Taylor, Dara	16	14	0.9

<u>Blocked Shots</u>	<u>G</u>	<u>No.</u>	<u>Blk/G</u>
Greene, Nikki	16	17	1.1
Waldner, Tori	14	14	1.0
Nickson, Mia	15	10	0.7
East, Talia	15	10	0.7
Edwards, Ariel	16	8	0.5
Lucas, Maggie	16	8	0.5
Agee, Candice	14	8	0.6

<u>Defensive Rebounds</u>	<u>G</u>	<u>No.</u>	<u>Avg/G</u>
Greene, Nikki	16	75	4.7
Bentley, Alex	16	60	3.8
Lucas, Maggie	16	58	3.6
Nickson, Mia	15	53	3.5
Edwards, Ariel	16	51	3.2

<u>Minutes</u>	<u>G</u>	<u>No.</u>	<u>Min/G</u>
Lucas, Maggie	16	534	33.4
Bentley, Alex	16	485	30.3
Taylor, Dara	16	427	26.7
Nickson, Mia	15	414	27.6
Edwards, Ariel	16	357	22.3

<u>Fouls</u>	<u>G</u>	<u>No.</u>	<u>Per/G</u>
Greene, Nikki	16	50	3.1
Taylor, Dara	16	40	2.5
Nickson, Mia	15	36	2.4
Lucas, Maggie	16	35	2.2
Bentley, Alex	16	32	2.0

<u>Turnovers</u>	<u>G</u>	<u>No.</u>	<u>TO/G</u>
Taylor, Dara	16	51	3.2
Lucas, Maggie	16	42	2.6
Bentley, Alex	16	33	2.1
Greene, Nikki	16	31	1.9
Nickson, Mia	15	27	1.8

<u>Foulsouts</u>	<u>G</u>	<u>No.</u>
Edwards, Ariel	16	2
East, Talia	15	2
Lucas, Maggie	16	1
Nickson, Mia	15	1
Greene, Nikki	16	1

2012-13 Penn State Lady Lions  
Penn State Combined Team Statistics (as of Jan 17, 2013)  
Conference games

RECORD:	OVERALL	HOME	AWAY	NEUTRAL
ALL GAMES	4-0	3-0	1-0	0-0
CONFERENCE	4-0	3-0	1-0	0-0
NON-CONFERENCE	0-0	0-0	0-0	0-0

##	Player	gp-gs	min	avg	Total		3-Point		F-Throw		Rebounds				pf	dq	a	to	blk	stl	pts	avg
					fg-fga	fg%	3fg-fga	3fg%	ft-fta	ft%	off	def	tot	avg								
33	Lucas, Maggie	4-4	128	32.0	15-50	.300	12-22	.545	24-29	.828	2	7	9	2.3	12	0	10	9	3	12	66	16.5
20	Bentley, Alex	4-4	122	30.5	20-56	.357	5-15	.333	10-14	.714	0	15	15	3.8	6	0	9	6	1	18	55	13.8
54	Greene, Nikki	4-4	82	20.5	21-36	.583	0-0	.000	8-13	.615	19	19	38	9.5	13	1	1	3	4	1	50	12.5
02	Taylor, Dara	4-4	114	28.5	17-33	.515	5-12	.417	3-6	.500	3	11	14	3.5	7	0	19	15	1	17	42	10.5
23	Edwards, Ariel	4-0	93	23.3	16-32	.500	3-4	.750	2-2	1.000	3	13	16	4.0	4	0	4	4	3	2	37	9.3
24	Nickson, Mia	4-4	115	28.8	11-25	.440	0-0	.000	13-15	.867	17	22	39	9.8	9	0	4	3	3	4	35	8.8
01	Agee, Candice	3-0	22	7.3	4-9	.444	0-0	.000	0-0	.000	1	0	1	0.3	4	0	0	1	1	0	8	2.7
25	Studevent, Gizelle	4-0	38	9.5	4-10	.400	0-1	.000	1-2	.500	0	4	4	1.0	0	0	0	2	1	1	9	2.3
05	East, Talia	4-0	45	11.3	1-4	.250	0-0	.000	4-8	.500	2	7	9	2.3	13	2	0	4	3	0	6	1.5
44	Waldner, Tori	4-0	41	10.3	2-7	.286	0-1	.000	1-3	.333	4	6	10	2.5	4	0	3	3	5	1	5	1.3
Team											5	8	13							1		
Total.....		4	800		111-262	.424	25-55	.455	66-92	.717	56	112	168	42.0	72	3	50	51	25	56	313	78.2
Opponents.....		4	800		78-237	.329	19-82	.232	47-65	.723	56	111	167	41.8	72	3	43	85	12	24	222	55.5

TEAM STATISTICS	PSU	OPP	Date	Opponent	Score	Att.
SCORING	313	222	* 1/3/13	NORTHWESTERN	w 73-69	3863
Points per game	78.2	55.5	* 01/06/13	at Michigan State	w 76-55	6818
Scoring margin	+22.8	-	* 1/13/13	NEBRASKA	w 80-58	6098
FIELD GOALS-ATT	111-262	78-237	* 1/17/13	WISCONSIN	w 84-40	3848
Field goal pct	.424	.329	* - Conference game			
3 POINT FG-ATT	25-55	19-82				
3-point FG pct	.455	.232				
3-pt FG made per game	6.3	4.8				
FREE THROWS-ATT	66-92	47-65				
Free throw pct	.717	.723				
F-Throws made per game	16.5	11.8				
REBOUNDS	168	167				
Rebounds per game	42.0	41.8				
Rebounding margin	+0.3	-				
ASSISTS	50	43				
Assists per game	12.5	10.8				
TURNOVERS	51	85				
Turnovers per game	12.8	21.3				
Turnover margin	+8.5	-				
Assist/turnover ratio	1.0	0.5				
STEALS	56	24				
Steals per game	14.0	6.0				
BLOCKS	25	12				
Blocks per game	6.3	3.0				
ATTENDANCE	13809	6818				
Home games-Avg/Game	3-4603	1-6818				
Neutral site-Avg/Game	-	0-0				

Score by Periods	1st	2nd	Totals
Penn State	152	161	313
Opponents	111	111	222

2012-13 Penn State Lady Lions  
Penn State Category Leaders (as of Jan 17, 2013)  
Conference games

Points	G	Pts	Pts/G
Lucas, Maggie	4	66	16.5
Bentley, Alex	4	55	13.8
Greene, Nikki	4	50	12.5
Taylor, Dara	4	42	10.5
Edwards, Ariel	4	37	9.3
Nickson, Mia	4	35	8.8
Studevent, Gizelle	4	9	2.3
Agee, Candice	3	8	2.7
East, Talia	4	6	1.5
Waldner, Tori	4	5	1.3

FG Percentage	FG	Att	Pct
Greene, Nikki	21	36	.583
Taylor, Dara	17	33	.515
Edwards, Ariel	16	32	.500
Agee, Candice	4	9	.444
Nickson, Mia	11	25	.440
Studevent, Gizelle	4	10	.400
Bentley, Alex	20	56	.357
Lucas, Maggie	15	50	.300
Waldner, Tori	2	7	.286
East, Talia	1	4	.250

3-Point Percentage	3FG	Att	Pct
Edwards, Ariel	3	4	.750
Lucas, Maggie	12	22	.545
Taylor, Dara	5	12	.417
Bentley, Alex	5	15	.333
Waldner, Tori	0	1	.000
Studevent, Gizelle	0	1	.000

Free Throw Percent	FG	Att	Pct
Edwards, Ariel	2	2	1.000
Nickson, Mia	13	15	.867
Lucas, Maggie	24	29	.828
Bentley, Alex	10	14	.714
Greene, Nikki	8	13	.615
East, Talia	4	8	.500
Studevent, Gizelle	1	2	.500
Taylor, Dara	3	6	.500
Waldner, Tori	1	3	.333

Scoring Average	G	Pts	Avg/G
Lucas, Maggie	4	66	16.5
Bentley, Alex	4	55	13.8
Greene, Nikki	4	50	12.5
Taylor, Dara	4	42	10.5
Edwards, Ariel	4	37	9.3
Nickson, Mia	4	35	8.8
Agee, Candice	3	8	2.7
Studevent, Gizelle	4	9	2.3
East, Talia	4	6	1.5
Waldner, Tori	4	5	1.3

Field Goal Attempts	G	Att	Att/G
Bentley, Alex	4	56	14.0
Lucas, Maggie	4	50	12.5
Greene, Nikki	4	36	9.0
Taylor, Dara	4	33	8.3
Edwards, Ariel	4	32	8.0

Field Goals Made	G	Made	Made/G
Greene, Nikki	4	21	5.3
Bentley, Alex	4	20	5.0
Taylor, Dara	4	17	4.3
Edwards, Ariel	4	16	4.0
Lucas, Maggie	4	15	3.8

3-Point FG Attempts	G	Att	Att/G
Lucas, Maggie	4	22	5.5
Bentley, Alex	4	15	3.8
Taylor, Dara	4	12	3.0
Edwards, Ariel	4	4	1.0
Waldner, Tori	4	1	0.3
Studevent, Gizelle	4	1	0.3

3-Point FG Made	G	Made	Made/G
Lucas, Maggie	4	12	3.0
Bentley, Alex	4	5	1.3
Taylor, Dara	4	5	1.3
Edwards, Ariel	4	3	0.8

Free Throw Attempts	G	Att	Att/G
Lucas, Maggie	4	29	7.3
Nickson, Mia	4	15	3.8
Bentley, Alex	4	14	3.5
Greene, Nikki	4	13	3.3
East, Talia	4	8	2.0

Free Throws Made	G	Made	Made/G
Lucas, Maggie	4	24	6.0
Nickson, Mia	4	13	3.3
Bentley, Alex	4	10	2.5
Greene, Nikki	4	8	2.0
East, Talia	4	4	1.0

2012-13 Penn State Lady Lions  
Penn State Category Leaders (as of Jan 17, 2013)  
Conference games

<u>Rebounds</u>	<u>G</u>	<u>Reb</u>	<u>Reb/G</u>
Nickson, Mia	4	39	9.8
Greene, Nikki	4	38	9.5
Edwards, Ariel	4	16	4.0
Bentley, Alex	4	15	3.8
Taylor, Dara	4	14	3.5

<u>Assists</u>	<u>G</u>	<u>No.</u>	<u>Ast/G</u>
Taylor, Dara	4	19	4.8
Lucas, Maggie	4	10	2.5
Bentley, Alex	4	9	2.3
Edwards, Ariel	4	4	1.0
Nickson, Mia	4	4	1.0

<u>Rebound Average</u>	<u>G</u>	<u>Reb</u>	<u>Avg/G</u>
Nickson, Mia	4	39	9.8
Greene, Nikki	4	38	9.5
Edwards, Ariel	4	16	4.0
Bentley, Alex	4	15	3.8
Taylor, Dara	4	14	3.5

<u>Steals</u>	<u>G</u>	<u>No.</u>	<u>Stl/G</u>
Bentley, Alex	4	18	4.5
Taylor, Dara	4	17	4.3
Lucas, Maggie	4	12	3.0
Nickson, Mia	4	4	1.0
Edwards, Ariel	4	2	0.5

<u>Offensive Rebounds</u>	<u>G</u>	<u>No.</u>	<u>Avg/G</u>
Greene, Nikki	4	19	4.8
Nickson, Mia	4	17	4.3
Waldner, Tori	4	4	1.0
Edwards, Ariel	4	3	0.8
Taylor, Dara	4	3	0.8

<u>Blocked Shots</u>	<u>G</u>	<u>No.</u>	<u>Blk/G</u>
Waldner, Tori	4	5	1.3
Greene, Nikki	4	4	1.0
Lucas, Maggie	4	3	0.8
Nickson, Mia	4	3	0.8
East, Talia	4	3	0.8
Edwards, Ariel	4	3	0.8

<u>Defensive Rebounds</u>	<u>G</u>	<u>No.</u>	<u>Avg/G</u>
Nickson, Mia	4	22	5.5
Greene, Nikki	4	19	4.8
Bentley, Alex	4	15	3.8
Edwards, Ariel	4	13	3.3
Taylor, Dara	4	11	2.8

<u>Minutes</u>	<u>G</u>	<u>No.</u>	<u>Min/G</u>
Lucas, Maggie	4	128	32.0
Bentley, Alex	4	122	30.5
Nickson, Mia	4	115	28.8
Taylor, Dara	4	114	28.5
Edwards, Ariel	4	93	23.3

<u>Fouls</u>	<u>G</u>	<u>No.</u>	<u>Per/G</u>
Greene, Nikki	4	13	3.3
East, Talia	4	13	3.3
Lucas, Maggie	4	12	3.0
Nickson, Mia	4	9	2.3
Taylor, Dara	4	7	1.8

<u>Turnovers</u>	<u>G</u>	<u>No.</u>	<u>TO/G</u>
Taylor, Dara	4	15	3.8
Lucas, Maggie	4	9	2.3
Bentley, Alex	4	6	1.5
Edwards, Ariel	4	4	1.0
East, Talia	4	4	1.0

<u>Foulsouts</u>	<u>G</u>	<u>No.</u>
East, Talia	4	2
Greene, Nikki	4	1