

PENN STATE

SOFTBALL



2014

GoPSUsports.com | ONE TEAM

2014 SCHEDULE

FEBRUARY

Fri. 7	!	vs. Oregon State	L, 12-10
	!	vs. Appalachian State	W, 10-6
Sat. 8	!	vs. Bradley	W, 5-3
	!	at No. 7 Arizona State	L, 9-1 [6]
Sun. 9	!	vs. Seattle	W, 6-1
Sun. 16	@	vs. George Washington	W, 9-1 [5]
	@	vs. Northwestern	L, 11-1 [5]
Mon. 17	@	at No. 21 LSU (DH)	L, 11-3 [5]
	@	at No. 21 LSU (DH)	W, 6-5
Fri. 21	#	vs. Kentucky	L, 5-0
	#	at Florida Atlantic	L, 3-2 (8)
Sat. 22	#	vs. Pitt	L, 3-1
	#	at Florida Atlantic	L, 3-2
Sun. 23	#	vs. Kentucky	L, 8-1

MARCH

Sat. 1	\$	vs. Kent State	L, 9-1 [5]
	\$	vs. Dartmouth	L, 6-3
Sun. 2	\$	vs. Fairfield	Cancelled
	\$	at James Madison	Cancelled
Fri. 14	%	vs. Rutgers	L, 4-3
	%	vs. Central Connecticut St.	L, 1-0
Sat. 15	%	vs. Wagner	L, 4-2
	%	vs. Yale	W, 5-0
	%	vs. Baylor	L, 8-1
Fri. 21	*	PURDUE	L, 10-3
Sat. 22	*	PURDUE	L, 9-2
	*	PURDUE	L, 13-4 [5]
Fri. 28	*	No. 6 MICHIGAN	L, 6-0
Sat. 29	*	No. 6 MICHIGAN	L, 22-0 [5]
Sun. 30	*	No. 6 MICHIGAN	L, 12-4 [5]

APRIL

Wed. 2		SAINT FRANCIS (Pa.) (DH)	L, 4-2 (8)
		SAINT FRANCIS (Pa.) (DH)	W, 9-1 [6]
Fri. 4	*	at Michigan State	W, 9-3
Sat. 5	*	at Michigan State	W, 7-3
Sun. 6	*	at Michigan State	W, 6-0
Fri. 11	*	at Indiana	5 p.m.
Sat. 12	*	at Indiana	1 p.m.
Sun. 13	*	at Indiana	1 p.m.
Wed. 16		BUCKNELL (DH)	6 p.m.
		BUCKNELL (DH)	8 p.m.
Fri. 18	*	WISCONSIN	6 p.m.
Sat. 19	*	WISCONSIN (DH)	1 p.m.
	*	WISCONSIN (DH)	3 p.m.
Wed. 23	*	at Ohio State (DH)	5 p.m.
	*	at Ohio State (DH)	7 p.m.
Fri. 25	*	at Minnesota	7 p.m.
Sat. 26	*	at Minnesota	2 p.m.
Sun. 27	*	at Minnesota	2 p.m.
Wed. 30		PITT (DH)	5 p.m.
		PITT (DH)	7 p.m.

MAY

Fri. 2	*	ILLINOIS	6 p.m.
Sat. 3	*	ILLINOIS	3 p.m.
Sun. 4	*	ILLINOIS	10:30 a.m.
8-11		Big Ten Tournament	TBA

! Kajikawa Classic, Tempe, Ariz.
 @ Tiger Invitational, Baton Rouge, La.
 # FAU Tournament, Boca Raton, Fla.
 \$ JMU Tournament, Harrisonburg, Va.
 % USF Tournament, Clearwater, Fla.
 * Big Ten contest | All times Eastern

Home games in CAPS at Nittany Lion Softball Park

PENN STATE NITTANY LIONS

(10-22, 3-6 B1G)

INDIANA HOOSIERS

(11-27-1, 3-8 B1G)



Games 33-35 • April 11-13 • Andy Mohr Field • Bloomington, Ind.

SERIES INFORMATION

VENUE

Andy Mohr Field

Big Ten Digital Network

COVERAGE

GoPSUsports.com (GameTracker)

SERIES RECORD

Indiana leads 32-25

LAST MEETING

April 7, 2013, IU won, 4-3

NEXT SERIES

April 16 vs. Bucknell (DH)

SERIES NOTES

- Penn State swept MSU last weekend for first B1G wins
- The sweep was the first for the Blue and White since sweeping Minnesota in 2012
- The Lions are on a four-game winning streak for the first time since 2012
- PSU travels to Indiana for three-game series
- The Blue and White trail 25-32 in the all-time series vs. IU
- Penn State last defeated Indiana on April 6, 2013 in a 3-0 decision
- Indiana split with Michigan State in a DH on Wednesday
- The Lions lead the Big Ten in triples with 10
- Lexi Knief is tied for first in the Big Ten & 11th in the NCAA with four triples
- Knief also ranks in the top 10 in the league in batting average (9th, .392), on base pct. (6th, .487) and runs (9th, 30)
- Senior Kasie Hatfield is tied for 6th in the league with 10 doubles

2014 STAT LEADERS

RUNS

Lexi Knief	30
Alyssa Sovereign	14
Macy Jones	17

WALKS

Lexi Knief	18
Macy Jones	17
Reina Furuya	15

HITS

Lexi Knief	38
Karlie Habitz	32
Kasie Hatfield	28

ERA

Marlaina Laubach	3.70
Christy Von Pusch	6.66
Macy Jones	6.70

RBI

Karlie Habitz	28
Macy Jones	20
Kasie Hatfield	17

STRIKEOUTS

Marlaina Laubach	50
Macy Jones	25
Marissa Diescher	24

BATTING AVG (2.0 AB/Game)

Lexi Knief	.392
Karlie Habitz	.352
Shelby Miller	.329

INNINGS PITCHED

Marlaina Laubach	81.1
Macy Jones	47.0
Christy Von Pusch	41.0



QUICK FACTS

ATHLETIC COMMUNICATIONS

Softball Contact Kellie O'Brien
 Office Phone 814-863-1377
 Cell Phone 814-321-5119
 Email kbo2@psu.edu
 Fax 814-863-3165
 Mailing Address 101 Bryce Jordan Center
 University Park, Pa. 16802

COACHING STAFF

Head Coach Amanda Lehotak (1st Year)
 Alma Mater Nebraska-Omaha '03
 Overall Record 188-206 (.477)
 Record at Penn State 0-0 (.000)
 Email ajl22@psu.edu
 Assistant Coach Megan Gibson (1st Year)
 Alma Mater Texas A&M '08
 Email mlg36@psu.edu
 Assistant Coach Joe Guthrie (First Year)
 Alma Mater Alabama '01
 Email jwg23@psu.edu
 Office Phone (814) 865-0936
 Office Fax (814) 863-8120
 Office 302 Nittany Lion Softball Park
 Park Avenue
 University Park, Pa. 16802

TEAM INFORMATION

2013 Overall Record 16-34
 2013 Big Ten Record (Finish) 5-17 (11th)
 Starters Returning/Lost 4/5
 Position Players Returning/Lost 10/7
 Pitchers Returning/Lost 3/2
 Letterwinners Returning/Lost 14/8
 Newcomers 5
 Facebook PennStateSoftball
 Twitter/Instagram @PennStateSB

PROGRAM HISTORY

First Varsity Year 1965
 All-Time Record 921-877-3 (.512)
 All-Time Big Ten Record 173-299-1 (.348)
 NCAA Postseason Appearances 10
 All-Time NCAA Tournament Record 12-20
 NFCA All-Americans 4
 Academic All-Americans 13
 First Team All-Big Ten Selections 10
 Second Team All-Big Ten Selections 20
 Third Team All-Big Ten Selections 22

PENN STATE UNIVERSITY

Location University Park, Pa.
 Founded 1855
 Enrollment 44,679
 Nickname Nittany Lions
 Colors Blue and White
 Conference Big Ten Conference
 Home Facility Nittany Lion Softball Park (1,084)
 President Dr. Rodney Erickson
 Director of Athletics Dr. Dave Joyner
 Senior Women's Administrator Charmelle Green
 Faculty Representative Dr. Linda Caldwell
 Athletics Website www.GoPSUsports.com

UP TO BAT

Penn State continues its six-game road swing this weekend with a three-game series at Indiana. The Lions look to add to a four-game winning streak after sweeping Michigan State and splitting with Saint Francis (Pa.) last week.

Penn State faces the Hoosiers on Friday at 5 p.m., Saturday at 1 p.m. and Sunday at 1 p.m. Friday and Sunday's contest will be broadcast live on the Big Ten Digital Network.

ON DECK

PSU returns to Nittany Lion Softball Park and Beard Field next week for two series, facing Bucknell and Wisconsin. The Lions and the Bison take the field on Wednesday for a doubleheader while Penn State and Wisconsin square off in a three-game series with one game Friday night followed by a doubleheader on Saturday.

Saturday's games will be broadcast live on the Big Ten Network.

SERIES HISTORY vs. INDIANA

The Hoosiers hold a 32-25 advantage over PSU in the all-time series. Penn State is 12-17 when playing Indiana in Bloomington with its last win on the Hoosiers' home field coming in a 3-0 decision last April.

PSU went 1-2 at IU last season but has won three out of the five last meetings between the two teams.

HOMING IN ON THE HOOSIERS

Indiana enters the weekend at 11-27-1 overall after most recently splitting a midweek doubleheader with Michigan State. IU is 3-8 in conference play with victories against MSU, Purdue and Ohio State.

Redshirt senior Breanna Saucedo and sophomore Kassie Farmer lead Indiana offensively as the only two hitters averaging over .300. Saucedo is hitting at a .338 clip with 21 runs and eight RBI on 45 hits while Farmer is batting .301 with 20 runs and 14 RBI on 31 hits. Farmer leads the team in slugging percentage at .563 and has hit six home runs.

The IU pitching staff has combined for 204 strikeouts in 246.2 innings. Junior Lora Olson leads the Hoosiers in the circle with an ERA of 4.41 through 95.1 innings. Olson is 4-12 on the year and has struck out 65 opponents.

B1G RECOGNITION

Center fielder Lexi Knief pulled in the first Big Ten honor of her career on Monday as she was named the conference's Player of the Week for her efforts on the field. The sophomore went 10-for-18 at the plate through five games last week, registering seven runs, three RBI, a double, a triple and her first collegiate home run to help the Nittany Lions to four straight wins.

Knief posted at least one hit in all five games and multiple hits in four of the contests against Saint Francis (Pa.) and conference foe Michigan State, helping the Blue and White to a 4-for-5 effort on the week and a series sweep of the Spartans. She was a single away from hitting for the cycle in the final game at MSU as she turned in each of her extra-base hits in one contest.

SWEEPING THE SPARTANS

Penn State posted its first series sweep since 2012 last weekend with three-game sweep of Michigan State. The Lions opened the series with a 9-3 victory on Friday and followed with a 7-3 win on Saturday and a 6-0 shutout win on Sunday.

Freshman pitcher Marlaina Laubach picked up wins for Friday and Sunday's contest while sophomore Marissa Diescher earned the W for Saturday's victory.

Lexi Knief led the charge for PSU offensively, posting multiple hits in each of the games. She was a single away from hitting for the cycle in the series finale, turning in a double, a triple and her first collegiate home run.

MAKING CONTACT

Sophomore Lexi Knief is the top hitter for PSU through the first 32 outings. The outfielder is 38-for-97 at the plate for a team-best batting average of .392 and has scored a team-high 30 runs. She is tied for first in the league and 11th in the nation in triples with four and has posted four doubles on the year.

The Ramsey, N.J. product leads the Lions and is sixth in the conference with an on-base percentage of .487 and is currently the 34th-toughest hitter to strike out in the nation.

LAU OF THE LAND

Freshman pitcher Marlaina Laubach has done the bulk of the work in the circle for Penn State, earning wins in seven of PSU's 10 victories, including a signature win over No. 21 LSU and two wins over Michigan State. The Northampton, Pa.



2014 PENN STATE SOFTBALL



native has a team-best ERA of 3.70 through 81.1 innings. She has thrown 50 strikeouts on the season, including a season-high six vs. FAU (2/21) and MSU (4/4).

FORMING GOOD HABITZ

Sophomore Karlie Habitz has proven to be the most powerful hitter in the PSU lineup this year. The Newhall, Calif. product leads the Lions with 28 RBI and owns a team-best slugging percentage of .549. She has registered six doubles and a team-best four home runs. The catcher, who is hitting at a .352 clip, broke up two no-hitters vs. No. 6 Michigan and went 4-for-8 at the dish.

Habitz posted six RBI in the season opener vs. Oregon State (2/7), a mark that ties for the second most in program history.

DOUBLING UP

Senior Kasie Hatfield is currently tied for sixth in the league in doubles, having already notched 10 this season. The Tampa, Fla. native surpassed her previous season-best of eight doubles from 2012 in the second game of PSU's doubleheader with Purdue.

MAGNIFICENT MILLER

Shelby Miller has turned in an impressive rookie campaign thus far for Penn State. The freshman has the third best batting average on the team at .329 and has been churning out the hits, posting a 23-for-70 mark at the dish through 27 games.

Miller has four extra-base hits under her belt with two double and two triples, each of which has come in the last four weeks of play.

IN-STATE SPLIT

The Nittany Lions gained their first home win of the season on April 2 as they turned in a split effort vs. Saint Francis (Pa.). After failing to take game one, Penn State roared back in the late game to best the Red Flash, 9-1, in six innings.

Senior Alyssa Sovereign led the PSU offense with a 4-for-8 effort at the plate and scored one run. Freshman Shelby Miller also gave the Lions a spark, going a perfect 3-for-3 in the second game with a single, a two-RBI double and two runs.

SERIES HISTORY vs. INDIANA

All-Time Series	PSU trails 25-32
PSU Streak	L 1
First Meeting	4/29/77, W 1-0
Last Meeting	4/7/13, L 3-4
Last PSU Win	4/6/13, 3-0
Largest PSU Win	4/7/00, 16-0 (5)
Largest IU Win	4/2/94, 13-3
	4/1/94, 10-0

Previous Five Meetings

4/7/13	A	L	3-4
4/6/13	A	W	3-0
4/5/13	A	L	3-4
4/15/12	H	W	9-4
4/14/12	H	W	5-2

TAKING DOWN THE TIGERS

The Nittany Lions earned their biggest win of the season on Feb. 17 as they took down No. 21 LSU in the second game of a doubleheader. Sophomore Macy Jones posted two RBI and one run in the win and freshman Shelby Miller went 2-for-4 at the plate with one run to lead Penn State to a 6-5 victory over the Tigers.

Pitcher Marlaina Laubach also played a significant role in the victory, recording three strikeouts in her third complete game for PSU. The freshman moved to a perfect 4-0 on the season with the win.

LIONS IN THE B1G/NCAA (thru 4/6 games)

STAT	Total	B1G	NCAA (Top 100)	PLAYER	STAT	TOTAL	B1G	NCAA (Top 100)
» Batting Average	.257	9th	--	» K. Brackpool	SacFlies	3	2nd	--
» Slugging Pct.	.357	9th	--	» Reina Furuya	SacBunts	8	4th	--
» On-Base Pct.	.343	9th	--		SacHits/Game	0.25	2nd	34th
» Runs Scored	118	10th	--	» Lexi Knief	BattingAvg	.392	9th	--
» Hits	207	10th	--		OnBasePct	.487	6th	--
» Runs Batted In	112	10th	--		RunsScored	30	9th	--
» Doubles	31	10th	--		RunsPG	0.94	6th	63rd
» Triples	10	1st	--		Toughest to K	24.3	2nd	34th
» Triples/game	.031	2nd	18th		Triples	4	1st	11th
» Home Runs	10	11th	--		TriplesPG	0.13	1st	19th
» Total Bases	288	10th	--	» Karlie Habitz	RBI	28	10th	--
» Walks	94	9th	--					
» Stolen Bases	16	12th	--	» Kasie Hatfield	Doubles	10	6th	--
» Earned Run Avg.	5.91	12th	--		DoublesPG	0.31	5th	76th
» Opposing Batting Avg.	.329	12th	--					
» Batters Struck Out	122	9th	--	» Macy Jones	Triples	3	3rd	38th
» Runs Allowed	194	11th	--		TriplesPG	0.09	5th	61st
» Earned Runs Allowed	170	11th	--		WlksAllwd/7Inn.	1.64	3rd	96th
» Walks Allowed	118	9th	--	» Shelby Miller	Triples	2	8th	--
» Home Runs Allowed	27	9th	--					
» Fielding Percentage	.963	6th	93rd					



WALK IT OUT

Penn State registered a new single-game record in the win over George Washington on Feb. 16 as the Lions were walked a total of 15 times in just five innings.

The 15 walks crushed the previous record of 11 free passes set last season against Northwestern (4/20). Penn State has already amassed 60 walks in 14 games this season, more than one third of the total from 2013 (151).

EYES ON THE PRIZE

The 2014 PSU squad looks to return to postseason action after missing out on the NCAA Tournament in 2012 and 2013. Seniors Alyssa Sovereign, Liz Presto and Kasie Hatfield will lead the charge while juniors Marissa Diescher, Alicia Walker and Meghan Bradley also add experience to the young team which features eight sophomores and five freshmen.

In the outfield, sophomore Lexi Knief has moved to the center field position while Walker, sophomores Taylor Abeyta and Shannon Good and freshman Mary Ward are battling for the right and left field starting positions.

New faces are abundant in the infield as well as Sovereign moves into the second base spot while freshman Kristina Brackpool takes over first base responsibilities. Sophomore Reina Furuya will return at shortstop and Presto and freshman Sam Shanahan are each looking strong for the third baseman spot.

Macy Jones returns as the top pitcher and hitter for the Blue and White. The sophomore spun 175.0 innings, turning a 3.84 ERA in her rookie season and finished with a 13-17 record. Jones hit at a .274 clip a season ago, driving in 28 runners on 40 hits.

FIERCE COMPETITION

Six of Penn State's 2014 opponents are listed in the current USA Today/NFCA poll, including No. 5 Michigan. Other opponents include Arizona State (No. 7), Kentucky, (No. 11), Baylor (No. 12), Minnesota (No. 14) and Northwestern (No. 23) while LSU has received votes. All six programs are also represented in the current ESPN.com/USA Softball rankings.

PSU ON BTN

BTN has announced its spring softball schedule and Penn State will be featured a total of 11 times across the network's platforms. The Nittany Lions are scheduled to play in four games on BTN and five on the Big Ten Digital Network, which can be viewed online.

BIG TEN STANDINGS

As of April 10

Team	Big Ten				Overall			
	W	L	T	Pct	W	L	T	Pct
MICHIGAN.....	9	0	0	1.000	30	6	0	.833
MINNESOTA.....	8	2	0	.800	30	5	0	.857
PURDUE.....	7	2	0	.778	20	19	1	.512
NORTHWESTERN.....	5	4	0	.556	22	9	0	.710
NEBRASKA.....	5	4	0	.556	27	13	0	.675
OHIO STATE.....	5	4	0	.556	19	18	0	.514
IOWA.....	5	6	0	.455	10	20	0	.333
WISCONSIN.....	3	5	0	.375	19	15	0	.559
PENN STATE.....	3	6	0	.333	10	22	0	.312
INDIANA.....	3	8	0	.273	11	27	1	.295
ILLINOIS.....	2	7	0	.222	18	15	0	.545
MICHIGAN STATE.....	2	9	0	.182	9	25	0	.265



2014 PENN STATE SOFTBALL



USA TODAY/NFCA April 8, 2014

No.	Team	Record	Last
1	Oregon (30)	34-5	3
2	UCLA (2)	34-4	1
3	Alabama	35-5	4
4	Tennessee	32-5	2
5	Michigan	29-6	5
6	Florida	34-8	6
7	Arizona State	35-6	7
8	Florida State	38-4	8
9	Arizona	32-8	10
10	Washington	22-10	9
11	Kentucky	31-8	12
12	Baylor	28-6	13
13	Georgia	33-6	15
14	Minnesota	28-5	14
15	South Alabama	30-6	11
16	Missouri	27-10	16
17	Tulsa	35-4	17
18	Louisiana-Lafayette	28-6-1	21
19	Oklahoma	28-8	22
20	Auburn	31-9-1	19
21	Texas A&M	27-12	18
22	Nebraska	26-12	20
23	Northwestern	22-9	23
24	USC Upstate	36-4	RV
25	Notre Dame	22-8	25

RV: Stanford (19), James Madison (16), Houston (15), DePaul (12), **LSU** (12), Long Beach State (8), NC State (6), Hofstra (1), Louisville (1), USF (1).

ESPN.COM/USA SOFTBALL April 8, 2014

No.	Team	Record	Last
1	Oregon (18)	34-5	3
2	Alabama (1)	35-5	4
3	UCLA	34-4	1
4	Michigan	29-6	5
5	Tennessee	32-5	2
6	Arizona State	35-6	6
7	Florida State (1)	38-4	8
8	Florida	34-8	7
9	Arizona	32-8	10
10	Washington	22-10	9
11	Kentucky	31-8	12
12	Baylor	28-6	13
13	Oklahoma	28-8	15
14	Minnesota	28-5	14
15	Tulsa	35-4	16
16	South Alabama	30-6	11
17	Georgia	33-6	17
18	Missouri	27-10	18
19	Nebraska	26-12	20
20	Louisiana-Lafayette	28-6-1	22
21	Auburn	31-9-1	19
22	Texas A&M	27-12	21
23	Notre Dame	22-8	23
24	South Carolina Upstate	36-4	NR
25	Northwestern	22-9	NR

RV: **LSU**, Stanford, NC State, Houston, Texas State, San Diego State, California, South Florida, Lipscomb, Stetson, James Madison, Louisville

Bold indicates 2014 opponent

2014 PENN STATE RECORDS (As of 4/6/14)

Stat	Record
Total	10-22
Conference	3-6
Non-Conf	7-16
Home	1-7
Away	4-4
Neutral	5-11
Day	7-15
Night	3-7
vs Left	1-6
vs Right	9-16
1-Run games	1-4
2-Run games	1-4
5+Run games	7-13
Extra inns	0-2
Shutouts	2-4
Scoring 0-2 runs	0-15
Scoring 3-5 runs	2-6
Scoring 6-9 runs	7-0
Scoring 10+ runs	1-1
Opponent 0-2 runs	5-1
Opponent 3-5 runs	5-7
Opponent 6-9 runs	0-7
Opponent 10+ runs	0-7
Scored in 1st inning	5-9
Scores first	8-7
Opp. scores first	2-15
After 4 leading	8-4
After 4 trailing	2-15
After 4 tied	0-3
After 5 leading	7-2
After 5 trailing	2-11
After 5 tied	0-3
After 6 leading	8-1
After 6 trailing	0-13
After 6 tied	0-1
Hit 0 home runs	7-16
Hit 1 home run	2-6
Hit 2+ home runs	1-0
Opponent 0 home runs	7-8
Opponent 1 home run	2-7
Opponent 2+ HRs	1-7
Made 0 errors	6-6
Made 1 error	3-8
Made 2+ errors	1-8
Opp. made 0 errors	2-10
Opp. made 1 error	5-8
Opp. made 2+ errors	3-4
Out-hit opponent	8-4
Out-hit by opponent	1-17
Hits are tied	1-1
vs. AAC	0-1
vs. ACC	0-1
vs. America East	0-0
vs. Atlantic 10	1-0
vs. Big 12	0-1
vs. Big East	0-0
vs. Big South	0-0
vs. Big Ten	3-6
vs. Colonial	0-0
vs. Conference USA	0-2
vs. Ivy	1-1
vs. Mid-American	0-1
vs. Missouri Valley	1-0
vs. Mountain West	0-0
vs. North East Conference	1-3
vs. Pacific Coast	0-0
vs. Pac-12	0-2
vs. SEC	1-3
vs. Southern	1-0
vs. Summit	0-0
vs. WAC	1-0
Monday	1-1
Wednesday	1-1
Friday	1-8
Saturday	2-9
Sunday	2-3



2014 PENN STATE SOFTBALL



2014 PENN STATE SOFTBALL NUMERICAL ROSTER

No.	Name	Pos.	Year	Height	B/T	Hometown	High School
2	Taylor Abeyta	OF	So.	5-6	L/R	San Diego, Calif.	Mt. Carmel
3	Liz Presto	INF	Sr.	5-7	R/R	Bethlehem, Pa.	Bethlehem Catholic
4	Marissa Diescher	P	Jr.	5-10	R/R	Livingston Manor, N.Y.	Livingston Manor Central
5	Christy Von Pusch	P	So.	5-10	R/R	Bryn Mawr, Pa.	Radnor
7	Kasie Hatfield	C/INF	Sr.	5-5	R/R	Tampa, Fla.	Chamberlain
8	Reina Furuya	INF	So.	5-7	R/R	Waipahu, Hawaii	Punahou
10	Lexi Knief	INF/OF	So.	5-6	L/R	Ramsey, N.J.	Ramsey
11	Sam Shanahan	INF	Fr.	5-5	R/R	Seattle, Wash.	Bishop Blanchet
12	Macy Jones	OF/P	So.	5-4	L/L	Ashburn, Va.	Briar Woods
13	Maegan Tupinio	INF/OF	So.	5-4	L/R	Wahiawa, Hawaii	Leilehua
17	Marlaina Laubach	P	Fr.	5-8	R/R	Northampton, Pa.	Northampton
18	Alicia Walker	UTL	Jr.	5-6	R/R	Los Alamitos, Calif.	Los Alamitos
22	Alyssa Sovereign	OF	Sr.	5-5	L/R	La Canada, Calif.	Crescenta Valley
24	Mary Ward	OF	Fr.	5-3	L/L	Greencastle, Pa.	Greencastle-Antrim
25	Meghan Bradley	OF	Jr.	5-7	L/L	Santa Monica, Calif.	Santa Monica
28	Shannon Good	OF	So.	5-7	R/R	Horseheads, N.Y.	Horseheads
30	Karlie Habitz	C	So.	5-11	R/R	Newhall, Calif.	Valencia
52	Kristina Brackpool	OF/INF	Fr.	5-8	R/R	Valencia, Calif.	Valencia
77	Shelby Miller	INF	Fr.	5-8	L/R	Sugar Land, Texas	Kempner

Head Coach: Amanda Lehotak (First Season)
Assistant Coach: Megan Gibson (First Season)
Assistant Coach: Joe Guthrie (First Season)

2014 PENN STATE SOFTBALL ALPHABETICAL ROSTER

No.	Name	Pos.	Year	Height	B/T	Hometown	High School
20	Taylor Abeyta	OF	So.	5-6	L/R	San Diego, Calif.	Mt. Carmel
52	Kristina Brackpool	OF/INF	Fr.	5-8	R/R	Valencia, Calif.	Valencia
25	Meghan Bradley	OF	Jr.	5-7	L/L	Santa Monica, Calif.	Santa Monica
4	Marissa Diescher	P	Jr.	5-10	R/R	Livingston Manor, N.Y.	Livingston Manor
8	Reina Furuya	INF	So.	5-7	R/R	Waipahu, Hawaii	Punahou
28	Shannon Good	OF	So.	5-7	R/R	Horseheads, N.Y.	Horseheads
30	Karlie Habitz	C	So.	5-11	R/R	Newhall, Calif.	Valencia
7	Kasie Hatfield	C/INF	Sr.	5-5	R/R	Tampa, Fla.	Chamberlain
12	Macy Jones	OF/P	So.	5-4	L/L	Ashburn, Va.	Briar Woods
10	Lexi Knief	INF/OF	So.	5-6	L/R	Ramsey, N.J.	Ramsey
17	Marlaina Laubach	P	Fr.	5-8	R/R	Northampton, Pa.	Northampton HS
77	Shelby Miller	INF	Fr.	5-8	L/R	Sugar Land, Texas	Kempner
3	Liz Presto	INF	Sr.	5-7	R/R	Bethlehem, Pa.	Bethlehem Catholic
11	Sam Shanahan	INF	Fr.	5-5	R/R	Seattle, Wash.	Bishop Blanchet
22	Alyssa Sovereign	OF	Sr.	5-5	L/R	La Canada, Calif.	Crescenta Valley
13	Maegan Tupinio	INF/OF	So.	5-4	L/R	Wahiawa, Hawaii	Leilehua
5	Christy Von Pusch	P	So.	5-10	R/R	Bryn Mawr, Pa.	Radnor
18	Alicia Walker	UTL	Jr.	5-6	R/R	Los Alamitos, Calif.	Los Alamitos
24	Mary Ward	OF	Fr.	5-3	L/L	Greencastle, Pa.	Greencastle-Antrim

PRONUNCIATION GUIDE

Taylor Abeyta	uh-BAY-teh
Marissa Diescher	DEE-sheer
Reina Furuya	RAIN-eh fa-ROO-yah
Kasie Hatfield	KAY-see
Lexi Knief	kuh-NEEF
Marlaina Laubach	LAW-bok
Lehotak	leh-HOE-tack
M. Tupinio	two-PEEN-ee-yo
C. Von Pusch	von POOSH

LIONS BY ELIGIBILITY

Seniors (3): Hatfield, Presto, Sovereign
Juniors (3): Bradley, Diescher, Walker
Sophomores (8): Abeyta, Furuya, Good, Habitz, Jones, Knief, Tupinio, Von Pusch
Freshmen (5): Brackpool, Laubach, Miller, Shanahan, Ward

LIONS BY POSITION

Catchers (3): Habitz, Hatfield, Presto
Infielders (9): Brackpool, Furuya, Habitz, Hatfield, Knief, Miller, Shanahan, Tupinio
Outfielders (9): Abeyta, Brackpool, Bradley, Good, Jones, Knief, Sovereign, Tupinio, Ward
Pitchers (5): Diescher, Jones, Laubach, Shanahan, Von Pusch
Utility Players (1): Walker

LIONS BY STATE

California (6): Abeyta, Brackpool, Bradley, Habitz, Sovereign, Walker
Florida (1): Hatfield
Hawaii (2): Furuya, Tupinio
New Jersey (1): Knief
New York (2): Diescher, Good
Pennsylvania (4): Laubach, Presto, Von Pusch, Ward
Texas (1): Miller
Virginia (1): Jones
Washington (1): Shanahan



2014 PENN STATE SOFTBALL



2014 Penn State Softball Overall Statistics for Penn State (as of Apr 06, 2014) (All games Sorted by Batting avg)

Record: 10-22 Home: 1-7 Away: 4-4 Neutral: 5-11 Big Ten: 3-6

Player	avg	gp-gs	ab	r	h	2b	3b	hr	rbi	tb	slg%	bb	hp	so	gdp	ob%	sf	sh	sb-att	po	a	e	fld%
10 Knief, Lexi	.392	32-32	97	30	38	4	4	1	8	53	.546	18	0	4	0	.487	0	2	2-2	47	4	0	1.000
30 Habitz, Karlie	.352	31-30	91	8	32	6	0	4	28	50	.549	7	2	10	0	.406	1	0	0-0	77	8	3	.966
77 Miller, Shelby	.329	27-26	70	7	23	2	2	0	9	29	.414	4	0	12	0	.365	0	0	2-2	27	35	4	.939
7 Hatfield, Kasie	.315	32-31	89	7	28	10	1	0	17	40	.449	10	4	6	0	.408	0	4	1-2	123	10	4	.971
12 Jones, Macy	.279	32-31	86	17	24	1	3	3	20	40	.465	17	2	19	0	.402	2	0	6-7	42	9	3	.944
18 Walker, Alicia	.226	22-13	31	2	7	1	0	0	4	8	.258	2	1	5	0	.294	0	1	0-0	7	0	0	1.000
52 Brackpool, Kristina	.200	23-22	65	1	13	4	0	1	12	20	.308	1	1	13	1	.214	3	0	0-0	135	3	2	.986
22 Sovereign, Alyssa	.198	32-32	91	18	18	2	0	0	7	20	.220	10	1	10	0	.282	1	2	0-0	71	30	0	1.000
8 Furuya, Reina	.178	32-32	73	10	13	0	0	0	5	13	.178	15	2	19	0	.330	1	8	5-5	28	66	10	.904
11 Shanahan, Sam	.125	27-25	48	5	6	1	0	0	1	7	.146	3	0	11	0	.176	0	0	0-0	29	33	4	.939
25 Bradley, Meghan	.118	11-3	17	0	2	0	0	0	0	2	.118	0	0	6	0	.118	0	0	0-0	1	0	0	1.000
13 Tupinio, Maegan	.111	13-2	9	6	1	0	0	0	0	1	.111	0	0	4	0	.111	0	0	0-0	0	0	0	.000
3 Presto, Liz	.080	14-10	25	2	2	0	0	1	1	5	.200	7	1	8	0	.303	0	2	0-0	8	10	1	.947
28 Good, Shannon	.000	4-1	6	0	0	0	0	0	0	0	.000	0	1	2	0	.143	0	0	0-0	0	0	0	.000
2 Abeyta, Taylor	.000	13-5	5	1	0	0	0	0	0	0	.000	0	0	3	0	.000	0	0	0-0	3	0	1	.750
24 Ward, Mary	.000	19-1	4	4	0	0	0	0	0	0	.000	0	1	2	0	.200	0	0	0-0	0	1	0	1.000
Totals	.257	32	807	118	207	31	10	10	112	288	.357	94	16	134	1	.343	8	19	16-18	604	254	33	.963
Opponents	.329	32	836	194	275	45	7	27	176	415	.496	118	27	122	1	.423	11	25	25-34	615	259	29	.968

LOB - Team (212), Opp (220). DPs turned - Team (6), Opp (8). IBB - Team (2), Jones 1, Habitz 1, Opp (2).

(All games Sorted by Earned run avg)

Player	era	w-l	app	gs	cg	sho	sv	ip	h	r	er	bb	so	2b	3b	hr	b/avg	wp	hp	bk	sfa	sha
17 Laubach, Marlaina	3.70	6-9	18	14	7	0/1	0	81.1	100	51	43	35	50	13	0	9	.313	2	3	1	5	15
5 Von Pusch, Christy	6.66	2-1	16	4	2	1/1	0	41.0	53	47	39	40	23	13	1	5	.315	10	6	0	3	3
12 Jones, Macy	6.70	0-8	12	8	3	0/0	1	47.0	71	50	45	11	25	7	5	10	.346	1	13	0	2	4
4 Diescher, Marissa	9.41	2-4	13	6	0	0/0	1	32.0	51	46	43	32	24	12	1	3	.354	5	5	1	1	3
Totals	5.91	10-22	32	32	12	2/1	2	201.1	275	194	170	118	122	45	7	27	.329	18	27	2	11	25
Opponents	3.31	22-10	32	32	21	4/0	0	205.0	207	118	97	94	134	31	10	10	.257	7	16	0	8	19

PB - Team (9), Habitz 5, Hatfield 4, Opp (8). SBA/ATT - Habitz (17-21), Hatfield (8-12), Von Pusch (7-10), Laubach (7-10), Jones (6-7), Diescher (5-7).



2014 PENN STATE SOFTBALL



2014 RESULTS

7-22 OVERALL • 0-6 BIG TEN • 1-7 HOME • 1-4 AWAY • 2-2 • 5-11 NEUTRAL

Date	Event	Opponent	W/L/T	Score	R-H-E	R-H-E	Inn.	Overall	Big Ten	Pitcher (Record)	Attend.	Time
2/7	!	vs. Oregon State	L	10-12	10-11-0	12-12-1	7	0-1	0-0	Jones (L 0-1)	-	2:20
2/7	!	vs. Appalachian St.	W	10-4	10-10-2	4-10-2	7	1-1	0-0	Diescher (W 1-0)	210	1:30
2/8	!	vs. Bradley	W	5-3	5-10-0	3-7-1	7	2-1	0-0	Laubach (W 1-0)	397	2:00
2/8	!	at No. 7 Arizona St.	L	1-9	1-5-1	9-14-1	[6]	2-2	0-0	Jones (L 0-2)	943	1:55
2/9	!	vs. Seattle	W	6-1	6-11-1	1-4-0	7	3-2	0-0	Laubach (W 2-0)	209	1:30
2/16	@	vs. George Washington	W	9-1	9-8-0	1-4-1	[5]	4-2	0-0	Laubach (W 3-0)	-	1:53
2/16	@	vs. Northwestern	L	1-11	1-2-2	11-10-1	[5]	4-3	0-0	Diescher (L 1-1)	-	1:51
2/17	@	at No. 21 LSU	L	3-11	3-2-0	11-12-0	[5]	4-4	0-0	Jones (L 0-3)	1071	1:42
2/17	@	at No. 21 LSU	W	6-5	6-8-0	5-12-1	7	5-4	0-0	Laubach (W 4-0)	1071	2:18
2/21	#	vs. No. 5 Kentucky	L	5-0	0-2-3	5-6-0	7	5-5	0-0	Diescher (L 1-2)	319	1:49
2/21	#	vs. FAU	L	3-2	2-8-1	3-9-0	(8)	5-6	0-0	Laubach (L 4-1)	319	2:00
2/22	#	vs. Pitt	L	3-1	1-9-1	3-9-1	7	5-7	0-0	Laubach (L 4-2)	346	1:46
2/22	#	at FAU	L	3-2	2-7-0	3-5-0	7	5-8	0-0	Diescher (L 1-3)	346	1:47
2/23	#	vs. No. 5 Kentucky	L	8-1	1-4-1	8-13-1	7	5-9	0-0	Laubach (L 4-3)	358	2:02
3/1	\$	vs. Kent State	L	9-1	1-4-1	9-8-2	[5]	5-10	0-0	Laubach (L 4-4)	65	1:42
3/1	\$	vs. Dartmouth	L	6-3	3-10-3	6-9-0	7	5-11	0-0	Von Pusch (L 0-1)	65	1:51
3/14	%	vs. Rutgers	L	4-3	3-7-1	4-5-1	7	5-12	0-0	Jones (L, 0-4)	33	1:55
3/14	%	vs. Central Conn. St.	L	1-0	0-4-0	1-7-1	7	5-13	0-0	Laubach (L, 4-5)	53	2:00
3/15	%	vs. Wagner	L	4-2	2-5-3	4-8-0	7	5-14	0-0	Laubach (L, 4-6)	85	2:15
3/15	%	vs. Yale	W	5-0	5-5-0	0-1-0	7	6-14	0-0	Von Pusch (W, 1-1)	90	1:20
3/16	%	vs. No. 12 Baylor	L	8-1	1-5-3	8-12-0	7	6-15	0-0	Diescher (L, 1-4)	100	1:40
3/21	*	vs. Purdue	L	10-3	3-9-2	10-10-2	7	6-16	0-1	Laubach (L, 4-7)	170	2:40
3/22	*	vs. Purdue	L	9-2	2-4-1	9-10-0	7	6-17	0-2	Jones (L, 0-5)	427	1:53
3/22	*	vs. Purdue	L	13-4	4-5-0	13-15-3	[5]	6-18	0-3	Laubach (L, 4-8)	427	2:04
3/28	*	vs. No. 6 Michigan	L	6-0	0-1-1	6-8-0	7	6-19	0-4	Jones (L, 0-6)	181	1:30
3/28	*	vs. No. 6 Michigan	L	22-0	0-4-2	22-16-0	[5]	6-20	0-5	Laubach (L, 4-9)	181	1:57
3/29	*	vs. No. 6 Michigan	L	12-4	4-3-2	12-15-2	[5]	6-21	0-6	Jones (L, 0-7)	310	1:56
4/2		vs. Saint Francis (Pa.)	L	4-2	2-7-0	4-5-1	(8)	6-22	0-6	Jones (L, 0-8)	328	2:00
4/2		vs. Saint Francis (Pa.)	W	9-1	9-10-0	1-3-3	[6]	7-22	0-6	Laubach (W, 5-9)	328	1:23
4/4	*	at Michigan State	W	9-3	9-9-0	3-7-2	7	8-22	1-6	Laubach (W, 6-9)	138	2:20
4/5	*	at Michigan State	W	7-3	7-9-1	3-6-1	7	9-22	2-6	Diescher (W, 2-4)	289	2:17
4/6	*	at Michigan State	W	6-0	6-9-1	0-3-1	7	10-22	3-6	Laubach (W, 7-9)	766	1:37

! Kajikawa Classic, Tempe, Ariz. | @ Tiger Invitational, Baton Rouge, La. | # FAU Invitational, Boca Raton, Fla. |
 \$ JMU Invitational, Harrisonburg, Va. | % Michele Smith Spring Break Tournament, Clearwater, Fla. | * Big Ten Game
 () Extra inning game | [] Shortened game (eight-run rule)



2014 PENN STATE SOFTBALL



2014 Defensive Lineup by Game

Date	Opponent	Pitcher	Catcher	First	Second	Third	Short	Left	Center	Right	DP
2/7	Oregon State	Jones	Habitz	Brackpool	Sovereign	Shanahan	Furuya	Walker	Knief	Good	Miller
2/7	Appalachian State	Diescher	Habitz	Brackpool	Sovereign	Shanahan	Furuya	Jones	Knief	Walker	Hatfield
2/8	Bradley	Laubach	Habitz	Hatfield	Sovereign	Shanahan	Furuya	Jones	Knief	Walker	Bradley
2/8	at Arizona State	Jones	Habitz	Hatfield	Sovereign	Shanahan	Furuya	Abeyta	Knief	Walker	Bradley
2/9	Seattle	Laubach	Hatfield	Brackpool	Sovereign	Shanahan	Furuya	Jones	Knief	Walker	Habitz
2/16	George Washington	Laubach	Habitz	Hatfield	Sovereign	Presto	Furuya	Jones	Knief	Miller	Brackpool
2/16	Northwestern	Diescher	Habitz	Hatfield	Sovereign	Shanahan	Furuya	Jones	Knief	Miller	Presto
2/17	at LSU	Jones	Habitz	Hatfield	Sovereign	Shanahan	Furuya	Abeyta	Knief	Miller	Presto
2/17	at LSU	Laubach	Habitz	Hatfield	Sovereign	Shanahan	Furuya	Jones	Knief	Miller	Walker
2/21	Kentucky	Diescher	Habitz	Hatfield	Sovereign	Shanahan	Furuya	Jones	Knief	Miller	Walker
2/21	at FAU	Laubach	Hatfield	Brackpool	Sovereign	Presto	Furuya	Jones	Knief	Abeyta	Habitz
2/22	Pitt	Laubach	Hatfield	Brackpool	Sovereign	Shanahan	Furuya	Jones	Knief	Miller	Habitz
2/22	at FAU	Diescher	Habitz	Brackpool	Sovereign	Shanahan	Furuya	Jones	Knief	Miller	Hatfield
2/23	Kentucky	Laubach	Habitz	Brackpool	Sovereign	Shanahan	Furuya	Jones	Knief	Miller	Hatfield
3/1	Kent State	Laubach	Habitz	Hatfield	Sovereign	Shanahan	Furuya	Jones	Knief	Miller	Walker
3/1	Dartmouth	Von Pusch	Habitz	Hatfield	Sovereign	Shanahan	Furuya	Abeyta	Knief	Ward	Presto
3/14	Rutgers	Jones	Habitz	Brackpool	Miller	Shanahan	Furuya	Sovereign	Knief	Walker	Hatfield
3/14	Central Conn. St.	Laubach	Habitz	Brackpool	Miller	Presto	Furuya	Sovereign	Knief	Jones	Hatfield
3/15	Wagner	Diescher	Hatfield	Brackpool	Miller	Presto	Furuya	Sovereign	Knief	Jones	Habitz
3/15	Yale	Von Pusch	Hatfield	Brackpool	Miller	Shanahan	Furuya	Sovereign	Knief	Jones	Habitz
3/16	Baylor	Diescher	Hatfield	Brackpool	Miller	Shanahan	Furuya	Sovereign	Knief	Jones	Habitz
3/21	PURDUE	Laubach	Habitz	Hatfield	Miller	Shanahan	Furuya	Sovereign	Knief	Jones	Brackpool
3/22	PURDUE	Jones	Hatfield	Brackpool	Miller	Shanahan	Furuya	Sovereign	Knief	Abeyta	Habitz
3/22	PURDUE	Laubach	Hatfield	Brackpool	Miller	Shanahan	Furuya	Sovereign	Knief	Jones	Habitz
3/28	MICHIGAN	Jones	Habitz	Brackpool	Miller	Shanahan	Furuya	Sovereign	Knief	Abeyta	Hatfield
3/28	MICHIGAN	Laubach	Habitz	Brackpool	Miller	Shanahan	Furuya	Sovereign	Knief	Jones	Hatfield
3/28	MICHIGAN	Jones	Habitz	Hatfield	Miller	Shanahan	Furuya	Sovereign	Knief	Walker	Brackpool
4/2	SAINT FRANCIS	Jones	Hatfield	Brackpool	Miller	Presto	Furuya	Sovereign	Knief	Walker	Habitz
4/2	SAINT FRANCIS	Laubach	Hatfield	Jones	Miller	Presto	Furuya	Sovereign	Knief	Walker	Tupinio
4/4	at Michigan State	Laubach	Hatfield	Jones	Miller	Presto	Furuya	Sovereign	Knief	Walker	Tupinio
4/5	at Michigan State	Von Pusch	Hatfield	Brackpool	Miller	Shanahan	Furuya	Sovereign	Knief	Jones	Habitz
4/6	at Michigan State	Von Pusch	Hatfield	Brackpool	Miller	Shanahan	Furuya	Sovereign	Knief	Jones	Habitz



AMANDA LEHOTAK

Head Coach • First Year
NEBRASKA-OMAHA '03

RECORD: 198-228 (.465)

Amanda Lehotak enters her first season as the Penn State softball head coach. She was named the seventh coach in program history on July 22, 2013. Lehotak comes to Penn State with seven years of head coaching experience under her belt, including the last two seasons at Texas-San Antonio.

Lehotak guided the Roadrunners to a 27-26 overall record in 2013 to give the program just their second winning overall record in the last seven years. She also led the team to a fifth-place finish and a berth in the WAC Tournament in UTSA's first season in the conference. Additionally, Darian Blake was named to the All-WAC first team.

In her first season at UTSA, Lehotak and the Roadrunners posted a 24-28 overall record and 12-8 mark in Southland Conference play en route to a third-place finish, which was the program's highest finish since 2009. She had five players earn All-Southland honors in 2012, including Freshman of the Year Megan Low.

Prior to her time at UTSA, Lehotak spent six seasons at Jacksonville University, including five as the head coach. The Dolphins improved their win total each of Lehotak's five seasons at the helm, culminating in a 44-16 overall record and 18-2 conference mark in 2011.

That season, Jacksonville won the Atlantic Sun regular-season and tournament titles on its way to the first NCAA Tournament appearance in school history. Lehotak was selected as the 2011 Atlantic Sun Coach of the Year as her squad set school records for home runs, earned run average, shutouts and fielding percentage. Lehotak left Jacksonville with a school-record 137 wins.

In 2010, Lehotak led the Dolphins to a then-second-best win total in program history with a 33-23 overall record. Additionally, a then-program-record five student-athletes earned All-Atlantic Sun recognition under her guidance in 2010.

Lehotak owns a 188-206 record in seven seasons as a collegiate head coach at UTSA and Jacksonville. In addition to her one season as an assistant coach at Jacksonville, Lehotak was also an assistant coach at Missouri Western State for one season where she was responsible for recruiting, working with the outfielders, hitting instruction, coordinating camps and clinics, as well as managing the team's travel schedule.

She also served as an assistant coach at Daniel J. Gross High School in Bellevue, Neb. and was an interim assistant coach at College of Saint Mary in Omaha (2004).

A native of Omaha, Neb., Lehotak played collegiately at the University of Mississippi for two seasons (2000-01) before finishing her career at Nebraska-Omaha (2002-03). She set the single-season hits record in 2001 at Ole Miss and was a third team All-American at UNO with a pair of first team All-North Central Conference selections. Lehotak earned her bachelor's degree in family science from Nebraska-Omaha in 2003.

LEHOTAK'S COLLEGIATE RÉSUMÉ

Head Coach	
Penn State	2014
Texas-San Antonio	2012-13
Jacksonville	2007-11
<i>2011 Atlantic Sun Coach of the Year</i>	
Assistant Coach	
Jacksonville	2006
Missouri Western State	2005
College of St. Mary (Neb.)	2004
Student-Athlete	
Nebraska-Omaha	2002-03
Mississippi	2000-01

CAREER RECORD

Season	School	Overall Record	Pct.	Conf. Record	Pct.	Finish	NCAA
2014	Penn State	10-22	.313	3-6	.333	--	--
2013	Texas-San Antonio	27-26	.509	9-12	.429	5th	--
2012	Texas-San Antonio	24-28	.462	12-8	.600	T3rd	--
2011	Jacksonville	44-16	.733	18-2	.900	1st	Regionals
2010	Jacksonville	33-23	.589	10-10	.500	6th	--
2009	Jacksonville	24-31	.436	7-13	.350	7th	--
2008	Jacksonville	21-39	.350	5-17	.227	11th	--
2007	Jacksonville	15-43	.259	4-14	.222	10th	--



2014 PENN STATE SOFTBALL



#2 TAYLOR ABEYTA



OF • So. • San Diego, Calif. Mt. Carmel

- Has seen action in 13 games in 2014
- Has started five contests at right field
- Earned her first at-bat of the season vs. Oregon St. (2/7)

ABEYTA'S CAREER HIGHS

AT BATS	4	vs. South Carolina	3/10/13
RUNS	1	6x, last vs. Northwestern	2/16/14
HITS	2	vs. DePaul	3/16/13
RBI	3	2x, last vs. DePaul	3/16/13
WALKS	3	vs. Missouri-KC	2/17/13
STOLEN BASES	1	3x, last vs. Maine	3/9/13
TOTAL BASES	2	vs. Ohio State	5/11/12

2014 SEASON HIGHS

AT BATS	2	vs. Dartmouth	3/1/14
RUNS	-	-	-
HITS	-	-	-
RBI	-	-	-
WALKS	-	-	-
STOLEN BASES	-	-	-
TOTAL BASES	-	-	-

CAREER HITTING STATISTICS

Year	AVG.	GP-GS	AB	R	H	2B	3B	HR	RBI	TB	SLG	BB	HBP	SO	GDP	OBP	SF-SH	SB-ATT	PO-A-E	FLD%
2013	.229	36-14	35	5	8	1	0	1	7	23	.343	3	0	14	0	.289	0-0	3-3	55-2-2	.966
2014	.000	13-5	5	1	0	0	0	0	0	0	.000	0	0	3	0	.000	0-0	0-0	3-0-1	.750
Total	.200	49-19	40	6	8	1	0	1	7	12	.300	3	0	17	0	.256	0-0	3-3	58-2-3	.952

#3 LIZ PRESTO



C • Sr. • Bethlehem, Pa. Bethlehem Catholic

- Has seen action in 14 games in 2014
- Notched her first HR of the season vs. Saint Francis (4/2)
- Posted her first hit of the season at FAU (2/21)
- Earned her first start of the season vs. George Washington (2/16)
- Registered two walks vs. George Washington

PRESTO'S CAREER HIGHS

AT BATS	4	2x, last vs. Minnesota	4/28/12
RUNS	2	vs. Michigan State	4/7/12
HITS	3	vs. Michigan State	4/7/12
RBI	4	vs. Minnesota	4/28/12
WALKS	2	5x, last vs. George Washington	2/16/14
STOLEN BASES	-	-	-
TOTAL BASES	4	3x, last vs. Texas	3/15/13

2014 SEASON HIGHS

AT BATS	3	3x, last at Michigan State	4/4/14
RUNS	1	vs. Saint Francis	4/2/14
HITS	1	2x, last vs. Saint Francis	4/2/14
RBI	1	vs. Saint Francis	4/2/14
WALKS	2	vs. George Washington	2/16/14
STOLEN BASES	-	-	-
TOTAL BASES	4	vs. Saint Francis	4/2/14

CAREER HITTING STATISTICS

Year	AVG.	GP-GS	AB	R	H	2B	3B	HR	RBI	TB	SLG	BB	HBP	SO	GDP	OBP	SF-SH	SB-ATT	PO-A-E	FLD%
2011	.067	16-4	15	4	1	1	0	0	1	2	.133	5	0	5	0	.300	0-0	0-0	0-0-0	.000
2012	.190	38-35	79	6	15	3	0	1	7	21	.266	20	2	18	1	.366	0-3	0-0	83-34-4	.967
2013	.222	17-5	18	1	4	0	0	1	3	7	.389	6	0	7	0	.417	0-0	0-0	0-1-0	1.000
2014	.080	14-10	25	2	2	0	0	1	1	5	.200	7	1	8	0	.303	0-2	0-0	8-10-1	.947
Total	.161	85-54	137	13	22	4	0	3	12	35	.255	38	3	38	1	.354	0-5	0-0	91-45-5	.965



2014 PENN STATE SOFTBALL



#4 MARISSA DIESCHER



RHP • Jr. • Livingston Manor, N.Y. Livingston Manor Central

- Pitched a season-high 5.0 innings vs. Wagner (3/15) and No. 5 Kentucky (2/21)
- Started her first game of the year vs. Appalachian St. (2/7)
- Notched her first win of 2014 vs. Appalachian St.
- Registered her first save of the season vs. Bradley (2/8)
- Matched career-high with five strikeouts vs. Wagner in four innings
- Gave up just two walks in four innings vs. Bradley

DIESCHER'S CAREER PITCHING HIGHS

INNINGS.....7.0 5x, last vs. Indiana 4/15/12
 STRIKEOUTS.....5 vs. LIU-Brooklyn 3/2/12
 WALKS10 at Michigan 3/24/12

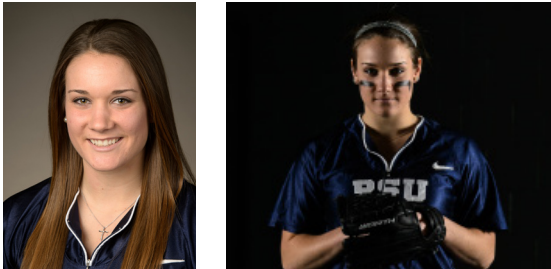
2014 SEASON PITCHING HIGHS

INNINGS.....5.0 2x, last vs. Wagner 3/15/14
 STRIKEOUTS.....5 vs. Wagner 3/15/14
 WALKS5 2x, last vs. Kent State 3/1/14

CAREER PITCHING STATISTICS

Year	ERA	W-L	APP	GS	CG	SHO/C	SV	IP	H	R	ER	BB	SO	2B	3B	HR	BF	BAA	WP	HBP	BK	SFA	SHA
2012	5.52	5-9	22	19	6	1/0	0	78.2	94	76	62	88	33	8	0	7	429	.295	20	6	0	3	13
2013	10.21	1-7	17	11	0	0/0	0	36.1	37	57	53	69	21	4	0	2	225	.255	4	7	1	0	4
2014	9.41	2-4	13	6	0	0/0	1	32.0	51	46	43	32	24	12	1	3	185	.354	5	5	1	1	3
Total	7.52	8-20	52	36	6	1/0	1	147.0	182	179	158	189	78	24	1	12	839	.299	29	18	2	4	20

#5 CHRISTY VON PUSCH



RHP • So. • Bryn Mawr, Pa. Radnor

- Doled out a career-high four strikeouts at MSU (4/5)
- Earned her first collegiate victory vs. Yale (3/14)
- Pitched her first complete game vs. Dartmouth (3/1)
- Made her first start of the season vs. Dartmouth
- Has seen action in 16 games in 2014
- Gave up just one walk in 2.2 innings vs. Arizona State

VON PUSCH'S CAREER PITCHING BESTS

INNINGS.....7.0 2x, last vs. Yale 3/14/14
 STRIKEOUTS.....3 vs. Kentucky 2/23/14
 WALKS11 vs. Texas Tech 2/16/13

VON PUSCH'S 2014 SEASON PITCHING BESTS

INNINGS.....7.0 2x, last vs. Yale 3/15/14
 STRIKEOUTS.....4 at Michigan State 4/5/14
 WALKS5 vs. Purdue 3/22/14

CAREER PITCHING STATISTICS

Year	ERA	W-L	APP	GS	CG	SHO/C	SV	IP	H	R	ER	BB	SO	2B	3B	HR	BF	BAA	WP	HBP	BK	SFA	SHA
2013	17.02	0-6	12	7	0	0/1	0	19.1	34	54	47	50	2	4	1	3	141	.386	19	0	0	0	3
2014	6.66	1-1	16	4	2	1/1	0	41.0	53	47	39	40	23	13	1	5	220	.315	10	6	0	3	3
Total	9.98	1-7	28	11	2	1/2	0	60.1	87	101	86	90	25	17	2	8	361	.340	29	6	0	3	6



2014 PENN STATE SOFTBALL



#7 KASIE HATFIELD



C/INF • Sr. • Tampa, Fla. Chamberlain

- Has started all but one game for PSU this season
- Leads the team and is tied for fifth in the Big Ten in doubles with 10
- Is currently on a four-game hitting streak
- Notched her first triple of the year at MSU (4/4)
- Put together a 5-for-10 effort at the dish in the series vs. Purdue with two doubles and two RBI
- Went 3-for-4 at the plate vs. FAU (2/21)
- Drove in a season-high three runs vs. George Washington (2/16)

HATFIELD'S CAREER HIGHS

AT BATS	7	vs. Fordham	5/21/11
RUNS	2	5x, last vs. Northwestern	4/20/13
HITS	4	vs. Michigan State	4/7/12
RBI	5	vs. Indiana	4/15/12
WALKS	2	2x, last vs. Bradley	2/8/14
STOLEN BASES	1	vs. Texas A&M	3/3/13
TOTAL BASES	8	vs. Ohio State	5/11/12

2014 SEASON HIGHS

AT BATS	4	3x, last vs. Saint Francis	4/2/14
RUNS	1	5x, last at MSU	4/6/14
HITS	3	at Florida Atlantic	2/21/14
RBI	3	vs. George Washington	2/16/14
WALKS	2	vs. Bradley	2/8/14
STOLEN BASES	--	--	--
TOTAL BASES	4	at Florida Atlantic	2/21/14

CAREER HITTING STATISTICS

Year	AVG.	GP-GS	AB	R	H	2B	3B	HR	RBI	TB	SLG	BB	HBP	SO	GDP	OBP	SF-SH	SB-ATT	PO-A-E	FLD%
2011	.223	49-45	130	10	29	6	1	1	10	40	.308	6	3	23	2	.273	0-3	0-0	218-16-2	.992
2012	.252	48-48	131	16	33	8	0	5	26	56	.427	10	0	22	3	.305	0-2	0-1	156-45-6	.971
2013	.181	45-42	105	5	19	0	0	2	6	25	.238	5	0	21	0	.218	0-3	1-1	149-25-6	.967
2014	.315	32-31	89	7	28	10	1	0	17	40	.449	10	4	6	0	.408	0-4	1-2	123-10-4	.971
Total	.240	174-166	455	38	109	24	2	8	59	161	.354	31	7	72	5	.298	0-12	2-4	646-96-18	.976

#8 REINA FURUYA



INF • So. • Waipahu, Hawaii Punahou

- Has started all 32 games for PSU in 2014 at SS
- Third in the Big Ten in sac bunts (8)
- Went 2-for-5 at the plate in the series at MSU
- Third on team in walks with 15
- Second on the team in stolen bases with five
- Turned in a 2-for-4 performance vs. Dartmouth (3/1)
- Went 2-for-2 at the plate vs. Appalachian State (2/7) with an RBI and two runs

FURUYA'S CAREER HIGHS

AT BATS	4	9x, last vs. Saint Francis	4/2/14
RUNS	2	vs. Appalachian State	2/7/14
HITS	2	7x, last vs. Dartmouth	3/1/14
RBI	4	vs. Northwestern	4/20/13
WALKS	2	3x, last vs. George Washington	2/16/14
STOLEN BASES	1	7x, last at MSU	4/6/14
TOTAL BASES	2	2x, last vs. Appalachian State	2/7/14

2014 SEASON HIGHS

AT BATS	4	4x, last vs. Saint Francis	4/2/14
RUNS	2	vs. Appalachian State	2/7/14
HITS	2	2x, last vs. Dartmouth	3/1/14
RBI	1	5x, last at MSU	4/6/14
WALKS	2	3x, last vs. George Washington	2/16/14
STOLEN BASES	1	5x, last at MSU	4/6/14
TOTAL BASES	2	vs. Appalachian State	2/7/14

CAREER HITTING STATISTICS

Year	AVG.	GP-GS	AB	R	H	2B	3B	HR	RBI	TB	SLG	BB	HBP	SO	GDP	OBP	SF-SH	SB-ATT	PO-A-E	FLD%
2013	.224	43-41	107	8	24	5	0	4	20	41	.383	7	0	21	1	.270	1-4	2-2	50-66-8	.935
2014	.178	32-32	73	10	13	0	0	0	5	13	.178	15	2	19	0	.330	1-8	5-5	28-66-10	.904
Total	.206	75-73	180	18	37	5	0	4	25	54	.300	22	2	40	1	.296	2-12	7-7	78-132-18	.921



2014 PENN STATE SOFTBALL



#10 LEXI KNIEF



CF • So. • Ramsey, N.J. Ramsey

- Leads team and ranks 8th in the Big Ten in runs with 30
- Team-best and B1G 9th best batting avg. of .394
- Tied for first in the Big Ten and 11th in the nation in triples with four
- Leads PSU and is 6th in the Big Ten with OBP of .487
- Named B1G Player of the Week after stellar series at MSU
- Posted a double, a triple & first collegiate HR at MSU (4/6)
- Drove in career-best two runs at FAU (2/22)
- Scored career-high four runs vs. Oregon State (2/7)

KNIEF'S CAREER HIGHS

AT BATS	4	15x, last at Michigan State	4/6/14
RUNS	4	vs. Oregon State	2/7/14
HITS	3	3x, last at Michigan State	4/2/13
RBI	2	at FAU	2/22/14
WALKS	2	8x, last at Michigan State	4/2/14
STOLEN BASES	1	3x, last vs. Purdue	3/22/13
TOTAL BASES	9	at Michigan State	4/6/14

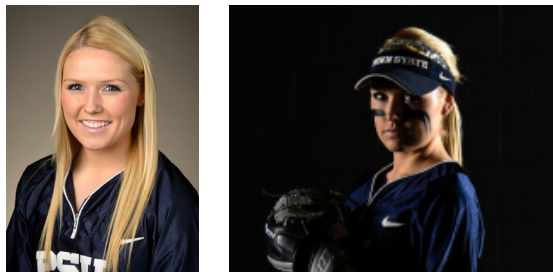
2014 SEASON HIGHS

AT BATS	4	8x, last at Michigan State	4/6/14
RUNS	4	vs. Oregon State	2/7/14
HITS	3	2x, last at Michigan State	4/6/14
RBI	2	at FAU	2/22/14
WALKS	2	6x, last at Michigan State	4/4/14
STOLEN BASES	1	2x, last vs. Purdue	3/22/14
TOTAL BASES	9	at Michigan State	4/6/14

CAREER HITTING STATISTICS

Year	AVG.	GP-GS	AB	R	H	2B	3B	HR	RBI	TB	SLG	BB	HBP	SO	GDP	OBP	SF-SH	SB-ATT	PO-A-E	FLD%
2013	.224	38-26	76	11	17	1	0	0	3	18	.237	10	4	15	1	.344	0-1	1-3	39-32-8	.899
2014	.392	32-32	97	30	38	4	4	1	8	53	.546	18	0	4	0	.487	0-2	2-2	47-4-0	1.000
Total	.318	70-58	173	41	55	5	4	1	11	71	.410	28	4	19	1	.424	0-3	3-5	86-36-8	.938

#11 SAM SHANAHAN



3B • Fr. • Seattle, Wash. Bishop Blanchet

- Has started 25 games for PSU in 2014
- Turned in a 2-for-3 effort at the plate vs. Dartmouth (3/1)
- Registered her first collegiate double vs. Dartmouth
- Made first collegiate start in season-opener vs. Oregon State (2/7) and has started all but one game in 2014
- Recorded her first collegiate RBI at No. 21 LSU (2/17)
- Notched a season-high two runs vs. Oregon State
- Registered her first collegiate hit vs. Oregon State

SHANAHAN'S 2014 SEASON HIGHS

AT BATS	3	5x, last vs. Dartmouth	3/1/14
RUNS	2	vs. Oregon State	2/7/14
HITS	2	vs. Dartmouth	3/1/14
RBI	1	at LSU	2/17/14
WALKS	1	3x, last vs. Kentucky	2/23/14
STOLEN BASES	-	-	-
TOTAL BASES	3	vs. Dartmouth	3/1/14

CAREER HITTING STATISTICS

Year	AVG.	GP-GS	AB	R	H	2B	3B	HR	RBI	TB	SLG	BB	HBP	SO	GDP	OBP	SF-SH	SB-ATT	PO-A-E	FLD%
2014	.125	27-25	48	5	6	1	0	0	1	7	.146	3	0	11	0	.176	0-0	0-0	29-33-4	.939
Total	.125	27-25	48	5	6	1	0	0	1	7	.146	3	0	11	0	.176	0-0	0-0	29-33-4	.939



2014 PENN STATE SOFTBALL



#12 MACY JONES



OF/LHP • So. • Ashburn, Va. Briar Woods

- Has started all but one game for PSU in 2014
- Has allowed less walks than any other B1G pitcher (11)
- Tied for 3rd in the B1G with 3 triples
- Notched a season-high 7 K's vs. SFU (4/2)
- Stole a career-best two bases vs. Saint Francis
- Notched HR's in back-to-back games vs. Wagner (3/15) and Yale (3/15)
- Posted her first HR of 2014 vs. Pitt (2/22)
- Posted 3-for-3 efforts vs. Seattle (2/9) and GWU (2/16)

JONES' CAREER HITTING HIGHS

AT BATS	5	2x, last vs. Appalachian State	2/7/14
RUNS	3	at Pitt	4/10/13
HITS	3	3x, last vs. Saint Francis	4/9/13
RBI	6	at New Mexico State	2/16/13
WALKS	2	4x, last at Michigan State	4/4/14
STOLEN BASES	2	vs. Saint Francis	4/2/14
TOTAL BASES	7	2x, last vs. Yale	3/15/13

2014 HITTING HIGHS

AT BATS	5	vs. Appalachian State	2/7/14
RUNS	2	vs. Seattle	2/9/14
HITS	3	2x, last vs. George Washington	2/16/14
RBI	2	vs. Seattle	2/9/14
WALKS	2	3x, last at Michigan State	4/4/14
STOLEN BASES	2	vs. Saint Francis	4/2/14
TOTAL BASES	7	vs. Yale	3/15/14

JONES' CAREER PITCHING HIGHS

INNINGS	8.0	vs. Saint Francis	4/2/14
STRIKEOUTS	12	vs. Maine	3/9/13
COMPLETE GAMES	14	last vs. Illinois	5/9/13
SHUTOUTS	1	vs. Maine	3/9/13

2014 PITCHING HIGHS

INNINGS	8.0	vs. Saint Francis	4/2/14
STRIKEOUTS	7	vs. Saint Francis	4/2/14
WALKS	3	vs. Rutgers	3/14/14

CAREER PITCHING STATISTICS

Year	ERA	W-L	APP	GS	CG	SHO/C	SV	IP	H	R	ER	BB	SO	2B	3B	HR	BF	BAA	WP	HBP	BK	SFA	SHA
2013	3.84	13-17	36	22	14	1/1	1	175.0	196	111	96	60	000	40	3	29	785	.286	2	11	0	11	17
2014	6.70	0-8	12	8	3	0/0	1	47.0	71	50	45	11	25	7	5	10	235	.346	1	13	0	2	4
Total	4.45	13-25	48	30	17	1/1	2	222.0	267	161	141	71	126	47	8	39	1020	.300	3	24	0	13	21

CAREER HITTING STATISTICS

Year	AVG.	GP-GS	AB	R	H	2B	3B	HR	RBI	TB	SLG	BB	HBP	SO	GDP	OBP	SF-SH	SB-ATT	PO-A-E	FLD%
2013	.274	49-49	146	20	40	8	2	5	28	67	.459	13	5	38	0	.349	2-2	3-4	21-29-4	.926
2014	.279	32-31	86	17	24	1	3	3	20	40	.465	17	2	19	0	.402	2-0	6-7	42-9-3	.944
Total	.276	81-80	232	37	64	9	5	8	48	107	.461	30	7	57	0	.370	4-2	9-11	63-38-7	.935

#13 MAEGAN TUPINIO



INF/OF • So. • Wahiawa, Hawaii Leilehua

- Has seen action in 13 games for PSU in 2014
- Earned her first start of the year vs. Saint Francis (4/2)
- Posted her first collegiate hit in the win over Saint Francis and scored her fourth run of the season
- Registered her first at-bat as a Nittany Lion at Florida Atlantic (2/22)
- Scored as a pinch runner vs. George Washington (2/16)
- Notched her first run of the season vs. Appalachian State (2/7) as a pinch runner

TUPINIO'S CAREER HIGHS

AT BATS	3	vs. Saint Francis	4/2/14
RUNS	1	11x, last vs. Saint Francis	4/2/14
HITS	1	vs. Saint Francis	4/2/14
RBI	--	--	--
WALKS	--	--	--
STOLEN BASES	1	3x, last at Indiana	4/6/13
TOTAL BASES	1	vs. Saint Francis	4/2/14

TUPINIO'S 2014 SEASON HIGHS

AT BATS	3	vs. Saint Francis	4/2/14
RUNS	1	3x, last vs. Saint Francis	4/2/14
HITS	1	vs. Saint Francis	4/2/14
RBI	--	--	--
WALKS	--	--	--
STOLEN BASES	--	--	--
TOTAL BASES	1	vs. Saint Francis	4/2/14

CAREER HITTING STATISTICS

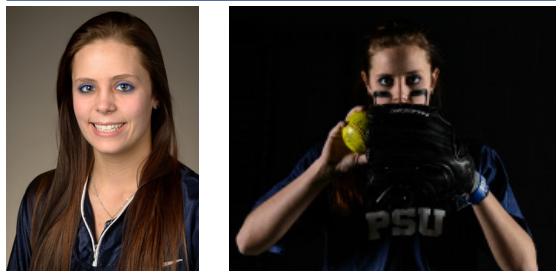
Year	AVG.	GP-GS	AB	R	H	2B	3B	HR	RBI	TB	SLG	BB	HBP	SO	GDP	OBP	SF-SH	SB-ATT	PO-A-E	FLD%
2013	.000	24-1	0	9	0	0	0	0	0	0	.000	0	0	0	0	.000	0-0	3-3	0-0-0	.000
2014	.111	13-2	9	6	1	0	0	0	0	1	.111	0	0	4	0	.111	0-0	0-0	0-0-0	.000
Total	.111	37-3	9	15	1	0	0	0	0	1	.111	0	0	4	0	.111	0-0	3-3	0-0-0	.000



2014 PENN STATE SOFTBALL



#17 MARLAINA LAUBACH



RHP • Fr. • Northampton, Pa. Northampton

- Has thrown a season-high six K's twice, at MSU (4/4) and at FAU (2/21)
- Pitched a season-high eight innings at FAU (2/21)
- Led the Nittany Lions to a win over No. 21 LSU (2/17)
- Allowed just four hits and did not give up a single walk vs. George Washington (2/16)
- Picked up a win against Bradley (2/8) in her collegiate debut
- Pitched her first complete game as a Nittany Lion vs. Seattle (2/9)
- Allowed just four hits in seven innings vs. Seattle
- Struck out five Bradley hitters & four Seattle hitters

LAUBACH'S 2014 PITCHING HIGHS

INNINGS.....	8.0.....	at Florida Atlantic.....	2/21/14
STRIKEOUTS.....	6.....	2x, last at Michigan State.....	4/4/14
WALKS.....	6.....	vs. Purdue.....	3/21/14
COMPLETE GAMES..	7.....	last at Michigan State.....	4/4/14

CAREER HITTING STATISTICS

Year	ERA	W-L	APP	GS	CG	SHO/C	SV	IP	H	R	ER	BB	SO	2B	3B	HR	BF	BAA	WP	HBP	BK	SFA	SHA
2014	3.70	7-9	18	14	7	0/1	0	81.1	100	51	43	35	50	13	0	9	377	.313	2	3	1	5	15
Total	3.70	7-9	18	14	7	0/1	0	81.1	100	51	43	35	50	13	0	9	377	.313	2	3	1	5	15

#18 ALICIA WALKER



UTL • Jr. • Los Alamitos, Calif. Los Alamitos

- Has started 13 games for the Nittany Lions in 2014
- Drove in two runs in the win over Saint Francis (4/2)
- Hit her first-career double vs. Oregon State (2/7)
- Drove in two runs vs. Appalachian State (2/7)
- Scored once vs. Appalachian State

WALKER'S CAREER HIGHS

AT BATS.....	4.....	vs. Appalachian State.....	2/7/14
RUNS.....	2.....	vs. Western Michigan.....	3/8/13
HITS.....	2.....	vs. Ohio State.....	5/11/12
RBI.....	2.....	2x, last vs. Saint Francis.....	4/2/14
WALKS.....	1.....	3x, last vs. Western Michigan.....	3/8/13
STOLEN BASES.....	2.....	vs. Ohio State.....	5/12/12
TOTAL BASES.....	2.....	2x, last vs. Oregon State.....	2/7/14

2014 SEASON HIGHS

AT BATS.....	4.....	vs. Appalachian State.....	2/7/14
RUNS.....	1.....	2x, last vs. Saint Francis.....	4/2/14
HITS.....	1.....	7x, last vs. Saint Francis.....	4/2/14
RBI.....	2.....	2x, last vs. Saint Francis.....	4/2/14
WALKS.....	1.....	2x, last at Arizona State.....	2/8/14
STOLEN BASES.....	--	--	--
TOTAL BASES.....	2.....	vs. Oregon State.....	2/7/14

CAREER HITTING STATISTICS

Year	AVG.	GP-GS	AB	R	H	2B	3B	HR	RBI	TB	SLG	BB	HBP	SO	GDP	OBP	SF-SH	SB-ATT	PO-A-E	FLD%
2012	.207	39-15	29	9	6	0	0	0	3	6	.207	1	2	9	0	.265	2-4	5-7	19-0-2	.905
2013	.059	38-4	17	17	1	0	0	0	0	1	.059	2	1	4	0	.200	0-1	6-7	2-0-0	1.000
2014	.226	22-13	31	2	7	1	0	0	4	8	.258	2	1	5	0	.294	0-1	0-0	7-0-0	1.000
Total	.182	99-32	77	28	14	1	0	0	7	15	.195	5	4	18	0	.261	2-6	11-14	28-0-2	.933



2014 PENN STATE SOFTBALL



#22 ALYSSA SOVEREIGN



2B • Sr. • La Canada, Calif. Crescenta Valley

- Has started all 29 games for PSU in 2014
- Went 4-for-8 in the DH vs. Saint Francis (4/2)
- Drove in two runs vs. No. 6 Michigan with her second double of the year
- Third on team in at-bats (74)
- Scored two runs in the win over No. 21 LSU (2/17)
- Registered a career-high four hits in a 4-for-5 effort vs. Oregon State (2/7)
- Scored twice vs. Oregon State and Bradley (2/8)

SOVEREIGN'S CAREER HIGHS		
AT BATS	7	vs. Fordham 5/21/11
HITS	4	vs. Oregon State 2/7/14
RUNS	3	vs. James Madison 2/26/12
RBI	3	vs. Northwestern 4/20/13
STOLEN BASES	1	2x, last vs. DePaul 3/16/13
WALKS	2	8x, last at LSU 2/17/14
TOTAL BASES	6	vs. LIU-Brooklyn 3/2/12
2014 SEASON HIGHS		
AT BATS	5	vs. Oregon State 2/7/14
HITS	4	vs. Oregon State 2/7/14
RUNS	2	4x, last at LSU 2/17/14
RBI	2	vs. No. 6 Michigan 3/29/14
STOLEN BASES	0	0
WALKS	2	3x, last at LSU 2/17/14
TOTAL BASES	4	vs. Oregon State 2/7/14

CAREER HITTING STATISTICS																				
Year	AVG.	GP-GS	AB	R	H	2B	3B	HR	RBI	TB	SLG	BB	HBP	SO	GDP	OBP	SF-SH	SB-ATT	PO-A-E	FLD%
2011	.257	56-55	167	11	43	9	1	5	26	69	.413	9	2	38	1	.302	1-4	0-1	56-6-0	1.000
2012	.209	50-50	153	21	32	5	0	4	17	49	.320	19	0	27	0	.297	0-1	1-1	51-1-1	.981
2013	.248	42-35	109	15	27	8	0	0	11	35	.321	11	0	21	0	.314	1-0	1-1	53-7-1	.984
2014	.195	29-29	82	14	16	2	0	0	6	18	.220	9	0	9	0	.272	1-2	0-0	62-30-0	1.000
Total	.231	177-169	511	61	118	24	1	9	60	171	.335	48	2	95	1	.298	3-7	2-3	222-44-2	.993

#24 MARY WARD



OF • Fr. • Greencastle, Pa. Greencastle-Antrim

- Earned her first collegiate start vs. Dartmouth (3/1)
- Scored as a pinch runner vs. No. 6 Michigan (3/29)
- Scored one run vs. George Washington (2/16)
- Notched her first collegiate run vs. Oregon State (2/7) as a pinch runner
- Also crossed the plate once vs. Seattle (2/9)

WARD'S SEASON HIGHS		
AT BATS	1	4x, last vs. Michigan 3/28/14
RUNS	1	4x, last vs. Michigan 3/29/14
HITS	0	0
RBI	0	0
WALKS	0	0
STOLEN BASES	0	0
TOTAL BASES	0	0

CAREER HITTING STATISTICS																				
Year	AVG.	GP-GS	AB	R	H	2B	3B	HR	RBI	TB	SLG	BB	HBP	SO	GDP	OBP	SF-SH	SB-ATT	PO-A-E	FLD%
2014	.000	19-1	4	4	0	0	0	0	0	0	.000	0	1	2	0	.200	0-0	0-0	0-1-0	1.000
Total	.000	19-1	4	4	0	0	0	0	0	0	.000	0	1	2	0	.200	0-0	0-0	0-1-0	1.000



2014 PENN STATE SOFTBALL



#25 MEGHAN BRADLEY



OF • Jr. • Santa Monica, Calif. Santa Monica

- Has seen action in 11 games in 2014
- Registered her first hit as a Nittany Lion vs. Bradley (2/8)
- Put together a 2-for-4 effort vs. Bradley
- Earned her first collegiate start vs. Bradley as the DP

BRADLEY'S CAREER HIGHS		
AT BATS	4	vs. Bradley 2/8/14
RUNS	1	3x, last vs. Indiana 4/15/12
HITS	2	vs. Bradley 2/8/14
RBI	-	-
WALKS	-	-
STOLEN BASES	-	-
TOTAL BASES	2	vs. Bradley 2/8/14

2014 SEASON HIGHS		
AT BATS	4	vs. Bradley 2/8/14
RUNS	-	-
HITS	2	vs. Bradley 2/8/14
RBI	-	-
WALKS	-	-
STOLEN BASES	-	-
TOTAL BASES	2	vs. Bradley 2/8/14

CAREER HITTING STATISTICS																				
Year	AVG.	GP-GS	AB	R	H	2B	3B	HR	RBI	TB	SLG	BB	HBP	SO	GDP	OBP	SF-SH	SB-ATT	PO-A-E	FLD%
2012	.000	14-0	0	3	0	0	0	0	0	0	.000	0	1	0	0	1.000	0-0	0-0	0-0-0	.000
2013	.000	1-0	0	0	0	0	0	0	0	0	.000	0	0	0	0	.000	0-0	0-0	0-0-0	.000
2014	.118	11-3	17	0	2	0	0	0	0	2	.118	0	0	6	0	.118	0-0	0-0	1-0-0	1.000
Total	.118	26-3	17	3	2	0	0	0	0	2	.118	0	1	6	0	.167	0-0	0-0	1-0-0	1.000

#28 SHANNON GOOD



OF • So. • Horseheads, N.Y. Horseheads

- Has seen action in four games in 2014
- Earned a start in the season opener vs. Oregon State (2/7)
- Registered four at-bats vs. the Beavers in her first appearance at th plate

GOOD'S CAREER HIGHS		
AT BATS	4	vs. Oregon State 2/7/14
RUNS	-	-
HITS	-	-
RBI	-	-
WALKS	-	-
STOLEN BASES	-	-
TOTAL BASES	-	-

2014 SEASON HIGHS		
AT BATS	4	vs. Oregon State 2/7/14
RUNS	-	-
HITS	-	-
RBI	-	-
WALKS	-	-
STOLEN BASES	-	-
TOTAL BASES	-	-

CAREER HITTING STATISTICS																				
Year	AVG.	GP-GS	AB	R	H	2B	3B	HR	RBI	TB	SLG	BB	HBP	SO	GDP	OBP	SF-SH	SB-ATT	PO-A-E	FLD%
2013	.000	8-5	0	0	0	0	0	0	0	0	.000	0	0	0	0	.000	0-0	0-0	0-0-0	.000
2014	.000	4-1	6	0	0	0	0	0	0	0	.000	0	1	2	0	.143	0-0	0-0	0-0-0	.000
TOTAL	.000	12-6	6	0	0	0	0	0	0	0	.000	0	1	2	0	.143	0-0	0-0	0-0-0	.000



2014 PENN STATE SOFTBALL



#30 KARLIE HABITZ



C • So. • Newhall, Calif. Valencia

- Has started all but two games for PSU in 2014
- Leads team and ranks 8th in the B1G with 28 RBI
- Drove in five runs on four hits in the series at Michigan State
- Went 4-for-8 in the series vs. No. 6 Michigan
- Notched her fourth HR of 2014 vs. Purdue (3/22)
- Turned in a perfect 3-for-3 effort vs. Dartmouth
- Hit her first-career grand slam vs. Oregon State (2/7)
- Drove in a career-high six RBIs vs. Oregon State
- Went a perfect 3-for-3 at the plate vs. Bradley (2/8) with three RBI

HABITZ'S CAREER HIGHS

AT BATS	4	10x, last vs. Oregon State	2/7/14
RUNS	2	vs. Yale	3/15/14
HITS	3	2x, last vs. Dartmouth	3/1/14
RBI	6	vs. Oregon State	2/7/14
WALKS	3	vs. George Washington	2/16/14
STOLEN BASES	-	-	-
TOTAL BASES	7	vs. Dartmouth	3/1/14

2014 SEASON HIGHS

AT BATS	4	3x, last vs. Purdue	3/21/14
RUNS	2	vs. Yale	3/15/14
HITS	3	2x, last vs. Dartmouth	3/1/14
RBI	6	vs. Oregon State	2/7/14
WALKS	3	vs. George Washington	2/16/14
STOLEN BASES	-	-	-
TOTAL BASES	7	vs. Dartmouth	3/1/14

CAREER HITTING STATISTICS

Year	AVG.	GP-GS	AB	R	H	2B	3B	HR	RBI	TB	SLG	BB	HBP	SO	GDP	OBP	SF-SH	SB-ATT	PO-A-E	FLD%
2013	.210	36-32	100	4	21	7	0	3	16	37	.370	7	0	17	0	.259	1-1	0-0	60-4-1	.985
2014	.352	31-30	91	8	32	6	0	4	28	50	.549	7	2	10	0	.406	1-0	0-0	77-8-3	.966
Total	.277	67-62	191	12	53	13	0	7	44	87	.455	14	2	27	0	.330	2-1	0-0	137-12-4	.974

#52 KRISTINA BRACKPOOL



1B • Fr. • Valencina, Calif. Valencia

- Has started 22 games for PSU in 2014
- Drove in five runs on five hits in the series at Michigan State
- Put together a 2-for-3 effort vs. Pitt (2/22)
- Drove in one run vs. George Washington (2/16)
- Notched her first hit as a Nittany Lion vs. Seattle (2/9)
- Hit her first-collegiate homerun vs. Seattle
- Drove in three runs vs. SU
- Went 2-for-3 at the plate vs. SU

BRACKPOOL'S SEASON HIGHS

AT BATS	4	2x, last vs. George Washington	2/16/14
RUNS	1	vs. Seattle	2/9/14
HITS	2	2x, last vs. Pitt	2/22/14
RBI	3	vs. Seattle	2/7/14
WALKS	1	vs. Appalachian State	2/7/14
STOLEN BASES	-	-	-
TOTAL BASES	5	vs. Seattle	2/9/14

CAREER HITTING STATISTICS

Year	AVG.	GP-GS	AB	R	H	2B	3B	HR	RBI	TB	SLG	BB	HBP	SO	GDP	OBP	SF-SH	SB-ATT	PO-A-E	FLD%
2014	.200	23-22	65	1	13	4	0	1	12	20	.308	1	1	13	1	.214	3-0	0-0	135-3-2	.986
Total	.200	23-22	65	1	13	4	0	1	12	20	.308	1	1	13	1	.214	3-0	0-0	135-3-2	.986



2014 PENN STATE SOFTBALL



#77 SHELBY MILLER



INF • Fr. • Sugar Land, Texas Kempner

- Has started 26 games for PSU in her rookie campaign
- Turned in a perfect 3-for-3 effort in the win over Saint Francis (4/2) with a double, two RBI and two runs
- Registered first collegiate triples in the series vs. Purdue
- Registered her first collegiate double vs. No. 12 Baylor (3/16)
- Went 2-for-3 at the plate vs. Baylor
- Turned in a 2-for-3 performance vs. Wagner (3/15)
- Put together a 2-for-3 effort vs. No. 5 Kentucky (2/23)
- Went 2-for-4 at the plate in the win over No. 21 LSU (2/17)
- Drove in two runs in game one at No. 21 LSU

MILLER'S SEASON HIGHS

AT BATS	4	4x, last at Michigan State	4/6/14
RUNS	2	vs. Saint Francis	4/2/14
HITS	3	vs. Saint Francis	4/2/14
RBI	2	2x, last vs. Saint Francis	4/2/14
WALKS	3	vs. George Washington	2/16/14
STOLEN BASES	1	2x, last vs. Yale	3/15/14
TOTAL BASES	3	4x, last vs. Saint Francis	4/2/14

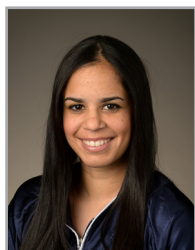
- Got on base four times vs. George Washington (2/16) with one hit and three walks
- Registered her first collegiate hit in her first at-bat as a Nittany Lion vs. Seattle (2/9)

CAREER HITTING STATISTICS

Year	AVG.	GP-GS	AB	R	H	2B	3B	HR	RBI	TB	SLG	BB	HBP	SO	GDP	OBP	SF-SH	SB-ATT	PO-A-E	FLD%
2014	.329	27-26	70	7	23	2	2	0	9	29	.414	4	0	12	0	.365	0-0	2-2	27-35-4	.939
Total	.329	27-26	70	7	23	2	2	0	9	29	.414	4	0	12	0	.365	0-0	2-2	27-35-4	.939



TV/RADIO ROSTER



TAYLOR ABEYTA
Sophomore • OF
San Diego, Calif.



LIZ PRESTO
Senior • C
Bethlehem, Pa.



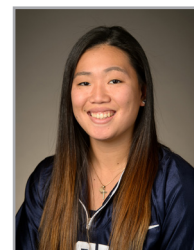
MARISSA DIESCHER
Junior • RHP
Livingston Manor, N.Y.



CHRISTY VON PUSCH
Sophomore • RHP/INF
Bryn Mawr, Pa.



KASIE HATFIELD
Senior • C/INF
Tampa, Fla.



REINA FURUYA
Sophomore • INF
Waipahu, Hawaii



LEXI KNIEF
Sophomore • INF/OF
Ramsey, N.J.



SAM SHANAHAN
Freshman • INF
Seattle, Wash.



MACY JONES
Sophomore • OF/LHP
Ashburn, Va.



MAEGAN TUPINIO
Sophomore • INF/OF
Wahiawa, Hawaii



MARLAINA LAUBACH
Freshman • RHP
Northampton, Pa.



ALICIA WALKER
Junior • UTL
Los Alamitos, Calif.



ALYSSA SOVEREIGN
Senior • OF
La Canada, Calif.



MARY WARD
Freshman • OF
Greencastle, Pa.



MEGHAN BRADLEY
Junior • OF
Santa Monica, Calif.



SHANNON GOOD
Sophomore • OF
Horseheads, N.Y.



KARLIE HABITZ
Sophomore • C/INF
Newhall, Calif.



KRISTINA BRACKPOOL
Freshman • OF/INF
Valencia, Calif.



SHELBY MILLER
Freshman • INF
Sugar Land, Texas



AMANDA LEHOTAK
Head Coach



MEGAN GIBSON
Assist Coach



JOE GUTHRIE
Assistant Coach