

PENN STATE

SOFTBALL



2014

GoPSUsports.com | ONE TEAM

2014 SCHEDULE

FEBRUARY

Fri. 7	!	vs. Oregon State	L, 12-10
	!	vs. Appalachian State	W, 10-6
Sat. 8	!	vs. Bradley	W, 5-3
	!	at No. 7 Arizona State	L, 9-1 (6)
Sun. 9	!	vs. Seattle	W, 6-1
Sun. 16	@	vs. George Washington	W, 9-1 (5)
	@	vs. Northwestern	L, 11-1 (5)
Mon. 17	@	at No. 21 LSU (DH)	L, 11-3 (5)
	@	at No. 21 LSU (DH)	W, 6-5
Fri. 21	#	vs. Kentucky	L, 5-0
	#	at Florida Atlantic	L, 3-2 (8)
Sat. 22	#	vs. Pitt	L, 3-1
	#	at Florida Atlantic	L, 3-2
Sun. 23	#	vs. Kentucky	L, 8-1

MARCH

Sat. 1	\$	vs. Kent State	L, 9-1 (8)
	\$	vs. Dartmouth	L, 6-3
Sun. 2	\$	vs. Fairfield	Cancelled
	\$	at James Madison	Cancelled
Fri. 14	%	vs. Rutgers	L, 4-3
	%	vs. Central Connecticut St.	L, 1-0
Sat. 15	%	vs. Wagner	L, 4-2
	%	vs. Yale	W, 5-0
	%	vs. Baylor	L, 8-1
Fri. 21	*	PURDUE	L, 10-3
Sat. 22	*	PURDUE	L, 9-2
	*	PURDUE	L, 13-4 (5)
Fri. 28	*	No. 6 MICHIGAN	L, 6-0
Sat. 29	*	No. 6 MICHIGAN	L, 22-0 (5)
Sun. 30	*	No. 6 MICHIGAN	L, 12-4 (5)

APRIL

Wed. 2		SAINT FRANCIS (Pa.) (DH)	5 p.m.
		SAINT FRANCIS (Pa.) (DH)	7 p.m.
Fri. 4	*	at Michigan State	5 p.m.
Sat. 5	*	at Michigan State	1 p.m.
Sun. 6	*	at Michigan State	1 p.m.
Fri. 11	*	at Indiana	5 p.m.
Sat. 12	*	at Indiana	1 p.m.
Sun. 13	*	at Indiana	1 p.m.
Wed. 16		BUCKNELL (DH)	6 p.m.
		BUCKNELL (DH)	8 p.m.
Fri. 18	*	WISCONSIN	6 p.m.
Sat. 19	*	WISCONSIN (DH)	1 p.m.
	*	WISCONSIN (DH)	3 p.m.
Wed. 23	*	at Ohio State (DH)	5 p.m.
	*	at Ohio State (DH)	7 p.m.
Fri. 25	*	at Minnesota	7 p.m.
Sat. 26	*	at Minnesota	2 p.m.
Sun. 27	*	at Minnesota	2 p.m.
Wed. 30		PITT (DH)	5 p.m.
		PITT (DH)	7 p.m.

MAY

Fri. 2	*	ILLINOIS	6 p.m.
Sat. 3	*	ILLINOIS	3 p.m.
Sun. 4	*	ILLINOIS	10:30 a.m.
8-11		Big Ten Tournament	TBA

! Kajikawa Classic, Tempe, Ariz.
 @ Tiger Invitational, Baton Rouge, La.
 # FAU Tournament, Boca Raton, Fla.
 \$ JMU Tournament, Harrisonburg, Va.
 % USF Tournament, Clearwater, Fla.
 * Big Ten contest | All times Eastern

Home games in CAPS at Nittany Lion Softball Park

PENN STATE NITTANY LIONS

(6-21, 0-6 B1G)

SAINT FRANCIS RED FLASH

(17-7, 2-0 NEC)



Games 28 & 29 • April 2 • Nittany Lion Softball Park & Beard Field • University Park, Pa.

SERIES INFORMATION

VENUE Nittany Lion Softball Park & Beard Field (1,084)
 COVERAGE GoPSUsports.com (GameTracker)

PSU ComRadio (Live Audio Stream)
 1400wwge.com (Live Audio Stream)

SERIES RECORD

Penn State leads 29-2

LAST MEETING

April 9, 2013; PSU won 4-1

NEXT SERIES

April 4-6, at Michigan State; East Lansing, Mich.

SERIES NOTES

- Penn State falls to No. 6 Michigan in second weekend of B1G play
- The Lions start Big Ten play at 0-6
- PSU hosts Saint Francis (PA) for a doubleheader on Wednesday
- The Blue and White hold a 29-2 record vs. SFU
- Penn State last defeated the Red Flash in a 4-1 decision on April 9, 2013
- Saint Francis has won three straight contests heading into the twin bill
- The Lions are second the Big Ten in triples with seven
- Sophomore Lexi Knief is tied for first in the Big Ten & 29th in the NCAA with three triples
- Knief also ranks ninth in the league in runs per game (0.85)
- Senior Kasie Hatfield is tied for 5th in the league with nine doubles

2014 STAT LEADERS

RUNS		WALKS	
Lexi Knief	23	Lexi Knief	15
Macy Jones	14	Reina Furuya	13
Alyssa Sovereign	13	Macy Jones	12
HITS		ERA	
Lexi Knief	28	Marlaina Laubach	4.31
Karlie Habitz	27	Christy Von Pusch	7.20
Kasie Hatfield	23	Macy Jones	7.76
RBI		STRIKEOUTS	
Karlie Habitz	22	Marlaina Laubach	38
Macy Jones	18	Marissa Diescher	24
Kasie Hatfield	11	Christy Von Pusch	18
BATTING AVG (2.0 AB/Game)		INNINGS PITCHED	
Lexi Knief	.354	Marlaina Laubach	63.1
Karlie Habitz	.351	Macy Jones	37.0
Kasie Hatfield	.311	Christy Von Pusch	35.0



QUICK FACTS

ATHLETIC COMMUNICATIONS

Softball Contact Kellie O'Brien
 Office Phone 814-863-1377
 Cell Phone 814-321-5119
 Email kbo2@psu.edu
 Fax 814-863-3165
 Mailing Address 101 Bryce Jordan Center
 University Park, Pa. 16802

COACHING STAFF

Head Coach Amanda Lehotak (1st Year)
 Alma Mater Nebraska-Omaha '03
 Overall Record 188-206 (.477)
 Record at Penn State 0-0 (.000)
 Email ajl22@psu.edu
 Assistant Coach Megan Gibson (1st Year)
 Alma Mater Texas A&M '08
 Email mlg36@psu.edu
 Assistant Coach Joe Guthrie (First Year)
 Alma Mater Alabama '01
 Email jwg23@psu.edu
 Office Phone (814) 865-0936
 Office Fax (814) 863-8120
 Office 302 Nittany Lion Softball Park
 Park Avenue
 University Park, Pa. 16802

TEAM INFORMATION

2013 Overall Record 16-34
 2013 Big Ten Record (Finish) 5-17 (11th)
 Starters Returning/Lost 4/5
 Position Players Returning/Lost 10/7
 Pitchers Returning/Lost 3/2
 Letterwinners Returning/Lost 14/8
 Newcomers 5
 Facebook PennStateSoftball
 Twitter/Instagram @PennStateSB

PROGRAM HISTORY

First Varsity Year 1965
 All-Time Record 921-877-3 (.512)
 All-Time Big Ten Record 173-299-1 (.348)
 NCAA Postseason Appearances 10
 All-Time NCAA Tournament Record 12-20
 NFCA All-Americans 4
 Academic All-Americans 13
 First Team All-Big Ten Selections 10
 Second Team All-Big Ten Selections 20
 Third Team All-Big Ten Selections 22

PENN STATE UNIVERSITY

Location University Park, Pa.
 Founded 1855
 Enrollment 44,679
 Nickname Nittany Lions
 Colors Blue and White
 Conference Big Ten Conference
 Home Facility.. Nittany Lion Softball Park (1,084)
 President Dr. Rodney Erickson
 Director of Athletics Dr. Dave Joyner
 Senior Women's Administrator Charmelle Green
 Faculty Representative.....Dr. Linda Caldwell
 Athletics Website www.GoPSUsports.com

UP TO BAT

Penn State closes out its eight-game homestand on Wednesday with a doubleheader vs. Saint Francis. The twinbill is set for a 5 p.m. start at Nittany Lion Softball Park and Beard Field.

ON DECK

Penn State hits the road for its first Big Ten away series this weekend, traveling to East Lansing, Mich. to take on the Michigan State Spartans. PSU and MSU open the three-game series on Friday at 3 p.m. followed by 1 p.m. matchups on Saturday and Sunday.

SERIES HISTORY vs. SAINT FRANCIS

The Nittany Lions hold a 29-2 record over the Red Flash heading into the midweek matchup. Penn State won the most recent contest between the two teams, defeating SFU, 4-1, last April.

The Blue and White's only two losses to the Red Flash came in back-to-back seasons as SFU claimed victories in 2009 and 2010.

SCOUTING THE RED FLASH

Saint Francis enters the weekend at 17-7 overall and has won three consecutive games. The Red Flash most recently took down Northeastern Conference foe Robert Morris in a pair of contests. SFU's last loss came on March 22 to Kansas in a 10-2 decision. Senior Chelsy Consentino has led the charge for the Red Flash, hitting at a .409 clip with 14 RBI on 16 hits.

The Saint Francis pitching staff has combined for 102 strikeouts in 150.2 innings. Freshman Alexis Bower heads into the weekend with a 9-3 record and has registered an ERA of 2.95 through 61.2 innings with a team-best 40 strikeouts.

LAST TIME OUT

The Nittany Lions faced one of its toughest opponents yet last weekend, hosting No. 6 Michigan in the second weekend of Big Ten action. PSU dropped all three games over the weekend, moving to 7-56 against the Wolverines all-time. Sophomore Karlie Habitz led the Lions offensively vs. Michigan, putting together a 4-for-8 effort at the dish.

MAKING CONTACT

Sophomore Lexi Knief is off to a great start in 2014. The outfielder is 28-for-79 at the plate for a team-best batting average of .354 and has scored a team-high 23 runs. She is tied for second in the league and 29th in the nation in triples with three and has posted three doubles on the year.

The Ramsey, N.J. product leads the Lions with an on-base percentage of .457 and is currently the 65th-toughest hitter to strike out in the nation.

LAU OF THE LAND

Freshman pitcher Marlaina Laubach has done the bulk of the work in the circle for Penn State, earning wins in four of PSU's six victories, including a signature win over No. 21 LSU. The Northampton, Pa. native has a team-best ERA of 4.31 through 63.1 innings. She has thrown 38 strikeouts on the season, including a season-high six vs. FAU (2/21).

FORMING GOOD HABITZ

Sophomore Karlie Habitz has come out of the gate swinging, literally. The Newhall, Calif. native leads the Lions and is tied for with 22 RBIs. Habitz also leads Penn State in slugging percentage at .558 and has registered four doubles and a team-best four home runs. The catcher, who is hitting at a .351 clip, broke up to no-hitters last weekend vs. No. 6 Michigan and went 4-for-8 at the dish.

Habitz posted six RBI in the season opener vs. Oregon State (2/7), a mark that ties for the second most in program history.

DOUBLING UP

Senior Kasie Hatfield is currently tied for fifth in the league in doubles, having already notched nine this season. The Tampa, Fla. native surpassed her previous season-best of eight doubles from 2012 in the second game of PSU's doubleheader with Purdue.

TAKING DOWN THE TIGERS

The Nittany Lions earned their biggest win of the season on Feb. 17 as they took down No. 21 LSU in the second game of a doubleheader. Sophomore Macy Jones posted two RBIs and one run in the win and freshman Shelby Miller went 2-for-4 at the plate with one run to lead Penn State to a 6-5 victory over the Tigers.

Pitcher Marlaina Laubach also played a significant role in the victory, recording three strikeouts in her third complete game for PSU. The freshman moved to a perfect 4-0 on the season with the win.



2014 PENN STATE SOFTBALL



WALK IT OUT

Penn State registered a new single-game record in the win over George Washington on Feb. 16 as the Lions were walked a total of 15 times in just five innings.

The 15 walks crushed the previous record of 11 free passes set last season against Northwestern (4/20). Penn State has already amassed 60 walks in 14 games this season, more than one third of the total from 2013 (151).

EYES ON THE PRIZE

The 2014 PSU squad looks to return to postseason action after missing out on the NCAA Tournament in 2012 and 2013. Seniors Alyssa Sovereign, Liz Presto and Kasie Hatfield will lead the charge while juniors Marissa Diescher, Alicia Walker and Meghan Bradley also add experience to the young team which features eight sophomores and five freshmen.

In the outfield, sophomore Lexi Knief has moved to the center field position while Walker, sophomores Taylor Abeyta and Shannon Good and freshman Mary Ward are battling for the right and left field starting positions.

New faces are abundant in the infield as well as Sovereign moves into the second base spot while freshman Kristina Brackpool takes over first base responsibilities. Sophomore Reina Furuya will return at shortstop and Presto and freshman Sam Shanahan are each looking strong for the third baseman spot.

Macy Jones returns as the top pitcher and hitter for the Blue and White. The sophomore spun 175.0 innings, turning a 3.84 ERA in her rookie season and finished with a 13-17 record. Jones hit at a .274 clip a season ago, driving in 28 runners on 40 hits.

FIERCE COMPETITION

Six of Penn State's 2014 opponents are listed in the current USA Today/NFCA poll, including No. 5 Michigan. Other opponents include Arizona State (No. 7), Kentucky, (No. 12), Baylor (No. 13), Minnesota (No. 14) and Northwestern (No. 23) while LSU has received votes. Five of the six programs are also represented in the current ESPN.com/USA Softball rankings.

PSU ON BTN

BTN has announced its spring softball schedule and Penn State will be featured a total of 11 times across the network's platforms. The Nittany Lions are scheduled to play in four games on BTN and five on the Big Ten Digital Network, which can be viewed online.

SERIES HISTORY vs. SAINT FRANCIS

All-Time Series	PSU leads 29-2
PSU Streak	W2
First Meeting	3/27/90, W 2-1
Last Meeting	4/9/13, W 4-1
Last PSU Win	4/9/13, 4-1
Largest PSU Win	3/27/90, 15-1
Largest SFU Win	3/24/10, 5-3
	4/16/09, 4-2

Previous Five Meetings

4/9/13	H	W	4-1
3/24/10	H	W	8-0 (6)
3/24/10	H	L	3-5
4/16/09	H	W	2-0
4/16/09	H	L	2-4

LIONS IN THE B1G / NCAA (thru 3/30 games)

STAT	Total	B1G	NCAA (Top 100)	PLAYER	STAT	TOTAL	B1G	NCAA (Top 100)
» Batting Average	.245	10th	--	» Lexi Knief	RunsPG	0.96	5th	67th
» Slugging Pct.	.339	10th	--		Toughest to K	19.8	2nd	65th
» On-Base Pct.	.333	9th	--		Triples	3	2nd	29th
» Runs Scored	85	11th	--		TriplesPG	0.11	3rd	41st
» Hits	163	10th	--	» Kasie Hatfield	Doubles	9	2nd	--
» Runs Batted In	81	10th	--		DoublesPG	0.33	3rd	51st
» Doubles	24	10th	--	» Macy Jones	Sac Flies	2	6th	85th
» Triples	7	2nd	--		Triples	2	5th	86th
» Triples/game	.026	3rd	43rd		TriplesPG	0.07	7th	--
» Home Runs	8	11th	--	» Shelby Miller	Triples	2	5th	86th
» Total Bases	225	10th	--		TriplesPG	0.09	5th	78th
» Walks	77	9th	--					
» Hit By Pitch	13	12th	--					
» Stolen Bases	11	12th	--					
» Earned Run Avg.	6.69	12th	--					
» Opposing Batting Avg.	.351	12th	--					
» Batters Struck Out	97	10th	--					
» Runs Allowed	183	11th	--					
» Earned Runs Allowed	159	12th	--					
» Walks Allowed	103	9th	--					
» Home Runs Allowed	23	11th	--					



2014 PENN STATE SOFTBALL



USA TODAY/NFCA April 1, 2014

No.	Team	Record	Last
1	UCLA (31)	33-2	1
2	Tennessee (1)	31-3	3
3	Oregon	30-4	2
4	Alabama	31-5	7
5	Michigan	25-6	6
6	Florida	31-7	4
7	Arizona State	32-6	11
8	Florida State	33-4	9
9	Washington	21-10	5
10	Arizona	29-8	8
11	South Alabama	29-3	12
12	Kentucky	28-7	10
13	Baylor	27-6	14
14	Minnesota	27-4	15
15	Georgia	30-5	13
16	Missouri	25-9	16
17	Tulsa	32-3	18
18	Texas A&M	26-9	17
19	Auburn	31-6-1	21
20	Nebraska	23-11	19
21	Louisiana-Lafayette	25-6-1	20
22	Oklahoma	24-8	22
23	Northwestern	19-8	23
24	Stanford	24-11	24
25	Notre Dame	20-7	25

RV: USC Upstate (24), USF (21), California (3), Houston (3), James Madison (3), Long Beach State (3), NC State (2), LSU (1).

ESPN.COM/USA SOFTBALL April 1, 2014

No.	Team	Record	Last
1	UCLA (16)	33-2	1
2	Tennessee (4)	31-3	2
3	Oregon	30-4	3
4	Alabama	30-5	5
5	Michigan	25-6	6
6	Arizona State	32-6	8
7	Florida	31-7	4
8	Florida State	33-4	11
9	Washington	21-10	7
10	Arizona	29-8	9
11	South Alabama	29-3	13
12	Kentucky	28-7	10
13	Baylor	27-6	12
14	Minnesota	27-4	15
15	Oklahoma	24-8	16
16	Tulsa	32-3	17
17	Georgia	30-5	14
18	Missouri	25-9	19
19	Auburn	31-6-1	21
20	Nebraska	23-11	18
21	Texas A&M	25-10	20
22	Louisiana-Lafayette	35-6-1	22
23	Notre Dame	20-7	24
24	Stanford	24-11	23
25	South Florida	29-8	25

RV: USC Upstate, Northwestern, NC State, Houston, San Diego State, California, Cal State Fullerton, Stetson, Virginia Tech

Bold indicates 2014 opponent

2014 PENN STATE RECORDS (As of 3/29/14)

Stat	Record
Total	6-21
Conference	0-6
Non-Conf	6-15
Home	0-6
Away	1-4
Neutral	5-11
Day	4-15
Night	2-6
vs Left	1-6
vs Right	5-15
1-Run games	1-4
2-Run games	1-3
5+Run games	4-13
Extra inns	0-1
Shutouts	1-4
Scoring 0-2 runs	0-14
Scoring 3-5 runs	2-6
Scoring 6-9 runs	3-0
Scoring 10+ runs	1-1
Opponent 0-2 runs	3-1
Opponent 3-5 runs	3-6
Opponent 6-9 runs	0-7
Opponent 10+ runs	0-7
Scored in 1st inning	4-9
Scores first	5-7
Opp. scores first	1-14
After 4 leading	5-4
After 4 trailing	1-14
After 4 tied	0-3
After 5 leading	4-2
After 5 trailing	1-10
After 5 tied	0-3
After 6 leading	5-1
After 6 trailing	0-12
After 6 tied	0-1
Hit 0 home runs	4-16
Hit 1 home run	1-5
Hit 2+ home runs	1-0
Opponent 0 home runs	4-8
Opponent 1 home run	2-7
Opponent 2+ HRs	0-6
Made 0 errors	4-5
Made 1 error	1-8
Made 2+ errors	1-8
Opp. made 0 errors	2-10
Opp. made 1 error	3-7
Opp. made 2+ errors	1-4
Out-hit opponent	4-3
Out-hit by opponent	1-17
Hits are tied	1-1
vs. AAC	0-1
vs. ACC	0-1
vs. America East	0-0
vs. Atlantic 10	1-0
vs. Big 12	0-1
vs. Big East	0-0
vs. Big South	0-0
vs. Big Ten	0-6
vs. Colonial	0-0
vs. Conference USA	0-2
vs. Ivy	1-1
vs. Mid-American	0-1
vs. Missouri Valley	1-0
vs. Mountain West	0-0
vs. Northeast Conference	0-2
vs. Pacific Coast	0-0
vs. Pac-12	0-2
vs. SEC	1-3
vs. Southern	1-0
vs. Summit	0-0
vs. WAC	1-0
Monday	1-1
Friday	1-8
Saturday	2-9
Sunday	2-3



2014 PENN STATE SOFTBALL



2014 PENN STATE SOFTBALL NUMERICAL ROSTER

No.	Name	Pos.	Year	Height	B/T	Hometown	High School
1	Mary Ward	OF	Fr.	5-3	L/L	Greencastle, Pa.	Greencastle-Antrim
2	Taylor Abeyta	OF	So.	5-6	L/R	San Diego, Calif.	Mt. Carmel
3	Liz Presto	INF	Sr.	5-7	R/R	Bethlehem, Pa.	Bethlehem Catholic
4	Marissa Diescher	P	Jr.	5-10	R/R	Livingston Manor, N.Y.	Livingston Manor Central
5	Christy Von Pusch	P	So.	5-10	R/R	Bryn Mawr, Pa.	Radnor
7	Kasie Hatfield	C/INF	Sr.	5-5	R/R	Tampa, Fla.	Chamberlain
8	Reina Furuya	INF	So.	5-7	R/R	Waipahu, Hawaii	Punahou
10	Lexi Knief	INF/OF	So.	5-6	L/R	Ramsey, N.J.	Ramsey
11	Sam Shanahan	INF	Fr.	5-5	R/R	Seattle, Wash.	Bishop Blanchet
12	Macy Jones	OF/P	So.	5-4	L/L	Ashburn, Va.	Briar Woods
13	Maegan Tupinio	INF/OF	So.	5-4	L/R	Wahiawa, Hawaii	Leilehua
17	Marlaina Laubach	P	Fr.	5-8	R/R	Northampton, Pa.	Northampton
18	Alicia Walker	UTL	Jr.	5-6	R/R	Los Alamitos, Calif.	Los Alamitos
22	Alyssa Sovereign	OF	Sr.	5-5	L/R	La Canada, Calif.	Crescenta Valley
25	Meghan Bradley	OF	Jr.	5-7	L/L	Santa Monica, Calif.	Santa Monica
28	Shannon Good	OF	So.	5-7	R/R	Horseheads, N.Y.	Horseheads
30	Karlie Habitz	C	So.	5-11	R/R	Newhall, Calif.	Valencia
52	Kristina Brackpool	OF/INF	Fr.	5-8	R/R	Valencia, Calif.	Valencia
77	Shelby Miller	INF	Fr.	5-8	L/R	Sugar Land, Texas	Kempner

Head Coach: Amanda Lehotak (First Season)
Assistant Coach: Megan Gibson (First Season)
Assistant Coach: Joe Guthrie (First Season)

2014 PENN STATE SOFTBALL ALPHABETICAL ROSTER

No.	Name	Pos.	Year	Height	B/T	Hometown	High School
20	Taylor Abeyta	OF	So.	5-6	L/R	San Diego, Calif.	Mt. Carmel
52	Kristina Brackpool	OF/INF	Fr.	5-8	R/R	Valencia, Calif.	Valencia
25	Meghan Bradley	OF	Jr.	5-7	L/L	Santa Monica, Calif.	Santa Monica
4	Marissa Diescher	P	Jr.	5-10	R/R	Livingston Manor, N.Y.	Livingston Manor
8	Reina Furuya	INF	So.	5-7	R/R	Waipahu, Hawaii	Punahou
28	Shannon Good	OF	So.	5-7	R/R	Horseheads, N.Y.	Horseheads
30	Karlie Habitz	C	So.	5-11	R/R	Newhall, Calif.	Valencia
7	Kasie Hatfield	C/INF	Sr.	5-5	R/R	Tampa, Fla.	Chamberlain
12	Macy Jones	OF/P	So.	5-4	L/L	Ashburn, Va.	Briar Woods
10	Lexi Knief	INF/OF	So.	5-6	L/R	Ramsey, N.J.	Ramsey
17	Marlaina Laubach	P	Fr.	5-8	R/R	Northampton, Pa.	Northampton HS
77	Shelby Miller	INF	Fr.	5-8	L/R	Sugar Land, Texas	Kempner
3	Liz Presto	INF	Sr.	5-7	R/R	Bethlehem, Pa.	Bethlehem Catholic
11	Sam Shanahan	INF	Fr.	5-5	R/R	Seattle, Wash.	Bishop Blanchet
22	Alyssa Sovereign	OF	Sr.	5-5	L/R	La Canada, Calif.	Crescenta Valley
13	Maegan Tupinio	INF/OF	So.	5-4	L/R	Wahiawa, Hawaii	Leilehua
5	Christy Von Pusch	P	So.	5-10	R/R	Bryn Mawr, Pa.	Radnor
18	Alicia Walker	UTL	Jr.	5-6	R/R	Los Alamitos, Calif.	Los Alamitos
1	Mary Ward	OF	Fr.	5-3	L/L	Greencastle, Pa.	Greencastle-Antrim

PRONUNCIATION GUIDE

Taylor Abeyta	uh-BAY-teh
Marissa Diescher	DEE-sheer
Reina Furuya	RAIN-eh fa-ROO-yah
Kasie Hatfield	KAY-see
Lexi Knief	kuh-NEEF
Marlaina Laubach	LAW-bok
Lehotak	leh-HOE-tack
M. Tupinio	two-PEEN-ee-yo
C. Von Pusch	von POOSH

LIONS BY ELIGIBILITY

Seniors (3): Hatfield, Presto, Sovereign
Juniors (3): Bradley, Diescher, Walker
Sophomores (8): Abeyta, Furuya, Good, Habitz, Jones, Knief, Tupinio, Von Pusch
Freshmen (5): Brackpool, Laubach, Miller, Shanahan, Ward

LIONS BY POSITION

Catchers (3): Habitz, Hatfield, Presto
Infielders (9): Brackpool, Furuya, Habitz, Hatfield, Knief, Miller, Shanahan, Tupinio
Outfielders (9): Abeyta, Brackpool, Bradley, Good, Jones, Knief, Sovereign, Tupinio, Ward
Pitchers (5): Diescher, Jones, Laubach, Shanahan, Von Pusch
Utility Players (1): Walker

LIONS BY STATE

California (6): Abeyta, Brackpool, Bradley, Habitz, Sovereign, Walker
Florida (1): Hatfield
Hawaii (2): Furuya, Tupinio
New Jersey (1): Knief
New York (2): Diescher, Good
Pennsylvania (4): Laubach, Presto, Von Pusch, Ward
Texas (1): Miller
Virginia (1): Jones
Washington (1): Shanahan



2014 PENN STATE SOFTBALL



2014 Penn State Softball Overall Statistics for Penn State (as of Mar 29, 2014) (All games Sorted by Batting avg)

Record: 6-21 Home: 0-6 Away: 1-4 Neutral: 5-11 Big Ten: 0-6

Player	avg	gp-gs	ab	r	h	2b	3b	hr	rbi	tb	slg%	bb	hp	so	gdp	ob%	sf	sh	sb-att	po	a	e	fld%
10 Knief, Lexi	.354	27-27	79	23	28	3	3	0	5	37	.468	15	0	4	0	.457	0	2	2-2	38	3	0	1.000
30 Habitz, Karlie	.351	27-27	77	7	27	4	0	4	22	43	.558	7	2	9	0	.419	0	0	0-0	75	7	3	.965
77 Miller, Shelby	.346	22-21	52	4	18	1	2	0	6	23	.442	4	0	11	0	.393	0	0	2-2	23	27	4	.926
7 Hatfield, Kasie	.311	27-26	74	4	23	9	0	0	11	32	.432	7	4	6	0	.400	0	2	1-2	91	5	4	.960
12 Jones, Macy	.278	27-26	72	14	20	1	2	3	18	34	.472	12	1	18	0	.379	2	0	3-3	31	9	2	.952
18 Walker, Alicia	.222	18-10	27	1	6	1	0	0	2	7	.259	2	1	5	0	.300	0	1	0-0	6	0	0	1.000
52 Brackpool, Kristina	.189	19-19	53	1	10	2	0	1	7	15	.283	1	1	12	1	.211	2	0	0-0	115	1	2	.983
22 Sovereign, Alyssa	.162	27-27	74	13	12	2	0	0	6	14	.189	9	0	9	0	.250	1	2	0-0	56	30	0	1.000
8 Furuya, Reina	.161	27-27	62	7	10	0	0	0	3	10	.161	13	1	16	0	.316	0	4	3-3	25	58	10	.892
11 Shanahan, Sam	.140	24-23	43	4	6	1	0	0	1	7	.163	3	0	9	0	.196	0	0	0-0	27	28	3	.948
25 Bradley, Meghan	.125	10-3	16	0	2	0	0	0	0	2	.125	0	0	6	0	.125	0	0	0-0	1	0	0	1.000
3 Presto, Liz	.059	10-7	17	0	1	0	0	0	0	1	.059	4	1	7	0	.273	0	1	0-0	4	5	1	.900
28 Good, Shannon	.000	4-1	6	0	0	0	0	0	0	0	.000	0	1	2	0	.143	0	0	0-0	0	0	0	.000
2 Abeyta, Taylor	.000	12-5	5	0	0	0	0	0	0	0	.000	0	0	3	0	.000	0	0	0-0	3	0	1	.750
24 Ward, Mary	.000	17-1	4	4	0	0	0	0	0	0	.000	0	1	2	0	.200	0	0	0-0	0	1	0	1.000
13 Tupinio, Maegan	.000	10-0	3	3	0	0	0	0	0	0	.000	0	0	2	0	.000	0	0	0-0	0	0	0	.000
Totals	.245	27	664	85	163	24	7	8	81	225	.339	77	13	121	1	.333	5	12	11-12	499	210	31	.958
Opponents	.351	27	716	183	251	41	7	23	166	375	.524	103	19	97	1	.439	11	18	23-30	511	214	21	.972

LOB - Team (176), Opp (186). DPs turned - Team (6), Opp (5). IBB - Team (1), Habitz 1, Opp (2).

(All games Sorted by Earned run avg)

Player	era	w-l	app	gs	cg	sho	sv	ip	h	r	er	bb	so	2b	3b	hr	b/avg	wp	hp	bk	sfa	sha
17 Laubach, Marlaina	4.31	4-9	15	12	5	0/0	0	63.1	87	47	39	28	38	11	0	9	.340	2	2	1	5	11
5 Von Pusch, Christy	7.20	1-1	14	2	2	1/0	0	35.0	49	44	36	35	18	12	1	3	.331	10	3	0	3	1
12 Jones, Macy	7.76	0-7	10	7	2	0/0	1	37.0	66	46	41	9	17	7	5	8	.386	0	10	0	2	3
4 Diescher, Marissa	9.71	1-4	12	6	0	0/0	1	31.0	49	46	43	31	24	11	1	3	.348	5	4	1	1	3
Totals	6.69	6-21	27	27	9	1/0	2	166.1	251	183	159	103	97	41	7	23	.351	17	19	2	11	18
Opponents	3.08	21-6	27	27	18	4/0	0	170.1	163	85	75	77	121	24	7	8	.245	6	13	0	5	12

PB - Team (9), Habitz 5, Hatfield 4, Opp (7). SBA/ATT - Habitz (17-21), Von Pusch (6-9), Laubach (7-9), Hatfield (6-9), Jones (6-7), Diescher (4-5).



2014 PENN STATE SOFTBALL



2014 RESULTS

6-21 OVERALL • 0-6 BIG TEN • 0-6 HOME • 1-4 AWAY • 2-2 • 5-11 NEUTRAL

Date	Event	Opponent	W/L/T	Score	R-H-E	R-H-E	Inn.	Overall	Big Ten	Pitcher (Record)	Attend.	Time
2/7	!	vs. Oregon State	L	10-12	10-11-0	12-12-1	7	0-1	0-0	Jones (L 0-1)	-	2:20
2/7	!	vs. Appalachian St.	W	10-4	10-10-2	4-10-2	7	1-1	0-0	Diescher (W 1-0)	210	1:30
2/8	!	vs. Bradley	W	5-3	5-10-0	3-7-1	7	2-1	0-0	Laubach (W 1-0)	397	2:00
2/8	!	at No. 7 Arizona St.	L	1-9	1-5-1	9-14-1	[6]	2-2	0-0	Jones (L 0-2)	943	1:55
2/9	!	vs. Seattle	W	6-1	6-11-1	1-4-0	7	3-2	0-0	Laubach (W 2-0)	209	1:30
2/16	@	vs. George Washington	W	9-1	9-8-0	1-4-1	[5]	4-2	0-0	Laubach (W 3-0)	-	1:53
2/16	@	vs. Northwestern	L	1-11	1-2-2	11-10-1	[5]	4-3	0-0	Diescher (L 1-1)	-	1:51
2/17	@	at No. 21 LSU	L	3-11	3-2-0	11-12-0	[5]	4-4	0-0	Jones (L 0-3)	1071	1:42
2/17	@	at No. 21 LSU	W	6-5	6-8-0	5-12-1	7	5-4	0-0	Laubach (W 4-0)	1071	2:18
2/21	#	vs. No. 5 Kentucky	L	5-0	0-2-3	5-6-0	7	5-5	0-0	Diescher (L 1-2)	319	1:49
2/21	#	vs. FAU	L	3-2	2-8-1	3-9-0	[8]	5-6	0-0	Laubach (L 4-1)	319	2:00
2/22	#	vs. Pitt	L	3-1	1-9-1	3-9-1	7	5-7	0-0	Laubach (L 4-2)	346	1:46
2/22	#	at FAU	L	3-2	2-7-0	3-5-0	7	5-8	0-0	Diescher (L 1-3)	346	1:47
2/23	#	vs. No. 5 Kentucky	L	8-1	1-4-1	8-13-1	7	5-9	0-0	Laubach (L 4-3)	358	2:02
3/1	\$	vs. Kent State	L	9-1	1-4-1	9-8-2	[5]	5-10	0-0	Laubach (L 4-4)	65	1:42
3/1	\$	vs. Dartmouth	L	6-3	3-10-3	6-9-0	7	5-11	0-0	Von Pusch (L 0-1)	65	1:51
3/14	%	vs. Rutgers	L	4-3	3-7-1	4-5-1	7	5-12	0-0	Jones (L, 0-4)	33	1:55
3/14	%	vs. Central Conn. St.	L	1-0	0-4-0	1-7-1	7	5-13	0-0	Laubach (L, 4-5)	53	2:00
3/15	%	vs. Wagner	L	4-2	2-5-3	4-8-0	7	5-14	0-0	Laubach (L, 4-6)	85	2:15
3/15	%	vs. Yale	W	5-0	5-5-0	0-1-0	7	6-14	0-0	Von Pusch (W, 1-1)	90	1:20
3/16	%	vs. No. 12 Baylor	L	8-1	1-5-3	8-12-0	7	6-15	0-0	Diescher (L, 1-4)	100	1:40
3/21	*	vs. Purdue	L	10-3	3-9-2	10-10-2	7	6-16	0-1	Laubach (L, 4-7)	170	2:40
3/22	*	vs. Purdue	L	9-2	2-4-1	9-10-0	7	6-17	0-2	Jones (L, 0-5)	427	1:53
3/22	*	vs. Purdue	L	13-4	4-5-0	13-15-3	[5]	6-18	0-3	Laubach (L, 4-8)	427	2:04
3/28	*	vs. No. 6 Michigan	L	6-0	0-1-1	6-8-0	7	6-19	0-4	Jones (L, 0-6)	181	1:30
3/28	*	vs. No. 6 Michigan	L	22-0	0-4-2	22-16-0	[5]	6-20	0-5	Laubach (L, 4-9)	181	1:57
3/29	*	vs. No. 6 Michigan	L	12-4	4-3-2	12-15-2	[5]	6-21	0-6	Jones (L, 0-7)	310	1:56

! Kajakawa Classic, Tempe, Ariz. | @ Tiger Invitational, Baton Rouge, La. | # FAU Invitational, Boca Raton, Fla. |
 \$ JMU Invitational, Harrisonburg, Va. | % Michele Smith Spring Break Tournament, Clearwater, Fla. | * Big Ten Game
 () Extra inning game | [] Shortened game (eight-run rule)



2014 PENN STATE SOFTBALL



2014 Defensive Lineup by Game

Date	Opponent	Pitcher	Catcher	First	Second	Third	Short	Left	Center	Right	DP
2/7	Oregon State	Jones	Habitz	Brackpool	Sovereign	Shanahan	Furuya	Walker	Knief	Good	Miller
2/7	Appalachian State	Diescher	Habitz	Brackpool	Sovereign	Shanahan	Furuya	Jones	Knief	Walker	Hatfield
2/8	Bradley	Laubach	Habitz	Hatfield	Sovereign	Shanahan	Furuya	Jones	Knief	Walker	Bradley
2/8	Arizona State	Jones	Habitz	Hatfield	Sovereign	Shanahan	Furuya	Abeyta	Knief	Walker	Bradley
2/9	Seattle	Laubach	Hatfield	Brackpool	Sovereign	Shanahan	Furuya	Jones	Knief	Walker	Habitz
2/16	George Washington	Laubach	Habitz	Hatfield	Sovereign	Presto	Furuya	Jones	Knief	Miller	Brackpool
2/16	Northwestern	Diescher	Habitz	Hatfield	Sovereign	Shanahan	Furuya	Jones	Knief	Miller	Presto
2/17	LSU	Jones	Habitz	Hatfield	Sovereign	Shanahan	Furuya	Abeyta	Knief	Miller	Presto
2/17	LSU	Laubach	Habitz	Hatfield	Sovereign	Shanahan	Furuya	Jones	Knief	Miller	Walker
2/21	Kentucky	Diescher	Habitz	Hatfield	Sovereign	Shanahan	Furuya	Jones	Knief	Miller	Walker
2/21	FAU	Laubach	Hatfield	Brackpool	Sovereign	Presto	Furuya	Jones	Knief	Abeyta	Habitz
2/22	Pitt	Laubach	Hatfield	Brackpool	Sovereign	Shanahan	Furuya	Jones	Knief	Miller	Habitz
2/22	FAU	Diescher	Habitz	Brackpool	Sovereign	Shanahan	Furuya	Jones	Knief	Miller	Hatfield
2/23	Kentucky	Laubach	Habitz	Brackpool	Sovereign	Shanahan	Furuya	Jones	Knief	Miller	Hatfield
3/1	Kent State	Laubach	Habitz	Hatfield	Sovereign	Shanahan	Furuya	Jones	Knief	Miller	Walker
3/1	Dartmouth	Von Pusch	Habitz	Hatfield	Sovereign	Shanahan	Furuya	Abeyta	Knief	Ward	Presto
3/14	Rutgers	Jones	Habitz	Brackpool	Miller	Shanahan	Furuya	Sovereign	Knief	Walker	Hatfield
3/14	Central Conn. St.	Laubach	Habitz	Brackpool	Miller	Presto	Furuya	Sovereign	Knief	Jones	Hatfield
3/15	Wagner	Diescher	Hatfield	Brackpool	Miller	Presto	Furuya	Sovereign	Knief	Jones	Habitz
3/15	Yale	Von Pusch	Hatfield	Brackpool	Miller	Shanahan	Furuya	Sovereign	Knief	Jones	Habitz
3/16	Baylor	Diescher	Hatfield	Brackpool	Miller	Shanahan	Furuya	Sovereign	Knief	Jones	Habitz
3/21	PURDUE	Laubach	Habitz	Hatfield	Miller	Shanahan	Furuya	Sovereign	Knief	Jones	Brackpool
3/22	PURDUE	Jones	Hatfield	Brackpool	Miller	Shanahan	Furuya	Sovereign	Knief	Abeyta	Habitz
3/22	PURDUE	Laubach	Hatfield	Brackpool	Miller	Shanahan	Furuya	Sovereign	Knief	Jones	Habitz
3/28	MICHIGAN	Jones	Habitz	Brackpool	Miller	Shanahan	Furuya	Sovereign	Knief	Abeyta	Hatfield
3/28	MICHIGAN	Laubach	Habitz	Brackpool	Miller	Shanahan	Furuya	Sovereign	Knief	Jones	Hatfield
3/28	MICHIGAN	Jones	Habitz	Hatfield	Miller	Shanahan	Furuya	Sovereign	Knief	Walker	Brackpool



AMANDA LEHOTAK

Head Coach • First Year
NEBRASKA-OMAHA '03

RECORD: 194-227 (.461)

Amanda Lehotak enters her first season as the Penn State softball head coach. She was named the seventh coach in program history on July 22, 2013. Lehotak comes to Penn State with seven years of head coaching experience under her belt, including the last two seasons at Texas-San Antonio.

Lehotak guided the Roadrunners to a 27-26 overall record in 2013 to give the program just their second winning overall record in the last seven years. She also led the team to a fifth-place finish and a berth in the WAC Tournament in UTSA's first season in the conference. Additionally, Darian Blake was named to the All-WAC first team.

In her first season at UTSA, Lehotak and the Roadrunners posted a 24-28 overall record and 12-8 mark in Southland Conference play en route to a third-place finish, which was the program's highest finish since 2009. She had five players earn All-Southland honors in 2012, including Freshman of the Year Megan Low.

Prior to her time at UTSA, Lehotak spent six seasons at Jacksonville University, including five as the head coach. The Dolphins improved their win total each of Lehotak's five seasons at the helm, culminating in a 44-16 overall record and 18-2 conference mark in 2011.

That season, Jacksonville won the Atlantic Sun regular-season and tournament titles on its way to the first NCAA Tournament appearance in school history. Lehotak was selected as the 2011 Atlantic Sun Coach of the Year as her squad set school records for home runs, earned run average, shutouts and fielding percentage. Lehotak left Jacksonville with a school-record 137 wins.

In 2010, Lehotak led the Dolphins to a then-second-best win total in program history with a 33-23 overall record. Additionally, a then-program-record five student-athletes earned All-Atlantic Sun recognition under her guidance in 2010.

Lehotak owns a 188-206 record in seven seasons as a collegiate head coach at UTSA and Jacksonville. In addition to her one season as an assistant coach at Jacksonville, Lehotak was also an assistant coach at Missouri Western State for one season where she was responsible for recruiting, working with the outfielders, hitting instruction, coordinating camps and clinics, as well as managing the team's travel schedule.

She also served as an assistant coach at Daniel J. Gross High School in Bellevue, Neb. and was an interim assistant coach at College of Saint Mary in Omaha (2004).

A native of Omaha, Neb., Lehotak played collegiately at the University of Mississippi for two seasons (2000-01) before finishing her career at Nebraska-Omaha (2002-03). She set the single-season hits record in 2001 at Ole Miss and was a third team All-American at UNO with a pair of first team All-North Central Conference selections. Lehotak earned her bachelor's degree in family science from Nebraska-Omaha in 2003.

LEHOTAK'S COLLEGIATE RÉSUMÉ

Head Coach	
Penn State	2014
Texas-San Antonio	2012-13
Jacksonville	2007-11
<i>2011 Atlantic Sun Coach of the Year</i>	
Assistant Coach	
Jacksonville	2006
Missouri Western State	2005
College of St. Mary (Neb.)	2004
Student-Athlete	
Nebraska-Omaha	2002-03
Mississippi	2000-01

CAREER RECORD

Season	School	Overall Record	Pct.	Conf. Record	Pct.	Finish	NCAA
2014	Penn State	6-21	.222	0-6	.000	--	--
2013	Texas-San Antonio	27-26	.509	9-12	.429	5th	--
2012	Texas-San Antonio	24-28	.462	12-8	.600	T3rd	--
2011	Jacksonville	44-16	.733	18-2	.900	1st	Regionals
2010	Jacksonville	33-23	.589	10-10	.500	6th	--
2009	Jacksonville	24-31	.436	7-13	.350	7th	--
2008	Jacksonville	21-39	.350	5-17	.227	11th	--
2007	Jacksonville	15-43	.259	4-14	.222	10th	--



2014 PENN STATE SOFTBALL



#2 TAYLOR ABEYTA



OF • So. • San Diego, Calif. Mt. Carmel

- Has seen action in 12 games in 2014
- Has started five contests at right field
- Earned her first at-bat of the season vs. Oregon St. (2/7)

ABEYTA'S CAREER HIGHS

AT BATS	4	vs. South Carolina	3/10/13
RUNS	1	6x, last vs. Northwestern	2/16/14
HITS	2	vs. DePaul	3/16/13
RBI	3	2x, last vs. DePaul	3/16/13
WALKS	3	vs. Missouri-KC	2/17/13
STOLEN BASES	1	3x, last vs. Maine	3/9/13
TOTAL BASES	2	vs. Ohio State	5/11/12

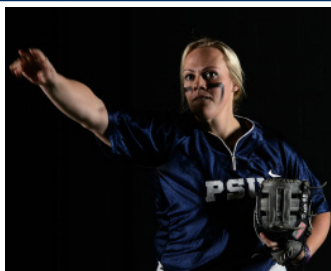
2014 SEASON HIGHS

AT BATS	2	vs. Dartmouth	3/1/14
RUNS	-	-	-
HITS	-	-	-
RBI	-	-	-
WALKS	-	-	-
STOLEN BASES	-	-	-
TOTAL BASES	-	-	-

CAREER HITTING STATISTICS

Year	AVG.	GP-GS	AB	R	H	2B	3B	HR	RBI	TB	SLG	BB	HBP	SO	GDP	OBP	SF-SH	SB-ATT	PO-A-E	FLD%
2013	.229	36-14	35	5	8	1	0	1	7	23	.343	3	0	14	0	.289	0-0	3-3	55-2-2	.966
2014	.000	12-5	5	0	0	0	0	0	0	0	.000	0	0	3	0	.000	0-0	0-0	3-0-1	.750
Total	.200	48-19	40	5	8	1	0	1	7	12	.300	3	0	17	0	.256	0-0	3-3	58-2-3	.952

#3 LIZ PRESTO



C • Sr. • Bethlehem, Pa. Bethlehem Catholic

- Has seen action in 10 games in 2014
- Posted her first hit of the season at FAU (2/21)
- Earned her first start of the season vs. George Washington (2/16)
- Registered two walks vs. George Washington

PRESTO'S CAREER HIGHS

AT BATS	4	2x, last vs. Minnesota	4/28/12
RUNS	2	vs. Michigan State	4/7/12
HITS	3	vs. Michigan State	4/7/12
RBI	4	vs. Minnesota	4/28/12
WALKS	2	5x, last vs. George Washington	2/16/14
STOLEN BASES	-	-	-
TOTAL BASES	4	3x, last vs. Texas	3/15/13

2014 SEASON HIGHS

AT BATS	3	at Florida Atlantic	2/21/14
RUNS	-	-	-
HITS	1	at Florida Atlantic	2/21/14
RBI	-	-	-
WALKS	2	vs. George Washington	2/16/14
STOLEN BASES	-	-	-
TOTAL BASES	1	at Florida Atlantic	2/21/14

CAREER HITTING STATISTICS

Year	AVG.	GP-GS	AB	R	H	2B	3B	HR	RBI	TB	SLG	BB	HBP	SO	GDP	OBP	SF-SH	SB-ATT	PO-A-E	FLD%
2011	.067	16-4	15	4	1	1	0	0	1	2	.133	5	0	5	0	.300	0-0	0-0	0-0-0	.000
2012	.190	38-35	79	6	15	3	0	1	7	21	.266	20	2	18	1	.366	0-3	0-0	83-34-4	.967
2013	.222	17-5	18	1	4	0	0	1	3	7	.389	6	0	7	0	.417	0-0	0-0	0-1-0	1.000
2014	.059	10-7	17	0	1	0	0	0	0	1	.059	4	1	7	0	.273	0-1	0-0	4-5-1	.900
Total	.163	81-51	129	11	21	4	0	2	11	31	.240	35	3	37	1	.353	0-4	0-0	87-40-5	.962



2014 PENN STATE SOFTBALL



#4 MARISSA DIESCHER



RHP • Jr. • Livingston Manor, N.Y. Livingston Manor Central

- Pitched a season-high 5.0 innings vs. Wagner (3/15) and No. 5 Kentucky (2/21)
- Started her first game of the year vs. Appalachian St. (2/7)
- Notched her first win of 2014 vs. Appalachian St.
- Registered her first save of the season vs. Bradley (2/8)
- Matched career-high with five strikeouts vs. Wagner in four innings
- Gave up just two walks in four innings vs. Bradley

DIESCHER'S CAREER PITCHING HIGHS

INNINGS.....7.0 5x, last vs. Indiana 4/15/12
 STRIKEOUTS.....5 vs. LIU-Brooklyn 3/2/12
 WALKS10 at Michigan 3/24/12

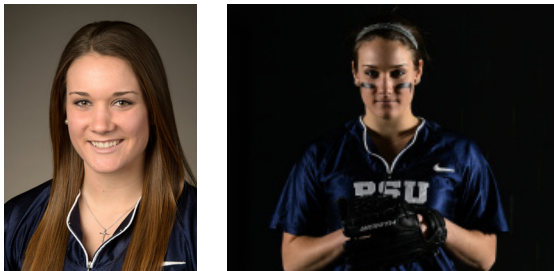
2014 SEASON PITCHING HIGHS

INNINGS.....5.0 2x, last vs. Wagner 3/15/14
 STRIKEOUTS.....5 vs. Wagner 3/15/14
 WALKS5 2x, last vs. Kent State 3/1/14

CAREER PITCHING STATISTICS

Year	ERA	W-L	APP	GS	CG	SHO/C	SV	IP	H	R	ER	BB	SO	2B	3B	HR	BF	BAA	WP	HBP	BK	SFA	SHA
2012	5.52	5-9	22	19	6	1/0	0	78.2	94	76	62	88	33	8	0	7	429	.295	20	6	0	3	13
2013	10.21	1-7	17	11	0	0/0	0	36.1	37	57	53	69	21	4	0	2	225	.255	4	7	1	0	4
2014	9.71	1-4	12	6	0	0/0	1	31.0	49	46	43	31	24	11	1	3	180	.348	5	4	1	1	3
Total	7.58	7-20	51	36	6	1/0	1	146.0	180	179	158	188	78	23	1	12	834	.298	29	17	2	4	20

#5 CHRISTY VON PUSCH



RHP • So. • Bryn Mawr, Pa. Radnor

- Earned her first collegiate victory vs. Yale (3/14)
- Pitched her first complete game vs. Dartmouth (3/1)
- Made her first start of the season vs. Dartmouth
- Has seen action in 14 games in 2014
- Gave up just one walk in 2.2 innings vs. Arizona State

VON PUSCH'S CAREER PITCHING BESTS

INNINGS.....7.0 2x, last vs. Yale 3/14/14
 STRIKEOUTS.....3 vs. Kentucky 2/23/14
 WALKS11 vs. Texas Tech 2/16/13

VON PUSCH'S 2014 SEASON PITCHING BESTS

INNINGS.....7.0 2x, last vs. Yale 3/15/14
 STRIKEOUTS.....3 vs. Kentucky 2/23/14
 WALKS5 vs. Purdue 3/22/14

CAREER PITCHING STATISTICS

Year	ERA	W-L	APP	GS	CG	SHO/C	SV	IP	H	R	ER	BB	SO	2B	3B	HR	BF	BAA	WP	HBP	BK	SFA	SHA
2013	17.02	0-6	12	7	0	0/1	0	19.1	34	54	47	50	2	4	1	3	141	.386	19	0	0	0	3
2014	7.20	1-1	14	2	2	1/0	0	35.0	49	44	36	35	18	12	1	3	190	.331	10	3	0	3	1
Total	10.69	1-7	26	9	2	1/1	0	54.1	83	98	83	85	20	16	2	6	331	.352	29	3	0	3	4



2014 PENN STATE SOFTBALL



#7 KASIE HATFIELD



C/INF • Sr. • Tampa, Fla. Chamberlain

- Has started all but one game for PSU this season
- Leads the team and is tied for second in the Big Ten in doubles with nine
- Put together a 5-for-10 effort at the dish in the series vs. Purdue with two doubles and two RBI
- Went 3-for-4 at the plate vs. FAU (2/21)
- Drove in a season-high three runs vs. George Washington (2/16)
- Put together a 2-for-3 performance vs. George Washington
- Went 2-for-3 vs. Appalachian St. (2/7) with a single, a double, two RBIs and a walk

HATFIELD'S CAREER HIGHS

AT BATS	7	vs. Fordham	5/21/11
RUNS	2	5x, last vs. Northwestern	4/20/13
HITS	4	vs. Michigan State	4/7/12
RBI	5	vs. Indiana	4/15/12
WALKS	2	2x, last vs. Bradley	2/8/14
STOLEN BASES	1	vs. Texas A&M	3/3/13
TOTAL BASES	8	vs. Ohio State	5/11/12

2014 SEASON HIGHS

AT BATS	4	2x, last vs. Purdue	3/21/14
RUNS	1	2x, last at LSU	2/17/14
HITS	3	at Florida Atlantic	2/21/14
RBI	3	vs. George Washington	2/16/14
WALKS	2	vs. Bradley	2/8/14
STOLEN BASES	--	--	--
TOTAL BASES	4	at Florida Atlantic	2/21/14

CAREER HITTING STATISTICS

Year	AVG.	GP-GS	AB	R	H	2B	3B	HR	RBI	TB	SLG	BB	HBP	SO	GDP	OBP	SF-SH	SB-ATT	PO-A-E	FLD%
2011	.223	49-45	130	10	29	6	1	1	10	40	.308	6	3	23	2	.273	0-3	0-0	218-16-2	.992
2012	.252	48-48	131	16	33	8	0	5	26	56	.427	10	0	22	3	.305	0-2	0-1	156-45-6	.971
2013	.181	45-42	105	5	19	0	0	2	6	25	.238	5	0	21	0	.218	0-3	1-1	149-25-6	.967
2014	.311	27-26	74	4	23	9	0	0	11	32	.432	7	4	6	0	.400	0-2	1-2	91-5-4	.960
Total	.236	169-161	440	35	104	23	1	8	53	153	.348	28	7	72	5	.293	0-10	2-4	614-91-18	.975

#8 REINA FURUYA



INF • So. • Waipahu, Hawaii Punahou

- Has started all 27 games for PSU in 2014 at SS
- Second on team in walks with 13
- Leads team in stolen bases with three
- Turned in a 2-for-4 performance vs. Dartmouth (3/1)
- Went 2-for-2 at the plate vs. Appalachian State (2/7) with an RBI and two runs

FURUYA'S CAREER HIGHS

AT BATS	4	8x, last vs. Dartmouth	3/1/14
RUNS	2	vs. Appalachian State	2/7/14
HITS	2	7x, last vs. Dartmouth	3/1/14
RBI	4	vs. Northwestern	4/20/13
WALKS	2	3x, last vs. George Washington	2/16/14
STOLEN BASES	1	5x, last at LSU	2/17/14
TOTAL BASES	2	2x, last vs. Appalachian State	2/7/14

2014 SEASON HIGHS

AT BATS	4	3x, last vs. Dartmouth	3/1/14
RUNS	2	vs. Appalachian State	2/7/14
HITS	2	2x, last vs. Dartmouth	3/1/14
RBI	1	3x, last at LSU	2/17/14
WALKS	2	3x, last vs. George Washington	2/16/14
STOLEN BASES	1	3x, last at LSU	2/17/14
TOTAL BASES	2	vs. Appalachian State	2/7/14

CAREER HITTING STATISTICS

Year	AVG.	GP-GS	AB	R	H	2B	3B	HR	RBI	TB	SLG	BB	HBP	SO	GDP	OBP	SF-SH	SB-ATT	PO-A-E	FLD%
2013	.224	43-41	107	8	24	5	0	4	20	41	.383	7	0	21	1	.270	1-4	2-2	50-66-8	.935
2014	.161	27-27	62	7	10	0	0	0	3	10	.161	13	1	16	0	.316	0-4	3-3	25-58-10	.892
Total	.201	70-68	169	15	34	5	0	4	23	51	.302	20	1	37	1	.288	1-8	5-5	75-124-18	.917



2014 PENN STATE SOFTBALL



#10 LEXI KNIEF



CF • So. • Ramsey, N.J. Ramsey

- Leads team in runs with 23
- Team-best batting avg. of .354
- Tied for second in the Big Ten and 29th in the nation in triples with three
- Leads Penn State with OBP of .457
- Drove in career-best two runs at FAU (2/22)
- Scored career-high four runs vs. Oregon State (2/7)
- Leads team in at-bats (79)

KNIEF'S CAREER HIGHS

AT BATS	49x, last vs. Seattle	2/9/14
RUNS	4vs. Oregon State	2/7/14
HITS	3vs. Iowa State	2/24/13
RBI	2at FAU	2/22/14
WALKS	27x, last at LSU	2/17/14
STOLEN BASES	13x, last vs. Purdue	3/22/13
TOTAL BASES	4vs. Rutgers	3/14/14

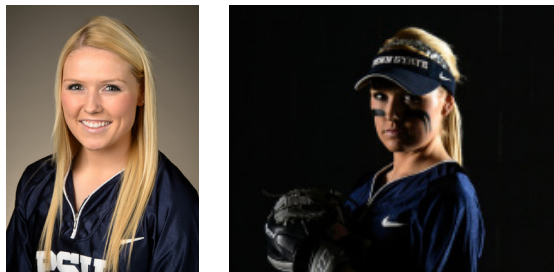
2014 SEASON HIGHS

AT BATS	42x, last vs. Seattle	2/9/14
RUNS	4vs. Oregon State	2/7/14
HITS	26x, last vs. Purdue	3/22/14
RBI	2at FAU	2/22/14
WALKS	24x, last at LSU	2/17/14
STOLEN BASES	12x, last vs. Purdue	3/22/14
TOTAL BASES	4vs. Rutgers	3/14/14

CAREER HITTING STATISTICS

Year	AVG.	GP-GS	AB	R	H	2B	3B	HR	RBI	TB	SLG	BB	HBP	SO	GDP	OBP	SF-SH	SB-ATT	PO-A-E	FLD%
2013	.224	38-26	76	11	17	1	0	0	3	18	.237	10	4	15	1	.344	0-1	1-3	39-32-8	.899
2014	.354	27-27	79	23	28	3	3	0	5	37	.468	15	0	4	0	.457	0-2	2-2	38-3-0	1.000
Total	.290	65-53	155	34	45	4	3	0	8	55	.355	25	4	19	1	.402	0-3	3-5	77-35-8	.933

#11 SAM SHANAHAN



3B • Fr. • Seattle, Wash. Bishop Blanchet

- Has started all but four games for PSU in 2014
- Turned in a 2-for-3 effort at the plate vs. Dartmouth (3/1)
- Registered her first collegiate double vs. Dartmouth
- Made first collegiate start in season-opener vs. Oregon State (2/7) and has started all but one game in 2014
- Recorded her first collegiate RBI at No. 21 LSU (2/17)
- Notched a season-high two runs vs. Oregon State
- Registered her first collegiate hit vs. Oregon State

SHANAHAN'S 2014 SEASON HIGHS

AT BATS	35x, last vs. Dartmouth	3/1/14
RUNS	2vs. Oregon State	2/7/14
HITS	2vs. Dartmouth	3/1/14
RBI	1at LSU	2/17/14
WALKS	13x, last vs. Kentucky	2/23/14
STOLEN BASES	-	-
TOTAL BASES	3vs. Dartmouth	3/1/14

CAREER HITTING STATISTICS

Year	AVG.	GP-GS	AB	R	H	2B	3B	HR	RBI	TB	SLG	BB	HBP	SO	GDP	OBP	SF-SH	SB-ATT	PO-A-E	FLD%
2014	.140	24-23	43	4	6	1	0	0	1	7	.163	3	0	9	0	.196	0-0	0-0	27-28-3	.948
Total	.140	24-23	43	4	6	1	0	0	1	7	.163	3	0	9	0	.196	0-0	0-0	27-28-3	.948



2014 PENN STATE SOFTBALL



#12 MACY JONES



OF/LHP • So. • Ashburn, Va. Briar Woods

- Has started all but one game for PSU in 2014
- Notched HR's in back-to-back games vs. Wagner (3/15) and Yale (3/15)
- Posted her first HR of 2014 vs. Pitt (2/22)
- Put together a perfect 3-for-3 performance vs. GWU (2/16)
- Went a perfect 3-for-3 at the plate vs. Seattle (2/9)
- Registered five strikeouts vs. Oregon State (2/7)

JONES' CAREER HITTING HIGHS

AT BATS	5	2x, last vs. Appalachian State	2/7/14
RUNS	3	at Pitt	4/10/13
HITS	3	3x, last vs. Saint Francis (Pa.)	4/9/13
RBI	6	at New Mexico State	2/16/13
WALKS	2	at Pitt	4/10/13
STOLEN BASES	1	4x, last vs. George Washington	2/16/14
TOTAL BASES	7	at New Mexico State	2/16/13

2014 HITTING HIGHS

AT BATS	5	vs. Appalachian State	2/7/14
RUNS	2	vs. Seattle	2/9/14
HITS	3	2x, last vs. George Washington	2/16/14
RBI	2	vs. Seattle	2/9/14
WALKS	2	vs. Oregon State	2/7/14
STOLEN BASES	1	vs. George Washington	2/16/14
TOTAL BASES	4	vs. Seattle	2/9/14

JONES' CAREER PITCHING BESTS

INNINGS	7.2	at Ohio State	4/14/13
STRIKEOUTS	12	vs. Maine	3/9/13
COMPLETE GAMES	14	last vs. Illinois	5/9/13
SHUTOUTS	1	vs. Maine	3/9/13

2014 PITCHING BESTS

INNINGS	7.0	vs. Michigan	3/28/14
STRIKEOUTS	5	vs. Oregon State	2/7/14
WALKS	3	vs. Rutgers	3/14/14

CAREER PITCHING STATISTICS

Year	ERA	W-L	APP	GS	CG	SHO/C	SV	IP	H	R	ER	BB	SO	2B	3B	HR	BF	BAA	WP	HBP	BK	SFA	SHA
2013	3.84	13-17	36	22	14	1/1	1	175.0	196	111	96	60	000	40	3	29	785	.286	2	11	0	11	17
2014	8.00	0-5	8	5	1	0/0	1	28.0	49	34	32	8	14	5	5	8	146	.386	0	6	0	2	3
Total	4.41	13-22	44	27	15	1/1	2	203.0	245	145	128	68	115	45	8	37	931	.301	2	17	0	13	20

CAREER HITTING STATISTICS

Year	AVG.	GP-GS	AB	R	H	2B	3B	HR	RBI	TB	SLG	BB	HBP	SO	GDP	OBP	SF-SH	SB-ATT	PO-A-E	FLD%
2013	.274	49-49	146	20	40	8	2	5	28	67	.459	13	5	38	0	.349	2-2	3-4	21-29-4	.926
2014	.278	27-26	72	14	20	1	2	3	18	34	.472	12	1	18	0	.379	2-0	3-3	31-9-2	.952
Total	.275	76-75	218	34	60	9	4	8	46	101	.463	25	6	56	0	.360	4-2	6-7	52-38-6	.938

#13 MAEGAN TUPINIO



INF/OF • So. • Wahiawa, Hawaii Leilehua

- Has seen action in 10 games for PSU in 2014
- Registered her first at-bat as a Nittany Lion at Florida Atlantic (2/22)
- Scored as a pinch runner vs. George Washington (2/16)
- Notched her first run of the season vs. Appalachian State (2/7) as a pinch runner

TUPINIO'S CAREER HIGHS

AT BATS	--	--	--	--	--	--	--	--	--	--	--	--	--	--	--	--	--	--	--	--	--	--	--
RUNS	1	10x, last vs. Appalachian State	2/7/14																				
HITS	--	--	--	--	--	--	--	--	--	--	--	--	--	--	--	--	--	--	--	--	--	--	--
RBI	--	--	--	--	--	--	--	--	--	--	--	--	--	--	--	--	--	--	--	--	--	--	--
WALKS	--	--	--	--	--	--	--	--	--	--	--	--	--	--	--	--	--	--	--	--	--	--	--
STOLEN BASES	1	3x, last at Indiana	4/6/13																				
TOTAL BASES	--	--	--	--	--	--	--	--	--	--	--	--	--	--	--	--	--	--	--	--	--	--	--

TUPINIO'S 2014 SEASON HIGHS

AT BATS	1	3x, last vs. Purdue	3/22/14
RUNS	1	2x, last vs. George Washington	2/16/14
HITS	--	--	--
RBI	--	--	--
WALKS	--	--	--
STOLEN BASES	--	--	--
TOTAL BASES	--	--	--

CAREER HITTING STATISTICS

Year	AVG.	GP-GS	AB	R	H	2B	3B	HR	RBI	TB	SLG	BB	HBP	SO	GDP	OBP	SF-SH	SB-ATT	PO-A-E	FLD%
2013	.000	24-1	0	9	0	0	0	0	0	0	.000	0	0	0	0	.000	0-0	3-3	0-0-0	.000
2014	.000	10-0	3	3	0	0	0	0	0	0	.000	0	0	2	0	.000	0-0	0-0	0-0-0	.000
Total	.000	34-1	3	12	0	0	0	0	0	0	.000	0	0	2	0	.000	0-0	3-3	0-0-0	.000



2014 PENN STATE SOFTBALL



#17 MARLAINA LAUBACH



RHP • Fr. • Northampton, Pa. Northampton

- Threw a season-high six strikeouts at FAU (2/21)
- Pitched a season-high eight innings at FAU (2/21)
- Led the Nittany Lions to a win over No. 21 LSU (2/17)
- Allowed just four hits and did not give up a single walk vs. George Washington (2/16)
- Picked up a win against Bradley (2/8) in her collegiate debut
- Pitched her first complete game as a Nittany Lion vs. Seattle (2/9)
- Allowed just four hits in seven innings vs. Seattle
- Struck out five Bradley hitters & four Seattle hitters

LAUBACH'S 2014 PITCHING HIGHS

INNINGS.....	8.0	at Florida Atlantic	2/21/14
STRIKEOUTS.....	6	at Florida Atlantic	2/21/14
WALKS.....	3	vs. Bradley	2/8/14
COMPLETE GAMES.....	5	last vs. CCSU	3/14/14

CAREER HITTING STATISTICS

Year	ERA	W-L	APP	GS	CG	SHO/C	SV	IP	H	R	ER	BB	SO	2B	3B	HR	BF	BAA	WP	HBP	BK	SFA	SHA
2014	4.31	4-9	15	12	5	0/0	0	63.1	87	47	39	28	38	11	0	9	302	.340	2	2	1	5	11
Total	4.31	4-9	15	12	5	0/0	0	63.1	87	47	39	28	38	11	0	9	302	.340	2	2	1	5	11

#18 ALICIA WALKER



UTL • Jr. • Los Alamitos, Calif. Los Alamitos

- Has started 10 games for the Nittany Lions in 2014
- Hit her first-career double vs. Oregon State (2/7)
- Drove in two runs vs. Appalachian State (2/7)
- Scored once vs. Appalachian State

WALKER'S CAREER HIGHS

AT BATS.....	4	vs. Appalachian State	2/7/14
RUNS.....	2	vs. Western Michigan	3/8/13
HITS.....	2	vs. Ohio State	5/11/12
RBI.....	1	3x, last vs. Ohio State	5/11/12
WALKS.....	1	3x, last vs. Western Michigan	3/8/13
STOLEN BASES.....	2	vs. Ohio State	5/12/12
TOTAL BASES.....	2	vs. Ohio State	5/11/12

2014 SEASON HIGHS

AT BATS.....	4	vs. Appalachian State	2/7/14
RUNS.....	1	vs. Appalachian State	2/7/14
HITS.....	1	3x, last at Arizona State	2/8/14
RBI.....	2	vs. Appalachian State	2/7/14
WALKS.....	1	2x, last at Arizona State	2/8/14
STOLEN BASES.....	--	--	--
TOTAL BASES.....	2	vs. Oregon State	2/7/14

CAREER HITTING STATISTICS

Year	AVG.	GP-GS	AB	R	H	2B	3B	HR	RBI	TB	SLG	BB	HBP	SO	GDP	OBP	SF-SH	SB-ATT	PO-A-E	FLD%
2012	.207	39-15	29	9	6	0	0	0	3	6	.207	1	2	9	0	.265	2-4	5-7	19-0-2	.905
2013	.059	38-4	17	17	1	0	0	0	0	1	.059	2	1	4	0	.200	0-1	6-7	2-0-0	1.000
2014	.222	18-10	27	1	6	1	0	0	2	7	.259	2	1	5	0	.300	0-1	0-0	6-0-0	1.000
Total	.178	95-29	73	27	13	1	0	0	5	14	.192	5	4	18	0	.262	2-6	11-14	27-0-2	.931



2014 PENN STATE SOFTBALL



#22 ALYSSA SOVEREIGN



2B • Sr. • La Canada, Calif. Crescenta Valley

- Has started all 27 games for PSU in 2014
- Drove in two runs vs. No. 6 Michigan with her second double of the year
- Third on team in at-bats (74)
- Scored two runs in the win over No. 21 LSU (2/17)
- Registered a career-high four hits in a 4-for-5 effort vs. Oregon State (2/7)
- Scored twice vs. Oregon State and Bradley (2/8)

SOVEREIGN'S CAREER HIGHS

AT BATS	7	vs. Fordham	5/21/11
HITS	4	vs. Oregon State	2/7/14
RUNS	3	vs. James Madison	2/26/12
RBI	3	vs. Northwestern	4/20/13
STOLEN BASES	1	2x, last vs. DePaul	3/16/13
WALKS	2	8x, last at LSU	2/17/14
TOTAL BASES	6	vs. LIU-Brooklyn	3/2/12

2014 SEASON HIGHS

AT BATS	5	vs. Oregon State	2/7/14
HITS	4	vs. Oregon State	2/7/14
RUNS	2	4x, last at LSU	2/17/14
RBI	2	vs. No. 6 Michigan	3/29/14
STOLEN BASES	0		--
WALKS	2	3x, last at LSU	2/17/14
TOTAL BASES	4	vs. Oregon State	2/7/14

CAREER HITTING STATISTICS

Year	AVG.	GP-GS	AB	R	H	2B	3B	HR	RBI	TB	SLG	BB	HBP	SO	GDP	OBP	SF-SH	SB-ATT	PO-A-E	FLD%
2011	.257	56-55	167	11	43	9	1	5	26	69	.413	9	2	38	1	.302	1-4	0-1	56-6-0	1.000
2012	.209	50-50	153	21	32	5	0	4	17	49	.320	19	0	27	0	.297	0-1	1-1	51-1-1	.981
2013	.248	42-35	109	15	27	8	0	0	11	35	.321	11	0	21	0	.314	1-0	1-1	53-7-1	.984
2014	.162	27-27	74	13	12	2	0	0	6	14	.189	9	0	9	0	.250	1-2	0-0	56-30-0	1.000
Total	.227	175-167	503	60	114	24	1	9	60	167	.332	48	2	95	1	.295	3-7	2-3	216-44-2	.992

#24 MARY WARD



OF • Fr. • Greencastle, Pa. Greencastle-Antrim

- Earned her first collegiate start vs. Dartmouth (3/1)
- Scored as a pinch runner vs. No. 6 Michigan (3/29)
- Scored one run vs. George Washington (2/16)
- Notched her first collegiate run vs. Oregon State (2/7) as a pinch runner
- Also crossed the plate once vs. Seattle (2/9)

WARD'S SEASON HIGHS

AT BATS	1	4x, last vs. Michigan	3/28/14
RUNS	1	4x, last vs. Michigan	3/29/14
HITS	--		--
RBI	--		--
WALKS	--		--
STOLEN BASES	--		--
TOTAL BASES	--		--

CAREER HITTING STATISTICS

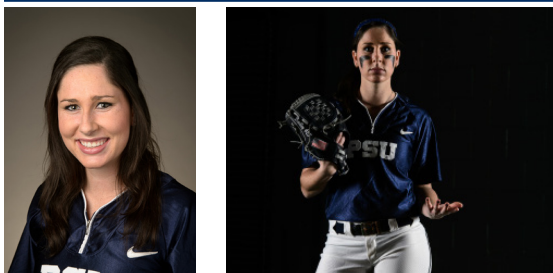
Year	AVG.	GP-GS	AB	R	H	2B	3B	HR	RBI	TB	SLG	BB	HBP	SO	GDP	OBP	SF-SH	SB-ATT	PO-A-E	FLD%
2014	.000	17-1	4	4	0	0	0	0	0	0	.000	0	1	2	0	.200	0-0	0-0	0-1-0	1.000
Total	.000	17-1	4	4	0	0	0	0	0	0	.000	0	1	2	0	.200	0-0	0-0	0-1-0	1.000



2014 PENN STATE SOFTBALL



#25 MEGHAN BRADLEY



OF • Jr. • Santa Monica, Calif. Santa Monica

- Has seen action in 10 games in 2014
- Registered her first hit as a Nittany Lion vs. Bradley (2/8)
- Put together a 2-for-4 effort vs. Bradley
- Earned her first collegiate start vs. Bradley as the DP

BRADLEY'S CAREER HIGHS		
AT BATS	4	vs. Bradley 2/8/14
RUNS	1	3x, last vs. Indiana 4/15/12
HITS	2	vs. Bradley 2/8/14
RBI	-	-
WALKS	-	-
STOLEN BASES	-	-
TOTAL BASES	2	vs. Bradley 2/8/14
2014 SEASON HIGHS		
AT BATS	4	vs. Bradley 2/8/14
RUNS	-	-
HITS	2	vs. Bradley 2/8/14
RBI	-	-
WALKS	-	-
STOLEN BASES	-	-
TOTAL BASES	2	vs. Bradley 2/8/14

CAREER HITTING STATISTICS																				
Year	AVG.	GP-GS	AB	R	H	2B	3B	HR	RBI	TB	SLG	BB	HBP	SO	GDP	OBP	SF-SH	SB-ATT	PO-A-E	FLD%
2012	.000	14-0	0	3	0	0	0	0	0	0	.000	0	1	0	0	1.000	0-0	0-0	0-0-0	.000
2013	.000	1-0	0	0	0	0	0	0	0	0	.000	0	0	0	0	.000	0-0	0-0	0-0-0	.000
2014	.125	10-3	16	0	2	0	0	0	0	2	.125	0	0	6	0	.125	0-0	0-0	1-0-0	1.000
Total	.125	25-3	16	3	2	0	0	0	0	2	.125	0	1	6	0	.176	0-0	0-0	1-0-0	1.000

#28 SHANNON GOOD



OF • So. • Horseheads, N.Y. Horseheads

- Has seen action in four games in 2014
- Earned a start in the season opener vs. Oregon State (2/7)
- Registered four at-bats vs. the Beavers in her first appearance at th plate

GOOD'S CAREER HIGHS		
AT BATS	4	vs. Oregon State 2/7/14
RUNS	-	-
HITS	-	-
RBI	-	-
WALKS	-	-
STOLEN BASES	-	-
TOTAL BASES	-	-
2014 SEASON HIGHS		
AT BATS	4	vs. Oregon State 2/7/14
RUNS	-	-
HITS	-	-
RBI	-	-
WALKS	-	-
STOLEN BASES	-	-
TOTAL BASES	-	-

CAREER HITTING STATISTICS																				
Year	AVG.	GP-GS	AB	R	H	2B	3B	HR	RBI	TB	SLG	BB	HBP	SO	GDP	OBP	SF-SH	SB-ATT	PO-A-E	FLD%
2013	.000	8-5	0	0	0	0	0	0	0	0	.000	0	0	0	0	.000	0-0	0-0	0-0-0	.000
2014	.000	4-1	6	0	0	0	0	0	0	0	.000	0	1	2	0	.143	0-0	0-0	0-0-0	.000
TOTAL	.000	12-6	6	0	0	0	0	0	0	0	.000	0	1	2	0	.143	0-0	0-0	0-0-0	.000



2014 PENN STATE SOFTBALL



#30 KARLIE HABITZ



C • So. • Newhall, Calif. Valencia

- Has started all 27 games for PSU in 2014
- Leads team in RBIs with 22
- Went 4-for-8 in the series vs. No. 6 Michigan
- Notched her fourth HR of 2014 vs. Purdue (3/22)
- Registered her second HR of the year vs. Dartmouth (3/1)
- Turned in a perfect 3-for-3 effort vs. Dartmouth
- Hit her first-career grand slam vs. Oregon State (2/7)
- Drove in a career-high six RBIs vs. Oregon State
- Went a perfect 3-for-3 at the plate vs. Bradley (2/8) with three RBIs

HABITZ'S CAREER HIGHS

AT BATS	4	10x, last vs. Oregon State	2/7/14
RUNS	2	vs. Yale	3/15/14
HITS	3	2x, last vs. Dartmouth	3/1/14
RBI	6	vs. Oregon State	2/7/14
WALKS	3	vs. George Washington	2/16/14
STOLEN BASES	-	-	-
TOTAL BASES	7	vs. Dartmouth	3/1/14

2014 SEASON HIGHS

AT BATS	4	3x, last vs. Purdue	3/21/14
RUNS	2	vs. Yale	3/15/14
HITS	3	2x, last vs. Dartmouth	3/1/14
RBI	6	vs. Oregon State	2/7/14
WALKS	3	vs. George Washington	2/16/14
STOLEN BASES	-	-	-
TOTAL BASES	7	vs. Dartmouth	3/1/14

CAREER HITTING STATISTICS

Year	AVG.	GP-GS	AB	R	H	2B	3B	HR	RBI	TB	SLG	BB	HBP	SO	GDP	OBP	SF-SH	SB-ATT	PO-A-E	FLD%
2013	.210	36-32	100	4	21	7	0	3	16	37	.370	7	0	17	0	.259	1-1	0-0	60-4-1	.985
2014	.351	27-27	77	7	27	4	0	4	22	43	.558	7	2	9	0	.419	0-0	0-0	75-7-3	.965
Total	.271	63-59	177	11	48	11	0	7	38	80	.452	14	2	26	0	.330	1-1	0-0	135-11-4	.973

#52 KRISTINA BRACKPOOL



1B • Fr. • Valencina, Calif. Valencia

- Has played and started in 19 games for PSU in 2014
- Put together a 2-for-3 effort vs. Pitt (2/22)
- Drove in one run vs. George Washington (2/16)
- Notched her first hit as a Nittany Lion vs. Seattle (2/9)
- Hit her first-collegiate homerun vs. Seattle
- Drove in three runs vs. SU
- Went 2-for-3 at the plate vs. SU

BRACKPOOL'S SEASON HIGHS

AT BATS	4	2x, last vs. George Washington	2/16/14
RUNS	1	vs. Seattle	2/9/14
HITS	2	2x, last vs. Pitt	2/22/14
RBI	3	vs. Seattle	2/7/14
WALKS	1	vs. Appalachian State	2/7/14
STOLEN BASES	-	-	-
TOTAL BASES	5	vs. Seattle	2/9/14

CAREER HITTING STATISTICS

Year	AVG.	GP-GS	AB	R	H	2B	3B	HR	RBI	TB	SLG	BB	HBP	SO	GDP	OBP	SF-SH	SB-ATT	PO-A-E	FLD%
2014	.189	19-19	53	1	10	2	0	1	7	15	.283	1	1	12	1	.211	2-0	0-0	115-1-2	.983
Total	.189	19-19	53	1	10	2	0	1	7	15	.283	1	1	12	1	.211	2-0	0-0	115-1-2	.983



2014 PENN STATE SOFTBALL



#77 SHELBY MILLER



INF • Fr. • Sugar Land, Texas Kempner

- Has started 21 games for PSU in her rookie campaign
- Registered first collegiate triples in the series vs. Purdue
- Registered her first collegiate double vs. No. 12 Baylor (3/16)
- Went 2-for-3 at the plate vs. Baylor
- Turned in a 2-for-3 performance vs. Wagner (3/15)
- Put together a 2-for-3 effort vs. No. 5 Kentucky (2/23)
- Went 2-for-4 at the plate in the win over No. 21 LSU (2/17)
- Drove in two runs in game one at No. 21 LSU
- Got on base four times vs. George Washington (2/16) with one hit and three walks
- Registered her first collegiate hit in her first at-bat as a Nittany Lion vs. Seattle (2/9)

MILLER'S SEASON HIGHS

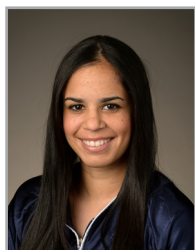
AT BATS	4	2x, last vs. Purdue	3/21/14
RUNS	1	2x, last at LSU	2/17/14
HITS	2	4x, last vs. Baylor	3/16/14
RBI	2	at LSU	2/17/14
WALKS	3	vs. George Washington	2/16/14
STOLEN BASES	1	2x, last vs. Yale	3/15/14
TOTAL BASES	3	3x, last vs. Purdue	3/22/14

CAREER HITTING STATISTICS

Year	AVG.	GP-GS	AB	R	H	2B	3B	HR	RBI	TB	SLG	BB	HBP	SO	GDP	OBP	SF-SH	SB-ATT	PO-A-E	FLD%
2014	.346	22-21	52	4	18	1	2	0	6	23	.442	4	0	11	0	.393	0-0	2-2	23-27-4	.926
Total	.346	22-21	52	4	18	1	2	0	6	23	.442	4	0	11	0	.393	0-0	2-2	23-27-4	.926



TV/RADIO ROSTER



TAYLOR ABEYTA
Sophomore • OF
San Diego, Calif.



LIZ PRESTO
Senior • C
Bethlehem, Pa.



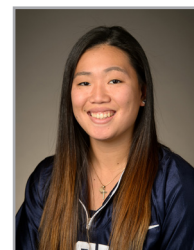
MARISSA DIESCHER
Junior • RHP
Livingston Manor, N.Y.



CHRISTY VON PUSCH
Sophomore • RHP/INF
Bryn Mawr, Pa.



KASIE HATFIELD
Senior • C/INF
Tampa, Fla.



REINA FURUYA
Sophomore • INF
Waipahu, Hawaii



LEXI KNIEF
Sophomore • INF/OF
Ramsey, N.J.



SAM SHANAHAN
Freshman • INF
Seattle, Wash.



MACY JONES
Sophomore • OF/LHP
Ashburn, Va.



MAEGAN TUPINIO
Sophomore • INF/OF
Wahiawa, Hawaii



MARLAINA LAUBACH
Freshman • RHP
Northampton, Pa.



ALICIA WALKER
Junior • UTL
Los Alamitos, Calif.



ALYSSA SOVEREIGN
Senior • OF
La Canada, Calif.



MARY WARD
Freshman • OF
Greencastle, Pa.



MEGHAN BRADLEY
Junior • OF
Santa Monica, Calif.



SHANNON GOOD
Sophomore • OF
Horseheads, N.Y.



KARLIE HABITZ
Sophomore • C/INF
Newhall, Calif.



KRISTINA BRACKPOOL
Freshman • OF/INF
Valencia, Calif.



SHELBY MILLER
Freshman • INF
Sugar Land, Texas



AMANDA LEHOTAK
Head Coach



MEGAN GIBSON
Assist Coach



JOE GUTHRIE
Assistant Coach