

# PENN STATE

## SOFTBALL



2014

GoPSUsports.com | ONE TEAM

### 2014 SCHEDULE

#### FEBRUARY

Fri. 7	!	vs. Oregon State	L, 12-10
	!	vs. Appalachian State	W, 10-6
Sat. 8	!	vs. Bradley	W, 5-3
	!	at No. 7 Arizona State	L, 9-1 [6]
Sun. 9	!	vs. Seattle	W, 6-1
Sun. 16	@	vs. George Washington	W, 9-1 [5]
	@	vs. Northwestern	L, 11-1 [5]
Mon. 17	@	at No. 21 LSU (DH)	L, 11-3 [5]
	@	at No. 21 LSU (DH)	W, 6-5
Fri. 21	#	vs. Kentucky	L, 5-0
	#	at Florida Atlantic	L, 3-2 (8)
Sat. 22	#	vs. Pitt	L, 3-1
	#	at Florida Atlantic	L, 3-2
Sun. 23	#	vs. Kentucky	L, 8-1

#### MARCH

Sat. 1	\$	vs. Kent State	L, 9-1 [5]
	\$	vs. Dartmouth	L, 6-3
Sun. 2	\$	vs. Fairfield	Cancelled
	\$	at James Madison	Cancelled
Fri. 14	%	vs. Rutgers	L, 4-3
	%	vs. Central Connecticut St.	L, 1-0
Sat. 15	%	vs. Wagner	L, 4-2
	%	vs. Yale	W, 5-0
	%	vs. Baylor	L, 8-1
Fri. 21	*	PURDUE	L, 10-3
Sat. 22	*	PURDUE	L, 9-2
	*	PURDUE	L, 13-4 [5]
Fri. 28	*	No. 6 MICHIGAN	L, 6-0
Sat. 29	*	No. 6 MICHIGAN	L, 22-0 [5]
Sun. 30	*	No. 6 MICHIGAN	L, 12-4 [5]

#### APRIL

Wed. 2		SAINT FRANCIS (Pa.) (DH)	L, 4-2 (8)
		SAINT FRANCIS (Pa.) (DH)	W, 9-1 [6]
Fri. 4	*	at Michigan State	W, 9-3
Sat. 5	*	at Michigan State	W, 7-3
Sun. 6	*	at Michigan State	W, 6-0
Fri. 11	*	at Indiana	W, 4-1
Sat. 12	*	at Indiana	W, 2-1
Sun. 13	*	at Indiana	L, 8-7 (8)
Wed. 16		BUCKNELL (DH)	6 p.m.
		BUCKNELL (DH)	8 p.m.
Fri. 18	*	WISCONSIN	6 p.m.
Sat. 19	*	WISCONSIN (DH)	1 p.m.
	*	WISCONSIN (DH)	3 p.m.
Wed. 23	*	at Ohio State (DH)	5 p.m.
	*	at Ohio State (DH)	7 p.m.
Fri. 25	*	at Minnesota	7 p.m.
Sat. 26	*	at Minnesota	2 p.m.
Sun. 27	*	at Minnesota	2 p.m.
Wed. 30		PITT (DH)	5 p.m.
		PITT (DH)	7 p.m.

#### MAY

Fri. 2	*	ILLINOIS	6 p.m.
Sat. 3	*	ILLINOIS	3 p.m.
Sun. 4	*	ILLINOIS	10:30 a.m.
8-11		Big Ten Tournament	TBA

! Kajikawa Classic, Tempe, Ariz.  
 @ Tiger Invitational, Baton Rouge, La.  
 # FAU Tournament, Boca Raton, Fla.  
 \$ JMU Tournament, Harrisonburg, Va.  
 % USF Tournament, Clearwater, Fla.  
 \* Big Ten contest | All times Eastern

Home games in CAPS at Nittany Lion Softball Park

### PENN STATE NITTANY LIONS

(12-23, 5-7 B1G)

### BUCKNELL BISON

(15-18, 7-5 Patriot League)



Games 36-37 • April 16 • Nittany Lion Softball Park & Beard Field • University Park, Pa.

#### SERIES INFORMATION

VENUE	Nittany Lion Softball Park & Beard Field
COVERAGE	Big Ten Digital Network
SERIES RECORD	GoPSUsports.com (GameTracker)
LAST MEETING	Penn State leads 24-5
NEXT SERIES	March 25, 2008, PSU won 15-3
	April 18-19 vs. Wisconsin

#### SERIES NOTES

- Penn State takes two wins from IU for series win
- The Blue and White have won six of their last seven games
- PSU returns to Nittany Lion Softball Park to face Bucknell in a midweek doubleheader
- Penn State holds a 24-5 record against BU in the all-time series
- The Lions alst defeated the Bison on March 25, 2008 in a 15-3 decision
- Wednesday's meeting will be the first between PSU and BU at the Lions' new stadium
- Bucknell went 1-2 against Lehigh last weekend
- The Lions are currently 8th in the Big Ten standings
- Kasie Hatfield is tied for 9th in single-season doubles in the PSU record books with 12
- Hatfield also ranks 4th in the Big Ten standings in doubles
- Lexi Knief is tied for second in the Big Ten & 14th in the NCAA with four triples
- Knief also ranks in the top 10 in the league in batting average (9th, .394), on base pct. (6th, .484) and runs (8th, 33)

#### 2014 STAT LEADERS

<b>RUNS</b>	Lexi Knief	33	<b>WALKS</b>	Lexi Knief	19
	Alyssa Sovereign	18		Macy Jones	19
	Macy Jones	18		Reina Furuya	16
<b>HITS</b>	Lexi Knief	43	<b>ERA</b>	Marlaina Laubach	3.46
	Kasie Hatfield	35		Macy Jones	6.53
	Karlie Habitz	33		Christy Von Pusch	6.79
<b>RBI</b>	Karlie Habitz	28	<b>STRIKEOUTS</b>	Marlaina Laubach	54
	Kasie Hatfield	24		Macy Jones	29
	Macy Jones	21		Marissa Diescher	28
<b>BATTING AVG (2.0 AB/Game)</b>	Lexi Knief	.394	<b>INNINGS PITCHED</b>	Marlaina Laubach	93.0
	Kasie Hatfield	.354		Macy Jones	49.1
	Karlie Habitz	.337		Christy Von Pusch	44.0



## QUICK FACTS

### ATHLETIC COMMUNICATIONS

Softball Contact ..... Kellie O'Brien  
 Office Phone ..... 814-863-1377  
 Cell Phone ..... 814-321-5119  
 Email ..... kbo2@psu.edu  
 Fax ..... 814-863-3165  
 Mailing Address ..... 101 Bryce Jordan Center  
 University Park, Pa. 16802

### COACHING STAFF

Head Coach ..... Amanda Lehotak (1st Year)  
 Alma Mater ..... Nebraska-Omaha '03  
 Overall Record ..... 188-206 (.477)  
 Record at Penn State ..... 0-0 (.000)  
 Email ..... ajl22@psu.edu  
 Assistant Coach ..... Megan Gibson (1st Year)  
 Alma Mater ..... Texas A&M '08  
 Email ..... mlg36@psu.edu  
 Assistant Coach ..... Joe Guthrie (First Year)  
 Alma Mater ..... Alabama '01  
 Email ..... jwg23@psu.edu  
 Office Phone ..... (814) 865-0936  
 Office Fax ..... (814) 863-8120  
 Office ..... 302 Nittany Lion Softball Park  
 Park Avenue  
 University Park, Pa. 16802

### TEAM INFORMATION

2013 Overall Record ..... 16-34  
 2013 Big Ten Record (Finish) ..... 5-17 (11th)  
 Starters Returning/Lost ..... 4/5  
 Position Players Returning/Lost ..... 10/7  
 Pitchers Returning/Lost ..... 3/2  
 Letterwinners Returning/Lost ..... 14/8  
 Newcomers ..... 5  
 Facebook ..... PennStateSoftball  
 Twitter/Instagram ..... @PennStateSB

### PROGRAM HISTORY

First Varsity Year ..... 1965  
 All-Time Record ..... 921-877-3 (.512)  
 All-Time Big Ten Record ..... 173-299-1 (.348)  
 NCAA Postseason Appearances ..... 10  
 All-Time NCAA Tournament Record ..... 12-20  
 NFCA All-Americans ..... 4  
 Academic All-Americans ..... 13  
 First Team All-Big Ten Selections ..... 10  
 Second Team All-Big Ten Selections ..... 20  
 Third Team All-Big Ten Selections ..... 22

### PENN STATE UNIVERSITY

Location ..... University Park, Pa.  
 Founded ..... 1855  
 Enrollment ..... 44,679  
 Nickname ..... Nittany Lions  
 Colors ..... Blue and White  
 Conference ..... Big Ten Conference  
 Home Facility ..... Nittany Lion Softball Park (1,084)  
 President ..... Dr. Rodney Erickson  
 Director of Athletics ..... Dr. Dave Joyner  
 Senior Women's Administrator ..... Charmelle Green  
 Faculty Representative ..... Dr. Linda Caldwell  
 Athletics Website ..... www.GoPSUsports.com

### UP TO BAT

Penn State softball returns to Nittany Lion Softball Park and Beard Field after a six-game road swing for a midweek doubleheader against regional foe Bucknell on Wednesday. PSU looks to get back in the win column after dropping last Sunday's series finale at Indiana.

The Nittany Lions and the Bison take the field at 6 p.m. for the first game and the second contest is scheduled to begin at 8 p.m. Both games will be streamed live on the Big Ten Digital Network.

### ON DECK

PSU continues its five-game homestand this weekend with a three-game bout vs. Wisconsin. Penn State opens the series against the Badgers on Friday at 6 p.m., and will return to the field for a pair of matchups on Saturday starting at Noon.

Saturday's doubleheader will air live on the Big Ten Network with Wayne Randazzo and Garland (Wiberly) Cooper on the call.

### SERIES HISTORY vs. BUCKNELL

The Lions hold a 24-5 advantage over the Bison in the all-time series. Penn State is 14-3 when playing Bucknell in University Park with its last home win coming in a 10-0 decision in five innings on April 24, 2007. Wednesday's matchup will be the first between the two teams at Nittany Lions Softball Park and Beard Field.

The Blue and White swept the Bison in their last meeting, taking home a 6-2 win in the first game and a 15-3 victory in the second game of a twinbill on March 25, 2008.

### BREAKING DOWN THE BISON

Bucknell enters the weekend at 15-18 overall after going 1-for-3 against Lehigh over the weekend. The Bison are 7-5 in Patriot League play.

Juniors Cydnee Sanders and sophomore Karen Zahn lead Bucknell offensively as the top two hitters on the squad. Sanders is hitting at an impressive .449 clip with 28 runs and 17 RBI on 48 hits while Zahn is batting .363 with 24 runs and 26 RBI on 37 hits. Zahn leads the team in slugging percentage at .618 and has hit five home runs.

The BU pitching staff has combined for 180 strikeouts in 220 innings. Freshman Lara Bean and sophomore Dana Nielsen lead the Bison in the circle with ERAs of 2.39 and 3.78 through 70.1 and 92.2 innings, respectively. Bean is 6-3 on the year while Nielsen has a record of 6-9.

### B1G WINS IN BLOOMINGTON

Penn State found success for the second straight weekend, taking two of three games to claim the series at Indiana. The Nittany Lions defeated the Hoosiers, 4-1, in the series opener on Friday and won 2-1 on Saturday before falling in, 8-7, in eight innings in the series finale on Sunday.

Kasie Hatfield paced PSU's offensive strike, going 7-for-10 at the plate with two doubles and her first home run of the year. The senior drove in seven runs and scored twice over the weekend.

### MAKING CONTACT

Sophomore Lexi Knief is the top hitter for PSU through the first 35 outings. The outfielder is 43-for-109 at the plate for a team-best batting average of .394 and has scored a team-high 33 runs. She is tied for second in the league and 14th in the nation in triples with four and has posted six doubles on the year.

The Ramsey, N.J. product leads the Lions and is sixth in the conference with an on-base percentage of .484.

### DOUBLING UP

Senior Kasie Hatfield officially earned a spot in the Penn State record books in the series finale at Indiana after registering her 12th double of the year, tying for No. 9 on the single season doubles list.

The Tampa, Fla. product is currently tied for fourth in the league in doubles and ranks 37th in the nation in doubles per game at 0.34.

### LAU OF THE LAND

Freshman pitcher Marlaina Laubach has done the bulk of the work in the circle for Penn State, earning wins in eight of PSU's 12 victories, including a signature win over No. 21 LSU and three conference wins. The Northampton, Pa. native has a team-best ERA of 3.46 through 93 innings. She has thrown 54 strikeouts on the season, including a season-high six vs. FAU (2/21) and MSU (4/4).



## FORMING GOOD HABITZ

Sophomore Karlie Habitz has been a consistent hitter for PSU all-season and is currently third on the team with a batting average of .337. The Newhall, Calif. product leads the Lions with 28 RBI and owns a slugging percentage of .520. She has registered six doubles and a team-best four home runs. The catcher broke up two no-hitters vs. No. 6 Michigan and went 4-for-8 at the dish.

Habitz posted six RBI in the season opener vs. Oregon State (2/7), a mark that ties for the second most in program history.

## MAGNIFICENT MILLER

Shelby Miller has turned in an impressive rookie campaign thus far for Penn State. The freshman has the fourth best batting average on the team at .325 and has been churning out the hits, posting a 26-for-80 mark at the dish through 30 games.

Miller has four extra-base hits under her belt with two double and two triples.

## B1G RECOGNITION

Center fielder Lexi Knief pulled in the first Big Ten honor of her career on April 7 as she was named the conference's Player of the Week for her efforts on the field. The sophomore went 10-for-18 at the plate through five games last week, registering seven runs, three RBI, a double, a triple and her first collegiate home run to help the Nittany Lions to four straight wins.

Knief posted at least one hit in all five games and multiple hits in four of the contests against Saint Francis (Pa.) and conference foe Michigan State, helping the Blue and White to a 4-for-5 effort on the week and a series sweep of the Spartans. She was a single away from hitting for the cycle in the final game at MSU as she turned in each of her extra-base hits in one contest.

## SWEEPING THE SPARTANS

Penn State posted its first series sweep since 2012 last weekend with three-game sweep of Michigan State. The Lions opened the series with a 9-3 victory on Friday and followed with a 7-3 win on Saturday and a 6-0 shutout win on Sunday.

Freshman pitcher Marlaina Laubach picked up wins for Friday and Sunday's contest while sophomore Marissa Diescher earned the W for Saturday's victory.

Lexi Knief led the charge for PSU offensively, posting multiple hits in each of the games. She was a single away from hitting for the cycle in the series finale, turning in a double, a triple and her first collegiate home run.

## SERIES HISTORY vs. BUCKNELL

All-Time Series		PSU leads 24-5	
PSU Streak		W2	
First Meeting		4/25/66, W 24-2	
Last Meeting		3/25/08, W 15-3	
Last PSU Win		3/25/08, 15-3	
Previous Five Meetings			
3/25/08	A	W	15-3
3/25/08	A	W	6-2
4/24/07	H	L	7-8
4/24/07	H	W	10-0 [5]
4/11/06	H	W	8-0 (8)

## IN-STATE SPLIT

The Nittany Lions gained their first home win of the season on April 2 as they turned in a split effort vs. Saint Francis (Pa.). After failing to take game one, Penn State roared back in the late game to best the Red Flash, 9-1, in six innings.

Senior Alyssa Sovereign led the PSU offense with a 4-for-8 effort at the plate and scored one run. Freshman Shelby Miller also gave the Lions a spark, going a perfect 3-for-3 in the second game with a single, a two-RBI double and two runs.

## LIONS IN THE B1G/NCAA (thru 4/13 games)

STAT	Total	B1G	NCAA (Top 100)	PLAYER	STAT	TOTAL	B1G	NCAA (Top 100)
» Batting Average	.258	9th	--	» K. Brackpool	SacFlies	3	2nd	--
» Slugging Pct.	.357	9th	--	» Reina Furuya	SacBunts	10	3rd	--
» On-Base Pct.	.344	9th	--		SacHits/Game	0.29	3rd	23rd
» Runs Scored	131	10th	--	» Lexi Knief	BattingAvg	.394	9th	--
» Hits	229	10th	--		OnBasePct	.484	6th	--
» Runs Batted In	125	10th	--		RunsScored	33	8th	--
» Doubles	35	9th	--		RunsPG	0.94	7th	64th
» Triples	10	2nd	--		Triples	4	2nd	14th
» Triples/game	.031	2nd	26th		TriplesPG	0.11	3rd	18th
» Home Runs	11	12th	--	» Kasie Hatfield	Doubles	12	4th	--
» Total Bases	317	10th	--		DoublesPG	0.34	3rd	37th
» Walks	102	9th	--		ToughestToK	16.5	4th	97th
» Stolen Bases	17	12th	--	» Macy Jones	Triples	3	4th	47th
» Earned Run Avg.	5.65	12th	--		TriplesPG	0.09	5th	61st
» Opposing Batting Avg.	.329	12th	--		WilksAllwd/7Inn.	1.56	3rd	78th
» Batters Struck Out	135	9th	--	» Shelby Miller	Triples	2	10th	--
» Runs Allowed	204	10th	--					
» Earned Runs Allowed	180	11th	--					
» Walks Allowed	127	9th	--					
» Home Runs Allowed	29	9th	--					
» Fielding Percentage	.965	5th	68th					





## TAKING DOWN THE TIGERS

The Nittany Lions earned their biggest win of the season on Feb. 17 as they took down No. 21 LSU in the second game of a doubleheader. Sophomore Macy Jones posted two RBI and one run in the win and freshman Shelby Miller went 2-for-4 at the plate with one run to lead Penn State to a 6-5 victory over the Tigers.

Pitcher Marlaina Laubach also played a significant role in the victory, recording three strikeouts in her third complete game for PSU. The freshman moved to a perfect 4-0 on the season with the win.

## WALK IT OUT

Penn State registered a new single-game record in the win over George Washington on Feb. 16 as the Lions were walked a total of 15 times in just five innings.

The 15 walks crushed the previous record of 11 free passes set last season against Northwestern (4/20). Penn State has already amassed 60 walks in 14 games this season, more than one third of the total from 2013 (151).

## FIERCE COMPETITION

Six of Penn State's 2014 opponents are listed in the current USA Today/NFCA poll, including No. 5 Michigan. Other opponents include Arizona State (No. 7), Kentucky, (No. 11), Baylor (No. 12), Minnesota (No. 14) and Northwestern (No. 23) while LSU has received votes. All six programs are also represented in the current ESPN.com/USA Softball rankings.

## PSU ON BTN

BTN has announced its spring softball schedule and Penn State will be featured a total of 11 times across the network's platforms. The Nittany Lions are scheduled to play in four games on BTN and five on the Big Ten Digital Network, which can be viewed online.

## 2014 PENN STATE RECORDS

(As of 4/13/14)

Stat	Record
Total	12-23
Conference	5-7
Non-Conf	7-16
Home	1-7
Away	6-5
Neutral	5-11
Day	8-16
Night	4-7
vs Left	2-6
vs Right	10-17
1-Run games	2-5
2-Run games	1-4
5+Run games	7-13
Extra inns	0-3
Shutouts	2-4
Scoring 0-2 runs	1-15
Scoring 3-5 runs	3-6
Scoring 6-9 runs	7-1
Scoring 10+ runs	1-1
Opponent 0-2 runs	7-1
Opponent 3-5 runs	5-7
Opponent 6-9 runs	0-8
Opponent 10+ runs	0-7
Scored in 1st inning	6-9
Scores first	9-7
Opp. scores first	3-16
After 4 leading	9-5
After 4 trailing	3-15
After 4 tied	0-3
After 5 leading	9-3
After 5 trailing	2-11
After 5 tied	0-3
After 6 leading	10-1
After 6 trailing	0-13
After 6 tied	0-2
Hit 0 home runs	8-17
Hit 1 home run	3-6
Hit 2+ home runs	1-0
Opponent 0 home runs	9-8
Opponent 1 home run	2-7
Opponent 2+ HRs	1-8
Made 0 errors	7-7
Made 1 error	4-8
Made 2+ errors	1-8
Opp. made 0 errors	3-10
Opp. made 1 error	5-9
Opp. made 2+ errors	4-4
Out-hit opponent	8-4
Out-hit by opponent	2-18
Hits are tied	2-1
vs. AAC	0-1
vs. ACC	0-1
vs. America East	0-0
vs. Atlantic 10	1-0
vs. Big 12	0-1
vs. Big East	0-0
vs. Big South	0-0
vs. Big Ten	5-7
vs. Colonial	0-0
vs. Conference USA	0-2
vs. Ivy	1-1
vs. Mid-American	0-1
vs. Missouri Valley	1-0
vs. Mountain West	0-0
vs. North East Conference	1-3
vs. Pacific Coast	0-0
vs. Pac-12	0-2
vs. SEC	1-3
vs. Southern	1-0
vs. Summit	0-0
vs. WAC	1-0
Monday	1-1
Wednesday	1-1
Friday	3-8
Saturday	4-9
Sunday	3-4

## BIG TEN STANDINGS

As of April 13

Team	Big Ten				Overall			
	W	L	T	Pct	W	L	T	Pct
MICHIGAN	12	0	0	1.000	33	6	0	.846
MINNESOTA	10	3	0	.769	32	6	0	.842
PURDUE	9	3	0	.750	22	20	1	.523
NEBRASKA	8	4	0	.667	30	13	0	.698
WISCONSIN	6	5	0	.545	22	15	0	.595
NORTHWESTERN	6	6	0	.500	23	11	0	.676
OHIO STATE	6	6	0	.500	20	20	0	.500
PENN STATE	5	7	0	.417	12	23	0	.343
IOWA	5	9	0	.357	10	23	0	.303
INDIANA	4	10	0	.286	12	29	1	.298
ILLINOIS	2	10	0	.167	18	18	0	.500
MICHIGAN STATE	2	12	0	.143	9	28	0	.243



# 2014 PENN STATE SOFTBALL



## USA TODAY/NFCA April 15, 2014

No.	Team	Record	Last
1	Oregon (32)	36-5	1
2	UCLA	35-4	2
3	Michigan	33-6	5
4	Tennessee	35-6	4
5	Florida	37-8	6
6	Arizona State	38-6	7
7	Alabama	37-7	3
8	Kentucky	36-8	11
9	Florida State	39-6	8
10	Arizona	34-9	9
11	Washington	24-11	10
12	Minnesota	32-6	14
13	Missouri	32-10	16
14	Baylor	30-9	12
15	Georgia	35-8	13
16	Oklahoma	32-9	19
17	Louisiana-Lafayette	30-7-1	18
18	Tulsa	38-5	17
19	South Alabama	32-8	15
20	Nebraska	30-13	22
21	Texas A&M	28-14	21
22	Notre Dame	25-9	25
23	Auburn	31-12-1	20
24	USC Upstate	39-5	24
25	Northwestern	23-11	23

RV: LSU (29), Houston (13), DePaul (10), Long Beach State (8), McNeese State (4), Mississippi State (4), James Madison (3), Virginia Tech (3), Wisconsin (2), California (1), Lipscomb (1), Louisville (1), NC State (1)

## ESPN.COM/USA SOFTBALL April 15, 2014

No.	Team	Record	Last
1	Oregon (20)	37-5	1
2	UCLA	35-4	3
3	<b>Michigan</b>	<b>33-6</b>	<b>4</b>
4	Tennessee	35-6	5
5	<b>Arizona State</b>	<b>38-6</b>	<b>6</b>
6	Alabama	37-7	2
7	Florida	37-8	8
8	Florida State	39-6	7
9	Arizona	34-9	9
10	<b>Kentucky</b>	<b>36-8</b>	<b>11</b>
11	Washington	24-11	10
12	Oklahoma	32-9	13
13	<b>Minnesota</b>	<b>32-6</b>	<b>14</b>
14	<b>Baylor</b>	<b>30-9</b>	<b>12</b>
15	Missouri	32-10	18
16	Tulsa	38-5	15
17	Louisiana-Lafayette	30-7-1	20
18	Georgia	35-8	17
19	Nebraska	30-13	19
20	South Alabama	32-8	16
21	Notre Dame	25-9	23
22	Texas A&M	28-14	22
23	Auburn	31-12-1	21
24	<b>LSU</b>	<b>23-18</b>	<b>NR</b>
25	USC Upstate	39-5	24

RV: Northwestern, Houston, NC State, Stanford, Lipscomb, Louisville, South Florida, McNeese State, Texas, Virginia Tech

**Bold** indicates 2014 opponent

## PENN STATE SEASON RECORD BOOK WATCH

### BATTING AVERAGE (Min. 90 At-Bats)

1. Cassidy Bell	.456	2013
2. Cassidy Bell	.423	2012
3. Nan Sichler	.413	1988
4. Ashley Esparza	.402	2005
5. Karen Gulini	.400	2000
6. <b>Lexi Knief</b>	<b>.394</b>	<b>2014</b>
7. Geri Saya	.386	1983
8. Nan Sichler	.385	1987
9. Michelle Turk	.381	1984

### HITS

1. Nan Sichler	74	1988
2. Jen Acunto	72	2005
3. Ashley Esparza	70	2005
4. Gina Bianchini	67	2002
5. Jen Williams	66	2004
6. Karen Gulini	65	2001
7. Karen Gulini	64	2000
8. Erin Norton	63	2002
9. Cassidy Bell	62	2013
Allison Medellin	62	2001
Jodi Ricciardi	62	1999
<b>Lexi Knief</b>	<b>43</b>	<b>2014</b>

### RUNS BATTED IN

1. Jennifer Trippen	49	2002
Nan Sichler	49	1988
3. Michelle Turk	43	1984
4. Cassidy Bell	42	2013
5. Jen Acunto	38	2005
Shannon Salsburg	38	1996
7. Kelley Galigher	37	2003
8. Hollee Haines	36	2005
Joyce Tinner	36	1990
Val Serpico	36	1995
<b>Karlie Habitz</b>	<b>28</b>	<b>2014</b>
<b>Kasie Hatfield</b>	<b>24</b>	<b>2014</b>

### RUNS SCORED

1. Cassidy Bell	55	2013
2. Jennifer Trippen	45	2002
3. Gina Bianchini	44	2002
Deb Bryan	44	1988
5. Nan Sichler	40	1988
6. Gina Bianchini	39	2000
<b>Lexi Knief</b>	<b>33</b>	<b>2014</b>

### DOUBLES

1. Danielle Kinley	18	2007
Jen Acunto	18	2005
3. Cassidy Bell	15	2011
Megan Humphrey	15	2001
5. Ashley Esparza	14	2005
6. Cassidy Bell	13	2014
Danielle Kinley	13	2008
Erin Norton	13	2002
Joyce Tinner	13	1990
9. <b>Kasie Hatfield</b>	<b>12</b>	<b>2014</b>
Seven tied	12	

### TRIPLES

1. Carol Fultz	9	1983
2. Donna Devanney	8	1988
Donna Devanney	8	1985
Nan Schiler	8	1985
5. Michelle Turk	7	1981
Nan Schiler	7	1988
<b>Lexi Knief</b>	<b>4</b>	<b>2014</b>



# 2014 PENN STATE SOFTBALL



## 2014 PENN STATE SOFTBALL NUMERICAL ROSTER

No.	Name	Pos.	Year	Height	B/T	Hometown	High School
2	Taylor Abeyta	OF	So.	5-6	L/R	San Diego, Calif.	Mt. Carmel
3	Liz Presto	INF	Sr.	5-7	R/R	Bethlehem, Pa.	Bethlehem Catholic
4	Marissa Diescher	P	Jr.	5-10	R/R	Livingston Manor, N.Y.	Livingston Manor Central
5	Christy Von Pusch	P	So.	5-10	R/R	Bryn Mawr, Pa.	Radnor
7	Kasie Hatfield	C/INF	Sr.	5-5	R/R	Tampa, Fla.	Chamberlain
8	Reina Furuya	INF	So.	5-7	R/R	Waipahu, Hawaii	Punahou
10	Lexi Knief	INF/OF	So.	5-6	L/R	Ramsey, N.J.	Ramsey
11	Sam Shanahan	INF	Fr.	5-5	R/R	Seattle, Wash.	Bishop Blanchet
12	Macy Jones	OF/P	So.	5-4	L/L	Ashburn, Va.	Briar Woods
13	Maegan Tupinio	INF/OF	So.	5-4	L/R	Wahiawa, Hawaii	Leilehua
17	Marlaina Laubach	P	Fr.	5-8	R/R	Northampton, Pa.	Northampton
18	Alicia Walker	UTL	Jr.	5-6	R/R	Los Alamitos, Calif.	Los Alamitos
22	Alyssa Sovereign	OF	Sr.	5-5	L/R	La Canada, Calif.	Crescenta Valley
24	Mary Ward	OF	Fr.	5-3	L/L	Greencastle, Pa.	Greencastle-Antrim
25	Meghan Bradley	OF	Jr.	5-7	L/L	Santa Monica, Calif.	Santa Monica
28	Shannon Good	OF	So.	5-7	R/R	Horseheads, N.Y.	Horseheads
30	Karlie Habitz	C	So.	5-11	R/R	Newhall, Calif.	Valencia
52	Kristina Brackpool	OF/INF	Fr.	5-8	R/R	Valencia, Calif.	Valencia
77	Shelby Miller	INF	Fr.	5-8	L/R	Sugar Land, Texas	Kempner

**Head Coach:** Amanda Lehotak (First Season)  
**Assistant Coach:** Megan Gibson (First Season)  
**Assistant Coach:** Joe Guthrie (First Season)

## 2014 PENN STATE SOFTBALL ALPHABETICAL ROSTER

No.	Name	Pos.	Year	Height	B/T	Hometown	High School
20	Taylor Abeyta	OF	So.	5-6	L/R	San Diego, Calif.	Mt. Carmel
52	Kristina Brackpool	OF/INF	Fr.	5-8	R/R	Valencia, Calif.	Valencia
25	Meghan Bradley	OF	Jr.	5-7	L/L	Santa Monica, Calif.	Santa Monica
4	Marissa Diescher	P	Jr.	5-10	R/R	Livingston Manor, N.Y.	Livingston Manor
8	Reina Furuya	INF	So.	5-7	R/R	Waipahu, Hawaii	Punahou
28	Shannon Good	OF	So.	5-7	R/R	Horseheads, N.Y.	Horseheads
30	Karlie Habitz	C	So.	5-11	R/R	Newhall, Calif.	Valencia
7	Kasie Hatfield	C/INF	Sr.	5-5	R/R	Tampa, Fla.	Chamberlain
12	Macy Jones	OF/P	So.	5-4	L/L	Ashburn, Va.	Briar Woods
10	Lexi Knief	INF/OF	So.	5-6	L/R	Ramsey, N.J.	Ramsey
17	Marlaina Laubach	P	Fr.	5-8	R/R	Northampton, Pa.	Northampton HS
77	Shelby Miller	INF	Fr.	5-8	L/R	Sugar Land, Texas	Kempner
3	Liz Presto	INF	Sr.	5-7	R/R	Bethlehem, Pa.	Bethlehem Catholic
11	Sam Shanahan	INF	Fr.	5-5	R/R	Seattle, Wash.	Bishop Blanchet
22	Alyssa Sovereign	OF	Sr.	5-5	L/R	La Canada, Calif.	Crescenta Valley
13	Maegan Tupinio	INF/OF	So.	5-4	L/R	Wahiawa, Hawaii	Leilehua
5	Christy Von Pusch	P	So.	5-10	R/R	Bryn Mawr, Pa.	Radnor
18	Alicia Walker	UTL	Jr.	5-6	R/R	Los Alamitos, Calif.	Los Alamitos
24	Mary Ward	OF	Fr.	5-3	L/L	Greencastle, Pa.	Greencastle-Antrim

### PRONUNCIATION GUIDE

<b>Taylor Abeyta</b>	uh-BAY-teh
<b>Marissa Diescher</b>	DEE-sheer
<b>Reina Furuya</b>	RAIN-eh fa-ROO-yah
<b>Kasie Hatfield</b>	KAY-see
<b>Lexi Knief</b>	kuh-NEEF
<b>Marlaina Laubach</b>	LAW-bok
<b>Lehotak</b>	leh-HOE-tack
<b>M. Tupinio</b>	two-PEEN-ee-yo
<b>C. Von Pusch</b>	von POOSH

### LIONS BY ELIGIBILITY

**Seniors (3):** Hatfield, Presto, Sovereign  
**Juniors (3):** Bradley, Diescher, Walker  
**Sophomores (8):** Abeyta, Furuya, Good, Habitz, Jones, Knief, Tupinio, Von Pusch  
**Freshmen (5):** Brackpool, Laubach, Miller, Shanahan, Ward

### LIONS BY POSITION

**Catchers (3):** Habitz, Hatfield, Presto  
**Infielders (9):** Brackpool, Furuya, Habitz, Hatfield, Knief, Miller, Shanahan, Tupinio  
**Outfielders (9):** Abeyta, Brackpool, Bradley, Good, Jones, Knief, Sovereign, Tupinio, Ward  
**Pitchers (5):** Diescher, Jones, Laubach, Shanahan, Von Pusch  
**Utility Players (1):** Walker

### LIONS BY STATE

**California (6):** Abeyta, Brackpool, Bradley, Habitz, Sovereign, Walker  
**Florida (1):** Hatfield  
**Hawaii (2):** Furuya, Tupinio  
**New Jersey (1):** Knief  
**New York (2):** Diescher, Good  
**Pennsylvania (4):** Laubach, Presto, Von Pusch, Ward  
**Texas (1):** Miller  
**Virginia (1):** Jones  
**Washington (1):** Shanahan



# 2014 PENN STATE SOFTBALL



## 2014 Penn State Softball Overall Statistics for Penn State (as of Apr 13, 2014) (All games Sorted by Batting avg)

Record: 12-23 Home: 1-7 Away: 6-5 Neutral: 5-11 Big Ten: 5-7

Player	avg	gp-gs	ab	r	h	2b	3b	hr	rbi	tb	slg%	bb	hp	so	gdp	ob%	sf	sh	sb-att	po	a	e	fld%
10 Knief, Lexi	.394	35-35	109	33	43	6	4	1	8	60	.550	19	0	7	0	.484	0	2	2-2	47	4	0	1.000
7 Hatfield, Kasie	.354	35-34	99	9	35	12	1	1	24	52	.525	10	5	6	0	.439	0	4	2-3	143	11	4	.975
30 Habitz, Karlie	.337	34-33	98	8	33	6	0	4	28	51	.520	9	2	10	0	.400	1	1	0-0	89	10	3	.971
77 Miller, Shelby	.325	30-29	80	10	26	2	2	0	10	32	.400	4	0	14	0	.357	0	0	2-2	37	43	4	.952
12 Jones, Macy	.266	35-34	94	18	25	1	3	3	21	41	.436	19	2	20	0	.393	2	0	6-7	48	11	3	.952
18 Walker, Alicia	.216	25-15	37	3	8	1	0	0	5	9	.243	2	2	6	0	.293	0	1	0-0	7	0	0	1.000
22 Sovereign, Alyssa	.204	35-35	98	18	20	2	0	0	8	22	.224	12	1	11	0	.295	1	3	0-0	74	30	0	1.000
52 Brackpool, Kristina	.194	24-23	67	1	13	4	0	1	12	20	.299	1	1	15	1	.208	3	0	0-0	140	3	2	.986
8 Furuya, Reina	.171	35-35	82	12	14	0	0	0	7	14	.171	16	3	23	0	.324	1	10	5-5	31	79	10	.917
11 Shanahan, Sam	.118	30-26	51	5	6	1	0	0	1	7	.137	3	0	12	0	.167	0	0	0-0	33	34	4	.944
25 Bradley, Meghan	.118	11-3	17	0	2	0	0	0	0	2	.118	0	0	6	0	.118	0	0	0-0	1	0	0	1.000
13 Tupinio, Maegan	.111	15-2	9	7	1	0	0	0	0	1	.111	0	0	4	0	.111	0	0	0-0	0	0	0	.000
3 Presto, Liz	.097	16-12	31	2	3	0	0	1	1	6	.194	7	1	8	0	.282	0	3	0-0	10	14	1	.960
2 Abeyta, Taylor	.000	14-5	6	1	0	0	0	0	0	0	.000	0	0	4	0	.000	0	0	0-0	3	0	1	.750
28 Good, Shannon	.000	4-1	6	0	0	0	0	0	0	0	.000	0	1	2	0	.143	0	0	0-0	0	0	0	.000
24 Ward, Mary	.000	20-1	4	4	0	0	0	0	0	0	.000	0	1	2	0	.200	0	0	0-0	0	1	0	1.000
5 Von Pusch, Christy	.000	1-1	0	0	0	0	0	0	0	0	.000	0	0	0	0	.000	0	0	0-0	1	13	0	1.000
Totals	.258	35	888	131	229	35	10	11	125	317	.357	102	19	150	1	.344	8	24	17-19	669	290	34	.966
Opponents	.329	35	925	204	304	48	7	29	186	453	.490	127	28	135	2	.421	11	28	28-38	681	287	32	.968

LOB - Team (230), Opp (247). DPs turned - Team (7), Opp (8). IBB - Team (3), Knief 1, Habitz 1, Jones 1, Opp (2).

## (All games Sorted by Earned run avg)

Player	era	w-l	app	gs	cg	sho	sv	ip	h	r	er	bb	so	2b	3b	hr	b/avg	wp	hp	bk	sfa	sha
17 Laubach, Marlaina	3.46	8-10	21	15	7	0/1	1	93.0	115	54	46	38	54	14	0	9	.313	2	3	1	5	16
12 Jones, Macy	6.53	0-8	14	8	3	0/0	2	49.1	73	51	46	11	29	7	5	11	.341	1	13	0	2	4
5 Von Pusch, Christy	6.79	2-1	18	5	2	1/1	0	44.1	59	51	43	42	24	14	1	6	.326	10	6	0	3	5
4 Diescher, Marissa	8.67	2-4	15	7	0	0/0	1	36.1	57	48	45	36	28	13	1	3	.350	6	6	1	1	3
Totals	5.65	12-23	35	35	12	2/1	4	223.0	304	204	180	127	135	48	7	29	.329	19	28	2	11	28
Opponents	3.39	23-12	35	35	21	4/0	0	227.0	229	131	110	102	150	35	10	11	.258	7	19	0	8	24

PB - Team (12), Habitz 7, Hatfield 5, Opp (8). Pickoffs - Team (2), Laubach 1, Hatfield 1. SBA/ATT - Habitz (19-24), Hatfield (9-13), Von Pusch (8-12), Laubach (7-10), Diescher (6-8), Jones (7-8).





# 2014 PENN STATE SOFTBALL



## 2014 RESULTS

7-22 OVERALL • 0-6 BIG TEN • 1-7 HOME • 1-4 AWAY • 2-2 • 5-11 NEUTRAL

Date	Event	Opponent	W/L/T	Score	R-H-E	R-H-E	Inn.	Overall	Big Ten	Pitcher (Record)	Attend.	Time
2/7	!	vs. Oregon State	L	10-12	10-11-0	12-12-1	7	0-1	0-0	Jones (L 0-1)	-	2:20
2/7	!	vs. Appalachian St.	W	10-4	10-10-2	4-10-2	7	1-1	0-0	Diescher (W 1-0)	210	1:30
2/8	!	vs. Bradley	W	5-3	5-10-0	3-7-1	7	2-1	0-0	Laubach (W 1-0)	397	2:00
2/8	!	at No. 7 Arizona St.	L	1-9	1-5-1	9-14-1	[6]	2-2	0-0	Jones (L 0-2)	943	1:55
2/9	!	vs. Seattle	W	6-1	6-11-1	1-4-0	7	3-2	0-0	Laubach (W 2-0)	209	1:30
2/16	@	vs. George Washington	W	9-1	9-8-0	1-4-1	[5]	4-2	0-0	Laubach (W 3-0)	-	1:53
2/16	@	vs. Northwestern	L	1-11	1-2-2	11-10-1	[5]	4-3	0-0	Diescher (L 1-1)	-	1:51
2/17	@	at No. 21 LSU	L	3-11	3-2-0	11-12-0	[5]	4-4	0-0	Jones (L 0-3)	1071	1:42
2/17	@	at No. 21 LSU	W	6-5	6-8-0	5-12-1	7	5-4	0-0	Laubach (W 4-0)	1071	2:18
2/21	#	vs. No. 5 Kentucky	L	5-0	0-2-3	5-6-0	7	5-5	0-0	Diescher (L 1-2)	319	1:49
2/21	#	vs. FAU	L	3-2	2-8-1	3-9-0	(8)	5-6	0-0	Laubach (L 4-1)	319	2:00
2/22	#	vs. Pitt	L	3-1	1-9-1	3-9-1	7	5-7	0-0	Laubach (L 4-2)	346	1:46
2/22	#	at FAU	L	3-2	2-7-0	3-5-0	7	5-8	0-0	Diescher (L 1-3)	346	1:47
2/23	#	vs. No. 5 Kentucky	L	8-1	1-4-1	8-13-1	7	5-9	0-0	Laubach (L 4-3)	358	2:02
3/1	\$	vs. Kent State	L	9-1	1-4-1	9-8-2	[5]	5-10	0-0	Laubach (L 4-4)	65	1:42
3/1	\$	vs. Dartmouth	L	6-3	3-10-3	6-9-0	7	5-11	0-0	Von Pusch (L 0-1)	65	1:51
3/14	%	vs. Rutgers	L	4-3	3-7-1	4-5-1	7	5-12	0-0	Jones (L, 0-4)	33	1:55
3/14	%	vs. Central Conn. St.	L	1-0	0-4-0	1-7-1	7	5-13	0-0	Laubach (L, 4-5)	53	2:00
3/15	%	vs. Wagner	L	4-2	2-5-3	4-8-0	7	5-14	0-0	Laubach (L, 4-6)	85	2:15
3/15	%	vs. Yale	W	5-0	5-5-0	0-1-0	7	6-14	0-0	Von Pusch (W, 1-1)	90	1:20
3/16	%	vs. No. 12 Baylor	L	8-1	1-5-3	8-12-0	7	6-15	0-0	Diescher (L, 1-4)	100	1:40
3/21	*	vs. Purdue	L	10-3	3-9-2	10-10-2	7	6-16	0-1	Laubach (L, 4-7)	170	2:40
3/22	*	vs. Purdue	L	9-2	2-4-1	9-10-0	7	6-17	0-2	Jones (L, 0-5)	427	1:53
3/22	*	vs. Purdue	L	13-4	4-5-0	13-15-3	[5]	6-18	0-3	Laubach (L, 4-8)	427	2:04
3/28	*	vs. No. 6 Michigan	L	6-0	0-1-1	6-8-0	7	6-19	0-4	Jones (L, 0-6)	181	1:30
3/28	*	vs. No. 6 Michigan	L	22-0	0-4-2	22-16-0	[5]	6-20	0-5	Laubach (L, 4-9)	181	1:57
3/29	*	vs. No. 6 Michigan	L	12-4	4-3-2	12-15-2	[5]	6-21	0-6	Jones (L, 0-7)	310	1:56
4/2		vs. Saint Francis (Pa.)	L	4-2	2-7-0	4-5-1	(8)	6-22	0-6	Jones (L, 0-8)	328	2:00
4/2		vs. Saint Francis (Pa.)	W	9-1	9-10-0	1-3-3	[6]	7-22	0-6	Laubach (W, 5-9)	328	1:23
4/4	*	at Michigan State	W	9-3	9-9-0	3-7-2	7	8-22	1-6	Laubach (W, 6-9)	138	2:20
4/5	*	at Michigan State	W	7-3	7-9-1	3-6-1	7	9-22	2-6	Diescher (W, 2-4)	289	2:17
4/6	*	at Michigan State	W	6-0	6-9-1	0-3-1	7	10-22	3-6	Laubach (W, 7-9)	766	1:37
4/11	*	at Indiana	W	4-1	4-7-1	1-7-2	7	11-22	4-6	Laubach (W, 8-9)	306	1:48
4/12	*	at Indiana	W	2-1	2-4-0	1-9-0	7	12-22	5-6	Von Pusch (W, 2-1)	487	2:02
4/13	*	at Indiana	L	8-7	7-11-0	8-13-1	(8)	12-23	5-7	Laubach (L, 8-10)	415	2:27

! Kajikawa Classic, Tempe, Ariz. | @ Tiger Invitational, Baton Rouge, La. | # FAU Invitational, Boca Raton, Fla. |  
 \$ JMU Invitational, Harrisonburg, Va. | % Michele Smith Spring Break Tournament, Clearwater, Fla. | \* Big Ten Game  
 ( ) Extra inning game | [ ] Shortened game (eight-run rule)





# 2014 PENN STATE SOFTBALL



## 2014 Defensive Lineup by Game

Date	Opponent	Pitcher	Catcher	First	Second	Third	Short	Left	Center	Right	DP
2/7	Oregon State	Jones	Habitz	Brackpool	Sovereign	Shanahan	Furuya	Walker	Knief	Good	Miller
2/7	Appalachian State	Diescher	Habitz	Brackpool	Sovereign	Shanahan	Furuya	Jones	Knief	Walker	Hatfield
2/8	Bradley	Laubach	Habitz	Hatfield	Sovereign	Shanahan	Furuya	Jones	Knief	Walker	Bradley
2/8	at Arizona State	Jones	Habitz	Hatfield	Sovereign	Shanahan	Furuya	Abeyta	Knief	Walker	Bradley
2/9	Seattle	Laubach	Hatfield	Brackpool	Sovereign	Shanahan	Furuya	Jones	Knief	Walker	Habitz
2/16	George Washington	Laubach	Habitz	Hatfield	Sovereign	Presto	Furuya	Jones	Knief	Miller	Brackpool
2/16	Northwestern	Diescher	Habitz	Hatfield	Sovereign	Shanahan	Furuya	Jones	Knief	Miller	Presto
2/17	at LSU	Jones	Habitz	Hatfield	Sovereign	Shanahan	Furuya	Abeyta	Knief	Miller	Presto
2/17	at LSU	Laubach	Habitz	Hatfield	Sovereign	Shanahan	Furuya	Jones	Knief	Miller	Walker
2/21	Kentucky	Diescher	Habitz	Hatfield	Sovereign	Shanahan	Furuya	Jones	Knief	Miller	Walker
2/21	at FAU	Laubach	Hatfield	Brackpool	Sovereign	Presto	Furuya	Jones	Knief	Abeyta	Habitz
2/22	Pitt	Laubach	Hatfield	Brackpool	Sovereign	Shanahan	Furuya	Jones	Knief	Miller	Habitz
2/22	at FAU	Diescher	Habitz	Brackpool	Sovereign	Shanahan	Furuya	Jones	Knief	Miller	Hatfield
2/23	Kentucky	Laubach	Habitz	Brackpool	Sovereign	Shanahan	Furuya	Jones	Knief	Miller	Hatfield
3/1	Kent State	Laubach	Habitz	Hatfield	Sovereign	Shanahan	Furuya	Jones	Knief	Miller	Walker
3/1	Dartmouth	Von Pusch	Habitz	Hatfield	Sovereign	Shanahan	Furuya	Abeyta	Knief	Ward	Presto
3/14	Rutgers	Jones	Habitz	Brackpool	Miller	Shanahan	Furuya	Sovereign	Knief	Walker	Hatfield
3/14	Central Conn. St.	Laubach	Habitz	Brackpool	Miller	Presto	Furuya	Sovereign	Knief	Jones	Hatfield
3/15	Wagner	Diescher	Hatfield	Brackpool	Miller	Presto	Furuya	Sovereign	Knief	Jones	Habitz
3/15	Yale	Von Pusch	Hatfield	Brackpool	Miller	Shanahan	Furuya	Sovereign	Knief	Jones	Habitz
3/16	Baylor	Diescher	Hatfield	Brackpool	Miller	Shanahan	Furuya	Sovereign	Knief	Jones	Habitz
3/21	PURDUE	Laubach	Habitz	Hatfield	Miller	Shanahan	Furuya	Sovereign	Knief	Jones	Brackpool
3/22	PURDUE	Jones	Hatfield	Brackpool	Miller	Shanahan	Furuya	Sovereign	Knief	Abeyta	Habitz
3/22	PURDUE	Laubach	Hatfield	Brackpool	Miller	Shanahan	Furuya	Sovereign	Knief	Jones	Habitz
3/28	MICHIGAN	Jones	Habitz	Brackpool	Miller	Shanahan	Furuya	Sovereign	Knief	Abeyta	Hatfield
3/28	MICHIGAN	Laubach	Habitz	Brackpool	Miller	Shanahan	Furuya	Sovereign	Knief	Jones	Hatfield
3/28	MICHIGAN	Jones	Habitz	Hatfield	Miller	Shanahan	Furuya	Sovereign	Knief	Walker	Brackpool
4/2	SAINT FRANCIS	Jones	Hatfield	Brackpool	Miller	Presto	Furuya	Sovereign	Knief	Walker	Habitz
4/2	SAINT FRANCIS	Laubach	Hatfield	Jones	Miller	Presto	Furuya	Sovereign	Knief	Walker	Tupinio
4/4	at Michigan State	Laubach	Hatfield	Jones	Miller	Presto	Furuya	Sovereign	Knief	Walker	Tupinio
4/5	at Michigan State	Von Pusch	Hatfield	Brackpool	Miller	Shanahan	Furuya	Sovereign	Knief	Jones	Habitz
4/6	at Michigan State	Von Pusch	Hatfield	Brackpool	Miller	Shanahan	Furuya	Sovereign	Knief	Jones	Habitz
4/11	at Indiana	Laubach	Hatfield	Brackpool	Miller	Shanahan	Furuya	Sovereign	Knief	Jones	Habitz
4/12	at Indiana	Diescher	Habitz	Hatfield	Miller	Presto	Furuya	Sovereign	Knief	Jones	Walker
4/13	at Indiana	Von Pusch	Hatfield	Jones	Miller	Presto	Furuya	Sovereign	Knief	Walker	Habitz



## AMANDA LEHOTAK

Head Coach • First Year  
**NEBRASKA-OMAHA '03**

**RECORD: 200-229 (.466)**

Amanda Lehotak enters her first season as the Penn State softball head coach. She was named the seventh coach in program history on July 22, 2013. Lehotak comes to Penn State with seven years of head coaching experience under her belt, including the last two seasons at Texas-San Antonio.

Lehotak guided the Roadrunners to a 27-26 overall record in 2013 to give the program just their second winning overall record in the last seven years. She also led the team to a fifth-place finish and a berth in the WAC Tournament in UTSA's first season in the conference. Additionally, Darian Blake was named to the All-WAC first team.

In her first season at UTSA, Lehotak and the Roadrunners posted a 24-28 overall record and 12-8 mark in Southland Conference play en route to a third-place finish, which was the program's highest finish since 2009. She had five players earn All-Southland honors in 2012, including Freshman of the Year Megan Low.

Prior to her time at UTSA, Lehotak spent six seasons at Jacksonville University, including five as the head coach. The Dolphins improved their win total each of Lehotak's five seasons at the helm, culminating in a 44-16 overall record and 18-2 conference mark in 2011.

That season, Jacksonville won the Atlantic Sun regular-season and tournament titles on its way to the first NCAA Tournament appearance in school history. Lehotak was selected as the 2011 Atlantic Sun Coach of the Year as her squad set school records for home runs, earned run average, shutouts and fielding percentage. Lehotak left Jacksonville with a school-record 137 wins.

In 2010, Lehotak led the Dolphins to a then-second-best win total in program history with a 33-23 overall record. Additionally, a then-program-record five student-athletes earned All-Atlantic Sun recognition under her guidance in 2010.

Lehotak owns a 188-206 record in seven seasons as a collegiate head coach at UTSA and Jacksonville. In addition to her one season as an assistant coach at Jacksonville, Lehotak was also an assistant coach at Missouri Western State for one season where she was responsible for recruiting, working with the outfielders, hitting instruction, coordinating camps and clinics, as well as managing the team's travel schedule.

She also served as an assistant coach at Daniel J. Gross High School in Bellevue, Neb. and was an interim assistant coach at College of Saint Mary in Omaha (2004).

A native of Omaha, Neb., Lehotak played collegiately at the University of Mississippi for two seasons (2000-01) before finishing her career at Nebraska-Omaha (2002-03). She set the single-season hits record in 2001 at Ole Miss and was a third team All-American at UNO with a pair of first team All-North Central Conference selections. Lehotak earned her bachelor's degree in family science from Nebraska-Omaha in 2003.

### LEHOTAK'S COLLEGIATE RÉSUMÉ

<b>Head Coach</b>	
Penn State	2014
Texas-San Antonio	2012-13
Jacksonville	2007-11
<i>2011 Atlantic Sun Coach of the Year</i>	
<b>Assistant Coach</b>	
Jacksonville	2006
Missouri Western State	2005
College of St. Mary (Neb.)	2004
<b>Student-Athlete</b>	
Nebraska-Omaha	2002-03
Mississippi	2000-01

### CAREER RECORD

Season	School	Overall Record	Pct.	Conf. Record	Pct.	Finish	NCAA
2014	Penn State	12-23	.343	5-7	.417	--	--
2013	Texas-San Antonio	27-26	.509	9-12	.429	5th	--
2012	Texas-San Antonio	24-28	.462	12-8	.600	T3rd	--
2011	Jacksonville	44-16	.733	18-2	.900	1st	Regionals
2010	Jacksonville	33-23	.589	10-10	.500	6th	--
2009	Jacksonville	24-31	.436	7-13	.350	7th	--
2008	Jacksonville	21-39	.350	5-17	.227	11th	--
2007	Jacksonville	15-43	.259	4-14	.222	10th	--



# 2014 PENN STATE SOFTBALL



## #2 TAYLOR ABEYTA



OF • So. • San Diego, Calif. Mt. Carmel

- Has seen action in 14 games in 2014
- Has started five contests at right field
- Earned her first at-bat of the season vs. Oregon St. (2/7)

### ABEYTA'S CAREER HIGHS

AT BATS	4	vs. South Carolina	3/10/13
RUNS	1	6x, last vs. Northwestern	2/16/14
HITS	2	vs. DePaul	3/16/13
RBI	3	2x, last vs. DePaul	3/16/13
WALKS	3	vs. Missouri-KC	2/17/13
STOLEN BASES	1	3x, last vs. Maine	3/9/13
TOTAL BASES	2	vs. Ohio State	5/11/12

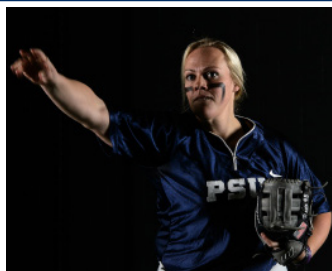
### 2014 SEASON HIGHS

AT BATS	2	vs. Dartmouth	3/1/14
RUNS	-	-	-
HITS	-	-	-
RBI	-	-	-
WALKS	-	-	-
STOLEN BASES	-	-	-
TOTAL BASES	-	-	-

### CAREER HITTING STATISTICS

Year	AVG.	GP-GS	AB	R	H	2B	3B	HR	RBI	TB	SLG	BB	HBP	SO	GDP	OBP	SF-SH	SB-ATT	PO-A-E	FLD%
2013	.229	36-14	35	5	8	1	0	1	7	23	.343	3	0	14	0	.289	0-0	3-3	55-2-2	.966
2014	.000	14-5	6	1	0	0	0	0	0	0	.000	0	0	4	0	.000	0-0	0-0	3-0-1	.750
<b>Total</b>	<b>.195</b>	<b>50-19</b>	<b>41</b>	<b>6</b>	<b>8</b>	<b>1</b>	<b>0</b>	<b>1</b>	<b>7</b>	<b>12</b>	<b>.293</b>	<b>3</b>	<b>0</b>	<b>18</b>	<b>0</b>	<b>.250</b>	<b>0-0</b>	<b>3-3</b>	<b>58-2-3</b>	<b>.952</b>

## #3 LIZ PRESTO



C • Sr. • Bethlehem, Pa. Bethlehem Catholic

- Has seen action in 16 games in 2014, starting 12
- Notched her first HR of the season vs. Saint Francis (4/2)
- Posted her first hit of the season at FAU (2/21)
- Earned her first start of the season vs. George Washington (2/16)
- Registered two walks vs. George Washington

### PRESTO'S CAREER HIGHS

AT BATS	4	2x, last vs. Minnesota	4/28/12
RUNS	2	vs. Michigan State	4/7/12
HITS	3	vs. Michigan State	4/7/12
RBI	4	vs. Minnesota	4/28/12
WALKS	2	5x, last vs. George Washington	2/16/14
STOLEN BASES	-	-	-
TOTAL BASES	4	3x, last vs. Texas	3/15/13

### 2014 SEASON HIGHS

AT BATS	3	3x, last at Michigan State	4/4/14
RUNS	1	vs. Saint Francis	4/2/14
HITS	1	3x, last at Indiana	4/13/14
RBI	1	vs. Saint Francis	4/2/14
WALKS	2	vs. George Washington	2/16/14
STOLEN BASES	-	-	-
TOTAL BASES	4	vs. Saint Francis	4/2/14

### CAREER HITTING STATISTICS

Year	AVG.	GP-GS	AB	R	H	2B	3B	HR	RBI	TB	SLG	BB	HBP	SO	GDP	OBP	SF-SH	SB-ATT	PO-A-E	FLD%
2011	.067	16-4	15	4	1	1	0	0	1	2	.133	5	0	5	0	.300	0-0	0-0	0-0-0	.000
2012	.190	38-35	79	6	15	3	0	1	7	21	.266	20	2	18	1	.366	0-3	0-0	83-34-4	.967
2013	.222	17-5	18	1	4	0	0	1	3	7	.389	6	0	7	0	.417	0-0	0-0	0-1-0	1.000
2014	.097	16-12	31	2	3	0	0	1	1	6	.194	7	1	8	0	.282	0-3	0-0	10-14-1	.960
<b>Total</b>	<b>.161</b>	<b>87-56</b>	<b>143</b>	<b>13</b>	<b>23</b>	<b>4</b>	<b>0</b>	<b>3</b>	<b>12</b>	<b>36</b>	<b>.252</b>	<b>38</b>	<b>3</b>	<b>38</b>	<b>1</b>	<b>.348</b>	<b>0-6</b>	<b>0-0</b>	<b>93-49-5</b>	<b>.966</b>





# 2014 PENN STATE SOFTBALL



## #4 MARISSA DIESCHER



RHP • Jr. • Livingston Manor, N.Y. Livingston Manor Central

- Pitched a season-high 5.0 innings vs. Wagner (3/15) and No. 5 Kentucky (2/21)
- Started her first game of the year vs. Appalachian St. (2/7)
- Notched her first win of 2014 vs. Appalachian St.
- Registered her first save of the season vs. Bradley (2/8)
- Matched career-high with five strikeouts vs. Wagner in four innings
- Gave up just two walks in four innings vs. Bradley

### DIESCHER'S CAREER PITCHING HIGHS

INNINGS.....7.0 ..... 5x, last vs. Indiana ..... 4/15/12  
 STRIKEOUTS.....5 ..... vs. LIU-Brooklyn ..... 3/2/12  
 WALKS .....10 ..... at Michigan ..... 3/24/12

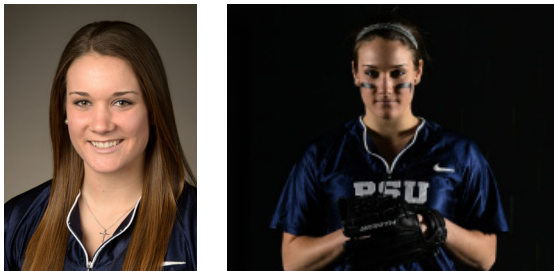
### 2014 SEASON PITCHING HIGHS

INNINGS.....5.0 ..... 2x, last vs. Wagner ..... 3/15/14  
 STRIKEOUTS.....5 ..... vs. Wagner ..... 3/15/14  
 WALKS .....5 ..... 2x, last vs. Kent State ..... 3/1/14

### CAREER PITCHING STATISTICS

Year	ERA	W-L	APP	GS	CG	SHO/C	SV	IP	H	R	ER	BB	SO	2B	3B	HR	BF	BAA	WP	HBP	BK	SFA	SHA
2012	5.52	5-9	22	19	6	1/0	0	78.2	94	76	62	88	33	8	0	7	429	.295	20	6	0	3	13
2013	10.21	1-7	17	11	0	0/0	0	36.1	37	57	53	69	21	4	0	2	225	.255	4	7	1	0	4
2014	8.67	2-4	15	7	0	0/0	1	36.1	57	48	45	36	28	13	1	3	209	.350	6	6	1	1	3
<b>Total</b>	<b>7.40</b>	<b>8-20</b>	<b>54</b>	<b>37</b>	<b>6</b>	<b>1/0</b>	<b>1</b>	<b>151.1</b>	<b>188</b>	<b>181</b>	<b>160</b>	<b>193</b>	<b>82</b>	<b>25</b>	<b>1</b>	<b>12</b>	<b>863</b>	<b>.300</b>	<b>30</b>	<b>19</b>	<b>2</b>	<b>4</b>	<b>20</b>

## #5 CHRISTY VON PUSCH



RHP • So. • Bryn Mawr, Pa. Radnor

- Doled out a career-high four strikeouts at MSU (4/5)
- Earned her first collegiate victory vs. Yale (3/14)
- Pitched her first complete game vs. Dartmouth (3/1)
- Made her first start of the season vs. Dartmouth
- Has seen action in 16 games in 2014
- Gave up just one walk in 2.2 innings vs. Arizona State

### VON PUSCH'S CAREER PITCHING BESTS

INNINGS.....7.0 ..... 2x, last vs. Yale ..... 3/14/14  
 STRIKEOUTS.....3 ..... vs. Kentucky ..... 2/23/14  
 WALKS .....11 ..... vs. Texas Tech ..... 2/16/13

### VON PUSCH'S 2014 SEASON PITCHING BESTS

INNINGS.....7.0 ..... 2x, last vs. Yale ..... 3/15/14  
 STRIKEOUTS.....4 ..... at Michigan State ..... 4/5/14  
 WALKS .....5 ..... vs. Purdue ..... 3/22/14

### CAREER PITCHING STATISTICS

Year	ERA	W-L	APP	GS	CG	SHO/C	SV	IP	H	R	ER	BB	SO	2B	3B	HR	BF	BAA	WP	HBP	BK	SFA	SHA
2013	17.02	0-6	12	7	0	0/1	0	19.1	34	54	47	50	2	4	1	3	141	.386	19	0	0	0	3
2014	6.79	2-1	18	5	2	1/1	0	44.1	59	51	43	42	24	14	1	6	237	.326	10	6	0	3	5
<b>Total</b>	<b>9.90</b>	<b>2-7</b>	<b>30</b>	<b>12</b>	<b>2</b>	<b>1/2</b>	<b>0</b>	<b>63.2</b>	<b>93</b>	<b>105</b>	<b>90</b>	<b>92</b>	<b>26</b>	<b>18</b>	<b>2</b>	<b>9</b>	<b>378</b>	<b>.346</b>	<b>29</b>	<b>6</b>	<b>0</b>	<b>3</b>	<b>8</b>





# 2014 PENN STATE SOFTBALL



## #7 KASIE HATFIELD



C/INF • Sr. • Tampa, Fla. Chamberlain

- Has started all but one game for PSU this season
- Leads the team and is tied for fourth in the Big Ten in doubles with 12
- Is currently on a seven-game hitting streak
- Entered PSU's record books at No. 9 on the single season doubles list after posting her 12th double at IU on April 13
- Went 7-for-10 at the plate in the series at Indiana with seven RBI and two runs on two double and a HR
- Notched her first triple of the year at MSU (4/4)
- Drove in a season-high three runs vs. George Washington (2/16)

### HATFIELD'S CAREER HIGHS

AT BATS	7	vs. Fordham	5/21/11
RUNS	2	5x, last vs. Northwestern	4/20/13
HITS	4	vs. Michigan State	4/7/12
RBI	5	vs. Indiana	4/15/12
WALKS	2	2x, last vs. Bradley	2/8/14
STOLEN BASES	1	vs. Texas A&M	3/3/13
TOTAL BASES	8	vs. Ohio State	5/11/12

### 2014 SEASON HIGHS

AT BATS	4	4x, last at Indiana	4/12/14
RUNS	1	7x, last at Indiana	4/13/14
HITS	3	2x, last at Indiana	4/11/14
RBI	3	2x, last at Indiana	4/13/14
WALKS	2	vs. Bradley	2/8/14
STOLEN BASES	--	--	--
TOTAL BASES	7	at Indiana	4/11/14

### CAREER HITTING STATISTICS

Year	AVG.	GP-GS	AB	R	H	2B	3B	HR	RBI	TB	SLG	BB	HBP	SO	GDP	OBP	SF-SH	SB-ATT	PO-A-E	FLD%
2011	.223	49-45	130	10	29	6	1	1	10	40	.308	6	3	23	2	.273	0-3	0-0	218-16-2	.992
2012	.252	48-48	131	16	33	8	0	5	26	56	.427	10	0	22	3	.305	0-2	0-1	156-45-6	.971
2013	.181	45-42	105	5	19	0	0	2	6	25	.238	5	0	21	0	.218	0-3	1-1	149-25-6	.967
2014	.354	35-34	99	9	35	12	1	1	24	52	.525	10	5	6	0	.439	0-4	2-3	143-11-4	.975
<b>Total</b>	<b>.249</b>	<b>177-169</b>	<b>465</b>	<b>40</b>	<b>116</b>	<b>26</b>	<b>2</b>	<b>9</b>	<b>66</b>	<b>173</b>	<b>.372</b>	<b>31</b>	<b>8</b>	<b>72</b>	<b>5</b>	<b>.308</b>	<b>0-12</b>	<b>3-5</b>	<b>666-97-18</b>	<b>.977</b>

## #8 REINA FURUYA



INF • So. • Waipahu, Hawaii Punahou

- Has started all 35 games for PSU in 2014 at SS
- Third in the Big Ten in sac bunts (10)
- Scored two runs and drove in two runs in the series at IU
- Went 2-for-5 at the plate in the series at MSU
- Third on team in walks with 16
- Second on the team in stolen bases with five
- Turned in a 2-for-4 performance vs. Dartmouth (3/1)
- Went 2-for-2 at the plate vs. Appalachian State (2/7) with an RBI and two runs

### FURUYA'S CAREER HIGHS

AT BATS	4	9x, last vs. Saint Francis	4/2/14
RUNS	2	vs. Appalachian State	2/7/14
HITS	2	7x, last vs. Dartmouth	3/1/14
RBI	4	vs. Northwestern	4/20/13
WALKS	2	3x, last vs. George Washington	2/16/14
STOLEN BASES	1	7x, last at MSU	4/6/14
TOTAL BASES	2	2x, last vs. Appalachian State	2/7/14

### 2014 SEASON HIGHS

AT BATS	4	4x, last vs. Saint Francis	4/2/14
RUNS	2	vs. Appalachian State	2/7/14
HITS	2	2x, last vs. Dartmouth	3/1/14
RBI	1	7x, last at Indiana	4/13/14
WALKS	2	3x, last vs. George Washington	2/16/14
STOLEN BASES	1	5x, last at MSU	4/6/14
TOTAL BASES	2	vs. Appalachian State	2/7/14

### CAREER HITTING STATISTICS

Year	AVG.	GP-GS	AB	R	H	2B	3B	HR	RBI	TB	SLG	BB	HBP	SO	GDP	OBP	SF-SH	SB-ATT	PO-A-E	FLD%
2013	.224	43-41	107	8	24	5	0	4	20	41	.383	7	0	21	1	.270	1-4	2-2	50-66-8	.935
2014	.171	35-35	82	12	14	0	0	0	7	14	.171	16	3	23	0	.324	1-10	5-5	31-79-10	.917
<b>Total</b>	<b>.201</b>	<b>78-76</b>	<b>189</b>	<b>20</b>	<b>38</b>	<b>5</b>	<b>0</b>	<b>4</b>	<b>27</b>	<b>55</b>	<b>.291</b>	<b>23</b>	<b>3</b>	<b>44</b>	<b>1</b>	<b>.295</b>	<b>2-14</b>	<b>7-7</b>	<b>81-145-18</b>	<b>.926</b>



# 2014 PENN STATE SOFTBALL



## #10 LEXI KNIEF



CF • So. • Ramsey, N.J. Ramsey

- Leads team and ranks 8th in the Big Ten in runs with 33
- Team-best and B1G 9th best batting avg. of .394
- Tied for second in the Big Ten and 14th in the nation in triples with four
- Leads PSU and is 6th in the Big Ten with OBP of .484
- Named B1G Player of the Week on April 7 after stellar series at MSU
- Posted a double, a triple & first collegiate HR at MSU (4/6)
- Drove in career-best two runs at FAU (2/22)
- Scored career-high four runs vs. Oregon State (2/7)

### KNIEF'S CAREER HIGHS

AT BATS	4	18x, last at Indiana	4/13/14
RUNS	4	vs. Oregon State	2/7/14
HITS	3	3x, last at Michigan State	4/2/13
RBI	2	at FAU	2/22/14
WALKS	2	8x, last at Michigan State	4/2/14
STOLEN BASES	1	3x, last vs. Purdue	3/22/13
TOTAL BASES	9	at Michigan State	4/6/14

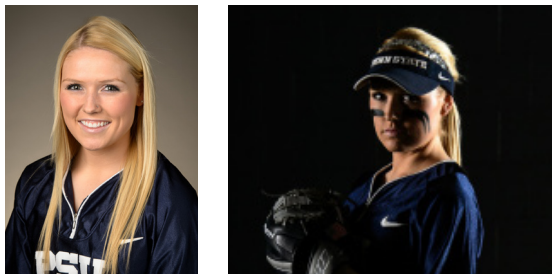
### 2014 SEASON HIGHS

AT BATS	4	11x, last at Indiana	4/11/14
RUNS	4	vs. Oregon State	2/7/14
HITS	3	2x, last at Michigan State	4/6/14
RBI	2	at FAU	2/22/14
WALKS	2	6x, last at Michigan State	4/4/14
STOLEN BASES	1	2x, last vs. Purdue	3/22/14
TOTAL BASES	9	at Michigan State	4/6/14

### CAREER HITTING STATISTICS

Year	AVG.	GP-GS	AB	R	H	2B	3B	HR	RBI	TB	SLG	BB	HBP	SO	GDP	OBP	SF-SH	SB-ATT	PO-A-E	FLD%
2013	.224	38-26	76	11	17	1	0	0	3	18	.237	10	4	15	1	.344	0-1	1-3	39-32-8	.899
2014	.394	35-35	109	33	43	6	4	1	8	60	.550	19	0	7	0	.484	0-2	2-2	47-4-0	1.000
<b>Total</b>	<b>.324</b>	<b>73-61</b>	<b>185</b>	<b>44</b>	<b>60</b>	<b>7</b>	<b>4</b>	<b>1</b>	<b>11</b>	<b>78</b>	<b>.422</b>	<b>29</b>	<b>4</b>	<b>22</b>	<b>1</b>	<b>.427</b>	<b>0-3</b>	<b>3-5</b>	<b>86-36-8</b>	<b>.938</b>

## #11 SAM SHANAHAN



3B • Fr. • Seattle, Wash. Bishop Blanchet

- Has started 26 games for PSU in 2014
- Turned in a 2-for-3 effort at the plate vs. Dartmouth (3/1)
- Registered her first collegiate double vs. Dartmouth
- Made first collegiate start in season-opener vs. Oregon State (2/7) and has started all but one game in 2014
- Recorded her first collegiate RBI at No. 21 LSU (2/17)
- Notched a season-high two runs vs. Oregon State
- Registered her first collegiate hit vs. Oregon State

### SHANAHAN'S 2014 SEASON HIGHS

AT BATS	3	5x, last vs. Dartmouth	3/1/14
RUNS	2	vs. Oregon State	2/7/14
HITS	2	vs. Dartmouth	3/1/14
RBI	1	at LSU	2/17/14
WALKS	1	3x, last vs. Kentucky	2/23/14
STOLEN BASES	0		
TOTAL BASES	3	vs. Dartmouth	3/1/14

### CAREER HITTING STATISTICS

Year	AVG.	GP-GS	AB	R	H	2B	3B	HR	RBI	TB	SLG	BB	HBP	SO	GDP	OBP	SF-SH	SB-ATT	PO-A-E	FLD%
2014	.118	30-26	51	5	6	1	0	0	1	7	.137	3	0	12	0	.167	0-0	0-0	33-34-4	.944
<b>Total</b>	<b>.118</b>	<b>30-26</b>	<b>51</b>	<b>5</b>	<b>6</b>	<b>1</b>	<b>0</b>	<b>0</b>	<b>1</b>	<b>7</b>	<b>.137</b>	<b>3</b>	<b>0</b>	<b>12</b>	<b>0</b>	<b>.167</b>	<b>0-0</b>	<b>0-0</b>	<b>33-34-4</b>	<b>.944</b>



# 2014 PENN STATE SOFTBALL



## #12 MACY JONES



OF/LHP • So. • Ashburn, Va. Briar Woods

- Has started all but one game for PSU in 2014
- Has allowed less walks than any other B1G pitcher (11)
- Tied for 4th in the B1G with 3 triples
- Notched a season-high 7 K's vs. SFU (4/2)
- Stole a career-best two bases vs. Saint Francis
- Notched HR's in back-to-back games vs. Wagner (3/15) and Yale (3/15)
- Posted her first HR of 2014 vs. Pitt (2/22)
- Posted 3-for-3 efforts vs. Seattle (2/9) and GWU (2/16)

### JONES' CAREER HITTING HIGHS

AT BATS	5	2x, last vs. Appalachian State	2/7/14
RUNS	3	at Pitt	4/10/13
HITS	3	3x, last vs. Saint Francis	4/9/13
RBI	6	at New Mexico State	2/16/13
WALKS	2	4x, last at Michigan State	4/4/14
STOLEN BASES	2	vs. Saint Francis	4/2/14
TOTAL BASES	7	2x, last vs. Yale	3/15/13

### 2014 HITTING HIGHS

AT BATS	5	vs. Appalachian State	2/7/14
RUNS	2	vs. Seattle	2/9/14
HITS	3	2x, last vs. George Washington	2/16/14
RBI	2	vs. Seattle	2/9/14
WALKS	2	3x, last at Michigan State	4/4/14
STOLEN BASES	2	vs. Saint Francis	4/2/14
TOTAL BASES	7	vs. Yale	3/15/14

### JONES' CAREER PITCHING HIGHS

INNINGS	8.0	vs. Saint Francis	4/2/14
STRIKEOUTS	12	vs. Maine	3/9/13
COMPLETE GAMES	14	last vs. Illinois	5/9/13
SHUTOUTS	1	vs. Maine	3/9/13

### 2014 PITCHING HIGHS

INNINGS	8.0	vs. Saint Francis	4/2/14
STRIKEOUTS	7	vs. Saint Francis	4/2/14
WALKS	3	vs. Rutgers	3/14/14

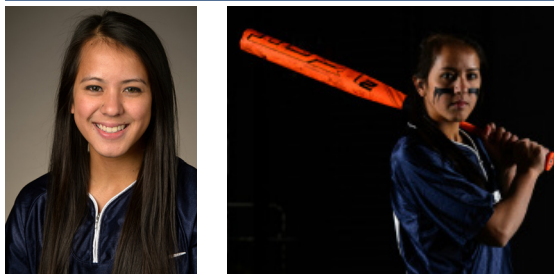
### CAREER PITCHING STATISTICS

Year	ERA	W-L	APP	GS	CG	SHO/C	SV	IP	H	R	ER	BB	SO	2B	3B	HR	BF	BAA	WP	HBP	BK	SFA	SHA
2013	3.84	13-17	36	22	14	1/1	1	175.0	196	111	96	60	000	40	3	29	785	.286	2	11	0	11	17
2014	6.53	0-8	14	8	3	0/0	2	49.1	73	51	46	11	29	7	5	11	244	.341	1	13	0	2	4
<b>Total</b>	<b>4.43</b>	<b>13-25</b>	<b>50</b>	<b>30</b>	<b>17</b>	<b>1/1</b>	<b>3</b>	<b>224.1</b>	<b>269</b>	<b>162</b>	<b>142</b>	<b>71</b>	<b>130</b>	<b>47</b>	<b>8</b>	<b>40</b>	<b>1029</b>	<b>.299</b>	<b>3</b>	<b>24</b>	<b>0</b>	<b>13</b>	<b>21</b>

### CAREER HITTING STATISTICS

Year	AVG.	GP-GS	AB	R	H	2B	3B	HR	RBI	TB	SLG	BB	HBP	SO	GDP	OBP	SF-SH	SB-ATT	PO-A-E	FLD%
2013	.274	49-49	146	20	40	8	2	5	28	67	.459	13	5	38	0	.349	2-2	3-4	21-29-4	.926
2014	.266	35-34	94	18	25	1	3	3	21	41	.436	19	2	20	0	.393	2-0	6-7	48-11-3	.952
<b>Total</b>	<b>.271</b>	<b>84-83</b>	<b>240</b>	<b>38</b>	<b>65</b>	<b>9</b>	<b>5</b>	<b>8</b>	<b>49</b>	<b>108</b>	<b>.450</b>	<b>32</b>	<b>7</b>	<b>58</b>	<b>0</b>	<b>.367</b>	<b>4-2</b>	<b>9-11</b>	<b>69-40-7</b>	<b>.940</b>

## #13 MAEGAN TUPINIO



INF/OF • So. • Wahiawa, Hawaii Leilehua

- Has seen action in 15 games for PSU in 2014
- Earned her first start of the year vs. Saint Francis (4/2)
- Posted her first collegiate hit in the win over Saint Francis and scored her fourth run of the season
- Registered her first at-bat as a Nittany Lion at Florida Atlantic (2/22)
- Scored as a pinch runner vs. George Washington (2/16)
- Notched her first run of the season vs. Appalachian State (2/7) as a pinch runner

### TUPINIO'S CAREER HIGHS

AT BATS	3	vs. Saint Francis	4/2/14
RUNS	1	11x, last vs. Saint Francis	4/2/14
HITS	1	vs. Saint Francis	4/2/14
RBI	--	--	--
WALKS	--	--	--
STOLEN BASES	1	3x, last at Indiana	4/6/13
TOTAL BASES	1	vs. Saint Francis	4/2/14

### TUPINIO'S 2014 SEASON HIGHS

AT BATS	3	vs. Saint Francis	4/2/14
RUNS	1	4x, last at Indiana	4/13/14
HITS	1	vs. Saint Francis	4/2/14
RBI	--	--	--
WALKS	--	--	--
STOLEN BASES	--	--	--
TOTAL BASES	1	vs. Saint Francis	4/2/14

### CAREER HITTING STATISTICS

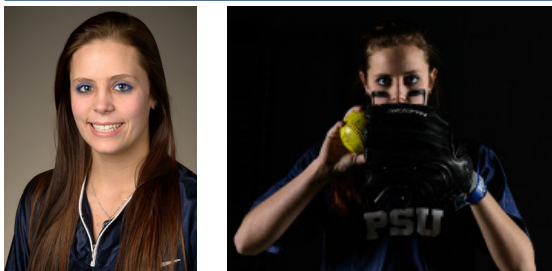
Year	AVG.	GP-GS	AB	R	H	2B	3B	HR	RBI	TB	SLG	BB	HBP	SO	GDP	OBP	SF-SH	SB-ATT	PO-A-E	FLD%
2013	.000	24-1	0	9	0	0	0	0	0	0	.000	0	0	0	0	.000	0-0	3-3	0-0-0	.000
2014	.111	15-2	9	7	1	0	0	0	0	1	.111	0	0	4	0	.111	0-0	0-0	0-0-0	.000
<b>Total</b>	<b>.111</b>	<b>39-3</b>	<b>9</b>	<b>16</b>	<b>1</b>	<b>0</b>	<b>0</b>	<b>0</b>	<b>0</b>	<b>1</b>	<b>.111</b>	<b>0</b>	<b>0</b>	<b>4</b>	<b>0</b>	<b>.111</b>	<b>0-0</b>	<b>3-3</b>	<b>0-0-0</b>	<b>.000</b>



# 2014 PENN STATE SOFTBALL



## #17 MARLAINA LAUBACH



RHP • Fr. • Northampton, Pa. Northampton

- Has thrown a season-high six K's twice, at MSU (4/4) and at FAU (2/21)
- Pitched a season-high eight innings at FAU (2/21)
- Earned her first collegiate save in game two at Indiana (4/12)
- Led the Nittany Lions to a win over No. 21 LSU (2/17)
- Allowed just four hits and did not give up a single walk vs. George Washington (2/16)
- Picked up a win against Bradley (2/8) in her collegiate debut
- Pitched her first complete game as a Nittany Lion vs. Seattle (2/9)
- Allowed just four hits in seven innings vs. Seattle
- Struck out five Bradley hitters & four Seattle hitters

LAUBACH'S 2014 PITCHING HIGHS	
INNINGS.....	8.0.....at Florida Atlantic..... 2/21/14
STRIKEOUTS.....	6.....2x, last at Michigan State..... 4/4/14
WALKS.....	6.....vs. Purdue..... 3/21/14
COMPLETE GAMES..	7.....last at Michigan State..... 4/4/14

Year	CAREER HITTING STATISTICS																						
	ERA	W-L	APP	GS	CG	SHO/C	SV	IP	H	R	ER	BB	SO	2B	3B	HR	BF	BAA	WP	HBP	BK	SFA	SHA
2014	3.46	8-10	21	15	7	0/1	1	93.0	115	54	46	38	54	14	0	9	429	.313	2	3	1	5	16
<b>Total</b>	<b>3.46</b>	<b>8-10</b>	<b>21</b>	<b>15</b>	<b>7</b>	<b>0/1</b>	<b>1</b>	<b>93.0</b>	<b>115</b>	<b>54</b>	<b>46</b>	<b>38</b>	<b>54</b>	<b>14</b>	<b>0</b>	<b>9</b>	<b>429</b>	<b>.313</b>	<b>2</b>	<b>3</b>	<b>1</b>	<b>5</b>	<b>16</b>

## #18 ALICIA WALKER



UTL • Jr. • Los Alamitos, Calif. Los Alamitos

- Has started 15 games for the Nittany Lions in 2014
- Drove in two runs in the win over Saint Francis (4/2)
- Hit her first-career double vs. Oregon State (2/7)
- Drove in two runs vs. Appalachian State (2/7)
- Scored once vs. Appalachian State

WALKER'S CAREER HIGHS	
AT BATS.....	4.....vs. Appalachian State..... 2/7/14
RUNS.....	2.....vs. Western Michigan..... 3/8/13
HITS.....	2.....vs. Ohio State..... 5/11/12
RBI.....	2.....2x, last vs. Saint Francis..... 4/2/14
WALKS.....	1.....3x, last vs. Western Michigan..... 3/8/13
STOLEN BASES.....	2.....vs. Ohio State..... 5/12/12
TOTAL BASES.....	2.....2x, last vs. Oregon State..... 2/7/14

2014 SEASON HIGHS	
AT BATS.....	4.....vs. Appalachian State..... 2/7/14
RUNS.....	1.....2x, last vs. Saint Francis..... 4/2/14
HITS.....	1.....7x, last vs. Saint Francis..... 4/2/14
RBI.....	2.....2x, last vs. Saint Francis..... 4/2/14
WALKS.....	1.....2x, last at Arizona State..... 2/8/14
STOLEN BASES.....	--.....--.....
TOTAL BASES.....	2.....vs. Oregon State..... 2/7/14

Year	CAREER HITTING STATISTICS																			
	AVG.	GP-GS	AB	R	H	2B	3B	HR	RBI	TB	SLG	BB	HBP	SO	GDP	OBP	SF-SH	SB-ATT	PO-A-E	FLD%
2012	.207	39-15	29	9	6	0	0	0	3	6	.207	1	2	9	0	.265	2-4	5-7	19-0-2	.905
2013	.059	38-4	17	17	1	0	0	0	0	1	.059	2	1	4	0	.200	0-1	6-7	2-0-0	1.000
2014	.216	25-15	37	3	8	1	0	0	5	9	.243	2	2	6	0	.293	0-1	0-0	7-0-0	1.000
<b>Total</b>	<b>.181</b>	<b>102-34</b>	<b>83</b>	<b>29</b>	<b>15</b>	<b>1</b>	<b>0</b>	<b>0</b>	<b>8</b>	<b>16</b>	<b>.193</b>	<b>5</b>	<b>5</b>	<b>19</b>	<b>0</b>	<b>.263</b>	<b>2-6</b>	<b>11-14</b>	<b>28-0-2</b>	<b>.933</b>





# 2014 PENN STATE SOFTBALL



## #22 ALYSSA SOVEREIGN



2B • Sr. • La Canada, Calif. Crescenta Valley

- Has started all 35 games for PSU in 2014
- Has registered a hit in 7 of the last 9 games
- Went 4-for-8 in the DH vs. Saint Francis (4/2)
- Drove in two runs vs. No. 6 Michigan with her second double of the year
- Third on team in at-bats (98)
- Scored two runs in the win over No. 21 LSU (2/17)
- Registered a career-high four hits in a 4-for-5 effort vs. Oregon State (2/7)

### SOVEREIGN'S CAREER HIGHS

AT BATS	7	vs. Fordham	5/21/11
HITS	4	vs. Oregon State	2/7/14
RUNS	3	vs. James Madison	2/26/12
RBI	3	vs. Northwestern	4/20/13
STOLEN BASES	1	2x, last vs. DePaul	3/16/13
WALKS	2	8x, last at LSU	2/17/14
TOTAL BASES	6	vs. LIU-Brooklyn	3/2/12

### 2014 SEASON HIGHS

AT BATS	5	vs. Oregon State	2/7/14
HITS	4	vs. Oregon State	2/7/14
RUNS	2	4x, last at LSU	2/17/14
RBI	2	vs. No. 6 Michigan	3/29/14
STOLEN BASES	0		--
WALKS	2	3x, last at LSU	2/17/14
TOTAL BASES	4	vs. Oregon State	2/7/14

### CAREER HITTING STATISTICS

Year	AVG.	GP-GS	AB	R	H	2B	3B	HR	RBI	TB	SLG	BB	HBP	SO	GDP	OBP	SF-SH	SB-ATT	PO-A-E	FLD%
2011	.257	56-55	167	11	43	9	1	5	26	69	.413	9	2	38	1	.302	1-4	0-1	56-6-0	1.000
2012	.209	50-50	153	21	32	5	0	4	17	49	.320	19	0	27	0	.297	0-1	1-1	51-1-1	.981
2013	.248	42-35	109	15	27	8	0	0	11	35	.321	11	0	21	0	.314	1-0	1-1	53-7-1	.984
2014	.204	35-35	98	18	20	2	0	0	8	22	.224	12	1	11	0	.295	1-3	0-0	74-30-0	1.000
<b>Total</b>	<b>..232</b>	<b>183-175</b>	<b>527</b>	<b>65</b>	<b>122</b>	<b>24</b>	<b>1</b>	<b>9</b>	<b>62</b>	<b>175</b>	<b>.332</b>	<b>51</b>	<b>3</b>	<b>97</b>	<b>1</b>	<b>.301</b>	<b>3-8</b>	<b>2-3</b>	<b>234-44-2</b>	<b>.993</b>

## #24 MARY WARD



OF • Fr. • Greencastle, Pa. Greencastle-Antrim

- Has seen action in 20 games in her rookie campaign
- Earned her first collegiate start vs. Dartmouth (3/1)
- Scored as a pinch runner vs. No. 6 Michigan (3/29)
- Scored one run vs. George Washington (2/16)
- Notched her first collegiate run vs. Oregon State (2/7) as a pinch runner
- Also crossed the plate once vs. Seattle (2/9)

### WARD'S SEASON HIGHS

AT BATS	1	4x, last vs. Michigan	3/28/14
RUNS	1	4x, last vs. Michigan	3/29/14
HITS	--		--
RBI	--		--
WALKS	--		--
STOLEN BASES	--		--
TOTAL BASES	--		--

### CAREER HITTING STATISTICS

Year	AVG.	GP-GS	AB	R	H	2B	3B	HR	RBI	TB	SLG	BB	HBP	SO	GDP	OBP	SF-SH	SB-ATT	PO-A-E	FLD%
2014	.000	20-1	4	4	0	0	0	0	0	0	.000	0	1	2	0	.200	0-0	0-0	0-1-0	1.000
<b>Total</b>	<b>.000</b>	<b>20-1</b>	<b>4</b>	<b>4</b>	<b>0</b>	<b>0</b>	<b>0</b>	<b>0</b>	<b>0</b>	<b>0</b>	<b>.000</b>	<b>0</b>	<b>1</b>	<b>2</b>	<b>0</b>	<b>.200</b>	<b>0-0</b>	<b>0-0</b>	<b>0-1-0</b>	<b>1.000</b>



# 2014 PENN STATE SOFTBALL



## #25 MEGHAN BRADLEY



OF • Jr. • Santa Monica, Calif. Santa Monica

- Has seen action in 11 games in 2014
- Registered her first hit as a Nittany Lion vs. Bradley (2/8)
- Put together a 2-for-4 effort vs. Bradley
- Earned her first collegiate start vs. Bradley as the DP

BRADLEY'S CAREER HIGHS		
AT BATS	4	vs. Bradley 2/8/14
RUNS	1	3x, last vs. Indiana 4/15/12
HITS	2	vs. Bradley 2/8/14
RBI	-	-
WALKS	-	-
STOLEN BASES	-	-
TOTAL BASES	2	vs. Bradley 2/8/14
2014 SEASON HIGHS		
AT BATS	4	vs. Bradley 2/8/14
RUNS	-	-
HITS	2	vs. Bradley 2/8/14
RBI	-	-
WALKS	-	-
STOLEN BASES	-	-
TOTAL BASES	2	vs. Bradley 2/8/14

CAREER HITTING STATISTICS																				
Year	AVG.	GP-GS	AB	R	H	2B	3B	HR	RBI	TB	SLG	BB	HBP	SO	GDP	OBP	SF-SH	SB-ATT	PO-A-E	FLD%
2012	.000	14-0	0	3	0	0	0	0	0	0	.000	0	1	0	0	1.000	0-0	0-0	0-0-0	.000
2013	.000	1-0	0	0	0	0	0	0	0	0	.000	0	0	0	0	.000	0-0	0-0	0-0-0	.000
2014	.118	11-3	17	0	2	0	0	0	0	2	.118	0	0	6	0	.118	0-0	0-0	1-0-0	1.000
<b>Total</b>	<b>.118</b>	<b>26-3</b>	<b>17</b>	<b>3</b>	<b>2</b>	<b>0</b>	<b>0</b>	<b>0</b>	<b>0</b>	<b>2</b>	<b>.118</b>	<b>0</b>	<b>1</b>	<b>6</b>	<b>0</b>	<b>.167</b>	<b>0-0</b>	<b>0-0</b>	<b>1-0-0</b>	<b>1.000</b>

## #28 SHANNON GOOD



OF • So. • Horseheads, N.Y. Horseheads

- Has seen action in four games in 2014
- Earned a start in the season opener vs. Oregon State (2/7)
- Registered four at-bats vs. the Beavers in her first appearance at th plate

GOOD'S CAREER HIGHS		
AT BATS	4	vs. Oregon State 2/7/14
RUNS	-	-
HITS	-	-
RBI	-	-
WALKS	-	-
STOLEN BASES	-	-
TOTAL BASES	-	-
2014 SEASON HIGHS		
AT BATS	4	vs. Oregon State 2/7/14
RUNS	-	-
HITS	-	-
RBI	-	-
WALKS	-	-
STOLEN BASES	-	-
TOTAL BASES	-	-

CAREER HITTING STATISTICS																				
Year	AVG.	GP-GS	AB	R	H	2B	3B	HR	RBI	TB	SLG	BB	HBP	SO	GDP	OBP	SF-SH	SB-ATT	PO-A-E	FLD%
2013	.000	8-5	0	0	0	0	0	0	0	0	.000	0	0	0	0	.000	0-0	0-0	0-0-0	.000
2014	.000	4-1	6	0	0	0	0	0	0	0	.000	0	1	2	0	.143	0-0	0-0	0-0-0	.000
<b>TOTAL</b>	<b>.000</b>	<b>12-6</b>	<b>6</b>	<b>0</b>	<b>0</b>	<b>0</b>	<b>0</b>	<b>0</b>	<b>0</b>	<b>0</b>	<b>.000</b>	<b>0</b>	<b>1</b>	<b>2</b>	<b>0</b>	<b>.143</b>	<b>0-0</b>	<b>0-0</b>	<b>0-0-0</b>	<b>.000</b>



# 2014 PENN STATE SOFTBALL



## #30 KARLIE HABITZ



C • So. • Newhall, Calif. Valencia

- Has started all but two games for PSU in 2014
- Leads team with 28 RBI
- Drove in five runs on four hits in the series at Michigan State
- Went 4-for-8 in the series vs. No. 6 Michigan
- Notched her fourth HR of 2014 vs. Purdue (3/22)
- Turned in a perfect 3-for-3 effort vs. Dartmouth
- Hit her first-career grand slam vs. Oregon State (2/7)
- Drove in a career-high six RBIs vs. Oregon State
- Went a perfect 3-for-3 at the plate vs. Bradley (2/8) with three RBI

### HABITZ'S CAREER HIGHS

AT BATS	4	10x, last vs. Oregon State	2/7/14
RUNS	2	vs. Yale	3/15/14
HITS	3	2x, last vs. Dartmouth	3/1/14
RBI	6	vs. Oregon State	2/7/14
WALKS	3	vs. George Washington	2/16/14
STOLEN BASES	-	-	-
TOTAL BASES	7	vs. Dartmouth	3/1/14

### 2014 SEASON HIGHS

AT BATS	4	3x, last vs. Purdue	3/21/14
RUNS	2	vs. Yale	3/15/14
HITS	3	2x, last vs. Dartmouth	3/1/14
RBI	6	vs. Oregon State	2/7/14
WALKS	3	vs. George Washington	2/16/14
STOLEN BASES	-	-	-
TOTAL BASES	7	vs. Dartmouth	3/1/14

### CAREER HITTING STATISTICS

Year	AVG.	GP-GS	AB	R	H	2B	3B	HR	RBI	TB	SLG	BB	HBP	SO	GDP	OBP	SF-SH	SB-ATT	PO-A-E	FLD%
2013	.210	36-32	100	4	21	7	0	3	16	37	.370	7	0	17	0	.259	1-1	0-0	60-4-1	.985
2014	.337	34-33	98	8	33	6	0	4	28	51	.520	9	2	10	0	.400	1-1	0-0	89-10-3	.971
<b>Total</b>	<b>.273</b>	<b>70-65</b>	<b>198</b>	<b>12</b>	<b>54</b>	<b>13</b>	<b>0</b>	<b>7</b>	<b>44</b>	<b>88</b>	<b>.444</b>	<b>16</b>	<b>2</b>	<b>27</b>	<b>0</b>	<b>.330</b>	<b>2-2</b>	<b>0-0</b>	<b>149-14-4</b>	<b>.976</b>

## #52 KRISTINA BRACKPOOL



1B • Fr. • Valencina, Calif. Valencia

- Has started 23 games for PSU in 2014
- Drove in five runs on five hits in the series at Michigan State
- Put together a 2-for-3 effort vs. Pitt (2/22)
- Drove in one run vs. George Washington (2/16)
- Notched her first hit as a Nittany Lion vs. Seattle (2/9)
- Hit her first-collegiate homerun vs. Seattle
- Drove in three runs vs. SU
- Went 2-for-3 at the plate vs. SU

### BRACKPOOL'S SEASON HIGHS

AT BATS	4	2x, last vs. George Washington	2/16/14
RUNS	1	vs. Seattle	2/9/14
HITS	2	2x, last vs. Pitt	2/22/14
RBI	3	vs. Seattle	2/7/14
WALKS	1	vs. Appalachian State	2/7/14
STOLEN BASES	-	-	-
TOTAL BASES	5	vs. Seattle	2/9/14

### CAREER HITTING STATISTICS

Year	AVG.	GP-GS	AB	R	H	2B	3B	HR	RBI	TB	SLG	BB	HBP	SO	GDP	OBP	SF-SH	SB-ATT	PO-A-E	FLD%
2014	.194	24-23	67	1	13	4	0	1	12	20	.299	1	1	15	1	.208	3-0	0-0	140-3-2	.986
<b>Total</b>	<b>.194</b>	<b>24-23</b>	<b>67</b>	<b>1</b>	<b>13</b>	<b>4</b>	<b>0</b>	<b>1</b>	<b>12</b>	<b>20</b>	<b>.299</b>	<b>1</b>	<b>1</b>	<b>15</b>	<b>1</b>	<b>.208</b>	<b>3-0</b>	<b>0-0</b>	<b>140-3-2</b>	<b>.986</b>



# 2014 PENN STATE SOFTBALL



## #77 SHELBY MILLER



INF • Fr. • Sugar Land, Texas Kempner

- Has started 29 games for PSU in her rookie campaign
- Went 2-for-4 in the series finale at Indiana (4/13) with an RBI and two runs
- Turned in a perfect 3-for-3 effort in the win over Saint Francis (4/2) with a double, two RBI and two runs
- Registered first collegiate triples in the series vs. Purdue
- Registered her first collegiate double vs. No. 12 Baylor (3/16)
- Went 2-for-3 at the plate vs. Baylor
- Turned in a 2-for-3 performance vs. Wagner (3/15)
- Put together a 2-for-3 effort vs. No. 5 Kentucky (2/23)
- Went 2-for-4 at the plate in the win over No. 21 LSU (2/17)

### MILLER'S SEASON HIGHS

AT BATS	4	.....4x, last at Michigan State	4/6/14
RUNS	2	.....vs. Saint Francis	4/2/14
HITS	3	.....vs. Saint Francis	4/2/14
RBI	2	.....2x, last vs. Saint Francis	4/2/14
WALKS	3	.....vs. George Washington	2/16/14
STOLEN BASES	1	.....2x, last vs. Yale	3/15/14
TOTAL BASES	3	.....4x, last vs. Saint Francis	4/2/14

- Drove in two runs in game one at No. 21 LSU
- Registered her first collegiate hit in her first at-bat as a Nittany Lion vs. Seattle (2/9)

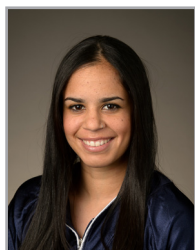
### CAREER HITTING STATISTICS

Year	AVG.	GP-GS	AB	R	H	2B	3B	HR	RBI	TB	SLG	BB	HBP	SO	GDP	OBP	SF-SH	SB-ATT	PO-A-E	FLD%
2014	.325	30-29	80	10	26	2	2	0	10	32	.400	4	0	14	0	.357	0-0	2-2	37-43-4	.952
<b>Total</b>	<b>.325</b>	<b>30-29</b>	<b>80</b>	<b>10</b>	<b>26</b>	<b>2</b>	<b>2</b>	<b>0</b>	<b>10</b>	<b>32</b>	<b>.400</b>	<b>4</b>	<b>0</b>	<b>14</b>	<b>0</b>	<b>.357</b>	<b>0-0</b>	<b>2-2</b>	<b>37-43-4</b>	<b>.952</b>





TV/RADIO ROSTER



**TAYLOR ABEYTA**  
Sophomore • OF  
San Diego, Calif.



**LIZ PRESTO**  
Senior • C  
Bethlehem, Pa.



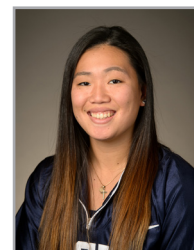
**MARISSA DIESCHER**  
Junior • RHP  
Livingston Manor, N.Y.



**CHRISTY VON PUSCH**  
Sophomore • RHP/INF  
Bryn Mawr, Pa.



**KASIE HATFIELD**  
Senior • C/INF  
Tampa, Fla.



**REINA FURUYA**  
Sophomore • INF  
Waipahu, Hawaii



**LEXI KNIEF**  
Sophomore • INF/OF  
Ramsey, N.J.



**SAM SHANAHAN**  
Freshman • INF  
Seattle, Wash.



**MACY JONES**  
Sophomore • OF/LHP  
Ashburn, Va.



**MAEGAN TUPINIO**  
Sophomore • INF/OF  
Wahiawa, Hawaii



**MARLAINA LAUBACH**  
Freshman • RHP  
Northampton, Pa.



**ALICIA WALKER**  
Junior • UTL  
Los Alamitos, Calif.



**ALYSSA SOVEREIGN**  
Senior • OF  
La Canada, Calif.



**MARY WARD**  
Freshman • OF  
Greencastle, Pa.



**MEGHAN BRADLEY**  
Junior • OF  
Santa Monica, Calif.



**SHANNON GOOD**  
Sophomore • OF  
Horseheads, N.Y.



**KARLIE HABITZ**  
Sophomore • C/INF  
Newhall, Calif.



**KRISTINA BRACKPOOL**  
Freshman • OF/INF  
Valencia, Calif.



**SHELBY MILLER**  
Freshman • INF  
Sugar Land, Texas



**AMANDA LEHOTAK**  
Head Coach



**MEGAN GIBSON**  
Assist Coach



**JOE GUTHRIE**  
Assistant Coach