



Penn St. at Indiana

02/26/25 Simon Skjodt Assembly Hall, Bloomington, Indiana
2024-25 Indiana University Men's Basketball

Game Time: 8:30 PM
Game Duration: 2:07
Attendance: 17,222

Officials: Brian Dorsey, Michael Reed, Andy O'Brien

Penn St. - 78

Record: 15-14 (5-13)

NO.	Name	Min	FG	3P	FT	Rebounds			Fouls		TP	AS	TO	ST	Blocks		+/-
			M-A	M-A	M-A	OR	DR	TOT	PF	FD					BS	BA	
14	Yanic Konan Niederhauser	35:59	5-10	0-1	6-7	2	5	7	3	7	16	1	1	0	2	0	3
24	Zach Hicks	34:56	4-8	1-3	1-2	1	2	3	2	1	10	4	3	1	0	0	-10
1	Ace Baldwin Jr.	36:31	6-12	4-8	6-7	0	5	5	4	4	22	5	3	6	0	0	-4
2	D'Marco Dunn	15:12	3-3	0-0	4-4	0	0	0	5	2	10	1	0	0	0	0	6
4	Freddie Dilione V	34:36	4-8	2-4	0-0	0	2	2	1	0	10	2	2	2	0	0	-2
3	Nick Kern	28:54	5-8	0-0	0-0	0	2	2	3	0	10	0	1	1	2	0	-11
15	Kachi Nzeh	02:32	0-0	0-0	0-0	0	0	0	2	0	0	0	1	0	0	0	-4
0	Jahvin Carter	07:04	0-2	0-2	0-2	0	0	0	0	1	0	1	0	0	0	0	-1
7	Dominick Stewart	02:48	0-0	0-0	0-0	0	1	1	0	0	0	0	0	0	0	0	2
8	Miles Goodman	01:29	0-0	0-0	0-0	0	0	0	0	0	0	0	1	0	0	0	-4
Team						1	2	3			0		0				
Totals			27-51	7-18	17-22	4	19	23	20	15	78	14	12	10	4	0	-5

Shooting By Period		
1st FG%	16-25	64.0%
3PT%	4-8	50.0%
FT%	3-7	42.9%
2nd FG%	11-26	42.3%
3PT%	3-10	30.0%
FT%	14-15	93.3%
GM FG%	27-51	52.9%
3PT%	7-18	38.9%
FT%	17-22	77.3%

Dead Ball Rebounds: 2, 0

Technical Fouls: NONE

Indiana - 83

Record: 17-11 (8-9)

NO.	Name	Min	FG	3P	FT	Rebounds			Fouls		TP	AS	TO	ST	Blocks		+/-
			M-A	M-A	M-A	OR	DR	TOT	PF	FD					BS	BA	
21	Mackenzie Mgbako	27:38	6-11	1-3	0-4	0	2	2	1	3	13	2	0	0	0	0	-2
11	Oumar Ballo	35:30	8-14	0-0	4-6	2	10	12	3	6	20	5	2	2	0	2	6
3	Anthony Leal	30:19	1-2	0-0	4-5	1	3	4	3	5	6	3	1	0	0	1	5
10	Luke Goode	34:47	2-4	2-3	4-4	0	2	2	2	2	10	3	1	0	0	0	4
32	Trey Galloway	34:17	6-11	4-5	0-0	0	3	3	3	0	16	9	6	2	0	1	16
1	Myles Rice	23:19	4-6	2-2	3-6	2	0	2	1	4	13	2	4	2	0	0	8
12	Langdon Hatton	03:58	0-0	0-0	0-0	0	0	0	2	0	0	0	0	0	0	0	-3
9	Kanaan Carlyle	10:12	2-3	1-2	0-0	1	1	2	0	0	5	0	0	1	0	0	-9
Team						2	1	3			0		0				
Totals			29-51	10-15	15-25	8	22	30	15	20	83	24	14	7	0	4	5

Shooting By Period		
1st FG%	15-25	60.0%
3PT%	4-7	57.1%
FT%	3-8	37.5%
2nd FG%	14-26	53.8%
3PT%	6-8	75.0%
FT%	12-17	70.6%
GM FG%	29-51	56.9%
3PT%	10-15	66.7%
FT%	15-25	60.0%

Dead Ball Rebounds: 5, 1

Technical Fouls: NONE

	PSU	IND
Biggest lead	6 (1 st 18:36)	7 (2 nd 2:33)
Best Scoring Run	10 (1 st 9:10)	8 (2 nd 4:51)
Lead Changes	7	
Times Tied	10	
Time with Lead	24:48	10:02

	PSU	IND
Points from		
Turnovers	10	18
Paint	32	36
Second Chance	4	8
Fast Breaks	15	10
Bench	10	18

	Period by Period Scoring		
	1st	2nd	TOT
PSU	39	39	78
IND	37	46	83



Penn St. at Indiana

02/26/25 Simon Skjodt Assembly Hall, Bloomington, Indiana
2024-25 Indiana University Men's Basketball

Game Time: 8:30 PM
Game Duration: 2:07
Attendance: 17,222

Officials: Brian Dorsey, Michael Reed, Andy O'Brien

Period 1

Quarter Starters:

IND	3 Leal A	10 Goode L	11 Ballo O	21 Mgbako M	32 Galloway T
PSU	1 Baldwin Jr. A	2 Dunn D	4 Dilione V F	14 Konan Niederhauser Y	24 Hicks Z

Game Time	IND	Score	Diff	PSU
20:00	11 BALLO O jumpball lost			14 KONAN NIEDERHAUSER Y jumpball won
19:47				1 BALDWIN JR. A 2pt FG in the paint, driving layup missed
19:44				14 KONAN NIEDERHAUSER Y offensive rebound (1)
19:43		0-2	-2	14 KONAN NIEDERHAUSER Y 2pt FG second chance in the paint, dunk, made (2)
19:21	11 BALLO O foul drawn (1)			2 DUNN D foul shooting (1 - 1)
19:21	11 BALLO O free throw 1 - 2 missed			
19:21	offensive dead ball rebound (1)			
19:21	11 BALLO O free throw 2 - 2 made (1)	1-2	-1	
19:04		1-4	-3	14 KONAN NIEDERHAUSER Y 2pt FG in the paint, driving layup made (4)
18:43	21 MGBAKO M 2pt FG outside the paint, jump shot missed			
18:40				1 BALDWIN JR. A defensive rebound (1)
18:36		1-7	-6	4 DILIONE V F 3pt FG fast break, jump shot made (3)
18:36				1 BALDWIN JR. A assist (1)
18:07	21 MGBAKO M foul drawn (1)			2 DUNN D foul shooting (2 - 2)
18:07	21 MGBAKO M free throw 1 - 2 missed			
18:07	offensive dead ball rebound (2)			
18:07				2 DUNN D substitution out
18:07				3 KERN N substitution in
18:07	21 MGBAKO M free throw 2 - 2 missed			
18:06				14 KONAN NIEDERHAUSER Y defensive rebound (2)
17:51				14 KONAN NIEDERHAUSER Y 2pt FG in the paint, hook shot missed
17:47	11 BALLO O defensive rebound (1)			
17:46	3 LEAL A foul drawn (1)			1 BALDWIN JR. A foul personal (1 - 3)
17:28	3 LEAL A turnover bad pass (1)			4 DILIONE V F steal (1)
17:17				3 KERN N turnover out of bounds (1)
17:01	10 GOODE L 2pt FG from turnover outside the paint, pull up jump shot missed			
16:57				1 BALDWIN JR. A defensive rebound (2)
16:52				4 DILIONE V F 3pt FG , jump shot missed
16:48	21 MGBAKO M defensive rebound (1)			
16:44	10 GOODE L 3pt FG fast break, jump shot made (3)	4-7	-3	
16:44	3 LEAL A assist (1)			
16:24		4-9	-5	14 KONAN NIEDERHAUSER Y 2pt FG in the paint, turnaround jump shot made (6)
16:06	21 MGBAKO M 2pt FG in the paint, floating jump shot made (2)	6-9	-3	
16:06	32 GALLOWAY T assist (1)			
15:40				1 BALDWIN JR. A 2pt FG outside the paint, step back jump shot missed
15:36	21 MGBAKO M defensive rebound (2)			
15:21	3 LEAL A 2pt FG in the paint, layup made (2)	8-9	-1	
15:21	11 BALLO O assist (1)			
15:01	10 GOODE L foul shooting (1 - 1)			24 HICKS Z foul drawn (1)



Penn St. at Indiana

02/26/25 Simon Skjodt Assembly Hall, Bloomington, Indiana
2024-25 Indiana University Men's Basketball

Game Time: 8:30 PM
Game Duration: 2:07
Attendance: 17,222

Officials: Brian Dorsey, Michael Reed, Andy O'Brien

Game Time	IND	Score	Diff	PSU
15:01	Timeout media			
15:01	10 GOODE L substitution out			
15:01	1 RICE M substitution in			
15:01				14 KONAN NIEDERHAUSER Y substitution out
15:01				15 NZEH K substitution in
15:01		8-10	-2	24 HICKS Z free throw 1 - 2 made (1)
15:01				24 HICKS Z free throw 2 - 2 missed
15:00	3 LEAL A defensive rebound (1)			
14:41	1 RICE M turnover travel (1)			
14:26	3 LEAL A foul drawn (2)			15 NZEH K foul offensive (1 - 4)
14:26				15 NZEH K turnover offensive (1)
14:11	32 GALLOWAY T 2pt FG from turnover in the paint, pull up jump shot made (2)	10-10	0	
13:50	32 GALLOWAY T steal (1)			24 HICKS Z turnover lost ball (1)
13:46	32 GALLOWAY T 2pt FG fast break from turnover in the paint, dunk, made (4)	12-10	2	
13:28		12-12	0	3 KERN N 2pt FG in the paint, driving layup made (2)
13:28				24 HICKS Z assist (1)
13:15	1 RICE M foul drawn (1)			3 KERN N foul shooting (1 - 5)
13:15	1 RICE M free throw 1 - 2 made (1)	13-12	1	
13:15	11 BALLO O substitution out			
13:15	12 HATTON L substitution in			
13:15				4 DILIONE V F substitution out
13:15				15 NZEH K substitution out
13:15				24 HICKS Z substitution out
13:15				0 CARTER J substitution in
13:15				7 STEWART D substitution in
13:15				14 KONAN NIEDERHAUSER Y substitution in
13:15	1 RICE M free throw 2 - 2 made (2)	14-12	2	
12:49	32 GALLOWAY T foul shooting (1 - 2)			0 CARTER J foul drawn (1)
12:49				0 CARTER J free throw 1 - 2 missed
12:49				offensive dead ball rebound (1)
12:49	21 MGBAKO M substitution out			
12:49	10 GOODE L substitution in			
12:49				0 CARTER J free throw 2 - 2 missed
12:48	10 GOODE L defensive rebound (1)			
12:31	32 GALLOWAY T turnover lost ball (1)			1 BALDWIN JR. A steal (1)
12:18	1 RICE M steal (1)			14 KONAN NIEDERHAUSER Y turnover lost ball (1)
12:07	10 GOODE L 3pt FG from turnover, jump shot made (6)	17-12	5	
12:07	3 LEAL A assist (2)			
11:52		17-14	3	14 KONAN NIEDERHAUSER Y 2pt FG outside the paint, pull up jump shot made (8)
11:52	12 HATTON L foul shooting (1 - 3)			14 KONAN NIEDERHAUSER Y foul drawn (1)
11:52	Timeout media			
11:52	32 GALLOWAY T substitution out			
11:52	9 CARLYLE K substitution in			
11:52		17-15	2	14 KONAN NIEDERHAUSER Y free throw 1 - 1 made (9)
11:39	10 GOODE L 3pt FG , jump shot missed			
11:35	3 LEAL A offensive rebound (2)			
11:34	3 LEAL A 2pt FG second chance in the paint, layup blocked			



Penn St. at Indiana

02/26/25 Simon Skjodt Assembly Hall, Bloomington, Indiana
2024-25 Indiana University Men's Basketball

Game Time: 8:30 PM
Game Duration: 2:07
Attendance: 17,222

Officials: Brian Dorsey, Michael Reed, Andy O'Brien

Game Time	IND	Score	Diff	PSU
11:34				14 KONAN NIEDERHAUSER Y block (1)
11:31				7 STEWART D defensive rebound (1)
11:03		17-18	-1	1 BALDWIN JR. A 3pt FG , jump shot made (3)
11:03				0 CARTER J assist (1)
10:39	10 GOODE L turnover bad pass (1)			1 BALDWIN JR. A steal (2)
10:27	12 HATTON L foul personal (2 - 4)			14 KONAN NIEDERHAUSER Y foul drawn (2)
10:27	3 LEAL A substitution out			
10:27	12 HATTON L substitution out			
10:27	11 BALLO O substitution in			
10:27	21 MGBAKO M substitution in			
10:27				1 BALDWIN JR. A substitution out
10:27				7 STEWART D substitution out
10:27				4 DILIONE V F substitution in
10:27				24 HICKS Z substitution in
10:20				0 CARTER J 3pt FG from turnover, jump shot missed
10:18	defensive rebound (7)			
10:00	21 MGBAKO M 3pt FG , jump shot missed			
09:57				24 HICKS Z defensive rebound (1)
09:41		17-20	-3	4 DILIONE V F 2pt FG in the paint, pull up jump shot made (5)
09:20	11 BALLO O 2pt FG in the paint, layup missed			
09:17				14 KONAN NIEDERHAUSER Y defensive rebound (3)
09:10		17-22	-5	24 HICKS Z 2pt FG in the paint, driving layup made (3)
08:39	9 CARLYLE K 3pt FG , jump shot missed			
08:35	1 RICE M offensive rebound (1)			
08:31	21 MGBAKO M foul drawn (2)			4 DILIONE V F foul shooting (1 - 6)
08:31	21 MGBAKO M free throw 1 - 2 missed			
08:31	offensive dead ball rebound (3)			
08:31	1 RICE M substitution out			
08:31	32 GALLOWAY T substitution in			
08:31	21 MGBAKO M free throw 2 - 2 missed			
08:30				3 KERN N defensive rebound (1)
08:11	9 CARLYLE K steal (1)			4 DILIONE V F turnover bad pass (1)
07:59	9 CARLYLE K 2pt FG from turnover in the paint, layup made (2)	19-22	-3	
07:59	11 BALLO O assist (2)			
07:38				4 DILIONE V F 2pt FG in the paint, turnaround jump shot missed
07:35	11 BALLO O defensive rebound (2)			
07:20	9 CARLYLE K 3pt FG , jump shot made (5)	22-22	0	
07:20	32 GALLOWAY T assist (2)			
07:07				0 CARTER J 3pt FG , pull up jump shot missed
07:03	9 CARLYLE K defensive rebound (1)			
06:58	32 GALLOWAY T turnover bad pass (2)			
06:58	Timeout media			
06:58				0 CARTER J substitution out
06:58				1 BALDWIN JR. A substitution in
06:39				14 KONAN NIEDERHAUSER Y 3pt FG from turnover, jump shot missed
06:36	11 BALLO O defensive rebound (3)			
06:17	11 BALLO O 2pt FG in the paint, turnaround jump shot blocked			
06:17				14 KONAN NIEDERHAUSER Y block (2)



Penn St. at Indiana

02/26/25 Simon Skjodt Assembly Hall, Bloomington, Indiana
2024-25 Indiana University Men's Basketball

Game Time: 8:30 PM
Game Duration: 2:07
Attendance: 17,222

Officials: Brian Dorsey, Michael Reed, Andy O'Brien

Game Time	IND	Score	Diff	PSU
06:13				1 BALDWIN JR. A defensive rebound (3)
06:05				24 HICKS Z 2pt FG in the paint, driving layup missed
06:02	11 BALLO O defensive rebound (4)			
05:49	32 GALLOWAY T turnover lost ball (3)			1 BALDWIN JR. A steal (3)
05:43		22-24	-2	24 HICKS Z 2pt FG fast break from turnover in the paint, layup made (5)
05:43				4 DILIONE V F assist (1)
05:26	11 BALLO O 2pt FG in the paint, dunk, made (3)	24-24	0	
05:26	21 MGBAKO M assist (1)			
05:11		24-27	-3	1 BALDWIN JR. A 3pt FG , pull up jump shot made (6)
04:51	32 GALLOWAY T 2pt FG in the paint, layup missed			
04:48				24 HICKS Z defensive rebound (2)
04:45		24-29	-5	3 KERN N 2pt FG fast break in the paint, layup made (4)
04:45				24 HICKS Z assist (2)
04:34	Timeout 30 Sec			
04:34	9 CARLYLE K substitution out			
04:34	3 LEAL A substitution in			
04:24	11 BALLO O 2pt FG in the paint, driving layup made (5)	26-29	-3	
04:24	32 GALLOWAY T assist (3)			
04:02				4 DILIONE V F turnover travel (2)
03:46	21 MGBAKO M 3pt FG from turnover, jump shot made (5)	29-29	0	
03:46	32 GALLOWAY T assist (4)			
03:20	21 MGBAKO M foul shooting (1 - 5)			1 BALDWIN JR. A foul drawn (1)
03:20	Timeout media			
03:20		29-30	-1	1 BALDWIN JR. A free throw 1 - 2 made (7)
03:20				1 BALDWIN JR. A free throw 2 - 2 missed
03:19	11 BALLO O defensive rebound (5)			
03:05	11 BALLO O 2pt FG in the paint, dunk, made (7)	31-30	1	
03:05	10 GOODE L assist (1)			
02:49		31-32	-1	4 DILIONE V F 2pt FG outside the paint, pull up jump shot made (7)
02:33	32 GALLOWAY T turnover bad pass (4)			1 BALDWIN JR. A steal (4)
02:26		31-34	-3	3 KERN N 2pt FG fast break from turnover in the paint, dunk, made (6)
02:26				1 BALDWIN JR. A assist (2)
01:56	21 MGBAKO M 2pt FG in the paint, pull up jump shot made (7)	33-34	-1	
01:38		33-37	-4	1 BALDWIN JR. A 3pt FG , pull up jump shot made (10)
01:38				24 HICKS Z assist (3)
01:10	11 BALLO O turnover travel (1)			
01:10	21 MGBAKO M substitution out			
01:10	1 RICE M substitution in			
00:46				24 HICKS Z turnover travel (2)
00:38	11 BALLO O 2pt FG from turnover in the paint, layup made (9)	35-37	-2	
00:38	10 GOODE L assist (2)			
00:30				Timeout 30 Sec
00:12		35-39	-4	3 KERN N 2pt FG in the paint, driving layup made (8)
00:12				1 BALDWIN JR. A assist (3)
00:03	32 GALLOWAY T 2pt FG in the paint, driving layup missed			
00:02	11 BALLO O offensive rebound (6)			



Official Basketball Play by Play - First Half

Penn St. at Indiana

02/26/25 Simon Skjodt Assembly Hall, Bloomington, Indiana
2024-25 Indiana University Men's Basketball

Game Time: 8:30 PM

Game Duration: 2:07

Attendance: 17,222

Officials: Brian Dorsey, Michael Reed, Andy O'Brien

Game Time	IND	Score	Diff	PSU
00:01	11 BALLO O 2pt FG second chance in the paint, layup made (11)	37-39	-2	
END OF PERIOD				
IND 37-39 PSU				



Penn St. at Indiana

02/26/25 Simon Skjodt Assembly Hall, Bloomington, Indiana
2024-25 Indiana University Men's Basketball

Game Time: 8:30 PM
Game Duration: 2:07
Attendance: 17,222

Officials: Brian Dorsey, Michael Reed, Andy O'Brien

Penn St. - 39

NO.	Name	Min	FG	3P	FT	Rebounds			Fouls		TP	AS	TO	ST	Blocks		+/-
			M-A	M-A	M-A	OR	DR	TOT	PF	FD					BS	BA	
14	Yanic Konan Niederhauser	18:14	4-6	0-1	1-1	1	2	3	0	2	9	0	1	0	2	0	4
24	Zach Hicks	17:12	2-3	0-0	1-2	0	2	2	0	1	5	3	2	0	0	0	0
1	Ace Baldwin Jr.	16:31	3-5	3-3	1-2	0	3	3	1	1	10	3	0	4	0	0	3
2	D'Marco Dunn	01:53	0-0	0-0	0-0	0	0	0	2	0	0	0	0	0	0	0	6
4	Freddie Dilione V	17:12	3-5	1-2	0-0	0	0	0	1	0	7	1	2	1	0	0	0
3	Nick Kern	18:07	4-4	0-0	0-0	0	1	1	1	0	8	0	1	0	0	0	-4
15	Kachi Nzeh	01:46	0-0	0-0	0-0	0	0	0	1	0	0	0	1	0	0	0	-2
0	Jahvin Carter	06:17	0-2	0-2	0-2	0	0	0	0	1	0	1	0	0	0	0	1
7	Dominick Stewart	02:48	0-0	0-0	0-0	0	1	1	0	0	0	0	0	0	0	0	2
Team						0	0	0			0		0				
Totals			16-25	4-8	3-7	1	9	10	6	5	39	8	7	5	2	0	2

Shooting By Period		
1st FG%	16-25	64.0%
3PT%	4-8	50.0%
FT%	3-7	42.9%
GM FG%	16-25	64.0%
3PT%	4-8	50.0%
FT%	3-7	42.9%

Dead Ball Rebounds: 1, 0

Technical Fouls: NONE

Indiana - 37

NO.	Name	Min	FG	3P	FT	Rebounds			Fouls		TP	AS	TO	ST	Blocks		+/-
			M-A	M-A	M-A	OR	DR	TOT	PF	FD					BS	BA	
21	Mackenzie Mgbako	16:28	3-5	1-2	0-4	0	2	2	1	2	7	1	0	0	0	0	-1
11	Oumar Ballo	17:12	5-7	0-0	1-2	1	5	6	0	1	11	2	1	0	0	1	0
3	Anthony Leal	14:07	1-2	0-0	0-0	1	1	2	0	2	2	2	1	0	0	1	2
10	Luke Goode	17:48	2-4	2-3	0-0	0	1	1	1	0	6	2	1	0	0	0	-5
32	Trey Galloway	16:39	2-4	0-0	0-0	0	0	0	1	0	4	4	4	1	0	0	6
1	Myles Rice	07:40	0-0	0-0	2-2	1	0	1	0	1	2	0	1	1	0	0	-2
12	Langdon Hatton	02:48	0-0	0-0	0-0	0	0	0	2	0	0	0	0	0	0	0	-2
9	Kanaan Carlyle	07:18	2-3	1-2	0-0	0	1	1	0	0	5	0	0	1	0	0	-8
Team						0	1	1			0		0				
Totals			15-25	4-7	3-8	3	11	14	5	6	37	11	8	3	0	2	-2

Shooting By Period		
1st FG%	15-25	60.0%
3PT%	4-7	57.1%
FT%	3-8	37.5%
GM FG%	15-25	60.0%
3PT%	4-7	57.1%
FT%	3-8	37.5%

Dead Ball Rebounds: 3, 0

Technical Fouls: NONE

	PSU	IND
Biggest lead	6 (1 st 18:36)	5 (1 st 12:07)
Best Scoring Run	10 (1 st 9:10)	5 (1 st 12:07)
Lead Changes	4	
Times Tied	5	
Time with Lead	14:01	02:46

	PSU	IND
Points from		
Turnovers	4	14
Paint	20	22
Second Chance	2	2
Fast Breaks	9	5
Bench	8	7

	Period by Period Scoring		
	1st	2nd	TOT
PSU	39	39	78
IND	37	46	83



Period 2

Quarter Starters:

IND	3 Leal A	10 Goode L	11 Ballo O	21 Mgbako M	32 Galloway T
PSU	1 Baldwin Jr. A	2 Dunn D	4 Dilione V F	14 Konan Niederhauser Y	24 Hicks Z

Game Time	IND	Score	Diff	PSU
20:00	1 RICE M substitution out			
20:00	21 MGBAKO M substitution in			
20:00				3 KERN N substitution out
20:00				2 DUNN D substitution in
19:40	11 BALLO O 2pt FG in the paint, turnaround jump shot missed			
19:38				4 DILIONE V F defensive rebound (1)
19:30				14 KONAN NIEDERHAUSER Y 2pt FG in the paint, jump shot missed
19:27	32 GALLOWAY T defensive rebound (1)			
19:03	11 BALLO O 2pt FG outside the paint, turnaround jump shot missed			
19:00				1 BALDWIN JR. A defensive rebound (4)
18:50	11 BALLO O steal (1)			1 BALDWIN JR. A turnover bad pass (1)
18:43	21 MGBAKO M 3pt FG from turnover, jump shot missed			
18:40				defensive rebound (13)
18:19		37-41	-4	2 DUNN D 2pt FG outside the paint, pull up jump shot made (2)
18:19				14 KONAN NIEDERHAUSER Y assist (1)
18:02	32 GALLOWAY T 3pt FG , jump shot made (7)	40-41	-1	
18:02	11 BALLO O assist (3)			
17:46	11 BALLO O foul shooting (1 - 1)			14 KONAN NIEDERHAUSER Y foul drawn (3)
17:46		40-42	-2	14 KONAN NIEDERHAUSER Y free throw 1 - 2 made (10)
17:46		40-43	-3	14 KONAN NIEDERHAUSER Y free throw 2 - 2 made (11)
17:26	21 MGBAKO M 2pt FG in the paint, dunk, made (9)	42-43	-1	
17:26	11 BALLO O assist (4)			
17:19				4 DILIONE V F 2pt FG in the paint, driving layup missed
17:16	10 GOODE L defensive rebound (2)			
17:05	32 GALLOWAY T turnover bad pass (5)			1 BALDWIN JR. A steal (5)
17:00		42-45	-3	2 DUNN D 2pt FG fast break from turnover in the paint, layup made (4)
17:00				24 HICKS Z assist (4)
16:34	11 BALLO O 2pt FG in the paint, layup missed			
16:32				14 KONAN NIEDERHAUSER Y defensive rebound (4)
16:28	10 GOODE L foul shooting (2 - 2)			14 KONAN NIEDERHAUSER Y foul drawn (4)
16:28		42-46	-4	14 KONAN NIEDERHAUSER Y free throw fast break 1 - 2 made (12)
16:28	3 LEAL A substitution out			
16:28	1 RICE M substitution in			
16:28				4 DILIONE V F substitution out
16:28				3 KERN N substitution in
16:28		42-47	-5	14 KONAN NIEDERHAUSER Y free throw fast break 2 - 2 made (13)
16:28				14 KONAN NIEDERHAUSER Y substitution out
16:28				15 NZEH K substitution in
16:03	21 MGBAKO M 2pt FG in the paint, layup made (11)	44-47	-3	
15:50		44-49	-5	1 BALDWIN JR. A 2pt FG in the paint, driving layup made (12)



Officials: Brian Dorsey, Michael Reed, Andy O'Brien

Game Time	IND	Score	Diff	PSU
15:42	11 BALLO O 2pt FG in the paint, layup made (13)	46-49	-3	
15:42	32 GALLOWAY T assist (5)			
15:42	11 BALLO O foul drawn (2)			15 NZEH K foul shooting (2 - 1)
15:42	Timeout media			
15:42				15 NZEH K substitution out
15:42				8 GOODMAN M substitution in
15:42	11 BALLO O free throw 1 - 1 made (14)	47-49	-2	
15:28		47-51	-4	2 DUNN D 2pt FG outside the paint, floating jump shot made (6)
15:05	1 RICE M 3pt FG , jump shot made (5)	50-51	-1	
15:05	32 GALLOWAY T assist (6)			
14:39	11 BALLO O steal (2)			8 GOODMAN M turnover lost ball (1)
14:28	1 RICE M 2pt FG from turnover in the paint, layup made (7)	52-51	1	
14:28	11 BALLO O assist (5)			
14:13	1 RICE M steal (2)			1 BALDWIN JR. A turnover lost ball (2)
14:13	11 BALLO O substitution out			
14:13	12 HATTON L substitution in			
14:13				8 GOODMAN M substitution out
14:13				14 KONAN NIEDERHAUSER Y substitution in
13:58	1 RICE M turnover bad pass (2)			3 KERN N steal (1)
13:54				1 BALDWIN JR. A 3pt FG from turnover, jump shot missed
13:52	defensive dead ball rebound (4)			
13:52	21 MGBAKO M foul drawn (3)			2 DUNN D foul loose ball (3 - 2)
13:52				24 HICKS Z substitution out
13:52				4 DILIONE V F substitution in
13:33	21 MGBAKO M 2pt FG in the paint, layup missed			
13:30				14 KONAN NIEDERHAUSER Y defensive rebound (5)
13:19	32 GALLOWAY T foul personal (2 - 3)			1 BALDWIN JR. A foul drawn (2)
13:03	32 GALLOWAY T foul shooting (3 - 4)			2 DUNN D foul drawn (1)
13:03		52-52	0	2 DUNN D free throw 1 - 2 made (7)
13:03	32 GALLOWAY T substitution out			
13:03	9 CARLYLE K substitution in			
13:03	12 HATTON L substitution out			
13:03	11 BALLO O substitution in			
13:03		52-53	-1	2 DUNN D free throw 2 - 2 made (8)
12:49	11 BALLO O foul drawn (3)			3 KERN N foul personal (2 - 3)
12:40	11 BALLO O foul drawn (4)			14 KONAN NIEDERHAUSER Y foul shooting (1 - 4)
12:40	11 BALLO O free throw 1 - 2 made (15)	53-53	0	
12:40	10 GOODE L substitution out			
12:40	3 LEAL A substitution in			
12:40	11 BALLO O free throw 2 - 2 missed			
12:39				3 KERN N defensive rebound (2)
12:13				3 KERN N 2pt FG in the paint, driving layup missed
12:10	11 BALLO O defensive rebound (7)			
12:07	1 RICE M 2pt FG in the paint, driving layup missed			
12:04				1 BALDWIN JR. A defensive rebound (5)
11:59	3 LEAL A foul shooting (1 - 5)			2 DUNN D foul drawn (2)
11:59	Timeout media			
11:59		53-54	-1	2 DUNN D free throw fast break 1 - 2 made (9)
11:59		53-55	-2	2 DUNN D free throw fast break 2 - 2 made (10)



Officials: Brian Dorsey, Michael Reed, Andy O'Brien

Game Time	IND	Score	Diff	PSU
11:43	1 RICE M 2pt FG outside the paint, step back jump shot missed			
11:40	9 CARLYLE K offensive rebound (2)			
11:38	21 MGBAKO M 2pt FG second chance outside the paint, jump shot missed			
11:36	offensive rebound (19)			
11:36				2 DUNN D substitution out
11:36				24 HICKS Z substitution in
11:27	21 MGBAKO M 2pt FG second chance outside the paint, jump shot made (13)	55-55	0	
11:27	1 RICE M assist (1)			
11:03		55-58	-3	1 BALDWIN JR. A 3pt FG , pull up jump shot made (15)
10:41	11 BALLO O foul drawn (5)			3 KERN N foul personal (3 - 5)
10:41	9 CARLYLE K substitution out			
10:41	32 GALLOWAY T substitution in			
10:40	32 GALLOWAY T 3pt FG , jump shot made (10)	58-58	0	
10:40	21 MGBAKO M assist (2)			
10:20		58-60	-2	14 KONAN NIEDERHAUSER Y 2pt FG in the paint, hook shot made (15)
09:58	11 BALLO O 2pt FG in the paint, jump shot blocked			
09:58				3 KERN N block (1)
09:55	1 RICE M offensive rebound (2)			
09:55	1 RICE M foul drawn (2)			1 BALDWIN JR. A foul personal (2 - 6)
09:49	32 GALLOWAY T turnover bad pass (6)			4 DILIONE V F steal (2)
09:39	11 BALLO O foul personal (2 - 6)			14 KONAN NIEDERHAUSER Y foul drawn (5)
09:39	1 RICE M substitution out			
09:39	10 GOODE L substitution in			
09:30	3 LEAL A foul shooting (2 - 7)			1 BALDWIN JR. A foul drawn (3)
09:30		58-61	-3	1 BALDWIN JR. A free throw 1 - 3 made (16)
09:30		58-62	-4	1 BALDWIN JR. A free throw 2 - 3 made (17)
09:30		58-63	-5	1 BALDWIN JR. A free throw 3 - 3 made (18)
09:14	11 BALLO O foul offensive (3 - 8)			14 KONAN NIEDERHAUSER Y foul drawn (6)
09:14	11 BALLO O turnover offensive (2)			
09:04				1 BALDWIN JR. A 3pt FG from turnover, pull up jump shot missed
09:00	11 BALLO O defensive rebound (8)			
08:50	3 LEAL A foul drawn (3)			24 HICKS Z foul personal (1 - 7)
08:50	3 LEAL A 1&1 free throw 1 made (3)	59-63	-4	
08:50	3 LEAL A 1&1 free throw 2 made (4)	60-63	-3	
08:50	1 RICE M substitution in			
08:50	21 MGBAKO M substitution out			
08:34				3 KERN N 2pt FG in the paint, driving layup missed
08:32	11 BALLO O defensive rebound (9)			
08:24	3 LEAL A foul drawn (4)			24 HICKS Z foul personal (2 - 8)
08:24				3 KERN N substitution out
08:24				2 DUNN D substitution in
08:24	3 LEAL A 1&1 free throw 1 missed			
08:23				14 KONAN NIEDERHAUSER Y defensive rebound (6)
08:07		60-65	-5	1 BALDWIN JR. A 2pt FG in the paint, driving layup made (20)
07:45	11 BALLO O 2pt FG in the paint, layup made (17)	62-65	-3	
07:45	3 LEAL A assist (3)			



Officials: Brian Dorsey, Michael Reed, Andy O'Brien

Game Time	IND	Score	Diff	PSU
07:45	11 BALLO O foul drawn (6)			2 DUNN D foul shooting (4 - 9)
07:45	Timeout media			
07:45				2 DUNN D substitution out
07:45				3 KERN N substitution in
07:45	11 BALLO O free throw 1 - 1 made (18)	63-65	-2	
07:22		63-67	-4	24 HICKS Z 2pt FG in the paint, dunk, made (7)
07:22				4 DILIONE V F assist (2)
07:02	10 GOODE L foul drawn (1)			14 KONAN NIEDERHAUSER Y foul shooting (2 - 10)
07:02	10 GOODE L free throw 1 - 2 made (7)	64-67	-3	
07:02	10 GOODE L free throw 2 - 2 made (8)	65-67	-2	
06:47				3 KERN N 2pt FG in the paint, driving layup missed
06:45	11 BALLO O defensive rebound (10)			
06:31	11 BALLO O 2pt FG in the paint, layup made (20)	67-67	0	
06:31	32 GALLOWAY T assist (7)			
05:59		67-69	-2	3 KERN N 2pt FG in the paint, layup made (10)
05:59				1 BALDWIN JR. A assist (4)
05:53	32 GALLOWAY T 2pt FG in the paint, layup blocked			
05:53				3 KERN N block (2)
05:52	offensive rebound (24)			
05:51	32 GALLOWAY T 3pt FG second chance, jump shot made (13)	70-69	1	
05:51	10 GOODE L assist (3)			
05:25				1 BALDWIN JR. A 3pt FG , jump shot missed
05:21	11 BALLO O defensive rebound (11)			
05:14	32 GALLOWAY T 3pt FG fast break, jump shot made (16)	73-69	4	
05:14	1 RICE M assist (2)			
05:12				Timeout 30 Sec
05:12	Timeout media			
05:12				3 KERN N substitution out
05:12				2 DUNN D substitution in
04:54				24 HICKS Z 2pt FG in the paint, layup missed
04:52				14 KONAN NIEDERHAUSER Y offensive rebound (7)
04:52				14 KONAN NIEDERHAUSER Y 2pt FG second chance in the paint, tip-in layup missed
04:51	3 LEAL A defensive rebound (3)			
04:51	3 LEAL A foul drawn (5)			14 KONAN NIEDERHAUSER Y foul personal (3 - 11)
04:51	3 LEAL A free throw 1 - 2 made (5)	74-69	5	
04:51	3 LEAL A free throw 2 - 2 made (6)	75-69	6	
04:30		75-72	3	4 DILIONE V F 3pt FG , jump shot made (10)
04:30				2 DUNN D assist (1)
04:03	1 RICE M turnover lost ball (3)			1 BALDWIN JR. A steal (6)
03:59				24 HICKS Z turnover travel (3)
03:59	Timeout media			
03:29	1 RICE M turnover lost ball (4)			24 HICKS Z steal (1)
03:13	3 LEAL A foul shooting (3 - 9)			14 KONAN NIEDERHAUSER Y foul drawn (7)
03:13	Timeout 30 Sec			
03:13				14 KONAN NIEDERHAUSER Y free throw 1 - 2 missed
03:13				offensive dead ball rebound (2)
03:13		75-73	2	14 KONAN NIEDERHAUSER Y free throw 2 - 2 made (16)
02:46	1 RICE M 3pt FG , jump shot made (10)	78-73	5	



Official Basketball Play by Play - Second Half
Penn St. at Indiana
 02/26/25 Simon Skjodt Assembly Hall, Bloomington, Indiana
 2024-25 Indiana University Men's Basketball

Game Time: 8:30 PM
Game Duration: 2:07
Attendance: 17,222

Officials: Brian Dorsey, Michael Reed, Andy O'Brien

Game Time	IND	Score	Diff	PSU
02:46	32 GALLOWAY T assist (8)			
02:36	32 GALLOWAY T steal (2)			1 BALDWIN JR. A turnover bad pass (3)
02:33	1 RICE M 2pt FG fast break from turnover in the paint, layup made (12)	80-73	7	
02:33	32 GALLOWAY T assist (9)			
02:32				Timeout 30 Sec
02:24		80-76	4	24 HICKS Z 3pt FG , jump shot made (10)
02:24				1 BALDWIN JR. A assist (5)
01:57	32 GALLOWAY T 2pt FG outside the paint, pull up jump shot missed			
01:57				defensive rebound (20)
01:34				4 DILIONE V F 3pt FG , pull up jump shot missed
01:31	3 LEAL A defensive rebound (4)			
01:03	32 GALLOWAY T 3pt FG , jump shot missed			
00:59	11 BALLO O offensive rebound (12)			
00:56	1 RICE M foul drawn (3)			2 DUNN D foul personal (5 - 12)
00:56				2 DUNN D substitution out
00:56				0 CARTER J substitution in
00:56	1 RICE M free throw 1 - 2 missed			
00:56	offensive dead ball rebound (5)			
00:56	1 RICE M free throw 2 - 2 made (13)	81-76	5	
00:56	Timeout 30 Sec			
00:46				1 BALDWIN JR. A 3pt FG , pull up jump shot missed
00:41				24 HICKS Z offensive rebound (3)
00:41	1 RICE M foul personal (1 - 10)			1 BALDWIN JR. A foul drawn (4)
00:41		81-77	4	1 BALDWIN JR. A free throw 1 - 2 made (21)
00:41				0 CARTER J substitution out
00:41				3 KERN N substitution in
00:41		81-78	3	1 BALDWIN JR. A free throw 2 - 2 made (22)
00:31	1 RICE M foul drawn (4)			1 BALDWIN JR. A foul personal (3 - 13)
00:31	1 RICE M free throw 1 - 2 missed			
00:31	offensive dead ball rebound (6)			
00:31				3 KERN N substitution out
00:31				0 CARTER J substitution in
00:31	11 BALLO O substitution out			
00:31	9 CARLYLE K substitution in			
00:31	1 RICE M free throw 2 - 2 missed			
00:30				4 DILIONE V F defensive rebound (2)
00:17				24 HICKS Z 3pt FG , pull up jump shot missed
00:14	32 GALLOWAY T defensive rebound (2)			
00:11	10 GOODE L foul drawn (2)			1 BALDWIN JR. A foul personal (4 - 14)
00:11	10 GOODE L free throw 1 - 2 made (9)	82-78	4	
00:11				Timeout 60 Sec
00:11	10 GOODE L free throw 2 - 2 made (10)	83-78	5	
00:05				14 KONAN NIEDERHAUSER Y 2pt FG in the paint, layup missed
00:03				offensive rebound (23)
00:02				24 HICKS Z 3pt FG second chance, jump shot missed
00:00	32 GALLOWAY T defensive rebound (3)			
END OF GAME				



Official Basketball Play by Play - Second Half
Penn St. at Indiana
02/26/25 Simon Skjodt Assembly Hall, Bloomington, Indiana
2024-25 Indiana University Men's Basketball

Game Time: 8:30 PM
Game Duration: 2:07
Attendance: 17,222

Officials: Brian Dorsey, Michael Reed, Andy O'Brien

Game Time	IND	Score	Diff	PSU
IND 83-78 PSU				



Penn St. at Indiana

02/26/25 Simon Skjodt Assembly Hall, Bloomington, Indiana
2024-25 Indiana University Men's Basketball

Game Time: 8:30 PM
Game Duration: 2:07
Attendance: 17,222

Officials: Brian Dorsey, Michael Reed, Andy O'Brien

Penn St. - 39

NO.	Name	Min	FG	3P	FT	Rebounds			Fouls		TP	AS	TO	ST	Blocks		+/-
			M-A	M-A	M-A	OR	DR	TOT	PF	FD					BS	BA	
14	Yanic Konan Niederhauser	17:45	1-4	0-0	5-6	1	3	4	3	5	7	1	0	0	0	0	-1
24	Zach Hicks	17:44	2-5	1-3	0-0	1	0	1	2	0	5	1	1	1	0	0	-10
1	Ace Baldwin Jr.	20:00	3-7	1-5	5-5	0	2	2	3	3	12	2	3	2	0	0	-7
2	D'Marco Dunn	13:19	3-3	0-0	4-4	0	0	0	3	2	10	1	0	0	0	0	0
4	Freddie Dilione V	17:24	1-3	1-2	0-0	0	2	2	0	0	3	1	0	1	0	0	-2
3	Nick Kern	10:47	1-4	0-0	0-0	0	1	1	2	0	2	0	0	1	2	0	-7
15	Kachi Nzeh	00:46	0-0	0-0	0-0	0	0	0	1	0	0	0	0	0	0	0	-2
8	Miles Goodman	01:29	0-0	0-0	0-0	0	0	0	0	0	0	0	1	0	0	0	-4
0	Jahvin Carter	00:47	0-0	0-0	0-0	0	0	0	0	0	0	0	0	0	0	0	-2
Team						1	2	3			0		0				
Totals			11-26	3-10	14-15	3	10	13	14	10	39	6	5	5	2	0	-7

Shooting By Period		
2 nd FG%	11-26	42.3%
3PT%	3-10	30.0%
FT%	14-15	93.3%
GM FG%	11-26	42.3%
3PT%	3-10	30.0%
FT%	14-15	93.3%

Dead Ball Rebounds: 1, 0

Technical Fouls: NONE

Indiana - 46

NO.	Name	Min	FG	3P	FT	Rebounds			Fouls		TP	AS	TO	ST	Blocks		+/-
			M-A	M-A	M-A	OR	DR	TOT	PF	FD					BS	BA	
21	Mackenzie Mgbako	11:10	3-6	0-1	0-0	0	0	0	0	1	6	1	0	0	0	0	-1
11	Oumar Ballo	18:18	3-7	0-0	3-4	1	5	6	3	5	9	3	1	2	0	1	6
3	Anthony Leal	16:12	0-0	0-0	4-5	0	2	2	3	3	4	1	0	0	0	0	3
10	Luke Goode	16:59	0-0	0-0	4-4	0	1	1	1	2	4	1	0	0	0	0	9
32	Trey Galloway	17:38	4-7	4-5	0-0	0	3	3	2	0	12	5	2	1	0	1	10
1	Myles Rice	15:39	4-6	2-2	1-4	1	0	1	1	3	11	2	3	1	0	0	10
12	Langdon Hatton	01:10	0-0	0-0	0-0	0	0	0	0	0	0	0	0	0	0	0	-1
9	Kanaan Carlyle	02:54	0-0	0-0	0-0	1	0	1	0	0	0	0	0	0	0	0	-1
Team						2	0	2			0		0				
Totals			14-26	6-8	12-17	5	11	16	10	14	46	13	6	4	0	2	7

Shooting By Period		
2 nd FG%	14-26	53.8%
3PT%	6-8	75.0%
FT%	12-17	70.6%
GM FG%	14-26	53.8%
3PT%	6-8	75.0%
FT%	12-17	70.6%

Dead Ball Rebounds: 2, 1

Technical Fouls: NONE

	PSU	IND	Points from		Period by Period Scoring				
Biggest lead	5 (2 nd 16:28)	7 (2 nd 2:33)	Turnovers	6	4	1st	2nd	TOT	
Best Scoring Run	5(2 nd 9:30)	8(2 nd 4:51)	Paint	12	14	PSU	39	39	78
Lead Changes	3		Second Chance	2	6	IND	37	46	83
Times Tied	5		Fast Breaks	6	5				
Time with Lead	10:27	07:16	Bench	2	11				



Penn St. at Indiana

02/26/25 Simon Skjodt Assembly Hall, Bloomington, Indiana
2024-25 Indiana University Men's Basketball

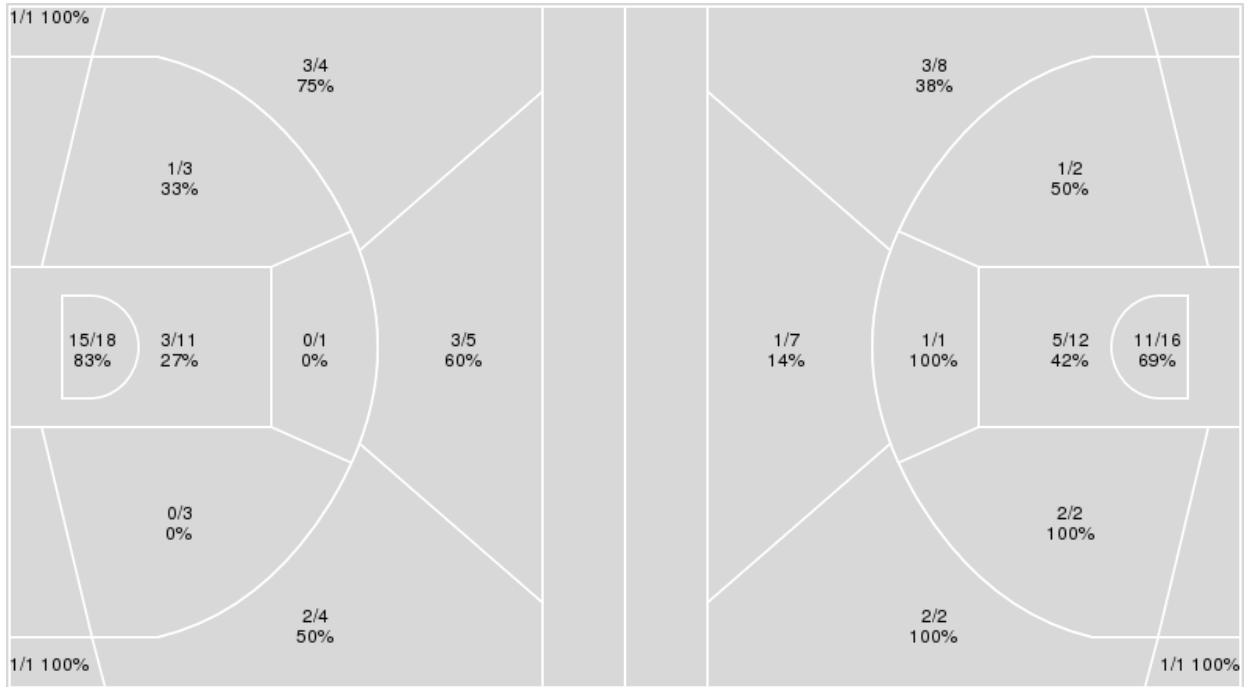
Officials: Brian Dorsey, Michael Reed, Andy O'Brien

{ Players => 0, 1, 2, 3, 5, 8, 9, 10, 11, 12, 13, 14, 15, 20, 21, 22, 30, 32, 42;} FG Types => All; Results => All;

{ Players => 0, 1, 2, 3, 4, 5, 7, 8, 10, 11, 14, 15, 24, 52;} FG Types => All; Results => All;

Indiana

Penn St.



Indiana	M/A	%
Field Goals	29/51	57
2 Points	19/36	53
3 Points	10/15	67
Free Throws	15/25	60

Penn St.	M/A	%
Field Goals	27/51	53
2 Points	20/33	61
3 Points	7/18	39
Free Throws	17/22	77



Penn St. at Indiana

02/26/25 Simon Skjodt Assembly Hall, Bloomington, Indiana
2024-25 Indiana University Men's Basketball

Officials: Brian Dorsey, Michael Reed, Andy O'Brien

Penn St.

No	Name	Mins		Score		Points Diff		Points per Min		Assists		Rebounds		Steals		Turnovers	
		On	Off	On	Off	On	Off	On	Off	On	Off	On	Off	On	Off	On	Off
0	Jahvin Carter	07:04	32:56	11 - 12	67 - 71	-1	-4	1.56	2.03	1	13	7	16	2	8	2	10
1	Ace Baldwin Jr.	36:31	03:29	74 - 78	4 - 5	-4	-1	2.03	1.15	14	0	20	3	10	0	11	1
2	D'Marco Dunn	15:12	24:49	32 - 26	46 - 57	6	-11	2.11	1.85	5	9	12	11	4	6	5	7
3	Nick Kern	28:54	11:06	54 - 65	24 - 18	-11	6	1.87	2.16	9	5	11	12	7	3	9	3
4	Freddie Dilione V	34:36	05:24	67 - 69	11 - 14	-2	-3	1.94	2.04	13	1	22	1	7	3	9	3
7	Dominick Stewart	02:48	37:12	6 - 4	72 - 79	2	-7	2.14	1.94	1	13	1	22	2	8	1	11
8	Miles Goodman	01:29	38:31	2 - 6	76 - 77	-4	-1	1.35	1.97	0	14	0	23	0	10	2	10
14	Yanic Konan Niederhauser	35:59	04:01	71 - 68	7 - 15	3	-8	1.97	1.74	13	1	23	0	10	0	8	4
15	Kachi Nzeh	02:32	37:28	5 - 9	73 - 74	-4	-1	1.97	1.95	1	13	0	23	0	10	2	10
24	Zach Hicks	34:56	05:04	68 - 78	10 - 5	-10	5	1.95	1.97	13	1	19	4	8	2	11	1

Indiana

No	Name	Mins		Score		Points Diff		Points per Min		Assists		Rebounds		Steals		Turnovers	
		On	Off	On	Off	On	Off	On	Off	On	Off	On	Off	On	Off	On	Off
1	Myles Rice	23:19	16:41	52 - 44	31 - 34	8	-3	2.23	1.86	13	11	19	11	5	2	7	7
3	Anthony Leal	30:19	09:41	65 - 60	18 - 18	5	0	2.14	1.86	18	6	24	6	4	3	11	3
9	Kanaan Carlyle	10:12	29:48	12 - 21	71 - 57	-9	14	1.18	2.38	4	20	12	18	1	6	3	11
10	Luke Goode	34:47	05:13	72 - 68	11 - 10	4	1	2.07	2.11	22	2	25	5	6	1	12	2
11	Oumar Ballo	35:30	04:30	77 - 71	6 - 7	6	-1	2.17	1.33	23	1	26	4	6	1	11	3
12	Langdon Hatton	03:58	36:02	4 - 7	79 - 71	-3	8	1.01	2.19	1	23	2	28	1	6	3	11
21	Mackenzie Mgbako	27:38	12:22	53 - 55	30 - 23	-2	7	1.92	2.43	16	8	18	12	5	2	10	4
32	Trey Galloway	34:17	05:43	80 - 64	3 - 14	16	-11	2.33	0.52	23	1	24	6	7	0	13	1



Penn St. at Indiana

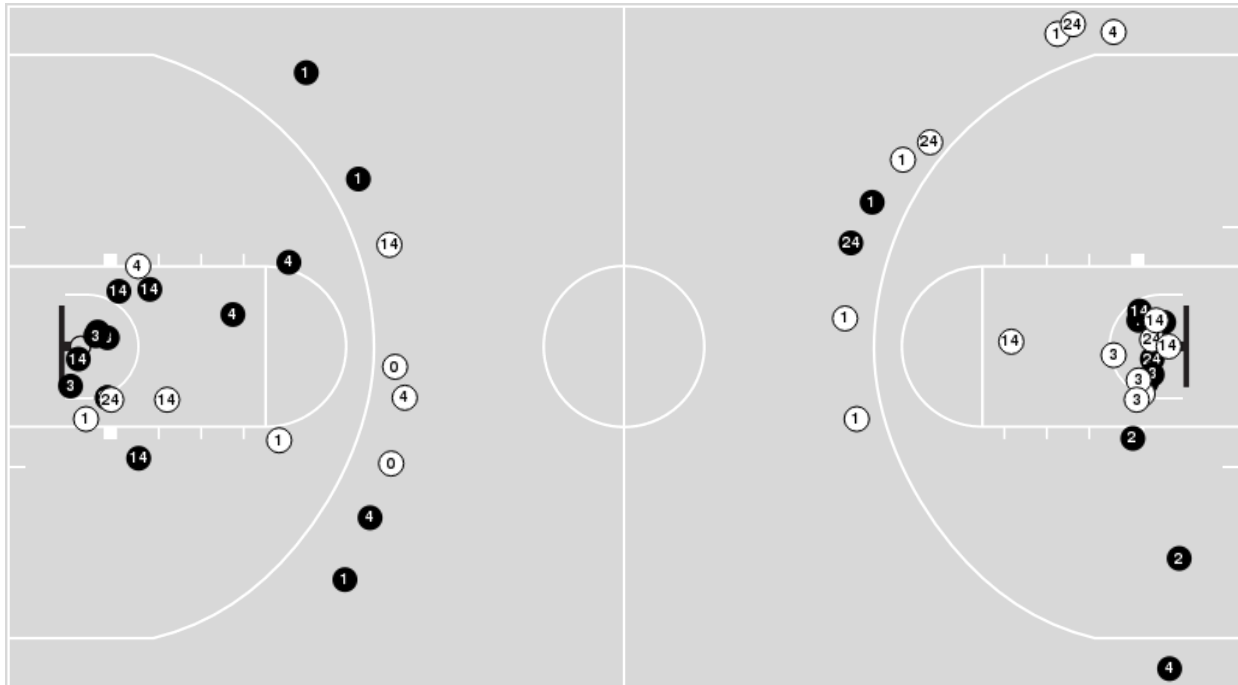
02/26/25 Simon Skjodt Assembly Hall, Bloomington, Indiana
2024-25 Indiana University Men's Basketball

Officials: Brian Dorsey, Michael Reed, Andy O'Brien

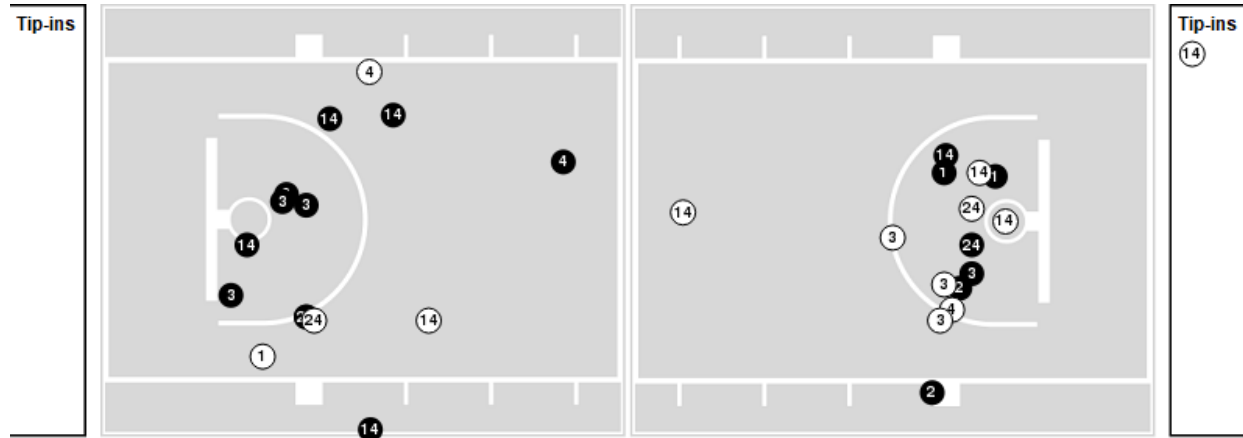
Players => 0, 1, 2, 3, 4, 5, 7, 8, 10, 11, 14, 15, 24, 52FG Types=>AllResults=>All

Penn St.

All Field Goals



Blow Up Chart



● Made ○ Missed N - Player Number

Penn St.	M/A	%
Field Goals	27/51	53
2 Points	20/33	61
3 Points	7/18	39
Free Throws	17/22	77

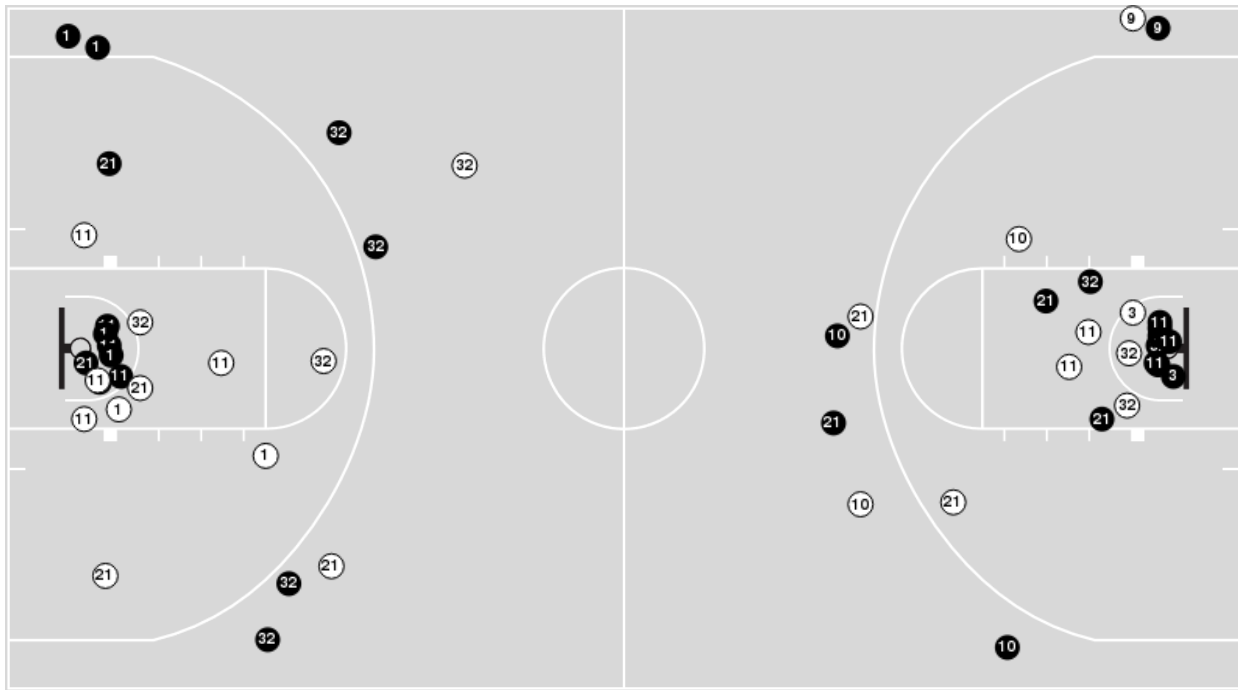
Penn St.	M/A	%
Points in the Paint	32 (16 / 28)	57
Fast Break Points	15 (9/9)	100
Second Chance Points	4 (3/5)	60
Effective FG%	60	



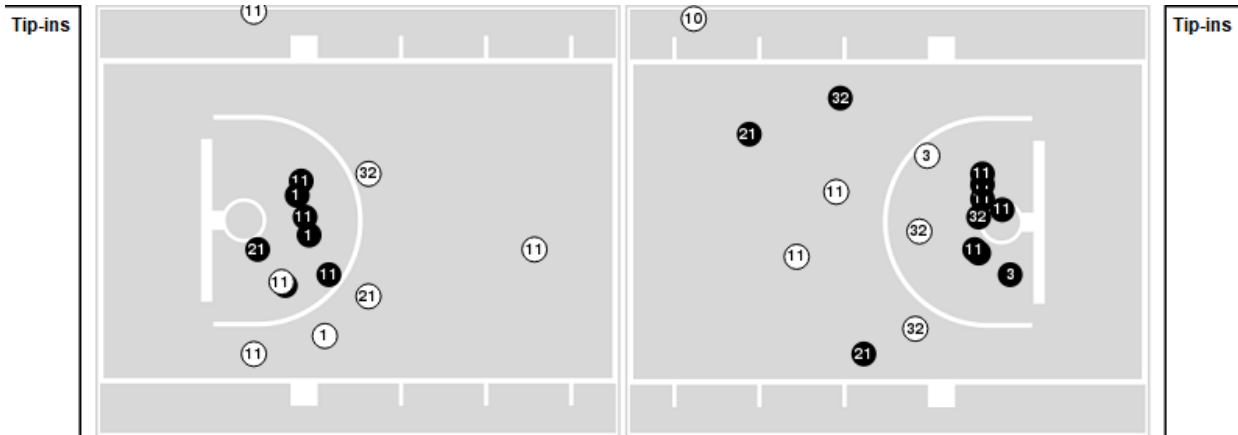
Players => 0, 1, 2, 3, 5, 8, 9, 10, 11, 12, 13, 14, 15, 20, 21, 22, 30, 32, 42FG Types=>AllResults=>All

Indiana

All Field Goals



Blow Up Chart



● Made ○ Missed N - Player Number

Indiana	M/A	%
Field Goals	29/51	57
2 Points	19/36	53
3 Points	10/15	67
Free Throws	15/25	60

Indiana	M/A	%
Points in the Paint	36 (18 / 29)	62
Fast Break Points	10 (4/4)	100
Second Chance Points	8 (4/9)	44
Effective FG%	67	



Officials: Brian Dorsey, Michael Reed, Andy O'Brien

Penn St.

Lineup	Quarter On	Time On	Quarter Off	Time Off	Time on Court	Score	Score Diff	Reb	Stl	Tov	Ass	PPP
1- Baldwin Jr. A/ 2- Dunn D/ 4- Dilione V F/ 14- Konan Niederhauser Y/ 24- Hicks Z/	1	20:00	1	18:07	01:53	7-1	6	2	0	0	1	2.3333
1- Baldwin Jr. A/ 3- Kern N/ 4- Dilione V F/ 14- Konan Niederhauser Y/ 24- Hicks Z/	1	18:07	1	15:01	03:06	2-7	-5	2	1	1	0	0.4000
1- Baldwin Jr. A/ 3- Kern N/ 4- Dilione V F/ 15- Nzeh K/ 24- Hicks Z/	1	15:01	1	13:15	01:46	3-5	-2	0	0	2	1	0.7732
0- Carter J/ 1- Baldwin Jr. A/ 3- Kern N/ 7- Stewart D/ 14- Konan Niederhauser Y/	1	13:15	1	10:27	02:48	6-4	2	1	2	1	1	1.3889
0- Carter J/ 3- Kern N/ 4- Dilione V F/ 14- Konan Niederhauser Y/ 24- Hicks Z/	1	10:27	1	06:58	03:29	4-5	-1	3	0	1	0	0.6667
1- Baldwin Jr. A/ 3- Kern N/ 4- Dilione V F/ 14- Konan Niederhauser Y/ 24- Hicks Z/	1	06:58	2	20:00	06:58	17-15	2	2	2	2	5	1.4310
1- Baldwin Jr. A/ 2- Dunn D/ 4- Dilione V F/ 14- Konan Niederhauser Y/ 24- Hicks Z/	2	20:00	2	16:28	03:32	7-5	2	4	1	1	2	1.1076
1- Baldwin Jr. A/ 2- Dunn D/ 3- Kern N/ 14- Konan Niederhauser Y/ 24- Hicks Z/	2	16:28	2	16:28	00:00	1-0	1	0	0	0	0	2.2727
1- Baldwin Jr. A/ 2- Dunn D/ 3- Kern N/ 15- Nzeh K/ 24- Hicks Z/	2	16:28	2	15:42	00:46	2-4	-2	0	0	0	0	2.0000
1- Baldwin Jr. A/ 2- Dunn D/ 3- Kern N/ 8- Goodman M/ 24- Hicks Z/	2	15:42	2	14:13	01:29	2-6	-4	0	0	2	0	0.6667
1- Baldwin Jr. A/ 2- Dunn D/ 3- Kern N/ 14- Konan Niederhauser Y/ 24- Hicks Z/	2	14:13	2	13:52	00:21	0-0	0	0	1	0	0	0.0000
1- Baldwin Jr. A/ 2- Dunn D/ 3- Kern N/ 4- Dilione V F/ 14- Konan Niederhauser Y/	2	13:52	2	11:36	02:16	4-1	3	3	0	0	0	1.4493
1- Baldwin Jr. A/ 3- Kern N/ 4- Dilione V F/ 14- Konan Niederhauser Y/ 24- Hicks Z/	2	11:36	2	08:24	03:12	8-7	1	0	1	0	0	1.5038
1- Baldwin Jr. A/ 2- Dunn D/ 4- Dilione V F/ 14- Konan Niederhauser Y/ 24- Hicks Z/	2	08:24	2	07:45	00:39	2-2	0	1	0	0	0	2.0000
1- Baldwin Jr. A/ 3- Kern N/ 4- Dilione V F/ 14- Konan Niederhauser Y/ 24- Hicks Z/	2	07:45	2	05:12	02:33	4-11	-7	0	0	0	2	1.0000
1- Baldwin Jr. A/ 2- Dunn D/ 4- Dilione V F/ 14- Konan Niederhauser Y/ 24- Hicks Z/	2	05:12	2	00:56	04:15	7-7	0	2	2	2	2	1.0174
0- Carter J/ 1- Baldwin Jr. A/ 4- Dilione V F/ 14- Konan Niederhauser Y/ 24- Hicks Z/	2	00:56	2	00:41	00:15	1-1	0	1	0	0	0	2.2727
1- Baldwin Jr. A/ 3- Kern N/ 4- Dilione V F/ 14- Konan Niederhauser Y/ 24- Hicks Z/	2	00:41	2	00:31	00:09	1-0	1	0	0	0	0	2.2727
0- Carter J/ 1- Baldwin Jr. A/ 4- Dilione V F/ 14- Konan Niederhauser Y/ 24- Hicks Z/	2	00:31	2	00:00	00:31	0-2	-2	2	0	0	0	0.0000



Officials: Brian Dorsey, Michael Reed, Andy O'Brien

Indiana

Lineup	Quarter On	Time On	Quarter Off	Time Off	Time on Court	Score	Score Diff	Reb	Stl	Tov	Ass	PPP
3- Leal A/ 10- Goode L/ 11- Ballo O/ 21- Mgbako M/ 32- Galloway T/	1	20:00	1	15:01	04:59	8-9	-1	3	0	1	3	1.0309
1- Rice M/ 3- Leal A/ 11- Ballo O/ 21- Mgbako M/ 32- Galloway T/	1	15:01	1	13:15	01:46	5-3	2	1	1	1	0	1.4535
1- Rice M/ 3- Leal A/ 12- Hatton L/ 21- Mgbako M/ 32- Galloway T/	1	13:15	1	12:49	00:26	1-0	1	0	0	0	0	2.2727
1- Rice M/ 3- Leal A/ 10- Goode L/ 12- Hatton L/ 32- Galloway T/	1	12:49	1	11:52	00:57	3-2	1	1	1	1	1	1.5000
1- Rice M/ 3- Leal A/ 9- Carlyle K/ 10- Goode L/ 12- Hatton L/	1	11:52	1	10:27	01:25	0-4	-4	1	0	1	0	0.0000
1- Rice M/ 9- Carlyle K/ 10- Goode L/ 11- Ballo O/ 21- Mgbako M/	1	10:27	1	08:31	01:56	0-4	-4	2	0	0	0	0.0000
9- Carlyle K/ 10- Goode L/ 11- Ballo O/ 21- Mgbako M/ 32- Galloway T/	1	08:31	1	04:34	03:57	7-7	0	4	1	2	3	0.9409
3- Leal A/ 10- Goode L/ 11- Ballo O/ 21- Mgbako M/ 32- Galloway T/	1	04:34	1	01:10	03:24	9-8	1	1	0	2	3	1.5000
1- Rice M/ 3- Leal A/ 10- Goode L/ 11- Ballo O/ 32- Galloway T/	1	01:10	2	20:00	01:10	4-2	2	1	0	0	1	2.0000
3- Leal A/ 10- Goode L/ 11- Ballo O/ 21- Mgbako M/ 32- Galloway T/	2	20:00	2	16:28	03:32	5-7	-2	2	1	1	2	0.7143
1- Rice M/ 10- Goode L/ 11- Ballo O/ 21- Mgbako M/ 32- Galloway T/	2	16:28	2	14:13	02:15	10-5	5	0	2	0	3	2.2523
1- Rice M/ 10- Goode L/ 12- Hatton L/ 21- Mgbako M/ 32- Galloway T/	2	14:13	2	13:03	01:10	0-1	-1	0	0	1	0	0.0000
1- Rice M/ 9- Carlyle K/ 10- Goode L/ 11- Ballo O/ 21- Mgbako M/	2	13:03	2	12:40	00:23	1-1	0	0	0	0	0	2.2727
1- Rice M/ 3- Leal A/ 9- Carlyle K/ 11- Ballo O/ 21- Mgbako M/	2	12:40	2	10:41	01:59	2-5	-3	3	0	0	1	0.8197
1- Rice M/ 3- Leal A/ 11- Ballo O/ 21- Mgbako M/ 32- Galloway T/	2	10:41	2	09:39	01:02	3-2	1	1	0	1	1	1.5000
3- Leal A/ 10- Goode L/ 11- Ballo O/ 21- Mgbako M/ 32- Galloway T/	2	09:39	2	08:50	00:49	2-3	-1	1	0	1	0	1.0638
1- Rice M/ 3- Leal A/ 10- Goode L/ 11- Ballo O/ 32- Galloway T/	2	08:50	2	00:31	08:18	21-15	6	7	1	2	6	1.6204
1- Rice M/ 3- Leal A/ 9- Carlyle K/ 10- Goode L/ 32- Galloway T/	2	00:31	2	00:00	00:31	2-0	2	2	0	0	0	1.5152



Penn St. at Indiana

02/26/25 Simon Skjodt Assembly Hall, Bloomington, Indiana
2024-25 Indiana University Men's Basketball

Game Time: 8:30 PM
Game Duration: 2:07
Attendance: 17,222

Officials: Brian Dorsey, Michael Reed, Andy O'Brien

Penn St.

Lineup	Time	Score	Score Diff	Pts/Min	Reb	Stl	Tov	Ass	PPP
1- Baldwin Jr. A/ 3- Kern N/ 4- Dilione V F/ 14- Konan Niederhauser Y/ 24- Hicks Z/	15:58	32-40	-8	2.0027	4	4	3	7	1.2012
1- Baldwin Jr. A/ 2- Dunn D/ 4- Dilione V F/ 14- Konan Niederhauser Y/ 24- Hicks Z/	10:19	23-15	8	2.2276	9	3	3	5	1.3372
0- Carter J/ 3- Kern N/ 4- Dilione V F/ 14- Konan Niederhauser Y/ 24- Hicks Z/	03:29	4-5	-1	1.1483	3	0	1	0	0.6667
0- Carter J/ 1- Baldwin Jr. A/ 3- Kern N/ 7- Stewart D/ 14- Konan Niederhauser Y/	02:48	6-4	2	2.1429	1	2	1	1	1.3889
1- Baldwin Jr. A/ 2- Dunn D/ 3- Kern N/ 4- Dilione V F/ 14- Konan Niederhauser Y/	02:16	4-1	3	1.7647	3	0	0	0	1.4493
1- Baldwin Jr. A/ 3- Kern N/ 4- Dilione V F/ 15- Nzeh K/ 24- Hicks Z/	01:46	3-5	-2	1.6981	0	0	2	1	0.7732
1- Baldwin Jr. A/ 2- Dunn D/ 3- Kern N/ 8- Goodman M/ 24- Hicks Z/	01:29	2-6	-4	1.3483	0	0	2	0	0.6667
0- Carter J/ 1- Baldwin Jr. A/ 4- Dilione V F/ 14- Konan Niederhauser Y/ 24- Hicks Z/	00:46	1-3	-2	1.2821	3	0	0	0	0.4098
1- Baldwin Jr. A/ 2- Dunn D/ 3- Kern N/ 15- Nzeh K/ 24- Hicks Z/	00:46	2-4	-2	2.6087	0	0	0	0	2.0000
1- Baldwin Jr. A/ 2- Dunn D/ 3- Kern N/ 14- Konan Niederhauser Y/ 24- Hicks Z/	00:21	1-0	1	2.8571	0	1	0	0	0.6944



Penn St. at Indiana

02/26/25 Simon Skjodt Assembly Hall, Bloomington, Indiana
2024-25 Indiana University Men's Basketball

Game Time: 8:30 PM

Game Duration: 2:07

Attendance: 17,222

Officials: Brian Dorsey, Michael Reed, Andy O'Brien

Indiana

Lineup	Time	Score	Score Diff	Pts/Min	Reb	Stl	Tov	Ass	PPP
3- Leal A/ 10- Goode L/ 11- Ballo O/ 21- Mgbako M/ 32- Galloway T/	12:44	24-27	-3	1.8848	7	1	5	8	1.0601
1- Rice M/ 3- Leal A/ 10- Goode L/ 11- Ballo O/ 32- Galloway T/	09:28	25-17	8	2.6395	8	1	2	7	1.6711
9- Carlyle K/ 10- Goode L/ 11- Ballo O/ 21- Mgbako M/ 32- Galloway T/	03:57	7-7	0	1.7722	4	1	2	3	0.9409
1- Rice M/ 3- Leal A/ 11- Ballo O/ 21- Mgbako M/ 32- Galloway T/	02:48	8-5	3	2.8571	2	1	2	1	1.4706
1- Rice M/ 9- Carlyle K/ 10- Goode L/ 11- Ballo O/ 21- Mgbako M/	02:19	1-5	-4	0.4317	2	0	0	0	0.3472
1- Rice M/ 10- Goode L/ 11- Ballo O/ 21- Mgbako M/ 32- Galloway T/	02:15	10-5	5	4.4444	0	2	0	3	2.2523
1- Rice M/ 3- Leal A/ 9- Carlyle K/ 11- Ballo O/ 21- Mgbako M/	01:59	2-5	-3	1.0084	3	0	0	1	0.8197
1- Rice M/ 3- Leal A/ 9- Carlyle K/ 10- Goode L/ 12- Hatton L/	01:25	0-4	-4	0.0000	1	0	1	0	0.0000
1- Rice M/ 10- Goode L/ 12- Hatton L/ 21- Mgbako M/ 32- Galloway T/	01:10	0-1	-1	0.0000	0	0	1	0	0.0000
1- Rice M/ 3- Leal A/ 10- Goode L/ 12- Hatton L/ 32- Galloway T/	00:57	3-2	1	3.1579	1	1	1	1	1.5000
1- Rice M/ 3- Leal A/ 9- Carlyle K/ 10- Goode L/ 32- Galloway T/	00:31	2-0	2	3.7855	2	0	0	0	1.5152
1- Rice M/ 3- Leal A/ 12- Hatton L/ 21- Mgbako M/ 32- Galloway T/	00:26	1-0	1	2.3077	0	0	0	0	2.2727