

2017-18 SEATTLE UNIVERSITY MEN'S BASKETBALL

GAME 22: SU at UTRGV - Jan. 20, 2018



CONTACT: Sarah Finney, Director of Communications • finneysa@seattleu.edu • 206-445-2237 • GoSeattleU.com

2017-18 SCHEDULE

NOVEMBER

N. 10	at Saint Louis #	L, 46-62
N. 12	Puget Sound (CC) (WACDN)	W, 121-70
N. 15	at Washington St. (Pac-12 Network)	L, 59-75
N. 18	vs. Detroit Mercy #	W, 102-71
N. 19	at Belmont #	L, 77-90
N. 24	at Washington # (Pac-12 Network)	L, 84-89
N. 27	Idaho State (Key) (WACDN)	W, 73-67
N. 30	Kennesaw State (CC) (WACDN)	W, 66-54

DECEMBER

D. 3	Eastern Washington (Key) (WACDN)	W, 84-65
D. 4	Pacific Lutheran (CC) (WACDN)	W, 99-69
D. 9	at Saint Mary's	L, 73-97
D. 13	Saint Martin's (CC) (WACDN)	W, 88-72
D. 16	Portland (Key) (WACDN)	W, 89-76
D. 19	Cal (Key) (WACDN)	L, 59-81
D. 23	Nicholls State (CC) (WACDN)	W, 95-89
D. 28	Grambling State (CC) (WACDN)	W, 93-63
D. 30	UC Riverside (CC) (WACDN)	W, 95-71

JANUARY

J. 6	Grand Canyon * (Key) (WACDN)	L, 57-73
J. 11	Chicago State * (CC) (WACDN)	W, 67-64
J. 13	Kansas City * (Key) (WACDN)	W, 77-75
J. 18	at New Mexico State *	L, 75-62
J. 20	at UTRGV * (WACDN)	5:00 PM
J. 26	CSU Bakersfield * (Key) (WACDN)	7:00 PM

FEBRUARY

F. 3	Utah Valley * (Key) (WACDN)	7:00 PM
F. 8	at Kansas City * (ESPN3)	5:00 PM
F. 10	at Chicago State * (WACDN)	12:00 PM
F. 15	UTRGV * (CC) (WACDN)	7:00 PM
F. 17	New Mexico State * (Key) (WACDN)	1:00 PM
F. 22	at Grand Canyon * (ESPN3)	6:00 PM
F. 24	at CSU Bakersfield * (WACDN)	6:00 PM

MARCH

M. 3	at Utah Valley * (WACDN)	6:00 PM
M. 8-10	at WAC Championship (Las Vegas, NV)	

* Western Athletic Conference game
 # 2K Classic Benefiting Wounded Warrior Project
 CC - Connolly Complex home games
 Key - KeyArena home games
 All times Pacific
 All dates and times subject to change
 All games broadcast on KTTH 770 AM



SEATTLE U (13-8, 2-2 WAC)



UTRGV (10-10, 2-2 WAC)

GAMEDAY ROUND-UP

Seattle University Redhawks (13-8, 2-2 WAC) vs UTRGV Vaqueros (10-10, 2-2 WAC)

Saturday, Jan. 20, 2018 • 5:00 PM PT • UTRGV • Edinburg, Texas

LISTEN: KTTH 770 AM/mynorthwest.com (Dave Grosby)

WATCH: WAC Digital Network

ON TAP

Seattle University men's basketball continues a two-game, Western Athletic Conference road trip on Saturday, Jan. 20 at UTRGV. Tip-off against the Vaqueros from UTRGV Fieldhouse in Edinburg, Texas, is scheduled for 7:00 p.m. Central Time, 5:00 p.m. Pacific. The Redhawks enter the game with a 13-8 overall record and 2-2 mark in WAC play. The Vaqueros are 10-10 on the year and 2-2 in WAC play. The game will stream live on the WAC Digital Network, and also be available on a variety of OTT platforms including Apple TV, Amazon Fire TV, Android TV and Roku. Fans can also tune in to KTTH 770 AM in Seattle or online at mynorthwest.com as Dave Grosby returns for his ninth season on air for the Redhawks.

ABOUT THE SERIES VS UTRGV

Formerly known as Texas Pan American, Saturday marks the 10th meeting between Seattle U and UTRGV, with the Redhawks holding a 7-2 series edge. The Redhawks swept the home-and-home series last year including a 96-84 victory at KeyArena on Jan. 28, 2017 and an 86-77 victory in Edinburg, Texas, on Feb. 23, 2017. UTRGV's last win was a 67-57 final on its home court on Feb. 18, 2016.

REDHAWK REPORT

- The Redhawks moved to 2-2 in WAC play after falling 75-62 at New Mexico State on Jan. 18.
- Aaron Menzies had 10 points and 12 rebounds at New Mexico State on Jan. 18, good for his seventh double-double of the season.
- Matej Kavaz scored 20 points at New Mexico State, marking the eighth time this season that the redshirt sophomore has cored 20 points or more in a game.
- Seattle U finished a nine-game homestand with a 7-2 record. The Redhawks matched their 2016-17 win total of 13 when they beat Kansas City, 77-75, on Jan. 13. They have also started WAC play 2-1 for the first time since 2014-15.
- Aaron Menzies pulled down a career-high 19 rebounds in the win over Chicago State on Jan. 11. The rebound total is also a modern-day DI record.

PROJECTED STARTING LINEUP

POS.	NO.	NAME	YR.	HT.	PPG	NOTABLE
G	2	Jordan Hill	RSr.	6-4	13.8	12 pts, 3 reb, 2 assts at New Mexico State
G	5	Matej Kavaz	RSo.	6-8	17.3	20 pts at New Mexico State for 8th 20+ pt game
G	10	Richaud Gittens	RSr.	6-4	11.0	11 pts, 3 reb at New Mexico State
F	13	Josh Hearlihy	RSr.	6-8	12.5	13 pts, 6 reb, 3 assts vs Kansas City
C	41	Aaron Menzies	RJr.	7-3	10.9	10 pts, 12 reb at New Mexico State for 7th DD

RESERVES

G	1	Morgan Means	So.	6-3	7.6	17 pts vs Chicago State
F	11	Scott Ulaneo	So.	6-10	2.6	3 pts, 4 reb in 13 mins vs Kansas City
G	12	Mattia Da Campo	So.	6-5	1.9	4 pts, 3 reb, 2 assts in 20 mis vs Grand Canyon
G	15	Jake Spurgeon	RSo.	6-7	1.3	Averaging 5.4 mins off the bench in 15 games
G	21	Collin Huun	Jr.	6-0	3.7	Has appeared off the bench in three games
G	23	Aaron Nettles	Fr.	5-11	3.5	Averaging 9.1 mins off the bench
G/F	35	Brennan Corrigan	Fr.	6-4	1.0	Scored 1st pts of the season vs Grambling State

**UNIVERSITY INFORMATION**

Location: Seattle, Wash.
 Founded: 1891
 Chartered: 1898
 Enrollment: 4,780 (undergrad)
 Nickname: Redhawks
 Colors: Red and White
 Affiliation: NCAA Division I
 Conference: Western Athletic Conference
 Home Facility (capacity): KeyArena (8,000)
 President: Fr. Stephen Sundborg, S.J.
 Director of Athletics: Shaney Fink
 Athletic Ticket Office: 206-398-GOSU (4678)

MEN'S BASKETBALL COACHING STAFF

Head Coach: Jim Hayford (First season)
 Alma Mater: (Azusa Pacific '89)
 Record at Seattle U: 13-8
 Career Record: 374-183 (18 seasons)
 Associate Head Coach: Chris Victor (First season)
 Alma Mater: Concordia '04
 Assistant Coach: Nick Robinson (First season)
 Alma Mater: Stanford '05
 Assistant Coach: Ryan Madry (First season)
 Alma Mater: West Georgia '06
 Director of Operations: Jesse Nakanishi (First season)
 Alma Mater: Lewis & Clark '99
 Director of Player Dev.: Patrick Mulligan (First season)
 Alma Mater: Gonzaga

TEAM FACTS

2016-17 Record: 13-17
 2016-17 WAC Record/Finish: 5-9/6th
 Letterwinners Returning/Lost: 6/6
 Starters Returning/Lost: 2/4
 Newcomers: 11
 (including 4 transfers who will redshirt 2017-18)
 2016-17 Postseason Result: None

ATHLETIC COMMUNICATIONS

Director of Communications/MBB Contact: Sarah Finney
 O: (206) 296-5915 | C: (206) 445-2237
 Email: finneysa@seattleu.edu
 Asst. Director of Communications: Brian Vail
 O: (206) 296-2490
 Email: vailbr@seattleu.edu
 Athletic Website: www.GoSeattleU.com
 Radio (Talent): KTTH 770 AM (Dave Grosby, Gary Hill, Jr.)
 Mailing Address:
 Seattle University, 901 12th Ave.,
 PO Box 222000, Seattle, WA 98122

- The Redhawks fell 73-57 to Grand Canyon to open WAC play on Jan. 6. Jordan Hill poured in a career-high 26 points on 11-of-22 shooting. It marked the first time this season only one player scored in double-figures.
- Josh Hearlihy was named WAC Player of the Week for the week of Dec. 25-Jan. 1. He averaged 20.0 points on 54.5 percent from the field, 62.5 percent from three-point range and 78.6 percent from the free-throw line, 3.5 rebounds, 3.5 assists, 1.5 steals and 1.0 blocks as the Redhawks went 2-0.
- Jordan Hill had 23 points, while Aaron Menzies and Matej Kavvas added 20 apiece in the Redhawks' 95-89 win over Nicholls State on Dec. 23. That marked the first time this season that three players had scored 20 or more points. It was also the fourth time that at least two players had achieved the feat. Hill had 21 points and Josh Hearlihy added 20 against Saint Martin's on Dec. 13. On Nov. 12 vs. Puget Sound when Richaud Gittens poured in 26 points and Hearlihy added 23. The Redhawks also had a pair of 20-point efforts on Dec. 3 vs. Eastern Washington when Kavvas had 26 points and Hearlihy added 20.
- Junior center Aaron Menzies finished with 13 points and 14 rebounds on Dec. 28 vs. Grambling State, marking his second straight outing with a double-double, and his team-leading sixth of the season.
- Matej Kavvas was named WAC Player of the Week for the week of Nov. 27-Dec. 3. The Ljubljana, Slovenia, native averaged 20.0 points and 7.0 rebounds while shooting 56.4 percent from the field to lead Seattle U to a perfect 3-0 record during the span. It was the first such honor of his career.

HOME SWEET HOME

The Redhawks are 12-2 at home this season following a thrilling 77-75 win over Kansas City on Jan. 13. They had opened the season with a seven-game streak that marked the longest home win streak since the 2014-15 season when they won six straight from Feb. 17, 2015 (vs. Utah Valley) to March 23, 2015 (vs. Colorado). That streak would be snapped at the start of the 2015-16 season with a loss to Arkansas-Pine Bluff. Seattle U's longest home win streak during its modern day DI era was a 13-game stretch that included a perfect 10-0 mark at home during the 2008-09 season. The Redhawks would go on to win their first three of the 2009-10 season. Harvard would end the streak on Jan. 2, 2010.

2017-18 NUMERICAL ROSTER

NO.	NAME	POS	HT	WT	YR/EXP	HOMETOWN/PREVIOUS SCHOOL
1	Morgan Means	G	6-3	175	So./IV	Compton, Calif./Redondo Union HS
2	Jordan Hill	G	6-4	183	Gr./TR	Pasadena, Calif./La Salle HS/Wisconsin
5	Matej Kavvas	G	6-8	200	RSO./IV	Ljubljana, Slovenia/Gimnazija Beograd HS
10	Richaud Gittens	G	6-4	195	Gr./TR	Tempe, Ariz./Marcos De Niza HS/Weber State
11	Scott Ulaneo	F	6-10	215	So./IV	Rome, Italy/Stella Azura Academy
12	Mattia Da Campo	G	6-5	210	So./IV	Venice, Italy/Stella Azura Academy
13	Josh Hearlihy	G/F	6-8	215	Gr./TR	Los Angeles, Calif./Northfield Mount Hermon/Tulane/Vermont
15	Jake Spurgeon	G	6-7	215	RSO./IV	Lake Oswego, Ore./Lakeridge HS
21	Collin Huun	G	6-0	175	Jr./TR	Salem, Ore./South Salem HS/Chemeketa CC
23	Aaron Nettles	G	5-11	175	Fr./HS	Seattle, Wash./Seattle Prep
35	Brennan Corrigan	G/F	6-4	180	Fr./HS	Westlake Village, Calif./Oaks Christian HS
41	Aaron Menzies	C	7-3	285	RJr./2V	Manchester, England/Loreto Academy

COACHING STAFF

Head Coach: Jim Hayford (Azusa Pacific '89) – First season
 Associate Head Coach: Chris Victor (Concordia Irvine '04) – First season
 Assistant Coach: Nick Robinson (Stanford '05) – First season
 Assistant Coach: Ryan Madry (West Georgia '06) – First season
 Director of Operations: Jesse Nakanishi (Lewis & Clark '99) – First season
 Director of Player Development: Patrick Mulligan (Gonzaga) – First season

PRONUNCIATION GUIDE

#5 Matej Kavvas: MAH-tey KAH-vahs
 #10 Richaud Gittens: RISH-ahd
 #11 Scott Ulaneo: You-LAWN-ee-oh
 #12 Mattia Da Campo: Mat-EE-AH DAH-Camp-oh
 #13 Josh Hearlihy: HER-lih-HE
 #15 Jake Spurgeon: SPUR-gon (like surgeon)
 #21 Collin Huun: WHO-n



INSIDE THE NUMBERS

2017-18 Record.....	13-8
Non-Conference.....	11-6
WAC.....	2-2
Home.....	12-2
Away.....	0-6
Neutral.....	1-0
In overtime.....	0-0
Current Streak.....	L1
Last win.....	1/13/18 vs. Kansas City (77-75)
Last loss. 1/18/18 at New Mexico State (62-75)	
Current Home Streak.....	W2
Last win.....	1/13/18 vs. Kansas City (77-75)
Last loss.....	1/6/18 vs. Grand Canyon (57-73)
Current Road Streak.....	L8
Last win.....	2/23/17 at UTRGV (86-77)
Last loss. 1/18/18 at New Mexico State (62-75)	
Current Neutral Streak.....	W1
Last win.....	11/18/17 vs Detroit Mercy (102-71)
Last loss.....	3/9/17 vs. Utah Valley (65-53)
Records When...	
November.....	4-4
December.....	7-2
January.....	2-2
February.....	0-0
March.....	0-0
Monday.....	2-0
Tuesday.....	0-1
Wednesday.....	1-1
Thursday.....	3-1
Friday.....	0-2
Saturday.....	5-2
Sunday.....	2-1
Leading at halftime.....	9-1
Trailing at halftime.....	4-7
Tied at halftime.....	0-0
Scoring less than 60.....	0-4
Scoring between 60-69.....	2-1
Scoring between 70-79.....	2-2
Scoring between 80-89.....	3-1
Scoring 90 or more.....	6-0

Allowing less than 60.....	1-0
Allowing between 60-69.....	5-1
Allowing between 70-79.....	6-3
Allowing between 80-89.....	1-2
Allowing 90 or more.....	0-2
Shooting below 30%.....	0-0
Shooting between 30-39.9%.....	1-4
Shooting between 40-44.9%.....	2-2
Shooting between 45-49.9%.....	4-2
Shooting between 50-54.9%.....	2-0
Shooting 55% or above.....	4-0
Opponent shooting below 30%.....	1-0
Opponent shooting between 30-39.9%.....	7-1
Opponent shooting between 40-44.9%.....	4-2
Opponent shooting between 45-49.9%.....	0-3
Opponent shooting between 50-54.9%.....	1-0
Opponent shooting 55% or above.....	0-2
More or same rebounds than opponent.....	13-3
Fewer rebounds than opponent.....	0-5
Game decided by 1-5 Points.....	2-1
Game decided by 6-10 Points.....	2-0
Game decided by 11-15 Points.....	3-2
Game decided by 16-20 Points.....	1-3
Game decided by 21+ Points.....	4-2
SU has 0 players in double figures.....	0-0
SU has 1 players in double figures.....	0-1
SU has 2 players in double figures.....	0-1
SU has 3 players in double figures.....	3-2
SU has 4 players in double figures.....	6-3
SU has 5+ players in double figures.....	4-1
Wearing Black Jerseys.....	2-4
Wearing Grey Jerseys.....	4-0
Wearing Red Jerseys.....	0-2
Wearing White Jerseys.....	7-2

RANKED REDHAWKS

In games played through Jan. 18, Seattle U is ranked in the top 50 nationally in eight team statistical categories. The Redhawks are 10th in the nation in free-throw percentage (77.9), 13th in rebounds (800), 17th in 3-pters (202), 22nd in 3-pt FG attempts (526), 31st in FTs (324), 35th in rebound margin (+6.3), 39th in 3-pt FGs per game (9.6) and 43rd in assists (314).

Matej Kavas is 14th in the nation in 3-pt FG% (47.3), 20th in total 3-pters (61) and 37th in 3-pt FGs per game (3.05).

The Redhawks lead the Western Athletic Conference in free-throw percentage (77.9), 3-pt FG% (38.4) and 3-pt FGs made (202, 9.6 per game). They also rank second in scoring (79.3) and FG% (46.4).

Matej Kavas ranks third in the WAC in scoring (17.3 ppg), first in 3-pt FG% (47.3) and first in 3-pt FGs made (61, 3.1 per game). Aaron Menzies ranks second in blocks (34, 1.6 per game), third in FG% (61.2), and third in rebounds per game (8.0). Jordan Hill is fourth in 3-pt FGs (49, 2.5 per game) and fourth in 3-pt FG% (41.5) and Richaud Gittens is second in steals (28, 1.4 per game).

LAST TIME OUT

The Redhawks used a 13-2 run midway through the second half to pull within a possession of New Mexico State, but the Aggies would respond and a first-half hole would be too much to overcome in a 75-62 final the Pan American Center Thursday night. Matej Kavas led all scorers with 20 points while Jordan Hill had 12 and Richaud Gittens added 11. Aaron Menzies collected his seventh double-double of the year, finishing with 10 points and 12 boards. Zach Lofton rebounded from a pair of early fouls to lead NMSU with 15 points. Eli Chuha added 14 points off the bench and Jemerrio Jones finished with a 10-point, 11-rebound double-double. Trailing 47-33 with 13:08 remaining, the Redhawks rolled off a 13-2 run as the Aggies went cold. Kavas would open the run with a lay-up and the foul, Menzies added an old-fashion three-point play of his own and Hill made two three-throws, cutting it to single digits, 49-41. Five straight points by Kavas, including a three from the top of the arc made it 49-46 with 9:30 to go. But the Aggies finally answered in the form of a Sidy N'Dir three. Lofton would score the next five points and NMSU quickly regained a double-digit lead. The spread would not dip below nine for the balance of the game. Seattle U found itself in a big hole early, trailing 17-2 midway through the first half. Turnovers were costly in the opening frame as nine Redhawk giveaways turned into 13 points for NSMU. The Redhawks shot nearly 54 percent in the second half to finish 44.7 percent for the night. They also went 15-of-21 (71.4 percent) from the charity stripe, but hit just 5-of-17 from three.

NON-CONFERENCE NUGGETS



- The Redhawks concluded non-conference play with an 11-6 record.
- The 11 wins marks the most non-conference victories since joining the Western Athletic Conference in the 2012-13 season. The previous high was eight, achieved in 2013-14 (8-5 non-conference) and 2016-17 (8-7 non-conference).

LYFT FREE TO KEYARENA

Enjoy FREE round trip rides from Seattle U to KeyArena and from KeyArena back to Seattle U for every Redhawks' men's basketball game this season. Each gameday discount code will be released on the Seattle U Athletics official Twitter (@goseattleu). SU Pick-up/Drop-off Locations include Pigott Turnaround and Campion Turnaround. The KeyArena Pick-up/Drop-off Location is the West Doors off of 1st Ave N.

A NEW ERA

The Redhawks began a new era when they tipped off at Saint Louis on Nov. 10 as the game marked the first under Head Coach Jim Hayford. The veteran coach was appointed at Seattle U on March 29, 2017 after six seasons at Eastern Washington. Hayford has 18 total seasons as a head coach, amassing an overall record of 360-175 (.673). Along with the new coaching staff, there are 11 new faces in the Redhawks' program, including seven who are eligible to compete this season, and four others who will redshirt the 2017-18 season due to NCAA transfer rules.

TRIO OF TRANSFERS

Inheriting a squad with no seniors, Head Coach Jim Hayford infused the 2017-18 Redhawks' roster with a trio of graduate transfers - Jordan Hill (Wisconsin), Richaud Gittens (Weber State) and Josh Hearlihy). Seattle U is believed to be one of just two NCAA Division I men's basketball programs to carry three grad transfers on its roster this season, the other school being Iowa State.

GET YOUR 2017-18 TICKETS!

Select single-game tickets for the Redhawks' remaining home games are available through Ticketmaster.com by searching "Seattle University Men's Basketball." Call 206-398-GOSU (4678) or visit GoSeattleU.com/SUTickets for more information.

BACK ON CAMPUS

The Seattle University men's basketball team formerly called the Connolly Complex home before returning to KeyArena for the 2009-10 season. While KeyArena remains the Redhawks primary home court, the program brings nine of 18 home games back on campus to the renovated North Court this winter. In 2014-15, the Redhawks returned to the then Connolly Center for one regular-season game, defeating Northwest University on Dec. 15, 2014, 84-58. With KeyArena unavailable during the postseason, Seattle U played both home CBI games in the renamed Connolly Complex, defeating Pep-

perdine (62-45) and Colorado (72-65). Seattle U has now compiled a 220-143 (.606) record in North Court, including a 15-game winning streak that began Nov. 5, 2008 with a perfect 10-0 mark during the 2008-09 season.

PRESEASON HONORS

Redshirt sophomore guard Matej Kavas was named to the 2017-18 Preseason All-WAC Second Team by both the league's eight head coaches and voting members of the media. Kavas earned the 2016-17 WAC Freshman of the Year award. He played in 27 games during his rookie season, averaging 8.6 points and 2.9 rebounds per game. His numbers rose during WAC play as he averaged 11.6 points and 3.7 rebounds per game.

WAC PRESEASON POLLS

The Redhawks were selected fifth in both the 2017-18 Preseason Coaches and Media Poll. Grand Canyon was selected as the league favorite in both polls, followed by 2016-17 champ New Mexico State.

REDHAWKS SIGN TWO FOR 2018-19

Trey'von Hopkins and Rip Economou have signed National Letters of Intent with Seattle University men's basketball, Head Coach Jim Hayford announced Nov. 8. The No. 1 ranked player in Oklahoma by PrepHoops.com, Hopkins is a 6-3, 185-pound guard hailing from Oklahoma City, Okla., where he preps at Carl Albert High School. He is also ranked as a 3-star prospect by Rivals.com and 247sports.com. "Trey'von is a great young man who will be an immediate force for us," said Hayford. He is a great student, great person and great player." Hopkins averaged 27.8 points, 7.0 rebounds and 6.0 assists per game during his junior season, earning First Team All-State honors. During his sophomore season, Hopkins led the Titans to the Class 5A State Championship. He was named a First Team All-State and the state MVP. Hopkins also earned Second Team All-State honors as a freshman. Economou is a 6-8, 185-pound shooting guard who preps at Santa Monica High School in Santa Monica, Calif. He earned First Team All-Ocean League honors both his sophomore and junior seasons as the Vikings made back-to-back CIF Southern Section appearances. "Rip us one of the top pure shooters on the West Coast," Hayford said. "He is still growing and will have the size and skill to play multiple positions for us. He is also a top student in the classroom and will be a great fit at Seattle U." Economou averaged 17 ppg as a sophomore, leading SMHS to the CIF Southern Section title. He averaged 19.5 points, 8.0 rebounds and 5.0 assists as a junior last season as the Vikings advanced to the second round of the section tournament. A 3-star prospect according to Rivals.com, Economou has also played for the Cali Stars AAU team. He is a 4.0 student at SMHS and his father, Greg, was a member of the UCONN men's basketball team in 1986-87 and 1987-88 seasons.

BRINGING ATTENTION TO NATIONAL ISSUES

Seattle U men's basketball will stand with arms locked during the national anthem performance at each game this year.

"In light of the national conversation around this issue, we have been talking for the last month as a team about the discussions surrounding the national anthem at sporting events," said Head Coach Jim Hayford. "Our conversation led us to look into the issues behind the protest movement. These are issues that our players and coaches believe are relevant and need to be addressed. We have also discussed how we would never want our actions to be taken by others as a sign of disrespect to armed services personnel and veterans. We love America and we love people. We want a better America for all people. So we have put together a plan of action and a statement that addresses who we are and what we believe."

The team warm-up shirts, which will be worn by the players during every anthem, contain a quote from Martin Luther King, Jr. - "Injustice anywhere is a threat to justice everywhere."

The team will lock arms to show that they both hear and join the voices that are shining light on the injustices in the American legal system and to those without access to legal recourse.

"Justice for all means the freedom to be who you are without worry of constant scrutiny, bodily harm, or hate because of your ideology," senior Jordan Hill said. "Justice for all means equality for all people, regardless of race, ethnicity, gender, religion, or political affiliation."

"Justice for all means acknowledging, accepting, and even appreciating each other's differences," said senior Josh Hearlihy.

"Everyone has a voice," said senior Richaud Gittens. "Justice for all means all voices being heard regardless of skin color, gender or sexual orientation."

The Redhawks are partnering with the Seattle U School of Law to draw attention to the great work being done by law students, staff and faculty in the community.



Jim Hayford was named Seattle University's men's basketball head coach, Director of Athletics Shaney Fink announced Wednesday, Mar. 28, 2017.

Hayford has 18 total seasons as a head coach, amassing an overall record of 360-175 (.673). He has stints at Eastern Washington, Whitworth (NCAA DIII) and Sioux Falls (NAIA). He has coached in nine national postseason tournaments, including six (2003, 2007, 2008, 2009, 2010, 2011) at NCAA Division III Whitworth and three at EWU (2015, 2016, 2017).

In 2016-17, Hayford completed his sixth season as the head coach at EWU, leading the Eagles to a 22-12 overall record and a 13-5 mark in Big Sky Conference play. In six seasons with Hayford at the helm, the Eagles went to the NCAA Tournament (2015), the CBI

Tournament (2016, 2017), earned a Big Sky regular season co-championship (2015) and won the Big Sky Tournament title (2015). Under Hayford, the Eagles had one Big Sky Conference Player of the Year (Jacob Wiles, 2017), two Big Sky Freshmen of the Year, 12 All-Big Sky selections, seven National Association of Basketball (NABC) All-District selections, two Associated Press honorable mention All-Americans and one NBA Draft pick (Tyler Harvey, 2015).

In addition, the Eagles reached 20+ wins in two of the last three seasons (2015, 2017) and had at least 10 Big Sky Conference wins during the past three seasons (2015, 2016, 2017). That includes the top two win totals in 30 seasons as a member of the Big Sky with 14 victories in 2015 and 13 in 2017.

The building process at EWU hit its stride in 2014-15 when Hayford led the Eagles to a 26-9 mark, including a 14-4 Big Sky record. EWU went on to win the Big Sky Conference Tournament and earn a bid to the NCAA Tournament – the first postseason appearance for the program since 2003-04. The team featured Tyler Harvey, who was the nation's leader in scoring (23.1 ppg) and three-pointers made per game (4.0), and went on to be the program's third all-time NBA Draft pick. For his efforts, Hayford was named Big Sky Co-Coach of the Year.

All told, 18 school records and one Big Sky mark were broken in the 2014-15 season, thanks to a productive offense that ranked third in NCAA Division I with an average of 80.6 points per game and fifth in 3-pointers per game with a 9.8 average.

The Eagles scaled one more peak in 2015-16, with the school's first-ever victory in a national postseason tournament in 33 seasons as a member of NCAA Division I – a 79-72 win over Pepperdine in the first round of the College Basketball Invitational.

Prior to the 2015-16 season, Hayford was selected by College Sports Madness as its preseason Big Sky Conference Coach of the Year. Additionally, Sam Vecenie of CBS Sports rated him as one of the top 21 offensive coaches in all of NCAA Division I.

He lived up to it, with the Eagles ranking in the top 25 in four team offensive categories in the 2015-16 season. The squad broke 17 school records, including 10 by senior Venky Jois. Jois closed his career as the all-time leading scorer in Eastern history with 1,803 points. Eastern finished 2015-16 ranked fifth in NCAA Division I with an average of 10.5 3-pointers made per game. Eastern also ranked 15th in NCAA Division I in scoring offense (81.4 points per game), 16th in overall field goal accuracy (48.3 percent) and 25th in accuracy from the 3-point stripe (38.5 percent).

Before taking over at Eastern Washington in March of 2011, Hayford spent 10 seasons building Whitworth University in Spokane, Wash., into a NCAA Division III powerhouse. In his tenure at the helm of the Pirates, Hayford had a record of 217-57 and a winning percentage of .792. He was the Northwest Conference Coach of the Year five times, and twice was honored by the NABC as the West Region Coach of the Year.

Taking over a program that went 25-24 in the two seasons prior (1999-01), Hayford coached the Pirates to eight 20-win seasons, six appearances in the NCAA Division III Tournament (including the last five seasons in a row), five Northwest Conference titles, three NCAA DIII Sweet 16 appearances (2008, 2010, 2011) and one Elite Eight appearance (2011). At the time he left Whitworth, his career winning percentage ranked among the top 10 among all active NCAA Division III coaches.

Prior to Whitworth, Hayford was head coach at the University of Sioux Falls (S.D.), where he compiled a 37-27 record in two seasons. During his inaugural season (1999-2000), he led the Cougars to their first conference playoff appearance in five years. Hayford's Cougars finished the 2000-01 season at 22-12, setting a school record for wins in a season. Prior to Hayford's arrival, USF was 9-17 in 1998-99.

Hayford served as the top assistant coach at Azusa Pacific University (Calif.) from 1990-99, including eight seasons under Bill Odell. APU won seven consecutive Golden State Athletic Conference titles during that time and advanced to the NAIA Division I Final Four in each of his final two seasons there.

Hayford earned his bachelor's degree in social science from Azusa Pacific in 1989. He earned a master's degree in education from Claremont Graduate School in 1991. Hayford and his wife, Robin, have two adult children, daughter, Jayme, and son, Joseph.

COACH HAYFORD'S YEAR-BY-YEAR RESULTS

YEAR	SCHOOL	OVERALL	PCT	CONFERENCE
1999-00	Sioux Falls	15-15	.500	
2000-01	Sioux Falls	22-12	.647	
Totals at Sioux Falls (2 seasons)		37-27	.578	
2001-02	Whitworth	20-7	.741	12-4/2nd
2002-03 \$	Whitworth	23-4	.851	13-3/1st
2003-04	Whitworth	19-6	.760	12-4/2nd
2004-05	Whitworth	13-11	.542	9-7/4th
2005-06	Whitworth	20-7	.741	13-3/2nd
2006-07 \$	Whitworth	24-4	.857	13-3/1st
2007-08 \$	Whitworth	21-7	.750	12-4/1st
2008-09 \$	Whitworth	23-6	.793	12-4/2nd
2009-10 \$	Whitworth	26-3	.897	16-0/1st
2010-11 \$	Whitworth	28-2	.933	15-1/1st
Totals at Whitworth (10 seasons)		217-57	.792	
2011-12	Eastern Washington	15-17	.469	8-8/4th
2012-13	Eastern Washington	10-21	.323	7-13/8th
2013-14	Eastern Washington	15-16	.484	10-10/T6th
2014-15 #	Eastern Washington	26-9	.743	14-4/T1st
2015-16 !	Eastern Washington	18-16	.529	10-8/T5th
2016-17 !	Eastern Washington	22-12	.647	13-5/2nd
Totals at EWU (6 seasons)		106-91	.538	
Total as Head Coach (18 seasons)		360-175	.673	

\$ - NCAA Division III participant

- NCAA DI Tournament participant, Big Sky Conference Tournament Champions & regular-season co-champions

! - College Basketball Invitational (CBI) Tournament participant



THE LAST TIME SEATTLE UNIVERSITY...

Won at home.....1/13/18 vs. Kansas City, 77-75
Lost at home.....1/6/18 vs. Grand Canyon, 57-73
Won on the road2/23/17 at UTRGV, 86-77
Lost on the road 1/18/17 at New Mexico State, 75-62
Won at a neutral site 11/18/17 vs. Detroit Mercy, 102-71 (Nashville, TN)
Lost at a neutral site 3/9/17 vs. Utah Valley, 65-53 (Las Vegas)
Won 5+ consecutive games..... 5 in 2016 (1/23/16 - 2/6/16)
Won 10+ consecutive games 10 in 2008-09 (1/13/09 - 2/27/09)
Won 20+ consecutive games 26 in 1953-54
Lost five+ consecutive games 6 in 2012-13 (2/2/13 - 2/28/13)
Scored less than 50 points11/10/17 at Saint Louis, 46-62
Scored 80-89 points..... 12/19/17 vs. Portland, 89-76
Scored 90-99 points..... 12/30/17 vs. UC Riverside, 95-71
Scored 100+ points..... 11/18/17 vs. Detroit Mercy, 102-71
Won an overtime game.....11/21/16 vs. Louisiana Monroe, 81-75
Lost an overtime game 12/4/16 vs Eastern Washington, 93-88 (2ot)
Defeated a nationally-ranked team1/12/74 vs. #16 UNLV, 82-64
Lost to a nationally-ranked team 12/21/11 vs. #24 Virginia, 83-77
Hosted a nationally-ranked team..... 12/21/11 vs. #24 Virginia (L, 77-83)
Shot under 30% FG 11/16/16 at Notre Dame, 29.1% (16-55)
Shot 30-39.9% FG 1/13/18 vs. Kansas City, 39.6% (19-48)
Shot 40-49.9% FG 1/18/18 at New Mexico State, 40.6% (26-64)
Shot 50-59.9% FG 12/19/17 vs Portland, 53.8% (35-65)
Shot 60+% FG 11/12/17 vs Puget Sound, 63.5% (40-63)
Had 50+ rebounds.....11/12/17 vs. Puget Sound, 61
Made 10+ 3-Pointers 1/13/18 vs. Kansas City, 10

THE LAST TIME A SEATTLE U PLAYER...

Scored 25-29 points1/6/18, Jordan Hill vs. Grand Canyon, 26
Scored 30-39 points 12/4/17, Aaron Menzies vs. Pacific Lutheran, 32
Scored 40-59 points..... 11/28/09, Charles Garcia vs. Wofford, 41
Scored 60+ points..... 1/30/58, Elgin Baylor vs. Portland, 60
Made 10+ field goals.....1/6/18, Jordan Hill vs. Grand Canyon, 11
Made 5+ 3-pointers..... 12/23/17, Matej Kavaz vs. Nicholls State, 6
..... 12/23/17, Jordan Hill vs. Nicholls State, 5
Had 10-15 rebounds.....1/18/18, Aaron Menzies at New Mexico State, 12
Had 16-19 rebounds1/6/17, Aaron Menzies vs. Chicago State, 19
Had 20+ rebounds..... 2/15/97, Roger Hammond at Northwest College, 24
Had a double-double..... 12/28/17, Aaron Menzies vs. Grambling State (13p, 14r)
Led team in pts. & rbs 12/13/17, Jordan Hill vs. Saint Martin's (21p, 7r)
Shot 100% FG (min. 5)..... 12/19/16, Morgan Means vs. Southern Utah (5-5)
Shot 100% FT (min. 10)..... 12/30/17, Richaud Gittens vs UC Riverside (10-10)
Had 10+ assists 12/4/17, Morgan Means vs. Pacific Lutheran, 13
Had 5+ steals..... 3/10/16, Brendan Westendorf vs. UT Rio Grande Valley, 5
Had 5+ blocks..... 12/2/13, Shore Adenekan vs. UC Davis, 5

STATISTICAL NOTEABLES

30-plus Points
32Aaron Menzies vs. Pacific Lutheran, 12/4/17

20-plus Points
27Matej Kavaz vs. Detroit Mercy, 11/18/17
26Jordan Hill vs. Grand Canyon, 1/6/18
26Matej Kavaz vs. Eastern Washington, 12/3/17
26 Richaud Gittens vs. Puget Sound, 11/12/17
25 Matej Kavaz at Washington, 11/24/17
24.....Matej Kavaz vs. Idaho State, 11/27/17
23 Jordan Hill vs. Nicholls State, 12/23/17
23 Jordan Hill vs. Portland, 12/16/17
23 Josh Hearlihy vs. Puget Sound, 11/12/17
22 Matej Kavaz vs. Kansas City, 1/13/18
21 Josh Hearlihy vs. Grambling State, 12/28/17
21 Jordan Hill vs. Saint Martin's, 12/13/17
20 Aaron Menzies vs. Nicholls State, 12/23/17
20 Matej Kavaz vs. Nicholls State, 12/23/17
20 Matej Kavaz vs. California, 12/19/17
20 Josh Hearlihy vs. Saint Martin's, 12/13/17
20 Aaron Nettles vs. Pacific Lutheran, 12/4/17
20 Josh Hearlihy vs. Eastern Washington, 12/3/17
20 Jordan Hill at Saint Louis, 11/10/17

15-plus Rebounds
19 Aaron Menzies vs. Chicago State, 1/11/18
15 Aaron Menzies vs. Pacific Lutheran, 12/4/17

5-plus Assists
13 Morgan Means vs. Pacific Lutheran, 12/4/17
10 Morgan Means vs. Puget Sound, 11/12/17
8 Jordan Hill vs. Nicholls State, 12/23/17
8 Jordan Hill vs. Eastern Washington, 12/3/17
7 Josh Hearlihy vs. Kennesaw State, 11/30/17
7 Josh Hearlihy at Washington, 11/24/17
7 Josh Hearlihy vs. Detroit Mercy, 11/18/17
6 Jordan Hill vs. Belmont, 11/19/17
6 Jordan Hill vs. Puget Sound, 11/12/17
5 Richaud Gittens vs. Chicago State, 1/11/18
5 Josh Hearlihy vs. California, 12/19/17
5 Jordan Hill vs. Saint Martin's, 12/13/17
5 Jordan Hill vs Idaho State, 11/27/17

DOUBLE-DOUBLES

Aaron Menzies (15p, 12r) vs. Puget Sound, 11/12/17
Morgan Means (14p, 10a) vs. Puget Sound, 11/12/17
Aaron Menzies (16p, 10r) vs. Detroit Mercy, 11/18/17
Aaron Menzies (17p, 13r) at Washington, 11/24/17
Josh Hearlihy (13 p, 10r) vs. Kennesaw State, 11/30/17
Aaron Menzies (32p, 15r) vs. Pacific Lutheran, 12/4/17
Aaron Menzies (20p, 14r) vs. Nicholls State, 12/23/17
Aaron Menzies (13p, 14r) vs. Grambling State, 12/28/17
Matej Kavaz (22p, 11r) vs. Kansas City, 1/13/18
Aaron Menzies (10p, 12r) at New Mexico State, 1/18/18



SPEED CHART



MORGAN MEANS
6-3 • 175 • G • SO



JORDAN HILL
6-4 • 183 • G • R-SR



MATEJ KAVAS
6-8 • 200 • G • R-SO



RICHAUD GITTENS
6-4 • 195 • G • R-SR



SCOTT ULANE0
6-10 • 215 • F • SO



MATTIA DA CAMPO
6-5 • 210 • G • SO



JOSH HEARLIHY
6-8 • 215 • G/F • R-SR



ERIC ALPERIN
6-2 • 170 • G • R-SO



JAKE SPURGEON
6-7 • 215 • G • R-SO



COLLIN HUUN
6-0 • 175 • G • JR



AARON NETTLES
5-11 • 175 • G • FR



LATIO COSMOS
6-0 • 170 • G • SO



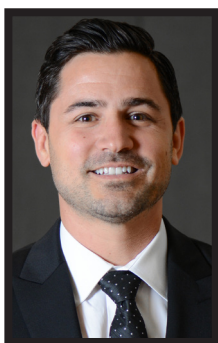
BRENNAN CORRIGAN
6-4 • 180 • G/F • FR



AARON MENZIES
7-3 • 285 • C • R-JR



JIM HAYFORD
HEAD COACH



CHRIS VICTOR
ASSOCIATE HEAD COACH



NICK ROBINSON
ASSISTANT COACH



RYAN MADRY
ASSISTANT COACH



JESSE NAKANISHI
DIRECTOR OF OPS



PATRICK MULLIGAN
DIRECTOR OF PLAYER DEV



Seattle University Basketball
Seattle University Combined Team Statistics (as of Jan 18, 2018)
All games

RECORD:	OVERALL	HOME	AWAY	NEUTRAL
ALL GAMES	13-8	12-2	0-6	1-0
CONFERENCE	2-2	2-1	0-1	0-0
NON-CONFERENCE	11-6	10-1	0-5	1-0

#	Player	gp-gs	min	Total		3-Point		F-Throw		Rebounds				pf	dq	a	to	blk	stl	pts	avg			
				fg-fga	fg%	3fg-fga	3fg%	ft-fga	ft%	off	def	tot	avg											
05	Kavas, Matej	20-18	659	33.0	119-235	.506	61-129	.473	47-57	.825	28	87	115	5.8	64	0	30	49	5	4	346	17.3		
02	Hill, Jordan	20-20	643	32.2	90-217	.415	49-118	.415	46-56	.821	13	58	71	3.6	63	2	75	55	11	26	275	13.8		
13	Hearlihy, Josh	19-17	569	29.9	71-162	.438	23-55	.418	72-86	.837	19	68	87	4.6	38	0	54	52	6	11	237	12.5		
10	Gittens, Richaud	20-17	607	30.4	75-167	.449	23-75	.307	46-60	.767	36	63	99	5.0	53	3	31	35	2	28	219	11.0		
41	Menzies, Aaron	21-20	491	23.4	90-147	.612	0-0	.000	48-72	.667	68	100	168	8.0	59	3	12	27	34	3	228	10.9		
01	Means, Morgan	21-6	528	25.1	58-151	.384	14-58	.241	30-36	.833	12	59	71	3.4	48	0	66	39	1	15	160	7.6		
21	Huun, Collin	3-0	11	3.7	4-5	.800	3-4	.750	0-2	.000	0	2	2	0.7	0	0	0	1	1	0	11	3.7		
23	Nettles, Aaron	21-2	192	9.1	22-49	.449	19-44	.432	11-13	.846	3	14	17	0.8	15	0	8	8	0	5	74	3.5		
11	Ulaneo, Scott	21-3	224	10.7	18-42	.429	3-10	.300	15-21	.714	17	42	59	2.8	44	1	17	21	5	3	54	2.6		
12	Da Campo, Mattia	21-1	184	8.8	15-24	.625	4-9	.444	5-7	.714	15	26	41	2.0	27	0	16	7	0	9	39	1.9		
15	Spurgeon, Jake	16-1	86	5.4	7-26	.269	2-20	.100	4-6	.667	3	9	12	0.8	12	1	5	6	1	0	20	1.3		
35	Corrigan, Brennan	3-0	6	2.0	1-4	.250	1-4	.250	0-0	.000	0	0	0	0.0	0	0	0	0	0	0	3	1.0		
Team											26	32	58											
Total.....		21	4200		570-1229	.464	202-526	.384	324-416	.779	240	560	800	38.1	423	10	314	304	66	104	1666	79.3		
Opponents.....		21	4200		510-1215	.420	170-468	.363	358-470	.762	196	471	667	31.8	406	5	238	242	66	148	1548	73.7		

TEAM STATISTICS	SU	OPP	Date	Opponent	Score	Att.
SCORING	1666	1548	# 11/10/17	at Saint Louis	L 46-62	7246
Points per game	79.3	73.7	11/12/17	PUGET SOUND	w 121-70	907
Scoring margin	+5.6	-	11/15/17	at Washington State	L 59-75	2340
FIELD GOALS-ATT	570-1229	510-1215	# 11/18/17	vs Detroit Mercy	w 102-71	455
Field goal pct	.464	.420	# 11/19/17	at Belmont	L 77-90	1087
3 POINT FG-ATT	202-526	170-468	# 11/24/17	at Washington	L 84-89	6428
3-point FG pct	.384	.363	11/27/17	IDAHO STATE	w 73-67	1178
3-pt FG made per game	9.6	8.1	11/30/17	KENNESAW STATE	w 66-54	782
FREE THROWS-ATT	324-416	358-470	12/03/17	EASTERN WASHINGTON	w 84-65	1487
Free throw pct	.779	.762	12/04/17	PACIFIC LUTHERAN	w 99-69	729
F-Throws made per game	15.4	17.0	12/09/17	at Saint Mary's (CA)	L 73-97	3324
REBOUNDS	800	667	12/13/17	SAINT MARTIN'S	w 88-72	773
Rebounds per game	38.1	31.8	12/16/17	PORTLAND	w 89-76	1569
Rebounding margin	+6.3	-	12/19/17	CALIFORNIA	L 59-81	2418
ASSISTS	314	238	12/23/17	NICHOLLS STATE	w 95-89	841
Assists per game	15.0	11.3	12/28/17	GRAMBLING STATE	w 93-63	999
TURNOVERS	304	242	12/30/17	UC RIVERSIDE	w 95-71	833
Turnovers per game	14.5	11.5	* 01/06/18	GRAND CANYON	L 57-73	2156
Turnover margin	-3.0	-	* 01/11/18	CHICAGO STATE	w 67-64	911
Assist/turnover ratio	1.0	1.0	* 01/13/18	KANSAS CITY	w 77-75	1449
STEALS	104	148	* 01/18/18	at New Mexico State	L 62-75	5035
Steals per game	5.0	7.0				
BLOCKS	66	66				
Blocks per game	3.1	3.1				
ATTENDANCE	17032	25915				
Home games-Avg/Game	14-1217	6-4243				
Neutral site-Avg/Game	-	1-455				

* = Conference game
- 2K Classic benefiting Wounded Warrior Project

Score by Periods	1st	2nd	Totals
Seattle University	802	864	1666
Opponents	718	830	1548



Seattle University Basketball
Seattle University Combined Team Statistics (as of Jan 18, 2018)
Conference games only

RECORD:	OVERALL	HOME	AWAY	NEUTRAL
ALL GAMES	2-2	2-1	0-1	0-0
CONFERENCE	2-2	2-1	0-1	0-0
NON-CONFERENCE	0-0	0-0	0-0	0-0

#	Player	gp-gs	min	avg	Total		3-Point		F-Throw		Rebounds				pf	dq	a	to	blk	stl	pts	avg
					fg-fga	fg%	3fg-fga	3fg%	ft-fga	ft%	off	def	tot	avg								
05	Kavas, Matej	4-4	130	32.5	22-51	.431	8-23	.348	10-12	.833	8	20	28	7.0	14	0	5	11	0	0	62	15.5
02	Hill, Jordan	4-4	145	36.2	17-50	.340	8-26	.308	17-20	.850	2	14	16	4.0	11	0	10	14	2	2	59	14.8
10	Gittens, Richaud	4-4	134	33.5	18-32	.563	4-10	.400	7-11	.636	7	10	17	4.3	11	0	7	11	0	4	47	11.8
01	Means, Morgan	4-1	109	27.3	13-29	.448	4-9	.444	3-5	.600	2	10	12	3.0	11	0	8	7	1	2	33	8.3
13	Hearlihy, Josh	3-3	99	33.0	5-19	.263	3-8	.375	10-12	.833	3	10	13	4.3	7	0	4	12	0	1	23	7.7
41	Menzies, Aaron	4-4	97	24.3	8-23	.348	0-0	.000	12-19	.632	16	27	43	10.8	13	1	2	7	2	0	28	7.0
11	Ulaneo, Scott	4-0	34	8.5	2-4	.500	0-0	.000	3-4	.750	2	7	9	2.3	9	0	2	5	1	0	7	1.8
12	Da Campo, Mattia	4-0	36	9.0	2-6	.333	0-0	.000	0-1	.000	2	4	6	1.5	3	0	2	1	0	1	4	1.0
15	Spurgeon, Jake	2-0	3	1.5	0-1	.000	0-1	.000	0-0	.000	0	0	0	0.0	0	0	0	0	0	0	0	0.0
23	Nettles, Aaron	4-0	13	3.3	0-2	.000	0-1	.000	0-0	.000	0	0	0	0.0	1	0	0	2	0	1	0	0.0
Team											8	8	16					1				
Total.....		4	800		87-217	.401	27-78	.346	62-84	.738	50	110	160	40.0	80	1	40	71	6	11	263	65.8
Opponents.....		4	800		95-232	.409	29-90	.322	68-84	.810	35	99	134	33.5	82	0	45	39	10	26	287	71.8

TEAM STATISTICS	SU	OPP	Date	Opponent	Score	Att.
SCORING	263	287	* 01/06/18	GRAND CANYON	L 57-73	2156
Points per game	65.8	71.8	* 01/11/18	CHICAGO STATE	w 67-64	911
Scoring margin	-6.0	-	* 01/13/18	KANSAS CITY	w 77-75	1449
FIELD GOALS-ATT	87-217	95-232	* 01/18/18	at New Mexico State	L 62-75	5035
Field goal pct	.401	.409	* = Conference game			
3 POINT FG-ATT	27-78	29-90	# - 2K Classic benefiting Wounded Warrior Project			
3-point FG pct	.346	.322				
3-pt FG made per game	6.8	7.3				
FREE THROWS-ATT	62-84	68-84				
Free throw pct	.738	.810				
F-Throws made per game	15.5	17.0				
REBOUNDS	160	134				
Rebounds per game	40.0	33.5				
Rebounding margin	+6.5	-				
ASSISTS	40	45				
Assists per game	10.0	11.3				
TURNOVERS	71	39				
Turnovers per game	17.8	9.8				
Turnover margin	-8.0	-				
Assist/turnover ratio	0.6	1.2				
STEALS	11	26				
Steals per game	2.8	6.5				
BLOCKS	6	10				
Blocks per game	1.5	2.5				
ATTENDANCE	4516	5035				
Home games-Avg/Game	3-1505	1-5035				
Neutral site-Avg/Game	-	0-0				

Score by Periods	1st	2nd	Totals
Seattle University	120	143	263
Opponents	135	152	287



Seattle University Basketball
Seattle University Season Schedule/Results & Leaders (as of Jan 18, 2018)
All games

RECORD:	OVERALL	HOME	AWAY	NEUTRAL
ALL GAMES	13-8	12-2	0-6	1-0
CONFERENCE	2-2	2-1	0-1	0-0
NON-CONFERENCE	11-6	10-1	0-5	1-0

Date	Opponent	Score	Att.	High Points	High Rebounds
11/10/17	#at Saint Louis	46-62 L	7246	(20)Hill, Jordan	(6)Kavas, Matej
11/12/17	PUGET SOUND	w 121-70	907	(26)Gittens, Richaud	(12)Menzies, Aaron
11/15/17	at Washington State	59-75 L	2340	(18)Gittens, Richaud	(12)Kavas, Matej
11/18/17	#vs Detroit Mercy	w 102-71	455	(27)Kavas, Matej	(10)Menzies, Aaron
11/19/17	#at Belmont	77-90 L	1087	(15)Kavas, Matej (15)Means, Morgan (15)Hill, Jordan	(5)Gittens, Richaud
11/24/17	#at Washington	84-89 L	6428	(25)Kavas, Matej	(13)Menzies, Aaron
11/27/17	IDAHO STATE	w 73-67	1178	(24)Kavas, Matej	(9)Kavas, Matej
11/30/17	KENNESAW STATE	w 66-54	782	(14)Menzies, Aaron	(10)Hearlihy, Josh
12/03/17	EASTERN WASHINGTON	w 84-65	1487	(26)Kavas, Matej	(8)Kavas, Matej
12/04/17	PACIFIC LUTHERAN	w 99-69	729	(32)Menzies, Aaron	(15)Menzies, Aaron
12/09/17	at Saint Mary's (CA)	73-97 L	3324	(19)Kavas, Matej	(6)Gittens, Richaud
12/13/17	SAINT MARTIN'S	w 88-72	773	(21)Hill, Jordan	(7)Hill, Jordan
12/16/17	PORTLAND	w 89-76	1569	(23)Hill, Jordan	(8)Menzies, Aaron
12/19/17	CALIFORNIA	59-81 L	2418	(20)Kavas, Matej	(7)Hearlihy, Josh
12/23/17	NICHOLLS STATE	w 95-89	841	(23)Hill, Jordan	(14)Menzies, Aaron
12/28/17	GRAMBLING STATE	w 93-63	999	(21)Hearlihy, Josh	(14)Menzies, Aaron
12/30/17	UC RIVERSIDE	w 95-71	833	(19)Hearlihy, Josh	(7)Menzies, Aaron
01/06/18	*GRAND CANYON	57-73 L	2156	(26)Hill, Jordan	(8)Kavas, Matej
01/11/18	*CHICAGO STATE	w 67-64	911	(17)Gittens, Richaud (17)Means, Morgan	(19)Menzies, Aaron
01/13/18	*KANSAS CITY	w 77-75	1449	(22)Kavas, Matej	(11)Kavas, Matej
01/18/18	*at New Mexico State	62-75 L	5035	(20)Kavas, Matej	(12)Menzies, Aaron

* = Conference game

- 2K Classic benefiting Wounded Warrior Project

Attendance Summary	Games	Attend	Avg/Game
Home	14	17032	1217
Away	6	25460	4243
Neutral	1	455	455
Total	21	42947	2045



**Seattle University Basketball
Seattle University Team Game-by-Game (as of Jan 18, 2018)
All games**

TEAM STATISTICS

Opponent	Date	Score		Total		3-Pointers		Free throws		Rebounds				pf	a	t/o	blk	stl	pts	avg
				fg-fga	pct	3fg-fga	pct	ft-fa	pct	off	def	tot	avg							
at Saint Louis	11/10/17	46-62	L	17-48	.354	7-25	.280	5-6	.833	3	23	26	26.0	18	8	14	4	5	46	46.0
PUGET SOUND	11/12/17	121-70	W	40-63	.635	8-25	.320	33-35	.943	12	49	61	43.5	21	27	32	8	16	121	83.5
at Washington State	11/15/17	59-75	L	21-70	.300	10-41	.244	7-10	.700	15	28	43	43.3	18	14	12	2	6	59	75.3
vs Detroit Mercy	11/18/17	102-71	W	32-54	.593	15-23	.652	23-28	.821	10	32	42	43.0	22	18	20	4	4	102	82.0
at Belmont	11/19/17	77-90	L	27-60	.450	12-31	.387	11-16	.688	10	20	30	40.4	16	15	8	2	2	77	81.0
at Washington	11/24/17	84-89	L	28-58	.483	12-32	.375	16-21	.762	14	21	35	39.5	22	17	18	3	4	84	81.5
IDAHO STATE	11/27/17	73-67	W	24-57	.421	4-20	.200	21-26	.808	10	33	43	40.0	24	9	12	4	4	73	80.3
KENNESAW STATE	11/30/17	66-54	W	26-57	.456	4-18	.222	10-10	1.000	10	24	34	39.2	20	12	12	2	6	66	78.5
EASTERN WASHINGTON	12/03/17	84-65	W	28-55	.509	9-17	.529	19-21	.905	3	29	32	38.4	19	17	14	0	8	84	79.1
PACIFIC LUTHERAN	12/04/17	99-69	W	38-66	.576	13-35	.371	10-18	.556	16	23	39	38.5	21	27	12	2	5	99	81.1
at Saint Mary's (CA)	12/09/17	73-97	L	24-54	.444	11-20	.550	14-19	.737	12	20	32	37.9	17	13	12	2	3	73	80.4
SAINT MARTIN'S	12/13/17	88-72	W	30-51	.588	7-20	.350	21-26	.808	8	24	32	37.4	14	13	12	3	6	88	81.0
PORTLAND	12/16/17	89-76	W	35-65	.538	16-28	.571	3-5	.600	14	17	31	36.9	22	18	8	4	5	89	81.6
CALIFORNIA	12/19/17	59-81	L	22-66	.333	7-32	.219	8-13	.615	15	23	38	37.0	23	12	16	4	4	59	80.0
NICHOLLS STATE	12/23/17	95-89	W	32-65	.492	14-27	.519	17-23	.739	10	29	39	37.1	18	21	8	8	4	95	81.0
GRAMBLING STATE	12/28/17	93-63	W	32-67	.478	9-27	.333	20-24	.833	16	32	48	37.8	20	16	11	5	7	93	81.8
UC RIVERSIDE	12/30/17	95-71	W	27-56	.482	17-27	.630	24-31	.774	12	23	35	37.6	28	17	12	3	4	95	82.5
GRAND CANYON	01/06/18	57-73	L	22-61	.361	5-20	.250	8-14	.571	13	31	44	38.0	25	6	16	1	2	57	81.1
CHICAGO STATE	01/11/18	67-64	W	25-61	.410	7-18	.389	10-15	.667	15	27	42	38.2	16	13	16	4	3	67	80.4
KANSAS CITY	01/13/18	77-75	W	19-48	.396	10-23	.435	29-34	.853	15	27	42	38.4	22	14	23	1	3	77	80.2
at New Mexico State	01/18/18	62-75	L	21-47	.447	5-17	.294	15-21	.714	7	25	32	38.1	17	7	16	0	3	62	79.3
Seattle University		1666		570-1229	.464	202-526	.384	324-416	.779	240	560	800	38.1	423	314	304	66	104	1666	79.3
Opponents		1548		510-1215	.420	170-468	.363	358-470	.762	196	471	667	31.8	406	238	242	66	148	1548	73.7

Games played: 21
Points/game: 79.3
FG Pct: 46.4
3FG Pct: 38.4
FT Pct: 77.9

Rebounds/game: 38.1
Assists/game: 15.0
Turnovers/game: 14.5
Assist/turnover ratio: 1.0
Steals/game: 5.0
Blocks/game: 3.1



Seattle University Basketball
Seattle University Points-Rebounds-Assists (as of Jan 18, 2018)
All games

Opponent	Date	Score	01		02		05		10		11		12		13	
			MEANS,MORG	HILL,JORDA	KAVAS,MATE	GITTENS,RI	ULANEO,SCO	DA CAMPO,M	HEARLIHY,J							
at Saint Louis	11/10/17	46-62	L	0-3-1	20-1-2	15-6-0	2-5-2	1-2-0	0-0-2	6-2-1						
PUGET SOUND	11/12/17	121-70	w	14-7-10	5-9-6	17-6-2	26-5-2	7-7-1	6-3-2	23-8-1						
at Washington State	11/15/17	59-75	L	12-4-1	6-1-3	6-12-4	18-6-2	0-0-0	0-0-0	12-6-2						
vs Detroit Mercy	11/18/17	102-71	w	7-3-3	17-7-2	27-3-2	9-4-0	0-1-0	0-6-1	16-4-7						
at Belmont	11/19/17	77-90	L	15-3-4	15-3-6	15-3-0	3-5-2	2-4-0	0-1-1	7-2-0						
at Washington	11/24/17	84-89	L	0-2-1	16-3-3	25-5-2	5-3-1	2-1-1	0-0-0	16-5-7						
IDAHO STATE	11/27/17	73-67	w	6-6-2	19-7-5	24-9-1	4-7-0	0-0-0	2-2-0	7-3-1						
KENNESAW STATE	11/30/17	66-54	w	12-6-2	3-0-1	10-4-0	12-7-0	0-2-2	0-0-0	13-10-7						
EASTERN WASHINGTON	12/03/17	84-65	w	0-3-3	13-6-8	26-8-2	11-7-1	4-0-1	2-0-0	20-5-2						
PACIFIC LUTHERAN	12/04/17	99-69	w	9-1-13	DNP	DNP	DNP	6-9-5	15-7-5	DNP						
at Saint Mary's (CA)	12/09/17	73-97	L	5-0-1	10-5-5	19-5-1	12-6-2	10-5-3	0-3-0	13-3-1						
SAINT MARTIN'S	12/13/17	88-72	w	1-4-2	21-7-5	17-6-2	13-5-2	2-3-0	0-0-0	20-6-2						
PORTLAND	12/16/17	89-76	w	8-5-4	23-1-4	18-5-2	8-5-4	0-0-0	0-0-0	10-3-3						
CALIFORNIA	12/19/17	59-81	L	10-2-1	2-2-1	20-1-2	11-6-1	6-4-0	0-2-0	0-7-5						
NICHOLLS STATE	12/23/17	95-89	w	3-5-4	23-2-8	20-7-3	18-4-0	0-1-0	0-0-1	11-3-4						
GRAMBLING STATE	12/28/17	93-63	w	14-1-4	6-0-4	12-5-1	8-5-1	2-5-1	7-7-0	21-4-3						
UC RIVERSIDE	12/30/17	95-71	w	11-4-2	17-1-2	13-2-1	12-2-4	5-6-1	3-4-2	19-3-4						
GRAND CANYON	01/06/18	57-73	L	7-5-1	26-5-2	6-8-0	6-5-1	0-3-0	4-3-2	5-3-0						
CHICAGO STATE	01/11/18	67-64	w	17-4-1	6-5-4	14-3-1	17-3-5	4-1-1	0-2-0	DNP						
KANSAS CITY	01/13/18	77-75	w	5-2-4	15-3-2	22-11-3	13-6-0	3-4-1	0-1-0	13-6-3						
at New Mexico State	01/18/18	62-75	L	4-1-2	12-3-2	20-6-1	11-3-1	0-1-0	0-0-0	5-4-1						

Opponent	Date	Score	15		21		23		35		41	
			SPURGEON,J	HUUN,COLLI	NETTLES,AA	CORRIGAN,B	MENZIES,AA					
at Saint Louis	11/10/17	46-62	L	0-0-0	DNP	0-1-0	DNP	2-2-0				
PUGET SOUND	11/12/17	121-70	w	2-1-1	DNP	6-2-1	0-0-0	15-12-1				
at Washington State	11/15/17	59-75	L	0-2-1	DNP	3-0-0	DNP	2-7-1				
vs Detroit Mercy	11/18/17	102-71	w	1-1-0	2-0-0	7-2-2	DNP	16-10-1				
at Belmont	11/19/17	77-90	L	0-0-0	DNP	12-3-1	DNP	8-4-1				
at Washington	11/24/17	84-89	L	DNP	DNP	3-1-1	DNP	17-13-1				
IDAHO STATE	11/27/17	73-67	w	0-1-0	DNP	0-0-0	DNP	11-7-0				
KENNESAW STATE	11/30/17	66-54	w	0-0-0	DNP	2-1-0	DNP	14-3-0				
EASTERN WASHINGTON	12/03/17	84-65	w	0-0-0	DNP	0-0-0	DNP	8-0-0				
PACIFIC LUTHERAN	12/04/17	99-69	w	8-3-2	9-0-0	20-3-2	0-0-0	32-15-0				
at Saint Mary's (CA)	12/09/17	73-97	L	DNP	DNP	0-0-0	DNP	4-3-0				
SAINT MARTIN'S	12/13/17	88-72	w	0-0-0	DNP	6-0-0	DNP	8-1-0				
PORTLAND	12/16/17	89-76	w	0-0-0	DNP	6-0-1	DNP	16-8-0				
CALIFORNIA	12/19/17	59-81	L	2-0-1	DNP	0-3-0	DNP	8-5-1				
NICHOLLS STATE	12/23/17	95-89	w	DNP	DNP	0-0-0	DNP	20-14-1				
GRAMBLING STATE	12/28/17	93-63	w	4-2-0	0-2-0	3-1-0	3-0-0	13-14-2				
UC RIVERSIDE	12/30/17	95-71	w	3-2-0	DNP	6-0-0	DNP	6-7-1				
GRAND CANYON	01/06/18	57-73	L	DNP	DNP	0-0-0	DNP	3-5-0				
CHICAGO STATE	01/11/18	67-64	w	0-0-0	DNP	0-0-0	DNP	9-19-1				
KANSAS CITY	01/13/18	77-75	w	DNP	DNP	0-0-0	DNP	6-7-1				
at New Mexico State	01/18/18	62-75	L	0-0-0	DNP	0-0-0	DNP	10-12-0				



#01 Means, Morgan

Opponent	Date	gs	min	Total		3-Pointers		Free throws		Rebounds					pts	avg					
				fg-fga	pct	3fg-fga	pct	ft-fga	pct	off	def	tot	avg	pf			a	t/o	blk	stl	
at Saint Louis	11/10/17	*	31	0-4	.000	0-3	.000	0-0	.000	0	3	3	3.0	3	1	2	0	1	0	0.0	
PUGET SOUND	11/12/17		30	4-6	.667	0-2	.000	6-6	1.000	1	6	7	5.0	1	10	5	0	2	14	7.0	
at Washington State	11/15/17		31	4-13	.308	2-9	.222	2-2	1.000	0	4	4	4.7	1	1	2	0	3	12	8.7	
vs Detroit Mercy	11/18/17	*	21	2-6	.333	1-2	.500	2-2	1.000	0	3	3	4.3	4	3	2	0	1	7	8.3	
at Belmont	11/19/17	*	29	7-14	.500	0-6	.000	1-1	1.000	1	2	3	4.0	4	4	2	0	0	15	9.6	
at Washington	11/24/17		12	0-4	.000	0-2	.000	0-0	.000	1	1	2	3.7	2	1	2	0	1	0	8.0	
IDAHO STATE	11/27/17		26	3-8	.375	0-1	.000	0-0	.000	0	6	6	4.0	3	2	2	0	1	6	7.7	
KENNESAW STATE	11/30/17		28	6-12	.500	0-2	.000	0-0	.000	2	4	6	4.3	2	2	2	0	1	12	8.3	
EASTERN WASHINGTON	12/03/17		16	0-1	.000	0-0	.000	0-0	.000	0	3	3	4.1	4	3	0	0	0	0	7.3	
PACIFIC LUTHERAN	12/04/17	*	40	3-10	.300	1-6	.167	2-2	1.000	0	1	1	3.8	1	13	3	0	2	9	7.5	
at Saint Mary's (CA)	12/09/17		16	2-4	.500	1-1	1.000	0-0	.000	0	0	0	3.5	1	1	1	0	0	5	7.3	
SAINT MARTIN'S	12/13/17		19	0-1	.000	0-1	.000	1-2	.500	2	2	4	3.5	2	2	0	0	0	1	6.8	
PORTLAND	12/16/17		26	3-7	.429	2-2	1.000	0-1	.000	0	5	5	3.6	1	4	0	0	1	8	6.8	
CALIFORNIA	12/19/17		26	4-11	.364	2-5	.400	0-0	.000	0	2	2	3.5	0	1	4	0	0	10	7.1	
NICHOLLS STATE	12/23/17	*	24	0-7	.000	0-3	.000	3-5	.600	2	3	5	3.6	2	4	1	0	0	3	6.8	
GRAMBLING STATE	12/28/17		22	3-6	.500	0-2	.000	8-8	1.000	0	1	1	3.4	3	4	1	0	0	14	7.3	
UC RIVERSIDE	12/30/17		22	4-8	.500	1-2	.500	2-2	1.000	1	3	4	3.5	3	2	3	0	0	11	7.5	
GRAND CANYON	01/06/18		25	3-7	.429	1-1	1.000	0-1	.000	1	4	5	3.6	4	1	1	1	0	7	7.4	
CHICAGO STATE	01/11/18	*	35	6-11	.545	2-4	.500	3-4	.750	0	4	4	3.6	4	1	2	0	1	17	7.9	
KANSAS CITY	01/13/18		24	2-7	.286	1-3	.333	0-0	.000	0	2	2	3.5	2	4	2	0	1	5	7.8	
at New Mexico State	01/18/18		25	2-4	.500	0-1	.000	0-0	.000	1	0	1	3.4	1	2	2	0	0	4	7.6	
Totals			6	528	58-151	.384	14-58	.241	30-36	.833	12	59	71	3.4	48	66	39	1	15	160	7.6

Games played: 21
 Minutes/game: 25.1
 Points/game: 7.6
 FG Pct: 38.4
 3FG Pct: 24.1
 FT Pct: 83.3

Rebounds/game: 3.4
 Assists/game: 3.1
 Turnovers/game: 1.9
 Assist/turnover ratio: 1.7
 Steals/game: 0.7
 Blocks/game: 0.0

CAREER STATS

Year	GP-GS	Min/Avg	Total		3-Point		FT-FTA	Pct	Rebounds					Pts/Avg			
			FG-FGA	Pct	FG-FGA	Pct			Off-Def	Tot	Avg	PF-FO	Ast		TO	Blk	Stl
2016-17	29-29	683/23.6	67-165	.406	25-70	.357	36-56	.643	12-65	77	2.7	69-3	60	56	0	27	195/6.7
2017-18	21-6	528/25.1	58-151	.384	14-58	.241	30-36	.833	12-59	71	3.4	48-0	66	39	1	15	160/7.6
TOTAL	50-35	1211/24.2	125-316	.396	39-128	.305	66-92	.717	24-124	148	3.0	117-3	126	95	1	42	355/7.1

SINGLE-GAME HIGHS

Points: 22, Northwest University -- 12/01/16
 Rebounds: 8, Northwest University -- 12/01/16
 Assists: 13, Pacific Lutheran -- 12/04/17
 Steals: 3, 4 times
 Blocks: 1, Grand Canyon -- 01/06/18
 FG made: 9, Northwest University -- 12/01/16
 FG attempts: 15, Northwest University -- 12/01/16
 3FG made: 4, at Utah Valley -- 03/04/17
 3FG attempts: 9, at Washington State -- 11/15/17
 FT made: 8, Southern Utah -- 12/19/16 ; Grambling State -- 12/28/17
 FT attempts: 10, Southern Utah -- 12/19/16



#02 Hill, Jordan

Opponent	Date	gs	min	Total		3-Pointers		Free throws		Rebounds				pf	a	t/o	blk	stl	pts	avg	
				fg-fga	pct	3fg-fga	pct	ft-fa	pct	off	def	tot	avg								
at Saint Louis	11/10/17	*	34	7-12	.583	4-6	.667	2-2	1.000	0	1	1	1.0	4	2	2	1	2	20	20.0	
PUGET SOUND	11/12/17	*	30	1-3	.333	1-3	.333	2-2	1.000	1	8	9	5.0	2	6	2	3	4	5	12.5	
at Washington State	11/15/17	*	33	3-11	.273	0-4	.000	0-1	.000	1	0	1	3.7	5	3	2	0	1	6	10.3	
vs Detroit Mercy	11/18/17	*	29	4-6	.667	3-3	1.000	6-8	.750	2	5	7	4.5	3	2	5	0	0	17	12.0	
at Belmont	11/19/17	*	30	5-13	.385	3-7	.429	2-5	.400	0	3	3	4.2	2	6	1	0	1	15	12.6	
at Washington	11/24/17	*	35	6-12	.500	4-9	.444	0-0	.000	0	3	3	4.0	3	3	3	1	0	16	13.2	
IDAHO STATE	11/27/17	*	39	5-11	.455	1-3	.333	8-8	1.000	4	3	7	4.4	4	5	5	0	1	19	14.0	
KENNESAW STATE	11/30/17	*	13	1-4	.250	1-2	.500	0-0	.000	0	0	0	3.9	4	1	0	0	0	3	12.6	
EASTERN WASHINGTON	12/03/17	*	39	4-13	.308	3-5	.600	2-2	1.000	1	5	6	4.1	2	8	5	0	3	13	12.7	
PACIFIC LUTHERAN	12/04/17	dn		-	-	-	-	-	-	-	-	-	-	-	-	-	-	-	-	-	
at Saint Mary's (CA)	12/09/17	*	33	4-12	.333	2-6	.333	0-0	.000	1	4	5	4.2	3	5	4	0	1	10	12.4	
SAINT MARTIN'S	12/13/17	*	37	8-11	.727	2-4	.500	3-3	1.000	0	7	7	4.5	3	5	4	0	1	21	13.2	
PORTLAND	12/16/17	*	35	8-16	.500	6-11	.545	1-1	1.000	0	1	1	4.2	3	4	2	0	3	23	14.0	
CALIFORNIA	12/19/17	*	22	1-8	.125	0-7	.000	0-0	.000	1	1	2	4.0	4	1	4	1	3	2	13.1	
NICHOLLS STATE	12/23/17	*	40	8-15	.533	5-9	.556	2-2	1.000	0	2	2	3.9	2	8	0	3	0	23	13.8	
GRAMBLING STATE	12/28/17	*	22	2-9	.222	1-7	.143	1-2	.500	0	0	0	3.6	5	4	1	0	2	6	13.3	
UC RIVERSIDE	12/30/17	*	27	6-11	.545	5-6	.833	0-0	.000	0	1	1	3.4	3	2	1	0	2	17	13.5	
GRAND CANYON	01/06/18	*	40	11-22	.500	4-10	.400	0-1	.000	1	4	5	3.5	1	2	2	0	0	26	14.2	
CHICAGO STATE	01/11/18	*	36	1-10	.100	1-5	.200	3-3	1.000	0	5	5	3.6	4	4	3	2	1	6	13.8	
KANSAS CITY	01/13/18	*	34	2-9	.222	2-7	.286	9-10	.900	1	2	3	3.6	3	2	7	0	0	15	13.8	
at New Mexico State	01/18/18	*	35	3-9	.333	1-4	.250	5-6	.833	0	3	3	3.6	3	2	2	0	1	12	13.8	
Totals			20	643	90-217	.415	49-118	.415	46-56	.821	13	58	71	3.6	63	75	55	11	26	275	13.8

Games played: 20
 Minutes/game: 32.2
 Points/game: 13.8
 FG Pct: 41.5
 3FG Pct: 41.5
 FT Pct: 82.1

Rebounds/game: 3.6
 Assists/game: 3.8
 Turnovers/game: 2.8
 Assist/turnover ratio: 1.4
 Steals/game: 1.3
 Blocks/game: 0.6

CAREER STATS

Year	GP-GS	Min/Avg	Total		3-Point		FT-FTA	Pct	Rebounds				TO	Blk	Stl	Pts/Avg	
			FG-FGA	Pct	FG-FGA	Pct			Tot	Avg	PF-FO	Ast					
2013-14*	11-0	25/2.3	1-7	.143	1-4	.250	4-7	.571	1-2	3	0.3	5-0	1	2	0	0	7/0.6
2015-16*	30-1	467/15.6	33-87	.379	17-51	.333	4-6	.667	14-28	42	1.4	44-0	24	19	1	9	87/2.9
2016-17*	35-0	348/9.9	19-54	.352	9-35	.257	6-9	.667	7-31	38	1.1	26-0	16	9	1	6	53/1.5
2017-18	20-20	643/32.2	90-217	.415	49-118	.415	46-56	.821	13-58	71	3.6	63-2	75	55	11	26	275/13.8
TOTAL	20-20	643/32.2	90-217	.415	49-118	.415	46-56	.821	13-58	71	3.6	63-2	75	55	11	26	275/13.8
All*	96-21	1483/15.4	143-365	.392	76-208	.365	60-78	.769	35-119	154	1.6	138-2	116	85	13	41	422/4.4

* Statistics from prior team/school

SINGLE-GAME HIGHS

Points: 26, Grand Canyon -- 01/06/18
 Rebounds: 9, Puget Sound -- 11/12/17
 Assists: 8, Eastern Washington -- 12/03/17 ; Nicholls State -- 12/23/17
 Steals: 4, Puget Sound -- 11/12/17
 Blocks: 3, Puget Sound -- 11/12/17 ; Nicholls State -- 12/23/17
 FG made: 11, Grand Canyon -- 01/06/18
 FG attempts: 22, Grand Canyon -- 01/06/18
 3FG made: 6, Portland -- 12/16/17
 3FG attempts: 11, Portland -- 12/16/17
 FT made: 9, Kansas City -- 01/13/18
 FT attempts: 10, Kansas City -- 01/13/18



#05 Kavas, Matej

Opponent	Date	gs	min	Total		3-Pointers		Free throws		Rebounds				pf	a	t/o	blk	stl	pts	avg	
				fg-fga	pct	3fg-fga	pct	ft-fa	pct	off	def	tot	avg								
at Saint Louis	11/10/17	*	38	5-11	.455	3-7	.429	2-2	1.000	0	6	6	6.0	3	0	5	1	0	15	15.0	
PUGET SOUND	11/12/17	*	25	8-11	.727	0-3	.000	1-1	1.000	2	4	6	6.0	1	2	3	0	0	17	16.0	
at Washington State	11/15/17	*	35	1-11	.091	1-8	.125	3-3	1.000	3	9	12	8.0	3	4	2	1	0	6	12.7	
vs Detroit Mercy	11/18/17		29	8-11	.727	7-9	.778	4-4	1.000	0	3	3	6.8	3	2	2	1	0	27	16.3	
at Belmont	11/19/17		33	4-8	.500	4-5	.800	3-5	.600	0	3	3	6.0	3	0	1	1	0	15	16.0	
at Washington	11/24/17	*	34	8-14	.571	5-10	.500	4-5	.800	1	4	5	5.8	4	2	4	0	0	25	17.5	
IDAHO STATE	11/27/17	*	37	9-18	.500	3-10	.300	3-6	.500	1	8	9	6.3	4	1	3	0	0	24	18.4	
KENNESAW STATE	11/30/17	*	30	4-8	.500	0-4	.000	2-2	1.000	2	2	4	6.0	4	0	3	0	0	10	17.4	
EASTERN WASHINGTON	12/03/17	*	38	9-13	.692	4-5	.800	4-4	1.000	0	8	8	6.2	4	2	4	0	1	26	18.3	
PACIFIC LUTHERAN	12/04/17		dnp	-	-	-	-	-	-	-	-	-	-	-	-	-	-	-	-	-	
at Saint Mary's (CA)	12/09/17	*	40	6-15	.400	3-7	.429	4-4	1.000	3	2	5	6.1	3	1	1	0	0	19	18.4	
SAINT MARTIN'S	12/13/17	*	36	6-10	.600	2-5	.400	3-5	.600	1	5	6	6.1	2	2	1	0	0	17	18.3	
PORTLAND	12/16/17	*	29	7-12	.583	4-6	.667	0-0	.000	3	2	5	6.0	4	2	0	0	1	18	18.3	
CALIFORNIA	12/19/17	*	37	7-14	.500	4-9	.444	2-2	1.000	1	0	1	5.6	4	2	3	0	0	20	18.4	
NICHOLLS STATE	12/23/17	*	37	7-13	.538	6-8	.750	0-0	.000	1	6	7	5.7	4	3	2	1	1	20	18.5	
GRAMBLING STATE	12/28/17	*	27	4-10	.400	4-7	.571	0-0	.000	2	3	5	5.7	1	1	2	0	0	12	18.1	
UC RIVERSIDE	12/30/17	*	24	4-5	.800	3-3	1.000	2-2	1.000	0	2	2	5.4	3	1	2	0	1	13	17.8	
GRAND CANYON	01/06/18	*	31	3-11	.273	0-5	.000	0-0	.000	0	8	8	5.6	4	0	3	0	0	6	17.1	
CHICAGO STATE	01/11/18	*	32	6-14	.429	1-4	.250	1-1	1.000	1	2	3	5.4	2	1	2	0	0	14	16.9	
KANSAS CITY	01/13/18	*	33	6-13	.462	4-7	.571	6-8	.750	6	5	11	5.7	4	3	3	0	0	22	17.2	
at New Mexico State	01/18/18	*	34	7-13	.538	3-7	.429	3-3	1.000	1	5	6	5.8	4	1	3	0	0	20	17.3	
Totals			18	659	119-235	.506	61-129	.473	47-57	.825	28	87	115	5.8	64	30	49	5	4	346	17.3

Games played: 20
 Minutes/game: 33.0
 Points/game: 17.3
 FG Pct: 50.6
 3FG Pct: 47.3
 FT Pct: 82.5

Rebounds/game: 5.8
 Assists/game: 1.5
 Turnovers/game: 2.5
 Assist/turnover ratio: 0.6
 Steals/game: 0.2
 Blocks/game: 0.3

CAREER STATS

Year	GP-GS	Min/Avg	Total		3-Point		FT-FTA	Pct	Rebounds				PF-FO	Ast	TO	Blk	Stl	Pts/Avg
			FG-FGA	Pct	FG-FGA	Pct			Off	Def	Tot	Avg						
2016-17	27-0	549/20.3	81-185	.438	42-104	.404	29-42	.690	11-68	79	2.9	51-2	15	23	9	6	233/8.6	
2017-18	20-18	659/33.0	119-235	.506	61-129	.473	47-57	.825	28-87	115	5.8	64-0	30	49	5	4	346/17.3	
TOTAL	47-18	1208/25.7	200-420	.476	103-233	.442	76-99	.768	39-155	194	4.1	115-2	45	72	14	10	579/12.3	

SINGLE-GAME HIGHS

Points: 27, vs Detroit Mercy -- 11/18/17
 Rebounds: 12, at Washington State -- 11/15/17
 Assists: 4, at Washington State -- 11/15/17
 Steals: 2, at Chicago State -- 2/9/17
 Blocks: 2, at Grand Canyon -- 01/21/17 ; Utah Valley -- 02/04/17 ; CSU Bakersfield -- 02/18/17
 FG made: 9, Idaho State -- 11/27/17 ; Eastern Washington -- 12/03/17
 FG attempts: 18, Idaho State -- 11/27/17
 3FG made: 7, vs Detroit Mercy -- 11/18/17
 3FG attempts: 10, at Washington -- 11/24/17 ; Idaho State -- 11/27/17
 FT made: 7, New Mexico State -- 01/26/17
 FT attempts: 9, New Mexico State -- 01/26/17



#10 Gittens, Richaud

Opponent	Date	gs	min	Total		3-Pointers		Free throws		Rebounds				pf	a	t/o	blk	stl	pts	avg	
				fg-fga	pct	3fg-fga	pct	ft-fa	pct	off	def	tot	avg								
at Saint Louis	11/10/17	*	29	1-12	.083	0-7	.000	0-0	.000	1	4	5	5.0	0	2	2	0	0	2	2.0	
PUGET SOUND	11/12/17		20	10-15	.667	4-8	.500	2-2	1.000	1	4	5	5.0	3	2	4	0	3	26	14.0	
at Washington State	11/15/17	*	28	6-16	.375	4-13	.308	2-2	1.000	2	4	6	5.3	4	2	4	0	1	18	15.3	
vs Detroit Mercy	11/18/17		19	4-6	.667	1-2	.500	0-0	.000	0	4	4	5.0	3	0	1	0	1	9	13.8	
at Belmont	11/19/17	*	25	1-5	.200	1-3	.333	0-0	.000	2	3	5	5.0	2	2	1	0	0	3	11.6	
at Washington	11/24/17		23	2-6	.333	1-5	.200	0-0	.000	0	3	3	4.7	5	1	1	0	2	5	10.5	
IDAHO STATE	11/27/17	*	24	2-2	1.000	0-0	.000	0-0	.000	3	4	7	5.0	5	0	1	0	0	4	9.6	
KENNESAW STATE	11/30/17	*	34	4-10	.400	2-4	.500	2-2	1.000	3	4	7	5.3	0	0	4	0	4	12	9.9	
EASTERN WASHINGTON	12/03/17	*	35	3-8	.375	1-2	.500	4-5	.800	1	6	7	5.4	0	1	0	0	3	11	10.0	
PACIFIC LUTHERAN	12/04/17	dnp		-	-	-	-	-	-	-	-	-	-	-	-	-	-	-	-	-	
at Saint Mary's (CA)	12/09/17	*	34	2-6	.333	2-3	.667	6-8	.750	2	4	6	5.5	0	2	0	1	0	12	10.2	
SAINT MARTIN'S	12/13/17	*	36	5-9	.556	0-3	.000	3-5	.600	3	2	5	5.5	3	2	1	0	4	13	10.5	
PORTLAND	12/16/17	*	39	3-8	.375	0-3	.000	2-3	.667	3	2	5	5.4	3	4	1	1	0	8	10.3	
CALIFORNIA	12/19/17	*	38	3-8	.375	1-4	.250	4-6	.667	3	3	6	5.5	5	1	0	0	1	11	10.3	
NICHOLLS STATE	12/23/17	*	37	6-10	.600	2-4	.500	4-4	1.000	1	3	4	5.4	3	0	1	0	3	18	10.9	
GRAMBLING STATE	12/28/17	*	25	4-9	.444	0-2	.000	0-2	.000	3	2	5	5.3	2	1	3	0	2	8	10.7	
UC RIVERSIDE	12/30/17	*	27	1-5	.200	0-2	.000	10-10	1.000	1	1	2	5.1	4	4	0	0	0	12	10.8	
GRAND CANYON	01/06/18	*	26	2-5	.400	0-1	.000	2-3	.667	3	2	5	5.1	4	1	1	0	1	6	10.5	
CHICAGO STATE	01/11/18	*	38	7-10	.700	3-4	.750	0-1	.000	1	2	3	5.0	0	5	3	0	1	17	10.8	
KANSAS CITY	01/13/18	*	35	4-8	.500	1-3	.333	4-4	1.000	1	5	6	5.1	3	0	4	0	1	13	10.9	
at New Mexico State	01/18/18	*	35	5-9	.556	0-2	.000	1-3	.333	2	1	3	5.0	4	1	3	0	1	11	11.0	
Totals			17	607	75-167	.449	23-75	.307	46-60	.767	36	63	99	5.0	53	31	35	2	28	219	11.0

Games played: 20
 Minutes/game: 30.4
 Points/game: 11.0
 FG Pct: 44.9
 3FG Pct: 30.7
 FT Pct: 76.7

Rebounds/game: 5.0
 Assists/game: 1.6
 Turnovers/game: 1.8
 Assist/turnover ratio: 0.9
 Steals/game: 1.4
 Blocks/game: 0.1

CAREER STATS

Year	GP-GS	Min/Avg	Total		3-Point		FT-FTA	Pct	Off-Def	Rebounds		PF-FO	Ast	TO	Blk	Stl	Pts/Avg
			FG-FGA	Pct	FG-FGA	Pct				Tot	Avg						
2013-14*	31-3	705/22.7	74-160	.463	16-33	.485	51-80	.638	13-78	91	2.9	57-0	68	58	6	19	215/6.9
2014-15*	30-30	989/33.0	93-229	.406	39-92	.424	73-94	.777	11-79	90	3.0	68-1	85	57	3	32	298/9.9
2015-16*	35-0	617/17.6	51-139	.367	31-89	.348	18-29	.621	6-69	75	2.1	49-0	46	29	2	25	151/4.3
2016-17*	6-0	120/20.0	16-35	.457	6-16	.375	6-8	.750	2-24	26	4.3	9-0	10	12	0	5	44/7.3
2017-18	20-17	607/30.4	75-167	.449	23-75	.307	46-60	.767	36-63	99	5.0	53-3	31	35	2	28	219/11.0
TOTAL	20-17	607/30.4	75-167	.449	23-75	.307	46-60	.767	36-63	99	5.0	53-3	31	35	2	28	219/11.0
All*	122-50	3038/24.9	309-730	.423	115-305	.377	194-271	.716	68-313	381	3.1	236-4	240	191	13	109	927/7.6

* Statistics from prior team/school

SINGLE-GAME HIGHS

Points: 26, Puget Sound -- 11/12/17
 Rebounds: 7, Idaho State -- 11/27/17 ; Kennesaw State -- 11/30/17 ; Eastern Washington -- 12/03/17
 Assists: 4, Portland -- 12/16/17 ; UC Riverside -- 12/30/17
 Steals: 4, Kennesaw State -- 11/30/17 ; Saint Martin's -- 12/13/17
 Blocks: 1, at Saint Mary's (CA) -- 12/09/17 ; Portland -- 12/16/17
 FG made: 10, Puget Sound -- 11/12/17
 FG attempts: 16, at Washington State -- 11/15/17
 3FG made: 4, Puget Sound -- 11/12/17 ; at Washington State -- 11/15/17
 3FG attempts: 13, at Washington State -- 11/15/17
 FT made: 10, UC Riverside -- 12/30/17
 FT attempts: 10, UC Riverside -- 12/30/17



#11 Ulaneo, Scott

Opponent	Date	gs	min	Total		3-Pointers		Free throws		Rebounds				pf	a	t/o	blk	stl	pts	avg	
				fg-fga	pct	3fg-fga	pct	ft-fa	pct	off	def	tot	avg								
at Saint Louis	11/10/17		14	0-0	.000	0-0	.000	1-2	.500	0	2	2	2.0	2	0	0	1	0	1	1.0	
PUGET SOUND	11/12/17	*	18	1-3	.333	1-2	.500	4-4	1.000	0	7	7	4.5	1	1	4	1	1	7	4.0	
at Washington State	11/15/17		6	0-1	.000	0-1	.000	0-0	.000	0	0	0	3.0	2	0	0	0	1	0	2.7	
vs Detroit Mercy	11/18/17	*	10	0-1	.000	0-1	.000	0-0	.000	0	1	1	2.5	2	0	2	0	0	0	2.0	
at Belmont	11/19/17		14	1-4	.250	0-2	.000	0-0	.000	2	2	4	2.8	1	0	0	0	0	2	2.0	
at Washington	11/24/17		9	1-1	1.000	0-0	.000	0-0	.000	1	0	1	2.5	0	1	0	0	0	2	2.0	
IDAHO STATE	11/27/17		6	0-1	.000	0-0	.000	0-0	.000	0	0	0	2.1	0	0	0	0	0	0	1.7	
KENNESAW STATE	11/30/17		13	0-2	.000	0-1	.000	0-0	.000	0	2	2	2.1	2	2	1	0	0	0	1.5	
EASTERN WASHINGTON	12/03/17		9	2-3	.667	0-0	.000	0-0	.000	0	0	0	1.9	2	1	1	0	0	4	1.8	
PACIFIC LUTHERAN	12/04/17	*	18	3-4	.750	0-0	.000	0-1	.000	4	5	9	2.6	5	5	3	0	0	6	2.2	
at Saint Mary's (CA)	12/09/17		20	4-4	1.000	2-2	1.000	0-2	.000	3	2	5	2.8	3	3	0	0	0	10	2.9	
SAINT MARTIN'S	12/13/17		10	1-3	.333	0-0	.000	0-0	.000	1	2	3	2.8	2	0	2	0	1	2	2.8	
PORTLAND	12/16/17		5	0-0	.000	0-0	.000	0-0	.000	0	0	0	2.6	1	0	1	0	0	0	2.6	
CALIFORNIA	12/19/17		11	2-4	.500	0-0	.000	2-2	1.000	1	3	4	2.7	2	0	0	0	0	6	2.9	
NICHOLLS STATE	12/23/17		4	0-2	.000	0-0	.000	0-0	.000	1	0	1	2.6	2	0	0	0	0	0	2.7	
GRAMBLING STATE	12/28/17		14	1-3	.333	0-0	.000	0-0	.000	1	4	5	2.8	4	1	1	1	0	2	2.6	
UC RIVERSIDE	12/30/17		9	0-2	.000	0-1	.000	5-6	.833	1	5	6	2.9	4	1	1	1	0	5	2.8	
GRAND CANYON	01/06/18		8	0-0	.000	0-0	.000	0-0	.000	0	3	3	2.9	1	0	2	0	0	0	2.6	
CHICAGO STATE	01/11/18		10	1-1	1.000	0-0	.000	2-3	.667	1	0	1	2.8	4	1	1	0	0	4	2.7	
KANSAS CITY	01/13/18		13	1-3	.333	0-0	.000	1-1	1.000	1	3	4	2.9	4	1	1	1	0	3	2.7	
at New Mexico State	01/18/18		3	0-0	.000	0-0	.000	0-0	.000	0	1	1	2.8	0	0	1	0	0	0	2.6	
Totals			3	224	18-42	.429	3-10	.300	15-21	.714	17	42	59	2.8	44	17	21	5	3	54	2.6

Games played: 21
 Minutes/game: 10.7
 Points/game: 2.6
 FG Pct: 42.9
 3FG Pct: 30.0
 FT Pct: 71.4

Rebounds/game: 2.8
 Assists/game: 0.8
 Turnovers/game: 1.0
 Assist/turnover ratio: 0.8
 Steals/game: 0.1
 Blocks/game: 0.2

CAREER STATS

Year	GP-GS	Min/Avg	Total		3-Point		FT-FTA	Pct	Off-Def	Tot	Avg	PF-FO	Ast	TO	Blk	Stl	Pts/Avg
			FG-FGA	Pct	FG-FGA	Pct											
2016-17	30-0	455/15.2	46-101	.455	8-30	.267	31-62	.500	29-68	97	3.2	73-2	27	34	7	13	131/4.4
2017-18	21-3	224/10.7	18-42	.429	3-10	.300	15-21	.714	17-42	59	2.8	44-1	17	21	5	3	54/2.6
TOTAL	51-3	679/13.3	64-143	.448	11-40	.275	46-83	.554	46-110	156	3.1	117-3	44	55	12	16	185/3.6

SINGLE-GAME HIGHS

Points: 12, at New Mexico State -- 02/25/17 ; Arkansas-Pine Bluff -- 12/12/16
 Rebounds: 11, at Colorado -- 11/14/16
 Assists: 5, Pacific Lutheran -- 12/04/17
 Steals: 2, at Colorado -- 11/14/16 ; Arkansas-Pine Bluff -- 12/12/16
 Blocks: 3, Grand Canyon -- 02/16/17
 FG made: 5, at New Mexico State -- 02/25/17
 FG attempts: 8, Mississippi Valley St. -- 12/15/16
 3FG made: 2, at UTRGV -- 02/23/17 ; at New Mexico State -- 02/25/17 ; at Saint Mary's (CA) -- 12/09/17
 3FG attempts: 4, Utah Valley -- 02/04/17
 FT made: 7, at UC Santa Barbara -- 12/30/16
 FT attempts: 8, at UC Santa Barbara -- 12/30/16



#12 Da Campo, Mattia

Opponent	Date	gs	min	Total		3-Pointers		Free throws		Rebounds				pf	a	t/o	blk	stl	pts	avg
				fg-fga	pct	3fg-fga	pct	ft-fa	pct	off	def	tot	avg							
at Saint Louis	11/10/17		3	0-0	.000	0-0	.000	0-0	.000	0	0	0	0.0	0	2	0	0	0	0	0.0
PUGET SOUND	11/12/17		18	2-2	1.000	0-0	.000	2-2	1.000	1	2	3	1.5	3	2	1	0	3	6	3.0
at Washington State	11/15/17		2	0-0	.000	0-0	.000	0-0	.000	0	0	0	1.0	0	0	0	0	0	0	2.0
vs Detroit Mercy	11/18/17		12	0-0	.000	0-0	.000	0-0	.000	3	3	6	2.3	2	1	1	0	1	0	1.5
at Belmont	11/19/17		4	0-0	.000	0-0	.000	0-0	.000	1	0	1	2.0	0	1	0	0	0	0	1.2
at Washington	11/24/17		1	0-0	.000	0-0	.000	0-0	.000	0	0	0	1.7	0	0	0	0	0	0	1.0
IDAHO STATE	11/27/17		10	0-1	.000	0-1	.000	2-2	1.000	0	2	2	1.7	3	0	0	0	0	2	1.1
KENNESAW STATE	11/30/17		7	0-0	.000	0-0	.000	0-0	.000	0	0	0	1.5	3	0	0	0	0	0	1.0
EASTERN WASHINGTON	12/03/17		5	1-1	1.000	0-0	.000	0-0	.000	0	0	0	1.3	2	0	0	0	0	2	1.1
PACIFIC LUTHERAN	12/04/17 *		37	6-10	.600	2-6	.333	1-2	.500	4	3	7	1.9	4	5	1	0	3	15	2.5
at Saint Mary's (CA)	12/09/17		5	0-0	.000	0-0	.000	0-0	.000	0	3	3	2.0	1	0	0	0	0	0	2.3
SAINT MARTIN'S	12/13/17		2	0-0	.000	0-0	.000	0-0	.000	0	0	0	1.8	0	0	0	0	0	0	2.1
PORTLAND	12/16/17		3	0-0	.000	0-0	.000	0-0	.000	0	0	0	1.7	1	0	0	0	0	0	1.9
CALIFORNIA	12/19/17		3	0-0	.000	0-0	.000	0-0	.000	0	2	2	1.7	1	0	0	0	0	0	1.8
NICHOLLS STATE	12/23/17		6	0-0	.000	0-0	.000	0-0	.000	0	0	0	1.6	1	1	1	0	0	0	1.7
GRAMBLING STATE	12/28/17		14	3-3	1.000	1-1	1.000	0-0	.000	3	4	7	1.9	1	0	1	0	1	7	2.0
UC RIVERSIDE	12/30/17		16	1-1	1.000	1-1	1.000	0-0	.000	1	3	4	2.1	2	2	1	0	0	3	2.1
GRAND CANYON	01/06/18		20	2-3	.667	0-0	.000	0-1	.000	0	3	3	2.1	3	2	0	0	0	4	2.2
CHICAGO STATE	01/11/18		11	0-3	.000	0-0	.000	0-0	.000	1	1	2	2.1	0	0	1	0	0	0	2.1
KANSAS CITY	01/13/18		4	0-0	.000	0-0	.000	0-0	.000	1	0	1	2.1	0	0	0	0	1	0	2.0
at New Mexico State	01/18/18		1	0-0	.000	0-0	.000	0-0	.000	0	0	0	2.0	0	0	0	0	0	0	1.9
Totals		1	184	15-24	.625	4-9	.444	5-7	.714	15	26	41	2.0	27	16	7	0	9	39	1.9

Games played: 21
 Minutes/game: 8.8
 Points/game: 1.9
 FG Pct: 62.5
 3FG Pct: 44.4
 FT Pct: 71.4

Rebounds/game: 2.0
 Assists/game: 0.8
 Turnovers/game: 0.3
 Assist/turnover ratio: 2.3
 Steals/game: 0.4

CAREER STATS

Year	GP-GS	Min/Avg	Total		3-Point		FT-FTA	Pct	Off-Def	Tot	Avg	PF-FO	Ast	TO	Blk	Stl	Pts/Avg
			FG-FGA	Pct	FG-FGA	Pct											
2016-17	16-0	139/8.7	9-14	.643	1-3	.333	5-10	.500	6-11	17	1.1	19-0	14	17	0	3	24/1.5
2017-18	21-1	184/8.8	15-24	.625	4-9	.444	5-7	.714	15-26	41	2.0	27-0	16	7	0	9	39/1.9
TOTAL	37-1	323/8.7	24-38	.632	5-12	.417	10-17	.588	21-37	58	1.6	46-0	30	24	0	12	63/1.7

SINGLE-GAME HIGHS

Points: 15, Pacific Lutheran -- 12/04/17
 Rebounds: 7, Pacific Lutheran -- 12/04/17 ; Great Falls -- 12/10/16
 Assists: 5, Pacific Lutheran -- 12/04/17
 Steals: 3, Puget Sound -- 11/12/17 ; Pacific Lutheran -- 12/04/17
 FG made: 6, Pacific Lutheran -- 12/04/17
 FG attempts: 10, Pacific Lutheran -- 12/04/17
 3FG made: 2, Pacific Lutheran -- 12/04/17
 3FG attempts: 6, Pacific Lutheran -- 12/04/17
 FT made: 3, at UMKC -- 02/11/17
 FT attempts: 5, at UMKC -- 02/11/17



#13 Hearlihy, Josh

Opponent	Date	gs	min	Total		3-Pointers		Free throws		Rebounds				pf	a	t/o	blk	stl	pts	avg	
				fg-fga	pct	3fg-fga	pct	ft-fa	pct	off	def	tot	avg								
at Saint Louis	11/10/17		21	3-6	.500	0-1	.000	0-0	.000	0	2	2	2.0	1	1	1	0	2	6	6.0	
PUGET SOUND	11/12/17	*	22	6-7	.857	2-2	1.000	9-10	.900	2	6	8	5.0	2	1	8	0	1	23	14.5	
at Washington State	11/15/17	*	38	5-12	.417	2-4	.500	0-0	.000	2	4	6	5.3	2	2	0	0	0	12	13.7	
vs Detroit Mercy	11/18/17	*	31	5-11	.455	2-3	.667	4-6	.667	1	3	4	5.0	3	7	5	1	0	16	14.3	
at Belmont	11/19/17	*	32	2-8	.250	1-4	.250	2-2	1.000	0	2	2	4.4	2	0	0	1	0	7	12.8	
at Washington	11/24/17	*	37	3-7	.429	1-4	.250	9-12	.750	2	3	5	4.5	1	7	3	0	1	16	13.3	
IDAHO STATE	11/27/17	*	20	3-8	.375	0-3	.000	1-2	.500	0	3	3	4.3	2	1	1	0	0	7	12.4	
KENNESAW STATE	11/30/17	*	37	4-13	.308	1-5	.200	4-4	1.000	1	9	10	5.0	2	7	1	0	1	13	12.5	
EASTERN WASHINGTON	12/03/17	*	39	6-10	.600	1-2	.500	7-8	.875	0	5	5	5.0	2	2	1	0	1	20	13.3	
PACIFIC LUTHERAN	12/04/17		dnp	-	-	-	-	-	-	-	-	-	-	-	-	-	-	-	-	-	
at Saint Mary's (CA)	12/09/17	*	24	5-9	.556	1-1	1.000	2-2	1.000	2	1	3	4.8	2	1	3	0	1	13	13.3	
SAINT MARTIN'S	12/13/17	*	33	4-8	.500	1-3	.333	11-11	1.000	1	5	6	4.9	0	2	4	1	0	20	13.9	
PORTLAND	12/16/17	*	35	4-8	.500	2-3	.667	0-0	.000	1	2	3	4.8	4	3	3	1	0	10	13.6	
CALIFORNIA	12/19/17	*	20	0-6	.000	0-2	.000	0-0	.000	3	4	7	4.9	4	5	5	0	0	0	12.5	
NICHOLLS STATE	12/23/17		22	4-8	.500	1-2	.500	2-3	.667	0	3	3	4.8	1	4	2	0	0	11	12.4	
GRAMBLING STATE	12/28/17	*	30	6-10	.600	1-2	.500	8-9	.889	1	3	4	4.7	0	3	0	1	2	21	13.0	
UC RIVERSIDE	12/30/17	*	29	6-12	.500	4-6	.667	3-5	.600	0	3	3	4.6	3	4	3	1	1	19	13.4	
GRAND CANYON	01/06/18	*	37	1-9	.111	0-3	.000	3-4	.750	3	0	3	4.5	3	0	4	0	1	5	12.9	
CHICAGO STATE	01/11/18		dnp	-	-	-	-	-	-	-	-	-	-	-	-	-	-	-	-	-	
KANSAS CITY	01/13/18	*	31	2-5	.400	2-3	.667	7-8	.875	0	6	6	4.6	2	3	4	0	0	13	12.9	
at New Mexico State	01/18/18	*	31	2-5	.400	1-2	.500	0-0	.000	0	4	4	4.6	2	1	4	0	0	5	12.5	
Totals			17	569	71-162	.438	23-55	.418	72-86	.837	19	68	87	4.6	38	54	52	6	11	237	12.5

Games played: 19
 Minutes/game: 29.9
 Points/game: 12.5
 FG Pct: 43.8
 3FG Pct: 41.8
 FT Pct: 83.7

Rebounds/game: 4.6
 Assists/game: 2.8
 Turnovers/game: 2.7
 Assist/turnover ratio: 1.0
 Steals/game: 0.6
 Blocks/game: 0.3

CAREER STATS

Year	GP-GS	Min/Avg	Total		3-Point		FT-FTA	Pct	Rebounds		PF-FO	Ast	TO	Blk	Stl	Pts/Avg	
			FG-FGA	Pct	FG-FGA	Pct			Tot	Avg							
2013-14*	18-0	97/5.4	3-13	.231	1-3	.333	2-2	1.000	1-9	10	0.6	10-0	6	4	0	2	9/0.5
2014-15*	22-0	186/8.5	13-39	.333	4-14	.286	4-12	.333	15-18	33	1.5	22-1	13	13	1	6	34/1.5
2016-17*	27-0	269/10.0	19-44	.432	6-19	.316	9-16	.563	5-34	39	1.4	23-0	15	20	1	5	53/2.0
2017-18	19-17	569/29.9	71-162	.438	23-55	.418	72-86	.837	19-68	87	4.6	38-0	54	52	6	11	237/12.5
TOTAL	19-17	569/29.9	71-162	.438	23-55	.418	72-86	.837	19-68	87	4.6	38-0	54	52	6	11	237/12.5
All*	86-17	1121/13.0	106-258	.411	34-91	.374	87-116	.750	40-129	169	2.0	93-1	88	89	8	24	333/3.9

* Statistics from prior team/school

SINGLE-GAME HIGHS

Points: 23, Puget Sound -- 11/12/17
 Rebounds: 10, Kennesaw State -- 11/30/17
 Assists: 7, vs Detroit Mercy -- 11/18/17 ; at Washington -- 11/24/17 ; Kennesaw State -- 11/30/17
 Steals: 2, at Saint Louis -- 11/10/17 ; Grambling State -- 12/28/17
 Blocks: 1, 6 times
 FG made: 6, 4 times
 FG attempts: 13, Kennesaw State -- 11/30/17
 3FG made: 4, UC Riverside -- 12/30/17
 3FG attempts: 6, UC Riverside -- 12/30/17
 FT made: 11, Saint Martin's -- 12/13/17
 FT attempts: 12, at Washington -- 11/24/17



#15 Spurgeon, Jake

Opponent	Date	gs	min	Total		3-Pointers		Free throws		Rebounds				pf	a	t/o	blk	stl	pts	avg
				fg-fga	pct	3fg-fga	pct	ft-fga	pct	off	def	tot	avg							
at Saint Louis	11/10/17		3	0-1	.000	0-1	.000	0-0	.000	0	0	0	0.0	1	0	0	0	0	0	0.0
PUGET SOUND	11/12/17		5	1-4	.250	0-3	.000	0-0	.000	0	1	1	0.5	2	1	1	0	0	2	1.0
at Washington State	11/15/17		9	0-1	.000	0-0	.000	0-0	.000	1	1	2	1.0	0	1	0	0	0	0	0.7
vs Detroit Mercy	11/18/17		8	0-1	.000	0-1	.000	1-2	.500	0	1	1	1.0	0	0	1	0	0	1	0.8
at Belmont	11/19/17		3	0-0	.000	0-0	.000	0-0	.000	0	0	0	0.8	1	0	0	0	0	0	0.6
at Washington	11/24/17		dnp	-	-	-	-	-	-	-	-	-	-	-	-	-	-	-	-	-
IDAHO STATE	11/27/17		5	0-0	.000	0-0	.000	0-0	.000	0	1	1	0.8	0	0	0	0	0	0	0.5
KENNESAW STATE	11/30/17		2	0-0	.000	0-0	.000	0-0	.000	0	0	0	0.7	1	0	0	0	0	0	0.4
EASTERN WASHINGTON	12/03/17		2	0-1	.000	0-1	.000	0-0	.000	0	0	0	0.6	0	0	0	0	0	0	0.4
PACIFIC LUTHERAN	12/04/17 *		24	2-6	.333	1-5	.200	3-4	.750	1	2	3	0.9	5	2	4	0	0	8	1.2
at Saint Mary's (CA)	12/09/17		dnp	-	-	-	-	-	-	-	-	-	-	-	-	-	-	-	-	-
SAINT MARTIN'S	12/13/17		2	0-1	.000	0-1	.000	0-0	.000	0	0	0	0.8	0	0	0	0	0	0	1.1
PORTLAND	12/16/17		0	0-0	.000	0-0	.000	0-0	.000	0	0	0	0.7	0	0	0	0	0	0	1.0
CALIFORNIA	12/19/17		8	1-4	.250	0-3	.000	0-0	.000	0	0	0	0.7	0	1	0	0	0	2	1.1
NICHOLLS STATE	12/23/17		dnp	-	-	-	-	-	-	-	-	-	-	-	-	-	-	-	-	-
GRAMBLING STATE	12/28/17		6	2-4	.500	0-2	.000	0-0	.000	1	1	2	0.8	1	0	0	1	0	4	1.3
UC RIVERSIDE	12/30/17		6	1-2	.500	1-2	.500	0-0	.000	0	2	2	0.9	1	0	0	0	0	3	1.4
GRAND CANYON	01/06/18		dnp	-	-	-	-	-	-	-	-	-	-	-	-	-	-	-	-	-
CHICAGO STATE	01/11/18		2	0-1	.000	0-1	.000	0-0	.000	0	0	0	0.8	0	0	0	0	0	0	1.3
KANSAS CITY	01/13/18		dnp	-	-	-	-	-	-	-	-	-	-	-	-	-	-	-	-	-
at New Mexico State	01/18/18		1	0-0	.000	0-0	.000	0-0	.000	0	0	0	0.8	0	0	0	0	0	0	1.3
Totals		1	86	7-26	.269	2-20	.100	4-6	.667	3	9	12	0.8	12	5	6	1	0	20	1.3

Games played: 16
 Minutes/game: 5.4
 Points/game: 1.3
 FG Pct: 26.9
 3FG Pct: 10.0
 FT Pct: 66.7

Rebounds/game: 0.8
 Assists/game: 0.3
 Turnovers/game: 0.4
 Assist/turnover ratio: 0.8
 Blocks/game: 0.1

CAREER STATS

Year	GP-GS	Min/Avg	Total		3-Point		FT-FTA	Pct	Off-Def	Tot	Avg	PF-FO	Ast	TO	Blk	Stl	Pts/Avg
			FG-FGA	Pct	FG-FGA	Pct											
2015-16	23-12	339/14.7	30-92	.326	19-71	.268	7-14	.500	10-21	31	1.3	37-2	10	10	2	7	86/3.7
2017-18	16-1	86/5.4	7-26	.269	2-20	.100	4-6	.667	3-9	12	0.8	12-1	5	6	1	0	20/1.3
TOTAL	39-13	425/10.9	37-118	.314	21-91	.231	11-20	.550	13-30	43	1.1	49-3	15	16	3	7	106/2.7

SINGLE-GAME HIGHS

Points: 16, Northwest Indian Col -- 12/17/15
 Rebounds: 7, Northwest Indian Col -- 12/17/15
 Assists: 3, Northwest Indian Col -- 12/17/15
 Steals: 4, Northwest Indian Col -- 12/17/15
 Blocks: 1, UMKC -- 02/06/16 ; VERMONT -- 03/21/16
 FG made: 6, Northwest Indian Col -- 12/17/15
 FG attempts: 11, Northwest Indian Col -- 12/17/15
 3FG made: 3, VERMONT -- 03/21/16
 3FG attempts: 6, Chicago State -- 02/04/16 ; VERMONT -- 03/21/16 ; Northwest Indian Col -- 12/17/15
 FT made: 3, Pacific Lutheran -- 12/04/17
 FT attempts: 4, Pacific Lutheran -- 12/04/17



#21 Huun, Collin

Opponent	Date	gs	min	Total		3-Pointers		Free throws		Rebounds				pf	a	t/o	blk	stl	pts	avg
				fg-fga	pct	3fg-fga	pct	ft-fga	pct	off	def	tot	avg							
at Saint Louis	11/10/17	dnp		-	-	-	-	-	-	-	-	-	-	-	-	-	-	-	-	-
PUGET SOUND	11/12/17	dnp		-	-	-	-	-	-	-	-	-	-	-	-	-	-	-	-	-
at Washington State	11/15/17	dnp		-	-	-	-	-	-	-	-	-	-	-	-	-	-	-	-	-
vs Detroit Mercy	11/18/17	1	1	1-1	1.000	0-0	.000	0-0	.000	0	0	0	0.0	0	0	0	0	0	2	2.0
at Belmont	11/19/17	dnp		-	-	-	-	-	-	-	-	-	-	-	-	-	-	-	-	-
at Washington	11/24/17	dnp		-	-	-	-	-	-	-	-	-	-	-	-	-	-	-	-	-
IDAHO STATE	11/27/17	dnp		-	-	-	-	-	-	-	-	-	-	-	-	-	-	-	-	-
KENNESAW STATE	11/30/17	dnp		-	-	-	-	-	-	-	-	-	-	-	-	-	-	-	-	-
EASTERN WASHINGTON	12/03/17	dnp		-	-	-	-	-	-	-	-	-	-	-	-	-	-	-	-	-
PACIFIC LUTHERAN	12/04/17	8	8	3-4	.750	3-4	.750	0-2	.000	0	0	0	0.0	0	0	0	0	0	9	5.5
at Saint Mary's (CA)	12/09/17	dnp		-	-	-	-	-	-	-	-	-	-	-	-	-	-	-	-	-
SAINT MARTIN'S	12/13/17	dnp		-	-	-	-	-	-	-	-	-	-	-	-	-	-	-	-	-
PORTLAND	12/16/17	dnp		-	-	-	-	-	-	-	-	-	-	-	-	-	-	-	-	-
CALIFORNIA	12/19/17	dnp		-	-	-	-	-	-	-	-	-	-	-	-	-	-	-	-	-
NICHOLLS STATE	12/23/17	dnp		-	-	-	-	-	-	-	-	-	-	-	-	-	-	-	-	-
GRAMBLING STATE	12/28/17	2	2	0-0	.000	0-0	.000	0-0	.000	0	2	2	0.7	0	0	1	1	0	0	3.7
UC RIVERSIDE	12/30/17	dnp		-	-	-	-	-	-	-	-	-	-	-	-	-	-	-	-	-
GRAND CANYON	01/06/18	dnp		-	-	-	-	-	-	-	-	-	-	-	-	-	-	-	-	-
CHICAGO STATE	01/11/18	dnp		-	-	-	-	-	-	-	-	-	-	-	-	-	-	-	-	-
KANSAS CITY	01/13/18	dnp		-	-	-	-	-	-	-	-	-	-	-	-	-	-	-	-	-
at New Mexico State	01/18/18	dnp		-	-	-	-	-	-	-	-	-	-	-	-	-	-	-	-	-
Totals		0	11	4-5	.800	3-4	.750	0-2	.000	0	2	2	0.7	0	0	1	1	0	11	3.7

Games played: 3
 Minutes/game: 3.7
 Points/game: 3.7
 FG Pct: 80.0
 3FG Pct: 75.0
 FT Pct: 0.0

Rebounds/game: 0.7
 Turnovers/game: 0.3
 Blocks/game: 0.3

CAREER STATS

Year	GP-GS	Min/Avg	Total		3-Point		FT-FTA	Pct	Off-Def	Tot	Avg	PF-FO	Ast	TO	Blk	Stl	Pts/Avg
			FG-FGA	Pct	FG-FGA	Pct											
2017-18	3-0	11/3.7	4-5	.800	3-4	.750	0-2	.000	0-2	2	0.7	0-0	0	1	1	0	11/3.7
TOTAL	3-0	11/3.7	4-5	.800	3-4	.750	0-2	.000	0-2	2	0.7	0-0	0	1	1	0	11/3.7

SINGLE-GAME HIGHS

Points: 9, Pacific Lutheran -- 12/04/17
 Rebounds: 2, Grambling State -- 12/28/17
 Blocks: 1, Grambling State -- 12/28/17
 FG made: 3, Pacific Lutheran -- 12/04/17
 FG attempts: 4, Pacific Lutheran -- 12/04/17
 3FG made: 3, Pacific Lutheran -- 12/04/17
 3FG attempts: 4, Pacific Lutheran -- 12/04/17
 FT attempts: 2, Pacific Lutheran -- 12/04/17



#23 Nettles, Aaron

Opponent	Date	gs	min	Total		3-Pointers		Free throws		Rebounds				pf	a	t/o	blk	stl	pts	avg
				fg-fga	pct	3fg-fga	pct	ft-fga	pct	off	def	tot	avg							
at Saint Louis	11/10/17	8		0-0	.000	0-0	.000	0-0	.000	0	1	1	1.0	1	0	1	0	0	0	0.0
PUGET SOUND	11/12/17	9		1-2	.500	0-1	.000	4-4	1.000	0	2	2	1.5	1	1	1	0	1	6	3.0
at Washington State	11/15/17	4		1-2	.500	1-2	.500	0-0	.000	0	0	0	1.0	0	0	1	0	0	3	3.0
vs Detroit Mercy	11/18/17	14		1-2	.500	1-2	.500	4-4	1.000	1	1	2	1.3	1	2	0	0	1	7	4.0
at Belmont	11/19/17	14		4-5	.800	3-4	.750	1-1	1.000	0	3	3	1.6	1	1	0	0	1	12	5.6
at Washington	11/24/17 *	18		1-2	.500	1-2	.500	0-0	.000	0	1	1	1.5	2	1	2	0	0	3	5.2
IDAHO STATE	11/27/17	6		0-2	.000	0-2	.000	0-0	.000	0	0	0	1.3	0	0	0	0	0	0	4.4
KENNESAW STATE	11/30/17	9		0-0	.000	0-0	.000	2-2	1.000	0	1	1	1.3	0	0	0	0	0	2	4.1
EASTERN WASHINGTON	12/03/17	5		0-2	.000	0-2	.000	0-0	.000	0	0	0	1.1	0	0	0	0	0	0	3.7
PACIFIC LUTHERAN	12/04/17 *	38		7-14	.500	6-12	.500	0-0	.000	0	3	3	1.3	4	2	0	0	0	20	5.3
at Saint Mary's (CA)	12/09/17	5		0-0	.000	0-0	.000	0-0	.000	0	0	0	1.2	0	0	0	0	1	0	4.8
SAINT MARTIN'S	12/13/17	8		2-3	.667	2-3	.667	0-0	.000	0	0	0	1.1	0	0	0	0	0	6	4.9
PORTLAND	12/16/17	9		2-3	.667	2-3	.667	0-0	.000	0	0	0	1.0	1	1	0	0	0	6	5.0
CALIFORNIA	12/19/17	9		0-2	.000	0-2	.000	0-0	.000	2	1	3	1.1	2	0	0	0	0	0	4.6
NICHOLLS STATE	12/23/17	1		0-1	.000	0-1	.000	0-0	.000	0	0	0	1.1	0	0	0	0	0	0	4.3
GRAMBLING STATE	12/28/17	10		1-3	.333	1-3	.333	0-0	.000	0	1	1	1.1	0	0	0	0	0	3	4.3
UC RIVERSIDE	12/30/17	12		2-4	.500	2-4	.500	0-2	.000	0	0	0	1.0	1	0	1	0	0	6	4.4
GRAND CANYON	01/06/18	1		0-0	.000	0-0	.000	0-0	.000	0	0	0	0.9	0	0	0	0	0	0	4.1
CHICAGO STATE	01/11/18	9		0-0	.000	0-0	.000	0-0	.000	0	0	0	0.9	0	0	2	0	0	0	3.9
KANSAS CITY	01/13/18	1		0-0	.000	0-0	.000	0-0	.000	0	0	0	0.9	1	0	0	0	0	0	3.7
at New Mexico State	01/18/18	2		0-2	.000	0-1	.000	0-0	.000	0	0	0	0.8	0	0	0	0	1	0	3.5
Totals		2	192	22-49	.449	19-44	.432	11-13	.846	3	14	17	0.8	15	8	8	0	5	74	3.5

Games played: 21
 Minutes/game: 9.1
 Points/game: 3.5
 FG Pct: 44.9
 3FG Pct: 43.2
 FT Pct: 84.6

Rebounds/game: 0.8
 Assists/game: 0.4
 Turnovers/game: 0.4
 Assist/turnover ratio: 1.0
 Steals/game: 0.2

CAREER STATS

Year	GP-GS	Min/Avg	Total		3-Point		FT-FTA	Pct	Off-Def	Tot	Avg	PF-FO	Ast	TO	Blk	Stl	Pts/Avg
			FG-FGA	Pct	FG-FGA	Pct											
2017-18	21-2	192/9.1	22-49	.449	19-44	.432	11-13	.846	3-14	17	0.8	15-0	8	8	0	5	74/3.5
TOTAL	21-2	192/9.1	22-49	.449	19-44	.432	11-13	.846	3-14	17	0.8	15-0	8	8	0	5	74/3.5

SINGLE-GAME HIGHS

Points: 20, Pacific Lutheran -- 12/04/17
 Rebounds: 3, at Belmont -- 11/19/17 ; Pacific Lutheran -- 12/04/17
 Assists: 2, vs Detroit Mercy -- 11/18/17 ; Pacific Lutheran -- 12/04/17
 Steals: 1, Puget Sound -- 11/12/17 ; vs Detroit Mercy -- 11/18/17 ; at Belmont -- 11/19/17
 FG made: 7, Pacific Lutheran -- 12/04/17
 FG attempts: 14, Pacific Lutheran -- 12/04/17
 3FG made: 6, Pacific Lutheran -- 12/04/17
 3FG attempts: 12, Pacific Lutheran -- 12/04/17
 FT made: 4, Puget Sound -- 11/12/17 ; vs Detroit Mercy -- 11/18/17
 FT attempts: 4, Puget Sound -- 11/12/17 ; vs Detroit Mercy -- 11/18/17



#35 Corrigan, Brennan

Opponent	Date	gs	min	Total		3-Pointers		Free throws		Rebounds				pf	a	t/o	blk	stl	pts	avg
				fg-fga	pct	3fg-fga	pct	ft-fa	pct	off	def	tot	avg							
at Saint Louis	11/10/17		dnp	-	-	-	-	-	-	-	-	-	-	-	-	-	-	-	-	-
PUGET SOUND	11/12/17	1		0-1	.000	0-1	.000	0-0	.000	0	0	0	0.0	0	0	0	0	0	0	0.0
at Washington State	11/15/17		dnp	-	-	-	-	-	-	-	-	-	-	-	-	-	-	-	-	-
vs Detroit Mercy	11/18/17		dnp	-	-	-	-	-	-	-	-	-	-	-	-	-	-	-	-	-
at Belmont	11/19/17		dnp	-	-	-	-	-	-	-	-	-	-	-	-	-	-	-	-	-
at Washington	11/24/17		dnp	-	-	-	-	-	-	-	-	-	-	-	-	-	-	-	-	-
IDAHO STATE	11/27/17		dnp	-	-	-	-	-	-	-	-	-	-	-	-	-	-	-	-	-
KENNESAW STATE	11/30/17		dnp	-	-	-	-	-	-	-	-	-	-	-	-	-	-	-	-	-
EASTERN WASHINGTON	12/03/17		dnp	-	-	-	-	-	-	-	-	-	-	-	-	-	-	-	-	-
PACIFIC LUTHERAN	12/04/17	3		0-2	.000	0-2	.000	0-0	.000	0	0	0	0.0	0	0	0	0	0	0	0.0
at Saint Mary's (CA)	12/09/17		dnp	-	-	-	-	-	-	-	-	-	-	-	-	-	-	-	-	-
SAINT MARTIN'S	12/13/17		dnp	-	-	-	-	-	-	-	-	-	-	-	-	-	-	-	-	-
PORTLAND	12/16/17		dnp	-	-	-	-	-	-	-	-	-	-	-	-	-	-	-	-	-
CALIFORNIA	12/19/17		dnp	-	-	-	-	-	-	-	-	-	-	-	-	-	-	-	-	-
NICHOLLS STATE	12/23/17		dnp	-	-	-	-	-	-	-	-	-	-	-	-	-	-	-	-	-
GRAMBLING STATE	12/28/17	2		1-1	1.000	1-1	1.000	0-0	.000	0	0	0	0.0	0	0	0	0	0	3	1.0
UC RIVERSIDE	12/30/17		dnp	-	-	-	-	-	-	-	-	-	-	-	-	-	-	-	-	-
GRAND CANYON	01/06/18		dnp	-	-	-	-	-	-	-	-	-	-	-	-	-	-	-	-	-
CHICAGO STATE	01/11/18		dnp	-	-	-	-	-	-	-	-	-	-	-	-	-	-	-	-	-
KANSAS CITY	01/13/18		dnp	-	-	-	-	-	-	-	-	-	-	-	-	-	-	-	-	-
at New Mexico State	01/18/18		dnp	-	-	-	-	-	-	-	-	-	-	-	-	-	-	-	-	-
Totals		0	6	1-4	.250	1-4	.250	0-0	.000	0	0	0	0.0	0	0	0	0	0	3	1.0

Games played: 3
 Minutes/game: 2.0
 Points/game: 1.0
 FG Pct: 25.0
 3FG Pct: 25.0

CAREER STATS

Year	GP-GS	Min/Avg	Total		3-Point		FT-FTA		Rebounds			PF-FO	Ast	TO	Blk	Stl	Pts/Avg
			FG-FGA	Pct	FG-FGA	Pct	Pct	Off-Def	Tot	Avg							
2017-18	3-0	6/2.0	1-4	.250	1-4	.250	0-0	.000	0-0	0	0.0	0-0	0	0	0	0	3/1.0
TOTAL	3-0	6/2.0	1-4	.250	1-4	.250	0-0	.000	0-0	0	0.0	0-0	0	0	0	0	3/1.0

SINGLE-GAME HIGHS

Points: 3, Grambling State -- 12/28/17
 FG made: 1, Grambling State -- 12/28/17
 FG attempts: 2, Pacific Lutheran -- 12/04/17
 3FG made: 1, Grambling State -- 12/28/17
 3FG attempts: 2, Pacific Lutheran -- 12/04/17



#41 Menzies, Aaron

Opponent	Date	gs	min	Total		3-Pointers		Free throws		Rebounds			pf	a	t/o	blk	stl	pts	avg		
				fg-fga	pct	3fg-fga	pct	ft-fga	pct	off	def	tot								avg	
at Saint Louis	11/10/17	*	19	1-2	.500	0-0	.000	0-0	.000	0	2	2	2.0	3	0	1	1	0	2	2.0	
PUGET SOUND	11/12/17	*	22	6-9	.667	0-0	.000	3-4	.750	4	8	12	7.0	5	1	3	4	1	15	8.5	
at Washington State	11/15/17	*	14	1-3	.333	0-0	.000	0-2	.000	3	4	7	7.0	1	1	1	1	0	2	6.3	
vs Detroit Mercy	11/18/17	*	26	7-9	.778	0-0	.000	2-2	1.000	3	7	10	7.8	1	1	1	2	0	16	8.8	
at Belmont	11/19/17	*	16	3-3	1.000	0-0	.000	2-2	1.000	2	2	4	7.0	0	1	2	0	0	8	8.6	
at Washington	11/24/17	*	31	7-12	.583	0-0	.000	3-4	.750	7	6	13	8.0	5	1	2	2	0	17	10.0	
IDAHO STATE	11/27/17	*	27	2-6	.333	0-0	.000	7-8	.875	2	5	7	7.9	3	0	0	4	2	11	10.1	
KENNESAW STATE	11/30/17	*	27	7-8	.875	0-0	.000	0-0	.000	1	2	3	7.3	2	0	1	2	0	14	10.6	
EASTERN WASHINGTON	12/03/17	*	12	3-3	1.000	0-0	.000	2-2	1.000	0	0	0	6.4	3	0	3	0	0	8	10.3	
PACIFIC LUTHERAN	12/04/17		32	14-16	.875	0-0	.000	4-7	.571	7	8	15	7.3	2	0	1	2	0	32	12.5	
at Saint Mary's (CA)	12/09/17	*	23	1-4	.250	0-0	.000	2-3	.667	1	2	3	6.9	4	0	2	1	0	4	11.7	
SAINT MARTIN'S	12/13/17	*	17	4-5	.800	0-0	.000	0-0	.000	0	1	1	6.4	2	0	0	2	0	8	11.4	
PORTLAND	12/16/17	*	19	8-11	.727	0-0	.000	0-0	.000	5	3	8	6.5	4	0	1	2	0	16	11.8	
CALIFORNIA	12/19/17	*	26	4-9	.444	0-0	.000	0-3	.000	3	2	5	6.4	1	1	0	3	0	8	11.5	
NICHOLLS STATE	12/23/17	*	29	7-9	.778	0-0	.000	6-9	.667	5	9	14	6.9	3	1	1	4	0	20	12.1	
GRAMBLING STATE	12/28/17	*	26	5-9	.556	0-0	.000	3-3	1.000	4	10	14	7.4	3	2	1	1	0	13	12.1	
UC RIVERSIDE	12/30/17	*	28	2-6	.333	0-0	.000	2-4	.500	5	2	7	7.4	4	1	0	1	0	6	11.8	
GRAND CANYON	01/06/18	*	12	0-4	.000	0-0	.000	3-4	.750	1	4	5	7.2	5	0	2	0	0	3	11.3	
CHICAGO STATE	01/11/18	*	27	4-11	.364	0-0	.000	1-3	.333	9	10	19	7.8	2	1	2	2	0	9	11.2	
KANSAS CITY	01/13/18	*	25	2-3	.667	0-0	.000	2-3	.667	4	3	7	7.8	3	1	2	0	0	6	10.9	
at New Mexico State	01/18/18	*	33	2-5	.400	0-0	.000	6-9	.667	2	10	12	8.0	3	0	1	0	0	10	10.9	
Totals			20	491	90-147	.612	0-0	.000	48-72	.667	68	100	168	8.0	59	12	27	34	3	228	10.9

Games played: 21
 Minutes/game: 23.4
 Points/game: 10.9
 FG Pct: 61.2
 FT Pct: 66.7

Rebounds/game: 8.0
 Assists/game: 0.6
 Turnovers/game: 1.3
 Assist/turnover ratio: 0.4
 Steals/game: 0.1
 Blocks/game: 1.6

CAREER STATS

Year	GP-GS	Min/Avg	Total		3-Point		FT-FTA	Pct	Off-Def	Tot	Avg	PF-FO	Ast	TO	Blk	Stl	Pts/Avg
			FG-FGA	Pct	FG-FGA	Pct											
2015-16	32-1	521/16.3	61-115	.530	0-0	.000	19-42	.452	51-104	155	4.8	79-2	11	46	15	8	141/4.4
2016-17	14-14	305/21.8	69-131	.527	0-0	.000	34-56	.607	25-61	86	6.1	30-1	9	17	15	3	172/12.3
2017-18	21-20	491/23.4	90-147	.612	0-0	.000	48-72	.667	68-100	168	8.0	59-3	12	27	34	3	228/10.9
TOTAL	67-35	1317/19.7	220-393	.560	0-0	.000	101-170	.594	144-265	409	6.1	168-6	32	90	64	14	541/8.1

SINGLE-GAME HIGHS

Points: 35, vs Louisiana Monroe -- 11/21/16
 Rebounds: 19, Chicago State -- 01/11/18
 Assists: 3, at UCF -- 11/26/16
 Steals: 2, Utah Valley -- 02/27/16 ; Idaho State -- 11/27/17 ; Northwest Indian Col -- 12/17/15
 Blocks: 4, Puget Sound -- 11/12/17 ; Idaho State -- 11/27/17 ; Nicholls State -- 12/23/17
 FG made: 14, Pacific Lutheran -- 12/04/17
 FG attempts: 17, Northwest University -- 12/01/16
 FT made: 11, vs Louisiana Monroe -- 11/21/16
 FT attempts: 14, vs Louisiana Monroe -- 11/21/16



Official Basketball Box Score -- Game Totals -- Final Statistics
Seattle University vs Saint Louis
11/10/17 7 p.m. at St. Louis, Mo. (Chaifetz Arena)

Seattle University 46 • 0-1
Table with columns: #, Player, FG-FGA, 3-Ptr, FT-FTA, Rebounds, PF, TP, A TO Blk Stl, Min. Includes team totals and shooting percentages.

Saint Louis 62 • 1-0
Table with columns: #, Player, FG-FGA, 3-Ptr, FT-FTA, Rebounds, PF, TP, A TO Blk Stl, Min. Includes team totals and shooting percentages.

Officials: Gerald Moyd, Dennis Allocco, Adam Flore
Technical fouls: Seattle University-None. Saint Louis-None.
Attendance: 7246
2K Classic benefiting Wounded Warrior Project
Score by periods table and game notes.

Official Basketball Box Score -- Game Totals -- Final Statistics
Puget Sound vs Seattle University
11/12/17 4:00 pm at Seattle, WA (Connolly Complex)

Puget Sound 70 • 0-0
Table with columns: #, Player, FG-FGA, 3-Ptr, FT-FTA, Rebounds, PF, TP, A TO Blk Stl, Min. Includes team totals and shooting percentages.

Seattle University 121 • 1-1
Table with columns: #, Player, FG-FGA, 3-Ptr, FT-FTA, Rebounds, PF, TP, A TO Blk Stl, Min. Includes team totals and shooting percentages.

Officials: Jimmy Casas, Mark Cook, Toby Doolittle
Technical fouls: Puget Sound-None. Seattle University-None.
Attendance: 907
(exhibition game for UPS)
Score by periods table and game notes.

Official Basketball Box Score -- Game Totals -- Final Statistics
Seattle University vs Washington State
11/15/17 6:00 PM at Pullman, WA (Beasley Coliseum)

Seattle University 59 • 1-2
Table with columns: #, Player, FG-FGA, 3-Ptr, FT-FTA, Rebounds, PF, TP, A TO Blk Stl, Min. Includes team totals and shooting percentages.

Washington State 75 • 2-0
Table with columns: #, Player, FG-FGA, 3-Ptr, FT-FTA, Rebounds, PF, TP, A TO Blk Stl, Min. Includes team totals and shooting percentages.

Officials: Tony Padilla, Kevin Brill, Scott Brown
Technical fouls: Seattle University-Menzies, Aaron. Washington State-Bernstine,Drick.
Attendance: 2340
Score by periods table and game notes.

Official Basketball Box Score -- Game Totals -- Final Statistics
Seattle University vs Detroit Mercy
11/18/17 1:00 pm at Nashville, Tenn. (Curb Event Center)

Seattle University 102 • 2-2
Table with columns: #, Player, FG-FGA, 3-Ptr, FT-FTA, Rebounds, PF, TP, A TO Blk Stl, Min. Includes team totals and shooting percentages.

Detroit Mercy 71 • 1-2
Table with columns: #, Player, FG-FGA, 3-Ptr, FT-FTA, Rebounds, PF, TP, A TO Blk Stl, Min. Includes team totals and shooting percentages.

Officials: Kevin Mathis, Coy Gammon, Evan Berg
Technical fouls: Seattle University-None. Detroit Mercy-None.
Attendance: 455
Score by periods table and game notes.



Official Basketball Box Score -- Game Totals -- Final Statistics
Seattle University vs Belmont
11/19/17 1:00 pm at Nashville, TN (Curb Event Center)

Seattle University 77 • 1-3

Table with columns: #, Player, FG-FGA, 3-PT, FT-FTA, Rebounds, PF, TP, A TO Blk Stl, Min. Rows include players like Menzies, Morgan, Hill, Jordan, Gittens, Richaud, etc.

FG % 1st Half: 13-29 44.8% 2nd half: 14-31 45.2% Game: 27-60 45.0%
3FG % 1st Half: 5-14 35.7% 2nd half: 7-17 41.2% Game: 12-31 38.7%
FT % 1st Half: 5-9 55.6% 2nd half: 6-7 85.7% Game: 11-16 68.8%

Belmont 90 • 4-1

Table with columns: #, Player, FG-FGA, 3-PT, FT-FTA, Rebounds, PF, TP, A TO Blk Stl, Min. Rows include players like MERCER, Mack, EGEKEZE, Amanze, etc.

FG % 1st Half: 15-27 55.6% 2nd half: 17-27 63.0% Game: 32-54 59.3%
3FG % 1st Half: 7-14 50.0% 2nd half: 7-13 53.8% Game: 14-27 51.9%
FT % 1st Half: 4-6 66.7% 2nd half: 8-10 80.0% Game: 12-16 75.0%

Officials: Mick Fieldbinder, Chris Ford, Evan Berg
Technical fouls: Seattle University-None. Belmont-EGEKEZE, Amanze.
Attendance: 6428

Score by periods table with columns: Score by periods, 1st, 2nd, Total. Rows for Seattle University and Belmont.

Last FG - SU 2nd-00:00, BEL 2nd-00:14.
Largest lead - SU by 4 1st-04:28, BEL by 19 2nd-04:25.
SU led for 01:52. BEL led for 35:31. Game was tied for 02:37.

Official Basketball Box Score -- Game Totals -- Final Statistics
Seattle University vs Washington
11/24/17 12:00 pm at Seattle, WA (Alaska Airlines Arena)

Seattle University 84 • 2-4

Table with columns: #, Player, FG-FGA, 3-PT, FT-FTA, Rebounds, PF, TP, A TO Blk Stl, Min. Rows include players like Kavas, Matej, Hearlihy, Josh, etc.

FG % 1st Half: 12-33 36.4% 2nd half: 16-25 64.0% Game: 28-58 48.3%
3FG % 1st Half: 5-17 29.4% 2nd half: 7-15 46.7% Game: 12-32 37.5%
FT % 1st Half: 7-10 70.0% 2nd half: 9-11 81.8% Game: 16-21 76.2%

Washington 89 • 3-2

Table with columns: #, Player, FG-FGA, 3-PT, FT-FTA, Rebounds, PF, TP, A TO Blk Stl, Min. Rows include players like Dickerson, Noah, Timmins, Sam, etc.

FG % 1st Half: 15-31 48.4% 2nd half: 13-27 48.1% Game: 28-58 48.3%
3FG % 1st Half: 3-14 21.4% 2nd half: 5-12 41.7% Game: 8-26 30.8%
FT % 1st Half: 5-8 62.5% 2nd half: 20-22 90.9% Game: 25-30 83.3%

Officials: Bob Staffan, Larry Spaulding, Jimmy Casas
Technical fouls: Seattle University-None. Washington-None.
Attendance: 6428

Score by periods table with columns: Score by periods, 1st, 2nd, Total. Rows for Seattle University and Washington.

Last FG - SU 2nd-00:55, UW 2nd-03:11.
Largest lead - SU by 1 1st-16:52, UW by 10 1st-11:06.
SU led for 01:33. UW led for 37:42. Game was tied for 00:31.

Official Basketball Box Score -- Game Totals -- Final Statistics
Idaho State vs Seattle University
11/27/17 7:00 pm at Seattle, WA (KeyArena)

Idaho State 67 • 0-5

Table with columns: #, Player, FG-FGA, 3-PT, FT-FTA, Rebounds, PF, TP, A TO Blk Stl, Min. Rows include players like INGRAM, Kyle, TOPALOVIC, Novak, etc.

FG % 1st Half: 11-26 42.3% 2nd half: 8-29 27.6% Game: 19-55 34.5%
3FG % 1st Half: 4-14 28.6% 2nd half: 3-10 30.0% Game: 7-24 29.2%
FT % 1st Half: 11-12 91.7% 2nd half: 11-15 73.3% Game: 22-27 81.5%

Seattle University 73 • 3-4

Table with columns: #, Player, FG-FGA, 3-PT, FT-FTA, Rebounds, PF, TP, A TO Blk Stl, Min. Rows include players like Hearlihy, Josh, Menzies, Aaron, etc.

FG % 1st Half: 13-34 38.2% 2nd half: 11-23 47.8% Game: 24-57 42.1%
3FG % 1st Half: 0-11 0.0% 2nd half: 4-9 44.4% Game: 4-20 20.0%
FT % 1st Half: 2-4 50.0% 2nd half: 19-22 86.4% Game: 21-26 80.8%

Officials: David Hall, Kelly Self, Kelly Phelver
Technical fouls: Idaho State-TOPALOVIC, Novak. Seattle University-None.
Attendance: 1178
Idaho State #13 was called for technical foul at 10:56 in first half

Score by periods table with columns: Score by periods, 1st, 2nd, Total. Rows for Idaho State and Seattle University.

Last FG - SU 2nd-00:00, SU 2nd-03:42.
Largest lead - ISU by 11 1st-06:18, SU by 7 2nd-00:11.
ISU led for 30:09. SU led for 08:11. Game was tied for 01:40.

Official Basketball Box Score -- Game Totals -- Final Statistics
Kennesaw State vs Seattle University
11/30/17 7:30 pm at Seattle, WA (Connolly Complex)

Kennesaw State 54 • 1-7

Table with columns: #, Player, FG-FGA, 3-PT, FT-FTA, Rebounds, PF, TP, A TO Blk Stl, Min. Rows include players like JONES, Jordan, JANKOVIC, Kosta, etc.

FG % 1st Half: 7-22 31.8% 2nd half: 11-29 37.9% Game: 18-51 35.3%
3FG % 1st Half: 1-4 25.0% 2nd half: 2-4 50.0% Game: 3-8 37.5%
FT % 1st Half: 9-14 64.3% 2nd half: 6-10 60.0% Game: 15-24 62.5%

Seattle University 66 • 4-4

Table with columns: #, Player, FG-FGA, 3-PT, FT-FTA, Rebounds, PF, TP, A TO Blk Stl, Min. Rows include players like Hearlihy, Josh, Menzies, Aaron, etc.

FG % 1st Half: 11-31 35.5% 2nd half: 15-26 57.7% Game: 26-57 45.6%
3FG % 1st Half: 1-10 10.0% 2nd half: 3-8 37.5% Game: 4-18 22.2%
FT % 1st Half: 8-8 100.0 2nd half: 2-2 100.0 Game: 10-10 100.0

Officials: Mike Reed, Deron White, Brent Watts
Technical fouls: Kennesaw State-None. Seattle University-None.
Attendance: 782

Score by periods table with columns: Score by periods, 1st, 2nd, Total. Rows for Kennesaw State and Seattle University.

Last FG - KSU 2nd-00:22, SU 2nd-01:09.
Largest lead - KSU by 2 1st-18:44, SU by 18 2nd-06:41.
KSU led for 01:17. SU led for 35:16. Game was tied for 03:27.



Official Basketball Box Score -- Game Totals -- Final Statistics
Eastern Washington vs Seattle University
12/03/17 1:00 pm at Seattle, WA (KeyArena)

Eastern Washington 65 • 3-5
Table with columns: #, Player, FG-FGA, 3-FGA, FT-FTA, Rebounds (Off, Def, Tot), PF, TP, A, TO, Blk, Stl, Min. Includes team totals and shooting percentages.

Seattle University 84 • 5-4
Table with columns: #, Player, FG-FGA, 3-FGA, FT-FTA, Rebounds (Off, Def, Tot), PF, TP, A, TO, Blk, Stl, Min. Includes team totals and shooting percentages.

Officials: Rick Batsell, Gregory Nixon, Mike Scyphe
Technical fouls: Eastern Washington-None. Seattle University-None.
Attendance: 1487

Score by periods table and Shooting Chart for Eastern Washington vs Seattle University.

Last FG - EWU 2nd-01:34, SU 2nd-02:00.
Largest lead - EWU None, SU by 32 2nd-08:23.
EWU led for 00:00. SU led for 39:36. Game was tied for 00:24.

Official Basketball Box Score -- Game Totals -- Final Statistics
Pacific Lutheran vs Seattle University
12/04/17 7:00 pm at Seattle, WA (Connolly Complex)

Pacific Lutheran 69 • 3-4
Table with columns: #, Player, FG-FGA, 3-FGA, FT-FTA, Rebounds (Off, Def, Tot), PF, TP, A, TO, Blk, Stl, Min. Includes team totals and shooting percentages.

Seattle University 99 • 6-4
Table with columns: #, Player, FG-FGA, 3-FGA, FT-FTA, Rebounds (Off, Def, Tot), PF, TP, A, TO, Blk, Stl, Min. Includes team totals and shooting percentages.

Officials: Scott Brown, Nate Harris, Steve Olson
Technical fouls: Pacific Lutheran-None. Seattle University-None.
Attendance: 729
Exhibition game for PLU

Score by periods table and Shooting Chart for Pacific Lutheran vs Seattle University.

Last FG - PLU 2nd-00:10, SU 2nd-00:37.
Largest lead - PLU None, SU by 32 2nd-00:37.
PLU led for 00:00. SU led for 38:37. Game was tied for 01:08.

Official Basketball Box Score -- Game Totals -- Final Statistics
Seattle University vs Saint Mary's (CA)
12/09/17 5:00 pm at Moraga, CA (McKeon Pavilion)

Seattle University 73 • 6-5
Table with columns: #, Player, FG-FGA, 3-FGA, FT-FTA, Rebounds (Off, Def, Tot), PF, TP, A, TO, Blk, Stl, Min. Includes team totals and shooting percentages.

Officials: Daryl Gelinax, Glen Mayberry, Jeff Wooten
Technical fouls: Seattle University-None. Saint Mary's (CA)-None.
Attendance: 3324

Score by periods table and Shooting Chart for Seattle University vs Saint Mary's (CA).

Last FG - SU 2nd-00:50, SMC 2nd-01:16.
Largest lead - SU by 2 1st-19:03, SMC by 29 2nd-01:57.
SU led for 00:26. SMC led for 37:25. Game was tied for 02:09.

Official Basketball Box Score -- Game Totals -- Final Statistics
Saint Martin's vs Seattle University
12/13/17 7:00 pm at Seattle, WA (Connolly Complex)

Saint Martin's 72 • 7-2
Table with columns: #, Player, FG-FGA, 3-FGA, FT-FTA, Rebounds (Off, Def, Tot), PF, TP, A, TO, Blk, Stl, Min. Includes team totals and shooting percentages.

Officials: Verne Harris, Gregory Nixon, Jimmy Casas
Technical fouls: Saint Martin's-None. Seattle University-Gittens, Richard.
Attendance: 773
Exhibition game for Saint Martin's

Score by periods table and Shooting Chart for Saint Martin's vs Seattle University.

Last FG - SMU 2nd-06:09, SU 2nd-00:47.
Largest lead - SMU by 7 1st-02:59, SU by 16 2nd-00:26.
SMU led for 15:38. SU led for 21:55. Game was tied for 02:21.



Official Basketball Box Score -- Game Totals -- Final Statistics
Portland vs Seattle University
12/16/17 7:00 pm at Seattle, WA (Connolly Complex)

Portland 76 • 4-7
Table with columns: #, Player, FG-FGA, 3-Ptr, FT-FTA, Rebounds, PF, TP, A TO Blk Stl, Min. Includes team totals and game statistics.

FG % 1st Half: 14-23 60.9% 2nd half: 12-28 42.9% Game: 26-51 51.0%
3FG % 1st Half: 7-10 70.0% 2nd half: 1-7 14.3% Game: 8-17 47.1%
FT % 1st Half: 7-11 63.6% 2nd half: 9-10 90.0% Game: 16-21 76.2%

Seattle University 89 • 8-5

Table with columns: #, Player, FG-FGA, 3-Ptr, FT-FTA, Rebounds, PF, TP, A TO Blk Stl, Min. Includes team totals and game statistics.

FG % 1st Half: 15-32 46.9% 2nd half: 20-33 60.6% Game: 35-65 53.8%
3FG % 1st Half: 7-14 50.0% 2nd half: 9-14 64.3% Game: 16-28 57.1%
FT % 1st Half: 1-1 100.0 2nd half: 2-4 50.0% Game: 3-5 60.0%

Officials: Dick Cartmell, Deron White, Tommy Nunez
Technical fouls: Portland-None, Seattle University-None.
Attendance: 1569

Score by periods table with columns: 1st, 2nd, Total. Rows for Portland and Seattle University.

Last FG - POR 2nd-00:15, SU 2nd-00:24.
Largest lead - POR by 6 2nd-19:25, SU by 17 2nd-03:09.
POR led for 14:27, SU led for 23:48. Game was tied for 01:36.

Score tied - 5 times.
Lead changed - 11 times.

Official Basketball Box Score -- Game Totals -- Final Statistics
California vs Seattle University
12/19/17 7:00 PM at Seattle, WA (KeyArena)

California 81 • 6-6
Table with columns: #, Player, FG-FGA, 3-Ptr, FT-FTA, Rebounds, PF, TP, A TO Blk Stl, Min. Includes team totals and game statistics.

FG % 1st Half: 14-31 45.2% 2nd half: 15-31 48.4% Game: 29-62 46.8%
3FG % 1st Half: 1-7 14.3% 2nd half: 4-7 57.1% Game: 5-14 35.7%
FT % 1st Half: 5-8 62.5% 2nd half: 13-19 68.4% Game: 18-27 66.7%

Seattle University 59 • 8-6

Table with columns: #, Player, FG-FGA, 3-Ptr, FT-FTA, Rebounds, PF, TP, A TO Blk Stl, Min. Includes team totals and game statistics.

FG % 1st Half: 9-29 31.0% 2nd half: 13-37 35.1% Game: 22-66 33.3%
3FG % 1st Half: 4-16 25.0% 2nd half: 3-16 18.8% Game: 7-32 21.9%
FT % 1st Half: 6-11 54.5% 2nd half: 2-2 100.0 Game: 8-13 61.5%

Officials: Mike Reed, Kevin Brill, Mike Scyphers
Technical fouls: California-None, Seattle University-None.
Attendance: 2418

Score by periods table with columns: 1st, 2nd, Total. Rows for California and Seattle University.

Last FG - CAL 2nd-04:25, SU 2nd-00:16.
Largest lead - CAL by 24 2nd-04:09, SU by 4 1st-11:05.
CAL led for 32:20, SU led for 04:26. Game was tied for 03:14.

Score tied - 4 times.
Lead changed - 7 times.

Official Basketball Box Score -- Game Totals -- Final Statistics
Nicholls State vs Seattle University
12/23/17 1:00 pm at Seattle, WA (Connolly Complex)

Nicholls State 89 • 6-7
Table with columns: #, Player, FG-FGA, 3-Ptr, FT-FTA, Rebounds, PF, TP, A TO Blk Stl, Min. Includes team totals and game statistics.

FG % 1st Half: 13-31 41.9% 2nd half: 17-36 47.2% Game: 30-67 44.8%
3FG % 1st Half: 6-9 66.7% 2nd half: 5-14 35.7% Game: 11-23 47.8%
FT % 1st Half: 6-8 75.0% 2nd half: 12-13 92.3% Game: 18-21 85.7%

Seattle University 95 • 9-6

Table with columns: #, Player, FG-FGA, 3-Ptr, FT-FTA, Rebounds, PF, TP, A TO Blk Stl, Min. Includes team totals and game statistics.

FG % 1st Half: 16-36 44.4% 2nd half: 16-29 55.2% Game: 32-65 49.2%
3FG % 1st Half: 11-19 57.9% 2nd half: 3-8 37.5% Game: 14-27 51.9%
FT % 1st Half: 4-5 80.0% 2nd half: 13-18 72.2% Game: 17-23 73.9%

Officials: Bill Vinovich, Jimmy Casas, Jeff Wooten
Technical fouls: Nicholls State-None, Seattle University-None.
Attendance: 841

Score by periods table with columns: 1st, 2nd, Total. Rows for Nicholls State and Seattle University.

Last FG - NICH 2nd-00:55, SU 2nd-00:14.
Largest lead - NICH None, SU by 21 1st-10:03.
NICH led for 00:00, SU led for 38:46. Game was tied for 01:14.

Score tied - 1 time.
Lead changed - 0 times.

Official Basketball Box Score -- Game Totals -- Final Statistics
Grambling State vs Seattle University
12/28/17 7:00 PM at Seattle, WA (Connolly Complex)

Grambling State 63 • 4-9
Table with columns: #, Player, FG-FGA, 3-Ptr, FT-FTA, Rebounds, PF, TP, A TO Blk Stl, Min. Includes team totals and game statistics.

FG % 1st Half: 7-27 25.9% 2nd half: 14-30 46.7% Game: 21-57 36.8%
3FG % 1st Half: 1-7 14.3% 2nd half: 1-3 33.3% Game: 2-10 20.0%
FT % 1st Half: 4-6 66.7% 2nd half: 15-20 75.0% Game: 19-26 73.1%

Seattle University 93 • 10-6

Table with columns: #, Player, FG-FGA, 3-Ptr, FT-FTA, Rebounds, PF, TP, A TO Blk Stl, Min. Includes team totals and game statistics.

FG % 1st Half: 19-39 48.7% 2nd half: 13-28 46.4% Game: 32-67 47.8%
3FG % 1st Half: 7-17 41.2% 2nd half: 2-10 20.0% Game: 9-27 33.3%
FT % 1st Half: 1-2 50.0% 2nd half: 19-22 86.4% Game: 20-24 83.3%

Officials: Gregory Nixon, Kevin Brill, Ken Ditty
Technical fouls: Grambling State-None, Seattle University-None.
Attendance: 999

Score by periods table with columns: 1st, 2nd, Total. Rows for Grambling State and Seattle University.

Last FG - GRAM 2nd-00:03, SU 2nd-01:10.
Largest lead - GRAM None, SU by 33 2nd-00:19.
GRAM led for 00:00, SU led for 39:21. Game was tied for 00:39.

Score tied - 1 time.
Lead changed - 0 times.



Official Basketball Box Score -- Game Totals -- Final Statistics
UC Riverside vs Seattle University
12/30/17 1:00 pm at Seattle, WA (Connolly Complex)

UC Riverside 71 • 5-9

Box score table for UC Riverside vs Seattle University. Columns include Player, FG-FGA, 3-Ptr, FT-FTA, Rebounds, PF, TP, A TO Blk Stl, Min. Totals: 21-53, 5-13, 24-34, 14 20 34, 29 71, 10 15 2 6, 200.

FG % 1st Half: 6-19 31.6% 2nd half: 15-34 44.1% Game: 21-53 39.6%
3FG % 1st Half: 3-6 50.0% 2nd half: 2-7 28.6% Game: 5-13 38.5%
FT % 1st Half: 14-19 73.7% 2nd half: 10-15 66.7% Game: 24-34 70.6%

Seattle University 95 • 11-6

Box score table for Seattle University vs UC Riverside. Columns include Player, FG-FGA, 3-Ptr, FT-FTA, Rebounds, PF, TP, A TO Blk Stl, Min. Totals: 27-56, 17-27, 24-31, 12 23 35, 28 95, 17 12 3 4, 200.

FG % 1st Half: 18-29 62.1% 2nd half: 9-27 33.3% Game: 27-56 48.2%
3FG % 1st Half: 13-16 81.3% 2nd half: 4-11 36.4% Game: 17-27 63.0%
FT % 1st Half: 6-8 75.0% 2nd half: 18-23 78.3% Game: 24-31 77.4%

Officials: Cuban Lopez, Justin Shamion, Riel Banaria
Technical fouls: UC Riverside-Kennedy, Ajani. Seattle University-Ulaneo, Scott.

Attendance: 833

Score by periods table with columns: 1st, 2nd, Total. UC Riverside: 29, 42, 71. Seattle University: 55, 40, 95.

Points, In Paint, Off T/O, 2nd Chance, Fast Break, Bench table. UC Riverside: 22, 9, 6, 7, 27. Seattle University: 18, 28, 17, 4, 28.

Last FG - UCR 2nd-01:20, SU 2nd-01:00.
Largest lead - UCR None, SU by 27 2nd-07:32.
UCR led for 00:00, SU led for 39:37. Game was tied for 00:23.

Score tied - 0 times.
Lead changed - 0 times.

Official Basketball Box Score -- Game Totals -- Final Statistics
Grand Canyon vs Seattle University
01/06/18 7:00 pm at Seattle, WA (KeyArena)

Grand Canyon 73 • 11-5, 1-0 WAC

Box score table for Grand Canyon vs Seattle University. Columns include Player, FG-FGA, 3-Ptr, FT-FTA, Rebounds, PF, TP, A TO Blk Stl, Min. Totals: 24-54, 6-16, 19-26, 6 32 38, 18 73, 12 12 1 7, 200.

FG % 1st Half: 9-25 36.0% 2nd half: 15-29 51.7% Game: 24-54 44.4%
3FG % 1st Half: 3-9 22.2% 2nd half: 4-7 57.1% Game: 6-16 37.5%
FT % 1st Half: 11-15 73.3% 2nd half: 8-11 72.7% Game: 19-26 73.1%

Seattle University 57 • 11-7, 0-1 WAC

Box score table for Seattle University vs Grand Canyon. Columns include Player, FG-FGA, 3-Ptr, FT-FTA, Rebounds, PF, TP, A TO Blk Stl, Min. Totals: 22-61, 5-20, 8-14, 13 31 44, 25 57, 6 16 1 2, 200.

FG % 1st Half: 10-30 33.3% 2nd half: 12-31 38.7% Game: 22-61 36.1%
3FG % 1st Half: 3-9 33.3% 2nd half: 2-11 18.2% Game: 5-20 25.0%
FT % 1st Half: 6-9 66.7% 2nd half: 2-5 40.0% Game: 8-14 57.1%

Officials: Ronnie Hernandez, Casey McClellan, SirAllen Conner
Technical fouls: Grand Canyon-None. Seattle University-Menzies, Aaron.
Attendance: 2156

Score by periods table with columns: 1st, 2nd, Total. Grand Canyon: 31, 42, 73. Seattle University: 29, 28, 57.

Points, In Paint, Off T/O, 2nd Chance, Fast Break, Bench table. Grand Canyon: 24, 22, 6, 0, 23. Seattle University: 30, 8, 8, 0, 11.

Last FG - GCU 2nd-01:03, SU 2nd-00:08.
Largest lead - GCU by 18 2nd-00:16, SU by 2 1st-13:33.
GCU led for 28:46, SU led for 03:15. Game was tied for 07:59.

Score tied - 4 times.
Lead changed - 6 times.

Official Basketball Box Score -- Game Totals -- Final Statistics
Chicago State vs Seattle University
01/11/18 7:00 pm at Seattle, WA (Connolly Complex)

Chicago State 64 • 2-17, 0-2 WAC

Box score table for Chicago State vs Seattle University. Columns include Player, FG-FGA, 3-Ptr, FT-FTA, Rebounds, PF, TP, A TO Blk Stl, Min. Totals: 23-61, 5-14, 13-15, 10 25 35, 20 64, 11 11 4 9, 200.

FG % 1st Half: 10-30 33.3% 2nd half: 13-31 41.9% Game: 23-61 37.7%
3FG % 1st Half: 3-9 33.3% 2nd half: 2-5 40.0% Game: 5-14 35.7%
FT % 1st Half: 10-10 100.0 2nd half: 3-5 60.0% Game: 13-15 86.7%

Seattle University 67 • 12-7, 1-1 WAC

Box score table for Seattle University vs Chicago State. Columns include Player, FG-FGA, 3-Ptr, FT-FTA, Rebounds, PF, TP, A TO Blk Stl, Min. Totals: 25-61, 7-18, 10-15, 15 27 42, 16 67, 13 16 4 3, 200.

FG % 1st Half: 12-30 40.0% 2nd half: 13-31 41.9% Game: 25-61 41.0%
3FG % 1st Half: 3-8 37.5% 2nd half: 4-10 40.0% Game: 7-18 38.9%
FT % 1st Half: 4-6 66.7% 2nd half: 6-9 66.7% Game: 10-15 66.7%

Officials: Ken Ditty, Marc A. Beasley, Wilson Holland
Technical fouls: Chicago State-None. Seattle University-None.
Attendance: 911

Score by periods table with columns: 1st, 2nd, Total. Chicago State: 33, 31, 64. Seattle University: 31, 36, 67.

Points, In Paint, Off T/O, 2nd Chance, Fast Break, Bench table. Chicago State: 28, 23, 14, 6, 21. Seattle University: 30, 10, 14, 2, 4.

Last FG - CSU 2nd-01:33, SU 2nd-00:17.
Largest lead - CSU by 7 2nd-10:58, SU by 13 1st-14:27.
CSU led for 16:19, SU led for 20:10. Game was tied for 03:31.

Score tied - 8 times.
Lead changed - 8 times.

Official Basketball Box Score -- Game Totals -- Final Statistics
Kansas City vs Seattle University
01/13/18 1:00 pm at Seattle, WA (KeyArena)

Kansas City 75 • 5-14, 0-3 WAC

Box score table for Kansas City vs Seattle University. Columns include Player, FG-FGA, 3-Ptr, FT-FTA, Rebounds, PF, TP, A TO Blk Stl, Min. Totals: 22-53, 9-30, 22-26, 5 18 23, 26 75, 9 10 3 8, 200.

FG % 1st Half: 10-26 38.5% 2nd half: 12-27 44.4% Game: 22-53 41.5%
3FG % 1st Half: 5-15 33.3% 2nd half: 4-15 26.7% Game: 9-30 30.0%
FT % 1st Half: 9-10 90.0% 2nd half: 13-16 81.3% Game: 22-26 84.6%

Seattle University 77 • 13-7, 2-1 WAC

Box score table for Seattle University vs Kansas City. Columns include Player, FG-FGA, 3-Ptr, FT-FTA, Rebounds, PF, TP, A TO Blk Stl, Min. Totals: 19-48, 10-23, 29-34, 15 27 42, 22 77, 14 23 1 3, 200.

FG % 1st Half: 9-22 40.9% 2nd half: 10-26 38.5% Game: 19-48 39.6%
3FG % 1st Half: 6-10 60.0% 2nd half: 4-13 30.8% Game: 10-23 43.5%
FT % 1st Half: 14-16 87.5% 2nd half: 15-18 83.3% Game: 29-34 85.3%

Officials: Coban Lopez, Toby Doolittle, Charles Robinson
Technical fouls: Kansas City-None. Seattle University-None.
Attendance: 1449

Score by periods table with columns: 1st, 2nd, Total. Kansas City: 34, 41, 75. Seattle University: 38, 39, 77.

Points, In Paint, Off T/O, 2nd Chance, Fast Break, Bench table. Kansas City: 18, 17, 12, 0, 8. Seattle University: 18, 17, 12, 0, 8.

Last FG - UMKC 2nd-00:49, SU 2nd-01:32.
Largest lead - UMKC by 3 1st-15:01, SU by 9 1st-01:31.
UMKC led for 07:35, SU led for 26:00. Game was tied for 06:25.

Score tied - 12 times.
Lead changed - 14 times.



Official Basketball Box Score -- Game Totals -- Final Statistics
Seattle U vs New Mexico State
01/18/18 7 p.m. at Pan American Center

Seattle U 62 • 13-8, 2-2 WAC

#	Player	Total		3-Ptr	FT-FTA	Rebounds			PF	TP	A	TO	Blk	Stl	Min
		FG-FGA	FG-FGA			Off	Def	Tot							
13	Hearlihy, Josh	f	2-5	1-2	0-0	0	4	4	2	5	1	4	0	0	31
41	Menzies, Aaron	c	2-5	0-0	6-9	2	10	12	3	10	0	1	0	0	33
02	Hill, Jordan	g	3-9	1-4	5-6	0	3	3	3	12	2	2	0	1	35
05	Kavas, Matej	g	7-13	3-7	3-3	1	5	6	4	20	1	3	0	0	34
10	Gittens, Richaud	g	5-9	0-2	1-3	2	1	3	4	11	1	3	0	1	35
01	Means, Morgan	g	2-4	0-1	0-0	1	0	1	1	4	2	2	0	0	25
11	Ulaneo, Scott	g	0-0	0-0	0-0	0	1	1	0	0	0	1	0	0	3
12	Da Campo, Mattia	g	0-0	0-0	0-0	0	0	0	0	0	0	0	0	0	1
15	Spurgeon, Jake	g	0-0	0-0	0-0	0	0	0	0	0	0	0	0	0	1
23	Nettles, Aaron	g	0-2	0-1	0-0	0	0	0	0	0	0	0	0	1	2
	Team					1	1	2							
	Totals		21-47	5-17	15-21	7	25	32	17	62	7	16	0	3	200

FG % 1st Half: 7-21 33.3% 2nd half: 14-26 53.8% Game: 21-47 44.7% Deadball
 3FG % 1st Half: 3-10 30.0% 2nd half: 2-7 28.6% Game: 5-17 29.4% Rebounds
 FT % 1st Half: 5-10 50.0% 2nd half: 10-11 90.9% Game: 15-21 71.4% 2

New Mexico State 75 • 16-3, 4-0 WAC

#	Player	Total		3-Ptr	FT-FTA	Rebounds			PF	TP	A	TO	Blk	Stl	Min
		FG-FGA	FG-FGA			Off	Def	Tot							
10	Jones, Jemerrio	f	5-7	0-0	0-0	3	8	11	1	10	1	1	0	0	31
11	Wilkins, Johnathon	f	2-6	1-4	0-0	2	3	5	2	5	1	1	0	0	18
12	Harris, AJ	g	2-11	0-4	2-2	0	1	1	1	6	5	1	0	1	33
13	N'Dir, Sidy	g	4-7	3-6	0-0	0	3	3	2	11	1	0	0	1	29
23	Lofton, Zach	g	5-13	2-6	3-4	2	3	5	2	15	0	0	0	0	23
00	Jones, Keyon	g	0-2	0-2	0-0	2	0	2	3	0	1	0	0	0	9
01	Buchanan, Shunn	g	1-3	1-3	0-0	0	2	2	2	3	2	0	1	0	15
03	Hadley, Gabe	g	2-5	2-4	0-0	0	0	0	0	6	0	0	0	0	6
05	Miles, Kortrijk	g	0-0	0-0	0-0	0	0	0	0	0	0	0	0	0	1
15	Garza, Joe	g	0-0	0-0	0-0	0	0	0	1	0	0	0	0	0	1
22	Chuha, Eli	g	3-4	0-1	8-8	1	2	3	3	14	2	0	0	0	19
24	Gordon, Leston	g	0-0	0-0	0-0	0	2	2	1	0	0	3	0	0	1
35	McCants, Johnny	g	2-6	0-0	1-3	3	0	3	0	5	0	0	1	0	14
	Team					1	0	1							
	Totals		26-64	9-30	14-17	14	24	38	18	75	13	6	2	2	200

FG % 1st Half: 12-32 37.5% 2nd half: 14-32 43.8% Game: 26-64 40.6% Deadball
 3FG % 1st Half: 6-18 33.3% 2nd half: 3-12 25.0% Game: 9-30 30.0% Rebounds
 FT % 1st Half: 7-8 87.5% 2nd half: 7-9 77.8% Game: 14-17 82.4% 1

Officials: Brad Gaston, Jon Stigliano, Jim Schipper
 Technical fouls: Seattle U-None. New Mexico State-None.
 Attendance: 5035

Score by periods	1st	2nd	Total
Seattle U	22	40	62
New Mexico State	37	38	75

	In	Off	2nd	Fast	Bench
Points	Paint	T/O	Chance	Break	
SU	22	5	10	0	4
NMSU	30	21	16	0	28

Last FG - SU 2nd-01:43, NMSU 2nd-03:04. Score tied - 0 times.
 Largest lead - SU None, NMSU by 17 2nd-15:40. Lead changed - 0 times.
 SU led for 00:00. NMSU led for 39:09. Game was tied for 00:51.