



# UTSA

2015  
volleyball

Volleyball Contact: Zena Rex | zena.rex@utsa.edu | (956) 739-4878

## 2015 Schedule

Overall: 11-5 | Home: 3-1 | Away: 1-3 | Neutral: 7-1 | C-USA: 2-0

Date	Opponent	Location	Time
8/28	Montana State !	Huntsville, Texas	W, 3-0
8/28	Prairie View A&M !	Huntsville, Texas	W, 3-0
8/29	Sam Houston State !	Huntsville, Texas	W, 3-2
8/29	Tulane !	Huntsville, Texas	W, 3-0
9/3	Texas State #	San Marcos, Texas	L, 3-2
9/4	Indiana #	San Marcos, Texas	W, 3-1
9/5	Texas Southern #	San Marcos, Texas	W, 3-0
9/7	<b>#12 Oregon</b>	<b>Convocation Center</b>	<b>W, 3-1</b>
9/10	<b>Santa Clara</b>	<b>Convocation Center</b>	<b>L, 3-1</b>
9/11	#4 Texas \$	Austin, Texas	L, 3-0
9/11	Iona \$	Austin, Texas	W, 3-0
9/18	TCU %	Dallas, Texas	L, 3-1
9/18	Clemson %	Dallas, Texas	W, 3-2
9/19	(RV) SMU %	Dallas, Texas	L, 3-1
9/25	<b>Middle Tennessee *</b>	<b>Convocation Center</b>	<b>W, 3-0</b>
9/27	<b>North Texas *</b>	<b>Convocation Center</b>	<b>W, 3-0</b>
10/2	UAB *	Birmingham, Ala.	7 p.m.
10/9	WKU *	Bowling Green, Ky.	7 p.m.
10/11	UTEP *	El Paso, Texas	2 p.m.
10/15	at Rice *	Houston, Texas	4 p.m.
10/18	<b>Marshall *</b>	<b>Convocation Center</b>	<b>11:30 a.m.</b>
10/21	<b>Charlotte *</b>	<b>Convocation Center</b>	<b>6 p.m.</b>
10/25	<b>UTEP *</b>	<b>Convocation Center</b>	<b>1 p.m.</b>
10/30	Florida Atlantic *	Boca Raton, Fla.	5 p.m.
11/1	FIU *	Miami, Fla.	12 p.m.
11/4	<b>Rice*</b>	<b>Convocation Center</b>	<b>6 p.m.</b>
11/6	<b>LA Tech *</b>	<b>Convocation Center</b>	<b>6 p.m.</b>
11/8	<b>UAB *</b>	<b>Convocation Center</b>	<b>1 p.m.</b>
11/12	Southern Miss *	Hattiesburg, Miss.	7 p.m.
11/14	North Texas *	Denton, Texas	1 p.m.
11/20-22	C-USA Championships	San Antonio, Texas	TBA

All home matches are played at the Convocation Center and subject to change.

\* Denotes C-USA match • ! Bearkats Invitational (Hosted by Sam Houston State)

# Delta Zeta Classic (Hosted by Texas State) • \$ Texas Classic (Hosted by Texas)

% SMU Doubletree Invitational (Hosted by SMU)

^ Conference USA Volleyball Championship (Hosted by UTSA)

## This Week

### Match #17 • UAB

Oct. 2 • Bartow Arena • Birmingham, Ala.

UTSA kicks off its three-match road swing Friday, Oct. 2, when the Roadrunners visit the UAB Blazers in Conference USA action.

The Roadrunners hosted a pair of league matches last weekend and begin the trek to their third C-USA title with a 2-0 record and 11-5 overall mark. Head coach Laura Neugebauer-Groff also picked up her 500th career win Sunday in a sweep over North Texas.

UTSA heads into the weekend tied for second in the circuit and in the top-three in most statistical categories. In conference-only matches, the Roadrunners hold the top hitting percentage with a .347 clip and also tie for first averaging 14.83 kills per set.

Junior Dajana Boskovic continues to lead the offense with 4.04 kills per set, which is only fifth in the league and 52nd in the NCAA. Boskovic also adds 113 digs and 28 blocks.

UAB welcomes the Roadrunners with a 7-11 overall record and an 0-4 mark in the conference (12th in the standings). The Blazer's last win came at its own Fight Like Hal Memorial Tournament (9/18-19) against Jacksonville State in a 3-1 decision.

Statistically, UAB is in the middle to lower half in C-USA in all but one statistic - service aces. The Blazers are averaging a league second-best 1.74 services aces per set, which ranks 21st in the nation. UAB's 118 total aces is second in the NCAA.

Outside hitter Gabby Deshotel leads the Blazers offense averaging 4.24 kills per set, which is best for 30th in the NCAA. Deshotel's 288 total kills also ranks second in the nation.

UTSA will end its road swing the following week when the Roadrunners square off with WKU on Oct. 9 and UTEP on Oct. 11.

The Roadrunners will also serve as the hosting school for the 2015 C-USA Volleyball Championships set for Nov. 20-22. The three-day event will take place at the Convocation Center on UTSA's campus.

## 2015 UTSA Volleyball Roster (Bold denotes probable starter)

No.	Name	Cl.	Pos.	Ht.	Hometown	Notes
1	Morgan Broussard	Sr.	S	5-9	Gering, Neb.	Averaging 5.50 assists per set through eight matches played
<b>5</b>	<b>Amanda Gonzales</b>	<b>Fr.</b>	<b>S</b>	<b>5-5</b>	<b>New Braunfels, Texas</b>	<b>Has seen action in five matches, averaging 7.26 aces</b>
<b>6</b>	<b>Kasey Kiefer</b>	<b>Jr.</b>	<b>OH</b>	<b>6-0</b>	<b>Tempe, Ariz.</b>	<b>Posted six matches in double figure kills, avg. 2.67 pe set</b>
7	Marijeta Runjic	So.	OH	6-4	Trogir, Croatia	Second on team with 2.88 kps and ties for 4th in aces with 7
8	Laura Cruz	Fr.	DS	5-2	Helotes, Texas	Has seen action in 12 of 16 matches and avg. 1.72 dps
<b>9</b>	<b>Megan Slan</b>	<b>So.</b>	<b>MH</b>	<b>6-0</b>	<b>Leander, Texas</b>	<b>Four matches with 5+ blocks and is second w/43 blocks</b>
<b>11</b>	<b>Annie Kunes (L)</b>	<b>Sr.</b>	<b>DS</b>	<b>5-6</b>	<b>Fontana, Wis.</b>	<b>Leads team with 3.54 digs per set, also has 47 assists</b>
12	Jordan Kotara	Sr.	MH/OH	6-1	Poth, Texas	Has seen action in five sets this season
<b>15</b>	<b>Kylie Schott</b>	<b>Sr.</b>	<b>MH</b>	<b>6-1</b>	<b>Cypress, Texas</b>	<b>Hitting a team second-best .417 and leads with 60 blocks</b>
<b>16</b>	<b>Shelby Williams</b>	<b>Fr.</b>	<b>DS</b>	<b>5-6</b>	<b>New Braunfels, Texas</b>	<b>Second on team with 191 digs (3.35 dps)</b>
<b>17</b>	<b>Dajana Boskovic</b>	<b>Jr.</b>	<b>OH</b>	<b>6-1</b>	<b>Trebinje, B&amp;H</b>	<b>Avg. team-best 4.04 kps and adds 113 digs and 28 blocks</b>
18	Tessa Dahnert	Jr.	MH	6-0	Cedar Park, Texas	Totalled 25 blocks and averaging 0.88 kills per set
20	Jessica Waldrip	Jr.	S	5-10	New Braunfels, Texas	Runnings 6-2 and is averaging 8.33 assists per set
24	Daniella Villarreal	Jr.	DS	5-5	New Braunfels, Texas	Registered 50 digs and averaging 1.79 digs per frame
26	Antonela Jularic	Fr.	OH	6-1	Vrbovec, Croatia	Has 2 starts and is third on the team in aces with 11



## Quick Facts

### General Information

Name	The University of Texas at San Antonio
Location	San Antonio, Texas
Founded	1969
Enrollment	28,628 (24,342 undergraduate)
Nickname	Roadrunners
School Colors	Navy Blue, White and Orange
Home Arena	Convocation Center / 2,650
Affiliation	Division I
Conference	Conference USA
President	Dr. Ricardo Romo
Director of Athletics	Lynn Hickey
Athletic Department Phone	210-458-4161

### Coaching Staff

Head Coach	Laura Neugebauer-Groff (Texas, '86)
Record at UTSA	244-184 (13 seasons)
Career record	500-246 (21 seasons)
Office Phone	210-458-4196
Assistant Coaches	Pat Stangle (Third season) Danka Danicic (Second season)

### Team Information

2014 overall record	20-9
2014 Conference USA record	15-1 (t-1st)
Final ranking	N/A
Letter winners R/L	11/3
Starters R/L	5 +libero/1

Key returners	D. Boskovic, J. Waldrip, A. Kunes, K. Schott
Key Losses	Dempsey Thornton
Key newcomers	Antonela Jularic, Amanda Gonzales

### Volleyball History

First year	1983
All-time record	593-492
NCAA Postseason appearances	3 (2000, 2010, 2013)
C-USA regular season titles	2 (2013, 2014)
C-USA tournament titles	1 (2013)
Southland Conference championships	3 (1999 regular season; 2000 and 2010 tournament)

### Athletics Communications

Assistant AD/Communications	Kyle Stephens
Email	kyle.stephens@utsa.edu
Associate Director	Brian Hernandez
Email	brian.hernandez@utsa.edu
Assistant Director	Jordan Korphage
Email	jordan.korphage@utsa.edu
Assistant Director (volleyball contact)	Zena Rex
Email	zena.rex@utsa.edu
Cell	(966) 739-4878

## Media

**WE ARE UTSA** | When referencing The University of Texas at San Antonio athletics, please use the acronym UTSA and the nickname Roadrunners. Please refrain from using Texas-San Antonio, UT-San Antonio, UT-SA or any other variation.

**Media Coverage** | The UTSA Athletics Communication Office assists members of the media with their coverage of all Roadrunners sports by providing player and coach interviews, feature ideas, pregame notes and updated statistics.

**Interviews** | All interviews with coaches and student-athletes must be arranged at least 24 hours in advance through volleyball contact Zena Rex. Telephone interviews are available to the media on a "call-back" basis at a time that is convenient for the coach or student-athlete. Post-match interviews with coaches and student-athletes will be conducted on the court following a 10-minute cooling off period.

**Internet Radio Broadcasts** | All of UTSA's home matches are slated to be broadcast live (audio) on goUTSA.com this season. Video streaming (subscription required) will also be available for all home matches.

## Last Time Out

SAN ANTONIO — Laura Neugebauer-Groff reached yet another milestone in her 22-year coaching career on Sunday as she led her team to a sweep (25-18, 25-15, 25-16) against North Texas at the Convocation Center for her 500th career victory.

UTSA improved to 11-5 overall and 2-0 in Conference USA, while North Texas dropped to 10-8 on the year and 2-1 in league play.

The trio of Kasey Kiefer, Dajana Boskovic and Kylie Schott accounted for almost all the Roadrunners kill as Kiefer put up a match-high 15. Boskovic added 11 and Schott 10 for the day.

Amanda Gonzales and Jessica Waldrip split duties at setter with Gonzales tallying 17 assists and Waldrip 18. Gonzales also registered her third double-double of the year with 10 digs.

As a team, UTSA hit .396 and held North Texas to a .170 attack percentage.

The Roadrunners led throughout the entire match for the exception of once in the third set after a blocking error by UTSA tied the score at five. A kill from Hannah Shaw put UNT up 6-5 but was short lived.

In the first set, UTSA spread the offense around and won the opening frame 25-18. Boskovic led the corps in the first set with five kills and nearly reached a double-double with seven digs. The junior outside hitter didn't complete her fifth double-double of the year until the third set when she totaled three kills and five digs for the stanza.

UTSA came out stronger in the second set as they hit .393 and held North Texas to a .037 clip. The Roadrunners totaled 13 kills to the Mean Green's eight and also tallied three blocks.

In the final set, the score tied twice, but after Kiefer tied the score at six, a miscue by the Mean Green allowed UTSA to remain on top the remainder of the set.

North Texas' Carnae Dillard was one kill shy of reaching her 2,000th career kill as she registered 14 on the day.

**National Poll****AVCA Division I Coaches Preseason Poll  
(September 28, 2015)**

School	Total Points	'15 Record	'14 Final Rank
1. Penn State (63)	1599	13-0	1
2. Southern California (1)	1502	14-0	3
3. Texas	1494	12-1	2
4. Nebraska	1401	11-1	4
5. Washington	1319	13-0	6
6. Arizona State	1296	13-0	7
7. Illinois	1159	11-2	9
8. Stanford	1139	7-3	8
9. Florida	1121	9-2	5
10. Hawaii	1014	12-1	11
11. UCLA	863	10-2	13
12. Kansas	852	14-0	15
13. Ohio State	794	12-2	12
14. Arizona	766	11-3	14
15. BYU	756	11-2	10
16. Minnesota	596	9-3	21
17. Florida State	551	9-4	17
18. Purdue	488	11-2	20
19. Wisconsin	447	8-4	16
20. Colorado State	388	9-3	19
21. Kentucky	351	10-5	24
22. Oregon	346	7-4	18
23. Michigan	155	11-2	22
24. Long Beach State	138	12-3	25
25. Wyoming	63	12-2	NR

**Others receiving votes:** Arkansas 56; Western Kentucky 39; Pacific 20; San Diego 16; North Carolina 10; Gonzaga 9; Michigan State 9; Iowa 7; Ohio 7; Creighton 5; Pittsburgh 4; Iowa State 3; Santa Clara 3

**Roadrunners Trends**

At Convocation Center	3-1
On the road	1-3
At a neutral site	7-1
Last 5 matches	3-2
Against ranked opponents	1-1
Longest win streak	4
Longest losing streak	2

**Scoreboard**

Up 1-0	9-1
Up 2-0	7-0
Up 2-1	4-0
Tied 1-1	4-3
Tied 2-2	2-1
Down 0-1	2-4
Down 0-2	0-2
Down 2-1	0-4

In August	4-0
In September	7-5
In October	0-0
In November	0-0

On Sundays	1-0
On Mondays	1-0
On Tuesdays	0-0
On Wednesdays	0-0
On Thursdays	0-2
On Fridays	6-2
On Saturdays	3-1

UTSA - More kills in match	10-0
Opp. - More kills in match	1-5
Tied	0-0

UTSA - More assists in match	10-0
Opp. - More assists in match	1-5
Tied	0-0

UTSA - More digs in match	8-3
Opp. - More digs in match	2-2
Tied	1-0

UTSA - More aces in match	9-0
Opp. - More aces in match	2-3
Tied	0-2

UTSA - More blocks in match	10-2
Opp. - More blocks in match	0-2
Tied	1-1

**Double-Doubles**

**Boskovic** 26 kills, 11 digs at SHSU  
25 kills, 18 digs vs. Texas State  
11 kills, 10 digs vs. Indiana  
21 kills, 16 digs vs. Oregon  
11 kills, 13 digs vs. North Texas  
**Waldrip** 50 assists, 10 digs at SHSU  
**Jularic** 14 kills, 12 digs vs. Clemson  
**Gonzales** 49 assists, 10 digs vs. Clemson  
29 assists, 10 digs vs. SMU  
17 assists, 10 digs vs. North Texas

**Nationally Ranked**

Matches thru Sept. 27

Name	Rank	Value
Boskovic (attacks per set)	35	11.40
Boskovic (kills per set)	52	4.04
Boskovic (total kills)	142	182
Schott (total blocks)	79	60
Schott (blocks per set)	137	1.09
Kunes (total digs)	149	209

**NCAA National Team Rankings - As of Sept. 27**

Leader	Statistic	UTSA
Denver	Team total blocks	36
Washington	Opp. hitting percentage	44
Rider	Team digs	54
Hofstra	Team kills	63
Akron	Team aces	65
Rider	Team total attacks	78
UNCW	Blocks per set	79
5 teams tied	Match W-L pct.	82
USC Upstate	Digs per set	91
New Orleans	Aces per set	116
Kansas	Assists per set	132
Kansas	Kills per set	134

**NCAA RPI Rankings****Court Notes****Roadrunners picked second in CUSA Poll**

UTSA was selected to finish second in the 2015 Conference USA Volleyball Preseason Poll, voted upon the league's coaches, it was announced July 30.

Coming off their second consecutive regular season title and fifth consecutive 20-plus win

season, UTSA was selected behind WKU, who shared the crown with UTSA last fall.

Dajana Boskovic and Jessica Waldrip also make their second appearance on the preseason all-conference team. Both were first team all-conference honorees in 2014 while Waldrip was tabbed the league's setter of the year.

**Hot streaks**

Combined with the 2013 and 2014 season, UTSA won 22 consecutive regular season Conference USA matches, for the all-time league record. Tulsa held the previous record of 20, set in 2010.



## Conference USA Preseason Team and Poll

Name	School	Pos.	Yr.
Katarina Stepanovic	Florida Atlantic	MB	Sr.
Ally Kiekoover	Marshall	MB	Jr.
Chelsea Ross	Middle Tennessee	OH	Sr.
Carnae Dillard	North Texas	OH	Sr.
Chelsey Harris	Rice	RS	Jr.
Leah Mikesky	Rice	OH	RJr.
Mary Pursell	Southern Miss	L/DS	Sr.
Dajana Boskovic	UTSA	OH	Jr.
Jessica Waldrip	UTSA	S	Jr.
Alyssa Cavanaugh	WKU	OH	So.
Jessica Lucas	WKU	S	So.
Noelle Langenkamp	WKU	MH	Sr.

**C-USA Volleyball Preseason Player of the Year:** Carnae Dillard, UNT

### 2015 Conference USA Volleyball Preseason Poll

1. WKU
2. **UTSA**
3. Rice
4. North Texas
5. Florida Atlantic
6. Southern Miss
7. Marshall
8. Middle Tennessee
9. FIU
10. Charlotte
11. UTEP
12. UAB
13. Louisiana Tech



### Stat Leaders

*Overall conference individual leaders - As of Sept. 30*

Hitting Percentage	No.	Avg./S
2. Kylie Schott	(104-14-216)	.417

Kills		
5. Dajana Boskovic	182	4.04

Assists		
8. Jessica Waldrip	408	8.33

Blocks		
5. Kylie Schott	60.0 (10-50)	1.09
10. Megan Slan	43.0 (4-39)	1.00

Points		
5. Dajana Boskovic	202.0 (182K-5SA-28B)	4.49

*Conference only leaders - As of Sept. 30*

Hitting Percentage	No.	Avg./S
1. Kylie Schott	(170-30)	.567
4. Marijeta Runjic	(19-3-37)	.432

Kills		
T8. Dajana Boskovic	22	3.67
10. Kasey Kiefer	18	3.60

Assists		
10. Amanda Gonzales	41	6.83

Service Aces		
1. Shelby Williams	6	1.00
T3. Antonela Jularic	3	0.50

Blocks		
2. Megan Slan	7.0 (1-6)	1.40

Points		
10. Dajana Boskovic	24.5 (22K-5B)	4.08

### Standings - As of Sept. 30

Team	Conference			Overall		
	W	L	Pct.	W	L	Pct.
WKU	3	0	1.000	16	2	.889
Rice	2	0	1.000	12	3	.800
UTSA	2	0	1.000	11	5	.688
Marshall	2	1	.667	11	5	.688
North Texas	2	1	.667	10	8	.556
Charlotte	2	1	.667	5	9	.357
FIU	2	2	.500	8	6	.571
Southern Miss	1	1	.500	14	5	.737
Florida Atlantic	1	2	.333	9	6	.600
UTEP	1	2	.333	7	10	.412
Middle Tennessee	1	2	.333	3	14	.176
UAB	0	4	.000	7	11	.389
Louisiana Tech	0	3	.000	6	10	.375

### Team Comparison

*As of Sept. 30*

Leader	Overall Statistic	UTSA
WKU - .280	Hitting percentage	3rd - .253
WKU - .142	Opponent hitting percentage	3rd - .165
Rice - 13.54	Assists	6th - 11.93
Rice - 14.30	Kills	6th - 12.83
Rice - 2.46	Blocks	5th - 2.32
UAB - 1.74	Service Aces	4th - 1.39
UTEP - 18.26	Digs	4th - 15.39
Leader	Conference-only Statistic	UTSA
UTSA - .347	Hitting percentage	1st
WKU - .103	Opponent hitting percentage	4th - 1.75
Rice - 14.17	Assists	3rd - 13.33
Rice, UTSA - 14.83	Kills	T1st
Rice - 3.50	Blocks	7th - 2.50
North Texas - 1.89	Service Aces	2nd - 1.67
Charlotte - 16.38	Digs	9th - 13.67

## C-USA Players of the Week

Week 1 - Aug. 31

Offensive - Noelle Langenkamp, WKU

**Defensive - Kylie Schott, UTSA**

Setter - Madison McDaniel, Rice

Freshman - Gabriela Martin, FAU

Week 2 - Sept. 8

Off. - Stephany Purdue, USM; Carnae Dillard, UNT

Defensive - Mary Pursell, Southern Miss

Setter - Madison McDaniel, Rice

Freshman - McKay Kyle, Rice

Week 3 - Sept. 14

Offensive - Leah Mikesky, Rice

Defensive - Allie Kellerman, Marshall

Setter - Madison McDaniel, Rice

Freshman - Gabriela Martin, FAU

Week 4 - Sept. 21

Offensive - Carnae Dillard, UNT

Defensive - Kimberly Vaio, Rice

Setter - Jessica Lucas, WKU

Freshman - Zahria Ri'chard, UAB

Week 5 - Sept. 28

Offensive - Abreia Epps, Charlotte

Defensive - Portia Okafor, Rice

Setter - Julianna Dole, Rice

Freshman - Rachel Anderson, WKU

Week 6 - Oct. 5

Offensive -

Defensive -

Setter -

Freshman -

Week 7 - Oct. 12

Offensive -

Defensive -

Setter -

Freshman -

Week 8 - Oct. 19

Offensive -

Defensive -

Setter -

Freshman -

Week 9 - Oct. 26

Offensive -

Defensive -

Setter -

Freshman -

Week 10 - Nov. 2

Offensive -

Defensive -

Setter -

Freshman -

Week 11 - Nov. 9

Offensive -

Defensive -

Setter -

Freshman -

## Scouting the Opponent

UAB • October 2 • 7 p.m.

- All-time record against UAB: 5-1

- Last meeting: Nov. 7, 2014 in San Antonio; UTSA 3, UAB 0

- In the last meeting, UTSA swept UAB at the Convocation Center and were paced by Dajana Boskovic's 17 kills. The team led in just about every statistical category and had won 14 consecutive matches at that point.

- The Blazers will welcome UTSA on Friday with a 7-11 overall record and 0-4 mark in Conference USA. UAB's last win came at its own Fight Like Hal Memorial Tournament (9/18-19) against Jacksonville State in a 3-1 decision.

- UAB is currently on a two-match losing streak and are 12th in the league standings.

- Statistically in Conference USA, UAB is in the middle to lower half in all statistics but one - service aces. The Blazers are averaging a league second-best 1.74 service aces per set, which ranks 21st in the NCAA. UAB's 118 total aces is second in the nation.

- Gabby Deshotel leads the Blazers offense averaging 4.24 kills per set, which ranks 30th in the NCAA. Deshotel's 288 kills also ranks second in the nation.

- As a team, UAB is even with its opponents in hitting percentage with a .185 clip and are slightly edging the competition with 11.74 kills per set to their 11.43.

- Defensively, opponents are out-digging and out-blocking the Blazers, 13.31-13.01 and 148.0-142.0 respectively.



## Court Notes

### We've got the keys

UTSA will return five of its starting six, plus libero, for the 2015 season. Highlighting the returning squad is Conference USA Setter of the Year and All-American Jessica Waldrip and all-conference selections Dajana Boskovic, Annie Kunes and Kylie Schott.

Reigning C-USA Coach of the Year Laura Groff will have one slot to fill with the graduation of outside Dempsey Thornton.

### The more the merrier

Head coach Laura Neugebauer-Groff adds four to the 2015 roster - all true freshman. The Roadrunners will welcome Antonela Jularic (OH), Amanda Gonzales (S), Laura Cruz (DS) and Shelby Williams (DS).

Jularic hails from Croatia where she most recently played in the Youth World Championships in Estonia. The 6-1 outside hitter was also a member of the Croatian Youth National and Senior National Teams.

Gonzales, Cruz and Williams all come to UTSA from the San Antonio/New Braunfels area.

### Make it 15

The Roadrunners have now opened each of their last 15 campaigns on the road. The last time UTSA opened at home was during the 2000 season when it hosted the UTSA/Hampton Inn Invitational.

Since then, the Roadrunners have headed to Wyoming, Illinois, North Carolina, Kansas, Idaho, Tennessee, Louisiana and have even stayed within the friendly confines of the Lone Star State to kick off their campaigns.

### Season openers

In the program's 32 years of existence, the Roadrunners have gone 13-19 in season openers. In the last five seasons, UTSA is 3-2, and in 2014 won the season opener against Tulane at the Texas A&M Invitational in College Station.

### Tough competition

The AVCA announced its preseason poll for the 2015 campaign and UTSA will face two opponents ranked in the top-25. Texas checked in at No. 3 and received one first-place vote while Oregon was picked No. 13. The Roadrunners will host the Ducks on Sept. 7 for the home opener.

### One at a time

During the 2014 season, UTSA won 15 consecutive matches during the regular season, which was the second longest win streak in program history. The program record of 16 was set in 1999 when the Roadrunners finished 22-7. The streak ended for the Roadrunners on November 13 when they traveled to North Texas and went down in straight sets.

1999 - 16 consecutive wins (22-7)  
2014 - 15 consecutive wins (20-9)  
2000 - 15 consecutive wins (24-9)  
2010, 2011 - 12 consecutive wins

### Milestone 500

At the conclusion of the 2014 season, head volleyball coach Laura Neugebauer-Groff wrapped up her 21st season coaching with a 489-241 career record and is 11 wins away from reaching her 500th career win.

In 2010, Neugebauer-Groff reached her 400th career win against McNeese State in a 3-2 decision.

### Among the best

Head coach Laura Neugebauer-Groff enters her 14th season at the helm of the Roadrunners volleyball program and 22nd overall in 2015. Among all coaches at the Division I level, Neugebauer-Groff is the 26th winningest coach (by wins) with 489 and is the 45th winningest coach (by percentage) with a 67 percent winning percentage.

### Program 600

Since its inception in 1983, UTSA has compiled a 582-487 overall record. The Roadrunners are 18 wins away from reaching the program's 600th win. Let the countdown begin!

### On the watch

Senior Kylie Schott already ranks in the all-time record books in block assists and total blocks but is nine block solos away from cracking into the top-10. Schott has totaled 41 block solos through three seasons.

### Reaching new heights

The Roadrunners set a program record on Aug. 28 when they swept Prairie View A&M at the Bearkats Invitational. UTSA hit a whopping .573 (49-6-75) which surpassed the previous mark of .536 set on Sept. 19, 2013 against Mississippi Valley State. Seven Roadrunners hit above .500.

### Trio standouts at Bearkats Invite

UTSA captured its first tournament title since the 2013 season (Hilton Mavericks Classic) at the 27th Bearkats Invitational hosted by Sam Houston State. Senior Kylie Schott was tabbed the Most Valuable Player while Jessica Waldrip and Dajana Boskovic were named to the all-tournament team.

### Schott tabbed DPOW

Kylie Schott hit .532 (28-3-47) over the weekend at the 27th Bearkats Invitational and was recognized as the tournament most valuable player. Schott in turn was recognized as the league's first defensive player of the week.

She tallied 11 kills with six blocks against Sam Houston State and helped lead the team to a 3-2 win over the Bearkats, their first since 2013 snapping a 16-home match win streak.

### Power 5, power down

UTSA squared off with Big Ten Indiana for the first time in school annals at the Delta Zeta Classic and notched a 3-1 victory over the Hoosiers. The win marked a program first for a win over a Big Ten school.

### Duo recognized on all-tournament team

After leading the Roadrunners to a 2-1 weekend, Dajana Boskovic and Marijeta Runjic led UTSA to a second-place finish at the DZ Classic and earned a spot on the all-tournament team. Boskovic notched double figure kills in all three matches, including a season-best of 25 against Texas State.

### Going down in history

Three days after posting a first-ever win over a Big Ten opponent, UTSA upset No. 12 Oregon, 3-1, at the Convocation Center in front of the program's sixth-best crowd (1,051).

The Roadrunners dropped the first set 25-19, but bounced back winning the last three sets. Dajana Boskovic led the team with 21 kills and 16 digs for her fourth double-double of the season.

### On the way to the top

After the second-best start in program history, the Roadrunners have added three more accomplishments to the 2015 season. UTSA has now earned wins against three Power 5 programs.

The first came against Indiana at the Delta Zeta

## Convocation Center



- Built in 1975, the Convocation Center features a permanent maple hardwood court that measures 17,900 square feet and seating that accommodates 4,080 spectators.
- The "Convo" hosted the 1993 United States Olympic Festival Volleyball Tournament, 1998 NORCECA World Volleyball Championships, 2002 WBCA All-Star Game and 2004 Nike Hoops Summit.
- It has been the home of UTSA's volleyball team since 1989.
- Nine of the top 10 crowds in program history have come during the 12-year Laura Neugebauer-Groff era.

### Top-10 Crowds

1.	1,612	vs. Texas State	Nov. 10, 2011	6.	1,051	vs. <b>#12 Oregon</b>	<b>Sept. 7, 2015</b>
2.	1,537	vs. McNeese State	Oct. 14, 2009	7.	987	vs. Baylor	Sept. 20, 2014
3.	1,330	vs. Texas State	Nov. 12, 2009	8.	923	vs. Rice	Aug. 28, 2013
4.	1,150	vs. Florida	Nov. 13, 1999	9.	918	vs. Rice	Oct. 20, 2014
5.	1,105	vs. Tulsa	Nov. 17, 2013	10.	863	vs. Texas State	Nov. 22, 2003



UTSA will be the host site for the 2015 Conference USA Volleyball Championships set for November 20-22.

The eight-team, single elimination tournament will be held at the Convocation Center Friday through Sunday. Western Kentucky won the tournament crown in 2014 after earning a share of the regular season title with the Roadrunners.

The 2015 edition of the event will mark the first time UTSA will play host to a Conference USA championship in any sport.

The last time UTSA hosted a conference tournament was back in 2012 in the Roadrunners first and only season in the Western Athletic Conference.

Classic and was followed by an upset over then-No. 12 Oregon at the Convocation Center. The final came this past weekend at the SMU Doubletree Invitational when the Roadrunners defeated Clemson (ACC) in five sets.

#### It's flu season

Tuesday's Conference USA opener against Rice (Sept. 22) was rescheduled due to Rice's team coming down with a stomach virus. A date has yet to be determined for a make up date.

#### Milestone 500

Head coach Laura Neugebauer-Groff reached yet another milestone on Sunday, Sept. 27, when she led her team to a sweep of North Texas. Neugebauer-Groff is now 500-246 for her career.

Prior to taking over the reigns at UTSA, Neugebauer-Groff was the head coach at Division II St. Mary's.

#### Schedule changes

Due to Rice's volleyball team coming down with a stomach virus for the Sept. 22 match, the entire home and home series was rescheduled.

The series will open in Houston on Oct. 15 with a 4 p.m. start time and the following match will take place on Nov. 4 at 6 p.m. in San Antonio.



## INDIVIDUAL RECORDS

### KILLS

Match: 40 - Tamara Luckemeyer vs. UT Arlington (Oct. 27, 1998)  
3 sets: 26 - Two players (last on Nov. 9, 2004)  
4 sets: 35 - Tamara Luckemeyer vs. Texas State (Oct. 23, 1998)  
5 sets: 40 - Tamara Luckemeyer vs. UT Arlington (Oct. 27, 1998)  
Season: 653 - McKenzie Adams (2013)  
Career: 2,034 - Tamara Luckemeyer (1996-2000)

### ATTACK ATTEMPTS

Match: 81 - McKenzie Adams (Oct. 18, 2013)  
3 sets: 59 - Tamara Luckemeyer vs. McNeese State (Oct. 22, 1999)  
4 sets: 74 - Stacy Schmidt at Stephen F. Austin (Sept. 15, 2000)  
5 sets: 81 - McKenzie Adams (Oct. 18, 2013)  
Season: 1,575 - McKenzie Adams (2013)  
Career: 5,159 - Meagan Daniel (2003-06)

### ATTACK PERCENTAGE

Match (20 att.): .762 - McKenzie Adams at McNeese State (Oct. 8, 2011)  
Season (100 att.): .385 - Kylie Schott (2014)  
Career (1500 att.): .383 - Leslie Dodson (1989-92)

### ASSISTS

Match: 88 - Natasha Biggers vs. UT Arlington (Oct. 27, 1998)  
3 sets: 64 - Natasha Biggers vs. McNeese State (Oct. 22, 1999)  
4 sets: 78 - Natasha Biggers at Lamar (Sept. 29, 2000)  
5 sets: 88 - Natasha Biggers vs. UT Arlington (Oct. 27, 1998)  
Season: 1,597 - Natasha Biggers (2000)  
Career: 5,440 - Natasha Biggers (1997-2000)

### SERVICE ACES

Match: 8 - Tamin Uthoff vs. Texas-Pan American (Sept. 29, 1989)  
3 sets: 6 - Two players (last on Sept. 10, 1995)  
4 sets: 8 - Tamin Uthoff vs. Texas-Pan American (Sept. 29, 1989)  
5 sets: 7 - Cristela Perez vs. McNeese State (Nov. 21, 1996)  
Season: 84 - Tamin Uthoff (1990)  
Career: 227 - Tamin Uthoff (1987-90)

### DIGS

Match: 42 - Erin McMillan vs. Texas State (Nov. 9, 2006)  
3 sets: 29 - Audrey Hiser vs. UT Arlington (Oct. 13, 2007)  
4 sets: 34 - Three players (last on Nov. 16, 2007)  
5 sets: 42 - Erin McMillan vs. Texas State (Nov. 9, 2006)  
Season: 734 - Erin McMillan (2006)  
Career: 2,280 - Kelsey Jewasko (2008-11)

### BLOCK SOLOS

Match: 6 - Victoria Prior at Prairie View A&M (Sept. 14, 2007)  
Season: 63 - Carla Dewey (1995)  
Career: 198 - Carla Dewey (1993-96)

### BLOCK ASSISTS

Match: 11 - Two players (last on Oct. 9, 1999)  
Season: 132 - Carla Dewey (1995)  
Career: 402 - Carla Dewey (1993-96)

### TOTAL BLOCKS

Match: 13 - Nicole Camp at Stephen F. Austin (Oct. 9, 1999)  
3 sets: 9 - Three players (last on Oct. 1, 2011)  
4 sets: 13 - Nicole Camp at Stephen F. Austin (Oct. 9, 1999)  
5 sets: 12 - Two players (last on Oct. 11, 1996)  
Season: 195 - Carla Dewey (1995)  
Career: 600 - Carla Dewey (1993-96)

## TEAM RECORDS

### KILLS

Match: 103 vs. UT Arlington (Oct. 27, 1998)  
3 sets: 72 vs. McNeese State (Oct. 9, 1998)  
4 sets: 96 vs. Texas State (Nov. 10, 1998)  
5 sets: 103 vs. UT Arlington (Oct. 27, 1998)  
Season: 2,005 (2000)

### ATTACK ATTEMPTS

Match: 268 vs. UT Arlington (Oct. 27, 1998)  
3 sets: 187 vs. McNeese State (Oct. 22, 1999)  
4 sets: 256 vs. Texas State (Nov. 10, 1998)  
5 sets: 268 vs. UT Arlington (Oct. 27, 1998)  
Season: 5,624 (2006)

### ATTACK PERCENTAGE

Match: .573 vs. Prairie View A&M (Aug. 28, 2015)  
Season: .267 (1999)

### ASSISTS

Match: 93 vs. McNeese State (Oct. 28, 2005)  
3 sets: 65 vs. UT Arlington (Nov. 9, 2004)  
4 sets: 86 at Stephen F. Austin (Sept. 16, 2000)  
5 sets: 93 vs. McNeese State (Oct. 28, 2005)  
Season: 1,819 (2006)

### SERVICE ACES

Match: 19 vs. Texas Southern (Sept. 30, 1995)  
3 sets: 12 at Louisiana-Monroe (Nov. 9, 2001)  
4 sets: 19 vs. Texas Southern (Sept. 30, 1995)  
5 sets: 15 vs. McNeese State (Nov. 21, 1996)  
Season: 285 (1990)

### DIGS

Match: 136 at Southeastern Louisiana (Nov. 2, 2001)  
3 sets: 89 vs. McNeese State (Oct. 22, 1999)  
4 sets: 131 vs. Texas State (Nov. 10, 1998)  
5 sets: 136 at Southeastern Louisiana (Nov. 2, 2001)  
Season: 2,638 (1990)

### BLOCK SOLOS

Match: 15 at Northwestern State (Oct. 11, 2002)  
Season: 138 (1995)

### BLOCK ASSISTS

Match: 34 vs. Sam Houston State (Sept. 23, 2006)  
Season: 482 (2013)

### TOTAL BLOCKS

Match: 27 at Texas-Pan American (Oct. 30, 1991)  
3 sets: 16.5 vs. Texas A&M-Corpus Christi (Sept. 23, 2004)  
4 sets: 27 at Texas-Pan American (Oct. 30, 1991)  
5 sets: 20 vs. UT Arlington (Oct. 27, 1998)  
Season: 355 (1995)

## CAREER RECORDS

## KILLS

1.	Tamara Luckemeyer, 1996-2000	2,034
2.	Meagan Daniel, 2003-06	1,808
3.	Stacy Schmidt, 1998-2001	1,779
4.	Kendra Rowland, 2007-10	1,625
5.	Leslie Dodson, 1989-92	1,612
6.	Connie Picard, 2003-06	1,396
7.	Heather Turner, 1994-97	1,391
8.	McKenzie Adams, 2011-13	1,382
9.	Brittany Hildebrand, 2003-06	1,342
10.	Whitney Walls, 2009-12	1,236

## KILLS PER SET

1.	Tamara Luckemeyer, 1996-00	4.60
2.	McKenzie Adams, 2011-13	4.44
3.	Stacy Schmidt, 1998-2001	4.09
4.	Meagan Daniel, 2003-06	3.99
5.	Charlsie Heifrin, 2000-02	3.38
6.	Kendra Rowland, 2007-10	3.37
7.	Victoria Prior, 2005-07	3.26
8.	Leslie Dodson, 1989-92	3.20
9.	Connie Picard, 2003-06	3.05
10.	Brittany Hildebrand, 2003-06	3.02

## ATTACK ATTEMPTS

1.	Meagan Daniel, 2003-06	5,159
2.	Kendra Rowland, 2007-10	4,963
3.	Stacy Schmidt, 1998-2001	4,914
4.	Tamara Luckemeyer, 1996-2000	4,803
5.	Heather Turner, 1994-97	4,167
6.	Brittany Hildebrand, 2003-06	3,750
7.	Dempsey Thornton, 2011-14	3,676
8.	Cristela Perez, 1993-96	3,468
9.	McKenzie Adams, 2011-13	3,391
10.	Connie Picard, 2003-06	3,240

## ATTACK PERCENTAGE (MIN. 1,500 ATTEMPTS)

1.	Leslie Dodson, 1989-92	.383
2.	Brittney Malloy, 2009-12	.295
2.	Charlsie Heifrin, 2000-02	.290
3.	Connie Picard, 2003-06	.285
4.	Whitney Walls, 2009-12	.276
	Victoria Prior, 2005-07	.276
6.	Carla Dewey, 1993-96	.272
7.	McKenzie Adams, 2011-13	.262
8.	Stacy Schmidt, 1998-2001	.259
9.	Katy Risinger, 1997-2000	.237
10.	Jennifer Sharp, 1991-94	.232
10.	Natasha Biggers, 1997-2000	.232

## ASSISTS

1.	Natasha Biggers, 1997-2000	5,440
2.	DeeDee Strickland, 2003-06	5,407
3.	Deanna Bower, 1991-94	3,761
4.	Tamin Uthoff, 1987-90	3,269
5.	Tobi Irish, 1994-97	2,760
6.	Kelsey Schwirtlich, 2008-11	2,523
7.	<b>Jessica Waldrip, 2013-Present</b>	<b>2,347</b>
8.	Amber Brooks, 2008-09	1,915
9.	Brandy Huskey, 2012-13	1,746
10.	Rebecca Hrapmann, 2005-08	1,350

## SERVICE ACES

1.	Tamin Uthoff, 1987-90	227
2.	Natasha Biggers, 1997-2000	159
3.	Meagan Daniel, 2003-06	144
4.	Cristela Perez, 1993-96	122
	Amber Soletti, 1994-96	122
6.	Leslie Dodson, 1989-92	118
	Jennifer Sharp, 1991-94	118
8.	Katy Risinger, 1997-2000	115
9.	Deanna Bower, 1991-94	111
10.	Heather Turner, 1994-97	107

## DIGS

1.	Kelsey Jewasko, 2008-11	2,280
2.	Erin McMillan, 2003-06	2,279
3.	Shalynn McCoy, 1986-89	2,009
4.	Stacy Schmidt, 1998-2001	1,839
5.	<b>Annie Kunes, 2012-Present</b>	<b>1,727</b>
6.	Tamara Luckemeyer, 1996-2000	1,549
7.	Meagan Daniel, 2003-06	1,433
8.	Kendra Rowland, 2007-10	1,395
9.	Audrey Hiser, 2005-08	1,359
10.	Heather Turner, 1994-97	1,356

## BLOCK SOLOS

1.	Carla Dewey, 1993-96	198
2.	Connie Picard, 2003-06	94
3.	Jennifer Sharp, 1991-94	84
4.	Charlsie Heifrin, 2000-02	83
5.	Kelly Paegle, 1990-92	79
6.	Teri Fry, 2000-03	62
7.	Briana Mason, 2007-10	61
8.	Victoria Prior, 2005-07	58
9.	<b>Kylie Schott, 2012-Present</b>	<b>51</b>
10.	McKenzie Adams, 2011-13	50
	Brittney Malloy, 2009-12	50

## BLOCK ASSISTS

1.	Carla Dewey, 1993-96	402
2.	Connie Picard, 2003-06	363
3.	Brittney Malloy, 2009-12	349
4.	<b>Kylie Schott, 2012-Present</b>	<b>334</b>
5.	Whitney Walls, 2009-11	279
6.	Charlsie Heifrin, 2000-02	236
7.	Briana Mason, 2007-10	225
8.	Jennifer Sharp, 1991-94	221
9.	Marcia Lyssy, 1996-97	216
10.	McKenzie Adams, 2011-13	210

## TOTAL BLOCKS

1.	Carla Dewey, 1993-96	600
2.	Connie Picard, 2003-06	457
3.	Brittney Malloy, 2009-11	399
4.	<b>Kylie Schott, 2012-Present</b>	<b>385</b>
5.	Kelly Paegle, 1989-92	344
6.	Charlsie Heifrin, 2000-02	319
7.	Jennifer Sharp, 1991-94	305
8.	Whitney Walls, 2009-12	294
9.	Briana Mason, 2007-10	286
10.	McKenzie Adams, 2011-13	260

**#1 Morgan Broussard • 5-9 • S • Sr. • Gering, Neb.****2015 Season Notes**

Career hitting pct. - 1.000 (6x) last at Middle Tennessee (10/3/14)

**2015 Season Highs**

Kills 2 vs. Texas Southern (9/5/15)  
Total Attacks 4 vs. Texas Southern (9/5/15)  
Assists 20 vs. Texas Southern (9/5/15)  
Service Aces 1 at Texas State (9/3/15)  
Digs 4 vs. Santa Clara (9/10/15)  
Total Blocks 2 vs. Prairie View A&M (8/28/15)  
Hitting Pct. .000 (2-2-4) vs. Texas Southern (9/5/15)

**Career Highs**

Kills **2 (3x) last vs. Texas Southern (9/5/15)**  
Total Attacks 5 vs. McCook C.C. (9/24/13)  
Assists 41 vs. Trinidad State Junior College (10/13/12)  
Service Aces 4 vs. McCook C.C. (10/16/12)  
Digs 14 vs. Marquette (9/13/14)  
Total Blocks 5 vs. Green Bay (9/12/14)

**#6 Kasey Kiefer • 6-0 • OH • Jr. • Tempe, Ariz.****2015 Season Notes**

Career hitting pct. - 1.000 (1-0-1) vs. Tulane (11/24/13)

**2015 Season Highs**

Kills 18 (2x) last vs. Clemson (9/18/15)  
Total Attacks 48 vs. Clemson (9/18/15)  
Assists 1 (2x) last at SMU (9/19/15)  
Service Aces 1 vs. North Texas (9/27/15)  
Digs 8 vs. TCU (9/18/15)  
Total Blocks 3 (3x) last vs. TCU (9/18/15)  
Hitting Pct. .600 (6-0-10) vs. Prairie View A&M (8/28/15)

**Career Highs**

Kills **18 (2x) last vs. Clemson (9/18/15)**  
Total Attacks **38 (2x) last vs. TCU (9/18/15)**  
Assists 2 vs. San Diego State (8/31/13)  
Service Aces 2 (2x) last vs. Wichita State (9/6/14)  
Digs 11 vs. San Diego State (8/31/13)  
Total Blocks **3 (4x) last vs. TCU (9/18/15)**

**#8 Laura Cruz • 5-2 • DS • Fr. • Helotes, Texas****2015 Season Notes****2015 Season Highs**

Kills  
Total Attacks  
Assists 1 (2x) last at #4 Texas (9/11/15)  
Service Aces 2 vs. Indiana (9/4/15)  
Digs 17 at Texas State (9/3/15)  
Total Blocks  
Hitting Pct.

**Career Highs**

Kills  
Total Attacks  
Assists  
Service Aces  
Digs  
Total Blocks

**#5 Amanda Gonzales • 5-5 • S • Fr. • New Braunfels, Texas****2015 Season Notes**

- Debuted college career against TCU (Sept. 18)

**2015 Season Highs**

Kills 2 vs. Clemson (9/18/15)  
Total Attacks 2 vs. Clemson (9/18/15)  
Assists 49 vs. Clemson (9/18/15)  
Service Aces 2 vs. TCU (9/18/15)  
Digs 10 (3x) last vs. North Texas (9/27/15)  
Total Blocks 2 at SMU (9/19/15)  
Hitting Pct. 1.000 (1-0-1)(2x) last at SMU (9/19/15)

**Career Highs**

Kills  
Total Attacks  
Assists  
Service Aces  
Digs  
Total Blocks

**#7 Marijeta Runjic • 6-4 • OH • So. • Trogir, Croatia****2015 Season Notes**

Career hitting pct. - .900 (9-0-10) vs. Prairie View A&M (8/28/15)

**2015 Season Highs**

Kills 19 at SMU (9/19/15)  
Total Attacks 35 vs. Santa Clara (9/10/15)  
Assists 1 (3x) last at SMU (9/19/15)  
Service Aces 5 vs. Iona (9/11/15)  
Digs 7 vs. Clemson (9/18/15)  
Total Blocks 6 (2x) last vs. Clemson (9/18/15)  
Hitting Pct. .900 (9-0-10) vs. Prairie View A&M (8/28/15)

**Career Highs**

Kills 24 at Texas A&M (8/30/14)  
Total Attacks 60 at Texas A&M (8/30/14)  
Assists 2 vs. James Madison (9/13/14)  
Service Aces **5 vs. Iona (9/11/15)**  
Digs 16 at Texas A&M (8/30/14)  
Total Blocks **6 (2x) last vs. Clemson (9/18/15)**

**#9 Megan Slan • 6-0 • MH • So. • Leander, Texas****2015 Season Notes**

Career hitting pct. - .900 (9-0-10) vs. Montana State (8/28/15)

**2015 Season Highs**

Kills 10 vs. Texas Southern (9/5/15)  
Total Attacks 12 vs. Texas Southern (9/5/15)  
Assists 1 (3x) last vs. #12 Oregon (9/7/15)  
Service Aces 1 vs. Prairie View A&M (8/28/15)  
Digs 2 at #4 Texas (9/11/15)  
Total Blocks 6 (2x) last vs. Clemson (9/18/15)  
Hitting Pct. .900 (9-0-10) vs. Montana State (8/28/15)

**Career Highs**

Kills **10 vs. Texas Southern (9/5/15)**  
Total Attacks **12 (2x) last vs. Texas Southern (9/5/15)**  
Assists **1 (5x) last vs. #12 Oregon (9/7/15)**  
Service Aces **1 vs. Prairie View A&M (8/28/15)**  
Digs 2 (2x) last at #4 Texas (9/11/15)  
Total Blocks 9 vs. Green Bay (9/12/14)

**#11 Annie Kunes • 5-6 • DS • Sr. • Fontana, Wis.**

**2015 Season Notes**

Career hitting pct. - 1.000 (3x) last vs. Texas A&M (12/5/13)

**2015 Season Highs**

Kills 1 vs. Iona (9/11/15)  
 Total Attacks 2 vs. Iona (9/11/15)  
 Assists 6 at SMU (9/19/15)  
 Service Aces 3 vs. Iona (9/11/15)  
 Digs 27 at Sam Houston State (8/29/15)  
 Total Blocks  
 Hitting Pct. .500 (1-0-2) vs. Iona (9/11/15)

**Career Highs**

Kills **1 (5x) last vs. Iona (9/11/15)**  
 Total Attacks 3 (4x) last vs. Florida Atlantic (9/26/14)  
 Assists 8 (2x) last vs. New Mexico State (11/10/12)  
 Service Aces 4 vs. Seattle (9/27/12)  
 Digs 39 at Texas A&M (8/30/14)  
 Total Blocks

**#12 Jordan Kotara • 6-1 • MH/OH • Sr. • Poth, Texas**

**2015 Season Notes**

Career hitting pct. - .600 (7-1-10) at LA Tech (11/3/12)

**2015 Season Highs**

Kills 1 vs. Iona (9/11/15)  
 Total Attacks 5 vs. Texas Southern (9/5/15)  
 Assists  
 Service Aces 1 (2x) last vs. Clemson (9/18/15)  
 Digs 3 vs. Clemson (9/18/15)  
 Total Blocks  
 Hitting Pct. .333 (1-0-3) vs. Iona (9/11/15)

**Career Highs**

Kills 14 vs. Tulane (8/29/14)  
 Total Attacks 45 vs. Tulane (8/29/14)  
 Assists 2 vs. Wichita State (9/6/14)  
 Service Aces 2 (3x) last at Texas A&M (8/30/14)  
 Digs 22 vs. Wichita State (9/6/14)  
 Total Blocks 5 at Texas State (9/5/14)

**#15 Kylie Schott • 6-1 • MH • Sr. • Cypress, Texas**

**2015 Season Notes**

Career hitting pct. - .800 (4-0-5) vs. Southern Miss (11/22/13)

**2015 Season Highs**

Kills 11 (2x) last vs. Santa Clara (9/10/15)  
 Total Attacks 20 (3x) last at SMU (9/19/15)  
 Assists 2 vs. #12 Oregon (9/7/15)  
 Service Aces 1 (3x) last vs. Clemson (9/18/15)  
 Digs 4 vs. Indiana (9/4/15)  
 Total Blocks 6 (2x) last vs. TCU (9/18/15)  
 Hitting Pct. .714 (5-0-7) vs. Prairie View A&M (8/28/15)

**Career Highs**

Kills 12 at Texas A&M (8/30/14)  
 Total Attacks 26 vs. Texas A&M (8/30/14)  
 Assists **2 (3x) last vs. #12 Oregon (9/7/15)**  
 Service Aces 2 (8x) last vs. North Texas (9/28/14)  
 Digs 7 at UAB (10/12/14)  
 Total Blocks 10 vs. Loyola Marymount (9/6/13)

**#16 Shelby Williams • 5-6 • DS • Fr. • New Braunfels, Texas**

**2015 Season Notes**

**2015 Season Highs**

Kills  
 Total Attacks 2 vs. Middle Tennessee (9/25/15)  
 Assists 3 vs. Prairie View A&M (8/28/15)  
 Service Aces 4 (2x) last vs. Middle Tennessee (9/25/15)  
 Digs 21 (2x) last vs. Clemson (9/18/15)  
 Total Blocks  
 Hitting Pct.

**Career Highs**

Kills  
 Total Attacks  
 Assists  
 Service Aces  
 Digs  
 Total Blocks

**#17 Dajana Boskovic • 6-1 • OH • Jr. • Bileca, Bosnia & Herzegovina**

**2015 Season Notes**

Career hitting pct. - .800 (4-0-5) vs. Mississippi Valley State (9/14/13)

**2015 Season Highs**

Kills 26 at Sam Houston State (8/29/15)  
 Total Attacks 80 at Sam Houston State (8/29/15)  
 Assists 2 (2x) last vs. #12 Oregon (9/7/15)  
 Service Aces 2 vs. Prairie View A&M (8/28/15)  
 Digs 18 at Texas State (9/3/15)  
 Total Blocks 6 vs. #12 Oregon (9/7/15)  
 Hitting Pct. .565 (16-3-23) vs. Prairie View A&M (8/28/15)

**Career Highs**

Kills **26 at Sam Houston State (8/29/15)**  
 Total Attacks **80 at Sam Houston State (8/29/15)**  
 Assists 3 vs. Texas A&M-Corpus Christi (9/9/13)  
 Service Aces 3 vs. Rice (10/19/14)  
 Digs 18 at Texas State (9/3/15)  
 Total Blocks 9 vs. Southern Miss (10/11/13)

**#18 Tessa Dahnert • 6-0 • MH • Jr. • Cedar Park, Texas**

**2015 Season Notes**

Career hitting pct. - 1.000 (1-0-1) at Marshall (11/3/13)

**2015 Season Highs**

Kills 4 vs. Montana State (8/28/15)  
 Total Attacks 13 vs. Santa Clara (9/10/15)  
 Assists  
 Service Aces  
 Digs 2 (3x) last vs. Santa Clara (9/10/15)  
 Total Blocks 7 (2x) last vs. Santa Clara (9/10/15)  
 Hitting Pct. .667 (2-0-3) vs. Tulane (8/29/15)

**Career Highs**

Kills 8 vs. North Texas (10/20/13)  
 Total Attacks 15 vs. LSU (8/30/13)  
 Assists 1 (2x) last vs. Rice (10/19/14)  
 Service Aces 3 at Marquette (9/13/14)  
 Digs 3 (2x) last vs. Rice (10/18/13)  
 Total Blocks 9 vs. Rice (10/18/13)

**#20 Jessica Waldrip • 5-10 • S • Jr. • New Braunfels, Texas****2015 Season Notes**

Career hitting pct. - 1.000 (6x) last vs. TCU (9/18/15)(3-0-3)

**2015 Season Highs**

Kills 5 vs. Indiana (9/4/15)  
Total Attacks 8 vs. Indiana (9/4/15)  
Assists 50 at Sam Houston State (8/29/15)  
Service Aces 3 at Sam Houston State (8/29/15)  
Digs 10 at Sam Houston State (8/29/15)  
Total Blocks 4 (2x) last vs. Tulane (8/29/15)  
Hitting Pct. 1.000 (3-0-3)(4x) last vs. TCU (9/18/15)

**Career Highs**

Kills **5 (2x) last vs. Indiana (9/4/15)**  
Total Attacks 14 vs. Rice (10/18/13)  
Assists 59 (2x) last vs. FIU (11/9/14)  
Service Aces 4 vs. Baylor (9/20/14)  
Digs 19 at Texas A&M (8/30/14)  
Total Blocks **4 (6x) last vs. Tulane (8/29/15)**

**#26 Antonela Jularic • 6-1 • OH • Fr. • Vrbovec, Croatia****2015 Season Notes**

- Had the game-winning point against No. 12 Oregon

**2015 Season Highs**

Kills 14 vs. Clemson (9/18/15)  
Total Attacks 47 vs. Clemson (9/18/15)  
Assists 2 vs. Texas Southern (9/5/15)  
Service Aces 2 (2x) last vs. Middle Tennessee (9/25/15)  
Digs 12 vs. Clemson (9/18/15)  
Total Blocks 3 vs. Clemson (9/18/15)  
Hitting Pct. .191 (14-5-47) vs. Clemson (9/18/15)

**Career Highs**

Kills  
Total Attacks  
Assists  
Service Aces  
Digs  
Total Blocks

**#24 Daniella Villarreal • 5-5 • DS • Jr. • New Braunfels, Texas****2015 Season Notes**

Career hitting pct. - 1.000 (1-0-1) vs. Marshall (11/23/13)

**2015 Season Highs**

Kills  
Total Attacks  
Assists 1 (4x) last at SMU (9/19/15)  
Service Aces 4 vs. Texas Southern (9/5/15)  
Digs 13 vs. Clemson (9/18/15)  
Total Blocks

**Career Highs**

Kills 1 vs. Marshall (11/23/13)  
Total Attacks 1 (4x) last vs. Florida Atlantic (9/26/14)  
Assists 5 at Texas State (9/5/14)  
Service Aces **4 vs. Texas Southern (9/5/15)**  
Digs 20 at Texas State (9/5/14)  
Total Blocks



## 2015 UTSA Volleyball Statistics

Overall record: 11-5 Conf: 2-0 Home: 3-1 Away: 1-3 Neutral: 7-1

##	Player	sp	Attack					Set		Serve			re	Dig			Blocking					points
			k	k/s	e	ta	pct	a	a/s	sa	se	sa/s		dig	dig/s	bs	ba	total	blk/s	be	bhe	
17	BOSKOVIC, Dajana	45	182	4.04	68	513	.222	9	0.20	5	22	0.11	17	113	2.51	2	26	28	0.62	5	0	-
7	RUNJIC, Marijeta	56	161	2.88	51	389	.283	3	0.05	7	9	0.12	2	27	0.48	5	29	34	0.61	3	1	-
6	KIEFER, Kasey	52	139	2.67	47	417	.221	2	0.04	1	4	0.02	6	51	0.98	1	13	14	0.27	0	0	-
15	SCHOTT, Kylie	55	104	1.89	14	216	.417	4	0.07	3	4	0.05	0	16	0.29	10	50	60	1.09	3	0	-
26	JULARIC, Antonela	41	56	1.37	36	232	.086	4	0.10	11	16	0.27	4	51	1.24	0	11	11	0.27	0	0	-
9	SLAN, Megan	43	57	1.33	10	103	.456	3	0.07	1	0	0.02	0	7	0.16	4	39	43	1.00	3	0	-
18	DAHNERT, Tessa	26	23	0.88	12	67	.164	0	0.00	0	6	0.00	0	7	0.27	0	25	25	0.96	3	0	-
20	WALDRIP, Jessica	49	28	0.57	1	55	.491	408	8.33	12	21	0.24	1	73	1.49	1	26	27	0.55	7	4	-
12	KOTARA, Jordan	5	1	0.20	3	10	-.200	0	0.00	2	0	0.40	0	4	0.80	0	0	0	0.00	0	0	-
1	BROUSSARD, Morgan	12	2	0.17	4	10	-.200	66	5.50	1	2	0.08	0	8	0.67	0	4	4	0.33	1	2	-
5	GONZALES, Amanda	19	3	0.16	0	4	.750	138	7.26	4	2	0.21	0	39	2.05	1	3	4	0.21	0	4	-
11	KUNES, Annie	59	1	0.02	0	3	.333	47	0.80	7	10	0.12	7	209	3.54	0	0	0	0.00	0	0	-
8	CRUZ, Laura	36	0	0.00	0	0	.000	2	0.06	5	8	0.14	7	62	1.72	0	0	0	0.00	0	0	-
16	WILLIAMS, Shelby	57	0	0.00	0	4	.000	14	0.25	16	18	0.28	7	191	3.35	0	0	0	0.00	0	0	-
24	VILLARREAL, Daniella	28	0	0.00	0	0	.000	4	0.14	7	7	0.25	5	50	1.79	0	0	0	0.00	0	0	-
UTSA		59	757	12.83	246	2023	.253	704	11.93	82	129	1.39	60	908	15.39	24	226	137.0	2.32	25	11	-
Opponents		59	709	12.02	362	2109	.165	644	10.92	60	94	1.02	82	854	14.47	17	174	104.0	1.76	32	18	-

Team Statistics	UTSA	OPP
ATTACK		
Kills	757	709
Errors	246	362
Total Attacks	2023	2109
Attack Pct	.253	.165
Kills/Set	12.8	12.0
SET		
Assists	704	644
Attempts	1954	2025
Assist Pct	.360	.318
Assists/Set	11.9	10.9
SERVE		
Aces	82	60
Errors	129	94
Attempts	1333	1176
Serve Pct	.903	.920
Aces/Set	1.4	1.0
SERVE RECEPTIONS		
Errors	60	82
Errors/Set	1.0	1.4
Attempts	1076	1195
Reception Pct	.944	.931
DEFENSE		
Digs	908	854
Digs/Set	15.4	14.5
BLOCKING		
Block Solo	24	17
Block Assist	226	174
Total Blocks	137.0	104.0
Blocks/Set	2.3	1.8
Block Errors	25	32
Ball handling errors	11	18
ATTENDANCE		
Total	2884	5072
Dates/Avg Per Date	4/721	4/1268
Neutral site #/Avg	8/114	
Current win streak	2	-
Home win streak	2	-

Date	Opponent	Score	Score by set	Att.
Aug 28	vs Montana State	w 3-0	25-17,25-16,25-23	117
Aug 28	vs Prairie View	w 3-0	25-13,25-13,25-14	101
Aug 29	at Sam Houston State	w 3-2	19-25,25-20,25-20,19-25,15-12	321
Aug 29	vs Tulane	w 3-0	25-16,25-14,25-19	94
Sep 03	at Texas State	L 2-3	21-25,25-20,14-25,25-19,14-16	2533
Sep 04	vs Indiana	w 3-1	25-18,18-25,25-19,25-19	100
Sep 05	vs Texas Southern	w 3-0	25-12,25-14,25-13	100
Sep 07	#12 ORE	w 3-1	21-25,25-23,25-19,25-23	1051
Sep 10	SANTA CLARA	L 1-3	17-25,25-17,22-25,20-25	456
Sep 11	at #4 Texas	L 0-3	29-31,21-25,14-25	1890
Sep 11	vs Iona	w 3-0	25-17,25-9,25-19	120
Sep 18	vs TCU	L 1-3	25-18,23-25,15-25,21-25	102
Sep 18	vs Clemson	w 3-2	25-13,17-25,25-14,25-27,15-6	178
Sep 19	at SMU	L 1-3	17-25,17-25,25-21,23-25	328
*Sep 25	MIDDLE TENNESSEE	w 3-0	25-18,25-22,25-23	637
*Sep 27	NORTH TEXAS	w 3-0	25-18,25-15,25-16	740

Record in 3-set matches:7-1 • Record in 4-set matches:2-3 • Record in 5-set matches:2-1



**1 Morgan BROUSSARD**  
S • 5-9 • Senior  
Gering, Nebraska



**5 Amanda GONZALES**  
S • 5-5 • Freshman  
New Braunfels, Texas



**6 Kasey KIEFER**  
OH • 6-0 • Junior  
Tempe, Arizona



**7 Marijeta RUNJIC**  
OH • 6-4 • Sophomore  
Trogir, Croatia



**8 Laura CRUZ**  
DS • 5-2 • Freshman  
Helotes, Texas



**9 Megan SLAN**  
MH • 6-0 • Sophomore  
Leander, Texas



**11 Annie KUNES**  
DS • 5-6 • Senior  
Fontana, Wis.



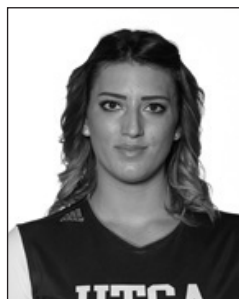
**12 Jordan KOTARA**  
MH/OH • 6-1 • Senior  
Poth, Texas



**15 Kylie SCHOTT**  
MH • 6-1 • Senior  
Cypress, Texas



**16 Shelby WILLIAMS**  
DS • 5-6 • Freshman  
New Braunfels, Texas



**17 Dajana BOSKOVIC**  
OH • 6-1 • Junior  
Bileca, Bosnia and Herzegovina



**18 Tessa DAHNERT**  
MH • 6-0 • Junior  
Cedar Park, Texas



**20 Jessica WALDRIP**  
S • 5-10 • Junior  
New Braunfels, Texas



**24 Daniella VILLARREAL**  
DS • 5-5 • Junior  
New Braunfels, Texas



**26 Antonela JULARIC**  
OH • 6-1 • Freshman  
Vrbovec, Croatia



**Laura NEUGEBAUER-GROFF**  
Head coach



**Pat STANGLE**  
Assistant coach



**Danka DANICIC**  
Assistant coach

### Pronunciation Guide

Bileca	be-LETCH-ah
Dahnert	DAY-nert
Dajana Boskovic	di-AH-nah
	BOSS-co-vitch
Danka Danicic	DON-kah
	DON-uh-chich
Kiefer	KEEF-er
Kunes	CUE-ness
Marijeta Runjic	mar-E-eta
	roon-itch
Trogir	troh-geer
Neugebauer	NEW-ga-bow-er
Poth	(rhymes with both)
Slan	(rhymes with can)
Jularic	you-LARRR-itch