



UTSA

2015-16 women's basketball

Women's Basketball Contact: Zena Rex | zena.rex@utsa.edu | (956) 739-4878

GAME INFORMATION

TV/VIDEO:

Rowdy Zone

RADIO/AUDIO:

goUTSA.com | Stu Paul (play-by-play)

LIVE STATS:

goUTSA.com

SOCIAL MEDIA:

Twitter - @utsawbb

Facebook - /UTSA Women's Basketball

Instagram - @utsaathletics

2015-16 Schedule

October

31 Trinity# W, 59-50

November

8 St. Edward's# W, 81-50

14 at Texas (LHN) L, 53-90

21 at Abilene Christian L, 60-79

UTSA Thanksgiving Classic - San Antonio, Texas

27 Illinois State W, 77-51

29 Houston Baptist W, 79-50

December

3 at Texas State L, 64-72

13 at Oklahoma (FOX Sports) L, 41-80

15 Howard Payne W, 106-65

19 Texas A&M-Kingsville W, 88-51

21 UT Arlington L, 47-51

UTSA Holiday Classic - San Antonio, Texas

28 Texas Southern L, 47-51

30 Bowling Green Canceled

January

1 at North Texas * L, 58-68

3 at Rice * L, 48-49 (OT)

7 UAB * W, 54-52

9 Middle Tennessee * L, 63-74

17 at UTEP * (ASN) L, 55-62

21 at FIU * W, 63-52

23 at Florida Atlantic * L, 51-64

28 Louisiana Tech * L, 72-82 (OT)

30 Southern Miss * W, 47-41

February

4 at WKU * L, 65-72

6 at Marshall * L, 76-80

11 Florida Atlantic * W, 57-54

13 FIU * L, 54-59

18 at Louisiana Tech * L, 66-75

20 at Southern Miss * L, 53-65

25 Charlotte * 7 p.m.

27 Old Dominion * 2 p.m.

March

3 UTEP * 7 p.m.

8-12 C-USA Basketball Championships TBA

- Denotes exhibition game

* - Denotes Conference USA game

GAME 26

SAN ANTONIO, TEXAS | CONVOCATION CENTER



UTSA ROADRUNNERS (8-17, 4-11 CONFERENCE USA)

Head coach: Lubomir Lichonczak (Idaho, '76)

Record at UTSA: 38-49 | Career record: 189-200



CHARLOTTE 49ERS (16-9, 9-5 C-USA)

Head coach: Cara Consuegra (Iowa, '01)

Record at CHAR: 88-62 | Career record: Same

SERIES: Series is even at 1-1

LAST MEETING: Feb. 14, 2015 in Charlotte, N.C. (Charlotte 74, UTSA 54)

UTSA AT A GLANCE: UTSA will end its regular season at home with its final three games of the year. The Roadrunners will host Charlotte and Old Dominion this week and will then take on UTEP the following Thursday. UTSA is on its second longest losing skid of the season having dropped the last three. Last week, the Roadrunners dropped games to Louisiana Tech and Southern Miss on the road. Southern Miss handed UTSA a 65-53 loss behind Brittany Dinkins 20-point performance. UTSA was led by Alexis Dukes' 14 points and Crystal Chidomere's 13. All but two players that saw time on the hardwood scored at least two points. The Roadrunners were held to a 32.3 (20-of-62) shooting percentage and to just one 3-pointer. In the Roadrunners' last three games, the team has combined for 4-of-31 from behind the arc. Tesha Smith remains the only Roadrunner to average double figures (10.0 ppg) but senior Akunna Elonu trails closely behind with 9.2 points per game. Smith is also grabbing a team-best 8.2 caroms a night and is shooting 50.7 (102-of-201) percent. The two rank ninth and 10th in the all-time record books in rebounds.

CHARLOTTE AT A GLANCE: Charlotte is coming off one of its biggest wins of the season with an 81-72 victory over WKU Saturday. The 49ers had its entire starting lineup score in double digits and were led by Lefty Websters 19 points and 11 rebounds. Saturday's win makes it four straight wins for the 49ers, Charlotte's longest win streak of the season. The 49ers are in sole possession of fourth in the standings are led by Alexis Alexander's 15.0 points and 7.9 rebounds per game. Charlotte has five total players averaging double digits.

UP NEXT: UTSA will host Old Dominion for its Senior Day on Saturday, Feb. 27. Tipoff is slated for 2 p.m.

UTSA PROJECTED STARTERS (BASED OFF OF LAST GAME)



5-11 • G • So.

#4 Chidomere

PPG - 8.6
RPG - 3.4
APG - 1.6
FG% - 44.9
3FG% - 9.1
FT% - 71.4



5-6 • G • Jr.

#5 Heard

PPG - 4.8
RPG - 2.3
APG - 1.8
FG% - 38.1
3FG% - 100.0
FT% - 88.9



5-10 • G/F • Sr.

#2 Hergott

PPG - 6.0
RPG - 2.3
APG - 2.1
FG% - 30.7
3FG% - 30.3
FT% - 60.0



6-1 • C • Gr.

#23 Thornton

PPG - 2.4
RPG - 2.6
APG - 0.3
FG% - 38.8
3FG% - 0.0
FT% - 47.4



5-9 • F • Sr.

#21 Elonu

PPG - 9.2
RPG - 7.0
APG - 0.9
FG% - 47.8
3FG% - 19.2
FT% - 66.7

QUICK FACTS

General Information

| | |
|---------------------------|----------------------------------------|
| Name | The University of Texas at San Antonio |
| Location | San Antonio, Texas |
| Founded | 1969 |
| Enrollment | 28,628 (24,342 undergraduate) |
| Nickname | Roadrunners |
| School Colors | Navy Blue, White and Orange |
| Home Arena | Convocation Center / 2,650 |
| Affiliation | Division I |
| Conference | Conference USA |
| President | Dr. Ricardo Romo |
| Director of Athletics | Lynn Hickey |
| Athletic Department Phone | 210-458-4161 |

Coaching Staff

| | |
|------------------------|---------------------------------|
| Head Coach | Lubomyr Lichonczak (Idaho, '78) |
| Record at UTSA | 38-49 (third season) |
| Career record | 189-200 (14th season) |
| Associate Head Coach | Kristen Holt |
| Assistant Coach | Nicole Dunson |
| Assistant Coach | Ela Mukosiej |
| Director of Operations | Emily Sherman |
| Athletic Trainer | Brenna Ellis |

Team Information

| | |
|-------------------------------|-------------------------------------------|
| 2014-15 overall record | 16-15 |
| 2014-15 Conference USA record | 11-7 (14th) |
| Final ranking | N/A |
| Starters R/L | 2/3 |
| Letter winners R/L | 8/5 |
| Newcomers | 5 |
| Key returners | A. Elonu, T. Smith |
| Key Losses | Kamra King |
| Key newcomers | K. Kiejdrowska, A. Dukes, S. Anastasieska |

Women's Basketball History

| | |
|------------------------------------|-------------------------------------------------------------------|
| First year | 1981-82 |
| All-time record | 491-498 |
| NCAA Postseason appearances | 2 (2008, 2009) |
| Last Tournament appearance | 2009 (vs. Baylor; L, 87-82 (OT)) |
| Southland Conference championships | 3 (2003 regular season and 2009 (west division); 2008 tournament) |

Athletics Communications

| | |
|--------------------|---------------------------------------|
| Assistant Director | Zena Rex (women's basketball contact) |
| Email | zena.rex@utsa.edu |
| Cell | (966) 739-4878 |
| Facebook | /UTSA Women's Basketball |
| Twitter | @utsawbb |
| Instagram | @utsaathletics |
| | @utsawbb |
| Hashtag | #birdsup |
| | #CUSAWBK or #CUSA20 |

MEDIA

WE ARE UTSA | When referencing The University of Texas at San Antonio athletics, please use the acronym UTSA and the nickname Roadrunners. Please refrain from using Texas-San Antonio, UT-San Antonio, UT-SA or any other variation.

Media Coverage | The UTSA Athletics Communication Office assists members of the media with their coverage of all Roadrunners sports by providing player and coach interviews, feature ideas, pregame notes and updated statistics.

Interviews | All interviews with coaches and student-athletes must be arranged at least 24 hours in advance through women's basketball contact Zena Rex. Telephone interviews are available to the media on a "call-back" basis at a time that is convenient for the coach or student-athlete. Post-game interviews with coaches and student-athletes will be conducted in the media room following a 10-minute cooling off period.

Internet Radio Broadcasts | All of UTSA's games for the 2015-16 season are slated to be broadcast live (audio) on goUTSA.com this season. Video streaming (subscription required) will also be available for all home games.

LAST TIME OUT

HATTIESBURG, Miss. — UTSA dropped a 65-53 decision at Southern Miss on Saturday at Reed Green Coliseum in the Roadrunners' final road contest of the regular season.

UTSA (8-17, 4-11 C-USA) held its final lead of the game in the second quarter before the Golden Eagles (13-12, 6-8 C-USA) exploded for 26 points to lead 37-20 at the half.

The Roadrunners bounced back-and-forth in the first half against the Golden Eagles and even led 16-11 at the end of the first quarter. UTSA shot 32.3 percent (20-of-62) from the field and were almost held to no 3-point field-goals until Alexis Dukes drained a triple with 27 seconds left in the fourth.

Dukes paced the team with 14 points, which all came in the second half, and added three steals.

Meanwhile, Crystal Chidomere reached double figures for the third straight game as she netted 13 points with three rebounds, one steal and an assist.

Despite the loss, UTSA outscored Southern Miss in second chance points, 24-12, and outrebounded the Golden Eagles 45-42.

Southern Miss snapped its three-game losing skid with the win and was led by Caitlin Jenkin's 22 points and Brittany Dinkins 20.

The Golden Eagles recorded a season-best nine 3-pointers as they fired 47.4 percent (9-of-19) from behind the arc.

UTSA will return to the Alamo City for its final three games of the regular season. The Roadrunners will host Charlotte (Feb. 25) and Old Dominion (Feb. 27) this week.

2015-16 UTSA WOMEN'S BASKETBALL

UTSA Women's Basketball Roster

| No. | Name | Pos. | Ht. | Yr. | Hometown (Previous School) |
|-----|---------------------|------|------|-----|----------------------------------------------------------|
| 1 | Kasia Kiejdrowska | F | 6-0 | Jr. | Gdynia, Poland (Mineral Area College) |
| 2 | Mathilde Hergott | G/F | 5-10 | Sr. | Lyon, France (Lycee Jean Mermoz) |
| 3 | Alexus Dukes | G | 5-5 | Fr. | Harker Heights, Texas (Harker Heights HS) |
| 4 | Crystal Chidomere | G | 5-11 | So. | Richmond, Texas (Bush HS) |
| 5 | Alana Heard | G | 5-6 | Jr. | Missouri City, Texas (Hightower HS) |
| 11 | Sara Anastasieska | G | 5-11 | Fr. | Sydney, NSW, Australia (Monte Sant Angelo Mercy College) |
| 12 | Niaga Mitchell-Cole | G/F | 5-10 | Sr. | San Antonio, Texas (Roosevelt HS) |
| 21 | Akunna Elonu | F | 5-9 | Sr. | Houston, Texas (Alief Elsik HS) |
| 23 | Dempsey Thornton | C | 6-1 | Gr. | Corpus Christi, Texas (King HS) |
| 25 | Taylor Williams | F | 6-2 | Jr. | Katy, Texas (Cinco Ranch HS) |
| 30 | Tesha Smith | C | 6-1 | Jr. | San Antonio, Texas (Wagner HS) |
| 31 | Carlie Heineman | G | 6-0 | So. | San Antonio, Texas (Brennan HS) |
| 32 | *Loryn Goodwin | G | 5-9 | Jr. | Houston, Texas (Butler) |

Head Coach: Lubomyr Lichonczak (Third season | Idaho State, '78)

Associate Head Coach: Kristen Holt (Third season | Ohio, '72)

Assistant Coach: Nicole Dunson (Third season | UTSA, '05)

Assistant Coach: Ela Mukosiej (First season | Seton Hall '07)

Director of Operations: Emily Sherman (Fourth season | St. Norbert College, '09)

**Will sit out the 2015-16 season due to NCAA transfer rule*

PRONUNCIATION GUIDE

Kasia Kiejdrowska caw-SHA | key-DRO-ska

Mathilde Hergott MAH-teeld | AIR-got

Chidomere chid-uh-meer

Sara Anastasieska SAR-uh | an-uh-stuh-see-es-ka

Niaga nye-AH-juh

Akunna Elonu AH-coon-uh | EE-lawn-oo

Tesha TEE-sha

Loryn (pronounced like Lauren)

Lubomyr Lichonczak LU-ba-meer | li-KON-zack

Mukosiej moo-COE-shay

ROSTER BREAKDOWN

...by Height

| 5-6 | 5-9 | 5-10 | 5-11 |
|--------------|---------------|---------------------|-------------------|
| Alexus Dukes | Akunna Elonu | Mathilde Hergott | Crystal Chidomere |
| Alana Heard | Loryn Goodwin | Niaga Mitchell-Cole | Sara Anastasieska |

6-0

| | |
|-------------------|------------------|
| Carlie Heineman | Tesha Smith |
| Kasia Kiejdrowska | Dempsey Thornton |

6-1

6-2

Taylor Williams

...by Position

Guard

Crystal Chidomere
Alana Heard
Carlie Heineman
Sara Anastasieska

Forward

Akunna Elonu
Taylor Williams

Center

Tesha Smith
Dempsey Thornton
Kasia Kiejdrowska

Guard/Forward

Alexus Dukes
Loryn Goodwin

Mathilde Hergott
Niaga Mitchell-Cole

...by Year

Freshman

Sara Anastasieska
Alexus Dukes

Junior

Loryn Goodwin
Alana Heard
Kasia Kiejdrowska

Senior

Akunna Elonu
Mathilde Hergott
Niaga Mitchell-Cole
Dempsey Thornton

Sophomore

Crystal Chidomere
Carlie Heineman

Tesha Smith
Taylor Williams

2015-16 TV/MEDIA ROSTER



1 Kasia KIEJDROWSKA
F • 6-0 • Junior
Gdynia, Poland



2 Mathilde HERGOTT
G/F • 5-10 • Senior
Jonage, France



3 Alexis DUKES
G • 5-5 • Freshman
Harker Heights, Texas



4 Crystal CHIDOMERE
G • 5-11 • Sophomore
Richmond, Texas



5 Alana HEARD
G • 5-6 • Junior
Houston, Texas



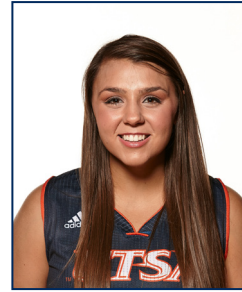
11 Sara ANASTASIESKA
G • 5-11 • Freshman
Sydney, New South Wales, Australia



12 Niaga MITCHELL-COLE
G/F • 5-10 • Senior
San Antonio, Texas



21 Akunna ELONU
F • 5-9 • Senior
Houston, Texas



23 Dempsey THORNTON
C • 6-1 • Graduate
Corpus Christi, Texas



25 Taylor WILLIAMS
F • 6-2 • Junior
Katy, Texas



30 Tesha SMITH
C • 6-1 • Junior
San Antonio, Texas



31 Carlie HEINEMAN
G • 6-0 • Sophomore
San Antonio, Texas



32 Loryn GOODWIN
G • 5-9 • Junior
Cypress, Texas



lubomyr LICHONCZAK
Head coach
Third season



kristen HOLT
Associate Head Coach
Third season



nicole DUNSON
Assistant coach
Third season



ela MUKOSIEJ
Assistant coach
First season



emily SHERMAN
Director of Operations
Fourth season

2015-16 UTSA WOMEN'S BASKETBALL

Roadrunners Trends

| | |
|--------------------------|------|
| At Convocation Center | 7-5 |
| On the road | 1-12 |
| At a neutral site | 0-0 |
| Last 5 games | 1-4 |
| Against ranked opponents | 0-2 |
| Longest win streak | 2 |
| Longest losing streak | 4 |

Scoreboard

| | |
|-----------------------------------|------|
| Up after the first quarter | 6-2 |
| Trailing after the first quarter | 0-14 |
| Tied after the first quarter | 2-1 |
| Up after the second quarter | 6-3 |
| Trailing after the second quarter | 2-14 |
| Tied after the second quarter | 0-0 |
| Up after the third quarter | 6-0 |
| Trailing after the third quarter | 1-16 |
| Tied after the third quarter | 1-1 |
| Overtime | 0-2 |
| In November | 2-2 |
| In December | 2-4 |
| In January | 3-6 |
| In February | 1-5 |
| In March | 0-0 |
| On Sundays | 1-3 |
| On Mondays | 0-2 |
| On Tuesdays | 1-0 |
| On Wednesdays | 0-0 |
| On Thursdays | 3-4 |
| On Fridays | 1-1 |
| On Saturdays | 2-7 |
| UTSA scores first | 7-7 |
| Opponents scores first | 1-10 |
| UTSA - More 3-pointers in game | 0-6 |
| Opp. - More 3-pointers in game | 6-11 |
| Tied | 2-0 |
| UTSA - More free throws in game | 4-2 |
| Opp. - More free throws in game | 4-15 |
| Tied | 0-0 |
| UTSA - More rebounds in game | 6-8 |
| Opp. - More rebounds in game | 2-9 |
| Tied | 0-0 |
| UTSA - More blocks in game | 5-7 |
| Opp. - More blocks in game | 2-9 |
| Tied | 1-1 |
| UTSA - More steals in game | 4-5 |
| Opp. - More steals in game | 2-9 |
| Tied | 2-3 |
| UTSA - More turnovers in game | 2-8 |
| Opp. - More turnovers in game | 6-8 |
| Tied | 0-1 |

When UTSA...

Field Goals

| | |
|---------------|------|
| Shoots 20-29% | 0-4 |
| Shoots 30-39% | 3-10 |
| Shoots 40-49% | 1-3 |
| Shoots 50-59% | 4-0 |
| Shoots 60-69% | 0-0 |

Three-Point Field Goals

| | |
|---------------|-----|
| Shoots 0-19% | 0-5 |
| Shoots 20-29% | 5-7 |
| Shoots 30-39% | 1-3 |
| Shoots 40-49% | 1-0 |
| Shoots 50-59% | 1-2 |
| Shoots 60-69% | 0-0 |

Free Throws

| | |
|---------------|-----|
| Shoots 30-39% | 0-0 |
| Shoots 40-49% | 0-1 |
| Shoots 50-59% | 2-7 |
| Shoots 60-69% | 2-4 |
| Shoots 70-79% | 3-2 |
| Shoots 80-89% | 1-3 |

| | |
|-----------------------------|-----|
| Scored less than 49 points | 1-4 |
| Scores between 50-59 points | 2-6 |
| Scores between 60-69 points | 1-5 |
| Scores between 70-79 points | 2-2 |
| Scores more than 80 points | 2-0 |

| | |
|-----------------------------|-----|
| Allows less than 49 points | 1-1 |
| Allows between 50-59 points | 6-3 |
| Allows between 60-69 points | 1-4 |
| Allows between 70-79 points | 0-5 |
| Allows more than 80 points | 0-4 |

| | |
|-------------------------|------|
| Leading with 5:00 left | 6-2 |
| Trailing with 5:00 left | 0-15 |
| Tied with 5:00 left | 1-0 |

2015-16 DOUBLE-DOUBLES

Tesha Smith - 22 points, 11 rebounds vs. Illinois State (11/27/15)
 Tesha Smith - 29 points, 12 rebounds vs. Howard Payne (12/15/15)
 Tesha Smith - 12 points, 10 rebounds vs. UT Arlington (12/21/15)
 Tesha Smith - 11 points, 11 rebounds vs. North Texas (1/1/16)
 Tesha Smith - 12 points, 13 rebounds vs. Rice (1/3/16)
 Akunna Elonu - 13 points, 19 rebounds at Florida Atlantic (1/23/16)
 Tesha Smith - 10 points, 17 rebounds vs. Louisiana Tech (1/28/16)

STARTERS BY GAME

| Date | Opponent | Starting 5 | Result |
|----------|----------------------|---------------------------------------------------------|---------------|
| 11/14/15 | at Texas | Hergott, Elonu, Thornton, Dukes, Mitchell-Cole | L, 53-90 |
| 11/21/15 | at Abilene Christian | Hergott, Elonu, Thornton, Dukes, Mitchell-Cole | L, 60-79 |
| 11/27/15 | Illinois State | Hergott, Elonu, Thornton, Dukes, Mitchell-Cole | W, 77-51 |
| 11/29/15 | Houston Baptist | Hergott, Elonu, Thornton, Dukes, Mitchell-Cole | W, 79-50 |
| 12/3/15 | at Texas State | Kiejdrowska, Thornton, Hergott, Mitchell-Cole, Heineman | L, 64-72 |
| 12/13/15 | at Oklahoma | Hergott, Elonu, Thornton, Dukes, Mitchell-Cole | L, 41-80 |
| 12/15/15 | Howard Payne | Hergott, Elonu, Dukes, Smith, Heineman | W, 106-65 |
| 12/19/15 | Texas A&M-Kingsville | Hergott, Elonu, Dukes, Smith, Mitchell-Cole | W, 88-51 |
| 12/21/15 | UT Arlington | Hergott, Elonu, Dukes, Smith, Mitchell-Cole | L, 47-51 |
| 12/28/15 | Texas Southern | Dukes, Heineman, Thornton, Mitchell-Cole, Elonu | L, 44-59 |
| 12/30/15 | Bowling Green | Canceled | ----- |
| 1/1/16 | at North Texas | Hergott, Elonu, Heineman, Smith, Mitchell-Cole | L, 58-68 |
| 1/3/16 | at Rice | Hergott, Elonu, Heineman, Smith, Mitchell-Cole | L, 48-49 (OT) |
| 1/7/16 | UAB | Hergott, Elonu, Heineman, Mitchell-Cole, Thornton | W, 54-52 |
| 1/9/16 | Middle Tennessee | Hergott, Elonu, Heineman, Mitchell-Cole, Thornton | L, 63-74 |
| 1/16/16 | at UTEP | Hergott, Elonu, Heineman, Thornton, Heard | L, 55-62 |
| 1/21/16 | at FIU | Hergott, Elonu, Heard, Mitchell-Cole, Smith | W, 63-52 |
| 1/23/16 | at Florida Atlantic | Hergott, Elonu, Heard, Mitchell-Cole, Smith | L, 51-64 |
| 1/28/16 | Louisiana Tech | Hergott, Elonu, Heard, Chidomere, Smith | L, 72-82 (OT) |
| 1/30/16 | Southern Miss | Hergott, Heard, Chidomere, Mitchell-Cole, Thornton | W, 47-41 |
| 2/4/16 | at WKU | Hergott, Heard, Mitchell-Cole, Thornton, Heineman | L, 65-72 |
| 2/6/16 | at Marshall | Hergott, Elonu, Heard, Thornton, Kiejdrowska | L, 76-80 |
| 2/11/16 | Florida Atlantic | Hergott, Elonu, Heard, Thornton, Kiejdrowska | W, 57-54 |
| 2/13/16 | FIU | Hergott, Elonu, Heard, Thornton, Kiejdrowska | L, 54-59 |
| 2/18/16 | at Louisiana Tech | Hergott, Elonu, Heard, Thornton, Kiejdrowska | L, 66-75 |
| 2/20/16 | at Southern Miss | Hergott, Elonu, Heard, Thornton, Chidomere | L, 53-65 |
| 2/25/16 | Charlotte | | |
| 2/27/16 | Old Dominion | | |
| 3/5/16 | UTEP | | |

Starting lineup combination W-L

| | |
|-------------------------------------------------------------------------------------------------|-----|
| Mathilde Hergott, Akunna Elonu, Dempsey Thornton, Alexis Dukes, Niaga Mitchell-Cole (5) | 2-3 |
| Kasia Kiejdrowska, Dempsey Thornton, Mathilde Hergott, Niaga Mitchell-Cole, Carlie Heineman (1) | 0-1 |
| Mathilde Hergott, Akunna Elonu, Alexis Dukes, Tesha Smith, Carlie Heineman (1) | 1-0 |
| Mathilde Hergott, Akunna Elonu, Alexis Dukes, Tesha Smith, Niaga Mitchell-Cole (2) | 1-1 |
| Alexis Dukes, Carlie Heineman, Dempsey Thornton, Niaga Mitchell-Cole, Akunna Elonu (1) | 0-1 |
| Mathilde Hergott, Akunna Elonu, Carlie Heineman, Tesha Smith, Niaga Mitchell-Cole (2) | 0-2 |
| Mathilde Hergott, Akunna Elonu, Carlie Heineman, Niaga Mitchell-Cole, Dempsey Thornton (2) | 1-1 |
| Mathilde Hergott, Akunna Elonu, Carlie Heineman, Dempsey Thornton, Alana Heard (1) | 0-1 |
| Mathilde Hergott, Akunna Elonu, Alana Heard, Niaga Mitchell-Cole, Tesha Smith (2) | 1-1 |
| Mathilde Hergott, Akunna Elonu, Alana Heard, Crystal Chidomere, Tesha Smith (1) | 0-1 |
| Mathilde Hergott, Alana Heard, Crystal Chidomere, Niaga Mitchell-Cole, Dempsey Thornton (1) | 1-0 |
| Mathilde Hergott, Alana Heard, Niaga Mitchell-Cole, Dempsey Thornton, Carlie Heineman (1) | 0-1 |
| Mathilde Hergott, Akunna Elonu, Alana Heard, Dempsey Thornton, Kasia Kiejdrowska (4) | 1-3 |
| Mathilde Hergott, Akunna Elonu, Alana Heard, Dempsey Thornton, Crystal Chidomere (1) | 0-1 |

| AP Top-25 Coaches' Poll - Feb. 22, 2016 | | | | USA Today Sports Top-25 Division I Basketball Coaches' Poll - Feb. 22 | | | | NCAA RPI Rankings | |
|-----------------------------------------------------------------------------------------------------------------------------------------------------------------------------------------|--------|--------|----------|---------------------------------------------------------------------------------------------------------------------------------------------------------------------------------------------------------------------------------------------------------------------------------------------------------------------------------------------------------------------------------|--------|--------|----------|-------------------|-------------|
| School | Record | Points | Previous | School (First-Place Votes) | Record | Points | Previous | Date | RPI Ranking |
| 1. Connecticut (32) | 26-0 | 800 | 1 | 1. Connecticut (32) | 26-0 | 800 | 1 | Dec. 1 | 230 |
| 2. Notre Dame | 25-1 | 756 | 2 | 2. South Carolina | 26-1 | 756 | 2 | Dec. 7 | 204 |
| 3. South Carolina | 25-1 | 746 | 3 | 3. Notre Dame | 26-1 | 748 | 3 | Dec. 14 | 184 |
| 4. Baylor | 27-1 | 704 | 4 | 4. Baylor | 28-1 | 704 | 4 | Dec. 18 | 185 |
| 5. Ohio State | 23-4 | 656 | 5 | 5. Ohio State | 23-4 | 664 | 5 | Dec. 21 | 185 |
| 6. Maryland | 25-3 | 623 | 6 | 6. Maryland | 25-3 | 625 | 6 | Dec. 24 | 222 |
| 7. Oregon State | 24-3 | 608 | 7 | 7. Oregon State | 24-3 | 594 | 8 | Dec. 29 | 224 |
| 8. Texas | 24-2 | 581 | 8 | 8. Texas | 24-2 | 588 | 7 | Dec. 30 | 270 |
| 9. Arizona State | 24-4 | 563 | 9 | 9. Arizona State | 24-4 | 541 | 10 | Jan. 2 | 273 |
| 10. Louisville | 22-6 | 508 | 11 | 10. Louisville | 22-6 | 503 | 11 | Jan. 4 | 292 |
| 11. Texas A&M | 20-7 | 463 | 12 | 11. Texas A&M | 20-7 | 461 | 12 | Jan. 5 | 288 |
| 12. Florida State | 21-5 | 421 | 10 | 12. Florida State | 21-6 | 433 | 9 | Jan. 8 | 257 |
| 13. Stanford | 22-6 | 409 | 15 | 13. Stanford | 22-6 | 390 | 15 | Jan. 11 | 256 |
| 14. UCLA | 20-7 | 387 | 12 | 14. Kentucky | 19-6 | 374 | 16 | Jan. 12 | 260 |
| 15. Kentucky | 19-6 | 338 | 16 | 15. UCLA | 20-7 | 335 | 14 | Jan. 14 | 261 |
| 16. Mississippi State | 22-6 | 319 | 14 | 16. Mississippi State | 22-6 | 319 | 13 | Jan. 15 | 253 |
| 17. Miami | 22-5 | 258 | 18 | 17. Miami | 22-5 | 291 | 17 | Jan. 19 | 247 |
| 18. Syracuse | 22-6 | 241 | 23 | 18. Syracuse | 22-6 | 275 | 18 | Jan. 22 | 233 |
| 19. DePaul | 23-7 | 221 | 21 | 19. DePaul | 23-7 | 229 | 19 | Jan. 26 | 234 |
| 20. Michigan State | 20-7 | 134 | 25 | 20. South Florida | 19-7 | 184 | 20 | Jan. 27 | 237 |
| 21. South Florida | 19-7 | 131 | 19 | 21. Michigan State | 20-7 | 159 | 22 | Jan. 29 | 246 |
| 22. Oklahoma State | 19-7 | 94 | 17 | 22. BYU | 23-4 | 84 | NR | Feb. 1 | 237 |
| 23. Oklahoma | 18-8 | 91 | 20 | 23. Oklahoma | 18-9 | 71 | 21 | Feb. 3 | 238 |
| 24. Missouri | 21-6 | 76 | NR | 24. Missouri | 21-6 | 55 | NR | Feb. 5 | 236 |
| 25. Colorado State | 24-1 | 58 | NR | 24. Colorado State | 24-1 | 36 | NR | Feb. 8 | 228 |
| Dropped from rankings: No. 22 Florida, No. 24 Tennessee | | | | Dropped out: No. 23 Duquesne, No. 24 Oklahoma State, No. 25 Florida | | | | Feb. 12 | 224 |
| Others receiving votes: Florida 55, BYU 50, West Virginia 42, Georgia 23, UTEP 14, Oregon 7, Arkansas State 7, Green Bay 5, Florida Gulf Coast 4, Duquesne 3, Washington 2, Tennessee 2 | | | | Others receiving votes: Duquesne (24-3) 27; Oklahoma State (19-7) 24; UTEP (23-2) 24; Florida (20-7) 21; Wisconsin-Green Bay (23-3) 20; Seton Hall (20-7) 11; St. John's (19-8) 11; West Virginia (20-8) 11; Auburn (18-9) 7; Florida Gulf Coast (25-4) 7; Georgia (20-7) 6; Albany (22-4) 5; North Carolina State (18-9) 3; Western Kentucky (20-5) 3; Arkansas State (22-3) 1 | | | | Feb. 15 | 244 |
| | | | | | | | | Feb. 16 | 246 |
| | | | | | | | | Feb. 19 | 253 |
| | | | | | | | | Feb. 23 | 265 |

CONFERENCE USA

2015-16 Preseason All-Conference USA Women's Basketball Team and Preseason Poll

Lefty Webster, Charlotte, Jr., Guard
 Brandi Wingate, Louisiana Tech, Sr., Guard/Forward
 Olivia Jones, Middle Tennessee, Jr., Guard/Forward
 Leah Scott, Marshall, Sr., Guard/Forward
 Jennie Simms, Old Dominion, Jr., Guard
 Jerontay Clemons, Southern Miss, Sr., Guard
 Cameasha Turner, UTEP, Sr., Guard
 Kendall Noble, WKU, Jr., Guard

Preseason Player of the Year: Olivia Jones, Middle Tennessee

1. Middle Tennessee (5)
2. Old Dominion (4)
3. WKU (4)
4. Southern Miss
5. UTEP
6. Charlotte
- 7. UTSA (1)**
8. UAB
9. Louisiana Tech
10. Marshall
11. Florida Atlantic
12. Rice
13. FIU
14. North Texas

(#) - indicates first-place vote

Conference USA Standings

As of February 21

| Team | Conference USA | | Overall | |
|------------------|----------------|----|---------|----|
| | W | L | W | L |
| UTEP | 14 | 1 | 23 | 2 |
| Middle Tennessee | 12 | 2 | 18 | 7 |
| WKU | 11 | 3 | 20 | 5 |
| Charlotte | 9 | 5 | 16 | 9 |
| Louisiana Tech | 8 | 6 | 13 | 12 |
| Old Dominion | 8 | 6 | 12 | 14 |
| UAB | 6 | 8 | 13 | 12 |
| Marshall | 6 | 8 | 16 | 9 |
| Southern Miss | 6 | 8 | 13 | 12 |
| Rice | 6 | 8 | 7 | 18 |
| North Texas | 4 | 10 | 9 | 15 |
| Florida Atlantic | 4 | 11 | 12 | 14 |
| UTSA | 4 | 11 | 8 | 17 |
| FIU | 2 | 13 | 4 | 22 |

Conference USA Team Comparison - As of Feb. 21

| Leader | Statistic | UTSA |
|--------------|---------------------------------|-------------|
| CHAR - 75.9 | Scoring offense | 10th - 61.6 |
| UAB - 57.4 | Scoring defense | 7th - 63.9 |
| UTEP - +11.6 | Scoring margin | 10th - -2.2 |
| FIU - .766 | Free throw percentage | 13th - .629 |
| CHAR - .456 | Field goal percentage | 14th - .384 |
| UTSA - .370 | Field goal percentage - defense | 1st |
| CHAR - .354 | 3-pt field goal percentage | 12th - .291 |
| UTEP - .266 | 3-pt field goal - defense | 10th - .325 |
| UTEP - 40.7 | Rebounding offense | 3rd - 40.2 |
| UAB - 32.5 | Rebounding defense | 12th - 38.9 |
| UAB - +7.0 | Rebounding margin | 7th - +1.3 |
| WKU - 4.5 | Blocked shots | 3rd - 4.2 |
| MT - 14.5 | Assists | 14th - 10.3 |
| UTEP - 12.0 | Steals | 4th - 8.1 |
| UTEP - +4.7 | Turnover margin | 8th - -0.9 |
| FAU - 9.7 | 3-point FG made | 11th - 4.6 |

This Week in Conference USA

Thursday, Feb. 25

UAB at Marshall - 10:30 a.m. (C-USA DN)
 Charlotte at UTSA - 7 p.m. (C-USA DN)
 Louisiana Tech at North Texas - 7 p.m. (C-USA DN)
 Southern Miss at Rice - 7 p.m. (C-USA DN)
 Middle Tennessee at WKU - 8 p.m. (FOX Sports)
 Old Dominion at UTEP - 8:05 p.m. (C-USA DN)

Saturday, Feb. 27

Middle Tennessee at Marshall - 12 p.m. (C-USA DN)
 Louisiana Tech at Rice - 2 p.m. (C-USA DN)
 Southern Miss at North Texas - 2 p.m. (C-USA DN)
 Old Dominion at UTSA - 2 p.m. (C-USA DN)
 UAB at WKU - 2 p.m. (FCS)
 Charlotte at UTEP - 3:05 p.m. (C-USA DN)
 Florida Atlantic at FIU - 7 p.m. (C-USA DN)

| Conference-only games | | |
|-----------------------|---------------------------------|-------------|
| CHAR - 73.7 | Scoring offense | 12th - 58.8 |
| UAB - 60.0 | Scoring defense | 6th - 63.3 |
| MT - +10.9 | Scoring margin | 11th - -4.5 |
| FIU - .776 | Free throw percentage | 14th - .624 |
| MT - .462 | Field goal percentage | 14th - .368 |
| UTSA - .388 | Field goal percentage - defense | 1st |
| MT - .374 | 3-pt field goal percentage | 12th - .289 |
| UTEP - .251 | 3-pt field goal - defense | 7th - .310 |
| UTEP - 40.9 | Rebounding offense | 6th - 39.1 |
| UAB - 32.7 | Rebounding defense | 12th - 38.9 |
| ODU - +6.7 | Rebounding margin | 9th - +0.1 |
| UAB - 4.3 | Blocked shots | 3rd - 3.7 |
| MT - 15.6 | Assists | 14th - 9.3 |
| UTEP - 11.7 | Steals | 5th - 7.9 |
| WKU - +4.8 | Turnover margin | 7th - -0.3 |
| FAU - 9.8 | 3-point FG made | 12th - 4.2 |

2015-16 UTSA WOMEN'S BASKETBALL

2015-16 Conference USA Freshman and Player of the Week

Player of the Week

November 16 - Ali Gorrell, Florida Atlantic
November 23 - Kendall Noble, WKU
November 30 - Brandi Wingate, LA Tech
December 7 - Brea Edwards, MT
December 14 - Brandi Wingate, LA Tech
December 21 - Brea Edwards, MT
December 28 - Ivy Brown, WKU
January 4 - Jennie Simms, Old Dominion
January 11 - Kelsey Criner - North Texas
January 18 - Brandi Wingate, LA Tech
January 25 - Kendall Noble, WKU
February 1 - Brea Edwards, MT
February 8 - Brandi Wingate, LA Tech
February 15 - Brea Edwards, MT
February 22 - Jennie Simms, ODU
February 29 -
March 7 -

Freshman of the Week

November 16 - Shayna Gore, Marshall
November 23 - Reauna Cleaver, LA Tech
November 30 - Alex Johnson, MT
December 7 - Alex Johnson, MT
December 14 - Caitlin Jenkins, Southern Miss
December 21 - Kierra Anthony, LA Tech
December 28 - Deanna Kuzmanic, UAB
January 4 - Caitlin Jenkins, Southern Miss
January 11 - G. Hunter, Char | A. Johnson, MT
January 18 - Caitlin Jenkins, Southern Miss
January 25 - Alex Johnson, MT
February 1 - Grace Hunter, Charlotte
February 8 - Grace Hunter, Charlotte
February 15 - Laia Raventos, Charlotte
February 22 - Alex Johnson, MT
February 29 -
March 7 -

Honor Roll

November 16 - Cierra Gregory, Charlotte
November 23 - Brea Edwards, MT
November 30 - Brea Edwards, MT
Dec. 7 - D. Young, ODU | S. Breedlove, UTEP
Dec. 14 - A. Alexander, Char | T. Brown, WKU
December 21 - None
December 28 - None
January 4 - Tashia Brown, WKU
January 11 - Cameasha Turner, UTEP
January 18 - None
January 25 - Ali Gorrell, Florida Atlantic
February 1 - None
February 8 - Leah Scott, Marshall
February 15 - Ivy Brown, WKU
February 22 - Lefty Webster, Charlotte
February 29 -
March 7 -



The 2016 Conference USA Basketball Championships returns to Birmingham, Ala. and this time will feature all 14 member schools. The tournament is scheduled to run from Tuesday, March 8 through Saturday, March 12. Games will be held at the Birmingham-Jefferson Civic Center and Bartow Arena.

UAB hosted the 2015 edition, as well as the 1999 C-USA Men's Basketball Championship and the 1996 C-USA Women's Basketball Championship.

Runners selected seventh in C-USA Preseason Poll

After an unexpected finish in the Conference USA standings last season and a first-round bye at the conference tournament, the women's team was picked to finish seventh for the upcoming season.

Last year, UTSA tied for fourth with a 11-7 league mark.

UTEP match-up to air on ASN

American Sports Network selected the Roadrunners' road contest at UTEP on Jan. 17 to air on its network. It was one of five women's games to be selected. Along with the season opener on the Longhorn Network, the Roadrunners will hit the airwaves twice this year.

Lichonczak adds 5 for 2015-16 season

After losing five players to graduation and some to transfer, head women's basketball coach Lubomyr Lichonczak adds five to the 2015-16 season, including former volleyball standout Dempsey Thornton.

Lichonczak will add two true freshman in Alexis Dukes (Harker Heights, Texas) and Sara Anastasieska (Sydney, Australia); junior transfers Kasia Kiejdrowska (Gdynia, Poland) and Loryn Goodwin (Houston, Texas); and Thornton.

Mukosiej rounds out coaching staff

In late April, head women's basketball coach rounded out his coaching staff with the addition of Ela Mukosiej, who will head up international recruiting for the Roadrunners.

The Poland native played collegiate basketball at Seton Hall, where she was an honorable mention All-Big East selection. She also played professionally overseas and was instrumental in her team's success in becoming the top Polish League.

UTSA/Charlotte Statistical Comparison

| Statistic | UTSA | Charlotte |
|---------------------------------|------|-----------|
| Record | 8-17 | 16-9 |
| RPI (As of 2/23) | 265 | 75 |
| Scoring offense | 61.6 | 75.9 |
| Scoring defense | 63.9 | 71.9 |
| Scoring margin | -2.2 | +4.0 |
| Field goal percentage | .384 | .456 |
| Field goal percentage - defense | .370 | .414 |
| 3-point field goal percentage | .291 | .354 |
| 3-point FG percentage - defense | .325 | .315 |
| Free throw percentage | .629 | .738 |
| Free throw percentage - defense | .682 | .664 |
| Rebounding offense | 40.2 | 38.6 |
| Rebounding defense | 38.9 | 38.7 |
| Rebounding margin | +1.3 | -0.1 |
| Assists | 10.3 | 13.9 |
| Turnovers | 17.4 | 15.5 |
| Steals | 8.1 | 7.0 |
| Blocked shots | 4.2 | 4.3 |

Started at the bottom, now we're here

Last season, UTSA was selected to finish tied for ninth in Conference USA but surprised most when the team tied for fourth in the standings with Old Dominion with an 11-7 record. The Roadrunners also managed to pull out a first-round bye with a 64-63 win over WKU at the Convocation Center.

Annual holiday classic in memory of Blair

UTSA has hosted its annual holiday tournament for the past 11 years. With the passing of Rae Blair back in the summer of 2014, the UTSA women's basketball program has dedicated its Holiday Classic and renamed the event to the Rae & Craig Blair Memorial Classic (Dec. 28-30).

UTSA to play a pair of ranked teams

UTSA will open its 2015-16 campaign on the road against nationally-ranked Texas. In the AP Top-25 Coaches' Poll, the Longhorns check in at No. 12 while in the WBCA/USA Today Coaches' Preseason Poll comes in at No. 11.

The Roadrunners will also face another ranked opponent in non-conference on Dec. 13 when the Roadrunners take on No. 17/18 Oklahoma.

Smith amongst top in league in double-doubles

Junior Tesha Smith is best known for aggressive play on the court as the Roadrunners' sixth player of the bench. Through two seasons at UTSA, Smith has combined for seven double-doubles, which ties for sixth in the league with four other players in Conference USA.

SCOUTING THE OPPONENT

Charlotte 49ers • February 25 • 7 p.m.

- All-time record against Charlotte: 1-1
- Last time out: Feb. 14, 2015 in Charlotte, N.C. (Charlotte 74, UTSA 54)
- Charlotte is coming off one of its biggest wins of the season with an 81-72 victory over WKU Saturday. The 49ers had its entire starting lineup score in double digits and were led by Lefty Webster's 19 points and 11 rebounds. Webster was named the league's Honor Roll Player of the Week.
- Saturday's win makes it four straight wins for the 49ers, their longest win streak of the season.
- The 49ers are in sole possession of fourth place with a 9-5 Conference USA record and 16-9 overall mark.
- A total of five players are averaging double figures with Alexis Alexander leading the pack with her 15.0 points and 7.9 rebounds per game. Alexander is shooting 54.8 percent (159-of-290) from the field.
- Lefty Webster is the only player on the 49ers roster that has started and appeared in all 25 games this season.
- The 49ers biggest quarter is the second as the team is outscoring its opponents 455-406. Charlotte trails off in the fourth with opponents outscoring the 49ers 526-513.

Dukes with stellar debut

Harker Heights native Alexis Dukes had a stellar collegiate debut for the Roadrunners against nationally ranked Texas. The true freshman scored 18 points off of 6-of-9 shooting from 3-point range, adding six rebounds. Dukes also made her first official start after earning a pair of starts in exhibition action.

Neighborhood watch: Niaga Mitchell-Cole

Niaga Mitchell-Cole entered her final season with UTSA with a career 45 blocks and is now 15 away from cracking into the UTSA all-time record books. In the 10-spot is Keelah Wilson (98-00) with 61.

D-fense! D-fense!

Since the inception of quarters for the 2015-16 season, UTSA has held opponents to single digits in three quarters, both coming in its wins during the Thanksgiving Classic. The Roadrunners held Illinois State to just three points in the opening frame and then allowed only eight points from the Redbirds in the third. UTSA did it again two days later against Houston Baptist holding the Huskies to just seven points in the third quarter.

Watch your back!

As of late, UTSA has been quick to steal the ball from its opponent and has recorded double figures in three straight games (beginning with Illinois State), averaging 10.0 steals per night. The Roadrunners tie for third in

COURT NOTES

C-USA and rank 64th in the NCAA. In the team's last outing at Texas State, Niaga Mitchell-Cole had six of the team's 11 total steals. The Roadrunners tallied a season high of 17 against Houston Baptist over the Thanksgiving holiday, which was the most steals since March 7, 2015 when the Roadrunners met with North Texas on the road in the final regular season game of the year.

Smith earns first start since freshman year

In her third season as a Roadrunner, San Antonio native Tesha Smith finally earned a spot in the starting lineup and did not disappoint. The 6-1 center netted a career high 29 points and grabbed 12 rebounds for her second double-double of the year and ninth overall. Smith also led four Roadrunners in double figures.

12 years in the making

UTSA reached triple digits for the first time in 12 years after defeating Division III Howard Payne (12/15/15) by a score of 106-65. The last time the Roadrunners scored 100-plus points on Dec. 7, 1993 against Prairie View and won 105-38.

Making the NCAA record books

On Monday, Dec. 28, UTSA and Texas Southern combined for 29 total blocks to set the NCAA record in blocked shots by both teams, surpassing the previous mark of 23 set in 2009.

UTSA totaled 16 blocks, which was also the single-game record, passing the previous mark of 14 set in 2001. Texas Southern also matched the program record of blocks against with 13.

The Tigers' Kianna Vines also matched an individual record of blocks in a game with eight, matching Cheyenne Parker's mark of 8 set last season in Murfreesboro.

..in conference openers

UTSA is 10-15 in conference openers. This spans between four different conferences. The Roadrunners first competed in the Oil Country Athletic Conference for two seasons before joining the Southland Conference during the 1992-93 season. Since then, UTSA made a transition from the Western Athletic Conference (2012-13) to Conference USA (2013-14 to present).

Buzzer-beater!

The Roadrunners picked up their first Conference USA win of the season in fashion after Tesha Smith's buzzer-beater with 0.1 seconds left was counted to defeat UAB 54-52 at the Convocation Center. UTSA had possession of the ball in the final 46 seconds of play and missed two shots before calling for a timeout to regroup. Smith was then passed the ball down low and she grabbed her missed shot for a tip-in and the win!

Finding the right one

Head women's coach Lubomyr Lichonczak has used eight different lineups this season with all but three having been used once. No one player has appeared in all eight but seniors Akunna Elonu and Mathilde Hergott have appeared in the most with seven.

Update: UTSA used its ninth different lineup against FIU and used it again at Florida Atlantic.

NCAA STATS (Top 200)

| Category | Rank |
|-------------------|---------------|
| FG pct. - defense | 64th - 37.0 |
| Rebounds per game | 83rd - 40.20 |
| Blocks per game | 88th - 4.2 |
| Blocks | 98th - 105 |
| Rebounding margin | 132nd - 1.3 |
| Rebounds | 141st - 1,005 |
| Steals per game | 143rd - 8.1 |
| Turnovers forced | 165th - 16.52 |
| Steals | 169th - 203 |
| Scoring defense | 184th - 63.9 |

| Individuals | Rank |
|------------------|-------------|
| Smith (rpg) | 122nd - 8.2 |
| Smith (rebounds) | 144th - 206 |

C-USA RANKS (Overall)

| Individuals | Avg. |
|---------------------------|------|
| 5. Smith (off. rpg) | 3.1 |
| 6. Smith (rpg) | 8.2 |
| 7. Smith (FG pct.) | .507 |
| 11. Smith (bpg) | 0.9 |
| 11. Smith (def. rpg) | 5.1 |
| 4. Elonu (off. rpg) | 3.2 |
| t12. Elonu (rpg) | 7.0 |
| 13. Elonu (FG pct.) | .478 |
| 12. Mitchell-Cole (spg) | 1.6 |
| 13. Chidomere (spg) | 1.6 |
| 9. Heineman (3pt FG pct.) | .377 |
| 8. Hergott (bpg) | 1.0 |

C-USA RANKS (Conf. Only)

| Individuals | Avg. |
|--------------------------|------|
| 14. Chidomere (spg) | 1.5 |
| 30. Chidomere (ppg) | 11.0 |
| 9. Smith (bpg) | 1.0 |
| 10. Smith (off. rpg) | 3.1 |
| 11. Smith (rpg) | 8.1 |
| 11. Smith (def. rpg) | 5.0 |
| 12. Smith (FG pct.) | .500 |
| 4. Elonu (off. rpg) | 3.6 |
| 12. Elonu (rpg) | 7.8 |
| 6. Hergott (bpg) | 1.1 |
| 15. Hergott (3pt FG mpg) | 1.5 |

2015-16 UTSA WOMEN'S BASKETBALL

First road win of season

After going 0-7 on the year on the road, the Roadrunners picked up their first road victory of the year in the Sunshine State with a 63-52 win over FIU. UTSA battled in the first quarter facing a 17-all tie and faced a three-point deficit at the half but rallied in the third, eventually tying the score at 36 midway through the quarter. By the end, UTSA saw itself leading 44-41 heading into the final 10 minutes of play.

Defending the perimeter

In early December, the Roadrunners were allowing opponents to tally 10-plus 3-pointers in consecutive games but put a halt to it allowing no more than eight just one time. However, Florida Atlantic (1/23) became the fourth team this season to do so with 10 and shot 33.3 percent (10-of-30) from behind the arc.

Making the trip

Louisiana Tech and UTSA combined for 63 fouls on Jan. 28 at the Convocation Center. LA Tech tallied 27 and the Roadrunners 36 - both marks in the UTSA record books. The Lady Techsters total matched the most fouls in a conference game while the Roadrunners surpassed their mark by three and snapping a 17-year record.

Giving a helping hand

UTSA will host its annual Pink Game on Saturday, Feb. 13, when the Roadrunners host FIU at 1 p.m. A silent auction will take place in the main lobby of the Convocation Center with all proceeds benefiting the Alamo City Breast Cancer Foundation.

Cracking the top 10

Her aggressive play finally paid dividends on Saturday at Marshall when senior Akunna Elonu grabbed her sixth rebound of the game to crack into the UTSA all-time record books. Elonu currently sits ninth with 545 total. Seven regular season games still remain before heading to the conference tournament in Birmingham, Ala.

Smith's nine just the beginning

Junior Tesha Smith becomes the second Roadrunner this season to crack into the UTSA all-time record books. Smith entered Saturday's contest against FIU with 539 career rebounds and registered nine against the Panthers to check-in with 548 to place her 10th.



2016 C-USA WOMEN'S BASKETBALL BRACKET

#CUSAWBK #BeTheNext

EVENT INFO
 March 8-12
 Birmingham, Alabama
 All Times Central

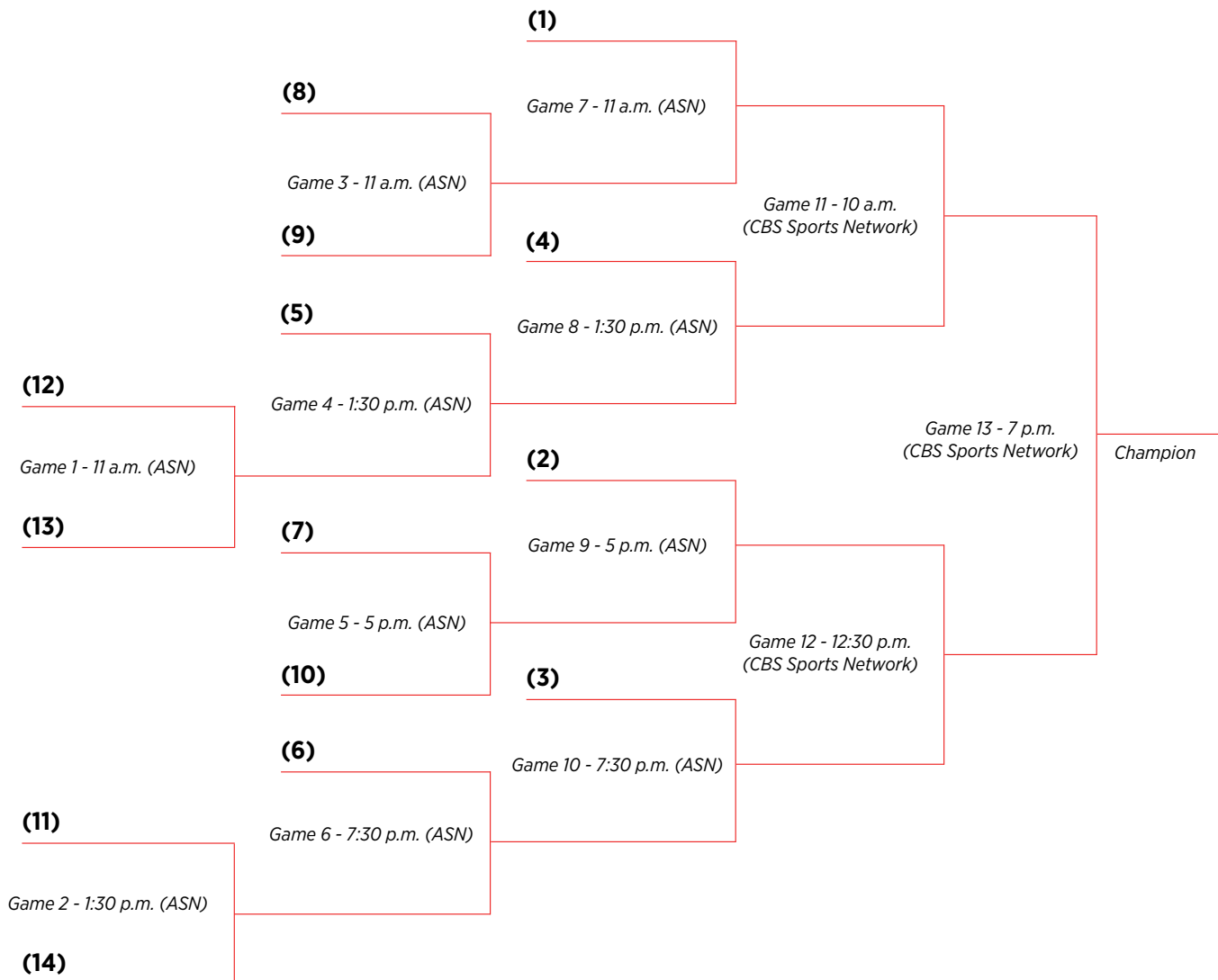
First Round
Tuesday, March 8

Second Round
Wednesday, March 9

Quarterfinals
Thursday, March 10

Semifinals
Friday, March 11

Championship
Saturday, March 12





KASIA KIEJDROWSKA

F • Junior

Gdynia, Poland • Mineral Area College

1

#01 KIEJDROWSKA, Kasia

| Opponent | Date | gs | min | Total | | 3-Pointers | | Free throws | | Rebounds | | | | pf | a | t/o | blk | stl | pts | avg |
|----------------------|----------|-----|-----|--------|------|------------|------|-------------|-------|----------|-----|-----|-----|----|----|-----|-----|-----|-----|-----|
| | | | | fg-fga | pct | 3fg-fga | pct | ft-fa | pct | off | def | tot | avg | | | | | | | |
| at Texas | 11/14/15 | 19 | | 1-8 | .125 | 1-5 | .200 | 2-2 | 1.000 | 0 | 4 | 4 | 4.0 | 5 | 0 | 1 | 0 | 1 | 5 | 5.0 |
| at Abilene Christian | 11/21/15 | 26 | | 3-9 | .333 | 2-6 | .333 | 1-2 | .500 | 0 | 6 | 6 | 5.0 | 0 | 1 | 1 | 0 | 0 | 9 | 7.0 |
| ILLINOIS STATE | 11/27/15 | 17 | | 3-5 | .600 | 0-1 | .000 | 1-2 | .500 | 0 | 0 | 0 | 3.3 | 2 | 2 | 0 | 0 | 2 | 7 | 7.0 |
| HOUSTON BAPTIST | 11/29/15 | 28 | | 2-5 | .400 | 0-1 | .000 | 0-1 | .000 | 0 | 4 | 4 | 3.5 | 4 | 1 | 3 | 0 | 2 | 4 | 6.3 |
| at Texas State | 12/03/15 | * | 15 | 1-5 | .200 | 1-2 | .500 | 0-0 | .000 | 1 | 1 | 2 | 3.2 | 1 | 0 | 0 | 0 | 0 | 3 | 5.6 |
| at Oklahoma | 12/13/15 | 16 | | 3-6 | .500 | 2-4 | .500 | 0-0 | .000 | 0 | 3 | 3 | 3.2 | 3 | 0 | 1 | 0 | 0 | 8 | 6.0 |
| HOWARD PAYNE | 12/15/15 | 25 | | 3-11 | .273 | 3-4 | .750 | 0-0 | .000 | 5 | 9 | 14 | 4.7 | 1 | 1 | 2 | 0 | 0 | 9 | 6.4 |
| TEXAS A&M-KINGSVILLE | 12/19/15 | 19 | | 3-6 | .500 | 1-3 | .333 | 0-1 | .000 | 0 | 6 | 6 | 4.9 | 5 | 1 | 1 | 0 | 0 | 7 | 6.5 |
| UT ARLINGTON | 12/21/15 | 18 | | 3-7 | .429 | 1-4 | .250 | 0-0 | .000 | 0 | 1 | 1 | 4.4 | 4 | 1 | 0 | 0 | 1 | 7 | 6.6 |
| TEXAS SOUTHERN | 12/28/15 | 15 | | 4-10 | .400 | 1-5 | .200 | 0-0 | .000 | 0 | 1 | 1 | 4.1 | 1 | 0 | 1 | 1 | 0 | 9 | 6.8 |
| at North Texas | 1/1/16 | 8 | | 0-6 | .000 | 0-3 | .000 | 0-0 | .000 | 0 | 1 | 1 | 3.8 | 0 | 0 | 0 | 0 | 0 | 0 | 6.2 |
| at Rice | 1/3/16 | dnp | | - | - | - | - | - | - | - | - | - | - | - | - | - | - | - | - | - |
| UAB | 1/7/16 | 10 | | 0-4 | .000 | 0-2 | .000 | 0-0 | .000 | 0 | 1 | 1 | 3.6 | 0 | 0 | 0 | 0 | 0 | 0 | 5.7 |
| MIDDLE TENNESSEE | 1/9/16 | 2 | | 0-1 | .000 | 0-1 | .000 | 0-0 | .000 | 0 | 0 | 0 | 3.3 | 1 | 0 | 1 | 0 | 0 | 0 | 5.2 |
| at UTEP | 1/17/16 | 2 | | 0-1 | .000 | 0-1 | .000 | 0-0 | .000 | 0 | 0 | 0 | 3.1 | 2 | 0 | 0 | 0 | 0 | 0 | 4.9 |
| at FIU | 01/21/16 | 25 | | 4-7 | .571 | 1-3 | .333 | 0-0 | .000 | 0 | 5 | 5 | 3.2 | 3 | 3 | 3 | 0 | 0 | 9 | 5.1 |
| at FAU | 1/23/16 | 11 | | 0-5 | .000 | 0-2 | .000 | 0-0 | .000 | 1 | 1 | 2 | 3.1 | 2 | 0 | 0 | 0 | 0 | 0 | 4.8 |
| LOUISIANA TECH | 1/28/16 | 8 | | 0-3 | .000 | 0-3 | .000 | 1-2 | .500 | 0 | 0 | 0 | 2.9 | 0 | 0 | 0 | 0 | 0 | 1 | 4.6 |
| SOUTHERN MISS | 1/30/16 | 2 | | 0-1 | .000 | 0-0 | .000 | 0-0 | .000 | 0 | 0 | 0 | 2.8 | 0 | 0 | 1 | 0 | 0 | 0 | 4.3 |
| at WKU | 02/04/16 | 31 | | 8-18 | .444 | 4-9 | .444 | 3-4 | .750 | 0 | 1 | 1 | 2.7 | 3 | 0 | 3 | 0 | 1 | 23 | 5.3 |
| at Marshall | 2/6/16 | * | 39 | 10-20 | .500 | 6-12 | .500 | 3-3 | 1.000 | 1 | 2 | 3 | 2.7 | 4 | 3 | 1 | 1 | 0 | 29 | 6.5 |
| FAU | 2/11/16 | * | 31 | 2-9 | .222 | 1-3 | .333 | 1-1 | 1.000 | 0 | 4 | 4 | 2.8 | 2 | 0 | 0 | 1 | 0 | 6 | 6.5 |
| FIU | 2/13/16 | * | 17 | 1-6 | .167 | 1-3 | .333 | 2-2 | 1.000 | 0 | 2 | 2 | 2.7 | 1 | 0 | 1 | 1 | 1 | 5 | 6.4 |
| at Louisiana Tech | 02/18/16 | * | 12 | 1-3 | .333 | 0-2 | .000 | 0-0 | .000 | 0 | 1 | 1 | 2.7 | 2 | 0 | 0 | 0 | 1 | 2 | 6.2 |
| at Southern Miss | 2/20/16 | dnp | | - | - | - | - | - | - | - | - | - | - | - | - | - | - | - | - | - |
| Totals | | 5 | 396 | 52-156 | .333 | 25-79 | .316 | 14-20 | .700 | 8 | 53 | 61 | 2.7 | 46 | 13 | 20 | 4 | 9 | 143 | 6.2 |

Games played: 23
Minutes/game: 17.2
Points/game: 6.2
FG Pct: 33.3
3FG Pct: 31.6
FT Pct: 70.0

Rebounds/game: 2.7
Assists/game: 0.6
Turnovers/game: 0.9
Assist/turnover ratio: 0.7
Steals/game: 0.4
Blocks/game: 0.2

Career Records

Points

31 vs. Marshalltown (1/27/15)

Rebounds

14 vs. Howard Payne (12/15/15)

Field Goals

13 vs. Marshalltown (1/27/15)

3-point FGs

7 at Crowder (2/14/15)

Free Throws

8 at St. Louis (12/16/13)

Assists

7 (2x) last vs. State Fair (2/28/15)

Blocks

2 vs. St. Clair County (11/15/14)

Steals

8 vs. Jefferson (Mo.)(1/14/15)

| Season | GP-GS | Min./Avg. | Total | | 3-PT | | Career Stats FT | | Rebounds | | | | Scoring | | | | | | | |
|----------|-------|-----------|---------|------|---------|------|-----------------|------|----------|-----|-----|------|---------|----|-----|-----|-----|-----|-----|------|
| | | | FG-FGA | Pct. | FG-FGA | Pct. | FT-FTA | Pct. | Off | Def | Tot | Avg. | PF | FO | A | TO | BLK | STL | PTS | Avg. |
| 2015-16 | 23-5 | 396/17.2 | 52-156 | .333 | 25-79 | .316 | 14-20 | .700 | 8 | 53 | 61 | 2.7 | 46 | 2 | 13 | 20 | 4 | 9 | 143 | 6.2 |
| 2014-15* | 31-30 | 783/25.3 | 148-372 | .398 | 63-164 | .384 | 50-70 | .714 | 24 | 106 | 130 | 4.2 | 72 | 3 | 97 | 66 | 10 | 52 | 409 | 13.2 |
| 2012-13* | 29-12 | 668/23.0 | 45-138 | .326 | 48-125 | .384 | 59-66 | .894 | 18 | 73 | 91 | 3.1 | 59 | 1 | 77 | 77 | 5 | 48 | 293 | 10.1 |
| TOTAL | 83-47 | 1847/22.3 | 245-666 | .368 | 136-368 | .370 | 123-156 | .788 | 50 | 232 | 282 | 3.4 | 177 | 6 | 187 | 163 | 19 | 109 | 845 | 10.2 |

* denotes stats from previous school

2015-16 Player Notes:

- Got her first official start as a Roadrunner against I-35 rival Texas State
- Scored in double figures for the first time with a team-leading 23 points at WKU
- Set a season high of 29 points on 10-of-20 shooting from the field, including 6-of-12 from 3-point range at Marshall
- Shot 66.7 percent of the team's 3-pointers against Marshall



MATHILDE HERGOTT

G/F • Junior

Lyon, France • Lycee Jean Mermoz

2

#02 HERGOTT, Mathilde

| Opponent | Date | gs | min | Total | | 3-Pointers | | Free throws | | Rebounds | | | | pf | a | t/o | blk | stl | pts | avg | |
|----------------------|----------|----|-----|--------|--------|------------|-------|-------------|-------|----------|-----|-----|-----|-----|----|-----|-----|-----|-----|-----|-----|
| | | | | fg-fga | pct | 3fg-3ga | pct | ft-fra | pct | off | def | tot | avg | | | | | | | | |
| at Texas | 11/14/15 | * | 20 | 1-3 | .333 | 1-2 | .500 | 0-0 | .000 | 0 | 1 | 1 | 1.0 | 2 | 2 | 3 | 0 | 0 | 3 | 3.0 | |
| at Abilene Christian | 11/21/15 | * | 21 | 0-2 | .000 | 0-1 | .000 | 0-0 | .000 | 0 | 2 | 2 | 1.5 | 2 | 0 | 2 | 1 | 0 | 0 | 1.5 | |
| ILLINOIS STATE | 11/27/15 | * | 18 | 1-4 | .250 | 0-1 | .000 | 0-0 | .000 | 0 | 1 | 1 | 1.3 | 1 | 2 | 3 | 2 | 1 | 2 | 1.7 | |
| HOUSTON BAPTIST | 11/29/15 | * | 34 | 4-12 | .333 | 0-3 | .000 | 0-2 | .000 | 0 | 1 | 1 | 1.3 | 3 | 3 | 2 | 1 | 5 | 8 | 3.3 | |
| at Texas State | 12/03/15 | * | 34 | 3-11 | .273 | 1-6 | .167 | 0-0 | .000 | 0 | 3 | 3 | 1.6 | 3 | 3 | 3 | 1 | 3 | 7 | 4.0 | |
| at Oklahoma | 12/13/15 | * | 25 | 2-9 | .222 | 1-4 | .250 | 0-0 | .000 | 0 | 3 | 3 | 1.8 | 3 | 3 | 3 | 1 | 0 | 5 | 4.2 | |
| HOWARD PAYNE | 12/15/15 | * | 22 | 2-2 | 1.000 | 1-1 | 1.000 | 0-0 | .000 | 1 | 1 | 2 | 1.9 | 3 | 4 | 4 | 0 | 0 | 5 | 4.3 | |
| TEXAS A&M-KINGSVILLE | 12/19/15 | * | 22 | 3-7 | .429 | 1-2 | .500 | 0-0 | .000 | 1 | 3 | 4 | 2.1 | 2 | 3 | 4 | 0 | 0 | 7 | 4.6 | |
| UT ARLINGTON | 12/21/15 | * | 18 | 0-4 | .000 | 0-2 | .000 | 0-0 | .000 | 0 | 3 | 3 | 2.2 | 0 | 0 | 4 | 0 | 1 | 0 | 4.1 | |
| TEXAS SOUTHERN | 12/28/15 | | 31 | 0-5 | .000 | 0-3 | .000 | 0-0 | .000 | 0 | 4 | 4 | 2.4 | 3 | 3 | 1 | 3 | 0 | 0 | 3.7 | |
| at North Texas | 1/1/16 | * | 35 | 1-3 | .333 | 0-1 | .000 | 0-0 | .000 | 2 | 3 | 5 | 2.6 | 3 | 2 | 4 | 1 | 0 | 2 | 3.5 | |
| at Rice | 1/3/16 | * | 38 | 2-10 | .200 | 2-4 | .500 | 0-0 | .000 | 0 | 3 | 3 | 2.7 | 2 | 3 | 2 | 1 | 0 | 6 | 3.8 | |
| UAB | 1/7/16 | * | 33 | 0-3 | .000 | 0-1 | .000 | 0-0 | .000 | 0 | 0 | 0 | 2.5 | 3 | 3 | 4 | 1 | 1 | 0 | 3.5 | |
| MIDDLE TENNESSEE | 1/9/16 | * | 34 | 3-4 | .750 | 2-2 | 1.000 | 0-0 | .000 | 1 | 0 | 1 | 2.4 | 3 | 3 | 2 | 2 | 1 | 8 | 3.8 | |
| at UTEP | 1/17/16 | * | 19 | 1-5 | .200 | 0-0 | .000 | 0-0 | .000 | 1 | 1 | 2 | 2.3 | 2 | 2 | 2 | 0 | 0 | 2 | 3.7 | |
| at FIU | 01/21/16 | * | 29 | 3-10 | .300 | 2-8 | .250 | 1-2 | .500 | 1 | 1 | 2 | 2.3 | 1 | 1 | 1 | 3 | 1 | 9 | 4.0 | |
| at FAU | 1/23/16 | * | 37 | 7-16 | .438 | 4-11 | .364 | 2-2 | 1.000 | 1 | 4 | 5 | 2.5 | 2 | 0 | 1 | 2 | 2 | 20 | 4.9 | |
| LOUISIANA TECH | 1/28/16 | * | 37 | 7-20 | .350 | 3-12 | .250 | 0-0 | .000 | 0 | 1 | 1 | 2.4 | 5 | 1 | 4 | 2 | 0 | 17 | 5.6 | |
| SOUTHERN MISS | 1/30/16 | * | 31 | 5-8 | .625 | 2-4 | .500 | 1-2 | .500 | 0 | 2 | 2 | 2.4 | 0 | 0 | 2 | 1 | 2 | 13 | 6.0 | |
| at WKU | 02/04/16 | * | 36 | 4-9 | .444 | 4-7 | .571 | 2-2 | 1.000 | 2 | 1 | 3 | 2.4 | 3 | 2 | 1 | 1 | 1 | 14 | 6.4 | |
| at Marshall | 2/6/16 | * | 22 | 2-6 | .333 | 2-3 | .667 | 0-0 | .000 | 1 | 0 | 1 | 2.3 | 2 | 3 | 1 | 0 | 1 | 6 | 6.4 | |
| FAU | 2/11/16 | * | 35 | 2-8 | .250 | 0-2 | .000 | 0-0 | .000 | 0 | 3 | 3 | 2.4 | 4 | 3 | 2 | 2 | 0 | 4 | 6.3 | |
| FIU | 2/13/16 | * | 35 | 2-11 | .182 | 1-4 | .250 | 0-0 | .000 | 1 | 2 | 3 | 2.4 | 2 | 1 | 2 | 0 | 2 | 5 | 6.2 | |
| at Louisiana Tech | 02/18/16 | * | 31 | 2-11 | .182 | 0-3 | .000 | 0-0 | .000 | 0 | 0 | 0 | 2.3 | 4 | 2 | 3 | 0 | 1 | 4 | 6.1 | |
| at Southern Miss | 2/20/16 | * | 27 | 1-6 | .167 | 0-2 | .000 | 0-0 | .000 | 0 | 3 | 3 | 2.3 | 3 | 3 | 1 | 1 | 0 | 2 | 6.0 | |
| Totals | | | 24 | 724 | 58-189 | .307 | 27-89 | .303 | 6-10 | .600 | 12 | 46 | 58 | 2.3 | 61 | 52 | 61 | 26 | 22 | 149 | 6.0 |

Games played: 25
Minutes/game: 29.0
Points/game: 6.0
FG Pct: 30.7
3FG Pct: 30.3
FT Pct: 60.0

Rebounds/game: 2.3
Assists/game: 2.1
Turnovers/game: 2.4
Assist/turnover ratio: 0.9
Steals/game: 0.9
Blocks/game: 0.9

Career Records

Points

22 vs. UTEP (2/26/14)

Rebounds

6 vs. Nicholls State (12/21/14)

Field Goals

8 vs. UTEP (2/26/14)

3-point FGs

6 vs. Tulsa (3/11/14)

Free Throws

2 (11x) last at WKU (2/4/16)

Assists

5 (2x) last vs. LA Tech (1/10/15)

Blocks

3 (2x) last at FIU (1/21/16)

Steals

5 vs. Houston Baptist (11/29/15)

Career Stats

| Season | GP-GS | Min./Avg. | Total | | 3-PT | | FT | | Rebounds | | | | Scoring | | | | | | | |
|---------|-------|-----------|---------|------|--------|------|--------|-------|----------|-----|-----|------|---------|----|-----|-----|-----|-----|-----|------|
| | | | FG-FGA | Pct. | FG-FGA | Pct. | FT-FTA | Pct. | Off | Def | Tot | Avg. | PF | FO | A | TO | BLK | STL | PTS | Avg. |
| 2015-16 | 25-24 | 724/29.0 | 58-189 | .307 | 27-89 | .303 | 6-10 | .600 | 12 | 46 | 58 | 2.3 | 61 | 1 | 52 | 61 | 26 | 22 | 149 | 6.0 |
| 2014-15 | 27-16 | 592/21.9 | 55-172 | .320 | 23-86 | .267 | 12-19 | .632 | 15 | 31 | 46 | 1.7 | 40 | 0 | 47 | 61 | 17 | 30 | 145 | 5.4 |
| 2013-14 | 29-4 | 439/15.1 | 34-112 | .304 | 19-61 | .311 | 9-14 | .643 | 6 | 29 | 35 | 1.2 | 43 | 1 | 27 | 27 | 5 | 8 | 96 | 3.3 |
| 2012-13 | 12-0 | 54/4.5 | 5-18 | .278 | 3-9 | .333 | 1-1 | 1.000 | 4 | 1 | 5 | 0.4 | 8 | 0 | 4 | 7 | 0 | 1 | 14 | 1.2 |
| TOTAL | 93-44 | 1809/19.5 | 152-491 | .310 | 72-245 | .294 | 28-44 | .636 | 37 | 107 | 144 | 1.5 | 152 | 2 | 130 | 156 | 48 | 61 | 404 | 4.3 |

2015-16 Player Notes:

- Had a 5-game streak where Hergott scored 5 or more points
- Paced UTSA against Florida Atlantic with 20 points on 7-of-10 shooting, including 4-of-11 from 3-point range
- Has scored in double figures in four consecutive games this season



ALEXUS DUKES

G • Freshman

Harker Heights, Texas • Harker Heights HS

3

Career Records

Points

18 at Texas (11/14/15)

Rebounds

6 at Texas (11/14/15)

Field Goals

6 (2x) last vs. Houston Baptist (11/29/15)

3-point FGs

6 at Texas (11/14/15)

Free Throws

4 vs. Howard Payne (12/15/15)

Assists

6 vs. Howard Payne (12/15/15)

Blocks

1 (4x) last at UTEP (1/17/16)

Steals

4 vs. Houston Baptist (11/29/15)

#03 DUKES, Alexus

| | | | | Total | | 3-Pointers | | Free throws | | Rebounds | | | | | | | | | | | |
|----------------------|----------|-----|-----|--------|------|------------|------|-------------|-------|----------|-----|-----|-----|----|----|-----|-----|-----|-----|------|--|
| Opponent | Date | gs | min | fg-fga | pct | 3fg-fga | pct | ft-fa | pct | off | def | tot | avg | pf | a | t/o | blk | stl | pts | avg | |
| at Texas | 11/14/15 | * | 29 | 6-12 | .500 | 6-9 | .667 | 0-0 | .000 | 1 | 5 | 6 | 6.0 | 1 | 2 | 2 | 0 | 0 | 18 | 18.0 | |
| at Abilene Christian | 11/21/15 | * | 24 | 2-9 | .222 | 0-4 | .000 | 0-2 | .000 | 1 | 1 | 2 | 4.0 | 3 | 2 | 5 | 0 | 0 | 4 | 11.0 | |
| ILLINOIS STATE | 11/27/15 | * | 24 | 3-5 | .600 | 0-0 | .000 | 0-0 | .000 | 0 | 3 | 3 | 3.7 | 2 | 4 | 4 | 0 | 1 | 6 | 9.3 | |
| HOUSTON BAPTIST | 11/29/15 | * | 28 | 6-10 | .600 | 0-3 | .000 | 1-2 | .500 | 0 | 1 | 1 | 3.0 | 2 | 3 | 3 | 0 | 4 | 13 | 10.3 | |
| at Texas State | 12/03/15 | | 4 | 0-1 | .000 | 0-1 | .000 | 0-0 | .000 | 0 | 0 | 0 | 2.4 | 0 | 0 | 0 | 0 | 0 | 0 | 8.2 | |
| at Oklahoma | 12/13/15 | * | 20 | 1-9 | .111 | 0-3 | .000 | 0-0 | .000 | 0 | 0 | 0 | 2.0 | 2 | 0 | 2 | 0 | 2 | 2 | 7.2 | |
| HOWARD PAYNE | 12/15/15 | * | 27 | 2-5 | .400 | 0-1 | .000 | 4-4 | 1.000 | 0 | 3 | 3 | 2.1 | 4 | 6 | 2 | 1 | 1 | 8 | 7.3 | |
| TEXAS A&M-KINGSVILLE | 12/19/15 | * | 31 | 5-9 | .556 | 1-3 | .333 | 1-2 | .500 | 1 | 2 | 3 | 2.3 | 0 | 1 | 0 | 0 | 1 | 12 | 7.9 | |
| UT ARLINGTON | 12/21/15 | * | 20 | 1-5 | .200 | 0-1 | .000 | 2-2 | 1.000 | 0 | 5 | 5 | 2.6 | 3 | 3 | 4 | 0 | 1 | 4 | 7.4 | |
| TEXAS SOUTHERN | 12/28/15 | * | 24 | 4-14 | .286 | 0-3 | .000 | 1-2 | .500 | 0 | 1 | 1 | 2.4 | 5 | 2 | 3 | 1 | 3 | 9 | 7.6 | |
| at North Texas | 1/1/16 | | 29 | 5-15 | .333 | 2-5 | .400 | 1-2 | .500 | 0 | 2 | 2 | 2.4 | 3 | 2 | 2 | 1 | 0 | 13 | 8.1 | |
| at Rice | 1/3/16 | | 15 | 1-4 | .250 | 0-1 | .000 | 0-0 | .000 | 0 | 0 | 0 | 2.2 | 3 | 2 | 2 | 0 | 1 | 2 | 7.6 | |
| UAB | 1/7/16 | | 14 | 1-4 | .250 | 0-1 | .000 | 1-1 | 1.000 | 0 | 2 | 2 | 2.2 | 0 | 1 | 1 | 0 | 1 | 3 | 7.2 | |
| MIDDLE TENNESSEE | 1/9/16 | | 20 | 3-6 | .500 | 1-3 | .333 | 1-2 | .500 | 0 | 1 | 1 | 2.1 | 2 | 0 | 4 | 0 | 1 | 8 | 7.3 | |
| at UTEP | 1/17/16 | | 23 | 1-6 | .167 | 0-0 | .000 | 2-3 | .667 | 2 | 2 | 4 | 2.2 | 4 | 3 | 5 | 1 | 2 | 4 | 7.1 | |
| at FIU | 01/21/16 | | 11 | 0-2 | .000 | 0-1 | .000 | 0-0 | .000 | 0 | 0 | 0 | 2.1 | 0 | 1 | 1 | 0 | 0 | 0 | 6.6 | |
| at FAU | 1/23/16 | | 14 | 0-5 | .000 | 0-1 | .000 | 0-0 | .000 | 1 | 0 | 1 | 2.0 | 1 | 3 | 1 | 0 | 0 | 0 | 6.2 | |
| LOUISIANA TECH | 1/28/16 | | 12 | 1-2 | .500 | 0-0 | .000 | 0-0 | .000 | 0 | 0 | 0 | 1.9 | 4 | 2 | 0 | 0 | 0 | 2 | 6.0 | |
| SOUTHERN MISS | 1/30/16 | dnp | - | - | - | - | - | - | - | - | - | - | - | - | - | - | - | - | - | - | |
| at WKU | 02/04/16 | dnp | - | - | - | - | - | - | - | - | - | - | - | - | - | - | - | - | - | - | |
| at Marshall | 2/6/16 | dnp | - | - | - | - | - | - | - | - | - | - | - | - | - | - | - | - | - | - | |
| FAU | 2/11/16 | | 9 | 1-5 | .200 | 0-1 | .000 | 1-2 | .500 | 1 | 3 | 4 | 2.0 | 1 | 0 | 1 | 0 | 0 | 3 | 5.8 | |
| FIU | 2/13/16 | | 7 | 0-3 | .000 | 0-1 | .000 | 0-0 | .000 | 0 | 0 | 0 | 1.9 | 3 | 2 | 1 | 0 | 0 | 0 | 5.6 | |
| at Louisiana Tech | 02/18/16 | | 26 | 0-6 | .000 | 0-1 | .000 | 0-0 | .000 | 0 | 2 | 2 | 1.9 | 3 | 3 | 0 | 0 | 1 | 0 | 5.3 | |
| at Southern Miss | 2/20/16 | | 22 | 5-13 | .385 | 1-3 | .333 | 3-6 | .500 | 2 | 0 | 2 | 1.9 | 1 | 0 | 2 | 0 | 3 | 14 | 5.7 | |
| Totals | | 9 | 433 | 48-150 | .320 | 11-46 | .239 | 18-30 | .600 | 9 | 33 | 42 | 1.9 | 47 | 42 | 45 | 4 | 22 | 125 | 5.7 | |

Games played: 22
Minutes/game: 19.7
Points/game: 5.7
FG Pct: 32.0
3FG Pct: 23.9
FT Pct: 60.0

Rebounds/game: 1.9
Assists/game: 1.9
Turnovers/game: 2.0
Assist/turnover ratio: 0.9
Steals/game: 1.0
Blocks/game: 0.2

| Season | GP-GS | Min./Avg. | Total | | 3-PT | | Career Stats FT | | Rebounds | | | | Scoring | | | | | | | |
|---------|-------|-----------|--------|------|--------|------|-----------------|------|----------|-----|-----|------|---------|----|----|----|-----|-----|-----|------|
| | | | FG-FGA | Pct. | FG-FGA | Pct. | FT-FTA | Pct. | Off | Def | Tot | Avg. | Pf | FO | A | TO | BLK | STL | PTS | Avg. |
| 2015-16 | 22-9 | 433/19.7 | 48-150 | .320 | 11-46 | .239 | 18-30 | .600 | 9 | 33 | 42 | 1.9 | 47 | 1 | 42 | 45 | 4 | 22 | 125 | 5.7 |
| TOTAL | 22-9 | 433/19.7 | 48-150 | .320 | 11-46 | .239 | 18-30 | .600 | 9 | 33 | 42 | 1.9 | 47 | 1 | 42 | 45 | 4 | 22 | 125 | 5.7 |

2015-16 Player Notes:

- Made 4 straight 3-pointers against Texas...finished 6-9 from beyond the arc
- Scored in double digits five times this season
- Recorded season highs in free throws, assists and blocks against Howard Payne in a 106-65 win at the Convo



CRYSTAL CHIDOMERE

G • Sophomore

Richmond, Texas • Bush HS

4

#04 CHIDOMERE, Crystal

| | | | | Total | | 3-Pointers | | Free throws | | Rebounds | | | | | | | | | | | |
|----------------------|----------|----|------|--------|------|------------|------|-------------|------|----------|-----|-----|-----|----|----|-----|-----|-----|-----|-----|--|
| Opponent | Date | gs | min | fg-fga | pct | 3fg-fga | pct | ft-fa | pct | off | def | tot | avg | pf | a | t/o | blk | stl | pts | avg | |
| at Texas | 11/14/15 | 12 | 1-3 | .333 | 1-2 | .500 | 0-0 | .000 | 0 | 2 | 2 | 2.0 | 1 | 0 | 3 | 0 | 1 | 3 | 3.0 | | |
| at Abilene Christian | 11/21/15 | 27 | 6-13 | .462 | 0-2 | .000 | 0-0 | .000 | 1 | 4 | 5 | 3.5 | 4 | 3 | 6 | 0 | 1 | 12 | 7.5 | | |
| ILLINOIS STATE | 11/27/15 | 25 | 2-5 | .400 | 0-0 | .000 | 3-3 | 1.000 | 0 | 5 | 5 | 4.0 | 3 | 3 | 4 | 1 | 4 | 7 | 7.3 | | |
| HOUSTON BAPTIST | 11/29/15 | 3 | 0-0 | .000 | 0-0 | .000 | 0-0 | .000 | 0 | 0 | 0 | 3.0 | 1 | 0 | 0 | 0 | 0 | 0 | 5.5 | | |
| at Texas State | 12/03/15 | 15 | 1-4 | .250 | 0-0 | .000 | 0-0 | .000 | 1 | 1 | 2 | 2.8 | 2 | 1 | 2 | 1 | 1 | 2 | 4.8 | | |
| at Oklahoma | 12/13/15 | 13 | 1-6 | .167 | 0-1 | .000 | 0-0 | .000 | 0 | 1 | 1 | 2.5 | 2 | 1 | 1 | 0 | 0 | 2 | 4.3 | | |
| HOWARD PAYNE | 12/15/15 | 23 | 3-8 | .375 | 0-1 | .000 | 0-0 | .000 | 2 | 1 | 3 | 2.6 | 1 | 5 | 0 | 0 | 2 | 6 | 4.6 | | |
| TEXAS A&M-KINGSVILLE | 12/19/15 | 22 | 5-7 | .714 | 0-0 | .000 | 0-2 | .000 | 2 | 3 | 5 | 2.9 | 3 | 3 | 2 | 2 | 4 | 10 | 5.3 | | |
| UT ARLINGTON | 12/21/15 | 25 | 2-4 | .500 | 0-0 | .000 | 2-2 | 1.000 | 1 | 0 | 1 | 2.7 | 5 | 1 | 7 | 2 | 2 | 6 | 5.3 | | |
| TEXAS SOUTHERN | 12/28/15 | 11 | 1-5 | .200 | 0-1 | .000 | 0-0 | .000 | 1 | 2 | 3 | 2.7 | 2 | 1 | 1 | 0 | 2 | 2 | 5.0 | | |
| at North Texas | 1/1/16 | 10 | 1-4 | .250 | 0-1 | .000 | 0-0 | .000 | 0 | 0 | 0 | 2.5 | 4 | 0 | 0 | 0 | 1 | 2 | 4.7 | | |
| at Rice | 1/3/16 | 32 | 5-15 | .333 | 0-1 | .000 | 1-2 | .500 | 2 | 3 | 5 | 2.7 | 2 | 0 | 1 | 2 | 0 | 11 | 5.3 | | |
| UAB | 1/7/16 | 18 | 2-6 | .333 | 0-0 | .000 | 2-2 | 1.000 | 2 | 3 | 5 | 2.8 | 0 | 0 | 0 | 0 | 1 | 6 | 5.3 | | |
| MIDDLE TENNESSEE | 1/9/16 | 30 | 7-12 | .583 | 0-1 | .000 | 2-2 | 1.000 | 6 | 3 | 9 | 3.3 | 4 | 1 | 0 | 0 | 1 | 16 | 6.1 | | |
| at UTEP | 1/17/16 | 20 | 4-9 | .444 | 0-0 | .000 | 0-0 | .000 | 0 | 2 | 2 | 3.2 | 2 | 1 | 5 | 3 | 1 | 8 | 6.2 | | |
| at FIU | 01/21/16 | 17 | 3-4 | .750 | 0-0 | .000 | 1-2 | .500 | 0 | 1 | 1 | 3.1 | 2 | 1 | 3 | 0 | 0 | 7 | 6.3 | | |
| at FAU | 1/23/16 | 32 | 5-10 | .500 | 0-0 | .000 | 3-3 | 1.000 | 0 | 3 | 3 | 3.1 | 3 | 2 | 1 | 0 | 1 | 13 | 6.6 | | |
| LOUISIANA TECH | 1/28/16 | * | 16 | 7-12 | .583 | 0-0 | .000 | 3-5 | .600 | 1 | 1 | 2 | 3.0 | 5 | 2 | 2 | 0 | 4 | 17 | 7.2 | |
| SOUTHERN MISS | 1/30/16 | * | 30 | 5-11 | .455 | 0-0 | .000 | 0-0 | .000 | 0 | 3 | 3 | 3.0 | 1 | 3 | 2 | 0 | 3 | 10 | 7.4 | |
| at WKU | 02/04/16 | 22 | 3-12 | .250 | 0-0 | .000 | 0-0 | .000 | 3 | 5 | 8 | 3.3 | 2 | 4 | 3 | 0 | 3 | 6 | 7.3 | | |
| at Marshall | 2/6/16 | 27 | 6-13 | .462 | 0-1 | .000 | 2-2 | 1.000 | 3 | 2 | 5 | 3.3 | 4 | 3 | 2 | 0 | 3 | 14 | 7.6 | | |
| FAU | 2/11/16 | 14 | 4-7 | .571 | 0-0 | .000 | 0-0 | .000 | 0 | 3 | 3 | 3.3 | 3 | 0 | 2 | 0 | 2 | 8 | 7.6 | | |
| FIU | 2/13/16 | 27 | 7-13 | .538 | 0-0 | .000 | 4-5 | .800 | 3 | 2 | 5 | 3.4 | 5 | 4 | 2 | 0 | 2 | 18 | 8.1 | | |
| at Louisiana Tech | 02/18/16 | 21 | 6-12 | .500 | 0-0 | .000 | 4-6 | .667 | 1 | 3 | 4 | 3.4 | 3 | 0 | 2 | 0 | 0 | 16 | 8.4 | | |
| at Southern Miss | 2/20/16 | * | 26 | 5-10 | .500 | 0-0 | .000 | 3-6 | .500 | 0 | 3 | 3 | 3.4 | 4 | 1 | 5 | 0 | 1 | 13 | 8.6 | |
| Totals | | 3 | 518 | 92-205 | .449 | 1-11 | .091 | 30-42 | .714 | 29 | 56 | 85 | 3.4 | 68 | 40 | 56 | 11 | 40 | 215 | 8.6 | |

Games played: 25
Minutes/game: 20.7
Points/game: 8.6
FG Pct: 44.9
3FG Pct: 9.1
FT Pct: 71.4

Rebounds/game: 3.4
Assists/game: 1.6
Turnovers/game: 2.2
Assist/turnover ratio: 0.7
Steals/game: 1.6
Blocks/game: 0.4

Career Records

Points

18 vs. FIU (2/13/16)

Rebounds

9 vs. Middle Tennessee (1/9/16)

Field Goals

7 (4x) last vs. FIU (2/13/16)

3-point FGs

1 (5x) last at Texas (11/14/15)

Free Throws

4 (4x) last at Louisiana Tech (2/18/16)

Assists

5 vs. Howard Payne (12/15/15)

Blocks

3 (2x) last at UTEP (1/17/16)

Steals

4 (3x) last vs. Louisiana Tech (1/28/16)

| Career Stats | | | | | | | | | | | | | | | | | | | | |
|--------------|-------|-----------|---------|------|--------|------|--------|------|----------|-----|-----|------|---------|----|----|-----|-----|-----|-----|------|
| Season | GP-GS | Min./Avg. | Total | | 3-PT | | FT | | Rebounds | | | | Scoring | | | | | | | |
| | | | FG-FGA | Pct. | FG-FGA | Pct. | FT-FTA | Pct. | Off | Def | Tot | Avg. | PF | FO | A | TO | BLK | STL | PTS | Avg. |
| 2015-16 | 25-3 | 518/20.7 | 92-205 | .449 | 1-11 | .091 | 30-42 | .714 | 29 | 56 | 85 | 3.4 | 68 | 3 | 40 | 56 | 11 | 40 | 215 | 8.6 |
| 2014-15 | 29-0 | 390/13.4 | 54-157 | .344 | 4-18 | .222 | 19-29 | .655 | 20 | 31 | 51 | 1.8 | 44 | 1 | 37 | 44 | 11 | 17 | 131 | 4.5 |
| TOTAL | 54-3 | 908/16.8 | 146-362 | .403 | 5-29 | .172 | 49-71 | .690 | 49 | 87 | 136 | 2.5 | 112 | 4 | 77 | 100 | 22 | 57 | 346 | 6.4 |

2015-16 Player Notes:

- Has either set or matched a career high this season in four categories
- Career day against Middle Tennessee in points, rebounds and field goals made
- Matched a career high three blocks at UTEP in a 62-55 loss
- Has scored in double figures 11 times this season
- Set a new career high with 17 points against Louisiana Tech and also earned first career start...shot 7-of-12 from the field
- Surpassed previous mark in points and scored career best 18 points on 7-of-13 shooting and was 4-of-5 from the stripe
- Scored 16 points against Louisiana Tech (2/18) with 15 of them coming in the second half



ALANA HEARD

G • Junior

Missouri City, Texas • Hightower HS

5

Career Records

Points

12 at Louisiana Tech (2/18/16)

Rebounds

7 vs. Norfolk State (11/30/13)

Field Goals

5 at Louisiana Tech (2/18/16)

3-point FGs

1 at WKU (2/4/16)

Free Throws

6 vs. Norfolk State (11/30/13)

Assists

5 (3x) last at WKU (2/4/16)

Blocks

3 vs. Lamar (11/23/14)

Steals

4 (5x) last at Marshall (2/6/16)

#05 HEARD, Alana

| Opponent | Date | gs | min | Total | | 3-Pointers | | Free throws | | Rebounds | | | | pf | a | t/o | blk | stl | pts | avg | |
|----------------------|----------|----|-----|--------|-------|------------|-------|-------------|-------|----------|-----|-----|-----|-----|----|-----|-----|-----|-----|-----|-----|
| | | | | fg-fga | pct | 3fg-fga | pct | ft-fga | pct | off | def | tot | avg | | | | | | | | |
| at Texas | 11/14/15 | | 12 | 1-3 | .333 | 0-0 | .000 | 0-0 | .000 | 0 | 2 | 2 | 2.0 | 0 | 0 | 3 | 0 | 0 | 2 | 2.0 | |
| at Abilene Christian | 11/21/15 | | dnp | - | - | - | - | - | - | - | - | - | - | - | - | - | - | - | - | - | |
| ILLINOIS STATE | 11/27/15 | | dnp | - | - | - | - | - | - | - | - | - | - | - | - | - | - | - | - | - | |
| HOUSTON BAPTIST | 11/29/15 | | dnp | - | - | - | - | - | - | - | - | - | - | - | - | - | - | - | - | - | |
| at Texas State | 12/03/15 | | dnp | - | - | - | - | - | - | - | - | - | - | - | - | - | - | - | - | - | |
| at Oklahoma | 12/13/15 | | dnp | - | - | - | - | - | - | - | - | - | - | - | - | - | - | - | - | - | |
| HOWARD PAYNE | 12/15/15 | | dnp | - | - | - | - | - | - | - | - | - | - | - | - | - | - | - | - | - | |
| TEXAS A&M-KINGSVILLE | 12/19/15 | | dnp | - | - | - | - | - | - | - | - | - | - | - | - | - | - | - | - | - | |
| UT ARLINGTON | 12/21/15 | | dnp | - | - | - | - | - | - | - | - | - | - | - | - | - | - | - | - | - | |
| TEXAS SOUTHERN | 12/28/15 | | dnp | - | - | - | - | - | - | - | - | - | - | - | - | - | - | - | - | - | |
| at North Texas | 1/1/16 | | dnp | - | - | - | - | - | - | - | - | - | - | - | - | - | - | - | - | - | |
| at Rice | 1/3/16 | | dnp | - | - | - | - | - | - | - | - | - | - | - | - | - | - | - | - | - | |
| UAB | 1/7/16 | | dnp | - | - | - | - | - | - | - | - | - | - | - | - | - | - | - | - | - | |
| MIDDLE TENNESSEE | 1/9/16 | | dnp | - | - | - | - | - | - | - | - | - | - | - | - | - | - | - | - | - | |
| at UTEP | 1/17/16 | * | 15 | 2-5 | .400 | 0-0 | .000 | 0-0 | .000 | 0 | 0 | 0 | 1.0 | 4 | 0 | 2 | 0 | 1 | 4 | 3.0 | |
| at FIU | 01/21/16 | * | 19 | 1-6 | .167 | 0-0 | .000 | 2-2 | 1.000 | 1 | 4 | 5 | 2.3 | 4 | 2 | 5 | 0 | 0 | 4 | 3.3 | |
| at FAU | 1/23/16 | * | 13 | 0-0 | .000 | 0-0 | .000 | 0-0 | .000 | 0 | 0 | 0 | 1.8 | 2 | 1 | 3 | 0 | 0 | 0 | 2.5 | |
| LOUISIANA TECH | 1/28/16 | * | 28 | 4-9 | .444 | 0-0 | .000 | 3-4 | .750 | 0 | 3 | 3 | 2.0 | 3 | 1 | 4 | 0 | 1 | 11 | 4.2 | |
| SOUTHERN MISS | 1/30/16 | * | 26 | 2-5 | .400 | 0-0 | .000 | 0-0 | .000 | 0 | 2 | 2 | 2.0 | 1 | 2 | 4 | 1 | 4 | 4 | 4.2 | |
| at WKU | 02/04/16 | * | 28 | 3-5 | .600 | 1-1 | 1.000 | 0-0 | .000 | 1 | 3 | 4 | 2.3 | 2 | 5 | 2 | 0 | 2 | 7 | 4.6 | |
| at Marshall | 2/6/16 | * | 22 | 0-5 | .000 | 0-0 | .000 | 0-0 | .000 | 1 | 0 | 1 | 2.1 | 2 | 4 | 3 | 0 | 4 | 0 | 4.0 | |
| FAU | 2/11/16 | * | 29 | 4-9 | .444 | 0-0 | .000 | 1-1 | 1.000 | 0 | 3 | 3 | 2.2 | 1 | 1 | 5 | 0 | 3 | 9 | 4.6 | |
| FIU | 2/13/16 | * | 18 | 1-4 | .250 | 0-0 | .000 | 0-0 | .000 | 0 | 1 | 1 | 2.1 | 2 | 1 | 0 | 0 | 1 | 2 | 4.3 | |
| at Louisiana Tech | 02/18/16 | * | 25 | 5-7 | .714 | 0-0 | .000 | 2-2 | 1.000 | 2 | 2 | 4 | 2.3 | 2 | 2 | 4 | 0 | 3 | 12 | 5.0 | |
| at Southern Miss | 2/20/16 | * | 25 | 1-5 | .200 | 0-0 | .000 | 0-0 | .000 | 2 | 0 | 2 | 2.3 | 3 | 2 | 2 | 0 | 1 | 2 | 4.8 | |
| Totals | | | 11 | 260 | 24-63 | .381 | 1-1 | 1.000 | 8-9 | .889 | 7 | 20 | 27 | 2.3 | 26 | 21 | 37 | 1 | 20 | 57 | 4.8 |

Games played: 12
Minutes/game: 21.7
Points/game: 4.8
FG Pct: 38.1
3FG Pct: 100.0
FT Pct: 88.9

Rebounds/game: 2.3
Assists/game: 1.8
Turnovers/game: 3.1
Assist/turnover ratio: 0.6
Steals/game: 1.7
Blocks/game: 0.1

| Season | GP-GS | Min./Avg. | Career Stats | | | | | | | | | | | | | | | | | |
|---------|-------|-----------|--------------|------|--------|-------|--------|------|----------|-----|-----|------|---------|----|-----|-----|-----|-----|-----|------|
| | | | Total | | 3-PT | | FT | | Rebounds | | | | Scoring | | | | | | | |
| | | | FG-FGA | Pct. | FG-FGA | Pct. | FT-FTA | Pct. | Off | Def | Tot | Avg. | PF | FO | A | TO | BLK | STL | PTS | Avg. |
| 2015-16 | 12-11 | 260/21.7 | 24-63 | .381 | 1-1 | 1.000 | 8-9 | .889 | 7 | 29 | 27 | 2.3 | 26 | 0 | 21 | 37 | 1 | 20 | 57 | 4.8 |
| 2014-15 | 29-14 | 452/15.6 | 26-86 | .302 | 0-3 | .000 | 31-40 | .775 | 10 | 42 | 52 | 1.8 | 70 | 3 | 49 | 73 | 7 | 21 | 83 | 2.9 |
| 2013-14 | 30-0 | 327/10.9 | 20-63 | .317 | 0-0 | .000 | 21-42 | .500 | 14 | 29 | 43 | 1.4 | 53 | 1 | 40 | 56 | 2 | 26 | 61 | 2.0 |
| TOTAL | 71-25 | 1039/14.6 | 70-212 | .330 | 1-4 | .250 | 60-91 | .659 | 31 | 91 | 122 | 1.7 | 149 | 4 | 110 | 166 | 10 | 67 | 201 | 2.8 |

2015-16 Player Notes:

- Netted a career high 11 points against Louisiana Tech and was one of five players to score in double digits
- Made her first collegiate 3-pointer to beat the buzzer at the half against WKU
- Scored a career best 12 points at Louisiana Tech on 5-of-7 shooting (career high)



SARA ANASTASIESKA

G • Freshman

Sydney, NSW, Australia • Monte Sant Angelo Mercy College

11

#11 ANASTASIESKA, Sara

| Opponent | Date | gs | min | Total | | 3-Pointers | | Free throws | | Rebounds | | | | pf | a | t/o | blk | stl | pts | avg |
|----------------------|----------|-----|-----|--------|------|------------|------|-------------|-------|----------|-----|-----|-----|----|----|-----|-----|-----|-----|-----|
| | | | | fg-fga | pct | 3fg-fga | pct | ft-fa | pct | off | def | tot | avg | | | | | | | |
| at Texas | 11/14/15 | 15 | | 1-3 | .333 | 1-3 | .333 | 0-0 | .000 | 1 | 2 | 3 | 3.0 | 2 | 1 | 2 | 0 | 1 | 3 | 3.0 |
| at Abilene Christian | 11/21/15 | 7 | | 0-3 | .000 | 0-1 | .000 | 0-0 | .000 | 0 | 0 | 0 | 1.5 | 1 | 0 | 2 | 0 | 0 | 0 | 1.5 |
| ILLINOIS STATE | 11/27/15 | 19 | | 2-4 | .500 | 0-1 | .000 | 0-0 | .000 | 0 | 1 | 1 | 1.3 | 3 | 1 | 3 | 0 | 0 | 4 | 2.3 |
| HOUSTON BAPTIST | 11/29/15 | 15 | | 1-2 | .500 | 0-1 | .000 | 2-2 | 1.000 | 0 | 3 | 3 | 1.8 | 2 | 2 | 3 | 0 | 1 | 4 | 2.8 |
| at Texas State | 12/03/15 | 3 | | 0-0 | .000 | 0-0 | .000 | 0-0 | .000 | 0 | 0 | 0 | 1.4 | 1 | 0 | 1 | 0 | 0 | 0 | 2.2 |
| at Oklahoma | 12/13/15 | 14 | | 1-2 | .500 | 0-1 | .000 | 1-2 | .500 | 0 | 3 | 3 | 1.7 | 0 | 0 | 2 | 0 | 0 | 3 | 2.3 |
| HOWARD PAYNE | 12/15/15 | 24 | | 6-9 | .667 | 3-4 | .750 | 0-0 | .000 | 0 | 2 | 2 | 1.7 | 4 | 1 | 3 | 0 | 0 | 15 | 4.1 |
| TEXAS A&M-KINGSVILLE | 12/19/15 | 22 | | 3-12 | .250 | 1-4 | .250 | 2-2 | 1.000 | 2 | 6 | 8 | 2.5 | 3 | 0 | 1 | 2 | 0 | 9 | 4.8 |
| UT ARLINGTON | 12/21/15 | 6 | | 0-3 | .000 | 0-0 | .000 | 0-0 | .000 | 1 | 2 | 3 | 2.6 | 0 | 0 | 0 | 0 | 0 | 0 | 4.2 |
| TEXAS SOUTHERN | 12/28/15 | dnp | | - | - | - | - | - | - | - | - | - | - | - | - | - | - | - | - | - |
| at North Texas | 1/1/16 | dnp | | - | - | - | - | - | - | - | - | - | - | - | - | - | - | - | - | - |
| at Rice | 1/3/16 | dnp | | - | - | - | - | - | - | - | - | - | - | - | - | - | - | - | - | - |
| UAB | 1/7/16 | 21 | | 7-9 | .778 | 1-2 | .500 | 4-4 | 1.000 | 0 | 1 | 1 | 2.4 | 2 | 3 | 1 | 0 | 0 | 19 | 5.7 |
| MIDDLE TENNESSEE | 1/9/16 | 10 | | 0-2 | .000 | 0-2 | .000 | 5-6 | .833 | 0 | 1 | 1 | 2.3 | 4 | 0 | 3 | 0 | 0 | 5 | 5.6 |
| at UTEP | 1/17/16 | 12 | | 1-5 | .200 | 0-2 | .000 | 0-0 | .000 | 0 | 1 | 1 | 2.2 | 0 | 2 | 2 | 0 | 2 | 2 | 5.3 |
| at FIU | 01/21/16 | dnp | | - | - | - | - | - | - | - | - | - | - | - | - | - | - | - | - | - |
| at FAU | 1/23/16 | 3 | | 0-2 | .000 | 0-0 | .000 | 0-0 | .000 | 0 | 0 | 0 | 2.0 | 0 | 0 | 1 | 0 | 0 | 0 | 4.9 |
| LOUISIANA TECH | 1/28/16 | 28 | | 1-8 | .125 | 0-2 | .000 | 0-2 | .000 | 0 | 3 | 3 | 2.1 | 2 | 2 | 3 | 0 | 0 | 2 | 4.7 |
| SOUTHERN MISS | 1/30/16 | 3 | | 0-1 | .000 | 0-1 | .000 | 0-0 | .000 | 0 | 0 | 0 | 1.9 | 0 | 0 | 0 | 0 | 0 | 0 | 4.4 |
| at WKU | 02/04/16 | 17 | | 3-7 | .429 | 1-2 | .500 | 2-2 | 1.000 | 0 | 1 | 1 | 1.9 | 2 | 2 | 3 | 0 | 0 | 9 | 4.7 |
| at Marshall | 2/6/16 | 15 | | 2-7 | .286 | 1-2 | .500 | 2-4 | .500 | 0 | 0 | 0 | 1.8 | 1 | 0 | 1 | 0 | 0 | 7 | 4.8 |
| FAU | 2/11/16 | 9 | | 0-5 | .000 | 0-2 | .000 | 0-0 | .000 | 0 | 0 | 0 | 1.7 | 0 | 1 | 0 | 0 | 0 | 0 | 4.6 |
| FIU | 2/13/16 | 25 | | 5-10 | .500 | 1-4 | .250 | 1-4 | .250 | 0 | 3 | 3 | 1.7 | 2 | 1 | 2 | 0 | 1 | 12 | 4.9 |
| at Louisiana Tech | 02/18/16 | 6 | | 0-1 | .000 | 0-0 | .000 | 0-0 | .000 | 0 | 0 | 0 | 1.7 | 0 | 0 | 0 | 0 | 1 | 0 | 4.7 |
| at Southern Miss | 2/20/16 | 17 | | 0-2 | .000 | 0-1 | .000 | 0-0 | .000 | 1 | 2 | 3 | 1.7 | 1 | 1 | 2 | 0 | 2 | 0 | 4.5 |
| Totals | | 0 | 291 | 33-97 | .340 | 9-35 | .257 | 19-28 | .679 | 5 | 31 | 36 | 1.7 | 30 | 17 | 35 | 2 | 8 | 94 | 4.5 |

Games played: 21
Minutes/game: 13.9
Points/game: 4.5
FG Pct: 34.0
3FG Pct: 25.7
FT Pct: 67.9

Rebounds/game: 1.7
Assists/game: 0.8
Turnovers/game: 1.7
Assist/turnover ratio: 0.5
Steals/game: 0.4
Blocks/game: 0.1

Career Records

Points

19 vs. UAB (1/7/16)

Rebounds

8 vs. Texas A&M-Kingsville (12/19/15)

Field Goals

7 vs. UAB (1/7/16)

3-point FGs

3 vs. Howard Payne (12/15/15)

Free Throws

5 vs. Middle Tennessee (1/9/16)

Assists

3 vs. UAB (1/7/16)

Blocks

2 vs. Texas A&M-Kingsville (12/19/15)

Steals

2 (2x) last at Southern Miss (2/20/16)

Career Stats

| Season | GP-GS | Min./Avg. | Total | | 3-PT | | FT | | Rebounds | | | | Scoring | | | | | | | |
|---------|-------|-----------|--------|------|--------|------|--------|------|----------|-----|-----|------|---------|----|----|----|-----|-----|-----|------|
| | | | FG-FGA | Pct. | FG-FGA | Pct. | FT-FTA | Pct. | Off | Def | Tot | Avg. | PF | FO | A | TO | BLK | STL | PTS | Avg. |
| 2015-16 | 21-0 | 291/13.9 | 33-97 | .340 | 9-35 | .257 | 19-28 | .679 | 5 | 31 | 36 | 1.7 | 30 | 0 | 17 | 35 | 2 | 8 | 94 | 4.5 |
| TOTAL | 21-0 | 291/13.9 | 33-97 | .340 | 9-35 | .257 | 19-28 | .679 | 5 | 31 | 36 | 1.7 | 30 | 0 | 17 | 35 | 2 | 8 | 94 | 4.5 |

2015-16 Player Notes:

- Had a breakout game against Howard Payne with a season best 15 points on 6 of 9 shooting from the field, including 3 of 4 from 3-point range
- Scored a season best 19 points on 7 of 9 shooting from the field and was a perfect 4 of 4 against UAB; also registered a season best three assists
- Has three games in doubles figures, including season best of 19 points against UAB



AKUNNA ELONU

F • Senior

Houston, Texas • Elsik HS

21

#21 ELONU, Akunna

| Opponent | Date | gs | min | Total | | 3-Pointers | | Free throws | | Rebounds | | | | pf | a | t/o | blk | stl | pts | avg | |
|----------------------|----------|----|-----|-------|--------|------------|-------|-------------|-------|----------|-----|-----|-----|-----|----|-----|-----|-----|-----|-----|-----|
| | | | | fg | pct | 3fg | pct | ft | pct | off | def | tot | avg | | | | | | | | |
| at Texas | 11/14/15 | * | 22 | 2-9 | .222 | 0-3 | .000 | 1-1 | 1.000 | 1 | 1 | 2 | 2.0 | 4 | 0 | 4 | 1 | 5 | 5.0 | | |
| at Abilene Christian | 11/21/15 | * | 24 | 1-7 | .143 | 0-3 | .000 | 2-2 | 1.000 | 1 | 2 | 3 | 2.5 | 5 | 1 | 4 | 0 | 4 | 4.5 | | |
| ILLINOIS STATE | 11/27/15 | * | 17 | 3-6 | .500 | 2-2 | 1.000 | 4-6 | .667 | 0 | 2 | 2 | 2.3 | 2 | 1 | 1 | 0 | 2 | 12 | 7.0 | |
| HOUSTON BAPTIST | 11/29/15 | * | 15 | 4-7 | .571 | 0-1 | .000 | 2-3 | .667 | 3 | 6 | 9 | 4.0 | 2 | 0 | 0 | 0 | 1 | 10 | 7.8 | |
| at Texas State | 12/03/15 | | 28 | 4-7 | .571 | 1-2 | .500 | 0-0 | .000 | 4 | 7 | 11 | 5.4 | 4 | 2 | 0 | 0 | 1 | 9 | 8.0 | |
| at Oklahoma | 12/13/15 | * | 25 | 2-5 | .400 | 0-2 | .000 | 1-2 | .500 | 4 | 3 | 7 | 5.7 | 4 | 0 | 1 | 0 | 0 | 5 | 7.5 | |
| HOWARD PAYNE | 12/15/15 | * | 15 | 5-6 | .833 | 0-0 | .000 | 4-5 | .800 | 4 | 0 | 4 | 5.4 | 0 | 0 | 2 | 0 | 1 | 14 | 8.4 | |
| TEXAS A&M-KINGSVILLE | 12/19/15 | * | 17 | 4-5 | .800 | 0-1 | .000 | 0-0 | .000 | 2 | 4 | 6 | 5.5 | 3 | 1 | 2 | 0 | 0 | 8 | 8.4 | |
| UT ARLINGTON | 12/21/15 | * | 23 | 5-7 | .714 | 0-2 | .000 | 0-0 | .000 | 3 | 2 | 5 | 5.4 | 3 | 1 | 2 | 1 | 0 | 10 | 8.6 | |
| TEXAS SOUTHERN | 12/28/15 | * | 34 | 4-9 | .444 | 0-0 | .000 | 0-0 | .000 | 4 | 6 | 10 | 5.9 | 1 | 0 | 2 | 2 | 3 | 8 | 8.5 | |
| at North Texas | 1/1/16 | * | 39 | 2-8 | .250 | 0-2 | .000 | 3-6 | .500 | 8 | 3 | 11 | 6.4 | 3 | 0 | 0 | 0 | 2 | 7 | 8.4 | |
| at Rice | 1/3/16 | * | 33 | 2-4 | .500 | 0-0 | .000 | 0-0 | .000 | 2 | 1 | 3 | 6.1 | 5 | 1 | 3 | 0 | 1 | 4 | 8.0 | |
| UAB | 1/7/16 | * | 36 | 4-8 | .500 | 0-0 | .000 | 2-3 | .667 | 3 | 4 | 7 | 6.2 | 1 | 0 | 2 | 1 | 1 | 10 | 8.2 | |
| MIDDLE TENNESSEE | 1/9/16 | * | 39 | 3-11 | .273 | 0-2 | .000 | 1-1 | 1.000 | 1 | 2 | 3 | 5.9 | 3 | 4 | 2 | 2 | 1 | 7 | 8.1 | |
| at UTEP | 1/17/16 | * | 37 | 4-6 | .667 | 0-2 | .000 | 2-2 | 1.000 | 2 | 5 | 7 | 6.0 | 1 | 0 | 4 | 0 | 2 | 10 | 8.2 | |
| at FIU | 01/21/16 | * | 32 | 4-9 | .444 | 0-0 | .000 | 0-0 | .000 | 9 | 6 | 15 | 6.6 | 1 | 2 | 2 | 0 | 1 | 8 | 8.2 | |
| at FAU | 1/23/16 | * | 30 | 4-9 | .444 | 0-0 | .000 | 5-6 | .833 | 7 | 12 | 19 | 7.3 | 4 | 0 | 4 | 0 | 1 | 13 | 8.5 | |
| LOUISIANA TECH | 1/28/16 | * | 33 | 2-6 | .333 | 0-0 | .000 | 6-14 | .429 | 3 | 5 | 8 | 7.3 | 3 | 0 | 0 | 0 | 1 | 10 | 8.6 | |
| SOUTHERN MISS | 1/30/16 | | 23 | 1-6 | .167 | 0-0 | .000 | 2-2 | 1.000 | 1 | 1 | 2 | 7.1 | 1 | 3 | 0 | 1 | 0 | 4 | 8.3 | |
| at WKU | 02/04/16 | | dnp | - | - | - | - | - | - | - | - | - | - | - | - | - | - | - | - | - | |
| at Marshall | 2/6/16 | * | 37 | 6-10 | .600 | 0-0 | .000 | 1-2 | .500 | 5 | 3 | 8 | 7.1 | 2 | 2 | 1 | 0 | 1 | 13 | 8.6 | |
| FAU | 2/11/16 | * | 34 | 8-9 | .889 | 2-2 | 1.000 | 2-3 | .667 | 3 | 6 | 9 | 7.2 | 1 | 0 | 3 | 0 | 4 | 20 | 9.1 | |
| FIU | 2/13/16 | * | 28 | 2-5 | .400 | 0-0 | .000 | 0-0 | .000 | 1 | 4 | 5 | 7.1 | 3 | 1 | 0 | 1 | 1 | 4 | 8.9 | |
| at Louisiana Tech | 02/18/16 | * | 38 | 7-13 | .538 | 0-2 | .000 | 4-5 | .800 | 4 | 3 | 7 | 7.1 | 4 | 1 | 4 | 1 | 1 | 18 | 9.3 | |
| at Southern Miss | 2/20/16 | * | 27 | 3-8 | .375 | 0-0 | .000 | 1-2 | .500 | 2 | 3 | 5 | 7.0 | 2 | 1 | 0 | 0 | 1 | 7 | 9.2 | |
| Totals | | | 22 | 686 | 86-180 | .478 | 5-26 | .192 | 43-65 | .662 | 77 | 91 | 168 | 7.0 | 62 | 21 | 43 | 10 | 27 | 220 | 9.2 |

Games played: 24
Minutes/game: 28.6
Points/game: 9.2
FG Pct: 47.8
3FG Pct: 19.2
FT Pct: 66.2

Rebounds/game: 7.0
Assists/game: 0.9
Turnovers/game: 1.8
Assist/turnover ratio: 0.5
Steals/game: 1.1
Blocks/game: 0.4

Career Records

Points

20 vs. Florida Atlantic (2/11/16)

Rebounds

19 at Florida Atlantic (1/23/16)

Field Goals

8 vs. Florida Atlantic (2/11/16)

3-point FGs

2 (2x) last vs. Florida Atlantic (2/11/16)

Free Throws

9 vs. Northern Iowa (11/29/13)

Assists

4 vs. Middle Tennessee (1/9/16)

Blocks

3 vs. Old Dominion (3/12/15)

Steals

4 vs. Florida Atlantic (2/11/16)

| Season | GP-GS | Min./Avg. | Total | | 3-PT | | Career Stats FT | | Rebounds | | | | Scoring | | | | | | | |
|---------|--------|-----------|---------|------|--------|------|-----------------|------|----------|-----|-----|------|---------|----|----|-----|-----|-----|-----|------|
| | | | FG-FGA | Pct. | FG-FGA | Pct. | FT-FTA | Pct. | Off | Def | Tot | Avg. | PF | FO | A | TO | BLK | STL | PTS | Avg. |
| 2015-16 | 24-22 | 686/28.6 | 86-180 | .478 | 5-26 | .192 | 43-65 | .662 | 77 | 91 | 168 | 7.0 | 62 | 2 | 21 | 43 | 10 | 27 | 220 | 9.2 |
| 2014-15 | 31-31 | 777/25.1 | 90-173 | .520 | 0-1 | .000 | 45-71 | .634 | 95 | 130 | 225 | 7.3 | 62 | 0 | 20 | 45 | 20 | 25 | 225 | 7.3 |
| 2013-14 | 29-16 | 453/15.6 | 38-75 | .507 | 0-0 | .000 | 31-44 | .705 | 38 | 72 | 110 | 3.8 | 34 | 0 | 7 | 23 | 2 | 9 | 107 | 3.7 |
| 2012-13 | 22-1 | 201/9.1 | 23-57 | .404 | 0-0 | .000 | 12-22 | .545 | 32 | 36 | 68 | 3.1 | 22 | 0 | 8 | 10 | 2 | 9 | 58 | 2.6 |
| TOTAL | 106-70 | 2117/20.0 | 237-485 | .489 | 5-27 | .185 | 131-202 | .649 | 242 | 329 | 571 | 5.4 | 180 | 2 | 56 | 121 | 34 | 70 | 610 | 5.8 |

2015-16 Player Notes:

- CAREER DOUBLE-DOUBLES: 6
 - 2015-16: 1 double-double
 - 2014-15: 5 double-doubles
- Fouled out for the first time in her career at Abilene Christian
- Scored first-ever 3-pointer against Illinois State going 2-for-2 from long range
- Has scored in double figures nine times this season
- Has reached double figure rebounds five times this season, including a career best 19 at Florida Atlantic
- Followed 15-rebound performance at FIU with a career high 19 rebounds against Florida Atlantic along with 13 points for first double-double of the season
- Cracked into the UTSA all-time records in rebounds at Marshall and sits eighth as of 2/18/16 with 566



DEMPSEY THORNTON

C • Graduate
Corpus Christi, Texas • King HS

23

#23 THORNTON, Dempsey

| Opponent | Date | gs | min | Total | | 3-Pointers | | Free throws | | Rebounds | | | | | | | | | | | |
|----------------------|----------|----|-----|-------|-------|------------|------|-------------|-------|----------|-----|-----|-----|-----|----|-----|-----|-----|-----|-----|-----|
| | | | | fg-fg | pct | 3fg-fga | pct | ft-fa | pct | off | def | tot | avg | pf | a | t/o | blk | stl | pts | avg | |
| at Texas | 11/14/15 | * | 22 | 1-3 | .333 | 0-1 | .000 | 0-0 | .000 | 0 | 1 | 1 | 1.0 | 3 | 1 | 1 | 0 | 0 | 2 | 2.0 | |
| at Abilene Christian | 11/21/15 | * | 21 | 2-2 | 1.000 | 0-0 | .000 | 0-0 | .000 | 1 | 3 | 4 | 2.5 | 1 | 1 | 0 | 0 | 0 | 4 | 3.0 | |
| ILLINOIS STATE | 11/27/15 | * | 18 | 3-4 | .750 | 0-0 | .000 | 1-4 | .250 | 0 | 2 | 2 | 2.3 | 2 | 1 | 2 | 0 | 0 | 7 | 4.3 | |
| HOUSTON BAPTIST | 11/29/15 | * | 21 | 1-1 | 1.000 | 0-0 | .000 | 0-0 | .000 | 0 | 2 | 2 | 2.3 | 3 | 0 | 2 | 0 | 1 | 2 | 3.8 | |
| at Texas State | 12/03/15 | * | 15 | 0-2 | .000 | 0-0 | .000 | 1-2 | .500 | 1 | 3 | 4 | 2.6 | 1 | 0 | 2 | 0 | 0 | 1 | 3.2 | |
| at Oklahoma | 12/13/15 | * | 19 | 1-3 | .333 | 0-0 | .000 | 0-0 | .000 | 1 | 3 | 4 | 2.8 | 2 | 0 | 1 | 0 | 0 | 2 | 3.0 | |
| HOWARD PAYNE | 12/15/15 | | 19 | 6-10 | .600 | 0-0 | .000 | 1-1 | 1.000 | 2 | 4 | 6 | 3.3 | 2 | 2 | 8 | 2 | 2 | 13 | 4.4 | |
| TEXAS A&M-KINGSVILLE | 12/19/15 | | 13 | 1-2 | .500 | 0-0 | .000 | 0-0 | .000 | 0 | 2 | 2 | 3.1 | 1 | 0 | 0 | 2 | 0 | 2 | 4.1 | |
| UT ARLINGTON | 12/21/15 | | 8 | 0-1 | .000 | 0-0 | .000 | 1-2 | .500 | 2 | 1 | 3 | 3.1 | 1 | 0 | 1 | 0 | 0 | 1 | 3.8 | |
| TEXAS SOUTHERN | 12/28/15 | * | 15 | 2-7 | .286 | 0-0 | .000 | 0-0 | .000 | 2 | 2 | 4 | 3.2 | 0 | 1 | 0 | 1 | 0 | 4 | 3.8 | |
| at North Texas | 1/1/16 | | 5 | 1-2 | .500 | 0-0 | .000 | 0-0 | .000 | 0 | 0 | 0 | 2.9 | 0 | 1 | 0 | 0 | 0 | 2 | 3.6 | |
| at Rice | 1/3/16 | | 9 | 0-0 | .000 | 0-0 | .000 | 0-0 | .000 | 1 | 0 | 1 | 2.8 | 2 | 0 | 2 | 0 | 0 | 0 | 3.3 | |
| UAB | 1/7/16 | * | 11 | 0-1 | .000 | 0-0 | .000 | 0-0 | .000 | 0 | 2 | 2 | 2.7 | 2 | 0 | 3 | 0 | 0 | 0 | 3.1 | |
| MIDDLE TENNESSEE | 1/9/16 | * | 6 | 0-1 | .000 | 0-0 | .000 | 0-0 | .000 | 0 | 0 | 0 | 2.5 | 0 | 0 | 0 | 0 | 0 | 0 | 2.9 | |
| at UTEP | 1/17/16 | * | 13 | 0-2 | .000 | 0-0 | .000 | 0-0 | .000 | 2 | 2 | 4 | 2.6 | 1 | 0 | 1 | 0 | 0 | 0 | 2.7 | |
| at FIU | 01/21/16 | | 7 | 0-1 | .000 | 0-0 | .000 | 0-0 | .000 | 1 | 1 | 2 | 2.6 | 1 | 0 | 1 | 0 | 2 | 0 | 2.5 | |
| at FAU | 1/23/16 | | 20 | 0-2 | .000 | 0-0 | .000 | 0-0 | .000 | 2 | 1 | 3 | 2.6 | 0 | 0 | 1 | 0 | 0 | 0 | 2.4 | |
| LOUISIANA TECH | 1/28/16 | | 8 | 1-2 | .500 | 0-0 | .000 | 0-0 | .000 | 1 | 0 | 1 | 2.5 | 4 | 0 | 1 | 0 | 0 | 2 | 2.3 | |
| SOUTHERN MISS | 1/30/16 | * | 27 | 1-2 | .500 | 0-0 | .000 | 3-4 | .750 | 2 | 0 | 2 | 2.5 | 3 | 0 | 1 | 2 | 0 | 5 | 2.5 | |
| at WKU | 02/04/16 | * | 9 | 0-1 | .000 | 0-0 | .000 | 0-0 | .000 | 1 | 1 | 2 | 2.5 | 3 | 0 | 1 | 0 | 0 | 0 | 2.4 | |
| at Marshall | 2/6/16 | * | 12 | 1-2 | .500 | 0-0 | .000 | 0-0 | .000 | 0 | 0 | 0 | 2.3 | 1 | 0 | 1 | 0 | 0 | 2 | 2.3 | |
| FAU | 2/11/16 | * | 13 | 0-5 | .000 | 0-0 | .000 | 0-0 | .000 | 3 | 2 | 5 | 2.5 | 1 | 1 | 0 | 0 | 0 | 0 | 2.2 | |
| FIU | 2/13/16 | * | 6 | 0-0 | .000 | 0-0 | .000 | 1-2 | .500 | 0 | 0 | 0 | 2.3 | 1 | 0 | 1 | 0 | 0 | 1 | 2.2 | |
| at Louisiana Tech | 02/18/16 | * | 21 | 2-3 | .667 | 0-0 | .000 | 1-4 | .250 | 2 | 2 | 4 | 2.4 | 3 | 0 | 0 | 0 | 1 | 5 | 2.3 | |
| at Southern Miss | 2/20/16 | * | 24 | 3-8 | .375 | 0-0 | .000 | 0-0 | .000 | 4 | 2 | 6 | 2.6 | 3 | 0 | 3 | 0 | 0 | 6 | 2.4 | |
| Totals | | | 17 | 362 | 26-67 | .388 | 0-1 | .000 | 9-19 | .474 | 28 | 36 | 64 | 2.6 | 41 | 8 | 33 | 8 | 6 | 61 | 2.4 |

Games played: 25
Minutes/game: 14.5
Points/game: 2.4
FG Pct: 38.8
3FG Pct: 0.0
FT Pct: 47.4

Rebounds/game: 2.6
Assists/game: 0.3
Turnovers/game: 1.3
Assist/turnover ratio: 0.2
Steals/game: 0.2
Blocks/game: 0.3

Career Records

Points

13 vs. Howard Payne (12/15/15)

Rebounds

6 (2x) last at Southern Miss (2/20/16)

Field Goals

6 vs. Howard Payne (12/15/15)

3-point FGs

-

Free Throws

3 vs. Southern Miss (1/30/16)

Assists

2 vs. Howard Payne (12/15/15)

Blocks

2 (3x) last vs. Southern Miss (1/30/16)

Steals

2 (2x) last at FIU (1/21/16)

| Season | GP-GS | Min./Avg. | Total | | 3-PT | | Career Stats FT | | Rebounds | | | | Scoring | | | | | | | |
|---------|-------|-----------|--------|------|--------|------|--------------------|------|----------|-----|-----|------|---------|----|---|----|-----|-----|-----|------|
| | | | FG-FGA | Pct. | FG-FGA | Pct. | FT-FTA | Pct. | Off | Def | Tot | Avg. | PF | FO | A | TO | BLK | STL | PTS | Avg. |
| 2015-16 | 25-17 | 362/14.5 | 26-67 | .388 | 0-1 | .000 | 9-19 | .474 | 28 | 36 | 64 | 2.6 | 41 | 0 | 8 | 33 | 8 | 6 | 61 | 2.4 |
| TOTAL | 25-17 | 362/14.5 | 26-67 | .388 | 0-1 | .000 | 9-19 | .474 | 28 | 36 | 64 | 2.6 | 41 | 0 | 8 | 33 | 8 | 6 | 61 | 2.4 |

2015-16 Player Notes:

- Had a breakout game against Howard Payne with 13 points, 6 rebounds with a pair of assists, blocks and steals.
- Gone four straight games without scoring any points but has started three of those games



TESHA SMITH

C • Junior
San Antonio, Texas • Wagner HS

30

Career Records

Points

29 vs. Howard Payne (12/15/15)

Rebounds

17 vs. Louisiana Tech (1/28/16)

Field Goals

12 vs. Howard Payne (12/15/15)

3-point FGs

-

Free Throws

10 vs. East Carolina (2/20/14)

Assists

2 (2x) last vs. Middle Tennessee (1/9/16)

Blocks

3 (3x) last vs. Middle Tennessee (1/9/16)

Steals

2 (4x) last vs. FIU (2/13/16)

#30 SMITH, Tesha

| Opponent | Date | gs | min | Total | | 3-Pointers | | Free throws | | Rebounds | | | | pf | a | t/o | blk | stl | pts | avg |
|----------------------|----------|----|-------|---------|------|------------|------|-------------|-------|----------|-----|-----|-----|----|---|-----|-----|-----|------|------|
| | | | | fg-fga | pct | 3fg-fga | pct | ft-fa | pct | off | def | tot | avg | | | | | | | |
| at Texas | 11/14/15 | 15 | | 2-8 | .250 | 0-0 | .000 | 3-5 | .600 | 3 | 4 | 7 | 7.0 | 5 | 0 | 4 | 1 | 0 | 7 | 7.0 |
| at Abilene Christian | 11/21/15 | 16 | | 1-6 | .167 | 0-0 | .000 | 2-4 | .500 | 5 | 4 | 9 | 8.0 | 4 | 0 | 1 | 0 | 0 | 4 | 5.5 |
| ILLINOIS STATE | 11/27/15 | 29 | 11-14 | .786 | 0-0 | .000 | 0-0 | .000 | 3 | 8 | 11 | 9.0 | 3 | 0 | 2 | 1 | 1 | 22 | 11.0 | |
| HOUSTON BAPTIST | 11/29/15 | 19 | 4-9 | .444 | 0-0 | .000 | 3-4 | .750 | 3 | 4 | 7 | 8.5 | 1 | 0 | 1 | 0 | 1 | 11 | 11.0 | |
| at Texas State | 12/03/15 | 24 | 6-11 | .545 | 0-0 | .000 | 4-7 | .571 | 3 | 5 | 8 | 8.4 | 3 | 0 | 1 | 1 | 0 | 16 | 12.0 | |
| at Oklahoma | 12/13/15 | 15 | 1-8 | .125 | 0-0 | .000 | 0-0 | .000 | 5 | 0 | 5 | 7.8 | 3 | 1 | 4 | 1 | 0 | 2 | 10.3 | |
| HOWARD PAYNE | 12/15/15 | * | 24 | 12-15 | .800 | 0-0 | .000 | 5-6 | .833 | 2 | 10 | 12 | 8.4 | 3 | 2 | 1 | 0 | 0 | 29 | 13.0 |
| TEXAS A&M-KINGSVILLE | 12/19/15 | * | 20 | 7-10 | .700 | 0-0 | .000 | 3-5 | .600 | 3 | 2 | 5 | 8.0 | 2 | 0 | 3 | 1 | 0 | 17 | 13.5 |
| UT ARLINGTON | 12/21/15 | * | 29 | 5-10 | .500 | 0-0 | .000 | 2-3 | .667 | 2 | 8 | 10 | 8.2 | 4 | 0 | 2 | 0 | 1 | 12 | 13.3 |
| TEXAS SOUTHERN | 12/28/15 | | 24 | 3-10 | .300 | 0-0 | .000 | 2-2 | 1.000 | 3 | 8 | 11 | 8.5 | 2 | 1 | 5 | 2 | 0 | 8 | 12.8 |
| at North Texas | 1/1/16 | * | 22 | 5-9 | .556 | 0-0 | .000 | 1-3 | .333 | 4 | 7 | 11 | 8.7 | 5 | 1 | 2 | 1 | 0 | 11 | 12.6 |
| at Rice | 1/3/16 | * | 34 | 6-11 | .545 | 0-0 | .000 | 0-0 | .000 | 4 | 9 | 13 | 9.1 | 3 | 0 | 5 | 0 | 0 | 12 | 12.6 |
| UAB | 1/7/16 | | 19 | 4-11 | .364 | 0-0 | .000 | 1-3 | .333 | 3 | 4 | 7 | 8.9 | 3 | 0 | 0 | 1 | 0 | 9 | 12.3 |
| MIDDLE TENNESSEE | 1/9/16 | | 33 | 4-7 | .571 | 0-0 | .000 | 3-4 | .750 | 3 | 5 | 8 | 8.9 | 2 | 2 | 2 | 3 | 1 | 11 | 12.2 |
| at UTEP | 1/17/16 | | 13 | 3-6 | .500 | 0-0 | .000 | 1-2 | .500 | 3 | 4 | 7 | 8.7 | 4 | 0 | 2 | 1 | 2 | 7 | 11.9 |
| at FIU | 01/21/16 | * | 32 | 7-10 | .700 | 0-0 | .000 | 6-7 | .857 | 3 | 6 | 9 | 8.8 | 1 | 0 | 2 | 2 | 0 | 20 | 12.4 |
| at FAU | 1/23/16 | * | 11 | 1-4 | .250 | 0-0 | .000 | 0-0 | .000 | 0 | 3 | 3 | 8.4 | 4 | 0 | 4 | 0 | 0 | 2 | 11.8 |
| LOUISIANA TECH | 1/28/16 | * | 33 | 5-8 | .625 | 0-0 | .000 | 0-0 | .000 | 5 | 12 | 17 | 8.9 | 5 | 0 | 5 | 2 | 0 | 10 | 11.7 |
| SOUTHERN MISS | 1/30/16 | | 6 | 0-1 | .000 | 0-0 | .000 | 0-0 | .000 | 0 | 1 | 1 | 8.5 | 3 | 0 | 2 | 0 | 1 | 0 | 11.1 |
| at WKU | 02/04/16 | | 28 | 2-7 | .286 | 0-0 | .000 | 2-4 | .500 | 5 | 7 | 12 | 8.7 | 2 | 1 | 2 | 1 | 0 | 6 | 10.8 |
| at Marshall | 2/6/16 | | 22 | 2-3 | .667 | 0-0 | .000 | 1-4 | .250 | 3 | 4 | 7 | 8.6 | 3 | 0 | 2 | 0 | 1 | 5 | 10.5 |
| FAU | 2/11/16 | | 19 | 3-6 | .500 | 0-0 | .000 | 0-2 | .000 | 1 | 3 | 4 | 8.4 | 1 | 0 | 1 | 2 | 0 | 6 | 10.3 |
| FIU | 2/13/16 | | 32 | 3-6 | .500 | 0-0 | .000 | 1-3 | .333 | 4 | 5 | 9 | 8.4 | 1 | 0 | 2 | 0 | 2 | 7 | 10.2 |
| at Louisiana Tech | 02/18/16 | | 14 | 3-5 | .600 | 0-0 | .000 | 1-2 | .500 | 1 | 2 | 3 | 8.2 | 3 | 0 | 2 | 1 | 0 | 7 | 10.0 |
| at Southern Miss | 2/20/16 | | 18 | 2-6 | .333 | 0-0 | .000 | 5-9 | .556 | 7 | 3 | 10 | 8.2 | 2 | 1 | 1 | 1 | 1 | 9 | 10.0 |
| Totals | | 8 | 551 | 102-201 | .507 | 0-0 | .000 | 46-79 | .582 | 78 | 128 | 206 | 8.2 | 72 | 9 | 58 | 22 | 11 | 250 | 10.0 |

Games played: 25
Minutes/game: 22.0
Points/game: 10.0
FG Pct: 50.7
FT Pct: 58.2

Rebounds/game: 8.2
Assists/game: 0.4
Turnovers/game: 2.3
Assist/turnover ratio: 0.2
Steals/game: 0.4
Blocks/game: 0.9

| Season | GP-GS | Min./Avg. | Career Stats | | | | | | | | | | | | | | | | | |
|---------|-------|-----------|--------------|------|--------|------|---------|------|----------|-----|-----|------|---------|----|----|-----|-----|-----|-----|------|
| | | | Total | | 3-PT | | FT | | Rebounds | | | | Scoring | | | | | | | |
| | | | FG-FGA | Pct. | FG-FGA | Pct. | FT-FTA | Pct. | Off | Def | Tot | Avg. | PF | FO | A | TO | BLK | STL | PTS | Avg. |
| 2015-16 | 25-8 | 551/22.0 | 102-201 | .507 | 0-0 | .000 | 46-79 | .582 | 78 | 128 | 206 | 8.2 | 72 | 3 | 9 | 58 | 22 | 11 | 250 | 10.0 |
| 2014-15 | 31-0 | 542/17.5 | 97-199 | .487 | 0-0 | .000 | 43-83 | .518 | 69 | 118 | 187 | 6.0 | 92 | 6 | 6 | 61 | 13 | 7 | 237 | 7.6 |
| 2013-14 | 30-7 | 480/16.0 | 85-160 | .531 | 0-0 | .000 | 49-75 | .653 | 60 | 108 | 168 | 5.6 | 82 | 1 | 4 | 33 | 20 | 13 | 219 | 7.3 |
| TOTAL | 86-15 | 1573/18.3 | 284-560 | .507 | 0-0 | .000 | 138-237 | .582 | 207 | 354 | 561 | 6.5 | 246 | 10 | 19 | 152 | 55 | 31 | 706 | 8.2 |

2015-16 Player Notes:

- CAREER DOUBLE-DOUBLES: 13
 - 2015-16: 6 double-doubles
 - 2014-15: 3 double-doubles
 - 2013-14: 4 double-doubles
- Scored in double figures in three consecutive games
- Started her first game since freshman year against Howard Payne and scored a career high 29 points on 12 of 15 shooting with 12 rebounds
- Has nine games in double figure rebounds
- Had the game winning tip-in to defeat UAB for the first Conference USA win of the season
- Recorded 20-plus points for the third time this season to lead UTSA to its first road victory

2015-16 UTSA WOMEN'S BASKETBALL

Team Records

Most Points

Game - 113 vs. Schreiner (11/24/90)
Season - 2,392 vs. 30 games (1990-91)

Fewest Points

Game - 30 at TCU (11/14/11)
Half - 10 at UT Arlington (1/27/97)
Season - 1,455 in 28 games (2001-02)

Highest Victory Margin

67 (105-38) vs. Prairie View A&M (12/7/93)
67 (96-29) vs. Prairie View A&M (2/10/83)

Highest Loss Margin

57 (39-96) at Texas Tech (12/2/98)

Highest Scoring Average

Season - 79.7 in 30 games (1990-91)

Lowest Scoring Average

Season - 51.9 in 28 games (2001-02)

Most Field Goals Made

Game - 45 vs. Schreiner (11/24/90)
Season - 872 (1983-84)

Fewest Field Goals Made

Game - 8 at TCU (11/14/11)
Season - 516 (2001-02)

Most Field Goals Attempted

Game - 78 at Rice (1/4/10)
Season - 2,069 (2008-09)

Fewest Field Goals Attempted

Game - 36 at Baylor (12/16/96)
36 vs. South Alabama (11/15/11)
Season - 1,367 (1998-99)

Highest Field Goal Percentage

Game - .706 vs. Texas Southern (12/5/96)
Season - .478 (800-1,675); 1984-85

Lowest Field Goal Percentage

Game - .133 (8-60) at TCU (11/14/11)
Season - .344 (549-1,596); 2011-12

Most Free Throws Made

Game - 33 vs. Oral Roberts (2/22/86)
33 at Texas Tech (12/17/88)
Season - 531 (1990-91)

Fewest Free Throws Made

Game - 0 vs. St. Bonaventure (12/21/10)
Season - 286 (1981-82)

Most Free Throws Attempted

Game - 45 vs. Texas State (12/22/13)
Season - 789 (1990-91)

Fewest Free Throws Attempted

Game - 3 vs. St. Mary's (2/14/84)
3 vs. St. Bonaventure (12/21/10)
Season - 427 (1981-82)

Highest Free Throw Percentage

Game - .944 (17-18) vs. UNT (1/22/96)
Season - .726 (462-636); 2010-11

Lowest Free Throw Percentage

Game - .000 (0-3) vs. St. Bonaventure (12/21/10)
Season - .619 (289-467); 1993-94

Most 3-point Field Goals Made

Game - 13 vs. Tulsa (1/5/09)
13 vs. Tulsa (3/11/14)
Season - 229 (2008-09)

Fewest 3-point Field Goals Made

Game - 0 multiple times
Season - 47 (1996-97)

Most 3-point Field Goals Attempted

Game - 37 vs. UT-Arlington (2/14/09)
Season - 698 (2008-09)

Most Rebound

Game - 64 vs. Prairie View A&M (2/8/90)
Season - 1,441 (2008-09)

Fewest Rebounds

Game - 21 at UT-Arlington (1/23/07)
Season - 863 (1998-99)

Most Assists

Game - 34 vs. Southwestern (11/22/83)
34 vs. Oklahoma City (2/27/84)
Season - 529 (1981-82)

Fewest Assists

Game - 1 at Creighton (2/10/87)
Season - 265 (2011-12)

Most Steals

Game - 32 at Hardin Simmons (2/6/84)
Season - 373 (1986-87)

Fewest Steals

Game - 0 multiple times
Season - 163 (1998-99)

Most Blocked Shots

Game - 16 vs. Texas Southern (12/28/15)
Season - 138 (2010-11, 2011-12)

Fewest Blocked Shots

Game - 0 multiple times
Season - 22 (1996-97)

Most Turnovers

Game - 38 vs. Sam Houston St. (1/12/95)
Season - 679 (1991-92)

Fewest Turnovers

Game - 5 vs. McNeese St. (2/5/12)
Season - 420 (1997-98)

Most Fouls

Game - 36 vs. Louisiana Tech (1/28/16)
Season - 653 (1983-84)

Fewest Fouls

Game - 8 vs. A&M-Corpus Christi (2/2/08)
Season - 471 (2002-03)

Most Disqualifications

31 (2011-12)

100-point Games

| Score..... | Opponent..... | Date |
|--------------|------------------------|----------|
| 113-89..... | Schreiner | 11/24/90 |
| 113-91..... | Oklahoma City | 2/27/84 |
| 106-65 | Howard Payne | 12/15/15 |
| 105-38 | Prairie View A&M | 12/7/93 |
| 100-62 | St. Mary's..... | 1/24/89 |
| 100-46 | Southwestern..... | 11/28/83 |

90-point Games

| Score..... | Opponent..... | Date |
|-------------------|-----------------------------------|----------|
| 99-93 (OT) | at Tulane | 2/16/91 |
| 99-65 | UTEP | 3/1/86 |
| 99-73 | Texas State | 1/3/84 |
| 98-84 | New Mexico State | 12/31/90 |
| 97-89 (OT) | at Central Arkansas | 2/11/09 |
| 96-78 | Sam Houston State..... | 1/29/91 |
| 96-29 | Prairie View A&M | 2/10/83 |
| 93-62 | at Texas A&M-Corpus Christi | 2/23/11 |
| 93-55 | Huston-Tillotson | 12/6/08 |
| 93-77 | SMU | 2/9/91 |
| 93-48 | Texas A&M-Commerce | 1/12/87 |
| 92-52 | Nicholls | 2/17/94 |
| 92-79 | UTEP | 2/11/84 |
| 92-56 | Huston-Tillotson | 1/29/83 |
| 92-57 | Texas Lutheran | 12/2/82 |
| 91-30 | Texas Southern..... | 12/5/96 |
| 90-89 | Tulsa | 3/11/14 |
| 90-89 (2OT) | vs. Miami (Ohio)..... | 12/29/07 |
| 90-53 | Southeastern Louisiana | 3/3/01 |
| 90-41 | Hardin-Simmons | 2/20/84 |

2015-16 UTSA WOMEN'S BASKETBALL

Individual Records

Points

Game - 40 by Starlite Williams vs. St. Mary's (12/16/86)
Season - 583 by Tammy Rogers (1990-91)
Career - 1,607 by Starlite Williams (1983-87)

Scoring Average

Season - 20.7 by Starlite Williams (1986-87)
Career - 16.6 by Starlite Williams (1983-87)

Field Goals Made

Game - 16 by Starlite Williams vs. St. Mary's (12/16/86)
Season - 229 by Starlite Williams (1986-87)
Career - 674 by Starlite Williams (1983-87)

Field Goals Attempted

Game - 33 by Tammy Rogers vs. Alaska Anchorage (2/23/91)
Season - 482 by Tammy Rogers (1990-91)
Career - 1,305 by Starlite Williams (1983-87)

Field Goal Percentage (minimum attempts)

Game (10) - .928 (13-14) by Starlite Williams vs. Alabama (12/5/86)
Season (200) - .657 (184-280) by Margaret Martinovich (1984-85)
Career - .566 (589-1,039) by Margaret Martinovich (1981-85)

Free Throws Made

Game - 17 by Amber Gregg vs. Texas State (2/26/11)
17 by Monica Gibbs vs. Texas State (3/4/09)
Season - 167 by Monica Gibbs (2008-09)
167 by Tammy Rogers (1990-91)
Career - 553 by Angel Singleton (1993-98)

Free Throws Attempted

Game - 24 vs. Monica Gibbs vs. Texas State (3/4/09)
Season - 282 by Angel Singleton (1996-97)
Career - 811 by Angel Singleton (1993-98)

Free Throw Percentage (minimum)

Game (10) - 1.000 (12-12) by Whitney York vs. Central Arkanas (2/10/10)
1.000 (11-11) by Starlite Williams vs. Nevada (11/29/86)
Season (25) - .903 (28-31) by Rhonda Hoffman (1983-84)
Career (100) - .822 (259-315) by Amber Gregg (2007-11)

3-point Field Goals Made

Game - 8 by Terrie Davis vs. Lamar (1/12/08)
Season - 82 by Terrie Davis (2007-08)
Career - 200 by Amber Gregg (2007-11)

Consecutive 3-pointers Made

8 by Nicole Dunson

3-point Field Goals Attempted

Game - 16 by Jordan Stark vs. UT-Arlington (3/14/09)
16 by Simone Young at TCU (12/5/12)
Season - 224 by Terrie Davis (2007-08)
Career - 633 by Amber Gregg (2007-11)

3-point Percentage (minimum)

Game (5) - .875 (7-8) by Rosie Smith vs. SFA (1/8/98)
Season (75) - .441 (52-118) by Nicole Dunson (2005-06)
Career (150) - .419 (98-234) by Nicole Dunson (2004-06)

Rebounds

Game - 24 by Margaret Martinovich vs. A&M-Kingsville (11/27/81)
Season - 351 by Onika Anderson (2008-09)
Career - 990 by Monica Gibbs (2005-09)

Rebound Average (minimum)

Season (25) - 10.6 (26 games) by Onika Anderson (2008-09)
Career (50) - 9.8 (59 games) by Onika Anderson (2007-09)

Assists

Game - 15 by Monica Gibbs vs. Huston-Tillotson (12/6/08)
Season - 221 by Monica Gibbs (2008-09)
Career - 693 by Monica Gibbs (2005-09)

Steals

Game - 9 by Rhonda Hoffman vs. Sam Houston State (1/27/84)
Season - 92 by Starlite Williams (1986-87)
Career - 281 by Starlite Williams (1983-87)

Blocked Shots

Game - 8 by Alysse Davis vs. Huston-Tillotson (11/14/10)
8 by Kim Duncan vs. Texas State (1/24/85)
Season - 78 by Alysse Davis (2010-11)
Career - 105 by Whitney Wright (2009-13)

Games Played

123 by Monica Gibbs (2005-09)

| Attendance Records | | | |
|--------------------|----------------------|---------------|------------|
| Date | Opponent | Results | Attendance |
| 3/3/12 | UT-Arlington | L, 75-65 | 2,611 |
| 2/7/04 | McNeese State | W, 64-56 (OT) | 2,311 |
| 1/27/96 | Texas State | L, 78-57 | 2,021 |
| 2/9/91 | SMU | W, 93-77 | 2,000 |
| 11/12/10 | Our Lady of the Lake | W, 79-66 | 1,789 |
| 1/29/94 | North Texas | L, 74-65 | 1,786 |
| 2/26/05 | UT-Arlington | W, 48-46 | 1,736 |
| 2/24/07 | A&M-Corpus Christi | W, 61-43 | 1,699 |
| 11/19/10 | No. 23 TCU | L, 83-59 | 1,563 |
| 1/21/04 | Texas State | L, 44-43 | 1,445 |

2015-16 UTSA WOMEN'S BASKETBALL

Opponent Records

(against UTSA)

Individual Opponent Records

Single Game Points Scored

45 by Kelia Shelton, Louisiana Tech (2/7/13)

Points Scored/Conference Game

45 by Kelia Shelton, Louisiana Tech (2/7/13)

Field Goals

16 by Lisa Foss, No. Illinois (2/22/91)
16 by Kelia Shelton, Louisiana Tech (2/7/13)

Field Goals/Conference Game

16 by Kelia Shelton, Louisiana Tech (2/7/13)

Free Throws

17 by Tammy Terry, Oklahoma City (2/27/84)

Free Throws/Conference Game

17 by Tammy Terry, Oklahoma City (2/27/84)

Free Throw Attempts

21 by Katrina Price, SFA (3/5/98)

Free Throw Attempts/Conference

21 by Katrina Price, SFA (3/5/98)

3-Point FG

9 by Carin Stites, Oklahoma (1/21/91)
9 by Angela Branch, ULM (12/30/93)

3-Point FG/Conference Game

9 by Angela Branch, ULM (12/30/93)

Rebounds

21 by Kris Veatch, New Mexico St., (1/23/88)
21 by Yolanda Wilkerson, Texas St. (12/24/96)

Rebounds/Conference Game

21 by Yolanda Wilkerson, Texas St. (12/24/96)

Assists

14 by Amy Sheiron, Sam Houston (2/18/99)

Turnovers

12 by Lakeita Richardson, Sam Houston (2/10/94)

Blocked Shots

8 by Cheyenne Parker, Middle Tenn. (1/29/15)
8 by Kianna Vines, Texas Southern (12/28/15)

Steals

11 by Leslie Hale, Sam Houston (2/11/95)

Team Records

Single Game Points Scored

115 by Houston (12/18/89)

Points Scored/Conference Game

102 by Stephen F. Austin (2/3/96)

Points Scored in a Half

66 (1st half) by Houston (12/18/89)
60 (2nd half) by Houston (11/27/90)

Fewest Points Scored

26 by Prairie View A&M (1/29/83)

Fewest Points/Conference Game

37 by Texas A&M-Corpus Christi (2/17/10)

Fewest Points Scored in a Half

8 (1st half) by Prairie View A&M (12/3/96)

Most Field Goals Made

47 by Houston (11/27/90)

Fewest Field Goals Made

7 by Schreiner (11/15/09)

Fewest Field Goals in a Half

1 by Prairie View A&M (12/3/96); Schreiner (11/15/09)

Fewest Field Goals/Conference Game

12 by Southeastern Louisiana (1/4/01)

Most FG Attempts

90 by Houston (11/27/90)

Highest FG Percentage

67.8% (40-59) by Stephen F. Austin (1/8/00)

Highest FG Percentage in a Half

72% by Baylor (12/16/96)

Lowest FG Percentage

14% (7-50) by Schreiner (11/15/09)

Most Free Throws Made

33 by Oral Roberts (2/22/86); Texas Tech (12/17/88)

Fewest Free Throws Made

1 by 5 opponents, most recent by Texas St. (1/28/09)

Most 3-Point FG

13 by Oklahoma (1/21/91)
13 by Howard Payne (12/15/15)

Most 3-Point FG Made/Conference Game

11 by Sam Houston St. (1/19/06)

Most 3-Point FG Attempts

40 by New Mexico St. (12/31/90)

Most 3-Point FG Attempts/Conference Game

34 by Nicholls (2/19/11)

Highest 3-Point FG Percentage

66.7% by four opponents, most recent by UAB (6-of-9)(1/31/15)

Most Rebounds

64 by Prairie View A&M (2/8/90); La.-Monroe (12/30/93)

Most Rebounds/Conference Game

64 by Louisiana-Monroe (12/30/93)

Most Assists

38 by Northwestern St. (2/20/93)

Most Assists/Conference Game

38 by Northwestern St. (2/20/93)

Most Turnovers

43 by A&M-Commerce (1/12/87)

Most Fouls

36 by Angelo St. (1/11/82)

Most Fouls/Conference Game

27 by Northwestern St. (1/30/99); Lamar (2/3/05); Louisiana Tech (1/28/16)

Fewest Fouls

7 by McNeese St. (2/19/94)

Most Blocks

13 by Idaho (1/26/13); Southern Miss (12/28/15)

Most Steals

31 by Houston (11/27/90)

ALL-TIME VS. RANKED OPPONENTS

By Date

| | | |
|----------------|------------------------------|---------------|
| Dec. 5, 1985 | vs. No. 25 Houston | L, 52-63 |
| Dec. 13, 1986 | at No. 22 Texas Tech | L, 62-75 |
| Jan. 9, 1988 | at No. 25 Stephen F. Austin | L, 58-81 |
| Dec. 19, 1988 | vs. No. 19 Stephen F. Austin | L, 59-66 |
| Nov. 22, 1997 | vs. No. 19 Texas Tech | L, 44-57 |
| Dec. 2, 1998 | at No. 12 Texas Tech | L, 39-96 |
| Dec. 30, 2001 | vs. No. 19 Auburn | L, 50-73 |
| Dec. 31, 2003 | vs. No. 11 Kansas State | L, 45-75 |
| Dec. 19, 2005 | at No. 10 Arizona State | L, 64-78 |
| Dec. 20, 2006 | vs. No. 13 Purdue | L, 50-75 |
| March 22, 2008 | vs. No. 8 Texas A&M | L, 52-91 |
| Nov. 16, 2008 | at No. 24 TCU | L, 60-73 |
| March 22, 2009 | vs. No. 5 Baylor | L, 82-87 (OT) |
| Nov. 13, 2009 | at No. 10 Texas | L, 60-71 |
| Dec. 19, 2009 | vs. No. 6 Florida State | L, 50-65 |
| Nov. 19, 2010 | vs. No. 23 TCU | L, 59-83 |
| Nov. 15, 2014 | vs. No. 9 Texas | L, 68-48 |
| Jan. 24, 2015 | vs. No. 24 WKU | W, 64-63 |
| Nov. 14, 2015 | at No. 11 Texas | L, 53-90 |
| Dec. 13, 2015 | at No. 17 Oklahoma | L, 80-41 |

1-19

By Rank

| | | |
|----------------|------------------------------|---------------|
| March 22, 2009 | vs. No. 5 Baylor | L, 82-87 (OT) |
| Dec. 19, 2009 | vs. No. 6 Florida State | L, 50-65 |
| March 22, 2008 | vs. No. 8 Texas A&M | L, 52-91 |
| Nov. 15, 2014 | vs. No. 9 Texas | L, 68-48 |
| Dec. 19, 2005 | at No. 10 Arizona State | L, 64-78 |
| Nov. 13, 2009 | at No. 10 Texas | L, 60-71 |
| Nov. 14, 2015 | at No. 11 Texas | L, 53-90 |
| Dec. 31, 2003 | vs. No. 11 Kansas State | L, 45-75 |
| Dec. 2, 1998 | at No. 12 Texas Tech | L, 39-96 |
| Dec. 20, 2006 | vs. No. 13 Purdue | L, 50-75 |
| Dec. 13, 2015 | at No. 17 Oklahoma | L, 80-41 |
| Dec. 19, 1988 | vs. No. 19 Stephen F. Austin | L, 59-66 |
| Nov. 22, 1997 | vs. No. 19 Texas Tech | L, 44-57 |
| Dec. 30, 2001 | vs. No. 19 Auburn | L, 50-73 |
| Dec. 13, 1986 | at No. 22 Texas Tech | L, 62-75 |
| Nov. 19, 2010 | vs. No. 23 TCU | L, 59-83 |
| Nov. 16, 2008 | at No. 24 TCU | L, 60-73 |
| Jan. 24, 2015 | vs. No. 24 WKU | W, 64-63 |
| Dec. 5, 1985 | vs. No. 25 Houston | L, 52-63 |
| Jan. 9, 1988 | at No. 25 Stephen F. Austin | L, 58-81 |

1-19

2015-16 UTSA WOMEN'S BASKETBALL

Career Top-10

Points

| Name | Yr. | Points |
|-------------------------|---------|--------|
| 1. Starlite Williams | 1983-87 | 1,607 |
| 2. Angel Singleton | 1994-98 | 1,565 |
| 3. Margaret Martinovich | 1981-85 | 1,480 |
| 4. Monica Gibbs | 2005-09 | 1,460 |
| 5. Tisha Boldt | 1986-91 | 1,379 |
| 6. Kamra King | 2011-15 | 1,367 |
| 7. Tammy Rogers | 1987-91 | 1,343 |
| 8. Michelle Martin | 1989-93 | 1,192 |
| 9. Sharon Wilson | 1985-89 | 1,173 |
| 10. Amber Gregg | 2007-11 | 1,143 |

Scoring Average

| Name | Games | Avg |
|----------------------------------|-------|------|
| 1. Starlite Williams (83-87) | 97 | 16.5 |
| 2. Rosie Smith (97-99) | 54 | 16.3 |
| 3. Valerie Wells (82-84) | 54 | 15.3 |
| 4. Angel Singleton (93-98) | 105 | 14.9 |
| 5. Nikki Hendrix (01-04) | 78 | 14.4 |
| 6. Vivian Ewalefo (05-07) | 60 | 14.1 |
| Denise Forestier (99-02) | 38 | 14.1 |
| Karen Gaskin (88-90) | 54 | 14.1 |
| 9. Tammy Rogers (87-91) | 96 | 14.0 |
| 10. Margaret Martinovich (81-85) | 108 | 13.7 |

Field Goals Made

| Name | Games | FG |
|---------------------------------|-------|-----|
| 1. Starlite Williams (83-87) | 97 | 674 |
| 2. Margaret Martinovich (81-85) | 108 | 589 |
| 3. Tisha Boldt (86-91) | 111 | 561 |
| 4. Angel Singleton (93-98) | 105 | 506 |
| 5. Kim Maxwell (81-84) | 81 | 502 |
| 6. Monica Gibbs (05-09) | 123 | 490 |
| 7. Sharon Wilson (85-89) | 102 | 460 |
| 8. Tammy Rogers (87-91) | 96 | 451 |
| 9. Michelle Martin (89-93) | 103 | 444 |
| 10. Nikki Hendrix (01-04) | 81 | 426 |

Field Goal Percentage (min. 200)

| Name | Games | FG% |
|---------------------------------|-------|------|
| 1. Margaret Martinovich (81-85) | 108 | .567 |
| 2. Onika Anderson (07-09) | 59 | .527 |
| 3. Starlite Williams (83-87) | 97 | .516 |
| 4. Valerie Wells (82-84) | 54 | .514 |
| 5. Angel Singleton (93-98) | 105 | .511 |
| 6. Karen Gaskin (88-90) | 54 | .509 |
| 7. Tisha Boldt (86-91) | 111 | .505 |
| 8. Kim Maxwell (81-84) | 81 | .479 |
| 9. Renda Churman (97-01) | 108 | .475 |
| Debbie Groves (84-88) | 101 | .475 |

Rebounds

| Name | Games | Reb |
|---------------------------------|------------|------------|
| 1. Monica Gibbs (05-09) | 123 | 990 |
| 2. Margaret Martinovich (81-85) | 108 | 778 |
| 3. Angel Singleton (93-98) | 105 | 730 |
| 4. Tisha Boldt (86-91) | 111 | 675 |
| 5. Starlite Williams (83-87) | 97 | 636 |
| 6. Michelle Martin (89-93) | 103 | 590 |
| 7. Onika Anderson (07-09) | 59 | 579 |
| 8. Akunna Elonu (2012-P) | 106 | 571 |
| 9. Tesha Smith (2013-P) | 86 | 561 |
| 10. Debbie Groves (84-88) | 101 | 550 |

Rebounding Average

| Name | Games | Avg |
|---------------------------------|-------|-----|
| 1. Onika Anderson (07-09) | 59 | 9.8 |
| 2. Ashleigh Franklin (09-11) | 58 | 8.7 |
| 3. Monica Gibbs (05-09) | 123 | 8.0 |
| 4. Vivian Ewalefo (05-07) | 60 | 7.6 |
| 5. Valerie Wells (82-84) | 54 | 7.4 |
| 6. Margaret Martinovich (81-85) | 108 | 7.2 |
| 7. Angel Singleton (93-98) | 105 | 7.0 |
| 8. Keelah Williams (98-00) | 52 | 6.6 |
| Starlite Williams (83-87) | 97 | 6.6 |
| 10. Mantha Emory (93-95) | 52 | 6.4 |

3-point Field Goals Made

| Name | Games | 3-pt |
|------------------------------|-------|------|
| 1. Amber Gregg (07-11) | 118 | 200 |
| 2. Terrie Davis (04-08) | 118 | 195 |
| 3. Ashley Spaletta (2011-15) | 119 | 174 |
| 4. Kamra King (2011-15) | 121 | 128 |
| 5. Philicia Ross (90-94) | 96 | 121 |
| 6. Jordan Stark (07-09) | 53 | 111 |
| 7. Alysse Davis (08-11) | 57 | 102 |
| 8. Nicole Dunson (04-06) | 54 | 98 |
| 9. Rosie Smith (96-98) | 54 | 94 |
| 10. Tammy Rogers (87-91) | 96 | 86 |

Assists

| Name | Games | Ast |
|----------------------------|-------|-----|
| 1. Monica Gibbs (05-09) | 123 | 693 |
| 2. Tammy Rogers (87-91) | 96 | 377 |
| 3. Rhonda Hoffman (83-87) | 102 | 375 |
| 4. Sharon Wilson (85-89) | 102 | 355 |
| 5. Joyce Howard (96-98) | 53 | 333 |
| 6. Shelley Seale (81-83) | 54 | 296 |
| 7. Kim Reed (01-05) | 112 | 272 |
| 8. Karen Kroen (83-87) | 73 | 263 |
| 9. Kim Maxwell (81-84) | 81 | 259 |
| 10. Whitney York (2007-13) | 96 | 249 |

Steals

| Name | Games | Steals |
|------------------------------|-------|--------|
| 1. Starlite Williams (83-87) | 97 | 281 |
| 2. Kamra King (2011-15) | 121 | 240 |
| 3. Michelle Martin (89-93) | 103 | 227 |
| 4. Sharon Wilson (85-89) | 102 | 223 |
| 5. Rhonda Hoffman (83-87) | 102 | 222 |
| 6. Monica Gibbs (05-09) | 123 | 207 |
| 7. Terrie Davis (04-08) | 118 | 173 |
| 8. Tammy Rogers (87-91) | 96 | 165 |
| 9. Ashley Spaletta (2011-15) | 119 | 153 |
| 10. Latifa Northern (98-02) | 109 | 144 |

Blocks

| Name | Games | Bk |
|------------------------------|-------|-----|
| 1. Whitney Wright (09-13) | 114 | 105 |
| 2. Alysse Davis (08-11) | 57 | 98 |
| 3. Kim Duncan (83-85) | 55 | 93 |
| 4. Starlite Williams (83-87) | 97 | 88 |
| 5. Mantha Emory (93-95) | 52 | 81 |
| 6. Lacy Mingee (01-06) | 113 | 70 |
| 7. Monica Gibbs (05-09) | 90 | 69 |
| 8. Katie Sandefur (02-06) | 116 | 66 |
| Ryba Pawlaczyk (07-09) | 60 | 66 |
| 10. Keelah Wilson (98-00) | 52 | 61 |

Games Played

| Name | Yrs. | Games |
|--------------------|---------|-------|
| 1. Monica Gibbs | 2005-09 | 123 |
| 2. Kamra King | 2011-15 | 121 |
| 3. Ashley Spaletta | 2011-15 | 119 |
| 4. Terrie Davis | 2004-08 | 118 |
| Amber Gregg | 2007-11 | 118 |
| 6. Katie Sandefur | 2002-06 | 116 |
| 7. Lacy Mingee | 2001-06 | 115 |
| 8. Whitney Wright | 2009-13 | 114 |
| 9. Kim Reed | 2001-05 | 112 |
| 10. Tisha Boldt | 1987-91 | 111 |

Games Started

| Name | Yrs. | Starts |
|----------------------|---------|--------|
| 1. Kamra King | 2011-15 | 118 |
| 2. Monica Gibbs | 2005-09 | 113 |
| 3. Angel Singleton | 1994-98 | 101 |
| 4. Terrie Davis | 2004-08 | 99 |
| 5. Starlite Williams | 1983-87 | 92 |
| 6. Tammy Rogers | 1987-91 | 90 |
| Tisha Boldt | 1986-91 | 87 |
| 8. Amber Gregg | 2007-11 | 86 |
| 9. Latifa Northern | 1998-02 | 84 |
| Whitney York | 2008-13 | 84 |

2015-16 UTSA WOMEN'S BASKETBALL

2015-16 UTSA Roadrunners Basketball UTSA Combined Team Statistics (as of Feb 20, 2016) All games

| RECORD: | OVERALL | HOME | AWAY | NEUTRAL |
|----------------|---------|------|------|---------|
| ALL GAMES | 8-17 | 7-5 | 1-12 | 0-0 |
| CONFERENCE | 4-11 | 3-3 | 1-8 | 0-0 |
| NON-CONFERENCE | 4-6 | 4-2 | 0-4 | 0-0 |

| ## | Player | gp-gs | min | avg | Total | | 3-Point | | F-Throw | | Rebounds | | | | pf | dq | a | to | blk | stl | pts | avg |
|----------------|--------------------|-------|------|------|----------|------|---------|-------|---------|------|----------|-----|------|------|-----|----|-----|-----|-----|-----|------|------|
| | | | | | fg-fga | fg% | 3fg-fga | 3fg% | ft-fga | ft% | off | def | tot | avg | | | | | | | | |
| 30 | SMITH, Tesha | 25-8 | 551 | 22.0 | 102-201 | .507 | 0-0 | .000 | 46-79 | .582 | 78 | 128 | 206 | 8.2 | 72 | 3 | 9 | 58 | 22 | 11 | 250 | 10.0 |
| 21 | ELONU, Akunna | 24-22 | 686 | 28.6 | 86-180 | .478 | 5-26 | .192 | 43-65 | .662 | 77 | 91 | 168 | 7.0 | 62 | 2 | 21 | 43 | 10 | 27 | 220 | 9.2 |
| 04 | CHIDOMERE, Crystal | 25-3 | 518 | 20.7 | 92-205 | .449 | 1-11 | .091 | 30-42 | .714 | 29 | 56 | 85 | 3.4 | 68 | 3 | 40 | 56 | 11 | 40 | 215 | 8.6 |
| 01 | KIEJDROWSKA, Kasia | 23-5 | 396 | 17.2 | 52-156 | .333 | 25-79 | .316 | 14-20 | .700 | 8 | 53 | 61 | 2.7 | 46 | 2 | 13 | 20 | 4 | 9 | 143 | 6.2 |
| 12 | MITCHELL-COLE, Nia | 19-17 | 461 | 24.3 | 41-136 | .301 | 8-33 | .242 | 25-42 | .595 | 28 | 65 | 93 | 4.9 | 42 | 0 | 19 | 31 | 13 | 31 | 115 | 6.1 |
| 02 | HERGOTT, Mathilde | 25-24 | 724 | 29.0 | 58-189 | .307 | 27-89 | .303 | 6-10 | .600 | 12 | 46 | 58 | 2.3 | 61 | 1 | 52 | 61 | 26 | 22 | 149 | 6.0 |
| 03 | DUKES, Alexis | 22-9 | 433 | 19.7 | 48-150 | .320 | 11-46 | .239 | 18-30 | .600 | 9 | 33 | 42 | 1.9 | 47 | 1 | 42 | 45 | 4 | 22 | 125 | 5.7 |
| 05 | HEARD, Alana | 12-11 | 260 | 21.7 | 24-63 | .381 | 1-1 | 1.000 | 8-9 | .889 | 7 | 20 | 27 | 2.3 | 26 | 0 | 21 | 37 | 1 | 20 | 57 | 4.8 |
| 31 | HEINEMAN, Carlie | 24-9 | 368 | 15.3 | 36-112 | .321 | 29-77 | .377 | 11-20 | .550 | 9 | 27 | 36 | 1.5 | 20 | 0 | 16 | 12 | 4 | 7 | 112 | 4.7 |
| 11 | ANASTASIESKA, Sara | 21-0 | 291 | 13.9 | 33-97 | .340 | 9-35 | .257 | 19-28 | .679 | 5 | 31 | 36 | 1.7 | 30 | 0 | 17 | 35 | 2 | 8 | 94 | 4.5 |
| 23 | THORNTON, Dempse | 25-17 | 362 | 14.5 | 26-67 | .388 | 0-1 | .000 | 9-19 | .474 | 28 | 36 | 64 | 2.6 | 41 | 0 | 8 | 33 | 8 | 6 | 61 | 2.4 |
| Team | | | | | | | | | | | 59 | 70 | 129 | | 1 | | 4 | | | | | |
| Total..... | | 25 | 5050 | | 598-1556 | .384 | 116-398 | .291 | 229-364 | .629 | 349 | 656 | 1005 | 40.2 | 516 | 12 | 258 | 435 | 105 | 203 | 1541 | 61.6 |
| Opponents..... | | 25 | 5056 | | 536-1447 | .370 | 161-495 | .325 | 364-534 | .682 | 322 | 650 | 972 | 38.9 | 432 | - | 303 | 413 | 91 | 202 | 1597 | 63.9 |

| TEAM STATISTICS | UTSA | OPP | Date | Opponent | Score | Att. |
|------------------------|----------|----------|------------|----------------------|-----------|------|
| SCORING | 1541 | 1597 | 11/14/15 | at Texas | L 53-90 | 2596 |
| Points per game | 61.6 | 63.9 | 11/21/15 | at Abilene Christian | L 60-79 | 1000 |
| Scoring margin | -2.2 | - | 11/27/15 | ILLINOIS STATE | W 77-51 | 0 |
| FIELD GOALS-ATT | 598-1556 | 536-1447 | 11/29/15 | HOUSTON BAPTIST | W 79-50 | 400 |
| Field goal pct | .384 | .370 | 12/03/15 | at Texas State | L 64-72 | 1309 |
| 3 POINT FG-ATT | 116-398 | 161-495 | 12/13/15 | at Oklahoma | L 41-80 | 4086 |
| 3-point FG pct | .291 | .325 | 12/15/15 | HOWARD PAYNE | W 106-65 | 265 |
| 3-pt FG made per game | 4.6 | 6.4 | 12/19/15 | TEXAS A&M-KINGSVILLE | W 88-51 | 250 |
| FREE THROWS-ATT | 229-364 | 364-534 | 12/21/15 | UT ARLINGTON | L 47-51 | 353 |
| Free throw pct | .629 | .682 | 12/28/15 | TEXAS SOUTHERN | L 44-59 | 297 |
| F-Throws made per game | 9.2 | 14.6 | * 1/1/16 | at North Texas | L 58-68 | 882 |
| REBOUNDS | 1005 | 972 | * 1/3/16 | at Rice | Lot 48-49 | 583 |
| Rebounds per game | 40.2 | 38.9 | * 1/7/16 | UAB | W 54-52 | 307 |
| Rebounding margin | +1.3 | - | * 1/9/16 | MIDDLE TENNESSEE | L 63-74 | 303 |
| ASSISTS | 258 | 303 | * 1/17/16 | at UTEP | L 55-62 | 1605 |
| Assists per game | 10.3 | 12.1 | * 01/21/16 | at FIU | W 63-52 | 376 |
| TURNOVERS | 435 | 413 | * 1/23/16 | at FAU | L 51-64 | 763 |
| Turnovers per game | 17.4 | 16.5 | * 1/28/16 | LOUISIANA TECH | Lot 72-82 | 539 |
| Turnover margin | -0.9 | - | * 1/30/16 | SOUTHERN MISS | W 47-41 | 554 |
| Assist/turnover ratio | 0.6 | 0.7 | * 02/04/16 | at WKU | L 65-72 | 1076 |
| STEALS | 203 | 202 | * 2/6/16 | at Marshall | L 76-80 | 812 |
| Steals per game | 8.1 | 8.1 | * 2/11/16 | FAU | W 57-54 | 536 |
| BLOCKS | 105 | 91 | * 2/13/16 | FIU | L 54-59 | 400 |
| Blocks per game | 4.2 | 3.6 | * 02/18/16 | at Louisiana Tech | L 66-75 | 1835 |
| ATTENDANCE | 4204 | 18472 | * 2/20/16 | at Southern Miss | L 53-65 | 1549 |
| Home games-Avg/Game | 12-350 | 13-1421 | | | | |
| Neutral site-Avg/Game | - | 0-0 | | | | |

* = Conference game

| Score by Periods | 1st | 2nd | 3rd | 4th | OT | Totals |
|------------------|-----|-----|-----|-----|----|--------|
| UTSA | 355 | 345 | 387 | 449 | 5 | 1541 |
| Opponents | 365 | 400 | 391 | 425 | 16 | 1597 |

2015-16 UTSA WOMEN'S BASKETBALL

2015-16 UTSA Roadrunners Basketball UTSA Combined Team Statistics (as of Feb 20, 2016) Conference games

| RECORD: | OVERALL | HOME | AWAY | NEUTRAL |
|----------------|---------|------|------|---------|
| ALL GAMES | 4-11 | 3-3 | 1-8 | 0-0 |
| CONFERENCE | 4-11 | 3-3 | 1-8 | 0-0 |
| NON-CONFERENCE | 0-0 | 0-0 | 0-0 | 0-0 |

| # | Player | gp-gs | min | avg | Total | | 3-Point | | F-Throw | | Rebounds | | | | pf | dq | a | to | blk | stl | pts | avg |
|----------------|--------------------|-------|------|------|---------|------|---------|-------|---------|------|----------|-----|-----|------|-----|----|-----|-----|-----|-----|-----|------|
| | | | | | fg-fga | fg% | 3fg-fga | 3fg% | ft-fa | ft% | off | def | tot | avg | | | | | | | | |
| 04 | CHIDOMERE, Crystal | 15-3 | 342 | 22.8 | 70-150 | .467 | 0-4 | .000 | 25-35 | .714 | 21 | 37 | 58 | 3.9 | 44 | 2 | 22 | 30 | 5 | 23 | 165 | 11.0 |
| 21 | ELONU, Akunna | 14-13 | 466 | 33.3 | 52-112 | .464 | 2-10 | .200 | 29-46 | .630 | 51 | 58 | 109 | 7.8 | 34 | 1 | 15 | 25 | 6 | 18 | 135 | 9.6 |
| 30 | SMITH, Tesha | 15-5 | 336 | 22.4 | 50-100 | .500 | 0-0 | .000 | 22-43 | .512 | 46 | 75 | 121 | 8.1 | 42 | 2 | 5 | 34 | 15 | 8 | 122 | 8.1 |
| 02 | HERGOTT, Mathilde | 15-15 | 479 | 31.9 | 42-130 | .323 | 22-64 | .344 | 6-8 | .750 | 10 | 24 | 34 | 2.3 | 39 | 1 | 29 | 32 | 17 | 12 | 112 | 7.5 |
| 01 | KIEJDROWSKA, Kasia | 13-4 | 198 | 15.2 | 26-84 | .310 | 13-44 | .295 | 10-12 | .833 | 2 | 18 | 20 | 1.5 | 20 | 0 | 6 | 10 | 3 | 3 | 75 | 5.8 |
| 05 | HEARD, Alana | 11-11 | 248 | 22.5 | 23-60 | .383 | 1-1 | 1.000 | 8-9 | .889 | 7 | 18 | 25 | 2.3 | 26 | 0 | 21 | 34 | 1 | 20 | 55 | 5.0 |
| 11 | ANASTASIESKA, Sara | 12-0 | 166 | 13.8 | 19-59 | .322 | 4-20 | .200 | 14-22 | .636 | 1 | 12 | 13 | 1.1 | 14 | 0 | 12 | 18 | 0 | 6 | 56 | 4.7 |
| 12 | MITCHELL-COLE, Nia | 10-8 | 235 | 23.5 | 14-65 | .215 | 3-16 | .188 | 12-19 | .632 | 16 | 36 | 52 | 5.2 | 25 | 0 | 7 | 18 | 3 | 12 | 43 | 4.3 |
| 03 | DUKES, Alexis | 12-0 | 202 | 16.8 | 18-71 | .254 | 4-18 | .222 | 9-16 | .563 | 6 | 12 | 18 | 1.5 | 25 | 0 | 19 | 20 | 2 | 9 | 49 | 4.1 |
| 31 | HEINEMAN, Carlie | 15-6 | 187 | 12.5 | 15-56 | .268 | 14-41 | .341 | 3-9 | .333 | 4 | 12 | 16 | 1.1 | 8 | 0 | 1 | 7 | 2 | 4 | 47 | 3.1 |
| 23 | THORNTON, Dempse | 15-10 | 191 | 12.7 | 9-32 | .281 | 0-0 | .000 | 5-10 | .500 | 19 | 13 | 32 | 2.1 | 25 | 0 | 2 | 16 | 2 | 3 | 23 | 1.5 |
| Team | | | | | | | | | | | 38 | 50 | 88 | | | | 3 | | | | | |
| Total..... | | 15 | 3050 | | 338-919 | .368 | 63-218 | .289 | 143-229 | .624 | 221 | 365 | 586 | 39.1 | 302 | 6 | 139 | 247 | 56 | 118 | 882 | 58.8 |
| Opponents..... | | 15 | 3056 | | 327-843 | .388 | 85-274 | .310 | 210-313 | .671 | 193 | 391 | 584 | 38.9 | 266 | - | 190 | 243 | 47 | 121 | 949 | 63.3 |

| TEAM STATISTICS | UTSA | OPP | Date | Opponent | Score | Att. |
|------------------------|---------|---------|---------------------|-------------------|-----------|------|
| SCORING | 882 | 949 | * 1/1/16 | at North Texas | L 58-68 | 882 |
| Points per game | 58.8 | 63.3 | * 1/3/16 | at Rice | Lot 48-49 | 583 |
| Scoring margin | -4.5 | - | * 1/7/16 | UAB | W 54-52 | 307 |
| FIELD GOALS-ATT | 338-919 | 327-843 | * 1/9/16 | MIDDLE TENNESSEE | L 63-74 | 303 |
| Field goal pct | .368 | .388 | * 1/17/16 | at UTEP | L 55-62 | 1605 |
| 3 POINT FG-ATT | 63-218 | 85-274 | * 01/21/16 | at FIU | W 63-52 | 376 |
| 3-point FG pct | .289 | .310 | * 1/23/16 | at FAU | L 51-64 | 763 |
| 3-pt FG made per game | 4.2 | 5.7 | * 1/28/16 | LOUISIANA TECH | Lot 72-82 | 539 |
| FREE THROWS-ATT | 143-229 | 210-313 | * 1/30/16 | SOUTHERN MISS | W 47-41 | 554 |
| Free throw pct | .624 | .671 | * 02/04/16 | at WKU | L 65-72 | 1076 |
| F-Throws made per game | 9.5 | 14.0 | * 2/6/16 | at Marshall | L 76-80 | 812 |
| REBOUNDS | 586 | 584 | * 2/11/16 | FAU | W 57-54 | 536 |
| Rebounds per game | 39.1 | 38.9 | * 2/13/16 | FIU | L 54-59 | 400 |
| Rebounding margin | +0.1 | - | * 02/18/16 | at Louisiana Tech | L 66-75 | 1835 |
| ASSISTS | 139 | 190 | * 2/20/16 | at Southern Miss | L 53-65 | 1549 |
| Assists per game | 9.3 | 12.7 | * = Conference game | | | |
| TURNOVERS | 247 | 243 | | | | |
| Turnovers per game | 16.5 | 16.2 | | | | |
| Turnover margin | -0.3 | - | | | | |
| Assist/turnover ratio | 0.6 | 0.8 | | | | |
| STEALS | 118 | 121 | | | | |
| Steals per game | 7.9 | 8.1 | | | | |
| BLOCKS | 56 | 47 | | | | |
| Blocks per game | 3.7 | 3.1 | | | | |
| ATTENDANCE | 2639 | 9481 | | | | |
| Home games-Avg/Game | 6-440 | 9-1053 | | | | |
| Neutral site-Avg/Game | - | 0-0 | | | | |

| Score by Periods | 1st | 2nd | 3rd | 4th | OT | Totals |
|------------------|-----|-----|-----|-----|----|--------|
| UTSA | 189 | 183 | 227 | 278 | 5 | 882 |
| Opponents | 211 | 242 | 236 | 244 | 16 | 949 |

2015-16 UTSA WOMEN'S BASKETBALL

Official Basketball Box Score -- Game Totals -- Final Statistics UTSA vs Southern Miss 2/20/16 5 p.m. at Hattiesburg, Miss. (Reed Green Coliseum)

UTSA 53 • 8-17, 4-11

| ## | Player | | Total | 3-Ptr | FT-FTA | Rebounds | | | PF | TP | A | TO | Blk | Stl | Min |
|----|--------------------|---|--------|--------|--------|----------|-----|-----|----|----|---|----|-----|-----|-----|
| | | | FG-FGA | FG-FGA | | Off | Def | Tot | | | | | | | |
| 02 | HERGOTT, Mathilde | f | 1-6 | 0-2 | 0-0 | 0 | 3 | 3 | 3 | 2 | 3 | 1 | 1 | 0 | 27 |
| 21 | ELONU, Akunna | f | 3-8 | 0-0 | 1-2 | 2 | 3 | 5 | 2 | 7 | 1 | 0 | 0 | 1 | 27 |
| 23 | THORNTON, Dempsey | c | 3-8 | 0-0 | 0-0 | 4 | 2 | 6 | 3 | 6 | 0 | 3 | 0 | 0 | 24 |
| 04 | CHIDOMERE, Crystal | g | 5-10 | 0-0 | 3-6 | 0 | 3 | 3 | 4 | 13 | 1 | 5 | 0 | 1 | 26 |
| 05 | HEARD, Alana | g | 1-5 | 0-0 | 0-0 | 2 | 0 | 2 | 3 | 2 | 2 | 2 | 0 | 1 | 25 |
| 03 | DUKES, Alexis | | 5-13 | 1-3 | 3-6 | 2 | 0 | 2 | 1 | 14 | 0 | 2 | 0 | 3 | 22 |
| 11 | ANASTASIESKA, Sara | | 0-2 | 0-1 | 0-0 | 1 | 2 | 3 | 1 | 0 | 1 | 2 | 0 | 2 | 17 |
| 30 | SMITH, Tesha | | 2-6 | 0-0 | 5-9 | 7 | 3 | 10 | 2 | 9 | 1 | 1 | 1 | 1 | 18 |
| 31 | HEINEMAN, Carlie | | 0-4 | 0-2 | 0-0 | 0 | 1 | 1 | 0 | 0 | 0 | 0 | 0 | 0 | 14 |
| | Team | | | | | 3 | 7 | 10 | | | | | | | |
| | Totals | | 20-62 | 1-8 | 12-23 | 21 | 24 | 45 | 19 | 53 | 9 | 16 | 2 | 9 | 200 |

1st - FG %: 8-19 42.1% 2nd: 2-13 15.4% 3rd: 4-13 30.8% 4th: 6-17 35.3% Game: 20-62 32.3% Deadball
3FG %: 0-2 0.0% 0-1 0.0% 0-2 0.0% 1-3 33.3% 1-8 12.5% Rebounds
FT %: 0-0 0.0% 0-0 0.0% 6-11 54.5% 6-12 50.0% 12-23 52.2% 5

Southern Miss 65 • 13-12, 6-8

| ## | Player | | Total | 3-Ptr | FT-FTA | Rebounds | | | PF | TP | A | TO | Blk | Stl | Min |
|----|--------------------|---|--------|--------|--------|----------|-----|-----|----|----|----|----|-----|-----|-----|
| | | | FG-FGA | FG-FGA | | Off | Def | Tot | | | | | | | |
| 21 | KING, Jayla | f | 2-6 | 0-0 | 1-2 | 4 | 4 | 8 | 4 | 5 | 0 | 2 | 0 | 1 | 19 |
| 44 | WILSON, Shayla | f | 0-3 | 0-0 | 0-0 | 0 | 3 | 3 | 3 | 0 | 0 | 2 | 0 | 0 | 10 |
| 03 | JEWETT-GILES, Keri | g | 1-5 | 0-1 | 2-2 | 2 | 2 | 4 | 3 | 4 | 2 | 1 | 0 | 0 | 29 |
| 12 | DINKINS, Brittanny | g | 7-11 | 6-7 | 0-0 | 1 | 5 | 6 | 3 | 20 | 3 | 1 | 0 | 2 | 30 |
| 24 | NORRIS, Brittny | g | 4-11 | 3-8 | 0-0 | 0 | 1 | 1 | 3 | 11 | 1 | 3 | 0 | 0 | 31 |
| 01 | VEIGA, Tajanay | | 0-5 | 0-2 | 1-2 | 1 | 4 | 5 | 2 | 1 | 7 | 3 | 0 | 2 | 27 |
| 02 | COTTON, Lashyra | | 1-6 | 0-0 | 0-0 | 0 | 1 | 1 | 0 | 2 | 3 | 2 | 0 | 1 | 20 |
| 14 | DOZIER, Katie | | 0-1 | 0-1 | 0-0 | 0 | 0 | 0 | 0 | 0 | 0 | 2 | 0 | 0 | 3 |
| 15 | JENKINS, Caitlin | | 9-14 | 0-0 | 4-6 | 4 | 7 | 11 | 1 | 22 | 3 | 1 | 6 | 1 | 31 |
| | Team | | | | | 3 | 0 | 3 | | | | | | | |
| | Totals | | 24-62 | 9-19 | 8-12 | 15 | 27 | 42 | 19 | 65 | 19 | 17 | 6 | 7 | 200 |

1st - FG %: 4-12 33.3% 2nd: 10-16 62.5% 3rd: 4-18 22.2% 4th: 6-16 37.5% Game: 24-62 38.7% Deadball
3FG %: 1-3 33.3% 4-6 66.7% 1-3 33.3% 3-7 42.9% 9-19 47.4% Rebounds
FT %: 2-3 66.7% 2-4 50.0% 2-3 66.7% 2-2 100.0% 8-12 66.7% 3

Officials: R-Eric Koch; U1-Jules Gallien; U2-Julie Krommenhoek
Technical fouls: UTSA-None. Southern Miss-None.
Attendance: 1549

| Score by periods | 1st | 2nd | 3rd | 4th | Total |
|------------------|-----|-----|-----|-----|-----------|
| UTSA | 16 | 4 | 14 | 19 | 53 |
| Southern Miss | 11 | 26 | 11 | 17 | 65 |

| Points | In Paint | Off T/O | 2nd Chance | Fast Break | Bench |
|--------|----------|---------|------------|------------|-------|
| UTSA | 24 | 14 | 24 | 4 | 23 |
| USM | 24 | 13 | 12 | 4 | 25 |

Last FG - UTSA 4th-00:08, USM 4th-03:37.
Largest lead - UTSA by 5 1st-00:00, USM by 22 4th-06:08.
UTSA led for 04:47. USM led for 32:56. Game was tied for 02:17.

Score tied - 2 times.
Lead changed - 4 times.