



COLORADO STATE

BASKETBALL



2021-22 WOMEN'S BASKETBALL GAME NOTES

2021-22 SCHEDULE/RESULTS

Record: 5-1 | MW: 0-0

Home: 4-1 | Away: 1-0 | Neutral: 0-0

NOVEMBER (5-1)

3	CHADRON STATE (EXH)	W, 78-43
9	COLORADO CHRISTIAN	W, 77-42
12	NORTHERN COLORADO	W, 61-50
15	ORAL ROBERTS	W, 71-56
18	at Denver	W, 67-43
21	LIPSCOMB	W, 81-55
28	LOUISVILLE	L, 56-71

DECEMBER (0-0)

4	vs. Harvard-	3:30 p.m.
5	vs. UTSA-	2:30 p.m.
8	WEBER STATE	6 p.m.
12	CSU-Pueblo	12 p.m.
21	at Northern Illinois	5 p.m.
28	BOISE STATE*	6 p.m.

JANUARY (0-0)

3	at San Diego State*	7 p.m.
6	at Fresno State*	12 p.m.
9	SAN JOSE STATE*	12 p.m.
13	AIR FORCE*	11 a.m.
15	NEW MEXICO*	1 p.m.
19	at Utah State*	6 p.m.
22	at Boise State*	2 p.m.
27	NEVADA*	6 p.m.

FEBRUARY (0-0)

2	at New Mexico*	7 p.m.
5	at Air Force*	1 p.m.
9	UTAH STATE*	6 p.m.
12	at San Jose State*	3 p.m.
16	WYOMING*	6 p.m.
19	at Nevada*	3 p.m.
24	SAN DIEGO STATE*	6 p.m.
26	UNLV*	1 p.m.

MARCH (0-0)

2	at Wyoming*	6:30 p.m.
6-9	Mountain West Tournament	

Home games listed in **CAPS & BOLD** | Time in MT

* - MW Game | ~ - Arizona State Classic

GAME 7 & 8: COLORADO STATE RAMS (5-1, 0-0 MW) vs. ARIZONA STATE CLASSIC SAT./SUN., DEC. 4TH/5TH AT 3 P.M. MT | TEMPE, ARIZ. | DESERT FINANCIAL ARENA

TEAM COMPARISON

Category	Colorado State	Harvard	UTSA
PPG	68.8	70.4	56.6
Def PPG	52.8	73.0	73.2
FG%	.423	.405	.341
Opp. FG%	.350	.455	.405
3FG%	.382	.392	.204
Opp. 3FG%	.311	.394	.342
FT%	.776	.550	.700
Reb/G	38.0	34.6	43.6
Reb. Margin	+1.2	-7.8	+8.0
Assists/G	14.7	17.0	9.0
TO/G	9.7	14.3	24.6
Opp. TO/G	12.7	18.9	16.0
Steals/G	5.3	9.0	7.2
Blocks/G	4.7	3.0	3.2

ARIZONA STATE CLASSIC



SCHEDULE

Saturday, Dec. 4th

Game 1: Arizona State vs. UTSA, 1 p.m. MT

Game 2: Colorado State vs. Harvard, 3:30 p.m. MT

Sunday, Dec. 5th

Game 1: Arizona State vs. Harvard, 12 p.m. MT

Game 2: Colorado State vs. UTSA, 2:30 p.m. MT

OFF THE TIP

• A two-time Mountain West Coach of the Year and the winningest coach in program history, Ryun Williams enters his 10th season at the helm of the Colorado State women's basketball program in 2021-22. The win against Lipscomb marked the first time since the 2000-01 campaign that the Rams have started 5-0. The 5-1 November tied Williams' best Ram squad - the 2015-16 team that went 31-2 overall, winning the MW outright and advancing to the NCAA Tournament.

• For the first time since the 2016 Preseason WNIT, the Rams are headed to an in-season non-conference tournament. However, that 2016 tourney with Omaha, Washington and Nebraska wasn't played at a central location. Therefore, you have to go one more season back to the 2015 Navy Classic, involving Siena, Morgan State and Navy in Annapolis to find a true tournament format. The Rams defeated Navy in double overtime for the title with current overseas professional player, Ellen Nystrom, spraying a boxscore of 17 points, five rebounds, six assists, four steals and two blocks.

• This weekend's tournament isn't quite true either considering the matchups are already set. The Rams will face Harvard for the first-time ever and UTSA for the second time with the first occurring in 2008 when the Roadrunners won 67-58 in San Antonio. The Crimson were picked to finish fifth in the Ivy League Preseason Poll, while the Roadrunners were picked last in the 14-team Conference USA.

• Last time out, the Rams hosted 10th-ranked Louisville for CSU's first non-conference ranked matchup since 2004 when No. 8 UCONN visited Moby Arena. A lopsided first quarter of 24-10 carried the Cardinals to the eventual 71-56 win. However, the Rams were just outscored by five points the rest of the way. The Bigs, Sydney Mech, Karly Murphy, and Cali Clark, led the Rams in scoring with 12, 12, and 10, respectively, while guards McKenna Hofschild and Upe Atosu were kept at bay.

• The Preseason Mountain West awards pinned the Rams to finish fourth in the 11-team conference. Hofschild was named to the five-person All-MW team. The Prior Lake, Minn, native started every game last season, averaging 13.4 points and led the MW in assists with 5.4 per game en route to being named the MW Newcomer of the Year and earn an All-MW nod.

A Colorado State Weekend Sweep Would Mean...

• The second straight season that CSU has started off 7-1 and third time overall for Ryun Williams, counting the 2015-16 squad.

PROJECTED COLORADO STATE STARTERS



#4	#5	#24	#0	#42
McKenna Hofschild Jr. G	Upe Atosu Gr. G	Sydney Mech R-Jr. G/F	Kendyll Kinzer Jr. F	Karly Murphy Gr. F
MPG: 32.9	MPG: 27.7	MPG: 31.2	MPG: 27.2	MPG: 21.4
PPG: 13.3	PPG: 11.3	PPG: 7.0	PPG: 8.5	PPG: 11.3
FG%: .409	FG%: .434	REB: 2.8	FG%: .500	REB: 9.0
3FG%: .444	3FG%: .375	FG%: .500	3FG%: .407	FG%: .429
APG: 5.0	APG: 1.5	BPG: 2.8	RPG: 5.2	FT%: 1.000

PRESS BOX - GM 7 & 8 AT ARIZONA STATE CLASSIC

Live Stats: Saturday : csura.ms/3rw0zpe

Sunday : csura.ms/3dcbyfw

Live Stream: N/A

Radio: Saturday The X 94.3

Sunday KARS 102.9 | csura.ms/Listen

ON-AIR Talent: Matt Wozniak

Colorado State Athletics:

Austin Hannon | Communications Coordinator

404-861-8787 | Austin.Hannon@colostate.edu

2021-22 ROSTER



2021-22 Colorado State Rams

Front (L-R): Upe Atosu, Bengisu Alper, McKenna Hofschild, Petra Farkas, Anna Prim

Back (L-R): Jess Moors, Clara Gomez, Sydney Mech, Cali Clark, Kendyll Kinzer, Karly Murphy, Makayla Hemingway

NUMERICAL ROSTER

NO	NAME	HT	POS	YR	HOMETOWN (LAST SCHOOL)
0	Kendyll Kinzer	6-1	F	Jr.	Lewiston, Idaho (Fresno State/Lewiston HS)
3	Jess Moors	6-0	F	Fr.	Auckland, New Zealand (Westlake Girls HS)
4	McKenna Hofschild	5-5	G	Jr.	Prior Lake, Minn. (Seton Hall/Prior Lake HS)
5	Upe Atosu	5-9	G	Gr.	Edo State, Nigeria (Butler/Scholars Imperial)
11	Petra Farkas	5-10	G/F	Jr.	Kecskemet, Hungary (Coll. of Southern Idaho/Kecskemet TE)
12	Clara Gomez	6-1	F	Fr.	Sabadell, Spain (Segle XXI)
22	Cali Clark	6-3	F	Soph.	Centennial, Colo. (Cherry Creek HS)
23	Anna Prim	5-6	G	Fr.	Lleida, Spain (Segle XXI)
24	Sydney Mech	6-2	G/F	RS-Jr.	Englewood, Colo. (Denver/Cherry Creek HS)
32	Makayla Hemingway	5-11	G/F	Soph.	Aurora, Colo. (Cherokee Trail HS)
33	Bengisu Alper	5-11	G	RS-Jr.	Istanbul, Turkey (Maine/Florya Doga Anataolian - Fenerbahce S.K.)
42	Karly Murphy	6-1	F	Gr.	River Falls, Wisc. (Wisconsin-Green Bay/River Falls HS)

Head Coach: Ryun Williams (10th Season/South Dakota '92)

Assistant Coaches: Rico Burkett (North Dakota '93/Fourth Season)
Amber Cunningham (South Dakota '12/Sixth Season)
Kyley Bachand (Illinois '15/First Season)

Pronunciation Guide

Bengisu Alper	Ben-Ge-Su AL-Per
Upe Atosu	EW-PAY AH-TAW-SU
Anna Prim	ON-NA
Clara Gomez	CLAW-RA
McKenna Hofschild	HOF-SHIELD
Sydney Mech	MECK
Kyley Bachand	Ba-Sean

2021-22 QUICK SHEET



#0 KENDYLL KINZER | JR. | F

2021-22 Season Stats

MPG	PPG	FG%	3FG%	RPG	ASST
27.2	8.5	.500	.407	5.2	16

Highlights

- In her two years as a Bulldog, she played 52 of 60 games, accumulating the team's second-most threes made in the span at 59.
- Ranked second on Fresno State in made 3-pointers (32) in 2020-21, 10 multi 3 games
- Has played in each of the last two Mountain West Championship Tournament games



#3 JESS MOORS | FR. | F

2021-22 Season Stats

MPG	PPG	Blocks	Assists	FG%	3FG%
5.3	0.5	1	2	.333	.000

Highlights

- For New Zealand, she has played on U-16, U-17, and U-19 national teams
- Played club for NZ WNBL North Harbour Breeze that won back-to-back titles in the U19 League and the women's NBL
- Older brother, James, is a sophomore on the CSU men's basketball team



#4 MCKENNA HOFSCILD | JR. | G

2021-22 Season Stats

MPG	PPG	APG	FG%	3FG%	FT%
32.9	13.3	5.0	.409	.444	.824

Highlights

- Named Preseason All-Mountain West
- Reigning All-MW Newcomer of the Year and was named to All-MW Team
- Led the conference with 5.4 apg, which also was 19th in the NCAA last season
- Three 20+ scoring games and 15 double-digit scoring games



#5 UPE ATOSU | GR. | G

2021-22 Season Stats

MPG	PPG	APG	RPG	FG%	3FG%
27.7	11.3	1.5	1.7	.434	.375

Highlights

- Practiced with the Nigerian women's national team in Las Vegas and was in attendance for the men's national team win over USA basketball in an exhibition on July 10, 2021
- Started all 15 games last year for Butler, scoring in double figures eight times
- Prior to Butler, she played two seasons at Labette Community College



#11 PETRA FARKAS | SR. | G/F

2021-22 Season Stats

MPG	PPG	RPG	SPG	FG%	3FG%
19.7	5.0	2.3	1.3	.290	.360

Highlights

- Appeared in 20 games last season, starting four and scoring in double digits three times
- Prior to CSU, played at College of Southern Idaho, earning NJCAA Honorable Mention All-America.; Tabbed Region 18 Player of the Year
- Played on U16, U18, and U20 for Hungary National Team



#12 CLARA GOMEZ | FR. | F

2021-22 Season Stats

MPG	PPG	Steals	FG%	3FG%	FT
3.6	0.0		.000		

Highlights

- Played club for Segle XXI in the Spain-LF2 League with teammate Anna Prim
- In 2019-20, played in 20 games, averaging 10.6 minutes per game, 2.5 rpg, and 1.6 ppg
- Has competed nationally for Spain in several FIBA 3x3 tournaments with Spain teammates now competing in NCAA



#22 CALI CLARK | SOPH. | F

2021-22 Season Stats

MPG	PPG	RPG	FG%	3FGM	Blocks
15.9	7.5	6.0	.567	3-4	7

Highlights

- Joined Ellie Boni as first two true freshmen starters in season opener since 2013-14
- Started 11 of 20 games played last season, tallying five double-digit scoring games
- Seven games with at least seven rebounds; Season-best nine boards at Boise State
- Played club for Colorado Basketball Club Elite GUAA U 17 squad with Makayla Hemingway



#23 ANNA PRIM | FR. | G

2021-22 Season Stats

MPG	PPG	RPG	Assists	FG%	3FG%
8.3	2.8	0.5	6	.600	.500

Highlights

- Played club for Segle XXI in the Spain-LF2 League with teammate Clara Gomez
- Aided Spain to a second-place finish in Group C at the 2021 FIBA U18 Challengers, averaging 5.8 ppg and 3.2 apg in 18.2 mpg
- Helped Spain get third place at 2019 FIBA U16 Women's European Championship



#24 SYDNEY MECH | RS-JR. | G/F

2021-22 Season Stats

MPG	PPG	RPG	Blocks	APG	FG%
31.2	7.0	2.8	14	1.4	.500

Highlights

- Appeared in 13 games, starting five last season
- Seven blocks against SDSU was second-most in CSU single game history
- Sat out 2019-20 due to transfer rules after coming from Denver
- Saw action in 19 games at Denver, while making 10 starts; most minutes by a freshman



#32 MAKAYLA HEMINGWAY | FR. | G/F

2021-22 Season Stats

MPG	PPG	BPG	RPG	FG%	3FG%
4.7	1.3	0.3	1.3	.250	.200

Highlights

- Played a season-high 11 minutes in the 2020 season opener against Regis, scoring a season-best five points with two blocks and two steals - also season-highs
- Helped the Cougars to the sweet 16, losing to Cali Clark's Bruins
- Led CTHS in five categories: (15.5 ppg), (6.4 rpg), (3.8 apg), (3.4 spg) and blocks (1.1 bpg)



#33 BENGISU ALPER | RS-SOPH. | G/F

2021-22 Season Stats

MPG	PPG	RPG	APG	FG%	3FG%
12.0	2.0	2.0	0.5	.200	.167

Highlights

- Appeared in 19 games last season with a season-high 16 minutes vs. Denver
- Had five games with over 10 minutes of playing time
- Prior to joining CSU, she played her freshman year at Maine; Sat out 2019-20 with Mech
- Has competed in Turkish National games



#42 KARLY MURPHY | GR. | F

2021-22 Season Stats

MPG	PPG	RPG	Steals	FG%	FT%
21.4	11.3	9.0	4	.429	1.000

Highlights

- Appeared in 16 games, starting seven last season with eight double-digit scoring games
- Missed five games with an injury
- Grabbed at least five rebounds in a game 13 times, including four double-digit games
- Graduated from Wisconsin-Green Bay with bachelor's degree in Business Administration

COLORADO STATE



UNDER ARMOUR

STATE



UNDER ARMOUR



HEAD COACH

RYUN WILLIAMS

10th Season | 176-105 (.626)

Accolades

- Five Mountain West championships (2013-14, 2014-15, 2015-16*, 2016-17)
- Two-time Mountain West Coach of the Year (2016; 2014)
- Five postseason appearances, including the 2015-16 NCAA Tournament
- 2014 Russell Athletic/WBCA NCAA Division I Regional Coach of the Year award
- Five 20-win seasons
- Colorado State's winningest coach

Team Highlights

- Program record consecutive home wins: 22 at Moby Arena (2015-17)
- Program record win streak: 28 in 2015-16
- Program record road win streak: 12 in 2015-16
- 2016 NCAA Tournament appearance and national ranking of No. 22
- Mountain West single season win record: 31-2 (.939) in 2015-16, also second-highest in CSU history
- Undefeated home season: 15-0 in 2015-16; CSU's second-time ever (1998-99),
- Undefeated MW season: 18-0 in 2015-16; the third team all time in Mountain West play but first since expanding to an 18-game schedule

-Nation's third-best turnaround of his first season to second season: 11-19 (.367) in 2012-13 (.367) to a 25-8 (.758) record in 2013-14.

Players Highlights

- Three MW Player of the Year Awards
- 17 All-MW Team awards, 7 All-Defensive Team, 2 All-Freshman Team, 1 Sixth Player of the Year, 1 Newcomer of the Year
- 78 Academic All-Conference Awards, including 27 Scholar-Athlete awards

Personal

-A native of Gillette, Wyo., Williams earned his associate's degree from Sheridan in 1990, his bachelor's degree from South Dakota in 1992 and his master's degree from South Dakota in 1997. Williams and his wife, Lyndy, have two daughters, Natalie and Emily.

Playing Career

- Campbell County High School; Named Mr. Basketball for state of Wyoming in 1988
- Sheridan College 1988-90; All-Region IX as a sophomore
- South Dakota 1990-92; All-NCC selection

HEAD COACHING EXPERIENCE

Year	School	Record (%)	Conf. Rec.	Conf. Finish	Postseason
1995-96	Sheridan College	7-21	N/A	N/A	--
1996-97	Sheridan College	19-12	N/A	N/A	--
1997-98	Sheridan College	28-5	N/A	N/A	--
Three seasons		54-38 (.587)	N/A		--
1998-99	Wayne State	15-12	N/A	N/A	--
1999-00	Wayne State	19-9	14-4	4th	--
2000-01	Wayne State	18-9	12-6	4th	--
2001-02	Wayne State	12-15	9-9	7th	--
2002-03	Wayne State	17-11	11-7	5th	--
2003-04	Wayne State	13-15	6-10	7th	--
2004-05	Wayne State	20-11	7-7	6th	--
2005-06	Wayne State	27-4	13-1	1st	NCAA DII First Round
2006-07	Wayne State	19-10	11-7	4th	--
2007-08	Wayne State	22-10	12-6	2nd	NCAA DII Regional Semifinal
10 seasons		182-106 (.632)	95-57		Two Appearances
2008-09	South Dakota	18-11	N/A	N/A	--
2009-10	South Dakota	15-16	6-6	4th	--
2010-11	South Dakota	20-12	10-2	2nd	WBI Second Round
2011-12	South Dakota	23-8	12-6	3rd	WNIT Second Round
Four seasons		76-47 (.618)	28-14		Two Appearances
2012-13	Colorado State	11-19	7-9	6th	--
2013-14	Colorado State	25-8	15-3	1st	WNIT First Round
2014-15	Colorado State	23-8	15-3	1st	WNIT First Round
2015-16	Colorado State	31-2	18-0	1st	NCAA First Round
2016-17	Colorado State	25-9	15-3	1st	WNIT Second Round
2017-18	Colorado State	21-12	11-7	T-4th	WNIT Second Round
2018-19	Colorado State	8-22	2-16	11TH	--
2019-20	Colorado State	12-18	6-12	10th	--
2020-21	Colorado State	15-6	11-5	3rd	--
2021-22	Colorado State	5-0			
Nine seasons		176-105 (.626)	100-58		Five Appearances
TOTALS	24 seasons	488-296 (.622)			Nine Appearances

RAMS NOTEBOOK

What to Watch For Vs. Harvard?

- CSU Scoring Defense (52.8; #1 in MW) vs. HU Scoring Offense (70.4; #2 in Ivy)
- CSU FG Percentage (.423; #3 in MW) vs. HU FG Percentage Defense (.455; #8 in Ivy)
- CSU 3FG Percentage (.382; #2 in MW) vs. HU 3FG Percentage (.392; #1 in Ivy)
- Battle of the Guards: CSU's McKenna Hofschild vs. HU's McKenzie Forbes, formerly at Cal

What to Watch For Vs. UTSA?

- CSU Scoring Defense (52.8; #1 in MW) vs. UTSA Scoring Offense (56.6; #14 in C-USA)
- CSU Scoring Offense (68.8; #4 in MW) vs. UTSA Scoring Defense (73.2; #14 in C-USA)
- CSU Reb Margin (+1.17; #4 in MW) vs. UTSA Reb Margin (+8.0; #3 in C-USA)
- Battle of the Guards: CSU's McKenna Hofschild vs. UTSA's LaPraisjah, formerly at Nevada

Protecting the Rock Better Than ALL

- The Rams lead the NCAA in turnovers per game at 9.7. CSU's assist to turnover ratio is also third in the country at 1.52. Last season, CSU finished second and fifth, respectively, in those two categories nationally. This season the Rams have had the same or less turnovers than their opponent in five of six games. Also, CSU has only one game with double-digit turnovers (16 vs Oral Roberts).

From the Line

- Last season, Ryun Williams' squad ranked 19th in the nation in free-throw percentage at 76.3%, which also went down as the second-best percentage in CSU history. Picking up where they left off, CSU is 59 for 76 (77.6%) from the charity strike thus far. Karly Murphy is a perfect 14-of-14, while McKenna Hofschild is 14-of-17. The Rams are fourth in the Mountain West in FT% and 29th in the country.

Early Defensive Trends

- Outside of the Louisville game, the Rams have held all their opponents to 60 points or less and under 35% shooting. CSU boasts the conference's No. 1 scoring defense (52.8 ppg) that checks in at No. 28 nationally. The Rams are No. 1 in field goal defense (35.0%) for the Mountain West. The 28 blocked shots are second best in the conference with Sydney Mech leading the efforts with 14 blocks that is second in the conference.

Hofchild's Week

- McKenna Hofschild was named Mountain West Player of the Week after averaging 19 points per game and leading CSU to three wins in the week before Thanksgiving. The three-game stretch in which Hofschild scored 57 points is the second-best three-game total from the junior guard who notched 61 points in a trio of games last season that coincidentally earned her MW PoW Week honors (1/11/21) too. She dropped a career-best 27 on Denver.

Finding the Right Group

- It did not take long for the Rams to solidify their starting five. Three different starting lineups occupied the first three games, but the Rams have now gone four straight games with the same starting five. The three constants who have started each game are Hofschild, Atosu and Kinzer. Mech did miss the opener due to injury precaution. More on this on page nine.

Rams Needing Moby Arena Love

- Prior to the season opener, not a single Ram on the 2021-22 roster had played a regular-season home game in front of fans at Moby Arena, which was a span of 623 days. Ironically, junior Kendyll Kinzer was the only outlier as she played in a fan-filled Moby Arena when she was playing for Fresno State.

Threes Galore

- The Rams breezed past Lipscomb, 81-55, by draining 16 threes - the fourth-most total in school history. McKenna Hofschild and Petra Farkas each sunk five each with the latter obtaining a career-best 15 points. Upe Atosu set the tone early with 10 points in the second quarter and 16 at the half - both team-high for the season - before finishing with a season-best 21 points.

Rams Pinned to finish fourth in Mountain West Preseason Poll

- The preseason Mountain West Awards were released on Wednesday, Oct. 13. In Williams' nine years, he has four first-place finishes, a third-place finish, a fourth place, a sixth place, a 10th place and 11th place.

PREDICTED ORDER OF FINISH (first place votes):

Team (First-Place Votes)	Points
1. Fresno State (13)	269
2. New Mexico (7)	251
3. UNLV (3)	232
4. Colorado State (1)	207
5. Wyoming	190
6. Boise State	166
7. San Diego State	135
8. Nevada	123
9. San Jose State	105
10. Air Force	62
11. Utah State	42

STATISTICAL RANKINGS

SELECT TEAM CATEGORIES (2021-22)

As of 12/3

STAT	NCAA	MW	VALUE
Assist/TO Ratio	3	1	1.52
Assists	167	5	88
Assists/G	98	3	14.7
Blockeds	78	2	28
Blocks/G	46	1	4.7
Def. Rebs/G	10	1	31.2
Fewest Fouls	6	2	64
Fewest TO	3	1	58
FG%	111	3	42.3
FG% Def	53	1	35
FTA	304	11	76
FTM	262	10	59
FT%	29	4	77.6
Personal Fouls/G	2	2	10.7
Reb Margin	161	4	1.2
Rebounds	228	10	228
Rebounds/G	158	5	38
Scoring Defense	28	1	52.8
Scoring Margin	51	1	16
Scoring Offense 120	4	68.8	
Steals	331	11	32
Steals/G	333	11	5.3
3FG Def.	206	6	31.1
3FGA	132	6	136
3FGM	62	4	52
3FGM/G	32	2	8.7
3FG%	26	2	38.2
TO Margin	94	3	3
TO Forced	331	10	12.67
TO/G	1	1	9.7

SELECT PLAYER CATEGORIES (Top 100)

STAT	NCAA	MW	VALUE
McKenna Hofschild			
Assists	85	3	30
Assists/G	48	3	5.0
Assist/TO	68	3	2.31
3FG%	47	3	44.4
Sydney Mech			
Blocked Shots	36	2	14
Blocked/G	15	1	2.8
Karly Murphy			
Defensive Reb./G	26	2	7.3
Rebounds Per Game	72	2	9.0

RAMS NOTEBOOK

Williams Defeats DU for Ninth Time

• In head coach Ryun Williams' first matchup against Denver on 12/20/12, the Pioneers got the win. Ever since it has been all CSU and all Williams. In the 2021 edition, the Rams breezed past DU, 67-43, on the back of McKenna Hofschild and the defense collectively. Hofschild poured in a career-best 27 points on 9-of-16 shooting with four 3-pointers. Defensively, CSU held its third opponent to under 50 points and second opponent to shoot less than 30% from the floor. The Pioneers' scoring leader, Meghan Boyd, went scoreless and fellow senior guard, Anna Jackson, to just two points. The explosive 22-8 third quarter broke it open.

Blocks Lead to Win over Oral Roberts

• Entering the fourth quarter, ORU trailed by five, but CSU won the quarter 19-11. For the third-straight game, four Rams finished with double-digit scoring marks led by Karly Murphy's second straight double-double. The Rams collected 11 swats for the fourth-highest total in history with Sydney Mech notching eight for the second-most all-time individually.

Rams Win the Battle vs. the Greeley Opponent

• CSU overcame a 10-point halftime deficit to defeat Northern Colorado. The Rams outscored the Bears 41-20 in the second half. For the second-straight game four Rams scored in double digits. Karly Murphy had a team-high 14 points, while adding 13 rebounds for her fifth-career double-double. Head coach Ryun Williams improved to 7-2 against UNC.

Season Opener vs. Colorado Christian, 77-42

• The Rams dominated the ratio in points from turnovers (24-2), points in the paint (32-8), fast break points (22-3) and bench points (36-16). Eight Rams scored at least five points with four reaching double digits. Freshman Anna Prim had 14 points, becoming the first frosh to lead the team in scoring for a season opener since Lore Devos' 25 in 2017. CSU tallied 24 assists led by Hofschild's 10 -- tying her career-best mark. Last season, CSU had two games with at least 20 assists.

Back to a Normal November & Non-Conference Hustle

• Last year, the Rams played three games in the opening month of play. This year, CSU has six games on the docket for November. Then in the first week of December, CSU goes to their first non-conference tournament played at a neutral site since the Navy Classic in 2015. For the Arizona State Classic, CSU will play Harvard and UTSA.

Exhibition

• All 12 Rams played at least eight minutes apiece and no Ram played over 27 minutes in the 78-43 win over Chadron State. The guards, Hofschild and Atosu, shared the team high in scoring with 12, while Cali Clark (10), Kendyll Kinzer (10) and Bengisu Alper (11) all reached double digits. Hofschild was the team's leading rebounder with six in what was a tied rebounding battle for the teams at 33-all. She also tacked on a team-best five assists, which is a category she led 16 times last season for the team.

Returners

• This 2021-22 Rams return seven student-athletes and two starters from last season's squad. Junior McKenna Hofschild and sophomore Cali Clark account for the two starters, but low post players Karly Murphy and Sydney Mech combined to start 12 games last season and will solidify the Rams in the front court. The other three returners include Petra Farkas, Bengisu Alper and Makayla Hemingway.

Newbies

• New to the Rams' locker room are freshmen Anna Prim, Clara Gomez and Jess Moors in addition to transfers Kendyll Kinzer and Upe Atosu. Moors' is the younger sister of James Moors who is a sophomore on the CSU men's basketball team. Prim and Gomez both hail from Spain and were teammates before on their club team. Kinzer is a familiar face in the conference coming from Fresno State, while Atosu is a graduate transfer from Butler.

Class of 2021 - Freshmen

• On November 15th, 2020, Ryun Williams announced three Rams (Kylee Arzner, of McMinnville, Ore.; Anna Prim of Lleida, Spain; and Clara Gomez of Sabadell, Spain) for the 2021 class. "I couldn't be more excited about this group," Williams said. "All three of these players bring a very competitive nature and skill sets that will really add to the current roster. They are exceptional young women with extremely high character and are very conscientious students."

• Prim and Gomez are from the same Spanish team - Segle XXI - in Barcelona. At 5'6", Prim finished with 7.2 points, 2.4 rebounds, and 1.9 assists in 22 minutes per game last year, while Gomez, a 6-foot forward, came off the bench, contributing 2.5 rebounds and 1.6 points in 10.6 mpg. Since 2018-19, Segle XXI has produced a dozen college players.

• Prim helped Spain to a third place showing in the 2019 FIBA U-16 European Championships, where she averaged 8.7 points, 3.1 rebounds, 3 assists and 1.6 steals per game. She was on Spain's roster for the 2020 FIBA U17 Skills Challenge for another bronze finish. In the last four years, both Prim and Gomez has played in numerous FIBA 3v3 tournaments, including one together in which they finished fourth place. Prim's best finish was runner-up when she teamed up with Nerea Hermosa now of Georgia Tech. Gomez's best finish was also runner-up with Aixa Wone of Ohio State.

• Arzner opted out of attending Colorado State earlier this fall.

Ram Departures

• Eight student-athletes departed the Rams over the offseason. Lore Devos, Lauren Brocke, Jamie Bonnarens, Tori Williams and Liah Davis each collected degrees and moved on to their next step in life. Devos is playing overseas, while Bonnarens is using her last season of eligibility at SF Austin. Ellie Boni opted to continue her career at San Jose State, so we'll see her down the road. Maria Torres, Alexis Eberhardt and Katia Stamatelopoulos as of now have retired.

THE RAMS RECORD WHEN...

	2021-22	WILLIAMS
At Home	4-1	111-35
On the Road	1-0	57-52
On Neutral Court		9-14
Playing on Monday	1-0	3-4
Playing on Tuesday	1-0	16-8
Playing on Wednesday		51-28
Playing on Thursday	1-0	14-10
Playing on Friday	1-0	20-5
Playing on Saturday		52-30
Playing on Sunday	1-1	20-15
Playing during the day	1-1	83-42
Playing at night	4-0	94-54
Playing in November	5-1	33-20
Playing in December		38-20
Playing in January		48-21
Playing in February		40-21
Playing in March		17-18
An overtime game		9-6
Leading at the half	4-0	136-17
Tied at the half		3-5
Trailing at the half	1-1	35-78
Scoring 60 or fewer points	0-1	43-76
Scoring 61-70 points	2-0	55-20
Scoring 71-80 points	2-0	40-4
Scoring 81-90 points	1-0	26-1
Scoring 91 or more points		13-0
Allowing 60 points or less	5-0	131-34
Allowing 61-70 points		29-28
Allowing 71-80 points	0-1	12-34
Allowing 81-90 points		3-4
Allowing 91 or more points		1-1
Shooting higher fg%	5-0	157-26
Shooting .350 or below		13-45
Shooting .351-400	0-1	41-34
Shooting .401-450	5-0	56-12
Shooting .451-500		38-8
Shooting above .500		27-0
Allowing less than .350	5-0	113-20
Allowing .351-400		33-30
Allowing .401-450		23-22
Allowing .451-500		7-19
Allowing above .500	0-1	0-7
Shooting higher 3-pt fg%	4-0	126-27
Shooting .300 or higher 3-pt %	5-1	122-45
Allowing .300 or higher 3-pt %	2-1	67-69
Shooting higher free-throw %	4-0	108-37
Making more free throws	5-1	100-33
Making less free throws		78-62
Free throws are equal		8-5
Outrebounding opponent	4-0	99-8
Being outrebounded	1-1	68-91
Rebounds are equal		8-2
Recording more assists	5-0	142-21
Recording more steals	4-1	113-41
Blocking more shots	3-0	129-53
Recording fewer turnovers	3-1	124-45
When CSU scores first	3-0	100-43
When opponent scores first	2-1	74-58

THE LAST TIME...

INDIVIDUAL

Player scores 20 points:

- 21, Upe Atosu vs Lipscomb (11/21/2021)

Player scores 30 points:

- 30, Tori Williams vs. Regis, 11/25/20

Player scores 40 points:

- 41, Sara Hunter vs USF, 11/13/07

Two or more players score 20 points:

- 22, Elin Gustavsson, 20, Ellen Nystrom vs. Utah State; 1/21/17

Player grabs 15 rebounds:

- 23, Annie Brady vs. San Jose State, 1/11/20

Player grabs 20 rebounds:

- 23, Annie Brady vs. San Jose State, 1/11/20

Player records a double-double:

- 18p, 13r; Karly Murphy vs. Oral Roberts 11/15/2021

Player records a triple-double:

- 11p-14r-10a, Ellen Nystrom vs. San José State, 1/8/14

Two players record double-doubles in game:

- 10pt-10reb, Tori Williams; 23pt-12reb, Lore Devos; vs. San Diego State (12/10/20)

Three players record double-doubles in game:

- 17p-10r; Sam Martin; 16p-11r; Elin Gustavsson; 10p-14a, Gritt Ryder vs. Utah State, 1/15/14

Player records 10 assists:

- 10, McKenna Hofschild vs Colorado Christian 11/9/21

Player blocks five shots:

- 8, Sydney Mech vs.Oral Roberts 11/15/2021

Two players record 10 rebounds:

- 10pt-10reb, Tori Williams; 23pt-12reb, Lore Devos; vs. San Diego State (12/10/20)

Three players record 10 rebounds:

- 11, Elle Queen; 11, Juanise Cornell; 10, Carine Reimink vs. USF, 11/13/07

Five players record double figures in scoring:

- See below

Six players record double figures in scoring:

- 14 Clark, 13 Williams, 11 Hofschild, 12 Devos, 10 Farkas, 13 Murphy, vs. Utah State, 1/22/21

TEAM

100 points or more in a game:

- Nov. 25, 2020; Colorado State 111, Regis 64

50 points or less in a game:

- February 27, 2020; Colorado State 44, USAFA 49

Opponent scores 100+ points in a game:

- Nov. 14, 2016; Colorado State 68, No. 17/15 Washington 101

Opponent scores 35 or fewer points in a game:

- Nov. 16, 2017; Colorado State 75, Eastern New Mexico 35

Opponent shoots 25% or less from the field:

- Dec. 1, 2019; Colorado State 52, Chadron State 40 (.246)

Game over 60% from the field as a team:

- Dec. 29, 2018; Colorado State 81, Chadron State 38

Overtime victory:

- Dec. 10, 2020; CSU 84, SDSU 77 2OT

Overtime loss:

- Feb. 24, 2020; San Diego State 64, Colorado State 61 (OT)

Double-overtime game:

- Dec. 10, 2020; CSU 84, SDSU 77 2OT

Triple-overtime game:

- March 14, 2014; CSU 95, Wyoming 92

Game without a 3-pointer:

- Dec. 31, 2011 vs. Bowling Green

RAMS NOTEBOOK

Rams' Defensive Prowess

- In Ryun Williams' nine seasons, the Rams have registered four top-20 final rankings in field goal percentage defense. At one period of time, the Rams have ranked as high as second in the nation.
- CSU has not been below third in the category within the Mountain West since Williams has been at the helm.
- [Colorado State's NCAA Rank in Field Goal Percentage Defense Under Ryun Williams](#)

2020-21 - 90th (.384) (3rd in MW)

2019-20 - 81st (.380) (1st in MW)

2018-19 - 36th (.367)(1st in MW)

2017-18 - 9th (.351) (1st in MW)

2016-17 -5th (.339) (1st in MW)

2015-16 - 2nd (.330) (1st in MW)

2014-15 - 15th (.354) (1st in MW)

2013-14 - 48th (.375) (1st in MW)

2012-13 - 54th (.363) (2nd in MW)

Reminder on Last Season

- Colorado State entered the 2021 MW Basketball Tournament as the No. 3 seed - its highest position since 2017. The Ram team was a far cry from the 2019-20 squad that averaged 60.6 points and concluded 12-18 overall. Williams led the Rams to a 15-6 overall record and represented the No. 3 scoring offense and No. 5 scoring defense in the conference. Additionally, the Rams held the top spot in the statistical categories of 3FG%, defensive reb/g and least turnovers/g. Individually, guard McKenna Hofschild led the MW in assists/g and A-to-TO ratio, while Karly Murphy was tops in offensive reb/g with 3.44.
- Hofschild was named Newcomer of the Year after spending her freshman season at Seton Hall. She joined Ashley Augspurger (1999-00) as the only Rams to receive the honor. Hofschild also earned All-MW honors in addition to Lore Devos who picked up her first career conference accolade.
- The Rams swept five opponents including four in the MW (SDSU, USU, BS and UW) - a feat last done in 2015-16 when CSU went 31-2 overall and 18-0 in MW play. That year, Ryun Williams' Rams won the MW regular-season title and the MW tournament before advancing to the NCAA tournament.
- Pace and scoring was the biggest change as the Rams scored over 70 points in 14 of 21 games, easily surpassing 2019-20's six. The last time CSU had 14 games over 70 points was 1998-99 - the 2nd-highest scoring team (79.22 ppg) in CSU history. The Rams finished with an average 77.6 ppg for third in the MW, 16th in the nation and fifth all-time at CSU.
- The Rams were eighth in the nation in asst/turnover ratio (1.38), while leading the MW in the category. CSU's 285 assists and 14.2 apg were third and fourth in the MW, respectively. CSU tied or outassisted their opponent in all but six games. The Rams tallied a season-high 24 assists against Denver at home.
- The season saw its first tip-off on Nov. 25th, marking the latest beginning of a season since 1975-76's December 3rd. The 21 games was the lowest total games played since 1977-78, which completed at 19 games.
- The altered MW schedule featured 10 two-game series with five home dates and five away opponents. The plan reduced the regular season travel schedule by four weeks to help mitigate potential virus exposure. With cancellations in the final week of the season, the Rams had to play four games in seven days.

New Marks in the Record Book

- The Media Guide will be provided soon. It just needs some final touches on it. If you have a question or need to research a stat that is missing then contact myself, Austin Hannon. If you're reading this far into the notes I applaud you and thank you. They will get better each game.
- Free Throw - Game Percentage - Karly Murphy vs. Regis (11/25/20) 1.000 (10-10) | Tied first
- Three-Point Field Goals - Game - Made - Tori Williams vs. Regis (11/25/20) 8 (8-10) | Tied first
- Blocks - Game - Sydney Mech vs. San Diego State (12/10/20) 7 | Tied Second
- Team Scoring - Offense - Points Per Game - 2020-21, 77.6 ppg | Fifth
- Team Scoring - Offense - Game -111 points vs. Regis (11/25/20) | Third
- Team - Free Throw Season Percentage - Season - 2020-21, .763 | Second
- Team - Free Throw Season Percentage - Game - vs. Boise State (1/27/21) , 1.000 (16-16) | Tied First
- Team -3-Point FG Season Percentage - 2020-21, .383 | Second

Notes on the Ball Coach

- Ryun Williams has won 100 conference games, by far the most in program history. Former CSU head coach Tom Collen is the closest with 56 conference wins.
- Williams also ranks in the top 10 in Mountain West history in terms of win percentage in conference games (63.3 percent, 100-58).
- Ryun Williams' 10th season as CSU basketball coach makes him the longest-tenured head coach in program history. Greg Williams served as head coach for seven seasons from 1990-97
- Williams was not in attendance on the sidelines during the season's opening two games due to COVID-19 contact tracing in 2020-21. The week up-to and after the games, Williams delivered messages through zoom. Nevertheless, the wins get credited to Williams and the CCU win marked No. 100 for inside Moby Arena. During the contests, assistant coach Rico Burkett acted as head coach.

Mountain West Head Coach 100-Win Club in Conference Play

1.	Joe Legerski	Wyoming	2003-2019	159-103	.607
2.	Elaine Elliott	Utah	1999-2010	130-34	.793
3.	Don Flanagan	New Mexico	1999-2011	114-66	.633
4.	Kathy Olivier	UNLV	2008-2020	106-98	.520
5.	Gordy Presnell	Boise State	2011-Present	108-64	.628
6.	Ryun Williams	Colorado State	2012-Present	100-58	.633

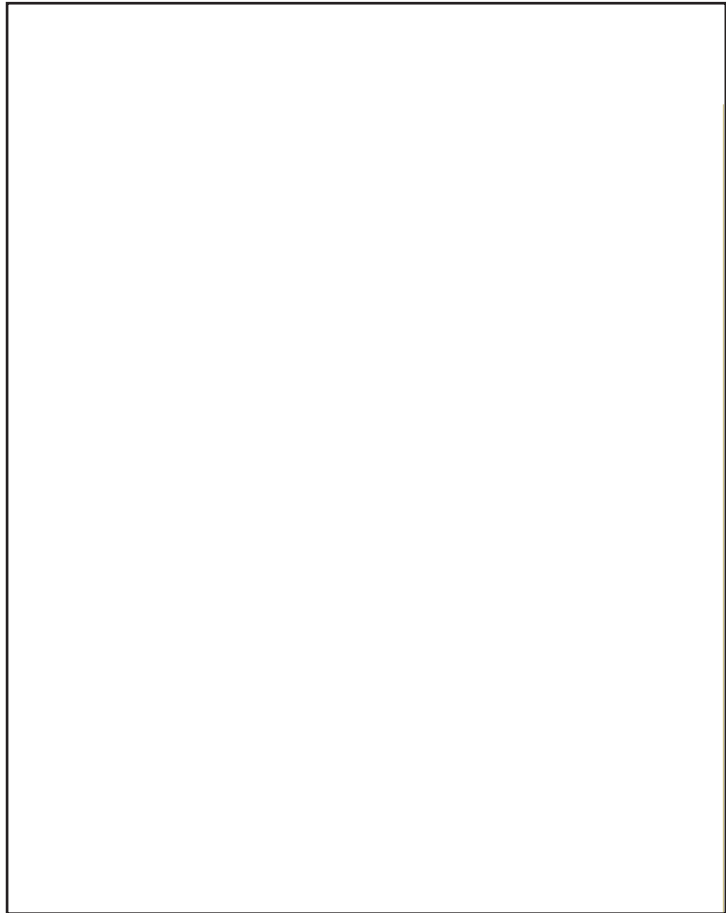
PREVIOUS MATCHUPS

SERIES HISTORY

UTSA		
Overall: 0-1		
Home: 0-0 Away: 0-1 Neutral: 0-0		
12/29/08	L 58-67	San Antonio

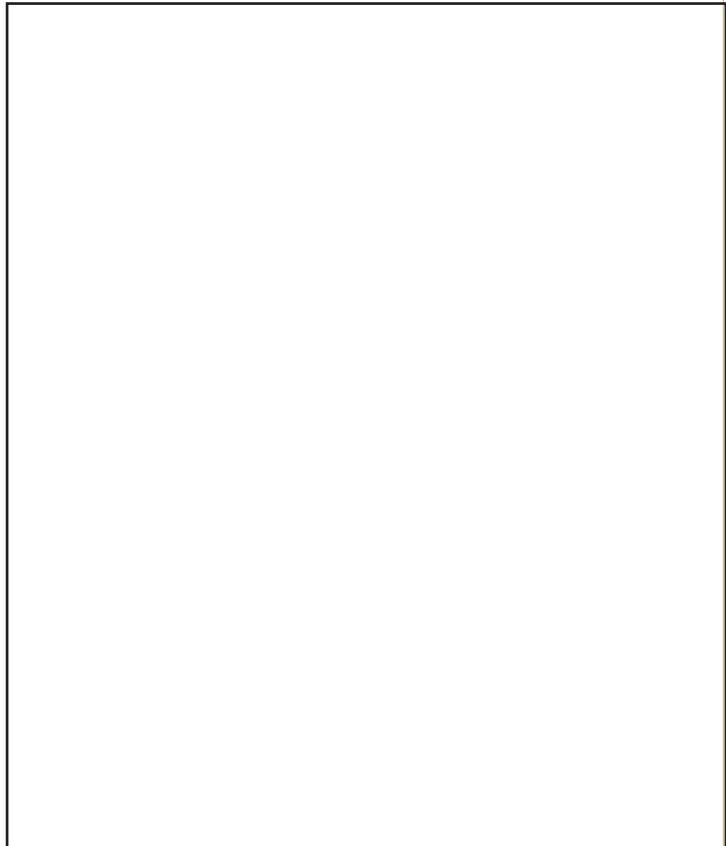
PREVIOUS TWO MATCHUPS

**Boxscore
Not Found**



SERIES HISTORY

Harvard		
Overall: 0-0		
Home: 0-0 Away: 0-0 Neutral: 0-0		



GAME-BY-GAME STARTERS

Opponent	1	2	3	4	5
Colorado Christian	Hofschild	Atosu	Farkas	Kinzer	Murphy
Northern Colorado	Hofschild	Atosu	Farkas	Kinzer	Clark
Oral Roberts	Hofschild	Atosu	Mech	Kinzer	Murphy
Denver	Hofschild	Atosu	Mech	Kinzer	Murphy
Lipscomb	Hofschild	Atosu	Mech	Kinzer	Murphy
Louisville	Hofschild	Atosu	Mech	Kinzer	Murphy

STARTERS BY RECORD & APPEARANCE

Record	1	2	3	4	5
1-0	Hofschild	Atosu	Farkas	Kinzer	Murphy
1-0	Hofschild	Atosu	Farkas	Kinzer	Clark
3-1	Hofschild	Atosu	Mech	Kinzer	Murphy

QUICK FACTS

GENERAL INFORMATION

Location..... Fort Collins, Colo.
 Founded1870
 Enrollment 33,769
 NicknameRams
 Colors..... Green and Gold
 Elevation..... 5,004 feet
 Arena (Capacity)..... Moby Arena (8,038)
 ConferenceMountain West
 President..... Dr. Anthony A. Frank
 Director of Athletics..... Joe Parker
 Senior Assoc. A.D./SWA Shalini Shanker
 Faculty Representative Kyle Saunders
 Athletic Department Phone 970-491-3350
 Ticket Office Phone..... 970-491-7267
 Athletic Website..... www.CSURams.com
 Twitter@CSUWBasketball
@CSU_Williams
@CSURams
 Instagram..... CSUWBasketball
 Facebook..... CSUWBasketball

STAFF INFORMATION

Head Coach Ryun Williams
 Alma Mater South Dakota, 1992
 Record at CSU176-105 (10th Season)
 Career RecordNCAA: 434-258 (23rd Season)
 Juco: 54-38 (Three Seasons)
 Assistant Coaches.....
 Rico Burkett, Fourth Season (North Dakota, '93)
 Amber Cunningham, Sixth Season (South Dakota '12)
 Kiley Bachand, First Season..... (Illinois '15)
 Director of Ops.....
 Marcie Johnston (23rd Season)..... (CSU, 1994)
 Dir. of Creative Productions/Social Media
 Megan Rakoczy (Third Season)..... (CSU, 2017)
 Women's Basketball Office 970-491-6569

TEAM INFORMATION

2020-21 Record 15-6
 2020-21 MW Record (Finish).....11-5 (3rd)
 2020-21 Postseason Play..... N/A
 All-Time Record 711-638 (.527)
 NCAA Appearances (Record)..... 6 (5-6)
 Last NCAA Appearance 2016
 WNIT Appearances (Record)..... 7 (8-7)
 Last WNIT Appearance 2018
 Starters Returning/Lost.....2/3
 Letterwinners Returning/Lost 7/7
 Others Returning 5
 Newcomers..... 5

MEDIA INFORMATION

Women's Basketball Contact Austin Hannon
 Phone (c)404-861-8787
 (w) 970-485-3657
 E-Mail Austin.Hannon@colostate.edu
 FAX 970-491-1348
 Mailing Address311 McGraw Athletic Center
 Fort Collins, CO 80523
 Credential Request Portal
 csurams.com/sb_output.aspx?form=1078

2021-22 SUPERLATIVES

INDIVIDUAL

COLORADO STATE	CATEGORY	OPPONENT
McKenna Hofschild, 27 (vs. Denver 11/18)	Points Scored	Hannah Cooper, 18 (Oral Roberts, 11/15)
Upe Atosu, 10 (vs. Lipscomb 11/21)	Points Scored/Quarter	Collier & Harrison, 8 (Lipscomb, 11/21)
Hofschild, 16 (DU 11/18), Atosu (LU 11/21)	Points Scored/Half	Hannah Cooper, 12 (Oral Roberts, 11/15)
Murphy, 9 (vs. ORU 11/15), Hofschild (DU 11/18)	Total Field Goals Made	Dorie Harrison, 7 (Lipscomb, 11/21)
McKenna Hofschild, 16 (vs. Denver 11/18)	Total FGs Attempted	Casey Collier, 15 (Lipscomb 11/21)
Cali Clark, .750 (6-8) (vs. Colorado Christian 11/9)	Highest FG % (min. 6 att.)	Dorie Harrison, .778 (7-9) (LU, 11/21)
Karly Murphy, .643 (9-14) (vs. Oral Roberts 11/15)	Highest FG % (min. 10 att.)	Casey Collier, .400 (6-15) (LU, 11/21)
McKenna Hofschild, .563 (9-16) (vs. Denver 11/18)	Highest FG % (min. 15 att.)	Casey Collier, .400 (6-15) (LU, 11/21)
Farkas & Hofschild, 5 (vs. LU 11/21)	3-Point Field Goals Made	Jaiden Galloway, 4 (Northern Colo., 11/12)
Petra Farkas, 10 (vs. Colorado Christian 11/9)	3-Pt. FGs Attempted	Haley Hansen, 9 (Colorado Christian, 11/9)
Petra Farkas, 1.000 (5-5) (vs. LU 11/21)	3-Pt. FGs Percentage (min. 5 made)	
Karly Murphy, 6 (vs. Northern Colo. 11/12)	Free Throws Made	Uju Ezeudu, 5 (DU 11/18), Olivia Cochran (UoL 11/28)
Karly, 6 (vs. UNC 11/12), Atosu (vs. LU 11/21)	Free Throws Attempted	Uju Ezeudu, 6 (DU 11/18), Olivia Cochran (UoL 11/28)
Karly Murphy 1.000 (6-6) (vs. Northern Colo. 11/12)	Free Throw Percentage (min. 5 att.)	Ezeudu, .833 (5-6) (DU 11/18) & ^ Cochran (UoL)
	Free Throw Percentage (min 10 att.)	
Murphy, 4 (vs. UNC 11/12), Clark (ORU 11/15)	Offensive Rebounds	Paramore, 4 (ORU, 11/15), Harrison (LU 11/21)
Murphy, 11 (vs. ORU 11/15)	Defensive Rebounds	Faith Paramore, 9 (Oral Roberts, 11/15)
Murphy, 13 (2x last vs. ORU 11/15)	Total Rebounds	Faith Paramore, 13 (Oral Roberts, 11/15)
McKenna Hofschild, 10 (vs. Colorado Christian 11/9)	Assists	Olivia Cochran, 6 (UoL 11/28)
3, by 3 different players for four times total	Steals	Hannah Cooper, 3 (Oral Roberts, 11/15)
Mech, 8 (vs. Oral Roberts 11/15)	Blocked Shots	Zoe Campbell, 3 (Northern Colo. 11/12)
Cali Clark, 6 (vs. Louisville 11/28)	Turnovers	4, by three different players
McKenna Hofschild, 37 (vs. ORU 11/15)	Minutes Played (Including OT)	Ariel Walker, 36 (Oral Roberts, 11/15)

TEAM

CSU HIGH	CSU LOW	CATEGORY	OPP. LOW	OPP. HIGH
81 (vs. LU)	56 (vs. UoL)	Points	42 (CCU)	71 (UoL)
26 (vs. LU)	9 (vs. UNC)	Points/Quarter	8 (DU)	24 (UoL)
42 (vs. LU)	20 (vs. UNC)	Points/Half	18 (DU)	41 (UoL)
29 (vs. CCU)	19 (vs. UoL)	Field Goals Made	16 (CCU) (DU)	28 (UoL)
66 (vs. CCU)	49 (vs. UoL)	FGs Attempted	54 (CCU)	69 (LU)
.448 (vs. LU)	.388 (vs. UoL)	FG Percentage	.286 (DU)	.528 (UoL)
16 (vs. LU)	5 (vs. UoL)	3-Point FG Made	5 (ORU) (LU) (UoL)	10 (UNC)
32 (vs. CCU)	15 (vs. UoL)	3-Pt. FGs Attempted	10 (UoL)	27 (UNC)
.571 (vs. LU)	.300 (vs. ORU)	3-Pt. FGs Percentage	.240 (DU)	.500 (UoL)
13 (vs. LU)	8 (vs. CCU) (vs. UNC) (vs. DU)	Free Throws Made	2 (UNC)	10 (UoL)
18 (vs. LU)	8 (vs. CCU)	FT Attempted	4 (UNC) (LU)	13 (UoL)
.889 (vs. DU)	.684 (vs. UoL)	FT Percentage (min. 10 att.)	.417 (ORU)	.769 (UoL)
9 (vs. CCU) (vs. UNC)	2 (vs. UoL)	Offensive Rebounds	2 (DU)	14 (UNC)
39 (vs. ORU)	20 (vs. UoL)	Defensive Rebounds	25 (LU)	32 (UoL)
47 (vs. ORU)	22 (vs. UoL)	Total Rebounds	30 (DU)	41 (UNC)
24 (vs. CCU)	10 (vs. UoL)	Assists	6 (DU)	14 (UoL)
7 (vs. ORU)	4 (vs. UNC) (vs. DU) (vs. LU)	Steals	2 (LU)	8 (ORU)
11 (vs. ORU)	1 (vs. DU)	Blocked Shots	0 (ORU)	5 (UNC) (DU)
16 (vs. ORU)	6 (vs. CCU)	Turnovers	7 (LU)	15 (CCU) (UNC) (UoL)



**2021-22 Colorado St. Women's Basketball
Combined Team Statistics
All games**

Page 1/1
as of Nov 28, 2021

Game Records

Record	Overall	Home	Away	Neutral
ALL GAMES	5-1	4-1	1-0	0-0
CONFERENCE	0-0	0-0	0-0	0-0
NON-CONFERENCE	5-1	4-1	1-0	0-0

Score by Periods

Team	1st	2nd	3rd	4th	OT	TOT
Colorado St.	98	95	120	100	0	413
Opponents	94	77	73	73	0	317

Team Box Score

No.	Player	Total			3-Point			F-Throw		Rebounds				PF DQ A TO BLK STL PTS AVG								
		GP-GS	MIN	AVG	FG-FGA	FG%	3FG-3FGA	3FG%	FT-FTA	FT%	OFF	DEF	TOT	AVG	PF	DQ	A	TO	BLK	STL	PTS	AVG
4	HOFSCCHILD, McKenna	6-6	197:12	32.9	27-66	.409	12-27	.444	14-17	.824	1	18	19	3.2	5	0	30	13	1	3	80	13.3
42	MURPHY, Karly	6-5	128:09	21.4	27-63	.429	0-2	.000	14-14	1.000	10	44	54	9.0	14	0	6	6	1	4	68	11.3
5	ATOSU, Upe	6-6	166:13	27.7	23-53	.434	9-24	.375	13-16	.813	3	7	10	1.7	9	0	9	6	0	6	68	11.3
0	KINZER, Kendyll	6-6	163:20	27.2	20-40	.500	11-27	.407	0-0	.000	3	28	31	5.2	6	0	16	4	3	4	51	8.5
22	CLARK, Cali	6-1	95:13	15.9	17-30	.567	3-4	.750	8-10	.800	11	25	36	6.0	9	0	3	9	7	2	45	7.5
24	MECH, Sydney	5-4	156:06	31.2	15-30	.500	2-7	.286	3-6	.500	1	13	14	2.8	5	0	7	5	14	3	35	7.0
11	FARKAS, Petra	6-2	117:55	19.7	9-31	.290	9-25	.360	3-3	1.000	1	13	14	2.3	6	0	4	2	0	8	30	5.0
23	PRIM, Anna	6-0	49:44	8.3	6-10	.600	4-8	.500	1-2	.500	1	2	3	0.5	1	0	6	6	0	1	17	2.8
33	ALPER, Bengisu	6-0	71:53	12.0	4-20	.200	1-6	.167	3-8	.375	2	10	12	2.0	7	0	3	3	0	0	12	2.0
32	HEMINGWAY, Makayla	4-0	18:48	4.7	2-8	.250	1-5	.200	0-0	.000	0	5	5	1.3	1	0	2	0	1	1	5	1.3
3	MOORS, Jess	4-0	21:09	5.3	1-3	.333	0-1	.000	0-0	.000	3	3	6	1.5	0	0	2	0	1	0	2	0.5
12	GOMEZ, Clara	4-0	14:17	3.6	0-3	.000	0-0	.000	0-0	.000	2	0	2	0.5	1	0	0	1	0	0	0	0.0
Team											3	19	22					3				
Total		6	1200		151-357	.423	52-136	.382	59-76	.776	41	187	228	38.0	64	0	88	58	28	32	413	68.8
Opponents		6	1204		125-357	.350	37-119	.311	30-47	.638	51	170	221	36.8	84	0	50	76	15	26	317	52.8

Team Statistics

	CSU	OPP
Scoring	413	317
Points per game	68.8	52.8
Scoring margin	+16.0	-
Field goals-att	151-357	125-357
Field goal pct	.423	.350
3 point fg-att	52-136	37-119
3-point FG pct	.382	.311
3-pt FG made per game	8.7	6.2
Free throws-att	59-76	30-47
Free throw pct	.776	.638
F-Throws made per game	9.8	5.0
Rebounds	228	221
Rebounds per game	38.0	36.8
Rebounding margin	+1.2	-
Assists	88	50
Assists per game	14.7	8.3
Turnovers	58	76
Turnovers per game	9.7	12.7
Turnover margin	+3.0	-
Assist/turnover ratio	1.5	0.7
Steals	32	26
Steals per game	5.3	4.3
Blocks	28	15
Blocks per game	4.7	2.5
Winning streak	0	-
Home win streak	0	-
Attendance	5650	376
Home games-Avg/Game	5-1130	1-376
Neutral site-Avg/Game	-	0-0

Team Results

Date	Opponent		Score	Att.
11/09/2021	Colo. Christian	W	77-42	1356
11/12/2021	Northern Colo.	W	61-50	1194
11/15/2021	Oral Roberts	W	71-56	862
11/18/2021	at Denver	W	67-43	376
11/21/2021	Lipscomb	W	81-55	902
11/28/2021	Louisville	L	56-71	1336



2021-22 Colorado St. Women's Basketball
Team Game-by-Game
All games

Page 1/1
as of Nov 23, 2021

Opponent	Date	Score	W	Total		3-Pointers		Free throws		Rebounds										
				FG-FGA	PCT	3FG-3FGA	PCT	FT-FTA	PCT	OFF	DEF	TOT	AVG	PF	A	TO	BLK	STL	PTS	AVG
Colo. Christian	11/09/2021	77-42	W	29-66	.439	11-32	.344	8-8	1.000	9	31	40	40.0	14	24	6	6	6	77	77.0
Northern Colo.	11/12/2021	61-50	W	23-57	.404	7-20	.350	8-11	.727	9	26	35	37.5	5	11	7	4	4	61	69.0
Oral Roberts	11/15/2021	71-56	W	28-65	.431	6-20	.300	9-11	.818	8	39	47	40.7	13	11	16	11	7	71	69.7
at Denver	11/18/2021	67-43	W	26-62	.419	7-21	.333	8-9	.889	6	37	43	41.3	11	13	7	1	4	67	69.0
Lipscomb	11/21/2021	81-55	W	26-58	.448	16-28	.571	13-18	.722	7	34	41	41.2	11	19	9	4	4	81	71.4
Total		357		132-308	.429	47-121	.388	46-57	.807	39	167	206	41.2	54	78	45	26	25	357	71.4
Opponents		246		97-304	.319	32-109	.294	20-34	.588	44	138	182	36.4	65	36	61	11	20	246	49.2

Colorado St. Averages

Games Played	Points/game	FG Pct	3FG Pct	FT Pct	Rebounds/game	Assists/game	Turnovers/game	Assist/Turnover ratio	Steals/game	Blocks/game
5	71.4	42.9	38.8	80.7	41.2	15.6	9.0	1.7	5.0	5.2



2021-22 Colorado St. Women's Basketball
Opponents Game-by-Game
All games

Page 1/1
as of Nov 28, 2021

Opponent	Date	Score	W	Total		3-Pointers		Free throws		Rebounds										
				FG-FGA	PCT	3FG-3FGA	PCT	FT-FTA	PCT	OFF	DEF	TOT	AVG	PF	A	TO	BLK	STL	PTS	AVG
Colo. Christian	11/09/2021	77-42	W	16-54	.296	6-20	.300	4-8	.500	8	28	36	36.0	12	7	15	0	4	42	42.0
Northern Colo.	11/12/2021	61-50	W	19-57	.333	10-27	.370	2-4	.500	14	27	41	38.5	15	8	15	5	3	50	46.0
Oral Roberts	11/15/2021	71-56	W	23-68	.338	5-17	.294	5-12	.417	10	30	40	39.0	13	7	14	0	8	56	49.3
at Denver	11/18/2021	67-43	W	16-56	.286	6-25	.240	5-6	.833	2	28	30	36.8	9	6	10	5	3	43	47.8
Lipscomb	11/21/2021	81-55	W	23-69	.333	5-20	.250	4-4	1.000	10	25	35	36.4	16	8	7	1	2	55	49.2
Louisville	11/28/2021	56-71	L	28-53	.528	5-10	.500	10-13	.769	7	32	39	36.8	19	14	15	4	6	71	52.8
Total		317		125-357	.350	37-119	.311	30-47	.638	51	170	221	36.8	84	50	76	15	26	317	52.8
Colorado St.		413		151-357	.423	52-136	.382	59-76	.776	41	187	228	38.0	64	88	58	28	32	413	68.8

Opponents Averages

Games Played	Points/game	FG Pct	3FG Pct	FT Pct	Rebounds/game	Assists/game	Turnovers/game	Assist/Turnover ratio	Steals/game	Blocks/game
6	52.8	35.0	31.1	63.8	36.8	8.3	12.7	0.7	4.3	2.5

BOX SCORES

EXH

Official Basketball Box Score - Final
Chadron St. at Colorado St.
 11/03/21 Moby Arena, Fort Collins
 2021-22 Women's Basketball

Game Time: 6:00 PM
 Game Duration: 1:40
 Attendance: 919



Chadron St. - 43

Record: 0-0

NO.	Name	Min	FG		3P		FT		Rebounds		Fouls		TP	AS	TO	ST	Blocks		+/-	
			M	A	M	A	O	R	O	R	OR	DR					PF	FD		BS
14	Tatum Peterson	F 29:31	2-5	0-0	4-4	4	4	8	2	2	8	0	0	1	0	0	0	0	-33	
20	Ashlyah Powers	F 09:59	1-3	0-0	1-1	0	1	3	5	1	1	1	0	0	0	0	0	-11		
3	Emily Achter	G 23:33	1-4	0-0	0	0	2	1	2	0	1	0	1	0	0	0	0	-19		
12	Jori Peters	G 36:20	7-20	1-11	2-2	3	5	1	3	16	2	2	1	0	1	0	1	-28		
21	Bailey Brooks	G 26:41	4-10	0-3	0-0	0	5	1	3	8	0	1	0	0	0	0	0	-26		
40	Riley Alono	G 13:27	0-1	0-0	0	0	1	1	0	0	0	0	0	0	0	0	0	-13		
13	Brittini McCully	G 15:38	0-1	0-1	0-0	1	1	2	0	1	0	0	0	0	0	0	0	-9		
2	Samiyah Worrell	G 16:30	2-10	1-7	0-0	1	3	4	0	5	0	2	0	1	0	0	-15			
10	Olivia Wauale	G 19:54	1-4	0-1	0-0	0	0	0	1	0	2	1	1	0	0	0	-19			
1	Olivia Pacheco	G 08:27	0-2	0-0	0-0	1	1	2	0	1	0	1	2	0	0	0	-2			
Team					2		2		4		0		2		0					
Totals			18-60		2-25		5-6		13		20		33		18		11		43	

Technical Fouls: NONE

Dead Ball Rebounds: 1, 0

Colorado St. - 78

Record: 0-0

NO.	Name	Min	FG		3P		FT		Rebounds		Fouls		TP	AS	TO	ST	Blocks		+/-	
			M	A	M	A	O	R	O	R	OR	DR					PF	FD		BS
0	Kendyll Kinzer	F 18:57	3-6	1-4	3-3	0	1	1	0	2	10	0	0	0	0	0	0	18		
24	Sydney Mech	F 22:45	3-5	0-1	0-0	0	4	4	1	6	2	0	1	0	0	0	0	14		
42	Karly Murphy	F 13:22	3-4	0-0	2-2	0	3	3	1	8	0	0	0	0	0	0	0	17		
4	McKenna Hofschild	G 26:09	5-10	0-3	2-2	1	5	6	0	3	12	5	0	0	0	0	21			
5	Upe Atosu	G 19:16	3-5	1-1	5-5	0	0	0	2	4	12	1	1	0	0	0	15			
11	Petra Farkas	G 18:01	0-1	0-1	0-0	0	0	0	0	0	0	1	1	0	0	0	23			
22	Calli Clark	G 22:55	5-8	0-1	0-0	2	4	6	1	0	10	0	0	0	0	0	16			
33	Bengisus Alper	G 15:09	5-7	0-2	1-2	0	1	1	3	2	11	0	2	1	0	0	13			
23	Anna Prim	G 13:51	0-0	0-0	2-2	0	1	1	0	2	0	0	1	0	0	0	14			
12	Clara Gomez	G 09:37	0-0	0-0	0	0	2	2	3	1	0	0	1	2	1	0	6			
3	Jess Moors	G 11:54	0-1	0-1	4-4	1	3	4	0	2	4	1	0	0	0	0	12			
32	Makayia Hemingway	G 08:04	0-3	0-3	3-4	0	0	0	2	3	1	0	0	0	0	0	6			
Team					0		2		2		0		0		0					
Totals			27-50		2-17		22-24		4		29		33		11		18		78	

Technical Fouls: NONE

Dead Ball Rebounds: 1, 0

Biggest lead

CSC 0 (1st 10:00)

CSU 36 (4th 3:03)

Points from Turnovers 1 12

Paint 14 36

Lead Changes 0

Times Tied 0

Time with Lead 00:00 39:50

Period by Period Scoring

1st 2nd 3rd 4th TOT

CSC 11 11 12 9 43

CSU 28 12 22 16 78

GAME 1

Official Basketball Box Score - Final
Chadron St. at Colorado St.
 11/03/21 Moby Arena, Fort Collins
 2021-22 Women's Basketball

Game Time: 6:00 PM
 Game Duration: 1:40
 Attendance: 919



Chadron St. - 43

Record: 0-0

NO.	Name	Min	FG		3P		FT		Rebounds		Fouls		TP	AS	TO	ST	Blocks		+/-	
			M	A	M	A	O	R	O	R	OR	DR					PF	FD		BS
14	Tatum Peterson	F 29:31	2-5	0-0	4-4	4	4	8	2	2	8	0	0	1	0	0	0	-33		
20	Ashlyah Powers	F 09:59	1-3	0-0	1-1	0	1	3	5	1	1	1	0	0	0	0	0	-11		
3	Emily Achter	G 23:33	1-4	0-0	0	0	2	1	2	0	1	0	1	0	0	0	0	-19		
12	Jori Peters	G 36:20	7-20	1-11	2-2	3	5	1	3	16	2	2	1	0	1	0	1	-28		
21	Bailey Brooks	G 26:41	4-10	0-3	0-0	0	5	1	3	8	0	1	0	0	0	0	0	-26		
40	Riley Alono	G 13:27	0-1	0-0	0	0	1	1	0	0	0	0	0	0	0	0	0	-13		
13	Brittini McCully	G 15:38	0-1	0-1	0-0	1	1	2	0	1	0	0	0	0	0	0	0	-9		
2	Samiyah Worrell	G 16:30	2-10	1-7	0-0	1	3	4	0	5	0	2	0	1	0	0	-15			
10	Olivia Wauale	G 19:54	1-4	0-1	0-0	0	0	0	1	0	2	1	1	0	0	0	-19			
1	Olivia Pacheco	G 08:27	0-2	0-0	0-0	1	1	2	0	1	0	1	2	0	0	0	-2			
Team					2		2		4		0		2		0					
Totals			18-60		2-25		5-6		13		20		33		18		11		43	

Technical Fouls: NONE

Dead Ball Rebounds: 1, 0

Colorado St. - 78

Record: 0-0

NO.	Name	Min	FG		3P		FT		Rebounds		Fouls		TP	AS	TO	ST	Blocks		+/-	
			M	A	M	A	O	R	O	R	OR	DR					PF	FD		BS
0	Kendyll Kinzer	F 18:57	3-6	1-4	3-3	0	1	1	0	2	10	0	0	0	0	0	0	18		
24	Sydney Mech	F 22:45	3-5	0-1	0-0	0	4	4	1	6	2	0	1	0	0	0	0	14		
42	Karly Murphy	F 13:22	3-4	0-0	2-2	0	3	3	1	8	0	0	0	0	0	0	0	17		
4	McKenna Hofschild	G 26:09	5-10	0-3	2-2	1	5	6	0	3	12	5	0	0	0	0	21			
5	Upe Atosu	G 19:16	3-5	1-1	5-5	0	0	0	2	4	12	1	1	0	0	0	15			
11	Petra Farkas	G 18:01	0-1	0-1	0-0	0	0	0	0	0	0	1	1	0	0	0	23			
22	Calli Clark	G 22:55	5-8	0-1	0-0	2	4	6	1	0	10	0	0	0	0	0	16			
33	Bengisus Alper	G 15:09	5-7	0-2	1-2	0	1	1	3	2	11	0	2	1	0	0	13			
23	Anna Prim	G 13:51	0-0	0-0	2-2	0	1	1	0	2	0	0	1	0	0	0	14			
12	Clara Gomez	G 09:37	0-0	0-0	0	0	2	2	3	1	0	0	1	2	1	0	6			
3	Jess Moors	G 11:54	0-1	0-1	4-4	1	3	4	0	2	4	1	0	0	0	0	12			
32	Makayia Hemingway	G 08:04	0-3	0-3	3-4	0	0	0	2	3	1	0	0	0	0	0	6			
Team					0		2		2		0		0		0					
Totals			27-50		2-17		22-24		4		29		33		11		18		78	

Technical Fouls: NONE

Dead Ball Rebounds: 1, 0

Biggest lead

CSC 0 (1st 10:00)

CSU 36 (4th 3:03)

Points from Turnovers 1 12

Paint 14 36

Lead Changes 0

Times Tied 0

Time with Lead 00:00 39:50

Period by Period Scoring

1st 2nd 3rd 4th TOT

CSC 11 11 12 9 43

CSU 28 12 22 16 78

GAME 2

Official Basketball Box Score - Final
Northern Colo. at Colorado St.
 11/10/21 Moby Arena, Fort Collins
 2021-22 Women's Basketball

Game Time: 5:30 PM
 Game Duration: 1:30
 Attendance: 135



Northern Colo. - 50

Record: 0-2

NO.	Name	Min	FG		3P		FT		Rebounds		Fouls		TP	AS	TO	ST	Blocks		+/-
			M	A	M	A	O	R	O	R	OR	DR					PF	FD	
14	Jayce Gorzeman	F 13:59	0-1	0-0	0-0	0	2	2	0	0	0	0	1	0	0	0	0	4	
4	Jaiden Galloway	F 23:44	3-9	0-0	1-2	4	6	3	1	6	1	1	0	0	2	1	0	-20	
4	Jaiden Galloway	G 23:38	4-9	4-7	0-0	2	4	0	0	12	4	0	0	1	0	0	0	-5	
10	Hannah Simental	G 34:00	4-9	2-4	0-0	1	1	2	2	0	10	1	2	0	0	0	1	-7	

BOX SCORES

GAME 4

Official Basketball Box Score - Final
Colorado State at Denver
 11/18/21 Hamilton Gymnasium, Denver, Colo.
 2021-22 Women's Basketball

Game Time: 7:05 PM
 Game Duration: 1:41
 Attendance: 376



Officials: Andrew Heo, Chris Packler, Jennifer Donato

Colorado State - 67													Record: 4-0													
NO.	Name	Min	FG	3P	FT	Rebounds	Fouls	TP	AS	TO	ST	Blocks	+/	Shooting By Period												
			M/A	M/A	M/A	OR	DR	PF	FD			BS	BA	1st	2nd	3rd	4th	FT%	GM	3PT%	FT%					
0	Kendyll Kinzer	F 23:27	3-4	2-3	0-0	1	4	5	2	1	8	3	0	1	0	0	18	1st FG%	7-16	43.8%	3PT%	1-3	33.3%	FT%	4-4	100%
42	Sydney Mech	F 31:38	1-6	0-1	0-0	2	2	0	0	2	3	1	0	1	0	22	2nd FG%	5-13	38.5%	3PT%	2-5	40.0%	FT%	2-2	100%	
44	Karly Murphy	F 23:49	6-12	0-0	0-0	0	9	3	1	12	0	1	0	0	2	26	3rd FG%	3-6	50.0%	3PT%	2-5	40.0%	FT%	2-2	100%	
4	McKenna Hofschild	G 32:29	9-16	4-7	5-5	0	6	6	0	3	27	3	2	0	0	1	28	4th FG%	5-17	29.4%	3PT%	1-7	14.3%	FT%	1-1	100%
5	Upe Atosu	G 25:03	3-7	1-3	2-2	0	1	1	1	9	1	1	1	0	0	14	GM FG%	26-42	61.9%	3PT%	7-21	33.3%	FT%	8-9	88.9%	
22	Call Clark	10:31	3-4	0-1	0-0	2	2	4	2	0	6	1	1	1	0	0	-2									
11	Petra Farkas	18:30	0-7	0-4	0-0	1	4	5	1	0	0	0	0	1	0	0	14									
33	Bengisu Alper	14:00	0-3	0-1	1-2	1	3	4	2	3	1	0	0	0	0	0	6									
32	Makayla Hemingway	04:49	0-0	0-0	0-1	0	2	2	0	0	1	0	0	0	0	0	2									
23	Anna Prim	07:31	1-2	0-1	0-0	0	1	1	0	0	2	0	0	0	0	0	4									
3	Jess Moors	04:45	0-0	0-0	0-0	1	1	2	0	0	0	0	0	0	0	0	0									
12	Clara Gomez	03:28	0-1	0-0	0-0	0	0	0	0	0	0	0	0	0	0	0	0									
Team						0	2	2			0					0										
Totals			26-62	7-21	8-9	6	37	43	11	9	67	13	7	4	1	5	24									

Technical Fouls: NONE

Dead Ball Rebounds: 2, 1

Denver - 43													Record: 1-3													
NO.	Name	Min	FG	3P	FT	Rebounds	Fouls	TP	AS	TO	ST	Blocks	+/	Shooting By Period												
			M/A	M/A	M/A	OR	DR	PF	FD			BS	BA	1st	2nd	3rd	4th	FT%	GM	3PT%	FT%					
22	Tess Santos	F 33:27	2-5	2-4	0-0	3	3	1	0	6	2	1	2	2	0	11	1st FG%	3-12	25.0%	3PT%	2-7	28.6%	FT%	2-2	100%	
24	Uju Ezeudu	F 28:26	5-9	0-2	5-6	0	6	6	2	6	15	1	2	0	0	1	-18	2nd FG%	6-15	40.0%	3PT%	3-7	42.9%	FT%	0-0	0%
0	Meghan Boyd	G 26:30	0-5	0-0	0-0	3	3	2	1	0	1	1	0	0	0	13	3rd FG%	3-14	21.4%	3PT%	1-7	14.3%	FT%	1-2	50%	
2	Indeya Sanders	G 23:47	2-13	2-8	0-0	3	3	1	0	6	2	1	0	0	0	-16	4th FG%	4-15	26.7%	3PT%	0-3	0.0%	FT%	2-2	100%	
5	Anna Jackson	G 33:26	1-7	0-4	0-0	1	1	2	0	2	0	1	1	0	0	-16	GM FG%	16-56	28.6%	3PT%	6-25	24.0%	FT%	5-6	83.3%	
12	Makayla Minnett	18:03	2-2	0-0	0-0	1	5	6	1	2	4	0	1	0	2	0	-8									
21	Jocelyn Wyatt	14:17	2-6	2-4	0-0	2	2	0	1	6	0	0	0	0	0	-8										
11	Emily Counsel	07:51	1-3	0-0	0-0	1	1	0	0	2	0	0	0	0	0	-8										
33	Mary Wilson	05:39	0-2	0-2	0-0	1	1	0	0	0	0	0	0	0	0	7										
34	Cheyenne Forney	08:34	1-4	0-1	0-0	1	2	3	0	1	2	0	1	0	1	0	-5									
Team						0	1	1		0	2					0										
Totals			16-56	6-25	5-6	2	28	30	9	11	43	6	10	3	5	1	-24									

Technical Fouls: NONE

Dead Ball Rebounds: 1, 1

Biggest lead		CSU	DEN	Points from		CSU		DEN		Period by Period Scoring			
Turnovers		10	6	Paint		26	14	1st 2nd 3rd 4th TOT					
Best Scoring Run		24 (4 th 6:19)	2 (1 st 4:05)	Second Chance		10	4	CSU 19 14 22 12 67					
Lead Changes		13 (3 rd 6:00)	5 (1 st 4:05)	Fast Breaks		6	3	DEN 10 15 8 10 43					
Times Tied		3	0	Bench		9	14						
Time with Lead		35:18	00:16										



GAME 5

Official Basketball Box Score - Final
Lipscomb at Colorado State
 11/21/21 Moby Arena, Fort Collins
 2021-22 Women's Basketball

Game Time: 12:00 PM
 Game Duration: 1:33
 Attendance: 302



Officials: Brian Woods, Cheryl Bus, Corey Long

Lipscomb - 55													Record: 1-3														
NO.	Name	Min	FG	3P	FT	Rebounds	Fouls	TP	AS	TO	ST	Blocks	+/	Shooting By Period													
			M/A	M/A	M/A	OR	DR	PF	FD			BS	BA	1st	2nd	3rd	4th	FT%	GM	3PT%	FT%						
12	Dorie Harrison	C 23:20	7-9	0-0	2-2	4	3	7	2	3	16	0	0	0	0	0	22	1st FG%	5-16	31.3%	3PT%	2-5	40.0%	FT%	0-0	0%	
1	Jordan Pelele	G 23:51	0-4	0-2	0-0	0	0	4	3	0	1	2	0	0	1	-28	2nd FG%	5-18	27.8%	3PT%	1-5	20.0%	FT%	2-2	100%		
15	Blythe Pearson	G 26:43	3-8	2-5	0-0	0	4	0	1	8	0	0	1	1	0	1	24	3rd FG%	3-6	50.0%	3PT%	2-5	40.0%	FT%	2-2	100%	
23	Jalyn Holcomb	G 19:53	0-4	0-2	0-0	2	2	3	0	0	0	0	1	0	0	0	1	28	4th FG%	5-17	29.4%	3PT%	1-7	14.3%	FT%	1-2	50%
24	Casey Collier	G 34:47	6-15	0-4	0-0	1	3	4	1	3	12	4	3	0	0	1	-17	GM FG%	26-42	61.9%	3PT%	7-21	33.3%	FT%	8-9	88.9%	
00	Sydney Shelton	23:40	1-8	1-2	0-0	0	4	4	0	0	3	1	0	0	1	0	-21										
21	Bella Vinson	18:32	2-3	1-2	2-2	1	2	3	2	1	7	1	0	0	0	1	-9										
33	Diana Saleh	03:45	1-1	0-0	0-0	1	1	0	0	0	2	0	0	0	0	0	4										
22	Maddie Cook	12:12	1-14	0-2	0-0	0	2	2	0	2	0	0	0	0	0	0	-3										
32	Katherine Weakley	06:08	0-0	0-0	0-0	0	0	0	1	1	0	0	0	0	0	0	3										
2	Hilary James	02:41	2-2	1-1	0-0	0	0	0	1	0	5	0	0	0	0	0	6										
11	Taylor Hammack	02:41	0-1	0-0	0-0	0	1	1	0	0	0	0	0	0	0	0	6										
14	Nicole Hemphill	01:47	0-0	0-0	0-0	0	0	0	0	0	0	0	0	0	0	0	3										
Team						4	2	6			0					0											
Totals			23-69	5-20	4-4	10	25	35	16	11	55	8	7	2	1	4	26										

Technical Fouls: NONE

Dead Ball Rebounds: 0, 1

Colorado State - 61													Record: 5-0													
NO.	Name	Min	FG	3P	FT	Rebounds	Fouls	TP	AS	TO	ST	Blocks	+/	Shooting By Period												
			M/A	M/A	M/A	OR	DR	PF	FD			BS	BA	1st	2nd	3rd	4th	FT%	GM	3PT%	FT%					
0	Kendyll Kinzer	F 28:34	2-5	2-5	0-0	0	7	7	0	0	6	4	0	0	0	0	32	1st FG%	5-16	31.3%	3PT%	3-7	42.9%	FT%	3-4	75%
24	Sydney Mech	F 21:15	2-4	0-1	0-0	0	1	1	0	0	4	2	1	0	0	0	24	2nd FG%	9-15	60.0%	3PT%	4-8	50.0%	FT%	4-6	66.7%
44	Karly Murphy	F 18:13	0-6	0-1	4-4	2	6	8	3	2	4	1	2	0	0	0	13	3rd FG%	3-14	21.4%	3PT%	1-7	14.3%	FT%	1-2	50%
4	McKenna Hofschild	G 33:09	6-13	5-8	0-0	3	3	1	4	17	3	1	0	0	0	0	29	4th FG%	4-15	26.7%	3PT%	0-3	0.0%	FT%	2-2	100%
5	Upe Atosu	G 33:17	7-13	3-6	4-6	1	1	2	1	2	1	2	0	3	0	1	31	GM FG%	16-56	28.6%	3PT%	6-25	24.0%	FT%	5-6	83.3%
11	Petra Farkas	22:47	5-7	5-5	0-0	0	2	2	3	2	15	3	0	0	0	0	-5									
22																										



0 KENDYLL KINZER

Junior • Forward • 6-1 • Lewiston, Id. (Lewiston HS/Fresno State)

2021-22 Highlights

- Scored 10 points in CSU debut, while adding four assists and three rebounds
- Has scored 10 points in three games this season, marking her first time scoring in double digits in back-to-back games let alone three times
- The 51 points thru the first six games is the best five-game scoring stretch in her career
- Has made at least two three in all but one game this season. Has at least one three in all games.
- Has already notched five career highs (minutes played, rebounds, blocks, assists, T-steals)
- Has upped her career rebound mark twice (6 vs. UNC, 7 vs. ORU)

GAME HIGHS

POINTS

Season: 10 vs. CCU (11/9) (UNC 11/12)
 Career: 18 vs. UNM (1/28/21)

3 FGM

Season: 2 vs. 5x, last LU (11/21)
 Career: 6 vs. UNM (1/28/21)

REBOUNDS

Season: 7 vs. (ORU 11/12) (LU 11/21)
 Career: ^

ASSISTS

Season: 4 vs. CCU (11/9) (LU 11/21)
 Career: ^

BLOCKS

Season: 3 vs. (UNC 11/12)
 Career: ^

STEALS

Season: 2 vs. ORU (11/15)
 Career: 2, 2x last ^

MINUTES

Season: 32 vs. UNC (11/12)
 Career: ^

MISCELLANEOUS STATS

DOUBLE-DIGIT POINTS

Season: 3
 Career: 7

NCAA CAREER STATS (*2019-21 AT FRESNO STATE)

YEAR	GP	GS	MIN	AVG	TOTAL			3-POINT			F-THROW			REBOUNDS							PTS	AVG			
					FG	FGA	PCT	FG	FGA	PCT	FT	FTA	PCT	OFF	DEF	TOT	AVG	PF	FO	AST			TO	BLK	STL
2019-20	28	0	340	12.1	40	112	.357	27	87	.310	7	8	.875	8	36	44	1.6	16	0	11	9	6	4	114	4.1
2020-21	24	4	358	14.9	38	101	.376	32	84	.381	4	7	.571	6	31	37	1.5	13	0	14	6	6	5	112	4.7
2021-22	6	6	164	27.3	20	40	.500	11	27	.407	0	0	.000	3	28	31	5.2	6	0	16	4	3	4	51	8.5
TOTAL	58	10	862	14.9	98	253	0.387	70	198	0.354	11	15	0.733	17	95	112	1.9	35	0	41	19	15	13	277	4.8

MOUNTAIN WEST CAREER STATS (*2019-21 AT FRESNO STATE)

YEAR	GP	GS	MIN	AVG	TOTAL			3-POINT			F-THROW			REBOUNDS							PTS	AVG			
					FG	FGA	PCT	FG	FGA	PCT	FT	FTA	PCT	OFF	DEF	TOT	AVG	PF	FO	AST			TO	BLK	STL
2019-20	16	0	238	14.9	27	76	.355	17	57	.298	4	5	.800	8	28	36	2.3	12	0	9	4	5	3	75	4.7
2020-21	16	2	245	15.3	31	71	.437	25	58	.431	2	3	.667	2	22	24	1.5	8	0	6	2	6	4	89	5.6
TOTAL	32	2	483	15.1	58	147	.395	42	115	.365	6	8	.750	10	50	60	1.88	20	0	15	6	11	7	164	5.1



#3 JESS MOORS

Freshman • Forward • 6-0 • Auckland, New Zealand (Westlake Girls HS)

2021-22 Highlights

- Made collegiate debut in season opener vs. Colorado Christian
- Older brother, James, is a sophomore forward on the CSU men's basketball team

GAME HIGHS

POINTS

Season: 2 vs. CCU (11/9)
Career:

3 FGM

Season:
Career:

REBOUNDS

Season: 3 vs. CCU (11/9)
Career:

ASSISTS

Season: 2 vs. CCU (11/9)
Career:

STEALS

Season:
Career:

BLOCKS

Season: 1 vs. CCU (11/9)
Career:

MINUTES

Season: 13 vs. CCU (11/9)
Career:

NCAA CAREER STATS

YEAR	GP	GS	MIN	AVG	TOTAL			3-POINT			F-THROW			REBOUNDS											
					FG	FGA	PCT	FG	FGA	PCT	FT	FTA	PCT	OFF	DEF	TOT	AVG	PF	FO	AST	TO	BLK	STL	PTS	AVG
2021-22	4	0	22	5.5	1	3	.333	0	1	.000	0	0	.000	3	3	6	1.5	0	0	2	0	1	0	2	0.5
TOTAL	^SAME																								

MOUNTAIN WEST CAREER STATS

YEAR	GP	GS	MIN	AVG	TOTAL			3-POINT			F-THROW			REBOUNDS											
					FG	FGA	PCT	FG	FGA	PCT	FT	FTA	PCT	OFF	DEF	TOT	AVG	PF	FO	AST	TO	BLK	STL	PTS	AVG
2021-22																									
TOTAL	^SAME																								



#4 MCKENNA HOFSCILD

Junior • Guard • 5-5 • Prior Lake, Minn. (Seton Hall/Prior Lake HS)

2021-22 Highlights

- Tied a career-high 10 assists in the season opener vs. Colorado Christian, while adding six points, going 4-of-4 from the free-throw line
- Scored 12 points for her first double-digit output on the season against Northern Colorado
- Exploded for a career-high 27 at Denver in which she had nine at the end of first quarter and 16 at the half, marking the most in an individual quarter [at that time] and half from a Ram this season
- Three games with at least five assists; She had 15 games with at least that many last season
- Named Mountain West Player of the Week (11/22) after helping CSU go 3-0 on the week with three games in double-digit scoring including her 27-point game. Had 10 total threes within the three games.
- Splashed in a season-high five 3s versus Lipscomb, helping CSU's total of 16 3-balls, which is fourth-most in school history

GAME HIGHS

POINTS

Season: 27 at DU (11/18)
Career: ^

3 FGM

Season: 5 vs LU (11/21)
Career: 6 vs. UNLV (1/9/21)

REBOUNDS

Season: 6 at DU (11/18)
Career: 6, 3x last ^ at DU

ASSISTS

Season: 10 vs. CCU (11/9)
Career: 2x, ^ 6 vs. RU (11/25/20)

BLOCKS

Season: 1 vs. CCU (11/9)
Career: 13x, last ^

STEALS

Season: 3 vs ORU (11/15)
Career: 4, at BS (1/29)

MINUTES

Season: 37 vs. ORU (11/15)
Career: 38 vs. SDSU (12/8/20)

MISCELLANEOUS STATS

DOUBLE-DIGIT POINTS

Season: 4
Career: 19

20+ POINTS

Season: 1
Career: 3

NCAA CAREER STATS (*2019-20 AT SETON HALL)

YEAR	GP	GS	MIN	AVG	TOTAL			3-POINT			F-THROW			REBOUNDS					PF	FO	AST	TO	BLK	STL	PTS	AVG
					FG	FGA	PCT	FG	FGA	PCT	FT	FTA	PCT	OFF	DEF	TOT	AVG									
2019-20*	18	0	152	8.4	13	36	.361	7	24	.292	5	8	.625	0	11	11	0.6	14	0	31	14	0	9	38	2.1	
2020-21	21	21	649	30.9	97	221	.439	29	72	.403	58	75	.773	5	52	57	2.7	35	2	114	44	3	24	281	13.4	
2021-22	6	6	197	32.8	27	66	.409	12	27	.444	14	17	.824	1	18	19	3.2	5	0	30	13	1	3	80	13.3	
TOTAL	45	27	998	22.2	137	323	0.424	48	123	0.390	77	100	0.770	6	81	87	1.9	54	2	175	71	4	36	399	8.9	

MOUNTAIN WEST CAREER STATS

YEAR	GP	GS	MIN	AVG	TOTAL			3-POINT			F-THROW			REBOUNDS					PF	FO	AST	TO	BLK	STL	PTS	AVG
					FG	FGA	PCT	FG	FGA	PCT	FT	FTA	PCT	OFF	DEF	TOT	AVG									
2020-21	16	16	536	33.5	78	190	.411	23	58	.397	53	67	.791	4	41	45	2.80	25	2	87	40	2	23	232	14.5	
2021-22																										
TOTAL	^SAME																									



#5 UPE ATOSU

Graduate • Guard • 5-9 • Edo State, Nigeria (Scholars Imperial/Butler)

2021-22 Highlights

- Made CSU debut in the season opener, dropping 11 points and grabbing four rebounds
- Tied a career high in minutes played with 33 against Northern Colorado and Lipscomb
- Scored a season-best 21 against Lipscomb with 16 in the first half and 10 in the second quarter - both team highs for individual points in half and quarter
- The 65 total points (13.0 ppg) thru the first five games was the best start to the season for Atosu's NCAA career. It is the third-best five-game total in her career.
- She ended last season at Butler, scoring 84 points in her final five games. Put that with the first five games of this season and that's 14.9 ppg in the past 10 games

GAME HIGHS

POINTS

Season: 21 vs. LU (11/21)
 Career: 23 vs Xavier (2/22/21)

3 FGM

Season: 3 vs. LU (11/21)
 Career: 4 vs. PFW (12/22/19)

REBOUNDS

Season: 4 vs. CCU (11/9)
 Career: 7 vs. Akron (12/8/19)

ASSISTS

Season: 3 vs. DRU (11/15)
 Career: 7 vs. UCONN (2/27/21)

BLOCKS

Season:
 Career: 1 vs. PFW (12/22/19)

STEALS

Season: 3 vs. LU (11/21)
 Career: 4, vs. Georgetown (1/13/21)

MINUTES

Season: 33 vs. UNC (1/12), LU (11/21)
 Career: 33 ^ G vs. UCONN (2/27/21)

MISCELLANEOUS STATS

DOUBLE-DIGIT POINTS

Season: 3
 Career: 18

20+ POINTS

Season: 1
 Career: 3

NCAA CAREER STATS (*2019-21 AT BUTLER)

YEAR	GP	GS	MIN	AVG	TOTAL			3-POINT			F-THROW			REBOUNDS								PTS	AVG		
					FG	FGA	PCT	FG	FGA	PCT	FT	FTA	PCT	OFF	DEF	TOT	AVG	PF	FO	AST	TO			BLK	STL
2019-20*	23	4	530	23	49	146	.336	28	94	.298	26	33	.788	20	50	70	3.0	43	0	28	36	1	22.0	152	6.6
2020-21*	15	15	411	27.4	49	151	.325	15	65	.231	53	60	.883	20	27	47	3.1	39	0	50	46	0	23	166	11.1
2021-22	6	6	165	27.5	23	53	.434	9	24	.375	13	16	.813	3	7	10	1.7	9	0	9	6	0	6	68	11.3
TOTAL	44	25	1106	25.1	121	350	0.346	52	183	0.284	92	109	0.844	43	84.0	127	2.9	91	0	87	88	1	51.0	386	8.8

MOUNTAIN WEST CAREER STATS

YEAR	GP	GS	MIN	AVG	TOTAL			3-POINT			F-THROW			REBOUNDS								PTS	AVG			
					FG	FGA	PCT	FG	FGA	PCT	FT	FTA	PCT	OFF	DEF	TOT	AVG	PF	FO	AST	TO			BLK	STL	
2021-22																										
TOTAL	^SAME	-	-	-	-	-	-	-	-	-	-	-	-	-	-	-	-	-	-	-	-	-	-	-	-	-



11 PETRA FARKAS

Senior • Guard/Forward • 5-10 • Kecskemet, Hungary (Coll. of So. Idaho/Kecskemet TE)

2021-22 Highlights

- Her initials "PF" are on the warmup shirts in honor of her father, Pal, who passed away before the season
- Started the first two games of the season
- Drained a career-high five 3s for a career-high 15 points against Lipscomb, while adding a season-best three assists

GAME HIGHS

POINTS

Season: 15 vs. LU (11/21)
Career: ^

3 FGM

Season: 5 vs. LU (11/21)
Career: ^

REBOUNDS

Season: 5 vs. DU (11/18)
Career: 6 at UNLV (1/7/21)

ASSISTS

Season: 3 vs. LU (11/21)
Career: 4 vs. BSU (3/8/21)

BLOCKS

Season:
Career: 1, 3x last vs UNM (3/4/21)

STEALS

Season: 3 vs. CCU (11/9), UoL (11/28)
Career: ^

MINUTES

Season: 28 vs. CCU (11/9)
Career: 35 at DU (12/18)

MISCELLANEOUS STATS

DOUBLE-DIGIT POINTS

Season: 1
Career: 4

NJCAA CAREER STATS (* AT COLLEGE OF SOUTHERN IDAHO)

YEAR	GP	GS	MIN	AVG	TOTAL			3-POINT			F-THROW			REBOUNDS				PF	FO	AST	TO	BLK	STL	PTS	AVG
					FG	FGA	PCT	FG	FGA	PCT	FT	FTA	PCT	OFF	DEF	TOT	AVG								
2018-19*	31	11	517	16.7	92	226	.407	24	65	.369	8	12	.667	38	67	105	3.4	60	0	43	46	3	39	216	7.0
2019-20*	30	24	801	26.7	158	380	.416	52	139	.374	25	38	.658	51	142	193	6.4	60	1	109	81	12	48	393	13.1
TOTAL	61	35	1318	21.6	250	606	.413	76	204	.373	33	50	.660	89	209	298	4.9	120	1	152	127	15	87	609	10.0

NCAA CAREER STATS

YEAR	GP	GS	MIN	AVG	TOTAL			3-POINT			F-THROW			REBOUNDS				PF	FO	AST	TO	BLK	STL	PTS	AVG
					FG	FGA	PCT	FG	FGA	PCT	FT	FTA	PCT	OFF	DEF	TOT	AVG								
2020-21	20	4	300	15.0	31	81	.383	17	45	.378	3	4	.750	4	39	43	2.2	13	0	12	12	2	3	82	4.1
2021-22	6	2	119	19.8	9	31	.290	9	25	.360	3	3	1.000	1	13	14	2.3	6	0	4	2	0	8	30	5.0
TOTAL	26	6	419	16.1	40	112	0.357	26	70	0.371	6	7	0.857	5	52	57	2.2	19	0	16	14	2	11	112	4.3

MOUNTAIN WEST CAREER STATS

YEAR	GP	GS	MIN	AVG	TOTAL			3-POINT			F-THROW			REBOUNDS				PF	FO	AST	TO	BLK	STL	PTS	AVG
					FG	FGA	PCT	FG	FGA	PCT	FT	FTA	PCT	OFF	DEF	TOT	AVG								
2020-21	15	2	196	13.1	19	54	.352	11	33	0.333	0	.000	0	1	27	28	1.9	8	0	4	10	2	0	49.0	3.3
2021-22																									
TOTAL																									



#12 CLARA GOMEZ

Freshman • Forward • 6-1 • Sabadell, Spain (Segle XXI)

2021-22 Highlights

- Made CSU debut in the season opener, playing seven minutes
- Grabbed her first career rebounds against Lipscomb

GAME HIGHS

POINTS

Season:
Career:

3 FGM

Season:
Career:

REBOUNDS

Season: 2 vs. LU (11/21)
Career: ^

ASSISTS

Season:
Career:

STEALS

Season:
Career:

BLOCKS

Season:
Career:

MINUTES

Season: 7 vs. CCU (11/9)
Career:

NCAA CAREER STATS

YEAR	GP	GS	MIN	AVG	TOTAL			3-POINT			F-THROW			REBOUNDS											
					FG	FGA	PCT	FG	FGA	PCT	FT	FTA	PCT	OFF	DEF	TOT	AVG	PF	FO	AST	TO	BLK	STL	PTS	AVG
2021-22	4	0	14	3.5	0	3	.000	0	0	.000	0	0	.000	2	0	2	0.5	1	0	0	1	0	0	0	0.0
TOTAL	^SAME																								

MOUNTAIN WEST CAREER STATS

YEAR	GP	GS	MIN	AVG	TOTAL			3-POINT			F-THROW			REBOUNDS											
					FG	FGA	PCT	FG	FGA	PCT	FT	FTA	PCT	OFF	DEF	TOT	AVG	PF	FO	AST	TO	BLK	STL	PTS	AVG
2021-22																									
TOTAL	^SAME																								



#22 CALI CLARK

Sophomore • Forward • 6-3 • Centennial, Colo. (Cherry Creek HS)

2021-22 Highlights

- Switched from #14 that she wore last year to #22
- One of four Rams to score in double digits in the season opener, finishing with 13 points - one away from her career high
- Started the second game of the season against Northern Colorado,
- Tied a career high in rebounds (9) and blocks (3) against Oral Roberts
- Has at least five rebounds in all but two games thus far

SEASON & CAREER HIGHS

POINTS

Season: 13 vs. CCU (11/9)
 Career: 14 vs. USU (1/22/21)

3FG Made

Season: 1 vs. CCU (11/9) LU (11/21)
 Career: 1 vs. ^ & Regis (11/25)

REBOUNDS

Season: 9, vs. ORU (11/15) LU (11/21)
 Career: 9, 3x last ^ & BS (1/29)

ASSISTS

Season: 1 vs 3x last LU (11/21)
 Career: 2, 2x last vs. BS (1/29/21)

STEALS

Season: 1, vs LU (11/21)
 Career: 1, 5x last^

Blocks

Season: 3, vs. ORU (11/15)
 Career: 3, 2x last ^ & UNM (3/5/21)

MINUTES

Season: 20 vs. CCU (11/9)
 Career: 23 vs. BS (1/27)

MISCELLANEOUS STATS

DOUBLE-DIGIT POINTS

Season: 3
 Career: 8

NCAA CAREER STATS

YEAR	GP	GS	MIN	AVG	TOTAL			3-POINT			F-THROW			REBOUNDS											
					FG	FGA	PCT	FG	FGA	PCT	FT	FTA	PCT	OFF	DEF	TOT	AVG	PF	FO	AST	TO	BLK	STL	PTS	AVG
2020-21	20	11	237	11.9	45	87	.517	1	6	.167	14	20	.700	25	59	84	4.2	27	1	11	21	8	3	105	5.3
2021-22	6	1	95	15.8	17	30	.567	3	4	.750	8	10	.800	11	25	36	6.0	9	0	3	9	7	2	45	7.5
TOTAL	26	12	332	12.8	62	117	.530	4	10	.400	22	30	.733	36	84	120	4.6	36	1	14	30	15	5	150	5.8

MOUNTAIN WEST CAREER STATS

YEAR	GP	GS	MIN	AVG	TOTAL			3-POINT			F-THROW			REBOUNDS											
					FG	FGA	PCT	FG	FGA	PCT	FT	FTA	PCT	OFF	DEF	TOT	AVG	PF	FO	AST	TO	BLK	STL	PTS	AVG
2020-21	15	8	174	11.6	31	67	.463	0	5	.000	11	14	.786	20	46	66	4.4	15	0	8	12	6	2	73	4.9
2021-22																									
TOTAL																									



#23 ANNA PRIM

Freshman • Forward • 5-6 • Lleida, Spain (Segle XXI)

2021-22 Highlights

- Made CSU debut in the season opener and led the team in scoring with 14 points, which marked the most by a freshman in a season opener since Lore Devos in 2017
- Drained four threes in the season opener for the most threes from a freshman in an opener during the Ryun Williams' era

GAME HIGHS

POINTS

Season: 14 vs. CCU (11/9)

Career:

3 FGM

Season: 4 vs. CCU (11/9)

Career:

REBOUNDS

Season: 2 vs. CCU (11/9)

Career:

ASSISTS

Season: 3 vs. CCU (11/9)

Career:

STEALS

Season:

Career:

BLOCKS

Season:

Career:

MINUTES

Season: 19 vs. CCU (11/9)

Career:

MISCELLANEOUS STATS

DOUBLE-DIGIT POINTS

Season: 1

Career:

NCAA CAREER STATS

YEAR	GP	GS	MIN	AVG	TOTAL			3-POINT			F-THROW			REBOUNDS							PTS	AVG			
					FG	FGA	PCT	FG	FGA	PCT	FT	FTA	PCT	OFF	DEF	TOT	AVG	PF	FO	AST			TO	BLK	STL
2021-22	6	0	50	8.3	6	10	.600	4	8	.500	1	2	.500	1	2	3	0.5	1	0	6	6	0	1	17	2.8
TOTAL	^SAME																								

MOUNTAIN WEST CAREER STATS

YEAR	GP	GS	MIN	AVG	TOTAL			3-POINT			F-THROW			REBOUNDS							PTS	AVG			
					FG	FGA	PCT	FG	FGA	PCT	FT	FTA	PCT	OFF	DEF	TOT	AVG	PF	FO	AST			TO	BLK	STL
2021-22																									
TOTAL	^SAME																								



24 SYDNEY MECH

Junior • Guard/Forward • 6-2 • Englewood, Colo. (Denver/Cherry Creek HS)

2021-22 Highlights

- Missed season opener due to injury
- Made season debut against Northern Colorado, scoring 10 points
- Notched career best marks in rebounds (8) and blocks (8) against Oral Roberts, while playing a season-high 36 minutes, which is the second-most time on the floor in her career
- The eight blocks marked the second-highest total for a game in CSU history (10 by Teresa James vs. Baylor on 12/12/92)
- Seven career games with at least three blocks

GAME HIGHS

POINTS

Season: 12 vs. UoL (11/28)
 Career: 24 at FS (12/4/20)

3FG Made

Season: 1 vs. UNC (11/12), UoL (11/28)
 Career: 2, 2x last at FS (12/4)

REBOUNDS

Season: 8 vs. ORU (11/15)
 Career: 8 vs. ORU (11/15)

ASSISTS

Season: 3 at DU (11/18)
 Career: 5 at FS (12/3/20)

BLOCKS

Season: 8 vs ORU (11/15)
 Career: 8 vs ORU (11/15)

MINUTES

Season: 36 vs ORU (11/15), UoL (11/28)
 Career: 46 vs. SDSU (12/10/20)

MISCELLANEOUS STATS

DOUBLE-DIGIT POINTS

Season: 2
 Career: 7

20+ POINTS

Season:
 Career: 1

NCAA CAREER STATS (*2018-19 AT DENVER)

YEAR	GP	GS	MIN	AVG	TOTAL			3-POINT			F-THROW			REBOUNDS				PF	FO	AST	TO	BLK	STL	PTS	AVG	
					FG	FGA	PCT	FG	FGA	PCT	FT	FTA	PCT	OFF	DEF	TOT	AVG									
2018-19	19	10	377	19.8	41	91	.451	11	19	.579	24	27	.889	29	35	64	3.4	45	5	24	27	24	6	117	6.2	
2019-20	REDSHIRT																									
2020-21	13	5	309	23.8	37	72	.514	7	19	.368	7	9	.778	14	25	39	3.0	26	0	23	7	16	4	88	6.8	
2021-22	5	4	156	31.2	15	30	.500	2	7	.286	3	6	.500	1	13	14	2.8	5	0	7	5	14	3	35	7.0	
TOTAL	37	19	842	22.8	93	193	0.482	20	45	0.444	34	42	0.810	44	73	117	3.2	76	5	54	39	54	13	240	6.5	

MOUNTAIN WEST CAREER STATS

YEAR	GP	GS	MIN	AVG	TOTAL			3-POINT			F-THROW			REBOUNDS				PF	FO	AST	TO	BLK	STL	PTS	AVG	
					FG	FGA	PCT	FG	FGA	PCT	FT	FTA	PCT	OFF	DEF	TOT	AVG									
2019-20	8	3	220	27.5	28	52	.538	6	14	.429	7	9	.778	9	17	26	3.3	19	0	16	5	9	3	69	8.6	
2021-22																										
TOTAL																										



#32 MAKAYLA HEMINGWAY

Fr. • Guard/Forward • 5-11 • Aurora, Colo. (Cherokee Trail HS)

2021-22 Highlights

- Made season debut in the season opener against Colorado Christian and scored five points to tie her career-best total for a game

GAME HIGHS

POINTS

Season: 5 vs. CCU (11/9)
 Career: 5, 2x ^ 6 vs. RU (11/25/20)

3FG Made

Season: 1 vs. CCU (11/9)
 Career: 1, 3x last^

REBOUNDS

Season: 2 vs. CCU (11/9) DU (11/18)
 Career: 3 at DU (12/18)

ASSISTS

Season: 1 vs. CCU (11/9) (DU 11/18)
 Career: 2 vs. CCU (11/28/20)

BLOCKS

Season: 1 vs. CCU (11/9)
 Career: 2 vs. Regis (11/25/20)

STEALS

Season: 1 vs. CCU (11/9)
 Career: 2 vs. Regis (11/25/20)

MINUTES

Season: 10 vs. CCU (11/9)
 Career: 11, 2x last vs. CCU (11/28/20)

NCAA CAREER STATS

YEAR	GP	GS	MIN	AVG	TOTAL			3-POINT			F-THROW			REBOUNDS											
					FG	FGA	PCT	FG	FGA	PCT	FT	FTA	PCT	OFF	DEF	TOT	AVG	PF	FO	AST	TO	BLK	STL	PTS	AVG
2020-21	10	0	41	4.1	5	10	.500	2	5	.400	1	6	.167	1	7	8	0.8	4	0	2	1	5	2	13	1.3
2021-22	4	0	19	4.75	2	8	.250	1	5	.200	0	0	.000	0	5	5	1.3	1	0	2	0	1	1	5	1.3
TOTAL	14	0	60	4.3	7	18	0.389	3	10	0.300	1	6	0.167	1	12	13	0.9	5	0	4	1	6	3	18	1.3

MOUNTAIN WEST CAREER STATS

YEAR	GP	GS	MIN	AVG	TOTAL			3-POINT			F-THROW			REBOUNDS											
					FG	FGA	PCT	FG	FGA	PCT	FT	FTA	PCT	OFF	DEF	TOT	AVG	PF	FO	AST	TO	BLK	STL	PTS	AVG
2020-21	6	0	11	1.8	1	2	.500	1	1	1.000	0	0	.000	1	1	2	0.3	0	0	0	1	1	0	3	0.5
2021-22																									
TOTAL	^SAME																								



#33 BENGISU ALPER

R-Junior • Guard • 5-11 • Istanbul, Turkey (Maine/ Florya Doga Anataolian- Fenerbahce)

2021-22 Highlights

- Has scored in all three games this season
- Played a season-high 16 minutes in the season opener against Colorado Christian
- Drew five fouls against Louisville

GAME HIGHS

POINTS

Season: 5, vs. ORU (11/15)
 Career: 8, 2x vs. UMBC (1/5/19), DU (12/13/20)

3FG Made

Season: 1, vs. ORU (11/15)
 Career: 2, UMBC (1/5/19)

REBOUNDS

Season: 4 vs. DU (11/18)
 Career: 6 vs. UMBC (1/5/19)

ASSISTS

Season: 2 vs. LU (11/21)
 Career: 4 vs. DU (12/13)

STEALS

Season:
 Career: 1 vs. UMBC (1/5/19), at DU (12/18)

MINUTES

Season: 16 vs. CCU (11/9)
 Career: 17, vs. UMBC (1/5/19)

NCAA CAREER STATS (*2018-19 AT MAINE)

YEAR	GP	GS	MIN	AVG	TOTAL			3-POINT			F-THROW			REBOUNDS					PF	FO	AST	TO	BLK	STL	PTS	AVG	
					FG	FGA	PCT	FG	FGA	PCT	FT	FTA	PCT	OFF	DEF	TOT	AVG										
2018-19*	15	0	82	5.5	7	22	.318	5	12	.417	4	9	.444	1	10	11	0.7	8	0	2	8	0	1	23	1.5		
2019-20	REDSHIRT																										
2020-21	19	0	136	7.2	15	40	.375	3	6	.500	7	14	.500	0	17	17	0.9	11	0	13	11	1	2	40	2.1		
2021-22	6	0	73	12.2	4	20	.200	1	6	.167	3	8	.375	2	10	12	2.0	7	0	3	3	0	0	12	2.0		
TOTAL	40	0	291	7.3	26	82	0.317	9	24	0.375	14	31	0.452	3	37	40	1.0	26	0	18	22	1	3	75	1.9		

MOUNTAIN WEST CAREER STATS

YEAR	GP	GS	MIN	AVG	TOTAL			3-POINT			F-THROW			REBOUNDS					PF	FO	AST	TO	BLK	STL	PTS	AVG
					FG	FGA	PCT	FG	FGA	PCT	FT	FTA	PCT	OFF	DEF	TOT	AVG									
2019-20	-	-	-	-	-	-	-	-	-	-	-	-	-	-	-	-	-	-	-	-	-	-	-	-	-	
2020-21	15	0	88	5.9	10	20	.500	1	2	.500	1	2	.500	0	10	10	0.7	9	0	7	9	0	1	22	1.5	
2021-22	-	-	-	-	-	-	-	-	-	-	-	-	-	-	-	-	-	-	-	-	-	-	-	-	-	
TOTAL	15	0	88	5.9	10	20	.500	1	2	.500	1	2	.500	0	10	10	0.7	9	0	7	9	0	1	22	1.5	



#42 KARLY MURPHY

Gr. • Forward • 6-1 • River Falls, Wisc. (Wisconsin-Green Bay/River Falls HS)

2021-22 Highlights

- Team's second leading scorer and top rebounder thru six games despite being fifth in minute per game
- Has been the team's leading scorer three times this season and four last season
- Perfect from the free-throw line (14-14). Since becoming a Ram, she is 50 for 53.
- Recorded back-to-back double-doubles against Northern Colorado and Oral Roberts, while being one off in tying her career-best rebound mark both times
- The 49 total rebound thru the first five games was the best start to the season in that category over her career. Better yet, it is the best five-game stretch. (Previous was 38, 2020-21).
- The 18 points she scored vs. Oral Roberts is the third-most she has had as a Ram after her 19-point performances against Utah State and Air Force last season

GAME HIGHS

POINTS

Season: 18 vs. ORU (11/15)
 Career: 30 vs. CMU (11/6/19)

FG MADE

Season: 9 vs. ORU (11/15)
 Career: 13 vs. CMU (11/6/19)

REBOUNDS

Season: 13 vs. UNC (11/12) ORU (11/15)
 Career: 14 vs. USU (1/20)

ASSISTS

Season: 2 vs. UNC (11/12)
 Career: 4, 3x last vs. Missouri (11/16/19)

BLOCKS

Season: 1 vs. UNC (11/12)
 Career: 1, 15x last ^

STEALS

Season: 2 vs. UNC (11/12), UoL (11/28)
 Career: 3 vs. Wright St. (3/6/18)

MINUTES

Season: 26 vs. UNC (11/12) ORU (11/15)
 Career: 46 vs. CMU (11/6/19)

MISCELLANEOUS STATS

DOUBLE-DIGIT POINTS

Season: 4
 Career: 31

DOUBLE-DOUBLES

Season: 2
 Career: 6

20+ POINTS

Season:
 Career: 1

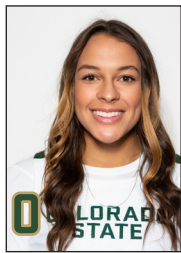
NCAA CAREER STATS (*2016-20 AT WISCONSIN-GREEN BAY)

YEAR	GP	GS	MIN	AVG	TOTAL			3-POINT			F-THROW			REBOUNDS											
					FG	FGA	PCT	FG	FGA	PCT	FT	FTA	PCT	OFF	DEF	TOT	AVG	PF	FO	AST	TO	BLK	STL	PTS	AVG
2016-17*	REDSHIRT																								
2017-18*	33	32	640	19.4	119	237	.502	2	6	.333	27	43	.628	58	82	140	4.2	62	0	28	55	3	19	267	8.1
2018-19*	1	1	1	1.0	0	0	.000	0	0	.000	0	0	.000	0	0	0	0	0	0	0	1	0	0	0	0
2019-20*	32	19	587	18.3	118	270	.437	1	12	.083	30	45	.667	51	95	146	4.6	49	0	38	33	6	18	267	8.3
2020-21	16	7	317	19.8	66	120	.550	0	0	.000	36	39	.923	55	68	123	7.7	35	1	6	21	5	8	168	10.5
2021-22	6	5	126	21.0	27	63	.429	0	2	.000	14	14	1.000	10	44	54	9.0	14	0	6	6	1	4	68	11.3
TOTAL	88	64	1671	19.0	330	690	.478	3	20	.150	107	141	.759	174	289	463	5.3	160	1	78	116	15	49	770	8.8

MOUNTAIN WEST CAREER STATS

YEAR	GP	GS	MIN	AVG	TOTAL			3-POINT			F-THROW			REBOUNDS											
					FG	FGA	PCT	FG	FGA	PCT	FT	FTA	PCT	OFF	DEF	TOT	AVG	PF	FO	AST	TO	BLK	STL	PTS	AVG
2020-21	13	6	273	21.0	58	103	.563	0	0	.000	24	27	.889	43	60	103	7.9	4	0	4	18	5	7	140	10.8
2021-22																									
TOTAL																									

2021-22 TEAM PHOTO ROSTER



KENDYLL KINZER
Jr. • F • 6-1
Lewiston, Idaho
Lewiston HS/Fresno St.



JESS MOORS
Fr. • F • 6-0
Auckland, New Zealand
Westlake Girls HS



MCKENNA HOFSCILD
Jr. • G • 5-5
Prior Lake, Minn.
Seton Hall/Prior Lake HS



UPE ATOSU
Gr. • G • 5-9
Edo State, Nigeria
Scholars Imperial/Butler



PETRA FARKAS
Sr. • G/F • 5-10
Kecskemet, Hungary
Coll. of Southern Idaho



CLARA GOMEZ
Fr. • F • 6-1
Sabadell, Spain
Segle XXI



CALI CLARK
Soph. • F • 6-3
Centennial, Colo.
Cherry Creek HS



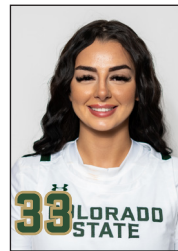
ANNA PRIM
Fr. • G • 5-6
Lleida, Spain
Segle XXI



SYDNEY MECH
R-Jr. • G/F • 6-2
Englewood, Colo.
Denver/Cherry Creek HS



MAKAYLA HEMINGWAY
Soph. • G/F • 5-11
Aurora, Colo.
Cherokee Trail HS



BENGISU ALPER
R-Jr. • G • 5-11
Istanbul, Turkey
Maine/Florya Doga A.



KARLY MURPHY
Gr. • F • 6-1
River Falls, Wisc.
Wisc-Green Bay/River Falls HS



RYUN WILLIAMS
Head Coach
Ninth Season
South Dakota '92



RICO BURKETT
Assistant Coach
Fourth Season
North Dakota '93



AMBER CUNNINGHAM
Assistant Coach
Sixth Season
South Dakota '12



KYLEY BACHAND
Assistant Coach
First Season
Illinois '15