



Officials: Brooks Wells, Chris Hudson, Marques Pettigrew

St. Mary's (TX) - 59

Record: 0-2

NO.	Name	F	Min	FG		3P		FT		Rebounds			Fouls		TP	AS	TO	ST	Blocks		+/-
				M-A	M-A	M-A	OR	DR	TOT	PF	FD	BS	BA								
15	Tyler Caron	F	20:26	3-9	1-5	2-2	2	2	4	2	3	9	0	2	2	0	0	0	0	0	-14
32	Emmanuel Ewuzie	F	27:28	5-7	0-0	4-7	3	3	6	1	5	14	2	1	0	4	0	1	0	1	
1	Caleb Jordan	G	27:57	2-6	0-2	1-4	0	1	1	1	5	5	0	3	0	0	1	0	1	-12	
2	Lovre Zaja	G	15:28	0-1	0-1	1-2	1	0	1	4	4	1	2	1	0	0	0	0	8		
25	Ryan Leonard	G	29:22	5-13	0-3	1-1	1	6	7	2	1	11	1	4	3	1	2	1	-12		
4	Dawson John		16:33	2-5	2-5	0-4	1	1	2	0	3	6	1	2	1	0	0	4			
5	Edward Manuel		28:26	1-5	0-2	2-2	0	5	5	2	1	4	0	1	0	1	0	5			
10	Jalon Johnson		13:00	0-1	0-0	0-0	0	2	2	1	1	0	3	1	0	0	0	-10			
21	Diego Gonzalez		08:48	3-4	1-1	0-0	2	0	2	3	0	7	0	1	0	0	1	3			
11	Mamady Djikine		12:32	0-6	0-0	2-2	0	1	1	2	2	2	0	0	2	0	3	-8			
Team							4	3	7			0			0						
<b>Totals</b>				21-57	4-19	13-24	14	24	38	18	25	59	9	16	8	6	7	-7			

Shooting By Period		
1st FG%	13-27	48.1%
3PT%	3-9	33.3%
FT%	4-6	66.7%
2nd FG%	8-30	26.7%
3PT%	1-10	10.0%
FT%	9-18	50%
GM FG%	21-57	36.8%
3PT%	4-19	21.1%
FT%	13-24	54.2%

Dead Ball Rebounds: 7, 0

Technical Fouls::NONE

UTSA - 66

Record: 2-1

NO.	Name	F	Min	FG		3P		FT		Rebounds			Fouls		TP	AS	TO	ST	Blocks		+/-
				M-A	M-A	M-A	OR	DR	TOT	PF	FD	BS	BA								
4	Josh Farmer	F	22:35	2-6	0-2	0-0	2	5	7	3	3	4	0	2	0	1	0	0	0	-4	
24	Jacob Germany	C	25:36	6-11	0-0	2-3	3	0	3	4	3	14	0	1	0	2	0	21			
0	John Buggs III	G	36:20	5-9	4-6	0-0	0	2	2	3	0	14	1	4	0	0	1	9			
1	Japhet Medor	G	20:20	2-7	0-0	2-4	0	5	5	4	5	6	3	5	2	1	2	16			
25	Isaiah Addo-Ankrah	G	22:17	1-5	1-4	0-0	0	2	2	2	1	3	2	1	0	0	1	4			
5	DJ Richards		21:48	1-5	1-3	2-2	2	3	5	3	2	5	1	2	2	0	1	-6			
10	Erik Czumbel		17:44	3-4	1-1	0-1	0	1	1	2	3	7	1	0	1	0	1	-11			
2	Aleu Aleu		16:50	3-5	1-3	0-0	1	1	2	3	0	7	0	0	0	0	0	1			
20	Lamin Sabally		10:16	2-2	0-0	2-2	0	1	1	0	1	6	1	2	0	2	0	-2			
11	Lachlan Bofinger		02:55	0-1	0-0	0-0	0	2	2	1	0	0	0	0	0	1	0	3			
22	Christian Tucker		03:19	0-0	0-0	0-0	0	0	0	0	0	0	0	0	0	0	0	4			
Team							2	4	6			0			0						
<b>Totals</b>				25-55	8-19	8-12	10	26	36	25	18	66	9	17	5	7	6	7			

Shooting By Period		
1st FG%	12-21	57.1%
3PT%	5-11	45.5%
FT%	3-4	75%
2nd FG%	13-34	38.2%
3PT%	3-8	37.5%
FT%	5-8	62.5%
GM FG%	25-55	45.5%
3PT%	8-19	42.1%
FT%	8-12	66.7%

Dead Ball Rebounds: 0, 0

Technical Fouls::NONE

	StMU	UTSA
Biggest lead	8 (1 <sup>st</sup> 2:47)	13 (2 <sup>nd</sup> 15:44)
Best Scoring Run	8 (2 <sup>nd</sup> 1:01)	21 (2 <sup>nd</sup> 15:44)
Lead Changes	1	
Times Tied	2	
Time with Lead	19:26	19:27

Points from	StMU	UTSA
Turnovers	16	21
Paint	28	34
Second Chance	15	12
Fast Breaks	7	20
Bench	19	25

	Period by Period Scoring		
	1st	2nd	TOT
StMU	33	26	59
UTSA	32	34	66



**Period 1**

**Quarter Starters:**

<b>UTSA</b>	0 Buggs III J	1 Medor J	4 Farmer J	24 Germany J	25 Addo-Ankrah I
<b>StMU</b>	1 Jordan C	2 Zaja L	15 Caron T	25 Leonard R	32 Ewuzie E

Game Time	UTSA	Score	Diff	StMU
20:00	24 GERMANY J jumpball lost			32 EWUZIE E jumpball won
19:38		<b>0-2</b>	<b>-2</b>	25 LEONARD R 2pt FG outside the paint, jump shot made (2)
19:15	24 GERMANY J 2pt FG outside the paint, hook shot missed			
19:12				25 LEONARD R defensive rebound (1)
19:00		<b>0-5</b>	<b>-5</b>	15 CARON T 3pt FG , jump shot made (3)
19:00				32 EWUZIE E assist (1)
18:45	0 BUGGS III J turnover bad pass (1)			25 LEONARD R steal (1)
18:38				15 CARON T 3pt FG from turnover, jump shot missed
18:35	defensive rebound (1)			
18:15	25 ADDO-ANKRAH I 3pt FG , step back jump shot missed			
18:11				32 EWUZIE E defensive rebound (1)
18:05	0 BUGGS III J foul personal (1 - 1)			1 JORDAN C foul drawn (1)
17:43				25 LEONARD R turnover travel (1)
17:32	24 GERMANY J 2pt FG from turnover in the paint, layup made (2)	<b>2-5</b>	<b>-3</b>	
17:32	24 GERMANY J foul drawn (1)			2 ZAJA L foul shooting (1 - 1)
17:32	24 GERMANY J free throw 1 - 1 made (3)	<b>3-5</b>	<b>-2</b>	
17:02		<b>3-7</b>	<b>-4</b>	32 EWUZIE E 2pt FG in the paint, dunk, made (2)
17:02				25 LEONARD R assist (1)
16:54	4 FARMER J turnover bad pass (1)			25 LEONARD R steal (2)
16:51				25 LEONARD R turnover lost ball (2)
16:35	25 ADDO-ANKRAH I 3pt FG from turnover, jump shot made (3)	<b>6-7</b>	<b>-1</b>	
16:35	1 MEDOR J assist (1)			
16:14		<b>6-9</b>	<b>-3</b>	15 CARON T 2pt FG in the paint, dunk, made (5)
16:14				32 EWUZIE E assist (2)
15:55	24 GERMANY J 2pt FG in the paint, driving layup made (5)	<b>8-9</b>	<b>-1</b>	
15:39				1 JORDAN C turnover travel (1)
15:39	Timeout media			
15:39	24 GERMANY J substitution out			
15:39	5 RICHARDS D substitution in			
15:39				1 JORDAN C substitution out
15:39				15 CARON T substitution out
15:39				25 LEONARD R substitution out
15:39				4 JOHN D substitution in
15:39				5 MANUEL E substitution in
15:39				10 JOHNSON J substitution in
15:29	1 MEDOR J turnover lost ball (1)			
15:15				32 EWUZIE E 2pt FG from turnover in the paint, hook shot missed
15:11				4 JOHN D offensive rebound (1)
15:07	4 FARMER J foul drawn (1)			2 ZAJA L foul offensive (2 - 2)
15:07				2 ZAJA L turnover offensive (1)
15:07	1 MEDOR J substitution out			
15:07	10 CZUMBEL E substitution in			



**St. Mary's (TX) at UTSA**

11/14/22 Convocation Center, San Antonio  
2022-23 Men's Basketball

**Game Time:** 7:00 PM  
**Game Duration:** 1:53  
**Attendance:** 782

**Officials:** Brooks Wells, Chris Hudson, Marques Pettigrew

Game Time	UTSA	Score	Diff	StMU
15:07				2 ZAJA L substitution out
15:07				21 GONZALEZ D substitution in
14:40	0 BUGGS III J 3pt FG from turnover, jump shot missed			
14:37				10 JOHNSON J defensive rebound (1)
14:31		<b>8-12</b>	<b>-4</b>	21 GONZALEZ D 3pt FG , jump shot made (3)
14:31				10 JOHNSON J assist (1)
14:06	4 FARMER J 3pt FG , jump shot missed			
14:03				5 MANUEL E defensive rebound (1)
13:49	10 CZUMBEL E steal (1)			4 JOHN D turnover lost ball (1)
13:42	10 CZUMBEL E 3pt FG fast break from turnover, jump shot made (3)	<b>11-12</b>	<b>-1</b>	
13:42	25 ADDO-ANKRAH I assist (1)			
13:17		<b>11-14</b>	<b>-3</b>	21 GONZALEZ D 2pt FG in the paint, driving layup made (5)
13:00	0 BUGGS III J 3pt FG , step back jump shot made (3)	<b>14-14</b>	<b>0</b>	
12:39		<b>14-17</b>	<b>-3</b>	4 JOHN D 3pt FG , jump shot made (3)
12:39				10 JOHNSON J assist (2)
12:22	10 CZUMBEL E foul drawn (1)			21 GONZALEZ D foul personal (1 - 3)
12:22	0 BUGGS III J substitution out			
12:22	4 FARMER J substitution out			
12:22	25 ADDO-ANKRAH I substitution out			
12:22	2 ALEU A substitution in			
12:22	20 SABALLY L substitution in			
12:22	24 GERMANY J substitution in			
12:22				32 EWUZIE E substitution out
12:22				11 DJIKINE M substitution in
12:11	20 SABALLY L 2pt FG in the paint, layup made (2)	<b>16-17</b>	<b>-1</b>	
12:11	10 CZUMBEL E assist (1)			
12:01	10 CZUMBEL E foul personal (1 - 2)			10 JOHNSON J foul drawn (1)
11:43				10 JOHNSON J 2pt FG outside the paint, turnaround jump shot missed
11:39				21 GONZALEZ D offensive rebound (1)
11:38		<b>16-19</b>	<b>-3</b>	21 GONZALEZ D 2pt FG second chance in the paint, layup made (7)
11:24	5 RICHARDS D 2pt FG outside the paint, pull up jump shot missed			
11:21				10 JOHNSON J defensive rebound (2)
11:15				4 JOHN D 3pt FG , pull up jump shot missed
11:12	5 RICHARDS D defensive rebound (1)			
11:06	20 SABALLY L turnover lost ball (1)			4 JOHN D steal (1)
10:41	2 ALEU A foul personal (1 - 3)			4 JOHN D foul drawn (1)
10:41	Timeout media			
10:41	5 RICHARDS D substitution out			
10:41	10 CZUMBEL E substitution out			
10:41	0 BUGGS III J substitution in			
10:41	1 MEDOR J substitution in			
10:41				10 JOHNSON J substitution out
10:41				1 JORDAN C substitution in
10:25				11 DJIKINE M 2pt FG from turnover outside the paint, jump shot missed
10:22	1 MEDOR J defensive rebound (1)			
10:20	1 MEDOR J foul drawn (1)			21 GONZALEZ D foul personal (2 - 4)



Game Time	UTSA	Score	Diff	StMU
10:20				21 GONZALEZ D substitution out
10:20				25 LEONARD R substitution in
10:09	1 MEDOR J foul offensive (1 - 4)			1 JORDAN C foul drawn (2)
10:09	1 MEDOR J turnover offensive (2)			
09:50		<b>16-21</b>	<b>-5</b>	25 LEONARD R 2pt FG from turnover outside the paint, pull up jump shot made (4)
09:43	20 SABALLY L 2pt FG fast break in the paint, driving layup made (4)	<b>18-21</b>	<b>-3</b>	
09:43	1 MEDOR J assist (2)			
09:15				4 JOHN D turnover travel (2)
08:55	2 ALEU A 3pt FG from turnover, jump shot missed			
08:52				defensive rebound (8)
08:52				4 JOHN D substitution out
08:52				15 CARON T substitution in
08:37	1 MEDOR J foul shooting (2 - 5)			1 JORDAN C foul drawn (3)
08:37				1 JORDAN C free throw 1 - 2 missed
08:37				offensive dead ball rebound (1)
08:37	1 MEDOR J substitution out			
08:37	10 CZUMBEL E substitution in			
08:37				1 JORDAN C free throw 2 - 2 missed
08:34	20 SABALLY L defensive rebound (1)			
08:19	2 ALEU A 3pt FG , jump shot made (3)	<b>21-21</b>	<b>0</b>	
08:19	20 SABALLY L assist (1)			
08:00				25 LEONARD R 3pt FG , jump shot missed
07:55				15 CARON T offensive rebound (1)
07:55		<b>21-23</b>	<b>-2</b>	15 CARON T 2pt FG second chance in the paint, step back jump shot made (7)
07:33	20 SABALLY L turnover bad pass (2)			15 CARON T steal (1)
07:28				15 CARON T 3pt FG from turnover, jump shot missed
07:26				offensive dead ball rebound (2)
07:25	24 GERMANY J foul loose ball (1 - 6)			11 DJIKINE M foul drawn (1)
07:25	Timeout media			
07:25	2 ALEU A substitution out			
07:25	20 SABALLY L substitution out			
07:25	24 GERMANY J substitution out			
07:25	4 FARMER J substitution in			
07:25	5 RICHARDS D substitution in			
07:25	25 ADDO-ANKRAH I substitution in			
07:25				11 DJIKINE M substitution out
07:25				32 EWUZIE E substitution in
07:07				15 CARON T 2pt FG from turnover second chance outside the paint, turnaround jump shot missed
07:04				32 EWUZIE E offensive rebound (2)
07:01				1 JORDAN C 2pt FG from turnover second chance in the paint, driving layup blocked
07:01	4 FARMER J block (1)			
07:00				offensive rebound (11)
06:50		<b>21-25</b>	<b>-4</b>	25 LEONARD R 2pt FG from turnover second chance in the paint, driving layup made (6)
06:50	4 FARMER J foul shooting (1 - 7)			25 LEONARD R foul drawn (1)
06:50		<b>21-26</b>	<b>-5</b>	25 LEONARD R free throw 1 - 1 made (7)



Game Time	UTSA	Score	Diff	StMU
06:38	5 RICHARDS D 3pt FG , step back jump shot missed			
06:35				5 MANUEL E defensive rebound (2)
06:10	5 RICHARDS D steal (1)			25 LEONARD R turnover lost ball (3)
06:04	25 ADDO-ANKRAH I 3pt FG from turnover, jump shot missed			
06:00				5 MANUEL E defensive rebound (3)
05:44				1 JORDAN C turnover lost ball (2)
05:33	4 FARMER J foul drawn (2)			25 LEONARD R foul personal (1 - 5)
05:28	25 ADDO-ANKRAH I turnover bad pass (1)			
05:01				15 CARON T 3pt FG from turnover, jump shot missed
04:58	4 FARMER J defensive rebound (1)			
04:34	10 CZUMBEL E 2pt FG in the paint, driving layup made (5)	<b>23-26</b>	<b>-3</b>	
04:34	10 CZUMBEL E foul drawn (2)			1 JORDAN C foul shooting (1 - 6)
04:34				1 JORDAN C substitution out
04:34				10 JOHNSON J substitution in
04:34	10 CZUMBEL E free throw 1 - 1 missed			
04:33				15 CARON T defensive rebound (2)
04:09		<b>23-28</b>	<b>-5</b>	32 EWUZIE E 2pt FG in the paint, layup made (4)
03:56	4 FARMER J 2pt FG in the paint, floating jump shot made (2)	<b>25-28</b>	<b>-3</b>	
03:37		<b>25-30</b>	<b>-5</b>	32 EWUZIE E 2pt FG in the paint, layup made (6)
03:37				10 JOHNSON J assist (3)
03:37	25 ADDO-ANKRAH I foul shooting (1 - 8)			32 EWUZIE E foul drawn (1)
03:37	Timeout media			
03:37	5 RICHARDS D substitution out			
03:37	10 CZUMBEL E substitution out			
03:37	25 ADDO-ANKRAH I substitution out			
03:37	2 ALEU A substitution in			
03:37	11 BOFINGER L substitution in			
03:37	22 TUCKER C substitution in			
03:37		<b>25-31</b>	<b>-6</b>	32 EWUZIE E free throw 1 - 1 made (7)
03:12	0 BUGGS III J turnover bad pass (2)			25 LEONARD R steal (3)
02:54				25 LEONARD R 2pt FG from turnover in the paint, layup blocked
02:54	11 BOFINGER L block (1)			
02:49				25 LEONARD R offensive rebound (2)
02:47	11 BOFINGER L foul shooting (1 - 9)			5 MANUEL E foul drawn (1)
02:47		<b>25-32</b>	<b>-7</b>	5 MANUEL E free throw 1 - 2 made (1)
02:47	4 FARMER J substitution out			
02:47	24 GERMANY J substitution in			
02:47		<b>25-33</b>	<b>-8</b>	5 MANUEL E free throw 2 - 2 made (2)
02:33	2 ALEU A 2pt FG in the paint, layup made (5)	<b>27-33</b>	<b>-6</b>	
02:13				32 EWUZIE E 2pt FG in the paint, layup missed
02:13	2 ALEU A defensive rebound (1)			
02:13	jump ball situation			
01:46	11 BOFINGER L 2pt FG in the paint, driving layup missed			
01:43				25 LEONARD R defensive rebound (3)
01:33				5 MANUEL E 3pt FG , jump shot missed
01:28	11 BOFINGER L defensive rebound (1)			
01:25	0 BUGGS III J 3pt FG fast break, pull up jump shot made (6)	<b>30-33</b>	<b>-3</b>	
01:11				Timeout 30 Sec



Official Basketball Play by Play - First Half

**St. Mary's (TX) at UTSA**

11/14/22 Convocation Center, San Antonio  
2022-23 Men's Basketball

**Game Time:** 7:00 PM  
**Game Duration:** 1:53  
**Attendance:** 782

**Officials:** Brooks Wells, Chris Hudson, Marques Pettigrew

Game Time	UTSA	Score	Diff	StMU
01:11	2 ALEU A substitution out			
01:11	1 MEDOR J substitution in			
01:11				32 EWUZIE E substitution out
01:11				11 DJIKINE M substitution in
00:50				25 LEONARD R 2pt FG outside the paint, step back jump shot missed
00:46	11 BOFINGER L defensive rebound (2)			
00:42	1 MEDOR J foul drawn (2)			10 JOHNSON J foul shooting (1 - 7)
00:42	1 MEDOR J free throw fast break 1 - 2 made (1)	<b>31-33</b>	<b>-2</b>	
00:42				10 JOHNSON J substitution out
00:42				1 JORDAN C substitution in
00:42	11 BOFINGER L substitution out			
00:42	4 FARMER J substitution in			
00:42	1 MEDOR J free throw fast break 2 - 2 made (2)	<b>32-33</b>	<b>-1</b>	
00:17				25 LEONARD R turnover bad pass (4)
00:17	Timeout 30 Sec			
00:17	22 TUCKER C substitution out			
00:17	25 ADDO-ANKRAH I substitution in			
<b>END OF PERIOD</b>				
<b>UTSA 32-33 StMU</b>				



**St. Mary's (TX) at UTSA**

11/14/22 Convocation Center, San Antonio  
2022-23 Men's Basketball

Game Time: 7:00 PM  
Game Duration: 1:53  
Attendance: 782

Officials: Brooks Wells, Chris Hudson, Marques Pettigrew

**St. Mary's (TX) - 33**

NO.	Name	F	Min	FG			Rebounds			Fouls		TP	AS	TO	ST	Blocks		+/-
				M-A	M-A	M-A	OR	DR	TOT	PF	FD					BS	BA	
15	Tyler Caron	F	13:13	3-7	1-4	0-0	1	1	2	0	0	7	0	0	1	0	0	-1
32	Emmanuel Ewuzie	F	13:52	3-5	0-0	1-1	1	1	2	0	1	7	2	0	0	0	0	4
1	Caleb Jordan	G	11:10	0-1	0-0	0-2	0	0	0	1	3	0	0	2	0	0	1	0
2	Lovre Zaja	G	04:53	0-0	0-0	0-0	0	0	0	2	0	0	0	1	0	0	0	1
25	Ryan Leonard	G	14:41	3-6	0-1	1-1	1	2	3	1	1	7	1	4	3	0	1	-1
4	Dawson John		06:47	1-2	1-2	0-0	1	0	1	0	1	3	0	2	1	0	0	2
5	Edward Manuel		15:39	0-1	0-1	2-2	0	3	3	0	1	2	0	0	0	0	0	0
10	Jalon Johnson		08:50	0-1	0-0	0-0	0	2	2	1	1	0	3	0	0	0	0	1
21	Diego Gonzalez		04:47	3-3	1-1	0-0	1	0	1	2	0	7	0	0	0	0	0	2
11	Mamady Djikine		06:08	0-1	0-0	0-0	0	0	0	0	1	0	0	0	0	0	0	-3
Team							1	1	2			0		0				
<b>Totals</b>				13-27	3-9	4-6	6	10	16	7	9	33	6	9	5	0	2	1

Shooting By Period		
1st FG%	13-27	48.1%
3PT%	3-9	33.3%
FT%	4-6	66.7%
GM FG%	13-27	48.1%
3PT%	3-9	33.3%
FT%	4-6	66.7%

Dead Ball Rebounds: 2, 0

Technical Fouls::NONE

**UTSA - 32**

NO.	Name	F	Min	FG			Rebounds			Fouls		TP	AS	TO	ST	Blocks		+/-
				M-A	M-A	M-A	OR	DR	TOT	PF	FD					BS	BA	
4	Josh Farmer	F	12:58	1-2	0-1	0-0	0	1	1	1	2	2	0	1	0	1	0	-7
24	Jacob Germany	C	12:05	2-3	0-0	1-1	0	0	0	1	1	5	0	0	0	0	0	6
0	John Buggs III	G	18:19	2-3	2-3	0-0	0	0	0	1	0	6	0	2	0	0	0	-1
1	Japhet Medor	G	08:08	0-0	0-0	2-2	0	1	1	2	2	2	2	2	0	0	0	1
25	Isaiah Addo-Ankrah	G	11:44	1-3	1-3	0-0	0	0	0	1	0	3	1	1	0	0	0	-6
5	DJ Richards		08:46	0-2	0-1	0-0	0	1	1	0	0	0	0	0	1	0	0	-5
10	Erik Czumbel		09:26	2-2	1-1	0-1	0	0	0	1	2	5	1	0	1	0	0	-4
2	Aleu Aleu		07:23	2-3	1-2	0-0	0	1	1	1	0	5	0	0	0	0	0	3
20	Lamin Sabally		04:57	2-2	0-0	0-0	0	1	1	0	0	4	1	2	0	0	0	1
11	Lachlan Bofinger		02:55	0-1	0-0	0-0	0	2	2	1	0	0	0	0	0	1	0	3
22	Christian Tucker		03:19	0-0	0-0	0-0	0	0	0	0	0	0	0	0	0	0	0	4
Team							0	1	1			0		0				
<b>Totals</b>				12-21	5-11	3-4	0	8	8	9	7	32	5	8	2	2	0	-1

Shooting By Period		
1st FG%	12-21	57.1%
3PT%	5-11	45.5%
FT%	3-4	75%
GM FG%	12-21	57.1%
3PT%	5-11	45.5%
FT%	3-4	75.0%

Dead Ball Rebounds: 0, 0

Technical Fouls::NONE

	StMU	UTSA
Biggest lead	8 (1st 2:47)	0 (1st 20:00)
Best Scoring Run	5(1st 19:00)	7(1st 0:42)
Lead Changes	0	
Times Tied	2	
Time with Lead	18:53	00:00

Points from	StMU	UTSA
Turnovers	7	9
Paint	16	14
Second Chance	9	0
Fast Breaks	0	10
Bench	12	14

	Period by Period Scoring		
	1st	2nd	TOT
StMU	33	26	59
UTSA	32	34	66



**Period 2**

**Quarter Starters:**

<b>UTSA</b>	0 Buggs III J	1 Medor J	4 Farmer J	24 Germany J	25 Addo-Ankrah I
<b>StMU</b>	1 Jordan C	10 Johnson J	15 Caron T	25 Leonard R	32 Ewuzie E

Game Time	UTSA	Score	Diff	StMU
20:00				5 MANUEL E substitution out
20:00				11 DJIKINE M substitution out
20:00				10 JOHNSON J substitution in
20:00				32 EWUZIE E substitution in
19:38	4 FARMER J foul personal (2 - 1)			15 CARON T foul drawn (1)
19:31				25 LEONARD R 3pt FG , jump shot missed
19:31	25 ADDO-ANKRAH I defensive rebound (1)			
19:27	0 BUGGS III J 3pt FG fast break, jump shot made (9)	<b>35-33</b>	<b>2</b>	
19:11				32 EWUZIE E turnover travel (1)
19:05	1 MEDOR J 2pt FG from turnover in the paint, jump shot blocked			
19:05				32 EWUZIE E block (1)
19:05	offensive rebound (10)			
18:55	4 FARMER J 3pt FG from turnover second chance, jump shot missed			
18:55	24 GERMANY J offensive rebound (1)			
18:36	24 GERMANY J 2pt FG from turnover second chance in the paint, layup made (7)	<b>37-33</b>	<b>4</b>	
18:36	25 ADDO-ANKRAH I assist (2)			
18:24				15 CARON T 2pt FG outside the paint, pull up jump shot missed
18:24	defensive rebound (12)			
18:16	0 BUGGS III J 3pt FG fast break, jump shot made (12)	<b>40-33</b>	<b>7</b>	
18:16				Timeout 30 Sec
18:16				32 EWUZIE E substitution out
18:16				11 DJIKINE M substitution in
18:07	1 MEDOR J steal (1)			10 JOHNSON J turnover lost ball (1)
18:07	1 MEDOR J 2pt FG fast break from turnover in the paint, driving layup made (4)	<b>42-33</b>	<b>9</b>	
17:45				25 LEONARD R 2pt FG in the paint, driving layup blocked
17:45	24 GERMANY J block (1)			
17:40	4 FARMER J defensive rebound (2)			
17:31	1 MEDOR J turnover bad pass (3)			11 DJIKINE M steal (1)
17:21				11 DJIKINE M 2pt FG from turnover in the paint, layup blocked
17:21	1 MEDOR J block (1)			
17:17	25 ADDO-ANKRAH I defensive rebound (2)			
17:08	24 GERMANY J 2pt FG outside the paint, hook shot missed			
17:05				25 LEONARD R defensive rebound (4)
16:53				11 DJIKINE M 2pt FG in the paint, layup blocked
16:53	24 GERMANY J block (2)			
16:52				15 CARON T offensive rebound (3)
16:52	25 ADDO-ANKRAH I foul personal (2 - 2)			15 CARON T foul drawn (2)
16:52	4 FARMER J substitution out			
16:52	25 ADDO-ANKRAH I substitution out			
16:52	2 ALEU A substitution in			
16:52	5 RICHARDS D substitution in			





**St. Mary's (TX) at UTSA**

11/14/22 Convocation Center, San Antonio  
2022-23 Men's Basketball

**Game Time:** 7:00 PM  
**Game Duration:** 1:53  
**Attendance:** 782

**Officials:** Brooks Wells, Chris Hudson, Marques Pettigrew

Game Time	UTSA	Score	Diff	StMU
16:52				10 JOHNSON J substitution out
16:52				2 ZAJA L substitution in
16:40				11 DJIKINE M 2pt FG second chance in the paint, layup missed
16:38	0 BUGGS III J defensive rebound (1)			
16:24	0 BUGGS III J 2pt FG in the paint, driving layup made (14)	<b>44-33</b>	<b>11</b>	
16:09	24 GERMANY J foul personal (2 - 3)			2 ZAJA L foul drawn (1)
16:09	24 GERMANY J substitution out			
16:09	4 FARMER J substitution in			
15:59	1 MEDOR J steal (2)			15 CARON T turnover lost ball (1)
15:54	1 MEDOR J 2pt FG from turnover in the paint, driving layup missed			
15:49	4 FARMER J offensive rebound (3)			
15:49	4 FARMER J 2pt FG from turnover second chance in the paint, dunk, missed			
15:48	5 RICHARDS D offensive rebound (2)			
15:44	4 FARMER J 2pt FG from turnover second chance in the paint, layup made (4)	<b>46-33</b>	<b>13</b>	
15:44	1 MEDOR J assist (3)			
15:42	1 MEDOR J foul personal (3 - 4)			2 ZAJA L foul drawn (2)
15:42	Timeout media			
15:42	1 MEDOR J substitution out			
15:42	10 CZUMBEL E substitution in			
15:42				15 CARON T substitution out
15:42				5 MANUEL E substitution in
15:27				11 DJIKINE M 2pt FG in the paint, layup missed
15:22	0 BUGGS III J defensive rebound (2)			
15:00	4 FARMER J turnover travel (2)			
15:00				11 DJIKINE M substitution out
15:00				32 EWUZIE E substitution in
14:46		<b>46-35</b>	<b>11</b>	25 LEONARD R 2pt FG from turnover in the paint, driving layup made (9)
14:38	10 CZUMBEL E 2pt FG in the paint, driving layup blocked			
14:38				32 EWUZIE E block (2)
14:34				25 LEONARD R defensive rebound (5)
14:13		<b>46-37</b>	<b>9</b>	1 JORDAN C 2pt FG outside the paint, pull up jump shot made (2)
13:47	4 FARMER J 2pt FG outside the paint, jump shot missed			
13:43				32 EWUZIE E defensive rebound (3)
13:43	5 RICHARDS D foul personal (1 - 5)			32 EWUZIE E foul drawn (2)
13:43	0 BUGGS III J substitution out			
13:43	20 SABALLY L substitution in			
13:43				25 LEONARD R substitution out
13:43				4 JOHN D substitution in
13:39	5 RICHARDS D foul personal (2 - 6)			1 JORDAN C foul drawn (4)
13:25	4 FARMER J foul shooting (3 - 7)			32 EWUZIE E foul drawn (3)
13:25		<b>46-38</b>	<b>8</b>	32 EWUZIE E free throw 1 - 2 made (8)
13:25	4 FARMER J substitution out			
13:25	24 GERMANY J substitution in			
13:25		<b>46-39</b>	<b>7</b>	32 EWUZIE E free throw 2 - 2 made (9)
13:17	5 RICHARDS D 2pt FG in the paint, driving layup blocked			
13:17				32 EWUZIE E block (3)



**St. Mary's (TX) at UTSA**

11/14/22 Convocation Center, San Antonio  
2022-23 Men's Basketball

**Game Time:** 7:00 PM  
**Game Duration:** 1:53  
**Attendance:** 782

**Officials:** Brooks Wells, Chris Hudson, Marques Pettigrew

Game Time	UTSA	Score	Diff	StMU
13:09	24 GERMANY J offensive rebound (2)			
13:09	24 GERMANY J 2pt FG second chance in the paint, layup made (9)	<b>48-39</b>	<b>9</b>	
13:01		<b>48-41</b>	<b>7</b>	5 MANUEL E 2pt FG fast break in the paint, driving layup made (4)
12:38	10 CZUMBEL E foul drawn (3)			32 EWUZIE E foul personal (1 - 1)
12:25	5 RICHARDS D foul offensive (3 - 8)			2 ZAJA L foul drawn (3)
12:25	5 RICHARDS D turnover offensive (1)			
12:25	10 CZUMBEL E substitution out			
12:25	1 MEDOR J substitution in			
12:25				1 JORDAN C substitution out
12:25				21 GONZALEZ D substitution in
12:23				21 GONZALEZ D turnover bad pass (1)
12:18	5 RICHARDS D foul drawn (1)			21 GONZALEZ D foul personal (3 - 2)
12:02	24 GERMANY J 2pt FG from turnover in the paint, turnaround jump shot missed			
11:58				5 MANUEL E defensive rebound (4)
11:52				5 MANUEL E 3pt FG , jump shot missed
11:48	1 MEDOR J defensive rebound (2)			
11:44	1 MEDOR J 2pt FG in the paint, driving layup blocked			
11:44				5 MANUEL E block (1)
11:44	offensive rebound (21)			
11:44	Timeout media			
11:44	2 ALEU A substitution out			
11:44	5 RICHARDS D substitution out			
11:44	0 BUGGS III J substitution in			
11:44	25 ADDO-ANKRAH I substitution in			
11:38	25 ADDO-ANKRAH I foul drawn (1)			5 MANUEL E foul personal (1 - 3)
11:24	24 GERMANY J 2pt FG second chance in the paint, driving layup made (11)	<b>50-41</b>	<b>9</b>	
11:04		<b>50-44</b>	<b>6</b>	4 JOHN D 3pt FG , jump shot made (6)
11:04				2 ZAJA L assist (1)
10:50	25 ADDO-ANKRAH I 2pt FG in the paint, driving layup blocked			
10:50				32 EWUZIE E block (4)
10:50				defensive rebound (22)
10:31				4 JOHN D 3pt FG , jump shot missed
10:28	1 MEDOR J defensive rebound (3)			
10:24	24 GERMANY J turnover travel (1)			
10:02				2 ZAJA L 3pt FG from turnover, jump shot missed
09:58				32 EWUZIE E offensive rebound (4)
09:58		<b>50-46</b>	<b>4</b>	32 EWUZIE E 2pt FG from turnover second chance in the paint, layup made (11)
09:55	1 MEDOR J foul drawn (3)			2 ZAJA L foul personal (3 - 4)
09:55				32 EWUZIE E substitution out
09:55				11 DJIKINE M substitution in
09:38	1 MEDOR J 2pt FG in the paint, floating jump shot missed			
09:38				defensive rebound (24)
09:38	24 GERMANY J foul loose ball (3 - 9)			11 DJIKINE M foul drawn (2)
09:38	24 GERMANY J substitution out			
09:38	4 FARMER J substitution in			
09:38		<b>50-47</b>	<b>3</b>	11 DJIKINE M 1&1 free throw 1 made (1)



**St. Mary's (TX) at UTSA**

11/14/22 Convocation Center, San Antonio  
2022-23 Men's Basketball

**Game Time:** 7:00 PM  
**Game Duration:** 1:53  
**Attendance:** 782

**Officials:** Brooks Wells, Chris Hudson, Marques Pettigrew

Game Time	UTSA	Score	Diff	StMU
09:38		<b>50-48</b>	<b>2</b>	11 DJIKINE M 1&1 free throw 2 made (2)
09:12	20 SABALLY L foul drawn (1)			11 DJIKINE M foul shooting (1 - 5)
09:12	20 SABALLY L free throw 1 - 2 made (5)	<b>51-48</b>	<b>3</b>	
09:12				2 ZAJA L substitution out
09:12				1 JORDAN C substitution in
09:12	20 SABALLY L free throw 2 - 2 made (6)	<b>52-48</b>	<b>4</b>	
08:58				11 DJIKINE M 2pt FG in the paint, hook shot blocked
08:58	20 SABALLY L block (1)			
08:53				21 GONZALEZ D offensive rebound (2)
08:52				21 GONZALEZ D 2pt FG second chance in the paint, layup blocked
08:52	20 SABALLY L block (2)			
08:50	1 MEDOR J defensive rebound (4)			
08:50	1 MEDOR J 2pt FG fast break in the paint, driving layup made (6)	<b>54-48</b>	<b>6</b>	
08:50	1 MEDOR J foul drawn (4)			11 DJIKINE M foul shooting (2 - 6)
08:50	1 MEDOR J free throw fast break 1 - 1 missed			
08:49				11 DJIKINE M defensive rebound (1)
08:34				5 MANUEL E 2pt FG outside the paint, turnaround jump shot missed
08:30	4 FARMER J defensive rebound (4)			
08:24	20 SABALLY L substitution out			
08:24	5 RICHARDS D substitution in			
08:24				21 GONZALEZ D substitution out
08:24				25 LEONARD R substitution in
08:20	1 MEDOR J turnover bad pass (4)			11 DJIKINE M steal (2)
08:14	1 MEDOR J foul shooting (4 - 10)			4 JOHN D foul drawn (2)
08:14				4 JOHN D free throw fast break 1 - 2 missed
08:14				offensive dead ball rebound (3)
08:14	1 MEDOR J substitution out			
08:14	10 CZUMBEL E substitution in			
08:14				4 JOHN D free throw fast break 2 - 2 missed
08:12	4 FARMER J defensive rebound (5)			
08:02	5 RICHARDS D turnover lost ball (2)			
07:57		<b>54-50</b>	<b>4</b>	25 LEONARD R 2pt FG from turnover in the paint, driving layup made (11)
07:57				4 JOHN D assist (1)
07:48	Timeout 30 Sec			
07:48				Timeout media
07:33	0 BUGGS III J 3pt FG , jump shot missed			
07:30				25 LEONARD R defensive rebound (6)
07:10				5 MANUEL E 2pt FG in the paint, hook shot missed
07:07	5 RICHARDS D defensive rebound (3)			
07:01	0 BUGGS III J 2pt FG in the paint, driving layup blocked			
07:01				25 LEONARD R block (1)
06:56				5 MANUEL E defensive rebound (5)
06:47	10 CZUMBEL E foul shooting (2 - 11)			1 JORDAN C foul drawn (5)
06:47		<b>54-51</b>	<b>3</b>	1 JORDAN C free throw 1 - 2 made (3)
06:47				11 DJIKINE M substitution out
06:47				32 EWUZIE E substitution in



**St. Mary's (TX) at UTSA**

11/14/22 Convocation Center, San Antonio  
2022-23 Men's Basketball

**Game Time:** 7:00 PM  
**Game Duration:** 1:53  
**Attendance:** 782

**Officials:** Brooks Wells, Chris Hudson, Marques Pettigrew

Game Time	UTSA	Score	Diff	StMU
06:47				1 JORDAN C free throw 2 - 2 missed
06:45	4 FARMER J defensive rebound (6)			
06:28	0 BUGGS III J 2pt FG outside the paint, step back jump shot missed			
06:24	4 FARMER J offensive rebound (7)			
06:22	25 ADDO-ANKRAH I 3pt FG second chance, jump shot missed			
06:19				1 JORDAN C defensive rebound (1)
06:07	4 FARMER J foul drawn (3)			5 MANUEL E foul offensive (2 - 7)
06:07				5 MANUEL E turnover offensive (1)
06:07	4 FARMER J substitution out			
06:07	24 GERMANY J substitution in			
05:52	10 CZUMBEL E 2pt FG from turnover in the paint, driving layup made (7)	<b>56-51</b>	<b>5</b>	
05:26				25 LEONARD R 2pt FG in the paint, turnaround jump shot missed
05:24	defensive rebound (29)			
05:24	25 ADDO-ANKRAH I substitution out			
05:24	2 ALEU A substitution in			
05:09	2 ALEU A 3pt FG , jump shot missed			
05:05				4 JOHN D defensive rebound (2)
04:54				4 JOHN D 3pt FG , jump shot missed
04:51	10 CZUMBEL E defensive rebound (1)			
04:33	24 GERMANY J 2pt FG in the paint, layup missed			
04:29	2 ALEU A offensive rebound (2)			
04:29	2 ALEU A 2pt FG second chance in the paint, layup made (7)	<b>58-51</b>	<b>7</b>	
04:17				1 JORDAN C 2pt FG outside the paint, pull up jump shot missed
04:14				32 EWUZIE E offensive rebound (5)
04:03				1 JORDAN C 3pt FG second chance, pull up jump shot missed
04:01				offensive rebound (32)
04:01	2 ALEU A foul loose ball (2 - 12)			4 JOHN D foul drawn (3)
04:01				4 JOHN D free throw 1 - 2 missed
04:01				offensive dead ball rebound (4)
04:01	10 CZUMBEL E substitution out			
04:01	1 MEDOR J substitution in			
04:01				4 JOHN D free throw 2 - 2 missed
03:59	1 MEDOR J defensive rebound (5)			
03:57	1 MEDOR J turnover bad pass (5)			
03:57	Timeout media			
03:57				4 JOHN D substitution out
03:57				5 MANUEL E substitution out
03:57				2 ZAJA L substitution in
03:57				15 CARON T substitution in
03:40	24 GERMANY J foul shooting (4 - 13)			32 EWUZIE E foul drawn (4)
03:40				32 EWUZIE E free throw 1 - 2 missed
03:40				offensive dead ball rebound (5)
03:40				32 EWUZIE E free throw 2 - 2 missed
03:38	5 RICHARDS D defensive rebound (4)			
03:19	1 MEDOR J 2pt FG in the paint, driving layup missed			
03:16				15 CARON T defensive rebound (4)
03:07	24 GERMANY J foul drawn (2)			15 CARON T foul offensive (1 - 8)



**St. Mary's (TX) at UTSA**

11/14/22 Convocation Center, San Antonio  
2022-23 Men's Basketball

**Game Time:** 7:00 PM  
**Game Duration:** 1:53  
**Attendance:** 782

**Officials:** Brooks Wells, Chris Hudson, Marques Pettigrew

Game Time	UTSA	Score	Diff	StMU
03:07				15 CARON T turnover offensive (2)
02:52	5 RICHARDS D 3pt FG from turnover, jump shot made (3)	<b>61-51</b>	<b>10</b>	
02:52	0 BUGGS III J assist (1)			
02:34				25 LEONARD R 2pt FG in the paint, driving layup missed
02:30				offensive rebound (34)
02:30	1 MEDOR J substitution out			
02:30	24 GERMANY J substitution out			
02:30	4 FARMER J substitution in			
02:30	10 CZUMBEL E substitution in			
02:22		<b>61-53</b>	<b>8</b>	1 JORDAN C 2pt FG second chance in the paint, driving layup made (5)
02:22	4 FARMER J substitution out			
02:22	10 CZUMBEL E substitution out			
02:22	1 MEDOR J substitution in			
02:22	24 GERMANY J substitution in			
02:09	0 BUGGS III J turnover bad pass (3)			15 CARON T steal (2)
01:58		<b>61-55</b>	<b>6</b>	32 EWUZIE E 2pt FG from turnover in the paint, dunk, made (13)
01:58				2 ZAJA L assist (2)
01:51	1 MEDOR J foul drawn (5)			2 ZAJA L foul personal (4 - 9)
01:51	24 GERMANY J substitution out			
01:51	4 FARMER J substitution in			
01:51	1 MEDOR J 1&1 free throw 1 missed			
01:49				25 LEONARD R defensive rebound (7)
01:45				1 JORDAN C 3pt FG , jump shot missed
01:45				offensive rebound (36)
01:45	2 ALEU A foul loose ball (3 - 14)			15 CARON T foul drawn (3)
01:45		<b>61-56</b>	<b>5</b>	15 CARON T free throw fast break 1 - 2 made (8)
01:45	2 ALEU A substitution out			
01:45	4 FARMER J substitution out			
01:45	24 GERMANY J substitution in			
01:45	25 ADDO-ANKRAH I substitution in			
01:45				2 ZAJA L substitution out
01:45				10 JOHNSON J substitution in
01:45		<b>61-57</b>	<b>4</b>	15 CARON T free throw fast break 2 - 2 made (9)
01:45				15 CARON T substitution out
01:45				5 MANUEL E substitution in
01:31	5 RICHARDS D 3pt FG , jump shot missed			
01:27	24 GERMANY J offensive rebound (3)			
01:25	24 GERMANY J 2pt FG second chance in the paint, layup missed			
01:22				32 EWUZIE E defensive rebound (6)
01:14				Timeout 60 Sec
01:14	1 MEDOR J substitution out			
01:14	25 ADDO-ANKRAH I substitution out			
01:14	2 ALEU A substitution in			
01:14	10 CZUMBEL E substitution in			
01:14				5 MANUEL E substitution out
01:14				10 JOHNSON J substitution out
01:14				2 ZAJA L substitution in
01:14				15 CARON T substitution in



**St. Mary's (TX) at UTSA**

11/14/22 Convocation Center, San Antonio  
2022-23 Men's Basketball

**Game Time:** 7:00 PM  
**Game Duration:** 1:53  
**Attendance:** 782

**Officials:** Brooks Wells, Chris Hudson, Marques Pettigrew

Game Time	UTSA	Score	Diff	StMU
01:10	0 BUGGS III J foul personal (2 - 15)			2 ZAJA L foul drawn (4)
01:10				2 ZAJA L free throw 1 - 2 missed
01:10				offensive dead ball rebound (6)
01:10	2 ALEU A substitution out			
01:10	10 CZUMBEL E substitution out			
01:10	1 MEDOR J substitution in			
01:10	25 ADDO-ANKRAH I substitution in			
01:10				15 CARON T substitution out
01:10				5 MANUEL E substitution in
01:10		<b>61-58</b>	<b>3</b>	2 ZAJA L free throw 2 - 2 made (1)
01:10				2 ZAJA L substitution out
01:10				10 JOHNSON J substitution in
01:07	0 BUGGS III J turnover travel (4)			
01:07	1 MEDOR J substitution out			
01:07	25 ADDO-ANKRAH I substitution out			
01:07	2 ALEU A substitution in			
01:07	10 CZUMBEL E substitution in			
01:07				5 MANUEL E substitution out
01:07				10 JOHNSON J substitution out
01:07				2 ZAJA L substitution in
01:07				15 CARON T substitution in
01:01	0 BUGGS III J foul shooting (3 - 16)			32 EWUZIE E foul drawn (5)
01:01				32 EWUZIE E free throw fast break 1 - 2 missed
01:01				offensive dead ball rebound (7)
01:01				2 ZAJA L substitution out
01:01				15 CARON T substitution out
01:01				5 MANUEL E substitution in
01:01				10 JOHNSON J substitution in
01:01	Timeout 60 Sec			
01:01	2 ALEU A substitution out			
01:01	10 CZUMBEL E substitution out			
01:01	1 MEDOR J substitution in			
01:01	25 ADDO-ANKRAH I substitution in			
01:01		<b>61-59</b>	<b>2</b>	32 EWUZIE E free throw fast break 2 - 2 made (14)
00:46	24 GERMANY J 2pt FG in the paint, layup made (13)	<b>63-59</b>	<b>4</b>	
00:46	5 RICHARDS D assist (1)			
00:34	5 RICHARDS D steal (2)			1 JORDAN C turnover lost ball (3)
00:32	24 GERMANY J foul drawn (3)			25 LEONARD R foul personal (2 - 10)
00:32	24 GERMANY J free throw 1 - 2 made (14)	<b>64-59</b>	<b>5</b>	
00:32				5 MANUEL E substitution out
00:32				10 JOHNSON J substitution out
00:32				2 ZAJA L substitution in
00:32				15 CARON T substitution in
00:32	24 GERMANY J free throw 2 - 2 missed			
00:30	5 RICHARDS D offensive rebound (5)			
00:30	5 RICHARDS D foul drawn (2)			15 CARON T foul personal (2 - 11)
00:30	5 RICHARDS D free throw 1 - 2 made (4)	<b>65-59</b>	<b>6</b>	
00:30	5 RICHARDS D free throw 2 - 2 made (5)	<b>66-59</b>	<b>7</b>	
00:30	5 RICHARDS D substitution out			



Official Basketball Play by Play - Second Half

**St. Mary's (TX) at UTSA**

11/14/22 Convocation Center, San Antonio  
2022-23 Men's Basketball

**Game Time:** 7:00 PM

**Game Duration:** 1:53

**Attendance:** 782

**Officials:** Brooks Wells, Chris Hudson, Marques Pettigrew

Game Time	UTSA	Score	Diff	StMU
00:30	25 ADDO-ANKRAH I substitution out			
00:30	2 ALEU A substitution in			
00:30	10 CZUMBEL E substitution in			
00:18				25 LEONARD R 3pt FG , jump shot missed
00:14				2 ZAJA L offensive rebound (1)
00:09				15 CARON T 3pt FG second chance, jump shot missed
00:07	defensive rebound (36)			
<b>END OF GAME</b>				
<b>UTSA 66-59 StMU</b>				



**St. Mary's (TX) at UTSA**

11/14/22 Convocation Center, San Antonio  
2022-23 Men's Basketball

Game Time: 7:00 PM  
Game Duration: 1:53  
Attendance: 782

Officials: Brooks Wells, Chris Hudson, Marques Pettigrew

**St. Mary's (TX) - 26**

NO.	Name	Min	FG		3P	FT	Rebounds			Fouls		TP	AS	TO	ST	Blocks		+/-
			M-A	M-A	M-A	OR	DR	TOT	PF	FD	BS					BA		
15	Tyler Caron	F 07:13	0-2	0-1	2-2	1	1	2	2	3	2	0	2	1	0	0	-13	
32	Emmanuel Ewuzie	F 13:36	2-2	0-0	3-6	2	2	4	1	4	7	0	1	0	4	0	-3	
1	Caleb Jordan	G 16:47	2-5	0-2	1-2	0	1	1	0	2	5	0	1	0	0	0	-12	
2	Lovre Zaja	G 10:35	0-1	0-1	1-2	1	0	1	2	4	1	2	0	0	0	0	7	
25	Ryan Leonard	G 14:41	2-7	0-2	0-0	0	4	4	1	0	4	0	0	0	1	1	-11	
10	Jalon Johnson	04:10	0-0	0-0	0-0	0	0	0	0	0	0	0	1	0	0	0	-11	
11	Mamady Djikine	06:24	0-5	0-0	2-2	0	1	1	2	1	2	0	0	2	0	3	-5	
5	Edward Manuel	12:47	1-4	0-1	0-0	0	2	2	2	0	2	0	1	0	1	0	5	
4	Dawson John	09:46	1-3	1-3	0-4	0	1	1	0	2	3	1	0	0	0	0	2	
21	Diego Gonzalez	04:01	0-1	0-0	0-0	1	0	1	1	0	0	0	1	0	0	1	1	
Team							3	2	5		0		0					
<b>Totals</b>			8-30	1-10	9-18	8	14	22	11	16	26	3	7	3	6	5	-8	

Shooting By Period		
2 <sup>nd</sup> FG%	8-30	26.7%
3PT%	1-10	10.0%
FT%	9-18	50%
GM FG%	8-30	26.7%
3PT%	1-10	10.0%
FT%	9-18	50.0%

Dead Ball Rebounds: 5, 0

Technical Fouls::NONE

**UTSA - 34**

NO.	Name	Min	FG		3P	FT	Rebounds			Fouls		TP	AS	TO	ST	Blocks		+/-
			M-A	M-A	M-A	OR	DR	TOT	PF	FD	BS					BA		
4	Josh Farmer	F 09:37	1-4	0-1	0-0	2	4	6	2	1	2	0	1	0	0	0	3	
24	Jacob Germany	C 13:31	4-8	0-0	1-2	3	0	3	3	2	9	0	1	0	2	0	15	
0	John Buggs III	G 18:01	3-6	2-3	0-0	0	2	2	2	0	8	1	2	0	0	1	10	
1	Japhet Medor	G 12:12	2-7	0-0	0-2	0	4	4	2	3	4	1	3	2	1	2	15	
25	Isaiah Addo-Ankrah	G 10:33	0-2	0-1	0-0	0	2	2	1	1	0	1	0	0	0	1	10	
2	Aleu Aleu	09:27	1-2	0-1	0-0	1	0	1	2	0	2	0	0	0	0	0	-2	
5	DJ Richards	13:02	1-3	1-2	2-2	2	2	4	3	2	5	1	2	1	0	1	-1	
10	Erik Czumbel	08:18	1-2	0-0	0-0	0	1	1	1	1	2	0	0	0	0	1	-7	
20	Lamin Sabally	05:19	0-0	0-0	2-2	0	0	0	0	1	2	0	0	0	2	0	-3	
Team							2	3	5		0		0					
<b>Totals</b>			13-34	3-8	5-8	10	18	28	16	11	34	4	9	3	5	6	8	

Shooting By Period		
2 <sup>nd</sup> FG%	13-34	38.2%
3PT%	3-8	37.5%
FT%	5-8	62.5%
GM FG%	13-34	38.2%
3PT%	3-8	37.5%
FT%	5-8	62.5%

Dead Ball Rebounds: 0, 0

Technical Fouls::NONE

	StMU	UTSA
Biggest lead	1 (2 <sup>nd</sup> 19:31)	13 (2 <sup>nd</sup> 15:44)
Best Scoring Run	8(2 <sup>nd</sup> 1:01)	14(2 <sup>nd</sup> 15:44)
Lead Changes	1	
Times Tied	0	
Time with Lead	00:04	19:27

Points from	StMU	UTSA
Turnovers	9	12
Paint	12	20
Second Chance	6	12
Fast Breaks	7	10
Bench	7	11

	Period by Period Scoring		
	1st	2nd	TOT
StMU	33	26	59
UTSA	32	34	66





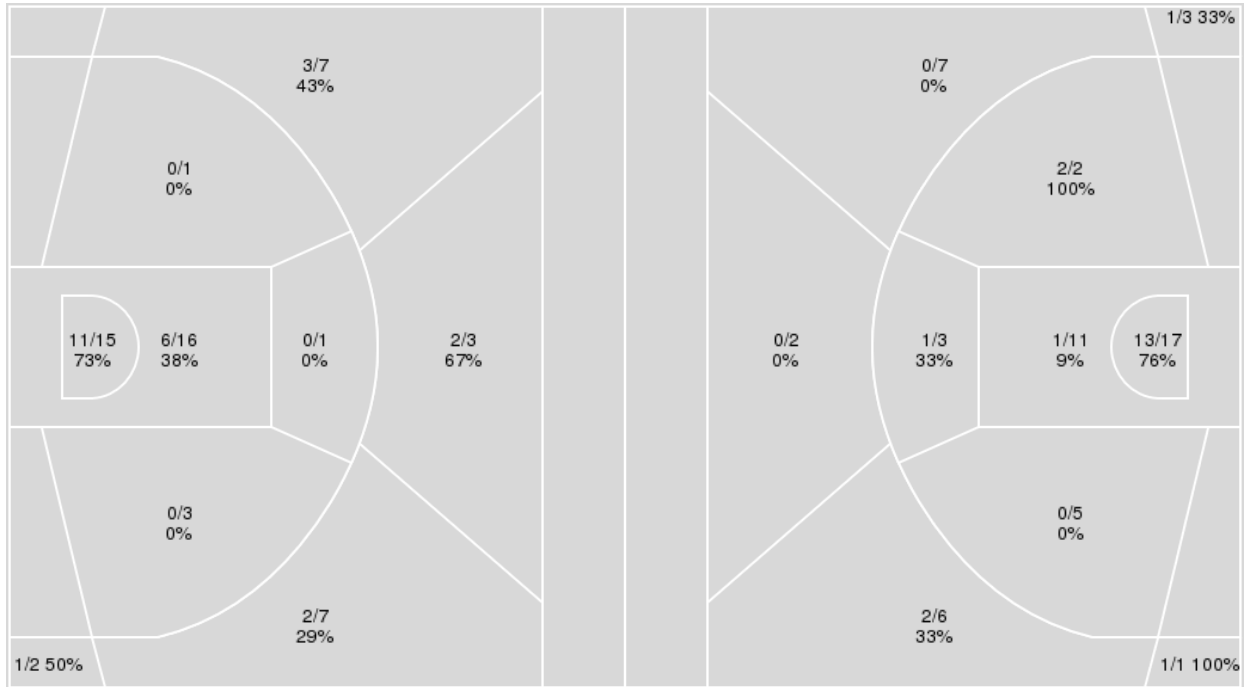
**Officials:** Brooks Wells, Chris Hudson, Marques Pettigrew

{ Players => 0, 1, 2, 3, 4, 5, 10, 11, 12, 13, 14, 20, 22, 24, 25; } FG  
 Types => All; Results => All;

{ Players => 0, 1, 2, 3, 4, 5, 10, 11, 12, 15, 20, 21, 22, 23, 25, 30, 31,  
 32, 33, 40, 41; } FG Types => All; Results => All;

**UTSA**

**St. Mary's (TX)**



UTSA	M/A	%
Field Goals	25/55	45
2 Points	17/36	47
3 Points	8/19	42
Free Throws	8/12	67

St. Mary's (TX)	M/A	%
Field Goals	21/57	37
2 Points	17/38	45
3 Points	4/19	21
Free Throws	13/24	54



**St. Mary's (TX) at UTSA**

11/14/22 Convocation Center, San Antonio  
2022-23 Men's Basketball

Game Time: 7:00 PM  
Game Duration: 1:53  
Attendance: 782

Officials: Brooks Wells, Chris Hudson, Marques Pettigrew

**St. Mary's (TX)**

No	Name	Mins		Score		Points Diff		Points per Min		Assists		Rebounds		Steals		Turnovers	
		On	Off	On	Off	On	Off	On	Off	On	Off	On	Off	On	Off	On	Off
1	Caleb Jordan	27:57	12:03	35 - 47	24 - 19	-12	5	1.25	1.99	5	4	26	12	6	2	13	3
2	Lovre Zaja	15:28	24:32	30 - 22	29 - 44	8	-15	1.94	1.18	5	4	14	24	3	5	7	9
4	Dawson John	16:33	23:27	26 - 22	33 - 44	4	-11	1.57	1.41	4	5	18	20	2	6	5	11
5	Edward Manuel	28:26	11:34	44 - 39	15 - 27	5	-12	1.55	1.30	5	4	29	9	4	4	9	7
10	Jalon Johnson	13:00	27:00	19 - 29	40 - 37	-10	3	1.46	1.48	3	6	11	27	3	5	5	11
11	Mamady Djikine	12:32	27:28	11 - 19	48 - 47	-8	1	0.88	1.75	1	8	11	27	4	4	4	12
15	Tyler Caron	20:26	19:34	27 - 41	32 - 25	-14	7	1.32	1.64	5	4	17	21	6	2	10	6
21	Diego Gonzalez	08:48	31:12	17 - 14	42 - 52	3	-10	1.93	1.35	3	6	10	28	1	7	2	14
25	Ryan Leonard	29:22	10:38	38 - 50	21 - 16	-12	5	1.29	1.97	6	3	27	11	7	1	13	3
32	Emmanuel Ewuzie	27:28	12:32	48 - 47	11 - 19	1	-8	1.75	0.88	8	1	27	11	4	4	12	4

**UTSA**

No	Name	Mins		Score		Points Diff		Points per Min		Assists		Rebounds		Steals		Turnovers	
		On	Off	On	Off	On	Off	On	Off	On	Off	On	Off	On	Off	On	Off
0	John Buggs III	36:20	03:40	62 - 53	4 - 6	9	-2	1.71	1.09	8	1	32	4	5	0	15	2
1	Japhet Medor	20:20	19:40	40 - 24	26 - 35	16	-9	1.97	1.32	6	3	22	14	3	2	10	7
2	Aleu Aleu	16:50	23:10	23 - 22	43 - 37	1	6	1.37	1.86	5	4	17	19	1	4	8	9
4	Josh Farmer	22:35	17:25	35 - 39	31 - 20	-4	11	1.55	1.78	4	5	17	19	4	1	9	8
5	DJ Richards	21:48	18:12	30 - 36	36 - 23	-6	13	1.38	1.98	5	4	20	16	4	1	10	7
10	Erik Czumbel	17:44	22:16	21 - 32	45 - 27	-11	18	1.18	2.02	3	6	13	23	2	3	6	11
11	Lachlan Bofinger	02:55	37:05	6 - 3	60 - 56	3	4	2.06	1.62	0	9	3	33	0	5	1	16
20	Lamin Sabally	10:16	29:44	15 - 17	51 - 42	-2	9	1.46	1.72	3	6	9	27	0	5	5	12
22	Christian Tucker	03:19	36:41	7 - 3	59 - 56	4	3	2.11	1.61	0	9	3	33	0	5	1	16
24	Jacob Germany	25:36	14:24	50 - 29	16 - 30	21	-14	1.95	1.11	7	2	26	10	2	3	11	6
25	Isaiah Addo-Ankrah	22:17	17:43	41 - 37	25 - 22	4	3	1.84	1.41	4	5	18	18	4	1	9	8

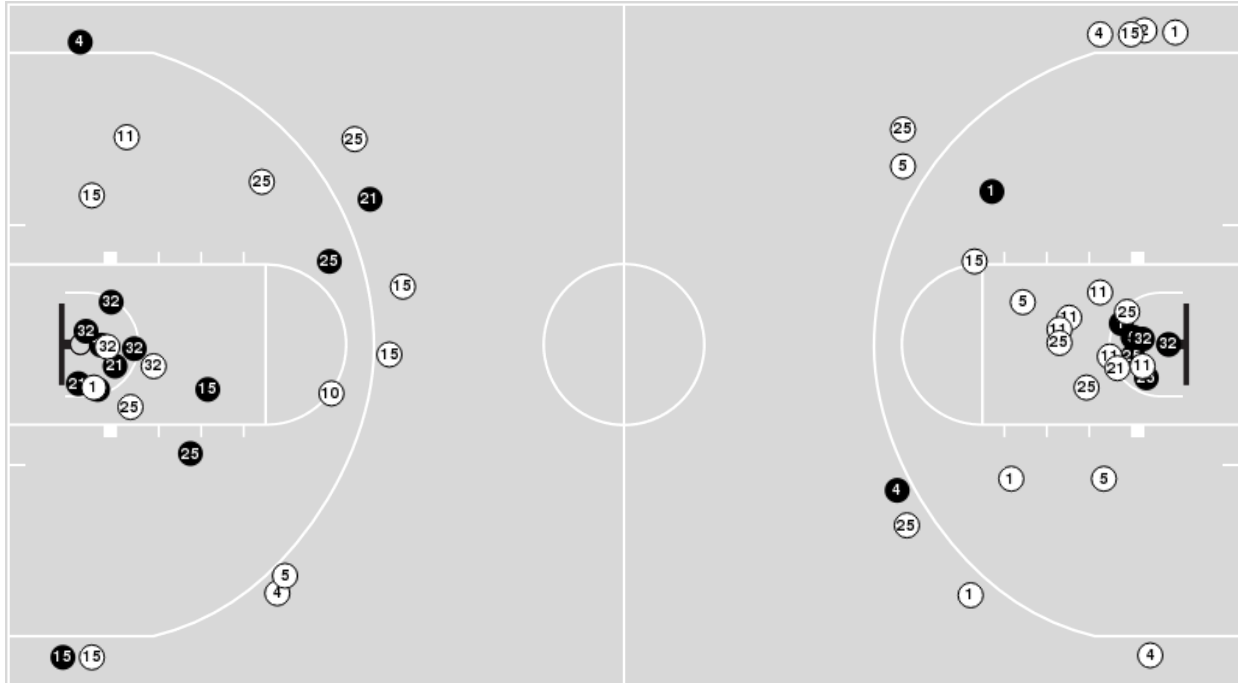


**Officials:** Brooks Wells, Chris Hudson, Marques Pettigrew

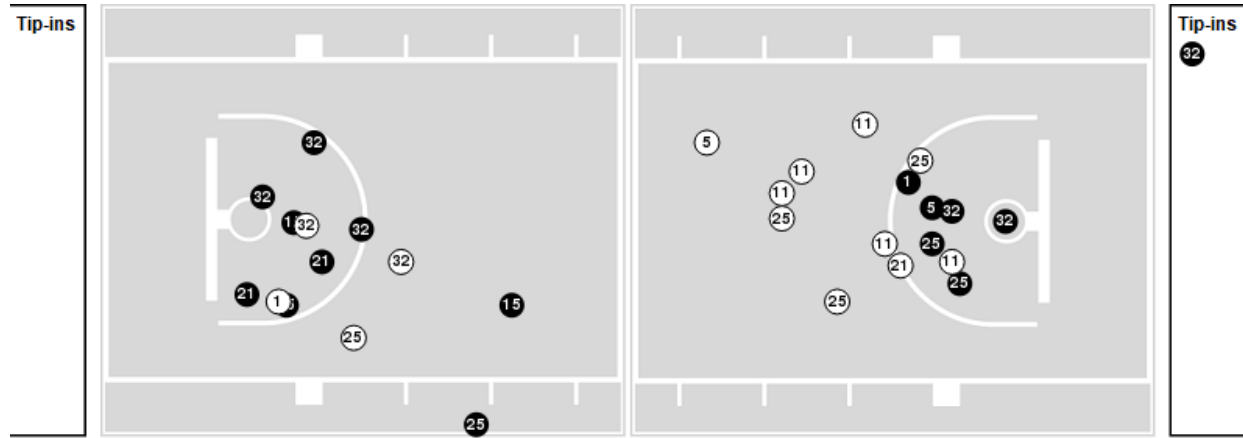
Players => 0, 1, 2, 3, 4, 5, 10, 11, 12, 15, 20, 21, 22, 23, 25, 30, 31, 32, 33, 40, 41 FG Types=>AllResults=>All

**St. Mary's (TX)**

**All Field Goals**



**Blow Up Chart**



● Made ○ Missed N - Player Number

St. Mary's (TX)	M/A	%
Field Goals	21/57	37
2 Points	17/38	45
3 Points	4/19	21
Free Throws	13/24	54

St. Mary's (TX)	M/A	%
Points in the Paint	28 (14 / 28)	50
Fast Break Points	7 (6/9)	67
Second Chance Points	15 (10/18)	56
Effective FG%	40	

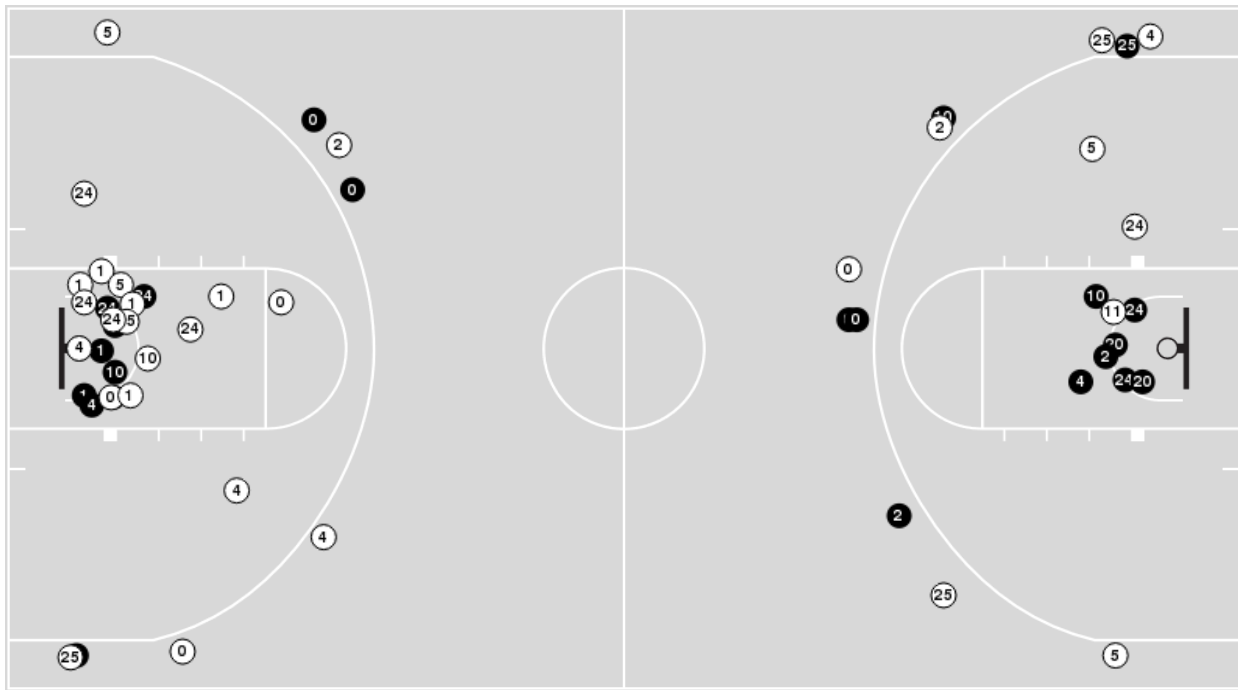


**Officials:** Brooks Wells, Chris Hudson, Marques Pettigrew

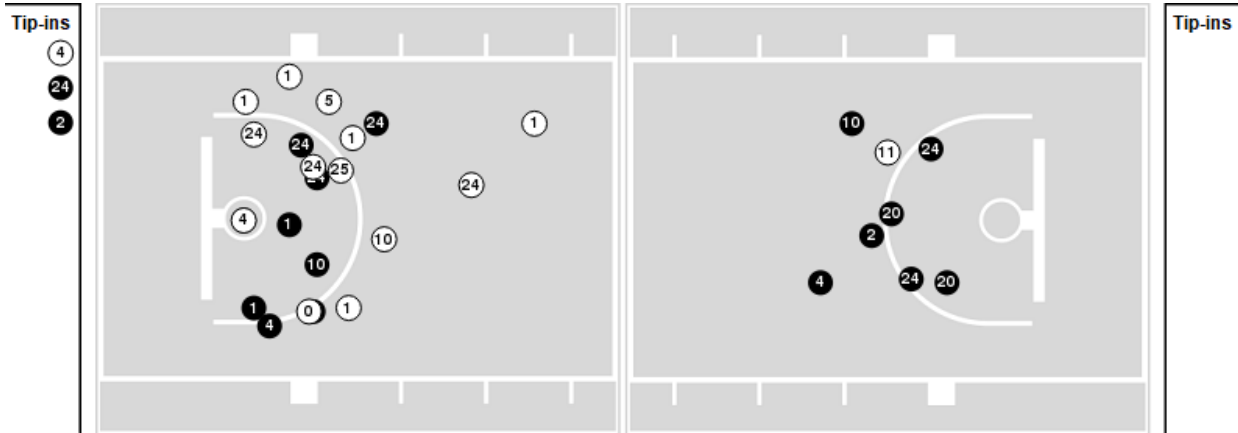
Players => 0, 1, 2, 3, 4, 5, 10, 11, 12, 13, 14, 20, 22, 24, 25FG Types=>AllResults=>All

**UTSA**

**All Field Goals**



**Blow Up Chart**



● Made ○ Missed N - Player Number

UTSA	M/A	%
Field Goals	25/55	45
2 Points	17/36	47
3 Points	8/19	42
Free Throws	8/12	67

UTSA	M/A	%
Points in the Paint	34 (17 / 31)	55
Fast Break Points	20 (9/11)	82
Second Chance Points	12 (7/11)	64
Effective FG%	53	



**St. Mary's (TX) at UTSA**

11/14/22 Convocation Center, San Antonio  
2022-23 Men's Basketball

**Game Time:** 7:00 PM  
**Game Duration:** 1:53  
**Attendance:** 782

**Officials:** Brooks Wells, Chris Hudson, Marques Pettigrew

**St. Mary's (TX)**

Lineup	Quarter On	Time On	Quarter Off	Time Off	Time on Court	Score	Score Diff	Reb	Stl	Tov	Ass	PPP
1- Jordan C/ 2- Zaja L/ 15- Caron T/ 25- Leonard R/ 32- Ewuzie E/	1	20:00	1	15:39	04:21	9-8	1	2	2	3	3	1.1250
2- Zaja L/ 4- John D/ 5- Manuel E/ 10- Johnson J/ 32- Ewuzie E/	1	15:39	1	15:07	00:32	0-0	0	1	0	1	0	0.0000
4- John D/ 5- Manuel E/ 10- Johnson J/ 21- Gonzalez D/ 32- Ewuzie E/	1	15:07	1	12:22	02:45	8-6	2	2	0	1	2	2.0000
4- John D/ 5- Manuel E/ 10- Johnson J/ 11- Djikine M/ 21- Gonzalez D/	1	12:22	1	10:41	01:41	2-2	0	2	1	0	0	1.0000
1- Jordan C/ 4- John D/ 5- Manuel E/ 11- Djikine M/ 21- Gonzalez D/	1	10:41	1	10:20	00:21	0-0	0	0	0	0	0	0.0000
1- Jordan C/ 4- John D/ 5- Manuel E/ 11- Djikine M/ 25- Leonard R/	1	10:20	1	08:52	01:28	2-2	0	1	0	1	0	1.0000
1- Jordan C/ 5- Manuel E/ 11- Djikine M/ 15- Caron T/ 25- Leonard R/	1	08:52	1	07:25	01:27	2-3	-1	1	1	0	0	0.6944
1- Jordan C/ 5- Manuel E/ 15- Caron T/ 25- Leonard R/ 32- Ewuzie E/	1	07:25	1	04:34	02:51	3-2	1	4	0	2	0	0.6757
5- Manuel E/ 10- Johnson J/ 15- Caron T/ 25- Leonard R/ 32- Ewuzie E/	1	04:34	1	01:11	03:23	7-7	0	3	1	0	1	1.3158
5- Manuel E/ 10- Johnson J/ 11- Djikine M/ 15- Caron T/ 25- Leonard R/	1	01:11	1	00:42	00:29	0-1	-1	0	0	0	0	0.0000
1- Jordan C/ 5- Manuel E/ 11- Djikine M/ 15- Caron T/ 25- Leonard R/	1	00:42	2	20:00	00:42	0-1	-1	0	0	1	0	0.0000
1- Jordan C/ 10- Johnson J/ 15- Caron T/ 25- Leonard R/ 32- Ewuzie E/	2	20:00	2	18:16	01:44	0-8	-8	0	0	1	0	0.0000
1- Jordan C/ 10- Johnson J/ 11- Djikine M/ 15- Caron T/ 25- Leonard R/	2	18:16	2	16:52	01:24	0-2	-2	2	1	1	0	0.0000
1- Jordan C/ 2- Zaja L/ 11- Djikine M/ 15- Caron T/ 25- Leonard R/	2	16:52	2	15:42	01:10	0-4	-4	0	0	1	0	0.0000
1- Jordan C/ 2- Zaja L/ 5- Manuel E/ 11- Djikine M/ 25- Leonard R/	2	15:42	2	15:00	00:42	0-0	0	0	0	0	0	0.0000
1- Jordan C/ 2- Zaja L/ 5- Manuel E/ 25- Leonard R/ 32- Ewuzie E/	2	15:00	2	13:43	01:17	4-0	4	2	0	0	0	2.0000
1- Jordan C/ 2- Zaja L/ 4- John D/ 5- Manuel E/ 32- Ewuzie E/	2	13:43	2	12:25	01:18	4-2	2	0	0	0	0	2.1277
2- Zaja L/ 4- John D/ 5- Manuel E/ 21- Gonzalez D/ 32- Ewuzie E/	2	12:25	2	09:55	02:30	5-2	3	3	0	1	1	1.0000
2- Zaja L/ 4- John D/ 5- Manuel E/ 11- Djikine M/ 21- Gonzalez D/	2	09:55	2	09:12	00:43	2-1	1	1	0	0	0	2.2727
1- Jordan C/ 4- John D/ 5- Manuel E/ 11- Djikine M/ 21- Gonzalez D/	2	09:12	2	08:24	00:48	0-3	-3	2	0	0	0	0.0000
1- Jordan C/ 4- John D/ 5- Manuel E/ 11- Djikine M/ 25- Leonard R/	2	08:24	2	06:47	01:37	3-0	3	2	1	0	1	0.9036
1- Jordan C/ 4- John D/ 5- Manuel E/ 25- Leonard R/ 32- Ewuzie E/	2	06:47	2	03:57	02:50	0-4	-4	4	0	1	0	0.0000
1- Jordan C/ 2- Zaja L/ 15- Caron T/ 25- Leonard R/ 32- Ewuzie E/	2	03:57	2	01:45	02:12	5-3	2	4	1	1	1	1.1574
1- Jordan C/ 10- Johnson J/ 15- Caron T/ 25- Leonard R/ 32- Ewuzie E/	2	01:45	2	01:45	00:00	1-0	1	0	0	0	0	2.2727
1- Jordan C/ 5- Manuel E/ 10- Johnson J/ 25- Leonard R/ 32- Ewuzie E/	2	01:45	2	01:14	00:31	0-0	0	1	0	0	0	0.0000
1- Jordan C/ 2- Zaja L/ 15- Caron T/ 25- Leonard R/ 32- Ewuzie E/	2	01:14	2	01:10	00:04	0-0	0	0	0	0	0	0.0000
1- Jordan C/ 2- Zaja L/ 5- Manuel E/ 25- Leonard R/ 32- Ewuzie E/	2	01:10	2	01:10	00:00	1-0	1	0	0	0	0	2.2727
1- Jordan C/ 5- Manuel E/ 10- Johnson J/ 25- Leonard R/ 32- Ewuzie E/	2	01:10	2	01:07	00:03	0-0	0	0	0	0	0	0.0000
1- Jordan C/ 2- Zaja L/ 15- Caron T/ 25- Leonard R/ 32- Ewuzie E/	2	01:07	2	01:01	00:06	0-0	0	0	0	0	0	0.0000
1- Jordan C/ 5- Manuel E/ 10- Johnson J/ 25- Leonard R/ 32- Ewuzie E/	2	01:01	2	00:32	00:28	1-3	-2	0	0	1	0	0.6944
1- Jordan C/ 2- Zaja L/ 15- Caron T/ 25- Leonard R/ 32- Ewuzie E/	2	00:32	2	00:00	00:33	0-2	-2	1	0	0	0	0.0000



St. Mary's (TX) at UTSA

11/14/22 Convocation Center, San Antonio
2022-23 Men's Basketball

Game Time: 7:00 PM
Game Duration: 1:53
Attendance: 782

Officials: Brooks Wells, Chris Hudson, Marques Pettigrew

UTSA

Table with columns: Lineup, Quarter On, Time On, Quarter Off, Time Off, Time on Court, Score, Score Diff, Reb, Stl, Tov, Ass, PPP. Contains 40 rows of game data.



**St. Mary's (TX) at UTSA**

11/14/22 Convocation Center, San Antonio  
2022-23 Men's Basketball

**Game Time:** 7:00 PM  
**Game Duration:** 1:53  
**Attendance:** 782

**Officials:** Brooks Wells, Chris Hudson, Marques Pettigrew

**St. Mary's (TX)**

Lineup	Time	Score	Score Diff	Pts/Min	Reb	Stl	Tov	Ass	PPP
1- Jordan C/ 2- Zaja L/ 15- Caron T/ 25- Leonard R/ 32- Ewuzie E/	07:16	14-13	1	1.9266	7	3	4	4	0.9859
5- Manuel E/ 10- Johnson J/ 15- Caron T/ 25- Leonard R/ 32- Ewuzie E/	03:23	7-7	0	2.0690	3	1	0	1	1.3158
1- Jordan C/ 4- John D/ 5- Manuel E/ 11- Djikine M/ 25- Leonard R/	03:05	5-2	3	1.6216	3	1	1	1	0.9398
1- Jordan C/ 5- Manuel E/ 15- Caron T/ 25- Leonard R/ 32- Ewuzie E/	02:51	3-2	1	1.0526	4	0	2	0	0.6757
1- Jordan C/ 4- John D/ 5- Manuel E/ 25- Leonard R/ 32- Ewuzie E/	02:50	0-4	-4	0.0000	4	0	1	0	0.0000
4- John D/ 5- Manuel E/ 10- Johnson J/ 21- Gonzalez D/ 32- Ewuzie E/	02:45	8-6	2	2.9091	2	0	1	2	2.0000
2- Zaja L/ 4- John D/ 5- Manuel E/ 21- Gonzalez D/ 32- Ewuzie E/	02:30	5-2	3	2.0000	3	0	1	1	1.0000
1- Jordan C/ 5- Manuel E/ 11- Djikine M/ 15- Caron T/ 25- Leonard R/	02:09	2-4	-2	0.9302	1	1	1	0	0.5155
1- Jordan C/ 10- Johnson J/ 15- Caron T/ 25- Leonard R/ 32- Ewuzie E/	01:44	1-8	-7	0.5769	0	0	1	0	0.2907
4- John D/ 5- Manuel E/ 10- Johnson J/ 11- Djikine M/ 21- Gonzalez D/	01:41	2-2	0	1.1881	2	1	0	0	1.0000
1- Jordan C/ 10- Johnson J/ 11- Djikine M/ 15- Caron T/ 25- Leonard R/	01:24	0-2	-2	0.0000	2	1	1	0	0.0000
1- Jordan C/ 2- Zaja L/ 4- John D/ 5- Manuel E/ 32- Ewuzie E/	01:18	4-2	2	3.0769	0	0	0	0	2.1277
1- Jordan C/ 2- Zaja L/ 5- Manuel E/ 25- Leonard R/ 32- Ewuzie E/	01:17	5-0	5	3.8961	2	0	0	0	2.0492
1- Jordan C/ 2- Zaja L/ 11- Djikine M/ 15- Caron T/ 25- Leonard R/	01:10	0-4	-4	0.0000	0	0	1	0	0.0000
1- Jordan C/ 4- John D/ 5- Manuel E/ 11- Djikine M/ 21- Gonzalez D/	01:09	0-3	-3	0.0000	2	0	0	0	0.0000
1- Jordan C/ 5- Manuel E/ 10- Johnson J/ 25- Leonard R/ 32- Ewuzie E/	01:02	1-3	-2	0.9677	1	0	1	0	0.6944
2- Zaja L/ 4- John D/ 5- Manuel E/ 11- Djikine M/ 21- Gonzalez D/	00:43	2-1	1	2.7907	1	0	0	0	2.2727
1- Jordan C/ 2- Zaja L/ 5- Manuel E/ 11- Djikine M/ 25- Leonard R/	00:42	0-0	0	0.0000	0	0	0	0	0.0000
2- Zaja L/ 4- John D/ 5- Manuel E/ 10- Johnson J/ 32- Ewuzie E/	00:32	0-0	0	0.0000	1	0	1	0	0.0000
5- Manuel E/ 10- Johnson J/ 11- Djikine M/ 15- Caron T/ 25- Leonard R/	00:29	0-1	-1	0.0000	0	0	0	0	0.0000



**St. Mary's (TX) at UTSA**

11/14/22 Convocation Center, San Antonio  
2022-23 Men's Basketball

**Game Time:** 7:00 PM  
**Game Duration:** 1:53  
**Attendance:** 782

**Officials:** Brooks Wells, Chris Hudson, Marques Pettigrew

**UTSA**

Lineup	Time	Score	Score Diff	Pts/Min	Reb	Stl	Tov	Ass	PPP
0- Buggs III J/ 4- Farmer J/ 5- Richards D/ 10- Czumbel E/ 25- Addo-Ankrah I/	08:40	10-18	-8	1.1538	5	2	2	1	0.7440
0- Buggs III J/ 1- Medor J/ 4- Farmer J/ 24- Germany J/ 25- Addo-Ankrah I/	07:47	18-9	9	2.3126	7	1	3	2	1.3393
0- Buggs III J/ 1- Medor J/ 2- Aleu A/ 5- Richards D/ 24- Germany J/	02:45	5-2	3	1.8182	3	0	2	1	1.0000
2- Aleu A/ 5- Richards D/ 10- Czumbel E/ 20- Sabally L/ 24- Germany J/	02:41	4-5	-1	1.4907	2	0	2	1	0.8000
0- Buggs III J/ 2- Aleu A/ 4- Farmer J/ 5- Richards D/ 10- Czumbel E/	02:07	0-6	-6	0.0000	1	0	1	0	0.0000
0- Buggs III J/ 1- Medor J/ 20- Sabally L/ 24- Germany J/ 25- Addo-Ankrah I/	02:06	2-5	-3	0.9524	1	0	1	0	0.5000
0- Buggs III J/ 1- Medor J/ 2- Aleu A/ 20- Sabally L/ 24- Germany J/	02:04	2-2	0	0.9677	1	0	1	1	0.6667
0- Buggs III J/ 2- Aleu A/ 11- Bofinger L/ 22- Tucker C/ 24- Germany J/	01:36	5-1	4	3.1250	2	0	0	0	1.6667
0- Buggs III J/ 2- Aleu A/ 5- Richards D/ 10- Czumbel E/ 24- Germany J/	01:33	2-0	2	1.2903	2	0	0	0	1.0000
0- Buggs III J/ 1- Medor J/ 4- Farmer J/ 20- Sabally L/ 25- Addo-Ankrah I/	01:14	4-2	2	3.2432	2	0	0	0	1.7241
0- Buggs III J/ 2- Aleu A/ 10- Czumbel E/ 20- Sabally L/ 24- Germany J/	01:12	3-2	1	2.5000	1	0	1	1	1.5000
0- Buggs III J/ 1- Medor J/ 5- Richards D/ 24- Germany J/ 25- Addo-Ankrah I/	01:05	5-3	2	4.6154	2	1	1	1	1.3298
0- Buggs III J/ 2- Aleu A/ 4- Farmer J/ 11- Bofinger L/ 22- Tucker C/	00:50	0-2	-2	0.0000	0	0	1	0	0.0000
0- Buggs III J/ 5- Richards D/ 10- Czumbel E/ 24- Germany J/ 25- Addo-Ankrah I/	00:43	2-0	2	2.7907	1	0	0	0	2.0000
0- Buggs III J/ 1- Medor J/ 4- Farmer J/ 5- Richards D/ 25- Addo-Ankrah I/	00:42	0-0	0	0.0000	0	0	2	0	0.0000
1- Medor J/ 2- Aleu A/ 5- Richards D/ 20- Sabally L/ 24- Germany J/	00:41	0-0	0	0.0000	2	0	0	0	0.0000
0- Buggs III J/ 1- Medor J/ 2- Aleu A/ 4- Farmer J/ 5- Richards D/	00:33	2-1	1	3.6364	2	1	0	1	1.3889
0- Buggs III J/ 1- Medor J/ 2- Aleu A/ 10- Czumbel E/ 24- Germany J/	00:30	0-0	0	0.0000	1	0	0	0	0.0000
0- Buggs III J/ 1- Medor J/ 11- Bofinger L/ 22- Tucker C/ 24- Germany J/	00:29	1-0	1	2.0690	1	0	0	0	2.2727
0- Buggs III J/ 1- Medor J/ 4- Farmer J/ 22- Tucker C/ 24- Germany J/	00:24	1-0	1	2.5000	0	0	0	0	2.2727
2- Aleu A/ 4- Farmer J/ 5- Richards D/ 10- Czumbel E/ 20- Sabally L/	00:18	0-1	-1	0.0000	0	0	0	0	0.0000