



UTSA

2014-15 women's basketball

Women's Basketball Contact: Zena Rex | zena.rex@utsa.edu | (956) 739-4878

2014-15 Schedule

November

1	McMurry#	W, 69-43
8	Howard Payne#	W, 95-40
15	at Texas (LHN)	2 p.m.
19	Abilene Christian	7 p.m.
23	at Lamar	2 p.m.

UTSA Thanksgiving Classic - San Antonio, Texas

28	Drake	2:30 p.m.
30	Incarnate Word	5 p.m.

December

2	at UT Arlington	7 p.m.
4	Texas State	7 p.m.

Athletes in Action - Texas Tech - Lubbock, Texas

19	vs. Houston	3 p.m.
20	at Texas Tech	2 p.m.
21	vs. Nicholls	12 p.m.

UTSA Holiday Classic - San Antonio, Texas

28	South Dakota	2:30 p.m.
29	SIU Edwardsville	2:30 p.m.

January

2	Rice*	7 p.m.
4	North Texas*	2 p.m.
8	at Southern Miss*	6 p.m.
10	at Louisiana Tech*	6 p.m.
17	at UTEP*	3 p.m.
22	Marshall*	7 p.m.
24	Western Kentucky*	2 p.m.
29	at Middle Tennessee*	7 p.m.
31	at UAB	2 p.m.

February

5	FIU*	7 p.m.
8	Florida Atlantic* (FOX)	11 a.m.
12	at Old Dominion*	6 p.m.
14	at Charlotte*	6 p.m.
21	UTEP*	2 p.m.
26	Southern Miss*	7 p.m.
28	Louisiana Tech*	2 p.m.

March

5	at Rice*	6 p.m.
7	at North Texas*	4 p.m.
11-14	Conference USA Tournament	TBA

- Denotes exhibition game

* - Denotes Conference USA game

UTSA vs. No. 9/12 Texas

November 12, 2014 - 2 p.m.

Frank C. Erwin, Jr. Center • Austin, Texas



TV/VIDEO:

Longhorn Network

RADIO/AUDIO:

goUTSA.com

LIVE STATS:

texasports.com

SOCIAL MEDIA:

Twitter - @utsawbb

Facebook - /UTSA Women's Basketball

Instagram - @utsaathletics

UTSA: 0-0

H:0-0, A:0-0, N:0-0

Texas: 1-0

H:1-0, A:0-0, N:0-0

Series:

Texas leads 4-0

Last:

Nov. 10, 2013

Texas 63, UTSA 42

The UTSA women's basketball team will open the 2014-15 regular season on the road as they travel to Austin and take on the No. 9 Texas Longhorns Saturday, November 15 at 2 p.m.

Saturday's contest will be aired on the Longhorn Network and will be the fifth overall meeting between the two programs. Texas leads the series 4-0 with the last meeting coming November 10, 2013 in Austin.

UTSA used a pair of exhibition games to gear up for the season, downing McMurry 69-43 on Nov. 1 and Howard Payne 95-40 on Nov. 9. Back for the Roadrunners are four starters led by leading scorer Kamra King. The senior averaged 13.6 points with 3.1 rebounds and 1.4 assists per game.

Ashley Spaletta (7.4 ppg, 1.5 spg), Mannasha Bell (5.9 ppg, 5.3 rpg) and Akunna Elonu (3.7 ppg, 3.8 rpg) will also add some depth to the Roadrunners' starting lineup. Freshman and local product Carlie Heineman will look to make an immediate impact on the team as she produced a combined 24 points and eight rebounds in her first two unofficial games at UTSA.

Lubomyr Lichonczak is in his second season at the helm of the Roadrunners' women's basketball team and owns an overall record of 165-168. Lichonczak is only the eighth head coach in program history.

No. 9 Texas is coming off a 22-12 season that saw the Longhorns advance to the second round of the NCAA Championship. UT has 10 returning letter winners, including four starters for the 2014-15 season along with the No. 11 recruiting class in the nation.

The Longhorns were selected as the Big 12 preseason favorite with Ariel Atkins named Big 12 Preseason Freshman of the Year. Nneka Enemkpali was also voted to the Preseason All-Big 12 Team while Imani McGee-Stafford was selected honorable mention.



QUICK FACTS

General Information

Name The University of Texas at San Antonio
 Location San Antonio, Texas
 Founded 1969
 Enrollment 28,628 (24,342 undergraduate)
 Nickname Roadrunners
 School Colors Navy Blue, White and Orange
 Home Arena Convocation Center / 2,650
 Affiliation Division I
 Conference Conference USA
 President Dr. Ricardo Romo
 Director of Athletics Lynn Hickey
 Athletic Department Phone 210-458-4161

Coaching Staff

Head Coach Lubomyr Lichonczak (Idaho, '78)
 Record at UTSA 14-17 (1 seasons)
 Career record 165-168 (12 seasons)
 Associate Head Coach Kristen Holt
 Assistant Coach Nicole Dunson
 Director of Operations Emily Sherman
 Athletic Trainer Brenna Ellis

Team Information

201-14 overall record 14-17
 2013-14 Conference USA record 4-12 (15th)
 Final ranking N/A
 Letter winners R/L 11/4
 Starters R/L 4/1

Key returners K. King, A. Spaletta
 Key Losses Mikki Turner
 Key newcomers Pearl Johnson, Crystal Chidomere, Carlie Heineman

Women's Basketball History

First year 1981-82
 All-time record 467-466
 NCAA Postseason appearances 2 (2008, 2009)
 Last Tournament appearance 2009 (vs. Baylor; L, 87-82 (OT))
 Southland Conference championships 3 (2003 regular season;
 2009 and 2011 (West) tournament)

Athletics Communications

Assistant Director Zena Rex (women's basketball contact)
 Email zena.rex@utsa.edu
 Cell (966) 739-4878
 Facebook /UTSA Women's Basketball
 Twitter @utsawbb
 Instagram @utsaathletics

MEDIA

WE ARE UTSA | When referencing The University of Texas at San Antonio athletics, please use the acronym UTSA and the nickname Roadrunners. Please refrain from using Texas-San Antonio, UT-San Antonio, UT-SA or any other variation.

Media Coverage | The UTSA Athletics Communication Office assists members of the media with their coverage of all Roadrunners sports by providing player and coach interviews, feature ideas, pregame notes and updated statistics.

Interviews | All interviews with coaches and student-athletes must be arranged at least 24 hours in advance through volleyball contact Zena Rex. Telephone interviews are available to the media on a "call-back" basis at a time that is convenient for the coach or student-athlete. Post-match interviews with coaches and student-athletes will be conducted on the court following a 10-minute cooling off period.

Internet Radio Broadcasts | All of UTSA's home matches are slated to be broadcast live (audio) on goUTSA.com this season. Video streaming (subscription required) will also be available for all home matches.

MEDIA OUTLETS

San Antonio Express-News
 Phone: (210) 250-3373
 Fax: (210) 250-3351
 Email: sports@express-news.net
 Website: mysa.com | expressnews.com

The Paisano
 Phone: (210) 690-9301
 Fax: (210) 690-3423
 Email: sports@paisano-online.com
 Website: paisano-online.com

KABB-TV (FOX)
 Phone: (210) 442-6304
 Fax: (210) 442-6333
 Email: maxsports@kabb.com
 Website: foxsanantonio.com

KENS-TV (CBS)
 Phone: (210) 366-5001
 Fax: (210) 377-8757
 Email: jreingel@kens5.com
 Website: kens5.com

KSAT-TV (ABC)
 Phone: (210) 351-1270
 Fax: (210) 351-1310
 Email: sports@ksat.com
 Website: ksat.com

KWEX-TV (Univision)
 Phone: (210) 227-4141
 Fax: (210) 226-0131
 Email: sanantoniodesk@univision.net
 Website: univision41.com

WOAI-TV (NBC)
 Phone: (210) 223-4742
 Fax: (210) 476-1088
 Email: donharris@sbgstv.com
 Website: woai.com

**UTSA Women's Basketball Roster**

No.	Name	Pos.	Ht.	Yr.	Hometown (Previous School)
1	Pearl Johnson	G	5-6	Jr.	Fruitland, Fla. (St. Petersburg College)
2	Mathilde Hergott	G/F	5-10	Jr.	Jonage, France (Lycee Jean Mermoz)
4	Crystal Chidomere	G	5-11	Fr.	Richmond, Texas (Bush HS)
5	Alana Heard	G	5-6	So.	Missouri City, Texas (Hightower HS)
10	Kamra King	G	5-6	Sr.	Norman, Okla. (Norman HS)
12	Niaga Mitchell-Cole	G/F	5-10	Jr.	San Antonio, Texas (Roosevelt HS)
21	Akunna Elonu	F	5-9	Jr.	Houston, Texas (Alief Elsik HS)
24	Ashley Spaletta	G	5-9	Sr.	Magnolia, Ark. (Magnolia HS)
25	Taylor Williams	F	6-2	So.	Katy, Texas (Cinco Ranch HS)
30	Tesha Smith	C	6-1	So.	San Antonio, Texas (Wagner HS)
31	Carlie Heineman	G	6-0	Fr.	San Antonio, Texas (Brennan HS)
32	Dwanisha Tate	G	5-9	So.	Arlington, Texas (Seguin HS)
33	Mannasha Bell	F	5-11	Jr.	Fort Smith, Ark. (Northside HS)
45	Haylee Beard	G/F	5-9	So.	Ozark, Mo. (Ozark HS)

Head Coach: Lubomyr Lichonczak (Second season | Idaho State, '78)

Associate Head Coach: Kristen Holt (Second season | Ohio, '72)

Assistant Coach: Nicole Dunson (Second season | UTSA, '05)

Director of Operations: Emily Sherman (Third season | St. Norbert College, '09)

BREAKDOWN**...by Height****5-6 (3)**

Pearl Johnson
Alana Heard
Kamra King

5-9 (4)

Akunna Elonu
Ashley Spaletta
Dwanisha Tate
Haylee Beard

5-10 (2)

Mathilde Hergott
Niaga Mitchell-Cole

5-11 (2)

Crystal Chidomere
Mannasha Bell

6-0 (1)

Carlie Heineman

6-1 (1)

Tesha Smith

6-2 (1)

Taylor Williams

...by State**Texas (8)**

Crystal Chidomere
Alana Heard
Niaga Mitchell-Cole
Akunna Elonu
Taylor Williams
Tesha Smith
Carlie Heineman
Dwanisha Tate

Florida (1)

Pearl Johnson

Oklahoma (1)

Kamra King

Arkansas (2)

Ashley Spaletta
Mannasha Bell

Missouri (1)

Haylee Beard

...by Country**France (1)**

Mathilde Hergott

...by Position**Guard (7)**

Pearl Johnson
Crystal Chidomere
Alana Heard
Kamra King
Ashley Spaletta
Carlie Heineman
Dwanisha Tate

Forward (3)

Akunna Elonu
Taylor Williams
Mannasha Bell

Center (1)

Tesha Smith

Guard/Forward (3)

Mathilde Hergott
Niaga Mitchell-Cole
Haylee Beard

...by Year**Freshman (2)**

Crystal Chidomere
Carlie Heineman

Sophomore (5)

Alana Heard
Taylor Williams
Tesha Smith
Dwanisha Tate
Haylee Beard

Junior (5)

Pearl Johnson (TR)
Mathilde Hergott
Niaga Mitchell-Cole
Akunna Elonu
Mannasha Bell

Senior (2)

Kamra King
Ashley Spaletta



2014-15 TV/MEDIA ROSTER



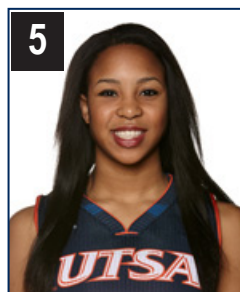
1
pearl **JOHNSON**
5-6 • G • Jr.-Tr.
Fruitland, Fla.



2
mathilde **HERGOTT**
5-10 • G/F • Jr.-2L
Jonage, France



4
crystal **CHIDOMERE**
5-11 • G • Fr.-HS
Richmond, Texas



5
alana **HEARD**
5-6 • G • So.-1L
Missouri City, Texas



10
kamra **KING**
5-6 • G • Sr.-3L
Norman, Okla.



12
niaga **MITCHELL-COLE**
5-10 • G/F • Jr.-2L
San Antonio, Texas



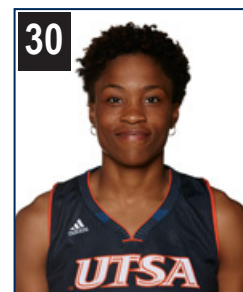
21
akunna **ELONU**
5-9 • F • Jr.-2L
Houston, Texas



24
ashley **SPALETTA**
5-9 • G • Sr.-3L
Magnolia, Ark.



25
taylor **WILLIAMS**
6-2 • F • So.-1L
Katy, Texas



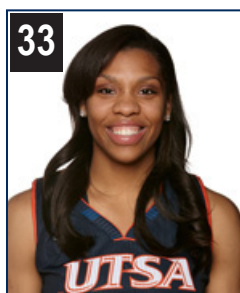
30
tesha **SMITH**
6-1 • C • So.-1L
San Antonio, Texas



31
carlie **HEINEMAN**
6-0 • G • Fr.-HS
San Antonio, Texas



32
dwanisha **TATE**
5-9 • G • So.-1L
Arlington, Texas



33
mannasha **BELL**
5-11 • F • Jr.-2L
Fort Smith, Ark.



45
haylee **BEARD**
5-9 • G/F • So.-1L
Ozark, Mo.



lubomyr **LICHONCZAK**
Head coach
Second season



kristen **HOLT**
Associate Head Coach
Second season



nicole **DUNSON**
Assistant coach
Second season



emily **SHERMAN**
Director of Operations
Third season

Pronunciation Guide

Mathilde Hergott MAH-teel | AIR-got
Niaga nye-AH-juh
Akunna Elonu AH-coon-uh | EE-lawn-oo

Dwanisha Dwon-EE-sha
Mannasha mah-NAH-sha
Lubomyr Lichonczak LU-ba-meer | li-KON-zack

Tesha TEE-sha

**Roadrunners Trends**

At Convocation Center	0-0
On the road	0-0
At a neutral site	0-0
Last 5 games	0-0
Against ranked opponents	0-0
Longest win streak	0
Longest losing streak	0

Scoreboard

Up at the half	0-0
Trailing at the half	0-0
Tied at the half	0-0
Overtime	0-0

In November	0-0
In December	0-0
In January	0-0
In February	0-0
In March	0-0

On Sundays	0-0
On Mondays	0-0
On Tuesdays	0-0
On Wednesdays	0-0
On Thursdays	0-0
On Fridays	0-0
On Saturdays	0-0

UTSA - More points in game	0-0
Opp. - More points in game	0-0
Tied	0-0

UTSA - More 3-pointers in game	0-0
Opp. - More 3-pointers in game	0-0
Tied	0-0

UTSA - More free throws in game	0-0
Opp. - More free throws in game	0-0
Tied	0-0

UTSA - More rebounds in game	0-0
Opp. - More rebounds in game	0-0
Tied	0-0

UTSA - More blocks in game	0-0
Opp. - More blocks in game	0-0
Tied	0-0

UTSA - More steals in game	0-0
Opp. - More steals in game	0-0
Tied	0-0

UTSA - More turnovers in game	0-0
Opp. - More turnovers in game	0-0
Tied	0-0

When UTSA...**Field Goals**

Shoots 20-29%	0-0
Shoots 30-39%	0-0
Shoots 40-49%	0-0
Shoots 50-59%	0-0
Shoots 60-69%	0-0

Three-Point Field Goals

Shoots 0-19%	0-0
Shoots 20-29%	0-0
Shoots 30-39%	0-0
Shoots 40-49%	0-0
Shoots 50-59%	0-0
Shoots 60-69%	0-0

Free Throws

Shoots 30-39%	0-0
Shoots 40-49%	0-0
Shoots 50-59%	0-0
Shoots 60-69%	0-0
Shoots 70-79%	0-0
Shoots 80-89%	0-0

Scored less than 49 points	0-0
Scores between 50-59 points	0-0
Scores between 60-69 points	0-0
Scores between 70-79 points	0-0
Scores more than 80 points	0-0

Allows less than 49 points	0-0
Allows between 50-59 points	0-0
Allows between 60-69 points	0-0
Allows between 70-79 points	0-0
Allows more than 80 points	0-0

Leading with 5:00 left	0-0
Trailing with 5:00 left	0-0
Tied with 5:00 left	0-0

2014-15 Double-Doubles**Career-Highs**



CONFERENCE USA

2014-15 Preseason All-Conference USA Women's Basketball Team

Lefty Webster, Charlotte, So., Guard

Whitney Frazier, Louisiana Tech, Sr., Forward

Olivia Jones, Middle Tennessee, So., Guard/Forward

Tamara Jones, Southern Miss, Sr., Forward

Chelsee Black, UAB, Jr., Guard

Chastity Gooch, WKU, Sr., Forward

Alexis Govan, WKU, Sr., Guard/Forward

Kendall Noble, WKU, RS So., Guard

Preseason Player of the Year: Chastity Gooch, WKU

Preseason Conference USA Women's Basketball Poll

1. Middle Tennessee (6) - 181 points

2. WKU (5) - 179 points

3. Southern Miss (1) - 163 points

4. UTEP (1) - 154 points

5. Charlotte - 132 points

6. Old Dominion - 116 points

7. Louisiana Tech - 105 points

8. UAB - 104 points

T9. North Texas - 70 points

T9. *UTSA (1) - 70 points*

11. FIU - 61 points

12. Rice - 58 points

13. Florida Atlantic - 45 points

14. Marshall - 32 points

(#) - indicates first-place vote

Conference USA Standings

As of November 1

Conference USA

Overall

Team	W	L	W	L
Middle Tennessee	0	0	0	0
WKU	0	0	0	0
Southern Miss	0	0	0	0
UTEP	0	0	0	0
Charlotte	0	0	0	0
Old Dominion	0	0	0	0
La. Tech	0	0	0	0
UAB	0	0	0	0
North Texas	0	0	0	0
UTSA	0	0	0	0
FIU	0	0	0	0
Rice	0	0	0	0
Florida Atlantic	0	0	0	0
Marshall	0	0	0	0

THIS WEEK IN CONFERENCE USA...

Sunday	Monday	Tuesday	Wednesday	Thursday	Friday	Saturday
16 FAU at BC UTEP at SMU WKU vs. TBD	17 Northern Colo. at UNT William & Mary at ODU Miami at MT USM at South Ala.				14 FAU at UCF Marshall at R.I. William Carey at USM Tenn. Tech at FIU Charlotte at Liberty MT at ASU Presbyterian at ODU PVAM at Rice UAB at FSU NMSU at UTEP Houston at UNT Central Ark. at WKU	15 Marshall vs. Fairfield UTSA at Texas La. Tech at SFA



2014-15 Conference USA Freshman and Player of the Week

Player of the Week

November 17
November 24
December 1
December 8
December 15
December 22
January 5
January 12
January 19
January 26
February 2
February 9
February 16
February 23
March 2
March 7

Freshman of the Week

November 17
November 24
December 1
December 8
December 15
December 22
January 5
January 12
January 19
January 26
February 2
February 9
February 16
February 23
March 2
March 7



MARCH 11-14 ▪ HOSTED BY UAB

UAB will host the 2015 Conference USA Women's Basketball Championship March 11-14, 2015 in Birmingham, Ala.

The top 12 teams in the regular season standings qualify for the single-elimination tournament with the top four teams receiving a bye. The winner will gain the league's automatic bid to the NCAA Championship.

The first two days will be hosted at Bartow Arena on the UAB campus before moving over to the Birmingham Jefferson Convention Complex (BJCC) for Friday's semifinals as well as the championship game on Saturday.

American Sports Network (ASN) will broadcast the first round and quarterfinal games, while CBS Sports Network is slated to carry the semifinals and the 2015 C-USA Women's Basketball Championship title game.



NATIONAL POLL

AP Top-25 Preseason Poll (October 31, 2014)

School (First place votes)	Record	Points
1. Connecticut (35)	40-0	875
2. South Carolina	29-5	824
3. Notre Dame	37-1	798
4. Tennessee	29-6	749
5. Texas A&M	27-9	702
6. Stanford	33-4	645
7. Duke	28-7	577
8. Baylor	32-5	573
9. Texas	22-12	532
10. Maryland	28-7	531
11. Kentucky	26-9	522
12. Louisville	33-5	505
13. North Carolina	27-10	504
14. Michigan State	23-10	433
15. California	22-10	423
16. Nebraska	26-7	314
17. West Virginia	30-5	306
18. DePaul	29-7	301
19. Iowa	27-9	236
20. Oregon St.	24-11	183
21. Oklahoma St.	24-11	158
22. Dayton	23-8	95
23. UCLA	13-18	86
24. Rutgers	28-9	65
24. Syracuse	23-10	65

Dropped out: Penn State 14, NC State 16, Purdue 17, Gonzaga 18, Middle Tennessee 22, USC 25

Others receiving votes: LSU 58, Purdue 45, Penn State 43, Georgia 37, Gonzaga 28, NC State 24, Vanderbilt 23, Oklahoma 17, BYU 14, Arkansas 14, Mississippi State 13, Florida State 10, South Florida 8, Minnesota 8, St. John's 7, Oregon 5, Western Kentucky 4, Green Bay 4, Middle Tennessee 3, Iowa State 2, Northwestern 2, Arizona State 1, Colorado State 1, Albany 1, James Madison 1

WBCA/USA Today Division I Coaches Top-25 Preseason Poll (November 3, 2014)

School (13-14 Rec.)	Total Points	13-14 Final Rank	1 st Place Votes
1. Connecticut (40-0)	800	1	32
2. South Carolina (29-5)	739	9	0
3. Notre Dame (37-1)	736	2	0
4. Tennessee (29-6)	683	8	0
5. Texas A&M (27-9)	630	10	0
6. Stanford (33-4)	608	3	0
7. Duke (28-7)	566	13	0
8. Maryland (28-7)	543	4	0
9. Baylor (32-5)	531	6	0
10. Kentucky (26-9)	484	11	0
11. Louisville (33-5)	474	5	0
12. Texas (22-12)	458	NR	0
13. North Carolina (27-10)	407	7	0
14. California (22-10)	366	20	0
15. Michigan St. (23-10)	343	23	0
16. Nebraska (26-7)	305	17	0
17. West Virginia (30-5)	274	12	0
18. DePaul (29-7)	246	16	0
19. Iowa (27-9)	217	NR	0
20. Oklahoma St. (24-11)	164	15	0
21. Oregon St. (24-11)	123	25	0
22. Dayton (23-8)	117	NR	0
23. UCLA (13-18)	116	NR	0
24. LSU (21-13)	65	24	0
25. Syracuse (23-10)	55	NR	0

Dropped out: No. 14 Penn State (24-8), No. 18 Brigham Young (28-7), No. 19 Purdue (22-9), No. 21 North Carolina State (25-8), No. 22 Gonzaga (29-5)

Others receiving votes: Penn State (24-8) 50; Rutgers (28-9) 45; Purdue (22-9) 37; Georgia (20-12) 29; Vanderbilt (18-13) 24; Gonzaga (29-5) 17; Brigham Young (28-7) 16; Florida State (21-12) 16; St. John's (23-11) 16; North Carolina State (25-8) 14; Iowa State (20-11) 12; South Florida (23-13) 11; Ohio State (17-18) 10; Arkansas (19-11) 9; Oklahoma (18-15) 8; Oregon (16-16) 8; Middle Tennessee (29-5) 7; Southern California (22-13) 7; Western Kentucky (24-9) 5; James Madison (29-6) 3; Arizona State (23-10) 2; Albany (28-5) 1; Arkansas State (22-12) 1; Cal State Northridge (18-15) 1; Marist (27-7) 1

**Runners Voted Ninth in C-USA Preseason Poll**

UTSA was selected to finish ninth in the 2014-15 Conference USA Preseason Poll. The Roadrunners received one first-place vote and 70 points.

Middle Tennessee was voted as the preseason favorite with 181 points and six first-place votes while newcomer WKU came in a close second with 179 points and five first-place votes.

FAU Game to be Televised

UTSA's home contest on Sunday, Feb. 8 against FAU will be televised on FOX Sports Network. Other TV games for UTSA include the season opener against Texas on the Longhorn Network.

Tough Competition

After completing the 2013-14 season with a 14-17 record, the Roadrunners have a lot of work ahead of them if they plan on making the Conference USA Tournament. UTSA will face three teams mentioned in the WBCA/USA Today Division I Coaches' Top-25 Preseason Poll.

Texas checked in at No. 12 while Middle Tennessee (7) and Western Kentucky (5) each received votes in the poll.

**Note: Texas was also voted No. 12 in the AP Coaches' Poll.*

Great to be King

Senior Kamra King has led the team in scoring the past three years and seeks to be the first Roadrunner in program history to be the leading scorer all four years.

SCOUTING THE OPPONENT

Texas Longhorns • November 15 • 2 p.m.

- All-time record against Texas: 0-4
- Last time out: Nov. 10, 2013 in Austin, Texas; Texas 63, UTSA 42
- The last time the two teams met Tesha Smith recorded a double-double of 10 points and 10 rebounds in her first career outing as a Roadrunner in the 63-42 loss to the Longhorns. UTSA shot 19 percent in the first half behind Mathilde Hergott's team-leading six points. At the break, UT led 33-12 as Imani McGee-Stafford accounted for 11 points and half a dozen boards.
- In their only exhibition game of the season, the Longhorns defeated Oklahoma City University 102-56 on November 9. UT used a 29-3 run to begin the second half en route to the win after only holding a nine-point lead at the half. The Longhorns shot 71.9 percent in the second half.
- Texas debuted at No. 9 in The Associated Press' Preseason Top 25, which marks the first time the Longhorns have been in the top 10 since Nov. 17, 2009.
- In the USA TODAY Preseason Top 25 Coaches' Poll, Texas received the highest preseason ranking at No. 12 since the 2005-06 season (No. 12). The last time the Longhorns were ranked in the coaches' top 25 was in head coach Karen Aston's first season at the helm when the team won five start to begin the 2012-13 season.
- UT will have 10 returning letter winners, including four starters, for the 2014-15 season along with the No. 11 recruiting class in the nation. Three Longhorns players were named preseason all-americans - Nneka Enemkpali (*Sporting News* Third Team, *CollegeSportsMadness.com* Third Team), Ariel Atkins (*Sporting News* Third Team), and Imani McGee-Stafford (*Sporting News* Third Team)
- Texas was selected as the Big 12 preseason favorite voted on by the leagues coaches, which marks the third time in conference history. The Longhorns received five first-place votes and a total of 73 points. Ariel Atkins was named Big 12 Preseason Freshman of the Year, Nneka Enemkpali was named to the Preseason All-Big 12 Team while Imani McGee-Stafford was selected as an honorable mention Preseason All-Big 12.
- Last season, the Longhorns finished third in the Big 12 with a 22-12 overall record and 11-7 mark in the league as they advanced to the second round of the NCAA Championship.



HEAD COACH

Lubomyr Lichonczak

(Idaho, 1985 • Second Season)

Record at UTSA: 14-17 • **Career record:** 165-168 (.495), 12 years

Head coach Lubomyr Lichonczak enters his second season at the helm of the UTSA women's basketball program after becoming only the eighth head coach in program history on August 28, 2013.

In his first season as head coach, Lichonczak led the team to a 14-17 overall record and 4-12 mark in UTSA's inaugural season in Conference USA. Junior Kamra King concluded her third campaign as a Roadrunner averaging double-figures (13.6 ppg) while also leading the team in scoring for the third time

in her collegiate career.

The Roadrunners made an appearance in the C-USA Women's Basketball Championship and upset 10th-seeded Tulsa in their first game before being knocked out by Old Dominion in the second round.

Prior to taking over the women's program in 2013, Lichonczak spent 11 years on the Roadrunners' coaching staff, including nine as the associate head coach. He was hired at UTSA prior to the 2002-03 season and spent two campaigns as an assistant before being promoted to associate head coach. Lichonczak primarily worked with the post players and served as the program's scouting coordinator and team academic liaison and assisted with scheduling and recruiting.

During his time on the UTSA bench, he helped mentor 23 all-conference selections – including seven first-team All-Southland Conference picks – one Southland Player and Defensive Player of the Year (Monica Gibbs/2009), three Southland Newcomers of the Year (Dwella Holliday, 2003/Vivian Ewalefo, 2006/Onika Anderson, 2008) and a pair of Southland Freshmen of the Year (Richelle Parks, 2005/Monica Gibbs, 2006).

He was instrumental in helping UTSA win back-to-back Southland Tournament Championships to earn the program's only NCAA Tournament appearances in 2008 and '09. The 2008-09 squad posted a school-record 24 wins and became the first No. 15-seed in the history of the NCAA Division I Championship to take a No. 2-seed to overtime.

In addition to the squad's accomplishments on the court, Lichonczak aided several student-athletes in the classroom. Ryba Pawlaczyk earned ESPN The Magazine/CoSIDA Academic All-District IV, Southland Student-Athlete of the Year and first-team Southland All-Academic in 2009, while Nicole Dunson took home the league's Student-Athlete of the Year and first-team all-academic honors in 2005.



Lichonczak came to the Alamo City after spending the 2001-02 campaign as the associate head coach at Colorado State where he helped the Rams to a 24-7 mark, including a 12-2 league record en route to the Mountain West Regular Season Championship and an at-large berth in the NCAA Tournament.

His stint in Fort Collins came after an 11-year run as the head coach at Radford (1990-2001). Lichonczak coached the Highlanders to a 151-151 (.500) overall record and 99-53 (.651) mark in Big South Conference games. His 151 wins rank second in program annals.

Under his guidance, Radford claimed six consecutive Big South Tournament titles (1991-96) and made three straight NCAA Tournament appearances (1994-96). Lichonczak earned Big South Coach of the Year honors in 1992 after the squad posted a 20-9 record and 11-1 league ledger en route to a conference regular-season title.



Lichonczak was an assistant under Hickey at Texas A&M from 1987-90 after a pair of seasons (1985-87) at Old Dominion, where he helped the Monarchs to the 1987 Sun Belt Conference Championship and an NCAA Tournament berth. Prior to his time in Norfolk, Va., Lichonczak was an assistant at Ohio State from 1980-85 and aided the Buckeyes to four consecutive Big Ten titles (1982-85) and NCAA Tournament appearances in 1982, '84 and '85. The 1985 squad finished the season with a 26-2 record, 18-0 Big Ten mark and advanced to the Elite Eight before falling to Old Dominion, the eventual national champion.

His coaching career began at his alma mater, Idaho, in 1978. In his final campaign with the Vandals, the squad went 25-6 and claimed the Region IX Championship to advance to the Association for Intercollegiate Athletics for Women (IAAW) Division II National Tournament.

Along with his collegiate experience, Lichonczak served in the WNBA as an advance scout for the San Antonio Silver Stars in 2010 and was a first assistant and offensive coordinator for the Washington Mystics in 2009. In addition, he was an assistant coach for the Nigerian Women's National Team in 2007.

Lichonczak, who earned a bachelor of science degree in social studies and education from Idaho in 1978 and a master of arts degree in athletic administration from Ohio State in 1985, and his wife, Maryann, have a son, Yov, and a daughter, Nika.



Into the *Luby* Looking Glass

Education

Idaho, 1978 - B.S. social studies and education
Ohio State, 1985 - M.S. athletic administration

Coaching Background

Head coach, UTSA (2013-Present)
Associate head coach, UTSA (2004-13)
Assistant coach, UTSA (2002-04)
Associate head coach, Colorado State (2001-02)
Head coach, Radford (1990-2001)
Assistant coach, Texas A&M (1987-90)
Assistant coach, Old Dominion (1985-87)
Assistant coach, Ohio State (1980-85)
Assistant coach, Idaho (1978-80)

WNBA Coaching Background

Advanced scout, San Antonio Silver Stars (2010)
First assistant, Washington Mystics (2009)

Achievements

- 3 NCAA Tournament (1994, '95, '96)
- 1 Big South Conference regular season championships (1991-92)
- 6 Big South Tournament championships (1991, '92, '93, '94, '95, '96)
- 1992 Big South Coach of the Year
- Second winningest coach in Radford history (151 wins)
- 1 20-win season
- 4 seasons with 15 or more wins
- 2 Big South Player of the Year selections
- 2 Big South Rookie of the Year selections
- 4 Big South Tournament MVP's
- 18 all-conference selections
- 9 First Team All-Big South Conference selections
- 2 Big South Scholar-Athlete of the Year honorees

Year-by-Year Record

Radford (1990-01)

1990-91	13-17
1991-92	20-9
1992-93	17-11
1993-94	18-12
1994-95	15-15
1995-96	17-12
1996-97	12-16
1997-98	14-14
1998-99	11-17
1999-00	11-17
2000-01	10-18
Record	151-151 (.500)

UTSA (2013-Present)

2013-14	14-17
Record	14-17



PEARL JOHNSON

G • Junior

Fruitland, Fla. • St. Petersburg College

1

Career Records

Points

11 vs. Santa Fe College (3/6/14)

Rebounds

4 vs. Miami Dade College (2/8/14)

Assists

4 at Miami Dade College (1/31/14)

Field Goals

4 vs. Santa Fe College (3/6/14)

3-point FGs

2 at Broward College (2/1/14)

Free Throws

5 vs. Northwest Fla. State College (3/7/14)

Blocks

-

Steals

3 (4x) last at Miami Dade College (1/31/14)

Season	GP-GS	Min./Avg.	Total		3-PT		Career Stats FT		Rebounds				Scoring							
			FG-FGA	Pct.	FG-FGA	Pct.	FT-FTA	Pct.	Off	Def	Tot	Avg.	Pf	FO	A	TO	BLK	STL	PTS	Avg.
*2013-14	26-0	40/1.5	32-85	.376	5-11	.455	32-36	.889	6	21	27	1.0	5	0	22	21	0	23	101	3.9
TOTAL	26-0	40/1.5	32-85	.376	5-11	.455	32-36	.889	6	21	27	1.0	5	0	22	21	0	23	101	3.9

* denotes stats from previous school

2014-15 Player Notes:

**MATHILDE HERGOTT**

G/F • Junior

Jonage, France • Lycee Jean Mermoz

2**Career Records****Points**

22 vs. UTEP (2/26/14)

Rebounds

3 (5x) last vs. Tulsa (3/11/14)

Assists

5 vs. Marshall (3/5/14)

Field Goals

8 vs. UTEP (2/26/14)

3-point FGs

6 vs. Tulsa (3/11/14)

Free Throws

2 (3x) last vs. Fla. Atlantic (3/1/4)

Blocks

1 (5x) last vs. Tulane (2/8/14)

Steals

3 vs. Tulane (2/8/14)

Season	GP-GS	Min./Avg.	Total		3-PT		Career Stats FT		Rebounds				Scoring							
			FG-FGA	Pct.	FG-FGA	Pct.	FT-FTA	Pct.	Off	Def	Tot	Avg.	Pf	FO	A	TO	BLK	STL	PTS	Avg.
2013-14	29-4	439/15.1	34-112	.304	19-61	.311	9-14	.643	6	29	35	1.2	43	1	27	27	5	8	96	3.3
2012-13	12-0	54/4.5	5-18	.278	3-9	.333	1-1	1.000	4	1	5	0.4	8	0	4	7	0	1	14	1.2
TOTAL	41-4	493/12.0	39-130	.300	22-70	.314	10-15	.667	10	30	40	0.9	51	1	31	34	5	9	100	2.4

2014-15 Player Notes:



CRYSTAL CHIDOMERE

G • Freshman

Richmond, Texas • Bush HS

4

Career Records

Points

-

Rebounds

-

Assists

-

Field Goals

-

3-point FGs

-

Free Throws

-

Blocks

-

Steals

-

Season	GP-GS	Min./Avg.	Career Stats																	
			Total		3-PT		FT		Rebounds				Scoring							
			FG-FGA	Pct.	FG-FGA	Pct.	FT-FTA	Pct.	Off	Def	Tot	Avg.	PF	FO	A	TO	BLK	STL	PTS	Avg.
2014-15																				
TOTAL																				

2014-15 Player Notes:

**ALANA HEARD**

G • Sophomore

Missouri City, Texas • Hightower HS

5**Career Records****Points**

9 vs. UT-Arlington (11/17/13)

Rebounds

7 vs. Norfolk State (11/30/13)

Assists

5 vs. TAMUCC (12/5/13)

Field Goals

4 vs. Tulsa (1/8/14)

3-point FGs

-

Free Throws

6 vs. Norfolk State (11/30/13)

Blocks

1 (2x) last vs. NM State (12/29/13)

Steals

4 (2x) last vs. TX State (12/22/13)

Season	GP-GS	Min./Avg.	Total		3-PT		Career Stats FT		Rebounds				Scoring							
			FG-FGA	Pct.	FG-FGA	Pct.	FT-FTA	Pct.	Off	Def	Tot	Avg.	PF	FO	A	TO	BLK	STL	PTS	Avg.
2013-14	30-0	327/10.9	20-63	.317	0-0	.000	21-42	.500	14	29	43	1.4	53	1	40	56	2	26	61	2.0
TOTAL	30-0	327/10.9	20-63	.317	0-0	.000	21-42	.500	14	29	43	1.4	53	1	40	56	2	26	61	2.0

2014-15 Player Notes:

**KAMRA KING****G • Senior**

Norman, Okla. • Norman HS

10**Career Records****Points**

27 vs. Lamar (11/14/13)

Rebounds

8 (2x) last vs. La. Tech (1/12/13)

Assists

6 (5x) last vs. TX State (2/16/13)

Field Goals

7 (4x) last vs. Norfolk St. (11/30/13)

3-point FGs

5 vs. Norfolk State (11/30/13)

Free Throws

13 vs. East Carolina (2/20/14)

Blocks

2 vs. Houston (12/4/11)

Steals

7 vs. Idaho (1/26/13)

Season	GP-GS	Min./Avg.	Total		3-PT		Career Stats FT		Rebounds				Scoring							
			FG-FGA	Pct.	FG-FGA	Pct.	FT-FTA	Pct.	Off	Def	Tot	Avg.	Pf	FO	A	TO	BLK	STL	PTS	Avg.
2013-14	31-30	1002/32.3	113-334	.338	37-140	.264	160-217	.737	18	77	95	3.1	79	1	44	88	2	57	423	13.6
2012-13	30-29	889/29.6	85-268	.317	35-132	.265	74-110	.673	24	64	88	2.9	71	2	59	72	2	63	279	9.3
2011-12	29-28	1014/35.0	79-231	.342	33-118	.280	111-145	.766	10	74	84	2.9	66	1	56	75	6	56	302	10.4
TOTAL	90-87	2905/32.3	277-833	.333	105-390	.269	345-472	.731	52	215	267	2.9	216	4	159	235	10	176	1004	11.2

2014-15 Player Notes:

**NIAGA MITCHELL-COLE**

G/F • Junior

San Antonio, Texas • Roosevelt HS

12**Career Records****Points**

15 vs. La. Tech (2/7/13)

Rebounds

10 (2x) last vs. Tulsa (1/8/14)

Assists

3 (2x) last vs. S. Miss (1/11/14)

Field Goals

6 vs. La. Tech (2/7/13)

3-point FGs

2 (7x) last vs. San Jose St. (3/17/13)

Free Throws

4 vs. Abilene Christian (1/4/14)

Blocks

3 vs. Tulsa (1/8/14)

Steals

3 (2x) last vs. TAMUCC (12/5/13)

Season	GP-GS	Min./Avg.	Total		3-PT		Career Stats FT		Rebounds				Scoring							
			FG-FGA	Pct.	FG-FGA	Pct.	FT-FTA	Pct.	Off	Def	Tot	Avg.	PF	FO	A	TO	BLK	STL	PTS	Avg.
2013-14	22-12	427/19.4	31-116	.267	4-31	.129	28-54	.519	41	47	88	4.0	56	2	18	27	13	24	94	4.3
2012-13	30-0	564/18.8	55-161	.342	18-66	.273	22-49	.449	59	69	128	4.3	60	1	12	31	15	24	150	5.0
TOTAL	52-12	991/19.1	86-277	.310	22-97	.227	50-103	.485	100	116	216	4.2	116	3	30	58	28	48	244	4.7

2014-15 Player Notes:

**AKUNNA ELONU**

F • Junior

Houston, Texas • Elsik HS

21**Career Records****Points**

14 vs. Florida Atlantic (3/1/14)

Rebounds

12 vs. Marshall (3/5/14)

Assists

2 (3x) last vs. N. Dakota St. (12/28/13)

Field Goals

6 vs. Florida Atlantic (3/1/14)

3-point FGs

-

Free Throws

9 vs. Northern Iowa (11/29/13)

Blocks

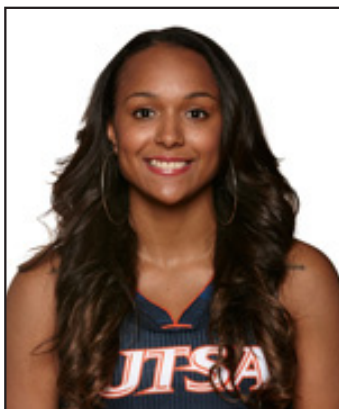
1 (4x) last vs. Tulsa (1/8/14)

Steals

3 vs. La. Tech (2/7/13)

Season	GP-GS	Min./Avg.	Total		3-PT		Career Stats FT		Rebounds				Scoring							
			FG-FGA	Pct.	FG-FGA	Pct.	FT-FTA	Pct.	Off	Def	Tot	Avg.	Pf	FO	A	TO	BLK	STL	PTS	Avg.
2013-14	29-16	453/15.6	38-75	.507	0-0	.000	31-44	.705	38	72	110	3.8	34	0	7	23	2	9	107	3.7
2012-13	22-1	201/9.1	23-57	.404	0-0	.000	12-22	.545	32	36	68	3.1	22	0	8	10	2	9	58	2.6
TOTAL	51-17	654/12.8	61-132	.462	0-0	.000	43-66	.652	70	108	178	3.5	56	0	15	33	4	18	165	3.2

2014-15 Player Notes:

**ASHLEY SPALETTA**

G • Senior

Magnolia, Ark. • Magnolia HS

24**Career Records****Points**

21 vs. UT-Arlington (2/9/13)

Rebounds

9 (2x) last vs. N. Dakota St. (12/28/13)

Assists

5 vs. Texas State (12/22/13)

Field Goals

7 vs. UT-Arlington (2/9/13)

3-point FGs

7 vs. UT-Arlington (2/9/13)

Free Throws

4 (4x) last vs. Rice (2/15/14)

Blocks

3 vs. UT-Arlington (2/9/13)

Steals

5 vs. Seattle (1/24/13)

Season	GP-GS	Min./Avg.	Total		3-PT		Career Stats FT		Rebounds				Scoring							
			FG-FGA	Pct.	FG-FGA	Pct.	FT-FTA	Pct.	Off	Def	Tot	Avg.	PF	FO	A	TO	BLK	STL	PTS	Avg.
2013-14	30-19	829/27.6	69-226	.305	48-164	.293	37-62	.597	39	101	140	4.7	64	1	40	47	2	46	223	7.4
2012-13	30-2	438/14.6	68-196	.347	46-151	.305	14-29	.483	24	47	71	2.4	38	1	26	32	7	35	196	6.5
2011-12	29-1	592/20.4	53-182	.291	40-152	.263	19-33	.576	16	55	71	2.4	34	1	23	34	5	19	165	5.7
TOTAL	89-22	1859/20.9	190-604	.315	134-467	.287	70-124	.565	79	203	282	3.2	136	3	89	113	14	100	584	6.6

2014-15 Player Notes:

**TAYLOR WILLIAMS**

F • Sophomore

Katy, Texas • Cinco Ranch HS

25**Career Records****Points**

2 vs. UAB (2/15/14)

Rebounds

4 vs. UAB (2/15/14)

Assists

-

Field Goals

1 vs. UAB (2/15/14)

3-point FGs

-

Free Throws

-

Blocks

1 vs. FIU (2/5/14)

Steals

-

Season	GP-GS	Min./Avg.	Total		3-PT		Career Stats FT		Rebounds				Scoring							
			FG-FGA	Pct.	FG-FGA	Pct.	FT-FTA	Pct.	Off	Def	Tot	Avg.	Pf	FO	A	TO	BLK	STL	PTS	Avg.
2013-14	9-0	19/2.1	1-4	.250	0-0	.000	0-0	.000	2	2	4	0.4	2	0	0	2	1	0	2	0.2
TOTAL	9-0	19/2.1	1-4	.250	0-0	.000	0-0	.000	2	2	4	0.4	2	0	0	2	1	0	2	0.2

2014-15 Player Notes:

**TESHA SMITH**

C • Sophomore

San Antonio, Texas • Wagner HS

30**Career Records****Points**

19 vs. FIU (2/5/14)

Rebounds

12 vs. East Carolina (2/20/14)

Assists

1 (4x) last vs. UTEP (2/26/14)

Field Goals

8 (2x) last vs. Rice (2/15/14)

3-point FGs

-

Free Throws

10 vs. East Carolina (2/20/14)

Blocks

3 vs. Old Dominion (2/22/14)

Steals

2 (2x) last vs. Tulane (2/8/14)

Season	GP-GS	Min./Avg.	Total		3-PT		Career Stats FT		Rebounds				Scoring							
			FG-FGA	Pct.	FG-FGA	Pct.	FT-FTA	Pct.	Off	Def	Tot	Avg.	Pf	FO	A	TO	BLK	STL	PTS	Avg.
2013-14	30-7	480/16.0	85-160	.531	0-0	.000	49-75	.653	60	108	168	5.6	82	1	4	33	20	13	219	7.3
TOTAL	30-7	480/16.0	85-160	.531	0-0	.000	49-75	.653	60	108	168	5.6	82	1	4	33	20	13	219	7.3

2014-15 Player Notes:

**CARLIE HEINEMAN**

G • Freshman

San Antonio, Texas • Brennan HS

31Career Records

Points

-

Rebounds

-

Assists

-

Field Goals

-

3-point FGs

-

Free Throws

-

Blocks

-

Steals

-

Season	GP-GS	Min./Avg.	Career Stats																	
			Total		3-PT		FT		Rebounds				Scoring							
			FG-FGA	Pct.	FG-FGA	Pct.	FT-FTA	Pct.	Off	Def	Tot	Avg.	PF	FO	A	TO	BLK	STL	PTS	Avg.
2014-15																				
TOTAL																				

2014-15 Player Notes:

**DWANISHA TATE**

G • Sophomore
Arlington, Texas • Seguin HS

32**Career Records****Points**

9 (3x) last vs. Marshall (3/5/14)

Rebounds

5 vs. Marshall (3/5/14)

Assists

2 (4x) last vs. Marshall (3/5/14)

Field Goals

4 (2x) last vs. Tulsa (1/8/14)

3-point FGs

2 (2x) last vs. Marshall (3/5/14)

Free Throws

2 (2x) last vs. FAU (3/1/14)

Blocks

1 (3x) last vs. Tulane (2/8/14)

Steals

1 (7x) last vs. Marshall (3/5/14)

Season	GP-GS	Min./Avg.	Total		3-PT		Career Stats FT		Rebounds				Scoring							
			FG-FGA	Pct.	FG-FGA	Pct.	FT-FTA	Pct.	Off	Def	Tot	Avg.	Pf	FO	A	TO	BLK	STL	PTS	Avg.
2013-14	27-0	343/12.7	37-83	.446	5-17	.294	10-21	.476	8	38	46	1.7	38	0	16	47	3	7	89	3.3
TOTAL	27-0	343/12.7	37-83	.446	5-17	.294	10-21	.476	8	38	46	1.7	38	0	16	47	3	7	89	3.3

2014-15 Player Notes:

**MANNASHA BELL**

F • Junior

Fort Smith, Ark. • Northside HS

33**Career Records****Points**

16 vs. FIU (11/18/11)

Rebounds

16 vs. Houston (12/4/11)

Assists

2 vs. TAMUCC (11/16/12)

Field Goals

5 (7x) last vs. Tulane (2/8/14)

3-point FGs

-

Free Throws

6 vs. Texas State (12/22/13)

Blocks

2 vs. UNLV (11/22/11)

Steals

3 (4x) last vs. Texas (11/10/13)

Season	GP-GS	Min./Avg.	Total		3-PT		Career Stats FT		Rebounds				Scoring							
			FG-FGA	Pct.	FG-FGA	Pct.	FT-FTA	Pct.	Off	Def	Tot	Avg.	Pf	FO	A	TO	BLK	STL	PTS	Avg.
2013-14	29-26	607/20.9	65-148	.439	0-1	.000	40-79	.506	85	69	154	5.3	64	2	12	54	4	24	170	5.9
2012-13	29-13	369/12.7	46-105	.438	0-0	.000	19-38	.500	47	51	98	3.4	41	0	8	24	3	19	111	3.8
2011-12	9-9	254/28.2	26-70	.371	0-1	.000	22-40	.550	31	39	70	7.8	20	1	3	20	4	14	74	8.2
TOTAL	67-48	1230/18.4	137-323	.424	0-2	.000	81-157	.516	163	159	322	4.8	125	3	23	98	11	57	355	5.3

2014-15 Player Notes:

**HAYLEE BEARD**

G/F • Sophomore
Ozark, Mo. • Ozark HS

45**Career Records****Points**

3 (2x) last vs. Savannah St. (11/22/13)

Rebounds

1 (4x) last vs. UTEP (1/25/14)

Assists

1 (2x) last vs. UT-Arlington (11/17/13)

Field Goals

1 (2x) last vs. Savannah St. (11/22/13)

3-point FGs

1 (2x) last vs. Savannah St. (11/22/13)

Free Throws

1 vs. UT-Arlington (11/17/13)

Blocks

1 vs. UT-Arlington (11/17/13)

Steals

-

Season	GP-GS	Min./Avg.	Total		3-PT		Career Stats FT		Rebounds				Scoring							
			FG-FGA	Pct.	FG-FGA	Pct.	FT-FTA	Pct.	Off	Def	Tot	Avg.	Pf	FO	A	TO	BLK	STL	PTS	Avg.
2013-14	19-0	67/3.5	3-22	.136	2-17	.118	1-2	.500	3	1	4	0.2	7	0	2	2	1	0	9	0.5
TOTAL	19-0	67/3.5	3-22	.136	2-17	.118	1-2	.500	3	1	4	0.2	7	0	2	2	1	0	9	0.5

2014-15 Player Notes:

**TEAM RECORDS****MOST POINTS**

Game - 113 vs. Schreiner (11/24/90)
Season - 2,392 vs. 30 games (1990-91)

FEWEST POINTS

Game - 30 at TCU (11/14/11)
Half - 10 at UT Arlington (1/27/97)
Season - 1,455 in 28 games (2001-02)

HIGHEST VICTORY MARGIN

67 (105-38) vs. Prairie View A&M (12/7/93)
67 (96-29) vs. Prairie View A&M (2/10/83)

HIGHEST LOSS MARGIN

57 (39-96) at Texas Tech (12/2/98)

HIGHEST SCORING AVERAGE

Season - 79.7 in 30 games (1990-91)

LOWEST SCORING MARGIN

Season - 51.9 in 28 games (2001-02)

MOST FIELD GOALS MADE

Game - 45 vs. Schreiner (11/24/90)
Season - 872 (1983-84)

FEWEST FIELD GOALS MADE

Game - 8 at TCU (11/14/11)
Season - 516 (2001-02)

MOST FIELD GOALS ATTEMPTED

Game - 78 at Rice (1/4/10)
Season - 2,069 (2008-09)

FEWEST FIELD GOALS ATTEMPTED

Game - 36 at Baylor (12/16/96)
36 vs. South Alabama (11/15/11)
Season - 1,367 (1998-99)

HIGHEST FIELD GOAL PERCENTAGE

Game - .706 vs. Texas Southern (12/5/96)
Season - .478 (800-1,675); 1984-85

LOWEST FIELD GOAL PERCENTAGE

Game - .133 (8-60) at TCU (11/14/11)
Season - .344 (549-1,596); 2011-12

MOST FREE THROWS MADE

Game - 33 vs. Oral Roberts (2/22/86)
33 at Texas Tech (12/17/88)
Season - 531 (1990-91)

FEWEST FREE THROWS MADE

Game - 0 vs. St. Bonaventure (12/21/10)
Season - 286 (1981-82)

MOST FREE THROWS ATTEMPTED

Game - 45 vs. Texas State (12/22/13)
Season - 789 (1990-91)

FEWEST FREE THROWS ATTEMPTED

Game - 3 vs. St. Mary's (2/14/84)
3 vs. St. Bonaventure (12/21/10)
Season - 427 (1981-82)

HIGHEST FREE THROW PERCENTAGE

Game - .944 (17-18) vs. UNT (1/22/96)
Season - .726 (462-636); 2010-11

LOWEST FREE THROW PERCENTAGE

Game - .000 (0-3) vs. St. Bonaventure (12/21/10)
Season - .619 (289-467); 1993-94

MOST 3-PT FIELD GOALS MADE

Game - 13 vs. Tulsa (1/5/09)
13 vs. Tulsa (3/11/14)
Season - 229 (2008-09)

FEWEST 3-PT FIELD GOALS MADE

Game - 0 multiple times
Season - 47 (1996-97)

MOST 3-PT FIELD GOALS ATTEMPTED

Game - 37 vs. UT-Arlington (2/14/09)
Season - 698 (2008-09)

MOST REBOUNDS

Game - 64 vs. Prairie View A&M (2/8/90)
Season - 1,441 (2008-09)

FEWEST REBOUNDS

Game - 21 at UT-Arlington (1/23/07)
Season - 863 (1998-99)

MOST ASSISTS

Game - 34 vs. Southwestern (11/22/83)
34 vs. Oklahoma City (2/27/84)
Season - 529 (1981-82)

FEWEST ASSISTS

Game - 1 at Creighton (2/10/87)
Season - 265 (2011-12)

MOST STEALS

Game - 32 at Hardin Simmons (2/6/84)
Season - 373 (1986-87)

FEWEST STEALS

Game - 0 multiple times
Season - 163 (1998-99)

MOST BLOCKED SHOTS

Game - 14 vs. UTPA (12/21/11)
Season - 138 (2010-11, 2011-12)

FEWEST BLOCKED SHOTS

Game - 0 multiple times
Season - 22 (1996-97)

MOST TURNOVERS

Game - 38 vs. Sam Houston St. (1/12/95)
Season - 679 (1991-92)

FEWEST TURNOVERS

Game - 5 vs. McNeese St. (2/5/12)
Season - 420 (1997-98)

MOST FOULS

Game - 33 at UC-Irvine (11/26/99)
Season - 653 (1983-84)

FEWEST FOULS

Game - 8 vs. A&M-Corpus Christi (2/2/08)
Season - 471 (2002-03)

MOST DISQUALIFICATIONS

31 (2011-12)

100-point Games

Score.....	Opponent.....	Date
113-89.....	Schreiner	11/24/90
113-91.....	Oklahoma City	2/27/84
105-38	Prairie View A&M	12/7/93
100-62	St. Mary's	1/24/89
100-46	Southwestern	11/28/83

90-point Games

Score.....	Opponent.....	Date
99-65	UTEP	3/1/86
99-73	Texas State	1/3/84
99-98 (OT)	at Tulane	2/16/91
98-84	New Mexico State	12/31/90
97-89 (OT)	at Central Arkansas	2/11/09
96-78	Sam Houston State	1/29/91
93-78	at Texas A&M-Corpus Christi	2/23/11
93-55	Huston-Tillotson	12/6/08
93-48	Texas A&M-Commerce	1/12/88
92-52	Nicholls	2/17/94
92-79	UTEP	2/11/84
92-56	Huston-Tillotson	1/29/83
92-57	Texas Lutheran	12/2/82
91-30	Texas Southern	12/5/96
90-89 (2OT)	vs. Miami (Ohio)	12/29/07
90-53	Southeastern Louisiana	3/3/01
90-41	Hardin-Simmons	2/20/84
99-89	Tulsa	3/11/14

**INDIVIDUAL RECORDS****POINTS**

Game - 40 by Starlite Williams vs. St. Mary's (12/16/86)
 Season - 583 by Tammy Rogers (1990-91)
 Career - 1,607 by Starlite Williams (1983-87)

SCORING AVERAGE

Season - 20.7 by Starlite Williams (1986-87)
 Career - 16.6 by Starlite Williams (1983-87)

FIELD GOALS MADE

Game - 16 by Starlite Williams vs. St. Mary's (12/16/86)
 Season - 229 by Starlite Williams (1986-87)
 Career - 674 by Starlite Williams (1983-87)

FIELD GOALS ATTEMPTED

Game - 33 by Tammy Rogers vs. Alaska Anchorage (2/23/91)
 Season - 482 by Tammy Rogers (1990-91)
 Career - 1,305 by Starlite Williams (1983-87)

FIELD GOAL PERCENTAGE (MINIMUM ATTEMPTS)

Game (10) - .928 (13-14) by Starlite Williams vs. Alabama (12/5/86)
 Season (200) - .657 (184-280) by Margaret Martinovich (1984-85)
 Career - .566 (589-1,039) by Margaret Martinovich (1981-85)

FREE THROWS MADE

Game - 17 by Amber Gregg vs. Texas State (2/26/11)
 17 by Monica Gibbs vs. Texas State (3/4/09)
 Season - 167 by Monica Gibbs (2008-09)
 167 by Tammy Rogers (1990-91)
 Career - 553 by Angel Singleton (1993-98)

FREE THROWS ATTEMPTED

Game - 24 vs. Monica Gibbs vs. Texas State (3/4/09)
 Season - 282 by Angel Singleton (1996-97)
 Career - 811 by Angel Singleton (1993-98)

FREE THROW PERCENTAGE (MINIMUM)

Game (10) - 1.000 (12-12) by Whitney York vs. Central Arkansas (2/10/10)
 1.000 (11-11) by Starlite Williams vs. Nevada (11/29/86)
 Season (25) - .903 (28-31) by Rhonda Hoffman (1983-84)
 Career (100) - .822 (259-315) by Amber Gregg (2007-11)

3-PT FIELD GOALS MADE

Game - 8 by Terrie Davis vs. Lamar (1/12/08)
 Season - 82 by Terrie Davis (2007-08)
 Career - 200 by Amber Gregg (2007-11)

CONSECUTIVE 3-POINTERS MADE

8 by Nicole Dunson

3-PT FIELD GOALS ATTEMPTED

Game - 16 by Jordan Stark vs. UT-Arlington (3/14/09)
 16 by Simone Young at TCU (12/5/12)
 Season - 224 by Terrie Davis (2007-08)
 Career - 633 by Amber Gregg (2007-11)

3-PT PERCENTAGE (MINIMUM)

Game (5) - .875 (7-8) by Rosie Smith vs. SFA (1/8/98)
 Season (75) - .441 (52-118) by Nicole Dunson (2005-06)
 Career (150) - .419 (98-234) by Nicole Dunson (2004-06)

REBOUNDS

Game - 24 by Margaret Martinovich vs. A&M-Kingsville (11/27/81)
 Season - 351 by Onika Anderson (2008-09)
 Career - 990 by Monica Gibbs (2005-09)

REBOUND AVERAGE (MINIMUM)

Season (25) - 10.6 (26 games) by Onika Anderson (2008-09)
 Career (50) - 9.8 (59 games) by Onika Anderson (2007-09)

ASSISTS

Game - 15 by Monica Gibbs vs. Huston-Tillotson (12/6/08)
 Season - 221 by Monica Gibbs (2008-09)
 Career - 693 by Monica Gibbs (2005-09)

STEALS

Game - 9 by Rhonda Hoffman vs. Sam Houston State (1/27/84)
 Season - 92 by Starlite Williams (1986-87)
 Career - 281 by Starlite Williams (1983-87)

BLOCKED SHOTS

Game - 8 by Alysse Davis vs. Huston-Tillotson (11/14/10)
 8 by Kim Duncan vs. Texas State (1/24/85)
 Season - 78 by Alysse Davis (2010-11)
 Career - 105 by Whitney Wright (2009-13)

GAMES PLAYED

123 by Monica Gibbs (2005-09)

ATTENDANCE RECORDS

Date	Opponent	Results	Attendance
3/3/12	UT-Arlington	L, 75-65	2,611
2/7/04	McNeese State	W, 64-56 (OT)	2,311
1/27/96	Texas State	L, 78-57	2,021
2/9/91	SMU	W, 93-77	2,000
11/12/10	Our Lady of the Lake	W, 79-66	1,789
1/29/94	North Texas	L, 74-65	1,786
2/26/05	UT-Arlington	W, 48-46	1,736
2/24/07	A&M-Corpus Christi	W, 61-43	1,699
11/19/10	No. 23 TCU	L, 83-59	1,563
1/21/04	Texas State	L, 44-43	1,445

**OPPONENT RECORDS**

(against UTSA)

Individual Opponent Records**Single Game****Points Scored**

45 by Kelia Shelton, Louisiana Tech (2/7/13)

Points Scored/Conference Game

45 by Kelia Shelton, Louisiana Tech (2/7/13)

Field Goals

16 by Lisa Foss, No. Illinois (2/22/91)

16 by Kelia Shelton, Louisiana Tech (2/7/13)

Field Goals/Conference Game

16 by Kelia Shelton, Louisiana Tech (2/7/13)

Free Throws

17 by Tammy Terry, Oklahoma City (2/27/84)

Free Throws/Conference Game

17 by Tammy Terry, Oklahoma City (2/27/84)

Free Throw Attempts

21 by Katrina Price, SFA (3/5/98)

Free Throw Attempts/Conference

21 by Katrina Price, SFA (3/5/98)

3-Point FG

9 by Carin Stites, Oklahoma (1/21/91)

9 by Angela Branch, ULM (12/30/93)

3-Point FG/Conference Game

9 by Angela Branch, ULM (12/30/93)

Rebounds

21 by Kris Veatch, New Mexico St., (1/23/88)

21 by Yolanda Wilkerson, Texas St. (12/24/96)

Rebounds/Conference Game

21 by Yolanda Wilkerson, Texas St. (12/24/96)

Assists

14 by Amy Sheiron, Sam Houston (2/18/99)

Turnovers

12 by Lakeita Richardson, Sam Houston (2/10/94)

Blocked Shots

7 by Shannon Spriggs, UT Arlington (3/2/95)

Steals

11 by Leslie Hale, Sam Houston (2/11/95)

Team Records**Single Game****Points Scored**

115 by Houston (12/18/89)

Points Scored/Conference Game

102 by Stephen F. Austin (2/3/96)

Points Scored in a Half

66 (1st half) by Houston (12/18/89)

60 (2nd half) by Houston (11/27/90)

Fewest Points

26 by Prairie View A&M (1/29/83)

Fewest Points/Conference Game

37 by Texas A&M-Corpus Christi (2/17/10)

Fewest Points Scored in a Half

8 (1st half) by Prairie View A&M (12/3/96)

Most Field Goals Made

47 by Houston (11/27/90)

Fewest Field Goals Made

7 by Schreiner (11/15/09)

Fewest Field Goals in a Half

1 by Prairie View A&M (12/3/96)

Schreiner (11/15/09)

Fewest Field Goals/Conference Game

12 by Southeastern Louisiana (1/4/01)

Most FG Attempts

90 by Houston (11/27/90)

Highest FG Percentage

67.8% (40-59) by Stephen F. Austin (1/8/00)

Highest FG Percentage in a Half

72% by Baylor (12/16/96)

Lowest FG Percentage

14% (7-50) by Schreiner (11/15/09)

Most Free Throws Made

33 by Oral Roberts (2/22/86); Texas Tech (12/17/88)

Fewest Free Throws Made

1 by five opponents, most recent by Texas St. (1/28/09)

Most 3-Point FG

13 by Oklahoma (1/21/91)

Most 3-Point FG Made/Conference Game

11 by Sam Houston St. (1/19/06)

Most 3-Point FG Attempts

40 by New Mexico St. (12/31/90)

Most 3-Point FG Attempts/Conference Game

34 by Nicholls (2/19/11)

Highest 3-Point FG Percentage

66.7% by three opponents, most recent by Northwestern St. (8-of-12)(1/22/05)

Most Rebounds

64 by Prairie View A&M (2/8/90); Louisiana-Monroe (12/30/93)

Most Rebounds/Conference Game

64 by Louisiana-Monroe (12/30/93)

Most Assists

38 by Northwestern St. (2/20/93)

Most Assists/Conference Game

38 by Northwestern St. (2/20/93)

Most Turnovers

43 by A&M-Commerce (1/12/87)

Most Fouls

36 by Angelo St. (1/11/82)

Most Fouls/Conference Game

27 by Northwestern St. (1/30/99); Lamar (2/3/05)

Fewest Fouls

7 by McNeese St. (2/19/94)

Most Blocks

13 by Idaho (1/26/13)

Most Steals

31 by Houston (11/27/90)

ALL-TIME VS. RANKED OPPONENTS**By Date**

Dec. 5, 1985	vs. No. 25 Houston	L, 52-63
Dec. 13, 1986	at No. 22 Texas Tech	L, 62-75
Jan. 9, 1988	at No. 25 Stephen F. Austin	L, 58-81
Dec. 19, 1988	vs. No. 19 Stephen F. Austin	L, 59-66
Nov. 22, 1997	vs. No. 19 Texas Tech	L, 44-57
Dec. 2, 1998	at No. 12 Texas Tech	L, 39-96
Dec. 30, 2001	vs. No. 19 Auburn	L, 50-73
Dec. 31, 2003	vs. No. 11 Kansas State	L, 45-75
Dec. 19, 2005	at No. 10 Arizona State	L, 64-78
Dec. 20, 2006	vs. No. 13 Purdue	L, 50-75
March 22, 2008	vs. No. 8 Texas A&M	L, 52-91
Nov. 16, 2008	at No. 24 TCU	L, 60-73
March 22, 2009	vs. No. 5 Baylor	L, 82-87 (OT)
Nov. 13, 2009	at No. 10 Texas	L, 60-71
Dec. 19, 2009	vs. No. 6 Florida State	L, 50-65
Nov. 19, 2010	vs. No. 23 TCU	L, 59-83
0-16		

By Rank

March 22, 2009	vs. No. 5 Baylor	L, 82-87 (OT)
Dec. 19, 2009	vs. No. 6 Florida State	L, 50-65
March 22, 2008	vs. No. 8 Texas A&M	L, 52-91
Dec. 19, 2005	at No. 10 Arizona State	L, 64-78
Nov. 13, 2009	at No. 10 Texas	L, 60-71
Dec. 31, 2003	vs. No. 11 Kansas State	L, 45-75
Dec. 2, 1998	at No. 12 Texas Tech	L, 39-96
Dec. 20, 2006	vs. No. 13 Purdue	L, 50-75
Dec. 19, 1988	vs. No. 19 Stephen F. Austin	L, 59-66
Nov. 22, 1997	vs. No. 19 Texas Tech	L, 44-57
Dec. 30, 2001	vs. No. 19 Auburn	L, 50-73
Dec. 13, 1986	at No. 22 Texas Tech	L, 62-75
Nov. 19, 2010	vs. No. 23 TCU	L, 59-83
Nov. 16, 2008	at No. 24 TCU	L, 60-73
Dec. 5, 1985	vs. No. 25 Houston	L, 52-63
Jan. 9, 1988	at No. 25 Stephen F. Austin	L, 58-81
0-16		



2013-14 UTSA Roadrunners Basketball
UTSA Season Box Score (as of Sep 25, 2014)
All games

RECORD:	OVERALL	HOME	AWAY	NEUTRAL
ALL GAMES	14-17	8-7	4-8	2-2
CONFERENCE	4-12	2-6	2-6	0-0
NON-CONFERENCE	10-5	6-1	2-2	2-2

##	Player	gp-gs	min	avg	Total		3-Point		F-Throw		Rebounds				pf	dq	a	to	blk	stl	pts	avg
					fg-fga	fg%	3fg-fga	3fg%	ft-fa	ft%	off	def	tot	avg								
10	King, Kamra	31-30	1002	32.3	113-334	.338	37-140	.264	160-217	.737	18	77	95	3.1	79	1	44	88	2	57	423	13.6
01	Turner, Miki	29-25	854	29.4	108-281	.384	11-33	.333	90-123	.732	12	76	88	3.0	68	2	89	69	7	23	317	10.9
24	Spaletta, Ashley	30-19	829	27.6	69-226	.305	48-164	.293	37-62	.597	39	101	140	4.7	64	1	40	47	2	46	223	7.4
30	Smith, Tesha	30-7	480	16.0	85-160	.531	0-0	.000	49-75	.653	60	108	168	5.6	82	1	4	33	20	13	219	7.3
33	Bell, Mannasha	29-26	607	20.9	65-148	.439	0-1	.000	40-79	.506	85	69	154	5.3	64	2	12	54	4	24	170	5.9
23	Adams, McKenzie	21-16	424	20.2	49-145	.338	1-9	.111	13-30	.433	31	89	120	5.7	52	1	9	22	27	15	112	5.3
12	Mitchell-Cole, Niaga	22-12	427	19.4	31-116	.267	4-31	.129	28-54	.519	41	47	88	4.0	56	2	18	27	13	24	94	4.3
21	Elonu, Akunna	29-16	453	15.6	38-75	.507	0-0	.000	31-44	.705	38	72	110	3.8	34	0	7	23	2	9	107	3.7
02	Hergott, Mathilde	29-4	439	15.1	34-112	.304	19-61	.311	9-14	.643	6	29	35	1.2	43	1	27	27	5	8	96	3.3
32	Tate, Dwanisha	27-0	343	12.7	37-83	.446	5-17	.294	10-21	.476	8	38	46	1.7	38	0	16	47	3	7	89	3.3
05	Heard, Alana	30-0	327	10.9	20-63	.317	0-0	.000	21-42	.500	14	29	43	1.4	53	1	40	56	2	26	61	2.0
45	Beard, Haylee	19-0	67	3.5	3-22	.136	2-17	.118	1-2	.500	3	1	4	0.2	7	0	2	2	1	0	9	0.5
25	Williams, Taylor	9-0	19	2.1	1-4	.250	0-0	.000	0-0	.000	2	2	4	0.4	2	0	0	2	1	0	2	0.2
35	Means, Destiny	2-0	1	0.5	0-0	.000	0-0	.000	0-0	.000	0	0	0	0.0	1	0	0	0	0	0	0	0.0
34	Stephens, Ashley	1-0	3	3.0	0-0	.000	0-0	.000	0-0	.000	0	0	0	0.0	1	0	0	0	0	0	0	0.0
Team											55	54	109				4					
Total.....		31	6275		653-1769	.369	127-473	.268	489-763	.641	412	792	1204	38.8	644	12	308	501	89	252	1922	62.0
Opponents.....		31	6275		710-1775	.400	136-434	.313	495-704	.703	379	847	1226	39.5	661	24	382	491	126	217	2051	66.2

Score by Periods	1st	2nd	OT	Totals
UTSA	916	982	24	1922
Opponents	975	1061	15	2051



Official Basketball Box Score -- Game Totals -- Final Statistics
Howard Payne vs UTSA
 11/8/14 2 pm at San Antonio, Texas (Convocation Center)

**Howard Payne 40**

##	Player		Total	3-Ptr	Rebounds			PF	TP	A	TO	Blk	Stl	Min
			FG-FGA	FG-FGA	FT-FTA	Off	Def							
15	Remmen,Sarah Van	f	3-7	0-0	5-6	2	3	5	1	11	3	5	0	23
32	Castillo,Sarahi	c	1-7	0-0	2-2	0	2	2	3	4	1	2	0	21
01	Cazares,Yessenia	g	0-6	0-6	1-2	0	0	0	0	1	0	4	0	26
10	Bradley,Danyel	g	2-7	1-1	3-3	1	2	3	3	8	1	2	0	24
20	Galaviz,Jessica	g	1-2	0-0	0-0	2	1	3	2	2	0	6	0	12
03	McKethan,Presley		1-2	0-1	0-0	0	0	0	2	2	1	4	0	19
12	Leaks,Jessica		0-2	0-0	0-0	1	0	1	0	0	0	2	0	3
21	Evans,Jada		0-6	0-1	4-6	1	2	3	2	4	0	1	0	12
22	Holmes,Cordin		3-6	1-3	0-0	3	1	4	4	7	0	5	0	16
23	Featherstone,Dom		0-1	0-1	0-2	0	0	0	1	0	0	1	0	5
33	Brown,Erionna		0-1	0-1	1-3	2	2	4	0	1	0	1	0	11
34	Kimball,Mackenzie		0-1	0-0	0-0	0	0	0	0	0	0	0	0	6
40	Benham,Harli		0-0	0-0	0-0	0	0	0	0	0	0	1	0	3
44	Hanna,Kalin		0-3	0-0	0-0	0	2	2	3	0	0	0	4	15
45	Freeland,Shania		0-0	0-0	0-0	0	0	0	0	0	0	0	0	4
Team						5	2	7						
Totals			11-51	2-14	16-24	17	17	34	21	40	6	34	4	200

FG % 1st Half: 5-24 20.8% 2nd half: 6-27 22.2% Game: 11-51 21.6%
 3FG % 1st Half: 1-8 12.5% 2nd half: 1-6 16.7% Game: 2-14 14.3%
 FT % 1st Half: 10-18 55.6% 2nd half: 6-6 100.0% Game: 16-24 66.7%

Deadball
Rebounds
4,1

UTSA 95

##	Player		Total	3-Ptr	Rebounds			PF	TP	A	TO	Blk	Stl	Min
			FG-FGA	FG-FGA	FT-FTA	Off	Def							
21	Elonu, Akunna	f	8-9	0-0	1-3	2	1	3	1	17	0	1	0	18
33	Bell, Mannasha	f	4-7	0-0	2-2	0	2	2	1	10	1	3	0	16
02	Hergott, Mathilde	g	3-5	0-0	0-0	0	2	2	2	6	1	0	1	17
12	Mitchell-Cole, Niaga	g	0-2	0-2	2-4	2	2	4	3	2	0	0	0	11
24	Spaletta, Ashley	g	2-5	0-2	0-0	1	2	3	0	4	4	3	1	15
04	Chidomere, Crystal		2-8	0-1	1-3	2	5	7	1	5	3	2	1	27
05	Heard, Alana		2-4	0-0	0-0	1	3	4	3	4	6	3	1	19
10	King, Kamra		4-5	1-1	3-6	0	1	1	1	12	2	0	0	20
25	Williams, Taylor		3-5	0-0	2-5	0	3	3	4	8	1	0	2	16
30	Smith, Tesha		1-2	0-0	1-2	0	0	0	1	3	0	2	0	4
31	Heineman, Charlie		5-10	2-4	4-6	4	2	6	2	16	1	1	0	24
32	Tate, Dwanisha		4-6	0-0	0-0	3	1	4	1	8	2	0	2	13
Team						3	3	6						
Totals			38-68	3-10	16-31	18	27	45	20	95	21	15	8	200

FG % 1st Half: 18-38 47.4% 2nd half: 20-30 66.7% Game: 38-68 55.9%
 3FG % 1st Half: 1-7 14.3% 2nd half: 2-3 66.7% Game: 3-10 30.0%
 FT % 1st Half: 11-21 52.4% 2nd half: 5-10 50.0% Game: 16-31 51.6%

Deadball
Rebounds
9

Officials: Bobby Jarmon, Ivory Bickham, Rochelle Bennett
 Technical fouls: Howard Payne-None. UTSA-None.
 Attendance: 400
 Exhibition Game

Score by periods	1st	2nd	Total
Howard Payne	21	19	40
UTSA	48	47	95

Points	In Paint	Off T/O	2nd Chance	Fast Break	Bench
HPU	12	10	7	3	14
UTSA	60	47	21	20	56

Last FG - HPU 2nd-05:33, UTSA 2nd-00:45.
 Largest lead - HPU None, UTSA by 55 2nd-01:14.
 HPU led for 00:00. UTSA led for 39:33. Game was tied for 00:15.

Score tied - 0 times.
 Lead changed - 0 times.