



UTSA

2014-15 women's basketball

Women's Basketball Contact: Zena Rex | zena.rex@utsa.edu | (956) 739-4878

2014-15 Schedule

November

| | | |
|----|-------------------|----------|
| 1 | McMurry# | W, 69-43 |
| 8 | Howard Payne# | W, 95-40 |
| 15 | at Texas (LHN) | L, 68-49 |
| 19 | Abilene Christian | W, 70-57 |
| 23 | at Lamar | W, 72-40 |

UTSA Thanksgiving Classic - San Antonio, Texas

| | | |
|----|----------------|----------|
| 28 | Drake | L, 69-61 |
| 30 | Incarnate Word | W, 57-31 |

December

| | | |
|---|-----------------|----------|
| 2 | at UT Arlington | W, 63-55 |
| 4 | Texas State | L, 57-53 |

Athletes in Action - Texas Tech - Lubbock, Texas

| | | |
|----|---------------|----------|
| 19 | vs. Houston | L, 56-53 |
| 20 | at Texas Tech | L, 64-48 |
| 21 | vs. Nicholls | L, 57-49 |

UTSA Holiday Classic - San Antonio, Texas

| | | |
|----|------------------|-----------|
| 28 | South Dakota | 2:30 p.m. |
| 29 | SIU Edwardsville | 2:30 p.m. |

January

| | | |
|----|----------------------|--------|
| 2 | Rice* | 7 p.m. |
| 4 | North Texas* | 2 p.m. |
| 8 | at Southern Miss* | 6 p.m. |
| 10 | at Louisiana Tech* | 6 p.m. |
| 17 | at UTEP* | 3 p.m. |
| 22 | Marshall* | 7 p.m. |
| 24 | Western Kentucky* | 2 p.m. |
| 29 | at Middle Tennessee* | 7 p.m. |
| 31 | at UAB | 2 p.m. |

February

| | | |
|----|-------------------------|---------|
| 5 | FIU* | 7 p.m. |
| 8 | Florida Atlantic* (FOX) | 11 a.m. |
| 12 | at Old Dominion* | 6 p.m. |
| 14 | at Charlotte* | 6 p.m. |
| 21 | UTEP* | 2 p.m. |
| 26 | Southern Miss* | 7 p.m. |
| 28 | Louisiana Tech* | 2 p.m. |

March

| | | |
|-------|---------------------------|--------|
| 5 | at Rice* | 6 p.m. |
| 7 | at North Texas* | 4 p.m. |
| 11-14 | Conference USA Tournament | TBA |

- Denotes exhibition game

* - Denotes Conference USA game



UTSA Holiday Classic

December 28-29, 2014

Convocation Center • San Antonio, Texas

TV/VIDEO:

Rowdy Zone

RADIO/AUDIO:

goUTSA.com | Stu Paul (play-by-play)

LIVE STATS:

goUTSA.com

SOCIAL MEDIA:

Twitter - @utsawbb

Facebook - /UTSA Women's Basketball

Instagram - @utsaathletics

UTSA: 4-6

H:2-2, A:2-2, N:0-2

South Dakota: 9-2

H:6-0, A:3-2, N:0-0

SIU Edwardsville: 5-6

H:3-0, A:2-6, N:0-0

The UTSA women's basketball team will close out the 2014 year at the Convocation Center when they host the UTSA Holiday Classic, Dec. 28-29. The Roadrunners will welcome South Dakota, SIU Edwardsville and Chattanooga.

The two-day event will feature two games per day with Chattanooga and SIU Edwardsville kicking off the action on Sunday at 12 p.m. UTSA and South Dakota will follow at 2:30 p.m. and at the conclusion of the contest, former head women's basketball coach, the late Rae Rippetoe-Blair, will be honored as the Southland's Coach of the Decade of the 2000s.

The Roadrunners enter the weekend on a four-game losing skid and 4-6 overall. UTSA last hit the hardwood at the Athletes in Action Classic hosted by Texas Tech one week ago and went 0-3 with losses to Houston, Texas Tech and Nicholls State.

UTSA will face two of the three teams they welcome over the weekend. SIU Edwardsville comes to the Lone Star State with a 5-6 record and winners of its last two games.

South Dakota, who will take on UTSA in its first game of the weekend, is 9-2 and on a seven-game win streak. The Coyotes' only losses this season came to Kansas and Washington.

UT Chattanooga, the only team that the Roadrunners will not play over the two days, is 9-3 and has won their last five games.

UTSA will return the following weekend as the host Rice in the Conference USA opener on January 2 at 7 p.m.

PROJECTED LINEUP

| | | | | | |
|----|---------------------|------|-----|-----|---|
| 10 | Kamra King | 5-6 | G | Sr. | All-tournament selection at AIA Classic |
| 12 | Niaga Mitchell-Cole | 5-10 | G/F | Jr. | DNP last week |
| 21 | Akunna Elonu | 5-9 | F | Jr. | Leads team with 6.7 rpg |
| 24 | Ashley Spaletta | 5-9 | G | Sr. | Avg. 6.7 ppg and 3.6 rpg |
| 33 | Mannasha Bell | 5-11 | F | Jr. | Shooting team-best 50% (24-48) |

BENCH

| | | | | | |
|----|-------------------|------|-----|-----|--|
| 2 | Mathilde Hergott | 5-10 | G/F | Jr. | Earned her first career start at AIA Cl. |
| 4 | Crystal Chidomere | 5-11 | G | Fr. | Avg. 2.2 ppg and 1.0 rpg in 9 games |
| 5 | Alana Heard | 5-6 | G | So. | Earned her first career start at AIA Cl. |
| 25 | Taylor Williams | 6-2 | F | So. | Ties with team-best 6 blocks |
| 30 | Tesha Smith | 6-1 | C | So. | Third in rebounds with 52 (5.2 rpg) |
| 31 | Carlie Heineman | 6-0 | G | Fr. | DNP last week |
| 32 | Dwanisha Tate | 5-9 | G | So. | Shooting 72% (5-7) from FT line |
| 45 | Haylee Beard | 5-9 | G/F | So. | Has played in 3 games |



QUICK FACTS

General Information

Name The University of Texas at San Antonio
 Location San Antonio, Texas
 Founded 1969
 Enrollment 28,628 (24,342 undergraduate)
 Nickname Roadrunners
 School Colors Navy Blue, White and Orange
 Home Arena Convocation Center / 2,650
 Affiliation Division I
 Conference Conference USA
 President Dr. Ricardo Romo
 Director of Athletics Lynn Hickey
 Athletic Department Phone 210-458-4161

Coaching Staff

Head Coach Lubomyr Lichonczak (Idaho, '78)
 Record at UTSA 18-23 (1 seasons)
 Career record 169-174 (12 seasons)
 Associate Head Coach Kristen Holt
 Assistant Coach Nicole Dunson
 Director of Operations Emily Sherman
 Athletic Trainer Brenna Ellis

Team Information

201-14 overall record 14-17
 2013-14 Conference USA record 4-12 (15th)
 Final ranking N/A
 Letter winners R/L 11/4
 Starters R/L 4/1

Key returners K. King, A. Spaletta
 Key Losses Mikki Turner
 Key newcomers Pearl Johnson, Crystal Chidomere, Carlie Heineman

Women's Basketball History

First year 1981-82
 All-time record 467-466
 NCAA Postseason appearances 2 (2008, 2009)
 Last Tournament appearance 2009 (vs. Baylor; L, 87-82 (OT))
 Southland Conference championships 3 (2003 regular season;
 2009 and 2011 (West) tournament)

Athletics Communications

Assistant Director Zena Rex (women's basketball contact)
 Email zena.rex@utsa.edu
 Cell (966) 739-4878

Facebook /UTSA Women's Basketball
 Twitter @utsawbb
 Instagram @utsaathletics
 Hashtag #birdsup
 #CUSAWBK or #CUSA20

MEDIA

WE ARE UTSA | When referencing The University of Texas at San Antonio athletics, please use the acronym UTSA and the nickname Roadrunners. Please refrain from using Texas-San Antonio, UT-San Antonio, UT-SA or any other variation.

Media Coverage | The UTSA Athletics Communication Office assists members of the media with their coverage of all Roadrunners sports by providing player and coach interviews, feature ideas, pregame notes and updated statistics.

Interviews | All interviews with coaches and student-athletes must be arranged at least 24 hours in advance through women's basketball contact Zena Rex. Telephone interviews are available to the media on a "call-back" basis at a time that is convenient for the coach or student-athlete. Post-game interviews with coaches and student-athletes will be conducted on the court following a 10-minute cooling off period.

Internet Radio Broadcasts | All of UTSA's games for the 2014-15 season are slated to be broadcast live (audio) on goUTSA.com this season. Video streaming (subscription required) will also be available for all home matches.

MEDIA OUTLETS

San Antonio Express-News
 Phone: (210) 250-3373
 Fax: (210) 250-3351
 Email: sports@express-news.net
 Website: mysa.com | expressnews.com

The Paisano
 Phone: (210) 690-9301
 Fax: (210) 690-3423
 Email: sports@paisano-online.com
 Website: paisano-online.com

KABB-TV (FOX)
 Phone: (210) 442-6304
 Fax: (210) 442-6333
 Email: maxsports@kabb.com
 Website: foxsanantonio.com

KENS-TV (CBS)
 Phone: (210) 366-5001
 Fax: (210) 377-8757
 Email: jreingel@kens5.com
 Website: kens5.com

KSAT-TV (ABC)
 Phone: (210) 351-1270
 Fax: (210) 351-1310
 Email: sports@ksat.com
 Website: ksat.com

KWEX-TV (Univision)
 Phone: (210) 227-4141
 Fax: (210) 226-0131
 Email: sanantoniodesk@univision.net
 Website: univision41.com

WOAI-TV (NBC)
 Phone: (210) 223-4742
 Fax: (210) 476-1088
 Email: donharris@sbgstv.com
 Website: woai.com

**UTSA Women's Basketball Roster**

| No. | Name | Pos. | Ht. | Yr. | Hometown (Previous School) |
|-----|---------------------|------|------|-----|--|
| 1 | Pearl Johnson | G | 5-6 | Jr. | Fruitland, Fla. (St. Petersburg College) |
| 2 | Mathilde Hergott | G/F | 5-10 | Jr. | Jonage, France (Lycee Jean Mermoz) |
| 4 | Crystal Chidomere | G | 5-11 | Fr. | Richmond, Texas (Bush HS) |
| 5 | Alana Heard | G | 5-6 | So. | Missouri City, Texas (Hightower HS) |
| 10 | Kamra King | G | 5-6 | Sr. | Norman, Okla. (Norman HS) |
| 12 | Niaga Mitchell-Cole | G/F | 5-10 | Jr. | San Antonio, Texas (Roosevelt HS) |
| 21 | Akunna Elonu | F | 5-9 | Jr. | Houston, Texas (Alief Elsik HS) |
| 24 | Ashley Spaletta | G | 5-9 | Sr. | Magnolia, Ark. (Magnolia HS) |
| 25 | Taylor Williams | F | 6-2 | So. | Katy, Texas (Cinco Ranch HS) |
| 30 | Tesha Smith | C | 6-1 | So. | San Antonio, Texas (Wagner HS) |
| 31 | Carlie Heineman | G | 6-0 | Fr. | San Antonio, Texas (Brennan HS) |
| 32 | Dwanisha Tate | G | 5-9 | So. | Arlington, Texas (Seguin HS) |
| 33 | Mannasha Bell | F | 5-11 | Jr. | Fort Smith, Ark. (Northside HS) |
| 45 | Haylee Beard | G/F | 5-9 | So. | Ozark, Mo. (Ozark HS) |

Head Coach: Lubomyr Lichonczak (Second season | Idaho State, '78)

Associate Head Coach: Kristen Holt (Second season | Ohio, '72)

Assistant Coach: Nicole Dunson (Second season | UTSA, '05)

Director of Operations: Emily Sherman (Third season | St. Norbert College, '09)

Graduate assistant: Miki Turner (First season | UTSA '14)

LAST TIME OUT**Texas Tech 57, UTSA 49**

UTSA last hit the hardwood against Nicholls State in its final game of the Athletes in Action Classic. The Roadrunners went 0-3 with losses to Houston, Texas Tech and Nicholls State.

A late second half surge by the Colonels put UTSA behind as they suffered a 57-49 loss. Nicholls State made up a 10-point deficit from the start of the second half and tied the game with 9:08 to play on a layup by Ekiya Gray. The Colonels held UTSA to 19 points in the latter half, the second fewest points scored by UTSA in a half.

The Colonels shot 52 percent (12-23) from the field in the second, while UTSA fired only 26 percent (7-27). Nicholls also snapped a three-game losing skid with the win as both teams moved their overall record to 4-6.

All-tournament team selection Kamra King led UTSA with 13 points and four rebounds. Tesha Smith chipped in with a double figure performance of 10 points with seven boards.

Mathilde Hergott had a career day in her second start of the season as she notched career bests in steals (4) and rebounds (6). The junior also netted seven points and matched a career high of two blocks.

Momentum shifted after the first half for UTSA as they forced 14 Nicholls State turnovers in the opening stanza, the most of any half this season. UTSA scored 17 points off the miscues and headed into intermission with a 30-22 advantage.

Runners voted ninth in C-USA Preseason Poll

UTSA was selected to finish ninth in the 2014-15 Conference USA Preseason Poll. The Roadrunners received one first-place vote and 70 points.

Middle Tennessee was voted as the preseason favorite with 181 points and six first-place votes while newcomer WKU came in a close second with 179 points and five first-place votes.

FAU game to be televised

UTSA's home contest on Sunday, Feb. 8 against FAU will be televised on FOX Sports Network. Other TV games for UTSA include the season opener against Texas on the Longhorn Network.

Tough competition

After completing the 2013-14 season with a 14-17 record, the Roadrunners have a lot of work ahead of them if they plan on making the Conference USA Tournament. UTSA will face three teams mentioned in the WBCA/USA Today Division I Coaches' Top-25 Preseason Poll.

Texas checked in at No. 12 while Middle Tennessee (7) and Western Kentucky (5) each received votes in the poll.

**Note: Texas was also voted No. 12 in the AP Coaches' Poll.*

Great to be King

Senior Kamra King has led the team in scoring the past three years and seeks to be the first Roadrunner in program history to be the leading scorer in each of her four years.



2014-15 TV/MEDIA ROSTER



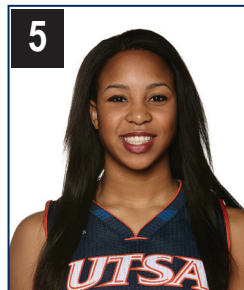
pearl **JOHNSON**
5-6 • G • Jr.-Tr.
Fruitland, Fla.



mathilde **HERGOTT**
5-10 • G/F • Jr.-2L
Jonage, France



crystal **CHIDOMERE**
5-11 • G • Fr.-HS
Richmond, Texas



alana **HEARD**
5-6 • G • So.-1L
Missouri City, Texas



kamra **KING**
5-6 • G • Sr.-3L
Norman, Okla.



niaga **MITCHELL-COLE**
5-10 • G/F • Jr.-2L
San Antonio, Texas



akunna **ELONU**
5-9 • F • Jr.-2L
Houston, Texas



ashley **SPALETTA**
5-9 • G • Sr.-3L
Magnolia, Ark.



taylor **WILLIAMS**
6-2 • F • So.-1L
Katy, Texas



tesha **SMITH**
6-1 • C • So.-1L
San Antonio, Texas



carlie **HEINEMAN**
6-0 • G • Fr.-HS
San Antonio, Texas



dwanisha **TATE**
5-9 • G • So.-1L
Arlington, Texas



mannasha **BELL**
5-11 • F • Jr.-2L
Fort Smith, Ark.



haylee **BEARD**
5-9 • G/F • So.-1L
Ozark, Mo.



lubomyr **LICHONCZAK**
Head coach
Second season



kristen **HOLT**
Associate Head Coach
Second season



nicole **DUNSON**
Assistant coach
Second season



emily **SHERMAN**
Director of Operations
Third season

Pronunciation Guide

Mathilde HergottMAH-teeld | AIR-got
Niaganye-AH-juh
Akunna ElonuAH-coon-uh | EE-lawn-oo

Dwanisha Dwon-EE-sha
Mannasha mah-NAH-sha
Lubomyr Lichonczak LU-ba-meer | li-KON-zack

Tesha TEE-sha

**Roadrunners Trends**

| | |
|--------------------------|-----|
| At Convocation Center | 2-2 |
| On the road | 2-2 |
| At a neutral site | 0-2 |
| Last 5 games | 1-4 |
| Against ranked opponents | 0-1 |
| Longest win streak | 2 |
| Longest losing streak | 4 |

Scoreboard

| | |
|----------------------|-----|
| Up at the half | 3-2 |
| Trailing at the half | 1-3 |
| Tied at the half | 0-1 |
| Overtime | 0-0 |

| | |
|-------------|-----|
| In November | 3-2 |
| In December | 1-4 |
| In January | 0-0 |
| In February | 0-0 |
| In March | 0-0 |

| | |
|---------------|-----|
| On Sundays | 2-1 |
| On Mondays | 0-0 |
| On Tuesdays | 1-0 |
| On Wednesdays | 1-0 |
| On Thursdays | 0-1 |
| On Fridays | 0-2 |
| On Saturdays | 0-2 |

| | |
|----------------------------|-----|
| UTSA - More points in game | 4-0 |
| Opp. - More points in game | 0-6 |

| | |
|--------------------------------|-----|
| UTSA - More 3-pointers in game | 4-2 |
| Opp. - More 3-pointers in game | 0-4 |
| Tied | 0-0 |

| | |
|---------------------------------|-----|
| UTSA - More free throws in game | 2-3 |
| Opp. - More free throws in game | 0-2 |
| Tied | 2-1 |

| | |
|------------------------------|-----|
| UTSA - More rebounds in game | 4-3 |
| Opp. - More rebounds in game | 0-3 |
| Tied | 0-0 |

| | |
|----------------------------|-----|
| UTSA - More blocks in game | 3-4 |
| Opp. - More blocks in game | 1-1 |
| Tied | 0-1 |

| | |
|----------------------------|-----|
| UTSA - More steals in game | 2-3 |
| Opp. - More steals in game | 2-3 |
| Tied | 0-0 |

| | |
|-------------------------------|-----|
| UTSA - More turnovers in game | 1-4 |
| Opp. - More turnovers in game | 3-2 |
| Tied | 0-0 |

When UTSA...**Field Goals**

| | |
|---------------|-----|
| Shoots 20-29% | 0-1 |
| Shoots 30-39% | 2-5 |
| Shoots 40-49% | 2-0 |
| Shoots 50-59% | 0-0 |
| Shoots 60-69% | 0-0 |

Three-Point Field Goals

| | |
|---------------|-----|
| Shoots 0-19% | 0-2 |
| Shoots 20-29% | 3-2 |
| Shoots 30-39% | 1-2 |
| Shoots 40-49% | 0-0 |
| Shoots 50-59% | 0-0 |
| Shoots 60-69% | 0-0 |

Free Throws

| | |
|---------------|-----|
| Shoots 30-39% | 0-0 |
| Shoots 40-49% | 1-0 |
| Shoots 50-59% | 0-2 |
| Shoots 60-69% | 2-3 |
| Shoots 70-79% | 0-1 |
| Shoots 80-89% | 1-0 |

| | |
|-----------------------------|-----|
| Scored less than 49 points | 0-3 |
| Scores between 50-59 points | 1-2 |
| Scores between 60-69 points | 1-1 |
| Scores between 70-79 points | 2-0 |
| Scores more than 80 points | 0-0 |

| | |
|-----------------------------|-----|
| Allows less than 49 points | 2-0 |
| Allows between 50-59 points | 2-3 |
| Allows between 60-69 points | 0-3 |
| Allows between 70-79 points | 0-0 |
| Allows more than 80 points | 0-0 |

| | |
|-------------------------|-----|
| Leading with 5:00 left | 4-1 |
| Trailing with 5:00 left | 0-5 |
| Tied with 5:00 left | 0-0 |

2014-15 Double-Doubles

Akunna Elonu - 15 points, 11 rebounds vs. UT Arlington (12/2/14)
 Tesha Smith - 11 points, 12 rebounds vs. Texas State (12/4/14)

Career Record Holders**Kamra King**

3-point field goals made (116) - 5th
 Steals (197) - 6th
 Games started (97) - 4th

Ashley Spaletta

3-point field goals made (147) - 3rd



Starters by Game

| Date | Opponent | Starting 5 | Result |
|----------|-------------------|--|----------|
| 11/15/14 | Texas | Akunna Elonu , Mannasha Bell , Kamra King , Ashley Spaletta , Carlie Heineman | L, 68-48 |
| 11/19/14 | Abilene Christian | Niaga Mitchell-Cole , Akunna Elonu , Mannasha Bell , Kamra King , Ashley Spaletta | W, 70-57 |
| 11/23/14 | Lamar | Akunna Elonu , Mannasha Bell , Kamra King , Niaga Mitchell-Cole , Ashley Spaletta | W, 72-40 |
| 11/28/14 | Drake | Akunna Elonu , Mannasha Bell , Kamra King , Niaga Mitchell-Cole , Ashley Spaletta | L, 69-61 |
| 11/30/14 | Incarnate Word | Akunna Elonu , Mannasha Bell , Kamra King , Niaga Mitchell-Cole , Ashley Spaletta | W, 57-31 |
| 12/02/14 | UT Arlington | Akunna Elonu , Mannasha Bell , Kamra King , Niaga Mitchell-Cole , Ashley Spaletta | W, 63-55 |
| 12/04/14 | Texas State | Akunna Elonu , Mannasha Bell , Kamra King , Niaga Mitchell-Cole , Ashley Spaletta | L, 57-33 |
| 12/19/14 | Houston | Alana Heard , Kamra King , Akunna Elonu , Ashley Spaletta , Mannasha Bell | L, 56-63 |
| 12/20/14 | Texas Tech | Alana Heard , Kamra King , Akunna Elonu , Ashley Spaletta , Mannasha Bell | L, 64-48 |
| 12/21/14 | Nicholls | Mathilde Hergott , Kamra King , Akunna Elonu , Ashley Spaletta , Mannasha Bell | L, 57-49 |
| 12/28/14 | South Dakota | | |
| 12/29/14 | SIU Edwardsville | | |
| 01/02/15 | Rice | | |
| 01/04/15 | North Texas | | |
| 01/08/15 | Southern Miss | | |
| 01/10/15 | La. Tech | | |
| 01/17/15 | UTEP | | |
| 01/22/15 | Marshall | | |
| 01/24/15 | WKU | | |
| 01/29/15 | Middle Tennessee | | |
| 01/31/15 | UAB | | |
| 02/05/15 | FIU | | |
| 02/08/15 | Florida Atlantic | | |
| 02/12/15 | Old Dominion | | |
| 02/14/15 | Charlotte | | |
| 02/21/15 | UTEP | | |
| 02/26/15 | Southern Miss | | |
| 02/28/15 | La. Tech | | |
| 03/05/15 | Rice | | |
| 03/07/15 | North Texas | | |

Starting lineup combination W-L

| | |
|---|-----|
| Akunna Elonu, Mannasha Bell, Kamra King, Ashley Spaletta, Heineman (1) | 0-1 |
| Akunna Elonu, Mannasha Bell, Kamra King, Niaga Mitchell-Cole, Ashley Spaletta (6) | 4-2 |
| Alana Heard, Kamra King, Akunna Elonu, Ashley Spaletta, Mannasha Bell (1) | 0-2 |
| Mathilde Hergott, Kamra King, Akunna Elonu, Ashley Spaletta, Mannasha Bell | 0-1 |

**CONFERENCE USA****2014-15 Preseason All-Conference USA Women's Basketball Team**

Lefty Webster, Charlotte, So., Guard
 Whitney Frazier, Louisiana Tech, Sr., Forward
 Olivia Jones, Middle Tennessee, So., Guard/Forward
 Tamara Jones, Southern Miss, Sr., Forward
 Chelsee Black, UAB, Jr., Guard
 Chastity Gooch, WKU, Sr., Forward
 Alexis Govan, WKU, Sr., Guard/Forward
 Kendall Noble, WKU, RS So., Guard

Preseason Player of the Year: Chastity Gooch, WKU

Preseason Conference USA Women's Basketball Poll

1. Middle Tennessee (6) - 181 points
2. WKU (5) - 179 points
3. Southern Miss (1) - 163 points
4. UTEP (1) - 154 points
5. Charlotte - 132 points
6. Old Dominion - 116 points
7. Louisiana Tech - 105 points
8. UAB - 104 points
- T9. North Texas - 70 points
- T9. *UTSA (1) - 70 points*
11. FIU - 61 points
12. Rice - 58 points
13. Florida Atlantic - 45 points
14. Marshall - 32 points

(#) - indicates first-place vote

Conference USA Standings

As of December 25

| Team | Conference USA | | Overall | |
|------------------|----------------|---|---------|---|
| | W | L | W | L |
| WKU | 0 | 0 | 10 | 2 |
| Marshall | 0 | 0 | 7 | 3 |
| Old Dominion | 0 | 0 | 7 | 3 |
| Southern Miss | 0 | 0 | 6 | 4 |
| UAB | 0 | 0 | 6 | 4 |
| Middle Tennessee | 0 | 0 | 5 | 4 |
| Florida Atlantic | 0 | 0 | 5 | 5 |
| UTEP | 0 | 0 | 4 | 4 |
| Louisiana Tech | 0 | 0 | 4 | 5 |
| Rice | 0 | 0 | 4 | 5 |
| UTSA | 0 | 0 | 4 | 6 |
| Charlotte | 0 | 0 | 4 | 7 |
| FIU | 0 | 0 | 2 | 7 |
| North Texas | 0 | 0 | 1 | 8 |

THIS WEEK IN CONFERENCE USA...

| Sunday | Monday | Tuesday | Wednesday | Thursday | Friday | Saturday |
|--|---|---|--------------------------|----------|---|----------|
| 28 Denver at UNT Lamar at Rice MT at Tenn. Tech USD at UTSA Alcorn State at UTEP | 29 Harvard at La. Tech SIUE at UTSA FIU at Auburn Robert Morris at Marshall USM at Nicholls State UNCW at FAU WKU at Belmont Charlotte at Utah ODU at Cal | 30 Bowling Green/ Hampton at FIU Rice at Texas Richmond at UAB TBD at La. Tech | 31 UNT at TAMU | 1 | 2 RICE at UTSA UNT at UTEP | 3 |



2014-15 Conference USA Freshman and Player of the Week

Player of the Week

November 17 - Leah Scott, Marshall
 November 24 - Chastity Gooch, Western Kentucky
 December 1 - Chastity Gooch, WKU, | Shaneese Bailey, FAU
 December 8 - Olivia Jones, MT
 December 15 - Kelia Shelton, La. Tech
 December 22 - Chastity Gooch, WKU
 January 5
 January 12
 January 19
 January 26
 February 2
 February 9
 February 16
 February 23
 March 2
 March 7

Freshman of the Week

November 17 - Amaya Ransom, Charlotte
 November 24 - Malia Kency, FAU
 December 1 - Kiandre'a Pound, FIU
 December 8 - Tashia Brown, WKU
 December 15 - Kiandre'a Pound, FIU
 December 22 - Lulu McKinney, UTEP
 January 5
 January 12
 January 19
 January 26
 February 2
 February 9
 February 16
 February 23
 March 2
 March 7



MARCH 11-14 ▪ HOSTED BY UAB

UAB will host the 2015 Conference USA Women's Basketball Championship March 11-14, 2015 in Birmingham, Ala.

The top 12 teams in the regular season standings qualify for the single-elimination tournament with the top four teams receiving a bye. The winner will gain the league's automatic bid to the NCAA Championship.

The first two days will be hosted at Bartow Arena on the UAB campus before moving over to the Birmingham Jefferson Convention Complex (BJCC) for Friday's semifinals as well as the championship game on Saturday.

American Sports Network (ASN) will broadcast the first round and quarterfinal games, while CBS Sports Network is slated to carry the semifinals and the 2015 C-USA Women's Basketball Championship title game.

Conference USA Team Comparison

| Leader | Statistic | UTSA |
|---------------|----------------------------|------|
| WKU | Scoring offense | 13th |
| UNT | Scoring defense | 2nd |
| WKU | Scoring margin | 6th |
| FIU | Free throw percentage | 10th |
| WKU | Field goal percentage | 13th |
| Southern Miss | 3-pt field goal percentage | 13th |
| Rice | 3-pt field goal defense | 5th |
| FIU | Rebounding margin | 6th |
| ODU | Blocked shots | 2nd |
| WKU | Assists | 13th |
| WKU | Steals | 4th |

Conference-only matches

Scoring offense
 Scoring defense
 Scoring margin
 Free throw percentage
 Field goal percentage
 3-pt field goal percentage
 3-pt field goal defense
 Rebounding margin
 Blocked shots
 Assists
 Steals

NCAA National Team Rankings (Top-150)

| Leader | Statistic | UTSA |
|-------------------|-------------------------|-------|
| Kansas State | Scoring defense | 33rd |
| Mississippi State | 3-pt FG defense | 62nd |
| Sacramento State | Steals per game | 64th |
| Montana | Blocked shots per game | 83rd |
| Texas A&M | FG percentage - defense | 108th |
| Duke | Rebound margin | 126th |



NATIONAL POLLS

AP Top-25 Coaches' Poll
(December 22, 2014)

| School (First place votes) | Record | Points | Previous |
|----------------------------|--------|--------|----------|
| 1. South Carolina (24) | 12-0 | 840 | 1 |
| 2. Connecticut (6) | 8-1 | 809 | 2 |
| 3. Texas (4) | 10-0 | 792 | 3 |
| 4. Notre Dame | 11-1 | 735 | 5 |
| 5. Texas A&M | 11-1 | 709 | 4 |
| 6. Baylor | 10-1 | 652 | 9 |
| 7. Louisville | 11-1 | 599 | 10 |
| 8. Tennessee | 9-2 | 576 | 11 |
| 9. North Carolina | 11-1 | 559 | 6 |
| 10. Duke | 8-3 | 517 | 13 |
| 11. Oregon State | 10-0 | 517 | 16 |
| 12. Kentucky | 10-2 | 467 | 8 |
| 13. Nebraska | 10-1 | 467 | 12 |
| 14. Georgia | 11-0 | 418 | 15 |
| 15. Maryland | 9-2 | 405 | 14 |
| 16. Stanford | 6-4 | 320 | 7 |
| 17. Rutgers | 9-2 | 284 | 17 |
| 18. Oklahoma State | 9-1 | 253 | 19 |
| 19. Mississippi State | 14-0 | 248 | 21 |
| 20. Michigan State | 8-3 | 234 | 18 |
| 21. West Virginia | 9-1 | 174 | 22 |
| 22. Syracuse | 8-3 | 109 | 19 |
| 23. Iowa | 9-2 | 99 | 23 |
| 24. Green Bay | 9-2 | 84 | NR |
| 25. Arizona State | 10-1 | 36 | NR |

Dropped out: No. 24 California, No. 25 DePaul

Others receiving votes: DePaul 31, Princeton 31, California 18, W. Kentucky 13, Chattanooga 11, Washington 9, James Madison 7, Washington St. 7, Florida State 5, Arkansas 4, Northwestern 4, St. John's 4, Seton Hall 2, Indiana St. 1

WBCA/USA Today Division I Coaches Top-25 Poll
(December 13, 2014)

| School (First-Place Votes) | Record | Points | Previous |
|----------------------------|--------|--------|----------|
| 1. South Carolina (25) | 12-0 | 793 | 1 |
| 2. Connecticut (6) | 8-1 | 771 | 2 |
| 3. Texas (1) | 10-0 | 734 | 3 |
| 4. Notre Dame | 11-1 | 702 | 4 |
| 5. Texas A&M | 11-1 | 652 | 5 |
| 6. Baylor | 10-1 | 625 | 9 |
| 7. Louisville | 11-1 | 568 | 10 |
| 8. North Carolina | 11-1 | 532 | 6 |
| 9. Maryland | 9-2 | 501 | 11 |
| 10. Duke | 8-3 | 500 | 13 |
| 11. Tennessee | 9-2 | 497 | 12 |
| 12. Oregon State | 10-0 | 477 | 14 |
| 13. Kentucky | 10-2 | 427 | 8 |
| 14. Nebraska | 10-1 | 375 | 15 |
| 15. Stanford | 7-4 | 329 | 7 |
| 16. Georgia | 12-0 | 323 | 17 |
| 17. Oklahoma State | 9-1 | 321 | 16 |
| 18. Rutgers | 9-2 | 256 | 19 |
| 19. Mississippi State | 14-0 | 236 | 20 |
| 20. Iowa | 9-2 | 131 | 24 |
| 21. West Virginia | 9-2 | 127 | 18 |
| 22. Michigan State | 8-3 | 118 | 21 |
| 23. Syracuse | 8-3 | 67 | 22 |
| 24. James Madison | 9-1 | 63 | NR |
| 25. DePaul | 8-4 | 36 | NR |

Dropped out: No. 23 California; No. 25 St. John's

Others receiving votes: Florida State 34; Arizona State 33; California 28; Princeton 25; Wisconsin-Green Bay 23; South Florida 21; Washington 17; Seton Hall 16; St. John's 14; Northwestern 11; George Washington 5; Chattanooga 4; Washington State 3; Dayton 2; Tulane 2; Arkansas-Little Rock 1



Running with the best

UTSA kept pace with the No. 9 Texas Longhorns in the second half on a 17-4 run to come within three, 40-37. During the run, freshman Carlie Heineman nailed two of her five 3-pointers of the night. Texas ultimately won with a 20-point victory, 68-48.

Best start since...

The last time UTSA started 4-2 was back during the 2012-13 season when the Roadrunners finished 16-14 in the only season in the Western Athletic Conference. UTSA also posted a 10-8 record in league action and were knocked out of the tournament with a loss to La. Tech in the first game.

Athletes in Action

UTSA will participate in the Athletes in Action Tournament hosted by Texas Tech, Dec. 19-21. While in Lubbock, the Roadrunners will face Houston, Texas Tech and Nicholls State. The last time UTSA faced Houston and Nicholls was in 2012 while last meeting TTU in 2010.

UTSA and Nicholls used to both compete in the Southland Conference where the Roadrunners held a 27-12 series advantage, including a 20-10 mark in conference play.

The Roadrunners' lone win against Houston came on Dec. 4, 2011 at the Convocation Center when UTSA notched a 70-59 win.

SCOUTING THE OPPONENTS

South Dakota Coyotes • December 28 • 2 p.m.

- All-time record against South Dakota: 0-0
- Last time out: First meeting
- The Coyotes travel to the Lone Star State with an overall record of 9-2 and on a seven game win streak. USD's two losses came early in the year against Kansas (11/16) and Washington (11/20).
- Have scored 80-plus points on nine occasions, including a 115-51 thrashing of University of Saint Mary on Dec. 18 in Vermillion.
- USD is averaging 84.5 points per game, which is a +17.5 point advantage over its opponents, and ranks 11th in the NCAA. The Coyotes also have the fifth-best free throw shooting percentage in the nation with 78 percent (185-237) success.
- The Coyotes have three players averaging double figures with Raeshel Contreras averaging 17.8 a night. Her 2.7 3-pointers per game also ranks 43rd in the nation.
- Also scoring in double figures are Nicole Seekamp (15.0 ppg) and Margaret McCloud (10.1 ppg).
- Through 11 games this season, the highest scoring player in each game has netted 20-plus on eight occasions.

SIU Edwardsville Cougars • December 29 • 2 p.m.

- All-time record against SIU Edwardsville: 0-0
- Last time out: First meeting
- SIU Edwardsville comes to the Alamo City with a 5-6 overall record and winners of its last two. The Cougars picked up wins against Valparaiso and UMKC.
- The Cougars are almost shooting even with their opponents as they are averaging 67.5 points to their 67.0 ppg.
- SIUE is shooting 72 percent (192-268) from the charity stripe, which is best for 66th in the NCAA.
- The Cougars have yet to play a game on neutral ground and will be the first of the 2014-15 season. On the road, SIUE is 2-6 and perfect (3-0) at home.
- SIUE has three players scoring in double figures with Tierny Austin pacing the offense with 13.5 points per game.
- Shrona Butts (11.1) and Gwen Adams (10.6) are also scoring in double digits while Adams leads the team with 7.3 rebounds per game



HEAD COACH

Lubomyr Lichonczak

(Idaho, 1985 • Second Season)

Record at UTSA: 14-18 • **Career record:** 165-169 (.495), 12 years

Head coach Lubomyr Lichonczak enters his second season at the helm of the UTSA women's basketball program after becoming only the eighth head coach in program history on August 28, 2013.

In his first season as head coach, Lichonczak led the team to a 14-17 overall record and 4-12 mark in UTSA's inaugural season in Conference USA. Junior Kamra King concluded her third campaign as a Roadrunner averaging double-figures (13.6 ppg) while also leading the team in scoring for the third time

in her collegiate career.

The Roadrunners made an appearance in the C-USA Women's Basketball Championship and upset 10th-seeded Tulsa in their first game before being knocked out by Old Dominion in the second round.

Prior to taking over the women's program in 2013, Lichonczak spent 11 years on the Roadrunners' coaching staff, including nine as the associate head coach. He was hired at UTSA prior to the 2002-03 season and spent two campaigns as an assistant before being promoted to associate head coach. Lichonczak primarily worked with the post players and served as the program's scouting coordinator and team academic liaison and assisted with scheduling and recruiting.

During his time on the UTSA bench, he helped mentor 23 all-conference selections – including seven first-team All-Southland Conference picks – one Southland Player and Defensive Player of the Year (Monica Gibbs/2009), three Southland Newcomers of the Year (Dwella Holliday, 2003/Vivian Ewalefo, 2006/Onika Anderson, 2008) and a pair of Southland Freshmen of the Year (Richelle Parks, 2005/Monica Gibbs, 2006).

He was instrumental in helping UTSA win back-to-back Southland Tournament Championships to earn the program's only NCAA Tournament appearances in 2008 and '09. The 2008-09 squad posted a school-record 24 wins and became the first No. 15-seed in the history of the NCAA Division I Championship to take a No. 2-seed to overtime.

In addition to the squad's accomplishments on the court, Lichonczak aided several student-athletes in the classroom. Ryba Pawlaczyk earned ESPN The Magazine/CoSIDA Academic All-District IV, Southland Student-Athlete of the Year and first-team Southland All-Academic in 2009, while Nicole Dunson took home the league's Student-Athlete of the Year and first-team all-academic honors in 2005.



Lichonczak came to the Alamo City after spending the 2001-02 campaign as the associate head coach at Colorado State where he helped the Rams to a 24-7 mark, including a 12-2 league record en route to the Mountain West Regular Season Championship and an at-large berth in the NCAA Tournament.

His stint in Fort Collins came after an 11-year run as the head coach at Radford (1990-2001). Lichonczak coached the Highlanders to a 151-151 (.500) overall record and 99-53 (.651) mark in Big South Conference games. His 151 wins rank second in program annals.

Under his guidance, Radford claimed six consecutive Big South Tournament titles (1991-96) and made three straight NCAA Tournament appearances (1994-96). Lichonczak earned Big South Coach of the Year honors in 1992 after the squad posted a 20-9 record and 11-1 league ledger en route to a conference regular-season title.



Lichonczak was an assistant under Hickey at Texas A&M from 1987-90 after a pair of seasons (1985-87) at Old Dominion, where he helped the Monarchs to the 1987 Sun Belt Conference Championship and an NCAA Tournament berth. Prior to his time in Norfolk, Va., Lichonczak was an assistant at Ohio State from 1980-85 and aided the Buckeyes to four consecutive Big Ten titles (1982-85) and NCAA Tournament appearances in 1982, '84 and '85. The 1985 squad finished the season with a 26-2 record, 18-0 Big Ten mark and advanced to the Elite Eight before falling to Old Dominion, the eventual national champion.

His coaching career began at his alma mater, Idaho, in 1978. In his final campaign with the Vandals, the squad went 25-6 and claimed the Region IX Championship to advance to the Association for Intercollegiate Athletics for Women (IAIW) Division II National Tournament.

Along with his collegiate experience, Lichonczak served in the WNBA as an advance scout for the San Antonio Silver Stars in 2010 and was a first assistant and offensive coordinator for the Washington Mystics in 2009. In addition, he was an assistant coach for the Nigerian Women's National Team in 2007.

Lichonczak, who earned a bachelor of science degree in social studies and education from Idaho in 1978 and a master of arts degree in athletic administration from Ohio State in 1985, and his wife, Maryann, have a son, Yov, and a daughter, Nika.



Into the *Luby* Looking Glass

Education

Idaho, 1978 - B.S. social studies and education

Ohio State, 1985 - M.S. athletic administration

Coaching Background

Head coach, UTSA (2013-Present)

Associate head coach, UTSA (2004-13)

Assistant coach, UTSA (2002-04)

Associate head coach, Colorado State (2001-02)

Head coach, Radford (1990-2001)

Assistant coach, Texas A&M (1987-90)

Assistant coach, Old Dominion (1985-87)

Assistant coach, Ohio State (1980-85)

Assistant coach, Idaho (1978-80)

WNBA Coaching Background

Advanced scout, San Antonio Silver Stars (2010)

First assistant, Washington Mystics (2009)

Achievements

- 3 NCAA Tournament (1994, '95, '96)
- 1 Big South Conference regular season championships (1991-92)
- 6 Big South Tournament championships (1991, '92, '93, '94, '95, '96)
- 1992 Big South Coach of the Year
- Second winningest coach in Radford history (151 wins)
- 1 20-win season
- 4 seasons with 15 or more wins
- 2 Big South Player of the Year selections
- 2 Big South Rookie of the Year selections
- 4 Big South Tournament MVP's
- 18 all-conference selections
- 9 First Team All-Big South Conference selections
- 2 Big South Scholar-Athlete of the Year honorees

Year-by-Year Record

Radford (1990-01)

| | |
|----------------------|-----------------------|
| 1990-91 | 13-17 |
| 1991-92 | 20-9 |
| 1992-93 | 17-11 |
| 1993-94 | 18-12 |
| 1994-95 | 15-15 |
| 1995-96 | 17-12 |
| 1996-97 | 12-16 |
| 1997-98 | 14-14 |
| 1998-99 | 11-17 |
| 1999-00 | 11-17 |
| <u>2000-01</u> | <u>10-18</u> |
| <u>Record</u> | <u>151-151 (.500)</u> |

UTSA (2013-Present)

| | |
|----------------------|--------------|
| <u>2013-14</u> | <u>14-17</u> |
| <u>Record</u> | <u>14-17</u> |



PEARL JOHNSON

G • Junior
Fruitland, Fla. • St. Petersburg College

1

Career Records

Points

11 vs. Santa Fe College (3/6/14)

Rebounds

4 vs. Miami Dade College (2/8/14)

Assists

4 at Miami Dade College (1/31/14)

Field Goals

4 vs. Santa Fe College (3/6/14)

3-point FGs

2 at Broward College (2/1/14)

Free Throws

5 vs. Northwest Fla. State College (3/7/14)

Blocks

-

Steals

3 (4x) last at Miami Dade College (1/31/14)

| Season | GP-GS | Min./Avg. | Career Stats | | | | | | | | | | | | | | | | | |
|----------|-------|-----------|--------------|------|--------|------|--------|------|----------|-----|-----|------|---------|----|----|----|-----|-----|-----|------|
| | | | Total | | 3-PT | | FT | | Rebounds | | | | Scoring | | | | | | | |
| | | | FG-FGA | Pct. | FG-FGA | Pct. | FT-FTA | Pct. | Off | Def | Tot | Avg. | PF | FO | A | TO | BLK | STL | PTS | Avg. |
| *2013-14 | 26-0 | 40/1.5 | 32-85 | .376 | 5-11 | .455 | 32-36 | .889 | 6 | 21 | 27 | 1.0 | 5 | 0 | 22 | 21 | 0 | 23 | 101 | 3.9 |
| TOTAL | 26-0 | 40/1.5 | 32-85 | .376 | 5-11 | .455 | 32-36 | .889 | 6 | 21 | 27 | 1.0 | 5 | 0 | 22 | 21 | 0 | 23 | 101 | 3.9 |

* denotes stats from previous school

2014-15 Player Notes:

**MATHILDE HERGOTT**

G/F • Junior

Jonage, France • Lycee Jean Mermoz

2**Career Records****Points**

22 vs. UTEP (2/26/14)

Rebounds

6 vs. Nicholls State (12/21/14)

Assists

5 vs. Marshall (3/5/14)

Field Goals

8 vs. UTEP (2/26/14)

3-point FGs

6 vs. Tulsa (3/11/14)

Free Throws

2 (4x) last vs. Nicholls State (12/21/14)

Blocks

2 (2x) last vs. Nicholls State (12/21/14)

Steals

4 vs. Nicholls State (12/21/14)

| Opponent | Date | gs | min | Total | | 3-Pointers | | Free throws | | Rebounds | | | | pf | a | t/o | blk | stl | pts | avg |
|-------------------|----------|----|-----|--------|------|------------|------|-------------|-------|----------|-----|-----|-----|----|---|-----|-----|-----|-----|-----|
| | | | | fg-fga | pct | 3fg-fga | pct | ft-fa | pct | off | def | tot | avg | | | | | | | |
| INCARNATE WORD | 11/30/14 | 8 | | 0-3 | .000 | 0-2 | .000 | 0-3 | .000 | 2 | 0 | 2 | 2.0 | 2 | 2 | 2 | 2 | 1 | 0 | 0.0 |
| at UT Arlington | 12/02/14 | 6 | | 0-1 | .000 | 0-1 | .000 | 0-0 | .000 | 0 | 1 | 1 | 1.5 | 0 | 0 | 0 | 0 | 0 | 0 | 0.0 |
| TEXAS STATE | 12/4/14 | 10 | | 1-4 | .250 | 0-2 | .000 | 0-0 | .000 | 0 | 0 | 0 | 1.0 | 0 | 0 | 4 | 0 | 0 | 2 | 0.7 |
| vs Houston | 12/19/14 | 26 | | 1-7 | .143 | 1-4 | .250 | 0-0 | .000 | 0 | 1 | 1 | 1.0 | 2 | 2 | 1 | 1 | 1 | 3 | 1.3 |
| at Texas Tech | 12/20/14 | 27 | | 2-6 | .333 | 2-4 | .500 | 0-0 | .000 | 1 | 0 | 1 | 1.0 | 4 | 1 | 4 | 0 | 0 | 6 | 2.2 |
| vs Nicholls State | 12/21/14 | * | 40 | 2-8 | .250 | 1-6 | .167 | 2-2 | 1.000 | 2 | 4 | 6 | 1.8 | 2 | 2 | 3 | 2 | 4 | 7 | 3.0 |
| Totals | | 1 | 117 | 6-29 | .207 | 4-19 | .211 | 2-5 | .400 | 5 | 6 | 11 | 1.8 | 10 | 7 | 14 | 5 | 6 | 18 | 3.0 |

Games played: 6
 Minutes/game: 19.5
 Points/game: 3.0
 FG Pct: 20.7
 3FG Pct: 21.1
 FT Pct: 40.0

Rebounds/game: 1.8
 Assists/game: 1.2
 Turnovers/game: 2.3
 Assist/turnover ratio: 0.5
 Steals/game: 1.0
 Blocks/game: 0.8

| Season | GP-GS | Min./Avg. | Total | | 3-PT | | Career Stats FT | | Rebounds | | | | Scoring | | | | | |
|--------------|-------------|-----------------|---------------|-------------|--------------|-------------|-----------------|-------------|-----------|-----------|-----------|------------|-----------|----------|-----------|-----------|-----------|-----------|
| | | | FG-FGA | Pct. | FG-FGA | Pct. | FT-FTA | Pct. | Off | Def | Tot | Avg. | PF | FO | A | TO | BLK | STL |
| 2014-15 | 6-1 | 117/19.5 | 6-29 | .207 | 4-19 | .211 | 2-5 | .400 | 5 | 6 | 11 | 1.8 | 10 | 0 | 7 | 14 | 5 | 6 |
| 2013-14 | 29-4 | 439/15.1 | 34-112 | .304 | 19-61 | .311 | 9-14 | .643 | 6 | 29 | 35 | 1.2 | 43 | 1 | 27 | 27 | 5 | 8 |
| 2012-13 | 12-0 | 54/4.5 | 5-18 | .278 | 3-9 | .333 | 1-1 | 1.000 | 4 | 1 | 5 | 0.4 | 8 | 0 | 4 | 7 | 0 | 1 |
| TOTAL | 47-5 | 610/13.0 | 45-159 | .283 | 26-89 | .292 | 12-20 | .600 | 15 | 36 | 51 | 1.1 | 61 | 1 | 38 | 48 | 10 | 15 |

2014-15 Player Notes:



CRYSTAL CHIDOMERE

G • Freshman

Richmond, Texas • Bush HS

4

Career Records

Points

11 vs. Incarnate Word (11/30/14)

Rebounds

3 vs. Texas Tech (12/20/14)

Assists

3 vs. Incarnate Word (11/30/14)

Field Goals

5 vs. Incarnate Word (11/30/14)

3-point FGs

-

Free Throws

1 (2x) last vs. Houston (12/19/14)

Blocks

3 vs. Incarnate Word (11/30/14)

Steals

1 vs. Lamar (11/23/14)

| Opponent | Date | gs | min | Total | | 3-Pointers | | Free throws | | Rebounds | | | | pf | a | t/o | blk | stl | pts | avg |
|-------------------|----------|----|-----|--------|-------|------------|------|-------------|-------|----------|-----|-----|-----|----|---|-----|-----|-----|-----|-----|
| | | | | fg-fga | pct | 3fg-fga | pct | ft-fa | pct | off | def | tot | avg | | | | | | | |
| at Texas | 11/15/14 | 7 | | 0-1 | .000 | 0-0 | .000 | 0-0 | .000 | 0 | 0 | 0 | 0.0 | 2 | 1 | 1 | 0 | 0 | 0 | 0.0 |
| ABILENE CHRISTIAN | 11/19/14 | 4 | | 0-0 | .000 | 0-0 | .000 | 0-0 | .000 | 0 | 1 | 1 | 0.5 | 1 | 0 | 0 | 1 | 0 | 0 | 0.0 |
| at Lamar | 11/23/14 | 14 | | 3-7 | .429 | 0-1 | .000 | 0-0 | .000 | 1 | 1 | 2 | 1.0 | 1 | 2 | 1 | 0 | 1 | 6 | 2.0 |
| DRAKE | 11/28/14 | 1 | | 0-0 | .000 | 0-0 | .000 | 0-0 | .000 | 0 | 0 | 0 | 0.8 | 0 | 0 | 1 | 0 | 0 | 0 | 1.5 |
| INCARNATE WORD | 11/30/14 | 20 | | 5-7 | .714 | 0-0 | .000 | 1-2 | .500 | 0 | 2 | 2 | 1.0 | 2 | 3 | 1 | 3 | 0 | 11 | 3.4 |
| TEXAS STATE | 12/4/14 | 5 | | 0-5 | .000 | 0-1 | .000 | 0-0 | .000 | 0 | 0 | 0 | 0.8 | 0 | 0 | 0 | 1 | 0 | 0 | 2.8 |
| vs Houston | 12/19/14 | 10 | | 1-1 | 1.000 | 0-0 | .000 | 1-1 | 1.000 | 0 | 0 | 0 | 0.7 | 2 | 0 | 0 | 0 | 0 | 3 | 2.9 |
| at Texas Tech | 12/20/14 | 12 | | 0-2 | .000 | 0-0 | .000 | 0-0 | .000 | 2 | 1 | 3 | 1.0 | 5 | 0 | 3 | 0 | 0 | 0 | 2.5 |
| vs Nicholls State | 12/21/14 | 5 | | 0-1 | .000 | 0-0 | .000 | 0-0 | .000 | 0 | 1 | 1 | 1.0 | 0 | 0 | 0 | 0 | 0 | 0 | 2.2 |
| Totals | | 0 | 78 | 9-24 | .375 | 0-2 | .000 | 2-3 | .667 | 3 | 6 | 9 | 1.0 | 13 | 6 | 7 | 5 | 1 | 20 | 2.2 |

Games played: 9
 Minutes/game: 8.7
 Points/game: 2.2
 FG Pct: 37.5
 3FG Pct: 0.0
 FT Pct: 66.7

Rebounds/game: 1.0
 Assists/game: 0.7
 Turnovers/game: 0.8
 Assist/turnover ratio: 0.9
 Steals/game: 0.1
 Blocks/game: 0.6

| Season | GP-GS | Min./Avg. | Total | | 3-PT | | Career Stats FT | | Rebounds | | | | Scoring | | | | | |
|---------|-------|-----------|--------|------|--------|------|-----------------|------|----------|-----|-----|------|---------|----|---|----|-----|-----|
| | | | FG-FGA | Pct. | FG-FGA | Pct. | FT-FTA | Pct. | Off | Def | Tot | Avg. | PF | FO | A | TO | BLK | STL |
| 2014-15 | 9-0 | 78/8.7 | 9-24 | .375 | 0-2 | .000 | 2-3 | .667 | 3 | 6 | 9 | 1.0 | 13 | 1 | 6 | 7 | 5 | 1 |
| TOTAL | 9-0 | 78/8.7 | 9-24 | .375 | 0-2 | .000 | 2-3 | .667 | 3 | 6 | 9 | 1.0 | 13 | 1 | 6 | 7 | 5 | 1 |
| | | | | | | | | | | | | | | | | | | |
| | | | | | | | | | | | | | | | | | | |
| | | | | | | | | | | | | | | | | | | |
| | | | | | | | | | | | | | | | | | | |
| | | | | | | | | | | | | | | | | | | |
| | | | | | | | | | | | | | | | | | | |
| | | | | | | | | | | | | | | | | | | |
| | | | | | | | | | | | | | | | | | | |

2014-15 Player Notes:

- Career day against Incarnate Word: points, rebounds, assists, field goals made, free throws made and blocks



ALANA HEARD

G • Sophomore

Missouri City, Texas • Hightower HS

5

Career Records

Points

9 vs. UT Arlington (11/17/13)

Rebounds

7 vs. Norfolk State (11/30/13)

Assists

5 (2x) last vs. UT Arlington (12/2/14)

Field Goals

4 vs. Tulsa (1/8/14)

3-point FGs

-

Free Throws

6 vs. Norfolk State (11/30/13)

Blocks

3 vs. Lamar (11/23/14)

Steals

4 (2x) last vs. TX State (12/22/13)

| Opponent | Date | gs | min | Total | | 3-Pointers | | Free throws | | Rebounds | | | | pf | a | t/o | blk | stl | pts | avg |
|-------------------|----------|----|-----|--------|-------|------------|------|-------------|-------|----------|-----|-----|-----|----|----|-----|-----|-----|-----|-----|
| | | | | fg-fga | pct | 3fg-fga | pct | ft-fa | pct | off | def | tot | avg | | | | | | | |
| ABILENE CHRISTIAN | 11/19/14 | 7 | | 1-2 | .500 | 0-0 | .000 | 0-0 | .000 | 0 | 1 | 1 | 1.0 | 3 | 1 | 4 | 1 | 0 | 2 | 2.0 |
| at Lamar | 11/23/14 | 16 | | 1-4 | .250 | 0-0 | .000 | 2-2 | 1.000 | 1 | 2 | 3 | 2.0 | 2 | 3 | 2 | 3 | 2 | 4 | 3.0 |
| DRAKE | 11/28/14 | 13 | | 1-3 | .333 | 0-0 | .000 | 0-0 | .000 | 1 | 1 | 2 | 2.0 | 2 | 0 | 4 | 2 | 2 | 2 | 2.7 |
| INCARNATE WORD | 11/30/14 | 18 | | 1-2 | .500 | 0-0 | .000 | 0-1 | .000 | 0 | 1 | 1 | 1.8 | 5 | 2 | 0 | 0 | 1 | 2 | 2.5 |
| at UT Arlington | 12/02/14 | 17 | | 1-1 | 1.000 | 0-0 | .000 | 2-5 | .400 | 0 | 2 | 2 | 1.8 | 2 | 5 | 3 | 0 | 0 | 4 | 2.8 |
| TEXAS STATE | 12/4/14 | 26 | | 1-5 | .200 | 0-0 | .000 | 0-1 | .000 | 0 | 4 | 4 | 2.2 | 5 | 3 | 3 | 0 | 1 | 2 | 2.7 |
| vs Houston | 12/19/14 | * | 14 | 0-1 | .000 | 0-0 | .000 | 2-2 | 1.000 | 0 | 2 | 2 | 2.1 | 4 | 1 | 2 | 0 | 0 | 2 | 2.6 |
| at Texas Tech | 12/20/14 | * | 25 | 2-7 | .286 | 0-0 | .000 | 0-0 | .000 | 1 | 4 | 5 | 2.5 | 2 | 2 | 5 | 0 | 0 | 4 | 2.8 |
| vs Nicholls State | 12/21/14 | 10 | | 1-1 | 1.000 | 0-0 | .000 | 0-0 | .000 | 0 | 0 | 0 | 2.2 | 2 | 0 | 1 | 0 | 0 | 2 | 2.7 |
| Totals | | 2 | 146 | 9-26 | .346 | 0-0 | .000 | 6-11 | .545 | 3 | 17 | 20 | 2.2 | 27 | 17 | 24 | 6 | 6 | 24 | 2.7 |

Games played: 9
 Minutes/game: 16.2
 Points/game: 2.7
 FG Pct: 34.6
 FT Pct: 54.5

Rebounds/game: 2.2
 Assists/game: 1.9
 Turnovers/game: 2.7
 Assist/turnover ratio: 0.7
 Steals/game: 0.7
 Blocks/game: 0.7

| Season | GP-GS | Min./Avg. | Total | | 3-PT | | Career Stats FT | | Rebounds | | | | Scoring | | | | | | | |
|---------|-------|-----------|--------|------|--------|------|-----------------|------|----------|-----|-----|------|---------|----|----|----|-----|-----|-----|------|
| | | | FG-FGA | Pct. | FG-FGA | Pct. | FT-FTA | Pct. | Off | Def | Tot | Avg. | PF | FO | A | TO | BLK | STL | PTS | Avg. |
| 2014-15 | 9-2 | 146/16.2 | 9-26 | .346 | 0-0 | .000 | 6-11 | .545 | 3 | 17 | 20 | 2.2 | 27 | 2 | 17 | 24 | 6 | 6 | 24 | 2.7 |
| 2013-14 | 30-0 | 327/10.9 | 20-63 | .317 | 0-0 | .000 | 21-42 | .500 | 14 | 29 | 43 | 1.4 | 53 | 1 | 40 | 56 | 2 | 26 | 61 | 2.0 |
| TOTAL | 39-2 | 473/12.1 | 29-89 | .326 | 0-0 | .000 | 27-53 | .509 | 17 | 46 | 63 | 1.6 | 80 | 3 | 57 | 80 | 8 | 32 | 85 | 2.2 |

2014-15 Player Notes:

- First career start against Houston at the Athletes in Action Classic hosted by Texas Tech



KAMRA KING

G • Senior

Norman, Okla. • Norman HS

10

Career Records

Points

27 vs. Lamar (11/14/13)

Rebounds

8 (2x) last vs. La. Tech (1/12/13)

Assists

6 (5x) last vs. TX State (2/16/13)

Field Goals

7 (4x) last vs. Norfolk St. (11/30/13)

3-point FGs

5 vs. Norfolk State (11/30/13)

Free Throws

13 vs. East Carolina (2/20/14)

Blocks

2 vs. Houston (12/4/11)

Steals

7 vs. Idaho (1/26/13)

| | | | | Total | | 3-Pointers | | Free throws | | Rebounds | | | | | | | | | | | |
|-------------------|----------|----|-----|--------|------|------------|------|-------------|-------|----------|-----|-----|-----|----|----|-----|-----|-----|-----|------|--|
| Opponent | Date | gs | min | fg-fga | pct | 3fg-fga | pct | ft-fa | pct | off | def | tot | avg | pf | a | t/o | blk | stl | pts | avg | |
| at Texas | 11/15/14 | * | 38 | 2-11 | .182 | 2-5 | .400 | 7-9 | .778 | 0 | 1 | 1 | 1.0 | 3 | 2 | 6 | 0 | 0 | 13 | 13.0 | |
| ABILENE CHRISTIAN | 11/19/14 | * | 27 | 3-10 | .300 | 0-3 | .000 | 8-10 | .800 | 0 | 5 | 5 | 3.0 | 4 | 3 | 6 | 0 | 3 | 14 | 13.5 | |
| at Lamar | 11/23/14 | * | 18 | 2-9 | .222 | 2-6 | .333 | 6-6 | 1.000 | 0 | 0 | 0 | 2.0 | 2 | 1 | 3 | 0 | 0 | 12 | 13.0 | |
| DRAKE | 11/28/14 | * | 38 | 4-18 | .222 | 1-10 | .100 | 6-10 | .600 | 3 | 3 | 6 | 3.0 | 5 | 4 | 3 | 1 | 5 | 15 | 13.5 | |
| INCARNATE WORD | 11/30/14 | * | 18 | 5-13 | .385 | 1-5 | .200 | 3-4 | .750 | 2 | 0 | 2 | 2.8 | 1 | 0 | 0 | 0 | 2 | 14 | 13.6 | |
| at UT Arlington | 12/02/14 | * | 38 | 2-9 | .222 | 1-2 | .500 | 7-9 | .778 | 3 | 0 | 3 | 2.8 | 4 | 3 | 1 | 1 | 3 | 12 | 13.3 | |
| TEXAS STATE | 12/4/14 | * | 36 | 5-12 | .417 | 0-1 | .000 | 3-4 | .750 | 1 | 3 | 4 | 3.0 | 1 | 4 | 4 | 0 | 3 | 13 | 13.3 | |
| vs Houston | 12/19/14 | * | 35 | 6-16 | .375 | 2-7 | .286 | 11-15 | .733 | 1 | 1 | 2 | 2.9 | 0 | 1 | 6 | 0 | 2 | 25 | 14.8 | |
| at Texas Tech | 12/20/14 | * | 27 | 4-9 | .444 | 1-4 | .250 | 11-13 | .846 | 2 | 1 | 3 | 2.9 | 3 | 0 | 5 | 0 | 2 | 20 | 15.3 | |
| vs Nicholls State | 12/21/14 | * | 38 | 4-15 | .267 | 1-6 | .167 | 4-6 | .667 | 2 | 2 | 4 | 3.0 | 1 | 1 | 4 | 0 | 1 | 13 | 15.1 | |
| Totals | | 10 | 313 | 37-122 | .303 | 11-49 | .224 | 66-86 | .767 | 14 | 16 | 30 | 3.0 | 24 | 19 | 38 | 2 | 21 | 151 | 15.1 | |

Games played: 10
 Minutes/game: 31.3
 Points/game: 15.1
 FG Pct: 30.3
 3FG Pct: 22.4
 FT Pct: 76.7

Rebounds/game: 3.0
 Assists/game: 1.9
 Turnovers/game: 3.8
 Assist/turnover ratio: 0.5
 Steals/game: 2.1
 Blocks/game: 0.2

Career Stats

| Season | GP-GS | Min./Avg. | Total | | 3-PT | | Career Stats FT | | Rebounds | | | | Scoring | | | | | | | |
|---------|--------|-----------|---------|------|---------|------|-----------------|------|----------|-----|-----|------|---------|----|-----|-----|-----|-----|------|------|
| | | | FG-FGA | Pct. | FG-FGA | Pct. | FT-FTA | Pct. | Off | Def | Tot | Avg. | PF | FO | A | TO | BLK | STL | PTS | Avg. |
| 2014-15 | 10-10 | 313/31.3 | 37-122 | .303 | 11-49 | .224 | 66-86 | .767 | 14 | 16 | 30 | 3.0 | 24 | 1 | 19 | 38 | 2 | 21 | 151 | 15.1 |
| 2013-14 | 31-30 | 1002/32.3 | 113-334 | .338 | 37-140 | .264 | 160-217 | .737 | 18 | 77 | 95 | 3.1 | 79 | 1 | 44 | 88 | 2 | 57 | 423 | 13.6 |
| 2012-13 | 30-29 | 889/29.6 | 85-268 | .317 | 35-132 | .265 | 74-110 | .673 | 24 | 64 | 88 | 2.9 | 71 | 2 | 59 | 72 | 2 | 63 | 279 | 9.3 |
| 2011-12 | 29-28 | 1014/35.0 | 79-231 | .342 | 33-118 | .280 | 111-145 | .766 | 10 | 74 | 84 | 2.9 | 66 | 1 | 56 | 75 | 6 | 56 | 302 | 10.4 |
| TOTAL | 100-97 | 3218/32.2 | 314-955 | .329 | 116-439 | .264 | 411-558 | .737 | 66 | 231 | 297 | 3.0 | 240 | 5 | 178 | 273 | 12 | 197 | 1155 | 11.6 |

2014-15 Player Notes:

- Has led the team in scoring in each of her previous three seasons
- Named to the UTSA Thanksgiving Classic All-Tournament Team
- Scored a season-high 25 points against Houston at the Athletes in Action Classic hosted by Texas Tech. King was also two free throws and one field goal shy of matching career bests.
- Named to the All-Tournament Team at the Athletes in Action Classic hosted by Texas Tech



NIAGA MITCHELL-COLE

G/F • Junior

San Antonio, Texas • Roosevelt HS

12

Career Records

Points

16 vs. Abilene Christian (11/19/14)

Rebounds

10 (2x) last vs. Tulsa (1/8/14)

Assists

3 (2x) last vs. S. Miss (1/11/14)

Field Goals

6 vs. La. Tech (2/7/13)

3-point FGs

2 (7x) last vs. San Jose St. (3/17/13)

Free Throws

6 vs. Abilene Christian (11/19/14)

Blocks

3 vs. Tulsa (1/8/14)

Steals

5 vs. Abilene Christian (11/19/14)

| Opponent | Date | gs | min | Total | | 3-Pointers | | Free throws | | Rebounds | | | | pf | a | t/o | blk | stl | pts | avg | |
|-------------------|----------|----|-----|--------|-------|------------|------|-------------|-------|----------|-----|-----|-----|-----|---|-----|-----|-----|-----|------|-----|
| | | | | fg-fga | pct | 3fg-fga | pct | ft-fa | pct | off | def | tot | avg | | | | | | | | |
| ABILENE CHRISTIAN | 11/19/14 | * | 32 | 5-13 | .385 | 0-0 | .000 | 6-6 | 1.000 | 1 | 6 | 7 | 7.0 | 1 | 0 | 3 | 2 | 5 | 16 | 16.0 | |
| at Lamar | 11/23/14 | * | 25 | 3-9 | .333 | 1-4 | .250 | 2-2 | 1.000 | 0 | 1 | 1 | 4.0 | 2 | 0 | 0 | 0 | 4 | 9 | 12.5 | |
| DRAKE | 11/28/14 | * | 23 | 0-2 | .000 | 0-1 | .000 | 3-4 | .750 | 1 | 3 | 4 | 4.0 | 1 | 1 | 2 | 1 | 0 | 3 | 9.3 | |
| INCARNATE WORD | 11/30/14 | * | 25 | 2-8 | .250 | 0-2 | .000 | 0-1 | .000 | 0 | 6 | 6 | 4.5 | 1 | 1 | 1 | 2 | 0 | 4 | 8.0 | |
| at UT Arlington | 12/02/14 | * | 28 | 1-8 | .125 | 0-0 | .000 | 3-5 | .600 | 1 | 1 | 2 | 4.0 | 2 | 1 | 2 | 0 | 0 | 5 | 7.4 | |
| TEXAS STATE | 12/4/14 | * | 8 | 0-1 | .000 | 0-0 | .000 | 0-0 | .000 | 0 | 0 | 0 | 3.3 | 0 | 0 | 0 | 1 | 0 | 0 | 6.2 | |
| Totals | | | 6 | 141 | 11-41 | .268 | 1-7 | .143 | 14-18 | .778 | 3 | 17 | 20 | 3.3 | 7 | 3 | 8 | 6 | 9 | 37 | 6.2 |

Games played: 6
 Minutes/game: 23.5
 Points/game: 6.2
 FG Pct: 26.8
 3FG Pct: 14.3
 FT Pct: 77.8

Rebounds/game: 3.3
 Assists/game: 0.5
 Turnovers/game: 1.3
 Assist/turnover ratio: 0.4
 Steals/game: 1.5
 Blocks/game: 1.0

| Season | GP-GS | Min./Avg. | Career Stats | | | | | | | | | | | | | | | | | |
|---------|-------|-----------|--------------|------|--------|------|--------|------|----------|-----|-----|------|---------|----|----|----|-----|-----|-----|------|
| | | | Total | | 3-PT | | FT | | Rebounds | | | | Scoring | | | | | | | |
| | | | FG-FGA | Pct. | FG-FGA | Pct. | FT-FTA | Pct. | Off | Def | Tot | Avg. | PF | FO | A | TO | BLK | STL | PTS | Avg. |
| 2014-15 | 6-6 | 141/23.5 | 11-41 | .268 | 1-7 | .143 | 14-18 | .778 | 3 | 17 | 20 | 3.3 | 7 | 0 | 3 | 8 | 6 | 9 | 37 | 6.2 |
| 2013-14 | 22-12 | 427/19.4 | 31-116 | .267 | 4-31 | .129 | 28-54 | .519 | 41 | 47 | 88 | 4.0 | 56 | 2 | 18 | 27 | 13 | 24 | 94 | 4.3 |
| 2012-13 | 30-0 | 564/18.8 | 55-161 | .342 | 18-66 | .273 | 22-49 | .449 | 59 | 69 | 128 | 4.3 | 60 | 1 | 12 | 31 | 15 | 24 | 150 | 5.0 |
| TOTAL | 58-18 | 1132/19.5 | 97-318 | .305 | 23-104 | .221 | 64-121 | .529 | 103 | 133 | 236 | 4.1 | 123 | 3 | 33 | 66 | 34 | 57 | 281 | 4.8 |

2014-15 Player Notes:

- Has one career double-double

**AKUNNA ELONU**

F • Junior

Houston, Texas • Elsik HS

21**Career Records****Points**

15 vs. UT Arlington (12/2/14)

Rebounds

12 vs. Marshall (3/5/14)

Assists

2 (3x) last vs. Drake (11/28/14)

Field Goals

6 (2x) last vs. UT Arlington (12/2/14)

3-point FGs

-

Free Throws

9 vs. Northern Iowa (11/29/13)

Blocks

2 (2x) last vs. Incarnate Word (11/30/14)

Steals

3 (2x) last vs. Texas State (12/4/14)

| | | | | Total | | 3-Pointers | | Free throws | | Rebounds | | | | | | | | | | | | |
|-------------------|----------|----|-----|--------|------|------------|------|-------------|------|----------|-----|-----|-----|----|---|-----|-----|-----|-----|-----|--|--|
| Opponent | Date | gs | min | fg-fga | pct | 3fg-fga | pct | ft-fa | pct | off | def | tot | avg | pf | a | t/o | blk | stl | pts | avg | | |
| at Texas | 11/15/14 | * | 24 | 1-6 | .167 | 0-0 | .000 | 0-0 | .000 | 2 | 6 | 8 | 8.0 | 1 | 2 | 3 | 0 | 1 | 2 | 2.0 | | |
| ABILENE CHRISTIAN | 11/19/14 | * | 23 | 2-4 | .500 | 0-0 | .000 | 2-4 | .500 | 3 | 5 | 8 | 8.0 | 2 | 1 | 1 | 2 | 0 | 6 | 4.0 | | |
| at Lamar | 11/23/14 | * | 29 | 2-5 | .400 | 0-0 | .000 | 0-0 | .000 | 4 | 2 | 6 | 7.3 | 1 | 0 | 1 | 0 | 0 | 4 | 4.0 | | |
| DRAKE | 11/28/14 | * | 22 | 3-4 | .750 | 0-0 | .000 | 3-6 | .500 | 4 | 3 | 7 | 7.3 | 1 | 2 | 0 | 0 | 1 | 9 | 5.3 | | |
| INCARNATE WORD | 11/30/14 | * | 18 | 0-2 | .000 | 0-0 | .000 | 1-3 | .333 | 2 | 5 | 7 | 7.2 | 1 | 0 | 1 | 2 | 0 | 1 | 4.4 | | |
| at UT Arlington | 12/02/14 | * | 33 | 6-7 | .857 | 0-0 | .000 | 3-4 | .750 | 2 | 9 | 11 | 7.8 | 1 | 0 | 2 | 1 | 1 | 15 | 6.2 | | |
| TEXAS STATE | 12/4/14 | * | 21 | 2-3 | .667 | 0-0 | .000 | 0-0 | .000 | 2 | 2 | 4 | 7.3 | 3 | 1 | 1 | 0 | 3 | 4 | 5.9 | | |
| vs Houston | 12/19/14 | * | 29 | 3-7 | .429 | 0-0 | .000 | 2-4 | .500 | 5 | 5 | 10 | 7.6 | 2 | 0 | 2 | 0 | 0 | 8 | 6.1 | | |
| at Texas Tech | 12/20/14 | * | 17 | 1-5 | .200 | 0-0 | .000 | 1-3 | .333 | 0 | 0 | 0 | 6.8 | 3 | 0 | 0 | 0 | 0 | 3 | 5.8 | | |
| vs Nicholls State | 12/21/14 | * | 19 | 2-4 | .500 | 0-0 | .000 | 2-4 | .500 | 3 | 3 | 6 | 6.7 | 4 | 1 | 1 | 0 | 1 | 6 | 5.8 | | |
| Totals | | 10 | 235 | 22-47 | .468 | 0-0 | .000 | 14-28 | .500 | 27 | 40 | 67 | 6.7 | 19 | 7 | 12 | 5 | 7 | 58 | 5.8 | | |

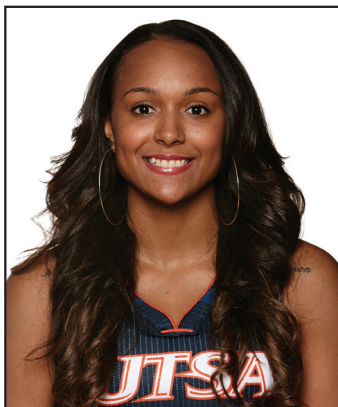
Games played: 10
 Minutes/game: 23.5
 Points/game: 5.8
 FG Pct: 46.8
 FT Pct: 50.0

Rebounds/game: 6.7
 Assists/game: 0.7
 Turnovers/game: 1.2
 Assist/turnover ratio: 0.6
 Steals/game: 0.7
 Blocks/game: 0.5

| Season | GP-GS | Min./Avg. | Total | | 3-PT | | Career Stats FT | | Rebounds | | | | Scoring | | | | | |
|--------------|--------------|-----------------|---------------|-------------|------------|-------------|-----------------|-------------|-----------|------------|------------|------------|-----------|----------|-----------|-----------|----------|-----------|
| | | | FG-FGA | Pct. | FG-FGA | Pct. | FT-FTA | Pct. | Off | Def | Tot | Avg. | PF | FO | A | TO | BLK | STL |
| 2014-14 | 10-10 | 235/23.5 | 22-47 | .468 | 0-0 | .000 | 14-28 | .500 | 27 | 40 | 67 | 6.7 | 19 | 0 | 7 | 12 | 5 | 7 |
| 2013-14 | 29-16 | 453/15.6 | 38-75 | .507 | 0-0 | .000 | 31-44 | .705 | 38 | 72 | 110 | 3.8 | 34 | 0 | 7 | 23 | 2 | 9 |
| 2012-13 | 22-1 | 201/9.1 | 23-57 | .404 | 0-0 | .000 | 12-22 | .545 | 32 | 36 | 68 | 3.1 | 22 | 0 | 8 | 10 | 2 | 9 |
| TOTAL | 61-27 | 889/14.3 | 83-179 | .464 | 0-0 | .000 | 57-94 | .606 | 97 | 148 | 245 | 4.0 | 75 | 0 | 22 | 45 | 9 | 25 |

2014-15 Player Notes:

- Picked up the team's first double-double of the season with 15 points and 11 rebounds against UT Arlington
- Was one rebound shy against UTA to match a career best



ASHLEY SPALETTA

G • Senior

Magnolia, Ark. • Magnolia HS

24

Career Records

Points

21 vs. UT Arlington (2/9/13)

Rebounds

9 (2x) last vs. N. Dakota St. (12/28/13)

Assists

5 vs. Texas State (12/22/13)

Field Goals

7 vs. UT-Arlington (2/9/13)

3-point FGs

7 vs. UT-Arlington (2/9/13)

Free Throws

4 (5x) last vs. Texas Tech (12/20/14)

Blocks

3 vs. UT-Arlington (2/9/13)

Steals

5 (2x) last vs. Houston (12/19/14)

| | | | | Total | | 3-Pointers | | Free throws | | Rebounds | | | | | | | | | | | |
|-------------------|----------|----|-----|--------|------|------------|------|-------------|-------|----------|-----|-----|-----|----|----|-----|-----|-----|-----|-----|--|
| Opponent | Date | gs | min | fg-fga | pct | 3fg-fga | pct | ft-fa | pct | off | def | tot | avg | pf | a | t/o | blk | stl | pts | avg | |
| at Texas | 11/15/14 | * | 33 | 0-5 | .000 | 0-4 | .000 | 1-2 | .500 | 0 | 3 | 3 | 3.0 | 3 | 1 | 5 | 1 | 1 | 1 | 1.0 | |
| ABILENE CHRISTIAN | 11/19/14 | * | 34 | 4-12 | .333 | 4-9 | .444 | 0-0 | .000 | 1 | 2 | 3 | 3.0 | 3 | 0 | 5 | 0 | 0 | 12 | 6.5 | |
| at Lamar | 11/23/14 | * | 23 | 3-9 | .333 | 3-8 | .375 | 0-0 | .000 | 0 | 3 | 3 | 3.0 | 3 | 2 | 0 | 0 | 0 | 9 | 7.3 | |
| DRAKE | 11/28/14 | * | 35 | 3-14 | .214 | 1-9 | .111 | 0-0 | .000 | 1 | 4 | 5 | 3.5 | 5 | 4 | 2 | 1 | 4 | 7 | 7.3 | |
| INCARNATE WORD | 11/30/14 | * | 13 | 0-3 | .000 | 0-3 | .000 | 0-0 | .000 | 1 | 1 | 2 | 3.2 | 1 | 3 | 2 | 1 | 0 | 0 | 5.8 | |
| at UT Arlington | 12/02/14 | * | 25 | 4-8 | .500 | 2-6 | .333 | 3-4 | .750 | 1 | 1 | 2 | 3.0 | 3 | 4 | 3 | 0 | 2 | 13 | 7.0 | |
| TEXAS STATE | 12/4/14 | * | 27 | 5-10 | .500 | 3-5 | .600 | 0-0 | .000 | 1 | 4 | 5 | 3.3 | 2 | 0 | 3 | 1 | 3 | 13 | 7.9 | |
| vs Houston | 12/19/14 | * | 34 | 3-7 | .429 | 0-4 | .000 | 2-4 | .500 | 0 | 4 | 4 | 3.4 | 2 | 1 | 3 | 0 | 5 | 8 | 7.9 | |
| at Texas Tech | 12/20/14 | * | 26 | 0-6 | .000 | 0-4 | .000 | 4-4 | 1.000 | 0 | 7 | 7 | 3.8 | 3 | 3 | 2 | 0 | 2 | 4 | 7.4 | |
| vs Nicholls State | 12/21/14 | * | 30 | 0-7 | .000 | 0-3 | .000 | 0-0 | .000 | 1 | 1 | 2 | 3.6 | 0 | 3 | 5 | 0 | 4 | 0 | 6.7 | |
| Totals | | 10 | 280 | 22-81 | .272 | 13-55 | .236 | 10-14 | .714 | 6 | 30 | 36 | 3.6 | 25 | 21 | 30 | 4 | 21 | 67 | 6.7 | |

Games played: 10
 Minutes/game: 28.0
 Points/game: 6.7
 FG Pct: 27.2
 3FG Pct: 23.6
 FT Pct: 71.4

Rebounds/game: 3.6
 Assists/game: 2.1
 Turnovers/game: 3.0
 Assist/turnover ratio: 0.7
 Steals/game: 2.1
 Blocks/game: 0.4

| Season | GP-GS | Min./Avg. | Career Stats | | | | | | | | | | | | | | | | | |
|---------|-------|-----------|--------------|------|---------|------|--------|------|----------|-----|-----|------|---------|----|-----|-----|-----|-----|-----|------|
| | | | Total | | 3-PT | | FT | | Rebounds | | | | Scoring | | | | | | | |
| | | | FG-FGA | Pct. | FG-FGA | Pct. | FT-FTA | Pct. | Off | Def | Tot | Avg. | PF | FO | A | TO | BLK | STL | PTS | Avg. |
| 2014-15 | 10-10 | 280/28.0 | 22-81 | .272 | 13-55 | .236 | 10-14 | .714 | 6 | 30 | 36 | 3.6 | 25 | 1 | 21 | 30 | 4 | 21 | 67 | 6.7 |
| 2013-14 | 30-19 | 829/27.6 | 69-226 | .305 | 48-164 | .293 | 37-62 | .597 | 39 | 101 | 140 | 4.7 | 64 | 1 | 40 | 47 | 2 | 46 | 223 | 7.4 |
| 2012-13 | 30-2 | 438/14.6 | 68-196 | .347 | 46-151 | .305 | 14-29 | .483 | 24 | 47 | 71 | 2.4 | 38 | 1 | 26 | 32 | 7 | 35 | 196 | 6.5 |
| 2011-12 | 29-1 | 592/20.4 | 53-182 | .291 | 40-152 | .263 | 19-33 | .576 | 16 | 55 | 71 | 2.4 | 34 | 1 | 23 | 34 | 5 | 19 | 165 | 5.7 |
| TOTAL | 99-32 | 2139/21.6 | 212-685 | .309 | 147-522 | .282 | 80-138 | .580 | 85 | 233 | 318 | 3.2 | 161 | 4 | 110 | 143 | 18 | 121 | 651 | 6.6 |

2014-15 Player Notes:

- Made three straight 3-pointers against Lamar in the first half

**TAYLOR WILLIAMS**

F • Sophomore

Katy, Texas • Cinco Ranch HS

25**Career Records****Points**

4 vs. Incarnate Word (11/30/14)

Rebounds

5 vs. Houston (12/19/14)

Assists

-

Field Goals

2 vs. Incarnate Word (11/30/14)

3-point FGs

-

Free Throws

2 vs. Texas (11/15/14)

Blocks

3 vs. Texas State (12/4/14)

Steals

1 vs. Houston (12/19/14)

| Opponent | Date | gs | min | Total | | 3-Pointers | | Free throws | | Rebounds | | | | pf | a | t/o | blk | stl | pts | avg |
|-------------------|----------|----|-----|--------|-------|------------|------|-------------|------|----------|-----|-----|-----|----|---|-----|-----|-----|-----|-----|
| | | | | fg-fga | pct | 3fg-fga | pct | ft-fa | pct | off | def | tot | avg | | | | | | | |
| at Texas | 11/15/14 | 3 | | 0-0 | .000 | 0-0 | .000 | 2-4 | .500 | 0 | 0 | 0 | 0.0 | 0 | 0 | 0 | 0 | 0 | 2 | 2.0 |
| INCARNATE WORD | 11/30/14 | 14 | | 2-3 | .667 | 0-0 | .000 | 0-0 | .000 | 1 | 2 | 3 | 1.5 | 0 | 0 | 0 | 0 | 0 | 4 | 3.0 |
| at UT Arlington | 12/02/14 | 2 | | 0-0 | .000 | 0-0 | .000 | 0-0 | .000 | 0 | 0 | 0 | 1.0 | 0 | 0 | 0 | 0 | 0 | 0 | 2.0 |
| TEXAS STATE | 12/4/14 | 8 | | 1-1 | 1.000 | 0-0 | .000 | 0-0 | .000 | 0 | 1 | 1 | 1.0 | 0 | 0 | 0 | 3 | 0 | 2 | 2.0 |
| vs Houston | 12/19/14 | 12 | | 0-0 | .000 | 0-0 | .000 | 0-0 | .000 | 2 | 3 | 5 | 1.8 | 2 | 0 | 0 | 2 | 1 | 0 | 1.6 |
| at Texas Tech | 12/20/14 | 7 | | 0-0 | .000 | 0-0 | .000 | 0-0 | .000 | 0 | 1 | 1 | 1.7 | 0 | 0 | 1 | 1 | 0 | 0 | 1.3 |
| vs Nicholls State | 12/21/14 | 5 | | 0-0 | .000 | 0-0 | .000 | 0-0 | .000 | 0 | 0 | 0 | 1.4 | 1 | 0 | 1 | 0 | 0 | 0 | 1.1 |
| Totals | | 0 | 51 | 3-4 | .750 | 0-0 | .000 | 2-4 | .500 | 3 | 7 | 10 | 1.4 | 3 | 0 | 2 | 6 | 1 | 8 | 1.1 |

Games played: 7
 Minutes/game: 7.3
 Points/game: 1.1
 FG Pct: 75.0
 FT Pct: 50.0

Rebounds/game: 1.4
 Turnovers/game: 0.3
 Steals/game: 0.1
 Blocks/game: 0.9

| Season | GP-GS | Min./Avg. | Total | | 3-PT | | Career Stats FT | | Rebounds | | | | Scoring | | | | | |
|---------|-------|-----------|--------|------|--------|------|-----------------|------|----------|-----|-----|------|---------|----|---|----|-----|-----|
| | | | FG-FGA | Pct. | FG-FGA | Pct. | FT-FTA | Pct. | Off | Def | Tot | Avg. | PF | FO | A | TO | BLK | STL |
| 2014-15 | 7-0 | 51/7.3 | 3-4 | .750 | 0-0 | .000 | 2-4 | .500 | 3 | 7 | 10 | 1.4 | 3 | 0 | 0 | 2 | 6 | 1 |
| 2013-14 | 9-0 | 19/2.1 | 1-4 | .250 | 0-0 | .000 | 0-0 | .000 | 2 | 2 | 4 | 0.4 | 2 | 0 | 0 | 2 | 1 | 0 |
| TOTAL | 16-0 | 70/4.4 | 4-8 | .500 | 0-0 | .000 | 2-4 | .500 | 5 | 9 | 14 | 0.9 | 2 | 0 | 0 | 4 | 7 | 1 |

2014-15 Player Notes:

- First career steal against Houston at the Athletes in Action Classic hosted by Texas Tech



TESHA SMITH

C • Sophomore

San Antonio, Texas • Wagner HS

30

Career Records

Points

19 vs. FIU (2/5/14)

Rebounds

12 (2x) last vs. Texas State (12/4/14)

Assists

1 (5x) last vs. Texas (11/15/14)

Field Goals

8 (2x) last vs. Rice (2/15/14)

3-point FGs

-

Free Throws

10 vs. East Carolina (2/20/14)

Blocks

3 vs. Old Dominion (2/22/14)

Steals

2 (2x) last vs. Tulane (2/8/14)

| Opponent | Date | gs | min | Total | | 3-Pointers | | Free throws | | Rebounds | | | | pf | a | t/o | blk | stl | pts | avg |
|-------------------|----------|----|-----|--------|------|------------|------|-------------|------|----------|-----|-----|-----|----|---|-----|-----|-----|-----|-----|
| | | | | fg-fga | pct | 3fg-fga | pct | ft-fa | pct | off | def | tot | avg | | | | | | | |
| at Texas | 11/15/14 | 24 | | 3-4 | .750 | 0-0 | .000 | 1-5 | .200 | 2 | 5 | 7 | 7.0 | 4 | 1 | 6 | 1 | 0 | 7 | 7.0 |
| ABILENE CHRISTIAN | 11/19/14 | 16 | | 1-4 | .250 | 0-0 | .000 | 1-2 | .500 | 2 | 4 | 6 | 6.5 | 5 | 0 | 1 | 0 | 1 | 3 | 5.0 |
| at Lamar | 11/23/14 | 23 | | 6-7 | .857 | 0-0 | .000 | 4-8 | .500 | 4 | 5 | 9 | 7.3 | 1 | 0 | 0 | 0 | 1 | 16 | 8.7 |
| DRAKE | 11/28/14 | 15 | | 0-2 | .000 | 0-0 | .000 | 0-0 | .000 | 0 | 0 | 0 | 5.5 | 1 | 0 | 2 | 1 | 0 | 0 | 6.5 |
| INCARNATE WORD | 11/30/14 | 8 | | 1-2 | .500 | 0-0 | .000 | 0-0 | .000 | 1 | 1 | 2 | 4.8 | 5 | 0 | 2 | 0 | 0 | 2 | 5.6 |
| at UT Arlington | 12/02/14 | 11 | | 1-3 | .333 | 0-0 | .000 | 1-2 | .500 | 0 | 2 | 2 | 4.3 | 3 | 0 | 0 | 0 | 0 | 3 | 5.2 |
| TEXAS STATE | 12/4/14 | 23 | | 5-10 | .500 | 0-0 | .000 | 1-3 | .333 | 3 | 9 | 12 | 5.4 | 5 | 0 | 2 | 0 | 1 | 11 | 6.0 |
| vs Houston | 12/19/14 | 6 | | 0-4 | .000 | 0-0 | .000 | 1-3 | .333 | 1 | 1 | 2 | 5.0 | 0 | 0 | 0 | 0 | 0 | 1 | 5.4 |
| at Texas Tech | 12/20/14 | 18 | | 2-6 | .333 | 0-0 | .000 | 0-1 | .000 | 3 | 2 | 5 | 5.0 | 3 | 0 | 1 | 0 | 0 | 4 | 5.2 |
| vs Nicholls State | 12/21/14 | 20 | | 5-7 | .714 | 0-0 | .000 | 0-0 | .000 | 2 | 5 | 7 | 5.2 | 3 | 0 | 4 | 0 | 0 | 10 | 5.7 |
| Totals | | 0 | 164 | 24-49 | .490 | 0-0 | .000 | 9-24 | .375 | 18 | 34 | 52 | 5.2 | 30 | 1 | 18 | 2 | 3 | 57 | 5.7 |

Games played: 10
 Minutes/game: 16.4
 Points/game: 5.7
 FG Pct: 49.0
 FT Pct: 37.5

Rebounds/game: 5.2
 Assists/game: 0.1
 Turnovers/game: 1.8
 Assist/turnover ratio: 0.1
 Steals/game: 0.3
 Blocks/game: 0.2

| Season | GP-GS | Min./Avg. | Total | | 3-PT | | Career Stats FT | | Rebounds | | | | Scoring | | | | | |
|---------|-------|-----------|---------|------|--------|------|-----------------|------|----------|-----|-----|------|---------|----|---|----|-----|-----|
| | | | FG-FGA | Pct. | FG-FGA | Pct. | FT-FTA | Pct. | Off | Def | Tot | Avg. | PF | FO | A | TO | BLK | STL |
| 2014-15 | 10-0 | 164/16.4 | 24-49 | .490 | 0-0 | .000 | 9-24 | .375 | 18 | 34 | 52 | 5.2 | 30 | 3 | 1 | 18 | 2 | 3 |
| 2013-14 | 30-7 | 480/16.0 | 85-160 | .531 | 0-0 | .000 | 49-75 | .653 | 60 | 108 | 168 | 5.6 | 82 | 1 | 4 | 33 | 20 | 13 |
| TOTAL | 40-7 | 644/16.1 | 109-209 | .522 | 0-0 | .000 | 58-99 | .586 | 78 | 142 | 220 | 5.5 | 112 | 4 | 5 | 51 | 22 | 16 |

2014-15 Player Notes:

- CAREER DOUBLE-DOUBLES: 5
- First double-double of the season came against Texas State with 11 points and 12 rebounds



CARLIE HEINEMAN

G • Freshman
San Antonio, Texas • Brennan HS

31

Career Records

Points

15 vs. Texas (11/15/14)

Rebounds

3 vs. Incarnate Word (11/30/14)

Assists

3 vs. Abilene Christian (11/19/14)

Field Goals

5 vs. Texas (11/15/14)

3-point FGs

5 vs. Texas (11/15/14)

Free Throws

-

Blocks

1 vs. Lamar (11/23/14)

Steals

1 (3x) last vs. Incarnate Word (11/30/14)

| Opponent | Date | gs | min | Total | | 3-Pointers | | Free throws | | Rebounds | | | | pf | a | t/o | blk | stl | pts | avg |
|-------------------|----------|----|-----|--------|------|------------|------|-------------|------|----------|-----|-----|-----|----|---|-----|-----|-----|-----|------|
| | | | | fg-fga | pct | 3fg-fga | pct | ft-fta | pct | off | def | tot | avg | | | | | | | |
| at Texas | 11/15/14 | * | 38 | 5-13 | .385 | 5-10 | .500 | 0-0 | .000 | 0 | 2 | 2 | 2.0 | 2 | 0 | 2 | 0 | 1 | 15 | 15.0 |
| ABILENE CHRISTIAN | 11/19/14 | | 20 | 2-5 | .400 | 2-5 | .400 | 0-0 | .000 | 1 | 0 | 1 | 1.5 | 1 | 3 | 0 | 0 | 0 | 6 | 10.5 |
| at Lamar | 11/23/14 | | 24 | 2-6 | .333 | 0-4 | .000 | 0-0 | .000 | 0 | 0 | 0 | 1.0 | 1 | 1 | 2 | 1 | 1 | 4 | 8.3 |
| DRAKE | 11/28/14 | | 21 | 3-14 | .214 | 3-14 | .214 | 0-0 | .000 | 1 | 0 | 1 | 1.0 | 0 | 0 | 0 | 0 | 0 | 9 | 8.5 |
| INCARNATE WORD | 11/30/14 | | 26 | 3-8 | .375 | 3-7 | .429 | 0-0 | .000 | 1 | 2 | 3 | 1.4 | 3 | 2 | 0 | 0 | 1 | 9 | 8.6 |
| at UT Arlington | 12/02/14 | | 6 | 1-3 | .333 | 1-3 | .333 | 0-0 | .000 | 0 | 0 | 0 | 1.2 | 1 | 0 | 1 | 0 | 0 | 3 | 7.7 |
| TEXAS STATE | 12/4/14 | | 8 | 1-4 | .250 | 1-3 | .333 | 0-0 | .000 | 0 | 1 | 1 | 1.1 | 0 | 1 | 0 | 0 | 0 | 3 | 7.0 |
| Totals | | 1 | 143 | 17-53 | .321 | 15-46 | .326 | 0-0 | .000 | 3 | 5 | 8 | 1.1 | 8 | 7 | 5 | 1 | 3 | 49 | 7.0 |

Games played: 7
Minutes/game: 20.4
Points/game: 7.0
FG Pct: 32.1
3FG Pct: 32.6

Rebounds/game: 1.1
Assists/game: 1.0
Turnovers/game: 0.7
Assist/turnover ratio: 1.4
Steals/game: 0.4
Blocks/game: 0.1

| | | | Career Stats | | | | | | | | | | | | | | | | | |
|---------|-------|-----------|--------------|------|--------|------|--------|------|----------|-----|-----|------|---------|----|---|----|-----|-----|-----|------|
| | | | Total | | 3-PT | | FT | | Rebounds | | | | Scoring | | | | | | | |
| Season | GP-GS | Min./Avg. | FG-FGA | Pct. | FG-FGA | Pct. | FT-FTA | Pct. | Off | Def | Tot | Avg. | PF | FO | A | TO | BLK | STL | PTS | Avg. |
| 2014-15 | 7-1 | 143/20.4 | 17-53 | .321 | 15-46 | .326 | 0-0 | .000 | 3 | 5 | 8 | 1.1 | 8 | 0 | 7 | 5 | 1 | 3 | 49 | 7.0 |
| TOTAL | 7-1 | 143/20.4 | 17-53 | .321 | 15-46 | .326 | 0-0 | .000 | 3 | 5 | 8 | 1.1 | 8 | 0 | 7 | 5 | 1 | 3 | 49 | 7.0 |

2014-15 Player Notes:



DWANISHA TATE

G • Sophomore

Arlington, Texas • Seguin HS

32

Career Records

Points

9 (3x) last vs. Marshall (3/5/14)

Rebounds

5 (3x) last vs. Incarnate Word (11/30/14)

Assists

2 (4x) last vs. Marshall (3/5/14)

Field Goals

4 (2x) last vs. Tulsa (1/8/14)

3-point FGs

2 (2x) last vs. Marshall (3/5/14)

Free Throws

2 (4x) last vs. Nicholls State (12/21/14)

Blocks

1 (3x) last vs. Tulane (2/8/14)

Steals

1 (10x) last vs. Incarnate Word (11/30/14)

| Opponent | Date | gs | min | Total | | 3-Pointers | | Free throws | | Rebounds | | | | pf | a | t/o | blk | stl | pts | avg |
|-------------------|----------|----|-----|--------|-------|------------|------|-------------|-------|----------|-----|-----|-----|----|---|-----|-----|-----|-----|-----|
| | | | | fg-fga | pct | 3fg-fga | pct | ft-fa | pct | off | def | tot | avg | | | | | | | |
| at Texas | 11/15/14 | 9 | | 0-1 | .000 | 0-0 | .000 | 0-0 | .000 | 1 | 0 | 1 | 1.0 | 1 | 0 | 1 | 0 | 0 | 0 | 0.0 |
| ABILENE CHRISTIAN | 11/19/14 | 5 | | 1-2 | .500 | 0-1 | .000 | 0-0 | .000 | 1 | 2 | 3 | 2.0 | 3 | 0 | 0 | 0 | 1 | 2 | 1.0 |
| at Lamar | 11/23/14 | 7 | | 1-1 | 1.000 | 0-0 | .000 | 2-2 | 1.000 | 1 | 4 | 5 | 3.0 | 0 | 0 | 0 | 0 | 1 | 4 | 2.0 |
| INCARNATE WORD | 11/30/14 | 15 | | 1-4 | .250 | 0-0 | .000 | 0-1 | .000 | 1 | 4 | 5 | 3.5 | 3 | 0 | 1 | 0 | 1 | 2 | 2.0 |
| vs Houston | 12/19/14 | 3 | | 0-0 | .000 | 0-0 | .000 | 0-0 | .000 | 1 | 0 | 1 | 3.0 | 1 | 0 | 0 | 0 | 0 | 0 | 1.6 |
| at Texas Tech | 12/20/14 | 12 | | 0-2 | .000 | 0-1 | .000 | 1-2 | .500 | 1 | 1 | 2 | 2.8 | 1 | 0 | 0 | 0 | 0 | 1 | 1.5 |
| vs Nicholls State | 12/21/14 | 9 | | 2-5 | .400 | 0-1 | .000 | 2-2 | 1.000 | 1 | 0 | 1 | 2.6 | 2 | 0 | 1 | 0 | 0 | 6 | 2.1 |
| Totals | | 0 | 60 | 5-15 | .333 | 0-3 | .000 | 5-7 | .714 | 7 | 11 | 18 | 2.6 | 11 | 0 | 3 | 0 | 3 | 15 | 2.1 |

Games played: 7
Minutes/game: 8.6
Points/game: 2.1
FG Pct: 33.3
3FG Pct: 0.0
FT Pct: 71.4

Rebounds/game: 2.6
Turnovers/game: 0.4
Steals/game: 0.4

| Season | GP-GS | Min./Avg. | Total | | 3-PT | | Career Stats FT | | Rebounds | | | | Scoring | | | | | | | |
|---------|-------|-----------|--------|------|--------|------|-----------------|------|----------|-----|-----|------|---------|----|----|----|-----|-----|-----|------|
| | | | FG-FGA | Pct. | FG-FGA | Pct. | FT-FTA | Pct. | Off | Def | Tot | Avg. | PF | FO | A | TO | BLK | STL | PTS | Avg. |
| 2014-15 | 7-0 | 60/8.6 | 5-15 | .333 | 0-3 | .000 | 5-7 | .714 | 7 | 11 | 18 | 2.6 | 11 | 0 | 0 | 3 | 0 | 3 | 15 | 2.1 |
| 2013-14 | 27-0 | 343/12.7 | 37-83 | .446 | 5-17 | .294 | 10-21 | .476 | 8 | 38 | 46 | 1.7 | 38 | 0 | 16 | 47 | 3 | 7 | 89 | 3.3 |
| TOTAL | 34-0 | 403/11.9 | 42-98 | .429 | 5-20 | .250 | 15-28 | .536 | 15 | 49 | 64 | 1.9 | 49 | 0 | 16 | 50 | 3 | 10 | 104 | 3.1 |

2014-15 Player Notes:



MANNASHA BELL

F • Junior

Fort Smith, Ark. • Northside HS

33

Career Records

Points

16 (2x) last vs. Drake (11/30/14)

Rebounds

16 vs. Houston (12/4/11)

Assists

2 (3x) last vs. Abilene Christian (11/19/14)

Field Goals

5 (8x) last vs. Drake (11/30/14)

3-point FGs

-

Free Throws

6 (2x) last vs. Drake (11/30/14)

Blocks

2 vs. UNLV (11/22/11)

Steals

5 vs. Abilene Christian (11/19/14)

| | | | | Total | | 3-Pointers | | Free throws | | Rebounds | | | | | | | | | | | |
|-------------------|----------|----|-----|--------|------|------------|------|-------------|-------|----------|-----|-----|-----|----|---|-----|-----|-----|-----|-----|--|
| Opponent | Date | gs | min | fg-fga | pct | 3fg-fga | pct | ft-fa | pct | off | def | tot | avg | pf | a | t/o | blk | stl | pts | avg | |
| at Texas | 11/15/14 | * | 24 | 3-4 | .750 | 0-0 | .000 | 2-5 | .400 | 1 | 0 | 1 | 1.0 | 4 | 2 | 3 | 0 | 4 | 8 | 8.0 | |
| ABILENE CHRISTIAN | 11/19/14 | * | 32 | 3-8 | .375 | 0-0 | .000 | 3-7 | .429 | 4 | 4 | 8 | 4.5 | 3 | 2 | 5 | 0 | 5 | 9 | 8.5 | |
| at Lamar | 11/23/14 | * | 21 | 0-0 | .000 | 0-0 | .000 | 4-4 | 1.000 | 4 | 3 | 7 | 5.3 | 2 | 1 | 2 | 0 | 1 | 4 | 7.0 | |
| DRAKE | 11/28/14 | * | 32 | 5-6 | .833 | 0-0 | .000 | 6-8 | .750 | 5 | 4 | 9 | 6.3 | 4 | 0 | 2 | 0 | 3 | 16 | 9.3 | |
| INCARNATE WORD | 11/30/14 | * | 17 | 3-5 | .600 | 0-0 | .000 | 2-2 | 1.000 | 3 | 5 | 8 | 6.6 | 1 | 0 | 2 | 0 | 2 | 8 | 9.0 | |
| at UT Arlington | 12/02/14 | * | 34 | 4-8 | .500 | 0-0 | .000 | 0-1 | .000 | 3 | 8 | 11 | 7.3 | 4 | 0 | 0 | 0 | 1 | 8 | 8.8 | |
| TEXAS STATE | 12/4/14 | * | 28 | 1-3 | .333 | 0-0 | .000 | 1-2 | .500 | 3 | 2 | 5 | 7.0 | 3 | 0 | 3 | 0 | 2 | 3 | 8.0 | |
| vs Houston | 12/19/14 | * | 31 | 1-4 | .250 | 0-0 | .000 | 1-3 | .333 | 0 | 4 | 4 | 6.6 | 3 | 1 | 0 | 0 | 2 | 3 | 7.4 | |
| at Texas Tech | 12/20/14 | * | 24 | 2-4 | .500 | 0-0 | .000 | 0-1 | .000 | 1 | 3 | 4 | 6.3 | 4 | 0 | 1 | 0 | 1 | 4 | 7.0 | |
| vs Nicholls State | 12/21/14 | * | 21 | 2-6 | .333 | 0-0 | .000 | 1-2 | .500 | 4 | 1 | 5 | 6.2 | 3 | 1 | 1 | 0 | 1 | 5 | 6.8 | |
| Totals | | 10 | 264 | 24-48 | .500 | 0-0 | .000 | 20-35 | .571 | 28 | 34 | 62 | 6.2 | 31 | 7 | 19 | 0 | 22 | 68 | 6.8 | |

Games played: 10
 Minutes/game: 26.4
 Points/game: 6.8
 FG Pct: 50.0
 FT Pct: 57.1

Rebounds/game: 6.2
 Assists/game: 0.7
 Turnovers/game: 1.9
 Assist/turnover ratio: 0.4
 Steals/game: 2.2

| Season | GP-GS | Min./Avg. | Career Stats | | | | | | | | | | | | | | | | | |
|---------|-------|-----------|--------------|------|--------|------|---------|------|----------|-----|-----|------|---------|----|----|-----|-----|-----|-----|------|
| | | | Total | | 3-PT | | FT | | Rebounds | | | | Scoring | | | | | | | |
| | | | FG-FGA | Pct. | FG-FGA | Pct. | FT-FTA | Pct. | Off | Def | Tot | Avg. | PF | FO | A | TO | BLK | STL | PTS | Avg. |
| 2014-15 | 10-10 | 264/26.4 | 24-48 | .500 | 0-0 | .000 | 20-35 | .571 | 28 | 34 | 62 | 6.2 | 31 | 0 | 7 | 19 | 0 | 22 | 68 | 6.8 |
| 2013-14 | 29-26 | 607/20.9 | 65-148 | .439 | 0-1 | .000 | 40-79 | .506 | 85 | 69 | 154 | 5.3 | 64 | 2 | 12 | 54 | 4 | 24 | 170 | 5.9 |
| 2012-13 | 29-13 | 369/12.7 | 46-105 | .438 | 0-0 | .000 | 19-38 | .500 | 47 | 51 | 98 | 3.4 | 41 | 0 | 8 | 24 | 3 | 19 | 111 | 3.8 |
| 2011-12 | 9-9 | 254/28.2 | 26-70 | .371 | 0-1 | .000 | 22-40 | .550 | 31 | 39 | 70 | 7.8 | 20 | 1 | 3 | 20 | 4 | 14 | 74 | 8.2 |
| TOTAL | 77-58 | 1494/19.4 | 161-371 | .434 | 0-2 | .000 | 101-192 | .526 | 191 | 193 | 394 | 5.0 | 156 | 3 | 30 | 117 | 11 | 79 | 423 | 5.5 |

2014-15 Player Notes:

- CAREER DOUBLE-DOUBLES: 3
- Named to the UTSA Thanksgiving Classic All-Tournament Team



HAYLEE BEARD

G/F • Sophomore
Ozark, Mo. • Ozark HS

45

Career Records

Points

3 (2x) last vs. Savannah St. (11/22/13)

Rebounds

1 (5x) last vs. Texas Tech (12/20/14)

Assists

1 (2x) last vs. UT-Arlington (11/17/13)

Field Goals

1 (3x) last vs. Texas Tech (12/20/14)

3-point FGs

1 (2x) last vs. Savannah St. (11/22/13)

Free Throws

1 vs. UT-Arlington (11/17/13)

Blocks

1 vs. UT-Arlington (11/17/13)

Steals

-

| Opponent | Date | gs | min | Total | | 3-Pointers | | Free throws | | Rebounds | | | | pf | a | t/o | blk | stl | pts | avg |
|-------------------|----------|----|-----|--------|------|------------|------|-------------|------|----------|-----|-----|-----|----|---|-----|-----|-----|-----|-----|
| | | | | fg-fga | pct | 3fg-fga | pct | ft-fa | pct | off | def | tot | avg | | | | | | | |
| TEXAS STATE | 12/4/14 | 0 | | 0-0 | .000 | 0-0 | .000 | 0-0 | .000 | 0 | 0 | 0 | 0.0 | 0 | 0 | 0 | 0 | 0 | 0 | 0.0 |
| at Texas Tech | 12/20/14 | 5 | | 1-3 | .333 | 0-1 | .000 | 0-0 | .000 | 0 | 1 | 1 | 0.5 | 0 | 0 | 0 | 0 | 0 | 2 | 1.0 |
| vs Nicholls State | 12/21/14 | 3 | | 0-1 | .000 | 0-0 | .000 | 0-0 | .000 | 0 | 0 | 0 | 0.3 | 0 | 0 | 0 | 0 | 0 | 0 | 0.7 |
| Totals | | 0 | 8 | 1-4 | .250 | 0-1 | .000 | 0-0 | .000 | 0 | 1 | 1 | 0.3 | 0 | 0 | 0 | 0 | 0 | 2 | 0.7 |

Games played: 3

Minutes/game: 2.7

Points/game: 0.7

FG Pct: 25.0

3FG Pct: 0.0

Rebounds/game: 0.3

| Season | GP-GS | Min./Avg. | Career Stats | | | | | | | | | | | | | | | | | |
|---------|-------|-----------|--------------|------|--------|------|--------|------|----------|-----|-----|------|---------|----|---|----|-----|-----|-----|------|
| | | | Total | | 3-PT | | FT | | Rebounds | | | | Scoring | | | | | | | |
| | | | FG-FGA | Pct. | FG-FGA | Pct. | FT-FTA | Pct. | Off | Def | Tot | Avg. | PF | FO | A | TO | BLK | STL | PTS | Avg. |
| 2014-15 | 3-0 | 8/2.7 | 1-4 | .250 | 0-1 | .000 | 0-0 | .000 | 0 | 1 | 1 | 0.3 | 0 | 0 | 0 | 0 | 0 | 0 | 2 | 0.7 |
| 2013-14 | 19-0 | 67/3.5 | 3-22 | .136 | 2-17 | .118 | 1-2 | .500 | 3 | 1 | 4 | 0.2 | 7 | 0 | 2 | 2 | 1 | 0 | 9 | 0.5 |
| TOTAL | 22-0 | 75/3.4 | 4-26 | .154 | 2-18 | .111 | 1-2 | .500 | 3 | 2 | 5 | 0.2 | 7 | 0 | 2 | 2 | 1 | 0 | 11 | 0.5 |

2014-15 Player Notes:

**TEAM RECORDS****MOST POINTS**

Game - 113 vs. Schreiner (11/24/90)
Season - 2,392 vs. 30 games (1990-91)

FEWEST POINTS

Game - 30 at TCU (11/14/11)
Half - 10 at UT Arlington (1/27/97)
Season - 1,455 in 28 games (2001-02)

HIGHEST VICTORY MARGIN

67 (105-38) vs. Prairie View A&M (12/7/93)
67 (96-29) vs. Prairie View A&M (2/10/83)

HIGHEST LOSS MARGIN

57 (39-96) at Texas Tech (12/2/98)

HIGHEST SCORING AVERAGE

Season - 79.7 in 30 games (1990-91)

LOWEST SCORING MARGIN

Season - 51.9 in 28 games (2001-02)

MOST FIELD GOALS MADE

Game - 45 vs. Schreiner (11/24/90)
Season - 872 (1983-84)

FEWEST FIELD GOALS MADE

Game - 8 at TCU (11/14/11)
Season - 516 (2001-02)

MOST FIELD GOALS ATTEMPTED

Game - 78 at Rice (1/4/10)
Season - 2,069 (2008-09)

FEWEST FIELD GOALS ATTEMPTED

Game - 36 at Baylor (12/16/96)
36 vs. South Alabama (11/15/11)
Season - 1,367 (1998-99)

HIGHEST FIELD GOAL PERCENTAGE

Game - .706 vs. Texas Southern (12/5/96)
Season - .478 (800-1,675); 1984-85

LOWEST FIELD GOAL PERCENTAGE

Game - .133 (8-60) at TCU (11/14/11)
Season - .344 (549-1,596); 2011-12

MOST FREE THROWS MADE

Game - 33 vs. Oral Roberts (2/22/86)
33 at Texas Tech (12/17/88)
Season - 531 (1990-91)

FEWEST FREE THROWS MADE

Game - 0 vs. St. Bonaventure (12/21/10)
Season - 286 (1981-82)

MOST FREE THROWS ATTEMPTED

Game - 45 vs. Texas State (12/22/13)
Season - 789 (1990-91)

FEWEST FREE THROWS ATTEMPTED

Game - 3 vs. St. Mary's (2/14/84)
3 vs. St. Bonaventure (12/21/10)
Season - 427 (1981-82)

HIGHEST FREE THROW PERCENTAGE

Game - .944 (17-18) vs. UNT (1/22/96)
Season - .726 (462-636); 2010-11

LOWEST FREE THROW PERCENTAGE

Game - .000 (0-3) vs. St. Bonaventure (12/21/10)
Season - .619 (289-467); 1993-94

MOST 3-PT FIELD GOALS MADE

Game - 13 vs. Tulsa (1/5/09)
13 vs. Tulsa (3/11/14)
Season - 229 (2008-09)

FEWEST 3-PT FIELD GOALS MADE

Game - 0 multiple times
Season - 47 (1996-97)

MOST 3-PT FIELD GOALS ATTEMPTED

Game - 37 vs. UT-Arlington (2/14/09)
Season - 698 (2008-09)

MOST REBOUNDS

Game - 64 vs. Prairie View A&M (2/8/90)
Season - 1,441 (2008-09)

FEWEST REBOUNDS

Game - 21 at UT-Arlington (1/23/07)
Season - 863 (1998-99)

MOST ASSISTS

Game - 34 vs. Southwestern (11/22/83)
34 vs. Oklahoma City (2/27/84)
Season - 529 (1981-82)

FEWEST ASSISTS

Game - 1 at Creighton (2/10/87)
Season - 265 (2011-12)

MOST STEALS

Game - 32 at Hardin Simmons (2/6/84)
Season - 373 (1986-87)

FEWEST STEALS

Game - 0 multiple times
Season - 163 (1998-99)

MOST BLOCKED SHOTS

Game - 14 vs. UTPA (12/21/11)
Season - 138 (2010-11, 2011-12)

FEWEST BLOCKED SHOTS

Game - 0 multiple times
Season - 22 (1996-97)

MOST TURNOVERS

Game - 38 vs. Sam Houston St. (1/12/95)
Season - 679 (1991-92)

FEWEST TURNOVERS

Game - 5 vs. McNeese St. (2/5/12)
Season - 420 (1997-98)

MOST FOULS

Game - 33 at UC-Irvine (11/26/99)
Season - 653 (1983-84)

FEWEST FOULS

Game - 8 vs. A&M-Corpus Christi (2/2/08)
Season - 471 (2002-03)

MOST DISQUALIFICATIONS

31 (2011-12)

100-point Games

| Score..... | Opponent..... | Date |
|--------------|------------------------|----------|
| 113-89..... | Schreiner | 11/24/90 |
| 113-91..... | Oklahoma City | 2/27/84 |
| 105-38 | Prairie View A&M | 12/7/93 |
| 100-62 | St. Mary's..... | 1/24/89 |
| 100-46 | Southwestern..... | 11/28/83 |

90-point Games

| Score..... | Opponent..... | Date |
|-------------------|-----------------------------------|----------|
| 99-65 | UTEP | 3/1/86 |
| 99-73 | Texas State | 1/3/84 |
| 99-98 (OT) | at Tulane | 2/16/91 |
| 98-84 | New Mexico State | 12/31/90 |
| 97-89 (OT) | at Central Arkansas | 2/11/09 |
| 96-78 | Sam Houston State..... | 1/29/91 |
| 93-78 | at Texas A&M-Corpus Christi | 2/23/11 |
| 93-55 | Huston-Tillotson | 12/6/08 |
| 93-48 | Texas A&M-Commerce | 1/12/88 |
| 92-52 | Nicholls | 2/17/94 |
| 92-79 | UTEP | 2/11/84 |
| 92-56 | Huston-Tillotson | 1/29/83 |
| 92-57 | Texas Lutheran | 12/2/82 |
| 91-30 | Texas Southern | 12/5/96 |
| 90-89 (2OT) | vs. Miami (Ohio)..... | 12/29/07 |
| 90-53 | Southeastern Louisiana | 3/3/01 |
| 90-41 | Hardin-Simmons | 2/20/84 |
| 99-89 | Tulsa | 3/11/14 |

**INDIVIDUAL RECORDS****POINTS**

Game - 40 by Starlite Williams vs. St. Mary's (12/16/86)
 Season - 583 by Tammy Rogers (1990-91)
 Career - 1,607 by Starlite Williams (1983-87)

SCORING AVERAGE

Season - 20.7 by Starlite Williams (1986-87)
 Career - 16.6 by Starlite Williams (1983-87)

FIELD GOALS MADE

Game - 16 by Starlite Williams vs. St. Mary's (12/16/86)
 Season - 229 by Starlite Williams (1986-87)
 Career - 674 by Starlite Williams (1983-87)

FIELD GOALS ATTEMPTED

Game - 33 by Tammy Rogers vs. Alaska Anchorage (2/23/91)
 Season - 482 by Tammy Rogers (1990-91)
 Career - 1,305 by Starlite Williams (1983-87)

FIELD GOAL PERCENTAGE (MINIMUM ATTEMPTS)

Game (10) - .928 (13-14) by Starlite Williams vs. Alabama (12/5/86)
 Season (200) - .657 (184-280) by Margaret Martinovich (1984-85)
 Career - .566 (589-1,039) by Margaret Martinovich (1981-85)

FREE THROWS MADE

Game - 17 by Amber Gregg vs. Texas State (2/26/11)
 17 by Monica Gibbs vs. Texas State (3/4/09)
 Season - 167 by Monica Gibbs (2008-09)
 167 by Tammy Rogers (1990-91)
 Career - 553 by Angel Singleton (1993-98)

FREE THROWS ATTEMPTED

Game - 24 vs. Monica Gibbs vs. Texas State (3/4/09)
 Season - 282 by Angel Singleton (1996-97)
 Career - 811 by Angel Singleton (1993-98)

FREE THROW PERCENTAGE (MINIMUM)

Game (10) - 1.000 (12-12) by Whitney York vs. Central Arkanas (2/10/10)
 1.000 (11-11) by Starlite Williams vs. Nevada (11/29/86)
 Season (25) - .903 (28-31) by Rhonda Hoffman (1983-84)
 Career (100) - .822 (259-315) by Amber Gregg (2007-11)

3-PT FIELD GOALS MADE

Game - 8 by Terrie Davis vs. Lamar (1/12/08)
 Season - 82 by Terrie Davis (2007-08)
 Career - 200 by Amber Gregg (2007-11)

CONSECUTIVE 3-POINTERS MADE

8 by Nicole Dunson

3-PT FIELD GOALS ATTEMPTED

Game - 16 by Jordan Stark vs. UT-Arlington (3/14/09)
 16 by Simone Young at TCU (12/5/12)
 Season - 224 by Terrie Davis (2007-08)
 Career - 633 by Amber Gregg (2007-11)

3-PT PERCENTAGE (MINIMUM)

Game (5) - .875 (7-8) by Rosie Smith vs. SFA (1/8/98)
 Season (75) - .441 (52-118) by Nicole Dunson (2005-06)
 Career (150) - .419 (98-234) by Nicole Dunson (2004-06)

REBOUNDS

Game - 24 by Margaret Martinovich vs. A&M-Kingsville (11/27/81)
 Season - 351 by Onika Anderson (2008-09)
 Career - 990 by Monica Gibbs (2005-09)

REBOUND AVERAGE (MINIMUM)

Season (25) - 10.6 (26 games) by Onika Anderson (2008-09)
 Career (50) - 9.8 (59 games) by Onika Anderson (2007-09)

ASSISTS

Game - 15 by Monica Gibbs vs. Huston-Tillotson (12/6/08)
 Season - 221 by Monica Gibbs (2008-09)
 Career - 693 by Monica Gibbs (2005-09)

STEALS

Game - 9 by Rhonda Hoffman vs. Sam Houston State (1/27/84)
 Season - 92 by Starlite Williams (1986-87)
 Career - 281 by Starlite Williams (1983-87)

BLOCKED SHOTS

Game - 8 by Alysse Davis vs. Huston-Tillotson (11/14/10)
 8 by Kim Duncan vs. Texas State (1/24/85)
 Season - 78 by Alysse Davis (2010-11)
 Career - 105 by Whitney Wright (2009-13)

GAMES PLAYED

123 by Monica Gibbs (2005-09)

ATTENDANCE RECORDS

| Date | Opponent | Results | Attendance |
|----------|----------------------|---------------|------------|
| 3/3/12 | UT-Arlington | L, 75-65 | 2,611 |
| 2/7/04 | McNeese State | W, 64-56 (OT) | 2,311 |
| 1/27/96 | Texas State | L, 78-57 | 2,021 |
| 2/9/91 | SMU | W, 93-77 | 2,000 |
| 11/12/10 | Our Lady of the Lake | W, 79-66 | 1,789 |
| 1/29/94 | North Texas | L, 74-65 | 1,786 |
| 2/26/05 | UT-Arlington | W, 48-46 | 1,736 |
| 2/24/07 | A&M-Corpus Christi | W, 61-43 | 1,699 |
| 11/19/10 | No. 23 TCU | L, 83-59 | 1,563 |
| 1/21/04 | Texas State | L, 44-43 | 1,445 |

**OPPONENT RECORDS**

(against UTSA)

Individual Opponent Records**Single Game****Points Scored**

45 by Kelia Shelton, Louisiana Tech (2/7/13)

Points Scored/Conference Game

45 by Kelia Shelton, Louisiana Tech (2/7/13)

Field Goals

16 by Lisa Foss, No. Illinois (2/22/91)

16 by Kelia Shelton, Louisiana Tech (2/7/13)

Field Goals/Conference Game

16 by Kelia Shelton, Louisiana Tech (2/7/13)

Free Throws

17 by Tammy Terry, Oklahoma City (2/27/84)

Free Throws/Conference Game

17 by Tammy Terry, Oklahoma City (2/27/84)

Free Throw Attempts

21 by Katrina Price, SFA (3/5/98)

Free Throw Attempts/Conference

21 by Katrina Price, SFA (3/5/98)

3-Point FG

9 by Carin Stites, Oklahoma (1/21/91)

9 by Angela Branch, ULM (12/30/93)

3-Point FG/Conference Game

9 by Angela Branch, ULM (12/30/93)

Rebounds

21 by Kris Veatch, New Mexico St., (1/23/88)

21 by Yolanda Wilkerson, Texas St. (12/24/96)

Rebounds/Conference Game

21 by Yolanda Wilkerson, Texas St. (12/24/96)

Assists

14 by Amy Sheiron, Sam Houston (2/18/99)

Turnovers

12 by Lakeita Richardson, Sam Houston (2/10/94)

Blocked Shots

7 by Shannon Spriggs, UT Arlington (3/2/95)

Steals

11 by Leslie Hale, Sam Houston (2/11/95)

Team Records**Single Game****Points Scored**

115 by Houston (12/18/89)

Points Scored/Conference Game

102 by Stephen F. Austin (2/3/96)

Points Scored in a Half

66 (1st half) by Houston (12/18/89)

60 (2nd half) by Houston (11/27/90)

Fewest Points in a Game

26 by Prairie View A&M (1/29/83)

Fewest Points/Conference Game

37 by Texas A&M-Corpus Christi (2/17/10)

Fewest Points Scored in a Half

8 (1st half) by Prairie View A&M (12/3/96)

Most Field Goals Made

47 by Houston (11/27/90)

Fewest Field Goals Made

7 by Schreiner (11/15/09)

Fewest Field Goals in a Half

1 by Prairie View A&M (12/3/96)

Schreiner (11/15/09)

Fewest Field Goals/Conference Game

12 by Southeastern Louisiana (1/4/01)

Most FG Attempts

90 by Houston (11/27/90)

Highest FG Percentage

67.8% (40-59) by Stephen F. Austin (1/8/00)

Highest FG Percentage in a Half

72% by Baylor (12/16/96)

Lowest FG Percentage

14% (7-50) by Schreiner (11/15/09)

Most Free Throws Made

33 by Oral Roberts (2/22/86); Texas Tech (12/17/88)

Fewest Free Throws Made

1 by five opponents, most recent by Texas St. (1/28/09)

Most 3-Point FG

13 by Oklahoma (1/21/91)

Most 3-Point FG Made/Conference Game

11 by Sam Houston St. (1/19/06)

Most 3-Point FG Attempts

40 by New Mexico St. (12/31/90)

Most 3-Point FG Attempts/Conference Game

34 by Nicholls (2/19/11)

Highest 3-Point FG Percentage

66.7% by three opponents, most recent by Northwestern St. (8-of-12)(1/22/05)

Most Rebounds

64 by Prairie View A&M (2/8/90); Louisiana-Monroe (12/30/93)

Most Rebounds/Conference Game

64 by Louisiana-Monroe (12/30/93)

Most Assists

38 by Northwestern St. (2/20/93)

Most Assists/Conference Game

38 by Northwestern St. (2/20/93)

Most Turnovers

43 by A&M-Commerce (1/12/87)

Most Fouls

36 by Angelo St. (1/11/82)

Most Fouls/Conference Game

27 by Northwestern St. (1/30/99); Lamar (2/3/05)

Fewest Fouls

7 by McNeese St. (2/19/94)

Most Blocks

13 by Idaho (1/26/13)

Most Steals

31 by Houston (11/27/90)

ALL-TIME VS. RANKED OPPONENTS**By Date**

| | | |
|----------------|------------------------------|---------------|
| Dec. 5, 1985 | vs. No. 25 Houston | L, 52-63 |
| Dec. 13, 1986 | at No. 22 Texas Tech | L, 62-75 |
| Jan. 9, 1988 | at No. 25 Stephen F. Austin | L, 58-81 |
| Dec. 19, 1988 | vs. No. 19 Stephen F. Austin | L, 59-66 |
| Nov. 22, 1997 | vs. No. 19 Texas Tech | L, 44-57 |
| Dec. 2, 1998 | at No. 12 Texas Tech | L, 39-96 |
| Dec. 30, 2001 | vs. No. 19 Auburn | L, 50-73 |
| Dec. 31, 2003 | vs. No. 11 Kansas State | L, 45-75 |
| Dec. 19, 2005 | at No. 10 Arizona State | L, 64-78 |
| Dec. 20, 2006 | vs. No. 13 Purdue | L, 50-75 |
| March 22, 2008 | vs. No. 8 Texas A&M | L, 52-91 |
| Nov. 16, 2008 | at No. 24 TCU | L, 60-73 |
| March 22, 2009 | vs. No. 5 Baylor | L, 82-87 (OT) |
| Nov. 13, 2009 | at No. 10 Texas | L, 60-71 |
| Dec. 19, 2009 | vs. No. 6 Florida State | L, 50-65 |
| Nov. 19, 2010 | vs. No. 23 TCU | L, 59-83 |
| Nov. 15, 2014 | vs. No. 9 Texas | L, 68-48 |

0-17

By Rank

| | | |
|----------------|------------------------------|---------------|
| March 22, 2009 | vs. No. 5 Baylor | L, 82-87 (OT) |
| Dec. 19, 2009 | vs. No. 6 Florida State | L, 50-65 |
| March 22, 2008 | vs. No. 8 Texas A&M | L, 52-91 |
| Nov. 15, 2014 | vs. No. 9 Texas | L, 68-48 |
| Dec. 19, 2005 | at No. 10 Arizona State | L, 64-78 |
| Nov. 13, 2009 | at No. 10 Texas | L, 60-71 |
| Dec. 31, 2003 | vs. No. 11 Kansas State | L, 45-75 |
| Dec. 2, 1998 | at No. 12 Texas Tech | L, 39-96 |
| Dec. 20, 2006 | vs. No. 13 Purdue | L, 50-75 |
| Dec. 19, 1988 | vs. No. 19 Stephen F. Austin | L, 59-66 |
| Nov. 22, 1997 | vs. No. 19 Texas Tech | L, 44-57 |
| Dec. 30, 2001 | vs. No. 19 Auburn | L, 50-73 |
| Dec. 13, 1986 | at No. 22 Texas Tech | L, 62-75 |
| Nov. 19, 2010 | vs. No. 23 TCU | L, 59-83 |
| Nov. 16, 2008 | at No. 24 TCU | L, 60-73 |
| Dec. 5, 1985 | vs. No. 25 Houston | L, 52-63 |
| Jan. 9, 1988 | at No. 25 Stephen F. Austin | L, 58-81 |

0-17



CAREER TOP-10 LIST

POINTS

| Name | Yr. | Points |
|-------------------------|---------|--------|
| 1. Starlite Williams | 1983-87 | 1,607 |
| 2. Angel Singleton | 1994-98 | 1,565 |
| 3. Margaret Martinovich | 1981-85 | 1,480 |
| 4. Monica Gibbs | 2005-09 | 1,460 |
| 5. Tisha Boldt | 1986-91 | 1,379 |
| 6. Tammy Rogers | 1987-91 | 1,343 |
| 7. Michelle Martin | 1989-93 | 1,192 |
| 8. Sharon Wilson | 1985-89 | 1,173 |
| 9. Amber Gregg | 2007-11 | 1,143 |
| 10. Nikki Hendrix | 2001-04 | 1,122 |

SCORING AVERAGE

| Name | Games | Avg |
|----------------------------------|-------|------|
| 1. Starlite Williams (83-87) | 97 | 16.5 |
| 2. Rosie Smith (97-99) | 54 | 16.3 |
| 3. Valerie Wells (82-84) | 54 | 15.3 |
| 4. Angel Singleton (93-98) | 105 | 14.9 |
| 5. Nikki Hendrix (01-04) | 78 | 14.4 |
| 6. Vivian Ewalefo (05-07) | 60 | 14.1 |
| Denise Forestier (990-92) | 38 | 14.1 |
| Karen Gaskin (88-90) | 54 | 14.1 |
| 9. Tammy Rogers (87-91) | 96 | 14.0 |
| 10. Margaret Martinovich (81-85) | 108 | 13.7 |

FIELD GOALS MADE

| Name | Games | FG |
|---------------------------------|-------|-----|
| 1. Starite Williams (83-87) | 97 | 674 |
| 2. Margaret Martinovich (81-85) | 108 | 589 |
| 3. Tisha Boldt (86-91) | 111 | 561 |
| 4. Angel Singleton (93-98) | 105 | 506 |
| 5. Kim Maxwell (81-84) | 81 | 502 |
| 6. Monica Gibbs (05-09) | 123 | 490 |
| 7. Sharon Wilson (85-89) | 102 | 460 |
| 8. Tammy Rogers (87-91) | 96 | 451 |
| 9. Michelle Martin (89-93) | 103 | 444 |
| 10. Nikki Hendrix (01-04) | 81 | 426 |

FIELD GOAL PERCENTAGE (MIN. 200)

| Name | Games | FG% |
|---------------------------------|-------|------|
| 1. Margaret Martinovich (81-85) | 108 | .567 |
| 2. Onika Anderson (07-09) | 59 | .527 |
| 3. Starlite Williams (83-87) | 97 | .516 |
| 4. Valerie Wells (82-84) | 54 | .514 |
| 5. Angel Singleton (93-98) | 105 | .511 |
| 6. Karen Gaskin (88-90) | 54 | .509 |
| 7. Tisha Boldt (86-91) | 111 | .505 |
| 8. Kim Maxwell (81-84) | 81 | .479 |
| 9. Renda Churman (97-01) | 108 | .475 |
| Debbie Groves (84-88) | 101 | .475 |

REBOUNDS

| Name | Games | Reb |
|---------------------------------|-------|-----|
| 1. Monica Gibbs (05-09) | 123 | 990 |
| 2. Margaret Martinovich (81-85) | 108 | 778 |
| 3. Angel Singleton (93-98) | 105 | 730 |
| 4. Tisha Boldt (86-91) | 111 | 675 |
| 5. Starlite Williams (83-87) | 97 | 636 |
| 6. Michelle Martin (89-93) | 103 | 590 |
| 7. Onika Anderson (07-09) | 59 | 579 |
| 8. Debbie Groves (84-88) | 101 | 550 |
| 9. Tiffany Williams (90-94) | 102 | 544 |
| 10. Tammy Rogers (87-91) | 96 | 513 |

REBOUNDBING AVERAGE

| Name | Games | Avg |
|---------------------------------|-------|-----|
| 1. Onika Anderson (07-09) | 59 | 9.8 |
| 2. Ashleigh Franklin (09-11) | 58 | 8.7 |
| 3. Monica Gibbs (05-09) | 123 | 8.0 |
| 4. Vivian Ewalefo (05-07) | 60 | 7.6 |
| 5. Valerie Wells (82-84) | 54 | 7.4 |
| 6. Margaret Martinovich (81-85) | 108 | 7.2 |
| 7. Angel Singleton (93-98) | 105 | 7.0 |
| 8. Keelah Williams (98-00) | 52 | 6.6 |
| Starlite Williams (83-87) | 97 | 6.6 |
| 10. Mantha Emory (93-95) | 52 | 6.4 |

3-PT FIELD GOALS MADE

| Name | Games | 3-pt |
|------------------------------------|-----------|------------|
| 1. Amber Gregg (07-11) | 118 | 200 |
| 2. Terrie Davis (04-08) | 118 | 195 |
| 3. Ashley Spaletta (2011-P) | 89 | 147 |
| 4. Philicia Ross (90-94) | 96 | 121 |
| 5. Kamra King (2011-P) | 90 | 114 |
| 6. Jordan Stark (07-09) | 53 | 111 |
| 7. Alysse Davis (08-11) | 57 | 102 |
| 8. Nicole Dunson (04-06) | 54 | 98 |
| 9. Rosie Smith (96-98) | 54 | 94 |
| 10. Tammy Rogers (87-91) | 96 | 86 |

ASSISTS

| Name | Games | Ast |
|----------------------------|-------|-----|
| 1. Monica Gibbs (05-09) | 123 | 693 |
| 2. Tammy Rogers (87-91) | 96 | 377 |
| 3. Rhonda Hoffman (83-87) | 102 | 375 |
| 4. Sharon Wilson (85-89) | 102 | 355 |
| 5. Joyce Howard (96-98) | 53 | 333 |
| 6. Shelley Seale (81-83) | 54 | 296 |
| 7. Kim Reed (01-05) | 112 | 272 |
| 8. Karen Kroen (83-87) | 73 | 263 |
| 9. Kim Maxwell (81-84) | 81 | 259 |
| 10. Whitney York (2007-13) | 96 | 249 |

STEALS

| Name | Games | Steals |
|-------------------------------|-----------|------------|
| 1. Starlite Williams (83-87) | 97 | 281 |
| 2. Michelle Martin (89-93) | 103 | 227 |
| 3. Sharon Wilson (85-89) | 102 | 223 |
| 4. Rhonda Hoffman (83-87) | 102 | 222 |
| 5. Monica Gibbs (05-09) | 123 | 207 |
| 6. Kamra King (2011-P) | 90 | 194 |
| 7. Terrie Davis (04-08) | 118 | 173 |
| 8. Tammy Rogers (87-91) | 96 | 165 |
| 9. Latifa Northern (98-02) | 109 | 144 |
| 10. Angel Singleton (93-98) | 105 | 140 |

BLOCKS

| Name | Games | Bk |
|------------------------------|-------|-----|
| 1. Whitney Wright (09-13) | 114 | 105 |
| 2. Alysse Davis (08-11) | 57 | 98 |
| 3. Kim Duncan (83-85) | 55 | 93 |
| 4. Starlite Williams (83-87) | 97 | 88 |
| 5. Mantha Emory (93-95) | 52 | 81 |
| 6. Lacy Mingee (01-06) | 113 | 70 |
| 7. Monica Gibbs (05-09) | 90 | 69 |
| 8. Katie Sandefur (02-06) | 116 | 66 |
| Ryba Pawlaczyk (07-09) | 60 | 66 |
| 10. Keelah Wilson (98-00) | 52 | 61 |

GAMES PLAYED

| Name | Yrs. | Games |
|-------------------------|---------|-------|
| 1. Monica Gibbs | 2005-09 | 123 |
| 2. Terrie Davis | 2004-08 | 118 |
| Amber Gregg | 2007-11 | 118 |
| 4. Katie Sandefur | 2002-06 | 116 |
| 5. Lacy Mingee | 2001-06 | 115 |
| 6. Whitney Wright | 2009-13 | 114 |
| 7. Kim Reed | 2001-05 | 112 |
| 8. Tisha Boldt | 1987-91 | 111 |
| 9. Latifa Northern | 1998-02 | 109 |
| 10. Melinda Hausenfluke | 1990-94 | 108 |
| Margaret Martinovich | 1981-85 | 108 |
| Renda Churman | 1997-01 | 108 |

GAMES STARTED

| Name | Yrs. | Starts |
|----------------------|---------------|-----------|
| 1. Monica Gibbs | 2005-09 | 113 |
| 2. Angel Singleton | 1994-98 | 101 |
| 3. Terrie Davis | 2004-08 | 99 |
| 4. Kamra King | 2011-P | 95 |
| 5. Starlite Williams | 1983-87 | 92 |
| 6. Tammy Rogers | 1987-91 | 90 |
| Tisha Boldt | 1986-91 | 87 |
| 8. Amber Gregg | 2007-11 | 86 |
| 9. Latifa Northern | 1998-02 | 84 |
| Whitney York | 2008-13 | 84 |



2014-15 UTSA Roadrunners Basketball
UTSA Season Box Score (as of Dec 26, 2014)
All games

| RECORD: | OVERALL | HOME | AWAY | NEUTRAL |
|----------------|----------------|-------------|-------------|----------------|
| ALL GAMES | 4-6 | 2-2 | 2-2 | 0-2 |
| CONFERENCE | 0-0 | 0-0 | 0-0 | 0-0 |
| NON-CONFERENCE | 4-6 | 2-2 | 2-2 | 0-2 |

| ## | Player | gp-gs | min | avg | Total | | 3-Point | | F-Throw | | Rebounds | | | | pf | dq | a | to | blk | stl | pts | avg |
|----------------|--------------------|-------|------|------|---------|------|---------|------|---------|------|----------|-----|-----|------|-----|----|----|-----|-----|-----|-----|------|
| | | | | | fg-fga | fg% | 3fg-fga | 3fg% | ft-fa | ft% | off | def | tot | avg | | | | | | | | |
| 10 | KING, Kamra | 10-10 | 313 | 31.3 | 37-122 | .303 | 11-49 | .224 | 66-86 | .767 | 14 | 16 | 30 | 3.0 | 24 | 1 | 19 | 38 | 2 | 21 | 151 | 15.1 |
| 31 | HEINEMAN, Carlie | 7-1 | 143 | 20.4 | 17-53 | .321 | 15-46 | .326 | 0-0 | .000 | 3 | 5 | 8 | 1.1 | 8 | 0 | 7 | 5 | 1 | 3 | 49 | 7.0 |
| 33 | BELL, Mannasha | 10-10 | 264 | 26.4 | 24-48 | .500 | 0-0 | .000 | 20-35 | .571 | 28 | 34 | 62 | 6.2 | 31 | 0 | 7 | 19 | 0 | 22 | 68 | 6.8 |
| 24 | SPALETТА, Ashley | 10-10 | 280 | 28.0 | 22-81 | .272 | 13-55 | .236 | 10-14 | .714 | 6 | 30 | 36 | 3.6 | 25 | 1 | 21 | 30 | 4 | 21 | 67 | 6.7 |
| 12 | MITCHELL-COLE, Nia | 6-6 | 141 | 23.5 | 11-41 | .268 | 1-7 | .143 | 14-18 | .778 | 3 | 17 | 20 | 3.3 | 7 | 0 | 3 | 8 | 6 | 9 | 37 | 6.2 |
| 21 | ELONU, Akunna | 10-10 | 235 | 23.5 | 22-47 | .468 | 0-0 | .000 | 14-28 | .500 | 27 | 40 | 67 | 6.7 | 19 | 0 | 7 | 12 | 5 | 7 | 58 | 5.8 |
| 30 | SMITH, Tesha | 10-0 | 164 | 16.4 | 24-49 | .490 | 0-0 | .000 | 9-24 | .375 | 18 | 34 | 52 | 5.2 | 30 | 3 | 1 | 18 | 2 | 3 | 57 | 5.7 |
| 02 | HERGOTT, Mathilde | 6-1 | 117 | 19.5 | 6-29 | .207 | 4-19 | .211 | 2-5 | .400 | 5 | 6 | 11 | 1.8 | 10 | 0 | 7 | 14 | 5 | 6 | 18 | 3.0 |
| 05 | HEARD, Alana | 9-2 | 146 | 16.2 | 9-26 | .346 | 0-0 | .000 | 6-11 | .545 | 3 | 17 | 20 | 2.2 | 27 | 2 | 17 | 24 | 6 | 6 | 24 | 2.7 |
| 04 | CHIDOMERE, Crystal | 9-0 | 78 | 8.7 | 9-24 | .375 | 0-2 | .000 | 2-3 | .667 | 3 | 6 | 9 | 1.0 | 13 | 1 | 6 | 7 | 5 | 1 | 20 | 2.2 |
| 32 | TATE, Dwanisha | 7-0 | 60 | 8.6 | 5-15 | .333 | 0-3 | .000 | 5-7 | .714 | 7 | 11 | 18 | 2.6 | 11 | 0 | 0 | 3 | 0 | 3 | 15 | 2.1 |
| 25 | WILLIAMS, Taylor | 7-0 | 51 | 7.3 | 3-4 | .750 | 0-0 | .000 | 2-4 | .500 | 3 | 7 | 10 | 1.4 | 3 | 0 | 0 | 2 | 6 | 1 | 8 | 1.1 |
| 45 | BEARD, Haylee | 3-0 | 8 | 2.7 | 1-4 | .250 | 0-1 | .000 | 0-0 | .000 | 0 | 1 | 1 | 0.3 | 0 | 0 | 0 | 0 | 0 | 0 | 2 | 0.7 |
| Team | | | | | | | | | | | 22 | 27 | 49 | | | | | 4 | | | | |
| Total..... | | 10 | 2000 | | 190-543 | .350 | 44-182 | .242 | 150-235 | .638 | 142 | 251 | 393 | 39.3 | 208 | 8 | 95 | 184 | 42 | 103 | 574 | 57.4 |
| Opponents..... | | 10 | 2000 | | 192-512 | .375 | 39-142 | .275 | 131-223 | .587 | 113 | 252 | 365 | 36.5 | 228 | - | 92 | 191 | 27 | 94 | 554 | 55.4 |

| Score by Periods | 1st | 2nd | Totals |
|-------------------------|------------|------------|---------------|
| UTSA | 277 | 297 | 574 |
| Opponents | 242 | 312 | 554 |



Official Basketball Box Score -- Game Totals -- Final Statistics

UTSA vs Nicholls State

12/21/14 11:00 PM at Lubbock, TX (United Supermarkets Arena)

UTSA 49 • 4-6

| # | Player | | Total | 3-Ptr | FT-FTA | Rebounds | | | PF | TP | A | TO | Blk | Stl | Min |
|--------|--------------------|---|--------|--------|--------|----------|-----|-----|----|----|---|----|-----|-----|-----|
| | | | FG-FGA | FG-FGA | | Off | Def | Tot | | | | | | | |
| 02 | HERGOTT, Mathilde | * | 2-8 | 1-6 | 2-2 | 2 | 4 | 6 | 2 | 7 | 2 | 3 | 2 | 4 | 40 |
| 10 | KING, Kamra | * | 4-15 | 1-6 | 4-6 | 2 | 2 | 4 | 1 | 13 | 1 | 4 | 0 | 1 | 38 |
| 21 | ELONU, Akunna | * | 2-4 | 0-0 | 2-4 | 3 | 3 | 6 | 4 | 6 | 1 | 1 | 0 | 1 | 19 |
| 24 | SPALETТА, Ashley | * | 0-7 | 0-3 | 0-0 | 1 | 1 | 2 | 0 | 0 | 3 | 5 | 0 | 4 | 30 |
| 33 | BELL, Mannasha | * | 2-6 | 0-0 | 1-2 | 4 | 1 | 5 | 3 | 5 | 1 | 1 | 0 | 1 | 21 |
| 04 | CHIDOMERE, Crystal | | 0-1 | 0-0 | 0-0 | 0 | 1 | 1 | 0 | 0 | 0 | 0 | 0 | 0 | 5 |
| 05 | HEARD, Alana | | 1-1 | 0-0 | 0-0 | 0 | 0 | 0 | 2 | 2 | 0 | 1 | 0 | 0 | 10 |
| 25 | WILLIAMS, Taylor | | 0-0 | 0-0 | 0-0 | 0 | 0 | 0 | 1 | 0 | 0 | 1 | 0 | 0 | 5 |
| 30 | SMITH, Tesha | | 5-7 | 0-0 | 0-0 | 2 | 5 | 7 | 3 | 10 | 0 | 4 | 0 | 0 | 20 |
| 32 | TATE, Dwanisha | | 2-5 | 0-1 | 2-2 | 1 | 0 | 1 | 2 | 6 | 0 | 1 | 0 | 0 | 9 |
| 45 | BEARD, Haylee | | 0-1 | 0-0 | 0-0 | 0 | 0 | 0 | 0 | 0 | 0 | 0 | 0 | 0 | 3 |
| Team | | | | | | 3 | 3 | 6 | | | | | | | |
| Totals | | | 18-55 | 2-16 | 11-16 | 18 | 20 | 38 | 18 | 49 | 8 | 21 | 2 | 11 | 200 |

FG % 1st Half: 11-28 39.3% 2nd half: 7-27 25.9% Game: 18-55 32.7%
 3FG % 1st Half: 2-7 28.6% 2nd half: 0-9 0.0% Game: 2-16 12.5%
 FT % 1st Half: 6-7 85.7% 2nd half: 5-9 55.6% Game: 11-16 68.8%

Deadball
Rebounds
4

Nicholls State 57 • 4-6

| # | Player | | Total | 3-Ptr | FT-FTA | Rebounds | | | PF | TP | A | TO | Blk | Stl | Min |
|--------|--------------------|---|--------|--------|--------|----------|-----|-----|----|----|---|----|-----|-----|-----|
| | | | FG-FGA | FG-FGA | | Off | Def | Tot | | | | | | | |
| 05 | Pawlowski, Hope | * | 0-3 | 0-0 | 0-0 | 2 | 0 | 2 | 2 | 0 | 0 | 1 | 0 | 0 | 10 |
| 12 | Nash, Jenny | * | 4-8 | 1-3 | 2-2 | 1 | 6 | 7 | 1 | 11 | 1 | 5 | 0 | 2 | 40 |
| 15 | Charles, Tia | * | 8-17 | 2-5 | 5-11 | 0 | 4 | 4 | 3 | 23 | 1 | 5 | 0 | 6 | 31 |
| 22 | Gray, Ekiya | * | 1-1 | 0-0 | 0-0 | 1 | 0 | 1 | 2 | 2 | 0 | 2 | 1 | 0 | 13 |
| 40 | Lilly, Marina | * | 0-2 | 0-0 | 0-0 | 0 | 2 | 2 | 2 | 0 | 0 | 1 | 0 | 0 | 13 |
| 01 | Mandic, Jovana | | 0-0 | 0-0 | 0-0 | 0 | 0 | 0 | 1 | 0 | 0 | 1 | 0 | 0 | 3 |
| 02 | Arnack, Shay | | 4-6 | 1-1 | 3-4 | 2 | 2 | 4 | 3 | 12 | 1 | 4 | 0 | 2 | 21 |
| 23 | Ryan, Veronica | | 1-3 | 1-2 | 0-0 | 0 | 1 | 1 | 1 | 3 | 2 | 0 | 0 | 2 | 30 |
| 24 | Morrison, Taylor | | 1-7 | 1-7 | 0-0 | 1 | 2 | 3 | 4 | 3 | 2 | 0 | 0 | 3 | 35 |
| 55 | Guillory, JonMarie | | 1-1 | 0-0 | 1-1 | 0 | 0 | 0 | 1 | 3 | 0 | 1 | 0 | 0 | 4 |
| Team | | | | | | 3 | 3 | 6 | | | | | | | |
| Totals | | | 20-48 | 6-18 | 11-18 | 10 | 20 | 30 | 20 | 57 | 7 | 20 | 1 | 15 | 200 |

FG % 1st Half: 8-25 32.0% 2nd half: 12-23 52.2% Game: 20-48 41.7%
 3FG % 1st Half: 2-8 25.0% 2nd half: 4-10 40.0% Game: 6-18 33.3%
 FT % 1st Half: 4-5 80.0% 2nd half: 7-13 53.8% Game: 11-18 61.1%

Deadball
Rebounds
5

Officials: Brian Hall, Roy Gulbeyan, Metta Roberts

Technical fouls: UTSA-None. Nicholls State-None.

Attendance:

| Score by periods | 1st | 2nd | Total |
|------------------|-----|-----|-------|
| UTSA | 30 | 19 | 49 |
| Nicholls State | 22 | 35 | 57 |

| | In | Off | 2nd | Fast | |
|--------|-------|-----|--------|-------|-------|
| Points | Paint | T/O | Chance | Break | Bench |
| UTSA | 30 | 23 | 14 | 8 | 18 |
| NICH | 24 | 24 | 11 | 8 | 21 |

Last FG - UTSA 2nd-00:53, NICH 2nd-01:51.

Largest lead - UTSA by 10 1st-07:20, NICH by 8 2nd-00:14.

UTSA led for 27:22. NICH led for 07:29. Game was tied for 04:12.

Score tied - 2 times.

Lead changed - 1 time.