

2023-24 SUN DEVIL WBB GAME NOTES

2023-24 Schedule/Results (0-0, 0-0 Pac-12)

DAY & DATE	OPPONENT	TIME/RESULT
MON., NOV. 6	UTSA (ASU Live Stream)	6 P.M. MST
FRI., NOV. 10	MONTANA STATE (ASU Live Stream)	6 P.M. MST
MON., NOV. 13	SAN FRANCISCO (ASU Live Stream)	7 P.M. MST
<u>Pac-12/SWAC Legacy Series</u>		
Thurs., Nov. 16	at Grambling State	5 p.m. MST/6 p.m. CST
SUN., NOV. 19	IDAHO STATE (ASU Live Stream)	6 P.M. MST
<u>Paradise Jam (Nov. 23-25/ St. Thomas, U.S. Virgin Islands)</u>		
Thurs., Nov. 23	vs. Texas	6 p.m. MST/9 p.m. AST
Fri., Nov. 24	vs. South Florida	3:45 p.m. MST/6:45 p.m. AST
Sat., Nov. 25	vs. High Point	3:45 p.m. MST/6:45 p.m. AST
<u>BRIANN JANUARY CLASSIC DEC. 1-2/TEMPE, ARIZ.</u>		
Fri., Dec. 1	Xavier vs Temple	4 p.m. MST
FRI., DEC. 1	ASU VS. PACIFIC (Pac-12 Networks)	7 P.M. MST
Sat., Dec. 2	Temple vs Pacific	1 p.m. MST
SAT., DEC. 2	ASU VS. XAVIER (ASU Live Stream)	4 P.M. MST
FRI., DEC. 8	GRAND CANYON (ASU Live Stream)	1 P.M. MST
SUN., DEC. 17	ARIZONA* (Pac-12 Networks)	5 P.M. MST
<u>Jerry Colangelo's 2023 Hall of Fame Series, Phoenix, Ariz.</u>		
Wed., Dec. 20	vs. Fresno State	12 p.m. MST
SAT., DEC. 30	SANTA CLARA (ASU Live Stream)	1 P.M. MST
FRI., JAN. 5	UTAH* (Pac-12 Networks)	7 P.M. MST
SUN., JAN. 7	COLORADO* (Pac-12 Networks)	12 P.M. MST
Fri., Jan. 12	at Oregon* (Pac-12 Networks)	8 p.m. MST/7 p.m. PST
Sun., Jan. 14	at Oregon State* (Pac-12 Networks)	1 p.m. MST/12 p.m. PST
Fri., Jan. 19	at Washington State* (Pac-12 Networks)	8 p.m. MST/7 p.m. PST
Sun., Jan. 21	at Washington* (Pac-12 Networks)	1 p.m. MST/12 p.m. PST
FRI., JAN. 26	STANFORD* (Pac-12 Networks)	6 P.M. MST
SUN., JAN. 28	CAL* (Pac-12 Networks)	12 P.M. MST
Sun., Feb. 4	at Arizona* (Pac-12 Networks)	12 p.m. MST
Fri., Feb. 9	at USC* (Pac-12 Networks)	8 p.m. MST/7 p.m. PST
Sun., Feb. 11	at UCLA* (Pac-12 Networks)	1 p.m. MST/12 p.m. PST
FRI., FEB. 16	WASHINGTON* (Pac-12 Networks)	6 P.M. MST
SUN., FEB. 18	WASHINGTON STATE* (Pac-12 Networks)	12 P.M. MST
Fri., Feb. 23	at Cal* (Pac-12 Networks)	8 p.m. MST/7 p.m. PST
Sun., Feb. 25	at Stanford* (Pac-12 Networks)	1 p.m. MST/12 p.m. PST
THURS., FEB. 29	UCLA* (Pac-12 Networks)	7 P.M. MST
SAT., MAR. 2	USC* (Pac-12 Networks)	12 P.M. MST
<u>2024 Pac-12 Women's Basketball Tournament</u>		
Mar. 6, 7, 8, 10	TBD	TBD

Home games (listed in BOLD CAPS) played at Desert Financial Arena.

* - Pac-12 Game

Game No. 1

Arizona State]

(0-0)

vs.

UTSA

(0-0)

Monday, November 6th, 2023

6 p.m. MST • Desert Financial Arena • Tempe, Ariz.

ASU Live Stream • KDUS AM 1060

UP NEXT

The Sun Devil women's basketball team opens the 2023-24 season on Monday (6 p.m. MST) when it hosts UTSA at Desert Financial Arena.

Second-year head coach Natasha Adair is excited about a roster that includes seven healthy returning players and eight newcomers.

For Adair, despite the countless number of positive adjectives she uses to describe each player on the roster, there is one that stands out above all others as it relates to all the active players: healthy.

While there are so many factors involved in any team's success, it could be argued there is an element of luck that has the potential to affect any team – no matter how talented, no matter how experienced – and that would be the ability to stay healthy.

Adair's first Sun Devil squad started the season 5-0, the first time an ASU team could boast of such an accomplishment since the 2002-03 season. Unfortunately, the team's fortunes would end up being beset by injuries that would ultimately be play a major factor in the team's ability to be competitive in arguably the best women's basketball conference in the nation in the Pac-12.

In 2022-23, the Sun Devils had four players who played in fewer than half the team's games due to injury. And that did not include a pair of difference makers who did not play in a single game due to injuries incurred before the start of the season.

With all that stated, it would come as little surprise to anyone that the team's much-improved health was the first item Adair reference when she was asked to talk about the state of this year's team at Pac-12 Media Day.

"We're healthy, and I'll start there," Adair stated. "It's just exciting to be able to be in the gym now ... a year ago we just didn't have this opportunity.

"But we talk about the energy, the enthusiasm, the competitiveness, and I think that's the energy right now, that we're healthy, but we're competing. I'm just excited moving forward."

WATCH/LISTEN

- Monday's season opener can be seen via ASU Live Stream. Alexis Davis (PxP), Blake Niemann (analyst) and Ben Parris (sideline) will be calling the action.
- The game can also be heard on KDUS AM 1060. Veteran broadcaster and the state of Arizona's 2010 & 2019 Broadcaster of the Year Jeff Munn is in his 20th season as the voice of ASU women's basketball. He will be joined by former Sun Devil head coach Maura McHugh.

SERIES NOTES VERSUS UTSA

- ASU has won its five prior contests vs. UTSA, most recently 68-44 in round one of the Sun Devil Classic in 2021 in Tempe.
- The last four meetings have been in Tempe after ASU took the first game 70-35 at UTSA on December 19, 1999.

SUN DEVIL

W O M E N ' S B A S K E T B A L L

2023-24 SUN DEVIL WBB GAME NOTES

SUN DEVIL WBB 2023-24 QUICK FACTS

School Information

Location	Tempe, Ariz.
Founded	1885
Enrollment.....	103,410
Nickname	Sun Devils
Colors	Maroon and Gold
Conference	Pac-12
Arena (Capacity).....	Desert Financial Arena (14,100)
President	Dr. Michael Crow
Vice President for University Athletics/Athletics Director.....	Ray Anderson
WBB Administrators	Christina Wombacher (Sr. Associate AD/SWA)
.....	Natesh Rao (Sr. Associate AD)

Staff

Head Coach	Natasha Adair (2nd season)
Record at ASU (seasons)	8-20 (2nd season)
Career record (seasons)	175-163 (12th season)
Associate Head Coach	Darrell Mosley (2nd season)
Assistant Coach/Recruiting Coordinator	Mykala Walker (2nd season)
Assistant Coach	Camille Collier (2nd season)
Special Asst. to the Head Coach.....	Yvonne Sanchez (1st season)
Director of Operations	Carter Caplan (2nd season)
Asst. Director of Operations.....	Lizzie Oleary (2nd season)

Media Relations Contacts

Associate SID	Steve Rodriguez
Cell/Email	480-254-2489 / steve.rodriguez@asu.edu
Sr. Associate AD, Media Relations	Doug Tammaro
Cell/Email	480-734-7795 / tammaro@asu.edu

Returns

#2	Jaddan Simmons	G	5-9	Sr.
#4	Trayanna Crisp	G	5-8	So.
#11	Maggie Besselink	G/F	6-3	Sr.
#12	Treasure Hunt	G	6-2	Sr.
#22	Journey Thompson	F	6-3	So.
#30	Morasha Wiggins	G	6-0	Jr.
#44	Isadora Sousa	G	6-0	Grad.

Newcomers

#1	Kadidia Toure	F	6-3	So.
#10	Marina Radocaj	G/F	6-2	Fr.
#13	Sandra Magolico	F	6-2	Jr.
#20	Kiley Sours-Miller	C	6-4	Fr.
#21	Hanna Miller	F	6-2	So.
#23	Jalyn Brown	G	6-1	So.
#24	Mallory Miller	F	6-4	Fr.
#25	Adison Novosel	G	5-11	Jr.

Will miss 2023-24 due to injury (both returners)

#0	Jaylah Robinson	G	5-11	Fr.
#3	Tyi Skinner	G	5-5	Jr.

Pronunciation Guide

Natasha Adair – A-dare
Maggie Besselink – Bessel-ink
Jalyn Brown – Jay-lynn
Trayanna Crisp – Tray-on-nah
Sandra Magolico – Sahn-dra Mag-oh-link-oh
Adison Novosel – No-vuh-sell
Marina Radocaj – Maude-E-nuh Rahd-oh-chai
Jaylah Robinson – Jay-luh
Jaddan Simmons – Jade-en
Tyi Skinner – Tie
Isadora Sousa – So-za
Kadidia Toure – kuh-DEE-shuh TORE-ay
Morasha Wiggins – more-AH-shuh

RECAPPING THE 2022-23 SEASON

Despite a spate of unlucky injuries to key personnel, the Sun Devils had several noteworthy accomplishments during Adair's inaugural season in Tempe. The accomplishments included...

- Starting 5-0 for the first time since 2002-03.
- Finishing the season No. 2 in the Pac-12 and 10th in the nation in fewest turnovers per game (12.3). Only ASU's 2017-18 squad averaged fewer turnovers per game (11.7) in a season.
- Even with all its injuries, ASU nearly pulled off three Top 25 upsets in the season's final five games: vs. No. 21 Colorado (62-70), vs. No. 4 Utah (69-74) and vs. No. 19 UCLA (70-81-OT) in the first round of the Pac-12 Tournament. After trailing the Bruins by as many as 19 points in the third quarter, the Sun Devils staged a furious rally to take a two-point lead in regulation before falling in overtime. The win would have been ASU's biggest comeback in school history.
- In their 75-73 win at Oregon State, the Sun Devils overcame their second-largest deficit in school history (17 points). The victory was also No. 175 of Adair's career.
- Individually, Sun Devil guards Jaddan Simmons (Pac-12 All-Defense honorable mention) and Tyi Skinner (All-Pac-12 honorable mention) comprised one of the most talented backcourts in the country. Both players earned Pac-12 honors as voted on by the league's head coaches. Skinner, who finished second in the Pac-12 and 27th in the nation in scoring (19.2 ppg), was also named to the media's 15-member All-Pac-12 team.

WBB ALL-PAC-12 STANDOUT TYI SKINNER TO MISS 2023-24 SEASON

Although the Sun Devil women's basketball team's overall health is a 180-degree difference from last season, the squad was dealt a tremendous blow when Natasha Adair announced Oct. 4, 2023 that senior guard Tyi Skinner will miss the 2023-24 season due to a knee injury.

Skinner, who last season earned All-Pac-12 honorable mention honors from the league's coaches and All-Pac-12 recognition from media who cover the league, quickly established herself as one of top scorers in the Pac-12 and one of the most exciting players in the nation to watch in her first season in Tempe.

In 2022-23, Skinner scored 20 or more points 15 times, including a career-high 29 points on two occasions. A starter in all 28 games, Skinner went on to average 19.3 points per game, the most by a Sun Devil since the 1988-89 season. She concluded her first campaign in the Maroon and Gold among the leaders in the Pac-12 in points per game (19.3/2nd/27th in the nation), 3-pointers per game (2.43 per game/2nd), minutes per game (36.59/3rd/29th in the nation), free throws made (79/3rd) and attempted (91/4th), steals per game (1.71/5th), 3-point FG percentage (34.7/6th) and free throw percentage (78.1/8th).

Skinner, who played her first two seasons at Delaware under Adair, went over 1,000 points in career scoring last season, concluding the campaign with 1,203 career points.

SUN DEVIL

W O M E N ' S B A S K E T B A L L

2023-24 SUN DEVIL WBB GAME NOTES

QUICK PLAYER NOTES

#1 • Kadidia Toure • F • 6-3 • So. • Silver Spring, Md.

- Transferred to ASU in 2023 after playing freshman season at James Madison.
- Played in 21 games and recorded career-highs in points (10) and steals (3) versus Queens (N.C.) on Nov. 13.
- Four-year varsity player for Our Lady of Good Counsel (Olney, Md.). As a senior in 2022, the league's player of the year averaged 14 points, 13 rebounds and four blocks on her way to WCAC Player of the Year honors and first-team All-Met recognition.

#2 • Jaddan Simmons • G • 5-9 • Sr. • Houston, Texas

- Has started all 77 games she's played over the last three seasons.
- Was named 2022 Preseason Pac-12 Honorable Mention and at the conclusion of the season was named Pac-12 All-Defensive Team Honorable Mention.
- Scored in double figures in 22 of 27 games last season on her way to a single-season, career-high 12.4 ppg.

#3 • Tyi Skinner • G • 5-5 • Sr. • Washington, D.C.

- Was announced on October 4, 2023 that Tyi Skinner will miss the 2023-24 season due to a knee injury.
- Tyi Skinner made an immediate impact in her first season as a Sun Devil, earning All Pac-12 recognition from media that cover the league and Pac-12 honorable mention honors from the league's coaches for a season in which she started all 28 games and averaged the most points per game (19.2) in a season since 1988-89.
- Finished second in the Pac-12 and 27th in the nation in points per game last season.
- Scored in double figures in 25 of 28 games, including 15 games with 20 or more points.

#4 • Trayanna Crisp • G • 5-8 • So. • Goodyear, Ariz.

- In her first season wearing the Maroon and Gold, Crisp appeared in all 28 games, starting five of them.
- Earned her first start against Missouri, scoring 11 points.
- Averaged double figures in scoring (11.5 ppg) and connected on 60 percent of her field goals (9-15) at the Goombay Splash (Nov. 25-26).

#10 • Marina Radocaj • G/F • 6-2 • Fr. • Richmond, British Columbia

- Talented standout, who earned spots on Canada's U16 and U17 teams.
 - Member of the 2021 U16 Canadian Team that placed second at FIBA Americas. Radocaj averaged 9.2 points and 5.0 rebounds per game in the six games she played (all starts). Scored 14 points (7-10 FGs) in semifinal matchup vs. Argentina and connected on 51 percent of her FGs in the tournament.
 - Played in five games at the 2022 FIBA U17 Women's Basketball World Cup.
- In 2023, was named McMath secondary's Female Athlete of the Year for her achievements in both basketball and volleyball.

#11 • Maggie Besselink • G/F • 6-3 • Sr. • Kingston, Ontario

- After missing the 2022-23 season due to injury, will look to return in 2023-24 and display the outstanding versatility that makes her a multi-dimension threat with or without the ball no matter where she is on the floor.
- In 2019 Besselink was selected to Canada's U19 national team that participated in the FIBA World Cup in Bangkok, Thailand.

SCORING HIGHS / LOWS BY ASU IN 2022-23

Most points (Game)

83 - @New Mexico - 11.20.22
82 - vs. Prairie View - 12.17.22
80 - @Grand Canyon - 11.30.22

Fewest points (Game)

48 - @Oregon - 2.25.23
49 - @USC - 2.3.23
53 - vs. Washington - 1.29.23

Most points (Quarter)

35 - @Grand Canyon (4th) - 11.30.22
30 - @Oregon St. (4th) - 2.23.23
26 - vs. Stanford (4th) - 2.12.23

Fewest points (Quarter)

3 - vs. Cal (3rd) - 2.10.23
6 - vs. Utah (2nd) - 2.19.23
7 - vs. Oregon St. (1st) - 1.8.23

Most points (1st half)

46 - @Montana State - 11.15.22
40 - (2x) last vs. PVAM - 12.17.22
36 - @New Mexico - 11.20.22

Fewest points (1st half)

19 - (2x) last vs. Washington St. - 1.27.23
22 - (2x) last vs. Oregon - 2.25.23
23 - vs. Stanford 2.12.23

Most points (2nd half)

49 - @Oregon St. - 2.23.22
48 - @Grand Canyon - 11.30.22
42 - vs. PVAM - 12.17.22

Fewest points (2nd half)

25 - vs. Washington - 1.29.23
26 - (2x) last @Oregon - 2.25.23
27 - (3x) last @USC - 2.3.23

SCORING HIGHS / LOWS BY OPPONENT IN 2022-23

Most points (Game)

101 - @Stanford - 12.31.22
96 - vs. Stanford - 2.12.23
88 - vs. Massachusetts - 12.2.22

Fewest points (Game)

49 - vs. Grambling - 11.11.22
55 - vs. Washington - 1.29.23
61 - (2x) last vs. Washington St. - 1.27.23

Most points (Quarter)

30 - (2x) last @Arizona (3rd) - 12.29.22
29 - vs. Stanford (1st) - 2.12.23
26 - (3x) last vs. Stanford (4th) - 2.12.23

Fewest points (Quarter)

6 - vs. UCLA (4th) - 3.1.23
7 - vs. Montana St. (1st) - 11.15.22
10 - (2x) last vs. Washington (2nd) - 1.29.23

Most points (1st half)

54 - (2x) last vs. Stanford - 2.12.23
51 - @Stanford - 12.31.22
43 - vs. Arizona - 1.23.23

Fewest points (1st half)

22 - vs. Grambling - 11.11.22
24 - vs. Washington - 1.29.23
27 - vs. Montana St. - 11.15.22

Most points (2nd half)

54 - vs. Notre Dame - 11.26.22
50 - @Stanford - 12.31.22
47 - @UCLA - 2.5.23

Fewest points (2nd half)

23 - vs. UCLA - 3.1.23
27 - vs. Grambling - 11.11.22
28 - (2x) last vs. Colorado - 2.17.23

#12 • Treasure Hunt • G • 6-2 • Sr. • Chattanooga, Tenn.

- In her first season as a Sun Devil, played & started in 27 games and averaged 34.1 minutes (third on team), 11.3 points and 6.1 rebounds. Also made 28 3-pointers and had 22 blocks and 25 steals.
- Had career-high 24 points vs. Arizona on Jan. 22 and had career-best 15 rebounds at New Mexico on Nov. 20.
- Including two seasons at Kentucky, has started 57 of the 72 games.

#13 • Sandra Magolico • F • 6-2 • Jr. • Maputo, Mozambique

- Transferred to ASU after playing two seasons at New Mexico CC.
- In 2019, competed for the Mozambique national team, playing in nine games and averaged 11.0 minutes per game.
- Started 28 of 30 games in 2022-23 in leading New Mexico JC to a 26-6 record and a Round of 16 finish in the NJCAA Women's Basketball Championship. Scored in double figures 10 times, including a game-high 18 points and a career-high 14 rebounds in win over Dodge City CC in opening-round win of the NJCAA Championships.

SUN DEVIL

W O M E N ' S B A S K E T B A L L

2023-24 SUN DEVIL WBB GAME NOTES

#20 • Kiley Sours-Miller • C • 6-3 • Fr. • Surprise, Ariz.

- Playing for Dream City Christian, as a senior was ranked No. 10 in The Arizona Republic's Elite Girls 50 players in 2022-23. At the time (December 2022), Sours-Miller was averaging 12.7 points, 10.7 rebounds and two blocks.
- Scored more than 1,000 points in her career and led Dream Christian to the 2023 Girls Open Division state title.
- Averaged a double-double after playing first two seasons at Peoria Centennial, junior season at Phoenix Greenway and senior season at Glendale Dream City Christian.

#21 • Hanna Miller • F • 6-2 • So. • Aberdeen, S.D.

- Transferred to ASU from Dodge City CC (Dodge City, Kan.) where Miller played one season.
- Sister of incoming freshman Sun Devil Mallory Miller. Both players are in their first season with the program.
- Played in 23 games (three starts) and averaged 11.3 minutes per game.
- As a senior, teamed with sister Mallory to help lead Aberdeen Christian to a 21-5 record and a berth in the Class B girls basketball tournament.

#22 • Journey Thompson • F • 6-3 • So. • McMurray, Pa.

- Played in 13 games (three starts) as a freshman before having season prematurely come to an end due to injury.
- After accounting for 6 points, 4 rebounds and one block in the fourth quarter of ASU's comeback win at GCU (Nov. 30), Thompson had her first career double-double with 11 points and 10 rebounds vs. UMass (Dec. 2).
- In her first career start, Thompson accounted for 11 points and six rebounds in ASU's win over Prairie View A&M (Dec. 17).

#23 • Jalyn Brown • G • 6-1 • So. • Baltimore, Md.

- Transferred to ASU in 2023 after playing freshman season at Louisville. Played in seven contests for Louisville squad that went on to conclude its season in the Elite Eight of the 2023 NCAA Tournament.
- Came to Louisville from St. Frances Academy, the same high school that former Cardinals great and WNBA All-Star Angel McCoughtry attended.
- A four-star prospect coming out of high school, who was ranked No. 78 overall and the No. 12 ranked wing by espnW HoopGurlz, Brown was ranked the fifth best player in Maryland by Prep Girls Hoops.

#24 • Mallory Miller • F • 6-4 • Fr. • Aberdeen, S.D.

- The sister of ASU sophomore guard Hanna Miller, Mallory was named a KELOLAND Media Group All-Star Girls Basketball Player of the Year finalist and was nominated Miss Basketball 2023 for the state of South Dakota after posting per-game averages of 18.5 points, 9.5 rebounds and 2.7 assists.
- Led Wolsey-Wessington to a 22-3 record an appearance in the state semifinals (its first appearance in the state tournament) and the state's top seed in 2023.
- As a junior, teamed with sister Hanna to help Aberdeen Christian to a 21-5 record and a berth in the Class B girls basketball tournament.

#25 • Adison Novosel • G • 5-11 • Jr. • Richfield, Ohio

- Transferred to ASU in 2023 after playing first two seasons at Saint Francis University where she appeared in 35 contests (25 starts).
- After appearing in seven games off the bench as a freshman, started 25 of 28 games in 2022-23.
- As a sophomore, led Saint Francis with 29 triples and posted career highs in points (12) and 3-pointers (4) vs. Central Connecticut State (Jan. 28). Also pulled down a career-high six rebounds twice – at Xavier (Nov. 13), at Sacred Heart (Feb. 9) and snared a career-high three steals vs. Coppin State (Nov. 7).

#30 • Morasha Wiggins • G • 6-0 • Jr. • Kalamazoo, Mich.

- Transferred to ASU after playing her freshman season (2021-22) at North Carolina.
- Ranked 18th in the ESPNW Class of 2021 rankings, Wiggins was expected to be an impact player for the Sun Devils before suffering a preseason injury that forced her to miss the entire 2022-23 campaign.

#44 • Isadora Sousa • G • 6-0 • Grad. • Sao Paulo, Brazil

- Has played in 30 games with seven starts in her two seasons with the Sun Devils.
- Has worked hard to come back from injury each of last two seasons and has proved to be an effective performer when on the floor.
- In 2022-23, scored a career high-tying points in consecutive games (at Stanford/Dec. 31 and at Cal/Jan 2) and had the second highest field goal percentage on the team, shooting 44.8%.

SCHEDULE NOTES

- Games against four teams that qualified for postseason play last season highlight the Sun Devil women's basketball team's 2023 non-conference schedule.
- The Sun Devils will play 17 home games: eight non-conference and nine Pac-12 contests. The Sun Devils, who will open the season on Mon., Nov. 6 at home vs. UTSA, will commence Pac-12 play – at home vs. Arizona on Dec. 17 – while still in the midst of playing their non-conference schedule. ASU's non-conference slate will conclude on Dec. 30 at home vs. Santa Clara.
- ASU will play 2023 NCAA Tournament participants Texas and South Florida and 2023 WNIT entry High Point at the Paradise Jam.
- The Pac-12 leads all conferences with six teams in the AP Pre-season Top 25: No. 4 UCLA, No. 5 Utah, No. 15 Stanford, No. 20 Colorado, No. 21 USC and No. 24 Washington State.
- The Sun Devils will appear on Pac-12 Networks at least 20 times during the 2023-24 campaign.

HEAD COACH NATASHA ADAIR



- On March 27, 2022, Natasha Adair was introduced as the new head coach of Sun Devil Women's Basketball.
- Adair, who brought 10 seasons of head coaching experience to ASU, came to Tempe after five seasons at Delaware where she compiled a 95-58 record, including a 48-13 record in her final two seasons.
- In 2021-22, Adair's final season at Delaware, the Blue Hens captured the program's third Colonial Athletic Association tournament title and earned their first trip to the NCAA Tournament in nearly a decade.
- In 2021, Adair was named the CAA's Coach of the Year for a season in which she guided Delaware to its first regular season conference championship since 2013.
- Prior to her five seasons at Delaware, Adair also had successful head coaching stints at College of Charleston (two seasons) and Georgetown (three seasons).
- Despite a spate of unlucky injuries to key personnel, the Sun Devils had several noteworthy accomplishments during Adair's inaugural season in Tempe, including: Starting 5-0 for the first time since 2002-03; Finishing the season No. 2 in the Pac-12 and 10th in the nation in fewest turnovers per game (12.3/only ASU's 2017-18 squad averaged fewer turnovers per game (11.7) in a season; Even with all its injuries, ASU nearly pulled off three Top 25 upsets in the season's final five games: vs. No. 21 Colorado (62-70), vs. No. 4 Utah (69-74) and vs. No. 19 UCLA (70-81-OT) in the first round of the Pac-12 Tournament; After trailing the Bruins by as many as 19 points in the third quarter, the Sun Devils staged a furious rally to take a two-point lead in

regulation before falling in overtime. The win would have been ASU's biggest comeback in school history; In their 75-73 win at Oregon State, the Sun Devils overcame their second-largest deficit in school history (17 points). The victory was also No. 175 of Adair's career; Individually, Sun Devil guards Jaddan Simmons (Pac-12 All-Defense honorable mention) and Tyi Skinner (All-Pac-12 honorable mention) comprised one of the most talented backcourts in the country; Both players earned Pac-12 honors as voted on by the league's head coaches. Skinner, who finished second in the Pac-12 and 27th in the nation in scoring (19.2 ppg), was also named to the media's 15-member All-Pac-12 team.

- In addition to the 2021-22 team (NCAA Tournament), Adair's leadership while at Delaware was instrumental in the 2017-18 (WNIT) and 2020-21 (WNIT) squads earning postseason appearances. Playing a big role in Delaware's success in Adair's final two seasons as head coach was the Blue Hens' resiliency on the offensive glass as they finished among the top three teams in the nation in offensive rebounding in 2020-21 and 2021-22.

- Under Adair's tutelage, three Delaware student-athletes earned Player of the Year honors, two were named Rookie of the Year and multiple players collected All-Conference honors.

- In recent years, Adair has taken on an increasingly prominent role within USA Basketball. In 2017, she was appointed as the U19 Women's World Cup Team Trials Court Coach. In 2018, Adair was a speaker at USA Basketball's Las Vegas Coach Academy. In 2018 and 2019, Adair earned gold medals while serving as an assistant coach for the USA teams that won the 2018 FIBA Americas U18 Championship and the 2019 FIBA U19 World Cup.

- Adair joined the Blue Hens from Georgetown University, where she turned a four-win Hoyas program into a postseason contender in three seasons as head coach. Behind Adair's leadership, Georgetown finished the 2016-17 campaign with 17 wins, the most wins for the Hoyas since 2011-12 and garnered the team's second straight trip to the Postseason WNIT.

- In only her second season at Georgetown, Adair helped the Hoyas experience a 180-degree turnaround as they finished 16-14 – the third-best NCAA DI turnaround in 2015-16 – and made the program's first postseason appearance since 2012.

- While at Georgetown, Adair coached a Big EAST Rookie of the Year, two players who were named to the league's All-Rookie team and pair of All-Conference standouts.

- Adair's first head coaching job was at College of Charleston, where (35-31 overall in two seasons). She was the first coach to lead the program to consecutive postseason appearances.



SUN DEVIL

W O M E N ' S B A S K E T B A L L

HEAD COACH NATASHA ADAIR

- In 2013-14, Adair’s second season and the Cougars’ first in the Colonial Athletic Association, Adair guided College of Charleston to a record of 19-15, marking the third-highest win total in the school’s Division I era. Additionally, the squad finished third in conference play, defeated five postseason teams from the previous year and advanced to the semifinals of both the CAA Championship and the Women’s Basketball invitational.
- In her first season at College of Charleston, Adair led the Cougars to 16 wins and a WBI postseason bid. Her first squad broke 22 school records along the way.
- While leading the College of Charleston, Adair coached two all-conference players and an all-rookie team performer who would go on to be named a three-time CAA Defensive Player of the Year.
- Adair previously spent 14 seasons in the assistant coaching ranks, with eight years (2004-12) at Wake Forest University and six seasons (1998-04) at Georgetown University. Her coaching career has seen her develop and mentor five WNBA draft picks and several players who went on to play professionally overseas.
- A founding member of the Black Coaches United, Adair has been recognized by the organization, as well as Advancement of Blacks in Sports (ABIS), as one of the top women’s basketball coaches in the country. Adair prides herself on being known as a game-changer as it relates to social justice and creating a safe space for athletes to find and use their voice; where she was a guest on ESPNW’s “Around the Rim” with LaChina Robinson and Delaware’s UD Winning Women in Athletics: Trailblazers and Changemakers Webinar Series.
- Adair played collegiately at Pensacola Junior College (1990- 92) before playing and graduating from the University of South Florida with a degree in communications in 1994.
- Coach Adair has two children, a son Aaron M. Adair (26), graduated magna cum laude from Johnson C. Smith University. A four-year member of the university’s President’s Council for his academic achievement, he also earned four letters playing for the men’s basketball team. Daughter Allyssa M. Adair (18) is a freshman at Texas State University and a middle blocker on the volleyball team.



NATASHA ADAIR’S CAREER COACHING RECORD

Year	School	Overall Record	Conf. Record	Notes
2023-24	Arizona State	0-0	0-0	
2022-23	Arizona State	8-20	1-17	Led ASU to first 5-0 start since 2002-03
ASU (1 season)		8-20	1-17	
2021-22	Delaware	24-8	15-3	Earned program’s third CAA title and its first NCAA Tournament berth since 2013
2020-21	Delaware	24-5	16-2	Named CAA Coach of the Year, guided squad to regular-season CAA title & WNIT semifinals
2019-20	Delaware	12-17	8-10	Season ended early by Covid-19
2018-19	Delaware	16-15	11-7	Reached 11 CAA wins in back-to-back seasons for the first time since 2013
2017-18	Delaware	19-13	11-7	Guided team to second-most wins (19) and first postseason appearance since 2013-14
Delaware Totals (5 seasons)		95-58	61-29	
2016-17	Georgetown	17-13	9-9	Most wins since 2012 and second straight trip to the Postseason WNIT
2015-16	Georgetown	16-14	9-9	Program’s first postseason appearance since 2011-12; third best turnaround in the nation
2014-15	Georgetown	4-27	2-16	Previously served as an assistant coach for six seasons (1998-2004)
Georgetown (3 seasons)		37-54	20-34	
2013-14	College of Charleston	19-15	9-7	Third-highest win total in the school’s Division I era & first season in the CAA
2012-13	College of Charleston	16-16	11-9	Third most wins in prior 23 years along with postseason WNIT invite
College of Charleston (2 seasons)		35-31	20-16	
Career Totals (12 seasons)		175-163	102-96	

2023-24 SUN DEVIL WBB ROSTER

No.	Name	Pos.	Ht.	Yr.	Hometown / High School / Last School
^0	Jaylah Robinson	G	5-11	So.	Philadelphia, Pa. / Mastery Charter School
1	Kadidia Toure	F	6-3	So.	Silver Spring, Md. / Our Lady of Good Counsel / James Madison
2	Jaddan Simmons	G	5-9	Sr.	Houston, Texas / Southwest (Wisc.)
^3	Tyi Skinner	G	5-5	Sr.	Washington, D.C. / TPLS Christian Academy / Delaware
4	Trayanna Crisp	G	5-8	So.	Goodyear, Ariz. / Millennium
10	Marina Radocaj	G/F	6-2	Fr.	Richmond, British Columbia / R.A. McMath Secondary School
11	Maggie Besselink	G/F	6-3	Sr.	Kingston, Ontario / Holy Cross Secondary School
12	Treasure Hunt	G	6-2	Sr.	Chattanooga, Tenn. / Hamilton Heights Christian Academy / Kentucky
13	Sandra Magolico	F	6-2	Jr.	Maputo, Mozambique / Escola Secundaria da Polana / New Mexico JC
20	Kiley Sours-Miller	C	6-4	Fr.	Surprise, Ariz. / Dream City Christian
21	Hanna Miller	F	6-2	So.	Aberdeen, S.D. / Aberdeen Christian / Dodge City CC
22	Journey Thompson	F	6-3	So.	McMurray, Pa. / Peters Township
23	Jalyn Brown	G	6-1	So.	Baltimore, Md. / St. Frances Academy / Louisville
24	Mallory Miller	F	6-4	Fr.	Aberdeen, S.D. / Wolsey-Wessington
25	Adison Novosel	G	5-11	Jr.	Richfield, Ohio / Revere / Saint Francis University
30	Morasha Wiggins	G	6-0	Jr.	Kalamazoo, Mich. / Kalamazoo / North Carolina
44	Isadora Sousa	G	6-0	Grad.	Sao Paulo, Brazil / Colegio A-Escopo / Chipola College

^ - Will not play in 2023-24 for medical reasons

Head Coach: Natasha Adair (2nd season)

Associate Head Coach: Darrell Mosley (2nd season)

Assistant Coach/Recruiting Coordinator: Mykala Walker (2nd season)

Assistant Coach: Camille Collier (2nd season)

Special Assistant to the Head Coach: Yvonne Sanchez (1st season)

Director of Operations: Carter Caplan (2nd season)

Assistant Director of Operations: Lizzie Oleary (2nd season)

Pronunciation Guide

Natasha Adair – A-dare

Maggie Besselink – Bessel-ink

Jalyn Brown – Jay-lynn

Trayanna Crisp – Tray-on-nah

Sandra Magolico – Sahn-dra Mag-oh-leek-oh

Adison Novosel – No-vuh-sell

Marina Radocaj – Maude-E-nuh Rahd-oh-chai

Jaylah Robinson – Jay-luh

Jaddan Simmons – Jade-en

Tyi Skinner – Tie

Isadora Sousa – So-za

Kadidia Toure – kuh-DEE-shuh TORE-ay

Morasha Wiggins – more-AH-shuh

SUN DEVIL

W O M E N ' S B A S K E T B A L L

2023-24 RADIO/TV ROSTER



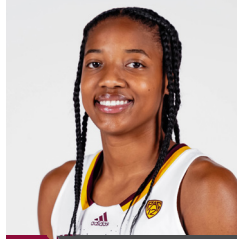
0 JAYLAH ROBINSON

Sophomore | Guard | 5-11
Philadelphia, Pa. |
Mastery Charter School



1 KADIDIA TOURE

Sophomore | Forward | 6-3
Silver Spring, Md | Our Lady of Good
Counsel | James Madison



2 JADDAN SIMMONS

Senior | Guard | 5-9
Houston, Texas | Southwest (Wisc.)



3 TYI SKINNER

Senior | Guard | 5-5
Washington, D.C. | TPLS Christian
Academy | Delaware



4 TRAYANNA CRISP

Sophomore | Guard | 5-8
Goodyear, Ariz. | Millennium



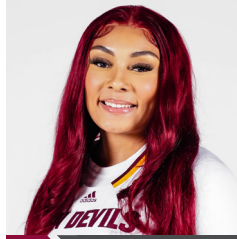
10 MARINA RADOCAJ

Freshman | Guard/Forward | 6-2
Richmond, British Columbia
R.A. McMath Secondary School



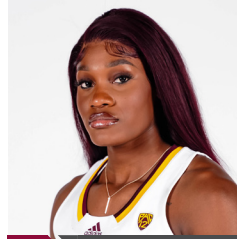
11 MAGGIE BESSELINK

Senior | Guard/Forward | 6-3
Kingston, Ontario | Holy Cross
Secondary School



12 TREASURE HUNT

Senior | Guard | 6-2
Chattanooga, Tenn. | Hamilton Heights
Christian Academy | Kentucky



13 SANDRA MAGOLICO

Junior | Forward | 6-2
Maputo, Mozambique / Escola Secundaria
da Polana / New Mexico JC



20 KILEY SOURS-MILLER

Freshman | Center | 6-4
Surprise, Ariz.
Dream City Christian



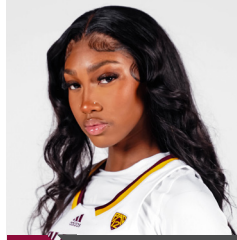
21 HANNA MILLER

Sophomore | Forward | 6-2
Aberdeen, S.D. | Aberdeen
Christian / Dodge City CC



22 JOURNEY THOMPSON

Sophomore | Forward | 6-3
McMurray, Pa. | Peters Township



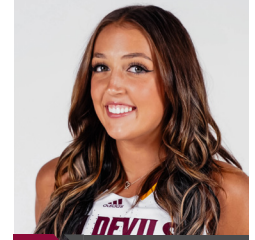
23 JALYN BROWN

Sophomore | Guard | 6-1
Baltimore, Md. | St. Frances
Academy | Louisville



24 MALLORY MILLER

Freshman | Forward | 6-4
Aberdeen, S.D.
Wolsey-Wessington



25 ADISON NOVOSEL

Junior | Guard | 5-11
Richfield, Ohio | Revere
Saint Francis University



30 MORASHA WIGGINS

Sophomore | Junior | 6-0
Kalamazoo, Mich. | Kalamazoo
North Carolina



44 ISADORA SOUSA

Grad | Guard | 6-0
Sao Paulo, Brazil | Colegio A-Escopo
Chipola College



NATASHA ADAIR

Head Coach
Second Season



DARRELL MOSLEY

Associate Head Coach
Second Season



MYKALA WALKER

Asst. Coach/Recruiting Coordinator
Second Season



CAMILLE COLLIER

Assistant Coach
Second Season



YVONNE SANCHEZ

Special Assistant to the Head Coach
First Season



CARTER CAPLAN

Director of Operations
Second Season



LIZZIE OLEARY

Assistant Director of Operations
Second Season



WOMEN'S BASKETBALL



2022-23 Arizona St. Women's Basketball Combined Team Statistics All games

Game Records

Record	Overall	Home	Away	Neutral
ALL GAMES	8-20	3-11	4-7	1-2
CONFERENCE	1-15	0-9	1-6	0-0
NON-CONFERENCE	7-5	3-2	3-1	1-2

Score by Periods

Team	1st	2nd	3rd	4th	OT	TOT
Arizona St.	446	403	421	541	18	1829
Opponents	497	471	545	536	23	2072

Team Box Score

No.	Player	Total			3-Point		F-Throw		Rebounds				Other									
		GP-GS	MIN	AVG	FG-FGA	FG%	3FG-3FGA	3FG%	FT-FTA	FT%	OFF	DEF	TOT	AVG	PF	DQ	A	TO	BLK	STL	PTS	AVG
3	SKINNER, Tyi	28-28	1024:35	36.6	175-485	.361	68-196	.347	121-155	.781	16	61	77	2.8	82	2	67	77	3	48	539	19.3
2	SIMMONS, Jaddan	27-27	996:33	36.9	115-304	.378	16-57	.281	90-119	.756	49	75	124	4.6	74	1	84	55	18	50	336	12.4
12	HUNT, Treasure	27-27	919:28	34.1	103-344	.299	28-118	.237	71-103	.689	41	123	164	6.1	49	1	20	48	22	25	305	11.3
24	MOKWUAH, Kayla	28-25	621:57	22.2	72-180	.400	0-1	.000	26-39	.667	59	79	138	4.9	85	6	17	32	23	15	170	6.1
4	CRISP, Trayanna	28-7	604:40	21.6	51-170	.300	14-59	.237	36-50	.720	16	49	65	2.3	58	1	37	38	1	16	152	5.4
42	NEWMAN, Meg	28-5	488:59	17.5	51-111	.459	0-0	.000	7-13	.538	51	89	140	5.0	51	0	11	20	9	12	109	3.9
22	THOMPSON, Journey	13-3	142:02	10.9	17-39	.436	0-0	.000	9-10	.900	12	27	39	3.0	19	0	1	7	6	6	43	3.3
44	SOUSA, Isadora	23-7	348:06	15.1	30-67	.448	4-16	.250	11-16	.688	21	54	75	3.3	23	0	25	16	2	12	75	3.3
11	ERIKSTRUP, Sydney	26-11	395:20	15.2	23-87	.264	13-54	.241	20-27	.741	24	39	63	2.4	39	0	14	27	4	9	79	3.0
43	GREENSLADE, Imogen	12-0	100:48	8.4	8-19	.421	0-0	.000	5-8	.625	11	16	27	2.3	20	1	2	9	2	2	21	1.8
5	SETTELMYER, Tatum	8-0	08:05	1.0	0-0	.000	0-0	.000	0-0	.000	0	0	0	0.0	0	0	1	0	0	0	0	0.0
0	ROBINSON, Jaylah	1-0	01:29	1.5	0-0	.000	0-0	.000	0-0	.000	0	0	0	0.0	0	0	0	2	0	0	0	0.0
Team											68	75	143					13				
Total		28	5652		645-1806	.357	143-501	.285	396-540	.733	368	687	1055	37.7	500	12	279	344	90	195	1829	65.3
Opponents		28	5650		764-1750	.437	182-528	.345	362-522	.693	377	869	1246	44.5	482	4	502	420	111	196	2072	74.0

Team Statistics

	ASU	OPP
Scoring	1829	2072
Points per game	65.3	74.0
Scoring margin	-8.7	-
Field goals-att	645-1806	764-1750
Field goal pct	.357	.437
3 point fg-att	143-501	182-528
3-point FG pct	.285	.345
3-pt FG made per game	5.1	6.5
Free throws-att	396-540	362-522
Free throw pct	.733	.693
F-Throws made per game	14.1	12.9
Rebounds	1055	1246
Rebounds per game	37.7	44.5
Rebounding margin	-6.8	-
Assists	279	502
Assists per game	10.0	17.9
Turnovers	344	420
Turnovers per game	12.3	15.0
Turnover margin	+2.7	-
Assist/turnover ratio	0.8	1.2
Steals	195	196
Steals per game	7.0	7.0
Blocks	90	111
Blocks per game	3.2	4.0
Winning streak	0	-
Home win streak	0	-
Attendance	35629	42054
Home games-Avg/Game	14-2545	11-3823
Neutral site-Avg/Game	-	3-172

Team Results

Date	Opponent		Score	Att.
11/07/2022	Northern Ariz.	W	69-68	6304
11/11/2022	Grambling	W	62-49	2565
11/15/2022	at Montana St.	W	79-64	1653
11/20/2022	at New Mexico	Wot	83-77	4848
11/25/2022	vs American	W	70-61	255
11/26/2022	vs Notre Dame	L	65-85	261
11/30/2022	at Grand Canyon	W	80-72	6019
12/02/2022	Massachusetts	L	64-88	1762
12/04/2022	Missouri	L	60-71	3221
12/11/2022	at SFA	L	60-75	1656
12/17/2022	Prairie View	W	82-67	1577
12/29/2022	at Arizona	L	66-84	9495
12/31/2022	at Stanford	L	69-101	2810
01/02/2023	at California	L	61-74	842
01/06/2023	Oregon	L	62-82	1876
01/08/2023	Oregon St.	L	59-69	1486
01/22/2023	Arizona	L	67-80	3508
01/27/2023	Washington St.	L	57-61	2349
01/29/2023	Washington	L	53-55	1851
02/03/2023	at Southern California	L	49-64	801
02/05/2023	at UCLA	L	63-82	3462
02/10/2023	California	L	61-72	2185
02/12/2023	Stanford	L	64-96	1759
02/17/2023	Colorado	L	62-70	2793
02/19/2023	Utah	L	69-74	2393
02/23/2023	at Oregon St.	W	75-73	3711
02/25/2023	at Oregon	L	48-77	6757
03/01/2023	vs UCLA	Lot	70-81	0



2022-23 Arizona St. Women's Basketball Combined Team Statistics In Conference games

Game Records

Record	Overall	Home	Away	Neutral
ALL GAMES	1-15	0-9	1-6	0-0
CONFERENCE	1-15	0-9	1-6	0-0
NON-CONFERENCE	0-0	0-0	0-0	0-0

Score by Periods

Team	1st	2nd	3rd	4th	OT	TOT
Arizona St.	241	195	251	298	0	985
Opponents	299	279	308	328	0	1214

Team Box Score

No.	Player	Total			3-Point		F-Throw		Rebounds				Other Stats									
		GP-GS	MIN	AVG	FG-FGA	FG%	3FG-3FGA	3FG%	FT-FTA	FT%	OFF	DEF	TOT	AVG	PF	DQ	A	TO	BLK	STL	PTS	AVG
3	SKINNER, Tyi	16-16	585:33	36.6	98-283	.346	37-114	.325	53-72	.736	7	40	47	2.9	47	1	34	39	2	27	286	17.9
12	HUNT, Treasure	16-16	554:49	34.7	65-212	.307	21-73	.288	42-57	.737	22	60	82	5.1	33	1	14	28	16	15	193	12.1
2	SIMMONS, Jaddan	16-16	592:37	37.0	67-188	.356	10-35	.286	38-56	.679	32	39	71	4.4	48	1	52	31	8	33	182	11.4
24	MOKWUAH, Kayla	16-13	385:48	24.1	41-110	.373	0-1	.000	17-24	.708	32	44	76	4.8	50	3	10	15	15	9	99	6.2
4	CRISP, Trayanna	16-5	341:03	21.3	27-92	.293	9-32	.281	16-23	.696	10	29	39	2.4	28	0	17	20	0	10	79	4.9
44	SOUSA, Isadora	15-7	236:53	15.8	22-51	.431	4-13	.308	5-8	.625	11	32	43	2.9	13	0	16	11	1	8	53	3.5
43	GREENSLADE, Imogen	3-0	34:12	11.4	3-9	.333	0-0	.000	2-2	1.000	3	3	6	2.0	5	0	1	2	2	1	8	2.7
11	ERIKSTRUP, Sydney	14-1	173:19	12.4	12-41	.293	6-23	.261	6-7	.857	15	20	35	2.5	20	0	5	8	2	3	36	2.6
42	NEWMAN, Meg	16-4	240:10	15.0	19-52	.365	0-0	.000	2-4	.500	21	36	57	3.6	26	0	4	9	4	6	40	2.5
22	THOMPSON, Journey	4-2	54:15	13.6	4-11	.364	0-0	.000	1-1	1.000	5	8	13	3.3	9	0	0	4	1	1	9	2.3
5	SETTELMYER, Tatum	2-0	03:23	1.7	0-0	.000	0-0	.000	0-0	.000	0	0	0	0.0	0	0	0	0	0	0	0	0.0
Team											36	48	84					8				
Total		16	3202		358-1049	.341	87-291	.299	182-254	.717	194	359	553	34.6	279	6	153	175	51	113	985	61.6
Opponents		16	3200		435-961	.453	110-286	.385	234-312	.750	204	534	738	46.1	245	1	296	247	63	102	1214	75.9

Team Statistics

	ASU	OPP
Scoring	985	1214
Points per game	61.6	75.9
Scoring margin	-14.3	-
Field goals-att	358-1049	435-961
Field goal pct	.341	.453
3 point fg-att	87-291	110-286
3-point FG pct	.299	.385
3-pt FG made per game	5.4	6.9
Free throws-att	182-254	234-312
Free throw pct	.717	.750
F-Throws made per game	11.4	14.6
Rebounds	553	738
Rebounds per game	34.6	46.1
Rebounding margin	-11.6	-
Assists	153	296
Assists per game	9.6	18.5
Turnovers	175	247
Turnovers per game	10.9	15.4
Turnover margin	+4.5	-
Assist/turnover ratio	0.9	1.2
Steals	113	102
Steals per game	7.1	6.4
Blocks	51	63
Blocks per game	3.2	3.9
Winning streak	0	-
Home win streak	0	-
Attendance	20200	27878
Home games-Avg/Game	9-2244	7-3983
Neutral site-Avg/Game	-	0-0

Team Results

Date	Opponent	Score	Att.
12/29/2022	at Arizona	L 66-84	9495
12/31/2022	at Stanford	L 69-101	2810
01/02/2023	at California	L 61-74	842
01/06/2023	Oregon	L 62-82	1876
01/08/2023	Oregon St.	L 59-69	1486
01/22/2023	Arizona	L 67-80	3508
01/27/2023	Washington St.	L 57-61	2349
01/29/2023	Washington	L 53-55	1851
02/03/2023	at Southern California	L 49-64	801
02/05/2023	at UCLA	L 63-82	3462
02/10/2023	California	L 61-72	2185
02/12/2023	Stanford	L 64-96	1759
02/17/2023	Colorado	L 62-70	2793
02/19/2023	Utah	L 69-74	2393
02/23/2023	at Oregon St.	W 75-73	3711
02/25/2023	at Oregon	L 48-77	6757



Arizona St. Women's Basketball
Individual Career Summaries
All games

BESSELINK, Maggie

				Field Goals		3-Point		F-Throws		Rebounds								Scoring		
SEASON	TEAM	GP-GS	MIN/AVG	FG-FGA	FG%	3FG-3FGA	3FG%	FT-FTA	FT%	OFF	DEF	TOT	AVG	PF-FO	A	TO	BLK	STL	PTS	AVG
2020-21	ASU	18-14	389/21.6	31-83	.373	5-13	.385	24-33	.727	41	61	102	5.7	47-2	13	38	8	12	91	5.1
2021-22	ASU	12-7	197/16.4	19-49	.388	0-7	.000	8-17	.471	27	37	64	5.3	28-1	8	12	5	5	46	3.8
TOTAL		30-21	586/19.5	50-132	.379	5-20	.250	32-50	.640	68	98	166	5.5	75-3	21	50	13	17	137	4.6

Single Game Highs

Statistic	Value	
Points	13	vs Southern California 03/03/21
Rebounds	15	vs Minnesota 11/12/21
Assists	3	vs Washington 02/12/21
Steals	2	4 times
Blocks	3	vs Marist 11/21/21
FG Made	4	vs Southern California 03/03/21, vs Utah 01/23/22
FG Attempts	9	vs Minnesota 11/12/21
3FG Made	2	at Stanford 02/19/21
3FG Attempts	3	vs California 01/01/21
FT Made	4	vs Stanford 01/03/21, vs Southern California 03/03/21, vs Baylor 11/26/21
FT Attempts	8	vs Baylor 11/26/21

BROWN, Jalyn

				Field Goals		3-Point		F-Throws		Rebounds								Scoring		
SEASON	TEAM	GP-GS	MIN/AVG	FG-FGA	FG%	3FG-3FGA	3FG%	FT-FTA	FT%	OFF	DEF	TOT	AVG	PF-FO	A	TO	BLK	STL	PTS	AVG
2022-23	LOU	7-0	32/4.6	3-9	.333	1-4	.250	1-2	.500	2	1	3	0.4	1-0	0	4	0	3	8	1.1
TOTAL FOR ASU		0-0	0/0.0	0-0	.000	0-0	.000	0-0	.000	0	0	0	0.0	0-0	0	0	0	0	0	0.0
TOTAL		7-0	32/4.6	3-9	.333	1-4	.250	1-2	.500	2	1	3	0.4	1-0	0	4	0	3	8	1.1

Single Game Highs

Statistic	Value	
Points	3	vs IUPUI 11/10/22, vs SIUE 12/06/22
Rebounds	1	vs IUPUI 11/10/22, vs SIUE 12/06/22, at Bellarmine 12/14/22
Steals	2	vs SIUE 12/06/22
FG Made	1	vs IUPUI 11/10/22, vs SIUE 12/06/22, at Bellarmine 12/14/22
FG Attempts	3	vs IUPUI 11/10/22, at Bellarmine 12/14/22
3FG Made	1	vs SIUE 12/06/22
3FG Attempts	2	at Bellarmine 12/14/22
FT Made	1	vs IUPUI 11/10/22
FT Attempts	2	vs IUPUI 11/10/22



**Arizona St. Women's Basketball
Individual Career Summaries
All games**

CRISP, Trayanna

				Field Goals		3-Point		F-Throws		Rebounds								Scoring		
SEASON	TEAM	GP-GS	MIN/AVG	FG-FGA	FG%	3FG-3FGA	3FG%	FT-FTA	FT%	OFF	DEF	TOT	AVG	PF-FO	A	TO	BLK	STL	PTS	AVG
2022-23	ASU	28-7	605/21.6	51-170	.300	14-59	.237	36-50	.720	16	49	65	2.3	58-1	37	38	1	16	152	5.4
TOTAL		28-7	605/21.6	51-170	.300	14-59	.237	36-50	.720	16	49	65	2.3	58-1	37	38	1	16	152	5.4

Single Game Highs

Statistic	Value	
Points	12	vs American 11/25/22
Rebounds	5	vs Prairie View 12/17/22, at Oregon St. 02/23/23, vs UCLA 03/01/23
Assists	5	vs Grambling 11/11/22, vs Missouri 12/04/22, vs Oregon 01/06/23
Steals	2	vs Northern Ariz. 11/07/22, vs California 02/10/23, at Oregon 02/25/23
Blocks	1	vs Northern Ariz. 11/07/22
FG Made	5	vs Notre Dame 11/26/22
FG Attempts	14	vs Missouri 12/04/22
3FG Made	2	vs Washington 01/29/23
3FG Attempts	5	vs Grambling 11/11/22
FT Made	5	vs Prairie View 12/17/22
FT Attempts	5	vs Missouri 12/04/22, vs Prairie View 12/17/22, vs American 11/25/22

HUNT, Treasure

				Field Goals		3-Point		F-Throws		Rebounds								Scoring		
SEASON	TEAM	GP-GS	MIN/AVG	FG-FGA	FG%	3FG-3FGA	3FG%	FT-FTA	FT%	OFF	DEF	TOT	AVG	PF-FO	A	TO	BLK	STL	PTS	AVG
2020-21	UK	15-1	195/13.0	21-62	.339	10-32	.313	4-6	.667	10	22	32	2.1	16-0	10	13	5	4	56	3.7
2021-22	UK	30-29	715/23.8	74-209	.354	17-66	.258	42-79	.532	57	82	139	4.6	49-0	42	50	21	16	207	6.9
2022-23	ASU	27-27	919/34.1	103-344	.299	28-118	.237	71-103	.689	41	123	164	6.1	49-1	20	48	22	25	305	11.3
TOTAL FOR ASU		27-27	919/34.1	103-344	.299	28-118	.237	71-103	.689	41	123	164	6.1	49-1	20	48	22	25	305	11.3
TOTAL		72-57	1829/25.4	198-615	.322	55-216	.255	117-188	.622	108	227	335	4.7	114-1	72	111	48	45	568	7.9

Single Game Highs

Statistic	Value	
Points	24	vs Arizona 01/22/23
Rebounds	15	at New Mexico 11/20/22
Assists	5	vs Presbyterian 11/09/21
Steals	3	vs Florida 01/20/22, vs California 02/10/23
Blocks	2	14 times
FG Made	7	vs Presbyterian 11/09/21, vs Prairie View 12/17/22
FG Attempts	18	at Stanford 12/31/22
3FG Made	3	5 times
3FG Attempts	9	at Arizona 12/29/22
FT Made	9	vs Arizona 01/22/23
FT Attempts	10	vs DePaul 12/09/21, at Montana St. 11/15/22, vs Arizona 01/22/23



Arizona St. Women's Basketball
Individual Career Summaries
All games

NOVOSEL, Adison

				Field Goals		3-Point		F-Throws		Rebounds									Scoring	
SEASON	TEAM	GP-GS	MIN/AVG	FG-FGA	FG%	3FG-3FGA	3FG%	FT-FTA	FT%	OFF	DEF	TOT	AVG	PF-FO	A	TO	BLK	STL	PTS	AVG
2021-22	SF-PA	7-0	12/1.7	3-4	.750	2-3	.667	0-0	.000	1	1	2	0.3	0-0	1	1	0	1	8	1.1
2022-23	SF-PA	28-25	575/20.5	35-132	.265	29-120	.242	3-6	.500	12	35	47	1.7	32-0	12	16	5	15	102	3.6
TOTAL FOR ASU		0-0	0/0.0	0-0	.000	0-0	.000	0-0	.000	0	0	0	0.0	0-0	0	0	0	0	0	0.0
TOTAL		35-25	587/16.8	38-136	.279	31-123	.252	3-6	.500	13	36	49	1.4	32-0	13	17	5	16	110	3.1

Single Game Highs

Statistic	Value	
Points	12	vs Central Conn. St. 01/28/23
Rebounds	6	at Xavier 11/13/22, at Sacred Heart 02/09/23
Assists	3	at Marquette 11/27/22
Steals	3	vs Coppin St. 12/11/22
Blocks	1	5 times
FG Made	4	vs Central Conn. St. 01/28/23
FG Attempts	9	at Central Conn. St. 01/08/23
3FG Made	4	vs Central Conn. St. 01/28/23
3FG Attempts	8	vs Towson 11/19/22, at Central Conn. St. 01/08/23
FT Made	1	at Michigan 11/11/22, at Xavier 11/13/22, vs Merrimack 02/04/23
FT Attempts	2	at Michigan 11/11/22, at Xavier 11/13/22, vs Merrimack 02/04/23

ROBINSON, Jaylah

				Field Goals		3-Point		F-Throws		Rebounds									Scoring	
SEASON	TEAM	GP-GS	MIN/AVG	FG-FGA	FG%	3FG-3FGA	3FG%	FT-FTA	FT%	OFF	DEF	TOT	AVG	PF-FO	A	TO	BLK	STL	PTS	AVG
2022-23	ASU	1-0	1/1.5	0-0	.000	0-0	.000	0-0	.000	0	0	0	0.0	0-0	0	2	0	0	0	0.0
TOTAL		1-0	1/1.5	0-0	.000	0-0	.000	0-0	.000	0	0	0	0.0	0-0	0	2	0	0	0	0.0



**Arizona St. Women's Basketball
Individual Career Summaries
All games**

SIMMONS, Jaddan

SEASON	TEAM	GP-GS	MIN/AVG	Field Goals		3-Point		F-Throws		Rebounds				Scoring						
				FG-FGA	FG%	3FG-3FGA	3FG%	FT-FTA	FT%	OFF	DEF	TOT	AVG	PF-FO	A	TO	BLK	STL	PTS	AVG
2020-21	ASU	24-24	725/30.2	76-225	.338	11-62	.177	96-121	.793	26	50	76	3.2	38-0	65	49	4	27	259	10.8
2021-22	ASU	26-26	760/29.2	77-196	.393	21-65	.323	75-105	.714	23	66	89	3.4	56-1	73	46	10	43	250	9.6
2022-23	ASU	27-27	997/36.9	115-304	.378	16-57	.281	90-119	.756	49	75	124	4.6	74-1	84	55	18	50	336	12.4
TOTAL		77-77	2482/32.2	268-725	.370	48-184	.261	261-345	.757	98	191	289	3.8	168-2	222	150	32	120	845	11.0

Single Game Highs

Statistic	Value	
Points	22	at Washington St. 02/18/22, vs Northern Ariz. 11/07/22
Rebounds	10	vs UCLA 03/01/23
Assists	7	vs California 01/01/21, vs UTSA 12/04/21
Steals	6	vs California 02/10/23
Blocks	3	vs Northern Ariz. 11/07/22
FG Made	9	vs Washington St. 01/27/23
FG Attempts	19	vs UCLA 03/01/23
3FG Made	3	4 times
3FG Attempts	8	at Southern California 01/31/21
FT Made	11	vs Arizona 01/22/23
FT Attempts	14	vs Arizona 01/22/23

SKINNER, Tyi

SEASON	TEAM	GP-GS	MIN/AVG	Field Goals		3-Point		F-Throws		Rebounds				Scoring						
				FG-FGA	FG%	3FG-3FGA	3FG%	FT-FTA	FT%	OFF	DEF	TOT	AVG	PF-FO	A	TO	BLK	STL	PTS	AVG
2020-21	UD	29-2	588/20.3	80-240	.333	30-121	.248	64-80	.800	13	33	46	1.6	59-0	51	59	2	25	254	8.8
2021-22	UD	32-30	1080/33.7	139-405	.343	66-187	.353	66-84	.786	19	71	90	2.8	68-2	105	86	3	25	410	12.8
2022-23	ASU	28-28	1025/36.6	175-485	.361	68-196	.347	121-155	.781	16	61	77	2.8	82-2	67	77	3	48	539	19.3
TOTAL FOR ASU		28-28	1025/36.6	175-485	.361	68-196	.347	121-155	.781	16	61	77	2.8	82-2	67	77	3	48	539	19.3
TOTAL		89-60	2693/30.3	394-1130	.349	164-504	.325	251-319	.787	48	165	213	2.4	209-4	223	222	8	98	1203	13.5

Single Game Highs

Statistic	Value	
Points	29	at Grand Canyon 11/30/22, vs Missouri 12/04/22
Rebounds	10	at California 01/02/23
Assists	7	5 times
Steals	4	at Montana St. 11/15/22, vs Stanford 02/12/23, vs Colorado 02/17/23
Blocks	1	8 times
FG Made	10	at Towson 03/03/22, at Arizona 12/29/22, at UCLA 02/05/23
FG Attempts	29	vs Oregon St. 01/08/23
3FG Made	6	vs Missouri 12/04/22, at UCLA 02/05/23
3FG Attempts	14	vs Oregon St. 01/08/23
FT Made	15	at Grand Canyon 11/30/22
FT Attempts	17	at Grand Canyon 11/30/22



Arizona St. Women's Basketball
Individual Career Summaries
All games

SOUSA, Isadora

				Field Goals		3-Point		F-Throws		Rebounds									Scoring	
SEASON	TEAM	GP-GS	MIN/AVG	FG-FGA	FG%	3FG-3FGA	3FG%	FT-FTA	FT%	OFF	DEF	TOT	AVG	PF-FO	A	TO	BLK	STL	PTS	AVG
2021-22	ASU	7-0	70/10.0	4-16	.250	2-11	.182	2-4	.500	3	8	11	1.6	6-0	4	11	3	0	12	1.7
2022-23	ASU	23-7	348/15.1	30-67	.448	4-16	.250	11-16	.688	21	54	75	3.3	23-0	25	16	2	12	75	3.3
TOTAL		30-7	418/13.9	34-83	.410	6-27	.222	13-20	.650	24	62	86	2.9	29-0	29	27	5	12	87	2.9

Single Game Highs

Statistic	Value	
Points	9	vs Utah 02/19/23
Rebounds	12	vs American 11/25/22
Assists	4	vs UCLA 03/01/23
Steals	2	at Grand Canyon 11/30/22, vs Washington St. 01/27/23
Blocks	1	5 times
FG Made	3	4 times
FG Attempts	7	vs Utah 02/19/23
3FG Made	1	6 times
3FG Attempts	4	vs UTSA 12/04/21
FT Made	5	at New Mexico 11/20/22
FT Attempts	6	at New Mexico 11/20/22

THOMPSON, Journey

				Field Goals		3-Point		F-Throws		Rebounds									Scoring	
SEASON	TEAM	GP-GS	MIN/AVG	FG-FGA	FG%	3FG-3FGA	3FG%	FT-FTA	FT%	OFF	DEF	TOT	AVG	PF-FO	A	TO	BLK	STL	PTS	AVG
2022-23	ASU	13-3	142/10.9	17-39	.436	0-0	.000	9-10	.900	12	27	39	3.0	19-0	1	7	6	6	43	3.3
TOTAL		13-3	142/10.9	17-39	.436	0-0	.000	9-10	.900	12	27	39	3.0	19-0	1	7	6	6	43	3.3

Single Game Highs

Statistic	Value	
Points	11	vs Massachusetts 12/02/22, vs Prairie View 12/17/22
Rebounds	12	vs Oregon St. 01/08/23
Assists	1	vs Massachusetts 12/02/22
Steals	2	vs Prairie View 12/17/22
Blocks	2	vs Prairie View 12/17/22
FG Made	5	vs Massachusetts 12/02/22
FG Attempts	9	vs Massachusetts 12/02/22
FT Made	5	vs Prairie View 12/17/22
FT Attempts	6	vs Prairie View 12/17/22



**Arizona St. Women's Basketball
Individual Career Summaries
All games**

TOURE, Kadidia

				Field Goals		3-Point		F-Throws		Rebounds									Scoring		
SEASON	TEAM	GP-GS	MIN/AVG	FG-FGA	FG%	3FG-3FGA	3FG%	FT-FTA	FT%	OFF	DEF	TOT	AVG	PF-FO	A	TO	BLK	STL	PTS	AVG	
2022-23	JMU	21-0	166/7.9	25-56	.446	1-4	.250	20-28	.714	18	23	41	2.0	30-0	9	18	3	9	71	3.4	
TOTAL FOR ASU		0-0	0/0.0	0-0	.000	0-0	.000	0-0	.000	0	0	0	0.0	0-0	0	0	0	0	0	0	0.0
TOTAL		21-0	166/7.9	25-56	.446	1-4	.250	20-28	.714	18	23	41	2.0	30-0	9	18	3	9	71	3.4	

Single Game Highs

Statistic	Value	
Points	10	vs Queens (NC) 11/13/22
Rebounds	9	at Longwood 11/17/22
Assists	2	at Longwood 11/17/22, vs UMES 12/04/22, at Millersville 11/09/22
Steals	3	vs Queens (NC) 11/13/22
Blocks	2	vs Liberty 11/23/22
FG Made	4	vs Queens (NC) 11/13/22
FG Attempts	8	at Longwood 11/17/22
3FG Made	1	at Coastal Carolina 01/26/23
3FG Attempts	1	4 times
FT Made	3	at VCU 12/01/22, vs UMES 12/04/22
FT Attempts	5	at VCU 12/01/22

WIGGINS, Morasha

				Field Goals		3-Point		F-Throws		Rebounds									Scoring		
SEASON	TEAM	GP-GS	MIN/AVG	FG-FGA	FG%	3FG-3FGA	3FG%	FT-FTA	FT%	OFF	DEF	TOT	AVG	PF-FO	A	TO	BLK	STL	PTS	AVG	
2021-22	UNC	21-0	174/8.3	10-38	.263	6-19	.316	6-16	.375	12	18	30	1.4	19-0	5	5	1	8	32	1.5	
TOTAL FOR ASU		0-0	0/0.0	0-0	.000	0-0	.000	0-0	.000	0	0	0	0.0	0-0	0	0	0	0	0	0	0.0
TOTAL		21-0	174/8.3	10-38	.263	6-19	.316	6-16	.375	12	18	30	1.4	19-0	5	5	1	8	32	1.5	

Single Game Highs

Statistic	Value	
Points	10	vs App State 11/17/21
Rebounds	4	vs App State 11/17/21
Assists	1	5 times
Steals	2	vs N.C. A&T 11/09/21
Blocks	1	at Wake Forest 02/03/22
FG Made	3	vs App State 11/17/21
FG Attempts	6	vs App State 11/17/21
3FG Made	2	vs App State 11/17/21
3FG Attempts	3	vs App State 11/17/21, vs Virginia 01/20/22, vs Duke 02/27/22
FT Made	2	vs App State 11/17/21
FT Attempts	4	vs App State 11/17/21, vs Washington 11/27/21