

• 2023-24 UTSA ROADRUNNERS WOMEN'S BASKETBALL •

| UTSA vs South Florida | January 16, 2024 | The Convo |

#CASHIN • #BIRDSUP • #LETSGO210

GOUTSA.COM



2023-24 SCHEDULE AND RESULTS

THE MATCHUP

HEAD-TO-HEAD

NOVEMBER

6	at Arizona State	L, 55-70
10	<b>New Mexico State</b>	<b>W, 58-55</b>
15	at A&M-Corpus Christi	W, 66-59 (OT)
18	at UT Arlington	W, 70-66
20	at Texas Tech	L, 58-63
25	at Sam Houston State	W, 63-56
30	<b>Texas State</b>	<b>L, 57-65 (OT)</b>

DECEMBER

3	<b>UTEP</b>	<b>W, 90-66</b>
14	<b>Houston</b>	<b>L, 64-66</b>
17	at Oregon	L, 48-61
19	at Seattle U	W, 75-64
30	at Temple *	L, 78-51

JANUARY

2	at East Carolina *	L, 54-82
6	<b>Wichita State *</b>	<b>W, 74-60</b>
10	at FAU *	W, 73-60
14	<b>Charlotte *</b>	<b>W, 81-80 (2OT)</b>
16	<b>USF *</b>	<b>6:30 p.m.</b>
21	at UAB *	1 p.m.
27	at SMU *	2 p.m.
31	<b>North Texas *</b>	<b>6:30 p.m.</b>

FEBRUARY

4	<b>Tulane *</b>	<b>2 p.m.</b>
11	<b>UAB *</b>	<b>1 p.m.</b>
14	at Tulsa *	6:30 p.m.
18	at North Texas *	2 p.m.
22	<b>Temple *</b>	<b>6:30 p.m.</b>
25	<b>FAU *</b>	<b>1 p.m.</b>
28	at Memphis *	7 p.m.

MARCH

5	<b>Rice *</b>	<b>6:30 p.m.</b>
9-13	AAC Championships	TBD

• On Tuesday, the UTSA women's basketball team will invite the 2023 American Athletic Conference regular-season Champions into the Convocation Center as they host South Florida at 6:30 p.m.

• The Roadrunners (9-7, 3-2 The American) secured their third straight victory on Sunday, with a freshman Idara Udo put-back with 1.8 seconds remaining in double-overtime allowing UTSA to top Charlotte, 81-80.

• The Bulls (11-7, 3-2 The American) entered with UTSA and for fifth in the league standings and are coming off a 67-64 defeat at the hands of Rice.

• They sit just behind the Roadrunners with 40.8 rebounds per game, slotting them second in the AAC, and a 59.9 scoring defense also ranks second.

• Individually, Vittoria Blasigh serves as one of the top three-point shooters in the NCAA, sinking 53 on the season for the seventh-most nationally.

• She converts shots from beyond the arc at a 38.7% rate and leads the Bulls scoring 15.7 points per game.

• Romi Levy joins her in averaging double-figures with 10.9 points per game, and Aerial Wilson enters the contest tied with White for the second-most assists in the conference.

• Evelien Lutje Schipholt and Carla Brito do the bulk of the work on the glass, with Lutje Schipholt securing 7.4 rebounds per game and Brito 6.7.

• Jacee Busick hauls in 5.1 rebounds per game to top the squad, while Olivia Porter's 50 assists are the most of any 49er.



Tuesday, Jan. 16 | 6:30 p.m. CT  
San Antonio, Texas  
UTSA vs USF



65.3	POINTS PER GAME	65.8
65.3	OPP. POINTS PER GAME	59.9
45.9	REBOUNDS PER GAME	40.8
+10.6	REBOUNDING MARGIN	+5.3
39.8	FIELD GOAL PCT.	40.0
28.8	3-POINT PCT.	31.1
62.8	FREE THROW PCT.	74.4
14.1	ASSISTS PER GAME	14.8
18.8	TURNOVERS PER GAME	15.0
6.9	STEALS PER GAME	5.2
5.2	BLOCKED SHOTS PER GAME	4.3

UTSA Roadrunners

Overall Record	9-7
American Athletic Conference Record	3-2
Home Record	5-2
Away Record	4-5
Neutral Record	0-0
2022-23 Record / C-USA Finish	13-19, 9-11 / 6th

South Florida Bulls

Overall Record	11-7
American Athletic Conference Record	3-2
Home Record	8-2
Away Record	1-2
Neutral Record	2-3
UTSA All-Time vs South Florida	First Meeting
at UTSA	0-0
at USF	0-0
Current Streak	N/A

WHERE TO WATCH: ESPN+

www.goutsa.com/wbblive  
Karl Schoening (play-by-play)  
Carlie Heineman (analyst)

GAME COVERAGE

Stats: [goutsa.com/wbbstats](https://goutsa.com/wbbstats)  
X (Twitter): @UTSAWBB  
Instagram: @UTSA\_WBB

WHERE TO LISTEN: THE BULL 93.3

www.goutsa.com/wbradio  
Neal Raphael (play-by-play)  
The iHeartRadio app

PREVIOUS STARTERS: 81-80 (2OT) WIN VS CHARLOTTE



11  
SIDNEY  
LOVE  
SO • G • 5-8



12  
AYSIA  
PROCTOR  
FR • G • 5-8



22  
KYRA  
WHITE  
SR • G • 5-9



25  
IDARA  
UDO  
FR • F • 6-1



0  
ELYSSA  
COLEMAN  
R-JR • F • 6-3

All Times Central | Home Games in Bold | AAC Games \*

WE ARE UTSA

When referencing University of Texas at San Antonio Athletics, please use the acronym UTSA and the nickname ROADRUNNERS. Please refrain from using UT-San Antonio, Texas-San Antonio, UT-SA, Lady Roadrunners or any other variation.

## QUICK FACTS

Institution Name..... The University of Texas at San Antonio (UTSA)  
 Location.....San Antonio, Texas  
 Founded..... 1969  
 Enrollment..... 34,864  
 Nickname..... Roadrunners  
 School Colors ..... Navy Blue (PMS 289), Orange (PMS 1665), White  
 Arena (Capacity)..... Convocation Center (2,650)  
 Year Opened..... 1975  
 Conference..... American Athletic Conference  
 President.....T. Taylor Eighmy, Ph.D. (Tufts, 1980)  
 Vice President/Athletics Director..... Lisa Campos (Colorado State)  
 Athletic Department Phone..... 210.458.4161  
 Ticket Office Phone.....210.458.UTSA (8872)

## TEAM INFORMATION

2022-23 Overall Record..... 13-19  
 Home / Away / Neutral..... 8-4/ 3-12 / 2-3  
 Conference Record/Finish (Conference USA).....9-11/6th  
 Letterwinners Returning/Lost..... 11/3  
 Starters Returning/Lost..... 5/0  
 Newcomers..... 5

## HISTORY

First Year of Basketball..... 1981-82  
 All-Time Record (pct.).....549-627 (.466)  
 All-Time AAC Record (pct.).....3-2 (.600)  
 Conference Regular Season Championships..... 2  
 2002-03 (Southland Conference) • 2008-09 (Southland Conference)  
 Conference Tournament Championships..... 2  
 2008 (Southland) • 2009 (Southland)  
 NCAA Tournament Appearances/Record..... 2/0-2 (.000)  
 2008 • 2009  
 Last NCAA Postseason Opponent/Result..... 2009  
 Lost to No. 2 seed Baylor, 87-82 OT (March 22, 2009)

## COACHING STAFF

Head Coach.....Karen Aston (Third season - Little Rock, 1987)  
 Record at UTSA (Years)..... 29-49 (Third season)  
 Career Record (Years)..... 314-195(16th season)  
 Assoc. Head Coach.....Jamie Carey (third season - Texas, 2004)  
 Assistant Coaches.....Empress Davenport (third season - Texas, 2016)  
 ..... Cameron Miles (third season - San Diego, 2004)  
 Dir./WBB Operations..... Chantel Govan (First season - UTSA, 2022)  
 Player Development.....Sophia Ramos (First Season - San Diego St., 2022)  
 Graduate Assistant..... Angel Almaguer ( First season - UTSA , 2022)

## ATHLETICS COMMUNICATIONS

Associate Athletics Director/Communications..... Kyle Stephens  
 Associate Director [MBB Contact]..... Michael Stambaugh  
 Assistant Director [WBB Contact]..... Ryan Smith  
 Assistant Director..... Alma Solis  
 Smith's Email Address..... ryan.smith2@utsa.edu  
 Smith's Cell Phone..... 361.442.9600  
 Website..... goutsa.com  
 General Athletics X (Twitter)..... @UTSAathletics  
 Women's Basketball X (Twitter)..... @UTSAWBB  
 Women's Basketball Instagram.....@UTSA\_WBB

## ROADRUNNER NOTES AND NEWS

### LAST TIME OUT

- The Roadrunners (9-7, 3-2 The American) secured their third straight victory on Sunday, with a freshman Idara Udo putback with 1.8 seconds remaining in double-overtime allowing UTSA to top Charlotte, 81-80.
- Udo dropped a career-high 26 points in the effort, shooting 69% from the field and collecting nine rebounds with three blocks to work her way onto the AAC Weekly Honor Roll.
- Newcomer Aysia Proctor was also excellent, logging a game-high 13 rebounds to go with 17 points, while senior Kyra White finished just shy of a triple-double.
- White scored nine points, hauled in 10 boards, and dished out nine assists in 44 minutes of action.

### 'RUNNERS IN THE RANKINGS

- As of 1/12The 'Runners rank inside the top 25 nationally in a quartet of statistics, including rebounds per game, where a 45.9 average sits atop The American and ninth nationally. 16.7 offensive rebounds per game also rank ninth, and a plus-10.6 rebounds margin is 15th in the NCAA and first in the AAC.
- 5.2 blocks per game pace The American and slot UTSA 20th overall.
- Redshirt junior Elyssa Coleman continues to lead the league in blocks per game with 1.75, and White has claimed her way into second on the AAC assist leader board with 78 on the year.
- White sits second in minutes per game, playing 35.1, and sophomore Sidney Love has been The American's second-most efficient free throw shooter, converting at 82.5%.

## 2023-24 WOMEN'S BASKETBALL ROSTER

#	Name	Pos	Ht	Yr.	Hometown • High School / Previous School
0	Elyssa Coleman	F	6-3	R-Jr.-2L	Houston, Texas/Atascocita HS/Texas
1	Hailey Atwood	G	5-8	GS. -2L	Austin, Texas/Bowie HS/Blinn CC
2	Alexis Parker	G	5-9	So.-1L	San Antonio, Texas/Brandeis HS
3	Emma Lucio	G	5-9	Fr.-HS	Edinburg, Texas / Robert Vela HS
4	Siena Guttadauro	G	5-6	So.-2L	San Jose, Calif./Archbishop Mitty HS
5	Madison Cockrell	G	5-4	So.-1L	Dallas, Texas/Bishop Lynch HS
11	Sidney Love	G	5-8	So.-1L	Cibolo, Texas/Steele HS
12	Aysia Proctor	G	5-8	Fr.-HS	Schertz, Texas / Samuel Clemens HS
13	Sarai Estupiñan	G	5-5	Jr.-TR	Cedar Park, Texas / St. Mary's (TX) / Tallahassee CC
20	Maya Linton	F	6-0	So.-1L	Duncanville, Texas/Duncanville HS
21	Cheyenne Rowe	F	6-2	So.-TR	Ajax, Ontatio / Bill Crothers Secondary School / JMU
22	Kyra White	G	5-9	Sr.-1L	Converse, Texas/Judson HS/Southern California
23	Kyleigh McGuire	F	5-10	Sr.-1L	Houston, Texas/Atascocita HS
25	Idara Udo	F	6-1	Fr.-HS	Plano, Texas / Plano East HS
30	Nissa Sam-Grant	C	6-4	Sr.-1L	Marietta, Ga./Wheeler HS/Panola CC
32	Jordyn Jenkins	F	6-0	Sr.-1L	Kent, Wash./Kentridge HS/Southern California

## UTSA RECORD WHEN...

Category	H	R	N	O
Overall	4-2	5-7	0-0	9-7
Conference	2-0	1-2	0-0	3-2
Non-Conference	2-2	4-3	0-0	6-5
Overtime	1-1	1-0	0-0	2-1
Double Overtime	1-0	0-0	0-0	0-0
Top-10 Opponents	0-0	0-0	0-0	0-0
Top-25 Opponents	0-0	0-0	0-0	0-0
Receiving Votes	0-0	0-0	0-0	0-0
Wear White	3-2	0-0	0-0	3-2
Wear Orange	0-0	3-2	0-0	3-2
Wear Navy	1-0	2-3	0-0	3-3
In November	1-1	3-2	0-0	4-3
In December	1-1	1-2	0-0	2-3
In January	2-0	1-1	0-0	3-1
In February	0-0	0-0	0-0	0-0
In March	0-0	0-0	0-0	0-0
Lead at Half	3-0	2-0	0-0	5-0
Trail at Half	1-2	2-5	0-0	3-6
Tied at Half	0-0	1-0	0-0	1-0
Decided by 1-4 Points	2-1	0-0	0-0	2-1
Decided by 5-9 Points	0-1	3-1	0-0	3-2
Decided by 10+ Points	2-0	2-4	0-0	4-4
Scoring 80+	2-0	0-0	0-0	2-0
Scoring 70-79	1-0	3-0	0-0	4-0
Scoring 60-69	0-1	2-0	0-0	2-1
Scoring 50-59	1-1	0-4	0-0	1-5
Scoring 0-49	0-0	0-1	0-0	0-1
Opp. Scoring 80+	1-0	0-1	0-0	1-1
Opp. Scoring 70-79	0-0	1-1	0-0	1-1
Opp. Scoring 60-69	2-2	2-2	0-0	4-4
Opp. Scoring 50-59	1-0	2-1	0-0	3-1
Opp. Scoring 0-49	0-0	0-0	0-0	0-0
FG 50% or Higher	1-0	0-0	0-0	1-0
FG 40-49.9%	1-1	4-1	0-0	5-2
FG 39.9% or Lower	2-1	1-4	0-0	3-5
Opp. FG 50% or Higher	0-0	0-0	0-0	0-0
Opp. FG 40-49.9%	0-0	2-2	0-0	2-2
Opp. FG 39.9% or Lower	4-2	3-3	0-0	7-5
Better FG% than Opp.	4-2	4-1	0-0	8-3
FG% is Equal	0-0	0-0	0-0	0-0
Opp. Better FG%	0-0	1-4	0-0	1-4
FT 80% or Higher	1-0	0-1	0-0	1-1
FT 70-79.9%	0-1	2-0	0-0	2-1
FT 69.9% or Lower	3-1	3-4	0-0	6-5
Opp. FT 80% or Higher	1-1	0-0	0-0	1-1
Opp. FT 70-79.9%	2-0	1-3	0-0	3-3
Opp. FT 69.9% or Lower	1-1	4-2	0-0	5-3
Better FT% than Opp.	0-0	3-1	0-0	3-1
FT% is Equal	0-0	0-0	0-0	0-0
Opp. Better FT%	4-2	2-4	0-0	6-6
Outrebounding Opp.	4-1	5-5	0-0	9-6
Rebounds are Equal	0-0	0-0	0-0	0-0
Outrebounded by Opp.	0-1	0-0	0-0	0-1
More Assists than Opp.	3-1	3-2	0-0	6-3
Assists are Equal	0-0	0-0	0-0	0-0
Fewer Assists than Opp.	1-1	2-3	0-0	3-4
Fewer TO than Opp.	1-0	3-0	0-0	4-0
Turnovers are Equal	0-0	0-0	0-0	0-0
More TO than Opp.	3-2	2-5	0-0	5-7
4+ in Double Figures	1-0	2-0	0-0	3-0
3 in Double Figures	2-2	2-2	0-0	4-4
2 in Double Figures	1-0	1-2	0-0	2-2
1 in Double Figures	0-0	0-1	0-0	0-1
Bench Scores More	0-1	3-4	0-0	3-5
Bench Points are Equal	1-0	0-0	0-0	1-0
Opp. Bench Scores More	3-1	2-1	0-0	5-2
More Fast Break Points	2-0	4-0	0-0	6-0
Fast Break Points are Equal	0-0	0-1	0-0	0-1
Fewer Fast Break Points	2-1	1-4	0-0	3-5
More Points in Paint	3-1	3-4	0-0	6-5
Points in Paint Equal	1-0	1-0	0-0	2-0
Fewer Points in Paint	0-1	1-1	0-0	1-2
Highest Scoring Quarter	1Q	26 / December 3, 2023 vs UTEP		
	2Q	23 / December 19, 2023 at Seattle U		
	3Q	26 / December 19, 2023 at Seattle U		
	4Q	30 / November 25, 2023 at Sam Houston		
Lowest Scoring Quarters	1Q	8, 3x / December 17, 2023 at Oregon		
	2Q	8 / November 25, 2023 at Sam Houston		
	3Q	12, 2x / January 2, 2024 at East Carolina		
	4Q	10 / December 19, 2023 at Seattle U		
Opponent Highest Scoring Quarters	1Q	25, 2x / January 2, 2024 at East Carolina		
	2Q	29 / December 14, 2023 vs Houston		
	3Q	22 / December 30, 2023 at Temple		
	4Q	27 / December 19, 2023 at Seattle U		
Opponent Lowest Scoring Quarters	1Q	8 / January 6, 2024 vs Wichita State		
	2Q	11 / December 17, 2023 at Oregon		
	3Q	9, 2x / December 14, 2023 vs Houston		
	4Q	10, 2x / November 30, 2023 vs Texas State		
Largest Halftime & Final Score	Half	48 / December 3, 2023 vs UTEP		
	Final	90 / December 3, 2023 vs UTEP		
Lowest Halftime & Final Score	Half	20, 2x / December 17, 2023 at Oregon		
	Final	48 / December 17, 2023 at Oregon		
Opponent Largest Halftime & Final Score	Half	49 / November 6, 2023 at Arizona State		
	Final	82 / January 2, 2024 at East Carolina		
Opponent Lowest Halftime & Final Score	Half	25 / January 14, 2024 vs Charlotte		
	Final	55 / November 10, 2023 vs New Mexico State		

## NOTES AND NEWS CONT.

### SHE'S ON A ROLL

• Senior Kyra White, sophomore Sidney Love, freshman Aysia Proctor, redshirt junior Elyssa Coleman and freshman Idara Udo have now each been selected for the American Athletic Conference's Weekly Honor Roll

• White was recognized on 11/20 after delivering a pair of solid performances in road victories against TAMUCC and UT Arlington.

• First, White dropped 18 points to go with six rebounds and five assists while propelling the squad to a 15-point come-from-behind victory over the Islanders.

• Later in the week, she added five more points to her total, hauling in six boards and dishing off six assists in a 70-66 win against the Lady Mavs.

• On the week, she swatted a shot and swiped a steal, all while averaging the most assists per game in the league at 5.50.

• Love was chosen on 11/27 after leading the Roadrunners in scoring on the week, first dropping 18 points at a .500 clip against Texas Tech.

• She then scored 12 more in a victory over Sam Houston, allowing her to average 15.0 ppg, to go along with 10 rebounds, and two assists.

• Love shot an efficient 47.6% and went 8-for-9 from the charity stripe.

• Defensively, she boasted a block and swiped five steals.

• Proctor was selected on 12/18 after averaging 19.5 ppg to go with 8.0 rpg after coming off the bench against Houston and Oregon.

• She first went 9-for-11 from the field for 19 points and five rebounds against the Cougars before logging a career-high 20 points and 11 rebounds against the Ducks on the road.

• Her double-double in the matchup with Oregon represented the first of her collegiate career.

• Coleman was awarded on 12/26 after posting 18 points and nine rebounds in a 75-64 victory over Seattle U and against on 1/6 after averaging 21.5 ppg and 11.5 rpg across contests against East Carolina and Wichita State

• Udo was selected on Jan. 15 after collecting seven rebounds with four assists and four points against Florida Atlantic, and recording a double-overtime game-winner against Charlotte.

• Following a 49er three-pointer with 13 seconds on the clock, Udo hauled in an offensive rebound and got a second-chance layup to fall, handing UTSA the lead with 1.8 seconds remaining in the period.

• She scored a career-high 26 points in the win, with nine rebounds, three blocks and a steal.

• On the week, she averaged 15 ppg at a 55% clip, with eight rpg, five blocks, a steal, and four assists.

### DOWN GOES CHARLOTTE

• On Jan. 14, UTSA secured their third straight victory, with a freshman Idara Udo putback with 1.8 seconds remaining in double-overtime allowing UTSA to top Charlotte, 81-80.

• UTSA dealt Charlotte their first AAC loss of the season, knocking the 49ers off the top of the standings with the victory

• Udo dropped a career-high 26 points in the effort, shooting 69% from the field and collecting nine rebounds with three blocks to work her way onto the AAC Weekly Honor Roll.

• Newcomer Aysia Proctor was also excellent, logging a game-high 13 rebounds to go with 17 points, while senior Kyra White finished just shy of a triple-double.

• White scored nine points, hauled in 10 boards, and dished out nine assists in 44 minutes of action.

## NOTES AND NEWS CONT.

### **CROWN HER**

- Redshirt junior Elyssa Coleman was phenomenal against Wichita State on Jan. 6, logging a career-high double-double and earning her a spot on the NCAA Starting Five for the week
- She scored 32 points at a 70% clip while hauling in 19 rebounds
- Coleman became the first member of the squad to record at least 19 rebounds since 2016, tying her for the fifth-best single-game performance in school history.
- Her 32 points are also tied for the 10th-best single-game performance in the program's history.
- As of 1/6, she's been the AAC's leader in blocks with 25, helping UTSA to the 22nd highest blocks per game total in the NCAA (5.1 bpg), and is the Roadrunner's top rebounder, with 7.9 rpg, propelling UTSA to the 11th-best rebounds per game average in the NCAA (46.0 rpg).
- Coleman also serves as UTSA's all-time blocking leader, swatting 120 shots across her career.

### **FIRST OF MANY**

- On Jan. 6, 2024, UTSA won its first ever American Athletic Conference contest, routing Wichita State 74-60 inside of the Convocation Center
- Redshirt junior Elyssa Coleman propelled the squad to victory with 32 points and 19 rebounds, while sophomore Sidney Love scored 16 and senior Kyra White 12
- As a team, UTSA recorded 12 more rebounds than the opposition, helping achieve 24 second-chance points and 36 points in the paint.

### **ON THE DOUBLE**

- Sophomore Maya Linton recorded UTSA's first double-double of the season on Nov. 18, 2023 against UTA, freshman Aysia Proctor the second on Dec. 17
- Redshirt junior Elyssa Colman accomplished the feat on Jan. 6 against Wichita State, before doing it again on Feb. 10 against FAU
- Proctor secured her second double-double of the campaign on JAN. 14 in a matchup with Charlotte
- Linton scored a career-high 15 points to go along with 10 rebounds in a 70-66 victory over the Lady Mavs
- Proctor charted a career-best 20 points to go with 11 rebounds in a 61-48 loss to Oregon in Eugene
- Coleman was incredible against the Shockers, logging a career-high 32 points and a whopping 19 rebounds
- She then accomplished the feat in her second consecutive contest, scoring 16 point with 10 rebounds against FAU
- Proctor recorded her second double-double of the campaign as she scored 17 points to go with 13 rebounds in a double-overtime win against the 49ers.

### **FRESHMAN PHENOM**

- The American Athletic Conference recognized Idara Udo on 12/26/23, selecting the Plano, Texas native as their Freshman of the Week after she delivered a solid shift off the bench in a 75-64 victory over Seattle U.
- Udo helped UTSA best the Redhawks to the tune of 15 points, nine rebounds, and two assists while going an incredibly efficient 62.5% from the field.
- The Roadrunners last boasted a Freshman of the Week on Nov. 22, 2021, after Elyssa Coleman claimed the C-USA accolade, dropping 14 points and 12 rebounds across a 66-60 win over UIW.
- Udo's accomplishment marks the first occasion in which a UTSA women's basketball player was honored since joining The American.

### **ENTERING LEAGUE PLAY**

- The Roadrunners enter their inaugural American Athletic Conference slate after going 6-5 across the teleconference slate
- UTSA will enter league play with a postie record for the first time since the 2013-14 campaign, when the team went 10-5 before kick-starting the C-USA slate
- The 'Runners bested New Mexico State, Texas A&M-Corpus Christi, UT Arlington, Sam Houston State, UTEP, and Seattle U, while falling to Arizona State, Texas Tech, Texas State, Houston and Oregon
- UTSA went 2-2 inside the Convocation Center, and 4-3 on the road

### **CLOSE BUT NO CIGAR**

- The Roadrunners came close to making history on Dec. 14th as they fell to Houston, 66-64
- After trailing by as much as 22 points late in the second quarter a Sidney Love three-pointer put UTSA down two with 12 seconds remaining in the contest
- Houston, however, prevailed and the comeback fell short in what would have represented the largest deficit overcome in school history
- A 22 point comeback would also have tied UTSA for the 13th largest deficit overcome in the history of NCAA Division I Women's Hoops

### **90'S KIDS**

- The Roadrunners scored 90 points on Dec. 3, 2023 in a victory over UTEP, marking the first time a UTSA squad has reached the benchmark since accomplishing the feat since a 97-47 win against Sul Ross State on Nov. 10, 2017
- The 24-point win represents the largest margin of victory in the Karen Aston era at UTSA.
- Redshirt junior Elyssa Coleman was an incredibly efficient 11-for-13, scoring a career-high 23 points and helping the team shoot 58% from the field.
- The squad also sunk eight three-pointers for their highest total of the season.
- Along with Coleman, sophomore Sidney Love posted 16 points, marking her sixth straight game achieving the feat, while classmate Siena Guttadauro and senior Kyra White each charted 12.

### **THE QUEEN OF THE COURT**

- Redshirt junior Elyssa Coleman became the Roadrunners all-time blocking leader on 11/25/23 after she swatted three shots against Sam Houston
- On that day, she recorded her 106th block wearing a UTSA uniform, allowing her to surpass the previous record of 105 that was held by Whitney Wright who played for the Roadrunners from 2009-2013
- Coleman's 57 blocks across the 2022-23 campaign helped propel her towards this award and is currently tied with Kim Duncan for the second-best single season mark

### **WELCOME TO THE BLOCK PARTY**

- The Roadrunners recorded the sixth-most blocks per game in the NCAA through the first month of the season, swatting 6.9 shots each time out
- Senior Elyssa Coleman heavily aided that figure, with 16 swats leading the American Athletic Conference and ranking 21st across the NCAA
- Not far behind, freshman Idara Udo ranked third in the American with 12 blocks and senior Kyra White sixth, logging 10.

### **IT'S A LOVE STORY**

- Sidney Love had recorded double-digit scoring performances in seven consecutive contests dating from 11/15/23-12/14/23
- She first scored 10 points in a matchup with Texas A&M-Corpus Christi, before working a career-high 26 points against UT Arlington, dropping 18 on Texas Tech and 12 on Sam Houston
- Love then added 11 against Texas State and 16 against UTEP increasing her streak to six
- The streak concluded with a 13 point performance against Houston on Dec. 14

### **OFF TO A HOT START**

- UTSA opened the season going 3-1 and using wins over New Mexico State, Texas A&M-Corpus Christi, and UT Arlington to capture a three-game winning streak
- The last time the Roadrunners started the season 3-1 against NCAA Division I opponents was the 2012-13 campaign
- That squad earned wins over UTRGV, Texas A&M-Corpus Christi and Austin Peay, while falling to Wichita State en route to a 16-14 overall record with a 10-8 mark in conference play

## NOTES AND NEWS CONT.

### **FABULOUS FRESHMEN**

---

- In their first week of collegiate competition, freshmen Idara Udo and Aysia Proctor delivered stellar performances
- Udo lead the AAC in rebounds per game on the first week of competition after averaging 10 rpg despite coming off the bench.
- She first scored 10 points and hauled nine boards in against Arizona State before snagging 11 rebounds in a win against New Mexico State.
- Additionally, she swiped two steals and swatter four shots, including a last-second block to secure a 58-55 victory over the Aggies.
- Proctor shot 75% from the field, scoring 21 points across the games against Arizona State and New Mexico State. In addition to her offensive success, she swiped a steal and hauled in 12 rebounds off the bench.

### **RUN IT BACK**

---

- 11 Roadrunners are back in Navy and Orange, as the team graduated Queen Ulabo, Kennedy Harrell, and Deborah Nwakamma
- A star-studded cast returns with Jordyn Jenkins, Hailey Atwood, Kyra White, Sidney Love and Elyssa Coleman all slated to be back in action
- Jenkins represents the reigning C-USA Player and Newcomer of the Year, while Love was an All-Freshman team selection and Coleman an All-Defensive pick
- Rounding out the group, Atwood was crowned the C-USA Scholar Athlete of the Year and White an All-Texas Honorable Mention by Dave Campbell Texas Basketball
- Other returnees include sophomores Alexis Parker, Siena Guttadauro, Madison Cockrell, and Maya Linton, along with seniors Kyleigh McGuire and Nissa Sam-Grant

### **ALL ABOARD THE ASTON EXPRESS**

---

- Five newcomers inked with UTSA ahead of the 2023-24 season; two entering the Alamo City via the portal and three true freshmen
- Notably, sophomore Cheyenne Rowe transferred in from James Madison where she was crowned Sun Belt Champion after appearing in 16 games for the Dukes.
- Also transferring into UTSA, junior Sarai Estupiñan has spent time with both St. Mary's (TX) and Tallahassee CC
- Guards Emma Lucio and Aysia Proctor joins as well, along with forward Idara Udo

### **INTO THE AMERICAN**

---

- The Roadrunners are set to embark on their inaugural season as a member of the American Athletic Conference
- UTSA went 44-107 in the C-USA era, and last won a championship as a member of the Southland
- The 'Runners were the 2002-03 SLC Regular Season Champs, and won the league again in 2008-09
- The program has won two SLC Tournaments in its history, punching its ticket to the NCAA Tournament in 2008 and 2009

# FAST FACTS

## #0 - ELYSSA COLEMAN

- 2022-23 C-USA All-Defensive Team selection...appeared in 32 games with 30 starts...averaged 9.3 ppg at a 44.6% shooting clip...logged 26.8 MPG, collecting 6.6 RPG and 57 blocks
- 2021-22: Played in 30 games with 18 starts...averaged 7.9 ppg and 4.9 rpg...led the team in field goals made (99) and blocked shots (38)...named C-USA Freshman of the Week on Nov. 21
- Transferred from the University of Texas...did not play due to injury...part of the Elite Eight team of 2021...in high school, ranked No. 12 forward in the class of 2020, according to ESPNW...played in 132 games and averaged 10.8 points, 8.1 rebounds, 2.1 blocks and 1.1 steals per game...named to the TABC Class 6A All-State Team and the District 22-6A Most Valuable Player in 2020
- Born on Feb. 27, 2002...daughter of Lorna and Quintin Coleman...has one brother, Jacody who played football at Iowa and Lamar...Pursuing a degree in sociology

## #1 - HAILEY ATWOOD

- 2022-23: Was named the 2022-23 C-USA Scholar Athlete of the Year...C-USA All-Academic selection...2022-23 Teammate of the Year by Team IMPACT...appeared in 31 games with 20 starts...averaged 21.9 mpg, 4.1 ppg, 3.2 rpg, and 1.2 apg...shot 40.1% from the field
- 2021-22: Played in 27 games with 12 starts...averaged 3.4 points and 4.3 rebounds per game
- Transferred from Blinn College...played in 24 games as a sophomore, with 18.5 points, 7.0 rebounds and 2.7 assists per game...as a freshman earned NJCAA Academic All-America honors...attended Bowie High School
- Born on Dec. 27, 2000...daughter of Jennifer Atwood...has two brother, Trey Thomson and Carter Lewis...has two sisters, Avery and Aubrey Lewis

## #2 - ALEXIS PARKER

- 2022-23: Participated in 21 games, averaging 12.7 MPG...posted 43 points at a 38.1% clip...hailed in 27 rebounds, dishing out 14 assists and swiping 10 steals
- Played four years at Brandeis High School...helped the Broncos to three playoff runs, including a fifth-round playoff appearance her sophomore season...three-time first-team all-academic honoree, three-time first-team all-district honoree, first-team all-area member and earned all-state accolades
- Born on Sept. 15, 2003...daughter of Cedrick and Jessica...sister of Cedrick Jr. and London...pursuing a degree in kinesiology, with a minor in biology

## #3 - EMMA LUCIO

- Joins the Roadrunners from Robert Vela High School in Edinburg, Texas...named the District Newcomer of the Year, Second Team All-District, and Third Team All-Valley as a freshman...earned First Team All-District and Second Team All-Valley during her sophomore year...named Co-Offensive Player of the Year, First Team All-District, All-Valley Defensive Team, All State Team, and All-City MVP as a junior...two-time district champion
- Daughter of Jessica Ann Lucio and Sergio Lucio Sr...six brothers, Stephen, Charles, Edgar, Eric, Jason, and Sergio Jr...two sisters, Korina and Allison...pursuing a degree in kinesiology with the goal to build her own fitness organization

## #4 - SIENA GUTTADAURO

- 2022-23: Logged three starts and 24 appearances in her inaugural season, averaging 12.3 MPG...scored 52 points with 18 assists and 29 rebounds
- Clubbed with the San Jose Cagers, a premier organization that dons a 90 percent winning percentage...helped the Archbishop Mity Monarchs to three WCAL Championships and two CIF Championships...2022 state runners-up...part of the 2020 Northern California Championship team...made 2020 State Finals but the game was canceled due to the COVID-19 pandemic
- Born on Oct. 26, 2003...daughter of Joe and Rosella Guttadauro...has three brothers, Joey, Anthony and Dominic...father played soccer at Santa Clara and brother played football at Linfield...majoring in communications with the goal of becoming a sports broadcaster

## #5 - MADISON COCKRELL

- 2022-23: Sixteen appearances with two starts...averaged 11.1 MPG with 3.3 PPG and 1.5 RPG...shot 39.1% from the field, including 33.3% from beyond the arc
- Four-year letter winner in high school, three of which at Bishop Lynch HS under coach Andy Zhilman...received District Defensive Player of the Year during her junior campaign...named First Team All-State in 2021 and All Tournament at the 2021 State Tournament where she helped the Friars to a state championship
- Born on Sept. 8, 2003...daughter of Milton and Daphne Cockrell...has one brother, Dylan...father played football at OSU and her mother played basketball and ran track at Southwestern Christian College...pursuing a degree in criminology with plans to attend law school

## #11 - SIDNEY LOVE

- 2022-23: C-USA All-Freshman Team selection...25 games played and 20 starts with 29.5 MPG...logged a team-high 29 three-pointers...shot 42.8% from the field, including 37.0% from beyond the arc...dished out 58 assists...15 double-digit scoring games
- In high school was named named the 2022 Co-District MVP, a McDonald's All-American nominee and the Express-News Player of the Week all in her senior season...four-time academic all-district recipient, named District Defensive MVP her junior year, earned TGCA All-Star accolades and first-team all-district...helped the team become 2020 District Champions and Co-District Champions in 2021
- Born on Sept. 11, 2003...daughter of Kevin and Andrea Love...has two brothers, Kijana and Langston, and two sisters, Endaisia and Camille...her father played football for Texas A&M, her sisters, Endaisia and Camille, played soccer at Trinity and St. Mary's, respectively, and her brothers, Kijana and Langston played basketball at New Hampshire and Baylor...pursuing a degree in business management

## #12 - AYSIA PROCTOR

- A local product from Samuel Clemens High School, Proctor was named to the All District First Team as a freshman in 2020...earned Texas Girls Coaches' Association All-State honors and Texas Association of Basketball Coaches All-Region honors in 2021...named to the 2021-22 UIL Girls All-Region Team...named to the All-District First Team in 2022
- Daughter of Bobby and Angela Proctor...father played basketball at the University of Colorado-Colorado Springs pursuing a degree in cyber security

## #13 - SARAI ESTUPIÑAN

- Began her collegiate career at St. Mary's where she played in 10 games across the 2021-22 season...She averaged 2.6 ppg for the Rattlers, collecting eight steals and eight rebounds in 14.1 mpg...Estupiñan then transferred to Tallahassee CC where she was named Second-Team All-Panhandle Conference for her performance in the 2022-23 campaign...led TCC in scoring with 13.0 ppg, shooting 33.6% from the field
- Was a two-time First-Team All-District selection and named to the All-State Tournament team for Cedar Park High School...Helped the team win the 5A State Championship also earning Academic All-District honors along the way

## #20 - MAYA LINTON

- 2022-23: Appeared in 27 games with 15.7 MPG...averaged 2.3 PPG, sinking shots at a 40.3% clip...hailed in 3.5 RPG
- Four-year letter winner at Duncanville High School...helped the Panthers to a Bi-District and area title...part of the Drive Nation 17U EYBL club team...received Defensive Player of the Year honors...awarded Second Team All-District and All-District Academic honors
- Daughter of Rose Fiomì...four sisters, Malia and McKenna Linton, Miranda Pohlman and Michaela Martinez...majoring in business

## #21 - CHEYENNE ROWE

- Transfer from James Madison, Rowe appeared in 16 games as a freshman in the 2022-23 season...As a Duke, she averaged nine minutes and two points per game...She helped lead the team to a successful 26-8 season, winning the Sun Belt Tournament to earn an automatic bid into the NCAA Tournament
- A native of Ajax, Ontario, she played for the Canada U18 National Team at the 2022 FIBA Women's Americas where she won a silver medal...high school career included the 2019 Biosteel Girls Future MVP and Biosteel 2022 Team member...She represented Team Ontario in their U14 and U15 teams from 2017-19. Rowe was named First Team All-Star in U17 Canadian National Championships in 2019...She was also selected for Canadian National Assessment Camp.
- Rowe is the daughter of Waine Rowe and Hilary Chung-Rowe and has one sister, Ciara.

## #22 - KYRA WHITE

- 2022-23: Named All-Texas Honorable Mention by Dave Campbell's Texas Basketball...started 28 games for the Roadrunners, averaging 33.2 MPG...led the team with 142 assists and 4.5 APG, the second-most in C-USA...third-most steals (24), blocks (27) and rebounds (160) on the team...averaged 7.9 PPG, shooting 33.7% from the field
- Transferred from the University of Southern California where she played the last three seasons...played in 77 games with 22 starts...scored 138 points, averaging 1.8 per game...also posted 131 rebounds, 49 steals, 25 blocks and 127 assists...a Converse Judson HS graduate where she was named the league MVP as a senior...was a three-time all-state first team honoree, selected 2016 league newcomer of the year and won the 2019 6A state championship...at Judson
- Born on Nov. 30, 2000...daughter of Christopher and Jennifer White...has two brothers, Jarehn and Isaac, and one sister, Cierra...her mother played softball at Texas Tech and her father played football at Texas A&M Commerce and in the Arena Football League for Houston in 2001. Also, her grandfather Rudy White played in the NBA for the Houston Rockets and Seattle Supersonics.

## #23 - KYLEIGH MCGUIRE

- 2022-23: Appeared in 21 games averaging 4.4 MPG...scored 15 points with four assists, two blocks and a steal...shot 50% from the field
- 2021-22: Played in two games...named to the Conference USA Commissioner's Honor Roll.
- Named the 2020 District 22-6A Defensive Player of the Year, 2019 Offensive Player of the Year and the 2018 Most Improved Player at Atascocita HS
- Born on Nov. 12, 2001...daughter of Elisabeth Rasheed and Rasheed McGuire...one four brothers, Rasheed Jr., Angel, Christopher and Isaiah...also has two sisters, Kemaini and Jordyn...her stepdad ran track at TCU...biology major.

## #23 - IDARA UDO

- Joins the UTSA family from Plano East High School...helped lead the Panthers to district championships in her sophomore and junior years...named Second Team All-District as a freshman and earned First Team honors her sophomore, junior, and senior year...named the Defensive Player of the Year as a sophomore and senior
- Daughter of Ituru Inim and Efrung Udo, one brother, Emem Udo and one sister Sema Udu...studying nursing

## #23 - NISSA SAM-GRANT

- 2022-23: Did not appear
- Transferred from Panola College...previous played at Arkansas-Pine Bluff for two seasons...with the Golden Lions, Sam-Grant averaged 2.8 points, 4.6 rebounds and 1.6 blocks per game where she led the team in blocks and finished in the top four in the SWAC as a freshman...with the Ponies, the Toronto, Canada, native averaged 4.0 points, 5.0 rebounds and 1.8 blocks per game.
- Born on Nov. 30, 1999...daughter of Nigel Grant and Lisa Sam...three brothers, Tremaine, J'uel, and Kamal, one sister J'nae...majoring in multidisciplinary Studies

## #23 - JORDYN JENKINS

- 2022-23: Conference USA Player of the Year...C-USA Newcomer of the Year...First-Team All-Conference...Became the third player in C-USA history to win all three awards and the first in 10 years...First Roadrunner to earn C-USA Player of the Year, also the first UTSA student-athlete to win four C-USA Player of the Week honors in a single season...awarded All-Texas First-Team by Dave Campbell's Texas Basketball...led the league with 659 points averaging 20.6 PPG at a 49.3% clip...659 points scored serves as the UTSA school record...79.0% free throw shooter...7.5 RPG and 1.3 SPG...posted nine double-doubles...career-high 40 points on Feb. 20 against North Texas, cementing a trilling 68-67 overtime victory on 12-for-20 shooting and a 13-for-16 performance at the charity stripe
- Transferred from the University of Southern California where she played for the last two seasons...played in 41 games with 35 starts after missing eight games during her debut season due to injury...scored 478 points, leading USC in scoring in the 2021-22 season with 384...also posted 236 rebounds, 36 steals, 31 blocks and 41 assists...as a sophomore in 2021-22, Jenkins starred for the Trojans, earning All Pac-12 honors and was tabbed Pac-12 Co-Most Improved Player after averaging a team-leading 14.8 points, 6.7 rebounds and 1.5 assists per game
- Kentridge High School graduate where she was a three-time all-state first-team honoree...helped her team to a 2017 state championship title and was a two-time league MVP...averaged 21.9 points and 9.2 rebounds in her junior season
- Born on Jan. 16, 2002...daughter of Alan and Joya Jenkins...sister of Alan Jenkins III and Taylor...studying multidisciplinary studies

## SUPERLATIVES

### 2023-24 DOUBLE-DOUBLE TRACKER

Date / Opp.	Who	Stat
Nov. 18 at UT Arlington	Linton	15 Points / 10 Rebounds
Dec. 17 at Oregon	Proctor	20 Points / 11 Rebounds
Jan. 6 vs Wichita State	Coleman	32 Points / 19 Rebounds
Jan. 10 at Florida Atlantic	Coleman <sup>2</sup>	16 Points / 10 Rebounds
Jan. 14 vs Charlotte	Proctor <sup>2</sup>	17 Points / 13 Rebounds

### 2023-24 DOUBLE-DIGIT POINTS

Date / Opp.	Who	Stat
Nov. 6 at Arizona State	Udo	10 Points
Nov. 6 at Arizona State	Linton	10 Points
Nov. 10 vs NM State	Proctor	19 Points
Nov. 10 vs NM State	White	13 Points
Nov. 15 at TAMUCC	White <sup>2</sup>	18 Points
Nov. 15 at TAMUCC	Coleman	14 Points
Nov. 15 at TAMUCC	Love	10 Points
Nov. 18 at UT Arlington	Love <sup>2</sup>	26 Points
Nov. 18 at UT Arlington	Linton <sup>2</sup>	15 Points
Nov. 20 at Texas Tech	Love <sup>3</sup>	18 Points
Nov. 20 at Texas Tech	White <sup>3</sup>	13 Points
Nov. 20 at Texas Tech	Proctor <sup>2</sup>	10 Points
Nov. 24 at Sam Houston	Coleman <sup>2</sup>	17 Points
Nov. 24 at Sam Houston	White <sup>4</sup>	14 Points
Nov. 24 at Sam Houston	Love <sup>4</sup>	12 Points
Nov. 30 vs Texas State	Love <sup>5</sup>	11 Points
Nov. 30 vs Texas State	Coleman <sup>3</sup>	11 Points
Nov. 30 vs Texas State	Guttadauro	11 Points
Dec. 3 vs UTEP	Coleman <sup>4</sup>	23 Points
Dec. 3 vs UTEP	Love <sup>6</sup>	16 Points
Dec. 3 vs UTEP	White <sup>5</sup>	12 Points
Dec. 3 vs UTEP	Guttadauro <sup>2</sup>	12 Points
Dec. 14 vs Houston	Proctor <sup>3</sup>	19 Points
Dec. 14 vs Houston	White <sup>6</sup>	17 Points
Dec. 14 vs Houston	Love <sup>7</sup>	13 Points
Dec. 17 at Oregon	Proctor <sup>4</sup>	20 Points
Dec. 19 at Seattle U	Coleman <sup>5</sup>	18 Points
Dec. 19 at Seattle U	Udo <sup>2</sup>	15 Points
Dec. 19 at Seattle U	Proctor <sup>4</sup>	10 Points
Dec. 19 at Seattle U	White <sup>7</sup>	10 Points
Dec. 30 at Temple	White <sup>8</sup>	16 Points
Dec. 30 at Temple	Coleman <sup>6</sup>	11 Points
Dec. 30 at Temple	Udo <sup>3</sup>	10 Points
Jan. 2 at East Carolina	Cockrell	13 Points
Jan. 2 at East Carolina	Coleman <sup>7</sup>	11 Points
Jan. 6 vs Wichita State	Coleman <sup>8</sup>	32 Points
Jan. 6 vs Wichita State	Love <sup>8</sup>	16 Points
Jan. 6 vs Wichita State	White <sup>9</sup>	12 Points
Jan. 10 at Florida Atlantic	Proctor <sup>5</sup>	17 Points
Jan. 10 at Florida Atlantic	Coleman <sup>9</sup>	16 Points
Jan. 10 at Florida Atlantic	White <sup>10</sup>	12 Points
Jan. 10 at Florida Atlantic	Linton <sup>3</sup>	10 Points
Jan. 14 vs Charlotte	Udo <sup>4</sup>	26 Points
Jan. 14 vs Charlotte	Proctor <sup>2</sup>	17 Points
Jan. 14 vs Charlotte	Coleman <sup>10</sup>	12 Points

### 2023-24 DOUBLE-DIGIT REBOUNDS

Date / Opp.	Who	Stat
Nov. 10 vs NM State	Udo	11 Rebounds
Nov. 18 at UT Arlington	Linton	10 Rebounds
Dec. 17 at Oregon	Coleman	13 Rebounds
Dec. 17 at Oregon	Proctor	11 Rebounds
Jan. 6 vs Wichita State	Coleman <sup>2</sup>	19 Rebounds
Jan. 10 at Florida Atlantic	Coleman <sup>3</sup>	10 Rebounds
Jan. 14 vs Charlotte	Proctor <sup>2</sup>	13 Rebounds
Jan. 14 vs Charlotte	White	10 Rebounds

### 2023-24 DOUBLE-DIGIT ASSISTS

Date / Opp.	Who	Stat
---	---	---

## GAME-BY-GAME STARTERS

NOVEMBER		1	2	3	4	5
6	AT ARIZONA STATE	LOVE	ATWOOD	WHITE	LINTON	COLEMAN
10	NEW MEXICO STATE	LOVE	ATWOOD	WHITE	LINTON	COLEMAN
15	AT TAMUCC	LOVE	PARKER	WHITE	UDO	COLEMAN
18	AT UT ARLINGTON	LOVE	PARKER	WHITE	LINTON	COLEMAN
20	AT TEXAS TECH	LOVE	PARKER	WHITE	LINTON	COLEMAN
25	AT SAM HOUSTON STATE	LOVE	PROCTOR	WHITE	LINTON	COLEMAN
30	TEXAS STATE	LOVE	PROCTOR	WHITE	LINTON	COLEMAN

DECEMBER		1	2	3	4	5
3	UTEP	LOVE	ATWOOD	WHITE	UDO	COLEMAN
14	HOUSTON	LOVE	ATWOOD	WHITE	UDO	COLEMAN
17	AT OREGON	LOVE	ATWOOD	WHITE	UDO	COLEMAN
19	AT SEATTLE U	LOVE	ATWOOD	WHITE	UDO	COLEMAN
30	AT TEMPLE *	LOVE	ATWOOD	WHITE	LINTON	COLEMAN

JANUARY		1	2	3	4	5
2	AT EAST CAROLINA *	LOVE	ATWOOD	WHITE	UDO	COLEMAN
6	WICHITA STATE *	LOVE	PROCTOR	WHITE	UDO	COLEMAN
10	AT FAU *	LOVE	PROCTOR	WHITE	UDO	COLEMAN
14	CHARLOTTE *	LOVE	PROCTOR	WHITE	UDO	COLEMAN
16	USF *	---	---	---	---	---
21	AT UAB *	---	---	---	---	---
27	AT SMU *	---	---	---	---	---
31	NORTH TEXAS *	---	---	---	---	---

FEBRUARY		1	2	3	4	5
4	TULANE *	---	---	---	---	---
11	UAB *	---	---	---	---	---
14	AT TULSA *	---	---	---	---	---
18	AT NORTH TEXAS *	---	---	---	---	---
22	TEMPLE *	---	---	---	---	---
25	FAU *	---	---	---	---	---
28	AT MEMPHIS *	---	---	---	---	---

MARCH		1	2	3	4	5
2	AT WICHITA STATE *	---	---	---	---	---

BREAKDOWN		1	2	3	4	5
#0	Elyssa Coleman	---	---	---	---	16
#1	Hailey Atwood	---	7	---	---	---
#2	Alexis Parker	---	3	---	---	---
#3	Emma Lucio	---	---	---	---	---
#4	Siena Guttadauro	---	---	---	---	---
#5	Madison Cockrell	---	---	---	---	---
#11	Sidney Love	16	---	---	---	---
#12	Aysia Proctor	---	5	---	---	---
#13	Sarai Estupiñan	---	---	---	---	---
#20	Maya Linton	---	---	---	6	---
#21	Cheyenne Rowe	---	---	---	---	---
#22	Kyra White	---	---	16	---	---
#23	Kyleigh McGuire	---	---	---	---	---
#25	Idara Udo	---	---	---	9	---
#30	Nissa Sam-Grant	---	---	---	---	---
#32	Jordyn Jenkins	---	---	---	---	---



# THE LAST TIME...

## TEAM

### PLAYED A RANKED TEAM

vs No. 21 Middle Tennessee (W, 58-53) - 2/4/23

### BEAT A RANKED TEAM

vs No. 21 Middle Tennessee (W, 58-53) - 2/4/23

### LOST TO A RANKED TEAM AT HOME

at No. 23 Texas A&M (L, 51-77) - 12/20/21

### LOST TO A RANKED TEAM ON THE ROAD

at No. 23 Texas A&M (L, 51-77) - 12/20/21

### PLAYED AN OVERTIME GAME

vs Charlotte (W, 81-80) - 1/14/24

### PLAYED A DOUBLE-OVERTIME GAME

vs Charlotte (W, 81-80) - 1/14/24

### PLAYED A TRIPLE-OVERTIME GAME

vs FIU (L, 103-107) - 2/6/21

### SCORED 100+ POINTS

UTSA: 103, vs FIU - 2/6/21

Opp: 107, vs FIU - 2/6/21

### SCORED 90+ POINTS

UTSA: 90 vs UTEP (W, 90-66) - 12/3/23

Opp: 93 at Houston (L, 89-93) - 12/19/22

### SCORED LESS THAN 50 POINTS

UTSA: 48, at Oregon - 12/17/23

Opp: 37, vs Sul Ross State - 11/25/20

### SHOT 50+ PERCENT FROM THE FIELD

UTSA: 58.3% (35-60), vs UTEP - 12/3/23

Opp: 56.1% (32-57), at Florida Atlantic - 2/13/21

### SHOT LESS THAN 40 PERCENT FROM THE FIELD

UTSA: 38.3% (38.3), vs Wichita State - 1/6/24

Opp: 34.3% (23-67), vs Charlotte - 1/14/24

### SHOT LESS THAN 30 PERCENT FROM THE FIELD

UTSA: 26.0% (20-77), at Oregon - 12/17/23

Opp: 24.6% (17-69), at Sam Houston - 11/25/23

### WON BY 20+ POINTS

UTSA: (24) (90-66), vs UTEP - 12/3/23

Opp: (28) (54-82), at East Carolina - 1/2/24

### WON BY 35+ POINTS

UTSA: (43) (80-37), vs Sul Ross State - 11/25/20

Opp: (39) (41-80), at Middle Tennessee - 1/5/23

### HAD 2+ 20-POINT SCORERS

UTSA: Jordyn Jenkins (25) & Sidney Love (22), at Charlotte - 3/2/23

Opp: Karina Gordon (22) & Danae McNea (20), at East Carolina - 1/2/24

### FORCED 30+ TURNOVERS

UTSA: 30, vs Concordia Texas - 11/6/19

Opp: 31, at Texas Tech- 11/20/23

## PLAYER

### SCORED 40+ POINTS

UTSA: 40, Jordyn Jenkins, at North Texas - 2/20/237

Opp: 43, Keila Shelton, vs Louisiana Tech -2/7/13

### SCORED 30+ POINTS

UTSA: 32, Elyssa Coleman, vs Wichita State - 1/6/24

Opp: 31, Acacia Hayes, at Western Kentucky - 1/7/23

### RECORDED A TRIPLE-DOUBLE

UTSA: Monica Gibbs (19 pts, 11 reb, 11 ast), at Texas A&M-Corpus Christi

Opp: N/A

### ONE PLAYER RECORDED A DOUBLE-DOUBLE

UTSA: Aysia Proctor (17 points & 13 rebounds), vs Charlotte - 1/14/24

Opp: Daniela Abies (12 points & 12 rebounds), vs Wichita State - 1/6/24

### TWO PLAYERS RECORDED A DOUBLE-DOUBLE

UTSA: Yuiyana Valcheva (25 pts & 15 reb) & Kyleigh McGuire (12 pts & 13 reb), vs FIU - 2/6/21

Opp: Janeta Rozentale (17 pts & 10 reb) & Iggy Allen (23 pts & 16 reb), at Florida Atlantic - 2/12/21

### RECORDED 20+ REBOUNDS

UTSA: 23, Anika Anderson, vs Sam Houston State - 2/21/09

Opp: 20, Briana Wright, vs FIU - 2/13/16

### RECORDED 15+ REBOUNDS

UTSA: 19, Elyssa Coleman, vs Wichita State - 1/6/24

Opp: 16, Zakyia Weathersby, UAB - 1/1/22

### TWO OR MORE PLAYERS RECORDED DOUBLE-DIGIT REBOUNDS

UTSA: Aysia Proctor (13) & Kyra White (10), vs Charlotte - 1/14/24

Opp: Iggy Allen (10) & Brianna Jackson (12), Old Dominion - 1/13/21

### RECORDED 20+ POINTS & 20+ REBOUNDS

UTSA: Ashleigh Franklin (22 pts, 22 reb), at Sam Houston State - 2/20/10

Opp: Jessica Kuster (21 pts, 21 reb), vs Rice - 12/20/11

### RECORDED 10+ ASSISTS

UTSA: 10, Karrington Donald, vs Rice - 1/2/21

Opp: 11, Courtney Blakely, at Middle Tennessee - 1/5/23

### MADE 8+ 3-POINTERS

UTSA: 8, Terrie Davis, vs Lamar - 1/12/08

Opp: N/A

### MADE 7+ 3-POINTERS

UTSA: 7, Ashley Spatletta, vs UT Arlington - 2/9/13

Opp: 7, Katelyn Crosthwait, at Rice - 1/16/23

### MADE 6+ 3-POINTERS

UTSA: 6, Carlie Heineman, vs Old Dominion - 1/13/18

Opp: 6, Karina Gordon, at East Carolina - 1/2/24

### MADE 15+ FREE THROWS

UTSA: 15, Mikayla Woods, vs Sam Houston State - 12/8/19

Opp: 18, Jennie Simms, at Old Dominion - 2/27/16

### MADE 10+ FREE THROWS

UTSA: 10, Jordyn Jenkins, vs Rice -3/9/23

Opp: 11, Destiny Thurman, at UTEP - 1/23/22

### RECORDED 5+ BLOCKS

UTSA: 6, Elyssa Coleman, at FIU - 1/21/23

Opp: 5, Tommissha Lampkin, North Texas - 2/5/22

### RECORDED 5+ STEALS

UTSA: 5, Kyra White, vs Rice - 3/9/23

Opp: 6, Danae McNeal, at East Carolina - 1/2/24

### PLAYED EVERY MINUTE (REGULATIONS)

UTSA: Karrington Donald, at Southern Miss - 1/23/21

Opp: Maya Perry, at Florida Atlantic - 1/10/24

### TWO PLAYERS PLAYED EVERY MINUTE (REGULATION)

UTSA: Chrystal Chidomere & Loryn Goodwin, vs Rice - 2/16/16

Opp: Courtney Blakely & Jalynn Gregory, at Middle Tennessee - 1/5/23

### PLAYED EVERY MINUTE (+OT)

UTSA: Monica Gibbs, vs Baylor - 3/22/09

Opp: Destinee Rogers, at Central Arkansas - 2/11/09

### PLAYED EVERY MINUTE (+2OT)

UTSA: Ashleigh Franklin, vs Nicholls - 2/19/11

Opp: Ricshanda Bickham & KK Babin, vs Nicholls - 2/19/11

### FOULED OUT

UTSA: Elyssa Coleman, vs Charlotte - 1/14/24

Opp: Tracey Hueston, vs Charlotte - 1/14/24

### TWO OR MORE PLAYERS FOULED OUT

UTSA: Sidney Love & Idara Udo, at Texas Tech- 11/20/23

Opp: Tommissha Lampkin & Aniyah Johnson, at North Texas - 1/26/23

### 5 OR MORE PLAYERS SCORED IN DOUBLE DIGITS

UTSA: Jordyn Jenkins (14), Elyssa Coleman (13), Hailey Atwood (12), Kyra White (11), Deborah Nwakamma (11), vs WKU - 2/2/23

Opp: Eric Wilson (22), Sabine Lipe (13), Elina Arike (12), Avery Crouse (11), Jazion Jackson (10), at UTEP - 2/11/23

### NO ONE SCORED IN DOUBLE DIGITS

UTSA: at Florida Atlantic - 1/29/22

Opp: vs Texas A&M-Kingsville -11/16/16

# INTRODUCING HEAD COACH KAREN ASTON



## Head Coach

**Karen Aston**  
**Third Season**  
**314-195 (29-49 UTSA)**

**X @CoachKarena**

Karen Aston, former head coach at Texas, North Texas and Charlotte, was named the 10th head coach in program history on March 29, 2021.

Throughout her first two seasons at UTSA, Aston has compiled a 20-42 record, going 7-23 (3-14, C-USA) in her inaugural year before collecting a 58-57 overtime win over UTEP at the league's postseason tournament.

She then led the 'Runners to a 13-19 (9-1, C-USA) campaign in the 2022-23. Her squad opened up the C-USA tournament with a thrilling 69-68 win over No. 11 seed Florida Atlantic, before besting No. 3 seed Rice 62-54 to advance to the leagues semifinals where they fell to No. 2 seed Western Kentucky.

Jordyn Jenkins had a fantastic season under Aston's tutelage, taking home 2022-23 C-USA Player of the Year, Newcomer of the Year, and First-Team All-C-USA.

Aston has been consistently recognized as one of the top coaches in the nation. She was one of four finalists for the Naismith Women's College Coach of the Year award in 2017 and was one of 10 semifinalists for the honor in 2018. Aston also earned Big 12 Coach of the Year accolades in 2017.

Aston has a career record of 305-188 [.618] which includes head coaching positions at Charlotte, North Texas and Texas. In her 13 seasons as a head coach, Aston's teams have averaged 22 wins per year and have made a combined 10 postseason appearances.

At the University of Texas, Aston led the Longhorns to a 184-83 [.689] record in eight seasons. In her final seven seasons combined at Texas, Aston's teams averaged 24.6 wins per year, making six NCAA Tournament appearances. From 2015-18, her squads made four consecutive NCAA Sweet 16 showings, marking the first time that had been accomplished at Texas since 1990. Aston also directed the 2015-16 Longhorns to the program's first NCAA Elite Eight appearance since 2003.

Aston, who also spent eight years as an assistant and associate head coach at Texas for Naismith Hall of Fame head coach Jody Conradt, stands as Texas' second-winningest coach all-time behind Conradt's 783 victories.

Three of Aston's Texas players [Nneka Enemkpali, Imani McGee-Stafford and Ariel Atkins] were drafted by WNBA teams with McGee-Stafford [10th] and Atkins [7th] being selected as first-round picks. As a starter, Atkins helped lead the Washington Mystics to the 2019 WNBA Championship and has earned WNBA All-Defensive Team honors in each of her two seasons.

Defense has been a staple of Aston's teams her entire coaching career. Each of her eight teams at Texas ranked in the top-25 nationally in rebounding margin, including three years in the top-five. Her 2017-18 and 2018-19 teams ranked third in the NCAA in rebounding margin. Four of the top-eight single-season team rebounding averages in Texas history came during Aston's tenure, as did five of the top-nine best seasons in field-goal percentage defense.

Aston's prowess as one of the nation's best recruiters is also well known. Five of the classes she recruited to Texas were ranked among the top-11 in the nation according to ESPN.com, including three top-five classes. Recruits Charli Collier and Joyner Holmes were both No. 2 prospects according to ESPN and were listed as the nation's top recruits by some services. Aston brought 14 McDonalds All-Americans to Texas during her eight seasons.

In a season shortened due to COVID-19, the 2019-20 Longhorns posted a 19-11 overall record and finished third in the Big 12 Conference. A season that began with off-season injuries to a number of key contributors featured some impressive accomplishments. Texas defeated three Associated Press Top-25 teams, including knocking off No. 1 Stanford, which marked the program's first win against an AP No. 1 squad since 2004. The Longhorns also won at No. 17 and previously undefeated Tennessee, and earned a road victory against No. 25 TCU. Texas led the nation in double-doubles during the 2019-20 campaign with 31.

Aston mentored Collier, a sophomore center, to First-Team All-Big 12 Conference honors, as she was one of only six players in the league to average a double-double. Collier became the first player in program history to average more than seven defensive rebounds per game in a single season. Freshman guard Celeste Taylor was a Big 12 All-Freshman Team selection and earned three Big 12 Freshman of the Week accolades.

In 2018-19, Aston led Texas to a 23-10 overall record and a third-place showing in the Big 12 Conference with a 12-6 overall mark. The Longhorns advanced to the semifinals of the Big 12 Conference Tournament for the sixth consecutive year. It marked the sixth year in a row that the Longhorns had won 20 or more games.

Under Aston's tutelage, junior point guard Sug Sutton earned First-Team All-Big 12 Conference honors in 2018-19 and was named to the Big 12 All-Tournament Team. She led the Longhorns in scoring [12.7 points per game], assists per game [5.4] and steals per game [1.3]. Sutton scored in double figures 23 times, including four 20-point performances, and her 178 assists on the year marked the seventh-most in a single-season in school history. She was the conference's best all-around point guard as a junior.

In 2017-18, Aston led the Longhorns to a 28-7 overall record and a second-place finish in the Big 12 Conference with a 15-3 overall mark. Texas advanced to the championship game of the Big 12 Conference Tournament for the third time in four years. It marked the fourth year in a row that the Longhorns had won 24 or more games.

For the third time in four seasons, Aston had one of her players selected in the WNBA Draft in 2018. Atkins was chosen with the No. 7 pick by the Washington Mystics, making her the third-highest draft pick in Texas history.

# INTRODUCING HEAD COACH KAREN ASTON

## The Aston File

### HEAD COACHING EXPERIENCE

2021- Present: Head Coach, UTSA  
2012-2020: Head Coach, Texas  
2011-12: Head Coach, North Texas  
2007-11: Head Coach, Charlotte  
2006-07: Associate Head Coach, Baylor  
2000-06: Associate Head Coach, Texas  
1998-00: Assistant Coach, Texas  
1996-98: Assistant Coach, North Texas  
1994-96: Assistant Coach, Baylor  
1993-94: Head Coach, Fort Smith Northside (HS)  
1988-93: Head Coach, Vilonia High School

### COLLEGIATE HEAD COACHING RECORD

Overall: 314-195 (.617)  
UTSA: 29-49 (.372)

Under Aston's direction, Atkins and fellow senior Brooke McCarty concluded their decorated Texas careers in 2017-18. It marked the end of an impressive four-year span that saw the Longhorns post a 108-32 [.771] overall record, four NCAA Tournament appearances, four NCAA Sweet 16 appearances, one NCAA Elite Eight appearance and three Big 12 Conference second-place finishes. Aston was a semifinalist for the Naismith Coach of the Year award.

Aston was named the Big 12 Conference Coach of the Year in 2016-17, as the Longhorns swept the league's annual honors. McCarty was named the Big 12 Player of the Year, Brianna Taylor was selected as the Big 12 Defensive Player of the Year and Holmes earned Big 12 Freshman of the Year accolades. Aston was one of four finalists nationally for the Naismith Coach of the Year honor.

The Longhorns recorded a 25-9 overall record during the 2016-17 campaign. Texas strung together a 19-game winning streak during the course of the season, which ranks tied for the 10th-longest spree in program history. With a rigorous slate that featured 14 top-25 opponents, the Longhorns recorded seven victories against ranked foes. Texas won 14 consecutive games to start Big 12 Conference play, which marked the best start to the Big 12 schedule in school history. The Longhorns charted a 15-3 record in Big 12 play to finish second in the conference for the second consecutive year.

In 2015-16, Aston led Texas to an historic season. The Longhorns posted a 31-5 overall record, which marked the school's most victories since the 1987-88 season, and tied the school record for most Big 12 Conference wins [15] in a single season. Texas hosted the NCAA First and Second Rounds for the first time since 2010 and advanced to the NCAA Elite Eight for the first time since 2003. The Longhorns opened the year with a 16-0 record, marking the third-best start in program history.

McGee-Stafford, a senior center, was named an honorable mention All-America selection from both the Associated Press and the Women's Basketball Coaches Association in 2015-16, and became the first player in program history to reach the combined milestone of 1,000 career points, 1,000 career rebounds and 200 career blocks. McGee-Stafford

was the fourth player in school history to be drafted in the first round of the WNBA Draft, going to the Chicago Sky with the 10th overall pick.

The 2014-15 Longhorns began the season on a 13-game winning streak and capped the year with a run to the NCAA Sweet 16. Texas finished with a 24-11 overall record and advanced to the championship game of the Big 12 Tournament for the first time since 2004. The Longhorns won nine of their last 12 games and posted what were then their most wins in more than a decade. Enemkpali was selected by the Seattle Storm in the third round of the 2015 WNBA Draft.

In 2013-14, Texas began a steady incline that included five wins against ranked opponents, a third-place finish in the Big 12 standings, a 10-win improvement from the previous season, and winning a game in the NCAA Tournament for the first time since 2008. UT's tie for third place in the Big 12 was its highest league finish since 2005.

Aston returned to the Forty Acres in 2012 after five years of experience reviving the women's basketball programs at the University of North Carolina at Charlotte and the University of North Texas.

Aston tripled the Mean Green's victory total in one season, as UNT went 15-16 during the 2011-12 season under her direction after winning just five games the previous year. At Charlotte, Aston led the program to record-breaking heights, with 86 victories in four seasons, including a school-record 27 wins in 2010-11.

Aston led the 49ers to four consecutive postseason appearances and the 2009 Atlantic 10 Tournament Championship en route to the school's second ever NCAA Tournament appearance. In her final season at Charlotte, Aston's squad advanced to the WNIT Final Four.

While on Conradt's Texas staff from 1998-2006, Aston helped the Longhorns post a 173-83 [.676] record during that span, with seven NCAA Tournament appearances, two trips to the Sweet 16 and a march to the 2003 Final Four. The Longhorns also captured the 2003 Big 12 regular-season and tournament titles, and UT shared the 2004 Big 12 regular-season title. Aston was promoted from assistant coach to associate head coach in July of 2000 after serving as an assistant coach for two seasons.

During her time as an assistant on the Forty Acres, Aston spearheaded the signing of 25 nationally-recognized recruits, including seven McDonald's High School All-Americans and seven WBCA/Nike All-Americans. Two of those high school All-Americans - Tiffany Jackson and Erika Arriaran - were named National High School Players of the Year. All eight of the recruiting classes Aston attracted were nationally ranked, including the No. 1 class in the nation in 2005-06.

Aston first came to Austin in 1998 from the University of North Texas, where she served as an assistant coach for two seasons [1996-98]. Prior to joining the North Texas staff, Aston was an assistant coach at Baylor for two seasons [1994-96].

Following Aston's initial stint on the Forty Acres, she was named associate head coach at Baylor during the 2006-07 season. With Aston on board, the Lady Bears won 26 games and reached the second round of the NCAA Tournament.

## INTRODUCING HEAD COACH KAREN ASTON

Before entering the collegiate coaching ranks, Aston was recognized as one of the top high school coaches in the nation. She coached five years at Vilonia High School [1988-93] in Vilonia, Ark., and one year at Fort Smith Northside [1993-94] in Fort Smith, Ark. She guided Fort Smith Northside to a 24-10 record and a fifth-place finish in Class 4A. For her efforts, she was named the Arkansas Northwest Region Coach of the Year.

While at Vilonia, Aston was not only the head basketball coach but also the head cross country and track coach. In 1992-93, she was named the Arkansas Basketball Coach of the Year after leading Vilonia to a 36-1 record and a Class 2A State Championship. Aston's cross country teams also claimed back-to-back state titles in 1991 and 1992.

A native of Benton, Ark., Aston was a two-time first-team all-state selection at Bryant High School. She capped her high school career by leading Bryant to the 1982 Arkansas Class 4A State Championship. Aston earned a bachelor of arts degree in physical education from Little Rock in 1987. She played two seasons of basketball at UALR after transferring from Ouachita Baptist.

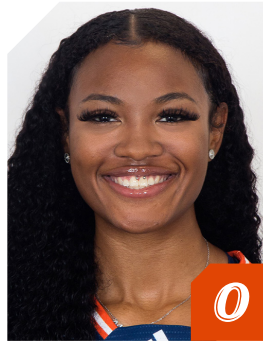
In 2019, Aston was inducted into the Trojan Athletics Hall of Fame at the University of Arkansas at Little Rock and the Bryant [Ark.] High School Athletic Hall of Honor.



*Aston alongside 2022-23 C--USA Player of the Year Jordyn Jenkins*



# 2023-24 UTSA WOMEN'S BASKETBALL ROSTER



0

ELYSSA COLEMAN  
R-JR • F • 6-3  
HOUSTON, TEXAS



1

HAILEY ATWOOD  
GS • G • 5-8  
AUSTIN, TEXAS



2

ALEXIS PARKER  
SO • G • 5-9  
SAN ANTONIO, TEXAS



3

EMMA LUCIO  
FR • G • 5-9  
EDINBURG, TEXAS



4

SIENA GUTTADAURO  
SO • G • 5-6  
SAN JOSE, CALIFORNIA



5

MADISON COCKRELL  
SO • G • 5-4  
DALLAS, TEXAS



11

SIDNEY LOVE  
SO • G • 5-8  
CIBOLO, TEXAS



12

AYSIA PROCTOR  
FR • G • 5-8  
SCHERTZ, TEXAS



13

SARAI ESTUPIÑAN  
JR • G • 5-5  
CEDAR PARK, TEXAS



20

MAYA LINTON  
SO • F • 5-11  
DUNCANVILLE, TEXAS



21

CHEYENNE ROWE  
SO • F • 6-2  
AJAX, ONTARIO, CANADA



22

KYRA WHITE  
SR • G • 5-9  
SAN ANTONIO, TEXAS



23

KYLEIGH MCGUIRE  
SR • F • 5-11  
HOUSTON, TEXAS



25

IDARA UDO  
FR • F • 6-1  
PLANO, TEXAS



30

NISSA SAM-GRANT  
SR • C • 6-4  
TORONTO, ONTARIO, CANADA



32

JORDYN JENKINS  
SR • F • 6-0  
KENT, WASHINGTON



HC

KAREN  
ASTON



AC

JAMIE  
CAREY



AC

EMPRESS  
DAVENPORT



AC

CAMERON  
MILES

# ROSTER ANALYSIS

## NUMERICAL ROSTER

#	NAME	POS	HT	YR.	EXP	HOMETOWN / PREVIOUS SCHOOL
0	Elyssa Coleman	F	6-3	R-Jr.	2L	Houston, Texas/Atascocita HS/Texas
1	Hailey Atwood	G	5-8	GS.	2L	Austin, Texas/Bowie HS/Blinn CC
2	Alexis Parker	G	5-9	So.	1L	San Antonio, Texas/Brandeis HS
3	Emma Lucio	G	5-9	Fr.	HS	Edinburg, Texas / Robert Vela HS
4	Siena Guttadauro	G	5-6	So.	2L	San Jose, Calif./Archbishop Mitty HS
5	Madison Cockrell	G	5-4	So.	1L	Dallas, Texas/Bishop Lynch HS
11	Sidney Love	G	5-8	So.	1L	Cibolo, Texas/Steele HS
12	Aysia Proctor	G	5-8	Fr.	HS	Schertz, Texas / Samuel Clemens HS
13	Sarai Estupiñan	G	5-5	Jr.	TR	Cedar Park, Texas / St. Mary's (TX) / Tallahassee CC
20	Maya Linton	F	6-0	So.	1L	Duncanville, Texas/Duncanville HS
21	Cheyenne Rowe	F	6-2	So.	TR	Ajax, Ontario / Bill Crothers Secondary School / JMU
22	Kyra White	G	5-9	Sr.	1L	Converse, Texas/Judson HS/Southern California
23	Kyleigh McGuire	F	5-10	Sr.	3L	Houston, Texas/Atascocita HS
25	Idara Udo	F	6-1	Fr.	HS	Plano, Texas / Plano East HS
30	Nissa Sam-Grant	C	6-4	Sr.	1L	Marietta, Ga./Wheeler HS/Panola CC
32	Jordyn Jenkins	F	6-0	Sr.	1L	Kent, Wash./Kentridge HS/Southern California

## ALPHABETICAL ROSTER

#	NAME	POS	HT	YR.	EXP	HOMETOWN / PREVIOUS SCHOOL
1	Hailey Atwood	G	5-8	GS.	2L	Austin, Texas/Bowie HS/Blinn CC
5	Madison Cockrell	G	5-4	So.	1L	Dallas, Texas/Bishop Lynch HS
0	Elyssa Coleman	F	6-3	R-Jr.	2L	Houston, Texas/Atascocita HS/Texas
13	Sarai Estupiñan	G	5-5	Jr.	TR	Cedar Park, Texas / St. Mary's (TX) / Tallahassee CC
4	Siena Guttadauro	G	5-6	So.	2L	San Jose, Calif./Archbishop Mitty HS
32	Jordyn Jenkins	F	6-0	Sr.	1L	Kent, Wash./Kentridge HS/Southern California
20	Maya Linton	F	6-0	So.	1L	Duncanville, Texas/Duncanville HS
11	Sidney Love	G	5-8	So.	1L	Cibolo, Texas/Steele HS
3	Emma Lucio	G	5-9	Fr.	HS	Edinburg, Texas / Robert Vela HS
23	Kyleigh McGuire	F	5-10	Sr.	3L	Houston, Texas/Atascocita HS
2	Alexis Parker	G	5-9	So.	1L	San Antonio, Texas/Brandeis HS
12	Aysia Proctor	G	5-8	Fr.	HS	Schertz, Texas / Samuel Clemens HS
21	Cheyenne Rowe	F	6-2	So.	TR	Ajax, Ontario / Bill Crothers Secondary School / JMU
30	Nissa Sam-Grant	C	6-4	Sr.	1L	Marietta, Ga./Wheeler HS/Panola CC
25	Idara Udo	F	6-1	Fr.	HS	Plano, Texas / Plano East HS
22	Kyra White	G	5-9	Sr.	1L	Converse, Texas/Judson HS/Southern California

### ROSTER BREAKDOWN

BY CLASS	
Graduate Student (1)	Atwood
Senior (4)	Jenkins, McGuire, Sam-Grant, White
Junior (2)	Coleman, Estupiñan
Sophomore (6)	Love, Parker, Guttadauro, Cockrell, Linton, Rowe
Freshman (3)	Lucio, Proctor, Udo
BY POSITION	
Guard (9)	Atwood, Parker, Guttadauro, Cockrell, Love, White, Lucio, Proctor, Estupiñan
Forward (6)	Coleman, Jenkins, Udo, Rowe, Linton, McGuire
Center (1)	Sam-Grant
BY STATE	
Texas (12)	Atwood, Estupiñan, Love, White, Cockrell, Linton, Lucio, McGuire, Coleman, Udo, Parker, Proctor
Ontario, Canada (2)	Rowe, Sam-Grant
California (1)	Guttadauro
Washington (1)	Jenkins

### PRONUNCIATION GUIDE

FIRST	LAST
0 Elyssa Coleman	alyssa
4 Siena Guttadauro	Goo-tuh-DAR (like far)-roh
12 Aysia Proctor	Asia
13 Sarai Estupiñan	eh-stew-pin-yawn
22 Kyra White	KEER-uh
30 Nissa Sam-Grant	NEE-suh

*Visit [gouts.com/wbbnames](http://gouts.com/wbbnames) to listen to audio pronunciations*

- Head Coach: Karen Aston (Third season • Little Rock, 1987)
- Associate Head Coach: Jamie Carey (Third season • Texas, 2004)
- Assistant Coach: Empress Davenport (Third season • Texas, 2016)
- Assistant Coach: Cameron Miles (Third season • San Diego, 2013)
- Director of Operations: Chantel Govan (First season • UTSA, 2022)
- Athletic Trainer: Tam-Anh Nguyen (First season • Texas, 2019)
- Director of Basketball Performance: Carl Austin III (Third season • UTSA, 2018)
- Player Development Coordinator: Sophia Ramos (First season • San Diego State, 2022)
- Graduate Assistant: Angel Almaguer (First Season • UTSA 2022)

# 2023-24 COMBINED STATS

## Game Records

Record	Overall	Home	Away	Neutral
ALL GAMES	9-7	4-2	5-5	0-0
CONFERENCE	3-2	2-0	1-2	0-0
NON-CONFERENCE	6-5	2-2	4-3	0-0

## Score by Periods

Team	1st	2nd	3rd	4th	OT	TOT
UTSA	223	233	280	271	37	1044
Opponents	251	274	241	241	37	1044

## Team Box Score

No.	Player				Total		3-Point		F-Throw		Rebounds											
		GP-GS	MIN	AVG	FG-FGA	FG%	3FG-3FGA	3FG%	FT-FTA	FT%	OFF	DEF	TOT	AVG	PF	DQ	A	TO	BLK	STL	PTS	AVG
0	COLEMAN, Elyssa	16-16	442:53	27.7	87-183	.475	1-5	.200	20-32	.625	39	85	124	7.8	53	5	10	32	28	10	195	12.2
11	LOVE, Sidney	16-16	488:27	30.5	58-159	.365	10-42	.238	47-57	.825	12	43	55	3.4	43	1	52	46	2	23	173	10.8
22	WHITE, Kyra	16-16	561:25	35.1	59-191	.309	22-79	.278	31-47	.660	14	70	84	5.3	33	0	78	52	20	19	171	10.7
12	PROCTOR, Aysia	15-5	361:34	24.1	65-134	.485	16-38	.421	4-10	.400	22	62	84	5.6	25	1	18	31	5	11	150	10.0
25	UDO, Idara	16-8	325:35	20.3	48-102	.471	0-0	.000	25-47	.532	57	42	99	6.2	44	2	14	28	18	6	121	7.6
20	LINTON, Maya	15-8	278:54	18.6	19-55	.345	3-10	.300	19-33	.576	34	41	75	5.0	45	3	7	14	0	19	60	4.0
4	GUTTADAURO, Siena	13-0	149:09	11.5	13-41	.317	11-34	.324	1-2	.500	5	11	16	1.2	9	0	9	17	0	0	38	2.9
23	MCGUIRE, Kyleigh	7-0	52:26	7.5	8-12	.667	0-0	.000	2-2	1.000	5	7	12	1.7	7	0	3	4	0	1	18	2.6
21	ROWE, Cheyenne	15-0	143:33	9.6	13-30	.433	0-1	.000	8-15	.533	23	20	43	2.9	12	0	4	5	2	2	34	2.3
5	COCKRELL, Madison	11-0	80:18	7.3	8-26	.308	5-13	.385	3-3	1.000	2	9	11	1.0	11	0	5	11	0	9	24	2.2
1	ATWOOD, Hailey	15-8	195:43	13.0	10-23	.435	3-8	.375	3-4	.750	8	15	23	1.5	24	0	14	22	1	5	26	1.7
3	LUCIO, Emma	6-0	69:05	11.5	3-19	.158	1-11	.091	3-6	.500	2	5	7	1.2	6	0	4	7	0	1	10	1.7
2	PARKER, Alexis	12-3	107:47	9.0	4-23	.174	0-9	.000	6-16	.375	6	7	13	1.1	8	0	6	12	1	4	14	1.2
30	SAM-GRANT, Nissa	9-0	43:12	4.8	5-7	.714	0-0	.000	0-0	.000	3	8	11	1.2	3	0	1	3	6	0	10	1.1
Team											35	43	78					16				
<b>Total</b>		<b>16</b>	<b>3300</b>		<b>400-1005</b>	<b>.398</b>	<b>72-250</b>	<b>.288</b>	<b>172-274</b>	<b>.628</b>	<b>267</b>	<b>468</b>	<b>735</b>	<b>45.9</b>	<b>323</b>	<b>12</b>	<b>225</b>	<b>300</b>	<b>83</b>	<b>110</b>	<b>1044</b>	<b>65.3</b>
<b>Opponents</b>		<b>16</b>	<b>3300</b>		<b>351-956</b>	<b>.367</b>	<b>106-330</b>	<b>.321</b>	<b>236-354</b>	<b>.667</b>	<b>189</b>	<b>377</b>	<b>566</b>	<b>35.4</b>	<b>277</b>	<b>5</b>	<b>204</b>	<b>226</b>	<b>59</b>	<b>150</b>	<b>1044</b>	<b>65.3</b>

## Team Statistics

	UTSA	OPP
<b>Scoring</b>	<b>1044</b>	<b>1044</b>
Points per game	65.3	65.3
Scoring margin	0.0	-
<b>Field goals-att</b>	<b>400-1005</b>	<b>351-956</b>
Field goal pct	.398	.367
<b>3 point fg-att</b>	<b>72-250</b>	<b>106-330</b>
3-point FG pct	.288	.321
3-pt FG made per game	4.5	6.6
<b>Free throws-att</b>	<b>172-274</b>	<b>236-354</b>
Free throw pct	.628	.667
F-Throws made per game	10.8	14.8
<b>Rebounds</b>	<b>735</b>	<b>566</b>
Rebounds per game	45.9	35.4
Rebounding margin	+10.6	-
<b>Assists</b>	<b>225</b>	<b>204</b>
Assists per game	14.1	12.8
<b>Turnovers</b>	<b>300</b>	<b>226</b>
Turnovers per game	18.8	14.1
Turnover margin	-4.6	-
Assist/turnover ratio	0.8	0.9
<b>Steals</b>	<b>110</b>	<b>150</b>
Steals per game	6.9	9.4
<b>Blocks</b>	<b>83</b>	<b>59</b>
Blocks per game	5.2	3.7
<b>Winning streak</b>	<b>3</b>	<b>-</b>
Home win streak	2	-
<b>Attendance</b>	<b>5435</b>	<b>15233</b>
Home games-Avg/Game	6-906	10-1523
Neutral site-Avg/Game	-	0-0

## Team Results

Date	Opponent	Score	Att.
11/06/2023	at Arizona St.	L 55-70	821
11/10/2023	New Mexico St.	W 58-55	712
11/15/2023	at A&M-Corpus Christi	Wot 66-59	779
11/18/2023	at UT Arlington	W 70-66	832
11/20/2023	at Texas Tech	L 58-63	4155
11/25/2023	at Sam Houston	W 63-56	235
11/30/2023	Texas St.	Lot 57-65	1535
12/03/2023	UTEP	W 90-66	926
12/14/2023	Houston	L 64-66	869
12/17/2023	at Oregon	L 48-61	5549
12/19/2023	at Seattle U	W 75-64	339
12/30/2023	at Temple	L 58-71	1324
01/02/2024	at East Carolina	L 54-82	956
01/06/2024	Wichita St.	W 74-60	722
01/10/2024	at Fla. Atlantic	W 73-60	243
01/14/2024	Charlotte	Wot2 81-80	671

# 2023-24 NCAA RANKING SUMMARY

Statistic	National Rank	Conference Rank	Value	National Leader	Value	Conference Leader	Value
Assist/Turnover Ratio (348 ranked)	216	9	0.75	Michigan St.	1.78	Temple	1.01
Assists Per Game (348 ranked)	132	7	14.1	Utah	22.0	Tulane	15.5
Bench Points Per Game (348 ranked)	150	8	20.1	Murray St.	41.6	Rice	26.5
Blocks Per Game (348 ranked)	20	1	5.2	South Carolina	9.1	UTSA	5.2
Field Goal Percentage (348 ranked)	214	8	39.8	UConn	51.5	North Texas	47.2
Field Goal Percentage Defense (348 ranked)	47	3	36.7	South Carolina	29.6	North Texas	35.7
Fouls Per Game (348 ranked)	327	13	20.2	Dartmouth	9.5	UAB	14.5
Free Throw Attempts Per Game (348 ranked)	150	10	17.13	LSU	30.22	North Texas	26.63
Free Throw Percentage (348 ranked)	330	13	62.8	Creighton	82.6	UAB	78.4
Free Throws Made Per Game (348 ranked)	228	13	10.75	LSU	22.33	North Texas	17.75
Rebound Margin (348 ranked)	15	1	10.6	UCLA	18.3	UTSA	10.6
Rebounds (Defensive) Per Game (348 ranked)	32	2	29.3	South Carolina	35.1	Tulsa	29.6
Rebounds (Offensive) Per Game (348 ranked)	9	3	16.7	Ga. Southern	19.3	Temple	17.4
Rebounds Per Game (348 ranked)	9	1	45.94	Ga. Southern	49.82	UTSA	45.94
Scoring Defense (348 ranked)	207	10	65.3	VCU	50.2	East Carolina	58.1
Scoring Margin (348 ranked)	200	11	0.0	South Carolina	37.3	North Texas	15.5
Scoring Offense (348 ranked)	186	12	65.3	Murray St.	92.3	North Texas	75.6
Steals Per Game (348 ranked)	258	10	6.9	West Virginia	14.7	East Carolina	13.1
Three Point Attempts Per Game (348 ranked)	293	11	15.6	FGCU	30.3	Tulsa	26.2
Three Point Percentage (348 ranked)	246	11	28.8	South Carolina	42.6	UAB	36.6
Three Point Percentage Defense (348 ranked)	236	12	32.1	Colgate	21.8	UAB	24.4
Three Pointers Per Game (348 ranked)	297	13	4.5	Utah	11.7	UAB	8.2
Turnover Margin (348 ranked)	324	13	-4.63	West Virginia	9.75	East Carolina	8.00
Turnovers Forced Per Game (348 ranked)	299	10	14.13	East Carolina	25.60	East Carolina	25.60
Turnovers Per Game (348 ranked)	296	14	18.8	Colorado St.	8.8	Temple	14.2
Winning Percentage (348 ranked)	158	8	56.3	South Carolina	100.0	North Texas	81.3

Statistic	Player	National Rank	Conference Rank	Value	National Leader	Value	Conference Leader	Value
Assist/Turnover Ratio (250 ranked)	Kyra White Sidney Love	152 247	5 10	1.50 1.13	Taryn Sides, Kansas St.	3.80	Aleah Nelson, Temple	2.11
Assists (140 ranked)	Kyra White	55	2	78	Caitlin Clark, Iowa	142	Denim DeShields, UAB	94
Assists Per Game (248 ranked)	Kyra White Sidney Love	54 248	2 8	4.9 3.3	McKenna Hofschild, Colorado St.	8.4	Denim DeShields, UAB	5.5
Blocks (135 ranked)	Elyssa Coleman Kyra White	50 116	1 7	28 20	Lucy Cochrane, Portland	61	Elyssa Coleman, UTSA	28
Blocks Per Game (250 ranked)	Elyssa Coleman Kyra White Idara Udo	50 126 165	1 7 9	1.75 1.25 1.13	Lucy Cochrane, Portland	3.59	Elyssa Coleman, UTSA	1.75
Double Doubles (44 ranked)					Lauren Gustin, BYU	16	Mia Moore, UAB	9
Field Goal Attempts (149 ranked)					Caitlin Clark, Iowa	396	Temira Poindexter, Tulsa	309
Field Goal Percentage (250 ranked)	Elyssa Coleman	119	7	47.5	Lauren Betts, UCLA	71.2	Tommisha Lampkin, North Texas	66.7
Field Goals (150 ranked)					Caitlin Clark, Iowa	191	Temira Poindexter, Tulsa	126
Free Throw Attempts (139 ranked)					Angel Reese, LSU	144	DesiRay Kernal, North Texas	109
Free Throw Percentage (249 ranked)	Sidney Love	98	2	82.5	Mara Braun, Minnesota	94.4	Dazia Lawrence, Charlotte	82.9
Free Throws (142 ranked)					Angel Reese, LSU	106	Dazia Lawrence, Charlotte	87
Minutes Per Game (150 ranked)	Kyra White	48	2	35.09	Megan McConnell, Duquesne	38.45	Madison Griggs, Memphis	35.85
Points (197 ranked)					Caitlin Clark, Iowa	557	Temira Poindexter, Tulsa	350
Points Per Game (249 ranked)					Caitlin Clark, Iowa	30.9	Temira Poindexter, Tulsa	19.4
Rebounds (147 ranked)	Elyssa Coleman	130	10	124	Lauren Gustin, BYU	279	Mia Moore, UAB	160
Rebounds (Defensive) Per Game (30 ranked)					Lauren Gustin, BYU	10.6	Mia Moore, UAB	7.2
Rebounds (Offensive) Per Game (30 ranked)					Christina Dalce, Villanova	5.7	Amiya Joyner, East Carolina	4.1
Rebounds Per Game (248 ranked)	Elyssa Coleman	127	6	7.8	Lauren Gustin, BYU	15.5	Mia Moore, UAB	10.0
Steals (143 ranked)					Hannah Hidalgo, Notre Dame	85	Danae McNeal, East Carolina	56
Steals Per Game (244 ranked)					Hannah Hidalgo, Notre Dame	5.67	Danae McNeal, East Carolina	3.73
Three Point Attempts (150 ranked)					Caitlin Clark, Iowa	228	Temira Poindexter, Tulsa	142
Three Point Percentage (170 ranked)					Te-Hina Paopao, South Carolina	56.3	Mya Perry, Fla. Atlantic	45.2
Three Pointers (139 ranked)					Caitlin Clark, Iowa	91	Vittoria Blasigh, South Fla.	53
Three Pointers Per Game (246 ranked)					Caitlin Clark, Iowa	5.06	Madison Griggs, Memphis	3.00
Triple Doubles (5 ranked)					Caitlin Clark, Iowa	4		



# 2023-24 ROADRUNNER TRACKER

## CAREER TRACKER

## UTSA RECORDS

1500 POINTS		100 STEALS	
Jordyn Jenkins*	1,137 (659 at UTSA)	Kyra White*	102 (53 at UTSA)
		Hailey Atwood*	95 (32 at UTSA)
		Jordyn Jenkins*	77 (41 at UTSA)
		Sidney Love	60
1000 POINTS		50 STEALS	
Hailey Atwood*	997 (245 at UTSA)	Elyssa Coleman	39
Elyssa Coleman	732	Maya Linton	32
Kyra White*	558 (420 at UTSA)	Nissa Sam-Grant*	25 (0 at UTSA)
500 POINTS		Madison Cockrell	19
Sidney Love	464	Alexis Parker	15
Sarai Estupiñan*	396 (0 at UTSA)	Sarai Estupiñan*	44 (0 at UTSA)
Nissa Sam-Grant*	262 (10 at UTSA)	Maya Linton	126
Aysia Proctor	150	Idara Udo	121
Maya Linton	126	Siena Guttadauro	109
Idara Udo	121	Kyleigh McGuire	109
Siena Guttadauro	109	Idara Udo	6
100 POINTS		Cheyenne Rowe*	4 (2 at UTSA)
Madison Cockrell	79	Emma Lucio	11
Kyleigh McGuire	84	250 BLOCKS	
Cheyenne Rowe*	73 (35 at UTSA)	Nissa Sam-Grant*	132 (6 at UTSA)
Alexis Parker	64	Elyssa Coleman	123
Emma Lucio	10	1000 REBOUNDS	
1000 REBOUNDS		100 BLOCKS	
Hailey Atwood*	543 (238 at UTSA)	Kyra White*	72 (47 at UTSA)
		Jordyn Jenkins*	67 (36 at UTSA)
500 REBOUNDS		50 BLOCKS	
Elyssa Coleman	482	Hailey Atwood*	31 (11 at UTSA)
Jordyn Jenkins*	476 (240 at UTSA)	Idara Udo	18
Nissa Sam-Grant*	403 (11 at UTSA)	10 BLOCKS	
Kyra White*	375 (244 at UTSA)	Maya Linton	8
Maya Linton	185	Sidney Love	6
Sidney Love	161	Cheyenne Rowe*	6 (2 at UTSA)
100 REBOUNDS		Aysia Proctor	5
Idara Udo	99	Kyleigh McGuire	3
Sarai Estupiñan*	99 (0 at UTSA)	Alexis Parker	2
Kyleigh McGuire	97	Siena Guttadauro	1
Aysia Proctor	84	* Includes totals from previous schools	
Cheyenne Rowe*	82 (43 at UTSA)		
Siena Guttadauro	48		
Alexis Parker	41		
Madison Cockrell	36		
Emma Lucio	7		
500 ASSISTS			
Kyra White*	348 (221 at UTSA)		
Hailey Atwood*	227 (69 at UTSA)		
Sarai Estupiñan*	137 (0 at UTSA)		
Sidney Love	119		
100 ASSISTS			
Jordyn Jenkins*	90 (49 at UTSA)		
Nissa Sam-Grant*	47 (1 at UTSA)		
Elyssa Coleman	41		
Siena Guttadauro	29		
Alexis Parker	24		
Maya Linton	20		
Madison Cockrell	19		
Aysia Proctor	18		
Idara Udo	14		
Kyleigh McGuire	10		
Cheyenne Rowe*	6 (4 at UTSA)		
Emma Lucio	4		

POINTS	CAREER	POINTS	SEASON
1. Starlite Williams, 1983-87	1,607	1. Jordyn Jenkins 2022-23	659
2. Angel Singleton, 1994-98	1,565	2. Tammy Rogers, 1990-91	583
3. Margaret Martinovich, 1981-85	1,480	3. Starlite Williams, 1986-87	538
4. Monica Gibbs, 2005-09	1,460	4. Loryn Goodwin, 2016-17	525
5. Tisha Boldt, 1986-91	1,379	5. Monica Gibbs, 2008-09	514
6. Kamra King, 2011-15	1,367	6. Starlite Williams, 1984-85	493
7. Tammy Rogers, 1987-91	1,343	7. Vivian Ewalefo, 2006-07	480
8. Michelle Martin, 1989-93	1,192	8. Margaret Martinovich, 1982-83	469
9. Sharon Wilson, 1985-89	1,173	9. Valerie Wells, 1983-84	452
10. Tesha Smith, 2013-17	1,169	10. Margaret Martinovich, 1984-85	451
REBOUNDS	CAREER	REBOUNDS	SEASON
1. Monica Gibbs, 2005-09	990	1. Onika Anderson, 2008-09	351
2. Tesha Smith, 2013-17	800	2. Monica Gibbs, 2008-09	309
3. Margaret Martinovich, 1981-85	778	3. Ryba Pawlaczyk, 2008-09	297
4. Angel Singleton, 1993-98	730	4. Marie Benson, 2018-19	289
5. Marie Benson, 2016-19	680	5. Cindy Pavell, 1981-82	271
6. Tisha Boldt, 1986-91	675	6. Ashleigh Franklin, 2009-10	268
7. Starlite Williams, 83-87	636	7. Tisha Boldt, 1987-88	262
8. Akunna Elonu, 2012-15	607	8. Marie Benson, 2017-18	249
9. Michelle Martin, 1989-93	590	9. Margaret Martinovich, 1982-83	247
10. Onika Anderson, 2007-09	579	10. Monica Gibbs, 2007-08	246
ASSISTS	CAREER	ASSISTS	SEASON
1. Monica Gibbs, 2005-09	693	1. Monica Gibbs, 2008-09	221
2. Tammy Rogers, 1987-91	377	2. Joyce Howard, 1997-98	201
3. Rhonda Hoffman, 1983-87	375	3. Monica Gibbs, 2007-08	195
4. Sharon Wilson, 1985-89	355	4. Tammy Rogers, 1990-91	188
5. Joyce Howard, 1996-98	333	5. Shelley Seale, 1982-83	173
6. Shelley Seale, 1981-83	296	6. <b>Kyra White, 2022-23</b>	<b>143</b>
7. Kim Reed, 2001-05	272	7. Monica Gibbs, 2006-07	139
8. Karen Kroen, 1983-87	263	8. Monica Gibbs, 2005-06	138
9. Kim Maxwell, 1981-84	259	9. Loryn Goodwin, 2016-17	134
10. Karrington Donald, 2017-21	252	10. Joyce Howard, 1996-97	132
STEALS	CAREER	STEALS	SEASON
1. Starlite Williams, 1983-87	281	1. Loryn Goodwin, 2016-17	94
2. Kamra King, 2011-15	240	2. Starlite Williams, 1986-87	92
3. Michelle Martin, 1989-93	227	3. Jady Pimentel, 2021-22	83
4. Sharon Wilson, 1985-89	223	4. Joyce Howard, 1997-98	79
5. Rhonda Hoffman, 1983-87	222	5. Michelle Martin, 1991-92	76
6. Monica Gibbs, 2005-09	207	6. Michelle Martin, 1992-93	76
7. Terrie Davis, 2004-08	173	7. Tammy Rogers, 1990-91	74
8. Tammy Rogers, 1987-91	165	8. Sharon Wilson, 1988-89	71
9. Ashley Spaletta, 2011-15	153	9. Starlite Williams, 1983-84	70
10. Crystal Chidomere, 2014-18	150	10. Valerie Wells, 1983-84	69
		Amber Prose, 2000-01	69
BLOCKS	CAREER	BLOCKS	SEASON
1. Elyssa Coleman, 2021-Pres.	123	1. Alysse Davis, 2010-11	78
2. Whitney Wright, 2009-13	105	2. Kim Duncan, 1984-85	57
3. Alysse Davis, 2008-11	98	3. <b>Elyssa Coleman, 2022-23</b>	<b>57</b>
4. Marie Benson, 2016-19	94	4. Ryba Pawlaczyk, 2008-09	56
5. Kim Duncan, 1983-85	93	5. Mantha Emory, 1994-95	50
6. Starlite Williams, 1983-87	88	6. Whitney Wright, 2011-12	48
7. Timea Toth, 2016-20	87	7. Timea Toth, 2019-20	44
8. Mantha Emory, 1993-95	81	8. Keelah Wilson, 1999-00	41
9. Tesha Smith, 2013-17	72	9. Whitney Wright, 2012-13	39
10. Lacy Mingee, 2001-06	70	10. Elyssa Coleman, 2021-22	38

# PLAYER GAME-BY-GAME STATISTICS



# 0

# ELYSSA COLEMAN

Redshirt Junior • Forward • 6-3 • Houston, Texas • Atascocita HS • Texas

### Coleman's Career and 2023-24 Game Highs

Career / Last	Category	2023-24 / Last
32 / January 6, 2024 vs Wichita State	Points	32 / January 6, 2024 vs Wichita State
19 / January 6, 2024 vs Wichita State	Rebounds	19 / January 6, 2024 vs Wichita State
3 / December 19, 2022	Assists	1, 6x / January 10, 2024 at Florida Atlantic
2, 8x / January 2, 2024 at East Carolina	Steals	2, 2x / January 2, 2024 at East Carolina
6 / January 21, 2023 at FIU	Blocks	4 / November 10, 2023 vs New Mexico State
14 / January 6, 2024 vs Wichita State	FG Made	14 / January 6, 2024 vs Wichita State
20 / January 6, 2024 vs Wichita State	FG Attempted	20 / January 6, 2024 vs Wichita State
1, 8x / December 3, 2023 vs UTEP	3PT Made	1 / December 3, 2023 vs UTEP
3 / February 5, 2022 vs North Texas	3PT Attempted	1, 5x / January 14, 2024 vs Charlotte
7 / March 10, 2022 vs Western Kentucky	FT Made	4, 2x / January 6, 2024 vs Wichita State
10 / March 10, 2022 vs Western Kentucky	FT Attempted	6, 2x / January 6, 2024 vs Wichita State
38 / March 10, 2022 vs Western Kentucky	Minutes	33 / November 30, 2023 vs Texas State

## #0 COLEMAN, Elyssa

## 2023-24 STATISTICS

Opponent	Date	GS	MIN	Total		3-Pointers		Free throws		Rebounds				PF	A	TO	BLK	STL	PTS	AVG	
				FG-FGA	PCT	3FG-3FGA	PCT	FT-FTA	PCT	OFF	DEF	TOT	AVG								
at Arizona St.	11/06/2023	*	10:23	0-6	.000	0-0	.000	0-0	.000	1	1	2	2.0	5	0	2	1	0	0	0.0	
New Mexico St.	11/10/2023	*	26:06	3-9	.333	0-1	.000	1-1	1.000	2	5	7	4.5	2	0	4	4	1	7	3.5	
at A&M-Corpus Christi	11/15/2023	*	29:07	7-13	.538	0-0	.000	0-0	.000	1	3	4	4.3	5	0	3	1	1	14	7.0	
at UT Arlington	11/18/2023	*	26:04	2-6	.333	0-1	.000	0-0	.000	2	6	8	5.3	2	1	3	2	0	4	6.3	
at Texas Tech	11/20/2023	*	27:45	3-8	.375	0-0	.000	0-2	.000	2	6	8	5.8	2	0	4	3	0	6	6.2	
at Sam Houston	11/25/2023	*	31:55	8-13	.615	0-0	.000	1-4	.250	3	3	6	5.8	5	0	1	3	2	17	8.0	
Texas St.	11/30/2023	*	33:11	4-13	.308	0-0	.000	3-4	.750	2	7	9	6.3	2	1	1	2	0	11	8.4	
UTEP	12/03/2023	*	25:01	11-13	.846	1-1	1.000	0-0	.000	2	6	8	6.5	3	0	3	1	0	23	10.3	
Houston	12/14/2023	*	28:40	3-6	.500	0-0	.000	0-0	.000	1	6	7	6.6	3	1	0	0	1	6	9.8	
at Oregon	12/17/2023	*	28:39	3-17	.176	0-0	.000	1-2	.500	7	6	13	7.2	2	0	1	0	1	7	9.5	
at Seattle U	12/19/2023	*	29:24	7-12	.583	0-0	.000	4-4	1.000	2	7	9	7.4	4	1	2	2	1	18	10.3	
at Temple	12/30/2023	*	32:27	5-11	.455	0-0	.000	1-1	1.000	1	6	7	7.3	3	1	0	2	0	11	10.3	
at East Carolina	01/02/2024	*	24:48	4-13	.308	0-1	.000	3-6	.500	4	0	4	7.1	5	1	4	1	2	11	10.4	
Wichita St.	01/06/2024	*	30:49	14-20	.700	0-0	.000	4-6	.667	6	13	19	7.9	3	1	1	3	1	32	11.9	
at Fla. Atlantic	01/10/2024	*	28:34	8-11	.727	0-0	.000	0-0	.000	3	7	10	8.1	2	1	1	2	0	16	12.2	
Charlotte	01/14/2024	*	30:00	5-12	.417	0-1	.000	2-2	1.000	0	3	3	7.8	5	2	2	1	0	12	12.2	
<b>Totals</b>			<b>16</b>	<b>442:53</b>	<b>87-183</b>	<b>.475</b>	<b>1-5</b>	<b>.200</b>	<b>20-32</b>	<b>.625</b>	<b>39</b>	<b>85</b>	<b>124</b>	<b>7.8</b>	<b>53</b>	<b>10</b>	<b>32</b>	<b>28</b>	<b>10</b>	<b>195</b>	<b>12.2</b>

## Player Averages

Games Played	Minutes/game	Points/game	FG Pct	3FG Pct	FT Pct	Rebounds/game	Assists/game	Turnovers/game	Assist/Turnover ratio	Steals/game	Blocks/game
16	27.7	12.2	47.5	20.0	62.5	7.8	0.6	2.0	0.3	0.6	1.8

# PLAYER GAME-BY-GAME STATISTICS

1

**HAILEY ATWOOD**

Graduate Student • Guard • 5-8 • Austin, Texas • James Bowie HS • Blinn College



Atwood's NCAA Career and 2023-24 Game Highs

Career / Last	Category	2023-24 / Last
13 / February 25, 2023 vs FIU	Points	8 / December 19, 2023 at Seattle U
8, 2x / February 17, 2022 vs Southern Miss	Rebounds	4 / January 2, 2024 at East Carolina
5 / February 23, 2023 vs Florida Atlantic	Assists	3 / January 2, 2024 at East Carolina
3, 2x / February 23, 2023 vs Florida Atlantic	Steals	2 / January 2, 2024 at East Carolina
1, 11x / November 24, 2023 at Sam Houston	Blocks	1 / November 24, 2023 at Sam Houston
6 / February 2, 2023 vs Western Kentucky	FG Made	4 / December 19, 2023 at Seattle U
12 / February 25, 2023 vs FIU	FG Attempted	7 / December 19, 2023 at Seattle U
2, 2x / February 25, 2023 vs FIU	3PT Made	1, 2x / January 10, 2024 at Florida Atlantic
5 / February 25, 2023 vs FIU	3PT Attempted	1, 5x / January 10, 2024 at Florida Atlantic
2, 11x / November 24, 2023 at Sam Houston	FT Made	2 / November 24, 2023 at Sam Houston
3, 2x / February 23, 2023 vs Florida Atlantic	FT Attempted	2, 2x / January 2, 2024 at East Carolina
34 / March 10, 2022 vs Western Kentucky	Minutes	24 / December 19, 2023 at Seattle U

**2023-24 STATISTICS**

Opponent	Date	GS	MIN	Total		3-Pointers		Free throws		Rebounds				PF	A	TO	BLK	STL	PTS	AVG
				FG-FGA	PCT	3FG-3FGA	PCT	FT-FTA	PCT	OFF	DEF	TOT	AVG							
at Arizona St.	11/06/2023	*	16:39	0-2	.000	0-0	.000	0-0	.000	1	0	1	1.0	2	0	3	0	0	0	0.0
New Mexico St.	11/10/2023	*	19:46	0-2	.000	0-1	.000	0-0	.000	0	1	1	1.0	2	0	2	0	0	0	0.0
at A&M-Corpus Christi	11/15/2023		02:47	0-1	.000	0-0	.000	0-0	.000	0	0	0	0.7	3	0	1	0	0	0	0.0
at UT Arlington	11/18/2023		10:11	0-0	.000	0-0	.000	0-0	.000	0	2	2	1.0	1	1	0	0	0	0	0.0
at Texas Tech	11/20/2023		03:13	0-0	.000	0-0	.000	0-0	.000	0	2	2	1.2	0	0	2	0	0	0	0.0
at Sam Houston	11/25/2023		10:27	0-1	.000	0-0	.000	2-2	1.000	2	1	3	1.5	3	1	1	1	0	2	0.3
Texas St.	11/30/2023		06:02	0-0	.000	0-0	.000	0-0	.000	0	1	1	1.4	1	1	0	0	0	0	0.3
UTEP	12/03/2023	*	18:22	1-2	.500	0-0	.000	0-0	.000	0	1	1	1.4	1	2	2	0	0	2	0.5
Houston	12/14/2023	*	15:24	0-1	.000	0-1	.000	0-0	.000	0	2	2	1.4	0	2	3	0	0	0	0.4
at Oregon	12/17/2023	*	12:08	0-0	.000	0-0	.000	0-0	.000	1	1	2	1.5	1	1	3	0	0	0	0.4
at Seattle U	12/19/2023	*	24:38	4-7	.571	0-1	.000	0-0	.000	0	1	1	1.5	2	1	1	0	1	8	1.1
at Temple	12/30/2023	*	08:28	1-1	1.000	0-0	.000	0-0	.000	1	0	1	1.4	3	0	1	0	1	2	1.2
at East Carolina	01/02/2024	*	14:46	1-1	1.000	1-1	1.000	1-2	.500	1	3	4	1.6	1	3	2	0	2	4	1.4
at Fla. Atlantic	01/10/2024		09:06	1-1	1.000	1-1	1.000	0-0	.000	1	0	1	1.6	1	1	0	0	1	3	1.5
Charlotte	01/14/2024		23:47	2-4	.500	1-3	.333	0-0	.000	1	0	1	1.5	3	1	1	0	0	5	1.7
<b>Totals</b>			<b>8 195:43</b>	<b>10-23</b>	<b>.435</b>	<b>3-8</b>	<b>.375</b>	<b>3-4</b>	<b>.750</b>	<b>8</b>	<b>15</b>	<b>23</b>	<b>1.5</b>	<b>24</b>	<b>14</b>	<b>22</b>	<b>1</b>	<b>5</b>	<b>26</b>	<b>1.7</b>

**Player Averages**

Games Played	Minutes/game	Points/game	FG Pct	3FG Pct	FT Pct	Rebounds/game	Assists/game	Turnovers/game	Assist/Turnover ratio	Steals/game	Blocks/game
15	13.0	1.7	43.5	37.5	75.0	1.5	0.9	1.5	0.6	0.3	0.1

# PLAYER GAME-BY-GAME STATISTICS

2

**ALEXIS PARKER**



Sophomore • Guard • 5-9 • San Antonio, Texas • Brandeis HS

Parker's Career and 2023-24 Game Highs

Career / Last	Category	2023-24 / Last
11 / December 19, 2022 at Houston	Points	4 / November 18, 2023 at UT Arlington
5 / February 4, 2023 vs Middle Tennessee	Rebounds	2, 4x / December 3, 2023 vs UTEP
3, 4x / November 15, 2023 at Texas A&M-Corpus Christi	Assists	3 / November 15, 2023 at Texas A&M-Corpus Christi
3 / December 19, 2022 at Houston	Steals	2 / November 18, 2023 at UT Arlington
1, 2x / November 24, 2023 at Sam Houston	Blocks	1 / November 24, 2023 at Sam Houston
4 / December 19, 2022 at Houston	FG Made	1, 2x / November 18, 2023 at UT Arlington
7 / December 19, 2022 at Houston	FG Attempted	6 / November 18, 2023 at UT Arlington
1, 7x / February 11, 2023 vs UTEP	3PT Made	N/A
4 / February 11, 2023 vs UTEP	3PT Attempted	2, 2x / November 18, 2023 at UT Arlington
2, 12x / December 14, 2023 vs Houston	FT Made	2, 2x / December 14, 2023 vs Houston
4, 2x / November 18, 2023 at UT Arlington	FT Attempted	4, 2x / November 18, 2023 at UT Arlington
31 / December 10, 2022 vs Idaho	Minutes	19, 2x / November 18, 2023 at UT Arlington

#2 PARKER, Alexis

2023-24 STATISTICS

Opponent	Date	GS	MIN	Total		3-Pointers		Free throws		Rebounds				PF	A	TO	BLK	STL	PTS	AVG
				FG-FGA	PCT	3FG-3FGA	PCT	FT-FTA	PCT	OFF	DEF	TOT	AVG							
at Arizona St.	11/06/2023		08:26	1-3	.333	0-1	.000	1-4	.250	0	0	0	0.0	0	0	1	0	0	3	3.0
New Mexico St.	11/10/2023		06:30	0-0	.000	0-0	.000	0-2	.000	0	0	0	0.0	0	0	0	0	0	0	1.5
at A&M-Corpus Christi	11/15/2023	*	19:24	0-3	.000	0-2	.000	0-0	.000	0	2	2	0.7	1	3	2	0	1	0	1.0
at UT Arlington	11/18/2023	*	19:52	1-6	.167	0-2	.000	2-4	.500	1	1	2	1.0	2	2	3	0	2	4	1.8
at Texas Tech	11/20/2023	*	19:01	2-3	.667	0-1	.000	0-0	.000	0	2	2	1.2	1	0	2	0	1	4	2.2
at Sam Houston	11/25/2023		07:47	0-0	.000	0-0	.000	0-2	.000	1	1	2	1.3	0	0	1	1	0	0	1.8
Texas St.	11/30/2023		12:21	0-3	.000	0-1	.000	0-0	.000	1	0	1	1.3	2	0	1	0	0	0	1.6
UTEP	12/03/2023		03:17	0-2	.000	0-0	.000	0-0	.000	2	0	2	1.4	1	0	1	0	0	0	1.4
Houston	12/14/2023		02:57	0-1	.000	0-1	.000	2-2	1.000	0	1	1	1.3	0	0	0	0	0	2	1.4
at Seattle U	12/19/2023		00:43	0-0	.000	0-0	.000	0-0	.000	0	0	0	1.2	0	0	0	0	0	0	1.3
at Temple	12/30/2023		04:02	0-1	.000	0-0	.000	0-0	.000	0	0	0	1.1	1	0	0	0	0	0	1.2
at East Carolina	01/02/2024		03:27	0-1	.000	0-1	.000	1-2	.500	1	0	1	1.1	0	1	1	0	0	1	1.2
<b>Totals</b>		<b>3</b>	<b>107:47</b>	<b>4-23</b>	<b>.174</b>	<b>0-9</b>	<b>.000</b>	<b>6-16</b>	<b>.375</b>	<b>6</b>	<b>7</b>	<b>13</b>	<b>1.1</b>	<b>8</b>	<b>6</b>	<b>12</b>	<b>1</b>	<b>4</b>	<b>14</b>	<b>1.2</b>

Player Averages

Games Played	Minutes/game	Points/game	FG Pct	3FG Pct	FT Pct	Rebounds/game	Assists/game	Turnovers/game	Assist/Turnover ratio	Steals/game	Blocks/game
12	9.0	1.2	17.4	0.0	37.5	1.1	0.5	1.0	0.5	0.3	0.1

# PLAYER GAME-BY-GAME STATISTICS

3

**EMMA LUCIO**



Freshman • Guard • 5-9 • Edinburg, Texas • Robert Vela HS

### Lucio's Career and 2023-24 Game Highs

Career / Last	Category	2023-24 / Last
3, 2x / January 2, 2024 at East Carolina	Points	3, 2x / January 2, 2024 at East Carolina
3 / January 2, 2024 at East Carolina	Rebounds	3 / January 2, 2024 at East Carolina
2, 2x / January 14, 2024 vs Charlotte	Assists	2, 2x / January 14, 2024 vs Charlotte
1 / January 14, 2024 vs Charlotte	Steals	1 / January 14, 2024 vs Charlotte
N/A	Blocks	N/A
1, 3x / January 6, 2024 vs Wichita State	FG Made	1, 3x / January 6, 2024 vs Wichita State
9 / January 2, 2024 at East Carolina	FG Attempted	9 / January 2, 2024 at East Carolina
1 / December 3, 2023 vs UTEP	3PT Made	1 / December 3, 2023 vs UTEP
6 / January 2, 2024 at East Carolina	3PT Attempted	6 / January 2, 2024 at East Carolina
2 / January 14, 2024 vs Charlotte	FT Made	2 / January 14, 2024 vs Charlotte
4 / January 2, 2024 at East Carolina	FT Attempted	4 / January 2, 2024 at East Carolina
21 / January 2, 2024 at East Carolina	Minutes	21 / January 2, 2024 at East Carolina

### 2023-24 STATISTICS

#3 LUCIO, Emma

Opponent	Date	GS	MIN	Total		3-Pointers		Free throws		Rebounds				PF	A	TO	BLK	STL	PTS	AVG
				FG-FGA	PCT	3FG-3FGA	PCT	FT-FTA	PCT	OFF	DEF	TOT	AVG							
at Sam Houston	11/25/2023		11:22	0-1	.000	0-0	.000	0-0	.000	0	2	2	2.0	1	0	1	0	0	0	0.0
UTEP	12/03/2023		05:42	1-2	.500	1-2	.500	0-0	.000	0	0	0	1.0	0	0	1	0	0	3	1.5
at East Carolina	01/02/2024		21:05	1-9	.111	0-6	.000	1-4	.250	1	2	3	1.7	2	2	2	0	0	3	2.0
Wichita St.	01/06/2024		10:32	1-4	.250	0-2	.000	0-0	.000	1	0	1	1.5	2	0	0	0	0	2	2.0
at Fla. Atlantic	01/10/2024		10:08	0-3	.000	0-1	.000	0-0	.000	0	0	0	1.2	0	0	2	0	0	0	1.6
Charlotte	01/14/2024		10:16	0-0	.000	0-0	.000	2-2	1.000	0	1	1	1.2	1	2	1	0	1	2	1.7
<b>Totals</b>		<b>0</b>	<b>69:05</b>	<b>3-19</b>	<b>.158</b>	<b>1-11</b>	<b>.091</b>	<b>3-6</b>	<b>.500</b>	<b>2</b>	<b>5</b>	<b>7</b>	<b>1.2</b>	<b>6</b>	<b>4</b>	<b>7</b>	<b>0</b>	<b>1</b>	<b>10</b>	<b>1.7</b>

### Player Averages

Games Played	Minutes/game	Points/game	FG Pct	3FG Pct	FT Pct	Rebounds/game	Assists/game	Turnovers/game	Assist/Turnover ratio	Steals/game	Blocks/game
6	11.5	1.7	15.8	9.1	50.0	1.2	0.7	1.2	0.6	0.2	0.0

# PLAYER GAME-BY-GAME STATISTICS

4

**SIENA GUTTADAURO**



Sophomore • Guard • 5-6 • San Jose, California • Archbishop Mitty HS

Guttadauro's Career and 2023-24 Game Highs

Career / Last	Category	2023-24 / Last
12 / December 3, 2023 vs UTEP	Points	12 / December 3, 2023 vs UTEP
4 / February 11, 2023 vs UTEP	Rebounds	2, 3x / December 14, 2023 vs Houston
3, 3x / November 6, 2023 at Arizona State	Assists	3 / November 6, 2023 at Arizona State
1, 9x / February 23 at Florida Atlantic	Steals	N/A
1 / February 2, 2023 vs Western Kentucky	Blocks	N/A
4, 3x / December 3, 2023 vs UTEP	FG Made	4, 2x / December 3, 2023 vs UTEP
8 / February 11, 2023 vs UTEP	FG Attempted	7 / November 30, 2023 vs Texas State
4 / December 3, 2023 vs UTEP	3PT Made	4 / December 3, 2023 vs UTEP
6, 4x / November 30, 2023 vs Texas State	3PT Attempted	6, 2x / November 30, 2023 vs Texas State
2, 3x March 2, 2023 at Charlotte	FT Made	1 / November 6, 2023 at Arizona State
3 2x / February 4, 2023 vs. Middle Tennessee	FT Attempted	2 / November 6, 2023 at Arizona State
24 / December 10, 2022 vs Idaho	Minutes	19 / November 30, 2023 vs Texas State

2023-24 STATISTICS

#4 GUTTADAURO, Siena

Opponent	Date	GS	MIN	Total		3-Pointers		Free throws		Rebounds				PF	A	TO	BLK	STL	PTS	AVG
				FG-FGA	PCT	3FG-3FGA	PCT	FT-FTA	PCT	OFF	DEF	TOT	AVG							
at Arizona St.	11/06/2023		14:01	1-6	.167	1-6	.167	1-2	.500	0	0	0	0.0	2	3	1	0	0	4	4.0
at A&M-Corpus Christi	11/15/2023		13:45	2-4	.500	2-4	.500	0-0	.000	0	0	0	0.0	1	0	1	0	0	6	5.0
at UT Arlington	11/18/2023		10:26	1-5	.200	0-3	.000	0-0	.000	2	0	2	0.7	1	0	0	0	0	2	4.0
at Texas Tech	11/20/2023		08:37	0-2	.000	0-2	.000	0-0	.000	0	0	0	0.5	0	0	2	0	0	0	3.0
at Sam Houston	11/25/2023		02:25	0-0	.000	0-0	.000	0-0	.000	0	1	1	0.6	0	0	1	0	0	0	2.4
Texas St.	11/30/2023		19:01	4-7	.571	3-6	.500	0-0	.000	0	1	1	0.7	0	1	0	0	0	11	3.8
UTEP	12/03/2023		18:35	4-5	.800	4-5	.800	0-0	.000	0	2	2	0.9	0	1	3	0	0	12	5.0
Houston	12/14/2023		13:17	0-2	.000	0-1	.000	0-0	.000	0	2	2	1.0	0	1	3	0	0	0	4.4
at Oregon	12/17/2023		20:26	0-4	.000	0-3	.000	0-0	.000	1	3	4	1.3	2	1	0	0	0	0	3.9
at Seattle U	12/19/2023		03:59	0-0	.000	0-0	.000	0-0	.000	0	1	1	1.3	2	0	1	0	0	0	3.5
at Temple	12/30/2023		10:01	0-2	.000	0-1	.000	0-0	.000	0	0	0	1.2	0	0	1	0	0	0	3.2
at East Carolina	01/02/2024		12:04	1-3	.333	1-2	.500	0-0	.000	2	1	3	1.3	1	1	4	0	0	3	3.2
at Fla. Atlantic	01/10/2024		02:32	0-1	.000	0-1	.000	0-0	.000	0	0	0	1.2	0	1	0	0	0	0	2.9
<b>Totals</b>		<b>0</b>	<b>149:09</b>	<b>13-41</b>	<b>.317</b>	<b>11-34</b>	<b>.324</b>	<b>1-2</b>	<b>.500</b>	<b>5</b>	<b>11</b>	<b>16</b>	<b>1.2</b>	<b>9</b>	<b>9</b>	<b>17</b>	<b>0</b>	<b>0</b>	<b>38</b>	<b>2.9</b>

Player Averages

Games Played	Minutes/game	Points/game	FG Pct	3FG Pct	FT Pct	Rebounds/game	Assists/game	Turnovers/game	Assist/Turnover ratio	Steals/game	Blocks/game
13	11.5	2.9	31.7	32.4	50.0	1.2	0.7	1.3	0.5	0.0	0.0

# PLAYER GAME-BY-GAME STATISTICS

5

**MADISON COCKRELL**

Sophomore • Guard • 5-4 • Dallas, Texas • Bishop Lynch HS



### Cockrell's Career and 2023-24 Game Highs

Career / Last	Category	2023-24 / Last
13 / January 2, 2024 at East Carolina	Points	13 / January 2, 2024 at East Carolina
4, 3x / November 6, 2023 at Arizona State	Rebounds	4 / November 6, 2023 at Arizona State
3, 2x / January 21, 2023 at FIU	Assists	2 / January 6, 2024 vs Wichita State
3 / January 2, 2024 at East Carolina	Steals	3 / January 2, 2024 at East Carolina
N/A	Blocks	N/A
4, 3x / January 2, 2024 at East Carolina	FG Made	4 / January 2, 2024 at East Carolina
8, 3x / January 2, 2024 at East Carolina	FG Attempted	8 / January 2, 2024 at East Carolina
3, 2x / January 2, 2024 at East Carolina	3PT Made	3 / January 2, 2024 at East Carolina
6 / January 2, 2024 at East Carolina	3PT Attempted	6 / January 2, 2024 at East Carolina
3 / November 30, 2022 at Texas State	FT Made	2 / January 2, 2024 at East Carolina
4 / November 30, 2022 at Texas State	FT Attempted	2 / January 2, 2024 at East Carolina
20, 2x / January 21, 2023 at FIU	Minutes	17 / January 2, 2024 at East Carolina

### #5 COCKRELL, Madison

### 2023-24 STATISTICS

Opponent	Date	GS	MIN	Total		3-Pointers		Free throws		Rebounds				PF	A	TO	BLK	STL	PTS	AVG
				FG-FGA	PCT	3FG-3FGA	PCT	FT-FTA	PCT	OFF	DEF	TOT	AVG							
at Arizona St.	11/06/2023		07:43	1-4	.250	0-1	.000	1-1	1.000	1	3	4	4.0	0	1	1	0	2	3	3.0
New Mexico St.	11/10/2023		03:42	0-1	.000	0-0	.000	0-0	.000	0	0	0	2.0	1	0	1	0	0	0	1.5
at A&M-Corpus Christi	11/15/2023		07:24	0-1	.000	0-0	.000	0-0	.000	1	1	2	2.0	1	0	1	0	0	0	1.0
at UT Arlington	11/18/2023		07:36	1-2	.500	1-1	1.000	0-0	.000	0	1	1	1.8	1	1	1	0	1	3	1.5
Texas St.	11/30/2023		02:06	1-1	1.000	0-0	.000	0-0	.000	0	0	0	1.4	0	0	0	0	0	2	1.6
UTEP	12/03/2023		02:23	1-1	1.000	1-1	1.000	0-0	.000	0	0	0	1.2	0	0	1	0	0	3	1.8
at Seattle U	12/19/2023		01:36	0-1	.000	0-0	.000	0-0	.000	0	0	0	1.0	0	0	1	0	0	0	1.6
at East Carolina	01/02/2024		17:01	4-8	.500	3-6	.500	2-2	1.000	0	2	2	1.1	4	0	2	0	3	13	3.0
Wichita St.	01/06/2024		11:42	0-4	.000	0-2	.000	0-0	.000	0	0	0	1.0	0	2	1	0	1	0	2.7
at Fla. Atlantic	01/10/2024		05:48	0-1	.000	0-1	.000	0-0	.000	0	1	1	1.0	1	0	1	0	0	0	2.4
Charlotte	01/14/2024		13:18	0-2	.000	0-1	.000	0-0	.000	0	1	1	1.0	3	1	1	0	2	0	2.2
<b>Totals</b>		<b>0</b>	<b>80:18</b>	<b>8-26</b>	<b>.308</b>	<b>5-13</b>	<b>.385</b>	<b>3-3</b>	<b>1.000</b>	<b>2</b>	<b>9</b>	<b>11</b>	<b>1.0</b>	<b>11</b>	<b>5</b>	<b>11</b>	<b>0</b>	<b>9</b>	<b>24</b>	<b>2.2</b>

### Player Averages

Games Played	Minutes/game	Points/game	FG Pct	3FG Pct	FT Pct	Rebounds/game	Assists/game	Turnovers/game	Assist/Turnover ratio	Steals/game	Blocks/game
11	7.3	2.2	30.8	38.5	100.0	1.0	0.5	1.0	0.5	0.8	0.0

# PLAYER GAME-BY-GAME STATISTICS

11

**SIDNEY LOVE**



Sophomore • Guard • 5-8 • Cibolo, Texas. • Steele HS

Love's Career and 2023-24 Game Highs

Career / Last	Category	2023-24 / Last
26 / November 18, 2023 at UT Arlington	Points	26 / November 18, 2023 at UT Arlington
10 / January 21, 2023 at FIU	Rebounds	7, 2x / December 30, 2023 at Temple
7, 2x / December 3, 2023 vs UTEP	Assists	7 / December 3, 2023 vs UTEP
4 / January 16, 2023 at Rice	Steals	3, 2x / November 24, 2023 at Sam Houston
1, 6x / November 24, 2023 at Sam Houston	Blocks	1, 2x / November 24, 2023 at Sam Houston
9 / December 31, 2022 vs UAB	FG Made	7, 2x / January 6, 2024 vs Wichita State
18 / January 6, 2024 vs Wichita State	FG Attempted	18 / January 6, 2024 vs Wichita State
5 / 23 / December 31, 2022 vs UAB	3PT Made	2 / January 6, 2024 vs Wichita State
9 / 23 / December 31, 2022 vs UAB	3PT Attempted	7 / January 6, 2024 vs Wichita State
13 / November 18, 2023 at UT Arlington	FT Made	13 / November 18, 2023 at UT Arlington
15 / November 18, 2023 at UT Arlington	FT Attempted	15 / November 18, 2023 at UT Arlington
38 / Match 8, 2023 vs Florida Atlantic	Minutes	37 / November 15, 2023 at Texas A&M-Corpus Christi

#11 LOVE, Sidney

2023-24 STATISTICS

Opponent	Date	GS	MIN	Total		3-Pointers		Free throws		Rebounds				PF	A	TO	BLK	STL	PTS	AVG	
				FG-FGA	PCT	3FG-3FGA	PCT	FT-FTA	PCT	OFF	DEF	TOT	AVG								
at Arizona St.	11/06/2023	*	22:47	2-6	.333	0-1	.000	3-4	.750	1	1	2	2.0	2	1	4	0	1	7	7.0	
New Mexico St.	11/10/2023	*	36:21	3-11	.273	0-4	.000	1-1	1.000	0	3	3	2.5	2	3	3	0	2	7	7.0	
at A&M-Corpus Christi	11/15/2023	*	37:06	3-8	.375	0-2	.000	4-4	1.000	1	3	4	3.0	3	5	4	0	3	10	8.0	
at UT Arlington	11/18/2023	*	33:10	6-10	.600	1-2	.500	13-15	.867	0	2	2	2.8	2	2	2	1	0	26	12.5	
at Texas Tech	11/20/2023	*	29:20	7-14	.500	1-3	.333	3-3	1.000	1	2	3	2.8	5	1	2	0	2	18	13.6	
at Sam Houston	11/25/2023	*	34:01	3-7	.429	1-1	1.000	5-6	.833	1	6	7	3.5	2	1	4	1	3	12	13.3	
Texas St.	11/30/2023	*	35:30	5-10	.500	1-4	.250	0-0	.000	0	2	2	3.3	3	3	4	0	1	11	13.0	
UTEP	12/03/2023	*	26:00	6-11	.545	1-3	.333	3-4	.750	0	5	5	3.5	1	7	1	0	0	16	13.4	
Houston	12/14/2023	*	29:35	5-12	.417	1-2	.500	2-2	1.000	0	3	3	3.4	2	2	2	0	2	13	13.3	
at Oregon	12/17/2023	*	34:38	2-15	.133	0-3	.000	5-5	1.000	3	3	6	3.7	3	2	6	0	3	9	12.9	
at Seattle U	12/19/2023	*	29:46	2-7	.286	0-0	.000	1-2	.500	0	2	2	3.5	4	6	2	0	0	5	12.2	
at Temple	12/30/2023	*	34:16	3-8	.375	1-3	.333	1-3	.333	3	4	7	3.8	3	5	7	0	0	8	11.8	
at East Carolina	01/02/2024	*	18:43	0-4	.000	0-2	.000	0-0	.000	0	1	1	3.6	2	1	3	0	2	0	10.9	
Wichita St.	01/06/2024	*	36:50	7-18	.389	2-7	.286	0-0	.000	2	1	3	3.6	2	6	1	0	2	16	11.3	
at Fla. Atlantic	01/10/2024	*	25:20	2-9	.222	0-2	.000	3-4	.750	0	3	3	3.5	3	4	1	0	2	7	11.0	
Charlotte	01/14/2024	*	25:04	2-9	.222	1-3	.333	3-4	.750	0	2	2	3.4	4	3	0	0	0	8	10.8	
<b>Totals</b>			<b>16</b>	<b>488:27</b>	<b>58-159</b>	<b>.365</b>	<b>10-42</b>	<b>.238</b>	<b>47-57</b>	<b>.825</b>	<b>12</b>	<b>43</b>	<b>55</b>	<b>3.4</b>	<b>43</b>	<b>52</b>	<b>46</b>	<b>2</b>	<b>23</b>	<b>173</b>	<b>10.8</b>

Player Averages

Games Played	Minutes/game	Points/game	FG Pct	3FG Pct	FT Pct	Rebounds/game	Assists/game	Turnovers/game	Assist/Turnover ratio	Steals/game	Blocks/game
16	30.5	10.8	36.5	23.8	82.5	3.4	3.3	2.9	1.1	1.4	0.1



# PLAYER GAME-BY-GAME STATISTICS

## 12

## AYSIA PROCTOR

Freshman • Guard • 5-8 • Schertz, Texas • Samuel Clemens HS



### Proctors' Career and 2023-24 Game Highs

Career / Last	Category	2023-24 / Last
20 / December 17, 2023 at Oregon	Points	20 / December 17, 2023 at Oregon
13 / January 14, 2024 vs Charlotte	Rebounds	13 / January 14, 2024 vs Charlotte
3, 2x / December 19, 2023 at Seattle U	Assists	3, 2x / December 19, 2023 at Seattle U
2 / December 19, 2023 at Seattle U	Steals	2 / December 19, 2023 at Seattle U
2 / January 6, 2024 vs Wichita State	Blocks	2 / January 6, 2024 vs Wichita State
9, 2x / December 17, 2023 at Oregon	FG Made	9, 2x / December 17, 2023 at Oregon
21 / December 17, 2023 at Oregon	FG Attempted	21 / December 17, 2023 at Oregon
5 / January 14, 2024 vs Charlotte	3PT Made	5 / January 14, 2024 vs Charlotte
6, 2x / January 14, 2024 vs Charlotte	3PT Attempted	6, 2x / January 14, 2024 vs Charlotte
1, 4x / December 19, 2023 at Seattle U	FT Made	1, 4x / December 19, 2023 at Seattle U
2, 5x / January 14, 2024 vs Charlotte	FT Attempted	2, 5x / January 14, 2024 vs Charlotte
29 / November 30, 2023 vs Texas State	Minutes	29 / November 30, 2023 vs Texas State

### #12 PROCTOR, Aysia

### 2023-24 STATISTICS

Opponent	Date	GS	MIN	Total		3-Pointers		Free throws		Rebounds				PF	A	TO	BLK	STL	PTS	AVG
				FG-FGA	PCT	3FG-3FGA	PCT	FT-FTA	PCT	OFF	DEF	TOT	AVG							
at Arizona St.	11/06/2023		13:43	1-3	.333	0-2	.000	0-0	.000	3	4	7	7.0	0	0	2	0	0	2	2.0
New Mexico St.	11/10/2023		22:19	8-9	.889	2-3	.667	1-2	.500	1	4	5	6.0	1	1	2	0	1	19	10.5
at A&M-Corpus Christi	11/15/2023		26:21	3-9	.333	0-3	.000	1-2	.500	1	4	5	5.7	2	1	3	1	1	7	9.3
at UT Arlington	11/18/2023		03:57	1-1	1.000	0-0	.000	0-0	.000	0	0	0	4.3	1	0	1	0	0	2	7.5
at Texas Tech	11/20/2023		25:19	5-7	.714	0-0	.000	0-0	.000	2	3	5	4.4	3	0	6	0	1	10	8.0
at Sam Houston	11/25/2023	*	26:38	4-7	.571	0-0	.000	0-0	.000	1	7	8	5.0	1	3	4	0	0	8	8.0
Texas St.	11/30/2023	*	29:42	2-10	.200	0-2	.000	0-0	.000	2	5	7	5.3	5	0	1	1	0	4	7.4
UTEP	12/03/2023		19:11	1-4	.250	0-2	.000	0-0	.000	1	5	6	5.4	2	2	1	1	0	2	6.8
Houston	12/14/2023		24:54	9-11	.818	0-1	.000	1-2	.500	2	3	5	5.3	0	0	1	0	0	19	8.1
at Oregon	12/17/2023		25:18	9-21	.429	2-6	.333	0-0	.000	5	6	11	5.9	2	0	2	0	1	20	9.3
at Seattle U	12/19/2023		26:41	4-11	.364	1-2	.500	1-2	.500	1	1	2	5.5	1	3	0	0	2	10	9.4
at Temple	12/30/2023		27:24	3-9	.333	1-2	.500	0-0	.000	1	4	5	5.5	2	2	2	0	1	7	9.2
Wichita St.	01/06/2024	*	22:22	2-9	.222	2-5	.400	0-0	.000	0	3	3	5.3	1	2	1	2	0	6	8.9
at Fla. Atlantic	01/10/2024	*	28:53	7-11	.636	3-4	.750	0-0	.000	0	2	2	5.1	3	2	2	0	1	17	9.5
Charlotte	01/14/2024	*	38:52	6-12	.500	5-6	.833	0-2	.000	2	11	13	5.6	1	2	3	0	3	17	10.0
<b>Totals</b>		<b>5</b>	<b>361:34</b>	<b>65-134</b>	<b>.485</b>	<b>16-38</b>	<b>.421</b>	<b>4-10</b>	<b>.400</b>	<b>22</b>	<b>62</b>	<b>84</b>	<b>5.6</b>	<b>25</b>	<b>18</b>	<b>31</b>	<b>5</b>	<b>11</b>	<b>150</b>	<b>10.0</b>

### Player Averages

Games Played	Minutes/game	Points/game	FG Pct	3FG Pct	FT Pct	Rebounds/game	Assists/game	Turnovers/game	Assist/Turnover ratio	Steals/game	Blocks/game
15	24.1	10.0	48.5	42.1	40.0	5.6	1.2	2.1	0.6	0.7	0.3

# PLAYER GAME-BY-GAME STATISTICS

**13**

**SARAI ESTUPINAN**

Junior • Guard • 5-5 • Cedar Park, Texas • Cedar Park HS • St. Mary's (TX) • Tallahassee CC



Estupinan's NCAA Career and 2023-24 Game Highs (\* at St. Mary's)

Career / Last	Category	2023-24 / Last
11 / November 20, 2021 vs Lander*	Points	N/A
6 / December 13, 2021 at Angelo State*	Rebounds	N/A
9 / January 8, 2022 at Midwestern State*	Assists	N/A
3 / February 3, 2022 at Texas A&M-International*	Steals	N/A
N/A	Blocks	N/A
4 / November 20, 2021 vs Lander*	FG Made	N/A
9 / November 20, 2021 vs Lander*	FG Attempted	N/A
3 / November 20, 2021 vs Lander*	3PT Made	N/A
7 / November 20, 2021 vs Lander*	3PT Attempted	N/A
4 / January 8, 2022 at Midwestern State*	FT Made	N/A
6 / January 8, 2022 at Midwestern State*	FT Attempted	N/A
20 / February 21, 2021 vs West Texas A&M*	Minutes	N/A

**HAS YET TO APPEAR IN THE 2023-24 SEASON**

# PLAYER GAME-BY-GAME STATISTICS

20

MAYA LINTON



Sophomore • Forward • 6-0 • Duncanville, Texas • Duncanville HS

### Linton's Career and 2023-24 Game Highs

Career / Last	Category	2023-24 / Last
15 / November 18, 2023 at UT Arlington	Points	15 / November 18, 2023 at UT Arlington
10 / November 18, 2023 at UT Arlington	Rebounds	10 / November 18, 2023 at UT Arlington
2 / January 25, 2023 at FIU	Assists	1, 6x / January 10, 2024 at Florida Atlantic
3, 2x / December 19, 2023 at Seattle U	Steals	3, 2x / December 19, 2023 at Seattle U
2 / March 10, 2023 vs Western Kentucky	Blocks	N/A
6 / November 18, 2023 at UT Arlington	FG Made	6 / November 18, 2023 at UT Arlington
11 / November 18, 2023 at UT Arlington	FG Attempted	11 / November 18, 2023 at UT Arlington
2 / January 10, 2024 at Florida Atlantic	3PT Made	2 / January 10, 2024 at Florida Atlantic
4 / January 10, 2024 at Florida Atlantic	3PT Attempted	4 / January 10, 2024 at Florida Atlantic
4 / November 24, 2023 at Sam Houston	FT Made	4 / November 24, 2023 at Sam Houston
8 / November 24, 2023 at Sam Houston	FT Attempted	8 / November 24, 2023 at Sam Houston
26 / November 18, 2023 at UT Arlington	Minutes	26 / November 18, 2023 at UT Arlington

### 2023-24 STATISTICS

#### #20 LINTON, Maya

Opponent	Date	GS	MIN	Total		3-Pointers		Free throws		Rebounds				PF	A	TO	BLK	STL	PTS	AVG	
				FG-FGA	PCT	3FG-3FGA	PCT	FT-FTA	PCT	OFF	DEF	TOT	AVG								
at Arizona St.	11/06/2023	*	20:22	4-7	.571	0-0	.000	2-2	1.000	1	3	4	4.0	5	0	0	0	3	10	10.0	
New Mexico St.	11/10/2023	*	20:49	3-6	.500	0-1	.000	3-3	1.000	5	1	6	5.0	5	0	2	0	1	9	9.5	
at A&M-Corpus Christi	11/15/2023		18:35	0-3	.000	0-1	.000	0-0	.000	3	4	7	5.7	3	0	2	0	2	0	6.3	
at UT Arlington	11/18/2023	*	26:41	6-11	.545	0-0	.000	3-6	.500	3	7	10	6.8	5	0	1	0	2	15	8.5	
at Texas Tech	11/20/2023	*	23:04	0-1	.000	0-0	.000	2-4	.500	4	0	4	6.2	4	1	2	0	2	2	7.2	
at Sam Houston	11/25/2023	*	14:23	0-2	.000	0-0	.000	4-8	.500	2	4	6	6.2	2	1	0	0	0	4	6.7	
Texas St.	11/30/2023	*	18:35	0-4	.000	0-1	.000	0-0	.000	1	4	5	6.0	2	1	1	0	0	0	5.7	
Houston	12/14/2023		16:16	0-1	.000	0-0	.000	0-0	.000	2	2	4	5.8	2	0	0	0	1	0	5.0	
at Oregon	12/17/2023		13:25	0-0	.000	0-0	.000	0-0	.000	1	0	1	5.2	3	0	0	0	1	0	4.4	
at Seattle U	12/19/2023	*	24:44	1-5	.200	0-1	.000	3-4	.750	3	1	4	5.1	3	1	0	0	3	5	4.5	
at Temple	12/30/2023	*	19:25	1-1	1.000	1-1	1.000	0-0	.000	2	4	6	5.2	3	1	0	0	1	3	4.4	
at East Carolina	01/02/2024		15:54	1-3	.333	0-0	.000	0-0	.000	3	2	5	5.2	3	0	3	0	2	2	4.2	
Wichita St.	01/06/2024		15:15	0-3	.000	0-0	.000	0-2	.000	2	4	6	5.2	2	1	2	0	0	0	3.8	
at Fla. Atlantic	01/10/2024		18:16	3-6	.500	2-4	.500	2-2	1.000	2	3	5	5.2	2	1	1	0	0	10	4.3	
Charlotte	01/14/2024		13:09	0-2	.000	0-1	.000	0-2	.000	0	2	2	5.0	1	0	0	0	1	0	4.0	
<b>Totals</b>			<b>8</b>	<b>278:54</b>	<b>19-55</b>	<b>.345</b>	<b>3-10</b>	<b>.300</b>	<b>19-33</b>	<b>.576</b>	<b>34</b>	<b>41</b>	<b>75</b>	<b>5.0</b>	<b>45</b>	<b>7</b>	<b>14</b>	<b>0</b>	<b>19</b>	<b>60</b>	<b>4.0</b>

#### Player Averages

Games Played	Minutes/game	Points/game	FG Pct	3FG Pct	FT Pct	Rebounds/game	Assists/game	Turnovers/game	Assist/Turnover ratio	Steals/game	Blocks/game
15	18.6	4.0	34.5	30.0	57.6	5.0	0.5	0.9	0.5	1.3	0.0

# PLAYER GAME-BY-GAME STATISTICS

## 21

## CHEYENNE ROWE

Sophomore • Forward • 6-2 • Ajax, Ontario, Canada • Bill Crothers Secondary School • James Madison



### Rowe's Career and 2023-24 Game Highs (\* at James Madison)

Career / Last	Category	2023-24 / Last
11 / December 4, 2022 vs UMES*	Points	8 / December 17, 2023 at Oregon
9 / November 6, 2023 at Arizona State	Rebounds	9 / November 6, 2023 at Arizona State
1, 6x / December 3, 2023 vs UTEP	Assists	1, 4x / December 3, 2023 vs UTEP
1, 5x / December 17, 2023 at Oregon	Steals	1, 3x / December 17, 2023 at Oregon
2, 2x / December 17, 2022 at Hampton*	Blocks	1 / November 20, 2023 at Texas Tech
5 / December 4, 2022 vs UMES*	FG Made	4 / December 17, 2023 at Oregon
5, 3x / December 3, 2023 vs UTEP	FG Attempted	7 / December 17, 2023 at Oregon
N/A	3PT Made	N/A
1 / December 17, 2023 at Oregon	3PT Attempted	1 / December 17, 2023 at Oregon
3 / November 15, 2023 at Texas A&M-Corpus Christi	FT Made	3 / November 15, 2023 at Texas A&M-Corpus Christi
4, 3x / November 15, 2023 at Texas A&M-Corpus Christi	FT Attempted	4, 2x / November 15, 2023 at Texas A&M-Corpus Christi
17, 3x / December 3, 2023 vs UTEP	Minutes	17, 2x / December 3, 2023 vs UTEP

### #21 ROWE, Cheyenne

### 2023-24 STATISTICS

Opponent	Date	GS	MIN	Total		3-Pointers		Free throws		Rebounds				PF	A	TO	BLK	STL	PTS	AVG
				FG-FGA	PCT	3FG-3FGA	PCT	FT-FTA	PCT	OFF	DEF	TOT	AVG							
at Arizona St.	11/06/2023		17:13	2-4	.500	0-0	.000	2-3	.667	5	4	9	9.0	2	1	0	0	0	6	6.0
New Mexico St.	11/10/2023		07:25	0-0	.000	0-0	.000	1-2	.500	1	0	1	5.0	1	0	0	0	0	1	3.5
at A&M-Corpus Christi	11/15/2023		13:41	2-3	.667	0-0	.000	3-4	.750	4	3	7	5.7	1	0	0	0	0	7	4.7
at UT Arlington	11/18/2023		06:03	0-1	.000	0-0	.000	0-0	.000	0	1	1	4.5	1	1	1	0	0	0	3.5
at Texas Tech	11/20/2023		09:30	1-1	1.000	0-0	.000	0-2	.000	1	0	1	3.8	1	1	0	1	0	2	3.2
at Sam Houston	11/25/2023		03:44	0-0	.000	0-0	.000	1-2	.500	0	1	1	3.3	1	0	0	0	0	1	2.8
Texas St.	11/30/2023		14:11	2-5	.400	0-0	.000	0-0	.000	4	3	7	3.9	1	0	1	0	1	4	3.0
UTEP	12/03/2023		17:32	2-5	.400	0-0	.000	0-0	.000	1	3	4	3.9	0	1	1	1	0	4	3.1
Houston	12/14/2023		08:02	0-0	.000	0-0	.000	0-0	.000	0	0	0	3.4	0	0	0	0	0	0	2.8
at Oregon	12/17/2023		15:17	4-7	.571	0-1	.000	0-0	.000	2	2	4	3.5	2	0	1	0	1	8	3.3
at Temple	12/30/2023		07:03	0-0	.000	0-0	.000	1-2	.500	0	2	2	3.4	0	0	0	0	0	1	3.1
at East Carolina	01/02/2024		08:21	0-4	.000	0-0	.000	0-0	.000	2	0	2	3.3	1	0	1	0	0	0	2.8
Wichita St.	01/06/2024		04:51	0-0	.000	0-0	.000	0-0	.000	1	0	1	3.1	0	0	0	0	0	0	2.6
at Fla. Atlantic	01/10/2024		05:39	0-0	.000	0-0	.000	0-0	.000	1	0	1	2.9	1	0	0	0	0	0	2.4
Charlotte	01/14/2024		05:02	0-0	.000	0-0	.000	0-0	.000	1	1	2	2.9	0	0	0	0	0	0	2.3
<b>Totals</b>		<b>0</b>	<b>143:33</b>	<b>13-30</b>	<b>.433</b>	<b>0-1</b>	<b>.000</b>	<b>8-15</b>	<b>.533</b>	<b>23</b>	<b>20</b>	<b>43</b>	<b>2.9</b>	<b>12</b>	<b>4</b>	<b>5</b>	<b>2</b>	<b>2</b>	<b>34</b>	<b>2.3</b>

### Player Averages

Games Played	Minutes/game	Points/game	FG Pct	3FG Pct	FT Pct	Rebounds/game	Assists/game	Turnovers/game	Assist/Turnover ratio	Steals/game	Blocks/game
15	9.6	2.3	43.3	0.0	53.3	2.9	0.3	0.3	0.8	0.1	0.1

# PLAYER GAME-BY-GAME STATISTICS

## 22

## KYRA WHITE



Senior • Guard • 5-9 • Converse, Texas • Judson HS • Southern California

### White's Career and 2023-24 Game Highs

Career / Last	Category	2023-24 / Last
22 / January 25, 2023 at FIU	Points	18 / November 15, 2023 at Texas A&M-Corpus Christi
13 / January 4, 2023 at Middle Tennessee	Rebounds	10 / January 14, 2024 vs Charlotte
9, 3x / January 14, 2024 vs Charlotte	Assists	9 / January 14, 2024 vs Charlotte
5 / March 9, 2023 vs Rice	Steals	3 / November 10, 2023 vs New Mexico State
4 / November 30, 2023 vs Texas State	Blocks	4 / November 30, 2023 vs Texas State
10 / January 25, 2023 at FIU	FG Made	6 / December 14, 2023 vs Houston
19 / December 14, 2023 vs Houston	FG Attempted	19 / December 14, 2023 vs Houston
4 / December 14, 2023 vs Houston	3PT Made	4 / December 14, 2023 vs Houston
9 / December 30, 2023 at Temple	3PT Attempted	9 / December 30, 2023 at Temple
5 / November 15, 2023 at Texas A&M-Corpus Christi	FT Made	5 / November 15, 2023 at Texas A&M-Corpus Christi
6, 2x / November 15, 2023 at Texas A&M-Corpus Christi	FT Attempted	6, 2x / November 15, 2023 at Texas A&M-Corpus Christi
44 / January 14, 2024 vs Charlotte	Minutes	44 / January 14, 2024 vs Charlotte

### 2023-24 STATISTICS

#### #22 WHITE, Kyra

Opponent	Date	GS	MIN	Total		3-Pointers		Free throws		Rebounds				PF	A	TO	BLK	STL	PTS	AVG	
				FG-FGA	PCT	3FG-3FGA	PCT	FT-FTA	PCT	OFF	DEF	TOT	AVG								
at Arizona St.	11/06/2023	*	36:41	3-9	.333	1-2	.500	1-2	.500	0	2	2	2.0	2	4	3	3	1	8	8.0	
New Mexico St.	11/10/2023	*	32:48	4-17	.235	2-8	.250	3-6	.500	2	6	8	5.0	1	3	2	0	3	13	10.5	
at A&M-Corpus Christi	11/15/2023	*	42:41	5-13	.385	3-6	.500	5-6	.833	3	3	6	5.3	1	5	1	1	1	18	13.0	
at UT Arlington	11/18/2023	*	34:57	2-6	.333	0-1	.000	1-2	.500	1	5	6	5.5	2	6	2	0	0	5	11.0	
at Texas Tech	11/20/2023	*	34:49	4-11	.364	3-5	.600	2-2	1.000	0	8	8	6.0	3	3	6	1	0	13	11.4	
at Sam Houston	11/25/2023	*	36:04	5-16	.313	1-3	.333	3-3	1.000	0	3	3	5.5	2	1	6	1	2	14	11.8	
Texas St.	11/30/2023	*	36:53	3-9	.333	0-3	.000	1-4	.250	0	3	3	5.1	3	5	3	4	0	7	11.1	
UTEP	12/03/2023	*	26:30	4-10	.400	0-4	.000	4-5	.800	0	3	3	4.9	1	7	3	0	1	12	11.3	
Houston	12/14/2023	*	35:07	6-19	.316	4-8	.500	1-2	.500	0	8	8	5.2	2	5	6	3	0	17	11.9	
at Oregon	12/17/2023	*	33:54	0-8	.000	0-5	.000	0-0	.000	0	5	5	5.2	4	4	3	0	0	0	10.7	
at Seattle U	12/19/2023	*	34:22	4-10	.400	1-5	.200	1-2	.500	2	4	6	5.3	2	3	4	2	2	10	10.6	
at Temple	12/30/2023	*	37:04	5-17	.294	2-9	.222	4-4	1.000	1	2	3	5.1	1	3	4	1	0	16	11.1	
at East Carolina	01/02/2024	*	28:44	2-8	.250	1-6	.167	0-0	.000	0	0	0	4.7	4	7	1	0	3	5	10.6	
Wichita St.	01/06/2024	*	34:33	4-15	.267	1-5	.200	3-4	.750	2	7	9	5.0	2	8	3	1	1	12	10.7	
at Fla. Atlantic	01/10/2024	*	32:15	4-9	.444	2-5	.400	2-4	.500	0	4	4	4.9	1	5	2	2	4	12	10.8	
Charlotte	01/14/2024	*	44:03	4-14	.286	1-4	.250	0-1	.000	3	7	10	5.3	2	9	3	1	1	9	10.7	
<b>Totals</b>			<b>16</b>	<b>561:25</b>	<b>59-191</b>	<b>.309</b>	<b>22-79</b>	<b>.278</b>	<b>31-47</b>	<b>.660</b>	<b>14</b>	<b>70</b>	<b>84</b>	<b>5.3</b>	<b>33</b>	<b>78</b>	<b>52</b>	<b>20</b>	<b>19</b>	<b>171</b>	<b>10.7</b>

#### Player Averages

Games Played	Minutes/game	Points/game	FG Pct	3FG Pct	FT Pct	Rebounds/game	Assists/game	Turnovers/game	Assist/Turnover ratio	Steals/game	Blocks/game
16	35.1	10.7	30.9	27.8	66.0	5.3	4.9	3.3	1.5	1.2	1.3

# PLAYER GAME-BY-GAME STATISTICS

## 23

## KYLEIGH MCGUIRE

Senior • Forward • 5-11 • Houston, Texas • Atascocita HS



### McGuire's Career and 2023-24 Game Highs

Career / Last	Category	2023-24 / Last
12 / February 6, 2021 vs FIU	Points	4, 3x / January 10, 2024 at Florida Atlantic
13 / February 6, 2021 vs FIU	Rebounds	4 / December 3, 2023 vs UTEP
1, 9x / January 14, 2024 vs Charlotte	Assists	1, 3x / January 14, 2024 vs Charlotte
1, 7x / December 19, 2023 at Seattle U	Steals	1 / December 19, 2023 at Seattle U
1, 3x / January 19, 2023 vs Florida Atlantic	Blocks	N/A
4 / February 6, 2021 vs FIU	FG Made	2, 2x / January 10, 2024 at Florida Atlantic
8 / February 6, 2021 vs FIU	FG Attempted	4 / January 10, 2024 at Florida Atlantic
N/A	3PT Made	N/A
N/A	3PT Attempted	N/A
5 / November 30, 2020	FT Made	2 / December 3, 2023 vs UTEP
8 / February 6, 2021 vs FIU	FT Attempted	2 / December 3, 2023 vs UTEP
45 / February 6, 2021 vs FIU	Minutes	9 / January 10, 2024 at Florida Atlantic

### #23 MCGUIRE, Kyleigh

### 2023-24 STATISTICS

Opponent	Date	GS	MIN	Total		3-Pointers		Free throws		Rebounds				PF	A	TO	BLK	STL	PTS	
				FG-FGA	PCT	3FG-3FGA	PCT	FT-FTA	PCT	OFF	DEF	TOT	AVG						2	1
at Arizona St.	11/06/2023		07:25	1-1	1.000	0-0	.000	0-0	.000	0	1	1	1.0	1	1	1	0	0	2	2.0
UTEP	12/03/2023		07:38	1-1	1.000	0-0	.000	2-2	1.000	1	3	4	2.5	1	1	1	0	0	4	3.0
at Seattle U	12/19/2023		07:50	2-2	1.000	0-0	.000	0-0	.000	1	1	2	2.3	1	0	0	0	1	4	3.3
at East Carolina	01/02/2024		07:02	1-2	.500	0-0	.000	0-0	.000	0	1	1	2.0	1	0	1	0	0	2	3.0
Wichita St.	01/06/2024		03:43	0-0	.000	0-0	.000	0-0	.000	0	1	1	1.8	0	0	0	0	0	0	2.4
at Fla. Atlantic	01/10/2024		09:23	2-4	.500	0-0	.000	0-0	.000	2	0	2	1.8	0	0	1	0	0	4	2.7
Charlotte	01/14/2024		09:25	1-2	.500	0-0	.000	0-0	.000	1	0	1	1.7	3	1	0	0	0	2	2.6
<b>Totals</b>		<b>0</b>	<b>52:26</b>	<b>8-12</b>	<b>.667</b>	<b>0-0</b>	<b>.000</b>	<b>2-2</b>	<b>1.000</b>	<b>5</b>	<b>7</b>	<b>12</b>	<b>1.7</b>	<b>7</b>	<b>3</b>	<b>4</b>	<b>0</b>	<b>1</b>	<b>18</b>	<b>2.6</b>

### Player Averages

Games Played	Minutes/ game	Points/ game	FG Pct	3FG Pct	FT Pct	Rebounds/ game	Assists/ game	Turnovers/ game	Assist/Turnover ratio	Steals/ game	Blocks/ game
7	7.5	2.6	66.7	0.0	100.0	1.7	0.4	0.6	0.8	0.1	0.0

# PLAYER GAME-BY-GAME STATISTICS

## 25

## IDARA UDO

Freshman • Forward • 6-1 • Plano, Texas • Plano East HS



### Udo's Career and 2023-24 Game Highs

Career / Last	Category	2023-24 / Last
26 / January 14, 2024 vs Charlotte	Points	26 / January 14, 2024 vs Charlotte
11 / November 10, 2023 vs New Mexico State	Rebounds	11 / November 10, 2023 vs New Mexico State
4 / January 10, 2024 at Florida Atlantic	Assists	4 / January 10, 2024 at Florida Atlantic
1, 5x / January 2, 2024 at East Carolina	Steals	1, 5x / January 2, 2024 at East Carolina
4 / November 30, 2023 vs Texas State	Blocks	4 / November 30, 2023 vs Texas State
9 / January 14, 2024 vs Charlotte	FG Made	9 / January 14, 2024 vs Charlotte
13 / January 14, 2024 vs Charlotte	FG Attempted	13 / January 14, 2024 vs Charlotte
N/A	3PT Made	N/A
N/A	3PT Attempted	N/A
8 / January 14, 2024 vs Charlotte	FT Made	8 / January 14, 2024 vs Charlotte
10 / January 14, 2024 vs Charlotte	FT Attempted	10 / January 14, 2024 vs Charlotte
25 / December 14, 2023 vs Houston	Minutes	25 / December 14, 2023 vs Houston

### 2023-24 STATISTICS

Opponent	Date	GS	MIN	Total		3-Pointers		Free throws		Rebounds				PF	A	TO	BLK	STL	PTS	AVG
				FG-FGA	PCT	3FG-3FGA	PCT	FT-FTA	PCT	OFF	DEF	TOT	AVG							
at Arizona St.	11/06/2023		23:19	4-7	.571	0-0	.000	2-6	.333	4	5	9	9.0	4	0	2	2	1	10	10.0
New Mexico St.	11/10/2023		24:14	1-3	.333	0-0	.000	0-2	.000	4	7	11	10.0	1	1	0	2	1	2	6.0
at A&M-Corpus Christi	11/15/2023	*	11:00	1-5	.200	0-0	.000	0-2	.000	2	4	6	8.7	5	1	2	1	0	2	4.7
at UT Arlington	11/18/2023		21:03	4-9	.444	0-0	.000	1-2	.500	4	3	7	8.3	2	1	3	0	1	9	5.8
at Texas Tech	11/20/2023		14:45	1-4	.250	0-0	.000	1-1	1.000	2	2	4	7.4	5	0	4	2	0	3	5.2
at Sam Houston	11/25/2023		19:26	2-4	.500	0-0	.000	1-2	.500	3	2	5	7.0	2	0	1	1	1	5	5.2
Texas St.	11/30/2023		17:29	2-5	.400	0-0	.000	3-4	.750	1	5	6	6.9	1	0	0	4	0	7	5.4
UTEP	12/03/2023	*	15:32	1-1	1.000	0-0	.000	3-4	.750	1	1	2	6.3	2	0	0	0	0	5	5.4
Houston	12/14/2023	*	25:48	3-9	.333	0-0	.000	1-2	.500	7	1	8	6.4	3	1	1	0	0	7	5.6
at Oregon	12/17/2023	*	13:49	2-5	.400	0-0	.000	0-0	.000	1	2	3	6.1	4	0	0	0	0	4	5.4
at Seattle U	12/19/2023		16:17	5-8	.625	0-0	.000	5-7	.714	6	3	9	6.4	0	2	1	0	0	15	6.3
at Temple	12/30/2023		19:50	5-9	.556	0-0	.000	0-1	.000	4	1	5	6.3	2	1	5	0	0	10	6.6
at East Carolina	01/02/2024	*	17:54	3-6	.500	0-0	.000	0-0	.000	1	2	3	6.0	4	1	3	1	1	6	6.5
Wichita St.	01/06/2024	*	24:36	3-7	.429	0-0	.000	0-1	.000	5	0	5	5.9	3	2	1	0	0	6	6.5
at Fla. Atlantic	01/10/2024	*	24:07	2-7	.286	0-0	.000	0-3	.000	6	1	7	6.0	2	4	0	2	0	4	6.3
Charlotte	01/14/2024	*	36:27	9-13	.692	0-0	.000	8-10	.800	6	3	9	6.2	4	0	5	3	1	26	7.6
<b>Totals</b>		<b>8</b>	<b>325:35</b>	<b>48-102</b>	<b>.471</b>	<b>0-0</b>	<b>.000</b>	<b>25-47</b>	<b>.532</b>	<b>57</b>	<b>42</b>	<b>99</b>	<b>6.2</b>	<b>44</b>	<b>14</b>	<b>28</b>	<b>18</b>	<b>6</b>	<b>121</b>	<b>7.6</b>

### Player Averages

Games Played	Minutes/game	Points/game	FG Pct	3FG Pct	FT Pct	Rebounds/game	Assists/game	Turnovers/game	Assist/Turnover ratio	Steals/game	Blocks/game
16	20.3	7.6	47.1	0.0	53.2	6.2	0.9	1.8	0.5	0.4	1.1

# PLAYER GAME-BY-GAME STATISTICS

# 30

# NISSA SAM-GRANT

Senior • Center • 6-4 • Toronto, Ontario Canada • Wheeler HS • Arkansas-Pine Bluff • Panola College



### Sam-Grant's NCAA Career and 2023-24 Game Highs (\* at Arkansas-Pine Bluff)

Career / Last	Category	2023-24 / Last
10 / November 21, 2019 at Illinois*	Points	4, 2x / January 2, 2024 at East Carolina
12 / January 27, 2020 at Texas Southern*	Rebounds	6 / January 2, 2024 at East Carolina
3 / February 23, 2021 at Prairie View A&M*	Assists	1 / December 3, 2023 vs UTEP
2 / December 17, 2020 vs New Mexico*	Steals	N/A
8 / January 11, 2021 vs Alabama A&M*	Blocks	3 / December 3, 2023 vs UTEP
4 / November 21, 2019 at Illinois*	FG Made	2, 2x / January 2, 2024 at East Carolina
7 / November 29, 2019 at Iowa State*	FG Attempted	3 / December 3, 2023 vs UTEP
1, 2x / December 21, 202 at Arkansas*	3PT Made	N/A
2 / December 20, 2019 at Texas Tech*	3PT Attempted	N/A
4 / January 25, 2020 at Prairie View A&M*	FT Made	N/A
5 / December 29, 2020 at Oklahoma*	FT Attempted	N/A
28 / December 29, 2020 at Oklahoma*	Minutes	14 / December 3, 2023 vs UTEP

### 2023-24 STATISTICS

### #30 SAM-GRANT, Nissa

Opponent	Date	GS	MIN	Total		3-Pointers		Free throws		Rebounds				PF	A	TO	BLK	STL	PTS	AVG	
				FG-FGA	PCT	3FG-3FGA	PCT	FT-FTA	PCT	OFF	DEF	TOT	AVG								
at Arizona St.	11/06/2023		01:18	0-0	.000	0-0	.000	0-0	.000	0	0	0	0.0	0	0	0	0	0	0	0.0	
at A&M-Corpus Christi	11/15/2023		03:09	1-1	1.000	0-0	.000	0-0	.000	0	1	1	0.5	2	0	0	1	0	2	1.0	
at Texas Tech	11/20/2023		04:37	0-0	.000	0-0	.000	0-0	.000	0	0	0	0.3	0	0	0	0	0	0	0.7	
at Sam Houston	11/25/2023		01:47	0-0	.000	0-0	.000	0-0	.000	0	0	0	0.3	0	0	1	1	0	0	0.5	
UTEP	12/03/2023		14:17	2-3	.667	0-0	.000	0-0	.000	0	3	3	0.8	1	1	0	3	0	4	1.2	
at Oregon	12/17/2023		02:26	0-0	.000	0-0	.000	0-0	.000	0	0	0	0.7	0	0	0	0	0	0	1.0	
at East Carolina	01/02/2024		10:13	2-2	1.000	0-0	.000	0-0	.000	2	4	6	1.4	0	0	2	1	0	4	1.4	
Wichita St.	01/06/2024		04:47	0-1	.000	0-0	.000	0-0	.000	1	0	1	1.4	0	0	0	0	0	0	1.3	
Charlotte	01/14/2024		00:38	0-0	.000	0-0	.000	0-0	.000	0	0	0	1.2	0	0	0	0	0	0	1.1	
<b>Totals</b>			<b>0</b>	<b>43:12</b>	<b>5-7</b>	<b>.714</b>	<b>0-0</b>	<b>.000</b>	<b>0-0</b>	<b>.000</b>	<b>3</b>	<b>8</b>	<b>11</b>	<b>1.2</b>	<b>3</b>	<b>1</b>	<b>3</b>	<b>6</b>	<b>0</b>	<b>10</b>	<b>1.1</b>

### Player Averages

Games Played	Minutes/game	Points/game	FG Pct	3FG Pct	FT Pct	Rebounds/game	Assists/game	Turnovers/game	Assist/Turnover ratio	Steals/game	Blocks/game
9	4.8	1.1	71.4	0.0	0.0	1.2	0.1	0.3	0.3	0.0	0.7



# PLAYER GAME-BY-GAME STATISTICS

**32**

**JORDYN JENKINS**



Jenkins' Career and 2023-24 Game Highs (* at USC)		
Career / Last	Category	2023-24 / Last
40 / February 20, 2023 at North Texas	Points	N/A
16 / January 4, 2023 vs Middle Tennessee	Rebounds	N/A
5 / January 16, 2022 vs Washington*	Assists	N/A
4 / November 26, 2022 vs St. John's	Steals	N/A
4 / November 30, 2022 at Texas State	Blocks	N/A
15 / January 11, 2023 vs UTEP	FG Made	N/A
22 / January 11, 2023 vs UTEP	FG Attempted	N/A
3, 4x / February 20, 2023 at North Texas	3PT Made	N/A
6 / March 8, 2023 vs Florida Atlantic	3PT Attempted	N/A
13 / February 20, 2023 at North Texas	FT Made	N/A
16 / February 20, 2023 at North Texas	FT Attempted	N/A
39 / February 20, 2023 at North Texas	Minutes	N/A

**HAS YET TO APPEAR IN THE 2023-24 SEASON**

# 2023-24 ROADRUNNER WOMEN'S BASKETBALL STATS



## PLAYER SEASON / CAREER STATISTICS



### Summary

Player	Season Statistics										Career Statistics									
	GP-GS	MIN/G	FG%	3FG%	FT%	R/G	A/G	STL	BLK	PTS/G	GP-GS	MIN/G	FG%	3FG%	FT%	R/G	A/G	STL	BLK	PTS/G
ATWOOD, Hailey	15-8	13.0	.435	.375	.750	1.5	0.9	5	1	1.7	73-40	20.1	.336	.182	.604	3.3	0.9	32	11	3.4
COCKRELL, Madison	11-0	7.3	.308	.385	1.000	1.0	0.5	9	0	2.2	28-2	9.7	.346	.343	.684	1.3	0.7	19	0	2.8
COLEMAN, Elyssa	16-16	27.7	.475	.200	.625	7.8	0.6	10	28	12.2	78-64	24.8	.435	.195	.659	6.2	0.5	39	123	9.4
GUTTADAURO, Siena	13-0	11.5	.317	.324	.500	1.2	0.7	0	0	2.9	41-3	11.8	.286	.291	.583	1.2	0.7	9	1	2.7
LINTON, Maya	15-8	18.6	.345	.300	.576	5.0	0.5	19	0	4.0	46-9	16.4	.378	.273	.611	4.0	0.4	32	8	2.7
LOVE, Sidney	16-16	30.5	.365	.238	.825	3.4	3.3	23	2	10.8	45-40	29.4	.402	.310	.816	3.6	2.6	60	6	10.3
LUCIO, Emma	6-0	11.5	.158	.091	.500	1.2	0.7	1	0	1.7	6-0	11.5	.158	.091	.500	1.2	0.7	1	0	1.7
MCGUIRE, Kyleigh	7-0	7.5	.667	.000	1.000	1.7	0.4	1	0	2.6	49-7	9.3	.420	.000	.578	2.0	0.2	7	3	1.7
PARKER, Alexis	12-3	9.0	.174	.000	.375	1.1	0.5	4	1	1.2	36-4	11.4	.315	.200	.367	1.1	0.7	15	2	1.8
PROCTOR, Aysia	15-5	24.1	.485	.421	.400	5.6	1.2	11	5	10.0	15-5	24.1	.485	.421	.400	5.6	1.2	11	5	10.0
ROWE, Cheyenne	15-0	9.6	.433	.000	.533	2.9	0.3	2	2	2.3	31-0	9.3	.538	.000	.552	2.6	0.2	4	6	2.3
SAM-GRANT, Nissa	9-0	4.8	.714	.000	.000	1.2	0.1	0	6	1.1	9-0	4.8	.714	.000	.000	1.2	0.1	0	6	1.1
UDO, Idara	16-8	20.3	.471	.000	.532	6.2	0.9	6	18	7.6	16-8	20.3	.471	.000	.532	6.2	0.9	6	18	7.6
WHITE, Kyra	16-16	35.1	.309	.278	.660	5.3	4.9	19	20	10.7	125-70	23.8	.345	.272	.670	3.0	2.8	102	72	4.5

### Scoring

Player	Season Statistics								Career Statistics							
	FG-FGA	FG%	3FG-3FGA	3FG%	FT-FTA	FT%	PTS	PTS/G	FG-FGA	FG%	3FG-3FGA	3FG%	FT-FTA	FT%	PTS	PTS/G
ATWOOD, Hailey	10-23	.435	3-8	.375	3-4	.750	26	1.7	100-298	.336	16-88	.182	29-48	.604	245	3.4
COCKRELL, Madison	8-26	.308	5-13	.385	3-3	1.000	24	2.2	27-78	.346	12-35	.343	13-19	.684	79	2.8
COLEMAN, Elyssa	87-183	.475	1-5	.200	20-32	.625	195	12.2	307-705	.435	8-41	.195	110-167	.659	732	9.4
GUTTADAURO, Siena	13-41	.317	11-34	.324	1-2	.500	38	2.9	36-126	.286	30-103	.291	7-12	.583	109	2.7
LINTON, Maya	19-55	.345	3-10	.300	19-33	.576	60	4.0	45-119	.378	3-11	.273	33-54	.611	126	2.7
LOVE, Sidney	58-159	.365	10-42	.238	47-57	.825	173	10.8	166-413	.402	39-126	.310	93-114	.816	464	10.3
LUCIO, Emma	3-19	.158	1-11	.091	3-6	.500	10	1.7	3-19	.158	1-11	.091	3-6	.500	10	1.7
MCGUIRE, Kyleigh	8-12	.667	0-0	.000	2-2	1.000	18	2.6	29-69	.420	0-0	.000	26-45	.578	84	1.7
PARKER, Alexis	4-23	.174	0-9	.000	6-16	.375	14	1.2	23-73	.315	7-35	.200	11-30	.367	64	1.8
PROCTOR, Aysia	65-134	.485	16-38	.421	4-10	.400	150	10.0	65-134	.485	16-38	.421	4-10	.400	150	10.0
ROWE, Cheyenne	13-30	.433	0-1	.000	8-15	.533	34	2.3	28-52	.538	0-1	.000	16-29	.552	72	2.3
SAM-GRANT, Nissa	5-7	.714	0-0	.000	0-0	.000	10	1.1	5-7	.714	0-0	.000	0-0	.000	10	1.1
UDO, Idara	48-102	.471	0-0	.000	25-47	.532	121	7.6	48-102	.471	0-0	.000	25-47	.532	121	7.6
WHITE, Kyra	59-191	.309	22-79	.278	31-47	.660	171	10.7	211-612	.345	59-217	.272	77-115	.670	558	4.5

### Totals

Player	Season Statistics										Career Statistics									
	O-REB	D-REB	TOTAL	PF	FO	A	TO	A/TO	O-REB	D-REB	TOTAL	PF	FO	A	TO	A/TO				
ATWOOD, Hailey	8	15	23	24	0	14	22	0.6	91	147	238	131	0	69	113	0.6				
COCKRELL, Madison	2	9	11	11	0	5	11	0.5	9	27	36	35	1	20	31	0.6				
COLEMAN, Elyssa	39	85	124	53	5	10	32	0.3	188	294	482	234	13	41	145	0.3				
GUTTADAURO, Siena	5	11	16	9	0	9	17	0.5	14	34	48	20	0	29	36	0.8				
LINTON, Maya	34	41	75	45	3	7	14	0.5	84	101	185	130	4	20	51	0.4				
LOVE, Sidney	12	43	55	43	1	52	46	1.1	43	118	161	120	1	119	127	0.9				
LUCIO, Emma	2	5	7	6	0	4	7	0.6	2	5	7	6	0	4	7	0.6				
MCGUIRE, Kyleigh	5	7	12	7	0	3	4	0.8	43	54	97	81	3	10	27	0.4				
PARKER, Alexis	6	7	13	8	0	6	12	0.5	14	27	41	37	0	24	28	0.9				
PROCTOR, Aysia	22	62	84	25	1	18	31	0.6	22	62	84	25	1	18	31	0.6				
ROWE, Cheyenne	23	20	43	12	0	4	5	0.8	46	36	82	36	1	6	13	0.5				
SAM-GRANT, Nissa	3	8	11	3	0	1	3	0.3	3	8	11	3	0	1	3	0.3				
UDO, Idara	57	42	99	44	2	14	28	0.5	57	42	99	44	2	14	28	0.5				
WHITE, Kyra	14	70	84	33	0	78	52	1.5	54	321	375	206	3	348	266	1.3				

# 2023-24 ROADRUNNER WOMEN'S BASKETBALL STATS



## TEAM AND OPPONENTS STATISTICS



	UTSA	OPP
<b>Scoring</b>	<b>1044</b>	<b>1044</b>
Points per game	65.3	65.3
Scoring margin	0.0	-
<b>Field goals-att</b>	<b>400-1005</b>	<b>351-956</b>
Field goal pct	.398	.367
<b>3 point fg-att</b>	<b>72-250</b>	<b>106-330</b>
3-point FG pct	.288	.321
3-pt FG made per game	4.5	6.6
<b>Free throws-att</b>	<b>172-274</b>	<b>236-354</b>
Free throw pct	.628	.667
F-Throws made per game	10.8	14.8
<b>Rebounds</b>	<b>735</b>	<b>566</b>
Rebounds per game	45.9	35.4
Rebounding margin	+10.6	-
<b>Assists</b>	<b>225</b>	<b>204</b>
Assists per game	14.1	12.8
<b>Turnovers</b>	<b>300</b>	<b>226</b>
Turnovers per game	18.8	14.1
Turnover margin	-4.6	-
Assist/turnover ratio	0.8	0.9
<b>Steals</b>	<b>110</b>	<b>150</b>
Steals per game	6.9	9.4
<b>Blocks</b>	<b>83</b>	<b>59</b>
Blocks per game	5.2	3.7
<b>Winning streak</b>	<b>3</b>	<b>-</b>
Home win streak	2	-
<b>Attendance</b>	<b>5435</b>	<b>15233</b>
Home games-Avg/Game	6-906	10-1523
Neutral site-Avg/Game	-	0-0

### Score by Periods

Team	1st	2nd	3rd	4th	OT	TOT
UTSA	223	233	280	271	37	1044
Opponents	251	274	241	241	37	1044

# 2023-24 ROADRUNNER WOMEN'S BASKETBALL STATS



## INDIVIDUAL GAME HIGHS



<b>POINTS</b>	32		Elyssa Coleman vs Wichita St. (01/06/2024)
	26		Idara Udo vs Charlotte (01/14/2024)
	26		Sidney Love at UT Arlington (11/18/2023)
	23		Elyssa Coleman vs UTEP (12/03/2023)
	20		Aysia Proctor at Oregon (12/17/2023)
<b>FIELD GOALS MADE</b>	14		Elyssa Coleman vs Wichita St. (01/06/2024)
	11		Elyssa Coleman vs UTEP (12/03/2023)
<b>FIELD GOAL ATTEMPTS</b>	21		Aysia Proctor at Oregon (12/17/2023)
	20		Elyssa Coleman vs Wichita St. (01/06/2024)
<b>FIELD GOAL PERCENTAGE (min 5 made)</b>	.889	(8-9)	Aysia Proctor vs New Mexico St. (11/10/2023)
	.846	(11-13)	Elyssa Coleman vs UTEP (12/03/2023)
<b>3 PT FG MADE</b>	5		Aysia Proctor vs Charlotte (01/14/2024)
	4		Kyra White vs Houston (12/14/2023)
	4		Siena Guttadauro vs UTEP (12/03/2023)
<b>3 PT FG ATTEMPTS</b>	9		Kyra White at Temple (12/30/2023)
	8		Kyra White vs Houston (12/14/2023)
	8		Kyra White vs New Mexico St. (11/10/2023)
<b>3 PT FG PERCENTAGE (min 2 made)</b>	.833	(5-6)	Aysia Proctor vs Charlotte (01/14/2024)
	.800	(4-5)	Siena Guttadauro vs UTEP (12/03/2023)
<b>FREE THROWS MADE</b>	13		Sidney Love at UT Arlington (11/18/2023)
	8		Idara Udo vs Charlotte (01/14/2024)
<b>FREE THROW ATTEMPTS</b>	15		Sidney Love at UT Arlington (11/18/2023)
	10		Idara Udo vs Charlotte (01/14/2024)
<b>FREE THROW PERCENTAGE (min 3 made)</b>	1.000	(5-5)	Sidney Love at Oregon (12/17/2023)
	1.000	(4-4)	Kyra White at Temple (12/30/2023)
	1.000	(4-4)	Elyssa Coleman at Seattle U (12/19/2023)
	1.000	(4-4)	Sidney Love at A&M-Corpus Christi (11/15/2023)
	1.000	(3-3)	Kyra White at Sam Houston (11/25/2023)
	1.000	(3-3)	Sidney Love at Texas Tech (11/20/2023)
<b>REBOUNDS</b>	19		Elyssa Coleman vs Wichita St. (01/06/2024)
	13		Aysia Proctor vs Charlotte (01/14/2024)
	13		Elyssa Coleman at Oregon (12/17/2023)
<b>ASSISTS</b>	9		Kyra White vs Charlotte (01/14/2024)
	8		Kyra White vs Wichita St. (01/06/2024)
<b>STEALS</b>	4		Kyra White at Fla. Atlantic (01/10/2024)
	3		Aysia Proctor vs Charlotte (01/14/2024)
	3		Kyra White at East Carolina (01/02/2024)
	3		Madison Cockrell at East Carolina (01/02/2024)
	3		Maya Linton at Seattle U (12/19/2023)
	3		Sidney Love at Oregon (12/17/2023)
	3		Sidney Love at Sam Houston (11/25/2023)
	3		Sidney Love at A&M-Corpus Christi (11/15/2023)
	3		Kyra White vs New Mexico St. (11/10/2023)
	3		Maya Linton at Arizona St. (11/06/2023)
<b>BLOCKED SHOTS</b>	4		Kyra White vs Texas St. (11/30/2023)
	4		Idara Udo vs Texas St. (11/30/2023)
	4		Elyssa Coleman vs New Mexico St. (11/10/2023)
<b>TURNOVERS</b>	7		Sidney Love at Temple (12/30/2023)
	6		Sidney Love at Oregon (12/17/2023)
	6		Kyra White vs Houston (12/14/2023)
	6		Kyra White at Sam Houston (11/25/2023)
	6		Kyra White at Texas Tech (11/20/2023)
	6		Aysia Proctor at Texas Tech (11/20/2023)

# 2023-24 ROADRUNNER WOMEN'S BASKETBALL STATS



## OPPONENTS INDIVIDUAL GAME HIGHS



<b>POINTS</b>	27		Tracey Hueston vs Charlotte (01/14/2024)
	22		Karina Gordon at East Carolina (01/02/2024)
	21		Mya Perry at Fla. Atlantic (01/10/2024)
	20		Danae McNeal at East Carolina (01/02/2024)
	18		Bailey Maupin at Texas Tech (11/20/2023)
<b>FIELD GOALS MADE</b>	10		Tracey Hueston vs Charlotte (01/14/2024)
	7		Mya Perry at Fla. Atlantic (01/10/2024)
	7		Aaliyah Stanton vs UTEP (12/03/2023)
<b>FIELD GOAL ATTEMPTS</b>	17		Dazia Lawrence vs Charlotte (01/14/2024)
	17		Tracey Hueston vs Charlotte (01/14/2024)
	17		Sydnee Kemp at Sam Houston (11/25/2023)
<b>FIELD GOAL PERCENTAGE (min 5 made)</b>	.714	(5-7)	Tatyana Wyche at East Carolina (01/02/2024)
	.714	(5-7)	Mireia Aguado at A&M-Corpus Christi (11/15/2023)
<b>3 PT FG MADE</b>	7		Mya Perry at Fla. Atlantic (01/10/2024)
	6		Karina Gordon at East Carolina (01/02/2024)
<b>3 PT FG ATTEMPTS</b>	12		Mya Perry at Fla. Atlantic (01/10/2024)
	9		Karina Gordon at East Carolina (01/02/2024)
	9		Sydnee Kemp at Sam Houston (11/25/2023)
<b>3 PT FG PERCENTAGE (min 2 made)</b>	1.000	(4-4)	Tracey Hueston vs Charlotte (01/14/2024)
	.800	(4-5)	Tylie Jones vs New Mexico St. (11/10/2023)
<b>FREE THROWS MADE</b>	10		Jaddan Simmons at Arizona St. (11/06/2023)
	8		Imani Smith vs Charlotte (01/14/2024)
	8		Erin Wilson vs UTEP (12/03/2023)
<b>FREE THROW ATTEMPTS</b>	12		Jaddan Simmons at Arizona St. (11/06/2023)
	11		Alecia Westbrook at A&M-Corpus Christi (11/15/2023)
<b>FREE THROW PERCENTAGE (min 3 made)</b>	1.000	(8-8)	Erin Wilson vs UTEP (12/03/2023)
	1.000	(6-6)	Chance Gray at Oregon (12/17/2023)
	1.000	(5-5)	Laila Blair vs Houston (12/14/2023)
	1.000	(4-4)	Karina Gordon at East Carolina (01/02/2024)
	1.000	(4-4)	Rayne Tucker at Temple (12/30/2023)
	1.000	(3-3)	Aniya Bell vs Wichita St. (01/06/2024)
<b>REBOUNDS</b>	13		Tatyana Wyche at East Carolina (01/02/2024)
	12		Daniela Abies vs Wichita St. (01/06/2024)
<b>ASSISTS</b>	9		Peyton Howard at Seattle U (12/19/2023)
	7		Karina Gordon at East Carolina (01/02/2024)
<b>STEALS</b>	6		Danae McNeal at East Carolina (01/02/2024)
	4		Tiarra East at Temple (12/30/2023)
	4		Mya Moore at Seattle U (12/19/2023)
	4		Jane Asinde vs UTEP (12/03/2023)
	4		Jordyn Merritt at Texas Tech (11/20/2023)
	4		Sabou Gueye vs New Mexico St. (11/10/2023)
	4		Jaddan Simmons at Arizona St. (11/06/2023)
	4		
<b>BLOCKED SHOTS</b>	4		Grace VanSlooten at Oregon (12/17/2023)
	4		Nabaweeyah McGill at A&M-Corpus Christi (11/15/2023)
<b>TURNOVERS</b>	6		Karina Gordon at East Carolina (01/02/2024)
	6		Mireia Aguado at A&M-Corpus Christi (11/15/2023)
<b>FOULS</b>	5		Tracey Hueston vs Charlotte (01/14/2024)
	5		Tiffany Tullis vs Texas St. (11/30/2023)
	5		Diana Rosenthal at Sam Houston (11/25/2023)
	5		Gia Adams at UT Arlington (11/18/2023)
	5		Nabaweeyah McGill at A&M-Corpus Christi (11/15/2023)

# 2023-24 ROADRUNNER WOMEN'S BASKETBALL STATS



## STATISTICAL LEADERS



### Points

##	Player	G	Pts	Pts/G
0	Coleman, Elyssa	16	195	12.2
11	Love, Sidney	16	173	10.8
22	White, Kyra	16	171	10.7
12	Proctor, Aysia	15	150	10.0
25	Udo, Idara	16	121	7.6
20	Linton, Maya	15	60	4.0
4	Guttadauro, Siena	13	38	2.9
21	Rowe, Cheyenne	15	34	2.3
1	Atwood, Hailey	15	26	1.7
5	Cockrell, Madison	11	24	2.2
23	McGuire, Kyleigh	7	18	2.6
2	Parker, Alexis	12	14	1.2
3	Lucio, Emma	6	10	1.7
30	Sam-Grant, Nissa	9	10	1.1

### Scoring Average

##	Player	G	Pts	Pts/G
0	Coleman, Elyssa	16	195	12.2
11	Love, Sidney	16	173	10.8
22	White, Kyra	16	171	10.7
12	Proctor, Aysia	15	150	10.0
25	Udo, Idara	16	121	7.6
20	Linton, Maya	15	60	4.0
4	Guttadauro, Siena	13	38	2.9
23	McGuire, Kyleigh	7	18	2.6
21	Rowe, Cheyenne	15	34	2.3
5	Cockrell, Madison	11	24	2.2
1	Atwood, Hailey	15	26	1.7
3	Lucio, Emma	6	10	1.7
2	Parker, Alexis	12	14	1.2
30	Sam-Grant, Nissa	9	10	1.1

### Field Goal Percentage

##	Player	FG	Att	Pct
30	Sam-Grant, Nissa	5	7	.714
23	McGuire, Kyleigh	8	12	.667
12	Proctor, Aysia	65	134	.485
0	Coleman, Elyssa	87	183	.475
25	Udo, Idara	48	102	.471
1	Atwood, Hailey	10	23	.435
21	Rowe, Cheyenne	13	30	.433
11	Love, Sidney	58	159	.365
20	Linton, Maya	19	55	.345
4	Guttadauro, Siena	13	41	.317
22	White, Kyra	59	191	.309
5	Cockrell, Madison	8	26	.308
2	Parker, Alexis	4	23	.174
3	Lucio, Emma	3	19	.158

### Field Goal Attempts

##	Player	G	Att	Att/G
22	White, Kyra	16	191	11.9
0	Coleman, Elyssa	16	183	11.4
11	Love, Sidney	16	159	9.9
12	Proctor, Aysia	15	134	8.9
25	Udo, Idara	16	102	6.4

### Field Goals Made

##	Player	G	Made	Made/G
0	Coleman, Elyssa	16	87	5.4
12	Proctor, Aysia	15	65	4.3
22	White, Kyra	16	59	3.7
11	Love, Sidney	16	58	3.6
25	Udo, Idara	16	48	3.0

# 2023-24 ROADRUNNER WOMEN'S BASKETBALL STATS



## STATISTICAL LEADERS CONT.



### 3-Point FG Percentage

##	Player	3FG	Att	Pct
12	Proctor, Aysia	16	38	.421
5	Cockrell, Madison	5	13	.385
1	Atwood, Hailey	3	8	.375
4	Guttadauro, Siena	11	34	.324
20	Linton, Maya	3	10	.300
22	White, Kyra	22	79	.278
11	Love, Sidney	10	42	.238
0	Coleman, Elyssa	1	5	.200
3	Lucio, Emma	1	11	.091

### 3-Point FG Attempts

##	Player	G	Att	Att/G
22	White, Kyra	16	79	4.9
11	Love, Sidney	16	42	2.6
12	Proctor, Aysia	15	38	2.5
4	Guttadauro, Siena	13	34	2.6
5	Cockrell, Madison	11	13	1.2

### 3-Point FG Made

##	Player	G	Made	Made/G
22	White, Kyra	16	22	1.4
12	Proctor, Aysia	15	16	1.1
4	Guttadauro, Siena	13	11	0.8
11	Love, Sidney	16	10	0.6
5	Cockrell, Madison	11	5	0.5

### Free Throw Percentage

##	Player	Made	Att	Pct
23	McGuire, Kyleigh	2	2	1.000
5	Cockrell, Madison	3	3	1.000
11	Love, Sidney	47	57	.825
1	Atwood, Hailey	3	4	.750
22	White, Kyra	31	47	.660
0	Coleman, Elyssa	20	32	.625
20	Linton, Maya	19	33	.576
21	Rowe, Cheyenne	8	15	.533
25	Udo, Idara	25	47	.532
4	Guttadauro, Siena	1	2	.500
3	Lucio, Emma	3	6	.500
12	Proctor, Aysia	4	10	.400
2	Parker, Alexis	6	16	.375

### Free Throw Attempts

##	Player	G	Att	Att/G
11	Love, Sidney	16	57	3.6
22	White, Kyra	16	47	2.9
25	Udo, Idara	16	47	2.9
20	Linton, Maya	15	33	2.2
0	Coleman, Elyssa	16	32	2.0

### Free Throws Made

##	Player	G	Made	Made/G
11	Love, Sidney	16	47	2.9
22	White, Kyra	16	31	1.9
25	Udo, Idara	16	25	1.6
0	Coleman, Elyssa	16	20	1.3
20	Linton, Maya	15	19	1.3

### Rebounds

##	Player	G	Reb	Reb/G
0	Coleman, Elyssa	16	124	7.8
25	Udo, Idara	16	99	6.2
22	White, Kyra	16	84	5.3
12	Proctor, Aysia	15	84	5.6
20	Linton, Maya	15	75	5.0

### Assists

##	Player	G	Ast	Ast/G
22	White, Kyra	16	78	4.9
11	Love, Sidney	16	52	3.3
12	Proctor, Aysia	15	18	1.2
25	Udo, Idara	16	14	0.9
1	Atwood, Hailey	15	14	0.9

### Rebounds Average

##	Player	G	Reb	Reb/G
0	Coleman, Elyssa	16	124	7.8
25	Udo, Idara	16	99	6.2
12	Proctor, Aysia	15	84	5.6
22	White, Kyra	16	84	5.3
20	Linton, Maya	15	75	5.0

### Steals

##	Player	G	Stl	Stl/G
11	Love, Sidney	16	23	1.4
22	White, Kyra	16	19	1.2
20	Linton, Maya	15	19	1.3
12	Proctor, Aysia	15	11	0.7
0	Coleman, Elyssa	16	10	0.6

# 2023-24 ROADRUNNER WOMEN'S BASKETBALL STATS



## STATISTICAL LEADERS CONT.



### Offensive Rebounds

##	Player	G	OReb	OReb/G
25	Udo, Idara	16	57	3.6
0	Coleman, Elyssa	16	39	2.4
20	Linton, Maya	15	34	2.3
21	Rowe, Cheyenne	15	23	1.5
12	Proctor, Aysia	15	22	1.5

### Blocked Shots

##	Player	G	Blk	Blk/G
0	Coleman, Elyssa	16	28	1.8
22	White, Kyra	16	20	1.3
25	Udo, Idara	16	18	1.1
30	Sam-Grant, Nissa	9	6	0.7
12	Proctor, Aysia	15	5	0.3

### Defensive Rebounds

##	Player	G	DReb	DReb/G
0	Coleman, Elyssa	16	85	5.3
22	White, Kyra	16	70	4.4
12	Proctor, Aysia	15	62	4.1
11	Love, Sidney	16	43	2.7
25	Udo, Idara	16	42	2.6

### Minutes

##	Player	G	Min	Min/G
22	White, Kyra	16	561	35:05
11	Love, Sidney	16	488	30:32
0	Coleman, Elyssa	16	443	27:41
12	Proctor, Aysia	15	362	24:06
25	Udo, Idara	16	326	20:21

### Fouls

##	Player	G	PF	PF/G
0	Coleman, Elyssa	16	53	3.3
20	Linton, Maya	15	45	3.0
25	Udo, Idara	16	44	2.8
11	Love, Sidney	16	43	2.7
22	White, Kyra	16	33	2.1

### Turnovers

##	Player	G	TO	TO/G
22	White, Kyra	16	52	3.3
11	Love, Sidney	16	46	2.9
0	Coleman, Elyssa	16	32	2.0
12	Proctor, Aysia	15	31	2.1
25	Udo, Idara	16	28	1.8

### Foul Outs

##	Player	G	FO
0	Coleman, Elyssa	16	5
20	Linton, Maya	15	3
25	Udo, Idara	16	2
11	Love, Sidney	16	1
12	Proctor, Aysia	15	1



# 2023-24 ROADRUNNER WOMEN'S BASKETBALL STATS



## TEAM GAME-BY-GAME



### Game Records

Record	Overall	Home	Away	Neutral
ALL GAMES	9-7	4-2	5-5	0-0
CONFERENCE	3-2	2-0	1-2	0-0
NON-CONFERENCE	6-5	2-2	4-3	0-0

### Team Results

Date	Opponent		Score	Att.	High Points	High Rebounds
11/06/2023	at Arizona St.	L	55-70	821	(10) LINTON, Maya (10) UDO, Idara	(9) ROWE, Cheyenne (9) UDO, Idara
11/10/2023	New Mexico St.	W	58-55	712	(19) PROCTOR, Aysia	(11) UDO, Idara
11/15/2023	at A&M-Corpus Christi	Wot	66-59	779	(18) WHITE, Kyra	(7) LINTON, Maya (7) ROWE, Cheyenne
11/18/2023	at UT Arlington	W	70-66	832	(26) LOVE, Sidney	(10) LINTON, Maya
11/20/2023	at Texas Tech	L	58-63	4155	(18) LOVE, Sidney	(8) WHITE, Kyra (8) COLEMAN, Elyssa
11/25/2023	at Sam Houston	W	63-56	235	(17) COLEMAN, Elyssa	(8) PROCTOR, Aysia
11/30/2023	Texas St.	Lot	57-65	1535	(11) COLEMAN, Elyssa (11) GUTTADAURO, Siena (11) LOVE, Sidney	(9) COLEMAN, Elyssa
12/03/2023	UTEP	W	90-66	926	(23) COLEMAN, Elyssa	(8) COLEMAN, Elyssa
12/14/2023	Houston	L	64-66	869	(19) PROCTOR, Aysia	(8) WHITE, Kyra (8) UDO, Idara
12/17/2023	at Oregon	L	48-61	5549	(20) PROCTOR, Aysia	(13) COLEMAN, Elyssa
12/19/2023	at Seattle U	W	75-64	339	(18) COLEMAN, Elyssa	(9) COLEMAN, Elyssa (9) UDO, Idara
12/30/2023	at Temple	L	58-71	1324	(16) WHITE, Kyra	(7) COLEMAN, Elyssa (7) LOVE, Sidney
01/02/2024	at East Carolina	L	54-82	956	(13) COCKRELL, Madison	(6) SAM-GRANT, Nissa
01/06/2024	Wichita St.	W	74-60	722	(32) COLEMAN, Elyssa	(19) COLEMAN, Elyssa
01/10/2024	at Fla. Atlantic	W	73-60	243	(17) PROCTOR, Aysia	(10) COLEMAN, Elyssa
01/14/2024	Charlotte	Wot2	81-80	671	(26) UDO, Idara	(13) PROCTOR, Aysia

### Attendance Summary

	Games	Attend	Avg/Game
Home	6	5435	906
Away	10	15233	1523
Neutral	0	0	0
<b>Total</b>	<b>16</b>	<b>20668</b>	<b>1292</b>

# 2023-24 ROADRUNNER WOMEN'S BASKETBALL STATS



## TEAM GAME HIGHS



<b>POINTS</b>	90	UTEP (12/03/2023)
	81	Charlotte (01/14/2024)
	75	at Seattle U (12/19/2023)
	74	Wichita St. (01/06/2024)
	73	at Fla. Atlantic (01/10/2024)
<b>FIELD GOALS MADE</b>	35	UTEP (12/03/2023)
	31	Wichita St. (01/06/2024)
<b>FIELD GOAL ATTEMPTS</b>	81	Wichita St. (01/06/2024)
	77	at Oregon (12/17/2023)
<b>FIELD GOAL PERCENTAGE</b>	.583 (35-60)	UTEP (12/03/2023)
	.460 (29-63)	at Fla. Atlantic (01/10/2024)
	.460 (29-63)	at Seattle U (12/19/2023)
<b>3 PT FG MADE</b>	8	Charlotte (01/14/2024)
	8	at Fla. Atlantic (01/10/2024)
	8	UTEP (12/03/2023)
<b>3 PT FG ATTEMPTS</b>	25	at East Carolina (01/02/2024)
	21	Wichita St. (01/06/2024)
<b>3 PT FG PERCENTAGE</b>	.500 (2-4)	at Sam Houston (11/25/2023)
	.444 (8-18)	UTEP (12/03/2023)
<b>FREE THROWS MADE</b>	20	at UT Arlington (11/18/2023)
	17	at Sam Houston (11/25/2023)
<b>FREE THROW ATTEMPTS</b>	29	at Sam Houston (11/25/2023)
	29	at UT Arlington (11/18/2023)
<b>FREE THROW PERCENTAGE</b>	.857 (6-7)	at Oregon (12/17/2023)
	.800 (12-15)	UTEP (12/03/2023)
<b>REBOUNDS</b>	57	at Oregon (12/17/2023)
	53	at Sam Houston (11/25/2023)
<b>ASSISTS</b>	22	Wichita St. (01/06/2024)
	22	UTEP (12/03/2023)
<b>STEALS</b>	15	at East Carolina (01/02/2024)
	10	at Seattle U (12/19/2023)
<b>BLOCKED SHOTS</b>	11	Texas St. (11/30/2023)
	9	at Sam Houston (11/25/2023)
<b>TURNOVERS</b>	31	at Texas Tech (11/20/2023)
	29	at East Carolina (01/02/2024)
<b>FOULS</b>	28	at East Carolina (01/02/2024)
	28	at A&M-Corpus Christi (11/15/2023)

# 2023-24 ROADRUNNER WOMEN'S BASKETBALL STATS



## OPPONENT GAME HIGHS



<b>POINTS</b>	82	at East Carolina (01/02/2024)
	80	Charlotte (01/14/2024)
	71	at Temple (12/30/2023)
	70	at Arizona St. (11/06/2023)
	66	Houston (12/14/2023)
	66	UTEP (12/03/2023)
<b>FIELD GOALS MADE</b>	27	at Temple (12/30/2023)
	25	at East Carolina (01/02/2024)
	25	at UT Arlington (11/18/2023)
<b>FIELD GOAL ATTEMPTS</b>	69	Texas St. (11/30/2023)
	69	at Sam Houston (11/25/2023)
<b>FIELD GOAL PERCENTAGE</b>	.472 (25-53)	at East Carolina (01/02/2024)
	.435 (27-62)	at Temple (12/30/2023)
<b>3 PT FG MADE</b>	13	at Fla. Atlantic (01/10/2024)
	11	Charlotte (01/14/2024)
<b>3 PT FG ATTEMPTS</b>	31	at Fla. Atlantic (01/10/2024)
	26	at Arizona St. (11/06/2023)
<b>3 PT FG PERCENTAGE</b>	.556 (10-18)	at East Carolina (01/02/2024)
	.440 (11-25)	Charlotte (01/14/2024)
<b>FREE THROWS MADE</b>	23	Charlotte (01/14/2024)
	22	at East Carolina (01/02/2024)
<b>FREE THROW ATTEMPTS</b>	33	Charlotte (01/14/2024)
	32	at A&M-Corpus Christi (11/15/2023)
<b>FREE THROW PERCENTAGE</b>	.850 (17-20)	Houston (12/14/2023)
	.813 (13-16)	UTEP (12/03/2023)
<b>REBOUNDS</b>	49	Texas St. (11/30/2023)
	43	Charlotte (01/14/2024)
<b>ASSISTS</b>	19	at East Carolina (01/02/2024)
	19	at UT Arlington (11/18/2023)
<b>STEALS</b>	16	at Texas Tech (11/20/2023)
	14	at East Carolina (01/02/2024)
<b>BLOCKED SHOTS</b>	13	at Oregon (12/17/2023)
	6	Charlotte (01/14/2024)
	6	at Seattle U (12/19/2023)
	6	at A&M-Corpus Christi (11/15/2023)
<b>TURNOVERS</b>	26	at East Carolina (01/02/2024)
	17	at A&M-Corpus Christi (11/15/2023)
<b>FOULS</b>	25	at Sam Houston (11/25/2023)
	25	at Arizona St. (11/06/2023)

# 2023-24 ROADRUNNER WOMEN'S BASKETBALL STATS



## TEAM GAME LOWS



<b>POINTS</b>	48		at Oregon (12/17/2023)
	54		at East Carolina (01/02/2024)
	55		at Arizona St. (11/06/2023)
	57		Texas St. (11/30/2023)
	58		at Temple (12/30/2023)
	58		at Texas Tech (11/20/2023)
	58		New Mexico St. (11/10/2023)
<b>FIELD GOALS MADE</b>	20		at East Carolina (01/02/2024)
	20		at Oregon (12/17/2023)
	20		at Arizona St. (11/06/2023)
<b>FIELD GOAL ATTEMPTS</b>	51		at Sam Houston (11/25/2023)
	51		at Texas Tech (11/20/2023)
<b>FIELD GOAL PERCENTAGE</b>	.260	(20-77)	at Oregon (12/17/2023)
	.313	(20-64)	at East Carolina (01/02/2024)
<b>3 PT FG MADE</b>	2		at Seattle U (12/19/2023)
	2		at Oregon (12/17/2023)
	2		at Sam Houston (11/25/2023)
	2		at UT Arlington (11/18/2023)
	2		at Arizona St. (11/06/2023)
<b>3 PT FG ATTEMPTS</b>	4		at Sam Houston (11/25/2023)
	9		at Seattle U (12/19/2023)
<b>3 PT FG PERCENTAGE</b>	.111	(2-18)	at Oregon (12/17/2023)
	.154	(2-13)	at Arizona St. (11/06/2023)
<b>FREE THROWS MADE</b>	6		at Oregon (12/17/2023)
	7		at Fla. Atlantic (01/10/2024)
	7		Wichita St. (01/06/2024)
	7		at Temple (12/30/2023)
	7		Houston (12/14/2023)
	7		Texas St. (11/30/2023)
<b>FREE THROW ATTEMPTS</b>	7		at Oregon (12/17/2023)
	10		Houston (12/14/2023)
<b>FREE THROW PERCENTAGE</b>	.500	(8-16)	at East Carolina (01/02/2024)
	.526	(10-19)	New Mexico St. (11/10/2023)
<b>REBOUNDS</b>	39		at Temple (12/30/2023)
	40		at Seattle U (12/19/2023)
<b>ASSISTS</b>	6		at Texas Tech (11/20/2023)
	7		at Sam Houston (11/25/2023)
<b>STEALS</b>	1		UTEP (12/03/2023)
	2		Texas St. (11/30/2023)
<b>BLOCKED SHOTS</b>	0		at Oregon (12/17/2023)
	3		at East Carolina (01/02/2024)
	3		at Temple (12/30/2023)
	3		Houston (12/14/2023)
	3		at UT Arlington (11/18/2023)
<b>TURNOVERS</b>	10		Wichita St. (01/06/2024)
	12		at Fla. Atlantic (01/10/2024)
	12		Texas St. (11/30/2023)
<b>FOULS</b>	12		Houston (12/14/2023)
	13		UTEP (12/03/2023)

# 2023-24 ROADRUNNER WOMEN'S BASKETBALL STATS



## OPPONENT GAME LOWS



<b>POINTS</b>	55		New Mexico St. (11/10/2023)
	56		at Sam Houston (11/25/2023)
	59		at A&M-Corpus Christi (11/15/2023)
	60		at Fla. Atlantic (01/10/2024)
	60		Wichita St. (01/06/2024)
<b>FIELD GOALS MADE</b>	17		at Sam Houston (11/25/2023)
	18		at Oregon (12/17/2023)
<b>FIELD GOAL ATTEMPTS</b>	51		at Oregon (12/17/2023)
	51		at A&M-Corpus Christi (11/15/2023)
<b>FIELD GOAL PERCENTAGE</b>	.246	(17-69)	at Sam Houston (11/25/2023)
	.333	(23-69)	Texas St. (11/30/2023)
<b>3 PT FG MADE</b>	3		at A&M-Corpus Christi (11/15/2023)
	4		at Temple (12/30/2023)
	4		at Sam Houston (11/25/2023)
<b>3 PT FG ATTEMPTS</b>	12		at Temple (12/30/2023)
	14		at A&M-Corpus Christi (11/15/2023)
<b>3 PT FG PERCENTAGE</b>	.167	(4-24)	at Sam Houston (11/25/2023)
	.214	(3-14)	at A&M-Corpus Christi (11/15/2023)
<b>FREE THROWS MADE</b>	5		at Fla. Atlantic (01/10/2024)
	11		Wichita St. (01/06/2024)
	11		at UT Arlington (11/18/2023)
	11		New Mexico St. (11/10/2023)
<b>FREE THROW ATTEMPTS</b>	11		at Fla. Atlantic (01/10/2024)
	15		Wichita St. (01/06/2024)
<b>FREE THROW PERCENTAGE</b>	.455	(5-11)	at Fla. Atlantic (01/10/2024)
	.500	(16-32)	at A&M-Corpus Christi (11/15/2023)
<b>REBOUNDS</b>	24		UTEP (12/03/2023)
	30		at Seattle U (12/19/2023)
	30		at Texas Tech (11/20/2023)
	30		at UT Arlington (11/18/2023)
<b>ASSISTS</b>	9		at Seattle U (12/19/2023)
	9		Texas St. (11/30/2023)
	9		New Mexico St. (11/10/2023)
<b>STEALS</b>	5		at Fla. Atlantic (01/10/2024)
	5		Wichita St. (01/06/2024)
<b>BLOCKED SHOTS</b>	0		at Sam Houston (11/25/2023)
	1		at Fla. Atlantic (01/10/2024)
	1		New Mexico St. (11/10/2023)
	1		at Arizona St. (11/06/2023)
<b>TURNOVERS</b>	8		Texas St. (11/30/2023)
	9		Houston (12/14/2023)
<b>FOULS</b>	9		at Oregon (12/17/2023)
	12		UTEP (12/03/2023)

# AROUND THE AMERICAN

## 2023-24 AAC WEEKLY WBB SCHEDULE ALL TIMES ET

**Tuesday, January 16**  
South Florida at UTSA 7:30 PM

**Wednesday, January 17**  
Rice at East Carolina 11:00 AM  
Tulane at Charlotte 6:30 PM  
Memphis at Wichita State 7:00 PM  
North Texas at SMU 8:00 PM

**Saturday, January 20**  
SMU at East Carolina 2:00 PM  
Wichita State at Tulsa 3:00 PM  
Rice at Tulane 3:00 PM  
Florida Atlantic at Memphis 3:00 PM  
North Texas at South Florida 7:00 PM

**Sunday, January 21**  
Charlotte at Temple 1:00 PM  
UTSA at UAB 2:00 PM

For the complete schedule, visit [theamerican.org](http://theamerican.org)



# AMERICAN

## ATHLETIC CONFERENCE

AP Poll • Jan. 14, 2023

#	School (1st)	W-L	Pts.	Prev.
1	South Carolina (36)	14-0	900	1
2	Iowa	17-1	843	3
3	Colorado	15-1	814	5
4	NC State	15-1	777	6
5	UCLA	14-1	750	2
6	Southern Cal	13-1	744	9
7	Kansas State	17-1	692	12
8	Stanford	15-2	608	8
9	UConn	14-3	597	13
10	LSU	16-2	537	7
11	Texas	16-2	515	10
12	Baylor	14-2	492	4
13	Louisville	15-2	460	15
14	Virginia Tech	13-3	419	11
15	Florida State	14-4	365	21
16	Indiana	14-2	351	14
17	Gonzaga	16-2	345	16
18	Ohio State	13-3	336	17
19	Notre Dame	11-4	301	18
20	Utah	12-5	187	19
21	Creighton	13-3	144	22
22	Marquette	15-2	129	23
23	North Carolina	12-5	106	20
24	Iowa State	12-4	80	NR
25	UNLV	14-1	69	25

RV (In AAC): N/A

## 2023-24 AAC WEEKLY AWARDS

**November 13**  
Player of the Week: Delanie Crawford, Jr., G, Tulsa  
Freshman of the Week: Karina Gordon, Fr., G, East Carolina

**November 20**  
Player of the Week: Tiara Young, Gr., G, SMU  
Freshman of the Week: Vittoria Blasigh, Fr., G, South Florida

**November 27**  
Player of the Week: Temira Poindexter, Jr., F, Tulsa  
Freshman of the Week: Salese Blow, Fr., G, Wichita State

**December 4**  
Player of the Week: Danae McNeal, East Carolina  
Freshman of the Week: Jade Weathersby, F, UAB

**December 10**  
Player of the Week: DesiRay Kernal, Gr., F, North Texas  
Freshman of the Week: Vittoria Blasigh, Fr., G, South Florida

**December 18**  
Player of the Week: Mia Moore, R-So., G, UAB  
Freshman of the Week: Jade Weathersby, Fr., F, UAB

**December 26**  
Player of the Week: Amiya Joyner, So., F, East Carolina  
Freshman of the Week: Idara Udo, Fr., F, UTSA

**January 1**  
Player of the Week: Tre'Zure Jobe, R-Sr., G, Wichita State  
Freshman of the Week: Vittoria Blasigh, Fr., G, South Florida

**January 8**  
Player of the Week: Dazia Lawrence, R-Jr., G, Charlotte  
Freshman of the Week: Karina Gordon, Fr., G, East Carolina

**January 15**  
Player of the Week: Tiara Young, Gr., G, SMU  
Freshman of the Week: Vittoria Blasigh, Fr., G, South Florida

**January 22**  
Player of the Week:  
Freshman of the Week:

**January 29**  
Player of the Week:  
Freshman of the Week:

**February 5**  
Player of the Week:  
Freshman of the Week:

**February 12**  
Player of the Week:  
Freshman of the Week:

**February 19**  
Player of the Week:  
Freshman of the Week:

**February 26**  
Player of the Week:  
Freshman of the Week:

**March 4**  
Player of the Week:  
Freshman of the Week:

### 2023-24 AAC Standings

School	AAC	Pct.	Ovr.	Pct.	Streak
UAB	4-1	.800	13-4	.765	W2
Charlotte	4-1	.800	11-6	.647	L1
North Texas	3-1	.750	13-3	.812	W3
Rice	3-1	.750	9-6	.600	W1
Tulsa	3-2	.600	13-5	.722	W1
South Florida	3-2	.600	11-7	.611	L1
<b>UTSA</b>	<b>3-2</b>	<b>.600</b>	<b>9-7</b>	<b>.562</b>	<b>W3</b>
Temple	3-2	.600	9-8	.529	L1
East Carolina	2-2	.500	9-6	.600	L2
SMU	2-3	.400	8-8	.500	L1
Tulane	1-3	.250	8-7	.533	W1
Memphis	1-4	.200	5-11	.312	W1
Wichita State	1-4	.200	5-12	.294	L4
Florida Atlantic	0-5	.000	5-11	.312	L6

### WBCA Coaches Poll • Jan. 9, 2023

#	School (Record)	Pts.	Prev.	1st
1	South Carolina (14-0)	800	1	32
2	UCLA (14-0)	768	2	0
3	Iowa (15-1)	727	3	0
4	LSU (15-1)	661	5	0
5	Colorado (13-1)	632	7	0
6	Southern California (12-1)	626	6	0
7	Baylor (14-0)	590	9	0
8	Stanford (14-1)	585	8	0
9	North Carolina State (14-1)	574	4	0
10	Texas (15-1)	508	10	0
11	Virginia Tech (12-2)	499	11	0
12	Kansas State (15-1)	457	12	0
13	Indiana (13-1)	415	14	0
14	Connecticut (12-3)	394	15	0
15	Louisville (13-2)	337	16	0
16	Ohio State (11-3)	296	18	0
17	Gonzaga (14-2)	280	19	0
18	Utah (11-4)	268	12	0
19	Notre Dame (10-3)	191	17	0
20	Florida State (12-4)	146	22	0
21	Creighton (11-3)	129	21	0
22	North Carolina (11-4)	117	NR	0
23	Marquette (13-2)	91	20	0
24	Vanderbilt (15-1)	57	NR	0
25	UNLV (12-1)	50	NR	0

RV (In AAC): N/A

# AROUND THE AMERICAN



## CONFERENCE TEAM RANKINGS



Team	Offense				Defense			
	Scoring	FG Pct	3FG Pct	Rebounds	Scoring	FG Pct	3FG Pct	Rebounds
Charlotte	9	6	5	8	4	4	6	2
East Carolina	11	10	13	14	1	6	10	11
Fla. Atlantic	14	11	4	7	9	9	14	8
Memphis	7	14	9	5	14	13	8	14
North Texas	1	1	12	3	3	1	2	3
Rice	6	12	7	9	6	8	9	7
SMU	3	2	2	11	12	7	7	6
South Fla.	10	7	8	2	2	5	11	5
Temple	4	9	10	4	5	11	5	9
Tulane	8	5	3	13	7	12	13	1
Tulsa	5	4	6	6	11	2	4	13
UAB	2	3	1	10	8	10	1	10
UTSA	12	8	11	1	10	3	12	4
Wichita St.	13	13	14	12	13	14	3	12

Team	FT Pct.	3FGs	Blocks	Steals	Assists	Scoring Margin	Rebound Margin	Turnover Margin	Ast/TO Ratio
Charlotte	5	10	7	4	11	7	4	9	13
East Carolina	10	9	3	1	10	4	14	1	10
Fla. Atlantic	14	6	13	13	14	13	7	14	14
Memphis	12	8	2	3	12	12	11	4	11
North Texas	9	14	11	6	6	1	2	6	8
Rice	2	5	12	5	9	5	8	3	6
SMU	7	11	8	6	2	8	9	5	2
South Fla.	4	4	4	14	3	6	3	10	4
Temple	6	7	6	2	4	3	6	2	1
Tulane	3	3	10	9	1	9	5	11	3
Tulsa	8	2	5	12	8	10	12	12	7
UAB	1	1	9	11	5	2	10	8	5
UTSA	13	13	1	10	7	11	1	13	9
Wichita St.	11	12	14	8	13	14	13	7	12

# AROUND THE AMERICAN



## CONFERENCE INDIVIDUAL LEADERS



To be ranked, a player must appear in at least 75.0% of their team's games.

### Scoring

	Player	G	FG	3FG	FT	Pts	AVG
1.	Poindexter, Temira - Tulsa	18	126	40	58	350	19.44
2.	Young, Tiara - SMU	16	110	7	77	304	19.00
3.	Lawrence, Dazia - CLT	17	104	14	87	309	18.18
4.	Crawford, Delanie - Tulsa	18	108	48	61	325	18.06
5.	McNeal, Danae - ECU	15	101	20	45	267	17.80
6.	Griggs, Madison - Mem	16	96	48	36	276	17.25
7.	Moore, Mia - UAB	16	87	14	73	261	16.31
8.	Kernal, DesiRay - UNT	16	81	9	86	257	16.06
9.	Whittington, Kyren - Tulane	13	73	11	51	208	16.00
10.	Blasigh, Vittoria - USF	18	97	53	36	283	15.72
11.	Galic, Marta - Tulane	15	77	36	38	228	15.20
12.	Lampkin, Tommisha - UNT	16	92	0	46	230	14.38
13.	Ennis, Dominique - Rice	15	72	33	20	197	13.13
14.	Hueston, Tracey - CLT	17	85	7	45	222	13.06
15.	Moore, Jada - FAU	14	67	3	40	177	12.64
16.	Nelson, Aleah - Temple	17	75	25	39	214	12.59
17.	Perry, Mya - FAU	15	61	42	21	185	12.33
	Pratt, Hannah - Tulane	15	66	35	18	185	12.33
19.	Coleman, Elyssa - UTSA	16	87	1	20	195	12.19
20.	East, Tiarra - Temple	15	67	11	33	178	11.87

### Rebounding

	Player	G	Off	Def	Total	AVG
1.	Moore, Mia - UAB	16	45	115	160	10.00
2.	Rozentale, Janeta - FAU	16	43	103	146	9.13
	Smith, Alasia - Mem	16	64	82	146	9.13
4.	Joyner, Amiya - ECU	15	62	65	127	8.47
5.	Kernal, DesiRay - UNT	16	32	96	128	8.00
6.	Coleman, Elyssa - UTSA	16	39	85	124	7.75
7.	Abies, Daniela - WSU	17	59	71	130	7.65
8.	Tucker, Rayne - Temple	17	57	71	128	7.53
9.	Lutje Schipholt, Evelien - USF	18	60	73	133	7.39
10.	Periman, Hadley - Tulsa	18	40	92	132	7.33
11.	Fisher, Malia - Rice	13	26	67	93	7.15
12.	Parau, Irina - Tulane	15	32	74	106	7.07
13.	Brito, Carla - USF	18	32	88	120	6.67
14.	Moore, Jada - FAU	14	34	59	93	6.64
15.	Lampkin, Tommisha - UNT	16	41	62	103	6.44
16.	Abdur-Rahim, Amirah - SMU	16	27	74	101	6.31
17.	Udo, Idara - UTSA	16	57	42	99	6.19
18.	Crawford, Delanie - Tulsa	18	23	86	109	6.06
19.	Young, Tiara - SMU	16	10	83	93	5.81
20.	Pratt, Hannah - Tulane	15	21	66	87	5.80

### Field Goal Percentage (Minimum 5 FGM/G average)

	Player	G	FGM	FGA	Pct.
1.	Lampkin, Tommisha - UNT	16	92	138	.667
2.	Kernal, DesiRay - UNT	16	81	153	.529
3.	Hueston, Tracey - CLT	17	85	170	.500
4.	Young, Tiara - SMU	16	110	230	.478
5.	Moore, Mia - UAB	16	87	182	.478
6.	Whittington, Kyren - Tulane	13	73	153	.477
7.	Coleman, Elyssa - UTSA	16	87	183	.475
8.	Crawford, Delanie - Tulsa	18	108	232	.466
9.	Galic, Marta - Tulane	15	77	174	.443
10.	Lawrence, Dazia - CLT	17	104	238	.437
11.	Blasigh, Vittoria - USF	18	97	229	.424
12.	Poindexter, Temira - Tulsa	18	126	309	.408
13.	McNeal, Danae - ECU	15	101	249	.406
14.	Griggs, Madison - Mem	16	96	263	.365

### Assists

	Player	G	No.	AVG
1.	DeShields, Denim - UAB	17	94	5.53
2.	White, Kyra - UTSA	16	78	4.88
3.	Nelson, Aleah - Temple	17	76	4.47
4.	Wilson, Aerial - USF	18	78	4.33
5.	Rainey, Kaylah - Tulane	13	53	4.08
6.	Jones, Tamia - SMU	16	64	4.00
7.	Bradley, Reagan - SMU	16	61	3.81
8.	Love, Sidney - UTSA	16	52	3.25
9.	Porter, Olivia - CLT	17	54	3.18
10.	Parau, Irina - Tulane	15	47	3.13
11.	Hardaway, Ereauna - UNT	16	44	2.75
	Moore, Mia - UAB	16	44	2.75
13.	Jackson, Destiny - Rice	15	40	2.67
14.	Jobe, Tre'Zure - WSU	17	44	2.59
15.	Taylor, Tristen - Temple	17	42	2.47



# AROUND THE AMERICAN



## CONFERENCE INDIVIDUAL LEADERS CONT.



### Free Throw Percentage (Minimum 2.5 FTM/G average)

	Player	G	FTM	FTA	Pct.
1.	Lawrence, Dazia - CLT	17	87	105	.829
2.	Love, Sidney - UTSA	16	47	57	.825
3.	Moore, Mia - UAB	16	73	89	.820
4.	Crawford, Delanie - Tulsa	18	61	75	.813
5.	DeShields, Denim - UAB	17	49	61	.803
6.	Galic, Marta - Tulane	15	38	48	.792
7.	Kernal, DesiRay - UNT	16	86	109	.789
8.	Fisher, Malia - Rice	13	33	42	.786
9.	Whittington, Kyren - Tulane	13	51	65	.785
10.	Weathersby, Jade - UAB	17	56	73	.767
11.	McNeal, Danae - ECU	15	45	61	.738
12.	Owens-Barnett, Jazzy - Rice	15	45	62	.726
13.	Young, Tiara - SMU	16	77	107	.720
14.	Hueston, Tracey - CLT	17	45	64	.703
15.	Poindexter, Temira - Tulsa	18	58	83	.699

### Steals

	Player	G	No.	AVG
1.	McNeal, Danae - ECU	15	56	3.73
2.	Whittington, Kyren - Tulane	13	38	2.92
3.	Jones, Tamia - SMU	16	34	2.13
4.	Smith, Alasia - Mem	16	33	2.06
5.	Jobe, Tre'Zure - WSU	17	31	1.82
	Lawrence, Dazia - CLT	17	31	1.82
7.	Griggs, Madison - Mem	16	29	1.81
8.	East, Tiarra - Temple	15	27	1.80
9.	Kernal, DesiRay - UNT	16	27	1.69
10.	Joyner, Amiya - ECU	15	25	1.67
11.	Smith, Imani - CLT	17	28	1.65
12.	Moore, Mia - UAB	16	26	1.63
13.	Ennis, Dominique - Rice	15	24	1.60
14.	Jackson, Destiny - Rice	15	23	1.53
15.	Fisher, Malia - Rice	13	19	1.46

### 3-Point FG Percentage (Minimum 2 3FG/G average)

	Player	G	3FG	3FGA	Pct.
1.	Perry, Mya - FAU	15	42	93	.452
2.	Galic, Marta - Tulane	15	36	84	.429
3.	Bershers, Tracey - UAB	17	43	101	.426
4.	Crawford, Delanie - Tulsa	18	48	116	.414
5.	Blasigh, Vittoria - USF	18	53	137	.387
6.	Griggs, Madison - Mem	16	48	136	.353
7.	Ennis, Dominique - Rice	15	33	99	.333
8.	Pratt, Hannah - Tulane	15	35	109	.321
9.	Poindexter, Temira - Tulsa	18	40	142	.282

### 3-Point FG Made

	Player	G	3FG	Avg
1.	Griggs, Madison - Mem	16	48	3.00
2.	Blasigh, Vittoria - USF	18	53	2.94
3.	Perry, Mya - FAU	15	42	2.80
4.	Crawford, Delanie - Tulsa	18	48	2.67
5.	Bershers, Tracey - UAB	17	43	2.53
6.	Galic, Marta - Tulane	15	36	2.40
7.	Pratt, Hannah - Tulane	15	35	2.33
8.	Poindexter, Temira - Tulsa	18	40	2.22
9.	Ennis, Dominique - Rice	15	33	2.20
10.	Cartwright, Mady - Tulsa	18	34	1.89
11.	Walsh, Maddie - UAB	17	30	1.76
12.	Gary, Tarryonna - Temple	16	28	1.75
13.	Bokunewicz, Maya - Rice	15	26	1.73
14.	Nelson, Aleah - Temple	17	25	1.47
15.	Gordon, Karina - ECU	15	22	1.47

# AROUND THE AMERICAN



## CONFERENCE INDIVIDUAL LEADERS CONT.



### Blocked Shots

	Player	G	No.	AVG
1.	Coleman, Elyssa - UTSA	16	28	1.75
2.	Joyner, Amiya - ECU	15	26	1.73
3.	Abdur-Rahim, Amirah - SMU	16	26	1.63
4.	Poindexter, Temira - Tulsa	18	26	1.44
5.	Smith, Alasia - Mem	16	21	1.31
6.	Piper, Ines - Temple	17	22	1.29
7.	White, Kyra - UTSA	16	20	1.25
8.	Lampkin, Tommisha - UNT	16	19	1.19
9.	Green, Aliyah - Mem	16	18	1.13
	Udo, Idara - UTSA	16	18	1.13
11.	Periman, Hadley - Tulsa	18	17	0.94
12.	Hueston, Tracey - CLT	17	16	0.94
	Walsh, Maddie - UAB	17	16	0.94
	Tucker, Rayne - Temple	17	16	0.94
15.	Hanna, Dyllan - FAU	16	15	0.94

### Assist/Turnover Ratio (Minimum 3 AST/G average)

	Player	G	Ast.	T/O	Ratio
1.	Nelson, Aleah - Temple	17	76	36	2.11
2.	Wilson, Aerial - USF	18	78	37	2.11
3.	Rainey, Kaylah - Tulane	13	53	28	1.89
4.	Jones, Tamia - SMU	16	64	40	1.60
5.	White, Kyra - UTSA	16	78	52	1.50
6.	DeShields, Denim - UAB	17	94	63	1.49
7.	Parau, Irina - Tulane	15	47	32	1.47
8.	Bradley, Reagan - SMU	16	61	42	1.45
9.	Porter, Olivia - CLT	17	54	46	1.17
10.	Love, Sidney - UTSA	16	52	46	1.13

### Offensive Rebounds

	Player	G	No.	AVG
1.	Joyner, Amiya - ECU	15	62	4.13
2.	Smith, Alasia - Mem	16	64	4.00
3.	Udo, Idara - UTSA	16	57	3.56
4.	Abies, Daniela - WSU	17	59	3.47
5.	Tucker, Rayne - Temple	17	57	3.35
6.	Lutje Schipholt, Evelien - USF	18	60	3.33
7.	Piper, Ines - Temple	17	52	3.06
8.	Moore, Mia - UAB	16	45	2.81
9.	Rozentale, Janeta - FAU	16	43	2.69
10.	Lampkin, Tommisha - UNT	16	41	2.56
11.	Hanna, Dyllan - FAU	16	39	2.44
	Coleman, Elyssa - UTSA	16	39	2.44
13.	Moore, Jada - FAU	14	34	2.43
14.	Linton, Maya - UTSA	15	34	2.27
15.	Periman, Hadley - Tulsa	18	40	2.22

### Defensive Rebounds

	Player	G	No.	AVG
1.	Moore, Mia - UAB	16	115	7.19
2.	Rozentale, Janeta - FAU	16	103	6.44
3.	Kernal, DesiRay - UNT	16	96	6.00
4.	Coleman, Elyssa - UTSA	16	85	5.31
5.	Young, Tiara - SMU	16	83	5.19
6.	Fisher, Malia - Rice	13	67	5.15
7.	Smith, Alasia - Mem	16	82	5.13
8.	Periman, Hadley - Tulsa	18	92	5.11
9.	Parau, Irina - Tulane	15	74	4.93
10.	Brito, Carla - USF	18	88	4.89
11.	Crawford, Delanie - Tulsa	18	86	4.78
12.	Abdur-Rahim, Amirah - SMU	16	74	4.63
13.	Pratt, Hannah - Tulane	15	66	4.40
14.	White, Kyra - UTSA	16	70	4.38
15.	Bershers, Tracey - UAB	17	74	4.35

# AROUND THE AMERICAN



## CONFERENCE INDIVIDUAL LEADERS CONT.



### Minutes Played

	Player	G	No.	AVG
1.	Griggs, Madison - Mem	16	574	35.85
2.	White, Kyra - UTSA	16	561	35.09
3.	Jones, Tamia - SMU	16	555	34.67
4.	Moore, Mia - UAB	16	536	33.50
5.	Poindexter, Temira - Tulsa	18	602	33.46
6.	Bradley, Reagan - SMU	16	531	33.17
7.	Young, Tiara - SMU	16	528	33.03
8.	Galic, Marta - Tulane	15	486	32.37
9.	DeShields, Denim - UAB	17	547	32.16
10.	McNeal, Danae - ECU	15	478	31.88
11.	Parau, Irina - Tulane	15	471	31.42
12.	Nelson, Aleah - Temple	17	531	31.22
13.	Rozentale, Janeta - FAU	16	498	31.10
14.	Crawford, Delanie - Tulsa	18	556	30.86
15.	Walsh, Maddie - UAB	17	524	30.83

### Team Identification

Team	Team ID
Charlotte	CLT
East Carolina	ECU
Fla. Atlantic	FAU
Memphis	Mem
North Texas	UNT
Rice	Rice
SMU	SMU
South Fla.	USF
Temple	Temple
Tulane	Tulane
Tulsa	Tulsa
UAB	UAB
UTSA	UTSA
Wichita St.	WSU

# AROUND THE AMERICAN



## CONFERENCE TEAM HIGHS



<b>POINTS</b>	117	North Texas vs North Texas-Dallas (11/06/2023)
	109	Temple vs Delaware St. (11/06/2023)
<b>FIELD GOALS MADE</b>	43	Temple vs Delaware St. (11/06/2023)
	40	South Fla. vs Gardner-Webb (12/10/2023)
<b>FIELD GOAL ATTEMPTS</b>	86	Memphis at UAB (01/03/2024)
	81	UTSA vs Wichita St. (01/06/2024)
	81	Temple vs Northwestern (12/21/2023)
	81	Temple at La Salle (12/17/2023)
<b>FIELD GOAL PERCENTAGE</b>	.608 (31-51)	SMU vs Air Force (12/21/2023)
	.603 (35-58)	North Texas vs Fla. Atlantic (01/07/2024)
<b>3 PT FG MADE</b>	14	UAB at Charlotte (01/07/2024)
	14	Tulane vs New Orleans (12/06/2023)
<b>3 PT FG ATTEMPTS</b>	32	Tulsa at TCU (12/01/2023)
	32	Tulsa vs Clemson (N) (11/25/2023)
	32	East Carolina at Elon (11/06/2023)
<b>3 PT FG PERCENTAGE</b>	.636 (7-11)	SMU vs Alabama St. (11/11/2023)
	.600 (3-5)	East Carolina at Memphis (01/06/2024)
<b>FREE THROWS MADE</b>	40	SMU at Memphis (01/11/2024)
	36	North Texas vs North Texas-Dallas (11/06/2023)
<b>FREE THROW ATTEMPTS</b>	60	SMU at Memphis (01/11/2024)
	49	North Texas vs North Texas-Dallas (11/06/2023)
<b>FREE THROW PERCENTAGE</b>	.941 (16-17)	South Fla. vs Baylor (N) (12/21/2023)
	.929 (26-28)	UAB vs SMU (01/14/2024)
<b>REBOUNDS</b>	57	UTSA at Oregon (12/17/2023)
	57	Rice vs Houston Christian (11/06/2023)
<b>ASSISTS</b>	27	Tulane vs New Orleans (12/06/2023)
	26	Temple vs Delaware St. (11/06/2023)
<b>STEALS</b>	32	East Carolina vs USC Upstate (11/09/2023)
	21	North Texas vs North Texas-Dallas (11/06/2023)
<b>BLOCKED SHOTS</b>	11	East Carolina vs George Mason (12/18/2023)
	11	UTSA vs Texas St. (11/30/2023)
<b>TURNOVERS</b>	31	UTSA at Texas Tech (11/20/2023)
	30	Charlotte vs West Virginia (N) (11/24/2023)
<b>FOULS</b>	43	Memphis vs SMU (01/11/2024)
	32	SMU at Memphis (01/11/2024)