

SMU

WOMEN'S BASKETBALL

2023-24 GAME NOTES

GAME 20

7 NCAA TOURNAMENT APPEARANCES • 10 WNIT APPEARANCES • 5 CONFERENCE CHAMPIONSHIPS

CONTACT: CHARLIE ROSE • OFFICE PHONE: 214-768-4970 • CELL PHONE: 469-442-6768 • EMAIL: ROSEC@SMU.EDU



SMU MUSTANGS

9-10; 3-5 AMERICAN

VS



UTSA ROADRUNNERS

10-8; 4-3 AMERICAN

SATURDAY, JAN. 27 | 2 P.M. CT

TV: ESPN+ • SMU MOBILE APP
MOODY COLISEUM • DALLAS, TEXAS

SERIES: 12th meeting (SMU leads the all-time series 9-2)

TV: ESPN+
John Little (PxP), Brian Burton (Analyst)

RADIO: Available on the SMU Mobile App / The Varsity Network App (Search SMU)
John Hendry (PxP) / KAAM 770 AM

2023-24 MUSTANG ROSTER

No.	Name	Pos.	Ht.	Class	Hometown/Previous School
0	Tamia Jones	G	5-8	SR	The Colony, Texas/The Colony HS
1	Tiara Young	G	5-9	GR	Shreveport, La. / Houston
2	TK Pitts	G	6-1	SO	Lubbock, Texas/Oklahoma
3	Aaliyah Henderson	G	5-7	FR	Norman, Okla. / Norman HS
4	Jiya Perry	G	5-10	SO	DeSoto, Texas/DeSoto HS
5	Ella Brow	G	5-8	SO	Palm Beach, Australia/Palm Beach Currumbin HS
10	Maya Chandler	G	5-7	SR	Martinsville, Ind. / Loyola Chicago
13	Reagan Bradley	G	5-8	GR	Little Rock, Ark./Little Rock Christian
14	Shanel Reid	G	5-11	FR	Austin Texas / Austin HS
23	Amirah Abdur-Rahim	F	6-3	SR	Marietta, Ga./Notre Dame
24	Donavia Hall	G	5-10	JR	Plano, Texas/Plano East HS
33	Chantae Embry	F	6-1	JR	Norman, Okla./Texas Tech
35	Jessica Peterson	C	6-2	JR	Rancho Cucamonga, Calif./Fresno State

Head Coach:	Toyelle Wilson (3rd Season, Manhattan)
Associate Head Coach:	Deneen Parker (23rd Season, SFA)
Assistant Coach / Recruiting Coordinator:	Danielle Edwards (3rd Season, Clemson)
Assistant Coach / Assistant Recruiting Coordinator:	Anthony Anderson (2nd Season, FIU)
Assistant Coach/Director of Player Development:	Alex Furr (1st Season, Fresno State)
Assistant Coach/Director of Scouting and Video Operations:	Brian Porth (1st Season, SMU)
Director Of Basketball Operations:	AK Prestridge (1st Season, Auburn)
Sports Performance Coach:	Anthony Cockrill
Senior Associate Athletic Trainer:	Kelli Swing
Director of Multimedia and Creative Content:	Josh Reising

UPCOMING SCHEDULE.

Sat., Jan. 27	UTSA	ESPN+	2 p.m.
Wed., Jan. 31	Rice	ESPN+	7 p.m.

LAST FIVE (2-3)

Wed., Jan. 24	Temple		W, 68-66
Wed., Jan. 24	ECU		L, 68-61
Wed., Jan. 17	UNT		L, 76-61
Sun., Jan. 14	UAB		L, 84-75
Thur., Jan. 11	Memphis		W, 91-86

Home | Away | *Conference Game

2023-24 ACTIVE LEADERS (75% GAMES)

Category	Player	Value	AAC/National Rank
Assist/TO Ratio	Tamia Jones	1.66	4/126
	Reagan Bradley	1.41	7/181
Total Assists	Tamia Jones	73	5/113
	Reagan Bradley	69	6/143
Assists Per Game	Tamia Jones	4.1	6/120
	Reagan Bradley	3.6	7/172
Total Blocks	Amirah Abdur-Rahim	33	1/45
Blocks Per Game	Amirah Abdur-Rahim	1.74	1/51
FG%	Tiara Young	47.2	4/124
Field Goals	Tiara Young	125	2/41
Free Throws	Tiara Young	96	2/9
Free Throw Attempts	Tiara Young	135	1/3
Total Points	Tiara Young	354	3/32
Points Per Game	Tiara Young	18.6	3/37
Total Steals	Tamia Jones	37	4/109
Steals Per Game	Tamia Jones	2.06	3/123114

SMUWBB, @COACHTMWILSON, @SMUMUSTANGS

SMUBASKETBALLW, /SMUMUSTANGS

SMUWBB, @COACHTOYELLEWILSON, @SMU.MUSTANGS



SMU MUSTANGS

2023-24 SCHEDULE

Mon. Nov. 6	UC Riverside	ESPN+	W, 78-55
Sat. Nov. 11	Alabama State	ESPN+	W, 96-47
Tue. Nov. 14	Nicholls	ESPN+	W, 69-54
Sat. Nov. 18	#5 Colorado	ESPN+	L, 84-69

San Diego Classic - San Diego, Calif.

Fri. Nov. 24	vs. Toledo	FloSports	L, 74-73
Sat. Nov. 25	vs. Harvard	FloSports	L, 80-67

Thu. Nov. 30	#13 Baylor	ESPNU	L, 85-61
Mon. Dec. 4	Arkansas-Pine Bluff	ESPN+	L, 78-76

Thu. Dec. 14	at Louisiana Tech	ESPN+	W, 69-53
Mon. Dec. 18	Sam Houston	ESPN+	W, 69-64

Thu. Dec. 21	Air Force	ESPN+	W, 75-44
Sat. Dec. 30	at South Florida*	ESPN+	L, 70-61

Thu. Jan. 4	Florida Atlantic*	ESPN+	W, 57-52
Sun. Jan. 7	Rice*	ESPN+	L, 65-63

Thu. Jan. 11	at Memphis*	ESPN+	W, 91-86
Sun. Jan. 14	at UAB*	ESPN+	L, 84-75

Wed. Jan. 17	North Texas*	ESPN+	L, 76-61
Sat. Jan. 20	at ECU*	ESPN+	L, 68-61

Wed. Jan. 24	Temple*	ESPN+	W, 68-66
Sat. Jan. 27	UTSA*	ESPN+	2 p.m.

Wed. Jan. 31	at Rice*	ESPN+	7 p.m.
Sat. Feb. 3	Memphis*	ESPN+	2 p.m.

Sat. Feb. 10	at North Texas*	ESPN+	2 p.m.
Wed. Feb. 14	at Tulane*	ESPN+	6 p.m.

Sun. Feb. 18	Charlotte*	ESPN+	5:30 p.m.
Sat. Feb. 24	ECU*	ESPN+	2 p.m.

Wed. Feb. 28	at Wichita State*	ESPN+	6 p.m.
Sat. Mar. 2	at Tulsa*	ESPN+	2 p.m.

Tue. Mar. 5	South Florida*	ESPN+	7 p.m.
Mar. 9-13	at AAC Championships		TBD

Home | Away | *Conference Game

THE MATCH-UP

Overall: 9-2 | Home: 5-0 | Road: 3-2 | Neutral: 1-0

Saturday will be the 11th matchup between the two programs. SMU leads the all-time series 9-2. The Mustangs have won the last six games against the Roadrunners dating back to 1991. Most recently, SMU defeated UTSA, a 69-65 victory on Dec. 28, 2011.

2023-24 TEAM RANKINGS

Category	Value	AAC/National
Assist/Turnover Ratio	0.97	4/98
Assists Per Game	14.9	2/82
Bench Points Per Game	15.7	12/256
Blocks Per Game	3.3	8/148
Field Goal Percentage	43.3	2/81
Field Goal Percentage Defense	39.1	8/139
Fouls Per Game	17.7	7/229
Free Throw Attempts Per Game	21.53	3/27
Free Throw Percentage	69.2	7/218
Free Throws Made Per Game	14.89	3/38
Rebounds Per Game	37.11	11/163
Scoring Defense	67.6	12/249
Scoring Margin	2.8	9/175
Scoring Offense	70.5	4/108
Steals Per Game	8.8	5/109
Three Point Attempts Per Game	13.4	14/327
Three Point Percentage	33.9	2/77
Three Point Percentage Defense	30.1	10/145
Three Pointers Per Game	4.5	13/292
Turnover Margin	1.68	5/133
Turnovers Forced Per Game	17.05	8/140
Turnovers Per Game	15.4	5/133

PRONUNCIATION GUIDE

TAMIA Jones	tah-me-uh
TIARA Young	tee-air-uh
AALIYAH Henderson	ah-lee-uh
JIYA Perry	ja-eye-uh
AMIRAH ABDUR-RAHIM	ah-meer-rah ab-door rah-heem
DONAVIA Hall	duh-nah-v-uh
CHANTE EMBRY	shawn-tay
TOYELLE Wilson	toy-ell
DENEEN Parker	duh-kneen

AMERICAN STANDINGS

North Texas	6-1	16-3
UAB	5-1	14-4
Tulsa	5-2	15-5
Charlotte	5-2	12-7
Rice	5-2	11-7
UTSA	4-3	10-8
Temple	4-3	10-9
East Carolina	3-3	10-7
South Florida	3-4	11-9
SMU	3-5	9-10
Memphis	2-5	6-12
Wichita State	2-5	6-13
Tulane	1-6	8-10
Florida Atlantic	0-6	5-12

MEDIA INFORMATION

For all media information, including credential application information and more, visit:
SMUMUSTANGS.COM/MEDIA

SMU ATHLETICS PUBLIC RELATIONS

Charlie Rose: Assistant Director/WBB Contact
 Cell: 469-442-6768
 E-mail: rosec@smu.edu

Main Public Relations Office: 214-768-2883
 Athletics Website: SMUMustangs.com
 Twitter: @SMUMustangs, @SMUWBB
 Facebook: /SMUMustangs, /SMUBasketballW
 Instagram: @SMU.Mustangs, @smuwbb

The Official Mobile App of the Mustangs is now available. Download the app & set your notification preferences for your favorite teams.
SMUMUSTANGS.COM/APP



OPENING TIP

SMU continues its homestand with a matchup against UTSA on Saturday afternoon. Tipoff is slated for 2 p.m. in Moody Coliseum. Saturday's action can be seen on ESPN+, with live stats accessible at SMUMustangs.com/stats.

LAST TIME OUT

SMU 68, Temple 66 | Wednesday, Jan. 24
 DALLAS (SMU) Using Chantae Embry's career-high 24 points, the SMU women's basketball team defeated Temple 68-66 on Wednesday night in Moody Coliseum.

Embry's 24 led SMU (9-10; 3-5 American Athletic Conference). The junior forward grabbed eight rebounds. Tiara Young scored 17 points and tallied six boards, while Reagan Bradley scored nine points, grabbed three rebounds, passed out two assists, and recorded two steals.

Amirah Abdur-Rahim scored six points and blocked three shots, and TK Pitts added three points, seven boards, and two steals. Jiya Perry scored a career-high nine points and finished with a rebound and a steal.

A LOOK AT THE OPPONENT

UTSA is 10-8 overall and 4-3 in league play. The Roadrunners finished their non-conference slate with a 6-5 record. Most recently, UTSA fell to UAB, a 54-53 defeat in Birmingham that snapped the Roadrunners four game win streak.

UP TO THIS POINT

SMU is 9-10 overall and 3-5 in the American. SMU ranks second in the American in three team statistical categories. SMU's 33.9% shooting from behind the arc, 43.3% shooting from the field, and 14.9 assists all rank second in the league. SMU's 21.5 free throw attempts and 14.9 points per game from behind the charity stripe rank third, and the Mustangs 70.5 points per game, and .97 assist/turnover ratio check in fourth. SMU won its home conference opener, a 57-52 victory over Florida Atlantic on Jan. 4. The Mustangs dropped their conference opener at South Florida. SMU bounced back from a loss to Rice at the buzzer with a gritty 91-86 victory at Memphis on Jan. 11. SMU finished its road trip with an 84-75 loss at UAB three days later. The Mustangs suffered a home loss to North Texas before falling 68-61 in a hard-fought contest at ECU. SMU snapped a three-game losing skid with a 68-66 victory over Temple on Jan. 24. SMU closed out its non-conference slate with a 6-5 record,

STARTERS VS. TEMPLE

Tiara Young vs Temple	GP/GS	PTS	REB	A	STL	BLK	MIN
	*	17	6	2	2	0	20.51*
Season	GP/GS	PPG	RPG	APG	STL	BLK	MIN/G
	19/19	18.6	5.6	1.8	1.1	0.3	32.06*

Reagan Bradley vs Temple	GP/GS	PTS	REB	A	STL	BLK	MIN
	*	9	3	2	2	0	34.54*
Season	GP/GS	PPG	RPG	APG	STL	BLK	MIN/G
	19/19	9.2	3.5	3.6	1.4	0.1	33.05*

Maya Chandler vs Temple	GP/GS	PTS	REB	A	STL	BLK	MIN
	*	0	4	2	0	0	17.33*
Season	GP/GS	PPG	RPG	APG	STL	BLK	MIN/G
	19/7	4.8	1.5	0.8	0.4	0.1	17.02*

Amirah Abdur-Rahim vs Temple	GP/GS	PTS	REB	A	STL	BLK	MIN
	*	6	2	1	0	3	12.47*
Season	GP/GS	PPG	RPG	APG	STL	BLK	MIN/G
	19/19	10.7	6.5	1.4	0.9	1.7	26.04*

Chantae Embry vs Temple	GP/GS	PTS	REB	A	STL	BLK	MIN
	*	24	8	3	0	0	39.29*
Season	GP/GS	PPG	RPG	APG	STL	BLK	MIN/G
	14/10	10.8	5.1	1.6	1.1	0.1	25.02*

2023-24 RECORDS AGAINST

	Record	Home (Streak)	Road (Streak)	Neutral (Streak)	Overtime	Streak
OVERALL	9-10	7-5 (W1)	2-3 (L2)	0-2 (L2)	1-0 (W1)	W(1)
AMERICAN	3-5	2-2 (W1)	1-3 (L2)	-	1-0 (W1)	W(1)
BIG WEST	1-0	1-0 (W1)	-	-	-	-
SWAC	1-1	1-1 (L1)	-	-	-	-
SOUTHLAND	1-0	1-0 (W1)	-	-	-	-
PAC 12	0-1	0-1 (L1)	-	-	-	-
MAC	0-1	-	-	0-1 (L1)	-	-
IVY League	0-1	-	-	0-1 (L1)	-	-
Big 12	0-1	0-1 (L1)	-	-	-	-
CUSA	2-0	1-0 (W1)	1-0 (W1)	-	-	-
MWC	1-0	1-0 (W1)	-	-	-	-

and entered league play riding a three-game win streak. The Mustangs started the season 3-1 for the first time since the 2013-14 season, and won their third consecutive season opener with a 78-75 victory over UC Riverside. SMU picked up a dominating 96-47 victory over Alabama State. SMU's 96 points marked the most points scored during the Toyelle Wilson era.

AMERICAN AWARD WINNERS

Nov. 20- Tiara Young- Offensive Player of the Week
 Dec. 18- Tiara Young- Weekly Honor Roll
 Dec. 26- Amirah Abdur-Rahim- Weekly Honor Roll
 Jan. 15- Tiara Yuong- Player of the Week

A WALKING BUCKET

Former AAC Sixth Player of the Year Tiara Young is putting together an impressive season.

Young averages 18.6 points per game, which ranks third in the American and 37th nationally. She has scored 354 points (3rd AAC, 32nd nationally), on 47.2% shooting (4th AAC). Young has attempted the third most free throws in the nation (135), and scored 96 points from behind the charity stripe, ranking second in the league and top-10 in the country.

Young has scored double-digit points in 17 out of the Mustangs 19 games, including six 20+ point performances, three of which she eclipsed 30 points.

Young was named the AAC Player of the Week for the second time this season after finishing with her first double-double of the season, including career-highs in points (38) and rebounds (15) in SMU's first conference road win at Memphis. Young is the only player in the NCAA to post 38 and 15 this season. She tied the third highest-scoring performance in SMU history and attempted the most free throws ever by a Mustang (22). Three days later, Young totaled 32 points, and added six rebounds at UAB.

Young was crowned the AAC Player of the Week on Nov. 20 after posting 24 points and earning her 1000th career point against Nicholls to start the week. She added a career-high 30 points against then-No. 5 Colorado. Young was named to the All-Tournament Team at the San Diego Classic after leading the Mustangs with 18 points against Toledo and 17 in the tournament finale against Harvard.

Young was named to the AAC Weekly Honor Roll on Dec. 18 after turning in 29 points over two games.

BRADLEY LEAVING HER MARK

Guard Reagan Bradley returned for her fifth season on the Hilltop. Bradley moved to fifth on SMU's all-time assist list on Jan. 7 after tallying four assists against Rice.

Bradley moved to sixth on the list after tying her career-high with nine against Alabama State. Bradley opened the season by moving to seventh on the list after passing out two against UC Riverside.

Bradley averages 9.2 points, 3.5 rebounds, and 3.6 assists (7th AAC), and 1.4 steals per game. Bradley has passed out 69 assists this season, ranking sixth in the league. She has turned in double-digit scoring performances in 10 games this season, including 12+ in the last five out of the last seven games.

Bradley has started 104 and played in 109 games at SMU.

SMU Career Assists
 489 Suzanne McAnally 1989-92
 481 Kendall Shead 2003-06
 462 Karen Blair 1995-99
 435 Brittany Gilliam 2006-10
387 Reagan Bradley 2019-24
 368 Missy Parker 1990-93
 327 Tomi Hollis 1983-86
 319 Alisha Filmore 2009-13

CAREER YEAR FOR ABDUR-RAHIM

Amirah Abdur-Rahim is putting together an impressive season. The senior forward averages 10.7 points, 6.5 rebounds, 1.4 assists, and 1.7 blocks per game (1st AAC, 51st nationally). Abdur-Rahim has blocked 33 shots this season, which also ranks atop the American and top-50 nationally. Abdur-Rahim has posted double-digit points 11 times this season.

Abdur-Rahim scored 10 points, grabbed nine rebounds and passed out a career-high four assists against ECU.

Abdur-Rahim started league play on fire, posting double-digit scoring performances in the Mustangs first three American games.

Abdur-Rahim earned her fourth double-double of the season with 10 points and 10 rebounds to lead SMU to a 57-52 victory over Florida Atlantic. She tied her career-high with four blocks and added three steals.

She scored a career-high 24 points against Rice. The senior forward grabbed seven rebounds, blocked four shots, and passed out three assists.

Abdur-Rahim was named to the AAC Weekly Honor Roll following back-to-back double-doubles to close out non-conference play. She scored 15 points and grabbed a career-high 13 rebounds against Sam Houston to start the week. She turned in her second straight double-double with 19 points in SMU's dominating victory over Air Force. She added 11 rebounds, three blocks, and a steal.

EMBRY GETTING IT DONE

Embry has been on fire since returning to the lineup after missing time due to injury.

Embry averages 10.8 points, 5.1 rebounds, 1.6 assists, and 1.1 steals per game.

Embry posted a season-high 19 points and added nine rebounds against ECU, followed by a career-high 24 points and eight boards in SMU's 68-66 win over Temple. The junior forward tied her season-high with four made three-pointers.

Embry has scored double figures eight times this season. Embry tallied double-digit points for the sixth time this season with 10 in the conference opener at South Florida. Embry started this season's campaign with a double-double, including 16 points and 12 rebounds against UC Riverside.

Embry added 13 points, four rebounds, one steal and an assist against Alabama State and tallied 14 points, eight rebounds, and four assists against then-No. 5 Colorado. Embry turned in 17 points and grabbed her 300th career rebound against Arkansas-Pine Bluff.

TK MAKIN' PLAYS

Sophomore guard TK Pitts has emerged as a key role player for the Mustangs.

Pitts is averaging 5.3 points, 4.4 rebounds, and 1.4 steals per game.

Pitts put together one of her most complete performances of the year in SMU's win at Memphis. She finished with six points, tallied a career-high five steals, and grabbed 10 rebounds.

Pitts closed out non-conference play with a career-high 13 points against Air Force. Pitts added a career-high two blocks, and season-high three rebounds against Sam Houston.

Pitts has grabbed five plus rebounds in eight contests this season, including 10+ boards three times (vs. Nicholls, vs. Arkansas- Pine Bluff, at Memphis).

TALE OF THE TAPE

	SMU	UTSA
PPG	70.5	64.6
FG%	.433	.396
3PT%	.339	.301
FT%	.692	.621
REB	37.1	46.4
ASST	14.9	13.6
TO	15.4	18.4
STLS	8.8	6.5
BLKS	3.3	5.2

FILLING UP THE STAT SHEET

Tamia Jones has done it all for the Mustangs so far this season.

Jones averages 9 points, 3.8 boards, 4.1 assists (6th AAC), and 2.1 steals (4th AAC). Jones has recorded 37 total steals (4th AAC).

Jones tied career highs in assists (8) against Nicholls, and points (17) against then-No. 13 Baylor.

Jones has tallied double-digit points eight times and has turned in three plus steals in seven contests, including a career-high six against Alabama State.

Jones has passed out at least five assists nine times.

HOME COOKING

The Mustangs outscore their opponents 70.2-64.2 in Moody Coliseum, shooting 44.5% to opponents' 38.4%. SMU outshoots its opponents 38.2%-27.8% from the three-point line at home.

The Mustangs record 1.5 more assists and 1.4 more steals than their foes in Moody Coliseum.

INSIDE THE NUMBERS

SMU has outscored its opponents 70.5-67.6 through 19 games this season.

SMU outshoots its opponents .433-.391, including a 33.9% clip from behind the arc.

SMU has outrebounded its opponent in nine games this season.

SMU has recorded more assists than its opponent in 10 games this season.

SMU has blocked more shots than its opponent in nine games this season.

SMU has outshot its opponent from the field in 13 games this season, and made more three-point field goals seven times.

SMU has scored more fast break and points than its opponent in eight games.

SMU has scored more points in the paint than its opponent in 11 games.

SMU has tallied more bench and second-chance points than its opponent in six games.

SHOOTING STARS

SMU has outshot its opponents in 12 games this season. SMU is shooting 43.3% from the field, which ranks second in the American.

SMU is shooting 33.9% from the three-point line, which also ranks second in the conference.

SMU shot a season-best 50.8% (31-51) from the field to finish out non-conference play against Air Force.

SMU shot a season-high 63.6% (7/11) from behind the arc, and 56.3% from the field against Alabama State.

SMU shot over 50% from the field in their first two games of the season.

GETTING DEFENSIVE

SMU has held five opponents under 55 points this season. SMU closed its non-conference slate holding Air Force to 25% shooting, marking the lowest shooting percentage by an opponent this season. SMU has held nine foes under 40% shooting. SMU is 4-0 when holding opponents below 60 points, and 2-0 when foes score under 50 points.

TAKING IT AWAY

SMU recorded more steals than its opponent in 11 games this season. SMU tied a Moody Coliseum record with 16 steals against Alabama State on Nov. 11. SMU has tallied eight plus steals in 11 out of the last 12 games and 14 times total. The Mustangs have record 10 plus steals in six games.

20-20 VISION

Tiara Young owns six of the Mustangs eight 20+-point games this season, including three games where she dropped 30+ points: (20 vs. UC Riverside, 24 vs. Nicholls, 30 vs. Colorado, 22 vs. Arkansas- Pine Bluff, 38 at Memphis, at UAB, 32). Amirah Abdur-Rahim posted a career-high 24 points on Jan. 7 against Rice. Chantae Embry tallied a career-high 24 points on Jan. 24 against Temple.

GAME FOR THE AGES

Using Tiara Young's first double-double of the season, including a career-high 38 points and 15 rebounds, SMU defeated Memphis 91-86 in double overtime on Jan. 11. SMU was down to only four players after Tamia Jones fouled out with 56 seconds remaining.

Tiara Young finished with 38 points, tying the third highest-scoring performance in SMU history and attempted the most free throws ever by a Mustang (24). SMU made 40 free throws, marking the most points from the charity stripe in program history. SMU attempted 60 free throws, marking the most attempts in program history. There were 75 combined fouls in Thursday's contest, marking the most combined fouls in NCAA history. The record broke 70 combined fouls from Oklahoma vs. Kentucky on Nov. 28, 2014.

Thursday's contest also marked the most fouls in SMU history with the record previously being 33 at TCU on Jan. 25, 1997.

SMU scored 91 points, marking the second most points this season. SMU grabbed a season-high 55 rebounds.

YOUNG MAKES ALL-TOURNAMENT TEAM

SMU graduate guard Tiara Young was named to the All-Tournament Team at the San Diego Classic. Young led the Mustangs with 18 points against Toledo. The graduate guard grabbed four rebounds and passed out two assists. Young scored 17 points, grabbed eight rebounds, and passed out three assists in the finale of the San Diego Classic against Harvard.

RETURNERS AAC AWARDS

Ella Brow was named the AAC Freshman of the Week on Jan. 16 after wins against Cincinnati and ECU.

Chantae Embry was a five-time AAC Weekly Honor Roll selection last season (2/13, 1/24, 1/16, 1/2, 11/14).

Jessica Peterson earned a spot on the final 2022-23 Weekly Honor Roll for the first time in her career in March.

BACK-TO-BACK POSTSEASON APPEARANCES

SMU made the WNIT for the second consecutive season under Head Coach Toyelle Wilson.

The Mustangs made the postseason in back-to-back years for the first time since 2014 and 2015. The 2022-23 season marked the third postseason appearance in seven seasons. SMU defeated Little Rock 68-42 in the first round of the WNIT in Moody Coliseum.

RECAPPING THE 2022-23 SEASON

SMU finished the 2022-23 season with a 17-13 record.

SMU went 13-2 in Moody Coliseum, including a program-record 10-game home winning streak. Savannah Wilkinson, Jasmine Smith and Ella Brow each earned All-American Athletic Conference honors.

The Mustangs made the WNIT for the second straight season, earning a postseason bid in back-to-back seasons for the first time since 2014 and 2015.

The Mustangs ranked second in scoring defense in the AAC, holding opponents to only 58.3 points per game.

Three different Mustangs finished in the top 10 in the league in four separate individual categories.

NO PRESSURE, NO DIAMONDS

The Mustangs 11-game non-conference gauntlet features eight games in Moody Coliseum. SMU will navigate a tough non-conference schedule, featuring games against No. 13 Baylor, and fifth-ranked Colorado along with a matchup with Toledo who made a run to the quarterfinals of the WNIT last season.

WELCOME TO THE HILLTOP

SMU welcomes two freshman and two transfers to the Hilltop for the 2023-24 season.

Tiara Young | G | GR | Shreveport, La./Houston

2022-23 (Senior at Houston): Appeared in 30 games, starting one game on Senior Night against Wichita State (Mar. 1)... Finished 17 games with 10 or more points and led the Cougars in scoring in 10 games... Led the team in free throws made (85), while finishing second in points (361), field goals made (136), and assists (51)... Recorded several career-highs in her senior season including a 26-point performance in the American Athletic Conference Tournament semifinal against Wichita State (Mar. 8)... Unanimously American Athletic Conference Sixth Player of the Year.

Maya Chandler | G | SR | Martinsville, Ind./Loyola Chicago

2022-23 (Junior at Loyola Chicago): Started 23 games and appeared in 30... Led the Ramblers in scoring with 10.7 points per game... Averaged three rebounds per game... Totaled 34 assists and 31 steals... Shot 82.6% from the charity stripe.

Aaliyah Henderson | G | FR | Norman, Okla.

High School: Henderson, a three-year letterwinner for Norman High School ranks in the top-five in Oklahoma for the class of 2022 at the point-guard position. She earned two All-Central Oklahoma Athletic Conference Selections, including first team in 2022. Her team won the 2021 Oklahoma 6A State Title after qualifying for the state tournament the previous year, before it was cancelled due to COVID-19. Her other accolades include Joe Lawson All Tournament First Team, Bruce Gray Invitational All Tournament MVP, 56th Annual Tournament of Champions All-Tournament First Team, Big All City Second Team, The Oklahoman Super 5 Honorable Mention, a two-time All-Oklahoma Honorable mention. In the classroom, Henderson entered her senior campaign for accuracy.

Shanel Reid | G | FR | Austin Texas

High School: A three-year letterwinner for Austin High School earned All-Texas First Team Honors twice, an All-Texas Academic First Team Accolade, All-Region First Team in 2021-22, All-District First Team Selection and 2019-20 district newcomer of the year and offensive MVP.

PRESEASON PROWESS

SMU was predicted to finish fourth in the AAC standings in 2023-24 Preseason Poll behind league front-runners USF, ECU, and Rice.

PONY UP DALLAS

In just seven days, SMU has raised \$100 million to support the Mustangs' transition to the Atlantic Coast Conference.

The generous early commitments from a group of thirty donors that includes trustees and key donors – alumni and non-alumni alike – will enable SMU to align and compete with an elite group of national institutions with powerhouse athletic programs, benefitting both SMU Athletics and the entire University community.

The move to the new conference is also creating additional impact. Mustang fans have responded enthusiastically to the planned move, with men's basketball season ticket sales jumping 30% in the last week and hundreds of new football season tickets being sold as well.

Notably, the move has immediately raised SMU's profile, with media coverage of the move generating more than \$163 million in advertising value in the first three days. In that same small window, SMU also experienced a 103% increase in visitors to its undergraduate admissions homepage.

AAC UNITY WEEK

Together We Stand is Jan. 27 to Feb. 4: The American Athletic Conference is committed to racial equality and continuous development of an environment that embraces and celebrates diversity, inclusion, advocacy, accountability, and education for student-athletes, coaches, conference staff, administrators, and our fans. As a component of our commitment to immediate and ongoing action, The American has established conference-wide "Unity Weeks" where student-athletes will wear special warm-up shirts, signifying their commitment to these principles. SMU's games during Unity Week are at Wichita State on Jan. 28 and at home versus Tulane on Feb. 1.

SMU WOMEN'S BASKETBALL

SMU'S RECORD WHEN...

	Overall	AAC
Record	9-10	3-5
Home	7-5	2-2
Road	2-3	1-3
Neutral	0-2	
Overtime		
Double Overtime	1-0	1-0
vs. Ranked Opponent	0-2	
Leading after first quarter	7-0	2-0
Trailing after first quarter	2-9	1-4
Tied after first quarter	0-1	0-1
Leading at halftime	6-1	2-0
Trailing at halftime	3-9	1-5
Tied at halftime		
Leading after third quarter	7-2	1-1
Trailing after third quarter	1-8	1-4
Tied after third quarter	1-0	1-0
Decided by three points or less	1-3	1-1
Decided by single digits	3-3	2-3
Decided by 10 points or more	2-3	0-1
Decided by 20 points or more	1-1	
Decided by 30 points or more	1-0	
Decided by 40 points or more	1-0	
Outrebounds opponent	6-3	1-2
Trails opponent in rebounds	3-5	2-3
Tied in rebounds	0-1	
Tallies 50+ rebounds	2-0	1-0
More assists than opponent	8-2	2-2
Fewer assists than opponent	1-7	1-2
Tied in assists	0-1	0-1
Tallies 20+ assists	1-0	
More 3-point Field Goals	5-2	1-0
Fewer 3-point Field Goals	4-8	2-5
Tied 3-point Field Goals		
More blocks than opponent	6-3	1-2
Fewer blocks than opponent	1-7	1-3
Tied in blocks	2-0	1-0
More turnovers	5-4	2-1
Fewer turnovers than opponent	4-4	1-3
Tied in turnovers	0-2	0-1
Higher Shooting Percentage	9-4	3-2
Lower Shooting Percentage	0-6	0-3
More bench points	3-3	0-1
Fewer bench points	6-7	3-4
More steals	4-8	1-5
Less steals	5-2	2-0

	Overall	AAC
More points in the paint	7-4	2-4
Fewer points in the paint	1-6	1-2
Tied in points in the paint	1-0	
More second-chance points	2-4	0-3
Fewer second-chance points	7-5	3-2
Tied second-chance points	0-1	
More fast break points	6-2	2-0
Fewer fast break points	3-7	1-4
Tied in fast break points	0-1	0-1
Shooting 60.0 or better	1-0	
Shooting 50.0 or better	2-0	
Shooting 40.0-49.9	4-7	1-2
Shooting below 40.0	2-3	2-3
Opponent shoots 50.0 or better	0-1	
Opponent shoots 40.0-49.9	0-8	0-4
Opponent shoots below 40.0	8-1	3-1
Opponent shoots below 30.0	1-0	
Scoring 90+ points	2-0	1-0
Scoring 80-89		
Scoring 70-79	2-3	0-1
Scoring 60-69	4-7	1-4
Scoring below 60	1-0	1-0
Opponent scores 80+	1-4	1-1
Opponent scores 70-79	0-4	0-2
Opponent scores 60-69	2-2	1-2
Opponent scores below 60	4-0	1-0
Opponent scores below 50	2-0	
A Mustang scores 20+ points	3-2	1-1
A Mustangs scores 30+ points	1-2	1-1
A Mustang has 10+ assists		
A Mustang has a double-double	6-0	2-0
Two Mustangs have a double-double		
Four Mustangs score 10+ points	3-0	
Five Mustangs score 10+ points	1-1	
Three Mustangs score 10+ points	3-7	1-4
Two Mustangs score 10+ points	2-2	2-1
A Mustang scores 10+ points		
Against .500+ record (day of game)	5-8	1-5
Against teams with a sub-.500 record	4-2	2-0
November	3-4	
December	3-2	0-1
January	3-4	3-4
February		
March		

DOUBLE-DOUBLES

	2023-24	Career
Chantae Embry	1	7
Amirah Abdur-Rahim	4	5
Tiara Young	1	

MILESTONE WATCH

Player	Milestone	To Tie
Bradley	400 assists	13
	500 rebounds	72
	1000 points	129
Toyelle Wilson	100 wins	5
Young	500 rebounds	46

2023-24 TEAM LEADERS

Player	10+	10-14	15-19	20-24	30+	10+ REB	DOUBLE-DOUBLES	PTS	REB	AST	STL	BLK
Abdur-Rahim	-	6	4	1	-	3	4	5	9	1	1	13
Bradley	-	9	1	-	-	-	-	-	-	9	4	-
Chandler	-	1	1	-	-	-	-	-	-	-	-	1
Embry	-	4	4	-	-	1	1	2	4	3	1	1
Hall	-	-	-	-	-	-	-	-	-	-	-	-
Henderson	-	-	-	-	-	-	-	-	1	-	-	-
Jones	-	6	2	-	-	-	-	2	1	9	8	2
Perry	-	-	-	-	-	-	-	-	-	-	1	-
Pitts	-	3	-	-	-	3	-	-	2	-	7	2
Reid	-	-	-	-	-	-	-	-	-	-	-	-
Young	-	2	9	4	3	1	1	10	4	1	4	1

STARTING LINEUPS

Lineup #	Gm #	G	G	G/F	F	F/C	Games	W-L	Pct.
1	1-7, 11-12	Reagan Bradley	Tamia Jones	Tiara Young	Chantae Embry	Amirah Abdur-Rahim	9	4-5	.444
2	8-10	Reagan Bradley	Tamia Jones	Tiara Young	TK Pitts	Amirah Abdur-Rahim	3	2-1	.667
3	13-18	Reagan Bradley	Tamia Jones	Tiara Young	Maya Chandler	Amirah Abdur-Rahim	6	2-4	.333
4	19	Reagan Bradley	Maya Chandler	Tiara Young	Chantae Embry	Amirah Abdur-Rahim	1	1-0	.100

2023-24 SMU MUSTANGS



0

TAMIA JONES
G • 5-8 • SR
The Colony, Texas
The Colony HS



1

TIARA YOUNG
G • 5-9 • GR
Shreveport, La.
LSU/Houston



2

TK PITTS
G • 6-1 • SO
Lubbock, Texas
Union HS (Okla.)



3

AALIYAH HENDERSON
G • 5-7 • FR
Norman, Okla.
Norman HS



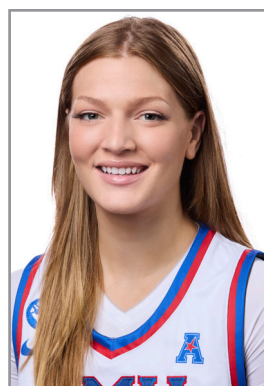
4

JIYA PERRY
G • 5-10 • SO
DeSoto, Texas
DeSoto HS



5

ELLA BROW
G • 5-8 • SO
Palm Beach, Australia
Palm Beach Currumbin HS



10

MAYA CHANDLER
G • 5-7 • SR
Martinsville, Ind.
Loyola Chicago



13

REAGAN BRADLEY
G • 5-8 • GR
Little Rock, Ark.
Little Rock Christian HS



14

SHANEL REID
G • 5-11 • FR
Austin, Texas
Austin HS



23

AMIRAH ABDUR-RAHIM
F • 6-3 • SR
Marietta, Ga.
Notre Dame



24

DONAVIA HALL
G/F • 5-10 • SO
Plano, Texas
Plano East HS



33

CHANTAE EMBRY
F • 6-1 • JR
Norman, Okla.
Texas Tech



35

JESSICA PETERSON
C • 6-2 • JR
Rancho Cucamonga, Calif.
Fresno State



TOYELLE WILSON

**HEAD COACH
THIRD SEASON
MANHATTAN COLLEGE, 2003**

Toyelle Wilson was named the SMU women's basketball head coach in April of 2021 after two seasons with the Michigan women's basketball program, where she served as an assistant coach and recruiting coordinator. She arrived in Ann Arbor in 2019 after spending six years as an assistant coach at Baylor and three seasons as the head coach at Prairie View A&M. Wilson is the first Black female head coach at SMU.

SMU finished the 2022-23 season with a 17-13 record and its second consecutive WNIT appearance. The Mustangs made the postseason in back-to-back seasons for the first time since 2014 and 2015. The 2022-23 season marked the third postseason appearance in seven seasons. SMU defeated Little Rock 68-42 in the first round of the WNIT in Moody Coliseum. SMU finished 13-2 in Moody Coliseum, including a 10-0 start at home- breaking the program's best start to open a season (2004-05) and best home winning streak (1999-00, final nine games).

The Mustangs ranked second in scoring defense in the AAC, holding opponents to only 58.3 points per game. Three different Mustangs finished in the top 10 in the league in four separate individual categories.

Wilson helped guide Savannah Wilkinson, Jasmine Smith and Ella Brow Brow to All-AAC honors.

She led the Mustangs to a 14-15 record, including 7-7 in her first season on the Hilltop. Her squad finished tied for fourth, the program's highest finish in the American Athletic Conference and they garnered the third-most votes in last season's preseason poll.

At UM, Wilson coached five Big Ten All-Conference Team selections, among them the 2020-21 Big Ten Player of the Year, the school's first AP All-American and Wade Trophy finalist, Naz Hillmon. On the recruiting trail, Michigan's 2020 recruiting class was ranked as high as No. 12 and its 2021 class rated 18th.

Michigan finished the 2020-21 season 16-6, earning its highest-ever NCAA Tournament seed (No. 6), and reached the Sweet 16 for the first time in school history. The Wolverines defeated 11th-seeded Florida Gulf Coast and No. 3 seed Tennessee in the tournament before falling in overtime to Baylor. During her first year at Michigan,

WILSON YEAR-BY-YEAR RECORD

Year	Organization/School	Position	Record (Conf)	Conference Finish	Postseason
2010-11	Prairie View A&M	Head Coach	21-12 (12-4)	1st	NCAA First Round
2011-12	Prairie View A&M	Head Coach	17-16 (11-7)	4th	
2012-13	Prairie View A&M	Head Coach	17-15 (11-7)	4th	
2013-14	Baylor	Assistant Coach	34-5	1st	NCAA Elite Eight
2014-15	Baylor	Assistant Coach	33-4	1st	NCAA Elite Eight
2015-16	Baylor	Assistant Coach	36-2	1st	NCAA Elite Eight
2016-17	Baylor	Assistant Coach	33-4	1st	NCAA Elite Eight
2017-18	Baylor	Assistant Coach	33-2	1st	NCAA Sweet Sixteen
2018-19	Baylor	Assistant Coach	37-1	1st	NCAA National Champion
2019-20	Michigan	Assistant Coach	21-11	7th	Cancelled
2020-21	Michigan	Assistant Coach	16-6	4th	NCAA Sweet Sixteen
2021-22	SMU	Head Coach	14-15 (7-7)	4th	WNIT First Round
2022-23	SMU	Head Coach	17-12 (7-8)	5th	WNIT Second Round
2023-24	SMU	Head Coach	9-10 (3-5)	-	-

the Wolverines compiled a 21-11 record and were poised to make the 2020 NCAA Tournament before the season was canceled due to the COVID-19 pandemic. Over her six seasons at Baylor, the Lady Bears won the 2019 National Championship and claimed six regular season Big 12 Conference championships and five conference tournament titles. Baylor also made four NCAA Elite Eight appearances and one NCAA Sweet 16 during her time in Waco. In total, she assisted the program to a 204-18 overall record and a 102-6 mark in Big 12 play. She recruited and coached 40 All-Conference selections, as well as three Big 12 Players of the Year, three Defensive Players of the Year, two Freshman/Newcomers of the Year and 10 WNBA draft picks.

On the recruiting trail, she helped Baylor recruit top-10 recruiting classes every year, including the No. 1 recruiting class in the country in her final season in Waco. Prior to joining the Baylor staff, she led Prairie View A&M to three-straight SWAC Tournament championships and NCAA Tournament appearances. She compiled a 55-43 record in her three seasons as the program's head coach, recruiting and coaching eight SWAC All-Conference Team selections, a Player of the Year, a Freshman of the Year

and a Newcomer of the Year. Prior to accepting the head coach position, Wilson was the Panthers' top assistant for four years, and spent three seasons as an assistant coach at Robert Morris University.

Wilson was one of 30 coaches across the nation who participated in the Center for Coaching Excellence (CCE) by the Women's Basketball Coaches Association (WBCA). The CCE is an elite program for select basketball coaches and is designed to provide college women's basketball coaches with the professional skills and personal ethics training necessary to be exceptional leaders. Wilson is also a member of the WBCA.

A native of Voorhees, New Jersey, Wilson earned a bachelor's degree in business management from Manhattan College in 2003 and was a four-year letterwinner for the women's basketball team. She was a team captain and earned Defensive Player of the Year honors while leading the Jaspers to an NCAA Tournament berth and a Metro Atlantic Athletic Conference championship in 2003.

Wilson is the mother of one son, Kash.

ACCOMPLISHMENTS AND HONORS CHAMPIONSHIPS

As a Head Coach

- 3x SWAC tournament champions (2011-2013)
- 3 NCAA tournament appearances
- 2 WNIT appearances

As an Assistant

- NCAA Champions (2019)
- 6x Big 12 Regular Season Champions (2013-2019)
- 5x Big 12 Tournament Champions (2013-16, 2018, 2019)





0 - TAMIA JONES

G ■ 6-1 ■ SR
THE COLONY, TEXAS
THE COLONY HIGH SCHOOL

2022-23 (Junior): Played in 29 games and started 27... Averaged 6.1 points per game on 31% shooting from the field... Totaled 55 assists, averaging 2.29 per game (15th AAC)... Led the Mustangs with 49 steals, averaging 1.69 per game (11th AAC)... Averaged 30 minutes per game (15th AAC)... Scored 17 points, dished out four assists, and grabbed six rebounds against California (12/04).

2021-22 (Sophomore): Played in 13 games, averaging 4.1 minutes... Made 3-of-9 field goals and 2-of-4 free-throw attempts... Scored eight points, including six against Oral Roberts (11/17)... Also had 11 rebounds, two assists, 1 block and five steals.

2020-21 (Freshman): Played in six games with two starts, averaging 15.3 minutes... Went 6-for-22 from the field, including 3-for-7 from behind the arc... Made one free throw to finish with 16 points... Grabbed 12 rebounds... Also had nine assists, one block and four steals... Season was canceled after six games due to concerns regarding Covid-19.

High School: Named to the TABC All-State team as a junior... Led The Colony High School to the Class 5A Region I semifinals... Averaged 18.5 points and 5.1 assists per game.



JONES STATS MUSTANG BASKETBALL

SEASON HIGHS

Points	17
Assists	8
Rebounds	7
Steals	6
Blocks	3
FG Made	6
3 PT FG Made	2
FT Made	3

CAREER HIGHS

Points	17
Assists	8
Rebounds	8
Steals	6
Blocks	3
FG Made	6
3 PT FG Made	3
FT Made	5

MISCELLANEOUS

Double-Doubles	-
Double-Digit Points	8x
5+ Assists	9x
Double-Digit Blocks	-
5+Steals	1





1 - TIARA YOUNG

G ■ 5-9 ■ GR
SHREVEPORT, LA.
WALKER HIGH SCHOOL/HOUSTON

2022-23 (Senior at Houston): Appeared in 30 games, starting one game on Senior Night against Wichita State (Mar. 1)... Finished 17 games with 10 or more points and led the Cougars in scoring in 10 games... Led the team in free throws made (85), while finishing second in points (361), field goals made (136), and assists (51)... Recorded several career-highs in her senior season including a 26-point performance in the American Athletic Conference Tournament semifinal against Wichita State (Mar. 8)... Unanimously American Athletic Conference Sixth Player of the Year... Dave Campbell's Texas Basketball Sixth Woman of the Year.

2021-22 (Junior at Houston): Played in 31 games, starting eight... Led the team in scoring in five games and rebounds in three games... Contributed to the teams national ranks in steals (No. 14 – 341), steals per game (No. 32 – 10.0) and turnovers forced (No. 44 – 18.59)... Second on the team in free throws (46) and third on the team in points (266), scoring average (8.6) and assists (51).

At LSU: Played in 29 games, making nine starts... Recorded 37 assists, 14 steals and two blocks in her debut season... Posted a season-high 19 points against New Orleans.

High School: Played high school ball at Walker HS... Three-time District 1-5A Most Valuable Player... District 4-5A Most Valuable player... Three-time All-City Most Valuable Player... Two-time All-State Most Valuable Player... 2019 Parish/Metro Most Valuable Player... Gatorade Louisiana Player of the Year... Miss Louisiana Basketball honoree... Two-time All-USA Louisiana Player of the Year... 2019 WBCA High School All-American Honorable Mention.

Personal: Daughter of Meoka Young and Warren Young Sr... Has one brother, Warren Young Jr.

Awards at SMU:

San Diego Classic All-Tournament Team
 AAC Player of the Week (Nov. 20)



YOUNG STATS
 MUSTANG BASKETBALL

SEASON HIGHS

Points	38
Assists	5
Rebounds	15
Steals	3
Blocks	2
FG Made	10
3 PT FG Made	1
FT Made	18

CAREER HIGHS

Points	38
Assists	7
Rebounds	15
Steals	5
Blocks	2
FG Made	10
3 PT FG Made	2
FT Made	18

MISCELLANEOUS

Double-Doubles	1
Double-Digit Points	17x
5+ Assists	1x
5+ Rebounds	12x
Double-Digit Steals	-





2 - TK PITTS

G ■ 6-1 ■ SO
 LUBBOCK, TEXAS
 UNION HS (OKLAHOMA)

2022-23 (Freshman): Played in 24 games, averaging 12.8 minutes per game.... Averaged 2.5 points and two rebounds per game... Earned career-highs in points (11), assists (3), steals (3) and rebounds (6) against Alabama State (11/07).

High School: TK Pitts, a 6-1 guard from Lubbock, Texas, played at Union High School in Tulsa, Okla. She was named the Frontier Valley Conference Defensive Player of the Year, earned all-conference honors, was an Academic All-Conference selection and was voted the school's homecoming queen in 2021. Pitts is ranked No. 80 overall by All Star Girls Report and No. 123 by Girls Basketball Report. Girls Basketball Report also has her ranked No. 32 at the shooting guard position.

"TK played on the highest level in AAU with Lady Proskills. There is something special about her. The first time I saw her, I said she can be a huge mismatch problem for smaller guards and as a face-up post. She can be at the front of a press, with her anticipation defensively, rebounding out of her area, and running the floor. We got a diamond and I can't wait to see her shine. She is a family-oriented person and you just gravitate to her personality and character." - Head Coach Toyelle Wilson



PITTS STATS MUSTANG BASKETBALL

SEASON HIGHS

Points	13
Assists	3
Rebounds	10
Steals	5
Blocks	2
FG Made	5
3 PT FG Made	1
FT Made	4

CAREER HIGHS

Points	13
Assists	3
Rebounds	10
Steals	5
Blocks	2
FG Made	5
3 PT FG Made	1
FT Made	5

MISCELLANEOUS

Double-Doubles	-
Double-Digit Points	2x
5+ Rebounds	8x
Double-Digit Rebounds	3x
Double-Digit Steals	-





3 - AALIYAH HENDERSON

G ■ 5-7 ■ FR
NORMAN, OKLA.
NORMAN HIGH SCHOOL

High School: Henderson, a three-year letterwinner for Norman High School ranks in the top-five in Oklahoma for the class of 2022 at the point-guard position. She earned two All-Central Oklahoma Athletic Conference Selections, including first team in 2022. Her team won the 2021 Oklahoma 6A State Title after qualifying for the state tournament the previous year, before it was cancelled due to COVID-19. Her other accolades include Joe Lawson All Tournament First Team, Bruce Gray Invitational All Tournament MVP, 56th Annual Tournament of Champions All-Tournament First Team, Big All City Second Team, The Oklahoman Super 5 Honorable Mention, a two-time All-Oklahoma Honorable mention. In the classroom, Henderson entered her senior campaign for accuracy.

"Aaliyah is a scoring point guard that can flat out score the ball," Wilson said. "She brings a defensive mentality we need on our team. She has instant energy and quickness that will help our team on both sides of the ball. Aaliyah won a state championship and knew what it takes to win. She is a proven winner and I'm excited for Mustang Nation to see her on the court."



HENDERSON STATS MUSTANG BASKETBALL

SEASON HIGHS

Points	4
Assists	3
Rebounds	7
Steals	1
Blocks	-

CAREER HIGHS

Points	4
Assists	3
Rebounds	7
Steals	1
Blocks	-

MISCELLANEOUS

Double-Doubles	-
Double-Digit Points	-
Double-Digit Assists	-
Double-Digit Blocks	-
Double-Digit Steals	-





4 - JIYA PERRY

G ■ 5-10 ■ SO
 DESOTO, TEXAS
 DESOTO HIGH SCHOOL

2022-23 (Freshman): Played in 24 games averaging 8.2 minutes a game... Totaled 43 points, 23 rebounds, seven assists, and seven steals... Added seven points, three rebounds, two assists, and a steal against UIW (12/21).

High School: Jiya Perry, a 5-10 guard, helped Desoto win the programs first state championship. Desoto went 28-2 during its historic run and finished the season ranked No. 11 in the nation by MaxPreps. Perry is ranked as the No. 23 prospect in Texas by Premier Basketball Report.

"Jiya is a scoring wing who can flat out shoot the ball. She has a knack for the ball, and she understands the game very well. She has a scorer's mentality and has instant energy and quickness that will help our team on both sides of the ball. She won a state championship and knows what it takes to win. She is a proven winner. I'm excited for Mustang Nation to see her on the court." - Head Coach Toyelle Wilson



PERRY STATS MUSTANG BASKETBALL

SEASON HIGHS

Points	9
Assists	4
Rebounds	6
Steals	3
Blocks	1
FG Made	3
3 PT FG Made	1
FT Made	2

CAREER HIGHS

Points	9
Assists	4
Rebounds	6
Steals	3
Blocks	1
FG Made	3
3 PT FG Made	1
FT Made	2

MISCELLANEOUS

Double-Doubles	-
Double-Digit Points	-
Double-Digit Assists	-
Double-Digit Blocks	-
Double-Digit Steals	-





5 - ELLA BROW

G ■ 5-8 ■ SO

PALM BEACH, AUSTRALIA

PALM BEACH CURRUMBIN HS

2022-23 (Freshman): Played in 25 games totaling 10 starts... Averaged 4.6 points, and 2.7 assists per game (14th AAC) in 22.4 minutes... Totaled 21 steals... Shot 35.2% from the field... Earned career-highs in points (14), assists (eight) and rebounds (six) against East Carolina (1/14)... Was named to the 2022-23 AAC All-Freshman team.

High School: Ella Brow, a guard, played at Palm Beach Currumbin High School in Palm Beach, Queensland, Australia. She also plays for Southern District Lady Spartans in the NBL1, the top level in Australia, and formerly of the Queensland Basketball League.

"Our staff got to see Ella a couple years ago, and on film in April, and she will be one of the hardest working players I've ever coached. She reminds me of a former player I coached, Kristy Wallace, also from Australia. She has grit, toughness, and a high basketball IQ. She brings something different to the table with her skill level, knowledge to play at this level, and already having experience playing professionally at the highest level. The fans will love her." - Head Coach Toyelle Wilson



BROW STATS MUSTANG BASKETBALL

SEASON HIGHS

Points	10
Assists	1
Rebounds	5
Steals	-
Blocks	-
FG Made	3
3 PT FG Made	2
FT Made	2

CAREER HIGHS

Points	14
Assists	8
Rebounds	6
Steals	2
Blocks	1
FG Made	5
3 PT FG Made	3
FT Made	4

MISCELLANEOUS

Double-Doubles	-
Double-Digit Points	1
Double-Digit Assists	-
Double-Digit Blocks	-
Double-Digit Steals	-





10 - MAYA CHANDLER

G ■ 5-7 ■ SR

MARTINSVILLE, IND.

TRITON CENTRAL/LOYOLA CHICAGO

2022-23 (Junior at Loyola Chicago): Started 23 games and appeared in 30... Led the Ramblers in scoring with 10.7 points per game... Averaged three rebounds per game... Totaled 34 assists and 31 steals... Shot 82.6% from the charity stripe.

2021-22 (Sophomore at Loyola Chicago): Started in 29 of her 30 appearances... Led the team in scoring, averaging 10.6 points as she scored in double figures 17 times ... Reached the 20-point mark on three separate occasions ... Upped her scoring mark to 10.7 ppg during Missouri Valley Conference play ... Also chipped in 2.8 rebounds, 1.6 assists, and 0.7 steals per contest during the season ... Shot 37.2 percent (110-for-296) from the field and operated at a team-best 83.3 percent clip (60-for-72) from the free throw line.

2020-21 (Freshman at Loyola Chicago): Started all 27 games ... Became the first player in program history to be named the Missouri Valley Conference Freshman of the Year ... Also landed on the MVC All-Freshman Team ... Ranked third on the team in scoring, averaging 8.7 points... Added 2.8 rebounds, 1.3 assists, and 0.9 steals ... Operated at a 39.3 percent (83-for-211) clip from the field ... Shot 36.6 percent (26-for-71) from beyond the three-point arc ... Finished the year at 72.1 percent (44-for-61) from the free throw line ... Scored in double figures 11 times.

High School: Explosive combo guard who starred at Triton Central for head coach Bryan Graham ... Won three straight Indiana Crossroads Conference (ICC) titles in addition to a pair of sectional crowns ... Averaged 14.4 points and 4.2 assists last season en route to earning an Indiana Junior All-Star selection ... Two-time All-State selection by the Indiana Coaches of Girls Sports Association (ICGSA) ... Three-time All-Indiana Crossroads Conference honoree ... Won an Adidas Gauntlet National Championship on the club level with coach Tony Marlin's Indiana Elite Thunder.



CHANDLER STATS MUSTANG BASKETBALL

SEASON HIGHS

Points	16
Assists	1
Rebounds	7
Steals	3
Blocks	1
FG Made	5
3 PT FG Made	1
FT Made	5

CAREER HIGHS

Points	23
Assists	5
Rebounds	11
Steals	5
Blocks	1
FG Made	8
3 PT FG Made	5
FT Made	7

MISCELLANEOUS

Double-Doubles	-
Double-Digit Points	1
Double-Digit Assists	-
Double-Digit Blocks	-
Double-Digit Steals	-





13 - REAGAN BRADLEY

G ■ 5-8 ■ GR
LITTLE ROCK, ARK.
LITTLE ROCK CHRISTIAN

2022-23 (Senior): Played in 27 games and started in 26... Averaged 8.7 points, 3.1 assists (8th AAC), and three rebounds while playing 30.2 minutes per game... Recorded 23 steals... Shot 71% from the free throw line... Moved to eighth on SMU's all-time assists list (318) against Texas Tech (3/22)... Added 17 points, six assists, three rebounds, and two steals against Louisiana Tech (11/22)... Scored 18 points including 100% (3-3) from the three point line against Tulsa (2/7).

2021-22 (Junior): Played in 29 games with 25 starts... Second on the team with 92 assists, ranking 14th in The American with 3.2 per game... Passed out a season-high eight assists twice, against Tulane (1/15) and at Cincinnati (2/9)... Scored 5.0 points per game with a season-high 18 at Memphis (1/8)... Finished with at least 10 points four times... Pulled down 3.1 rebounds per game with a season-high eight against Arkansas-Pine Bluff (12/28)... Also had 23 steals and four blocks.

2020-21 (Sophomore): Started five of six games... Averaged 6.3 points and led the team with 6.2 rebounds per game... Third on the team with 14 field goals made and tied for second with four 3-pointers made... Had a team-best 13 assists... Also had six steals and a block... Season was canceled after six games due to concerns regarding Covid-19.

2019-20 (Freshman): Named to the American Athletic Conference All-Freshman team... Ranked second in the league with 4.4 assists per game... Set an SMU freshman record with 129 assists, ranking ninth in a season all-time... Recorded a season-high nine assists against UTEP (12/19)... Finished with eight in the season-opener against McNeese (11/5) and again against Houston (2/22)... Had 13 games with at least five assists... Averaged 9.6 points per game, with a season-high 18 against George Mason (12/31)... Scored 17 at UCF (2/1), and 16 against UTEP... Scored at least 10 in 15 times, including a stretch of five straight games starting against UTEP and ending with 11 against Connecticut (1/5)... Led the team with 24 3-pointers, shooting 34.3 percent outside the arc... Shot 35.4 percent from the field... Averaged 5.2 rebounds... Grabbed a season-high 10 at Tulsa (2/15) and nine against North Dakota (12/9)... Led the team with 55 steals... Swiped a season-high five against McNeese... Also recorded five blocks.

High School: Reagan Bradley was named Arkansas Democrat-Gazette All-Arkansas Preps Girls Basketball Player of the Year for 2019. Led by Bradley, Little Rock Christian won its first state championship in 2019. She was named state tournament MVP, scoring 10 points with five assists in the title game, and showcased her ability to score in the quarterfinal round, finishing with 34 points. Bradley was a four-time all-state selection. A 5-8 guard, she averaged 15.2 points during her senior campaign, shooting 54.0 percent from the field after scoring 17.6 points with a 44.0 field goal percentage as a junior.



BRADLEY STATS MUSTANG BASKETBALL

SEASON HIGHS

Points	16
Assists	9
Rebounds	8
Steals	4
Blocks	-
FG Made	5
3 PT FG Made	2
FT Made	5

CAREER HIGHS

Points	18
Assists	9
Rebounds	10
Steals	5
Blocks	2
FG Made	7
3 PT FG Made	4
FT Made	6

MISCELLANEOUS

Double-Doubles	-
Double-Digit Points	10x
5+ Assists	4x
Double-Digit Blocks	-
Double-Digit Steals	-





14 - SHANEL REID

G ■ 5-11 ■ FR
 AUSTIN, TEXAS
 AUSTIN HIGH SCHOOL

High School: A three-year letterwinner for Austin High School earned All-Texas First Team Honors twice, an All-Texas Academic First Team Accolade, All-Region First Team in 2021-22, All-District First Team Selection and 2019-20 district newcomer of the year and offensive MVP.

"Shanel is a 6-0 wing with a smooth game that will bring size and athleticism to our back court," Wilson said. "She can shoot the three, get to the rim and has a great midrange game. She handles the ball well and is an incredible passer. The best part of her game is how versatile she is from the perimeter. When I got to see her in person, she made a huge impact for her team on and off the ball. She will have a chance to make an immediate impact with the system we run here at SMU."



REID STATS MUSTANG BASKETBALL

SEASON HIGHS

Points	-
Assists	-
Rebounds	-
Steals	-
Blocks	-

CAREER HIGHS

Points	-
Assists	-
Rebounds	-
Steals	-
Blocks	-

MISCELLANEOUS

Double-Doubles	-
Double-Digit Points	-
Double-Digit Assists	-
Double-Digit Blocks	-





23 - AMIRAH ABDUR-RAHIM

F ■ 6-3 ■ SR
 MARIETTA, GA.
 SAINT FRANCIS HIGH SCHOOL

2022-23 (Junior): Averaged 5.8 minutes per game over nine games... Totaled 28 points and 14 rebounds... Scored a career-high nine points, and recorded two rebounds while shooting 100% (4-4) from the field against Little Rock (3/16).

2021-22 (Sophomore): Played in one game before suffering a season-ending knee injury... Scored eight points with four rebounds... Was 4-of-5 from the field... Also had one assist, one block and one steal.

2020-21 (Freshman): At Notre Dame, Abdur-Rahim played in eight games, scoring eight points on 4-of-10 shots from the field. She also grabbed nine rebounds with three assists, one block and one steal while averaging 5.7 minutes.

High School: A Marietta, Georgia, native, Abdur-Rahim was a 2020 Georgia Athletic Coaches Association All-State selection, and an Atlanta Journal Constitution Class A Private All-State Honorable Mention at St. Francis High School. She also earned All-Metro First Team honors in the North Fulton district after averaging 14.1 points, 4.6 rebounds, 2.6 assists and 1.4 blocks during her senior season. The forward shot 60.1 percent from the field during the campaign, while leading the Knights to a runner-up finish in the state championship tournament. As a junior, Abdur-Rahim was named to the espnW HoopGurlz Super 60 and averaged 12.8 points per game before an injury cut her season short. During her sophomore season, she scored 9.5 points per game to lead St. Francis to the semifinals of the state tournament, finishing with a 26-5 record. She also was a member of the track team, running the 200-, 400- and 800-meter relays as well as competing in the high jump and triple jump.

Personal: She is the 11th of 13 children and the sister of Shareef Abdur-Rahim, who played 13 seasons in the NBA and averaged 18.1 points per game. Shareef is currently the President of the NBA G League.



ABDUR-RAHIM STATS MUSTANG BASKETBALL

SEASON HIGHS

Points	24
Assists	4
Rebounds	13
Steals	4
Blocks	4
FG Made	9
3 PT FG Made	-
FT Made	4

CAREER HIGHS

Points	24
Assists	4
Rebounds	13
Steals	4
Blocks	4
FG Made	9
3 PT FG Made	-
FT Made	4

MISCELLANEOUS

Double-Doubles	4
Double-Digit Points	11x
Double-Digit Rebounds	4x
3+ Blocks	7x
3+ Steals	2x





24 - DONAVIA HALL

G ■ 5-10 ■ SO
 PLANO, TEXAS
 PLANO EAST HIGH SCHOOL

2022-23: Did not see action.

High School: Donavia Hall, a 5-10 guard, guided Plano East to its first regional final since 1993, earning District 6-6A MVP and all-state accolades. She averaged 11 points, six rebounds, three assists and four steals during the 2021 season and was a third-team all-area selection. Hall is ranked as the No. 13 small forward prospect and No. 59 overall by Girls Basketball Report.

"Donavia is a guard that is very athletic and will bring size to our back court. She got my attention immediately when I first got the job and saw her play. She can shoot the 3, get to the rim, and has a smooth midrange game. She can handle the ball and is an incredible passer. The best part of her game is probably her defense. That quickly got my attention. She will have a chance to make an immediate impact on our program when she steps on campus." - Head Coach Toyelle Wilson



HALL STATS MUSTANG BASKETBALL

SEASON HIGHS

Points	6
Assists	4
Rebounds	6
Steals	2
Blocks	-

CAREER HIGHS

Points	6
Assists	4
Rebounds	6
Steals	2
Blocks	-

MISCELLANEOUS

Double-Doubles	-
Double-Digit Points	-
Double-Digit Assists	-
Double-Digit Blocks	-
Double-Digit Steals	-





33 - CHANTAE EMBRY

F ■ 6-1 ■ JR
 NORMAN, OKLA.
 NORMAN HIGH SCHOOL/TEXAS TECH

2022-23 (Sophomore): Totaled 28 starts while playing 30 games... Averaged 11.6 points (20th AAC), 6.2 rebounds (11th AAC) per game.... Shot 48.3% from the field and 75.5% at the free throw line... Totaled 29 steals and 44 assists...Recorded five double-doubles on the year... Owned four of the Mustangs' seven 20-point games this season (20 at OU, 20 at Oral Roberts, 20 vs. ECU, 21 vs. Houston)... Tallied 15 points, 13 rebounds, four assists and one steal in the win over UCF, becoming the first Mustang with 15+ points, 10+ rebounds, four+ assists since 2018.

2021-22 (Freshman at Texas Tech): Played in 28 games... averaged 4.5 points and 2.6 rebounds... hit 53.5% from the field and 77.1% on FTs... season-high 11 points at Kansas State 2/5... season-best 8 rebounds vs Oklahoma State 3/10.

High School: Posted an impressive high school career at Norman High School and Prague High School, and was heralded as one of the top recruits in the country by a number of outlets, boasting a four-star rating and ranking No. 67 overall and the No. 14 forward according to ESPN ... Also ranked in the top 100 of the 2021 signing class according to Vype ... As a senior, averaged 12.3 points, 9.9 rebounds, 2.9 assists, 1.8 steals and 1.4 blocks per game, while leading Norman to the 6A state championship with a perfect 19-0 record ... Played her junior season at Norman High School in 2019-20, and averaged 16.8 points and 8.9 rebounds per game while leading Norman to a 24-1 record, and championships at the conference, district, regional and area levels, along with a national top-25 ranking in the ESPNW poll ... Earned Suddenlink First Team All-State honors by MaxPreps and All-City Second Team, while also making All-Tournament Teams at the Joe Lawson Invitational and 2020 Titan Classic ... As a freshman at Prague High School, averaged 23 points and 13.1 rebounds and garnered a number of individual honors, including conference MVP, All-Star Preps Star Player of the Year, Second Team All-USA Oklahoma Girls Basketball Team, and Vype Class 3A First Team ... That season, led Prague to district and regional championships, as well as advancing to the first round of state.

Personal: Was born in October of 2002 to mother Rhonda Embry ... Has four older siblings: Montreal, Cherelle, Darnel and Ray ... Enjoys listening to music, hanging out with her best friend Karley and her mom, shopping, playing basketball, watching movies, dancing and watching TikToks.



EMBRY STATS MUSTANG BASKETBALL

SEASON HIGHS

Points	24
Assists	5
Rebounds	12
Steals	3
Blocks	1
FG Made	6
3 PT FG Made	4
FT Made	3

CAREER HIGHS

Points	24
Assists	4
Rebounds	15
Steals	3
Blocks	2
FG Made	9
3 PT FG Made	4
FT Made	9

MISCELLANEOUS

Double-Doubles	1
Double-Digit Points	8x
Double-Digit Rebounds	1x
Double-Digit Assists	-
Double-Digit Blocks	-





35 - JESSICA PETERSON

C ■ 6-2 ■ JR

RANCHO CUCAMONGA, CALIF.

ETIWANDA HIGH SCHOOL/ FRESNO STATE

2022-23 (Sophomore): Played in 27 games and started three while averaging 5.3 points, and five rebounds per game... Totaled 16 blocks, and 12 steals... Shot 43.8% from the field and 60.9% from the free throw line... Scored 19 points and grabbed nine rebounds against Temple (3/1) on 50% shooting from the field and 4-for-5 from the free throw line.

2021-22 (Freshman at Fresno State): Played in 22 games, averaging 8.6 minutes ... averaged 2.4 points and 2.7 rebounds per game ... posted season highs of eight points and eight rebounds versus Wyoming ... also grabbed eight boards against UC Merced ... scored eight points in Fresno State's first round game of the Mountain West tournament against Utah State ... collected at least five rebounds on six occasions ... produced season-high four blocks versus Stanislaus State ... earned first collegiate start at UNLV ... played double digit minutes in 10 games, with nine of those coming after the start of February.

High School: Averaged 14 points and 11 rebounds per game as a junior for Etiwanda HS ... earned three all-state selections in 2020, being tabbed first team All-CIF Open Division, second team Cal Hi Sports and second team All-CIF ... garnered first team All Baseline league honors and two all-area selections in Inland Empire ... earned first team honors at the Nike Battle of the Beach tournament ... averaged a double-double during the 2019 and 2020 seasons ... was ranked as the No. 8 player in Southern California in the Class of 2021.

Personal: Born in Rancho Cucamonga, Calif. ... Daughter of Winston and Rosalie Peterson ... has four siblings, William, Max, Sophia and Morgan.



PETERSON STATS MUSTANG BASKETBALL

SEASON HIGHS

Points	4
Assists	1
Rebounds	5
Steals	1
Blocks	2
FG Made	1
3 PT FG Made	-
FT Made	2

CAREER HIGHS

Points	19
Assists	3
Rebounds	14
Steals	2
Blocks	4
FG Made	7
3 PT FG Made	-
FT Made	5

MISCELLANEOUS

Double-Doubles	-
Double-Digit Points	-
Double-Digit Assists	-
Double-Digit Blocks	-
Double-Digit Steals	-



2023-24 SMU MUSTANGS BOX SCORES

UC Riverside (0-1,0-0 Big West) -vs- SMU (1-0,0-0 AAC)
11/06/23 at Moody Coliseum, Dallas, TX

Alabama St. (0-0,0-0 SWAC) -vs- SMU (2-0,0-0 AAC)
11/11/23 at Moody Coliseum, Dallas, TX

Date: 11/06/23	Score By Period	1	2	3	4	Total
Time: 4:00 PM	UC Riverside	8	17	21	9	55
Attendance: 541	SMU	16	21	16	25	78
Site: Moody Coliseum, Dallas, TX						
Referees: Katrina Barker-Cutler, Chris Markey, Jules Gallien						

Date: 11/11/23	Score By Period	1	2	3	4	Total
Time: 2:00 PM	Alabama St.	11	8	18	10	47
Attendance: 549	SMU	30	22	21	23	96
Site: Moody Coliseum, Dallas, TX						
Referees: Lauren Niemiera, Talisa Green, Timothy Bryant						

UC Riverside 55

#	Player	GS	MIN	FG	3PT	FT	ORB-DRB	REB	PF	A	TO	BLK	STL	PTS
32	Webster,Jordan	*	35	8-19	3-8	5-6	4-6	10	1	2	2	0	3	24
01	Bryant,Matehya	*	38	10-17	0-1	2-4	5-6	11	5	0	1	1	1	22
10	Stenberg,Julia	*	27	1-6	1-4	0-0	1-1	2	1	0	0	0	0	3
02	Walters,Rykana	*	34	0-7	0-3	0-0	0-5	5	3	7	1	0	1	0
13	Chocano,Maya	*	15	0-3	0-2	0-0	0-0	0	0	1	0	1	0	0
00	Jackson,Makayla		16	1-4	1-2	0-1	1	1	0	0	0	0	2	4
04	Marshall,Jordyn		24	1-7	0-3	0-0	0-1	1	3	3	0	0	0	2
11	Matarranz,Esther		7	0-1	0-0	0-0	1-1	2	2	0	1	0	0	0
03	Tillery,Zoe		4	0-0	0-0	0-0	0-1	1	0	0	3	0	0	0
TM TEAM			0	0-0	0-0	0-0	2-3	5	0	0	3	0	0	0
Totals			200	21-64	5-25	8-12	13-25	38	16	13	11	2	7	55

Team Summary	FG	3PT	FT
1st Quarter	3-13 23.08 %	0-6 0.00 %	2-2 100.00 %
2nd Quarter	7-16 43.75 %	3-10 30.00 %	0-0 0.00 %
3rd Quarter	8-22 36.36 %	2-7 28.57 %	3-4 75.00 %
4th Quarter	3-13 23.08 %	0-2 0.00 %	3-6 50.00 %
Total	21-64 32.8 %	5-25 20.0 %	8-12 66.7 %

Technical Fouls: none Second Chance Points: 11 Scores Tied: 1 time(s) Points in the Paint: 24 Fast Break Points: 7
Lead Changed: 0 time(s) Points off Turnovers: 18 Bench Points: 6 Largest Lead: 0 0

SMU 78

#	Player	GS	MIN	FG	3PT	FT	ORB-DRB	REB	PF	A	TO	BLK	STL	PTS
01	Young,Tiara	*	34	9-14	1-2	1-4	0-3	3	2	5	1	0	0	20
03	Embry,Chantae	*	28	6-12	2-5	2-2	1-11	12	2	5	3	1	2	16
13	Bradley,Reagan	*	30	4-9	2-4	2-2	0-2	2	1	2	2	0	1	12
00	Jones,Tamia	*	35	2-5	0-0	3-3	2-3	5	0	4	0	1	1	7
23	Abdur-Rahim,Amirah	*	19	2-6	0-0	0-2	1-2	3	3	1	1	1	0	4
05	Brow,Ella		24	3-5	2-3	2-2	1-4	5	0	1	1	0	0	10
02	Pitts,TK		9	3-3	0-0	0-0	0-1	1	1	0	1	0	1	6
04	Perry,JIya		6	0-1	0-1	2-2	0-0	0	1	0	0	0	0	2
10	Chandler,Maya		9	0-1	0-1	1-2	0-2	2	0	1	0	1	0	1
24	Hall,Donavia		6	0-0	0-0	0-0	0-2	2	2	1	3	0	0	0
TM TEAM			0	0-0	0-0	0-0	1-3	4	0	0	0	0	0	0
Totals			200	29-56	7-16	13-19	6-33	39	12	20	12	4	5	78

Team Summary	FG	3PT	FT
1st Quarter	5-15 33.33 %	3-7 42.86 %	3-4 75.00 %
2nd Quarter	8-14 57.14 %	1-3 33.33 %	4-5 80.00 %
3rd Quarter	6-15 40.00 %	1-4 25.00 %	3-3 100.00 %
4th Quarter	10-12 83.33 %	2-2 100.00 %	3-7 42.86 %
Total	29-56 51.8 %	7-16 43.8 %	13-19 68.4 %

Technical Fouls: none Second Chance Points: 6 Scores Tied: 0 time(s) Points in the Paint: 18 Fast Break Points: 7
Lead Changed: 0 time(s) Points off Turnovers: 7 Bench Points: 29 Largest Lead: 0 0

Nicholls (3-1,0-0 Southland) -vs- SMU (3-0,0-0 AAC)
11/14/23 at Moody Coliseum, Dallas, TX

Colorado (4-0,0-0 Pac-12) -vs- SMU (3-1,0-0 AAC)
11/18/23 at Moody Coliseum, Dallas, TX

Date: 11/14/23	Score By Period	1	2	3	4	Total
Time: 11:00 AM	Nicholls	11	15	8	20	54
Attendance: 4,548	SMU	7	16	25	21	69
Site: Moody Coliseum, Dallas, TX						
Referees: Tasha Smith, Brandon Enterline, Courtney Robinson						

Date: 11/18/23	Score By Period	1	2	3	4	Total
Time: 8:00 PM	Colorado	18	26	20	20	84
Attendance: 1,749	SMU	13	23	16	17	69
Site: Moody Coliseum, Dallas, TX						
Referees: Trevor Inouye, Mark Resch, Maj Forsberg						

Nicholls 54

#	Player	GS	MIN	FG	3PT	FT	ORB-DRB	REB	PF	A	TO	BLK	STL	PTS
21	Alexander,Lexi	*	36	6-13	0-1	0-0	1-2	3	3	0	5	0	0	12
07	Delgado,Betzalys	*	34	5-14	0-4	0-0	3-5	8	0	8	4	0	0	10
22	Brister,Deonna	*	20	3-6	1-3	0-0	1-6	7	3	2	2	0	1	7
12	Hamilton,Kyla	*	24	1-4	1-2	0-0	1-1	2	3	0	1	0	1	3
23	Craig,Daelyn	*	15	0-4	0-0	0-0	0-0	0	3	0	1	0	1	0
03	Malone,Ashley		14	4-4	0-0	5-6	0-0	0	2	0	0	0	1	13
11	Curtis,Britiya		27	3-8	1-2	0-0	0-5	5	0	1	3	0	2	7
25	Skipworth,Violette		19	1-4	0-2	0-0	1-1	2	2	1	0	0	0	2
01	Etienne,Mikayla		9	0-2	0-1	0-0	0-0	0	1	0	1	0	0	0
30	Manley,Kate		2	0-0	0-0	0-0	0-1	1	1	0	1	0	0	0
TM TEAM			0	0-0	0-0	0-0	2-4	6	0	0	2	0	0	0
Totals			200	23-59	3-15	5-6	9-25	34	18	12	20	0	6	54

Team Summary	FG	3PT	FT
1st Quarter	5-16 31.25 %	1-4 25.00 %	0-0 0.00 %
2nd Quarter	6-14 42.86 %	1-2 50.00 %	1-2 100.00 %
3rd Quarter	3-13 23.08 %	0-5 0.00 %	2-2 100.00 %
4th Quarter	9-16 56.25 %	0-2 0.00 %	2-2 100.00 %
Total	23-59 39.0 %	3-15 20.0 %	5-6 83.3 %

Technical Fouls: none Second Chance Points: 9 Scores Tied: 5 time(s) Points in the Paint: 26 Fast Break Points: 4
Lead Changed: 8 time(s) Points off Turnovers: 17 Bench Points: 22 Largest Lead: 0 0

SMU 69

#	Player	GS	MIN	FG	3PT	FT	ORB-DRB	REB	PF	A	TO	BLK	STL	PTS
01	Young,Tiara	*	35	10-18	0-2	4-6	2-5	7	3	1	1	0	1	24
00	Jones,Tamia	*	35	5-10	2-6	2-4	0-1	1	0	8	2	4	0	14
23	Abdur-Rahim,Amirah	*	31	5-10	0-1	4-6	2-6	8	0	1	4	3	0	14
13	Bradley,Reagan	*	32	3-7	2-6	2-2	0-3	3	2	3	4	0	0	10
03	Embry,Chantae	*	29	1-6	1-2	0-0	1-3	4	2	2	3	0	3	3
02	Pitts,TK		22	0-4	0-1	4-4	5-5	10	3	0	1	1	2	4
10	Chandler,Maya		9	0-0	0-0	0-0	0-1	1	2	1	1	0	0	0
04	Perry,JIya		6	0-1	0-0	0-0	0-0	0	0	0	1	0	0	0
24	Hall,Donavia		1	0-0	0-0	0-0	0-0	0	0	0	0	0	0	0
TM TEAM			0	0-0	0-0	0-0	0-3	3	0	0	0	0	0	0
Totals			200	24-56	5-18	16-22	10-27	37	12	16	17	4	10	69

Team Summary	FG	3PT	FT
1st Quarter	3-14 21.43 %	0-4 0.00 %	1-2 50.00 %
2nd Quarter	6-15 40.00 %	1-5 20.00 %	3-4 75.00 %
3rd Quarter	8-15 53.33 %	2-5 40.00 %	7-11 63.64 %
4th Quarter	7-12 58.33 %	2-4 50.00 %	5-5 100.00 %
Total	24-56 42.9 %	5-18 27.8 %	16-22 72.7 %

Technical Fouls: none Second Chance Points: 4 Scores Tied: 5 time(s) Points in the Paint: 26 Fast Break Points: 23
Lead Changed: 8 time(s) Points off Turnovers: 30 Bench Points: 4 Largest Lead: 0 0

Colorado 84

#	Player	GS	MIN	FG	3PT	FT	ORB-DRB	REB	PF	A	TO	BLK	STL	PTS
21	Vonieh,Aaronette	*	32	10-15	0-0	3-4	2-3	5	3	2	0	2	0	23
00	Sherrod,Jaylyn	*	32	6-11	0-5	6-7	0-1	1	4	4	3	0	1	18
11	Miller,Quay	*	29	6-10	4-7	2-2	3-7	10	3	1	2	0	1	18
03	Formann,Frida	*	35	1-7	1-5	4-4	0-5	5	1	4	2	3	1	7
02	Sadler,Tameiya	*	19	2-6	0-3	2-2	0-1	1	3	3	1	0	2	6
15	Wetta,Kindyl		22	3-5	0-1	0-0	1-3	4	1	5	2	0	2	6
04	Smith,Sara-Rose		15	3-4	0-0	0-0	1-1	2	0	0	1	0	0	6
24	Nolan,Maddie		10	0-3	0-2	0-0	0-0	0	2	1	0	0	0	0
25	McLeod,Brianna		3	0-1	0-0	0-0	0-0	0	0	1	0	0	1	0
45	Whittaker,Charlotte		2	0-0	0-0	0-0	1-0	1	2	0	0	0	0	0
01	Atchison,Jadyn		1	0-1	0-0	0-0	0-0	0	0	0	0	0	0	0
TM TEAM			0	0-0	0-0	0-0	2-3	5						

SMU WOMEN'S BASKETBALL

SMU (3-2,0-0 AAC) -vs- Toledo (2-2,0-0 MAC) 11/24/23 at Jenny Craig Pavilion, San Diego, CA

Date: 11/24/23
Time: 2:00 PM
Site: Jenny Craig Pavilion, San Diego, CA
Referees: Andy Heo, Amy Krommhoek, Kim Hobbs

Score By Period	1	2	3	4	Total
SMU	16	22	15	20	73
Toledo	15	9	28	22	74

SMU 73

#	Player	GS	MIN	FG	3PT	FT	ORB-DRB	REB	PF	A	TO	BLK	STL	PTS
01	Young,Tiara	* 35	6-14	1-1	5-8	1-3	4	2	2	5	0	0	1	25
13	Bradley,Reagan	* 36	4-10	1-2	5-6	1-3	4	3	1	0	0	0	14	
00	Jones,Tamia	* 35	5-9	1-3	0-0	1-3	4	2	5	2	0	0	3	
23	Abdur-Rahim,Amirah	* 30	5-7	0-1	0-0	1-8	9	2	1	0	2	0	10	
33	Embry,Chantae	* 20	2-6	0-1	2-3	3-5	8	3	1	6	0	0	6	
02	Pitts,TK	* 24	4-5	0-0	4-4	3-2	5	3	2	0	0	3	12	
10	Chandler,Maya	* 9	1-4	0-2	0-0	0-0	0	1	0	0	0	1	2	
04	Perry, Jiya	* 7	0-0	0-0	0-0	0-1	1	2	0	0	0	0	0	
35	Peterson, Jessica	* 4	0-0	0-0	0-0	0-0	0	1	0	2	2	0	0	
TM TEAM		0	0-0	0-0	0-0	3-1	4	0	0	0	0	0	0	
Totals		200	27-55	3-10	16-21	13-26	39	19	12	15	4	7	73	

Team Summary	FG	3PT	FT
1st Quarter	7-17 41.18%	0-4 0.00%	2-4 50.00%
2nd Quarter	8-14 57.14%	0-2 0.00%	6-7 85.71%
3rd Quarter	6-13 46.15%	0-1 0.00%	3-4 75.00%
4th Quarter	6-11 54.55%	3-3 100.00%	5-6 83.33%
Total	27-55 49.1%	3-10 30.0%	16-21 76.2%

Technical Fouls: none Second Chance Points: 13 Scores Tied: 4 times(s) Points in the Paint: 30 Fast Break Points: 4
Lead Changed: 7 times(s) Points off Turnovers: 16 Bench Points: 14 Largest Lead: 0

Toledo 74

#	Player	GS	MIN	FG	3PT	FT	ORB-DRB	REB	PF	A	TO	BLK	STL	PTS
05	Lockett,Quinesha	* 36	7-16	2-7	1-4	5	2	4	2	0	2	2	22	
33	Mikonowicz,Sammie	* 36	5-7	2-3	0-1	1-3	4	2	4	2	0	0	12	
02	Wiard,Sophia	* 35	2-12	0-2	6-6	1-3	4	4	5	2	0	2	10	
22	Goss,Khera	* 32	4-12	1-6	0-0	1-0	1	3	1	2	0	0	9	
34	Cook, Jessica	* 14	2-4	0-0	2-2	1-2	3	0	0	0	1	3	6	
51	Noveroske,Hannah	10	4-7	0-0	0-0	3-2	5	2	0	2	1	0	8	
01	Garcia,Nan	16	1-1	1-1	1-2	0-2	2	2	1	1	0	1	4	
30	Rinat,Ermii	14	1-2	1-2	0-0	0-0	0	2	1	0	1	0	3	
12	Weaver,Elia	4	0-1	0-1	0-0	0-1	1	1	0	0	0	0	0	
14	Dykstra,Cadence	* 3	0-1	0-1	0-0	0-0	0	0	0	1	0	0	0	
TM TEAM		0	0-0	0-0	0-0	5-0	5	0	0	0	0	0	0	
Totals		200	26-63	7-23	15-18	13-17	30	18	16	12	3	8	74	

Team Summary	FG	3PT	FT
1st Quarter	5-16 31.25%	1-6 16.67%	4-4 100.00%
2nd Quarter	3-17 17.65%	1-7 14.29%	5-5 100.00%
3rd Quarter	10-18 55.56%	3-6 50.00%	5-5 100.00%
4th Quarter	8-12 66.67%	2-4 50.00%	4-6 66.67%
Total	26-63 41.3%	7-23 30.4%	15-18 83.3%

Technical Fouls: none Second Chance Points: 13 Scores Tied: 4 times(s) Points in the Paint: 34 Fast Break Points: 3
Lead Changed: 7 times(s) Points off Turnovers: 18 Bench Points: 15 Largest Lead: 0

Baylor (6-0,0-0 Big 12) -vs- SMU (3-4,0-0 AAC) 11/30/23 at Moody Coliseum, Dallas, TX

Date: 11/30/23
Time: 7:00 PM
Attendance: 2,294
Site: Moody Coliseum, Dallas, TX
Referees: John Capolino, Julie Krommhoek, Cameron Inouye

Score By Period	1	2	3	4	Total
Baylor	20	22	20	23	85
SMU	16	16	13	16	61

Baylor 85

#	Player	GS	MIN	FG	3PT	FT	ORB-DRB	REB	PF	A	TO	BLK	STL	PTS
05	Littpage-Buggs,Darrianna	* 33	11-15	0-0	2-4	6-5	11	1	3	3	0	0	24	
44	Edwards,Drefuna	* 33	5-9	0-0	0-0	3-8	11	2	3	5	3	3	10	
24	Andrews,Sarah	* 20	3-9	3-7	0-0	0-3	3	3	2	0	0	0	9	
11	Walker,Jada	* 28	2-9	1-4	1-1	0-5	5	3	6	2	0	0	6	
33	Blackwell,Aijha	* 18	2-9	1-4	0-0	5-3	8	2	1	0	0	0	5	
22	Fontleroy,Bella	* 23	7-11	2-4	1-2	2-4	6	1	2	0	0	1	17	
02	Felder,Yaya	* 21	1-3	1-2	4-4	0-3	3	1	6	3	0	0	7	
03	Bartley, Madison	* 4	1-4	0-1	2-2	0-0	0	0	0	0	0	0	4	
01	Fritz,Denae	* 7	1-1	1-1	0-0	0-1	1	0	0	0	0	1	3	
04	Van Gytenbeek,Jana	11	0-2	0-2	0-0	1-0	1	2	3	1	0	0	0	
30	Ferreira,Catarina	2	0-0	0-0	0-0	0-0	0	1	1	0	0	0	0	
TM TEAM		0	0-0	0-0	0-0	0-2	2	0	0	0	0	0	0	
Totals		200	33-72	9-25	10-13	17-34	51	16	27	14	3	5	85	

Team Summary	FG	3PT	FT
1st Quarter	8-18 44.44%	2-6 33.33%	2-2 100.00%
2nd Quarter	8-21 38.10%	1-8 12.50%	5-6 83.33%
3rd Quarter	7-16 43.75%	4-8 50.00%	2-4 50.00%
4th Quarter	10-17 58.82%	2-3 66.67%	1-1 100.00%
Total	33-72 45.8%	9-25 36.0%	10-13 76.9%

Technical Fouls: none Second Chance Points: 17 Scores Tied: 1 times(s) Points in the Paint: 46 Fast Break Points: 12
Lead Changed: 4 times(s) Points off Turnovers: 19 Bench Points: 31 Largest Lead: 0

SMU 61

#	Player	GS	MIN	FG	3PT	FT	ORB-DRB	REB	PF	A	TO	BLK	STL	PTS
00	Jones,Tamia	* 37	7-11	2-3	1-2	0-1	1	2	3	1	0	4	17	
01	Young,Tiara	* 35	7-16	2-3	0-2	0-9	9	3	2	1	0	0	16	
13	Bradley,Reagan	* 35	5-13	0-3	4-6	1-1	2	0	3	5	0	1	14	
33	Embry,Chantae	* 25	2-4	2-4	0-0	1-1	2	1	2	2	0	1	6	
23	Abdur-Rahim,Amirah	* 21	1-9	0-0	0-0	1-3	4	3	1	1	1	0	2	
02	Pitts,TK	* 21	2-4	0-0	0-0	2-2	4	0	1	1	0	0	4	
10	Chandler,Maya	* 9	1-1	0-0	0-0	0-1	1	0	0	2	0	0	2	
35	Peterson, Jessica	8	0-1	0-0	0-0	0-1	1	2	0	1	0	1	0	
04	Perry, Jiya	6	0-1	0-0	0-0	0-1	1	3	0	0	0	0	0	
24	Hall,Donavia	3	0-1	0-0	0-0	0-0	0	0	1	0	0	0	0	
TM TEAM		0	0-0	0-0	0-0	1-3	4	0	0	0	0	0	0	
Totals		200	25-61	6-13	5-23	28	15	12	14	1	7	61		

Team Summary	FG	3PT	FT
1st Quarter	5-15 33.33%	3-4 75.00%	3-6 50.00%
2nd Quarter	7-14 50.00%	2-4 50.00%	0-0 0.00%
3rd Quarter	6-16 37.50%	0-3 0.00%	1-2 50.00%
4th Quarter	7-16 43.75%	1-2 50.00%	1-2 50.00%
Total	25-61 41.0%	6-13 46.2%	5-10 50.0%

Technical Fouls: none Second Chance Points: 4 Scores Tied: 1 times(s) Points in the Paint: 28 Fast Break Points: 9
Lead Changed: 4 times(s) Points off Turnovers: 5 Bench Points: 6 Largest Lead: 0

Harvard (5-2,0-0 Ivy League) -vs- SMU (3-3,0-0 AAC) 11/25/23 at San Diego City College, San Diego, CA

Date: 11/25/23
Time: 5:30 PM
Attendance: 255
Site: San Diego City College, San Diego, CA
Referees: TALA VAHEDI, ANDY HEO, AMY KROMMENHOEK

Score By Period	1	2	3	4	Total
Harvard	22	26	15	17	80
SMU	15	15	22	15	67

Harvard 80

#	Player	GS	MIN	FG	3PT	FT	ORB-DRB	REB	PF	A	TO	BLK	STL	PTS
14	Turner,Harmoni	* 32	6-18	1-6	12-14	1-5	6	3	7	3	1	1	25	
31	Krupa,Katie	* 33	6-9	4-7	7-7	1-2	3	4	0	1	1	0	23	
20	Mullaney,Lola	* 39	6-14	3-9	2-2	0-1	1	3	0	2	0	2	17	
10	Rodriguez,Elena	* 30	3-6	1-1	0-0	1-8	9	3	5	1	1	1	7	
12	White,Karlee	* 21	0-3	0-3	0-0	0-0	0	3	1	1	0	0	0	
40	Wright,Abigail	18	2-3	0-1	4-4	0-2	2	2	2	2	3	0	8	
22	Glenn,Sariyah	26	0-1	0-0	0-0	2-2	4	1	2	2	0	0	2	
24	Hollenstein,Mary	1	0-0	0-0	0-0	0-1	1	0	0	0	0	0	0	
TM TEAM		0	0-0	0-0	0-0	4-3	7	0	0	0	0	0	0	
Totals		200	23-54	9-27	25-27	9-24	33	19	17	12	6	6	80	

Team Summary	FG	3PT	FT
1st Quarter	8-18 44.44%	3-9 44.44%	2-2 100.00%
2nd Quarter	9-12 75.00%	4-5 80.00%	5-6 83.33%
3rd Quarter	4-13 30.77%	2-7 28.57%	5-5 100.00%
4th Quarter	2-11 18.18%	0-6 0.00%	13-14 92.86%
Total	23-54 42.6%	9-27 33.3%	25-27 92.6%

Technical Fouls: none Second Chance Points: 9 Scores Tied: 0 times(s) Points in the Paint: 24 Fast Break Points: 17
Lead Changed: 0 times(s) Points off Turnovers: 12 Bench Points: 8 Largest Lead: 0

SMU 67

#	Player	GS	MIN	FG	3PT	FT	ORB-DRB	REB	PF	A	TO	BLK	STL	PTS
01	Young,Tiara	* 34	5-13	0-2	7-8	2-6	8	4	3	2				

SMU WOMEN'S BASKETBALL

SMU (4-5,0-0 AAC) -vs- Louisiana Tech (2-9,0-0 CUSA) 12/14/23 at Thomas Assembly Center, Ruston, LA

Date: 12/14/23
Time: 6:00 PM
Attendance: 1,655
Site: Thomas Assembly Center, Ruston, LA
Referees: Chaney Muench, Ifeyinwa Seales, Brian Garland

Score By Period	1	2	3	4	Total
SMU	16	12	18	23	69
Louisiana Tech	15	11	9	18	53

SMU 69

#	Player	GS	MIN	FG	3PT	FT	ORB-DRB	REB	PF	A	TO	BLK	STL	PTS
01	Young,Tiara	*	35	8-15	0-0	3-4	1-4	5	4	1	3	0	2	19
23	Abdur-Rahim,Amirah	*	36	7-15	0-0	2-2	2-2	4	4	0	1	1	2	16
13	Bradley,Reagan	*	35	3-7	1-2	3-4	1-3	4	3	3	2	0	1	10
00	Jones,Tamia	*	38	3-7	1-5	1-4	1-3	4	2	5	1	3	4	8
02	Pitts,TK	*	14	1-3	1-1	1-1	0-4	4	3	0	2	1	0	4
10	Chandler,Maya	*	24	3-8	2-3	0-0	2-0	2	2	1	0	0	1	8
03	Henderson,Aaliyah		16	1-5	0-1	2-2	2-5	7	1	3	0	0	1	4
04	Perry,JIYA		2	0-0	0-0	0-0	0-0	0	0	0	0	0	0	0
14	Reid,Shanel		0	0-0	0-0	0-0	0-0	0	0	0	0	0	0	0
TM	TEAM		0	0-0	0-0	0-0	2-3	5	0	0	0	0	0	0
Totals			200	26-60	5-12	12-17	11-24	35	19	13	9	5	11	69

Team Summary	FG	3PT	FT
1st Quarter	6-19 31.58%	2-5 40.00%	2-2 100.00%
2nd Quarter	4-14 28.57%	1-2 50.00%	3-4 75.00%
3rd Quarter	7-15 46.67%	2-4 50.00%	2-5 40.00%
4th Quarter	9-12 75.00%	0-1 0.00%	5-6 83.33%
Total	26-60 43.3%	5-12 41.7%	12-17 70.6%

Technical Fouls: none
Lead Changed: 3 times(s)
Second Chance Points: 14
Points off Turnovers: 14
Scores Tied: 0 times(s)
Bench Points: 12
Points in the Paint: 34
Largest Lead: 0
Fast Break Points: 17

Louisiana Tech 53

#	Player	GS	MIN	FG	3PT	FT	ORB-DRB	REB	PF	A	TO	BLK	STL	PTS
44	Roberson,Anna Larr	*	32	4-10	1-3	4-6	3-9	12	1	1	1	0	0	13
10	Bates,Salma	*	39	3-15	1-12	2-2	0-2	2	0	2	2	0	1	9
32	Thompson,Kate	*	13	2-4	1-1	0-0	0-2	2	3	0	0	0	0	5
23	Nativi,Silvia	*	36	0-2	0-1	0-0	1-2	3	4	3	5	1	0	0
22	Morris,Janina	*	24	0-2	0-1	0-0	0-2	2	2	1	2	0	0	0
03	Lee,Robyn		29	5-11	1-1	5-8	5-5	10	3	1	0	1	1	16
24	Brannon,Amaya		20	2-7	0-3	4-4	1-0	1	4	0	5	0	1	8
01	Smith,Autum		7	1-3	0-0	0-0	0-0	0	0	0	1	0	1	2
TM	TEAM		0	0-0	0-0	0-0	4-2	6	0	0	2	0	0	0
Totals			200	17-54	4-22	15-20	14-24	38	17	8	18	2	4	53

Team Summary	FG	3PT	FT
1st Quarter	6-15 40.00%	1-6 16.67%	2-2 100.00%
2nd Quarter	4-13 30.77%	1-4 25.00%	2-2 100.00%
3rd Quarter	1-10 10.00%	0-5 0.00%	7-11 63.64%
4th Quarter	6-16 37.50%	2-7 28.57%	4-5 80.00%
Total	17-54 31.5%	4-22 18.2%	15-20 75.0%

Technical Fouls: none
Lead Changed: 3 times(s)
Second Chance Points: 9
Points off Turnovers: 10
Scores Tied: 0 times(s)
Bench Points: 26
Points in the Paint: 26
Largest Lead: 0
Fast Break Points: 6

Air Force (7-6,0-0 Mountain West) -vs- SMU (6-5,0-0 AAC) 12/21/23 at Moody Coliseum, Dallas, TX

Date: 12/21/23
Time: 1:00 PM
Attendance: 1,031
Site: Moody Coliseum, Dallas, TX
Referees: Nicole Brannon, March Merritt, Dee Kantner

Score By Period	1	2	3	4	Total
Air Force	10	5	8	21	44
SMU	14	26	21	14	75

Air Force 44

#	Player	GS	MIN	FG	3PT	FT	ORB-DRB	REB	PF	A	TO	BLK	STL	PTS
02	Perry,Milahnje	*	31	5-15	1-7	2-3	0-1	1	2	0	3	0	1	13
05	Britt,Taylor	*	20	4-11	1-4	1-2	2-1	3	4	6	0	1	5	10
30	Macmillan,Dasha	*	28	1-6	1-5	0-0	3-0	3	2	0	2	0	2	3
10	McNabb,Jayda	*	20	1-3	0-1	1-2	4-2	6	1	1	0	0	1	3
04	Smith,Madison	*	22	0-8	0-6	0-0	0-5	5	1	0	2	0	0	0
00	DeVaughn,Jordyn		24	4-12	2-7	0-0	1-3	4	0	1	2	1	0	10
13	O'Hollaren,Keelie		20	1-6	1-6	0-0	0-0	0	2	2	2	1	3	3
31	Adams,Emily		14	1-3	0-0	0-0	0-3	3	0	0	1	0	2	2
01	Cortez,Alexis		19	0-4	0-0	0-0	1-0	1	3	2	2	0	1	0
23	Brown,Parker		2	0-0	0-0	0-0	0-0	0	0	0	0	0	0	0
TM	TEAM		0	0-0	0-0	0-0	1-1	2	0	0	0	0	0	0
Totals			200	17-68	6-36	4-7	12-16	28	15	12	14	3	15	44

Team Summary	FG	3PT	FT
1st Quarter	4-14 28.57%	1-9 11.11%	1-2 50.00%
2nd Quarter	2-15 13.33%	1-8 12.50%	0-0 0.00%
3rd Quarter	3-16 18.75%	1-8 12.50%	1-2 50.00%
4th Quarter	8-23 34.78%	3-11 27.27%	2-3 66.67%
Total	17-68 25.0%	6-36 16.7%	4-7 57.1%

Technical Fouls: none
Lead Changed: 2 times(s)
Second Chance Points: 8
Points off Turnovers: 18
Scores Tied: 0 times(s)
Bench Points: 15
Points in the Paint: 16
Largest Lead: 0
Fast Break Points: 9

SMU 75

#	Player	GS	MIN	FG	3PT	FT	ORB-DRB	REB	PF	A	TO	BLK	STL	PTS
23	Abdur-Rahim,Amirah	*	36	9-11	0-0	1-3	1-10	11	1	0	1	3	1	19
00	Jones,Tamia	*	25	6-7	1-2	1-1	0-4	4	2	6	1	0	0	14
33	Embry,Chantae	*	22	3-4	0-0	0-0	1-3	4	4	1	5	0	1	6
01	Young,Tiara	*	21	2-9	0-1	2-2	0-3	3	2	1	3	0	1	6
13	Bradley,Reagan	*	13	3-5	0-0	0-0	0-1	1	0	1	1	0	1	6
02	Pitts,TK		27	5-7	1-1	2-4	1-5	6	0	2	2	1	2	13
04	Perry,JIYA		19	3-4	1-1	2-2	0-6	6	2	4	2	0	2	9
10	Chandler,Maya		22	0-3	0-0	2-2	1-1	2	1	0	3	0	1	2
24	Hall,Donavia		15	0-1	0-1	0-0	0-6	6	0	4	2	0	0	0
TM	TEAM		0	0-0	0-0	0-0	1-1	2	0	0	1	0	0	0
Totals			200	31-51	3-6	10-14	5-40	45	12	19	21	4	9	75

Team Summary	FG	3PT	FT
1st Quarter	6-14 42.86%	0-0 0.00%	2-2 100.00%
2nd Quarter	12-15 80.00%	2-2 100.00%	0-1 0.00%
3rd Quarter	6-11 54.55%	1-2 50.00%	8-11 72.73%
4th Quarter	7-11 63.64%	0-2 0.00%	0-0 0.00%
Total	31-51 60.8%	3-6 50.0%	10-14 71.4%

Technical Fouls: none
Lead Changed: 2 times(s)
Second Chance Points: 4
Points off Turnovers: 12
Scores Tied: 0 times(s)
Bench Points: 24
Points in the Paint: 52
Largest Lead: 0
Fast Break Points: 4

Sam Houston (5-5,0-0 CUSA) -vs- SMU (5-5,0-0 AAC) 12/18/23 at Moody Coliseum, Dallas, TX

Date: 12/18/23
Time: 7:00 PM
Attendance: 1,186
Site: Moody Coliseum, Dallas, TX
Referees: Carolyn Derksen, Ashley Birch, Karen Preato

Score By Period	1	2	3	4	Total
Sam Houston	15	19	10	20	64
SMU	18	14	16	21	69

Sam Houston 64

#	Player	GS	MIN	FG	3PT	FT	ORB-DRB	REB	PF	A	TO	BLK	STL	PTS
22	Henry,Shant	*	32	4-11	3-8	0-1	0-0	0	1	1	0	0	1	11
13	Jefferson,Kaylee	*	36	3-10	0-2	3-4	3-8	11	1	2	6	0	2	9
10	Oxon,Kassidy	*	15	3-7	0-0	2-4	1-1	2	2	4	1	0	1	8
25	Sisoko,Diarrah	*	13	1-5	1-2	2-4	0-1	1	2	2	1	0	0	5
14	Smith,Raane	*	30	0-4	0-0	1-2	2-6	8	1	0	4	2	3	1
00	Kemp,Sydney		30	5-15	3-7	0-0	2-2	4	4	1	1	0	1	13
11	Rosenthal,Diana		25	5-20	3-4	2-2	4	2	1	2	0	0	13	
12	Houghton,Elena		14	0-1	0-0	2-2	1-3	4	2	1	0	1	2	2
32	Derrough,Tammera		2	1-1	0-0	0-0	0-0	0	1	0	0	0	0	2
15	Seaton,Alexus		3	0-0	0-0	0-0	0-0	0	0	1	0	1	0	0
TM	TEAM		0	0-0	0-0	0-0	6-0	6	0	0	0	0	0	0
Totals			200	22-74	7-22	13-21	17-23	40	17	12	16	3	10	64

Team Summary	FG	3PT	FT
1st Quarter	6-17 35.29%	1-6 16.67%	2-4 50.00%
2nd Quarter	6-16 37.50%	3-3 100.00%	4-7 57.14%
3rd Quarter	4-21 19.05%	1-6 16.67%	1-3 33.33%
4th Quarter	6-20 30.00%	2-7 28.57%	6-7 85.71%
Total	22-74 29.7%	7-22 31.8%	13-21 61.9%

Technical Fouls: (1) TEAM
Lead Changed: 7 times(s)
Second Chance Points: 14
Points off Turnovers: 24
Scores Tied: 5 times(s)
Bench Points: 30
Points in the Paint: 20
Largest Lead: 0
Fast Break Points: 11

SMU 69

#	Player	GS	MIN	FG	3PT	FT	ORB-DRB	REB	PF	A	TO	BLK	STL	PTS
---	--------	----	-----	----	-----	----	---------	-----	----	---	----	-----	-----	-----

SMU WOMEN'S BASKETBALL

Fla. Atlantic (5-8,0-2 AAC) -vs- SMU (7-6,1-1 AAC) 01/04/24 at Moody Coliseum, Dallas, TX

Rice (8-5,2-0 AAC) -vs- SMU (7-7,1-2 AAC) 01/07/24 at Moody Coliseum, Dallas, TX

Date: 01/04/24
Time: 7:00 PM
Attendance: 724
Site: Moody Coliseum, Dallas, TX
Referees: Kelsey Reynolds, Bryan Brunette, Cameron Inouye

Score By Period	1	2	3	4	Total
Fla. Atlantic	11	12	16	13	52
SMU	18	11	16	12	57

Date: 01/07/24
Time: 2:00 PM
Attendance: 985
Site: Moody Coliseum, Dallas, TX
Referees: Kelsey Reynolds, Bryan Brunette, Cameron Inouye

Score By Period	1	2	3	4	Total
Rice	15	16	17	17	65
SMU	11	12	19	21	63

Fla. Atlantic 52

#	Player	GS	MIN	FG	3PT	FT	ORB-DRB	REB	PF	A	TO	BLK	STL	PTS
30	Zoentale,Janeta	* 35	3-7	1-3	4-6	3-16	19	5	4	4	0	1	11	
24	Caverly,Rose	* 23	4-7	3-6	0-0	1-0	1	0	3	2	0	0	11	
23	Moore,Jada	* 35	2-12	0-1	2-2	1-3	4	2	2	3	0	0	2	6
22	Hanna,Dyllan	* 31	2-4	0-0	2-4	5-8	13	2	0	2	2	0	6	
01	Scott,Devyn	* 6	1-3	1-3	0-0	0-0	0	1	0	3	0	0	3	
11	Perry,Mya	* 35	3-13	1-5	3-4	0-2	2	3	1	4	0	3	10	
12	Tylka,Allie	16	2-4	1-2	0-0	1-2	3	0	0	0	0	0	5	
14	Zaph,Alexa	19	0-5	0-0	0-0	0-1	1	2	1	1	0	0	0	
TM TEAM		0	0-0	0-0	0-0	3-1	4	0	0	2	0	0	0	
Totals		- 200	17-55	7-20	11-16	14-33	47	15	11	21	2	6	52	

Team Summary	FG	3PT	FT
1st Quarter	3-14 21.43%	2-6 33.33%	3-4 75.00%
2nd Quarter	3-14 21.43%	1-4 25.00%	5-8 62.50%
3rd Quarter	6-14 42.86%	1-3 33.33%	2-4 75.00%
4th Quarter	5-13 38.46%	3-7 42.86%	0-0 0.00%
Total	17-55 30.9%	7-20 35.0%	11-16 68.8%

Technical Fouls: none
Lead Changed: 0 times(s)
Second Chance Points: 15
Points off Turnovers: 4
Scores Tied: 1 times(s)
Bench Points: 15
Points in the Paint: 18
Largest Lead: 0 0
Fast Break Points: 2

SMU 57

#	Player	GS	MIN	FG	3PT	FT	ORB-DRB	REB	PF	A	TO	BLK	STL	PTS
00	Jones,Tamia	* 39	5-13	2-5	4-4	1-3	4	3	0	0	2	16		
13	Bradley,Reagan	* 39	4-12	0-1	4-4	3-2	5	4	7	4	0	4	12	
23	Abdur-Rahim,Amirah	* 34	5-16	0-0	0-0	6-4	10	3	0	4	1	10		
01	Young,Tiara	* 26	3-13	0-1	0-0	1-6	7	3	2	2	1	1	6	
10	Chandler,Maya	* 24	2-3	2-2	0-0	0-0	0	2	1	0	0	3	6	
04	Perry, Jiya	14	1-4	1-2	0-0	1-4	5	1	0	0	1	0	3	
02	Pitts,TK	17	0-3	0-0	2-4	1-2	3	1	2	0	0	0	2	
24	Hall,Donavia	6	1-2	0-0	0-0	0-3	3	0	0	2	0	0	2	
03	Henderson,Aaliyah	1	0-0	0-0	0-0	0-0	0	0	1	1	0	0	0	
TM TEAM		0	0-0	0-0	0-0	0-2	2	0	0	0	0	0	0	
Totals		- 200	21-66	5-11	10-12	13-26	39	17	16	9	6	11	57	

Team Summary	FG	3PT	FT
1st Quarter	9-20 45.00%	0-1 0.00%	0-2 0.00%
2nd Quarter	3-17 17.65%	3-7 42.86%	2-2 100.00%
3rd Quarter	3-12 25.00%	2-3 66.67%	8-8 100.00%
4th Quarter	6-17 35.29%	0-0 0.00%	0-0 0.00%
Total	21-66 31.8%	5-11 45.5%	10-12 83.3%

Technical Fouls: none
Lead Changed: 0 times(s)
Second Chance Points: 7
Points off Turnovers: 26
Scores Tied: 1 times(s)
Bench Points: 7
Points in the Paint: 22
Largest Lead: 0 0
Fast Break Points: 14

SMU (8-7,2-2 AAC) -vs- Memphis (4-11,0-4 AAC) 01/11/24 at Elma Roane Fieldhouse, Memphis, TN

Date: 01/11/24
Time: 7:00 PM
Attendance: 854
Site: Elma Roane Fieldhouse, Memphis, TN
Referees: Whitney Armstrong, Josh Hall, John Capolino

Score By Period	1	2	3	4	OT 1	OT 2	Total
SMU	14	18	18	17	10	14	91
Memphis	23	10	18	16	10	9	86

SMU 91

#	Player	GS	MIN	FG	3PT	FT	ORB-DRB	REB	PF	A	TO	BLK	STL	PTS
01	Young,Tiara	* 43	10-24	0-1	18-22	1-14	15	5	1	3	0	1	38	
13	Bradley,Reagan	* 47	6-16	1-3	3-6	2-1	3	5	2	4	0	0	16	
00	Jones,Tamia	* 45	1-10	0-5	7-12	1-4	5	5	1	6	0	1	9	
23	Abdur-Rahim,Amirah	* 22	3-6	0-0	1-4	1-1	2	5	0	3	1	0	7	
10	Chandler,Maya	* 44	1-4	0-3	3-4	0-7	7	3	1	2	0	1	5	
02	Pitts,TK	25	2-4	0-0	2-4	5-5	10	5	0	3	0	5	6	
04	Perry, Jiya	15	1-1	0-0	4-4	0-3	3	3	0	0	0	0	6	
24	Hall,Donavia	6	1-4	0-1	1-2	1-0	1	0	0	1	0	0	3	
03	Henderson,Aaliyah	3	0-0	0-0	1-2	0-0	0	1	0	0	0	0	1	
TM TEAM		0	0-0	0-0	0-0	8-1	9	0	0	0	0	0	0	
Totals		- 250	25-69	1-13	40-60	19-36	55	32	5	22	1	8	91	

Team Summary	FG	3PT	FT
1st Quarter	5-13 38.46%	0-3 0.00%	4-8 50.00%
2nd Quarter	6-14 42.86%	0-1 0.00%	6-8 75.00%
3rd Quarter	4-19 21.05%	1-5 20.00%	9-12 75.00%
4th Quarter	5-12 41.67%	0-1 0.00%	7-12 58.33%
OT 1	3-9 33.33%	0-3 0.00%	4-6 66.67%
OT 2	2-2 100.00%	0-0 0.00%	10-14 71.43%
Total	25-69 36.2%	1-13 7.7%	40-60 66.7%

Technical Fouls: (1) Abdur-Rahim,Amirah
Lead Changed: 11 times(s)
Second Chance Points: 14
Points off Turnovers: 13
Scores Tied: 9 times(s)
Bench Points: 16
Points in the Paint: 34
Largest Lead: 0 0
Fast Break Points: 15

Memphis 86

#	Player	GS	MIN	FG	3PT	FT	ORB-DRB	REB	PF	A	TO	BLK	STL	PTS
02	Griggs,Madison	* 49	5-13	2-7	7-10	0-5	5	5	5	7	0	2	19	
30	Smith,Alasia	* 38	5-10	2-5	1-1	2-7	9	5	0	2	2	3	13	
01	Cain,Ki'Ari	* 29	2-10	2-6	0-0	0-2	2	4	2	3	0	1	6	
03	Brown,Shelbee	* 19	0-2	0-0	4-4	0-1	1	5	0	1	0	0	4	
35	Green,Aliyah	* 13	2-2	0-0	0-0	1-4	5	5	0	3	0	0	4	
07	Riddick,Hannah	25	8-14	0-0	6-8	1-2	3	4	0	2	3	2	22	
00	Jackson,Destyne	30	2-10	0-5	6-7	2-2	4	4	2	0	1	2	10	
24	Carter,Kai	14	1-4	0-0	3-4	2-2	4	5	2	1	0	0	5	
23	Sims,Raven	17	1-4	0-0	0-2	1-2	3	3	3	1	0	2	2	
22	Cox,Layken	6	0-2	0-0	1-2	0-1	1	0	0	0	1	1	1	
05	Hollifield,Ally	8	0-1	0-0	0-0	0-1	1	1	0	0	0	0	0	
12	Saliman,Jana	2	0-1	0-0	0-0	0-0	0	2	0	0	0	1	0	
TM TEAM		0	0-0	0-0	0-0	3-0	3	0	0	0	0	0	0	
Totals		- 250	26-73	6-24	28-38	12-29	41	43	14	20	7	14	86	

Team Summary	FG	3PT	FT
1st Quarter	8-14 57.14%	3-6 50.00%	4-4 100.00%
2nd Quarter	1-13 7.69%	0-2 0.00%	8-9 88.89%
3rd Quarter	7-15 46.67%	0-3 0.00%	4-7 57.14%
4th Quarter	6-17 35.29%	2-8 25.00%	2-3 66.67%

Rice 65

#	Player	GS	MIN	FG	3PT	FT	ORB-DRB	REB	PF	A	TO	BLK	STL	PTS
05	Jackson,Destiny	* 35	7-13	1-4	2-2	1-5	6	2	7	1	1	1	17	
01	Fisher,Malia	* 32	6-16	1-4	2-3	2-8	10	2	3	2	0	1	15	
11	Ennis,Dominique	* 34	2-9	2-3	3-4	0-2	2	3	1	0	0	0	9	
44	Hayes,Shelby	* 6	1-1	0-0	0-0	1-0	1	1	0	2	0	0	2	
32	Gooden,Trinity	* 18	0-4	0-1	0-0	0-1	1	3	0	1	0	0	0	
30	Owens-Barnett,Jazzy	20	3-5	0-1	4-4	0-1	1	1	2	1	0	2	10	
02	Klaczek,Emily	7	2-2	2-2	0-0	0-3	3	2	0	1	0	0	6	
20	Adams,Hailey	25	16	0-0	2-2	1-4	5	3	0	5	1	1	4	
33	Samb,Fatou	17	1-4	0-0	0-0	2-1	3	2	0	3	1	0	2	
14	Bokuniewicz,Maya	6	0-0	0-0	0-0	0-1	1	2	0	0	0	0	0	
TM TEAM		0	0-0	0-0	0-0	3-3	6	0	0	0	0	0	0	
Totals		- 200	23-60	6-15	13-15	10-29	39	21	13	16	3	5	65	

Team Summary	FG	3PT	FT
1st Quarter	6-17 35.29%	1-6 16.67%	2-2 100.00%
2nd Quarter	6-14 42.86%	3-3 100.00%	1-2 50.00%
3rd Quarter	5-15 33.33%	2-5 40.00%	5-5 100.00%
4th Quarter	6-14 42.86%	0-1 0.00%	5-6 83.33%
Total	23-60 38.3%	6-15 40.0%	13-15 86.7%

Technical Fouls: none
Lead Changed: 9 times(s)
Second Chance Points: 18
Points off Turnovers: 17
Scores Tied: 8 times(s)
Bench Points: 22
Points in the Paint: 26
Largest Lead: 0 0
Fast Break Points: 11

SMU 63

#	Player	GS	MIN	FG	3PT	FT	ORB-DRB	REB	PF	A	
---	--------	----	-----	----	-----	----	---------	-----	----	---	--

SMU WOMEN'S BASKETBALL

North Texas (14-3,4-1 AAC) -vs- SMU (8-9,2-4 AAC)
01/17/24 at Moody Coliseum, Dallas, TX

Date: 01/17/24
Time: 7:00 PM
Attendance: 902
Site: Moody Coliseum, Dallas, TX
Referees: Saif Esho, Teresa Stuck, Fatou Cissoko-Stephens

Score By Period	1	2	3	4	Total
North Texas	21	16	17	22	76
SMU	15	14	9	23	61

North Texas 76

#	Player	GS	MIN	FG	3PT	FT	ORB-DRB	REB	PF	A	TO	BLK	STL	PTS
10	Kernal,DesiRay	*	34	5-12	2-3	3-3	1-9	10	2	3	6	0	0	15
04	Moore,Jaacklyn	*	32	6-9	1-4	2-2	1-3	4	1	3	1	0	1	15
24	Lampkin,Tommisha	*	29	6-11	0-0	1-1	8-2	10	3	2	2	1	1	13
02	Hardaway,Ereauna	*	21	0-1	0-1	2-2	0-2	2	0	4	4	0	0	2
20	Duncan,Shamayah	*	11	1-2	0-1	0-0	1-2	3	4	1	2	0	0	2
12	Robinson,Dyani	*	25	5-12	2-6	0-0	0-2	2	0	4	4	0	0	12
03	Wooten,Desiree		20	3-8	1-3	2-2	0-3	3	2	2	0	2	1	9
21	Mallard,Jaylen		9	1-1	1-1	0-0	0-1	1	1	0	0	0	0	3
23	Brackens,Shadasia		8	0-1	0-1	3-4	1-0	1	0	0	0	0	1	3
35	Johnson,Aniyah		5	1-1	0-0	0-0	0-0	0	0	1	1	0	0	2
14	Cleary,Maddie		4	0-1	0-1	0-0	1-0	1	1	0	0	0	0	0
05	Davis,Breanna		1	0-0	0-0	0-0	0-0	0	1	0	0	0	0	0
11	Hartfield,Jahcelyn		1	0-0	0-0	0-0	0-0	0	0	0	0	0	0	0
TM	TEAM		0	0-0	0-0	0-0	3-3	6	0	0	0	0	0	0
Totals			-	200	28-59	7-21	13-14	16-27	43	15	20	20	3	4 76

Team Summary	FG	3PT	FT
1st Quarter	8-12 66.67 %	4-7 57.14 %	1-1 100.00 %
2nd Quarter	7-22 31.82 %	0-8 0.00 %	2-3 66.67 %
3rd Quarter	7-12 58.33 %	1-2 50.00 %	2-2 100.00 %
4th Quarter	6-13 46.15 %	2-4 50.00 %	8-8 100.00 %
Total	28-59 47.5 %	7-21 33.3 %	13-14 92.9 %

Technical Fouls: none Second Chance Points: 14 Scores Tied: 0 times(s) Points in the Paint: 34 Fast Break Points: 13
Lead Changed: 0 times(s) Points off Turnovers: 18 Bench Points: 29 Largest Lead: 0 0

SMU 61

#	Player	GS	MIN	FG	3PT	FT	ORB-DRB	REB	PF	A	TO	BLK	STL	PTS
01	Young,Tiara	*	33	4-10	0-1	8-11	3-3	6	3	1	4	0	3	16
13	Bradley,Reagan	*	37	6-15	1-5	0-0	0-0	0	2	3	0	1	2	13
00	Jones,Tamia	*	34	3-8	2-6	1-4	0-1	1	2	5	1	0	1	9
23	Abdur-Rahim,Amirah	*	26	4-9	0-0	0-0	2-5	7	0	2	3	3	1	8
10	Chandler,Maya	*	11	2-5	1-3	0-0	0-1	1	0	0	1	0	0	5
04	Perry,Jiya		26	2-6	1-3	0-0	0-0	0	3	1	0	1	1	5
24	Hall,Donavia		12	2-2	0-0	0-0	1-0	1	0	1	0	0	0	4
03	Henderson,Aaliyah		6	0-0	0-0	1-2	1-1	2	1	3	0	0	1	1
02	Pitts,TK		9	0-3	0-1	0-0	1-0	1	2	1	1	0	3	0
33	Embry,Chantae		6	0-0	0-0	0-0	0-1	1	2	0	0	0	0	0
14	Reid,Shanel		0+	0-0	0-0	0-0	0-0	0	0	0	0	0	0	0
TM	TEAM		0	0-0	0-0	0-0	0-3	3	0	0	1	0	0	0
Totals			-	200	23-58	5-19	10-17	8-15	23	15	17	11	5	12 61

Team Summary	FG	3PT	FT
1st Quarter	6-14 42.86 %	1-6 16.67 %	2-2 100.00 %
2nd Quarter	6-12 50.00 %	1-3 33.33 %	1-4 25.00 %
3rd Quarter	2-14 14.29 %	1-4 25.00 %	4-6 66.67 %
4th Quarter	9-18 50.00 %	2-6 33.33 %	3-5 60.00 %



**2023-24 SMU Women's Basketball
Individual Game-by-Game
All games**

#0 JONES, Tamia

Opponent	Date	GS	MIN	Total		3-Pointers		Free throws		Rebounds				PF	A	TO	BLK	STL	PTS	AVG
				FG-FGA	PCT	3FG-3FGA	PCT	FT-FTA	PCT	OFF	DEF	TOT	AVG							
UC Riverside	11/06/2023	*	34:08	2-5	.400	0-0	.000	3-3	1.000	2	3	5	5.0	0	4	0	1	1	7	7.0
Alabama St.	11/11/2023	*	24:13	4-7	.571	2-2	1.000	2-2	1.000	0	5	5	5.0	0	7	2	0	6	12	9.5
Nicholls	11/14/2023	*	34:54	5-10	.500	2-6	.333	2-4	.500	0	1	1	3.7	0	8	2	0	4	14	11.0
Colorado	11/18/2023	*	32:38	2-5	.400	0-2	.000	0-0	.000	0	4	4	3.8	4	0	3	1	0	4	9.3
vs Toledo	11/24/2023	*	35:25	5-9	.556	1-3	.333	0-0	.000	1	3	4	3.8	2	5	2	0	3	11	9.6
vs Harvard	11/25/2023	*	35:59	6-12	.500	2-5	.400	0-3	.000	0	3	3	3.7	3	2	3	0	3	14	10.3
Baylor	11/30/2023	*	37:38	7-11	.636	2-3	.667	1-2	.500	0	1	1	3.3	2	3	1	0	4	17	11.3
Ark.-Pine Bluff	12/04/2023	*	34:06	1-8	.125	0-3	.000	2-2	1.000	0	1	1	3.0	2	3	5	0	3	4	10.4
at Louisiana Tech	12/14/2023	*	37:24	3-7	.429	1-5	.200	1-4	.250	1	3	4	3.1	2	5	1	3	4	8	10.1
Sam Houston	12/18/2023	*	30:43	5-9	.556	1-2	.500	0-0	.000	1	7	8	3.6	2	5	7	0	3	11	10.2
Air Force	12/21/2023	*	24:57	6-7	.857	1-2	.500	1-1	1.000	0	4	4	3.6	2	6	1	0	0	14	10.5
at South Fla.	12/30/2023	*	36:37	3-10	.300	3-5	.600	0-2	.000	0	3	3	3.6	1	1	4	0	0	9	10.4
Fla. Atlantic	01/04/2024	*	38:26	5-13	.385	2-5	.400	4-4	1.000	1	3	4	3.6	3	3	0	0	2	16	10.8
Rice	01/07/2024	*	39:59	1-9	.111	0-2	.000	1-2	.500	0	7	7	3.9	3	6	2	0	0	3	10.3
at Memphis	01/11/2024	*	44:30	1-10	.100	0-5	.000	7-12	.583	1	4	5	3.9	5	1	6	0	1	9	10.2
at UAB	01/14/2024	*	33:03	0-8	.000	0-4	.000	0-0	.000	0	5	5	4.0	4	5	1	0	0	0	9.6
North Texas	01/17/2024	*	33:37	3-8	.375	2-6	.333	1-4	.250	0	1	1	3.8	2	5	1	0	1	9	9.5
at East Carolina	01/20/2024	*	13:40	0-1	.000	0-0	.000	0-0	.000	0	3	3	3.8	2	4	3	0	2	0	9.0
Totals		18	601:56	59-149	.396	19-60	.317	25-45	.556	7	61	68	3.8	39	73	44	5	37	162	9.0

Player Averages

Games Played	Minutes/game	Points/game	FG Pct	3FG Pct	FT Pct	Rebounds/game	Assists/game	Turnovers/game	Assist/Turnover ratio	Steals/game	Blocks/game
18	33.4	9.0	39.6	31.7	55.6	3.8	4.1	2.4	1.7	2.1	0.3



**2023-24 SMU Women's Basketball
Individual Game-by-Game
All games**

#1 YOUNG, Tiara

Opponent	Date	GS	MIN	Total		3-Pointers		Free throws		Rebounds				PF	A	TO	BLK	STL	PTS	AVG	
				FG-FGA	PCT	3FG-3FGA	PCT	FT-FTA	PCT	OFF	DEF	TOT	AVG								
UC Riverside	11/06/2023	*	33:17	9-14	.643	1-2	.500	1-4	.250	0	3	3	3.0	2	5	1	0	0	20	20.0	
Alabama St.	11/11/2023	*	22:08	7-9	.778	1-1	1.000	2-5	.400	0	2	2	2.5	0	2	3	0	0	17	18.5	
Nicholls	11/14/2023	*	34:35	10-18	.556	0-2	.000	4-6	.667	2	5	7	4.0	3	1	1	0	1	24	20.3	
Colorado	11/18/2023	*	37:04	9-16	.563	0-2	.000	12-15	.800	0	4	4	4.0	1	2	3	1	0	30	22.8	
vs Toledo	11/24/2023	*	35:26	6-14	.429	1-1	1.000	5-8	.625	1	3	4	4.0	2	2	5	0	0	18	21.8	
vs Harvard	11/25/2023	*	34:41	5-13	.385	0-2	.000	7-8	.875	2	6	8	4.7	4	3	2	0	0	17	21.0	
Baylor	11/30/2023	*	34:56	7-16	.438	2-3	.667	0-2	.000	0	9	9	5.3	3	2	1	0	0	16	20.3	
Ark.-Pine Bluff	12/04/2023	*	36:13	7-14	.500	1-1	1.000	7-8	.875	0	6	6	5.4	2	2	1	0	2	22	20.5	
at Louisiana Tech	12/14/2023	*	35:38	8-15	.533	0-0	.000	3-4	.750	1	4	5	5.3	4	1	3	0	2	19	20.3	
Sam Houston	12/18/2023	*	33:01	3-4	.750	0-0	.000	4-8	.500	1	5	6	5.4	5	0	7	0	0	10	19.3	
Air Force	12/21/2023	*	21:12	2-9	.222	0-1	.000	2-2	1.000	0	3	3	5.2	2	1	3	0	1	6	18.1	
at South Fla.	12/30/2023	*	37:00	7-15	.467	1-2	.500	2-4	.500	1	4	5	5.2	2	0	0	0	0	17	18.0	
Fla. Atlantic	01/04/2024	*	26:12	3-13	.231	0-1	.000	0-0	.000	1	6	7	5.3	3	2	2	1	1	6	17.1	
Rice	01/07/2024	*	27:41	5-14	.357	0-0	.000	2-2	1.000	0	3	3	5.1	4	2	2	2	3	12	16.7	
at Memphis	01/11/2024	*	43:02	10-24	.417	0-1	.000	18-22	.818	1	14	15	5.8	5	1	3	0	1	38	18.1	
at UAB	01/14/2024	*	36:21	12-22	.545	0-0	.000	8-9	.889	0	6	6	5.8	4	1	2	0	2	32	19.0	
North Texas	01/17/2024	*	33:20	4-10	.400	0-1	.000	8-11	.727	3	3	6	5.8	3	1	4	0	3	16	18.8	
at East Carolina	01/20/2024	*	37:08	5-11	.455	1-1	1.000	6-8	.750	1	1	2	5.6	4	2	6	1	2	17	18.7	
Temple	01/24/2024	*	20:51	6-14	.429	0-2	.000	5-9	.556	0	6	6	5.6	1	2	4	0	2	17	18.6	
Totals			19	619:44	125-265	.472	8-23	.348	96-135	.711	14	93	107	5.6	54	34	53	5	20	354	18.6

Player Averages

Games Played	Minutes/game	Points/game	FG Pct	3FG Pct	FT Pct	Rebounds/game	Assists/game	Turnovers/game	Assist/Turnover ratio	Steals/game	Blocks/game
19	32.6	18.6	47.2	34.8	71.1	5.6	1.8	2.8	0.6	1.1	0.3



**2023-24 SMU Women's Basketball
Individual Game-by-Game
All games**

#2 PITTS, TK

Opponent	Date	GS	MIN	Total		3-Pointers		Free throws		Rebounds				PF	A	TO	BLK	STL	PTS	AVG
				FG-FGA	PCT	3FG-3FGA	PCT	FT-FTA	PCT	OFF	DEF	TOT	AVG							
UC Riverside	11/06/2023		08:53	3-3	1.000	0-0	.000	0-0	.000	0	1	1	1.0	1	0	1	0	1	6	6.0
Alabama St.	11/11/2023		18:13	4-5	.800	0-0	.000	1-3	.333	2	1	3	2.0	1	0	1	0	0	9	7.5
Nicholls	11/14/2023		22:40	0-4	.000	0-1	.000	4-4	1.000	5	5	10	4.7	3	0	1	1	2	4	6.3
Colorado	11/18/2023		13:47	1-1	1.000	0-0	.000	2-3	.667	0	0	0	3.5	1	0	1	0	2	4	5.8
vs Toledo	11/24/2023		24:17	4-5	.800	0-0	.000	4-4	1.000	3	2	5	3.8	3	2	0	0	3	12	7.0
vs Harvard	11/25/2023		22:57	4-6	.667	1-1	1.000	2-3	.667	1	2	3	3.7	4	0	0	0	2	11	7.7
Baylor	11/30/2023		21:36	2-4	.500	0-0	.000	0-0	.000	2	2	4	3.7	0	1	1	0	0	4	7.1
Ark.-Pine Bluff	12/04/2023	*	28:42	2-5	.400	0-1	.000	3-4	.750	3	7	10	4.5	4	0	1	1	1	7	7.1
at Louisiana Tech	12/14/2023	*	13:34	1-3	.333	1-1	1.000	1-1	1.000	0	4	4	4.4	3	0	2	1	0	4	6.8
Sam Houston	12/18/2023	*	23:45	2-5	.400	0-1	.000	0-0	.000	1	7	8	4.8	4	3	4	2	1	4	6.5
Air Force	12/21/2023		27:02	5-7	.714	1-1	1.000	2-4	.500	1	5	6	4.9	0	2	2	1	2	13	7.1
at South Fla.	12/30/2023		09:58	0-0	.000	0-0	.000	0-0	.000	1	0	1	4.6	1	0	0	0	0	0	6.5
Fla. Atlantic	01/04/2024		16:39	0-3	.000	0-0	.000	2-4	.500	1	2	3	4.5	1	2	0	0	0	2	6.2
Rice	01/07/2024		15:24	0-1	.000	0-0	.000	3-6	.500	0	2	2	4.3	1	1	1	0	1	3	5.9
at Memphis	01/11/2024		25:22	2-4	.500	0-0	.000	2-4	.500	5	5	10	4.7	5	0	3	0	5	6	5.9
at UAB	01/14/2024		18:08	2-2	1.000	0-0	.000	1-1	1.000	1	4	5	4.7	5	0	0	0	2	5	5.9
North Texas	01/17/2024		09:38	0-3	.000	0-1	.000	0-0	.000	1	0	1	4.5	2	1	1	0	3	0	5.5
at East Carolina	01/20/2024		07:21	1-2	.500	0-0	.000	2-2	1.000	1	0	1	4.3	2	0	1	0	0	4	5.4
Temple	01/24/2024		25:38	1-3	.333	0-0	.000	1-2	.500	1	6	7	4.4	3	1	0	0	2	3	5.3
Totals		3	353:33	34-66	.515	3-7	.429	30-45	.667	29	55	84	4.4	44	13	20	6	27	101	5.3

Player Averages

Games Played	Minutes/game	Points/game	FG Pct	3FG Pct	FT Pct	Rebounds/game	Assists/game	Turnovers/game	Assist/Turnover ratio	Steals/game	Blocks/game
19	18.6	5.3	51.5	42.9	66.7	4.4	0.7	1.1	0.7	1.4	0.3



**2023-24 SMU Women's Basketball
Individual Game-by-Game
All games**

#3 HENDERSON, Aaliyah

Opponent	Date	GS	MIN	Total		3-Pointers		Free throws		Rebounds				PF	A	TO	BLK	STL	PTS	AVG
				FG-FGA	PCT	3FG-3FGA	PCT	FT-FTA	PCT	OFF	DEF	TOT	AVG							
Ark.-Pine Bluff	12/04/2023		03:49	0-1	.000	0-0	.000	0-0	.000	0	0	0	0.0	0	0	0	0	0	0	0.0
at Louisiana Tech	12/14/2023		15:55	1-5	.200	0-1	.000	2-2	1.000	2	5	7	3.5	1	3	0	0	1	4	2.0
at South Fla.	12/30/2023		05:14	0-1	.000	0-0	.000	0-0	.000	0	0	0	2.3	3	1	0	0	0	0	1.3
Fla. Atlantic	01/04/2024		01:43	0-0	.000	0-0	.000	0-0	.000	0	0	0	1.8	0	1	1	0	0	0	1.0
Rice	01/07/2024		00:01	0-0	.000	0-0	.000	0-0	.000	0	0	0	1.4	0	0	0	0	0	0	0.8
at Memphis	01/11/2024		02:17	0-0	.000	0-0	.000	1-2	.500	0	0	0	1.2	1	0	0	0	0	1	0.8
North Texas	01/17/2024		06:05	0-0	.000	0-0	.000	1-2	.500	1	1	2	1.3	1	3	0	0	1	1	0.9
at East Carolina	01/20/2024		09:10	1-1	1.000	0-0	.000	0-0	.000	0	0	0	1.1	2	0	2	0	1	2	1.0
Temple	01/24/2024		07:49	0-0	.000	0-0	.000	0-0	.000	0	1	1	1.1	2	1	2	0	0	0	0.9
Totals		0	52:02	2-8	.250	0-1	.000	4-6	.667	3	7	10	1.1	10	9	5	0	3	8	0.9

Player Averages

Games Played	Minutes/ game	Points/ game	FG Pct	3FG Pct	FT Pct	Rebounds/ game	Assists/ game	Turnovers/ game	Assist/Turnover ratio	Steals/ game	Blocks/ game
9	5.8	0.9	25.0	0.0	66.7	1.1	1.0	0.6	1.8	0.3	0.0



**2023-24 SMU Women's Basketball
Individual Game-by-Game
All games**

#4 PERRY, Jiya

Opponent	Date	GS	MIN	Total		3-Pointers		Free throws		Rebounds				PF	A	TO	BLK	STL	PTS	AVG
				FG-FGA	PCT	3FG-3FGA	PCT	FT-FTA	PCT	OFF	DEF	TOT	AVG							
UC Riverside	11/06/2023		05:44	0-1	.000	0-1	.000	2-2	1.000	0	0	0	0.0	1	0	0	0	0	2	2.0
Alabama St.	11/11/2023		18:20	3-6	.500	1-3	.333	1-2	.500	2	0	2	1.0	1	0	3	1	1	8	5.0
Nicholls	11/14/2023		05:07	0-1	.000	0-0	.000	0-0	.000	0	0	0	0.7	0	0	1	0	0	0	3.3
Colorado	11/18/2023		04:19	1-1	1.000	1-1	1.000	0-0	.000	0	0	0	0.5	2	0	0	0	0	3	3.3
vs Toledo	11/24/2023		06:50	0-0	.000	0-0	.000	0-0	.000	0	1	1	0.6	2	0	0	0	0	0	2.6
vs Harvard	11/25/2023		15:44	2-5	.400	0-0	.000	0-0	.000	1	0	1	0.7	3	1	0	0	1	4	2.8
Baylor	11/30/2023		06:32	0-1	.000	0-0	.000	0-0	.000	0	1	1	0.7	3	0	0	0	0	0	2.4
Ark.-Pine Bluff	12/04/2023		07:56	0-1	.000	0-0	.000	0-0	.000	1	0	1	0.8	5	1	1	0	0	0	2.1
at Louisiana Tech	12/14/2023		02:10	0-0	.000	0-0	.000	0-0	.000	0	0	0	0.7	0	0	0	0	0	0	1.9
Sam Houston	12/18/2023		12:23	2-7	.286	0-3	.000	0-0	.000	1	1	2	0.8	1	0	0	1	0	4	2.1
Air Force	12/21/2023		19:13	3-4	.750	1-1	1.000	2-2	1.000	0	6	6	1.3	2	4	2	0	2	9	2.7
at South Fla.	12/30/2023		02:14	0-0	.000	0-0	.000	0-0	.000	0	0	0	1.2	0	0	1	0	0	0	2.5
Fla. Atlantic	01/04/2024		14:21	1-4	.250	1-2	.500	0-0	.000	1	4	5	1.5	1	0	0	1	0	3	2.5
Rice	01/07/2024		19:09	2-4	.500	1-2	.500	0-0	.000	2	1	3	1.6	2	1	2	0	0	5	2.7
at Memphis	01/11/2024		15:44	1-1	1.000	0-0	.000	4-4	1.000	0	3	3	1.7	3	0	0	0	0	6	2.9
at UAB	01/14/2024		09:07	0-3	.000	0-1	.000	1-2	.500	0	1	1	1.6	1	0	0	0	0	1	2.8
North Texas	01/17/2024		25:47	2-6	.333	1-3	.333	0-0	.000	0	0	0	1.5	3	1	0	1	1	5	2.9
at East Carolina	01/20/2024		20:54	1-5	.200	0-2	.000	2-2	1.000	0	1	1	1.5	2	1	1	0	3	4	3.0
Temple	01/24/2024		19:44	3-4	.750	1-1	1.000	2-2	1.000	0	1	1	1.5	2	0	0	0	1	9	3.3
Totals		0	231:17	21-54	.389	7-20	.350	14-16	.875	8	20	28	1.5	34	9	11	4	9	63	3.3

Player Averages

Games Played	Minutes/game	Points/game	FG Pct	3FG Pct	FT Pct	Rebounds/game	Assists/game	Turnovers/game	Assist/Turnover ratio	Steals/game	Blocks/game
19	12.2	3.3	38.9	35.0	87.5	1.5	0.5	0.6	0.8	0.5	0.2



2023-24 SMU Women's Basketball
Individual Game-by-Game
All games

#5 BROW, Ella

Opponent	Date	GS	MIN	Total		3-Pointers		Free throws		Rebounds				PF	A	TO	BLK	STL	PTS	AVG
				FG-FGA	PCT	3FG-3FGA	PCT	FT-FTA	PCT	OFF	DEF	TOT	AVG							
UC Riverside	11/06/2023		24:05	3-5	.600	2-3	.667	2-2	1.000	1	4	5	5.0	0	1	1	0	0	10	10.0
Totals		0	24:05	3-5	.600	2-3	.667	2-2	1.000	1	4	5	5.0	0	1	1	0	0	10	10.0

Player Averages

Games Played	Minutes/game	Points/game	FG Pct	3FG Pct	FT Pct	Rebounds/game	Assists/game	Turnovers/game	Assist/Turnover ratio	Steals/game	Blocks/game
1	24.1	10.0	60.0	66.7	100.0	5.0	1.0	1.0	1.0	0.0	0.0



**2023-24 SMU Women's Basketball
Individual Game-by-Game
All games**

#10 CHANDLER, Maya

Opponent	Date	GS	MIN	Total		3-Pointers		Free throws		Rebounds				PF	A	TO	BLK	STL	PTS	AVG
				FG-FGA	PCT	3FG-3FGA	PCT	FT-FTA	PCT	OFF	DEF	TOT	AVG							
UC Riverside	11/06/2023		09:46	0-1	.000	0-1	.000	1-2	.500	0	2	2	2.0	0	1	0	1	0	1	1.0
Alabama St.	11/11/2023		25:53	5-8	.625	1-1	1.000	5-7	.714	1	3	4	3.0	1	1	1	0	1	16	8.5
Nicholls	11/14/2023		09:10	0-0	.000	0-0	.000	0-0	.000	0	1	1	2.3	2	1	1	0	0	0	5.7
Colorado	11/18/2023		05:18	0-0	.000	0-0	.000	0-0	.000	0	0	0	1.8	0	1	2	0	0	0	4.3
vs Toledo	11/24/2023		08:50	1-4	.250	0-2	.000	0-0	.000	0	0	0	1.4	1	0	0	0	1	2	3.8
vs Harvard	11/25/2023		05:12	2-2	1.000	2-2	1.000	2-2	1.000	0	0	0	1.2	2	0	0	0	0	8	4.5
Baylor	11/30/2023		08:41	1-1	1.000	0-0	.000	0-0	.000	0	1	1	1.1	0	0	2	0	0	2	4.1
Ark.-Pine Bluff	12/04/2023		07:35	2-4	.500	1-1	1.000	0-0	.000	0	0	0	1.0	0	1	0	0	0	5	4.3
at Louisiana Tech	12/14/2023		24:22	3-8	.375	2-3	.667	0-0	.000	2	0	2	1.1	2	1	0	0	1	8	4.7
Sam Houston	12/18/2023		15:45	1-1	1.000	1-1	1.000	3-4	.750	0	1	1	1.1	3	1	1	0	0	6	4.8
Air Force	12/21/2023		21:40	0-3	.000	0-0	.000	2-2	1.000	1	1	2	1.2	1	0	3	0	1	2	4.5
at South Fla.	12/30/2023		21:37	2-6	.333	1-2	.500	2-3	.667	0	0	0	1.1	1	1	0	0	0	7	4.8
Fla. Atlantic	01/04/2024	*	23:32	2-3	.667	2-2	1.000	0-0	.000	0	0	0	1.0	2	1	0	0	3	6	4.8
Rice	01/07/2024	*	20:12	1-2	.500	0-0	.000	2-2	1.000	0	2	2	1.1	2	1	1	0	0	4	4.8
at Memphis	01/11/2024	*	43:33	1-4	.250	0-3	.000	3-4	.750	0	7	7	1.5	3	1	2	0	1	5	4.8
at UAB	01/14/2024	*	34:06	5-9	.556	1-3	.333	2-4	.500	0	1	1	1.4	2	2	1	0	0	13	5.3
North Texas	01/17/2024	*	10:45	2-5	.400	1-3	.333	0-0	.000	0	1	1	1.4	0	0	1	0	0	5	5.3
at East Carolina	01/20/2024	*	13:48	0-3	.000	0-3	.000	1-2	.500	0	0	0	1.3	1	0	1	0	0	1	5.1
Temple	01/24/2024	*	17:33	0-2	.000	0-1	.000	0-0	.000	0	4	4	1.5	2	2	1	0	0	0	4.8
Totals		7	327:17	28-66	.424	12-28	.429	23-32	.719	4	24	28	1.5	25	15	17	1	8	91	4.8

Player Averages

Games Played	Minutes/game	Points/game	FG Pct	3FG Pct	FT Pct	Rebounds/game	Assists/game	Turnovers/game	Assist/Turnover ratio	Steals/game	Blocks/game
19	17.2	4.8	42.4	42.9	71.9	1.5	0.8	0.9	0.9	0.4	0.1



**2023-24 SMU Women's Basketball
Individual Game-by-Game
All games**

#13 BRADLEY, Reagan

Opponent	Date	GS	MIN	Total		3-Pointers		Free throws		Rebounds				PF	A	TO	BLK	STL	PTS	AVG
				FG-FGA	PCT	3FG-3FGA	PCT	FT-FTA	PCT	OFF	DEF	TOT	AVG							
UC Riverside	11/06/2023	*	30:08	4-9	.444	2-4	.500	2-2	1.000	0	2	2	2.0	1	2	2	0	1	12	12.0
Alabama St.	11/11/2023	*	20:14	1-6	.167	0-1	.000	0-0	.000	2	0	2	2.0	2	9	2	0	3	2	7.0
Nicholls	11/14/2023	*	32:12	3-7	.429	2-6	.333	2-2	1.000	0	3	3	2.3	2	3	4	0	0	10	8.0
Colorado	11/18/2023	*	38:33	1-12	.083	1-5	.200	3-4	.750	0	4	4	2.8	3	3	5	0	0	6	7.5
vs Toledo	11/24/2023	*	35:45	4-10	.400	1-2	.500	5-6	.833	1	3	4	3.0	3	1	0	0	0	14	8.8
vs Harvard	11/25/2023	*	39:03	1-8	.125	0-3	.000	0-0	.000	0	5	5	3.3	3	4	3	0	1	2	7.7
Baylor	11/30/2023	*	34:28	5-13	.385	0-3	.000	4-6	.667	1	1	2	3.1	0	3	5	0	1	14	8.6
Ark.-Pine Bluff	12/04/2023	*	31:56	3-8	.375	1-4	.250	2-2	1.000	0	3	3	3.1	3	5	4	0	1	9	8.6
at Louisiana Tech	12/14/2023	*	34:37	3-7	.429	1-2	.500	3-4	.750	1	3	4	3.2	3	3	2	0	1	10	8.8
Sam Houston	12/18/2023	*	30:44	3-9	.333	1-5	.200	0-0	.000	1	5	6	3.5	0	6	5	0	0	7	8.6
Air Force	12/21/2023	*	13:01	3-5	.600	0-0	.000	0-0	.000	0	1	1	3.3	0	1	1	0	1	6	8.4
at South Fla.	12/30/2023	*	32:10	2-7	.286	0-2	.000	0-0	.000	0	6	6	3.5	1	3	0	0	2	4	8.0
Fla. Atlantic	01/04/2024	*	38:37	4-12	.333	0-1	.000	4-4	1.000	3	2	5	3.6	4	7	4	0	4	12	8.3
Rice	01/07/2024	*	37:15	3-14	.214	2-3	.667	4-4	1.000	0	1	1	3.4	0	4	0	0	3	12	8.6
at Memphis	01/11/2024	*	46:47	6-16	.375	1-3	.333	3-6	.500	2	1	3	3.4	5	2	4	0	0	16	9.1
at UAB	01/14/2024	*	35:16	4-9	.444	2-4	.500	2-2	1.000	3	2	5	3.5	4	5	1	0	0	12	9.3
North Texas	01/17/2024	*	36:43	6-15	.400	1-5	.200	0-0	.000	0	0	0	3.3	2	3	0	1	2	13	9.5
at East Carolina	01/20/2024	*	33:30	1-14	.071	0-6	.000	2-2	1.000	6	2	8	3.6	2	3	4	0	4	4	9.2
Temple	01/24/2024	*	34:54	4-9	.444	1-3	.333	0-0	.000	0	3	3	3.5	1	2	3	0	2	9	9.2
Totals			19 635:53	61-190	.321	16-62	.258	36-44	.818	20	47	67	3.5	39	69	49	1	26	174	9.2

Player Averages

Games Played	Minutes/game	Points/game	FG Pct	3FG Pct	FT Pct	Rebounds/game	Assists/game	Turnovers/game	Assist/Turnover ratio	Steals/game	Blocks/game
19	33.5	9.2	32.1	25.8	81.8	3.5	3.6	2.6	1.4	1.4	0.1



**2023-24 SMU Women's Basketball
Individual Game-by-Game
All games**

#14 REID, Shanel

Opponent	Date	GS	MIN	Total		3-Pointers		Free throws		Rebounds				PF	A	TO	BLK	STL	PTS	AVG
				FG-FGA	PCT	3FG-3FGA	PCT	FT-FTA	PCT	OFF	DEF	TOT	AVG							
at Louisiana Tech	12/14/2023		00:17	0-0	.000	0-0	.000	0-0	.000	0	0	0	0.0	0	0	0	0	0	0	0.0
North Texas	01/17/2024		00:10	0-0	.000	0-0	.000	0-0	.000	0	0	0	0.0	0	0	0	0	0	0	0.0
Totals		0	00:27	0-0	.000	0-0	.000	0-0	.000	0	0	0	0.0	0	0	0	0	0	0	0.0

Player Averages

Games Played	Minutes/game	Points/game	FG Pct	3FG Pct	FT Pct	Rebounds/game	Assists/game	Turnovers/game	Assist/Turnover ratio	Steals/game	Blocks/game
2	0.2	0.0	0.0	0.0	0.0	0.0	0.0	0.0	0.0	0.0	0.0



**2023-24 SMU Women's Basketball
Individual Game-by-Game
All games**

#23 ABDUR-RAHIM, Amirah

Opponent	Date	GS	MIN	Total		3-Pointers		Free throws		Rebounds				PF	A	TO	BLK	STL	PTS	AVG
				FG-FGA	PCT	3FG-3FGA	PCT	FT-FTA	PCT	OFF	DEF	TOT	AVG							
UC Riverside	11/06/2023	*	18:40	2-6	.333	0-0	.000	0-2	.000	1	2	3	3.0	3	1	1	1	0	4	4.0
Alabama St.	11/11/2023	*	26:57	8-14	.571	0-0	.000	2-5	.400	3	8	11	7.0	2	1	1	4	2	18	11.0
Nicholls	11/14/2023	*	30:55	5-10	.500	0-1	.000	4-6	.667	2	6	8	7.3	0	1	4	3	0	14	12.0
Colorado	11/18/2023	*	30:11	3-5	.600	0-1	.000	2-2	1.000	1	3	4	6.5	3	1	0	2	0	8	11.0
vs Toledo	11/24/2023	*	29:43	5-7	.714	0-1	.000	0-0	.000	1	8	9	7.0	2	1	0	2	0	10	10.8
vs Harvard	11/25/2023	*	09:42	1-2	.500	0-0	.000	0-0	.000	0	0	0	5.8	1	1	2	0	0	2	9.3
Baylor	11/30/2023	*	20:42	1-9	.111	0-0	.000	0-0	.000	1	3	4	5.6	3	1	1	1	0	2	8.3
Ark.-Pine Bluff	12/04/2023	*	21:11	5-11	.455	0-0	.000	0-0	.000	0	5	5	5.5	2	2	2	0	0	10	8.5
at Louisiana Tech	12/14/2023	*	36:04	7-15	.467	0-0	.000	2-2	1.000	2	2	4	5.3	4	0	1	1	2	16	9.3
Sam Houston	12/18/2023	*	29:25	7-15	.467	0-1	.000	1-2	.500	4	9	13	6.1	4	3	1	0	2	15	9.9
Air Force	12/21/2023	*	36:29	9-11	.818	0-0	.000	1-3	.333	1	10	11	6.5	1	0	1	3	1	19	10.7
at South Fla.	12/30/2023	*	25:10	3-10	.300	0-1	.000	4-6	.667	2	5	7	6.6	3	2	3	0	4	10	10.7
Fla. Atlantic	01/04/2024	*	34:23	5-16	.313	0-0	.000	0-0	.000	6	4	10	6.8	3	0	0	4	1	10	10.6
Rice	01/07/2024	*	36:45	11-15	.733	0-1	.000	2-5	.400	0	7	7	6.9	3	3	3	4	1	24	11.6
at Memphis	01/11/2024	*	22:42	3-6	.500	0-0	.000	1-4	.250	1	1	2	6.5	5	0	3	1	0	7	11.3
at UAB	01/14/2024	*	20:39	3-4	.750	0-0	.000	0-0	.000	2	1	3	6.3	3	2	4	0	1	6	10.9
North Texas	01/17/2024	*	24:43	4-9	.444	0-0	.000	0-0	.000	2	5	7	6.4	0	2	3	3	1	8	10.8
at East Carolina	01/20/2024	*	33:57	5-11	.455	0-1	.000	0-0	.000	4	5	9	6.5	4	4	4	1	1	10	10.7
Temple	01/24/2024	*	12:47	3-5	.600	0-0	.000	0-2	.000	1	1	2	6.3	1	1	1	3	0	6	10.5
Totals			19 501:04	90-181	.497	0-7	.000	19-39	.487	34	85	119	6.3	47	26	35	33	16	199	10.5

Player Averages

Games Played	Minutes/game	Points/game	FG Pct	3FG Pct	FT Pct	Rebounds/game	Assists/game	Turnovers/game	Assist/Turnover ratio	Steals/game	Blocks/game
19	26.4	10.5	49.7	0.0	48.7	6.3	1.4	1.8	0.7	0.8	1.7



**2023-24 SMU Women's Basketball
Individual Game-by-Game
All games**

#24 HALL, Donavia

Opponent	Date	GS	MIN	Total		3-Pointers		Free throws		Rebounds				PF	A	TO	BLK	STL	PTS	AVG
				FG-FGA	PCT	3FG-3FGA	PCT	FT-FTA	PCT	OFF	DEF	TOT	AVG							
UC Riverside	11/06/2023		06:18	0-0	.000	0-0	.000	0-0	.000	0	2	2	2.0	2	1	3	0	0	0	0.0
Alabama St.	11/11/2023		16:34	0-1	.000	0-0	.000	1-4	.250	0	2	2	2.0	0	3	0	0	2	1	0.5
Nicholls	11/14/2023		01:49	0-0	.000	0-0	.000	0-0	.000	0	0	0	1.3	0	0	0	0	0	0	0.3
vs Harvard	11/25/2023		03:27	0-2	.000	0-0	.000	0-0	.000	0	0	0	1.0	0	0	0	0	0	0	0.3
Baylor	11/30/2023		03:50	0-1	.000	0-0	.000	0-0	.000	0	0	0	0.8	0	1	0	0	0	0	0.2
Ark.-Pine Bluff	12/04/2023		01:21	0-0	.000	0-0	.000	0-0	.000	0	0	0	0.7	0	0	0	0	0	0	0.2
Air Force	12/21/2023		14:16	0-1	.000	0-1	.000	0-0	.000	0	6	6	1.4	0	4	2	0	0	0	0.1
at South Fla.	12/30/2023		06:00	2-2	1.000	0-0	.000	0-0	.000	0	0	0	1.3	0	0	0	0	1	4	0.6
Fla. Atlantic	01/04/2024		06:07	1-2	.500	0-0	.000	0-0	.000	0	3	3	1.4	0	0	2	0	0	2	0.8
Rice	01/07/2024		03:35	0-0	.000	0-0	.000	0-0	.000	0	1	1	1.4	0	0	1	0	0	0	0.7
at Memphis	01/11/2024		05:07	1-4	.250	0-1	.000	1-2	.500	1	0	1	1.4	0	0	1	0	0	3	0.9
at UAB	01/14/2024		13:20	3-6	.500	0-0	.000	0-0	.000	1	2	3	1.5	2	0	2	0	0	6	1.3
North Texas	01/17/2024		12:56	2-2	1.000	0-0	.000	0-0	.000	1	0	1	1.5	0	1	0	0	0	4	1.5
at East Carolina	01/20/2024		04:27	0-0	.000	0-0	.000	0-0	.000	1	2	3	1.6	1	0	1	0	0	0	1.4
Temple	01/24/2024		16:05	0-2	.000	0-0	.000	0-0	.000	0	0	0	1.5	0	1	1	2	1	0	1.3
Totals		0	115:12	9-23	.391	0-2	.000	2-6	.333	4	18	22	1.5	5	11	13	2	4	20	1.3

Player Averages

Games Played	Minutes/game	Points/game	FG Pct	3FG Pct	FT Pct	Rebounds/game	Assists/game	Turnovers/game	Assist/Turnover ratio	Steals/game	Blocks/game
15	7.7	1.3	39.1	0.0	33.3	1.5	0.7	0.9	0.8	0.3	0.1



**2023-24 SMU Women's Basketball
Individual Game-by-Game
All games**

#33 EMBRY, Chantae

Opponent	Date	GS	MIN	Total		3-Pointers		Free throws		Rebounds				PF	A	TO	BLK	STL	PTS	AVG
				FG-FGA	PCT	3FG-3FGA	PCT	FT-FTA	PCT	OFF	DEF	TOT	AVG							
UC Riverside	11/06/2023	*	29:01	6-12	.500	2-5	.400	2-2	1.000	1	11	12	12.0	2	5	3	1	2	16	16.0
Alabama St.	11/11/2023	*	27:28	4-8	.500	2-3	.667	3-4	.750	2	2	4	8.0	4	1	0	0	1	13	14.5
Nicholls	11/14/2023	*	28:38	1-6	.167	1-2	.500	0-0	.000	1	3	4	6.7	2	2	3	0	3	3	10.7
Colorado	11/18/2023	*	38:10	5-10	.500	4-5	.800	0-0	.000	4	4	8	7.0	1	4	1	0	1	14	11.5
vs Toledo	11/24/2023	*	20:18	2-6	.333	0-1	.000	2-3	.667	3	5	8	7.2	3	1	6	0	0	6	10.4
vs Harvard	11/25/2023	*	22:51	2-4	.500	0-2	.000	1-2	.500	0	3	3	6.5	2	2	3	0	1	5	9.5
Baylor	11/30/2023	*	24:19	2-4	.500	2-4	.500	0-0	.000	0	1	1	5.7	2	1	2	0	1	6	9.0
Ark.-Pine Bluff	12/04/2023		19:56	6-11	.545	3-6	.500	2-2	1.000	1	0	1	5.1	1	1	2	0	1	17	10.0
Sam Houston	12/18/2023		24:15	4-10	.400	1-3	.333	3-4	.750	2	4	6	5.2	1	1	1	1	2	12	10.2
Air Force	12/21/2023	*	22:10	3-4	.750	0-0	.000	0-0	.000	1	3	4	5.1	4	1	5	0	1	6	9.8
at South Fla.	12/30/2023	*	24:00	3-5	.600	0-0	.000	4-4	1.000	2	1	3	4.9	3	0	3	0	1	10	9.8
North Texas	01/17/2024		06:16	0-0	.000	0-0	.000	0-0	.000	0	1	1	4.6	2	0	0	0	0	0	9.0
at East Carolina	01/20/2024		26:05	7-13	.538	0-2	.000	5-6	.833	6	3	9	4.9	4	1	2	0	1	19	9.8
Temple	01/24/2024	*	39:29	7-15	.467	4-8	.500	6-8	.750	3	5	8	5.1	2	3	2	0	0	24	10.8
Totals			10 352:56	52-108	.481	19-41	.463	28-35	.800	26	46	72	5.1	33	23	33	2	15	151	10.8

Player Averages

Games Played	Minutes/game	Points/game	FG Pct	3FG Pct	FT Pct	Rebounds/game	Assists/game	Turnovers/game	Assist/Turnover ratio	Steals/game	Blocks/game
14	25.2	10.8	48.1	46.3	80.0	5.1	1.6	2.4	0.7	1.1	0.1



2023-24 SMU Women's Basketball
Individual Game-by-Game
All games

#35 PETERSON, Jessica

Opponent	Date	GS	MIN	Total		3-Pointers		Free throws		Rebounds				PF	A	TO	BLK	STL	PTS	AVG
				FG-FGA	PCT	3FG-3FGA	PCT	FT-FTA	PCT	OFF	DEF	TOT	AVG							
vs Toledo	11/24/2023		03:26	0-0	.000	0-0	.000	0-0	.000	0	0	0	0.0	1	0	2	2	0	0	0.0
vs Harvard	11/25/2023		10:26	1-2	.500	0-0	.000	2-2	1.000	2	3	5	2.5	2	0	1	0	1	4	2.0
Baylor	11/30/2023		07:19	0-1	.000	0-0	.000	0-0	.000	0	1	1	2.0	2	0	1	0	1	0	1.3
Ark.-Pine Bluff	12/04/2023		07:16	0-1	.000	0-0	.000	2-2	1.000	1	2	3	2.3	1	1	0	1	0	2	1.5
Totals		0	28:27	1-4	.250	0-0	.000	4-4	1.000	3	6	9	2.3	6	1	4	3	2	6	1.5

Player Averages

Games Played	Minutes/game	Points/game	FG Pct	3FG Pct	FT Pct	Rebounds/game	Assists/game	Turnovers/game	Assist/Turnover ratio	Steals/game	Blocks/game
4	7.1	1.5	25.0	0.0	100.0	2.3	0.3	1.0	0.3	0.5	0.8



2023-24 SMU Women's Basketball Combined Team Statistics All games

Game Records

Record	Overall	Home	Away	Neutral
ALL GAMES	9-10	7-5	2-3	0-2
CONFERENCE	3-5	2-2	1-3	0-0
NON-CONFERENCE	6-5	5-3	1-0	0-2

Score by Periods

Team	1st	2nd	3rd	4th	OT	TOT
SMU	295	310	340	370	24	1339
Opponents	301	294	312	359	19	1285

Team Box Score

No.	Player	Overall			Total			3-Point			F-Throw		Rebounds				Other					
		GP-GS	MIN	AVG	FG-FGA	FG%	3FG-3FGA	3FG%	FT-FTA	FT%	OFF	DEF	TOT	AVG	PF	DQ	A	TO	BLK	STL	PTS	AVG
1	YOUNG, Tiara	19-19	619:44	32.6	125-265	.472	8-23	.348	96-135	.711	14	93	107	5.6	54	2	34	53	5	20	354	18.6
33	EMBRY, Chantae	14-10	352:56	25.2	52-108	.481	19-41	.463	28-35	.800	26	46	72	5.1	33	0	23	33	2	15	151	10.8
23	ABDUR-RAHIM, Amirah	19-19	501:04	26.4	90-181	.497	0-7	.000	19-39	.487	34	85	119	6.3	47	1	26	35	33	16	199	10.5
5	BROW, Ella	1-0	24:05	24.1	3-5	.600	2-3	.667	2-2	1.000	1	4	5	5.0	0	0	1	1	0	0	10	10.0
13	BRADLEY, Reagan	19-19	635:53	33.5	61-190	.321	16-62	.258	36-44	.818	20	47	67	3.5	39	1	69	49	1	26	174	9.2
0	JONES, Tamia	18-18	601:56	33.4	59-149	.396	19-60	.317	25-45	.556	7	61	68	3.8	39	1	73	44	5	37	162	9.0
2	PITTS, TK	19-3	353:33	18.6	34-66	.515	3-7	.429	30-45	.667	29	55	84	4.4	44	2	13	20	6	27	101	5.3
10	CHANDLER, Maya	19-7	327:17	17.2	28-66	.424	12-28	.429	23-32	.719	4	24	28	1.5	25	0	15	17	1	8	91	4.8
4	PERRY, Jiya	19-0	231:17	12.2	21-54	.389	7-20	.350	14-16	.875	8	20	28	1.5	34	1	9	11	4	9	63	3.3
35	PETERSON, Jessica	4-0	28:27	7.1	1-4	.250	0-0	.000	4-4	1.000	3	6	9	2.3	6	0	1	4	3	2	6	1.5
24	HALL, Donavia	15-0	115:12	7.7	9-23	.391	0-2	.000	2-6	.333	4	18	22	1.5	5	0	11	13	2	4	20	1.3
3	HENDERSON, Aaliyah	9-0	52:02	5.8	2-8	.250	0-1	.000	4-6	.667	3	7	10	1.1	10	0	9	5	0	3	8	0.9
14	REID, Shanel	2-0	00:27	0.2	0-0	.000	0-0	.000	0-0	.000	0	0	0	0.0	0	0	0	0	0	0	0	0.0
Team											43	43	86					7				
Total		19	3844		485-1119	.433	86-254	.339	283-409	.692	196	509	705	37.1	336	8	284	292	62	167	1339	70.5
Opponents		19	3860		450-1152	.391	122-405	.301	263-340	.774	225	481	706	37.2	374	9	287	324	65	144	1285	67.6

Team Statistics

	SMU	OPP
Scoring	1339	1285
Points per game	70.5	67.6
Scoring margin	+2.8	-
Field goals-att	485-1119	450-1152
Field goal pct	.433	.391
3 point fg-att	86-254	122-405
3-point FG pct	.339	.301
3-pt FG made per game	4.5	6.4
Free throws-att	283-409	263-340
Free throw pct	.692	.774
F-Throws made per game	14.9	13.8
Rebounds	705	706
Rebounds per game	37.1	37.2
Rebounding margin	-0.1	-
Assists	284	287
Assists per game	14.9	15.1
Turnovers	292	324
Turnovers per game	15.4	17.1
Turnover margin	+1.7	-
Assist/turnover ratio	1.0	0.9
Steals	167	144
Steals per game	8.8	7.6
Blocks	62	65
Blocks per game	3.3	3.4
Winning streak	1	-
Home win streak	1	-
Attendance	16343	6401
Home games-Avg/Game	12-1362	5-1280
Neutral site-Avg/Game	-	2-369

Team Results

Date	Opponent		Score	Att.
11/06/2023	UC Riverside	W	78-55	541
11/11/2023	Alabama St.	W	96-47	549
11/14/2023	Nicholls	W	69-54	4548
11/18/2023	Colorado	L	69-84	1749
11/24/2023	vs Toledo	L	73-74	482
11/25/2023	vs Harvard	L	67-80	255
11/30/2023	Baylor	L	61-85	2294
12/04/2023	Ark.-Pine Bluff	L	76-78	969
12/14/2023	at Louisiana Tech	W	69-53	1655
12/18/2023	Sam Houston	W	69-64	1186
12/21/2023	Air Force	W	75-44	1031
12/30/2023	at South Fla.	L	61-70	2142
01/04/2024	Fla. Atlantic	W	57-52	724
01/07/2024	Rice	L	63-65	985
01/11/2024	at Memphis	Wot2	91-86	854
01/14/2024	at UAB	L	75-84	491
01/17/2024	North Texas	L	61-76	902
01/20/2024	at East Carolina	L	61-68	1259
01/24/2024	Temple	W	68-66	865



**2023-24 SMU Women's Basketball
Team Overall Conference
All games**

Summary

Player	Overall Statistics										Conference Statistics									
	GP-GS	MIN/G	FG%	3FG%	FT%	R/G	A/G	STL	BLK	PTS/G	GP-GS	MIN/G	FG%	3FG%	FT%	R/G	A/G	STL	BLK	PTS/G
YOUNG, Tiara	19-19	32.6	.472	.348	.711	5.6	1.8	20	5	18.6	8-8	32.7	.423	.250	.754	6.3	1.6	14	4	19.4
EMBRY, Chantae	14-10	25.2	.481	.463	.800	5.1	1.6	15	2	10.8	4-2	24.0	.515	.400	.833	5.3	1.0	2	0	13.3
ABDUR-RAHIM, Amirah	19-19	26.4	.497	.000	.487	6.3	1.4	16	33	10.5	8-8	26.4	.487	.000	.412	5.9	1.8	9	16	10.1
BROW, Ella	1-0	24.1	.600	.667	1.000	5.0	1.0	0	0	10.0	0-0	0.0	.000	.000	.000	0.0	0.0	0	0	0.0
BRADLEY, Reagan	19-19	33.5	.321	.258	.818	3.5	3.6	26	1	9.2	8-8	36.9	.313	.259	.833	3.9	3.6	17	1	10.3
JONES, Tamia	18-18	33.4	.396	.317	.556	3.8	4.1	37	5	9.0	7-7	34.3	.220	.259	.542	4.0	3.6	6	0	6.6
PITTS, TK	19-3	18.6	.515	.429	.667	4.4	0.7	27	6	5.3	8-0	16.0	.333	.000	.579	3.8	0.6	13	0	2.9
CHANDLER, Maya	19-7	17.2	.424	.429	.719	1.5	0.8	8	1	4.8	8-7	23.1	.382	.294	.667	1.9	1.0	4	0	5.1
PERRY, Jiya	19-0	12.2	.389	.350	.875	1.5	0.5	9	4	3.3	8-0	15.9	.370	.364	.900	1.8	0.4	5	2	4.1
PETERSON, Jessica	4-0	7.1	.250	.000	1.000	2.3	0.3	2	3	1.5	0-0	0.0	.000	.000	.000	0.0	0.0	0	0	0.0
HALL, Donavia	15-0	7.7	.391	.000	.333	1.5	0.7	4	2	1.3	8-0	8.5	.500	.000	.500	1.5	0.3	2	2	2.4
HENDERSON, Aaliyah	9-0	5.8	.250	.000	.667	1.1	1.0	3	0	0.9	7-0	4.6	.500	.000	.500	0.4	0.9	2	0	0.6
REID, Shanel	2-0	0.2	.000	.000	.000	0.0	0.0	0	0	0.0	1-0	0.2	.000	.000	.000	0.0	0.0	0	0	0.0
Totals	19		.433	.339	.692	37.1	14.9	167	62	70.5	8		.387	.276	.688	36.5	13.6	74	25	67.1
Opponent	19		.391	.301	.774	37.2	15.1	144	65	67.6	8		.404	.368	.792	38.9	14.8	61	28	70.9

Scoring

Player	Overall Statistics										Conference Statistics									
	FG-FGA	FG%	3FG-3FGA	3FG%	FT-FTA	FT%	PTS	PTS/G	FG-FGA	FG%	3FG-3FGA	3FG%	FT-FTA	FT%	PTS	PTS/G				
YOUNG, Tiara	125-265	.472	8-23	.348	96-135	.711	354	18.6	52-123	.423	2-8	.250	49-65	.754	155	19.4				
EMBRY, Chantae	52-108	.481	19-41	.463	28-35	.800	151	10.8	17-33	.515	4-10	.400	15-18	.833	53	13.3				
ABDUR-RAHIM, Amirah	90-181	.497	0-7	.000	19-39	.487	199	10.5	37-76	.487	0-3	.000	7-17	.412	81	10.1				
BROW, Ella	3-5	.600	2-3	.667	2-2	1.000	10	10.0	0-0	.000	0-0	.000	0-0	.000	0	0.0				
BRADLEY, Reagan	61-190	.321	16-62	.258	36-44	.818	174	9.2	30-96	.313	7-27	.259	15-18	.833	82	10.3				
JONES, Tamia	59-149	.396	19-60	.317	25-45	.556	162	9.0	13-59	.220	7-27	.259	13-24	.542	46	6.6				
PITTS, TK	34-66	.515	3-7	.429	30-45	.667	101	5.3	6-18	.333	0-1	.000	11-19	.579	23	2.9				
CHANDLER, Maya	28-66	.424	12-28	.429	23-32	.719	91	4.8	13-34	.382	5-17	.294	10-15	.667	41	5.1				
PERRY, Jiya	21-54	.389	7-20	.350	14-16	.875	63	3.3	10-27	.370	4-11	.364	9-10	.900	33	4.1				
PETERSON, Jessica	1-4	.250	0-0	.000	4-4	1.000	6	1.5	0-0	.000	0-0	.000	0-0	.000	0	0.0				
HALL, Donavia	9-23	.391	0-2	.000	2-6	.333	20	1.3	9-18	.500	0-1	.000	1-2	.500	19	2.4				
HENDERSON, Aaliyah	2-8	.250	0-1	.000	4-6	.667	8	0.9	1-2	.500	0-0	.000	2-4	.500	4	0.6				
REID, Shanel	0-0	.000	0-0	.000	0-0	.000	0	0.0	0-0	.000	0-0	.000	0-0	.000	0	0.0				
Totals	485-1119	.433	86-254	.339	283-409	.692	1339	70.5	188-486	.387	29-105	.276	132-192	.688	537	67.1				
Opponent	450-1152	.391	122-405	.301	263-340	.774	1285	67.6	189-468	.404	56-152	.368	133-168	.792	567	70.9				

Totals

Player	Overall Statistics										Conference Statistics									
	O-REB	D-REB	TOTAL	PF	FO	A	TO	A/TO	HI	PTS	O-REB	D-REB	TOTAL	PF	FO	A	TO	A/TO	HI	PTS
YOUNG, Tiara	14	93	107	54	2	34	53	0.6	38	7	43	50	26	1	13	23	0.6	38	38	
EMBRY, Chantae	26	46	72	33	0	23	33	0.7	24	11	10	21	11	0	4	7	0.6	24	24	
ABDUR-RAHIM, Amirah	34	85	119	47	1	26	35	0.7	24	18	29	47	22	1	14	21	0.7	24	24	
BROW, Ella	1	4	5	0	0	1	1	1.0	10	0	0	0	0	0	0	0	0.0	0	0	
BRADLEY, Reagan	20	47	67	39	1	69	49	1.4	16	14	17	31	19	1	29	16	1.8	16	16	
JONES, Tamia	7	61	68	39	1	73	44	1.7	17	2	26	28	20	1	25	17	1.5	16	16	
PITTS, TK	29	55	84	44	2	13	20	0.7	13	11	19	30	20	2	5	6	0.8	6	6	
CHANDLER, Maya	4	24	28	25	0	15	17	0.9	16	0	15	15	13	0	8	7	1.1	13	13	
PERRY, Jiya	8	20	28	34	1	9	11	0.8	9	3	11	14	14	0	3	4	0.8	9	9	
PETERSON, Jessica	3	6	9	6	0	1	4	0.3	4	0	0	0	0	0	0	0	0.0	0	0	
HALL, Donavia	4	18	22	5	0	11	13	0.8	6	4	8	12	3	0	2	8	0.3	6	6	
HENDERSON, Aaliyah	3	7	10	10	0	9	5	1.8	4	1	2	3	9	0	6	5	1.2	2	2	
REID, Shanel	0	0	0	0	0	0	0	0.0	0	0	0	0	0	0	0	0	0.0	0	0	
Totals	196	509	705	336	8	284	292	1.0	96	92	200	292	157	6	109	119	0.9	91	91	
Opponent	225	481	706	374	9	287	324	0.9	86	91	220	311	172	8	118	146	0.8	86	86	



**2023-24 SMU Women's Basketball
Team Game-by-Game
All games**

Opponent	Date	Score		Total		3-Pointers		Free throws		Rebounds										
				FG-FGA	PCT	3FG-3FGA	PCT	FT-FTA	PCT	OFF	DEF	TOT	AVG	PF	A	TO	BLK	STL	PTS	AVG
UC Riverside	11/06/2023	78-55	W	29-56	.518	7-16	.438	13-19	.684	6	33	39	39.0	12	20	12	4	5	78	78.0
Alabama St.	11/11/2023	96-47	W	36-64	.563	7-11	.636	17-32	.531	15	26	41	40.0	11	24	13	5	16	96	87.0
Nicholls	11/14/2023	69-54	W	24-56	.429	5-18	.278	16-22	.727	10	27	37	39.0	12	16	17	4	10	69	81.0
Colorado	11/18/2023	69-84	L	22-50	.440	6-16	.375	19-24	.792	7	22	29	36.5	15	11	15	4	3	69	78.0
vs Toledo	11/24/2023	73-74	L	27-55	.491	3-10	.300	16-21	.762	13	26	39	37.0	19	12	15	4	7	73	77.0
vs Harvard	11/25/2023	67-80	L	24-56	.429	5-15	.333	14-20	.700	10	23	33	36.3	24	13	15	0	9	67	75.3
Baylor	11/30/2023	61-85	L	25-61	.410	6-13	.462	5-10	.500	5	23	28	35.1	15	12	14	1	7	61	73.3
Ark.-Pine Bluff	12/04/2023	76-78	L	26-64	.406	6-16	.375	18-20	.900	9	25	34	35.0	20	16	16	2	8	76	73.6
at Louisiana Tech	12/14/2023	69-53	W	26-60	.433	5-12	.417	12-17	.706	11	24	35	35.0	19	13	9	5	11	69	73.1
Sam Houston	12/18/2023	69-64	W	27-60	.450	4-16	.250	11-18	.611	13	40	53	36.8	20	19	26	4	8	69	72.7
Air Force	12/21/2023	75-44	W	31-51	.608	3-6	.500	10-14	.714	5	40	45	37.5	12	19	21	4	9	75	72.9
at South Fla.	12/30/2023	61-70	L	22-56	.393	5-12	.417	12-19	.632	7	21	28	36.8	15	10	11	0	8	61	71.9
Fla. Atlantic	01/04/2024	57-52	W	21-66	.318	5-11	.455	10-12	.833	13	26	39	36.9	17	16	9	6	11	57	70.8
Rice	01/07/2024	63-65	L	23-59	.390	3-8	.375	14-21	.667	6	28	34	36.7	15	18	13	6	8	63	70.2
at Memphis	01/11/2024	91-86	Wot2	25-69	.362	1-13	.077	40-60	.667	19	36	55	37.9	32	5	22	1	8	91	71.6
at UAB	01/14/2024	75-84	L	29-63	.460	3-12	.250	14-18	.778	10	25	35	37.8	25	15	12	0	5	75	71.8
North Texas	01/17/2024	61-76	L	23-58	.397	5-19	.263	10-17	.588	8	15	23	36.9	15	17	11	5	12	61	71.2
at East Carolina	01/20/2024	61-68	L	21-61	.344	1-15	.067	18-22	.818	21	21	42	37.2	24	15	25	2	14	61	70.6
Temple	01/24/2024	68-66	W	24-54	.444	6-15	.400	14-23	.609	8	28	36	37.1	14	13	16	5	8	68	70.5
Total		1339		485-1119	.433	86-254	.339	283-409	.692	196	509	705	37.1	336	284	292	62	167	1339	70.5
Opponents		1285		450-1152	.391	122-405	.301	263-340	.774	225	481	706	37.2	374	287	324	65	144	1285	67.6

SMU Averages

Games Played	Points/game	FG Pct	3FG Pct	FT Pct	Rebounds/game	Assists/game	Turnovers/game	Assist/Turnover ratio	Steals/game	Blocks/game
19	70.5	43.3	33.9	69.2	37.1	14.9	15.4	1.0	8.8	3.3



2023-24 SMU Women's Basketball
Overall Team Statistics
All games

Team Statistics

	SMU	OPP
Scoring	1339	1285
Points per game	70.5	67.6
Scoring margin	+2.8	-
Field goals-att	485-1119	450-1152
Field goal pct	.433	.391
3 point fg-att	86-254	122-405
3-point FG pct	.339	.301
3-pt FG made per game	4.5	6.4
Free throws-att	283-409	263-340
Free throw pct	.692	.774
F-Throws made per game	14.9	13.8
Rebounds	705	706
Rebounds per game	37.1	37.2
Rebounding margin	-0.1	-
Assists	284	287
Assists per game	14.9	15.1
Turnovers	292	324
Turnovers per game	15.4	17.1
Turnover margin	+1.7	-
Assist/turnover ratio	1.0	0.9
Steals	167	144
Steals per game	8.8	7.6
Blocks	62	65
Blocks per game	3.3	3.4
Winning streak	1	-
Home win streak	1	-
Attendance	16343	6401
Home games-Avg/Game	12-1362	5-1280
Neutral site-Avg/Game	-	2-369

Score by Periods

Team	1st	2nd	3rd	4th	OT	TOT
SMU	295	310	340	370	24	1339
Opponents	301	294	312	359	19	1285