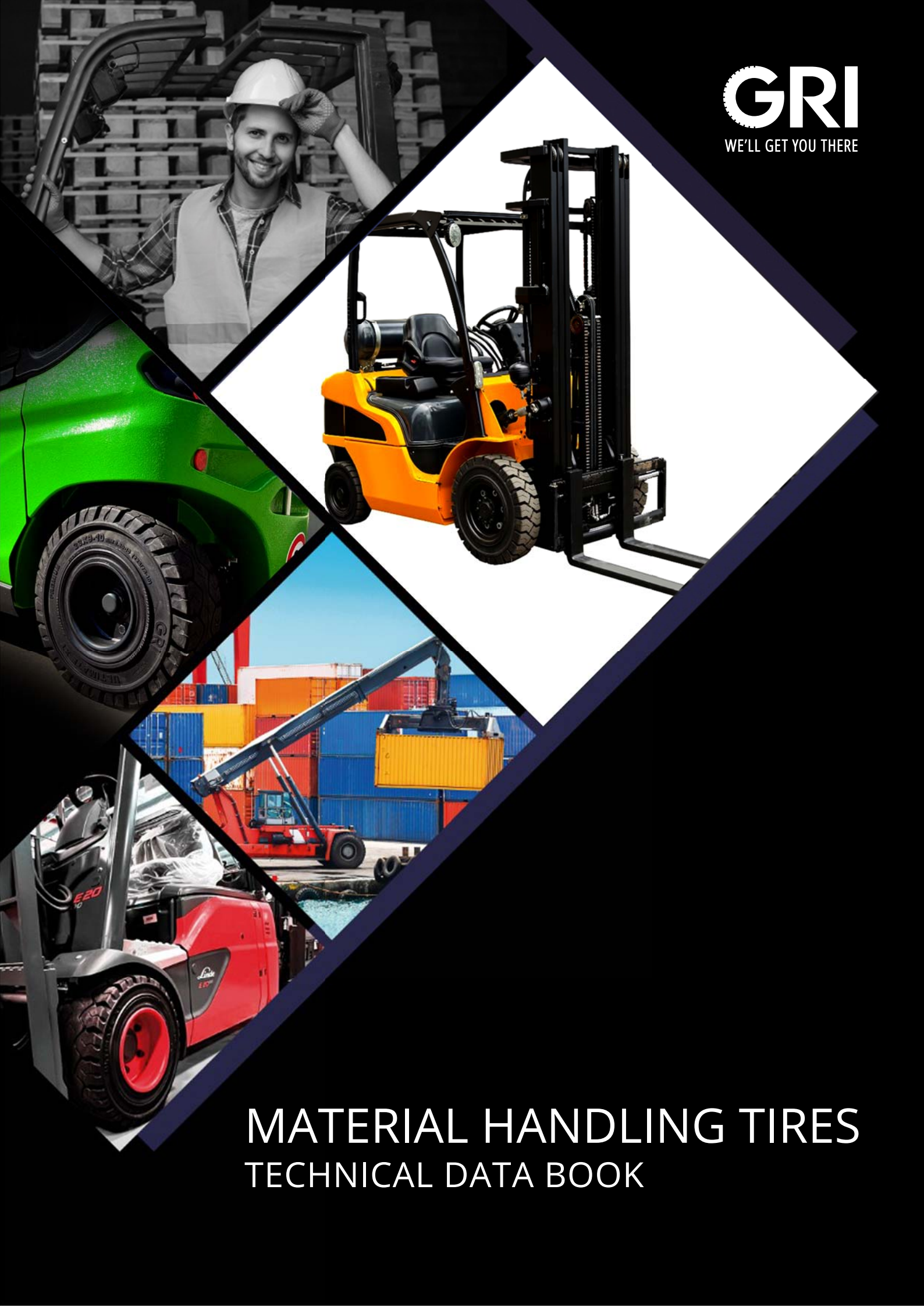


GRI
WE'LL GET YOU THERE



MATERIAL HANDLING TIRES

TECHNICAL DATA BOOK

TABLE OF CONTENTS

About GRI	01
Product range overview (SRT)	02
Product range overview (POB)	03
Material Handling Tires	04
Our Product Range	
- Forklift - solid	
- Forklift – pneumatic	
- Forklift press on bands – POB	
- Excavator	
- Skid Teer	
- Port Trailer	
Types of Forklift Tires	05
SRT Tire Construction	06
Solid Tire Designations	07
Press On Band (POB) Tire Construction	08
POB Tire Designations	
Usage & Solutions	09
Ultimate XT	10 - 12
Ultimate Green XT	13 - 15
Peakmaster	16 - 17
Globestar WT	18 - 19
The Performer	20 - 22
Ultimate XT (POB)	23 - 25
Globestar (POB)	26 - 28
Air Ryde	29 - 30

ABOUT GRI

GRI is a leading producer of Specialty Tires in Sri Lanka with offices in nine countries and sales in over 50 countries around the world. We produce high-performance Agriculture, Construction and Material Handling Tires.

We deliver high-grade specialty tires that are built sustainably using pure natural rubber at our advanced production plants in Sri Lanka. Our state-of-the-art factory is the largest in Sri Lanka to produce specialty tires and the first to produce radial agriculture tires. Technological innovation, engineering strength and operational excellence have powered GRI through rapid growth to become a leader in specialty tires.

Having built a strong reputation in Material Handling industrial solid tires since 2002, GRI embarked to produce a compelling range of Agriculture and Construction tires in Sri Lanka in 2018. We built a new factory, with some of the best tire building machines and started production in April 2018. Customers have found GRI to be an attractive alternative to their current suppliers and find an advantage in selling a new product line from a new country of origin.

GRI ensures its commitment to sustainability and environmental protection by the way we develop new products, generate our power, build our tires, recycle our waste, and manage our water systems. Environmentally sustainable growth is our strategic goal, both now and for generations to come.

GRI is certified in ISO 9001:2015 - Quality Management, ISO 50001: 2011 - Energy Management and ISO 14001:2004 Environmental Management.



PRODUCT RANGE OVERVIEW (SRT)

Size Category	Tire Size		Rim Size	Ultimate Green XT	Ultimate XT	Peakmaster	Globestar WT	The Performer	Air Ryde
4"	4.00-4		2.10 -4			•	•		
	4.00-4		2.50 C-4			•	•		
8"	4.00-8		3.00 D-8		•	•	•	•	
	5.00-8		3.00 D-8	•	•	•	•	•	
	15x4 1/2-8	125/75-8	3.00 D-8	•	•	•	•	•	
	16x6-8	150/75-8	4.33 R-8	•	•	•	•	•	
9"	18x7-8	180/70-8	4.33 R-8	•	•	•	•	•	
	140/55-9		4.00 E-9	•	•	•	•	•	
	6.00-9		4.00 E-9	•	•	•	•	•	
10"	21x8-9	200/75-9	6.00 E-9	•	•	•	•	•	
	6.50-10		5.00 F-10	•	•	•	•	•	
	200/50-10		6.50 F-10	•	•	•	•	•	
12"	23x9-10	225/75-10	6.50 F-10	•	•	•	•	•	
	7.00-12		5.00 S-12	•	•	•	•	•	
	23x10-12	250/60-12	8.00 G-12		•	•	•	•	
15"	27x10-12	250/75-12	8.00 G-12	•	•	•	•	•	
	7.00-15		5.50-15		•	•	•	•	
	7.00-15		6.00-15				•	•	
	8.15-15 (28x9-15)	225/75-15	7.00-15	•	•	•	•	•	
	8.25-15		5.50-15	•			•	•	
	8.25-15		6.50-15	•	•	•	•	•	
16"	250-15	250/70-15	7.00-15	•	•	•	•	•	
	250-15	250/70-15	7.50-15	•	•	•	•	•	
	300-15	315/70-15	8.00-15		•	•	•	•	
20"	28x12.5-15	355/45-15	9.75-15		•	•			
	355/65-15		9.75-15		•	•	•	•	
	7.50-16		6.00-16			•			
	8.00-16		6.00-16			•			
	31x10-20		7.50-20						•
	33x12-20		7.50-20						•
	9.00-20		6.50-10		•		•	•	
	9.00-20		7.00-20		•		•	•	
	10.00-20		7.00-20		•		•	•	
	10.00-20		7.50-20		•		•	•	
	10.00-20		8.00-20		•		•	•	
	11.00-20		7.50-20					•	
	11.00-20		8.00-20					•	
	11.00-20		8.50-20					•	
	12.00-20		7.50-20				•		
	12.00-20		8.00-20		•		•	•	
12.00-20		8.50-20		•		•	•		
12.00-20		10.00-20		•					

PRODUCT RANGE OVERVIEW (POB)

Tire Size		SM	LUG	ULT
10x4x6 1/2	254/102-165	•		
10x5x6 1/2	254/127-165	•	•	
10 1/2 x5x 6 1/2	267/127-165	•		
10x4 3/4x6 1/2	254/121-165	•		
13 1/2x4 1/2x8	343/114-203	•		
13 1/2x5 1/2x8	343/140-203	•		
13 1/2x6 1/2x8	343/165-203	•		
12 x 4 1/2 x8	305/114-203	•	•	
14x4 1/2x8	356/114-203	•	•	
14x5x10	356x127-254	•		
15x5x11 1/4	381/127-286	•		
15x6x11 1/4	381/152-286	•		
16x5x10 1/2	406/127-267	•	•	
16x6x10 1/2	406/152-267	•	•	•
16x7x10 1/2	406/178-267	•		
16 1/4x5x11 1/4	413/127-286			
16 1/4x6x11 1/4	413/152-286	•	•	
16 1/4x7x11 1/4	413/178-286	•		
18x5x12 1/8	457/127-308	•		
18x6x12 1/8	457/152-308		•	•
18x7x12 1/8	457/178-308	•	•	•
18x8x12 1/8	457/203-308	•	•	
18x9x12 1/8	457/229-308	•	•	
21x6x15	533/152-381		•	
21x7x15	533/178-381	•	•	•
21x8x15	533/203-381	•	•	•
22x8x16	559/203-406	•	•	
22x9x16	559/229-406	•	•	•
22x10x16	559/254-406	•		
22x12x16	559/305-406	•		
	645/200-410	•		
	645/250-410	•		
28x10x22	711/254-559	•		
28x12x22	711/305-559	•		
22x16x16	559/406-406	•		
40x16x30	1016/406-762	•		
40x20x30	1016/508-762	•		

MATERIAL HANDLING TIRES

GRI Material Handling tires for forklifts are built with high-quality natural rubber and are known for their excellence in heat dissipation, high run-time and low rolling resistance properties. Our tires are designed for maximum stability and safety along with extensive tire life and low energy consumption. Our premium range of solid tires perform brilliantly in extreme operations. Engineered with high-technology using the best quality natural rubber especially for forklift operators who move material to supply our needs.

OUR PRODUCT RANGE

FORKLIFT - SOLID

ULTIMATE XT

GLOBESTAR WT

ULTIMATE GREEN XT

THE PERFORMER

PEAKMASTER

FORKLIFT - PNEUMATIC

ULTIMATE XT POB

GLOBE STAR POB

FORKLIFT PRESS ON BANDS - POB

LIFT EX

EXCAVATOR

GLOBE STAR

SKIDS TEER

AIR RYDE

PORT TRAILER

Our portfolio includes port trailer tires as well.

TYPES OF FORKLIFT TIRES

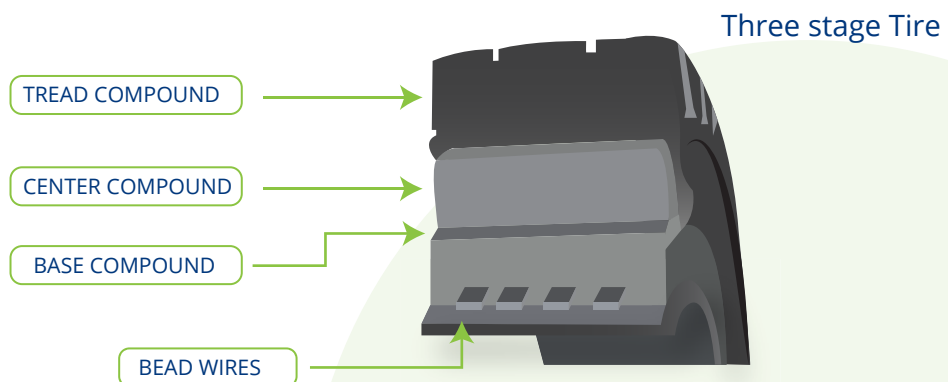
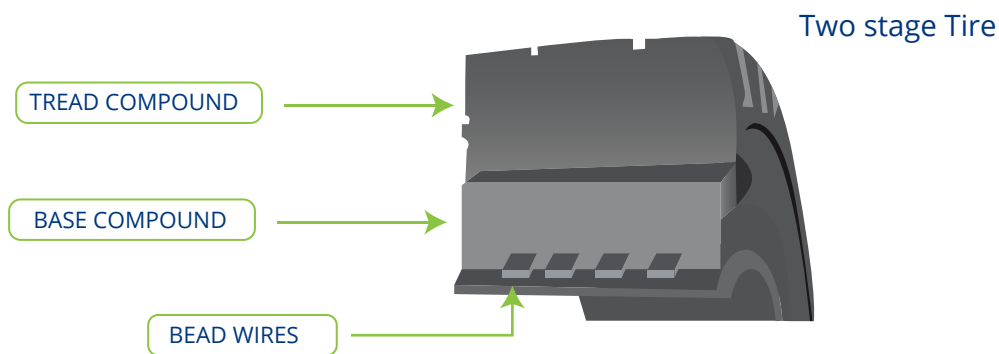
Solid Industrial Tires

- Best for tough applications on slow vehicles or trailers with a high risk of tire damages
- High stability - more stable than pneumatic tires Puncture resistant
- Maintenance Free - no pressure checks
- High load carrying capacity
- No down time - do not burst, deflate or go flat

Press On Band Tires (POB)

- Solid rubber is bonded to a steel band
- Handles tough conditions
- High reliability and safety
- Less rolling resistance
- Runs cooler

Solid Forklift Tires formation



SRT TIRE CONSTRUCTION

Tread Compound

- Gives the tire a long service life and ensures a firm grip to the surface.
- Has optimum hardness with excellent chipping & chunking resistance.
- Excellent abrasion resistance tread compound with greater tread volume for extended service life.

Center Compound

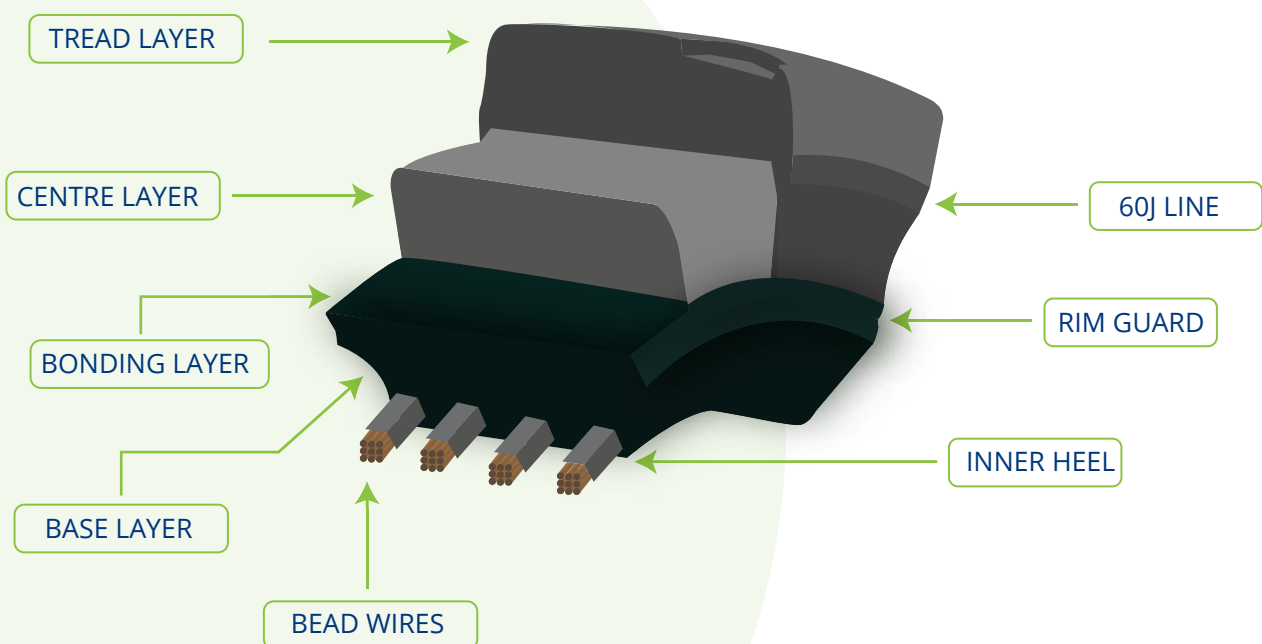
- Gives the tire properties for impact / vibration damping, low rolling resistance and low heat build up.
- Has the lowest heat buildup in all three compounds where the tire will withstand the most severe and aggressive applications without premature failures.

Base Compound

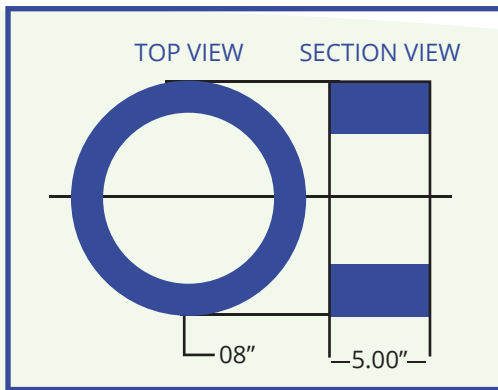
- Ensures the tire fits firmly on the rim.
- Made of a hard compound in which the bead rings are embedded, ensuring maximum tire stability.

Bead Wires

- Ensures perfect fitment of the solid tire to the rim. Anchors the tire to the wheel.
- Ensures excellent circumferential rim fit by even stress distribution in tire mounting.

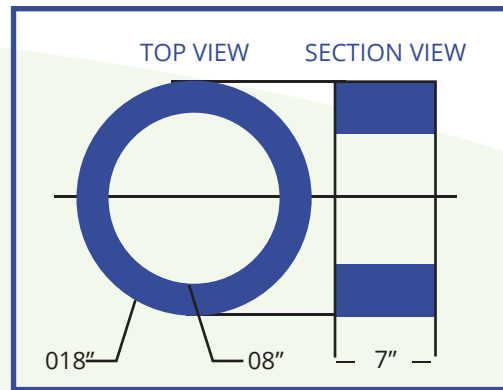


SOLID TIRE DESIGNATIONS



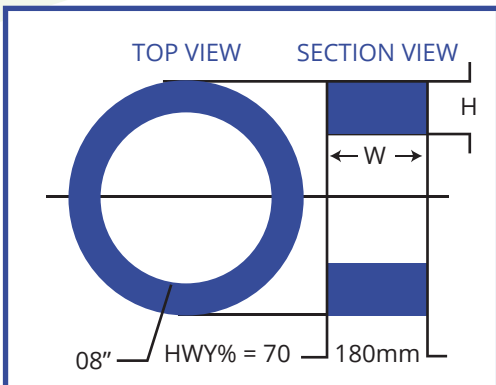
Type 1

- Tire Size 5.00-8
- 5.00- Tire Width in Inches
- 8 - Rim Diameter in inches



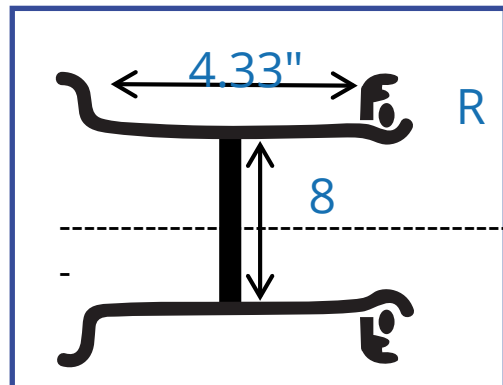
Type 2

- Tire Size 18x7-8
- 18 - Tire Diameter in inches
- 7 - Tire width in inches
- 8 - Rim Diameter in inches



Type 3

- Tire Size 180/70-8
- 180 - Tire width in mm
- 70 - Ratio of cross section H/W%
- 8 - Rim Diameter in inches



Type 4

- Rim Size 4.33R-8
- 4.33- Base Width in inches
- R -Indication for Height of Flange
- 8 - Rim Diameter in inches

PRESS ON BAND (POB) TIRE CONSTRUCTION

Press On Band Tires

Tread Layer

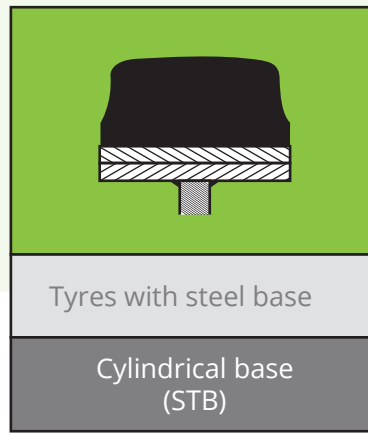
The tread layer has excellent abrasion resistance and cut resistance, giving the tire a long service life.

Steel Band

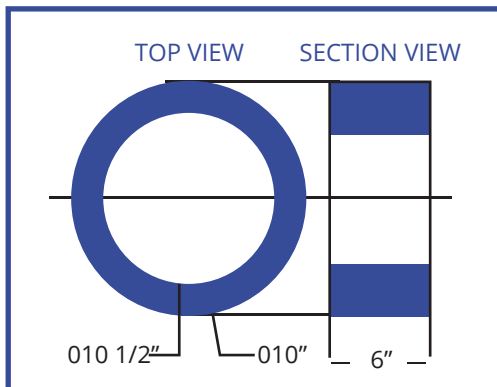
Rigid steel band provides good heat dissipation and incorporates the best possible adhesion of rubber to steel. It also enhances the stability of the tire.

Wheel

Enables easy mounting and provides good stability to the machine

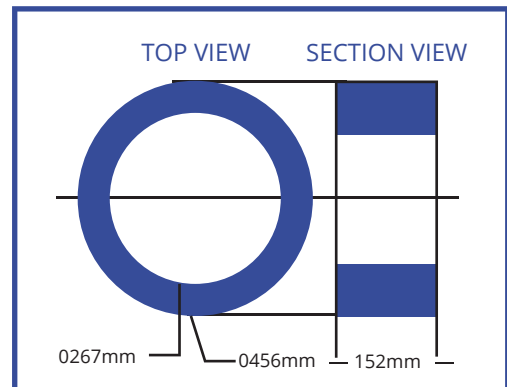


POB TIRE DESIGNATIONS



Type 1

- Tire Size: 16x6x10 1/2
- 16 - Tire OD in inches
- 6 - Tire Width in inches
- 10 1/2 - Rim Diameter in inches



Type 2

- Tire Size: 406/152-267
- 406 Tire OD in mm
- 152 - Tire Width in mm
- 267 - Rim Diameter in mm

USAGE & SOLUTIONS

APPLICATION HOURS	8 hours per day (1 shift)	10-14 hours per day (1.5 shifts)	14-16 hours per day (2 shifts)	24 hours per day (3 shifts)
USAGE	Normal Use	Normal Use	High Ambient Use	Extremely Hard Use
SURFACE TYPE	Smooth Surface	Indoor, Outdoor Surface	Indoor, Outdoor Surface	Indoor, Outdoor Surface
GRI Best Solution	PERFORMER	GLOBESTAR	PEAKMASTER	ULTIMATE XT



Solid Resilient Tires – 60J line

Solid Resilient tires can be worn down to the 60-J line as indicated on the sidewall of the tire. Wearing beyond the 60-J line represents a safety hazard and can lead to unexpected tire failure as well as potential damage to the forklift. The 60-J line is shown by the red line on the image



Press-On-Band Tires

Smooth Pattern - Most manufacturers say to replace a smooth Press on tire when the overall rubber height reaches 2/3rds of the original rubber height.

Traction Pattern - Similar to a solid tire, a traction tire has a safety line, indicating the tread is gone and the tire should be replaced (See Image).

WEARABLE RUBBER



Pneumatic Tires

Pneumatic tires can be worn until the tread pattern has been worn away, just like car and truck tires. Wearing beyond the tread pattern represents a safety hazard and can lead to unexpected tire failure as well as potential damage to the forklift.

GRI

WE'LL GET YOU THERE



ULTIMATE  **XT**[®]
PREMIUM PLUS

ULTIMATE XT

One of the Greatest Solid Tires

ULTIMATE XT is a premium-plus solid tire that goes beyond the norm to provide the ultimate in performance, productivity, and efficiency. Powerful and robust, this tire epitomizes GRI's advanced engineering, research, development, and manufacturing capabilities.



ENERGY SAVING

Highest energy saving and efficiency due to extremely low rolling resistance, resulting in very low carbon emissions.



OPERATING TIME

Highest operating time due to reduced heat build-up and very low cost per hour.



LIFE TIME

Exceptional lifetime due to very high abrasion resistance.



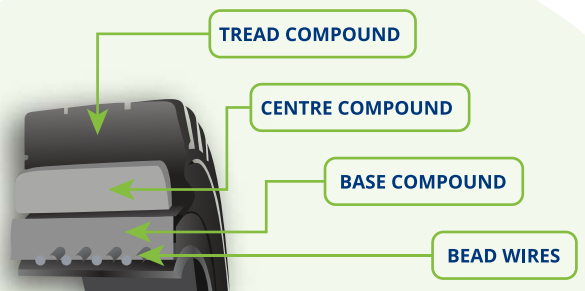
CORNERING STABILITY

Maximum cornering stability enabling high level of safety and comfort.



Unique tread pattern and optimized lug depth that provide excellent traction.

Excellent tread compound that is ideal for intense working environments under all surface conditions.



Tire Size	Rim Size	Clip on	Profile	Tire Dimensions		Tire Dimensions		Other Vehicles Load Capacity (Kg)		Tire load capacity on forklifts at Max. Speed			
				Max width ±1% (mm)	OD ± 2% (mm)	Max width ±1% (inch)	OD ± 2% (Inch)	6 Km/h	10 Km/h	16 Miles/h (Lbs)		25 Km/h (Kg)	
										Load wheel	Steer wheel	Load wheel	Steer wheel
4.00-8	3.00 D-8	•	UT	106	406	4.17	15.98	950	860	2095	1610	950	730
5.00-8	3.00 D-8	•	UT	120	446	4.72	17.56	1415	1285	3120	2405	1415	1090
5.00-8-2	3.00 D-8		SM	116	446	4.57	17.56	1415	1285	3120	2403	1415	1090
15x4 1/2-8 125/75-8	4.33 R-8	•	UT	114	377	4.49	14.84	1040	945	2295	1765	1040	800
16x6-8 150/75-8	4.33 R-8	•	UT	151	411	5.94	16.18	1455	1360	3210	2535	1455	1150
18x7-8 180/70-8	4.33 R-8	•	UT	153	453	6.02	17.83	2145	1945	4730	3640	2145	1650
140/55-9	4.00 E-9	•	UT	129	375	5.08	14.76	1170	1060	2580	1986	1170	900
6.00-9	4.00 E-9	•	UT	137	519	5.39	20.43	1885	1710	4155	3195	1885	1450
6.00-9	6.00 E-9		SM	140	520	5.51	20.47	1885	1710	4156	3197	1885	1450
21x8-9 200/75-9	5.00F-10	•	UT	186	518	7.32	20.39	2755	2505	6075	4675	2755	2120
180/60-10	5.00 F-10	•	UT	165	456	6.50	17.95	2410	2180	5315	4080	2410	1850
6.50-10	6.50 F-10	•	UT	160	561	6.30	22.09	2340	2125	5160	3970	2340	1800
200/50-10	6.50 F-10	•	UT	190	455	7.48	17.91	2470	2240	5445	4190	2470	1900
23x9-10 225/75-10	5.00 S-12	•	UT	200	580	7.87	22.83	3445	3125	7595	5840	3445	2650
7.00-12	8.00 G-12	•	UT	171	651	6.73	25.63	2920	2645	6435	4940	2920	2240
23x10-12	10.00	•	UT	233	578	9.17	22.76	3770	3420	8310	6390	3770	2900
23x12-12 315/45-12	G-12	•	UT	284	584	11.18	22.99	4485	4070	9885	7600	4485	3450
27x10-12 250/75-12	8.00 G-12	•	UT	237	677	9.33	26.65	3900	3540	8600	6615	3900	3000
7.00-15	5.50-15	•	UT	175	722	6.89	28.43	3545	3215	7815	6005	3545	2725
250-15 250/70-15	7.00-15	•	UT	221	722	8.70	28.43	4750	4300	10470	8045	4750	3650
250-15 250/70-15	7.50-15	•	UT	221	722	8.70	28.43	4750	4300	10470	8045	4750	3650
8.15-15 (28x9-15) 225/75-15	7.00-15	•	UT	217	691	8.54	27.20	3900	3540	8310	6390	3900	3000
8.25-15	6.50-15	•	UT	212	810	8.35	31.89	4750	4300	10470	8045	4750	3650
300-15 315/70-15	8.00-15	•	UT	250	824	9.84	32.44	5850	5310	12895	9920	5850	4500
28x12.5-15 355/45-15	9.75-15	•	UT	292	697	11.50	27.44	5525	5015	12185	9375	5525	4250
355/50-15	9.75-15	•	UT	295	713	11.61	28.07	5690	5165	12545	9645	5690	4375
355/65-15	9.75-15	•	UT	300	821	11.81	32.32	7085	6430	17190	13230	7800	6000
9.00-20	6.50-20		UT	224	974	8.82	38.35	5400	4905	11900	9920	5400	4500
9.00-20	7.00-20		UT	224	974	8.82	38.35	5400	4905	11900	9920	5400	4500
10.00-20	7.00-20		UT	255	1016	10.04	40.00	6000	5450	13227	11022	6000	5000
10.00-20	7.50-20		UT	255	1016	10.04	40.00	6000	5450	13227	11022	6000	5000
10.00-20	8.00-20		UT	255	1016	10.04	40.00	6000	5450	13227	11022	6000	5000
12.00-20	8.00-20		UT	269	1090	10.59	42.91	7560	6865	16670	13890	7560	6300
12.00-20	8.50-20		UT	269	1090	10.59	42.91	7560	6865	16670	13890	7560	6300
12.00-20	10.00-20		UT	297	1090	11.70	42.91	7800	7085	16670	13890	7800	6500
355/50-20	10.00-20	•	SM	315	831	12.40	32.72	8990	8160	19820	15245	8990	6915

GRI

WE'LL GET YOU THERE



ULTIMATE GREEN^{XT} PREMIUM PLUS

Probably, The Most Environmentally Friendly Solid Tire in the World

ULTIMATE GREEN XT

Probably, *The Most Environmentally Friendly* Solid Tire in the World

ULTIMATE GREEN XT is a premium-plus solid tire that goes beyond the norm to provide the ultimate in performance, productivity, sustainability and efficiency. Powerful and robust, this tire epitomizes GRI's advanced engineering, research, development, and manufacturing capabilities.



ENERGY SAVING

Highest energy saving and efficiency in the range due to extremely low rolling resistance, resulting in very low carbon emissions.



OPERATING TIME

Highest operating time in the range due to reduced heat build-up and very low cost per hour.



LIFE TIME

Exceptional lifetime due to very high abrasion resistance.



CORNERING STABILITY

Maximum cornering stability enabling high level of safety and comfort.

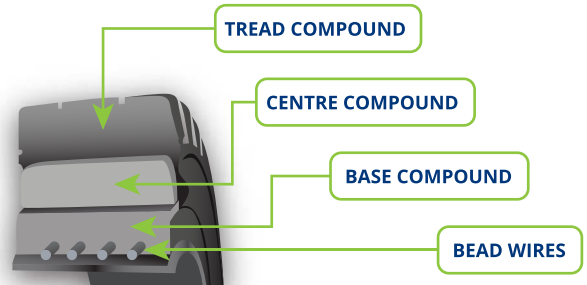
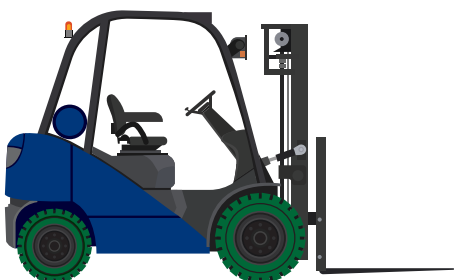


Very low abrasion, reducing particle release and increasing tire life.

Unique tread pattern and optimized lug depth that provide excellent traction.

Advanced tread compound with Highly Dispersible Silica. Developed for high-intense operations and all surface conditions.

Recycled Carbon Black in center.



A tire to protect our planet for the next generation

A tire containing **Bio-sourced and Recycled materials.**

A tire providing **Lower Rolling Resistance** and therefore **Higher Energy Saving.**

A tire that has **Lower Heat Build-up** and therefore **Longer Operating Time**

A tire with **Lower Abrasion Loss** and therefore **Higher Lifetime**



REDUCED
Carbon Particles to Environment

REDUCED
Solid Waste Generation

REDUCED
CO₂ Emissions in ICE Forklifts

LONGER
Battery Life in Electric Forklifts

Tire Size	Rim Size	Tire Dimensions		Tire Dimensions		Other Vehicles load capacity (Kg)		Tire load capacity on forklifts at Max. Speed			
		Max width ±1% (mm)	OD ± 2% (mm)	Max width ±1% (inch)	OD ± 2% (inch)	6 Km/h	10 Km/h	16 Miles/h (Lbs)		25 Km/h (Kg)	
								Load wheel	Steer wheel	Load wheel	Steer wheel
5.00-8	3.00 D-8	120	446	4.72	17.56	1415	1285	3120	2405	1415	1090
15x4 1/2-8 125/75-8	3.00 D-8	114	377	4.49	14.84	1040	945	2295	1765	1040	800
16x6-8 150/75-8	4.33 R-8	151	411	5.94	16.18	1455	1360	3210	2535	1455	1150
18x7-8 180/70-8	4.33 R-8	153	453	6.02	17.83	2145	1945	4730	3640	2145	1650
140/55-9	4.00 E-9	129	375	5.08	14.76	1170	1060	2580	1986	1170	900
6.00-9	4.00 E-9	137	519	5.39	20.43	1885	1710	4155	3195	1885	1450
21x8-9 200/75-9	6.00 E-9	186	518	7.32	20.39	2755	2505	6075	4675	2755	2120
6.50-10	5.00 F-10	160	561	6.30	22.09	2340	2125	5160	3970	2340	1800
200/50-10	6.50 F-10	190	455	7.48	17.91	2470	2240	5445	4190	2470	1900
23x9-10 225/75-10	6.50 F-10	200	580	7.87	22.83	3445	3125	7595	5840	3445	2650
7.00-12	5.00 S-12	171	651	6.73	25.63	2920	2645	6435	4940	2920	2240
27x10-12 250/75-12	8.00 G-12	237	677	9.33	26.65	3900	3540	8600	6615	3900	3000
250-15 250/70-15	7.00-15	221	722	8.70	28.43	4750	4300	10470	8045	4750	3650
250-15 250/70-15	7.50-15	221	722	8.70	28.43	4750	4300	10470	8045	4750	3650
8.15-15 (28x9-15) 225/75-15	7.00-15	217	691	8.54	27.20	3900	3540	8310	6390	3770	2900
8.25-15	6.50-15	212	810	8.35	31.89	4750	4300	10470	8045	4750	3650

PEAKMASTER

A Solid Tire at Peak Performance

PEAKMASTER brings together an innovative design and tire construction using advanced natural rubber compounds to provide optimum performance.



ENERGY SAVING

Highest energy saving and efficiency due to extremely low rolling resistance, resulting in very low carbon emissions.



OPERATING TIME

Highest operating time due to reduced heat build-up and very low cost per hour.



LIFE TIME

Exceptional lifetime due to very high abrasion resistance.



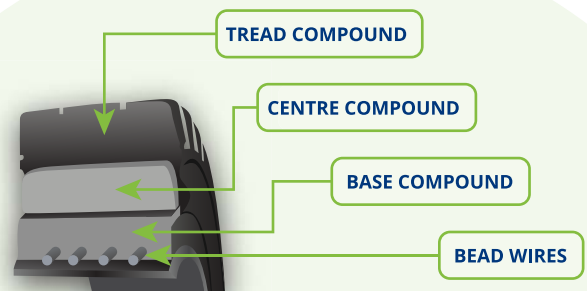
CORNERING STABILITY

Maximum cornering stability enabling high level of safety and comfort.



Wide profile, bold tread pattern and increased tread depth.

Optimized for high intensity applications with an asymmetric tread design.



Tire Size	Rim Size	Clip on	Profile	Tire Dimensions (mm)		Tire Dimensions (mm)		Other Vehicles Load Capacity (Kg)		Tire load capacity on forklifts at Max. Speed			
				Max width ±1% (mm)	OD ± 2% (mm)	Max width ±1% (inch)	OD ± 2% (Inch)	6 Km/h	10 Km/h	16 Miles/h (Lbs)		25 Km/h (Kg)	
										Load wheel	Steer wheel	Load wheel	Steer wheel
4.00-4	2.10-4		PM	99	304	3.90	11.97	535	485	1180	910	535	412
4.00-4	2.50-C-4		PM	99	304	3.90	11.97	535	485	1180	910	535	412
4.00-8	3.00 D-8	•	PM	106	406	4.17	15.98	950	860	2095	1610	950	730
5.00-8	3.00 D-8	•	PM	120	446	4.72	17.56	1415	1285	3120	2405	1415	1090
15x4 1/2-8 125/75-8	3.00 D-8	•	PM	114	377	4.49	14.84	1040	945	2295	1765	1040	800
16x6-8 150/75-8	4.33 R-8	•	PM	151	411	5.94	16.18	1455	1360	3210	2535	1455	1150
18x7-8 180/70-8	4.33 R-8	•	PM	153	453	6.02	17.83	2145	1945	4730	3640	2145	1650
140/55-9	4.00 E-9	•	PM	129	375	5.08	14.76	1170	1060	2580	1986	1170	900
6.00-9	4.00 E-9	•	PM	137	519	5.39	20.43	1885	1710	4155	3195	1885	1450
21x8-9 200/75-9	6.00 E-9	•	PM	186	518	7.32	20.39	2755	2505	6075	4675	2755	2120
6.50-10	5.00 F-10	•	PM	160	561	6.30	22.09	2340	2125	5160	3970	2340	1800
200/50-10	6.50 F-10	•	PM	190	455	7.48	17.91	2470	2240	5445	4190	2470	1900
23x9-10 225/75-10	6.50 F-10	•	PM	200	580	7.87	22.83	3445	3125	7595	5840	3445	2650
7.00-12	5.00 S-12	•	PM	172	650	6.77	25.59	2920	2645	6435	4940	2920	2240
23x10-12	8.00 G-12	•	PM	233	578	9.17	22.76	3770	3420	8310	6390	3770	2900
27x10-12 250/75-12	8.00 G-12	•	PM	237	677	9.33	26.65	3900	3540	8600	6615	3900	3000
7.00-15	5.50-15	•	PM	180	722	7.09	28.43	3545	3215	7815	6005	3545	2725
7.50-16	6.00-16		PM	207	777	8.15	30.59	3965	3600	8740	6745	3965	3060
8.00-16	6.00-16		PM	207	777	8.15	30.59	3965	3540	8740	6745	3965	3060
250-15 250/70-15	7.00-15	•	PM	222	722	8.74	28.43	4750	4300	10470	8045	4750	3650
250-15 250/70-15	7.50-15	•	PM	222	722	8.74	28.43	4750	4300	10470	8045	4750	3650
8.15-15 (28x9-15) 225/75-15	7.00-15	•	PM	217	691	8.54	27.20	3900	3540	8600	6615	3900	3000
8.25-15	6.50-15	•	PM	212	810	8.35	31.89	4750	4300	10470	8045	4750	3650
300-15 315/70-15	8.00-15	•	PM	250	824	9.84	32.44	5850	5310	12895	9920	5850	4500
28x12.5-15 355/45-15	9.75-15	•	PM	292	697	11.50	27.44	5690	5165	12545	9645	5690	4375
355/65-15	9.75-15	•	PM	300	819	11.81	32.24	7085	6430	17190	13230	7800	6000

GLOBESTAR WT

One of the Widest Solid Tires

A universal solid tire, **GLOBESTAR Wide-Tread** ensures consistency in performance and durability. It is one of the widest tires in the industry.



ENERGY SAVING

Very good energy saving due to very low rolling resistance.



OPERATING TIME

Very good operating time due to low heat build-up and low cost per hour.



LIFE TIME

Ideal tire life and reduced maintenance cost.

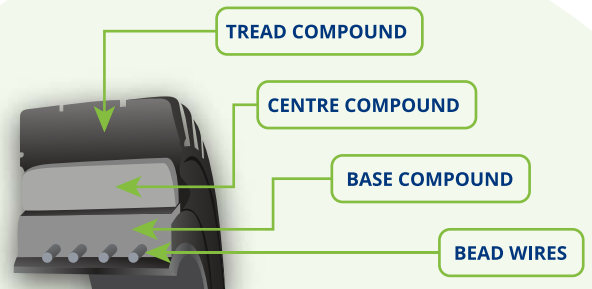


CORNERING STABILITY

The wide tread provides very good cornering stability and driver comfort.



GLOBESTAR WT



Tire Size	Rim Size	Clip on	Tire Dimensions		Tire Dimensions		Other Vehicles Load Capacity (Kg)		Tire load capacity on forklifts at Max. Speed			
			Max width ±1% (mm)	OD ± 2% (mm)	Max width ±1% (Inch)	OD ± 2% (Inch)	6 Km/h	10 Km/h	16 Miles/h (Lbs)		25 Km/h (Kg)	
									Load wheel	Steer wheel	Load wheel	Steer wheel
4.00-4	2.10 -4		97	304	3.82	11.97	535	485	1180	910	535	412
4.00-4	2.50 C-4		97	304	3.82	11.97	535	485	1180	910	535	412
4.00-8	3.00 D-8	•	104	403	4.09	15.87	950	860	2095	1610	950	730
5.00-8	3.00 D-8	•	115	444	4.53	17.48	1415	1285	3120	2405	1415	1090
15x4 1/2-8 125/75-8	3.00 D-8	•	115	374	4.53	14.72	1040	945	2295	1765	1040	800
16x6-8 150/75-8	4.33 R-8	•	138	406	5.43	15.98	1495	1360	3210	2535	1495	1150
18x7-8 180/70-8	4.33 R-8	•	152	451	5.98	17.76	2145	1945	4730	3640	2145	1650
140/55-9	4.00 E-9	•	129	377	5.08	14.84	1170	1060	2580	1986	1170	900
6.00-9	4.00 E-9	•	139	517	5.47	20.35	1885	1710	4155	3195	1885	1450
21x8-9 200/75-9	6.00 E-9	•	179	514	7.05	20.24	2755	2505	6075	4675	2755	2120
6.50-10	5.00 F-10	•	156	563	6.14	22.17	2340	2125	5160	3970	2340	1800
200/50-10	6.50 F-10	•	191	455	7.52	17.91	2470	2240	5445	4190	2470	1900
23x9-10 225/75-10	6.50 F-10	•	197	580	7.76	22.83	3445	3125	7595	5840	3445	2650
7.00-12	5.00 S-12	•	167	645	6.57	25.39	2920	2645	6435	4940	2920	2240
23x10-12 250/60-12	8.00 G-12	•	232	580	9.13	22.83	3770	3420	8310	6390	3770	2900
27x10-12 250/75-12	8.00 G-12	•	243	670	9.57	26.38	3900	3540	8600	6615	3900	3000
7.00-15	5.50-15	•	174	704	6.85	27.72	3545	3215	7815	6005	3545	2725
7.00-15	6.00-15	•	174	704	6.85	27.72	3545	3215	7815	6005	3545	2725
8.15-15 (28x9-15) 225/75-15	7.00-15	•	214	680	8.43	26.77	3900	3540	8310	6390	3900	3000
8.25-15	5.50-15	•	209	806	8.23	31.73	4750	4300	10470	8045	4750	3650
8.25-15	6.50-15	•	209	806	8.23	31.73	4750	4300	10470	8045	4750	3650
250-15 250/70-15	7.00-15	•	216	709	8.50	27.91	4750	4300	10470	8045	4750	3650
250-15 250/70-15	7.50-15	•	216	709	8.50	27.91	4750	4300	10470	8045	4750	3650
300-15 315/70-15	8.00-15	•	262	811	10.31	31.93	5850	5310	12895	9920	5850	4500
355/65-15	9.75-15	•	290	819	11.42	32.24	7085	6430	17190	13230	7800	6000
9.00-20	6.50-20		231	970	9.09	38.19	5400	4905	11770	9810	5400	4500
9.00-20	7.00-20		231	970	9.09	38.19	5400	4905	11770	9810	5400	4500
10.00-20	7.00-20		248	1005	9.76	39.57	6000	5450	13230	11025	6000	5000
10.00-20	7.50-20		248	1005	9.76	39.57	6000	5450	13230	11025	6000	5000
10.00-20	7.50-20	•	248	1005	9.76	39.57	6000	5450	13230	11025	6000	5000
10.00-20	8.00-20		248	1005	9.76	39.57	6000	5450	13230	11025	6000	5000
12.00-20	7.50-20		284	1084	11.18	42.68	7560	6865	16535	13780	7560	6300
12.00-20	8.00-20		284	1084	11.18	42.68	7560	6865	16535	13780	7560	6300
12.00-20	8.50-20		284	1084	11.18	42.68	7560	6865	16535	13780	7560	6300

GRI
WE'LL GET YOU THERE



THE PERFORMER
VALUE

THE PERFORMER

Optimized for Value

THE PERFORMER is simple and efficient, providing perfect performance at a competitive price.



ENERGY SAVING

Good energy saving and efficiency due to low rolling resistance.



OPERATING TIME

Good operating time in suitable applications.



LIFE TIME

Good tire life providing very good value.



CORNERING STABILITY

Good cornering stability enabling safety and comfort.



Low abrasion tread compound.

High lug depth and optimized aspect ratio.



TREAD COMPOUND

BASE COMPOUND

BEAD WIRES

Tire Size	Rim Size	Clip on	Profile	Tire Dimensions		Tire Dimensions		Tire load capacity on forklifts at Max. Speed			
				Max width ±1% (mm)	OD ± 2% (mm)	Max width ±1% (Inch)	OD ± 2% (Inch)	12 Miles/h (Lbs)		20 Km/h (Kg)	
								Load wheel	Steer wheel	Load wheel	Steer wheel
4.00-8	3.00 D-8		GS	104	406	4.09	15.98	2095	1610	950	730
5.00-8	3.00 D-8		GS	116	446	4.57	17.56	3120	2405	1415	1090
15x4 1/2-8 125/75-8	3.00 D-8	•	GS	103	377	4.06	14.84	2295	1765	1040	800
16x6-8 150/75-8	4.33 R-8	•	GS	139	407	5.47	16.02	3210	2535	1455	1150
18x7-8 180/70-8	4.33 R-8	•	GS	153	451	6.02	17.76	4730	3640	2145	1650
6.00-9	4.00 E-9	•	GS	139	520	5.51	20.47	4155	3195	1885	1450
21x8-9 200/75-9	6.00 E-9	•	GS	174	516	6.85	20.31	6075	4675	2755	2120
6.50-10	5.00 F-10	•	GS	153	565	6.02	22.24	5160	3970	2340	1800
200/50-10	6.50 F-10	•	GS	188	456	7.40	17.95	5445	4190	2470	1900
23x9-10 225/75-10	6.50 F-10	•	GS	188	582	7.52	22.80	7595	5840	3445	2650
7.00-12	5.00 S-12	•	GS	164	647	6.46	25.47	6435	4940	2920	2240
23x10-12	8.00 G-12	•	GS	234	580	9.21	22.83	8310	6390	3770	2900
27x10-12 250/75-12	8.00 G-12	•	GS	232	675	9.13	26.50	8600	6615	3900	3000
7.00-15	5.50-15	•	GS	175	705	7.01	27.76	7815	6005	3545	2725
7.00-15	6.00-15	•	GS	175	705	7.01	27.76	7815	6005	3545	2725
250-15 250/70-15	7.00-15	•	GS	211	712	8.43	28.03	10470	8045	4750	3650
250-15 250/70-15	7.50-15	•	GS	211	712	8.43	28.03	10470	8045	4750	3650
8.15-15 (28x9-15) 225/75-15	7.00-15	•	GS	202	681	8.23	26.81	8600	6615	3900	3000
8.25-15	5.50-15	•	GS	194	809	7.64	31.85	10470	8045	4750	3650
8.25-15	6.50-15	•	GS	193	809	7.60	31.85	10470	8045	4750	3650
300-15 315/70-15	8.00-15	•	GS	243	812	9.57	31.97	12895	9920	5850	4500
355/65-15	9.75-15	•	GS	291	826	11.46	32.52	17190	13230	7800	6000
9.00-20	6.50-10		GS	225	971	8.86	38.23	11900	9920	5400	4500
9.00-20	7.00-20		GS	225	971	8.86	38.23	11900	9920	5400	4500
10.00-20	7.00-20		GS	250	1006	9.84	39.61	13230	11025	6000	5000
10.00-20	7.50-20		GS	250	1006	9.84	39.61	13230	11025	6000	5000
10.00-20	8.00-20		GS	250	1006	9.84	39.61	13230	11025	6000	5000
11.00-20	7.50-20		GS	265	1088	10.43	42.83	14420	12015	6540	5450
11.00-20	8.00-20		GS	265	1088	10.43	42.83	14420	12015	6540	5450
11.00-20	8.50-20		GS	265	1088	10.43	42.83	14420	12015	6540	5450
12.00-20	8.00-20		GS	265	1088	10.43	42.83	16670	13890	7560	6300
12.00-20	8.50-20		GS	265	1088	10.43	42.83	16670	13890	7560	6300

GRI

WE'LL GET YOU THERE



ULTIMATE **XT** POB
STANDARD

ULTIMATE XT

PRESS ON BAND (POB) TIRES

ULTIMATE XT pob high quality abrasion and tear resistant tread of a perfected natural rubber compound is vulcanized onto a precision band using a new 'global-lock' bonding process, which virtually locks the rubber to steel base bands. ULTIMATE XT POB is a state of the art cushion tire built for long running hours, reduced downtime and increased load capacity.



ENERGY SAVING

Highest energy saving and efficiency due to extremely low rolling resistance, resulting in very low carbon emissions.



OPERATING TIME

Highest operating time due to reduced heat build-up and very low cost per hour.



LIFE TIME

Exceptional lifetime due to very high abrasion resistance.



CORNERING STABILITY

Maximum cornering stability enabling high level of safety and comfort.



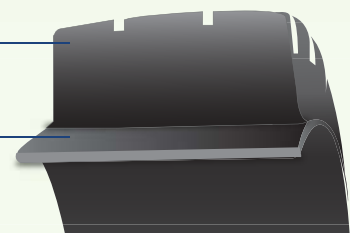
Increased Lug depth for longer tire life

Used global lock bonding process to precision the band.



Tread Compound

Steel Band



Tire Size		Lug	Profile	Tire Weight(Kg)	Fork Lift Truck Load Capacity at 16 Km/h (Kg)		Other Vehicles Load Capacity (Kg)		
Inch	mm				Load Wheel	Steer Wheel	6 Km/h	10 Km/h	16 Km/h
16x6x10 1/2	406/152-267	•	UT	17.4	1710	1435	1710	1570	1435
18x6x12 1/8	457/152-308	•	UT	21.2	1870	1575	1870	1720	1575
18x7x12 1/8	457/178-308	•	UT	24.3	2280	1910	2280	2095	1915
21x7x15	533/178-381	•	UT	30.2	2560	2150	2560	2355	2150
21x8x15	533/203-381	•	UT	34.0	3020	2540	3020	2780	2535
22x9x16	559/229-406	•	UT	44.8	3600	3025	3605	3315	3025

GRI

WE'LL GET YOU THERE



GLOBE STAR POB
STANDARD

GLOBE STAR

PRESS ON BAND (POB) TIRES

A wear abrasion and tear resistant tread of a perfected natural rubber compound is vulcanized onto a precision band using a new 'global-lock' bonding process, which virtually locks the rubber to steel base bands. GLOBESTAR POB is a great cushion tire ensuring reduced downtime and increased load capacity.



ENERGY SAVING

Very good energy saving due to very low rolling resistance.



OPERATING TIME

Very good operating time due to low heat build-up and low cost per hour.



LIFE TIME

Ideal tire life and reduced maintenance cost.



CORNERING STABILITY

Maximum cornering stability enabling high level of safety and comfort.



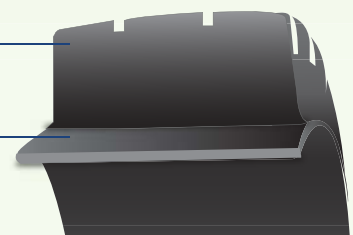
Wide footprint for better stability

Used global lock bonding process to precision the band.



Tread Compound

Steel Band



Tyre Size		Sm	Lug	Tire load capacity on forklifts at Max. Speed			
Inch	mm			10 Miles/h (Lbs)		16 Km/h (Kg)	
				Load Wheel	Steer Wheel	Load Wheel	Steer Wheel
10x4x6 1/2	254/102-165	•		1530	1290	695	585
10x5x6 1/2	254/127-165	•	•	1995	1675	905	760
10 1/2 x5x 6 1/2	267/127-165			2113	1772	960	810
10x4 3/4x6 1/2	254/121-165			1874	1579	845	710
13 1/2x4 1/2x8	343/114-203	•		2205	1850	1025	860
13 1/2x5 1/2x8	343/140-203	•		2965	2490	1345	1130
13 1/2x6 1/2x8	343/165-203	•		3240	2710	1470	1230
12 x 4 1/2 x8	305/114-203	•	•	2072	1477	930	780
14x4 1/2x8	356/114-203	•	•	2300	1930	1045	875
14x5x10	356x127-254	•		2648	2207	1195	1000
15x5x11 1/4	381/127-286	•		2735	2305	1240	1040
15x6x11 1/4	381/152-286	•		3385	2845	1530	1285
16x5x10 1/2	406/127-267	•	•	2965	2490	1345	1130
16x6x10 1/2	406/152-267	•	•	3770	3165	1710	1435
16x7x10 1/2	406/178-267	•		4563	3836	2070	1740
16 1/4x5x11 1/4	413/127-286	•		3000	2525	1360	1145
16 1/4x6x11 1/4	413/152-286	•	•	3780	3175	1715	1440
16 1/4x7x11 1/4	413/178-286	•		4555	3825	2060	1735
18x5x12 1/8	457/127-308	•		3230	2710	1470	1230
18x6x12 1/8	457/152-308	•	•	4120	3470	1870	1575
18x7x12 1/8	457/178-308	•	•	5925	4220	2280	1910
18x8x12 1/8	457/203-308	•	•	5920	4970	2680	2250
18x9x12 1/8	457/229-308	•	•	6810	5720	3090	2600
21x6x15	533/152-381		•	4640	3890	2100	1765
21x7x15	533/178-381	•	•	5645	4740	2560	2150
21x8x15	533/203-381	•	•	6660	5590	3025	2540
22x8x16	559/203-406	•	•	6900	5790	3130	2625
22x9x16	559/229-406	•	•	7950	6670	3600	3025
22x10x16	559/254-406	•		8995	7550	4080	3425
22x12x16	559/305-406	•		11090	9315	5030	4225
	645/200-410	•		7720	6170	3500	2800
	645/250-410	•		10420	8552	4180	3430
28x10x22	711/254-559	•		10285	8290	4880	4100
28x12x22	711/305-559	•		12135	10230	6020	5060
22x16x16	559/406-406	•		13850	11640	6915	5810
40x16x30	1016/406-762	•		21610	17740	10810	8870
40x20x30	1016/508-762	•		30910	25400	14020	11520

GRI

WE'LL GET YOU THERE



AIR RYDE

VALUE

AIR RYDE

A solid Skid-Steer tire built with natural rubber formulation and aperture sidewall design, providing the softest cushion ride. AIR RYDE tires are engineered specifically to handle the extreme lateral forces of skid-steer machines.



ENERGY SAVING

Very good energy saving due to very low rolling resistance.



OPERATING TIME

Very good operating time due to low heat build-up and low cost per hour.



LIFE TIME

Ideal tire life and reduced maintenance cost.



CORNERING STABILITY

The aperture sidewall design provides very good cornering stability and driver comfort.



Three angled stepped Lug design for higher stability

Deep directional tread for harsh terrains

Aperture sidewall design

Tire Size	Rim Size	Profile	Tire Dimensions		Tire Dimensions		Load capacity			
			Max width ±1% (mm)	OD ± 2% (mm)	Max width ±1% (inch)	OD ± 2% (inch)	6 Miles/h (Lbs)		10 Km/h (Kg)	
							Load wheel	Steer wheel	Load wheel	Steer wheel
31x10-20	7.50-20	RD	236	777	9.3	30,6	8886	6853	4030	3100
33x12-20	7.50-20	RD	287	828	11.3	32.6	11466	8820	5200	4000



AIR RYDE



GRI produces high-grade specialty tires that are built sustainably using pure natural rubber in Sri Lanka. Founded in 2002, the company produces material handling solid tires, radial agriculture tires and construction tires. GRI has operations in 9 countries, and a business presence in more than 50 countries. In 2018, GRI opened an advanced manufacturing plant in Sri Lanka to produce radial agricultural tires. In 2020, GRI commenced construction of a large mixing facility for tire compounds and in 2021 began further expansion of its advanced specialty tire plant. GRI ensures its commitment to sustainability and environmental protection through all its strategies and processes. Environmentally sustainable growth is our strategic goal, both now and for generations to come.

info@gritires.com

www.gritires.com

www.facebook.com/GRI tires/
www.instagram.com/gritires/?hl=en

LIMITED WARRANTY

All solid rubber forklift tires manufactured by Global Rubber Industries (Pvt) Ltd are covered by limited warranty, which includes cover against material, workmanship and other manufacturing defects subject to the usage of the tires under specified conditions. If any tire covered by this warranty is deemed unserviceable due to aforementioned defects, we will either repair the tire or provide an allowance to purchase a new tire at the current price as a percentage of the worn off tread of the original tire at the time of making the claim.

The cost of transportation, service and paid sales tax will be borne by the owner of the claimed tire. The limited warranty is exclusively applicable to the tire owner who is