



ULTIMATE GREEN^{XT}

PREMIUM PLUS

The first Environment Friendly Material Handling Tire

ULTIMATE GREEN XT

The First Environment Friendly Solid Tire in the World

ULTIMATE GREEN XT is a premium-plus solid tire that goes beyond the norm to provide the ultimate in performance, productivity, sustainability and efficiency. Powerful and robust, this tire epitomizes GRI's advanced engineering, research, development, and manufacturing capabilities.



ENERGY SAVING

Highest energy saving and efficiency in the range due to extremely low rolling resistance, resulting in very low carbon emissions.



OPERATING TIME

Highest operating time in the range due to reduced heat build-up and very low cost per hour.



LIFE TIME

Exceptional lifetime due to very high abrasion resistance.



CORNERING STABILITY

Maximum cornering stability enabling high level of safety and comfort.

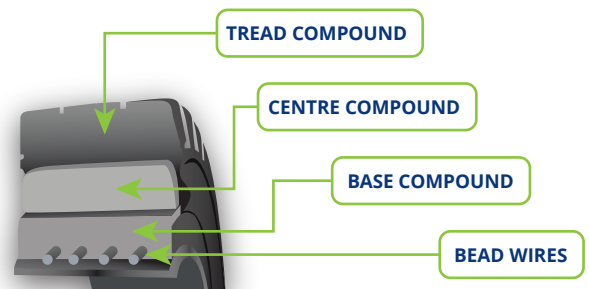
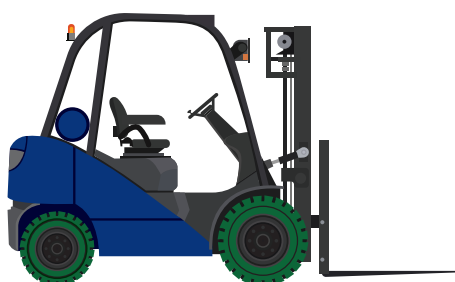


Very low abrasion, reducing particle release and increasing tire life.

Unique tread pattern and optimized lug depth that provide excellent traction.

Advanced tread compound with Highly Dispersible Silica. Developed for high-intense operations and all surface conditions.

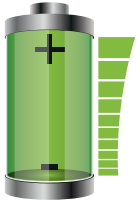
Recycled Carbon Black in center.



ULTIMATE GREEN XT

A tire to *protect our planet for the next generation*

GRI
WE'LL GET YOU THERE



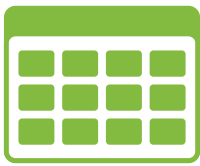
ENERGY SAVING

Highest energy saving and efficiency in the range, due to extremely low rolling resistance, resulting in very low carbon emissions.



OPERATING TIME

Highest operating time in the range, due to reduced heat build-up and very low cost per hour.



LIFE TIME

Exceptional lifetime due to very high abrasion resistance.



CORNERING STABILITY

Maximum cornering stability enabling high level of safety and comfort.



REDUCED
Carbon Particles
to Environment

REDUCED
Solid Waste
Generation

REDUCED
CO₂ Emissions
in ICE Forklifts

LONGER
Battery Life
in Electric Forklifts

Tire Size	Rim Size	Tire Dimensions		Tire Dimensions		Other Vehicles load capacity (Kg)		Tire load capacity on forklifts at Max. Speed			
								16 Miles/h (Lbs)		25 Km/h (Kg)	
		Max width ±1% (mm)	OD ± 2% (mm)	Max width ±1% (inch)	OD ± 2% (inch)	6 Km/h	10 Km/h	Load wheel	Steer wheel	Load wheel	Steer wheel
5.00-8	3.00 D-8	120	446	4.72	17.56	1415	1285	3120	2405	1415	1090
15x4 1/2-8 125/75-8	3.00 D-8	114	377	4.49	14.84	1040	945	2295	1765	1040	800
16x6-8 150/75-8	4.33 R-8	151	411	5.94	16.18	1455	1360	3210	2535	1455	1150
18x7-8 180/70-8	4.33 R-8	153	453	6.02	17.83	2145	1945	4730	3640	2145	1650
140/55-9	4.00 E-9	129	375	5.08	14.76	1170	1060	2580	1986	1170	900
6.00-9	4.00 E-9	137	519	5.39	20.43	1885	1710	4155	3195	1885	1450
21x8-9 200/75-9	6.00 E-9	186	518	7.32	20.39	2755	2505	6075	4675	2755	2120
6.50-10	5.00 F-10	160	561	6.30	22.09	2340	2125	5160	3970	2340	1800
200/50-10	6.50 F-10	190	455	7.48	17.91	2470	2240	5445	4190	2470	1900
23x9-10 225/75-10	6.50 F-10	200	580	7.87	22.83	3445	3125	7595	5840	3445	2650
7.00-12	5.00 S-12	171	651	6.73	25.63	2920	2645	6435	4940	2920	2240
27x10-12 250/75-12	8.00 G-12	237	677	9.33	26.65	3900	3540	8600	6615	3900	3000
250-15 250/70-15	7.00-15	221	722	8.70	28.43	4750	4300	10470	8045	4750	3650
250-15 250/70-15	7.50-15	221	722	8.70	28.43	4750	4300	10470	8045	4750	3650
8.15-15 (28x9-15) 225/75-15	7.00-15	217	691	8.54	27.20	3900	3540	8310	6390	3770	2900
8.25-15	6.50-15	212	810	8.35	31.89	4750	4300	10470	8045	4750	3650