



MENU



## A Speakeasy Hidden in Plain Sight

The sewing machine hums. The iron hisses. Nothing looks out of place.  
It's just a tailor's shop—pressed fabric, chalk lines, measured silence.  
Exactly as it should be.

But Madras has always hidden its finest secrets in plain sight.  
There's a door that doesn't announce itself. No sign. No sound.  
Only those who know, know.

Steam & Whistles draws from 1940s Madras—when  
tailors heard confessions,

trams rang through the night, and restraint was worn in  
public while rebellion was poured in private.

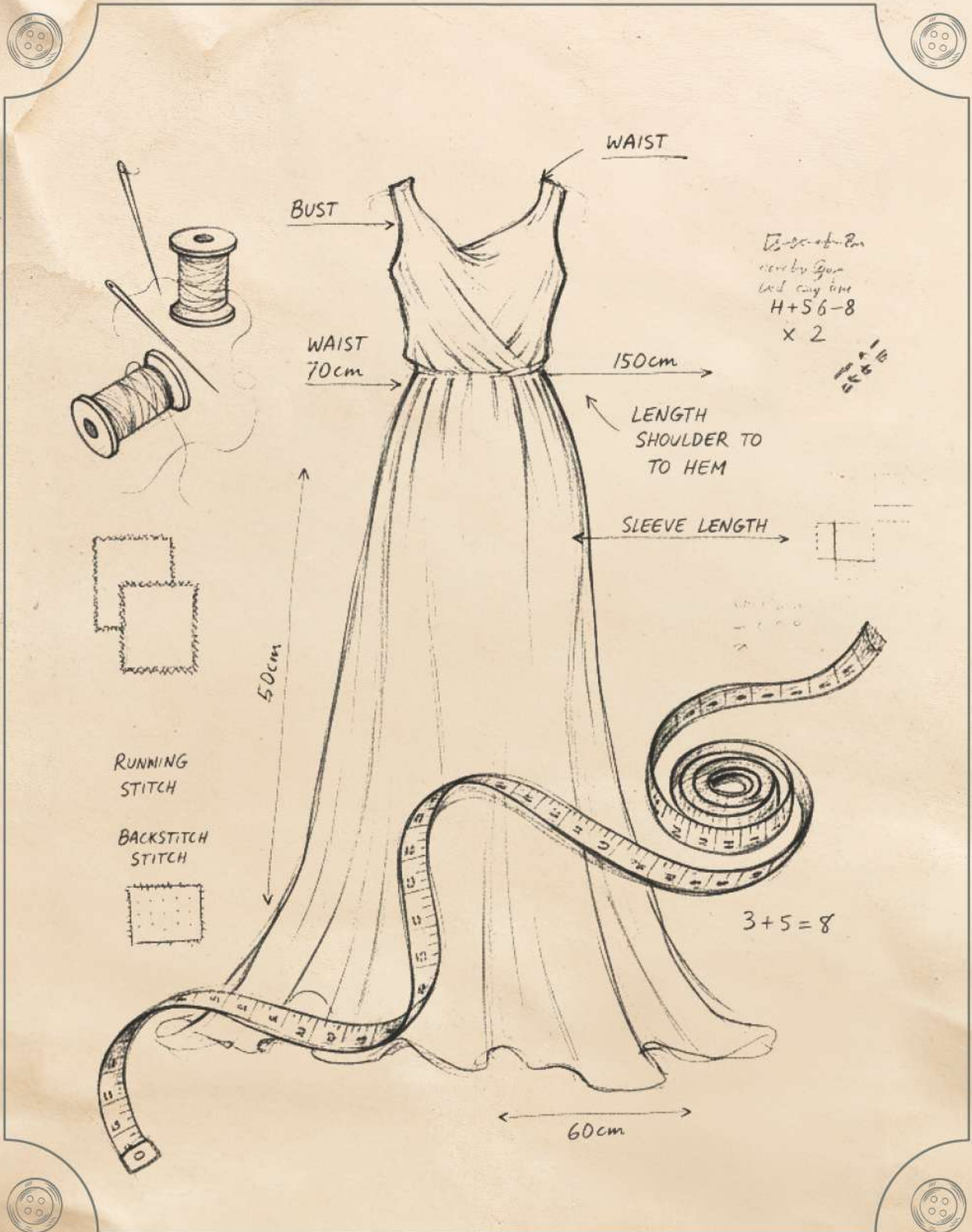
Our cocktails are stitched, not mixed. Measured. Balanced. Unhurried.  
Crafted the way good suits once were—by hand, with judgment.

Each glass carries echoes of colonial bars, portside deals,  
jazz drifting under slow ceiling fans, and conversations meant  
to stay inside the room.

This is not a menu.  
It's an invitation.  
Once the door closes,

Madras begins.





WAIST

BUST

WAIST  
70cm

150cm

LENGTH  
SHOULDER TO  
TO HEM

SLEEVE LENGTH

50cm

60cm

Dress of the 20s  
made by G. G.  
had very fine  
H+56-8  
x 2

1 1/2  
56-8

3+5=8

RUNNING  
STITCH

BACKSTITCH  
STITCH

# COCKTAILS



• Sleeve  
• Length: 24.5"

## BLACK BUTTON RESERVE

Whiskey | Crème de cacao  
Cold brew coffee | Orange bitters

**Story:**

*Dark as a midnight fitting, finished with polished edges. Chocolate and whiskey meet like a black button on tailored wool.*



745

— Waist: 34"  
← Inseam: 32"



## YELLOW SEAM

Dark rum | Banana puree  
Lime juice | Honey syrup

**Story:**

*Soft fruit stitched into deep rum warmth. Comforting, but finished with clean structure*

745

*Your bill attracts a discretionary Service Charge of 5% on Food & Beverage Service (This is not mandatory. Should you wish not to pay, kindly inform the service staff before billing). Conditions apply on availability of item in the menu. The above-mentioned rates are inclusive of VAT, with 58% applicable on imported beverages and 14.5% on Indian-made beverages. All Prices in Indian Rupees*

# COCKTAILS

16 1/2 + 1/4

## PRESSED LINEN

Gin | Cucumber juice  
Lime juice | Elderflower syrup

**Story:**  
*Cool, crisp and ironed flat like fresh linen before the first cut. Minimal, precise, elegant.*

745



## THE ALTERATION JAR

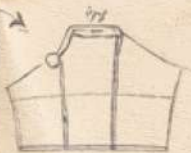
Vodka | Pickle brine  
Tomato juice | Lime juice

**Story:**  
*Unexpected adjustments often make the best fit. Sharp, salty, and deliberately off-center.*

745

Your bill attracts a discretionary Service Charge of 5% on Food & Beverage Service (This is not mandatory. Should you wish not to pay, kindly inform the service staff before billing). Conditions apply on availability of item in the menu. The above-mentioned rates are inclusive of VAT, with 58% applicable on imported beverages and 14.5% on Indian-made beverages. All Prices in Indian Rupees

# COCKTAILS



## PINNED ROSEMARY

Tequila | Rosemary syrup  
Grapefruit juice | Lime juice

**Story:**  
*Herbal notes pinned carefully into  
bright citrus lines.  
Structured but never stiff*

745



*16 1/2 + 1/4*



## PINK THREAD

Vodka | Cotton candy syrup  
Lemon juice | Soda - top up

**Story:**  
*Soft sweetness disappears like loose  
thread in steam. Playful first sip,  
clean finish.*

745

*Your bill attracts a discretionary Service Charge of 5% on Food & Beverage Service  
(This is not mandatory. Should you wish not to pay, kindly inform the service staff before billing).  
Conditions apply on availability of item in the menu. The above-mentioned rates are inclusive of VAT, with 58%  
applicable on imported beverages and 14.5% on Indian-made beverages. All Prices in Indian Rupees*

# COCKTAILS

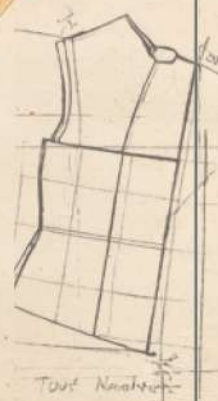
## CINEMA STITCH

Bourbon whiskey | Popcorn syrup  
Cream soda | Bitters

**Story:**

*Warm grain, butter notes, and a little  
nostalgia folded inside. Like old films  
behind hidden curtains*

745



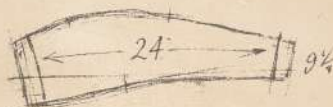
## POCKET SQUARE

Gin | Rose syrup  
Cranberry juice | Lime juice

**Story:**

*A small detail that changes the  
whole look. Elegant, floral, and  
quietly sharp*

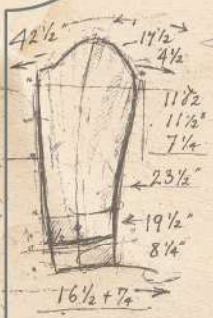
745



*Your bill attracts a discretionary Service Charge of 5% on Food & Beverage Service  
(This is not mandatory. Should you wish not to pay, kindly inform the service staff before billing).  
Conditions apply on availability of item in the menu. The above-mentioned rates are inclusive of VAT, with 58%  
applicable on imported beverages and 14.5% on Indian-made beverages. All Prices in Indian Rupees*



# COCKTAILS



## CRIMSON HEM

White rum | Hibiscus reduction  
Lime juice | Honey syrup

**Story:**

*Bright red edges finished with clean tension. Bold enough to hold the whole garment together.*

745



## LOOSE BUTTON

Vodka | Bubblegum syrup  
Lemon juice | Soda

**Story:**

*Unexpected, playful, and slightly rebellious. Like wearing something formal with one secret mistake*

745



*Your bill attracts a discretionary Service Charge of 5% on Food & Beverage Service (This is not mandatory. Should you wish not to pay, kindly inform the service staff before billing). Conditions apply on availability of item in the menu. The above-mentioned rates are inclusive of VAT, with 58% applicable on imported beverages and 14.5% on Indian-made beverages. All Prices in Indian Rupees*



# MOCKTAILS



- Sleeve
- Length: 24.5"

## STITCH COLD BREW

KitKat | Cold milk |  
Vanilla ice cream | Ice cubes

### Story

*Cut like a clean morning seam, this drink opens with sharp chocolate edges and sweetness finishing threads. Made for guests who arrive quietly but leaves a strong impression.*



645

- Back Length: 30"
- Trouser Outseam: 42"



Collar:  $16\frac{3}{16}$ "

## GOLDEN THREAD ELANEER

Tender coconut water | Lime juice  
Saffron infusion |  
Honey syrup | Ice cubes

### Story:

*A delicate saffron line stitched through fresh coconut, light as silk on first sip. Inspired by gold thread embroidery hidden inside old tailoring secrets*



645

*Your bill attracts a discretionary Service Charge of 5% on Food & Beverage Service (This is not mandatory. Should you wish not to pay, kindly inform the service staff before billing). Conditions apply on availability of item in the menu. The above-mentioned rates are inclusive of VAT, with 58% applicable on imported beverages and 14.5% on Indian-made beverages. All Prices in Indian Rupees*

# MOCKTAILS

1 1/2"  
4 1/2



## THE INNER LINING

Tender coconut water  
Lime juice | Sprite

### Story:

*Simple on the outside, carefully layered underneath – like every fine jacket lining. Soft, crisp, and designed to stay unnoticed until remembered.*

645



## MALLI HEMLINE

Jasmine extract | Strawberry syrup  
Honey syrup | Soda

### Story:

*A floral edge with fruit stitched neatly through every sip. Like jasmine pinned into a collar before an evening out*

645

*Your bill attracts a discretionary Service Charge of 5% on Food & Beverage Service (This is not mandatory. Should you wish not to pay, kindly inform the service staff before billing). Conditions apply on availability of item in the menu. The above-mentioned rates are inclusive of VAT, with 58% applicable on imported beverages and 14.5% on Indian-made beverages. All Prices in Indian Rupees*

# MOCKTAILS



## PRESSED COLLAR SMASH

Lemongrass | Fresh ginger  
Lime juice | Ginger ale

**Story:**

*Bright, sharp and lifted like a freshly pressed collar. A little spice, a little order, and perfect tension in every fold.*

645



## CHALK MARK GUAVA

Guava juice | Lime juice  
Chili salt | Sugar syrup | Soda

**Story:**

*Bold as chalk lines before the first cut. Sweet fruit meets sharp spice like decisions made with confidence.*

645



*Your bill attracts a discretionary Service Charge of 5% on Food & Beverage Service (This is not mandatory. Should you wish not to pay, kindly inform the service staff before billing). Conditions apply on availability of item in the menu. The above-mentioned rates are inclusive of VAT, with 58% applicable on imported beverages and 14.5% on Indian-made beverages. All Prices in Indian Rupees*

# MOCKTAILS

## NANNARI SEAM FIZZ

Nannari syrup | Lemon juice  
Honey syrup | Sprite

**Story:**

*Classic roots stitched into modern sparkle. A seam that connects old street flavors to hidden bar nights.*

645



4 1/2  
Collar

## PINNED PINEAPPLE DRAFT

Pineapple juice | Mint leaves  
Lime juice | Roasted cumin pinch

**Story:**

*Bright tropical notes pinned carefully with spice. Like fabric held in place before the final cut*

645

*Your bill attracts a discretionary Service Charge of 5% on Food & Beverage Service (This is not mandatory. Should you wish not to pay, kindly inform the service staff before billing). Conditions apply on availability of item in the menu. The above-mentioned rates are inclusive of VAT, with 58% applicable on imported beverages and 14.5% on Indian-made beverages. All Prices in Indian Rupees*

# MOCKTAILS

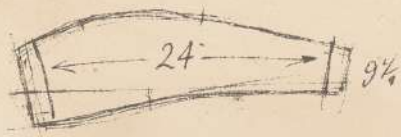
## ROSE POCKET FOLD

Pomegranate juice | Basil leaves  
Rose syrup | Lime juice | Soda

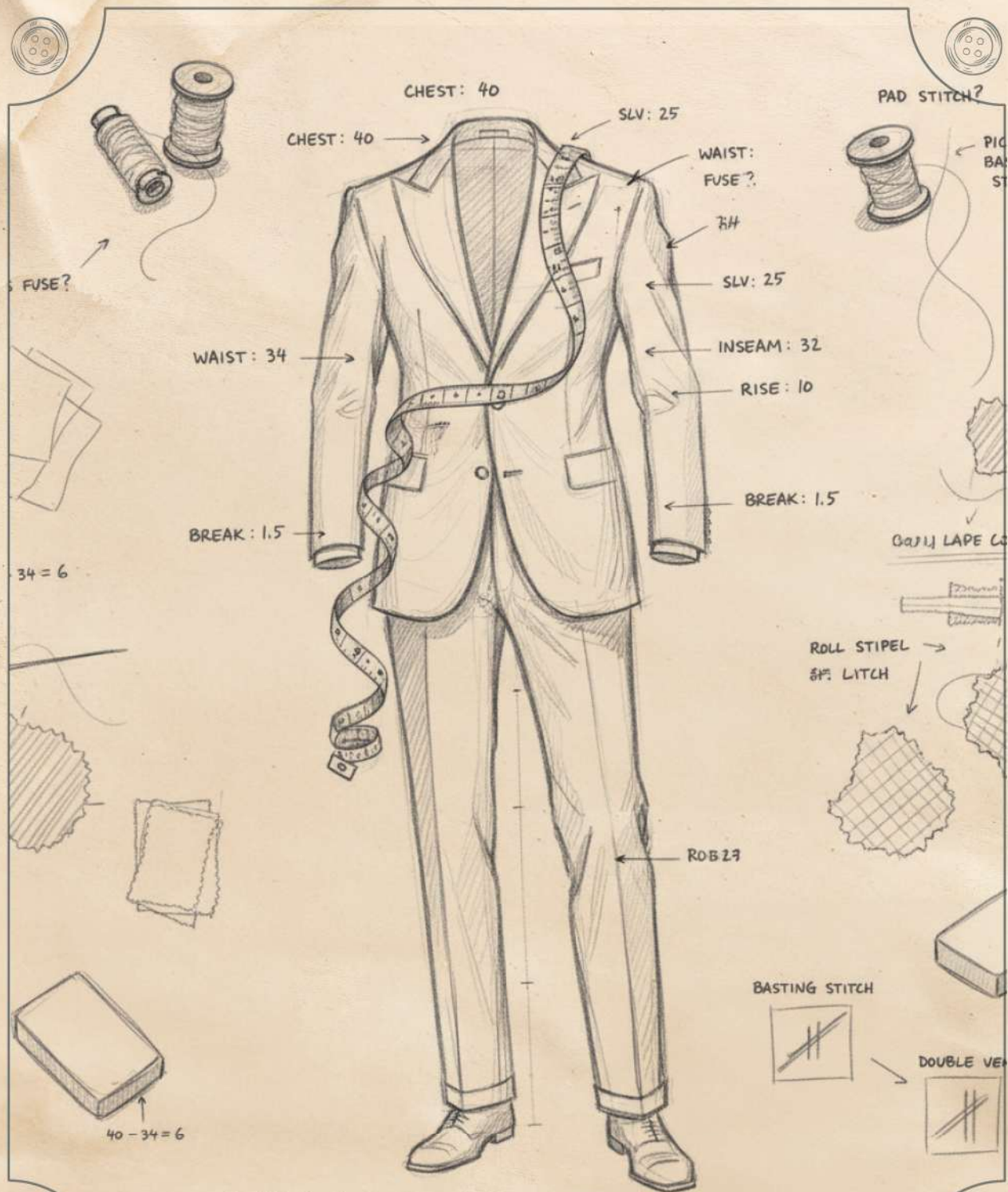
**Story:**

*Soft rose folded into dark fruit and hidden basil edges. Elegant like a pocket square nobody forgets.*

645



*Your bill attracts a discretionary Service Charge of 5% on Food & Beverage Service  
(This is not mandatory. Should you wish not to pay, kindly inform the service staff before billing).  
Conditions apply on availability of item in the menu. The above-mentioned rates are inclusive of VAT, with 58%  
applicable on imported beverages and 14.5% on Indian-made beverages. All Prices in Indian Rupees*

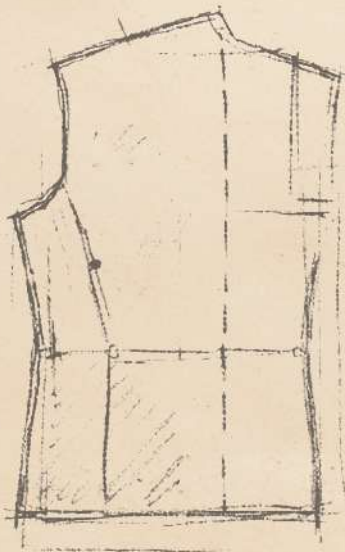


Your bill attracts a discretionary Service Charge of 5% on Food & Beverage Service  
 (This is not mandatory. Should you wish not to pay, kindly inform the service staff before billing).  
 Conditions apply on availability of item in the menu. The above-mentioned rates are inclusive of VAT, with 58%  
 applicable on imported beverages and 14.5% on Indian-made beverages. All Prices in Indian Rupees

# BEVERAGE

## SINGLE MALT

	60 ml	90 ml
GLENFIDDICH 21 YO	5850	7050
GLENFIDDICH 18 YO	3950	4750
THE YAMAZAKI	3950	4750
HIBIKI	3950	4750
GLENFIDDICH 12 YO	2150	2550
GLENLIVET 12 YO	2150	2550
DEWARS 18 YO	1950	2350
DEWARS 12 YO	1950	2350
ABERFELDY 12 YO	1950	2350
GLENMORANGIE 12 YO	1950	2350
TALISKER 10 YO	1950	2350
LAPHROAIG 10 YO	1950	2350
SUNTORY TOKI	1950	2350
BALLENTINE BOURBON 7 YO	1250	1500

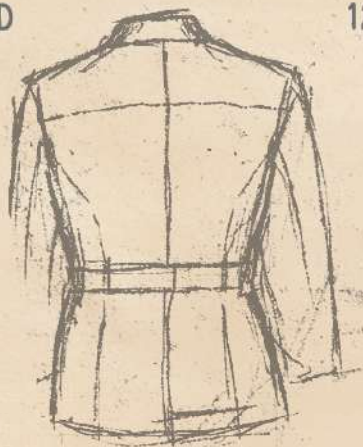


*Your bill attracts a discretionary Service Charge of 5% on Food & Beverage Service  
 (This is not mandatory. Should you wish not to pay, kindly inform the service staff before billing).  
 Conditions apply on availability of item in the menu. The above-mentioned rates are inclusive of VAT, with 58%  
 applicable on imported beverages and 14.5% on Indian-made beverages. All Prices in Indian Rupees*

# BEVERAGE

<b>PREMIUM BLENDED SCOTCH</b>	60 ml	90 ml
DOUBLE BLACK	1650	1950
CHIVAS REGAL	1450	1750
JW BLACK LABEL	1450	1750

<b>DELUXE BLENDED SCOTCH</b>	60 ml	90 ml
BALLENTINE'S FINEST	1250	1500
TEACHER'S HIGHLAND CREAM	1250	1500
JW RED LABEL	1250	1500
GRANTS	1250	1500
DEWARS WHITE LABEL	1250	1500
SCOTTISH LEADER BLENDED	1250	1500



*Your bill attracts a discretionary Service Charge of 5% on Food & Beverage Service  
(This is not mandatory. Should you wish not to pay, kindly inform the service staff before billing).  
Conditions apply on availability of item in the menu. The above-mentioned rates are inclusive of VAT, with 58%  
applicable on imported beverages and 14.5% on Indian-made beverages. All Prices in Indian Rupees*

# BEVERAGE

## BLENDED MALT SCOTCH

MONKEY SHOULDER

60 ml 90 ml

1650 1950

## IRISH

JAMESON IRISH

17 1/3

1450 1750

## AMERICAN

JACK DANIEL

4 1/4

1450 1750

JIM BEAM BOURBON

1250 1500

## DOMESTIC

ANTIQUITY BLUE

1250 1500

100 PIPERS IMFL

750 900

ROYAL CHALLENGE

650 800

SIGNATURE RARE

650 800

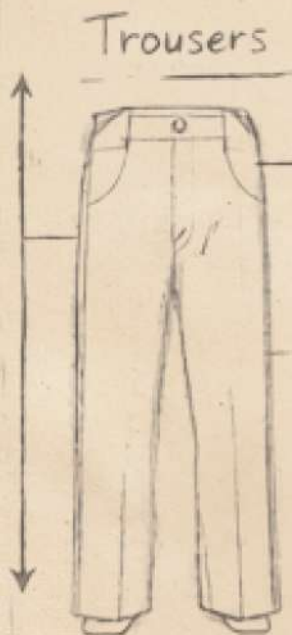


*Your bill attracts a discretionary Service Charge of 5% on Food & Beverage Service  
(This is not mandatory. Should you wish not to pay, kindly inform the service staff before billing).  
Conditions apply on availability of item in the menu. The above-mentioned rates are inclusive of VAT, with 58%  
applicable on imported beverages and 14.5% on Indian-made beverages. All Prices in Indian Rupees*

# BEVERAGE

VODKA	60 ml	90 ml
<b>INTERNATIONAL</b>		
BELVEDERE	1650	1950
GREY GOOSE ORIGINAL	1450	1750
SMIRNOFF RED	1250	1500
ABSOLUT VODKA	1250	1500
<b>DOMESTIC</b>		
ERISTOFF TRIPLE / JUNO	650	800

RUM		
BACARDI BLACK IMFL	650	800
BACARDI WHITE IMFL	650	800
OLD MONK	650	800



*Your bill attracts a discretionary Service Charge of 5% on Food & Beverage Service  
 (This is not mandatory. Should you wish not to pay, kindly inform the service staff before billing).  
 Conditions apply on availability of item in the menu. The above-mentioned rates are inclusive of VAT, with 58%  
 applicable on imported beverages and 14.5% on Indian-made beverages. All Prices in Indian Rupees*

# BEVERAGE

BRANDY	60 ml	90 ml
<b>INTERNATIONAL COGNAC</b>		
HENNESSY XO	5500	6600
HENNESSY VSOP	3450	4150
HENNESSY VS	1950	2400
MARTELL VSOP	1750	2150
MARTELL VS	1350	1650
MEUKOW VS	1350	1650
<b>DOMESTIC</b>		
MC VSOP	950	1150
MORPHEUS XO PREMIUM	950	1150



Front View

*Your bill attracts a discretionary Service Charge of 5% on Food & Beverage Service  
 (This is not mandatory. Should you wish not to pay, kindly inform the service staff before billing).  
 Conditions apply on availability of item in the menu. The above-mentioned rates are inclusive of VAT, with 58%  
 applicable on imported beverages and 14.5% on Indian-made beverages. All Prices in Indian Rupees*

# BEVERAGE

GIN	60 ml	90 ml
<b>INTERNATIONAL</b>		
BEEFEATER	1250	1500
BOMBAY SAPPHIRE	1250	1500
GORDON'S DRY	1250	1500
<b>DOMESTIC</b>		
HICHKI	950	1150
<b>TEQUILA</b>		
CASCO SILVER / GOLD	1250	1500
DON ANGEL BLANCO	1250	1500
CAMINO SILVER / GOLD	1250	1500

16½ + ¼

*Your bill attracts a discretionary Service Charge of 5% on Food & Beverage Service  
(This is not mandatory. Should you wish not to pay, kindly inform the service staff before billing).  
Conditions apply on availability of item in the menu. The above-mentioned rates are inclusive of VAT, with 58%  
applicable on imported beverages and 14.5% on Indian-made beverages. All Prices in Indian Rupees*

# BEVERAGE

## BEER

INTERNATIONAL

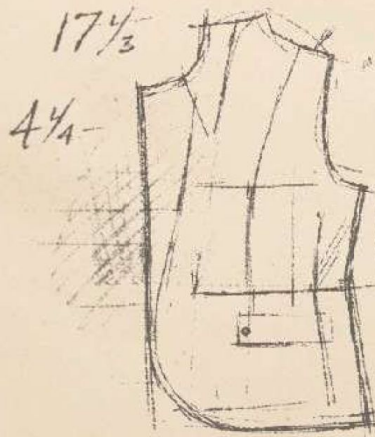
DOMESTIC 650 ML

DOMESTIC 325 ML

## ON THE TAP

PITCHER (1500 ML)

MUG (330 ML)



800

800

450

1800

450

o Back Length: 30"

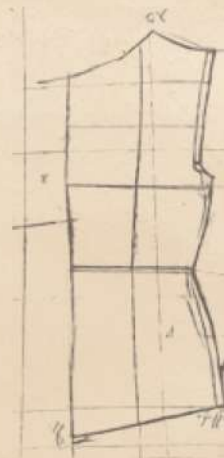
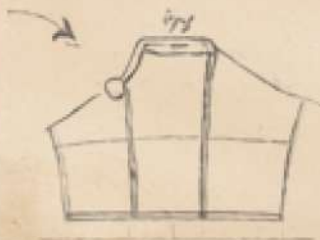
o Trouser Outseam: 42"

*Your bill attracts a discretionary Service Charge of 5% on Food & Beverage Service  
(This is not mandatory. Should you wish not to pay, kindly inform the service staff before billing).  
Conditions apply on availability of item in the menu. The above-mentioned rates are inclusive of VAT, with 58%  
applicable on imported beverages and 14.5% on Indian-made beverages. All Prices in Indian Rupees*

# BEVERAGE

## LIQUEUR

	60 ml	90 ml
BAILEYS IRISH CREAM	1250	1500
CREME DE CACAO	1250	1500
CREME DE CASSIS	1250	1500
JAGERMEISTER	1250	1500
KAHLUA	1250	1500
PERNOD	1250	1500
PEPPER MINT	1250	1500
SAMBUCA	1250	1500
TRIPLE SEC	1250	1500



*Your bill attracts a discretionary Service Charge of 5% on Food & Beverage Service  
 (This is not mandatory. Should you wish not to pay, kindly inform the service staff before billing).  
 Conditions apply on availability of item in the menu. The above-mentioned rates are inclusive of VAT, with 58%  
 applicable on imported beverages and 14.5% on Indian-made beverages. All Prices in Indian Rupees*

# BEVERAGE

1 1/2"  
4 1/2" 

## SOFT BEVERAGE

BOTTLED WATER 750ML <i>(Evian / Himalayan)</i>	545 / 345
FRESH JUICE	495
PERRIER 330ML	395
RED BULL	395
DIET SOFT DRINKS	345
SOFT DRINKS	345
GINGER ALE	345
SODA CANNED	345
TONIC WATER	345
FRESH LIME SODA / WATER	345
CANNED JUICE	345



*Your bill attracts a discretionary Service Charge of 5% on Food & Beverage Service  
(This is not mandatory. Should you wish not to pay, kindly inform the service staff before billing).  
Conditions apply on availability of item in the menu. The above-mentioned rates are inclusive of VAT, with 58%  
applicable on imported beverages and 14.5% on Indian-made beverages. All Prices in Indian Rupees*

# FLAVOURS STITCHED IN TIME

Long before nightclubs and loud bars, India's great cities had clubs.  
They were places where the rich and influential gathered,  
where deals were discussed between drinks,  
where writers argued, cricketers lingered,  
and politicians listened more than they spoke.  
Madras Club. MCC. Cosmopolitan. Tollygunge.  
Hill-station clubs in Ooty, Kodaikanal, Darjeeling and Shimla.

Behind heavy doors and soft lighting,  
food arrived without fuss—cutlets, toasts, eggs, stews—  
not to impress, but to sustain long evenings of conversation.

This menu draws from that tradition.

These are the dishes that once moved quietly across club tables  
while reputations were built, friendships tested, and history waited outside.  
Steam & Whistles brings those flavours out of the club room  
and into a speakeasy—  
where the rules are fewer, the mood is lighter, and the company still matters.  
Order as they once did.  
Without hurry.  
With a drink close at hand.  
And conversations that linger longer than planned.





X - - - X

Soft Draping

Soft Draping

Structured Weave

Breathable

Breathable

Natural Texture

XXX



# Allergen Details

Kindly let the associate know if you are allergic to molluscs, egg, fish, soya, milk, peanut, gluten, crustaceans, nuts, mustard, sesame, celery, sulphites or any other ingredients, we will suggest alternatives.

## List of Allergens:

 Gluten  Egg  Fish  Shellfish  Milk  Peanut  
 Soya Beans  Sesame Seed  Mustard  Crustaceans  
 Nuts  Celery  Sulphites  Molluscs  Monosodium Glutamate

Calories are in kilocalories (kcal) and size in 100 grams (gms) per serving.  
As per the guidelines issued by the Food Safety & Standards Authority of India (FSSAI),  
an average active adult requires 2000 kcal of energy per day; however, the actual  
calories needed may vary per person.

 Vegetarian |  Non-Vegetarian

# THE GARDEN TRIMMINGS

*Vegetarian Bestsellers*

- 
**MASALA CHEESE CROQUETTES**


795

Creamy inside, crisp outside. Comfort that disappears fast.  
*Kcal: 289 / 180 Gms*
- 
**VEGETABLE DUMPLINGS WITH INDIAN CHILLI OIL**



795

Soft, warming, and addictive. Great with cocktails.  
*Kcal: 310 / 180 Gms*
- 
**PULIODHARA ARANCINI**


795

Crisp rice balls, Indian spice, rich centre. Orders rarely stop at one.  
*Kcal: 349 / 180 Gms*
- 
**VEGETABLE TEMPURA WITH CHAAT SALT**

795

Light, crunchy, and drink-friendly. Easy repeat order.  
*Kcal: 397 / 180 Gms*
- 
**CRISPY GOBI - GUNTUR STYLE**

795

Sweet-spicy glaze, confident heat. Bar energy on a plate.  
*Kcal: 328 / 180 Gms*
- 
**INDIAN FRIES WITH CURRY-LEAF AIOLI**






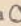
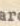
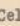

695

Every table understands fries. This version gets remembered.  
*Kcal: 458 / 180 Gms*
- 
**INDIAN MASALA NACHOS**

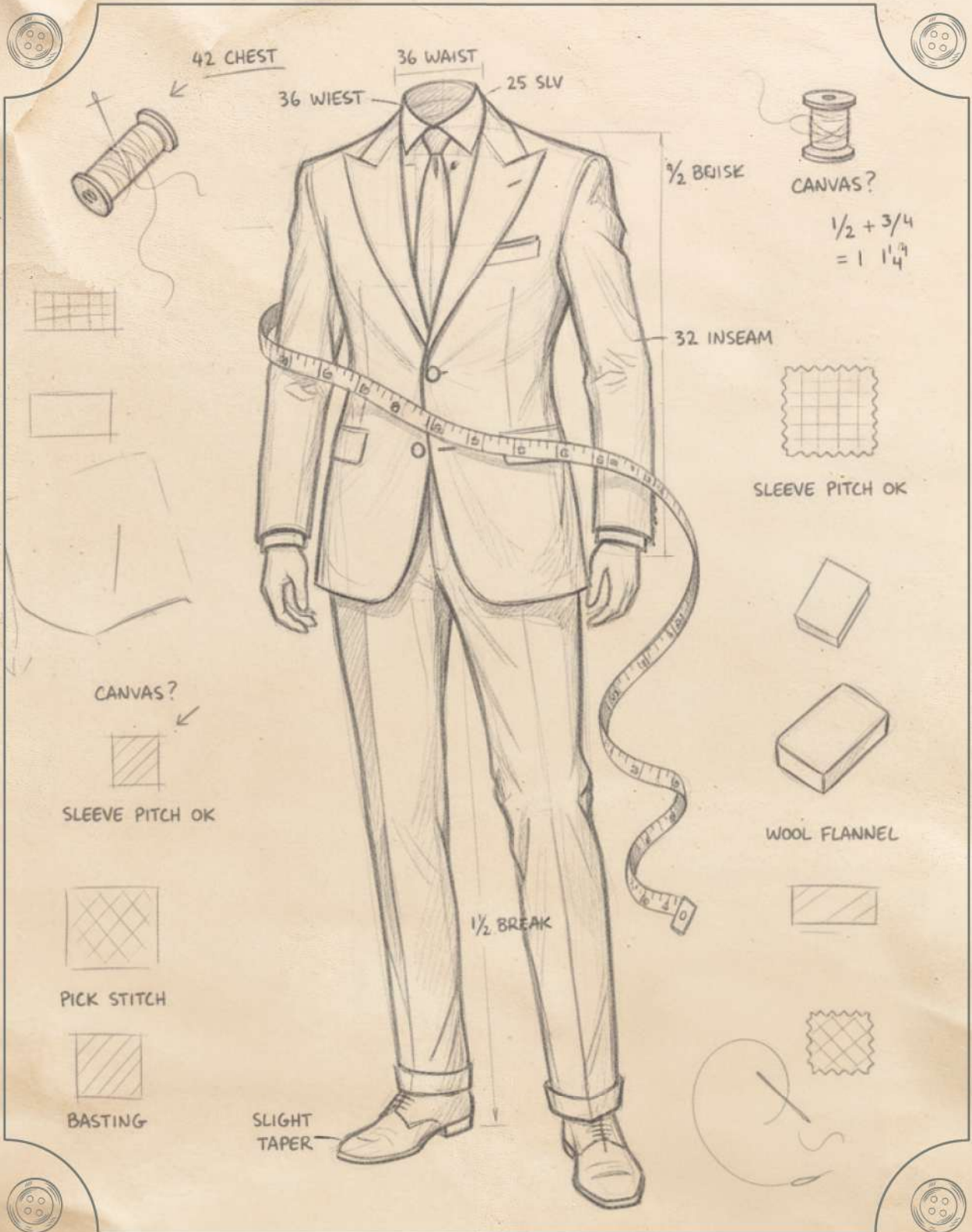

695

The table always finishes these. Always.  
*Kcal: 383 / 180 Gms*



 Vegetarian
  Non-Vegetarian
  Dairy
  Gluten  
 Soya
  Egg
  Mustard
  Celery
  Sesame

Your bill attracts a discretionary Service Charge of 5% on Food & Beverage Service. (This is not mandatory. Should you wish not to pay, kindly inform the service staff before billing). Govt. taxes as applicable. All Prices in Indian Rupees.



42 CHEST

36 WAIST

25 SLV

36 WIEST

1/2 BREAK

CANVAS?

$$\frac{1}{2} + \frac{3}{4} = 1 \frac{1}{4}$$

32 INSEAM

SLEEVE PITCH OK

CANVAS?

SLEEVE PITCH OK

WOOL FLANNEL

1/2 BREAK

PICK STITCH

BASTING

SLIGHT TAPER

# FROM THE HOUSE LEDGER

## Non-Vegetarian Specials

- ▲ **THE MADRAS CLUB MIXED GRILL** 🍲 🌿 🍷 2495  
 Chicken | lamb | sausage | pepper jus  
 A restrained mixed grill – no theatrics, no excess.  
 This is what senior members ordered when conversations ran late.  
 Best with: Whisky, Old Fashioned  
 Kcal: 751 | 320 Gms
- ▲ **SECUNDERABAD PEPPER LAMB & EGG FRY** 🍲 🍳 1055  
 Slow-cooked lamb | cracked pepper | fried eggs  
 Cantonment comfort. Strong flavours. Strong opinions.  
 Best with: Single malt, brandy  
 Kcal: 455 | 220 Gms
- ▲ **POONA KEEMA PAV** 🍲 🌿 1055  
 Spiced minced meat | buttered pav | onion salad  
 Messy, nostalgic, and completely forgiven.  
 Always ordered "one more pav."  
 Best with: Beer, highballs  
 Kcal: 482 | 320 Gms
- ▲ **DARJEELING CLUB CHICKEN STEW** 🍲 🌿 🍷 1055  
 Tender chicken | vegetables | light pepper broth  
 Served warm. Eaten slowly. Usually followed by a second drink.  
 Best with: Gin & tonic, martini  
 Kcal: 431 | 250 Gms
- ▲ **TOLLYGUNGE BUTTER CHICKEN** 🍲 955  
 Char-grilled chicken | mild butter sauce | pepper finish  
 Not sweet. Not heavy.  
 Just enough gravy to keep the table quiet for a moment.  
 Best with: Dark rum  
 Kcal: 416 | 250 Gms



🍲 Vegetarian ▲ Non-Vegetarian 🍲 Dairy 🌿 Gluten  
 🍷 Soya 🍳 Egg ▲ Mustard 🌿 Celery 🌿 Sesame

Your bill attracts a discretionary Service Charge of 5% on Food & Beverage Service.  
 (This is not mandatory. Should you wish not to pay, kindly inform the service staff  
 before billing). Govt. taxes as applicable. All Prices in Indian Rupees.

