



UVC-G3-FLEX Quick Start Guide

Package Contents



Camera



Flush Mount



Pole/Wall Mount



Outdoor Cover



Security Screw (Qty. 1)



Screws (Qty. 3)



Screw Anchors (Qty. 3)



Zip Ties (Qty. 2)

Installation Requirements

- Phillips screwdriver
- Drill and 6 mm (1/4") bit for drywall anchors and 3 mm (1/8") for screws)
- Category 5e (or above) Ethernet cable



Note: When using the Outdoor Cover, use an Ethernet cable without a strain-relief boot on the connector. This will prevent unnecessary tension on the cable ends during installation.



UVC-G3-FLEX Quick Start Guide

Cable without a strain-relief boot

Cable with a strain-relief boot

Outdoor Installation Requirements

! **IMPORTANT:** When installed outdoors, the camera must be installed in the upright position only.

- Mounting location should be at least 60 cm (2 ft) from the edge of the eave or ceiling.
- Mount the camera in the upright position only. Please see diagram below.
- Shielded Category 5e (or above) cabling with drain wire should be used for all outdoor wired Ethernet connections and should be grounded through the AC ground of the PoE.

We recommend that you protect your networks from harmful outdoor environments and destructive ESD events with industrial-grade, shielded Ethernet cable from Ubiquiti. For more details, visit ui.com/toughcable

- Surge protection should be used for all outdoor installations. We recommend that you use two Ethernet Surge Protectors, model ETH-SP-G2, one near the UVC-G3-Flex and the other at the entry point to the building. The ETH-SP-G2 will absorb power surges and safely discharge them into the ground.

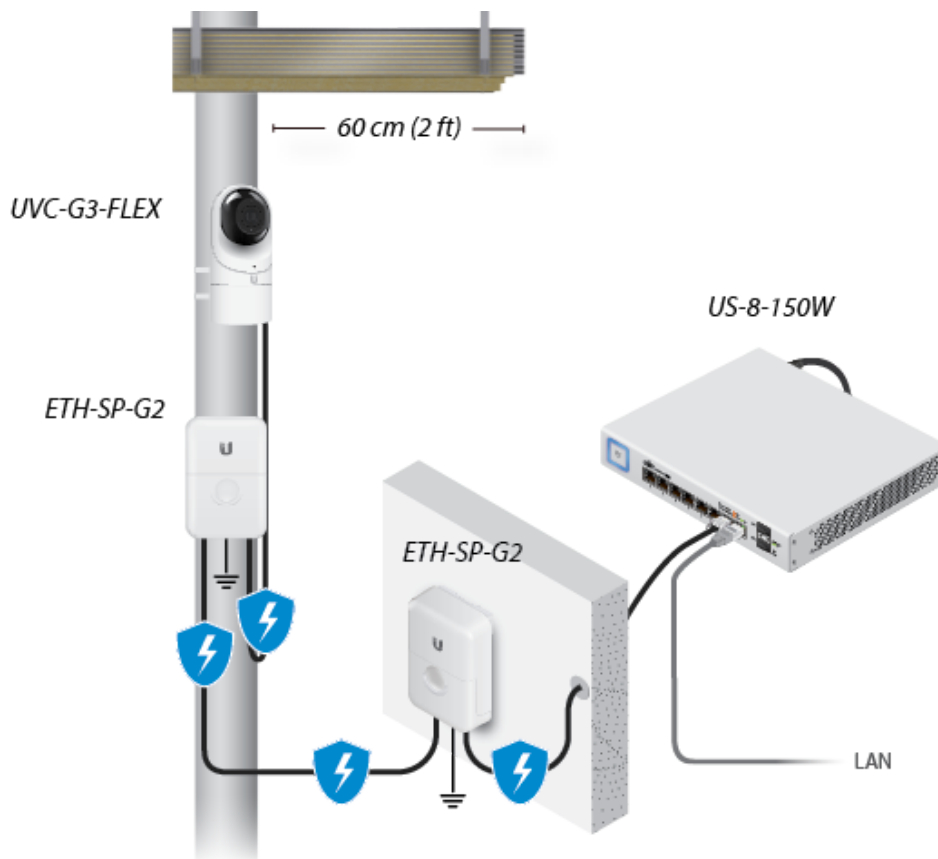
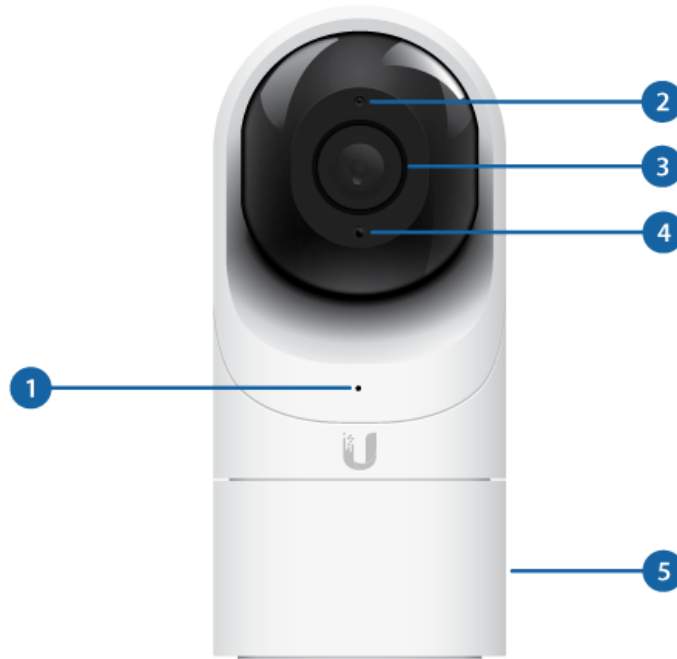


Diagram Showing Use of Ethernet Surge Protectors



UVC-G3-FLEX Quick Start Guide



1 LED	
Alternating White/Blue	Device is busy; do not touch or unplug it. This usually indicates that a process such as a firmware upgrade is taking place.
Steady Blue	Connected to UniFi Protect Controller; Reset Button Pressed
Flashing Green	Disconnected from Controller
Steady White	Awaiting adoption
2 Microphone	
Microphone for recording audio	
3 Camera Lens	
Lens for viewing/recording video	
4 Light Sensor	
Sensor for ambient light detection	
5 Swivel Base	
Allows you to change the viewing angle of the camera by adjusting left or right. Useful if mounted on a wall or other permanent surface.	



UVC-G3-FLEX Quick Start Guide



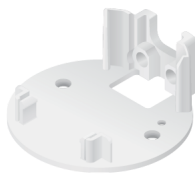
1 Ethernet Port

The Ethernet Port is a 10/100 Mbps port used to supply power from a PoE 802.3af-compliant switch to the camera. The switch should be connected to a LAN running DHCP services and the UniFi Protect Controller software.

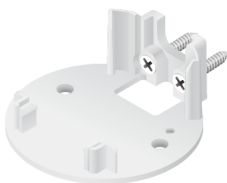
2 Reset Button

The Reset Button is used to reset the camera to factory defaults. Press and hold the Reset Button for more than 10 seconds while the camera is powered on.

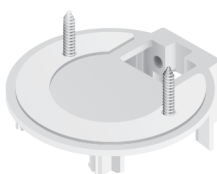
Mounting Options



Use the Flush Mount by itself to install the G3 Flex camera on a desktop or tabletop. Out of the box, this mount comes preinstalled on the camera.



Use the Flush Mount with two screws to install the G3 Flex camera on a wall (vertically).



Use the Flush Mount with two screws to install the G3 Flex camera on a solid horizontal surface or ceiling.

Use the Pole Mount with two screws and the Outdoor Cover to install the G3 Flex camera on a wall or flat



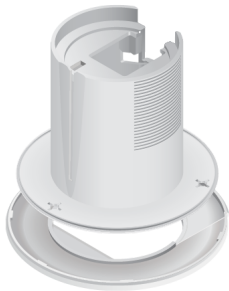
UVC-G3-FLEX Quick Start Guide



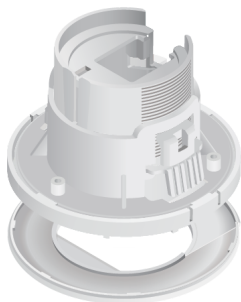
Use the Pole Mount with two plastic zip ties and the Outdoor Cover to install the G3 Flex camera on an outdoor pole. The Outdoor Cover is not required for indoor pole installations.

Additional Mounts Available

There are two additional mounts available for the G3 Flex: a Ceiling Mount and a Pendant Mount. Each is sold separately.



Use the optional Ceiling Mount, Screw Kit, and Mount Cover to install the G3 Flex camera on a solid horizontal surface or ceiling.



Use the optional Ceiling Mount, Mount Cover, and Back Plate Assembly to install the G3 Flex camera on a drop tile ceiling or horizontal surface where the interior side of the Ceiling Mount is accessible.



Use the Pendant Mount to install the G3 Flex camera onto a fitted 3/4" or 1.5" conduit mount or ceiling pipe.



UVC-G3-FLEX Quick Start Guide

The UVC G3 Flex can be installed using one of the following methods:

- [Desktop](#) For installing on a flat surface such as a desktop or table/shelf; could be set up for temporary installations.
- [Wall/Ceiling](#) For installing in a secure location; used more for stationary or permanent installations.
- [Pole](#) For installing on a pole (indoor or outdoor).

Proceed to the appropriate section for your installation.



Note: The viewing angle or surveillance coverage of the G3 Flex camera can be changed at any time.

- Tilt the lens up or down for vertical adjustment
- Turn the base left or right for horizontal adjustment



Desktop

1. Remove the Flush Mount from the bottom of the camera.



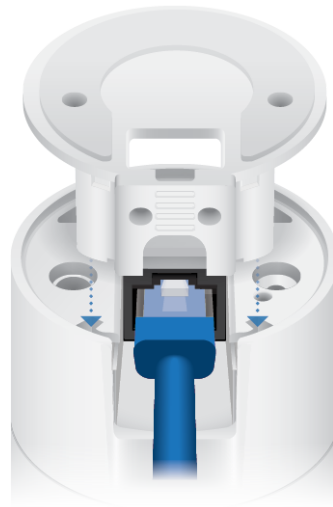
2. Insert one end of the RJ-45 cable into the Ethernet Port and the other end into a PoE 802.3af-compliant switch.



UVC-G3-FLEX Quick Start Guide



3. Attach the camera to the Flush Mount by lining up the notches with the slots in the base of the camera. Press firmly together until the camera is secure.



Note: Ensure the Ethernet cable is seated in the notch between the Flush Mount and base of the camera.

4. Place the camera on a desk or table in its upright position.
5. Adjust the viewing angle or surveillance coverage as needed by following these steps:
 - Tilt the lens up or down to adjust the angle vertically
 - Turn the camera body left or right to adjust the angle horizontally



UVC-G3-FLEX Quick Start Guide



Installation complete.



Desktop / Table Install

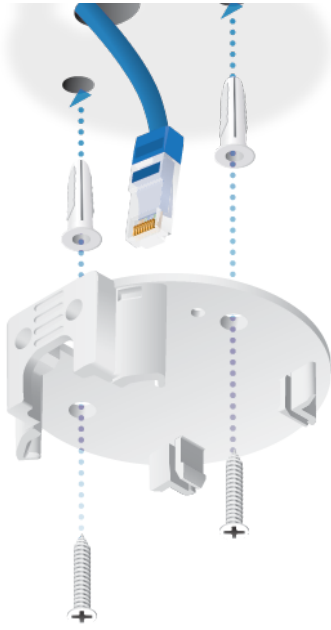
Wall/Ceiling

1. If the Ethernet cable is coming from the inside of a wall:
 - a. Drill or cut a hole in the wall and feed the Ethernet cable through the opening.
 - b. Pull the Ethernet cable forward and slide it through the opening in the mount.
2. Use the Screws and Screw Anchors to secure the Flush Mount to the wall.

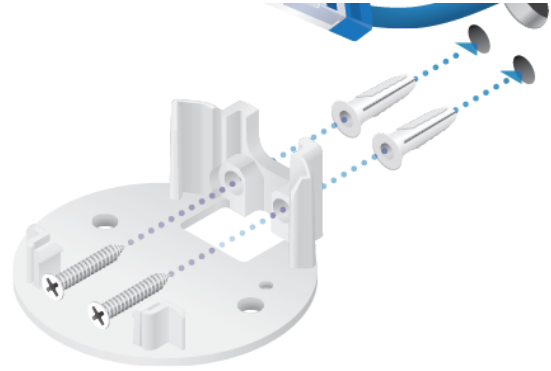
or



UVC-G3-FLEX Quick Start Guide

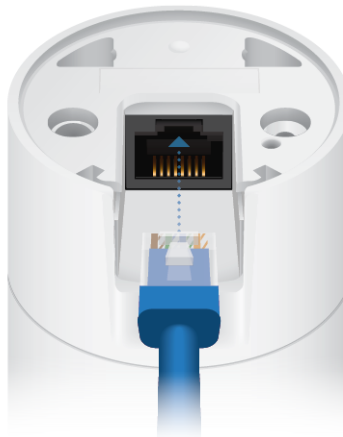


Top Side Down Mounting



Vertical Upright Mounting

3. Connect the Ethernet cable to the Ethernet Port in the base of the camera.



4. Attach the camera to the Flush Mount by lining up the notches with the slots in the base of the camera. Press firmly together until the camera is secure.

or



UVC-G3-FLEX Quick Start Guide



Vertical mounting on ceiling



Vertical mounting on a wall

Installation complete.



Horizontal Surface / Ceiling with Flush Mount



UVC-G3-FLEX Quick Start Guide



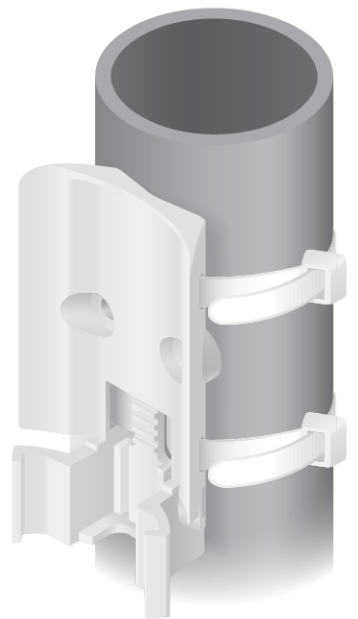
Indoor Wall with Flush Mount

Pole



Note: If you are mounting the camera outdoors, it must be installed in the upright position to prevent water from getting into the base of the camera. Use the Outdoor Cover for additional protection from moisture.

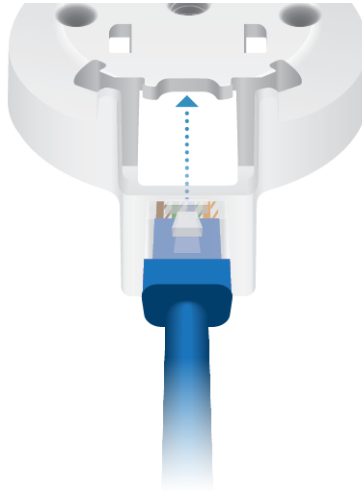
1. Attach the Pole Mount to a pole using the included Zip Ties.



2. Insert and pull an Ethernet cable through the back port opening of the Outdoor Cover.

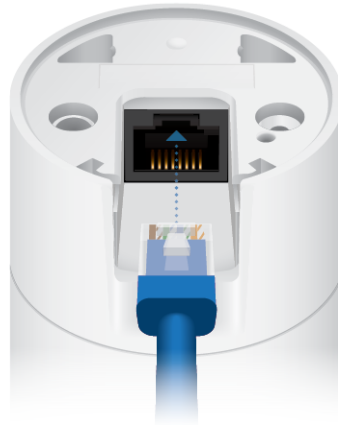


UVC-G3-FLEX Quick Start Guide



Note: When using the Outdoor Cover, use an Ethernet cable without strain-relief boots on the connector. This will prevent unnecessary tension on the cable ends.

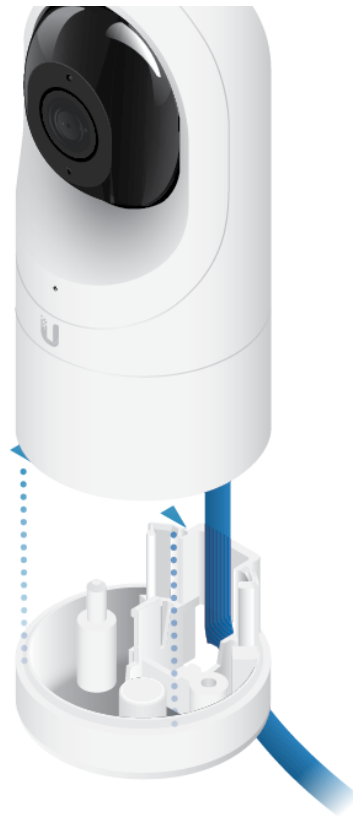
3. Connect the Ethernet cable to the Ethernet Port on the G3 Flex camera.



4. Attach the camera to the Outdoor Cover by lining up the notches with the slots on the bottom of the camera. Press firmly until the camera snaps on.



UVC-G3-FLEX Quick Start Guide



5. Attach the camera to the Pole Mount:

- a. Press the camera against the Pole Mount and line up the notches on the mount with the slots on the bottom of the camera.
- b. Slide the camera down onto the Pole Mount until it is secure.



Note: When using the Outdoor Cover, use an Ethernet cable without strain-relief boots on the connector. This will prevent unnecessary tension on the cable ends.



UVC-G3-FLEX Quick Start Guide

mount.



7. Adjust the camera to the desired viewing angle by:

- Tilting the lens up or down for vertical adjustment
- Turn the camera body left or right to adjust the angle horizontally



Installation is complete.



UVC-G3-FLEX Quick Start Guide



Pole Mount Install

Setting Up UniFi Protect via App

Download and install the UniFi Protect Mobile App to configure the UVC-G3-Flex.



Note: When you first launch UniFi Protect, the app will prompt you to enable Bluetooth and other relevant features necessary to provide the best user experience possible. Please allow these features and permissions to take place for proper app functionality.

Specifications

UVC-G3-FLEX	
Dimensions	Ø 107.5 x 48 x 48 mm (Ø 4.23 x 1.89 x 1.89")
Weight	170 g (5.99 oz)
Sensor	1/2.7" 2-Megapixel HDR Sensor
Lens	EFL 4mm / f2.0
Viewing Angle with Lens Distortion Correction (LDC) LDC Off	87.4° (H), 47° (V), 104° (D)



UVC-G3-FLEX Quick Start Guide

Night Mode	IR LEDs with Mechanical ICR Filter
Video Compression	H.264
Resolution	1080p FHD (1920 x 1080)
Maximum Frame Rate	25 FPS
Image Settings	Brightness, Contrast, Sharpness, Saturation, Noise Reduction, 50/60 Hz
Microphone	Yes
Management Interface	UniFi Protect
Networking Interface	(1) 10/100 Ethernet Port
Max. Power Consumption	4W
Power Method	802.3af PoE
Power Supply	802.3af PoE Switch Port
Mounting	Table, Wall (Indoor/Outdoor), Pole
Operating Temperature	-20 to 50° C (-4 to 122° F)
Operating Humidity	20 to 90% Noncondensing

Safety Notices

1. Read, follow, and keep these instructions.
2. Heed all warnings.
3. Only use attachments/accessories specified by the manufacturer.



WARNING: Hot surface. Do not touch.



WARNING: Do not use this product in location that can be submerged by water.



WARNING: Avoid using this product during an electrical storm. There may be a remote risk of electric shock from lightning.

Electrical Safety Information

1. Compliance is required with respect to voltage, frequency, and current requirements indicated on the manufacturer's label. Connection to a different power source than those specified may result in improper operation, damage to the equipment or pose a fire hazard if the limitations are not followed.
2. There are no operator serviceable parts inside this equipment. Service should be provided only by a qualified service technician.



UVC-G3-FLEX Quick Start Guide

ui.com/support/warranty

The limited warranty requires the use of arbitration to resolve disputes on an individual basis, and, where applicable, specify arbitration instead of jury trials or class actions.

Compliance

FCC

Changes or modifications not expressly approved by the party responsible for compliance could void the user's authority to operate the equipment.

This device complies with Part 15 of the FCC Rules. Operation is subject to the following two conditions.

1. This device may not cause harmful interference, and
2. This device must accept any interference received, including interference that may cause undesired operation.

This equipment has been tested and found to comply with the limits for a Class A digital device, pursuant to Part 15 of the FCC Rules. These limits are designed to provide reasonable protection against harmful interference when the equipment is operated in a commercial environment. This equipment generates, uses, and can radiate radio frequency energy and, if not installed and used in accordance with the instruction manual, may cause harmful interference to radio communications. Operations of this equipment in a residential area is likely to cause harmful interference in which case the user will be required to correct the interference at his own expense.

ISED Canada

CAN ICES-3(A)/NMB-3(A)

Australia and New Zealand



Warning: This equipment is compliant with Class A of CISPR 32. In a residential environment this equipment may cause radio interference.

CE Marking

CE marking on this product represents the product is in compliance with all directives that are applicable to it.



WEEE Compliance Statement

Declaration of Conformity



UVC-G3-FLEX Quick Start Guide



© 2022 Ubiquiti Inc. All rights reserved.