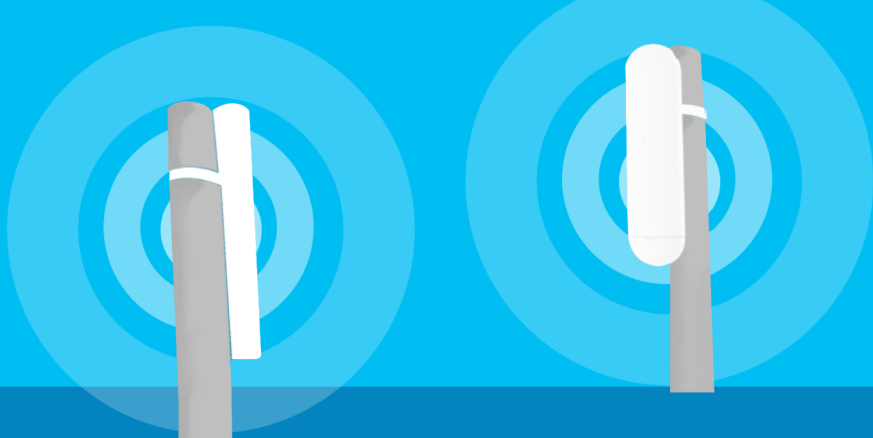
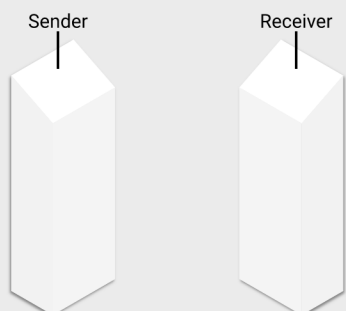


# How to Set Up Your Point-to-Point Link

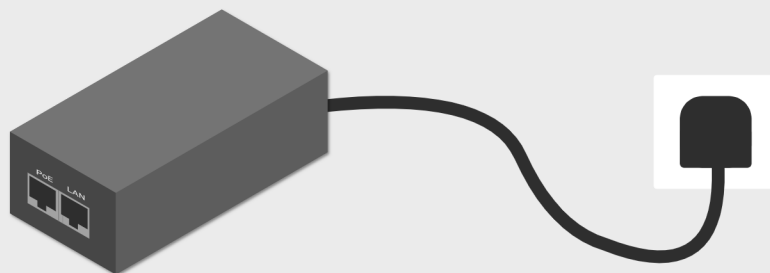


Thank you for your purchase. Please follow these simple steps to extend your network from one location to another within line-of-sight.

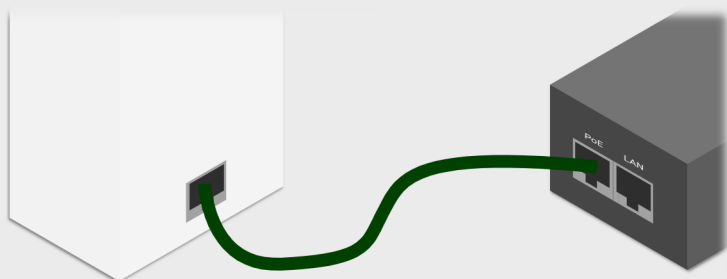
1. You will have two PtP units, one marked 'Sender', the other marked 'Receiver'.



2. Unpack the unit marked Sender. Plug the PoE injector for the Sender unit into the mains power in your primary location, i.e. the building with internet connectivity.



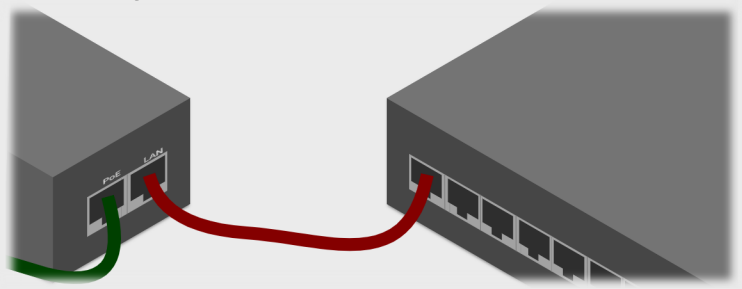
3. Use an Ethernet cable to plug the Sender unit into the PoE port of the PoE injector (the PoE port will be labelled on the injector).



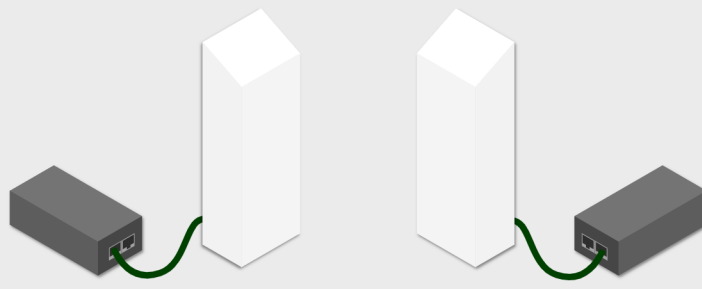
4. Wait for the PtP link to power on.



5. Once the unit is powered on, use an Ethernet cable to connect the LAN port of your PoE injector into your router/switch, thus enabling the Sender unit to receive a network connection.

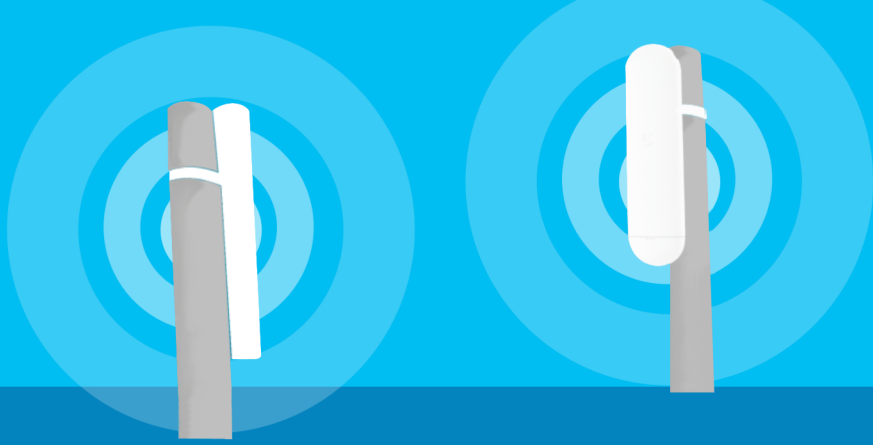


6. At the secondary location, i.e. the building you want to have internet connectivity, repeat steps 2 - 4 with the Receiver unit.



Almost there! Turn over for the final step...

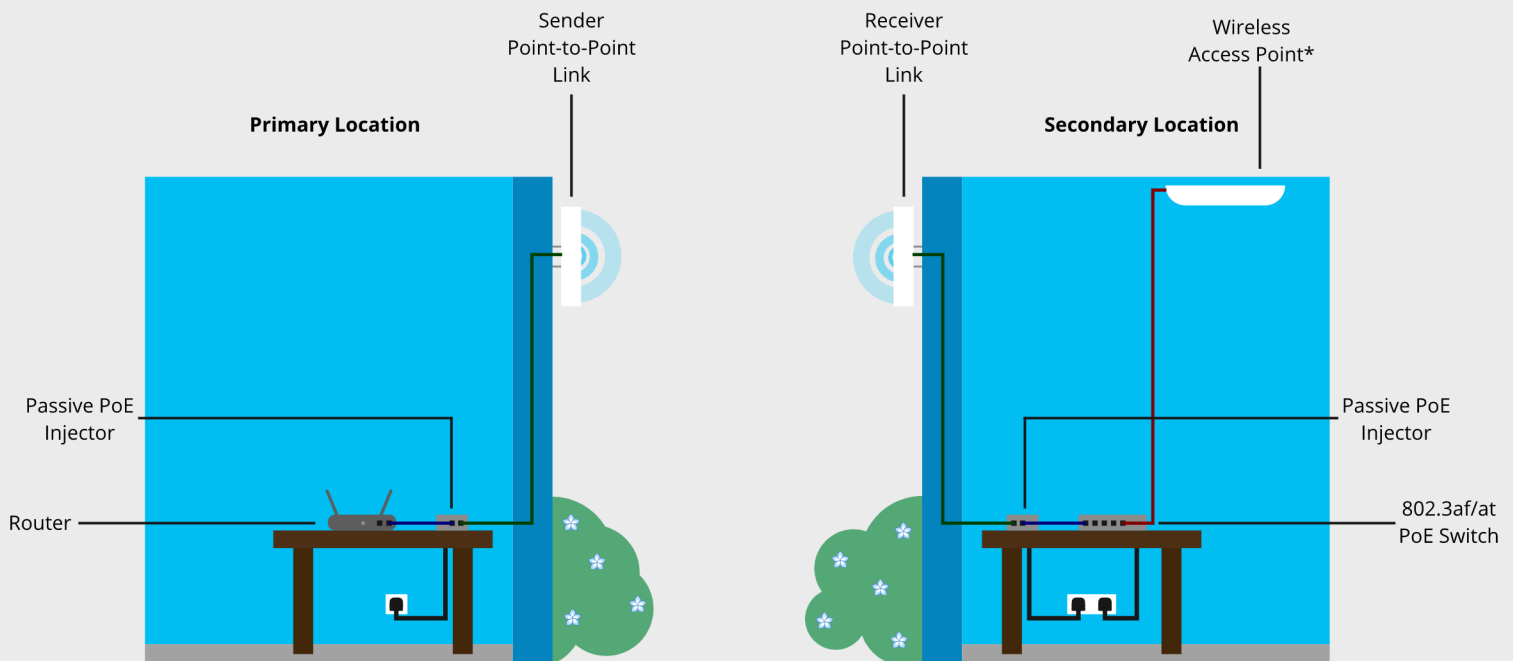
# How to Set Up Your Point-to-Point Link



## Ideal Point-to-Point Setup

7. Once the Receiver unit is powered on, you will be able to extend your network to this secondary location. You can do this by using an Ethernet cable to connect the LAN port of the PoE injector into the device or switch you wish to incorporate into this area of your network.

When installing your PtP units, make sure that they are pointed at each other with a clear line of sight.



The diagram above represents an ideal point-to-point link setup. The easiest way to power a PtP link is via PoE - many link kits will include a PoE injector (please check the product listing for more information).

In order to have enough power to run additional IoT devices at the receiving end, such as access points (as shown above\*), IP cameras, POS systems, etc., you will need a PoE switch.

For enquiries and advice on this set up, please call or email our sales team:

01908 760795  
[sales@broadbandbuyer.com](mailto:sales@broadbandbuyer.com)

If you encounter any issues while installing your PtP links or require any further help, please email our support team:

[support@broadbandbuyer.com](mailto:support@broadbandbuyer.com)