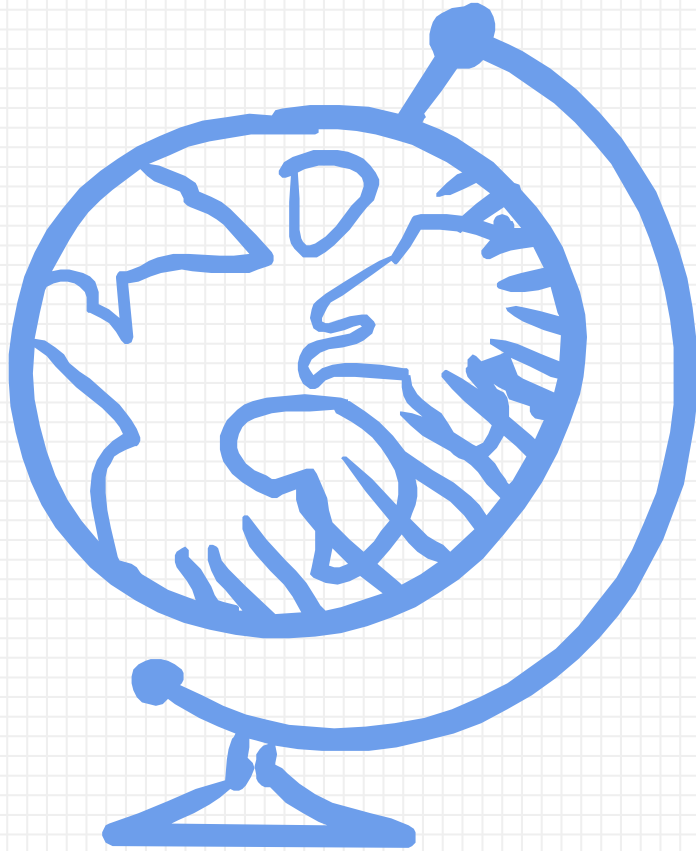
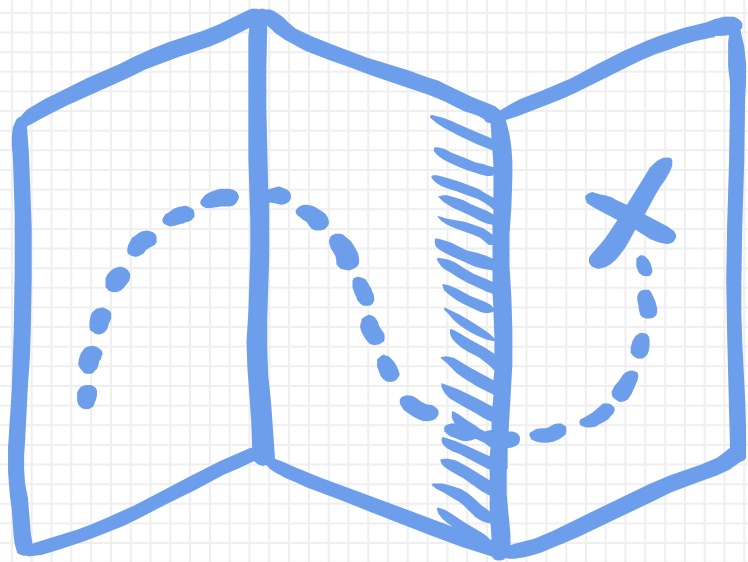


(Adapted from Chris Harte, EduTECH 2017)

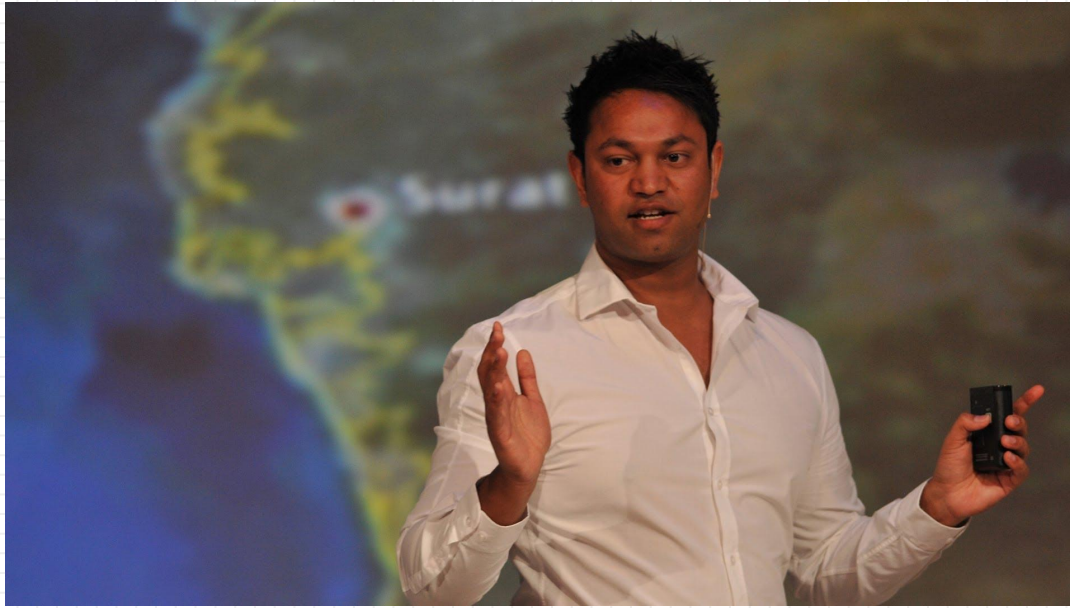


Finding Home

Add your name here



**What does it
mean to be
home?**



**Saroo Brierley had a very long
journey home - find out more [here](#)**

Questions..

What would be the range that Saroo could have travelled in the time he was on the train?

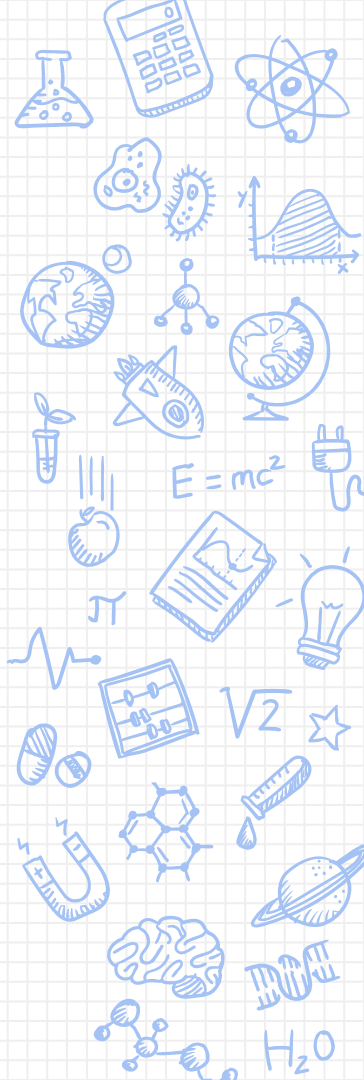
(You must have read up to slide 4!)

Answer:

[Go to this map of Howrah Station](#)

Click on the ruler tool and place the first point at the station - now drag out the number of kilometres you calculated in the previous question. Rotate the line, keeping the same distance to see how far you can narrow down the search area.

Extension - Where can you travel to, which is the same distance from your house?





Questions...

Googleable

What two reasons does Saroo give for thinking he did not live in the north?

Answer:

Ungoogleable

How would you feel waking up alone on a train in an unknown place?

(use three adjectives)

- 1.
- 2.
- 3.

Burhanpur Railway Station

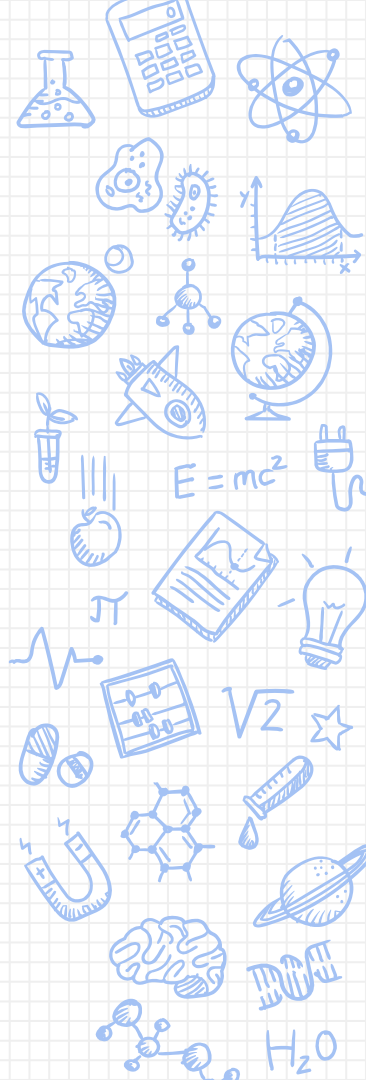
Search for Burhanpur Railway Station on the map.

Identify the water tower, an overpass and a ring road

Drop a pin at the location of each clue

On your map, search for Ganesha Talai -this is where Saroo was born. Drop a pin there.

Measure the distance from Saroo's home to his adopted home in Hobart, Tasmania



Imagine you were 30 year old Saroo giving words of encouragement to 5 year old Saroo to never give up...

Write your response here



Record your message to young Saroo on Screencastify

