
Towards Automatic Concept-based Explanations

Amirata Ghorbani
amiratag@stanford.edu

James Wexler
jwexler@google.com

James Zou
jamesz@stanford.edu

Been Kim
beenkim@google.com

Abstract

Interpretability has become an important topic of research as more machine learning (ML) models are deployed and widely used to make important decisions. Most of the current explanation methods provide explanations through feature importance scores, which identify features that are salient for each individual input. However, how to systematically summarize and interpret such per sample feature importance scores itself is challenging. In this work, we propose principles and desiderata for *concept* based explanation, which goes beyond per-sample features to identify higher level human-understandable concepts that apply across the entire dataset. We develop a new algorithm, ACE, to automatically extract visual concepts. Our systematic experiments demonstrate that ACE discovers concepts that are human-meaningful, coherent and salient for the neural network’s predictions.

1 Introduction

As machine learning (ML) becomes widely used in applications ranging from medicine [17] to commerce [37], gaining insights into ML models’ predictions has become an important topic of study, and in some cases a legal requirement [16]. The industry is also recognizing explainability as one of the main components of responsible use of ML [1]; not just a nice-to-have component but a must-have one.

Most of the recent literature on ML explanation methods has revolved around deep learning models. Methods that are focused on providing explanations of ML models through a common procedure: For each input to the model, they alter individual features (pixels, super-pixels, word-vectors, etc) either in the form of removal (zero-out, blur, shuffle, etc) [29, 5] or perturbation [35, 34] to approximate the importance of each feature for model’s prediction. These “feature-based” explanations suffer from several drawbacks. There has been a line of research focused on showing that these methods are not as reliable [14, 3, 15]. For examples, Kindermans *et al.* discussed vulnerability even to simple shifts in the input [21] while Ghorbani *et al.* designed adversarial perturbations against these methods. A more important concern, however, is that human experiments show that these methods are susceptible to human confirmation biases [20], and also showing that these methods do not increase human understanding of the model and human trust in the model [28, 20]. For example, Kim *et al.* [20] showed that given identical feature-based explanations, human subjects confidently find evidence for completely contradicting conclusions.

As a consequence, a recent line of research has focused on providing explanations in the form of high-level human “concepts” [45, 20]. Instead of assigning importance to individual features or pixels, the output of the method reveals the important concepts. For examples, the wheel and the police logo are important concepts for detecting police vans. These methods come with their own drawbacks. Rather than pointing to the important concepts, they respond to the user’s queries about concepts. That is, for each concept’s importance to query, a human has to provide hand-labeled examples of that concept.

While these methods are useful when the user knows the set of well-defined concepts and has the resources to provide examples, a major problem is that the space of possible concepts to query can first of all, be unlimited, or in some settings even be unclear. Another important drawback is that they rely on human bias in the explanation process; humans might fail to choose the right concepts to query. Because these previous methods can only test concepts that are already labeled and identified by humans, their discovery power is severely limited.

Our contribution We lay out general principles that a concept-based explanation of ML should satisfy. Then we develop a systemic framework to automatically identify higher-level concepts which are meaningful to humans and are salient for the ML model. Our novel method, Automated Concept-based Explanation (ACE), works by aggregating related local image segments across diverse data. ACE removes the need to have humans look through anecdotal examples to manually suggest concepts, and enables more holistic and less biased exploration of relevant concepts. We apply an efficient implementation of our method to a widely-used object recognition model. Quantitative human experiments and evaluations demonstrate that ACE satisfies the principles of concept-based explanation and provide interesting insights into the ML model.¹

2 Concept-based Explanation Desiderata

Our goal is to explain a machine learning model’s decision making via units that are more understandable to humans than individual features, pixels, characters, and so forth. Following the literature [45, 20], throughout this work, we refer to these units as concepts. A precise definition of a concept is not easy [13]. Instead, we lay out the desired properties that a concept-based explanation of a machine learning model should satisfy to be understandable by humans.

1. **Meaningfulness** An example of a concept is semantically meaningful on its own. In the case of image data, for instance, individual pixels may not satisfy this property while a group of pixels (an image segment) containing a texture concept or an object part concept is meaningful. Meaningfulness should also correspond to different individuals associating similar meanings to the concept.
2. **Coherency** Examples of a concept should be perceptually similar to each other while being different from examples of other concepts. Examples of “black and white striped” concept are all similar in having black and white stripes.
3. **Saliency** A concept is salient for a classification task if its presence is “important” for predicting its related class (using a chosen measure of importance). In the case of image data for instance, the object of prediction is typically salient while the background color is not.

We do not claim these properties to be a complete set of desiderata, however, we believe that this is a good starting point towards concept-based explanations.

3 Methods

An explanation algorithm has typically three main components: A trained classification model, a set of data points from the same classification task, and a saliency computation procedure that assigns importance to features, pixels, concepts, and so forth. The method either explains an individual data point’s prediction (local explanation), or an entire model, class or sets of examples (global explanation). One example of a local explanation method is the family of saliency map methods [33, 34, 35]. Each pixel in every image is assigned a saliency score for the correct prediction of that image typically by using the gradient of prediction with respect to each pixel. TCAV method [20] is an example of a global method. For each class, it determines how important a given concept is for predicting that class.

In what follows, we present ACE. ACE is a global explanation method that explains an entire class in a trained classifier without the need for human supervision.

¹ Implementation available: <https://github.com/anonymousneuripssubmission/>

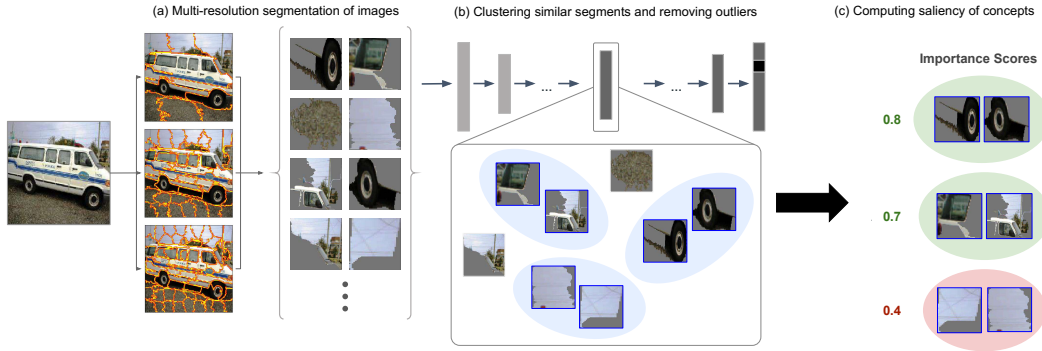


Figure 1: **ACE algorithm** (a) A set of images from the same class is given. Each image is segmented with multiple resolutions resulting in a pool of segments all coming from the same class. (b) The activation space of one bottleneck layer of a state-of-the-art CNN classifier is used as a similarity space. After resizing each segment to the standard input size of the model, similar segments are clustered in the activation space and outliers are removed to increase coherency of clusters. (d) For each concept, its TCAV importance score is computed given its examples segments.

Automated concept-based explanations step-by-step ACE takes a trained classifier and a set of images of a class as input. It then extracts concepts present in that class and returns each concept’s saliency. In image data, concepts are present in the form of groups of pixels (segments). To extract all concepts of a class, the first step of ACE (Fig 1(a)) starts with segmentation of the given class images. To capture the complete hierarchy of concepts from simple fine-grained ones like textures and colors to more complex and coarse-grained ones such as parts and objects, each image is segmented with multiple resolutions. In our experiments, we used three different levels of resolution to capture three levels of texture, object parts, and objects. As discussed in Section 4, three levels of segmentation is enough to achieve the goal.

The second step of ACE (Fig 1(b)) groups similar segments as examples of the same concept. To measure the similarity of segments, we use the result of previous work [44] showing that in state-of-the-art convolutional neural networks (CNNs) trained on large-scale data sets like ImageNet [32], the euclidean distance in the activation space of final layers is an effective perceptual similarity metric. Each segment is then passed through the CNN to be mapped to the activation space. Similar to the argument made by Dabkowski & Gal [8], as most image classifiers accept images of a standard size while the segments have arbitrary size, we resize the segment to the required size disregarding aspect ratio. As the results in Section 4 suggest, this works fine in practice but it should be mentioned that the proposed similarity measure works the best with classifiers robust to scale and aspect ratio. After the mapping is performed, using the euclidean distance between segments, we cluster similar segments as examples of the same concept. To preserve concept coherency, outlier segments of each cluster that have low similarity to cluster’s segments are removed (Fig. 1(b)).

The last step of ACE (Fig 1(c)) includes returning salient concepts from the set of extracted concepts in previous steps. TCAV [20] concept-based saliency score is used in this work (Fig. 1(c)), though any other concept-importance saliency score could be used.

How ACE is designed to achieve the three desiderata The first of the desiderata requires the returned concepts to be clean of meaningless examples (segments). To perfectly satisfy meaningfulness, the first step of ACE can be replaced by a human subject going over all the given images and extracting only meaningful segments. To automate this procedure, a long line of research has focused on semantic segmentation algorithms [25, 23, 27, 30], that is, to segment an image so that every pixel is assigned to a meaningful class. State-of-the-art semantic segmentation methods use deep neural networks which imposes higher computational cost. Most of these methods are also unable to perform segmentation with different resolutions. To tackle these issues, ACE uses simple and fast super-pixel segmentation methods which have been widely used in the hierarchical segmentation literature [42]. These methods could be applied with any desired level of resolution with low computational cost

at the cost of suffering from lower segmentation quality, that is, returning segments that either are meaningless or capture numerous textures, objects, etc instead of isolating one meaningful concept.

To have perfect meaningfulness and coherency, we can replace the second step with a human subject to go over all the segments, clusters similar segments as concepts, and remove meaningless or dissimilar segments. The second step of ACE aims to automate the same procedure. It replaces of a human subject as a perceptual similarity metric, with an ImageNet-trained CNN. It then clusters similar segments and removes outliers. The outlier removal step is necessary to make every cluster of segments clean of meaningless or dissimilar segments. The idea is that if a segment is dissimilar to segments in a cluster, it is either a random and meaningless segment or if it is meaningful, it belongs to a different concept; a concept that has appeared a few times in the class images and therefore its segments are not numerous enough to form a cluster. For examples, asphalt texture segments appear in almost every police van image and therefore are expected to form a coherent cluster while segments of a grass texture that has appeared in only one police van image is an unrelated concept to the class and is to be removed.

ACE utilizes the TCAV score as a concept’s saliency metric. The intuition behind the TCAV score is to approximate the average positive effect of a concept on predicting the class and is generally applied to deep neural network classifiers. Given examples of a concept, TCAV score [20] is the fraction of class images for which the prediction score increases if the representation of those images in the activation space are perturbed in the general direction of representation of concept examples in the same activation space (with the use directional derivatives). Details are described in the original work [20].

It is evident that satisfying the desiderata through ACE is limited to the performance of the segmentation method, the clustering and outlier removal method, and above all the reliability of using CNNs as a similarity metric. The results and human experiments in the next section verify the effectiveness of this method.

4 Experiments and Results

As an experimental example, we use ACE to interpret the widely-used Inception-V3 model [36] trained on ILSVRC2012 data set (ImageNet) [32]. We select a subset of 100 classes out of the 1000 classes in the data set to apply ACE. For each class, using only 50 images was sufficient for extracting the related concepts as the related concepts of a class tend to be present frequently in the class images. Segmentation step is performed using SLIC [2] due to its speed and performance (after examining several super-pixel methods [10, 26, 40]) with three resolutions of 15, 50, and 80 segments for each image. For our similarity metric, we examined at the euclidean distance in several layers of the ImageNet trained Inception-V3 architecture and chose the “mixed_8” layer. As previously shown [20], earlier layers are better at similarity of textures and colors while latter ones are better for object and the “mixed_8” layer yields the best trade-off. K-Means clustering is performed and outliers are removed using euclidean distance to the cluster centers. More implementation details are provided in Appendix A.

Examples of ACE algorithm We apply ACE to 100 randomly selected ImageNet classes. Fig. 2 depicts the outputs for three classes. For each class, we show the four most salient concepts via three randomly selected examples (each example is shown above the original image it was segmented from). The figure suggests that ACE considers concepts of several levels of complexity. From Lionfish spines and its skin texture to a car wheel or window. More examples are shown in Appendix E.

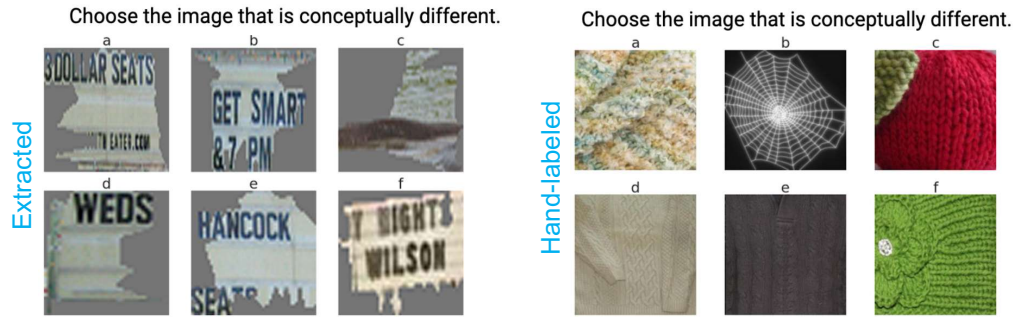
Human experiments To verify the coherency of concepts, following the explainability literature [7], we designed an intruder detection experiment. At each question, a subject is asked to identify one image out of six that is conceptually different from the rest. We created a questionnaire of 34 questions, such as shown in Fig. 3 Among 34 randomly ordered questions, 15 of them include using the output concepts of ACE and other 15 questions using human-labeled concepts from Broden dataset [4]. The first four questions were used as training and discarded. On average, 30 participants answered the hand-labeled dataset 97% (14.6/15) (± 0.7) correctly, while discovered concepts were answered 99% (14.9/15) (± 0.3) correctly. This experiment confirms that while a discovered concept is only a set of segments of images, ACE outputs concepts that are *coherent*.



Figure 2: **The output of ACE for three ImageNet classes.** Here we depict three randomly selected examples of the top-4 salient concepts of each class (each example is shown above the original image it was segmented from). Using this result, for instance, we could see that the network classifies police vans using the van’s tire and the police logo.

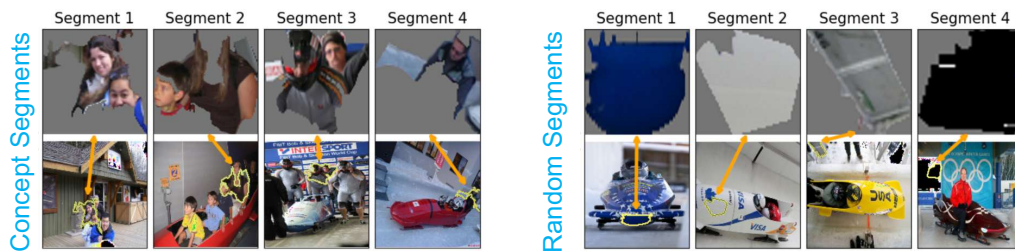
In our second experiment, we test how meaningful the concepts are to humans. We asked 30 participants to perform two tasks: As a baseline test of meaningfulness, first we ask them to choose the more meaningful of two options. One being four segments of the same concept (along with the image they were segmented from) and the other being four random segments of images in the same class. To further query the meaningfulness of the concepts, they were asked to describe their chosen option with one word. The questionnaire had 19 questions and the first 4 were used as training and were discarded. The right option was chosen 95.6% (14.3/15)(±1.0). For each concept, on average, 56% of participants described it with the same word and its synonyms. 77% of descriptions were from the two most frequent words on average. For examples, for the question in Fig. 3, 19 users used the word human or person and 8 users used face or head. This suggests that ACE discovers concepts with high precision and that have consistent semantic/verbal meanings across individuals.

Examining the saliency of salient concepts To confirm the importance scores given by TCAV method, we extend two measures defined for pixel importance scores in the literature [8] to the case of concepts. Smallest sufficient concepts (SSC) which looks for the smallest set of concepts that are enough for predicting the target class. Smallest destroying concepts (SDC) which looks for the smallest set of concepts removing which will cause incorrect prediction. Note that these importance scores are defined and used for local pixel-based explanations in [8] (explaining one data point), the main idea can still be used to evaluate our global concept-based explanation (explaining a class).



Experiment 1: Identifying intruder concept

Look at the following two groups of segments. In each group, you should look at the top row. Each image in the top row is a zoomed-in version of another image shown on the bottom row. Now the question is that which of the groups seems more meaningful to you.



Which groups of images is more meaningful to you? right left

If possible please describe the chosen row in one word.

Experiment 2: Identifying the meaning of concept

Figure 3: **Human subject experiments questionnaires.** (Texts in blue are not part of the questionnaire) (a) 30 human subjects were asked to identify one image out of six that is conceptually different from the rest. For comparison, each question is either a set of extracted or hand-labeled concepts. On average, participants answer the hand-labeled dataset 97% (14.6/15, ± 0.7) correctly, while discovered concepts were answered 99% (14.9/15, ± 0.3) correctly. (b) 30 human subjects were asked to identify a set of image segments belonging to a concept versus a random set of segments and then to assign a word to the selected concept. On average, 55% of participants used the most frequent word and its synonyms for each question and 77% of the answers were one of top-two frequent words.

To examine ACE with these two measure, we use 1000 randomly selected ImageNet validation images from the same 100 classes. Each image is segmented with multiple resolutions similar to ACE. Using the same similarity metric in ACE, each resulting segment is assigned to a concept using its the examples of a concept with least similarity distance concept's examples. Fig. 4 shows the prediction accuracy on these examples as we add and remove salient concepts.

Insights into the model through ACE To begin with, some interesting correlations are revealed. For many classes, the concepts with high importance follow human intuition, e.g. the “Police” characters on a police car are important for detecting a police van while the asphalt on the ground is not salient. Fig. 5(a) shows more examples of this kind. On the other side, there are examples where the correlations in the real world are transformed into model’s prediction behavior. For instance, the most salient concept for predicting basketball images is the players’ jerseys rather than the ball itself. It turns out that most of the ImageNet basketball images contain jerseys in the image (We inspected 50 training images and there was a jersey in 48 of them). Similar examples are shown in Fig. 5(b). A third category of results is shown in Fig. 5(c). In some cases, when the object’s structure is complex, parts of the object as separate concepts have their own saliency and some parts are more important than others. The example of carousel is shown: lights, poles, and seats. It is interesting to learn that the lights are more salient than seats.

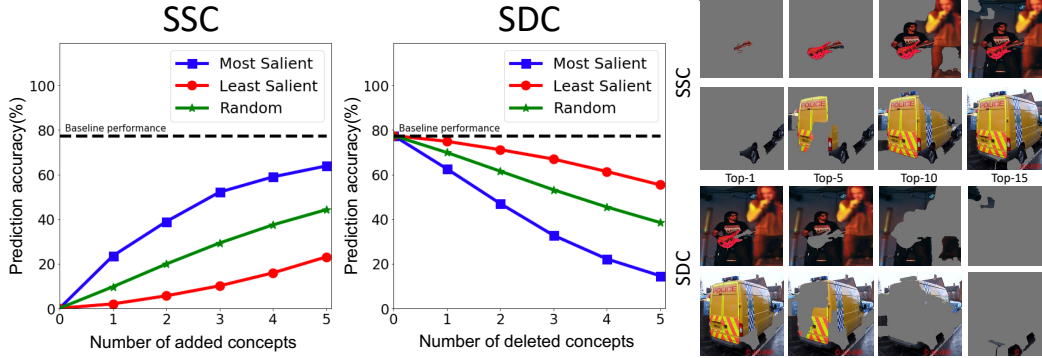


Figure 4: **saliency** For 1000 randomly sampled images in the ImageNet validation set, we start removing/adding concepts from the most salient. As it is shown, the top-5 concepts is enough to reach within 80% of the original accuracy and removing the top-5 concepts results in misclassification of more than 80% of samples that are classified correctly. For comparison, we also plot the effect of adding/removing concepts with random order and with reverse saliency order.

A natural follow-up question is whether the mere existence of a salient concepts is enough for prediction without having the structural properties; e.g. an image of just black and white zebra stripes is predicted as zebra. For each class, we randomly place examples of the four most salient concepts on a blank image. (100 images for each class) Fig. 6 depicts examples of these randomly “stitched” images with their predicted class. For 20 classes (zebra, liner, etc), more than 80% of images were classified correctly. For more than half of the classes, above 40% of the images were classified correctly (note that random chance is 0.001%). This result aligns with similar findings [6, 12] of surprising effectiveness of Bag-of-local-Features and CNNs bias towards texture and shows that our extracted concepts are salient enough to be *sufficient* for the ML model. Examples are discussed in Appendix C.

5 Related Works

This work is focused on post-training explanation methods - explaining an already trained model instead of building an inherently explainable model [41, 19, 39]. Most common post-training explanation methods provide explanations by estimating the importance of each input feature (covariates, pixels, etc) or training sample for the prediction of a particular data point [33, 34, 43, 22] and are designed to explain the prediction on individual data points. While this is useful when only specific data points matter, these methods have been shown to come with many limitations, both methodologically and fundamentally. [21, 18, 14] For example, [18] showed that some input feature-based explanations are qualitatively and quantitatively similar for a trained model (i.e., making superhuman performance prediction) and a randomized model (i.e., making random predictions). Other work proved that some of these methods are in fact trying to reconstruct the input image, rather than estimating pixels’ importance for prediction [38]. In addition, it’s been shown that these explanations are susceptible to humans’ confirmation biases [20]. Using input features as explanations also introduces challenges in scaling this method to high dimensional datasets (e.g., health records). Humans typically reason in higher abstracted concepts [31] than a particular input feature (e.g., lab results, a particular hospital visit). A recently developed method uses high-level concepts, instead of input features. TCAV [20] produces estimates of how important that a concept was for the prediction and IBD [45] decomposes the prediction of one image into human-interpretable conceptual components. Both methods require humans to provide examples of concepts. Our work introduces an explanation method that explains each class in the network using concepts that are present in the images of that class while removing the need for humans to label examples of those concepts. Although rare, but there were cases that a returned concept did not satisfy the desiderata.

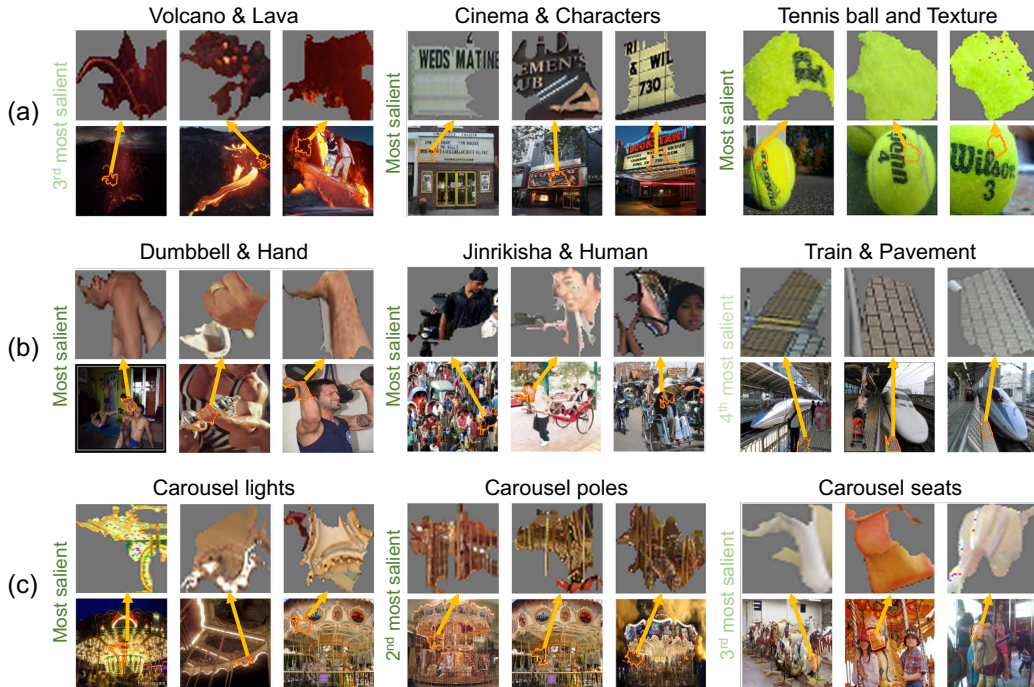


Figure 5: **Insights into the model** The text above each image describes its original class and our subjective interpretation of the extracted concept; e.g. “Volcano” class and “Lava” concepts. (a) Intuitive correlations. (b) Unintuitive correlations (c) Different parts of an object as separate but important concepts



Figure 6: **Stitching salient concepts** We test what would the classifier see if we randomly stitch salient concepts. We discover that for a number classes this results in predicting the image to be a member of that class. For instance, basketball jerseys, zebra skin, lionfish, and king snake patterns all seem to be enough for the Inception-V3 network to classify them as images of their class.

6 Discussion

We note a couple of limitations of our method. The experiments are performed on image data, as automatically grouping features into meaningful units is simple for this case. The general idea of providing concept-based explanations applies to other data types such as texts, and this would be an interesting direction of future work. Additionally, the above discussions only apply to concepts that are present in the form of groups of pixels. While this assumption gave us plenty of insight into the model, there might be more complex and abstract concepts are difficult to automatically extracted. Future work includes tuning the ACE hyper-parameters (multi-resolution segmentation, etc) for each class separately. This may better capture the inherent granularity of objects; for example, scenes in nature may contain a smaller number of concepts compared to scenes in a city.

In conclusion, we introduces ACE , a post-training explanation method that automatically groups input features into high-level concepts; *Meaningful* concepts that appear as *coherent* examples and are *salient* for correct prediction of the images they appear in. We verified the meaningfulness and

coherency through human experiments and further validated that they indeed carry salient signals for prediction. The discovered concepts reveal insights into potentially surprising correlations that the model has learned. Such insights may help to promote safer use of this powerful tool, machine learning.

References

- [1] Google AI principles. <https://www.blog.google/technology/ai/ai-principles/>. Accessed: 2018-11-15.
- [2] R. Achanta, A. Shaji, K. Smith, A. Lucchi, P. Fua, S. Süsstrunk, et al. Slic superpixels compared to state-of-the-art superpixel methods. *IEEE transactions on pattern analysis and machine intelligence*, 34(11):2274–2282, 2012.
- [3] J. Adebayo, J. Gilmer, M. Muehly, I. Goodfellow, M. Hardt, and B. Kim. Sanity checks for saliency maps. In *Advances in Neural Information Processing Systems*, pages 9505–9515, 2018.
- [4] D. Bau, B. Zhou, A. Khosla, A. Oliva, and A. Torralba. Network dissection: Quantifying interpretability of deep visual representations. In *Computer Vision and Pattern Recognition*, 2017.
- [5] L. Breiman. Random forests. *Machine learning*, 45(1):5–32, 2001.
- [6] W. Brendel and M. Bethge. Approximating cnns with bag-of-local-features models works surprisingly well on imagenet. *arXiv preprint arXiv:1904.00760*, 2019.
- [7] J. Chang, S. Gerrish, C. Wang, J. L. Boyd-Graber, and D. M. Blei. Reading tea leaves: How humans interpret topic models. In *Advances in neural information processing systems*, pages 288–296, 2009.
- [8] P. Dabkowski and Y. Gal. Real time image saliency for black box classifiers. In *Advances in Neural Information Processing Systems*, pages 6967–6976, 2017.
- [9] M. Ester, H.-P. Kriegel, J. Sander, X. Xu, et al. A density-based algorithm for discovering clusters in large spatial databases with noise. In *Kdd*, volume 96, pages 226–231, 1996.
- [10] P. F. Felzenszwalb and D. P. Huttenlocher. Efficient graph-based image segmentation. *International journal of computer vision*, 59(2):167–181, 2004.
- [11] B. J. Frey and D. Dueck. Clustering by passing messages between data points. *science*, 315(5814):972–976, 2007.
- [12] R. Geirhos, P. Rubisch, C. Michaelis, M. Bethge, F. A. Wichmann, and W. Brendel. Imagenet-trained cnns are biased towards texture; increasing shape bias improves accuracy and robustness. *arXiv preprint arXiv:1811.12231*, 2018.
- [13] J. Genone and T. Lombrozo. Concept possession, experimental semantics, and hybrid theories of reference. *Philosophical Psychology*, 25(5):717–742, 2012.
- [14] A. Ghorbani, A. Abid, and J. Zou. Interpretation of neural networks is fragile. *arXiv preprint arXiv:1710.10547*, 2017.
- [15] J. R. Gimenez, A. Ghorbani, and J. Zou. Knockoffs for the mass: new feature importance statistics with false discovery guarantees. *arXiv preprint arXiv:1807.06214*, 2018.
- [16] B. Goodman and S. Flaxman. European union regulations on algorithmic decision-making and a “right to explanation”. *arXiv preprint arXiv:1606.08813*, 2016.
- [17] V. Gulshan, L. Peng, M. Coram, M. C. Stumpe, D. Wu, A. Narayanaswamy, S. Venugopalan, K. Widner, T. Madams, J. Cuadros, et al. Development and validation of a deep learning algorithm for detection of diabetic retinopathy in retinal fundus photographs. *Jama*, 316(22):2402–2410, 2016.
- [18] M. M. I. G. M. H. B. K. Julius Adebayo, Justin Gilmer. Sanity checks for saliency maps. *NIPS*, 2018.
- [19] B. Kim, C. Rudin, and J. A. Shah. The Bayesian Case Model: A generative approach for case-based reasoning and prototype classification. In *Advances in Neural Information Processing Systems*, pages 1952–1960, 2014.
- [20] B. Kim, M. Wattenberg, J. Gilmer, C. Cai, J. Wexler, F. Viegas, and R. Sayres. Interpretability beyond feature attribution: Quantitative testing with concept activation vectors (tcav). In *International Conference on Machine Learning*, pages 2673–2682, 2018.
- [21] P.-J. Kindermans, S. Hooker, J. Adebayo, M. Alber, K. T. Schütt, S. Dähne, D. Erhan, and B. Kim. The (un) reliability of saliency methods. *arXiv preprint arXiv:1711.00867*, 2017.
- [22] P. W. Koh and P. Liang. Understanding black-box predictions via influence functions. *arXiv preprint arXiv:1703.04730*, 2017.
- [23] W. Liu, A. Rabinovich, and A. C. Berg. Parsenet: Looking wider to see better. *arXiv preprint arXiv:1506.04579*, 2015.
- [24] S. Lloyd. Least squares quantization in pcm. *IEEE transactions on information theory*, 28(2):129–137, 1982.

- [25] J. Long, E. Shelhamer, and T. Darrell. Fully convolutional networks for semantic segmentation. In *Proceedings of the IEEE conference on computer vision and pattern recognition*, pages 3431–3440, 2015.
- [26] P. Neubert and P. Protzel. Compact watershed and preemptive slic: On improving trade-offs of superpixel segmentation algorithms. In *Pattern Recognition (ICPR), 2014 22nd International Conference on*, pages 996–1001. IEEE, 2014.
- [27] H. Noh, S. Hong, and B. Han. Learning deconvolution network for semantic segmentation. In *Proceedings of the IEEE international conference on computer vision*, pages 1520–1528, 2015.
- [28] F. Poursabzi-Sangdeh, D. G. Goldstein, J. M. Hofman, J. W. Vaughan, and H. Wallach. Manipulating and measuring model interpretability. *arXiv preprint arXiv:1802.07810*, 2018.
- [29] M. T. Ribeiro, S. Singh, and C. Guestrin. Model-agnostic interpretability of machine learning. *arXiv preprint arXiv:1606.05386*, 2016.
- [30] O. Ronneberger, P. Fischer, and T. Brox. U-net: Convolutional networks for biomedical image segmentation. In *International Conference on Medical image computing and computer-assisted intervention*, pages 234–241. Springer, 2015.
- [31] E. Rosch. Principles of categorization. *Concepts: core readings*, 189, 1999.
- [32] O. Russakovsky, J. Deng, H. Su, J. Krause, S. Satheesh, S. Ma, Z. Huang, A. Karpathy, A. Khosla, M. Bernstein, et al. Imagenet large scale visual recognition challenge. *International Journal of Computer Vision*, 115(3):211–252, 2015.
- [33] K. Simonyan, A. Vedaldi, and A. Zisserman. Deep inside convolutional networks: Visualising image classification models and saliency maps. *arXiv preprint arXiv:1312.6034*, 2013.
- [34] D. Smilkov, N. Thorat, B. Kim, F. Viégas, and M. Wattenberg. Smoothgrad: removing noise by adding noise. *arXiv preprint arXiv:1706.03825*, 2017.
- [35] M. Sundararajan, A. Taly, and Q. Yan. Axiomatic attribution for deep networks. In *Proceedings of the 34th International Conference on Machine Learning-Volume 70*, pages 3319–3328. JMLR.org, 2017.
- [36] C. Szegedy, V. Vanhoucke, S. Ioffe, J. Shlens, and Z. Wojna. Rethinking the inception architecture for computer vision. In *Proceedings of the IEEE conference on computer vision and pattern recognition*, pages 2818–2826, 2016.
- [37] N. Tintarev and J. Masthoff. Designing and evaluating explanations for recommender systems. In *Recommender Systems Handbook*. Springer, 2011.
- [38] D. Ulyanov, A. Vedaldi, and V. S. Lempitsky. Deep image prior. *CoRR*, abs/1711.10925, 2017.
- [39] B. Ustun and C. Rudin. Methods and models for interpretable linear classification. *ArXiv*, 2014.
- [40] A. Vedaldi and S. Soatto. Quick shift and kernel methods for mode seeking. In *European Conference on Computer Vision*, pages 705–718. Springer, 2008.
- [41] F. Wang and C. Rudin. Falling rule lists. In *AISTATS*, 2015.
- [42] X. Wei, Q. Yang, Y. Gong, N. Ahuja, and M.-H. Yang. Superpixel hierarchy. *IEEE Transactions on Image Processing*, 27(10):4838–4849, 2018.
- [43] M. D. Zeiler and R. Fergus. Visualizing and understanding convolutional networks. In *European conference on computer vision*, pages 818–833. Springer, 2014.
- [44] R. Zhang, P. Isola, A. A. Efros, E. Shechtman, and O. Wang. The unreasonable effectiveness of deep features as a perceptual metric. In *Proceedings of the IEEE Conference on Computer Vision and Pattern Recognition*, pages 586–595, 2018.
- [45] B. Zhou, Y. Sun, D. Bau, and A. Torralba. Interpretable basis decomposition for visual explanation. In *Proceedings of the European Conference on Computer Vision (ECCV)*, pages 119–134, 2018.

A More Implementation Details

We selected a random subset of 100 classes in ImageNet dataset and chose a random set of 50 images in the training set of each class to be our “concept-discover” images. For each class, we performed SLIC super-pixel segmentation on the discovery-images. Each of the images was segmented into 15, 50 and 80 segments. Each segment was then resized to the original input size of Inception-V3 network (by padding with gray scale value of 117.5 which is the default zero value for Inception-V3 network). We then pass all the segments of a class through the Inception-V3 network to get their “mixed_8” layer representation.

The next step is to cluster the segments that belong to one concept together (*coherent* examples) while removing the meaningless segments. We tested several clustering methods including K-means [24], Affinity Propagation [11], and DBSCAN [9]. When Affinity Propagation was used, typically a large number of clusters (30-70) were produced, which was then simplified by another hierarchical clustering step. Interestingly, the best results were acquired as follows: We first perform K-Means clustering with $K = 25$. After performing the K-Means, for each cluster, we keep only the $n = 40$ segments that have the smallest ℓ_2 distance from the cluster center and remove the rest. We then remove three types of clusters: 1) Infrequent Clusters that have segments only coming from one or a few number of discovery-images. The problem with these clusters is that the concept they represent is not a common concept for the target-class. One examples is that having many segments of the same grass type that appears in one image. These segments tend to form a cluster due to similarity but don't represent a frequent concept. 2) Unpopular clusters that have very few members. To have a trade-off, we keep three groups of clusters: a) high frequency (segments come from more than half of discovery images) b) medium frequency with medium popularity (more than one-quarter of discovery images) and the cluster size is larger than the number of discovery-images) and c) high popularity (cluster size is larger twice the number of discovery images.)

B ACE Considers Simple to Complex Concepts

The multi-resolution segmentation step of ACE naturally returns segments that contain simple concepts such as color or texture and more complex concepts, such as parts of body or objects. Among those segments, ACE successfully identifies concepts with similar level of abstract-ness with similar semantic meaning (as verified via human experiment). Fig. 7 shows some examples of the discovered concepts. Note that each segment is re-sized for display.

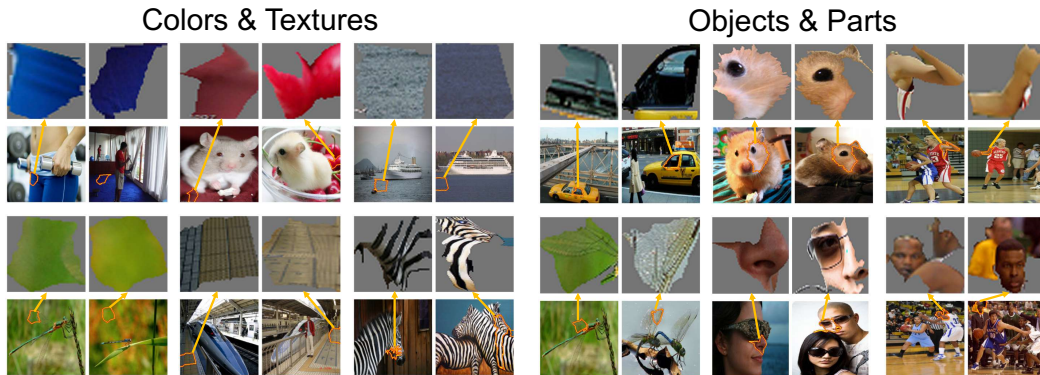


Figure 7: **Examples of discovered concepts.** A wide range of concepts like blue color, asphalt texture, car window, and human face are detected through the algorithm. Multi-resolution segmentation helped discovering concepts with varying sizes. For example, two car windows with different sizes (one twice as big as the other) were identified as the same concept.

C Drawbacks of ACE

The first drawback of ACE is its susceptibility for returning either meaningless or non-coherent concepts due to the segmentation errors, clustering errors, or errors of the similarity metric. While rare, there are concepts that are less subjectively less coherent. This may be due to limitations of our method or because things that are similar to the neural network are not similar to humans. However, the incoherent concepts were never in top-5 most important concepts among the 100 classes used for experiments. Another potential problem is the possibility of returning several concepts that are subjectively duplicates. For example, in Fig. 8(b), three different ocean surfaces (wavy, calm, and shiny) are discovered separately and all of them have similarly high TCAV scores. Future work remains to see whether this is because the network represents these ocean surfaces differently, or whether we can further combine these concepts into one 'ocean' concept.

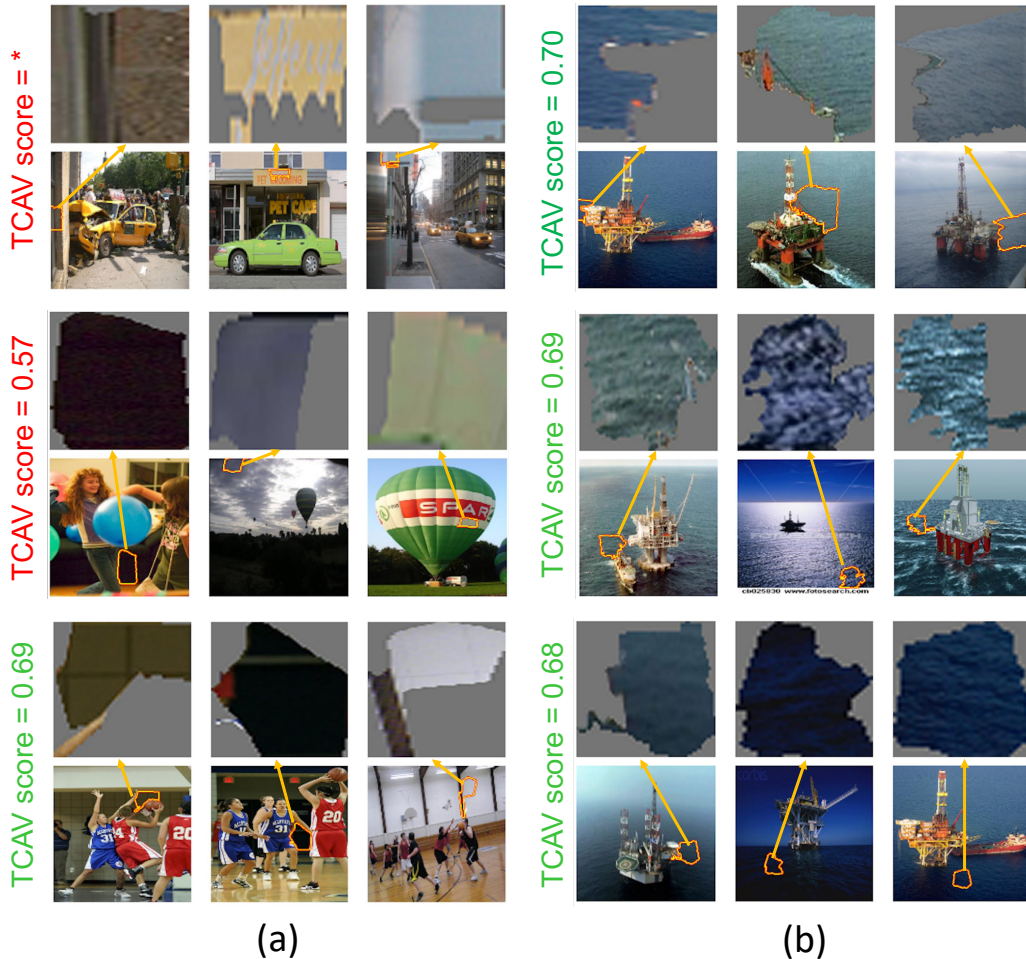


Figure 8: (a) Semantically inconsistent concepts achieve low or no TCAV scores (b) Seemingly duplicated concepts (to humans) may be discovered

D Stitching Concepts

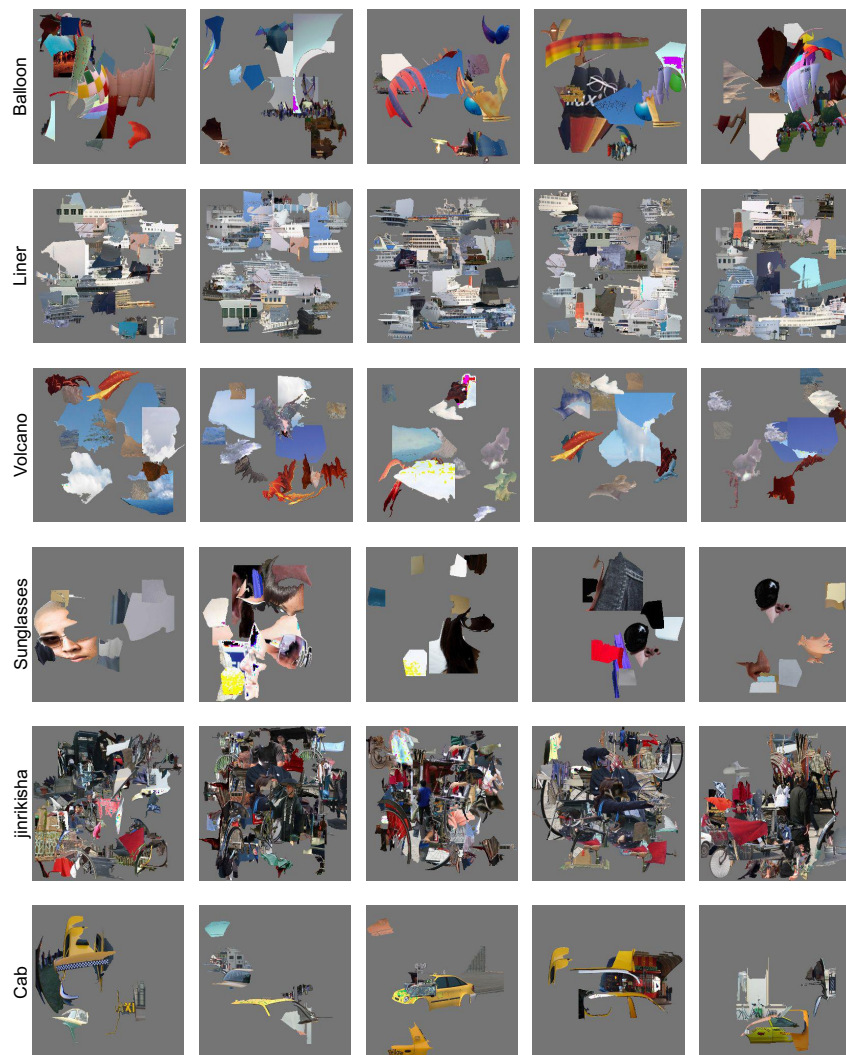


Figure 9: Examples of stitched images classified correctly by the Inception-V3 network.

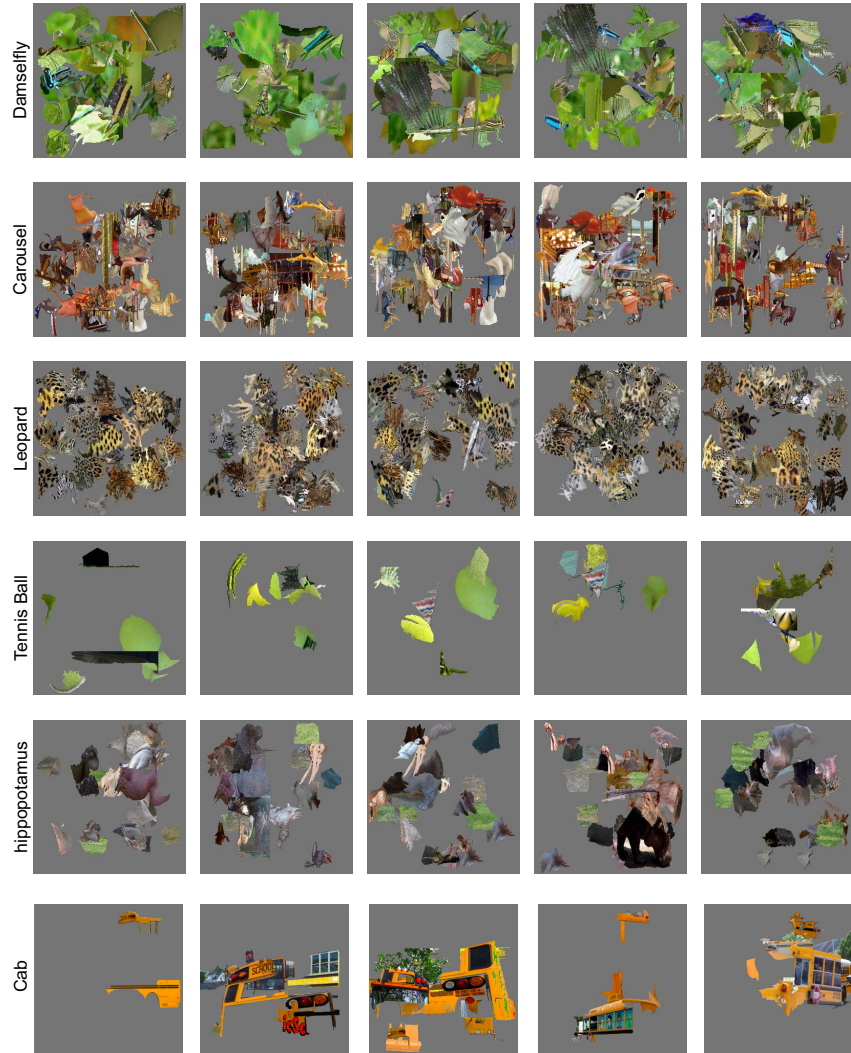


Figure 10: Examples of stitched images classified correctly by the Inception-V3 network.

E More Examples of ACE

We show the results for 12 ImageNet classes. For each class, four of the top-5 salient concepts are shown.

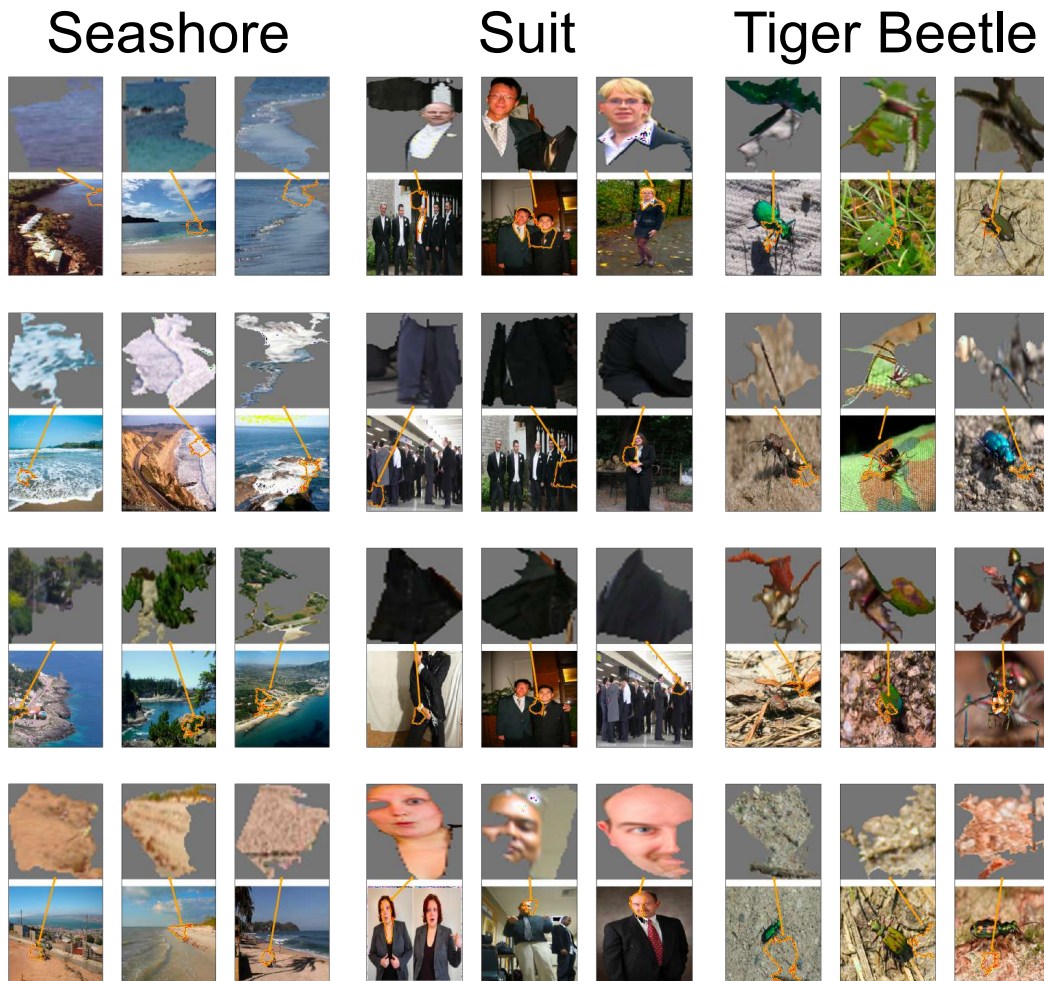


Figure 11: Examples of extracted concepts and their respective TCAV scores for class cinema.

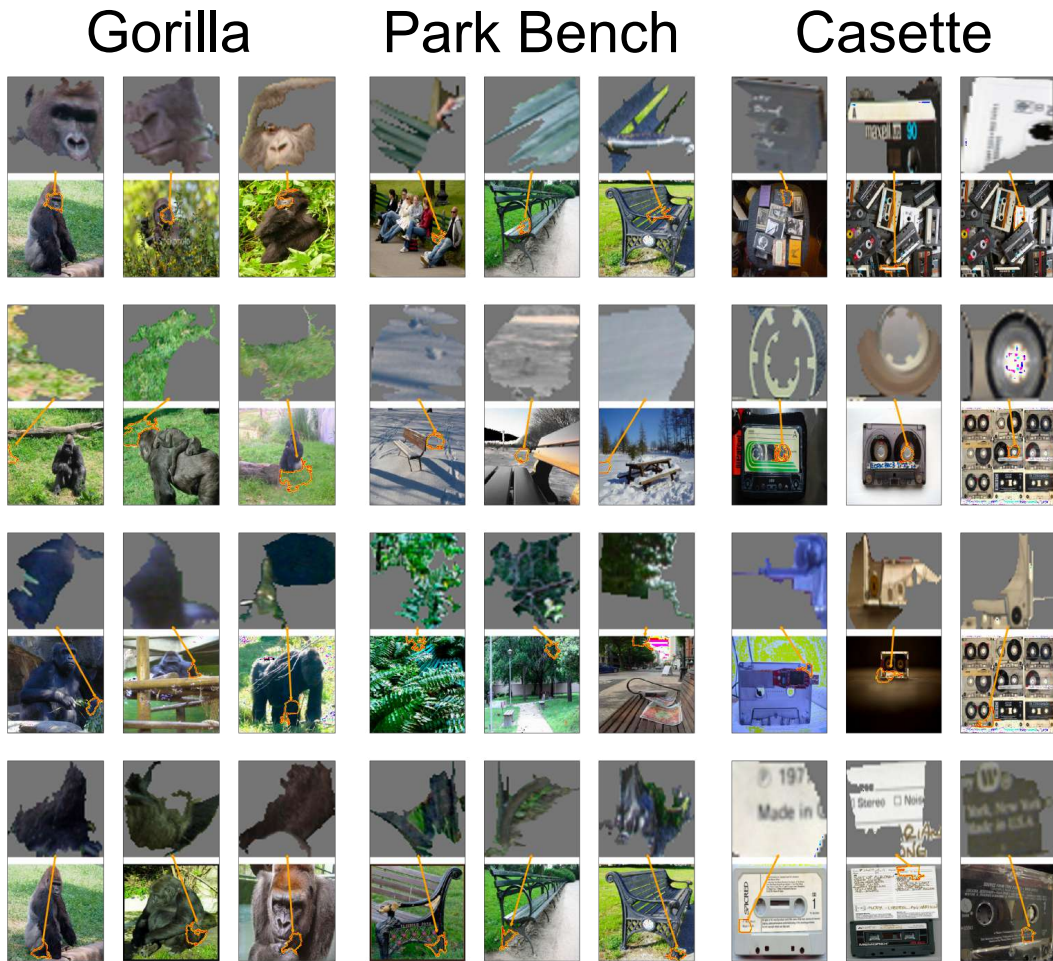


Figure 12: Examples of extracted concepts and their respective TCAV scores for class zebra.

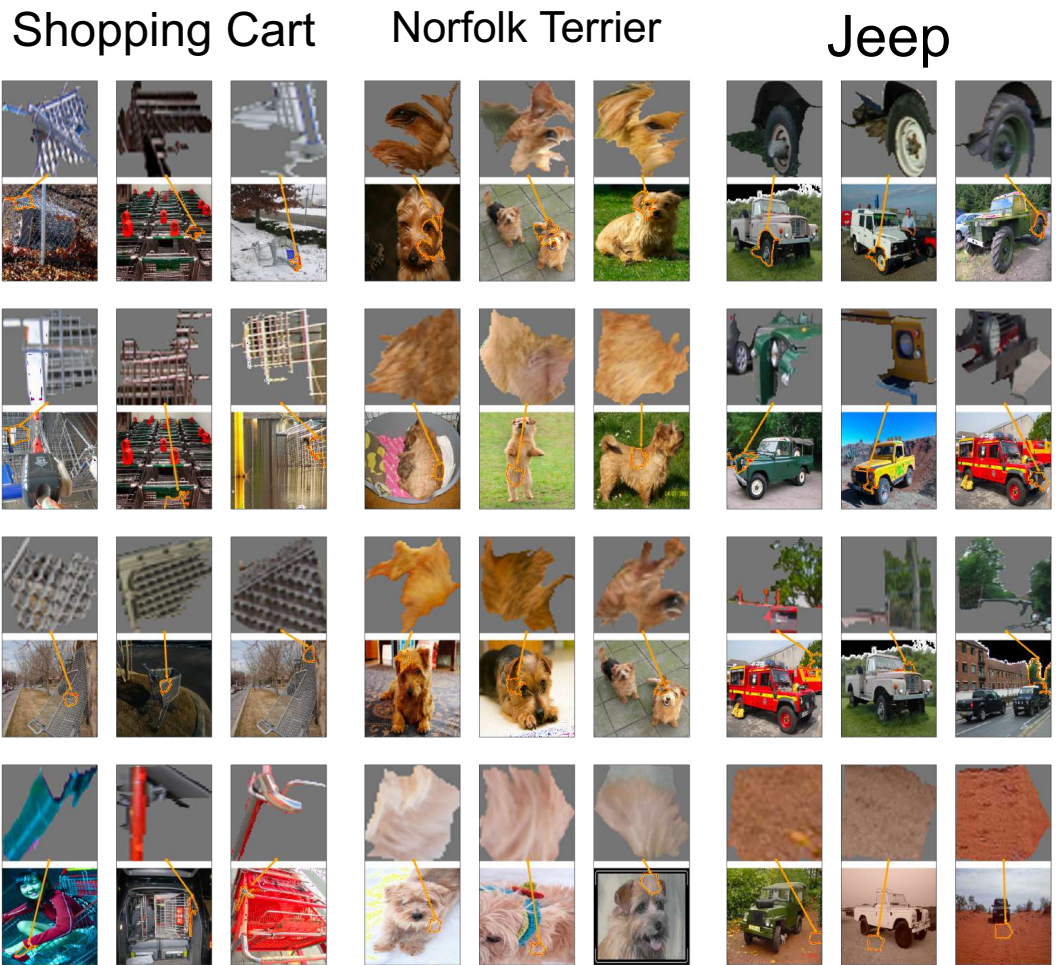


Figure 13: More examples of ACE.

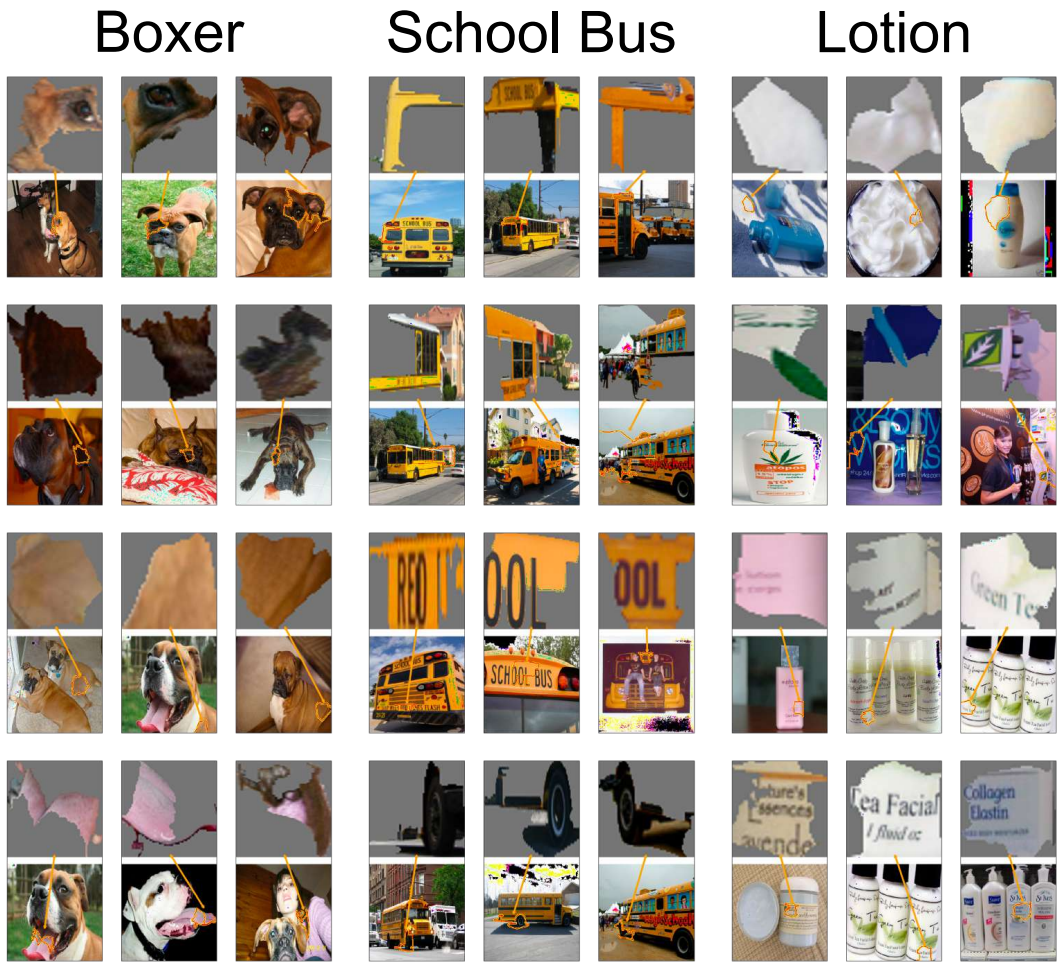


Figure 14: More examples of ACE.