

HYPERION

PREMIUM CLASS-H AMPLIFIERS

TETRA
4 CHANNEL

PENTA
5 CHANNEL

HEPTA
7 CHANNEL

For over four decades, AudioControl has set the benchmark for premium amplification—delivering extraordinary power, sonic purity, and unmatched reliability. Every amplifier is built on a foundation of innovation, craftsmanship, and real-world expertise, trusted by integrators and audiophiles alike for installations that range from grand to intimate. Hyperion Power Amplifiers extend this proud legacy, integrating decades of engineering excellence with next-generation technology to deliver breathtaking dynamics, rich musicality, and flawless control. Beneath their elegant chassis, proprietary circuitry and precision components ensure absolute fidelity from the quietest details to the most explosive cinematic moments. Whether anchoring a reference-grade theater or elevating whole-home entertainment, Hyperion amplifiers are designed to inspire, endure, and impress—every installation, every time.

 **Dante**[®]
SPOKEN HERE



HYPERION
AudioControl[®]
Making Good Sound Great™

WARM, POWERFUL SOUND

LEGENDARY PERFORMANCE

Decades of engineering excellence integrated with next-generation technology to deliver breathtaking dynamics, rich musicality, and flawless loudspeaker control.

CONNECT WITH EASE

Less cabling for easier installation. Dante-enabled for seamless network integration. Flexible connectivity with single-ended or XLR balanced analog and digital audio.

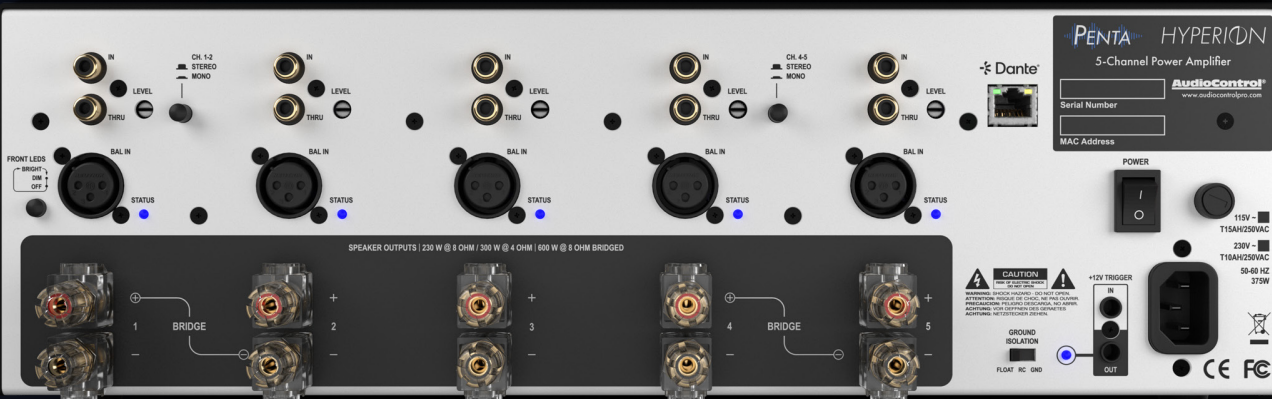
UNCOMPROMISING DESIGN

Beneath an elegant chassis, proprietary circuitry and precisely matched components ensure absolute fidelity from the most intricate detail in the quietest music passage, to explosive room-shaking cinematic moments.

INPUTS
Inputs: 4, 5 or 7 RCA Unbalanced, 4, 5 or 7 XLR Balanced
RJ45 - 4, 5 or 7 Channels of Dante Audio
Input Sensitivity: 1.42 Vrms for full output
Maximum Input Voltage: 2.7 Vrms
Input Impedance: 100 kΩ
OUTPUTS
Amplifier Channels: 4, 5, or 7
Power Output (8Ω): 230 watts per channel
Power Output (4Ω): 300 watts per channel
Power Output (8Ω Bridged Mono): 600 watts
Minimum Speaker Load: 4 Ω
PERFORMANCE
Damping Factor: >450
Total Harmonic Distortion: 0.04% (230 watts @ 8 ohms 20 Hz to 20 kHz)
Signal to Noise: >102 dB, A-wid ref Full Output
Frequency Response: 10 Hz -20 kHz, ±1 dB
CONTROL
Remote Power Trigger: +12 VDC or Dry Contact Closure
SEE POWER CONSUMPTION SPECS ONLINE



TETRA



PENTA



HEPTA