

Design Services Program (DSP)

- Consultations with CinemaTech's Senior Theater Designer
- AutoCAD drawings of all 4 walls, reflective ceiling and floor plan including seating layout with sight lines and viewing angles
- Room dimensional analysis for acoustical optimization
- Photo quality artisan 3-Dimensional Renderings
- Assistance with materials and finishes that are hand selected by CinemaTech's Theater Design team
- Finalized color board including all materials and finishes that have been selected for your dream theater
- Fully Refundable Deposit*

*Must purchase a minimum of \$25,000 of seating and/or acoustic treatment



CinemaTech Design Services Program
Stage 1: Initial Contact

[Contact Us](#)
4319 Lindbergh Drive, Addison, TX 75001
P +1 (972) 381-1071 / Sales@MyCinemaTech.com

Design Consultation

The Design Consultation is the first step in the design process so CinemaTech can determine:

- What the theater room will look like
- What it will be used for (Movies, Sports, Performances, Etc.)
- What type of seating (Dedicated Theater Seating, Sofas, Sectionals, Sofa Beds, Bar Stools, Etc.)
- What equipment will be used in the room (Projector, Screen, Speakers, Etc.)
- Any other details of the room that are important to the design

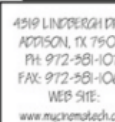
This can be done via conference call, a trip to CinemaTech's Showroom through our Fly and Buy Program or a visit to the jobsite¹

¹Please contact CinemaTech for special arrangements



CinemaTech Design Services Program
Stage 2: Design Consultation

[Contact Us](#)
4319 Lindbergh Drive, Addison, TX 75001
P +1 (972) 381-1071 / Sales@MyCinemaTech.com



REV.	DATE
1.	08/05/1
2.	08/09/1
3.	08/28/1

GENERAL
INFORMATIC

DRAWN BY: _____

DATE: 06/06/2018

SHEET:
PRELIMINARY
DRAWINGS
FLOOR PLAN



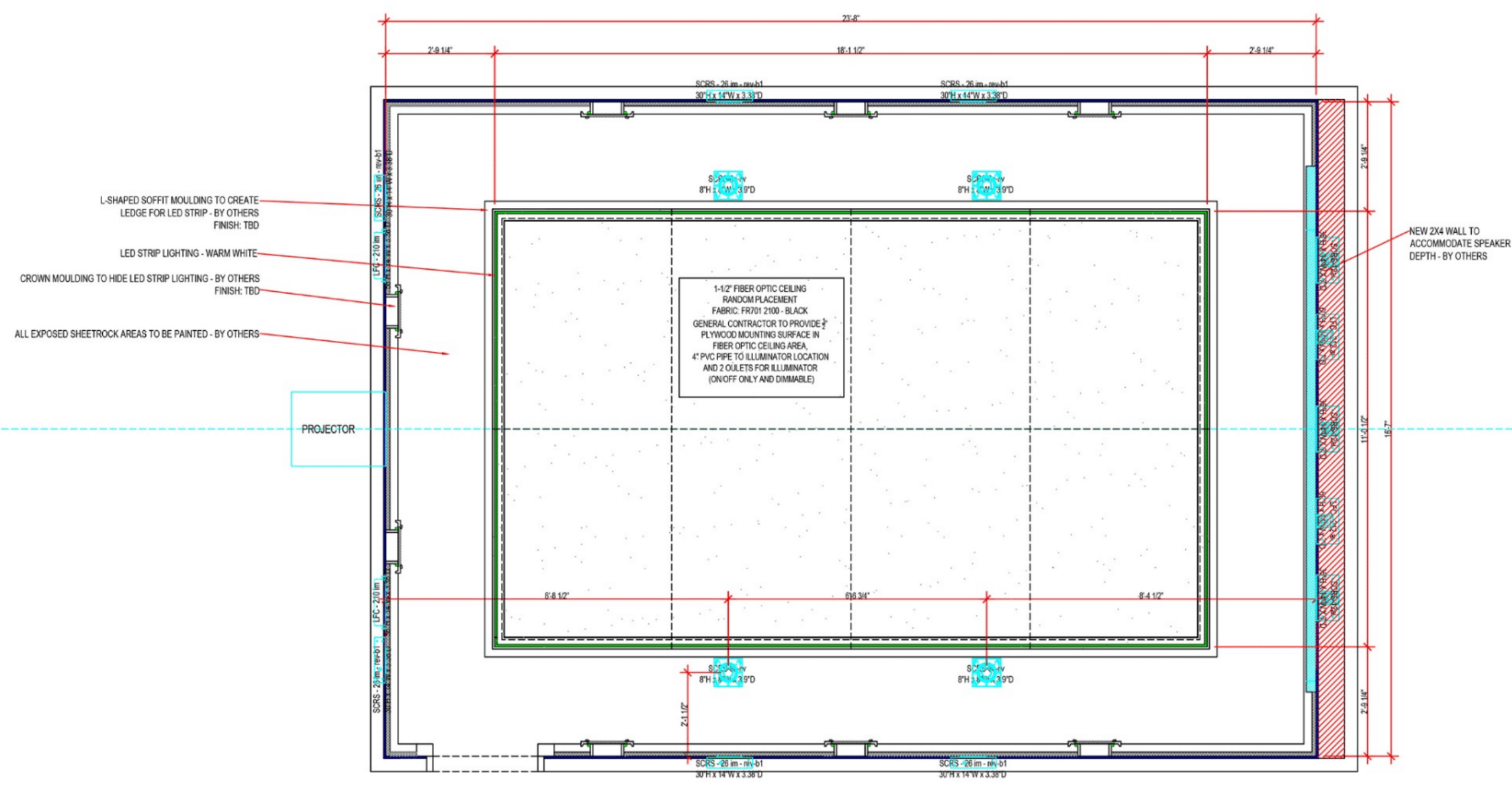
CinemaTech Design Services Program
Stage 3: Preliminary Drawings – Floor Plan

4319 Lindbergh Drive, Addison, TX 75001
P +1 (972) 381-1071 / Sales@MyCinemaTech.com

REV.	DATE
1.	08/09/17
2.	08/09/17
3.	08/25/17

GENERAL INFORMATION

DESIGNED BY:	NS
DATE:	08/08/18
SCALE:	3/8" = 1'-0"
SHEET:	PRELIMINARY DRAWINGS CEILING PLAN

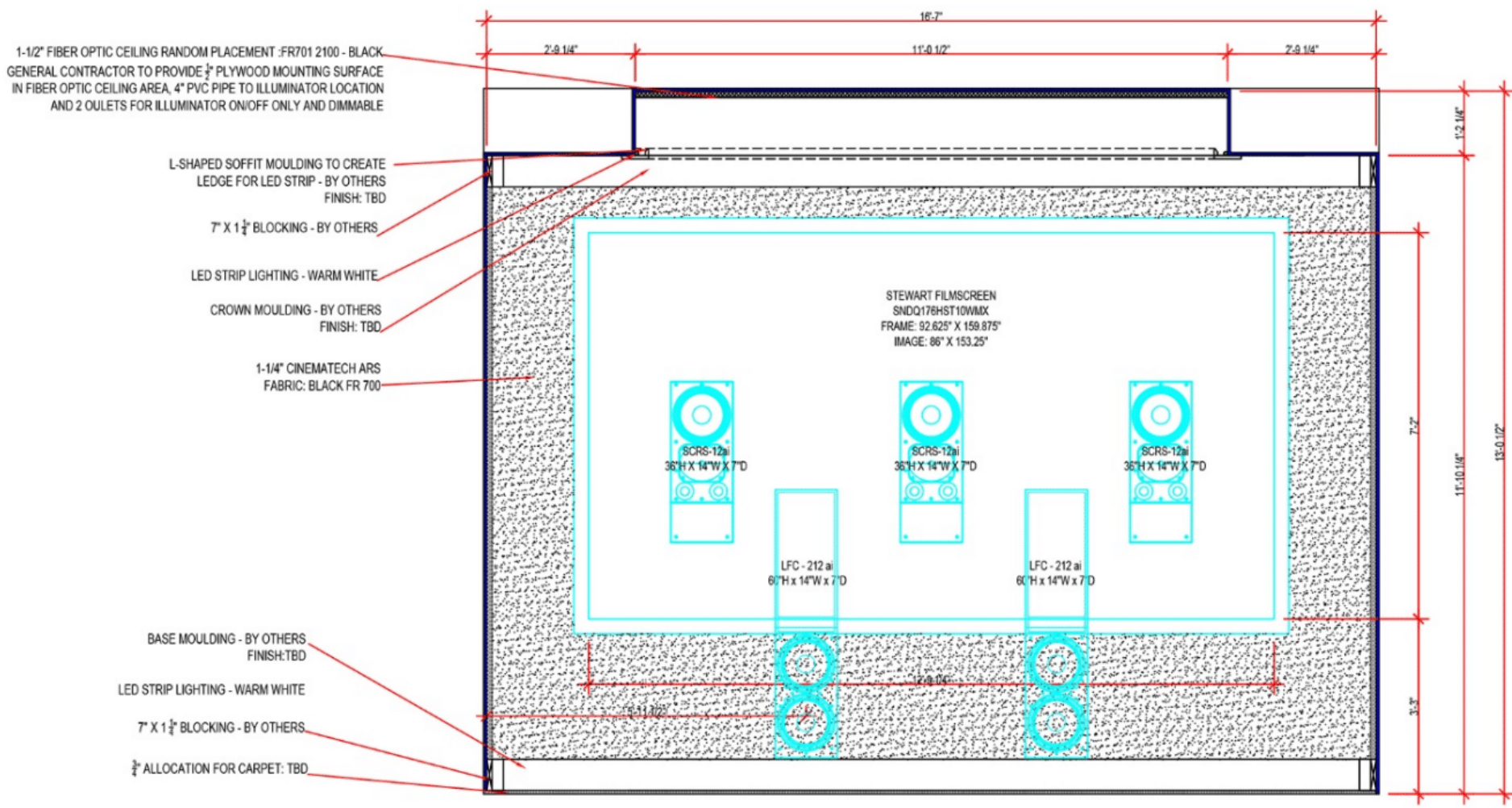


2 CEILING PLAN
SCALE: 3/8" = 1'-0"

REV.	DATE
1.	08/09/17
2.	08/09/17
3.	08/25/17

GENERAL INFORMATION

DRAWN BY:	NS
DATE:	08/08/18
SCALE:	3/8" = 1'-0"
SHEET:	PRELIMINARY DRAWINGS FRONT WALL ELEVATION

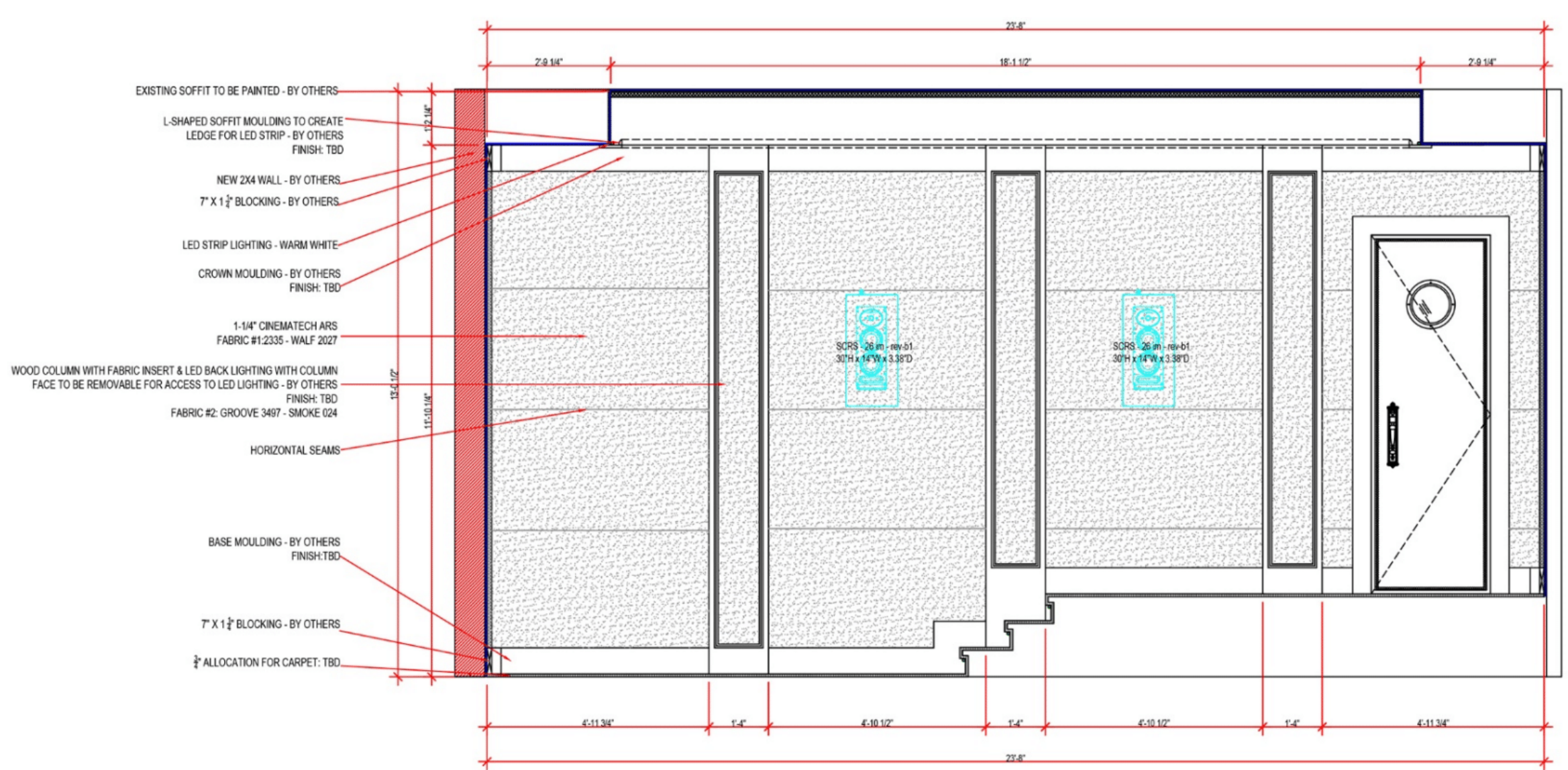


3 FRONT WALL ELEVATION
SCALE: 3/8" = 1'-0"

REV.	DATE
1.	08/09/17
2.	08/09/17
3.	08/25/17

GENERAL INFORMATION

DRAWN BY:	N5
DATE:	08/08/18
SCALE:	3/8" = 1'-0"
SHEET:	PRELIMINARY DRAWINGS RIGHT WALL ELEVATION

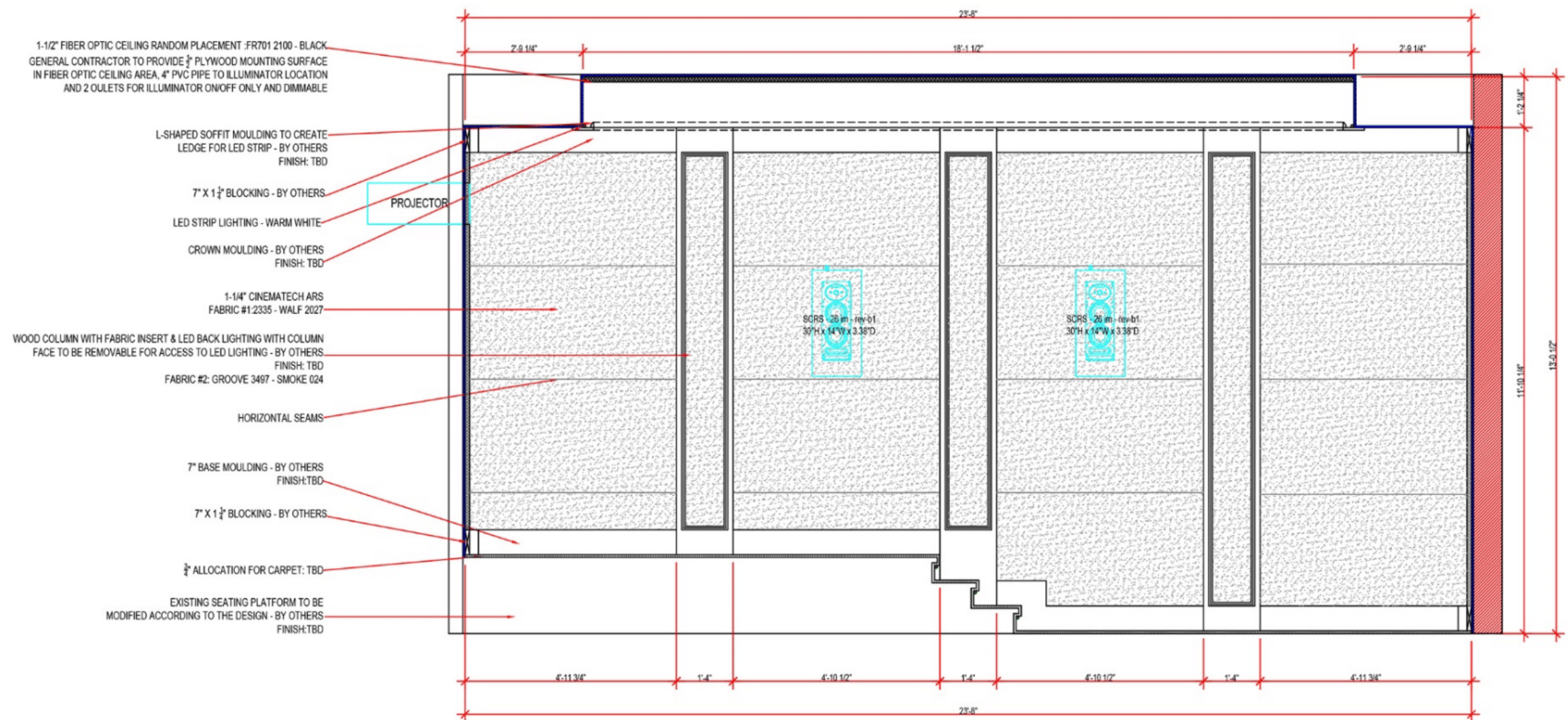


4 RIGHT WALL ELEVATION
SCALE: 3/8" = 1'-0"

REV.	DATE
1.	08/09/17
2.	08/09/17
3.	08/25/17

GENERAL INFORMATION

DESIGNED BY:	N5
DATE:	08/08/18
SCALE:	3/8" = 1'-0"
SHEET:	PRELIMINARY DRAWINGS LEFT WALL ELEVATION



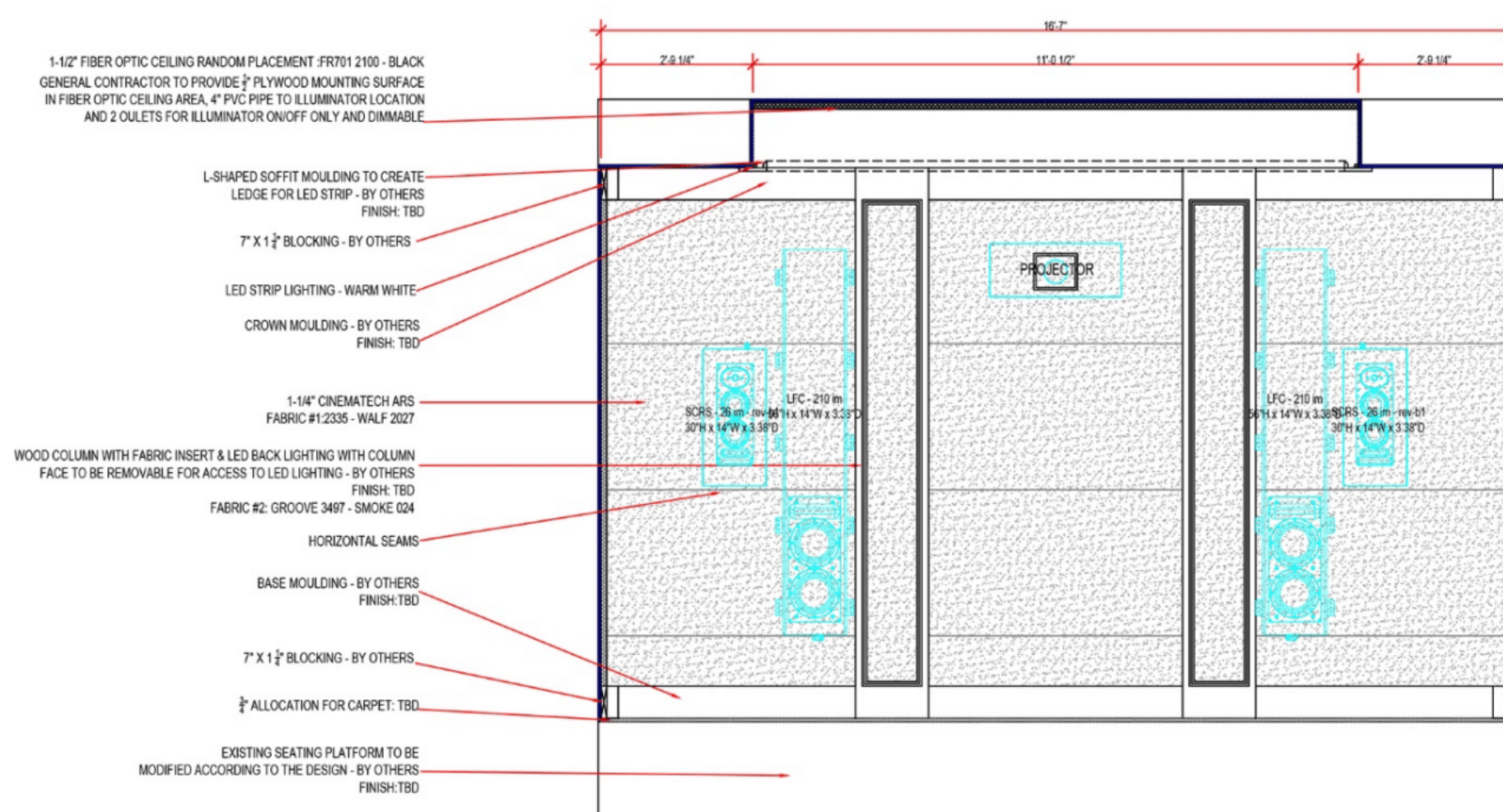
5 LEFT WALL ELEVATION
SCALE: 3/8" = 1'-0"

REV.	DATE
1.	08/05/17
2.	08/09/17
3.	08/25/17

GENERAL
INFORMATION

DRAWN BY:	N
DATE:	03/08/11
SCALE:	3/8" = 1'

SHEET:
PRELIMINARY
DRAWINGS
BACK WALL
ELEVATION

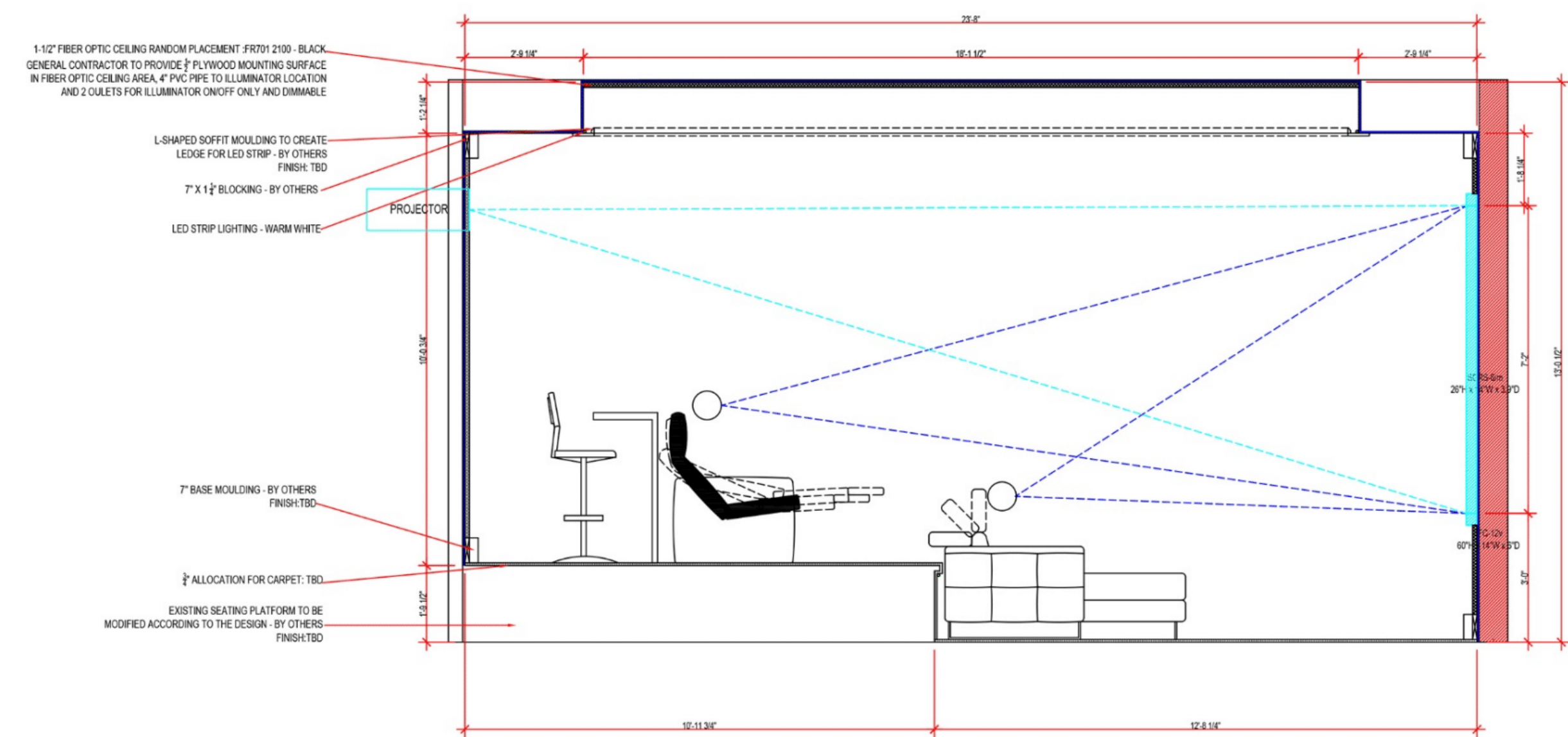


6 BACK WALL ELEVATION
SCALE: 3/8" = 1'0"

REV.	DATE
1.	08/09/17
2.	08/09/17
3.	08/25/17

GENERAL INFORMATION

DESIGNED BY:	NS
DATE:	08/08/16
SCALE:	3/8" = 1'-0"
SHEET:	PRELIMINARY DRAWINGS CENTER SECTION WALL ELEVATION



7 CENTER SECTION ELEVATION
SCALE: 3/8" = 1'-0"

3-Dimensional Renderings



CinemaTech Design Services Program
Stage 4: 3-Dimensional Renderings

[Contact Us](#)
4319 Lindbergh Drive, Addison, TX 75001
P +1 (972) 381-1071 / Sales@MyCinemaTech.com

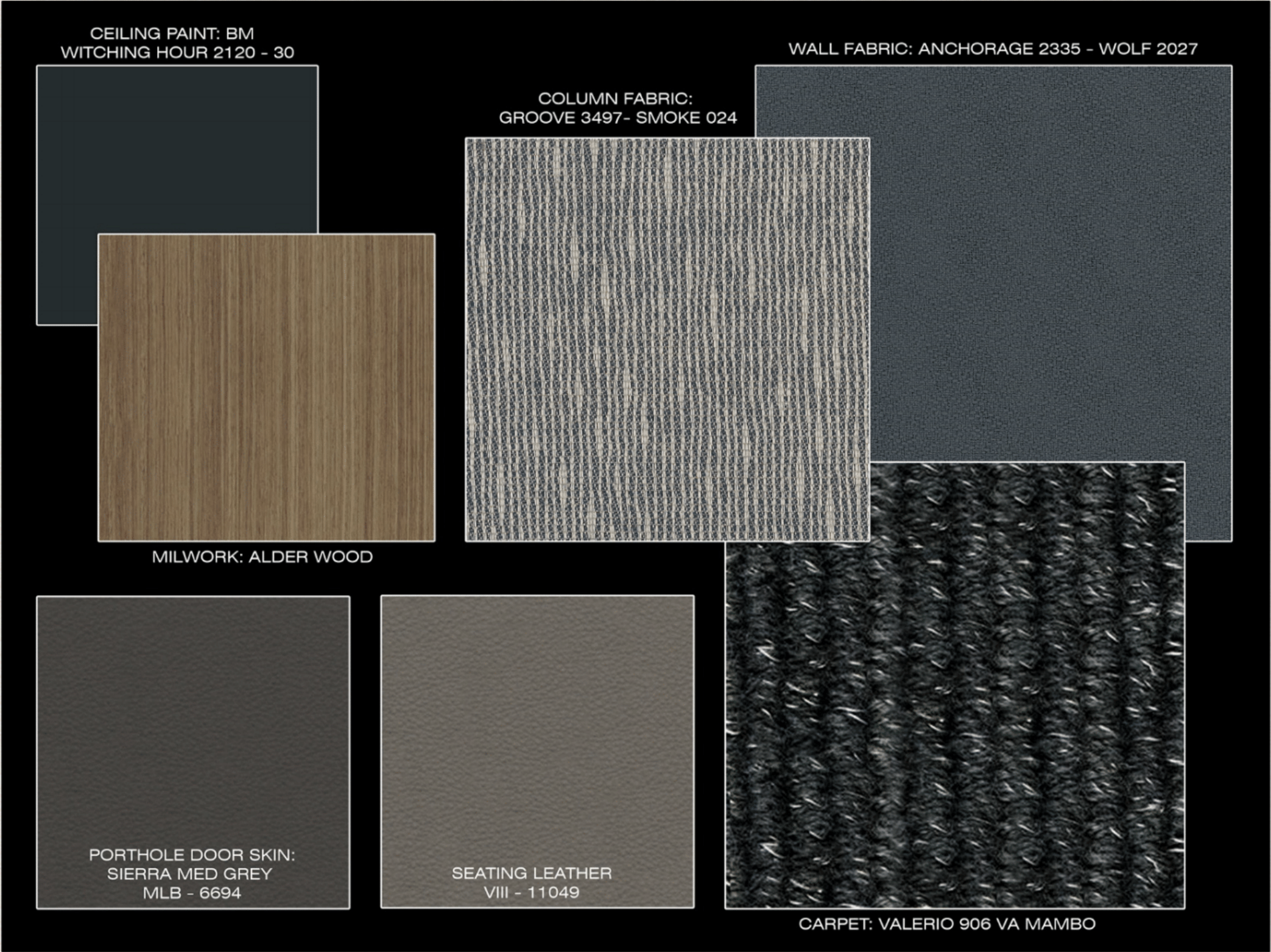
3-Dimensional Renderings



CinemaTech Design Services Program
Stage 4: 3-Dimensional Renderings

[Contact Us](#)
4319 Lindbergh Drive, Addison, TX 75001
P +1 (972) 381-1071 / Sales@MyCinemaTech.com

Material and Finish Color Board



CinemaTech Design Services Program
Stage 5: Material and Finish Color Board

[Contact Us](#)
4319 Lindbergh Drive, Addison, TX 75001
P +1 (972) 381-1071 / Sales@MyCinemaTech.com

Design Services Program **Plus** (DSP+)

The purpose of the **Design Services Program** is to create a design concept and adjust as needed in order to create the theater that the client is looking for. If more detail is needed for the construction of the room, CinemaTech offers a separate program called **Design Services Program **Plus** (DSP+)** for \$15,000 and includes the following additional drawings:

- Electrical Drawings
- Mill Working Drawings
- Construction Drawings
- Sound Isolation Drawings
- Contractor Build To Drawings

*\$3,950 is credited towards the purchase of a minimum order of \$25,000 with CinemaTech



CinemaTech Design Services Program
Design Services Program **Plus** (DSP+)

[Contact Us](#)
4319 Lindbergh Drive, Addison, TX 75001
P +1 (972) 381-1071 / Sales@MyCinemaTech.com

Renderings



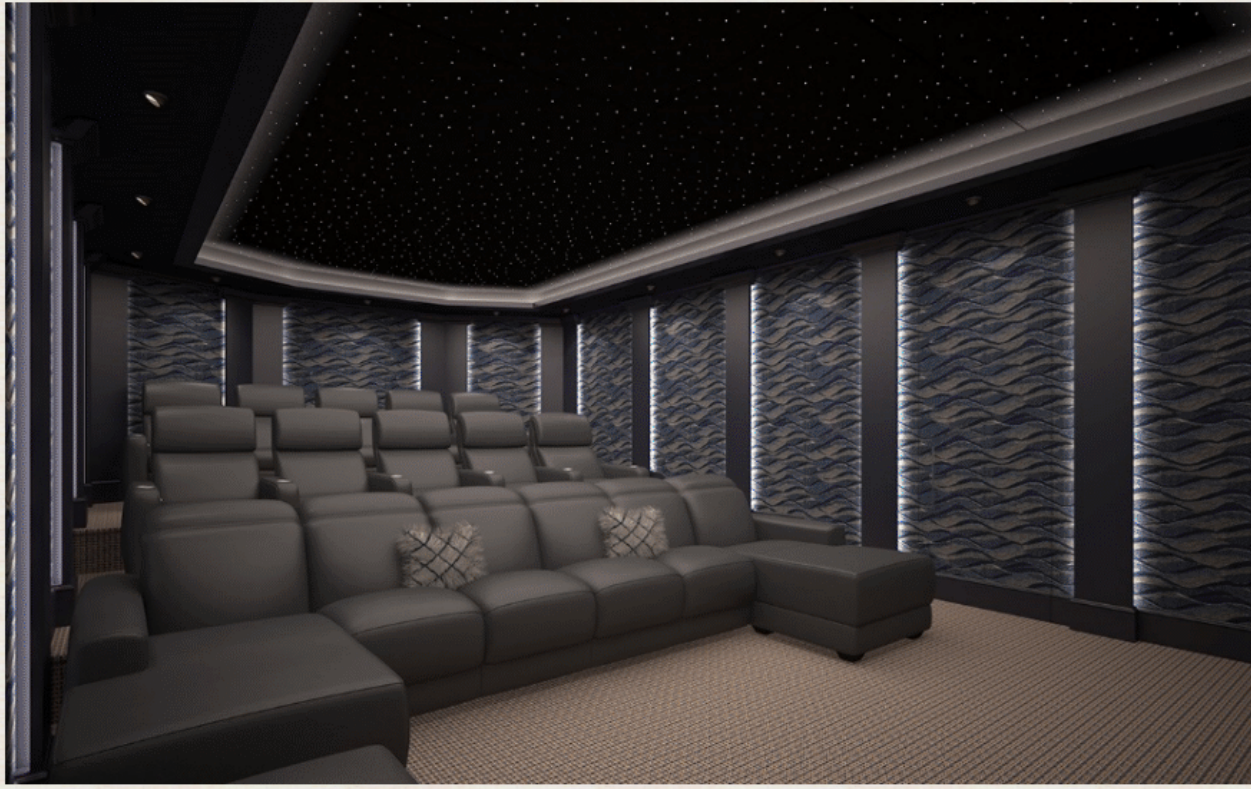
Actual Photos



CinemaTech Design Services Program
Renderings vs. Actual Photos

[Contact Us](#)
4319 Lindbergh Drive, Addison, TX 75001
P +1 (972) 381-1071 / Sales@MyCinemaTech.com

Renderings



Actual Photos



CinemaTech Design Services Program
Renderings vs. Actual Photos

[Contact Us](#)
4319 Lindbergh Drive, Addison, TX 75001
P +1 (972) 381-1071 / Sales@MyCinemaTech.com