



SALES GUIDE

WELCOME TO JAMES LOUDSPEAKER

James Loudspeaker was established in the San Francisco Bay area in 1999 by a group of dedicated audio engineers, craftsmen, and entrepreneurs. James Loudspeaker has established itself as a world leader and innovator in both high-performance residential and commercial speaker solutions, providing products for exclusive homes, forward-thinking businesses and upscale marine applications. James Loudspeaker takes pride in its ongoing spirit of innovation, unprecedented customization capabilities, flawless sonic reproduction and excellence in design and quality of build. James Loudspeaker products are known for delivering the ultimate entertainment experience while maintaining a minimal visual presence in interior or landscape designs.





James
LOUDSPEAKER®

DESIGNED TO DISAPPEAR

Technology should disappear into architecture...this simple philosophy continues to inspire everything we do. Our hidden audio solutions deliver an even, balanced sound experience that is nothing short of magical, blending into any style, installation, or budget.

AUTHENTIC PARTNERSHIP

Every day at our facilities in San Clemente, CA, and Minden, NV, you will find passionate, immensely knowledgeable people forging some of the strongest relationships in our industry. From our customer-centric culture, to our not-to-be-missed Studio Seminars, we aim to define what authentic partnership looks like. Connecting our strategy and products to your company, we help unlock the most value possible for your business.

OUR TEAM IS YOUR TEAM.

A HERITAGE OF INNOVATION

James Loudspeaker is deeply rooted in a passion for audio performance and creative design to empower homeowners and businesses to demand superior audio without compromise to the aesthetic of their space. We have earned a reputation for outstanding performance, construction, and engineering as a provider for unique and custom audio solutions.

TABLE OF CONTENTS

1-10	MEET JAMES LOUDSPEAKER
11-20	SMALL APERTURE
11-18	Small Aperture Series
19-20	High Output Speaker
21-32	SUBWOOFERS
23-26	PowerPipe Subwoofers
27-30	EMB Series
31-32	In-Wall & In Ceiling Subwoofers
33-48	SOUNDBARS
41-42	SPL Soundbars
43-44	Powered Soundbars
45-46	In-Wall & Custom Soundbars
47-48	Centergy Soundbars
49-54	IN-WALL & IN-CEILING SPEAKERS
51-52	In-Wall Speakers
53-54	In-Ceiling Speakers
55-60	ON WALL SERIES
61-76	OUTDOOR
63-66	Outdoor Tower Speakers
67-68	On-Wall Marine Series
69-70	Wedge Series
71-72	OMNI Series
73-76	All Terrain Series & EMBM
77-82	THEATER
79-80	Mavericks Series
81-82	BE Reference Series
83-84	Amplifiers
85-88	MARINE
89-92	CUSTOM
93-96	MASON BOXES

KEY TECHNOLOGIES



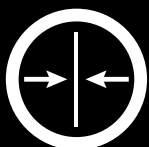
MARINE READY PRODUCTS

- Sealed Aircraft-Grade Aluminum Enclosures
- Powder Coated Aluminum Grilles
- Drivers constructed of Aluminum Cones
- Santoprene™ Surrounds
- Marine-Grade Hardware



CENTERGY TECHNOLOGY

- Center Channel Imaging from Left and Right Speakers
- Dual Monaural Technology



ULTRA-SLIM TECHNOLOGY

- Variety of Proprietary Ultra-Slim Drivers
- Convex Cone Design



UL LISTED

- UL2043 and UL1480 Rated
- Rated for Wet Outdoor Environments
- Listed under "Intertek 4010877"



QUAD TWEETER ARRAY

- Wide Dispersion Quad Tweeter Array
- High Power Handling
- Smooth Frequency Response
- Low Distortion



70V TRANSFORMER

- 70V Transformer Option
- Internal and External Options



CUSTOM BUILD

- Three Week Production Time
- Custom Design, Dimensions, Build, and Finishes



MADE IN THE USA

- Designed, Assembled, and Tested in the USA



MEET JAMES LOUDSPEAKER...

At James Loudspeaker, we believe that audio should never compromise design or performance. We are a team of passionate visionaries, committed to that belief, applying it to every idea that is nurtured into a refined audio solution. Our designers, engineers and manufacturing team create hundreds of application-specific speakers that ship worldwide each year. We are dedicated to crafting excellence from our facility in Minden, NV.



NAPA VALLEY, CA

James Loudspeaker began in Napa Valley, CA in 1999. James Loudspeaker outgrew that facility and today operates out of Minden, NV where a remarkable 95% of the James Loudspeaker staff relocated to continue working as part of the James family.



SAN CLEMENTE, CA

James Loudspeaker was acquired by Sonance in early 2020, joining resources and a shared passion for designing technology to disappear without compromise.



FULL SERVICE UNDER ONE ROOF

James Loudspeaker is a complete in-house machine shop, master carpentry shop, fabrication, testing, powder-coating, and finishing facility, all in one. Nearly every product is designed, engineered, and manufactured in Minden, NV by our skilled team of craftsmen and craftswomen.



AWARD-WINNING TECHNOLOGIES

Over 20 years of experience building world-class products has led to a catalog of close to 10,000 reference speaker designs and more than 30 custom-designed transducers. Our legacy has led to many award-winning technologies that continue to drive the performance of our products today. Technologies like Quad Tweeter Array, Centergy, and Adjustable Frequency Distribution Circuit elevate our products for superior performance across the catalog.



CRAFTED TO ORDER

The James Loudspeaker product offering is flexible for any project application. Almost every product in the catalog can be customized for 70V and or marine-grade for a nominal upcharge. Every product can be customized for dimensions, finishes, and grille material, and for the ultimate personal touch, James Loudspeaker can design, engineer, and build speakers by request from the ground up for a completely bespoke solution.



James
LOUDSPEAKER

SMALL APERTURE SERIES

SMALL APERTURE SERIES

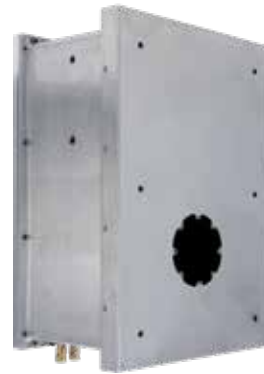


SA SERIES

James Loudspeaker Small Aperture® Series speakers and subwoofers are a harmonious blend of performance and aesthetics in a single in-wall or in-ceiling enclosure system. Each Small Aperture speaker or subwoofer is built from aircraft-grade aluminum and is modular to support the construction process and serviceability. Complete with an integrated woofer and midrange, and high frequency module, SA Series delivers an impressive frequency response that is beyond expectation from a visibly discreet aperture that matches elegantly with most architectural lighting finishes. Engineered to satisfy the most discerning designer and listener, Small Aperture Series meets any architectural demand and delivers uncompromised audio performance.

SMALL APERTURE COMPONENTS

Each James Loudspeaker Small Aperture product is modular to accommodate the construction process and project customizability. Select the right spacing and trim solutions to meet your client's unique project requirements.



SUB ENCLOSURE



SPACER



TRIM



MODULE



GRILLE

FEATURES

- Built-in overload protection circuitry
- Each module includes a midrange driver and tweeter in a single housing that securely connects to the enclosure crossover via RJ45.
- Concealed Micro-Power-Pipe™ woofer for astounding bass response
- 3" and 4" SA Trim Kits are designed to match industry standard lighting trim kits to allow visual integration with lighting products

SUB ENCLOSURE

All aircraft-grade aluminum construction and modular design to last the life of the home.



MODULE

Removable mid/high module to support construction process and provide future serviceability.

SMALL APERTURE SERIES

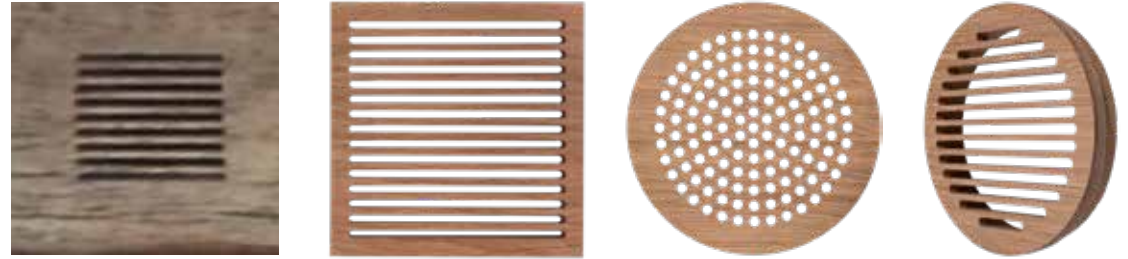
MATCHING ANY SURFACE



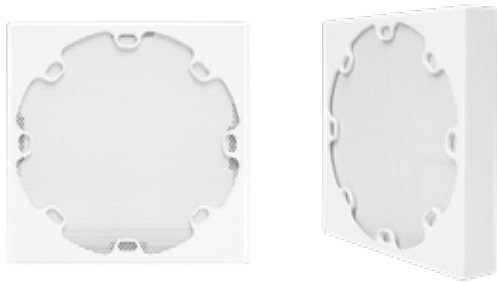
TRIM KITS

Select the SA Trim Kit based on the install, and to suit a specific 3" or 4" grille size, shape, and finish. For unique and custom finishes, partner with the James Loudspeaker team to fabricate a completely bespoke solution in our full-service in-house workshop.

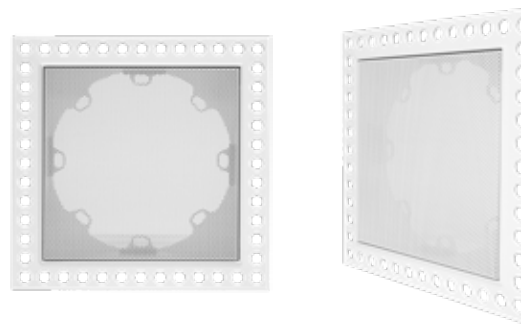
CUSTOM WOOD



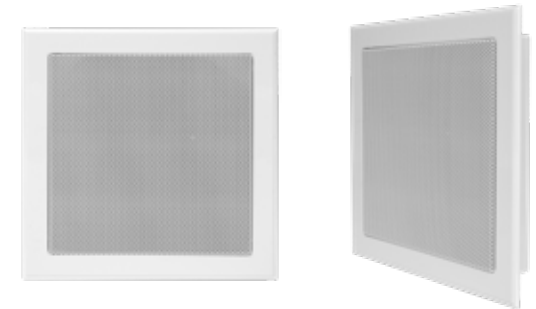
SOLID SURFACE



SHEETROCK

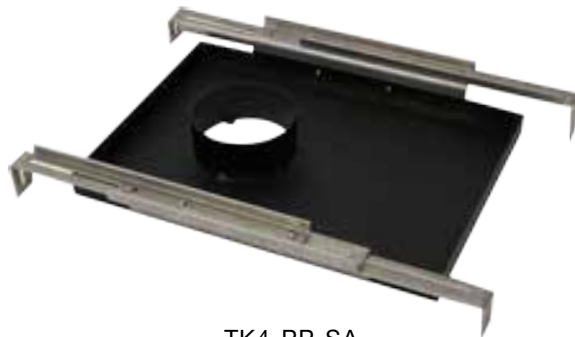


RETROFIT



POWERPIPE SA ADAPTER

Adapt James Loudspeaker PowerPipe subwoofers (PP6-M and PP8-M, recommended) to match the aesthetic of Small Aperture using the TK4-PP-SA toe kick.



TK4-PP-SA
4" Ceiling PowerPipe Port

MODULE SPACERS

Custom depth spacers accommodate varying surfaces for a precise finish to any James Loudspeaker Small Aperture speaker or subwoofer.

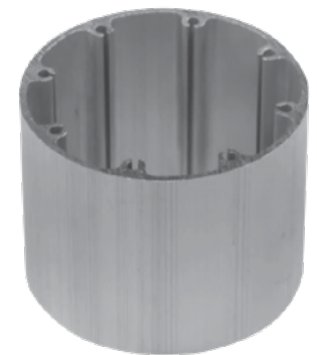
STANDARD



0.125" SPACER



0.325" SPACER



CUSTOM SPACER

STANDARD ENCLOSURE



SA63-7

6.5" WOOFER | 2" MID | 0.75" TWEETER
Dimensions (HxWxD): 13.62" x 9.75" x 6.375"
(346mm x 248mm x 162mm)

STANDARD ENCLOSURE WITH 2.5" OFFSET



OFFSET LEFT: SA63-7-L

6.5" WOOFER | 2" MID | 0.75" TWEETER
Dimensions (HxWxD): 13.62" x 9.75" x 6.375"
(346mm x 248mm x 162mm)

OFFSET RIGHT: SA63-7-R

6.5" WOOFER | 2" MID | 0.75" TWEETER
Dimensions (HxWxD): 13.62" x 9.75" x 6.375"
(346mm x 248mm x 162mm)

SHALLOW DEPTH ENCLOSURES



SA42-4

4" WOOFER | 2" MID/HIGH
Dimensions (HxWxD): 12" x 7" x 3.375"
(305mm x 178mm x 86mm)



SA63-4

6.5" WOOFER | 2" MID | 0.75" TWEETER
Dimensions (HxWxD): 26" x 11" x 3.4"
(660mm x 279mm x 86mm)

NARROW WIDTH ENCLOSURES

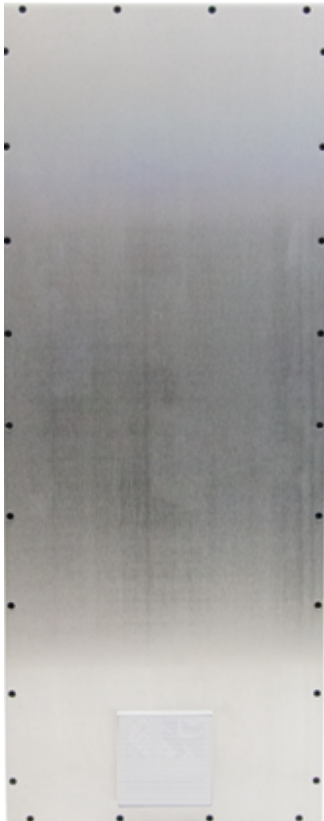


SA63-8

6.5" WOOFER | 2" MID | 0.75" TWEETER
Dimensions (HxWxD): 17" x 8" x 7.5"
(432mm x 203mm x 191mm)

SHALLOW DEPTH SUBWOOFERS

Available in 4" Trim Options



SA54-4-SUB

4EA 5.25" WOOFERS

Dimensions (HxWxD): 36" x 14" x 3.4"
(914mm x 356mm x 86mm)



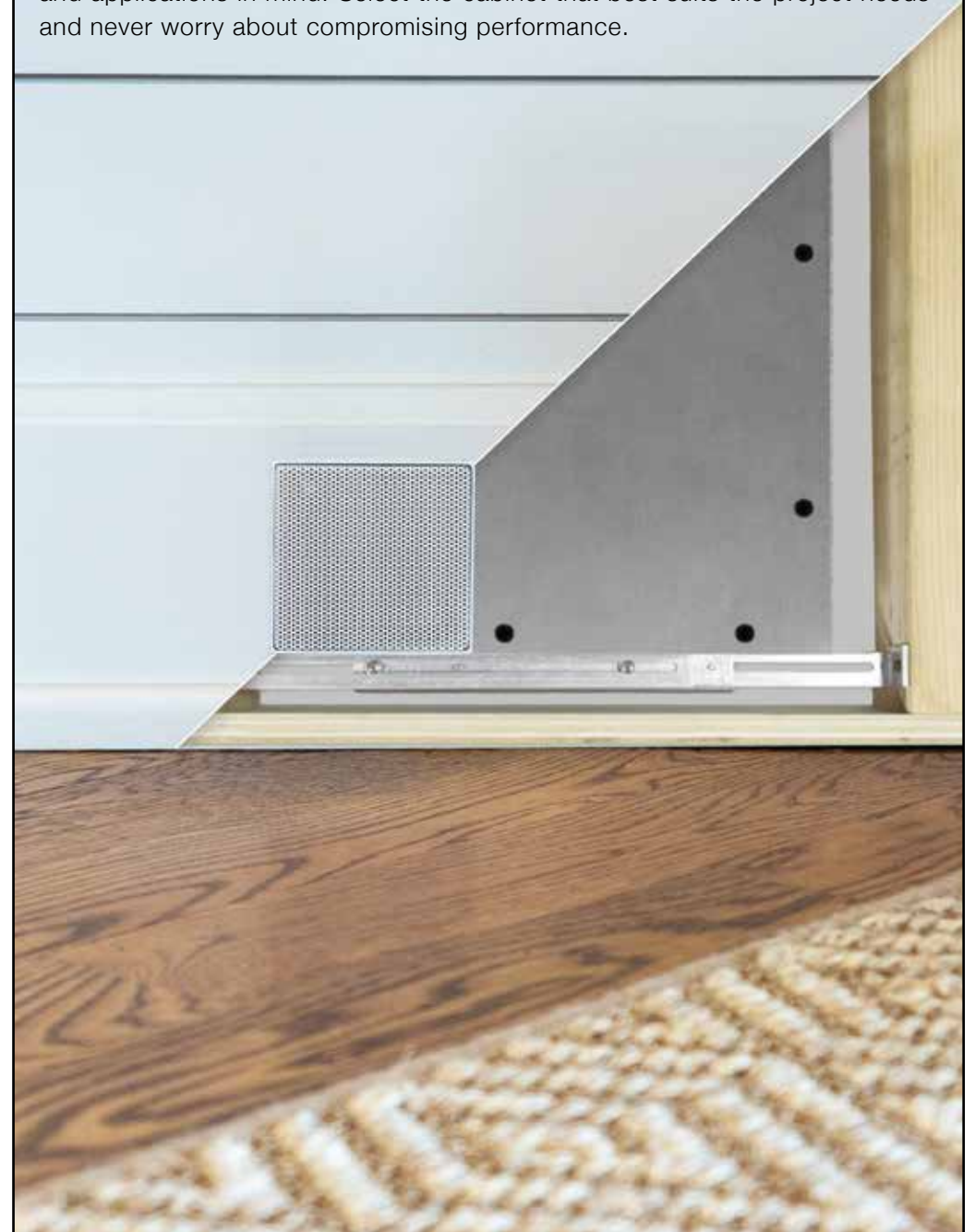
SA101-SUB

10" WOOFER

Dimensions (HxWxD): 50" x 12" x 5.375"
(1270mm x 305mm x 137mm)

FLEXIBLE APPLICATION

Small Aperture speakers and subwoofers are built with unique construction and applications in mind. Select the cabinet that best suits the project needs and never worry about compromising performance.



HIGHEST PERFORMANCE

The James Loudspeaker High Output Small Aperature 853 is the highest performing in-ceiling speaker available today. The SA853Q-9 is a 3-way speaker system that brings concert-level performance concealed behind a 7" square or 9.5" round grille.



ULTRA HIGH OUTPUT, SMALL SPEAKER



HIGH OUTPUT SPEAKER



SA853Q-9 SUB ENCLOSURE
Dimensions (HxWxD): 20" x 10" x 9" (508mm x 254mm x 229mm)

SA853Q-9 MODULE
Mid/Tweeter module



BIGGER ENCLOSURE, BIGGER SOUND

This complete speaker system packs an 8" woofer, a 5.25" driver, and quad tweeter array into a single enclosure that is bi-amped for outstanding performance.



SA853Q-9



SA63-7

James
LOUDSPEAKER

SUBWOOFERS

POWERPIPE SUBWOOFERS



POWERPIPE SUBWOOFERS

The custom electronics industry has taken note of the vast possibilities our PowerPipe subwoofers can offer. The choices are endless and the quality is second to none. You simply cannot get a better sounding subwoofer anywhere, or be able to hide it the way we can. All models are 70V and marine grade in any color. They come with a standard aluminum 2.75" x 14.125" grille.

- Aircraft Grade Aluminum Woofer
- Various Toekick Solutions to Complement Any Design
- Custom Drivers



Hide the PoperPipe subwoofer into any surface or cabinet. Select from a variety of trimkits or work with the James Loudspeaker team to customize one to suit your project. The result is powerful bass performance with a clean aesthetic finish.



PP6-M



6.5" SUBWOOFER, 48" HOSE
 Dimensions (HxWxD): 9.6" x 9" x 15.4"
 (244mm x 229mm x 391mm)

PP8-M



8" SUBWOOFER, 36" HOSE
 Dimensions (HxWxD): 11.6" x 10" x 16.6"
 (295mm x 254mm x 422mm)

PP10 | PP10-M



PP10: 10" SUBWOOFER, 28" HOSE
 Dimensions (HxWxD): 12.62" x 12" x 11.5"
 (321mm x 305mm x 292mm)

PP10-M: 10" SUBWOOFER, 28" HOSE
 Dimensions (HxWxD): 11.8" x 12.5" x 14"
 (300mm x 318mm x 356mm)

PP12 | PP12-M



PP12: 12" SUBWOOFER, 28" HOSE
 Dimensions (HxWxD): 15.5" x 14.9" x 15.4"
 (394mm x 378mm x 391mm)

PP12-M: 12" SUBWOOFER, 28" HOSE
 Dimensions (HxWxD): 14.1" x 13.5" x 15"
 (366mm x 343mm x 381mm)

PP12-2 | PP12-2-M



PP12-2: 12" SUBWOOFER, 48" HOSE
 Dimensions (HxWxD): 15.5" x 14.9" x 15.4"
 (394mm x 378mm x 391mm)

PP12-2-M: 12" SUBWOOFER, 48" HOSE
 Dimensions (HxWxD): 14.1" x 13.5" x 15"
 (366mm x 343mm x 381mm)

PP15-M



15" SUBWOOFER, 36" HOSE
 Dimensions (HxWxD): 17.1" x 16.5" x 24"
 (434mm x 419mm x 610mm)



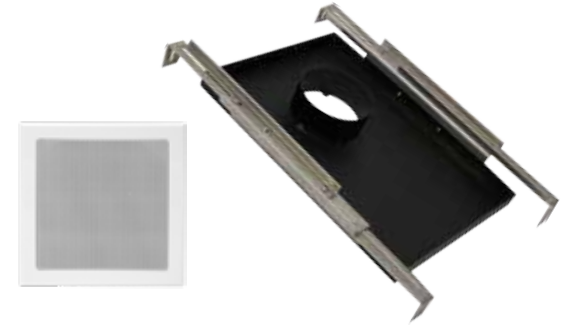
POWERPIPE ACCESSORIES

STANDARD TOE KICK



TK4-3x14-2 | TK4-3x14-6 | TK4-3x14-8
4" Standard Toekick

SMALL APERTURE ADAPTER



TK4-PP-SA
4" Ceiling PowerPipe Port

STRAIGHT BACK TOE KICKS



TK4S-3x14-6
4" Racetrack PowerPipe Port

POWERPIPE CUSTOM TOEKICK



PP CUSTOM WOOD TOEKICK
Custom Designed



TK4S-3x14
6" x 14" HVAC Vent Design



PP CUSTOM TOEKICK
Custom Designed

EMB SERIES



HIGH-POWER HANDLING

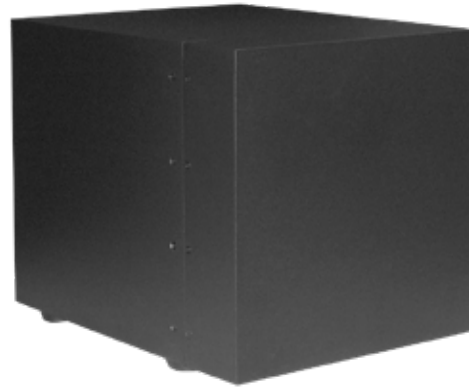
EMB Series II Subwoofers are a passive design engineered for high-power handling. We recommend powering EMB Series II subwoofers with the James Loudspeaker M1000 class D amplifier for 1000 watts of clean power and full DSP digital processing.

CABINET SUBWOOFER



EMB Series II Subwoofers are a passive design engineered for high-power handling. The cabinet is available in four sizes and can be oriented for front-firing or down-firing. Each cabinet is constructed from solid aluminum for luxuriously sleek and powerful bass. The result is lower distortion, smoother frequency response, and greater bass extension.

BANDPASS SUBWOOFER



EMB Series II Bandpass subwoofers leverage “Energy Multiplying Bandpass” technology to obtain high output and low distortion from a very compact enclosure. The bandpass models feature a front “Acoustic Energy Director,” which allows stealthy in-cabinet installation, porting through a James Loudspeaker toekick or cabinet side.

DF-10 SUBWOOFER



The DF-10 Subwoofer is designed for installations under furniture or on the wall. The ultra slim 4” tall cabinet is down-firing and constructed of 5052 marine grade aluminum for indoor or marine applications.



ENERGY MULTIPLYING BANDPASS

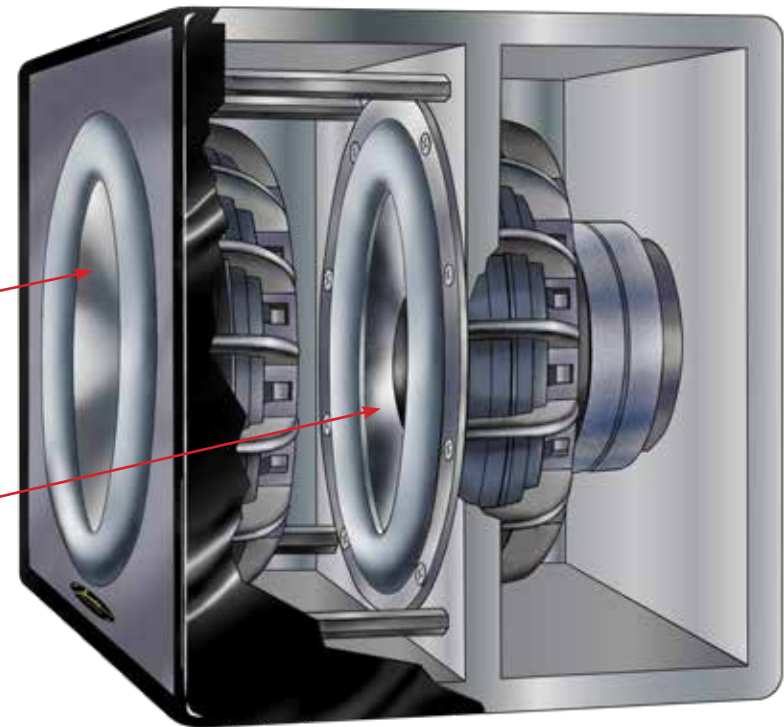
EMB Series II Subwoofers are a passive design engineered for high-power handling. The active driver is pneumatically coupled to a passive radiator for 2x the power from an impressively small physical footprint.

PASSIVE RADIATOR

Pneumatically phase-coupled passive radiator delivers high-impact bass with ultra-low distortion.

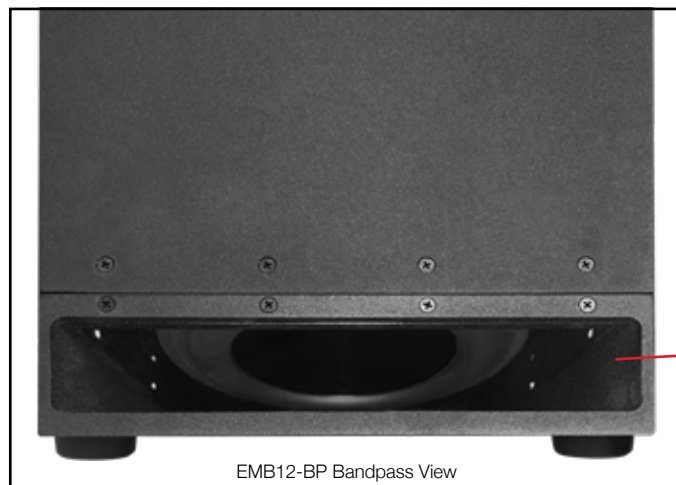
ACTIVE DRIVER

Specialty designed aluminum woofer moves air within the sealed portion of the aluminum enclosure to engage the Passive Radiator.



EMB BANDPASS

Tuck EMB Bandpass subwoofers into cabinets and port them through a toekick for a beautiful finish without compromise to bass performance.



CABINET SUBWOOFERS



EMB15-DF

15" SUBWOOFER

Dimensions (HxWxD): 16" x 16.25" x 16.25"
(406mm x 413mm x 413mm)



EMB12-DF

12" SUBWOOFER

Dimensions (HxWxD): 15" x 14" x 14"
(381mm x 356mm x 356mm)



EMB10-DF

10" SUBWOOFER

Dimensions (HxWxD): 13" x 12" x 12"
(330mm x 305mm x 305mm)



EMB8-DF

8" SUBWOOFER

Dimensions (HxWxD): 11.25" x 9.75" x 9.75"
(286mm x 248mm x 248mm)

BANDPASS SUBWOOFERS



EMB12-BP Bandpass View
with "Acoustic Energy Director"



EMB12-BP ("Acoustic Energy
Director" Removed)

12" SUBWOOFER

Dimensions (HxWxD): 13.5" x 13.5" x 17.6"
(343mm x 343mm x 447mm)



EMB10-BP ("Acoustic Energy
Director" Removed)

10" SUBWOOFER

Dimensions (HxWxD): 11.5" x 11.5" x 15.6"
(292mm x 292mm x 396mm)

DF-10 SUBWOOFER



DF-10 SUBWOOFER

Dimensions (HxWxD): 3.875" x 16" x 16"
(98mm x 406mm x 406mm)

IN-WALL | IN-CEILING SUBS



IN-WALL SUBWOOFERS



QX1010

10" IN-WALL SUBWOOFER

Dimensions (HxWxD): 20.32" x 14.32" x 3.88"
(516mm x 364mm x 99mm)



QX1020

10" ACTIVE/PASSIVE IN-WALL SUBWOOFER

Dimensions (HxWxD): 28.46" x 14.32" x 3.88"
(723mm x 364mm x 99mm)



QX1020A

10" DUAL ACTIVE IN-WALL SUBWOOFER

Dimensions (HxWxD): 28.46" x 14.32" x 3.88"
(723mm x 364mm x 99mm)

POWERFUL, UNOBTRUSIVE BASS

These unique subs are designed to offer smooth, deep bass to complement any audio system while maintaining a discreet, space-saving design. Placement is flexible, hidden out of sight behind displays or tucked up into the ceiling. James Loudspeaker QX in-wall and in-ceiling subwoofers are built to match other QX series models and deliver powerful, visually unobtrusive bass.

IN-CEILING SUBWOOFERS



QX8S-R/S

8" IN-CEILING SUBWOOFER

Dimensions (DIAxD): 10.84" x 7.14"
(275mm x 181mm)



QX10S-R/S

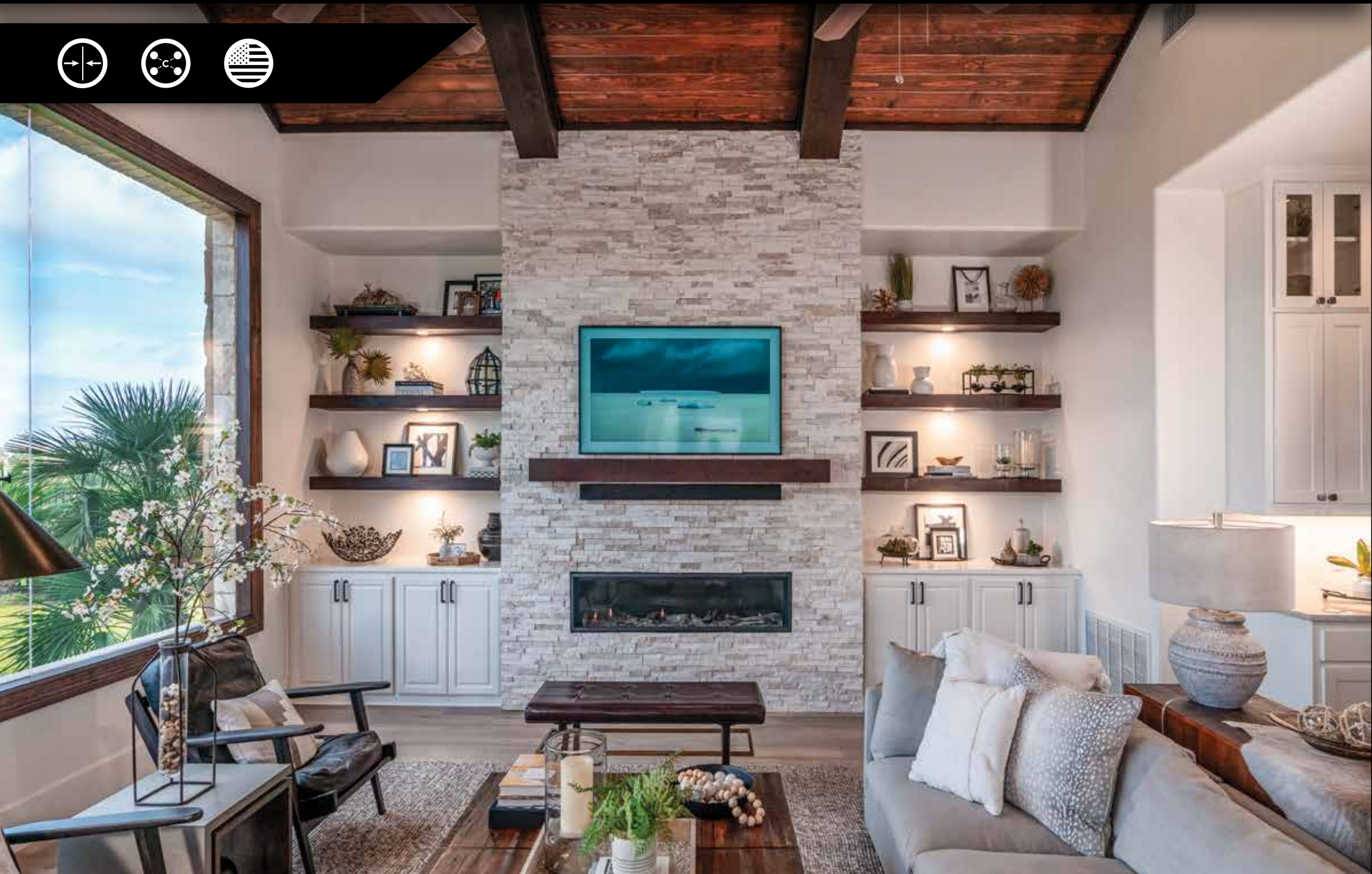
10" IN-CEILING WOOFER

Dimensions (DIAxD): 12.64" x 7.5"
(321mm x 190mm)

James
LOUDSPEAKER

SOUNDBARS

SOUNDBARS





HAND CRAFTED IN THE USA

James Loudspeaker SoundBars are each hand crafted in our full-service factory in Nevada, CA. Our facility is complete with precision-tuned machinery, in-house powder coating, and hydrodip resources to deliver exceptional products. Our team of skilled, passionate craftsmen and engineers are experienced to ensure the perfect solution for every order.



CUSTOMIZED & CONFIGURED

Each SoundBar can be customized to accommodate the length and unique design of television bezels at no added cost. And with six standard and endless custom finishes available, SoundBar elegantly becomes part of the television and surrounding elements. Selecting a James Loudspeaker SoundBar includes selecting a preferred configuration for the project. Whether the need is for a center channel, stereo, LCR, 2.1, centergy, or powered, James SoundBars offer a solution for every need.



PERFORMANCE LEVELS

The other element to consider in selecting James Loudspeaker SoundBars is the performance level. James SoundBars are available in four series models, determined by their driver sizes and performance level (SPL3, SPL5Q, SPL6Q, and SPL8Q). Each series model determines the SoundBar's height and depth dimension. This, in itself, may determine which model is best suited to match the physical project requirements.

DETERMINING THE PERFECT

STEP 1

When selecting a James Loudspeaker SoundBar, be sure to first identify the TV size and model for the project. This will define the custom width and possible depth limitations of your SoundBar.



STEP 2

Next, consider the desired SoundBar configuration based on the client's desired experience. James Loudspeaker SoundBars can be configured in many ways to provide stereo, center channel, LCR, 2.1 stereo, and even Powered SoundBars.

SPL3 SOUNDBAR

Dimensions (HxD): 4" x 1.5"
(102mm x 38mm)

SPL5 SOUNDBAR

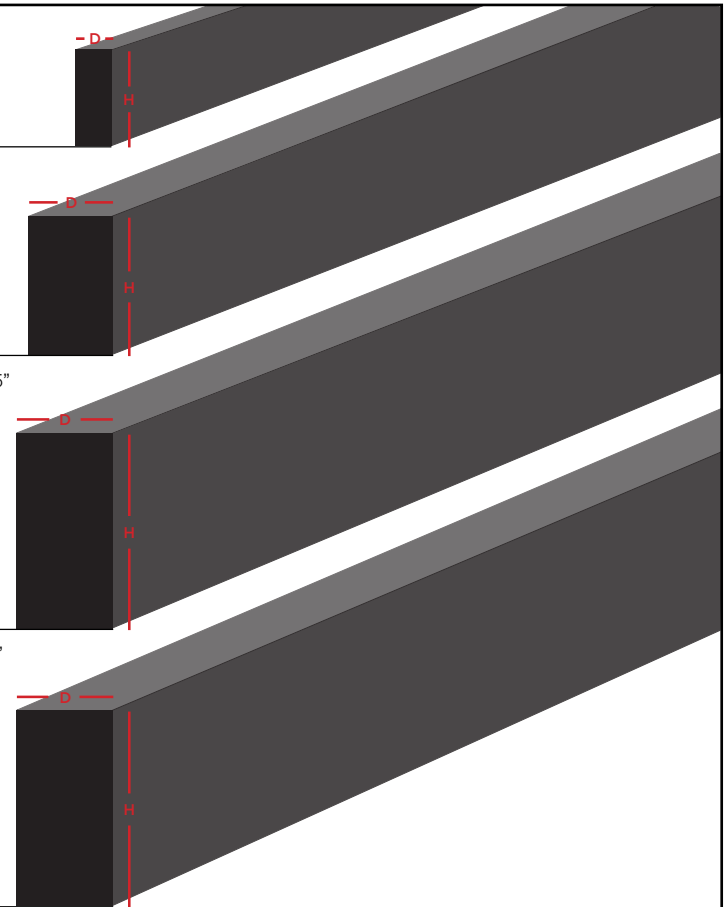
Dimensions (HxD): 5.75" x 3.5"
(146mm x 89mm)

SPL6 SOUNDBAR

Dimensions (HxD): 8.125" x 4"
(206mm x 102mm)

SPL8 SOUNDBAR

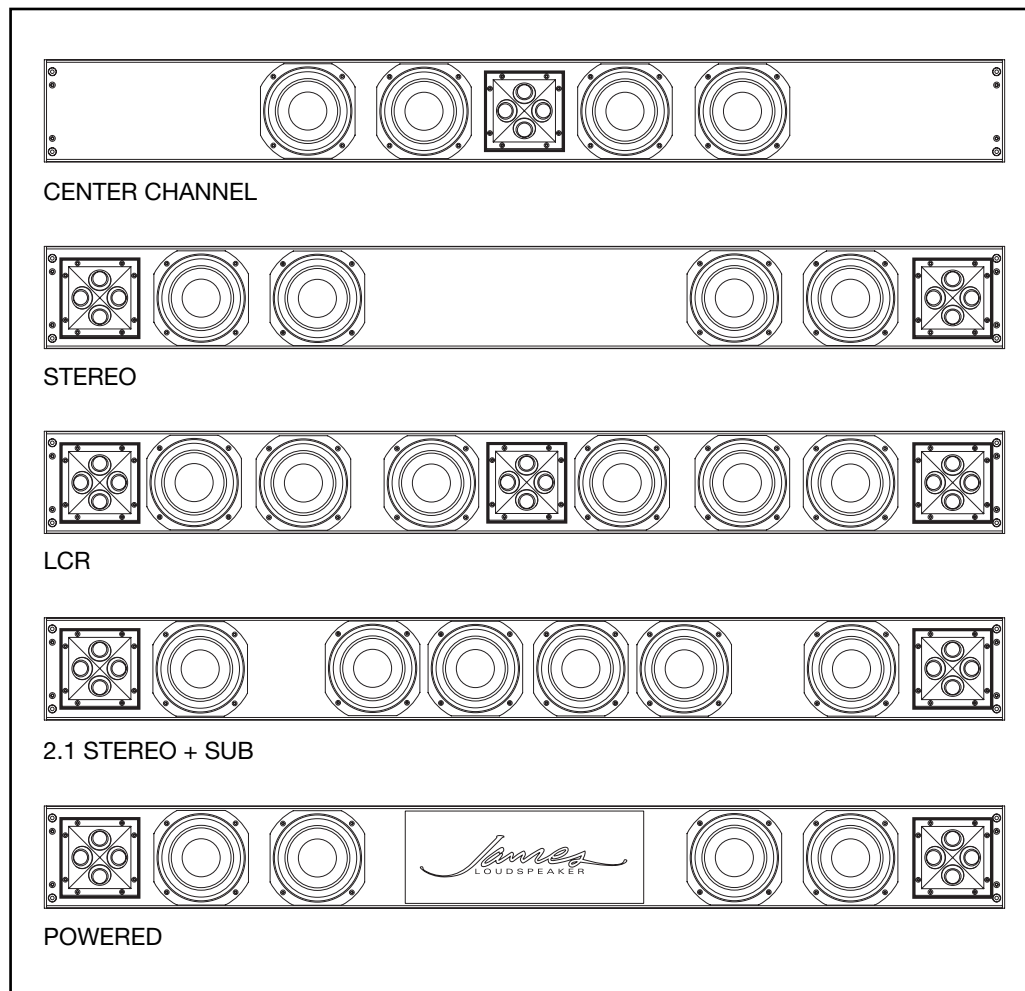
Dimensions (HxD): 8.125" x 4"
(206mm x 102mm)



SOUNDBAR FOR ANY SPACE

STEP 3

Based on the depth of the client's TV and desired performance, choose from four SPL SoundBar performance levels. With different driver sizes, tweeter design and material, and physical height and depth of the SoundBar itself, there is a James Loudspeaker SoundBar to meet the needs of every project.



STEP 4

Finally, each James Loudspeaker SoundBar is customized to accommodate the specific application. Each one can be notched to match the shape of the TV bezel and powder coated to match the color.



ATTENTION TO DETAIL



All notches, cutouts, and custom widths are included with every Soundbar at no additional charge.

COLOR OPTIONS

James Loudspeaker Soundbars are available in six standard color options with the ability to select a completely custom color and finish.



STBK
SATIN BLACK



STUDIO BK
STUDIO BLACK



GLBK
GLOSS BLACK



DKTI
DARK TITANIUM



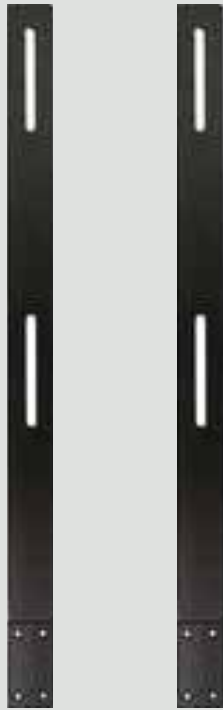
LITI
LIGHT TITANIUM



MRSLV
MIRROR SILVER

MOUNTING OPTIONS

Universal soundbar mounting brackets can be ordered separately and upgraded to Marine Grade. Optional custom TV brackets are also available.



PL-B-CUSTOM
Custom Brackets for Oversize
and Side Mounted SoundBars



BRK.SPL3.UN | BRK.SPL5.UN | BRK.SPL6.UN
Universal SoundBar Brackets



BRK.Z
On-Wall Bracket



BRK.U4 | BRK.U5 | BRK.U6QUE | BRK.U6OW | BRK.U8
Tilting U-Bracket

SPL SOUNDBARS



SPL8 SOUNDBARS

The SPL8 SoundBar Series is designed for large format video displays that demand home theater performance. The cabinet design features all aircraft grade aluminum for strength, sonic performance, and suitability for outdoor and marine grade applications.



SPL8Q-LCR

- 4" (102mm) Deep x 8.125" (206mm) Tall
- Plays Down to 60Hz
- High Output 8" (203 mm) Aluminum Cone Woofers
- Exclusively Built-to-Order

SPL6 SOUNDBARS

The SPL6 Soundbar Series is custom built to the exact length of your TV and can even be split into a pair of soundbars that mount to the sides of the TV in a dual monaural design using James Loudspeaker's Centergy Technology.



SPL6Q-LRSUB | SPL6Q-LCR | SPL6Q-LR | SPL6Q-C

- 4" (102mm) Deep x 8.125" (146mm) Tall
- Aluminum Dome Quad Tweeter Array
- Exclusively Built-to-Order

SPL5 SOUNDBARS

The SPL5 Soundbar Series are completely customizable. Using our proprietary aluminum cone 5.25" (133mm) woofers and 0.75" (19mm) aluminum dome quad tweeter array.



SPL5Q-LRSUB | SPL5Q-LCR | SPL5Q-LR | SPL5-C

- 3.5" (89mm) Deep x 5.75" (146mm) Tall
- Plays Down to 65Hz
- Exclusively Built-to-Order
- Aluminum Dome Quad Tweeter

SPL3 SOUNDBARS

The SPL3 Soundbar Series boasts a slim profile design that matches the ultra-slim depth of flat screen TV's. Featuring James proprietary ultra-slim driver technology, unparalleled frequency response and acoustic performance in a smaller size than ever imagined.

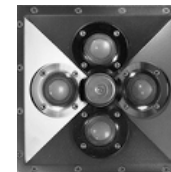


SPL3-LCR-75 | SPL3-LCR-65 | SPL3-LCR-55 | SPL3-LCR | SPL3-LR | SPL3-C

- Ultra Slim 1.5" (38mm) Deep x 4" (102mm) Tall
- Plays Down to 80Hz
- Standard Width or Built-to-Order
- Matches Samsung Frame TV 1.7" (48mm) Deep

BEQ SOUNDBARS

BEQ SoundbBar models use a Beryllium Quad Tweeter Array for wide dispersion, high power handling and low distortion, delivering audiophile-quality performance. Available in SPL8 and SPL6 SoundBars.



SPL8Q-LCR-BE

- 4" (102mm) Deep x 8.125" (206mm) Tall
- Beryllium Dome Quad Array



SPL6Q-LCR-BE

- 4" (102mm) Deep x 8.125" (146mm) Tall
- Beryllium Dome Quad Array



SPL5Q-LCR



POWERED SOUNDBARS



POWERED SOUNDBARS

James Loudspeaker now offers our popular premium performance, ultra sleek SPL SoundBars as a Powered, all-in-one solution. James Loudspeaker Powered SoundBars are great for projects that require a completely standalone system at TV locations that are not on a distributed system or where wiring to a central equipment location is not desirable.



SPL4Q-LR-POW DRIVER



SPL5Q-LR-POW DRIVER



SPL6Q-LR-POW DRIVER



SPL8Q-LR-POW DRIVER



SPL6Q-LR-POW

SPL6Q-LR-POW | SPL8Q-LR-POW | SPL8Q-LR-BE-POW

Dimensions (WxHxD): Custom x 8.125" x 4" (Custom x 206mm x 102mm)



SPL5Q-LR-POW

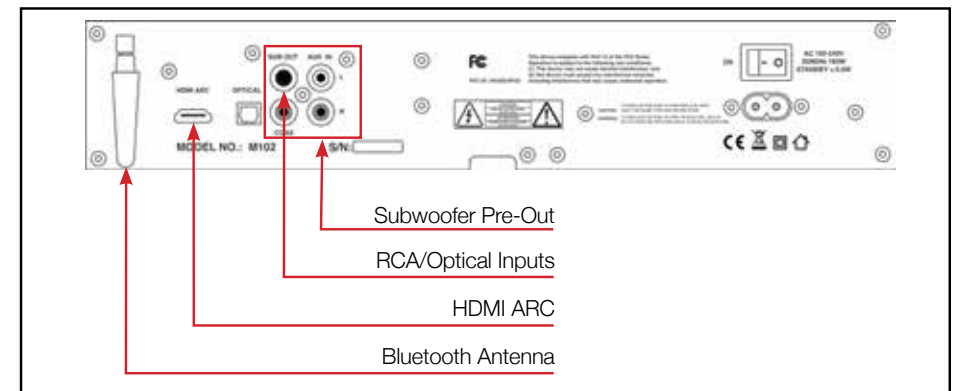
SPL4Q-LR-POW | SPL5Q-LR-POW

Dimensions (WxHxD): Custom x 5.75" x 3.5" (Custom x 146mm x 89mm)

AMPLIFIER PLATE



James Loudspeaker Powered SoundBars are bi-amped to the robust James Loudspeaker M102 amplifier located within the SoundBar housing, delivering 50W to the tweeter section and 50W to the woofer section. The design features sophisticated DSP processing for an accurately matched electronic crossover and full equalization.



The built-in amplifier is fully accessible from behind the grille to allow all connections to be made with the SoundBar on the wall. Inputs include AUX/Analog IN (RCA Jacks), Coax Digital IN (RCA Jack), Optical/Digital IN (TosLink), HDMI-ARC, and Bluetooth. A subwoofer Pre-Out (RCA Jack) is also included for added bass extension with an optional external powered subwoofer or passive subwoofer with an amp.

IN-WALL & CUSTOM SOUNDBARS



IN-WALL SOUNDBARS

As with other James SoundBar models, QX In-Wall SoundBars can be customized to fit the dimensions of the display and finished in custom colors. QX In-Wall SoundBars feature a unique three-piece installation method leveraging a lightweight frame, independent speaker body and border-less grille. All enclosures are constructed of aircraft grade aluminum, making these sound bars the perfect solution for any marine vessel or outdoor environment.



QX-SPL5-CS



QX-SPL5-LCR

QX-SPL5-LR | QX-SPL5-LCR | QX-SPL5-LRSUB | QX-SPL5-CS
Dimensions (WxHxD): Custom x 8.125" x 3.88" (Custom x 206mm x 99mm)



QX-SPL3-CS



QX-SPL3-LCR



QX-SPL3-LR

QX-SPL3-LR | QX-SPL3-LCR | QX-SPL3-CS
Dimensions (WxHxD): Custom x 7.27" x 3.88" (Custom x 185mm x 99mm)

COMPLETELY BESPOKE SOUNDBARS

Our SoundBar customizations don't stop at a small cutout to accommodate a tab or logo on the TV or matching the length of the bar to the dimensions of the display. As your partner, we will build just about anything to accommodate the needs of the client. We have been asked to create SoundBars with space for housing a video conferencing camera, SoundBars that double as a garden planter, and even a curved SoundBar to match a curved video wall. We have done this and so much more. We have the craftsmanship and resources to continue to deliver on truly bespoke solutions for unique project demands.



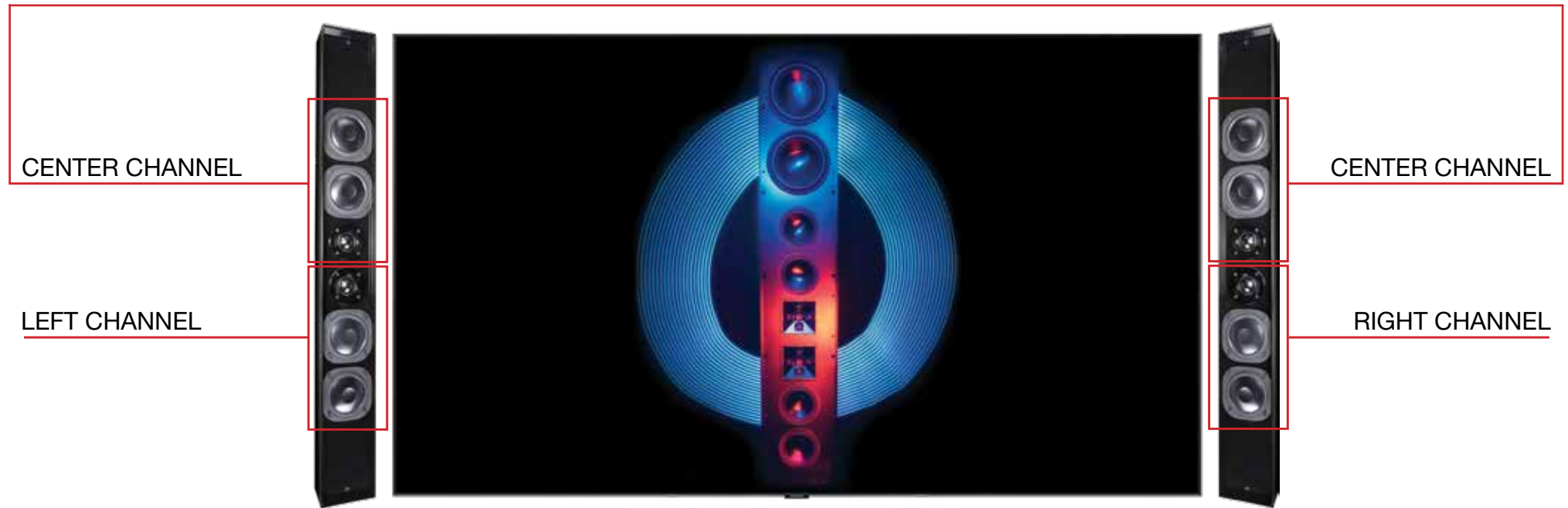
Custom Curved Video Wall Soundbar

CENTERGY SOUNDBARS



CENTERGY CONFIGURATION

James Loudspeaker Centergy configuration is a unique dual monaural technology that places the vocals vividly front and center without the need for a dedicated center speaker (priced and sold in pairs).



James
LOUDSPEAKER

IN-WALL & IN-CEILING SPEAKERS

IN-WALL SPEAKERS



QX SERIES SPEAKERS

QX Series speakers feature aluminum cone woofers with Santoprene™ rubber surrounds and quad aluminum tweeter arrays that deliver wide dispersion and reference-quality sound. James Loudspeaker quad tweeter array is designed to provide superb off-axis stereo performance, even in rooms with speakers mounted in less-than-ideal locations. All enclosures are constructed of aircraft/marine grade aluminum, making these speakers a perfect choice for any marine vessel or outdoor environment.

QX 8" SPEAKERS



QX806BE



QX830



QX820

QX806BE

Dimensions (WxHxD): 14.1" x 33.15" x 3.95"
(358mm x 842mm x 100mm)

QX830

Dimensions (WxHxD): 11.11" x 26.1" x 3.88"
(282mm x 663mm x 99mm)

QX820

Dimensions (WxHxD): 11.11" x 17.47" x 3.88"
(282mm x 444mm x 99mm)

QX 6.5" SPEAKERS



QX630



QX620

QX630

Dimensions (WxHxD): 9.61" x 22.2" x 3.88"
(244mm x 564mm x 99mm)

QX620

Dimensions (WxHxD): 9.61" x 15.4" x 3.88"
(244mm x 391mm x 99mm)

QX 5.25" SPEAKERS



QX530



QX520

QX530

Dimensions (WxHxD): 7.75" x 21.33" x 3.88"
(197mm x 556mm x 99mm)

QX520

Dimensions (WxHxD): 7.75" x 14.64" x 3.88"
(197mm x 372mm x 99mm)

QX 3" SPEAKERS



QX320

Dimensions (WxHxD):
7.27" x 11.36" x 3.88"
(185mm x 289mm x 99mm)

ASX SHALLOW DEPTH SPEAKER



ASX62

Dimensions (WxHxD):
9.88" x 13.75" x 2.5"
(251mm x 349mm x 64mm)

CUSTOM INSTALLATION



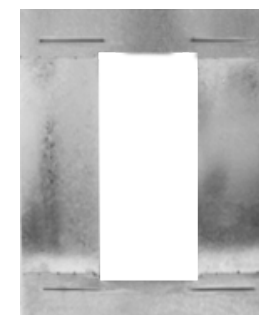
ACCESSORIES



QX5LCR-MB
Mason Box for QX5LCR



QX620-MB
Mason Box for QX620M



Aluminum
Pre-Construction Board



MDF Flush Mount
Pre-Construction Board

IN-CEILING SPEAKERS



IN-CEILING SPEAKERS

QXC in-ceiling speakers feature the same design elements of the QX in-wall series, using aluminum cone woofers with Santoprene rubber surrounds and quad aluminum tweeters. Like QX Series, QXC achieves outstanding dispersion and is suited for indoors or outdoors. Additionally, SXC speakers are designed using a single tweeter to accommodate petite spaces where ceiling surface is limited, such as small bedrooms or powder rooms. For home theater applications, FXA Series speakers use a 3-way design to provide high-output, off-axis performance tucked into the ceiling.

QXC SERIES



QXC820S

Dimensions (DiaxD): 10.84" x 6"
(275mm x 152mm)



QXC820R

Dimensions (DiaxD): 10.84" x 6"
(275mm x 152mm)



QXC620S

Dimensions (DiaxD): 9.14" x 6"
(232mm x 152mm)



QXC620R

Dimensions (DiaxD): 9.14" x 6"
(232mm x 152mm)

SXC SERIES



SXC420R

SXC420R | SXC420S

Dimensions (DiaxD): 6.5" x 6.26"
(165mm x 159mm)

FXA SERIES



FXA550S



FXAQ550S

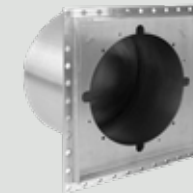
FXA550S | FXAQ550S

Dimensions (WxHxD): 12.75" x 12.75" x 5.88"
(324mm x 324mm x 149mm)

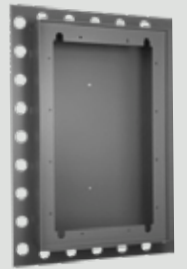
ACCESSORIES



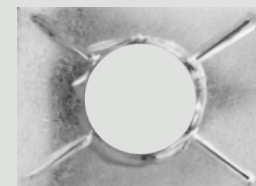
QXC620R-MB
Custom Mason Box



QXC620S-MB
Custom Mason Box



QX1010M-MB
Custom Mason Box



Aluminum
Pre-Construction Board



MDF Flush Mount
Pre-Construction Board

James
LOUDSPEAKER

ON-WALL SERIES

ON-WALL SERIES



ON-WALL SERIES

At James Loudspeaker, we believe in providing solutions for any application. For wall mounted applications, we offer speakers that are designed to be installed using a simple through-hole system to the wall surface. This design is available for indoor or outdoor applications as our On-Wall Series speakers. Constructed from aircraft-grade aluminum, available in a selection of performance levels and finishes, On-Wall speakers provide a surprising elegance and outstanding audio to indoor and outdoor spaces.



ON-WALL SERIES

ON-WALL

James Loudspeaker On-Wall Series speakers are a slim profile, surface mounted solution that delivers superior audio performance. With a variety of standard finishes and infinite custom finishes, On-Wall Series speakers can blend into any space.

6" WOOFERS



OW68QBE



OW66QBE



OW63Q



OW62Q

OW68QBE

Dimensions (WxHxD): 9.75" x 40" x 2.74"
(248mm x 1016mm x 70mm)

OW66QBE

Dimensions (WxHxD): 9.75" x 27" x 2.74"
(248mm x 686mm x 70mm)

OW63Q

Dimensions (WxHxD): 7.75" x 22" x 2.71"
(197mm x 559mm x 69mm)

OW62Q

Dimensions (WxHxD): 7.75" x 16" x 2.71"
(197mm x 406mm x 69mm)

5" WOOFERS



OW53Q



OW52Q

OW53Q

Dimensions (WxHxD): 5.75" x 20" x 3.5"
(146mm x 508mm x 89mm)

OW52Q

Dimensions (WxHxD): 5.75" x 12.5" x 3.5"
(146mm x 318mm x 89mm)

3.5" WOOFERS



OW43



OW42

OW43

Dimensions (WxHxD): 4" x 14" x 1.62"
(102mm x 356mm x 41mm)

OW42

Dimensions (WxHxD): 4" x 10" x 1.62"
(102mm x 254mm x 41mm)

ACCESSORIES



OW62Q-MB
Mason Box for OW62Q



OW52Q-MB
Mason Box for OW52Q



OW43-MB
Mason Box for OW43

James
LOUDSPEAKER®

OUTDOOR

OUTDOOR TOWER SPEAKERS



PERFORMANCE AND FLEXIBILITY

Outdoor Tower speakers are high-performance tower speaker designed to deliver concert-level performance outdoors. Each speaker features a titanium quad array tweeter for wide dispersion and crisp fidelity and dual 6.5" woofers for detailed midrange. The OT88Q includes a sealed bass enclosure with dual 8" subwoofers that is bi-amped for a smooth and powerful bass response. Their robust engineering and design allow the James Loudspeaker Outdoor Tower speakers to effortlessly deliver high SPL playback over extended periods of time.



OT88Q

Dimensions (WxHxD): 10" x 50" x 7.3" (254mm x 1270mm x 185mm)

EASY AND COUNTLESS MOUNTING SOLUTIONS

Any Outdoor Tower speaker can be installed using our internal mount (a beautifully hidden mounting solution for permanent installation into hardscape), or external mount (a wider mounting plate, best suited for permanent landscape installations, or for moveable hardscape installations). For simplified installation and configuration, James Loudspeaker offers optional custom wiring harnesses. The speaker also has access through the front grille for easy in-field servicing.



OT66Q

Dimensions (WxHxD): 10" x 30" 7.3" (254mm x 762mm x 185mm)



OT84

Dimensions (WxHxD): 10" x 30" 7.3" (254mm x 762mm x 185mm)



OUTDOOR TOWER SPEAKERS

James Loudspeaker Outdoor Tower speakers are designed to deliver concert-level performance outdoors. These freestanding outdoor speakers are constructed of aircraft-grade aluminum and powder coated to a fine finish by our skilled craftsmen at the James Loudspeaker full-service facility in Minden, Nevada. Each exquisite model features proprietary drivers and the sonic refinement that integrators and end-users have come to expect from James Loudspeaker products.

ON-WALL MARINE SERIES



6" WOOFERS



OW68Q-M



OW66Q-M



OW63Q-M



OW62Q-M

OW68Q-M

Dimensions (WxHxD): 9.75" x 40" x 2.74"
(248mm x 1016mm x 70mm)

OW66Q-M

Dimensions (WxHxD): 9.75" x 27" x 2.74"
(248mm x 686mm x 70mm)

OW63Q-M

Dimensions (WxHxD): 7.75" x 22" x 2.71"
(197mm x 559mm x 69mm)

OW62Q-M

Dimensions (WxHxD): 7.75" x 16" x 2.71"
(197mm x 406mm x 69mm)

5" WOOFERS



OW53Q-M



OW52Q-M

OW53Q-M

Dimensions (WxHxD): 5.75" x 20" x 3.5"
(146mm x 508mm x 89mm)

OW52Q-M

Dimensions (WxHxD): 5.75" x 12.5" x 3.5"
(146mm x 318mm x 89mm)

3.5" WOOFERS



OW43-M



OW42-M

OW43-M

Dimensions (WxHxD): 4" x 14" x 1.62"
(102mm x 356mm x 41mm)

OW42-M

Dimensions (WxHxD): 4" x 10" x 1.62"
(102mm x 254mm x 41mm)



MARINE GRADE

Constructed from marine-grade aluminum for durable outdoor performance, they can be designed as a system of their own or deployed as part of an All Terrain Series system for mounting to the surface of a structure with a slim profile, sleek finish. Complete with a wide variety of sizes and performance levels, these speakers can be custom fit to an existing space as well as custom colored to match any finish, making it easier than ever to integrate these incredible speakers into any outdoor or high moisture environment.

ACCESSORIES



OW62Q-MB
Mason Box for OW62Q-M



OW52Q-MB
Mason Box for OW52Q-M



OW43-MB
Mason Box for OW43-M

WEDGE SERIES



WEDGE

Wedge Series is a specialized all-terrain boundary application speaker system for integration into 90° corners where walls and ceilings meet. Wedge speakers are great for high mounted applications like outdoor trellises, pergolas, or under eaves. With proprietary James Loudspeaker high excursion woofers, and signature aluminum dome quad-tweeter array, Wedge speakers offer silky smooth response across a broad range of frequencies. A unique mounting system features an easy to install corner bracket that the speaker clips into and securely fastenes to via set screws and provides a clean looking visual with no exposed wires or brackets. Wedge Series speakers can be custom built to match the entire width of the wall to disappear completely as if it were part of the construction itself.



5.25" WOOFERS



W53Q



W53Q

W53Q

Dimensions (WxHxD): 22" x 5.86" x 6.28"
(1227mm x 134mm x 65mm)

W52Q

Dimensions (WxHxD): 15.5" x 5.86" x 6.28"
(1445mm x 134mm x 65mm)

4" WOOFERS



W43Q



W43Q

W43Q

Dimensions (WxHxD): 16.75" x 4.75" x 4.75"
(425mm x 121mm x 121mm)

W42Q

Dimensions (WxHxD): 12" x 4.75" x 4.75"
(305mm x 121mm x 121mm)

OMNI SERIES



360° DISPERSION

James Loudspeaker Omni Series are omnidirectional 3-way, biamped, all-terrain speakers/planter. They are a great solution as a stand alone outdoor system of Omni planter speakers, or as an addition to an AT Series system. Omni Series speakers and planter speakers are well suited for areas requiring omnidirectional coverage and above ground installations like hardscape areas where traditional sat/sub combinations cannot be installed, or large open seating where full omni coverage is a benefit.

ACCESSORIES

Omni Series speakers can be secured to solid surfaces using the optional Omni Floor Bracket.



BRK.OMNI89 | BRK.OMNI09 | BRK.OMNI29



PLANTER OMNI SPEAKER



OMNI129-70-P | OMNI129-4-P
Dimensions (WxHxD): 14" x 34.125" x 14"
(1227mm x 134mm x 65mm)

OMNI109-70-P | OMNI109-4-P
Dimensions (WxHxD): 12" x 30.125" x 12"
(1445mm x 134mm x 65mm)

OMNI89-70-P | OMNI89-4-P
Dimensions (WxHxD): 9.75" x 25.325" x 9.75"
(1445mm x 134mm x 65mm)

4 OHM | 70V

Omni Series speakers and planter speakers are available in 4 Ohm or 70V configurations. The 4 Ohm configuration is biamped for powerful, detailed audio playback. 70V models use high-quality, low-loss, toroidal transformers which deliver outstanding performance.

OMNI SPEAKER

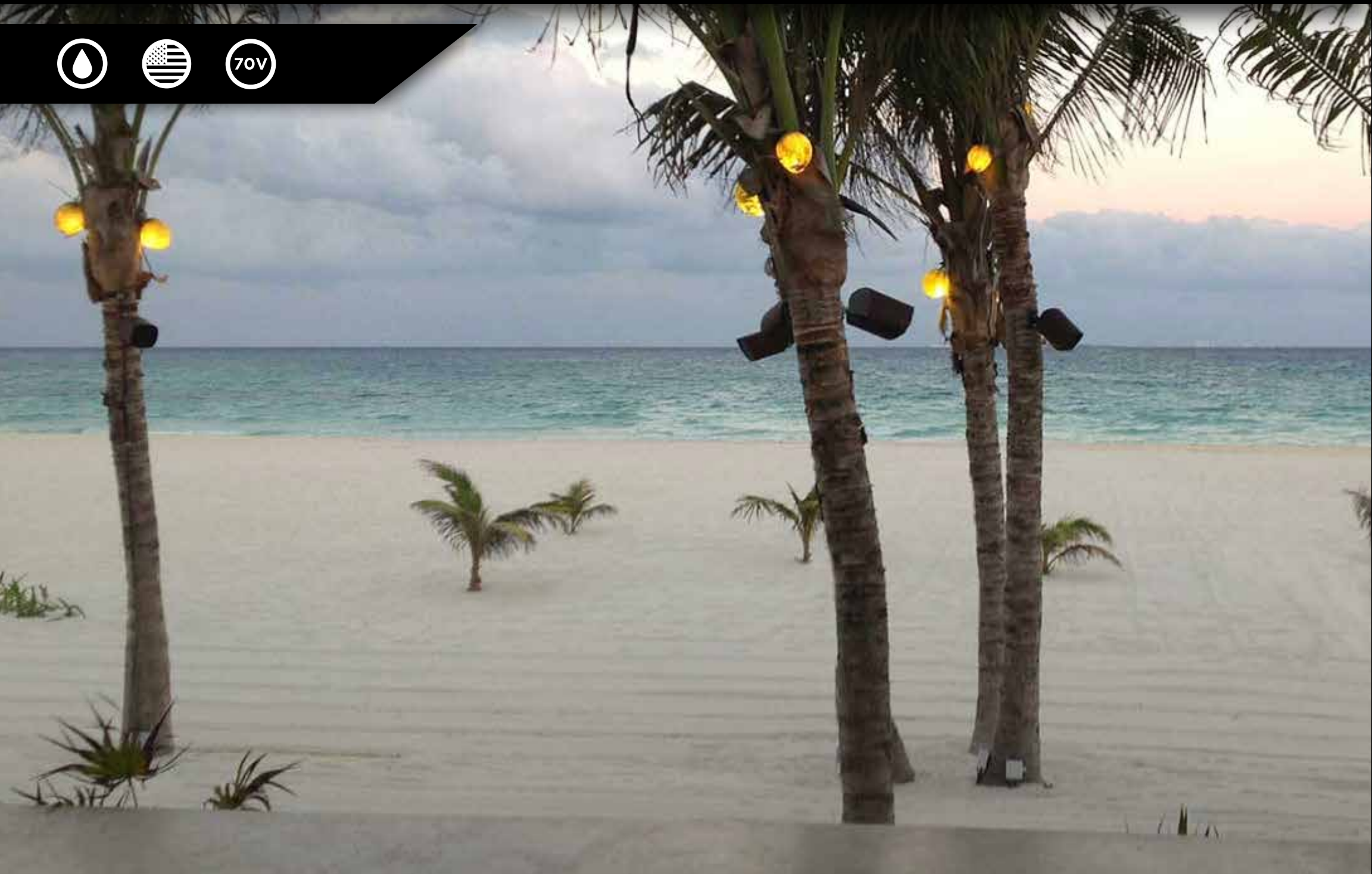


OMNI129-70 | OMNI129-4
Dimensions (WxHxD): 14" x 25.13" x 14"
(1227mm x 134mm x 65mm)

OMNI109-70 | OMNI109-4
Dimensions (WxHxD): 12" x 20.13" x 12"
(1445mm x 134mm x 65mm)

OMNI89-70 | OMNI89-4
Dimensions (WxHxD): 9.75" x 17.4" x 9.75"
(1445mm x 134mm x 65mm)

ALL TERRAIN SERIES



WEATHER THE ELEMENTS

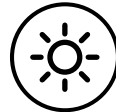
James Loudspeaker All Terrain Landscape products are constructed from marine-grade aluminum for performance and durability. The direct-burial subwoofers eliminate the need for an exposed, bulky enclosure by hiding the main portion of the subwoofer underground. By using a bandpass box design, these water-tight, weather-proof speakers deliver deep, powerful bass and a subdued visual effect, exposing only a small hooded port.



RAIN



SNOW



SUN



WIND



SEA



SAND



FULLY SCALABLE AND EXPANDABLE

James Loudspeaker All Terrain Landscape products offer precise audio performance for outdoor environments with unlimited installation configurations. All James Loudspeaker products are timbre matched, resulting in an unrivaled audio experience. Systems can be configured for 4 Ohm or 70V, allowing for flexibility for system design and configuration into any outdoor project that demands superior performance without compromise to design.

AT SATELLITES



AT42-4 | AT42-70

Dimensions (WxHxD): 6.8" x 6.8" x 10.5"
(173mm x 173mm x 267mm)



AT42-4 | AT42-70

Dimensions (WxHxD): 4.75" x 4.75" x 7.88"
(121mm x 121mm x 200mm)



AT32-4 | AT32-70

Dimensions (WxHxD): 3.9" x 2.9" x 7"
(99mm x 99mm x 178mm)

TWO PIECE CONSTRUCTION

Allows for easy color changes or maintenance.



COLOR OPTIONS

Available in 10 standard colors in addition to custom colors.

	Black Wrinkle		Sandstone
	Weathered Iron		Hunter Green
	Verde		Chocolate
	Bronze Wrinkle		Satin Bronze
	Sierra Mountain Granite		Antique Brass

ACCESSORIES



AT.STAKE.AL.18
18" Aluminum Stake



AT.STAKE.AL.12
12" Aluminum Stake



AT.STAND.AL
8" Aluminum Stand



AT.MOUNT
Aluminum Tree Mount

ST SUBWOOFERS



ST21-4

Dimensions (WxHxD): 24" x 24" x 24"
(610mm x 610mm x 610mm)
Canopy (LxW): 12.2" x 12.2" (310mm x 310mm)



ST15-4 | ST15-70

Dimensions (WxHxD): 16.5" x 16.5" x 22.5"
(419mm x 419mm x 572mm)
Canopy (Dia): 10" (254mm)



ST12-4 | ST12-70

Dimensions (WxHxD): 14" x 11.5" x 16.5"
(356mm x 292mm x 419mm)
Canopy (Dia): 8.4" (213mm)



ST10-4 | ST10-70

Dimensions (WxHxD): 11.3" x 14.38" x 18.5"
(287mm x 365mm x 470mm)
Canopy (Dia): 8.4" (213mm)



ST8-4 | ST8-70

Dimensions (WxHxD): 10.5" x 10.95" x 10.5"
(267mm x 278mm x 267mm)
Canopy (Dia): 8.4" (213mm)

EMBM SUBWOOFERS



EMB15-70-M | EMB15-4-M

Dimensions (WxHxD): 16.5" x 16" x 16.5"
(419mm x 406mm x 419mm)



EMB12-70-M | EMB12-4-M

Dimensions (WxHxD): 14" x 15" x 14"
(356mm x 381mm x 356mm)



EMB10-70-M | EMB10-4-M

Dimensions (WxHxD): 12" x 13" x 12"
(305mm x 330mm x 305mm)



EMB8-70-M | EMB8-4-M

Dimensions (WxHxD): 9.75" x 11.25" x 9.75"
(248mm x 286mm x 248mm)

James
LOUDSPEAKER

THEATER

MAVERICKS SERIES





M213

3X 21" SUBWOOFERS

Dimensions (WxHxD):
25" x 69.5" x 15.5"
(635mm x 1765mm x 394mm)

SUBWOOFERS



M152

2X 15" SUBWOOFERS

Dimensions (WxHxD):
23.4" x 35.1" x 15.5"
(594mm x 892mm x 394mm)



M122

2X 12" SUBWOOFERS

Dimensions (WxHxD):
15.5" x 28" x 15.5"
(394mm x 711mm x 394mm)

FULL RANGE SPEAKERS

Each L/C/R channel can be stacked (MQ84A+M152) for a full 5-way amplified system covering 30Hz to 25kHz with a sensitivity of 102dB at 1 meter/2.83V.



MQ84

4-WAY LCR
Dimensions (WxHxD):
23.4" x 23.4" x 15.5"
(594mm x 594mm x 394mm)



MQS85

4-WAY SURROUND
Dimensions (WxHxD):
14" x 26" x 6"
(356mm x 660mm x 154mm)

BIG WAVE PERFORMANCE

Inspired by the legendary "Mavericks" surf of NorCal - Awesome, Powerful & Exciting! This large format hybrid horn system, was specifically developed for ultra-high output home theater applications where enclosure depth is not an issue. The Mavericks series by James Loudspeaker provides ultra-wide bandwidth, very high sound pressure levels and very low distortion - making for a stunning cinema experience.



BE REFERENCE SERIES

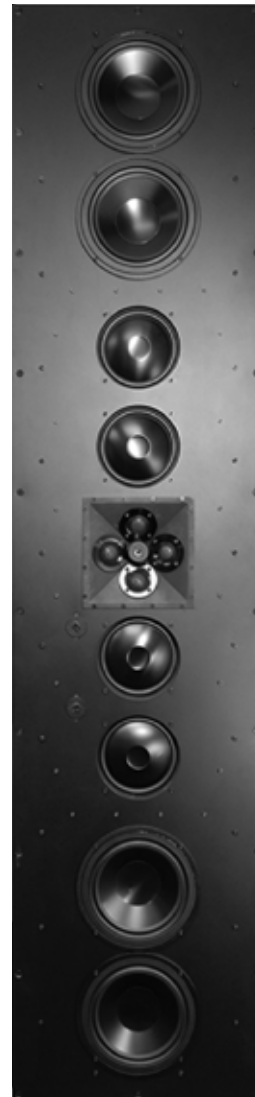




BE Reference Series speakers are crafted from solid aluminum and built by hand in our Minden, NV facility, leveraging hours of precision milling and machining. Featuring a sturdy aluminum baffle and completely sealed enclosure, BE Reference Series speakers are acoustically inert, delivering the most accurate reproduction while preventing undesirable colorations and reflections.

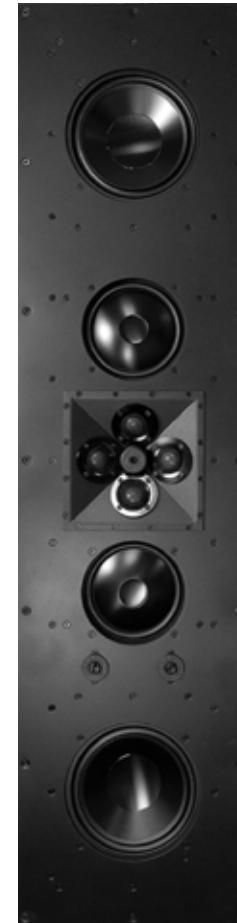


BE SERIES



812BE

812BE
Dimensions (WxHxD):
17.5" x 75" x 3.875"
(445mm x 1905mm x 98mm)



808BE

808BE
Dimensions (WxHxD):
12.95" x 50.625" x 3.875"
(329mm x 1286mm x 98mm)



806BE

806BE
Dimensions (WxHxD):
12.95" x 32" x 3.875"
(329mm x 813mm x 98mm)

AMPLIFIERS

70V



THE FINISHING TOUCHES

Amplification is a critical factor in an audio system. The right power and signal processing can elevate the experience and exercise the full potential of an audio solution. James Loudspeaker and Sonance amplifiers are available to support speakers, SoundBars, and subwoofers, alike. With amplifiers for 70V or low impedance configurations, and an assortment of DSP enabled amps, James Loudspeaker products will always perform their best.

JAMES LOUDSPEAKER AMPLIFIERS



A2.1

Dimensions (WxHxD): 19" x 1.75" x 10"
(482.6mm x 44.45mm x 254mm)



M1000

Dimensions (WxHxD): 16.75" x 3.5" x 14.23"
(425.45mm x 88.9mm x 361.44mm)

SONANCE DSP AMPLIFIERS WITH SONARC V2



DSP 8-130 MKII

Dimensions (WxHxD): 17 1/4" x 2 1/8" x 16 13/16"
(438mm x 54mm x 427mm)



DSP 2-750 MKII

Dimensions (WxHxD): 17 1/4" x 3 7/8" x 17 7/32"
(438mm x 98mm x 437mm)

James
LOUDSPEAKER

MARINE

MARINE PERFORMANCE

James Loudspeaker is the go-to partner for any marine audio need. With the ability to adapt just about any product in the catalog to a marine-grade spec, James Loudspeaker knows what it takes to deliver full performance audio in the specific demands for marine applications.





CABIN INTERIORS

James Loudspeaker can provide solutions based on shallow depth construction of places like yacht cabin interiors.



EXCEPTIONAL SOUND

James Loudspeaker offers in-wall solutions that are built for outdoor use with an attractive grille finish to provide an exceptional experience in marine applications without compromising the beauty of the vessel.



STRUCTURAL INTEGRITY

James Loudspeaker can customize the size and shape of any standard product to suit the unique curvatures of marine applications.



James
LOUDSPEAKER

CUSTOM

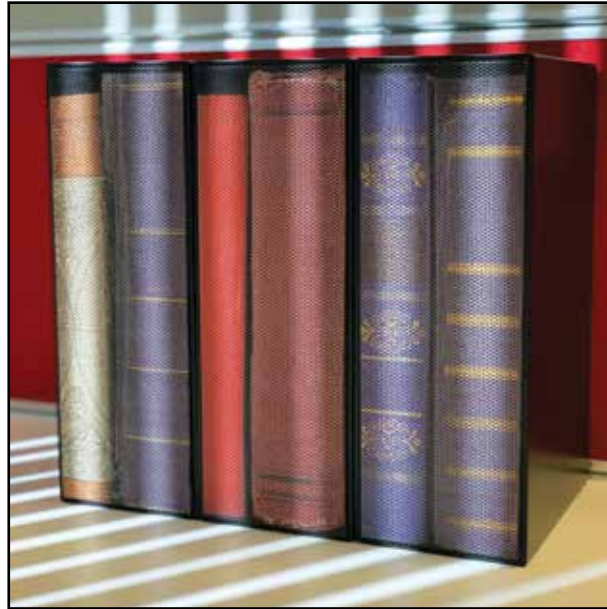


BESPOKE SOLUTIONS

James Loudspeaker is truly a custom partner. We have the passion and resources to deliver any solution based on unique requests for performance, application, and finish.

YOU DREAM IT, WE CREATE IT

James Loudspeaker has the resources and expertise to provide custom finishes using hydrodip film and custom materials. We can also design and engineer a dream solution from the ground up to bring those dreams to life.



HIDDEN SPEAKERS



BARREL SPEAKERS

STYLIZED SPEAKERS



STEAMPUNK

FREESTANDING



CORNER

James
LOUDSPEAKER

MASON BOXES

MASON BOXES

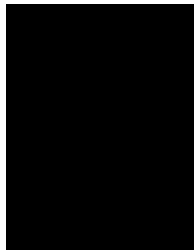


MASON BOX HARDSCAPE SOLUTIONS

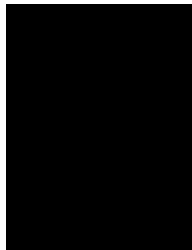
Since each wall installation can have uniquely different construction (rock, cinder block, rock veneer, etc), and a uniquely different required appearance (flush, oversize proud grille, etc) almost all mason boxes are CUSTOM and designed to order.

MASON BOX STANDARD FINISHES

Available in 11 standard colors in addition to custom colors.



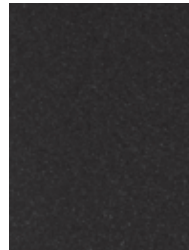
Black Wrinkle
(BLW)



Gloss Black
(GLBK)



Satin Black
(STBK)



Studio Black
(STUDIOBK)



Dark Titanium
(DKTI)



Sierra Mountain Granite
(SMG)



Satin Bronze
(BZP)



Bronze Wrinkle
(BZW)



Chocolate
(CHO)



Weathered Iron
(WIR)



Sandstone
(SDS)

COLOR DISCLAIMER: The colors you see on your computer monitor, mobile device or printer should only be used as a guide and are not absolute. Colors may vary, and the colors you see may be different from the actual powder coat. There is no substitute to seeing the actual color swatch in person. For questions or color samples please contact your local sales representative.

MASON BOX IN CONCRETE



MASON BOX IN WOOD



JAMES LOUDSPEAKER PRODUCT INDEX

SMALL APERTURE SERIES

SMALL APERTURE SERIES

MODEL	UOM	PAGE
SA63-7	EA	17
SA63-7-L	EA	17
SA63-7-R	EA	17
SA42-4	EA	17
SA63-8	EA	17
SA63-4	EA	17
CUSTOM	EA	17

SMALL APERTURE SERIES SUBWOOFERS

MODEL	UOM	PAGE
SA101-SUB	EA	18
SA54-4-SUB	EA	18

SMALL APERTURE HIGH OUTPUT SPEAKER

MODEL	UOM	PAGE
SA853Q-9	EA	19

SUBWOOFERS

POWERPIPE SUBWOOFERS

MODEL	UOM	PAGE
PP6-M	EA	25
PP8-M	EA	25
PP10	EA	25
PP10-M	EA	25
PP12	EA	25
PP12-M	EA	25
PP12-2	EA	25
PP12-2-M	EA	25
PP15-M	EA	25

EMB SUBWOOFERS

MODEL	UOM	PAGE
EMB8-DF	EA	30
EMB10-DF	EA	30
EMB10-BP	EA	30
DF-10	EA	30
EMB12-DF	EA	30
EMB12-BP	EA	30
EMB15-DF	EA	30

IN-WALL / IN-CEILING SUBWOOFERS

MODEL	UOM	PAGE
QX1010	EA	32
QX1020	EA	32
QX1020A	EA	32
QXC8S-R	EA	32
QXC8S-S	EA	32
QXC10S-R	EA	32
QXC10S-S	EA	32

SOUNDBARS

SPL3 SOUNDBARS

MODEL	UOM	PAGE
SPL3-C	EA	42
SPL3-LR	EA	42
SPL3-LCR	EA	42
SPL3-LCR-55	EA	42
SPL3-LCR-65	EA	42
SPL3-LCR-75	EA	42

SPL5 SOUNDBARS

MODEL	UOM	PAGE
SPL5-C	EA	42
SPL5Q-LR	EA	42
SPL5Q-LCR	EA	42
SPL5Q-LRSUB	EA	42

SPL6/SPL8 SOUNDBARS

MODEL	UOM	PAGE
SPL6Q-C	EA	42
SPL6Q-LR	EA	42
SPL6Q-LCR	EA	42
SPL6Q-LCR-BE	EA	42
SPL6Q-LRSUB	EA	42
SPL8Q-LCR	EA	42
SPL8Q-LCR-BE	EA	42

POWERED SOUNDBARS

MODEL	UOM	PAGE
SPL4Q-LR-POW	EA	44
SPL5Q-LR-POW	EA	44
SPL6Q-LR-POW	EA	44
SPL8Q-LR-POW	EA	44
SPL8Q-LR-BE-POW	EA	44

QX IN-WALL SOUNDBARS

MODEL	UOM	PAGE
QX-SPL3-LR	EA	46
QX-SPL3-LCR	EA	46
QX-SPL5-LR	EA	46
QX-SPL5-LCR	EA	46
QX-SPL5-LR-SUB	EA	46
CUSTOM	EA	46

CENTERGY SOUNDBARS

MODEL	UOM	PAGE
SPL3-CS	PR	48
SPL5Q-CS	PR	48
SPL6Q-CS	PR	48
QX-SPL3-CS	PR	48
QX-SPL5-CS	PR	48

IN-WALL & IN-CEILING SPEAKERS

IN-WALL SPEAKERS

MODEL	UOM	PAGE
QX320	EA	52
QX520	EA	52
QX530	EA	52
QX620	EA	52
QX630	EA	52
QX820	EA	52
QX830	EA	52
QX806BE	EA	52
ASX62	EA	52

IN-WALL & IN-CEILING SPEAKERS CONTINUED

IN-CEILING SPEAKERS

MODEL	UOM	PAGE
QXC620R	EA	54
QXC620S	EA	54
QXC820R	EA	54
QXC820S	EA	54
FXA550S	EA	54
FXAQ550S	EA	54
SXC420R	EA	54
SXC420S	EA	54

IN-ROOM SPEAKERS

ON-WALL SERIES

MODEL	UOM	PAGE
OW42	EA	60
OW43	EA	60
OW52Q	EA	60
OW53Q	EA	60
OW62Q	EA	60
OW63Q	EA	60
OW66QBE	EA	60
OW68QBE	EA	60

OUTDOOR

OUTDOOR TOWER SPEAKERS

MODEL	UOM	PAGE
OT88Q-4	EA	64
OT88Q-70	EA	64
OT66Q-4	EA	65
OT66Q-70	EA	65
OT84-4	EA	65

ON-WALL MARINE SERIES

MODEL	UOM	PAGE
OW42-M	EA	67
OW43-M	EA	67
OW52Q-M	EA	67
OW53Q-M	EA	67
OW62Q-M	EA	67
OW63Q-M	EA	67
OW66Q-M	EA	67
OW68Q-M	EA	67

WEDGE SERIES

MODEL	UOM	PAGE
W42Q	EA	70
W43Q	EA	70
W52Q	EA	70
W53Q	EA	70
CUSTOM	EA	70

OUTDOOR CONTINUED

OMNI SERIES

MODEL	UOM	PAGE
OMNI89-4	EA	72
OMNI89-70	EA	72
OMNI109-4	EA	72
OMNI109-70	EA	72
OMNI129-4	EA	72
OMNI129-70	EA	72
OMNI89-4-P	EA	72
OMNI89-70-P	EA	72
OMNI109-4-P	EA	72
OMNI109-70-P	EA	72
OMNI129-4-P	EA	72
OMNI129-70-P	EA	72

SATELLITE SERIES

MODEL	UOM	PAGE
AT32-4	EA	75
AT32-70	EA	75
AT42-4	EA	75
AT42-70	EA	75
AT62-4	EA	75
AT62-70	EA	75

SUBTERRANEAN SUBWOOFERS

MODEL	UOM	PAGE
ST8-4	EA	76
ST8-70(-X)	EA	76
ST10-4	EA	76
ST10-70(-X)	EA	76
ST12-4	EA	76
ST12-70(-X)	EA	76
ST15-4	EA	76
ST15-70(-X)	EA	76
ST21-4	EA	76

EMBM SERIES

MODEL	UOM	PAGE
EMB8-4-M	EA	76
EMB8-70-M	EA	76
EMB10-4-M	EA	76
EMB10-70-M	EA	76
EMB12-4-M	EA	76
EMB12-70-M	EA	76
EMB15-4-M	EA	76
EMB15-70-M	EA	76

THEATER

MAVERICKS SERIES

MODEL	UOM	PAGE
MQ84	EA	80
MQS85	EA	80
M122	EA	80
M152	EA	80
M213	EA	80

BE SERIES

MODEL	UOM	PAGE
BE806	EA	82
BE808	EA	82
BE812	EA	82

AMPLIFIERS

AMPLIFIERS

MODEL	UOM	PAGE
A2.1	EA	84
M1000	EA	84
DSP 2-750 MKII	EA	84
DSP 8-130 MKII	EA	84



©2021 JamesLoudspeaker. All rights reserved. James Loudspeaker is a registered trademark.

Due to continuous product improvement, all features and specifications are subject to change without notice.
For the latest James Loudspeaker product specification information visit our website: www.jamesloudspeaker.com

James Loudspeaker • 2185 Park Place • Minden, NV 89423 USA
04.06.2021 | 336-0067