



James Loudspeaker contact:  
Keith Parke (615) 210-8092  
[Keith@jamesloudspeaker.com](mailto:Keith@jamesloudspeaker.com)

PR contact:  
Vijita U. G. (775) 461-7519  
[Vijita@jamesloudspeaker.com](mailto:Vijita@jamesloudspeaker.com)

## JAMES LOUDSPEAKER CASE STUDY.



### ACCOMMODATE THE CLIENT

JAMES LOUDSPEAKER  
DELIVERS BUILT-TO-SUIT  
HIGH-PERFORMANCE  
MARINE-GRADE  
LOUDSPEAKERS FOR A  
DELUXE 68-FOOT FISHING  
BOAT



### INTEGRATOR: [CREATIVE SYSTEMS USA](http://CREATIVE SYSTEMS USA)



James Loudspeaker  
535 Airpark Road, Napa, CA 94558

## James Loudspeaker delivers built-to-suit high-performance marine-grade loudspeakers for a deluxe 68-foot fishing boat



*Lady Rebecca, a 68 custom fishing boat outfitted for sound by Creative Systems USA with James Loudspeaker marine-grade speaker systems*

### Case Study

James Loudspeaker has always prided itself on offering highly durable, elegant sounding marine grade loudspeakers intended for use in an array of harsh environments, from under eaves and across the landscape in residential and commercial settings to the many watercraft traversing lakes and oceans with our products providing the entertainment. One such vessel is Lady Rebecca, a 68-foot fishing boat constructed by custom boat builder Michael Rybovich & Sons Boatworks of Florida. The boat's proud owner turned to the integrator who had successfully designed and installed their home technology, Creative Systems USA of Collegeville, PA. to outfit the boat with entertainment and automation. Creative Systems has been serving the greater Philadelphia region for over 35 years and has become known for unparalleled service, design and integration of smart home electronics systems including whole home audio / video, home theater, smart home automation, lighting control, networking

solutions, security cameras, and more. Meticulous preparation and detailed drawings are generated for each project to ensure that client expectations are met or exceeded. Creative Systems USA deploys solutions designed to take advantage of the latest technologies while merging seamlessly with the needs, lifestyles and budgets of each client.

"Actually, we were initially just brought in as a consultant on this project, but once we unveiled some of our creative processes and ideas including the [James Loudspeaker Small Aperture speakers](#), the boat builder and client requested that we take over the A/V integration process for Lady Rebecca," explained senior sales engineer Harry Blanchard. The SmallAperture™ (SA) speakers enable us to deliver superb, full range sound with the reliability of a marine grade speaker all from a discreet, décor-matched 3-inch grille. The unparalleled elegance of the SA solution was befitting of this incredible fishing vessel.





*Décor-matched grilles for the Small Aperture speaker and custom subwoofer visible in the cockpit overhang*

## The Technology

Lady Rebecca utilizes an amalgam of sophisticated technologies such as enterprise-grade networking, audio and video distribution, motorized window treatments and automation that includes interfacing with the boat's HVAC and navigation systems. The James Loudspeaker models used throughout this project were the Small Aperture [63SA-7HQ](#), an array of customized [SPL3](#) sound bars, three models of PowerPipe subwoofers ([650PTM](#), [800PTM](#), and [1200PT-1M](#)), [QXC620](#) Quad-tweeter in-ceiling speakers, and a pair of customized Small Aperture [540SAS-4](#) subwoofers.

## Every Cabin is First Class

The rear covered area of the boat used for fishing, otherwise referred to as the cockpit, utilizes a pair of the Small Aperture speakers and a pair of Small Aperture subwoofers nestled into the “roof” extending over the cockpit’s beautiful teak “fighting chair.” All that is visible are small, décor-matched grilles yet the sound is full range and clearly dispersed throughout the cockpit and mezzanine areas. Each of the two 540SAS-4 subwoofers use four 5.25-inch woofers in a tuned enclosure, with low frequencies vented through a 4-inch grille. James Loudspeaker engineers created a custom enclosure to accommodate the unusual space restrictions of the mezzanine overhead while maintaining the required internal air volume for optimized performance. “This is a perfect example of why James Loudspeaker is such a valued partner to Creative Systems USA—we were able to deliver superb sound from tailored solutions where off-the-shelf products would never do,” Blanchard stated.



*The James SPL3 LR sound bar fits precisely into the elegant cabinet work of the master stateroom*



The Master Stateroom features a custom Seura mirror HDTV housed in elegant cabinetry, with a James Loudspeaker SPL3 LR sound bar built to fit the exact width of the TV. The SPL3 LR provides stereo (left and right channel audio output) suitable for music or movie playback, with a James Loudspeaker 650PTM PowerPipe subwoofer hidden inconspicuously below the bed. The toe-kick vent for the subwoofer has been integrated into the lower portion of the wood bed assembly, delivering superb sound throughout the cabin while barely visible. The Master Head (lavatory) also features a custom Seura mirror display integrated into the mirror and a custom-sized SPL3 sound bar integrated into the woodwork above the mirror.

For Lady Rebecca's stately Bridge, Creative Systems USA utilized a pair of James Loudspeaker QXC620 marine rated speakers that leverage the company's Quad Tweeter array for superb dispersion and high efficiency. The grilles were color-matched white to blend perfectly with the side panels of the Bridge. For bass on the Bridge, a James Loudspeaker PowerPipe 1200PT-1M was installed out of site, venting through a barely noticeable toe-kick grille oriented vertically. These loudspeakers deliver tremendous detail, wide dispersion and can play loudly enough to be enjoyed above ambient noise—all from products engineered to withstand the harsh marine environment.

The Salon, which is akin to a living room area, features a 5.1 surround system. The front LCR speakers are a pair of custom-sized James Loudspeaker SPL3CS sound bars mounted on either side of a motorized Sony 55-inch TV. The SPL3CS bars use James Loudspeaker's proprietary Centergy™ technology that incorporates a center channel driver into each right and left speaker, eliminating the need for a dedicated center speaker below the TV. The Salon system also includes a pair of 63SA-7HO Small Aperture speakers used as rear channels within the 5.1 system. The subwoofer in the Salon is a PowerPoint 800PTM, delivering detailed and extended bass response for both music and cinematic content. Once again, the rear speaker and



*On the bridge, the round QXC620 grille is visible beside the vertically mounted toe-kick grille for the PowerPipe subwoofer*

subwoofer integration has been accomplished using décor-matched grilles that are barely noticeable within the Salon area.

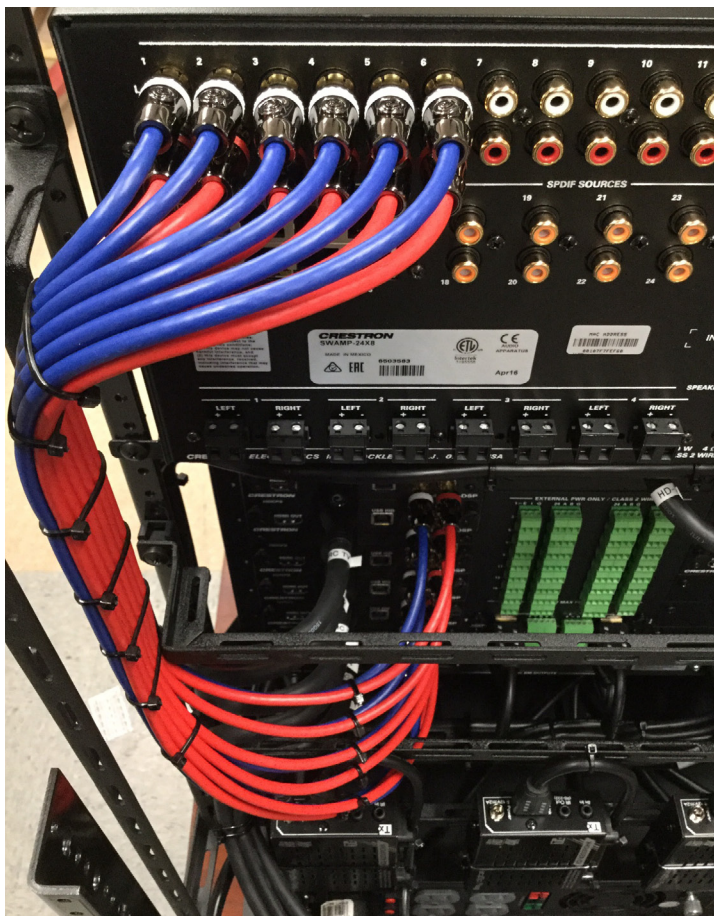


## This is Your Captain Speaking

The Crew Quarters was outfitted with a sound system as well (“we have to take care of the captain,” said Blanchard) with another built-to-match SPL3 sound bar and a PowerPipe subwoofer nestled under the bunk. The captain can use the video switching capability of the Crestron control system in order to view all nautical data as well as the engine room and outdoor camera images on the entertainment screen in the Crew Quarters.



*A down-facing SPL3 sound bar nestled into the woodwork above the mirror delivers sound in the master head*



## Conclusion

The client loves the A/V entertainment system aboard Lady Rebecca. “James Loudspeaker builds unique products and creates customized solutions that enable us to say “yes” to our clients and deliver the best possible performance,” said Blanchard. “Their team has been doing this for many years—they offer a unique service and a high quality range of products. I find that I am most likely to stick with a manufacturer that is truly supporting my business and creative initiatives.”