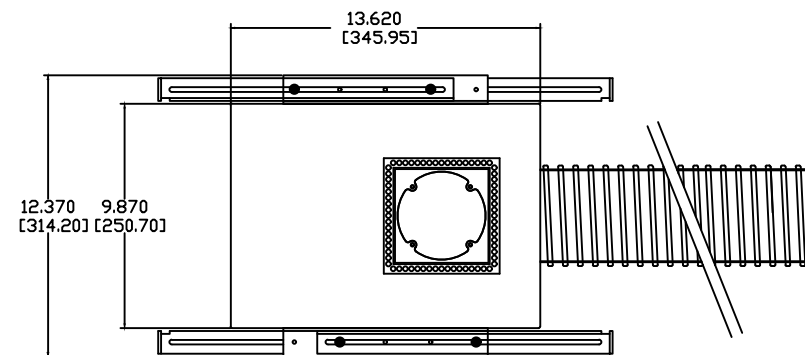
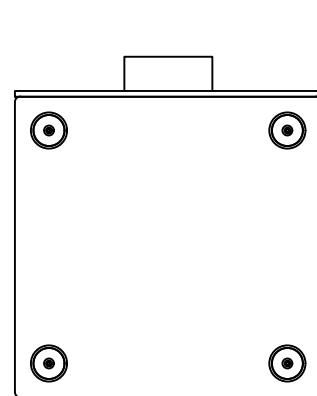
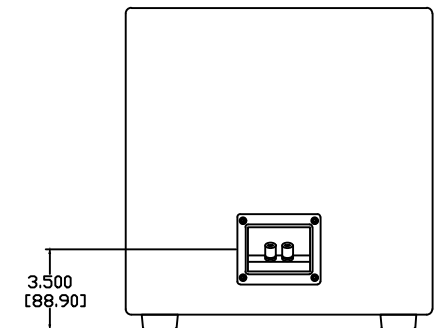
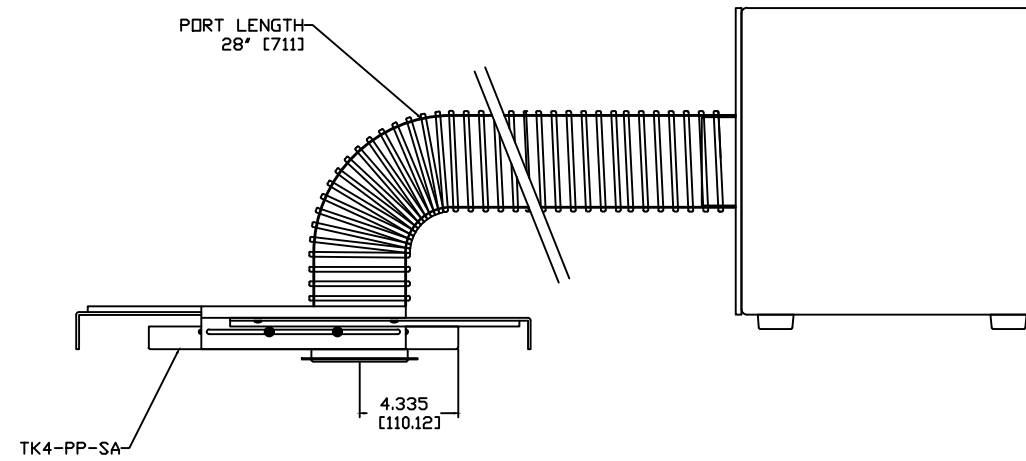
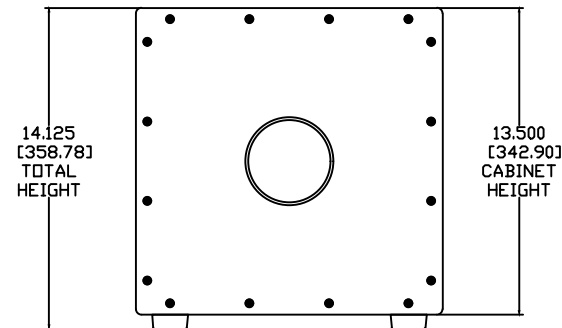
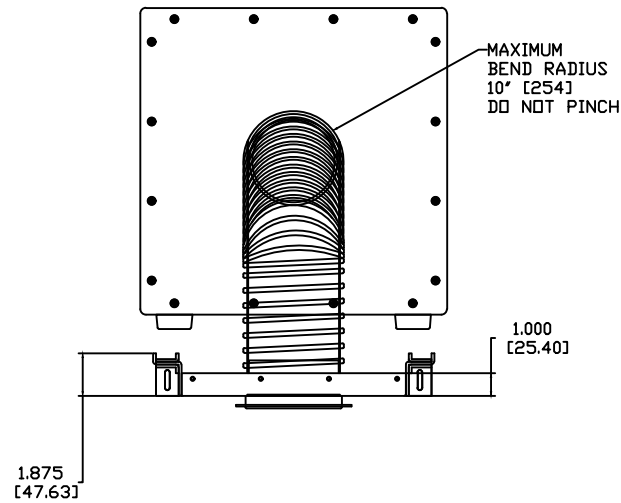
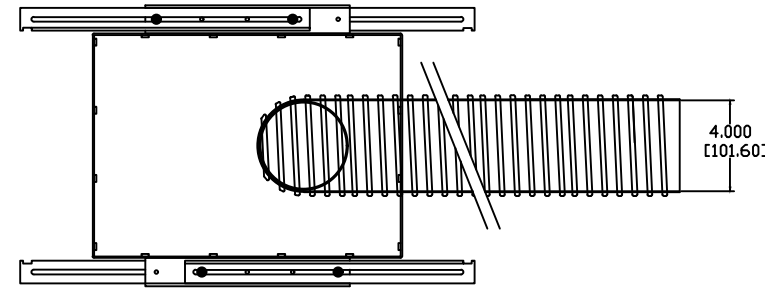
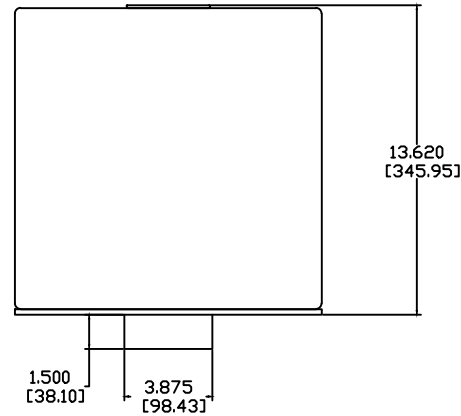
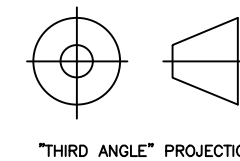


REVISIONS				
ECN	REV.	DESCRIPTION	DATE	APPROVED
	A	RELEASE FOR PRODUCTION	07-22-09	
	B	DRAWING UPDATED	11-02-18	
19025	C	REVISED PORT PLATE HOLE PATTERN	07-17-19	



- NOTES:
- 1: MATERIAL - 5052 ALUMINUM UNLESS OTHERWISE SPECIFIED
 - 2: FINISH: STUDIO BLACK POWDER COAT UNLESS OTHERWISE SPECIFIED
 - 3: PORT LENGTH : 4" DIA. @ 28" LONG



PROPRIETARY INFORMATION		THE DESIGNS, INFORMATION, AND DATA CONTAINED HEREIN ARE PROPRIETARY AND ARE SUBMITTED IN CONFIDENCE, AND SHALL NOT BE DISCLOSED, USED OR DUPLICATED IN WHOLE OR IN PART, FOR ANY PURPOSES WHATSOEVER, WITHOUT THE PRIOR WRITTEN PERMISSION OF JAMES LOUDSPEAKER LLC, 535 AIRPARK RD, NAPA, CA 94558. THIS LEGEND SHALL BE MARKED ON ANY REPRODUCTIONS HEREOF IN WHOLE OR IN PART. RECEIPT OF THIS DOCUMENT SHALL BE DEEMED TO BE AN ACCEPTANCE OF THE CONDITIONS SPECIFIED HEREIN.	
JAMES LOUDSPEAKER		1200PT-1M.TK4-PP-SA	
P/N: -		DWR #: 090930-B00	
REVISED BY: S. LOESCH		DRAWN BY: M. PARK	
DATE: 11-05-08		SCALE:	
APPROVED:		DRAFTING APPROVED:	
DO NOT SCALE DRAWING		DRAWING NOT TO BE USED FOR CNC	
TOLERANCES: ANG: ± = .5°		FRACT. ± = 1/32	
DECIMALS: .XX ± = .01		.XXX ± = .005	
REVISION: C		SHEET 1 OF 4	