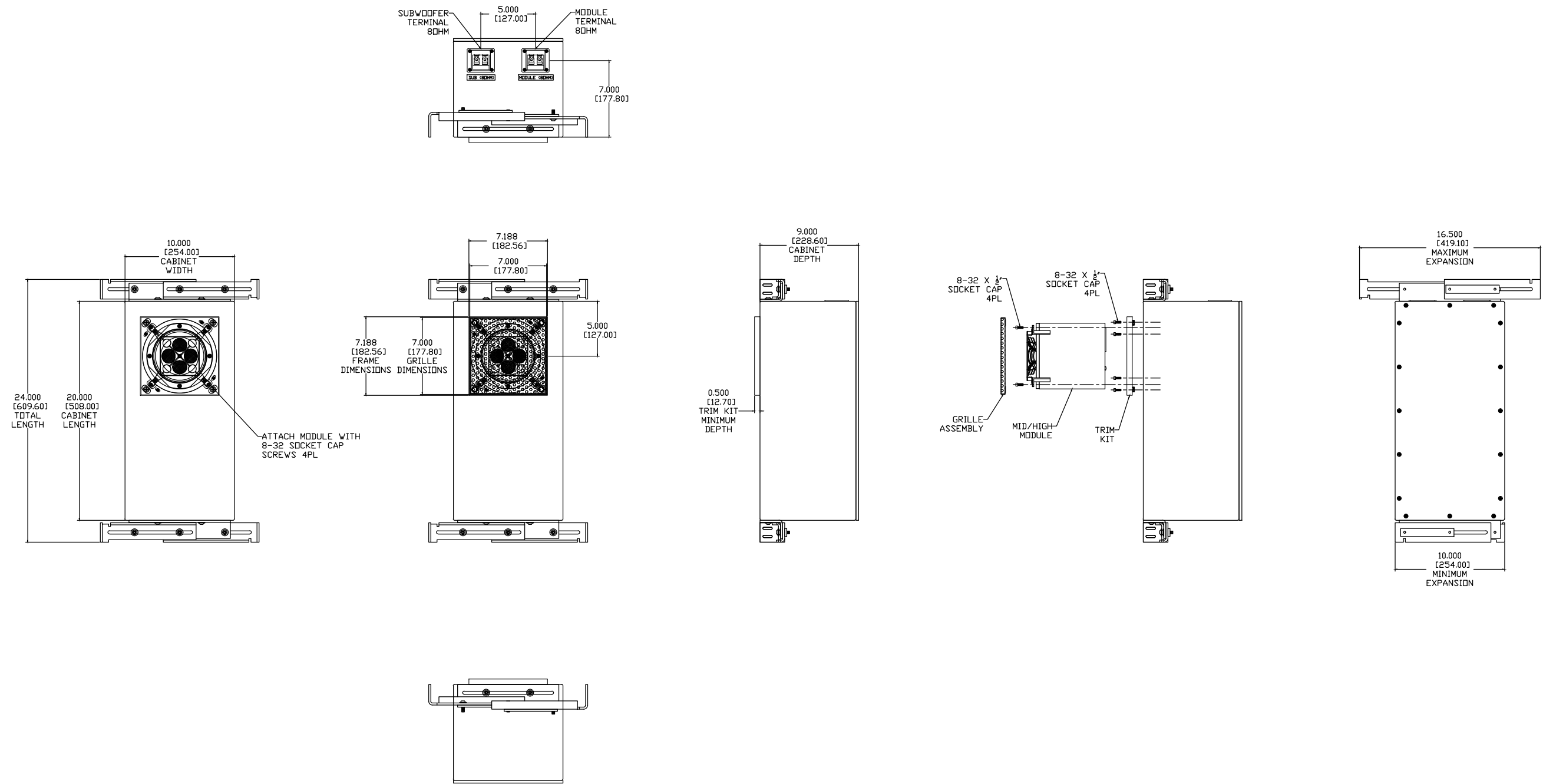
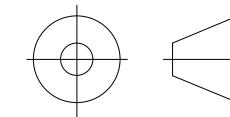


REVISIONS				
ECN	REV.	DESCRIPTION	DATE	APPROVED
	A	RELEASE FOR PRODUCTION	10-11-19	
20019	B	MOVE DRV.8.003.1 UP BY 0.625"	03-30-19	
20052	C	MODULE UPDATED WITH STANDARD NETWORK	10-06-20	
21015	D	HOLES REMOVED FROM SIDES; PORT REVISED	03-30-21	
21007		BRACKET REDESIGN WITH TOP BRACKET PLATE		
21010		REVISED TRIM KITS PORT ID; SLOTS; MAGNET HOLES		
21022	E	UPDATED TO PG11 GLAND	05-06-21	



NOTES:

- 1: MATERIAL - 5052 ALUMINUM
UNLESS OTHERWISE SPECIFIED
- 2: FINISH: TBD
- 3: TRIM KIT DESIGNED TO BE USED WITH 1/8" THICK SPACERS



"THIRD ANGLE" PROJECTION

PROPRIETARY INFORMATION
 THE DESIGNS, INFORMATION, AND DATA CONTAINED HEREIN ARE PROPRIETARY AND ARE SUBMITTED IN CONFIDENCE, AND SHALL NOT BE DISCLOSED, USED OR DUPLICATED IN WHOLE OR IN PART, FOR ANY PURPOSES WHATSOEVER, WITHOUT THE PRIOR WRITTEN PERMISSION OF JAMES LOUDSPEAKER LLC, 2185 PARK PL, MINDEN, NV 89423. THIS LEGEND SHALL BE MARKED ON ANY REPRODUCTIONS HEREOF IN WHOLE OR IN PART. RECEIPT OF THIS DOCUMENT SHALL BE DEEMED TO BE AN ACCEPTANCE OF THE CONDITIONS SPECIFIED HEREIN.

JAMES LOUDSPEAKER

SA853Q-9

EXTERNAL DIMENSIONS

P/N: -

DWR #: 190410-S401

REVISED BY: P. KADLEC

DRAWN BY: S. LDESCH

DATE: 04-10-19

APPROVED:

DRAFTING APPROVED:

SCALE:

TOLERANCES: ANG: ± = .5° FRACT. ± = 1/32
 DECIMALS: .XX ± = .01 .XXX ± = .005

REVISION: E