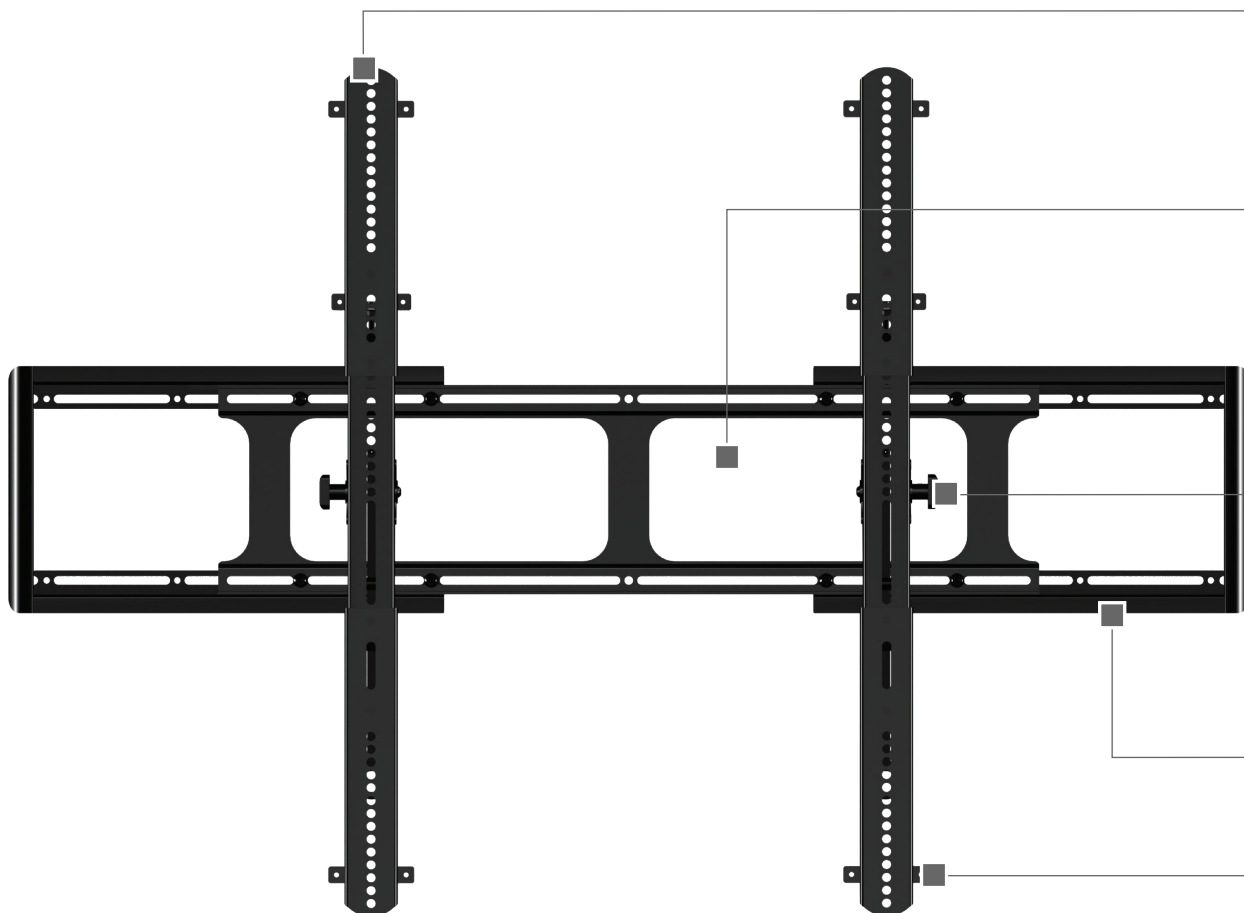


SANUS®

BLACK SERIES



MODEL
CIXT1-B1

UPC
793795529848

DEPTH
2.5"

PACKAGE WEIGHT
21 lbs / 9.5kg

MOUNTING PATTERNS - VESA
Min: 200 x 200 | Max: 1100 x 800

SUGGESTED TV SIZE RANGE
40"-110"

MASTER PACK QUANTITY
2

WEIGHT CAPACITY
300 lbs

TILTS
+7°/-10°

**MASTER PACKAGE
DIMENSIONS (w x d x h)**
33.6" x 11.68" x 7.31"

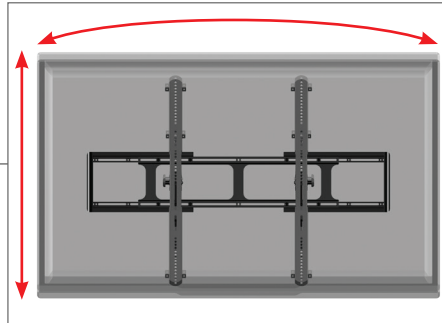
PRODUCT DIMENSIONS
(w x d x h)
33.43"-52.93" x 2.41" x 17.53"-32.49"

**MASTER PACKAGE
WEIGHT**
44.4 lbs / 20kg

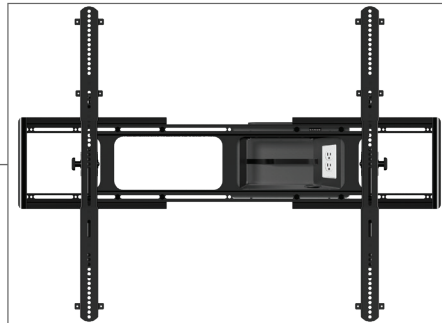
PACKAGE DIMENSIONS
(w x d x h)
36.59" x 10.88" x 3.32"

**COMPATIBLE WITH
UP TO 2 CIASP1**

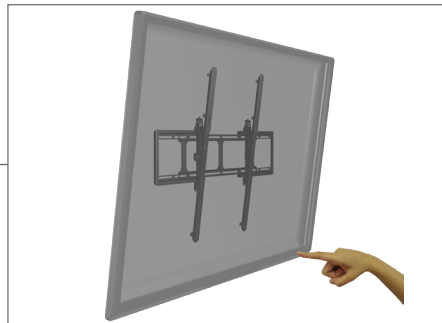
CIXT1 – EXTRA LARGE TILTING MOUNT



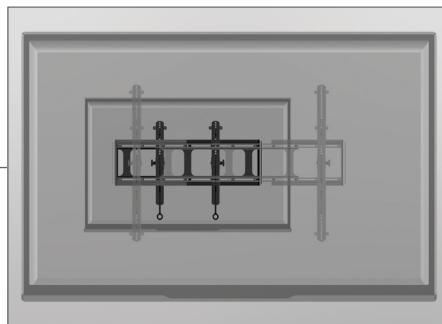
New ProSet Plus™ post install height and level adjustments allow for up to one full inch of height and level adjustment.



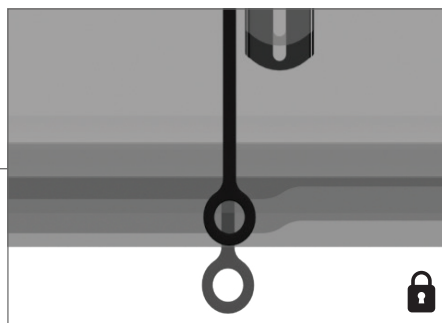
Open wall plate design allows mounting directly over most wall boxes and electrical outlets.



Virtual Axis™ Fingertip tilt allows for easy TV adjustments and quick access to cables.



CIXT1 comes with extender brackets that easily attach to accommodate large hole patterns. Brackets are also compatible with CILT1 and CILL1.



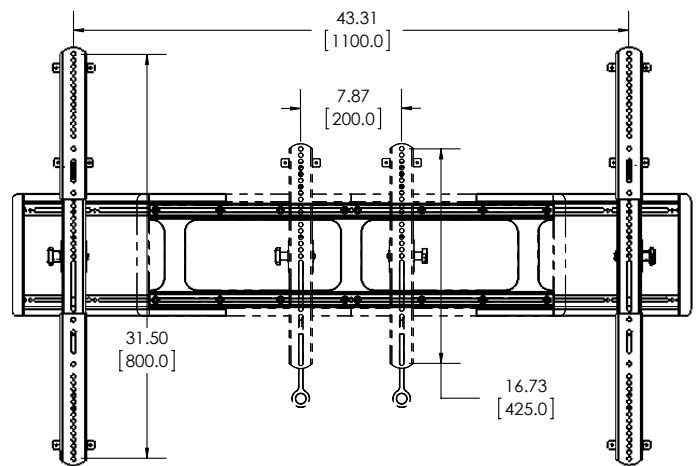
High quality Quick-Release tabs instantly unlock the TV from the wall plate and adjust to line up with the bottom of the TV. Optional padlock adds security.

SANUS®

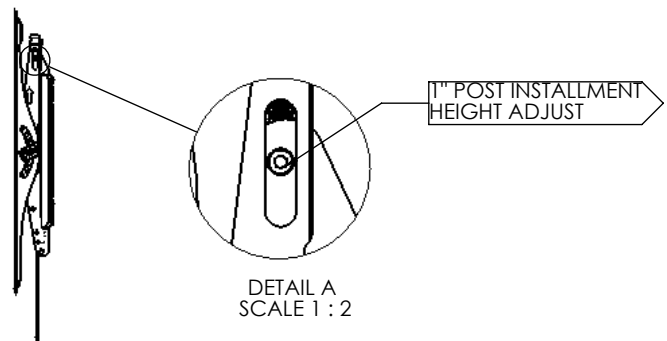
BLACK SERIES

CIXT1 –
EXTRA LARGE
TILTING MOUNT

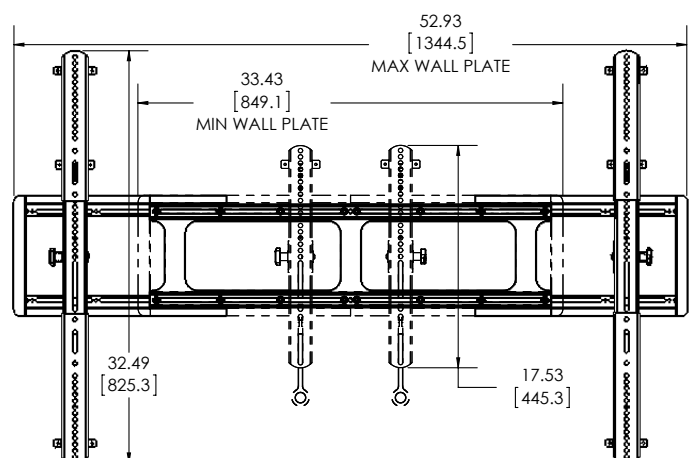
TV INTERFACE - VESA

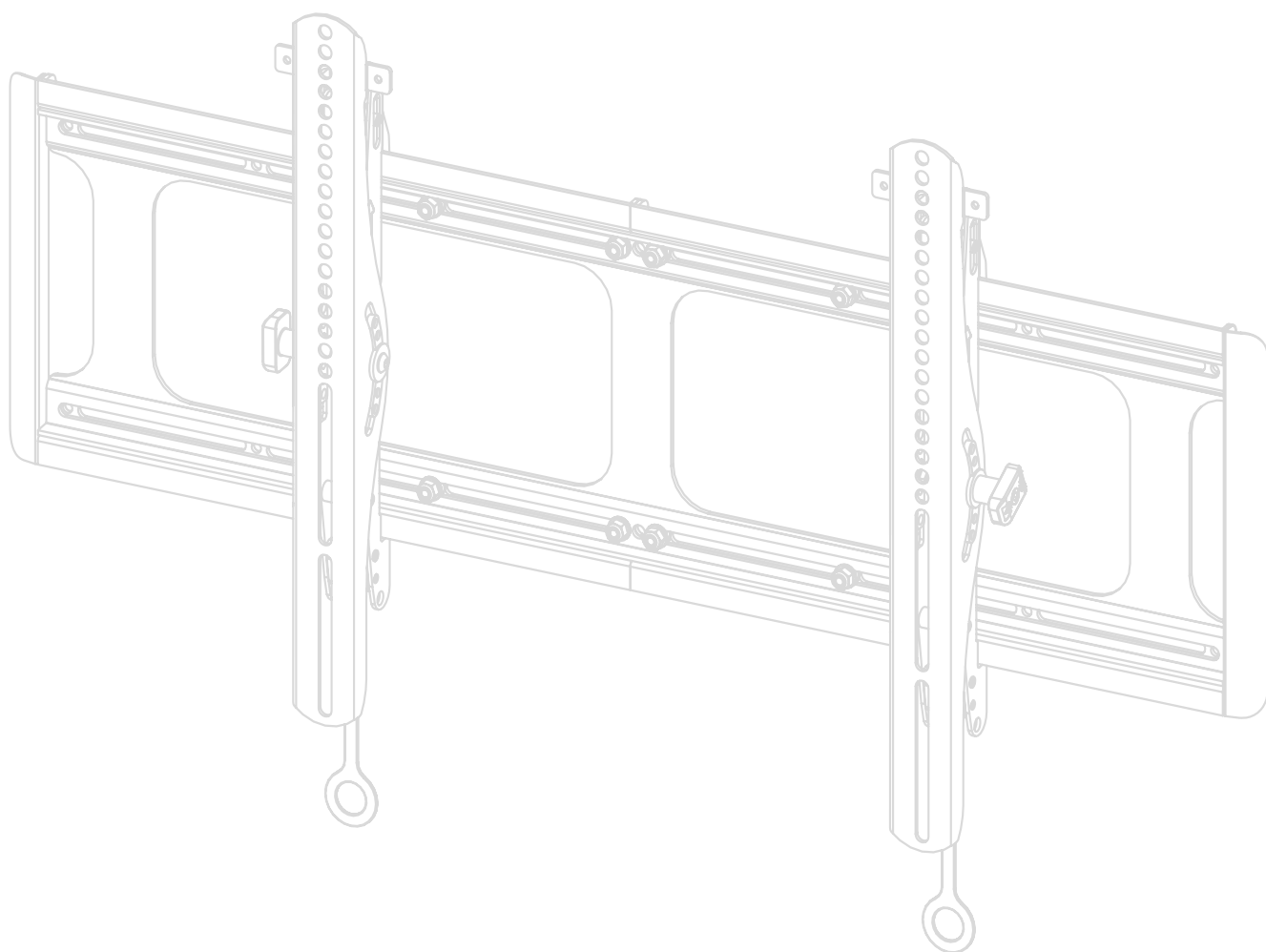


SIDE VIEW - HEIGHT ADJUSTMENT

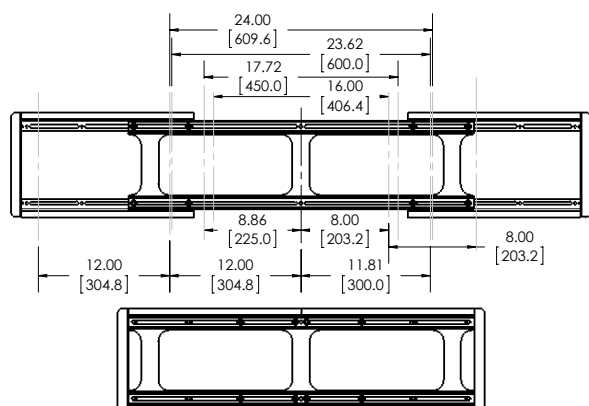


FRONT VIEW





WALL PLATE



WALL PLATE OPENING

