



Sazgar Engineering Works Limited

Head Office: 88-Ali Town, Thokar Niaz Baig, Raiwind Road, Lahore, Pakistan.

UAN: 3444-SAZGAR (729-427) ☎ +92-42-35297863

✉ info@haval.pk | 🌐 haval.pk | 📱 HavalPakistan | 📺 havalpakistan



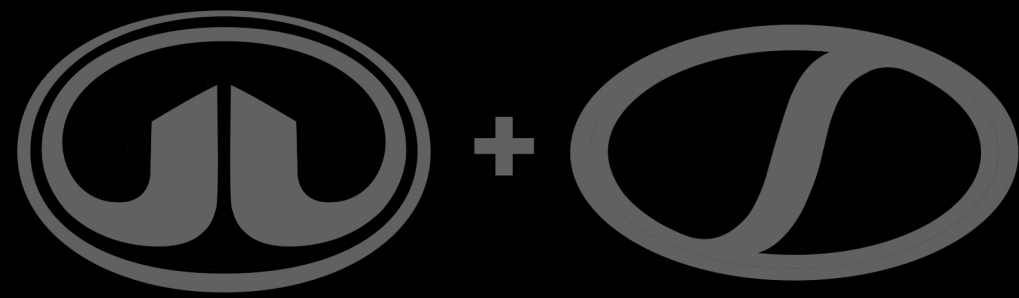
GWM TANK

NOTHING IS UNREACHABLE



**ALL NEW
GWM TANK 500**

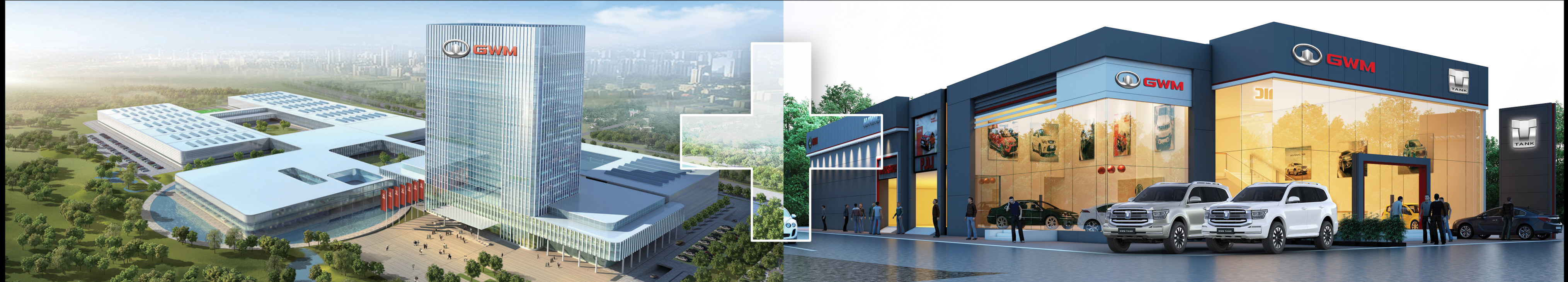




Introducing the New TANK 500

From your Partners in automotive excellence.





GWM is a world-renowned vehicle manufacturer and the parent company of TANK, Haval and ORA vehicles.

At GWM, everything we do is grounded in our corporate philosophy: improving little by little, every day. From building world-class research and development (which enable continuous innovation) to following the 'excessive investment'

principle (which drives industry leadership), we relentlessly put our philosophy into practice.

GWM is a global SUV specialist and creators of this TANK 500 Luxury SUV. We are proud to make vehicles that combine the best components, technology and safety features from around the world.

With over 7 million sales to date in more than 60 countries (and counting), we are the No.1 SUV brand in the world's largest market and have been for the past 12 years. We attribute our success to passion, drive and a commitment to listening to our customers.

Purchasing a TANK 500 Luxury SUV ensures the best of all worlds. You not only get a vehicle designed for any road you can throw at it, but it is backed by two powerhouse automotive companies. GWM and SAZGAR have an extensive history of understanding the Pakistani Market and providing exceptional solutions to all your driving needs.

The TANK 500, with its uncompromised quality and unparalleled safety features

coupled with the superior support and after-sales service of SAZGAR, ensures your driving experiences will be completely worry-free.

SAZGAR has been producing superior automotive solutions in Pakistan for over 30 years. We understand our market and have been responding to its ongoing driving evolution since day one. We pride ourselves on taking care of you.

SAZGAR was established in 1991 as a public limited company. We have grown to employ more than 1000 people in Pakistan alone. SAZGAR quickly became a household name in the automobile industry, and continues our push to improve life for those who have come to trust our products and expertise. We proudly lay claim to being the first 3-wheeler manufacturer in Pakistan and the only OEM from Pakistan to have its indigenous vehicles exported to more than 25 countries across the globe.

SOUGHT-AFTER SOPHISTICATION

TANK provides that potential in a vehicle that breaks free from the constraints of the expected. A unique design of dynamic utility that conquers both urban and off-road terrain. Unleashing potential without sacrificing comfort or convenience.



INDULGE IN ELEVATED COMFORT WHERE LUXURY MEETS INNOVATION

Step in to pure cabin luxury. The ultimate fusion of luxury and performance. Meticulously crafted and delivered at once in this exceptional appreciated detail. A ride that embodies elegance and power that elegantly echoes its striking exterior. Step into a refined journey impressive to the eye and spacious cabin fully equipped with cutting-edge technology for unrivalled comfort and convenience. Unleash the perfect blend of luxury, innovation, and power.



Full Multiple Driving Mode Control: Urban, Suburban & Off-Road Terrain



Professional off-road suspension and body-on-frame chassis



Front & Rear fully automated differential locking system complete with M-Lock Four Wheel Drive.



TANK Turn Agile U-turn capability



Creep Mode 24° approach angle



Optional 64 colour ambient lighting system



12 speaker 'Infinity' sound system



Meticulously tailored premium-grade Nappa Leather Seats



Exceptional attention to interior detail illustrated by the stunning Gem-Design chronograph clock dash



Massive 14.6" Infotainment Display which is fully Apple CarPlay & Android Auto compatible.

NOTHING TIMID ABOUT IT

Elegance and excellence combine to ensure a quiet, comfortable escape from whatever has stolen your attention. Steal it back with the New TANK 500.



BUILT BOLD AND BEAUTIFUL

Tackle the most challenging conditions with absolute confidence. Invite the spirit of exploration with superior off-road technology and break boundaries without limitations.



Wading Depth Detection
Water depth detection system



Double glazed, sound-dampening
windshield and driver & passenger
windows for superior quiet ride.



Fiercely Competitive
Fuel Consumption



Automated Off-Road
cruise-control system



11 driving modes for urban,
suburban, and off-road
terrain conditions



Onboard instant energy management
adjustments based on road
condition predictions.



Sober grille +
LED split headlamps



Exterior mounted spare tire to
free-up even more interior
storage space

ALL NEW GWM TANK 500

EQUAL MEASURE OF ASSERTIVE STRENGTH AND REFINED LUXURY

Completely engineered to stand up and stand out. Stylish sophistication packed with power that ensures it can withstand the rigours of whatever road you throw at it.

Forward thinking design and durability to help you define driving success, your way.





12.3" LCD
Instrument Cluster

14.6" Infotainment
System

Stunning timeless
chronograph

Driving Mode Control
provides 11 All-terrain Options

• Electric Panoramic Sunroof

12 speaker Infinity sound system
with independent amplifiers

8-way power driver seat
adjustment + 4-way lumbar support

Massively expansive
interior cabin space and a
true 7 passenger capacity

Meticulously tailored
premium-grade
NAPPA leather seats

98 litres of cargo
capacity. Expanding to
795L in five-seat mode
and 1459L with the
middle-row folded down.

PREMIER HYBRID TECHNOLOGY

Take charge of every journey with the TANK 500 Hybrid. Escape the confines of mere roads with the exhilarating acceleration of its 2.0T (litre) Turbo engine. Providing over 345 horsepower at 648 N.m. maximum torque.



INDULGE IN ELEVATED COMFORT

Step in to pure cabin contentment. Ergonomically engineered to a perfect blend of generous space and appreciated detail. Well planned, considerably executed in a true seven-seater space that will make each journey impressive to your passengers... from the moment they open their door.



Parallel Drive Mode
Automatic determination to draw on fuel and electricity to ensure optimum torque output



Shared Responsiveness
Fuel + Electricity
Perfect blend of power



Impressive Battery Warranty
8 years / 150,000 km



Powerboost
Amplified transmission assistance



Elegant Automated
slide-out Side Steps



Abundant true 7-seat cabin



Full rear-passenger
climate control panel



Unprecedented third-row
passenger control panel

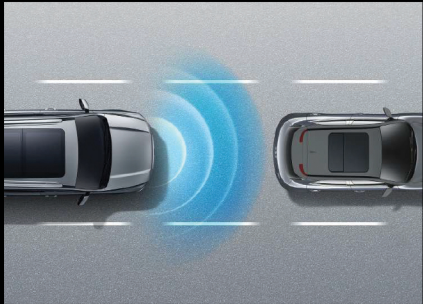
WHERE THE
GWM TANK TAKES YOU...

ROADS DON'T
REALLY MATTER.

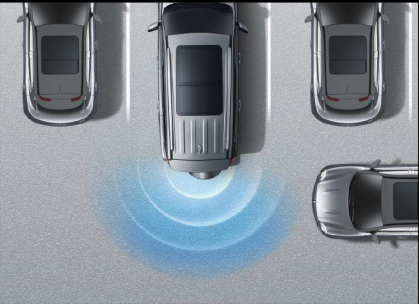


PIONEERING APPRECIATED TECHNOLOGY

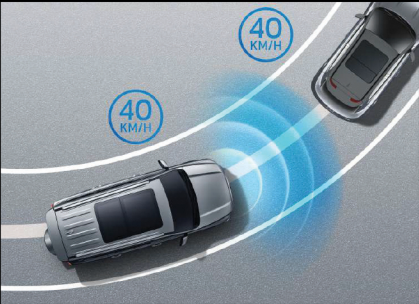
TANK features enumerable amenities that often go unseen. Aside from responsive performance and commendable cabin comfort, there is much more to a TANK. Seamlessly integrated safety and smart-technology designed specifically for peace of mind. Closely consider the following details:



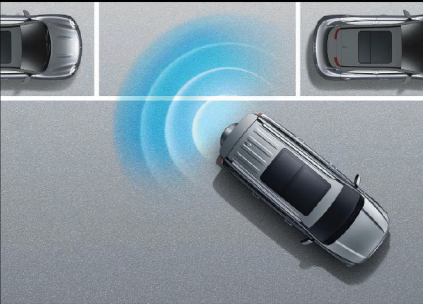
AEBI AUTO EMERGENCY BRAKING + INTERSECTION
MEB MANEUVER EMERGENCY BRAKING
FCW FRONT COLLISION WARNING



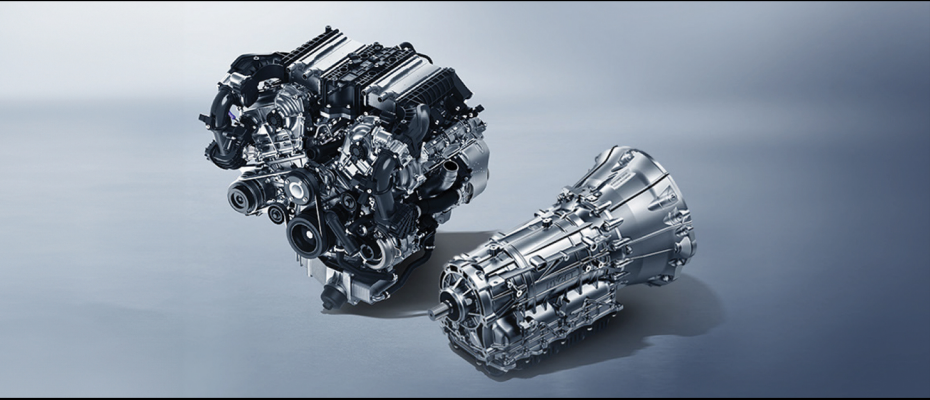
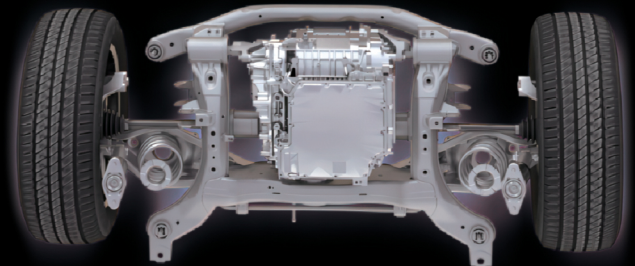
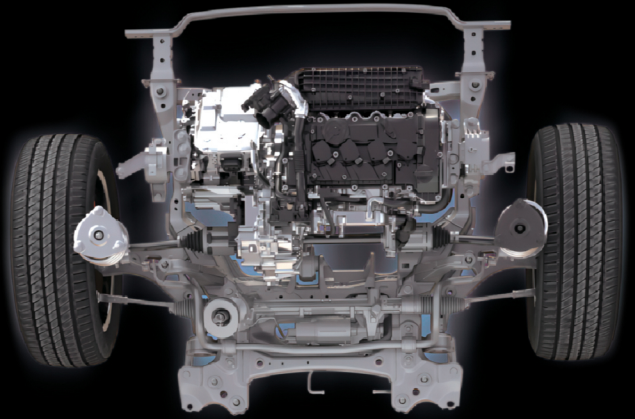
RCTA REAR CROSS TRAFFIC ALERT
RCTB REAR CROSS TRAFFIC BRAKING



ACC ADAPTIVE CRUISE CONTROL
ICC INTELLIGENT CORNERING
TJA TRAFFIC JAM ASSIST



IIP 3 TYPES OF INTEGRATION INTELLIGENT PARKING
360° SURROUNDING CAMERA



TANK's sophisticated 2.0 litre Turbo Hybrid Engine goes beyond impressive horsepower and torque to provide seamless and dependable performance and power via its 9AT Automatic Hybrid Transmission.

Each moment of your journey allows you to focus more on the destination rather than the drive to get there.



Tackle all terrains with TANK. Compliments of an impressive array of 11 Driving Mode Options, Triple-Lock Automated Differential system and the superior GWM Intelligent 4WD Technology.

Ensuring a level of unparalleled confidence and control wherever life may take you.



DEALERSHIP CONTACT

City	Dealers Name	Contact No.
Lahore	Queens Motors	0323-8777778
Lahore	Hashmi and Hashmi Motors	0321-8462133
Lahore	Central Motors LLP	0300-0341444
Lahore	Haval Club	0308-4444125
Karachi	Automotive Technologies	0213-4188886
Islamabad	Haval Islamabad Motors	051-2802242
Rawalpindi	Haval Rawalpindi Motors	0333-6205064
Faisalabad	Sitara Lyallpur Motors	0321-8696766
Gujranwala	HB Gujranwala Motors	0311-1142825
Gujrat	Kaira Motors	0333-8403030
Multan	Southern Motors	0311-1446677
Sialkot	Haval Sialkot	0315-0204777

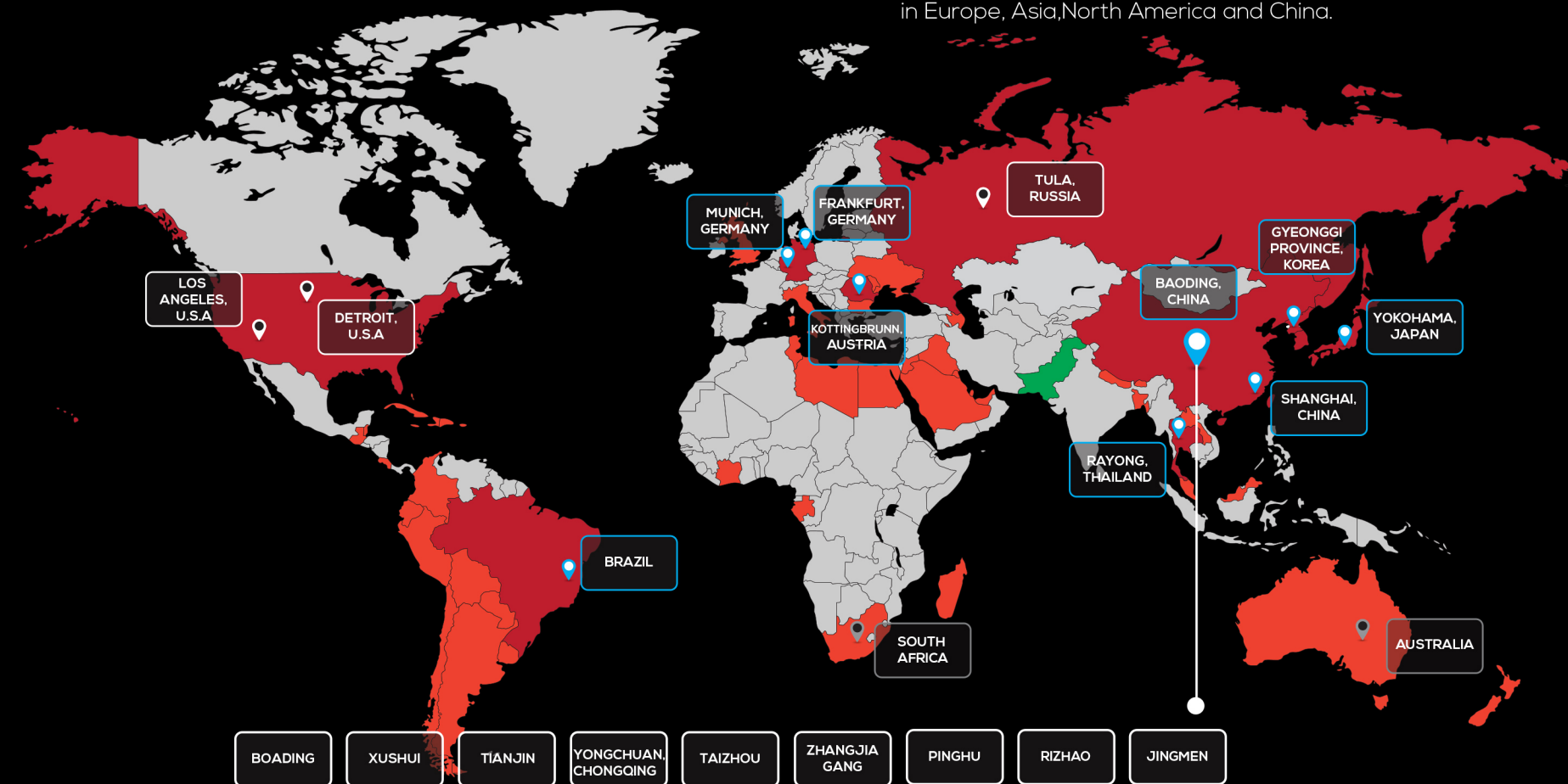


PAKISTAN DEALERSHIP NETWORK



GWM'S GLOBAL FOOTPRINT

Overseas sales cover more than **60** countries worldwide with R & D centers in Europe, Asia, North America and China.



GWM's goal is to go global

GWM Group Chairman Jack Wey's Vision

"As the founder of this company, I would be extremely disappointed and frustrated if the company ended up as a 'merely Chinese car company' when i retire."

EXTERIOR COLORS



Champagne Golden



Titanium Silver



Jet Black



Snowy

INTERIOR COLORS



Blue Rice



Black



Double Brown

DIMENSIONS



TANK 500 - HYBRID

TANK 500HEV CONFIGURATION SHEET	
Model	CC2030BN31CHEV
Driveline	4WD
Emission Standard	Euro V
Engine/Transmission	2.0T(Gasoline)+9HAT
Variant	High
CHASSIS&WHEEL	
Front Suspension: Double Wishbone	•
Rear Suspension: Multi Link Non-Independent	•
Rear Disc Brake	•
Electric Cooling Fan	•
Off-Road Cruise Control	•
Adjustable Energy Recovery Level	•
Handle Shift Function	•
Rear Axle Electronically Controlled Differential Lock	•
Front And Rear Axle Electronically Controlled Differential Lock	◦
Driving Mode Optional+AwdAdaptive+Intelligent Awd Mode+Expert Mode	•
Race Start	•
ABS+EBD+TCS+RMI+ESC+BAS+EPB	•
8*18: Alloy Wheel Rim+Wheel Spoke-Type C+265/60 R18 Tire+Tire-Type G	•
8.5*20: Alloy Wheel Rim+Wheel Spoke-Type F+265/50 R20 Tire+Tire-Type F	◦
Outer Back Mount Spare Tire	•
TPMS	•
Kilo Per Hour Adjust Alarm	•
EXTERIOR COLOR & SUITES	
A01 Golden	◦
Snowy White	•
B05 Silver	◦
NT Black	◦
Roof Rack	•
Electric Treadplate	•
Outside Door Handle: Body Color With Chromplate	•
Self-Sucking Tailgate	•
Trailer Power Outlet	•
Front Radar	•
Chassis Guard Board	•
Panoramic Sunroof	•
Auto Flat Wiper	•
Rear Wiper	•
Shark Antenna	•
INTERIOR COLOR & SUITES	
Black	•
Blue/Beige	◦
Double Brown	◦
Driver Side + Passenger Side Keyless Access	•
Microfiber Leather Steering Wheel	•
Trunk Cover	•
Fixed Rope Hook	•
Manual Window Visor Curtain(2Nd Row)	•
Two Extra Power	•
220V Power(400W)	•
Driving Recorder Usb Power Interface	•
Transparent Underbody	•
MULTI-MEDIA	
12.3 Inch Cluster With Light Adjust	•
Bluetooth	•
360 View System	•

Av+Mp5+Wi-Fi	•
Front Usb+Back Usb	•
12 Speaker	•
Speed Sensing Volum	•
Cell Phone Connector	•
Active Noise Reduction System	•
14.6" Color Multitouch Screen	•
Carplay + Android Auto	•
Front Wireless Charging	•
W-Hud	•
Electronic Clock	•
SEATS & SAFETY BELT & STEERING WHEEL	
Driver Seat: Electric+8 Direction+Memory+Welcome	•
Passenger Seat: Electric+6 Direction+Memory+Welcome	•
6/4 Back-Rear Seat	•
Electric 4 Direction Adjust-Driver Seat Waist Support	•
Rear 2nd Seat Folding: 1/2 Electric Folding	•
Central Armrest With Fixed Cupholder	•
Nappa Leather Seat	•
2nd Row Seat: Backrest Adjust (Manual)	•
2nd Row Seat: Manual 4 Direction Adjust	•
3Rd Row Seat: Electric 2 Direction Adjust	•
Front Seat Headrest: Manual 4 Direction Adjust	•
2nd Row Seat Headrest: Manual 2 Direction Adjust	•
Front Seat Ventilation With Massage	•
Air Bag: Dual+Front Side+ Curtain	•
Rear Seat: Pretentioner+Load Limiter: 3P*3	•
Child Anchor	•
Seat Belt Unfastened Warning-Row(1,2)	•
Front Safety Belt: Pre-Tightening+Load Limiter+Pre-Tightening End Piece+Clt	•
Electric Power Steering (EPS)	•
Electric Adjust of Steering Wheel (4-Direction)	•
LIGHTS	
LED Headlamp	•
Headlamp Auto-Off With Following Home	•
Front Fog Lamp(With Steering Auto Lighting)	•
Rear Fog Lamp	•
Led Light Guide-Hight Mount Stop Lamp	•
Auto Headlight	•
Daytime Running Lights	•
Front Room Lamp(With Soft Light Lamp, With Glasses Box)	•
Side Roof Lamp	•
Ambient Lamp-Multi Color : Rhythm+Running Water	•
Glove Box Lamp	•
Light Automatic Switching System: High/Low	•
Foot Lamp	•
Luggage Light	•
Dashboard Atmosphere Light	•
Close To Lighting Function	•
GLASS/REARVIEW MIRROR	
Osurr: Memory+Electric Fold+Angle Adjust+Heat+Side Repeater+Lamp	•
Rear Door Glass-Grey	◦
Rear Door Glass-Green	•
Rear Hotline Defrost	•
Driver Window: One-Touch Lifting+Safety+Auto Close	•
Passenger Window: One-Touch Lifting+Safety+Auto Close	•
Rear Seat Window: One-Touch Lifting+Safety+Auto Close	•
Soundproof Glass(Front/Rear Door, Front Windshield)	•

Rear Windshield Washer System	•
Sun Visors With Mirror & Lamp	•
Electronic Anti-Glare Mirror	•
INTELLIGENT SECURITY CONFIGURATION	
Traffic Sign Reminder + Speed Alarm Function + Intelligent Speed Assistance	•
Rear Collision Warning(Rcw)	•
Rear Camera Cleaning	◦
Aeb Junction Assist	•
Low Speed Emergency Braking	•
Front Radar Auto Turn-On-Low Speed	•
Auto Collision Unlock	•
Door Open Warning(Dow)	•
Emergency Brake Warning System	•
Auto Door Lock	•
Astern Radar + Astern Side Warning + Astern Side Brake	•
Uphill And Downhill Assistance	•
Automatic Vehicle Hold(Avh)	•
Secondary Collision Mitigation(Scm)	•
Adaptive Cruise + Intelligent Cruise Assistance + Traffic Jam Assistance + Intelligent Cornering	•
Collision Cut-Off System	•
Edr Accident Data Logger	•
Fully Automatic Integrated Parking System	•
Engine Immobilizer	•
Lane Departure Warning + Lane Stay + Lane Center Stay + Emergency Lane Stay + Smart Dodge	•
Lane Change Assist	•
Driver Fatigue Monitor System	•
Front Collision Warning + Automatic Emergency Braking + Pedestrian Safety Assistance + Bicycle Safety Assistance	•
A/C & OTHERS	
Dust Filter	•
Auto A/C(2-Zone)	•
Rear A/C Outlet-Top/Under	•
Auto Indoor Defogging	•
Fragrance System	•
Outside Temperature Display	•
A/C Comfortable Mode Optional	•
Rear Auto A/C+Controller	•
Aid Kit	◦
Warning Triangle	◦
Fire Extinguisher(0.5Kg)	◦
Body Protective Film	◦