

HAVAL JOLION





Built for the world, by the world.

GWM is a world-renowned vehicle manufacturer and the parent company of HAVAL. At GWM, everything we do is grounded in our corporate philosophy: 'improving little by little, every day.' From building world-class research and development systems, which enable continuous innovation, to following the 'excessive investment' principle, which drives industry leadership, we relentlessly put our philosophy into practice.

HAVAL is a global SUV specialist and part of the rapidly-growing GWM group. We are proud to make vehicles that combine the best components, technology and safety features from around the world. With over 7.5 million sales to date in more than 60 countries (and counting), we are the No.1 SUV brand in the world's largest market and have been for the past 12 years. We attribute our success to passion, drive and a commitment to listening to our customers.



SAZGAR was established in 1991 and went public in 1994. It has more than 1000 employees. SAZGAR quickly became a household name in the automobile industry, with over 30+ years of experience. SAZGAR is proud to be the first electric 3-wheeler manufacturer in Pakistan and the only OEM from Pakistan to export its indigenous vehicles to 30+ countries including Japan.



BRAND VALUE

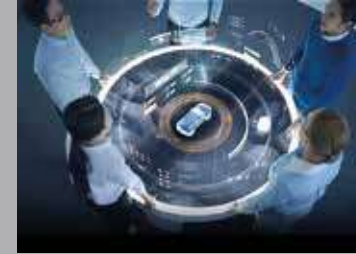
In March 2018, an international branding valuation institution released the Brand Finance Top 100 Most Valuable Auto Brands 2018. The HAVAL brand surpassed prestigious international brands such as Ferrari and Aston Martin rising to 16th place & becoming the most valuable Chinese car brand world over.



China's SUV Sales Crown for 12 Consecutive Years



The First Chinese SUV Brand with Sales Volume of 7.5 Million



Global Professional SUV Brand

HAVAL TECHNOLOGY CENTER

HAVAL Technology Center covers an area of 250,000 m², with a floor area of 260,000 m². HAVAL has a R&D team of more than 7,000 people, including over 100 overseas technical experts, and 14 types of large-scale comprehensive laboratories such as environmental wind tunnel laboratory, high-altitude environment simulation laboratory, EMC laboratory and vehicle four-wheel drive NVH semi-anechoic laboratory.



GWM SPENDS \$1B **ON THE NEW HIGH INTELLIGENT MODULAR TECHNOLOGY L.E.M.O.N PLATFORM**

High Performance, High Safety, High Ductility and Lightweight

L.E.M.O.N PLATFORM

Jolion is built on Great Wall Motors' latest billion-dollar global platform which is called 'L.E.M.O.N' – for lightweight, electrification, multi-purpose, omni-protection and network. It is designed to meet the latest efficiency, power and safety standards. The Jolion sits on a new modular (stretchable) architecture with INDEPENDENT SUSPENSION at each end, NEW ELECTRIC-ASSISTED STEERING, and a NEW OFF-THE-SHELF ESP SYSTEM. Haval also claims to have fitted seven “NVH ACOUSTIC PACKAGES” to cut road and wind noise, and to have produced the body from high-strength thermoformed steel with 2000 MPa of yield strength in parts.



BOLD
DESIGN



A Liberating escape
from the Ordinary



Functional Layout

Five Noise
Reduction NVH

Rotary Gear Knob

Power Heated Seats

Driver's Seat with 6-Direction
Electric Adjustable

Multi-Function
Steering Wheel

EXQUISITE AND EXCLUSIVE COCKPIT



Rotary Gear Knob



12.3" Infotainment System



Multi-Function Leather Steering Wheel



6-Way Electric Adjustable

CUTTING EDGE DESIGN



Seamless Connectivity



Apple CarPlay & Android Auto



Fast Wireless Charging

Three Screen Linkage



12.3-Inch Intelligent Screen



Heads-up Display



7-Inch Colored Instrument

SMART SAFETY

Careful and Considerate
Protection



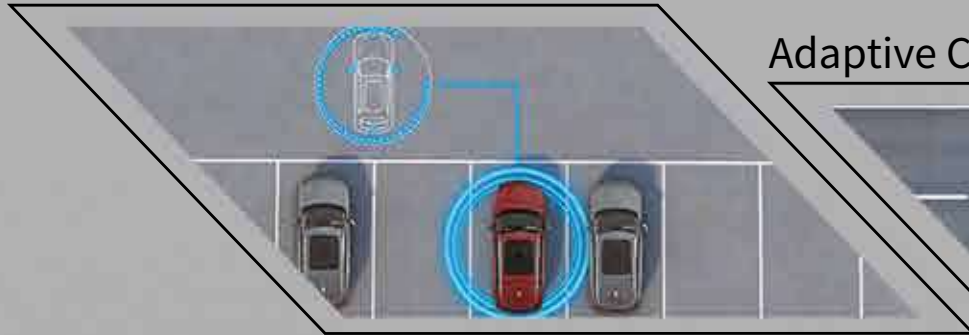
6 Omni-Directional Airbags



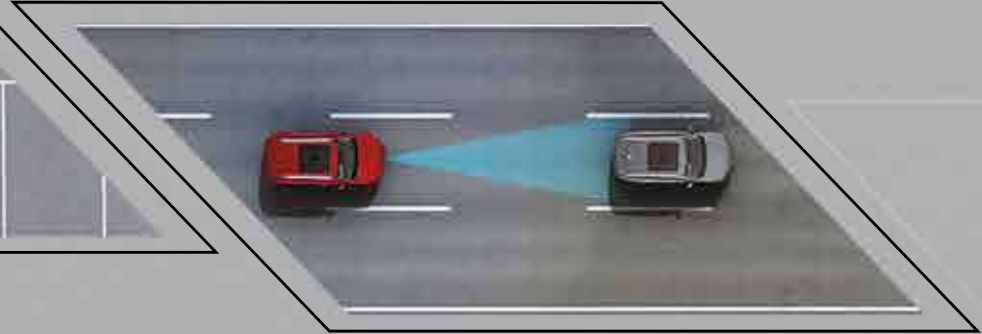
L2 Autonomous Driving

The integration of 360° view, full-speed adaptive cruise, collision warning and other functions offer you intelligent and safe driving.

360° Panoramic View



Adaptive Cruise Control




High Strength
Steel Body




Multiple Driving Modes

 Standard

 ECO

 Sport

 Snowfield



Mechanical Structure

Lighter mechanical structure, lower vehicle fuel consumption, multi-wheel chassis tuning, bringing better driving comfort.



4G15K Engine

Enhanced torque brings stronger power output, letting the vehicle standby and ready to go at any time.



Transmission

7DCT transmission adopts a low energy consumption system, with high transmission efficiency, stable performance and better NVH performance.



SUPER-LARGE TRUNK



Unrivaled Elegance, Versatile Capacity

Storage Space capacity: **337L**



2700mm Long Wheelbase

Large Rear Space





26
Storage
Spaces



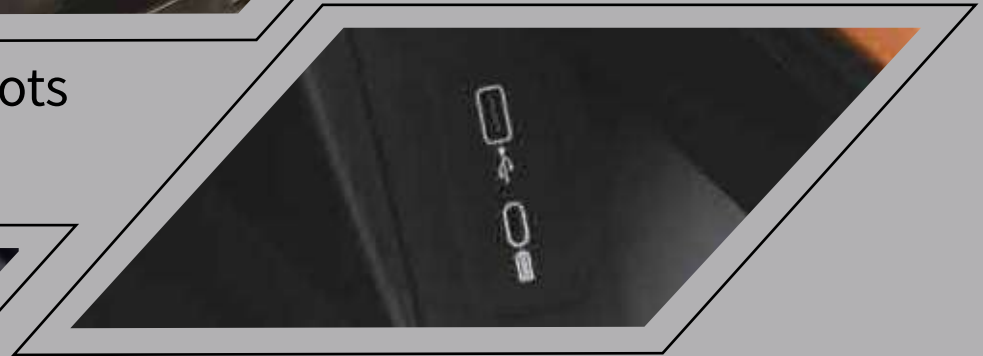
Luggage Hooks



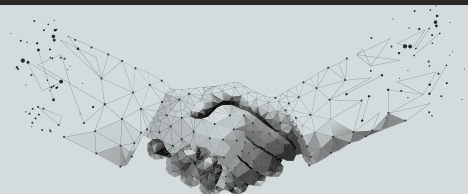
Back Row USB Slots



Encircling Seat



Front Row USB Type-A+C



DEALERSHIP CONTACT

City	Dealers Name	Contact No.
Lahore	Queens Motors	0323-8777778
Lahore	Hashmi and Hashmi Motors	0321-8462133
Lahore	Central Motors LLP	0300-0341444
Lahore	Haval Club	0308-4444125
Karachi	Automotive Technologies	0213-4188886
Islamabad	Haval Islamabad Motors	0302-8621222
Islamabad	Haval Experience	0320-8555007
Rawalpindi	Haval Rawalpindi Motors	0333-6205064
Faisalabad	Sitara Lyallpur Motors	0321-8696766
Faisalabad	Downtown Motors	041-2617144
Gujranwala	HB Gujranwala Motors	0300-2242794
Gujrat	Kaira Motors	0333-8403030
Multan	Southern Motors	0311-1446677
Sialkot	Haval Sialkot	0315-0204777

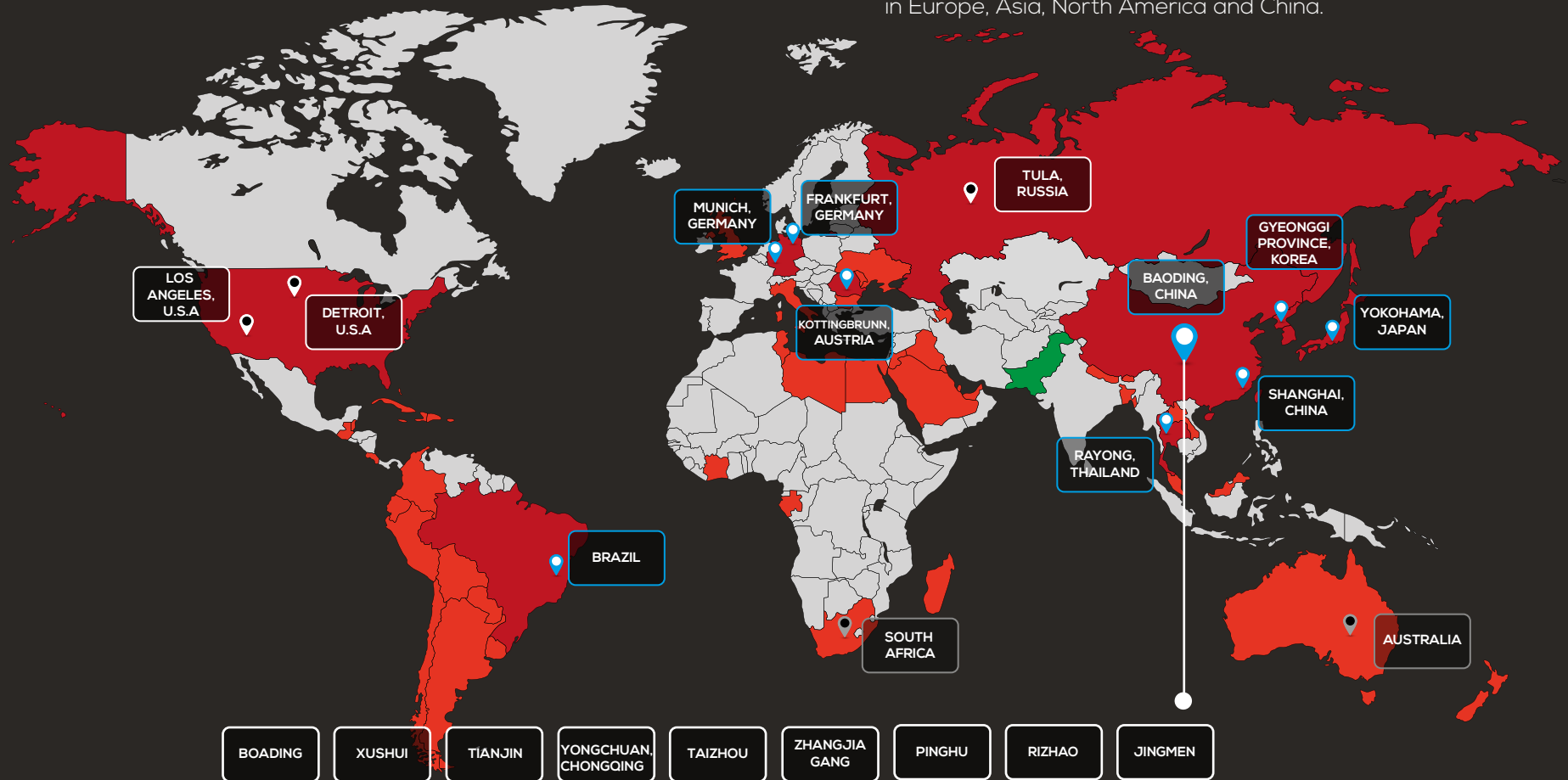


PAKISTAN DEALERSHIP NETWORK



GWM'S GLOBAL FOOTPRINT

Overseas sales cover more than **60** countries worldwide with R & D centers in Europe, Asia, North America and China.



GWM's goal is to go global

GWM Group Chairman Jack Wey's Vision

"As the founder of this company, I would be extremely disappointed and frustrated if the company ended up as a 'merely Chinese car company' when I retire."

BODY COLOR



Arctic White

Ayers Grey



Black Pearl



Burgundy Red



INTERIOR



WHEEL HUB



R18

SPECIFICATIONS

DIMENSIONS - ENGINE - TRANSMISSION	
Engine	1.5 T
Transmission	7 DCT
Driveline	FWD
Emission standard	Euro V +
Power KW (HP)	110 (150)
Torque	220 NM

CHASSIS & STEERING SYSTEM	
Electric Shift	●
Electronic Parking Brake (EPB)	●
Auto Hold	●
Disc Brakes (Front + Rear)	●
Electric Power Steering	●
T135/90 R17 Spare Tire	●
Drive Mode (Std, Eco, Sport, Snow)	●
Steering Mode (Sport, Comfort, Light)	●

EXTERNAL EQUIPMENTS	
Shark Fin Antenna	●
Front Boneless Wiper	●
Rear Bone Wiper	●
Automatic Headlamps+Automatic Wipers	●
Panoramic Sunroof (Open-Type)	●

INTERNAL EQUIPMENTS	
Leather Steering Wheel	●
Paddle Shift	●
2-Way Manually Adjustable Steering Wheel	●
Front 12V Power Outlet	●
Colored Combination Instrument -7 Inch (LCD)	●
Driver/Front Passenger Sunvisor W/Vanity Mirror & Light	●
Wireless Charge	●

SEATS EQUIPMENTS	
Leather Seats	●
6-Way Electric Adjustable Driver Seat	●
4-Way Manual Adjustable Front Passenger Seat	●
6:4 Separated Foldable Rear Seats	●
Power Heated Front Seats	●

LIGHTS	
LED Headlamps	●
Electric Height-Adjustable Headlamps	●
Way-Home Lighting	●
Rear Foglights	●
High Level Brake Lamp	●
Lights-On Warning System	●
Split Daytime Running Lamps	●

ACTIVE / PASSIVE SAFETY	
Dual SRS Airbags	●
Front Side Airbags	●
Side Curtain Airbags	●
ABS + EBD	●
ESC (Electronic Stability Control)	●
TCS (Traction Control System)	●
HHC (Hill-Start Assist Control)	●
HDC (Hill Descent Control)	●
RMI (Roll Movement Intervention)	●
BA (Brake Assist)	●
SCM (Secondary Collision Mitigation)	●
BOS (Brake Override System)	●
USB Interface	●
Parking Aid System	●
360 View	●
ACC (Adaptive Cruise Control)	●
ICA (Intelligent Cruise Assist) + Intelligent Turning	●
TJA (Traffic Jam Assistance)	●
FCW (Front Collision Warning) + AEB+AEB-P	●
AEB-Bicycle	●
LDW (Lane Departure Warning) + LKA (Lane Keep Assist)	●
LCK (Lane Central Keeping)	●
IACC (Integrated Adapted Cruise Control)	●
Intelligent Dodge	●
AEB-Crossroad	●
TSR (Traffic Sign Recognition) + Over Speed Warning + Intelligent Speed Assist	●
LCA (Lane Change Assist)	●
BSD (Blind Spot Detection) + LCA (Lane Change Assist)	●
Astern Side Warning + Astern Side Warning Braking	●
RCW (Rear Collision Warning)	●
DOW (Door Open Warning)	●
ELK (Emergency Lane Keeping)	●
Driver Drowsiness Detection	●
EDR (Event Data Recorder)	●
TPMS (Tyre Pressure Management System)	●
Automatic Collision Unlock Function	●
Collision Fuel Shutoff System	●
ISOFIX	●
W-HUD	●

IMMOBILIZER	
Keyless Entry System	●
Button Type Push-To-Start System	●
Car Locating Function	●
Anti-theft Alarm System	●
Locking Function While Driving	●
Door Ajar Warning System	●
Door Anti-Error Locking Function	●

MEDIA	
Radio Wireless Signal	●
Bluetooth Hands-Free Calls System	●
12.3 Inch Touch Screen	●
Smartphone Connection (Apple CarPlay + Android Auto)	●
2 High Tone Speakers + 2 Low Tone Speakers + 2 Full Frequency Speaker + DTS	●

AIR CONDITIONING	
Dual-Zone Auto AC	●
Outside Temperature Indicator	●
Dust Filter	●
Front Windshield Automatic Defog	●
Rear AC Vent	●

GLASS / REAR-VIEW MIRROR	
Privacy Glass	●
Electronic Internal Anti-glare Rear View Mirror	●
Electrically Adjustable Rear View Mirror	●
W/Turn Signal Light	●
Electrically Foldable Rear View Mirror	●
Auto Foldable Rear View Mirror Locking	●
Heated Rear View Mirror	●
Full Power Windows With Anti-Pinch Function	●
Remote Control And Lock Window Closed	●

For more details: Please visit www.haval.pk

► Dimensions



This brochure is published by Sazgar Engineering Works Limited. All figures and presentations may be amended from time to time. We reserve the rights of final explanation. Due to product design or improvement, etc. We reserve the rights to amend the models and service specified herein, without giving further notice. The parameters and configurations shall be subject to the actual products.



HAVAL



SAZGAR

Sazgar Engineering Works Limited

Head Office: 88-Ali Town, Thokar Niaz Baig, Raiwind Road, Lahore, Pakistan.

UAN: 111-SAZGAR (729-427) ☎ +92-42-35297863

✉ info@haval.pk | 🌐 haval.pk | 📘 HavalPakistan | 📷 havalpakistan