

IOWA HAWKEYES



University of Iowa Athletic Communications – Jessa Hansen, Gymnastics Contact

WOMEN'S GYMNASTICS WEEKLY RELEASE

April 2, 2013

2013 SCHEDULE

1/11	vs. Ball State	W, 193.375-193.125
1/19	at #21 Ohio State	L, 194.925-194.200
2/26	at Penn State, Pitt, Rutgers	2nd/4 (195.325)
2/2	at #3 Michigan	L, 196.675-195.200
2/8	vs. Michigan State, Illinois-Chicago	1st/3 (195.875)
2/16	at #21 Illinois	L, 195.975-195.875
2/22	vs. #12 Minnesota	W, 195.725-195.550
3/4	at #10 Nebraska	L, 197.675-194.950
3/8	vs. Iowa State	W, 196.375-194.575
3/15	at Southern Utah	2nd/4 (195.025)
3/23	Big Ten Championships	8th/8 (193.400)
4/6	NCAA Regionals	4 p.m.
4/19	NCAA Nationals	TBA
4/20	NCAA Nationals	TBA

All times are Central and subject to change.

2013 ROSTER

Opua Calucag	Fr.	South Pasadena, Calif.
Rachel Chambers	Fr.	Buffalo Grove, Ill.
Morgan Fairman	Fr.	Cedar Falls, Iowa
Alie Glover	Fr.	Destin, Fla.
Adara Griffin	Fr.	Moline, Ill.
Sydney Hoerr	So.	Bloomington, Ill.
Maryah Huntley	Fr.	Van Meter, Iowa
Alyssa Lopez	Fr.	Dekalb, Ill.
Jessica Morreale	So.	Dekalb, Ill.
Emma Stevenson	Sr.	Winfield, Ill.
Johanny Sotillo	RS Fr.	Valencia, Venezuela
Caitlin Tanzer	So.	Naperville, Ill.
Kyra Trowbridge	Fr.	Fredericksburg, Va.
Kaitlynn Urano	Sr.	Mission, B.C., Canada
Maya Wickus	Sr.	Port Washington, Wis.
Emma Willis	So.	Sarnia, Ontario, Canada

2013 TEAM BESTS

Vault	49.375	vs. Iowa State
Uneven Bars	49.325	at SUU
Balance Beam	48.775	vs. MSU & UIC
Floor Exercise	49.275	vs. MSU & UIC
Total	196.375	vs. Iowa State

2013 INDIVIDUAL BESTS

Vault	9.925	Willis	vs. Iowa State
Uneven Bars	9.925	Hoerr	at SUU
Balance Beam	9.875	Morreale	vs. MSU & UIC
Floor Exercise	9.900	Trowbridge	4X, Last vs. SUU
		Stevenson	vs. Minnesota
		Willis	vs. MSU & UIC
All-Around	39.400	Hoerr	vs. Iowa State

NCAA REGIONAL CHAMPIONSHIPS:

The University of Iowa women's gymnastics team has been selected to compete in NCAA Regional competition for the sixth-straight year under head coach Larissa Libby. The GymHawks were one of just 36 teams to receive an invitation to regional competition at one of six different sites. Iowa will join No. 2 Oklahoma, No. 11 Stanford, No. 14 Penn State, No. 22 Washington and Southern Utah in the Norman, Okla., Regional. Competition will begin at 4 p.m. (CT) on Saturday in the Lloyd Noble Center.

IOWA'S NCAA POSTSEASON HISTORY:

This year marks Iowa's sixth-consecutive NCAA postseason appearance and the 13th in program history. Libby has led Iowa to seven NCAA postseason appearances in nine seasons. Iowa posted a 194.600 and finished fifth at the Seattle Regional last year. The Hawkeyes have advanced to the NCAA National Championships twice as a team in 2003 and 2004, while five student-athletes have advanced individually. Most recently, Rebecca Simbhudas and Houry Gebeshian advanced as all-arounders in 2011. Simbhudas also qualified in 2010, earning All-America honors on beam. She is one of three GymHawks to be honored as an All-American.

LAST TIME OUT:

The GymHawks scored 193.400 for eighth place at the Big Ten Championships on Saturday, March 23. Freshman Kyra Trowbridge led Iowa on beam (9.675), floor (9.900) and vault (9.825). Trowbridge matched her career-best on floor for the fifth time this season, tying for sixth place on the event. Senior Emma Stevenson tied for eighth place on bars, earning 9.875.

Nebraska won its second Big Ten title with a score of 197.800. Michigan earned second (197.225), followed by Minnesota (196.775), Illinois (196.475), Ohio State (195.950), Penn State (195.825) and Michigan State (195.450). Nebraska junior Emily Wong won the all-around title with 39.725.

BIG LIFE, BIG STAGE, BIG TEN:

The Hawkeyes rank seventh in the conference (195.600 RQS). In the Big Ten all-around, sophomore Emma Willis improved to 11th (39.015 RQS). Michigan leads the conference on vault (49.435 RQS), bars (49.370 RQS) and floor (49.450 RQS), while Nebraska ranks No. 1 in the Big Ten on beam (49.225 RQS).

The Big Ten produced four of the nation's top ten all-arounders (No. 4 Nebraska junior Emily Wong, No. 5 Michigan junior Joanna Sampson, No. 8 Nebraska sophomore Jessie DeZiel and No. 9 Penn State senior Sharaya Musser). Additionally, six of the eight Big Ten teams are nationally-ranked in the top 25 (No. 5 Michigan, No. 8 Nebraska, No. 12 Minnesota, No. 14 Penn State, No. 17 Illinois and No. 20 Ohio State). Seven league teams qualified to the 2013 NCAA Regional Championships.

S300 Carver-Hawkeye Arena

Iowa City, IA 52242

Phone: 319-335-9411

hawkeyesports.com

E-mail: jessa-hansen@uiowa.edu

IOWA HAWKEYES



University of Iowa Athletic Communications – Jessa Hansen, Gymnastics Contact

WOMEN'S GYMNASTICS WEEKLY RELEASE

RECORD-BREAKING HOME ATTENDANCE:

This season, Iowa recorded its highest-ever average home attendance (1,414), with a season-high 2,303 in attendance against Iowa State (3/8). In 2012, the GymHawks drew an average of 940 fans. Before 2013, Iowa's record was an average of 1,307 fans in 2001.

ACADEMIC ALL-BIG TEN HONOREES:

Four GymHawks, sophomore Sydney Hoerr, senior Emma Stevenson, senior Kaitlynn Urano and sophomore Emma Willis, were named to the 2013 Big Ten Winter Academic All-Conference team. To be eligible for academic All-Big Ten honors, student-athletes must be letterwinners and in at least their second academic year at the institution. They must also carry a cumulative grade point average of 3.0 or better. Stevenson and Urano are three-time Academic All-Big Ten selections.

IN THE NATIONAL RANKINGS:

For 11-consecutive weeks, Iowa has been nationally-ranked in the top 25 on bars and floor. Currently, Iowa is 16th on bars (49.115 RQS) and 21st on floor (49.140 RQS). Sophomore Emma Willis leads Iowa in the all-around, ranking 58th (39.015 RQS). Freshman Kyra Trowbridge is tied for 48th on floor (9.888 RQS) with West Virginia senior Alaska Richardson and Michigan junior Reema Zakharia.

HUNTLEY SHINES ON FLOOR:

Freshman Maryah Huntley made her collegiate debut on floor at the Big Ten Championships, earning 9.800. Huntley, a former UI cheerleader, learned her floor routine less than a week prior to competition and anchored Iowa's lineup. Before attending Iowa, the Van Meter, Iowa, native placed seventh in the all-around at the 2010 Region IV Championships and qualified to the 2010 Junior Olympic Nationals. Additionally, Huntley qualified to the 2007 and 2008 Level 9 Western National Championships, placing 11th in the all-around in 2008.

YOUNG TALENT:

The majority of GymHawks are underclassmen, with eight freshmen, four sophomores, three seniors and no juniors. With senior Kaitlynn Urano out with a fractured tibia and fibula, 20 of Iowa's 24 routines are contributed by underclassmen. Freshman Alie Glover is the only Hawkeye to compete on four events in every competition. Glover was named Big Ten Freshman of the Week on Feb. 11 for her outstanding performance in the tri-meet against Michigan State and Illinois-Chicago (2/8). Glover captured the all-around title with a career-high 39.050, leading the Hawkeyes to a first-place finish (195.875).

HEAD COACH LARISSA LIBBY:

Libby has led Iowa to seven NCAA postseason appearances in nine seasons. In 2012, the Hawkeyes finished the season ranked 26th nationally, the highest finish since 2004. Libby also coached Emma Stevenson to the Big Ten All-Championship Team. The Hawkeyes hosted the Big Ten Championships, drawing a season-high attendance figure of 1,661. Stevenson scored a 9.875 on the floor exercise, and Iowa finished seventh as a team. Libby led the Hawkeyes to a fifth-consecutive NCAA postseason appearance. Iowa posted 194.600 and finished fifth at the Seattle Regional.

NCAA NATIONAL CHAMPIONSHIPS:

The top two teams, event winners and top two all-around competitors not on an advancing team will qualify to the national championships in Los Angeles, Calif., on April 19-21, hosted by UCLA.

FOLLOW THE HAWKEYES:

Web Address: hawkeyesports.com
Facebook: [facebook.com/iowagymnastics](https://www.facebook.com/iowagymnastics)
Twitter: twitter.com/iowagymnastics

S300 Carver-Hawkeye Arena

Iowa City, IA 52242

Phone: 319-335-9411

hawkeyesports.com

E-mail: jessa-hansen@uiowa.edu

IOWA HAWKEYES



University of Iowa Athletic Communications – Jessa Hansen, Gymnastics Contact

WOMEN'S GYMNASTICS WEEKLY RELEASE

YouTube: youtube.com/iowagymnastics

REGIONAL GROUPINGS:

Gainesville, Fla.

1. Florida (No. 1, 197.840 RQS)
2. Minnesota (No. 12, 196.615 RQS)
3. Auburn (No. 12, 196.615 RQS)
4. Maryland (No. 24, 195.810 RQS)
5. Bridgeport (195.485 RQS)
6. Pittsburgh (195.065 RQS)

Norman, Okla.

1. Oklahoma (No. 2, 197.570 RQS)
2. Stanford (No. 11, 196.710 RQS)
3. Penn State (No. 14, 196.500 RQS)
4. Washington (No. 22, 195.965 RQS)
5. Iowa (195.600 RQS)
6. Southern Utah (195.145 RQS)

Tuscaloosa, Ala.

1. Alabama (No. 3, 197.415 RQS)
2. Utah (No. 9, 197.105 RQS)
3. Denver (No. 15, 196.470 RQS)
4. Kent State (No. 23, 195.815 RQS)
5. Brigham Young (195.365 RQS)
6. Iowa State (195.105 RQS)

Corvallis, Ore.

1. Georgia (No. 4, 197.260 RQS)
2. Oregon State (No. 10, 196.900 RQS)
3. Arkansas (No. 16, 196.435 RQS)
4. Boise State (No. 21, 195.970 RQS)
5. Arizona State (195.495 RQS)
6. California (195.340 RQS)

Morgantown, W. Va.

1. Michigan (No. 5, 197.235 RQS)
2. Nebraska (No. 8, 197.145 RQS)
3. Illinois (No. 17, 196.210 RQS)
4. Kentucky (No. 19, 196.060 RQS)
5. West Virginia (195.780 RQS)
6. North Carolina (195.200 RQS)

Columbus, Ohio

1. UCLA (No. 6, 197.200 RQS)
2. LSU (No. 7, 197.180 RQS)
3. Arizona (No. 18, RQS)
4. Ohio State (No. 20, 196.090 RQS)
5. Central Michigan (195.810 RQS)
6. North Carolina State (195.350 RQS)



2013 IOWA WOMEN'S GYMNASTICS STAT BOOK

SCHEDULE

Date	Tournament	Team Finish	Point Total
1/11	vs. Ball State	1/2	193.375
1/19	at Ohio State	2/2	194.200
1/26	at Penn State	2/4	195.325
2/2	at Michigan	2/2	195.200
2/8	vs. Michigan State	1/3	195.875
2/16	at Illinois	2/2	195.875
2/22	vs. Minnesota	1/2	195.725
3/4	at Nebraska	2/2	194.950
3/8	vs. Iowa State	1/2	196.375
3/15	at Southern Utah	2/4	195.025
3/23	Big Ten Championships	8/8	193.400
4/6	NCAA Regional Championships		
4/19	NCAA National Championships		

ROSTER

Name	Year	Events	Hometown (Last School)
Opua Calucag	Fr.	UB, BB	South Pasadena, Calif. (California Virtual Academy)
Rachel Chambers	Fr.	BB, FX	Buffalo Grove, Ill. (New Trier)
Allie Glover	Fr.	AA	Destin, Fla. (South Walton)
Adara Griffin	Fr.	UB, BB, FX	Moline, Ill. (Moline)
Sydney Hoerr	So.	AA	Bloomington, Ill. (Tri-Valley)
Maryah Huntley	Fr.	BB, FX	Van Meter, Iowa (Van Meter)
Alyssa Lopez	Fr.	AA	DeKalb, Ill. (DeKalb)
Jessica Morreale	So.	AA	DeKalb, Ill. (DeKalb)
Emma Stevenson	Sr.	V, UB, FX	Winfield, Ill. (Wheaton North)
Johanny Sotillo	RS Fr.	AA	Valencia, Venezuela
Caitlin Tanzer	So.	BB, FX	Naperville, Ill. (Neuqua Valley)
Kyra Trowbridge	Fr.	AA	Fredericksburg, Va. (Stafford High)
Kaitlyn Urano	Sr.	UB, BB, FX	Mission, B.C., Canada (Heritage Park Secondary)
Maya Wickus	Sr.	V, UB	Port Washington, Wis. (Port Washington)
Emma Willis	So.	AA	Sarnia, Ontario, Canada (Northern Collegiate Institute)

Head Coach: Larissa Libby

Assistant Coach: Jacob Lee

Caleb Phillips

SEASON BESTS (Individual/Team)

Event	Score	Gymnast	Meet
V	9.925	Emma Willis	vs. Iowa State
UB	9.900	Sydney Hoerr	at Illinois
FX	9.900	Kyra Trowbridge	5x, last at Big Ten Championships
		Emma Stevenson	vs. Minnesota
		Emma Willis	vs. MSU & UIC
BB	9.875	Jessica Morreale	vs. MSU & UIC
AA	39.400	Sydney Hoerr	vs. Iowa State

Event	Score	Meet
V	49.375	vs. Iowa State (3/8)
UB	49.325	at SUU (3/15)
FX	49.275	vs. MSU & UIC (2/8)
BB	48.775	2x, last vs Iowa State (3/8)
AA	196.375	vs. Iowa State (3/8)



2013 IOWA WOMEN'S GYMNASTICS INDIVIDUAL RESULTS



OPUA CALUCAG

Freshman

South Pasadena, Calif.

California Virtual Academy

Season Bests:

V:

UB:

FX:

BB: 9.075 (3/8)

AA:

BALL STATE

V:

UB:

FX:

BB:

AA:

OHIO STATE

V:

UB:

FX:

BB:

AA:

PENN STATE

V:

UB:

FX:

BB:

AA:

MICHIGAN

V:

UB:

FX:

BB:

AA:

MICHIGAN STATE

V:

UB:

FX:

BB:

AA:

ILLINOIS

V:

UB:

FX:

BB:

AA:

MINNESOTA

V:

UB:

FX:

BB:

AA:

NEBRASKA

V:

UB:

FX:

BB:

AA:

IOWA STATE

V:

UB:

FX:

BB: 9.075

AA:

SOUTHERN UTAH

V:

UB:

FX:

BB: 8.925

AA:

BIG TEN CHAMPIONSHIPS

V:

UB:

FX:

BB: 9.050

AA:

NCAA REGIONALS

V:

UB:

FX:

BB:

AA:

NCAA NATIONAL CHAMPIONSHIPS

V:

UB:

FX:

BB:

AA:



2013 IOWA WOMEN'S GYMNASTICS INDIVIDUAL RESULTS



Rachel Chambers

Freshman
Buffalo Grove, Ill.
New Trier

Season Bests:

V:
UB:
FX:
BB:
AA:

BALL STATE

V:
UB:
FX:
BB:
AA:

ILLINOIS

V:
UB:
FX:
BB:
AA:

BIG TEN CHAMPIONSHIPS

V:
UB:
FX:
BB:
AA:

OHIO STATE

V:
UB:
FX:
BB:
AA:

MINNESOTA

V:
UB:
FX:
BB:
AA:

NCAA REGIONALS

V:
UB:
FX:
BB:
AA:

PENN STATE

V:
UB:
FX:
BB:
AA:

NEBRASKA

V:
UB:
FX:
BB:
AA:

NCAA NATIONAL CHAMPIONSHIPS

V:
UB:
FX:
BB:
AA:

MICHIGAN

V:
UB:
FX:
BB:
AA:

IOWA STATE

V:
UB:
FX:
BB:
AA:

MICHIGAN STATE

V:
UB:
FX:
BB:
AA:

SOUTHERN UTAH

V:
UB:
FX:
BB:
AA:



2013 IOWA WOMEN'S GYMNASTICS INDIVIDUAL RESULTS



Alie Glover

Freshman

Destin, Fla.

South Walton

Season Bests:

V: 9.825 (1/11)

UB: 9.825 (2/8)

FX: 9.800 (5x, last 3/8)

BB: 9.750 (2x, last 3/15)

AA: 39.050 (2/8)

BALL STATE

V: 9.700
UB: 9.750
FX: 9.775
BB: 9.250
AA: 38.475

OHIO STATE

V: 9.825
UB: 9.775
FX: 9.525
BB: 9.675
AA: 38.800

PENN STATE

V: 9.775
UB: 9.700
FX: 9.700
BB: 9.650
AA: 38.825

MICHIGAN

V: 9.775
UB: 9.725
FX: 9.800
BB: 9.675
AA: 38.975

MICHIGAN STATE

V: 9.675
UB: 9.825
FX: 9.800
BB: 9.750
AA: 39.050

ILLINOIS

V: 9.800
UB: 9.800
FX: 9.800
BB: 9.150
AA: 38.550

MINNESOTA

V: 9.700
UB: 9.700
FX: 9.800
BB: 9.675
AA: 38.875

NEBRASKA

V: 9.750
UB: 9.775
FX: 9.775
BB: 9.625
AA: 38.925

IOWA STATE

V: 9.750
UB: 9.750
FX: 9.800
BB: 9.675
AA: 38.975

SOUTHERN UTAH

V: 9.700
UB: 9.825
FX: 9.675
BB: 9.750
AA: 38.850

BIG TEN CHAMPIONSHIPS

V: 9.775
UB: 9.800
FX: 8.850
BB: 9.600
AA: 38.025

NCAA REGIONALS

V:
UB:
FX:
BB:
AA:

NCAA NATIONAL CHAMPIONSHIPS

V:
UB:
FX:
BB:
AA:



2013 IOWA WOMEN'S GYMNASTICS INDIVIDUAL RESULTS



Adara Griffin

Freshman
Moline, Ill.
Moline

Season Bests:
V: 9.825 (3/8)
UB: 9.675 (3/15)
FX:
BB:
AA:

BALL STATE

V:
UB:
FX:
BB:
AA:

ILLINOIS

V: 9.725
UB:
FX:
BB:
AA:

BIG TEN CHAMPIONSHIPS

V: 9.500
UB: 9.625
FX:
BB:
AA:

OHIO STATE

V:
UB:
FX:
BB:
AA:

MINNESOTA

V: 9.700
UB:
FX:
BB:
AA:

NCAA REGIONALS

V:
UB:
FX:
BB:
AA:

PENN STATE

V:
UB:
FX:
BB:
AA:

NEBRASKA

V:
UB:
FX:
BB:
AA:

NCAA NATIONAL CHAMPIONSHIPS

V:
UB:
FX:
BB:
AA:

MICHIGAN

V:
UB:
FX:
BB:
AA:

IOWA STATE

V: 9.825
UB: 9.050
FX:
BB:
AA:

MICHIGAN STATE

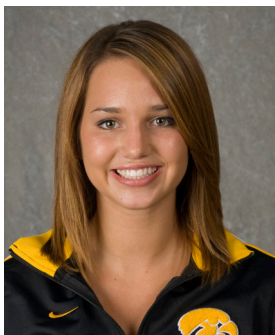
V:
UB:
FX:
BB:
AA:

SOUTHERN UTAH

V: 9.750
UB: 9.675
FX:
BB:
AA:



2013 IOWA WOMEN'S GYMNASTICS INDIVIDUAL RESULTS



Sydney Hoerr

Sophomore
Bloomington, Ill.
Tri-Valley

Season Bests:
V: 9.875 (3/8)
UB: 9.925 (3/15)
FX: 9.875 (3/8)
BB: 9.825 (3/8)
AA: 39.400 (3/8)

Career Bests:
V: 9.875 (3/8/13)
UB: 9.925 (3/15/13)
FX: 9.875 (3/8/13)
BB: 9.825 (3/8/13)
AA: 39.400 (3/8/13)

BALL STATE

V: 9.650
UB: 9.825
FX: 9.500
BB: 9.325
AA: 38.300

OHIO STATE

V: 9.800
UB: 9.775
FX: 9.775
BB: 9.750
AA: 39.100

PENN STATE

V: 9.125
UB: 9.775
FX: 9.600
BB: 9.550
AA: 38.050

MICHIGAN

V:
UB: 9.850
FX: 9.750
BB: 8.825
AA:

MICHIGAN STATE

V:
UB: 9.825
FX: 9.825
BB: 9.800
AA:

ILLINOIS

V: 9.825
UB: 9.900
FX: 9.825
BB: 9.800
AA: 39.350

MINNESOTA

V: 9.675
UB: 9.800
FX: 9.800
BB: 9.775
AA: 39.050

NEBRASKA

V: 9.625
UB: 9.850
FX: 9.250
BB: 9.425
AA: 38.150

IOWA STATE

V: 9.875
UB: 9.825
FX: 9.875
BB: 9.825
AA: 39.400

SOUTHERN UTAH

V: 9.850
UB: 9.925
FX: 9.675
BB: 9.700
AA: 39.150

BIG TEN CHAMPIONSHIPS

V: 9.625
UB: 9.850
FX: 9.700
BB: 8.925
AA: 38.100

NCAA REGIONALS

V:
UB:
FX:
BB:
AA:

NCAA NATIONAL CHAMPIONSHIPS

V:
UB:
FX:
BB:
AA:



2013 IOWA WOMEN'S GYMNASTICS INDIVIDUAL RESULTS



Alyssa Lopez

Freshman
Dekalb, Ill.
Dekalb

Season Bests:
V: 9.775 (2x, last 1/26)
UB:
FX:
BB: 9.675 (2/2)
AA:

BALL STATE

V: 9.500
UB:
FX:
BB: 9.025
AA:

ILLINOIS

V:
UB:
FX:
BB:
AA:

BIG TEN CHAMPIONSHIPS

V:
UB:
FX:
BB:
AA:

OHIO STATE

V: 9.775
UB:
FX:
BB:
AA:

MINNESOTA

V:
UB:
FX:
BB:
AA:

NCAA REGIONALS

V:
UB:
FX:
BB:
AA:

PENN STATE

V: 9.775
UB:
FX:
BB:
AA:

NEBRASKA

V:
UB:
FX:
BB:
AA:

NCAA NATIONAL CHAMPIONSHIPS

V:
UB:
FX:
BB:
AA:

MICHIGAN

V: 9.625
UB:
FX:
BB: 9.675
AA:

IOWA STATE

V:
UB:
FX:
BB:
AA:

MICHIGAN STATE

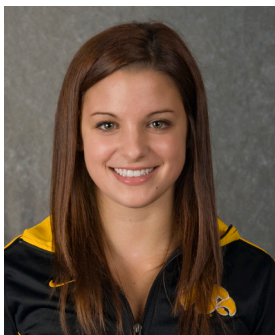
V: 9.725
UB:
FX:
BB: 9.200
AA:

SOUTHERN UTAH

V:
UB:
FX:
BB:
AA:



2013 IOWA WOMEN'S GYMNASTICS INDIVIDUAL RESULTS



Jessica Morreale

Sophomore
Dekalb, Ill.
Dekalb

Season Bests:
V: 9.700 (2/2)
UB:
FX:
BB: 9.875 (2/8)
AA:

Career Bests:
V: 9.775 (1/27/12)
UB:
FX:
BB: 9.875 (2/8/13)
AA:

BALL STATE

V:
UB:
FX:
BB: 9.825
AA:

OHIO STATE

V:
UB:
FX:
BB: 9.100
AA:

PENN STATE

V:
UB:
FX:
BB: 9.625
AA:

MICHIGAN

V: 9.700
UB:
FX:
BB: 9.675
AA:

MICHIGAN STATE

V: 9.675
UB:
FX:
BB: 9.875
AA:

ILLINOIS

V:
UB:
FX:
BB: 9.000
AA:

MINNESOTA

V:
UB:
FX:
BB:
AA:

NEBRASKA

V:
UB:
FX:
BB:
AA:

IOWA STATE

V:
UB:
FX:
BB:
AA:

SOUTHERN UTAH

V:
UB:
FX:
BB:
AA:

BIG TEN CHAMPIONSHIPS

V:
UB:
FX:
BB:
AA:

NCAA REGIONALS

V:
UB:
FX:
BB:
AA:

NCAA NATIONAL CHAMPIONSHIPS

V:
UB:
FX:
BB:
AA:



2013 IOWA WOMEN'S GYMNASTICS INDIVIDUAL RESULTS



Emma Stevenson

Senior
Winfield, Ill.
Wheaton North

Season Bests:
V:
UB: 9.900 (3/15)
FX: 9.900 (2/22)
BB:
AA:

Career Bests:
V: 9.875 (3/24/12)
UB: 9.900 (3/15/13)
FX: 9.900 (2/22/13)
BB:
AA:

BALL STATE

V:
UB: 9.825
FX: 9.825
BB:
AA:

ILLINOIS

V:
UB: 9.850
FX: 9.850
BB:
AA:

BIG TEN CHAMPIONSHIPS

V:
UB: 9.875
FX: 9.850
BB:
AA:

OHIO STATE

V:
UB: 9.775
FX: 9.800
BB:
AA:

MINNESOTA

V:
UB: 9.825
FX: 9.900
BB:
AA:

NCAA REGIONALS

V:
UB:
FX:
BB:
AA:

PENN STATE

V:
UB: 9.800
FX: 9.875
BB:
AA:

NEBRASKA

V:
UB: 9.875
FX: 9.875
BB:
AA:

NCAA NATIONAL CHAMPIONSHIPS

V:
UB:
FX:
BB:
AA:

MICHIGAN

V:
UB: 9.825
FX: 9.875
BB:
AA:

IOWA STATE

V:
UB: 9.850
FX: 9.875
BB:
AA:

MICHIGAN STATE

V:
UB: 9.850
FX: 9.850
BB:
AA:

SOUTHERN UTAH

V:
UB: 9.900
FX: 9.850
BB:
AA:



2013 IOWA WOMEN'S GYMNASTICS INDIVIDUAL RESULTS



Caitlin Tanzer

Sophomore
Naperville, Ill.
Neuqua Valley

Season Bests:
V:
UB:
FX:
BB: 9.725 (2/22)
AA:

Career Bests:
V:
UB:
FX:
BB: 9.725 (2/22/13)
AA:

BALL STATE

V:
UB:
FX:
BB:
AA:

OHIO STATE

V:
UB:
FX:
BB:
AA:

PENN STATE

V:
UB:
FX:
BB:
AA:

MICHIGAN

V:
UB:
FX:
BB:
AA:

MICHIGAN STATE

V:
UB:
FX:
BB:
AA:

ILLINOIS

V:
UB:
FX:
BB: 9.725
AA:

MINNESOTA

V:
UB:
FX:
BB:
AA:

NEBRASKA

V:
UB:
FX:
BB: 9.675
AA:

IOWA STATE

V:
UB:
FX:
BB: 9.700
AA:

SOUTHERN UTAH

V:
UB:
FX:
BB: 9.000
AA:

BIG TEN CHAMPIONSHIPS

V:
UB:
FX:
BB: 9.000
AA:

NCAA REGIONALS

V:
UB:
FX:
BB:
AA:

NCAA NATIONAL CHAMPIONSHIPS

V:
UB:
FX:
BB:
AA:



2013 IOWA WOMEN'S GYMNASTICS INDIVIDUAL RESULTS



Kaitlynn Urano
Senior
Mission, B.C., Canada
Heritage Park Secondary

Season Bests:
V:
UB: 9.825 (2x, last 3/4)
FX: 9.800 (1/26)
BB: 9.800 (1/26)
AA:

Career Bests:
V:
UB: 9.850 (3/8/12)
FX: 9.800 (2x, last 1/26/13)
BB: 9.800 (1/26/13)
AA:

BALL STATE

V:
UB: 9.700
FX: 9.475
BB: 9.050
AA:

OHIO STATE

V:
UB: 9.700
FX: 9.800
BB: 9.750
AA:

PENN STATE

V:
UB: 9.725
FX: 9.800
BB: 9.800
AA:

MICHIGAN

V:
UB: 9.725
FX: 9.625
BB: 9.800
AA:

MICHIGAN STATE

V:
UB: 9.625
FX: 9.775
BB: 9.725
AA:

ILLINOIS

V:
UB: 9.825
FX: 9.775
BB: 9.775
AA:

MINNESOTA

V:
UB: 9.750
FX: 9.775
BB: 9.775
AA:

NEBRASKA

V:
UB: 9.825
FX: 9.800
BB: 9.725
AA:

IOWA STATE

V:
UB:
FX:
BB:
AA:

SOUTHERN UTAH

V:
UB:
FX:
BB:
AA:

BIG TEN CHAMPIONSHIPS

V:
UB:
FX:
BB:
AA:

NCAA REGIONALS

V:
UB:
FX:
BB:
AA:

NCAA NATIONAL CHAMPIONSHIPS

V:
UB:
FX:
BB:
AA:



2013 IOWA WOMEN'S GYMNASTICS INDIVIDUAL RESULTS



Maya Wickus

Senior

Port Washington, Wis.

Port Washington

Season Bests:

V: 9.875 (3/4)

UB: 9.875 (3/15)

FX:

BB:

AA:

Career Bests:

V: 9.925 (3/12/11)

UB: 9.875 (3/15/13)

FX:

BB:

AA:

BALL STATE

V: 9.825

UB: 9.825

FX:

BB:

AA:

OHIO STATE

V: 9.200

UB: 9.675

FX:

BB:

AA:

PENN STATE

V: 9.800

UB: 9.725

FX:

BB:

AA:

MICHIGAN

V: 9.775

UB: 9.725

FX:

BB:

AA:

MICHIGAN STATE

V: 9.750

UB: 9.800

FX:

BB:

AA:

ILLINOIS

V: 9.850

UB: 9.825

FX:

BB:

AA:

MINNESOTA

V: 9.825

UB: 9.700

FX:

BB:

AA:

NEBRASKA

V: 9.850

UB: 9.775

FX:

BB:

AA:

IOWA STATE

V: 9.875

UB: 9.775

FX:

BB:

AA:

SOUTHERN UTAH

V: 9.850

UB: 9.875

FX:

BB:

AA:

BIG TEN CHAMPIONSHIPS

V: 9.725

UB: 9.800

FX:

BB:

AA:

NCAA REGIONALS

V:

UB:

FX:

BB:

AA:

NCAA NATIONAL CHAMPIONSHIPS

V:

UB:

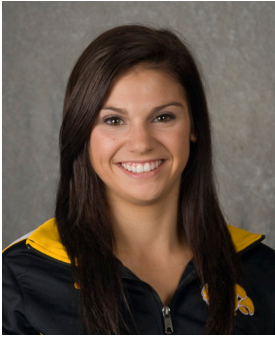
FX:

BB:

AA:



2013 IOWA WOMEN'S GYMNASTICS INDIVIDUAL RESULTS



Emma Willis

Sophomore

Sarnia, Ontario, Canada

Northern Collegiate Institute

Season Bests:

V: 9.925 (3/8)

UB: 9.875 (2/8)

FX: 9.900 (2/8)

BB: 9.825 (2x, last 2/16)

AA: 39.350 (3/4)

Career Bests:

V: 9.925 (3/8/13)

UB: 9.875 (2/8/13)

FX: 9.900 (2/8/13)

BB: 9.825 (2x, last 2/16/13)

AA: 39.350 (3/4/13)

BALL STATE

V: 9.725

UB: 9.625

FX: 9.750

BB:

AA:

ILLINOIS

V: 9.875

UB: 9.775

FX: 9.625

BB: 9.825

AA:

BIG TEN CHAMPIONSHIPS

V: 9.700

UB: 9.775

FX: 9.850

BB: 9.225

AA: 38.550

OHIO STATE

V: 9.900

UB: 9.725

FX: 9.100

BB: 9.325

AA: 38.050

MINNESOTA

V: 9.900

UB: 9.825

FX: 9.875

BB: 9.700

AA: 39.300

NCAA REGIONALS

V:

UB:

FX:

BB:

AA:

PENN STATE

V: 9.825

UB: 9.725

FX: 9.825

BB: 9.825

AA: 39.200

NEBRASKA

V: 9.750

UB: 9.675

FX: 9.700

BB: 9.225

AA: 38.350

NCAA NATIONAL CHAMPIONSHIPS

V:

UB:

FX:

BB:

AA:

MICHIGAN

V: 9.800

UB: 9.775

FX: 9.800

BB:

AA:

IOWA STATE

V: 9.925

UB: 9.800

FX: 9.775

BB: 9.775

AA: 39.275

MICHIGAN STATE

V: 9.750

UB: 9.875

FX: 9.900

BB:

AA:

SOUTHERN UTAH

V: 9.875

UB: 9.800

FX: 9.800

BB: 9.675

AA: 39.150



2013 IOWA WOMEN'S GYMNASTICS INDIVIDUAL RESULTS

Kyra Trowbridge

Freshman

Fredericksburg, Va.

Stafford High

Season Bests:

V: 9.875 (2x, last 3/8)

UB:

FX: 9.900 (5x, last 3/23)

BB: 9.800 (3/8)

AA:

BALL STATE

V: 9.650

UB:

FX: 9.850

BB: 9.775

AA:

OHIO STATE

V: 9.750

UB:

FX: 9.850

BB: 9.150

AA:

PENN STATE

V: 9.725

UB:

FX: 9.800

BB: 9.775

AA:

MICHIGAN

V: 9.675

UB:

FX: 9.775

BB: 9.750

AA:

MICHIGAN STATE

V: 9.750

UB:

FX: 9.900

BB: 9.625

AA:

ILLINOIS

V: 9.875

UB:

FX: 9.900

BB: 9.750

AA:

MINNESOTA

V: 9.750

UB:

FX: 9.850

BB: 9.750

AA:

NEBRASKA

V: 9.800

UB:

FX: 9.850

BB: 9.725

AA:

IOWA STATE

V: 9.875

UB:

FX: 9.900

BB: 9.800

AA:

SOUTHERN UTAH

V: 9.725

UB:

FX: 9.900

BB: 9.725

AA:

BIG TEN CHAMPIONSHIPS

V: 9.825

UB:

FX: 9.900

BB: 9.675

AA:

NCAA REGIONALS

V:

UB:

FX:

BB:

AA:

NCAA NATIONAL CHAMPIONSHIPS

V:

UB:

FX:

BB:

AA:



2013 IOWA WOMEN'S GYMNASTICS

Maryah Huntley

Freshman
Van Meter, Iowa
Van Meter High

Season Bests:
V:
UB:
FX: 9.800 (3/23)
BB:
AA:

BALL STATE

V:
UB:
FX:
BB:
AA:

ILLINOIS

V:
UB:
FX:
BB:
AA:

BIG TEN CHAMPIONSHIPS

V:
UB:
FX: 9.800
BB:
AA:

OHIO STATE

V:
UB:
FX:
BB:
AA:

MINNESOTA

V:
UB:
FX:
BB:
AA:

NCAA REGIONALS

V:
UB:
FX:
BB:
AA:

PENN STATE

V:
UB:
FX:
BB:
AA:

NEBRASKA

V:
UB:
FX:
BB:
AA:

NCAA NATIONAL CHAMPIONSHIPS

V:
UB:
FX:
BB:
AA:

MICHIGAN

V:
UB:
FX:
BB:
AA:

IOWA STATE

V:
UB:
FX:
BB:
AA:

MICHIGAN STATE

V:
UB:
FX:
BB:
AA:

SOUTHERN UTAH

V:
UB:
FX:
BB:
AA: