



# University of Iowa Women's Basketball

Game #29

Feb. 26, 2013

## 2012-13 Schedule/Results 17-11 Overall, 6-8 Big Ten

11/9	Northern Illinois^	W, 63-40
11/11	Illinois State^	W, 74-64
11/14	Middle Tennessee^	W, 69-63 (OT)
11/18	North Carolina^	L, 64-77
11/20	Robert Morris	W, 58-44
11/23	at Florida International#	L, 65-66
11/25	vs. #12 West Virginia#	W, 79-70
11/28	at Florida State~	L, 69-83
12/1	Northern Iowa	W, 68-46
12/6	#22 Iowa State*	W, 50-42
12/16	at Drake	W, 82-65
12/19	Missouri State	W, 97-43
12/28	vs. #20 Texas%	W, 86-63
12/30	vs. San Diego%	W, 83-73
1/3	#24 Ohio State	W, 77-71 (OT)
1/6	Michigan	L, 64-68
1/10	at Wisconsin	W, 65-56
1/17	at Michigan State	L, 54-65
1/20	#11 Purdue	W, 62-46
1/24	Wisconsin	W, 71-60
1/27	at #23 Michigan	W, 63-57
1/31	at Illinois	L, 62-74
2/3	Northwestern	L, 65-67
2/7	at Minnesota	L, 60-72
2/11	Nebraska	L, 75-76
2/14	#8 Penn State	L, 69-81
2/17	at #18 Purdue	W, 72-52
2/24	at #24 Nebraska	L, 46-66
2/28	Indiana	7 p.m.
3/3	at Northwestern	2 p.m.

^ -- WNIT

# -- FIU Thanksgiving Classic, Miami

~ -- ACC/Big Ten Challenge

\* - Iowa Corn Cy-Hawk Series

% -- San Diego Surf 'N Slam Classic, San Diego

## Pronunciation Guide

Lisa Bluder.....BLUE-dir

Kali Peschel.....PEH-shull

Theairra Taylor.....thee-AIR-uh

SID Contact: Aaron Blau (@AaronBlau)  
Email: aaron-blau@hawkeyesports.com

Office: (319) 335-9268  
Cell: (319) 430-5103

## Game Information

Indiana (11-16, 2-12) vs. Iowa (17-11, 6-8)

Feb. 28, 2013 • 7 p.m.

Mediacom Court at Carver-Hawkeye Arena  
Iowa City, Iowa



TV: N/A

TV Talent: N/A

Web: Big Ten Digital Network via Hawkeye All-Access

Radio: AM-800 KXIC, AM-600 WMT, AM-1040 WHO

Radio Talent: Brent Balbinot and Shelley Till

Live Stats/Audio: [www.hawkeyesports.com](http://www.hawkeyesports.com)

Twitter Updates: @IowaWBB

Series: Iowa leads, 44-15

## Storylines

- Morgan Johnson has started 123 games, the most in school history. She has played in all 124 games of her career -- the third most in school history.
- Iowa is 7-2 against ranked teams this season. Only Baylor (10), Stanford (8), Connecticut (7) and Notre Dame (7) have as many wins against ranked teams as Iowa. This year marks only the fourth season in school history that an Iowa team has knocked off seven ranked opponents (1995-96, 1993-94, 1992-93).
- Morgan Johnson needs two more blocks to move into fifth place on the Big Ten career blocks list.
- In Big Ten games, Melissa Dixon leads the conference in 3-point percentage (43.9) and is second in 3-pointers made per game (2.6).
- Samantha Logic leads the Big Ten and ranks 14th in the NCAA with 6.5 assists per game.
- Jaime Printy is shooting 92 percent from the free this season. She ranks second in the Big Ten and fourth in the NCAA.
- Iowa's 16.1 assists per game are the best in the Big Ten and 31st nationally.
- The Hawkeyes lead the Big Ten and are 11th in the NCAA in blocks per game (5.6).
- Iowa is second in the Big Ten and 13th in the NCAA in free throw percentage (76.3).
- Jaime Printy is 41-of-41 from the free throw line in the final five minutes of a game, 31-of-31 in the final two minutes, 20-of-20 in the final minute and 6-of-6 in overtime.

## Tentative Starting Lineup

### Iowa Hawkeyes (17-11, 6-8)

Pos.	No.	Name	Ht.	Yr.	Statistical Summary
G	22	Samantha Logic	5-8	So.	9.4 ppg, 6.5 rpg, 6.5 apg, .493 FG%, .676 FT% - Leading scorer in last two contests
G	24	Jaime Printy	5-11	Sr.	13.3 ppg, 4.4 rpg, 3.2 apg, .365 FG%, .920 FT% - Recorded nine games with at least 15 points this season
G	23	Theairra Taylor	5-11	Jr.	8.3 ppg, 4.5 rpg, 2.2 apg, .392 FG%, .696 FT% - Averaging 11.8 points and 5.8 rebounds over last four games
F	51	Bethany Doolittle	6-4	So.	7.2 ppg, 5.7 rpg, 2.0 bpg, .416 FG%, .813 FT% - Blocked at least three shots in 10 games this season
C	12	Morgan Johnson	6-5	Sr.	14.8 ppg, 7.4 rpg, 2.0 bpg, .530 FG%, .739 FT% - Shooting 56.8 percent from the field (25-of-44) over last four games

Head Coach: Lisa Bluder (Northern Iowa, 1983); 13th Season at Iowa (247-155); 29th Season Overall (603-297)



## Inside the Numbers

	IOWA	IU
Scoring Average	68.3	55.3
Scoring Defense	62.5	60.4
Scoring Margin	+5.8	-5.2
FG%	.427	.376
FG% Defense	.371	.388
FT%	.763	.681
3-PT FG%	.345	.312
3-PT FG% Defense	.296	.310
Rebound Margin	+1.6	-2.3
Assists Per Game	15.8	10.6
Turnovers Per Game	15.9	16.3
Turnover Margin	-0.4	-2.1
Steals Per Game	7.2	5.9
Blocks Per Game	5.6	3.9

## Indiana vs. Iowa Series History

**Iowa leads, 44-15**  
Last 10 Meetings Listed Below

2/5/12	..... at Indiana	..... W, 83-64
2/27/11	..... at Indiana	..... W, 93-79
1/16/11	..... at Iowa	..... W, 71-51
2/25/10	..... at Iowa	..... W, 76-64
2/11/10	..... at Indiana	..... W, 71-67
2/5/09	..... at Iowa	..... W, 69-67
1/4/09	..... at Indiana	..... L, 54-76
2/3/08	..... at Iowa	..... W, 81-65
3/1/07	..... at Big Ten Tourney	L, 53-67
1/11/07	..... at Indiana	..... W, 71-67

## How Many Times a Hawkeye Player...

Scored 20 or More Points	
Morgan Johnson	.....8
Jaime Printy	.....5
Melissa Dixon	.....2
Samantha Logic	.....1

Scored 15 or More Points	
Morgan Johnson	.....14
Jaime Printy	.....9
Melissa Dixon	.....5
Samantha Logic	.....4
Bethany Doolittle	.....2
Theairra Taylor	.....2
Kathy Thomas	.....1

Grabbed 10 or More Rebounds	
Morgan Johnson	.....10
Samantha Logic	.....4
Theairra Taylor	.....3
Bethany Doolittle	.....2

Grabbed 7 or More Rebounds	
Morgan Johnson	.....13
Bethany Doolittle	.....11
Samantha Logic	.....10
Theairra Taylor	.....6
Jaime Printy	.....3

Dished out 7 or More Assists	
Samantha Logic	.....13
Jaime Printy	.....1
Theairra Taylor	.....1

Dished out 5 or More Assists	
Samantha Logic	.....20
Jaime Printy	.....6
Theairra Taylor	.....5
Morgan Johnson	.....1

Recorded 4 or More Steals	
Samantha Logic	.....1

Blocked 3 or More Shots	
Bethany Doolittle	.....10
Morgan Johnson	.....9

## 2012-13 Margin of Victory/Defeat

Points	1	2	3	4	5	6	7	8	9	10-14	15-19	20+
Wins	0	0	0	0	0	3	0	1	2	5	1	5
Losses	2	1	0	1	0	0	0	0	0	6	0	1

### IOWA HISTORY

Iowa has played 1,126 games since beginning basketball in 1974. Iowa's overall record is 688-438 (.611). That includes a 346-178 (.660) mark in regular season Big Ten contests and a 333-96 (.776) mark in Carver-Hawkeye Arena.

### SCOUTING INDIANA

The Indiana Hoosiers are 11-16 overall and 2-12 in Big Ten play. Indiana's two Big Ten wins have come at home against Northwestern and Purdue.

In their last game, the Hoosiers were defeated at Illinois, 73-60. Illinois turned 25 Hoosier turnovers into 24 points and shot 47.3 percent from the field. Indiana was led by Jasmine McGhee's 25 points on 10-of-16 field goal shooting. Linda Rubene added 12 points and seven rebounds.

Aulani Sinclair leads the team with 15.6 points per game. She is shooting 38.9 percent from 3-point distance. McGhee is next at 12.7 points and a team best 5.8 rebounds per game.

Indiana is averaging 55.3 points per game and is shooting 37.6 percent from the field for the season.

### INDIANA VS. IOWA NOTES

- Iowa leads the all-time series, 44-15. The Hawkeyes have won eight of the last 10 meetings, including the last six straight. The Hawkeyes are 24-2 all-time vs. Indiana in Iowa City.
- Indiana Junior Linda Rubene spent two seasons at Iowa Western Community College.

### LAST MEETING

Iowa used a hot shooting performance in the second half to run past Indiana, 83-64 (Feb. 5).

The Hawkeyes held a four-point lead at the half but shot 70 percent (21-of-30) from the field in the second half, including 4-of-6 (66.7 percent) from 3-point distance. Iowa converted 20 Indiana turnovers into 28 points and netted 13 fastbreak points.

Four Hawkeyes hit double figures, led by Kamille Wahlin's 22 points. She also added six assists and four rebounds. Melissa Dixon had 19 points, Morgan Johnson had 12 and Kelly Krei had 10.

### HAWKEYES FALL AT NEBRASKA

Iowa dropped a 66-46 decision at No. 24 Nebraska on Feb. 24. The Hawkeyes couldn't overcome 21 turnovers, including 14 in the first half, which led to 17 Nebraska points.

Iowa trailed by nine at the half, but fought back to within two points at the 13:20 mark in the second half. Nebraska used a 9-2 to run to take a nine-point lead and never looked back.

Samantha Logic led Iowa with 12 points. She also added four rebounds and six assists. Theairra Taylor had 12 points while Morgan Johnson added eight points and nine rebounds.

## 2012-13 Iowa Hawkeye Roster

No.	Name	Yr.	Ht.	Pos.	Hometown (High School/College)
3	Claire Till	Fr.	6-0	G	Dubuque, Iowa (Dubuque Wahlert)
11	Trisha Nesbitt	Sr.	5-7	G	Ames, Iowa (Ames)
12	Morgan Johnson	Sr.	6-5	C	Platte City, Mo. (Platte County)
13	Kathy Thomas	So.	5-6	G	Flint, Mich. (Highland CC, KS)
21	Melissa Dixon	So.	5-8	G	Johnsburg, Ill. (Johnsburg)
22	Samantha Logic	So.	5-9	G	Racine, Wis. (Racine J.I. Case)
23	Theairra Taylor	Jr.	5-11	G	St. Paul, Minn. (Central)
24	Jaime Printy	Sr.	5-11	G	Marion, Iowa (Linn-Mar)
25	Kali Peschel	Fr.	6-1	G	Sauk Centre, Minn. (Sauk Centre)
33	Kathryn Reynolds	So.	5-7	G	Cincinnati, Ohio (Mount Notre Dame)
45	Nicole Smith	Fr.	6-4	C	Rockton, Ill. (Hononegah)
51	Bethany Doolittle	So.	6-4	C	Oakdale, Minn. (Hill-Murray)
54	Kayla Timmerman	Fr.	6-3	F	Wayzata, Minn. (Wayzata)

**Head Coach:** Lisa Bluder      **Associate Head Coach:** Jan Jensen  
**Assistant Coaches:** Jenni Fitzgerald and Shannon Gage



## 2012-13 Team Captains

Iowa captains are seniors  
Jaime Printy, Morgan Johnson and Trisha Nesbitt

### **DIXON IS FRONT-RUNNER FOR SIXTH PLAYER OF THE YEAR**

Sophomore Melissa Dixon is making a strong case for Big Ten Sixth Player of the Year with her performance in conference play.

Among players coming off the bench across the conference, Dixon leads the league in total points (154), points per game (11), 3-pointers made (36) and 3-point percentage (43.9). Penn State's Ariel Edwards is the next closest player, in terms of scoring, with 109 points (7.8 per game).

In conference games only, Dixon leads the Big Ten in 3-point percentage (43.9 percent) and is tied for second in 3-pointers made per game (2.6).

### **LOGIC IN FEBRUARY**

Sophomore Samantha Logic has enjoyed the month of February in her Hawkeye career.

In 13 career games in the month, Logic is averaging 13.1 points, 9.4 rebounds, 5.5 assists and shooting 50.8 percent from the field.

Logic netted a career-high 26 points at Purdue on Feb. 17 this year. Last season in February, Logic registered two 20-point performances and five double-doubles, including one triple-double.

### **JOHNSON SETS NEW CAREER STARTS RECORD**

Senior Morgan Johnson set the school record for career starts in Iowa's game at Purdue (Feb. 17). Johnson broke Jennie Lillis' record of 121 starts as a Hawkeye and currently has 123 career starts.

Johnson has played in 124 games in her four-year career, which is third-most in school history.

### **TAYLOR COLLECTS DOUBLE-DOUBLE**

Junior Theairra Taylor recorded her second double-double of the season, and her career, in Iowa's win at Purdue (Feb. 17).

Taylor finished with 15 points and tied a career-high with 11 rebounds. Her first career double-double came against Illinois State earlier this season on Nov. 11 (10 points and 11 rebounds).

### **JOHNSON IN TOP-10 IN CAREER DOUBLE-DOUBLES**

Senior Morgan Johnson posted her third straight and ninth double-double of the season on Feb. 14 against Penn State, finishing with 17 points and 11 rebounds. It was the center's 21st career double-double, which are the sixth most in school history.

### **JOHNSON SETS FAMILY BLOCK RECORD**

Morgan Johnson not only set the Iowa school record for career blocks, but she now holds the record for blocks in the Johnson household.

Johnson's mother, Leslie, compiled 265 career blocks from 1981-85 at Midland Lutheran College in Nebraska. Morgan broke her mother's record against Michigan (Jan. 27), collecting her 266th career block, and her career total now stands at 279.

### **PRINTY A SENIOR CLASS AWARD FINALIST**

Senior Jaime Printy is one of 10 finalists for the 2013 Senior CLASS Award. To be eligible for the award, a student-athlete must be an NCAA Division I senior and have notable achievements in four areas of excellence - community, classroom, character and competition. Fans are encouraged to vote on the Senior CLASS Award website - [www.seniorCLASSaward.com](http://www.seniorCLASSaward.com).

## Head Coach Lisa Bluder

Lisa Bluder (pronounced BLUE-dir) is in her 13th season as head coach at the University of Iowa and her 29th season as a college head coach. She is a three-time Big Ten and two-time WBCA Regional Coach of the Year.

Bluder has a career record of 603-297 (.670), including a 247-155 (.614) record at Iowa, a 187-106 (.638) record in 10 seasons (1990-2000) at Drake and a six-year mark (1984-90) of 169-36 (.824) at St. Ambrose.

Bluder is Iowa's second all-time winningest coach and trails only C. Vivian Stringer. She has guided the Hawkeyes to 11 postseason tournaments (9 NCAA, 2 WNIT) and nine upper-division finishes in the Big Ten Conference, including winning a share of the league championship in 2008 and taking home the conference tournament title in 2001.

In her first season with the Hawkeyes, Bluder transformed a struggling program into a 21-game winner. Iowa finished second in the Big Ten, won the conference tournament and advanced to the second round of the NCAA Tournament. Bluder became Iowa's third coach to be named Big Ten Coach of the Year. She was also honored as the College Coach of the Year by the *Women's Basketball News Service* and was named the WBCA District 6 Coach of the Year. Iowa's 2001-02 squad finished fourth in the Big Ten and advanced to the second round of the NCAA Tournament for the second consecutive year. In 2003, Bluder guided the Hawkeyes to their first-ever WNIT appearance. Iowa, which had nine underclassmen on its roster, advanced to the quarterfinals before falling to Creighton. In 2004-05, Iowa finished 23-10, starting the year 13-0 and was the last Division I undefeated team standing. In 2005-06, Bluder mentored a team plagued by injuries to a fifth-place Big Ten finish and an NCAA Tournament berth.

In her 10 years at Drake, Bluder brought great success and tradition to the Bulldog program and established herself as one of the top coaches in the country. She led Drake to five 20-plus win seasons in her last six years, including five post-season appearances. She guided the Bulldogs to eight Missouri Valley Conference Tournament appearances, reaching the semifinals six times and winning the tournament four times. Bluder was also named the Conference Coach of the Year three times at Drake.

Bluder began her coaching career at St. Ambrose, where she coached six successful seasons, building the Bees into a NAIA powerhouse. During her tenure at St. Ambrose, Bluder guided the Bees to four straight national tournaments, including two consecutive Final Four appearances. The 1990 St. Ambrose team was ranked No. 1 and Bluder was named the NAIA Converse Coach of the Year.

A graduate of Linn-Mar High School in Marion, Iowa, Bluder was a three-year starter at Northern Iowa. She graduated from UNI in 1983 with a bachelor's degree in marketing.



## Big Ten Overall Stats (Thru Feb. 25)

<b>Scoring Offense</b>	
1. Penn State	73.8
4. Iowa	68.3
<b>Scoring Defense</b>	
1. Michigan State	51.4
9. Iowa	62.5
<b>Scoring Margin</b>	
1. Penn State	+16.6
6. Iowa	+5.8
<b>Free Throw Percentage</b>	
1. Purdue	.766
2. Iowa	.763
<b>Field Goal Percentage</b>	
1. Minnesota	.446
5. Iowa	.427
<b>Field Goal Percentage Defense</b>	
1. Northwestern	.349
4. Iowa	.371
<b>3-Point Field Goals Made</b>	
1. Nebraska	6.5
4. Iowa	5.8
<b>3-Point Field Goal Percentage</b>	
1. Penn State	.397
5. Iowa	.345
<b>3-Point Field Goal Percentage Defense</b>	
1. Michigan State	.256
5. Iowa	.296
<b>Rebounding</b>	
1. Penn State	42.2
4. Iowa	38.8
<b>Rebounding Allowed</b>	
1. Michigan	31.9
9. Iowa	37.2
<b>Rebounding Margin</b>	
1. Michigan State	+8.1
7. Iowa	+1.6
<b>Offensive Rebounds</b>	
1. Penn State	15.2
8. Iowa	11.7
<b>Defensive Rebounds</b>	
1. Northwestern	28.6
3. Iowa	27.1
<b>Blocked Shots</b>	
1. Northwestern	5.7
2. Iowa	5.6
<b>Assists</b>	
1. Iowa	15.8
<b>Steals</b>	
1. Illinois	12.8
9. Iowa	7.2
<b>Turnover Margin</b>	
1. Illinois	+5.3
7. Iowa	-0.4
<b>Assist/Turnover Ratio</b>	
1. Nebraska	1.1
2. Iowa	1.0

## Big Ten Overall Stats (Thru Feb. 25)

<b>Morgan Johnson</b>	<b>Rank</b>	<b>Avg.</b>	<b>Jaime Printy</b>	<b>Rank</b>	<b>Avg.</b>
Field Goal Percentage	1st	.530	Free Throw Percentage	2nd	.920
Blocks	T-4th	2.0	Assists	11th	3.2
Offensive Rebounds	6th	3.0	3-Point Percentage	12th	1.8
Rebounding	8th	7.4	Assist/Turnover Ratio	12th	1.1
Scoring	9th	14.8	Scoring	13th	13.3
Defensive Rebounds	14th	4.5			
<b>Samantha Logic</b>	<b>Rank</b>	<b>Avg.</b>	<b>Melissa Dixon</b>	<b>Rank</b>	<b>Avg.</b>
Assists	1st	6.5	3-Point Percentage	4th	.401
Assist/Turnover Ratio	5th	1.4	3-Pointers Made	6th	2.2
Field Goal Percentage	6th	.493	Scoring	30th	9.5
Offensive Rebounds	11th	2.4			
Steals	12th	1.9	<b>Bethany Doolittle</b>	<b>Rank</b>	<b>Avg.</b>
Rebounding	14th	6.5	Blocks	T-4th	2.0

### LOGIC CRASHING THE BOARDS

With 12 rebounds against Northwestern (Feb. 3), sophomore Samantha Logic collected her 10th career double digit rebounding performance and her second in two games (10 at Illinois). She added 11 points and three steals against Northwestern.

Logic has four games this season with 10 or more rebounds. Last year as a freshman, Logic tallied six games, including a stretch of four-straight during Big Ten play.

### LOGIC'S EYE-POPPING ASSIST FIGURES

- Samantha Logic leads the Big Ten and ranks 14th in the NCAA with 6.5 assists per game.
- Logic is on pace to break the Iowa single season assists record of 191, held by Cara Con-suegra (2000-01 season). Logic currently has 183 assists and needs to average 4.5 assists per game in the final two regular season games to break the record.
- Logic has recorded seven or more assists in 13 games, including four games with 10 or more. She has had at least five assists in 19 games.
- Logic's six games with double digit assists are the second most in Iowa history. Cara Con-suegra had nine games in her career with 10 or more assists. The next closest Hawkeyes on the list are Kachine Alexander, Jolette Law and Michelle Edwards, with two career games.

### HAWKEYES LIKE TO SHARE

- Iowa leads the Big Ten and ranks 31st in the NCAA with 15.8 assists per game.
- The Hawkeyes broke the school record for team assists last year, collecting 514. This year's team is nearly on pace to break that mark. Iowa had 454 assists through 28 games last year and has 441 through 28 games this year.
- Iowa has recorded at least 17 assists in 12 games, including four games with 20 or more.
- The Hawkeyes have 434 assists on 669 made field goals this season (1.5 assist/field goal ratio).

### BALANCING ACT

Iowa has had seven different players lead, or share the lead, in scoring this season.

Morgan Johnson has paced the Hawkeyes in scoring 12 times, Jaime Printy nine times, Melissa Dixon six times, Samantha Logic three times, Theairra Taylor twice and Kathy Thom-as and Bethany Doolittle once.

### PRINTY CLOSE TO BIG FREE THROW RECORDS

- Jaime Printy currently owns an 88.9 percent career free throw percentage (423-of-476). Former Hawkeye Wendy Ausdemore holds the Iowa and Big Ten record for career free throw percentage at 89.2 (174-of-195).
- Printy is shooting 92 percent (115-of-125) for the season. The Iowa single season record is 89.4 percent (101-of-113) by Lindsey Meder in 2000-01. The Big Ten single season record is 92.5 percent (99-of-107) by Indiana's Cyndi Valentin in 2003-04.



## Big Ten League Stats (thru Feb. 25)

Samantha Logic			Melissa Dixon		
	Rank	Avg.		Rank	Avg.
Assists	2nd	6.2	3-Point Percentage	1st	.439
Field Goal Percentage	3rd	.518	3-Pointers Made	T-2nd	2.6
Assist/Turnover Ratio	6th	1.4	Scoring	24th	11.0
Offensive Rebounds	12th	2.5			
Rebounding	14th	6.9	Jaime Printy		
Scoring	T-26th	10.8		Rank	Avg.
			Free Throw Percentage	2nd	.925
			Scoring	T-17th	12.3
Morgan Johnson			Bethany Doolittle		
	Rank	Avg.		Rank	Avg.
Blocks	3rd	1.9	Blocks	2nd	2.1
Offensive Rebounds	4th	3.5			
Rebounding	8th	7.9			
Field Goal Percentage	12th	.456			
Scoring	20th	11.6			

### PRINTY FREE THROW NOTES

- Printy has gone 3-of-3 from the line against Drake, 4-of-4 against Northern Illinois, Northern Iowa, Ohio State, Michigan State, Purdue and Michigan, 6-of-6 against Iowa State and San Diego, 8-of-8 vs. Northwestern, 11-of-11 against Middle Tennessee and 17-of-17 against West Virginia.
- Printy made 22-straight free throws, from Iowa's game vs. Texas (Dec. 28) through the game vs. Wisconsin (Jan. 24). Printy converted 21-consecutive free throws between Iowa's game vs. North Carolina and the road contest at Florida State
- Printy has put together a string of at least 20-consecutive made free throws in each year of her career. She converted 27-straight as a freshman and 32-straight as a sophomore and junior. Iowa's record for consecutive free throws made is 33 by Lindsey Meder.

### BLUDER GETS WIN NO. 600

Head coach Lisa Bluder became the 42nd coach in NCAA women's basketball history (all divisions) and only the 25th Division I head coach (minimum 10 years at a DI school) to collect 600 wins Jan. 20 vs. Purdue.

Bluder entered the 2012-13 season as the 26th winningest active coach and the 46th overall winningest coach in NCAA women's basketball history (by victories).

### MOVING UP CAREER CHARTS

- Morgan Johnson, Iowa's all-time blocks leader (280), ranks sixth in career rebounds (838) and ninth in career scoring (1,507). She needs 11 more rebounds to move past Lisa Long for fifth place and 92 points to pass Tangela Smith for eighth place.
- Jaime Printy ranks second in career 3-pointers made (246), fourth in career scoring (1,781) and fifth in career assists (393). She needs 16 more 3-pointers to move past Lindsey Meder for first place, 41 points to move past Michelle Edwards for third place and 20 more assists to move past Kristi Smith for fourth place.
- Samantha Logic ranks 13th in career assists (319). She needs four more assists to move past Lisa Anderson into 12th place.

### BEST BOARD GAME IN B1G

Iowa's 60 rebounds against Missouri State (Dec. 19) are the most by a Big Ten team this season.

The Hawkeyes collected 21 offensive and 39 defensive rebounds against the Lady Bears.

## Big Ten League Stats (thru Feb. 25)

<b>Scoring Offense</b>	
1. Penn State	73.4
<b>T5. Iowa</b>	<b>64.6</b>
<b>Scoring Defense</b>	
1. Nebraska	55.4
<b>10. Iowa</b>	<b>65.1</b>
<b>Scoring Margin</b>	
1. Penn State	+15.7
<b>7. Iowa</b>	<b>-0.4</b>
<b>Free Throw Percentage</b>	
1. Iowa	.788
<b>Field Goal Percentage</b>	
1. Penn State	.429
<b>3. Iowa</b>	<b>.408</b>
<b>Field Goal Percentage Defense</b>	
1. Northwestern	.340
<b>6. Iowa</b>	<b>.402</b>
<b>3-Point Field Goals Made</b>	
1. Nebraska	6.9
<b>3. Iowa</b>	<b>5.8</b>
<b>3-Point Field Goal Percentage</b>	
1. Penn State	.406
<b>2. Iowa</b>	<b>.352</b>
<b>3-Point Field Goal Percentage Defense</b>	
1. Nebraska	.266
<b>8. Iowa</b>	<b>.327</b>
<b>Rebounding</b>	
1. Penn State	40.6
<b>5. Iowa</b>	<b>37.1</b>
<b>Rebounding Allowed</b>	
1. Michigan	32.5
<b>6. Iowa</b>	<b>36.4</b>
<b>Rebounding Margin</b>	
1. Michigan State	+6.9
<b>6. Iowa</b>	<b>+0.7</b>
<b>Offensive Rebounds</b>	
1. Michigan State	15.2
<b>6. Iowa</b>	<b>11.7</b>
<b>Defensive Rebounds</b>	
1. Nebraska	28.1
<b>5. Iowa</b>	<b>25.4</b>
<b>Blocked Shots</b>	
1. Iowa	5.4
<b>Assists</b>	
1. Northwestern	15.0
<b>4. Iowa</b>	<b>14.3</b>
<b>Steals</b>	
1. Illinois	14.9
<b>3. Iowa</b>	<b>7.8</b>
<b>Turnover Margin</b>	
1. Illinois	+7.6
<b>6. Iowa</b>	<b>-0.4</b>
<b>Assist/Turnover Ratio</b>	
1. Nebraska	1.1
<b>2. Iowa</b>	<b>1.0</b>



## Hawkeyes in NCAA Stats (thru Feb. 24)

Iowa	Rank	Avg.
Blocks	11th	5.6
Free Throw Percentage	13th	76.3
Assists	31st	15.8
3-Point Percentage	34th	34.5
Assist/Turnover Ratio	43rd	1.0
Field Goal Percentage	45th	42.7
Scoring Offense	60th	68.3
3-Pointers Made Per Game	86th	5.8

Morgan Johnson	Rank	Avg.
Field Goal Percentage	25th	53.0
Blocks	T-37th	2.0

Melissa Dixon	Rank	Avg.
3-Point Percentage	21st	40.1
3-Pointers Made Per Game	84th	2.2

Samantha Logic	Rank	Avg.
Assists	14th	6.5

Jaime Printy	Rank	Avg.
Free Throw Percentage	4th	92.0

Bethany Doolittle	Rank	Avg.
Blocks	T-37th	2.0

## Follow the Hawkeyes on Twitter

Iowa Women's Basketball....@IowaWBB

Claire Till.....@clairetill3

Trisha Nesbitt.....@TNesbitt11

Morgan Johnson.....@MoJohnson12

Kathy Thomas.....@datgurlgotgame\_

Melissa Dixon.....@MDix21

Theairra Taylor.....@two3KneeTaylor

Jaime Printy.....@jprinty24

Kali Peschel.....@KaliPeschel

Kathryn Reynolds.....kc\_reynolds

Nicole Smith.....@NicoleSmith42

Kayla Timmerman.....@timmykay54

Jan Jensen.....@golowa

Jenni Fitzgerald.....@jlefty21

Abby Emmert.....@abbyemmert

## Press Conference FTP Information

Weekly press conference footage will be available to media outlets via [www.dropbox.com](http://www.dropbox.com).  
Username: ath-media@uiowa.edu  
Password: hawks2012

### IOWA CONTINUES TREND AGAINST RANKED FOES

- Iowa's win over 11th-ranked Purdue (Jan. 20) marked the 15th time under Lisa Bluder that the Hawkeyes have defeated a top-15 team.
- The Hawkeyes have recorded at least one win against a top-25 team in all but two seasons under Bluder. In nine of those seasons, Iowa has knocked off at least one top-15 opponent.
- Purdue was the highest ranked opponent the Hawkeyes have defeated since knocking off No. 10 Michigan State (66-64) on Jan. 27, 2011.
- This season marks just the second time in school history that Iowa has defeated three ranked teams prior to Big Ten play (No. 12 West Virginia, No. 22 Iowa State, No. 20 Texas). The only other time Iowa knocked off three ranked opponents was in 1993 (No. 4 Louisiana Tech, No. 20 Missouri State, No. 9 Southern California).
- This season is only the sixth time in school history that Iowa played at least three ranked teams prior to conference action. Iowa faced five ranked opponents in 1990 (2-3 record) and three in 1999 (0-3), 1995 (2-1), 1993 (3-0) and 1989 (1-2).
- Iowa has tied the school record for number of wins over ranked teams in a season with seven. The Hawkeyes have accomplished the feat three other times (1995-96, 1993-94, 1992-93).

### PRINTY AND DOOLITTLE TAKE OVER LATE

Jaime Printy and Bethany Doolittle both had impressive finishes in Iowa's games against Wisconsin and at Michigan.

Printy took over in the final minutes against Wisconsin (Jan. 24), scoring 14-straight points to give Iowa the win. The Hawkeyes trailed 52-51 with 5:25 left in the game. Printy then scored Iowa's next 14 points and went on her own personal 12-0 run from the 4:11 mark to the 1:53 mark, giving Iowa a 10-point advantage.

Doolittle did the same at Michigan (Jan. 27), netting eight points to give Iowa a lead after it trailed by a point late in the contest. Doolittle's jumper with 5:20 left put Iowa ahead, 55-54. Doolittle went on her own 8-1 run from 5:20-1:45 in the second half to lift the Hawkeyes to the win.

Printy added 12 points, three assists and three steals against Northwestern, while Doolittle had nine rebounds and four blocked shots.

### PRINTY - BIG PLAYER OF THE WEEK - JAN. 26

Jaime Printy was named Big Ten Player of Week (Jan. 29) for her efforts in Iowa's wins against Wisconsin and at No. 23 Michigan.

Printy averaged 21.5 points, 6.5 rebounds, shot 54.5 percent from the field, 41.7 percent from 3-point range and was 14-of-15 from the free throw line in Iowa's two wins.

Printy is averaging 14.4 points per game, having scored in double figures in nine-straight games and 20-of-25 games for the season. She leads the Big Ten and ranks fifth nationally in free throw percentage (92.4).

Printy netted 29 points against Wisconsin, missing only two shots in 10 attempts, while going 3-of-3 from 3-point distance and 10-of-11 from the charity stripe. She also added eight rebounds and four assists, with just one turnover, in 35 minutes.

The Marion, Iowa, native finished the week with 14 points and five rebounds at No. 23 Michigan. She was a perfect 4-of-4 from the free throw line.

The honor marked the second time in Printy's career she has been named Big Ten Player of the Week and her sixth Big Ten honor (four-time Big Ten Freshman of the Week in 2009-10).



## 2012-13 Big Ten Standings/Schedule (thru Feb. 25)

Team	Big Ten	Overall	Thursday, Feb. 28
Penn State	13-1	23-3	Michigan State at Purdue
Nebraska	11-3	21-6	Ohio State at Illinois
Purdue	9-5	20-7	Indiana at Iowa
Illinois	9-5	16-10	Nebraska at Wisconsin
Michigan State	8-6	20-7	Northwestern at Michigan
Michigan	8-6	19-8	Penn State at Minnesota
Iowa	6-8	17-11	
Minnesota	5-9	16-12	
Ohio State	5-9	15-12	
Northwestern	5-9	13-14	
Wisconsin	3-11	11-16	
Indiana	2-12	11-16	

### JOHNSON - BIG PLAYER OF THE WEEK - NOV. 19

Morgan Johnson was named Big Ten Player of the Week (Nov. 19) for her efforts in the Pre-season WNIT semifinals and championship game.

Johnson averaged 20 points, 9.5 rebounds and shot 76.2 percent (16-of-21) from the floor against two tough opponents in Middle Tennessee and North Carolina.

Johnson started the week with 20 points (8-of-10 FGs), eight rebounds and two blocks in Iowa's overtime win over Middle Tennessee. She followed with another 20-point performance, along with 11 rebounds, against ACC opponent North Carolina, battling 6-6 center Waltiea Rolle in the paint.

The award was Johnson's second weekly honor from the Big Ten in her career. She was named Big Ten Player of the Week last year after scoring 37 points at Bradley.

### SCHOOL/BIG RECORDS SET THIS SEASON

- Morgan Johnson became the Iowa career leader in blocks against Florida International. Johnson entered the game needing two blocks to break Tangela Smith's career blocks record and she finished with five. Johnson is currently sixth in Big Ten history with 280 blocks.
- Jaime Printy tied the school record for 3-pointers made in a single game with seven against San Diego. Kamille Wahlin and Lindsey Meder are the only other Iowa players to hit seven 3's in a single game. Printy was 6-of-7 in the second half, making her final five attempts. Her seven made treys tie as the most by a Big Ten player this season.
- Samantha Logic broke Iowa's school record for assists in a single game against Texas, finishing with 14. Her 14 assists tie as the most by a Big Ten player this season. Earlier this year, Logic tied the previous school record with 12 against Middle Tennessee State.
- Against West Virginia, Jaime Printy became only the third player in Big Ten history to go 17-of-17 from the free throw line, matching the best single game free throw performance in conference history. Wisconsin's Michele Kozelka (1989) and Keisha Anderson (1996) are the only other players in Big Ten history to accomplish the feat.
- Printy's 17 made free throws tied the single game school record and are tied for the second most made free throws in Big Ten history.
- Printy's performance against West Virginia marked the ninth time in school history that an Iowa player has been perfect from the free throw line (minimum 10 attempts). Printy now has three of those marks, with one of those performances coming earlier this year against Middle Tennessee (11-of-11). The other came against Indiana (10-of-10) on Feb. 27, 2011.
- Morgan Johnson was a perfect 11-of-11 from the free throw line at Wisconsin, marking the 10th time in school history, and the third this season, an Iowa player was perfect in at least 10 attempts.
- Melissa Dixon tied the school record for 3-pointers made by an Iowa player in Carver-Hawkeye Arena with six against Northwestern.
- As a team, the Hawkeyes set the Big Ten and school record for free throws made (42) and set the school record for free throw attempts (50) in the win over West Virginia.

### Career Scoring in Iowa History

Rank...No.....	Player.....	Years
2.....	1906..... Lindsey Meder .....	98-02
3.....	1821..... Michelle Edwards .....	84-88
<b>4.....</b>	<b>1781..... Jaime Printy .....</b>	<b>10-Pres.</b>
6.....	1742..... Franthea Price.....	86-90
7.....	1606..... Toni Foster .....	89-93
8.....	1598..... Tangela Smith .....	94-98
<b>9.....</b>	<b>1507..... Morgan Johnson .....</b>	<b>10-Pres.</b>

### Career 3-Pointers in Iowa History

Rank...No.....	Player.....	Years
1.....	261..... Lindsey Meder .....	98-02
<b>2.....</b>	<b>246..... Jaime Printy .....</b>	<b>10-Pres.</b>
3.....	231..... Kamille Wahlin.....	09-Pr.

### Career Blocks in Iowa History

Rank...No.....	Player.....	Years
<b>1.....</b>	<b>280..... Morgan Johnson .....</b>	<b>10-Pres.</b>
2.....	235..... Tangela Smith .....	94-98

### Career Rebounds in Iowa History

Rank...No.....	Player.....	Years
2.....	910..... Kachine Alexander .....	08-11
3.....	887..... Toni Foster .....	89-93
4.....	859..... Tangela Smith .....	94-98
5.....	848..... Lisa Long .....	83-87
<b>6.....</b>	<b>838..... Morgan Johnson .....</b>	<b>10-Pres.</b>

### Career Assists in Iowa History

Rank...No.....	Player.....	Years
1.....	576..... Cara Consuegra.....	97-01
2.....	431..... Michelle Edwards .....	84-88
3.....	427..... Kamille Wahlin.....	09-12
4.....	412..... Kristi Smith.....	05-09
<b>5.....</b>	<b>393..... Jaime Printy .....</b>	<b>10-Pres.</b>
10.....	353..... Jollette Law.....	86-90
11.....	339..... Kachine Alexander .....	08-11
12.....	322..... Lisa Anderson .....	80-84
<b>13.....</b>	<b>319..... Samantha Logic.....</b>	<b>12-Pres.</b>

### Career Double-Doubles in Iowa History

Rank...No.....	Player.....	Years
4.....	24..... Amy Herrig.....	95-99
5.....	24..... Kachine Alexander .....	07-11
<b>6.....</b>	<b>21..... Morgan Johnson .....</b>	<b>10-Pres.</b>

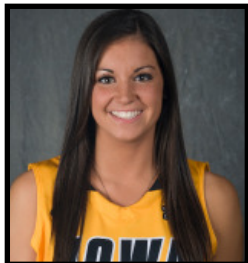




# University of Iowa Women's Basketball

## Updated Iowa Player Bio

### Claire Till



# 3

**Guard, 6-0, Freshman**  
**Dubuque, Iowa**  
**Dubuque Wahlert HS**

- Missed a total of six games with a stress reaction in right femur (missed four games from Dec. 1-Dec. 28 and two games from Jan. 6-Jan.17).
- Seven points and six rebounds against Florida International.
- Five points and two rebounds in win over Robert Morris.
- Scored three points and recorded six rebounds in collegiate debut vs. NIU.
- Two-time all-state selection.
- Three-time IBCA Select Team member.
- Four-time first team all-conference and all-district pick.
- Underwent three surgeries in high school to repair injured knee.

#### Personal Bests

**Points:** 7 at Florida International (11/23/12)  
**Rebounds:** 6, twice, last at FIU (11/23/12)  
**FGM:** 1, 4x, last at FIU (11/23/12)  
**FGA:** 6 at Florida International (11/23/12)  
**3-pt FG:** 1, twice, last vs. RMU (11/20/12)  
**3-pt FGA:** 2, twice, last at FIU (11/23/12)  
**FTM:** 5, twice, last vs. WVU (11/25/12)  
**FTA:** 8 at Florida International (11/23/12)  
**Assists:** 1, 3x, last vs. Texas (12/28/12)  
**Steals:** 1, 3x, last vs. WVU (11/25/12)  
**Blocks:** 1, 3x, last vs. Ohio State (1/3/13)  
**Minutes:** 18 at Florida International (11/23/12)

### 2012-13 Game-by-Game

#03 Till, Claire

Opponent	Date	gs	min	Total		3-Pointers		Free throws		Rebounds			pf	a	t/o	blk	stl	pts	avg	
				fg-fga	pct	3fg-fga	pct	ft-fa	pct	off	def	tot								avg
NORTHERN ILLINOIS	11/9/12	11	1-3	.333	1-2	.500	0-2	.000	1	5	6	6.0	3	0	0	1	1	3	3.0	
ILLINOIS STATE	11/11/12	7	1-2	.500	0-0	.000	2-2	1.000	0	3	3	4.5	1	0	2	0	1	4	3.5	
MIDDLE TENNESSEE	11/14/12	8	0-1	.000	0-0	.000	0-0	.000	0	1	1	3.3	2	0	0	0	0	0	2.3	
NORTH CAROLINA	11/18/12	6	0-0	.000	0-0	.000	1-2	.500	0	2	2	3.0	0	1	2	0	0	1	2.0	
ROBERT MORRIS	11/20/12	16	1-2	.500	1-1	1.000	2-2	1.000	0	2	2	2.8	0	0	2	0	0	5	2.6	
at FIU	11/23/12	18	1-6	.167	0-2	.000	5-8	.625	5	1	6	3.3	0	0	0	0	0	7	3.3	
vs WVU	11/25/12	14	0-1	.000	0-0	.000	5-6	.833	2	0	2	3.1	1	0	1	0	1	5	3.6	
at Florida State	11/28/12	12	0-2	.000	0-1	.000	0-0	.000	0	1	1	2.9	2	1	0	1	0	0	3.1	
vs Texas	12/28/12	4	0-1	.000	0-1	.000	0-0	.000	1	0	1	2.7	1	1	0	0	0	0	2.8	
OHIO STATE	1/3/13	4	0-1	.000	0-0	.000	0-0	.000	0	1	1	2.5	0	0	0	1	0	0	2.5	
PURDUE	01/20/13	1	0-0	.000	0-0	.000	0-0	.000	0	0	0	2.3	0	0	0	0	0	0	2.3	
WISCONSIN	1/24/13	2	0-0	.000	0-0	.000	0-0	.000	0	0	0	2.1	1	0	1	0	0	0	2.1	
at Purdue	02/17/13	1	0-0	.000	0-0	.000	0-0	.000	0	0	0	1.9	0	0	0	0	0	0	1.9	
<b>Totals</b>		<b>0</b>	<b>104</b>	<b>4-19</b>	<b>.211</b>	<b>2-7</b>	<b>.286</b>	<b>15-22</b>	<b>.682</b>	<b>9</b>	<b>16</b>	<b>25</b>	<b>1.9</b>	<b>11</b>	<b>3</b>	<b>9</b>	<b>3</b>	<b>3</b>	<b>25</b>	<b>1.9</b>

Games played: 13  
 Minutes/game: 8.0  
 Points/game: 1.9  
 FG Pct: 21.1  
 3FG Pct: 28.6  
 FT Pct: 68.2

Rebounds/game: 1.9  
 Assists/game: 0.2  
 Turnovers/game: 1.9  
 Assist/turnover ratio: 0.3  
 Steals/game: 0.2  
 Blocks/game: 0.2

#### CAREER STATISTICS

YEAR	G/GS	FG-A	PCT	3-PT	PCT	FT-A	PCT	O-D-REB	AVG	PF-FO	AS	TO	BK	ST	PTS	AVG
Fresh.	13/0	4-19	.211	2-7	.286	15-22	.682	9-16-25	1.9	11-0	3	9	3	3	25	1.9







# University of Iowa Women's Basketball

## Updated Iowa Player Bio

### Trisha Nesbitt



# 11

**Guard, 5-7, Senior**  
**Ames, Iowa**  
**Ames HS**

- Career-high 12 points in win at Drake.
- Academic All-Big Ten in 2011-12.
- Had minor knee surgery Nov. 15, 2011 and missed the first 10 games of the season as a junior.
- Saw first action last season Dec. 20 vs. Drake, recording one rebound and one steal in seven minutes of play.

#### Personal Bests

**Points:** 12 at Drake (12/16/12)  
**Rebounds:** 3, 2x, last vs. NIU (11/9/12)  
**FGM:** 4 vs. Michigan State (3/6/10)  
**FGA:** 8 at Indiana (2/11/10)  
**3-pt FG:** 2, 3x, last at Drake (12/16/12)  
**3-pt FGA:** 4, 3x, last vs. Missouri State (12/19/12)  
**FTM:** 4, 3x, last at Drake (12/16/12)  
**FTA:** 5 at UNI (11/22/09)  
**Assists:** 4, 3x, last at Iowa St. (12/10/09)  
**Steals:** 3 at Minnesota (1/3/10)  
**Blocks:** - - -  
**Minutes:** 37 at Indiana (2/11/10)

### 2012-13 Game-by-Game

#11 Nesbitt, Trisha

Opponent	Date	gs	min	Total		3-Pointers		Free throws		Rebounds				pf	a	t/o	blk	stl	pts	avg
				fg-fga	pct	3fg-fga	pct	ft-fa	pct	off	def	tot	avg							
NORTHERN ILLINOIS	11/9/12	18	1-1	1.000	1-1	1.000	0-0	.000	0	3	3	3.0	0	1	2	0	0	3	3.0	
ILLINOIS STATE	11/11/12	15	0-3	.000	0-1	.000	3-4	.750	0	1	1	2.0	3	0	1	0	1	3	3.0	
MIDDLE TENNESSEE	11/14/12	4	1-1	1.000	0-0	.000	0-0	.000	0	0	0	1.3	0	0	0	0	0	2	2.7	
NORTH CAROLINA	11/18/12	5	1-2	.500	0-1	.000	0-0	.000	0	0	0	1.0	0	0	0	0	0	2	2.5	
ROBERT MORRIS	11/20/12	13	0-0	.000	0-0	.000	0-0	.000	0	2	2	1.2	0	2	0	0	0	0	2.0	
at FIU	11/23/12	8	1-2	.500	0-0	.000	0-0	.000	0	1	1	1.2	1	1	0	0	0	2	2.0	
vs WVU	11/25/12	14	1-1	1.000	1-1	1.000	1-2	.500	0	0	0	1.0	2	1	1	0	1	4	2.3	
at Florida State	11/28/12	5	0-0	.000	0-0	.000	0-0	.000	0	0	0	0.9	1	0	0	0	1	0	2.0	
UNI	12/1/12	5	0-0	.000	0-0	.000	0-0	.000	0	0	0	0.8	0	0	0	0	0	0	1.8	
IOWA STATE	12/6/12	6	0-0	.000	0-0	.000	0-0	.000	0	1	1	0.8	1	0	0	0	0	0	1.6	
at Drake	12/16/12	15	3-4	.750	2-3	.667	4-4	1.000	0	0	0	0.7	4	0	1	0	0	12	2.5	
MISSOURI STATE	12/19/12	15	1-4	.250	1-4	.250	1-2	.500	0	1	1	0.8	5	1	1	0	0	4	2.7	
vs Texas	12/28/12	8	0-1	.000	0-1	.000	0-0	.000	0	0	0	0.7	1	0	0	0	0	0	2.5	
MICHIGAN	1/6/13	3	0-0	.000	0-0	.000	0-0	.000	0	0	0	0.6	0	0	0	0	0	0	2.3	
at Wisconsin	01/10/13	3	0-1	.000	0-1	.000	0-0	.000	0	0	0	0.6	0	0	0	0	0	0	2.1	
at Michigan State	01/17/13	4	0-1	.000	0-0	.000	0-0	.000	0	1	1	0.6	0	0	0	0	1	0	2.0	
PURDUE	01/20/13	2	0-0	.000	0-0	.000	0-0	.000	0	0	0	0.6	0	0	0	0	0	0	1.9	
WISCONSIN	1/24/13	2	0-0	.000	0-0	.000	0-0	.000	0	0	0	0.6	0	0	0	0	0	0	1.8	
at Michigan	01/27/13	9	0-1	.000	0-1	.000	0-0	.000	0	2	2	0.6	0	0	0	0	0	0	1.7	
NORTHWESTERN	2/03/13	3	0-1	.000	0-0	.000	0-0	.000	0	0	0	0.6	0	1	1	0	1	0	1.6	
at Minnesota	02/07/13	2	0-1	.000	0-0	.000	0-0	.000	0	0	0	0.6	0	0	0	0	0	0	1.5	
NEBRASKA	02/11/13	8	0-1	.000	0-0	.000	0-0	.000	0	0	0	0.5	1	0	0	0	0	0	1.5	
PENN STATE	2/14/13	2	0-0	.000	0-0	.000	0-0	.000	0	0	0	0.5	0	0	0	0	0	0	1.4	
at Purdue	02/17/13	1	0-0	.000	0-0	.000	0-0	.000	0	0	0	0.5	0	0	0	0	0	0	1.3	
at Nebraska	02/24/13	2	0-0	.000	0-0	.000	0-0	.000	0	0	0	0.5	0	0	1	0	0	0	1.3	
<b>Totals</b>		0	172	9-25	.360	5-14	.357	9-12	.750	0	12	12	0.5	19	7	8	0	5	32	1.3

Games played: 25  
 Minutes/game: 6.9  
 Points/game: 1.3  
 FG Pct: 36.0  
 3FG Pct: 35.7  
 FT Pct: 75.0

Rebounds/game: 0.5  
 Assists/game: 0.3  
 Turnovers/game: 0.3  
 Assist/turnover ratio: 0.9  
 Steals/game: 0.2

#### CAREER STATISTICS

YEAR	G/GS	FG-A	PCT	3-PT	PCT	FT-A	PCT	O-D-REB	AVG	PF-FO	AS	TO	BK	ST	PTS	AVG
Fresh.	34/1	25-85	.294	9-36	.250	25-31	.806	2-22-24	0.7	46-0	43	42	0	14	84	2.5
Soph.	16/0	3-13	.231	2-6	.333	0-1	.000	0-4-4	0.3	7-0	5	10	0	1	8	0.5
Junior	15/0	1-8	.125	0-6	.000	3-4	.750	1-2-3	0.2	10-0	4	3	0	3	5	0.3
Senior	25/0	9-25	.360	5-14	.357	9-12	.750	0-12-12	0.5	19-1	7	8	0	5	32	1.3
<b>TOTALS</b>	<b>90/1</b>	<b>38-131</b>	<b>.290</b>	<b>16-62</b>	<b>.258</b>	<b>37-48</b>	<b>.771</b>	<b>3-40-43</b>	<b>0.5</b>	<b>82-1</b>	<b>59</b>	<b>63</b>	<b>0</b>	<b>23</b>	<b>129</b>	<b>1.4</b>





# University of Iowa Women's Basketball

## Updated Iowa Player Bio

### Morgan Johnson



# 12

**Center, 6-5, Senior**  
**Platte City, Mo.**  
**Platte County HS**

- Iowa career blocks leader (280), sixth in career rebounds (838) and ninth in career scoring (1,507).
- Posted 21 career double-doubles, which rank sixth all-time in school history... had three as a freshman, five as a sophomore, four as a junior and nine as a senior.
- Capital One Academic All-District selection.
- Ninth double-double against Penn State, finishing with 17 points and 11 rebounds.
- Posted eighth double-double against Nebraska, finishing with 19 points on 9-of-11 shooting to go along with 10 rebounds.
- Seventh double-double of the season with 13 points and 10 rebounds at Minnesota.
- Sixth double-double of the season with 13 points and 12 rebounds at Michigan St.
- Fifth double-double of the season with 23 points and 11 rebounds in win at Wisconsin.
- Fourth double-double of the season with 16 points and 12 rebounds in win over Ohio State.
- 26 points, eight rebounds and three blocks in win at Drake.
- Third double-double of the season with 19 points, 12 rebounds and a career-high five assists in win over Northern Iowa.
- 20 points at Florida State.
- Second double-double of the season with 19 points and 11 rebounds in win over Robert Morris.
- Big Ten Player of the Week (Nov. 19).
- First double-double of the season with 20 points and 11 rebounds vs. N. Carolina.
- 24 points (12-of-13 FTs) and nine rebounds in win over Illinois State.
- Preseason All-Big Ten selection.

### 2012-13 Game-by-Game

#12 Johnson, Morgan

Opponent	Date	gs	min	Total		3-Pointers		Free throws		Rebounds			pf	a	t/o	blk	stl	pts	avg		
				fg-fga	pct	3fg-fga	pct	ft-fa	pct	off	def	tot								avg	
NORTHERN ILLINOIS	11/9/12	*	20	4-11	.364	0-0	.000	3-5	.600	1	4	5	5.0	2	0	1	0	1	11	11.0	
ILLINOIS STATE	11/11/12	*	30	6-14	.429	0-0	.000	12-13	.923	4	5	9	7.0	2	2	2	5	1	24	17.5	
MIDDLE TENNESSEE	11/14/12	*	41	8-10	.800	0-0	.000	4-6	.667	2	6	8	7.3	4	1	0	2	0	20	18.3	
NORTH CAROLINA	11/18/12	*	39	8-11	.727	0-0	.000	4-5	.800	3	8	11	8.3	4	1	2	2	2	20	18.8	
ROBERT MORRIS	11/20/12	*	33	8-13	.615	0-0	.000	3-5	.600	5	6	11	8.8	3	0	3	0	0	19	18.8	
at FIU	11/23/12	*	36	6-9	.667	0-0	.000	2-2	1.000	3	3	6	8.3	2	2	3	5	0	14	18.0	
vs WVU	11/25/12	*	30	6-11	.545	0-0	.000	7-11	.636	0	3	3	7.6	3	1	2	2	1	19	18.1	
at Florida State	11/28/12	*	30	8-15	.533	0-0	.000	4-4	1.000	3	1	4	7.1	2	1	2	2	0	20	18.4	
UNI	12/1/12	*	35	6-11	.545	0-0	.000	7-11	.636	4	8	12	7.7	2	5	2	2	2	19	18.4	
IOWA STATE	12/6/12	*	38	3-8	.375	0-0	.000	1-2	.500	1	5	6	7.5	1	2	4	1	1	7	17.3	
at Drake	12/16/12	*	38	11-19	.579	0-0	.000	4-7	.571	2	6	8	7.5	2	0	0	3	2	26	18.1	
MISSOURI STATE	12/19/12	*	15	6-7	.857	0-0	.000	1-2	.500	2	2	4	7.3	4	1	3	0	0	13	17.7	
vs Texas	12/28/12	*	23	8-13	.615	0-0	.000	4-5	.800	1	4	5	7.1	3	0	0	2	3	20	17.8	
at San Diego	12/30/12	*	38	8-10	.800	0-0	.000	4-4	1.000	3	3	6	7.0	2	1	4	3	1	20	18.0	
OHIO STATE	1/3/13	*	43	7-17	.412	0-0	.000	2-3	.667	3	9	12	7.3	2	3	0	3	3	16	17.9	
MICHIGAN	1/6/13	*	39	4-7	.571	0-0	.000	2-3	.667	3	4	7	7.3	4	2	0	1	2	10	17.4	
at Wisconsin	01/10/13	*	35	6-12	.500	0-0	.000	11-11	1.000	8	3	11	7.5	3	0	3	2	0	23	17.7	
at Michigan State	01/17/13	*	37	5-12	.417	0-0	.000	3-4	.750	5	7	12	7.8	3	0	1	2	2	13	17.4	
PURDUE	01/20/13	*	24	3-14	.214	0-0	.000	1-1	1.000	3	4	7	7.7	3	0	1	3	0	7	16.9	
WISCONSIN	1/24/13	*	17	1-2	.500	0-0	.000	0-0	.000	2	2	4	7.6	4	1	1	0	0	2	16.2	
at Michigan	01/27/13	*	31	2-4	.500	0-0	.000	2-2	1.000	1	6	7	7.5	4	0	0	1	2	6	15.7	
at Illinois	01/31/13	*	27	3-6	.500	0-0	.000	0-0	.000	1	3	4	7.4	5	0	2	1	1	6	15.2	
NORTHWESTERN	2/03/13	*	18	3-9	.333	0-0	.000	5-7	.714	1	2	3	7.2	5	0	2	1	1	11	15.0	
at Minnesota	02/07/13	*	35	3-9	.333	0-0	.000	7-7	1.000	4	6	10	7.3	1	2	0	1	2	13	15.0	
NEBRASKA	02/11/13	*	30	9-11	.818	0-0	.000	1-3	.333	7	3	10	7.4	1	1	1	4	0	19	15.1	
PENN STATE	2/14/13	*	36	8-16	.500	0-0	.000	1-5	.200	6	5	11	7.5	3	0	2	1	1	17	15.2	
at Purdue	02/17/13	*	38	4-7	.571	0-0	.000	4-4	1.000	1	2	3	7.4	1	4	2	5	1	12	15.1	
at Nebraska	02/24/13	*	39	4-10	.400	0-0	.000	0-2	.000	4	5	9	7.4	2	0	3	1	0	8	14.8	
Totals			28	895	158-298	.530	0-0	.000	99-134	.739	83	125	208	7.4	77	30	46	55	29	415	14.8

Games played: 28  
Minutes/game: 32.0  
Points/game: 14.8  
FG Pct: 53.0  
FT Pct: 73.9

Rebounds/game: 7.4  
Assists/game: 1.1  
Turnovers/game: 1.6  
Assist/turnover ratio: 0.7  
Steals/game: 1.0  
Blocks/game: 2.0

#### Personal Bests

- Points:** 37 at Bradley (12/17/11)
- Rebounds:** 16 vs. Illinois (1/5/12)
- FGM:** 13 at Bradley (12/17/11)
- FGA:** 21 vs. Virginia Tech (11/30/11)
- 3-pt FG:** 1 at Iowa State (12/10/09)
- 3-pt FGA:** 2 at Iowa State (12/10/09)
- FTM:** 12 vs. Illinois State (11/11/12)
- FTA:** 13 vs. Illinois State (11/11/12)
- Assists:** 5 vs. Northern Iowa (12/1/12)
- Steals:** 3, 5x, last vs. Ohio State (1/3/13)
- Blocks:** 8 vs. Minnesota (2/18/10)
- Minutes:** 43 vs. Ohio State (1/3/13)

#### CAREER STATISTICS

YEAR	G/GS	FG-A	PCT	3-PT	PCT	FT-A	PCT	O-D-REB	AVG	PF-FO	AS	TO	BK	ST	PTS	AVG
Fresh.	34/34	124-250	.496	1-4	.250	48-76	.632	78-139-217	6.4	87-2	24	61	79	15	297	8.7
Soph.	31/30	132-276	.478	0-0	.000	70-96	.729	90-118-208	6.7	83-3	25	58	76	21	334	10.8
Junior	31/31	179-326	.549	0-0	.000	103-141	.730	67-138-205	6.6	96-4	24	64	70	12	461	14.9
Senior	28/28	158-298	.530	0-0	.000	99-134	.739	83-125-208	7.4	77-2	30	46	55	29	415	14.8
<b>TOTALS</b>	<b>124/123</b>	<b>593-1150</b>	<b>.516</b>	<b>1.4</b>	<b>.250</b>	<b>320-447</b>	<b>.716</b>	<b>318-520-838</b>	<b>6.8</b>	<b>343-11</b>	<b>103</b>	<b>229</b>	<b>280</b>	<b>77</b>	<b>1507</b>	<b>12.2</b>





# University of Iowa Women's Basketball

## Updated Iowa Player Bio

### Kathy Thomas



# 13

**Guard, 5-6, Sophomore  
Flint, Mich.  
Highland CC (Kan.)**

- 15 points (3-of-6 3Pt. FGs) in win over Missouri State.
- Scored eight points in collegiate debut vs. NIU.
- NJCAA first team All-American at Highlands Community College.
- Jayhawk Conference Player and Freshman of the Year.
- Led Highland Community College to 28-4 overall record, second place finish in Jayhawk Conference and NJCAA Division II District B finals appearance, the most successful season in school history.
- Averaged 13.2 points, 8.9 assists and 9.8 steals as a senior in high school.

#### Personal Bests

**Points:** 15 vs. Missouri State (12/19/12)  
**Rebounds:** 3, twice, last at San Diego (12/30/12)  
**FGM:** 6 vs. Missouri State (12/19/12)  
**FGA:** 9 vs. Missouri State (12/19/12)  
**3-pt FG:** 3 vs. Missouri State (12/19/12)  
**3-pt FGA:** 6 vs. Missouri State (12/19/12)  
**FTM:** 5 vs. Ill. State (11/11/12)  
**FTA:** 8 vs. Ill. State (11/11/12)  
**Assists:** 3, 3x, last vs. Penn State (2/14/13)  
**Steals:** 2, 4x, last at Purdue (2/17/13)  
**Blocks:** 1 at Minnesota (2/7/13)  
**Minutes:** 19 vs. Missouri State (12/19/12)

### 2012-13 Game-by-Game

#13 Thomas, Kathy

Opponent	Date	qs	min	Total		3-Pointers		Free throws		Rebounds				pf	a	t/o	blk	stl	pts	avg
				fg-fga	pct	3fg-fga	pct	ft-fa	pct	off	def	tot	avg							
NORTHERN ILLINOIS	11/9/12	15	3-4	.750	0-0	.000	2-2	1.000	1	1	2	2.0	3	0	1	0	0	8	8.0	
ILLINOIS STATE	11/11/12	16	0-2	.000	0-0	.000	5-8	.625	2	1	3	2.5	3	3	3	0	1	5	6.5	
MIDDLE TENNESSEE	11/14/12	2	0-0	.000	0-0	.000	0-0	.000	0	0	0	1.7	1	0	0	0	0	0	4.3	
NORTH CAROLINA	11/18/12	2	0-0	.000	0-0	.000	0-0	.000	0	0	0	1.3	1	0	0	0	0	0	3.3	
ROBERT MORRIS	11/20/12	10	1-3	.333	1-1	1.000	0-0	.000	0	1	1	1.2	2	1	0	0	0	3	3.2	
at FIU	11/23/12	8	0-0	.000	0-0	.000	0-0	.000	0	0	0	1.0	0	0	0	0	0	0	2.7	
UNI	12/1/12	7	0-1	.000	0-0	.000	0-0	.000	0	2	2	1.1	2	1	0	0	0	0	2.3	
IOWA STATE	12/6/12	6	0-1	.000	0-1	.000	3-4	.750	1	1	2	1.3	1	0	0	0	0	3	2.4	
at Drake	12/16/12	7	1-1	1.000	1-1	1.000	0-0	.000	0	0	0	1.1	0	0	0	0	0	3	2.4	
MISSOURI STATE	12/19/12	19	6-9	.667	3-6	.500	0-0	.000	0	2	2	1.2	2	2	3	0	2	15	3.7	
vs Texas	12/28/12	9	1-1	1.000	0-0	.000	0-0	.000	0	2	2	1.3	0	0	2	0	1	2	3.5	
at San Diego	12/30/12	4	0-1	.000	0-0	.000	0-0	.000	1	2	3	1.4	2	0	1	0	0	0	3.3	
OHIO STATE	1/3/13	5	0-0	.000	0-0	.000	0-0	.000	0	1	1	1.4	3	1	2	0	0	0	3.0	
MICHIGAN	1/6/13	2	0-0	.000	0-0	.000	0-0	.000	0	0	0	1.3	0	0	0	0	0	0	2.8	
at Wisconsin	01/10/13	2	0-1	.000	0-0	.000	0-0	.000	0	0	0	1.2	1	0	0	0	0	0	2.6	
at Michigan State	01/17/13	5	0-2	.000	0-0	.000	0-0	.000	0	2	2	1.3	2	0	0	0	0	0	2.4	
PURDUE	01/20/13	8	0-1	.000	0-0	.000	0-0	.000	0	1	1	1.2	1	3	2	0	2	0	2.3	
WISCONSIN	1/24/13	8	0-1	.000	0-1	.000	0-0	.000	0	1	1	1.2	1	0	1	0	0	0	2.2	
at Michigan	01/27/13	6	1-3	.333	1-2	.500	1-2	.500	0	0	0	1.2	0	0	1	0	0	4	2.3	
at Illinois	01/31/13	4	0-1	.000	0-1	.000	0-0	.000	0	0	0	1.1	0	1	0	0	0	0	2.2	
NORTHWESTERN	2/03/13	3	0-0	.000	0-0	.000	0-0	.000	0	0	0	1.0	1	0	2	0	0	0	2.0	
at Minnesota	02/07/13	13	1-2	.500	1-1	1.000	0-0	.000	0	1	1	1.0	0	1	1	1	0	3	2.1	
NEBRASKA	02/11/13	4	1-2	.500	0-1	.000	0-0	.000	0	1	1	1.0	1	0	1	0	0	2	2.1	
PENN STATE	2/14/13	10	0-0	.000	0-0	.000	1-3	.333	0	2	2	1.1	0	3	1	0	2	1	2.0	
at Purdue	02/17/13	8	1-2	.500	0-1	.000	0-0	.000	0	0	0	1.0	2	0	0	0	2	2	2.0	
at Nebraska	02/24/13	7	0-3	.000	0-2	.000	0-0	.000	0	0	0	1.0	1	0	1	0	1	0	2.0	
<b>Totals</b>		<b>0</b>	<b>190</b>	<b>16-41</b>	<b>.390</b>	<b>7-18</b>	<b>.389</b>	<b>12-19</b>	<b>.632</b>	<b>5</b>	<b>21</b>	<b>26</b>	<b>1.0</b>	<b>30</b>	<b>16</b>	<b>22</b>	<b>1</b>	<b>11</b>	<b>51</b>	<b>2.0</b>

Games played: 26  
 Minutes/game: 7.3  
 Points/game: 2.0  
 FG Pct: 39.0  
 3FG Pct: 38.9  
 FT Pct: 63.2

Rebounds/game: 1.0  
 Assists/game: 0.6  
 Turnovers/game: 0.8  
 Assist/turnover ratio: 0.7  
 Steals/game: 0.4  
 Blocks/game: 0.0

#### CAREER STATISTICS

YEAR	G/GS	FG-A	PCT	3-PT	PCT	FT-A	PCT	O-D-REB	AVG	PF-FO	AS	TO	BK	ST	PTS	AVG
Fresh.	26/0	16-41	.390	7-18	.389	12-19	.632	5-21-26	1.0	30-0	16	22	1	11	51	2.0





# University of Iowa Women's Basketball

## Updated Iowa Player Bio

### Melissa Dixon



# 21

**Guard, 5-8, Sophomore**  
**Johnsburg, Ill.**  
**Johnsburg HS**

- Recorded 16 points against Penn State.
- Scored 19 points (7-15 FG, 5-10 3PT) against Nebraska.
- 21 points (7-10 FGs, 6-9 3Pt. FGs) against Northwestern.
- 15 points in win over Purdue.
- Career-high 23 points (5-of-10 3Pt. FGs) in win over Texas.
- 11 points in win over Iowa State.
- 12 points against North Carolina.
- Career-high 22 points (8-18 FGs, 6-15 3Pt. FGs) in win over Michigan as a freshman.
- Suffered torn meniscus at Ohio State (Jan. 2, 2012) as a freshman. Missed a total of seven games.
- First career start came at Indiana, registering career-highs in points (19), field goals made (7), 3-pointers made and attempted (5-for-10), steals (3) and minutes (28).

### 2012-13 Game-by-Game

#21 Dixon, Melissa

Opponent	Date	gs	min	Total		3-Pointers		Free throws		Rebounds				pts	avg						
				fg-fga	pct	3fg-fga	pct	ft-fta	pct	off	def	tot	avg								
NORTHERN ILLINOIS	11/9/12	*	24	3-4	.750	2-3	.667	0-0	.000	0	2	2	2.0	2	1	0	1	8	8.0		
ILLINOIS STATE	11/11/12	*	24	2-3	.667	2-3	.667	2-2	1.000	0	0	0	1.0	4	2	1	1	0	8	8.0	
MIDDLE TENNESSEE	11/14/12	*	34	2-9	.222	2-7	.286	0-1	.000	0	1	1	1.0	2	1	1	0	2	6	7.3	
NORTH CAROLINA	11/18/12		20	5-11	.455	2-8	.250	0-0	.000	0	1	1	1.0	4	0	2	0	0	12	8.5	
ROBERT MORRIS	11/20/12		17	2-8	.250	2-7	.286	0-0	.000	0	2	2	1.2	2	0	3	0	0	6	8.0	
at FIU	11/23/12		19	3-11	.273	2-7	.286	0-0	.000	0	2	2	1.3	2	0	0	0	0	8	8.0	
vs WVU	11/25/12		17	0-2	.000	0-1	.000	0-0	.000	0	0	0	1.1	2	0	1	0	0	0	6.9	
at Florida State	11/28/12		14	1-5	.200	0-3	.000	1-1	1.000	0	0	0	1.0	0	1	0	0	1	3	6.4	
UNI	12/1/12		16	2-4	.500	2-2	1.000	0-0	.000	1	1	2	1.1	2	1	0	0	0	6	6.3	
IOWA STATE	12/6/12		19	4-8	.500	2-5	.400	1-3	.333	0	2	2	1.2	1	1	1	0	1	11	6.8	
at Drake	12/16/12		6	0-3	.000	0-3	.000	0-0	.000	0	0	0	1.1	0	1	0	0	0	0	6.2	
MISSOURI STATE	12/19/12		23	4-11	.364	2-8	.250	2-2	1.000	0	2	2	1.2	1	2	1	0	1	12	6.7	
vs Texas	12/28/12		25	9-15	.600	5-10	.500	0-0	.000	0	3	3	1.3	1	2	0	0	0	23	7.9	
at San Diego	12/30/12		17	3-7	.429	2-3	.667	0-0	.000	0	0	0	1.2	1	0	2	0	1	8	7.9	
OHIO STATE	1/3/13		15	1-6	.167	1-2	.500	0-0	.000	0	1	1	1.2	2	0	1	0	1	3	7.6	
MICHIGAN	1/6/13		25	6-14	.429	5-9	.556	0-0	.000	3	0	3	1.3	2	0	2	0	0	17	8.2	
at Wisconsin	01/10/13		19	2-6	.333	2-5	.400	2-2	1.000	0	3	3	1.4	2	2	2	0	0	8	8.2	
at Michigan State	01/17/13		22	2-7	.286	1-3	.333	2-2	1.000	3	0	3	1.5	1	0	1	0	0	7	8.1	
PURDUE	01/20/13		20	6-10	.600	3-6	.500	0-0	.000	0	0	0	1.4	1	0	1	0	1	15	8.5	
WISCONSIN	1/24/13		26	3-6	.500	2-4	.500	2-2	1.000	0	0	0	1.4	2	0	1	0	1	10	8.6	
at Michigan	01/27/13		22	2-5	.400	1-3	.333	0-0	.000	0	2	2	1.4	3	1	1	0	0	5	8.4	
at Illinois	01/31/13		24	4-9	.444	3-6	.500	0-0	.000	0	2	2	1.4	2	1	3	0	1	11	8.5	
NORTHWESTERN	2/03/13		22	7-10	.700	6-9	.667	1-2	.500	0	2	2	1.4	2	1	0	0	0	21	9.0	
at Minnesota	02/07/13		27	2-10	.200	0-6	.000	0-0	.000	0	3	3	1.5	2	2	0	0	1	4	8.8	
NEBRASKA	02/11/13		32	7-15	.467	5-10	.500	0-0	.000	0	0	0	1.4	3	3	0	0	1	19	9.2	
PENN STATE	2/14/13		29	5-11	.455	4-9	.444	2-2	1.000	0	2	2	1.5	5	1	1	0	0	16	9.5	
at Purdue	02/17/13		26	3-7	.429	2-6	.333	2-2	1.000	0	0	0	1.4	2	0	1	0	1	10	9.5	
at Nebraska	02/24/13		25	3-8	.375	1-4	.250	1-2	.500	1	1	2	1.4	3	0	2	0	1	8	9.5	
<b>Totals</b>			<b>3</b>	<b>609</b>	<b>93-225</b>	<b>.413</b>	<b>61-152</b>	<b>.401</b>	<b>18-23</b>	<b>.783</b>	<b>8</b>	<b>32</b>	<b>40</b>	<b>1.4</b>	<b>56</b>	<b>24</b>	<b>29</b>	<b>1</b>	<b>15</b>	<b>265</b>	<b>9.5</b>

Games played: 28  
Minutes/game: 21.8  
Points/game: 9.5  
FG Pct: 41.3  
3FG Pct: 40.1  
FT Pct: 78.3

Rebounds/game: 1.4  
Assists/game: 0.9  
Turnovers/game: 1.0  
Assist/turnover ratio: 0.8  
Steals/game: 0.5  
Blocks/game: 0.0

#### Personal Bests

- Points:** 23 vs. Texas (12/28/12)
- Rebounds:** 4, 4x, last vs. Minnesota (2/9/12)
- FGM:** 9 vs. Texas (12/28/12)
- FGA:** 18 vs. Michigan (2/26/12)
- 3-pt FG:** 6, twice, last vs. N'western (2/3/13)
- 3-pt FGA:** 15 vs. Michigan (2/26/12)
- FTM:** 5, 2x, last vs. Drake (12/20/11)
- FTA:** 6, 2x, last vs. Drake (12/20/11)
- Assists:** 4 vs. Nebraska (3/2/12)
- Steals:** 3 at Indiana (2/5/12)
- Blocks:** 1, 3x, last vs. Ill. State (11/11/12)
- Minutes:** 34, twice, last vs. MTSU (11/14/12)

#### CAREER STATISTICS

YEAR	G/GS	FG-A	PCT	3-PT	PCT	FT-A	PCT	O-D-REB	AVG	PF-FO	AS	TO	BK	ST	PTS	AVG
Fresh.	24/8	50-141	.355	35-98	.357	27-33	.818	17-25-42	1.8	47-1	18	28	2	15	162	6.8
Soph.	28/3	93-225	.413	61-152	.401	18-23	.783	8-32-40	1.4	56-1	24	29	1	15	265	9.5
<b>TOTALS</b>	<b>52/11</b>	<b>143-366</b>	<b>.391</b>	<b>96-250</b>	<b>.384</b>	<b>45-56</b>	<b>.804</b>	<b>25-57-82</b>	<b>1.6</b>	<b>103-2</b>	<b>42</b>	<b>57</b>	<b>3</b>	<b>30</b>	<b>427</b>	<b>8.2</b>





# University of Iowa Women's Basketball

## Updated Iowa Player Bio

### Samantha Logic



# 22

**Guard, 5-9, Sophomore**  
**Racine, Wis.**  
**Racine J.I. Case HS**

- 12th in career assists at Iowa (319).
- Recorded 11 career double-doubles, including one triple-double. Eight double-doubles are points/rebounds, one is points/assists and one is rebounds/assists.
- Ranks second in Iowa history with six double digit assist performances. Cara Consuegra holds the record with nine.
- Career-high 26 points (10-of-13 FGs), along with nine rebounds, in win at Purdue.
- Third double-double of the season with 11 points, 12 rebounds in loss to Northwestern.
- Recorded 10 assists in win over Purdue.
- Second double-double of the season with 12 points, 10 rebounds and nine assists in win at Wisconsin.
- 17 points, six rebounds, eight assists and three steals in win over Ohio State.
- Double-double with 15 rebounds and school record 14 assists in win over Texas.
- 13 points, five rebounds and seven assists in win at Drake.
- 15 points, four rebounds and three assists in win over Northern Iowa.
- 14 points, seven rebounds, seven assists and three steals at Florida State.
- Nine points, seven rebounds and seven assists in win over West Virginia.
- 12 points, six rebounds, six assists and four steals against North Carolina.
- Tied school record with 12 assists in win over Middle Tennessee.
- Third team Freshman All-American by Full Court.
- Unanimous selection for Big Ten All-Freshman Team.

### 2012-13 Game-by-Game

#22 Logic, Samantha

Opponent	Date	gs	min	Total		3-Pointers		Free throws		Rebounds				pf	a	t/o	blk	stl	pts	avg	
				fg-fga	pct	3fg-fga	pct	ft-fa	pct	off	def	tot	avg								
NORTHERN ILLINOIS	11/9/12	*	25	5-8	.625	0-0	.000	0-0	.000	0	3	3	3.0	1	2	2	0	2	10	10.0	
ILLINOIS STATE	11/11/12	*	24	1-6	.167	0-1	.000	4-4	1.000	3	2	5	4.0	2	4	6	1	2	6	8.0	
MIDDLE TENNESSEE	11/14/12	*	40	0-6	.000	0-2	.000	0-1	.000	1	2	3	3.7	2	12	6	1	2	0	5.3	
NORTH CAROLINA	11/18/12	*	31	6-10	.600	0-1	.000	0-0	.000	3	3	6	4.3	2	6	7	0	4	12	7.0	
ROBERT MORRIS	11/20/12	*	28	2-7	.286	0-2	.000	0-0	.000	3	3	6	4.6	1	9	2	0	3	4	6.4	
at FIU	11/23/12	*	32	3-6	.500	1-1	1.000	0-0	.000	3	2	5	4.7	3	7	4	0	1	7	6.5	
vs WVU	11/25/12	*	34	2-6	.333	0-0	.000	5-6	.833	2	5	7	5.0	5	7	9	0	3	9	6.9	
at Florida State	11/28/12	*	36	7-11	.636	0-1	.000	0-0	.000	2	5	7	5.3	4	7	10	0	3	14	7.8	
UNI	12/1/12	*	33	7-9	.778	0-1	.000	1-1	1.000	1	3	4	5.1	3	3	1	1	1	15	8.6	
IOWA STATE	12/6/12	*	28	1-7	.143	1-3	.333	3-6	.500	4	5	9	5.5	3	4	1	1	0	6	8.3	
at Drake	12/16/12	*	35	5-9	.556	1-1	1.000	2-2	1.000	3	2	5	5.5	4	7	3	2	1	13	8.7	
MISSOURI STATE	12/19/12	*	27	3-7	.429	0-2	.000	1-3	.333	2	4	6	5.5	1	4	3	1	3	7	8.6	
vs Texas	12/28/12	*	31	1-3	.333	0-1	.000	0-0	.000	5	10	15	6.2	3	14	3	0	2	2	8.1	
at San Diego	12/30/12	*	36	2-2	1.000	1-1	1.000	2-4	.500	1	2	3	6.0	3	10	6	0	2	7	8.0	
OHIO STATE	1/3/13	*	40	5-7	.714	0-0	.000	7-10	.700	1	5	6	6.0	1	8	5	0	3	17	8.6	
MICHIGAN	1/6/13	*	38	6-13	.462	2-4	.500	2-2	1.000	5	4	9	6.2	3	9	3	1	3	16	9.1	
at Wisconsin	01/10/13	*	38	4-11	.364	2-2	1.000	2-3	.667	3	7	10	6.4	1	9	3	0	1	12	9.2	
at Michigan State	01/17/13	*	35	3-7	.429	0-0	.000	1-2	.500	1	4	5	6.3	3	4	5	0	1	7	9.1	
PURDUE	01/20/13	*	32	2-4	.500	0-1	.000	0-0	.000	2	1	3	6.2	3	10	7	0	1	4	8.8	
WISCONSIN	1/24/13	*	34	3-7	.429	0-2	.000	0-0	.000	2	7	9	6.3	0	5	5	0	1	6	8.7	
at Michigan	01/27/13	*	34	3-5	.600	0-1	.000	4-5	.800	2	4	6	6.3	4	8	4	0	2	10	8.8	
at Illinois	01/31/13	*	36	6-10	.600	1-2	.500	0-0	.000	3	7	10	6.5	5	6	8	1	2	13	9.0	
NORTHWESTERN	2/03/13	*	37	4-10	.400	1-1	1.000	2-5	.400	6	6	12	6.7	3	2	2	0	3	11	9.0	
at Minnesota	02/07/13	*	31	0-3	.000	0-1	.000	0-0	.000	2	1	3	6.5	4	5	5	0	1	0	8.7	
NEBRASKA	02/11/13	*	38	2-8	.250	0-3	.000	4-6	.667	2	6	8	6.6	4	6	3	0	2	8	8.6	
PENN STATE	2/14/13	*	31	4-4	1.000	1-1	1.000	0-1	.000	2	1	3	6.5	4	6	5	0	2	9	8.7	
at Purdue	02/17/13	*	39	10-13	.769	2-2	1.000	4-5	.800	3	6	9	6.6	0	3	4	1	1	26	9.3	
at Nebraska	02/24/13	*	33	5-8	.625	0-1	.000	2-2	1.000	1	3	4	6.5	5	6	5	0	1	12	9.4	
Totals			28	936	102-207	.493	13-38	.342	46-68	.676	68	113	181	6.5	77	183	127	10	53	263	9.4

Games played: 28  
Minutes/game: 33.4  
Points/game: 9.4  
FG Pct: 49.3  
3FG Pct: 34.2  
FT Pct: 67.6

Rebounds/game: 6.5  
Assists/game: 6.5  
Turnovers/game: 4.5  
Assist/turnover ratio: 1.4  
Steals/game: 1.9  
Blocks/game: 0.4

#### Personal Bests

- Points:** 26 at Purdue (2/17/13)
- Rebounds:** 18 at Michigan (2/16/12)
- FGM:** 10 at Purdue (2/17/13)
- FGA:** 18 vs. Nebraska (3/2/12)
- 3-pt FG:** 3 vs. Drake (12/20/11)
- 3-pt FGA:** 4, 4x, last vs. Michigan (1/6/13)
- FTM:** 8 at Northwestern (2/23/12)
- FTA:** 10, twice, last vs. Ohio State (1/3/13)
- Assists:** 14 vs. Texas (12/28/12)
- Steals:** 4 vs. North Carolina (11/18/12)
- Blocks:** 2, twice, last at Drake (12/16/12)
- Minutes:** 40, twice, last vs. Ohio State (1/3/13)

#### CAREER STATISTICS

YEAR	G/GS	FG-A	PCT	3-PT	PCT	FT-A	PCT	O-D-REB	AVG	PF-FO	AS	TO	BK	ST	PTS	AVG
Fresh.	31/31	109-261	.418	15-49	.306	59-79	.747	87-133-220	7.1	73-1	136	113	7	47	292	9.4
Soph.	28/28	102-207	.493	13-38	.342	46-68	.676	68-113-181	6.5	77-3	183	127	10	53	263	9.4
TOTALS	59/59	211-468	.451	28-87	.322	105-147	.714	155-246-401	6.8	150-4	319	240	17	100	555	9.4





# University of Iowa Women's Basketball

## Updated Iowa Player Bio

### Theairra Taylor



# 23

**Guard, 5-11, Junior**  
**St. Paul, Minn.**  
**Central HS**

- Second double-double of the season with 15 points and a career-high 11 rebounds in win at Purdue.
- Scored 11 points, had five rebounds and five assists vs. Nebraska.
- Recorded 10 rebounds in win over Purdue.
- Career-high 19 points in win over Ohio State. Scored Iowa's first six points in overtime.
- Career-high seven assists in win at Drake.
- 11 points and nine rebounds in win over Iowa State. Named CollegeSportsMadness.com's Big Ten Player of the Week for her performance.
- First career double-double with 10 points and 11 rebounds, also tied career high with five assists, in win over Illinois State.
- Season-high 14 points, along with six rebounds and two assists in 26 minutes of play vs. California as a sophomore.
- 10 points and tied a career-high with three steals in win over Michigan State as a sophomore.
- Suffered third ACL in a 20-month span during preseason workouts in 2010. Missed a total of 53 games with ACL injuries from 2009 through 2011.

### 2012-13 Game-by-Game

#23 Taylor, Theairra

Opponent	Date	gs	min	Total		3-Pointers		Free throws		Rebounds			pf	a	t/o	blk	stl	pts	avg		
				fg-fga	pct	3fg-fga	pct	ft-fa	pct	off	def	tot								avg	
NORTHERN ILLINOIS	11/9/12	*	19	2-4	.500	1-1	1.000	0-0	.000	0	1	1	1.0	1	1	1	0	5	5.0		
ILLINOIS STATE	11/11/12	*	21	3-6	.500	1-1	1.000	3-4	.750	0	11	11	6.0	1	5	2	0	2	10	7.5	
MIDDLE TENNESSEE	11/14/12	*	23	3-8	.375	1-4	.250	0-2	.000	1	3	4	5.3	2	2	4	2	1	7	7.3	
NORTH CAROLINA	11/18/12	*	25	1-6	.167	0-3	.000	1-3	.333	1	3	4	5.0	2	1	2	0	0	3	6.3	
ROBERT MORRIS	11/20/12	*	20	3-7	.429	1-4	.250	0-0	.000	0	4	4	4.8	0	0	3	0	1	7	6.4	
at FIU	11/23/12	*	19	2-5	.400	0-1	.000	2-2	1.000	0	3	3	4.5	2	2	2	0	0	6	6.3	
vs WVU	11/25/12	*	23	1-3	.333	0-1	.000	4-5	.800	1	6	7	4.9	4	0	2	1	0	6	6.3	
at Florida State	11/28/12	*	33	4-11	.364	0-2	.000	1-2	.500	2	4	6	5.0	2	1	4	2	0	9	6.6	
UNI	12/1/12	*	28	3-6	.500	0-2	.000	0-0	.000	1	4	5	5.0	0	2	0	0	0	6	6.6	
IOWA STATE	12/6/12	*	27	4-12	.333	1-3	.333	2-4	.500	4	5	9	5.4	0	3	5	1	2	11	7.0	
at Drake	12/16/12	*	30	2-5	.400	2-3	.667	0-0	.000	0	3	3	5.2	1	6	2	0	0	6	6.9	
MISSOURI STATE	12/19/12	*	19	3-9	.333	1-3	.333	2-2	1.000	3	3	6	5.3	3	7	3	1	1	9	7.1	
vs Texas	12/28/12	*	25	2-9	.222	0-1	.000	0-0	.000	0	1	1	4.9	2	2	1	0	3	4	6.8	
at San Diego	12/30/12	*	33	3-7	.429	1-2	.500	2-3	.667	0	4	4	4.9	3	4	2	1	0	9	7.0	
OHIO STATE	1/3/13	*	36	8-12	.667	1-1	1.000	2-2	1.000	1	3	4	4.8	2	0	2	0	2	19	7.8	
MICHIGAN	1/6/13	*	32	5-9	.556	1-3	.333	3-4	.750	0	3	3	4.7	3	2	3	1	2	14	8.2	
at Wisconsin	01/10/13	*	27	2-5	.400	0-1	.000	0-0	.000	3	5	8	4.9	2	5	4	0	3	4	7.9	
at Michigan State	01/17/13	*	23	3-7	.429	0-3	.000	0-0	.000	1	1	2	4.7	2	1	3	0	0	6	7.8	
PURDUE	01/20/13	*	20	3-8	.375	3-3	1.000	0-0	.000	2	8	10	5.0	1	1	0	1	1	9	7.9	
WISCONSIN	1/24/13	*	24	4-11	.364	0-1	.000	2-3	.667	0	1	1	4.8	0	2	1	2	2	10	8.0	
at Michigan	01/27/13	*	17	2-4	.500	1-3	.333	0-0	.000	1	1	2	4.7	2	1	1	0	0	5	7.9	
at Illinois	01/31/13	*	24	4-9	.444	1-2	.500	0-0	.000	0	0	0	4.5	0	1	2	1	2	9	7.9	
NORTHWESTERN	2/03/13	*	22	1-8	.125	0-2	.000	0-0	.000	0	1	1	4.3	1	2	1	1	2	2	7.7	
at Minnesota	02/07/13	*	20	3-8	.375	1-3	.333	2-4	.500	0	5	5	4.3	5	1	1	1	0	9	7.7	
NEBRASKA	02/11/13	*	34	3-10	.300	1-3	.333	4-4	1.000	1	4	5	4.4	0	5	1	0	0	11	7.8	
PENN STATE	2/14/13	*	26	4-10	.400	1-2	.500	2-2	1.000	0	3	3	4.3	3	0	4	0	1	11	8.0	
at Purdue	02/17/13	*	36	7-13	.538	1-2	.500	0-0	.000	3	8	11	4.6	1	4	1	0	2	15	8.2	
at Nebraska	02/24/13	*	27	4-15	.267	2-6	.333	0-0	.000	1	3	4	4.5	1	1	3	0	2	10	8.3	
Totals			28	713	89-227	.392	22-66	.333	32-46	.696	26	101	127	4.5	46	62	60	16	29	232	8.3

Games played: 28  
Minutes/game: 25.5  
Points/game: 8.3  
FG Pct: 39.2  
3FG Pct: 33.3  
FT Pct: 69.6

Rebounds/game: 4.5  
Assists/game: 2.2  
Turnovers/game: 2.1  
Assist/turnover ratio: 1.0  
Steals/game: 1.0  
Blocks/game: 0.6

#### Personal Bests

- Points:** 19 vs. Ohio State (1/3/13)
- Rebounds:** 11, twice, last at Purdue (2/17/13)
- FGM:** 8 vs. Ohio State (1/3/13)
- FGA:** 15, twice, last at Nebraska (2/24/13)
- 3-pt FG:** 3 vs. Purdue (1/20/13)
- 3-pt FGA:** 6 at Nebraska (2/24/13)
- FTM:** 4, 6x, last vs. Nebraska (2/11/13)
- FTA:** 5 vs. West Virginia (11/25/12)
- Assists:** 7 vs. Missouri State (12/19/12)
- Steals:** 4 at Northwestern (2/23/12)
- Blocks:** 4, 3x, last vs. Michigan (12/6/09)
- Minutes:** 36, three times, last at Purdue (2/17/13)

#### CAREER STATISTICS

YEAR	G/GS	FG-A	PCT	3-PT	PCT	FT-A	PCT	O-D-REB	AVG	PF-FO	AS	TO	BK	ST	PTS	AVG
Fresh.	10/8	29-86	.337	9-26	.346	14-18	.778	15-34-49	4.9	22-1	24	29	10	13	81	8.1
Soph.	31/0	37-97	.381	2-18	.111	19-29	.655	35-57-92	3.0	53-1	30	47	11	18	95	3.1
Junior	28/28	89-227	.392	22-66	.333	32-46	.696	26-101-217	4.5	46-1	63	60	16	29	232	8.3
<b>TOTALS</b>	<b>69/36</b>	<b>155-410</b>	<b>.378</b>	<b>33-110</b>	<b>.300</b>	<b>65-93</b>	<b>.699</b>	<b>76-192-268</b>	<b>3.9</b>	<b>121-3</b>	<b>116</b>	<b>136</b>	<b>37</b>	<b>60</b>	<b>408</b>	<b>5.9</b>





# University of Iowa Women's Basketball

## Updated Iowa Player Bio

### Jaime Printy



# 24

**Guard, 5-11, Senior**  
**Marion, Iowa**  
**Linn-Mar HS**

- Ranks second in career 3-pointers made (246), fourth in career scoring (1,781) and sixth in career assists (393).
- One of 10 finalists for the Senior CLASS Award.
- Reached double digits in 20-of-27 games... has 20 or more points in five games.
- Netted 16 points on 6-of-14 shooting in the 76-75 loss to Nebraska... moved into fourth place in career scoring.
- Scored 21 points, including five 3-pointers, in loss at Minnesota.
- Became sixth player in Iowa history to score 1,700 career points in win at Michigan.
- Big Ten Player of the Week (Jan. 30).
- Scored 29 points, including 14-straight in the final 5:25, to give Iowa the win over Wisconsin.
- Career-high 33 points with a school record seven 3-pointers in win at San Diego.
- 21 points in win over Texas.
- 19 points (17-of-17 FTs) and seven rebounds in win over West Virginia.
- 12 points, five rebounds and four assists vs. North Carolina, returning to starting lineup for first time since ACL injury as a junior.
- 26 points, including game-tying 3-pointer with 1.6 seconds left in regulation, along with five rebounds and six assists, in win over Middle Tennessee. Also tied school record for FT percentage (11-for-11).
- 11 points and three assists in season-opening win over NIU, recording first action since tearing ACL in left knee in final 30 seconds of overtime at Wisconsin (Feb. 2, 2012).

### 2012-13 Game-by-Game

#24 Printy, Jaime

Opponent	Date	gs	min	Total		3-Pointers		Free throws		Rebounds				pf	a	t/o	blk	stl	pts	avg	
				fg-fga	pct	3fg-fga	pct	ft-fa	pct	off	def	tot	avg								
NORTHERN ILLINOIS	11/9/12		16	3-4	.750	1-1	1.000	4-4	1.000	0	1	1	1.0	1	3	1	0	1	11	11.0	
ILLINOIS STATE	11/11/12		15	0-4	.000	0-3	.000	1-2	.500	0	2	2	1.5	0	1	2	0	0	1	6.0	
MIDDLE TENNESSEE	11/14/12		38	6-13	.462	3-7	.429	11-11	1.000	1	4	5	2.7	1	6	5	0	1	26	12.7	
NORTH CAROLINA	11/18/12	*	39	3-15	.200	3-12	.250	3-4	.750	0	5	5	3.3	4	4	8	0	1	12	12.5	
ROBERT MORRIS	11/20/12	*	31	2-4	.500	2-4	.500	2-2	1.000	1	5	6	3.8	0	5	2	0	1	8	11.6	
at FIU	11/23/12	*	34	5-12	.417	4-9	.444	1-1	1.000	2	3	5	4.0	2	4	3	0	0	15	12.2	
vs WVU	11/25/12	*	33	1-3	.333	0-2	.000	17-17	1.000	0	7	7	4.4	1	3	4	1	0	19	13.1	
at Florida State	11/28/12	*	33	5-7	.714	2-4	.500	1-2	.500	0	1	1	4.0	2	1	6	0	0	13	13.1	
UNI	12/1/12	*	30	2-7	.286	1-4	.250	4-4	1.000	0	3	3	3.9	1	5	3	0	0	9	12.7	
IOWA STATE	12/6/12	*	34	2-7	.286	0-3	.000	6-6	1.000	1	5	6	4.1	1	2	3	0	2	10	12.4	
at Drake	12/16/12	*	31	3-9	.333	0-3	.000	3-3	1.000	2	2	4	4.1	1	7	1	0	0	9	12.1	
MISSOURI STATE	12/19/12	*	21	4-11	.364	3-8	.375	2-3	.667	1	1	2	3.9	0	6	2	0	0	13	12.2	
vs Texas	12/28/12	*	30	7-14	.500	2-7	.286	5-7	.714	0	3	3	3.8	1	1	1	0	0	21	12.8	
at San Diego	12/30/12	*	30	10-20	.500	7-12	.583	6-6	1.000	0	2	2	3.7	1	4	3	0	2	33	14.3	
OHIO STATE	1/3/13	*	39	5-8	.625	0-1	.000	4-4	1.000	0	3	3	3.7	1	3	4	0	0	14	14.3	
MICHIGAN	1/6/13	*	32	2-14	.143	1-9	.111	1-1	1.000	2	3	5	3.8	0	3	2	0	1	6	13.8	
at Wisconsin	01/10/13	*	35	3-10	.300	2-8	.250	2-2	1.000	0	6	6	3.9	0	1	1	0	1	10	13.5	
at Michigan State	01/17/13	*	34	3-16	.188	1-8	.125	4-4	1.000	1	3	4	3.9	0	3	0	0	1	11	13.4	
PURDUE	01/20/13	*	38	4-11	.364	3-5	.600	4-4	1.000	2	7	9	4.2	1	1	0	0	0	15	13.5	
WISCONSIN	1/24/13	*	35	8-10	.800	3-3	1.000	10-11	.909	1	7	8	4.4	1	4	1	0	0	29	14.3	
at Michigan	01/27/13	*	33	4-12	.333	2-9	.222	4-4	1.000	2	3	5	4.4	2	2	4	1	1	14	14.2	
at Illinois	01/31/13	*	34	5-14	.357	2-8	.250	1-2	.500	0	4	4	4.4	3	3	7	0	1	13	14.2	
NORTHWESTERN	2/03/13	*	33	2-6	.333	0-2	.000	8-8	1.000	0	4	4	4.3	0	3	2	0	3	12	14.1	
at Minnesota	02/07/13	*	34	6-22	.273	5-9	.556	4-5	.800	1	4	5	4.4	3	0	2	0	3	21	14.4	
NEBRASKA	02/11/13	*	38	6-14	.429	2-7	.286	2-2	1.000	1	3	4	4.4	1	4	2	1	1	16	14.4	
PENN STATE	2/14/13	*	29	0-5	.000	0-3	.000	2-2	1.000	0	5	5	4.4	3	4	6	0	2	2	14.0	
at Purdue	02/17/13	*	35	1-8	.125	0-5	.000	3-4	.750	0	5	5	4.4	3	6	0	1	1	5	13.6	
at Nebraska	02/24/13	*	29	2-5	.400	0-2	.000	0-0	.000	0	4	4	4.4	2	0	3	0	1	4	13.3	
Totals			25	893	104-285	.365	49-158	.310	115-125	.920	18	105	123	4.4	36	89	78	4	24	372	13.3

Games played: 28  
 Minutes/game: 31.9  
 Points/game: 13.3  
 FG Pct: 36.5  
 3FG Pct: 31.0  
 FT Pct: 92.0

Rebounds/game: 4.4  
 Assists/game: 3.2  
 Turnovers/game: 2.8  
 Assist/turnover ratio: 1.1  
 Steals/game: 0.9  
 Blocks/game: 0.1

#### Personal Bests

- Points:** 33 at San Diego (12/30/12)  
**Rebounds:** 9, twice, last vs. Purdue (1/20/13)  
**FGM:** 11 at Indiana (2/11/10)  
**FGA:** 25 vs. Michigan (1/2/11)  
**3-pt FG:** 7 at San Diego (12/30/12)  
**3-pt FGA:** 15 vs. Michigan (1/2/11)  
**FTM:** 17 vs. West Virginia (11/25/12)  
**FTA:** 17 vs. West Virginia (11/25/12)  
**Assists:** 9 vs. Iowa State (12/9/10)  
**Steals:** 5 at Bradley (12/17/11)  
**Blocks:** 1, 16x, last at Purdue (2/17/13)  
**Minutes:** 40 vs. Illinois (1/5/12)

#### CAREER STATISTICS

YEAR	G/GS	FG-A	PCT	3-PT	PCT	FT-A	PCT	O-D-REB	AVG	PF-FO	AS	TO	BK	ST	PTS	AVG
Fresh.	34/34	168-406	.414	82-212	.387	83-94	.883	35-101-136	4.0	77-1	99	82	4	30	501	14.7
Soph.	31/31	168-391	.430	70-183	.383	114-132	.864	21-109-130	4.2	60-0	109	91	7	34	520	16.8
Junior	23/23	116-329	.353	45-155	.290	111-125	.888	32-70-102	4.4	45-1	96	70	3	46	388	16.9
Senior	28/25	104-285	.365	49-158	.310	115-125	.920	18-105-123	4.4	36-0	89	78	4	24	372	13.3
<b>TOTALS</b>	<b>116/113</b>	<b>556-1411</b>	<b>.394</b>	<b>246-708</b>	<b>.347</b>	<b>423-476</b>	<b>.889</b>	<b>106-385-491</b>	<b>4.2</b>	<b>218-2</b>	<b>393</b>	<b>321</b>	<b>18</b>	<b>134</b>	<b>1781</b>	<b>15.4</b>





# University of Iowa Women's Basketball

## Updated Iowa Player Bio

### Kali Peschel



# 25

**Guard, 6-1, Freshman**  
**Sauk Centre, Minn.**  
**Sauk Centre HS**

- Five points in win at Drake.
- Recorded five rebounds in collegiate debut vs. NIU.
- Miss Minnesota Basketball finalist.
- Two-time all-state selection.
- Started for her high school team as an eighth grader.
- Only played 11 games as a senior after suffering ACL injury between her junior and senior seasons.

#### Personal Bests

**Points:** 5 at Drake (12/16/12)  
**Rebounds:** 5, twice, last vs. Missouri State (12/19/12)  
**FGM:** 2 at Drake (12/16/12)  
**FGA:** 6 vs. Northern Illinois (11/9/12)  
**3-pt FG:** 1 at Drake (12/16/12)  
**3-pt FGA:** 2, 3x, last vs. Missouri State (12/19/12)  
**FTM:** 2, twice, last at Minnesota (2/7/13)  
**FTA:** 4 vs. Missouri State (12/19/12)  
**Assists:** 2, twice, last vs. Texas (12/28/12)  
**Steals:** 1, 6x, last at Purdue (2/17/13)  
**Blocks:** 1, 4x, last vs. Northwestern (2/3/13)  
**Minutes:** 20 vs. Northwestern (2/3/13)

### 2012-13 Game-by-Game

#25 Peschel, Kali

Opponent	Date	gs	min	Total		3-Pointers		Free throws		Rebounds			pf	a	t/o	blk	stl	pts	avg	
				fg-fga	pct	3fg-fga	pct	ft-fa	pct	off	def	tot								avg
NORTHERN ILLINOIS	11/9/12	18	0-6	.000	0-2	.000	1-2	.500	3	2	5	5.0	3	1	0	0	0	1	1.0	
ILLINOIS STATE	11/11/12	16	0-2	.000	0-1	.000	0-0	.000	0	3	3	4.0	1	0	2	0	0	0	0.5	
MIDDLE TENNESSEE	11/14/12	2	0-0	.000	0-0	.000	0-0	.000	0	1	1	3.0	0	0	0	0	0	0	0.3	
ROBERT MORRIS	11/20/12	5	0-0	.000	0-0	.000	0-0	.000	0	0	0	2.3	2	0	0	0	1	0	0.3	
at FIU	11/23/12	2	0-1	.000	0-0	.000	0-0	.000	2	0	2	2.2	0	0	0	0	0	0	0.2	
at Florida State	11/28/12	3	0-1	.000	0-0	.000	0-0	.000	2	0	2	2.2	0	0	0	0	0	0	0.2	
UNI	12/1/12	18	1-4	.250	0-2	.000	1-2	.500	1	1	2	2.1	3	0	2	1	1	3	0.6	
IOWA STATE	12/6/12	6	0-0	.000	0-0	.000	0-0	.000	0	0	0	1.9	2	0	0	0	0	0	0.5	
at Drake	12/16/12	16	2-3	.667	1-1	1.000	0-0	.000	0	0	0	1.7	4	2	1	1	1	5	1.0	
MISSOURI STATE	12/19/12	19	0-4	.000	0-2	.000	2-4	.500	3	2	5	2.0	4	0	0	0	1	2	1.1	
vs Texas	12/28/12	9	0-0	.000	0-0	.000	0-0	.000	0	0	0	1.8	4	2	0	0	0	0	1.0	
at San Diego	12/30/12	12	0-0	.000	0-0	.000	0-0	.000	1	0	1	1.8	0	0	0	0	0	0	0.9	
OHIO STATE	1/3/13	1	0-1	.000	0-0	.000	0-0	.000	0	0	0	1.6	2	0	1	0	0	0	0.8	
MICHIGAN	1/6/13	3	0-0	.000	0-0	.000	1-2	.500	1	0	1	1.6	0	0	0	0	0	1	0.9	
at Wisconsin	01/10/13	5	0-0	.000	0-0	.000	0-0	.000	0	0	0	1.5	0	0	0	0	0	0	0.8	
at Michigan State	01/17/13	4	0-0	.000	0-0	.000	0-0	.000	0	0	0	1.4	0	0	0	0	0	0	0.8	
PURDUE	01/20/13	7	0-0	.000	0-0	.000	0-0	.000	1	0	1	1.4	1	1	0	1	0	0	0.7	
WISCONSIN	1/24/13	5	0-1	.000	0-1	.000	0-0	.000	0	1	1	1.3	1	0	1	0	0	0	0.7	
at Michigan	01/27/13	9	0-1	.000	0-1	.000	0-0	.000	0	0	0	1.3	0	0	0	0	0	0	0.6	
at Illinois	01/31/13	3	0-0	.000	0-0	.000	0-0	.000	0	0	0	1.2	0	0	0	0	0	0	0.6	
NORTHWESTERN	2/03/13	20	1-1	1.000	0-0	.000	0-0	.000	3	1	4	1.3	0	1	1	1	1	2	0.7	
at Minnesota	02/07/13	8	0-0	.000	0-0	.000	2-2	1.000	0	0	0	1.3	1	1	1	0	0	2	0.7	
at Purdue	02/17/13	1	0-0	.000	0-0	.000	0-0	.000	0	0	0	1.2	0	0	0	0	1	0	0.7	
at Nebraska	02/24/13	1	0-0	.000	0-0	.000	0-0	.000	0	0	0	1.2	0	0	0	0	0	0	0.7	
<b>Totals</b>		0	193	4-25	.160	1-10	.100	7-12	.583	17	11	28	1.2	28	8	9	4	6	16	0.7

Games played: 24  
 Minutes/game: 8.0  
 Points/game: 0.7  
 FG Pct: 16.0  
 3FG Pct: 10.0  
 FT Pct: 58.3

Rebounds/game: 1.2  
 Assists/game: 0.3  
 Turnovers/game: 0.4  
 Assist/turnover ratio: 0.9  
 Steals/game: 0.3  
 Blocks/game: 0.2

#### CAREER STATISTICS

YEAR	G/GS	FG-A	PCT	3-PT	PCT	FT-A	PCT	O-D-REB	AVG	PF-FO	AS	TO	BK	ST	PTS	AVG
Fresh.	24/0	4-25	.160	1-10	.100	7-12	.583	17-11-28	1.2	28-0	8	9	4	6	16	0.7







# University of Iowa Women's Basketball

Updated Iowa Player Bio

## Kathryn Reynolds



# 33

**Guard, 5-7, Sophomore**  
**Cincinnati, Ohio**  
**Mount Notre Dame HS**

- Will miss entire 2012-13 season after suffering an ACL injury in April during offseason workouts.
- Five assists in win over Western Illinois as a freshman.
- Played 12 minutes in first career game, a win over Harvard.

### Personal Bests

**Points:** 4 vs. Drake (12/20/11)  
**Rebounds:** 2 vs. Texas A&M (11/26/11)  
**FGM:** 2 vs. Drake (12/20/11)  
**FGA:** 3, 2x, last vs. Drake (12/20/11)  
**3-pt FG:** ---  
**3-pt FGA:** 1, 7x, last vs. Michigan State (2/12/12)  
**FTM:** 2 vs. Western Illinois (12/9/11)  
**FTA:** 2, 3x, last vs. W. Illinois (12/9/11)  
**Assists:** 5 vs. W. Illinois (12/9/11)  
**Steals:** ---  
**Blocks:** ---  
**Minutes:** 20 vs. W. Illinois (12/9/11)

## 2012-13 Game-by-Game

### CAREER STATISTICS

YEAR	G/GS	FG-A	PCT	3-PT	PCT	FT-A	PCT	O-D-REB	AVG	PF-FO	AS	TO	BK	ST	PTS	AVG
Fresh.	21/0	5-16	.313	0-7	.000	3-4	.750	1-8-9	0.4	6-0	15	11	0	0	13	0.7
Soph.	-	-	-	-	-	-	-	-	-	-	-	-	-	-	-	-
<b>TOTALS</b>	<b>21/0</b>	<b>5-16</b>	<b>.313</b>	<b>0-7</b>	<b>.000</b>	<b>3-4</b>	<b>.750</b>	<b>1-8-9</b>	<b>0.4</b>	<b>6-0</b>	<b>15</b>	<b>11</b>	<b>0</b>	<b>0</b>	<b>13</b>	<b>0.7</b>





# University of Iowa Women's Basketball

## Updated Iowa Player Bio

### Nicole Smith



# 45

**Center, 6-4, Freshman**  
**Rockton, Ill.**  
**Hononegah HS**

- Tallied first career points against Missouri State, finishing with four points.
- Recorded one rebound in collegiate debut vs. NIU.
- Three-time all-state selection.
- Three-time all-conference pick.
- Recorded triple-double in high school with 20 points (10-for-10) 10 rebounds and 10 blocks.
- Played in 26 games as a senior before suffering ACL injury

#### Personal Bests

**Points:** 4 vs. Missouri State (12/19/12)  
**Rebounds:** 1 vs. NIU (11/9/12)  
**FGM:** 1, twice, last vs. Texas (12/28/12)  
**FGA:** 2 vs. NIU (11/9/12)  
**3-pt FG:** ---  
**3-pt FGA:** ---  
**FTM:** 2 vs. Missouri State (12/19/12)  
**FTA:** 2 vs. Missouri State (12/19/12)  
**Assists:** ---  
**Steals:** ---  
**Blocks:** ---  
**Minutes:** 4 vs. Missouri State (12/19/12))

### 2012-13 Game-by-Game

#45 Smith, Nicole

Opponent	Date	gs	min	Total		3-Pointers		Free throws		Rebounds			pf	a	t/o	blk	stl	pts	avg
				fg-fga	pct	3fg-fga	pct	ft-fa	pct	off	def	tot							
NORTHERN ILLINOIS	11/9/12	3	0-2	.000	0-0	.000	0-0	.000	0	1	1	1.0	0	0	0	0	0	0	0.0
ILLINOIS STATE	11/11/12	2	0-0	.000	0-0	.000	0-0	.000	0	0	0	0.5	0	0	0	0	0	0	0.0
UNI	12/1/12	1	0-0	.000	0-0	.000	0-0	.000	0	0	0	0.3	0	0	0	0	0	0	0.0
MISSOURI STATE	12/19/12	4	1-1	1.000	0-0	.000	2-2	1.000	0	0	0	0.3	1	0	0	0	0	4	1.0
vs Texas	12/28/12	1	1-1	1.000	0-0	.000	0-0	.000	0	0	0	0.2	0	0	1	0	0	2	1.2
at Wisconsin	01/10/13	1	0-0	.000	0-0	.000	0-0	.000	0	0	0	0.2	1	0	0	0	0	0	1.0
<b>Totals</b>		<b>0</b>	<b>12</b>	<b>2-4</b>	<b>.500</b>	<b>0-0</b>	<b>.000</b>	<b>2-2</b>	<b>1.000</b>	<b>0</b>	<b>1</b>	<b>1</b>	<b>0.2</b>	<b>2</b>	<b>0</b>	<b>1</b>	<b>0</b>	<b>6</b>	<b>1.0</b>

Games played: 6  
 Minutes/game: 2.0  
 Points/game: 1.0  
 FG Pct: 50.0  
 FT Pct: 100.0

Rebounds/game: 0.2  
 Turnovers/game: 0.2

#### CAREER STATISTICS

YEAR	G/GS	FG-A	PCT	3-PT	PCT	FT-A	PCT	O-D-REB	AVG	PF-FO	AS	TO	BK	ST	PTS	AVG
Fresh.	6/0	2-4	.500	0-0	.000	2-2	1.000	0-1-1	0.2	2-0	0	1	0	0	6	1.0





# University of Iowa Women's Basketball

## Updated Iowa Player Bio

### Bethany Doolittle



# 51

**Center, 6-4, Sophomore**  
**Oakdale, Minn**  
**Hill-Murray HS**

- 13 points, six rebounds and four assists against Penn State.
- Career-high 19 points, including eight-straight points from 5:20-1:45 mark in the second half, to give Iowa the win at Michigan.
- 10 points and seven rebounds in win over Wisconsin.
- 10 points at Michigan State.
- Eight points, five rebounds and six blocks in win over Ohio State.
- 10 rebounds in win at San Diego.
- 10 points in win over Texas.
- First career double-double with 12 points and 12 rebounds in win over Missouri State. 12 rebounds were a career-high. Had double-double at halftime (10 pts, 10 reb).
- 10 points and nine rebounds at Florida State.
- Career-high 17 points, along with six rebounds, in win over West Virginia.
- Eight points, tied a career-high with nine rebounds and blocked five shots in win over Middle Tennessee.
- Career-high six blocks in season-opening win vs. NIU.

### 2012-13 Game-by-Game

#51 Doolittle, Bethany

Opponent	Date	gs	min	Total		3-Pointers		Free throws		Rebounds				pf	a	t/o	blk	stl	pts	avg	
				fg-fga	pct	3fg-fga	pct	ft-fa	pct	off	def	tot	avg								
NORTHERN ILLINOIS	11/9/12	*	21	1-8	.125	0-0	.000	0-0	.000	0	0	0	0.0	2	0	1	6	0	2	2.0	
ILLINOIS STATE	11/11/12	*	25	4-10	.400	0-1	.000	0-0	.000	0	5	5	2.5	1	0	2	2	1	8	5.0	
MIDDLE TENNESSEE	11/14/12	*	30	4-7	.571	0-0	.000	0-0	.000	4	5	9	4.7	3	0	4	5	0	8	6.0	
NORTH CAROLINA	11/18/12	*	32	1-7	.143	0-0	.000	0-0	.000	2	5	7	5.3	3	1	2	2	2	5.0		
ROBERT MORRIS	11/20/12	*	20	2-9	.222	0-0	.000	0-0	.000	1	4	5	5.2	2	1	1	1	0	4	4.8	
at FIU	11/23/12	*	22	3-5	.600	0-0	.000	0-0	.000	0	3	3	4.8	3	0	2	0	0	6	5.0	
vs WVU	11/25/12	*	31	7-12	.583	0-0	.000	3-3	1.000	1	5	6	5.0	4	0	2	1	0	17	6.7	
at Florida State	11/28/12	*	34	5-9	.556	0-0	.000	0-0	.000	4	5	9	5.5	3	1	2	1	1	10	7.1	
UNI	12/1/12	*	26	4-11	.364	0-0	.000	0-0	.000	1	6	7	5.7	2	0	1	0	1	8	7.2	
IOWA STATE	12/6/12	*	36	1-8	.125	0-1	.000	0-0	.000	0	4	4	5.5	3	0	1	0	1	2	6.7	
at Drake	12/16/12	*	22	4-6	.667	0-0	.000	0-0	.000	1	3	4	5.4	5	0	0	2	1	8	6.8	
MISSOURI STATE	12/19/12	*	25	6-8	.750	0-0	.000	0-0	.000	3	9	12	5.9	3	1	0	2	1	12	7.3	
vs Texas	12/28/12	*	33	5-8	.625	0-0	.000	0-0	.000	1	4	5	5.8	3	1	1	0	2	10	7.5	
at San Diego	12/30/12	*	30	3-6	.500	0-0	.000	0-0	.000	1	9	10	6.1	3	0	2	4	1	6	7.4	
OHIO STATE	1/3/13	*	42	4-6	.667	0-0	.000	0-0	.000	2	3	5	6.1	1	2	2	6	3	8	7.4	
MICHIGAN	1/6/13	*	25	0-5	.000	0-0	.000	0-0	.000	0	1	1	5.8	4	1	1	0	0	0	6.9	
at Wisconsin	01/10/13	*	33	4-9	.444	0-0	.000	0-0	.000	1	3	4	5.6	2	0	2	0	0	8	7.0	
at Michigan State	01/17/13	*	36	5-8	.625	0-0	.000	0-0	.000	1	2	3	5.5	2	1	3	2	2	10	7.2	
PURDUE	01/20/13	*	32	3-12	.250	0-0	.000	2-4	.500	3	6	9	5.7	1	0	3	3	3	8	7.2	
WISCONSIN	1/24/13	*	32	4-7	.571	0-0	.000	2-2	1.000	2	5	7	5.8	3	0	2	3	0	10	7.4	
at Michigan	01/27/13	*	37	9-15	.600	0-0	.000	1-1	1.000	3	1	4	5.7	4	0	2	2	1	19	7.9	
at Illinois	01/31/13	*	37	2-7	.286	0-0	.000	0-0	.000	0	8	8	5.8	1	0	2	2	0	4	7.7	
NORTHWESTERN	2/03/13	*	31	2-12	.167	0-0	.000	0-0	.000	2	7	9	5.9	2	1	1	4	0	4	7.6	
at Minnesota	02/07/13	*	28	3-7	.429	0-0	.000	2-2	1.000	0	3	3	5.8	2	0	2	1	3	8	7.6	
NEBRASKA	02/11/13	*	16	0-3	.000	0-0	.000	0-0	.000	2	3	5	5.8	3	0	0	1	0	0	7.3	
PENN STATE	2/14/13	*	37	5-11	.455	0-0	.000	3-4	.750	3	3	6	5.8	2	4	0	0	1	13	7.5	
at Purdue	02/17/13	*	14	1-3	.333	0-0	.000	0-0	.000	0	1	1	5.6	2	1	0	3	0	2	7.3	
at Nebraska	02/24/13	*	36	2-7	.286	0-0	.000	0-0	.000	3	5	8	5.7	2	0	2	2	1	4	7.2	
Totals			28	823	94-226	.416	0-2	.000	13-16	.813	41	118	159	5.7	71	15	41	55	25	201	7.2

Games played: 28  
Minutes/game: 29.4  
Points/game: 7.2  
FG Pct: 41.6  
3FG Pct: 0.0  
FT Pct: 81.3

Rebounds/game: 5.7  
Assists/game: 0.5  
Turnovers/game: 1.5  
Assist/turnover ratio: 0.4  
Steals/game: 0.9  
Blocks/game: 2.0

#### Personal Bests

- Points:** 19 at Michigan (1/27/13)
- Rebounds:** 12 vs. Missouri State (12/19/12)
- FGM:** 9 at Michigan (1/27/13)
- FGA:** 15 at Michigan (1/27/13)
- 3-pt FG:** ---
- 3-pt FGA:** 1, 3x, last vs. Iowa State (12/6/12)
- FTM:** 4 vs. Michigan State (2/12/12)
- FTA:** 5 vs. Michigan State (2/12/12)
- Assists:** 4 vs. Penn State (2/14/13)
- Steals:** 3, 3x, last at Minnesota (2/7/13)
- Blocks:** 6, twice, last vs. Ohio State (1/3/13)
- Minutes:** 42 vs. Ohio State (1/3/13)

#### CAREER STATISTICS

YEAR	G/GS	FG-A	PCT	3-PT	PCT	FT-A	PCT	O-D-REB	AVG	PF-FO	AS	TO	BK	ST	PTS	AVG
Fresh.	31/0	46-99	.465	0-1	.000	24-30	.800	13-44-57	1.8	51-0	6	19	19	9	116	3.7
Soph.	28/28	94-226	.416	0-2	.000	13-16	.813	41-118-159	5.7	71-1	15	41	55	25	201	7.2
<b>TOTALS</b>	<b>59/28</b>	<b>140-325</b>	<b>.431</b>	<b>0-3</b>	<b>.000</b>	<b>37-46</b>	<b>.804</b>	<b>54-162-216</b>	<b>3.7</b>	<b>122-1</b>	<b>21</b>	<b>60</b>	<b>74</b>	<b>34</b>	<b>317</b>	<b>5.4</b>





# University of Iowa Women's Basketball

## Updated Iowa Player Bio

### Kayla Timmerman



# 54

**Forward, 6-3, Freshman**  
**Wayzata, Minn.**  
**Wayzata HS**

- Six points and eight rebounds (five of- fensive rebounds) in 13 minutes in win over Missouri State.
- Recorded one point and one rebound in collegiate debut vs. NIU.
- Miss Minnesota Basketball candidate.
- Athena Award nominee.
- Two-time all-state selection.
- Standout in track and field, winning conference championship in shot put and discus and participated in state meet in both events.

#### Personal Bests

**Points:** 6, twice, last at Illinois (1/31/13)  
**Rebounds:** 8 vs. Missouri State (12/19/12)  
**FGM:** 3 at Illinois (1/31/13)  
**FGA:** 6 vs. Wisconsin (1/24/13)  
**3-pt FG:** 1 vs. Ill. State (11/11/12)  
**3-pt FGA:** 1 vs. Ill. State (11/11/12)  
**FTM:** 2, twice, last vs. N'western (2/3/13)  
**FTA:** 4 vs. Missouri State (12/19/12)  
**Assists:** 1, 4x, last at Minnesota (2/7/13)  
**Steals:** 1, twice, last vs. N'western (2/3/13)  
**Blocks:** 2 vs. NIU (11/9/12)  
**Minutes:** 16 vs. Purdue (1/20/13)

### 2012-13 Game-by-Game

#54 Timmerman, Kayla

Opponent	Date	gs	min	Total		3-Pointers		Free throws		Rebounds				pf	a	t/o	blk	stl	pts	avg
				fg-fga	pct	3fg-fga	pct	ft-fa	pct	off	def	tot	avg							
NORTHERN ILLINOIS	11/9/12	10	0-2	.000	0-0	.000	1-2	.500	0	1	1	1.0	0	0	0	2	0	1	1.0	
ILLINOIS STATE	11/11/12	5	2-2	1.000	1-1	1.000	0-2	.000	0	0	0	0.5	0	1	0	1	0	5	3.0	
MIDDLE TENNESSEE	11/14/12	3	0-0	.000	0-0	.000	0-0	.000	0	0	0	0.3	0	0	0	0	0	0	2.0	
NORTH CAROLINA	11/18/12	1	0-0	.000	0-0	.000	0-0	.000	0	0	0	0.3	0	0	0	0	0	0	1.5	
ROBERT MORRIS	11/20/12	7	1-4	.250	0-0	.000	0-0	.000	1	2	3	0.8	1	0	2	0	0	2	1.6	
at FIU	11/23/12	2	0-0	.000	0-0	.000	0-0	.000	0	0	0	0.7	1	0	1	0	0	0	1.3	
vs WVU	11/25/12	4	0-0	.000	0-0	.000	0-0	.000	0	1	1	0.7	1	0	1	0	0	0	1.1	
UNI	12/1/12	1	1-1	1.000	0-0	.000	0-0	.000	0	1	1	0.8	1	0	0	0	0	2	1.3	
MISSOURI STATE	12/19/12	13	2-4	.500	0-1	.000	2-4	.500	5	3	8	1.6	1	0	0	1	0	6	1.8	
vs Texas	12/28/12	2	1-1	1.000	0-0	.000	0-0	.000	0	0	0	1.4	1	0	0	0	0	2	1.8	
MICHIGAN	1/6/13	1	0-0	.000	0-0	.000	0-0	.000	0	0	0	1.3	0	0	0	0	0	0	1.6	
at Wisconsin	01/10/13	2	0-0	.000	0-0	.000	0-0	.000	0	0	0	1.2	1	0	0	0	0	0	1.5	
at Michigan State	01/17/13	0	0-0	.000	0-0	.000	0-0	.000	0	0	0	1.1	1	0	1	0	0	0	1.4	
PURDUE	01/20/13	16	2-3	.667	0-0	.000	0-0	.000	0	2	2	1.1	0	0	0	1	1	4	1.6	
WISCONSIN	1/24/13	15	2-6	.333	0-0	.000	0-0	.000	0	3	3	1.3	2	1	1	1	0	4	1.7	
at Michigan	01/27/13	2	0-0	.000	0-0	.000	0-0	.000	0	0	0	1.2	0	0	0	0	0	0	1.6	
at Illinois	01/31/13	11	3-3	1.000	0-0	.000	0-0	.000	1	3	4	1.4	1	0	2	0	0	6	1.9	
NORTHWESTERN	2/03/13	11	0-4	.000	0-0	.000	2-2	1.000	0	1	1	1.3	0	1	0	1	1	2	1.9	
at Minnesota	02/07/13	2	0-1	.000	0-0	.000	0-0	.000	0	0	0	1.3	1	1	1	0	0	0	1.8	
at Purdue	02/17/13	1	0-1	.000	0-0	.000	0-0	.000	0	0	0	1.2	0	0	0	0	0	0	1.7	
at Nebraska	02/24/13	1	0-0	.000	0-0	.000	0-0	.000	0	0	0	1.1	0	0	0	0	0	0	1.6	
<b>Totals</b>		0	110	14-32	.438	1-2	.500	5-10	.500	7	17	24	1.1	12	4	9	7	2	34	1.6

Games played: 21  
 Minutes/game: 5.2  
 Points/game: 1.6  
 FG Pct: 43.8  
 3FG Pct: 50.0  
 FT Pct: 50.0

Rebounds/game: 1.1  
 Assists/game: 0.2  
 Turnovers/game: 0.4  
 Assist/turnover ratio: 0.4  
 Steals/game: 0.1  
 Blocks/game: 0.3

#### CAREER STATISTICS

YEAR	G/GS	FG-A	PCT	3-PT	PCT	FT-A	PCT	O-D-REB	AVG	PF-FO	AS	TO	BK	ST	PTS	AVG
Fresh.	21/0	14-32	.438	1-2	.500	5-10	.500	7-17-24	1.1	12-0	4	9	7	2	34	1.6





# University of Iowa Women's Basketball

## Game-by-Game Results

Overall: 17-11

Big Ten: 6-8

Home: 10-5

Away: 5-6

Neutral: 2-0

Date	Opponent	Result	Attend.	Top Scorer	Top Rebounder
Nov. 9	Northern Illinois <sup>^</sup>	W, 63-40	4,739	Johnson, Printy (11)	Till (6)
Nov. 11	Illinois State <sup>^</sup>	W, 74-64	2,930	Johnson (24)	Taylor (11)
Nov. 14	Middle Tennessee <sup>^</sup>	W, 69-63 (OT)	1,691	Printy (26)	Doolittle (9)
Nov. 18	North Carolina <sup>^</sup>	L, 64-77	3,073	Johnson (20)	Johnson (11)
Nov. 20	Robert Morris	W, 58-44	3,032	Johnson (19)	Johnson (11)
Nov. 23	at Florida Int.#	L, 65-66	430	Printy (15)	Johnson, Till (6)
Nov. 25	vs. #12 West Virginia#	W, 79-70	387	Johnson, Printy (19)	Logic, Printy, Taylor (7)
Nov. 28	at Florida State <sup>~</sup>	L, 69-83	2,389	Johnson (20)	Doolittle (9)
Dec. 1	Northern Iowa	W, 68-46	6,368	Johnson (19)	Johnson (12)
Dec. 6	#22 Iowa State*	W, 50-42	4,483	Dixon, Taylor (11)	Logic, Taylor (9)
Dec. 16	at Drake	W, 82-65	2,716	Johnson (26)	Johnson (8)
Dec. 19	Missouri State	W, 97-43	4,588	Thomas (15)	Doolittle (12)
Dec. 28	vs. #20 Texas%	W, 86-63	776	Dixon (23)	Logic (15)
Dec. 20	at San Diego%	W, 83-73	543	Printy (33)	Doolittle (10)
Jan. 3	#24 Ohio State	W, 77-71 (OT)	3,850	Taylor (19)	Johnson (12)
Jan. 6	Michigan	L, 64-68	4,644	Dixon (17)	Logic (9)
Jan. 10	at Wisconsin	W, 65-56	3,495	Johnson (23)	Johnson (11)
Jan. 17	at Michigan State	L, 54-65	5,343	Johnson (13)	Johnson (12)
Jan. 20	#11 Purdue	W, 62-46	8,576	Dixon, Printy (15)	Taylor (10)
Jan. 24	Wisconsin	W, 71-60	3,894	Printy (29)	Logic (9)
Jan. 27	at #23 Michigan	W, 63-57	2,607	Doolittle (19)	Johnson (7)
Jan. 31	at Illinois	L, 62-74	1,808	Logic, Printy (13)	Logic (10)
Feb. 3	Northwestern	L, 65-67	4,697	Dixon (21)	Logic (12)
Feb. 7	at Minnesota	L, 60-72	3,528	Printy (21)	Johnson (10)
Feb. 11	Nebraska	L, 75-76	3,937	Johnson (19)	Johnson (10)
Feb. 14	#8 Penn State	L, 69-81	5,783	Johnson (17)	Johnson (11)
Feb. 17	at #18 Purdue	W, 72-52	9,543	Logic (26)	Taylor (11)
Feb. 24	at Nebraska	L, 46-66	7,374	Logic (12)	Johnson (9)
Feb. 28	Indiana				
March 3	at Northwestern				

<sup>^</sup> - Preseason WNIT

# - FIU Thanksgiving Classic, Miami

<sup>~</sup> - ACC/Big Ten Challenge

\* - Iowa Corn Cy-Hawk Series

% - San Diego Surf 'N Slam Classic, San Diego

Attendance Summary	Games	Totals	Average
Home	15	66,276	4,419
Away	11	39,059	3,551
Neutral	2	1,163	582
<b>Totals</b>	<b>28</b>	<b>107,215</b>	<b>3,830</b>





# University of Iowa Women's Basketball

## Game-by-Game Statistics

Team	Score	FG-A	PCT	3-PT. FG	PCT	FT-A	PCT	REB	PF	AS	TO	BLK	ST
Northen Illinois	40	14-48	29.2%	1-9	11.1%	11-19	57.9%	44	19	3	22	2	6
at Iowa	63	23-57	40.4%	6-10	60.0%	11-17	64.7%	34	18	10	10	10	6
Illinois State	64	25-76	32.9%	2-14	14.3%	12-21	57.1%	44	27	6	17	4	15
at Iowa	74	19-54	35.2%	4-12	33.3%	32-41	78.0%	50	18	18	23	10	9
Middle Tennessee	63	22-70	31.4%	7-30	23.3%	12-18	66.7%	46	22	9	20	3	12
at Iowa	69	24-55	43.6%	6-20	30.0%	15-21	71.4%	40	17	22	20	10	6
North Carolina	77	27-66	40.9%	8-22	36.4%	15-27	55.6%	45	18	14	20	4	15
at Iowa	64	25-62	40.3%	5-25	20.0%	9-14	64.3%	43	20	14	25	4	9
Robert Morris	44	15-53	28.3%	6-21	28.6%	8-14	57.1%	34	11	12	16	2	4
at Iowa	58	22-57	38.6%	7-19	36.8%	7-9	77.8%	44	13	18	18	1	6
at Florida International	66	24-65	36.9%	4-15	26.7%	14-17	82.4%	37	16	8	10	3	6
Iowa	65	24-57	42.1%	7-20	35.0%	10-13	76.9%	39	16	16	16	5	1
vs. West Virginia	70	21-72	29.2%	6-28	21.4%	22-29	75.9%	41	35	12	15	1	10
Iowa	79	18-39	46.2%	1-5	20.0%	42-50	84.0%	39	23	12	23	5	6
at Florida State	83	31-63	49.2%	5-10	50.0%	16-22	72.7%	29	10	18	13	4	12
Iowa	69	30-61	49.2%	2-11	18.2%	7-9	77.8%	35	16	13	24	6	6
Northern Iowa	46	12-53	22.6%	8-29	27.6%	14-16	87.5%	31	17	9	11	0	2
at Iowa	68	26-54	48.1%	3-11	27.3%	13-18	72.2%	43	16	17	9	4	5
Iowa State	42	15-57	26.3%	7-34	20.6%	5-5	100.0%	43	20	7	21	1	6
at Iowa	50	15-51	29.4%	4-16	25.0%	16-25	64.0%	41	13	12	15	3	7
at Drake	65	20-51	39.2%	7-18	38.9%	18-24	75.0%	32	12	15	13	1	5
Iowa	82	31-59	52.5%	7-15	46.7%	13-16	81.3%	31	21	23	8	8	5
Missouri State	43	12-58	20.7%	1-18	5.6%	18-31	58.1%	38	28	3	22	1	8
at Iowa	97	36-75	48.0%	10-34	29.4%	15-24	62.5%	60	25	25	16	5	9
vs. Texas	63	21-54	38.9%	6-14	42.9%	15-28	53.6%	36	15	14	16	4	3
Iowa	86	35-67	52.2%	7-21	33.3%	9-12	75.0%	38	20	23	10	2	11
at San Diego	73	30-64	46.9%	3-6	50.0%	10-17	58.8%	34	13	15	16	1	9
Iowa	83	29-53	54.7%	11-18	61.1%	14-17	82.4%	31	15	19	20	8	7
Ohio State	71	27-68	39.7%	6-21	28.6%	11-14	78.6%	33	19	14	17	4	8
at Iowa	77	30-58	51.7%	2-4	50.0%	15-19	78.9%	39	14	17	19	10	12
Michigan	68	24-48	50.0%	10-22	45.5%	10-14	71.4%	35	17	14	16	2	7
at Iowa	64	23-62	37.1%	9-25	36.0%	9-12	75.0%	32	16	17	11	3	8
at Wisconsin	56	18-54	33.3%	9-26	34.6%	11-14	78.6%	25	14	12	11	2	11
Iowa	65	21-55	38.2%	6-17	35.3%	17-18	94.4%	45	13	17	15	2	5
at Michigan State	65	23-61	37.7%	5-19	26.3%	14-15	93.3%	42	10	14	14	3	4
Iowa	54	21-60	35.0%	2-14	14.3%	10-12	83.3%	36	14	9	14	4	7
Purdue	46	21-66	31.8%	3-18	16.7%	1-6	16.7%	44	13	10	18	3	10
at Iowa	62	23-63	36.5%	9-15	60.0%	7-9	77.8%	45	12	16	14	9	9
Wisconsin	60	24-64	37.5%	5-26	19.2%	7-11	63.6%	33	14	12	12	0	9
at Iowa	71	25-51	49.0%	5-12	41.7%	16-18	88.9%	36	15	13	15	6	4
at Michigan	57	22-53	41.5%	4-12	33.3%	9-15	60.0%	29	17	9	11	3	6
Iowa	63	23-50	46.0%	5-20	25.0%	12-14	85.7%	32	19	12	11	4	6
at Illinois	74	25-60	41.7%	11-24	45.8%	13-19	68.4%	31	10	15	19	2	15
Iowa	62	27-59	45.8%	7-19	36.8%	1-2	50.0%	38	17	12	27	5	7
Northwestern	67	27-59	45.8%	5-15	33.3%	8-12	66.7%	37	16	18	16	3	5
at Iowa	65	20-61	32.8%	7-14	50.0%	18-24	75.0%	40	14	12	13	8	12
at Minnesota	72	26-58	44.8%	5-12	41.7%	15-20	75.0%	48	17	14	16	9	5
Iowa	60	18-63	28.6%	7-20	35.0%	17-20	85.0%	34	19	13	13	4	10
Nebraska	76	26-60	43.3%	10-23	43.5%	14-16	87.5%	37	14	21	12	2	4
at Iowa	75	28-64	43.8%	8-24	33.3%	11-15	73.3%	36	14	19	8	6	4
Penn State	81	29-62	46.8%	4-9	44.4%	19-25	76.0%	38	23	10	16	4	12
at Iowa	69	26-57	45.6%	6-15	40.0%	11-19	57.9%	36	20	18	20	1	9
at Purdue	52	22-69	31.9%	5-20	25.0%	3-7	42.9%	39	12	14	15	3	3
Iowa	72	27-54	50.0%	5-16	31.3%	13-15	86.7%	33	11	18	8	10	9
at Nebraska	66	24-59	40.7%	4-16	25.0%	14-18	77.8%	38	9	15	11	2	7
Iowa	46	20-56	35.7%	3-15	20.0%	3-6	50.0%	37	16	7	21	3	7





# University of Iowa Women's Basketball

## Season & Career Bests

### Season Bests

Player	Points	3-Pointers	Rebounds	Assists	Blocks	Steals
#3 Claire Till	7 at FIU	1, twice	6, twice	1, three times	1, three times	1, three times
#11 Trisha Nesbitt	12 at Drake	2 at Drake	3 vs. Northern Illinois	2 vs. Robert Morris	---	2 vs. North Carolina
#12 Morgan Johnson	26 at Drake	---	12, three times	5 vs. Northern Iowa	5, three times	3, twice
#13 Kathy Thomas	15 vs. Missouri State	2 vs. Missouri State	3, twice	3, three times	1 at Minnesota	2, four times
#21 Melissa Dixon	23 vs. Texas	6 vs. Northwestern	3, five times	3 vs. Nebraska	1 vs. Illinois State	2 vs. MTSU
#22 Samantha Logic	26 at Purdue	2, three times	15 vs. Texas	14 vs. Texas	2 at Drake	4 vs. North Carolina
#23 Theairra Taylor	19 vs. Ohio State	3 vs. Purdue	11, twice	7 vs. Missouri State	2, three times	3, twice
#24 Jaime Printy	33 at San Diego	7 at San Diego	9 vs. Purdue	7 at Drake	1, four times	3, twice
#25 Kali Peschel	5 at Drake	1 at Drake	5, twice	2, twice	1, four times	1, six times
#33 Kathryn Reynolds	---	---	---	---	---	---
#45 Nicole Smith	4 vs. Missouri State	---	1 vs. Northern Illinois	---	---	---
#51 Bethany Doolittle	19 at Michigan	---	12 vs. Missouri State	4 vs. Penn State	6, twice	3, three times
#54 Kayla Timmerman	6, twice	1 vs. Illinois State	8 vs. Missouri State	1, three times	2 vs. Northern Illinois	1, twice

### Career Bests

Player	Points	3-Pointers	Rebounds	Assists	Blocks	Steals
#3 Claire Till	7 at FIU	1, twice	6, twice	1, three times	1, three times	1, three times
#11 Trisha Nesbitt	12 at Drake	2, twice	3, 3 times	4, three times	1, Michigan State '11	3, Minnesota
#12 Morgan Johnson	37 at Bradley	---	16 vs. Illinois	5 vs. Northern Iowa	8, Minnesota, '10	3, five times
#13 Kathy Thomas	15 vs. Missouri State	2 vs. Missouri State	3, twice	3, three times	1 at Minnesota	2, four times
#21 Melissa Dixon	23 vs. Texas	6, twice	4, four times	4 vs. Nebraska	1, four times	3 at Indiana
#22 Samantha Logic	26 at Purdue	3 vs. Drake	18 at Michigan	14 vs. Texas	2, twice	4 vs. North Carolina
#23 Theairra Taylor	19 vs. Ohio State	3 vs. Purdue	11, twice	7 vs. Missouri State	4, Michigan	4 at Northwestern
#24 Jaime Printy	33 at San Diego	7 at San Diego	9, twice	9, Iowa State, '10	1, 16 times	5 at Bradley
#25 Kali Peschel	5 at Drake	1 at Drake	5, twice	2, three times	1, four times	1, six times
#33 Kathryn Reynolds	4 vs. Drake	---	2 vs. Texas A&M	5 vs. Western Illinois	---	---
#45 Nicole Smith	4 vs. Missouri State	---	1 vs. Northern Illinois	---	---	---
#51 Bethany Doolittle	19 at Michigan	---	12 vs. Missouri State	4 vs. Penn State	6, twice	3, three times
#54 Kayla Timmerman	6, twice	1 vs. Illinois State	8 vs. Missouri State	1, three times	2 vs. Northern Illinois	1, twice

**BOLD** - set career best during current season

\* - - tied school single-game and Carver-Hawkeye Arena record





# University of Iowa Women's Basketball

## The Last Time...

### The Last Time a Player . . .

#### **Had 30 or more points**

Iowa -- 33, Jaime Printy, at San Diego, 12/30/12  
Opponent -- 34, Rachel Banham, Minnesota, 2/7/13

#### **Made at least 80% of her FGA (10 att.)**

Iowa -- .818 (9-11), Morgan Johnson, vs. Nebraska, 2/11/13  
Opponent -- .857 (12-14), Kelsey Budd, Bradley, 12/17/11

#### **Made 100% of her FTA (10 att.)**

Iowa -- 1.000 (11-11), Morgan Johnson, at Wisconsin, 1/10/13  
Opponent -- 1.000 (11-11), Courtney Vandersloot, Gonzaga, 3/19/11

#### **Had 15 or more rebounds**

Iowa -- 15, Samantha Logic, vs. Texas, 12/28/12  
Opponent -- 16, Artemis Spanou, Robert Morris, 11/20/12

#### **Had 10 or more assists**

Iowa -- 10, Samantha Logic, vs. Purdue, 1/20/13  
Opponent -- 10, Brittnay McCoy, Minnesota, 2/18/10

#### **Had 5 or more blocks**

Iowa -- 5, Morgan Johnson, at Purdue, 2/17/13  
Opponent -- 5, Ebony Ellis, Northern Illinois, 12/8/07

#### **Had 5 or more steals**

Iowa -- 5, Kelly Krei, at Indiana, 2/5/12  
Opponent -- 5, Adrienne GodBold, Illinois, 1/31/13

### The Last Time A Team . . .

#### **Scored 100 or more points**

Iowa -- 100 vs. Minnesota, 2/12/88  
Opponent -- 101, Iowa State, 12/3/03

#### **Scored 40 or fewer points**

Iowa -- 40, vs. Illinois, 2/10/77  
Opponent -- 40, Northern Illinois, 11/9/12

#### **Won an overtime game**

Iowa -- 77-71, vs. Ohio State, 1/3/13  
Opponent -- 81-78, Kansas State, 12/3/11

#### **Made at least 60% of its FGA (20 att.)**

Iowa -- .632 (36-57), vs. Rider, 11/26/05  
Opponent -- .654 (34-52), Ohio State, 2/12/06

#### **Made at least 50% of its 3-pt. FGA (8 att.)**

Iowa -- .500 (7-14), vs. Northwestern, 2/3/13  
Opponent -- .500 (5-10), Florida State, 11/28/12

#### **Made at least 90% of its FTA (10 att.)**

Iowa -- .944 (17-18), at Wisconsin, 1/10/13  
Opponents -- .933 (14-15), Michigan State, 1/17/13

\* - Carver-Hawkeye Arena record ^ - school record







# University of Iowa Women's Basketball

## Miscellaneous Records and Statistics

### GAME-BY-GAME, POINTS-REBOUNDS-ASSISTS-STEALS

# -- starter		3	11	12	13	21	22	23	24	25	33	45	51	54
Date	Opponent	P-R-A-S	P-R-A-S	Johns Johnson	Thomas	Dixon	Logic	Taylor	Printy	Peschel	Reynolds	Smith	Doolittle	Timmerman
Nov. 9	Northern Illinois	3-6-0-1	3-3-1-0	11-5-0-1#	8-2-0-0	8-2-2-1#	10-3-2-2#	5-1-1-0#	11-1-3-1	1-5-1-0	DNP	0-1-0-0	2-0-0-0#	1-1-0-0
Nov. 11	Illinois State	4-3-0-1	3-1-0-1	24-9-2-1#	5-3-3-1	8-0-2-0#	6-5-4-2#	10-11-5-2#	1-2-1-0	0-3-0-0	DNP	0-0-0-0	8-5-0-1#	5-0-1-0
Nov. 14	Middle Tennessee	0-1-0-0	2-0-0-0	20-8-1-0#	0-0-0-0	6-1-1-2#	0-3-12-2#	7-4-2-1#	26-5-6-1	0-1-0-0	DNP	DNP	8-9-0-0#	0-0-0-0
Nov. 18	North Carolina	1-2-1-0	2-0-0-0	20-11-1-2#	0-0-0-0	12-1-0-0	12-6-6-4#	3-4-1-0#	12-5-4-1#	DNP	DNP	DNP	2-7-1-2#	0-0-0-0
Nov. 20	Robert Morris	5-2-0-0	0-2-2-0	19-11-0-0#	3-1-1-0	6-2-0-0	4-6-9-3#	7-4-0-1#	8-6-5-1#	0-0-0-1	DNP	DNP	4-5-1-0#	2-3-0-0
Nov. 23	Florida International	6-7-0-0	2-1-1-0	14-6-2-0#	0-0-0-0	8-2-0-0	7-5-7-1#	6-3-2-0#	15-5-4-0#	0-2-0-0	DNP	DNP	6-3-0-0#	0-0-0-0
Nov. 25	West Virginia	5-2-0-1	4-0-1-1	19-3-1-1#	DNP	0-0-0-0	9-7-7-3#	6-7-0-0#	19-7-3-0#	DNP	DNP	DNP	17-6-0-0#	0-1-0-0
Nov. 28	Florida State	0-1-1-0	0-0-0-1	20-4-1-0#	DNP	3-0-1-1	14-7-7-3#	9-6-1-0#	13-1-1-0#	0-2-0-0	DNP	DNP	10-9-1-1#	DNP
Dec. 1	Northern Iowa	DNP	0-0-0-0	19-12-5-2#	0-2-1-0	6-2-1-0	15-4-3-1#	6-5-2-0#	9-3-5-0#	3-2-0-1	DNP	0-0-0-0	8-7-0-1#	2-1-0-0
Dec. 6	Iowa State	DNP	0-1-0-0	7-6-2-1#	3-2-0-0	11-2-1-1	6-9-4-0#	11-9-3-2#	10-6-2-2#	0-0-0-0	DNP	DNP	2-4-0-1#	DNP
Dec. 16	Drake	DNP	12-0-0-0	26-8-0-2#	3-0-0-0	0-0-1-0	13-5-7-1#	6-3-6-0#	9-4-7-0#	5-0-2-1	DNP	DNP	8-4-0-1#	DNP
Dec. 19	Missouri State	DNP	4-1-1-0	13-4-1-0#	15-2-2-2	12-2-2-1	7-6-4-3#	9-6-7-1#	13-2-6-0#	2-5-0-1	DNP	4-0-0-0	12-12-1-1#	6-8-0-0
Dec. 28	Texas	0-1-1-0	0-0-0-0	20-5-0-3#	2-2-0-1	23-3-2-0	2-15-14-2#	4-1-2-3#	21-3-1-0#	0-0-2-0	DNP	2-0-0-0	10-5-1-2#	2-0-0-0
Dec. 30	San Diego	DNP	DNP	20-6-1-1#	0-3-0-0	8-0-0-1	7-3-10-2#	9-4-4-0#	33-2-4-2#	0-1-0-0	DNP	DNP	6-10-0-1#	DNP
Jan. 3	Ohio State	0-1-0-0	DNP	16-12-3-3#	0-1-1-0	3-1-0-1	17-6-8-3#	19-4-0-2#	14-3-3-0#	0-0-0-0	DNP	DNP	8-5-2-3#	DNP
Jan. 6	Michigan	DNP	0-0-0-0	10-7-2-2#	0-0-0-0	17-3-0-0	16-9-9-3#	14-3-2-2#	6-5-3-1#	1-1-0-0	DNP	DNP	0-1-0-0#	0-0-0-0
Jan. 10	Wisconsin	DNP	0-0-0-0	23-11-0-0#	0-0-0-0	8-3-2-0	12-10-9-1#	4-8-5-3#	10-6-1-1#	0-0-0-0	DNP	0-0-0-0	8-4-0-0#	0-0-0-0
Jan. 17	Michigan State	DNP	0-1-0-1	13-12-0-2#	0-2-0-0	7-3-0-0	7-5-4-1#	6-2-1-0#	11-4-3-1#	0-0-0-0	DNP	DNP	10-3-1-2#	0-0-0-0
Jan. 20	Purdue	0-0-0-0	0-0-0-0	7-7-0-0#	0-1-3-2	15-0-0-1	4-3-10-1#	9-10-1-1#	15-9-1-0#	0-1-1-0	DNP	DNP	8-9-0-3#	4-2-0-1
Jan. 24	Wisconsin	0-0-0-0	0-0-0-0	2-4-1-0#	0-0-0-0	10-0-0-1	6-9-5-1#	10-1-2-2#	29-8-4-0#	0-1-0-0	DNP	DNP	10-7-0-0#	4-3-1-0
Jan. 27	Michigan	DNP	0-2-0-0	6-7-0-2#	4-0-0-0	5-2-1-0	10-6-8-2#	5-2-1-0#	14-5-2-1#	0-0-0-0	DNP	DNP	19-4-0-1#	0-0-0-0
Jan. 31	Illinois	DNP	DNP	6-4-0-1#	0-0-1-0	11-2-1-1	13-10-6-2#	9-0-1-2#	13-4-3-1#	0-0-0-0	DNP	DNP	4-8-0-0#	6-4-0-1
Feb. 3	Northwestern	DNP	0-0-1-1	11-3-0-1#	0-0-0-0	21-2-1-0	11-12-2-3#	2-1-2-2#	12-4-3-3#	2-4-1-1	DNP	DNP	4-9-1-0#	2-1-1-1
Feb. 7	Minnesota	DNP	0-0-0-0	13-10-2-2#	3-1-1-0	4-3-2-1	0-3-5-1#	9-5-1-0#	21-5-0-3#	2-0-1-0	DNP	DNP	8-3-0-3#	0-0-1-0
Feb. 11	Nebraska	DNP	0-0-0-0	19-10-1-0#	2-1-0-0	19-0-3-1	8-8-6-2#	11-5-5-0#	16-4-4-1#	DNP	DNP	DNP	0-5-0-0#	DNP
Feb. 14	Penn State	DNP	0-0-0-0	17-11-0-1#	1-2-3-2	16-2-1-0	9-3-6-2#	11-3-0-1#	2-5-4-2#	DNP	DNP	DNP	13-6-4-1#	DNP
Feb. 17	Purdue	0-0-0-0	0-0-0-0	12-3-4-1#	2-0-0-2	10-0-0-1	26-9-3-1#	15-11-4-2#	5-5-6-1#	0-0-0-1	DNP	DNP	2-1-1-0#	0-0-0-0
Feb. 24	Nebraska	DNP	0-0-0-0	8-9-0-0#	0-0-0-1	8-2-0-1	12-4-6-1#	10-4-1-2#	4-4-0-1#	0-0-0-0	DNP	DNP	4-8-0-1#	0-0-0-0

### IOWA RECORD WHEN...

Playing at home:	10-5
Playing on the road:	5-6
Playing on a neutral floor:	2-0
Leading at the half: 11-2	
Trailing at the half: 6-8	
Tied at the half: 0-1	
Wearing white: 6-1	
Wearing black: 7-6	
Wearing gold: 4-3	
Wearing pink: 0-1	
Scoring 80+ points: 4-0	
Scoring 70-79 points: 5-1	
Scoring 60-69 points: 6-8	
Scoring 59 or fewer points: 2-2	
Allowing 80+ points: 0-2	
Allowing 70-79 points: 3-4	
Allowing 60-69 points: 5-5	
Allowing 59 or fewer points: 9-0	
Shooting at least 50% FG: 5-0	
Shooting less than 50% FG: 12-11	
Shooting at least 80% FT: 7-2	
Shooting less than 80% FT: 10-9	
Shooting at least 40% 3-pt. FG: 6-2	
Shooting less than 40% 3-pt. FG: 11-9	
Most 1st half points: 46 vs. Missouri State (Dec. 19)	
Most 2nd half points: 54 vs. West Virginia (Nov. 25)	
Fewest opponent 1st half points: 13 vs. NIU (Nov. 9)	
Fewest opponent 2nd half points: 22 vs. UNI (Dec. 1)	

Iowa has more rebounds:	10-4
Opponent has more rebounds:	7-7
Rebounds are equal:	0-0
Iowa has more assists: 16-2	
Opponent has more assists: 0-8	
Assists are equal: 1-1	
Iowa has fewer turnovers: 8-4	
Opponent has fewer turnovers: 7-6	
Turnovers are equal: 2-1	
Iowa has more steals: 7-4	
Opponent has more steals: 7-5	
Steals are equal: 3-2	
Playing on Sunday: 7-4	
Playing on Monday: 0-1	
Playing on Tuesday: 1-0	
Playing on Wednesday: 2-1	
Playing on Thursday: 4-4	
Playing on Friday: 2-1	
Playing on Saturday: 1-0	
Playing on BTN: 4-4	
Playing on CBS Sports Network: 0-1	
Playing on ESPN2: 1-0	
Playing on Mediacom: 3-1	
Playing on no TV: 9-5	
Largest Iowa lead: 54 vs. Missouri State (Dec. 19)	
Largest Iowa deficit: 22 vs. UNC (Nov. 18)	
Largest halftime lead: 31 vs. NIU (Nov. 9)	
Largest halftime deficit: 22 vs. UNC (Nov. 18)	

### LATE GAME CLUTCH FREE THROW SHOOTING

In Final Five Minutes of Game			
Player	FTM	FTA	Pct.
Jaime Printy	41	41	1.000
Trisha Nesbitt	4	4	1.000
Nicole Smith	2	2	1.000
Melissa Dixon	10	11	.909
Morgan Johnson	22	25	.880
Theairra Taylor	7	8	.875
Bethany Doolittle	4	6	.667
Samantha Logic	17	26	.654
Claire Till	3	6	.500
Kathy Thomas	2	4	.500
Kayla Timmerman	2	6	.333
TOTALS	114	139	.820

In Final Two Minutes of Game			
Player	FTM	FTA	Pct.
Jaime Printy	31	31	1.000
Trisha Nesbitt	4	4	1.000
Nicole Smith	2	2	1.000
Melissa Dixon	6	7	.857
Morgan Johnson	12	14	.857
Bethany Doolittle	3	4	.750
Theairra Taylor	3	4	.750
Samantha Logic	10	16	.625
Claire Till	1	4	.250
Kathy Thomas	0	2	.000
TOTALS	72	88	.818

In Final One Minute of Game			
Player	FTM	FTA	Pct.
Jaime Printy	20	20	1.000
Morgan Johnson	6	6	1.000
Melissa Dixon	2	2	1.000
Trisha Nesbitt	2	2	1.000
Theairra Taylor	2	2	1.000
Samantha Logic	2	7	.246
Claire Till	1	4	.250
Kathy Thomas	0	2	.000
TOTALS	35	45	.777

In Overtime			
Player	FTM	FTA	Pct.
Jaime Printy	6	6	1.000
Samantha Logic	4	4	1.000
Theairra Taylor	2	2	1.000
Morgan Johnson	0	2	.000
Claire Till	0	2	.000
Melissa Dixon	0	1	.000
TOTALS	12	16	.750





# University of Iowa Women's Basketball

## Season Highs And Lows/Specialty Statistics

CATEGORY		IOWA	OPPONENTS
<b>Points</b>	High Low	97 vs. Missouri State 46 at Nebraska	83, Florida State 40, Northern Illinois
<b>FG Made</b>	High Low	36 vs. Missouri State 15 vs. Iowa State	31, Florida State 12, two teams
<b>FG Att.</b>	High Low	75 vs. Missouri State 39 vs. West Virginia	76, Illinois State 48, two teams
<b>FG%</b>	High Low	54.7 at San Diego 28.6 at Minnesota	50.0, Michigan 20.7, Missouri State
<b>3FG Made</b>	High Low	11 at San Diego 1 vs. West Virginia	11, Illinois 1, two teams
<b>3FG Att.</b>	High Low	34 vs. Missouri State 4 vs. Ohio State	34, Iowa State 9, two teams
<b>3FG%</b>	High Low	61.1 at San Diego 14.3 at Michigan State	50.0, two teams 5.6, Missouri State
<b>FTM</b>	High Low	42 vs. West Virginia 1 at Illinois	22, West Virginia 1, Purdue
<b>FTA</b>	High Low	50 vs. West Virginia 2 at Illinois	31, Missouri State 5, Iowa State
<b>FT% (min. 10)</b>	High Low	94.4 at Wisconsin 57.9 vs. Penn State	93.3, Michigan State 53.6, Texas
<b>Off. Reb.</b>	High Low	21 vs. Missouri State 6 vs. Northern Illinois	23, West Virginia 7, Northwestern
<b>Def. Reb.</b>	High Low	39 vs. Missouri State 16 vs. Michigan	38, Minnesota 15, Florida State
<b>Total Reb.</b>	High Low	60 vs. Missouri State 31, twice, last at San Diego	48, Minnesota 25, Wisconsin
<b>Assists</b>	High Low	25 vs. Missouri State 7 at Nebraska	21, Nebraska 3, two teams
<b>Steals</b>	High Low	12, twice, last vs. Northwestern 1 at Florida International	15, three teams 1, West Virginia
<b>Blocks</b>	High Low	10, five times, last at Purdue 1, twice, last vs. Penn State	9, Minnesota 0, two teams
<b>Turnovers</b>	High Low	27 at Illinois 8, three times, last at Purdue	22, two teams 10, Florida International
<b>Fouls</b>	High Low	25 vs. Missouri State 11 at Purdue	35, West Virginia 9, Nebraska

GAME-BY-GAME SPECIALTY STATS					
Date	Opponent	IA-Opp.	IA-Opp.	IA-Opp.	IA-Opp.
		Pts. Off TO's	Pts. in Paint	2nd Chance	Fast Break
Nov. 9	Northern Illinois	26-6	24-10	4-3	3-2
Nov. 11	Illinois State	18-20	22-24	8-6	18-11
Nov. 14	Middle Tennessee	15-11	24-26	11-12	2-6
Nov. 18	North Carolina	12-22	30-24	6-22	15-14
Nov. 20	Robert Morris	16-12	22-10	11-6	2-2
Nov. 23	Florida International	6-20	24-20	13-15	6-6
Nov. 25	West Virginia	14-20	24-18	11-22	0-4
Dec. 1	Northern Iowa	11-11	34-4	9-5	2-0
Dec. 6	Iowa State	12-12	14-12	10-8	2-4
Dec. 16	Drake	15-5	40-18	11-12	2-4
Dec. 19	Missouri State	28-14	32-18	17-8	4-6
Dec. 28	Texas	24-10	40-26	11-8	9-0
Dec. 30	San Diego	14-22	30-44	8-9	0-2
Jan. 3	Ohio State	19-18	40-34	12-9	4-6
Jan. 6	Michigan	24-4	22-22	10-8	6-0
Jan. 10	Wisconsin	11-18	18-12	7-17	4-2
Jan. 17	Michigan State	12-22	26-30	12-7	2-12
Jan. 20	Purdue	17-9	24-28	12-5	10-8
Jan. 24	Wisconsin	11-13	30-32	12-13	2-2
Jan. 27	Michigan	10-8	18-24	13-10	4-2
Jan. 31	Illinois	21-30	28-20	13-8	4-4
Feb. 3	Northwestern	17-8	20-32	6-5	6-0
Feb. 7	Minnesota	28-9	18-32	4-10	2-11
Feb. 11	Nebraska	8-4	30-22	20-6	4-2
Feb. 14	Penn State	18-10	38-32	19-14	2-8
Feb. 17	Purdue	15-6	36-24	12-21	10-0
Feb. 24	Nebraska	6-17	28-30	4-12	2-4

## IOWA AND OPPONENT INDIVIDUAL HIGH PERFORMANCES

CATEGORY		IOWA	OPPONENTS
Points	33	Jaime Printy at San Diego	34 Hill, Ohio State; Banham, Minnesota
Field Goals Made	11	Morgan Johnson at Drake	12 Jamie Russell, Illinois State
Field Goals Attempted	22	Jaime Printy at Minnesota	28 Russell, Ill. State; Coley, FIU
3-Point Field Goals Made	7	Jaime Printy at San Diego	6 Kyndal Clark, Drake
3-Point Field Goals Attempted	12	Jaime Printy vs. UNC, at San Diego	13 Taylor Palmer, West Virginia
Free Throws Made	17	Jaime Printy vs. West Virginia	11 Rachel Banham, Minnesota
Free Throws Attempted	17	Jaime Printy vs. West Virginia	14 Rachel Banham, Minnesota
Offensive Rebounds	8	Morgan Johnson at Wisconsin	11 Ebony Rowe, Middle Tennessee
Defensive Rebounds	11	Theairra Taylor vs. Ill. State	13 Artemis Spanou, Robert Morris
Total Rebounds	15	Samantha Logic vs. Texas	16 Rowe, MTSU; Spanou, RMU
Assists	14	Samantha Logic vs. Texas	8 Four players, last by Lindsey Moore (Nebraska)
Steals	4	Samantha Logic vs. North Carolina	8 Jamie Russell, Illinois State
Blocks	6	Bethany Doolittle vs. NIU, Ohio State	3 Rolle, UNC; Thompson, Mich.; Loberg, Minn.



















# University of Iowa Women's Basketball

## Season Box Scores



Official Basketball Box Score -- Game Totals -- Final Statistics  
**Nebraska vs Iowa**  
02/11/13 7:36 p.m. at Carver-Hawkeye Arena, Iowa City, Iowa



Nebraska 76 • 18-6, 8-3

#	Player	Total			Rebounds			PF	TP	A	TO	Blk	Stl	Min	
		FG-FGA	FG-FGA	FT-FTA	Off	Def	Tot								
03	Sample, Hailee	f	1-3	0-0	2-2	2	2	4	2	4	6	2	1	1	25
23	Cady, Emily	f	3-5	2-3	1-2	2	6	8	1	9	4	1	1	1	33
35	Hooper, Jordan	f	11-23	2-8	5-6	4	4	8	2	29	0	0	0	0	40
00	Moore, Lindsey	g	3-8	2-4	6-6	0	7	7	2	14	7	1	0	0	31
24	Theriot, Rachel	g	2-4	2-3	0-0	1	0	1	1	6	2	3	0	0	23
01	Laudermill, Tear'a	g	1-5	0-2	0-0	1	1	2	2	2	1	0	0	1	11
10	Williams, Meghin	g	1-3	0-0	0-0	0	1	1	3	2	0	0	0	0	10
13	Jeffery, Brandi	g	4-9	2-3	0-0	2	1	3	1	10	1	2	0	0	20
14	Simon, Katie	g	0-0	0-0	0-0	0	1	1	0	0	0	0	0	1	7
Team						1	1	2			3				4
Totals			26-60	10-23	14-16	13	24	37	14	76	21	12	2	4	200

FG % 1st Half: 16-34 47.1% 2nd half: 10-26 38.5% Game: 26-60 43.3%  
 3FG % 1st Half: 7-14 50.0% 2nd half: 3-9 33.3% Game: 10-23 43.5%  
 FT % 1st Half: 2-3 66.7% 2nd half: 12-13 92.3% Game: 14-16 87.5%

Iowa 75 • 16-9, 5-6

#	Player	Total			Rebounds			PF	TP	A	TO	Blk	Stl	Min	
		FG-FGA	FG-FGA	FT-FTA	Off	Def	Tot								
24	Printy, Jaime	f	6-14	2-7	2-2	1	3	4	1	16	4	2	1	1	38
51	Doolittle, Bethany	f	0-3	0-0	0-0	2	3	5	3	0	0	0	1	0	16
12	Johnson, Morgan	c	9-11	0-0	1-3	7	3	10	1	19	1	1	4	0	30
22	Logic, Samantha	g	2-8	0-3	4-4	2	6	8	4	8	6	3	0	2	38
23	Taylor, Theairra	g	3-10	1-3	4-6	1	4	5	0	11	5	1	0	0	34
11	Nesbitt, Trisha	g	0-1	0-0	0-0	0	0	0	0	1	0	0	0	0	8
13	Thomas, Kathy	g	1-2	0-1	0-0	0	0	1	1	2	0	1	0	0	4
21	Dixon, Melissa	g	7-15	5-10	0-0	0	0	0	3	19	3	0	0	1	32
Team						2	1	3							4
Totals			28-64	8-24	11-15	15	21	36	14	75	19	8	6	4	200

FG % 1st Half: 13-27 48.1% 2nd half: 15-37 40.5% Game: 28-64 43.8%  
 3FG % 1st Half: 3-8 37.5% 2nd half: 5-16 31.3% Game: 8-24 33.3%  
 FT % 1st Half: 3-4 75.0% 2nd half: 8-11 72.7% Game: 11-15 73.3%

Score by periods	1st	2nd	Total
Nebraska	41	35	76
Iowa	32	43	75

Officials: Beverly Roberts, Michael Price, Angie Enlund  
 Technical fouls: Nebraska-None. Iowa-None.  
 Attendance: 3937

Points	In	Off	2nd	Fast	Bench
NEB	Paint	T/O	Chance	Break	
Iowa	30	8	20	4	21

Score tied - 1 time.  
Lead changed - 0 times.

Last FG - NEB 2nd-03:04, IOWA 2nd-00:01.  
 Largest lead - NEB by 12 2nd-08:32, IOWA None.



Official Basketball Box Score -- Game Totals -- Final Statistics  
**Penn State vs Iowa**  
2/14/13 7:00 PM at Carver-Hawkeye Arena, Iowa City, IA



Penn State 81 • 21-3, 11-1

#	Player	Total			Rebounds			PF	TP	A	TO	Blk	Stl	Min	
		FG-FGA	FG-FGA	FT-FTA	Off	Def	Tot								
24	Nickson, Mia	f	4-7	0-0	3-5	4	4	8	3	11	1	1	0	0	38
54	Greene, Nikki	c	2-3	0-0	2-2	3	4	7	4	6	0	3	1	1	22
02	Taylor, Dara	g	4-10	1-1	0-0	1	6	7	2	9	3	4	0	4	26
20	Bentley, Alex	g	6-15	0-1	2-3	0	2	2	2	14	4	2	1	4	30
33	Lucas, Maggie	g	7-15	3-6	4-4	1	3	4	0	21	1	1	0	1	35
01	Agee, Candice	g	0-0	0-0	1-2	1	1	2	1	2	1	0	0	0	4
05	East, Talia	g	0-0	0-0	2-2	1	0	1	3	2	0	2	1	1	9
23	Edwards, Ariel	g	5-7	0-1	5-7	2	0	2	4	15	1	3	1	1	18
25	Studevent, Gizelle	g	0-3	0-0	0-0	0	0	0	0	0	0	0	0	0	10
44	Waldner, Tori	g	1-2	0-0	0-0	0	1	1	3	2	0	0	0	0	8
Team						1	3	4							8
Totals			29-62	4-9	19-25	14	24	38	23	81	10	16	4	12	200

FG % 1st Half: 13-31 41.9% 2nd half: 16-31 51.6% Game: 29-62 46.8%  
 3FG % 1st Half: 3-6 50.0% 2nd half: 1-3 33.3% Game: 4-9 44.4%  
 FT % 1st Half: 8-10 80.0% 2nd half: 11-15 73.3% Game: 19-25 76.0%

Iowa 69 • 16-10, 5-7

#	Player	Total			Rebounds			PF	TP	A	TO	Blk	Stl	Min	
		FG-FGA	FG-FGA	FT-FTA	Off	Def	Tot								
51	Doolittle, Bethany	f	5-11	0-0	3-4	3	3	6	2	13	4	0	0	1	37
12	Johnson, Morgan	c	8-16	0-0	1-5	6	5	11	3	17	0	2	1	1	36
22	Logic, Samantha	g	4-4	1-1	0-1	2	1	3	4	9	6	5	0	2	31
23	Taylor, Theairra	g	4-10	1-2	2-2	0	3	3	3	11	0	4	0	1	26
24	Printy, Jaime	g	0-5	0-3	2-2	0	5	5	3	2	4	6	0	2	29
11	Nesbitt, Trisha	g	0-0	0-0	0-0	0	0	0	0	0	0	0	0	0	2
13	Thomas, Kathy	g	0-0	0-0	1-3	0	2	2	0	1	3	1	0	2	10
21	Dixon, Melissa	g	5-11	4-9	2-2	0	2	2	5	16	1	1	0	0	29
Team						2	2	4							9
Totals			26-57	6-15	11-19	13	23	36	20	69	18	20	1	9	200

FG % 1st Half: 14-28 50.0% 2nd half: 12-29 41.4% Game: 26-57 45.6%  
 3FG % 1st Half: 2-7 28.6% 2nd half: 4-8 50.0% Game: 6-15 40.0%  
 FT % 1st Half: 4-6 66.7% 2nd half: 7-13 53.8% Game: 11-19 57.9%

Score by periods	1st	2nd	Total
Penn State	37	44	81
Iowa	34	35	69

Officials: Felicia Grinter, Cameron Inouye, John Whitson  
 Technical fouls: Penn State-None. Iowa-None.  
 Attendance: 5783  
 Fouled Out: #21 IA 2:10 2nd

Points	In	Off	2nd	Fast	Bench
IOWA	Paint	T/O	Chance	Break	
Iowa	30	8	20	4	21

Score tied - 7 times.  
Lead changed - 9 times.

Last FG - PSU 2nd-00:38, IOWA 2nd-00:21.  
 Largest lead - PSU by 21 2nd-05:07, IOWA by 5 1st-14:50.



Official Basketball Box Score -- Game Totals -- Final Statistics  
**Iowa vs Purdue**  
02/17/13 5:10 PM ET at Mackey Arena - West Lafayette, IN



Iowa 72 • 17-10, 6-7

#	Player	Total			Rebounds			PF	TP	A	TO	Blk	Stl	Min	
		FG-FGA	FG-FGA	FT-FTA	Off	Def	Tot								
12	Johnson, Morgan	c	4-7	0-0	4-4	1	2	3	1	12	4	2	5	1	38
51	Doolittle, Bethany	c	1-3	0-0	0-0	0	1	1	2	2	1	0	3	0	14
22	Logic, Samantha	g	10-13	2-2	4-5	3	6	9	0	26	3	4	1	1	39
23	Taylor, Theairra	g	7-13	1-2	0-0	3	8	11	1	15	4	1	0	2	36
24	Printy, Jaime	g	1-8	0-5	3-4	0	5	5	3	5	6	0	1	1	35
03	Till, Claire	g	0-0	0-0	0-0	0	0	0	0	0	0	0	0	0	1
11	Nesbitt, Trisha	g	0-0	0-0	0-0	0	0	0	0	0	0	0	0	0	1
13	Thomas, Kathy	g	1-2	0-1	0-0	0	0	0	2	2	0	0	0	2	8
21	Dixon, Melissa	g	3-7	2-6	2-2	0	0	0	2	10	0	1	0	1	26
25	Peschel, Kali	g	0-0	0-0	0-0	0	0	0	0	0	0	0	0	1	1
54	Timmerman, Kayla	g	0-1	0-0	0-0	0	0	0	0	0	0	0	0	0	1
Team						1	3	4							1
Totals			27-54	5-16	13-15	8	25	33	11	72	18	8	10	9	200

FG % 1st Half: 14-27 51.9% 2nd half: 13-27 48.1% Game: 27-54 50.0%  
 3FG % 1st Half: 3-8 37.5% 2nd half: 2-8 25.0% Game: 5-16 31.3%  
 FT % 1st Half: 1-2 50.0% 2nd half: 12-13 92.3% Game: 13-15 86.7%

Purdue 52 • 19-6, 8-4

#	Player	Total			Rebounds			PF	TP	A	TO	Blk	Stl	Min	
		FG-FGA	FG-FGA	FT-FTA	Off	Def	Tot								
24	Mingo, Drey	f	6-11	1-2	1-1	3	1	4	3	14	2	1	0	0	27
32	Ostarello, Sam	f	7-16	0-1	1-1	6	5	11	1	15	4	2	1	1	35
15	Moses, Courtney	g	0-7	0-3	0-0	1	1	2	0	0	1	1	0	0	25
20	Williams, Dee Dee	g	0-4	0-1	0-0	4	2	6	1	0	1	4	0	0	26
22	Houser, KK	g	4-15	3-10	1-3	0	1	1	3	12	0	4	0	0	33
25	Wilson, April	g	2-6	1-3	0-2	0	1	1	2	5	2	2	0	2	25
43	Poston, Chantel	g	1-2	0-0	0-0	0	0	0	0	2	0	2	0	0	13
50	Manuel, Taylor	g	2-8	0-0	0-0	1	2	3	2	4	2	1	2	0	16
Team						6	5	11							11
Totals			22-69	5-20	3-7	21	18	39	12	52	14	15	3	2	200

FG % 1st Half: 11-31 35.5% 2nd half: 11-38 28.9% Game: 22-69 31.9%  
 3FG % 1st Half: 3-9 33.3% 2nd half: 2-11 18.2% Game: 5-20 25.0%  
 FT % 1st Half: 2-3 66.7% 2nd half: 1-4 25.0% Game: 3-7 42.9%

Score by periods	1st	2nd	Total
Iowa	32	40	72
Purdue	27	25	52

Officials: Beverly Roberts, Tina Napier, Barb Smith  
 Technical fouls: Iowa-None. Purdue-None.  
 Attendance: 9543  
 GAME ID 1177134  
 PLAY 4KAY GAME

Points	In	Off	2nd	Fast	Bench
IOWA	Paint	T/O	Chance	Break	
Iowa	36	15	12	10	12
PUR	24	6	21	0	11

Score tied - 2 times.  
Lead changed - 10 times.

Last FG - IOWA 2nd-00:30, PUR 2nd-00:08.  
 Largest lead - IOWA by 22 2nd-00:30, PUR by 3 1st-12:04.



Official Basketball Box Score -- Game Totals -- Final Statistics  
**Iowa vs Nebraska**  
02/24/13 2:06 p.m. at Bob Devaney Sports Center - Lincoln, Neb.





**2012-13 IOWA WOMEN'S BASKETBALL**  
**Iowa Combined Team Statistics (as of Feb 24, 2013)**  
**All games**



<b>RECORD:</b>	<b>OVERALL</b>	<b>HOME</b>	<b>AWAY</b>	<b>NEUTRAL</b>
ALL GAMES	17-11	10-5	5-6	2-0
CONFERENCE	6-8	3-4	3-4	0-0
NON-CONFERENCE	11-3	7-1	2-2	2-0

#	Player	gp-gs	min	avg	Total		3-Point		F-Throw		Rebounds				pf	dq	a	to	blk	stl	pts	avg
					fg-fga	fg%	3fg-fga	3fg%	ft-fa	ft%	off	def	tot	avg								
12	Johnson, Morgan	28-28	895	32.0	158-298	.530	0-0	.000	99-134	.739	83	125	208	7.4	77	2	30	46	55	29	415	14.8
24	Printy, Jaime	28-25	893	31.9	104-285	.365	49-158	.310	115-125	.920	18	105	123	4.4	36	0	89	78	4	24	372	13.3
21	Dixon, Melissa	28-3	609	21.8	93-225	.413	61-152	.401	18-23	.783	8	32	40	1.4	56	1	24	29	1	15	265	9.5
22	Logic, Samantha	28-28	936	33.4	102-207	.493	13-38	.342	46-68	.676	68	113	181	6.5	77	3	183	127	10	53	263	9.4
23	Taylor, Theairra	28-28	713	25.5	89-227	.392	22-66	.333	32-46	.696	26	101	127	4.5	46	1	62	60	16	29	232	8.3
51	Doolittle, Bethany	28-28	823	29.4	94-226	.416	0-2	.000	13-16	.813	41	118	159	5.7	71	1	15	41	55	25	201	7.2
13	Thomas, Kathy	26-0	190	7.3	16-41	.390	7-18	.389	12-19	.632	5	21	26	1.0	30	0	16	22	1	11	51	2.0
03	Till, Claire	13-0	104	8.0	4-19	.211	2-7	.286	15-22	.682	9	16	25	1.9	11	0	3	9	3	3	25	1.9
54	Timmerman, Kayla	21-0	110	5.2	14-32	.438	1-2	.500	5-10	.500	7	17	24	1.1	12	0	4	9	7	2	34	1.6
11	Nesbitt, Trisha	25-0	172	6.9	9-25	.360	5-14	.357	9-12	.750	0	12	12	0.5	19	1	7	8	0	5	32	1.3
45	Smith, Nicole	6-0	12	2.0	2-4	.500	0-0	.000	2-2	1.000	0	1	1	0.2	2	0	0	1	0	0	6	1.0
25	Peschel, Kali	24-0	193	8.0	4-25	.160	1-10	.100	7-12	.583	17	11	28	1.2	28	0	8	9	4	6	16	0.7
Team											45	88	133				7					
Total.....		28	5650		689-1614	.427	161-467	.345	373-489	.763	327	760	1087	38.8	465	9	441	446	156	202	1912	68.3
Opponents.....		28	5650		627-1691	.371	157-531	.296	339-494	.686	388	655	1043	37.2	468	8	337	436	73	219	1750	62.5

<b>TEAM STATISTICS</b>	<b>IOWA</b>	<b>OPP</b>	<b>Date</b>	<b>Opponent</b>	<b>Score</b>	<b>Att.</b>
SCORING	1912	1750	^	11/9/12	NORTHERN ILLINOIS	w 63-40 4739
Points per game	68.3	62.5	^	11/11/12	ILLINOIS STATE	w 74-64 2930
Scoring margin	+5.8	-	^	11/14/12	MIDDLE TENNESSEE	Wot 69-63 1691
FIELD GOALS-ATT	689-1614	627-1691	^	11/18/12	NORTH CAROLINA	L 64-77 3073
Field goal pct	.427	.371		11/20/12	ROBERT MORRIS	w 58-44 3032
3 POINT FG-ATT	161-467	157-531	#	11/23/12	at FIU	L 65-66 430
3-point FG pct	.345	.296	#	11/25/12	vs WVU	w 79-70 387
3-pt FG made per game	5.8	5.6		11/28/12	at Florida State	L 69-83 2389
FREE THROWS-ATT	373-489	339-494		12/1/12	UNI	w 68-46 6368
Free throw pct	.763	.686		12/6/12	IOWA STATE	w 50-42 4483
F-Throws made per game	13.3	12.1		12-16-12	at Drake	w 82-65 2716
REBOUNDS	1087	1043		12/19/12	MISSOURI STATE	w 97-43 4588
Rebounds per game	38.8	37.2	%	12/28/12	vs Texas	w 86-63 776
Rebounding margin	+1.6	-	%	12/30/12	at San Diego	w 83-73 543
ASSISTS	441	337	*	1/3/13	OHIO STATE	Wot 77-71 3850
Assists per game	15.8	12.0	*	1/6/13	MICHIGAN	L 64-68 4644
TURNOVERS	446	436	*	01/10/13	at Wisconsin	w 65-56 3495
Turnovers per game	15.9	15.6	*	01/17/13	at Michigan State	L 54-65 5343
Turnover margin	-0.4	-	*	01/20/13	PURDUE	w 62-46 8576
Assist/turnover ratio	1.0	0.8	*	1/24/13	WISCONSIN	w 71-60 3894
STEALS	202	219	*	01/27/13	at Michigan	w 63-57 2607
Steals per game	7.2	7.8	*	01/31/13	at Illinois	L 62-74 1808
BLOCKS	156	73	*	2/03/13	NORTHWESTERN	L 65-67 4697
Blocks per game	5.6	2.6	*	02/07/13	at Minnesota	L 60-72 3528
ATTENDANCE	66285	40939	*	02/11/13	NEBRASKA	L 75-76 3937
Home games-Avg/Game	15-4419	11-3616	*	2/14/13	PENN STATE	L 69-81 5783
Neutral site-Avg/Game	-	2-582	*	02/17/13	at Purdue	w 72-52 9543
			*	02/24/13	at Nebraska	L 46-66 7374

<b>Score by Periods</b>	<b>1st</b>	<b>2nd</b>	<b>OT</b>	<b>Totals</b>
Iowa	859	1029	24	1912
Opponents	793	945	12	1750

^ - Preseason WNIT  
# - FIU Thanksgiving Classic; Miami  
% - San Diego Surf 'N Slam Classic; San Diego  
\* - Conference game



**2012-13 IOWA WOMEN'S BASKETBALL**  
**Iowa Combined Team Statistics (as of Feb 24, 2013)**  
**Conference games**



<b>RECORD:</b>	<b>OVERALL</b>	<b>HOME</b>	<b>AWAY</b>	<b>NEUTRAL</b>
ALL GAMES	6-8	3-4	3-4	0-0
CONFERENCE	6-8	3-4	3-4	0-0
NON-CONFERENCE	0-0	0-0	0-0	0-0

#	Player	gp-gs	min	Total		3-Point		F-Throw		Rebounds				pf	dq	a	to	blk	stl	pts	avg	
				fg-fga	fg%	3fg-fga	3fg%	ft-fa	ft%	off	def	tot	avg									
24	Printy, Jaime	14-14	478	34.1	51-155	.329	21-79	.266	49-53	.925	10	61	71	5.1	20	0	37	34	3	16	172	12.3
12	Johnson, Morgan	14-14	449	32.1	62-136	.456	0-0	.000	39-52	.750	49	61	110	7.9	41	2	13	18	26	15	163	11.6
21	Dixon, Melissa	14-0	334	23.9	53-124	.427	36-82	.439	12-14	.857	7	16	23	1.6	32	1	11	16	0	8	154	11.0
22	Logic, Samantha	14-14	496	35.4	57-110	.518	9-21	.429	28-41	.683	35	62	97	6.9	40	2	87	64	3	24	151	10.8
23	Taylor, Theairra	14-14	368	26.3	53-129	.411	13-35	.371	15-19	.789	13	46	59	4.2	23	1	26	27	7	19	134	9.6
51	Doolittle, Bethany	14-14	436	31.1	44-112	.393	0-0	.000	10-13	.769	22	51	73	5.2	31	0	10	20	29	14	98	7.0
54	Timmerman, Kayla	11-0	62	5.6	7-18	.389	0-0	.000	2-2	1.000	1	9	10	0.9	6	0	3	5	3	2	16	1.5
13	Thomas, Kathy	14-0	85	6.1	4-18	.222	2-9	.222	2-5	.400	0	9	9	0.6	13	0	9	12	1	7	12	0.9
25	Peschel, Kali	12-0	67	5.6	1-4	.250	0-2	.000	3-4	.750	5	2	7	0.6	5	0	3	4	2	2	5	0.4
11	Nesbitt, Trisha	12-0	41	3.4	0-6	.000	0-2	.000	0-0	.000	0	3	3	0.3	1	0	1	2	0	2	0	0.0
45	Smith, Nicole	1-0	1	1.0	0-0	.000	0-0	.000	0-0	.000	0	0	0	0.0	1	0	0	0	0	0	0	0.0
03	Till, Claire	4-0	8	2.0	0-1	.000	0-0	.000	0-0	.000	0	1	1	0.3	1	0	0	1	1	0	0	0.0
Team											22	34	56				6					
Total.....		14	2825		332-813	.408	81-230	.352	160-203	.788	164	355	519	37.1	214	6	200	209	75	109	905	64.6
Opponents.....		14	2825		338-841	.402	86-263	.327	149-206	.723	176	333	509	36.4	205	0	192	204	42	106	911	65.1

<b>TEAM STATISTICS</b>	<b>IOWA</b>	<b>OPP</b>	<b>Date</b>	<b>Opponent</b>	<b>Score</b>	<b>Att.</b>
SCORING	905	911	* 1/3/13	OHIO STATE	Wot 77-71	3850
Points per game	64.6	65.1	* 1/6/13	MICHIGAN	L 64-68	4644
Scoring margin	-0.4	-	* 01/10/13	at Wisconsin	W 65-56	3495
FIELD GOALS-ATT	332-813	338-841	* 01/17/13	at Michigan State	L 54-65	5343
Field goal pct	.408	.402	* 01/20/13	PURDUE	W 62-46	8576
3 POINT FG-ATT	81-230	86-263	* 1/24/13	WISCONSIN	W 71-60	3894
3-point FG pct	.352	.327	* 01/27/13	at Michigan	W 63-57	2607
3-pt FG made per game	5.8	6.1	* 01/31/13	at Illinois	L 62-74	1808
FREE THROWS-ATT	160-203	149-206	* 2/03/13	NORTHWESTERN	L 65-67	4697
Free throw pct	.788	.723	* 02/07/13	at Minnesota	L 60-72	3528
F-Throws made per game	11.4	10.6	* 02/11/13	NEBRASKA	L 75-76	3937
REBOUNDS	519	509	* 2/14/13	PENN STATE	L 69-81	5783
Rebounds per game	37.1	36.4	* 02/17/13	at Purdue	W 72-52	9543
Rebounding margin	+0.7	-	* 02/24/13	at Nebraska	L 46-66	7374
ASSISTS	200	192				
Assists per game	14.3	13.7				
TURNOVERS	209	204				
Turnovers per game	14.9	14.6				
Turnover margin	-0.4	-				
Assist/turnover ratio	1.0	0.9				
STEALS	109	106				
Steals per game	7.8	7.6				
BLOCKS	75	42				
Blocks per game	5.4	3.0				
ATTENDANCE	35381	33698				
Home games-Avg/Game	7-5054	7-4814				
Neutral site-Avg/Game	-	0-0				

^ - Preseason WNIT  
# - FIU Thanksgiving Classic; Miami  
% - San Diego Surf 'N Slam Slassic; San Diego  
\* - Conference game

<b>Score by Periods</b>	<b>1st</b>	<b>2nd</b>	<b>OT</b>	<b>Totals</b>
Iowa	410	481	14	905
Opponents	411	492	8	911