



2014-15 Iowa Women's Golf Results

2014-15 Stroke Averages

<u>Name</u>	<u>Rds.</u>	<u>Strokes</u>	<u>Avg.</u>	<u>Low</u>	<u>Top-10's</u>	<u>Top-20's</u>	<u>Rds. At Or Below Par</u>
Jessie Jordan (Sr)	9	751	83.4	77	-	-	-
Shelby Phillips (Sr)	23	1,793	77.9	68	-	-	1
Nicole Rae (Sr)	6	487	81.1	79	-	-	-
Amy Ihm (Jr)	26	1,995	76.7	70	1	1	-
Briana Midkiff (Jr)	9	725	80.5	76	-	-	-
Jessie Sindlinger (So)	26	1,988	76.4	68	-	2	1
Jessica Ip (Fr)	26	2,033	78.2	71	1	2	1
Anna Kim (Fr)	3	246	82	79	-	-	-
Morgan Kukla (Fr)	3	258	86	85	-	-	-
Elisa Suarez (Fr)	26	1,979	76.1	70	1	2	4

2014-15 Schedule

FALL SCHEDULE

<u>Date</u>	<u>Tournament</u>	<u>Location</u>	<u>Team Finish</u>	<u>Top Individual Finish</u>
Sept. 13-14	Mary Fossum Invitational	East Lansing, Mich.	9/15 (951)	Jessie Sindlinger (T13)
Sept. 20-22	East/West Match Play Challenge	Ann Arbor, Mich.	6/8 (608)	Jessica Ip (T9)
Oct. 4-5	Diane Thomason Invitational	Iowa City, Iowa	2/13 (931)	Amy Ihm (T5)
Oct. 20-22	Old Waverly Bulldog Invite	Starkville, Miss.	8/13 (903)	Elisa Suarez (T4)
Nov. 2-4	Jim West Invitational	Boerne, Texas	12/12 (934)	Elisa Suarez (T26)

SPRING SCHEDULE

<u>Date</u>	<u>Tournament</u>	<u>Location</u>	<u>Team Finish</u>	<u>Top Individual Finish</u>
Feb. 15-17	Lady Puerto Rico Classic	Rio Grande, PR	13/15 (933)	Amy Ihm (T44)
Feb. 22-23	Westbrook Spring Invitational	Peoria, Ariz.	9/15 (882)	Amy Ihm (T22)
Mar. 16-17	BYU Entrada Classic	St. George, Utah	6/ 15 (897)	Amy Ihm (12th)
Mar. 20-21	Mountain View Collegiate	Tucson, Ariz.	11/20 (883)	Shelby Phillips (T18)
Mar. 29-30	Saluki Invitational	Carbondale, Ill.	/ ()	
Apr. 18-19	Lady Buckeye Invitational	Columbus, Ohio	/ ()	
Apr. 24-26	Big Ten Championships	Indianapolis, Ind.	/ ()	



2014-15 Iowa Women's Golf Results

2014 Fall Tournament Results

Mary Fossum Invitational

September 13-14 -- East Lansing, Michigan
Forest Akers West Coast Golf Course (par 72, 6,236 yards)

9th - Iowa - 318, 317, 316 - 951 (+57)

T13	Jessie Sindlinger (3)	74, 79, 78 - 231 (+15)
T24	Amy Ihml (2)	83, 78, 74 - 235 (+19)
T48	Elisa Suarez (5)	81, 81, 79 - 241 (+25)
T64	Nicole Rae (1)	80, 81, 85 - 246 (+30)
T68	Jessica Ip(4)	83, 79, 86 - 248 (+32)

East/West Match Play Challenge

September 20-22 -- Ann Arbor, Michigan
Radrick Farms Golf Course (par 72, 6,292 yards)

6th - Iowa 303, 305 - 608 (+32)

T9	Jessica Ip (5)	77, 71, - 148 (+4)
T16	Elisa Suarez (4)	72, 79, - 151 (+7)
T25	Jessie Sindlinger (1)	79, 75, - 154 (+10)
T32	Amy Ihm (2)	76, 80, - 156 (+12)
47th	Shelby Phillips (3)	78, 85, - 163 (+19)

Diane Thomason Invitational

October 4-5 -- Iowa City, Iowa
Finkbine Golf Course (par 72, 6,142 yards)

2nd - Iowa 326, 302, 303 - 931 (+67)

T5	Amy Ihm (3)	77, 76, 77 - 230 (+14)
T10	Jessie Sindlinger (2)	85, 72, 75 - 232 (+16)
T14	Jessica Ip (4)	79, 78, 77 - 234 (+18)
T26	Shelby Phillips (1)	88, 77, 74 - 239 (+23)
T26	Elisa Suarez (5)	85, 77, 77 - 239 (+23)

Old Waverly Bulldog Invitational

October 20-22 -- Starkville, Mississippi
Old Waverly Golf Course (par 72, 6,229 yards)

8th - Iowa 298, 304, 301 - 903 (+39)

T4	Elisa Suarez	72, 71, 74 - 217 (+1)
T35	Jessie Sindlinger	75, 73, 80 - 228 (+12)
T35	Jessica Ip	76, 80, 72 - 228 (+12)
T45	Shelby Phillips	75, 80, 75 - 230 (+14)
72nd	Amy Ihm	80, 85, 83 - 248 (+32)

Jim West Invitational

November 2-4 -- Boerne, Texas
Tapatío Springs Golf Course (par 72, 6,234 yards)

12th - Iowa 320, 311, 303 - 934 (+70)

T26	Elisa Suarez (1)	84, 77, 70 - 231 (+15)
T33	Jessie Sindlinger (2)	74, 80, 79 - 233 (+17)
T40	Amy Ihm (5)	80, 79, 75 - 234 (+18)
58th	Shelby Phillips (4)	84, 77, 79 - 240 (+24)
63rd	Jessica Ip (3)	82, 78, 84 - 244 (+28)

2015 Spring Tournament Results

Lady Puerto Rico Classic

February 15-17 -- Rio Grande, Puerto Rico
Wyndham Rio Mar Resort & Rio Mar Country Club (par 72)

13th - Iowa - 317, 307, 309 - 933 (+69)

T44	Amy Ihm (3)	79, 76, 76 - 231 (+15)
T49	Elisa Suarez (2)	79, 76, 77 - 232 (+16)
T61	Jessie Sindlinger (5)	81, 79, 76 - 236 (+20)
T67	Jessica Ip (1)	79, 76, 84 - 239 (+23)
T69	Shelby Phillips(4)	80, 80, 80 - 240 (+24)

Westbrook Spring Invitational

February 22-23 -- Peoria, Arizona
Westbrook Village Golf Club (par 72, 6,269)

9th - Iowa - 298, 292, 292 - 882 (+18)

T22	Amy Ihm (2)	72, 73, 73 - 218 (+1)
T33	Jessie Sindlinger (4)	78, 75, 68 - 221 (+4)
T48	Elisa Suarez (1)	73, 76, 75 - 224(+8)
T48	Jessica Ip (5)	77, 71, 76 - 224 (+8)
T59	Shelby Phillips(3)	76, 73, 77 - 226(+10)

BYU Entrada Classic

March 16-17 -- St. George, Utah
Entrada Golf Course (par 72, 6,269)

6th - Iowa - 299, 297, 301 - 897 (+33)

12th	Amy Ihm (1)	75, 74, 71 - 220 (+4)
T19	Jessie Sindlinger (2)	75, 75, 75 - 225 (+9)
T25	Elisa Suarez (3)	75, 73, 78 - 226(+10)
T48	Jessica Ip (4)	83, 75, 77 - 235 (+19)
T58	Shelby Phillips (5)	74, 82, 83 - 239 (+23)

Mountain View Collegiate

March 21-22 -- Tucson, Arizona
Mountain View Golf Course (par 72, 6,227)

11th - Iowa - 295, 292, 289 - 877 (+10)

T29	Amy Ihm (1)	74, 70, 75 - 219 (+3)
T55	Jessie Sindlinger (2)	72, 78, 74 - 224 (+8)
T55	Elisa Suarez (3)	74, 76, 74 - 224(+8)
T95	Jessica Ip (4)	83, 75, 77 - 235 (+19)
T18	Shelby Phillips (5)	77, 81, 75 - 233 (+17)

2015 Lady Buckeye Invitational

April 18-19 -- Columbus, Ohio

2015 Big Ten Championships

April 24-26 -- Indianapolis, Ind.



2014-15 Individual Results



Jessie Jordan
Senior
Urbana, Ohio
Wisconsin University



Shelby Phillips
Senior
Gilbert, Ariz.
Highland High School

Tournament Results

<u>Event</u>	<u>Score</u>	<u>To Par</u>	<u>Place</u>
Mary Fossum Invite	84, 77, 82 - 243	+27	59th
Thomason Invite	92, 81, 82 - 251	+35	T71

Tournament Results

<u>Event</u>	<u>Score</u>	<u>To Par</u>	<u>Place</u>
East/West Match Play	78, 85 - 163	+19	47th
Thomason Invite	88, 77, 74 - 239	+23	T26
Old Waverly Invite	75, 80, 75 - 230	+14	T45
Jim West Invite	84, 77, 79 - 240	+24	58th
Puerto Rico Classic	80, 80, 80 - 240	+24	T69
Westbrook Invite	76, 73, 77 - 226	+10	T59
BYU Entrada	74, 82, 83 - 239	+23	T58
Mountain View	75, 73, 68 - 216 (E)		T18

Season Bests

Low 18-Hole Score: 81, Thomason Invite - Fall 2014
Low 36-Hole Score: 173, Thomason Invite - Fall 2014
Low 54-Hole Score: 251, Thomason Invite - Fall 2014
Best Season Finish: T71, Thomason Invite - Fall 2014

Career Bests

Low 18-Hole Score: 81, Thomason Invite - Fall 2014
Low 36-Hole Score: 251, Thomason Invite - Fall 2014
Low 54-Hole Score: T71, Thomason Invite - Fall 2014
Best Career Finish: T71, Thomason Invite - Fall 2014

Season Bests

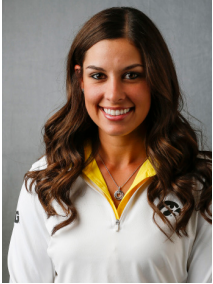
Low 18-Hole Score: 68, Mountain View Collegiate - Spring 2015
Low 36-Hole Score: 155, Old Waverly Invite - Fall 2014
Low 54-Hole Score: 216, Thomason Invite - Fall 2014
Best Season Finish: T18, Mountain View Collegiate - Spring 2015

Career Bests

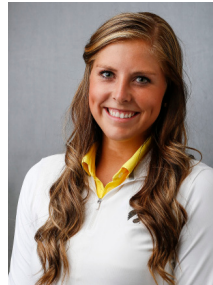
Low 18-Hole Score: 67, Chip-N-Club Invite - Fall 2013
Low 36-Hole Score: 145, Westbrook Invitational - Spring 2014
Low 54-Hole Score: 220, Chip-N-Club Invite - Fall 2013
Best Career Finish: T5, Chip-N-Club Invite - Fall 2013



2014-15 Individual Results



Nicole Rae
Senior
St. Charles, Ill.
East High School



Amy Ihm
Junior
Peosta, Iowa
Dubuque Wahlert High School

Tournament Results

<u>Event</u>	<u>Score</u>	<u>To Par</u>	<u>Place</u>
Mary Fossum Invite	80, 81, 85 - 246	+30	T64
Thomason Invite	80, 79, 82 - 241	+25	T37

Tournament Results

<u>Event</u>	<u>Score</u>	<u>To Par</u>	<u>Place</u>
Mary Fossum Invite	83, 78, 74 - 253	+19	T24
East/West Match Play	76, 80 - 156	+12	T32
Thomason Invite	77, 76, 77 - 230	+14	T5
Old Waverly Invite	80, 85, 83 - 248	+32	72nd
Jim West Invite	80, 79, 75 - 234	+18	T40
Puerto Rico Classic	79, 76, 76 - 231	+15	T44th
Westbrook Invite	72, 73, 73 - 218	+2	T22nd
BYU Entrada	75, 74, 71 - 220	+4	12th
Mountain View	74, 70, 75 - 219	+3	T29

Season Bests

Low 18-Hole Score: 79, Thomason invite - Fall 2014
Low 36-Hole Score: 159, Thomason Invite - Fall 2014
Low 54-Hole Score: 241, Thomason Invite - Fall 2014
Best Season Finish: T37, Thomason Invite - Fall 2014

Season Bests

Low 18-Hole Score: 76, Twice
Low 36-Hole Score: 153, Thomason Invite - Fall 2014
Low 54-Hole Score: 230, Thomason Invite - Fall 2014
Best Season Finish: T5, Thomason Invite - Fall 2014

Career Bests

Low 18-Hole Score: 74, Westbrook Invite - Spring 2014
Low 36-Hole Score: 158, Johnie Imes Invite - Fall 2012
Low 54-Hole Score: 227, Westbrook Invite - Spring 2014
Best Career Finish: T13, Rainy Day Shootout - Spring 2014

Career Bests

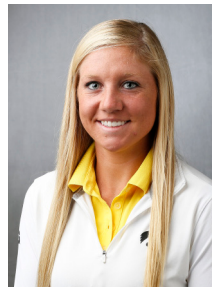
Low 18-Hole Score: 68, Johnie Imes Invite - Fall 2012
Low 36-Hole Score: 143, Johnie Imes Invite - Fall 2012
Low 54-Hole Score: 216, Onion Creek - Spring 2013
Best Career Finish: T5, Thomason Invite - Fall 2014



2014-15 Individual Results



Briana Midkiff
Junior
Carmel, Ind.
Carmel High School



Jessie Sindlinger
Sophomore
Charles City, Iowa
Charles City High School

Tournament Results

<u>Event</u>	<u>Score</u>	<u>To Par</u>	<u>Place</u>
Thomason Invite	84, 84, 79 - 245	+29	T51
Westbrook Invite	76, 80, 78 - 234	+18	79th
BYU Entrada	80, 85, 81 - 246	+30	T70

Tournament Results

<u>Event</u>	<u>Score</u>	<u>To Par</u>	<u>Place</u>
Mary Fossum Invite	74, 79, 78 - 231	+15	T13
East/West Challenge	79, 75 - 154	+10	T25
Thomason Invite	85, 72, 75 - 232	+16	T10
Old Waverly Invite	75, 73, 80 - 228	+16	T35
Jim West Invite	74, 80 79 - 233	+17	T33
Puerto Rico Classic	81, 79, 76 - 236	+20	T61
Westbrook Invite	78, 75, 68 - 221	+5	T33
BYU Entrada	75, 75, 75 - 225	+9	T19
Mountain View	72, 78, 74 - 224	+8	T55

Season Bests

Low 18-Hole Score: 76, Westbrook Invite - Spring 2015
Low 36-Hole Score: 156, Westbrook Invite - Spring 2015
Low 54-Hole Score: 245, Thomason Invite - Fall 2014
Best Season Finish: T51, Thomason Invite - Fall 2014

Career Bests

Low 18-Hole Score: 72, Challenge at Onion Creek - Fall 2013
Low 36-Hole Score: 153, Three Times
Low 54-Hole Score: 224, Challenge at Onion Creek - Fall 2013
Best Career Finish: T21, Diane Thomason Invite - Fall 2013

Season Bests

Low 18-Hole Score: 68, Westbrook Invite - Spring 2014
Low 36-Hole Score: 148, Old Waverly Invite - Fall 2014
Low 54-Hole Score: 231, Mary Fossum Invite - Fall 2014
Best Season Finish: T10, Thomason Invite - Fall 2014

Career Bests

Low 18-Hole Score: 68, Westbrook Invite - Spring 2015
Low 36-Hole Score: 148, Old Waverly Invite - Fall 2014
Low 54-Hole Score: 219, Challenge at Onion Creek - Fall 2013
Best Season Finish: T8, Rainy Day Shootout - Spring 2014



2014-15 Individual Results



Jessica Ip
Freshman
Richmond Hill, Ontario, Canada
Jean Vanier Catholic



Anna Kim
Freshman
Tulsa, Oklahoma
Union High School

Tournament Results

<u>Event</u>	<u>Score</u>	<u>To Par</u>	<u>Place</u>
Mary Fossum Invite	83, 79, 86 - 248	+42	T68
East/West Match Play	77, 71 - 148	+4	T9
Thomason Invite	79, 78, 77 - 234	+18	T14
Old Waverly Invite	76, 80, 72 - 228	+12	T35
Jim West Invite	82, 78, 84 - 244	+28	63rd
Puerto Rico Classic	79, 76, 84 - 239	+23	T67
Westbrook Invite	77, 71, 76 - 224	+8	T48
BYU Entrada	83, 75, 77 - 235	+19	T50
Mountain View	77, 81, 75 - 233	+17	T95

Season Bests

Low 18-Hole Score: 71, East/West Match Play - Fall 2014
Low 36-Hole Score: 148, East/West Match Play - Fall 2014
Low 54-Hole Score: 234, Thomason Invite - Fall 2014
Best Season Finish: T9, East/West Match Play - Fall 2014

Career Bests

Low 18-Hole Score: 71, East/West Match Play - Fall 2014
Low 36-Hole Score: 148, East/West Match Play - Fall 2014
Low 54-Hole Score: 234, Thomason Invite - Fall 2014
Best Career Finish: T9, East/West Match Play - Fall 2014

Tournament Results

<u>Event</u>	<u>Score</u>	<u>To Par</u>	<u>Place</u>
Thomason Invite	83, 79, 84 - 246	+30	53rd

Season Bests

Low 18-Hole Score: 79, Thomason Invite - Fall 2014
Low 36-Hole Score: 162, Thomason Invite - Fall 2014
Low 54-Hole Score: 246, Thomason Invite - Fall 2014
Best Season Finish: 53rd, Thomason Invite - Fall 2014

Career Bests

Low 18-Hole Score: 79, Thomason Invite - Fall 2014
Low 36-Hole Score: 162, Thomason Invite - Fall 2014
Low 54-Hole Score: 246, Thomason Invite - Fall 2014
Best Season Finish: 53rd, Thomason Invite - Fall 2014



2014-15 Individual Results



Morgan Kukla
Freshman
Winthrop Harbor, Ill.
Zion Benton Township High School



Elisa Suarez
Freshman
Oviedo, Asturias, Spain
Santa Teresa

Tournament Results

<u>Event</u>	<u>Score</u>	<u>To Par</u>	<u>Place</u>
Thomason Invite	88, 85, 85 - 258	+42	74th

Tournament Results

<u>Event</u>	<u>Score</u>	<u>To Par</u>	<u>Place</u>
Mary Fossum Invite	80, 81, 79 - 241	+25	T48
East/West Match Play	72, 79 - 151	+7	T16
Thomason Invite	85, 77, 77 - 239	+23	T26
Old Waverly Invite	72, 71, 74 - 217	+1	T4
Jim West Invite	84, 77, 70 - 231	+15	T26
Puerto Rico Classic	79, 76, 77 - 232	+16	T49
Westbrook Invite	73, 76, 75 - 224	+8	T48
BYU Entrada	75, 73, 78 - 226	+10	T25
Mountain View	77, 76, 74 - 224	+8	T55

Season Bests

Low 18-Hole Score: 85, Thomason Invite - Fall 2014
Low 36-Hole Score: 173, Thomason Invite - Fall 2014
Low 54-Hole Score: 258, Thomason Invite - Fall 2014
Best Season Finish: 74th, Thomason Invite - Fall 2014

Season Bests

Low 18-Hole Score: 70, Jim West Invite - Fall 2014
Low 36-Hole Score: 143, Old Waverly Invite - Fall 2014
Low 54-Hole Score: 217, Old Waverly Invite - Fall 2014
Best Season Finish: T4, Old Waverly Invite - Fall 2014

Career Bests

Low 18-Hole Score: 85, Thomason Invite - Fall 2014
Low 36-Hole Score: 173, Thomason Invite - Fall 2014
Low 54-Hole Score: 258, Thomason Invite - Fall 2014
Best Season Finish: 74th, Thomason Invite - Fall 2014

Career Bests

Low 18-Hole Score: 70, Jim West Invite - Fall 2014
Low 36-Hole Score: 143, Old Waverly Invite - Fall 2014
Low 54-Hole Score: 217, Old Waverly Invite - Fall 2014
Best Career Finish: T4, Old Waverly Invite - Fall 2014