



University of Iowa Women's Basketball

Game #24

February 7, 2013

2012-13 Schedule/Results
16-7 Overall, 5-4 Big Ten

SID Contact: Aaron Blau (@AaronBlau)
E-Mail: aaron-blau@hawkeyesports.com

Office: (319) 335-9268
Cell: (319) 430-5103

Game Information

Iowa (16-7, 5-4) at Minnesota (14-9, 3-6)

Feb. 7, 2013 • 7:31 p.m.

Williams Arena
Minneapolis, Minn.



TV: Big Ten Network (BTN)

TV Talent: Brenda VanLengen and Stephanie White

Web: BTN2GO

Radio: AM-800 KXIC, AM-1360 KMJM

Radio Talent: Brent Balbinot and Shelley Till

Live Stats/Audio: www.hawkeyesports.com

Twitter Updates: @IowaWBB

Series: Iowa leads, 45-22

Storylines

- Morgan Johnson has started 118 games. That's the third-most in Iowa history (Jennie Lillis holds the record with 121 games started). She has played in 119 games. That's the ninth most for a player in Iowa history.
- Iowa is a perfect 6-0 against ranked teams this season. The Hawkeyes are the only team in the country to have played at least three ranked teams and have an undefeated record against ranked opponents.
- Samantha Logic leads the Big Ten and ranks 10th in the NCAA with 6.8 assists per game.
- Jaime Printy leads the Big Ten and ranks fourth in the NCAA with a 92.9 free throw percentage.
- Iowa's 15.9 assists per game rank second in the Big Ten and 32nd in the NCAA. Iowa is also second in the Big Ten in blocked shots (5.7) and three-point field goal defense (.286) and third in free throw percentage (.768).
- Iowa ranks 10th in the NCAA in blocks (5.7) and 13th in free throw percentage (76.8).
- Jaime Printy is 37-of-37 from the free throw line in the final five minutes of a game, 29-of-29 in the final two minutes, 20-of-20 in the final minute and 6-of-6 in overtime.

Tentative Starting Lineup

Iowa Hawkeyes (16-7, 5-4)

Pos.	No.	Name	Ht.	Yr.	Statistical Summary
G	22	Samantha Logic	5-8	So.	9.0 ppg, 6.7 rpg, 6.8 apg, .474 FG%, .667 FT% - Recorded 10th career double-digit rebound performance, and second straight, vs. Northwestern
G	24	Jaime Printy	5-11	Sr.	14.1 ppg, 4.3 rpg, 3.3 apg, .385 FG%, .929 FT% - Scored double figures in seven-straight games
G	23	Theairra Taylor	5-11	Jr.	7.7 ppg, 4.3 rpg, 2.2 apg, .398 FG%, .667 FT% - Recorded two or more steals in nine games this season
F	51	Bethany Doolittle	6-4	So.	7.6 ppg, 5.9 rpg, 2.1 bpg, .426 FG%, .800 FT% - Averaging 7.4 rebounds over last five contests
C	12	Morgan Johnson	6-5	Sr.	15.0 ppg, 7.2 rpg, 1.9 bpg, .531 FG%, .761 FT% - Shooting 83.8 percent from the free throw line in Big Ten play (26-of-31)

Head Coach: Lisa Bluder (Northern Iowa, 1983); 13th Season at Iowa (246-151); 29th Season Overall (602-293)

11/9	Northern Illinois^	W, 63-40
11/11	Illinois State^	W, 74-64
11/14	Middle Tennessee^	W, 69-63 (OT)
11/18	North Carolina^	L, 64-77
11/20	Robert Morris	W, 58-44
11/23	at Florida International#	L, 65-66
11/25	vs. #12 West Virginia#	W, 79-70
11/28	at Florida State~	L, 69-83
12/1	Northern Iowa	W, 68-46
12/6	#22 Iowa State*	W, 50-42
12/16	at Drake	W, 82-65
12/19	Missouri State	W, 97-43
12/28	vs. #20 Texas%	W, 86-63
12/30	vs. San Diego%	W, 83-73
1/3	#24 Ohio State	W, 77-71 (OT)
1/6	Michigan	L, 64-68
1/10	at Wisconsin	W, 65-56
1/17	at Michigan State	L, 54-65
1/20	#11 Purdue	W, 62-46
1/24	Wisconsin	W, 71-60
1/27	at #23 Michigan	W, 63-57
1/31	at Illinois	L, 62-74
2/3	Northwestern	L, 65-67
2/7	at Minnesota	7:30 p.m.
2/11	Nebraska	7:30 p.m.
2/14	Penn State	7 p.m.
2/17	at Purdue	4 p.m.
2/24	at Nebraska	2 p.m.
2/28	Indiana	TBA
3/3	at Northwestern	TBA

^ -- WNIT

-- FIU Thanksgiving Classic, Miami

~ -- ACC/Big Ten Challenge

* - Iowa Corn Cy-Hawk Series

% -- San Diego Surf 'N Slam Classic, San Diego

Pronunciation Guide

Lisa Bluder.....BLUE-dir

Kali Peschel.....PEH-shull

Theairra Taylor.....thee-AIR-uh



Inside the Numbers

	IOWA	Minn.
Scoring Average	69.1	71.9
Scoring Defense	61.0	65.7
Scoring Margin	+8.1	+6.2
FG%	.432	.451
FG% Defense	.362	.399
FT%	.768	.760
3-PT FG%	.350	.338
3-PT FG% Defense	.286	.311
Rebound Margin	+3.0	+3.0
Assists Per Game	15.9	14.6
Turnovers Per Game	16.3	15.0
Turnover Margin	-0.4	+1.0
Steals Per Game	7.1	8.0
Blocks Per Game	5.7	3.7

Minnesota vs. Iowa Series History

Iowa leads, 45-22

Last 10 Meetings Listed Below

2007-08 at Minnesota W, 68-66 (ot)
2007-08 at Iowa W, 72-69
2008-09 at Iowa W, 74-57
2008-09 at Minnesota L, 58-64
2008-09 at Big Ten W, 79-64
2009-10 at Minnesota L, 69-72 (ot)
2009-10 at Iowa W, 75-54
2010-11 at Minnesota W, 89-76
2010-11 at Iowa W, 64-62
2011-12 at Iowa W, 75-58

How Many Times a Hawkeye Player...

Scored 20 or More Points	
Morgan Johnson8
Jaime Printy4
Melissa Dixon2

Scored 15 or More Points	
Morgan Johnson12
Jaime Printy7
Samantha Logic3
Melissa Dixon3
Bethany Doolittle2
Kathy Thomas1
Theairra Taylor1

Grabbed 10 or More Rebounds	
Morgan Johnson7
Samantha Logic4
Bethany Doolittle2
Theairra Taylor2

Grabbed 7 or More Rebounds	
Morgan Johnson10
Bethany Doolittle10
Samantha Logic8
Theairra Taylor5
Jaime Printy3

Dished out 7 or More Assists	
Samantha Logic13
Jaime Printy1
Theairra Taylor1

Dished out 5 or More Assists	
Samantha Logic16
Jaime Printy5
Theairra Taylor4
Morgan Johnson1

Recorded 4 or More Steals	
Samantha Logic1

Blocked 3 or More Shots	
Bethany Doolittle9
Morgan Johnson7

2012-13 Margin of Victory/Defeat

Points	1	2	3	4	5	6	7	8	9	10-14	15-19	20+
Wins	0	0	0	0	0	3	0	1	2	5	1	4
Losses	1	1	0	1	0	0	0	0	0	4	0	0

IOWA HISTORY

Iowa has played 1,121 games since beginning basketball in 1974. Iowa's overall record is 687-434 (.613). That includes a 345-174 (.665) mark in regular season Big Ten contests and a 333-94 (.780) mark in Carver-Hawkeye Arena.

SCOUTING MINNESOTA

Minnesota holds a 14-9 overall record and stands 3-6 in Big Ten play. In their last game, the Golden Gophers were defeated at Nebraska, 80-56, on Sunday. The Gophers shot 46% from the field in the first half at Nebraska and trailed 38-30 at intermission. Minnesota shot just 37.5% in the second half as Nebraska pulled away. Minnesota was guilty of 19 turnovers, which led to 31 Husker points. Nebraska also held a 10-2 advantage in fast break points and a 34-20 advantage in points in the paint. Micaella Riche led the Gophers with 12 points and seven rebounds. Rachel Banham added 11 points and Shayne Mullaney had five assists.

For the season, Minnesota is averaging 71.9 points a game (third in the Big Ten), while allowing 65.7. Banham leads the Gophers by scoring 21.1 points per contest. Riche is shooting 54.3% from the field and leads the team in rebounding at 7.1 per game.

Like Iowa, Minnesota has lost to Illinois and defeated Michigan in two of its last three outings.

MINNESOTA VS. IOWA NOTES

- Iowa leads the all-time series, 45-22. The Hawkeyes have won eight of the last 10 meetings after the Gophers had won seven of the previous 10.
- Iowa has won three of the last five games played at Minnesota, including an 89-76 win in 2010-11 on its last visit.
- This is the only meeting between Iowa and Minnesota during the regular season. Iowa and Minnesota met just once last year, with Iowa winning 75-58 in Iowa City.
- Iowa's starting line-up includes two Minnesota natives in junior Theairra Taylor (St. Paul) and sophomore Bethany Doolittle (Oakdale). The Iowa roster also includes Minnesota natives in freshmen Kali Peschel (Sauk Centre) and Kayla Timmerman (Wayzata).

LAST MEETING

Iowa defeated Minnesota 75-58 in Iowa City (Feb. 9) in the only meeting a year ago, leading from start to finish. Iowa started fast, building a 15 point advantage late in the first half. Iowa led 40-25 at intermission, using a 10-0 advantage at the free throw line and a 26-15 rebounding advantage.

Minnesota scored the opening field goal of the second half, but would get no closer the rest of the way, as Iowa led by as many as 22 points. Iowa ended the game with a 43-26 rebounding advantage, but still had just two more field goal attempts.

2012-13 Iowa Hawkeye Roster

No.	Name	Yr.	Ht.	Pos.	Hometown (High School/College)
3	Claire Till	Fr.	6-0	G	Dubuque, Iowa (Dubuque Wahlert)
11	Trisha Nesbitt	Sr.	5-7	G	Ames, Iowa (Ames)
12	Morgan Johnson	Sr.	6-5	C	Platte City, Mo. (Platte County)
13	Kathy Thomas	So.	5-6	G	Flint, Mich. (Highland CC, KS)
21	Melissa Dixon	So.	5-8	G	Johnsburg, Ill. (Johnsburg)
22	Samantha Logic	So.	5-9	G	Racine, Wis. (Racine J.I. Case)
23	Theairra Taylor	Jr.	5-11	G	St. Paul, Minn. (Central)
24	Jaime Printy	Sr.	5-11	G	Marion, Iowa (Linn-Mar)
25	Kali Peschel	Fr.	6-1	G	Sauk Centre, Minn. (Sauk Centre)
33	Kathryn Reynolds	So.	5-7	G	Cincinnati, Ohio (Mount Notre Dame)
45	Nicole Smith	Fr.	6-4	C	Rockton, Ill. (Hononegah)
51	Bethany Doolittle	So.	6-4	C	Oakdale, Minn. (Hill-Murray)
54	Kayla Timmerman	Fr.	6-3	F	Wayzata, Minn. (Wayzata)

Head Coach: Lisa Bluder **Associate Head Coach:** Jan Jensen
Assistant Coaches: Jenni Fitzgerald and Shannon Gage



2012-13 Team Captains

Iowa captains are seniors
Jaime Printy, Morgan Johnson and Trisha Nesbitt

Morgan Johnson led Iowa with 23 points, while collecting eight rebounds. Samantha Logic added 20 points, nine rebounds and six assists. Kamille Wahlin added 19 points and five assists, while Kelly Krei matched Logic with nine rebounds. Minnesota was led by Rachel Banham's 20 points and six rebounds.

HAWKEYES FALL TO NORTHWESTERN

Northwestern scored on a driving lay-up as time expired to take a 67-65 win over Iowa Sunday in Iowa City. The Hawkeyes had tied the score on a basket by Melissa Dixon with just under seven seconds to play, but Northwestern's Karly Roser drove to the basket for the winning points just before the final buzzer.

Iowa trailed in the early going of the first half, but held the Wildcats to eight points over the final 16 minutes of the half and took a 29-18 advantage at the break. Melissa Dixon led Iowa in the first half, scoring 12 of her game-high 21 points (4-5 treys) in the first 20 minutes.

Northwestern used a 12-1 scoring run in the middle of the second half to tie the score at 49. Iowa scored six straight points, but Northwestern eventually led by three with 50 seconds remaining. Dixon hit a free throw with 41 seconds left before her last basket tied the score for the final time.

Dixon tied her own personal best and the Carver-Hawkeye Arena record with six three-pointers (6-9) in scoring 21 points. Samantha Logic added a double-double with 11 points and 12 rebounds, while Morgan Johnson scored 11 points and Bethany Doolittle added nine rebounds and four blocked shots. Johnson played just 18 minutes due to foul problems, collecting her fifth foul with 8:47 remaining.

IOWA CRACKS TOP 25

- Iowa entered both the Associated Press and the USA Today Sports Coaches' Top 25 polls last week. The Hawkeyes were No. 24 in the AP poll and No. 25 in the USA Today Sports poll.
- The Hawkeyes had not been ranked in the AP poll since Feb. 28, 2011. Iowa spent 14 weeks ranked in the Associated Press Top 25 during the 2010-11 season, climbing as high as No. 14.
- Iowa was ranked in the USA Today Sports Coaches' poll for the first time since Jan. 31, 2011. The Hawkeyes spent 13 weeks in the poll during the 2010-11 season and were ranked as high as No. 13.

PERFECTION AGAINST RANKED OPPONENTS

- The Hawkeyes are a perfect 6-0 against ranked opponents this season. Iowa is the only team in the country to have played at least three ranked teams and have an undefeated record against ranked opponents.
- Iowa is one of only six teams to have at least six wins over ranked opponents. The others are Baylor (8), Stanford (7), Connecticut (7), Tennessee (7) and Notre Dame (6).

PRINTY WAS PLAYER OF THE WEEK

Jaime Printy was named Big Ten Player of Week (Jan. 29) for her efforts in Iowa's wins against Wisconsin and at No. 23 Michigan.

Printy averaged 21.5 points, 6.5 rebounds, shot 54.5 percent from the field, 41.7 percent from 3-point range and was 14-of-15 from the free throw line in Iowa's two wins.

Printy is scoring 14.1 points per game, having scored in double figures in seven-straight games and 18-of-23 games for the season. She leads the Big Ten and ranks fourth nationally in free throw percentage (92.9).

Head Coach Lisa Bluder

Lisa Bluder (pronounced BLUE-dir) is in her 13th season as head coach at the University of Iowa and her 29th season as a college head coach. She is a three-time Big Ten and two-time WBCA Regional Coach of the Year.

Bluder has a career record of 602-293 (.673), including a 246-151 (.620) record at Iowa, a 187-106 (.638) record in 10 seasons (1990-2000) at Drake and a six-year mark (1984-90) of 169-36 (.824) at St. Ambrose.

Bluder is Iowa's second all-time winningest coach and trails only C. Vivian Stringer. She has guided the Hawkeyes to 11 postseason tournaments (9 NCAA, 2 WNIT) and nine upper-division finishes in the Big Ten Conference, including winning a share of the league championship in 2008 and taking home the conference tournament title in 2001.

In her first season with the Hawkeyes, Bluder transformed a struggling program into a 21-game winner. Iowa finished second in the Big Ten, won the conference tournament and advanced to the second round of the NCAA Tournament. Bluder became Iowa's third coach to be named Big Ten Coach of the Year. She was also honored as the College Coach of the Year by the *Women's Basketball News Service* and was named the WBCA District 6 Coach of the Year. Iowa's 2001-02 squad finished fourth in the Big Ten and advanced to the second round of the NCAA Tournament for the second consecutive year. In 2003, Bluder guided the Hawkeyes to their first-ever WNIT appearance. Iowa, which had nine underclassmen on its roster, advanced to the quarterfinals before falling to Creighton. In 2004-05, Iowa finished 23-10, starting the year 13-0 and was the last Division I undefeated team standing. In 2005-06, Bluder mentored a team plagued by injuries to a fifth-place Big Ten finish and an NCAA Tournament berth.

In her 10 years at Drake, Bluder brought great success and tradition to the Bulldog program and established herself as one of the top coaches in the country. She led Drake to five 20-plus win seasons in her last six years, including five post-season appearances. She guided the Bulldogs to eight Missouri Valley Conference Tournament appearances, reaching the semifinals six times and winning the tournament four times. Bluder was also named the Conference Coach of the Year three times at Drake.

Bluder began her coaching career at St. Ambrose, where she coached six successful seasons, building the Bees into a NAIA powerhouse. During her tenure at St. Ambrose, Bluder guided the Bees to four straight national tournaments, including two consecutive Final Four appearances. The 1990 St. Ambrose team was ranked No. 1 and Bluder was named the NAIA Converse Coach of the Year.

A graduate of Linn-Mar High School in Marion, Iowa, Bluder was a three-year starter at Northern Iowa. She graduated from UNI in 1983 with a bachelor's degree in marketing.



Press Conferences

Below is a list of press conferences for Head Iowa Women's Basketball Coach Lisa Bluder. Press conferences will be held in the Media Room on the first floor of Carver-Hawkeye Arena. Select student-athletes will be available before or after Coach Bluder addresses the media.

Tuesday, Feb. 511:30 a.m.
Wednesday, Feb. 1311:30 a.m.
Friday, Feb. 2211:30 a.m.
Week of March. 4 (B1G Tourney) TBA

Follow the Hawkeyes on Twitter

Iowa Women's Basketball....@IowaWBB
Claire Till..... @clairetill3
Trisha Nesbitt.....@TNesbitt11
Morgan Johnson..... @MoJohnson12
Kathy Thomas.....@datgurlgotgame_
Melissa Dixon@MDix21
Theairra Taylor..... @two3KneeTaylor
Jaime Printy.....@jprinty24
Kali Peschel..... @KaliPeschel
Nicole Smith@NicoleSmith42
Kayla Timmerman.....@timmykay54
Jan Jensen @golowa
Jenni Fitzgerald..... @jlefty21
Abby Emmert @abbyemmert

Press Conference FTP Information

Weekly press conference footage will be available to media outlets via www.dropbox.com.
Username: ath-media@uiowa.edu
Password: hawks2012

Printy netted 29 points against Wisconsin, missing only two shots in 10 attempts, while going 3-of-3 from 3-point distance and 10-of-11 from the charity stripe. She also added eight rebounds and four assists, with just one turnover, in 35 minutes.

The Marion, Iowa, native finished the week with 14 points and five rebounds at No. 23 Michigan. She was a perfect 4-of-4 from the free throw line.

The honor marked the second time in Printy's career she has been named Big Ten Player of the Week and her sixth Big Ten honor (four-time Big Ten Freshman of the Week in 2009-10).

SIXTH PLAYER TO REACH 1,700

Jaime Printy became just the sixth player in Iowa history to score 1,700 career points in Iowa's win at Michigan (Jan. 27).

Printy joins former Hawkeye greats Cindy Haugejorde, Lindsey Meder, Michelle Edwards, Jennie Lillis and Franthea Price as the only members of the 1,700 career point club.

LOGIC CRASHING THE BOARDS

With 12 rebounds against Northwestern (Feb. 3), sophomore Samantha Logic collected her 10th career double digit rebounding performance and her second in two games (10 at Illinois). She added 11 points and three steals against Northwestern.

Logic has four games this season with 10 or more rebounds. Last year as a freshman, Logic tallied six games, including a stretch of four-straight during Big Ten play.

Logic leads the Big Ten in assists (6.8), while ranking sixth in field goal percentage (.474) and assist-to-turnover ratio (1.5) and 11th in rebounding (6.7).

DIXON CONNECTS FROM LONG RANGE

Melissa Dixon led Iowa in scoring with 21 points in the narrow loss to Northwestern. Dixon helped the Hawkeye offense get on track in the first half, scoring 12 points off the bench to lead Iowa to a 29-18 halftime advantage. She added a pair of three-pointers in the second half and made 6-9 treys in the game. She added a free throw and a two-point field goal in the final minute as Iowa tied the score before Northwestern's winning basket.

The six three-pointers match a career-best for Dixon, and tie the Carver-Hawkeye Arena record by an Iowa player that Dixon shares with Wendy Ausdemore and Kamille Wahlin. (Jaime Printy, Lindsey Meder and Wahlin share the Iowa school record with seven treys). Dixon is averaging nine points per outing, including 10.8 points in Big Ten games. She is fourth in the Big Ten in three-point percentage (.419).

Dixon has come off the bench in 37 career games and has scored a total of 295 points as a substitute (8.0 points per game). Dixon has scored 10 or more points in 13 of those games (four as a freshman, nine as a sophomore).

PRINTY AND DOOLITTLE TAKE OVER LATE

Jaime Printy and Bethany Doolittle both had impressive finishes in Iowa's games against Wisconsin and at Michigan.

Printy took over in the final minutes against Wisconsin (Jan. 24), scoring 14-straight points to give Iowa the win. The Hawkeyes trailed, 52-51 with 5:25 left in the game. Printy then scored Iowa's next 14 points and went on her own personal 12-0 run from the 4:11 mark to the 1:53 mark, giving Iowa a 10-point advantage.

Doolittle did the same at Michigan (Jan. 27), netting eight points to give Iowa a lead after it trailed by a point late in the contest. Doolittle's jumper with 5:20 left put Iowa ahead, 55-54. Doolittle went on her own 8-1 run from 5:20-1:45 in the second half to lift the Hawkeyes to the win.

Printy added 12 points, three assists and three steals against Northwestern, while Doolittle had nine rebounds and four blocked shots.

BLUDER GETS WIN NO. 600

Head coach Lisa Bluder Bluder became the 42nd coach in NCAA women's basketball history (all divisions) and only the 25th Division I head coach (minimum 10 years at a DI school) to collect 600 wins Jan. 20 vs. Purdue.

Bluder entered the 2012-13 season as the 26th winningest active coach and the 46th overall winningest coach in NCAA women's basketball history (by victories).



Big Ten Overall Individual Stats (thru Feb. 4)

Morgan Johnson			Jaime Printy		
	Rank	Avg.		Rank	Avg.
Field Goal Percentage	3rd	.531	Free Throw Percentage	1st	.929
Blocks	5th	1.9	Assists	12th	3.3
Offensive Rebounds	7th	2.7	Assist/Turnover Ratio	12th	1.2
Rebounding	8th	7.2	Scoring	12th	14.1
Scoring	8th	15.0	3-Pointers Made	12th	1.8
Defensive Rebounds	14th	4.5			
Samantha Logic			Melissa Dixon		
	Rank	Avg.		Rank	Avg.
Assists	1st	6.8	3-Point Percentage	4th	.419
Assist/Turnover Ratio	6th	1.5	3-Pointers Made	7th	2.1
Field Goal Percentage	6th	.474			
Steals	T-9th	2.0	Bethany Doolittle		
Offensive Rebounds	10th	2.5		Rank	Avg.
Rebounding	T-11th	6.7	Blocks	4th	2.1

JOHNSON SETS FAMILY BLOCK RECORD

Morgan Johnson not only set the Iowa school record for career blocks, but she now holds the record for blocks in the Johnson household.

Johnson's mother, Leslie, compiled 265 career blocks from 1981-85 at Midland Lutheran College in Nebraska. Morgan broke her mother's record against Michigan (Jan. 27), collecting her 266th career block, and her career total now stands at 268.

LOGIC'S EYE-POPPING ASSIST FIGURES

- Samantha Logic leads the Big Ten and ranks 10th in the NCAA with 6.8 assists per game.
- Logic is on pace to break the Iowa single season assists record of 191, held by Cara Consuegra (2000-01 season). Logic currently has 157 assists and needs to average 4.9 assists per game in the final seven regular season games to break the record.
- Logic has recorded seven or more assists in 13 games, including four games with 10 or more. She has had at least eight assists in six of Iowa's last 10 games.
- Logic's six games with double digit assists are the second most in Iowa history. Cara Consuegra had nine games in her career with 10 or more assists. The next closest Hawkeyes on the list are Kachine Alexander, Jollette Law and Michelle Edwards, with two career games.

HAWKEYES LIKE TO SHARE

- Iowa is second in the Big Ten and ranks 32nd in the NCAA with 15.9 assists per game.
- The Hawkeyes broke the school record for team assists last year, collecting 514. This year's team is nearly on pace to break that mark. Iowa had 373 assists through 23 games last year and has 366 through 23 games this year.
- Iowa has recorded at least 17 assists in 10 games, including four games with 20 or more.
- The Hawkeyes have 366 assists on 570 made field goals this season (1.6 assist/field goal ratio).

BALANCING ACT

Iowa has had seven different players lead, or share the lead, in scoring this season.

Morgan Johnson has paced the Hawkeyes in scoring 10 times, Jaime Printy eight times, Melissa Dixon five times, Theairra Taylor twice and Kathy Thomas, Bethany Doolittle and Samantha Logic once.

PRINTY CLOSE TO BIG FREE THROW RECORDS

- Jaime Printy currently owns an 88.9 career free throw percentage (412-of-463). Former Hawkeye Wendy Ausdemore holds the Iowa and Big Ten record for career free throw percentage at 89.2 (174-of-195).
- Printy is shooting 92.9 percent (104-of-112) for the season. The Iowa single season record is 89.4 percent (101-of-113) by Lindsey Meder in 2000-01. The Big Ten single season record is 92.5 percent (99-of-107) by Indiana's Cyndi Valentin in 2003-04.

Big Ten Overall Stats (thru Feb. 4)

Scoring Offense	
1. Penn State	72.8
4. Iowa	69.1
Scoring Defense	
1. Michigan State	49.7
8. Iowa	61.0
Scoring Margin	
1. Penn State	+16.1
6. Iowa	+8.1
Free Throw Percentage	
1. Purdue	.771
3. Iowa	.768
Field Goal Percentage	
1. Ohio State	.459
5. Iowa	.432
Field Goal Percentage Defense	
1. Michigan State	.345
4. Iowa	.362
3-Point Field Goals Made	
1. Michigan	6.6
4. Iowa	5.7
3-Point Field Goal Percentage	
1. Penn State	.392
4. Iowa	.350
3-Point Field Goal Percentage Defense	
1. Michigan State	.252
2. Iowa	.286
Rebounding	
1. Michigan State	42.2
4. Iowa	39.6
Rebounding Allowed	
1. Michigan	31.1
7. Iowa	36.7
Rebounding Margin	
1. Michigan State	+8.4
7. Iowa	+3.0
Offensive Rebounds	
1. Penn State	15.3
8. Iowa	11.8
Defensive Rebounds	
1. Northwestern	28.8
3. Iowa	27.8
Blocked Shots	
1. Northwestern	5.8
2. Iowa	5.7
Assists	
1. Ohio State	16.0
2. Iowa	15.9
Steals	
1. Illinois	12.7
10. Iowa	7.1
Turnover Margin	
1. Penn State	+5.0
7. Iowa	-0.4
Assist/Turnover Ratio	
1. Nebraska	+1.1
T2. Iowa	-1.0



Career Scoring in Iowa History

Rank... No.....	Player.....	Years
3..... 1821.....	Michelle Edwards	84-88
4..... 1762.....	Jennie Lillis.....	00-04
5..... 1742.....	Franthea Price.....	86-90
6..... 1733.....	Jaime Printy	10-
10..... 1455.....	Kristi Smith.....	05-09
11..... 1439.....	Megan Skouby	05-09
12..... 1427.....	Morgan Johnson	10-

Career 3-Pointers in Iowa History

Rank... No.....	Player.....	Years
1..... 261.....	Lindsey Meder	98-02
2..... 239.....	Jaime Printy	10-
3..... 231.....	Kamille Wahlin	09-Pr.

Career Blocks in Iowa History

Rank... No.....	Player.....	Years
1..... 268.....	Morgan Johnson	10-Pr
2..... 235.....	Tangela Smith	94-98

Career Rebounds in Iowa History

Rank... No.....	Player.....	Years
3..... 887.....	Toni Foster	89-93
4..... 859.....	Tangela Smith	94-98
5..... 848.....	Lisa Long	83-87
6..... 827.....	Jennie Lillis.....	00-04
7..... 795.....	Morgan Johnson	10-Pr

Career Assists in Iowa History

Rank... No.....	Player.....	Years
3..... 427.....	Kamille Wahlin	09-12
4..... 412.....	Kristi Smith.....	05-09
5..... 391.....	Johanna Solverson	02-05
6..... 387.....	Franthea Price.....	86-90
7..... 379.....	Jaime Printy	10-Pr
12..... 322.....	Lisa Anderson	80-84
13..... 297.....	Jennie Lillis.....	00-04
14..... 293.....	Samantha Logic.....	12-

2012-13 Big Ten Standings/Schedule (thru Feb. 3)

Team	Big Ten	Overall	Thursday, February 7
Penn State	8-1	18-3	Penn State at Indiana (BTN)
Purdue	7-2	18-4	Illinois at Michigan
Michigan State	6-3	18-4	Wisconsin at Ohio State
Nebraska	6-3	16-6	Nebraska at Northwestern
Illinois	6-3	13-8	Iowa at Minnesota (BTN)
Michigan	5-4	16-6	
Iowa	5-4	16-7	
Minnesota	3-6	14-9	
Northwestern	3-6	11-11	
Ohio State	2-7	12-10	
Wisconsin	2-7	10-12	
Indiana	1-8	10-12	

PRINTY FREE THROW NOTES

- Printy has gone 3-of-3 from the line against Drake, 4-of-4 against Northern Illinois, Northern Iowa, Ohio State, Michigan State, Purdue and Michigan, 6-of-6 against Iowa State and San Diego, 8-of-8 vs. Northwestern, 11-of-11 against Middle Tennessee and 17-of-17 against West Virginia.
- Printy made 22-straight free throws, from Iowa's game vs. Texas (Dec. 28) through the game vs. Wisconsin (Jan. 24). Printy converted 21-consecutive free throws between Iowa's game vs. North Carolina and the road contest at Florida State
- Printy has put together a string of at least 20-consecutive made free throws in each year of her career. She converted 27-straight as a freshman and 32-straight as a sophomore and junior. Iowa's record for consecutive free throws made is 33 by Lindsey Meder.

PRINTY MOVES INTO SECOND PLACE ON 3's LIST

Jaime Printy passed Kamille Wahlin for second place on Iowa's career 3-pointers list in Iowa's win over Purdue (Jan. 20).

Printy has 239 career 3-pointers and trails Lindsey Meder (261) for first place.

IOWA CONTINUES TREND AGAINST RANKED FOES

- Iowa's win over 11th-ranked Purdue (Jan. 20) marked the 15th time under Lisa Bluder that the Hawkeyes have defeated a top-15 team.
- The Hawkeyes have recorded at least one win against a top-25 team in all but two seasons under Bluder. In nine of those seasons, Iowa has knocked off at least one top-15 opponent.
- Purdue was the highest ranked opponent the Hawkeyes have defeated since knocking off No. 10 Michigan State (66-64) on Jan. 27, 2011.
- This season marks just the second time in school history that Iowa has defeated three ranked teams prior to Big Ten play (No. 12 West Virginia, No. 22 Iowa State, No. 20 Texas). The only other time Iowa knocked off three ranked opponents was in 1993 (No. 4 Louisiana Tech, No. 20 Missouri State, No. 9 Southern California).
- This season is only the sixth time in school history that Iowa played at least three ranked teams prior to conference action. Iowa faced five ranked opponents in 1990 (2-3 record) and three in 1999 (0-3), 1995 (2-1), 1993 (3-0) and 1989 (1-2).
- Iowa has defeated six ranked teams, marking the first time since the 1995-96 season that the Hawkeyes have accomplished that feat (seven victories, 7-3 record versus ranked teams in 1995-96).

SCHOOL/BIG RECORDS SET THIS SEASON

- Morgan Johnson became the Iowa career leader in blocks against Florida International. Johnson entered the game needing two blocks to break Tangela Smith's career blocks record and she finished with five. Johnson currently is tied for seventh in Big Ten history with 268 blocks.
- Jaime Printy tied the school record for 3-pointers made in a single game with seven against San Diego. Kamille Wahlin and Lindsey Meder are the only other Iowa players to hit seven 3's in a single game. Printy was 6-of-7 in the second half, making her final five attempts. Her seven made treys tie as the most by a Big Ten player this season.



- Samantha Logic broke Iowa's school record for assists in a single game against Texas, finishing with 14 assists. Her 14 assists tie as the most by a Big Ten player this season. Earlier this year, Logic tied the previous school record with 12 against Middle Tennessee State.
- Against West Virginia, Jaime Printy became only the third player in Big Ten history to go 17-of-17 from the free throw line, matching the best single game free throw performance in conference history. Wisconsin's Michele Kozelka (1989) and Keisha Anderson (1996) are the only other players in Big Ten history to accomplish the feat.
- Printy's 17 made free throws tied the single game school record and are tied for the second most made free throws in Big Ten history.
- Printy's performance against West Virginia marked the ninth time in school history that an Iowa player has been perfect from the free throw line (minimum 10 attempts). Printy now has three of those marks, with one of those performances coming earlier this year against Middle Tennessee (11-of-11). The other came against Indiana (10-of-10) on Feb. 27, 2011.
- Morgan Johnson was a perfect 11-of-11 from the free throw line at Wisconsin, marking the 10th time in school history, and the third this season, an Iowa player was perfect in at least 10 attempts.
- As a team, the Hawkeyes set the Big Ten and school record for free throws made (42) and set the school record for free throw attempts (50) in the win over West Virginia.

BEST BOARD GAME IN B1G

Iowa's 60 rebounds against Missouri State (Dec. 19) are the most by a Big Ten team this season.

The Hawkeyes collected 21 offensive and 39 defensive rebounds against the Lady Bears.

MOVING UP CAREER CHARTS

- Morgan Johnson, Iowa's all-time blocks leader (268), ranks seventh in career rebounds (795) and 12th in career scoring (1,438). She needs 33 more rebounds to move past Jennie Lillis for sixth place and two more points to pass Megan Skouby for 11th place.
- Jaime Printy ranks second in career 3-pointers made (239), sixth in career scoring (1,733) and eighth in career assists (379). She needs 23 more 3-pointers to move past Lindsey Meder for first place, 10 more points to move past Franthea Price for fifth place and nine more assists to move past Franthea Price for sixth place.
- Samantha Logic ranks 14th in career assists (293). She needs five more assists to move past Jennie Lillis for 13th place.

HAWKEYES RETURN HOME TO HOST NEBRASKA AND PENN STATE

Following the contest at Minnesota the Hawkeyes return home to host Nebraska on Monday, Feb. 11 (7:30 p.m., BTN) and Penn State on Thursday, Feb. 14 (7 p.m., BTN.com).

Hawkeyes in NCAA Stats (thru Feb. 3)

Iowa	Rank	Avg.
Blocks	10th	5.7
Free Throw Percentage	13th	76.8
3-Point Percentage	31st	35.0
Assists	32nd	15.9
Field Goal Percentage	34th	43.2
Assist/Turnover Ratio	43rd	0.97
Scoring Offense	52nd	69.1
Field Goal Percentage Defense	58th	36.2
Scoring Margin	74th	8.1
Win/Loss Percentage	74th	69.6
Melissa Dixon	Rank	Avg.
3-Point Percentage	18th	41.9
3-Pointers Made	94th	2.1
Morgan Johnson	Rank	Avg.
Field Goal Percentage	23rd	53.1
Blocks	45th	1.9
Samantha Logic	Rank	Avg.
Assists	10th	6.8
Jaime Printy	Rank	Avg.
Free Throw Percentage	4th	92.9
Bethany Doolittle	Rank	Avg.
Blocks	34th	2.1

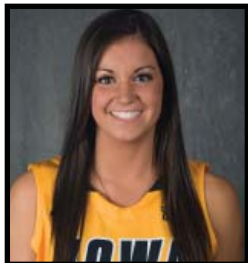




University of Iowa Women's Basketball

Updated Iowa Player Bio

Claire Till



3

Guard, 6-0, Freshman
Dubuque, Iowa
Dubuque Wahlert HS

- Missed a total of six games with a stress reaction in right femur (missed four games from Dec. 1-Dec. 28 and two games from Jan. 6-Jan.17).
- Seven points and six rebounds against Florida International.
- Five points and two rebounds in win over Robert Morris.
- Scored three points and recorded six rebounds in collegiate debut vs. NIU.
- Two-time all-state selection.
- Three-time IBCA Select Team member.
- Four-time first team all-conference and all-district pick.
- Underwent three surgeries in high school to repair injured knee.

Personal Bests

Points: 7 at Florida International (11/23/12)
Rebounds: 6, twice, last at FIU (11/23/12)
FGM: 1, 4x, last at FIU (11/23/12)
FGA: 6 at Florida International (11/23/12)
3-pt FG: 1, twice, last vs. RMU (11/20/12)
3-pt FGA: 2, twice, last at FIU (11/23/12)
FTM: 5, twice, last vs. WVU (11/25/12)
FTA: 8 at Florida International (11/23/12)
Assists: 1, 3x, last vs. Texas (12/28/12)
Steals: 1, 3x, last vs. WVU (11/25/12)
Blocks: 1, 3x, last vs. Ohio State (1/3/13)
Minutes: 18 at Florida International (11/23/12)

2012-13 Game-by-Game

#03 Till, Claire

Opponent	Date	gs	min	Total		3-Pointers		Free throws		Rebounds			pf	a	t/o	blk	stl	pts	avg	
				fg-fga	pct	3fg-fga	pct	ft-fa	pct	off	def	tot								avg
NORTHERN ILLINOIS	11/9/12	11	1-3	.333	1-2	.500	0-2	.000	1	5	6	6.0	3	0	0	1	1	3	3.0	
ILLINOIS STATE	11/11/12	7	1-2	.500	0-0	.000	2-2	1.000	0	3	3	4.5	1	0	2	0	1	4	3.5	
MIDDLE TENNESSEE	11/14/12	8	0-1	.000	0-0	.000	0-0	.000	0	1	1	3.3	2	0	0	0	0	0	2.3	
NORTH CAROLINA	11/18/12	6	0-0	.000	0-0	.000	1-2	.500	0	2	2	3.0	0	1	2	0	0	1	2.0	
ROBERT MORRIS	11/20/12	16	1-2	.500	1-1	1.000	2-2	1.000	0	2	2	2.8	0	0	2	0	0	5	2.6	
at FIU	11/23/12	18	1-6	.167	0-2	.000	5-8	.625	5	1	6	3.3	0	0	0	0	0	7	3.3	
vs WVU	11/25/12	14	0-1	.000	0-0	.000	5-6	.833	2	0	2	3.1	1	0	1	0	1	5	3.6	
at Florida State	11/28/12	12	0-2	.000	0-1	.000	0-0	.000	0	1	1	2.9	2	1	0	1	0	0	3.1	
vs Texas	12/28/12	4	0-1	.000	0-1	.000	0-0	.000	1	0	1	2.7	1	1	1	0	0	0	2.8	
OHIO STATE	1/3/13	4	0-1	.000	0-0	.000	0-0	.000	0	1	1	2.5	0	0	0	1	0	0	2.5	
PURDUE	01/20/13	1	0-0	.000	0-0	.000	0-0	.000	0	0	0	2.3	0	0	0	0	0	0	2.3	
WISCONSIN	1/24/13	2	0-0	.000	0-0	.000	0-0	.000	0	0	0	2.1	1	0	1	0	0	0	2.1	
Totals		0	103	4-19	.211	2-7	.286	15-22	.682	9	16	25	2.1	11	3	9	3	3	25	2.1

Games played: 12
 Minutes/game: 8.6
 Points/game: 2.1
 FG Pct: 21.1
 3FG Pct: 28.6
 FT Pct: 68.2

Rebounds/game: 2.1
 Assists/game: 0.3
 Turnovers/game: 0.8
 Assist/turnover ratio: 0.3
 Steals/game: 0.3
 Blocks/game: 0.3

CAREER STATISTICS

YEAR	G/GS	FG-A	PCT	3-PT	PCT	FT-A	PCT	O-D-REB	AVG	PF-FO	AS	TO	BK	ST	PTS	AVG
Fresh.	12/0	4-19	.211	2-7	.286	15-22	.682	9-16-25	2.1	11-0	3	9	3	3	25	2.1





University of Iowa Women's Basketball

Updated Iowa Player Bio

Trisha Nesbitt



11

Guard, 5-7, Senior
Ames, Iowa
Ames HS

- Career-high 12 points in win at Drake.
- Academic All-Big Ten in 2011-12.
- Had minor knee surgery Nov. 15, 2011 and missed the first 10 games of the season as a junior.
- Saw first action last season Dec. 20 vs. Drake, recording one rebound and one steal in seven minutes of play.

Personal Bests

Points: 12 at Drake (12/16/12)
Rebounds: 3, 2x, last vs. NIU (11/9/12)
FGM: 4 vs. Michigan State (3/6/10)
FGA: 8 at Indiana (2/11/10)
3-pt FG: 2, 3x, last at Drake (12/16/12)
3-pt FGA: 4, 3x, last vs. Missouri State (12/19/12)
FTM: 4, 3x, last at Drake (12/16/12)
FTA: 5 at UNI (11/22/09)
Assists: 4, 3x, last at Iowa St. (12/10/09)
Steals: 3 at Minnesota (1/3/10)
Blocks: ---
Minutes: 37 at Indiana (2/11/10)

2012-13 Game-by-Game

#11 Nesbitt, Trisha

Opponent	Date	gs	min	Total		3-Pointers		Free throws		Rebounds				pf	a	t/o	blk	stl	pts	avg
				fg-fga	pct	3fg-fga	pct	ft-fa	pct	off	def	tot	avg							
NORTHERN ILLINOIS	11/9/12	18	1-1	1.000	1-1	1.000	0-0	.000	0	3	3	3.0	0	1	2	0	0	3	3.0	
ILLINOIS STATE	11/11/12	15	0-3	.000	0-1	.000	3-4	.750	0	1	1	2.0	3	0	1	0	1	3	3.0	
MIDDLE TENNESSEE	11/14/12	4	1-1	1.000	0-0	.000	0-0	.000	0	0	0	1.3	0	0	0	0	0	2	2.7	
NORTH CAROLINA	11/18/12	5	1-2	.500	0-1	.000	0-0	.000	0	0	0	1.0	0	0	0	0	0	2	2.5	
ROBERT MORRIS	11/20/12	13	0-0	.000	0-0	.000	0-0	.000	0	2	2	1.2	0	2	0	0	0	0	2.0	
at FIU	11/23/12	8	1-2	.500	0-0	.000	0-0	.000	0	1	1	1.2	1	1	0	0	0	2	2.0	
vs WVU	11/25/12	14	1-1	1.000	1-1	1.000	1-2	.500	0	0	0	1.0	2	1	1	0	1	4	2.3	
at Florida State	11/28/12	5	0-0	.000	0-0	.000	0-0	.000	0	0	0	0.9	1	0	0	0	1	0	2.0	
UNI	12/1/12	5	0-0	.000	0-0	.000	0-0	.000	0	0	0	0.8	0	0	0	0	0	0	1.8	
IOWA STATE	12/6/12	6	0-0	.000	0-0	.000	0-0	.000	0	1	1	0.8	1	0	0	0	0	0	1.6	
at Drake	12/16/12	15	3-4	.750	2-3	.667	4-4	1.000	0	0	0	0.7	4	0	1	0	0	12	2.5	
MISSOURI STATE	12/19/12	15	1-4	.250	1-4	.250	1-2	.500	0	1	1	0.8	5	1	1	0	0	4	2.7	
vs Texas	12/28/12	8	0-1	.000	0-1	.000	0-0	.000	0	0	0	0.7	1	0	0	0	0	0	2.5	
MICHIGAN	1/6/13	3	0-0	.000	0-0	.000	0-0	.000	0	0	0	0.6	0	0	0	0	0	0	2.3	
at Wisconsin	01/10/13	3	0-1	.000	0-1	.000	0-0	.000	0	0	0	0.6	0	0	0	0	0	0	2.1	
at Michigan State	01/17/13	4	0-1	.000	0-0	.000	0-0	.000	0	1	1	0.6	0	0	0	0	1	0	2.0	
PURDUE	01/20/13	2	0-0	.000	0-0	.000	0-0	.000	0	0	0	0.6	0	0	0	0	0	0	1.9	
WISCONSIN	1/24/13	2	0-0	.000	0-0	.000	0-0	.000	0	0	0	0.6	0	0	0	0	0	0	1.8	
at Michigan	01/27/13	9	0-1	.000	0-1	.000	0-0	.000	0	2	2	0.6	0	0	0	0	0	0	1.7	
NORTHWESTERN	2/03/13	3	0-1	.000	0-0	.000	0-0	.000	0	0	0	0.6	0	1	1	0	1	0	1.6	
Totals		0	157	9-23	.391	5-14	.357	9-12	.750	0	12	12	0.6	18	7	7	0	5	32	1.6

Games played: 20
 Minutes/game: 7.9
 Points/game: 1.6
 FG Pct: 39.1
 3FG Pct: 35.7
 FT Pct: 75.0

Rebounds/game: 0.6
 Assists/game: 0.4
 Turnovers/game: 0.4
 Assist/turnover ratio: 1.0
 Steals/game: 0.3

CAREER STATISTICS

YEAR	G/GS	FG-A	PCT	3-PT	PCT	FT-A	PCT	O-D-REB	AVG	PF-FO	AS	TO	BK	ST	PTS	AVG
Fresh.	34/1	25-85	.294	9-36	.250	25-31	.806	2-22-24	0.7	46-0	43	42	0	14	84	2.5
Soph.	16/0	3-13	.231	2-6	.333	0-1	.000	0-4-4	0.3	7-0	5	10	0	1	8	0.5
Junior	15/0	1-8	.125	0-6	.000	3-4	.750	1-2-3	0.2	10-0	4	3	0	3	5	0.3
Senior	20/0	9-23	.391	5-14	.357	9-12	.750	0-12-12	0.6	18-1	7	7	0	5	32	1.6
TOTALS	85/1	38-129	.295	16-62	.258	37-48	.771	3-40-43	0.5	81-1	59	62	0	23	129	1.5





University of Iowa Women's Basketball

Updated Iowa Player Bio

Morgan Johnson



12

Center, 6-5, Senior
Platte City, Mo.
Platte County HS

- Iowa career blocks leader (268), seventh in career rebounds (795) and 12th in career scoring (1,438).
- Recorded 18 career double-doubles, including three as a freshman, five as a sophomore, four as a junior and six as a senior.
- Sixth double-double of the season with 13 points and 12 rebounds at Michigan St.
- Fifth double-double of the season with 23 points and 11 rebounds in win at Wisconsin.
- Fourth double-double of the season with 16 points and 12 rebounds in win over Ohio State.
- 20 points and five rebounds in win over Texas.
- 26 points, eight rebounds and three blocks in win at Drake.
- Third double-double of the season with 19 points, 12 rebounds and a career-high five assists in win over Northern Iowa.
- 20 points at Florida State.
- 19 points in win over West Virginia.
- Second double-double of the season with 19 points and 11 rebounds in win over Robert Morris.
- Big Ten Player of the Week (Nov. 19).
- First double-double of the season with 20 points and 11 rebounds vs. N. Carolina.
- 20 points and eight rebounds in win over Middle Tennessee.
- 24 points (12-of-13 FTs) and nine rebounds in win over Illinois State.
- Preseason All-Big Ten selection.

2012-13 Game-by-Game

#12 Johnson, Morgan

Opponent	Date	gs	min	Total		3-Pointers		Free throws		Rebounds			pf	a	t/o	blk	stl	pts	avg		
				fg-fga	pct	3fg-fga	pct	ft-fa	pct	off	def	tot								avg	
NORTHERN ILLINOIS	11/9/12	*	20	4-11	.364	0-0	.000	3-5	.600	1	4	5	5.0	2	0	1	0	1	11	11.0	
ILLINOIS STATE	11/11/12	*	30	6-14	.429	0-0	.000	12-13	.923	4	5	9	7.0	2	2	2	5	1	24	17.5	
MIDDLE TENNESSEE	11/14/12	*	41	8-10	.800	0-0	.000	4-6	.667	2	6	8	7.3	4	1	0	2	0	20	18.3	
NORTH CAROLINA	11/18/12	*	39	8-11	.727	0-0	.000	4-5	.800	3	8	11	8.3	4	1	2	2	2	20	18.8	
ROBERT MORRIS	11/20/12	*	33	8-13	.615	0-0	.000	3-5	.600	5	6	11	8.8	3	0	3	0	0	19	18.8	
at FIU	11/23/12	*	36	6-9	.667	0-0	.000	2-2	1.000	3	3	6	8.3	2	2	3	5	0	14	18.0	
vs WVU	11/25/12	*	30	6-11	.545	0-0	.000	7-11	.636	0	3	3	7.6	3	1	2	2	1	19	18.1	
at Florida State	11/28/12	*	30	8-15	.533	0-0	.000	4-4	1.000	3	1	4	7.1	2	1	2	2	0	20	18.4	
UNI	12/1/12	*	35	6-11	.545	0-0	.000	7-11	.636	4	8	12	7.7	2	5	2	2	2	19	18.4	
IOWA STATE	12/6/12	*	38	3-8	.375	0-0	.000	1-2	.500	1	5	6	7.5	1	2	4	1	1	7	17.3	
at Drake	12/16/12	*	38	11-19	.579	0-0	.000	4-7	.571	2	6	8	7.5	2	0	0	3	2	26	18.1	
MISSOURI STATE	12/19/12	*	15	6-7	.857	0-0	.000	1-2	.500	2	2	4	7.3	4	1	3	0	0	13	17.7	
vs Texas	12/28/12	*	23	8-13	.615	0-0	.000	4-5	.800	1	4	5	7.1	3	0	0	2	3	20	17.8	
at San Diego	12/30/12	*	38	8-10	.800	0-0	.000	4-4	1.000	3	3	6	7.0	2	1	4	3	1	20	18.0	
OHIO STATE	1/3/13	*	43	7-17	.412	0-0	.000	2-3	.667	3	9	12	7.3	2	3	0	3	3	16	17.9	
MICHIGAN	1/6/13	*	39	4-7	.571	0-0	.000	2-3	.667	3	4	7	7.3	4	2	0	1	2	10	17.4	
at Wisconsin	01/10/13	*	35	6-12	.500	0-0	.000	11-11	1.000	8	3	11	7.5	3	0	3	2	0	23	17.7	
at Michigan State	01/17/13	*	37	5-12	.417	0-0	.000	3-4	.750	5	7	12	7.8	3	0	1	2	2	13	17.4	
PURDUE	01/20/13	*	24	3-14	.214	0-0	.000	1-1	1.000	3	4	7	7.7	3	0	1	3	0	7	16.9	
WISCONSIN	1/24/13	*	17	1-2	.500	0-0	.000	0-0	.000	2	2	4	7.6	4	1	1	0	0	2	16.2	
at Michigan	01/27/13	*	31	2-4	.500	0-0	.000	2-2	1.000	1	6	7	7.5	4	0	0	1	2	6	15.7	
at Illinois	01/31/13	*	27	3-6	.500	0-0	.000	0-0	.000	1	3	4	7.4	5	0	2	1	1	6	15.2	
NORTHWESTERN	2/03/13	*	18	3-9	.333	0-0	.000	5-7	.714	1	2	3	7.2	5	0	2	1	1	11	15.0	
Totals			23	717	130-245	.531	0-0	.000	86-113	.761	61	104	165	7.2	69	23	38	43	25	346	15.0

Games played: 23
Minutes/game: 31.2
Points/game: 15.0
FG Pct: 53.1
FT Pct: 76.1

Rebounds/game: 7.2
Assists/game: 1.0
Turnovers/game: 1.7
Assist/turnover ratio: 0.6
Steals/game: 1.1
Blocks/game: 1.9

Personal Bests

- Points:** 37 at Bradley (12/17/11)
- Rebounds:** 16 vs. Illinois (1/5/12)
- FGM:** 13 at Bradley (12/17/11)
- FGA:** 21 vs. Virginia Tech (11/30/11)
- 3-pt FG:** 1 at Iowa State (12/10/09)
- 3-pt FGA:** 2 at Iowa State (12/10/09)
- FTM:** 12 vs. Illinois State (11/11/12)
- FTA:** 13 vs. Illinois State (11/11/12)
- Assists:** 5 vs. Northern Iowa (12/1/12)
- Steals:** 3, 5x, last vs. Ohio State (1/3/13)
- Blocks:** 8 vs. Minnesota (2/18/10)
- Minutes:** 43 vs. Ohio State (1/3/13)

CAREER STATISTICS

YEAR	G/GS	FG-A	PCT	3-PT	PCT	FT-A	PCT	O-D-REB	AVG	PF-FO	AS	TO	BK	ST	PTS	AVG
Fresh.	34/34	124-250	.496	1-4	.250	48-76	.632	78-139-217	6.4	87-2	24	61	79	15	297	8.7
Soph.	31/30	132-276	.478	0-0	.000	70-96	.729	90-118-208	6.7	83-3	25	58	76	21	334	10.8
Junior	31/31	179-326	.549	0-0	.000	103-141	.730	67-138-205	6.6	96-4	24	64	70	12	461	14.9
Senior	23/23	130-245	.531	0-0	.000	86-113	.761	61-104-165	7.2	69-2	23	38	43	25	346	15.0
TOTALS	119/118	565-1097	.515	1-4	.250	307-426	.721	296-499-795	6.7	335-11	96	221	268	73	1438	12.1





University of Iowa Women's Basketball

Updated Iowa Player Bio

Kathy Thomas



13

**Guard, 5-6, Sophomore
Flint, Mich.
Highland CC (Kan.)**

- 15 points (3-of-6 3Pt. FGs) in win over Missouri State.
- Scored eight points in collegiate debut vs. NIU.
- NJCAA first team All-American at Highlands Community College.
- Jayhawk Conference Player and Freshman of the Year.
- Led Highland Community College to 28-4 overall record, second place finish in Jayhawk Conference and NJCAA Division II District B finals appearance, the most successful season in school history.
- Averaged 13.2 points, 8.9 assists and 9.8 steals as a senior in high school.

Personal Bests

Points: 15 vs. Missouri State (12/19/12)
Rebounds: 3, twice, last at San Diego (12/30/12)
FGM: 6 vs. Missouri State (12/19/12)
FGA: 9 vs. Missouri State (12/19/12)
3-pt FG: 3 vs. Missouri State (12/19/12)
3-pt FGA: 6 vs. Missouri State (12/19/12)
FTM: 5 vs. Ill. State (11/11/12)
FTA: 8 vs. Ill. State (11/11/12)
Assists: 3, twice, last vs. Purdue (1/20/13)
Steals: 2, twice, last vs. Purdue (1/20/13)
Blocks: ---
Minutes: 19 vs. Missouri State (12/19/12)

2012-13 Game-by-Game

13 Thomas, Kathy

Opponent	Date	gs	min	Total		3-Pointers		Free throws		Rebounds				pf	a	t/o	blk	stl	pts	avg
				fg-fga	pct	3fg-fga	pct	ft-fa	pct	off	def	tot	avg							
NORTHERN ILLINOIS	11/9/12	15	3-4	.750	0-0	.000	2-2	1.000	1	1	2	2.0	3	0	1	0	0	8	8.0	
ILLINOIS STATE	11/11/12	16	0-2	.000	0-0	.000	5-8	.625	2	1	3	2.5	3	3	3	0	1	5	6.5	
MIDDLE TENNESSEE	11/14/12	2	0-0	.000	0-0	.000	0-0	.000	0	0	0	1.7	1	0	0	0	0	0	4.3	
NORTH CAROLINA	11/18/12	2	0-0	.000	0-0	.000	0-0	.000	0	0	0	1.3	1	0	0	0	0	0	3.3	
ROBERT MORRIS	11/20/12	10	1-3	.333	1-1	1.000	0-0	.000	0	1	1	1.2	2	1	0	0	0	3	3.2	
at FIU	11/23/12	8	0-0	.000	0-0	.000	0-0	.000	0	0	0	1.0	0	0	0	0	0	0	2.7	
UNI	12/1/12	7	0-1	.000	0-0	.000	0-0	.000	0	2	2	1.1	2	1	0	0	0	0	2.3	
IOWA STATE	12/6/12	6	0-1	.000	0-1	.000	3-4	.750	1	1	2	1.3	1	0	0	0	0	3	2.4	
at Drake	12/16/12	7	1-1	1.000	1-1	1.000	0-0	.000	0	0	0	1.1	0	0	0	0	0	3	2.4	
MISSOURI STATE	12/19/12	19	6-9	.667	3-6	.500	0-0	.000	0	2	2	1.2	2	2	3	0	2	15	3.7	
vs Texas	12/28/12	9	1-1	1.000	0-0	.000	0-0	.000	0	2	2	1.3	0	0	2	0	1	2	3.5	
at San Diego	12/30/12	4	0-1	.000	0-0	.000	0-0	.000	1	2	3	1.4	2	0	1	0	0	0	3.3	
OHIO STATE	1/3/13	5	0-0	.000	0-0	.000	0-0	.000	0	1	1	1.4	3	1	2	0	0	0	3.0	
MICHIGAN	1/6/13	2	0-0	.000	0-0	.000	0-0	.000	0	0	0	1.3	0	0	0	0	0	0	2.8	
at Wisconsin	01/10/13	2	0-1	.000	0-0	.000	0-0	.000	0	0	0	1.2	1	0	0	0	0	0	2.6	
at Michigan State	01/17/13	5	0-2	.000	0-0	.000	0-0	.000	0	2	2	1.3	2	0	0	0	0	0	2.4	
PURDUE	01/20/13	8	0-1	.000	0-0	.000	0-0	.000	0	1	1	1.2	1	3	2	0	2	0	2.3	
WISCONSIN	1/24/13	8	0-1	.000	0-1	.000	0-0	.000	0	1	1	1.2	1	0	1	0	0	0	2.2	
at Michigan	01/27/13	6	1-3	.333	1-2	.500	1-2	.500	0	0	0	1.2	0	0	1	0	0	4	2.3	
at Illinois	01/31/13	4	0-1	.000	0-1	.000	0-0	.000	0	0	0	1.1	0	1	0	0	0	0	2.2	
NORTHWESTERN	2/03/13	3	0-0	.000	0-0	.000	0-0	.000	0	0	0	1.0	1	0	2	0	0	0	2.0	
Totals		0	148	13-32	.406	6-13	.462	11-16	.688	5	17	22	1.0	26	12	18	0	6	43	2.0

Games played: 21
 Minutes/game: 7.0
 Points/game: 2.0
 FG Pct: 40.6
 3FG Pct: 46.2
 FT Pct: 68.8

Rebounds/game: 1.0
 Assists/game: 0.6
 Turnovers/game: 0.9
 Assist/turnover ratio: 0.7
 Steals/game: 0.3

CAREER STATISTICS

YEAR	G/GS	FG-A	PCT	3-PT	PCT	FT-A	PCT	O-D-REB	AVG	PF-FO	AS	TO	BK	ST	PTS	AVG
Fresh.	21/0	13-32	.406	6-13	.462	11-16	.688	5-17-22	1.0	26-0	12	18	0	6	43	2.0





University of Iowa Women's Basketball

Updated Iowa Player Bio

Melissa Dixon



21

Guard, 5-8, Sophomore
Johnsburg, Ill.
Johnsburg HS

- 21 points (7-10 FGs, 6-9 3Pt. FGs) in loss to Northwestern.
- 15 points in win over Purdue.
- Career-high 23 points (5-of-10 3Pt. FGs) in win over Texas.
- 11 points in win over Iowa State.
- 12 points against North Carolina.
- Career-high 22 points (8-18 FGs, 6-15 3Pt. FGs) in win over Michigan as a freshman.
- Suffered torn meniscus at Ohio State (Jan. 2, 2012) as a freshman. Missed a total of seven games.
- First career start came at Indiana, registering career-highs in points (19), field goals made (7), 3-pointers made and attempted (5-for-10), steals (3) and minutes (28).

Personal Bests

Points: 23 vs. Texas (12/28/12)
Rebounds: 4, 4x, last vs. Minnesota (2/9/12)
FGM: 9 vs. Texas (12/28/12)
FGA: 18 vs. Michigan (2/26/12)
3-pt FG: 6, twice, last vs. N'western (2/3/13)
3-pt FGA: 15 vs. Michigan (2/26/12)
FTM: 5, 2x, last vs. Drake (12/20/11)
FTA: 6, 2x, last vs. Drake (12/20/11)
Assists: 4 vs. Nebraska (3/2/12)
Steals: 3 at Indiana (2/5/12)
Blocks: 1, 3x, last vs. Ill. State (11/11/12)
Minutes: 34, twice, last vs. MTSU (11/14/12)

2012-13 Game-by-Game

#21 Dixon, Melissa

Opponent	Date	gs	min	Total		3-Pointers		Free throws		Rebounds				pf	a	t/o	blk	stl	pts	avg	
				fg	fga	pct	3fg	3fga	pct	ft	fta	pct	off								def
NORTHERN ILLINOIS	11/9/12	*	24	3-4	.750	2-3	.667	0-0	.000	0	2	2	2.0	2	2	1	0	1	8	8.0	
ILLINOIS STATE	11/11/12	*	24	2-3	.667	2-3	.667	2-2	1.000	0	0	0	1.0	4	2	1	1	0	8	8.0	
MIDDLE TENNESSEE	11/14/12	*	34	2-9	.222	2-7	.286	0-1	.000	0	1	1	1.0	2	1	1	0	2	6	7.3	
NORTH CAROLINA	11/18/12		20	5-11	.455	2-8	.250	0-0	.000	0	1	1	1.0	4	0	2	0	0	12	8.5	
ROBERT MORRIS	11/20/12		17	2-8	.250	2-7	.286	0-0	.000	0	2	2	1.2	2	0	3	0	0	6	8.0	
at FIU	11/23/12		19	3-11	.273	2-7	.286	0-0	.000	0	2	2	1.3	2	0	0	0	0	8	8.0	
vs WVU	11/25/12		17	0-2	.000	0-1	.000	0-0	.000	0	0	0	1.1	2	0	1	0	0	0	6.9	
at Florida State	11/28/12		14	1-5	.200	0-3	.000	1-1	1.000	0	0	0	1.0	0	1	0	0	1	3	6.4	
UNI	12/1/12		16	2-4	.500	2-2	1.000	0-0	.000	1	1	2	1.1	2	1	0	0	0	6	6.3	
IOWA STATE	12/6/12		19	4-8	.500	2-5	.400	1-3	.333	0	2	2	1.2	1	1	1	0	1	11	6.8	
at Drake	12/16/12		6	0-3	.000	0-3	.000	0-0	.000	0	0	0	1.1	0	1	0	0	0	0	6.2	
MISSOURI STATE	12/19/12		23	4-11	.364	2-8	.250	2-2	1.000	0	2	2	1.2	1	2	1	0	1	12	6.7	
vs Texas	12/28/12		25	9-15	.600	5-10	.500	0-0	.000	0	3	3	1.3	1	2	0	0	0	23	7.9	
at San Diego	12/30/12		17	3-7	.429	2-3	.667	0-0	.000	0	0	0	1.2	1	0	2	0	1	8	7.9	
OHIO STATE	1/3/13		15	1-6	.167	1-2	.500	0-0	.000	0	1	1	1.2	2	0	1	0	1	3	7.6	
MICHIGAN	1/6/13		25	6-14	.429	5-9	.556	0-0	.000	3	0	3	1.3	2	0	2	0	0	17	8.2	
at Wisconsin	01/10/13		19	2-6	.333	2-5	.400	2-2	1.000	0	3	3	1.4	2	2	2	0	0	8	8.2	
at Michigan State	01/17/13		22	2-7	.286	1-3	.333	2-2	1.000	3	0	3	1.5	1	0	1	0	0	7	8.1	
PURDUE	01/20/13		20	6-10	.600	3-6	.500	0-0	.000	0	0	0	1.4	1	0	1	0	1	15	8.5	
WISCONSIN	1/24/13		26	3-6	.500	2-4	.500	2-2	1.000	0	0	0	1.4	2	0	1	0	1	10	8.6	
at Michigan	01/27/13		22	2-5	.400	1-3	.333	0-0	.000	0	2	2	1.4	3	1	1	0	0	5	8.4	
at Illinois	01/31/13		24	4-9	.444	3-6	.500	0-0	.000	0	2	2	1.4	2	1	3	0	1	11	8.5	
NORTHWESTERN	2/03/13		22	7-10	.700	6-9	.667	1-2	.500	0	2	2	1.4	2	1	0	0	0	21	9.0	
Totals			3	470	73-174	.420	49-117	.419	13-17	.765	7	26	33	1.4	41	18	25	1	11	208	9.0

Games played: 23
 Minutes/game: 20.4
 Points/game: 9.0
 FG Pct: 42.0
 3FG Pct: 41.9
 FT Pct: 76.5

Rebounds/game: 1.4
 Assists/game: 0.8
 Turnovers/game: 1.1
 Assist/turnover ratio: 0.7
 Steals/game: 0.5
 Blocks/game: 0.0

CAREER STATISTICS

YEAR	G/GS	FG-A	PCT	3-PT	PCT	FT-A	PCT	O-D-REB	AVG	PF-FO	AS	TO	BK	ST	PTS	AVG
Fresh.	24/8	50-141	.355	35-98	.357	27-33	.818	17-25-42	1.8	47-1	18	28	2	15	162	6.8
Soph.	23/3	73-174	.420	49-117	.419	13-17	.765	7-26-33	1.4	41-0	18	25	1	11	208	9.0
TOTALS	47/11	123-315	.390	84-215	.391	40-50	.800	24-51-75	1.6	88-1	36	53	3	26	370	7.9





University of Iowa Women's Basketball

Updated Iowa Player Bio

Samantha Logic



22

Guard, 5-9, Sophomore
Racine, Wis.
Racine J.I. Case HS

- 14th in career assists at Iowa (293).
- Recorded 11 career double-doubles, including one triple-double. Eight double-doubles are points/rebounds, one is points/assists and one is rebounds/assists.
- Ranks second in Iowa history with six double digit assist performances. Cara Consuegra holds the record with nine.
- Third double-double of the season with 11 points, 12 rebounds in loss to Northwestern.
- Recorded 10 assists in win over Purdue.
- Second double-double of the season with 12 points, 10 rebounds and nine assists in win at Wisconsin.
- 17 points, six rebounds, eight assists and three steals in win over Ohio State.
- Double-double with 15 rebounds and school record 14 assists in win over Texas.
- 13 points, five rebounds and seven assists in win at Drake.
- 15 points, four rebounds and three assists in win over Northern Iowa.
- 14 points, seven rebounds, seven assists and three steals at Florida State.
- Nine points, seven rebounds and seven assists in win over West Virginia.
- 12 points, six rebounds, six assists and four steals against North Carolina.
- Tied school record with 12 assists in win over Middle Tennessee.
- Third team Freshman All-American by Full Court.
- Unanimous selection for Big Ten All-Freshman Team.

2012-13 Game-by-Game

#22 Logic, Samantha

Opponent	Date	gs	min	Total		3-Pointers		Free throws		Rebounds				pf	a	t/o	blk	stl	pts	avg	
				fg-fga	pct	3fg-fga	pct	ft-fa	pct	off	def	tot	avg								
NORTHERN ILLINOIS	11/9/12	*	25	5-8	.625	0-0	.000	0-0	.000	0	3	3	3.0	1	2	2	0	2	10	10.0	
ILLINOIS STATE	11/11/12	*	24	1-6	.167	0-1	.000	4-4	1.000	3	2	5	4.0	2	4	6	1	2	6	8.0	
MIDDLE TENNESSEE	11/14/12	*	40	0-6	.000	0-2	.000	0-1	.000	1	2	3	3.7	2	12	6	1	2	0	5.3	
NORTH CAROLINA	11/18/12	*	31	6-10	.600	0-1	.000	0-0	.000	3	3	6	4.3	2	6	7	0	4	12	7.0	
ROBERT MORRIS	11/20/12	*	28	2-7	.286	0-2	.000	0-0	.000	3	3	6	4.6	1	9	2	0	3	4	6.4	
at FIU	11/23/12	*	32	3-6	.500	1-1	1.000	0-0	.000	3	2	5	4.7	3	7	4	0	1	7	6.5	
vs WVU	11/25/12	*	34	2-6	.333	0-0	.000	5-6	.833	2	5	7	5.0	5	7	9	0	3	9	6.9	
at Florida State	11/28/12	*	36	7-11	.636	0-1	.000	0-0	.000	2	5	7	5.3	4	7	10	0	3	14	7.8	
UNI	12/1/12	*	33	7-9	.778	0-1	.000	1-1	1.000	1	3	4	5.1	3	3	1	1	1	15	8.6	
IOWA STATE	12/6/12	*	28	1-7	.143	1-3	.333	3-6	.500	4	5	9	5.5	3	4	1	1	0	6	8.3	
at Drake	12/16/12	*	35	5-9	.556	1-1	1.000	2-2	1.000	3	2	5	5.5	4	7	3	2	1	13	8.7	
MISSOURI STATE	12/19/12	*	27	3-7	.429	0-2	.000	1-3	.333	2	4	6	5.5	1	4	3	1	3	7	8.6	
vs Texas	12/28/12	*	31	1-3	.333	0-1	.000	0-0	.000	5	10	15	6.2	3	14	3	0	2	2	8.1	
at San Diego	12/30/12	*	36	2-2	1.000	1-1	1.000	2-4	.500	1	2	3	6.0	3	10	6	0	2	7	8.0	
OHIO STATE	1/3/13	*	40	5-7	.714	0-0	.000	7-10	.700	1	5	6	6.0	1	8	5	0	3	17	8.6	
MICHIGAN	1/6/13	*	38	6-13	.462	2-4	.500	2-2	1.000	5	4	9	6.2	3	9	3	1	3	16	9.1	
at Wisconsin	01/10/13	*	38	4-11	.364	2-2	1.000	2-3	.667	3	7	10	6.4	1	9	3	0	1	12	9.2	
at Michigan State	01/17/13	*	35	3-7	.429	0-0	.000	1-2	.500	1	4	5	6.3	3	4	5	0	1	7	9.1	
PURDUE	01/20/13	*	32	2-4	.500	0-1	.000	0-0	.000	2	1	3	6.2	3	10	7	0	1	4	8.8	
WISCONSIN	1/24/13	*	34	3-7	.429	0-2	.000	0-0	.000	2	7	9	6.3	0	5	5	0	1	6	8.7	
at Michigan	01/27/13	*	34	3-5	.600	0-1	.000	4-5	.800	2	4	6	6.3	4	8	4	0	2	10	8.8	
at Illinois	01/31/13	*	36	6-10	.600	1-2	.500	0-0	.000	3	7	10	6.5	5	6	8	1	2	13	9.0	
NORTHWESTERN	2/03/13	*	37	4-10	.400	1-1	1.000	2-5	.400	6	6	12	6.7	3	2	2	0	3	11	9.0	
Totals			23	764	81-171	.474	10-30	.333	36-54	.667	58	96	154	6.7	60	157	105	9	46	208	9.0

Games played: 23
Minutes/game: 33.2
Points/game: 9.0
FG Pct: 47.4
3FG Pct: 33.3
FT Pct: 66.7

Rebounds/game: 6.7
Assists/game: 6.8
Turnovers/game: 4.6
Assist/turnover ratio: 1.5
Steals/game: 2.0
Blocks/game: 0.4

Personal Bests

- Points:** 20, 2x, last vs. Minn. (2/9/12)
- Rebounds:** 18 at Michigan (2/16/12)
- FGM:** 7, 6x, last vs. UNI (12/1/12)
- FGA:** 18 vs. Nebraska (3/2/12)
- 3-pt FG:** 3 vs. Drake (12/20/11)
- 3-pt FGA:** 4, 4x, last vs. Michigan (1/6/13)
- FTM:** 8 at Northwestern (2/23/12)
- FTA:** 10, twice, last vs. Ohio State (1/3/13)
- Assists:** 14 vs. Texas (12/28/12)
- Steals:** 4 vs. North Carolina (11/18/12)
- Blocks:** 2, twice, last at Drake (12/16/12)

CAREER STATISTICS

YEAR	G/GS	FG-A	PCT	3-PT	PCT	FT-A	PCT	O-D-REB	AVG	PF-FO	AS	TO	BK	ST	PTS	AVG
Fresh.	31/31	109-261	.418	15-49	.306	59-79	.747	87-133-220	7.1	73-1	136	113	7	47	292	9.4
Soph.	23/23	81-171	.474	10-30	.333	36-54	.667	58-96-154	6.7	60-2	157	105	9	46	208	9.0
TOTALS	54/54	190-432	.440	25-79	.316	95-133	.714	145-229-374	6.9	133-3	293	128	16	93	500	9.3





University of Iowa Women's Basketball

Updated Iowa Player Bio

Theairra Taylor



23

Guard, 5-11, Junior
St. Paul, Minn.
Central HS

- Recorded 10 rebounds in win over Purdue.
- Career-high 19 points in win over Ohio State. Scored Iowa's first six points in overtime.
- Career-high seven assists in win at Drake.
- 11 points and nine rebounds in win over Iowa State. Named CollegeSportsMadness.com's Big Ten Player of the Week for her performance.
- First career double-double with 10 points and 11 rebounds, also tied career high with five assists, in win over Illinois State.
- Season-high 14 points, along with six rebounds and two assists in 26 minutes of play vs. California as a sophomore.
- 10 points and tied a career-high with three steals in win over Michigan State as a sophomore.
- Suffered third ACL in a 20-month span during preseason workouts in 2010. Missed a total of 53 games with ACL injuries from 2009 through 2011.

2012-13 Game-by-Game

#23 Taylor, Theairra

Opponent	Date	gs	min	Total		3-Pointers		Free throws		Rebounds				pf	a	to	blk	stl	pts	avg	
				fg	fga	3fg	3fga	ft	fta	off	def	tot	avg								
NORTHERN ILLINOIS	11/9/12	*	19	2-4	500	1-1	1.000	0-0	.000	0	1	1	1.0	1	1	1	0	5	5.0		
ILLINOIS STATE	11/11/12	*	21	3-6	500	1-1	1.000	3-4	.750	0	11	11	6.0	1	5	2	0	2	10	7.5	
MIDDLE TENNESSEE	11/14/12	*	23	3-8	.375	1-4	.250	0-2	.000	1	3	4	5.3	2	2	4	2	1	7	7.3	
NORTH CAROLINA	11/18/12	*	25	1-6	.167	0-3	.000	1-3	.333	1	3	4	5.0	2	1	2	0	0	3	6.3	
ROBERT MORRIS	11/20/12	*	20	3-7	.429	1-4	.250	0-0	.000	0	4	4	4.8	0	0	3	0	1	7	6.4	
at FIU	11/23/12	*	19	2-5	.400	0-1	.000	2-2	1.000	0	3	3	4.5	2	2	2	0	0	6	6.3	
vs WVU	11/25/12	*	23	1-3	.333	0-1	.000	4-5	.800	1	6	7	4.9	4	0	2	1	0	6	6.3	
at Florida State	11/28/12	*	33	4-11	.364	0-2	.000	1-2	.500	2	4	6	5.0	2	1	4	2	0	9	6.6	
UNI	12/1/12	*	28	3-6	.500	0-2	.000	0-0	.000	1	4	5	5.0	0	2	0	0	0	6	6.6	
IOWA STATE	12/6/12	*	27	4-12	.333	1-3	.333	2-4	.500	4	5	9	5.4	0	3	5	1	2	11	7.0	
at Drake	12/16/12	*	30	2-5	.400	2-3	.667	0-0	.000	0	3	3	5.2	1	6	2	0	0	6	6.9	
MISSOURI STATE	12/19/12	*	19	3-9	.333	1-3	.333	2-2	1.000	3	3	6	5.3	3	7	3	1	1	9	7.1	
vs Texas	12/28/12	*	25	2-9	.222	0-1	.000	0-0	.000	0	1	1	4.9	2	2	1	0	3	4	6.8	
at San Diego	12/30/12	*	33	3-7	.429	1-2	.500	2-3	.667	0	4	4	4.9	3	4	2	1	0	9	7.0	
OHIO STATE	1/3/13	*	36	8-12	.667	1-1	1.000	2-2	1.000	1	3	4	4.8	2	0	2	0	2	19	7.8	
MICHIGAN	1/6/13	*	32	5-9	.556	1-3	.333	3-4	.750	0	3	3	4.7	3	2	3	1	2	14	8.2	
at Wisconsin	01/10/13	*	27	2-5	.400	0-1	.000	0-0	.000	3	5	8	4.9	2	5	4	0	3	4	7.9	
at Michigan State	01/17/13	*	23	3-7	.429	0-3	.000	0-0	.000	1	1	2	4.7	2	1	3	0	0	6	7.8	
PURDUE	01/20/13	*	20	3-8	.375	3-3	1.000	0-0	.000	2	8	10	5.0	1	1	0	1	1	9	7.9	
WISCONSIN	1/24/13	*	24	4-11	.364	0-1	.000	2-3	.667	0	1	1	4.8	0	2	1	2	2	10	8.0	
at Michigan	01/27/13	*	17	2-4	.500	1-3	.333	0-0	.000	1	1	2	4.7	2	1	1	0	0	5	7.9	
at Illinois	01/31/13	*	24	4-9	.444	1-2	.500	0-0	.000	0	0	0	4.5	0	1	2	1	2	9	7.9	
NORTHWESTERN	2/03/13	*	22	1-8	.125	0-2	.000	0-0	.000	0	1	1	4.3	1	2	1	1	2	2	7.7	
Totals			23	570	68-171	.398	16-50	.320	24-36	.667	21	78	99	4.3	36	51	50	15	24	176	7.7

Games played: 23
Minutes/game: 24.8
Points/game: 7.7
FG Pct: 39.8
3FG Pct: 32.0
FT Pct: 66.7

Rebounds/game: 4.3
Assists/game: 2.2
Turnovers/game: 2.2
Assist/turnover ratio: 1.0
Steals/game: 1.0
Blocks/game: 0.7

Personal Bests

- Points:** 19 vs. Ohio State (1/3/13)
- Rebounds:** 11 vs. Ill. State (11/11/12)
- FGM:** 8 vs. Ohio State (1/3/13)
- FGA:** 15 vs. W&M (11/24/09)
- 3-pt FG:** 3 vs. Purdue (1/20/13)
- 3-pt FGA:** 5 vs. Boston College (12/2/09)
- FTM:** 4, 5x, last vs. WVU (11/25/12)
- FTA:** 5 vs. West Virginia (11/25/12)
- Assists:** 7 vs. Missouri State (12/19/12)
- Steals:** 4 at Northwestern (2/23/12)
- Blocks:** 4, 3x, last vs. Michigan (12/6/09)
- Minutes:** 36, twice, last vs. Ohio State (1/3/13)

CAREER STATISTICS

YEAR	G/GS	FG-A	PCT	3-PT	PCT	FT-A	PCT	O-D-REB	AVG	PF-FO	AS	TO	BK	ST	PTS	AVG
Fresh.	10/8	29-86	.337	9-26	.346	14-18	.778	15-34-49	4.9	22-1	24	29	10	13	81	8.1
Soph.	31/0	37-97	.381	2-18	.111	19-29	.655	35-57-92	3.0	53-1	30	47	11	18	95	3.1
Junior	23/23	68-171	.398	16-50	.320	24-36	.667	21-78-99	4.3	36-0	51	50	15	24	176	7.7
TOTALS	64/31	134-354	.379	27-94	.287	57-83	.687	71-169-240	3.8	111-2	105	126	36	55	352	5.5





University of Iowa Women's Basketball

Updated Iowa Player Bio

Jaime Printy



24

Guard, 5-11, Senior
Marion, Iowa
Linn-Mar HS

- Ranks second in career 3-pointers made (239), sixth in career scoring (1,733) and seventh in career assists (379).
- Senior CLASS Award nominee.
- Became sixth player in Iowa history to score 1,700 career points in win at Michigan.
- Big Ten Player of the Week (Jan. 30).
- Scored 29 points, including 14-straight in the final 5:25, to give Iowa the win over Wisconsin.
- Career-high 33 points with a school record seven 3-pointers in win at San Diego.
- 21 points in win over Texas.
- 19 points (17-of-17 FTs) and seven rebounds in win over West Virginia.
- 12 points, five rebounds and four assists vs. North Carolina, returning to starting lineup for first time since ACL injury as a junior.
- 26 points, including game-tying 3-pointer with 1.6 seconds left in regulation, along with five rebounds and six assists, in win over Middle Tennessee. Also tied school record for FT percentage (11-for-11).
- 11 points and three assists in season-opening win over NIU, recording first action since tearing ACL left knee in final 30 seconds of overtime at Wisconsin (Feb. 2, 2012).

2012-13 Game-by-Game

#24 Printy, Jaime

Opponent	Date	gs	min	Total		3-Pointers		Free throws		Rebounds			pf	a	to	blk	stl	pts	avg	
				fg-fga	pct	3fg-fga	pct	ft-fa	pct	off	def	tot								avg
NORTHERN ILLINOIS	11/9/12	16	3-4	.750	1-1	1.000	4-4	1.000	0	1	1	1.0	1	3	1	0	1	11	11.0	
ILLINOIS STATE	11/11/12	15	0-4	.000	0-3	.000	1-2	.500	0	2	2	1.5	0	1	2	0	0	1	6.0	
MIDDLE TENNESSEE	11/14/12	38	6-13	.462	3-7	.429	11-11	1.000	1	4	5	2.7	1	6	5	0	1	26	12.7	
NORTH CAROLINA	11/18/12	* 39	3-15	.200	3-12	.250	3-4	.750	0	5	5	3.3	4	4	8	0	1	12	12.5	
ROBERT MORRIS	11/20/12	* 31	2-4	.500	2-4	.500	2-2	1.000	1	5	6	3.8	0	5	2	0	1	8	11.6	
at FIU	11/23/12	* 34	5-12	.417	4-9	.444	1-1	1.000	2	3	5	4.0	2	4	3	0	0	15	12.2	
vs WVU	11/25/12	* 33	1-3	.333	0-2	.000	17-17	1.000	0	7	7	4.4	1	3	4	1	0	19	13.1	
at Florida State	11/28/12	* 33	5-7	.714	2-4	.500	1-2	.500	0	1	1	4.0	2	1	6	0	0	13	13.1	
UNI	12/1/12	* 30	2-7	.286	1-4	.250	4-4	1.000	0	3	3	3.9	1	5	3	0	0	9	12.7	
IOWA STATE	12/6/12	* 34	2-7	.286	0-3	.000	6-6	1.000	1	5	6	4.1	1	2	3	0	2	10	12.4	
at Drake	12/16/12	* 31	3-9	.333	0-3	.000	3-3	1.000	2	2	4	4.1	1	7	1	0	0	9	12.1	
MISSOURI STATE	12/19/12	* 21	4-11	.364	3-8	.375	2-3	.667	1	1	2	3.9	0	6	2	0	0	13	12.2	
vs Texas	12/28/12	* 30	7-14	.500	2-7	.286	5-7	.714	0	3	3	3.8	1	1	1	0	0	21	12.8	
at San Diego	12/30/12	* 30	10-20	.500	7-12	.583	6-6	1.000	0	2	2	3.7	1	4	3	0	2	33	14.3	
OHIO STATE	1/3/13	* 39	5-8	.625	0-1	.000	4-4	1.000	0	3	3	3.7	1	3	4	0	0	14	14.3	
MICHIGAN	1/6/13	* 32	2-14	.143	1-9	.111	1-1	1.000	2	3	5	3.8	0	3	2	0	1	6	13.8	
at Wisconsin	01/10/13	* 35	3-10	.300	2-8	.250	2-2	1.000	0	6	6	3.9	0	1	1	0	1	10	13.5	
at Michigan State	01/17/13	* 34	3-16	.188	1-8	.125	4-4	1.000	1	3	4	3.9	0	3	0	0	1	11	13.4	
PURDUE	01/20/13	* 38	4-11	.364	3-5	.600	4-4	1.000	2	7	9	4.2	1	1	0	0	0	15	13.5	
WISCONSIN	1/24/13	* 35	8-10	.800	3-3	1.000	10-11	.909	1	7	8	4.4	1	4	1	0	0	29	14.3	
at Michigan	01/27/13	* 33	4-12	.333	2-9	.222	4-4	1.000	2	3	5	4.4	2	2	4	1	1	14	14.2	
at Illinois	01/31/13	* 34	5-14	.357	2-8	.250	1-2	.500	0	4	4	4.4	3	3	7	0	1	13	14.2	
NORTHWESTERN	2/03/13	* 33	2-6	.333	0-2	.000	8-8	1.000	0	4	4	4.3	0	3	2	0	3	12	14.1	
Totals		20	728	89-231	.385	42-132	.318	104-112	.929	16	84	100	4.3	24	75	65	2	16	324	14.1

Games played: 23
Minutes/game: 31.7
Points/game: 14.1
FG Pct: 38.5
3FG Pct: 31.8
FT Pct: 92.9

Rebounds/game: 4.3
Assists/game: 3.3
Turnovers/game: 2.8
Assist/turnover ratio: 1.2
Steals/game: 0.7
Blocks/game: 0.1

Personal Bests

- Points:** 33 at San Diego (12/30/12)
- Rebounds:** 9, twice, last vs. Purdue (1/20/13)
- FGM:** 11 at Indiana (2/11/10)
- FGA:** 25 vs. Michigan (1/2/11)
- 3-pt FG:** 7 at San Diego (12/30/12)
- 3-pt FGA:** 15 vs. Michigan (1/2/11)
- FTM:** 17 vs. West Virginia (11/25/12)
- FTA:** 17 vs. West Virginia (11/25/12)
- Assists:** 9 vs. Iowa State (12/9/10)
- Steals:** 5 at Bradley (12/17/11)
- Blocks:** 1, 14x, last at Michigan (1/27/13)
- Minutes:** 40 vs. Illinois (1/5/12)

CAREER STATISTICS

YEAR	G/GS	FG-A	PCT	3-PT	PCT	FT-A	PCT	O-D-REB	AVG	PF-FO	AS	TO	BK	ST	PTS	AVG
Fresh.	34/34	168-406	.414	82-212	.387	83-94	.883	35-101-136	4.0	77-1	99	82	4	30	501	14.7
Soph.	31/31	168-391	.430	70-183	.383	114-132	.864	21-109-130	4.2	60-0	109	91	7	34	520	16.8
Junior	23/23	116-329	.353	45-155	.290	111-125	.888	32-70-102	4.4	45-1	96	70	3	46	388	16.9
Senior	23/20	89-231	.385	42-132	.318	104-112	.929	16-84-100	4.3	24-0	75	65	2	16	324	14.1
TOTALS	111/108	541-1357	.399	239-682	.350	412-463	.890	104-364-468	4.2	206-2	379	308	16	126	1733	15.6





University of Iowa Women's Basketball

Updated Iowa Player Bio

Kali Peschel



25

Guard, 6-1, Freshman
Sauk Centre, Minn.
Sauk Centre HS

- Five points in win at Drake.
- Recorded five rebounds in collegiate debut vs. NIU.
- Miss Minnesota Basketball finalist.
- Two-time all-state selection.
- Started for her high school team as an eighth grader.
- Only played 11 games as a senior after suffering ACL injury between her junior and senior seasons.

Personal Bests

Points: 5 at Drake (12/16/12)
Rebounds: 5, twice, last vs. Missouri State (12/19/12)
FGM: 2 at Drake (12/16/12)
FGA: 6 vs. Northern Illinois (11/9/12)
3-pt FG: 1 at Drake (12/16/12)
3-pt FGA: 2, 3x, last vs. Missouri State (12/19/12)
FTM: 2 vs. Missouri State (12/19/12)
FTA: 4 vs. Missouri State (12/19/12)
Assists: 2, twice, last vs. Texas (12/28/12)
Steals: 1, 5x, last vs. Northwestern (2/3/13)
Blocks: 1, 4x, last vs. Northwestern (2/3/13)
Minutes: 20 vs. Northwestern (2/3/13)

2012-13 Game-by-Game

#25 Peschel, Kali

Opponent	Date	gs	min	Total		3-Pointers		Free throws		Rebounds			pf	a	t/o	blk	stl	pts	avg	
				fg-fga	pct	3fg-fga	pct	ft-fa	pct	off	def	tot								avg
NORTHERN ILLINOIS	11/9/12	18	0-6	.000	0-2	.000	1-2	.500	3	2	5	5.0	3	1	0	0	0	1	1.0	
ILLINOIS STATE	11/11/12	16	0-2	.000	0-1	.000	0-0	.000	0	3	3	4.0	1	0	2	0	0	0	0.5	
MIDDLE TENNESSEE	11/14/12	2	0-0	.000	0-0	.000	0-0	.000	0	1	1	3.0	0	0	0	0	0	0	0.3	
ROBERT MORRIS	11/20/12	5	0-0	.000	0-0	.000	0-0	.000	0	0	0	2.3	2	0	0	0	1	0	0.3	
at FIU	11/23/12	2	0-1	.000	0-0	.000	0-0	.000	2	0	2	2.2	0	0	0	0	0	0	0.2	
at Florida State	11/28/12	3	0-1	.000	0-0	.000	0-0	.000	2	0	2	2.2	0	0	0	0	0	0	0.2	
UNI	12/1/12	18	1-4	.250	0-2	.000	1-2	.500	1	1	2	2.1	3	0	2	1	1	3	0.6	
IOWA STATE	12/6/12	6	0-0	.000	0-0	.000	0-0	.000	0	0	0	1.9	2	0	0	0	0	0	0.5	
at Drake	12/16/12	16	2-3	.667	1-1	1.000	0-0	.000	0	0	0	1.7	4	2	1	1	1	5	1.0	
MISSOURI STATE	12/19/12	19	0-4	.000	0-2	.000	2-4	.500	3	2	5	2.0	4	0	0	0	1	2	1.1	
vs Texas	12/28/12	9	0-0	.000	0-0	.000	0-0	.000	0	0	0	1.8	4	2	0	0	0	0	1.0	
at San Diego	12/30/12	12	0-0	.000	0-0	.000	0-0	.000	1	0	1	1.8	0	0	0	0	0	0	0.9	
OHIO STATE	1/3/13	1	0-1	.000	0-0	.000	0-0	.000	0	0	0	1.6	2	0	1	0	0	0	0.8	
MICHIGAN	1/6/13	3	0-0	.000	0-0	.000	1-2	.500	1	0	1	1.6	0	0	0	0	0	1	0.9	
at Wisconsin	01/10/13	5	0-0	.000	0-0	.000	0-0	.000	0	0	0	1.5	0	0	0	0	0	0	0.8	
at Michigan State	01/17/13	4	0-0	.000	0-0	.000	0-0	.000	0	0	0	1.4	0	0	0	0	0	0	0.8	
PURDUE	01/20/13	7	0-0	.000	0-0	.000	0-0	.000	1	0	1	1.4	1	1	0	1	0	0	0.7	
WISCONSIN	1/24/13	5	0-1	.000	0-1	.000	0-0	.000	0	1	1	1.3	1	0	1	0	0	0	0.7	
at Michigan	01/27/13	9	0-1	.000	0-1	.000	0-0	.000	0	0	0	1.3	0	0	0	0	0	0	0.6	
at Illinois	01/31/13	3	0-0	.000	0-0	.000	0-0	.000	0	0	0	1.2	0	0	0	0	0	0	0.6	
NORTHWESTERN	2/03/13	20	1-1	1.000	0-0	.000	0-0	.000	3	1	4	1.3	0	1	1	1	1	2	0.7	
Totals		0	183	4-25	.160	1-10	.100	5-10	.500	17	11	28	1.3	27	7	8	4	5	14	0.7

Games played: 21
 Minutes/game: 8.7
 Points/game: 0.7
 FG Pct: 16.0
 3FG Pct: 10.0
 FT Pct: 50.0

Rebounds/game: 1.3
 Assists/game: 0.3
 Turnovers/game: 0.4
 Assist/turnover ratio: 0.9
 Steals/game: 0.2
 Blocks/game: 0.2

CAREER STATISTICS

YEAR	G/GS	FG-A	PCT	3-PT	PCT	FT-A	PCT	O-D-REB	AVG	PF-FO	AS	TO	BK	ST	PTS	AVG
Fresh.	21/0	4-25	.160	1-10	.100	5-10	.500	17-11-28	1.3	27-0	7	8	4	5	14	0.7





University of Iowa Women's Basketball

Updated Iowa Player Bio

Kathryn Reynolds



33

Guard, 5-7, Sophomore
Cincinnati, Ohio
Mount Notre Dame HS

- Will miss entire 2012-13 season after suffering an ACL injury in April during offseason workouts.
- Five assists in win over Western Illinois as a freshman.
- Played 12 minutes in first career game, a win over Harvard.

Personal Bests

Points: 4 vs. Drake (12/20/11)
Rebounds: 2 vs. Texas A&M (11/26/11)
FGM: 2 vs. Drake (12/20/11)
FGA: 3, 2x, last vs. Drake (12/20/11)
3-pt FG: ---
3-pt FGA: 1, 7x, last vs. Michigan State (2/12/12)
FTM: 2 vs. Western Illinois (12/9/11)
FTA: 2, 3x, last vs. W. Illinois (12/9/11)
Assists: 5 vs. W. Illinois (12/9/11)
Steals: ---
Blocks: ---
Minutes: 20 vs. W. Illinois (12/9/11)

2012-13 Game-by-Game

CAREER STATISTICS

YEAR	G/GS	FG-A	PCT	3-PT	PCT	FT-A	PCT	O-D-REB	AVG	PF-FO	AS	TO	BK	ST	PTS	AVG
Fresh.	21/0	5-16	.313	0-7	.000	3-4	.750	1-8-9	0.4	6-0	15	11	0	0	13	0.7
Soph.																
TOTALS	21/0	5-16	.313	0-7	.000	3-4	.750	1-8-9	0.4	6-0	15	11	0	0	13	0.7





University of Iowa Women's Basketball

Updated Iowa Player Bio

Nicole Smith



45

Center, 6-4, Freshman
Rockton, Ill.
Hononegah HS

- Tallied first career points against Missouri State, finishing with four points.
- Recorded one rebound in collegiate debut vs. NIU.
- Three-time all-state selection.
- Three-time all-conference pick.
- Recorded triple-double in high school with 20 points (10-for-10) 10 rebounds and 10 blocks.
- Played in 26 games as a senior before suffering ACL injury

Personal Bests

Points: 4 vs. Missouri State (12/19/12)
Rebounds: 1 vs. NIU (11/9/12)
FGM: 1, twice, last vs. Texas (12/28/12)
FGA: 2 vs. NIU (11/9/12)
3-pt FG: ---
3-pt FGA: ---
FTM: 2 vs. Missouri State (12/19/12)
FTA: 2 vs. Missouri State (12/19/12)
Assists: ---
Steals: ---
Blocks: ---
Minutes: 4 vs. Missouri State (12/19/12)

2012-13 Game-by-Game

#45 Smith, Nicole

Opponent	Date	gs	min	Total		3-Pointers		Free throws		Rebounds			pf	a	t/o	blk	stl	pts	avg
				fg-fga	pct	3fg-fga	pct	ft-fa	pct	off	def	tot							
NORTHERN ILLINOIS	11/9/12	3	0-2	.000	0-0	.000	0-0	.000	0	1	1	1.0	0	0	0	0	0	0	0.0
ILLINOIS STATE	11/11/12	2	0-0	.000	0-0	.000	0-0	.000	0	0	0	0.5	0	0	0	0	0	0	0.0
UNI	12/1/12	1	0-0	.000	0-0	.000	0-0	.000	0	0	0	0.3	0	0	0	0	0	0	0.0
MISSOURI STATE	12/19/12	4	1-1	1.000	0-0	.000	2-2	1.000	0	0	0	0.3	1	0	0	0	0	4	1.0
vs Texas	12/28/12	1	1-1	1.000	0-0	.000	0-0	.000	0	0	0	0.2	0	0	1	0	0	2	1.2
at Wisconsin	01/10/13	1	0-0	.000	0-0	.000	0-0	.000	0	0	0	0.2	1	0	0	0	0	0	1.0
Totals		0	12	2-4	.500	0-0	.000	2-2	1.000	0	1	1	0.2	2	0	1	0	6	1.0

Games played: 6
 Minutes/game: 2.0
 Points/game: 1.0
 FG Pct: 50.0
 FT Pct: 100.0

Rebounds/game: 0.2
 Turnovers/game: 0.2

CAREER STATISTICS

YEAR	G/GS	FG-A	PCT	3-PT	PCT	FT-A	PCT	O-D-REB	AVG	PF-FO	AS	TO	BK	ST	PTS	AVG
Fresh.	6/0	2-4	.500	0-0	.000	2-2	1.000	0-1-1	0.2	2-0	0	1	0	0	6	1.0





University of Iowa Women's Basketball

Updated Iowa Player Bio

Bethany Doolittle



51

Center, 6-4, Sophomore
Oakdale, Minn
Hill-Murray HS

- Career-high 19 points, including eight-straight points from 5:20-1:45 mark in the second half, to give Iowa the win at Michigan.
- 10 points and seven rebounds in win over Wisconsin.
- 10 points at Michigan State.
- Eight points, five rebounds and six blocks in win over Ohio State.
- 10 rebounds in win at San Diego.
- 10 points in win over Texas.
- First career double-double with 12 points and 12 rebounds in win over Missouri State. 12 rebounds were a career-high. Had double-double at halftime (10 pts, 10 reb).
- 10 points and nine rebounds at Florida State.
- Career-high 17 points, along with six rebounds, in win over West Virginia.
- Eight points, tied a career-high with nine rebounds and blocked five shots in win over Middle Tennessee.
- Career-high six blocks in season-opening win vs. NIU.

2012-13 Game-by-Game

#51 Doolittle, Bethany

Opponent	Date	gs	min	Total		3-Pointers		Free throws		Rebounds				pf	a	to	blk	stl	pts	avg	
				fg-fga	pct	3fg-fga	pct	ft-fa	pct	off	def	tot	avg								
NORTHERN ILLINOIS	11/9/12	*	21	1-8	.125	0-0	.000	0-0	.000	0	0	0	0	0	0	0	0	0	2	0	
ILLINOIS STATE	11/11/12	*	25	4-10	.400	0-1	.000	0-0	.000	0	5	5	2.5	1	0	2	2	1	8	5.0	
MIDDLE TENNESSEE	11/14/12	*	30	4-7	.571	0-0	.000	0-0	.000	4	5	9	4.7	3	0	4	5	0	8	6.0	
NORTH CAROLINA	11/18/12	*	32	1-7	.143	0-0	.000	0-0	.000	2	5	7	5.3	3	1	2	2	2	2	5.0	
ROBERT MORRIS	11/20/12	*	20	2-9	.222	0-0	.000	0-0	.000	1	4	5	5.2	2	1	1	1	0	4	4.8	
at FIU	11/23/12	*	22	3-5	.600	0-0	.000	0-0	.000	0	3	3	4.8	3	0	2	0	0	6	5.0	
vs WVU	11/25/12	*	31	7-12	.583	0-0	.000	3-3	1.000	1	5	6	5.0	4	0	2	1	0	17	6.7	
at Florida State	11/28/12	*	34	5-9	.556	0-0	.000	0-0	.000	4	5	9	5.5	3	1	2	1	1	10	7.1	
UNI	12/1/12	*	26	4-11	.364	0-0	.000	0-0	.000	1	6	7	5.7	2	0	1	0	1	8	7.2	
IOWA STATE	12/6/12	*	36	1-8	.125	0-1	.000	0-0	.000	0	4	4	5.5	3	0	1	0	1	2	6.7	
at Drake	12/16/12	*	22	4-6	.667	0-0	.000	0-0	.000	1	3	4	5.4	5	0	0	2	1	8	6.8	
MISSOURI STATE	12/19/12	*	25	6-8	.750	0-0	.000	0-0	.000	3	9	12	5.9	3	1	0	2	1	12	7.3	
vs Texas	12/28/12	*	33	5-8	.625	0-0	.000	0-0	.000	1	4	5	5.8	3	1	1	0	2	10	7.5	
at San Diego	12/30/12	*	30	3-6	.500	0-0	.000	0-0	.000	1	9	10	6.1	3	0	2	4	1	6	7.4	
OHIO STATE	1/3/13	*	42	4-6	.667	0-0	.000	0-0	.000	2	3	5	6.1	1	2	2	6	3	8	7.4	
MICHIGAN	1/6/13	*	25	0-5	.000	0-0	.000	0-0	.000	0	1	1	5.8	4	1	1	0	0	0	6.9	
at Wisconsin	01/10/13	*	33	4-9	.444	0-0	.000	0-0	.000	1	3	4	5.6	2	0	2	0	0	8	7.0	
at Michigan State	01/17/13	*	36	5-8	.625	0-0	.000	0-0	.000	1	2	3	5.5	2	1	3	2	2	10	7.2	
PURDUE	01/20/13	*	32	3-12	.250	0-0	.000	2-4	.500	3	6	9	5.7	1	0	3	3	3	8	7.2	
WISCONSIN	1/24/13	*	32	4-7	.571	0-0	.000	2-2	1.000	2	5	7	5.8	3	0	2	3	0	10	7.4	
at Michigan	01/27/13	*	37	9-15	.600	0-0	.000	1-1	1.000	3	1	4	5.7	4	0	0	2	1	19	7.9	
at Illinois	01/31/13	*	37	2-7	.286	0-0	.000	0-0	.000	0	8	8	5.8	1	0	2	2	0	4	7.7	
NORTHWESTERN	2/03/13	*	31	2-12	.167	0-0	.000	0-0	.000	2	7	9	5.9	2	1	1	4	0	4	7.6	
Totals			23	692	83-195	.426	0-2	.000	8-10	.800	33	103	136	5.9	60	10	37	48	20	174	7.6

Games played: 23
Minutes/game: 30.1
Points/game: 7.6
FG Pct: 42.6
3FG Pct: 0.0
FT Pct: 80.0

Rebounds/game: 5.9
Assists/game: 0.4
Turnovers/game: 1.6
Assist/turnover ratio: 0.3
Steals/game: 0.9
Blocks/game: 2.1

Personal Bests

- Points:** 19 at Michigan (1/27/13)
- Rebounds:** 12 vs. Missouri State (12/19/12)
- FGM:** 9 at Michigan (1/27/13)
- FGA:** 15 at Michigan (1/27/13)
- 3-pt FG:** ---
- 3-pt FGA:** 1, 3x, last vs. Iowa State (12/6/12)
- FTM:** 4 vs. Michigan State (2/12/12)
- FTA:** 5 vs. Michigan State (2/12/12)
- Assists:** 2, twice, last vs. Ohio State (1/3/13)
- Steals:** 3, twice, last vs. Purdue (1/20/13)
- Blocks:** 6, twice, last vs. Ohio State (1/3/13)
- Minutes:** 42 vs. Ohio State (1/3/13)

CAREER STATISTICS

YEAR	G/GS	FG-A	PCT	3-PT	PCT	FT-A	PCT	O-D-REB	AVG	PF-FO	AS	TO	BK	ST	PTS	AVG
Fresh.	31/0	46-99	.465	0-1	.000	24-30	.800	13-44-57	1.8	51-0	6	19	19	9	116	3.7
Soph.	23/23	83-195	.426	0-2	.000	8-10	.800	33-103-136	5.9	60-1	10	37	48	20	174	7.6
TOTALS	54/23	129-294	.439	0-3	.000	32-40	.800	46-147-193	3.6	111-1	16	56	67	29	290	5.4





University of Iowa Women's Basketball

Updated Iowa Player Bio

Kayla Timmerman



54

Forward, 6-3, Freshman
Wayzata, Minn.
Wayzata HS

- Six points and eight rebounds (five of- fensive rebounds) in 13 minutes in win over Missouri State.
- Recorded one point and one rebound in collegiate debut vs. NIU.
- Miss Minnesota Basketball candidate.
- Athena Award nominee.
- Two-time all-state selection.
- Standout in track and field, winning conference championship in shot put and discus and participated in state meet in both events.

Personal Bests

Points: 6, twice, last at Illinois (1/31/13)
Rebounds: 8 vs. Missouri State (12/19/12)
FGM: 3 at Illinois (1/31/13)
FGA: 6 vs. Wisconsin (1/24/13)
3-pt FG: 1 vs. Ill. State (11/11/12)
3-pt FGA: 1 vs. Ill. State (11/11/12)
FTM: 2, twice, last vs. N'western (2/3/13)
FTA: 4 vs. Missouri State (12/19/12)
Assists: 1, 3x, last vs. N'western (2/3/13)
Steals: 1, twice, last vs. N'western (2/3/13)
Blocks: 2 vs. NIU (11/9/12)
Minutes: 16 vs. Purdue (1/20/13)

2012-13 Game-by-Game

#54 Timmerman, Kayla

Opponent	Date	gs	min	Total		3-Pointers		Free throws		Rebounds				pf	a	t/o	blk	stl	pts	avg
				fg-fga	pct	3fg-fga	pct	ft-fa	pct	off	def	tot	avg							
NORTHERN ILLINOIS	11/9/12	10	0-2	.000	0-0	.000	1-2	.500	0	1	1	1.0	0	0	0	2	0	1	1.0	
ILLINOIS STATE	11/11/12	5	2-2	1.000	1-1	1.000	0-2	.000	0	0	0	0.5	0	1	0	1	0	5	3.0	
MIDDLE TENNESSEE	11/14/12	3	0-0	.000	0-0	.000	0-0	.000	0	0	0	0.3	0	0	0	0	0	0	2.0	
NORTH CAROLINA	11/18/12	1	0-0	.000	0-0	.000	0-0	.000	0	0	0	0.3	0	0	0	0	0	0	1.5	
ROBERT MORRIS	11/20/12	7	1-4	.250	0-0	.000	0-0	.000	1	2	3	0.8	1	0	2	0	0	2	1.6	
at FIU	11/23/12	2	0-0	.000	0-0	.000	0-0	.000	0	0	0	0.7	1	0	1	0	0	0	1.3	
vs WVU	11/25/12	4	0-0	.000	0-0	.000	0-0	.000	0	1	1	0.7	1	0	1	0	0	0	1.1	
UNI	12/1/12	1	1-1	1.000	0-0	.000	0-0	.000	0	1	1	0.8	1	0	0	0	0	2	1.3	
MISSOURI STATE	12/19/12	13	2-4	.500	0-1	.000	2-4	.500	5	3	8	1.6	1	0	0	1	0	6	1.8	
vs Texas	12/28/12	2	1-1	1.000	0-0	.000	0-0	.000	0	0	0	1.4	1	0	0	0	0	2	1.8	
MICHIGAN	1/6/13	1	0-0	.000	0-0	.000	0-0	.000	0	0	0	1.3	0	0	0	0	0	0	1.6	
at Wisconsin	01/10/13	2	0-0	.000	0-0	.000	0-0	.000	0	0	0	1.2	1	0	0	0	0	0	1.5	
at Michigan State	01/17/13	0	0-0	.000	0-0	.000	0-0	.000	0	0	0	1.1	1	0	1	0	0	0	1.4	
PURDUE	01/20/13	16	2-3	.667	0-0	.000	0-0	.000	0	2	2	1.1	0	0	0	1	1	4	1.6	
WISCONSIN	1/24/13	15	2-6	.333	0-0	.000	0-0	.000	0	3	3	1.3	2	1	1	1	0	4	1.7	
at Michigan	01/27/13	2	0-0	.000	0-0	.000	0-0	.000	0	0	0	1.2	0	0	0	0	0	0	1.6	
at Illinois	01/31/13	11	3-3	1.000	0-0	.000	0-0	.000	1	3	4	1.4	1	0	2	0	0	6	1.9	
NORTHWESTERN	2/03/13	11	0-4	.000	0-0	.000	2-2	1.000	0	1	1	1.3	0	1	0	1	1	2	1.9	
Totals		0	106	14-30	.467	1-2	.500	5-10	.500	7	17	24	1.3	11	3	8	7	2	34	1.9

Games played: 18
Minutes/game: 5.9
Points/game: 1.9
FG Pct: 46.7
3FG Pct: 50.0
FT Pct: 50.0

Rebounds/game: 1.3
Assists/game: 0.2
Turnovers/game: 0.4
Assist/turnover ratio: 0.4
Steals/game: 0.1
Blocks/game: 0.4

CAREER STATISTICS

YEAR	G/GS	FG-A	PCT	3-PT	PCT	FT-A	PCT	O-D-REB	AVG	PF-FO	AS	TO	BK	ST	PTS	AVG
Fresh.	18/0	14-30	.467	1-2	.500	5-10	.500	7-17-24	1.3	11-0	3	8	7	2	34	1.9





University of Iowa Women's Basketball

Game-by-Game Results

Overall: 16-7

Big Ten: 5-4

Home: 10-3

Away: 4-4

Neutral: 2-0

Date	Opponent	Result	Attend.	Top Scorer	Top Rebounder
Nov. 9	Northern Illinois [^]	W, 63-40	4,739	Johnson, Printy (11)	Till (6)
Nov. 11	Illinois State [^]	W, 74-64	2,930	Johnson (24)	Taylor (11)
Nov. 14	Middle Tennessee [^]	W, 69-63 (OT)	1,691	Printy (26)	Doolittle (9)
Nov. 18	North Carolina [^]	L, 64-77	3,073	Johnson (20)	Johnson (11)
Nov. 20	Robert Morris	W, 58-44	3,032	Johnson (19)	Johnson (11)
Nov. 23	at Florida Int.#	L, 65-66	430	Printy (15)	Johnson, Till (6)
Nov. 25	vs. #12 West Virginia#	W, 79-70	387	Johnson, Printy (19)	Logic, Printy, Taylor (7)
Nov. 28	at Florida State [~]	L, 69-83	2,389	Johnson (20)	Doolittle (9)
Dec. 1	Northern Iowa	W, 68-46	6,368	Johnson (19)	Johnson (12)
Dec. 6	#22 Iowa State*	W, 50-42	4,483	Dixon, Taylor (11)	Logic, Taylor (9)
Dec. 16	at Drake	W, 82-65	2,716	Johnson (26)	Johnson (8)
Dec. 19	Missouri State	W, 97-43	4,588	Thomas (15)	Doolittle (12)
Dec. 28	vs. #20 Texas%	W, 86-63	776	Dixon (23)	Logic (15)
Dec. 20	at San Diego%	W, 83-73	543	Printy (33)	Doolittle (10)
Jan. 3	#24 Ohio State	W, 77-71 (OT)	3,850	Taylor (19)	Johnson (12)
Jan. 6	Michigan	L, 64-68	4,644	Dixon (17)	Logic (9)
Jan. 10	at Wisconsin	W, 65-56	3,495	Johnson (23)	Johnson (11)
Jan. 17	at Michigan State	L, 54-65	5,343	Johnson (13)	Johnson (12)
Jan. 20	#11 Purdue	W, 62-46	8,576	Dixon, Printy (15)	Taylor (10)
Jan. 24	Wisconsin	W, 71-60	3,894	Printy (29)	Logic (9)
Jan. 27	at #23 Michigan	W, 63-57	2,607	Doolittle (19)	Johnson (7)
Jan. 31	at Illinois	L, 62-74	1,808	Logic, Printy (13)	Logic (10)
Feb. 3	Northwestern	L, 65-67	4,697	Dixon (21)	Logic (12)
Feb. 7	at Minnesota				
Feb. 11	Nebraska				
Feb. 14	Penn State				
Feb. 17	at Purdue				
Feb. 24	at Nebraska				
Feb. 28	Indiana				
March 3	at Northwestern				

[^] - Preseason WNIT

- FIU Thanksgiving Classic, Miami

[~] - ACC/Big Ten Challenge

* - Iowa Corn Cy-Hawk Series

% - San Diego Surf 'N Slam Classic, San Diego

Attendance Summary	Games	Totals	Average
Home	13	56,556	4,351
Away	8	18,615	2,327
Neutral	2	1,163	582
Totals	23	77,050	3,350





University of Iowa Women's Basketball

Game-by-Game Statistics

Team	Score	FG-A	PCT	3-PT. FG	PCT	FT-A	PCT	REB	PF	AS	TO	BLK	ST
Northern Illinois	40	14-48	29.2%	1-9	11.1%	11-19	57.9%	44	19	3	22	2	6
at Iowa	63	23-57	40.4%	6-10	60.0%	11-17	64.7%	34	18	10	10	10	6
Illinois State	64	25-76	32.9%	2-14	14.3%	12-21	57.1%	44	27	6	17	4	15
at Iowa	74	19-54	35.2%	4-12	33.3%	32-41	78.0%	50	18	18	23	10	9
Middle Tennessee	63	22-70	31.4%	7-30	23.3%	12-18	66.7%	46	22	9	20	3	12
at Iowa	69	24-55	43.6%	6-20	30.0%	15-21	71.4%	40	17	22	20	10	6
North Carolina	77	27-66	40.9%	8-22	36.4%	15-27	55.6%	45	18	14	20	4	15
at Iowa	64	25-62	40.3%	5-25	20.0%	9-14	64.3%	43	20	14	25	4	9
Robert Morris	44	15-53	28.3%	6-21	28.6%	8-14	57.1%	34	11	12	16	2	4
at Iowa	58	22-57	38.6%	7-19	36.8%	7-9	77.8%	44	13	18	18	1	6
at Florida International	66	24-65	36.9%	4-15	26.7%	14-17	82.4%	37	16	8	10	3	6
Iowa	65	24-57	42.1%	7-20	35.0%	10-13	76.9%	39	16	16	16	5	1
vs. West Virginia	70	21-72	29.2%	6-28	21.4%	22-29	75.9%	41	35	12	15	1	10
Iowa	79	18-39	46.2%	1-5	20.0%	42-50	84.0%	39	23	12	23	5	6
at Florida State	83	31-63	49.2%	5-10	50.0%	16-22	72.7%	29	10	18	13	4	12
Iowa	69	30-61	49.2%	2-11	18.2%	7-9	77.8%	35	16	13	24	6	6
Northern Iowa	46	12-53	22.6%	8-29	27.6%	14-16	87.5%	31	17	9	11	0	2
at Iowa	68	26-54	48.1%	3-11	27.3%	13-18	72.2%	43	16	17	9	4	5
Iowa State	42	15-57	26.3%	7-34	20.6%	5-5	100.0%	43	20	7	21	1	6
at Iowa	50	15-51	29.4%	4-16	25.0%	16-25	64.0%	41	13	12	15	3	7
at Drake	65	20-51	39.2%	7-18	38.9%	18-24	75.0%	32	12	15	13	1	5
Iowa	82	31-59	52.5%	7-15	46.7%	13-16	81.3%	31	21	23	8	8	5
Missouri State	43	12-58	20.7%	1-18	5.6%	18-31	58.1%	38	28	3	22	1	8
at Iowa	97	36-75	48.0%	10-34	29.4%	15-24	62.5%	60	25	25	16	5	9
vs. Texas	63	21-54	38.9%	6-14	42.9%	15-28	53.6%	36	15	14	16	4	3
Iowa	86	35-67	52.2%	7-21	33.3%	9-12	75.0%	38	20	23	10	2	11
at San Diego	73	30-64	46.9%	3-6	50.0%	10-17	58.8%	34	13	15	16	1	9
Iowa	83	29-53	54.7%	11-18	61.1%	14-17	82.4%	31	15	19	20	8	7
Ohio State	71	27-68	39.7%	6-21	28.6%	11-14	78.6%	33	19	14	17	4	8
at Iowa	77	30-58	51.7%	2-4	50.0%	15-19	78.9%	39	14	17	19	10	12
Michigan	68	24-48	50.0%	10-22	45.5%	10-14	71.4%	35	17	14	16	2	7
at Iowa	64	23-62	37.1%	9-25	36.0%	9-12	75.0%	32	16	17	11	3	8
at Wisconsin	56	18-54	33.3%	9-26	34.6%	11-14	78.6%	25	14	12	11	2	11
Iowa	65	21-55	38.2%	6-17	35.3%	17-18	94.4%	45	13	17	15	2	5
at Michigan State	65	23-61	37.7%	5-19	26.3%	14-15	93.3%	42	10	14	14	3	4
Iowa	54	21-60	35.0%	2-14	14.3%	10-12	83.3%	36	14	9	14	4	7
Purdue	46	21-66	31.8%	3-18	16.7%	1-6	16.7%	44	13	10	18	3	10
at Iowa	62	23-63	36.5%	9-15	60.0%	7-9	77.8%	45	12	16	14	9	9
Wisconsin	60	24-64	37.5%	5-26	19.2%	7-11	63.6%	33	14	12	12	0	9
at Iowa	71	25-51	49.0%	5-12	41.7%	16-18	88.9%	36	15	13	15	6	4
at Michigan	57	22-53	41.5%	4-12	33.3%	9-15	60.0%	29	17	9	11	3	6
Iowa	63	23-50	46.0%	5-20	25.0%	12-14	85.7%	32	19	12	11	4	6
at Illinois	74	25-60	41.7%	11-24	45.8%	13-19	68.4%	31	10	15	19	2	15
Iowa	62	27-59	45.8%	7-19	36.8%	1-2	50.0%	38	17	12	27	5	7
Northwestern	67	27-59	45.8%	5-15	33.3%	8-12	66.7%	37	16	18	16	3	5
at Iowa	65	20-61	32.8%	7-14	50.0%	18-24	75.0%	40	14	12	13	8	12





University of Iowa Women's Basketball

Season & Career Bests

Season Bests

Player	Points	3-Pointers	Rebounds	Assists	Blocks	Steals
#3 Claire Till	7 at FIU	1, twice	6, twice	1, three times	1, three times	1, three times
#11 Trisha Nesbitt	12 at Drake	2 at Drake	3 vs. Northern Illinois	2 vs. Robert Morris	---	2 vs. North Carolina
#12 Morgan Johnson	26 at Drake	---	12, three times	5 vs. Northern Iowa	5, twice	3, twice
#13 Kathy Thomas	15 vs. Missouri State	2 vs. Missouri State	3, twice	3, twice	---	2, twice
#21 Melissa Dixon	23 vs. Texas	6 vs. Northwestern	3, four times	2, five times	1 vs. Illinois State	2 vs. MTSU
#22 Samantha Logic	17 vs. Ohio State	2, twice	15 vs. Texas	14 vs. Texas	2 at Drake	4 vs. North Carolina
#23 Theairra Taylor	19 vs. Ohio State	3 vs. Purdue	11 vs. Illinois State	7 vs. Missouri State	2, three times	3, twice
#24 Jaime Printy	33 at San Diego	7 at San Diego	9 vs. Purdue	7 at Drake	1, twice	3 vs. Northwestern
#25 Kali Peschel	5 at Drake	1 at Drake	5, twice	2, twice	1, four times	1, five times
#33 Kathryn Reynolds	---	---	---	---	---	---
#45 Nicole Smith	4 vs. Missouri State	---	1 vs. Northern Illinois	---	---	---
#51 Bethany Doolittle	19 at Michigan	---	12 vs. Missouri State	2 vs. Ohio State	6, twice	3, twice
#54 Kayla Timmerman	6, twice	1 vs. Illinois State	8 vs. Missouri State	1, three times	2 vs. Northern Illinois	1, twice

Career Bests

Player	Points	3-Pointers	Rebounds	Assists	Blocks	Steals
#3 Claire Till	7 at FIU	1, twice	6, twice	1, three times	1, three times	1, three times
#11 Trisha Nesbitt	12 at Drake	2, twice	3, 3 times	4, three times	1, Michigan State '11	3, Minnesota
#12 Morgan Johnson	37 at Bradley	---	16 vs. Illinois	5 vs. Northern Iowa	8, Minnesota, '10	3, five times
#13 Kathy Thomas	15 vs. Missouri State	2 vs. Missouri State	3, twice	3, twice	---	2, twice
#21 Melissa Dixon	23 vs. Texas	6, twice	4, four times	4 vs. Nebraska	1, four times	3 at Indiana
#22 Samantha Logic	20, twice	3 vs. Drake	18 at Michigan	14 vs. Texas	2, twice	4 vs. North Carolina
#23 Theairra Taylor	19 vs. Ohio State	3 vs. Purdue	11 vs. Illinois State	7 vs. Missouri State	4, Michigan	4 at Northwestern
#24 Jaime Printy	33 at San Diego	7 at San Diego	9, twice	9, Iowa State, '10	1, 14 times	5 at Bradley
#25 Kali Peschel	5 at Drake	1 at Drake	5, twice	2, three times	1, four times	1, five times
#33 Kathryn Reynolds	4 vs. Drake	---	2 vs. Texas A&M	5 vs. Western Illinois	---	---
#45 Nicole Smith	4 vs. Missouri State	---	1 vs. Northern Illinois	---	---	---
#51 Bethany Doolittle	19 at Michigan	---	12 vs. Missouri State	2, twice	6, twice	3, twice
#54 Kayla Timmerman	6, twice	1 vs. Illinois State	8 vs. Missouri State	1, three times	2 vs. Northern Illinois	1, twice

BOLD - set career best during current season

* - - tied school single-game and Carver-Hawkeye Arena record





University of Iowa Women's Basketball

The Last Time...

The Last Time a Player . . .

Had 30 or more points

Iowa -- 33, Jaime Printy, at San Diego, 12/30/12
Opponent -- 34, Tayler Hill, Ohio State, 1/3/13

Made at least 80% of her FGA (10 att.)

Iowa -- .800 (8-10), Jaime Printy, vs. Wisconsin, 1/24/13
Opponent -- .857 (12-14), Kelsey Budd, Bradley, 12/17/11

Made 100% of her FTA (10 att.)

Iowa -- 1.000 (11-11), Morgan Johnson, at Wisconsin, 1/10/13
Opponent -- 1.000 (11-11), Courtney Vandersloot, Gonzaga, 3/19/11

Had 15 or more rebounds

Iowa -- 15, Samantha Logic, vs. Texas, 12/28/12
Opponent -- 16, Artemis Spanou, Robert Morris, 11/20/12

Had 10 or more assists

Iowa -- 10, Samantha Logic, vs. Purdue, 1/20/13
Opponent -- 10, Brittney McCoy, Minnesota, 2/18/10

Had 5 or more blocks

Iowa -- 6, Bethany Doolittle, vs. Ohio State, 1/3/13
Opponent -- 5, Ebony Ellis, Northern Illinois, 12/8/07

Had 5 or more steals

Iowa -- 5, Kelly Krei, at Indiana, 2/5/12
Opponent -- 5, Adrienne GodBold, Illinois, 1/31/13

The Last Time A Team . . .

Scored 100 or more points

Iowa -- 100 vs. Minnesota, 2/12/88
Opponent -- 101, Iowa State, 12/3/03

Scored 40 or fewer points

Iowa -- 40, vs. Illinois, 2/10/77
Opponent -- 40, Northern Illinois, 11/9/12

Won an overtime game

Iowa -- 77-71, vs. Ohio State, 1/3/13
Opponent -- 81-78, Kansas State, 12/3/11

Made at least 60% of its FGA (20 att.)

Iowa -- .632 (36-57), vs. Rider, 11/26/05
Opponent -- .654 (34-52), Ohio State, 2/12/06

Made at least 50% of its 3-pt. FGA (8 att.)

Iowa -- .500 (7-14), vs. Northwestern, 2/3/13
Opponent -- .500 (5-10), Florida State, 11/28/12

Made at least 90% of its FTA (10 att.)

Iowa -- .944 (17-18), at Wisconsin, 1/10/13
Opponents -- .933 (14-15), Michigan State, 1/17/13

* - Carver-Hawkeye Arena record ^ - school record





University of Iowa Women's Basketball

Miscellaneous Records and Statistics

GAME-BY-GAME, POINTS-REBOUNDS-ASSISTS-STEALS

# -- starter	3	11	12	13	21	22	23	24	25	33	45	51	54	
Date	Opponent	P-R-A-S	P-R-A-S	P-R-A-S	P-R-A-S	P-R-A-S	P-R-A-S	P-R-A-S	P-R-A-S	P-R-A-S	P-R-A-S	P-R-A-S	P-R-A-S	
Nov. 9	Northern Illinois	3-6-0-1	3-3-1-0	11-5-0-1#	8-2-0-0	8-2-2-1#	10-3-2-2#	5-1-1-0#	11-1-3-1	1-5-1-0	DNP	0-1-0-0	2-0-0-0#	1-1-0-0
Nov. 11	Illinois State	4-3-0-1	3-1-0-1	24-9-2-1#	5-3-3-1	8-0-2-0#	6-5-4-2#	10-11-5-2#	1-2-1-0	0-3-0-0	DNP	0-0-0-0	8-5-0-1#	5-0-1-0
Nov. 14	Middle Tennessee	0-1-0-0	2-0-0-0	20-8-1-0#	0-0-0-0	6-1-1-2#	0-3-12-2#	7-4-2-1#	26-5-6-1	0-1-0-0	DNP	DNP	8-9-0-0#	0-0-0-0
Nov. 18	North Carolina	1-2-1-0	2-0-0-0	20-11-1-2#	0-0-0-0	12-1-0-0	12-6-6-4#	3-4-1-0#	12-5-4-1#	DNP	DNP	DNP	2-7-1-2#	0-0-0-0
Nov. 20	Robert Morris	5-2-0-0	0-2-2-0	19-11-0-0#	3-1-1-0	6-2-0-0	4-6-9-3#	7-4-0-1#	8-6-5-1#	0-0-0-1	DNP	DNP	4-5-1-0#	2-3-0-0
Nov. 23	Florida International	6-7-0-0	2-1-1-0	14-6-2-0#	0-0-0-0	8-2-0-0	7-5-7-1#	6-3-2-0#	15-5-4-0#	0-2-0-0	DNP	DNP	6-3-0-0#	0-0-0-0
Nov. 25	West Virginia	5-2-0-1	4-0-1-1	19-3-1-1#	DNP	0-0-0-0	9-7-7-3#	6-7-0-0#	19-7-3-0#	DNP	DNP	DNP	17-6-0-0#	0-1-0-0
Nov. 28	Florida State	0-1-1-0	0-0-0-1	20-4-1-0#	DNP	3-0-1-1	14-7-7-3#	9-6-1-0#	13-1-1-0#	0-2-0-0	DNP	DNP	10-9-1-1#	DNP
Dec. 1	Northern Iowa	DNP	0-0-0-0	19-12-5-2#	0-2-1-0	6-2-1-0	15-4-3-1#	6-5-2-0#	9-3-5-0#	3-2-0-1	DNP	0-0-0-0	8-7-0-1#	2-1-0-0
Dec. 6	Iowa State	DNP	0-1-0-0	7-6-2-1#	3-2-0-0	11-2-1-1	6-9-4-0#	11-9-3-2#	10-6-2-2#	0-0-0-0	DNP	DNP	2-4-0-1#	DNP
Dec. 16	Drake	DNP	12-0-0-0	26-8-0-2#	3-0-0-0	0-0-1-0	13-5-7-1#	6-3-6-0#	9-4-7-0#	5-0-2-1	DNP	DNP	8-4-0-1#	DNP
Dec. 19	Missouri State	DNP	4-1-1-0	13-4-1-0#	15-2-2-2	12-2-2-1	7-6-4-3#	9-6-7-1#	13-2-6-0#	2-5-0-1	DNP	4-0-0-0	12-12-1-1#	6-8-0-0
Dec. 28	Texas	0-1-1-0	0-0-0-0	20-5-0-3#	2-2-0-1	23-3-2-0	2-15-14-2#	4-1-2-3#	21-3-1-0#	0-0-2-0	DNP	2-0-0-0	10-5-1-2#	2-0-0-0
Dec. 30	San Diego	DNP	DNP	20-6-1-1#	0-3-0-0	8-0-0-1	7-3-10-2#	9-4-4-0#	33-2-4-2#	0-1-0-0	DNP	DNP	6-10-0-1#	DNP
Jan. 3	Ohio State	0-1-0-0	DNP	16-12-3-3#	0-1-1-0	3-1-0-1	17-8-8-3#	19-4-0-2#	14-3-3-0#	0-0-0-0	DNP	DNP	8-5-2-3#	DNP
Jan. 6	Michigan	DNP	0-0-0-0	10-7-2-2#	0-0-0-0	17-3-0-0	16-9-9-3#	14-3-2-2#	6-5-3-1#	1-1-0-0	DNP	DNP	0-1-0-0#	0-0-0-0
Jan. 10	Wisconsin	DNP	0-0-0-0	23-11-0-0#	0-0-0-0	8-3-2-0	12-10-9-1#	4-8-5-3#	10-6-1-1#	0-0-0-0	DNP	0-0-0-0	8-4-0-0#	0-0-0-0
Jan. 17	Michigan State	DNP	0-1-0-1	13-12-0-2#	0-2-0-0	7-3-0-0	7-5-4-1#	6-2-1-0#	11-4-3-1#	0-0-0-0	DNP	DNP	10-3-1-2#	0-0-0-0
Jan. 20	Purdue	0-0-0-0	0-0-0-0	7-7-0-0#	0-1-3-2	15-0-0-1	4-3-10-1#	9-10-1-1#	15-9-1-0#	0-1-1-0	DNP	DNP	8-9-0-3#	4-2-0-1
Jan. 24	Wisconsin	0-0-0-0	0-0-0-0	2-4-1-0#	0-1-0-0	10-0-0-1	6-9-5-1#	10-1-2-2#	29-8-4-0#	0-1-0-0	DNP	DNP	10-7-0-0#	4-3-1-0
Jan. 27	Michigan	DNP	0-2-0-0	6-7-0-2#	4-0-0-0	5-2-1-0	10-6-8-2#	5-2-1-0#	14-5-2-1#	0-0-0-0	DNP	DNP	19-4-0-1#	0-0-0-0
Jan. 31	Illinois	DNP	DNP	6-4-0-1#	0-0-1-0	11-2-1-1	13-10-6-2#	9-0-1-2#	13-4-3-1#	0-0-0-0	DNP	DNP	4-8-0-0#	6-4-0-1
Feb. 3	Northwestern	DNP	0-0-1-1	11-3-0-1#	0-0-0-0	21-2-1-0	11-12-2-3#	2-1-2-2#	12-4-3-3#	2-4-1-1	DNP	DNP	4-9-1-0#	2-1-1-1

IOWA RECORD WHEN...

Playing at home:	10-3
Playing on the road:	4-4
Playing on a neutral floor:	2-0
Leading at the half:	10-2
Trailing at the half:	6-4
Tied at the half:	0-1
Wearing white:	6-1
Wearing black:	6-4
Wearing gold:	4-1
Wearing pink:	0-1
Scoring 80+ points:	4-0
Scoring 70-79 points:	4-0
Scoring 60-69 points:	6-6
Scoring 60 or fewer points:	2-1
Allowing 80+ points:	0-1
Allowing 70-79 points:	3-2
Allowing 60-69 points:	5-4
Allowing 59 or fewer points:	8-0
Shooting at least 50% FG:	4-0
Shooting less than 50% FG:	12-7
Shooting at least 80% FT:	6-1
Shooting less than 80% FT:	10-6
Shooting at least 40% 3-pt. FG:	6-1
Shooting less than 40% 3-pt. FG:	10-6
Most 1st half points:	46 vs. Missouri State (Dec. 19)
Most 2nd half points:	54 vs. West Virginia (Nov. 25)
Fewest opponent 1st half points:	13 vs. NIU (Nov. 9)
Fewest opponent 2nd half points:	22 vs. UNI (Dec. 1)

Iowa has more rebounds:	10-4
Opponent has more rebounds:	6-3
Rebounds are equal:	0-0
Iowa has more assists:	15-2
Opponent has more assists:	0-4
Assists are equal:	1-1
Iowa has fewer turnovers:	7-2
Opponent has fewer turnovers:	7-4
Turnovers are equal:	2-1
Iowa has more steals:	6-3
Opponent has more steals:	7-4
Steals are equal:	3-0
Playing on Sunday:	6-3
Playing on Monday:	0-0
Playing on Tuesday:	1-0
Playing on Wednesday:	2-1
Playing on Thursday:	4-2
Playing on Friday:	2-1
Playing on Saturday:	1-0
Playing on BTN:	4-1
Playing on CBS Sports Network:	0-1
Playing on ESPN2:	0-0
Playing on Mediacom:	3-1
Playing on no TV:	9-4
Largest Iowa lead:	54 vs. Missouri State (Dec. 19)
Largest Iowa deficit:	22 vs. UNC (Nov. 18)
Largest halftime lead:	31 vs. NIU (Nov. 9)
Largest halftime deficit:	22 vs. UNC (Nov. 18)

LATE GAME CLUTCH FREE THROW SHOOTING

In Final Five Minutes of Game			
Player	FTM	FTA	Pct.
Jaime Printy	37	37	1.000
Trisha Nesbitt	4	4	1.000
Nicole Smith	2	2	1.000
Theairra Taylor	2	2	1.000
Morgan Johnson	18	19	.947
Melissa Dixon	8	9	.889
Bethany Doolittle	3	4	.750
Samantha Logic	15	24	.625
Claire Till	3	6	.500
Kathy Thomas	2	4	.500
Kayla Timmerman	2	6	.333
TOTALS	96	117	.821
In Final Two Minutes of Game			
Player	FTM	FTA	Pct.
Jaime Printy	29	29	1.000
Morgan Johnson	10	10	1.000
Trisha Nesbitt	4	4	1.000
Nicole Smith	2	2	1.000
Theairra Taylor	2	2	1.000
Bethany Doolittle	2	2	1.000
Melissa Dixon	4	5	.800
Samantha Logic	8	14	.571
Claire Till	1	4	.250
Kathy Thomas	0	2	.000
TOTALS	62	74	.838
In Final One Minute of Game			
Player	FTM	FTA	Pct.
Jaime Printy	20	20	1.000
Morgan Johnson	6	6	1.000
Melissa Dixon	2	2	1.000
Trisha Nesbitt	2	2	1.000
Theairra Taylor	2	2	1.000
Samantha Logic	2	7	.286
Claire Till	1	4	.250
Kathy Thomas	0	2	.000
TOTALS	35	45	.777
In Overtime			
Player	FTM	FTA	Pct.
Jaime Printy	6	6	1.000
Samantha Logic	4	4	1.000
Theairra Taylor	2	2	1.000
Morgan Johnson	0	2	.000
Claire Till	0	2	.000
Melissa Dixon	0	1	.000
TOTALS	12	16	.750





University of Iowa Women's Basketball

Season Highs And Lows/Specialty Statistics

CATEGORY		IOWA	OPPONENTS
Points	High Low	97 vs. Missouri State 50 vs. Iowa State	83, Florida State 40, Northern Illinois
FG Made	High Low	36 vs. Missouri State 15 vs. Iowa State	31, Florida State 12, two teams
FG Att.	High Low	75 vs. Missouri State 39 vs. West Virginia	76, Illinois State 48, two teams
FG%	High Low	54.7 at San Diego 29.4 vs. Iowa State	50.0, Michigan 20.7, Missouri State
3FG Made	High Low	11 at San Diego 1 vs. West Virginia	11, Illinois 1, two teams
3FG Att.	High Low	34 vs. Missouri State 4 vs. Ohio State	34, Iowa State 9, Northern Illinois
3FG%	High Low	61.1 at San Diego 14.3 at Michigan State	50.0, two teams 5.6, Missouri State
ETM	High Low	42 vs. West Virginia 1 at Illinois	22, West Virginia 1, Purdue
ETA	High Low	50 vs. West Virginia 2 at Illinois	31, Missouri State 5, Iowa State
FT% (min. 10)	High Low	94.4 at Wisconsin 62.5 vs. Missouri State	93.3, Michigan State 53.6, Texas
Off. Reb.	High Low	21 vs. Missouri State 6 vs. Northern Illinois	23, West Virginia 7, Northwestern
Def. Reb.	High Low	39 vs. Missouri State 16 vs. Michigan	33, Northern Illinois 15, Florida State
Total Reb.	High Low	60 vs. Missouri State 31, twice, last at San Diego	46, Middle Tennessee 25, Wisconsin
Assists	High Low	25 vs. Missouri State 9 at Michigan State	18, two teams 3, two teams
Steals	High Low	12, twice, last vs. Northwestern 1 at Florida International	15, three teams 1, West Virginia
Blocks	High Low	10, four times, last vs. Ohio State 1 vs. Robert Morris	4, five teams 0, two teams
Turnovers	High Low	27 at Illinois 8 at Drake	22, two teams 10, Florida International
Fouls	High Low	25 vs. Missouri State 12 vs. Purdue	35, West Virginia 10, three teams

GAME-BY-GAME SPECIALTY STATS

Date	Opponent	Pts. Off TO's	Pts. in Paint	2nd Chance	Fast Break
Nov. 9	Northern Illinois	26-6	24-10	4-3	3-2
Nov. 11	Illinois State	18-20	22-24	8-6	18-11
Nov. 14	Middle Tennessee	15-11	24-26	11-12	2-6
Nov. 18	North Carolina	12-22	30-24	6-22	15-14
Nov. 20	Robert Morris	16-12	22-10	11-6	2-2
Nov. 23	Florida International	6-20	24-20	13-15	6-6
Nov. 25	West Virginia	14-20	24-18	11-22	0-4
Dec. 1	Northern Iowa	11-11	34-4	9-5	2-0
Dec. 6	Iowa State	12-12	14-12	10-8	2-4
Dec. 16	Drake	15-5	40-18	11-12	2-4
Dec. 19	Missouri State	28-14	32-18	17-8	4-6
Dec. 28	Texas	24-10	40-26	11-8	9-0
Dec. 30	San Diego	14-22	30-44	8-9	0-2
Jan. 3	Ohio State	19-18	40-34	12-9	4-6
Jan. 6	Michigan	24-4	22-22	10-8	6-0
Jan. 10	Wisconsin	11-18	18-12	7-17	4-2
Jan. 17	Michigan State	12-22	26-30	12-7	2-12
Jan. 20	Purdue	17-9	24-28	12-5	10-8
Jan. 24	Wisconsin	11-13	30-32	12-13	2-2
Jan. 27	Michigan	10-8	18-24	13-10	4-2
Jan. 31	Illinois	21-30	28-20	13-8	4-4
Feb. 3	Northwestern	17-8	20-32	6-5	6-0

IOWA AND OPPONENT INDIVIDUAL HIGH PERFORMANCES

CATEGORY	IOWA	OPPONENTS
Points	33 Jaime Printy at San Diego	34 Tayler Hill, Ohio State
Field Goals Made	11 Morgan Johnson at Drake	12 Jamie Russell, Illinois State
Field Goals Attempted	20 Jaime Printy at San Diego	28 Russell, Ill. State; Coley, FIU
3-Point Field Goals Made	7 Jaime Printy at San Diego	6 Kyndal Clark, Drake
3-Point Field Goals Attempted	12 Jaime Printy vs. UNC, at San Diego	13 Taylor Palmer, West Virginia
Free Throws Made	17 Jaime Printy vs. West Virginia	10 Morgan Reid, Drake
Free Throws Attempted	17 Jaime Printy vs. West Virginia	12 Morgan Reid, Drake
Offensive Rebounds	8 Morgan Johnson at Wisconsin	11 Ebony Rowe, Middle Tennessee
Defensive Rebounds	11 Theairra Taylor vs. Ill. State	13 Artemis Spanou, Robert Morris
Total Rebounds	15 Samantha Logic vs. Texas	16 Rowe, MTSU; Spanou, RMU
Assists	14 Samantha Logic vs. Texas	8 Ryan, Mich.; Stephen, Wisc.; Roser, N'western
Steals	4 Samantha Logic vs. North Carolina	8 Jamie Russell, Illinois State
Blocks	6 Bethany Doolittle vs. NIU, Ohio State	3 Rolle, UNC; Thompson, Michigan





2012-13 IOWA WOMEN'S BASKETBALL
Iowa Combined Team Statistics (as of Feb 03, 2013)
All games



RECORD:	OVERALL	HOME	AWAY	NEUTRAL
ALL GAMES	16-7	10-3	4-4	2-0
CONFERENCE	5-4	3-2	2-2	0-0
NON-CONFERENCE	11-3	7-1	2-2	2-0

#	Player	gp-gs	min	avg	Total		3-Point		F-Throw		Rebounds				pf	dq	a	to	blk	stl	pts	avg
					fg-fga	fg%	3fg-fga	3fg%	ft-fa	ft%	off	def	tot	avg								
12	Johnson, Morgan	23-23	717	31.2	130-245	.531	0-0	.000	86-113	.761	61	104	165	7.2	69	2	23	38	43	25	346	15.0
24	Printy, Jaime	23-20	728	31.7	89-231	.385	42-132	.318	104-112	.929	16	84	100	4.3	24	0	75	65	2	16	324	14.1
21	Dixon, Melissa	23-3	470	20.4	73-174	.420	49-117	.419	13-17	.765	7	26	33	1.4	41	0	18	25	1	11	208	9.0
22	Logic, Samantha	23-23	764	33.2	81-171	.474	10-30	.333	36-54	.667	58	96	154	6.7	60	2	157	105	9	46	208	9.0
23	Taylor, Theairra	23-23	570	24.8	68-171	.398	16-50	.320	24-36	.667	21	78	99	4.3	36	0	51	50	15	24	176	7.7
51	Doolittle, Bethany	23-23	692	30.1	83-195	.426	0-2	.000	8-10	.800	33	103	136	5.9	60	1	10	37	48	20	174	7.6
03	Till, Claire	12-0	103	8.6	4-19	.211	2-7	.286	15-22	.682	9	16	25	2.1	11	0	3	9	3	3	25	2.1
13	Thomas, Kathy	21-0	148	7.0	13-32	.406	6-13	.462	11-16	.688	5	17	22	1.0	26	0	12	18	0	6	43	2.0
54	Timmerman, Kayla	18-0	106	5.9	14-30	.467	1-2	.500	5-10	.500	7	17	24	1.3	11	0	3	8	7	2	34	1.9
11	Nesbitt, Trisha	20-0	157	7.9	9-23	.391	5-14	.357	9-12	.750	0	12	12	0.6	18	1	7	7	0	5	32	1.6
45	Smith, Nicole	6-0	12	2.0	2-4	.500	0-0	.000	2-2	1.000	0	1	1	0.2	2	0	0	1	0	0	6	1.0
25	Peschel, Kali	21-0	183	8.7	4-25	.160	1-10	.100	5-10	.500	17	11	28	1.3	27	0	7	8	4	5	14	0.7
Team											37	75	112				5					
Total.....		23	4650		570-1320	.432	132-377	.350	318-414	.768	271	640	911	39.6	385	6	366	376	132	163	1590	69.1
Opponents.....		23	4650		500-1383	.362	129-451	.286	274-408	.672	319	524	843	36.7	393	8	263	366	53	188	1403	61.0

TEAM STATISTICS	IOWA	OPP	Date	Opponent	Score	Att.
SCORING	1590	1403	^	11/9/12	NORTHERN ILLINOIS	w 63-40 4739
Points per game	69.1	61.0	^	11/11/12	ILLINOIS STATE	w 74-64 2930
Scoring margin	+8.1	-	^	11/14/12	MIDDLE TENNESSEE	Wot 69-63 1691
FIELD GOALS-ATT	570-1320	500-1383	^	11/18/12	NORTH CAROLINA	L 64-77 3073
Field goal pct	.432	.362		11/20/12	ROBERT MORRIS	w 58-44 3032
3 POINT FG-ATT	132-377	129-451	#	11/23/12	at FIU	L 65-66 430
3-point FG pct	.350	.286	#	11/25/12	vs WVU	w 79-70 387
3-pt FG made per game	5.7	5.6		11/28/12	at Florida State	L 69-83 2389
FREE THROWS-ATT	318-414	274-408		12/1/12	UNI	w 68-46 6368
Free throw pct	.768	.672		12/6/12	IOWA STATE	w 50-42 4483
F-Throws made per game	13.8	11.9		12/16/12	at Drake	w 82-65 2716
REBOUNDS	911	843		12/19/12	MISSOURI STATE	w 97-43 4588
Rebounds per game	39.6	36.7	%	12/28/12	vs Texas	w 86-63 776
Rebounding margin	+3.0	-	%	12/30/12	at San Diego	w 83-73 543
ASSISTS	366	263	*	1/3/13	OHIO STATE	Wot 77-71 3850
Assists per game	15.9	11.4	*	1/6/13	MICHIGAN	L 64-68 4644
TURNOVERS	376	366	*	01/10/13	at Wisconsin	w 65-56 3495
Turnovers per game	16.3	15.9	*	01/17/13	at Michigan State	L 54-65 5343
Turnover margin	-0.4	-	*	01/20/13	PURDUE	w 62-46 8576
Assist/turnover ratio	1.0	0.7	*	1/24/13	WISCONSIN	w 71-60 3894
STEALS	163	188	*	01/27/13	at Michigan	w 63-57 2607
Steals per game	7.1	8.2	*	01/31/13	at Illinois	L 62-74 1808
BLOCKS	132	53	*	2/03/13	NORTHWESTERN	L 65-67 4697
Blocks per game	5.7	2.3				
ATTENDANCE	56565	20494				
Home games-Avg/Game	13-4351	8-2416				
Neutral site-Avg/Game	-	2-582				

^ = Preseason WNIT
= at FIU Thanksgiving Classic; Miami
% = at San Diego Surf "N Slam Classic; San Diego
* = Conference game

Score by Periods	1st	2nd	OT	Totals
Iowa	714	852	24	1590
Opponents	621	770	12	1403



2012-13 IOWA WOMEN'S BASKETBALL
Iowa Combined Team Statistics (as of Feb 03, 2013)
Conference games



RECORD:	OVERALL	HOME	AWAY	NEUTRAL
ALL GAMES	5-4	3-2	2-2	0-0
CONFERENCE	5-4	3-2	2-2	0-0
NON-CONFERENCE	0-0	0-0	0-0	0-0

#	Player	gp-gs	min	Total		3-Point		F-Throw		Rebounds				pf	dq	a	to	blk	stl	pts	avg	
				fg-fga	fg%	3fg-fga	3fg%	ft-fa	ft%	off	def	tot	avg									
24	Printy, Jaime	9-9	313	34.8	36-101	.356	14-53	.264	38-40	.950	8	40	48	5.3	8	0	23	21	1	8	124	13.8
21	Dixon, Melissa	9-0	195	21.7	33-73	.452	24-47	.511	7-8	.875	6	10	16	1.8	17	0	5	12	0	4	97	10.8
22	Logic, Samantha	9-9	324	36.0	36-74	.486	6-13	.462	18-27	.667	25	45	70	7.8	23	1	61	42	2	17	96	10.7
12	Johnson, Morgan	9-9	271	30.1	34-83	.410	0-0	.000	26-31	.839	27	40	67	7.4	33	2	6	10	14	11	94	10.4
23	Taylor, Theaira	9-9	225	25.0	32-73	.438	7-19	.368	7-9	.778	8	23	31	3.4	13	0	15	17	6	14	78	8.7
51	Doolittle, Bethany	9-9	305	33.9	33-81	.407	0-0	.000	5-7	.714	14	36	50	5.6	20	0	5	16	22	9	71	7.9
54	Timmerman, Kayla	8-0	58	7.3	7-16	.438	0-0	.000	2-2	1.000	1	9	10	1.3	5	0	2	4	3	2	16	2.0
13	Thomas, Kathy	9-0	43	4.8	1-9	.111	1-4	.250	1-2	.500	0	5	5	0.6	9	0	5	8	0	2	4	0.4
25	Peschel, Kali	9-0	57	6.3	1-4	.250	0-2	.000	1-2	.500	5	2	7	0.8	4	0	2	3	2	1	3	0.3
11	Nesbitt, Trisha	7-0	26	3.7	0-4	.000	0-2	.000	0-0	.000	0	3	3	0.4	0	0	1	1	0	2	0	0.0
45	Smith, Nicole	1-0	1	1.0	0-0	.000	0-0	.000	0-0	.000	0	0	0	0.0	1	0	0	0	0	0	0	0.0
03	Till, Claire	3-0	7	2.3	0-1	.000	0-0	.000	0-0	.000	0	1	1	0.3	1	0	0	1	1	0	0	0.0
Team											14	21	35				4					
Total.....		9	1825		213-519	.410	52-140	.371	105-128	.820	108	235	343	38.1	134	3	125	139	51	70	583	64.8
Opponents.....		9	1825		211-533	.396	58-183	.317	84-120	.700	107	202	309	34.3	130	0	118	134	22	75	564	62.7

TEAM STATISTICS	IOWA	OPP	Date	Opponent	Score	Att.
SCORING	583	564	* 1/3/13	OHIO STATE	Wot 77-71	3850
Points per game	64.8	62.7	* 1/6/13	MICHIGAN	L 64-68	4644
Scoring margin	+2.1	-	* 01/10/13	at Wisconsin	W 65-56	3495
FIELD GOALS-ATT	213-519	211-533	* 01/17/13	at Michigan State	L 54-65	5343
Field goal pct	.410	.396	* 01/20/13	PURDUE	W 62-46	8576
3 POINT FG-ATT	52-140	58-183	* 1/24/13	WISCONSIN	W 71-60	3894
3-point FG pct	.371	.317	* 01/27/13	at Michigan	W 63-57	2607
3-pt FG made per game	5.8	6.4	* 01/31/13	at Illinois	L 62-74	1808
FREE THROWS-ATT	105-128	84-120	* 2/03/13	NORTHWESTERN	L 65-67	4697
Free throw pct	.820	.700	^ = Preseason WNIT			
F-Throws made per game	11.7	9.3	# = at FIU Thanksgiving Classic; Miami			
REBOUNDS	343	309	% = at San Diego Surf "N Slam Classic; San Diego			
Rebounds per game	38.1	34.3	* = Conference game			
Rebounding margin	+3.8	-				
ASSISTS	125	118				
Assists per game	13.9	13.1				
TURNOVERS	139	134				
Turnovers per game	15.4	14.9				
Turnover margin	-0.6	-				
Assist/turnover ratio	0.9	0.9				
STEALS	70	75				
Steals per game	7.8	8.3				
BLOCKS	51	22				
Blocks per game	5.7	2.4				
ATTENDANCE	25661	13253				
Home games-Avg/Game	5-5132	4-3313				
Neutral site-Avg/Game	-	0-0				

Score by Periods	1st	2nd	OT	Totals
Iowa	265	304	14	583
Opponents	239	317	8	564