



University of Iowa Women's Basketball

Game #8

November 26, 2012

2012-13 Schedule/Results 5-2 Overall, 0-0 Big Ten

| | | |
|-------|---------------------------|-------------------|
| 11/9 | Northern Illinois^ | W, 63-40 |
| 11/11 | Illinois State^ | W, 74-64 |
| 11/14 | Middle Tennessee^ | W, 69-63 (OT) |
| 11/18 | North Carolina^ | L, 64-77 |
| 11/20 | Robert Morris | W, 58-44 |
| 11/23 | at Florida International# | L, 65-66 |
| 11/25 | vs. #12 West Virginia | W, 79-70 |
| 11/28 | at Florida State~ | 6 p.m. |
| 12/1 | Northern Iowa | 2:30 p.m. |
| 12/6 | Iowa State* | 7:30 p.m. |
| 12/16 | at Drake | 2 p.m. |
| 12/19 | Missouri State | 5:30 p.m. |
| 12/28 | vs. Texas% | 10 p.m. |
| 12/30 | vs. C. Mich./San Diego% | 2 or 4 p.m. |
| 1/3 | Ohio State | 5:30 or 7:30 p.m. |
| 1/6 | Michigan | 12 p.m. |
| 1/10 | at Wisconsin | 7:30 p.m. |
| 1/17 | at Michigan State | 5 p.m. |
| 1/20 | Purdue | 3 p.m. |
| 1/24 | Wisconsin | 7 p.m. |
| 1/27 | at Michigan | 1 p.m. |
| 1/31 | at Illinois | 7 p.m. |
| 2/3 | Northwestern | 1 p.m. |
| 2/7 | at Minnesota | 7:30 p.m. |
| 2/11 | Nebraska | 6:30 or 7:30 p.m. |
| 2/14 | Penn State | 7 p.m. |
| 2/17 | at Purdue | 4 p.m. |
| 2/24 | at Nebraska | 2 p.m. |
| 2/28 | Indiana | TBA |
| 3/3 | at Northwestern | TBA |

^ -- WNIT

-- FIU Thanksgiving Classic, Miami

~ -- ACC/Big Ten Challenge

* - Iowa Corn Cy-Hawk Series

% -- San Diego Surf 'N Slam Classic, San Diego

Pronunciation Guide

| | |
|----------------------|-------------|
| Lisa Bluder..... | BLUE-dir |
| Kali Peschel..... | PEH-shull |
| Theairra Taylor..... | thee-AIR-uh |

SID Contact: Aaron Blau (@AaronBlau)
E-Mail: aaron-blau@hawkeyesports.com

Office: (319) 335-9268
Cell: (319) 430-5103



Florida State (5-0) vs. Iowa (5-2)

November 28, 2012 • 6 p.m.

Tallahassee, Fla. • Donald L. Tucker Center

Radio: AM-800 KXIC, AM-600 WMT, AM-1040 WHO

TV: N/A • Webcast: ESPN3.com • Live Stats: hawkeyesports.com

Series Record: First Meeting



THE SETTING

The University of Iowa women's basketball team travels to Tallahassee, Fla., on Wednesday to take on the Florida State Seminoles in the annual ACC/Big Ten Challenge. Tip-off is scheduled for 6 p.m. (CT) at the Donald L. Tucker Center.

AUDIO COVERAGE

Brent Balbinot and Shelley Till will call Wednesday's game for the Hawkeye Radio Network. Hawkeye fans can listen to the contest on AM-800 KXIC in Iowa City, AM-600 WMT in Cedar Rapids, AM-1040 WHO in Des Moines or on the Hawkeye All-Access page of hawkeyesports.com. Balbinot is in his ninth season as Iowa's play-by-play voice, while Till is in her eighth providing analysis.

ON YOUR COMPUTER

Wednesday's ACC/Big Ten Challenge game at Florida State will be streamed live on ESPN3.com. Visit ESPN3.com to see if your website provider carries the service.

Hawkeye fans can also follow the game via live stats (Gametracker). The "GT" link can be accessed under the "Calendar" tab on the front page of hawkeyesports.com or on the women's basketball schedule page.

IOWA HISTORY

Iowa has played 1,105 games since beginning basketball in 1974. Iowa's overall record is 676-429 (.612). That includes a 340-170 (.667) mark in regular season Big Ten contests and a 337-92 (.786) mark in Carver-Hawkeye Arena.

Tentative Starting Lineup

Iowa Hawkeyes (5-2)

| Pos. | No. | Name | Ht. | Yr. | Statistical Summary |
|------|-----|-------------------|------|-----|--|
| G | 22 | Samantha Logic | 5-8 | So. | 6.9 ppg, 5.0 rpg, 6.7 apg, .388 FG%, .818 FT% - Recorded four or more assists in six of Iowa's seven games |
| G | 24 | Jaime Printy | 5-11 | Sr. | 13.1 ppg, 4.4 rpg, 3.7 apg, .364 FG%, .951 FT% - Converted her last 21 free throw attempts |
| G | 23 | Theairra Taylor | 5-11 | Jr. | 6.3 ppg, 4.9 rpg, 1.6 apg, .385 FG%, .625 FT% - Tallied four or more rebounds in five of Iowa's seven games |
| F | 51 | Bethany Doolittle | 6-4 | So. | 6.7 ppg, 5.0 rpg, 2.4 bpg, .379 FG%, .1000 FT% - Third career double-digit scoring performance came against West Virginia (16 points) |
| C | 12 | Morgan Johnson | 6-5 | Sr. | 18.1 ppg, 7.6 rpg, 2.3 bpg, .582 FG%, .745 FT% - Scored in double figures in all seven games |

Head Coach: Lisa Bluder (Northern Iowa, 1983); 12th Season at Iowa (235-146); 28th Season Overall (591-288)



Inside the Numbers

| | IOWA | FSU |
|--------------------|------|-------|
| Scoring Average | 67.4 | 82.8 |
| Scoring Defense | 60.6 | 52.6 |
| Scoring Margin | +6.9 | +30.2 |
| FG% | .407 | .515 |
| FG% Defense | .329 | .321 |
| FT% | .764 | .714 |
| 3-PT FG% | .324 | .426 |
| 3-PT FG% Defense | .245 | .214 |
| Rebound Margin | -0.3 | +14.8 |
| Assists Per Game | 15.7 | 18.8 |
| Turnovers Per Game | 19.3 | 18.8 |
| Turnover Margin | -2.1 | +0.8 |
| Steals Per Game | 6.1 | 10.6 |
| Blocks Per Game | 6.4 | 2.8 |

Iowa vs. Florida State Series History

First Meeting

How Many Times a Hawkeye Player...

| | |
|-------------------------------------|---|
| Scored 20 or More Points | |
| Morgan Johnson..... | 3 |
| Jaime Printy..... | 1 |
| Scored 15 or More Points | |
| Morgan Johnson..... | 5 |
| Jaime Printy..... | 3 |
| Bethany Doolittle..... | 1 |
| Grabbed 10 or More Rebounds | |
| Morgan Johnson..... | 2 |
| Theairra Taylor..... | 1 |
| Grabbed 7 or More Rebounds | |
| Morgan Johnson..... | 3 |
| Bethany Doolittle..... | 2 |
| Theairra Taylor..... | 2 |
| Samantha Logic..... | 1 |
| Jaime Printy..... | 1 |
| Dished out 7 or More Assists | |
| Samantha Logic..... | 4 |
| Dished out 5 or More Assists | |
| Samantha Logic..... | 5 |
| Jaime Printy..... | 2 |
| Theairra Taylor..... | 1 |
| Recorded 4 or More Steals | |
| Samantha Logic..... | 1 |
| Blocked 3 or More Shots | |
| Bethany Doolittle..... | 2 |
| Morgan Johnson..... | 2 |

2012-13 Margin of Victory/Defeat

| Points | 1 | 2 | 3 | 4 | 5 | 6 | 7 | 8 | 9 | 10-14 | 15-19 | 20+ |
|--------|---|---|---|---|---|---|---|---|---|-------|-------|-----|
| Wins | 0 | 0 | 0 | 0 | 0 | 1 | 0 | 0 | 1 | 2 | 0 | 1 |
| Losses | 1 | 0 | 0 | 0 | 0 | 0 | 0 | 0 | 0 | 1 | 0 | 0 |

SCOUTING FLORIDA STATE

The Florida State Seminoles are 5-0, with its first three wins coming at home and the last two victories at the San Juan Shootout in Puerto Rico.

In their most recent game, the Seminoles knocked off 17th-ranked Vanderbilt, 73-59, in Puerto Rico. Five players scored double figures, led by Leonor Rodriguez's 16 points. Natasha Howard had 15 points and Chasity Clayton added 13 points and seven rebounds. Florida State out-rebounded Vanderbilt, 42-33 and shot 50 percent (25-of-50) from the field.

Five Florida State players are averaging double figures. Rodriguez and Howard are each averaging 16 points, while Chelsea Davis is at 15 points per contest. Clayton is scoring 13.6 points per contest and Alexa Deluzio is at 12.2 per game. Davis is the team's leading rebounder at 8.2 boards per game.

Florida State is scoring 82.8 points per game and holds a +30.2 scoring margin. The Seminoles are shooting 51.5 percent from the field and 42.6 percent from 3-point distance.

IOWA VS. FLORIDA STATE NOTES

- Iowa is 1-4 in the ACC/Big Ten Challenge after picking up its first win last year with an 58-47 victory over Virginia Tech in Iowa City. The Hawkeyes were defeated at home by Georgia Tech (2007) and Boston College (2009) along with road losses at Duke (2008) and North Carolina (2010).
- Florida State is 3-2 in the Challenge. The Hawkeyes are 11-6 all-time vs. the ACC.
- Last season, the Big Ten and ACC battled to a 6-6 draw, the first tie in the Challenge's history. The ACC had won the previous five Challenges.
- Florida State director of operations Melissa Bruner graduated from Coe College in 1994 and was a four-sport athlete in softball, basketball, tennis and volleyball. She also served as an assistant athletic director and head women's basketball coach at Coe College before taking the job at Florida State.

HAWKEYES KNOCK OFF NATIONALLY RANKED WEST VIRGINIA

Iowa used outstanding free throw shooting to upset 12th-ranked West Virginia, 79-70 in the FIU Thanksgiving Classic. The Hawkeyes scored 42 of their 79 points at the charity stripe.

The two teams combined for a total of 58 fouls and 79 free throw attempts. Jaime Printy was a perfect 17-of-17 from the free throw line and Morgan Johnson was 7-of-11.

Iowa trailed by as many as nine in the contest, but a second half surge gave the Hawkeyes the upset. Iowa went on a 9-0 run to tie the game at 52. After trading baskets, another 8-0 run with just over two minutes left gave Iowa the lead for good.

Johnson and Printy led the way with 19 points each. Bethany Doolittle had 17 points and six rebounds and Samantha Logic added nine points, seven rebounds, seven assists and three steals.

2012-13 Iowa Hawkeye Roster

| No. | Name | Yr. | Ht. | Pos. | Hometown (High School/College) |
|-----|-------------------|-----|------|------|-------------------------------------|
| 3 | Claire Till | Fr. | 6-0 | G | Dubuque, Iowa (Dubuque Wahlert) |
| 11 | Trisha Nesbitt | Sr. | 5-7 | G | Ames, Iowa (Ames) |
| 12 | Morgan Johnson | Sr. | 6-5 | C | Platte City, Mo. (Platte County) |
| 13 | Kathy Thomas | So. | 5-6 | G | Flint, Mich. (Highland CC, KS) |
| 21 | Melissa Dixon | So. | 5-8 | G | Johnsburg, Ill. (Johnsburg) |
| 22 | Samantha Logic | So. | 5-9 | G | Racine, Wis. (Racine J.I. Case) |
| 23 | Theairra Taylor | Jr. | 5-11 | G | St. Paul, Minn. (Central) |
| 24 | Jaime Printy | Sr. | 5-11 | G | Marion, Iowa (Linn-Mar) |
| 25 | Kali Peschel | Fr. | 6-1 | G | Sauk Centre, Minn. (Sauk Centre) |
| 33 | Kathryn Reynolds | So. | 5-7 | G | Cincinnati, Ohio (Mount Notre Dame) |
| 45 | Nicole Smith | Fr. | 6-4 | C | Rockton, Ill. (Hononegah) |
| 51 | Bethany Doolittle | So. | 6-4 | C | Oakdale, Minn. (Hill-Murray) |
| 54 | Kayla Timmerman | Fr. | 6-3 | F | Wayzata, Minn. (Wayzata) |

Head Coach: Lisa Bluder **Associate Head Coach:** Jan Jensen
Assistant Coaches: Jenni Fitzgerald and Shannon Gage



2012-13 Team Captains

Iowa captains are seniors
Jaime Printy, Morgan Johnson and Trisha Nesbitt

IOWA IN THE RANKINGS

Iowa is receiving votes in the latest Associated Press Top 25.

Seven Iowa opponents are ranked in the Associated Press and ESPN/USA Today polls: Penn State (6th/7th), Purdue (14th/13th), Ohio State (15th/16th), Nebraska (21st/19th), North Carolina (22nd/RV), Iowa State (24th/RV) and West Virginia (25th/23rd).

In addition, Florida State, Middle Tennessee and Minnesota are receiving votes.

FREE THROW RECORDS FALL AGAINST WEST VIRGINIA

- Jaime Printy is only the third player in Big Ten history to go 17-of-17 from the free throw line, matching the best single game free throw performance in conference history. Wisconsin's Michele Kozelka (1989) and Keisha Anderson (1996) are the only other players in Big Ten history to accomplish the feat.
- Printy's 17 made free throws tied the single game school record and are tied for the second most made free throws in Big Ten history.
- Printy's performance against West Virginia marked the ninth time in school history that an Iowa player has been perfect from the free throw line (minimum 10 attempts). Printy now has three of those marks, with one of those performances coming earlier this year against Middle Tennessee (11-for-11). The other came against Indiana (10-for-10) on Feb. 27, 2011.
- As a team, the Hawkeyes set the Big Ten and school record for made free throws made (42) and set the school record for free throw attempts (50).

PRINTY ON ANOTHER FREE THROW STREAK

Jaime Printy has converted 21-consecutive free throws, dating back to Iowa's Preseason WNIT championship game against North Carolina (Nov. 18).

Printy has put together a string of at least 20-consecutive made free throws in each year of her career. She converted 27-straight as a freshman and 32-straight as a sophomore and junior.

Iowa's record for consecutive free throws made is 33 by Lindsey Meder.

CLOSING IN ON A BIG TEN RECORD

Jaime Printy currently owns an 88.5 career free throw percentage (347-of-392). Former Hawkeye Wendy Ausdemore holds the Iowa and Big Ten record for career free throw percentage at 89.2 (174-of-195).

JOHNSON SETS BLOCK RECORD

Morgan Johnson became the Iowa career leader in blocks against Florida International (Nov. 23).

Johnson entered the game needing two blocks to break Tangela Smith's career blocks record and she finished with five.

Johnson currently ranks eighth in Big Ten history with 241 blocks.

MILESTONE NOTES

- With one more rebound, Jaime Printy will be just the third player in school history with 1,500 career points, 400 career rebounds and 300 career assists. Michelle Edwards and Franthea Price are the other two Iowa players to record those career numbers.
- Morgan Johnson is only the second player in school history to collect over 200 blocks, joining Tangela Smith.

Head Coach Lisa Bluder

Lisa Bluder (pronounced BLUE-dir) is in her 13th season as head coach at the University of Iowa and her 29th season as a college head coach. She is a three-time Big Ten and two-time WBCA Regional Coach of the Year.

Bluder has a career record of 591-288 (.672), including a 235-146 (.617) record at Iowa, a 187-106 (.638) record in 10 seasons (1990-2000) at Drake and a six-year mark (1984-90) of 169-36 (.824) at St. Ambrose.

Bluder is Iowa's second all-time winningest coach and trails only C. Vivian Stringer. She has guided the Hawkeyes to 11 postseason tournaments (9 NCAA, 2 WNIT) and nine upper-division finishes in the Big Ten Conference, including winning a share of the league championship in 2008 and taking home the conference tournament title in 2001.

In her first season with the Hawkeyes, Bluder transformed a struggling program into a 21-game winner. Iowa finished second in the Big Ten, won the conference tournament and advanced to the second round of the NCAA Tournament. Bluder became Iowa's third coach to be named Big Ten Coach of the Year. She was also honored as the College Coach of the Year by the *Women's Basketball News Service* and was named the WBCA District 6 Coach of the Year. Iowa's 2001-02 squad finished fourth in the Big Ten and advanced to the second round of the NCAA Tournament for the second consecutive year. In 2003, Bluder guided the Hawkeyes to their first-ever WNIT appearance. Iowa, which had nine underclassmen on its roster, advanced to the quarterfinals before falling to Creighton. In 2004-05, Iowa finished 23-10, starting the year 13-0 and was the last Division I undefeated team standing. In 2005-06, Bluder mentored a team plagued by injuries to a fifth-place Big Ten finish and an NCAA Tournament berth.

In her 10 years at Drake, Bluder brought great success and tradition to the Bulldog program and established herself as one of the top coaches in the country. She led Drake to five 20-plus win seasons in her last six years, including five post-season appearances. She guided the Bulldogs to eight Missouri Valley Conference Tournament appearances, reaching the semifinals six times and winning the tournament four times. Bluder was also named the Conference Coach of the Year three times at Drake.

Bluder began her coaching career at St. Ambrose, where she coached six successful seasons, building the Bees into a NAIA powerhouse. During her tenure at St. Ambrose, Bluder guided the Bees to four straight national tournaments, including two consecutive Final Four appearances. The 1990 St. Ambrose team was ranked No. 1 and Bluder was named the NAIA Converse Coach of the Year.

A graduate of Linn-Mar High School in Marion, Iowa, Bluder was a three-year starter at Northern Iowa. She graduated from UNI in 1983 with a bachelor's degree in marketing.



Press Conferences

Below is a list of press conferences for Head Iowa Women's Basketball Coach Lisa Bluder. Press conferences will be held in the Media Room on the first floor of Carver-Hawkeye Arena. Select student-athletes will be available after Coach Bluder addresses the media.

| | |
|------------------------------------|------|
| Wednesday, Dec. 5 | Noon |
| Week of Dec. 10 (Finals) | TBA |
| Wednesday, Jan. 2 | TBA |
| Wednesday, Jan. 9 | TBA |
| Tuesday, Jan. 15 | TBA |
| Wednesday, Jan. 23 | TBA |
| Tuesday, Jan. 29 | TBA |
| Tuesday, Feb. 5 | TBA |
| Wednesday, Feb. 13 | TBA |
| Friday, Feb. 22 | TBA |
| Week of Feb. 4 (B1G Tourney) | TBA |

Follow the Hawkeyes on Twitter

| | |
|-----------------------------|------------------|
| Iowa Women's Basketball.... | @IowaWBB |
| Claire Till | @clairetill3 |
| Trisha Nesbitt | @TNesbitt11 |
| Morgan Johnson | @MoJohnson12 |
| Kathy Thomas | @datgurlgotgame_ |
| Melissa Dixon | @MDix21 |
| Theairra Taylor | @two3KneeTaylor |
| Jaime Printy | @jprinty24 |
| Kali Peschel | @KaliPeschel |
| Nicole Smith | @NicoleSmith42 |
| Kayla Timmerman | @timmykay54 |
| Jan Jensen | @golowa |
| Jenni Fitzgerald | @jlefty21 |
| Abby Emmert | @abbyemmert |

Press Conference FTP Information

Weekly press conference footage will be e-mailed to media outlets via www.dropbox.com. Media outlets will be able to download footage directly from a URL provided. More information will be available in the coming weeks.

STELLAR FROM THE FIELD

Morgan Johnson owns a career field goal percentage of 51.7 percent, converting on 481-of-931 shot attempts.

Johnson has played in 103 career games and attempted 10 or more shots in 42 of those contests. She has shot over 50 percent from the field in 29 of those games.

Johnson had 10 or more shot attempts in eight games as a freshman, making over half of her shots in six of those games. She went over 50 percent in eight of the 13 games she shot at least 10 times as a sophomore and 11-of-15 in those games as a junior.

Johnson has six games with over 10 shots as a senior, converting at least 50 percent four times.

LOGIC LIKES TO SHARE

Samantha Logic has collected five or more assists in Iowa's last five games.

She tied a school record with 12 assists against Middle Tennessee, dished out six against North Carolina, nine against Robert Morris and seven against Florida International and West Virginia.

SHARING AND SCORING

Iowa's guards are sharing the ball well, which is leading to numerous scoring chances.

The Hawkeyes have recorded 110 assists on 155 made field goals through seven games this season. Samantha Logic (35) and Jaime Printy (26) have 61 of Iowa's 110 assists.

IOWA CONTINUES TREND AGAINST RANKED FOES

Iowa's win over 12th-ranked West Virginia (Nov. 25) marked the 14th time under Lisa Bluder that the Hawkeyes have defeated a top-15 team.

The Hawkeyes have recorded at least one win against a top-25 team in all but two seasons under Bluder. In nine of those seasons, Iowa has knocked off at least one top-15 opponent.

West Virginia was the highest ranked opponent the Hawkeyes have defeated since knocking off No. 10 Michigan State (66-64) on Jan. 27, 2011.

BLUDER CLOSING IN ON MILESTONE

Head coach Lisa Bluder is just nine wins away from career win No. 600. Bluder entered the 2012-13 season as the 26th winningest active coach and the 46th overall winningest coach in NCAA women's basketball history (by victories).

Only 41 coaches in NCAA women's basketball history (all divisions) have reached the 600 career win plateau.

JOHNSON NAMED BIG TEN PLAYER OF THE WEEK

Morgan Johnson was named Big Ten Player of the Week (Nov. 19) for her efforts in the Preseason WNIT semifinals and championship game.

Johnson averaged 20 points, 9.5 rebounds and shot 76.2 percent (16-of-21) from the floor against two tough opponents in Middle Tennessee and North Carolina.

Johnson started the week with 20 points (8-of-10 FGs), eight rebounds and two blocks in Iowa's overtime win over Middle Tennessee. She followed with another 20-point performance, along with 11 rebounds, against ACC opponent North Carolina, battling 6-6 center Waltiea Rolle in the paint.

The award was Johnson's second weekly honor from the Big Ten in her career. She was named Big Ten Player of the Week last year after scoring 37 points at Bradley.

PRECONFERENCE ALL-TOURNAMENT TEAM HONORS

Morgan Johnson was named to the Preseason WNIT all-tournament team, while Jaime Printy was selected to both the Preseason WNIT and FIU Thanksgiving all-tournament teams.



| Final 2011-12 Big Ten Overall Individual Stats | | | | | |
|---|-------------|-------------|-----------------------|-------------|-------------|
| Morgan Johnson | Rank | Avg. | Samantha Logic | Rank | Avg. |
| Field Goal Percentage | 1st | .549 | Offensive Rebounds | 4th | 2.8 |
| Blocks | 2nd | 2.3 | Assists | 5th | 4.4 |
| Scoring | 9th | 14.9 | Rebounding | 7th | 7.1 |
| Rebounding | 10th | 6.6 | Assist/Turnover Ratio | 9th | 1.2 |
| Offensive Rebounds | 10th | 2.2 | Steals | 15th | 1.5 |
| Defensive Rebounds | 13th | 4.5 | Defensive Rebounds | 15th | 4.3 |
| Kamille Wahlin | Rank | Avg. | Kelly Krei | Rank | Avg. |
| 3-Pointers Made | 4th | 2.1 | 3-Pointers Made | 14th | 1.5 |
| 3-Point Percentage | 6th | .370 | 3-Point Percentage | 15th | .333 |
| Assist/Turnover Ratio | 6th | 1.5 | Rebounding | 18th | 5.8 |
| Minutes Played | 7th | 34.5 | | | |
| Assists | 9th | 3.8 | Melissa Dixon | Rank | Avg. |
| Scoring | 17th | 12.9 | 3-Point Percentage | 9th | .357 |
| | | | 3-Pointers Made | 15th | 1.5 |

MOVING UP CAREER CHARTS

- Morgan Johnson is Iowa's all-time blocks leader (241), 12th in career rebounds (683) and 20th in career scoring (1,231). She needs nine more rebounds to move past Lisa Becker for 11th place and 12 more points to past Lisa Long for 19th place.
- Jaime Printy ranks fourth in career 3-pointers made (210), eighth in career scoring (1,501) and 11th in career assists (330). She needs 12 more 3-pointers to move past Wendy Ausdemore for third place, 98 more points to move past Tangela Smith for eighth place and 10 more assists to move past Kachine Alexander for 10th place.

PRINTY NAMED SENIOR CLASS AWARD NOMINEE

Senior Jaime Printy is one of 30 NCAA Division I women's basketball players to be named a candidate for the 2012 Senior CLASS Award.

An acronym for Celebrating Loyalty and Achievement for Staying in School, the Senior CLASS Award focuses on the total student-athlete and encourages students to use their platform in athletics to make a positive impact as leaders in their communities.

Printy has excelled both on and off the court during her career. The Marion, Iowa, native is one of the most decorated players in Iowa history, earning Big Ten Freshman of the Year honors in 2010, Associated Press Honorable Mention All-America accolades as a sophomore and All-Big Ten recognition as a junior.

Off the court, Printy has been named Capital One Academic All-District, is a member of the Dean's List and is a two-time Academic All-Big Ten selection. She is active in the eastern Iowa community, volunteering with numerous charities, organizations and local elementary schools.

JOHNSON NAMED PRESEASON ALL-BIG TEN

Senior center Morgan Johnson was named Preseason All-Big Ten at the annual Big Ten Media Day in Chicago.

Johnson was one of seven players chosen by the league coaches for the Preseason All-Big Ten team. She was joined on the coaches team by Rachel Banham (Minnesota), Jordan Hooper (Nebraska), Tayler Hill (Ohio State), Courtney Moses (Purdue) and Alex Bentley and Maggie Lucas (Penn State).

The media Preseason All-Big Ten team consisted of Hooper and Lindsey Moore (Nebraska), Hill, Bentley and Lucas.

Johnson was a second team All-Big Ten selection as a junior last season, averaging 14.9 points and 6.6 rebounds. She led the Big Ten and ranked seventh in the NCAA in field goal percentage (54.9). She also ranked second in the Big Ten and 26th in the country in blocks per game (2.3).

This year marks the third consecutive season that a Hawkeye player has been named Pre-season All-Big Ten (Kachine Alexander – 2010, Jaime Printy – 2011).

| Final 2011-12 Big Ten Overall Stats | |
|--|-------|
| Scoring Offense | |
| 1. Penn State | 75.7 |
| 4. Iowa | 71.4 |
| Scoring Defense | |
| 1. Michigan | 58.9 |
| 8. Iowa | 65.9 |
| Scoring Margin | |
| 1. Penn State | +13.2 |
| 6. Iowa | +5.5 |
| Free Throw Percentage | |
| 1. Iowa | .794 |
| Field Goal Percentage | |
| 1. Ohio State | .462 |
| 5. Iowa | .419 |
| Field Goal Percentage Defense | |
| 1. Penn State | .358 |
| 7. Iowa | .385 |
| 3-Point Field Goals Made | |
| 1. Nebraska | 7.0 |
| 2. Iowa | 6.8 |
| 3-Point Field Goal Percentage | |
| 1. Penn State | .362 |
| 6. Iowa | .317 |
| 3-Point Field Goal Percentage Defense | |
| 1. Penn State | .260 |
| 9. Iowa | .321 |
| Rebounding | |
| 1. Nebraska | 42.3 |
| 6. Iowa | 39.6 |
| Rebounding Allowed | |
| 1. Michigan State | 33.4 |
| 7. Iowa | 38.1 |
| Rebounding Margin | |
| 1. Michigan State | +6.3 |
| 5. Iowa | +1.5 |
| Offensive Rebounds | |
| 1. Indiana | 16.1 |
| 8. Iowa | 12.9 |
| Defensive Rebounds | |
| 1. Penn State | 28.5 |
| 4. Iowa | 26.7 |
| Blocked Shots | |
| 1. Ohio State | 5.7 |
| 4. Iowa | 4.6 |
| Assists | |
| 1. Iowa | 16.6 |
| Steals | |
| 1. Purdue | 9.5 |
| 11. Iowa | 7.3 |
| Turnover Margin | |
| 1. Michigan | +3.3 |
| 7. Iowa | -0.4 |
| Assist/Turnover Ratio | |
| 1. Ohio State | 1.1 |
| 2. Iowa | 1.0 |



Career Scoring in Iowa History

| Rank...No..... | Player..... | Years |
|--------------------------|----------------------------|------------|
| 5..... 1742..... | Franthea Price..... | 86-90 |
| 6..... 1606..... | Toni Foster..... | 89-93 |
| 7..... 1598..... | Tangela Smith..... | 94-98 |
| 8..... 1501..... | Jaime Printy..... | 10- |
| 18..... 1239..... | Kachine Alexander..... | 08-11 |
| 19..... 1230..... | Lisa Long..... | 83-87 |
| 20..... 1219..... | Morgan Johnson..... | 10- |

Career 3-Pointers in Iowa History

| Rank...No..... | Player..... | Years |
|------------------------|--------------------------|------------|
| 1..... 261..... | Lindsey Meder..... | 98-02 |
| 2..... 231..... | Kamille Wahlin..... | 09-Pr. |
| 3..... 221..... | Wendy Ausdemore..... | 05-09 |
| 4..... 210..... | Jaime Printy..... | 10- |

Career Blocks in Iowa History

| Rank...No..... | Player..... | Years |
|------------------------|----------------------------|--------------|
| 1..... 241..... | Morgan Johnson..... | 10-Pr |
| 2..... 235..... | Tangela Smith..... | 94-98 |

Career Rebounds in Iowa History

| Rank...No..... | Player..... | Years |
|-------------------------|----------------------------|--------------|
| 8..... 789..... | Amy Herrig..... | 95-99 |
| 9..... 745..... | Randi Peterson..... | 97-01 |
| 10..... 726..... | Franthea Price..... | 86-90 |
| 11..... 691..... | Lisa Becker..... | 83-87 |
| 12..... 683..... | Morgan Johnson..... | 10-Pr |

Career Assists in Iowa History

| Rank...No..... | Player..... | Years |
|-------------------------|--------------------------|--------------|
| 4..... 412..... | Kristi Smith..... | 05-09 |
| 5..... 391..... | Johanna Solverson..... | 02-05 |
| 6..... 387..... | Franthea Price..... | 86-90 |
| 7..... 367..... | Steph Schueler..... | 87-91 |
| 8..... 357..... | Nadine Domond..... | 94-98 |
| 9..... 353..... | Jolette Law..... | 86-90 |
| 10..... 339..... | Kachine Alexander..... | 08-11 |
| 11..... 330..... | Jaime Printy..... | 10-Pr |

Hawkeyes in Final 2011-12 NCAA Stats

| Iowa | Rank | Avg. |
|--------------------------|------|------|
| Free Throw Percentage | 4th | 79.4 |
| Assists | 12th | 16.6 |
| Assist/Turnover Ratio | 19th | 1.0 |
| 3-Pointers Made Per Game | 28th | 6.8 |
| Scoring Offense | 31st | 71.4 |
| Blocks | 47th | 4.6 |
| Field Goal Percentage | 48th | 41.9 |
| Scoring Margin | 80th | 5.5 |

| Morgan Johnson | Rank | Avg. |
|-----------------------|------|------|
| Field Goal Percentage | 7th | 54.9 |
| Blocks Per Game | 26th | 2.3 |

| Kamille Wahlin | Rank | Avg. |
|--------------------|------|------|
| 3-Point Percentage | 40th | 37.0 |

| Samantha Logic | Rank | Avg. |
|----------------|------|------|
| Assists | 66th | 4.4 |

2012-13 Big Ten Standings (thru Nov. 26)

| Team | Overall | Pct. | Big Ten | Pct. |
|----------------|---------|-------|---------|------|
| Northwestern | 5-0 | 1.000 | 0-0 | .000 |
| Penn State | 5-0 | 1.000 | 0-0 | .000 |
| Michigan State | 5-0 | 1.000 | 0-0 | .000 |
| Minnesota | 6-1 | .857 | 0-0 | .000 |
| Nebraska | 5-1 | .833 | 0-0 | .000 |
| Purdue | 5-1 | .833 | 0-0 | .000 |
| Michigan | 5-1 | .833 | 0-0 | .000 |
| Indiana | 5-1 | .833 | 0-0 | .000 |
| Ohio State | 4-1 | .800 | 0-0 | .000 |
| Iowa | 5-2 | .714 | 0-0 | .000 |
| Illinois | 3-2 | .600 | 0-0 | .000 |
| Wisconsin | 3-2 | .600 | 0-0 | .000 |

SUCCESS UNDER BLUDER

Last season marked the ninth time in 12 seasons under head coach Lisa Bluder that Iowa has been selected for the NCAA Tournament, including each of the last five seasons. The Hawkeyes have participated in postseason play in all but one season under Bluder (two WNIT appearances).

In addition, Iowa finished with a winning record for the 11th time in 12 seasons under Bluder. Iowa's tie for second place in the Big Ten is also the ninth time, under Bluder, the Hawkeyes recorded an upper-division finish in the conference.

NCAA STREAK RANKS HIGH IN BIG TEN

Iowa's five straight NCAA Tournament appearances is the second-longest active streak among Big Ten schools. The Hawkeyes have been an at-large selection from 2008-12.

Ohio State is the only other Big Ten program to have a longer active NCAA selection streak, having made the tournament in each of the last 10 seasons.

REYNOLDS TO MISS 2012-13 SEASON

Sophomore Kathryn Reynolds will miss the entire 2012-13 season after tearing her left ACL during offseason workouts in April.

The injury was the second tear to Reynolds' left ACL. She tore the same ligament six games into her junior season in high school.

IOWA SELECTED TO HOST NCAA 1ST AND 2ND ROUNDS

The University of Iowa has been selected to host first and second round games of the 2013 NCAA Women's Basketball Championship.

The Iowa City site will host first round games on Sunday, March 24 at 4 and 6:30 p.m. The second round contest will be on Tuesday, March 26 at 8:30 p.m.

Fans can take advantage of a special advanced sale rate that runs until Jan. 1. All-session tickets are just \$25 for adults and \$15 for youth (18 and under), UI students and seniors (50+). The first 500 fans purchasing all-session tickets will receive a souvenir t-shirt.

IOWA WOMEN'S BASKETBALL AND SOCIAL MEDIA

The Hawkeye women's basketball has four different social media outlets. Check out the Iowa women's basketball Facebook page or the University of Iowa Athletics Facebook page. Fans can also follow @IowaWBB or @TheIowaHawkeyes on Twitter.

PLAYER AND STAFF HEADSHOTS

Media can download updated color headshots of the Iowa Hawkeye players and coaching staff at <http://pics.hawkeyesports.com>.

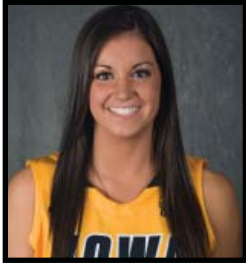




University of Iowa Women's Basketball

Updated Iowa Player Bio

Claire Till



3

Guard, 6-0, Freshman
Dubuque, Iowa
Dubuque Wahlert HS

- Seven points and six rebounds against Florida International.
- Five points and two rebounds in win over Robert Morris.
- Scored three points and recorded six rebounds in collegiate debut vs. NIU.
- Two-time all-state selection.
- Three-time IBCA Select Team member.
- Four-time first team all-conference and all-district pick.
- Underwent three surgeries in high school to repair injured knee.

Personal Bests

Points: 7 at Florida International (11/23/12)
Rebounds: 6, twice, last at FIU (11/23/12)
FGM: 1, 4x, last at FIU (11/23/12)
FGA: 6 at Florida International (11/23/12)
3-pt FG: 1, twice, last vs. RMU (11/20/12)
3-pt FGA: 2, twice, last at FIU (11/23/12)
FTM: 5, twice, last vs. WVU (11/25/12)
FTA: 8 at Florida International (11/23/12)
Assists: 1 vs. North Carolina (11/18/12)
Steals: 1, 3x, last vs. WVU (11/25/12)
Blocks: 1 vs. NIU (11/9/12)
Minutes: 18 at Florida International (11/23/12)

2012-13 Game-by-Game

#03 Till, Claire

| Opponent | Date | gs | min | Total | | 3-Pointers | | Free throws | | Rebounds | | | pf | a | t/o | blk | stl | pts | avg | |
|-------------------|----------|----|-----|--------|------|------------|------|-------------|------|----------|-----|-----|-----|---|-----|-----|-----|-----|-----|-----|
| | | | | fg-fga | pct | 3fg-fga | pct | ft-fa | pct | off | def | tot | | | | | | | | avg |
| NORTHERN ILLINOIS | 11/9/12 | 11 | 1-3 | .333 | 1-2 | .500 | 0-2 | .000 | 1 | 5 | 6 | 6.0 | 3 | 0 | 0 | 1 | 1 | 3 | 3.0 | |
| ILLINOIS STATE | 11/11/12 | 7 | 1-2 | .500 | 0-0 | .000 | 2-2 | 1.000 | 0 | 3 | 3 | 4.5 | 1 | 0 | 2 | 0 | 1 | 4 | 3.5 | |
| MIDDLE TENNESSEE | 11/14/12 | 8 | 0-1 | .000 | 0-0 | .000 | 0-0 | .000 | 0 | 1 | 1 | 3.3 | 2 | 0 | 0 | 0 | 0 | 0 | 2.3 | |
| NORTH CAROLINA | 11/18/12 | 6 | 0-0 | .000 | 0-0 | .000 | 1-2 | .500 | 0 | 2 | 2 | 3.0 | 0 | 1 | 2 | 0 | 0 | 1 | 2.0 | |
| ROBERT MORRIS | 11/20/12 | 16 | 1-2 | .500 | 1-1 | 1.000 | 2-2 | 1.000 | 0 | 2 | 2 | 2.8 | 0 | 0 | 2 | 0 | 0 | 5 | 2.6 | |
| at FIU | 11/23/12 | 18 | 1-6 | .167 | 0-2 | .000 | 5-8 | .625 | 5 | 1 | 6 | 3.3 | 0 | 0 | 0 | 0 | 0 | 7 | 3.3 | |
| vs WVU | 11/25/12 | 14 | 0-1 | .000 | 0-0 | .000 | 5-6 | .833 | 2 | 0 | 2 | 3.1 | 1 | 0 | 1 | 0 | 1 | 5 | 3.6 | |
| Totals | | 0 | 80 | 4-15 | .267 | 2-5 | .400 | 15-22 | .682 | 8 | 14 | 22 | 3.1 | 7 | 1 | 7 | 1 | 3 | 25 | 3.6 |

Games played: 7
 Minutes/game: 11.4
 Points/game: 3.6
 FG Pct: 26.7
 3FG Pct: 40.0
 FT Pct: 68.2

Rebounds/game: 3.1
 Assists/game: 0.1
 Turnovers/game: 1.0
 Assist/turnover ratio: 0.1
 Steals/game: 0.4
 Blocks/game: 0.1

CAREER STATISTICS

| YEAR | G/GS | FG-A | PCT | 3-PT | PCT | FT-A | PCT | O-D-REB | AVG | PF-FO | AS | TO | BK | ST | PTS | AVG |
|--------|------|------|------|------|------|-------|------|---------|-----|-------|----|----|----|----|-----|-----|
| Fresh. | 7/0 | 4-15 | .267 | 2-5 | .400 | 15-22 | .682 | 8-14-22 | 3.1 | 7-0 | 1 | 7 | 1 | 3 | 25 | 3.6 |





University of Iowa Women's Basketball

Updated Iowa Player Bio

Trisha Nesbitt



11

Guard, 5-7, Senior
Ames, Iowa
Ames HS

- Academic All-Big Ten in 2011-12.
- Had minor knee surgery Nov. 15, 2011 and missed the first 10 games of the season as a junior.
- Saw first action last season Dec. 20 vs. Drake, recording one rebound and one steal in seven minutes of play.

Personal Bests

Points: 10 vs. Michigan State (3/6/10)
Rebounds: 3, 2x, last vs. NIU (11/9/12)
FGM: 4 vs. Michigan State (3/6/10)
FGA: 8 at Indiana (2/11/10)
3-pt FG: 2, 2x, last vs. MSU (3/6/10)
3-pt FGA: 4, 2x, last vs. Stanford (3/22/10)
FTM: 4, 2x, last vs. SDSU (12/22/09)
FTA: 5 at UNI (11/22/09)
Assists: 4, 3x, last at Iowa St. (12/10/09)
Steals: 3 at Minnesota (1/3/10)
Blocks: ---
Minutes: 37 at Indiana (2/11/10)

2012-13 Game-by-Game

#11 Nesbitt, Trisha

| Opponent | Date | gs | min | Total | | 3-Pointers | | Free throws | | Rebounds | | | pf | a | t/o | blk | stl | pts | avg | | |
|-------------------|----------|----|-----|--------|-------|------------|-------|-------------|------|----------|-----|-----|-----|-----|-----|-----|-----|-----|-----|-----|-----|
| | | | | fg-fga | pct | 3fg-fga | pct | ft-fa | pct | off | def | tot | | | | | | | | avg | |
| NORTHERN ILLINOIS | 11/9/12 | | 18 | 1-1 | 1.000 | 1-1 | 1.000 | 0-0 | .000 | 0 | 3 | 3 | 3.0 | 0 | 1 | 2 | 0 | 3 | 3.0 | | |
| ILLINOIS STATE | 11/11/12 | | 15 | 0-3 | .000 | 0-1 | .000 | 3-4 | .750 | 0 | 1 | 1 | 2.0 | 3 | 0 | 1 | 0 | 1 | 3 | 3.0 | |
| MIDDLE TENNESSEE | 11/14/12 | | 4 | 1-1 | 1.000 | 0-0 | .000 | 0-0 | .000 | 0 | 0 | 0 | 1.3 | 0 | 0 | 0 | 0 | 2 | 2.7 | | |
| NORTH CAROLINA | 11/18/12 | | 5 | 1-2 | .500 | 0-1 | .000 | 0-0 | .000 | 0 | 0 | 0 | 1.0 | 0 | 0 | 0 | 0 | 2 | 2.5 | | |
| ROBERT MORRIS | 11/20/12 | | 13 | 0-0 | .000 | 0-0 | .000 | 0-0 | .000 | 0 | 2 | 2 | 1.2 | 0 | 2 | 0 | 0 | 0 | 2.0 | | |
| at FIU | 11/23/12 | | 8 | 1-2 | .500 | 0-0 | .000 | 0-0 | .000 | 0 | 1 | 1 | 1.2 | 1 | 1 | 0 | 0 | 2 | 2.0 | | |
| vs WVU | 11/25/12 | | 14 | 1-1 | 1.000 | 1-1 | 1.000 | 1-2 | .500 | 0 | 0 | 0 | 1.0 | 2 | 1 | 1 | 0 | 1 | 4 | 2.3 | |
| Totals | | | 0 | 77 | 5-10 | .500 | 2-4 | .500 | 4-6 | .667 | 0 | 7 | 7 | 1.0 | 6 | 5 | 4 | 0 | 2 | 16 | 2.3 |

Games played: 7
 Minutes/game: 11.0
 Points/game: 2.3
 FG Pct: 50.0
 3FG Pct: 50.0
 FT Pct: 66.7

Rebounds/game: 1.0
 Assists/game: 0.7
 Turnovers/game: 0.6
 Assist/turnover ratio: 1.3
 Steals/game: 0.3

CAREER STATISTICS

| YEAR | G/GS | FG-A | PCT | 3-PT | PCT | FT-A | PCT | O-D-REB | AVG | PF-FO | AS | TO | BK | ST | PTS | AVG |
|---------------|-------------|---------------|-------------|--------------|-------------|--------------|-------------|----------------|------------|-------------|-----------|-----------|----------|-----------|------------|------------|
| Fresh. | 34/1 | 25-85 | .294 | 9-36 | .250 | 25-31 | .806 | 2-22-24 | 0.7 | 46-0 | 43 | 42 | 0 | 14 | 84 | 2.5 |
| Soph. | 16/0 | 3-13 | .231 | 2-6 | .333 | 0-1 | .000 | 0-4-4 | 0.3 | 7-0 | 5 | 10 | 0 | 1 | 8 | 0.5 |
| Junior | 15/0 | 1-8 | .125 | 0-6 | .000 | 3-4 | .750 | 1-2-3 | 0.2 | 10-0 | 4 | 3 | 0 | 3 | 5 | 0.3 |
| Senior | 7/0 | 5-10 | .500 | 2-4 | .500 | 4-6 | .667 | 0-7-7 | 1.0 | 6-0 | 5 | 4 | 0 | 2 | 16 | 2.3 |
| TOTALS | 72/1 | 34-116 | .293 | 13-52 | .250 | 32-42 | .762 | 3-35-38 | 0.5 | 69-0 | 57 | 59 | 0 | 20 | 113 | 1.6 |





University of Iowa Women's Basketball

Updated Iowa Player Bio

Morgan Johnson



12

Center, 6-5, Senior
Platte City, Mo.
Platte County HS

- Iowa career blocks leader (241), 12th in career rebounds (683) and 20th in career scoring (1,231).
- Recorded 14 career double-doubles, including three as a freshman, five as a sophomore, four as a junior and two as a senior.
- 19 points in win over West Virginia.
- Second double-double of the season with 19 points and 11 rebounds in win over Robert Morris.
- Big Ten Player of the Week (Nov. 19).
- First double-double of the season with 20 points and 11 rebounds vs. N. Carolina.
- 20 points and eight rebounds in win over Middle Tennessee.
- 24 points (12-of-13 FTs) and nine rebounds in win over Illinois State.
- Preseason All-Big Ten selection.
- Second team All-Big Ten by coaches and media in 2011-12.

Personal Bests

Points: 37 at Bradley (12/17/11)
Rebounds: 16 vs. Illinois (1/5/12)
FGM: 13 at Bradley (12/17/11)
FGA: 21 vs. Virginia Tech (11/30/11)
3-pt FG: 1 at Iowa State (12/10/09)
3-pt FGA: 2 at Iowa State (12/10/09)
FTM: 12 vs. Illinois State (11/11/12)
FTA: 13 vs. Illinois State (11/11/12)
Assists: 4, 2x, last vs. Penn St. (1/14/10)
Steals: 3, 3x, last at Nwwestern (2/13/11)
Blocks: 8 vs. Minnesota (2/18/10)
Minutes: 41 vs. Middle Tennessee (11/14/12)

2012-13 Game-by-Game

#12 Johnson, Morgan

| Opponent | Date | gs | min | Total | | 3-Pointers | | Free throws | | Rebounds | | | pf | a | t/o | blk | stl | pts | avg | | |
|-------------------|----------|----|-----|--------|-------|------------|------|-------------|-------|----------|-----|-----|-----|-----|-----|-----|-----|-----|-----|------|------|
| | | | | fg-fga | pct | 3fg-fga | pct | ft-fa | pct | off | def | tot | | | | | | | | avg | |
| NORTHERN ILLINOIS | 11/9/12 | * | 20 | 4-11 | .364 | 0-0 | .000 | 3-5 | .600 | 1 | 4 | 5 | 5.0 | 2 | 0 | 1 | 0 | 1 | 11 | 11.0 | |
| ILLINOIS STATE | 11/11/12 | * | 30 | 6-14 | .429 | 0-0 | .000 | 12-13 | .923 | 4 | 5 | 9 | 7.0 | 2 | 2 | 2 | 5 | 1 | 24 | 17.5 | |
| MIDDLE TENNESSEE | 11/14/12 | * | 41 | 8-10 | .800 | 0-0 | .000 | 4-6 | .667 | 2 | 6 | 8 | 7.3 | 4 | 1 | 0 | 2 | 0 | 20 | 18.3 | |
| NORTH CAROLINA | 11/18/12 | * | 39 | 8-11 | .727 | 0-0 | .000 | 4-5 | .800 | 3 | 8 | 11 | 8.3 | 4 | 1 | 2 | 2 | 2 | 20 | 18.8 | |
| ROBERT MORRIS | 11/20/12 | * | 33 | 8-13 | .615 | 0-0 | .000 | 3-5 | .600 | 5 | 6 | 11 | 8.8 | 3 | 0 | 3 | 0 | 0 | 19 | 18.8 | |
| at FIU | 11/23/12 | * | 36 | 6-9 | .667 | 0-0 | .000 | 2-2 | 1.000 | 3 | 3 | 6 | 8.3 | 2 | 2 | 3 | 5 | 0 | 14 | 18.0 | |
| vs WVU | 11/25/12 | * | 30 | 6-11 | .545 | 0-0 | .000 | 7-11 | .636 | 0 | 3 | 3 | 7.6 | 3 | 1 | 2 | 2 | 1 | 19 | 18.1 | |
| Totals | | | 7 | 229 | 46-79 | .582 | 0-0 | .000 | 35-47 | .745 | 18 | 35 | 53 | 7.6 | 20 | 7 | 13 | 16 | 5 | 127 | 18.1 |

Games played: 7
 Minutes/game: 32.7
 Points/game: 18.1
 FG Pct: 58.2
 FT Pct: 74.5

Rebounds/game: 7.6
 Assists/game: 1.0
 Turnovers/game: 1.9
 Assist/turnover ratio: 0.5
 Steals/game: 0.7
 Blocks/game: 2.3

CAREER STATISTICS

| YEAR | G/GS | FG-A | PCT | 3-PT | PCT | FT-A | PCT | O-D-REB | AVG | PF-FO | AS | TO | BK | ST | PTS | AVG |
|---------------|----------------|----------------|-------------|------------|-------------|----------------|-------------|--------------------|------------|--------------|-----------|------------|------------|-----------|-------------|-------------|
| Fresh. | 34/34 | 124-250 | .496 | 1-4 | .250 | 48-76 | .632 | 78-139-217 | 6.4 | 87-2 | 24 | 61 | 79 | 15 | 297 | 8.7 |
| Soph. | 31/30 | 132-276 | .478 | 0-0 | .000 | 70-96 | .729 | 90-118-208 | 6.7 | 83-3 | 25 | 58 | 76 | 21 | 334 | 10.8 |
| Junior | 31/31 | 179-326 | .549 | 0-0 | .000 | 103-141 | .730 | 67-138-205 | 6.6 | 96-4 | 24 | 64 | 70 | 12 | 461 | 14.9 |
| Senior | 7/7 | 46-79 | .582 | 0-0 | .000 | 35-47 | .745 | 18-35-53 | 7.6 | 20-0 | 7 | 13 | 16 | 5 | 127 | 18.1 |
| TOTALS | 103/102 | 481-931 | .517 | 1-4 | .250 | 256-360 | .711 | 253-360-683 | 6.6 | 286-9 | 80 | 196 | 241 | 53 | 1219 | 11.8 |





University of Iowa Women's Basketball

Updated Iowa Player Bio

Kathy Thomas



13

**Guard, 5-6, Sophomore
Flint, Mich.
Highland CC (Kan.)**

- Scored eight points in collegiate debut vs. NIU.
- NJCAA first team All-American at Highlands Community College.
- Jayhawk Conference Player and Freshman of the Year.
- Led Highland Community College to 28-4 overall record, second place finish in Jayhawk Conference and NJCAA Division II District B finals appearance, the most successful season in school history.
- Averaged 13.2 points, 8.9 assists and 9.8 steals as a senior in high school.

Personal Bests

Points: 8 vs. NIU (11/9/12)
Rebounds: 3 vs. Ill. State (11/11/12)
FGM: 3 vs. NIU (11/9/12)
FGA: 4 vs. NIU (11/9/12)
3-pt FG: 1 vs. Robert Morris (11/20/12)
3-pt FGA: 1 vs. Robert Morris (11/20/12)
FTM: 5 vs. Ill. State (11/11/12)
FTA: 8 vs. Ill. State (11/11/12)
Assists: 3 vs. Ill. State (11/11/12)
Steals: 1 vs. Ill. State (11/11/12)
Blocks: ---
Minutes: 16 vs. Ill. State (11/11/12)

2012-13 Game-by-Game

#13 Thomas, Kathy

| Opponent | Date | gs | min | Total | | 3-Pointers | | Free throws | | Rebounds | | | | pf | a | t/o | blk | stl | pts | avg |
|-------------------|----------|----|-----|--------|------|------------|-------|-------------|------|----------|-----|-----|-----|----|---|-----|-----|-----|-----|-----|
| | | | | fg-fga | pct | 3fg-fga | pct | ft-fa | pct | off | def | tot | avg | | | | | | | |
| NORTHERN ILLINOIS | 11/9/12 | 15 | 3-4 | .750 | 0-0 | .000 | 2-2 | 1.000 | 1 | 1 | 2 | 2.0 | 3 | 0 | 1 | 0 | 0 | 8 | 8.0 | |
| ILLINOIS STATE | 11/11/12 | 16 | 0-2 | .000 | 0-0 | .000 | 5-8 | .625 | 2 | 1 | 3 | 2.5 | 3 | 3 | 3 | 0 | 1 | 5 | 6.5 | |
| MIDDLE TENNESSEE | 11/14/12 | 2 | 0-0 | .000 | 0-0 | .000 | 0-0 | .000 | 0 | 0 | 0 | 1.7 | 1 | 0 | 0 | 0 | 0 | 0 | 4.3 | |
| NORTH CAROLINA | 11/18/12 | 2 | 0-0 | .000 | 0-0 | .000 | 0-0 | .000 | 0 | 0 | 0 | 1.3 | 1 | 0 | 0 | 0 | 0 | 0 | 3.3 | |
| ROBERT MORRIS | 11/20/12 | 10 | 1-3 | .333 | 1-1 | 1.000 | 0-0 | .000 | 0 | 1 | 1 | 1.2 | 2 | 1 | 0 | 0 | 0 | 3 | 3.2 | |
| at FIU | 11/23/12 | 8 | 0-0 | .000 | 0-0 | .000 | 0-0 | .000 | 0 | 0 | 0 | 1.0 | 0 | 0 | 0 | 0 | 0 | 0 | 2.7 | |
| Totals | | 0 | 53 | 4-9 | .444 | 1-1 | 1.000 | 7-10 | .700 | 3 | 3 | 6 | 1.0 | 10 | 4 | 4 | 0 | 1 | 16 | 2.7 |

Games played: 6
 Minutes/game: 8.8
 Points/game: 2.7
 FG Pct: 44.4
 3FG Pct: 100.0
 FT Pct: 70.0

Rebounds/game: 1.0
 Assists/game: 0.7
 Turnovers/game: 0.7
 Assist/turnover ratio: 1.0
 Steals/game: 0.2

CAREER STATISTICS

| YEAR | G/GS | FG-A | PCT | 3-PT | PCT | FT-A | PCT | O-D-REB | AVG | PF-FO | AS | TO | BK | ST | PTS | AVG |
|--------|------|------|------|------|-------|------|------|---------|-----|-------|----|----|----|----|-----|-----|
| Fresh. | 6/0 | 4-9 | .444 | 1-1 | 1.000 | 7-10 | .700 | 3-3-6 | 1.0 | 10-0 | 4 | 4 | 0 | 1 | 16 | 2.7 |





University of Iowa Women's Basketball

Updated Iowa Player Bio

Melissa Dixon



21

Guard, 5-8, Sophomore
Johnsburg, Ill.
Johnsburg HS

- 12 points against North Carolina.
- Career-high 22 points (8-18 FGs, 6-15 3Pt. FGs) in win over Michigan as a freshman.
- Suffered torn meniscus at Ohio State (Jan. 2, 2012) as a freshman. Missed a total of seven games.
- First career start came at Indiana, registering career-highs in points (19), field goals made (7), 3-pointers made and attempted (5-for-10), steals (3) and minutes (28).

Personal Bests

Points: 22 vs. Michigan (2/26/12)
Rebounds: 4, 4x, last vs. Minnesota (2/9/12)
FGM: 8 vs. Michigan (2/26/12)
FGA: 18 vs. Michigan (2/26/12)
3-pt FG: 6 vs. Michigan (2/26/12)
3-pt FGA: 15 vs. Michigan (2/26/12)
FTM: 5, 2x, last vs. Drake (12/20/11)
FTA: 6, 2x, last vs. Drake (12/20/11)
Assists: 4 vs. Nebraska (3/2/12)
Steals: 3 at Indiana (2/5/12)
Blocks: 1, 3x, last vs. Ill. State (11/11/12)
Minutes: 34, twice, last vs. MTSU (11/14/12)

2012-13 Game-by-Game

#21 Dixon, Melissa

| Opponent | Date | gs | min | Total | | 3-Pointers | | Free throws | | Rebounds | | | | pf | a | t/o | blk | stl | pts | avg | |
|-------------------|----------|----|----------|------------|--------------|-------------|--------------|-------------|------------|-------------|----------|----------|----------|------------|-----------|----------|----------|----------|----------|-----------|------------|
| | | | | fg-fga | pct | 3fg-fga | pct | ft-fa | pct | off | def | tot | avg | | | | | | | | |
| NORTHERN ILLINOIS | 11/9/12 | * | 24 | 3-4 | .750 | 2-3 | .667 | 0-0 | .000 | 0 | 2 | 2 | 2.0 | 2 | 2 | 1 | 0 | 1 | 8 | 8.0 | |
| ILLINOIS STATE | 11/11/12 | * | 24 | 2-3 | .667 | 2-3 | .667 | 2-2 | 1.000 | 0 | 0 | 0 | 1.0 | 4 | 2 | 1 | 1 | 0 | 8 | 8.0 | |
| MIDDLE TENNESSEE | 11/14/12 | * | 34 | 2-9 | .222 | 2-7 | .286 | 0-1 | .000 | 0 | 1 | 1 | 1.0 | 2 | 1 | 1 | 0 | 2 | 6 | 7.3 | |
| NORTH CAROLINA | 11/18/12 | | 20 | 5-11 | .455 | 2-8 | .250 | 0-0 | .000 | 0 | 1 | 1 | 1.0 | 4 | 0 | 2 | 0 | 0 | 12 | 8.5 | |
| ROBERT MORRIS | 11/20/12 | | 17 | 2-8 | .250 | 2-7 | .286 | 0-0 | .000 | 0 | 2 | 2 | 1.2 | 2 | 0 | 3 | 0 | 0 | 6 | 8.0 | |
| at FIU | 11/23/12 | | 19 | 3-11 | .273 | 2-7 | .286 | 0-0 | .000 | 0 | 2 | 2 | 1.3 | 2 | 0 | 0 | 0 | 0 | 8 | 8.0 | |
| vs WVU | 11/25/12 | | 17 | 0-2 | .000 | 0-1 | .000 | 0-0 | .000 | 0 | 0 | 0 | 1.1 | 2 | 0 | 1 | 0 | 0 | 0 | 6.9 | |
| Totals | | | 3 | 155 | 17-48 | .354 | 12-36 | .333 | 2-3 | .667 | 0 | 8 | 8 | 1.1 | 18 | 5 | 9 | 1 | 3 | 48 | 6.9 |

Games played: 7
 Minutes/game: 22.1
 Points/game: 6.9
 FG Pct: 35.4
 3FG Pct: 33.3
 FT Pct: 66.7

Rebounds/game: 1.1
 Assists/game: 0.7
 Turnovers/game: 1.3
 Assist/turnover ratio: 0.6
 Steals/game: 0.4
 Blocks/game: 0.1

CAREER STATISTICS

| YEAR | G/GS | FG-A | PCT | 3-PT | PCT | FT-A | PCT | O-D-REB | AVG | PF-FO | AS | TO | BK | ST | PTS | AVG |
|---------------|--------------|---------------|-------------|---------------|-------------|--------------|-------------|-----------------|------------|-------------|-----------|-----------|----------|-----------|------------|------------|
| Fresh. | 24/8 | 50-141 | .355 | 35-98 | .357 | 27-33 | .818 | 17-25-42 | 1.8 | 47-1 | 18 | 28 | 2 | 15 | 162 | 6.8 |
| Soph. | 7/3 | 17-48 | .354 | 12-36 | .333 | 2-3 | .667 | 0-8-8 | 1.1 | 18-0 | 5 | 9 | 1 | 3 | 48 | 6.9 |
| TOTALS | 31/11 | 67-189 | .354 | 47-134 | .351 | 29-36 | .806 | 17-33-50 | 1.6 | 65-1 | 23 | 37 | 3 | 18 | 210 | 6.8 |





University of Iowa Women's Basketball

Updated Iowa Player Bio

Samantha Logic



22

Guard, 5-9, Sophomore
Racine, Wis.
Racine J.I. Case HS

- Recorded seven career double-doubles, including one triple-double. Six double-doubles are points and rebounds, one is points and assists.
- Nine points, seven rebounds and seven assists in win over West Virginia.
- Nine assists, six rebounds and three steals in win over Robert Morris.
- 12 points, six rebounds, six assists and four steals against North Carolina.
- Tied school record with 12 assists in win over Middle Tennessee.
- Third team Freshman All-American by Full Court.
- Unanimous selection for Big Ten All-Freshman Team.
- Named co-Big Ten Player of the Week and Freshman of the Week (Feb. 27).
- Triple-double with 13 points, 13 rebounds and 11 assists in win over Michigan. Also sixth double-double of the season.

Personal Bests

Points: 20, 2x, last vs. Minn. (2/9/12)
Rebounds: 18 at Michigan (2/16/12)
FGM: 7, 4x, last vs. Nebraska (3/2/12)
FGA: 18 vs. Nebraska (3/2/12)
3-pt FG: 3 vs. Drake (12/20/11)
3-pt FGA: 4, 3x, last at Nwwestern (2/23/12)
FTM: 8 at Northwestern (2/23/12)
FTA: 10 at Northwestern (2/23/12)
Assists: 12 vs. Middle Tennessee (11/14/12)
Steals: 4 vs. North Carolina (11/18/12)
Blocks: 2 vs. Miss. Valley State (12/22/11)
Minutes: 40 vs. Middle Tennessee (11/14/12)

2012-13 Game-by-Game

#22 Logic, Samantha

| Opponent | Date | gs | min | Total | | 3-Pointers | | Free throws | | Rebounds | | | pf | a | t/o | blk | stl | pts | avg | | |
|-------------------|----------|----|----------|------------|--------------|-------------|------------|-------------|-------------|-------------|-----------|-----------|-----------|------------|-----------|-----------|-----------|----------|-----------|-----------|------------|
| | | | | fg-fga | pct | 3fg-fga | pct | ft-fa | pct | off | def | tot | | | | | | | | avg | |
| NORTHERN ILLINOIS | 11/9/12 | * | 25 | 5-8 | .625 | 0-0 | .000 | 0-0 | .000 | 0 | 3 | 3 | 3.0 | 1 | 2 | 2 | 0 | 2 | 10 | 10.0 | |
| ILLINOIS STATE | 11/11/12 | * | 24 | 1-6 | .167 | 0-1 | .000 | 4-4 | 1.000 | 3 | 2 | 5 | 4.0 | 2 | 4 | 6 | 1 | 2 | 6 | 8.0 | |
| MIDDLE TENNESSEE | 11/14/12 | * | 40 | 0-6 | .000 | 0-2 | .000 | 0-1 | .000 | 1 | 2 | 3 | 3.7 | 2 | 12 | 6 | 1 | 2 | 0 | 5.3 | |
| NORTH CAROLINA | 11/18/12 | * | 31 | 6-10 | .600 | 0-1 | .000 | 0-0 | .000 | 3 | 3 | 6 | 4.3 | 2 | 6 | 7 | 0 | 4 | 12 | 7.0 | |
| ROBERT MORRIS | 11/20/12 | * | 28 | 2-7 | .286 | 0-2 | .000 | 0-0 | .000 | 3 | 3 | 6 | 4.6 | 1 | 9 | 2 | 0 | 3 | 4 | 6.4 | |
| at FIU | 11/23/12 | * | 32 | 3-6 | .500 | 1-1 | 1.000 | 0-0 | .000 | 3 | 2 | 5 | 4.7 | 3 | 7 | 4 | 0 | 1 | 7 | 6.5 | |
| vs WVU | 11/25/12 | * | 34 | 2-6 | .333 | 0-0 | .000 | 5-6 | .833 | 2 | 5 | 7 | 5.0 | 5 | 7 | 9 | 0 | 3 | 9 | 6.9 | |
| Totals | | | 7 | 214 | 19-49 | .388 | 1-7 | .143 | 9-11 | .818 | 15 | 20 | 35 | 5.0 | 16 | 47 | 36 | 2 | 17 | 48 | 6.9 |

Games played: 7
 Minutes/game: 30.6
 Points/game: 6.9
 FG Pct: 38.8
 3FG Pct: 14.3
 FT Pct: 81.8

Rebounds/game: 5.0
 Assists/game: 6.7
 Turnovers/game: 5.1
 Assist/turnover ratio: 1.3
 Steals/game: 2.4
 Blocks/game: 0.3

CAREER STATISTICS

| YEAR | G/GS | FG-A | PCT | 3-PT | PCT | FT-A | PCT | O-D-REB | AVG | PF-FO | AS | TO | BK | ST | PTS | AVG |
|---------------|--------------|----------------|-------------|--------------|-------------|--------------|-------------|--------------------|------------|-------------|------------|------------|----------|-----------|------------|------------|
| Fresh. | 31/31 | 109-261 | .418 | 15-49 | .306 | 59-79 | .747 | 87-133-220 | 7.1 | 73-1 | 136 | 113 | 7 | 47 | 292 | 9.4 |
| Soph. | 7/7 | 19-49 | .388 | 1-7 | .143 | 9-11 | .818 | 15-20-35 | 5.0 | 16-1 | 47 | 36 | 2 | 17 | 48 | 6.9 |
| TOTALS | 38/38 | 128-310 | .413 | 16-56 | .286 | 68-90 | .756 | 102-153-255 | 6.7 | 89-2 | 183 | 149 | 9 | 64 | 340 | 8.9 |





University of Iowa Women's Basketball

Updated Iowa Player Bio

Theairra Taylor



23

Guard, 5-11, Junior
St. Paul, Minn.
Central HS

- First career double-double with 10 points and 11 rebounds, also tied career high with five assists, in win over Illinois State.
- Season-high 14 points, along with six rebounds and two assists in 26 minutes of play vs. California as a sophomore.
- 10 points and tied a career-high with three steals in win over Michigan State as a sophomore.
- Suffered third ACL in a 20-month span during preseason workouts in 2010. Missed a total of 53 games with ACL injuries from 2009 through 2011.

Personal Bests

Points: 16 vs. W&M (11/24/09)
Rebounds: 11 vs. Ill. State (11/11/12)
FGM: 7 vs. W&M (11/24/09)
FGA: 15 vs. W&M (11/24/09)
3-pt FG: 2 vs. W&M (11/24/09)
3-pt FGA: 5 vs. Boston College (12/2/09)
FTM: 4, 5x, last vs. WVU (11/25/12)
FTA: 5 vs. West Virginia (11/25/12)
Assists: 5, twice, vs. Ill. State (11/11/12)
Steals: 4 at Northwestern (2/23/12)
Blocks: 4, 3x, last vs. Michigan (12/6/09)
Minutes: 36 vs. W&M (11/24/09)

2012-13 Game-by-Game

#23 Taylor, Theairra

| Opponent | Date | gs | min | Total | | 3-Pointers | | Free throws | | Rebounds | | | pf | a | t/o | blk | stl | pts | avg | | |
|-------------------|----------|----|-----|--------|-------|------------|-------|-------------|-------|----------|-----|-----|-----|-----|-----|-----|-----|-----|-----|-----|-----|
| | | | | fg-fga | pct | 3fg-fga | pct | ft-fa | pct | off | def | tot | | | | | | | | avg | |
| NORTHERN ILLINOIS | 11/9/12 | * | 19 | 2-4 | .500 | 1-1 | 1.000 | 0-0 | .000 | 0 | 1 | 1 | 1.0 | 1 | 1 | 1 | 0 | 5 | 5.0 | | |
| ILLINOIS STATE | 11/11/12 | * | 21 | 3-6 | .500 | 1-1 | 1.000 | 3-4 | .750 | 0 | 11 | 11 | 6.0 | 1 | 5 | 2 | 0 | 2 | 10 | 7.5 | |
| MIDDLE TENNESSEE | 11/14/12 | * | 23 | 3-8 | .375 | 1-4 | .250 | 0-2 | .000 | 1 | 3 | 4 | 5.3 | 2 | 2 | 4 | 2 | 1 | 7 | 7.3 | |
| NORTH CAROLINA | 11/18/12 | * | 25 | 1-6 | .167 | 0-3 | .000 | 1-3 | .333 | 1 | 3 | 4 | 5.0 | 2 | 1 | 2 | 0 | 0 | 3 | 6.3 | |
| ROBERT MORRIS | 11/20/12 | * | 20 | 3-7 | .429 | 1-4 | .250 | 0-0 | .000 | 0 | 4 | 4 | 4.8 | 0 | 0 | 3 | 0 | 1 | 7 | 6.4 | |
| at FIU | 11/23/12 | * | 19 | 2-5 | .400 | 0-1 | .000 | 2-2 | 1.000 | 0 | 3 | 3 | 4.5 | 2 | 2 | 2 | 0 | 0 | 6 | 6.3 | |
| vs WVU | 11/25/12 | * | 23 | 1-3 | .333 | 0-1 | .000 | 4-5 | .800 | 1 | 6 | 7 | 4.9 | 4 | 0 | 2 | 1 | 0 | 6 | 6.3 | |
| Totals | | | 7 | 150 | 15-39 | .385 | 4-15 | .267 | 10-16 | .625 | 3 | 31 | 34 | 4.9 | 12 | 11 | 16 | 4 | 4 | 44 | 6.3 |

Games played: 7
 Minutes/game: 21.4
 Points/game: 6.3
 FG Pct: 38.5
 3FG Pct: 26.7
 FT Pct: 62.5

Rebounds/game: 4.9
 Assists/game: 1.6
 Turnovers/game: 2.3
 Assist/turnover ratio: 0.7
 Steals/game: 0.6
 Blocks/game: 0.6

CAREER STATISTICS

| YEAR | G/GS | FG-A | PCT | 3-PT | PCT | FT-A | PCT | O-D-REB | AVG | PF-FO | AS | TO | BK | ST | PTS | AVG |
|---------------|--------------|---------------|-------------|--------------|-------------|--------------|-------------|-------------------|------------|-------------|-----------|-----------|-----------|-----------|------------|------------|
| Fresh. | 10/8 | 29-86 | .337 | 9-26 | .346 | 14-18 | .778 | 15-34-49 | 4.9 | 22-1 | 24 | 29 | 10 | 13 | 81 | 8.1 |
| Soph. | 31/0 | 37-97 | .381 | 2-18 | .111 | 19-29 | .655 | 35-57-92 | 3.0 | 53-1 | 30 | 47 | 11 | 18 | 95 | 3.1 |
| Junior | 7/7 | 15-39 | .385 | 4-15 | .267 | 10-16 | .625 | 3-31-34 | 4.9 | 12-0 | 11 | 16 | 4 | 4 | 44 | 6.3 |
| TOTALS | 48/15 | 81-222 | .365 | 15-59 | .254 | 43-63 | .683 | 53-122-175 | 3.6 | 87-2 | 65 | 92 | 25 | 35 | 220 | 4.6 |





University of Iowa Women's Basketball

Updated Iowa Player Bio

Jaime Printy



24

Guard, 5-11, Senior
Marion, Iowa
Linn-Mar HS

- Ranks fourth in career three-pointers made (210), eighth in career scoring (1,501) and 11th in career assists (330).
- Senior CLASS Award nominee.
- 19 points (17-of-17 FTs) and seven rebounds in win over West Virginia.
- 12 points, five rebounds and four assists vs. North Carolina, returning to starting lineup for first time since ACL injury as a junior.
- 26 points, including game-tying 3-pointer with 1.6 seconds left in regulation, along with five rebounds and six assists, in win over Middle Tennessee. Also tied school record for FT percentage (11-for-11).
- 11 points and three assists in season-opening win over NIU, recording first action since tearing ACLn left knee in final 30 seconds of overtime at Wisconsin (Feb. 2, 2012).

Personal Bests

Points: 32 vs. Illinois (2/24/11)
Rebounds: 9 vs. W&M (11/24/09)
FGM: 11 at Indiana (2/11/10)
FGA: 25 vs. Michigan (1/2/11)
3-pt FG: 5, 3x, last vs. Western Illinois (12/9/11)
3-pt FGA: 15 vs. Michigan (1/2/11)
FTM: 17 vs. West Virginia (11/25/12)
FTA: 17 vs. West Virginia (11/25/12)
Assists: 9 vs. Iowa State (12/9/10)
Steals: 5 at Bradley (12/17/11)
Blocks: 1, 13x, last vs. WVU (11/26/12)
Minutes: 40 vs. Illinois (1/5/12)

2012-13 Game-by-Game

#24 Printy, Jaime

| Opponent | Date | gs | min | Total | | 3-Pointers | | Free throws | | Rebounds | | | pf | a | t/o | blk | stl | pts | avg | |
|-------------------|------------|----------|------------|--------------|-------------|--------------|-------------|--------------|-------------|----------|-----------|-----------|------------|----------|-----------|-----------|----------|----------|-----------|-------------|
| | | | | fg-fga | pct | 3fg-fga | pct | ft-fta | pct | off | def | tot | | | | | | | | avg |
| NORTHERN ILLINOIS | 11/9/12 | 16 | 3-4 | .750 | 1-1 | 1.000 | 4-4 | 1.000 | 0 | 1 | 1 | 1.0 | 1 | 3 | 1 | 0 | 1 | 11 | 11.0 | |
| ILLINOIS STATE | 11/11/12 | 15 | 0-4 | .000 | 0-3 | .000 | 1-2 | .500 | 0 | 2 | 2 | 1.5 | 0 | 1 | 2 | 0 | 0 | 1 | 6.0 | |
| MIDDLE TENNESSEE | 11/14/12 | 38 | 6-13 | .462 | 3-7 | .429 | 11-11 | 1.000 | 1 | 4 | 5 | 2.7 | 1 | 6 | 5 | 0 | 1 | 26 | 12.7 | |
| NORTH CAROLINA | 11/18/12 * | 39 | 3-15 | .200 | 3-12 | .250 | 3-4 | .750 | 0 | 5 | 5 | 3.3 | 4 | 4 | 8 | 0 | 1 | 12 | 12.5 | |
| ROBERT MORRIS | 11/20/12 * | 31 | 2-4 | .500 | 2-4 | .500 | 2-2 | 1.000 | 1 | 5 | 6 | 3.8 | 0 | 5 | 2 | 0 | 1 | 8 | 11.6 | |
| at FIU | 11/23/12 * | 34 | 5-12 | .417 | 4-9 | .444 | 1-1 | 1.000 | 2 | 3 | 5 | 4.0 | 2 | 4 | 3 | 0 | 0 | 15 | 12.2 | |
| vs WVU | 11/25/12 * | 33 | 1-3 | .333 | 0-2 | .000 | 17-17 | 1.000 | 0 | 7 | 7 | 4.4 | 1 | 3 | 4 | 1 | 0 | 19 | 13.1 | |
| Totals | | 4 | 206 | 20-55 | .364 | 13-38 | .342 | 39-41 | .951 | 4 | 27 | 31 | 4.4 | 9 | 26 | 25 | 1 | 4 | 92 | 13.1 |

Games played: 7
 Minutes/game: 29.4
 Points/game: 13.1
 FG Pct: 36.4
 3FG Pct: 34.2
 FT Pct: 95.1

Rebounds/game: 4.4
 Assists/game: 3.7
 Turnovers/game: 3.6
 Assist/turnover ratio: 1.0
 Steals/game: 0.6
 Blocks/game: 0.1

CAREER STATISTICS

| YEAR | G/GS | FG-A | PCT | 3-PT | PCT | FT-A | PCT | O-D-REB | AVG | PF-FO | AS | TO | BK | ST | PTS | AVG |
|---------------|--------------|-----------------|-------------|----------------|-------------|----------------|-------------|-------------------|------------|--------------|------------|------------|-----------|------------|-------------|-------------|
| Fresh. | 34/34 | 168-406 | .414 | 82-212 | .387 | 83-94 | .883 | 35-101-136 | 4.0 | 77-1 | 99 | 82 | 4 | 30 | 501 | 14.7 |
| Soph. | 31/31 | 168-391 | .430 | 70-183 | .383 | 114-132 | .864 | 21-109-130 | 4.2 | 60-0 | 109 | 91 | 7 | 34 | 520 | 16.8 |
| Junior | 23/23 | 116-329 | .353 | 45-155 | .290 | 111-125 | .888 | 32-70-102 | 4.4 | 45-1 | 96 | 70 | 3 | 46 | 388 | 16.9 |
| Senior | 7/4 | 20-55 | .364 | 13-38 | .342 | 39-41 | .951 | 4-27-31 | 4.4 | 9-0 | 26 | 25 | 1 | 4 | 92 | 13.1 |
| TOTALS | 95/92 | 472-1181 | .400 | 210-588 | .357 | 347-392 | .885 | 92-307-399 | 4.2 | 191-2 | 330 | 268 | 15 | 114 | 1501 | 15.8 |





University of Iowa Women's Basketball

Updated Iowa Player Bio

Kali Peschel



25

Guard, 6-1, Freshman
Sauk Centre, Minn.
Sauk Centre HS

- Recorded five rebounds in collegiate debut vs. NIU.
- Miss Minnesota Basketball finalist.
- Two-time all-state selection.
- Started for her high school team as an eighth grader.
- Only played 11 games as a senior after suffering ACL injury between her junior and senior seasons.

Personal Bests

Points: 1 vs. NIU (11/9/12)
Rebounds: 5 vs. NIU (11/9/12)
FGM: ---
FGA: 6 vs. NIU (11/9/12)
3-pt FG: ---
3-pt FGA: 2 vs. NIU (11/9/12)
FTM: 1 vs. NIU (11/9/12)
FTA: 2 vs. NIU (11/9/12)
Assists: 1 vs. NIU (11/9/12)
Steals: 1 vs. Robert Morris (11/20/12)
Blocks: ---
Minutes: 18 vs. NIU (11/9/12)

2012-13 Game-by-Game

#25 Peschel, Kali

| Opponent | Date | gs | min | Total | | 3-Pointers | | Free throws | | Rebounds | | | | pf | a | t/o | blk | stl | pts | avg | |
|-------------------|----------|----|-----|--------|------|------------|------|-------------|------|----------|-----|-----|-----|-----|---|-----|-----|-----|-----|-----|-----|
| | | | | fg-fga | pct | 3fg-fga | pct | ft-fa | pct | off | def | tot | avg | | | | | | | | |
| NORTHERN ILLINOIS | 11/9/12 | | 18 | 0-6 | .000 | 0-2 | .000 | 1-2 | .500 | 3 | 2 | 5 | 5.0 | 3 | 1 | 0 | 0 | 0 | 1 | 1.0 | |
| ILLINOIS STATE | 11/11/12 | | 16 | 0-2 | .000 | 0-1 | .000 | 0-0 | .000 | 0 | 3 | 3 | 4.0 | 1 | 0 | 2 | 0 | 0 | 0 | 0.5 | |
| MIDDLE TENNESSEE | 11/14/12 | | 2 | 0-0 | .000 | 0-0 | .000 | 0-0 | .000 | 0 | 1 | 1 | 3.0 | 0 | 0 | 0 | 0 | 0 | 0 | 0.3 | |
| ROBERT MORRIS | 11/20/12 | | 5 | 0-0 | .000 | 0-0 | .000 | 0-0 | .000 | 0 | 0 | 0 | 2.3 | 2 | 0 | 0 | 0 | 1 | 0 | 0.3 | |
| Totals | | | 0 | 41 | 0-8 | .000 | 0-3 | .000 | 1-2 | .500 | 3 | 6 | 9 | 2.3 | 6 | 1 | 2 | 0 | 1 | 1 | 0.3 |

Games played: 4
 Minutes/game: 10.3
 Points/game: 0.3
 FG Pct: 0.0
 3FG Pct: 0.0
 FT Pct: 50.0

Rebounds/game: 2.3
 Assists/game: 0.3
 Turnovers/game: 0.5
 Assist/turnover ratio: 0.5
 Steals/game: 0.3

CAREER STATISTICS

| YEAR | G/GS | FG-A | PCT | 3-PT | PCT | FT-A | PCT | O-D-REB | AVG | PF-FO | AS | TO | BK | ST | PTS | AVG |
|--------|------|------|------|------|------|------|------|---------|-----|-------|----|----|----|----|-----|-----|
| Fresh. | 5/0 | 0-9 | .000 | 0-3 | .000 | 1-2 | .500 | 5-6-11 | 2.2 | 6-0 | 1 | 2 | 0 | 1 | 1 | 0.2 |





University of Iowa Women's Basketball

Updated Iowa Player Bio

Kathryn Reynolds



33

Guard, 5-7, Sophomore
Cincinnati, Ohio
Mount Notre Dame HS

- Will miss entire 2012-13 season after suffering an ACL injury in April during offseason workouts.
- Five assists in win over Western Illinois as a freshman.
- Played 12 minutes in first career game, a win over Harvard.

Personal Bests

Points: 4 vs. Drake (12/20/11)
Rebounds: 2 vs. Texas A&M (11/26/11)
FGM: 2 vs. Drake (12/20/11)
FGA: 3, 2x, last vs. Drake (12/20/11)
3-pt FG: ---
3-pt FGA: 1, 7x, last vs. Michigan State (2/12/12)
FTM: 2 vs. Western Illinois (12/9/11)
FTA: 2, 3x, last vs. W. Illinois (12/9/11)
Assists: 5 vs. W. Illinois (12/9/11)
Steals: ---
Blocks: ---
Minutes: 20 vs. W. Illinois (12/9/11)

2012-13 Game-by-Game

CAREER STATISTICS

| YEAR | G/GS | FG-A | PCT | 3-PT | PCT | FT-A | PCT | O-D-REB | AVG | PF-FO | AS | TO | BK | ST | PTS | AVG |
|---------------|------|------|------|------|------|------|------|---------|-----|-------|----|----|----|----|-----|-----|
| Fresh. | 21/0 | 5-16 | .313 | 0-7 | .000 | 3-4 | .750 | 1-8-9 | 0.4 | 6-0 | 15 | 11 | 0 | 0 | 13 | 0.7 |
| Soph. | | | | | | | | | | | | | | | | |
| TOTALS | | | | | | | | | | | | | | | | |





University of Iowa Women's Basketball

Updated Iowa Player Bio

Nicole Smith



45

Center, 6-4, Freshman
Rockton, Ill.
Hononegah HS

- Recorded one rebound in collegiate debut vs. NIU.
- Three-time all-state selection.
- Three-time all-conference pick.
- Recorded triple-double in high school with 20 points (10-for-10) 10 rebounds and 10 blocks.
- Played in 26 games as a senior before suffering ACL injury

Personal Bests

Points: ---
 Rebounds: 1 vs. NIU (11/9/12)
 FGM: ---
 FGA: 2 vs. NIU (11/9/12)
 3-pt FG: ---
 3-pt FGA: ---
 FTM: ---
 FTA: ---
 Assists: ---
 Steals: ---
 Blocks: ---
 Minutes: 3 vs. NIU (11/9/12)

2012-13 Game-by-Game

#45 Smith, Nicole

| Opponent | Date | gs | min | Total | | 3-Pointers | | Free throws | | Rebounds | | | | pf | a | t/o | blk | stl | pts | avg |
|-------------------|----------|----|-----|--------|------|------------|------|-------------|------|----------|-----|-----|-----|----|---|-----|-----|-----|-----|-----|
| | | | | fg-fga | pct | 3fg-fga | pct | ft-fa | pct | off | def | tot | avg | | | | | | | |
| NORTHERN ILLINOIS | 11/9/12 | 3 | | 0-2 | .000 | 0-0 | .000 | 0-0 | .000 | 0 | 1 | 1 | 1.0 | 0 | 0 | 0 | 0 | 0 | 0 | 0.0 |
| ILLINOIS STATE | 11/11/12 | 2 | | 0-0 | .000 | 0-0 | .000 | 0-0 | .000 | 0 | 0 | 0 | 0.5 | 0 | 0 | 0 | 0 | 0 | 0.0 | |
| Totals | | 0 | 5 | 0-2 | .000 | 0-0 | .000 | 0-0 | .000 | 0 | 1 | 1 | 0.5 | 0 | 0 | 0 | 0 | 0 | 0.0 | |

Games played: 2
 Minutes/game: 2.5
 FG Pct: 0.0

Rebounds/game: 0.5

CAREER STATISTICS

| YEAR | G/GS | FG-A | PCT | 3-PT | PCT | FT-A | PCT | O-D-REB | AVG | PF-FO | AS | TO | BK | ST | PTS | AVG |
|--------|------|------|------|------|------|------|------|---------|-----|-------|----|----|----|----|-----|-----|
| Fresh. | 2-0 | 0-2 | .000 | 0-0 | .000 | 0-0 | .000 | 0-1-1 | 0.5 | 0-0 | 0 | 0 | 0 | 0 | 0 | 0.0 |





University of Iowa Women's Basketball

Updated Iowa Player Bio

Bethany Doolittle



51

Center, 6-4, Sophomore
Oakdale, Minn
Hill-Murray HS

- Career-high 17 points, along with six rebounds, in win over West Virginia.
- Eight points, tied a career-high with nine rebounds and blocked five shots in win over Middle Tennessee.
- Career-high six blocks in season-opening win vs. NIU.
- Tied a career-high with 10 points, along with five rebounds, in win over Michigan State as a freshman.
- 10 points and six rebounds in just 11 minutes of action off the bench in win at Northern Iowa as a freshman.

Personal Bests

Points: 17 vs. West Virginia (11/25/12)
Rebounds: 9 vs. Middle Tennessee (11/14/12)
FGM: 7 vs. West Virginia (11/25/12)
FGA: 12 vs. West Virginia (11/25/12)
3-pt FG: ---
3-pt FGA: 1, twice, last vs. Ill. State (11/11/12)
FTM: 4 vs. Michigan State (2/12/12)
FTA: 5 vs. Michigan State (2/12/12)
Assists: 2 vs. Western Illinois (12/9/11)
Steals: 2, twice, last vs. UNC (11/18/12)
Blocks: 6 vs. NIU (11/9/12)
Minutes: 32 vs. North Carolina (11/18/12)

2012-13 Game-by-Game

#51 Doolittle, Bethany

| Opponent | Date | gs | min | Total | | 3-Pointers | | Free throws | | Rebounds | | | | pf | a | t/o | blk | stl | pts | avg | |
|-------------------|----------|----|----------|------------|--------------|-------------|------------|-------------|------------|--------------|----------|-----------|-----------|------------|-----------|----------|-----------|-----------|----------|-----------|------------|
| | | | | fg-fga | pct | 3fg-fga | pct | ft-fa | pct | off | def | tot | avg | | | | | | | | |
| NORTHERN ILLINOIS | 11/9/12 | * | 21 | 1-8 | .125 | 0-0 | .000 | 0-0 | .000 | 0 | 0 | 0 | 0.0 | 2 | 0 | 1 | 6 | 0 | 2 | 2.0 | |
| ILLINOIS STATE | 11/11/12 | * | 25 | 4-10 | .400 | 0-1 | .000 | 0-0 | .000 | 0 | 5 | 5 | 2.5 | 1 | 0 | 2 | 2 | 1 | 8 | 5.0 | |
| MIDDLE TENNESSEE | 11/14/12 | * | 30 | 4-7 | .571 | 0-0 | .000 | 0-0 | .000 | 4 | 5 | 9 | 4.7 | 3 | 0 | 4 | 5 | 0 | 8 | 6.0 | |
| NORTH CAROLINA | 11/18/12 | * | 32 | 1-7 | .143 | 0-0 | .000 | 0-0 | .000 | 2 | 5 | 7 | 5.3 | 3 | 1 | 2 | 2 | 2 | 2 | 5.0 | |
| ROBERT MORRIS | 11/20/12 | * | 20 | 2-9 | .222 | 0-0 | .000 | 0-0 | .000 | 1 | 4 | 5 | 5.2 | 2 | 1 | 1 | 1 | 0 | 4 | 4.8 | |
| at FIU | 11/23/12 | * | 22 | 3-5 | .600 | 0-0 | .000 | 0-0 | .000 | 0 | 3 | 3 | 4.8 | 3 | 0 | 2 | 0 | 0 | 6 | 5.0 | |
| vs WVU | 11/25/12 | * | 31 | 7-12 | .583 | 0-0 | .000 | 3-3 | 1.000 | 1 | 5 | 6 | 5.0 | 4 | 0 | 2 | 1 | 0 | 17 | 6.7 | |
| Totals | | | 7 | 181 | 22-58 | .379 | 0-1 | .000 | 3-3 | 1.000 | 8 | 27 | 35 | 5.0 | 18 | 2 | 14 | 17 | 3 | 47 | 6.7 |

Games played: 7
 Minutes/game: 25.9
 Points/game: 6.7
 FG Pct: 37.9
 3FG Pct: 0.0
 FT Pct: 100.0

Rebounds/game: 5.0
 Assists/game: 0.3
 Turnovers/game: 2.0
 Assist/turnover ratio: 0.1
 Steals/game: 0.4
 Blocks/game: 2.4

CAREER STATISTICS

| YEAR | G/GS | FG-A | PCT | 3-PT | PCT | FT-A | PCT | O-D-REB | AVG | PF-FO | AS | TO | BK | ST | PTS | AVG |
|---------------|-------------|---------------|-------------|------------|-------------|--------------|-------------|-----------------|------------|-------------|----------|-----------|-----------|-----------|------------|------------|
| Fresh. | 31/0 | 46-99 | .465 | 0-1 | .000 | 24-30 | .800 | 13-44-57 | 1.8 | 51-0 | 6 | 19 | 19 | 9 | 116 | 3.7 |
| Soph. | 7/7 | 22-58 | .379 | 0-1 | .000 | 3-3 | 1.000 | 8-27-35 | 5-0 | 18-0 | 2 | 14 | 17 | 3 | 47 | 6.7 |
| TOTALS | 38/7 | 68-157 | .433 | 0-2 | .000 | 27-33 | .818 | 21-71-92 | 2.4 | 69-0 | 8 | 33 | 36 | 12 | 163 | 4.3 |





University of Iowa Women's Basketball

Updated Iowa Player Bio

Kayla Timmerman



54

Forward, 6-3, Freshman
Wayzata, Minn.
Wayzata HS

- Recorded one point and one rebound in collegiate debut vs. NIU.
- Miss Minnesota Basketball candidate.
- Athena Award nominee.
- Two-time all-state selection.
- Standout in track and field, winning conference championship in shot put and discus and participated in state meet in both events.

Personal Bests

Points: 5 vs. Ill. State (11/11/12)
Rebounds: 3 vs. Robert Morris (11/20/12)
FGM: 2 vs. Ill. State
FGA: 4 vs. Robert Morris (11/20/12)
3-pt FG: 1 vs. Ill. State (11/11/12)
3-pt FGA: 1 vs. Ill. State (11/11/12)
FTM: 1 vs. NIU (11/9/12)
FTA: 2, twice, last vs. Ill. State (11/11/12)
Assists: 1 vs. Ill. State (11/11/12)
Steals: ---
Blocks: 2 vs. NIU (11/9/12)
Minutes: 10 vs. NIU (11/9/12)

2012-13 Game-by-Game

#54 Timmerman, Kayla

| Opponent | Date | gs | min | Total | | 3-Pointers | | Free throws | | Rebounds | | | | pf | a | t/o | blk | stl | pts | avg |
|-------------------|----------|----------|-----------|------------|-------------|------------|--------------|-------------|-------------|----------|----------|----------|------------|----------|----------|----------|----------|----------|----------|------------|
| | | | | fg-fga | pct | 3fg-fga | pct | ft-fa | pct | off | def | tot | avg | | | | | | | |
| NORTHERN ILLINOIS | 11/9/12 | 10 | 0-2 | .000 | 0-0 | .000 | 1-2 | .500 | 0 | 1 | 1 | 1.0 | 0 | 0 | 0 | 2 | 0 | 1 | 1.0 | |
| ILLINOIS STATE | 11/11/12 | 5 | 2-2 | 1.000 | 1-1 | 1.000 | 0-2 | .000 | 0 | 0 | 0 | 0.5 | 0 | 1 | 0 | 1 | 0 | 5 | 3.0 | |
| MIDDLE TENNESSEE | 11/14/12 | 3 | 0-0 | .000 | 0-0 | .000 | 0-0 | .000 | 0 | 0 | 0 | 0.3 | 0 | 0 | 0 | 0 | 0 | 0 | 2.0 | |
| NORTH CAROLINA | 11/18/12 | 1 | 0-0 | .000 | 0-0 | .000 | 0-0 | .000 | 0 | 0 | 0 | 0.3 | 0 | 0 | 0 | 0 | 0 | 0 | 1.5 | |
| ROBERT MORRIS | 11/20/12 | 7 | 1-4 | .250 | 0-0 | .000 | 0-0 | .000 | 1 | 2 | 3 | 0.8 | 1 | 0 | 2 | 0 | 0 | 2 | 1.6 | |
| at FIU | 11/23/12 | 2 | 0-0 | .000 | 0-0 | .000 | 0-0 | .000 | 0 | 0 | 0 | 0.7 | 1 | 0 | 1 | 0 | 0 | 0 | 1.3 | |
| vs WVU | 11/25/12 | 4 | 0-0 | .000 | 0-0 | .000 | 0-0 | .000 | 0 | 1 | 1 | 0.7 | 1 | 0 | 1 | 0 | 0 | 0 | 1.1 | |
| Totals | | 0 | 32 | 3-8 | .375 | 1-1 | 1.000 | 1-4 | .250 | 1 | 4 | 5 | 0.7 | 3 | 1 | 4 | 3 | 0 | 8 | 1.1 |

Games played: 7
 Minutes/game: 4.6
 Points/game: 1.1
 FG Pct: 37.5
 3FG Pct: 100.0
 FT Pct: 25.0

Rebounds/game: 0.7
 Assists/game: 0.1
 Turnovers/game: 0.6
 Assist/turnover ratio: 0.3
 Blocks/game: 0.4

CAREER STATISTICS

| YEAR | G/GS | FG-A | PCT | 3-PT | PCT | FT-A | PCT | O-D-REB | AVG | PF-FO | AS | TO | BK | ST | PTS | AVG |
|--------|------|------|------|------|-------|------|------|---------|-----|-------|----|----|----|----|-----|-----|
| Fresh. | 7/0 | 3-8 | .375 | 1-1 | 1.000 | 1-4 | .250 | 1-4-5 | 0.7 | 3-0 | 1 | 4 | 3 | 0 | 8 | 1.1 |





University of Iowa Women's Basketball

Game-by-Game Results

Overall: 5-2

Big Ten: 0-0

Home: 4-1

Away: 0-1

Neutral: 1-0

| Date | Opponent | Result | Attend. | Top Scorer | Top Rebounder |
|---------|--------------------------------|----------|---------|----------------------|---------------------------|
| Nov. 9 | Northern Illinois [^] | W, 63-40 | 4,739 | Johnson, Printy (11) | Till (6) |
| Nov. 11 | Illinois State [^] | W, 74-64 | 2,930 | Johnson (24) | Taylor (11) |
| Nov. 14 | Middle Tennessee [^] | W, 69-63 | 1,691 | Printy (26) | Doolittle (9) |
| Nov. 18 | North Carolina [^] | L, 64-77 | 3,073 | Johnson (20) | Johnson (11) |
| Nov. 20 | Robert Morris | W, 58-44 | 3,032 | Johnson (19) | Johnson (11) |
| Nov. 23 | at Florida International# | L, 65-66 | --- | Printy (15) | Johnson, Till (6) |
| Nov. 25 | vs. West Virginia# | W, 79-70 | --- | Johnson, Printy (19) | Logic, Printy, Taylor (7) |
| Nov. 28 | at Florida State [~] | | | | |
| Dec. 1 | Northern Iowa | | | | |
| Dec. 6 | Iowa State* | | | | |
| Dec. 16 | at Drake | | | | |
| Dec. 19 | Missouri State | | | | |
| Dec. 28 | vs. Texas% | | | | |
| Dec. 20 | vs. C. Michigan/San Diego% | | | | |
| Jan. 3 | Ohio State | | | | |
| Jan. 6 | Michigan | | | | |
| Jan. 10 | at Wisconsin | | | | |
| Jan. 17 | at Michigan State | | | | |
| Jan. 20 | Purdue | | | | |
| Jan. 24 | Wisconsin | | | | |
| Jan. 27 | at Michigan | | | | |
| Jan. 31 | at Illinois | | | | |
| Feb. 3 | Northwestern | | | | |
| Feb. 7 | at Minnesota | | | | |
| Feb. 11 | Nebraska | | | | |
| Feb. 14 | Penn State | | | | |
| Feb. 17 | at Purdue | | | | |
| Feb. 24 | at Nebraska | | | | |
| Feb. 28 | Indiana | | | | |
| March 3 | at Northwestern | | | | |

[^] - Preseason WNIT

- FIU Thanksgiving Classic, Miami

[~] - ACC/Big Ten Challenge

* - Iowa Corn Cy-Hawk Series

% - San Diego Surf 'N Slam Classic, San Diego

| Attendance Summary | Games | Totals | Average |
|--------------------|----------|---------------|--------------|
| Home | 5 | 15,465 | 3,093 |
| Away | --- | --- | --- |
| Neutral | --- | --- | --- |
| Totals | 5 | 15,465 | 3,093 |





University of Iowa Women's Basketball

Game-by-Game Statistics

| Team | Score | FG-A | PCT | 3-PT. FG | PCT | FT-A | PCT | REB | PF | AS | TO | BLK | ST |
|--------------------------|-------|-------|-------|----------|-------|-------|-------|-----|----|----|----|-----|----|
| Northern Illinois | 40 | 14-48 | 29.2% | 1-9 | 11.1% | 11-19 | 57.9% | 44 | 19 | 3 | 22 | 2 | 6 |
| at Iowa | 63 | 23-57 | 40.4% | 6-10 | 60.0% | 11-17 | 64.7% | 34 | 18 | 10 | 10 | 10 | 6 |
| Illinois State | 64 | 25-76 | 32.9% | 2-14 | 14.3% | 12-21 | 57.1% | 44 | 27 | 6 | 17 | 4 | 15 |
| at Iowa | 74 | 19-54 | 35.2% | 4-12 | 33.3% | 32-41 | 78.0% | 50 | 18 | 18 | 23 | 10 | 9 |
| Middle Tennessee | 63 | 22-70 | 31.4% | 7-30 | 23.3% | 12-18 | 66.7% | 46 | 22 | 9 | 20 | 3 | 12 |
| at Iowa | 69 | 24-55 | 43.6% | 6-20 | 30.0% | 15-21 | 71.4% | 40 | 17 | 22 | 20 | 10 | 6 |
| North Carolina | 77 | 27-66 | 40.9% | 8-22 | 36.4% | 15-27 | 55.6% | 45 | 18 | 14 | 20 | 4 | 15 |
| at Iowa | 64 | 25-62 | 40.3% | 5-25 | 20.0% | 9-14 | 64.3% | 43 | 20 | 14 | 25 | 4 | 9 |
| Robert Morris | 44 | 15-53 | 28.3% | 6-21 | 28.6% | 8-14 | 57.1% | 34 | 11 | 12 | 16 | 2 | 4 |
| at Iowa | 58 | 22-57 | 38.6% | 7-19 | 36.8% | 7-9 | 77.8% | 44 | 13 | 18 | 18 | 1 | 6 |
| at Florida International | 66 | 24-65 | 36.9% | 4-15 | 26.7% | 14-17 | 82.4% | 37 | 16 | 8 | 10 | 3 | 6 |
| Iowa | 65 | 24-57 | 42.1% | 7-20 | 35.0% | 10-13 | 76.9% | 39 | 16 | 16 | 16 | 5 | 1 |
| vs. West Virginia | 70 | 21-72 | 29.2% | 6-28 | 21.4% | 22-29 | 75.9% | 41 | 35 | 12 | 15 | 1 | 10 |
| Iowa | 79 | 18-39 | 46.2% | 1-5 | 20.0% | 42-50 | 84.0% | 39 | 23 | 12 | 23 | 5 | 6 |





University of Iowa Women's Basketball

Season & Career Bests

Season Bests

| Player | Points | 3-Pointers | Rebounds | Assists | Blocks | Steals |
|-----------------------|-------------------------|----------------------|-------------------------|-------------------------|-------------------------|----------------------|
| #3 Claire Till | 7 at FIU | 1, twice | 6, twice | 1 vs. North Carolina | 1 vs. Northern Illinois | 1, three times |
| #11 Trisha Nesbitt | 4 vs. West Virginia | 1, twice | 3 vs. Northern Illinois | 2 vs. Robert Morris | --- | 2 vs. North Carolina |
| #12 Morgan Johnson | 24 vs. Illinois State | --- | 11, twice | 2, twice | 5, twice | 1, three times |
| #13 Kathy Thomas | 8 vs. Northern Illinois | 1 vs. Robert Morris | 3 vs. Illinois State | 3 vs. Illinois State | --- | 1, twice |
| #21 Melissa Dixon | 12 vs. North Carolina | 2, six times | 2, three times | 2, twice | 1 vs. Illinois State | 2 vs. MTSU |
| #22 Samantha Logic | 12 vs. North Carolina | 1 at FIU | 7 vs. West Virginia | 12 vs. MTSU | 1, twice | 4 vs. North Carolina |
| #23 Theairra Taylor | 10 vs. Illinois State | 1, four times | 11 vs. Illinois State | 5 vs. Illinois State | 2 vs. MTSU | 2 vs. Illinois State |
| #24 Jaime Printy | 26 vs. MTSU | 4 at FIU | 7 vs. West Virginia | 6 vs. MTSU | 1 vs. West Virginia | 1, four times |
| #25 Kali Peschel | 1 vs. Northern Illinois | --- | 5 vs. Northern Illinois | 1 vs. Northern Illinois | --- | 1 vs. Robert Morris |
| #33 Kathryn Reynolds | --- | --- | --- | --- | --- | --- |
| #45 Nicole Smith | --- | --- | 1 vs. Northern Illinois | --- | --- | --- |
| #51 Bethany Doolittle | 17 vs. West Virginia | --- | 9 vs. MTSU | 1, twice | 6 vs. Northern Illinois | 2 vs. North Carolina |
| #54 Kayla Timmerman | 5 vs. Illinois State | 1 vs. Illinois State | 3 vs. Robert Morris | 1 vs. Illinois State | 2 vs. Northern Illinois | --- |

Career Bests

| Player | Points | 3-Pointers | Rebounds | Assists | Blocks | Steals |
|-----------------------|--------------------------------|-----------------------------|--------------------------------|--------------------------------|--------------------------------|-----------------------------|
| #3 Claire Till | 7 at FIU | 1, twice | 6, twice | 1 vs. North Carolina | 1 vs. Northern Illinois | 1, three times |
| #11 Trisha Nesbitt | 10, Michigan State | 2, Columbia | 3, 3 times | 4, three times | 1, Michigan State '11 | 3, Minnesota |
| #12 Morgan Johnson | 37 at Bradley | --- | 16 vs. Illinois | 4, twice | 8, Minnesota, '10 | 3, three times |
| #13 Kathy Thomas | 8 vs. Northern Illinois | 1 vs. Robert Morris | 3 vs. Illinois State | 3 vs. Illinois State | --- | 1, twice |
| #21 Melissa Dixon | 22 vs. Michigan | 6 vs. Michigan | 4, four times | 4 vs. Nebraska | 1, 4 times | 3 at Indiana |
| #22 Samantha Logic | 20, twice | 3 vs. Drake | 18 at Michigan | 12 vs. MTSU | 2 vs. MVSU | 4 vs. North Carolina |
| #23 Theairra Taylor | 20, William & Mary | 3, William & Mary | 11 vs. Illinois State | 6, Santa Clara | 4, Michigan | 4 at Northwestern |
| #24 Jaime Printy | 32 vs Illinois, '11 | 5, three times | 9, William & Mary | 9, Iowa State, '10 | 1, 13 times | 5 at Bradley |
| #25 Kali Peschel | 1 vs. Northern Illinois | --- | 5 vs. Northern Illinois | 1 vs. Northern Illinois | --- | 1 vs. Robert Morris |
| #33 Kathryn Reynolds | 4 vs. Drake | --- | 2 vs. Texas A&M | 5 vs. Western Illinois | --- | --- |
| #45 Nicole Smith | --- | --- | 1 vs. Northern Illinois | --- | --- | --- |
| #51 Bethany Doolittle | 17 vs. West Virginia | --- | 9 vs. MTSU | 2 vs. Western Illinois | 6 vs. Northern Illinois | 2, twice |
| #54 Kayla Timmerman | 5 vs. Illinois State | 1 vs. Illinois State | 3 vs. Robert Morris | 1 vs. Illinois State | 2 vs. Northern Illinois | --- |

BOLD - set career best during current season

* - - tied school single-game and Carver-Hawkeye Arena record





University of Iowa Women's Basketball

The Last Time...

The Last Time a Player . . .

Had 30 or more points

Iowa -- 37, Morgan Johnson, at Bradley, 12/17/11
Opponent -- 31, Jerica Coley, Florida International, 11/23/12

Made at least 80% of her FGA (10 att.)

Iowa -- .800 (8-10), Morgan Johnson, vs. Middle Tennessee, 11/14/2012
Opponent -- .857 (12-14), Kelsey Budd, Bradley, 12/17/11

Made 100% of her FTA (10 att.)

Iowa -- 1.000 (17-17), Jamie Printy, vs. West Virginia, 11/14/2012[^]
Opponent -- 1.000 (11-11), Courtney Vandersloot, Gonzaga, 3/19/11

Had 15 or more rebounds

Iowa -- 18, Samantha Logic, at Michigan, 2/16/12
Opponent -- 16, Artemis Spanou, Robert Morris, 11/20/2012

Had 10 or more assists

Iowa -- 12, Samantha Logic, vs. Middle Tennessee, 11/14/2012
Opponent -- 10, Brittney McCoy, Minnesota, 2/18/10

Had 5 or more blocks

Iowa -- 5, Morgan Johnson, at Florida International, 11/23/12
Opponent -- 5, Ebony Ellis, Northern Illinois, 12/8/07

Had 5 or more steals

Iowa -- 5, Kelly Krei, at Indiana, 2/5/12
Opponent -- 8, Jamie Russell, Illinois State, 11/11/12

The Last Time A Team . . .

Scored 100 or more points

Iowa -- 100 vs. Minnesota, 2/12/88
Opponent -- 101, Iowa State, 12/3/03

Scored 40 or fewer points

Iowa -- 40, vs. Illinois, 2/10/77
Opponent -- 40, Northern Illinois, 11/9/12

Won an overtime game

Iowa -- 69-63, vs. Middle Tennessee, 11/14/12
Opponent -- 81-78, Kansas State, 12/3/11

Made at least 60% of its FGA (20 att.)

Iowa -- .632 (36-57), vs. Rider, 11/26/05
Opponent -- .654 (34-52), Ohio State, 2/12/06

Made at least 50% of its 3-pt. FGA (8 att.)

Iowa -- .600 (6-10) vs. Northern Illinois, 11/9/12
Opponent -- .526 (10-19), Nebraska, 1/8/12

Made at least 90% of its FTA (10 att.)

Iowa -- .900 (9-10), vs. California, 3/18/12
Opponents -- .941 (16-17), UNI, 11/19/11

* - Carver-Hawkeye Arena record ^ - school record





University of Iowa Women's Basketball

Miscellaneous Records and Statistics

GAME-BY-GAME, POINTS-REBOUNDS-ASSISTS-STEALS

| # -- starter | 3 | 11 | 12 | 13 | 21 | 22 | 23 | 24 | 25 | 33 | 45 | 51 | 54 | |
|--------------|-----------------------|---------|---------|------------|---------|----------|-----------|------------|-----------|---------|----------|---------|-----------|-----------|
| Date | Opponent | Till | Nesbitt | Johnson | Thomas | Dixon | Logic | Taylor | Printy | Peschel | Reynolds | Smith | Doolittle | Timmerman |
| | | P-R-A-S | P-R-A-S | P-R-A-S | P-R-A-S | P-R-A-S | P-R-A-S | P-R-A-S | P-R-A-S | P-R-A-S | P-R-A-S | P-R-A-S | P-R-A-S | P-R-A-S |
| Nov. 9 | Northern Illinois | 3-6-0-1 | 3-3-1-0 | 11-5-0-1# | 8-2-0-0 | 8-2-2-1# | 10-3-2-2# | 5-1-1-0# | 11-1-3-1 | 1-5-1-0 | DNP | 0-1-0-0 | 2-0-0-0# | 1-1-0-0 |
| Nov. 11 | Illinois State | 4-3-0-1 | 3-1-0-1 | 24-9-2-1# | 5-3-3-1 | 8-0-2-0# | 6-5-4-2# | 10-11-5-2# | 1-2-1-0 | 0-3-0-0 | DNP | 0-0-0-0 | 8-5-0-1# | 5-0-1-0 |
| Nov. 14 | Middle Tennessee | 0-1-0-0 | 2-0-0-0 | 20-8-1-0# | 0-0-0-0 | 6-1-1-2# | 0-3-12-2# | 7-4-2-1# | 26-5-6-1 | 0-1-0-0 | DNP | DNP | 8-9-0-0# | 0-0-0-0 |
| Nov. 18 | North Carolina | 1-2-1-0 | 2-0-0-0 | 20-11-1-2# | 0-0-0-0 | 12-1-0-0 | 12-6-6-4# | 3-4-1-0# | 12-5-4-1# | DNP | DNP | DNP | 2-7-1-2# | 0-0-0-0 |
| Nov. 20 | Robert Morris | 5-2-0-0 | 0-2-2-0 | 19-11-0-0# | 3-1-1-0 | 6-2-0-0 | 4-6-9-3# | 7-4-0-1# | 8-6-5-1# | 0-0-0-1 | DNP | DNP | 4-5-1-0# | 2-3-0-0 |
| Nov. 23 | Florida International | 6-7-0-0 | 2-1-1-0 | 14-6-2-0# | 0-0-0-0 | 8-2-0-0 | 7-5-7-1# | 6-3-2-0# | 15-5-4-0# | 0-2-0-0 | DNP | DNP | 6-3-0-0# | 0-0-0-0 |
| Nov. 25 | West Virginia | 5-2-0-1 | 4-0-1-1 | 19-3-1-1# | DNP | 0-0-0-0 | 9-7-7-3# | 6-7-0-0# | 19-7-3-0# | DNP | DNP | DNP | 17-6-0-0# | 0-1-0-0 |

IOWA RECORD WHEN...

| | | | |
|---------------------------------------|--------------------------------|-------------------------------------|----------------------|
| Playing at home:..... | 4-1 | Iowa has more rebounds:..... | 2-1 |
| Playing on the road:..... | 0-1 | Opponent has more rebounds:..... | 3-1 |
| Playing on a neutral floor:..... | 1-0 | Rebounds are equal:..... | 0-0 |
| Leading at the half:..... | 3-1 | Iowa has more assists:..... | 4-1 |
| Trailing at the half:..... | 2-1 | Opponent has more assists:..... | 0-0 |
| Tied at the half:..... | 0-0 | Assists are equal:..... | 1-1 |
| Wearing white:..... | 2-0 | Iowa has fewer turnovers:..... | 1-0 |
| Wearing black:..... | 0-1 | Opponent has fewer turnovers:..... | 3-2 |
| Wearing gold:..... | 3-1 | Turnovers are equal:..... | 1-0 |
| Wearing pink:..... | 0-0 | Iowa has more steals:..... | 1-0 |
| Scoring 80+ points:..... | 0-0 | Opponent has more steals:..... | 3-2 |
| Scoring 70-79 points:..... | 2-0 | Steals are equal:..... | 1-0 |
| Scoring 60-69 points:..... | 2-2 | Playing on Sunday:..... | 2-1 |
| Scoring 60 or fewer points:..... | 1-0 | Playing on Monday:..... | 0-0 |
| Allowing 80+ points:..... | 0-0 | Playing on Tuesday:..... | 1-0 |
| Allowing 70-79 points:..... | 1-1 | Playing on Wednesday:..... | 1-0 |
| Allowing 60-69 points:..... | 2-1 | Playing on Thursday:..... | 0-0 |
| Allowing 60 or fewer points:..... | 2-0 | Playing on Friday:..... | 1-1 |
| Shooting at least 50% FG:..... | 0-0 | Playing on Saturday:..... | 0-0 |
| Shooting less than 50% FG:..... | 5-2 | Playing on BTN:..... | 0-0 |
| Shooting at least 80% FT:..... | 1-0 | Playing on CBS Sports Network:..... | 0-1 |
| Shooting less than 80% FT:..... | 4-2 | Playing on ESPN2:..... | 0-0 |
| Shooting at least 40% 3-pt. FG:..... | 1-0 | Playing on Mediacom:..... | 1-0 |
| Shooting less than 40% 3-pt. FG:..... | 4-2 | Playing on no TV:..... | 4-1 |
| Most 1st half points:..... | 39 vs. Ill. State (Nov. 11) | Largest Iowa lead:..... | 27 vs. NIU (Nov. 9) |
| Most 2nd half points:..... | 54 vs. West Virginia (Nov. 25) | Largest Iowa deficit:..... | 22 vs. UNC (Nov. 18) |
| Fewest opponent 1st half points:..... | 13 vs. NIU (Nov. 9) | Largest halftime lead:..... | 31 vs. NIU (Nov. 9) |
| Fewest opponent 2nd half points:..... | 24 vs. RMU (Nov. 20) | Largest halftime deficit:..... | 22 vs. UNC (Nov. 18) |

LATE GAME CLUTCH FREE THROW SHOOTING

In Final Five Minutes of Game

| Player | FTM | FTA | Pct. |
|-----------------|-----------|-----------|-------------|
| Jaime Printy | 12 | 12 | 1.000 |
| Morgan Johnson | 6 | 6 | 1.000 |
| Samantha Logic | 2 | 3 | .667 |
| Claire Till | 3 | 6 | .500 |
| Kathy Thomas | 2 | 4 | .500 |
| Kayla Timmerman | 0 | 2 | .000 |
| TOTALS | 25 | 33 | .758 |

In Final Two Minutes of Game

| Player | FTM | FTA | Pct. |
|----------------|-----------|-----------|-------------|
| Jaime Printy | 8 | 8 | 1.000 |
| Morgan Johnson | 4 | 4 | 1.000 |
| Claire Till | 1 | 4 | .250 |
| Kathy Thomas | 0 | 2 | .000 |
| TOTALS | 13 | 18 | .722 |

In Final One Minute of Game

| Player | FTM | FTA | Pct. |
|---------------|----------|-----------|-------------|
| Jaime Printy | 8 | 8 | 1.000 |
| Claire Till | 1 | 4 | .250 |
| Kathy Thomas | 0 | 2 | .000 |
| TOTALS | 9 | 14 | .643 |

In Overtime

| Player | FTM | FTA | Pct. |
|----------------|----------|----------|-------------|
| Jaime Printy | 6 | 6 | 1.000 |
| Morgan Johnson | 0 | 2 | .000 |
| Melissa Dixon | 0 | 1 | .000 |
| TOTALS | 6 | 9 | .667 |





University of Iowa Women's Basketball

Season Highs And Lows/Specialty Statistics

| CATEGORY | | IOWA | OPPONENTS |
|----------------------|------|--|-----------------------------|
| Points | High | 79 vs. West Virginia | 77, North Carolina |
| | Low | 58 vs. Robert Morris | 40, Northern Illinois |
| FG Made | High | 25 vs. North Carolina | 27, North Carolina |
| | Low | 18 vs. West Virginia | 14, Northern Illinois |
| FG Att. | High | 62 vs. North Carolina | 76, Illinois State |
| | Low | 39 vs. West Virginia | 48, Northern Illinois |
| FG% | High | 46.2 vs. West Virginia | 40.9, North Carolina |
| | Low | 35.2 vs. Illinois State | 28.3, Robert Morris |
| 3FG Made | High | 7, twice, last at Florida International | 8, North Carolina |
| | Low | 1 vs. West Virginia | 1, Northern Illinois |
| 3FG Att. | High | 25 vs. North Carolina | 30, Middle Tennessee |
| | Low | 5 vs. West Virginia | 9, Northern Illinois |
| 3FG% | High | 60.0 vs. Northern Illinois | 36.4, North Carolina |
| | Low | 20.0, twice, last vs. West Virginia | 11.1, Northern Illinois |
| FTM | High | 42 vs. West Virginia | 22, West Virginia |
| | Low | 7 vs. Robert Morris | 8, Robert Morris |
| FTA | High | 50 vs. West Virginia | 29, West Virginia |
| | Low | 9 vs. Robert Morris | 14, Robert Morris |
| FT% (min. 10) | High | 84.0 vs. West Virginia | 82.4, Florida International |
| | Low | 64.3 vs. North Carolina | 55.6, North Carolina |
| Off. Reb. | High | 16 at Florida International | 23, West Virginia |
| | Low | 6 vs. Northern Illinois | 10, Robert Morris |
| Def. Reb. | High | 38 vs. Illinois State | 33, Northern Illinois |
| | Low | 23 at Florida International | 18, two teams |
| Total Reb. | High | 50 vs. Illinois State | 46, Middle Tennessee |
| | Low | 34 vs. Northern Illinois | 34, Robert Morris |
| Assists | High | 22 vs. Middle Tennessee | 14, North Carolina |
| | Low | 10 vs. Northern Illinois | 3, Northern Illinois |
| Steals | High | 9, twice, last vs. North Carolina | 15, two teams |
| | Low | 1 at Florida International | 1, West Virginia |
| Blocks | High | 10, three times, last vs. Middle Tennessee | 4, two teams |
| | Low | 1 vs. Robert Morris | 1, West Virginia |
| Turnovers | High | 25 vs. North Carolina | 22, Northern Illinois |
| | Low | 10 vs. Northern Illinois | 10, Florida International |
| Fouls | High | 23 vs. West Virginia | 35, West Virginia |
| | Low | 13 vs. Robert Morris | 11, Robert Morris |

GAME-BY-GAME SPECIALTY STATS

| Date | Opponent | Pts. Off TO's | Pts. in Paint | 2nd Chance | Fast Break |
|---------|-----------------------|---------------|---------------|------------|------------|
| Nov. 9 | Northern Illinois | 26-6 | 24-10 | 4-3 | 3-2 |
| Nov. 11 | Illinois State | 18-20 | 22-24 | 8-6 | 18-11 |
| Nov. 14 | Middle Tennessee | 15-11 | 24-26 | 11-12 | 2-6 |
| Nov. 18 | North Carolina | 12-22 | 30-24 | 6-22 | 15-14 |
| Nov. 20 | Robert Morris | 16-12 | 22-10 | 11-6 | 2-2 |
| Nov. 23 | Florida International | 6-20 | 24-20 | 13-15 | 6-6 |
| Nov. 25 | West Virginia | 14-20 | 24-18 | 11-22 | 0-4 |

IOWA AND OPPONENT INDIVIDUAL HIGH PERFORMANCES

| CATEGORY | IOWA | OPPONENTS |
|-------------------------------|--|--|
| Points | 26 Jaime Printy vs. Middle Tennessee | 31 Jerica Coley, Florida International |
| Field Goals Made | 8 Morgan Johnson vs. MTSU, UNC, RMU | 12 Jamie Russell, Illinois State |
| Field Goals Attempted | 15 Jaime Printy vs. North Carolina | 28 Russell, Ill. State; Coley, FIU |
| 3-Point Field Goals Made | 4 Jaime Printy at Florida International | 5 Taylor Palmer, West Virginia |
| 3-Point Field Goals Attempted | 12 Jaime Printy vs. North Carolina | 13 Taylor Palmer, West Virginia |
| Free Throws Made | 17 Jaime Printy vs. West Virginia | 6 Three players |
| Free Throws Attempted | 17 Jaime Printy vs. West Virginia | 9 Xylina McDaniel, North Carolina |
| Offensive Rebounds | 5 Johnson vs. RMU, Till at FIU | 11 Ebony Rowe, Middle Tennessee |
| Defensive Rebounds | 11 Theairra Taylor vs. Ill. State | 13 Artemis Spanou, Robert Morris |
| Total Rebounds | 11 Taylor vs. Ill. State, Johnson vs. UNC, RMU | 16 Rowe, MTSU; Spanou, RMU |
| Assists | 12 Samantha Logic vs. Middle Tennessee | 4 Ruffin-Pratt, UNC; Coley, FIU |
| Steals | 4 Samantha Logic vs. North Carolina | 8 Jamie Russell, Ill. State |
| Blocks | 6 Bethany Doolittle vs. NIU | 3 Waltiea Rolle, North Carolina |





University of Iowa Women's Basketball

Season Box Scores



Official Basketball Box Score - Game Totals - Final Statistics
Northern Illinois vs Iowa
11/9/12 5:30 PM at Carver-Hawkeye Arena, Iowa City, IA



Northern Illinois 40 • 0-1

| # | Player | Total | | | 3-Ptr | | | Rebounds | | | PF | TP | A | TO | Blk | Stl | Min |
|----|-------------------|-------|-------|-----|-------|----|-----|----------|-----|-----|----|----|---|----|-----|-----|-----|
| | | FG | FGA | FT | FTA | FG | FGA | FT | FTA | Off | | | | | | | |
| 20 | THORP, Jenna | f | 1-5 | 0-1 | 3-4 | 2 | 4 | 6 | 2 | 5 | 0 | 1 | 0 | 1 | 26 | | |
| 33 | HAYWOOD, Shaakira | c | 0-0 | 0-0 | 2-2 | 1 | 1 | 2 | 2 | 2 | 0 | 2 | 0 | 0 | 12 | | |
| 12 | PULLIAM, Danny | g | 2-4 | 0-0 | 0-0 | 0 | 2 | 2 | 1 | 4 | 1 | 2 | 0 | 0 | 20 | | |
| 14 | TAYLOR, Satavia | g | 5-15 | 1-4 | 1-3 | 2 | 9 | 11 | 1 | 12 | 0 | 2 | 0 | 2 | 29 | | |
| 02 | CORRAL, Amanda | g | 2-10 | 0-3 | 2-5 | 0 | 3 | 3 | 4 | 6 | 0 | 8 | 0 | 1 | 29 | | |
| 23 | SNEED, Ashley | f | 1-4 | 0-0 | 0-0 | 0 | 3 | 3 | 1 | 2 | 0 | 1 | 0 | 0 | 14 | | |
| 05 | LINDSTROM, Alexis | f | 0-1 | 0-1 | 2-2 | 0 | 0 | 0 | 0 | 2 | 2 | 0 | 0 | 1 | 11 | | |
| 23 | BUGGS, Jada | f | 2-5 | 0-0 | 1-2 | 0 | 2 | 2 | 3 | 5 | 0 | 3 | 0 | 0 | 17 | | |
| 30 | JOHNSON, Alicia | g | 0-1 | 0-0 | 0-0 | 0 | 3 | 3 | 2 | 0 | 0 | 0 | 0 | 0 | 12 | | |
| 31 | WITTMAN, Nichole | f | 1-1 | 0-0 | 0-0 | 2 | 0 | 2 | 1 | 2 | 0 | 1 | 0 | 0 | 14 | | |
| 32 | AUGUSTA, Natecia | g | 0-2 | 0-0 | 0-1 | 1 | 3 | 4 | 2 | 0 | 1 | 2 | 1 | 1 | 16 | | |
| | Team | | | | | 3 | 3 | 6 | | | | | | | | | |
| | Totals | | 14-48 | 1-9 | 11-19 | 11 | 33 | 44 | 19 | 40 | 3 | 22 | 2 | 6 | 200 | | |

FG % 1st Half: 4-23 17.4% 2nd half: 10-25 40.0% Game: 14-48 29.2%
3FG % 1st Half: 0-7 0.0% 2nd half: 1-2 50.0% Game: 1-9 11.1%
FT % 1st Half: 5-10 50.0% 2nd half: 6-9 66.7% Game: 11-19 57.9%
Deadball Rebounds: 1

Iowa 63 • 1-0

| # | Player | Total | | | 3-Ptr | | | Rebounds | | | PF | TP | A | TO | Blk | Stl | Min |
|----|--------------------|-------|-------|------|-------|----|-----|----------|-----|-----|----|----|----|----|-----|-----|-----|
| | | FG | FGA | FT | FTA | FG | FGA | FT | FTA | Off | | | | | | | |
| 11 | Doolittle, Bethany | f | 1-8 | 0-0 | 0-0 | 0 | 0 | 0 | 2 | 2 | 0 | 1 | 6 | 0 | 21 | | |
| 12 | Johnson, Morgan | c | 4-11 | 0-0 | 3-5 | 1 | 4 | 5 | 2 | 11 | 0 | 1 | 0 | 1 | 24 | | |
| 21 | Dixon, Melissa | g | 3-4 | 2-3 | 0-0 | 0 | 2 | 2 | 2 | 8 | 2 | 1 | 0 | 1 | 20 | | |
| 22 | Logic, Samantha | g | 5-8 | 0-0 | 0-0 | 0 | 3 | 3 | 1 | 10 | 2 | 2 | 0 | 2 | 25 | | |
| 23 | Taylor, Theairra | g | 2-4 | 1-1 | 0-0 | 0 | 1 | 1 | 5 | 1 | 1 | 1 | 0 | 1 | 19 | | |
| 03 | Till, Claire | g | 1-3 | 1-2 | 0-0 | 1 | 5 | 6 | 3 | 3 | 0 | 0 | 1 | 1 | 11 | | |
| 11 | Nesbitt, Trisha | f | 1-1 | 1-1 | 0-0 | 0 | 3 | 3 | 0 | 3 | 1 | 2 | 0 | 0 | 18 | | |
| 13 | Thomas, Kathy | f | 3-4 | 0-0 | 2-2 | 1 | 1 | 2 | 3 | 8 | 0 | 1 | 0 | 0 | 15 | | |
| 24 | Printy, Jaime | f | 3-4 | 1-1 | 4-4 | 0 | 1 | 1 | 1 | 11 | 3 | 1 | 0 | 1 | 16 | | |
| 25 | Peschel, Kali | f | 0-6 | 0-2 | 1-2 | 3 | 2 | 5 | 3 | 1 | 0 | 0 | 0 | 0 | 18 | | |
| 45 | Smith, Nicole | f | 0-2 | 0-0 | 0-0 | 0 | 1 | 1 | 0 | 0 | 0 | 0 | 0 | 0 | 3 | | |
| 54 | Timmerman, Kayla | f | 0-2 | 0-0 | 1-2 | 0 | 1 | 1 | 0 | 1 | 0 | 0 | 2 | 0 | 10 | | |
| | Team | | | | | 0 | 4 | 4 | | | | | | | | | |
| | Totals | | 23-57 | 6-10 | 11-17 | 6 | 28 | 34 | 18 | 63 | 10 | 10 | 10 | 6 | 200 | | |

FG % 1st Half: 15-30 50.0% 2nd half: 8-27 29.6% Game: 23-57 40.4%
3FG % 1st Half: 4-5 80.0% 2nd half: 2-5 40.0% Game: 6-10 60.0%
FT % 1st Half: 0-1 0.0% 2nd half: 11-16 68.8% Game: 11-17 64.7%
Deadball Rebounds: 1.2

Officials: Ann Schroeder, Scott Fruehling, Dave Rittman
Technical fouls: Northern Illinois-None. Iowa-None.
Attendance: 4739

| Score by periods | 1st | 2nd | Total |
|-------------------|-----|-----|-------|
| Northern Illinois | 13 | 27 | 40 |
| Iowa | 34 | 29 | 63 |

Last FG - NIU 2nd-03:23, IOWA 2nd-02:17
Largest lead - NIU None, IOWA by 27 2nd-03:50.

Score tied - 3 times
Lead changed - 0 times.



Official Basketball Box Score - Game Totals - Final Statistics
Illinois State vs Iowa
11/11/12 2:00 PM at Carver-Hawkeye Arena, Iowa City, IA



Illinois State 64 • 1-1

| # | Player | Total | | | 3-Ptr | | | Rebounds | | | PF | TP | A | TO | Blk | Stl | Min |
|----|------------------|-------|-------|------|-------|----|-----|----------|-----|-----|----|----|---|----|-----|-----|-----|
| | | FG | FGA | FT | FTA | FG | FGA | FT | FTA | Off | | | | | | | |
| 25 | SMITH, Janae | f | 7-14 | 0-0 | 3-6 | 5 | 4 | 9 | 2 | 17 | 1 | 5 | 1 | 1 | 31 | | |
| 31 | OLIVER, Maddie | f | 0-2 | 0-0 | 0-0 | 1 | 0 | 1 | 4 | 0 | 0 | 0 | 0 | 1 | 14 | | |
| 01 | JENKINS, Alexis | g | 1-2 | 1-2 | 0-0 | 0 | 0 | 0 | 1 | 3 | 2 | 1 | 0 | 2 | 23 | | |
| 14 | FOLEY, Alexis | g | 1-8 | 1-4 | 0-0 | 2 | 4 | 6 | 5 | 3 | 0 | 2 | 0 | 0 | 27 | | |
| 23 | RUSSELL, Jamie | g | 12-28 | 0-2 | 6-6 | 2 | 10 | 12 | 3 | 30 | 2 | 6 | 1 | 8 | 37 | | |
| 04 | NELSON, Chloe | f | 2-9 | 0-3 | 2-4 | 2 | 1 | 3 | 3 | 6 | 0 | 1 | 2 | 0 | 20 | | |
| 22 | SEBERGER, Alison | f | 0-0 | 0-0 | 0-0 | 0 | 0 | 0 | 0 | 0 | 0 | 0 | 0 | 0 | 3 | | |
| 24 | WINGE, Katy | f | 1-5 | 0-3 | 0-0 | 0 | 2 | 2 | 0 | 2 | 0 | 1 | 0 | 0 | 11 | | |
| 32 | CRUMP, Octavia | f | 0-6 | 0-0 | 1-5 | 2 | 2 | 4 | 2 | 1 | 1 | 2 | 0 | 1 | 22 | | |
| 35 | PUNI, Brianna | f | 0-1 | 0-0 | 0-0 | 0 | 1 | 1 | 4 | 0 | 0 | 0 | 1 | 0 | 10 | | |
| 50 | GRACE, Megan | f | 1-1 | 0-0 | 0-0 | 0 | 0 | 0 | 1 | 2 | 0 | 0 | 0 | 0 | 1 | | |
| | Team | | | | | 3 | 2 | 5 | | | | | | | | | |
| | Totals | | 25-76 | 2-14 | 12-21 | 17 | 27 | 44 | 27 | 64 | 6 | 17 | 4 | 15 | 200 | | |

FG % 1st Half: 11-40 27.5% 2nd half: 14-36 38.9% Game: 25-76 32.9%
3FG % 1st Half: 1-6 16.7% 2nd half: 1-8 12.5% Game: 2-14 14.3%
FT % 1st Half: 6-9 66.7% 2nd half: 6-12 50.0% Game: 12-21 57.1%
Deadball Rebounds: 5.1

Iowa 74 • 2-0

| # | Player | Total | | | 3-Ptr | | | Rebounds | | | PF | TP | A | TO | Blk | Stl | Min |
|----|--------------------|-------|-------|------|-------|----|-----|----------|-----|-----|----|----|----|----|-----|-----|-----|
| | | FG | FGA | FT | FTA | FG | FGA | FT | FTA | Off | | | | | | | |
| 12 | Johnson, Morgan | c | 6-14 | 0-0 | 12-13 | 4 | 5 | 9 | 2 | 24 | 2 | 2 | 5 | 1 | 30 | | |
| 51 | Doolittle, Bethany | c | 4-10 | 0-1 | 0-0 | 0 | 5 | 5 | 1 | 8 | 0 | 2 | 2 | 1 | 25 | | |
| 21 | Dixon, Melissa | g | 2-3 | 2-3 | 2-2 | 0 | 0 | 0 | 4 | 8 | 2 | 1 | 0 | 24 | | | |
| 22 | Logic, Samantha | g | 1-6 | 0-1 | 4-4 | 3 | 2 | 5 | 2 | 6 | 4 | 6 | 1 | 24 | | | |
| 23 | Taylor, Theairra | g | 3-6 | 1-1 | 3-4 | 0 | 11 | 11 | 1 | 10 | 5 | 2 | 0 | 21 | | | |
| 03 | Till, Claire | f | 1-2 | 0-0 | 2-2 | 0 | 3 | 3 | 1 | 4 | 0 | 2 | 0 | 1 | 7 | | |
| 11 | Nesbitt, Trisha | f | 0-3 | 0-1 | 3-4 | 0 | 1 | 1 | 3 | 3 | 0 | 1 | 0 | 1 | 15 | | |
| 13 | Thomas, Kathy | f | 0-2 | 0-0 | 5-8 | 2 | 1 | 3 | 3 | 5 | 3 | 3 | 0 | 1 | 16 | | |
| 24 | Printy, Jaime | f | 0-4 | 0-3 | 1-2 | 0 | 2 | 2 | 0 | 1 | 1 | 2 | 0 | 0 | 15 | | |
| 25 | Peschel, Kali | f | 0-2 | 0-1 | 0-0 | 0 | 3 | 3 | 1 | 0 | 0 | 2 | 0 | 0 | 16 | | |
| 45 | Smith, Nicole | f | 0-0 | 0-0 | 0-0 | 0 | 0 | 0 | 0 | 0 | 0 | 0 | 0 | 0 | 2 | | |
| 54 | Timmerman, Kayla | f | 2-2 | 1-1 | 0-2 | 0 | 0 | 0 | 0 | 5 | 1 | 0 | 1 | 0 | 5 | | |
| | Team | | | | | 3 | 5 | 8 | | | | | | | | | |
| | Totals | | 19-54 | 4-12 | 32-41 | 12 | 38 | 50 | 18 | 74 | 18 | 23 | 10 | 9 | 200 | | |

FG % 1st Half: 7-26 26.9% 2nd half: 12-28 42.9% Game: 19-54 35.2%
3FG % 1st Half: 2-7 28.6% 2nd half: 2-5 40.0% Game: 4-12 33.3%
FT % 1st Half: 23-26 88.5% 2nd half: 9-15 60.0% Game: 32-41 78.0%
Deadball Rebounds: 4

Officials: Doug Knight, Erika Herriman, Scott Fruehling
Technical fouls: Illinois State-None. Iowa-None.
Attendance: 2930
Fouled Out: #14 ISU 1:02 2nd

| Score by periods | 1st | 2nd | Total |
|------------------|-----|-----|-------|
| Illinois State | 29 | 35 | 64 |
| Iowa | 39 | 35 | 74 |



Official Basketball Box Score - Game Totals - Final Statistics
Middle Tennessee vs Iowa
11/14/12 7:00 PM at Carver-Hawkeye Arena, Iowa City, IA



Middle Tennessee 63 • 2-1

| # | Player | Total | | | 3-Ptr | | | Rebounds | | | PF | TP | A | TO | Blk | Stl | Min |
|----|------------------|-------|-------|------|-------|----|-----|----------|-----|-----|----|----|---|----|-----|-----|-----|
| | | FG | FGA | FT | FTA | FG | FGA | FT | FTA | Off | | | | | | | |
| 13 | Elie, Icelyn | f | 3-11 | 1-2 | 1-1 | 6 | 8 | 14 | 3 | 8 | 2 | 3 | 1 | 3 | 43 | | |
| 21 | Rowe, Ebony | c | 10-21 | 0-0 | 4-6 | 11 | 5 | 16 | 4 | 24 | 3 | 3 | 2 | 4 | 45 | | |
| 05 | Cason, Shanice | g | 1-14 | 1-10 | 2-5 | 0 | 2 | 2 | 5 | 5 | 1 | 5 | 0 | 0 | 36 | | |
| 24 | Jones, Kortni | g | 4-14 | 3-10 | 4-4 | 2 | 2 | 4 | 3 | 15 | 3 | 4 | 0 | 1 | 44 | | |
| 02 | Leonard, Laken | g | 3-6 | 2-5 | 1-2 | 1 | 0 | 1 | 4 | 9 | 0 | 2 | 0 | 1 | 34 | | |
| 52 | Bronkley, Janay | g | 0-2 | 0-2 | 0-0 | 0 | 1 | 1 | 2 | 0 | 0 | 0 | 0 | 2 | 10 | | |
| 23 | March, Lauren | f | 1-1 | 0-0 | 0-0 | 0 | 1 | 2 | 0 | 2 | 0 | 0 | 0 | 1 | 9 | | |
| 32 | Warden, Caroline | f | 0-1 | 0-1 | 0-0 | 0 | 0 | 0 | 1 | 0 | 0 | 1 | 0 | 0 | 2 | | |
| 42 | Stewart, KeKe | f | 0-0 | 0-0 | 0-0 | 0 | 0 | 0 | 0 | 0 | 0 | 0 | 0 | 0 | 2 | | |
| | Team | | | | | 1 | 5 | 6 | | | | | | | | | |
| | Totals | | 22-70 | 7-30 | 12-18 | 22 | 24 | 46 | 22 | 63 | 9 | 20 | 3 | 12 | 225 | | |

FG % 1st Half: 13-34 38.2% 2nd half: 8-31 25.8% OT: 1-5 20.0% Game: 22-70 31.4%
3FG % 1st Half: 5-14 35.7% 2nd half: 2-13 15.4% OT: 0-3 0.0% Game: 7-30 23.3%
FT % 1st Half: 1-5 20.0% 2nd half: 9-11 81.8% OT: 2-2 100.0% Game: 12-18 66.7%
Deadball Rebounds: 3

Iowa 69 • 3-0

| # | Player | Total | | | 3-Ptr | | | Rebounds | | | PF | TP | A | TO | Blk | Stl | Min |
|----|--------------------|-------|-------|-----|-------|----|-----|----------|-----|-----|----|----|---|----|-----|-----|-----|
| | | FG | FGA | FT | FTA | FG | FGA | FT | FTA | Off | | | | | | | |
| 11 | Doolittle, Bethany | f | 4-7 | 0-0 | 0-0 | 4 | 5 | 9 | 3 | 8 | 0 | 4 | 5 | 0 | 30 | | |
| 12 | Johnson, Morgan | c | 10-10 | 0-0 | 4-6 | 2 | 6 | 8 | 4 | 20 | 1 | 0 | 2 | 0 | 41 | | |
| 21 | Dixon, Melissa | g | 2-9 | 2-7 | 0-1 | 0 | 1 | 1 | 2 | 6 | 1 | 1 | 0 | 2 | 34 | | |
| 22 | Logic, Samantha | g | 0-6 | 0-2 | 0-1 | 1 | 2 | 3 | 2 | 0 | 12 | 6 | 1 | 2 | 40 | | |
| 23 | Taylor, Theairra | g | 3-8 | 1-4 | 0-2 | 1 | 3 | 4 | 2 | 7 | 2 | 4 | 2 | 1 | 23 | | |
| 03 | Till, Claire | f | 0-1 | 0-0 | 0-0 | 0 | 1 | 1 | 2 | 0 | 0 | 0 | 0 | 0 | 8 | | |
| 11 | Nesbitt, Trisha | f | 1-1 | 0-0 | 0-0 | 0 | 0 | 0 | 0 | 2 | 0 | 0 | 0 | 0 | 4 | | |
| 13 | Thomas, Kathy | f | 0-0 | 0-0 | 0-0 | 0 | 0 | 0 | 1 | 0 | 0 | 0 | 0 | 0 | 2 | | |
| 24 | Printy, Jaime | f | 6-13 | 3-7 | 11-11 | 1 | 4 | 5 | 1 | 26 | 6 | 5 | 0 | 1 | 38 | | |
| 25 | Peschel, Kali | f | 0-0 | 0-0 | 0-0 | 0 | 1 | 1 | 0 | 0 | 0 | 0 | 0 | 0 | 2 | | |
| 54 | Timmerman, Kayla | f | 0-0 | 0-0 | 0-0 | 0 | 0 | 0 | | | | | | | | | |



University of Iowa Women's Basketball

Season Box Scores



Official Basketball Box Score -- Game Totals -- Final Statistics
Robert Morris vs Iowa
11/20/12 7:00 PM at Carver-Hawkeye Arena, Iowa City, IA



Robert Morris 44 • 0-4

| # | Player | Total | | 3-Ptr | | Rebounds | | | PF | TP | A | TO | Blk | Stl | Min |
|--------|-----------------|--------|--------|--------|------|----------|-----|----|----|----|----|----|-----|-----|-----|
| | | FG-FGA | FG-FGA | FT-FTA | Off | Def | Tot | | | | | | | | |
| 15 | SPANOU, Artemis | f | 2-19 | 1-9 | 4-7 | 3 | 13 | 16 | 3 | 9 | 3 | 8 | 0 | 1 | 40 |
| 42 | HARTWELL, Kelly | f | 0-1 | 0-0 | 1-2 | 1 | 1 | 2 | 0 | 1 | 2 | 0 | 0 | 0 | 23 |
| 52 | GAILITE, Anna | c | 5-10 | 0-0 | 0-0 | 2 | 2 | 4 | 4 | 10 | 0 | 1 | 2 | 0 | 33 |
| 10 | TATE, Jasmine | g | 1-4 | 0-0 | 0-1 | 0 | 3 | 3 | 1 | 2 | 2 | 5 | 0 | 1 | 27 |
| 14 | RAVELLI, Ashley | g | 3-7 | 2-4 | 1-2 | 1 | 1 | 2 | 0 | 9 | 3 | 1 | 0 | 1 | 31 |
| 12 | MATALY, Lou | g | 4-10 | 3-7 | 2-2 | 1 | 1 | 2 | 1 | 13 | 1 | 0 | 0 | 1 | 26 |
| 34 | KAVASILA, Anna | g | 0-0 | 0-0 | 0 | 0 | 0 | 0 | 2 | 0 | 0 | 0 | 0 | 7 | |
| 41 | JACKSON, Randi | g | 0-2 | 0-1 | 0-0 | 0 | 0 | 0 | 0 | 0 | 1 | 1 | 0 | 0 | 13 |
| Team | | | | | | 2 | 3 | 5 | | | | | | | |
| Totals | | | 15-53 | 6-21 | 8-14 | 10 | 24 | 34 | 11 | 44 | 12 | 16 | 2 | 4 | 200 |

FG % 1st Half: 8-25 29.6% 2nd half: 7-26 26.9% Game: 15-53 28.3% Deadball Rebounds
3FG % 1st Half: 3-10 30.0% 2nd half: 3-11 27.3% Game: 6-21 28.6%
FT % 1st Half: 1-3 33.3% 2nd half: 7-11 63.6% Game: 8-14 57.1%

Iowa 58 • 4-1

| # | Player | Total | | 3-Ptr | | Rebounds | | | PF | TP | A | TO | Blk | Stl | Min |
|--------|--------------------|--------|--------|--------|-----|----------|-----|----|----|----|----|----|-----|-----|-----|
| | | FG-FGA | FG-FGA | FT-FTA | Off | Def | Tot | | | | | | | | |
| 51 | Doolittle, Bethany | f | 2-9 | 0-0 | 0-0 | 1 | 4 | 5 | 2 | 4 | 1 | 1 | 0 | 0 | 20 |
| 12 | Johnson, Morgan | c | 8-13 | 0-0 | 3-5 | 5 | 6 | 11 | 3 | 19 | 0 | 3 | 0 | 0 | 33 |
| 22 | Logic, Samantha | g | 2-7 | 0-2 | 0-0 | 3 | 3 | 6 | 1 | 4 | 9 | 2 | 0 | 3 | 28 |
| 23 | Taylor, Theaira | g | 3-7 | 1-4 | 0-0 | 0 | 4 | 4 | 0 | 7 | 0 | 3 | 0 | 1 | 20 |
| 24 | Printy, Jaime | g | 2-4 | 2-4 | 2-2 | 1 | 5 | 6 | 0 | 8 | 5 | 2 | 0 | 1 | 31 |
| 03 | Till, Claire | g | 1-2 | 1-1 | 2-2 | 0 | 2 | 2 | 0 | 5 | 0 | 2 | 0 | 0 | 16 |
| 11 | Nesbitt, Trisha | g | 0-0 | 0-0 | 0 | 2 | 2 | 0 | 0 | 2 | 0 | 0 | 0 | 0 | 13 |
| 13 | Thomas, Kathy | g | 1-3 | 1-1 | 0-0 | 0 | 1 | 2 | 3 | 1 | 0 | 0 | 0 | 0 | 10 |
| 21 | Dixon, Melissa | g | 2-8 | 2-7 | 0-0 | 0 | 2 | 2 | 6 | 0 | 3 | 0 | 0 | 0 | 17 |
| 25 | Peschel, Kali | g | 0-0 | 0-0 | 0 | 0 | 0 | 0 | 2 | 0 | 0 | 0 | 0 | 1 | 5 |
| 54 | Timmerman, Kayla | g | 1-4 | 0-0 | 0-0 | 1 | 2 | 3 | 1 | 2 | 0 | 2 | 0 | 0 | 7 |
| Team | | | | | | 1 | 1 | 2 | | | | | | | |
| Totals | | | 22-57 | 7-19 | 7-9 | 12 | 32 | 44 | 13 | 58 | 18 | 18 | 1 | 6 | 200 |

FG % 1st Half: 8-25 32.0% 2nd half: 14-32 43.8% Game: 22-57 38.6% Deadball Rebounds
3FG % 1st Half: 4-10 40.0% 2nd half: 3-9 33.3% Game: 7-19 36.8%
FT % 1st Half: 3-4 75.0% 2nd half: 4-5 80.0% Game: 7-9 77.8%

Officials: Lisa Mattingly, Brian Hall, Angie Enlund
Technical fouls: Robert Morris-None. Iowa-None.
Attendance: 3032

| Score by periods | 1st | 2nd | Total |
|------------------|-----|-----|-------|
| Robert Morris | 20 | 24 | 44 |
| Iowa | 23 | 35 | 58 |

| Points | In | Off | 2nd | Fast | Bench |
|--------|----|-----|-----|------|-------|
| RMU | 10 | 12 | 6 | 2 | 13 |
| IOWA | 22 | 16 | 11 | 2 | 16 |

Last FG - RMU 2nd-01:52, IOWA 2nd-00:36.
Largest lead - RMU by 5 1st-12:17, IOWA by 16 2nd-12:41.

Score tied - 1 time.
Lead changed - 2 times.



Official Basketball Box Score -- Game Totals -- Final Statistics
Iowa vs FIU
11/23/12 6 p.m. at U.S. Century Bank Arena



Iowa 65 • 4-2

| # | Player | Total | | 3-Ptr | | Rebounds | | | PF | TP | A | TO | Blk | Stl | Min |
|--------|--------------------|--------|--------|--------|-------|----------|-----|----|----|----|----|----|-----|-----|-----|
| | | FG-FGA | FG-FGA | FT-FTA | Off | Def | Tot | | | | | | | | |
| 12 | Johnson, Morgan | * | 6-9 | 0-0 | 2-2 | 3 | 3 | 6 | 2 | 14 | 2 | 3 | 5 | 0 | 36 |
| 22 | Logic, Samantha | * | 3-6 | 1-1 | 0-0 | 3 | 2 | 5 | 3 | 7 | 7 | 4 | 0 | 1 | 32 |
| 23 | Taylor, Theaira | * | 2-5 | 0-1 | 2-2 | 0 | 3 | 3 | 2 | 6 | 2 | 2 | 0 | 0 | 19 |
| 24 | Printy, Jaime | * | 5-12 | 4-9 | 1-1 | 2 | 3 | 5 | 2 | 15 | 4 | 3 | 0 | 0 | 34 |
| 51 | Doolittle, Bethany | * | 3-5 | 0-0 | 0-0 | 0 | 3 | 3 | 3 | 6 | 0 | 2 | 0 | 0 | 22 |
| 03 | Till, Claire | * | 1-6 | 0-2 | 5-8 | 5 | 1 | 6 | 0 | 7 | 0 | 0 | 0 | 0 | 18 |
| 11 | Nesbitt, Trisha | * | 1-2 | 0-0 | 0-0 | 0 | 1 | 1 | 1 | 2 | 1 | 0 | 0 | 0 | 8 |
| 13 | Thomas, Kathy | * | 0-0 | 0-0 | 0-0 | 0 | 0 | 0 | 0 | 0 | 0 | 0 | 0 | 0 | 8 |
| 21 | Dixon, Melissa | * | 3-11 | 2-7 | 0-0 | 0 | 2 | 2 | 2 | 8 | 0 | 0 | 0 | 0 | 19 |
| 25 | Peschel, Kali | * | 0-1 | 0-0 | 0-0 | 0 | 2 | 2 | 0 | 0 | 0 | 0 | 0 | 0 | 2 |
| 54 | Timmerman, Kayla | * | 0-0 | 0-0 | 0-0 | 0 | 0 | 0 | 0 | 1 | 0 | 1 | 0 | 0 | 2 |
| Team | | | | | | 1 | 5 | 6 | | | | | | | |
| Totals | | | 24-57 | 7-20 | 10-13 | 16 | 23 | 39 | 16 | 65 | 16 | 16 | 5 | 1 | 200 |

FG % 1st Half: 14-32 43.8% 2nd half: 10-25 40.0% Game: 24-57 42.1% Deadball Rebounds
3FG % 1st Half: 3-12 25.0% 2nd half: 4-8 50.0% Game: 7-20 35.0%
FT % 1st Half: 3-3 100.0% 2nd half: 7-10 70.0% Game: 10-13 76.9%

FIU 66 • 2-2

| # | Player | Total | | 3-Ptr | | Rebounds | | | PF | TP | A | TO | Blk | Stl | Min |
|--------|------------------|--------|--------|--------|-------|----------|-----|----|----|----|---|----|-----|-----|-----|
| | | FG-FGA | FG-FGA | FT-FTA | Off | Def | Tot | | | | | | | | |
| 03 | Labady, Zsafia | * | 2-5 | 1-3 | 1-1 | 1 | 2 | 3 | 2 | 6 | 0 | 1 | 0 | 1 | 36 |
| 12 | Davydova, Marita | * | 1-8 | 0-0 | 4-4 | 4 | 1 | 5 | 4 | 6 | 0 | 0 | 0 | 0 | 26 |
| 22 | Coley, Jerica | * | 11-28 | 3-9 | 6-7 | 2 | 4 | 6 | 2 | 31 | 4 | 1 | 1 | 2 | 37 |
| 23 | Mansare, Finda | * | 7-14 | 0-0 | 3-4 | 5 | 3 | 8 | 4 | 17 | 1 | 5 | 1 | 0 | 36 |
| 24 | Miloglav, Carmen | * | 2-7 | 0-2 | 0-0 | 3 | 3 | 6 | 1 | 4 | 2 | 2 | 0 | 3 | 37 |
| 13 | Ashmore, Diamond | * | 1-2 | 0-0 | 0-0 | 1 | 1 | 2 | 2 | 2 | 0 | 0 | 0 | 0 | 13 |
| 14 | Idom, Kamika | * | 0-1 | 0-1 | 0-0 | 0 | 1 | 1 | 0 | 0 | 0 | 0 | 0 | 0 | 4 |
| 25 | Durant, Arielle | * | 0-0 | 0-0 | 0-0 | 0 | 1 | 1 | 0 | 0 | 0 | 0 | 0 | 0 | 11 |
| Team | | | | | | 3 | 2 | 5 | | | | | | | |
| Totals | | | 24-65 | 4-15 | 14-17 | 19 | 18 | 37 | 16 | 66 | 8 | 10 | 3 | 6 | 200 |

FG % 1st Half: 10-30 33.3% 2nd half: 14-35 40.0% Game: 24-65 36.9% Deadball Rebounds
3FG % 1st Half: 1-4 25.0% 2nd half: 3-11 27.3% Game: 4-15 26.7%
FT % 1st Half: 4-4 100.0% 2nd half: 10-13 76.9% Game: 14-17 82.4%

Officials: Erica Bradley, Jody Cantrell, Ron Harris
Technical fouls: Iowa-None. FIU-None.
Attendance:

| Score by periods | 1st | 2nd | Total |
|------------------|-----|-----|-------|
| Iowa | 34 | 31 | 65 |
| FIU | 25 | 41 | 66 |

| Points | In | Off | 2nd | Fast | Bench |
|--------|----|-----|-----|------|-------|
| IOWA | 24 | 6 | 13 | 6 | 17 |
| FIU | 20 | 20 | 15 | 6 | 2 |

Last FG - IOWA 2nd-00:48, FIU 2nd-00:00.
Largest lead - IOWA by 13 2nd-16:48, FIU by 2 2nd-07:12.

Score tied - 5 times.
Lead changed - 5 times.



Official Basketball Box Score -- Game Totals -- Final Statistics
WVU vs Iowa
11/25/12 1 pm at U.S. Century Bank Arena



WVU 70 • 3-2

| # | Player | Total | | 3-Ptr | | Rebounds | | | PF | TP | A | TO | Blk | Stl | Min |
|--------|--------------------|--------|--------|--------|-------|----------|-----|----|----|----|----|----|-----|-----|-----|
| | | FG-FGA | FG-FGA | FT-FTA | Off | Def | Tot | | | | | | | | |
| 01 | Caldwell, Christal | * | 5-16 | 1-5 | 6-6 | 3 | 1 | 4 | 5 | 17 | 1 | 3 | 0 | 0 | 23 |
| 02 | Palmer, Taylor | * | 7-20 | 5-13 | 4-4 | 3 | 6 | 9 | 3 | 23 | 2 | 0 | 0 | 1 | 37 |
| 05 | Fields, Avere | * | 2-4 | 0-0 | 1-2 | 3 | 5 | 8 | 2 | 5 | 1 | 2 | 1 | 2 | 23 |
| 22 | Stepney, Linda | * | 3-5 | 0-0 | 1-2 | 1 | 1 | 2 | 5 | 7 | 3 | 1 | 0 | 2 | 26 |
| 33 | Dunning, Ayana | * | 1-4 | 0-0 | 1-2 | 2 | 1 | 3 | 5 | 3 | 0 | 2 | 0 | 1 | 13 |
| 03 | Bethel, Akilah | * | 0-3 | 0-0 | 3-4 | 2 | 1 | 3 | 0 | 3 | 1 | 1 | 0 | 0 | 8 |
| 04 | Hampton, Brooke | * | 0-3 | 0-2 | 0-0 | 0 | 0 | 0 | 1 | 0 | 3 | 0 | 0 | 0 | 9 |
| 12 | Faulk, Darius | * | 0-0 | 0-0 | 1-2 | 0 | 0 | 0 | 3 | 1 | 0 | 0 | 0 | 0 | 5 |
| 14 | Harlee, Jess | * | 0-1 | 0-1 | 0-0 | 0 | 1 | 1 | 4 | 0 | 1 | 2 | 0 | 2 | 18 |
| 21 | Simms, Jennie | * | 0-3 | 0-1 | 0-0 | 1 | 0 | 1 | 3 | 0 | 0 | 1 | 0 | 0 | 8 |
| 23 | Holmes, Bria | * | 1-10 | 0-6 | 1-3 | 1 | 1 | 2 | 0 | 3 | 0 | 1 | 0 | 0 | 10 |
| 32 | Leary, Crystal | * | 2-3 | 0-0 | 4-4 | 4 | 1 | 5 | 3 | 8 | 0 | 1 | 0 | 2 | 20 |
| Team | | | | | | 3 | 0 | 3 | | | | | | | |
| Totals | | | 21-72 | 6-28 | 22-29 | 23 | 18 | 41 | 35 | 70 | 12 | 15 | 1 | 10 | 200 |

FG % 1st Half: 9-33 27.3% 2nd half: 12-39 30.8% Game: 21-72 29.2% Deadball Rebounds
3FG % 1st Half: 3-13 23.1% 2nd half: 3-15 20.0% Game: 6-28 21.4%
FT % 1st Half: 11-18 61.1% 2nd half: 11-11 100.0% Game: 22-29 75.9%

Iowa 79 • 5-2

| # | Player | Total | | 3-Ptr | | Rebounds | | | PF | TP | A | TO | Blk | Stl | Min |
|----|-----------------|--------|--------|--------|------|----------|-----|---|----|----|---|----|-----|-----|-----|
| | | FG-FGA | FG-FGA | FT-FTA | Off | Def | Tot | | | | | | | | |
| 12 | Johnson, Morgan | * | 6-11 | 0-0 | 7-11 | 0 | 3 | 3 | 3 | 19 | 1 | 2 | 2 | 1 | 30 |
| 22 | Logic, Samantha | * | 2-6 | 0-0 | 5-6 | 2 | 5 | 7 | 5 | 9 | 7 | 9 | 0 | 3 | 34 |
| 23 | Taylor, Theaira | * | 1-3 | 0-1 | 4-5 | 1 | 6 | 7 | 4 | 6 | 0 | 2 | 1 | | |



2012-13 IOWA WOMEN'S BASKETBALL
Iowa Combined Team Statistics (as of Nov 25, 2012)
All games



| RECORD: | OVERALL | HOME | AWAY | NEUTRAL |
|----------------|----------------|-------------|-------------|----------------|
| ALL GAMES | 5-2 | 4-1 | 0-1 | 1-0 |
| CONFERENCE | 0-0 | 0-0 | 0-0 | 0-0 |
| NON-CONFERENCE | 5-2 | 4-1 | 0-1 | 1-0 |

| # | Player | gp-gs | min | avg | Total | | 3-Point | | F-Throw | | Rebounds | | | | pf | dq | a | to | blk | stl | pts | avg | | |
|----------------|--------------------|-------|------|------|---------|------|---------|-------|---------|-------|----------|-----|-----|------|-----|----|-----|-----|-----|-----|-----|------|--|--|
| | | | | | fg-fga | fg% | 3fg-fga | 3fg% | ft-fa | ft% | off | def | tot | avg | | | | | | | | | | |
| 12 | Johnson, Morgan | 7-7 | 229 | 32.7 | 46-79 | .582 | 0-0 | .000 | 35-47 | .745 | 18 | 35 | 53 | 7.6 | 20 | 0 | 7 | 13 | 16 | 5 | 127 | 18.1 | | |
| 24 | Printy, Jaime | 7-4 | 206 | 29.4 | 20-55 | .364 | 13-38 | .342 | 39-41 | .951 | 4 | 27 | 31 | 4.4 | 9 | 0 | 26 | 25 | 1 | 4 | 92 | 13.1 | | |
| 21 | Dixon, Melissa | 7-3 | 155 | 22.1 | 17-48 | .354 | 12-36 | .333 | 2-3 | .667 | 0 | 8 | 8 | 1.1 | 18 | 0 | 5 | 9 | 1 | 3 | 48 | 6.9 | | |
| 22 | Logic, Samantha | 7-7 | 214 | 30.6 | 19-49 | .388 | 1-7 | .143 | 9-11 | .818 | 15 | 20 | 35 | 5.0 | 16 | 1 | 47 | 36 | 2 | 17 | 48 | 6.9 | | |
| 51 | Doolittle, Bethany | 7-7 | 181 | 25.9 | 22-58 | .379 | 0-1 | .000 | 3-3 | 1.000 | 8 | 27 | 35 | 5.0 | 18 | 0 | 2 | 14 | 17 | 3 | 47 | 6.7 | | |
| 23 | Taylor, Theairra | 7-7 | 150 | 21.4 | 15-39 | .385 | 4-15 | .267 | 10-16 | .625 | 3 | 31 | 34 | 4.9 | 12 | 0 | 11 | 16 | 4 | 4 | 44 | 6.3 | | |
| 03 | Till, Claire | 7-0 | 80 | 11.4 | 4-15 | .267 | 2-5 | .400 | 15-22 | .682 | 8 | 14 | 22 | 3.1 | 7 | 0 | 1 | 7 | 1 | 3 | 25 | 3.6 | | |
| 13 | Thomas, Kathy | 6-0 | 53 | 8.8 | 4-9 | .444 | 1-1 | 1.000 | 7-10 | .700 | 3 | 3 | 6 | 1.0 | 10 | 0 | 4 | 4 | 0 | 1 | 16 | 2.7 | | |
| 11 | Nesbitt, Trisha | 7-0 | 77 | 11.0 | 5-10 | .500 | 2-4 | .500 | 4-6 | .667 | 0 | 7 | 7 | 1.0 | 6 | 0 | 5 | 4 | 0 | 2 | 16 | 2.3 | | |
| 54 | Timmerman, Kayla | 7-0 | 32 | 4.6 | 3-8 | .375 | 1-1 | 1.000 | 1-4 | .250 | 1 | 4 | 5 | 0.7 | 3 | 0 | 1 | 4 | 3 | 0 | 8 | 1.1 | | |
| 25 | Peschel, Kali | 5-0 | 43 | 8.6 | 0-9 | .000 | 0-3 | .000 | 1-2 | .500 | 5 | 6 | 11 | 2.2 | 6 | 0 | 1 | 2 | 0 | 1 | 1 | 0.2 | | |
| 45 | Smith, Nicole | 2-0 | 5 | 2.5 | 0-2 | .000 | 0-0 | .000 | 0-0 | .000 | 0 | 1 | 1 | 0.5 | 0 | 0 | 0 | 0 | 0 | 0 | 0 | 0.0 | | |
| Team | | | | | | | | | | | 13 | 28 | 41 | | | | | | | | | | | |
| Total..... | | 7 | 1425 | | 155-381 | .407 | 36-111 | .324 | 126-165 | .764 | 78 | 211 | 289 | 41.3 | 125 | 1 | 110 | 135 | 45 | 43 | 472 | 67.4 | | |
| Opponents..... | | 7 | 1425 | | 148-450 | .329 | 34-139 | .245 | 94-145 | .648 | 119 | 172 | 291 | 41.6 | 148 | 5 | 64 | 120 | 19 | 68 | 424 | 60.6 | | |

| TEAM STATISTICS | IOWA | OPP | Date | Opponent | Score | Att. |
|------------------------|-------------|------------|-------------------------------------|-------------------|--------------|-------------|
| SCORING | 472 | 424 | ^ 11/9/12 | NORTHERN ILLINOIS | w 63-40 | 4739 |
| Points per game | 67.4 | 60.6 | ^ 11/11/12 | ILLINOIS STATE | w 74-64 | 2930 |
| Scoring margin | +6.9 | - | ^ 11/14/12 | MIDDLE TENNESSEE | wot 69-63 | 1691 |
| FIELD GOALS-ATT | 155-381 | 148-450 | ^ 11/18/12 | NORTH CAROLINA | L 64-77 | 3073 |
| Field goal pct | .407 | .329 | 11/20/12 | ROBERT MORRIS | w 58-44 | 3032 |
| 3 POINT FG-ATT | 36-111 | 34-139 | # 11/23/12 | at FIU | L 65-66 | 0 |
| 3-point FG pct | .324 | .245 | # 11/25/12 | vs WVU | w 79-70 | 0 |
| 3-pt FG made per game | 5.1 | 4.9 | | | | |
| FREE THROWS-ATT | 126-165 | 94-145 | ^ - Preseason WNIT | | | |
| Free throw pct | .764 | .648 | # - FIU Thanksgiving Classic; Miami | | | |
| F-Throws made per game | 18.0 | 13.4 | * = Conference game | | | |
| REBOUNDS | 289 | 291 | | | | |
| Rebounds per game | 41.3 | 41.6 | | | | |
| Rebounding margin | -0.3 | - | | | | |
| ASSISTS | 110 | 64 | | | | |
| Assists per game | 15.7 | 9.1 | | | | |
| TURNOVERS | 135 | 120 | | | | |
| Turnovers per game | 19.3 | 17.1 | | | | |
| Turnover margin | -2.1 | - | | | | |
| Assist/turnover ratio | 0.8 | 0.5 | | | | |
| STEALS | 43 | 68 | | | | |
| Steals per game | 6.1 | 9.7 | | | | |
| BLOCKS | 45 | 19 | | | | |
| Blocks per game | 6.4 | 2.7 | | | | |
| ATTENDANCE | 15465 | 0 | | | | |
| Home games-Avg/Game | 5-3093 | 1-0 | | | | |
| Neutral site-Avg/Game | - | 1-0 | | | | |

| Score by Periods | 1st | 2nd | OT | Totals |
|-------------------------|------------|------------|-----------|---------------|
| Iowa | 210 | 252 | 10 | 472 |
| Opponents | 198 | 222 | 4 | 424 |