



# University of Iowa Women's Basketball

**Game #25**

**Feb. 9, 2013**

2012-13 Schedule/Results  
16-8 Overall, 5-5 Big Ten

SID Contact: Aaron Blau (@AaronBlau)  
Email: aaron-blau@hawkeyesports.com

Office: (319) 335-9268  
Cell: (319) 430-5103

## Game Information

**Nebraska (17-6, 7-3) at Iowa (16-8, 5-5)**

**Feb. 11, 2013 • 7:36 p.m. (CT)**

**Carver-Hawkeye Arena**

**Iowa City, Iowa**



11/9	Northern Illinois^	W, 63-40
11/11	Illinois State^	W, 74-64
11/14	Middle Tennessee^	W, 69-63 (OT)
11/18	North Carolina^	L, 64-77
11/20	Robert Morris	W, 58-44
11/23	at Florida International#	L, 65-66
11/25	vs. #12 West Virginia#	W, 79-70
11/28	at Florida State~	L, 69-83
12/1	Northern Iowa	W, 68-46
12/6	#22 Iowa State*	W, 50-42
12/16	at Drake	W, 82-65
12/19	Missouri State	W, 97-43
12/28	vs. #20 Texas%	W, 86-63
12/30	vs. San Diego%	W, 83-73
1/3	#24 Ohio State	W, 77-71 (OT)
1/6	Michigan	L, 64-68
1/10	at Wisconsin	W, 65-56
1/17	at Michigan State	L, 54-65
1/20	#11 Purdue	W, 62-46
1/24	Wisconsin	W, 71-60
1/27	at #23 Michigan	W, 63-57
1/31	at Illinois	L, 62-74
2/3	Northwestern	L, 65-67
2/7	at Minnesota	L, 60-72
2/11	Nebraska	7:36 p.m.
2/14	Penn State	7 p.m.
2/17	at Purdue	4 p.m.
2/24	at Nebraska	2 p.m.
2/28	Indiana	TBA
3/3	at Northwestern	TBA

**TV:** Big Ten Network (BTN)

**TV Talent:** Kevin Kugler, Debbie Antonelli

**Web:** BTN2GO

**Radio:** AM-800 KXIC, AM-1360 KMJM

**Radio Talent:** Brent Balbinot and Shelley Till

**Live Stats/Audio:** [www.hawkeyesports.com](http://www.hawkeyesports.com)

**Twitter Updates:** @IowaWBB

**Series:** Series is tied, 7-7

## Storylines

- Morgan Johnson has started 119 games, which are the second-most in Iowa history (Jennie Lillis holds the record with 121 games started). She has played in all 120 games of her career -- the eighth most for a player in school history.
- Iowa is a perfect 6-0 against ranked teams this season. The Hawkeyes are the only team in the country to have played at least three ranked teams and have an undefeated record against ranked opponents.  
Iowa's next four games are against teams either ranked or receiving votes in the most recent polls.
- Samantha Logic leads the Big Ten and ranks 10th in the NCAA with 6.8 assists per game.
- Jaime Printy leads the Big Ten and ranks sixth in the NCAA with a 92.3 free throw percentage.
- Iowa's 15.8 assists per game rank third in the Big Ten and 35th nationally. Iowa is leading the Big Ten in free throw percentage (.772) and ranks second in blocked shots (5.7).
- Iowa ranks 11th in the NCAA in blocks (5.7) and 10th in free throw percentage (76.8).
- Jaime Printy is 37-of-37 from the free throw line in the final five minutes of a game, 29-of-29 in the final two minutes, 20-of-20 in the final minute and 6-of-6 in overtime.
- Morgan Johnson moved into a tie for sixth place in the Big Ten in career blocks. She has 169 in 120 career games -- an Iowa school record.

## Tentative Starting Lineup

Iowa Hawkeyes (16-8, 5-5)

Pos.	No.	Name	Ht.	Yr.	Statistical Summary
G	22	Samantha Logic	5-8	So.	8.7 ppg, 6.5 rpg, 6.8 apg, .466 FG%, .667 FT% - Recorded 10th career double-digit rebound performance vs. Northwestern
G	24	Jaime Printy	5-11	Sr.	14.4 ppg, 4.4 rpg, 3.1 apg, .375 FG%, .923 FT% - Scored double figures in eight-straight games; had her fifth 20-point game at Minnesota
G	23	Theairra Taylor	5-11	Jr.	7.7 ppg, 4.3 rpg, 2.2 apg, .397 FG%, .650 FT% - Recorded two or more steals in nine games this season
F	51	Bethany Doolittle	6-4	So.	7.6 ppg, 5.8 rpg, 2.0 bpg, .426 FG%, .833 FT% - Averaging nine points and 6.2 rebounds over last five contests
C	12	Morgan Johnson	6-5	Sr.	15.0 ppg, 7.3 rpg, 1.8 bpg, .524 FG%, .775 FT% - Notched her seventh double-double at Minnesota, finishing with 13 points and 10 rebounds

**Head Coach:** Lisa Bluder (Northern Iowa, 1983); 13th Season at Iowa (246-151); 29th Season Overall (602-294)

^ -- WNIT

# -- FIU Thanksgiving Classic, Miami

~ -- ACC/Big Ten Challenge

\* - Iowa Corn Cy-Hawk Series

% -- San Diego Surf 'N Slam Classic, San Diego

## Pronunciation Guide

Lisa Bluder.....BLUE-dir

Kali Peschel.....PEH-shull

Theairra Taylor.....thee-AIR-uh



## Inside the Numbers

	IOWA	NU
Scoring Average	64.3	68.2
Scoring Defense	63.6	59.1
Scoring Margin	+0.7	+9.0
FG%	39.7	40.3
FG% Defense	40.1	39.2
FT%	82.4	75.7
3-PT FG%	36.9	31.0
3-PT FG% Defense	32.3	30.9
Rebound Margin	+2.0	+3.8
Assists Per Game	13.8	15.4
Turnovers Per Game	15.2	14.7
Turnover Margin	-0.2	+2.0
Steals Per Game	8.0	7.9
Blocks Per Game	5.5	2.3

## Nebraska vs. Iowa Series History

Series is tied at 7-7  
Last 10 Meetings Listed Below

2011-12	at Big Ten	L, 68-80
2011-12	at Nebraska	L, 53-60
2011-12	at Iowa	L, 72-77
2004-05	at Nebraska	W, 71-67
1996-97	at Neutral	L, 67-73
1991-92	at Nebraska	W, 64-59
1990-91	at Iowa	W, 80-46
1989-90	at Iowa	W, 74-55
1988-89	at Nebraska	W, 84-67
1987-88	at Iowa	W, 68-58

## How Many Times a Hawkeye Player...

### Scored 20 or More Points

Morgan Johnson	8
Jaime Printy	5
Melissa Dixon	2

### Scored 15 or More Points

Morgan Johnson	12
Jaime Printy	8
Samantha Logic	3
Melissa Dixon	3
Bethany Doolittle	2
Kathy Thomas	1
Theairra Taylor	1

### Grabbed 10 or More Rebounds

Morgan Johnson	8
Samantha Logic	4
Bethany Doolittle	2
Theairra Taylor	2

### Grabbed 7 or More Rebounds

Morgan Johnson	10
Bethany Doolittle	10
Samantha Logic	8
Theairra Taylor	5
Jaime Printy	3

### Dished out 7 or More Assists

Samantha Logic	13
Jaime Printy	1
Theairra Taylor	1

### Dished out 5 or More Assists

Samantha Logic	17
Jaime Printy	5
Theairra Taylor	4
Morgan Johnson	1

### Recorded 4 or More Steals

Samantha Logic	1
----------------	---

### Blocked 3 or More Shots

Bethany Doolittle	9
Morgan Johnson	7

## 2012-13 Margin of Victory/Defeat

Points	1	2	3	4	5	6	7	8	9	10-14	15-19	20+
Wins	0	0	0	0	0	3	0	1	2	5	1	4
Losses	1	1	0	1	0	0	0	0	0	5	0	0

### IOWA HISTORY

Iowa has played 1,122 games since beginning basketball in 1974. Iowa's overall record is 687-435 (.613). That includes a 345-175 (.665) mark in regular season Big Ten contests and a 333-94 (.780) mark in Carver-Hawkeye Arena.

### SCOUTING NEBRASKA

The Cornhuskers enter Monday's contest riding a five-game winning streak that has improved their record to 17-6 overall and 7-3 in Big Ten play. Nebraska shoots 40.3 percent from the field, 31 percent from 3-point land and 75.7 from the charity stripe. The Huskers are +3.8 in rebounding margin, averaging 40.4 rebounds per game.

Junior forward Jordan Hooper averages 19 points and 8.5 rebounds to pace Nebraska. The figures rank third and fourth, respectively in the Big Ten. Hooper shoots 42 percent from the field and has a team-high 61 3-pointers. Senior guard Lindsey Moore is second on the team with a 15 point average to go along with 5.4 assists per game.

### NEBRASKA VS. IOWA NOTES

- Monday's meeting will be the 15th in the all-time series between Iowa and Nebraska. The Huskers have won all three meetings since joining the Big Ten Conference to even the series at seven.
- Nebraska is receiving votes in both the Associated Press and USA Today Coaches Poll. The Huskers are 27th in both polls with 20 and 19 points, respectively.
- Iowa signed top-100 recruit Alexa Kastanek to a National Letter of Intent in November. Kastanek is a native of Lincoln, Neb., and attends Lincoln Southeast High School.

### LAST MEETING

The third-seeded Hawkeyes fell to sixth-seeded Nebraska in the quarterfinal round of the Big Ten Tournament on March 2, 2012. Iowa led by nine points early in the second half and 48-40 with 15:38 remaining before a 9-0 spurt put Nebraska on top. With the game tied at 52, a 7-0 run gave the Huskers a lead it would never relinquish. Kamille Wahlin paced Iowa with 17 points, Samantha Logic had 17 points, eight boards and six assists, and Morgan Johnson had 12 points and six blocks.

### HAWKEYES FALL AT MINNESOTA

Iowa's second half rally fell short at Williams Arena in a 72-60 loss to Minnesota on Thursday night. The Gophers built a 14-point first half lead, but the Hawkeyes fought back to within three points (62-59) with three minutes remaining before sophomore Rachel Banham hit a back-breaking 3-pointer from well beyond the arc to stave off the Iowa comeback. Senior Jaime Printy paced the team with 21 points, while senior Morgan Johnson tallied a double-double (13 points/10 rebounds).

## 2012-13 Iowa Hawkeye Roster

No.	Name	Yr.	Ht.	Pos.	Hometown (High School/College)
3	Claire Till	Fr.	6-0	G	Dubuque, Iowa (Dubuque Wahlert)
11	Trisha Nesbitt	Sr.	5-7	G	Ames, Iowa (Ames)
12	Morgan Johnson	Sr.	6-5	C	Platte City, Mo. (Platte County)
13	Kathy Thomas	So.	5-6	G	Flint, Mich. (Highland CC, KS)
21	Melissa Dixon	So.	5-8	G	Johnsburg, Ill. (Johnsburg)
22	Samantha Logic	So.	5-9	G	Racine, Wis. (Racine J.I. Case)
23	Theairra Taylor	Jr.	5-11	G	St. Paul, Minn. (Central)
24	Jaime Printy	Sr.	5-11	G	Marion, Iowa (Linn-Mar)
25	Kali Peschel	Fr.	6-1	G	Sauk Centre, Minn. (Sauk Centre)
33	Kathryn Reynolds	So.	5-7	G	Cincinnati, Ohio (Mount Notre Dame)
45	Nicole Smith	Fr.	6-4	C	Rockton, Ill. (Hononegah)
51	Bethany Doolittle	So.	6-4	C	Oakdale, Minn. (Hill-Murray)
54	Kayla Timmerman	Fr.	6-3	F	Wayzata, Minn. (Wayzata)

Head Coach: Lisa Bluder Associate Head Coach: Jan Jensen  
Assistant Coaches: Jenni Fitzgerald and Shannon Gage



## 2012-13 Team Captains

Iowa captains are seniors  
Jaime Printy, Morgan Johnson and Trisha Nesbitt

### PRINTY NOTCHES 5TH 20-POINT GAME OF SEASON

Senior Jaime Printy scored 21 points on 6-of-22 shooting in Iowa's 72-60 road loss at Minnesota on Thursday night. It was the guard's fifth 20-plus point game this season and the 32nd of her Hawkeye career.

### JOHNSON IN TOP-10 IN CAREER DOUBLE-DOUBLES

Senior Morgan Johnson posted her seventh double-double of the season on Feb. 7 at Minnesota, finishing with 13 points and 10 rebounds. It was the center's 19th career double-double, which are the seventh most in school history.

### SHOOTING WOES

There has been a lid on the basket for the Hawkeyes during their current three-game losing streak. Iowa is shooting 35.5 percent (65-of-183) from the field during the stretch, which includes a season-low 28.6 percent (18-of-63) in Thursday's road loss at Minnesota. The Hawkeyes have a higher shooting percentage from 3-point range (39.6 percent; 21-of-53) during the three games.

Prior to the losing streak, Iowa shot 43.3 percent (71-of-164) from the floor and 40.4 percent (19-of-47) in wins over No. 11 Purdue, Wisconsin and No. 23 Michigan.

### IOWA CRACKS TOP 25

- Iowa entered both the Associated Press and the USA Today Sports Coaches' Top 25 polls last week. The Hawkeyes were No. 24 in the AP poll and No. 25 in the USA Today Sports poll.
- The Hawkeyes had not been ranked in the AP poll since Feb. 28, 2011. Iowa spent 14 weeks ranked in the Associated Press Top 25 during the 2010-11 season, climbing as high as No. 14.
- Iowa was ranked in the USA Today Sports Coaches' poll for the first time since Jan. 31, 2011. The Hawkeyes spent 13 weeks in the poll during the 2010-11 season and were ranked as high as No. 13.

### PERFECTION AGAINST RANKED OPPONENTS

- The Hawkeyes are a perfect 6-0 against ranked opponents this season. Iowa is the only team in the country to have played at least three ranked teams and have an undefeated record against ranked opponents.
- Iowa is one of only six teams to have at least six wins over ranked opponents. The others are Baylor (10), Stanford (7), Connecticut (7), Tennessee (7) and Notre Dame (6).

### PRINTY - BIG PLAYER OF THE WEEK - JAN. 26

Jaime Printy was named Big Ten Player of Week (Jan. 29) for her efforts in Iowa's wins against Wisconsin and at No. 23 Michigan.

Printy averaged 21.5 points, 6.5 rebounds, shot 54.5 percent from the field, 41.7 percent from 3-point range and was 14-of-15 from the free throw line in Iowa's two wins.

Printy is averaging 14.4 points per game, having scored in double figures in eight-straight games and 19-of-24 games for the season. She leads the Big Ten and ranks sixth nationally in free throw percentage (92.3).

Printy netted 29 points against Wisconsin, missing only two shots in 10 attempts, while going 3-of-3 from 3-point distance and 10-of-11 from the charity stripe. She also added eight rebounds and four assists, with just one turnover, in 35 minutes.

The Marion, Iowa, native finished the week with 14 points and five rebounds at No. 23 Michigan. She was a perfect 4-of-4 from the free throw line.

## Head Coach Lisa Bluder

Lisa Bluder (pronounced BLUE-dir) is in her 13th season as head coach at the University of Iowa and her 29th season as a college head coach. She is a three-time Big Ten and two-time WBCA Regional Coach of the Year.

Bluder has a career record of 602-294 (.673), including a 246-152 (.620) record at Iowa, a 187-106 (.638) record in 10 seasons (1990-2000) at Drake and a six-year mark (1984-90) of 169-36 (.824) at St. Ambrose.

Bluder is Iowa's second all-time winningest coach and trails only C. Vivian Stringer. She has guided the Hawkeyes to 11 postseason tournaments (9 NCAA, 2 WNIT) and nine upper-division finishes in the Big Ten Conference, including winning a share of the league championship in 2008 and taking home the conference tournament title in 2001.

In her first season with the Hawkeyes, Bluder transformed a struggling program into a 21-game winner. Iowa finished second in the Big Ten, won the conference tournament and advanced to the second round of the NCAA Tournament. Bluder became Iowa's third coach to be named Big Ten Coach of the Year. She was also honored as the College Coach of the Year by the *Women's Basketball News Service* and was named the WBCA District 6 Coach of the Year. Iowa's 2001-02 squad finished fourth in the Big Ten and advanced to the second round of the NCAA Tournament for the second consecutive year. In 2003, Bluder guided the Hawkeyes to their first-ever WNIT appearance. Iowa, which had nine underclassmen on its roster, advanced to the quarterfinals before falling to Creighton. In 2004-05, Iowa finished 23-10, starting the year 13-0 and was the last Division I undefeated team standing. In 2005-06, Bluder mentored a team plagued by injuries to a fifth-place Big Ten finish and an NCAA Tournament berth.

In her 10 years at Drake, Bluder brought great success and tradition to the Bulldog program and established herself as one of the top coaches in the country. She led Drake to five 20-plus win seasons in her last six years, including five post-season appearances. She guided the Bulldogs to eight Missouri Valley Conference Tournament appearances, reaching the semifinals six times and winning the tournament four times. Bluder was also named the Conference Coach of the Year three times at Drake.

Bluder began her coaching career at St. Ambrose, where she coached six successful seasons, building the Bees into a NAIA powerhouse. During her tenure at St. Ambrose, Bluder guided the Bees to four straight national tournaments, including two consecutive Final Four appearances. The 1990 St. Ambrose team was ranked No. 1 and Bluder was named the NAIA Converse Coach of the Year.

A graduate of Linn-Mar High School in Marion, Iowa, Bluder was a three-year starter at Northern Iowa. She graduated from UNI in 1983 with a bachelor's degree in marketing.



## Press Conferences

Below is a list of press conferences for Head Iowa Women's Basketball Coach Lisa Bluder. Press conferences will be held in the Media Room on the first floor of Carver-Hawkeye Arena. Select student-athletes will be available before or after Coach Bluder addresses the media.

Wednesday, Feb. 13 .....11:30 a.m.  
Friday, Feb. 22 .....11:30 a.m.  
Week of March. 4 (B1G Tourney) .... TBA

## Follow the Hawkeyes on Twitter

Iowa Women's Basketball....@IowaWBB  
Claire Till..... @clairetill3  
Trisha Nesbitt.....@TNesbitt11  
Morgan Johnson..... @MoJohnson12  
Kathy Thomas.....@datgurlgotgame\_  
Melissa Dixon .....@MDix21  
Theairra Taylor..... @two3KneeTaylor  
Jaime Printy.....@jprinty24  
Kali Peschel..... @KaliPeschel  
Nicole Smith .....@NicoleSmith42  
Kayla Timmerman.....@timmykay54  
Jan Jensen ..... @golowa  
Jenni Fitzgerald..... @jlefty21  
Abby Emmert ..... @abbyemmert

## Press Conference FTP Information

Weekly press conference footage will be available to media outlets via [www.dropbox.com](http://www.dropbox.com).  
Username: ath-media@uiowa.edu  
Password: hawks2012

The honor marked the second time in Printy's career she has been named Big Ten Player of the Week and her sixth Big Ten honor (four-time Big Ten Freshman of the Week in 2009-10).

### **SIXTH PLAYER TO REACH 1,700**

Jaime Printy became just the sixth player in Iowa history to score 1,700 career points in Iowa's win at Michigan (Jan. 27).

Printy joins former Hawkeye greats Cindy Haugejorde, Lindsey Meder, Michelle Edwards, Jennie Lillis and Franthea Price as the only members of the 1,700 career point club. She currently has 1,754 career points.

### **LOGIC CRASHING THE BOARDS**

With 12 rebounds against Northwestern (Feb. 3), sophomore Samantha Logic collected her 10th career double digit rebounding performance and her second in two games (10 at Illinois). She added 11 points and three steals against Northwestern.

Logic has four games this season with 10 or more rebounds. Last year as a freshman, Logic tallied six games, including a stretch of four-straight during Big Ten play.

Logic leads the Big Ten in assists (6.8), while ranking sixth in assist-to-turnover ratio (1.5), eighth in field goal percentage (.466), and 13th in rebounding (6.5).

### **DIXON CONNECTS FROM LONG RANGE**

Melissa Dixon led Iowa in scoring with 21 points in the narrow loss to Northwestern. Dixon helped the Hawkeye offense get on track in the first half, scoring 12 points off the bench to lead Iowa to a 29-18 halftime advantage. She added a pair of 3-pointers in the second half and made 6-of-9 treys in the game. She added a free throw and a two-point field goal in the final minute as Iowa tied the score before Northwestern's winning basket.

The six 3-pointers match a career-best for Dixon, and tie the Carver-Hawkeye Arena record by an Iowa player that Dixon shares with Wendy Ausdemore and Kamille Wahlin. (Jaime Printy, Lindsey Meder and Wahlin share the Iowa school record with seven treys). Dixon is averaging 8.8 points per outing, including 10.1 points in Big Ten games. She is sixth in the Big Ten in 3-point percentage (.398).

Dixon has come off the bench in 38 career games and has scored a total of 299 points as a substitute (7.9 points per game). Dixon has scored 10 or more points in 13 of those games (four as a freshman, nine as a sophomore).

### **PRINTY AND DOOLITTLE TAKE OVER LATE**

Jaime Printy and Bethany Doolittle both had impressive finishes in Iowa's games against Wisconsin and at Michigan.

Printy took over in the final minutes against Wisconsin (Jan. 24), scoring 14-straight points to give Iowa the win. The Hawkeyes trailed 52-51 with 5:25 left in the game. Printy then scored Iowa's next 14 points and went on her own personal 12-0 run from the 4:11 mark to the 1:53 mark, giving Iowa a 10-point advantage.

Doolittle did the same at Michigan (Jan. 27), netting eight points to give Iowa a lead after it trailed by a point late in the contest. Doolittle's jumper with 5:20 left put Iowa ahead, 55-54. Doolittle went on her own 8-1 run from 5:20-1:45 in the second half to lift the Hawkeyes to the win.

Printy added 12 points, three assists and three steals against Northwestern, while Doolittle had nine rebounds and four blocked shots.

### **BLUDER GETS WIN NO. 600**

Head coach Lisa Bluder Bluder became the 42nd coach in NCAA women's basketball history (all divisions) and only the 25th Division I head coach (minimum 10 years at a DI school) to collect 600 wins Jan. 20 vs. Purdue.

Bluder entered the 2012-13 season as the 26th winningest active coach and the 46th overall winningest coach in NCAA women's basketball history (by victories).



## Big Ten Overall Individual Stats (thru Feb. 7)

Morgan Johnson			Jaime Printy		
	Rank	Avg.		Rank	Avg.
Field Goal Percentage	3rd	.524	Free Throw Percentage	1st	.923
Blocks	5th	1.8	3-Pointers Made	11th	2.0
Offensive Rebounds	6th	2.7	Scoring	12th	14.4
Rebounding	9th	7.3	Assists	13th	3.1
Scoring	10th	15.0	Assist/Turnover Ratio	14th	1.1
Defensive Rebounds	14th	4.6			
Samantha Logic			Melissa Dixon		
	Rank	Avg.		Rank	Avg.
Assists	1st	6.8	3-Point Percentage	6th	.398
Assist/Turnover Ratio	6th	1.5	3-Pointers Made	8th	2.0
Field Goal Percentage	8th	.466			
Steals	11th	2.0	Bethany Doolittle		
Offensive Rebounds	10th	2.5		Rank	Avg.
Rebounding	13th	6.5	Blocks	4th	2.0

### JOHNSON SETS FAMILY BLOCK RECORD

Morgan Johnson not only set the Iowa school record for career blocks, but she now holds the record for blocks in the Johnson household.

Johnson's mother, Leslie, compiled 265 career blocks from 1981-85 at Midland Lutheran College in Nebraska. Morgan broke her mother's record against Michigan (Jan. 27), collecting her 266th career block, and her career total now stands at 269.

### LOGIC'S EYE-POPPING ASSIST FIGURES

- Samantha Logic leads the Big Ten and ranks 10th in the NCAA with 6.8 assists per game.
- Logic is on pace to break the Iowa single season assists record of 191, held by Cara Consuegra (2000-01 season). Logic currently has 162 assists and needs to average 4.9 assists per game in the final six regular season games to break the record.
- Logic has recorded seven or more assists in 13 games, including four games with 10 or more. She has had at least eight assists in six of Iowa's last 10 games.
- Logic's six games with double digit assists are the second most in Iowa history. Cara Consuegra had nine games in her career with 10 or more assists. The next closest Hawkeyes on the list are Kachine Alexander, Jolette Law and Michelle Edwards, with two career games.

### HAWKEYES LIKE TO SHARE

- Iowa is second in the Big Ten and ranks 35th in the NCAA with 15.8 assists per game.
- The Hawkeyes broke the school record for team assists last year, collecting 514. This year's team is nearly on pace to break that mark. Iowa had 391 assists through 24 games last year and has 379 through 24 games this year.
- Iowa has recorded at least 17 assists in 10 games, including four games with 20 or more.
- The Hawkeyes have 373 assists on 588 made field goals this season (1.6 assist/field goal ratio).

### BALANCING ACT

Iowa has had seven different players lead, or share the lead, in scoring this season. Morgan Johnson has paced the Hawkeyes in scoring 10 times, Jaime Printy nine times, Melissa Dixon five times, Theairra Taylor twice and Kathy Thomas, Bethany Doolittle and Samantha Logic once.

### PRINTY CLOSE TO BIG FREE THROW RECORDS

- Jaime Printy currently owns an 88.9 career free throw percentage (416-of-468). Former Hawkeye Wendy Ausdemore holds the Iowa and Big Ten record for career free throw percentage at 89.2 (174-of-195).
- Printy is shooting 92.3 percent (108-of-117) for the season. The Iowa single season record is 89.4 percent (101-of-113) by Lindsey Meder in 2000-01. The Big Ten single season record is 92.5 percent (99-of-107) by Indiana's Cyndi Valentin in 2003-04.

## Big Ten Overall Stats (thru Feb. 7)

<b>Scoring Offense</b>	
1. Penn State	73.0
6. Iowa	68.8
<b>Scoring Defense</b>	
1. Michigan State	49.7
9. Iowa	61.5
<b>Scoring Margin</b>	
1. Penn State	+16.4
7. Iowa	+7.3
<b>Free Throw Percentage</b>	
1. Iowa	.772
<b>Field Goal Percentage</b>	
1. Ohio State	.455
5. Iowa	.425
<b>Field Goal Percentage Defense</b>	
1. Michigan State	.345
4. Iowa	.365
<b>3-Point Field Goals Made</b>	
1. Michigan	6.6
4. Iowa	5.8
<b>3-Point Field Goal Percentage</b>	
1. Penn State	.388
4. Iowa	.350
<b>3-Point Field Goal Percentage Defense</b>	
1. Michigan State	.252
5. Iowa	.289
<b>Rebounding</b>	
1. Penn State	42.6
4. Iowa	39.4
<b>Rebounding Allowed</b>	
1. Michigan	31.3
9. Iowa	37.1
<b>Rebounding Margin</b>	
1. Michigan State	+8.4
7. Iowa	+2.2
<b>Offensive Rebounds</b>	
1. Penn State	15.7
8. Iowa	11.7
<b>Defensive Rebounds</b>	
1. Northwestern	28.8
3. Iowa	27.7
<b>Blocked Shots</b>	
1. Northwestern	5.9
2. Iowa	5.7
<b>Assists</b>	
1. Ohio State	16.0
3. Iowa	15.8
<b>Steals</b>	
1. Illinois	12.7
10. Iowa	7.2
<b>Turnover Margin</b>	
1. Penn State	+5.0
7. Iowa	-0.3
<b>Assist/Turnover Ratio</b>	
1. Nebraska	+1.0
T2. Iowa	-1.0



## Career Scoring in Iowa History

Rank... No.....	Player.....	Years
3..... 1821.....	Michelle Edwards .....	84-88
4..... 1762.....	Jennie Lillis.....	00-04
<b>5..... 1754.....</b>	<b>Jaime Printy .....</b>	<b>10-Pres.</b>
8..... 1598.....	Tangela Smith .....	94-98
9..... 1483.....	Kamille Wahlin.....	09-12
10..... 1455.....	Kristi Smith.....	05-09
<b>11..... 1451.....</b>	<b>Morgan Johnson .....</b>	<b>10-Pres.</b>

## Career 3-Pointers in Iowa History

Rank... No.....	Player.....	Years
1..... 261.....	Lindsey Meder .....	98-02
<b>2..... 244.....</b>	<b>Jaime Printy .....</b>	<b>10-Pres.</b>
3..... 231.....	Kamille Wahlin.....	09-Pr.

## Career Blocks in Iowa History

Rank... No.....	Player.....	Years
<b>1..... 269.....</b>	<b>Morgan Johnson .....</b>	<b>10-Pres.</b>
2..... 235.....	Tangela Smith .....	94-98

## Career Rebounds in Iowa History

Rank... No.....	Player.....	Years
3..... 887.....	Toni Foster .....	89-93
4..... 859.....	Tangela Smith .....	94-98
5..... 848.....	Lisa Long .....	83-87
6..... 827.....	Jennie Lillis.....	00-04
<b>7..... 805.....</b>	<b>Morgan Johnson .....</b>	<b>10-Pres.</b>

## Career Assists in Iowa History

Rank... No.....	Player.....	Years
3..... 427.....	Kamille Wahlin.....	09-12
4..... 412.....	Kristi Smith.....	05-09
5..... 391.....	Johanna Solverson .....	02-05
6..... 387.....	Franthea Price.....	86-90
<b>7..... 379.....</b>	<b>Jaime Printy .....</b>	<b>10-Pres.</b>
12..... 322.....	Lisa Anderson .....	80-84
<b>13..... 298.....</b>	<b>Samantha Logic.....</b>	<b>12-Pres.</b>

## Career Double-Doubles in Iowa History

Rank... No.....	Player.....	Years
4..... 24.....	Amy Herrig.....	95-99
5..... 24.....	Kachine Alexander .....	07-11
6..... 21.....	Shanda Berry .....	85-89
<b>7..... 19.....</b>	<b>Morgan Johnson .....</b>	<b>10-Pres.</b>

## 2012-13 Big Ten Standings/Schedule (thru Feb. 7)

Team	Big Ten	Overall	Sunday, Feb. 10
Penn State	9-1	19-3	Michigan at Purdue
Purdue	7-2	18-4	Michigan State at Penn State
Nebraska	7-3	17-6	Minnesota at Illinois
Michigan State	6-3	18-4	Indiana at Wisconsin
Michigan	6-4	17-6	Ohio State at Northwestern
Illinois	6-4	13-9	
<b>Iowa</b>	<b>5-5</b>	<b>15-9</b>	
Minnesota	4-6	15-9	
Northwestern	3-7	11-12	<b>Monday, Feb. 11</b>
Wisconsin	2-8	10-13	Nebraska at Iowa
Indiana	1-9	10-13	

### PRINTY FREE THROW NOTES

- Printy has gone 3-of-3 from the line against Drake, 4-of-4 against Northern Illinois, Northern Iowa, Ohio State, Michigan State, Purdue and Michigan, 6-of-6 against Iowa State and San Diego, 8-of-8 vs. Northwestern, 11-of-11 against Middle Tennessee and 17-of-17 against West Virginia.
- Printy made 22-straight free throws, from Iowa's game vs. Texas (Dec. 28) through the game vs. Wisconsin (Jan. 24). Printy converted 21-consecutive free throws between Iowa's game vs. North Carolina and the road contest at Florida State
- Printy has put together a string of at least 20-consecutive made free throws in each year of her career. She converted 27-straight as a freshman and 32-straight as a sophomore and junior. Iowa's record for consecutive free throws made is 33 by Lindsey Meder.

### PRINTY MOVES INTO SECOND PLACE ON 3's LIST

Jaime Printy passed Kamille Wahlin for second place on Iowa's career 3-pointers list in Iowa's win over Purdue (Jan. 20).

Printy has 244 career 3-pointers and trails Lindsey Meder (261) for first place.

### IOWA CONTINUES TREND AGAINST RANKED FOES

- Iowa's win over 11th-ranked Purdue (Jan. 20) marked the 15th time under Lisa Bluder that the Hawkeyes have defeated a top-15 team.
- The Hawkeyes have recorded at least one win against a top-25 team in all but two seasons under Bluder. In nine of those seasons, Iowa has knocked off at least one top-15 opponent.
- Purdue was the highest ranked opponent the Hawkeyes have defeated since knocking off No. 10 Michigan State (66-64) on Jan. 27, 2011.
- This season marks just the second time in school history that Iowa has defeated three ranked teams prior to Big Ten play (No. 12 West Virginia, No. 22 Iowa State, No. 20 Texas). The only other time Iowa knocked off three ranked opponents was in 1993 (No. 4 Louisiana Tech, No. 20 Missouri State, No. 9 Southern California).
- This season is only the sixth time in school history that Iowa played at least three ranked teams prior to conference action. Iowa faced five ranked opponents in 1990 (2-3 record) and three in 1999 (0-3), 1995 (2-1), 1993 (3-0) and 1989 (1-2).
- Iowa has defeated six ranked teams, marking the first time since the 1995-96 season that the Hawkeyes have accomplished that feat (seven victories, 7-3 record versus ranked teams in 1995-96).

### SCHOOL/BIG RECORDS SET THIS SEASON

- Morgan Johnson became the Iowa career leader in blocks against Florida International. Johnson entered the game needing two blocks to break Tangela Smith's career blocks record and she finished with five. Johnson currently is tied for sixth in Big Ten history with 269 blocks.
- Jaime Printy tied the school record for 3-pointers made in a single game with seven against San Diego. Kamille Wahlin and Lindsey Meder are the only other Iowa players to hit seven 3's in a single game. Printy was 6-of-7 in the second half, making her final five attempts. Her seven made treys tie as the most by a Big Ten player this season.



- Samantha Logic broke Iowa's school record for assists in a single game against Texas, finishing with 14. Her 14 assists tie as the most by a Big Ten player this season. Earlier this year, Logic tied the previous school record with 12 against Middle Tennessee State.
- Against West Virginia, Jaime Printy became only the third player in Big Ten history to go 17-of-17 from the free throw line, matching the best single game free throw performance in conference history. Wisconsin's Michele Kozelka (1989) and Keisha Anderson (1996) are the only other players in Big Ten history to accomplish the feat.
- Printy's 17 made free throws tied the single game school record and are tied for the second most made free throws in Big Ten history.
- Printy's performance against West Virginia marked the ninth time in school history that an Iowa player has been perfect from the free throw line (minimum 10 attempts). Printy now has three of those marks, with one of those performances coming earlier this year against Middle Tennessee (11-of-11). The other came against Indiana (10-of-10) on Feb. 27, 2011.
- Morgan Johnson was a perfect 11-of-11 from the free throw line at Wisconsin, marking the 10th time in school history, and the third this season, an Iowa player was perfect in at least 10 attempts.
- As a team, the Hawkeyes set the Big Ten and school record for free throws made (42) and set the school record for free throw attempts (50) in the win over West Virginia.

#### **BEST BOARD GAME IN BIG**

Iowa's 60 rebounds against Missouri State (Dec. 19) are the most by a Big Ten team this season.

The Hawkeyes collected 21 offensive and 39 defensive rebounds against the Lady Bears.

#### **MOVING UP CAREER CHARTS**

- Morgan Johnson, Iowa's all-time blocks leader (269), ranks seventh in career rebounds (805) and 11th in career scoring (1,451). She needs 23 more rebounds to move past Jennie Lillis for sixth place and five points to move past Kristi Smith into the top-10.
- Jaime Printy ranks second in career 3-pointers made (244), fifth in career scoring (1,754) and eighth in career assists (379). She needs 18 more 3-pointers to move past Lindsey Meder for first place, eight points to move past Lillis into fourth-place and nine more assists to move past Franthea Price for sixth place.
- Samantha Logic ranks 13th in career assists (298). She needs 25 more assists to move past Lisa Anderson into 12th place.

#### **HAWKEYES CONTINUE HOME STAND AGAINST NO. 8/9 PENN STATE**

Iowa continues its home stand, hosting No. 8/9 Penn State on Valentine's Day beginning at 7 p.m. (CT).

### **Hawkeyes in NCAA Stats (thru Feb. 7)**

Iowa	Rank	Avg.
Blocks	11th	5.7
Free Throw Percentage	10th	77.2
3-Point Percentage	28th	35.0
Assists	35th	15.8
Field Goal Percentage	49th	42.5
Assist/Turnover Ratio	45th	1.0
Scoring Offense	59th	68.8
Field Goal Percentage Defense	71st	36.5
Scoring Margin	77th	+7.3
<b>Melissa Dixon</b>	<b>Rank</b>	<b>Avg.</b>
3-Point Percentage	26th	32.3
<b>Morgan Johnson</b>	<b>Rank</b>	<b>Avg.</b>
Field Goal Percentage	23rd	52.4
Blocks	49th	1.8
<b>Samantha Logic</b>	<b>Rank</b>	<b>Avg.</b>
Assists	10th	6.8
<b>Jaime Printy</b>	<b>Rank</b>	<b>Avg.</b>
Free Throw Percentage	6th	92.3
<b>Bethany Doolittle</b>	<b>Rank</b>	<b>Avg.</b>
Blocks	37th	2.0

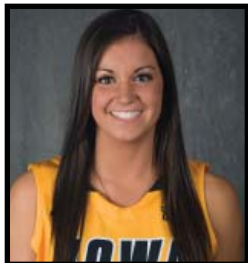




# University of Iowa Women's Basketball

## Updated Iowa Player Bio

### Claire Till



# 3

**Guard, 6-0, Freshman**  
**Dubuque, Iowa**  
**Dubuque Wahlert HS**

- Missed a total of six games with a stress reaction in right femur (missed four games from Dec. 1-Dec. 28 and two games from Jan. 6-Jan.17).
- Seven points and six rebounds against Florida International.
- Five points and two rebounds in win over Robert Morris.
- Scored three points and recorded six rebounds in collegiate debut vs. NIU.
- Two-time all-state selection.
- Three-time IBCA Select Team member.
- Four-time first team all-conference and all-district pick.
- Underwent three surgeries in high school to repair injured knee.

#### Personal Bests

**Points:** 7 at Florida International (11/23/12)  
**Rebounds:** 6, twice, last at FIU (11/23/12)  
**FGM:** 1, 4x, last at FIU (11/23/12)  
**FGA:** 6 at Florida International (11/23/12)  
**3-pt FG:** 1, twice, last vs. RMU (11/20/12)  
**3-pt FGA:** 2, twice, last at FIU (11/23/12)  
**FTM:** 5, twice, last vs. WVU (11/25/12)  
**FTA:** 8 at Florida International (11/23/12)  
**Assists:** 1, 3x, last vs. Texas (12/28/12)  
**Steals:** 1, 3x, last vs. WVU (11/25/12)  
**Blocks:** 1, 3x, last vs. Ohio State (1/3/13)  
**Minutes:** 18 at Florida International (11/23/12)

### 2012-13 Game-by-Game

#03 Till, Claire

Opponent	Date	gs	min	Total		3-Pointers		Free throws		Rebounds			pf	a	t/o	blk	stl	pts	avg	
				fg-fga	pct	3fg-fga	pct	ft-fa	pct	off	def	tot								avg
NORTHERN ILLINOIS	11/9/12	11	1-3	.333	1-2	.500	0-2	.000	1	5	6	6.0	3	0	0	1	1	3	3.0	
ILLINOIS STATE	11/11/12	7	1-2	.500	0-0	.000	2-2	1.000	0	3	3	4.5	1	0	2	0	1	4	3.5	
MIDDLE TENNESSEE	11/14/12	8	0-1	.000	0-0	.000	0-0	.000	0	1	1	3.3	2	0	0	0	0	0	2.3	
NORTH CAROLINA	11/18/12	6	0-0	.000	0-0	.000	1-2	.500	0	2	2	3.0	0	1	2	0	0	1	2.0	
ROBERT MORRIS	11/20/12	16	1-2	.500	1-1	1.000	2-2	1.000	0	2	2	2.8	0	0	2	0	0	5	2.6	
at FIU	11/23/12	18	1-6	.167	0-2	.000	5-8	.625	5	1	6	3.3	0	0	0	0	0	7	3.3	
vs WVU	11/25/12	14	0-1	.000	0-0	.000	5-6	.833	2	0	2	3.1	1	0	1	0	1	5	3.6	
at Florida State	11/28/12	12	0-2	.000	0-1	.000	0-0	.000	0	1	1	2.9	2	1	0	1	0	0	3.1	
vs Texas	12/28/12	4	0-1	.000	0-1	.000	0-0	.000	1	0	1	2.7	1	1	1	0	0	0	2.8	
OHIO STATE	1/3/13	4	0-1	.000	0-0	.000	0-0	.000	0	1	1	2.5	0	0	0	1	0	0	2.5	
PURDUE	01/20/13	1	0-0	.000	0-0	.000	0-0	.000	0	0	0	2.3	0	0	0	0	0	0	2.3	
WISCONSIN	1/24/13	2	0-0	.000	0-0	.000	0-0	.000	0	0	0	2.1	1	0	1	0	0	0	2.1	
Totals		0	103	4-19	.211	2-7	.286	15-22	.682	9	16	25	2.1	11	3	9	3	3	25	2.1

Games played: 12  
 Minutes/game: 8.6  
 Points/game: 2.1  
 FG Pct: 21.1  
 3FG Pct: 28.6  
 FT Pct: 68.2

Rebounds/game: 2.1  
 Assists/game: 0.3  
 Turnovers/game: 0.8  
 Assist/turnover ratio: 0.3  
 Steals/game: 0.3  
 Blocks/game: 0.3

#### CAREER STATISTICS

YEAR	G/GS	FG-A	PCT	3-PT	PCT	FT-A	PCT	O-D-REB	AVG	PF-FO	AS	TO	BK	ST	PTS	AVG
Fresh.	12/0	4-19	.211	2-7	.286	15-22	.682	9-16-25	2.1	11-0	3	9	3	3	25	2.1







# University of Iowa Women's Basketball

## Updated Iowa Player Bio

### Trisha Nesbitt



# 11

**Guard, 5-7, Senior**  
**Ames, Iowa**  
**Ames HS**

- Career-high 12 points in win at Drake.
- Academic All-Big Ten in 2011-12.
- Had minor knee surgery Nov. 15, 2011 and missed the first 10 games of the season as a junior.
- Saw first action last season Dec. 20 vs. Drake, recording one rebound and one steal in seven minutes of play.

#### Personal Bests

**Points:** 12 at Drake (12/16/12)  
**Rebounds:** 3, 2x, last vs. NIU (11/9/12)  
**FGM:** 4 vs. Michigan State (3/6/10)  
**FGA:** 8 at Indiana (2/11/10)  
**3-pt FG:** 2, 3x, last at Drake (12/16/12)  
**3-pt FGA:** 4, 3x, last vs. Missouri State (12/19/12)  
**FTM:** 4, 3x, last at Drake (12/16/12)  
**FTA:** 5 at UNI (11/22/09)  
**Assists:** 4, 3x, last at Iowa St. (12/10/09)  
**Steals:** 3 at Minnesota (1/3/10)  
**Blocks:** ---  
**Minutes:** 37 at Indiana (2/11/10)

### 2012-13 Game-by-Game

#11 Nesbitt, Trisha

Opponent	Date	gs	min	Total		3-Pointers		Free throws		Rebounds				pf	a	t/o	blk	stl	pts	avg
				fg-fga	pct	3fg-fga	pct	ft-fa	pct	off	def	tot	avg							
NORTHERN ILLINOIS	11/9/12	18	1-1	1.000	1-1	1.000	0-0	.000	0	3	3.0	0	1	2	0	0	3	3.0		
ILLINOIS STATE	11/11/12	15	0-3	.000	0-1	.000	3-4	.750	0	1	1	2.0	3	0	1	0	1	3	3.0	
MIDDLE TENNESSEE	11/14/12	4	1-1	1.000	0-0	.000	0-0	.000	0	0	0	1.3	0	0	0	0	0	2	2.7	
NORTH CAROLINA	11/18/12	5	1-2	.500	0-1	.000	0-0	.000	0	0	0	1.0	0	0	0	0	0	2	2.5	
ROBERT MORRIS	11/20/12	13	0-0	.000	0-0	.000	0-0	.000	0	2	2	1.2	0	2	0	0	0	0	2.0	
at FIU	11/23/12	8	1-2	.500	0-0	.000	0-0	.000	0	1	1	1.2	1	1	0	0	0	2	2.0	
vs WVU	11/25/12	14	1-1	1.000	1-1	1.000	1-2	.500	0	0	0	1.0	2	1	1	0	1	4	2.3	
at Florida State	11/28/12	5	0-0	.000	0-0	.000	0-0	.000	0	0	0	0.9	1	0	0	0	1	0	2.0	
UNI	12/1/12	5	0-0	.000	0-0	.000	0-0	.000	0	0	0	0.8	0	0	0	0	0	0	1.8	
IOWA STATE	12/6/12	6	0-0	.000	0-0	.000	0-0	.000	0	1	1	0.8	1	0	0	0	0	0	1.6	
at Drake	12/16/12	15	3-4	.750	2-3	.667	4-4	1.000	0	0	0	0.7	4	0	1	0	0	12	2.5	
MISSOURI STATE	12/19/12	15	1-4	.250	1-4	.250	1-2	.500	0	1	1	0.8	5	1	1	0	0	4	2.7	
vs Texas	12/28/12	8	0-1	.000	0-1	.000	0-0	.000	0	0	0	0.7	1	0	0	0	0	0	2.5	
MICHIGAN	1/6/13	3	0-0	.000	0-0	.000	0-0	.000	0	0	0	0.6	0	0	0	0	0	0	2.3	
at Wisconsin	01/10/13	3	0-1	.000	0-1	.000	0-0	.000	0	0	0	0.6	0	0	0	0	0	0	2.1	
at Michigan State	01/17/13	4	0-1	.000	0-0	.000	0-0	.000	0	1	1	0.6	0	0	0	0	1	0	2.0	
PURDUE	01/20/13	2	0-0	.000	0-0	.000	0-0	.000	0	0	0	0.6	0	0	0	0	0	0	1.9	
WISCONSIN	1/24/13	2	0-0	.000	0-0	.000	0-0	.000	0	0	0	0.6	0	0	0	0	0	0	1.8	
at Michigan	01/27/13	9	0-1	.000	0-1	.000	0-0	.000	0	2	2	0.6	0	0	0	0	0	0	1.7	
NORTHWESTERN	2/03/13	3	0-1	.000	0-0	.000	0-0	.000	0	0	0	0.6	0	1	1	0	1	0	1.6	
at Minnesota	02/07/13	2	0-1	.000	0-0	.000	0-0	.000	0	0	0	0.6	0	0	0	0	0	0	1.5	
<b>Totals</b>		<b>0</b>	<b>159</b>	<b>9-24</b>	<b>.375</b>	<b>5-14</b>	<b>.357</b>	<b>9-12</b>	<b>.750</b>	<b>0</b>	<b>12</b>	<b>12</b>	<b>0.6</b>	<b>18</b>	<b>7</b>	<b>7</b>	<b>0</b>	<b>5</b>	<b>32</b>	<b>1.5</b>

Games played: 21  
 Minutes/game: 7.6  
 Points/game: 1.5  
 FG Pct: 37.5  
 3FG Pct: 35.7  
 FT Pct: 75.0

Rebounds/game: 0.6  
 Assists/game: 0.3  
 Turnovers/game: 0.3  
 Assist/turnover ratio: 1.0  
 Steals/game: 0.2

#### CAREER STATISTICS

YEAR	G/GS	FG-A	PCT	3-PT	PCT	FT-A	PCT	O-D-REB	AVG	PF-FO	AS	TO	BK	ST	PTS	AVG
Fresh.	34/1	25-85	.294	9-36	.250	25-31	.806	2-22-24	0.7	46-0	43	42	0	14	84	2.5
Soph.	16/0	3-13	.231	2-6	.333	0-1	.000	0-4-4	0.3	7-0	5	10	0	1	8	0.5
Junior	15/0	1-8	.125	0-6	.000	3-4	.750	1-2-3	0.2	10-0	4	3	0	3	5	0.3
Senior	21/0	9-24	.375	5-14	.357	9-12	.750	0-12-12	0.6	18-1	7	7	0	5	32	1.5
<b>TOTALS</b>	<b>86/1</b>	<b>38-130</b>	<b>.292</b>	<b>16-62</b>	<b>.258</b>	<b>37-48</b>	<b>.771</b>	<b>3-40-43</b>	<b>0.5</b>	<b>81-1</b>	<b>59</b>	<b>62</b>	<b>0</b>	<b>23</b>	<b>129</b>	<b>1.5</b>





# University of Iowa Women's Basketball

## Updated Iowa Player Bio

### Morgan Johnson



# 12

**Center, 6-5, Senior**  
**Platte City, Mo.**  
**Platte County HS**

- Iowa career blocks leader (269), seventh in career rebounds (805) and 11th in career scoring (1,451).
- Recorded 19 career double-doubles, which rank seventh all-time in school history... had three as a freshman, five as a sophomore, four as a junior and seven as a senior.
- Seventh double-double of the season with 13 points and 10 rebounds at Minnesota.
- Sixth double-double of the season with 13 points and 12 rebounds at Michigan St.
- Fifth double-double of the season with 23 points and 11 rebounds in win at Wisconsin.
- Fourth double-double of the season with 16 points and 12 rebounds in win over Ohio State.
- 20 points and five rebounds in win over Texas.
- 26 points, eight rebounds and three blocks in win at Drake.
- Third double-double of the season with 19 points, 12 rebounds and a career-high five assists in win over Northern Iowa.
- 20 points at Florida State.
- 19 points in win over West Virginia.
- Second double-double of the season with 19 points and 11 rebounds in win over Robert Morris.
- Big Ten Player of the Week (Nov. 19).
- First double-double of the season with 20 points and 11 rebounds vs. N. Carolina.
- 20 points and eight rebounds in win over Middle Tennessee.
- 24 points (12-of-13 FTs) and nine rebounds in win over Illinois State.
- Preseason All-Big Ten selection.

### 2012-13 Game-by-Game

#12 Johnson, Morgan

Opponent	Date	gs	min	Total		3-Pointers		Free throws		Rebounds				pf	a	t/o	blk	stl	pts	avg	
				fg-fga	pct	3fg-fga	pct	ft-fta	pct	off	def	tot	avg								
NORTHERN ILLINOIS	11/9/12	*	20	4-11	.364	0-0	.000	3-5	.600	1	4	5	5.0	2	0	1	0	1	11	11.0	
ILLINOIS STATE	11/11/12	*	30	6-14	.429	0-0	.000	12-13	.923	4	5	9	7.0	2	2	2	5	1	24	17.5	
MIDDLE TENNESSEE	11/14/12	*	41	8-10	.800	0-0	.000	4-6	.667	2	6	8	7.3	4	1	0	2	0	20	18.3	
NORTH CAROLINA	11/18/12	*	39	8-11	.727	0-0	.000	4-5	.800	3	8	11	8.3	4	1	2	2	2	20	18.8	
ROBERT MORRIS	11/20/12	*	33	8-13	.615	0-0	.000	3-5	.600	5	6	11	8.8	3	0	3	0	0	19	18.8	
at FIU	11/23/12	*	36	6-9	.667	0-0	.000	2-2	1.000	3	3	6	8.3	2	2	3	5	0	14	18.0	
vs WVU	11/25/12	*	30	6-11	.545	0-0	.000	7-11	.636	0	3	3	7.6	3	1	2	2	1	19	18.1	
at Florida State	11/28/12	*	30	8-15	.533	0-0	.000	4-4	1.000	3	1	4	7.1	2	1	2	2	0	20	18.4	
UNI	12/1/12	*	35	6-11	.545	0-0	.000	7-11	.636	4	8	12	7.7	2	5	2	2	2	19	18.4	
IOWA STATE	12/6/12	*	38	3-8	.375	0-0	.000	1-2	.500	1	5	6	7.5	1	2	4	1	1	7	17.3	
at Drake	12/16/12	*	38	11-19	.579	0-0	.000	4-7	.571	2	6	8	7.5	2	0	0	3	2	26	18.1	
MISSOURI STATE	12/19/12	*	15	6-7	.857	0-0	.000	1-2	.500	2	2	4	7.3	4	1	3	0	0	13	17.7	
vs Texas	12/28/12	*	23	8-13	.615	0-0	.000	4-5	.800	1	4	5	7.1	3	0	0	2	3	20	17.8	
at San Diego	12/30/12	*	38	8-10	.800	0-0	.000	4-4	1.000	3	3	6	7.0	2	1	4	3	1	20	18.0	
OHIO STATE	1/3/13	*	43	7-17	.412	0-0	.000	2-3	.667	3	9	12	7.3	2	3	0	3	3	16	17.9	
MICHIGAN	1/6/13	*	39	4-7	.571	0-0	.000	2-3	.667	3	4	7	7.3	4	2	0	1	2	10	17.4	
at Wisconsin	01/10/13	*	35	6-12	.500	0-0	.000	11-11	1.000	8	3	11	7.5	3	0	3	2	0	23	17.7	
at Michigan State	01/17/13	*	37	5-12	.417	0-0	.000	3-4	.750	5	7	12	7.8	3	0	1	2	2	13	17.4	
PURDUE	01/20/13	*	24	3-14	.214	0-0	.000	1-1	1.000	3	4	7	7.7	3	0	1	3	0	7	16.9	
WISCONSIN	1/24/13	*	17	1-2	.500	0-0	.000	0-0	.000	2	2	4	7.6	4	1	1	0	0	2	16.2	
at Michigan	01/27/13	*	31	2-4	.500	0-0	.000	2-2	1.000	1	6	7	7.5	4	0	0	1	2	6	15.7	
at Illinois	01/31/13	*	27	3-6	.500	0-0	.000	0-0	.000	1	3	4	7.4	5	0	2	1	1	6	15.2	
NORTHWESTERN	2/03/13	*	18	3-9	.333	0-0	.000	5-7	.714	1	2	3	7.2	5	0	2	1	1	11	15.0	
at Minnesota	02/07/13	*	35	3-9	.333	0-0	.000	7-7	1.000	4	6	10	7.3	1	2	0	1	2	13	15.0	
Totals			24	752	133-254	.524	0-0	.000	93-120	.775	65	110	175	7.3	70	25	38	44	27	359	15.0

Games played: 24  
Minutes/game: 31.3  
Points/game: 15.0  
FG Pct: 52.4  
FT Pct: 77.5

Rebounds/game: 7.3  
Assists/game: 1.0  
Turnovers/game: 1.6  
Assist/turnover ratio: 0.7  
Steals/game: 1.1  
Blocks/game: 1.8

#### Personal Bests

- Points:** 37 at Bradley (12/17/11)
- Rebounds:** 16 vs. Illinois (1/5/12)
- FGM:** 13 at Bradley (12/17/11)
- FGA:** 21 vs. Virginia Tech (11/30/11)
- 3-pt FG:** 1 at Iowa State (12/10/09)
- 3-pt FGA:** 2 at Iowa State (12/10/09)
- FTM:** 12 vs. Illinois State (11/11/12)
- FTA:** 13 vs. Illinois State (11/11/12)
- Assists:** 5 vs. Northern Iowa (12/1/12)
- Steals:** 3, 5x, last vs. Ohio State (1/3/13)
- Blocks:** 8 vs. Minnesota (2/18/10)
- Minutes:** 43 vs. Ohio State (1/3/13)

#### CAREER STATISTICS

YEAR	G/GS	FG-A	PCT	3-PT	PCT	FT-A	PCT	O-D-REB	AVG	PF-FO	AS	TO	BK	ST	PTS	AVG
Fresh.	34/34	124-250	.496	1-4	.250	48-76	.632	78-139-217	6.4	87-2	24	61	79	15	297	8.7
Soph.	31/30	132-276	.478	0-0	.000	70-96	.729	90-118-208	6.7	83-3	25	58	76	21	334	10.8
Junior	31/31	179-326	.549	0-0	.000	103-141	.730	67-138-205	6.6	96-4	24	64	70	12	461	14.9
Senior	24/24	133-254	.524	0-0	.000	93-120	.775	65-110-175	7.3	70-2	25	38	44	27	359	15.0
<b>TOTALS</b>	<b>120/119</b>	<b>568-1106</b>	<b>.514</b>	<b>1-4</b>	<b>.250</b>	<b>314-433</b>	<b>.725</b>	<b>300-505-805</b>	<b>6.7</b>	<b>336-11</b>	<b>98</b>	<b>221</b>	<b>269</b>	<b>75</b>	<b>1451</b>	<b>12.1</b>





# University of Iowa Women's Basketball

## Updated Iowa Player Bio

### Kathy Thomas



# 13

**Guard, 5-6, Sophomore  
Flint, Mich.  
Highland CC (Kan.)**

- 15 points (3-of-6 3Pt. FGs) in win over Missouri State.
- Scored eight points in collegiate debut vs. NIU.
- NJCAA first team All-American at Highlands Community College.
- Jayhawk Conference Player and Freshman of the Year.
- Led Highland Community College to 28-4 overall record, second place finish in Jayhawk Conference and NJCAA Division II District B finals appearance, the most successful season in school history.
- Averaged 13.2 points, 8.9 assists and 9.8 steals as a senior in high school.

#### Personal Bests

**Points:** 15 vs. Missouri State (12/19/12)  
**Rebounds:** 3, twice, last at San Diego (12/30/12)  
**FGM:** 6 vs. Missouri State (12/19/12)  
**FGA:** 9 vs. Missouri State (12/19/12)  
**3-pt FG:** 3 vs. Missouri State (12/19/12)  
**3-pt FGA:** 6 vs. Missouri State (12/19/12)  
**FTM:** 5 vs. Ill. State (11/11/12)  
**FTA:** 8 vs. Ill. State (11/11/12)  
**Assists:** 3, twice, last vs. Purdue (1/20/13)  
**Steals:** 2, twice, last vs. Purdue (1/20/13)  
**Blocks:** 1 at Minnesota (2/7/13)  
**Minutes:** 19 vs. Missouri State (12/19/12)

### 2012-13 Game-by-Game

# 13 Thomas, Kathy

Opponent	Date	gs	min	Total		3-Pointers		Free throws		Rebounds			pf	a	t/o	blk	stl	pts	avg	
				fg-fga	pct	3fg-fga	pct	ft-fa	pct	off	def	tot								avg
NORTHERN ILLINOIS	11/9/12	15	3-4	.750	0-0	.000	2-2	1.000	1	1	2	2.0	3	0	1	0	0	8	8.0	
ILLINOIS STATE	11/11/12	16	0-2	.000	0-0	.000	5-8	.625	2	1	3	2.5	3	3	3	0	1	5	6.5	
MIDDLE TENNESSEE	11/14/12	2	0-0	.000	0-0	.000	0-0	.000	0	0	0	1.7	1	0	0	0	0	0	4.3	
NORTH CAROLINA	11/18/12	2	0-0	.000	0-0	.000	0-0	.000	0	0	0	1.3	1	0	0	0	0	0	3.3	
ROBERT MORRIS	11/20/12	10	1-3	.333	1-1	1.000	0-0	.000	0	1	1	1.2	2	1	0	0	0	3	3.2	
at FIU	11/23/12	8	0-0	.000	0-0	.000	0-0	.000	0	0	0	1.0	0	0	0	0	0	0	2.7	
UNI	12/1/12	7	0-1	.000	0-0	.000	0-0	.000	0	2	2	1.1	2	1	0	0	0	0	2.3	
IOWA STATE	12/6/12	6	0-1	.000	0-1	.000	3-4	.750	1	1	2	1.3	1	0	0	0	0	3	2.4	
at Drake	12/16/12	7	1-1	1.000	1-1	1.000	0-0	.000	0	0	0	1.1	0	0	0	0	0	3	2.4	
MISSOURI STATE	12/19/12	19	6-9	.667	3-6	.500	0-0	.000	0	2	2	1.2	2	2	3	0	2	15	3.7	
vs Texas	12/28/12	9	1-1	1.000	0-0	.000	0-0	.000	0	2	2	1.3	0	0	2	0	1	2	3.5	
at San Diego	12/30/12	4	0-1	.000	0-0	.000	0-0	.000	1	2	3	1.4	2	0	1	0	0	0	3.3	
OHIO STATE	1/3/13	5	0-0	.000	0-0	.000	0-0	.000	0	1	1	1.4	3	1	2	0	0	0	3.0	
MICHIGAN	1/6/13	2	0-0	.000	0-0	.000	0-0	.000	0	0	0	1.3	0	0	0	0	0	0	2.8	
at Wisconsin	01/10/13	2	0-1	.000	0-0	.000	0-0	.000	0	0	0	1.2	1	0	0	0	0	0	2.6	
at Michigan State	01/17/13	5	0-2	.000	0-0	.000	0-0	.000	0	2	2	1.3	2	0	0	0	0	0	2.4	
PURDUE	01/20/13	8	0-1	.000	0-0	.000	0-0	.000	0	1	1	1.2	1	3	2	0	2	0	2.3	
WISCONSIN	1/24/13	8	0-1	.000	0-1	.000	0-0	.000	0	1	1	1.2	1	0	1	0	0	0	2.2	
at Michigan	01/27/13	6	1-3	.333	1-2	.500	1-2	.500	0	0	0	1.2	0	0	1	0	0	4	2.3	
at Illinois	01/31/13	4	0-1	.000	0-1	.000	0-0	.000	0	0	0	1.1	0	1	0	0	0	0	2.2	
NORTHWESTERN	2/03/13	3	0-0	.000	0-0	.000	0-0	.000	0	0	0	1.0	1	0	2	0	0	0	2.0	
at Minnesota	02/07/13	13	1-2	.500	1-1	1.000	0-0	.000	0	1	1	1.0	0	1	1	1	0	3	2.1	
Totals		0	161	14-34	.412	7-14	.500	11-16	.688	5	18	23	1.0	26	13	19	1	6	46	2.1

Games played: 22  
 Minutes/game: 7.3  
 Points/game: 2.1  
 FG Pct: 41.2  
 3FG Pct: 50.0  
 FT Pct: 68.8

Rebounds/game: 1.0  
 Assists/game: 0.6  
 Turnovers/game: 0.9  
 Assist/turnover ratio: 0.7  
 Steals/game: 0.3  
 Blocks/game: 0.0

#### CAREER STATISTICS

YEAR	G/GS	FG-A	PCT	3-PT	PCT	FT-A	PCT	O-D-REB	AVG	PF-FO	AS	TO	BK	ST	PTS	AVG
Fresh.	22/0	14-34	.412	7-14	.500	11-16	.688	5-18-23	1.0	26-0	13	19	1	6	46	2.1





# University of Iowa Women's Basketball

## Updated Iowa Player Bio

### Melissa Dixon



# 21

**Guard, 5-8, Sophomore**  
**Johnsburg, Ill.**  
**Johnsburg HS**

- 21 points (7-10 FGs, 6-9 3Pt. FGs) in loss to Northwestern.
- 15 points in win over Purdue.
- Career-high 23 points (5-of-10 3Pt. FGs) in win over Texas.
- 11 points in win over Iowa State.
- 12 points against North Carolina.
- Career-high 22 points (8-18 FGs, 6-15 3Pt. FGs) in win over Michigan as a freshman.
- Suffered torn meniscus at Ohio State (Jan. 2, 2012) as a freshman. Missed a total of seven games.
- First career start came at Indiana, registering career-highs in points (19), field goals made (7), 3-pointers made and attempted (5-for-10), steals (3) and minutes (28).

#### Personal Bests

**Points:** 23 vs. Texas (12/28/12)  
**Rebounds:** 4, 4x, last vs. Minnesota (2/9/12)  
**FGM:** 9 vs. Texas (12/28/12)  
**FGA:** 18 vs. Michigan (2/26/12)  
**3-pt FG:** 6, twice, last vs. N'western (2/3/13)  
**3-pt FGA:** 15 vs. Michigan (2/26/12)  
**FTM:** 5, 2x, last vs. Drake (12/20/11)  
**FTA:** 6, 2x, last vs. Drake (12/20/11)  
**Assists:** 4 vs. Nebraska (3/2/12)  
**Steals:** 3 at Indiana (2/5/12)  
**Blocks:** 1, 3x, last vs. Ill. State (11/11/12)  
**Minutes:** 34, twice, last vs. MTSU (11/14/12)

### 2012-13 Game-by-Game

#21 Dixon, Melissa

Opponent	Date	gs	min	Total		3-Pointers		Free throws		Rebounds			pf	a	t/o	blk	stl	pts	avg		
				fg	fga	pct	3fg	3fga	pct	ft	fta	pct								off	def
NORTHERN ILLINOIS	11/9/12	*	24	3-4	.750	2-3	.667	0-0	.000	0	2	2	2.0	2	2	1	0	1	8	8.0	
ILLINOIS STATE	11/11/12	*	24	2-3	.667	2-3	.667	2-2	1.000	0	0	0	1.0	4	2	1	1	0	8	8.0	
MIDDLE TENNESSEE	11/14/12	*	34	2-9	.222	2-7	.286	0-1	.000	0	1	1	1.0	2	1	1	0	2	6	7.3	
NORTH CAROLINA	11/18/12		20	5-11	.455	2-8	.250	0-0	.000	0	1	1	1.0	4	0	2	0	0	12	8.5	
ROBERT MORRIS	11/20/12		17	2-8	.250	2-7	.286	0-0	.000	0	2	2	1.2	2	0	3	0	0	6	8.0	
at FIU	11/23/12		19	3-11	.273	2-7	.286	0-0	.000	0	2	2	1.3	2	0	0	0	0	8	8.0	
vs WVU	11/25/12		17	0-2	.000	0-1	.000	0-0	.000	0	0	0	1.1	2	0	1	0	0	0	6.9	
at Florida State	11/28/12		14	1-5	.200	0-3	.000	1-1	1.000	0	0	0	1.0	0	1	0	0	1	3	6.4	
UNI	12/1/12		16	2-4	.500	2-2	1.000	0-0	.000	1	1	2	1.1	2	1	0	0	0	6	6.3	
IOWA STATE	12/6/12		19	4-8	.500	2-5	.400	1-3	.333	0	2	2	1.2	1	1	1	0	1	11	6.8	
at Drake	12/16/12		6	0-3	.000	0-3	.000	0-0	.000	0	0	0	1.1	0	1	0	0	0	0	6.2	
MISSOURI STATE	12/19/12		23	4-11	.364	2-8	.250	2-2	1.000	0	2	2	1.2	1	2	1	0	1	12	6.7	
vs Texas	12/28/12		25	9-15	.600	5-10	.500	0-0	.000	0	3	3	1.3	1	2	0	0	0	23	7.9	
at San Diego	12/30/12		17	3-7	.429	2-3	.667	0-0	.000	0	0	0	1.2	1	0	2	0	1	8	7.9	
OHIO STATE	1/3/13		15	1-6	.167	1-2	.500	0-0	.000	0	1	1	1.2	2	0	1	0	1	3	7.6	
MICHIGAN	1/6/13		25	6-14	.429	5-9	.556	0-0	.000	3	0	3	1.3	2	0	2	0	0	17	8.2	
at Wisconsin	01/10/13		19	2-6	.333	2-5	.400	2-2	1.000	0	3	3	1.4	2	2	2	0	0	8	8.2	
at Michigan State	01/17/13		22	2-7	.286	1-3	.333	2-2	1.000	3	0	3	1.5	1	0	1	0	0	7	8.1	
PURDUE	01/20/13		20	6-10	.600	3-6	.500	0-0	.000	0	0	0	1.4	1	0	1	0	1	15	8.5	
WISCONSIN	1/24/13		26	3-6	.500	2-4	.500	2-2	1.000	0	0	0	1.4	2	0	1	0	1	10	8.6	
at Michigan	01/27/13		22	2-5	.400	1-3	.333	0-0	.000	0	2	2	1.4	3	1	1	0	0	5	8.4	
at Illinois	01/31/13		24	4-9	.444	3-6	.500	0-0	.000	0	2	2	1.4	2	1	3	0	1	11	8.5	
NORTHWESTERN	2/03/13		22	7-10	.700	6-9	.667	1-2	.500	0	2	2	1.4	2	1	0	0	0	21	9.0	
at Minnesota	02/07/13		27	2-10	.200	0-6	.000	0-0	.000	0	3	3	1.5	2	2	0	0	1	4	8.8	
Totals			3	497	75-184	.408	49-123	.398	13-17	.765	7	29	36	1.5	43	20	25	1	12	212	8.8

Games played: 24  
 Minutes/game: 20.7  
 Points/game: 8.8  
 FG Pct: 40.8  
 3FG Pct: 39.8  
 FT Pct: 76.5

Rebounds/game: 1.5  
 Assists/game: 0.8  
 Turnovers/game: 1.0  
 Assist/turnover ratio: 0.8  
 Steals/game: 0.5  
 Blocks/game: 0.0

#### CAREER STATISTICS

YEAR	G/GS	FG-A	PCT	3-PT	PCT	FT-A	PCT	O-D-REB	AVG	PF-FO	AS	TO	BK	ST	PTS	AVG
Fresh.	24/8	50-141	.355	35-98	.357	27-33	.818	17-25-42	1.8	47-1	18	28	2	15	162	6.8
Soph.	24/3	75-184	.408	49-123	.398	13-17	.765	7-29-36	1.5	43-0	20	25	1	12	212	8.8
<b>TOTALS</b>	<b>48/11</b>	<b>125-325</b>	<b>.385</b>	<b>84-221</b>	<b>.380</b>	<b>40-50</b>	<b>.800</b>	<b>24-54-78</b>	<b>1.6</b>	<b>90-1</b>	<b>38</b>	<b>53</b>	<b>3</b>	<b>27</b>	<b>374</b>	<b>7.8</b>





# University of Iowa Women's Basketball

## Updated Iowa Player Bio

### Samantha Logic



# 22

**Guard, 5-9, Sophomore**  
**Racine, Wis.**  
**Racine J.I. Case HS**

- 13th in career assists at Iowa (298).
- Recorded 11 career double-doubles, including one triple-double. Eight double-doubles are points/rebounds, one is points/assists and one is rebounds/assists.
- Ranks second in Iowa history with six double digit assist performances. Cara Consuegra holds the record with nine.
- Third double-double of the season with 11 points, 12 rebounds in loss to Northwestern.
- Recorded 10 assists in win over Purdue.
- Second double-double of the season with 12 points, 10 rebounds and nine assists in win at Wisconsin.
- 17 points, six rebounds, eight assists and three steals in win over Ohio State.
- Double-double with 15 rebounds and school record 14 assists in win over Texas.
- 13 points, five rebounds and seven assists in win at Drake.
- 15 points, four rebounds and three assists in win over Northern Iowa.
- 14 points, seven rebounds, seven assists and three steals at Florida State.
- Nine points, seven rebounds and seven assists in win over West Virginia.
- 12 points, six rebounds, six assists and four steals against North Carolina.
- Tied school record with 12 assists in win over Middle Tennessee.
- Third team Freshman All-American by Full Court.
- Unanimous selection for Big Ten All-Freshman Team.

### 2012-13 Game-by-Game

#22 Logic, Samantha

Opponent	Date	gs	min	Total		3-Pointers		Free throws		Rebounds				pf	a	t/o	blk	stl	pts	avg	
				fg-aga	pct	3fg-aga	pct	ft-fta	pct	off	def	tot	avg								
NORTHERN ILLINOIS	11/9/12	*	25	5-8	.625	0-0	.000	0-0	.000	0	3	3	3.0	1	2	2	0	2	10	10.0	
ILLINOIS STATE	11/11/12	*	24	1-6	.167	0-1	.000	4-4	1.000	3	2	5	4.0	2	4	6	1	2	6	8.0	
MIDDLE TENNESSEE	11/14/12	*	40	0-6	.000	0-2	.000	0-1	.000	1	2	3	3.7	2	12	6	1	2	0	5.3	
NORTH CAROLINA	11/18/12	*	31	6-10	.600	0-1	.000	0-0	.000	3	3	6	4.3	2	6	7	0	4	12	7.0	
ROBERT MORRIS	11/20/12	*	28	2-7	.286	0-2	.000	0-0	.000	3	3	6	4.6	1	9	2	0	3	4	6.4	
at FIU	11/23/12	*	32	3-6	.500	1-1	1.000	0-0	.000	3	2	5	4.7	3	7	4	0	1	7	6.5	
vs WVU	11/25/12	*	34	2-6	.333	0-0	.000	5-6	.833	2	5	7	5.0	5	7	9	0	3	9	6.9	
at Florida State	11/28/12	*	36	7-11	.636	0-1	.000	0-0	.000	2	5	7	5.3	4	7	10	0	3	14	7.8	
UNI	12/1/12	*	33	7-9	.778	0-1	.000	1-1	1.000	1	3	4	5.1	3	3	1	1	1	15	8.6	
IOWA STATE	12/6/12	*	28	1-7	.143	1-3	.333	3-6	.500	4	5	9	5.5	3	4	1	1	0	6	8.3	
at Drake	12/16/12	*	35	5-9	.556	1-1	1.000	2-2	1.000	3	2	5	5.5	4	7	3	2	1	13	8.7	
MISSOURI STATE	12/19/12	*	27	3-7	.429	0-2	.000	1-3	.333	2	4	6	5.5	1	4	3	1	3	7	8.6	
vs Texas	12/28/12	*	31	1-3	.333	0-1	.000	0-0	.000	5	10	15	6.2	3	14	3	0	2	2	8.1	
at San Diego	12/30/12	*	36	2-2	1.000	1-1	1.000	2-4	.500	1	2	3	6.0	3	10	6	0	2	7	8.0	
OHIO STATE	1/3/13	*	40	5-7	.714	0-0	.000	7-10	.700	1	5	6	6.0	1	8	5	0	3	17	8.6	
MICHIGAN	1/6/13	*	38	6-13	.462	2-4	.500	2-2	1.000	5	4	9	6.2	3	9	3	1	3	16	9.1	
at Wisconsin	01/10/13	*	38	4-11	.364	2-2	1.000	2-3	.667	3	7	10	6.4	1	9	3	0	1	12	9.2	
at Michigan State	01/17/13	*	35	3-7	.429	0-0	.000	1-2	.500	1	4	5	6.3	3	4	5	0	1	7	9.1	
PURDUE	01/20/13	*	32	2-4	.500	0-1	.000	0-0	.000	2	1	3	6.2	3	10	7	0	1	4	8.8	
WISCONSIN	1/24/13	*	34	3-7	.429	0-2	.000	0-0	.000	2	7	9	6.3	0	5	5	0	1	6	8.7	
at Michigan	01/27/13	*	34	3-5	.600	0-1	.000	4-5	.800	2	4	6	6.3	4	8	4	0	2	10	8.8	
at Illinois	01/31/13	*	36	6-10	.600	1-2	.500	0-0	.000	3	7	10	6.5	5	6	8	1	2	13	9.0	
NORTHWESTERN	2/03/13	*	37	4-10	.400	1-1	1.000	2-5	.400	6	6	12	6.7	3	2	2	0	3	11	9.0	
at Minnesota	02/07/13	*	31	0-3	.000	0-1	.000	0-0	.000	2	1	3	6.5	4	5	5	0	1	0	8.7	
Totals			24	795	81-174	.466	10-31	.323	36-54	.667	60	97	157	6.5	64	162	110	9	47	208	8.7

Games played: 24  
Minutes/game: 33.1  
Points/game: 8.7  
FG Pct: 46.6  
3FG Pct: 32.3  
FT Pct: 66.7

Rebounds/game: 6.5  
Assists/game: 6.8  
Turnovers/game: 4.6  
Assist/turnover ratio: 1.5  
Steals/game: 2.0  
Blocks/game: 0.4

#### Personal Bests

- Points:** 20, 2x, last vs. Minn. (2/9/12)  
**Rebounds:** 18 at Michigan (2/16/12)  
**FGM:** 7, 6x, last vs. UNI (12/1/12)  
**FGA:** 18 vs. Nebraska (3/2/12)  
**3-pt FG:** 3 vs. Drake (12/20/11)  
**3-pt FGA:** 4, 4x, last vs. Michigan (1/6/13)  
**FTM:** 8 at Northwestern (2/23/12)  
**FTA:** 10, twice, last vs. Ohio State (1/3/13)  
**Assists:** 14 vs. Texas (12/28/12)  
**Steals:** 4 vs. North Carolina (11/18/12)  
**Blocks:** 2, twice, last at Drake (12/16/12)  
**Minutes:** 40, twice, last vs. Ohio State (1/3/13)

#### CAREER STATISTICS

YEAR	G/GS	FG-A	PCT	3-PT	PCT	FT-A	PCT	O-D-REB	AVG	PF-FO	AS	TO	BK	ST	PTS	AVG
Fresh.	31/31	109-261	.418	15-49	.306	59-79	.747	87-133-220	7.1	73-1	136	113	7	47	292	9.4
Soph.	24/24	81-174	.466	10-31	.323	36-54	.667	60-97-157	6.5	64-2	162	110	9	47	208	8.7
<b>TOTALS</b>	<b>55/55</b>	<b>190-435</b>	<b>.437</b>	<b>25-80</b>	<b>.313</b>	<b>95-133</b>	<b>.714</b>	<b>147-230-377</b>	<b>6.9</b>	<b>137-3</b>	<b>298</b>	<b>223</b>	<b>16</b>	<b>94</b>	<b>500</b>	<b>9.1</b>





# University of Iowa Women's Basketball

## Updated Iowa Player Bio

### Theairra Taylor



# 23

**Guard, 5-11, Junior**  
**St. Paul, Minn.**  
**Central HS**

- Recorded 10 rebounds in win over Purdue.
- Career-high 19 points in win over Ohio State. Scored Iowa's first six points in overtime.
- Career-high seven assists in win at Drake.
- 11 points and nine rebounds in win over Iowa State. Named CollegeSportsMadness.com's Big Ten Player of the Week for her performance.
- First career double-double with 10 points and 11 rebounds, also tied career high with five assists, in win over Illinois State.
- Season-high 14 points, along with six rebounds and two assists in 26 minutes of play vs. California as a sophomore.
- 10 points and tied a career-high with three steals in win over Michigan State as a sophomore.
- Suffered third ACL in a 20-month span during preseason workouts in 2010. Missed a total of 53 games with ACL injuries from 2009 through 2011.

### 2012-13 Game-by-Game

#23 Taylor, Theairra

Opponent	Date	gs	min	Total		3-Pointers		Free throws		Rebounds			pf	a	to	blk	stl	pts	avg		
				fg	fga	fga	pct	ft	fta	off	def	tot								avg	
NORTHERN ILLINOIS	11/9/12	*	19	2-4	500	1-1	1.000	0-0	.000	0	1	1	1.0	1	1	1	0	5	5.0		
ILLINOIS STATE	11/11/12	*	21	3-6	500	1-1	1.000	3-4	.750	0	11	11	6.0	1	5	2	0	2	10	7.5	
MIDDLE TENNESSEE	11/14/12	*	23	3-8	.375	1-4	.250	0-2	.000	1	3	4	5.3	2	2	4	2	1	7	7.3	
NORTH CAROLINA	11/18/12	*	25	1-6	.167	0-3	.000	1-3	.333	1	3	4	5.0	2	1	2	0	0	3	6.3	
ROBERT MORRIS	11/20/12	*	20	3-7	.429	1-4	.250	0-0	.000	0	4	4	4.8	0	0	3	0	1	7	6.4	
at FIU	11/23/12	*	19	2-5	.400	0-1	.000	2-2	1.000	0	3	3	4.5	2	2	2	0	0	6	6.3	
vs WVU	11/25/12	*	23	1-3	.333	0-1	.000	4-5	.800	1	6	7	4.9	4	0	2	1	0	6	6.3	
at Florida State	11/28/12	*	33	4-11	.364	0-2	.000	1-2	.500	2	4	6	5.0	2	1	4	2	0	9	6.6	
UNI	12/1/12	*	28	3-6	.500	0-2	.000	0-0	.000	1	4	5	5.0	0	2	0	0	0	6	6.6	
IOWA STATE	12/6/12	*	27	4-12	.333	1-3	.333	2-4	.500	4	5	9	5.4	0	3	5	1	2	11	7.0	
at Drake	12/16/12	*	30	2-5	.400	2-3	.667	0-0	.000	0	3	3	5.2	1	6	2	0	0	6	6.9	
MISSOURI STATE	12/19/12	*	19	3-9	.333	1-3	.333	2-2	1.000	3	3	6	5.3	3	7	3	1	1	9	7.1	
vs Texas	12/28/12	*	25	2-9	.222	0-1	.000	0-0	.000	0	1	1	4.9	2	2	1	0	3	4	6.8	
at San Diego	12/30/12	*	33	3-7	.429	1-2	.500	2-3	.667	0	4	4	4.9	3	4	2	1	0	9	7.0	
OHIO STATE	1/3/13	*	36	8-12	.667	1-1	1.000	2-2	1.000	1	3	4	4.8	2	0	2	0	2	19	7.8	
MICHIGAN	1/6/13	*	32	5-9	.556	1-3	.333	3-4	.750	0	3	3	4.7	3	2	3	1	2	14	8.2	
at Wisconsin	01/10/13	*	27	2-5	.400	0-1	.000	0-0	.000	3	5	8	4.9	2	5	4	0	3	4	7.9	
at Michigan State	01/17/13	*	23	3-7	.429	0-3	.000	0-0	.000	1	1	2	4.7	2	1	3	0	0	6	7.8	
PURDUE	01/20/13	*	20	3-8	.375	3-3	1.000	0-0	.000	2	8	10	5.0	1	1	0	1	1	9	7.9	
WISCONSIN	1/24/13	*	24	4-11	.364	0-1	.000	2-3	.667	0	1	1	4.8	0	2	1	2	2	10	8.0	
at Michigan	01/27/13	*	17	2-4	.500	1-3	.333	0-0	.000	1	1	2	4.7	2	1	1	0	0	5	7.9	
at Illinois	01/31/13	*	24	4-9	.444	1-2	.500	0-0	.000	0	0	0	4.5	0	1	2	1	2	9	7.9	
NORTHWESTERN	2/03/13	*	22	1-8	.125	0-2	.000	0-0	.000	0	1	1	4.3	1	2	1	1	2	2	7.7	
at Minnesota	02/07/13	*	20	3-8	.375	1-3	.333	2-4	.500	0	5	5	4.3	5	1	1	1	0	9	7.7	
Totals			24	590	71-179	.397	17-53	.321	26-40	.650	21	83	104	4.3	41	52	51	16	24	185	7.7

Games played: 24  
Minutes/game: 24.6  
Points/game: 7.7  
FG Pct: 39.7  
3FG Pct: 32.1  
FT Pct: 65.0

Rebounds/game: 4.3  
Assists/game: 2.2  
Turnovers/game: 2.1  
Assist/turnover ratio: 1.0  
Steals/game: 1.0  
Blocks/game: 0.7

#### Personal Bests

- Points:** 19 vs. Ohio State (1/3/13)
- Rebounds:** 11 vs. Ill. State (11/11/12)
- FGM:** 8 vs. Ohio State (1/3/13)
- FGA:** 15 vs. W&M (11/24/09)
- 3-pt FG:** 3 vs. Purdue (1/20/13)
- 3-pt FGA:** 5 vs. Boston College (12/2/09)
- FTM:** 4, 5x, last vs. WVU (11/25/12)
- FTA:** 5 vs. West Virginia (11/25/12)
- Assists:** 7 vs. Missouri State (12/19/12)
- Steals:** 4 at Northwestern (2/23/12)
- Blocks:** 4, 3x, last vs. Michigan (12/6/09)
- Minutes:** 36, twice, last vs. Ohio State (1/3/13)

#### CAREER STATISTICS

YEAR	G/GS	FG-A	PCT	3-PT	PCT	FT-A	PCT	O-D-REB	AVG	PF-FO	AS	TO	BK	ST	PTS	AVG
Fresh.	10/8	29-86	.337	9-26	.346	14-18	.778	15-34-49	4.9	22-1	24	29	10	13	81	8.1
Soph.	31/0	37-97	.381	2-18	.111	19-29	.655	35-57-92	3.0	53-1	30	47	11	18	95	3.1
Junior	24/24	71-179	.397	17-53	.321	26-40	.650	21-83-104	4.3	41-1	52	51	16	24	185	7.7
<b>TOTALS</b>	<b>65/32</b>	<b>137-362</b>	<b>.378</b>	<b>28-97</b>	<b>.289</b>	<b>59-87</b>	<b>.678</b>	<b>71-174-245</b>	<b>3.8</b>	<b>116-3</b>	<b>106</b>	<b>127</b>	<b>37</b>	<b>55</b>	<b>361</b>	<b>5.6</b>





# University of Iowa Women's Basketball

## Updated Iowa Player Bio

### Jaime Printy



# 24

**Guard, 5-11, Senior**  
**Marion, Iowa**  
**Linn-Mar HS**

- Ranks second in career 3-pointers made (244), fifth in career scoring (1,754) and seventh in career assists (379).
- Senior CLASS Award nominee.
- Scored 21 points, including five 3-pointers, in loss at Minnesota.
- Became sixth player in Iowa history to score 1,700 career points in win at Michigan.
- Big Ten Player of the Week (Jan. 30).
- Scored 29 points, including 14-straight in the final 5:25, to give Iowa the win over Wisconsin.
- Career-high 33 points with a school record seven 3-pointers in win at San Diego.
- 21 points in win over Texas.
- 19 points (17-of-17 FTs) and seven rebounds in win over West Virginia.
- 12 points, five rebounds and four assists vs. North Carolina, returning to starting lineup for first time since ACL injury as a junior.
- 26 points, including game-tying 3-pointer with 1.6 seconds left in regulation, along with five rebounds and six assists, in win over Middle Tennessee. Also tied school record for FT percentage (11-for-11).
- 11 points and three assists in season-opening win over NIU, recording first action since tearing ACL in left knee in final 30 seconds of overtime at Wisconsin (Feb. 2, 2012).

### 2012-13 Game-by-Game

#24 Printy, Jaime

Opponent	Date	gs	min	Total		3-Pointers		Free throws		Rebounds			pf	a	t/o	blk	stl	pts	avg		
				fg	fga	pct	3fg	3fga	pct	ft	fta	pct								off	def
NORTHERN ILLINOIS	11/9/12		16	3-4	.750	1-1	1.000	4-4	1.000	0	1	1	1.0	1	3	1	0	1	11	11.0	
ILLINOIS STATE	11/11/12		15	0-4	.000	0-3	.000	1-2	.500	0	2	2	1.5	0	1	2	0	0	1	6.0	
MIDDLE TENNESSEE	11/14/12		38	6-13	.462	3-7	.429	11-11	1.000	1	4	5	2.7	1	6	5	0	1	26	12.7	
NORTH CAROLINA	11/18/12	*	39	3-15	.200	3-12	.250	3-4	.750	0	5	5	3.3	4	4	8	0	1	12	12.5	
ROBERT MORRIS	11/20/12	*	31	2-4	.500	2-4	.500	2-2	1.000	1	5	6	3.8	0	5	2	0	1	8	11.6	
at FIU	11/23/12	*	34	5-12	.417	4-9	.444	1-1	1.000	2	3	5	4.0	2	4	3	0	0	15	12.2	
vs WVU	11/25/12	*	33	1-3	.333	0-2	.000	17-17	1.000	0	7	7	4.4	1	3	4	1	0	19	13.1	
at Florida State	11/28/12	*	33	5-7	.714	2-4	.500	1-2	.500	0	1	1	4.0	2	1	6	0	0	13	13.1	
UNI	12/1/12	*	30	2-7	.286	1-4	.250	4-4	1.000	0	3	3	3.9	1	5	3	0	0	9	12.7	
IOWA STATE	12/6/12	*	34	2-7	.286	0-3	.000	6-6	1.000	1	5	6	4.1	1	2	3	0	2	10	12.4	
at Drake	12/16/12	*	31	3-9	.333	0-3	.000	3-3	1.000	2	2	4	4.1	1	7	1	0	0	9	12.1	
MISSOURI STATE	12/19/12	*	21	4-11	.364	3-8	.375	2-3	.667	1	1	2	3.9	0	6	2	0	0	13	12.2	
vs Texas	12/28/12	*	30	7-14	.500	2-7	.286	5-7	.714	0	3	3	3.8	1	1	1	0	0	21	12.8	
at San Diego	12/30/12	*	30	10-20	.500	7-12	.583	6-6	1.000	0	2	2	3.7	1	4	3	0	2	33	14.3	
OHIO STATE	1/3/13	*	39	5-8	.625	0-1	.000	4-4	1.000	0	3	3	3.7	1	3	4	0	0	14	14.3	
MICHIGAN	1/6/13	*	32	2-14	.143	1-9	.111	1-1	1.000	2	3	5	3.8	0	3	2	0	1	6	13.8	
at Wisconsin	01/10/13	*	35	3-10	.300	2-8	.250	2-2	1.000	0	6	6	3.9	0	1	1	0	1	10	13.5	
at Michigan State	01/17/13	*	34	3-16	.188	1-8	.125	4-4	1.000	1	3	4	3.9	0	3	0	0	1	11	13.4	
PURDUE	01/20/13	*	38	4-11	.364	3-5	.600	4-4	1.000	2	7	9	4.2	1	1	0	0	0	15	13.5	
WISCONSIN	1/24/13	*	35	8-10	.800	3-3	1.000	10-11	.909	1	7	8	4.4	1	4	1	0	0	29	14.3	
at Michigan	01/27/13	*	33	4-12	.333	2-9	.222	4-4	1.000	2	3	5	4.4	2	2	4	1	1	14	14.2	
at Illinois	01/31/13	*	34	5-14	.357	2-8	.250	1-2	.500	0	4	4	4.4	3	3	7	0	1	13	14.2	
NORTHWESTERN	2/03/13	*	33	2-6	.333	0-2	.000	8-8	1.000	0	4	4	4.3	0	3	2	0	3	12	14.1	
at Minnesota	02/07/13	*	34	6-22	.273	5-9	.556	4-5	.800	1	4	5	4.4	3	0	2	0	3	21	14.4	
Totals			21	762	95-253	.375	47-141	.333	108-117	.923	17	88	105	4.4	27	75	67	2	19	345	14.4

Games played: 24  
Minutes/game: 31.8  
Points/game: 14.4  
FG Pct: 37.5  
3FG Pct: 33.3  
FT Pct: 92.3

Rebounds/game: 4.4  
Assists/game: 3.1  
Turnovers/game: 2.8  
Assist/turnover ratio: 1.1  
Steals/game: 0.8  
Blocks/game: 0.1

#### Personal Bests

- Points:** 33 at San Diego (12/30/12)  
**Rebounds:** 9, twice, last vs. Purdue (1/20/13)  
**FGM:** 11 at Indiana (2/11/10)  
**FGA:** 25 vs. Michigan (1/2/11)  
**3-pt FG:** 7 at San Diego (12/30/12)  
**3-pt FGA:** 15 vs. Michigan (1/2/11)  
**FTM:** 17 vs. West Virginia (11/25/12)  
**FTA:** 17 vs. West Virginia (11/25/12)  
**Assists:** 9 vs. Iowa State (12/9/10)  
**Steals:** 5 at Bradley (12/17/11)  
**Blocks:** 1, 14x, last at Michigan (1/27/13)  
**Minutes:** 40 vs. Illinois (1/5/12)

#### CAREER STATISTICS

YEAR	G/GS	FG-A	PCT	3-PT	PCT	FT-A	PCT	O-D-REB	AVG	PF-FO	AS	TO	BK	ST	PTS	AVG
Fresh.	34/34	168-406	.414	82-212	.387	83-94	.883	35-101-136	4.0	77-1	99	82	4	30	501	14.7
Soph.	31/31	168-391	.430	70-183	.383	114-132	.864	21-109-130	4.2	60-0	109	91	7	34	520	16.8
Junior	23/23	116-329	.353	45-155	.290	111-125	.888	32-70-102	4.4	45-1	96	70	3	46	388	16.9
Senior	24/21	95-253	.375	47-141	.333	108-117	.923	17-88-105	4.4	27-0	75	67	2	19	345	14.4
<b>TOTALS</b>	<b>112/109</b>	<b>547-1379</b>	<b>.397</b>	<b>244-691</b>	<b>.353</b>	<b>416-468</b>	<b>.889</b>	<b>105-368-473</b>	<b>4.2</b>	<b>209-2</b>	<b>379</b>	<b>310</b>	<b>16</b>	<b>129</b>	<b>1754</b>	<b>15.7</b>





# University of Iowa Women's Basketball

## Updated Iowa Player Bio

### Kali Peschel



# 25

**Guard, 6-1, Freshman**  
**Sauk Centre, Minn.**  
**Sauk Centre HS**

- Five points in win at Drake.
- Recorded five rebounds in collegiate debut vs. NIU.
- Miss Minnesota Basketball finalist.
- Two-time all-state selection.
- Started for her high school team as an eighth grader.
- Only played 11 games as a senior after suffering ACL injury between her junior and senior seasons.

#### Personal Bests

**Points:** 5 at Drake (12/16/12)  
**Rebounds:** 5, twice, last vs. Missouri State (12/19/12)  
**FGM:** 2 at Drake (12/16/12)  
**FGA:** 6 vs. Northern Illinois (11/9/12)  
**3-pt FG:** 1 at Drake (12/16/12)  
**3-pt FGA:** 2, 3x, last vs. Missouri State (12/19/12)  
**FTM:** 2, twice, last at Minnesota (2/7/13)  
**FTA:** 4 vs. Missouri State (12/19/12)  
**Assists:** 2, twice, last vs. Texas (12/28/12)  
**Steals:** 1, 5x, last vs. Northwestern (2/3/13)  
**Blocks:** 1, 4x, last vs. Northwestern (2/3/13)  
**Minutes:** 20 vs. Northwestern (2/3/13)

### 2012-13 Game-by-Game

#25 Peschel, Kali

Opponent	Date	gs	min	Total		3-Pointers		Free throws		Rebounds			pf	a	t/o	blk	stl	pts	avg	
				fg-fga	pct	3fg-fga	pct	ft-fa	pct	off	def	tot								avg
NORTHERN ILLINOIS	11/9/12	18	0-6	.000	0-2	.000	1-2	.500	3	2	5	5.0	3	1	0	0	0	1	1.0	
ILLINOIS STATE	11/11/12	16	0-2	.000	0-1	.000	0-0	.000	0	3	3	4.0	1	0	2	0	0	0	0.5	
MIDDLE TENNESSEE	11/14/12	2	0-0	.000	0-0	.000	0-0	.000	0	1	1	3.0	0	0	0	0	0	0	0.3	
ROBERT MORRIS	11/20/12	5	0-0	.000	0-0	.000	0-0	.000	0	0	0	2.3	2	0	0	0	1	0	0.3	
at FIU	11/23/12	2	0-1	.000	0-0	.000	0-0	.000	2	0	2	2.2	0	0	0	0	0	0	0.2	
at Florida State	11/28/12	3	0-1	.000	0-0	.000	0-0	.000	2	0	2	2.2	0	0	0	0	0	0	0.2	
UNI	12/1/12	18	1-4	.250	0-2	.000	1-2	.500	1	1	2	2.1	3	0	2	1	1	3	0.6	
IOWA STATE	12/6/12	6	0-0	.000	0-0	.000	0-0	.000	0	0	0	1.9	2	0	0	0	0	0	0.5	
at Drake	12/16/12	16	2-3	.667	1-1	1.000	0-0	.000	0	0	0	1.7	4	2	1	1	1	5	1.0	
MISSOURI STATE	12/19/12	19	0-4	.000	0-2	.000	2-4	.500	3	2	5	2.0	4	0	0	0	1	2	1.1	
vs Texas	12/28/12	9	0-0	.000	0-0	.000	0-0	.000	0	0	0	1.8	4	2	0	0	0	0	1.0	
at San Diego	12/30/12	12	0-0	.000	0-0	.000	0-0	.000	1	0	1	1.8	0	0	0	0	0	0	0.9	
OHIO STATE	1/3/13	1	0-1	.000	0-0	.000	0-0	.000	0	0	0	1.6	2	0	1	0	0	0	0.8	
MICHIGAN	1/6/13	3	0-0	.000	0-0	.000	1-2	.500	1	0	1	1.6	0	0	0	0	0	1	0.9	
at Wisconsin	01/10/13	5	0-0	.000	0-0	.000	0-0	.000	0	0	0	1.5	0	0	0	0	0	0	0.8	
at Michigan State	01/17/13	4	0-0	.000	0-0	.000	0-0	.000	0	0	0	1.4	0	0	0	0	0	0	0.8	
PURDUE	01/20/13	7	0-0	.000	0-0	.000	0-0	.000	1	0	1	1.4	1	1	0	1	0	0	0.7	
WISCONSIN	1/24/13	5	0-1	.000	0-1	.000	0-0	.000	0	1	1	1.3	1	0	1	0	0	0	0.7	
at Michigan	01/27/13	9	0-1	.000	0-1	.000	0-0	.000	0	0	0	1.3	0	0	0	0	0	0	0.6	
at Illinois	01/31/13	3	0-0	.000	0-0	.000	0-0	.000	0	0	0	1.2	0	0	0	0	0	0	0.6	
NORTHWESTERN	2/03/13	20	1-1	1.000	0-0	.000	0-0	.000	3	1	4	1.3	0	1	1	1	1	2	0.7	
at Minnesota	02/07/13	8	0-0	.000	0-0	.000	2-2	1.000	0	0	0	1.3	1	1	1	0	0	2	0.7	
Totals		0	191	4-25	.160	1-10	.100	7-12	.583	17	11	28	1.3	28	8	9	4	5	16	0.7

Games played: 22  
 Minutes/game: 8.7  
 Points/game: 0.7  
 FG Pct: 16.0  
 3FG Pct: 10.0  
 FT Pct: 58.3

Rebounds/game: 1.3  
 Assists/game: 0.4  
 Turnovers/game: 0.4  
 Assist/turnover ratio: 0.9  
 Steals/game: 0.2  
 Blocks/game: 0.2

#### CAREER STATISTICS

YEAR	G/GS	FG-A	PCT	3-PT	PCT	FT-A	PCT	O-D-REB	AVG	PF-FO	AS	TO	BK	ST	PTS	AVG
Fresh.	22/0	4-25	.160	1-10	.100	7-12	.583	17-11-28	1.3	28-0	8	9	4	5	16	0.7







# University of Iowa Women's Basketball

Updated Iowa Player Bio

## Kathryn Reynolds



# 33

**Guard, 5-7, Sophomore**  
**Cincinnati, Ohio**  
**Mount Notre Dame HS**

- Will miss entire 2012-13 season after suffering an ACL injury in April during offseason workouts.
- Five assists in win over Western Illinois as a freshman.
- Played 12 minutes in first career game, a win over Harvard.

### Personal Bests

**Points:** 4 vs. Drake (12/20/11)  
**Rebounds:** 2 vs. Texas A&M (11/26/11)  
**FGM:** 2 vs. Drake (12/20/11)  
**FGA:** 3, 2x, last vs. Drake (12/20/11)  
**3-pt FG:** ---  
**3-pt FGA:** 1, 7x, last vs. Michigan State (2/12/12)  
**FTM:** 2 vs. Western Illinois (12/9/11)  
**FTA:** 2, 3x, last vs. W. Illinois (12/9/11)  
**Assists:** 5 vs. W. Illinois (12/9/11)  
**Steals:** ---  
**Blocks:** ---  
**Minutes:** 20 vs. W. Illinois (12/9/11)

## 2012-13 Game-by-Game

### CAREER STATISTICS

YEAR	G/GS	FG-A	PCT	3-PT	PCT	FT-A	PCT	O-D-REB	AVG	PF-FO	AS	TO	BK	ST	PTS	AVG
Fresh.	21/0	5-16	.313	0-7	.000	3-4	.750	1-8-9	0.4	6-0	15	11	0	0	13	0.7
Soph.																
<b>TOTALS</b>	<b>21/0</b>	<b>5-16</b>	<b>.313</b>	<b>0-7</b>	<b>.000</b>	<b>3-4</b>	<b>.750</b>	<b>1-8-9</b>	<b>0.4</b>	<b>6-0</b>	<b>15</b>	<b>11</b>	<b>0</b>	<b>0</b>	<b>13</b>	<b>0.7</b>





# University of Iowa Women's Basketball

## Updated Iowa Player Bio

### Nicole Smith



# 45

**Center, 6-4, Freshman**  
**Rockton, Ill.**  
**Hononegah HS**

- Tallied first career points against Missouri State, finishing with four points.
- Recorded one rebound in collegiate debut vs. NIU.
- Three-time all-state selection.
- Three-time all-conference pick.
- Recorded triple-double in high school with 20 points (10-for-10) 10 rebounds and 10 blocks.
- Played in 26 games as a senior before suffering ACL injury

#### Personal Bests

**Points:** 4 vs. Missouri State (12/19/12)  
**Rebounds:** 1 vs. NIU (11/9/12)  
**FGM:** 1, twice, last vs. Texas (12/28/12)  
**FGA:** 2 vs. NIU (11/9/12)  
**3-pt FG:** ---  
**3-pt FGA:** ---  
**FTM:** 2 vs. Missouri State (12/19/12)  
**FTA:** 2 vs. Missouri State (12/19/12)  
**Assists:** ---  
**Steals:** ---  
**Blocks:** ---  
**Minutes:** 4 vs. Missouri State (12/19/12)

### 2012-13 Game-by-Game

#### #45 Smith, Nicole

Opponent	Date	gs	min	Total		3-Pointers		Free throws		Rebounds			pf	a	t/o	blk	stl	pts	avg
				fg-fga	pct	3fg-fga	pct	ft-fa	pct	off	def	tot							
NORTHERN ILLINOIS	11/9/12	3	0-2	.000	0-0	.000	0-0	.000	0	1	1	1.0	0	0	0	0	0	0	0.0
ILLINOIS STATE	11/11/12	2	0-0	.000	0-0	.000	0-0	.000	0	0	0	0.5	0	0	0	0	0	0	0.0
UNI	12/1/12	1	0-0	.000	0-0	.000	0-0	.000	0	0	0	0.3	0	0	0	0	0	0	0.0
MISSOURI STATE	12/19/12	4	1-1	1.000	0-0	.000	2-2	1.000	0	0	0	0.3	1	0	0	0	0	4	1.0
vs Texas	12/28/12	1	1-1	1.000	0-0	.000	0-0	.000	0	0	0	0.2	0	0	1	0	0	2	1.2
at Wisconsin	01/10/13	1	0-0	.000	0-0	.000	0-0	.000	0	0	0	0.2	1	0	0	0	0	0	1.0
<b>Totals</b>		<b>0</b>	<b>12</b>	<b>2-4</b>	<b>.500</b>	<b>0-0</b>	<b>.000</b>	<b>2-2</b>	<b>1.000</b>	<b>0</b>	<b>1</b>	<b>1</b>	<b>0.2</b>	<b>2</b>	<b>0</b>	<b>1</b>	<b>0</b>	<b>6</b>	<b>1.0</b>

Games played: 6  
 Minutes/game: 2.0  
 Points/game: 1.0  
 FG Pct: 50.0  
 FT Pct: 100.0

Rebounds/game: 0.2  
 Turnovers/game: 0.2

#### CAREER STATISTICS

YEAR	G/GS	FG-A	PCT	3-PT	PCT	FT-A	PCT	O-D-REB	AVG	PF-FO	AS	TO	BK	ST	PTS	AVG
Fresh.	6/0	2-4	.500	0-0	.000	2-2	1.000	0-1-1	0.2	2-0	0	1	0	0	6	1.0





# University of Iowa Women's Basketball

## Updated Iowa Player Bio

### Bethany Doolittle



# 51

**Center, 6-4, Sophomore**  
**Oakdale, Minn**  
**Hill-Murray HS**

- Career-high 19 points, including eight-straight points from 5:20-1:45 mark in the second half, to give Iowa the win at Michigan.
- 10 points and seven rebounds in win over Wisconsin.
- 10 points at Michigan State.
- Eight points, five rebounds and six blocks in win over Ohio State.
- 10 rebounds in win at San Diego.
- 10 points in win over Texas.
- First career double-double with 12 points and 12 rebounds in win over Missouri State. 12 rebounds were a career-high. Had double-double at halftime (10 pts, 10 reb).
- 10 points and nine rebounds at Florida State.
- Career-high 17 points, along with six rebounds, in win over West Virginia.
- Eight points, tied a career-high with nine rebounds and blocked five shots in win over Middle Tennessee.
- Career-high six blocks in season-opening win vs. NIU.

### 2012-13 Game-by-Game

#51 Doolittle, Bethany

Opponent	Date	gs	min	Total		3-Pointers		Free throws		Rebounds				pf	a	to	blk	stl	pts	avg	
				fg-fga	pct	3fg-fga	pct	ft-fa	pct	off	def	tot	avg								
NORTHERN ILLINOIS	11/9/12	*	21	1-8	.125	0-0	.000	0-0	.000	0	0	0	0.0	2	0	1	6	0	2	2.0	
ILLINOIS STATE	11/11/12	*	25	4-10	.400	0-1	.000	0-0	.000	0	5	5	2.5	1	0	2	2	1	8	5.0	
MIDDLE TENNESSEE	11/14/12	*	30	4-7	.571	0-0	.000	0-0	.000	4	5	9	4.7	3	0	4	5	0	8	6.0	
NORTH CAROLINA	11/18/12	*	32	1-7	.143	0-0	.000	0-0	.000	2	5	7	5.3	3	1	2	2	2	5.0		
ROBERT MORRIS	11/20/12	*	20	2-9	.222	0-0	.000	0-0	.000	1	4	5	5.2	2	1	1	1	0	4	4.8	
at FIU	11/23/12	*	22	3-5	.600	0-0	.000	0-0	.000	0	3	3	4.8	3	0	2	0	0	6	5.0	
vs WVU	11/25/12	*	31	7-12	.583	0-0	.000	3-3	1.000	1	5	6	5.0	4	0	2	1	0	17	6.7	
at Florida State	11/28/12	*	34	5-9	.556	0-0	.000	0-0	.000	4	5	9	5.5	3	1	2	1	1	10	7.1	
UNI	12/1/12	*	26	4-11	.364	0-0	.000	0-0	.000	1	6	7	5.7	2	0	1	0	1	8	7.2	
IOWA STATE	12/6/12	*	36	1-8	.125	0-1	.000	0-0	.000	0	4	4	5.5	3	0	1	0	1	2	6.7	
at Drake	12/16/12	*	22	4-6	.667	0-0	.000	0-0	.000	1	3	4	5.4	5	0	0	2	1	8	6.8	
MISSOURI STATE	12/19/12	*	25	6-8	.750	0-0	.000	0-0	.000	3	9	12	5.9	3	1	0	2	1	12	7.3	
vs Texas	12/28/12	*	33	5-8	.625	0-0	.000	0-0	.000	1	4	5	5.8	3	1	1	0	2	10	7.5	
at San Diego	12/30/12	*	30	3-6	.500	0-0	.000	0-0	.000	1	9	10	6.1	3	0	2	4	1	6	7.4	
OHIO STATE	1/3/13	*	42	4-6	.667	0-0	.000	0-0	.000	2	3	5	6.1	1	2	2	6	3	8	7.4	
MICHIGAN	1/6/13	*	25	0-5	.000	0-0	.000	0-0	.000	0	1	1	5.8	4	1	1	0	0	0	6.9	
at Wisconsin	01/10/13	*	33	4-9	.444	0-0	.000	0-0	.000	1	3	4	5.6	2	0	2	0	0	8	7.0	
at Michigan State	01/17/13	*	36	5-8	.625	0-0	.000	0-0	.000	1	2	3	5.5	2	1	3	2	2	10	7.2	
PURDUE	01/20/13	*	32	3-12	.250	0-0	.000	2-4	.500	3	6	9	5.7	1	0	3	3	3	8	7.2	
WISCONSIN	1/24/13	*	32	4-7	.571	0-0	.000	2-2	1.000	2	5	7	5.8	3	0	2	3	0	10	7.4	
at Michigan	01/27/13	*	37	9-15	.600	0-0	.000	1-1	1.000	3	1	4	5.7	4	0	0	2	1	19	7.9	
at Illinois	01/31/13	*	37	2-7	.286	0-0	.000	0-0	.000	0	8	8	5.8	1	0	2	2	0	4	7.7	
NORTHWESTERN	2/03/13	*	31	2-12	.167	0-0	.000	0-0	.000	2	7	9	5.9	2	1	1	4	0	4	7.6	
at Minnesota	02/07/13	*	28	3-7	.429	0-0	.000	2-2	1.000	0	3	3	5.8	2	0	2	1	3	8	7.6	
Totals			24	720	86-202	.426	0-2	.000	10-12	.833	33	106	139	5.8	62	10	39	49	23	182	7.6

Games played: 24  
Minutes/game: 30.0  
Points/game: 7.6  
FG Pct: 42.6  
3FG Pct: 0.0  
FT Pct: 83.3

Rebounds/game: 5.8  
Assists/game: 0.4  
Turnovers/game: 1.6  
Assist/turnover ratio: 0.3  
Steals/game: 1.0  
Blocks/game: 2.0

#### Personal Bests

- Points:** 19 at Michigan (1/27/13)
- Rebounds:** 12 vs. Missouri State (12/19/12)
- FGM:** 9 at Michigan (1/27/13)
- FGA:** 15 at Michigan (1/27/13)
- 3-pt FG:** ---
- 3-pt FGA:** 1, 3x, last vs. Iowa State (12/6/12)
- FTM:** 4 vs. Michigan State (2/12/12)
- FTA:** 5 vs. Michigan State (2/12/12)
- Assists:** 2, twice, last vs. Ohio State (1/3/13)
- Steals:** 3, 3x, last at Minnesota (2/7/13)
- Blocks:** 6, twice, last vs. Ohio State (1/3/13)
- Minutes:** 42 vs. Ohio State (1/3/13)

#### CAREER STATISTICS

YEAR	G/GS	FG-A	PCT	3-PT	PCT	FT-A	PCT	O-D-REB	AVG	PF-FO	AS	TO	BK	ST	PTS	AVG
Fresh.	31/0	46-99	.465	0-1	.000	24-30	.800	13-44-57	1.8	51-0	6	19	19	9	116	3.7
Soph.	24/24	86-202	.426	0-2	.000	10-12	.833	33-106-139	5.8	62-1	10	39	49	23	182	7.6
<b>TOTALS</b>	<b>55/24</b>	<b>132-301</b>	<b>.439</b>	<b>0-3</b>	<b>.000</b>	<b>34-42</b>	<b>.810</b>	<b>46-150-196</b>	<b>3.6</b>	<b>113-1</b>	<b>16</b>	<b>58</b>	<b>68</b>	<b>32</b>	<b>298</b>	<b>5.4</b>





# University of Iowa Women's Basketball

## Updated Iowa Player Bio

### Kayla Timmerman



# 54

**Forward, 6-3, Freshman**  
**Wayzata, Minn.**  
**Wayzata HS**

- Six points and eight rebounds (five of- fensive rebounds) in 13 minutes in win over Missouri State.
- Recorded one point and one rebound in collegiate debut vs. NIU.
- Miss Minnesota Basketball candidate.
- Athena Award nominee.
- Two-time all-state selection.
- Standout in track and field, winning conference championship in shot put and discus and participated in state meet in both events.

#### Personal Bests

**Points:** 6, twice, last at Illinois (1/31/13)  
**Rebounds:** 8 vs. Missouri State (12/19/12)  
**FGM:** 3 at Illinois (1/31/13)  
**FGA:** 6 vs. Wisconsin (1/24/13)  
**3-pt FG:** 1 vs. Ill. State (11/11/12)  
**3-pt FGA:** 1 vs. Ill. State (11/11/12)  
**FTM:** 2, twice, last vs. N'western (2/3/13)  
**FTA:** 4 vs. Missouri State (12/19/12)  
**Assists:** 1, 4x, last at Minnesota (2/7/13)  
**Steals:** 1, twice, last vs. N'western (2/3/13)  
**Blocks:** 2 vs. NIU (11/9/12)  
**Minutes:** 16 vs. Purdue (1/20/13)

### 2012-13 Game-by-Game

#54 Timmerman, Kayla

Opponent	Date	gs	min	Total		3-Pointers		Free throws		Rebounds				pf	a	t/o	blk	stl	pts	avg
				fg-fga	pct	3fg-fga	pct	ft-fa	pct	off	def	tot	avg							
NORTHERN ILLINOIS	11/9/12	10	0-2	.000	0-0	.000	1-2	.500	0	1	1	1.0	0	0	0	2	0	1	1.0	
ILLINOIS STATE	11/11/12	5	2-2	1.000	1-1	1.000	0-2	.000	0	0	0	0.5	0	1	0	1	0	5	3.0	
MIDDLE TENNESSEE	11/14/12	3	0-0	.000	0-0	.000	0-0	.000	0	0	0	0.3	0	0	0	0	0	0	2.0	
NORTH CAROLINA	11/18/12	1	0-0	.000	0-0	.000	0-0	.000	0	0	0	0.3	0	0	0	0	0	0	1.5	
ROBERT MORRIS	11/20/12	7	1-4	.250	0-0	.000	0-0	.000	1	2	3	0.8	1	0	2	0	0	2	1.6	
at FIU	11/23/12	2	0-0	.000	0-0	.000	0-0	.000	0	0	0	0.7	1	0	1	0	0	0	1.3	
vs WVU	11/25/12	4	0-0	.000	0-0	.000	0-0	.000	0	1	1	0.7	1	0	1	0	0	0	1.1	
UNI	12/1/12	1	1-1	1.000	0-0	.000	0-0	.000	0	1	1	0.8	1	0	0	0	0	2	1.3	
MISSOURI STATE	12/19/12	13	2-4	.500	0-1	.000	2-4	.500	5	3	8	1.6	1	0	0	1	0	6	1.8	
vs Texas	12/28/12	2	1-1	1.000	0-0	.000	0-0	.000	0	0	0	1.4	1	0	0	0	0	2	1.8	
MICHIGAN	1/6/13	1	0-0	.000	0-0	.000	0-0	.000	0	0	0	1.3	0	0	0	0	0	0	1.6	
at Wisconsin	01/10/13	2	0-0	.000	0-0	.000	0-0	.000	0	0	0	1.2	1	0	0	0	0	0	1.5	
at Michigan State	01/17/13	0	0-0	.000	0-0	.000	0-0	.000	0	0	0	1.1	1	0	1	0	0	0	1.4	
PURDUE	01/20/13	16	2-3	.667	0-0	.000	0-0	.000	0	2	2	1.1	0	0	0	1	1	4	1.6	
WISCONSIN	1/24/13	15	2-6	.333	0-0	.000	0-0	.000	0	3	3	1.3	2	1	1	1	0	4	1.7	
at Michigan	01/27/13	2	0-0	.000	0-0	.000	0-0	.000	0	0	0	1.2	0	0	0	0	0	0	1.6	
at Illinois	01/31/13	11	3-3	1.000	0-0	.000	0-0	.000	1	3	4	1.4	1	0	2	0	0	6	1.9	
NORTHWESTERN	2/03/13	11	0-4	.000	0-0	.000	2-2	1.000	0	1	1	1.3	0	1	0	1	1	2	1.9	
at Minnesota	02/07/13	2	0-1	.000	0-0	.000	0-0	.000	0	0	0	1.3	1	1	1	0	0	0	1.8	
Totals		0	108	14-31	.452	1-2	.500	5-10	.500	7	17	24	1.3	12	4	9	7	2	34	1.8

Games played: 19  
Minutes/game: 5.7  
Points/game: 1.8  
FG Pct: 45.2  
3FG Pct: 50.0  
FT Pct: 50.0

Rebounds/game: 1.3  
Assists/game: 0.2  
Turnovers/game: 0.5  
Assist/turnover ratio: 0.4  
Steals/game: 0.1  
Blocks/game: 0.4

#### CAREER STATISTICS

YEAR	G/GS	FG-A	PCT	3-PT	PCT	FT-A	PCT	O-D-REB	AVG	PF-FO	AS	TO	BK	ST	PTS	AVG
Fresh.	19/0	14-31	.452	1-2	.500	5-10	.500	7-17-24	1.3	12-0	4	9	7	2	34	1.8





# University of Iowa Women's Basketball

## Game-by-Game Results

Overall: 16-8

Big Ten: 5-5

Home: 10-3

Away: 4-5

Neutral: 2-0

Date	Opponent	Result	Attend.	Top Scorer	Top Rebounder
Nov. 9	Northern Illinois <sup>^</sup>	W, 63-40	4,739	Johnson, Printy (11)	Till (6)
Nov. 11	Illinois State <sup>^</sup>	W, 74-64	2,930	Johnson (24)	Taylor (11)
Nov. 14	Middle Tennessee <sup>^</sup>	W, 69-63 (OT)	1,691	Printy (26)	Doolittle (9)
Nov. 18	North Carolina <sup>^</sup>	L, 64-77	3,073	Johnson (20)	Johnson (11)
Nov. 20	Robert Morris	W, 58-44	3,032	Johnson (19)	Johnson (11)
Nov. 23	at Florida Int.#	L, 65-66	430	Printy (15)	Johnson, Till (6)
Nov. 25	vs. #12 West Virginia#	W, 79-70	387	Johnson, Printy (19)	Logic, Printy, Taylor (7)
Nov. 28	at Florida State <sup>~</sup>	L, 69-83	2,389	Johnson (20)	Doolittle (9)
Dec. 1	Northern Iowa	W, 68-46	6,368	Johnson (19)	Johnson (12)
Dec. 6	#22 Iowa State*	W, 50-42	4,483	Dixon, Taylor (11)	Logic, Taylor (9)
Dec. 16	at Drake	W, 82-65	2,716	Johnson (26)	Johnson (8)
Dec. 19	Missouri State	W, 97-43	4,588	Thomas (15)	Doolittle (12)
Dec. 28	vs. #20 Texas%	W, 86-63	776	Dixon (23)	Logic (15)
Dec. 20	at San Diego%	W, 83-73	543	Printy (33)	Doolittle (10)
Jan. 3	#24 Ohio State	W, 77-71 (OT)	3,850	Taylor (19)	Johnson (12)
Jan. 6	Michigan	L, 64-68	4,644	Dixon (17)	Logic (9)
Jan. 10	at Wisconsin	W, 65-56	3,495	Johnson (23)	Johnson (11)
Jan. 17	at Michigan State	L, 54-65	5,343	Johnson (13)	Johnson (12)
Jan. 20	#11 Purdue	W, 62-46	8,576	Dixon, Printy (15)	Taylor (10)
Jan. 24	Wisconsin	W, 71-60	3,894	Printy (29)	Logic (9)
Jan. 27	at #23 Michigan	W, 63-57	2,607	Doolittle (19)	Johnson (7)
Jan. 31	at Illinois	L, 62-74	1,808	Logic, Printy (13)	Logic (10)
Feb. 3	Northwestern	L, 65-67	4,697	Dixon (21)	Logic (12)
Feb. 7	at Minnesota	L, 60-72	3,528	Printy (21)	Johnson (10)
Feb. 11	Nebraska				
Feb. 14	Penn State				
Feb. 17	at Purdue				
Feb. 24	at Nebraska				
Feb. 28	Indiana				
March 3	at Northwestern				

<sup>^</sup> - Preseason WNIT

# - FIU Thanksgiving Classic, Miami

<sup>~</sup> - ACC/Big Ten Challenge

\* - Iowa Corn Cy-Hawk Series

% - San Diego Surf 'N Slam Classic, San Diego

Attendance Summary	Games	Totals	Average
Home	13	56,556	4,351
Away	9	22,142	2,461
Neutral	2	1,163	582
<b>Totals</b>	<b>24</b>	<b>80,578</b>	<b>3,358</b>





# University of Iowa Women's Basketball

## Game-by-Game Statistics

Team	Score	FG-A	PCT	3-PT. FG	PCT	FT-A	PCT	REB	PF	AS	TO	BLK	ST
Northen Illinois	40	14-48	29.2%	1-9	11.1%	11-19	57.9%	44	19	3	22	2	6
at Iowa	63	23-57	40.4%	6-10	60.0%	11-17	64.7%	34	18	10	10	10	6
Illinois State	64	25-76	32.9%	2-14	14.3%	12-21	57.1%	44	27	6	17	4	15
at Iowa	74	19-54	35.2%	4-12	33.3%	32-41	78.0%	50	18	18	23	10	9
Middle Tennessee	63	22-70	31.4%	7-30	23.3%	12-18	66.7%	46	22	9	20	3	12
at Iowa	69	24-55	43.6%	6-20	30.0%	15-21	71.4%	40	17	22	20	10	6
North Carolina	77	27-66	40.9%	8-22	36.4%	15-27	55.6%	45	18	14	20	4	15
at Iowa	64	25-62	40.3%	5-25	20.0%	9-14	64.3%	43	20	14	25	4	9
Robert Morris	44	15-53	28.3%	6-21	28.6%	8-14	57.1%	34	11	12	16	2	4
at Iowa	58	22-57	38.6%	7-19	36.8%	7-9	77.8%	44	13	18	18	1	6
at Florida International	66	24-65	36.9%	4-15	26.7%	14-17	82.4%	37	16	8	10	3	6
Iowa	65	24-57	42.1%	7-20	35.0%	10-13	76.9%	39	16	16	16	5	1
vs. West Virginia	70	21-72	29.2%	6-28	21.4%	22-29	75.9%	41	35	12	15	1	10
Iowa	79	18-39	46.2%	1-5	20.0%	42-50	84.0%	39	23	12	23	5	6
at Florida State	83	31-63	49.2%	5-10	50.0%	16-22	72.7%	29	10	18	13	4	12
Iowa	69	30-61	49.2%	2-11	18.2%	7-9	77.8%	35	16	13	24	6	6
Northern Iowa	46	12-53	22.6%	8-29	27.6%	14-16	87.5%	31	17	9	11	0	2
at Iowa	68	26-54	48.1%	3-11	27.3%	13-18	72.2%	43	16	17	9	4	5
Iowa State	42	15-57	26.3%	7-34	20.6%	5-5	100.0%	43	20	7	21	1	6
at Iowa	50	15-51	29.4%	4-16	25.0%	16-25	64.0%	41	13	12	15	3	7
at Drake	65	20-51	39.2%	7-18	38.9%	18-24	75.0%	32	12	15	13	1	5
Iowa	82	31-59	52.5%	7-15	46.7%	13-16	81.3%	31	21	23	8	8	5
Missouri State	43	12-58	20.7%	1-18	5.6%	18-31	58.1%	38	28	3	22	1	8
at Iowa	97	36-75	48.0%	10-34	29.4%	15-24	62.5%	60	25	25	16	5	9
vs. Texas	63	21-54	38.9%	6-14	42.9%	15-28	53.6%	36	15	14	16	4	3
Iowa	86	35-67	52.2%	7-21	33.3%	9-12	75.0%	38	20	23	10	2	11
at San Diego	73	30-64	46.9%	3-6	50.0%	10-17	58.8%	34	13	15	16	1	9
Iowa	83	29-53	54.7%	11-18	61.1%	14-17	82.4%	31	15	19	20	8	7
Ohio State	71	27-68	39.7%	6-21	28.6%	11-14	78.6%	33	19	14	17	4	8
at Iowa	77	30-58	51.7%	2-4	50.0%	15-19	78.9%	39	14	17	19	10	12
Michigan	68	24-48	50.0%	10-22	45.5%	10-14	71.4%	35	17	14	16	2	7
at Iowa	64	23-62	37.1%	9-25	36.0%	9-12	75.0%	32	16	17	11	3	8
at Wisconsin	56	18-54	33.3%	9-26	34.6%	11-14	78.6%	25	14	12	11	2	11
Iowa	65	21-55	38.2%	6-17	35.3%	17-18	94.4%	45	13	17	15	2	5
at Michigan State	65	23-61	37.7%	5-19	26.3%	14-15	93.3%	42	10	14	14	3	4
Iowa	54	21-60	35.0%	2-14	14.3%	10-12	83.3%	36	14	9	14	4	7
Purdue	46	21-66	31.8%	3-18	16.7%	1-6	16.7%	44	13	10	18	3	10
at Iowa	62	23-63	36.5%	9-15	60.0%	7-9	77.8%	45	12	16	14	9	9
Wisconsin	60	24-64	37.5%	5-26	19.2%	7-11	63.6%	33	14	12	12	0	9
at Iowa	71	25-51	49.0%	5-12	41.7%	16-18	88.9%	36	15	13	15	6	4
at Michigan	57	22-53	41.5%	4-12	33.3%	9-15	60.0%	29	17	9	11	3	6
Iowa	63	23-50	46.0%	5-20	25.0%	12-14	85.7%	32	19	12	11	4	6
at Illinois	74	25-60	41.7%	11-24	45.8%	13-19	68.4%	31	10	15	19	2	15
Iowa	62	27-59	45.8%	7-19	36.8%	1-2	50.0%	38	17	12	27	5	7
Northwestern	67	27-59	45.8%	5-15	33.3%	8-12	66.7%	37	16	18	16	3	5
at Iowa	65	20-61	32.8%	7-14	50.0%	18-24	75.0%	40	14	12	13	8	12
at Minnesota	72	26-58	44.8%	5-12	41.7%	15-20	75.0%	48	17	14	16	9	5
Iowa	60	18-63	28.6%	7-20	35.0%	17-20	85.0%	34	19	13	13	4	10





# University of Iowa Women's Basketball

## Season & Career Bests

### Season Bests

Player	Points	3-Pointers	Rebounds	Assists	Blocks	Steals
#3 Claire Till	7 at FIU	1, twice	6, twice	1, three times	1, three times	1, three times
#11 Trisha Nesbitt	12 at Drake	2 at Drake	3 vs. Northern Illinois	2 vs. Robert Morris	---	2 vs. North Carolina
#12 Morgan Johnson	26 at Drake	---	12, three times	5 vs. Northern Iowa	5, twice	3, twice
#13 Kathy Thomas	15 vs. Missouri State	2 vs. Missouri State	3, twice	3, twice	1 at Minnesota	2, twice
#21 Melissa Dixon	23 vs. Texas	6 vs. Northwestern	3, five times	2, six times	1 vs. Illinois State	2 vs. MTSU
#22 Samantha Logic	17 vs. Ohio State	2, twice	15 vs. Texas	14 vs. Texas	2 at Drake	4 vs. North Carolina
#23 Theairra Taylor	19 vs. Ohio State	3 vs. Purdue	11 vs. Illinois State	7 vs. Missouri State	2, three times	3, twice
#24 Jaime Printy	33 at San Diego	7 at San Diego	9 vs. Purdue	7 at Drake	1, twice	3, twice
#25 Kali Peschel	5 at Drake	1 at Drake	5, twice	2, twice	1, four times	1, five times
#33 Kathryn Reynolds	---	---	---	---	---	---
#45 Nicole Smith	4 vs. Missouri State	---	1 vs. Northern Illinois	---	---	---
#51 Bethany Doolittle	19 at Michigan	---	12 vs. Missouri State	2 vs. Ohio State	6, twice	3, three times
#54 Kayla Timmerman	6, twice	1 vs. Illinois State	8 vs. Missouri State	1, three times	2 vs. Northern Illinois	1, twice

### Career Bests

Player	Points	3-Pointers	Rebounds	Assists	Blocks	Steals
#3 Claire Till	<b>7 at FIU</b>	<b>1, twice</b>	<b>6, twice</b>	<b>1, three times</b>	<b>1, three times</b>	<b>1, three times</b>
#11 Trisha Nesbitt	<b>12 at Drake</b>	<b>2, twice</b>	<b>3, 3 times</b>	4, three times	1, Michigan State '11	3, Minnesota
#12 Morgan Johnson	37 at Bradley	---	16 vs. Illinois	<b>5 vs. Northern Iowa</b>	8, Minnesota, '10	<b>3, five times</b>
#13 Kathy Thomas	<b>15 vs. Missouri State</b>	<b>2 vs. Missouri State</b>	<b>3, twice</b>	<b>3, twice</b>	<b>1 at Minnesota</b>	<b>2, twice</b>
#21 Melissa Dixon	<b>23 vs. Texas</b>	<b>6, twice</b>	4, four times	4 vs. Nebraska	<b>1, four times</b>	3 at Indiana
#22 Samantha Logic	20, twice	3 vs. Drake	18 at Michigan	<b>14 vs. Texas</b>	<b>2, twice</b>	<b>4 vs. North Carolina</b>
#23 Theairra Taylor	<b>19 vs. Ohio State</b>	<b>3 vs. Purdue</b>	<b>11 vs. Illinois State</b>	<b>7 vs. Missouri State</b>	4, Michigan	4 at Northwestern
#24 Jaime Printy	<b>33 at San Diego</b>	<b>7 at San Diego</b>	<b>9, twice</b>	9, Iowa State, '10	<b>1, 14 times</b>	5 at Bradley
#25 Kali Peschel	<b>5 at Drake</b>	<b>1 at Drake</b>	<b>5, twice</b>	<b>2, three times</b>	<b>1, four times</b>	<b>1, five times</b>
#33 Kathryn Reynolds	4 vs. Drake	---	2 vs. Texas A&M	5 vs. Western Illinois	---	---
#45 Nicole Smith	<b>4 vs. Missouri State</b>	---	<b>1 vs. Northern Illinois</b>	---	---	---
#51 Bethany Doolittle	<b>19 at Michigan</b>	---	<b>12 vs. Missouri State</b>	2, twice	<b>6, twice</b>	<b>3, three times</b>
#54 Kayla Timmerman	<b>6, twice</b>	<b>1 vs. Illinois State</b>	<b>8 vs. Missouri State</b>	<b>1, three times</b>	<b>2 vs. Northern Illinois</b>	<b>1, twice</b>

**BOLD** - set career best during current season

\* - - tied school single-game and Carver-Hawkeye Arena record





# University of Iowa Women's Basketball

## The Last Time...

### The Last Time a Player . . .

#### **Had 30 or more points**

Iowa -- 33, Jaime Printy, at San Diego, 12/30/12  
Opponent -- 34, Rachel Banham, Minnesota, 2/7/13

#### **Made at least 80% of her FGA (10 att.)**

Iowa -- .800 (8-10), Jaime Printy, vs. Wisconsin, 1/24/13  
Opponent -- .857 (12-14), Kelsey Budd, Bradley, 12/17/11

#### **Made 100% of her FTA (10 att.)**

Iowa -- 1.000 (11-11), Morgan Johnson, at Wisconsin, 1/10/13  
Opponent -- 1.000 (11-11), Courtney Vandersloot, Gonzaga, 3/19/11

#### **Had 15 or more rebounds**

Iowa -- 15, Samantha Logic, vs. Texas, 12/28/12  
Opponent -- 16, Artemis Spanou, Robert Morris, 11/20/12

#### **Had 10 or more assists**

Iowa -- 10, Samantha Logic, vs. Purdue, 1/20/13  
Opponent -- 10, Brittney McCoy, Minnesota, 2/18/10

#### **Had 5 or more blocks**

Iowa -- 6, Bethany Doolittle, vs. Ohio State, 1/3/13  
Opponent -- 5, Ebony Ellis, Northern Illinois, 12/8/07

#### **Had 5 or more steals**

Iowa -- 5, Kelly Krei, at Indiana, 2/5/12  
Opponent -- 5, Adrienne GodBold, Illinois, 1/31/13

### The Last Time A Team . . .

#### **Scored 100 or more points**

Iowa -- 100 vs. Minnesota, 2/12/88  
Opponent -- 101, Iowa State, 12/3/03

#### **Scored 40 or fewer points**

Iowa -- 40, vs. Illinois, 2/10/77  
Opponent -- 40, Northern Illinois, 11/9/12

#### **Won an overtime game**

Iowa -- 77-71, vs. Ohio State, 1/3/13  
Opponent -- 81-78, Kansas State, 12/3/11

#### **Made at least 60% of its FGA (20 att.)**

Iowa -- .632 (36-57), vs. Rider, 11/26/05  
Opponent -- .654 (34-52), Ohio State, 2/12/06

#### **Made at least 50% of its 3-pt. FGA (8 att.)**

Iowa -- .500 (7-14), vs. Northwestern, 2/3/13  
Opponent -- .500 (5-10), Florida State, 11/28/12

#### **Made at least 90% of its FTA (10 att.)**

Iowa -- .944 (17-18), at Wisconsin, 1/10/13  
Opponents -- .933 (14-15), Michigan State, 1/17/13

\* - Carver-Hawkeye Arena record ^ - school record







# University of Iowa Women's Basketball

## Miscellaneous Records and Statistics

### GAME-BY-GAME, POINTS-REBOUNDS-ASSISTS-STEALS

# -- starter	3 Till	11 Nesbitt	12 Johnson	13 Thomas	21 Dixon	22 Logic	23 Taylor	24 Printy	25 Peschel	33 Reynolds	45 Smith	51 Doolittle	54 Timmerman	
Date	Opponent	P-R-A-S	P-R-A-S	P-R-A-S	P-R-A-S	P-R-A-S	P-R-A-S	P-R-A-S	P-R-A-S	P-R-A-S	P-R-A-S	P-R-A-S	P-R-A-S	
Nov. 9	Northern Illinois	3-6-0-1	3-3-1-0	11-5-0-1#	8-2-0-0	8-2-2-1#	10-3-2-2#	5-1-1-0#	11-1-3-1	1-5-1-0	DNP	0-1-0-0	2-0-0-0#	1-1-0-0
Nov. 11	Illinois State	4-3-0-1	3-1-0-1	24-9-2-1#	5-3-3-1	8-0-2-0#	6-5-4-2#	10-11-5-2#	1-2-1-0	0-3-0-0	DNP	0-0-0-0	8-5-0-1#	5-0-1-0
Nov. 14	Middle Tennessee	0-1-0-0	2-0-0-0	20-8-1-0#	0-0-0-0	6-1-1-2#	0-3-12-2#	7-4-2-1#	26-5-6-1	0-1-0-0	DNP	DNP	8-9-0-0#	0-0-0-0
Nov. 18	North Carolina	1-2-1-0	2-0-0-0	20-11-1-2#	0-0-0-0	12-1-0-0	12-6-6-4#	3-4-1-0#	12-5-4-1#	DNP	DNP	DNP	2-7-1-2#	0-0-0-0
Nov. 20	Robert Morris	5-2-0-0	0-2-2-0	19-11-0-0#	3-1-1-0	6-2-0-0	4-6-9-3#	7-4-0-1#	8-6-5-1#	0-0-0-1	DNP	DNP	4-5-1-0#	2-3-0-0
Nov. 23	Florida International	6-7-0-0	2-1-1-0	14-6-2-0#	0-0-0-0	8-2-0-0	7-5-7-1#	6-3-2-0#	15-5-4-0#	0-2-0-0	DNP	DNP	6-3-0-0#	0-0-0-0
Nov. 25	West Virginia	5-2-0-1	4-0-1-1	19-3-1-1#	DNP	0-0-0-0	9-7-7-3#	6-7-0-0#	19-7-3-0#	DNP	DNP	DNP	17-6-0-0#	0-1-0-0
Nov. 28	Florida State	0-1-1-0	0-0-0-1	20-4-1-0#	DNP	3-0-1-1	14-7-7-3#	9-6-1-0#	13-1-1-0#	0-2-0-0	DNP	DNP	10-9-1-1#	DNP
Dec. 1	Northern Iowa	DNP	0-0-0-0	19-12-5-2#	0-2-1-0	6-2-1-0	15-4-3-1#	6-5-2-0#	9-3-5-0#	3-2-0-1	DNP	0-0-0-0	8-7-0-1#	2-1-0-0
Dec. 6	Iowa State	DNP	0-1-0-0	7-6-2-1#	3-2-0-0	11-2-1-1	6-9-4-0#	11-9-3-2#	10-6-2-2#	0-0-0-0	DNP	DNP	2-4-0-1#	DNP
Dec. 16	Drake	DNP	12-0-0-0	26-8-0-2#	3-0-0-0	0-0-1-0	13-5-7-1#	6-3-6-0#	9-4-7-0#	5-0-2-1	DNP	DNP	8-4-0-1#	DNP
Dec. 19	Missouri State	DNP	4-1-1-0	13-4-1-0#	15-2-2-2	12-2-2-1	7-6-4-3#	9-6-7-1#	13-2-6-0#	2-5-0-1	DNP	4-0-0-0	12-12-1-1#	6-8-0-0
Dec. 28	Texas	0-1-1-0	0-0-0-0	20-5-0-3#	2-2-0-1	23-3-2-0	2-15-14-2#	4-1-2-3#	21-3-1-0#	0-0-2-0	DNP	2-0-0-0	10-5-1-2#	2-0-0-0
Dec. 30	San Diego	DNP	DNP	20-6-1-1#	0-3-0-0	8-0-0-1	7-3-10-2#	9-4-4-0#	33-2-4-2#	0-1-0-0	DNP	DNP	6-10-0-1#	DNP
Jan. 3	Ohio State	0-1-0-0	DNP	16-12-3-3#	0-1-1-0	3-1-0-1	17-8-8-3#	19-4-0-2#	14-3-3-0#	0-0-0-0	DNP	DNP	8-5-2-3#	DNP
Jan. 6	Michigan	DNP	0-0-0-0	10-7-2-2#	0-0-0-0	17-3-0-0	16-9-9-3#	14-3-2-2#	6-5-3-1#	1-1-0-0	DNP	DNP	0-1-1-0#	0-0-0-0
Jan. 10	Wisconsin	DNP	0-0-0-0	23-11-0-0#	0-0-0-0	8-3-2-0	12-10-9-1#	4-8-5-3#	10-6-1-1#	0-0-0-0	DNP	0-0-0-0	8-4-0-0#	0-0-0-0
Jan. 17	Michigan State	DNP	0-1-0-1	13-12-0-2#	0-2-0-0	7-3-0-0	7-5-4-1#	6-2-1-0#	11-4-3-1#	0-0-0-0	DNP	DNP	10-3-1-2#	0-0-0-0
Jan. 20	Purdue	0-0-0-0	0-0-0-0	7-7-0-0#	0-1-3-2	15-0-0-1	4-3-10-1#	9-10-1-1#	15-9-1-0#	0-1-1-0	DNP	DNP	8-9-0-3#	4-2-0-1
Jan. 24	Wisconsin	0-0-0-0	0-0-0-0	2-4-1-0#	0-1-0-0	10-0-0-1	6-9-5-1#	10-1-2-2#	29-8-4-0#	0-1-0-0	DNP	DNP	10-7-0-0#	4-3-1-0
Jan. 27	Michigan	DNP	0-2-0-0	6-7-0-2#	4-0-0-0	5-2-1-0	10-6-8-2#	5-2-1-0#	14-5-2-1#	0-0-0-0	DNP	DNP	19-4-0-1#	0-0-0-0
Jan. 31	Illinois	DNP	DNP	6-4-0-1#	0-0-1-0	11-2-1-1	13-10-6-2#	9-0-1-2#	13-4-3-1#	0-0-0-0	DNP	DNP	4-8-0-0#	6-4-0-1
Feb. 3	Northwestern	DNP	0-0-1-1	11-3-0-1#	0-0-0-0	21-2-1-0	11-12-2-3#	2-1-2-2#	12-4-3-3#	2-4-1-1	DNP	DNP	4-9-1-0#	2-1-1-1
Feb. 7	Minnesota	DNP	0-0-0-0	13-10-2-2#	3-1-1-0	4-3-2-1	0-3-5-1#	9-5-1-0#	21-5-0-3#	2-0-1-0	DNP	DNP	8-3-0-3#	0-0-1-0

### IOWA RECORD WHEN...

Playing at home:	10-3
Playing on the road:	4-5
Playing on a neutral floor:	2-0
Leading at the half:	10-2
Trailing at the half:	6-5
Tied at the half:	0-1
Wearing white:	6-1
Wearing black:	6-5
Wearing gold:	4-1
Wearing pink:	0-1
Scoring 80+ points:	4-0
Scoring 70-79 points:	4-0
Scoring 60-69 points:	6-7
Scoring 59 or fewer points:	2-1
Allowing 80+ points:	0-1
Allowing 70-79 points:	3-3
Allowing 60-69 points:	5-4
Allowing 59 or fewer points:	8-0
Shooting at least 50% FG:	4-0
Shooting less than 50% FG:	12-8
Shooting at least 80% FT:	6-2
Shooting less than 80% FT:	10-6
Shooting at least 40% 3-pt. FG:	6-1
Shooting less than 40% 3-pt. FG:	10-7
Most 1st half points:	46 vs. Missouri State (Dec. 19)
Most 2nd half points:	54 vs. West Virginia (Nov. 25)
Fewest opponent 1st half points:	13 vs. NIU (Nov. 9)
Fewest opponent 2nd half points:	22 vs. UNI (Dec. 1)

Iowa has more rebounds:	10-4
Opponent has more rebounds:	6-4
Rebounds are equal:	0-0
Iowa has more assists:	15-2
Opponent has more assists:	0-5
Assists are equal:	1-1
Iowa has fewer turnovers:	7-3
Opponent has fewer turnovers:	7-4
Turnovers are equal:	2-1
Iowa has more steals:	6-4
Opponent has more steals:	7-4
Steals are equal:	3-0
Playing on Sunday:	6-3
Playing on Monday:	0-0
Playing on Tuesday:	1-0
Playing on Wednesday:	2-1
Playing on Thursday:	4-3
Playing on Friday:	2-1
Playing on Saturday:	1-0
Playing on BTN:	4-2
Playing on CBS Sports Network:	0-1
Playing on ESPN2:	0-0
Playing on Mediacom:	3-1
Playing on no TV:	9-4
Largest Iowa lead:	54 vs. Missouri State (Dec. 19)
Largest Iowa deficit:	22 vs. UNC (Nov. 18)
Largest halftime lead:	31 vs. NIU (Nov. 9)
Largest halftime deficit:	22 vs. UNC (Nov. 18)

### LATE GAME CLUTCH FREE THROW SHOOTING

#### In Final Five Minutes of Game

Player	FTM	FTA	Pct.
Jaime Printy	37	37	1.000
Trisha Nesbitt	4	4	1.000
Nicole Smith	2	2	1.000
Morgan Johnson	18	19	.947
Melissa Dixon	8	9	.889
Bethany Doolittle	3	4	.750
Theairra Taylor	3	4	.750
Samantha Logic	15	24	.625
Claire Till	3	6	.500
Kathy Thomas	2	4	.500
Kayla Timmerman	2	6	.333
TOTALS	97	119	.815

#### In Final Two Minutes of Game

Player	FTM	FTA	Pct.
Jaime Printy	29	29	1.000
Morgan Johnson	10	10	1.000
Trisha Nesbitt	4	4	1.000
Nicole Smith	2	2	1.000
Bethany Doolittle	2	2	1.000
Melissa Dixon	4	5	.800
Theairra Taylor	3	4	.750
Samantha Logic	8	14	.571
Claire Till	1	4	.250
Kathy Thomas	0	2	.000
TOTALS	63	76	.829

#### In Final One Minute of Game

Player	FTM	FTA	Pct.
Jaime Printy	20	20	1.000
Morgan Johnson	6	6	1.000
Melissa Dixon	2	2	1.000
Trisha Nesbitt	2	2	1.000
Theairra Taylor	2	2	1.000
Samantha Logic	2	7	.286
Claire Till	1	4	.250
Kathy Thomas	0	2	.000
TOTALS	35	45	.777

#### In Overtime

Player	FTM	FTA	Pct.
Jaime Printy	6	6	1.000
Samantha Logic	4	4	1.000
Theairra Taylor	2	2	1.000
Morgan Johnson	0	2	.000
Claire Till	0	2	.000
Melissa Dixon	0	1	.000
TOTALS	12	16	.750





# University of Iowa Women's Basketball

## Season Highs And Lows/Specialty Statistics

CATEGORY		IOWA	OPPONENTS
<b>Points</b>	High Low	97 vs. Missouri State 50 vs. Iowa State	83, Florida State 40, Northern Illinois
<b>FG Made</b>	High Low	36 vs. Missouri State 15 vs. Iowa State	31, Florida State 12, two teams
<b>FG Att.</b>	High Low	75 vs. Missouri State 39 vs. West Virginia	76, Illinois State 48, two teams
<b>FG%</b>	High Low	54.7 at San Diego 28.6 at Minnesota	50.0, Michigan 20.7, Missouri State
<b>3FG Made</b>	High Low	11 at San Diego 1 vs. West Virginia	11, Illinois 1, two teams
<b>3FG Att.</b>	High Low	34 vs. Missouri State 4 vs. Ohio State	34, Iowa State 9, Northern Illinois
<b>3FG%</b>	High Low	61.1 at San Diego 14.3 at Michigan State	50.0, two teams 5.6, Missouri State
<b>ETM</b>	High Low	42 vs. West Virginia 1 at Illinois	22, West Virginia 1, Purdue
<b>ETA</b>	High Low	50 vs. West Virginia 2 at Illinois	31, Missouri State 5, Iowa State
<b>FT% (min. 10)</b>	High Low	94.4 at Wisconsin 62.5 vs. Missouri State	93.3, Michigan State 53.6, Texas
<b>Off. Reb.</b>	High Low	21 vs. Missouri State 6 vs. Northern Illinois	23, West Virginia 7, Northwestern
<b>Def. Reb.</b>	High Low	39 vs. Missouri State 16 vs. Michigan	38, Minnesota 15, Florida State
<b>Total Reb.</b>	High Low	60 vs. Missouri State 31, twice, last at San Diego	48, Minnesota 25, Wisconsin
<b>Assists</b>	High Low	25 vs. Missouri State 9 at Michigan State	18, two teams 3, two teams
<b>Steals</b>	High Low	12, twice, last vs. Northwestern 1 at Florida International	15, three teams 1, West Virginia
<b>Blocks</b>	High Low	10, four times, last vs. Ohio State 1 vs. Robert Morris	9, Minnesota 0, two teams
<b>Turnovers</b>	High Low	27 at Illinois 8 at Drake	22, two teams 10, Florida International
<b>Fouls</b>	High Low	25 vs. Missouri State 12 vs. Purdue	35, West Virginia 10, three teams

### GAME-BY-GAME SPECIALTY STATS

Date	Opponent	Pts. Off TO's	Pts. in Paint	2nd Chance	Fast Break
Nov. 9	Northern Illinois	26-6	24-10	4-3	3-2
Nov. 11	Illinois State	18-20	22-24	8-6	18-11
Nov. 14	Middle Tennessee	15-11	24-26	11-12	2-6
Nov. 18	North Carolina	12-22	30-24	6-22	15-14
Nov. 20	Robert Morris	16-12	22-10	11-6	2-2
Nov. 23	Florida International	6-20	24-20	13-15	6-6
Nov. 25	West Virginia	14-20	24-18	11-22	0-4
Dec. 1	Northern Iowa	11-11	34-4	9-5	2-0
Dec. 6	Iowa State	12-12	14-12	10-8	2-4
Dec. 16	Drake	15-5	40-18	11-12	2-4
Dec. 19	Missouri State	28-14	32-18	17-8	4-6
Dec. 28	Texas	24-10	40-26	11-8	9-0
Dec. 30	San Diego	14-22	30-44	8-9	0-2
Jan. 3	Ohio State	19-18	40-34	12-9	4-6
Jan. 6	Michigan	24-4	22-22	10-8	6-0
Jan. 10	Wisconsin	11-18	18-12	7-17	4-2
Jan. 17	Michigan State	12-22	26-30	12-7	2-12
Jan. 20	Purdue	17-9	24-28	12-5	10-8
Jan. 24	Wisconsin	11-13	30-32	12-13	2-2
Jan. 27	Michigan	10-8	18-24	13-10	4-2
Jan. 31	Illinois	21-30	28-20	13-8	4-4
Feb. 3	Northwestern	17-8	20-32	6-5	6-0
Feb. 7	Minnesota	28-9	18-32	4-10	2-11

## IOWA AND OPPONENT INDIVIDUAL HIGH PERFORMANCES

CATEGORY	IOWA	OPPONENTS
Points	33 Jaime Printy at San Diego	34 Hill, Ohio State; Banham, Minnesota
Field Goals Made	11 Morgan Johnson at Drake	12 Jamie Russell, Illinois State
Field Goals Attempted	22 Jaime Printy at Minnesota	28 Russell, Ill. State; Coley, FIU
3-Point Field Goals Made	7 Jaime Printy at San Diego	6 Kyndal Clark, Drake
3-Point Field Goals Attempted	12 Jaime Printy vs. UNC, at San Diego	13 Taylor Palmer, West Virginia
Free Throws Made	17 Jaime Printy vs. West Virginia	11 Rachel Banham, Minnesota
Free Throws Attempted	17 Jaime Printy vs. West Virginia	14 Rachel Banham, Minnesota
Offensive Rebounds	8 Morgan Johnson at Wisconsin	11 Ebony Rowe, Middle Tennessee
Defensive Rebounds	11 Theairra Taylor vs. Ill. State	13 Artemis Spanou, Robert Morris
Total Rebounds	15 Samantha Logic vs. Texas	16 Rowe, MTSU; Spanou, RMU
Assists	14 Samantha Logic vs. Texas	8 Ryan, Mich.; Stephen, Wisc.; Roser, N'western
Steals	4 Samantha Logic vs. North Carolina	8 Jamie Russell, Illinois State
Blocks	6 Bethany Doolittle vs. NIU, Ohio State	3 Rolle, UNC; Thompson, Mich.; Loberg, Minn.





# University of Iowa Women's Basketball

## Season Box Scores



Official Basketball Box Score - Game Totals - Final Statistics  
**Northern Illinois vs Iowa**  
11/9/12 5:30 PM at Carver-Hawkeye Arena, Iowa City, IA



Northern Illinois 40 • 0-1

#	Player	Total			3-Ptr			Rebounds			PF	TP	A	TO	Blk	Stl	Min
		FG	FGA	FT	FTA	FG	FGA	FT	FTA	Off							
20	THORP, Jenna	f	1-5	0-1	3-4	2	4	6	2	5	0	1	0	1	26		
23	HAYWOOD, Shaakira	c	0-0	0-0	2-2	1	1	2	2	0	2	0	0	0	12		
12	PULLIAM, Danny	g	2-4	0-0	0-0	0	2	2	1	4	1	2	0	0	20		
14	TAYLOR, Satavia	g	5-15	1-4	1-3	2	9	11	1	12	0	2	0	2	29		
02	CORRAL, Amanda	g	2-10	0-3	2-5	0	3	3	4	6	0	8	0	1	29		
03	SNEED, Ashley	g	1-4	0-0	0-0	0	3	3	1	2	0	1	0	0	14		
05	LINDSTROM, Alexis	g	0-1	0-1	2-2	0	0	0	2	2	0	0	1	1	11		
23	BUGGS, Jada	g	2-5	0-0	1-2	0	2	2	3	5	0	3	0	0	17		
30	JOHNSON, Alicia	g	0-1	0-0	0-0	0	3	3	2	0	0	0	0	0	12		
31	WITTMAN, Nichole	g	1-1	0-0	0-0	2	0	2	1	2	0	1	0	0	14		
23	AUGUSTA, Natecia	g	0-2	0-0	0-1	1	3	4	2	0	1	2	1	1	16		
	<b>Team</b>					<b>3</b>	<b>3</b>	<b>6</b>									
	<b>Totals</b>		<b>14-48</b>	<b>1-9</b>	<b>11-19</b>	<b>11</b>	<b>33</b>	<b>44</b>	<b>19</b>	<b>40</b>	<b>3</b>	<b>22</b>	<b>2</b>	<b>6</b>	<b>200</b>		

FG % 1st Half: 4-23 17.4% 2nd half: 10-25 40.0% Game: 14-48 29.2%  
 3FG % 1st Half: 0-7 0.0% 2nd half: 1-2 50.0% Game: 1-9 11.1%  
 FT % 1st Half: 5-10 50.0% 2nd half: 6-9 66.7% Game: 11-19 57.9%

Iowa 63 • 1-0

#	Player	Total			3-Ptr			Rebounds			PF	TP	A	TO	Blk	Stl	Min
		FG	FGA	FT	FTA	FG	FGA	FT	FTA	Off							
51	Doolittle, Bethany	f	1-8	0-0	0-0	0	0	0	2	2	0	1	6	0	21		
12	Johnson, Morgan	c	4-11	0-0	3-5	1	4	5	2	11	0	1	0	1	20		
21	Dixon, Melissa	g	3-4	2-3	0-0	0	2	2	2	8	2	1	0	1	24		
22	Logic, Samantha	g	5-8	0-0	0-0	0	3	3	1	10	2	2	0	2	25		
23	Taylor, Theairra	g	2-4	1-1	0-0	0	1	1	1	5	1	1	0	1	19		
03	Till, Claire	g	1-3	1-2	0-0	1	5	6	3	3	0	0	1	1	11		
11	Nesbitt, Trisha	g	1-1	1-1	0-0	0	3	3	0	3	1	2	0	0	18		
13	Thomas, Kathy	g	3-4	0-0	2-2	1	1	2	3	8	0	1	0	0	15		
24	Printy, Jaime	g	3-4	1-1	4-4	0	1	1	1	11	3	1	0	1	16		
25	Peschel, Kali	g	0-6	0-2	1-2	3	2	5	3	1	1	0	0	0	18		
45	Smith, Nicole	g	0-2	0-0	0-0	0	1	1	0	0	0	0	0	0	3		
54	Timmerman, Kayla	g	0-2	0-0	1-2	0	1	1	0	1	0	0	2	0	10		
	<b>Team</b>					<b>0</b>	<b>4</b>	<b>4</b>									
	<b>Totals</b>		<b>23-57</b>	<b>6-10</b>	<b>11-17</b>	<b>6</b>	<b>28</b>	<b>34</b>	<b>18</b>	<b>63</b>	<b>10</b>	<b>10</b>	<b>10</b>	<b>6</b>	<b>200</b>		

FG % 1st Half: 15-30 50.0% 2nd half: 8-27 29.6% Game: 23-57 40.4%  
 3FG % 1st Half: 4-5 80.0% 2nd half: 2-4 50.0% Game: 6-10 60.0%  
 FT % 1st Half: 0-1 0.0% 2nd half: 11-16 68.8% Game: 11-17 64.7%

Officials: Ann Schroeder, Scott Fruehling, Dave Rittman  
 Technical fouls: Northern Illinois-None. Iowa-None.  
 Attendance: 4739

Score by periods	1st	2nd	Total
Northern Illinois	13	27	40
Iowa	34	29	63

Points In Off 2nd Fast  
NIU 10 6 4 3 11  
Iowa 24 26 3 2 27

Score tied - 3 times.  
Lead changed - 0 times.



Official Basketball Box Score - Game Totals - Final Statistics  
**Illinois State vs Iowa**  
11/11/12 2:00 PM at Carver-Hawkeye Arena, Iowa City, IA



Illinois State 64 • 1-1

#	Player	Total			3-Ptr			Rebounds			PF	TP	A	TO	Blk	Stl	Min
		FG	FGA	FT	FTA	FG	FGA	FT	FTA	Off							
25	SMITH, Janae	f	7-14	0-0	3-6	5	4	9	2	17	1	5	1	1	31		
31	OLIVER, Maddie	f	0-2	0-0	0-0	1	0	1	4	0	0	0	0	1	14		
01	JENKINS, Alexis	g	1-2	1-2	0-0	0	0	0	1	3	2	1	0	2	23		
14	FOLEY, Alexis	g	1-8	1-4	0-0	2	4	6	5	3	0	2	0	0	27		
23	RUSSELL, Jamie	g	12-28	0-2	6-6	2	10	12	3	30	2	6	1	8	37		
04	NELSON, Chloe	g	2-9	0-3	2-4	2	1	3	2	0	0	0	1	2	20		
11	HALL, Stekara	g	0-0	0-0	0-0	0	1	1	2	0	0	0	0	0	3		
22	SEBERGER, Alison	g	0-0	0-0	0-0	0	0	0	0	0	0	0	0	0	1		
24	WINGE, Katy	g	1-5	0-3	0-0	0	2	2	0	2	0	1	0	0	11		
32	CRUMP, Octavia	g	0-6	0-0	1-5	2	2	4	2	1	2	0	1	2	22		
35	PUNI, Brianna	g	0-1	0-0	0-0	0	1	1	4	0	0	0	1	0	10		
50	GRACE, Megan	g	1-1	0-0	0-0	0	0	0	1	2	0	0	0	0	1		
	<b>Team</b>					<b>3</b>	<b>2</b>	<b>5</b>									
	<b>Totals</b>		<b>25-76</b>	<b>2-14</b>	<b>12-21</b>	<b>17</b>	<b>27</b>	<b>44</b>	<b>27</b>	<b>64</b>	<b>6</b>	<b>17</b>	<b>4</b>	<b>15</b>	<b>200</b>		

FG % 1st Half: 11-40 27.5% 2nd half: 14-36 38.9% Game: 25-76 32.9%  
 3FG % 1st Half: 1-6 16.7% 2nd half: 1-8 12.5% Game: 2-14 14.3%  
 FT % 1st Half: 6-9 66.7% 2nd half: 6-12 50.0% Game: 12-21 57.1%

Iowa 74 • 2-0

#	Player	Total			3-Ptr			Rebounds			PF	TP	A	TO	Blk	Stl	Min
		FG	FGA	FT	FTA	FG	FGA	FT	FTA	Off							
12	Johnson, Morgan	c	6-14	0-0	12-13	4	5	9	2	24	2	2	5	1	30		
51	Doolittle, Bethany	c	4-10	0-1	0-0	0	5	5	1	8	0	2	2	1	25		
21	Dixon, Melissa	g	2-3	2-3	2-2	0	0	0	4	8	2	1	0	2	24		
22	Logic, Samantha	g	1-6	0-1	4-4	3	2	5	2	6	4	6	1	2	24		
23	Taylor, Theairra	g	3-6	1-1	3-4	0	11	11	1	10	5	2	0	2	21		
03	Till, Claire	g	1-2	0-0	2-2	0	3	3	1	4	0	2	0	1	7		
11	Nesbitt, Trisha	g	0-3	0-1	3-4	0	1	1	3	3	0	1	0	1	15		
13	Thomas, Kathy	g	0-2	0-0	5-8	2	1	3	3	5	3	3	0	1	16		
24	Printy, Jaime	g	0-4	0-3	1-2	0	2	2	0	1	1	2	0	0	15		
25	Peschel, Kali	g	0-2	0-1	0-0	0	3	3	1	0	2	0	0	0	16		
45	Smith, Nicole	g	0-0	0-0	0-0	0	0	0	0	0	0	0	0	0	2		
54	Timmerman, Kayla	g	2-2	1-1	0-2	0	0	0	0	5	1	0	1	0	5		
	<b>Team</b>					<b>3</b>	<b>5</b>	<b>8</b>									
	<b>Totals</b>		<b>19-54</b>	<b>4-12</b>	<b>32-41</b>	<b>12</b>	<b>38</b>	<b>50</b>	<b>18</b>	<b>74</b>	<b>18</b>	<b>23</b>	<b>10</b>	<b>9</b>	<b>200</b>		

FG % 1st Half: 7-26 26.9% 2nd half: 12-28 42.9% Game: 19-54 35.2%  
 3FG % 1st Half: 2-7 28.6% 2nd half: 2-5 40.0% Game: 4-12 33.3%  
 FT % 1st Half: 2-2 100.0% 2nd half: 9-15 60.0% Game: 32-41 78.0%

Officials: Doug Knight, Erika Herriman, Scott Fruehling  
 Technical fouls: Illinois State-None. Iowa-None.  
 Attendance: 2930

Score by periods	1st	2nd	Total
Illinois State	29	35	64
Iowa	39	35	74

Points In Off 2nd Fast  
ILS 24 20 6 12 11  
Iowa 22 18 8 11 18

Score tied - 1 time.  
Lead changed - 0 times.



Official Basketball Box Score - Game Totals - Final Statistics  
**Middle Tennessee vs Iowa**  
11/14/12 7:00 PM at Carver-Hawkeye Arena, Iowa City, IA



Middle Tennessee 63 • 2-1

#	Player	Total			3-Ptr			Rebounds			PF	TP	A	TO	Blk	Stl	Min
		FG	FGA	FT	FTA	FG	FGA	FT	FTA	Off							
13	Elie, Icelyn	f	3-11	1-2	1-1	6	8	14	3	8	2	3	1	3	43		
21	Rowe, Ebony	c	10-21	0-0	4-6	11	5	16	4	24	3	3	2	4	45		
05	Cason, Shanice	g	1-14	1-10	2-5	0	2	2	5	5	1	5	0	0	36		
24	Jones, Kortni	g	4-14	3-10	4-4	2	2	4	3	15	3	4	0	1	44		
02	Leonard, Laken	g	3-6	2-5	1-2	1	0	1	4	9	0	2	0	1	34		
52	Brinkley, Janay	g	0-2	0-2	0-0	0	1	1	2	0	0	0	0	2	10		
23	March, Lauren	g	1-1	0-0	0-0	1	1	2	0	2	0	0	0	1	9		
32	Warden, Caroline	g	0-1	0-1	0-0	0	0	0	1	0	0	1	0	0	2		
42	Stewart, KeKe	g	0-0	0-0	0-0	0	0	0	0	0	0	0	0	0	2		
	<b>Team</b>					<b>1</b>	<b>5</b>	<b>6</b>									
	<b>Totals</b>		<b>22-70</b>	<b>7-30</b>	<b>12-18</b>	<b>22</b>	<b>24</b>	<b>46</b>	<b>22</b>	<b>63</b>	<b>9</b>	<b>20</b>	<b>3</b>	<b>12</b>	<b>225</b>		

FG % 1st Half: 13-34 38.2% 2nd half: 8-31 25.8% OT: 1-5 20.0% Game: 22-70 31.4%  
 3FG % 1st Half: 5-14 35.7% 2nd half: 2-13 15.4% OT: 0-3 0.0% Game: 7-30 23.3%  
 FT % 1st Half: 1-5 20.0% 2nd half: 9-11 81.8% OT: 2-2 100.0% Game: 12-18 66.7%

Iowa 69 • 3-0

#	Player	Total			3-Ptr			Rebounds			PF	TP	A	TO	Blk	Stl	Min
		FG	FGA	FT	FTA	FG	FGA	FT	FTA	Off							
51	Doolittle, Bethany	f	4-7	0-0	0-0	4	5	9	3	8	0	4	5	0	30		
12	Johnson, Morgan	c	8-10	0-0	4-6	2	6	8	4	20	1	0	2	0	41		
21	Dixon, Melissa	g	2-9	2-7	0-1	0	1	1	2	6	1	1	0	2	34		
22	Logic, Samantha	g	0-6	0-2	0-1	1	2	3	2	0	12	6	1	2	40		
23	Taylor, Theairra	g	3-8	1-4	0-2	1	3	4	2	7	2	4	2				



# University of Iowa Women's Basketball

## Season Box Scores



Official Basketball Box Score -- Game Totals -- Final Statistics  
**Robert Morris vs Iowa**  
11/20/12 7:00 PM at Carver-Hawkeye Arena, Iowa City, IA

### BIG

#### Robert Morris 44 • 0-4

##	Player	Total	3-Ptr			Rebounds			PF	TP	A TO	Blk	Stl	Min	
			FG-FGA	FG-FGA	FT-FTA	Off	Def	Tot							
15	SPANOU, Artemis	f	2-19	1-9	4-7	3	13	16	3	9	3	8	0	1	40
42	HARTWELL, Kelly	f	0-1	0-0	1-2	1	1	2	0	1	2	0	0	0	23
52	GAILLITE, Anna	c	5-10	0-0	0-0	2	2	4	4	10	0	1	2	0	33
10	TATE, Jasmine	g	1-4	0-0	1-1	0	3	3	1	2	5	0	1	0	27
14	RAVELLI, Ashley	g	3-7	2-4	1-2	1	1	2	0	9	3	1	0	1	31
12	MATALY, Lou	g	4-10	3-7	2-2	1	1	2	1	13	1	0	0	1	26
34	KAVASILA, Anna	g	0-0	0-0	0-0	0	0	0	2	0	0	0	0	0	7
41	JACKSON, Randi	g	0-2	0-1	0-0	0	0	0	0	0	1	0	0	0	13
Team						2	3	5							
Totals			15-53	6-21	8-14	10	24	34	11	44	12	16	2	4	200

FG % 1st Half: 8-27 29.6% 2nd half: 7-26 26.9% Game: 15-53 28.3% Deadball Rebounds 2  
 3FG % 1st Half: 3-10 30.0% 2nd half: 3-11 27.3% Game: 6-21 28.6%  
 FT % 1st Half: 1-3 33.3% 2nd half: 7-11 63.6% Game: 8-14 57.1%

#### Iowa 58 • 4-1

##	Player	Total	3-Ptr			Rebounds			PF	TP	A TO	Blk	Stl	Min	
			FG-FGA	FG-FGA	FT-FTA	Off	Def	Tot							
51	Doolittle, Bethany	f	2-9	0-0	0-0	1	4	5	2	4	1	1	0	0	20
12	Johnson, Morgan	c	8-13	0-0	3-5	5	6	11	3	19	0	3	0	0	33
22	Logic, Samantha	g	2-7	0-2	0-0	3	3	6	1	4	9	2	0	3	28
23	Taylor, Theaira	g	3-7	1-4	0-0	0	4	4	0	7	0	3	0	1	20
24	Printy, Jaime	g	2-4	2-4	2-2	1	5	6	0	8	5	2	0	1	31
03	Till, Claire	f	1-2	1-1	2-2	0	2	2	0	5	0	2	0	0	16
11	Nesbitt, Trisha	g	0-0	0-0	0-0	0	2	2	0	2	0	0	0	0	13
13	Thomas, Kathy	g	1-3	1-1	0-0	0	1	2	3	1	0	0	0	0	10
21	Dixon, Melissa	g	2-8	2-7	0-0	0	2	2	2	6	0	3	0	0	17
25	Peschel, Kali	g	0-0	0-0	0-0	0	0	0	2	0	0	0	1	5	
54	Timmerman, Kayla	g	1-4	0-0	0-0	1	2	3	1	2	0	2	0	0	7
Team						1	1	2							
Totals			22-57	7-19	7-9	12	32	44	13	58	18	18	1	6	200

FG % 1st Half: 8-25 32.0% 2nd half: 14-32 43.8% Game: 22-57 38.6% Deadball Rebounds 1  
 3FG % 1st Half: 4-10 40.0% 2nd half: 3-9 33.3% Game: 7-19 36.8%  
 FT % 1st Half: 3-4 75.0% 2nd half: 4-5 80.0% Game: 7-9 77.8%

Officials: Lisa Mattingly, Brian Hall, Angie Enlund  
 Technical fouls: Robert Morris-None. Iowa-None.  
 Attendance: 3032

Score by periods	1st	2nd	Total
Robert Morris	20	24	44
Iowa	23	35	58

Points	In	Off	2nd	Fast	Bench
RMU	Paint	T/O	Chance	Break	
IOWA	10	12	6	2	13
IOWA	22	16	11	2	16

Last FG - RMU 2nd-01:52, IOWA 2nd-00:36.  
 Largest lead - RMU by 5 1st-12:17, IOWA by 16 2nd-12:41.

Score tied - 1 time.  
 Lead changed - 2 times.



Official Basketball Box Score -- Game Totals -- Final Statistics  
**Iowa vs FIU**  
11/23/12 6 p.m. at U.S. Century Bank Arena

### BIG

#### Iowa 65 • 4-2

##	Player	Total	3-Ptr			Rebounds			PF	TP	A TO	Blk	Stl	Min	
			FG-FGA	FG-FGA	FT-FTA	Off	Def	Tot							
12	Johnson, Morgan	* f	6-9	0-0	2-2	3	3	6	2	14	2	3	5	0	36
22	Logic, Samantha	* c	3-6	1-1	0-0	0	3	3	3	7	4	0	1	0	32
23	Taylor, Theaira	* g	2-5	0-1	2-2	0	3	3	2	6	2	2	0	0	19
24	Printy, Jaime	* g	5-12	4-9	1-1	2	3	5	2	15	4	3	0	0	34
51	Doolittle, Bethany	* g	3-5	0-0	0-0	0	3	3	3	6	0	2	0	0	22
03	Till, Claire	f	1-6	0-2	5-8	5	1	6	0	7	0	0	0	0	18
11	Nesbitt, Trisha	g	1-2	0-0	0-0	0	1	1	1	2	1	0	0	0	8
13	Thomas, Kathy	g	0-0	0-0	0-0	0	0	0	0	0	0	0	0	0	8
21	Dixon, Melissa	g	3-11	2-7	0-0	0	2	2	2	8	0	0	0	0	19
25	Peschel, Kali	g	0-1	0-0	0-0	0	2	2	0	0	0	0	0	0	2
54	Timmerman, Kayla	g	0-0	0-0	0-0	0	0	0	1	0	1	0	0	0	2
Team						1	5	6							
Totals			24-57	7-20	10-13	16	23	39	16	65	16	16	5	1	200

FG % 1st Half: 14-32 43.8% 2nd half: 10-25 40.0% Game: 24-57 42.1% Deadball Rebounds 2,1  
 3FG % 1st Half: 3-12 25.0% 2nd half: 4-8 50.0% Game: 7-20 35.0%  
 FT % 1st Half: 3-3 100.0% 2nd half: 7-10 70.0% Game: 10-13 76.9%

#### FIU 66 • 2-2

##	Player	Total	3-Ptr			Rebounds			PF	TP	A TO	Blk	Stl	Min	
			FG-FGA	FG-FGA	FT-FTA	Off	Def	Tot							
03	Labady, Zsafia	* f	2-5	1-3	1-1	1	2	3	2	6	0	1	0	1	36
12	Davydova, Marita	* c	1-8	0-0	4-4	4	1	5	4	6	0	0	0	0	26
22	Coley, Jerica	* g	11-28	3-9	6-7	2	4	6	2	31	4	1	2	37	
23	Mansare, Finda	* g	7-14	0-0	3-4	5	3	8	4	17	1	5	1	0	36
24	Miloglav, Carmen	* g	2-7	0-2	0-0	3	3	6	1	4	2	2	0	3	37
13	Ashmore, Diamond	* g	1-2	0-0	0-0	1	1	2	2	2	0	0	1	0	13
14	Idom, Kamika	* g	0-1	0-1	0-0	0	1	1	0	0	0	0	0	0	4
25	Durant, Arielle	* g	0-0	0-0	0-1	0	1	1	0	0	0	0	0	0	11
Team						3	2	5							
Totals			24-65	4-15	14-17	19	18	37	16	66	8	10	3	6	200

FG % 1st Half: 10-30 33.3% 2nd half: 14-35 40.0% Game: 24-65 36.9% Deadball Rebounds 1  
 3FG % 1st Half: 1-4 25.0% 2nd half: 3-11 27.3% Game: 4-15 26.7%  
 FT % 1st Half: 4-4 100.0% 2nd half: 10-13 76.9% Game: 14-17 82.4%

Officials: Erica Bradley, Jody Cantrell, Ron Harris  
 Technical fouls: Iowa-None. FIU-None.  
 Attendance:

Score by periods	1st	2nd	Total
Iowa	34	31	65
FIU	25	41	66

Last FG - IOWA 2nd-00:48, FIU 2nd-00:00.  
 Largest lead - IOWA by 13 2nd-16:48, FIU by 2 2nd-07:12.

Score tied - 5 times.  
 Lead changed - 5 times.



Official Basketball Box Score -- Game Totals -- Final Statistics  
**WVU vs Iowa**  
11/25/12 1 pm at U.S. Century Bank Arena

### BIG

#### WVU 70 • 3-2

##	Player	Total	3-Ptr			Rebounds			PF	TP	A TO	Blk	Stl	Min	
			FG-FGA	FG-FGA	FT-FTA	Off	Def	Tot							
01	Caldwell, Christal	* f	5-16	1-5	6-6	3	1	4	5	17	1	3	0	0	23
02	Palmer, Taylor	* f	7-20	5-13	4-4	3	6	9	3	23	2	0	1	0	37
05	Fields, Avere	* c	2-4	0-0	1-2	3	5	8	2	5	1	2	1	0	23
22	Stepney, Linda	* g	3-5	0-0	1-2	1	1	2	5	7	3	1	0	0	26
33	Dunning, Ayana	* g	1-4	0-0	1-2	2	1	3	3	0	2	0	0	0	13
03	Bethel, Akilah	g	0-3	0-0	3-4	2	1	3	0	3	1	1	0	0	8
04	Hampton, Brooke	g	0-3	0-2	0-0	0	0	0	1	0	3	0	0	0	9
12	Faulk, Darius	g	0-0	0-0	1-2	0	0	0	3	1	0	1	0	0	5
14	Harlee, Jess	g	0-1	0-1	0-0	0	1	1	4	0	1	2	0	0	18
21	Simms, Jennie	g	0-3	0-1	0-0	1	0	1	3	0	0	1	0	0	8
23	Holmes, Bria	g	1-10	0-6	1-3	1	1	2	0	3	0	1	0	0	10
32	Leary, Crystal	g	2-3	0-0	4-4	4	1	5	3	8	0	1	0	2	20
Team						3	0	3							
Totals			21-72	6-28	22-29	23	18	41	35	70	12	15	1	10	200

FG % 1st Half: 9-33 27.3% 2nd half: 12-39 30.8% Game: 21-72 29.2% Deadball Rebounds 5  
 3FG % 1st Half: 3-13 23.1% 2nd half: 3-15 20.0% Game: 6-28 21.4%  
 FT % 1st Half: 11-18 61.1% 2nd half: 11-11 100.0% Game: 22-29 75.9%

#### Iowa 79 • 5-2

##	Player	Total	3-Ptr			Rebounds			PF	TP	A TO	Blk	Stl	Min	
			FG-FGA	FG-FGA	FT-FTA	Off	Def	Tot							
12	Johnson, Morgan	* f	6-11	0-0	7-11	0	3	3	19	1	2	2	1	30	
22	Logic, Samantha	* g	2-6	0-0	5-6	2	5	7	5	9	7	0	0	3	34
23	Taylor, Theaira	* g	1-3	0-1	4-5	1	6	7	4	6	0	2	1	0	23
24	Printy, Jaime	* g	1-3	0-2	17-17	0	7	7	1	19</					



# University of Iowa Women's Basketball

## Season Box Scores



Official Basketball Box Score -- Game Totals -- Final Statistics  
**UNI vs Iowa**  
12/1/12 2:30 PM at Carver-Hawkeye Arena, Iowa City, Iowa



UNI 46 • 3-4

#	Player	Total		3-Ptr	Rebounds			PF	TP	A	TO	Blk	Stl	Min
		FG-FGA	FT-FGA		Off	Def	Tot							
00	Kirschbaum, Amber	f	3-5	0-0	2-2	3	8	11	4	0	3	0	1	29
15	McDowell, Jess	c	3-8	3-8	0-0	1	2	3	2	9	0	1	0	30
10	Jacqui Kalin	g	2-13	1-7	4-4	3	5	8	2	9	4	2	0	32
22	Brown, Brooke	g	3-6	3-5	3-4	0	0	0	0	12	0	0	1	19
32	Donaldson, Brittini	g	1-7	1-5	0-0	0	1	1	0	3	0	1	0	24
05	Sorenson, Amber	0-1	0-0	0-0	0-0	0	0	0	0	0	0	0	0	1
13	Lamar, Sharnae	0-5	0-2	2-2	1	1	2	1	2	3	1	0	0	28
14	Daivison, Stephanie	0-1	0-1	0-0	0	0	0	0	1	0	0	0	0	6
20	Schonhardt, Hannah	0-2	0-1	3-4	0	3	3	3	2	2	0	0	0	17
42	Keitel, Jen	0-5	0-0	0-0	0	1	4	0	0	1	0	0	0	14
	Team					2	0	2						
	Totals		12-53	8-29	14-16	10	21	31	17	46	9	11	0	200

FG % 1st Half: 7-24 29.2% 2nd half: 5-29 17.2% Game: 12-53 22.6%  
3FG % 1st Half: 4-11 36.4% 2nd half: 4-18 22.2% Game: 8-29 27.6%  
FT % 1st Half: 6-6 100.0% 2nd half: 8-10 80.0% Game: 14-16 87.5%

Deadball Rebounds 0

Iowa 68 • 6-3

#	Player	Total		3-Ptr	Rebounds			PF	TP	A	TO	Blk	Stl	Min	
		FG-FGA	FT-FGA		Off	Def	Tot								
51	Doolittle, Bethany	f	4-11	0-0	0-0	1	6	7	2	8	0	1	0	1	26
12	Johnson, Morgan	c	6-11	0-0	7-11	4	8	12	2	19	5	2	2	35	
22	Logic, Samantha	g	7-9	0-1	1-1	1	3	4	3	15	3	1	1	33	
23	Taylor, Theaira	g	3-6	0-2	0-0	1	4	5	0	6	2	0	0	28	
24	Printy, Jaime	g	2-7	1-4	4-4	0	3	3	1	9	5	3	0	30	
11	Nesbitt, Trisha	0-0	0-0	0-0	0	0	0	0	0	0	0	0	0	5	
13	Thomas, Kathy	0-1	0-0	0-0	0	2	2	2	0	1	0	0	0	7	
21	Dixon, Melissa	2-4	2-2	0-0	1	1	2	6	1	0	0	0	0	16	
25	Peschel, Kalli	1-4	0-2	1-2	1	1	2	3	3	0	2	1	1	18	
45	Smith, Nicole	0-0	0-0	0-0	0	0	0	0	0	0	0	0	0	1	
54	Timmerman, Kayla	1-1	0-0	0-0	0	1	1	1	2	0	0	0	0	1	
	Team					1	4	5							
	Totals		26-54	3-11	13-18	10	33	43	16	68	17	9	4	5	200

FG % 1st Half: 11-28 39.3% 2nd half: 15-26 57.7% Game: 26-54 48.1%  
3FG % 1st Half: 2-7 28.6% 2nd half: 4-18 22.2% Game: 3-11 27.3%  
FT % 1st Half: 6-11 54.5% 2nd half: 7-7 100.0% Game: 13-18 72.2%

Deadball Rebounds 2

Officials: Barb Smith, Tim Daley, Bob Enterline  
Technical fouls: UNI-None. Iowa-None.  
Attendance: 6368

Score by periods	1st	2nd	Total
UNI	24	22	46
Iowa	30	38	68

	Points	In Paint	T/O	2nd Chance	Fast Break	Bench
UNI	4	11	5	0	5	1
IOWA	34	11	9	2	5	11

Last FG - UNI 2nd-03:52, IOWA 2nd-00:33.  
Largest lead - UNI by 3 1st-19:31, IOWA by 22 2nd-00:33.

Score tied - 0 times.  
Lead changed - 1 time.



Official Basketball Box Score -- Game Totals -- Final Statistics  
**Iowa State vs Iowa**  
12/6/12 7:30 PM at Carver-Hawkeye Arena, Iowa City, IA



Iowa State 42 • 5-1

#	Player	Total		3-Ptr	Rebounds			PF	TP	A	TO	Blk	Stl	Min	
		FG-FGA	FT-FGA		Off	Def	Tot								
05	Christofferson, H.	f	2-8	1-3	5-5	2	11	13	3	10	0	2	0	40	
42	Zimmerman, Amanda	f	0-2	0-0	0-0	0	0	0	0	2	0	0	1	6	
55	Prins, Anna	c	4-18	2-10	0-0	5	3	8	3	10	0	3	1	39	
03	Bingley, Emiah	g	0-1	0-0	0-0	0	1	1	0	1	0	0	0	7	
22	Williamson, Brynn	g	2-6	2-6	0-0	0	2	2	4	6	0	3	0	31	
04	Moody, Nikki	5-12	2-7	0-0	2	4	6	2	12	5	6	0	2	36	
15	Blaskowsky, Nicole	2-10	0-8	0-0	2	6	8	5	4	2	0	0	3	27	
32	Ellis, Fallon	0-0	0-0	0-0	1	3	4	0	0	2	0	0	0	14	
	Team					0	1	1							
	Totals		15-57	7-34	5-5	12	31	43	20	42	7	21	1	6	200

FG % 1st Half: 7-28 25.0% 2nd half: 8-29 27.6% Game: 15-57 26.3%  
3FG % 1st Half: 3-16 18.8% 2nd half: 4-18 22.2% Game: 7-34 20.6%  
FT % 1st Half: 0-0 0.0% 2nd half: 5-5 100.0% Game: 5-5 100.0%

Deadball Rebounds 0

Iowa 50 • 7-3

#	Player	Total		3-Ptr	Rebounds			PF	TP	A	TO	Blk	Stl	Min	
		FG-FGA	FT-FGA		Off	Def	Tot								
51	Doolittle, Bethany	f	1-8	0-1	0-0	0	4	4	3	2	0	1	0	1	36
12	Johnson, Morgan	c	3-8	0-0	1-2	1	5	6	1	7	2	4	1	1	38
22	Logic, Samantha	g	1-7	1-3	3-6	4	5	9	3	6	4	1	1	28	
23	Taylor, Theaira	g	4-12	1-3	2-4	4	5	9	0	11	3	5	1	27	
24	Printy, Jaime	g	2-7	0-3	6-6	1	5	6	1	10	2	3	0	34	
11	Nesbitt, Trisha	0-0	0-0	0-0	0	1	1	1	0	0	0	0	0	6	
13	Thomas, Kathy	0-1	0-1	3-4	1	1	2	1	3	0	0	0	0	6	
21	Dixon, Melissa	4-8	2-5	1-3	0	2	2	1	11	1	1	0	1	19	
25	Peschel, Kalli	0-0	0-0	0-0	0	0	0	2	0	2	0	0	0	6	
	Team					0	2	2							
	Totals		15-51	4-16	16-25	11	30	41	13	50	12	15	3	7	200

FG % 1st Half: 7-26 26.9% 2nd half: 8-25 32.0% Game: 15-51 29.4%  
3FG % 1st Half: 2-8 25.0% 2nd half: 2-8 25.0% Game: 4-16 25.0%  
FT % 1st Half: 4-6 66.7% 2nd half: 12-19 63.2% Game: 16-25 64.0%

Deadball Rebounds 3

Officials: Bob Trammell, Felicia Grinter, Michael Price  
Technical fouls: Iowa State-None. Iowa-None.  
Attendance: 4483  
Fouled out #15 ISU :29 2nd

Score by periods	1st	2nd	Total
Iowa State	17	25	42
Iowa	20	30	50

	Points	In Paint	T/O	2nd Chance	Fast Break	Bench
ISU	12	12	8	2	2	16
IOWA	14	12	10	2	2	14

Last FG - ISU 2nd-01:41, IOWA 2nd-01:26.  
Largest lead - ISU by 2 2nd-12:20, IOWA by 14 1st-13:58.

Score tied - 3 times.  
Lead changed - 2 times.



Official Basketball Box Score -- Game Totals -- Final Statistics  
**Iowa vs Drake**  
12-16-12 2:07 pm at Knapp Center (Des Moines, Iowa)



Iowa 82 • 8-3

#	Player	Total		3-Ptr	Rebounds			PF	TP	A	TO	Blk	Stl	Min	
		FG-FGA	FT-FGA		Off	Def	Tot								
12	Johnson, Morgan	f	11-19	0-0	4-7	2	6	8	2	26	0	0	3	2	38
51	Doolittle, Bethany	c	4-6	0-0	0-0	1	3	4	5	8	0	0	2	1	22
22	Logic, Samantha	g	5-9	1-1	2-2	3	2	5	4	13	7	3	2	1	35
23	Taylor, Theaira	g	2-5	2-3	0-0	0	3	3	1	6	6	2	0	0	30
24	Printy, Jaime	g	3-9	0-3	3-3	2	2	4	1	9	7	1	0	0	31
11	Nesbitt, Trisha	3-4	2-3	4-4	0	0	0	4	12	0	1	0	0	15	
13	Thomas, Kathy	1-1	1-1	0-0	0	0	0	0	3	0	0	0	0	7	
21	Dixon, Melissa	0-3	0-3	0-0	0	0	0	0	0	1	0	0	0	6	
25	Peschel, Kalli	2-3	1-1	0-0	0	0	0	4	5	2	1	1	1	16	
	Team					2	5	7							
	Totals		31-59	7-15	13-16	10	21	31	21	82	23	8	8	5	200

FG % 1st Half: 16-30 53.3% 2nd half: 15-29 51.7% Game: 31-59 52.5%  
3FG % 1st Half: 5-11 45.5% 2nd half: 2-4 50.0% Game: 7-15 46.7%  
FT % 1st Half: 2-2 100.0% 2nd half: 11-14 78.6% Game: 13-16 81.3%

Deadball Rebounds 2

Drake 65 • 3-6

#	Player	Total		3-Ptr	Rebounds			PF	TP	A	TO	Blk	Stl	Min	
		FG-FGA	FT-FGA		Off	Def	Tot								
21	Reid, Morgan	f	3-9	0-0	10-12	3	4	7	5	16	1	3	1	0	34
44	Running, Stephanie	c	3-7	0-0	0-1	0	5	5	1	6	1	1	0	0	22
01	Grenfell, Carly	g	1-6	0-4	0-0	0	1	1	1	2	2	1	0	0	22
04	Clark, Kyndal	g	6-12	6-7	1-2	1	3	4	1	19	2	1	0	1	31
14	Marschner, Alyssa	g	2-5	0-1	3-5	0	1	1	1	7	7	5	0	3	29
02	Specht, Mary Pat	2-7	1-5	2-2	1	1	2								



# University of Iowa Women's Basketball

## Season Box Scores



Official Basketball Box Score -- Game Totals -- Final Statistics  
**Iowa vs Texas**  
12/28/12 8:35 PM at Jenny Craig Pavilion



**Iowa 86 • 10-3**

##	Player	Total	3-Ptr	Rebounds	PF	TP	A	To	Bk	Stl	Min	FG-FGA				FT-FTA			
												FG-FGA	FG-FGA	FT-FTA	Off	Def	Tot	Off	Def
12	Johnson, Morgan	c	8-13	0-0	4-5	1	4	5	3	20	0	0	2	3	23				
51	Doolittle, Bethany	c	5-8	0-0	0-0	1	4	5	3	10	1	1	0	2	33				
22	Logic, Samantha	g	1-3	0-1	0-0	5	10	15	3	2	14	3	0	2	31				
23	Taylor, Theairra	g	2-9	0-1	0-0	0	1	1	2	4	2	1	0	3	25				
24	Printy, Jaime	g	7-14	2-7	5-7	0	3	3	1	21	1	1	0	0	30				
03	Till, Claire	g	0-1	0-1	0-0	1	0	1	0	1	1	1	0	0	4				
11	Nesbitt, Trisha	g	0-1	0-1	0-0	0	0	0	1	0	0	0	0	0	8				
13	Thomas, Kathy	g	1-1	0-0	0-0	0	2	2	0	2	0	2	0	1	9				
21	Dixon, Melissa	g	9-15	5-10	0-0	0	3	3	1	23	2	0	0	0	25				
25	Peschel, Kali	g	0-0	0-0	0-0	0	0	0	4	0	2	0	0	0	9				
45	Smith, Nicole	g	1-1	0-0	0-0	0	0	0	2	0	1	0	0	1					
54	Timmerman, Kayla	g	1-1	0-0	0-0	0	0	0	1	2	0	0	0	0	2				
Team						2	1	3											
Totals			35-67	7-21	9-12	10	28	38	20	86	23	10	2	11	200				

FG % 1st Half: 17-35 48.6% 2nd half: 18-32 56.3% Game: 35-67 52.2%  
 3FG % 1st Half: 4-13 30.8% 2nd half: 3-8 37.5% Game: 7-21 33.3%  
 FT % 1st Half: 3-4 75.0% 2nd half: 6-8 75.0% Game: 9-12 75.0%

**Texas 63 • 7-3**

##	Player	Total	3-Ptr	Rebounds	PF	TP	A	To	Bk	Stl	Min	FG-FGA				FT-FTA			
												FG-FGA	FG-FGA	FT-FTA	Off	Def	Tot	Off	Def
03	Enemkpal, Nneka	f	6-12	0-0	1-5	4	8	12	3	13	0	3	1	0	29				
34	McGee-Stafford,Imani	c	4-8	0-0	4-5	2	1	3	5	12	1	2	3	1	24				
01	Davenport, Empress	g	1-5	0-0	5-11	2	3	5	2	7	3	3	0	2	25				
02	Rodrigo, Celina	g	2-5	1-1	0-0	1	3	4	0	5	3	3	0	0	27				
24	Fussell, Chassidy	g	4-14	1-5	2-3	0	2	2	0	11	3	1	0	0	35				
00	Brewer, Kayla	g	0-0	0-0	0-0	0	0	0	0	0	0	0	0	0	5				
05	Roberts, Ashley	g	3-4	3-4	0-0	0	1	1	3	9	0	0	0	0	24				
32	Sanders, Brady	g	1-6	1-4	0-0	0	0	0	1	3	2	3	0	0	17				
42	Taylor, Nadia	g	0-0	0-0	1-2	0	1	1	0	1	0	0	0	0	5				
44	Hartung, Anne Marie	g	0-0	0-0	2-2	1	3	4	1	2	2	1	0	0	9				
Team						2	2	4											
Totals			21-54	6-14	15-28	12	24	36	15	63	14	16	4	3	200				

FG % 1st Half: 7-23 30.4% 2nd half: 14-31 45.2% Game: 21-54 38.9%  
 3FG % 1st Half: 2-5 40.0% 2nd half: 4-9 44.4% Game: 6-14 42.9%  
 FT % 1st Half: 5-8 62.5% 2nd half: 10-20 50.0% Game: 15-28 53.6%

Officials: Cathi Cornell, Lorena Ahumada, Renee Robinson  
 Technical fouls: Iowa-None. Texas-McGee-Stafford,Imani.  
 Attendance: 776

Score by periods	1st	2nd	Total
Iowa	41	45	86
Texas	21	42	63

Last FG - Iowa 2nd-01:09, UT 2nd-01:19.  
 Largest lead - Iowa by 27 2nd-03:58, UT by 4 1st-16:48.

Points	In	Off	2nd	Fast	Bench
IOWA	Paint	T/O	Chance	Break	
IOWA	40	24	11	8	29
IOWA	26	10	8	0	15

Score tied - 0 times.  
 Lead changed - 3 times.



Official Basketball Box Score -- Game Totals -- Final Statistics  
**Iowa vs San Diego**  
12/30/12 2:35 PM at Jenny Craig Pavilion



**Iowa 83 • 11-3**

##	Player	Total	3-Ptr	Rebounds	PF	TP	A	To	Bk	Stl	Min	FG-FGA				FT-FTA			
												FG-FGA	FG-FGA	FT-FTA	Off	Def	Tot	Off	Def
12	Johnson, Morgan	c	8-10	0-0	4-4	3	3	6	2	20	1	4	3	1	38				
51	Doolittle, Bethany	c	3-6	0-0	0-0	1	9	10	3	6	0	2	4	1	30				
22	Logic, Samantha	g	2-2	1-1	2-4	1	2	3	3	7	10	6	0	2	36				
23	Taylor, Theairra	g	3-7	1-2	2-3	0	0	4	3	9	4	2	1	0	33				
24	Printy, Jaime	g	10-20	7-12	6-6	0	2	2	1	33	4	2	1	0	30				
13	Thomas, Kathy	g	0-1	0-0	0-0	1	2	3	2	0	0	1	0	0	4				
21	Dixon, Melissa	g	3-7	2-3	0-0	0	0	0	0	0	1	8	0	2	17				
25	Peschel, Kali	g	0-0	0-0	0-0	1	0	1	0	0	0	0	0	0	12				
Team						0	2	2											
Totals			29-53	11-18	14-17	7	24	31	15	83	19	20	8	7	200				

FG % 1st Half: 15-28 53.6% 2nd half: 14-25 56.0% Game: 29-53 54.7%  
 3FG % 1st Half: 3-8 37.5% 2nd half: 8-10 80.0% Game: 11-18 61.1%  
 FT % 1st Half: 0-3 0.0% 2nd half: 14-14 100.0% Game: 14-17 82.4%

**San Diego 73 • 8-4**

##	Player	Total	3-Ptr	Rebounds	PF	TP	A	To	Bk	Stl	Min	FG-FGA				FT-FTA			
												FG-FGA	FG-FGA	FT-FTA	Off	Def	Tot	Off	Def
13	WIJENBERG, Felicia	f	0-4	0-0	0-0	1	0	1	2	0	2	5	0	3	18				
21	WISCHER, Klara	f	4-8	0-1	0-0	3	5	8	0	8	1	1	0	0	29				
10	KAME, Amy	g	10-18	2-3	8-9	2	4	6	3	30	4	6	1	1	40-				
22	HOOD, Maya	g	2-10	0-0	1-2	1	0	1	3	5	4	1	0	3	36				
33	BARLOW, Alysse	g	1-4	1-2	1-3	0	1	1	0	4	2	0	0	1	28				
01	JELNIKER, Brooke	g	0-0	0-0	0-0	0	0	0	0	0	0	0	0	0	1				
05	BENNETT, Julia	g	0-1	0-0	0-0	0	0	0	0	0	0	0	0	0	2				
11	McDANIEL, Katelyn	g	5-8	0-0	0-0	3	2	5	1	10	1	2	0	0	24				
12	EDERAINE, Sophia	g	8-11	0-0	0-3	1	1	2	4	16	1	1	0	1	21				
45	KNUTSON, Kameron	g	0-0	0-0	0-0	0	0	0	0	0	0	0	0	0	1				
Team						5	5	10											
Totals			30-64	3-6	10-17	16	18	34	13	73	15	16	1	9	200				

FG % 1st Half: 12-28 42.9% 2nd half: 18-36 50.0% Game: 30-64 46.9%  
 3FG % 1st Half: 3-5 60.0% 2nd half: 0-1 0.0% Game: 3-6 50.0%  
 FT % 1st Half: 8-10 80.0% 2nd half: 2-7 28.6% Game: 10-17 58.8%

Officials: Cathi Cornell, Richard Waters, Cheryl Blue  
 Technical fouls: Iowa-None. San Diego-None.  
 Attendance: 543

Score by periods	1st	2nd	Total
Iowa	33	50	83
San Diego	35	38	73

Last FG - Iowa 2nd-02:26, USD 2nd-00:15.  
 Largest lead - Iowa by 15 2nd-04:24, USD by 11 1st-09:11.

Score tied - 1 time.  
 Lead changed - 3 times.



Official Basketball Box Score -- Game Totals -- Final Statistics  
**Ohio State vs Iowa**  
1/3/13 5:30 PM at Carver-Hawkeye Arena, Iowa City, IA



**Ohio State 71 • 10-4, 0-1**

##	Player	Total	3-Ptr	Rebounds	PF	TP	A	To	Bk	Stl	Min	FG-FGA				FT-FTA			
												FG-FGA	FG-FGA	FT-FTA	Off	Def	Tot	Off	Def
14	Alston, Ameryst	f	4-8	1-3	0-0	1	1	2	2	9	1	0	0	0	38				
33	Adams, Ashley	f	2-8	0-0	0-0	2	4	6	1	4	1	3	0	0	31				
15	Dobranic, Aleksandra	c	0-1	0-0	0-0	0	1	1	1	0	1	0	0	0	8				
03	Stokes, Amber	g	1-7	0-0	2-4	1	3	4	4	4	3	2	0	2	33				
04	Hill, Taylor	g	11-25	4-11	8-8	3	2	5	4	34	1	7	2	5	43				
12	Kynard, Maleeka	g	0-1	0-0	0-0	0	0	0	0	0	0	0	0	0	0				
02	Moore, Darryce	g	4-5	0-0	1-2	2	4	6	2	9	3	0	1	0	27				
23	Ellerbe, Martina	g	1-4	0-2	0-0	2	1	3	2	2	3	1	1	0	25				
31	Ferguson, Raven	g	4-8	1-5	0-0	0	3	3	3	9	1	4	0	1	20				
Team						1	2	3											
Totals			27-68	6-21	11-14	12	21	33	19	71	14	17	4	8	225				

FG % 1st Half: 11-30 36.7% 2nd half: 13-30 43.3% Game: 27-68 39.7%  
 3FG % 1st Half: 4-10 40.0% 2nd half: 1-9 11.1% Game: 6-21 28.6%  
 FT % 1st Half: 5-6 83.3% 2nd half: 5-6 83.3% Game: 11-14 78.6%

**Iowa 77 • 12-3, 1-0**

##	Player	Total	3-Ptr	Rebounds	PF	TP	A	To	Bk	Stl	Min	FG-FGA				FT-FTA			
												FG-FGA	FG-FGA	FT-FTA	Off	Def	Tot	Off	Def
24	Printy, Jaime	f	5-8	0-1	4-4	0	3	3	1	14	3	4	0	0	39				
51	Doolittle, Bethany	f	4-6	0-0	0-0	2	3	5	1	8	2	2	6	3	42				
12	Johnson, Morgan	c	7-17	0-0	2-3	3	9	12	2	16	3	0	3						









**2012-13 IOWA WOMEN'S BASKETBALL**  
**Iowa Combined Team Statistics (as of Feb 07, 2013)**  
**All games**



<b>RECORD:</b>	<b>OVERALL</b>	<b>HOME</b>	<b>AWAY</b>	<b>NEUTRAL</b>
ALL GAMES	16-8	10-3	4-5	2-0
CONFERENCE	5-5	3-2	2-3	0-0
NON-CONFERENCE	11-3	7-1	2-2	2-0

#	Player	gp-gs	min	avg	Total		3-Point		F-Throw		Rebounds				pf	dq	a	to	blk	stl	pts	avg
					fg-fga	fg%	3fg-fga	3fg%	ft-fa	ft%	off	def	tot	avg								
12	Johnson, Morgan	24-24	752	31.3	133-254	.524	0-0	.000	93-120	.775	65	110	175	7.3	70	2	25	38	44	27	359	15.0
24	Printy, Jaime	24-21	762	31.8	95-253	.375	47-141	.333	108-117	.923	17	88	105	4.4	27	0	75	67	2	19	345	14.4
21	Dixon, Melissa	24-3	497	20.7	75-184	.408	49-123	.398	13-17	.765	7	29	36	1.5	43	0	20	25	1	12	212	8.8
22	Logic, Samantha	24-24	795	33.1	81-174	.466	10-31	.323	36-54	.667	60	97	157	6.5	64	2	162	110	9	47	208	8.7
23	Taylor, Theairra	24-24	590	24.6	71-179	.397	17-53	.321	26-40	.650	21	83	104	4.3	41	1	52	51	16	24	185	7.7
51	Doolittle, Bethany	24-24	720	30.0	86-202	.426	0-2	.000	10-12	.833	33	106	139	5.8	62	1	10	39	49	23	182	7.6
13	Thomas, Kathy	22-0	161	7.3	14-34	.412	7-14	.500	11-16	.688	5	18	23	1.0	26	0	13	19	1	6	46	2.1
03	Till, Claire	12-0	103	8.6	4-19	.211	2-7	.286	15-22	.682	9	16	25	2.1	11	0	3	9	3	3	25	2.1
54	Timmerman, Kayla	19-0	108	5.7	14-31	.452	1-2	.500	5-10	.500	7	17	24	1.3	12	0	4	9	7	2	34	1.8
11	Nesbitt, Trisha	21-0	159	7.6	9-24	.375	5-14	.357	9-12	.750	0	12	12	0.6	18	1	7	7	0	5	32	1.5
45	Smith, Nicole	6-0	12	2.0	2-4	.500	0-0	.000	2-2	1.000	0	1	1	0.2	2	0	0	1	0	0	6	1.0
25	Peschel, Kali	22-0	191	8.7	4-25	.160	1-10	.100	7-12	.583	17	11	28	1.3	28	0	8	9	4	5	16	0.7
Team											39	77	116				5					
Total.....		24	4850		588-1383	.425	139-397	.350	335-434	.772	280	665	945	39.4	404	7	379	389	136	173	1650	68.8
Opponents.....		24	4850		526-1441	.365	134-463	.289	289-428	.675	329	562	891	37.1	410	8	277	382	62	193	1475	61.5

<b>TEAM STATISTICS</b>	<b>IOWA</b>	<b>OPP</b>	<b>Date</b>	<b>Opponent</b>	<b>Score</b>	<b>Att.</b>
SCORING	1650	1475	^	11/9/12	NORTHERN ILLINOIS	w 63-40 4739
Points per game	68.8	61.5	^	11/11/12	ILLINOIS STATE	w 74-64 2930
Scoring margin	+7.3	-	^	11/14/12	MIDDLE TENNESSEE	Wot 69-63 1691
FIELD GOALS-ATT	588-1383	526-1441	^	11/18/12	NORTH CAROLINA	L 64-77 3073
Field goal pct	.425	.365		11/20/12	ROBERT MORRIS	w 58-44 3032
3 POINT FG-ATT	139-397	134-463	#	11/23/12	at FIU	L 65-66 430
3-point FG pct	.350	.289	#	11/25/12	vs WVU	w 79-70 387
3-pt FG made per game	5.8	5.6		11/28/12	at Florida State	L 69-83 2389
FREE THROWS-ATT	335-434	289-428		12/1/12	UNI	w 68-46 6368
Free throw pct	.772	.675		12/6/12	IOWA STATE	w 50-42 4483
F-Throws made per game	14.0	12.0		12/16/12	at Drake	w 82-65 2716
REBOUNDS	945	891		12/19/12	MISSOURI STATE	w 97-43 4588
Rebounds per game	39.4	37.1	%	12/28/12	vs Texas	w 86-63 776
Rebounding margin	+2.3	-	%	12/30/12	at San Diego	w 83-73 543
ASSISTS	379	277	*	1/3/13	OHIO STATE	Wot 77-71 3850
Assists per game	15.8	11.5	*	1/6/13	MICHIGAN	L 64-68 4644
TURNOVERS	389	382	*	01/10/13	at Wisconsin	w 65-56 3495
Turnovers per game	16.2	15.9	*	01/17/13	at Michigan State	L 54-65 5343
Turnover margin	-0.3	-	*	01/20/13	PURDUE	w 62-46 8576
Assist/turnover ratio	1.0	0.7	*	1/24/13	WISCONSIN	w 71-60 3894
STEALS	173	193	*	01/27/13	at Michigan	w 63-57 2607
Steals per game	7.2	8.0	*	01/31/13	at Illinois	L 62-74 1808
BLOCKS	136	62	*	2/03/13	NORTHWESTERN	L 65-67 4697
Blocks per game	5.7	2.6	*	02/07/13	at Minnesota	L 60-72 3528
ATTENDANCE	56565	24022				
Home games-Avg/Game	13-4351	9-2540				
Neutral site-Avg/Game	-	2-582				

^ = Preseason WNIT  
# = at FIU Thanksgiving Classic; Miami  
% = at San Diego Surf "N Slam Classic; San Diego  
\* = Conference game

<b>Score by Periods</b>	<b>1st</b>	<b>2nd</b>	<b>OT</b>	<b>Totals</b>
Iowa	741	885	24	1650
Opponents	659	804	12	1475



**2012-13 IOWA WOMEN'S BASKETBALL**  
**Iowa Combined Team Statistics (as of Feb 07, 2013)**  
**Conference games**



<b>RECORD:</b>	<b>OVERALL</b>	<b>HOME</b>	<b>AWAY</b>	<b>NEUTRAL</b>
ALL GAMES	5-5	3-2	2-3	0-0
CONFERENCE	5-5	3-2	2-3	0-0
NON-CONFERENCE	0-0	0-0	0-0	0-0

#	Player	gp-gs	min	avg	Total		3-Point		F-Throw		Rebounds				pf	dq	a	to	blk	stl	pts	avg
					fg-fga	fg%	3fg-fga	3fg%	ft-fa	ft%	off	def	tot	avg								
24	Printy, Jaime	10-10	347	34.7	42-123	.341	19-62	.306	42-45	.933	9	44	53	5.3	11	0	23	23	1	11	145	14.5
12	Johnson, Morgan	10-10	306	30.6	37-92	.402	0-0	.000	33-38	.868	31	46	77	7.7	34	2	8	10	15	13	107	10.7
21	Dixon, Melissa	10-0	222	22.2	35-83	.422	24-53	.453	7-8	.875	6	13	19	1.9	19	0	7	12	0	5	101	10.1
22	Logic, Samantha	10-10	355	35.5	36-77	.468	6-14	.429	18-27	.667	27	46	73	7.3	27	1	66	47	2	18	96	9.6
23	Taylor, Theairra	10-10	245	24.5	35-81	.432	8-22	.364	9-13	.692	8	28	36	3.6	18	1	16	18	7	14	87	8.7
51	Doolittle, Bethany	10-10	333	33.3	36-88	.409	0-0	.000	7-9	.778	14	39	53	5.3	22	0	5	18	23	12	79	7.9
54	Timmerman, Kayla	9-0	60	6.7	7-17	.412	0-0	.000	2-2	1.000	1	9	10	1.1	6	0	3	5	3	2	16	1.8
13	Thomas, Kathy	10-0	56	5.6	2-11	.182	2-5	.400	1-2	.500	0	6	6	0.6	9	0	6	9	1	2	7	0.7
25	Peschel, Kali	10-0	65	6.5	1-4	.250	0-2	.000	3-4	.750	5	2	7	0.7	5	0	3	4	2	1	5	0.5
11	Nesbitt, Trisha	8-0	28	3.5	0-5	.000	0-2	.000	0-0	.000	0	3	3	0.4	0	0	1	1	0	2	0	0.0
45	Smith, Nicole	1-0	1	1.0	0-0	.000	0-0	.000	0-0	.000	0	0	0	0.0	1	0	0	0	0	0	0	0.0
03	Till, Claire	3-0	7	2.3	0-1	.000	0-0	.000	0-0	.000	0	1	1	0.3	1	0	0	1	1	0	0	0.0
Team											16	23	39				4					
Total.....		10	2025		231-582	.397	59-160	.369	122-148	.824	117	260	377	37.7	153	4	138	152	55	80	643	64.3
Opponents.....		10	2025		237-591	.401	63-195	.323	99-140	.707	117	240	357	35.7	147	0	132	150	31	80	636	63.6

<b>TEAM STATISTICS</b>	<b>IOWA</b>	<b>OPP</b>	<b>Date</b>	<b>Opponent</b>	<b>Score</b>	<b>Att.</b>
SCORING	643	636	* 1/3/13	OHIO STATE	Wot 77-71	3850
Points per game	64.3	63.6	* 1/6/13	MICHIGAN	L 64-68	4644
Scoring margin	+0.7	-	* 01/10/13	at Wisconsin	W 65-56	3495
FIELD GOALS-ATT	231-582	237-591	* 01/17/13	at Michigan State	L 54-65	5343
Field goal pct	.397	.401	* 01/20/13	PURDUE	W 62-46	8576
3 POINT FG-ATT	59-160	63-195	* 1/24/13	WISCONSIN	W 71-60	3894
3-point FG pct	.369	.323	* 01/27/13	at Michigan	W 63-57	2607
3-pt FG made per game	5.9	6.3	* 01/31/13	at Illinois	L 62-74	1808
FREE THROWS-ATT	122-148	99-140	* 2/03/13	NORTHWESTERN	L 65-67	4697
Free throw pct	.824	.707	* 02/07/13	at Minnesota	L 60-72	3528
F-Throws made per game	12.2	9.9	^ = Preseason WNIT			
REBOUNDS	377	357	# = at FIU Thanksgiving Classic; Miami			
Rebounds per game	37.7	35.7	% = at San Diego Surf "N Slam Classic; San Diego			
Rebounding margin	+2.0	-	* = Conference game			
ASSISTS	138	132				
Assists per game	13.8	13.2				
TURNOVERS	152	150				
Turnovers per game	15.2	15.0				
Turnover margin	-0.2	-				
Assist/turnover ratio	0.9	0.9				
STEALS	80	80				
Steals per game	8.0	8.0				
BLOCKS	55	31				
Blocks per game	5.5	3.1				
ATTENDANCE	25661	16781				
Home games-Avg/Game	5-5132	5-3356				
Neutral site-Avg/Game	-	0-0				

<b>Score by Periods</b>	<b>1st</b>	<b>2nd</b>	<b>OT</b>	<b>Totals</b>
Iowa	292	337	14	643
Opponents	277	351	8	636