



University of Iowa Women's Basketball

Game #26

Feb. 13, 2013

2012-13 Schedule/Results 16-9 Overall, 5-6 Big Ten

11/9	Northern Illinois^	W, 63-40
11/11	Illinois State^	W, 74-64
11/14	Middle Tennessee^	W, 69-63 (OT)
11/18	North Carolina^	L, 64-77
11/20	Robert Morris	W, 58-44
11/23	at Florida International#	L, 65-66
11/25	vs. #12 West Virginia#	W, 79-70
11/28	at Florida State~	L, 69-83
12/1	Northern Iowa	W, 68-46
12/6	#22 Iowa State*	W, 50-42
12/16	at Drake	W, 82-65
12/19	Missouri State	W, 97-43
12/28	vs. #20 Texas%	W, 86-63
12/30	vs. San Diego%	W, 83-73
1/3	#24 Ohio State	W, 77-71 (OT)
1/6	Michigan	L, 64-68
1/10	at Wisconsin	W, 65-56
1/17	at Michigan State	L, 54-65
1/20	#11 Purdue	W, 62-46
1/24	Wisconsin	W, 71-60
1/27	at #23 Michigan	W, 63-57
1/31	at Illinois	L, 62-74
2/3	Northwestern	L, 65-67
2/7	at Minnesota	L, 60-72
2/11	Nebraska	L, 75-76
2/14	#8 Penn State	7 p.m.
2/17	at #18 Purdue	4 p.m.
2/24	at Nebraska	2 p.m.
2/28	Indiana	7 p.m.
3/3	at Northwestern	TBA

^ -- WNIT

-- FIU Thanksgiving Classic, Miami

~ -- ACC/Big Ten Challenge

* - Iowa Corn Cy-Hawk Series

% -- San Diego Surf 'N Slam Classic, San Diego

Pronunciation Guide

Lisa Bluder.....	BLUE-dir
Kali Peschel.....	PEH-shull
Theairra Taylor.....	thee-AIR-uh

SID Contact: Aaron Blau (@AaronBlau)
Email: aaron-blau@hawkeyesports.com

Office: (319) 335-9268
Cell: (319) 430-5103

Game Information

#8/9 Penn State (20-3, 10-1) at Iowa (16-9, 5-6)

Feb. 14, 2013 • 7 p.m. (CT)

Carver-Hawkeye Arena

Iowa City, Iowa



TV: None

TV Talent: None

Web: BTN.com (Hawkeye All-Access)

Radio: AM-800 KXIC, AM-1360 KMJM

Radio Talent: Brent Balbinot and Shelley Till

Live Stats/Audio: www.hawkeyesports.com

Twitter Updates: @IowaWBB

Series: Penn State leads 23-8

Storylines

- Tonight's game is "Go Red for Women," so all fans are encouraged to wear red in support of heart disease awareness. Free "I heart Iowa" t-shirts and trading card strip No. 4 will be handed out to the first 500 fans.
- 2,500 tickets are available for FREE at Midwest One Bank at the Johnson County branches, while supplies last.
- Morgan Johnson has started 120 games, which are the second-most in Iowa history (Jennie Lillis holds the record with 121 games started). She has played in all 121 games of her career -- the eighth most for a player in school history.
- Iowa is a perfect 6-0 against ranked teams this season. The Hawkeyes are the only team in the country to have played at least three ranked teams and have an undefeated record against ranked opponents.
- Iowa's next three games are against teams either ranked or receiving votes in the most recent polls.
- Samantha Logic leads the Big Ten and ranks 10th in the NCAA with 6.8 assists per game.
- Jaime Printy leads the Big Ten and ranks fifth in the NCAA with a 92.4 free throw percentage.
- Iowa's 15.9 assists per game rank second in the Big Ten and 36th nationally. Iowa is leading the Big Ten in free throw percentage (.771) and ranks second in blocked shots (5.7).
- Iowa ranks 12th in the NCAA in blocks (5.7) and 11th in free throw percentage (77.2).
- Jaime Printy is 37-of-37 from the free throw line in the final five minutes of a game, 31-of-31 in the final two minutes, 20-of-20 in the final minute and 6-of-6 in overtime.
- Morgan Johnson moved into sixth place in the Big Ten in career blocks. She has 174 in 121 career games -- an Iowa school record.

Tentative Starting Lineup

Iowa Hawkeyes (16-9, 5-6)

Pos.	No.	Name	Ht.	Yr.	Statistical Summary
G	22	Samantha Logic	5-8	So.	8.6 ppg, 6.6 rpg, 6.7 apg, .456 FG%, .667 FT% - Has five or more assists in 18 games
G	24	Jaime Printy	5-11	Sr.	14.4 ppg, 4.4 rpg, 3.2 apg, .378 FG%, .924 FT% - Scored double figures in nine-straight games; had her fifth 20-point game at Minnesota
G	23	Theairra Taylor	5-11	Jr.	7.8 ppg, 4.4 rpg, 2.3 apg, .397 FG%, .650 FT% - Recorded two or more steals in nine games this season
F	51	Bethany Doolittle	6-4	So.	7.3 ppg, 5.8 rpg, 2.0 bpg, .420 FG%, .833 FT% - Has reached double figures in seven games this season
C	12	Morgan Johnson	6-5	Sr.	15.0 ppg, 7.3 rpg, 1.8 bpg, .524 FG%, .775 FT% - Has posted back-to-back double-doubles, finishing with 13/10 at Minnesota, 19/10 vs. Nebraska

Head Coach: Lisa Bluder (Northern Iowa, 1983); 13th Season at Iowa (246-152); 29th Season Overall (602-295)



Inside the Numbers

	IOWA	PSU
Scoring Average	69.0	72.9
Scoring Defense	62.0	56.5
Scoring Margin	+7.0	+16.3
FG%	42.6	41.8
FG% Defense	36.8	35.1
FT%	71.1	74.3
3-PT FG%	34.9	39.1
3-PT FG% Defense	29.6	29.5
Rebound Margin	+2.1	+5.5
Assists Per Game	15.9	12.0
Turnovers Per Game	15.9	15.3
Turnover Margin	-0.1	+5.3
Steals Per Game	7.1	11.8
Blocks Per Game	5.7	4.9

Penn State vs. Iowa Series History

Penn State leads, 23-8
Last 10 Meetings Listed Below

2007-08 at Iowa W, 67-58
2007-08 at PSU W, 73-75
2008-09 at Iowa W, 97-89 (3OT)
2008-09 at PSU W, 63-57
2009-10 at PSU L, 73-77 (OT)
2009-10 at Iowa L, 62-68
2009-10 at Big Ten W, 82-75
2010-11 at PSU L, 59-68
2010-11 at Iowa L, 75-82
2011-12 at PSU L, 52-68

How Many Times a Hawkeye Player...

Scored 20 or More Points

Morgan Johnson8
Jaime Printy5
Melissa Dixon2

Scored 15 or More Points

Morgan Johnson13
Jaime Printy9
Samantha Logic3
Melissa Dixon4
Bethany Doolittle2
Kathy Thomas1
Theairra Taylor1

Grabbed 10 or More Rebounds

Morgan Johnson9
Samantha Logic4
Bethany Doolittle2
Theairra Taylor2

Grabbed 7 or More Rebounds

Morgan Johnson11
Bethany Doolittle10
Samantha Logic9
Theairra Taylor5
Jaime Printy3

Dished out 7 or More Assists

Samantha Logic13
Jaime Printy1
Theairra Taylor1

Dished out 5 or More Assists

Samantha Logic18
Jaime Printy5
Theairra Taylor5
Morgan Johnson1

Recorded 4 or More Steals

Samantha Logic1
----------------	--------

Blocked 3 or More Shots

Bethany Doolittle9
Morgan Johnson8

2012-13 Margin of Victory/Defeat

Points	1	2	3	4	5	6	7	8	9	10-14	15-19	20+
Wins	0	0	0	0	0	3	0	1	2	5	1	4
Losses	2	1	0	1	0	0	0	0	0	5	0	0

IOWA HISTORY

Iowa has played 1,123 games since beginning basketball in 1974. Iowa's overall record is 687-436 (.613). That includes a 345-176 (.665) mark in regular season Big Ten contests and a 333-95 (.780) mark in Carver-Hawkeye Arena.

SCOUTING PENN STATE

Eighth-ranked Penn State is 20-3 overall and 10-1 in Big Ten play. The Nittany Lions' only losses during nonconference play came at Miami and at No. 2 Connecticut. Wisconsin knocked off the Lady Lions during Big Ten play in Madison.

In its last game, Penn State defeated Michigan State, 71-56. The Lady Lions turned 22 Spartan turnovers into 29 points and also netted 32 points in the paint. Alex Bentley led Penn State with 24 points, and Maggie Lucas added 19 points.

Lucas leads the team with 19.7 points per game. She is shooting 44.3 percent from the field, 48.9 percent from 3-point range and 89 percent from the free throw line. Bentley is next at 13.7 points per game. Nikki Green has a team best 8.7 boards per contest.

PENN STATE VS. IOWA NOTES

- Penn State leads the all-time series, 23-18. The Lady Lions have won the last three contests. Iowa's last win over Penn State came in the quarterfinals of the 2010 Big Ten Tournament.
- Iowa holds a 10-7 record against Penn State in games played in Iowa City. The Lady Lions have won the last two games at Carver-Hawkeye Arena.

LAST MEETING

No. 21 Penn State used a late second half run to defeat Iowa, 68-52, in University Park (Jan. 22, 2012).

After the teams traded baskets in the first minutes of the contest, the Hawkeyes took a 20-19 lead with 6:45 left in the first half. Iowa led by as many as eight in the first 20 minutes and took a one point lead into the locker room at halftime.

Iowa led for the majority of the second half, until a 20-2 Penn State run in the final 6:09 sealed the win for the Lady Lions.

Kamille Wahlin had a season-high 21 points (7-of-15 FGs, 5-of-10 3Pt. FGs). Jaime Printy added 13 points and seven assists.

HAWKEYES FALL ONE POINT SHORT AGAINST NEBRASKA

Iowa had three shots at the game-tying 3-pointer with less than a minute remaining before Nebraska held on for a 76-75 victory over the Hawkeyes on Feb. 11 inside Carver-Hawkeye Arena. Iowa trailed by 12 points with 8:32 left before rallying. Senior Morgan Johnson posted her eighth double-double, finishing with 19 points on 9-of-11 shooting and

2012-13 Iowa Hawkeye Roster

No.	Name	Yr.	Ht.	Pos.	Hometown (High School/College)
3	Claire Till	Fr.	6-0	G	Dubuque, Iowa (Dubuque Wahlert)
11	Trisha Nesbitt	Sr.	5-7	G	Ames, Iowa (Ames)
12	Morgan Johnson	Sr.	6-5	C	Platte City, Mo. (Platte County)
13	Kathy Thomas	So.	5-6	G	Flint, Mich. (Highland CC, KS)
21	Melissa Dixon	So.	5-8	G	Johnsburg, Ill. (Johnsburg)
22	Samantha Logic	So.	5-9	G	Racine, Wis. (Racine J.I. Case)
23	Theairra Taylor	Jr.	5-11	G	St. Paul, Minn. (Central)
24	Jaime Printy	Sr.	5-11	G	Marion, Iowa (Linn-Mar)
25	Kali Peschel	Fr.	6-1	G	Sauk Centre, Minn. (Sauk Centre)
33	Kathryn Reynolds	So.	5-7	G	Cincinnati, Ohio (Mount Notre Dame)
45	Nicole Smith	Fr.	6-4	C	Rockton, Ill. (Hononegah)
51	Bethany Doolittle	So.	6-4	C	Oakdale, Minn. (Hill-Murray)
54	Kayla Timmerman	Fr.	6-3	F	Wayzata, Minn. (Wayzata)

Head Coach: Lisa Bluder **Associate Head Coach:** Jan Jensen
Assistant Coaches: Jenni Fitzgerald and Shannon Gage



2012-13 Team Captains

Iowa captains are seniors
Jaime Printy, Morgan Johnson and Trisha Nesbitt

10 rebounds, sophomore Melissa Dixon made 7-of-15 attempts and five 3s en route to 19 points, and senior Jaime Printy had 16 points on 6-of-14 shooting.

PRINTY NOTCHES 5TH 20-POINT GAME OF SEASON

Senior Jaime Printy scored 21 points on 6-of-22 shooting in Iowa's 72-60 road loss at Minnesota on Thursday night. It was the guard's fifth 20-plus point game this season and the 32nd of her Hawkeye career.

The Marion, Iowa, native has scored in double figures in 20-of-25 games this season.

JOHNSON IN TOP-10 IN CAREER DOUBLE-DOUBLES

Senior Morgan Johnson posted her second straight and eighth double-double of the season on Feb. 11 against Nebraska, finishing with 19 points and 10 rebounds. It was the center's 20th career double-double, which are the seventh most in school history.

LONG-RANGE BOMBER

Sophomore Melissa Dixon made 5-of-10 attempts from 3-point range in the 76-75 loss to Nebraska on Feb. 11. It was Dixon's fourth game this season with at least five 3s. She tied a career-best by making six triples in a Feb. 3 game against Northwestern. Dixon has had at least two 3-pointers in 18 games.

PRINTY A SENIOR CLASS AWARD FINALIST

Senior Jaime Printy is one of 10 finalists for the 2013 Senior CLASS Award. To be eligible for the award, a student-athlete must be classified as an NCAA Division I senior and have notable achievements in four areas of excellence – community, classroom, character and competition. Fans are encouraged to vote on the Senior CLASS Award website -- www.seniorCLASSaward.com.

AN EFFICIENT SENIOR

Senior Morgan Johnson has been a model for efficiency for the Hawkeyes during the 2012-13 season. The Missouri native is shooting 53.6 percent (142-of-265) from the floor, a figure that ranks second in the Big Ten Conference. Johnson has eight games of shooting better than 60 percent from the field, and she has shot better than 50 percent in 18-of-25 games.

IOWA CRACKS TOP 25

- Iowa entered both the Associated Press and the USA Today Sports Coaches' Top 25 polls last week. The Hawkeyes were No. 24 in the AP poll and No. 25 in the USA Today Sports poll.
- The Hawkeyes had not been ranked in the AP poll since Feb. 28, 2011. Iowa spent 14 weeks ranked in the Associated Press Top 25 during the 2010-11 season, climbing as high as No. 14.
- Iowa was ranked in the USA Today Sports Coaches' poll for the first time since Jan. 31, 2011. The Hawkeyes spent 13 weeks in the poll during the 2010-11 season and were ranked as high as No. 13.

PERFECTION AGAINST RANKED OPPONENTS

- The Hawkeyes are a perfect 6-0 against ranked opponents this season. Iowa is the only team in the country to have played at least three ranked teams and have an undefeated record against ranked opponents.

Head Coach Lisa Bluder

Lisa Bluder (pronounced BLUE-dir) is in her 13th season as head coach at the University of Iowa and her 29th season as a college head coach. She is a three-time Big Ten and two-time WBCA Regional Coach of the Year.

Bluder has a career record of 602-295 (.673), including a 246-153 (.620) record at Iowa, a 187-106 (.638) record in 10 seasons (1990-2000) at Drake and a six-year mark (1984-90) of 169-36 (.824) at St. Ambrose.

Bluder is Iowa's second all-time winningest coach and trails only C. Vivian Stringer. She has guided the Hawkeyes to 11 postseason tournaments (9 NCAA, 2 WNIT) and nine upper-division finishes in the Big Ten Conference, including winning a share of the league championship in 2008 and taking home the conference tournament title in 2001.

In her first season with the Hawkeyes, Bluder transformed a struggling program into a 21-game winner. Iowa finished second in the Big Ten, won the conference tournament and advanced to the second round of the NCAA Tournament. Bluder became Iowa's third coach to be named Big Ten Coach of the Year. She was also honored as the College Coach of the Year by the *Women's Basketball News Service* and was named the WBCA District 6 Coach of the Year. Iowa's 2001-02 squad finished fourth in the Big Ten and advanced to the second round of the NCAA Tournament for the second consecutive year. In 2003, Bluder guided the Hawkeyes to their first-ever WNIT appearance. Iowa, which had nine underclassmen on its roster, advanced to the quarterfinals before falling to Creighton. In 2004-05, Iowa finished 23-10, starting the year 13-0 and was the last Division I undefeated team standing. In 2005-06, Bluder mentored a team plagued by injuries to a fifth-place Big Ten finish and an NCAA Tournament berth.

In her 10 years at Drake, Bluder brought great success and tradition to the Bulldog program and established herself as one of the top coaches in the country. She led Drake to five 20-plus win seasons in her last six years, including five post-season appearances. She guided the Bulldogs to eight Missouri Valley Conference Tournament appearances, reaching the semifinals six times and winning the tournament four times. Bluder was also named the Conference Coach of the Year three times at Drake.

Bluder began her coaching career at St. Ambrose, where she coached six successful seasons, building the Bees into a NAIA powerhouse. During her tenure at St. Ambrose, Bluder guided the Bees to four straight national tournaments, including two consecutive Final Four appearances. The 1990 St. Ambrose team was ranked No. 1 and Bluder was named the NAIA Converse Coach of the Year.

A graduate of Linn-Mar High School in Marion, Iowa, Bluder was a three-year starter at Northern Iowa. She graduated from UNI in 1983 with a bachelor's degree in marketing.



Press Conferences

Below is a list of press conferences for Head Iowa Women's Basketball Coach Lisa Bluder. Press conferences will be held in the Media Room on the first floor of Carver-Hawkeye Arena. Select student-athletes will be available before or after Coach Bluder addresses the media.

Friday, Feb. 2211:30 a.m.
Week of March. 4 (B1G Tourney) TBA

Follow the Hawkeyes on Twitter

Iowa Women's Basketball....@IowaWBB

Claire Till..... @clairetill3

Trisha Nesbitt.....@TNesbitt11

Morgan Johnson..... @MoJohnson12

Kathy Thomas.....@datgurlgotgame_

Melissa Dixon @MDix21

Theairra Taylor..... @two3KneeTaylor

Jaime Printy.....@jprinty24

Kali Peschel..... @KaliPeschel

Nicole Smith@NicoleSmith42

Kayla Timmerman.....@timmykay54

Jan Jensen @golowa

Jenni Fitzgerald..... @jlefty21

Abby Emmert @abbyemmert

Press Conference FTP Information

Weekly press conference footage will be available to media outlets via www.dropbox.com.
Username: ath-media@uiowa.edu
Password: hawks2012

- Iowa is one of only six teams to have at least six wins over ranked opponents. The others are Baylor (10), Stanford (7), Connecticut (7), Tennessee (7) and Notre Dame (7).

PRINTY - B1G PLAYER OF THE WEEK - JAN. 26

Jaime Printy was named Big Ten Player of Week (Jan. 29) for her efforts in Iowa's wins against Wisconsin and at No. 23 Michigan.

Printy averaged 21.5 points, 6.5 rebounds, shot 54.5 percent from the field, 41.7 percent from 3-point range and was 14-of-15 from the free throw line in Iowa's two wins.

Printy is averaging 14.4 points per game, having scored in double figures in nine-straight games and 20-of-25 games for the season. She leads the Big Ten and ranks fifth nationally in free throw percentage (92.4).

Printy netted 29 points against Wisconsin, missing only two shots in 10 attempts, while going 3-of-3 from 3-point distance and 10-of-11 from the charity stripe. She also added eight rebounds and four assists, with just one turnover, in 35 minutes.

The Marion, Iowa, native finished the week with 14 points and five rebounds at No. 23 Michigan. She was a perfect 4-of-4 from the free throw line.

The honor marked the second time in Printy's career she has been named Big Ten Player of the Week and her sixth Big Ten honor (four-time Big Ten Freshman of the Week in 2009-10).

PRINTY MOVES INTO ELITE COMPANY

Senior Jaime Printy moved into the top-four in career scoring in Iowa history with her 16-point output against Nebraska. She currently has 1,770 career points.

Printy is one of six members of the 1,700-point club, joining former Hawkeye greats Cindy Haugejorde, Lindsey Meder, Michelle Edwards, Jennie Lillis and Franthea Price.

LOGIC CRASHING THE BOARDS

With 12 rebounds against Northwestern (Feb. 3), sophomore Samantha Logic collected her 10th career double digit rebounding performance and her second in two games (10 at Illinois). She added 11 points and three steals against Northwestern.

Logic has four games this season with 10 or more rebounds. Last year as a freshman, Logic tallied six games, including a stretch of four-straight during Big Ten play.

Logic leads the Big Ten in assists (6.7), while ranking fifth in assist-to-turnover ratio (1.5), 13th in field goal percentage (.456), and 13th in rebounding (6.6).

DIXON CONNECTS FROM LONG RANGE

Melissa Dixon led Iowa in scoring with 21 points in the narrow loss to Northwestern. Dixon helped the Hawkeye offense get on track in the first half, scoring 12 points off the bench to lead Iowa to a 29-18 halftime advantage. She added a pair of 3-pointers in the second half and made 6-of-9 treys in the game. She added a free throw and a two-point field goal in the final minute as Iowa tied the score before Northwestern's winning basket.

The six 3-pointers match a career-best for Dixon, and tie the Carver-Hawkeye Arena record by an Iowa player that Dixon shares with Wendy Ausdemore and Kamille Wahlin. (Jaime Printy, Lindsey Meder and Wahlin share the Iowa school record with seven treys). Dixon is averaging 9.2 points per outing, including 10.9 points in Big Ten games. She is sixth in the Big Ten in 3-point percentage (.406).

Dixon has come off the bench in 39 career games and has scored a total of 308 points as a substitute (7.9 points per game). Dixon has scored 10 or more points in 14 of those games (four as a freshman, 10 as a sophomore).

PRINTY AND DOOLITTLE TAKE OVER LATE

Jaime Printy and Bethany Doolittle both had impressive finishes in Iowa's games against Wisconsin and at Michigan.

Printy took over in the final minutes against Wisconsin (Jan. 24), scoring 14-straight points to give Iowa the win. The Hawkeyes trailed 52-51 with 5:25 left in the game. Printy then scored Iowa's next 14 points and went on her own personal 12-0 run from the 4:11 mark to the 1:53 mark, giving Iowa a 10-point advantage.



Big Ten Overall Individual Stats (thru Feb. 10)

Morgan Johnson	Rank	Avg.	Jaime Printy	Rank	Avg.
Field Goal Percentage	2nd	53.6	Free Throw Percentage	1st	.924
Blocks	5th	1.9	3-Pointers Made	11th	2.0
Offensive Rebounds	5th	2.9	Scoring	11th	14.4
Rebounding	8th	7.4	Assists	12th	3.2
Scoring	9th	15.1	Assist/Turnover Ratio	14th	1.1
Defensive Rebounds	15th	4.5			
			Melissa Dixon	Rank	Avg.
Samantha Logic	Rank	Avg.	3-Point Percentage	5th	.406
Assists	1st	6.7	3-Pointers Made	7th	2.2
Assist/Turnover Ratio	5th	1.5			
Steals	10th	2.0	Bethany Doolittle	Rank	Avg.
Offensive Rebounds	10th	2.5	Blocks	4th	2.0
Field Goal Percentage	13th	456			
Rebounding	13th	6.6			

Doolittle did the same at Michigan (Jan. 27), netting eight points to give Iowa a lead after it trailed by a point late in the contest. Doolittle's jumper with 5:20 left put Iowa ahead, 55-54. Doolittle went on her own 8-1 run from 5:20-1:45 in the second half to lift the Hawkeyes to the win.

Printy added 12 points, three assists and three steals against Northwestern, while Doolittle had nine rebounds and four blocked shots.

BLUDER GETS WIN NO. 600

Head coach Lisa Bluder became the 42nd coach in NCAA women's basketball history (all divisions) and only the 25th Division I head coach (minimum 10 years at a DI school) to collect 600 wins Jan. 20 vs. Purdue.

Bluder entered the 2012-13 season as the 26th winningest active coach and the 46th overall winningest coach in NCAA women's basketball history (by victories).

JOHNSON SETS FAMILY BLOCK RECORD

Morgan Johnson not only set the Iowa school record for career blocks, but she now holds the record for blocks in the Johnson household.

Johnson's mother, Leslie, compiled 265 career blocks from 1981-85 at Midland Lutheran College in Nebraska. Morgan broke her mother's record against Michigan (Jan. 27), collecting her 266th career block, and her career total now stands at 273.

LOGIC'S EYE-POPPING ASSIST FIGURES

- Samantha Logic leads the Big Ten and ranks 10th in the NCAA with 6.7 assists per game.
- Logic is on pace to break the Iowa single season assists record of 191, held by Cara Consuegra (2000-01 season). Logic currently has 168 assists and needs to average 4.6 assists per game in the final five regular season games to break the record.
- Logic has recorded seven or more assists in 13 games, including four games with 10 or more. She has had at least five assists in 18 games.
- Logic's six games with double digit assists are the second most in Iowa history. Cara Consuegra had nine games in her career with 10 or more assists. The next closest Hawkeyes on the list are Kachine Alexander, Jollette Law and Michelle Edwards, with two career games.

HAWKEYES LIKE TO SHARE

- Iowa is second in the Big Ten and ranks 35th in the NCAA with 15.9 assists per game.
- The Hawkeyes broke the school record for team assists last year, collecting 514. This year's team is nearly on pace to break that mark. Iowa had 398 assists through 25 games last year and has 412 through 25 games this year.
- Iowa has recorded at least 17 assists in 10 games, including four games with 20 or more.
- The Hawkeyes have 398 assists on 616 made field goals this season (1.5 assist/field goal ratio).

Big Ten Overall Stats (thru Feb. 11)

Scoring Offense	
1. Penn State	72.9
4. Iowa	69.0
Scoring Defense	
1. Michigan State	50.6
9. Iowa	62.0
Scoring Margin	
1. Penn State	+16.3
6. Iowa	+7.0
Free Throw Percentage	
1. Purdue	.777
2. Iowa	.772
Field Goal Percentage	
1. Minnesota	.452
5. Iowa	.425
Field Goal Percentage Defense	
1. Michigan State	.349
4. Iowa	.368
3-Point Field Goals Made	
1. Michigan	6.7
4. Iowa	5.9
3-Point Field Goal Percentage	
1. Penn State	.391
4. Iowa	.349
3-Point Field Goal Percentage Defense	
1. Michigan State	.257
6. Iowa	.296
Rebounding	
1. Penn State	42.2
4. Iowa	39.2
Rebounding Allowed	
1. Michigan	31.0
9. Iowa	37.1
Rebounding Margin	
1. Michigan State	+8.3
7. Iowa	+2.1
Offensive Rebounds	
1. Penn State	15.5
8. Iowa	11.8
Defensive Rebounds	
1. Northwestern	28.8
3. Iowa	27.4
Blocked Shots	
1. Northwestern	5.9
2. Iowa	5.7
Assists	
1. Ohio State	16.0
2. Iowa	15.9
Steals	
1. Illinois	12.4
10. Iowa	7.1
Turnover Margin	
1. Penn State	+5.3
7. Iowa	-0.1
Assist/Turnover Ratio	
1. Nebraska	+1.0
3. Iowa	1.0



Career Scoring in Iowa History

Rank...No.....	Player.....	Years
3..... 1821.....	Michelle Edwards	84-88
4..... 1770.....	Jaime Printy	10-Pres.
8..... 1598.....	Tangela Smith	94-98
9..... 1483.....	Kamille Wahlin	09-12
10..... 1470.....	Morgan Johnson	10-Pres.

Career 3-Pointers in Iowa History

Rank...No.....	Player.....	Years
1..... 261.....	Lindsey Meder	98-02
2..... 246.....	Jaime Printy	10-Pres.
3..... 231.....	Kamille Wahlin	09-Pr.

Career Blocks in Iowa History

Rank...No.....	Player.....	Years
1..... 273.....	Morgan Johnson	10-Pres.
2..... 235.....	Tangela Smith	94-98

Career Rebounds in Iowa History

Rank...No.....	Player.....	Years
3..... 887.....	Toni Foster	89-93
4..... 859.....	Tangela Smith	94-98
5..... 848.....	Lisa Long	83-87
6..... 827.....	Jennie Lillis.....	00-04
7..... 815.....	Morgan Johnson	10-Pres.

Career Assists in Iowa History

Rank...No.....	Player.....	Years
3..... 427.....	Kamille Wahlin	09-12
4..... 412.....	Kristi Smith.....	05-09
5..... 391.....	Johanna Solverson	02-05
6..... 387.....	Franthea Price.....	86-90
7..... 383.....	Jaime Printy	10-Pres.
12..... 322.....	Lisa Anderson	80-84
13..... 304.....	Samantha Logic.....	12-Pres.

Career Double-Doubles in Iowa History

Rank...No.....	Player.....	Years
4..... 24.....	Amy Herring.....	95-99
5..... 24.....	Kachine Alexander	07-11
6..... 21.....	Shanda Berry	85-89
7..... 20.....	Morgan Johnson	10-Pres.

2012-13 Big Ten Standings/Schedule (thru Feb. 12)

Team	Big Ten	Overall	Wed., Feb. 13
Penn State	10-1	20-3	Indiana at Michigan State
Nebraska	8-3	18-6	
Purdue	7-3	18-5	Thurs., Feb. 14
Michigan	7-4	18-6	Penn State at Iowa
Illinois	7-4	14-9	Purdue at Wisconsin
Michigan State	6-4	18-5	Ohio state at Nebraska
Iowa	5-6	16-9	Saturday, Feb. 16
Minnesota	4-7	15-10	Michigan State at Michigan
Ohio State	4-7	14-10	
Northwestern	3-8	11-13	
Wisconsin	3-8	11-13	
Indiana	1-10	10-14	

BALANCING ACT

Iowa has had seven different players lead, or share the lead, in scoring this season.

Morgan Johnson has paced the Hawkeyes in scoring 11 times, Jaime Printy nine times, Melissa Dixon six times, Theairra Taylor twice and Kathy Thomas, Bethany Doolittle and Samantha Logic once.

PRINTY CLOSE TO BIG FREE THROW RECORDS

- Jaime Printy currently owns an 88.9 career free throw percentage (418-of-470). Former Hawkeye Wendy Ausdemore holds the Iowa and Big Ten record for career free throw percentage at 89.2 (174-of-195).
- Printy is shooting 92.4 percent (110-of-119) for the season. The Iowa single season record is 89.4 percent (101-of-113) by Lindsey Meder in 2000-01. The Big Ten single season record is 92.5 percent (99-of-107) by Indiana's Cyndi Valentin in 2003-04.

PRINTY FREE THROW NOTES

- Printy has gone 3-of-3 from the line against Drake, 4-of-4 against Northern Illinois, Northern Iowa, Ohio State, Michigan State, Purdue and Michigan, 6-of-6 against Iowa State and San Diego, 8-of-8 vs. Northwestern, 11-of-11 against Middle Tennessee and 17-of-17 against West Virginia.
- Printy made 22-straight free throws, from Iowa's game vs. Texas (Dec. 28) through the game vs. Wisconsin (Jan. 24). Printy converted 21-consecutive free throws between Iowa's game vs. North Carolina and the road contest at Florida State
- Printy has put together a string of at least 20-consecutive made free throws in each year of her career. She converted 27-straight as a freshman and 32-straight as a sophomore and junior. Iowa's record for consecutive free throws made is 33 by Lindsey Meder.

PRINTY MOVES INTO SECOND PLACE ON 3's LIST

Jaime Printy passed Kamille Wahlin for second place on Iowa's career 3-pointers list in Iowa's win over Purdue (Jan. 20).

Printy has 246 career 3-pointers and trails Lindsey Meder (261) for first place.

IOWA CONTINUES TREND AGAINST RANKED FOES

- Iowa's win over 11th-ranked Purdue (Jan. 20) marked the 15th time under Lisa Bluder that the Hawkeyes have defeated a top-15 team.
- The Hawkeyes have recorded at least one win against a top-25 team in all but two seasons under Bluder. In nine of those seasons, Iowa has knocked off at least one top-15 opponent.
- Purdue was the highest ranked opponent the Hawkeyes have defeated since knocking off No. 10 Michigan State (66-64) on Jan. 27, 2011.
- This season marks just the second time in school history that Iowa has defeated three ranked teams prior to Big Ten play (No. 12 West Virginia, No. 22 Iowa State, No. 20 Texas). The only other time Iowa knocked off three ranked opponents was in 1993 (No. 4 Louisiana Tech, No. 20 Missouri State, No. 9 Southern California).



- This season is only the sixth time in school history that Iowa played at least three ranked teams prior to conference action. Iowa faced five ranked opponents in 1990 (2-3 record) and three in 1999 (0-3), 1995 (2-1), 1993 (3-0) and 1989 (1-2).
- Iowa has defeated six ranked teams, marking the first time since the 1995-96 season that the Hawkeyes have accomplished that feat (seven victories, 7-3 record versus ranked teams in 1995-96).

SCHOOL/B1G RECORDS SET THIS SEASON

- Morgan Johnson became the Iowa career leader in blocks against Florida International. Johnson entered the game needing two blocks to break Tangela Smith's career blocks record and she finished with five. Johnson currently is tied for sixth in Big Ten history with 273 blocks.
- Jaime Printy tied the school record for 3-pointers made in a single game with seven against San Diego. Kamille Wahlin and Lindsey Meder are the only other Iowa players to hit seven 3's in a single game. Printy was 6-of-7 in the second half, making her final five attempts. Her seven made treys tie as the most by a Big Ten player this season.
- Samantha Logic broke Iowa's school record for assists in a single game against Texas, finishing with 14. Her 14 assists tie as the most by a Big Ten player this season. Earlier this year, Logic tied the previous school record with 12 against Middle Tennessee State.
- Against West Virginia, Jaime Printy became only the third player in Big Ten history to go 17-of-17 from the free throw line, matching the best single game free throw performance in conference history. Wisconsin's Michele Kozelka (1989) and Keisha Anderson (1996) are the only other players in Big Ten history to accomplish the feat.
- Printy's 17 made free throws tied the single game school record and are tied for the second most made free throws in Big Ten history.
- Printy's performance against West Virginia marked the ninth time in school history that an Iowa player has been perfect from the free throw line (minimum 10 attempts). Printy now has three of those marks, with one of those performances coming earlier this year against Middle Tennessee (11-of-11). The other came against Indiana (10-of-10) on Feb. 27, 2011.
- Morgan Johnson was a perfect 11-of-11 from the free throw line at Wisconsin, marking the 10th time in school history, and the third this season, an Iowa player was perfect in at least 10 attempts.
- As a team, the Hawkeyes set the Big Ten and school record for free throws made (42) and set the school record for free throw attempts (50) in the win over West Virginia.

BEST BOARD GAME IN B1G

Iowa's 60 rebounds against Missouri State (Dec. 19) are the most by a Big Ten team this season.

The Hawkeyes collected 21 offensive and 39 defensive rebounds against the Lady Bears.

MOVING UP CAREER CHARTS

- Morgan Johnson, Iowa's all-time blocks leader (273), ranks seventh in career rebounds (815) and 10th in career scoring (1,470). She needs 13 more rebounds to move past Jennie Lillis for sixth place.
- Jaime Printy ranks second in career 3-pointers made (246), fourth in career scoring (1,770) and seventh in career assists (383). She needs 16 more 3-pointers to move past Lindsey Meder for first place, 51 points to move past Michelle Edwards into the top-three and five more assists to move past Franthea Price for sixth place.
- Samantha Logic ranks 13th in career assists (304). She needs 19 more assists to move past Lisa Anderson into 12th place.

HAWKEYES FACE NO. 18 PURDUE IN WEST LAFAYETTE

Iowa returns to action Sunday afternoon at No. 18 Purdue, facing the Boilermakers at 4 p.m. (CT) inside Mackey Arena. The game will be televised on ESPN2.

Hawkeyes in NCAA Stats (thru Feb. 10)

Iowa	Rank	Avg.
Free Throw Percentage	11th	77.1
Blocks	12th	5.7
3-Point Percentage	26th	34.9
Assists	36th	15.8
Assist/Turnover Ratio	43rd	1.0
Field Goal Percentage	52th	42.6
Scoring Offense	54th	69.0
Field Goal Percentage Defense	70th	36.8
Scoring Margin	72nd	+7.0
Melissa Dixon	Rank	Avg.
3-Point Percentage	25th	39.8
Morgan Johnson	Rank	Avg.
Field Goal Percentage	26th	53.6
Blocks	48th	1.8
Samantha Logic	Rank	Avg.
Assists	10th	6.7
Jaime Printy	Rank	Avg.
Free Throw Percentage	5th	92.4
Bethany Doolittle	Rank	Avg.
Blocks	36th	2.0

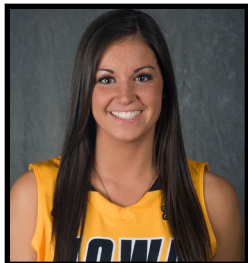




University of Iowa Women's Basketball

Updated Iowa Player Bio

Claire Till



3

Guard, 6-0, Freshman
Dubuque, Iowa
Dubuque Wahlert HS

- Missed a total of six games with a stress reaction in right femur (missed four games from Dec. 1-Dec. 28 and two games from Jan. 6-Jan.17).
- Seven points and six rebounds against Florida International.
- Five points and two rebounds in win over Robert Morris.
- Scored three points and recorded six rebounds in collegiate debut vs. NIU.
- Two-time all-state selection.
- Three-time IBCA Select Team member.
- Four-time first team all-conference and all-district pick.
- Underwent three surgeries in high school to repair injured knee.

Personal Bests

Points: 7 at Florida International (11/23/12)
Rebounds: 6, twice, last at FIU (11/23/12)
FGM: 1, 4x, last at FIU (11/23/12)
FGA: 6 at Florida International (11/23/12)
3-pt FG: 1, twice, last vs. RMU (11/20/12)
3-pt FGA: 2, twice, last at FIU (11/23/12)
FTM: 5, twice, last vs. WVU (11/25/12)
FTA: 8 at Florida International (11/23/12)
Assists: 1, 3x, last vs. Texas (12/28/12)
Steals: 1, 3x, last vs. WVU (11/25/12)
Blocks: 1, 3x, last vs. Ohio State (1/3/13)
Minutes: 18 at Florida International (11/23/12)

2012-13 Game-by-Game

#03 Till, Claire

Opponent	Date	gs	min	Total		3-Pointers		Free throws		Rebounds			pf	a	t/o	blk	stl	pts	avg	
				fg-fga	pct	3fg-fga	pct	ft-fa	pct	off	def	tot								avg
NORTHERN ILLINOIS	11/9/12	11	1-3	.333	1-2	.500	0-2	.000	1	5	6	6.0	3	0	0	1	1	3	3.0	
ILLINOIS STATE	11/11/12	7	1-2	.500	0-0	.000	2-2	1.000	0	3	3	4.5	1	0	2	0	1	4	3.5	
MIDDLE TENNESSEE	11/14/12	8	0-1	.000	0-0	.000	0-0	.000	0	1	1	3.3	2	0	0	0	0	0	2.3	
NORTH CAROLINA	11/18/12	6	0-0	.000	0-0	.000	1-2	.500	0	2	2	3.0	0	1	2	0	0	1	2.0	
ROBERT MORRIS	11/20/12	16	1-2	.500	1-1	1.000	2-2	1.000	0	2	2	2.8	0	0	2	0	0	5	2.6	
at FIU	11/23/12	18	1-6	.167	0-2	.000	5-8	.625	5	1	6	3.3	0	0	0	0	0	7	3.3	
vs WVU	11/25/12	14	0-1	.000	0-0	.000	5-6	.833	2	0	2	3.1	1	0	1	0	1	5	3.6	
at Florida State	11/28/12	12	0-2	.000	0-1	.000	0-0	.000	0	1	1	2.9	2	1	0	1	0	0	3.1	
vs Texas	12/28/12	4	0-1	.000	0-1	.000	0-0	.000	1	0	1	2.7	1	1	1	0	0	0	2.8	
OHIO STATE	1/3/13	4	0-1	.000	0-0	.000	0-0	.000	0	1	1	2.5	0	0	0	1	0	0	2.5	
PURDUE	01/20/13	1	0-0	.000	0-0	.000	0-0	.000	0	0	0	2.3	0	0	0	0	0	0	2.3	
WISCONSIN	1/24/13	2	0-0	.000	0-0	.000	0-0	.000	0	0	0	2.1	1	0	1	0	0	0	2.1	
Totals		0	103	4-19	.211	2-7	.286	15-22	.682	9	16	25	2.1	11	3	9	3	3	25	2.1

Games played: 12
 Minutes/game: 8.6
 Points/game: 2.1
 FG Pct: 21.1
 3FG Pct: 28.6
 FT Pct: 68.2

Rebounds/game: 2.1
 Assists/game: 0.3
 Turnovers/game: 0.8
 Assist/turnover ratio: 0.3
 Steals/game: 0.3
 Blocks/game: 0.3

CAREER STATISTICS

YEAR	G/GS	FG-A	PCT	3-PT	PCT	FT-A	PCT	O-D-REB	AVG	PF-FO	AS	TO	BK	ST	PTS	AVG
Fresh.	12/0	4-19	.211	2-7	.286	15-22	.682	9-16-25	2.1	11-0	3	9	3	3	25	2.1





University of Iowa Women's Basketball

Updated Iowa Player Bio

Trisha Nesbitt



11

Guard, 5-7, Senior
Ames, Iowa
Ames HS

- Career-high 12 points in win at Drake.
- Academic All-Big Ten in 2011-12.
- Had minor knee surgery Nov. 15, 2011 and missed the first 10 games of the season as a junior.
- Saw first action last season Dec. 20 vs. Drake, recording one rebound and one steal in seven minutes of play.

Personal Bests

Points: 12 at Drake (12/16/12)
Rebounds: 3, 2x, last vs. NIU (11/9/12)
FGM: 4 vs. Michigan State (3/6/10)
FGA: 8 at Indiana (2/11/10)
3-pt FG: 2, 3x, last at Drake (12/16/12)
3-pt FGA: 4, 3x, last vs. Missouri State (12/19/12)
FTM: 4, 3x, last at Drake (12/16/12)
FTA: 5 at UNI (11/22/09)
Assists: 4, 3x, last at Iowa St. (12/10/09)
Steals: 3 at Minnesota (1/3/10)
Blocks: ---
Minutes: 37 at Indiana (2/11/10)

2012-13 Game-by-Game

#11 Nesbitt, Trisha

Opponent	Date	gs	min	Total		3-Pointers		Free throws		Rebounds				pf	a	t/o	blk	stl	pts	avg
				fg-fga	pct	3fg-fga	pct	ft-fa	pct	off	def	tot	avg							
NORTHERN ILLINOIS	11/9/12	18	1-1	1.000	1-1	1.000	0-0	.000	0	3	3	3.0	0	1	2	0	0	3	3.0	
ILLINOIS STATE	11/11/12	15	0-3	.000	0-1	.000	3-4	.750	0	1	1	2.0	3	0	1	0	1	3	3.0	
MIDDLE TENNESSEE	11/14/12	4	1-1	1.000	0-0	.000	0-0	.000	0	0	0	1.3	0	0	0	0	0	2	2.7	
NORTH CAROLINA	11/18/12	5	1-2	.500	0-1	.000	0-0	.000	0	0	0	1.0	0	0	0	0	0	2	2.5	
ROBERT MORRIS	11/20/12	13	0-0	.000	0-0	.000	0-0	.000	0	2	2	1.2	0	2	0	0	0	0	2.0	
at FIU	11/23/12	8	1-2	.500	0-0	.000	0-0	.000	0	1	1	1.2	1	1	0	0	0	2	2.0	
vs WVU	11/25/12	14	1-1	1.000	1-1	1.000	1-2	.500	0	0	0	1.0	2	1	1	0	1	4	2.3	
at Florida State	11/28/12	5	0-0	.000	0-0	.000	0-0	.000	0	0	0	0.9	1	0	0	0	1	0	2.0	
UNI	12/1/12	5	0-0	.000	0-0	.000	0-0	.000	0	0	0	0.8	0	0	0	0	0	0	1.8	
IOWA STATE	12/6/12	6	0-0	.000	0-0	.000	0-0	.000	0	1	1	0.8	1	0	0	0	0	0	1.6	
at Drake	12/16/12	15	3-4	.750	2-3	.667	4-4	1.000	0	0	0	0.7	4	0	1	0	0	12	2.5	
MISSOURI STATE	12/19/12	15	1-4	.250	1-4	.250	1-2	.500	0	1	1	0.8	5	1	1	0	0	4	2.7	
vs Texas	12/28/12	8	0-1	.000	0-1	.000	0-0	.000	0	0	0	0.7	1	0	0	0	0	0	2.5	
MICHIGAN	1/6/13	3	0-0	.000	0-0	.000	0-0	.000	0	0	0	0.6	0	0	0	0	0	0	2.3	
at Wisconsin	01/10/13	3	0-1	.000	0-1	.000	0-0	.000	0	0	0	0.6	0	0	0	0	0	0	2.1	
at Michigan State	01/17/13	4	0-1	.000	0-0	.000	0-0	.000	0	1	1	0.6	0	0	0	0	1	0	2.0	
PURDUE	01/20/13	2	0-0	.000	0-0	.000	0-0	.000	0	0	0	0.6	0	0	0	0	0	0	1.9	
WISCONSIN	1/24/13	2	0-0	.000	0-0	.000	0-0	.000	0	0	0	0.6	0	0	0	0	0	0	1.8	
at Michigan	01/27/13	9	0-1	.000	0-1	.000	0-0	.000	0	2	2	0.6	0	0	0	0	0	0	1.7	
NORTHWESTERN	2/03/13	3	0-1	.000	0-0	.000	0-0	.000	0	0	0	0.6	0	1	1	0	1	0	1.6	
at Minnesota	02/07/13	2	0-1	.000	0-0	.000	0-0	.000	0	0	0	0.6	0	0	0	0	0	0	1.5	
NEBRASKA	02/11/13	8	0-1	.000	0-0	.000	0-0	.000	0	0	0	0.5	1	0	0	0	0	0	1.5	
Totals		0	167	9-25	.360	5-14	.357	9-12	.750	0	12	12	0.5	19	7	7	0	5	32	1.5

Games played: 22
 Minutes/game: 7.6
 Points/game: 1.5
 FG Pct: 36.0
 3FG Pct: 35.7
 FT Pct: 75.0

Rebounds/game: 0.5
 Assists/game: 0.3
 Turnovers/game: 0.3
 Assist/turnover ratio: 1.0
 Steals/game: 0.2

CAREER STATISTICS

YEAR	G/GS	FG-A	PCT	3-PT	PCT	FT-A	PCT	O-D-REB	AVG	PF-FO	AS	TO	BK	ST	PTS	AVG
Fresh.	34/1	25-85	.294	9-36	.250	25-31	.806	2-22-24	0.7	46-0	43	42	0	14	84	2.5
Soph.	16/0	3-13	.231	2-6	.333	0-1	.000	0-4-4	0.3	7-0	5	10	0	1	8	0.5
Junior	15/0	1-8	.125	0-6	.000	3-4	.750	1-2-3	0.2	10-0	4	3	0	3	5	0.3
Senior	22/0	9-25	.360	5-14	.357	9-12	.750	0-12-12	0.5	19-1	7	7	0	5	32	1.5
TOTALS	87/1	38-131	.290	16-62	.258	37-48	.771	3-40-43	0.5	82-1	59	62	0	23	129	1.5





University of Iowa Women's Basketball

Updated Iowa Player Bio

Morgan Johnson



12

Center, 6-5, Senior
Platte City, Mo.
Platte County HS

- Iowa career blocks leader (273), seventh in career rebounds (815) and 10th in career scoring (1,470).
- Posted 20 career double-doubles, which rank seventh all-time in school history... had three as a freshman, five as a sophomore, four as a junior and eight as a senior.
- Posted eighth double-double against Nebraska, finishing with 19 points on 9-of-11 shooting to go along with 10 rebounds.
- Seventh double-double of the season with 13 points and 10 rebounds at Minnesota.
- Sixth double-double of the season with 13 points and 12 rebounds at Michigan St.
- Fifth double-double of the season with 23 points and 11 rebounds in win at Wisconsin.
- Fourth double-double of the season with 16 points and 12 rebounds in win over Ohio State.
- 20 points and five rebounds in win over Texas.
- 26 points, eight rebounds and three blocks in win at Drake.
- Third double-double of the season with 19 points, 12 rebounds and a career-high five assists in win over Northern Iowa.
- 20 points at Florida State.
- 19 points in win over West Virginia.
- Second double-double of the season with 19 points and 11 rebounds in win over Robert Morris.
- Big Ten Player of the Week (Nov. 19).
- First double-double of the season with 20 points and 11 rebounds vs. N. Carolina.
- 20 points and eight rebounds in win over Middle Tennessee.
- 24 points (12-of-13 FTs) and nine rebounds in win over Illinois State.
- Preseason All-Big Ten selection.

2012-13 Game-by-Game

#12 Johnson, Morgan

Opponent	Date	gs	min	Total		3-Pointers		Free throws		Rebounds			pf	a	t/o	blk	stl	pts	avg		
				fg-fga	pct	3fg-fga	pct	ft-fa	pct	off	def	tot								avg	
NORTHERN ILLINOIS	11/9/12	*	20	4-11	.364	0-0	.000	3-5	.600	1	4	5	5.0	2	0	1	0	1	11	11.0	
ILLINOIS STATE	11/11/12	*	30	6-14	.429	0-0	.000	12-13	.923	4	5	9	7.0	2	2	2	5	1	24	17.5	
MIDDLE TENNESSEE	11/14/12	*	41	8-10	.800	0-0	.000	4-6	.667	2	6	8	7.3	4	1	0	2	0	20	18.3	
NORTH CAROLINA	11/18/12	*	39	8-11	.727	0-0	.000	4-5	.800	3	8	11	8.3	4	1	2	2	2	20	18.8	
ROBERT MORRIS	11/20/12	*	33	8-13	.615	0-0	.000	3-5	.600	5	6	11	8.8	3	0	3	0	0	19	18.8	
at FIU	11/23/12	*	36	6-9	.667	0-0	.000	2-2	1.000	3	3	6	8.3	2	2	3	5	0	14	18.0	
vs WVU	11/25/12	*	30	6-11	.545	0-0	.000	7-11	.636	0	3	3	7.6	3	1	2	2	1	19	18.1	
at Florida State	11/28/12	*	30	8-15	.533	0-0	.000	4-4	1.000	3	1	4	7.1	2	1	2	2	0	20	18.4	
UNI	12/1/12	*	35	6-11	.545	0-0	.000	7-11	.636	4	8	12	7.7	2	5	2	2	2	19	18.4	
IOWA STATE	12/6/12	*	38	3-8	.375	0-0	.000	1-2	.500	1	5	6	7.5	1	2	4	1	1	7	17.3	
at Drake	12/16/12	*	38	11-19	.579	0-0	.000	4-7	.571	2	6	8	7.5	2	0	0	3	2	26	18.1	
MISSOURI STATE	12/19/12	*	15	6-7	.857	0-0	.000	1-2	.500	2	2	4	7.3	4	1	3	0	0	13	17.7	
vs Texas	12/28/12	*	23	8-13	.615	0-0	.000	4-5	.800	1	4	5	7.1	3	0	0	2	3	20	17.8	
at San Diego	12/30/12	*	38	8-10	.800	0-0	.000	4-4	1.000	3	3	6	7.0	2	1	4	3	1	20	18.0	
OHIO STATE	1/3/13	*	43	7-17	.412	0-0	.000	2-3	.667	3	9	12	7.3	2	3	0	3	3	16	17.9	
MICHIGAN	1/6/13	*	39	4-7	.571	0-0	.000	2-3	.667	3	4	7	7.3	4	2	0	1	2	10	17.4	
at Wisconsin	01/10/13	*	35	6-12	.500	0-0	.000	11-11	1.000	8	3	11	7.5	3	0	3	2	0	23	17.7	
at Michigan State	01/17/13	*	37	5-12	.417	0-0	.000	3-4	.750	5	7	12	7.8	3	0	1	2	2	13	17.4	
PURDUE	01/20/13	*	24	3-14	.214	0-0	.000	1-1	1.000	3	4	7	7.7	3	0	1	3	0	7	16.9	
WISCONSIN	1/24/13	*	17	1-2	.500	0-0	.000	0-0	.000	2	2	4	7.6	4	1	1	0	0	2	16.2	
at Michigan	01/27/13	*	31	2-4	.500	0-0	.000	2-2	1.000	1	6	7	7.5	4	0	0	1	2	6	15.7	
at Illinois	01/31/13	*	27	3-6	.500	0-0	.000	0-0	.000	1	3	4	7.4	5	0	2	1	1	6	15.2	
NORTHWESTERN	2/03/13	*	18	3-9	.333	0-0	.000	5-7	.714	1	2	3	7.2	5	0	2	1	1	11	15.0	
at Minnesota	02/07/13	*	35	3-9	.333	0-0	.000	7-7	1.000	4	6	10	7.3	1	2	0	1	2	13	15.0	
NEBRASKA	02/11/13	*	30	9-11	.818	0-0	.000	1-3	.333	7	3	10	7.4	1	1	1	4	0	19	15.1	
Totals			25	782	142-265	.536	0-0	.000	94-123	.764	72	113	185	7.4	71	26	39	48	27	378	15.1

Games played: 25
 Minutes/game: 31.3
 Points/game: 15.1
 FG Pct: 53.6
 FT Pct: 76.4

Rebounds/game: 7.4
 Assists/game: 1.0
 Turnovers/game: 1.6
 Assist/turnover ratio: 0.7
 Steals/game: 1.1
 Blocks/game: 1.9

Personal Bests

- Points:** 37 at Bradley (12/17/11)
- Rebounds:** 16 vs. Illinois (1/5/12)
- FGM:** 13 at Bradley (12/17/11)
- FGA:** 21 vs. Virginia Tech (11/30/11)
- 3-pt FG:** 1 at Iowa State (12/10/09)
- 3-pt FGA:** 2 at Iowa State (12/10/09)
- FTM:** 12 vs. Illinois State (11/11/12)
- FTA:** 13 vs. Illinois State (11/11/12)
- Assists:** 5 vs. Northern Iowa (12/1/12)
- Steals:** 3, 5x, last vs. Ohio State (1/3/13)
- Blocks:** 8 vs. Minnesota (2/18/10)
- Minutes:** 43 vs. Ohio State (1/3/13)

CAREER STATISTICS

YEAR	G/GS	FG-A	PCT	3-PT	PCT	FT-A	PCT	O-D-REB	AVG	PF-FO	AS	TO	BK	ST	PTS	AVG
Fresh.	34/34	124-250	.496	1-4	.250	48-76	.632	78-139-217	6.4	87-2	24	61	79	15	297	8.7
Soph.	31/30	132-276	.478	0-0	.000	70-96	.729	90-118-208	6.7	83-3	25	58	76	21	334	10.8
Junior	31/31	179-326	.549	0-0	.000	103-141	.730	67-138-205	6.6	96-4	24	64	70	12	461	14.9
Senior	25/25	142-265	.536	0-0	.000	94-123	.764	72-113-185	7.4	71-2	26	39	48	27	378	15.1
TOTALS	121/120	577-1117	.517	1-4	.250	315-436	.722	307-508-815	6.7	337-11	99	222	273	75	1470	12.1





University of Iowa Women's Basketball

Updated Iowa Player Bio

Kathy Thomas



13

**Guard, 5-6, Sophomore
Flint, Mich.
Highland CC (Kan.)**

- 15 points (3-of-6 3Pt. FGs) in win over Missouri State.
- Scored eight points in collegiate debut vs. NIU.
- NJCAA first team All-American at Highlands Community College.
- Jayhawk Conference Player and Freshman of the Year.
- Led Highland Community College to 28-4 overall record, second place finish in Jayhawk Conference and NJCAA Division II District B finals appearance, the most successful season in school history.
- Averaged 13.2 points, 8.9 assists and 9.8 steals as a senior in high school.

Personal Bests

Points: 15 vs. Missouri State (12/19/12)
Rebounds: 3, twice, last at San Diego (12/30/12)
FGM: 6 vs. Missouri State (12/19/12)
FGA: 9 vs. Missouri State (12/19/12)
3-pt FG: 3 vs. Missouri State (12/19/12)
3-pt FGA: 6 vs. Missouri State (12/19/12)
FTM: 5 vs. Ill. State (11/11/12)
FTA: 8 vs. Ill. State (11/11/12)
Assists: 3, twice, last vs. Purdue (1/20/13)
Steals: 2, twice, last vs. Purdue (1/20/13)
Blocks: 1 at Minnesota (2/7/13)
Minutes: 19 vs. Missouri State (12/19/12)

2012-13 Game-by-Game

#13 Thomas, Kathy

Opponent	Date	qs	min	Total		3-Pointers		Free throws		Rebounds			pf	a	t/o	blk	stl	pts	avg	
				fg-fga	pct	3fg-fga	pct	ft-fa	pct	off	def	tot								avg
NORTHERN ILLINOIS	11/9/12	15	3-4	.750	0-0	.000	2-2	1.000	1	1	2	2.0	3	0	1	0	0	8	8.0	
ILLINOIS STATE	11/11/12	16	0-2	.000	0-0	.000	5-8	.625	2	1	3	2.5	3	3	3	0	1	5	6.5	
MIDDLE TENNESSEE	11/14/12	2	0-0	.000	0-0	.000	0-0	.000	0	0	0	1.7	1	0	0	0	0	0	4.3	
NORTH CAROLINA	11/18/12	2	0-0	.000	0-0	.000	0-0	.000	0	0	0	1.3	1	0	0	0	0	0	3.3	
ROBERT MORRIS	11/20/12	10	1-3	.333	1-1	1.000	0-0	.000	0	1	1	1.2	2	1	0	0	0	3	3.2	
at FIU	11/23/12	8	0-0	.000	0-0	.000	0-0	.000	0	0	0	1.0	0	0	0	0	0	0	2.7	
UNI	12/1/12	7	0-1	.000	0-0	.000	0-0	.000	0	2	2	1.1	2	1	0	0	0	0	2.3	
IOWA STATE	12/6/12	6	0-1	.000	0-1	.000	3-4	.750	1	1	2	1.3	1	0	0	0	0	3	2.4	
at Drake	12/16/12	7	1-1	1.000	1-1	1.000	0-0	.000	0	0	0	1.1	0	0	0	0	0	3	2.4	
MISSOURI STATE	12/19/12	19	6-9	.667	3-6	.500	0-0	.000	0	2	2	1.2	2	2	3	0	2	15	3.7	
vs Texas	12/28/12	9	1-1	1.000	0-0	.000	0-0	.000	0	2	2	1.3	0	0	2	0	1	2	3.5	
at San Diego	12/30/12	4	0-1	.000	0-0	.000	0-0	.000	1	2	3	1.4	2	0	1	0	0	0	3.3	
OHIO STATE	1/3/13	5	0-0	.000	0-0	.000	0-0	.000	0	1	1	1.4	3	1	2	0	0	0	3.0	
MICHIGAN	1/6/13	2	0-0	.000	0-0	.000	0-0	.000	0	0	0	1.3	0	0	0	0	0	0	2.8	
at Wisconsin	01/10/13	2	0-1	.000	0-0	.000	0-0	.000	0	0	0	1.2	1	0	0	0	0	0	2.6	
at Michigan State	01/17/13	5	0-2	.000	0-0	.000	0-0	.000	0	2	2	1.3	2	0	0	0	0	0	2.4	
PURDUE	01/20/13	8	0-1	.000	0-0	.000	0-0	.000	0	1	1	1.2	1	3	2	0	2	0	2.3	
WISCONSIN	1/24/13	8	0-1	.000	0-1	.000	0-0	.000	0	1	1	1.2	1	0	1	0	0	0	2.2	
at Michigan	01/27/13	6	1-3	.333	1-2	.500	1-2	.500	0	0	0	1.2	0	0	1	0	0	4	2.3	
at Illinois	01/31/13	4	0-1	.000	0-1	.000	0-0	.000	0	0	0	1.1	0	1	0	0	0	0	2.2	
NORTHWESTERN	2/03/13	3	0-0	.000	0-0	.000	0-0	.000	0	0	0	1.0	1	0	2	0	0	0	2.0	
at Minnesota	02/07/13	13	1-2	.500	1-1	1.000	0-0	.000	0	1	1	1.0	0	1	1	1	0	3	2.1	
NEBRASKA	02/11/13	4	1-2	.500	0-1	.000	0-0	.000	0	1	1	1.0	1	0	1	0	0	2	2.1	
Totals		0	165	15-36	.417	7-15	.467	11-16	.688	5	19	24	1.0	27	13	20	1	6	48	2.1

Games played: 23
 Minutes/game: 7.2
 Points/game: 2.1
 FG Pct: 41.7
 3FG Pct: 46.7
 FT Pct: 68.8

Rebounds/game: 1.0
 Assists/game: 0.6
 Turnovers/game: 0.9
 Assist/turnover ratio: 0.7
 Steals/game: 0.3
 Blocks/game: 0.0

CAREER STATISTICS

YEAR	G/GS	FG-A	PCT	3-PT	PCT	FT-A	PCT	O-D-REB	AVG	PF-FO	AS	TO	BK	ST	PTS	AVG
Fresh.	23/0	15-36	.417	7-15	.467	11-16	.688	5-19-24	1.0	27-0	13	20	1	6	48	2.1





University of Iowa Women's Basketball

Updated Iowa Player Bio

Melissa Dixon



21

Guard, 5-8, Sophomore
Johnsburg, Ill.
Johnsburg HS

- Scored 19 points (7-15 FG, 5-10 3PT) in the 76-75 loss against Nebraska.
- 21 points (7-10 FGs, 6-9 3Pt. FGs) in loss to Northwestern.
- 15 points in win over Purdue.
- Career-high 23 points (5-of-10 3Pt. FGs) in win over Texas.
- 11 points in win over Iowa State.
- 12 points against North Carolina.
- Career-high 22 points (8-18 FGs, 6-15 3Pt. FGs) in win over Michigan as a freshman.
- Suffered torn meniscus at Ohio State (Jan. 2, 2012) as a freshman. Missed a total of seven games.
- First career start came at Indiana, registering career-highs in points (19), field goals made (7), 3-pointers made and attempted (5-for-10), steals (3) and minutes (28).

Personal Bests

Points: 23 vs. Texas (12/28/12)
Rebounds: 4, 4x, last vs. Minnesota (2/9/12)
FGM: 9 vs. Texas (12/28/12)
FGA: 18 vs. Michigan (2/26/12)
3-pt FG: 6, twice, last vs. N'western (2/3/13)
3-pt FGA: 15 vs. Michigan (2/26/12)
FTM: 5, 2x, last vs. Drake (12/20/11)
FTA: 6, 2x, last vs. Drake (12/20/11)
Assists: 4 vs. Nebraska (3/2/12)
Steals: 3 at Indiana (2/5/12)
Blocks: 1, 3x, last vs. Ill. State (11/11/12)
Minutes: 34, twice, last vs. MTSU (11/14/12)

2012-13 Game-by-Game

#21 Dixon, Melissa

Opponent	Date	gs	min	Total		3-Pointers		Free throws		Rebounds			pf	a	t/o	blk	stl	pts	avg		
				fg-fga	pct	3fg-fga	pct	ft-fa	pct	off	def	tot								avg	
NORTHERN ILLINOIS	11/9/12	*	24	3-4	.750	2-3	.667	0-0	.000	0	2	2	2.0	2	2	1	0	1	8	8.0	
ILLINOIS STATE	11/11/12	*	24	2-3	.667	2-3	.667	2-2	1.000	0	0	0	1.0	4	2	1	1	0	8	8.0	
MIDDLE TENNESSEE	11/14/12	*	34	2-9	.222	2-7	.286	0-1	.000	0	1	1	1.0	2	1	1	0	2	6	7.3	
NORTH CAROLINA	11/18/12		20	5-11	.455	2-8	.250	0-0	.000	0	1	1	1.0	4	0	2	0	0	12	8.5	
ROBERT MORRIS	11/20/12		17	2-8	.250	2-7	.286	0-0	.000	0	2	2	1.2	2	0	3	0	0	6	8.0	
at FIU	11/23/12		19	3-11	.273	2-7	.286	0-0	.000	0	2	2	1.3	2	0	0	0	0	8	8.0	
vs WVU	11/25/12		17	0-2	.000	0-1	.000	0-0	.000	0	0	0	1.1	2	0	1	0	0	0	6.9	
at Florida State	11/28/12		14	1-5	.200	0-3	.000	1-1	1.000	0	0	0	1.0	0	1	0	0	1	3	6.4	
UNI	12/1/12		16	2-4	.500	2-2	1.000	0-0	.000	1	1	2	1.1	2	1	0	0	0	6	6.3	
IOWA STATE	12/6/12		19	4-8	.500	2-5	.400	1-3	.333	0	2	2	1.2	1	1	1	0	1	11	6.8	
at Drake	12/16/12		6	0-3	.000	0-3	.000	0-0	.000	0	0	0	1.1	0	1	0	0	0	0	6.2	
MISSOURI STATE	12/19/12		23	4-11	.364	2-8	.250	2-2	1.000	0	2	2	1.2	1	2	1	0	1	12	6.7	
vs Texas	12/28/12		25	9-15	.600	5-10	.500	0-0	.000	0	3	3	1.3	1	2	0	0	0	23	7.9	
at San Diego	12/30/12		17	3-7	.429	2-3	.667	0-0	.000	0	0	0	1.2	1	0	2	0	1	8	7.9	
OHIO STATE	1/3/13		15	1-6	.167	1-2	.500	0-0	.000	0	1	1	1.2	2	0	1	0	1	3	7.6	
MICHIGAN	1/6/13		25	6-14	.429	5-9	.556	0-0	.000	3	0	3	1.3	2	2	0	0	0	17	8.2	
at Wisconsin	01/10/13		19	2-6	.333	2-5	.400	2-2	1.000	0	3	3	1.4	2	2	0	0	0	8	8.2	
at Michigan State	01/17/13		22	2-7	.286	1-3	.333	2-2	1.000	3	0	3	1.5	1	0	1	0	0	7	8.1	
PURDUE	01/20/13		20	6-10	.600	3-6	.500	0-0	.000	0	0	0	1.4	1	0	1	0	1	15	8.5	
WISCONSIN	1/24/13		26	3-6	.500	2-4	.500	2-2	1.000	0	0	0	1.4	2	0	1	0	1	10	8.6	
at Michigan	01/27/13		22	2-5	.400	1-3	.333	0-0	.000	0	2	2	1.4	3	1	1	0	0	5	8.4	
at Illinois	01/31/13		24	4-9	.444	3-6	.500	0-0	.000	0	2	2	1.4	2	1	3	0	1	11	8.5	
NORTHWESTERN	2/03/13		22	7-10	.700	6-9	.667	1-2	.500	0	2	2	1.4	2	1	0	0	0	21	9.0	
at Minnesota	02/07/13		27	2-10	.200	0-6	.000	0-0	.000	0	3	3	1.5	2	2	0	0	1	4	8.8	
NEBRASKA	02/11/13		32	7-15	.467	5-10	.500	0-0	.000	0	0	0	1.4	3	3	0	0	1	19	9.2	
Totals			3	529	82-199	.412	54-133	.406	13-17	.765	7	29	36	1.4	46	23	25	1	13	231	9.2

Games played: 25
 Minutes/game: 21.2
 Points/game: 9.2
 FG Pct: 41.2
 3FG Pct: 40.6
 FT Pct: 76.5

Rebounds/game: 1.4
 Assists/game: 0.9
 Turnovers/game: 1.0
 Assist/turnover ratio: 0.9
 Steals/game: 0.5
 Blocks/game: 0.0

CAREER STATISTICS

YEAR	G/GS	FG-A	PCT	3-PT	PCT	FT-A	PCT	O-D-REB	AVG	PF-FO	AS	TO	BK	ST	PTS	AVG
Fresh.	24/8	50-141	.355	35-98	.357	27-33	.818	17-25-42	1.8	47-1	18	28	2	15	162	6.8
Soph.	25/3	82-199	.412	54-133	.406	13-17	.765	7-29-36	1.4	46-0	23	25	1	13	231	9.2
TOTALS	49/11	132-340	.388	89-231	.385	40-50	.800	24-54-78	1.6	93-1	41	53	3	28	393	8.0





University of Iowa Women's Basketball

Updated Iowa Player Bio

Samantha Logic



22

Guard, 5-9, Sophomore
Racine, Wis.
Racine J.I. Case HS

- 12th in career assists at Iowa (304).
- Recorded 11 career double-doubles, including one triple-double. Eight double-doubles are points/rebounds, one is points/assists and one is rebounds/assists.
- Ranks second in Iowa history with six double digit assist performances. Cara Consuegra holds the record with nine.
- Third double-double of the season with 11 points, 12 rebounds in loss to Northwestern.
- Recorded 10 assists in win over Purdue.
- Second double-double of the season with 12 points, 10 rebounds and nine assists in win at Wisconsin.
- 17 points, six rebounds, eight assists and three steals in win over Ohio State.
- Double-double with 15 rebounds and school record 14 assists in win over Texas.
- 13 points, five rebounds and seven assists in win at Drake.
- 15 points, four rebounds and three assists in win over Northern Iowa.
- 14 points, seven rebounds, seven assists and three steals at Florida State.
- Nine points, seven rebounds and seven assists in win over West Virginia.
- 12 points, six rebounds, six assists and four steals against North Carolina.
- Tied school record with 12 assists in win over Middle Tennessee.
- Third team Freshman All-American by Full Court.
- Unanimous selection for Big Ten All-Freshman Team.

2012-13 Game-by-Game

#22 Logic, Samantha

Opponent	Date	gs	min	Total		3-Pointers		Free throws		Rebounds				pf	a	t/o	blk	stl	pts	avg	
				fg-fga	pct	3fg-fga	pct	ft-fa	pct	off	def	tot	avg								
NORTHERN ILLINOIS	11/9/12	*	25	5-8	.625	0-0	.000	0-0	.000	0	3	3	3.0	1	2	2	0	2	10	10.0	
ILLINOIS STATE	11/11/12	*	24	1-6	.167	0-1	.000	4-4	1.000	3	2	5	4.0	2	4	6	1	2	6	8.0	
MIDDLE TENNESSEE	11/14/12	*	40	0-6	.000	0-2	.000	0-1	.000	1	2	3	3.7	2	12	6	1	2	0	5.3	
NORTH CAROLINA	11/18/12	*	31	6-10	.600	0-1	.000	0-0	.000	3	3	6	4.3	2	6	7	0	4	12	7.0	
ROBERT MORRIS	11/20/12	*	28	2-7	.286	0-2	.000	0-0	.000	3	3	6	4.6	1	9	2	0	3	4	6.4	
at FIU	11/23/12	*	32	3-6	.500	1-1	1.000	0-0	.000	3	2	5	4.7	3	7	4	0	1	7	6.5	
vs WVU	11/25/12	*	34	2-6	.333	0-0	.000	5-6	.833	2	5	7	5.0	5	7	9	0	3	9	6.9	
at Florida State	11/28/12	*	36	7-11	.636	0-1	.000	0-0	.000	2	5	7	5.3	4	7	10	0	3	14	7.8	
UNI	12/1/12	*	33	7-9	.778	0-1	.000	1-1	1.000	1	3	4	5.1	3	3	1	1	1	15	8.6	
IOWA STATE	12/6/12	*	28	1-7	.143	1-3	.333	3-6	.500	4	5	9	5.5	3	4	1	1	0	6	8.3	
at Drake	12/16/12	*	35	5-9	.556	1-1	1.000	2-2	1.000	3	2	5	5.5	4	7	3	2	1	13	8.7	
MISSOURI STATE	12/19/12	*	27	3-7	.429	0-2	.000	1-3	.333	2	4	6	5.5	1	4	3	1	3	7	8.6	
vs Texas	12/28/12	*	31	1-3	.333	0-1	.000	0-0	.000	5	10	15	6.2	3	14	3	0	2	2	8.1	
at San Diego	12/30/12	*	36	2-2	1.000	1-1	1.000	2-4	.500	1	2	3	6.0	3	10	6	0	2	7	8.0	
OHIO STATE	1/3/13	*	40	5-7	.714	0-0	.000	7-10	.700	1	5	6	6.0	1	8	5	0	3	17	8.6	
MICHIGAN	1/6/13	*	38	6-13	.462	2-4	.500	2-2	1.000	5	4	9	6.2	3	9	3	1	3	16	9.1	
at Wisconsin	01/10/13	*	38	4-11	.364	2-2	1.000	2-3	.667	3	7	10	6.4	1	9	3	0	1	12	9.2	
at Michigan State	01/17/13	*	35	3-7	.429	0-0	.000	1-2	.500	1	4	5	6.3	3	4	5	0	1	7	9.1	
PURDUE	01/20/13	*	32	2-4	.500	0-1	.000	0-0	.000	2	1	3	6.2	3	10	7	0	1	4	8.8	
WISCONSIN	1/24/13	*	34	3-7	.429	0-2	.000	0-0	.000	2	7	9	6.3	0	5	5	0	1	6	8.7	
at Michigan	01/27/13	*	34	3-5	.600	0-1	.000	4-5	.800	2	4	6	6.3	4	8	4	0	2	10	8.8	
at Illinois	01/31/13	*	36	6-10	.600	1-2	.500	0-0	.000	3	7	10	6.5	5	6	8	1	2	13	9.0	
NORTHWESTERN	2/03/13	*	37	4-10	.400	1-1	1.000	2-5	.400	6	6	12	6.7	3	2	2	0	3	11	9.0	
at Minnesota	02/07/13	*	31	0-3	.000	0-1	.000	0-0	.000	2	1	3	6.5	4	5	5	0	1	0	8.7	
NEBRASKA	02/11/13	*	38	2-8	.250	0-3	.000	4-6	.667	2	6	8	6.6	4	6	3	0	2	8	8.6	
Totals			25	833	83-182	.456	10-34	.294	40-60	.667	62	103	165	6.6	68	168	113	9	49	216	8.6

Games played: 25
Minutes/game: 33.3
Points/game: 8.6
FG Pct: 45.6
3FG Pct: 29.4
FT Pct: 66.7

Rebounds/game: 6.6
Assists/game: 6.7
Turnovers/game: 4.5
Assist/turnover ratio: 1.5
Steals/game: 2.0
Blocks/game: 0.4

Personal Bests

- Points:** 20, 2x, last vs. Minn. (2/9/12)
- Rebounds:** 18 at Michigan (2/16/12)
- FGM:** 7, 6x, last vs. UNI (12/1/12)
- FGA:** 18 vs. Nebraska (3/2/12)
- 3-pt FG:** 3 vs. Drake (12/20/11)
- 3-pt FGA:** 4, 4x, last vs. Michigan (1/6/13)
- FTM:** 8 at Northwestern (2/23/12)
- FTA:** 10, twice, last vs. Ohio State (1/3/13)
- Assists:** 14 vs. Texas (12/28/12)
- Steals:** 4 vs. North Carolina (11/18/12)
- Blocks:** 2, twice, last at Drake (12/16/12)
- Minutes:** 40, twice, last vs. Ohio State (1/3/13)

CAREER STATISTICS

YEAR	G/GS	FG-A	PCT	3-PT	PCT	FT-A	PCT	O-D-REB	AVG	PF-FO	AS	TO	BK	ST	PTS	AVG
Fresh.	31/31	109-261	.418	15-49	.306	59-79	.747	87-133-220	7.1	73-1	136	113	7	47	292	9.4
Soph.	25/25	83-182	.456	10-34	.294	40-60	.667	62-103-165	6.6	68-2	168	113	9	49	216	8.6
TOTALS	56/56	192-443	.433	25-83	.301	99-139	.712	149-236-385	6.9	141-3	304	226	16	96	508	9.1





University of Iowa Women's Basketball

Updated Iowa Player Bio

Theairra Taylor



23

Guard, 5-11, Junior
St. Paul, Minn.
Central HS

- Scored 11 points, had five rebounds and five assists vs. Nebraska.
- Recorded 10 rebounds in win over Purdue.
- Career-high 19 points in win over Ohio State. Scored Iowa's first six points in overtime.
- Career-high seven assists in win at Drake.
- 11 points and nine rebounds in win over Iowa State. Named CollegeSportsMadness.com's Big Ten Player of the Week for her performance.
- First career double-double with 10 points and 11 rebounds, also tied career high with five assists, in win over Illinois State.
- Season-high 14 points, along with six rebounds and two assists in 26 minutes of play vs. California as a sophomore.
- 10 points and tied a career-high with three steals in win over Michigan State as a sophomore.
- Suffered third ACL in a 20-month span during preseason workouts in 2010. Missed a total of 53 games with ACL injuries from 2009 through 2011.

2012-13 Game-by-Game

#23 Taylor, Theairra

Opponent	Date	gs	min	Total		3-Pointers		Free throws		Rebounds				pf	a	l/o	blk	stl	pts	avg	
				fg-fga	pct	3fg-fga	pct	ft-fa	pct	off	def	tot	avg								
NORTHERN ILLINOIS	11/9/12	*	19	2-4	.500	1-1	1.000	0-0	.000	0	1	1	1.0	1	1	1	1	0	5	5.0	
ILLINOIS STATE	11/11/12	*	21	3-6	.500	1-1	1.000	3-4	.750	0	11	11	6.0	1	5	2	0	2	10	7.5	
MIDDLE TENNESSEE	11/14/12	*	23	3-8	.375	1-4	.250	0-2	.000	1	3	4	5.3	2	2	4	2	1	7	7.3	
NORTH CAROLINA	11/18/12	*	25	1-6	.167	0-3	.000	1-3	.333	1	3	4	5.0	2	1	2	0	0	3	6.3	
ROBERT MORRIS	11/20/12	*	20	3-7	.429	1-4	.250	0-0	.000	0	4	4	4.8	0	0	3	0	1	7	6.4	
at FIU	11/23/12	*	19	2-5	.400	0-1	.000	2-2	1.000	0	3	3	4.5	2	2	2	0	0	6	6.3	
vs WVU	11/25/12	*	23	1-3	.333	0-1	.000	4-5	.800	1	6	7	4.9	4	0	2	1	0	6	6.3	
at Florida State	11/28/12	*	33	4-11	.364	0-2	.000	1-2	.500	2	4	6	5.0	2	1	4	2	0	9	6.6	
UNI	12/1/12	*	28	3-6	.500	0-2	.000	0-0	.000	1	4	5	5.0	0	2	0	0	0	6	6.6	
IOWA STATE	12/6/12	*	27	4-12	.333	1-3	.333	2-4	.500	4	5	9	5.4	0	3	5	1	2	11	7.0	
at Drake	12/16/12	*	30	2-5	.400	2-3	.667	0-0	.000	0	3	3	5.2	1	6	2	0	0	6	6.9	
MISSOURI STATE	12/19/12	*	19	3-9	.333	1-3	.333	2-2	1.000	3	3	6	5.3	3	7	3	1	1	9	7.1	
vs Texas	12/28/12	*	25	2-9	.222	0-1	.000	0-0	.000	0	1	1	4.9	2	2	1	0	3	4	6.8	
at San Diego	12/30/12	*	33	3-7	.429	1-2	.500	2-3	.667	0	4	4	4.9	3	4	2	1	0	9	7.0	
OHIO STATE	1/3/13	*	36	8-12	.667	1-1	1.000	2-2	1.000	1	3	4	4.8	2	0	2	0	2	19	7.8	
MICHIGAN	1/6/13	*	32	5-9	.556	1-3	.333	3-4	.750	0	3	3	4.7	3	2	3	1	2	14	8.2	
at Wisconsin	01/10/13	*	27	2-5	.400	0-1	.000	0-0	.000	3	5	8	4.9	2	5	4	0	3	4	7.9	
at Michigan State	01/17/13	*	23	3-7	.429	0-3	.000	0-0	.000	1	1	2	4.7	2	1	3	0	0	6	7.8	
PURDUE	01/20/13	*	20	3-8	.375	3-3	1.000	0-0	.000	2	8	10	5.0	1	1	0	1	1	9	7.9	
WISCONSIN	1/24/13	*	24	4-11	.364	0-1	.000	2-3	.667	0	1	1	4.8	0	2	1	2	2	10	8.0	
at Michigan	01/27/13	*	17	2-4	.500	1-3	.333	0-0	.000	1	1	2	4.7	2	1	1	0	0	5	7.9	
at Illinois	01/31/13	*	24	4-9	.444	1-2	.500	0-0	.000	0	0	0	4.5	0	1	2	1	2	9	7.9	
NORTHWESTERN	2/03/13	*	22	1-8	.125	0-2	.000	0-0	.000	0	1	1	4.3	1	2	1	1	2	2	7.7	
at Minnesota	02/07/13	*	20	3-8	.375	1-3	.333	2-4	.500	0	5	5	4.3	5	1	1	1	0	9	7.7	
NEBRASKA	02/11/13	*	34	3-10	.300	1-3	.333	4-4	1.000	1	4	5	4.4	0	5	1	0	0	11	7.8	
Totals			25	624	74-189	.392	18-56	.321	30-44	.682	22	87	109	4.4	41	57	52	16	24	196	7.8

Games played: 25
Minutes/game: 25.0
Points/game: 7.8
FG Pct: 39.2
3FG Pct: 32.1
FT Pct: 68.2

Rebounds/game: 4.4
Assists/game: 2.3
Turnovers/game: 2.1
Assist/turnover ratio: 1.1
Steals/game: 1.0
Blocks/game: 0.6

Personal Bests

- Points:** 19 vs. Ohio State (1/3/13)
Rebounds: 11 vs. Ill. State (11/11/12)
FGM: 8 vs. Ohio State (1/3/13)
FGA: 15 vs. W&M (11/24/09)
3-pt FG: 3 vs. Purdue (1/20/13)
3-pt FGA: 5 vs. Boston College (12/2/09)
FTM: 4, 6x, last vs. Nebraska (2/11/13)
FTA: 5 vs. West Virginia (11/25/12)
Assists: 7 vs. Missouri State (12/19/12)
Steals: 4 at Northwestern (2/23/12)
Blocks: 4, 3x, last vs. Michigan (12/6/09)
Minutes: 36, twice, last vs. Ohio State (1/3/13)

CAREER STATISTICS

YEAR	G/GS	FG-A	PCT	3-PT	PCT	FT-A	PCT	O-D-REB	AVG	PF-FO	AS	TO	BK	ST	PTS	AVG
Fresh.	10/8	29-86	.337	9-26	.346	14-18	.778	15-34-49	4.9	22-1	24	29	10	13	81	8.1
Soph.	31/0	37-97	.381	2-18	.111	19-29	.655	35-57-92	3.0	53-1	30	47	11	18	95	3.1
Junior	25/25	74-189	.392	18-56	.321	30-44	.682	22-87-109	4.4	41-1	57	52	16	24	196	7.8
TOTALS	66/33	140-372	.376	29-100	.290	63-91	.692	72-178-250	3.8	116-3	111	128	37	55	372	5.6





University of Iowa Women's Basketball

Updated Iowa Player Bio

Jaime Printy



24

Guard, 5-11, Senior
Marion, Iowa
Linn-Mar HS

- Ranks second in career 3-pointers made (246), fourth in career scoring (1,770) and seventh in career assists (383).
- One of 10 finalists for the Senior CLASS Award.
- Reached double digits in 20-of-25 games, including the last nine contests... has 20 or more points in five games.
- Netted 16 points on 6-of-14 shooting in the 76-75 loss to Nebraska... moved into fourth place in career scoring.
- Scored 21 points, including five 3-pointers, in loss at Minnesota.
- Became sixth player in Iowa history to score 1,700 career points in win at Michigan.
- Big Ten Player of the Week (Jan. 30).
- Scored 29 points, including 14-straight in the final 5:25, to give Iowa the win over Wisconsin.
- Career-high 33 points with a school record seven 3-pointers in win at San Diego.
- 21 points in win over Texas.
- 19 points (17-of-17 FTs) and seven rebounds in win over West Virginia.
- 12 points, five rebounds and four assists vs. North Carolina, returning to starting lineup for first time since ACL injury as a junior.
- 26 points, including game-tying 3-pointer with 1.6 seconds left in regulation, along with five rebounds and six assists, in win over Middle Tennessee. Also tied school record for FT percentage (11-for-11).
- 11 points and three assists in season-opening win over NIU, recording first action since tearing ACL in left knee in final 30 seconds of overtime at Wisconsin (Feb. 2, 2012).

2012-13 Game-by-Game

#24 Printy, Jaime

Opponent	Date	gs	min	Total		3-Pointers		Free throws		Rebounds			pf	a	t/o	blk	stl	pts	avg		
				fg-fga	pct	3fg-fga	pct	ft-fa	pct	off	def	tot								avg	
NORTHERN ILLINOIS	11/9/12		16	3-4	.750	1-1	1.000	4-4	1.000	0	1	1	1.0	1	3	1	0	1	11	11.0	
ILLINOIS STATE	11/11/12		15	0-4	.000	0-3	.000	1-2	.500	0	2	2	1.5	0	1	2	0	0	1	6.0	
MIDDLE TENNESSEE	11/14/12		38	6-13	.462	3-7	.429	11-11	1.000	1	4	5	2.7	1	6	5	0	1	26	12.7	
NORTH CAROLINA	11/18/12	*	39	3-15	.200	3-12	.250	3-4	.750	0	5	5	3.3	4	4	8	0	1	12	12.5	
ROBERT MORRIS	11/20/12	*	31	2-4	.500	2-4	.500	2-2	1.000	1	5	6	3.8	0	5	2	0	1	8	11.6	
at FIU	11/23/12	*	34	5-12	.417	4-9	.444	1-1	1.000	2	3	5	4.0	2	4	3	0	0	15	12.2	
vs WVU	11/25/12	*	33	1-3	.333	0-2	.000	17-17	1.000	0	7	7	4.4	1	3	4	1	0	19	13.1	
at Florida State	11/28/12	*	33	5-7	.714	2-4	.500	1-2	.500	0	1	1	4.0	2	1	6	0	0	13	13.1	
UNI	12/1/12	*	30	2-7	.286	1-4	.250	4-4	1.000	0	3	3	3.9	1	5	3	0	0	9	12.7	
IOWA STATE	12/6/12	*	34	2-7	.286	0-3	.000	6-6	1.000	1	5	6	4.1	1	2	3	0	2	10	12.4	
at Drake	12/16/12	*	31	3-9	.333	0-3	.000	3-3	1.000	2	2	4	4.1	1	7	1	0	0	9	12.1	
MISSOURI STATE	12/19/12	*	21	4-11	.364	3-8	.375	2-3	.667	1	1	2	3.9	0	6	2	0	0	13	12.2	
vs Texas	12/28/12	*	30	7-14	.500	2-7	.286	5-7	.714	0	3	3	3.8	1	1	1	0	0	21	12.8	
at San Diego	12/30/12	*	30	10-20	.500	7-12	.583	6-6	1.000	0	2	2	3.7	1	4	3	0	2	33	14.3	
OHIO STATE	1/3/13	*	39	5-8	.625	0-1	.000	4-4	1.000	0	3	3	3.7	1	3	4	0	0	14	14.3	
MICHIGAN	1/6/13	*	32	2-14	.143	1-9	.111	1-1	1.000	2	3	5	3.8	0	3	2	0	1	6	13.8	
at Wisconsin	01/10/13	*	35	3-10	.300	2-8	.250	2-2	1.000	0	6	6	3.9	0	1	1	0	1	10	13.5	
at Michigan State	01/17/13	*	34	3-16	.188	1-8	.125	4-4	1.000	1	3	4	3.9	0	3	0	0	1	11	13.4	
PURDUE	01/20/13	*	38	4-11	.364	3-5	.600	4-4	1.000	2	7	9	4.2	1	1	0	0	0	15	13.5	
WISCONSIN	1/24/13	*	35	8-10	.800	3-3	1.000	10-11	.909	1	7	8	4.4	1	4	1	0	0	29	14.3	
at Michigan	01/27/13	*	33	4-12	.333	2-9	.222	4-4	1.000	2	3	5	4.4	2	2	4	1	1	14	14.2	
at Illinois	01/31/13	*	34	5-14	.357	2-8	.250	1-2	.500	0	4	4	4.4	3	3	7	0	1	13	14.2	
NORTHWESTERN	2/03/13	*	33	2-6	.333	0-2	.000	8-8	1.000	0	4	4	4.3	0	3	2	0	3	12	14.1	
at Minnesota	02/07/13	*	34	6-22	.273	5-9	.556	4-5	.800	1	4	5	4.4	3	0	2	0	3	21	14.4	
NEBRASKA	02/11/13	*	38	6-14	.429	2-7	.286	2-2	1.000	1	3	4	4.4	1	4	2	1	1	16	14.4	
Totals			22	800	101-267	.378	49-148	.331	110-119	.924	18	91	109	4.4	28	79	69	3	20	361	14.4

Games played: 25
Minutes/game: 32.0
Points/game: 14.4
FG Pct: 37.8
3FG Pct: 33.1
FT Pct: 92.4

Rebounds/game: 4.4
Assists/game: 3.2
Turnovers/game: 2.8
Assist/turnover ratio: 1.1
Steals/game: 0.8
Blocks/game: 0.1

Personal Bests

- Points:** 33 at San Diego (12/30/12)
- Rebounds:** 9, twice, last vs. Purdue (1/20/13)
- FGM:** 11 at Indiana (2/11/10)
- FGA:** 25 vs. Michigan (1/2/11)
- 3-pt FG:** 7 at San Diego (12/30/12)
- 3-pt FGA:** 15 vs. Michigan (1/2/11)
- FTM:** 17 vs. West Virginia (11/25/12)
- FTA:** 17 vs. West Virginia (11/25/12)
- Assists:** 9 vs. Iowa State (12/9/10)
- Steals:** 5 at Bradley (12/17/11)
- Blocks:** 1, 15x, last vs. Nebraska (2/11/13)
- Minutes:** 40 vs. Illinois (1/5/12)

CAREER STATISTICS

YEAR	G/GS	FG-A	PCT	3-PT	PCT	FT-A	PCT	O-D-REB	AVG	PF-FO	AS	TO	BK	ST	PTS	AVG
Fresh.	34/34	168-406	.414	82-212	.387	83-94	.883	35-101-136	4.0	77-1	99	82	4	30	501	14.7
Soph.	31/31	168-391	.430	70-183	.383	114-132	.864	21-109-130	4.2	60-0	109	91	7	34	520	16.8
Junior	23/23	116-329	.353	45-155	.290	111-125	.888	32-70-102	4.4	45-1	96	70	3	46	388	16.9
Senior	25/22	101-267	.378	49-148	.331	110-119	.924	18-91-109	4.4	28-0	79	69	3	20	361	14.4
TOTALS	113/110	553-1393	.397	246-698	.352	418-470	.889	106-371-477	4.2	210-2	383	312	17	130	1770	15.7





University of Iowa Women's Basketball

Updated Iowa Player Bio

Kali Peschel



25

Guard, 6-1, Freshman
Sauk Centre, Minn.
Sauk Centre HS

- Five points in win at Drake.
- Recorded five rebounds in collegiate debut vs. NIU.
- Miss Minnesota Basketball finalist.
- Two-time all-state selection.
- Started for her high school team as an eighth grader.
- Only played 11 games as a senior after suffering ACL injury between her junior and senior seasons.

Personal Bests

Points: 5 at Drake (12/16/12)
Rebounds: 5, twice, last vs. Missouri State (12/19/12)
FGM: 2 at Drake (12/16/12)
FGA: 6 vs. Northern Illinois (11/9/12)
3-pt FG: 1 at Drake (12/16/12)
3-pt FGA: 2, 3x, last vs. Missouri State (12/19/12)
FTM: 2, twice, last at Minnesota (2/7/13)
FTA: 4 vs. Missouri State (12/19/12)
Assists: 2, twice, last vs. Texas (12/28/12)
Steals: 1, 5x, last vs. N'western (2/3/13)
Blocks: 1, 4x, last vs. N'western (2/3/13)
Minutes: 20 vs. Northwestern (2/3/13)

2012-13 Game-by-Game

#25 Peschel, Kali

Opponent	Date	gs	min	Total		3-Pointers		Free throws		Rebounds			pf	a	t/o	blk	stl	pts	avg	
				fg-fga	pct	3fg-fga	pct	ft-fa	pct	off	def	tot								avg
NORTHERN ILLINOIS	11/9/12	18	0-6	.000	0-2	.000	1-2	.500	3	2	5	5.0	3	1	0	0	0	1	1.0	
ILLINOIS STATE	11/11/12	16	0-2	.000	0-1	.000	0-0	.000	0	3	3	4.0	1	0	2	0	0	0	0.5	
MIDDLE TENNESSEE	11/14/12	2	0-0	.000	0-0	.000	0-0	.000	0	1	1	3.0	0	0	0	0	0	0	0.3	
ROBERT MORRIS	11/20/12	5	0-0	.000	0-0	.000	0-0	.000	0	0	0	2.3	2	0	0	0	1	0	0.3	
at FIU	11/23/12	2	0-1	.000	0-0	.000	0-0	.000	2	0	2	2.2	0	0	0	0	0	0	0.2	
at Florida State	11/28/12	3	0-1	.000	0-0	.000	0-0	.000	2	0	2	2.2	0	0	0	0	0	0	0.2	
UNI	12/1/12	18	1-4	.250	0-2	.000	1-2	.500	1	1	2	2.1	3	0	2	1	1	3	0.6	
IOWA STATE	12/6/12	6	0-0	.000	0-0	.000	0-0	.000	0	0	0	1.9	2	0	0	0	0	0	0.5	
at Drake	12/16/12	16	2-3	.667	1-1	1.000	0-0	.000	0	0	0	1.7	4	2	1	1	1	5	1.0	
MISSOURI STATE	12/19/12	19	0-4	.000	0-2	.000	2-4	.500	3	2	5	2.0	4	0	0	0	1	2	1.1	
vs Texas	12/28/12	9	0-0	.000	0-0	.000	0-0	.000	0	0	0	1.8	4	2	0	0	0	0	1.0	
at San Diego	12/30/12	12	0-0	.000	0-0	.000	0-0	.000	1	0	1	1.8	0	0	0	0	0	0	0.9	
OHIO STATE	1/3/13	1	0-1	.000	0-0	.000	0-0	.000	0	0	0	1.6	2	0	1	0	0	0	0.8	
MICHIGAN	1/6/13	3	0-0	.000	0-0	.000	1-2	.500	1	0	1	1.6	0	0	0	0	0	1	0.9	
at Wisconsin	01/10/13	5	0-0	.000	0-0	.000	0-0	.000	0	0	0	1.5	0	0	0	0	0	0	0.8	
at Michigan State	01/17/13	4	0-0	.000	0-0	.000	0-0	.000	0	0	0	1.4	0	0	0	0	0	0	0.8	
PURDUE	01/20/13	7	0-0	.000	0-0	.000	0-0	.000	1	0	1	1.4	1	1	0	1	0	0	0.7	
WISCONSIN	1/24/13	5	0-1	.000	0-1	.000	0-0	.000	0	1	1	1.3	1	0	1	0	0	0	0.7	
at Michigan	01/27/13	9	0-1	.000	0-1	.000	0-0	.000	0	0	0	1.3	0	0	0	0	0	0	0.6	
at Illinois	01/31/13	3	0-0	.000	0-0	.000	0-0	.000	0	0	0	1.2	0	0	0	0	0	0	0.6	
NORTHWESTERN	2/03/13	20	1-1	1.000	0-0	.000	0-0	.000	3	1	4	1.3	0	1	1	1	1	2	0.7	
at Minnesota	02/07/13	8	0-0	.000	0-0	.000	2-2	1.000	0	0	0	1.3	1	1	1	0	0	2	0.7	
Totals		0	191	4-25	.160	1-10	.100	7-12	.583	17	11	28	1.3	28	8	9	4	5	16	0.7

Games played: 22
 Minutes/game: 8.7
 Points/game: 0.7
 FG Pct: 16.0
 3FG Pct: 10.0
 FT Pct: 58.3

Rebounds/game: 1.3
 Assists/game: 0.4
 Turnovers/game: 0.4
 Assist/turnover ratio: 0.9
 Steals/game: 0.2
 Blocks/game: 0.2

CAREER STATISTICS

YEAR	G/GS	FG-A	PCT	3-PT	PCT	FT-A	PCT	O-D-REB	AVG	PF-FO	AS	TO	BK	ST	PTS	AVG
Fresh.	22/0	4-25	.160	1-10	.100	7-12	.583	17-11-28	1.3	28-0	8	9	4	5	16	0.7





University of Iowa Women's Basketball

Updated Iowa Player Bio

Kathryn Reynolds



33

Guard, 5-7, Sophomore
Cincinnati, Ohio
Mount Notre Dame HS

- Will miss entire 2012-13 season after suffering an ACL injury in April during offseason workouts.
- Five assists in win over Western Illinois as a freshman.
- Played 12 minutes in first career game, a win over Harvard.

Personal Bests

Points: 4 vs. Drake (12/20/11)
Rebounds: 2 vs. Texas A&M (11/26/11)
FGM: 2 vs. Drake (12/20/11)
FGA: 3, 2x, last vs. Drake (12/20/11)
3-pt FG: ---
3-pt FGA: 1, 7x, last vs. Michigan State (2/12/12)
FTM: 2 vs. Western Illinois (12/9/11)
FTA: 2, 3x, last vs. W. Illinois (12/9/11)
Assists: 5 vs. W. Illinois (12/9/11)
Steals: ---
Blocks: ---
Minutes: 20 vs. W. Illinois (12/9/11)

2012-13 Game-by-Game

CAREER STATISTICS

YEAR	G/GS	FG-A	PCT	3-PT	PCT	FT-A	PCT	O-D-REB	AVG	PF-FO	AS	TO	BK	ST	PTS	AVG
Fresh.	21/0	5-16	.313	0-7	.000	3-4	.750	1-8-9	0.4	6-0	15	11	0	0	13	0.7
Soph.	-	-	-	-	-	-	-	-	-	-	-	-	-	-	-	-
TOTALS	21/0	5-16	.313	0-7	.000	3-4	.750	1-8-9	0.4	6-0	15	11	0	0	13	0.7





University of Iowa Women's Basketball

Updated Iowa Player Bio

Nicole Smith



45

Center, 6-4, Freshman
Rockton, Ill.
Hononegah HS

- Tallied first career points against Missouri State, finishing with four points.
- Recorded one rebound in collegiate debut vs. NIU.
- Three-time all-state selection.
- Three-time all-conference pick.
- Recorded triple-double in high school with 20 points (10-for-10) 10 rebounds and 10 blocks.
- Played in 26 games as a senior before suffering ACL injury

Personal Bests

Points: 4 vs. Missouri State (12/19/12)
Rebounds: 1 vs. NIU (11/9/12)
FGM: 1, twice, last vs. Texas (12/28/12)
FGA: 2 vs. NIU (11/9/12)
3-pt FG: ---
3-pt FGA: ---
FTM: 2 vs. Missouri State (12/19/12)
FTA: 2 vs. Missouri State (12/19/12)
Assists: ---
Steals: ---
Blocks: ---
Minutes: 4 vs. Missouri State (12/19/12)

2012-13 Game-by-Game

#45 Smith, Nicole

Opponent	Date	gs	min	Total		3-Pointers		Free throws		Rebounds			pf	a	t/o	blk	stl	pts	avg
				fg-fga	pct	3fg-fga	pct	ft-fa	pct	off	def	tot							
NORTHERN ILLINOIS	11/9/12	3	0-2	.000	0-0	.000	0-0	.000	0	1	1	1.0	0	0	0	0	0	0	0.0
ILLINOIS STATE	11/11/12	2	0-0	.000	0-0	.000	0-0	.000	0	0	0	0.5	0	0	0	0	0	0	0.0
UNI	12/1/12	1	0-0	.000	0-0	.000	0-0	.000	0	0	0	0.3	0	0	0	0	0	0	0.0
MISSOURI STATE	12/19/12	4	1-1	1.000	0-0	.000	2-2	1.000	0	0	0	0.3	1	0	0	0	0	4	1.0
vs Texas	12/28/12	1	1-1	1.000	0-0	.000	0-0	.000	0	0	0	0.2	0	0	1	0	0	2	1.2
at Wisconsin	01/10/13	1	0-0	.000	0-0	.000	0-0	.000	0	0	0	0.2	1	0	0	0	0	0	1.0
Totals		0	12	2-4	.500	0-0	.000	2-2	1.000	0	1	1	0.2	2	0	1	0	6	1.0

Games played: 6
 Minutes/game: 2.0
 Points/game: 1.0
 FG Pct: 50.0
 FT Pct: 100.0

Rebounds/game: 0.2
 Turnovers/game: 0.2

CAREER STATISTICS

YEAR	G/GS	FG-A	PCT	3-PT	PCT	FT-A	PCT	O-D-REB	AVG	PF-FO	AS	TO	BK	ST	PTS	AVG
Fresh.	6/0	2-4	.500	0-0	.000	2-2	1.000	0-1-1	0.2	2-0	0	1	0	0	6	1.0





University of Iowa Women's Basketball

Updated Iowa Player Bio

Bethany Doolittle



51

Center, 6-4, Sophomore
Oakdale, Minn
Hill-Murray HS

- Career-high 19 points, including eight-straight points from 5:20-1:45 mark in the second half, to give Iowa the win at Michigan.
- 10 points and seven rebounds in win over Wisconsin.
- 10 points at Michigan State.
- Eight points, five rebounds and six blocks in win over Ohio State.
- 10 rebounds in win at San Diego.
- 10 points in win over Texas.
- First career double-double with 12 points and 12 rebounds in win over Missouri State. 12 rebounds were a career-high. Had double-double at halftime (10 pts, 10 reb).
- 10 points and nine rebounds at Florida State.
- Career-high 17 points, along with six rebounds, in win over West Virginia.
- Eight points, tied a career-high with nine rebounds and blocked five shots in win over Middle Tennessee.
- Career-high six blocks in season-opening win vs. NIU.

2012-13 Game-by-Game

#51 Doolittle, Bethany

Opponent	Date	gs	min	Total		3-Pointers		Free throws		Rebounds				pf	a	t/o	blk	stl	pts	avg	
				fg-fga	pct	3fg-fga	pct	ft-fa	pct	off	def	tot	avg								
NORTHERN ILLINOIS	11/9/12	*	21	1-8	.125	0-0	.000	0-0	.000	0	0	0	0.0	2	0	1	6	0	2	2.0	
ILLINOIS STATE	11/11/12	*	25	4-10	.400	0-1	.000	0-0	.000	0	5	5	2.5	1	0	2	2	1	8	5.0	
MIDDLE TENNESSEE	11/14/12	*	30	4-7	.571	0-0	.000	0-0	.000	4	5	9	4.7	3	0	4	5	0	8	6.0	
NORTH CAROLINA	11/18/12	*	32	1-7	.143	0-0	.000	0-0	.000	2	5	7	5.3	3	1	2	2	2	5.0		
ROBERT MORRIS	11/20/12	*	20	2-9	.222	0-0	.000	0-0	.000	1	4	5	5.2	2	1	1	1	0	4	4.8	
at FIU	11/23/12	*	22	3-5	.600	0-0	.000	0-0	.000	0	3	3	4.8	3	0	2	0	0	6	5.0	
vs WVU	11/25/12	*	31	7-12	.583	0-0	.000	3-3	1.000	1	5	6	5.0	4	0	2	1	0	17	6.7	
at Florida State	11/28/12	*	34	5-9	.556	0-0	.000	0-0	.000	4	5	9	5.5	3	1	2	1	1	10	7.1	
UNI	12/1/12	*	26	4-11	.364	0-0	.000	0-0	.000	1	6	7	5.7	2	0	1	0	1	8	7.2	
IOWA STATE	12/6/12	*	36	1-8	.125	0-1	.000	0-0	.000	0	4	4	5.5	3	0	1	0	1	2	6.7	
at Drake	12/16/12	*	22	4-6	.667	0-0	.000	0-0	.000	1	3	4	5.4	5	0	0	2	1	8	6.8	
MISSOURI STATE	12/19/12	*	25	6-8	.750	0-0	.000	0-0	.000	3	9	12	5.9	3	1	0	2	1	12	7.3	
vs Texas	12/28/12	*	33	5-8	.625	0-0	.000	0-0	.000	1	4	5	5.8	3	1	1	0	2	10	7.5	
at San Diego	12/30/12	*	30	3-6	.500	0-0	.000	0-0	.000	1	9	10	6.1	3	0	2	4	1	6	7.4	
OHIO STATE	1/3/13	*	42	4-6	.667	0-0	.000	0-0	.000	2	3	5	6.1	1	2	2	6	3	8	7.4	
MICHIGAN	1/6/13	*	25	0-5	.000	0-0	.000	0-0	.000	0	1	1	5.8	4	1	1	0	0	0	6.9	
at Wisconsin	01/10/13	*	33	4-9	.444	0-0	.000	0-0	.000	1	3	4	5.6	2	0	2	0	0	8	7.0	
at Michigan State	01/17/13	*	36	5-8	.625	0-0	.000	0-0	.000	1	2	3	5.5	2	1	3	2	2	10	7.2	
PURDUE	01/20/13	*	32	3-12	.250	0-0	.000	2-4	.500	3	6	9	5.7	1	0	3	3	3	8	7.2	
WISCONSIN	1/24/13	*	32	4-7	.571	0-0	.000	2-2	1.000	2	5	7	5.8	3	0	2	3	0	10	7.4	
at Michigan	01/27/13	*	37	9-15	.600	0-0	.000	1-1	1.000	3	1	4	5.7	4	0	0	2	1	19	7.9	
at Illinois	01/31/13	*	37	2-7	.286	0-0	.000	0-0	.000	0	8	8	5.8	1	0	2	2	0	4	7.7	
NORTHWESTERN	2/03/13	*	31	2-12	.167	0-0	.000	0-0	.000	2	7	9	5.9	2	1	1	4	0	4	7.6	
at Minnesota	02/07/13	*	28	3-7	.429	0-0	.000	2-2	1.000	0	3	3	5.8	2	0	2	1	3	8	7.6	
NEBRASKA	02/11/13	*	16	0-3	.000	0-0	.000	0-0	.000	2	3	5	5.8	3	0	0	1	0	0	7.3	
Totals			25	736	86-205	.420	0-2	.000	10-12	.833	35	109	144	5.8	65	10	39	50	23	182	7.3

Games played: 25
Minutes/game: 29.4
Points/game: 7.3
FG Pct: 42.0
3FG Pct: 0.0
FT Pct: 83.3

Rebounds/game: 5.8
Assists/game: 0.4
Turnovers/game: 1.6
Assist/turnover ratio: 0.3
Steals/game: 0.9
Blocks/game: 2.0

Personal Bests

- Points:** 19 at Michigan (1/27/13)
- Rebounds:** 12 vs. Missouri State (12/19/12)
- FGM:** 9 at Michigan (1/27/13)
- FGA:** 15 at Michigan (1/27/13)
- 3-pt FG:** ---
- 3-pt FGA:** 1, 3x, last vs. Iowa State (12/6/12)
- FTM:** 4 vs. Michigan State (2/12/12)
- FTA:** 5 vs. Michigan State (2/12/12)
- Assists:** 2, twice, last vs. Ohio State (1/3/13)
- Steals:** 3, 3x, last at Minnesota (2/7/13)
- Blocks:** 6, twice, last vs. Ohio State (1/3/13)
- Minutes:** 42 vs. Ohio State (1/3/13)

CAREER STATISTICS

YEAR	G/GS	FG-A	PCT	3-PT	PCT	FT-A	PCT	O-D-REB	AVG	PF-FO	AS	TO	BK	ST	PTS	AVG
Fresh.	31/0	46-99	.465	0-1	.000	24-30	.800	13-44-57	1.8	51-0	6	19	19	9	116	3.7
Soph.	25/25	86-205	.420	0-2	.000	10-12	.833	35-109-144	5.8	65-1	10	39	50	23	182	7.3
TOTALS	56/25	132-304	.434	0-3	.000	34-42	.810	48-153-201	3.6	116-1	16	58	69	32	298	5.3





University of Iowa Women's Basketball

Updated Iowa Player Bio

Kayla Timmerman



54

Forward, 6-3, Freshman
Wayzata, Minn.
Wayzata HS

- Six points and eight rebounds (five of- fensive rebounds) in 13 minutes in win over Missouri State.
- Recorded one point and one rebound in collegiate debut vs. NIU.
- Miss Minnesota Basketball candidate.
- Athena Award nominee.
- Two-time all-state selection.
- Standout in track and field, winning conference championship in shot put and discus and participated in state meet in both events.

Personal Bests

Points: 6, twice, last at Illinois (1/31/13)
Rebounds: 8 vs. Missouri State (12/19/12)
FGM: 3 at Illinois (1/31/13)
FGA: 6 vs. Wisconsin (1/24/13)
3-pt FG: 1 vs. Ill. State (11/11/12)
3-pt FGA: 1 vs. Ill. State (11/11/12)
FTM: 2, twice, last vs. N'western (2/3/13)
FTA: 4 vs. Missouri State (12/19/12)
Assists: 1, 4x, last at Minnesota (2/7/13)
Steals: 1, twice, last vs. N'western (2/3/13)
Blocks: 2 vs. NIU (11/9/12)
Minutes: 16 vs. Purdue (1/20/13)

2012-13 Game-by-Game

#54 Timmerman, Kayla

Opponent	Date	gs	min	Total		3-Pointers		Free throws		Rebounds				pf	a	t/o	blk	stl	pts	avg
				fg-fga	pct	3fg-fga	pct	ft-fa	pct	off	def	tot	avg							
NORTHERN ILLINOIS	11/9/12	10	0-2	.000	0-0	.000	1-2	.500	0	1	1	1.0	0	0	0	2	0	1	1.0	
ILLINOIS STATE	11/11/12	5	2-2	1.000	1-1	1.000	0-2	.000	0	0	0	0.5	0	1	0	1	0	5	3.0	
MIDDLE TENNESSEE	11/14/12	3	0-0	.000	0-0	.000	0-0	.000	0	0	0	0.3	0	0	0	0	0	0	2.0	
NORTH CAROLINA	11/18/12	1	0-0	.000	0-0	.000	0-0	.000	0	0	0	0.3	0	0	0	0	0	0	1.5	
ROBERT MORRIS	11/20/12	7	1-4	.250	0-0	.000	0-0	.000	1	2	3	0.8	1	0	2	0	0	2	1.6	
at FIU	11/23/12	2	0-0	.000	0-0	.000	0-0	.000	0	0	0	0.7	1	0	1	0	0	0	1.3	
vs WVU	11/25/12	4	0-0	.000	0-0	.000	0-0	.000	0	1	1	0.7	1	0	1	0	0	0	1.1	
UNI	12/1/12	1	1-1	1.000	0-0	.000	0-0	.000	0	1	1	0.8	1	0	0	0	0	2	1.3	
MISSOURI STATE	12/19/12	13	2-4	.500	0-1	.000	2-4	.500	5	3	8	1.6	1	0	0	1	0	6	1.8	
vs Texas	12/28/12	2	1-1	1.000	0-0	.000	0-0	.000	0	0	0	1.4	1	0	0	0	0	2	1.8	
MICHIGAN	1/6/13	1	0-0	.000	0-0	.000	0-0	.000	0	0	0	1.3	0	0	0	0	0	0	1.6	
at Wisconsin	01/10/13	2	0-0	.000	0-0	.000	0-0	.000	0	0	0	1.2	1	0	0	0	0	0	1.5	
at Michigan State	01/17/13	0	0-0	.000	0-0	.000	0-0	.000	0	0	0	1.1	1	0	1	0	0	0	1.4	
PURDUE	01/20/13	16	2-3	.667	0-0	.000	0-0	.000	0	2	2	1.1	0	0	0	1	1	4	1.6	
WISCONSIN	1/24/13	15	2-6	.333	0-0	.000	0-0	.000	0	3	3	1.3	2	1	1	1	1	4	1.7	
at Michigan	01/27/13	2	0-0	.000	0-0	.000	0-0	.000	0	0	0	1.2	0	0	0	0	0	0	1.6	
at Illinois	01/31/13	11	3-3	1.000	0-0	.000	0-0	.000	1	3	4	1.4	1	0	2	0	0	6	1.9	
NORTHWESTERN	2/03/13	11	0-4	.000	0-0	.000	2-2	1.000	0	1	1	1.3	0	1	0	1	1	2	1.9	
at Minnesota	02/07/13	2	0-1	.000	0-0	.000	0-0	.000	0	0	0	1.3	1	1	1	0	0	0	1.8	
Totals		0	108	14-31	.452	1-2	.500	5-10	.500	7	17	24	1.3	12	4	9	7	2	34	1.8

Games played: 19
Minutes/game: 5.7
Points/game: 1.8
FG Pct: 45.2
3FG Pct: 50.0
FT Pct: 50.0

Rebounds/game: 1.3
Assists/game: 0.2
Turnovers/game: 0.5
Assist/turnover ratio: 0.4
Steals/game: 0.1
Blocks/game: 0.4

CAREER STATISTICS

YEAR	G/GS	FG-A	PCT	3-PT	PCT	FT-A	PCT	O-D-REB	AVG	PF-FO	AS	TO	BK	ST	PTS	AVG
Fresh.	19/0	14-31	.452	1-2	.500	5-10	.500	7-17-24	1.3	12-0	4	9	7	2	34	1.8





University of Iowa Women's Basketball

Game-by-Game Results

Overall: 16-9

Big Ten: 5-6

Home: 10-4

Away: 4-5

Neutral: 2-0

Date	Opponent	Result	Attend.	Top Scorer	Top Rebounder
Nov. 9	Northern Illinois [^]	W, 63-40	4,739	Johnson, Printy (11)	Till (6)
Nov. 11	Illinois State [^]	W, 74-64	2,930	Johnson (24)	Taylor (11)
Nov. 14	Middle Tennessee [^]	W, 69-63 (OT)	1,691	Printy (26)	Doolittle (9)
Nov. 18	North Carolina [^]	L, 64-77	3,073	Johnson (20)	Johnson (11)
Nov. 20	Robert Morris	W, 58-44	3,032	Johnson (19)	Johnson (11)
Nov. 23	at Florida Int.#	L, 65-66	430	Printy (15)	Johnson, Till (6)
Nov. 25	vs. #12 West Virginia#	W, 79-70	387	Johnson, Printy (19)	Logic, Printy, Taylor (7)
Nov. 28	at Florida State [~]	L, 69-83	2,389	Johnson (20)	Doolittle (9)
Dec. 1	Northern Iowa	W, 68-46	6,368	Johnson (19)	Johnson (12)
Dec. 6	#22 Iowa State*	W, 50-42	4,483	Dixon, Taylor (11)	Logic, Taylor (9)
Dec. 16	at Drake	W, 82-65	2,716	Johnson (26)	Johnson (8)
Dec. 19	Missouri State	W, 97-43	4,588	Thomas (15)	Doolittle (12)
Dec. 28	vs. #20 Texas%	W, 86-63	776	Dixon (23)	Logic (15)
Dec. 20	at San Diego%	W, 83-73	543	Printy (33)	Doolittle (10)
Jan. 3	#24 Ohio State	W, 77-71 (OT)	3,850	Taylor (19)	Johnson (12)
Jan. 6	Michigan	L, 64-68	4,644	Dixon (17)	Logic (9)
Jan. 10	at Wisconsin	W, 65-56	3,495	Johnson (23)	Johnson (11)
Jan. 17	at Michigan State	L, 54-65	5,343	Johnson (13)	Johnson (12)
Jan. 20	#11 Purdue	W, 62-46	8,576	Dixon, Printy (15)	Taylor (10)
Jan. 24	Wisconsin	W, 71-60	3,894	Printy (29)	Logic (9)
Jan. 27	at #23 Michigan	W, 63-57	2,607	Doolittle (19)	Johnson (7)
Jan. 31	at Illinois	L, 62-74	1,808	Logic, Printy (13)	Logic (10)
Feb. 3	Northwestern	L, 65-67	4,697	Dixon (21)	Logic (12)
Feb. 7	at Minnesota	L, 60-72	3,528	Printy (21)	Johnson (10)
Feb. 11	Nebraska	L, 75-76	3,937	Johnson (19)	Johnson (10)
Feb. 14	#8 Penn State				
Feb. 17	at #18 Purdue				
Feb. 24	at Nebraska				
Feb. 28	Indiana				
March 3	at Northwestern				

[^] - Preseason WNIT

- FIU Thanksgiving Classic, Miami

[~] - ACC/Big Ten Challenge

* - Iowa Corn Cy-Hawk Series

% - San Diego Surf 'N Slam Classic, San Diego

Attendance Summary	Games	Totals	Average
Home	14	60,493	4,321
Away	9	22,142	2,461
Neutral	2	1,163	582
Totals	25	84,515	3,381





University of Iowa Women's Basketball

Game-by-Game Statistics

Team	Score	FG-A	PCT	3-PT. FG	PCT	FT-A	PCT	REB	PF	AS	TO	BLK	ST
Northen Illinois	40	14-48	29.2%	1-9	11.1%	11-19	57.9%	44	19	3	22	2	6
at Iowa	63	23-57	40.4%	6-10	60.0%	11-17	64.7%	34	18	10	10	10	6
Illinois State	64	25-76	32.9%	2-14	14.3%	12-21	57.1%	44	27	6	17	4	15
at Iowa	74	19-54	35.2%	4-12	33.3%	32-41	78.0%	50	18	18	23	10	9
Middle Tennessee	63	22-70	31.4%	7-30	23.3%	12-18	66.7%	46	22	9	20	3	12
at Iowa	69	24-55	43.6%	6-20	30.0%	15-21	71.4%	40	17	22	20	10	6
North Carolina	77	27-66	40.9%	8-22	36.4%	15-27	55.6%	45	18	14	20	4	15
at Iowa	64	25-62	40.3%	5-25	20.0%	9-14	64.3%	43	20	14	25	4	9
Robert Morris	44	15-53	28.3%	6-21	28.6%	8-14	57.1%	34	11	12	16	2	4
at Iowa	58	22-57	38.6%	7-19	36.8%	7-9	77.8%	44	13	18	18	1	6
at Florida International	66	24-65	36.9%	4-15	26.7%	14-17	82.4%	37	16	8	10	3	6
Iowa	65	24-57	42.1%	7-20	35.0%	10-13	76.9%	39	16	16	16	5	1
vs. West Virginia	70	21-72	29.2%	6-28	21.4%	22-29	75.9%	41	35	12	15	1	10
Iowa	79	18-39	46.2%	1-5	20.0%	42-50	84.0%	39	23	12	23	5	6
at Florida State	83	31-63	49.2%	5-10	50.0%	16-22	72.7%	29	10	18	13	4	12
Iowa	69	30-61	49.2%	2-11	18.2%	7-9	77.8%	35	16	13	24	6	6
Northern Iowa	46	12-53	22.6%	8-29	27.6%	14-16	87.5%	31	17	9	11	0	2
at Iowa	68	26-54	48.1%	3-11	27.3%	13-18	72.2%	43	16	17	9	4	5
Iowa State	42	15-57	26.3%	7-34	20.6%	5-5	100.0%	43	20	7	21	1	6
at Iowa	50	15-51	29.4%	4-16	25.0%	16-25	64.0%	41	13	12	15	3	7
at Drake	65	20-51	39.2%	7-18	38.9%	18-24	75.0%	32	12	15	13	1	5
Iowa	82	31-59	52.5%	7-15	46.7%	13-16	81.3%	31	21	23	8	8	5
Missouri State	43	12-58	20.7%	1-18	5.6%	18-31	58.1%	38	28	3	22	1	8
at Iowa	97	36-75	48.0%	10-34	29.4%	15-24	62.5%	60	25	25	16	5	9
vs. Texas	63	21-54	38.9%	6-14	42.9%	15-28	53.6%	36	15	14	16	4	3
Iowa	86	35-67	52.2%	7-21	33.3%	9-12	75.0%	38	20	23	10	2	11
at San Diego	73	30-64	46.9%	3-6	50.0%	10-17	58.8%	34	13	15	16	1	9
Iowa	83	29-53	54.7%	11-18	61.1%	14-17	82.4%	31	15	19	20	8	7
Ohio State	71	27-68	39.7%	6-21	28.6%	11-14	78.6%	33	19	14	17	4	8
at Iowa	77	30-58	51.7%	2-4	50.0%	15-19	78.9%	39	14	17	19	10	12
Michigan	68	24-48	50.0%	10-22	45.5%	10-14	71.4%	35	17	14	16	2	7
at Iowa	64	23-62	37.1%	9-25	36.0%	9-12	75.0%	32	16	17	11	3	8
at Wisconsin	56	18-54	33.3%	9-26	34.6%	11-14	78.6%	25	14	12	11	2	11
Iowa	65	21-55	38.2%	6-17	35.3%	17-18	94.4%	45	13	17	15	2	5
at Michigan State	65	23-61	37.7%	5-19	26.3%	14-15	93.3%	42	10	14	14	3	4
Iowa	54	21-60	35.0%	2-14	14.3%	10-12	83.3%	36	14	9	14	4	7
Purdue	46	21-66	31.8%	3-18	16.7%	1-6	16.7%	44	13	10	18	3	10
at Iowa	62	23-63	36.5%	9-15	60.0%	7-9	77.8%	45	12	16	14	9	9
Wisconsin	60	24-64	37.5%	5-26	19.2%	7-11	63.6%	33	14	12	12	0	9
at Iowa	71	25-51	49.0%	5-12	41.7%	16-18	88.9%	36	15	13	15	6	4
at Michigan	57	22-53	41.5%	4-12	33.3%	9-15	60.0%	29	17	9	11	3	6
Iowa	63	23-50	46.0%	5-20	25.0%	12-14	85.7%	32	19	12	11	4	6
at Illinois	74	25-60	41.7%	11-24	45.8%	13-19	68.4%	31	10	15	19	2	15
Iowa	62	27-59	45.8%	7-19	36.8%	1-2	50.0%	38	17	12	27	5	7
Northwestern	67	27-59	45.8%	5-15	33.3%	8-12	66.7%	37	16	18	16	3	5
at Iowa	65	20-61	32.8%	7-14	50.0%	18-24	75.0%	40	14	12	13	8	12
at Minnesota	72	26-58	44.8%	5-12	41.7%	15-20	75.0%	48	17	14	16	9	5
Iowa	60	18-63	28.6%	7-20	35.0%	17-20	85.0%	34	19	13	13	4	10
Nebraska	76	26-60	43.3%	10-23	43.5%	14-16	87.5%	37	14	21	12	2	4
at Iowa	75	28-64	43.8%	8-24	33.3%	11-15	73.3%	36	14	19	8	6	4





University of Iowa Women's Basketball

Season & Career Bests

Season Bests

Player	Points	3-Pointers	Rebounds	Assists	Blocks	Steals
#3 Claire Till	7 at FIU	1, twice	6, twice	1, three times	1, three times	1, three times
#11 Trisha Nesbitt	12 at Drake	2 at Drake	3 vs. Northern Illinois	2 vs. Robert Morris	---	2 vs. North Carolina
#12 Morgan Johnson	26 at Drake	---	12, three times	5 vs. Northern Iowa	5, twice	3, twice
#13 Kathy Thomas	15 vs. Missouri State	2 vs. Missouri State	3, twice	3, twice	1 at Minnesota	2, twice
#21 Melissa Dixon	23 vs. Texas	6 vs. Northwestern	3, five times	3 vs. Nebraska	1 vs. Illinois State	2 vs. MTSU
#22 Samantha Logic	17 vs. Ohio State	2, twice	15 vs. Texas	14 vs. Texas	2 at Drake	4 vs. North Carolina
#23 Theairra Taylor	19 vs. Ohio State	3 vs. Purdue	11 vs. Illinois State	7 vs. Missouri State	2, three times	3, twice
#24 Jaime Printy	33 at San Diego	7 at San Diego	9 vs. Purdue	7 at Drake	1, three times	3, twice
#25 Kali Peschel	5 at Drake	1 at Drake	5, twice	2, twice	1, four times	1, five times
#33 Kathryn Reynolds	---	---	---	---	---	---
#45 Nicole Smith	4 vs. Missouri State	---	1 vs. Northern Illinois	---	---	---
#51 Bethany Doolittle	19 at Michigan	---	12 vs. Missouri State	2 vs. Ohio State	6, twice	3, three times
#54 Kayla Timmerman	6, twice	1 vs. Illinois State	8 vs. Missouri State	1, three times	2 vs. Northern Illinois	1, twice

Career Bests

Player	Points	3-Pointers	Rebounds	Assists	Blocks	Steals
#3 Claire Till	7 at FIU	1, twice	6, twice	1, three times	1, three times	1, three times
#11 Trisha Nesbitt	12 at Drake	2, twice	3, 3 times	4, three times	1, Michigan State '11	3, Minnesota
#12 Morgan Johnson	37 at Bradley	---	16 vs. Illinois	5 vs. Northern Iowa	8, Minnesota, '10	3, five times
#13 Kathy Thomas	15 vs. Missouri State	2 vs. Missouri State	3, twice	3, twice	1 at Minnesota	2, twice
#21 Melissa Dixon	23 vs. Texas	6, twice	4, four times	4 vs. Nebraska	1, four times	3 at Indiana
#22 Samantha Logic	20, twice	3 vs. Drake	18 at Michigan	14 vs. Texas	2, twice	4 vs. North Carolina
#23 Theairra Taylor	19 vs. Ohio State	3 vs. Purdue	11 vs. Illinois State	7 vs. Missouri State	4, Michigan	4 at Northwestern
#24 Jaime Printy	33 at San Diego	7 at San Diego	9, twice	9, Iowa State, '10	1, 15 times	5 at Bradley
#25 Kali Peschel	5 at Drake	1 at Drake	5, twice	2, three times	1, four times	1, five times
#33 Kathryn Reynolds	4 vs. Drake	---	2 vs. Texas A&M	5 vs. Western Illinois	---	---
#45 Nicole Smith	4 vs. Missouri State	---	1 vs. Northern Illinois	---	---	---
#51 Bethany Doolittle	19 at Michigan	---	12 vs. Missouri State	2, twice	6, twice	3, three times
#54 Kayla Timmerman	6, twice	1 vs. Illinois State	8 vs. Missouri State	1, three times	2 vs. Northern Illinois	1, twice

BOLD - set career best during current season

* - - tied school single-game and Carver-Hawkeye Arena record





University of Iowa Women's Basketball

The Last Time...

The Last Time a Player . . .

Had 30 or more points

Iowa -- 33, Jaime Printy, at San Diego, 12/30/12
Opponent -- 34, Rachel Banham, Minnesota, 2/7/13

Made at least 80% of her FGA (10 att.)

Iowa -- .818 (9-11), Morgan Johnson, vs. Nebraska, 2/11/13
Opponent -- .857 (12-14), Kelsey Budd, Bradley, 12/17/11

Made 100% of her FTA (10 att.)

Iowa -- 1.000 (11-11), Morgan Johnson, at Wisconsin, 1/10/13
Opponent -- 1.000 (11-11), Courtney Vandersloot, Gonzaga, 3/19/11

Had 15 or more rebounds

Iowa -- 15, Samantha Logic, vs. Texas, 12/28/12
Opponent -- 16, Artemis Spanou, Robert Morris, 11/20/12

Had 10 or more assists

Iowa -- 10, Samantha Logic, vs. Purdue, 1/20/13
Opponent -- 10, Brittney McCoy, Minnesota, 2/18/10

Had 5 or more blocks

Iowa -- 6, Bethany Doolittle, vs. Ohio State, 1/3/13
Opponent -- 5, Ebony Ellis, Northern Illinois, 12/8/07

Had 5 or more steals

Iowa -- 5, Kelly Krei, at Indiana, 2/5/12
Opponent -- 5, Adrienne GodBold, Illinois, 1/31/13

The Last Time A Team . . .

Scored 100 or more points

Iowa -- 100 vs. Minnesota, 2/12/88
Opponent -- 101, Iowa State, 12/3/03

Scored 40 or fewer points

Iowa -- 40, vs. Illinois, 2/10/77
Opponent -- 40, Northern Illinois, 11/9/12

Won an overtime game

Iowa -- 77-71, vs. Ohio State, 1/3/13
Opponent -- 81-78, Kansas State, 12/3/11

Made at least 60% of its FGA (20 att.)

Iowa -- .632 (36-57), vs. Rider, 11/26/05
Opponent -- .654 (34-52), Ohio State, 2/12/06

Made at least 50% of its 3-pt. FGA (8 att.)

Iowa -- .500 (7-14), vs. Northwestern, 2/3/13
Opponent -- .500 (5-10), Florida State, 11/28/12

Made at least 90% of its FTA (10 att.)

Iowa -- .944 (17-18), at Wisconsin, 1/10/13
Opponents -- .933 (14-15), Michigan State, 1/17/13

* - Carver-Hawkeye Arena record ^ - school record





University of Iowa Women's Basketball

Miscellaneous Records and Statistics

GAME-BY-GAME, POINTS-REBOUNDS-ASSISTS-STEALS

# -- starter	3	11	12	13	21	22	23	24	25	33	45	51	54
Date	Opponent	P-R-A-S	P-R-A-S	P-R-A-S	P-R-A-S	P-R-A-S	P-R-A-S	P-R-A-S	P-R-A-S	P-R-A-S	P-R-A-S	P-R-A-S	P-R-A-S
Nov. 9	Northern Illinois	3-6-0-1	3-3-1-0	11-5-0-1#	8-2-0-0	8-2-2-1#	10-3-2-2#	5-1-1-0#	11-1-3-1	1-5-1-0	DNP	0-1-0-0	1-1-0-0
Nov. 11	Illinois State	4-3-0-1	3-1-0-1	24-9-2-1#	5-3-3-1	8-0-2-0#	6-5-4-2#	10-11-5-2#	1-2-1-0	0-3-0-0	DNP	0-0-0-0	5-0-1-0
Nov. 14	Middle Tennessee	0-1-0-0	2-0-0-0	20-8-1-0#	0-0-0-0	6-1-1-2#	0-3-12-2#	7-4-2-1#	26-5-6-1	0-1-0-0	DNP	DNP	8-9-0-0#
Nov. 18	North Carolina	1-2-1-0	2-0-0-0	20-11-1-2#	0-0-0-0	12-1-0-0	12-6-6-4#	3-4-1-0#	12-5-4-1#	DNP	DNP	2-7-1-2#	0-0-0-0
Nov. 20	Robert Morris	5-2-0-0	0-2-2-0	19-11-0-0#	3-1-1-0	6-2-0-0	4-6-9-3#	7-4-0-1#	8-6-5-1#	0-0-0-1	DNP	DNP	4-5-1-0#
Nov. 23	Florida International	6-7-0-0	2-1-1-0	14-6-2-0#	0-0-0-0	8-2-0-0	7-5-7-1#	6-3-2-0#	15-5-4-0#	0-2-0-0	DNP	DNP	6-3-0-0#
Nov. 25	West Virginia	5-2-0-1	4-0-1-1	19-3-1-1#	DNP	0-0-0-0	9-7-7-3#	6-7-0-0#	19-7-3-0#	DNP	DNP	17-6-0-0#	0-1-0-0
Nov. 28	Florida State	0-1-1-0	0-0-0-1	20-4-1-0#	DNP	3-0-1-1	14-7-7-3#	9-6-1-0#	13-1-1-0#	0-2-0-0	DNP	DNP	10-9-1-1#
Dec. 1	Northern Iowa	DNP	0-0-0-0	19-12-5-2#	0-2-1-0	6-2-1-0	15-4-3-1#	6-5-2-0#	9-3-5-0#	3-2-0-1	DNP	0-0-0-0	8-7-0-1#
Dec. 6	Iowa State	DNP	0-1-0-0	7-6-2-1#	3-2-0-0	11-2-1-1	6-9-4-0#	11-9-3-2#	10-6-2-2#	0-0-0-0	DNP	DNP	2-4-0-1#
Dec. 16	Drake	DNP	12-0-0-0	26-8-0-2#	3-0-0-0	0-0-1-0	13-5-7-1#	6-3-6-0#	9-4-7-0#	5-0-2-1	DNP	DNP	8-4-0-1#
Dec. 19	Missouri State	DNP	4-1-1-0	13-4-1-0#	15-2-2-2	12-2-2-1	7-6-4-3#	9-6-7-1#	13-2-6-0#	2-5-0-1	DNP	4-0-0-0	12-12-1-1#
Dec. 28	Texas	0-1-1-0	0-0-0-0	20-5-0-3#	2-2-0-1	23-3-2-0	2-15-14-2#	4-1-2-3#	21-3-1-0#	0-0-2-0	DNP	2-0-0-0	10-5-1-2#
Dec. 30	San Diego	DNP	DNP	20-6-1-1#	0-3-0-0	8-0-0-1	7-3-10-2#	9-4-4-0#	33-2-4-2#	0-1-0-0	DNP	DNP	6-10-0-1#
Jan. 3	Ohio State	0-1-0-0	DNP	16-12-3-3#	0-1-1-0	3-1-0-1	17-8-8-3#	19-4-0-2#	14-3-3-0#	0-0-0-0	DNP	DNP	8-5-2-3#
Jan. 6	Michigan	DNP	0-0-0-0	10-7-2-2#	0-0-0-0	17-3-0-0	16-9-9-3#	14-3-2-2#	6-5-3-1#	1-1-0-0	DNP	DNP	0-1-1-0#
Jan. 10	Wisconsin	DNP	0-0-0-0	23-11-0-0#	0-0-0-0	8-3-2-0	12-10-9-1#	4-8-5-3#	10-6-1-1#	0-0-0-0	DNP	0-0-0-0	8-4-0-0#
Jan. 17	Michigan State	DNP	0-1-0-1	13-12-0-2#	0-2-0-0	7-3-0-0	7-5-4-1#	6-2-1-0#	11-4-3-1#	0-0-0-0	DNP	DNP	10-3-1-2#
Jan. 20	Purdue	0-0-0-0	0-0-0-0	7-7-0-0#	0-1-3-2	15-0-0-1	4-3-10-1#	9-10-1-1#	15-9-1-0#	0-1-1-0	DNP	DNP	8-9-0-3#
Jan. 24	Wisconsin	0-0-0-0	0-0-0-0	2-4-1-0#	0-1-0-0	10-0-0-1	6-9-5-1#	10-1-2-2#	29-8-4-0#	0-1-0-0	DNP	DNP	10-7-0-0#
Jan. 27	Michigan	DNP	0-2-0-0	6-7-0-2#	4-0-0-0	5-2-1-0	10-6-8-2#	5-2-1-0#	14-5-2-1#	0-0-0-0	DNP	DNP	19-4-0-1#
Jan. 31	Illinois	DNP	DNP	6-4-0-1#	0-0-1-0	11-2-1-1	13-10-6-2#	9-0-1-2#	13-4-3-1#	0-0-0-0	DNP	DNP	4-8-0-0#
Feb. 3	Northwestern	DNP	0-0-1-1	11-3-0-1#	0-0-0-0	21-2-1-0	11-12-2-3#	2-1-2-2#	12-4-3-3#	2-4-1-1	DNP	DNP	4-9-1-0#
Feb. 7	Minnesota	DNP	0-0-0-0	13-10-2-2#	3-1-1-0	4-3-2-1	0-3-5-1#	9-5-1-0#	21-5-0-3#	2-0-1-0	DNP	DNP	8-3-0-3#
Feb. 11	Nebraska	DNP	0-0-0-0	19-10-1-0#	2-1-0-0	19-0-3-1	8-8-6-2#	11-5-5-0#	16-4-4-1#	DNP	DNP	DNP	0-5-0-0#

IOWA RECORD WHEN...

Playing at home:	10-4
Playing on the road:	4-5
Playing on a neutral floor:	2-0
Leading at the half:	10-2
Trailing at the half:	6-6
Tied at the half:	0-1
Wearing white:	6-1
Wearing black:	6-5
Wearing gold:	4-2
Wearing pink:	0-1
Scoring 80+ points:	4-0
Scoring 70-79 points:	4-1
Scoring 60-69 points:	6-7
Scoring 59 or fewer points:	2-1
Allowing 80+ points:	0-1
Allowing 70-79 points:	3-4
Allowing 60-69 points:	5-4
Allowing 59 or fewer points:	8-0
Shooting at least 50% FG:	4-0
Shooting less than 50% FG:	12-9
Shooting at least 80% FT:	6-2
Shooting less than 80% FT:	10-7
Shooting at least 40% 3-pt. FG:	6-1
Shooting less than 40% 3-pt. FG:	10-8
Most 1st half points:	46 vs. Missouri State (Dec. 19)
Most 2nd half points:	54 vs. West Virginia (Nov. 25)
Fewest opponent 1st half points:	13 vs. NIU (Nov. 9)
Fewest opponent 2nd half points:	22 vs. UNI (Dec. 1)

Iowa has more rebounds:	10-4
Opponent has more rebounds:	6-5
Rebounds are equal:	0-0
Iowa has more assists:	15-2
Opponent has more assists:	0-6
Assists are equal:	1-1
Iowa has fewer turnovers:	7-4
Opponent has fewer turnovers:	7-4
Turnovers are equal:	2-1
Iowa has more steals:	6-4
Opponent has more steals:	7-4
Steals are equal:	3-1
Playing on Sunday:	6-3
Playing on Monday:	0-1
Playing on Tuesday:	1-0
Playing on Wednesday:	2-1
Playing on Thursday:	4-3
Playing on Friday:	2-1
Playing on Saturday:	1-0
Playing on BTN:	4-3
Playing on CBS Sports Network:	0-1
Playing on ESPN2:	0-0
Playing on Mediacom:	3-1
Playing on no TV:	9-4
Largest Iowa lead:	54 vs. Missouri State (Dec. 19)
Largest Iowa deficit:	22 vs. UNC (Nov. 18)
Largest halftime lead:	31 vs. NIU (Nov. 9)
Largest halftime deficit:	22 vs. UNC (Nov. 18)

LATE GAME CLUTCH FREE THROW SHOOTING

In Final Five Minutes of Game			
Player	FTM	FTA	Pct.
Jaime Printy	39	39	1.000
Trisha Nesbitt	4	4	1.000
Nicole Smith	2	2	1.000
Morgan Johnson	18	19	.947
Melissa Dixon	8	9	.889
Theairra Taylor	5	6	.833
Bethany Doolittle	3	4	.750
Samantha Logic	17	26	.654
Claire Till	3	6	.500
Kathy Thomas	2	4	.500
Kayla Timmerman	2	6	.333
TOTALS	103	125	.824
In Final Two Minutes of Game			
Player	FTM	FTA	Pct.
Jaime Printy	31	31	1.000
Morgan Johnson	10	10	1.000
Trisha Nesbitt	4	4	1.000
Nicole Smith	2	2	1.000
Bethany Doolittle	2	2	1.000
Melissa Dixon	4	5	.800
Theairra Taylor	3	4	.750
Samantha Logic	10	16	.625
Claire Till	1	4	.250
Kathy Thomas	0	2	.000
TOTALS	67	80	.838
In Final One Minute of Game			
Player	FTM	FTA	Pct.
Jaime Printy	20	20	1.000
Morgan Johnson	6	6	1.000
Melissa Dixon	2	2	1.000
Trisha Nesbitt	2	2	1.000
Theairra Taylor	2	2	1.000
Samantha Logic	2	7	.286
Claire Till	1	4	.250
Kathy Thomas	0	2	.000
TOTALS	35	45	.777
In Overtime			
Player	FTM	FTA	Pct.
Jaime Printy	6	6	1.000
Samantha Logic	4	4	1.000
Theairra Taylor	2	2	1.000
Morgan Johnson	0	2	.000
Claire Till	0	2	.000
Melissa Dixon	0	1	.000
TOTALS	12	16	.750





University of Iowa Women's Basketball

Season Highs And Lows/Specialty Statistics

CATEGORY		IOWA	OPPONENTS
Points	High Low	97 vs. Missouri State 50 vs. Iowa State	83, Florida State 40, Northern Illinois
FG Made	High Low	36 vs. Missouri State 15 vs. Iowa State	31, Florida State 12, two teams
FG Att.	High Low	75 vs. Missouri State 39 vs. West Virginia	76, Illinois State 48, two teams
FG%	High Low	54.7 at San Diego 28.6 at Minnesota	50.0, Michigan 20.7, Missouri State
3FG Made	High Low	11 at San Diego 1 vs. West Virginia	11, Illinois 1, two teams
3FG Att.	High Low	34 vs. Missouri State 4 vs. Ohio State	34, Iowa State 9, Northern Illinois
3FG%	High Low	61.1 at San Diego 14.3 at Michigan State	50.0, two teams 5.6, Missouri State
FTM	High Low	42 vs. West Virginia 1 at Illinois	22, West Virginia 1, Purdue
FTA	High Low	50 vs. West Virginia 2 at Illinois	31, Missouri State 5, Iowa State
FT% (min. 10)	High Low	94.4 at Wisconsin 62.5 vs. Missouri State	93.3, Michigan State 53.6, Texas
Off. Reb.	High Low	21 vs. Missouri State 6 vs. Northern Illinois	23, West Virginia 7, Northwestern
Def. Reb.	High Low	39 vs. Missouri State 16 vs. Michigan	38, Minnesota 15, Florida State
Total Reb.	High Low	60 vs. Missouri State 31, twice, last at San Diego	48, Minnesota 25, Wisconsin
Assists	High Low	25 vs. Missouri State 9 at Michigan State	21, Nebraska 3, two teams
Steals	High Low	12, twice, last vs. Northwestern 1 at Florida International	15, three teams 1, West Virginia
Blocks	High Low	10, four times, last vs. Ohio State 1 vs. Robert Morris	9, Minnesota 0, two teams
Turnovers	High Low	27 at Illinois 8, twice, last vs. Nebraska	22, two teams 10, Florida International
Fouls	High Low	25 vs. Missouri State 12 vs. Purdue	35, West Virginia 10, three teams

GAME-BY-GAME SPECIALTY STATS					
Date	Opponent	IA-Opp.	IA-Opp.	IA-Opp.	IA-Opp.
		Pts. Off TO's	Pts. in Paint	2nd Chance	Fast Break
Nov. 9	Northern Illinois	26-6	24-10	4-3	3-2
Nov. 11	Illinois State	18-20	22-24	8-6	18-11
Nov. 14	Middle Tennessee	15-11	24-26	11-12	2-6
Nov. 18	North Carolina	12-22	30-24	6-22	15-14
Nov. 20	Robert Morris	16-12	22-10	11-6	2-2
Nov. 23	Florida International	6-20	24-20	13-15	6-6
Nov. 25	West Virginia	14-20	24-18	11-22	0-4
Dec. 1	Northern Iowa	11-11	34-4	9-5	2-0
Dec. 6	Iowa State	12-12	14-12	10-8	2-4
Dec. 16	Drake	15-5	40-18	11-12	2-4
Dec. 19	Missouri State	28-14	32-18	17-8	4-6
Dec. 28	Texas	24-10	40-26	11-8	9-0
Dec. 30	San Diego	14-22	30-44	8-9	0-2
Jan. 3	Ohio State	19-18	40-34	12-9	4-6
Jan. 6	Michigan	24-4	22-22	10-8	6-0
Jan. 10	Wisconsin	11-18	18-12	7-17	4-2
Jan. 17	Michigan State	12-22	26-30	12-7	2-12
Jan. 20	Purdue	17-9	24-28	12-5	10-8
Jan. 24	Wisconsin	11-13	30-32	12-13	2-2
Jan. 27	Michigan	10-8	18-24	13-10	4-2
Jan. 31	Illinois	21-30	28-20	13-8	4-4
Feb. 3	Northwestern	17-8	20-32	6-5	6-0
Feb. 7	Minnesota	28-9	18-32	4-10	2-11
Feb. 11	Nebraska	8-4	30-22	20-6	4-2

IOWA AND OPPONENT INDIVIDUAL HIGH PERFORMANCES

CATEGORY		IOWA	OPPONENTS
Points	33	Jaime Printy at San Diego	34 Hill, Ohio State; Banham, Minnesota
Field Goals Made	11	Morgan Johnson at Drake	12 Jamie Russell, Illinois State
Field Goals Attempted	22	Jaime Printy at Minnesota	28 Russell, Ill. State; Coley, FIU
3-Point Field Goals Made	7	Jaime Printy at San Diego	6 Kyndal Clark, Drake
3-Point Field Goals Attempted	12	Jaime Printy vs. UNC, at San Diego	13 Taylor Palmer, West Virginia
Free Throws Made	17	Jaime Printy vs. West Virginia	11 Rachel Banham, Minnesota
Free Throws Attempted	17	Jaime Printy vs. West Virginia	14 Rachel Banham, Minnesota
Offensive Rebounds	8	Morgan Johnson at Wisconsin	11 Ebony Rowe, Middle Tennessee
Defensive Rebounds	11	Theairra Taylor vs. Ill. State	13 Artemis Spanou, Robert Morris
Total Rebounds	15	Samantha Logic vs. Texas	16 Rowe, MTSU; Spanou, RMU
Assists	14	Samantha Logic vs. Texas	8 Ryan, Mich.; Stephen, Wisc.; Roser, N'western
Steals	4	Samantha Logic vs. North Carolina	8 Jamie Russell, Illinois State
Blocks	6	Bethany Doolittle vs. NIU, Ohio State	3 Rolle, UNC; Thompson, Mich.; Loberg, Minn.





University of Iowa Women's Basketball

Season Box Scores



Official Basketball Box Score -- Game Totals -- Final Statistics
Northern Illinois vs Iowa
11/9/12 5:30 PM at Carver-Hawkeye Arena, Iowa City, IA



Northern Illinois 40 • 0-1

#	Player	Total			3-Ptr			Rebounds			PF	TP	A	TO	Blk	Stl	Min
		FG-FGA	FG-FGA	FT-FTA	FG-FGA	FG-FGA	FT-FTA	Off	Def	Tot							
20	THORP, Jenna	f	1-5	0-1	3-4	2	4	6	2	5	0	1	0	1	26		
33	HAYWOOD, Shaakira	c	0-0	0-0	2-2	1	1	2	2	0	2	0	0	0	12		
12	PULLIAM, Danny	g	2-4	0-0	0-0	0	2	2	1	4	1	2	0	0	20		
14	TAYLOR, Satavia	g	5-15	1-4	1-3	2	9	11	1	12	0	2	0	2	29		
02	CORRAL, Amanda	g	2-10	0-3	2-5	0	3	3	4	6	0	8	0	1	29		
03	SNEED, Ashley	f	1-4	0-0	0-0	0	3	3	1	2	0	1	0	0	14		
05	LINDSTROM, Alexis	f	0-1	0-1	2-2	0	0	0	0	2	2	0	0	1	11		
23	BUGGS, Jada	f	2-5	0-0	1-2	0	2	2	3	5	0	3	0	0	17		
30	JOHNSON, Alicia	f	0-1	0-0	0-0	0	3	2	0	0	0	0	0	0	12		
31	WITTMAN, Nichole	f	1-1	0-0	0-0	2	0	2	1	2	0	1	0	0	14		
28	AUGUSTA, Natecia	f	0-2	0-0	0-1	1	3	2	0	0	1	2	1	1	16		
	Team					3	3	6									
	Totals		14-48	1-9	11-19	11	33	44	19	40	3	22	2	6	200		

FG % 1st Half: 4-23 17.4% 2nd half: 10-25 40.0% Game: 14-48 29.2%
 3FG % 1st Half: 0-7 0.0% 2nd half: 1-2 50.0% Game: 1-9 11.1%
 FT % 1st Half: 5-10 50.0% 2nd half: 6-9 66.7% Game: 11-19 57.9%

Iowa 63 • 1-0

#	Player	Total			3-Ptr			Rebounds			PF	TP	A	TO	Blk	Stl	Min
		FG-FGA	FG-FGA	FT-FTA	FG-FGA	FG-FGA	FT-FTA	Off	Def	Tot							
51	Doolittle, Bethany	f	1-8	0-0	0-0	0	0	0	2	2	0	1	6	0	21		
12	Johnson, Morgan	c	4-11	0-0	3-5	1	4	5	2	11	0	1	0	1	20		
21	Dixon, Melissa	g	3-4	2-3	0-0	0	2	2	2	8	2	1	0	1	24		
22	Logic, Samantha	g	5-8	0-0	0-0	0	3	3	1	10	2	2	0	2	25		
23	Taylor, Theairra	g	2-4	1-1	0-0	0	1	1	1	5	1	1	0	0	19		
03	Till, Claire	f	1-3	1-2	0-0	1	5	6	3	3	0	0	1	1	11		
11	Nesbitt, Trisha	f	1-1	1-1	0-0	0	3	3	0	3	1	2	0	0	18		
13	Thomas, Kathy	f	3-4	0-0	2-2	1	1	2	3	8	0	1	0	0	15		
24	Printy, Jaime	f	3-4	1-1	4-4	0	1	1	1	11	3	1	0	1	16		
25	Peschel, Kali	f	0-6	0-2	1-2	3	2	5	3	1	1	0	0	0	18		
45	Smith, Nicole	f	0-2	0-0	0-0	0	1	1	0	0	0	0	0	0	3		
54	Timmerman, Kayla	f	0-2	0-0	1-2	0	1	1	0	1	0	0	2	0	10		
	Team					0	4	4									
	Totals		23-57	6-10	11-17	6	28	34	18	63	10	10	10	6	200		

FG % 1st Half: 15-30 50.0% 2nd half: 8-27 29.6% Game: 23-57 40.4%
 3FG % 1st Half: 4-5 80.0% 2nd half: 2-4 50.0% Game: 6-10 60.0%
 FT % 1st Half: 0-1 0.0% 2nd half: 11-16 68.8% Game: 11-17 64.7%

Officials: Ann Schroeder, Scott Fruehling, Dave Rittman
 Technical fouls: Northern Illinois-None. Iowa-None.
 Attendance: 4739

Score by periods	1st	2nd	Total
Northern Illinois	13	27	40
Iowa	34	29	63

Points In Off 2nd Fast
NIU 10 6 4 3 11
Iowa 24 26 3 2 27

Last FG - NIU 2nd-03:23, IOWA 2nd-02:17.
 Largest lead - NIU None, IOWA by 27 2nd-03:50.



Official Basketball Box Score -- Game Totals -- Final Statistics
Iowa State vs Iowa
11/11/12 2:00 PM at Carver-Hawkeye Arena, Iowa City, IA



Iowa State 64 • 1-1

#	Player	Total			3-Ptr			Rebounds			PF	TP	A	TO	Blk	Stl	Min
		FG-FGA	FG-FGA	FT-FTA	FG-FGA	FG-FGA	FT-FTA	Off	Def	Tot							
25	SMITH, Janae	f	7-14	0-0	3-6	5	4	9	2	17	1	5	1	1	31		
31	OLIVER, Maddie	f	0-2	0-0	0-0	1	0	1	4	0	0	0	0	1	14		
01	JENKINS, Alexis	g	1-2	1-2	0-0	0	0	0	1	3	2	1	0	2	23		
14	FOLEY, Alexis	g	1-8	1-4	0-0	2	4	6	5	3	0	2	0	0	27		
23	RUSSELL, Jamie	g	12-28	0-2	6-6	2	10	12	3	30	2	6	1	8	37		
04	NELSON, Chloe	f	2-9	0-3	2-4	2	1	3	6	0	0	1	2	0	20		
11	HALL, Stekara	f	0-0	0-0	0-0	0	1	1	2	0	0	0	0	0	3		
22	SEBERGER, Alison	f	0-0	0-0	0-0	0	0	0	0	0	0	0	0	0	1		
24	WINGE, Katy	f	1-5	0-3	0-0	0	2	2	0	2	0	1	0	0	11		
32	CRUMP, Octavia	f	0-6	0-0	1-5	2	2	4	2	1	2	0	1	0	22		
35	PUNI, Brianna	f	0-1	0-0	0-0	0	1	1	4	0	0	0	1	0	10		
50	GRACE, Megan	f	1-1	0-0	0-0	0	0	0	1	2	0	0	0	0	1		
	Team					3	2	5									
	Totals		25-76	2-14	12-21	17	27	44	27	64	6	17	4	15	200		

FG % 1st Half: 11-40 27.5% 2nd half: 14-36 38.9% Game: 25-76 32.9%
 3FG % 1st Half: 1-6 16.7% 2nd half: 1-8 12.5% Game: 2-14 14.3%
 FT % 1st Half: 6-9 66.7% 2nd half: 6-12 50.0% Game: 12-21 57.1%

Iowa 74 • 2-0

#	Player	Total			3-Ptr			Rebounds			PF	TP	A	TO	Blk	Stl	Min
		FG-FGA	FG-FGA	FT-FTA	FG-FGA	FG-FGA	FT-FTA	Off	Def	Tot							
12	Johnson, Morgan	c	6-14	0-0	12-13	4	5	9	2	24	2	2	5	1	30		
51	Doolittle, Bethany	c	4-10	0-1	0-0	0	5	5	1	8	0	2	2	1	25		
21	Dixon, Melissa	g	2-3	2-3	2-2	0	0	0	4	8	2	1	0	0	24		
22	Logic, Samantha	g	1-6	0-1	4-4	3	2	5	2	6	4	6	1	2	24		
23	Taylor, Theairra	g	3-6	1-1	3-4	0	11	11	1	10	5	2	0	2	21		
03	Till, Claire	f	1-2	0-0	2-2	0	3	3	1	4	0	2	0	1	7		
11	Nesbitt, Trisha	f	0-3	0-1	3-4	0	1	1	3	3	0	1	0	1	15		
13	Thomas, Kathy	f	0-2	0-0	5-8	2	1	3	3	5	3	3	0	1	16		
24	Printy, Jaime	f	0-4	0-3	1-2	0	2	2	0	1	1	2	0	0	15		
25	Peschel, Kali	f	0-2	0-1	0-0	0	3	3	1	0	0	2	0	0	16		
45	Smith, Nicole	f	0-0	0-0	0-0	0	0	0	0	0	0	0	0	0	2		
54	Timmerman, Kayla	f	2-2	1-1	0-2	0	0	0	0	5	1	0	1	0	5		
	Team					3	5	8									
	Totals		19-54	4-12	32-41	12	38	50	18	74	18	23	10	9	200		

FG % 1st Half: 7-26 26.9% 2nd half: 12-28 42.9% Game: 19-54 35.2%
 3FG % 1st Half: 2-7 28.6% 2nd half: 2-5 40.0% Game: 4-12 33.3%
 FT % 1st Half: 23-26 88.5% 2nd half: 9-15 60.0% Game: 32-41 78.0%

Officials: Doug Knight, Erika Herriman, Scott Fruehling
 Technical fouls: Illinois State-None. Iowa-None.
 Attendance: 2930

Score by periods	1st	2nd	Total
Illinois State	29	35	64
Iowa	39	35	74

Points In Off 2nd Fast
Iowa 24 20 6 12 11
Iowa 32 18 8 11 18



Official Basketball Box Score -- Game Totals -- Final Statistics
Middle Tennessee vs Iowa
11/14/12 7:00 PM at Carver-Hawkeye Arena, Iowa City, IA



Middle Tennessee 63 • 2-1

#	Player	Total			3-Ptr			Rebounds			PF	TP	A	TO	Blk	Stl	Min
		FG-FGA	FG-FGA	FT-FTA	FG-FGA	FG-FGA	FT-FTA	Off	Def	Tot							
13	Elie, Icelyn	f	3-11	1-2	1-1	6	8	14	3	8	2	3	1	3	43		
21	Rowe, Ebony	c	10-21	0-0	4-6	11	5	16	4	24	3	3	2	4	45		
05	Cason, Shanice	g	1-14	1-10	2-5	0	2	2	5	5	1	5	0	0	36		
24	Jones, Kortni	g	4-14	3-10	4-4	2	2	4	3	15	3	4	0	1	44		
02	Leonard, Laken	g	3-6	2-5	1-2	1	0	1	4	9	0	2	0	1	34		
52	Brinkley, Janay	f	0-2	0-2	0-0	0	1	1	2	0	0	0	0	2	10		
23	March, Lauren	f	1-1	0-0	0-0	0	1	2	0	2	0	0	0	1	9		
32	Warden, Caroline	f	0-1	0-1	0-0	0	0	0	0	1	0	1	0	0	2		
42	Stewart, KeKe	f	0-0	0-0	0-0	0	0	0	0	0	0	0	0	0	2		
	Team					1	5	6									
	Totals		22-70	7-30	12-18	22	24	46	22	63	9	20	3	12	225		

FG % 1st Half: 13-34 38.2% 2nd half: 8-31 25.8% OT: 1-5 20.0% Game: 22-70 31.4%
 3FG % 1st Half: 5-14 35.7% 2nd half: 2-13 15.4% OT: 0-3 0.0% Game: 7-30 23.3%
 FT % 1st Half: 1-5 20.0% 2nd half: 9-11 81.8% OT: 2-2 100.0% Game: 12-18 66.7%

Iowa 69 • 3-0

#	Player	Total			3-Ptr			Rebounds			PF	TP	A	TO	Blk	Stl	Min
		FG-FGA	FG-FGA	FT-FTA	FG-FGA	FG-FGA	FT-FTA	Off	Def	Tot							
51	Doolittle, Bethany	f	4-7	0-0	0-0	4	5	9	3	8	0	4	5	0	30		
12	Johnson, Morgan	c	8-10	0-0	4-6	2	6	8	4	20	1	0	2	0	41		
21	Dixon, Melissa	g	2-9	2-7	0-1	0	1	1	2	6	1	1	0	2	34		
22	Logic, Samantha	g	0-6	0-2	0-1	1	2	3	2	0	12	6	1	2	40		
23	Taylor, Theairra	g	3-8	1-4	0-2	1	3	4	2	7	2	4	2	1	23		
03	Till, Claire	f	0-1	0-0	0-0	0	1	1	2	0	0	0	0	0	8		
11	Nesbitt, Trisha	f	1-1	0-0	0-0	0	0	0	0	2	0	0	0	0	4		
13	Thomas, Kathy	f	0-0	0-0	0-0	0	0	0	1	0	0	0	0	0	2		
24	Printy, Jaime	f	6-13	3-7	11-11	1	4	5	1	26	6						



University of Iowa Women's Basketball

Season Box Scores



Official Basketball Box Score -- Game Totals -- Final Statistics
Robert Morris vs Iowa
11/20/12 7:00 PM at Carver-Hawkeye Arena, Iowa City, IA



Robert Morris 44 • 0-4

#	Player	Total	3-Ptr			Rebounds			PF	TP	A	TO	Blk	Stl	Min
			FG-FGA	FG-FGA	FT-FTA	Off	Def	Tot							
15	SPANOU, Artemis	f	2-19	1-9	4-7	3	13	16	3	9	3	8	0	1	40
42	HARTWELL, Kelly	f	0-1	0-0	1-2	1	1	2	0	1	2	0	0	0	23
52	GAILITE, Anna	c	5-10	0-0	0-0	2	2	4	4	10	0	1	2	0	33
10	TATE, Jasmine	g	1-4	0-0	0-1	0	3	3	1	2	2	5	0	0	27
14	RAVELLI, Ashley	g	3-7	2-4	1-2	1	1	2	0	9	3	1	0	1	31
12	MATALY, Lou	g	4-10	3-7	2-2	1	1	2	1	13	1	0	0	1	26
34	KAVASILA, Anna	g	0-0	0-0	0-0	0	0	0	2	0	0	0	0	0	7
41	JACKSON, Randi	g	0-2	0-1	0-0	0	0	0	0	0	1	1	0	0	13
Team						2	3	5							
Totals			15-53	6-21	8-14	10	24	34	11	44	12	16	2	4	200

FG % 1st Half: 8-25 29.6% 2nd half: 7-26 26.9% Game: 15-53 28.3%
3FG % 1st Half: 3-10 30.0% 2nd half: 3-11 27.3% Game: 6-21 28.6%
FT % 1st Half: 1-3 33.3% 2nd half: 7-11 63.6% Game: 8-14 57.1%

Iowa 58 • 4-1

#	Player	Total	3-Ptr			Rebounds			PF	TP	A	TO	Blk	Stl	Min
			FG-FGA	FG-FGA	FT-FTA	Off	Def	Tot							
51	Doolittle, Bethany	f	2-9	0-0	0-0	1	4	5	2	4	1	1	1	0	20
12	Johnson, Morgan	c	8-13	0-0	3-5	5	6	11	3	19	0	3	0	0	33
22	Logic, Samantha	g	2-7	0-2	0-0	3	3	6	1	4	9	2	0	3	28
23	Taylor, Theaira	g	3-7	1-4	0-0	0	4	4	0	7	0	3	0	1	20
24	Printy, Jaime	g	2-4	2-4	2-2	1	5	6	0	8	5	2	0	1	31
03	Till, Claire	g	1-2	1-1	2-2	0	2	2	0	5	0	2	0	0	16
11	Nesbitt, Trisha	g	0-0	0-0	0-0	0	2	2	0	2	0	0	0	0	13
13	Thomas, Kathy	g	1-3	1-1	0-0	0	1	1	2	3	1	0	0	0	10
21	Dixon, Melissa	g	2-8	2-7	0-0	0	2	2	2	6	0	3	0	0	17
25	Peschel, Kali	g	0-0	0-0	0-0	0	0	0	2	0	0	0	0	1	5
54	Timmerman, Kayla	g	1-4	0-0	0-0	1	2	3	1	2	0	2	0	0	7
Team						1	1	2							
Totals			22-57	7-19	7-9	12	32	44	13	58	18	18	1	6	200

FG % 1st Half: 8-25 32.0% 2nd half: 14-32 43.8% Game: 22-57 38.6%
3FG % 1st Half: 4-10 40.0% 2nd half: 3-9 33.3% Game: 7-19 36.8%
FT % 1st Half: 3-4 75.0% 2nd half: 4-5 80.0% Game: 7-9 77.8%

Officials: Lisa Mattingly, Brian Hall, Angie Enlund
Technical fouls: Robert Morris-None. Iowa-None.
Attendance: 3032

Score by periods	1st	2nd	Total
Robert Morris	20	24	44
Iowa	23	35	58

Points	In	Off	2nd	Fast	Bench
RMU	Paint	T/O	Chance	Break	
IOWA	10	12	6	2	13
IOWA	22	16	11	2	16

Last FG - RMU 2nd-01:52, IOWA 2nd-00:36.
Largest lead - RMU by 5 1st-12:17, IOWA by 16 2nd-12:41.

Score tied - 1 time.
Lead changed - 2 times.



Official Basketball Box Score -- Game Totals -- Final Statistics
Iowa vs FIU
11/23/12 6 p.m. at U.S. Century Bank Arena



Iowa 65 • 4-2

#	Player	Total	3-Ptr			Rebounds			PF	TP	A	TO	Blk	Stl	Min
			FG-FGA	FG-FGA	FT-FTA	Off	Def	Tot							
12	Johnson, Morgan	*	6-9	0-0	2-2	3	3	6	2	14	2	3	5	0	36
22	Logic, Samantha	*	3-6	1-1	0-0	2	3	5	3	7	4	0	1	0	32
23	Taylor, Theaira	*	2-5	0-1	2-2	0	3	3	2	6	2	2	0	0	19
24	Printy, Jaime	*	5-12	4-9	1-1	2	3	5	2	15	4	3	0	0	34
51	Doolittle, Bethany	*	3-5	0-0	0-0	0	3	3	3	6	0	2	0	0	22
03	Till, Claire	*	1-6	0-2	5-8	5	1	6	0	7	0	0	0	0	18
11	Nesbitt, Trisha	*	1-2	0-0	0-0	0	1	1	1	2	1	0	0	0	8
13	Thomas, Kathy	*	0-0	0-0	0-0	0	0	0	0	0	0	0	0	0	8
21	Dixon, Melissa	*	3-11	2-7	0-0	0	2	2	2	8	0	0	0	0	19
25	Peschel, Kali	*	0-1	0-0	0-0	0	2	2	0	0	0	0	0	0	2
54	Timmerman, Kayla	*	0-0	0-0	0-0	0	0	0	1	0	1	0	1	0	2
Team						1	5	6							
Totals			24-57	7-20	10-13	16	23	39	16	65	16	16	5	1	200

FG % 1st Half: 14-32 43.8% 2nd half: 10-25 40.0% Game: 24-57 42.1%
3FG % 1st Half: 3-12 25.0% 2nd half: 4-8 50.0% Game: 7-20 35.0%
FT % 1st Half: 3-3 100.0% 2nd half: 7-10 70.0% Game: 10-13 76.9%

FIU 66 • 2-2

#	Player	Total	3-Ptr			Rebounds			PF	TP	A	TO	Blk	Stl	Min
			FG-FGA	FG-FGA	FT-FTA	Off	Def	Tot							
03	Labady, Zsafia	*	2-5	1-3	1-1	1	2	3	2	6	0	1	0	1	36
12	Davydova, Marita	*	1-8	0-0	4-4	4	1	5	4	6	0	0	0	0	26
22	Coley, Jerica	*	11-28	3-9	6-7	2	4	6	2	31	4	1	2	37	
23	Mansare, Finda	*	7-14	0-0	3-4	5	3	8	4	17	1	5	1	0	36
24	Miloglav, Carmen	*	2-7	0-2	0-0	3	3	6	1	4	2	2	0	3	37
13	Ashmore, Diamond	*	1-2	0-0	0-0	1	1	2	2	2	0	0	0	0	13
14	Idom, Kamika	*	0-1	0-1	0-0	0	1	1	0	0	0	0	0	0	4
25	Durant, Arielle	*	0-0	0-0	0-1	0	1	1	1	0	1	0	0	0	11
Team						3	2	5							
Totals			24-65	4-15	14-17	19	18	37	16	66	8	10	3	6	200

FG % 1st Half: 10-30 33.3% 2nd half: 14-35 40.0% Game: 24-65 36.9%
3FG % 1st Half: 1-4 25.0% 2nd half: 3-11 27.3% Game: 4-15 26.7%
FT % 1st Half: 4-4 100.0% 2nd half: 10-13 76.9% Game: 14-17 82.4%

Officials: Erica Bradley, Jody Cantrell, Ron Harris
Technical fouls: Iowa-None. FIU-None.
Attendance:

Score by periods	1st	2nd	Total
Iowa	34	31	65
FIU	25	41	66

Points	In	Off	2nd	Fast	Bench
IOWA	Paint	T/O	Chance	Break	
IOWA	24	6	13	6	2
IOWA	20	15	6	6	17

Last FG - IOWA 2nd-00:48, FIU 2nd-00:00.
Largest lead - IOWA by 13 2nd-16:48, FIU by 2 2nd-07:12.

Score tied - 5 times.
Lead changed - 5 times.



Official Basketball Box Score -- Game Totals -- Final Statistics
WVU vs Iowa
11/25/12 1 pm at U.S. Century Bank Arena



WVU 70 • 3-2

#	Player	Total	3-Ptr			Rebounds			PF	TP	A	TO	Blk	Stl	Min
			FG-FGA	FG-FGA	FT-FTA	Off	Def	Tot							
01	Caldwell, Christal	*	5-16	1-5	6-6	3	1	4	5	17	1	3	0	0	23
02	Palmer, Taylor	*	7-20	5-13	4-4	3	6	9	3	23	2	0	0	1	37
05	Fields, Averee	*	2-4	0-0	1-2	3	5	8	2	5	1	2	1	2	23
22	Stepney, Linda	*	3-5	0-0	1-2	1	1	2	5	7	3	1	0	2	26
33	Dunning, Ayana	*	1-4	0-0	1-2	2	1	3	3	0	2	0	0	1	13
03	Bethel, Akilah	g	0-3	0-0	3-4	2	1	3	0	3	1	1	0	0	8
04	Hampton, Brooke	g	0-3	0-2	0-0	0	0	0	1	0	3	0	0	0	9
12	Faulk, Darius	g	0-0	0-0	1-2	0	0	0	3	1	0	0	0	0	5
14	Harlee, Jess	g	0-1	0-1	0-0	0	1	1	4	0	1	2	0	2	18
21	Simms, Jennie	g	0-3	0-1	0-0	1	0	1	3	0	0	1	0	0	8
23	Holmes, Bria	g	1-10	0-6	1-3	1	1	2	0	3	0	1	0	0	10
32	Leary, Crystal	g	2-3	0-0	4-4	4	1	5	3	8	0	1	0	2	20
Team						3	0	3							
Totals			21-72	6-28	22-29	23	18	41	35	70	12	15	1	10	200

FG % 1st Half: 9-33 27.3% 2nd half: 12-39 30.8% Game: 21-72 29.2%
3FG % 1st Half: 3-13 23.1% 2nd half: 3-15 20.0% Game: 6-28 21.4%
FT % 1st Half: 11-18 61.1% 2nd half: 11-11 100.0% Game: 22-29 75.9%

Iowa 79 • 5-2

#	Player	Total	3-Ptr			Rebounds			PF	TP	A	TO	Blk	Stl	Min
			FG-FGA	FG-FGA	FT-FTA	Off	Def	Tot							
12	Johnson, Morgan	*	6-11	0-0	7-11	0	3	3	19	1	2	2	1	30	
22	Logic, Samantha	*	2-6	0-0	5-6	2	5	7	5	9	7	0	0	3	34
23	Taylor, Theaira	*	1-3	0-1	4-5	1	6	7	4	6	0	2	1	0	23
24	Printy, Jaime	*	1-3	0-2	17-17	0	7	7	1	19	3	4	1	0	33
51	Doolittle, Bethany	*	7-12	0-0	3-3	3	1	5	6	17	0	2	1	0	31
03	Till, Claire	g	0-1	0-0	5-6	2	0	2	1	5	0	1	0	1	14
11	Nesbitt, Trisha	g	1-1	1-1	1-2	0	0	0	2	4	1	1	0	1	14
21	Dixon, Melissa	g	0-2	0-1	0-0	0	0	0	2	0	0	1	0	0	17
54	Timmerman, Kayla	g	0-0	0-0	0-0	0	1	1	1	0	0	1	0	0	4
Team						3	3	6							
Totals			18-39	1-5	42-50	9	30	39	23	79	12	23	5	6	200

FG % 1st Half: 5-17 29.4% 2nd half: 13-22 59.1% Game: 18-39 46.2%
3FG % 1st Half: 0-3 0.0% 2nd half: 1-2 50.0% Game: 1-5 20.0%
FT % 1st Half: 15-20 75.0% 2nd half: 27-30 90.0% Game: 42-50 84.0%

Officials: Ed Novack, Erica Bradley, Ron Harris
Technical fouls: WVU-TEAM. Iowa-None.
Attendance:



University of Iowa Women's Basketball

Season Box Scores



Official Basketball Box Score -- Game Totals -- Final Statistics
UNI vs Iowa
12/1/12 2:30 PM at Carver-Hawkeye Arena, Iowa City, Iowa



UNI 46 • 3-4

#	Player	Total			3-Ptr			Rebounds			PF	TP	A	TO	Blk	Stl	Min
		FG-FGA	FG-FGA	FT-FTA	FG-FGA	FG-FGA	FT-FTA	Off	Def	Tot							
00	Kirschbaum, Amber	f	3-5	0-0	2-2	3	8	11	4	0	3	0	1	29			
15	McDowell, Jess	c	3-8	3-8	0-0	1	2	3	2	9	0	1	0	30			
10	Jacqui Kalin	g	2-13	1-7	4-4	3	5	8	2	9	4	2	0	32			
22	Brown, Brooke	g	3-6	3-5	3-4	0	0	0	0	12	0	0	0	19			
32	Donaldson, Brittini	g	1-7	1-5	0-0	0	1	1	0	3	0	1	0	24			
05	Sorenson, Amber	0-1	0-0	0-0	0	0	0	0	0	0	0	0	0	1			
13	Lamar, Sharnae	0-5	0-2	2-2	1	1	2	1	2	3	1	0	0	28			
14	Davidson, Stephanie	0-1	0-1	0-0	0	0	0	1	0	0	0	0	0	6			
20	Schonhardt, Hannah	0-2	0-1	3-4	0	3	3	3	2	2	0	0	0	17			
42	Keitel, Jen	0-5	0-0	0-0	0	1	1	4	0	1	0	1	0	14			
	Team				2	0	2										
	Totals		12-53	8-29	14-16	10	21	31	17	46	9	11	0	2	200		

FG % 1st Half: 7-24 29.2% 2nd half: 5-29 17.2% Game: 12-53 22.6%
 3FG % 1st Half: 4-11 36.4% 2nd half: 4-18 22.2% Game: 8-29 27.6%
 FT % 1st Half: 6-6 100.0 2nd half: 8-10 80.0% Game: 14-16 87.5%

Iowa 68 • 6-3

#	Player	Total			3-Ptr			Rebounds			PF	TP	A	TO	Blk	Stl	Min
		FG-FGA	FG-FGA	FT-FTA	FG-FGA	FG-FGA	FT-FTA	Off	Def	Tot							
51	Doolittle, Bethany	f	4-11	0-0	0-0	1	6	7	2	8	0	1	0	1	26		
12	Johnson, Morgan	c	6-11	0-0	7-11	4	8	12	2	19	5	2	2	35			
22	Logic, Samantha	g	7-9	0-1	1-1	1	3	4	3	15	3	1	1	33			
23	Taylor, Theaira	g	3-6	0-2	0-0	1	4	5	0	6	2	0	0	28			
24	Printy, Jaime	g	2-7	1-4	4-4	0	3	3	1	9	5	3	0	30			
11	Nesbitt, Trisha	0-0	0-0	0-0	0	0	0	0	0	0	0	0	0	5			
13	Thomas, Kathy	0-1	0-0	0-0	0	2	2	2	0	1	0	0	0	7			
21	Dixon, Melissa	2-4	2-2	0-0	1	1	2	2	6	1	0	0	0	16			
25	Peschel, Kalli	1-4	0-2	1-2	1	1	2	3	3	0	2	1	1	18			
45	Smith, Nicole	0-0	0-0	0-0	0	0	0	0	0	0	0	0	0	1			
54	Timmerman, Kayla	1-1	0-0	0-0	0	1	1	1	2	0	0	0	0	1			
	Team				1	4	5										
	Totals		26-54	3-11	13-18	10	33	43	16	68	17	9	4	5	200		

FG % 1st Half: 11-28 39.3% 2nd half: 15-26 57.7% Game: 26-54 48.1%
 3FG % 1st Half: 2-7 28.6% 2nd half: 1-4 25.0% Game: 3-11 27.3%
 FT % 1st Half: 6-11 54.5% 2nd half: 7-7 100.0% Game: 13-18 72.2%

Officials: Barb Smith, Tim Daley, Bob Enterline
 Technical fouls: UNI-None. Iowa-None.
 Attendance: 6368

Score by periods	1st	2nd	Total
UNI	24	22	46
Iowa	30	38	68

Points	In	Off	2nd	Fast	Bench
UNI	Paint	T/O	Chance	Break	
UNI	4	11	5	0	5
IOWA	34	11	9	2	11

Last FG - UNI 2nd-03:52, IOWA 2nd-00:33.
 Largest lead - UNI by 3 1st-19:31, IOWA by 22 2nd-00:33.

Score tied - 0 times.
 Lead changed - 1 time.



Official Basketball Box Score -- Game Totals -- Final Statistics
Iowa State vs Iowa
12/6/12 7:30 PM at Carver-Hawkeye Arena, Iowa City, IA



Iowa State 42 • 5-1

#	Player	Total			3-Ptr			Rebounds			PF	TP	A	TO	Blk	Stl	Min
		FG-FGA	FG-FGA	FT-FTA	FG-FGA	FG-FGA	FT-FTA	Off	Def	Tot							
05	Christofferson, H.	f	2-8	1-3	5-5	2	11	13	3	10	0	2	0	0	40		
42	Zimmerman, Amanda	f	0-2	0-0	0-0	0	0	0	0	2	0	0	1	0	6		
55	Prins, Anna	c	4-18	2-10	0-0	5	3	8	3	10	0	3	1	0	39		
03	Bingley, Emiah	g	0-1	0-0	0-0	0	1	1	0	0	0	0	0	0	7		
22	Williamson, Brynn	g	2-6	2-6	0-0	0	2	2	4	6	0	3	0	1	31		
04	Moody, Nikki	g	5-12	2-7	0-0	2	4	6	2	12	5	6	0	2	36		
15	Blaskowsky, Nicole	g	2-10	0-8	0-0	2	6	8	5	4	2	0	0	3	27		
32	Ellis, Fallon	g	0-0	0-0	0-0	1	3	4	0	2	0	0	0	0	14		
	Team					0	1	1									
	Totals		15-57	7-34	5-5	12	31	43	20	42	7	21	1	6	200		

FG % 1st Half: 7-28 25.0% 2nd half: 8-29 27.6% Game: 15-57 26.3%
 3FG % 1st Half: 3-16 18.8% 2nd half: 4-18 22.2% Game: 7-34 20.6%
 FT % 1st Half: 0-0 0.0% 2nd half: 5-5 100.0% Game: 5-5 100.0%

Iowa 50 • 7-3

#	Player	Total			3-Ptr			Rebounds			PF	TP	A	TO	Blk	Stl	Min
		FG-FGA	FG-FGA	FT-FTA	FG-FGA	FG-FGA	FT-FTA	Off	Def	Tot							
51	Doolittle, Bethany	f	1-8	0-1	0-0	0	4	4	3	2	0	1	0	1	36		
12	Johnson, Morgan	c	3-8	0-0	1-2	1	5	6	1	7	2	4	1	1	38		
22	Logic, Samantha	g	1-7	1-3	3-6	4	5	9	3	6	4	1	1	0	28		
23	Taylor, Theaira	g	4-12	1-3	2-4	4	5	9	0	11	3	5	1	2	27		
24	Printy, Jaime	g	2-7	0-3	6-6	1	5	6	1	10	2	3	0	2	34		
11	Nesbitt, Trisha	0-0	0-0	0-0	0	1	1	1	0	0	0	0	0	0	6		
13	Thomas, Kathy	0-1	0-1	3-4	1	1	2	1	3	0	0	0	0	0	6		
21	Dixon, Melissa	4-8	2-5	1-3	0	2	2	1	11	1	1	0	1	19			
25	Peschel, Kalli	0-0	0-0	0-0	0	0	0	0	2	0	0	0	0	0	6		
	Team				0	2	2										
	Totals		15-51	4-16	16-25	11	30	41	13	50	12	15	3	7	200		

FG % 1st Half: 7-26 26.9% 2nd half: 8-25 32.0% Game: 15-51 29.4%
 3FG % 1st Half: 2-8 25.0% 2nd half: 2-8 25.0% Game: 4-16 25.0%
 FT % 1st Half: 4-6 66.7% 2nd half: 12-19 63.2% Game: 16-25 64.0%

Officials: Bob Trammell, Felicia Grinter, Michael Price
 Technical fouls: Iowa State-None. Iowa-None.
 Attendance: 4483
 Fouled out @ #15 ISU :29 2nd

Score by periods	1st	2nd	Total
Iowa State	17	25	42
Iowa	20	30	50

Points	In	Off	2nd	Fast	Bench
ISU	Paint	T/O	Chance	Break	
ISU	12	12	8	2	16
IOWA	14	12	10	2	14

Last FG - ISU 2nd-01:41, IOWA 2nd-01:26.
 Largest lead - ISU by 2 2nd-12:20, IOWA by 14 1st-13:58.

Score tied - 3 times.
 Lead changed - 2 times.



Official Basketball Box Score -- Game Totals -- Final Statistics
Iowa vs Drake
12-16-12 2:07 pm at Knapp Center (Des Moines, Iowa)



Iowa 82 • 8-3

#	Player	Total			3-Ptr			Rebounds			PF	TP	A	TO	Blk	Stl	Min
		FG-FGA	FG-FGA	FT-FTA	FG-FGA	FG-FGA	FT-FTA	Off	Def	Tot							
12	Johnson, Morgan	f	11-19	0-0	4-7	2	6	8	2	26	0	0	3	2	38		
51	Doolittle, Bethany	c	4-6	0-0	0-0	1	3	4	5	8	0	2	1	22			
22	Logic, Samantha	g	5-9	1-1	2-2	3	2	5	4	13	7	3	2	1	35		
23	Taylor, Theaira	g	2-5	2-3	0-0	0	3	3	1	6	6	2	0	0	30		
24	Printy, Jaime	g	3-9	0-3	3-3	2	2	4	1	9	7	1	0	0	31		
11	Nesbitt, Trisha	3-4	2-3	4-4	0	0	0	4	12	0	1	0	0	0	15		
13	Thomas, Kathy	1-1	1-1	0-0	0	0	0	0	3	0	0	0	0	0	7		
21	Dixon, Melissa	0-3	0-3	0-0	0	0	0	0	0	1	0	0	0	0	6		
25	Peschel, Kalli	2-3	1-1	0-0	0	0	0	4	5	2	1	1	1	1	16		
	Team				2	5	7										
	Totals		31-59	7-15	13-16	10	21	31	21	82	23	8	8	5	200		

FG % 1st Half: 16-30 53.3% 2nd half: 15-29 51.7% Game: 31-59 52.5%
 3FG % 1st Half: 5-11 45.5% 2nd half: 2-4 50.0% Game: 7-15 46.7%
 FT % 1st Half: 2-2 100.0 2nd half: 11-14 78.6% Game: 13-16 81.3%

Drake 65 • 3-6

#	Player	Total			3-Ptr			Rebounds			PF	TP	A	TO	Blk	Stl	Min
		FG-FGA	FG-FGA	FT-FTA	FG-FGA	FG-FGA	FT-FTA	Off	Def	Tot							
21	Reid, Morgan	f	3-9	0-0	10-12	3	4	7	5	16	1	3	1	0	34		
44	Running, Stephanie	c	3-7	0-0	0-1	0	5	5	1	6	1	1	0	0	22		
01	Grenfell, Carly	g	1-6	0-4	0-0	0	1	1	1	2	2	1	0	0	22		
04	Clark, Kyndal	g	6-12	6-7	1-2	1	3	4	1	19	2	1	0	1	31		
14	Marschner, Alyssa	g	2-5	0-1	3-5	0	1	1	1	7	7	5	0	3	29		
02	Specht, Mary Pat	2-7	1-5	2-2	1	1	2	1	7	0	0	0	0	0	21		
11	Heap, Liza	1-2	0-0	0-0	1	1	2	0	2	0	0	0	0	0	20		
20	Bartow, Ashley	1-2	0-1	2-2	1	1	2	2	4	2	1	0	1	16			
51	Lutes, Cara	1-1	0-0	0-0	2	1	3	0	2	0	0	0	0	0	5		
	Team				4	1	5										
	Totals		20-51	7-18	18-24	13	19	32	12	65	15	13	1	5	200		

FG % 1st Half: 12-29 41.4% 2nd half: 8-22 36.4% Game: 20-51 39.2%
 3FG % 1st Half: 4-11 36.4% 2nd half: 3-7 42.9% Game: 7-18 38.9%
 FT % 1st Half: 6-6 100.0 2nd half: 12-18 66.7% Game: 18-24 75.0%

Officials: Carol Comanita, Erika Herriman, Jeff Stromgren
 Technical fouls: Iowa-None. Drake-None.
 Attendance: 2716
 Fouled out @ #11 IA 2:48 2nd

Score by periods	1st	2nd
------------------	-----	-----



University of Iowa Women's Basketball

Season Box Scores



Official Basketball Box Score -- Game Totals -- Final Statistics
Iowa vs Texas
12/28/12 8:35 PM at Jenny Craig Pavilion



Iowa 86 • 10-3

##	Player	Total	3-Ptr			Rebounds			PF	TP	A	T	B	S	Stl	Min
			FG-FGA	FG-FGA	FT-FTA	Off	Def	Tot								
12	Johnson, Morgan	c	8-13	0-0	4-5	1	4	5	3	20	0	0	2	3	23	
51	Doolittle, Bethany	c	5-8	0-0	0-0	1	4	5	3	10	1	1	0	2	33	
22	Logic, Samantha	g	1-3	0-1	0-0	5	10	15	3	2	14	3	0	2	31	
23	Taylor, Theairra	g	2-9	0-1	0-0	0	1	1	2	4	2	1	0	3	25	
24	Printy, Jaime	g	7-14	2-7	5-7	0	3	3	1	21	1	1	0	0	30	
03	Till, Claire	g	0-1	0-1	0-0	1	0	1	1	0	1	1	0	0	4	
11	Nesbitt, Trisha	g	0-1	0-1	0-0	0	0	0	1	0	0	0	0	0	8	
13	Thomas, Kathy	g	1-1	0-0	0-0	0	2	2	0	2	0	2	0	1	9	
21	Dixon, Melissa	g	9-15	5-10	0-0	0	3	3	1	23	2	0	0	0	25	
25	Peschel, Kali	g	0-0	0-0	0-0	0	0	0	4	0	2	0	0	0	9	
45	Smith, Nicole	g	1-1	0-0	0-0	0	0	0	0	2	0	1	0	0	1	
54	Timmerman, Kayla	g	1-1	0-0	0-0	0	0	0	1	2	0	0	0	0	2	
Team						2	1	3								
Totals			35-67	7-21	9-12	10	28	38	20	86	23	10	2	11	200	

FG % 1st Half: 17-35 48.6% 2nd half: 18-32 56.3% Game: 35-67 52.2%
 3FG % 1st Half: 4-13 30.8% 2nd half: 3-8 37.5% Game: 7-21 33.3%
 FT % 1st Half: 3-4 75.0% 2nd half: 6-8 75.0% Game: 9-12 75.0%

Texas 63 • 7-3

##	Player	Total	3-Ptr			Rebounds			PF	TP	A	T	B	S	Stl	Min
			FG-FGA	FG-FGA	FT-FTA	Off	Def	Tot								
03	Enemkpli, Nneka	f	6-12	0-0	1-5	4	8	12	3	13	0	3	1	0	29	
34	McGee-Stafford,Imani	c	4-8	0-0	4-5	2	1	3	5	12	1	2	3	1	24	
01	Davenport, Empress	g	1-5	0-0	5-11	2	3	5	2	7	3	3	0	2	25	
02	Rodrigo, Celina	g	2-5	1-1	0-0	1	3	4	0	5	3	3	0	0	27	
24	Fussell, Chassidy	g	4-14	1-5	2-3	0	2	2	0	11	3	1	0	0	35	
00	Brewer, Kayla	g	0-0	0-0	0-0	0	0	0	0	0	0	0	0	0	5	
05	Roberts, Ashley	g	3-4	3-4	0-0	0	1	1	3	9	0	0	0	0	24	
32	Sanders, Brady	g	1-6	1-4	0-0	0	0	1	1	3	2	3	0	0	17	
42	Taylor, Nadia	g	0-0	0-0	1-2	0	1	1	0	1	0	0	0	0	5	
44	Hartung, Anne Marie	g	0-0	0-0	2-2	1	3	4	1	2	2	1	0	0	9	
Team						2	2	4								
Totals			21-54	6-14	15-28	12	24	36	15	63	14	16	4	3	200	

FG % 1st Half: 7-23 30.4% 2nd half: 14-31 45.2% Game: 21-54 38.9%
 3FG % 1st Half: 2-5 40.0% 2nd half: 4-9 44.4% Game: 6-14 42.9%
 FT % 1st Half: 5-8 62.5% 2nd half: 10-20 50.0% Game: 15-28 53.6%

Officials: Cathi Cornell, Lorena Ahumada, Renee Robinson
 Technical fouls: Iowa-None. Texas-McGee-Stafford,Imani.
 Attendance: 776

Score by periods	1st	2nd	Total
Iowa	41	45	86
Texas	21	42	63

Points	In	Off	2nd	Fast	Bench
IOWA	40	24	11	8	29
IOWA	26	10	8	0	15

Last FG - IOWA 2nd-01:09, UT 2nd-01:19.
 Largest lead - IOWA by 27 2nd-03:58, UT by 4 1st-16:48.
 Score tied - 0 times.
 Lead changed - 3 times.



Official Basketball Box Score -- Game Totals -- Final Statistics
Iowa vs San Diego
12/30/12 2:35 PM at Jenny Craig Pavilion



Iowa 83 • 11-3

##	Player	Total	3-Ptr			Rebounds			PF	TP	A	T	B	S	Stl	Min
			FG-FGA	FG-FGA	FT-FTA	Off	Def	Tot								
12	Johnson, Morgan	c	8-10	0-0	4-4	3	3	6	2	20	1	4	3	1	38	
51	Doolittle, Bethany	c	3-6	0-0	0-0	1	9	10	3	6	0	2	4	1	30	
22	Logic, Samantha	g	2-2	1-1	2-4	1	2	3	3	7	10	6	0	2	36	
23	Taylor, Theairra	g	3-7	1-2	2-3	0	2	4	3	9	4	2	1	0	33	
24	Printy, Jaime	g	10-20	7-12	6-6	0	2	2	1	33	4	2	1	0	30	
13	Thomas, Kathy	g	0-1	0-0	0-0	1	2	3	2	0	0	1	0	0	4	
21	Dixon, Melissa	g	3-7	2-3	0-0	0	0	0	0	0	1	8	0	0	17	
25	Peschel, Kali	g	0-0	0-0	0-0	1	0	1	0	0	0	0	0	0	12	
Team						0	2	2								
Totals			29-53	11-18	14-17	7	24	31	15	83	19	20	8	7	200	

FG % 1st Half: 15-28 53.6% 2nd half: 14-25 56.0% Game: 29-53 54.7%
 3FG % 1st Half: 3-8 37.5% 2nd half: 8-10 80.0% Game: 11-18 61.1%
 FT % 1st Half: 0-3 0.0% 2nd half: 14-14 100.0% Game: 14-17 82.4%

San Diego 73 • 8-4

##	Player	Total	3-Ptr			Rebounds			PF	TP	A	T	B	S	Stl	Min
			FG-FGA	FG-FGA	FT-FTA	Off	Def	Tot								
13	WIJENBERG, Felicia	f	0-4	0-0	0-0	1	0	1	2	0	2	5	0	3	18	
21	WISCHER, Klara	f	4-8	0-1	0-0	3	5	8	0	8	1	1	0	0	29	
10	KAME, Amy	g	10-18	2-3	8-9	2	4	6	3	30	4	6	1	1	40-	
22	HOOD, Maya	g	2-10	0-0	1-2	1	0	1	3	5	4	1	0	3	36	
33	BARLOW, Alysse	g	1-4	1-2	1-3	0	1	1	0	4	2	0	0	1	28	
01	JELNIKER, Brooke	g	0-0	0-0	0-0	0	0	0	0	0	0	0	0	0	1	
05	BENNETT, Julia	g	0-1	0-0	0-0	0	0	0	0	0	0	0	0	0	2	
11	McDANIEL, Katelyn	g	5-8	0-0	0-0	3	2	5	1	10	1	2	0	0	24	
12	EDERAINE, Sophia	g	8-11	0-0	0-3	1	1	2	4	16	1	1	0	1	21	
45	KNUTSON, Kameron	g	0-0	0-0	0-0	0	0	0	0	0	0	0	0	0	1	
Team						5	5	10								
Totals			30-64	3-6	10-17	16	18	34	13	73	15	16	1	9	200	

FG % 1st Half: 12-28 42.9% 2nd half: 18-36 50.0% Game: 30-64 46.9%
 3FG % 1st Half: 3-5 60.0% 2nd half: 0-1 0.0% Game: 3-6 50.0%
 FT % 1st Half: 8-10 80.0% 2nd half: 2-7 28.6% Game: 10-17 58.8%

Officials: Cathi Cornell, Richard Waters, Cheryl Blue
 Technical fouls: Iowa-None. San Diego-None.
 Attendance: 543

Score by periods	1st	2nd	Total
Iowa	33	50	83
San Diego	35	38	73

Points	In	Off	2nd	Fast	Bench
IOWA	30	14	8	0	8
USD	44	22	9	2	26

Last FG - IOWA 2nd-02:26, USD 2nd-00:15.
 Largest lead - IOWA by 15 2nd-04:24, USD by 11 1st-09:11.
 Score tied - 1 time.
 Lead changed - 3 times.



Official Basketball Box Score -- Game Totals -- Final Statistics
Ohio State vs Iowa
1/3/13 5:30 PM at Carver-Hawkeye Arena, Iowa City, IA



Ohio State 71 • 10-4, 0-1

##	Player	Total	3-Ptr			Rebounds			PF	TP	A	T	B	S	Stl	Min
			FG-FGA	FG-FGA	FT-FTA	Off	Def	Tot								
14	Alston, Ameryst	f	4-8	1-3	0-0	1	1	2	2	9	1	0	0	0	38	
33	Adams, Ashley	f	2-8	0-0	0-0	2	4	6	1	4	1	3	0	0	31	
15	Dobranic, Aleksandra	c	0-1	0-0	0-0	0	1	1	1	0	1	0	0	0	8	
03	Stokes, Amber	g	1-7	0-0	2-4	1	3	4	4	4	3	2	0	2	33	
04	Hill, Taylor	g	11-25	4-11	8-8	3	2	5	4	34	1	7	2	5	43	
12	Kynard, Maleeka	g	0-1	0-0	0-0	0	0	0	0	0	0	0	0	0	0	
22	Moore, Darryce	g	4-5	0-0	1-2	2	4	6	2	9	3	0	1	0	27	
23	Ellerbe, Martina	g	1-4	0-2	0-0	2	1	3	2	2	3	1	0	0	25	
31	Ferguson, Raven	g	4-8	1-5	0-0	0	3	3	3	9	1	4	0	1	20	
Team						1	2	3								
Totals			27-68	6-21	11-14	12	21	33	19	71	14	17	4	8	225	

FG % 1st Half: 11-30 36.7% 2nd half: 13-30 43.3% OT: 3-8 37.5% Game: 27-68 39.7%
 3FG % 1st Half: 4-10 40.0% 2nd half: 1-9 11.1% OT: 1-2 50.0% Game: 6-21 28.6%
 FT % 1st Half: 5-6 83.3% 2nd half: 5-6 83.3% OT: 1-2 50.0% Game: 11-14 78.6%

Iowa 77 • 12-3, 1-0

##	Player	Total	3-Ptr			Rebounds			PF	TP	A	T	B	S	Stl	Min
			FG-FGA	FG-FGA	FT-FTA	Off	Def	Tot								
24	Printy, Jaime	f	5-8	0-1	4-4	0	3	3	1	14	3	4	0	0	39	
51	Doolittle, Bethany	f	4-6	0-0	0-0	2	3	5	1	8	2	2	6	3	42	
12	Johnson, Morgan	c	7-17	0-0	2-3	3	9	12	2	16	3	0	3	43		
22	Logic, Samantha	g	5-7	0-0	7-10	1	5	6	1	17	8	5	0	3	40-	
23	Taylor, Theairra	g	8-12	1-1	2-2	1	3	4	2	19	0	2	0	2	36	
03	Till, Claire	g	0-1	0-0	0-0	0	1	1	0	0	0	0	1	0	4	
13	Thomas, Kathy	g	0-0	0-0	0-0	0	1	1	3	0	1	2	0	0	5	
21	Dixon, Melissa	g	1-6	1-2	0-0	0	1	1	2	3	0	1	0	1	15	
25	Peschel, Kali	g	0-1	0-0	0-0	0	0	0	2	0	0	1	0	0	1	
Team						2	4	6								
Totals			30-58	2-4	15-19	9	30	39	14	77	17	19	10	12	225	

FG % 1st Half: 13-29 44.8% 2nd half: 13-24 54.2% OT: 4-5 80.0% Game: 30-58 51.7%
 3FG % 1st Half: 4-10 40.0% 2nd half: 0-1 0.0% OT: 0-0 0.0% Game: 2-4 50.0%
 FT % 1st Half: 2-3 66.7% 2nd half: 7-11 63.6% OT: 6-6 100.0% Game: 15-19 78.9%

Officials: Laura Morris, Bruce Morris, Michael McConnell
 Technical fouls: Ohio State-None. Iowa-None.
 Attendance: 3850



University of Iowa Women's Basketball

Season Box Scores



Official Basketball Box Score -- Game Totals -- Final Statistics
Iowa vs Wisconsin
01/10/13 7:30 p.m. at Kohl Center, Madison, WI



Iowa 65 • 13-4, 2-1

#	Player	Total			3-Ptr			Rebounds			PF	TP	A	TO	Blk	Stl	Min
		FG-FGA	FG-FGA	FT-FTA	FG-FGA	FG-FGA	FT-FTA	Off	Def	Tot							
51	Doolittle, Bethany	f	4-9	0-0	0-0	1	3	4	2	8	0	2	0	0	0	33	
12	Johnson, Morgan	c	6-12	0-0	11-11	8	3	11	3	23	0	3	2	0	0	35	
22	Logic, Samantha	g	4-11	2-2	2-3	3	7	10	1	12	9	3	0	1	0	38	
23	Taylor, Theaira	g	2-5	0-1	0-0	3	5	8	2	4	5	4	0	3	0	27	
24	Printy, Jaime	g	3-10	2-8	2-2	0	6	6	0	10	1	1	0	1	0	35	
11	Nesbitt, Trisha	g	0-1	0-1	0-0	0	0	0	0	0	0	0	0	0	0	3	
13	Thomas, Kathy	g	0-1	0-0	0-0	0	0	0	1	0	0	0	0	0	0	2	
21	Dixon, Melissa	g	2-6	2-5	2-2	0	3	2	0	8	2	2	0	0	0	19	
25	Peschel, Kali	g	0-0	0-0	0-0	0	0	0	0	0	0	0	0	0	0	5	
45	Smith, Nicole	g	0-0	0-0	0-0	0	0	0	1	0	0	0	0	0	0	1	
54	Timmerman, Kayla	g	0-0	0-0	0-0	0	0	0	1	0	0	0	0	0	0	2	
	Team					1	2	3									
	Totals		21-55	6-17	17-18	16	29	45	13	65	17	15	2	5	200		

FG % 1st Half: 7-28 25.0% 2nd half: 14-27 51.9% Game: 21-55 38.2%
3FG % 1st Half: 2-9 22.2% 2nd half: 4-8 50.0% Game: 6-17 35.3%
FT % 1st Half: 6-6 100.0 2nd half: 11-12 91.7% Game: 17-18 94.4%

Wisconsin 56 • 8-8, 0-3

#	Player	Total			3-Ptr			Rebounds			PF	TP	A	TO	Blk	Stl	Min
		FG-FGA	FG-FGA	FT-FTA	FG-FGA	FG-FGA	FT-FTA	Off	Def	Tot							
43	Rochel, Cassie	f	1-3	0-0	1-4	3	5	8	4	3	2	0	1	0	0	34	
04	Bauman, Nicole	g	4-10	3-8	4-4	2	2	4	3	15	0	2	0	4	0	35	
05	Paige, Morgan	g	6-18	4-12	2-2	1	1	2	2	18	3	3	0	0	0	38	
24	Stephen, Tiera	g	3-8	0-1	4-4	1	4	5	2	10	3	5	0	4	0	40	
35	Gulczynski, Jacki	g	4-14	2-5	0-0	2	2	4	3	10	4	0	1	2	0	39	
00	Malone, Shannon	g	0-0	0-0	0-0	0	0	0	0	0	0	0	0	0	0	1	
10	Whyte, Dakota	g	0-1	0-0	0-0	0	0	0	0	0	0	0	0	0	0	5	
22	Cichy, Tessa	g	0-0	0-0	0-0	0	0	0	0	0	1	0	1	0	0	4	
23	Kryuchkova, Daria	g	0-0	0-0	0-0	0	0	0	0	0	0	0	0	0	0	4	
	Team					0	2	2									
	Totals		18-54	9-26	11-14	9	16	25	14	56	12	11	2	11	200		

FG % 1st Half: 9-29 31.0% 2nd half: 9-25 36.0% Game: 18-54 33.3%
3FG % 1st Half: 5-15 33.3% 2nd half: 4-11 36.4% Game: 9-26 34.6%
FT % 1st Half: 1-2 50.0% 2nd half: 10-12 83.3% Game: 11-14 78.6%

Officials: Beverly Roberts, Michael Price, Tom Hallad
Technical fouls: Iowa-None, Wisconsin-None.
Attendance: 3495

Score by periods	1st	2nd	Total
Iowa	22	43	65
Wisconsin	24	32	56

In	Off	2nd	Fast	Bench	
Points	Paint	T/O	Chance	Break	
IOWA	18	11	7	4	8
WIS	12	18	7	2	0

Last FG - IOWA 2nd-06:10, WIS 2nd-00:10.
Largest lead - IOWA by 14 2nd-06:10, WIS by 3 2nd-18:39.
Score tied - 11 times.
Lead changed - 8 times.



Official Basketball Box Score -- Game Totals -- Final Statistics
Iowa vs Michigan State
01/17/13 6 p.m. at Breslin Center (East Lansing, Mich.)



Iowa 54 • 13-5, 2-2

#	Player	Total			3-Ptr			Rebounds			PF	TP	A	TO	Blk	Stl	Min
		FG-FGA	FG-FGA	FT-FTA	FG-FGA	FG-FGA	FT-FTA	Off	Def	Tot							
12	Johnson, Morgan	*	5-12	0-0	3-4	5	7	12	3	13	0	1	2	2	0	37	
22	Logic, Samantha	*	3-7	0-0	1-2	1	4	5	3	7	4	5	0	1	0	35	
23	Taylor, Theaira	*	3-7	0-3	0-0	1	1	2	2	6	1	3	0	0	0	23	
24	Printy, Jaime	*	3-16	1-8	4-4	1	3	4	0	11	3	0	0	1	0	34	
51	Doolittle, Bethany	*	5-8	0-0	0-0	1	2	3	2	10	1	3	2	2	0	36	
11	Nesbitt, Trisha	*	0-1	0-0	0-0	0	1	1	0	1	0	0	0	0	1	4	
13	Thomas, Kathy	*	0-2	0-0	0-0	0	2	2	2	0	0	0	0	0	0	5	
21	Dixon, Melissa	*	2-7	1-3	2-2	3	0	3	1	7	0	1	0	0	0	22	
25	Peschel, Kali	*	0-0	0-0	0-0	0	0	0	0	0	0	0	0	0	0	4	
54	Timmerman, Kayla	*	0-0	0-0	0-0	0	0	0	1	0	0	1	0	0	0	0	
	Team					1	3	4									
	Totals		21-60	2-14	10-12	13	23	36	14	54	9	14	4	7	200		

FG % 1st Half: 10-28 35.7% 2nd half: 11-32 34.4% Game: 21-60 35.0%
3FG % 1st Half: 0-6 0.0% 2nd half: 2-8 25.0% Game: 2-14 14.3%
FT % 1st Half: 5-6 83.3% 2nd half: 5-6 83.3% Game: 10-12 83.3%

Michigan State 65 • 15-2, 3-1

#	Player	Total			3-Ptr			Rebounds			PF	TP	A	TO	Blk	Stl	Min
		FG-FGA	FG-FGA	FT-FTA	FG-FGA	FG-FGA	FT-FTA	Off	Def	Tot							
01	Thomas, Jasmine	*	0-4	0-0	2-2	2	1	3	1	2	1	2	0	0	0	22	
11	Pickrel, Annalise	*	3-8	3-7	1-2	2	5	7	0	10	1	2	0	0	0	30	
21	Bell, Klarissa	*	10-20	2-4	3-3	0	9	9	1	25	1	1	1	0	0	40	
24	Schiffauer, Courtney	*	1-6	0-4	4-4	2	5	7	1	6	4	2	1	0	0	33	
52	Mills, Becca	*	2-6	0-0	2-2	3	0	3	1	6	1	3	0	0	0	16	
00	Johnson, Kiana	*	3-9	0-4	2-2	1	4	5	1	8	6	0	0	2	0	31	
04	Hines, Jasmine	*	2-5	0-0	0-0	3	2	5	3	4	0	2	1	2	1	18	
25	Taylor, Akyah	*	2-3	0-0	0-0	0	0	0	0	2	4	0	1	0	0	10	
	Team					3	0	3									
	Totals		23-61	5-19	14-15	16	26	42	10	65	14	14	3	4	200		

FG % 1st Half: 10-33 30.3% 2nd half: 13-28 46.4% Game: 23-61 37.7%
3FG % 1st Half: 2-7 28.6% 2nd half: 3-12 25.0% Game: 5-19 26.3%
FT % 1st Half: 3-3 100.0 2nd half: 11-12 91.7% Game: 14-15 93.3%

Officials: Laura Morris, Sue Blauch, Rod Creech
Technical fouls: Iowa-Timmerman, Kayla, Michigan State-Hines, Jasmine; Bell, Klarissa.
Attendance: 5343

Score by periods	1st	2nd	Total
Iowa	25	29	54
Michigan State	25	40	65

In	Off	2nd	Fast	Bench	
Points	Paint	T/O	Chance	Break	
IOWA	26	12	12	2	7
MSU	30	22	7	12	16

Last FG - IOWA 2nd-00:07, MSU 2nd-01:37.
Largest lead - IOWA by 6 1st-16:51, MSU by 13 2nd-00:59.
Score tied - 8 times.
Lead changed - 13 times.



Official Basketball Box Score -- Game Totals -- Final Statistics
Purdue vs Iowa
01/20/13 3:00 p.m. at Carver-Hawkeye Arena - Iowa City, IA



Purdue 46 • 15-3, 4-1

#	Player	Total			3-Ptr			Rebounds			PF	TP	A	TO	Blk	Stl	Min
		FG-FGA	FG-FGA	FT-FTA	FG-FGA	FG-FGA	FT-FTA	Off	Def	Tot							
24	Mingo, Drey	f	4-10	1-3	0-1	2	6	8	1	9	1	1	1	1	0	25	
32	Ostarello, Sam	f	1-7	0-0	0-0	2	4	6	3	2	0	4	1	0	0	29	
15	Moses, Courtney	g	5-11	1-5	0-0	2	0	0	2	11	3	2	0	0	0	22	
20	Williams, Dee Dee	g	2-8	1-2	0-0	2	0	2	0	4	2	1	0	1	0	24	
22	Houser, KK	g	1-5	0-3	0-0	0	1	1	2	2	1	2	0	2	0	18	
10	Hamby, Hayden	g	0-2	0-2	1-2	3	1	4	0	1	1	2	0	0	1	13	
21	Massey, Joslyn	g	0-0	0-0	0-0	0	0	0	1	0	0	0	0	0	0	5	
23	Clemons, Liza	g	0-1	0-0	0-0	0	0	0	0	0	0	0	0	0	0	5	
25	Wilson, April	g	2-5	1-3	0-0	0	1	1	2	5	0	2	0	4	0	18	
42	Redmon, Camille	g	1-3	0-0	0-0	0	2	2	1	2	0	0	0	0	0	5	
43	Poston, Chantel	g	2-5	0-0	0-1	4	0	4	0	4	0	1	0	0	0	17	
50	Manuel, Taylor	g	3-9	0-0	0-2	4	8	12	1	6	2	3	1	1	0	23	
	Team					3	1	4									
	Totals		21-66	3-18	1-6	20	24	44	13	46	10	18	3	10	200		

FG % 1st Half: 8-33 24.2% 2nd half: 13-33 39.4% Game: 21-66 31.8%
3FG % 1st Half: 2-8 25.0% 2nd half: 1-10 10.0% Game: 3-18 16.7%
FT % 1st Half: 0-1 0.0% 2nd half: 1-5 20.0% Game: 1-6 16.7%

Iowa 62 • 14-5, 3-2

#	Player	Total			3-Ptr			Rebounds			PF	TP	A	TO	Blk	Stl	Min
		FG-FGA	FG-FGA	FT-FTA	FG-FGA	FG-FGA	FT-FTA	Off	Def	Tot							
51	Doolittle, Bethany	f	3-12	0-0	2-4	3	6	9	1	8	0	3	3	0	0	32	
12	Johnson, Morgan	c	3-14	0-0	1-1	3	4	7	3	7	0	1	3	0	0	24	
22	Logic, Samantha	g	2-4	0-1	0-0	2	1	3	4	10	7	0	1	0	0	32	
23	Taylor, Theaira	g	2-8	3-3	0-0	2	8	10	1	9	1	0	1	0	0	24	
24	Printy, Jaime	g	4-11	3-5	4-4	2	7	9	1	15	1	0	0	0	0	38	
03	Till, Claire	g	0-0	0-0	0-0	0	0	0	0	0	0	0	0	0	0	1	
11	Nesbitt, Trisha	g															



University of Iowa Women's Basketball

Season Box Scores



Official Basketball Box Score -- Game Totals -- Final Statistics
Iowa vs Michigan
01/27/13 2:00 PM at Crisler Center, Ann Arbor, MI



Iowa 63 • 16-5 (5-2)

##	Player	c	Total			3-Ptr			Rebounds			PF	TP	A	TO	Blk	Stl	Min
			FG	FGA	FT	FTA	FG	FGA	FT	FTA	Off							
12	Johnson, Morgan	c	2-4	0-0	2-2	1	6	7	4	6	0	0	1	2	31			
51	Doolittle, Bethany	c	9-15	0-0	1-1	3	1	4	4	19	0	0	2	1	37			
22	Logic, Samantha	g	3-5	0-1	4-5	2	4	6	4	10	8	4	0	2	34			
23	Taylor, Theairra	g	2-4	1-3	0-0	1	1	2	2	5	1	1	0	0	17			
24	Printy, Jaime	g	4-12	2-9	4-4	2	3	5	2	14	2	4	1	1	33			
11	Nesbitt, Trisha	g	0-1	0-1	0-0	0	2	2	0	0	0	0	0	0	9			
13	Thomas, Kathy	g	1-3	1-2	1-2	0	0	0	0	4	0	1	0	0	6			
21	Dixon, Melissa	g	2-5	1-3	0-0	0	2	2	3	5	1	1	0	0	22			
25	Peschel, Kali	g	0-1	0-1	0-0	0	0	0	0	0	0	0	0	0	9			
54	Timmerman, Kayla	g	0-0	0-0	0-0	0	0	0	0	0	0	0	0	0	2			
	Team					1	3	4										
	Totals		23-50	5-20	12-14	10	22	32	19	63	12	11	4	6	200			

FG % 1st Half: 9-27 33.3% 2nd half: 14-23 60.9% Game: 23-50 46.0% Deadball Rebounds 0
 3FG % 1st Half: 2-12 16.7% 2nd half: 3-8 37.5% Game: 5-20 25.0%
 FT % 1st Half: 10-11 90.9% 2nd half: 2-3 66.7% Game: 12-14 85.7%

Michigan 57 • 16-4 (5-2)

##	Player	f	Total			3-Ptr			Rebounds			PF	TP	A	TO	Blk	Stl	Min
			FG	FGA	FT	FTA	FG	FGA	FT	FTA	Off							
44	Sheffer, Rachel	f	0-7	0-2	0-0	0	3	3	2	0	1	2	0	1	23			
12	Thompson, Kate	g	1-7	1-5	7-8	1	3	4	1	10	1	1	3	1	36			
4	Elmblad, Nicole	g	1-5	0-2	1-2	3	2	5	4	3	0	3	0	1	33			
21	Jordan, Nya	g	5-7	0-0	0-3	3	4	7	2	10	2	0	0	0	36			
24	Ryan, Jenny	g	9-14	2-2	0-0	0	1	1	3	20	4	3	0	2	40			
01	Harris, Brenae	g	0-1	0-0	0-0	0	0	0	1	0	0	0	0	0	3			
05	Ristovski, Madison	g	1-2	0-0	0-0	0	1	1	1	2	1	0	0	0	9			
11	Arnold, Sam	g	5-10	1-1	1-2	2	3	5	3	12	0	2	0	1	20			
	Team					2	1	3										
	Totals		22-53	4-12	9-15	11	18	29	17	57	9	11	3	6	200			

FG % 1st Half: 13-31 41.9% 2nd half: 9-22 40.9% Game: 22-53 41.5% Deadball Rebounds 4.1
 3FG % 1st Half: 1-6 16.7% 2nd half: 3-6 50.0% Game: 4-12 33.3%
 FT % 1st Half: 5-6 83.3% 2nd half: 4-9 44.4% Game: 9-15 60.0%

Officials: Michael McConnell, Carol Comanita, Bob Enterline
 Technical fouls: Iowa-None. Michigan-None.
 Attendance: 2607

Score by periods	1st	2nd	Total
Iowa	30	33	63
Michigan	32	25	57

Last FG - IOWA 2nd-01:45, MICH 2nd-00:10.
 Largest lead - IOWA by 6 2nd-01:45, MICH by 10 1st-04:51.

Points	In	Off	2nd	Fast	Break	Bench
IOWA	18	10	13	4	9	
MICH	24	8	10	2	14	

Score tied - 5 times.
 Lead changed - 9 times.



Official Basketball Box Score -- Game Totals -- Final Statistics
Iowa vs Illinois
01/31/13 7:05 PM at Assembly Hall, Champaign, Ill.



Iowa 62 • 16-6, 5-3

##	Player	f	Total			3-Ptr			Rebounds			PF	TP	A	TO	Blk	Stl	Min
			FG	FGA	FT	FTA	FG	FGA	FT	FTA	Off							
51	Doolittle, Bethany	f	2-7	0-0	0-0	0	8	8	1	4	0	2	2	0	37			
12	Johnson, Morgan	c	3-6	0-0	0-0	1	3	4	5	6	0	2	1	1	27			
22	Logic, Samantha	g	6-10	1-2	0-0	3	7	10	5	13	6	8	1	2	36			
23	Taylor, Theairra	g	4-9	1-2	0-0	0	0	0	0	9	1	2	1	2	24			
24	Printy, Jaime	g	5-14	2-8	1-2	0	4	4	3	13	3	7	0	1	34			
13	Thomas, Kathy	g	0-1	0-1	0-0	0	0	0	0	0	0	1	0	0	4			
21	Dixon, Melissa	g	4-9	3-6	0-0	0	2	2	2	11	1	3	0	1	24			
25	Peschel, Kali	g	0-0	0-0	0-0	0	0	0	0	0	0	0	0	0	3			
54	Timmerman, Kayla	g	3-3	0-0	0-0	1	3	4	1	6	0	2	0	0	11			
	Team					3	3	6										
	Totals		27-59	7-19	1-2	8	30	38	17	62	12	27	5	7	200			

FG % 1st Half: 13-34 38.2% 2nd half: 14-25 56.0% Game: 27-59 45.8% Deadball Rebounds 1
 3FG % 1st Half: 4-9 44.4% 2nd half: 3-10 30.0% Game: 7-19 36.8%
 FT % 1st Half: 1-2 50.0% 2nd half: 0-0 0.0% Game: 1-2 50.0%

Illinois 74 • 12-8, 5-3

##	Player	f	Total			3-Ptr			Rebounds			PF	TP	A	TO	Blk	Stl	Min
			FG	FGA	FT	FTA	FG	FGA	FT	FTA	Off							
24	Godbold, Adrienne	f	7-12	1-4	2-3	1	3	4	1	17	0	4	0	5	38			
42	Moore, Amber	f	5-10	5-8	2-2	0	4	4	2	17	3	2	0	1	38			
00	Penn, Karisma	c	6-14	1-2	5-8	2	6	8	3	18	2	6	2	4	35			
22	Crawford, Ivory	g	5-11	4-6	0-0	2	2	4	4	14	1	4	0	1	33			
23	Smith, Alexis	g	0-6	0-1	4-6	1	2	3	0	4	7	3	0	4	36			
01	Piper, McKenzie	g	0-0	0-0	0-0	0	1	1	0	0	1	0	0	0	2			
03	Tuck, Taylor	g	2-7	0-3	0-0	1	0	1	0	4	1	0	0	0	18			
	Team					2	4	6										
	Totals		25-60	11-24	13-19	9	22	31	10	74	15	19	2	15	200			

FG % 1st Half: 12-31 38.7% 2nd half: 13-29 44.8% Game: 25-60 41.7% Deadball Rebounds 2.2
 3FG % 1st Half: 8-16 50.0% 2nd half: 3-8 37.5% Game: 11-24 45.8%
 FT % 1st Half: 2-4 50.0% 2nd half: 11-15 73.3% Game: 13-19 68.4%

Officials: Barb Smith, Rod Creech, Bill Laranca
 Technical fouls: Iowa-None. Illinois-None.
 Attendance: 1808

Score by periods	1st	2nd	Total
Iowa	31	31	62
Illinois	34	40	74

Points	In	Off	2nd	Fast	Break	Bench
IOWA	28	21	13	4	17	
ILL	20	30	8	4	4	

Last FG - IOWA 2nd-00:13, ILL 2nd-03:05.
 Largest lead - IOWA by 6 1st-11:34, ILL by 14 2nd-01:41.

Score tied - 7 times.
 Lead changed - 13 times.





2012-13 IOWA WOMEN'S BASKETBALL
Iowa Combined Team Statistics (as of Feb 11, 2013)
All games



RECORD:	OVERALL	HOME	AWAY	NEUTRAL
ALL GAMES	16-9	10-4	4-5	2-0
CONFERENCE	5-6	3-3	2-3	0-0
NON-CONFERENCE	11-3	7-1	2-2	2-0

#	Player	gp-gs	min	avg	Total		3-Point		F-Throw		Rebounds				pf	dq	a	to	blk	stl	pts	avg
					fg-fga	fg%	3fg-fga	3fg%	ft-fa	ft%	off	def	tot	avg								
12	Johnson, Morgan	25-25	782	31.3	142-265	.536	0-0	.000	94-123	.764	72	113	185	7.4	71	2	26	39	48	27	378	15.1
24	Printy, Jaime	25-22	800	32.0	101-267	.378	49-148	.331	110-119	.924	18	91	109	4.4	28	0	79	69	3	20	361	14.4
21	Dixon, Melissa	25-3	529	21.2	82-199	.412	54-133	.406	13-17	.765	7	29	36	1.4	46	0	23	25	1	13	231	9.2
22	Logic, Samantha	25-25	833	33.3	83-182	.456	10-34	.294	40-60	.667	62	103	165	6.6	68	2	168	113	9	49	216	8.6
23	Taylor, Theairra	25-25	624	25.0	74-189	.392	18-56	.321	30-44	.682	22	87	109	4.4	41	1	57	52	16	24	196	7.8
51	Doolittle, Bethany	25-25	736	29.4	86-205	.420	0-2	.000	10-12	.833	35	109	144	5.8	65	1	10	39	50	23	182	7.3
13	Thomas, Kathy	23-0	165	7.2	15-36	.417	7-15	.467	11-16	.688	5	19	24	1.0	27	0	13	20	1	6	48	2.1
03	Till, Claire	12-0	103	8.6	4-19	.211	2-7	.286	15-22	.682	9	16	25	2.1	11	0	3	9	3	3	25	2.1
54	Timmerman, Kayla	19-0	108	5.7	14-31	.452	1-2	.500	5-10	.500	7	17	24	1.3	12	0	4	9	7	2	34	1.8
11	Nesbitt, Trisha	22-0	167	7.6	9-25	.360	5-14	.357	9-12	.750	0	12	12	0.5	19	1	7	7	0	5	32	1.5
45	Smith, Nicole	6-0	12	2.0	2-4	.500	0-0	.000	2-2	1.000	0	1	1	0.2	2	0	0	1	0	0	6	1.0
25	Peschel, Kali	22-0	191	8.7	4-25	.160	1-10	.100	7-12	.583	17	11	28	1.3	28	0	8	9	4	5	16	0.7
Team											41	78	119				5					
Total.....		25	5050		616-1447	.426	147-421	.349	346-449	.771	295	686	981	39.2	418	7	398	397	142	177	1725	69.0
Opponents.....		25	5050		552-1501	.368	144-486	.296	303-444	.682	342	586	928	37.1	424	8	298	394	64	197	1551	62.0

TEAM STATISTICS	IOWA	OPP	Date	Opponent	Score	Att.
SCORING	1725	1551	^	11/9/12	NORTHERN ILLINOIS	w 63-40 4739
Points per game	69.0	62.0	^	11/11/12	ILLINOIS STATE	w 74-64 2930
Scoring margin	+7.0	-	^	11/14/12	MIDDLE TENNESSEE	Wot 69-63 1691
FIELD GOALS-ATT	616-1447	552-1501	^	11/18/12	NORTH CAROLINA	L 64-77 3073
Field goal pct	.426	.368		11/20/12	ROBERT MORRIS	w 58-44 3032
3 POINT FG-ATT	147-421	144-486	#	11/23/12	at FIU	L 65-66 430
3-point FG pct	.349	.296	#	11/25/12	vs WVU	w 79-70 387
3-pt FG made per game	5.9	5.8		11/28/12	at Florida State	L 69-83 2389
FREE THROWS-ATT	346-449	303-444		12/1/12	UNI	w 68-46 6368
Free throw pct	.771	.682		12/6/12	IOWA STATE	w 50-42 4483
F-Throws made per game	13.8	12.1		12/16/12	at Drake	w 82-65 2716
REBOUNDS	981	928		12/19/12	MISSOURI STATE	w 97-43 4588
Rebounds per game	39.2	37.1	%	12/28/12	vs Texas	w 86-63 776
Rebounding margin	+2.1	-	%	12/30/12	at San Diego	w 83-73 543
ASSISTS	398	298	*	1/3/13	OHIO STATE	Wot 77-71 3850
Assists per game	15.9	11.9	*	1/6/13	MICHIGAN	L 64-68 4644
TURNOVERS	397	394	*	01/10/13	at Wisconsin	w 65-56 3495
Turnovers per game	15.9	15.8	*	01/17/13	at Michigan State	L 54-65 5343
Turnover margin	-0.1	-	*	01/20/13	PURDUE	w 62-46 8576
Assist/turnover ratio	1.0	0.8	*	1/24/13	WISCONSIN	w 71-60 3894
STEALS	177	197	*	01/27/13	at Michigan	w 63-57 2607
Steals per game	7.1	7.9	*	01/31/13	at Illinois	L 62-74 1808
BLOCKS	142	64	*	2/03/13	NORTHWESTERN	L 65-67 4697
Blocks per game	5.7	2.6	*	02/07/13	at Minnesota	L 60-72 3528
ATTENDANCE	60502	24022	*	02/11/13	NEBRASKA	L 75-76 3937
Home games-Avg/Game	14-4322	9-2540				
Neutral site-Avg/Game	-	2-582				

^ = Preseason WNIT
= at FIU Thanksgiving Classic; Miami
% = at San Diego Surf "N Slam Classic; San Diego
* = Conference game

Score by Periods	1st	2nd	OT	Totals
Iowa	773	928	24	1725
Opponents	700	839	12	1551



2012-13 IOWA WOMEN'S BASKETBALL
Iowa Combined Team Statistics (as of Feb 11, 2013)
Conference games



RECORD:	OVERALL	HOME	AWAY	NEUTRAL
ALL GAMES	5-6	3-3	2-3	0-0
CONFERENCE	5-6	3-3	2-3	0-0
NON-CONFERENCE	0-0	0-0	0-0	0-0

#	Player	gp-gs	min	avg	Total		3-Point		F-Throw		Rebounds				pf	dq	a	to	blk	stl	pts	avg		
					fg-fga	fg%	3fg-fga	3fg%	ft-fa	ft%	off	def	tot	avg										
24	Printy, Jaime	11-11	385	35.0	48-137	.350	21-69	.304	44-47	.936	10	47	57	5.2	12	0	27	25	2	12	161	14.6		
12	Johnson, Morgan	11-11	336	30.5	46-103	.447	0-0	.000	34-41	.829	38	49	87	7.9	35	2	9	11	19	13	126	11.5		
21	Dixon, Melissa	11-0	254	23.1	42-98	.429	29-63	.460	7-8	.875	6	13	19	1.7	22	0	10	12	0	6	120	10.9		
22	Logic, Samantha	11-11	393	35.7	38-85	.447	6-17	.353	22-33	.667	29	52	81	7.4	31	1	72	50	2	20	104	9.5		
23	Taylor, Theairra	11-11	279	25.4	38-91	.418	9-25	.360	13-17	.765	9	32	41	3.7	18	1	21	19	7	14	98	8.9		
51	Doolittle, Bethany	11-11	349	31.7	36-91	.396	0-0	.000	7-9	.778	16	42	58	5.3	25	0	5	18	24	12	79	7.2		
54	Timmerman, Kayla	9-0	60	6.7	7-17	.412	0-0	.000	2-2	1.000	1	9	10	1.1	6	0	3	5	3	2	16	1.8		
13	Thomas, Kathy	11-0	60	5.5	3-13	.231	2-6	.333	1-2	.500	0	7	7	0.6	10	0	6	10	1	2	9	0.8		
25	Peschel, Kali	10-0	65	6.5	1-4	.250	0-2	.000	3-4	.750	5	2	7	0.7	5	0	3	4	2	1	5	0.5		
11	Nesbitt, Trisha	9-0	36	4.0	0-6	.000	0-2	.000	0-0	.000	0	3	3	0.3	1	0	1	1	0	2	0	0.0		
45	Smith, Nicole	1-0	1	1.0	0-0	.000	0-0	.000	0-0	.000	0	0	0	0.0	1	0	0	0	0	0	0	0.0		
03	Till, Claire	3-0	7	2.3	0-1	.000	0-0	.000	0-0	.000	0	1	1	0.3	1	0	0	1	1	0	0	0.0		
Team											18	24	42					4						
Total.....		11	2225		259-646	.401	67-184	.364	133-163	.816	132	281	413	37.5	167	4	157	160	61	84	718	65.3		
Opponents.....		11	2225		263-651	.404	73-218	.335	113-156	.724	130	264	394	35.8	161	0	153	162	33	84	712	64.7		

TEAM STATISTICS	IOWA	OPP	Date	Opponent	Score	Att.
SCORING	718	712	* 1/3/13	OHIO STATE	Wot 77-71	3850
Points per game	65.3	64.7	* 1/6/13	MICHIGAN	L 64-68	4644
Scoring margin	+0.5	-	* 01/10/13	at Wisconsin	W 65-56	3495
FIELD GOALS-ATT	259-646	263-651	* 01/17/13	at Michigan State	L 54-65	5343
Field goal pct	.401	.404	* 01/20/13	PURDUE	W 62-46	8576
3 POINT FG-ATT	67-184	73-218	* 1/24/13	WISCONSIN	W 71-60	3894
3-point FG pct	.364	.335	* 01/27/13	at Michigan	W 63-57	2607
3-pt FG made per game	6.1	6.6	* 01/31/13	at Illinois	L 62-74	1808
FREE THROWS-ATT	133-163	113-156	* 2/03/13	NORTHWESTERN	L 65-67	4697
Free throw pct	.816	.724	* 02/07/13	at Minnesota	L 60-72	3528
F-Throws made per game	12.1	10.3	* 02/11/13	NEBRASKA	L 75-76	3937
REBOUNDS	413	394				
Rebounds per game	37.5	35.8	^ = Preseason WNIT			
Rebounding margin	+1.7	-	# = at FIU Thanksgiving Classic; Miami			
ASSISTS	157	153	% = at San Diego Surf "N Slam Classic; San Diego			
Assists per game	14.3	13.9	* = Conference game			
TURNOVERS	160	162				
Turnovers per game	14.5	14.7				
Turnover margin	+0.2	-				
Assist/turnover ratio	1.0	0.9				
STEALS	84	84				
Steals per game	7.6	7.6				
BLOCKS	61	33				
Blocks per game	5.5	3.0				
ATTENDANCE	29598	16781				
Home games-Avg/Game	6-4933	5-3356				
Neutral site-Avg/Game	-	0-0				

Score by Periods	1st	2nd	OT	Totals
Iowa	324	380	14	718
Opponents	318	386	8	712