



University of Iowa Women's Basketball

Game #27

Feb. 15, 2013

2012-13 Schedule/Results 16-10 Overall, 5-7 Big Ten

11/9	Northern Illinois^	W, 63-40
11/11	Illinois State^	W, 74-64
11/14	Middle Tennessee^	W, 69-63 (OT)
11/18	North Carolina^	L, 64-77
11/20	Robert Morris	W, 58-44
11/23	at Florida International#	L, 65-66
11/25	vs. #12 West Virginia#	W, 79-70
11/28	at Florida State~	L, 69-83
12/1	Northern Iowa	W, 68-46
12/6	#22 Iowa State*	W, 50-42
12/16	at Drake	W, 82-65
12/19	Missouri State	W, 97-43
12/28	vs. #20 Texas%	W, 86-63
12/30	vs. San Diego%	W, 83-73
1/3	#24 Ohio State	W, 77-71 (OT)
1/6	Michigan	L, 64-68
1/10	at Wisconsin	W, 65-56
1/17	at Michigan State	L, 54-65
1/20	#11 Purdue	W, 62-46
1/24	Wisconsin	W, 71-60
1/27	at #23 Michigan	W, 63-57
1/31	at Illinois	L, 62-74
2/3	Northwestern	L, 65-67
2/7	at Minnesota	L, 60-72
2/11	Nebraska	L, 75-76
2/14	#8 Penn State	L, 69-81
2/17	at #18 Purdue	4 p.m.
2/24	at Nebraska	2 p.m.
2/28	Indiana	7 p.m.
3/3	at Northwestern	TBA

^ -- WNIT

-- FIU Thanksgiving Classic, Miami

~ -- ACC/Big Ten Challenge

* - Iowa Corn Cy-Hawk Series

% -- San Diego Surf 'N Slam Classic, San Diego

Pronunciation Guide

Lisa Bluder.....BLUE-dir

Kali Peschel.....PEH-shull

Theairra Taylor.....thee-AIR-uh

SID Contact: Aaron Blau (@AaronBlau)
Email: aaron-blau@hawkeyesports.com

Office: (319) 335-9268
Cell: (319) 430-5103

Game Information

#18 Purdue (19-5, 8-3) vs. Iowa (16-10, 5-7)

Feb. 17, 2013 • 4 p.m. (CT)



Mackey Arena
West Lafayette, Ind.



TV: ESPN2

TV Talent: Beth Mowins and Nell Fortner

Web: ESPN3.com

Radio: AM-800 KXIC, AM-600 WMT, AM-1360 KMJM, AM-1040 WHO

Radio Talent: Brent Balbinot and Shelley Till

Live Stats/Audio: www.hawkeyesports.com

Twitter Updates: @IowaWBB

Series: Purdue leads, 35-27

Storylines

- Morgan Johnson has started 121 games, which is tied for the most in school history (Jennie Lillis). She has played in all 122 games of her career -- the seventh most for a player in school history.
- Iowa is 6-1 against ranked teams this season. Only Baylor (10), Stanford (7), Connecticut (7), Tennessee (7) and Notre Dame (7) have as many wins against ranked teams as Iowa.
- Iowa closes the season with three of its final four games on the road.
- In Big Ten games, Melissa Dixon leads the conference in 3-point percentage (45.8) and is second in 3-pointers made per game (2.8).
- Samantha Logic leads the Big Ten and ranks 10th in the NCAA with 6.7 assists per game.
- Jaime Priny leads the Big Ten and ranks fourth in the NCAA with a 92.6 free throw percentage.
- Iowa's 16 assists per game are the best in the Big Ten and 28th nationally.
- The Hawkeyes are second in the Big Ten and 12th in the NCAA in blocks per game (5.5).
- Iowa is second in the Big Ten and 13th in the NCAA in free throw percentage (76.3).
- Jaime Priny is 37-of-37 from the free throw line in the final five minutes of a game, 31-of-31 in the final two minutes, 20-of-20 in the final minute and 6-of-6 in overtime.
- Morgan Johnson moved into sixth place in the Big Ten in career blocks. She has 274 in 122 career games -- an Iowa school record.

Tentative Starting Lineup

Iowa Hawkeyes (16-10, 5-7)

Pos.	No.	Name	Ht.	Yr.	Statistical Summary
G	22	Samantha Logic	5-8	So.	8.7 ppg, 6.5 rpg, 6.7 apg, .468 FG%, .656 FT% - Has five or more assists in 19 games
G	24	Jaime Priny	5-11	Sr.	14.0 ppg, 4.4 rpg, 3.2 apg, .371 FG%, .926 FT% - Scored double figures in nine of Iowa's last 10 games
G	23	Theairra Taylor	5-11	Jr.	8.0 ppg, 4.3 rpg, 2.2 apg, .392 FG%, .696 FT% - Scored 11 points in each of Iowa's last two contests
F	51	Bethany Doolittle	6-4	So.	7.5 ppg, 5.8 rpg, 1.9 bpg, .421 FG%, .813 FT% - Collected a career-high four assists against Penn State
C	12	Morgan Johnson	6-5	Sr.	15.2 ppg, 7.5 rpg, 1.9 bpg, .534 FG%, .742 FT% - Has recorded three-straight double-doubles

Head Coach: Lisa Bluder (Northern Iowa, 1983); 13th Season at Iowa (246-154); 29th Season Overall (602-296)



Inside the Numbers

	IOWA	PUR
Scoring Average	69.0	67.9
Scoring Defense	62.8	61.0
Scoring Margin	+6.2	+6.9
FG%	.427	.432
FG% Defense	.372	.370
FT%	.763	.777
3-PT FG%	.351	.354
3-PT FG% Defense	.299	.302
Rebound Margin	+2.0	+4.4
Assists Per Game	16.0	15.9
Turnovers Per Game	16.0	18.5
Turnover Margin	-0.3	-2.0
Steals Per Game	7.2	8.2
Blocks Per Game	5.5	3.8

Iowa vs. Purdue Series History

Purdue leads, 35-27
Last 10 Meetings Listed Below

1/20/13.....	at Iowa	W, 62-46
1/28/12.....	at Iowa	W, 59-42
1/15/12.....	at Purdue	L, 55-57
2/3/11.....	at Purdue	L, 41-60
1/31/10.....	at Iowa	W, 70-50
1/17/10.....	at Purdue	L, 59-81
1/8/09.....	at Purdue	L, 49-60
12/28/08.....	at Iowa	L, 60-69
3/8/08.....	at Big Ten Tourney	L, 73-80
2/14/08.....	at Purdue	L, 46-59

How Many Times a Hawkeye Player...

Scored 20 or More Points

Morgan Johnson.....	8
Jaime Printy.....	5
Melissa Dixon.....	2

Scored 15 or More Points

Morgan Johnson.....	14
Jaime Printy.....	9
Melissa Dixon.....	5
Samantha Logic.....	3
Bethany Doolittle.....	2
Kathy Thomas.....	1
Theairra Taylor.....	1

Grabbed 10 or More Rebounds

Morgan Johnson.....	10
Samantha Logic.....	4
Bethany Doolittle.....	2
Theairra Taylor.....	2

Grabbed 7 or More Rebounds

Morgan Johnson.....	12
Bethany Doolittle.....	10
Samantha Logic.....	9
Theairra Taylor.....	5
Jaime Printy.....	3

Dished out 7 or More Assists

Samantha Logic.....	13
Jaime Printy.....	1
Theairra Taylor.....	1

Dished out 5 or More Assists

Samantha Logic.....	19
Jaime Printy.....	5
Theairra Taylor.....	5
Morgan Johnson.....	1

Recorded 4 or More Steals

Samantha Logic.....	1
---------------------	---

Blocked 3 or More Shots

Bethany Doolittle.....	9
Morgan Johnson.....	8

2012-13 Margin of Victory/Defeat

Points	1	2	3	4	5	6	7	8	9	10-14	15-19	20+
Wins	0	0	0	0	0	3	0	1	2	5	1	4
Losses	2	1	0	1	0	0	0	0	0	6	0	0

IOWA HISTORY

Iowa has played 1,124 games since beginning basketball in 1974. Iowa's overall record is 687-437 (.611). That includes a 345-177 (.661) mark in regular season Big Ten contests and a 333-96 (.776) mark in Carver-Hawkeye Arena.

SCOUTING PURDUE

The No. 18 Purdue Boilermakers are 19-5 overall and 8-3 in Big Ten play.

In their last game, the Boilermakers knocked off Wisconsin in Madison, 58-48. KK Houser had a game-high 20 points. Drey Mingo had 12 points and eight rebounds. Purdue limited Wisconsin to just 16-of-47 field goal shooting (34 percent).

Courtney Moses leads the team with 13.5 points per game. She is shooting 92.1 percent from the free throw line. Mingo is next with 11.9 points per game, followed by Houser's 10.7 points per contest. Sam Ostarello has a team-bset 10.1 rebounds per game.

As a team, Purdue is shooting 43.2 percent from the field, 25.4 percent from 3-point range and 77.7 percent from the free throw line.

IOWA VS. PURDUE NOTES

- Purdue leads the all-time series, 35-27. The Hawkeyes are 9-19 in games played in West Lafayette. Purdue has won 12-straight games at home against Iowa. The last Hawkeye win in West Lafayette was Feb. 6, 1998 (73-67).

LAST MEETING

Iowa used a solid defensive effort to upset 11th-ranked Purdue, 62-46 on Jan. 20.

The Hawkeyes forced 18 Boilermaker turnovers, scoring 17 points off the Purdue miscues. Iowa limited Purdue to a 31.8 field goal percentage (21-of-66), including just 3-of-18 (16.7 percent) from 3-point distance.

Jaime Printy and Melissa Dixon led Iowa with 15 points a piece. Theairra Taylor grabbed 10 rebounds and Samantha Logic dished out 10 assists.

HAWKEYES DROP HOME CONTEST TO NO. 8 PENN STATE

The No. 8 Penn State Lady Lions defeated Iowa, 81-69 on Feb. 14 inside Carver-Hawkeye Arena.

The Hawkeyes busted out of a recent shooting slump, finishing 45.6 percent from the field (26-of-57) and 40 percent from 3-point distance (6-of-15). Penn State converted 20 Hawkeye turnovers into 18 points and shot 19-of-25 from the charity stripe to help seal the win.

Morgan Johnson finished with a double-double, collecting 17 points and grabbing 11 rebounds. Melissa Dixon came off the bench to score 16 points on 4-of-9 shooting from 3-point distance. Theairra Taylor added 11 points.

2012-13 Iowa Hawkeye Roster

No.	Name	Yr.	Ht.	Pos.	Hometown (High School/College)
3	Claire Till	Fr.	6-0	G	Dubuque, Iowa (Dubuque Wahlert)
11	Trisha Nesbitt	Sr.	5-7	G	Ames, Iowa (Ames)
12	Morgan Johnson	Sr.	6-5	C	Platte City, Mo. (Platte County)
13	Kathy Thomas	So.	5-6	G	Flint, Mich. (Highland CC, KS)
21	Melissa Dixon	So.	5-8	G	Johnsburg, Ill. (Johnsburg)
22	Samantha Logic	So.	5-9	G	Racine, Wis. (Racine J.I. Case)
23	Theairra Taylor	Jr.	5-11	G	St. Paul, Minn. (Central)
24	Jaime Printy	Sr.	5-11	G	Marion, Iowa (Linn-Mar)
25	Kali Peschel	Fr.	6-1	G	Sauk Centre, Minn. (Sauk Centre)
33	Kathryn Reynolds	So.	5-7	G	Cincinnati, Ohio (Mount Notre Dame)
45	Nicole Smith	Fr.	6-4	C	Rockton, Ill. (Hononegah)
51	Bethany Doolittle	So.	6-4	C	Oakdale, Minn. (Hill-Murray)
54	Kayla Timmerman	Fr.	6-3	F	Wayzata, Minn. (Wayzata)

Head Coach: Lisa Bluder **Associate Head Coach:** Jan Jensen
Assistant Coaches: Jenni Fitzgerald and Shannon Gage



2012-13 Team Captains

Iowa captains are seniors
Jaime Printy, Morgan Johnson and Trisha Nesbitt

DIXON LIGHTING IT UP

Sophomore Melissa Dixon is making a strong case for Big Ten 6th Player of the Year with her performance in conference play.

Dixon is averaging 11.3 points per game during Big Ten action. In conference games only, Dixon tops the Big Ten in 3-point percentage (45.8 percent) and is second in 3-pointers made per game (2.8).

Over the past five games, Dixon is averaging 14.2 points per contest and is shooting 45 percent from 3-point distance (18-of-40). She netted 11 points at Illinois, 21 vs. Northwestern (6-of-9 3Pt. FG's), 19 vs. Nebraska (5-of-10) and 16 vs. Penn State (4-of-9).

JOHNSON IN TOP-10 IN CAREER DOUBLE-DOUBLES

Senior Morgan Johnson posted her third straight and ninth double-double of the season on Feb. 14 against Penn State, finishing with 17 points and 11 rebounds. It was the center's 21st career double-double, which are the sixth most in school history.

JOHNSON SETS NEW CAREER STARTS RECORD

Senior Morgan Johnson tied the school record for career starts in Iowa's game against Penn State (Feb. 14). Johnson tied Jennie Lillis' record of 121 starts as a Hawkeye.

Johnson has played in 122 games in her four-year career, which is tied for the seventh-most in school history.

JOHNSON SETS FAMILY BLOCK RECORD

Morgan Johnson not only set the Iowa school record for career blocks, but she now holds the record for blocks in the Johnson household.

Johnson's mother, Leslie, compiled 265 career blocks from 1981-85 at Midland Lutheran College in Nebraska. Morgan broke her mother's record against Michigan (Jan. 27), collecting her 266th career block, and her career total now stands at 274.

PRINTY A SENIOR CLASS AWARD FINALIST

Senior Jaime Printy is one of 10 finalists for the 2013 Senior CLASS Award. To be eligible for the award, a student-athlete must be classified as an NCAA Division I senior and have notable achievements in four areas of excellence – community, classroom, character and competition. Fans are encouraged to vote on the Senior CLASS Award website -- www.seniorCLASSaward.com.

LOGIC CRASHING THE BOARDS

With 12 rebounds against Northwestern (Feb. 3), sophomore Samantha Logic collected her 10th career double digit rebounding performance and her second in two games (10 at Illinois). She added 11 points and three steals against Northwestern.

Logic has four games this season with 10 or more rebounds. Last year as a freshman, Logic tallied six games, including a stretch of four-straight during Big Ten play.

BALANCING ACT

Iowa has had seven different players lead, or share the lead, in scoring this season.

Morgan Johnson has paced the Hawkeyes in scoring 12 times, Jaime Printy nine times, Melissa Dixon six times, Theairra Taylor twice and Kathy Thomas, Bethany Doolittle and Samantha Logic once.

Head Coach Lisa Bluder

Lisa Bluder (pronounced BLUE-dir) is in her 13th season as head coach at the University of Iowa and her 29th season as a college head coach. She is a three-time Big Ten and two-time WBCA Regional Coach of the Year.

Bluder has a career record of 602-296 (.670), including a 246-154 (.615) record at Iowa, a 187-106 (.638) record in 10 seasons (1990-2000) at Drake and a six-year mark (1984-90) of 169-36 (.824) at St. Ambrose.

Bluder is Iowa's second all-time winningest coach and trails only C. Vivian Stringer. She has guided the Hawkeyes to 11 postseason tournaments (9 NCAA, 2 WNIT) and nine upper-division finishes in the Big Ten Conference, including winning a share of the league championship in 2008 and taking home the conference tournament title in 2001.

In her first season with the Hawkeyes, Bluder transformed a struggling program into a 21-game winner. Iowa finished second in the Big Ten, won the conference tournament and advanced to the second round of the NCAA Tournament. Bluder became Iowa's third coach to be named Big Ten Coach of the Year. She was also honored as the College Coach of the Year by the *Women's Basketball News Service* and was named the WBCA District 6 Coach of the Year. Iowa's 2001-02 squad finished fourth in the Big Ten and advanced to the second round of the NCAA Tournament for the second consecutive year. In 2003, Bluder guided the Hawkeyes to their first-ever WNIT appearance. Iowa, which had nine underclassmen on its roster, advanced to the quarterfinals before falling to Creighton. In 2004-05, Iowa finished 23-10, starting the year 13-0 and was the last Division I undefeated team standing. In 2005-06, Bluder mentored a team plagued by injuries to a fifth-place Big Ten finish and an NCAA Tournament berth.

In her 10 years at Drake, Bluder brought great success and tradition to the Bulldog program and established herself as one of the top coaches in the country. She led Drake to five 20-plus win seasons in her last six years, including five post-season appearances. She guided the Bulldogs to eight Missouri Valley Conference Tournament appearances, reaching the semifinals six times and winning the tournament four times. Bluder was also named the Conference Coach of the Year three times at Drake.

Bluder began her coaching career at St. Ambrose, where she coached six successful seasons, building the Bees into a NAIA powerhouse. During her tenure at St. Ambrose, Bluder guided the Bees to four straight national tournaments, including two consecutive Final Four appearances. The 1990 St. Ambrose team was ranked No. 1 and Bluder was named the NAIA Converse Coach of the Year.

A graduate of Linn-Mar High School in Marion, Iowa, Bluder was a three-year starter at Northern Iowa. She graduated from UNI in 1983 with a bachelor's degree in marketing.



Big Ten Overall Stats (Thru Feb. 14)

Scoring Offense	
1. Penn State	73.2
4. Iowa	69.0
Scoring Defense	
1. Michigan State	50.2
9. Iowa	62.8
Scoring Margin	
1. Penn State	+16.2
7. Iowa	+6.2
Free Throw Percentage	
1. Purdue	.777
2. Iowa	.763
Field Goal Percentage	
1. Minnesota	.452
5. Iowa	.427
Field Goal Percentage Defense	
1. Michigan State	.349
6. Iowa	.372
3-Point Field Goals Made	
1. Michigan	6.7
4. Iowa	5.9
3-Point Field Goal Percentage	
1. Penn State	.393
4. Iowa	.351
3-Point Field Goal Percentage Defense	
1. Michigan State	.254
5. Iowa	.299
Rebounding	
1. Penn State	42.0
4. Iowa	39.1
Rebounding Allowed	
1. Michigan	31.0
9. Iowa	37.2
Rebounding Margin	
1. Michigan State	+8.4
7. Iowa	+2.0
Offensive Rebounds	
1. Penn State	15.4
8. Iowa	11.8
Defensive Rebounds	
1. Northwestern	28.8
3. Iowa	27.3
Blocked Shots	
1. Northwestern	5.9
2. Iowa	5.5
Assists	
1. Iowa	16.0
Steals	
1. Illinois	12.4
10. Iowa	7.2
Turnover Margin	
1. Penn State	+5.2
7. Iowa	-0.3
Assist/Turnover Ratio	
1. Nebraska	1.0
2. Iowa	1.0

Big Ten Overall Stats (Thru Feb. 14)

Morgan Johnson	Rank	Avg.	Jaime Printy	Rank	Avg.
Field Goal Percentage	1st	.534	Free Throw Percentage	1st	.926
Offensive Rebounds	5th	3.0	3-Pointers Made	11th	1.9
Blocks	T-5th	1.9	Scoring	12th	14.0
Rebounding	8th	7.5	Assists	12th	3.2
Scoring	9th	15.2	Assist/Turnover Ratio	14th	1.1
Defensive Rebounds	14th	4.5			
Samantha Logic	Rank	Avg.	Melissa Dixon	Rank	Avg.
Assists	1st	6.7	3-Point Percentage	4th	.408
Assist/Turnover Ratio	5th	1.5	3-Pointers Made	6th	2.2
Field Goal Percentage	6th	.468			
Steals	10th	2.0	Bethany Doolittle	Rank	Avg.
Offensive Rebounds	10th	2.5	Blocks	4th	1.9
Rebounding	14th	6.5			

LOGIC'S EYE-POPPING ASSIST FIGURES

- Samantha Logic leads the Big Ten and ranks 10th in the NCAA with 6.7 assists per game.
- Logic is on pace to break the Iowa single season assists record of 191, held by Cara Consuegra (2000-01 season). Logic currently has 174 assists and needs to average 4.5 assists per game in the final four regular season games to break the record.
- Logic has recorded seven or more assists in 13 games, including four games with 10 or more. She has had at least five assists in 19 games.
- Logic's six games with double digit assists are the second most in Iowa history. Cara Consuegra had nine games in her career with 10 or more assists. The next closest Hawkeyes on the list are Kachine Alexander, Jolette Law and Michelle Edwards, with two career games.

HAWKEYES LIKE TO SHARE

- Iowa leads the Big Ten and ranks 28th in the NCAA with 16 assists per game.
- The Hawkeyes broke the school record for team assists last year, collecting 514. This year's team is nearly on pace to break that mark. Iowa had 427 assists through 26 games last year and has 416 through 26 games this year.
- Iowa has recorded at least 17 assists in 11 games, including four games with 20 or more.
- The Hawkeyes have 416 assists on 642 made field goals this season (1.5 assist/field goal ratio).

PRINTY CLOSE TO BIG FREE THROW RECORDS

- Jaime Printy currently owns an 89 percent career free throw percentage (420-of-472). Former Hawkeye Wendy Ausdemore holds the Iowa and Big Ten record for career free throw percentage at 89.2 (174-of-195).
- Printy is shooting 92.6 percent (112-of-121) for the season. The Iowa single season record is 89.4 percent (101-of-113) by Lindsey Meder in 2000-01. The Big Ten single season record is 92.5 percent (99-of-107) by Indiana's Cyndi Valentin in 2003-04.

PRINTY FREE THROW NOTES

- Printy has gone 3-of-3 from the line against Drake, 4-of-4 against Northern Illinois, Northern Iowa, Ohio State, Michigan State, Purdue and Michigan, 6-of-6 against Iowa State and San Diego, 8-of-8 vs. Northwestern, 11-of-11 against Middle Tennessee and 17-of-17 against West Virginia.
- Printy made 22-straight free throws, from Iowa's game vs. Texas (Dec. 28) through the game vs. Wisconsin (Jan. 24). Printy converted 21-consecutive free throws between Iowa's game vs. North Carolina and the road contest at Florida State
- Printy has put together a string of at least 20-consecutive made free throws in each year of her career. She converted 27-straight as a freshman and 32-straight as a sophomore and junior. Iowa's record for consecutive free throws made is 33 by Lindsey Meder.



Big Ten League Stats (thru Feb. 14)

Samantha Logic			Jaime Printy		
	Rank	Avg.		Rank	Avg.
Assists	1st	6.5	Free Throw Percentage	1st	.939
Assist/Turnover Ratio	5th	1.4	Scoring	13th	13.6
Field Goal Percentage	6th	.472	3-Pointers Made	T-13th	1.8
Offensive Rebounds	13th	2.6			
Rebounding	T-13th	7.0	Melissa Dixon		
Steals	14th	1.8		Rank	Avg.
			3-Point Percentage	1st	.458
			3-Pointers Made	2nd	2.8
			Scoring	23rd	11.3
Morgan Johnson			Bethany Doolittle		
	Rank	Avg.		Rank	Avg.
Offensive Rebounds	4th	3.7	Blocks	3rd	2.0
Blocks	6th	1.7			
Rebounding	9th	8.2			
Field Goal Percentage	T-11th	.454			
Scoring	18th	11.9			

BLUDER GETS WIN NO. 600

Head coach Lisa Bluder became the 42nd coach in NCAA women's basketball history (all divisions) and only the 25th Division I head coach (minimum 10 years at a DI school) to collect 600 wins Jan. 20 vs. Purdue.

Bluder entered the 2012-13 season as the 26th winningest active coach and the 46th overall winningest coach in NCAA women's basketball history (by victories).

MOVING UP CAREER CHARTS

- Morgan Johnson, Iowa's all-time blocks leader (274), ranks seventh in career rebounds (826) and ninth in career scoring (1,487). She needs two more rebounds to move past Jennie Lillis for sixth place and 112 points to pass Tangelia Smith for eighth place.
- Jaime Printy ranks second in career 3-pointers made (246), fourth in career scoring (1,772) and sixth in career assists (387). She needs 16 more 3-pointers to move past Lindsey Meder for first place, 50 points to move past Michelle Edwards for third place and five more assists to move past Johanna Solverson for fourth place.
- Samantha Logic ranks 13th in career assists (130). She needs 13 more assists to move past Lisa Anderson into 12th place.

IOWA CONTINUES TREND AGAINST RANKED FOES

- Iowa's win over 11th-ranked Purdue (Jan. 20) marked the 15th time under Lisa Bluder that the Hawkeyes have defeated a top-15 team.
- The Hawkeyes have recorded at least one win against a top-25 team in all but two seasons under Bluder. In nine of those seasons, Iowa has knocked off at least one top-15 opponent.
- Purdue was the highest ranked opponent the Hawkeyes have defeated since knocking off No. 10 Michigan State (66-64) on Jan. 27, 2011.
- This season marks just the second time in school history that Iowa has defeated three ranked teams prior to Big Ten play (No. 12 West Virginia, No. 22 Iowa State, No. 20 Texas). The only other time Iowa knocked off three ranked opponents was in 1993 (No. 4 Louisiana Tech, No. 20 Missouri State, No. 9 Southern California).
- This season is only the sixth time in school history that Iowa played at least three ranked teams prior to conference action. Iowa faced five ranked opponents in 1990 (2-3 record) and three in 1999 (0-3), 1995 (2-1), 1993 (3-0) and 1989 (1-2).
- Iowa has defeated six ranked teams, marking the first time since the 1995-96 season that the Hawkeyes have accomplished that feat (seven victories, 7-3 record versus ranked teams in 1995-96).

BEST BOARD GAME IN BIG

Iowa's 60 rebounds against Missouri State (Dec. 19) are the most by a Big Ten team this season.

The Hawkeyes collected 21 offensive and 39 defensive rebounds against the Lady Bears.

Big Ten League Stats (thru Feb. 14)

Scoring Offense	
1. Penn State	72.1
T4. Iowa	65.6
Scoring Defense	
1. Penn State	57.4
11. Iowa	66.1
Scoring Margin	
1. Penn State	+14.7
7. Iowa	-0.5
Free Throw Percentage	
1. Iowa	.791
Field Goal Percentage	
1. Minnesota	.425
5. Iowa	.405
Field Goal Percentage Defense	
1. Northwestern	.337
8. Iowa	.410
3-Point Field Goals Made	
1. Nebraska	6.9
3. Iowa	6.1
3-Point Field Goal Percentage	
1. Penn State	.398
2. Iowa	.367
3-Point Field Goal Percentage Defense	
1. Michigan	.277
10. Iowa	.339
Rebounding	
1. Purdue	41.2
5. Iowa	37.4
Rebounding Allowed	
1. Michigan	30.8
4. Iowa	36.0
Rebounding Margin	
1. Michigan State	+7.0
6. Iowa	+1.4
Offensive Rebounds	
1. Michigan State	15.8
6. Iowa	12.1
Defensive Rebounds	
1. Northwestern	28.2
4. Iowa	25.3
Blocked Shots	
1. Northwestern	5.3
2. Iowa	5.2
Assists	
1. Purdue	15.5
T4. Iowa	14.6
Steals	
1. Illinois	14.6
4. Iowa	7.8
Turnover Margin	
1. Penn State	+6.8
6. Iowa	-0.2
Assist/Turnover Ratio	
1. Nebraska	1.1
2. Iowa	1.0



Hawkeyes in NCAA Stats (thru Feb. 14)

Iowa	Rank	Avg.
Blocks	12th	5.5
Free Throw Percentage	13th	76.3
3-Point Percentage	28th	35.1
Assists Per Game	28th	16.0
Assist/Turnover Ratio	38th	1.0
Field Goal Percentage	47th	42.7
Scoring Offense	52nd	69.0
3-Pointers Made Per Game	79th	5.9
Scoring Margin	88th	6.2

Morgan Johnson	Rank	Avg.
Blocks	44th	1.9
Field Goal Percentage	24th	53.4

Melissa Dixon	Rank	Avg.
3-Point Percentage	19th	40.8
3-Pointers Made Per Game	84th	2.2

Samantha Logic	Rank	Avg.
Assists	10th	6.7

Jaime Printy	Rank	Avg.
Free Throw Percentage	4th	92.6

Bethany Doolittle	Rank	Avg.
Blocks	42nd	1.9

Follow the Hawkeyes on Twitter

Iowa Women's Basketball....@IowaWBB

Claire Till..... @clairetill3

Trisha Nesbitt.....@TNesbitt11

Morgan Johnson..... @MoJohnson12

Kathy Thomas.....@datgurlgotgame_

Melissa Dixon.....@MDix21

Theairra Taylor..... @two3KneeTaylor

Jaime Printy.....@jprinty24

Kali Peschel..... @KaliPeschel

Nicole Smith.....@NicoleSmith42

Kayla Timmerman.....@timmykay54

Jan Jensen..... @golowa

Jenni Fitzgerald..... @jlefty21

Abby Emmert..... @abbyemmert

Press Conference FTP Information

Weekly press conference footage will be available to media outlets via www.dropbox.com.

Username: ath-media@uiowa.edu

Password: hawks2012

PRINTY AND DOOLITTLE TAKE OVER LATE

Jaime Printy and Bethany Doolittle both had impressive finishes in Iowa's games against Wisconsin and at Michigan.

Printy took over in the final minutes against Wisconsin (Jan. 24), scoring 14-straight points to give Iowa the win. The Hawkeyes trailed 52-51 with 5:25 left in the game. Printy then scored Iowa's next 14 points and went on her own personal 12-0 run from the 4:11 mark to the 1:53 mark, giving Iowa a 10-point advantage.

Doolittle did the same at Michigan (Jan. 27), netting eight points to give Iowa a lead after it trailed by a point late in the contest. Doolittle's jumper with 5:20 left put Iowa ahead, 55-54. Doolittle went on her own 8-1 run from 5:20-1:45 in the second half to lift the Hawkeyes to the win.

Printy added 12 points, three assists and three steals against Northwestern, while Doolittle had nine rebounds and four blocked shots.

PRINTY - BIG PLAYER OF THE WEEK - JAN. 26

Jaime Printy was named Big Ten Player of Week (Jan. 29) for her efforts in Iowa's wins against Wisconsin and at No. 23 Michigan.

Printy averaged 21.5 points, 6.5 rebounds, shot 54.5 percent from the field, 41.7 percent from 3-point range and was 14-of-15 from the free throw line in Iowa's two wins.

Printy is averaging 14.4 points per game, having scored in double figures in nine-straight games and 20-of-25 games for the season. She leads the Big Ten and ranks fifth nationally in free throw percentage (92.4).

Printy netted 29 points against Wisconsin, missing only two shots in 10 attempts, while going 3-of-3 from 3-point distance and 10-of-11 from the charity stripe. She also added eight rebounds and four assists, with just one turnover, in 35 minutes.

The Marion, Iowa, native finished the week with 14 points and five rebounds at No. 23 Michigan. She was a perfect 4-of-4 from the free throw line.

The honor marked the second time in Printy's career she has been named Big Ten Player of the Week and her sixth Big Ten honor (four-time Big Ten Freshman of the Week in 2009-10).

JOHNSON - BIG PLAYER OF THE WEEK - NOV. 19

Morgan Johnson was named Big Ten Player of the Week (Nov. 19) for her efforts in the Preseason WNIT semifinals and championship game.

Johnson averaged 20 points, 9.5 rebounds and shot 76.2 percent (16-of-21) from the floor against two tough opponents in Middle Tennessee and North Carolina.

Johnson started the week with 20 points (8-of-10 FGs), eight rebounds and two blocks in Iowa's overtime win over Middle Tennessee. She followed with another 20-point performance, along with 11 rebounds, against ACC opponent North Carolina, battling 6-6 center Waltiea Rolle in the paint.

The award was Johnson's second weekly honor from the Big Ten in her career. She was named Big Ten Player of the Week last year after scoring 37 points at Bradley.

CAREER-HIGH FOR TAYLOR

Junior Theairra Taylor recorded career-highs in points (19) and field goals made (8) in Iowa's win over Ohio State. Taylor's previous career-high of 16 points came her freshman season against William & Mary.

PRECONFERENCE ALL-TOURNAMENT TEAM HONORS

Morgan Johnson was named to the Preseason WNIT all-tournament team and MVP of the San Diego Surf 'N Slam Classic. Jaime Printy was selected to the Preseason WNIT, FIU Thanksgiving Classic and San Diego Surf 'N Slam Classic all-tournament teams.



2012-13 Big Ten Standings/Schedule (thru Feb. 14)

Team	Big Ten	Overall	Saturday, Feb. 16
Penn State	11-1	21-3	Michigan State at Michigan (BTN)
Nebraska	9-3	19-6	Sunday, Feb. 17
Purdue	8-3	19-5	Iowa at Purdue (ESPN 2)
Michigan State	7-4	19-5	Northwestern at Minnesota
Michigan	7-4	18-6	Monday, Feb. 18
Illinois	7-4	14-9	Wisconsin at Illinois (BTN)
Iowa	5-7	16-10	Wednesday, Feb. 20
Minnesota	4-7	15-10	Purdue at Indiana
Ohio State	4-8	14-11	Illinois at Penn State
Northwestern	3-8	11-13	Northwestern at Michigan State
Wisconsin	3-9	11-14	
Indiana	1-11	10-15	

JOHNSON NAMED PRESEASON ALL-BIG TEN

Senior center Morgan Johnson was named Preseason All-Big Ten at the annual Big Ten Media Day in Chicago.

Johnson was one of seven players chosen by the league coaches for the Preseason All-Big Ten team.

Johnson was a second team All-Big Ten selection as a junior last season, averaging 14.9 points and 6.6 rebounds. She led the Big Ten and ranked seventh in the NCAA in field goal percentage (54.9). She also ranked second in the Big Ten and 26th in the country in blocks per game (2.3).

This year marks the third consecutive season that a Hawkeye player has been named Preseason All-Big Ten (Kachine Alexander – 2010, Jaime Printy – 2011).

SCHOOL/BIG RECORDS SET THIS SEASON

- Morgan Johnson became the Iowa career leader in blocks against Florida International. Johnson entered the game needing two blocks to break Tangela Smith's career blocks record and she finished with five. Johnson currently is tied for sixth in Big Ten history with 273 blocks.
- Jaime Printy tied the school record for 3-pointers made in a single game with seven against San Diego. Kamille Wahlin and Lindsey Meder are the only other Iowa players to hit seven 3's in a single game. Printy was 6-of-7 in the second half, making her final five attempts. Her seven made treys tie as the most by a Big Ten player this season.
- Samantha Logic broke Iowa's school record for assists in a single game against Texas, finishing with 14. Her 14 assists tie as the most by a Big Ten player this season. Earlier this year, Logic tied the previous school record with 12 against Middle Tennessee State.
- Against West Virginia, Jaime Printy became only the third player in Big Ten history to go 17-of-17 from the free throw line, matching the best single game free throw performance in conference history. Wisconsin's Michele Kozelka (1989) and Keisha Anderson (1996) are the only other players in Big Ten history to accomplish the feat.
- Printy's 17 made free throws tied the single game school record and are tied for the second most made free throws in Big Ten history.
- Printy's performance against West Virginia marked the ninth time in school history that an Iowa player has been perfect from the free throw line (minimum 10 attempts). Printy now has three of those marks, with one of those performances coming earlier this year against Middle Tennessee (11-of-11). The other came against Indiana (10-of-10) on Feb. 27, 2011.
- Morgan Johnson was a perfect 11-of-11 from the free throw line at Wisconsin, marking the 10th time in school history, and the third this season, an Iowa player was perfect in at least 10 attempts.
- Melissa Dixon tied the school record for 3-pointers made by an Iowa player in Carver-Hawkeye Arena with six against Northwestern.
- As a team, the Hawkeyes set the Big Ten and school record for free throws made (42) and set the school record for free throw attempts (50) in the win over West Virginia.

Career Scoring in Iowa History

Rank...No.....	Player.....	Years
2.....	1906..... Lindsey Meder	98-02
3.....	1821..... Michelle Edwards	84-88
4.....	1772..... Jaime Printy	10-Pres.
6.....	1742..... Franthea Price.....	86-90
7.....	1606..... Toni Foster	89-93
8.....	1598..... Tangela Smith	94-98
9.....	1487..... Morgan Johnson	10-Pres.

Career 3-Pointers in Iowa History

Rank...No.....	Player.....	Years
1.....	261..... Lindsey Meder	98-02
2.....	246..... Jaime Printy	10-Pres.
3.....	231..... Kamille Wahlin.....	09-Pr.

Career Blocks in Iowa History

Rank...No.....	Player.....	Years
1.....	274..... Morgan Johnson	10-Pres.
2.....	235..... Tangela Smith	94-98

Career Rebounds in Iowa History

Rank...No.....	Player.....	Years
3.....	887..... Toni Foster	89-93
4.....	859..... Tangela Smith	94-98
5.....	848..... Lisa Long	83-87
6.....	827..... Jennie Lillis.....	00-04
7.....	826..... Morgan Johnson	10-Pres.

Career Assists in Iowa History

Rank...No.....	Player.....	Years
2.....	431..... Michelle Edwards	84-88
3.....	427..... Kamille Wahlin.....	09-12
4.....	412..... Kristi Smith.....	05-09
5.....	391..... Johanna Solverson.....	02-05
6.....	387..... Jaime Printy	10-Pres.
10.....	353..... Jolette Law	86-90
11.....	339..... Kachine Alexander	08-11
12.....	322..... Lisa Anderson	80-84
13.....	310..... Samantha Logic.....	12-Pres.

Career Double-Doubles in Iowa History

Rank...No.....	Player.....	Years
4.....	24..... Amy Herrig.....	95-99
5.....	24..... Kachine Alexander	07-11
6.....	21..... Morgan Johnson	10-Pres.

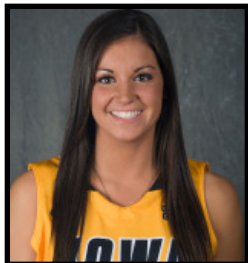




University of Iowa Women's Basketball

Updated Iowa Player Bio

Claire Till



3

Guard, 6-0, Freshman
Dubuque, Iowa
Dubuque Wahlert HS

- Missed a total of six games with a stress reaction in right femur (missed four games from Dec. 1-Dec. 28 and two games from Jan. 6-Jan.17).
- Seven points and six rebounds against Florida International.
- Five points and two rebounds in win over Robert Morris.
- Scored three points and recorded six rebounds in collegiate debut vs. NIU.
- Two-time all-state selection.
- Three-time IBCA Select Team member.
- Four-time first team all-conference and all-district pick.
- Underwent three surgeries in high school to repair injured knee.

Personal Bests

Points: 7 at Florida International (11/23/12)
Rebounds: 6, twice, last at FIU (11/23/12)
FGM: 1, 4x, last at FIU (11/23/12)
FGA: 6 at Florida International (11/23/12)
3-pt FG: 1, twice, last vs. RMU (11/20/12)
3-pt FGA: 2, twice, last at FIU (11/23/12)
FTM: 5, twice, last vs. WVU (11/25/12)
FTA: 8 at Florida International (11/23/12)
Assists: 1, 3x, last vs. Texas (12/28/12)
Steals: 1, 3x, last vs. WVU (11/25/12)
Blocks: 1, 3x, last vs. Ohio State (1/3/13)
Minutes: 18 at Florida International (11/23/12)

2012-13 Game-by-Game

#03 Till, Claire

Opponent	Date	gs	min	Total		3-Pointers		Free throws		Rebounds			pf	a	t/o	blk	stl	pts	avg	
				fg-fga	pct	3fg-fga	pct	ft-fa	pct	off	def	tot								avg
NORTHERN ILLINOIS	11/9/12	11	1-3	.333	1-2	.500	0-2	.000	1	5	6	6.0	3	0	0	1	1	3	3.0	
ILLINOIS STATE	11/11/12	7	1-2	.500	0-0	.000	2-2	1.000	0	3	3	4.5	1	0	2	0	1	4	3.5	
MIDDLE TENNESSEE	11/14/12	8	0-1	.000	0-0	.000	0-0	.000	0	1	1	3.3	2	0	0	0	0	0	2.3	
NORTH CAROLINA	11/18/12	6	0-0	.000	0-0	.000	1-2	.500	0	2	2	3.0	0	1	2	0	0	1	2.0	
ROBERT MORRIS	11/20/12	16	1-2	.500	1-1	1.000	2-2	1.000	0	2	2	2.8	0	0	2	0	0	5	2.6	
at FIU	11/23/12	18	1-6	.167	0-2	.000	5-8	.625	5	1	6	3.3	0	0	0	0	0	7	3.3	
vs WVU	11/25/12	14	0-1	.000	0-0	.000	5-6	.833	2	0	2	3.1	1	0	1	0	1	5	3.6	
at Florida State	11/28/12	12	0-2	.000	0-1	.000	0-0	.000	0	1	1	2.9	2	1	0	1	0	0	3.1	
vs Texas	12/28/12	4	0-1	.000	0-1	.000	0-0	.000	1	0	1	2.7	1	1	1	0	0	0	2.8	
OHIO STATE	1/3/13	4	0-1	.000	0-0	.000	0-0	.000	0	1	1	2.5	0	0	0	1	0	0	2.5	
PURDUE	01/20/13	1	0-0	.000	0-0	.000	0-0	.000	0	0	0	2.3	0	0	0	0	0	0	2.3	
WISCONSIN	1/24/13	2	0-0	.000	0-0	.000	0-0	.000	0	0	0	2.1	1	0	1	0	0	0	2.1	
Totals		0	103	4-19	.211	2-7	.286	15-22	.682	9	16	25	2.1	11	3	9	3	3	25	2.1

Games played: 12
 Minutes/game: 8.6
 Points/game: 2.1
 FG Pct: 21.1
 3FG Pct: 28.6
 FT Pct: 68.2

Rebounds/game: 2.1
 Assists/game: 0.3
 Turnovers/game: 0.8
 Assist/turnover ratio: 0.3
 Steals/game: 0.3
 Blocks/game: 0.3

CAREER STATISTICS

YEAR	G/GS	FG-A	PCT	3-PT	PCT	FT-A	PCT	O-D-REB	AVG	PF-FO	AS	TO	BK	ST	PTS	AVG
Fresh.	12/0	4-19	.211	2-7	.286	15-22	.682	9-16-25	2.1	11-0	3	9	3	3	25	2.1





University of Iowa Women's Basketball

Updated Iowa Player Bio

Trisha Nesbitt



11

Guard, 5-7, Senior
Ames, Iowa
Ames HS

- Career-high 12 points in win at Drake.
- Academic All-Big Ten in 2011-12.
- Had minor knee surgery Nov. 15, 2011 and missed the first 10 games of the season as a junior.
- Saw first action last season Dec. 20 vs. Drake, recording one rebound and one steal in seven minutes of play.

Personal Bests

Points: 12 at Drake (12/16/12)
Rebounds: 3, 2x, last vs. NIU (11/9/12)
FGM: 4 vs. Michigan State (3/6/10)
FGA: 8 at Indiana (2/11/10)
3-pt FG: 2, 3x, last at Drake (12/16/12)
3-pt FGA: 4, 3x, last vs. Missouri State (12/19/12)
FTM: 4, 3x, last at Drake (12/16/12)
FTA: 5 at UNI (11/22/09)
Assists: 4, 3x, last at Iowa St. (12/10/09)
Steals: 3 at Minnesota (1/3/10)
Blocks: - - -
Minutes: 37 at Indiana (2/11/10)

2012-13 Game-by-Game

#11 Nesbitt, Trisha

Opponent	Date	gs	min	Total		3-Pointers		Free throws		Rebounds				pf	a	t/o	blk	stl	pts	avg
				fg-fga	pct	3fg-fga	pct	ft-fa	pct	off	def	tot	avg							
NORTHERN ILLINOIS	11/9/12	18	1-1	1.000	1-1	1.000	0-0	.000	0	3	3	3.0	0	1	2	0	0	3	3.0	
ILLINOIS STATE	11/11/12	15	0-3	.000	0-1	.000	3-4	.750	0	1	1	2.0	3	0	1	0	1	3	3.0	
MIDDLE TENNESSEE	11/14/12	4	1-1	1.000	0-0	.000	0-0	.000	0	0	0	1.3	0	0	0	0	0	2	2.7	
NORTH CAROLINA	11/18/12	5	1-2	.500	0-1	.000	0-0	.000	0	0	0	1.0	0	0	0	0	0	2	2.5	
ROBERT MORRIS	11/20/12	13	0-0	.000	0-0	.000	0-0	.000	0	2	2	1.2	0	2	0	0	0	0	2.0	
at FIU	11/23/12	8	1-2	.500	0-0	.000	0-0	.000	0	1	1	1.2	1	1	0	0	0	2	2.0	
vs WVU	11/25/12	14	1-1	1.000	1-1	1.000	1-2	.500	0	0	0	1.0	2	1	1	0	1	4	2.3	
at Florida State	11/28/12	5	0-0	.000	0-0	.000	0-0	.000	0	0	0	0.9	1	0	0	0	1	0	2.0	
UNI	12/1/12	5	0-0	.000	0-0	.000	0-0	.000	0	0	0	0.8	0	0	0	0	0	0	1.8	
IOWA STATE	12/6/12	6	0-0	.000	0-0	.000	0-0	.000	0	1	1	0.8	1	0	0	0	0	0	1.6	
at Drake	12-16-12	15	3-4	.750	2-3	.667	4-4	1.000	0	0	0	0.7	4	0	1	0	0	12	2.5	
MISSOURI STATE	12/19/12	15	1-4	.250	1-4	.250	1-2	.500	0	1	1	0.8	5	1	1	0	0	4	2.7	
vs Texas	12/28/12	8	0-1	.000	0-1	.000	0-0	.000	0	0	0	0.7	1	0	0	0	0	0	2.5	
MICHIGAN	1/6/13	3	0-0	.000	0-0	.000	0-0	.000	0	0	0	0.6	0	0	0	0	0	0	2.3	
at Wisconsin	01/10/13	3	0-1	.000	0-1	.000	0-0	.000	0	0	0	0.6	0	0	0	0	0	0	2.1	
at Michigan State	01/17/13	4	0-1	.000	0-0	.000	0-0	.000	0	1	1	0.6	0	0	0	0	1	0	2.0	
PURDUE	01/20/13	2	0-0	.000	0-0	.000	0-0	.000	0	0	0	0.6	0	0	0	0	0	0	1.9	
WISCONSIN	1/24/13	2	0-0	.000	0-0	.000	0-0	.000	0	0	0	0.6	0	0	0	0	0	0	1.8	
at Michigan	01/27/13	9	0-1	.000	0-1	.000	0-0	.000	0	2	2	0.6	0	0	0	0	0	0	1.7	
NORTHWESTERN	2/03/13	3	0-1	.000	0-0	.000	0-0	.000	0	0	0	0.6	0	1	1	0	1	0	1.6	
at Minnesota	02/07/13	2	0-1	.000	0-0	.000	0-0	.000	0	0	0	0.6	0	0	0	0	0	0	1.5	
NEBRASKA	02/11/13	8	0-1	.000	0-0	.000	0-0	.000	0	0	0	0.5	1	0	0	0	0	0	1.5	
PENN STATE	2/14/13	2	0-0	.000	0-0	.000	0-0	.000	0	0	0	0.5	0	0	0	0	0	0	1.4	
Totals		0	169	9-25	.360	5-14	.357	9-12	.750	0	12	12	0.5	19	7	7	0	5	32	1.4

Games played: 23
 Minutes/game: 7.3
 Points/game: 1.4
 FG Pct: 36.0
 3FG Pct: 35.7
 FT Pct: 75.0

Rebounds/game: 0.5
 Assists/game: 0.3
 Turnovers/game: 0.3
 Assist/turnover ratio: 1.0
 Steals/game: 0.2

CAREER STATISTICS

YEAR	G/GS	FG-A	PCT	3-PT	PCT	FT-A	PCT	O-D-REB	AVG	PF-FO	AS	TO	BK	ST	PTS	AVG
Fresh.	34/1	25-85	.294	9-36	.250	25-31	.806	2-22-24	0.7	46-0	43	42	0	14	84	2.5
Soph.	16/0	3-13	.231	2-6	.333	0-1	.000	0-4-4	0.3	7-0	5	10	0	1	8	0.5
Junior	15/0	1-8	.125	0-6	.000	3-4	.750	1-2-3	0.2	10-0	4	3	0	3	5	0.3
Senior	23/0	9-25	.360	5-14	.357	9-12	.750	0-12-12	0.5	19-1	7	7	0	5	32	1.4
TOTALS	88/1	38-131	.290	16-62	.258	37-48	.771	3-40-43	0.5	82-1	59	62	0	23	129	1.5





University of Iowa Women's Basketball

Updated Iowa Player Bio

Morgan Johnson



12

Center, 6-5, Senior
Platte City, Mo.
Platte County HS

- Iowa career blocks leader (274), seventh in career rebounds (826) and ninth in career scoring (1,487).
- Posted 21 career double-doubles, which rank sixth all-time in school history... had three as a freshman, five as a sophomore, four as a junior and nine as a senior.
- Ninth double-double against Penn State, finishing with 17 points and 11 rebounds.
- Posted eighth double-double against Nebraska, finishing with 19 points on 9-of-11 shooting to go along with 10 rebounds.
- Seventh double-double of the season with 13 points and 10 rebounds at Minnesota.
- Sixth double-double of the season with 13 points and 12 rebounds at Michigan St.
- Fifth double-double of the season with 23 points and 11 rebounds in win at Wisconsin.
- Fourth double-double of the season with 16 points and 12 rebounds in win over Ohio State.
- 26 points, eight rebounds and three blocks in win at Drake.
- Third double-double of the season with 19 points, 12 rebounds and a career-high five assists in win over Northern Iowa.
- 20 points at Florida State.
- Second double-double of the season with 19 points and 11 rebounds in win over Robert Morris.
- Big Ten Player of the Week (Nov. 19).
- First double-double of the season with 20 points and 11 rebounds vs. N. Carolina.
- 24 points (12-of-13 FTs) and nine rebounds in win over Illinois State.
- Preseason All-Big Ten selection.

2012-13 Game-by-Game

#12 Johnson, Morgan

Opponent	Date	gs	min	Total		3-Pointers		Free throws		Rebounds			pf	a	t/o	blk	stl	pts	avg		
				fg-fga	pct	3fg-fga	pct	ft-fa	pct	off	def	tot								avg	
NORTHERN ILLINOIS	11/9/12	*	20	4-11	.364	0-0	.000	3-5	.600	1	4	5	5.0	2	0	1	0	1	11.0		
ILLINOIS STATE	11/11/12	*	30	6-14	.429	0-0	.000	12-13	.923	4	5	9	7.0	2	2	2	5	1	24	17.5	
MIDDLE TENNESSEE	11/14/12	*	41	8-10	.800	0-0	.000	4-6	.667	2	6	8	7.3	4	1	0	2	0	20	18.3	
NORTH CAROLINA	11/18/12	*	39	8-11	.727	0-0	.000	4-5	.800	3	8	11	8.3	4	1	2	2	2	20	18.8	
ROBERT MORRIS	11/20/12	*	33	8-13	.615	0-0	.000	3-5	.600	5	6	11	8.8	3	0	3	0	0	19	18.8	
at FIU	11/23/12	*	36	6-9	.667	0-0	.000	2-2	1.000	3	3	6	8.3	2	2	3	5	0	14	18.0	
vs WVU	11/25/12	*	30	6-11	.545	0-0	.000	7-11	.636	0	3	3	7.6	3	1	2	2	1	19	18.1	
at Florida State	11/28/12	*	30	8-15	.533	0-0	.000	4-4	1.000	3	1	4	7.1	2	1	2	2	0	20	18.4	
UNI	12/1/12	*	35	6-11	.545	0-0	.000	7-11	.636	4	8	12	7.7	2	5	2	2	2	19	18.4	
IOWA STATE	12/6/12	*	38	3-8	.375	0-0	.000	1-2	.500	1	5	6	7.5	1	2	4	1	1	7	17.3	
at Drake	12-16-12	*	38	11-19	.579	0-0	.000	4-7	.571	2	6	8	7.5	2	0	0	3	2	26	18.1	
MISSOURI STATE	12/19/12	*	15	6-7	.857	0-0	.000	1-2	.500	2	2	4	7.3	4	1	3	0	0	13	17.7	
vs Texas	12/28/12	*	23	8-13	.615	0-0	.000	4-5	.800	1	4	5	7.1	3	0	0	2	3	20	17.8	
at San Diego	12/30/12	*	38	8-10	.800	0-0	.000	4-4	1.000	3	3	6	7.0	2	1	4	3	1	20	18.0	
OHIO STATE	1/3/13	*	43	7-17	.412	0-0	.000	2-3	.667	3	9	12	7.3	2	3	0	3	3	16	17.9	
MICHIGAN	1/6/13	*	39	4-7	.571	0-0	.000	2-3	.667	3	4	7	7.3	4	2	0	1	2	10	17.4	
at Wisconsin	01/10/13	*	35	6-12	.500	0-0	.000	11-11	1.000	8	3	11	7.5	3	0	3	2	0	23	17.7	
at Michigan State	01/17/13	*	37	5-12	.417	0-0	.000	3-4	.750	5	7	12	7.8	3	0	1	2	2	13	17.4	
PURDUE	01/20/13	*	24	3-14	.214	0-0	.000	1-1	1.000	3	4	7	7.7	3	0	1	3	0	7	16.9	
WISCONSIN	1/24/13	*	17	1-2	.500	0-0	.000	0-0	.000	2	2	4	7.6	4	1	1	0	0	2	16.2	
at Michigan	01/27/13	*	31	2-4	.500	0-0	.000	2-2	1.000	1	6	7	7.5	4	0	0	1	2	6	15.7	
at Illinois	01/31/13	*	27	3-6	.500	0-0	.000	0-0	.000	1	3	4	7.4	5	0	2	1	1	6	15.2	
NORTHWESTERN	2/03/13	*	18	3-9	.333	0-0	.000	5-7	.714	1	2	3	7.2	5	0	2	1	1	11	15.0	
at Minnesota	02/07/13	*	35	3-9	.333	0-0	.000	7-7	1.000	4	6	10	7.3	1	2	0	1	2	13	15.0	
NEBRASKA	02/11/13	*	30	9-11	.818	0-0	.000	1-3	.333	7	3	10	7.4	1	1	1	4	0	19	15.1	
PENN STATE	2/14/13	*	36	8-16	.500	0-0	.000	1-5	.200	6	5	11	7.5	3	0	2	1	1	17	15.2	
Totals			26	818	150-281	.534	0-0	.000	95-128	.742	78	118	196	7.5	74	26	41	49	28	395	15.2

Games played: 26
Minutes/game: 31.5
Points/game: 15.2
FG Pct: 53.4
FT Pct: 74.2

Rebounds/game: 7.5
Assists/game: 1.0
Turnovers/game: 1.6
Assist/turnover ratio: 0.6
Steals/game: 1.1
Blocks/game: 1.9

Personal Bests

Points: 37 at Bradley (12/17/11)
Rebounds: 16 vs. Illinois (1/5/12)
FGM: 13 at Bradley (12/17/11)
FGA: 21 vs. Virginia Tech (11/30/11)
3-pt FG: 1 at Iowa State (12/10/09)
3-pt FGA: 2 at Iowa State (12/10/09)
FTM: 12 vs. Illinois State (11/11/12)
FTA: 13 vs. Illinois State (11/11/12)
Assists: 5 vs. Northern Iowa (12/1/12)
Steals: 3, 5x, last vs. Ohio State (1/3/13)
Blocks: 8 vs. Minnesota (2/18/10)
Minutes: 43 vs. Ohio State (1/3/13)

CAREER STATISTICS

YEAR	G/GS	FG-A	PCT	3-PT	PCT	FT-A	PCT	O-D-REB	AVG	PF-FO	AS	TO	BK	ST	PTS	AVG
Fresh.	34/34	124-250	.496	1-4	.250	48-76	.632	78-139-217	6.4	87-2	24	61	79	15	297	8.7
Soph.	31/30	132-276	.478	0-0	.000	70-96	.729	90-118-208	6.7	83-3	25	58	76	21	334	10.8
Junior	31/31	179-326	.549	0-0	.000	103-141	.730	67-138-205	6.6	96-4	24	64	70	12	461	14.9
Senior	26/26	150-281	.534	0-0	.000	95-128	.742	78-118-196	7.5	74-2	26	41	49	28	395	15.2
TOTALS	122/121	585-1133	.516	1-4	.250	316-441	.717	313-513-826	6.8	340-11	99	224	274	76	1487	12.2





University of Iowa Women's Basketball

Updated Iowa Player Bio

Kathy Thomas



13

**Guard, 5-6, Sophomore
Flint, Mich.
Highland CC (Kan.)**

- 15 points (3-of-6 3Pt. FGs) in win over Missouri State.
- Scored eight points in collegiate debut vs. NIU.
- NJCAA first team All-American at Highlands Community College.
- Jayhawk Conference Player and Freshman of the Year.
- Led Highland Community College to 28-4 overall record, second place finish in Jayhawk Conference and NJCAA Division II District B finals appearance, the most successful season in school history.
- Averaged 13.2 points, 8.9 assists and 9.8 steals as a senior in high school.

Personal Bests

Points: 15 vs. Missouri State (12/19/12)
Rebounds: 3, twice, last at San Diego (12/30/12)
FGM: 6 vs. Missouri State (12/19/12)
FGA: 9 vs. Missouri State (12/19/12)
3-pt FG: 3 vs. Missouri State (12/19/12)
3-pt FGA: 6 vs. Missouri State (12/19/12)
FTM: 5 vs. Ill. State (11/11/12)
FTA: 8 vs. Ill. State (11/11/12)
Assists: 3, 3x, last vs. Penn State (2/14/13)
Steals: 2, 3x, last vs. Penn State (2/14/13)
Blocks: 1 at Minnesota (2/7/13)
Minutes: 19 vs. Missouri State (12/19/12)

2012-13 Game-by-Game

#13 Thomas, Kathy

Opponent	Date	gs	min	Total		3-Pointers		Free throws		Rebounds			pf	a	t/o	blk	stl	pts	avg	
				fg-fga	pct	3fg-fga	pct	ft-fa	pct	off	def	tot								avg
NORTHERN ILLINOIS	11/9/12	15	3-4	.750	0-0	.000	2-2	1.000	1	1	2	2.0	3	0	1	0	0	8	8.0	
ILLINOIS STATE	11/11/12	16	0-2	.000	0-0	.000	5-8	.625	2	1	3	2.5	3	3	3	0	1	5	6.5	
MIDDLE TENNESSEE	11/14/12	2	0-0	.000	0-0	.000	0-0	.000	0	0	0	1.7	1	0	0	0	0	4.3		
NORTH CAROLINA	11/18/12	2	0-0	.000	0-0	.000	0-0	.000	0	0	0	1.3	1	0	0	0	0	3.3		
ROBERT MORRIS	11/20/12	10	1-3	.333	1-1	1.000	0-0	.000	0	1	1	1.2	2	1	0	0	3	3.2		
at FIU	11/23/12	8	0-0	.000	0-0	.000	0-0	.000	0	0	0	1.0	0	0	0	0	0	2.7		
UNI	12/1/12	7	0-1	.000	0-0	.000	0-0	.000	0	2	2	1.1	2	1	0	0	0	2.3		
IOWA STATE	12/6/12	6	0-1	.000	0-1	.000	3-4	.750	1	1	2	1.3	1	0	0	0	3	2.4		
at Drake	12-16-12	7	1-1	1.000	1-1	1.000	0-0	.000	0	0	0	1.1	0	0	0	0	3	2.4		
MISSOURI STATE	12/19/12	19	6-9	.667	3-6	.500	0-0	.000	0	2	2	1.2	2	2	3	2	15	3.7		
vs Texas	12/28/12	9	1-1	1.000	0-0	.000	0-0	.000	0	2	2	1.3	0	0	2	1	2	3.5		
at San Diego	12/30/12	4	0-1	.000	0-0	.000	0-0	.000	1	2	3	1.4	2	0	1	0	0	3.3		
OHIO STATE	1/3/13	5	0-0	.000	0-0	.000	0-0	.000	0	1	1	1.4	3	1	2	0	0	3.0		
MICHIGAN	1/6/13	2	0-0	.000	0-0	.000	0-0	.000	0	0	0	1.3	0	0	0	0	0	2.8		
at Wisconsin	01/10/13	2	0-1	.000	0-0	.000	0-0	.000	0	0	0	1.2	1	0	0	0	0	2.6		
at Michigan State	01/17/13	5	0-2	.000	0-0	.000	0-0	.000	0	2	2	1.3	2	0	0	0	0	2.4		
PURDUE	01/20/13	8	0-1	.000	0-0	.000	0-0	.000	0	1	1	1.2	1	3	2	2	2	2.3		
WISCONSIN	1/24/13	8	0-1	.000	0-1	.000	0-0	.000	0	1	1	1.2	1	0	1	0	0	2.2		
at Michigan	01/27/13	6	1-3	.333	1-2	.500	1-2	.500	0	0	0	1.2	0	0	1	0	4	2.3		
at Illinois	01/31/13	4	0-1	.000	0-1	.000	0-0	.000	0	0	0	1.1	0	1	0	0	0	2.2		
NORTHWESTERN	2/03/13	3	0-0	.000	0-0	.000	0-0	.000	0	0	0	1.0	1	0	2	0	0	2.0		
at Minnesota	02/07/13	13	1-2	.500	1-1	1.000	0-0	.000	0	1	1	1.0	0	1	1	1	3	2.1		
NEBRASKA	02/11/13	4	1-2	.500	0-1	.000	0-0	.000	0	1	1	1.0	1	0	1	0	2	2.1		
PENN STATE	2/14/13	10	0-0	.000	0-0	.000	1-3	.333	0	2	2	1.1	0	3	1	0	2	1	2.0	
Totals		0	175	15-36	.417	7-15	.467	12-19	.632	5	21	26	1.1	27	16	21	1	8	49	2.0

Games played: 24
 Minutes/game: 7.3
 Points/game: 2.0
 FG Pct: 41.7
 3FG Pct: 46.7
 FT Pct: 63.2

Rebounds/game: 1.1
 Assists/game: 0.7
 Turnovers/game: 2.0
 Assist/turnover ratio: 0.8
 Steals/game: 0.3
 Blocks/game: 0.0

CAREER STATISTICS

YEAR	G/GS	FG-A	PCT	3-PT	PCT	FT-A	PCT	O-D-REB	AVG	PF-FO	AS	TO	BK	ST	PTS	AVG
Fresh.	24/0	15-36	.417	7-15	.467	12-19	.632	5-21-26	1.1	27-0	16	21	1	8	49	2.0





University of Iowa Women's Basketball

Updated Iowa Player Bio

Melissa Dixon



21

Guard, 5-8, Sophomore
Johnsburg, Ill.
Johnsburg HS

- Recorded 16 points against Penn State.
- Scored 19 points (7-15 FG, 5-10 3PT) against Nebraska.
- 21 points (7-10 FGs, 6-9 3Pt. FGs) against Northwestern.
- 15 points in win over Purdue.
- Career-high 23 points (5-of-10 3Pt. FGs) in win over Texas.
- 11 points in win over Iowa State.
- 12 points against North Carolina.
- Career-high 22 points (8-18 FGs, 6-15 3Pt. FGs) in win over Michigan as a freshman.
- Suffered torn meniscus at Ohio State (Jan. 2, 2012) as a freshman. Missed a total of seven games.
- First career start came at Indiana, registering career-highs in points (19), field goals made (7), 3-pointers made and attempted (5-for-10), steals (3) and minutes (28).

Personal Bests

Points: 23 vs. Texas (12/28/12)
Rebounds: 4, 4x, last vs. Minnesota (2/9/12)
FGM: 9 vs. Texas (12/28/12)
FGA: 18 vs. Michigan (2/26/12)
3-pt FG: 6, twice, last vs. N'western (2/3/13)
3-pt FGA: 15 vs. Michigan (2/26/12)
FTM: 5, 2x, last vs. Drake (12/20/11)
FTA: 6, 2x, last vs. Drake (12/20/11)
Assists: 4 vs. Nebraska (3/2/12)
Steals: 3 at Indiana (2/5/12)
Blocks: 1, 3x, last vs. Ill. State (11/11/12)

2012-13 Game-by-Game

#21 Dixon, Melissa

Opponent	Date	gs	min	Total		3-Pointers		Free throws		Rebounds			pf	a	t/o	blk	stl	pts	avg		
				fg-fga	pct	3fg-fga	pct	ft-fa	pct	off	def	tot								avg	
NORTHERN ILLINOIS	11/9/12	*	24	3-4	.750	2-3	.667	0-0	.000	0	2	2	2.0	2	2	1	0	1	8	8.0	
ILLINOIS STATE	11/11/12	*	24	2-3	.667	2-3	.667	2-2	1.000	0	0	0	1.0	4	2	1	1	0	8	8.0	
MIDDLE TENNESSEE	11/14/12	*	34	2-9	.222	2-7	.286	0-1	.000	0	1	1	1.0	2	1	1	0	2	6	7.3	
NORTH CAROLINA	11/18/12		20	5-11	.455	2-8	.250	0-0	.000	0	1	1	1.0	4	0	2	0	0	12	8.5	
ROBERT MORRIS	11/20/12		17	2-8	.250	2-7	.286	0-0	.000	0	2	2	1.2	2	0	3	0	0	6	8.0	
at FIU	11/23/12		19	3-11	.273	2-7	.286	0-0	.000	0	2	2	1.3	2	0	0	0	0	8	8.0	
vs WVU	11/25/12		17	0-2	.000	0-1	.000	0-0	.000	0	0	0	1.1	2	0	1	0	0	0	6.9	
at Florida State	11/28/12		14	1-5	.200	0-3	.000	1-1	1.000	0	0	0	1.0	0	1	0	0	1	3	6.4	
UNI	12/1/12		16	2-4	.500	2-2	1.000	0-0	.000	1	1	2	1.1	2	1	0	0	0	6	6.3	
IOWA STATE	12/6/12		19	4-8	.500	2-5	.400	1-3	.333	0	2	2	1.2	1	1	1	0	1	11	6.8	
at Drake	12-16-12		6	0-3	.000	0-3	.000	0-0	.000	0	0	0	1.1	0	1	0	0	0	0	6.2	
MISSOURI STATE	12/19/12		23	4-11	.364	2-8	.250	2-2	1.000	0	2	2	1.2	1	2	1	0	1	12	6.7	
vs Texas	12/28/12		25	9-15	.600	5-10	.500	0-0	.000	0	3	3	1.3	1	2	0	0	0	23	7.9	
at San Diego	12/30/12		17	3-7	.429	2-3	.667	0-0	.000	0	0	0	1.2	1	0	2	0	1	8	7.9	
OHIO STATE	1/3/13		15	1-6	.167	1-2	.500	0-0	.000	0	1	1	1.2	2	0	1	0	1	3	7.6	
MICHIGAN	1/6/13		25	6-14	.429	5-9	.556	0-0	.000	3	0	3	1.3	2	2	0	0	0	17	8.2	
at Wisconsin	01/10/13		19	2-6	.333	2-5	.400	2-2	1.000	0	3	3	1.4	2	2	0	0	0	8	8.2	
at Michigan State	01/17/13		22	2-7	.286	1-3	.333	2-2	1.000	3	0	3	1.5	1	0	1	0	0	7	8.1	
PURDUE	01/20/13		20	6-10	.600	3-6	.500	0-0	.000	0	0	0	1.4	1	0	1	0	1	15	8.5	
WISCONSIN	1/24/13		26	3-6	.500	2-4	.500	2-2	1.000	0	0	0	1.4	2	0	1	0	1	10	8.6	
at Michigan	01/27/13		22	2-5	.400	1-3	.333	0-0	.000	0	2	2	1.4	3	1	1	0	0	5	8.4	
at Illinois	01/31/13		24	4-9	.444	3-6	.500	0-0	.000	0	2	2	1.4	2	1	3	0	1	11	8.5	
NORTHWESTERN	2/03/13		22	7-10	.700	6-9	.667	1-2	.500	0	2	2	1.4	2	1	0	0	0	21	9.0	
at Minnesota	02/07/13		27	2-10	.200	0-6	.000	0-0	.000	0	3	3	1.5	2	2	0	0	1	4	8.8	
NEBRASKA	02/11/13		32	7-15	.467	5-10	.500	0-0	.000	0	0	0	1.4	3	3	0	0	1	19	9.2	
PENN STATE	2/14/13		29	5-11	.455	4-9	.444	2-2	1.000	0	2	2	1.5	5	1	1	0	0	16	9.5	
Totals			3	558	87-210	.414	58-142	.408	15-19	.789	7	31	38	1.5	51	24	26	1	13	247	9.5

Games played: 26
 Minutes/game: 21.5
 Points/game: 9.5
 FG Pct: 41.4
 3FG Pct: 40.8
 FT Pct: 78.9

Rebounds/game: 1.5
 Assists/game: 0.9
 Turnovers/game: 1.0
 Assist/turnover ratio: 0.9
 Steals/game: 0.5
 Blocks/game: 0.0

Minutes: 34, twice, last vs. MTSU (11/14/12)

CAREER STATISTICS

YEAR	G/GS	FG-A	PCT	3-PT	PCT	FT-A	PCT	O-D-REB	AVG	PF-FO	AS	TO	BK	ST	PTS	AVG
Fresh.	24/8	50-141	.355	35-98	.357	27-33	.818	17-25-42	1.8	47-1	18	28	2	15	162	6.8
Soph.	26/3	87-210	.414	58-142	.408	15-19	.789	7-31-38	1.5	51-1	24	26	1	13	247	9.5
TOTALS	50/11	137-351	.390	93-240	.388	42-52	.808	24-56-80	1.6	98-2	42	54	3	28	409	8.2





University of Iowa Women's Basketball

Updated Iowa Player Bio

Samantha Logic



22

Guard, 5-9, Sophomore
Racine, Wis.
Racine J.I. Case HS

- 12th in career assists at Iowa (310).
- Recorded 11 career double-doubles, including one triple-double. Eight double-doubles are points/rebounds, one is points/assists and one is rebounds/assists.
- Ranks second in Iowa history with six double digit assist performances. Cara Consuegra holds the record with nine.
- Third double-double of the season with 11 points, 12 rebounds in loss to Northwestern.
- Recorded 10 assists in win over Purdue.
- Second double-double of the season with 12 points, 10 rebounds and nine assists in win at Wisconsin.
- 17 points, six rebounds, eight assists and three steals in win over Ohio State.
- Double-double with 15 rebounds and school record 14 assists in win over Texas.
- 13 points, five rebounds and seven assists in win at Drake.
- 15 points, four rebounds and three assists in win over Northern Iowa.
- 14 points, seven rebounds, seven assists and three steals at Florida State.
- Nine points, seven rebounds and seven assists in win over West Virginia.
- 12 points, six rebounds, six assists and four steals against North Carolina.
- Tied school record with 12 assists in win over Middle Tennessee.
- Third team Freshman All-American by Full Court.
- Unanimous selection for Big Ten All-Freshman Team.

2012-13 Game-by-Game

#22 Logic, Samantha

Opponent	Date	gs	min	Total		3-Pointers		Free throws		Rebounds				pf	a	t/o	blk	stl	pts	avg	
				fg-fga	pct	3fg-fga	pct	ft-fa	pct	off	def	tot	avg								
NORTHERN ILLINOIS	11/9/12	*	25	5-8	.625	0-0	.000	0-0	.000	0	3	3	3.0	1	2	2	0	2	10	10.0	
ILLINOIS STATE	11/11/12	*	24	1-6	.167	0-1	.000	4-4	1.000	3	2	5	4.0	2	4	6	1	2	6	8.0	
MIDDLE TENNESSEE	11/14/12	*	40	0-6	.000	0-2	.000	0-1	.000	1	2	3	3.7	2	12	6	1	2	0	5.3	
NORTH CAROLINA	11/18/12	*	31	6-10	.600	0-1	.000	0-0	.000	3	3	6	4.3	2	6	7	0	4	12	7.0	
ROBERT MORRIS	11/20/12	*	28	2-7	.286	0-2	.000	0-0	.000	3	3	6	4.6	1	9	2	0	3	4	6.4	
at FIU	11/23/12	*	32	3-6	.500	1-1	1.000	0-0	.000	3	2	5	4.7	3	7	4	0	1	7	6.5	
vs WVU	11/25/12	*	34	2-6	.333	0-0	.000	5-6	.833	2	5	7	5.0	5	7	9	0	3	9	6.9	
at Florida State	11/28/12	*	36	7-11	.636	0-1	.000	0-0	.000	2	5	7	5.3	4	7	10	0	3	14	7.8	
UNI	12/1/12	*	33	7-9	.778	0-1	.000	1-1	1.000	1	3	4	5.1	3	3	1	1	1	15	8.6	
IOWA STATE	12/6/12	*	28	1-7	.143	1-3	.333	3-6	.500	4	5	9	5.5	3	4	1	1	0	6	8.3	
at Drake	12-16-12	*	35	5-9	.556	1-1	1.000	2-2	1.000	3	2	5	5.5	4	7	3	2	1	13	8.7	
MISSOURI STATE	12/19/12	*	27	3-7	.429	0-2	.000	1-3	.333	2	4	6	5.5	1	4	3	1	3	7	8.6	
vs Texas	12/28/12	*	31	1-3	.333	0-1	.000	0-0	.000	5	10	15	6.2	3	14	3	0	2	2	8.1	
at San Diego	12/30/12	*	36	2-2	1.000	1-1	1.000	2-4	.500	1	2	3	6.0	3	10	6	0	2	7	8.0	
OHIO STATE	1/3/13	*	40	5-7	.714	0-0	.000	7-10	.700	1	5	6	6.0	1	8	5	0	3	17	8.6	
MICHIGAN	1/6/13	*	38	6-13	.462	2-4	.500	2-2	1.000	5	4	9	6.2	3	9	3	1	3	16	9.1	
at Wisconsin	01/10/13	*	38	4-11	.364	2-2	1.000	2-3	.667	3	7	10	6.4	1	9	3	0	1	12	9.2	
at Michigan State	01/17/13	*	35	3-7	.429	0-0	.000	1-2	.500	1	4	5	6.3	3	4	5	0	1	7	9.1	
PURDUE	01/20/13	*	32	2-4	.500	0-1	.000	0-0	.000	2	1	3	6.2	3	10	7	0	1	4	8.8	
WISCONSIN	1/24/13	*	34	3-7	.429	0-2	.000	0-0	.000	2	7	9	6.3	0	5	5	0	1	6	8.7	
at Michigan	01/27/13	*	34	3-5	.600	0-1	.000	4-5	.800	2	4	6	6.3	4	8	4	0	2	10	8.8	
at Illinois	01/31/13	*	36	6-10	.600	1-2	.500	0-0	.000	3	7	10	6.5	5	6	8	1	2	13	9.0	
NORTHWESTERN	2/03/13	*	37	4-10	.400	1-1	1.000	2-5	.400	6	6	12	6.7	3	2	2	0	3	11	9.0	
at Minnesota	02/07/13	*	31	0-3	.000	0-1	.000	0-0	.000	2	1	3	6.5	4	5	5	0	1	0	8.7	
NEBRASKA	02/11/13	*	38	2-8	.250	0-3	.000	4-6	.667	2	6	8	6.6	4	6	3	0	2	8	8.6	
PENN STATE	2/14/13	*	31	4-4	1.000	1-1	1.000	0-1	.000	2	1	3	6.5	4	6	5	0	2	9	8.7	
Totals			26	864	87-186	.468	11-35	.314	40-61	.656	64	104	168	6.5	72	174	118	9	51	225	8.7

Games played: 26
Minutes/game: 33.2
Points/game: 8.7
FG Pct: 46.8
3FG Pct: 31.4
FT Pct: 65.6

Rebounds/game: 6.5
Assists/game: 6.7
Turnovers/game: 4.5
Assist/turnover ratio: 1.5
Steals/game: 2.0
Blocks/game: 0.3

Personal Bests

- Points:** 20, 2x, last vs. Minn. (2/9/12)
- Rebounds:** 18 at Michigan (2/16/12)
- FGM:** 7, 6x, last vs. UNI (12/1/12)
- FGA:** 18 vs. Nebraska (3/2/12)
- 3-pt FG:** 3 vs. Drake (12/20/11)
- 3-pt FGA:** 4, 4x, last vs. Michigan (1/6/13)
- FTM:** 8 at Northwestern (2/23/12)
- FTA:** 10, twice, last vs. Ohio State (1/3/13)
- Assists:** 14 vs. Texas (12/28/12)
- Steals:** 4 vs. North Carolina (11/18/12)
- Blocks:** 2, twice, last at Drake (12/16/12)
- Minutes:** 40, twice, last vs. Ohio State (1/3/13)

CAREER STATISTICS

YEAR	G/GS	FG-A	PCT	3-PT	PCT	FT-A	PCT	O-D-REB	AVG	PF-FO	AS	TO	BK	ST	PTS	AVG
Fresh.	31/31	109-261	.418	15-49	.306	59-79	.747	87-133-220	7.1	73-1	136	113	7	47	292	9.4
Soph.	26/26	87-186	.468	11-35	.314	40-61	.656	64-104-168	6.5	72-2	174	118	9	51	225	8.7
TOTALS	57/57	196-447	.438	26-84	.310	99-140	.707	151-237-388	6.8	145-3	310	231	16	98	517	9.1





University of Iowa Women's Basketball

Updated Iowa Player Bio

Theairra Taylor



23

Guard, 5-11, Junior
St. Paul, Minn.
Central HS

- Scored 11 points, had five rebounds and five assists vs. Nebraska.
- Recorded 10 rebounds in win over Purdue.
- Career-high 19 points in win over Ohio State. Scored Iowa's first six points in overtime.
- Career-high seven assists in win at Drake.
- 11 points and nine rebounds in win over Iowa State. Named CollegeSportsMadness.com's Big Ten Player of the Week for her performance.
- First career double-double with 10 points and 11 rebounds, also tied career high with five assists, in win over Illinois State.
- Season-high 14 points, along with six rebounds and two assists in 26 minutes of play vs. California as a sophomore.
- 10 points and tied a career-high with three steals in win over Michigan State as a sophomore.
- Suffered third ACL in a 20-month span during preseason workouts in 2010. Missed a total of 53 games with ACL injuries from 2009 through 2011.

2012-13 Game-by-Game

#23 Taylor, Theairra

Opponent	Date	gs	min	Total		3-Pointers		Free throws		Rebounds				pf	a	t/o	blk	stl	pts	avg	
				fg-fga	pct	3fg-fga	pct	ft-fa	pct	off	def	tot	avg								
NORTHERN ILLINOIS	11/9/12	*	19	2-4	.500	1-1	1.000	0-0	.000	0	1	1	1.0	1	1	1	1	0	5	5.0	
ILLINOIS STATE	11/11/12	*	21	3-6	.500	1-1	1.000	3-4	.750	0	11	11	6.0	1	5	2	0	2	10	7.5	
MIDDLE TENNESSEE	11/14/12	*	23	3-8	.375	1-4	.250	0-2	.000	1	3	4	5.3	2	2	4	2	1	7	7.3	
NORTH CAROLINA	11/18/12	*	25	1-6	.167	0-3	.000	1-3	.333	1	3	4	5.0	2	1	2	0	0	3	6.3	
ROBERT MORRIS	11/20/12	*	20	3-7	.429	1-4	.250	0-0	.000	0	4	4	4.8	0	0	3	0	1	7	6.4	
at FIU	11/23/12	*	19	2-5	.400	0-1	.000	2-2	1.000	0	3	3	4.5	2	2	2	0	0	6	6.3	
vs WVU	11/25/12	*	23	1-3	.333	0-1	.000	4-5	.800	1	6	7	4.9	4	0	2	1	0	6	6.3	
at Florida State	11/28/12	*	33	4-11	.364	0-2	.000	1-2	.500	2	4	6	5.0	2	1	4	2	0	9	6.6	
UNI	12/1/12	*	28	3-6	.500	0-2	.000	0-0	.000	1	4	5	5.0	0	2	0	0	0	6	6.6	
IOWA STATE	12/6/12	*	27	4-12	.333	1-3	.333	2-4	.500	4	5	9	5.4	0	3	5	1	2	11	7.0	
at Drake	12-16-12	*	30	2-5	.400	2-3	.667	0-0	.000	0	3	3	5.2	1	6	2	0	0	6	6.9	
MISSOURI STATE	12/19/12	*	19	3-9	.333	1-3	.333	2-2	1.000	3	3	6	5.3	3	7	3	1	1	9	7.1	
vs Texas	12/28/12	*	25	2-9	.222	0-1	.000	0-0	.000	0	1	1	4.9	2	2	1	0	3	4	6.8	
at San Diego	12/30/12	*	33	3-7	.429	1-2	.500	2-3	.667	0	4	4	4.9	3	4	2	1	0	9	7.0	
OHIO STATE	1/3/13	*	36	8-12	.667	1-1	1.000	2-2	1.000	1	3	4	4.8	2	0	2	0	2	19	7.8	
MICHIGAN	1/6/13	*	32	5-9	.556	1-3	.333	3-4	.750	0	3	3	4.7	3	2	3	1	2	14	8.2	
at Wisconsin	01/10/13	*	27	2-5	.400	0-1	.000	0-0	.000	3	5	8	4.9	2	5	4	0	3	4	7.9	
at Michigan State	01/17/13	*	23	3-7	.429	0-3	.000	0-0	.000	1	1	2	4.7	2	1	3	0	0	6	7.8	
PURDUE	01/20/13	*	20	3-8	.375	3-3	1.000	0-0	.000	2	8	10	5.0	1	1	0	1	1	9	7.9	
WISCONSIN	1/24/13	*	24	4-11	.364	0-1	.000	2-3	.667	0	1	1	4.8	0	2	1	2	2	10	8.0	
at Michigan	01/27/13	*	17	2-4	.500	1-3	.333	0-0	.000	1	1	2	4.7	2	1	1	0	0	5	7.9	
at Illinois	01/31/13	*	24	4-9	.444	1-2	.500	0-0	.000	0	0	0	4.5	0	1	2	1	2	9	7.9	
NORTHWESTERN	2/03/13	*	22	1-8	.125	0-2	.000	0-0	.000	0	1	1	4.3	1	2	1	1	2	2	7.7	
at Minnesota	02/07/13	*	20	3-8	.375	1-3	.333	2-4	.500	0	5	5	4.3	5	1	1	1	0	9	7.7	
NEBRASKA	02/11/13	*	34	3-10	.300	1-3	.333	4-4	1.000	1	4	5	4.4	0	5	1	0	0	11	7.8	
PENN STATE	2/14/13	*	26	4-10	.400	1-2	.500	2-2	1.000	0	3	3	4.3	3	0	4	0	1	11	8.0	
Totals			26	650	78-199	.392	19-58	.328	32-46	.696	22	90	112	4.3	44	57	56	16	25	207	8.0

Games played: 26
Minutes/game: 25.0
Points/game: 8.0
FG Pct: 39.2
3FG Pct: 32.8
FT Pct: 69.6

Rebounds/game: 4.3
Assists/game: 2.2
Turnovers/game: 2.2
Assist/turnover ratio: 1.0
Steals/game: 1.0
Blocks/game: 0.6

Personal Bests

- Points:** 19 vs. Ohio State (1/3/13)
Rebounds: 11 vs. Ill. State (11/11/12)
FGM: 8 vs. Ohio State (1/3/13)
FGA: 15 vs. W&M (11/24/09)
3-pt FG: 3 vs. Purdue (1/20/13)
3-pt FGA: 5 vs. Boston College (12/2/09)
FTM: 4, 6x, last vs. Nebraska (2/11/13)
FTA: 5 vs. West Virginia (11/25/12)
Assists: 7 vs. Missouri State (12/19/12)
Steals: 4 at Northwestern (2/23/12)
Blocks: 4, 3x, last vs. Michigan (12/6/09)
Minutes: 36, twice, last vs. Ohio State (1/3/13)

CAREER STATISTICS

YEAR	G/GS	FG-A	PCT	3-PT	PCT	FT-A	PCT	O-D-REB	AVG	PF-FO	AS	TO	BK	ST	PTS	AVG
Fresh.	10/8	29-86	.337	9-26	.346	14-18	.778	15-34-49	4.9	22-1	24	29	10	13	81	8.1
Soph.	31/0	37-97	.381	2-18	.111	19-29	.655	35-57-92	3.0	53-1	30	47	11	18	95	3.1
Junior	26/26	78-199	.392	19-58	.328	32-46	.696	22-90-112	4.3	44-1	57	56	16	25	207	8.0
TOTALS	67/34	144-382	.377	30-102	.294	65-93	.699	72-181-253	3.8	119-3	111	132	37	56	383	5.7





University of Iowa Women's Basketball

Updated Iowa Player Bio

Jaime Printy



24

Guard, 5-11, Senior
Marion, Iowa
Linn-Mar HS

- Ranks second in career 3-pointers made (246), fourth in career scoring (1,772) and seventh in career assists (826).
- One of 10 finalists for the Senior CLASS Award.
- Reached double digits in 20-of-26 games... has 20 or more points in five games.
- Netted 16 points on 6-of-14 shooting in the 76-75 loss to Nebraska... moved into fourth place in career scoring.
- Scored 21 points, including five 3-pointers, in loss at Minnesota.
- Became sixth player in Iowa history to score 1,700 career points in win at Michigan.
- Big Ten Player of the Week (Jan. 30).
- Scored 29 points, including 14-straight in the final 5:25, to give Iowa the win over Wisconsin.
- Career-high 33 points with a school record seven 3-pointers in win at San Diego.
- 21 points in win over Texas.
- 19 points (17-of-17 FTs) and seven rebounds in win over West Virginia.
- 12 points, five rebounds and four assists vs. North Carolina, returning to starting lineup for first time since ACL injury as a junior.
- 26 points, including game-tying 3-pointer with 1.6 seconds left in regulation, along with five rebounds and six assists, in win over Middle Tennessee. Also tied school record for FT percentage (11-for-11).
- 11 points and three assists in season-opening win over NIU, recording first action since tearing ACL in left knee in final 30 seconds of overtime at Wisconsin (Feb. 2, 2012).

2012-13 Game-by-Game

#24 Printy, Jaime

Opponent	Date	gs	min	Total		3-Pointers		Free throws		Rebounds			pf	a	t/o	blk	stl	pts	avg		
				fg-fga	pct	3fg-fga	pct	ft-fa	pct	off	def	tot								avg	
NORTHERN ILLINOIS	11/9/12		16	3-4	.750	1-1	1.000	4-4	1.000	0	1	1	1.0	1	3	1	0	1	11	11.0	
ILLINOIS STATE	11/11/12		15	0-4	.000	0-3	.000	1-2	.500	0	2	2	1.5	0	1	2	0	0	1	6.0	
MIDDLE TENNESSEE	11/14/12		38	6-13	.462	3-7	.429	11-11	1.000	1	4	5	2.7	1	6	5	0	1	26	12.7	
NORTH CAROLINA	11/18/12	*	39	3-15	.200	3-12	.250	3-4	.750	0	5	5	3.3	4	4	8	0	1	12	12.5	
ROBERT MORRIS	11/20/12	*	31	2-4	.500	2-4	.500	2-2	1.000	1	5	6	3.8	0	5	2	0	1	8	11.6	
at FIU	11/23/12	*	34	5-12	.417	4-9	.444	1-1	1.000	2	3	5	4.0	2	4	3	0	0	15	12.2	
vs WVU	11/25/12	*	33	1-3	.333	0-2	.000	17-17	1.000	0	7	7	4.4	1	3	4	1	0	19	13.1	
at Florida State	11/28/12	*	33	5-7	.714	2-4	.500	1-2	.500	0	1	1	4.0	2	1	6	0	0	13	13.1	
UNI	12/1/12	*	30	2-7	.286	1-4	.250	4-4	1.000	0	3	3	3.9	1	5	3	0	0	9	12.7	
IOWA STATE	12/6/12	*	34	2-7	.286	0-3	.000	6-6	1.000	1	5	6	4.1	1	2	3	0	2	10	12.4	
at Drake	12-16-12	*	31	3-9	.333	0-3	.000	3-3	1.000	2	2	4	4.1	1	7	1	0	0	9	12.1	
MISSOURI STATE	12/19/12	*	21	4-11	.364	3-8	.375	2-3	.667	1	1	2	3.9	0	6	2	0	0	13	12.2	
vs Texas	12/28/12	*	30	7-14	.500	2-7	.286	5-7	.714	0	3	3	3.8	1	1	1	0	0	21	12.8	
at San Diego	12/30/12	*	30	10-20	.500	7-12	.583	6-6	1.000	0	2	2	3.7	1	4	3	0	2	33	14.3	
OHIO STATE	1/3/13	*	39	5-8	.625	0-1	.000	4-4	1.000	0	3	3	3.7	1	3	4	0	0	14	14.3	
MICHIGAN	1/6/13	*	32	2-14	.143	1-9	.111	1-1	1.000	2	3	5	3.8	0	3	2	0	1	6	13.8	
at Wisconsin	01/10/13	*	35	3-10	.300	2-8	.250	2-2	1.000	0	6	6	3.9	0	1	1	0	1	10	13.5	
at Michigan State	01/17/13	*	34	3-16	.188	1-8	.125	4-4	1.000	1	3	4	3.9	0	3	0	0	1	11	13.4	
PURDUE	01/20/13	*	38	4-11	.364	3-5	.600	4-4	1.000	2	7	9	4.2	1	1	0	0	0	15	13.5	
WISCONSIN	1/24/13	*	35	8-10	.800	3-3	1.000	10-11	.909	1	7	8	4.4	1	4	1	0	0	29	14.3	
at Michigan	01/27/13	*	33	4-12	.333	2-9	.222	4-4	1.000	2	3	5	4.4	2	2	4	1	1	14	14.2	
at Illinois	01/31/13	*	34	5-14	.357	2-8	.250	1-2	.500	0	4	4	4.4	3	3	7	0	1	13	14.2	
NORTHWESTERN	2/03/13	*	33	2-6	.333	0-2	.000	8-8	1.000	0	4	4	4.3	0	3	2	0	3	12	14.1	
at Minnesota	02/07/13	*	34	6-22	.273	5-9	.556	4-5	.800	1	4	5	4.4	3	0	2	0	3	21	14.4	
NEBRASKA	02/11/13	*	38	6-14	.429	2-7	.286	2-2	1.000	1	3	4	4.4	1	4	2	1	1	16	14.4	
PENN STATE	2/14/13	*	29	0-5	.000	0-3	.000	2-2	1.000	0	5	5	4.4	3	4	6	0	2	2	14.0	
Totals			23	829	101-272	.371	49-151	.325	112-121	.926	18	96	114	4.4	31	83	75	3	22	363	14.0

Games played: 26
Minutes/game: 31.9
Points/game: 14.0
FG Pct: 37.1
3FG Pct: 32.5
FT Pct: 92.6

Rebounds/game: 4.4
Assists/game: 3.2
Turnovers/game: 2.9
Assist/turnover ratio: 1.1
Steals/game: 0.8
Blocks/game: 0.1

Personal Bests

- Points:** 33 at San Diego (12/30/12)
- Rebounds:** 9, twice, last vs. Purdue (1/20/13)
- FGM:** 11 at Indiana (2/11/10)
- FGA:** 25 vs. Michigan (1/2/11)
- 3-pt FG:** 7 at San Diego (12/30/12)
- 3-pt FGA:** 15 vs. Michigan (1/2/11)
- FTM:** 17 vs. West Virginia (11/25/12)
- FTA:** 17 vs. West Virginia (11/25/12)
- Assists:** 9 vs. Iowa State (12/9/10)
- Steals:** 5 at Bradley (12/17/11)
- Blocks:** 1, 15x, last vs. Nebraska (2/11/13)
- Minutes:** 40 vs. Illinois (1/5/12)

CAREER STATISTICS

YEAR	G/GS	FG-A	PCT	3-PT	PCT	FT-A	PCT	O-D-REB	AVG	PF-FO	AS	TO	BK	ST	PTS	AVG
Fresh.	34/34	168-406	.414	82-212	.387	83-94	.883	35-101-136	4.0	77-1	99	82	4	30	501	14.7
Soph.	31/31	168-391	.430	70-183	.383	114-132	.864	21-109-130	4.2	60-0	109	91	7	34	520	16.8
Junior	23/23	116-329	.353	45-155	.290	111-125	.888	32-70-102	4.4	45-1	96	70	3	46	388	16.9
Senior	26/23	101-272	.371	49-151	.325	112-121	.926	18-96-114	4.4	31-0	83	75	3	22	363	14.0
TOTALS	114/111	553-1398	.396	246-701	.351	420-472	.890	106-376-482	4.2	213-2	387	318	17	132	1772	15.5





University of Iowa Women's Basketball

Updated Iowa Player Bio

Kali Peschel



25

Guard, 6-1, Freshman
Sauk Centre, Minn.
Sauk Centre HS

- Five points in win at Drake.
- Recorded five rebounds in collegiate debut vs. NIU.
- Miss Minnesota Basketball finalist.
- Two-time all-state selection.
- Started for her high school team as an eighth grader.
- Only played 11 games as a senior after suffering ACL injury between her junior and senior seasons.

Personal Bests

Points: 5 at Drake (12/16/12)
Rebounds: 5, twice, last vs. Missouri State (12/19/12)
FGM: 2 at Drake (12/16/12)
FGA: 6 vs. Northern Illinois (11/9/12)
3-pt FG: 1 at Drake (12/16/12)
3-pt FGA: 2, 3x, last vs. Missouri State (12/19/12)
FTM: 2, twice, last at Minnesota (2/7/13)
FTA: 4 vs. Missouri State (12/19/12)
Assists: 2, twice, last vs. Texas (12/28/12)
Steals: 1, 5x, last vs. Northwestern (2/3/13)
Blocks: 1, 4x, last vs. Northwestern (2/3/13)
Minutes: 20 vs. Northwestern (2/3/13)

2012-13 Game-by-Game

#25 Peschel, Kali

Opponent	Date	gs	min	Total		3-Pointers		Free throws		Rebounds			pf	a	t/o	blk	stl	pts	avg	
				fg	fga	pct	3fg	3fga	pct	ft	fta	pct								off
NORTHERN ILLINOIS	11/9/12	18	0-6	.000	0-2	.000	1-2	.500	3	2	5	5.0	3	1	0	0	0	1	1.0	
ILLINOIS STATE	11/11/12	16	0-2	.000	0-1	.000	0-0	.000	0	3	3	4.0	1	0	2	0	0	0	0.5	
MIDDLE TENNESSEE	11/14/12	2	0-0	.000	0-0	.000	0-0	.000	0	1	1	3.0	0	0	0	0	0	0	0.3	
ROBERT MORRIS	11/20/12	5	0-0	.000	0-0	.000	0-0	.000	0	0	0	2.3	2	0	0	0	1	0	0.3	
at FIU	11/23/12	2	0-1	.000	0-0	.000	0-0	.000	2	0	2	2.2	0	0	0	0	0	0	0.2	
at Florida State	11/28/12	3	0-1	.000	0-0	.000	0-0	.000	2	0	2	2.2	0	0	0	0	0	0	0.2	
UNI	12/1/12	18	1-4	.250	0-2	.000	1-2	.500	1	1	2	2.1	3	0	2	1	1	3	0.6	
IOWA STATE	12/6/12	6	0-0	.000	0-0	.000	0-0	.000	0	0	0	1.9	2	0	0	0	0	0	0.5	
at Drake	12/16/12	16	2-3	.667	1-1	1.000	0-0	.000	0	0	0	1.7	4	2	1	1	1	5	1.0	
MISSOURI STATE	12/19/12	19	0-4	.000	0-2	.000	2-4	.500	3	2	5	2.0	4	0	0	0	1	2	1.1	
vs Texas	12/28/12	9	0-0	.000	0-0	.000	0-0	.000	0	0	0	1.8	4	2	0	0	0	0	0.1	
at San Diego	12/30/12	12	0-0	.000	0-0	.000	0-0	.000	1	0	1	1.8	0	0	0	0	0	0	0.9	
OHIO STATE	1/3/13	1	0-1	.000	0-0	.000	0-0	.000	0	0	0	1.6	2	0	1	0	0	0	0.8	
MICHIGAN	1/6/13	3	0-0	.000	0-0	.000	1-2	.500	1	0	1	1.6	0	0	0	0	0	1	0.9	
at Wisconsin	01/10/13	5	0-0	.000	0-0	.000	0-0	.000	0	0	0	1.5	0	0	0	0	0	0	0.8	
at Michigan State	01/17/13	4	0-0	.000	0-0	.000	0-0	.000	0	0	0	1.4	0	0	0	0	0	0	0.8	
PURDUE	01/20/13	7	0-0	.000	0-0	.000	0-0	.000	1	0	1	1.4	1	1	0	1	0	0	0.7	
WISCONSIN	1/24/13	5	0-1	.000	0-1	.000	0-0	.000	0	1	1	1.3	1	0	1	0	0	0	0.7	
at Michigan	01/27/13	9	0-1	.000	0-1	.000	0-0	.000	0	0	0	1.3	0	0	0	0	0	0	0.6	
at Illinois	01/31/13	3	0-0	.000	0-0	.000	0-0	.000	0	0	0	1.2	0	0	0	0	0	0	0.6	
NORTHWESTERN	2/03/13	20	1-1	1.000	0-0	.000	0-0	.000	3	1	4	1.3	0	1	1	1	1	2	0.7	
at Minnesota	02/07/13	8	0-0	.000	0-0	.000	2-2	1.000	0	0	0	1.3	1	1	1	0	0	2	0.7	
Totals		0	191	4-25	.160	1-10	.100	7-12	.583	17	11	28	1.3	28	8	9	4	5	16	0.7

Games played: 22
 Minutes/game: 8.7
 Points/game: 0.7
 FG Pct: 16.0
 3FG Pct: 10.0
 FT Pct: 58.3

Rebounds/game: 1.3
 Assists/game: 0.4
 Turnovers/game: 0.4
 Assist/turnover ratio: 0.9
 Steals/game: 0.2
 Blocks/game: 0.2

CAREER STATISTICS

YEAR	G/GS	FG-A	PCT	3-PT	PCT	FT-A	PCT	O-D-REB	AVG	PF-FO	AS	TO	BK	ST	PTS	AVG
Fresh.	22/0	4-25	.160	1-10	.100	7-12	.583	17-11-28	1.3	28-0	8	9	4	5	16	0.7





University of Iowa Women's Basketball

Updated Iowa Player Bio

Kathryn Reynolds



33

2012-13 Game-by-Game

Guard, 5-7, Sophomore
Cincinnati, Ohio
Mount Notre Dame HS

- Will miss entire 2012-13 season after suffering an ACL injury in April during offseason workouts.
- Five assists in win over Western Illinois as a freshman.
- Played 12 minutes in first career game, a win over Harvard.

Personal Bests

Points: 4 vs. Drake (12/20/11)
Rebounds: 2 vs. Texas A&M (11/26/11)
FGM: 2 vs. Drake (12/20/11)
FGA: 3, 2x, last vs. Drake (12/20/11)
3-pt FG: ---
3-pt FGA: 1, 7x, last vs. Michigan State (2/12/12)
FTM: 2 vs. Western Illinois (12/9/11)
FTA: 2, 3x, last vs. W. Illinois (12/9/11)
Assists: 5 vs. W. Illinois (12/9/11)
Steals: ---
Blocks: ---
Minutes: 20 vs. W. Illinois (12/9/11)

CAREER STATISTICS

YEAR	G/GS	FG-A	PCT	3-PT	PCT	FT-A	PCT	O-D-REB	AVG	PF-FO	AS	TO	BK	ST	PTS	AVG
Fresh.	21/0	5-16	.313	0-7	.000	3-4	.750	1-8-9	0.4	6-0	15	11	0	0	13	0.7
Soph.	-	-	-	-	-	-	-	-	-	-	-	-	-	-	-	-
TOTALS	21/0	5-16	.313	0-7	.000	3-4	.750	1-8-9	0.4	6-0	15	11	0	0	13	0.7





University of Iowa Women's Basketball

Updated Iowa Player Bio

Nicole Smith



45

Center, 6-4, Freshman
Rockton, Ill.
Hononegah HS

- Tallied first career points against Missouri State, finishing with four points.
- Recorded one rebound in collegiate debut vs. NIU.
- Three-time all-state selection.
- Three-time all-conference pick.
- Recorded triple-double in high school with 20 points (10-for-10) 10 rebounds and 10 blocks.
- Played in 26 games as a senior before suffering ACL injury

Personal Bests

Points: 4 vs. Missouri State (12/19/12)
Rebounds: 1 vs. NIU (11/9/12)
FGM: 1, twice, last vs. Texas (12/28/12)
FGA: 2 vs. NIU (11/9/12)
3-pt FG: ---
3-pt FGA: ---
FTM: 2 vs. Missouri State (12/19/12)
FTA: 2 vs. Missouri State (12/19/12)
Assists: ---
Steals: ---
Blocks: ---
Minutes: 4 vs. Missouri State (12/19/12))

2012-13 Game-by-Game

#45 Smith, Nicole

Opponent	Date	gs	min	Total		3-Pointers		Free throws		Rebounds			pf	a	t/o	blk	stl	pts	avg
				fg-fga	pct	3fg-fga	pct	ft-fa	pct	off	def	tot							
NORTHERN ILLINOIS	11/9/12	3		0-2	.000	0-0	.000	0-0	.000	0	1	1	1.0	0	0	0	0	0	0.0
ILLINOIS STATE	11/11/12	2		0-0	.000	0-0	.000	0-0	.000	0	0	0	0.5	0	0	0	0	0	0.0
UNI	12/1/12	1		0-0	.000	0-0	.000	0-0	.000	0	0	0	0.3	0	0	0	0	0	0.0
MISSOURI STATE	12/19/12	4		1-1	1.000	0-0	.000	2-2	1.000	0	0	0	0.3	1	0	0	0	0	4 1.0
vs Texas	12/28/12	1		1-1	1.000	0-0	.000	0-0	.000	0	0	0	0.2	0	0	1	0	0	2 1.2
at Wisconsin	01/10/13	1		0-0	.000	0-0	.000	0-0	.000	0	0	0	0.2	1	0	0	0	0	0 1.0
Totals		0	12	2-4	.500	0-0	.000	2-2	1.000	0	1	1	0.2	2	0	1	0	0	6 1.0

Games played: 6
 Minutes/game: 2.0
 Points/game: 1.0
 FG Pct: 50.0
 FT Pct: 100.0

Rebounds/game: 0.2
 Turnovers/game: 0.2

CAREER STATISTICS

YEAR	G/GS	FG-A	PCT	3-PT	PCT	FT-A	PCT	O-D-REB	AVG	PF-FO	AS	TO	BK	ST	PTS	AVG
Fresh.	6/0	2-4	.500	0-0	.000	2-2	1.000	0-1-1	0.2	2-0	0	1	0	0	6	1.0





University of Iowa Women's Basketball

Updated Iowa Player Bio

Bethany Doolittle



51

Center, 6-4, Sophomore
Oakdale, Minn
Hill-Murray HS

- 13 points, six rebounds and four assists against Penn State.
- Career-high 19 points, including eight-straight points from 5:20-1:45 mark in the second half, to give Iowa the win at Michigan.
- 10 points and seven rebounds in win over Wisconsin.
- 10 points at Michigan State.
- Eight points, five rebounds and six blocks in win over Ohio State.
- 10 rebounds in win at San Diego.
- 10 points in win over Texas.
- First career double-double with 12 points and 12 rebounds in win over Missouri State. 12 rebounds were a career-high. Had double-double at halftime (10 pts, 10 reb).
- 10 points and nine rebounds at Florida State.
- Career-high 17 points, along with six rebounds, in win over West Virginia.
- Eight points, tied a career-high with nine rebounds and blocked five shots in win over Middle Tennessee.
- Career-high six blocks in season-opening win vs. NIU.

2012-13 Game-by-Game

#51 Doolittle, Bethany

Opponent	Date	gs	min	Total		3-Pointers		Free throws		Rebounds				pf	a	t/o	blk	stl	pts	avg	
				fg-fga	pct	3fg-fga	pct	ft-fa	pct	off	def	tot	avg								
NORTHERN ILLINOIS	11/9/12	*	21	1-8	.125	0-0	.000	0-0	.000	0	0	0	0.0	2	0	1	6	0	2	2.0	
ILLINOIS STATE	11/11/12	*	25	4-10	.400	0-1	.000	0-0	.000	0	5	5	2.5	1	0	2	2	1	8	5.0	
MIDDLE TENNESSEE	11/14/12	*	30	4-7	.571	0-0	.000	0-0	.000	4	5	9	4.7	3	0	4	5	0	8	6.0	
NORTH CAROLINA	11/18/12	*	32	1-7	.143	0-0	.000	0-0	.000	2	5	7	5.3	3	1	2	2	2	5.0		
ROBERT MORRIS	11/20/12	*	20	2-9	.222	0-0	.000	0-0	.000	1	4	5	5.2	2	1	1	1	0	4	4.8	
at FIU	11/23/12	*	22	3-5	.600	0-0	.000	0-0	.000	0	3	3	4.8	3	0	2	0	0	6	5.0	
vs WVU	11/25/12	*	31	7-12	.583	0-0	.000	3-3	1.000	1	5	6	5.0	4	0	2	1	0	17	6.7	
at Florida State	11/28/12	*	34	5-9	.556	0-0	.000	0-0	.000	4	5	9	5.5	3	1	2	1	1	10	7.1	
UNI	12/1/12	*	26	4-11	.364	0-0	.000	0-0	.000	1	6	7	5.7	2	0	1	0	1	8	7.2	
IOWA STATE	12/6/12	*	36	1-8	.125	0-1	.000	0-0	.000	0	4	4	5.5	3	0	1	0	1	2	6.7	
at Drake	12-16-12	*	22	4-6	.667	0-0	.000	0-0	.000	1	3	4	5.4	5	0	0	2	1	8	6.8	
MISSOURI STATE	12/19/12	*	25	6-8	.750	0-0	.000	0-0	.000	3	9	12	5.9	3	1	0	2	1	12	7.3	
vs Texas	12/28/12	*	33	5-8	.625	0-0	.000	0-0	.000	1	4	5	5.8	3	1	1	0	2	10	7.5	
at San Diego	12/30/12	*	30	3-6	.500	0-0	.000	0-0	.000	1	9	10	6.1	3	0	2	4	1	6	7.4	
OHIO STATE	1/3/13	*	42	4-6	.667	0-0	.000	0-0	.000	2	3	5	6.1	1	2	2	6	3	8	7.4	
MICHIGAN	1/6/13	*	25	0-5	.000	0-0	.000	0-0	.000	0	1	1	5.8	4	1	1	0	0	0	6.9	
at Wisconsin	01/10/13	*	33	4-9	.444	0-0	.000	0-0	.000	1	3	4	5.6	2	0	2	0	0	8	7.0	
at Michigan State	01/17/13	*	36	5-8	.625	0-0	.000	0-0	.000	1	2	3	5.5	2	1	3	2	2	10	7.2	
PURDUE	01/20/13	*	32	3-12	.250	0-0	.000	2-4	.500	3	6	9	5.7	1	0	3	3	3	8	7.2	
WISCONSIN	1/24/13	*	32	4-7	.571	0-0	.000	2-2	1.000	2	5	7	5.8	3	0	2	3	0	10	7.4	
at Michigan	01/27/13	*	37	9-15	.600	0-0	.000	1-1	1.000	3	1	4	5.7	4	0	2	2	1	19	7.9	
at Illinois	01/31/13	*	37	2-7	.286	0-0	.000	0-0	.000	0	8	8	5.8	1	0	2	2	0	4	7.7	
NORTHWESTERN	2/03/13	*	31	2-12	.167	0-0	.000	0-0	.000	2	7	9	5.9	2	1	1	4	0	4	7.6	
at Minnesota	02/07/13	*	28	3-7	.429	0-0	.000	2-2	1.000	0	3	3	5.8	2	0	2	1	3	8	7.6	
NEBRASKA	02/11/13	*	16	0-3	.000	0-0	.000	0-0	.000	2	3	5	5.8	3	0	0	1	0	0	7.3	
PENN STATE	2/14/13	*	37	5-11	.455	0-0	.000	3-4	.750	3	3	6	5.8	2	4	0	0	1	13	7.5	
Totals			26	773	91-216	.421	0-2	.000	13-16	.813	38	112	150	5.8	67	14	39	50	24	195	7.5

Games played: 26
Minutes/game: 29.7
Points/game: 7.5
FG Pct: 42.1
3FG Pct: 0.0
FT Pct: 81.3

Rebounds/game: 5.8
Assists/game: 0.5
Turnovers/game: 1.5
Assist/turnover ratio: 0.4
Steals/game: 0.9
Blocks/game: 1.9

Personal Bests

- Points:** 19 at Michigan (1/27/13)
- Rebounds:** 12 vs. Missouri State (12/19/12)
- FGM:** 9 at Michigan (1/27/13)
- FGA:** 15 at Michigan (1/27/13)
- 3-pt FG:** ---
- 3-pt FGA:** 1, 3x, last vs. Iowa State (12/6/12)
- FTM:** 4 vs. Michigan State (2/12/12)
- FTA:** 5 vs. Michigan State (2/12/12)
- Assists:** 4 vs. Penn State (2/14/13)
- Steals:** 3, 3x, last at Minnesota (2/7/13)
- Blocks:** 6, twice, last vs. Ohio State (1/3/13)
- Minutes:** 42 vs. Ohio State (1/3/13)

CAREER STATISTICS

YEAR	G/GS	FG-A	PCT	3-PT	PCT	FT-A	PCT	O-D-REB	AVG	PF-FO	AS	TO	BK	ST	PTS	AVG
Fresh.	31/0	46-99	.465	0-1	.000	24-30	.800	13-44-57	1.8	51-0	6	19	19	9	116	3.7
Soph.	26/26	91-216	.421	0-2	.000	13-16	.813	38-112-150	5.8	67-1	14	39	50	24	195	7.5
TOTALS	57/26	137-315	.435	0-3	.000	37-46	.804	51-156-207	3.6	118-1	20	58	69	33	311	5.5





University of Iowa Women's Basketball

Updated Iowa Player Bio

Kayla Timmerman



54

Forward, 6-3, Freshman
Wayzata, Minn.
Wayzata HS

- Six points and eight rebounds (five of- fensive rebounds) in 13 minutes in win over Missouri State.
- Recorded one point and one rebound in collegiate debut vs. NIU.
- Miss Minnesota Basketball candidate.
- Athena Award nominee.
- Two-time all-state selection.
- Standout in track and field, winning conference championship in shot put and discus and participated in state meet in both events.

Personal Bests

Points: 6, twice, last at Illinois (1/31/13)
Rebounds: 8 vs. Missouri State (12/19/12)
FGM: 3 at Illinois (1/31/13)
FGA: 6 vs. Wisconsin (1/24/13)
3-pt FG: 1 vs. Ill. State (11/11/12)
3-pt FGA: 1 vs. Ill. State (11/11/12)
FTM: 2, twice, last vs. N'western (2/3/13)
FTA: 4 vs. Missouri State (12/19/12)
Assists: 1, 4x, last at Minnesota (2/7/13)
Steals: 1, twice, last vs. N'western (2/3/13)
Blocks: 2 vs. NIU (11/9/12)
Minutes: 16 vs. Purdue (1/20/13)

2012-13 Game-by-Game

#54 Timmerman, Kayla

Opponent	Date	gs	min	Total		3-Pointers		Free throws		Rebounds				pf	a	t/o	blk	stl	pts	avg
				fg-fga	pct	3fg-fga	pct	ft-fa	pct	off	def	tot	avg							
NORTHERN ILLINOIS	11/9/12	10	0-2	.000	0-0	.000	1-2	.500	0	1	1	1.0	0	0	0	2	0	1	1.0	
ILLINOIS STATE	11/11/12	5	2-2	1.000	1-1	1.000	0-2	.000	0	0	0	0.5	0	1	0	1	0	5	3.0	
MIDDLE TENNESSEE	11/14/12	3	0-0	.000	0-0	.000	0-0	.000	0	0	0	0.3	0	0	0	0	0	0	2.0	
NORTH CAROLINA	11/18/12	1	0-0	.000	0-0	.000	0-0	.000	0	0	0	0.3	0	0	0	0	0	0	1.5	
ROBERT MORRIS	11/20/12	7	1-4	.250	0-0	.000	0-0	.000	1	2	3	0.8	1	0	2	0	0	2	1.6	
at FIU	11/23/12	2	0-0	.000	0-0	.000	0-0	.000	0	0	0	0.7	1	0	1	0	0	0	1.3	
vs WVU	11/25/12	4	0-0	.000	0-0	.000	0-0	.000	0	1	1	0.7	1	0	1	0	0	0	1.1	
UNI	12/1/12	1	1-1	1.000	0-0	.000	0-0	.000	0	1	1	0.8	1	0	0	0	0	2	1.3	
MISSOURI STATE	12/19/12	13	2-4	.500	0-1	.000	2-4	.500	5	3	8	1.6	1	0	0	1	0	6	1.8	
vs Texas	12/28/12	2	1-1	1.000	0-0	.000	0-0	.000	0	0	0	1.4	1	0	0	0	0	2	1.8	
MICHIGAN	1/6/13	1	0-0	.000	0-0	.000	0-0	.000	0	0	0	1.3	0	0	0	0	0	0	1.6	
at Wisconsin	01/10/13	2	0-0	.000	0-0	.000	0-0	.000	0	0	0	1.2	1	0	0	0	0	0	1.5	
at Michigan State	01/17/13	0	0-0	.000	0-0	.000	0-0	.000	0	0	0	1.1	1	0	1	0	0	0	1.4	
PURDUE	01/20/13	16	2-3	.667	0-0	.000	0-0	.000	0	2	2	1.1	0	0	0	1	1	4	1.6	
WISCONSIN	1/24/13	15	2-6	.333	0-0	.000	0-0	.000	0	3	3	1.3	2	1	1	1	0	4	1.7	
at Michigan	01/27/13	2	0-0	.000	0-0	.000	0-0	.000	0	0	0	1.2	0	0	0	0	0	0	1.6	
at Illinois	01/31/13	11	3-3	1.000	0-0	.000	0-0	.000	1	3	4	1.4	1	0	2	0	0	6	1.9	
NORTHWESTERN	2/03/13	11	0-4	.000	0-0	.000	2-2	1.000	0	1	1	1.3	0	1	0	1	1	2	1.9	
at Minnesota	02/07/13	2	0-1	.000	0-0	.000	0-0	.000	0	0	0	1.3	1	1	1	0	0	0	1.8	
Totals		0	108	14-31	.452	1-2	.500	5-10	.500	7	17	24	1.3	12	4	9	7	2	34	1.8

Games played: 19
Minutes/game: 4.7
Points/game: 1.8
FG Pct: 45.2
3FG Pct: 50.0
FT Pct: 50.0

Rebounds/game: 1.3
Assists/game: 0.2
Turnovers/game: 0.5
Assist/turnover ratio: 0.4
Steals/game: 0.1
Blocks/game: 0.4

CAREER STATISTICS

YEAR	G/GS	FG-A	PCT	3-PT	PCT	FT-A	PCT	O-D-REB	AVG	PF-FO	AS	TO	BK	ST	PTS	AVG
Fresh.	19/0	14-31	.452	1-2	.500	5-10	.500	7-17-24	1.3	12-0	4	9	7	2	34	1.8





University of Iowa Women's Basketball

Game-by-Game Results

Overall: 16-10

Big Ten: 5-7

Home: 10-5

Away: 4-5

Neutral: 2-0

Date	Opponent	Result	Attend.	Top Scorer	Top Rebounder
Nov. 9	Northern Illinois [^]	W, 63-40	4,739	Johnson, Printy (11)	Till (6)
Nov. 11	Illinois State [^]	W, 74-64	2,930	Johnson (24)	Taylor (11)
Nov. 14	Middle Tennessee [^]	W, 69-63 (OT)	1,691	Printy (26)	Doolittle (9)
Nov. 18	North Carolina [^]	L, 64-77	3,073	Johnson (20)	Johnson (11)
Nov. 20	Robert Morris	W, 58-44	3,032	Johnson (19)	Johnson (11)
Nov. 23	at Florida Int.#	L, 65-66	430	Printy (15)	Johnson, Till (6)
Nov. 25	vs. #12 West Virginia#	W, 79-70	387	Johnson, Printy (19)	Logic, Printy, Taylor (7)
Nov. 28	at Florida State [~]	L, 69-83	2,389	Johnson (20)	Doolittle (9)
Dec. 1	Northern Iowa	W, 68-46	6,368	Johnson (19)	Johnson (12)
Dec. 6	#22 Iowa State*	W, 50-42	4,483	Dixon, Taylor (11)	Logic, Taylor (9)
Dec. 16	at Drake	W, 82-65	2,716	Johnson (26)	Johnson (8)
Dec. 19	Missouri State	W, 97-43	4,588	Thomas (15)	Doolittle (12)
Dec. 28	vs. #20 Texas%	W, 86-63	776	Dixon (23)	Logic (15)
Dec. 20	at San Diego%	W, 83-73	543	Printy (33)	Doolittle (10)
Jan. 3	#24 Ohio State	W, 77-71 (OT)	3,850	Taylor (19)	Johnson (12)
Jan. 6	Michigan	L, 64-68	4,644	Dixon (17)	Logic (9)
Jan. 10	at Wisconsin	W, 65-56	3,495	Johnson (23)	Johnson (11)
Jan. 17	at Michigan State	L, 54-65	5,343	Johnson (13)	Johnson (12)
Jan. 20	#11 Purdue	W, 62-46	8,576	Dixon, Printy (15)	Taylor (10)
Jan. 24	Wisconsin	W, 71-60	3,894	Printy (29)	Logic (9)
Jan. 27	at #23 Michigan	W, 63-57	2,607	Doolittle (19)	Johnson (7)
Jan. 31	at Illinois	L, 62-74	1,808	Logic, Printy (13)	Logic (10)
Feb. 3	Northwestern	L, 65-67	4,697	Dixon (21)	Logic (12)
Feb. 7	at Minnesota	L, 60-72	3,528	Printy (21)	Johnson (10)
Feb. 11	Nebraska	L, 75-76	3,937	Johnson (19)	Johnson (10)
Feb. 14	#8 Penn State	L, 69-81	5,783	Johnson (17)	Johnson (11)
Feb. 17	at #18 Purdue				
Feb. 24	at Nebraska				
Feb. 28	Indiana				
March 3	at Northwestern				

[^] - Preseason WNIT

- FIU Thanksgiving Classic, Miami

[~] - ACC/Big Ten Challenge

* - Iowa Corn Cy-Hawk Series

% - San Diego Surf 'N Slam Classic, San Diego

Attendance Summary	Games	Totals	Average
Home	15	66,276	4,419
Away	9	22,142	2,461
Neutral	2	1,163	582
Totals	26	90,298	3,473





University of Iowa Women's Basketball

Game-by-Game Statistics

Team	Score	FG-A	PCT	3-PT. FG	PCT	FT-A	PCT	REB	PF	AS	TO	BLK	ST
Northen Illinois	40	14-48	29.2%	1-9	11.1%	11-19	57.9%	44	19	3	22	2	6
at Iowa	63	23-57	40.4%	6-10	60.0%	11-17	64.7%	34	18	10	10	10	6
Illinois State	64	25-76	32.9%	2-14	14.3%	12-21	57.1%	44	27	6	17	4	15
at Iowa	74	19-54	35.2%	4-12	33.3%	32-41	78.0%	50	18	18	23	10	9
Middle Tennessee	63	22-70	31.4%	7-30	23.3%	12-18	66.7%	46	22	9	20	3	12
at Iowa	69	24-55	43.6%	6-20	30.0%	15-21	71.4%	40	17	22	20	10	6
North Carolina	77	27-66	40.9%	8-22	36.4%	15-27	55.6%	45	18	14	20	4	15
at Iowa	64	25-62	40.3%	5-25	20.0%	9-14	64.3%	43	20	14	25	4	9
Robert Morris	44	15-53	28.3%	6-21	28.6%	8-14	57.1%	34	11	12	16	2	4
at Iowa	58	22-57	38.6%	7-19	36.8%	7-9	77.8%	44	13	18	18	1	6
at Florida International	66	24-65	36.9%	4-15	26.7%	14-17	82.4%	37	16	8	10	3	6
Iowa	65	24-57	42.1%	7-20	35.0%	10-13	76.9%	39	16	16	16	5	1
vs. West Virginia	70	21-72	29.2%	6-28	21.4%	22-29	75.9%	41	35	12	15	1	10
Iowa	79	18-39	46.2%	1-5	20.0%	42-50	84.0%	39	23	12	23	5	6
at Florida State	83	31-63	49.2%	5-10	50.0%	16-22	72.7%	29	10	18	13	4	12
Iowa	69	30-61	49.2%	2-11	18.2%	7-9	77.8%	35	16	13	24	6	6
Northern Iowa	46	12-53	22.6%	8-29	27.6%	14-16	87.5%	31	17	9	11	0	2
at Iowa	68	26-54	48.1%	3-11	27.3%	13-18	72.2%	43	16	17	9	4	5
Iowa State	42	15-57	26.3%	7-34	20.6%	5-5	100.0%	43	20	7	21	1	6
at Iowa	50	15-51	29.4%	4-16	25.0%	16-25	64.0%	41	13	12	15	3	7
at Drake	65	20-51	39.2%	7-18	38.9%	18-24	75.0%	32	12	15	13	1	5
Iowa	82	31-59	52.5%	7-15	46.7%	13-16	81.3%	31	21	23	8	8	5
Missouri State	43	12-58	20.7%	1-18	5.6%	18-31	58.1%	38	28	3	22	1	8
at Iowa	97	36-75	48.0%	10-34	29.4%	15-24	62.5%	60	25	25	16	5	9
vs. Texas	63	21-54	38.9%	6-14	42.9%	15-28	53.6%	36	15	14	16	4	3
Iowa	86	35-67	52.2%	7-21	33.3%	9-12	75.0%	38	20	23	10	2	11
at San Diego	73	30-64	46.9%	3-6	50.0%	10-17	58.8%	34	13	15	16	1	9
Iowa	83	29-53	54.7%	11-18	61.1%	14-17	82.4%	31	15	19	20	8	7
Ohio State	71	27-68	39.7%	6-21	28.6%	11-14	78.6%	33	19	14	17	4	8
at Iowa	77	30-58	51.7%	2-4	50.0%	15-19	78.9%	39	14	17	19	10	12
Michigan	68	24-48	50.0%	10-22	45.5%	10-14	71.4%	35	17	14	16	2	7
at Iowa	64	23-62	37.1%	9-25	36.0%	9-12	75.0%	32	16	17	11	3	8
at Wisconsin	56	18-54	33.3%	9-26	34.6%	11-14	78.6%	25	14	12	11	2	11
Iowa	65	21-55	38.2%	6-17	35.3%	17-18	94.4%	45	13	17	15	2	5
at Michigan State	65	23-61	37.7%	5-19	26.3%	14-15	93.3%	42	10	14	14	3	4
Iowa	54	21-60	35.0%	2-14	14.3%	10-12	83.3%	36	14	9	14	4	7
Purdue	46	21-66	31.8%	3-18	16.7%	1-6	16.7%	44	13	10	18	3	10
at Iowa	62	23-63	36.5%	9-15	60.0%	7-9	77.8%	45	12	16	14	9	9
Wisconsin	60	24-64	37.5%	5-26	19.2%	7-11	63.6%	33	14	12	12	0	9
at Iowa	71	25-51	49.0%	5-12	41.7%	16-18	88.9%	36	15	13	15	6	4
at Michigan	57	22-53	41.5%	4-12	33.3%	9-15	60.0%	29	17	9	11	3	6
Iowa	63	23-50	46.0%	5-20	25.0%	12-14	85.7%	32	19	12	11	4	6
at Illinois	74	25-60	41.7%	11-24	45.8%	13-19	68.4%	31	10	15	19	2	15
Iowa	62	27-59	45.8%	7-19	36.8%	1-2	50.0%	38	17	12	27	5	7
Northwestern	67	27-59	45.8%	5-15	33.3%	8-12	66.7%	37	16	18	16	3	5
at Iowa	65	20-61	32.8%	7-14	50.0%	18-24	75.0%	40	14	12	13	8	12
at Minnesota	72	26-58	44.8%	5-12	41.7%	15-20	75.0%	48	17	14	16	9	5
Iowa	60	18-63	28.6%	7-20	35.0%	17-20	85.0%	34	19	13	13	4	10
Nebraska	76	26-60	43.3%	10-23	43.5%	14-16	87.5%	37	14	21	12	2	4
at Iowa	75	28-64	43.8%	8-24	33.3%	11-15	73.3%	36	14	19	8	6	4
Penn State	81	29-62	46.8%	4-9	44.4%	19-25	76.0%	38	23	10	16	4	12
at Iowa	69	26-57	45.6%	6-15	40.0%	11-19	57.9%	36	20	18	20	1	9





University of Iowa Women's Basketball

Season & Career Bests

Season Bests

Player	Points	3-Pointers	Rebounds	Assists	Blocks	Steals
#3 Claire Till	7 at FIU	1, twice	6, twice	1, three times	1, three times	1, three times
#11 Trisha Nesbitt	12 at Drake	2 at Drake	3 vs. Northern Illinois	2 vs. Robert Morris	---	2 vs. North Carolina
#12 Morgan Johnson	26 at Drake	---	12, three times	5 vs. Northern Iowa	5, twice	3, twice
#13 Kathy Thomas	15 vs. Missouri State	2 vs. Missouri State	3, twice	3, three times	1 at Minnesota	2, three times
#21 Melissa Dixon	23 vs. Texas	6 vs. Northwestern	3, five times	3 vs. Nebraska	1 vs. Illinois State	2 vs. MTSU
#22 Samantha Logic	17 vs. Ohio State	2, twice	15 vs. Texas	14 vs. Texas	2 at Drake	4 vs. North Carolina
#23 Theairra Taylor	19 vs. Ohio State	3 vs. Purdue	11 vs. Illinois State	7 vs. Missouri State	2, three times	3, twice
#24 Jaime Printy	33 at San Diego	7 at San Diego	9 vs. Purdue	7 at Drake	1, three times	3, twice
#25 Kali Peschel	5 at Drake	1 at Drake	5, twice	2, twice	1, four times	1, five times
#33 Kathryn Reynolds	---	---	---	---	---	---
#45 Nicole Smith	4 vs. Missouri State	---	1 vs. Northern Illinois	---	---	---
#51 Bethany Doolittle	19 at Michigan	---	12 vs. Missouri State	4 vs. Penn State	6, twice	3, three times
#54 Kayla Timmerman	6, twice	1 vs. Illinois State	8 vs. Missouri State	1, three times	2 vs. Northern Illinois	1, twice

Career Bests

Player	Points	3-Pointers	Rebounds	Assists	Blocks	Steals
#3 Claire Till	7 at FIU	1, twice	6, twice	1, three times	1, three times	1, three times
#11 Trisha Nesbitt	12 at Drake	2, twice	3, 3 times	4, three times	1, Michigan State '11	3, Minnesota
#12 Morgan Johnson	37 at Bradley	---	16 vs. Illinois	5 vs. Northern Iowa	8, Minnesota, '10	3, five times
#13 Kathy Thomas	15 vs. Missouri State	2 vs. Missouri State	3, twice	3, three times	1 at Minnesota	2, three times
#21 Melissa Dixon	23 vs. Texas	6, twice	4, four times	4 vs. Nebraska	1, four times	3 at Indiana
#22 Samantha Logic	20, twice	3 vs. Drake	18 at Michigan	14 vs. Texas	2, twice	4 vs. North Carolina
#23 Theairra Taylor	19 vs. Ohio State	3 vs. Purdue	11 vs. Illinois State	7 vs. Missouri State	4, Michigan	4 at Northwestern
#24 Jaime Printy	33 at San Diego	7 at San Diego	9, twice	9, Iowa State, '10	1, 15 times	5 at Bradley
#25 Kali Peschel	5 at Drake	1 at Drake	5, twice	2, three times	1, four times	1, five times
#33 Kathryn Reynolds	4 vs. Drake	---	2 vs. Texas A&M	5 vs. Western Illinois	---	---
#45 Nicole Smith	4 vs. Missouri State	---	1 vs. Northern Illinois	---	---	---
#51 Bethany Doolittle	19 at Michigan	---	12 vs. Missouri State	4 vs. Penn State	6, twice	3, three times
#54 Kayla Timmerman	6, twice	1 vs. Illinois State	8 vs. Missouri State	1, three times	2 vs. Northern Illinois	1, twice

BOLD - set career best during current season

* - - tied school single-game and Carver-Hawkeye Arena record





University of Iowa Women's Basketball

The Last Time...

The Last Time a Player . . .

Had 30 or more points

Iowa -- 33, Jaime Printy, at San Diego, 12/30/12
Opponent -- 34, Rachel Banham, Minnesota, 2/7/13

Made at least 80% of her FGA (10 att.)

Iowa -- .818 (9-11), Morgan Johnson, vs. Nebraska, 2/11/13
Opponent -- .857 (12-14), Kelsey Budd, Bradley, 12/17/11

Made 100% of her FTA (10 att.)

Iowa -- 1.000 (11-11), Morgan Johnson, at Wisconsin, 1/10/13
Opponent -- 1.000 (11-11), Courtney Vandersloot, Gonzaga, 3/19/11

Had 15 or more rebounds

Iowa -- 15, Samantha Logic, vs. Texas, 12/28/12
Opponent -- 16, Artemis Spanou, Robert Morris, 11/20/12

Had 10 or more assists

Iowa -- 10, Samantha Logic, vs. Purdue, 1/20/13
Opponent -- 10, Brittnay McCoy, Minnesota, 2/18/10

Had 5 or more blocks

Iowa -- 6, Bethany Doolittle, vs. Ohio State, 1/3/13
Opponent -- 5, Ebony Ellis, Northern Illinois, 12/8/07

Had 5 or more steals

Iowa -- 5, Kelly Krei, at Indiana, 2/5/12
Opponent -- 5, Adrienne GodBold, Illinois, 1/31/13

The Last Time A Team . . .

Scored 100 or more points

Iowa -- 100 vs. Minnesota, 2/12/88
Opponent -- 101, Iowa State, 12/3/03

Scored 40 or fewer points

Iowa -- 40, vs. Illinois, 2/10/77
Opponent -- 40, Northern Illinois, 11/9/12

Won an overtime game

Iowa -- 77-71, vs. Ohio State, 1/3/13
Opponent -- 81-78, Kansas State, 12/3/11

Made at least 60% of its FGA (20 att.)

Iowa -- .632 (36-57), vs. Rider, 11/26/05
Opponent -- .654 (34-52), Ohio State, 2/12/06

Made at least 50% of its 3-pt. FGA (8 att.)

Iowa -- .500 (7-14), vs. Northwestern, 2/3/13
Opponent -- .500 (5-10), Florida State, 11/28/12

Made at least 90% of its FTA (10 att.)

Iowa -- .944 (17-18), at Wisconsin, 1/10/13
Opponents -- .933 (14-15), Michigan State, 1/17/13

* - Carver-Hawkeye Arena record ^ - school record





University of Iowa Women's Basketball

Miscellaneous Records and Statistics

GAME-BY-GAME, POINTS-REBOUNDS-ASSISTS-STEALS

# -- starter	3	11	12	13	21	22	23	24	25	33	45	51	54	
Date	Opponent	P-R-A-S	P-R-A-S	P-R-A-S	P-R-A-S	P-R-A-S	P-R-A-S	P-R-A-S	P-R-A-S	P-R-A-S	P-R-A-S	P-R-A-S	P-R-A-S	
Nov. 9	Northern Illinois	3-6-0-1	3-3-1-0	11-5-0-1#	8-2-0-0	8-2-2-1#	10-3-2-2#	5-1-1-0#	11-1-3-1	1-5-1-0	DNP	0-1-0-0	1-1-0-0	
Nov. 11	Illinois State	4-3-0-1	3-1-0-1	24-9-2-1#	5-3-3-1	8-0-2-0#	6-5-4-2#	10-11-5-2#	1-2-1-0	0-3-0-0	DNP	0-0-0-0	8-5-0-1#	5-0-1-0
Nov. 14	Middle Tennessee	0-1-0-0	2-0-0-0	20-8-1-0#	0-0-0-0	6-1-1-2#	0-3-12-2#	7-4-2-1#	26-5-6-1	0-1-0-0	DNP	DNP	8-9-0-0#	0-0-0-0
Nov. 18	North Carolina	1-2-1-0	2-0-0-0	20-11-1-2#	0-0-0-0	12-1-0-0	12-6-6-4#	3-4-1-0#	12-5-4-1#	DNP	DNP	DNP	2-7-1-2#	0-0-0-0
Nov. 20	Robert Morris	5-2-0-0	0-2-2-0	19-11-0-0#	3-1-1-0	6-2-0-0	4-6-9-3#	7-4-0-1#	8-6-5-1#	0-0-0-1	DNP	DNP	4-5-1-0#	2-3-0-0
Nov. 23	Florida International	6-7-0-0	2-1-1-0	14-6-2-0#	0-0-0-0	8-2-0-0	7-5-7-1#	6-3-2-0#	15-5-4-0#	0-2-0-0	DNP	DNP	6-3-0-0#	0-0-0-0
Nov. 25	West Virginia	5-2-0-1	4-0-1-1	19-3-1-1#	DNP	0-0-0-0	9-7-7-3#	6-7-0-0#	19-7-3-0#	DNP	DNP	DNP	17-6-0-0#	0-1-0-0
Nov. 28	Florida State	0-1-1-0	0-0-0-1	20-4-1-0#	DNP	3-0-1-1	14-7-7-3#	9-6-1-0#	13-1-1-0#	0-2-0-0	DNP	DNP	10-9-1-1#	DNP
Dec. 1	Northern Iowa	DNP	0-0-0-0	19-12-5-2#	0-2-1-0	6-2-1-0	15-4-3-1#	6-5-2-0#	9-3-5-0#	3-2-0-1	DNP	0-0-0-0	8-7-0-1#	2-1-0-0
Dec. 6	Iowa State	DNP	0-1-0-0	7-6-2-1#	3-2-0-0	11-2-1-1	6-9-4-0#	11-9-3-2#	10-6-2-2#	0-0-0-0	DNP	DNP	2-4-0-1#	DNP
Dec. 16	Drake	DNP	12-0-0-0	26-8-0-2#	3-0-0-0	0-0-1-0	13-5-7-1#	6-3-6-0#	9-4-7-0#	5-0-2-1	DNP	DNP	8-4-0-1#	DNP
Dec. 19	Missouri State	DNP	4-1-1-0	13-4-1-0#	15-2-2-2	12-2-2-1	7-6-4-3#	9-6-7-1#	13-2-6-0#	2-5-0-1	DNP	4-0-0-0	12-12-1-1#	6-8-0-0
Dec. 28	Texas	0-1-1-0	0-0-0-0	20-5-0-3#	2-2-0-1	23-3-2-0	2-15-14-2#	4-1-2-3#	21-3-1-0#	0-0-2-0	DNP	2-0-0-0	10-5-1-2#	2-0-0-0
Dec. 30	San Diego	DNP	DNP	20-6-1-1#	0-3-0-0	8-0-0-1	7-3-10-2#	9-4-4-0#	33-2-4-2#	0-1-0-0	DNP	DNP	6-10-0-1#	DNP
Jan. 3	Ohio State	0-1-0-0	DNP	16-12-3-3#	0-1-1-0	3-1-0-1	17-6-8-3#	19-4-0-2#	14-3-3-0#	0-0-0-0	DNP	DNP	8-5-2-3#	DNP
Jan. 6	Michigan	DNP	0-0-0-0	10-7-2-2#	0-0-0-0	17-3-0-0	16-9-9-3#	14-3-2-2#	6-5-3-1#	1-1-0-0	DNP	DNP	0-1-0-0#	0-0-0-0
Jan. 10	Wisconsin	DNP	0-0-0-0	23-11-0-0#	0-0-0-0	8-3-2-0	12-10-9-1#	4-8-5-3#	10-6-1-1#	0-0-0-0	DNP	0-0-0-0	8-4-0-0#	0-0-0-0
Jan. 17	Michigan State	DNP	0-1-0-1	13-12-0-2#	0-2-0-0	7-3-0-0	7-5-4-1#	6-2-1-0#	11-4-3-1#	0-0-0-0	DNP	DNP	10-3-1-2#	0-0-0-0
Jan. 20	Purdue	0-0-0-0	0-0-0-0	7-7-0-0#	0-1-3-2	15-0-0-1	4-3-10-1#	9-10-1-1#	15-9-1-0#	0-1-1-0	DNP	DNP	8-9-0-3#	4-2-0-1
Jan. 24	Wisconsin	0-0-0-0	0-0-0-0	2-4-1-0#	0-0-0-0	10-0-0-1	6-9-5-1#	10-1-2-2#	29-8-4-0#	0-1-0-0	DNP	DNP	10-7-0-0#	4-3-1-0
Jan. 27	Michigan	DNP	0-2-0-0	6-7-0-2#	4-0-0-0	5-2-1-0	10-6-8-2#	5-2-1-0#	14-5-2-1#	0-0-0-0	DNP	DNP	19-4-0-1#	0-0-0-0
Jan. 31	Illinois	DNP	DNP	6-4-0-1#	0-0-1-0	11-2-1-1	13-10-6-2#	9-0-1-2#	13-4-3-1#	0-0-0-0	DNP	DNP	4-8-0-0#	6-4-0-1
Feb. 3	Northwestern	DNP	0-0-1-1	11-3-0-1#	0-0-0-0	21-2-1-0	11-12-2-3#	2-1-2-2#	12-4-3-3#	2-4-1-1	DNP	DNP	4-9-1-0#	2-1-1-1
Feb. 7	Minnesota	DNP	0-0-0-0	13-10-2-2#	3-1-1-0	4-3-2-1	0-3-5-1#	9-5-1-0#	21-5-0-3#	2-0-1-0	DNP	DNP	8-3-0-3#	0-0-1-0
Feb. 11	Nebraska	DNP	0-0-0-0	19-10-1-0#	2-1-0-0	19-0-3-1	8-8-6-2#	11-5-5-0#	16-4-4-1#	DNP	DNP	DNP	0-5-0-0#	DNP
Feb. 14	Penn State	DNP	0-0-0-0	17-11-0-1#	1-2-3-2	16-2-1-0	9-3-6-2#	11-3-0-1#	2-5-4-2#	DNP	DNP	DNP	13-6-4-1#	DNP

IOWA RECORD WHEN...

Playing at home:	10-5
Playing on the road:	4-5
Playing on a neutral floor:	2-0
Leading at the half:	10-2
Trailing at the half:	6-7
Tied at the half:	0-1
Wearing white:	6-1
Wearing black:	6-5
Wearing gold:	4-3
Wearing pink:	0-1
Scoring 80+ points:	4-0
Scoring 70-79 points:	4-1
Scoring 60-69 points:	6-8
Scoring 59 or fewer points:	2-1
Allowing 80+ points:	0-2
Allowing 70-79 points:	3-4
Allowing 60-69 points:	5-4
Allowing 59 or fewer points:	8-0
Shooting at least 50% FG:	4-0
Shooting less than 50% FG:	12-10
Shooting at least 80% FT:	6-2
Shooting less than 80% FT:	10-8
Shooting at least 40% 3-pt. FG:	6-2
Shooting less than 40% 3-pt. FG:	10-8
Most 1st half points:	46 vs. Missouri State (Dec. 19)
Most 2nd half points:	54 vs. West Virginia (Nov. 25)
Fewest opponent 1st half points:	13 vs. NIU (Nov. 9)
Fewest opponent 2nd half points:	22 vs. UNI (Dec. 1)

Iowa has more rebounds:	10-4
Opponent has more rebounds:	6-6
Rebounds are equal:	0-0
Iowa has more assists:	15-2
Opponent has more assists:	0-7
Assists are equal:	1-1
Iowa has fewer turnovers:	7-4
Opponent has fewer turnovers:	7-5
Turnovers are equal:	2-1
Iowa has more steals:	6-4
Opponent has more steals:	7-5
Steals are equal:	3-1
Playing on Sunday:	6-3
Playing on Monday:	0-1
Playing on Tuesday:	1-0
Playing on Wednesday:	2-1
Playing on Thursday:	4-4
Playing on Friday:	2-1
Playing on Saturday:	1-0
Playing on BTN:	4-3
Playing on CBS Sports Network:	0-1
Playing on ESPN2:	0-0
Playing on Mediacom:	3-1
Playing on no TV:	9-5
Largest Iowa lead:	54 vs. Missouri State (Dec. 19)
Largest Iowa deficit:	22 vs. UNC (Nov. 18)
Largest halftime lead:	31 vs. NIU (Nov. 9)
Largest halftime deficit:	22 vs. UNC (Nov. 18)

LATE GAME CLUTCH FREE THROW SHOOTING

In Final Five Minutes of Game			
Player	FTM	FTA	Pct.
Jaime Printy	39	39	1.000
Trisha Nesbitt	4	4	1.000
Nicole Smith	2	2	1.000
Melissa Dixon	8	9	.889
Theairra Taylor	7	8	.875
Morgan Johnson	18	21	.857
Bethany Doolittle	4	6	.667
Samantha Logic	17	26	.654
Claire Till	3	6	.500
Kathy Thomas	2	4	.500
Kayla Timmerman	2	6	.333
TOTALS	106	131	.809
In Final Two Minutes of Game			
Player	FTM	FTA	Pct.
Jaime Printy	31	31	1.000
Trisha Nesbitt	4	4	1.000
Nicole Smith	2	2	1.000
Morgan Johnson	10	12	.833
Melissa Dixon	4	5	.800
Bethany Doolittle	3	4	.750
Theairra Taylor	3	4	.750
Samantha Logic	10	16	.625
Claire Till	1	4	.250
Kathy Thomas	0	2	.000
TOTALS	68	84	.810
In Final One Minute of Game			
Player	FTM	FTA	Pct.
Jaime Printy	20	20	1.000
Morgan Johnson	6	6	1.000
Melissa Dixon	2	2	1.000
Trisha Nesbitt	2	2	1.000
Theairra Taylor	2	2	1.000
Samantha Logic	2	7	.286
Claire Till	1	4	.250
Kathy Thomas	0	2	.000
TOTALS	35	45	.777
In Overtime			
Player	FTM	FTA	Pct.
Jaime Printy	6	6	1.000
Samantha Logic	4	4	1.000
Theairra Taylor	2	2	1.000
Morgan Johnson	0	2	.000
Claire Till	0	2	.000
Melissa Dixon	0	1	.000
TOTALS	12	16	.750





University of Iowa Women's Basketball

Season Highs And Lows/Specialty Statistics

CATEGORY		IOWA	OPPONENTS
Points	High Low	97 vs. Missouri State 50 vs. Iowa State	83, Florida State 40, Northern Illinois
FG Made	High Low	36 vs. Missouri State 15 vs. Iowa State	31, Florida State 12, two teams
FG Att.	High Low	75 vs. Missouri State 39 vs. West Virginia	76, Illinois State 48, two teams
FG%	High Low	54.7 at San Diego 28.6 at Minnesota	50.0, Michigan 20.7, Missouri State
3FG Made	High Low	11 at San Diego 1 vs. West Virginia	11, Illinois 1, two teams
3FG Att.	High Low	34 vs. Missouri State 4 vs. Ohio State	34, Iowa State 9, two teams
3FG%	High Low	61.1 at San Diego 14.3 at Michigan State	50.0, two teams 5.6, Missouri State
FTM	High Low	42 vs. West Virginia 1 at Illinois	22, West Virginia 1, Purdue
FTA	High Low	50 vs. West Virginia 2 at Illinois	31, Missouri State 5, Iowa State
FT% (min. 10)	High Low	94.4 at Wisconsin 57.9 vs. Penn State	93.3, Michigan State 53.6, Texas
Off. Reb.	High Low	21 vs. Missouri State 6 vs. Northern Illinois	23, West Virginia 7, Northwestern
Def. Reb.	High Low	39 vs. Missouri State 16 vs. Michigan	38, Minnesota 15, Florida State
Total Reb.	High Low	60 vs. Missouri State 31, twice, last at San Diego	48, Minnesota 25, Wisconsin
Assists	High Low	25 vs. Missouri State 9 at Michigan State	21, Nebraska 3, two teams
Steals	High Low	12, twice, last vs. Northwestern 1 at Florida International	15, three teams 1, West Virginia
Blocks	High Low	10, four times, last vs. Ohio State 1, twice, last vs. Penn State	9, Minnesota 0, two teams
Turnovers	High Low	27 at Illinois 8, twice, last vs. Nebraska	22, two teams 10, Florida International
Fouls	High Low	25 vs. Missouri State 12 vs. Purdue	35, West Virginia 10, three teams

GAME-BY-GAME SPECIALTY STATS					
Date	Opponent	IA-Opp.	IA-Opp.	IA-Opp.	IA-Opp.
		Pts. Off TO's	Pts. in Paint	2nd Chance	Fast Break
Nov. 9	Northern Illinois	26-6	24-10	4-3	3-2
Nov. 11	Illinois State	18-20	22-24	8-6	18-11
Nov. 14	Middle Tennessee	15-11	24-26	11-12	2-6
Nov. 18	North Carolina	12-22	30-24	6-22	15-14
Nov. 20	Robert Morris	16-12	22-10	11-6	2-2
Nov. 23	Florida International	6-20	24-20	13-15	6-6
Nov. 25	West Virginia	14-20	24-18	11-22	0-4
Dec. 1	Northern Iowa	11-11	34-4	9-5	2-0
Dec. 6	Iowa State	12-12	14-12	10-8	2-4
Dec. 16	Drake	15-5	40-18	11-12	2-4
Dec. 19	Missouri State	28-14	32-18	17-8	4-6
Dec. 28	Texas	24-10	40-26	11-8	9-0
Dec. 30	San Diego	14-22	30-44	8-9	0-2
Jan. 3	Ohio State	19-18	40-34	12-9	4-6
Jan. 6	Michigan	24-4	22-22	10-8	6-0
Jan. 10	Wisconsin	11-18	18-12	7-17	4-2
Jan. 17	Michigan State	12-22	26-30	12-7	2-12
Jan. 20	Purdue	17-9	24-28	12-5	10-8
Jan. 24	Wisconsin	11-13	30-32	12-13	2-2
Jan. 27	Michigan	10-8	18-24	13-10	4-2
Jan. 31	Illinois	21-30	28-20	13-8	4-4
Feb. 3	Northwestern	17-8	20-32	6-5	6-0
Feb. 7	Minnesota	28-9	18-32	4-10	2-11
Feb. 11	Nebraska	8-4	30-22	20-6	4-2
Feb. 14	Penn State	18-10	38-32	19-14	2-8

IOWA AND OPPONENT INDIVIDUAL HIGH PERFORMANCES

CATEGORY	IOWA	OPPONENTS
Points	33 Jaime Printy at San Diego	34 Hill, Ohio State; Banham, Minnesota
Field Goals Made	11 Morgan Johnson at Drake	12 Jamie Russell, Illinois State
Field Goals Attempted	22 Jaime Printy at Minnesota	28 Russell, Ill. State; Coley, FIU
3-Point Field Goals Made	7 Jaime Printy at San Diego	6 Kyndal Clark, Drake
3-Point Field Goals Attempted	12 Jaime Printy vs. UNC, at San Diego	13 Taylor Palmer, West Virginia
Free Throws Made	17 Jaime Printy vs. West Virginia	11 Rachel Banham, Minnesota
Free Throws Attempted	17 Jaime Printy vs. West Virginia	14 Rachel Banham, Minnesota
Offensive Rebounds	8 Morgan Johnson at Wisconsin	11 Ebony Rowe, Middle Tennessee
Defensive Rebounds	11 Theairra Taylor vs. Ill. State	13 Artemis Spanou, Robert Morris
Total Rebounds	15 Samantha Logic vs. Texas	16 Rowe, MTSU; Spanou, RMU
Assists	14 Samantha Logic vs. Texas	8 Ryan, Mich.; Stephen, Wisc.; Roser, N'western
Steals	4 Samantha Logic vs. North Carolina	8 Jamie Russell, Illinois State
Blocks	6 Bethany Doolittle vs. NIU, Ohio State	3 Rolle, UNC; Thompson, Mich.; Loberg, Minn.





University of Iowa Women's Basketball

Season Box Scores



Official Basketball Box Score -- Game Totals -- Final Statistics
Nebraska vs Iowa
02/11/13 7:36 p.m. at Carver-Hawkeye Arena, Iowa City, Iowa



Nebraska 76 • 18-6, 8-3

#	Player	Total			Rebounds			PF	TP	A	TO	Blk	Stl	Min	
		FG-FGA	3-PT	FT-FTA	Off	Def	Tot								
03	Sample, Hallie	f	1-3	0-0	2-2	2	2	4	2	4	6	2	1	1	25
23	Cady, Emily	f	3-5	2-3	1-2	2	6	8	1	9	4	1	1	1	33
35	Hooper, Jordan	f	11-23	2-8	5-6	4	4	8	2	29	0	0	0	0	31
00	Moore, Lindsey	g	3-8	2-4	6-6	0	7	7	2	14	7	1	0	0	40
24	Theriot, Rachel	g	2-4	2-3	0-0	1	0	1	1	6	2	3	0	0	23
01	Laudermill, Tear'a	g	1-5	0-2	0-0	1	1	2	2	2	1	0	0	1	11
10	Williams, Meghin	g	1-3	0-0	0-0	0	1	1	3	2	0	0	0	0	10
13	Jeffery, Brandi	g	4-9	2-3	0-0	2	1	3	1	10	1	2	0	0	20
14	Simon, Katie	g	0-0	0-0	0-0	0	1	1	0	0	0	0	0	1	7
Team						1	1	2			3				
Totals			26-60	10-23	14-16	13	24	37	14	76	21	12	2	4	200

FG % 1st Half: 16-34 47.1% 2nd half: 10-26 38.5% Game: 26-60 43.3% Deadball Rebounds: 2
 3FG % 1st Half: 7-14 50.0% 2nd half: 3-9 33.3% Game: 10-23 43.5%
 FT % 1st Half: 2-3 66.7% 2nd half: 12-13 92.3% Game: 14-16 87.5%

Iowa 75 • 16-9, 5-6

#	Player	Total			Rebounds			PF	TP	A	TO	Blk	Stl	Min	
		FG-FGA	3-PT	FT-FTA	Off	Def	Tot								
24	Printy, Jaime	f	6-14	2-7	2-2	1	3	4	1	16	4	2	1	1	38
51	Doolittle, Bethany	f	0-3	0-0	0-0	2	3	5	3	0	0	0	1	0	16
12	Johnson, Morgan	c	9-11	0-0	1-3	7	3	10	1	19	1	1	4	0	30
22	Logic, Samantha	g	2-8	0-3	4-6	2	6	8	4	8	6	3	0	2	38
23	Taylor, Theairra	g	3-10	1-3	4-4	1	4	5	0	11	5	1	0	0	34
11	Nesbitt, Trisha	g	0-1	0-0	0-0	0	0	0	1	0	0	0	0	0	8
13	Thomas, Kathy	g	1-2	0-1	0-0	0	1	1	1	2	0	1	0	0	4
21	Dixon, Melissa	g	7-15	5-10	0-0	0	0	0	3	19	3	0	0	1	32
Team						2	1	3							
Totals			28-64	8-24	11-15	15	21	36	14	75	19	8	6	4	200

FG % 1st Half: 13-27 48.1% 2nd half: 15-37 40.5% Game: 28-64 43.8% Deadball Rebounds: 1
 3FG % 1st Half: 3-8 37.5% 2nd half: 5-16 31.3% Game: 8-24 33.3%
 FT % 1st Half: 3-4 75.0% 2nd half: 8-11 72.7% Game: 11-15 73.3%

Officials: Beverly Roberts, Michael Price, Angie Enlund
 Technical fouls: Nebraska-None. Iowa-None.
 Attendance: 3937

Score by periods	1st	2nd	Total
Nebraska	41	35	76
Iowa	32	43	75

Last FG - NEB 2nd-03:04, IOWA 2nd-00:01.
 Largest lead - NEB by 12 2nd-08:32, IOWA None.

Points	In	Off	2nd	Fast	Bench
NEB	22	4	6	2	14
IOWA	30	8	20	4	21

Score tied - 1 time.
 Lead changed - 0 times.



Official Basketball Box Score -- Game Totals -- Final Statistics
Penn State vs Iowa
2/14/13 7:00 PM at Carver-Hawkeye Arena, Iowa City, IA



Penn State 81 • 21-3, 11-1

#	Player	Total			Rebounds			PF	TP	A	TO	Blk	Stl	Min	
		FG-FGA	3-PT	FT-FTA	Off	Def	Tot								
24	Nickson, Mia	f	4-7	0-0	3-5	4	4	8	3	11	1	1	0	0	38
54	Greene, Nikki	c	2-3	0-0	2-2	3	4	7	4	6	0	3	1	1	22
02	Taylor, Dara	g	4-10	1-1	0-0	1	6	7	2	9	3	4	0	4	26
20	Bentley, Alex	g	6-15	0-1	2-3	0	2	2	2	14	4	2	1	4	30
33	Lucas, Maggie	g	7-15	3-6	4-4	1	3	4	0	21	1	1	0	1	35
01	Agee, Candice	g	0-0	0-0	1-2	1	1	2	2	1	0	0	0	0	4
05	East, Talia	g	0-0	0-0	2-2	1	0	1	3	2	0	2	1	1	9
23	Edwards, Ariel	g	5-7	0-1	5-7	2	0	2	4	15	1	3	1	1	18
25	Studevent, Gizelle	g	0-3	0-0	0-0	0	0	0	0	0	0	0	0	0	10
44	Waldner, Tori	g	1-2	0-0	0-0	0	1	1	3	2	0	0	0	0	8
Team						1	3	4							
Totals			29-62	4-9	19-25	14	24	38	23	81	10	16	4	12	200

FG % 1st Half: 13-31 41.9% 2nd half: 16-31 51.6% Game: 29-62 46.8% Deadball Rebounds: 2
 3FG % 1st Half: 3-6 50.0% 2nd half: 1-3 33.3% Game: 4-9 44.4%
 FT % 1st Half: 8-10 80.0% 2nd half: 11-15 73.3% Game: 19-25 76.0%

Iowa 69 • 16-10, 5-7

#	Player	Total			Rebounds			PF	TP	A	TO	Blk	Stl	Min	
		FG-FGA	3-PT	FT-FTA	Off	Def	Tot								
51	Doolittle, Bethany	f	5-11	0-0	3-4	3	3	6	2	13	4	0	0	1	37
12	Johnson, Morgan	c	8-16	0-0	1-5	6	5	11	3	17	0	2	1	1	36
22	Logic, Samantha	g	4-4	1-1	0-1	2	1	3	4	9	6	5	0	2	31
23	Taylor, Theairra	g	4-10	1-2	2-2	0	3	3	3	11	0	4	0	1	26
24	Printy, Jaime	g	0-5	0-3	2-2	0	5	5	3	2	4	6	0	2	29
11	Nesbitt, Trisha	g	0-0	0-0	0-0	0	0	0	0	0	0	0	0	0	2
13	Thomas, Kathy	g	0-0	0-0	1-3	0	2	2	0	1	3	1	0	2	10
21	Dixon, Melissa	g	5-11	4-9	2-2	0	2	2	5	16	1	1	0	0	29
Team						2	2	4							
Totals			26-57	6-15	11-19	13	23	36	20	69	18	20	1	9	200

FG % 1st Half: 14-28 50.0% 2nd half: 12-29 41.4% Game: 26-57 45.6% Deadball Rebounds: 2
 3FG % 1st Half: 2-7 28.6% 2nd half: 4-8 50.0% Game: 6-15 40.0%
 FT % 1st Half: 4-6 66.7% 2nd half: 7-13 53.8% Game: 11-19 57.9%

Officials: Felicia Grinter, Cameron Inouye, John Whitson
 Technical fouls: Penn State-None. Iowa-None.
 Attendance: 5783
 Fouled Out: #21 IA 2:10 2nd

Score by periods	1st	2nd	Total
Penn State	37	44	81
Iowa	34	35	69

Last FG - PSU 2nd-00:38, IOWA 2nd-00:21.
 Largest lead - PSU by 21 2nd-05:07, IOWA by 5 1st-14:50.

Points	In	Off	2nd	Fast	Bench
PSU	32	18	14	8	20
IOWA	38	10	19	2	17

Score tied - 7 times.
 Lead changed - 9 times.





2012-13 IOWA WOMEN'S BASKETBALL
Iowa Combined Team Statistics (as of Feb 14, 2013)
All games



RECORD:	OVERALL	HOME	AWAY	NEUTRAL
ALL GAMES	16-10	10-5	4-5	2-0
CONFERENCE	5-7	3-4	2-3	0-0
NON-CONFERENCE	11-3	7-1	2-2	2-0

#	Player	gp-gs	min	avg	Total		3-Point		F-Throw		Rebounds				pf	dq	a	to	blk	stl	pts	avg
					fg-fga	fg%	3fg-fga	3fg%	ft-fa	ft%	off	def	tot	avg								
12	Johnson, Morgan	26-26	818	31.5	150-281	.534	0-0	.000	95-128	.742	78	118	196	7.5	74	2	26	41	49	28	395	15.2
24	Printy, Jaime	26-23	829	31.9	101-272	.371	49-151	.325	112-121	.926	18	96	114	4.4	31	0	83	75	3	22	363	14.0
21	Dixon, Melissa	26-3	558	21.5	87-210	.414	58-142	.408	15-19	.789	7	31	38	1.5	51	1	24	26	1	13	247	9.5
22	Logic, Samantha	26-26	864	33.2	87-186	.468	11-35	.314	40-61	.656	64	104	168	6.5	72	2	174	118	9	51	225	8.7
23	Taylor, Theairra	26-26	650	25.0	78-199	.392	19-58	.328	32-46	.696	22	90	112	4.3	44	1	57	56	16	25	207	8.0
51	Doolittle, Bethany	26-26	773	29.7	91-216	.421	0-2	.000	13-16	.813	38	112	150	5.8	67	1	14	39	50	24	195	7.5
03	Till, Claire	12-0	103	8.6	4-19	.211	2-7	.286	15-22	.682	9	16	25	2.1	11	0	3	9	3	3	25	2.1
13	Thomas, Kathy	24-0	175	7.3	15-36	.417	7-15	.467	12-19	.632	5	21	26	1.1	27	0	16	21	1	8	49	2.0
54	Timmerman, Kayla	19-0	108	5.7	14-31	.452	1-2	.500	5-10	.500	7	17	24	1.3	12	0	4	9	7	2	34	1.8
11	Nesbitt, Trisha	23-0	169	7.3	9-25	.360	5-14	.357	9-12	.750	0	12	12	0.5	19	1	7	7	0	5	32	1.4
45	Smith, Nicole	6-0	12	2.0	2-4	.500	0-0	.000	2-2	1.000	0	1	1	0.2	2	0	0	1	0	0	6	1.0
25	Peschel, Kali	22-0	191	8.7	4-25	.160	1-10	.100	7-12	.583	17	11	28	1.3	28	0	8	9	4	5	16	0.7
Team											43	80	123				6					
Total.....		26	5250		642-1504	.427	153-436	.351	357-468	.763	308	709	1017	39.1	438	8	416	417	143	186	1794	69.0
Opponents.....		26	5250		581-1563	.372	148-495	.299	322-469	.687	356	610	966	37.2	447	8	308	410	68	209	1632	62.8

TEAM STATISTICS	IOWA	OPP	Date	Opponent	Score	Att.
SCORING	1794	1632	^	11/9/12	NORTHERN ILLINOIS	w 63-40 4739
Points per game	69.0	62.8	^	11/11/12	ILLINOIS STATE	w 74-64 2930
Scoring margin	+6.2	-	^	11/14/12	MIDDLE TENNESSEE	Wot 69-63 1691
FIELD GOALS-ATT	642-1504	581-1563	^	11/18/12	NORTH CAROLINA	L 64-77 3073
Field goal pct	.427	.372		11/20/12	ROBERT MORRIS	w 58-44 3032
3 POINT FG-ATT	153-436	148-495	#	11/23/12	at FIU	L 65-66 430
3-point FG pct	.351	.299	#	11/25/12	vs WVU	w 79-70 387
3-pt FG made per game	5.9	5.7		11/28/12	at Florida State	L 69-83 2389
FREE THROWS-ATT	357-468	322-469		12/1/12	UNI	w 68-46 6368
Free throw pct	.763	.687		12/6/12	IOWA STATE	w 50-42 4483
F-Throws made per game	13.7	12.4		12/16/12	at Drake	w 82-65 2716
REBOUNDS	1017	966		12/19/12	MISSOURI STATE	w 97-43 4588
Rebounds per game	39.1	37.2	%	12/28/12	vs Texas	w 86-63 776
Rebounding margin	+2.0	-	%	12/30/12	at San Diego	w 83-73 543
ASSISTS	416	308	*	1/3/13	OHIO STATE	Wot 77-71 3850
Assists per game	16.0	11.8	*	1/6/13	MICHIGAN	L 64-68 4644
TURNOVERS	417	410	*	01/10/13	at Wisconsin	w 65-56 3495
Turnovers per game	16.0	15.8	*	01/17/13	at Michigan State	L 54-65 5343
Turnover margin	-0.3	-	*	01/20/13	PURDUE	w 62-46 8576
Assist/turnover ratio	1.0	0.8	*	1/24/13	WISCONSIN	w 71-60 3894
STEALS	186	209	*	01/27/13	at Michigan	w 63-57 2607
Steals per game	7.2	8.0	*	01/31/13	at Illinois	L 62-74 1808
BLOCKS	143	68	*	2/03/13	NORTHWESTERN	L 65-67 4697
Blocks per game	5.5	2.6	*	02/07/13	at Minnesota	L 60-72 3528
ATTENDANCE	66285	24022	*	02/11/13	NEBRASKA	L 75-76 3937
Home games-Avg/Game	15-4419	9-2540	*	2/14/13	PENN STATE	L 69-81 5783
Neutral site-Avg/Game	-	2-582				

^ = Preseason WNIT
= at FIU Thanksgiving Classic; Miami
% = at San Diego Surf "N Slam Classic; San Diego
* = Conference game

Score by Periods	1st	2nd	OT	Totals
Iowa	807	963	24	1794
Opponents	737	883	12	1632



2012-13 IOWA WOMEN'S BASKETBALL
Iowa Combined Team Statistics (as of Feb 14, 2013)
Conference games



RECORD:	OVERALL	HOME	AWAY	NEUTRAL
ALL GAMES	5-7	3-4	2-3	0-0
CONFERENCE	5-7	3-4	2-3	0-0
NON-CONFERENCE	0-0	0-0	0-0	0-0

#	Player	gp-gs	min	avg	Total		3-Point		F-Throw		Rebounds				pf	dq	a	to	blk	stl	pts	avg
					fg-fga	fg%	3fg-fga	3fg%	ft-fa	ft%	off	def	tot	avg								
24	Printy, Jaime	12-12	414	34.5	48-142	.338	21-72	.292	46-49	.939	10	52	62	5.2	15	0	31	31	2	14	163	13.6
12	Johnson, Morgan	12-12	372	31.0	54-119	.454	0-0	.000	35-46	.761	44	54	98	8.2	38	2	9	13	20	14	143	11.9
21	Dixon, Melissa	12-0	283	23.6	47-109	.431	33-72	.458	9-10	.900	6	15	21	1.8	27	1	11	13	0	6	136	11.3
22	Logic, Samantha	12-12	424	35.3	42-89	.472	7-18	.389	22-34	.647	31	53	84	7.0	35	1	78	55	2	22	113	9.4
23	Taylor, Theairra	12-12	305	25.4	42-101	.416	10-27	.370	15-19	.789	9	35	44	3.7	21	1	21	23	7	15	109	9.1
51	Doolittle, Bethany	12-12	386	32.2	41-102	.402	0-0	.000	10-13	.769	19	45	64	5.3	27	0	9	18	24	13	92	7.7
54	Timmerman, Kayla	9-0	60	6.7	7-17	.412	0-0	.000	2-2	1.000	1	9	10	1.1	6	0	3	5	3	2	16	1.8
13	Thomas, Kathy	12-0	70	5.8	3-13	.231	2-6	.333	2-5	.400	0	9	9	0.8	10	0	9	11	1	4	10	0.8
25	Peschel, Kali	10-0	65	6.5	1-4	.250	0-2	.000	3-4	.750	5	2	7	0.7	5	0	3	4	2	1	5	0.5
11	Nesbitt, Trisha	10-0	38	3.8	0-6	.000	0-2	.000	0-0	.000	0	3	3	0.3	1	0	1	1	0	2	0	0.0
45	Smith, Nicole	1-0	1	1.0	0-0	.000	0-0	.000	0-0	.000	0	0	0	0.0	1	0	0	0	0	0	0	0.0
03	Till, Claire	3-0	7	2.3	0-1	.000	0-0	.000	0-0	.000	0	1	1	0.3	1	0	0	1	1	0	0	0.0
Team											20	26	46				5					
Total.....		12	2425		285-703	.405	73-199	.367	144-182	.791	145	304	449	37.4	187	5	175	180	62	93	787	65.6
Opponents.....		12	2425		292-713	.410	77-227	.339	132-181	.729	144	288	432	36.0	184	0	163	178	37	96	793	66.1

TEAM STATISTICS	IOWA	OPP	Date	Opponent	Score	Att.
SCORING	787	793	* 1/3/13	OHIO STATE	Wot 77-71	3850
Points per game	65.6	66.1	* 1/6/13	MICHIGAN	L 64-68	4644
Scoring margin	-0.5	-	* 01/10/13	at Wisconsin	w 65-56	3495
FIELD GOALS-ATT	285-703	292-713	* 01/17/13	at Michigan State	L 54-65	5343
Field goal pct	.405	.410	* 01/20/13	PURDUE	w 62-46	8576
3 POINT FG-ATT	73-199	77-227	* 1/24/13	WISCONSIN	w 71-60	3894
3-point FG pct	.367	.339	* 01/27/13	at Michigan	w 63-57	2607
3-pt FG made per game	6.1	6.4	* 01/31/13	at Illinois	L 62-74	1808
FREE THROWS-ATT	144-182	132-181	* 2/03/13	NORTHWESTERN	L 65-67	4697
Free throw pct	.791	.729	* 02/07/13	at Minnesota	L 60-72	3528
F-Throws made per game	12.0	11.0	* 02/11/13	NEBRASKA	L 75-76	3937
REBOUNDS	449	432	* 2/14/13	PENN STATE	L 69-81	5783
Rebounds per game	37.4	36.0				
Rebounding margin	+1.4	-				
ASSISTS	175	163				
Assists per game	14.6	13.6				
TURNOVERS	180	178				
Turnovers per game	15.0	14.8				
Turnover margin	-0.2	-				
Assist/turnover ratio	1.0	0.9				
STEALS	93	96				
Steals per game	7.8	8.0				
BLOCKS	62	37				
Blocks per game	5.2	3.1				
ATTENDANCE	35381	16781				
Home games-Avg/Game	7-5054	5-3356				
Neutral site-Avg/Game	-	0-0				

^ = Preseason WNIT
= at FIU Thanksgiving Classic; Miami
% = at San Diego Surf "N Slam Classic; San Diego
* = Conference game

Score by Periods	1st	2nd	OT	Totals
Iowa	358	415	14	787
Opponents	355	430	8	793