



# University of Iowa Women's Basketball

Game #32

March 8, 2013

## 2012-13 Schedule/Results 20-11 Overall, 8-8 Big Ten

11/9	Northern Illinois^	W, 63-40
11/11	Illinois State^	W, 74-64
11/14	Middle Tennessee^	W, 69-63 (OT)
11/18	North Carolina^	L, 64-77
11/20	Robert Morris	W, 58-44
11/23	at Florida International#	L, 65-66
11/25	vs. #12 West Virginia#	W, 79-70
11/28	at Florida State~	L, 69-83
12/1	Northern Iowa	W, 68-46
12/6	#22 Iowa State*	W, 50-42
12/16	at Drake	W, 82-65
12/19	Missouri State	W, 97-43
12/28	vs. #20 Texas%	W, 86-63
12/30	vs. San Diego%	W, 83-73
1/3	#24 Ohio State	W, 77-71 (OT)
1/6	Michigan	L, 64-68
1/10	at Wisconsin	W, 65-56
1/17	at Michigan State	L, 54-65
1/20	#11 Purdue	W, 62-46
1/24	Wisconsin	W, 71-60
1/27	at #23 Michigan	W, 63-57
1/31	at Illinois	L, 62-74
2/3	Northwestern	L, 65-67
2/7	at Minnesota	L, 60-72
2/11	Nebraska	L, 75-76
2/14	#8 Penn State	L, 69-81
2/17	at #18 Purdue	W, 72-52
2/24	at #24 Nebraska	L, 46-66
2/28	Indiana	W, 75-70
3/3	at Northwestern	W, 62-45
3/7	vs. Northwestern+	W, 60-55
3/8	vs. # 21 Nebraska+	11:30 a.m.

^ -- WNIT

# -- FIU Thanksgiving Classic, Miami

~ -- ACC/Big Ten Challenge

\* - Iowa Corn Cy-Hawk Series

% -- San Diego Surf 'N Slam Classic, San Diego

+ -- Big Ten Tournament, Hoffman Estates, Ill.

## Pronunciation Guide

Lisa Bluder.....	BLUE-dir
Kali Peschel.....	PEH-shull
Theairra Taylor.....	thee-AIR-uh

SID Contact: Aaron Blau (@AaronBlau)  
Email: aaron-blau@hawkeyesports.com

Office: (319) 335-9268  
Cell: (319) 430-5103

## Game Information

#21/24 Nebraska (22-7, 12-4) vs. Iowa (20-11, 8-8)



March 8, 2013 • 11:30 a.m.

Sears Centre  
Hoffman Estates, Ill.



TV: BTN

TV Talent: Eric Collins, Stephanie White, Lisa Byington

Web: BTN2Go

Radio: AM-800 KXIC, AM-1360 KMJM, AM-1460 KXNO

Radio Talent: Brent Balbinot and Shelley Till

Live Stats/Audio: [www.hawkeyesports.com](http://www.hawkeyesports.com)

Twitter Updates: @IowaWBB

Series: Nebraska leads, 9-7

## Storylines

- Iowa and Nebraska face off in the quarterfinals of the Big Ten Tournament for the second-consecutive season.
- Among other sixth players in the country, Melissa Dixon ranks second in 3-point percentage (39.9) and 3-pointers made (71). In conference games, Dixon led the Big Ten in 3-point percentage (43.0) and was tied for second in 3-pointers made (2.9).
- Jaime Printy is only the second player in Iowa history to record 1,800 career points and 400 career assists.
- Jaime Printy is closing in on the Iowa and Big Ten career free throw percentage, held by Wendy Ausdemore (89.2). Printy is currently at 89 percent. Her season percentage of 92.0 would break the Iowa single season mark of 89.4 percent and is just .5 away from the B1G record.
- Morgan Johnson enters the matchup against Nebraska tied with Kamille Wahlin for the most games played in school history (127).
- Samantha Logic leads the Big Ten and ranks 12th in the NCAA with 6.6 assists per game.
- Jaime Printy is shooting 92 percent from the free this season. She leads the Big Ten and is third in the NCAA.
- Iowa's 16 assists per game are the best in the Big Ten and 25th nationally.
- The Hawkeyes lead the Big Ten and are 10th in the NCAA in blocks per game (5.7).
- Iowa is third in the Big Ten and 21st in the NCAA in free throw percentage (75.6).
- Jaime Printy is 46-of-47 from the free throw line in the final five minutes of a game, 36-of-37 in the final two minutes, 25-of-26 in the final minute and 6-of-6 in overtime.

## Tentative Starting Lineup

Iowa Hawkeyes (20-11, 8-8)

Pos.	No.	Name	Ht.	Yr.	Statistical Summary
G	22	Samantha Logic	5-8	So.	9.1 ppg, 6.5 rpg, 6.6 apg, .478 FG%, .635 FT% - Has at least five assists in 23 of Iowa's 31 games this season
G	24	Jaime Printy	5-11	Sr.	13.2 ppg, 4.2 rpg, 3.3 apg, .354 FG%, .920 FT% - 18 points vs. Northwestern were the most for her since scoring 21 at Minnesota (Feb. 7)
G	23	Theairra Taylor	5-11	Jr.	8.2 ppg, 4.5 rpg, 2.3 apg, .393 FG%, .731 FT% - Career-high five blocks in win over Northwestern, one shy of B1G Tournament record
F	51	Bethany Doolittle	6-4	So.	7.2 ppg, 5.5 rpg, 1.8 bpg, .421 FG%, .773 FT% - Scored 10 points in each of the last two contests
C	12	Morgan Johnson	6-5	Sr.	15.0 ppg, 7.6 rpg, 1.9 bpg, .530 FG%, .740 FT% - Shooting 54.8 percent from the field (46-of-84) over last seven games

Head Coach: Lisa Bluder (Northern Iowa, 1983); 13th Season at Iowa (250-155); 29th Season Overall (606-297)



## Inside the Numbers

	IOWA	NEB
Scoring Average	68.0	67.1
Scoring Defense	61.9	58.4
Scoring Margin	+6.1	+8.7
FG%	.426	.400
FG% Defense	.371	.388
FT%	.756	.751
3-PT FG%	.337	.312
3-PT FG% Defense	.300	.297
Rebound Margin	+1.5	+3.3
Assists Per Game	16.0	14.9
Turnovers Per Game	15.7	14.2
Turnover Margin	+0.2	+1.9
Steals Per Game	7.4	7.5
Blocks Per Game	5.7	2.4

## Iowa vs. Nebraska Series History

Nebraska leads, 9-7  
Last 10 Meetings Listed Below

2/24/13	..... at Nebraska	L, 46-66
2/11/13	..... at Iowa	L, 75-76
3/2/12	..... at Big Ten	L, 68-80
1/26/12	..... at Nebraska	L, 53-60
1/8/12	..... at Iowa	L, 72-77
3/21/05	..... at Nebraska	W, 71-67
12/8/96	..... at Neutral	L, 67-73
12/11/91	..... at Nebraska	W, 64-59
12/16/90	..... at Iowa	W, 80-46
11/29/90	..... at Iowa	W, 74-55

## How Many Times a Hawkeye Player...

<b>Scored 20 or More Points</b>	
Morgan Johnson	8
Jaime Printy	5
Melissa Dixon	4
Samantha Logic	1
<b>Scored 15 or More Points</b>	
Morgan Johnson	17
Jaime Printy	10
Melissa Dixon	7
Samantha Logic	4
Bethany Doolittle	2
Theairra Taylor	2
Kathy Thomas	1
<b>Grabbed 10 or More Rebounds</b>	
Morgan Johnson	10
Samantha Logic	5
Theairra Taylor	3
Bethany Doolittle	2
<b>Grabbed 7 or More Rebounds</b>	
Morgan Johnson	16
Bethany Doolittle	11
Samantha Logic	11
Theairra Taylor	6
Jaime Printy	3
<b>Dished out 7 or More Assists</b>	
Samantha Logic	15
Jaime Printy	1
Theairra Taylor	1
<b>Dished out 5 or More Assists</b>	
Samantha Logic	23
Jaime Printy	8
Theairra Taylor	5
Morgan Johnson	1
<b>Recorded 4 or More Steals</b>	
Samantha Logic	1
Jaime Printy	1
Morgan Johnson	1
<b>Blocked 3 or More Shots</b>	
Bethany Doolittle	10
Morgan Johnson	10
Theairra Taylor	2
Jaime Printy	1

## 2012-13 Margin of Victory/Defeat

Points	1	2	3	4	5	6	7	8	9	10-14	15-19	20+
Wins	0	0	0	0	2	3	0	1	2	5	2	5
Losses	2	1	0	1	0	0	0	0	0	6	0	1

### IOWA HISTORY

Iowa has played 1,129 games since beginning basketball in 1974. Iowa's overall record is 691-438 (.612). That includes a 348-178 (.662) mark in regular season Big Ten contests and a 334-96 (.777) mark in Carver-Hawkeye Arena.

### SCOUTING NEBRASKA

The No. 21 ranked Nebraska Cornhuskers are 22-7 overall and finished second place in the Big Ten with a 12-4 record.

In its last regular season game, Nebraska lost at home to Penn State, 82-67. Penn State shot 52.5 percent from the field, including 47.1 percent from 3-point distance, to seal the win. Lindsey Moore led Nebraska with 23 points. Emily Cady had a double-double with 15 points and 10 rebounds while Jordan Hooper added 14 points and nine rebounds.

Hooper leads Nebraska with 17.9 points and 8.7 rebounds per contest. Moore is next at 15 points per game and is shooting 40.9 percent from 3-point distance. Cady is averaging 9.5 points and eight rebounds.

As a team, Nebraska is averaging 67.1 points per game and shooting 40 percent from the field.

### NEBRASKA VS. IOWA NOTES

- Nebraska leads the all-time series, 9-7. The Huskers have won all five meetings against Iowa since joining the Big Ten, including an 80-68 victory in the quarterfinals of last year's Big Ten Tournament.
- Nebraska Head Coach Connie Yori is from Ankeny, Iowa, and graduated from Ankeny High School. She is a member of the Iowa Girls' High School Athletic Union Hall of Fame as a basketball and softball player.
- Iowa signed Lincoln, Neb., native and top-100 recruit Alexa Kastanek to a National Letter of Intent in November. Kastanek attends Lincoln Southeast High School and recently led her high school team to the Nebraska Class A state championship.

### LAST MEETING

Iowa dropped a 66-46 decision at No. 24 Nebraska on Feb. 24. The Hawkeyes couldn't overcome 21 turnovers, including 14 in the first half, which led to 17 Nebraska points.

Iowa trailed by nine at the half, but fought back to within two points at the 13:20 mark in the second half. Nebraska used a 9-2 to run to take a nine-point lead and never looked back.

Samantha Logic led Iowa with 12 points. She also added four rebounds and six assists. Theairra Taylor had 12 points while Morgan Johnson added eight points and nine rebounds.

## 2012-13 Iowa Hawkeye Roster

No.	Name	Yr.	Ht.	Pos.	Hometown (High School/College)
3	Claire Till	Fr.	6-0	G	Dubuque, Iowa (Dubuque Wahlert)
11	Trisha Nesbitt	Sr.	5-7	G	Ames, Iowa (Ames)
12	Morgan Johnson	Sr.	6-5	C	Platte City, Mo. (Platte County)
13	Kathy Thomas	So.	5-6	G	Flint, Mich. (Highland CC, KS)
21	Melissa Dixon	So.	5-8	G	Johnsburg, Ill. (Johnsburg)
22	Samantha Logic	So.	5-9	G	Racine, Wis. (Racine J.I. Case)
23	Theairra Taylor	Jr.	5-11	G	St. Paul, Minn. (Central)
24	Jaime Printy	Sr.	5-11	G	Marion, Iowa (Linn-Mar)
25	Kali Peschel	Fr.	6-1	G	Sauk Centre, Minn. (Sauk Centre)
33	Kathryn Reynolds	So.	5-7	G	Cincinnati, Ohio (Mount Notre Dame)
45	Nicole Smith	Fr.	6-4	C	Rockton, Ill. (Honeogah)
51	Bethany Doolittle	So.	6-4	C	Oakdale, Minn. (Hill-Murray)
54	Kayla Timmerman	Fr.	6-3	F	Wayzata, Minn. (Wayzata)

Head Coach: Lisa Bluder Associate Head Coach: Jan Jensen  
Assistant Coaches: Jenni Fitzgerald and Shannon Gage



## 2012-13 Team Captains

Iowa captains are seniors  
Jaime Printy, Morgan Johnson and Trisha Nesbitt

### B1G TOURNAMENT NOTES

- Iowa is 17-16 overall in the Big Ten Tournament, which includes championships in 1997 and 2001.
- Iowa is the No. 7 seed for the third time in school history and holds a 3-2 record in the tournament as the No. 7 seed.
- Iowa is 0-1 against Nebraska in the Big Ten Tournament, falling in the quarterfinals of the 2012 Big Ten Tournament (68-80).
- This year marks only the second time the Big Ten Women's Basketball Tournament has been hosted outside of Indianapolis. Iowa won the 2001 tournament when it was hosted in Grand Rapids, Mich., which was Bluder's first season at Iowa.
- Coach Bluder holds an 11-11 record in Big Ten Tournament games.
- No. 7 seeds have a combined record of 23-18 in the Big Ten Tournament.
- The Hawkeyes are 7-8 in the quarterfinal round of the Big Ten Tournament.

### ANOTHER 20-WIN SEASON

Iowa's victory over Northwestern in the Big Ten Tournament (March 7) marked its 20th win of the season.

This year is the seventh time in head coach Lisa Bluder's 13 seasons that the Hawkeyes have reached 20 wins. Iowa has collected 20 or more wins in five of the last six years.

### LOGIC CRASHING THE BOARDS

With 11 rebounds against Northwestern in the first round of the Big Ten Tournament (March 7), sophomore Samantha Logic collected her 11th career double digit rebounding performance.

Logic has five games this season with 10 or more rebounds. Last year as a freshman, Logic tallied six games, including a stretch of four-straight during Big Ten play.

### HAWKEYES TAKE HOME ALL-BIG TEN HONORS

- Sophomore Melissa Dixon was named Big Ten Sixth Player of the Year. She is the second Hawkeye in school history to earn the award (Megan Skouby, 2008).
- Senior Morgan Johnson was a second team All-Big Ten selection by the coaches and media. She was a second team pick last year as a junior.
- Sophomore Samantha Logic was a third team All-Big Ten selection by the media and an honorable mention pick by the coaches. She was a unanimous selection to the Big Ten All-Freshman Team last year.
- Senior Jaime Printy was an honorable mention All-Big Ten selection by the coaches and media. Printy is the only player in school history to earn All-Big Ten honors in each of her four years. She was Big Ten Freshman of the Year and second team All-Big Ten as a freshman, second team All-Big Ten as a sophomore and third team All-Big Ten as a junior.

### DIXON'S SIXTH PLAYER NUMBERS

Sophomore Melissa Dixon is not only the best sixth player in the Big Ten, she is one of the best across the country.

Dixon's 3-point percentage (39.9) and 3-pointers made (71) are the second-most in the nation among sixth players. Missouri's Morgan Eye tops the list (41.3, 109 3-pointers).

In conference games only, Dixon led the Big Ten in 3-point percentage (43 percent) and was tied for second in 3-pointers made (2.9).

## Head Coach Lisa Bluder

Lisa Bluder (pronounced BLUE-dir) is in her 13th season as head coach at the University of Iowa and her 29th season as a college head coach. She is a three-time Big Ten and two-time WBCA Regional Coach of the Year.

Bluder has a career record of 606-297 (.671), including a 250-155 (.617) record at Iowa, a 187-106 (.638) record in 10 seasons (1990-2000) at Drake and a six-year mark (1984-90) of 169-36 (.824) at St. Ambrose.

Bluder is Iowa's second all-time winningest coach and trails only C. Vivian Stringer. She has guided the Hawkeyes to 11 postseason tournaments (9 NCAA, 2 WNIT) and nine upper-division finishes in the Big Ten Conference, including winning a share of the league championship in 2008 and taking home the conference tournament title in 2001.

In her first season with the Hawkeyes, Bluder transformed a struggling program into a 21-game winner. Iowa finished second in the Big Ten, won the conference tournament and advanced to the second round of the NCAA Tournament. Bluder became Iowa's third coach to be named Big Ten Coach of the Year. She was also honored as the College Coach of the Year by the *Women's Basketball News Service* and was named the WBCA District 6 Coach of the Year. Iowa's 2001-02 squad finished fourth in the Big Ten and advanced to the second round of the NCAA Tournament for the second consecutive year. In 2003, Bluder guided the Hawkeyes to their first-ever WNIT appearance. Iowa, which had nine underclassmen on its roster, advanced to the quarterfinals before falling to Creighton. In 2004-05, Iowa finished 23-10, starting the year 13-0 and was the last Division I undefeated team standing. In 2005-06, Bluder mentored a team plagued by injuries to a fifth-place Big Ten finish and an NCAA Tournament berth.

In her 10 years at Drake, Bluder brought great success and tradition to the Bulldog program and established herself as one of the top coaches in the country. She led Drake to five 20-plus win seasons in her last six years, including five post-season appearances. She guided the Bulldogs to eight Missouri Valley Conference Tournament appearances, reaching the semifinals six times and winning the tournament four times. Bluder was also named the Conference Coach of the Year three times at Drake.

Bluder began her coaching career at St. Ambrose, where she coached six successful seasons, building the Bees into a NAIA powerhouse. During her tenure at St. Ambrose, Bluder guided the Bees to four straight national tournaments, including two consecutive Final Four appearances. The 1990 St. Ambrose team was ranked No. 1 and Bluder was named the NAIA Converse Coach of the Year.

A graduate of Linn-Mar High School in Marion, Iowa, Bluder was a three-year starter at Northern Iowa. She graduated from UNI in 1983 with a bachelor's degree in marketing.



## Big Ten Overall Stats (Entering B1G Tourney)

<b>Scoring Offense</b>	
1. Penn State	74.4
4. Iowa	68.3
<b>Scoring Defense</b>	
1. Michigan State	51.6
9. Iowa	62.2
<b>Scoring Margin</b>	
1. Penn State	+15.7
5. Iowa	+6.1
<b>Free Throw Percentage</b>	
1. Purdue	.764
3. Iowa	.755
<b>Field Goal Percentage</b>	
1. Minnesota	.449
6. Iowa	.428
<b>Field Goal Percentage Defense</b>	
1. Northwestern	.353
5. Iowa	.371
<b>3-Point Field Goals Made</b>	
1. Nebraska	6.3
3. Iowa	5.9
<b>3-Point Field Goal Percentage</b>	
1. Penn State	.391
5. Iowa	.344
<b>3-Point Field Goal Percentage Defense</b>	
1. Michigan State	.263
6. Iowa	.302
<b>Rebounding</b>	
1. Penn State	41.6
4. Iowa	38.6
<b>Rebounding Allowed</b>	
1. Michigan	31.8
9. Iowa	37.2
<b>Rebounding Margin</b>	
1. Michigan State	+7.8
7. Iowa	+1.4
<b>Offensive Rebounds</b>	
1. Penn State	15.3
7. Iowa	11.7
<b>Defensive Rebounds</b>	
1. Northwestern	28.3
3. Iowa	27.0
<b>Blocked Shots</b>	
T1. Iowa	5.6
<b>Assists</b>	
1. Iowa	16.0
<b>Steals</b>	
1. Illinois	12.8
7. Iowa	7.3
<b>Turnover Margin</b>	
1. Illinois	+4.9
T6. Iowa	+0.1
<b>Assist/Turnover Ratio</b>	
1. Nebraska	1.1
2. Iowa	1.0

## Big Ten Overall Stats (Entering B1G Tourney)

<b>Morgan Johnson</b>	<b>Rank</b>	<b>Avg.</b>	<b>Jaime Printy</b>	<b>Rank</b>	<b>Avg.</b>
Field Goal Percentage	4th	.525	Free Throw Percentage	1st	.922
Blocks	T-4th	1.9	Assists	10th	3.3
Offensive Rebounds	5th	3.0	Assist/Turnover Ratio	10th	1.2
Rebounding	8th	7.5	3-Pointers Made	T-12th	1.7
Scoring	9th	14.9	Scoring	15th	13.0
Defensive Rebounds	13th	4.6			
<b>Samantha Logic</b>	<b>Rank</b>	<b>Avg.</b>	<b>Melissa Dixon</b>	<b>Rank</b>	<b>Avg.</b>
Assists	1st	6.6	3-Point Percentage	4th	.401
Assist/Turnover Ratio	4th	1.5	3-Pointers Made	5th	2.4
Field Goal Percentage	7th	.493	Scoring	27th	10.3
Offensive Rebounds	11th	2.4			
Steals	13th	1.9	<b>Bethany Doolittle</b>	<b>Rank</b>	<b>Avg.</b>
Rebounding	15th	6.4	Blocks	5th	1.9

### DIXON CLOSES ON A HOT STREAK

Sophomore Melissa Dixon averaged 21.5 points in Iowa's two wins over Indiana and Northwestern to close to regular season. She shot 51.6 percent from the field (16-of-31) and 40 percent from 3-point distance (10-of-25).

Dixon netted 22 points against Indiana, including 14 in the first half to help Iowa climb back into the game after the Hoosiers' hot start. Iowa trailed 36-18 with 6:16 left in the first half before Dixon scored Iowa's next 14 points in 3:22.

She stayed hot against Northwestern, scoring a game-high 21 points. Dixon scored 16 points in the first half on 6-of-10 shooting, including 4-of-8 from 3-point distance. Iowa trailed 18-14 with 5:32 left in the half before Dixon rattled off 13 of Iowa's final 17 points of the half, including a buzzer-beating layup.

### LOGIC BREAKS ASSIST RECORD

- Samantha Logic became Iowa's single season assist record holder, breaking the mark in Iowa's win at Northwestern (March 3). Logic entered the game tied with Cara Consuegra (2000-01) at 191 assists. Logic collected seven assists at Northwestern and currently has 204.
- Logic leads the Big Ten and ranks 12th in the NCAA with 6.6 assists per game.
- Logic has recorded seven or more assists in 15 games, including four games with 10 or more. She has had at least five assists in 23 games.
- Logic's six games with double digit assists are the second most in Iowa history. Cara Consuegra had nine games in her career with 10 or more assists. The next closest Hawkeyes on the list are Kachine Alexander, Jolette Law and Michelle Edwards, with two career games.

### PRINTY IN ELITE COMPANY

Senior Jaime Printy is only the fourth player in Iowa history to score 1,800 career points and only the fifth Hawkeye to record 400 career assists.

Former Hawkeye-All American Michelle Edwards is the only other player in school history to reach 1,800 career points and 400 career assists.

### JOHNSON SETS NEW CAREER STARTS AND GAMES PLAYED RECORDS

Senior Morgan Johnson set the school record for career starts in Iowa's game at Purdue (Feb. 17). Johnson broke Jennie Lillis' record of 121 starts as a Hawkeye and currently has 125 career starts.

Johnson has played in 127 games in her four-year career, which ties Kamille Wahlin's school record for games played in a career.



## Big Ten League Stats (Final)

Samantha Logic			Melissa Dixon		
	Rank	Avg.		Rank	Avg.
Assists	1st	6.4	3-Point Percentage	1st	.430
Assist/Turnover Ratio	4th	1.5	3-Pointers Made	T-2nd	2.9
Field Goal Percentage	5th	.516	Field Goal Percentage	14th	.445
Offensive Rebounds	T-12th	2.4	Scoring	19th	12.3
Rebounding	14th	6.7			
Scoring	29th	10.3			
Morgan Johnson			Jaime Printy		
	Rank	Avg.		Rank	Avg.
Blocks	3rd	1.9	Free Throw Percentage	1st	.930
Offensive Rebounds	5th	3.4	Assist/Turnover Ratio	6th	1.2
Rebounding	8th	8.0	Assists	12th	3.0
Field Goal Percentage	11th	.457	Scoring	22nd	11.9
Defensive Rebounds	T-13th	4.6			
Scoring	20th	12.3			
			Bethany Doolittle		
	Rank	Avg.		Rank	Avg.
			Blocks	3rd	1.9

### JOHNSON SETS FAMILY BLOCK RECORD

Morgan Johnson not only set the Iowa school record for career blocks, but she now holds the record for blocks in the Johnson household.

Johnson's mother, Leslie, compiled 265 career blocks from 1981-85 at Midland Lutheran College in Nebraska. Morgan broke her mother's record against Michigan (Jan. 27), collecting her 266th career block, and her career total now stands at 285.

### PRINTY A SENIOR CLASS AWARD FINALIST

Senior Jaime Printy is one of 10 finalists for the 2013 Senior CLASS Award. To be eligible for the award, a student-athlete must be an NCAA Division I senior and have notable achievements in four areas of excellence - community, classroom, character and competition. Fans are encouraged to vote on the Senior CLASS Award website - [www.seniorCLASSaward.com](http://www.seniorCLASSaward.com).

### HAWKEYES LIKE TO SHARE

- Iowa leads the Big Ten and ranks 25th in the NCAA with 16 assists per game.
- The Hawkeyes broke the school record for team assists last year, collecting 514. This year's team is nearly on pace to break that mark. Iowa had 514 assists through 31 games last year and has 496 through 31 games this year.
- Iowa has recorded at least 17 assists in 15 games, including five games with 20 or more.

### PRINTY CLOSE TO BIG FREE THROW RECORDS

- Jaime Printy currently owns an 89 percent career free throw percentage (435-of-489). Former Hawkeye Wendy Ausdemore holds the Iowa and Big Ten record for career free throw percentage at 89.2 (174-of-195).
- Printy is shooting 92 percent (127-of-138) for the season. The Iowa single season record is 89.4 percent (101-of-113) by Lindsey Meder in 2000-01. The Big Ten single season record is 92.5 percent (99-of-107) by Indiana's Cyndi Valentin in 2003-04.

### PRINTY FREE THROW NOTES

- Printy has gone 3-of-3 from the line against Drake, 4-of-4 against Northern Illinois, Northern Iowa, Ohio State, Michigan State, Purdue, Michigan and Indiana, 6-of-6 against Iowa State and San Diego, 8-of-8 vs. Northwestern, 11-of-11 against Middle Tennessee and 17-of-17 against West Virginia.
- Printy made 22-straight free throws, from Iowa's game vs. Texas (Dec. 28) through the game vs. Wisconsin (Jan. 24). Printy converted 21-consecutive free throws between Iowa's game vs. North Carolina and the road contest at Florida State
- Printy has put together a string of at least 20-consecutive made free throws in each year of her career. She converted 27-straight as a freshman and 32-straight as a sophomore and junior. Iowa's record for consecutive free throws made is 33 by Lindsey Meder.

## Big Ten League Stats (Final)

<b>Scoring Offense</b>	
1. Penn State	74.4
<b>T4. Iowa</b>	<b>65.1</b>
<b>Scoring Defense</b>	
1. Nebraska	56.9
<b>8. Iowa</b>	<b>64.1</b>
<b>Scoring Margin</b>	
1. Penn State	+14.2
<b>5. Iowa</b>	<b>+1.0</b>
<b>Free Throw Percentage</b>	
1. Minnesota	.777
<b>2. Iowa</b>	<b>.768</b>
<b>Field Goal Percentage</b>	
1. Penn State	.435
<b>3. Iowa</b>	<b>.413</b>
<b>Field Goal Percentage Defense</b>	
1. Northwestern	.348
<b>6. Iowa</b>	<b>.400</b>
<b>3-Point Field Goals Made</b>	
1. Nebraska	6.5
<b>2. Iowa</b>	<b>6.1</b>
<b>3-Point Field Goal Percentage</b>	
1. Penn State	.393
<b>3. Iowa</b>	<b>.349</b>
<b>3-Point Field Goal Percentage Defense</b>	
1. Nebraska	.275
<b>10. Iowa</b>	<b>.334</b>
<b>Rebounding</b>	
1. Nebraska	39.9
<b>5. Iowa</b>	<b>36.9</b>
<b>Rebounding Allowed</b>	
1. Michigan	32.2
<b>6. Iowa</b>	<b>36.4</b>
<b>Rebounding Margin</b>	
1. Michigan State	+6.3
<b>6. Iowa</b>	<b>+0.6</b>
<b>Offensive Rebounds</b>	
1. Michigan State	14.9
<b>6. Iowa</b>	<b>11.7</b>
<b>Defensive Rebounds</b>	
1. Nebraska	27.8
<b>4. Iowa</b>	<b>25.3</b>
<b>Blocked Shots</b>	
1. Iowa	5.4
<b>Assists</b>	
1. Purdue	15.4
<b>2. Iowa</b>	<b>14.9</b>
<b>Steals</b>	
1. Illinois	14.6
<b>4. Iowa</b>	<b>7.9</b>
<b>Turnover Margin</b>	
1. Illinois	+6.7
<b>6. Iowa</b>	<b>+0.5</b>
<b>Assist/Turnover Ratio</b>	
1. Nebraska	1.1
<b>2. Iowa</b>	<b>1.0</b>



## Hawkeyes in NCAA Stats (Entering B1G Tourney)

Iowa	Rank	Avg.
Blocks	10th	5.6
Free Throw Percentage	21st	75.5
Assists	25th	16.0
Assist/Turnover Ratio	34th	+1.0
3-Point Percentage	36th	34.4
Field Goal Percentage	41st	42.8
Scoring	58th	68.3
3-Pointers Made Per Game	75th	5.9

Morgan Johnson	Rank	Avg.
Field Goal Percentage	28th	52.5
Blocks	T-39th	1.9

Melissa Dixon	Rank	Avg.
3-Point Percentage	22nd	40.1
3-Pointers Made Per Game	56th	2.4

Samantha Logic	Rank	Avg.
Assists	12th	6.6

Jaime Printy	Rank	Avg.
Free Throw Percentage	3rd	92.2

Bethany Doolittle	Rank	Avg.
Blocks	T-39th	1.9

## Follow the Hawkeyes on Twitter

Iowa Women's Basketball....@IowaWBB

Claire Till.....@clairetill3

Trisha Nesbitt.....@TNesbitt11

Morgan Johnson.....@MoJohnson12

Kathy Thomas.....@datgurlgotgame\_

Melissa Dixon.....@MDix21

Theairra Taylor.....@two3KneeTaylor

Jaime Printy.....@jprinty24

Kali Peschel.....@KaliPeschel

Kathryn Reynolds.....kc\_reynolds

Nicole Smith.....@NicoleSmith42

Kayla Timmerman.....@timmykay54

Jan Jensen.....@golowa

Jenni Fitzgerald.....@jlefty21

Abby Emmert.....@abbyemmert

## Press Conference FTP Information

Weekly press conference footage will be available to media outlets via [www.dropbox.com](http://www.dropbox.com).  
Username: ath-media@uiowa.edu  
Password: hawks2012

### BALANCING ACT

Iowa has had seven different players lead, or share the lead, in scoring this season. Morgan Johnson has paced the Hawkeyes in scoring 13 times, Jaime Printy 10 times, Melissa Dixon eight times, Samantha Logic three times, Theairra Taylor twice and Kathy Thomas and Bethany Doolittle once.

### BLUDER GETS WIN NO. 600

Head coach Lisa Bluder became the 42nd coach in NCAA women's basketball history (all divisions) and only the 25th Division I head coach (minimum 10 years at a DI school) to collect 600 wins Jan. 20 vs. Purdue.

Bluder entered the 2012-13 season as the 26th winningest active coach and the 46th overall winningest coach in NCAA women's basketball history (by victories).

### MOVING UP CAREER CHARTS

- Morgan Johnson, Iowa's all-time blocks leader (285), ranks fourth in career rebounds (865) and ninth in career scoring (1,558). She needs 23 more rebounds to move past Toni Foster for third place and 41 points to pass Tangela Smith for eighth place.
- Jaime Printy ranks second in career 3-pointers made (251), fourth in career scoring (1,818) and fifth in career assists (406). She needs 11 more 3-pointers to move past Lindsey Meder for first place, four points to move past Michelle Edwards for third place and seven more assists to move past Kristi Smith for fourth place.
- Samantha Logic ranks 11th in career assists (340). She needs 14 more assists to move past Jolette Law into 10th place.

### IOWA CONTINUES TREND AGAINST RANKED FOES

- Iowa's win over 11th-ranked Purdue (Jan. 20) marked the 15th time under Lisa Bluder that the Hawkeyes have defeated a top-15 team.
- The Hawkeyes have recorded at least one win against a top-25 team in all but two seasons under Bluder. In nine of those seasons, Iowa has knocked off at least one top-15 opponent.
- Purdue was the highest ranked opponent the Hawkeyes have defeated since knocking off No. 10 Michigan State (66-64) on Jan. 27, 2011.
- This season marks just the second time in school history that Iowa has defeated three ranked teams prior to Big Ten play (No. 12 West Virginia, No. 22 Iowa State, No. 20 Texas). The only other time Iowa knocked off three ranked opponents was in 1993 (No. 4 Louisiana Tech, No. 20 Missouri State, No. 9 Southern California).
- This season is only the sixth time in school history that Iowa played at least three ranked teams prior to conference action. Iowa faced five ranked opponents in 1990 (2-3 record) and three in 1999 (0-3), 1995 (2-1), 1993 (3-0) and 1989 (1-2).
- Iowa has tied the school record for number of wins over ranked teams in a season with seven. The Hawkeyes have accomplished the feat three other times (1995-96, 1993-94, 1992-93).

### PRINTY - BIG PLAYER OF THE WEEK - JAN. 26

Jaime Printy was named Big Ten Player of Week (Jan. 29) for her efforts in Iowa's wins against Wisconsin and at No. 23 Michigan.

Printy averaged 21.5 points, 6.5 rebounds, shot 54.5 percent from the field, 41.7 percent from 3-point range and was 14-of-15 from the free throw line in Iowa's two wins.

Printy netted 29 points against Wisconsin, missing only two shots in 10 attempts, while going 3-of-3 from 3-point distance and 10-of-11 from the charity stripe. She also added eight rebounds and four assists, with just one turnover, in 35 minutes.

The Marion, Iowa, native finished the week with 14 points and five rebounds at No. 23 Michigan. She was a perfect 4-of-4 from the free throw line.

The honor marked the second time in Printy's career she has been named Big Ten Player of the Week and her sixth Big Ten honor (four-time Big Ten Freshman of the Week in 2009-10).



## 2012-13 Big Ten Standings/Schedule (thru March 7)

Team	Big Ten	Overall	Thursday, March 7
Penn State	14-2	24-4	#7 Iowa vs. #2 Nebraska - 11:30 a.m.
Nebraska	12-4	22-7	
Michigan State	10-6	22-7	#11 Wisconsin vs. #3 Purdue - approx. 2 p.m.
Purdue	10-6	21-8	
Michigan	9-7	21-9	#9 Ohio State vs. #1 Penn State - 6 p.m.
Illinois	9-7	16-13	#5 Michigan vs. #4 Michigan State - approx. 8:30 p.m.
Iowa	8-8	20-11	
Minnesota	7-9	18-13	
Ohio State	7-9	18-12	
Northwestern	5-11	13-17	
Wisconsin	3-13	12-18	
Indiana	214	11-19	

### JOHNSON - BIG PLAYER OF THE WEEK - NOV. 19

Morgan Johnson was named Big Ten Player of the Week (Nov. 19) for her efforts in the Pre-season WNIT semifinals and championship game.

Johnson averaged 20 points, 9.5 rebounds and shot 76.2 percent (16-of-21) from the floor against two tough opponents in Middle Tennessee and North Carolina.

Johnson started the week with 20 points (8-of-10 FGs), eight rebounds and two blocks in Iowa's overtime win over Middle Tennessee. She followed with another 20-point performance, along with 11 rebounds, against ACC opponent North Carolina, battling 6-6 center Waltiea Rolle in the paint.

The award was Johnson's second weekly honor from the Big Ten in her career. She was named Big Ten Player of the Week last year after scoring 37 points at Bradley.

### SCHOOL/BIG RECORDS SET THIS SEASON

- Morgan Johnson became the Iowa career leader in blocks against Florida International. Johnson entered the game needing two blocks to break Tangela Smith's career blocks record and she finished with five. Johnson is currently fifth in Big Ten history with 283 blocks.
- Jaime Printy tied the school record for 3-pointers made in a single game with seven against San Diego. Kamille Wahlin and Lindsey Meder are the only other Iowa players to hit seven 3's in a single game. Printy was 6-of-7 in the second half, making her final five attempts. Her seven made treys tie as the most by a Big Ten player this season.
- Samantha Logic broke Iowa's school record for assists in a single game against Texas, finishing with 14. Her 14 assists tie as the most by a Big Ten player this season. Earlier this year, Logic tied the previous school record with 12 against Middle Tennessee State.
- Samantha Logic broke the single season assists record of 191, held by Cara Consuegra (2000-01). Logic currently has 198 assists.
- Against West Virginia, Jaime Printy became only the third player in Big Ten history to go 17-of-17 from the free throw line, matching the best single game free throw performance in conference history. Wisconsin's Michele Kozelka (1989) and Keisha Anderson (1996) are the only other players in Big Ten history to accomplish the feat.
- Printy's 17 made free throws tied the single game school record and are tied for the second most made free throws in Big Ten history.
- Printy's performance against West Virginia marked the ninth time in school history that an Iowa player has been perfect from the free throw line (minimum 10 attempts). Printy now has three of those marks, with one of those performances coming earlier this year against Middle Tennessee (11-of-11). The other came against Indiana (10-of-10) on Feb. 27, 2011.
- Morgan Johnson was a perfect 11-of-11 from the free throw line at Wisconsin, marking the 10th time in school history, and the third this season, an Iowa player was perfect in at least 10 attempts.
- Melissa Dixon tied the school record for 3-pointers made by an Iowa player in Carver-Hawkeye Arena with six against Northwestern.
- As a team, the Hawkeyes set the Big Ten and school record for free throws made (42) and set the school record for free throw attempts (50) in the win over West Virginia.

## Career Scoring in Iowa History

Rank...No.....	Player.....	Years
2.....	1906..... Lindsey Meder .....	98-02
3.....	1821..... Michelle Edwards .....	84-88
<b>4.....</b>	<b>1818..... Jaime Printy .....</b>	<b>10-Pres.</b>
6.....	1742..... Franthea Price.....	86-90
7.....	1606..... Toni Foster .....	89-93
8.....	1598..... Tangela Smith .....	94-98
<b>9.....</b>	<b>1558..... Morgan Johnson .....</b>	<b>10-Pres.</b>

## Career 3-Pointers in Iowa History

Rank...No.....	Player.....	Years
1.....	261..... Lindsey Meder .....	98-02
<b>2.....</b>	<b>251..... Jaime Printy .....</b>	<b>10-Pres.</b>
3.....	231..... Kamille Wahlin.....	09-Pr.

## Career Blocks in Iowa History

Rank...No.....	Player.....	Years
<b>1.....</b>	<b>285..... Morgan Johnson .....</b>	<b>10-Pres.</b>
2.....	235..... Tangela Smith .....	94-98

## Career Rebounds in Iowa History

Rank...No.....	Player.....	Years
1.....	1067..... Cindy Haugejorde .....	76-80
2.....	910..... Kachine Alexander .....	08-11
3.....	887..... Toni Foster .....	89-93
<b>4.....</b>	<b>865..... Morgan Johnson .....</b>	<b>10-Pres.</b>

## Career Assists in Iowa History

Rank...No.....	Player.....	Years
1.....	576..... Cara Consuegra.....	97-01
2.....	431..... Michelle Edwards .....	84-88
3.....	427..... Kamille Wahlin.....	09-12
4.....	412..... Kristi Smith.....	05-09
<b>5.....</b>	<b>406..... Jaime Printy .....</b>	<b>10-Pres.</b>
8.....	367..... Steph Schueler.....	87-91
9.....	357..... Nadine Domond .....	94-98
10.....	353..... Jollette Law.....	86-90
<b>11.....</b>	<b>340..... Samantha Logic.....</b>	<b>12-Pres.</b>

## Career Double-Doubles in Iowa History

Rank...No.....	Player.....	Years
4.....	24..... Amy Herring.....	95-99
5.....	24..... Kachine Alexander .....	07-11
<b>6.....</b>	<b>21..... Morgan Johnson .....</b>	<b>10-Pres.</b>

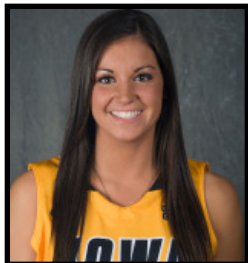




# University of Iowa Women's Basketball

## Updated Iowa Player Bio

### Claire Till



# 3

**Guard, 6-0, Freshman**  
**Dubuque, Iowa**  
**Dubuque Wahlert HS**

- Missed a total of six games with a stress reaction in right femur (missed four games from Dec. 1-Dec. 28 and two games from Jan. 6-Jan.17).
- Seven points and six rebounds against Florida International.
- Five points and two rebounds in win over Robert Morris.
- Scored three points and recorded six rebounds in collegiate debut vs. NIU.
- Two-time all-state selection.
- Three-time IBCA Select Team member.
- Four-time first team all-conference and all-district pick.
- Underwent three surgeries in high school to repair injured knee.

#### Personal Bests

**Points:** 7 at Florida International (11/23/12)  
**Rebounds:** 6, twice, last at FIU (11/23/12)  
**FGM:** 1, 4x, last at FIU (11/23/12)  
**FGA:** 6 at Florida International (11/23/12)  
**3-pt FG:** 1, twice, last vs. RMU (11/20/12)  
**3-pt FGA:** 2, twice, last at FIU (11/23/12)  
**FTM:** 5, twice, last vs. WVU (11/25/12)  
**FTA:** 8 at Florida International (11/23/12)  
**Assists:** 1, 3x, last vs. Texas (12/28/12)  
**Steals:** 1, 3x, last vs. WVU (11/25/12)  
**Blocks:** 1, 3x, last vs. Ohio State (1/3/13)  
**Minutes:** 18 at Florida International (11/23/12)

### 2012-13 Game-by-Game

#03 Till, Claire

Opponent	Date	gs	min	Total		3-Pointers		Free throws		Rebounds			pf	a	t/o	blk	stl	pts	avg
				fg-fga	pct	3fg-fga	pct	ft-fa	pct	off	def	tot							
NORTHERN ILLINOIS	11/9/12	11	1-3	.333	1-2	.500	0-2	.000	1	5	6	6.0	3	0	0	1	1	3	3.0
ILLINOIS STATE	11/11/12	7	1-2	.500	0-0	.000	2-2	1.000	0	3	3	4.5	1	0	2	0	1	4	3.5
MIDDLE TENNESSEE	11/14/12	8	0-1	.000	0-0	.000	0-0	.000	0	1	1	3.3	2	0	0	0	0	0	2.3
NORTH CAROLINA	11/18/12	6	0-0	.000	0-0	.000	1-2	.500	0	2	2	3.0	0	1	2	0	0	1	2.0
ROBERT MORRIS	11/20/12	16	1-2	.500	1-1	1.000	2-2	1.000	0	2	2	2.8	0	0	2	0	0	5	2.6
at FIU	11/23/12	18	1-6	.167	0-2	.000	5-8	.625	5	1	6	3.3	0	0	0	0	0	7	3.3
vs WVU	11/25/12	14	0-1	.000	0-0	.000	5-6	.833	2	0	2	3.1	1	0	1	0	1	5	3.6
at Florida State	11/28/12	12	0-2	.000	0-1	.000	0-0	.000	0	1	1	2.9	2	1	0	1	0	0	3.1
vs Texas	12/28/12	4	0-1	.000	0-1	.000	0-0	.000	1	0	1	2.7	1	1	0	0	0	0	2.8
OHIO STATE	1/3/13	4	0-1	.000	0-0	.000	0-0	.000	0	1	1	2.5	0	0	0	1	0	0	2.5
PURDUE	01/20/13	1	0-0	.000	0-0	.000	0-0	.000	0	0	0	2.3	0	0	0	0	0	0	2.3
WISCONSIN	1/24/13	2	0-0	.000	0-0	.000	0-0	.000	0	0	0	2.1	1	0	1	0	0	0	2.1
at Purdue	02/17/13	1	0-0	.000	0-0	.000	0-0	.000	0	0	0	1.9	0	0	0	0	0	0	1.9
at Northwestern	3/3/13	1	0-0	.000	0-0	.000	0-0	.000	0	1	1	1.9	0	0	0	0	0	0	1.9
Totals		0	105	4-19	.211	2-7	.286	15-22	.682	9	17	26	1.9	11	3	9	3	25	1.8

Games played: 14  
 Minutes/game: 7.5  
 Points/game: 1.8  
 FG Pct: 21.1  
 3FG Pct: 28.6  
 FT Pct: 68.2

Rebounds/game: 1.9  
 Assists/game: 0.2  
 Turnovers/game: 0.6  
 Assist/turnover ratio: 0.3  
 Steals/game: 0.2  
 Blocks/game: 0.2

#### CAREER STATISTICS

YEAR	G/GS	FG-A	PCT	3-PT	PCT	FT-A	PCT	O-D-REB	AVG	PF-FO	AS	TO	BK	ST	PTS	AVG
Fresh.	14/0	4-19	.211	2-7	.286	15-22	.682	9-17-26	1.9	11-0	3	9	3	3	25	1.8







# University of Iowa Women's Basketball

## Updated Iowa Player Bio

### Trisha Nesbitt



# 11

**Guard, 5-7, Senior**  
**Ames, Iowa**  
**Ames HS**

- Career-high 12 points in win at Drake.
- Academic All-Big Ten in 2011-12.
- Had minor knee surgery Nov. 15, 2011 and missed the first 10 games of the season as a junior.
- Saw first action last season Dec. 20 vs. Drake, recording one rebound and one steal in seven minutes of play.

#### Personal Bests

**Points:** 12 at Drake (12/16/12)  
**Rebounds:** 3, 2x, last vs. NIU (11/9/12)  
**FGM:** 4 vs. Michigan State (3/6/10)  
**FGA:** 8 at Indiana (2/11/10)  
**3-pt FG:** 2, 3x, last at Drake (12/16/12)  
**3-pt FGA:** 4, 3x, last vs. Missouri State (12/19/12)  
**FTM:** 4, 3x, last at Drake (12/16/12)  
**FTA:** 5 at UNI (11/22/09)  
**Assists:** 4, 3x, last at Iowa St. (12/10/09)  
**Steals:** 3 at Minnesota (1/3/10)  
**Blocks:** - - -  
**Minutes:** 37 at Indiana (2/11/10)

### 2012-13 Game-by-Game

#11 Nesbitt, Trisha

Opponent	Date	gs	min	Total		3-Pointers		Free throws		Rebounds				pf	a	t/o	blk	stl	pts	avg
				fg-fga	pct	3fg-fga	pct	ft-fa	pct	off	def	tot	avg							
NORTHERN ILLINOIS	11/9/12	18	1-1	1.000	1-1	1.000	0-0	.000	0	3	3	3.0	0	1	2	0	0	3	3.0	
ILLINOIS STATE	11/11/12	15	0-3	.000	0-1	.000	3-4	.750	0	1	1	2.0	3	0	1	0	1	3	3.0	
MIDDLE TENNESSEE	11/14/12	4	1-1	1.000	0-0	.000	0-0	.000	0	0	0	1.3	0	0	0	0	0	2	2.7	
NORTH CAROLINA	11/18/12	5	1-2	.500	0-1	.000	0-0	.000	0	0	0	1.0	0	0	0	0	0	2	2.5	
ROBERT MORRIS	11/20/12	13	0-0	.000	0-0	.000	0-0	.000	0	2	2	1.2	0	2	0	0	0	0	2.0	
at FIU	11/23/12	8	1-2	.500	0-0	.000	0-0	.000	0	1	1	1.2	1	1	0	0	0	2	2.0	
vs WVU	11/25/12	14	1-1	1.000	1-1	1.000	1-2	.500	0	0	0	1.0	2	1	1	0	1	4	2.3	
at Florida State	11/28/12	5	0-0	.000	0-0	.000	0-0	.000	0	0	0	0.9	1	0	0	0	1	0	2.0	
UNI	12/1/12	5	0-0	.000	0-0	.000	0-0	.000	0	0	0	0.8	0	0	0	0	0	0	1.8	
IOWA STATE	12/6/12	6	0-0	.000	0-0	.000	0-0	.000	0	1	1	0.8	1	0	0	0	0	0	1.6	
at Drake	12-16-12	15	3-4	.750	2-3	.667	4-4	1.000	0	0	0	0.7	4	0	1	0	0	12	2.5	
MISSOURI STATE	12/19/12	15	1-4	.250	1-4	.250	1-2	.500	0	1	1	0.8	5	1	1	0	0	4	2.7	
vs Texas	12/28/12	8	0-1	.000	0-1	.000	0-0	.000	0	0	0	0.7	1	0	0	0	0	0	2.5	
MICHIGAN	1/6/13	3	0-0	.000	0-0	.000	0-0	.000	0	0	0	0.6	0	0	0	0	0	0	2.3	
at Wisconsin	01/10/13	3	0-1	.000	0-1	.000	0-0	.000	0	0	0	0.6	0	0	0	0	0	0	2.1	
at Michigan State	01/17/13	4	0-1	.000	0-0	.000	0-0	.000	0	1	1	0.6	0	0	0	0	1	0	2.0	
PURDUE	01/20/13	2	0-0	.000	0-0	.000	0-0	.000	0	0	0	0.6	0	0	0	0	0	0	1.9	
WISCONSIN	1/24/13	2	0-0	.000	0-0	.000	0-0	.000	0	0	0	0.6	0	0	0	0	0	0	1.8	
at Michigan	01/27/13	9	0-1	.000	0-1	.000	0-0	.000	0	2	2	0.6	0	0	0	0	0	0	1.7	
NORTHWESTERN	2/03/13	3	0-1	.000	0-0	.000	0-0	.000	0	0	0	0.6	0	1	1	0	1	0	1.6	
at Minnesota	02/07/13	2	0-1	.000	0-0	.000	0-0	.000	0	0	0	0.6	0	0	0	0	0	0	1.5	
NEBRASKA	02/11/13	8	0-1	.000	0-0	.000	0-0	.000	0	0	0	0.5	1	0	0	0	0	0	1.5	
PENN STATE	2/14/13	2	0-0	.000	0-0	.000	0-0	.000	0	0	0	0.5	0	0	0	0	0	0	1.4	
at Purdue	02/17/13	1	0-0	.000	0-0	.000	0-0	.000	0	0	0	0.5	0	0	0	0	0	0	1.3	
at Nebraska	02/24/13	2	0-0	.000	0-0	.000	0-0	.000	0	0	0	0.5	0	0	1	0	0	0	1.3	
INDIANA	2/28/13	3	0-0	.000	0-0	.000	0-0	.000	0	0	0	0.5	1	0	0	0	0	0	1.2	
at Northwestern	3/3/13	7	0-0	.000	0-0	.000	0-0	.000	0	0	0	0.4	2	1	0	0	0	0	1.2	
vs Northwestern	3/7/13	2	0-0	.000	0-0	.000	0-0	.000	0	0	0	0.4	0	0	0	0	0	0	1.1	
Totals		0	184	9-25	.360	5-14	.357	9-12	.750	0	12	12	0.4	22	8	8	0	5	32	1.1

Games played: 28  
 Minutes/game: 6.6  
 Points/game: 1.1  
 FG Pct: 36.0  
 3FG Pct: 35.7  
 FT Pct: 75.0

Rebounds/game: 0.4  
 Assists/game: 0.3  
 Turnovers/game: 0.3  
 Assist/turnover ratio: 1.0  
 Steals/game: 0.2

#### CAREER STATISTICS

YEAR	G/GS	FG-A	PCT	3-PT	PCT	FT-A	PCT	O-D-REB	AVG	PF-FO	AS	TO	BK	ST	PTS	AVG
Fresh.	34/1	25-85	.294	9-36	.250	25-31	.806	2-22-24	0.7	46-0	43	42	0	14	84	2.5
Soph.	16/0	3-13	.231	2-6	.333	0-1	.000	0-4-4	0.3	7-0	5	10	0	1	8	0.5
Junior	15/0	1-8	.125	0-6	.000	3-4	.750	1-2-3	0.2	10-0	4	3	0	3	5	0.3
Senior	28/0	9-25	.360	5-14	.357	9-12	.750	0-12-12	0.4	22-1	8	8	0	5	32	1.1
TOTALS	93/1	38-131	.290	16-62	.258	37-48	.771	3-40-43	0.5	85-1	60	63	0	23	129	1.4





# University of Iowa Women's Basketball

## Updated Iowa Player Bio

### Morgan Johnson



# 12

**Center, 6-5, Senior**  
**Platte City, Mo.**  
**Platte County HS**

- Iowa career blocks leader (285), fourth in career rebounds (865) and ninth in career scoring (1,558).
- Posted 21 career double-doubles, which rank sixth all-time in school history... had three as a freshman, five as a sophomore, four as a junior and nine as a senior.
- Second team All-Big Ten by coaches and media.
- Capital One Academic All-District selection.
- 18 points and nine rebounds in win over Northwestern in first round of Big Ten Tournament.
- Ninth double-double against Penn State, finishing with 17 points and 11 rebounds.
- Posted eighth double-double against Nebraska, finishing with 19 points on 9-of-11 shooting to go along with 10 rebounds.
- Seventh double-double of the season with 13 points and 10 rebounds at Minnesota.
- Sixth double-double of the season with 13 points and 12 rebounds at Michigan St.
- Fifth double-double of the season with 23 points and 11 rebounds in win at Wisconsin.
- Fourth double-double of the season with 16 points and 12 rebounds in win over Ohio State.
- 26 points, eight rebounds and three blocks in win at Drake.
- Third double-double of the season with 19 points, 12 rebounds and a career-high five assists in win over Northern Iowa.
- 20 points at Florida State.
- Second double-double of the season with 19 points and 11 rebounds in win over Robert Morris.
- Big Ten Player of the Week (Nov. 19).
- First double-double of the season with 20 points and 11 rebounds vs. N. Carolina.
- 24 points (12-of-13 FTs) and nine rebounds in win over Illinois State.
- Preseason All-Big Ten selection.

### 2012-13 Game-by-Game

#12 Johnson, Morgan

Opponent	Date	gs	min	Total		3-Pointers		Free throws		Rebounds			pf	a	t/o	blk	stl	pts	avg		
				fg-fga	pct	3fg-3fga	pct	ft-fta	pct	off	def	tot								avg	
NORTHERN ILLINOIS	11/9/12	*	20	4-11	.364	0-0	.000	3-5	.600	1	4	5	5.0	2	0	1	0	1	11.0		
ILLINOIS STATE	11/11/12	*	30	6-14	.429	0-0	.000	12-13	.923	4	5	9	7.0	2	2	2	5	1	24	17.5	
MIDDLE TENNESSEE	11/14/12	*	41	8-10	.800	0-0	.000	4-6	.667	2	6	8	7.3	4	1	0	2	0	20	18.3	
NORTH CAROLINA	11/18/12	*	39	8-11	.727	0-0	.000	4-5	.800	3	8	11	8.3	4	1	2	2	2	20	18.8	
ROBERT MORRIS	11/20/12	*	33	8-13	.615	0-0	.000	3-5	.600	5	6	11	8.8	3	0	3	0	0	19	18.8	
at FIU	11/23/12	*	36	6-9	.667	0-0	.000	2-2	1.000	3	3	6	8.3	2	2	3	5	0	14	18.0	
vs WVU	11/25/12	*	30	6-11	.545	0-0	.000	7-11	.636	0	3	3	7.6	3	1	2	2	1	19	18.1	
at Florida State	11/28/12	*	30	8-15	.533	0-0	.000	4-4	1.000	3	1	4	7.1	2	1	2	2	0	20	18.4	
UNI	12/1/12	*	35	6-11	.545	0-0	.000	7-11	.636	4	8	12	7.7	2	5	2	2	2	19	18.4	
IOWA STATE	12/6/12	*	38	3-8	.375	0-0	.000	1-2	.500	1	5	6	7.5	1	2	4	1	1	7	17.3	
at Drake	12-16-12	*	38	11-19	.579	0-0	.000	4-7	.571	2	6	8	7.5	2	0	0	3	2	26	18.1	
MISSOURI STATE	12/19/12	*	15	6-7	.857	0-0	.000	1-2	.500	2	2	4	7.3	4	1	3	0	0	13	17.7	
vs Texas	12/28/12	*	23	8-13	.615	0-0	.000	4-5	.800	1	4	5	7.1	3	0	0	2	3	20	17.8	
at San Diego	12/30/12	*	38	8-10	.800	0-0	.000	4-4	1.000	3	3	6	7.0	2	1	4	3	1	20	18.0	
OHIO STATE	1/3/13	*	43	7-17	.412	0-0	.000	2-3	.667	3	9	12	7.3	2	3	0	3	3	16	17.9	
MICHIGAN	1/6/13	*	39	4-7	.571	0-0	.000	2-3	.667	3	4	7	7.3	4	2	0	1	2	10	17.4	
at Wisconsin	01/10/13	*	35	6-12	.500	0-0	.000	11-11	1.000	8	3	11	7.5	3	0	3	2	0	23	17.7	
at Michigan State	01/17/13	*	37	5-12	.417	0-0	.000	3-4	.750	5	7	12	7.8	3	0	1	2	2	13	17.4	
PURDUE	01/20/13	*	24	3-14	.214	0-0	.000	1-1	1.000	3	4	7	7.7	3	0	1	3	0	7	16.9	
WISCONSIN	1/24/13	*	17	1-2	.500	0-0	.000	0-0	.000	2	2	4	7.6	4	1	1	0	0	2	16.2	
at Michigan	01/27/13	*	31	2-4	.500	0-0	.000	2-2	1.000	1	6	7	7.5	4	0	0	1	2	6	15.7	
at Illinois	01/31/13	*	27	3-6	.500	0-0	.000	0-0	.000	1	3	4	7.4	5	0	2	1	1	6	15.2	
NORTHWESTERN	2/03/13	*	18	3-9	.333	0-0	.000	5-7	.714	1	2	3	7.2	5	0	2	1	1	11	15.0	
at Minnesota	02/07/13	*	35	3-9	.333	0-0	.000	7-7	1.000	4	6	10	7.3	1	2	0	1	2	13	15.0	
NEBRASKA	02/11/13	*	30	9-11	.818	0-0	.000	1-3	.333	7	3	10	7.4	1	1	1	4	0	19	15.1	
PENN STATE	2/14/13	*	36	8-16	.500	0-0	.000	1-5	.200	6	5	11	7.5	3	0	2	1	1	17	15.2	
at Purdue	02/17/13	*	38	4-7	.571	0-0	.000	4-4	1.000	1	2	3	7.4	1	4	2	5	1	12	15.1	
at Nebraska	02/24/13	*	39	4-10	.400	0-0	.000	0-2	.000	4	5	9	7.4	2	0	3	1	0	8	14.8	
INDIANA	2/28/13	*	38	7-13	.538	0-0	.000	3-4	.750	2	7	9	7.5	2	1	1	1	2	17	14.9	
at Northwestern	3/3/13	*	34	6-15	.400	0-0	.000	4-6	.667	4	5	9	7.5	4	2	1	2	3	16	14.9	
vs Northwestern	3/7/13	*	32	8-12	.667	0-0	.000	2-2	1.000	3	6	9	7.6	2	0	3	2	4	18	15.0	
Totals			31	999	179-338	.530	0-0	.000	108-146	.740	92	143	235	7.6	85	33	51	60	38	466	15.0

Games played: 31  
Minutes/game: 32.2  
Points/game: 15.0  
FG Pct: 53.0  
FT Pct: 74.0

Rebounds/game: 7.6  
Assists/game: 1.1  
Turnovers/game: 1.6  
Assist/turnover ratio: 0.6  
Steals/game: 1.2  
Blocks/game: 1.9

#### Personal Bests

- Points:** 37 at Bradley (12/17/11)  
**Rebounds:** 16 vs. Illinois (1/5/12)  
**FGM:** 13 at Bradley (12/17/11)  
**FGA:** 21 vs. Virginia Tech (11/30/11)  
**3-pt FG:** 1 at Iowa State (12/10/09)  
**3-pt FGA:** 2 at Iowa State (12/10/09)  
**FTM:** 12 vs. Illinois State (11/11/12)  
**FTA:** 13 vs. Illinois State (11/11/12)  
**Assists:** 5 vs. Northern Iowa (12/1/12)  
**Steals:** 4 vs. Northwestern (3/7/13)  
**Blocks:** 8 vs. Minnesota (2/18/10)  
**Minutes:** 43 vs. Ohio State (1/3/13)

#### CAREER STATISTICS

YEAR	G/GS	FG-A	PCT	3-PT	PCT	FT-A	PCT	O-D-REB	AVG	PF-FO	AS	TO	BK	ST	PTS	AVG
Fresh.	34/34	124-250	.496	1-4	.250	48-76	.632	78-139-217	6.4	87-2	24	61	79	15	297	8.7
Soph.	31/30	132-276	.478	0-0	.000	70-96	.729	90-118-208	6.7	83-3	25	58	76	21	334	10.8
Junior	31/31	179-326	.549	0-0	.000	103-141	.730	67-138-205	6.6	96-4	24	64	70	12	461	14.9
Senior	31/31	179-338	.530	0-0	.000	108-146	.740	92-143-235	7.6	85-2	33	51	60	38	466	15.0
<b>TOTALS</b>	<b>127/126</b>	<b>614-1190</b>	<b>.516</b>	<b>1-4</b>	<b>.250</b>	<b>329-459</b>	<b>.717</b>	<b>327-538-865</b>	<b>6.8</b>	<b>351-11</b>	<b>106</b>	<b>234</b>	<b>285</b>	<b>86</b>	<b>1558</b>	<b>12.3</b>





# University of Iowa Women's Basketball

## Updated Iowa Player Bio

### Kathy Thomas



# 13

**Guard, 5-6, Sophomore  
Flint, Mich.  
Highland CC (Kan.)**

- 15 points (3-of-6 3Pt. FGs) in win over Missouri State.
- Scored eight points in collegiate debut vs. NIU.
- NJCAA first team All-American at Highlands Community College.
- Jayhawk Conference Player and Freshman of the Year.
- Led Highland Community College to 28-4 overall record, second place finish in Jayhawk Conference and NJCAA Division II District B finals appearance, the most successful season in school history.
- Averaged 13.2 points, 8.9 assists and 9.8 steals as a senior in high school.

#### Personal Bests

**Points:** 15 vs. Missouri State (12/19/12)  
**Rebounds:** 3, twice, last at San Diego (12/30/12)  
**FGM:** 6 vs. Missouri State (12/19/12)  
**FGA:** 9 vs. Missouri State (12/19/12)  
**3-pt FG:** 3 vs. Missouri State (12/19/12)  
**3-pt FGA:** 6 vs. Missouri State (12/19/12)  
**FTM:** 5 vs. Ill. State (11/11/12)  
**FTA:** 8 vs. Ill. State (11/11/12)  
**Assists:** 3, 3x, last vs. Penn State (2/14/13)  
**Steals:** 2, 4x, last at Purdue (2/17/13)  
**Blocks:** 1 at Minnesota (2/7/13)  
**Minutes:** 19 vs. Missouri State (12/19/12)

### 2012-13 Game-by-Game

#13 Thomas, Kathy

Opponent	Date	gs	min	Total		3-Pointers		Free throws		Rebounds				pf	a	t/o	blk	stl	pts	avg
				fg-fga	pct	3fg-fga	pct	ft-fa	pct	off	def	tot	avg							
NORTHERN ILLINOIS	11/9/12	15	3-4	.750	0-0	.000	2-2	1.000	1	1	2	2.0	3	0	1	0	0	8	8.0	
ILLINOIS STATE	11/11/12	16	0-2	.000	0-0	.000	5-8	.625	2	1	3	2.5	3	3	3	0	1	5	6.5	
MIDDLE TENNESSEE	11/14/12	2	0-0	.000	0-0	.000	0-0	.000	0	0	0	1.7	1	0	0	0	0	4.3		
NORTH CAROLINA	11/18/12	2	0-0	.000	0-0	.000	0-0	.000	0	0	0	1.3	1	0	0	0	0	3.3		
ROBERT MORRIS	11/20/12	10	1-3	.333	1-1	1.000	0-0	.000	0	1	1	1.2	2	1	0	0	0	3	3.2	
at FIU	11/23/12	8	0-0	.000	0-0	.000	0-0	.000	0	0	0	1.0	0	0	0	0	0	2.7		
UNI	12/1/12	7	0-1	.000	0-0	.000	0-0	.000	0	2	2	1.1	2	1	0	0	0	2.3		
IOWA STATE	12/6/12	6	0-1	.000	0-1	.000	3-4	.750	1	1	2	1.3	1	0	0	0	0	3	2.4	
at Drake	12-16-12	7	1-1	1.000	1-1	1.000	0-0	.000	0	0	0	1.1	0	0	0	0	0	3	2.4	
MISSOURI STATE	12/19/12	19	6-9	.667	3-6	.500	0-0	.000	0	2	2	1.2	2	2	3	0	2	15	3.7	
vs Texas	12/28/12	9	1-1	1.000	0-0	.000	0-0	.000	0	2	2	1.3	0	0	2	0	1	2	3.5	
at San Diego	12/30/12	4	0-1	.000	0-0	.000	0-0	.000	1	2	3	1.4	2	0	1	0	0	0	3.3	
OHIO STATE	1/3/13	5	0-0	.000	0-0	.000	0-0	.000	0	1	1	1.4	3	1	2	0	0	0	3.0	
MICHIGAN	1/6/13	2	0-0	.000	0-0	.000	0-0	.000	0	0	0	1.3	0	0	0	0	0	0	2.8	
at Wisconsin	01/10/13	2	0-1	.000	0-0	.000	0-0	.000	0	0	0	1.2	1	0	0	0	0	0	2.6	
at Michigan State	01/17/13	5	0-2	.000	0-0	.000	0-0	.000	0	2	2	1.3	2	0	0	0	0	0	2.4	
PURDUE	01/20/13	8	0-1	.000	0-0	.000	0-0	.000	0	1	1	1.2	1	3	2	0	2	0	2.3	
WISCONSIN	1/24/13	8	0-1	.000	0-1	.000	0-0	.000	0	1	1	1.2	1	0	1	0	0	0	2.2	
at Michigan	01/27/13	6	1-3	.333	1-2	.500	1-2	.500	0	0	0	1.2	0	0	1	0	0	4	2.3	
at Illinois	01/31/13	4	0-1	.000	0-1	.000	0-0	.000	0	0	0	1.1	0	1	0	0	0	0	2.2	
NORTHWESTERN	2/03/13	3	0-0	.000	0-0	.000	0-0	.000	0	0	0	1.0	1	0	2	0	0	0	2.0	
at Minnesota	02/07/13	13	1-2	.500	1-1	1.000	0-0	.000	0	1	1	1.0	0	1	1	1	0	3	2.1	
NEBRASKA	02/11/13	4	1-2	.500	0-1	.000	0-0	.000	0	1	1	1.0	1	0	1	0	0	2	2.1	
PENN STATE	2/14/13	10	0-0	.000	0-0	.000	1-3	.333	0	2	2	1.1	0	3	1	0	2	1	2.0	
at Purdue	02/17/13	8	1-2	.500	0-1	.000	0-0	.000	0	0	0	1.0	2	0	0	0	2	2	2.0	
at Nebraska	02/24/13	7	0-3	.000	0-2	.000	0-0	.000	0	0	0	1.0	1	0	1	0	1	0	2.0	
INDIANA	2/28/13	4	0-1	.000	0-1	.000	0-0	.000	0	1	1	1.0	0	1	1	0	0	0	1.9	
at Northwestern	3/3/13	1	0-0	.000	0-0	.000	0-0	.000	0	0	0	1.0	0	0	0	0	0	0	1.8	
vs Northwestern	3/7/13	3	0-1	.000	0-0	.000	0-2	.000	0	0	0	0.9	1	0	0	0	0	0	1.8	
<b>Totals</b>		<b>0</b>	<b>198</b>	<b>16-43</b>	<b>.372</b>	<b>7-19</b>	<b>.368</b>	<b>12-21</b>	<b>.571</b>	<b>5</b>	<b>22</b>	<b>27</b>	<b>0.9</b>	<b>31</b>	<b>17</b>	<b>23</b>	<b>1</b>	<b>11</b>	<b>51</b>	<b>1.8</b>

Games played: 29  
 Minutes/game: 6.8  
 Points/game: 1.8  
 FG Pct: 37.2  
 3FG Pct: 36.8  
 FT Pct: 57.1

Rebounds/game: 0.9  
 Assists/game: 0.6  
 Turnovers/game: 0.8  
 Assist/turnover ratio: 0.7  
 Steals/game: 0.4  
 Blocks/game: 0.0

#### CAREER STATISTICS

YEAR	G/GS	FG-A	PCT	3-PT	PCT	FT-A	PCT	O-D-REB	AVG	PF-FO	AS	TO	BK	ST	PTS	AVG
Fresh.	29/0	16-43	.372	7-19	.368	12-21	.571	5-22-27	0.9	31-0	17	23	1	11	51	1.8





# University of Iowa Women's Basketball

## Updated Iowa Player Bio

### Melissa Dixon



# 21

**Guard, 5-8, Sophomore**  
**Johnsburg, Ill.**  
**Johnsburg HS**

- Big Ten Sixth Player of the Year.
- 21 points (8-of-15 FGs, 5-of-12 3Pt. FGs) in win at Northwestern.
- 22 points (8-of-16 FGs) in win over Indiana.
- Recorded 16 points against Penn State.
- Scored 19 points (7-15 FG, 5-10 3PT) against Nebraska.
- 21 points (7-10 FGs, 6-9 3Pt. FGs) against Northwestern.
- 15 points in win over Purdue.
- Career-high 23 points (5-of-10 3Pt. FGs) in win over Texas.
- 11 points in win over Iowa State.
- 12 points against North Carolina.
- Career-high 22 points (8-18 FGs, 6-15 3Pt. FGs) in win over Michigan as a freshman.
- Suffered torn meniscus at Ohio State (Jan. 2, 2012) as a freshman. Missed a total of seven games.
- First career start came at Indiana, registering career-highs in points (19), field goals made (7), 3-pointers made and attempted (5-for-10), steals (3) and minutes (28).

### 2012-13 Game-by-Game

#21 Dixon, Melissa

Opponent	Date	gs	min	Total		3-Pointers		Free throws		Rebounds				pts	avg						
				fg-aga	pct	3fg-aga	pct	ft-pta	pct	off	def	tot	avg								
NORTHERN ILLINOIS	11/9/12	*	24	3-4	.750	2-3	.667	0-0	.000	0	2	2	2.0	2	1	0	1	8	8.0		
ILLINOIS STATE	11/11/12	*	24	2-3	.667	2-3	.667	2-2	1.000	0	0	0	1.0	4	2	1	1	0	8	8.0	
MIDDLE TENNESSEE	11/14/12	*	34	2-9	.222	2-7	.286	0-1	.000	0	1	1	1.0	2	1	1	0	2	6	7.3	
NORTH CAROLINA	11/18/12		20	5-11	.455	2-8	.250	0-0	.000	0	1	1	1.0	4	0	2	0	0	12	8.5	
ROBERT MORRIS	11/20/12		17	2-8	.250	2-7	.286	0-0	.000	0	2	2	1.2	2	0	3	0	0	6	8.0	
at FIU	11/23/12		19	3-11	.273	2-7	.286	0-0	.000	0	2	2	1.3	2	0	0	0	0	8	8.0	
vs WVU	11/25/12		17	0-2	.000	0-1	.000	0-0	.000	0	0	0	1.1	2	0	1	0	0	0	6.9	
at Florida State	11/28/12		14	1-5	.200	0-3	.000	1-1	1.000	0	0	0	1.0	0	1	0	0	1	3	6.4	
UNI	12/1/12		16	2-4	.500	2-2	1.000	0-0	.000	1	1	2	1.1	2	1	0	0	0	6	6.3	
IOWA STATE	12/6/12		19	4-8	.500	2-5	.400	1-3	.333	0	2	2	1.2	1	1	1	0	1	11	6.8	
at Drake	12-16-12		6	0-3	.000	0-3	.000	0-0	.000	0	0	0	1.1	0	1	0	0	0	0	6.2	
MISSOURI STATE	12/19/12		23	4-11	.364	2-8	.250	2-2	1.000	0	2	2	1.2	1	2	1	0	1	12	6.7	
vs Texas	12/28/12		25	9-15	.600	5-10	.500	0-0	.000	0	3	3	1.3	1	2	0	0	0	23	7.9	
at San Diego	12/30/12		17	3-7	.429	2-3	.667	0-0	.000	0	0	0	1.2	1	0	2	0	1	8	7.9	
OHIO STATE	1/3/13		15	1-6	.167	1-2	.500	0-0	.000	0	1	1	1.2	2	0	1	0	1	3	7.6	
MICHIGAN	1/6/13		25	6-14	.429	5-9	.556	0-0	.000	3	0	3	1.3	2	0	2	0	0	17	8.2	
at Wisconsin	01/10/13		19	2-6	.333	2-5	.400	2-2	1.000	0	3	3	1.4	2	2	2	0	0	8	8.2	
at Michigan State	01/17/13		22	2-7	.286	1-3	.333	2-2	1.000	3	0	3	1.5	1	0	1	0	0	7	8.1	
PURDUE	01/20/13		20	6-10	.600	3-6	.500	0-0	.000	0	0	0	1.4	1	0	1	0	1	15	8.5	
WISCONSIN	1/24/13		26	3-6	.500	2-4	.500	2-2	1.000	0	0	0	1.4	2	0	1	0	1	10	8.6	
at Michigan	01/27/13		22	2-5	.400	1-3	.333	0-0	.000	0	2	2	1.4	3	1	1	0	0	5	8.4	
at Illinois	01/31/13		24	4-9	.444	3-6	.500	0-0	.000	0	2	2	1.4	2	1	3	0	1	11	8.5	
NORTHWESTERN	2/03/13		22	7-10	.700	6-9	.667	1-2	.500	0	2	2	1.4	2	1	0	0	0	21	9.0	
at Minnesota	02/07/13		27	2-10	.200	0-6	.000	0-0	.000	0	3	3	1.5	2	2	0	0	1	4	8.8	
NEBRASKA	02/11/13		32	7-15	.467	5-10	.500	0-0	.000	0	0	0	1.4	3	3	0	0	1	19	9.2	
PENN STATE	2/14/13		29	5-11	.455	4-9	.444	2-2	1.000	0	2	2	1.5	5	1	1	0	0	16	9.5	
at Purdue	02/17/13		26	3-7	.429	2-6	.333	2-2	1.000	0	0	0	1.4	2	0	1	0	1	10	9.5	
at Nebraska	02/24/13		25	3-8	.375	1-4	.250	1-2	.500	1	1	2	1.4	3	0	2	0	1	8	9.5	
INDIANA	2/28/13		34	8-16	.500	5-13	.385	1-3	.333	0	2	2	1.4	0	1	1	0	1	22	9.9	
at Northwestern	3/3/13		30	8-15	.533	5-12	.417	0-0	.000	0	3	3	1.5	2	1	3	0	0	21	10.3	
vs Northwestern	3/7/13		28	0-3	.000	0-1	.000	0-0	.000	0	0	0	1.5	3	3	1	0	0	0	9.9	
<b>Totals</b>			<b>3</b>	<b>701</b>	<b>109-259</b>	<b>.421</b>	<b>71-178</b>	<b>.399</b>	<b>19-26</b>	<b>.731</b>	<b>8</b>	<b>37</b>	<b>45</b>	<b>1.5</b>	<b>61</b>	<b>29</b>	<b>34</b>	<b>1</b>	<b>16</b>	<b>308</b>	<b>9.9</b>

Games played: 31  
 Minutes/game: 22.6  
 Points/game: 9.9  
 FG Pct: 42.1  
 3FG Pct: 39.9  
 FT Pct: 73.1

Rebounds/game: 1.5  
 Assists/game: 0.9  
 Turnovers/game: 1.1  
 Assist/turnover ratio: 0.9  
 Steals/game: 0.5  
 Blocks/game: 0.0

#### Personal Bests

- Points:** 23 vs. Texas (12/28/12)
- Rebounds:** 4, 4x, last vs. Minnesota (2/9/12)
- FGM:** 9 vs. Texas (12/28/12)
- FGA:** 18 vs. Michigan (2/26/12)
- 3-pt FG:** 6, twice, last vs. N'western (2/3/13)
- 3-pt FGA:** 15 vs. Michigan (2/26/12)
- FTM:** 5, 2x, last vs. Drake (12/20/11)
- FTA:** 6, 2x, last vs. Drake (12/20/11)
- Assists:** 4 vs. Nebraska (3/2/12)
- Steals:** 3 at Indiana (2/5/12)
- Blocks:** 1, 3x, last vs. Ill. State (11/11/12)
- Minutes:** 34, 3x, last vs. Indiana (2/28/13)

#### CAREER STATISTICS

YEAR	G/GS	FG-A	PCT	3-PT	PCT	FT-A	PCT	O-D-REB	AVG	PF-FO	AS	TO	BK	ST	PTS	AVG
Fresh.	24/8	50-141	.355	35-98	.357	27-33	.818	17-25-42	1.8	47-1	18	28	2	15	162	6.8
Soph.	31/3	109-259	.421	71-178	.399	19-26	.731	8-37-45	1.5	61-1	29	34	1	16	308	9.9
<b>TOTALS</b>	<b>55/11</b>	<b>159-400</b>	<b>.398</b>	<b>106-276</b>	<b>.384</b>	<b>46-59</b>	<b>.780</b>	<b>25-62-87</b>	<b>1.6</b>	<b>108-2</b>	<b>47</b>	<b>62</b>	<b>3</b>	<b>31</b>	<b>470</b>	<b>8.5</b>





# University of Iowa Women's Basketball

## Updated Iowa Player Bio

### Samantha Logic



# 22

**Guard, 5-9, Sophomore**  
**Racine, Wis.**  
**Racine J.I. Case HS**

- 11th in career assists at Iowa (340).
- Third team All-Big Ten by media, honorable mention All-Big Ten by coaches.
- Recorded 11 career double-doubles, including one triple-double. Eight double-doubles are points/rebounds, one is points/assists and one is rebounds/assists.
- Six points, 11 rebounds and six assists in win over Northwestern in first round of Big Ten Tournament.
- Career-high 26 points (10-of-13 FGs), along with nine rebounds, in win at Purdue.
- Third double-double of the season with 11 points, 12 rebounds in loss to Northwestern.
- Recorded 10 assists in win over Purdue.
- Second double-double of the season with 12 points, 10 rebounds and nine assists in win at Wisconsin.
- 17 points, six rebounds, eight assists and three steals in win over Ohio State.
- Double-double with 15 rebounds and school record 14 assists in win over Texas.
- 13 points, five rebounds and seven assists in win at Drake.
- 15 points, four rebounds and three assists in win over Northern Iowa.
- 14 points, seven rebounds, seven assists and three steals at Florida State.
- Nine points, seven rebounds and seven assists in win over West Virginia.
- 12 points, six rebounds, six assists and four steals against North Carolina.
- Tied school record with 12 assists in win over Middle Tennessee.
- Unanimous selection for Big Ten All-Freshman Team.

### 2012-13 Game-by-Game

#22 Logic, Samantha

Opponent	Date	gs	min	Total		3-Pointers		Free throws		Rebounds				pf	a	t/o	blk	stl	pts	avg	
				fg-fga	pct	3fg-fga	pct	ft-fta	pct	off	def	tot	avg								
NORTHERN ILLINOIS	11/9/12	*	25	5-8	.625	0-0	.000	0-0	.000	0	3	3	3.0	1	2	2	0	2	10	10.0	
ILLINOIS STATE	11/11/12	*	24	1-6	.167	0-1	.000	4-4	1.000	3	2	5	4.0	2	4	6	1	2	6	8.0	
MIDDLE TENNESSEE	11/14/12	*	40	0-6	.000	0-2	.000	0-1	.000	1	2	3	3.7	2	12	6	1	2	0	5.3	
NORTH CAROLINA	11/18/12	*	31	6-10	.600	0-1	.000	0-0	.000	3	3	6	4.3	2	6	7	0	4	12	7.0	
ROBERT MORRIS	11/20/12	*	28	2-7	.286	0-2	.000	0-0	.000	3	3	6	4.6	1	9	2	0	3	4	6.4	
at FIU	11/23/12	*	32	3-6	.500	1-1	1.000	0-0	.000	3	2	5	4.7	3	7	4	0	1	7	6.5	
vs WVU	11/25/12	*	34	2-6	.333	0-0	.000	5-6	.833	2	5	7	5.0	5	7	9	0	3	9	6.9	
at Florida State	11/28/12	*	36	7-11	.636	0-1	.000	0-0	.000	2	5	7	5.3	4	7	10	0	3	14	7.8	
UNI	12/1/12	*	33	7-9	.778	0-1	.000	1-1	1.000	1	3	4	5.1	3	3	1	1	1	15	8.6	
IOWA STATE	12/6/12	*	28	1-7	.143	1-3	.333	3-6	.500	4	5	9	5.5	3	4	1	1	0	6	8.3	
at Drake	12-16-12	*	35	5-9	.556	1-1	1.000	2-2	1.000	3	2	5	5.5	4	7	3	2	1	13	8.7	
MISSOURI STATE	12/19/12	*	27	3-7	.429	0-2	.000	1-3	.333	2	4	6	5.5	1	4	3	1	3	7	8.6	
vs Texas	12/28/12	*	31	1-3	.333	0-1	.000	0-0	.000	5	10	15	6.2	3	14	3	0	2	2	8.1	
at San Diego	12/30/12	*	36	2-2	1.000	1-1	1.000	2-4	.500	1	2	3	6.0	3	10	6	0	2	7	8.0	
OHIO STATE	1/3/13	*	40	5-7	.714	0-0	.000	7-10	.700	1	5	6	6.0	1	8	5	0	3	17	8.6	
MICHIGAN	1/6/13	*	38	6-13	.462	2-4	.500	2-2	1.000	5	4	9	6.2	3	9	3	1	3	16	9.1	
at Wisconsin	01/10/13	*	38	4-11	.364	2-2	1.000	2-3	.667	3	7	10	6.4	1	9	3	0	1	12	9.2	
at Michigan State	01/17/13	*	35	3-7	.429	0-0	.000	1-2	.500	1	4	5	6.3	3	4	5	0	1	7	9.1	
PURDUE	01/20/13	*	32	2-4	.500	0-1	.000	0-0	.000	2	1	3	6.2	3	10	7	0	1	4	8.8	
WISCONSIN	1/24/13	*	34	3-7	.429	0-2	.000	0-0	.000	2	7	9	6.3	0	5	5	0	1	6	8.7	
at Michigan	01/27/13	*	34	3-5	.600	0-1	.000	4-5	.800	2	4	6	6.3	4	8	4	0	2	10	8.8	
at Illinois	01/31/13	*	36	6-10	.600	1-2	.500	0-0	.000	3	7	10	6.5	5	6	8	1	2	13	9.0	
NORTHWESTERN	2/03/13	*	37	4-10	.400	1-1	1.000	2-5	.400	6	6	12	6.7	3	2	2	0	3	11	9.0	
at Minnesota	02/07/13	*	31	0-3	.000	0-1	.000	0-0	.000	2	1	3	6.5	4	5	5	0	1	0	8.7	
NEBRASKA	02/11/13	*	38	2-8	.250	0-3	.000	4-6	.667	2	6	8	6.6	4	6	3	0	2	8	8.6	
PENN STATE	2/14/13	*	31	4-4	1.000	1-1	1.000	0-1	.000	2	1	3	6.5	4	6	5	0	2	9	8.7	
at Purdue	02/17/13	*	39	10-13	.769	2-2	1.000	4-5	.800	3	6	9	6.6	0	3	4	1	1	26	9.3	
at Nebraska	02/24/13	*	33	5-8	.625	0-1	.000	2-2	1.000	1	3	4	6.5	5	6	5	0	1	12	9.4	
INDIANA	2/28/13	*	36	3-7	.429	1-2	.500	0-4	.000	2	2	4	6.4	2	8	2	1	2	7	9.3	
at Northwestern	3/3/13	*	39	3-5	.600	0-2	.000	1-2	.500	1	5	6	6.4	2	7	3	0	1	7	9.2	
vs Northwestern	3/7/13	*	40	3-13	.231	0-2	.000	0-0	.000	4	7	11	6.5	1	6	6	1	0	6	9.1	
Totals			31	1051	111-232	.478	14-44	.318	47-74	.635	75	127	202	6.5	82	204	138	12	56	283	9.1

Games played: 31  
Minutes/game: 33.9  
Points/game: 9.1  
FG Pct: 47.8  
3FG Pct: 31.8  
FT Pct: 63.5

Rebounds/game: 6.5  
Assists/game: 6.6  
Turnovers/game: 4.5  
Assist/turnover ratio: 1.5  
Steals/game: 1.8  
Blocks/game: 0.4

#### Personal Bests

- Points:** 26 at Purdue (2/17/13)
- Rebounds:** 18 at Michigan (2/16/12)
- FGM:** 10 at Purdue (2/17/13)
- FGA:** 18 vs. Nebraska (3/2/12)
- 3-pt FG:** 3 vs. Drake (12/20/11)
- 3-pt FGA:** 4, 4x, last vs. Michigan (1/6/13)
- FTM:** 8 at Northwestern (2/23/12)
- FTA:** 10, twice, last vs. Ohio State (1/3/13)
- Assists:** 14 vs. Texas (12/28/12)
- Steals:** 4 vs. North Carolina (11/18/12)
- Blocks:** 2, twice, last at Drake (12/16/12)
- Minutes:** 40, 3x, last vs. Northwestern (3/7/13)

#### CAREER STATISTICS

YEAR	G/GS	FG-A	PCT	3-PT	PCT	FT-A	PCT	O-D-REB	AVG	PF-FO	AS	TO	BK	ST	PTS	AVG
Fresh.	31/31	109-261	.418	15-49	.306	59-79	.747	87-133-220	7.1	73-1	136	113	7	47	292	9.4
Soph.	31/31	111-232	.478	14-44	.318	47-74	.635	75-127-202	6.5	82-3	204	138	12	56	283	9.1
<b>TOTALS</b>	<b>62/62</b>	<b>220-493</b>	<b>.446</b>	<b>29-93</b>	<b>.312</b>	<b>106-153</b>	<b>.693</b>	<b>162-220-422</b>	<b>6.8</b>	<b>155-4</b>	<b>340</b>	<b>251</b>	<b>19</b>	<b>103</b>	<b>575</b>	<b>9.3</b>





# University of Iowa Women's Basketball

## Updated Iowa Player Bio

### Theairra Taylor



# 23

**Guard, 5-11, Junior**  
**St. Paul, Minn.**  
**Central HS**

- Second double-double of the season with 15 points and a career-high 11 rebounds in win at Purdue.
- Scored 11 points, had five rebounds and five assists vs. Nebraska.
- Recorded 10 rebounds in win over Purdue.
- Career-high 19 points in win over Ohio State. Scored Iowa's first six points in overtime.
- Career-high seven assists in win at Drake.
- 11 points and nine rebounds in win over Iowa State. Named CollegeSportsMadness.com's Big Ten Player of the Week for her performance.
- First career double-double with 10 points and 11 rebounds, also tied career high with five assists, in win over Illinois State.
- Season-high 14 points, along with six rebounds and two assists in 26 minutes of play vs. California as a sophomore.
- 10 points and tied a career-high with three steals in win over Michigan State as a sophomore.
- Suffered third ACL in a 20-month span during preseason workouts in 2010. Missed a total of 53 games with ACL injuries from 2009 through 2011.

### 2012-13 Game-by-Game

#23 Taylor, Theairra

Opponent	Date	gs	min	Total		3-Pointers		Free throws		Rebounds			pf	a	t/o	blk	stl	pts	avg		
				fg-fga	pct	3fg-fga	pct	ft-fa	pct	off	def	tot								avg	
NORTHERN ILLINOIS	11/9/12	*	19	2-4	.500	1-1	1.000	0-0	.000	0	1	1	1.0	1	1	1	0	5	5.0		
ILLINOIS STATE	11/11/12	*	21	3-6	.500	1-1	1.000	3-4	.750	0	11	11	6.0	1	5	2	0	2	10	7.5	
MIDDLE TENNESSEE	11/14/12	*	23	3-8	.375	1-4	.250	0-2	.000	1	3	4	5.3	2	2	4	2	1	7	7.3	
NORTH CAROLINA	11/18/12	*	25	1-6	.167	0-3	.000	1-3	.333	1	3	4	5.0	2	1	2	0	0	3	6.3	
ROBERT MORRIS	11/20/12	*	20	3-7	.429	1-4	.250	0-0	.000	0	4	4	4.8	0	0	3	0	1	7	6.4	
at FIU	11/23/12	*	19	2-5	.400	0-1	.000	2-2	1.000	0	3	3	4.5	2	2	2	0	0	6	6.3	
vs WVU	11/25/12	*	23	1-3	.333	0-1	.000	4-5	.800	1	6	7	4.9	4	0	2	1	0	6	6.3	
at Florida State	11/28/12	*	33	4-11	.364	0-2	.000	1-2	.500	2	4	6	5.0	2	1	4	2	0	9	6.6	
UNI	12/1/12	*	28	3-6	.500	0-2	.000	0-0	.000	1	4	5	5.0	0	2	0	0	0	6	6.6	
IOWA STATE	12/6/12	*	27	4-12	.333	1-3	.333	2-4	.500	4	5	9	5.4	0	3	5	1	2	11	7.0	
at Drake	12-16-12	*	30	2-5	.400	2-3	.667	0-0	.000	0	3	3	5.2	1	6	2	0	0	6	6.9	
MISSOURI STATE	12/19/12	*	19	3-9	.333	1-3	.333	2-2	1.000	3	3	6	5.3	3	7	3	1	1	9	7.1	
vs Texas	12/28/12	*	25	2-9	.222	0-1	.000	0-0	.000	0	1	1	4.9	2	2	1	0	3	4	6.8	
at San Diego	12/30/12	*	33	3-7	.429	1-2	.500	2-3	.667	0	4	4	4.9	3	4	2	1	0	9	7.0	
OHIO STATE	1/3/13	*	36	8-12	.667	1-1	1.000	2-2	1.000	1	3	4	4.8	2	0	2	0	2	19	7.8	
MICHIGAN	1/6/13	*	32	5-9	.556	1-3	.333	3-4	.750	0	3	3	4.7	3	2	3	1	2	14	8.2	
at Wisconsin	01/10/13	*	27	2-5	.400	0-1	.000	0-0	.000	3	5	8	4.9	2	5	4	0	3	4	7.9	
at Michigan State	01/17/13	*	23	3-7	.429	0-3	.000	0-0	.000	1	1	2	4.7	2	1	3	0	0	6	7.8	
PURDUE	01/20/13	*	20	3-8	.375	3-3	1.000	0-0	.000	2	8	10	5.0	1	1	0	1	1	9	7.9	
WISCONSIN	1/24/13	*	24	4-11	.364	0-1	.000	2-3	.667	0	1	1	4.8	0	2	1	2	2	10	8.0	
at Michigan	01/27/13	*	17	2-4	.500	1-3	.333	0-0	.000	1	1	2	4.7	2	1	1	0	0	5	7.9	
at Illinois	01/31/13	*	24	4-9	.444	1-2	.500	0-0	.000	0	0	0	4.5	0	1	2	1	2	9	7.9	
NORTHWESTERN	2/03/13	*	22	1-8	.125	0-2	.000	0-0	.000	0	1	1	4.3	1	2	1	1	2	2	7.7	
at Minnesota	02/07/13	*	20	3-8	.375	1-3	.333	2-4	.500	0	5	5	4.3	5	1	1	1	0	9	7.7	
NEBRASKA	02/11/13	*	34	3-10	.300	1-3	.333	4-4	1.000	1	4	5	4.4	0	5	1	0	0	11	7.8	
PENN STATE	2/14/13	*	26	4-10	.400	1-2	.500	2-2	1.000	0	3	3	4.3	3	0	4	0	1	11	8.0	
at Purdue	02/17/13	*	36	7-13	.538	1-2	.500	0-0	.000	3	8	11	4.6	1	4	1	0	2	15	8.2	
at Nebraska	02/24/13	*	27	4-15	.267	2-6	.333	0-0	.000	1	3	4	4.5	1	1	3	0	2	10	8.3	
INDIANA	2/28/13	*	27	4-5	.800	1-2	.500	2-2	1.000	2	0	2	4.4	1	3	3	2	1	11	8.4	
at Northwestern	3/3/13	*	24	1-5	.200	1-2	.500	0-0	.000	0	4	4	4.4	3	2	2	2	1	3	8.2	
vs Northwestern	3/7/13	*	30	2-7	.286	0-3	.000	4-4	1.000	2	4	6	4.5	0	4	2	5	1	8	8.2	
<b>Totals</b>			<b>31</b>	<b>794</b>	<b>96-244</b>	<b>.393</b>	<b>24-73</b>	<b>.329</b>	<b>38-52</b>	<b>.731</b>	<b>30</b>	<b>109</b>	<b>139</b>	<b>4.5</b>	<b>50</b>	<b>71</b>	<b>67</b>	<b>25</b>	<b>32</b>	<b>254</b>	<b>8.2</b>

Games played: 31  
Minutes/game: 25.6  
Points/game: 8.2  
FG Pct: 39.3  
3FG Pct: 32.9  
FT Pct: 73.1

Rebounds/game: 4.5  
Assists/game: 2.3  
Turnovers/game: 2.2  
Assist/turnover ratio: 1.1  
Steals/game: 1.0  
Blocks/game: 0.8

#### Personal Bests

- Points:** 19 vs. Ohio State (1/3/13)
- Rebounds:** 11, twice, last at Purdue (2/17/13)
- FGM:** 8 vs. Ohio State (1/3/13)
- FGA:** 15, twice, last at Nebraska (2/24/13)
- 3-pt FG:** 3 vs. Purdue (1/20/13)
- 3-pt FGA:** 6 at Nebraska (2/24/13)
- FTM:** 4, 7x, last vs. Northwestern (3/7/13)
- FTA:** 5 vs. West Virginia (11/25/12)
- Assists:** 7 vs. Missouri State (12/19/12)
- Steals:** 4 at Northwestern (2/23/12)
- Blocks:** 5 vs. Northwestern (3/7/13)
- Minutes:** 36, three times, last at Purdue (2/17/13)

#### CAREER STATISTICS

YEAR	G/GS	FG-A	PCT	3-PT	PCT	FT-A	PCT	O-D-REB	AVG	PF-FO	AS	TO	BK	ST	PTS	AVG
Fresh.	10/8	29-86	.337	9-26	.346	14-18	.778	15-34-49	4.9	22-1	24	29	10	13	81	8.1
Soph.	31/0	37-97	.381	2-18	.111	19-29	.655	35-57-92	3.0	53-1	30	47	11	18	95	3.1
Junior	31/31	96-244	.393	24-73	.329	38-52	.731	30-109-139	4.5	50-1	71	67	25	32	254	8.2
<b>TOTALS</b>	<b>72/39</b>	<b>162-427</b>	<b>.379</b>	<b>35-117</b>	<b>.299</b>	<b>71-99</b>	<b>.717</b>	<b>80-200-280</b>	<b>3.9</b>	<b>125-3</b>	<b>125</b>	<b>143</b>	<b>46</b>	<b>63</b>	<b>430</b>	<b>6.0</b>





# University of Iowa Women's Basketball

## Updated Iowa Player Bio

### Jaime Printy



# 24

**Guard, 5-11, Senior**  
**Marion, Iowa**  
**Linn-Mar HS**

- Ranks second in career 3-pointers made (251), fourth in career scoring (1,818) and fifth in career assists (406).
- Honorable mention All-Big Ten by coaches and media.
- One of 10 finalists for the Senior CLASS Award.
- 18 points (8-of-9 FTs) in win over Northwestern in first round of Big Ten Tournament.
- Netted 16 points on 6-of-14 shooting against Nebraska.
- Scored 21 points, including five 3-pointers, in loss at Minnesota.
- Became sixth player in Iowa history to score 1,700 career points in win at Michigan.
- Big Ten Player of the Week (Jan. 30).
- Scored 29 points, including 14-straight in the final 5:25, to give Iowa the win over Wisconsin.
- Career-high 33 points with a school record seven 3-pointers in win at San Diego.
- 21 points in win over Texas.
- 19 points (17-of-17 FTs) and seven rebounds in win over West Virginia.
- 12 points, five rebounds and four assists vs. North Carolina, returning to starting lineup for first time since ACL injury as a junior.
- 26 points, including game-tying 3-pointer with 1.6 seconds left in regulation, along with five rebounds and six assists, in win over Middle Tennessee. Also tied school record for FT percentage (11-for-11).
- 11 points and three assists in season-opening win over NIU, recording first action since tearing ACL in left knee in final 30 seconds of overtime at Wisconsin (Feb. 2, 2012).

### 2012-13 Game-by-Game

#24 Printy, Jaime

Opponent	Date	gs	min	Total		3-Pointers		Free throws		Rebounds			pf	a	t/o	blk	stl	pts	avg		
				fg-fga	pct	3fg-fga	pct	ft-fa	pct	off	def	tot								avg	
NORTHERN ILLINOIS	11/9/12		16	3-4	.750	1-1	1.000	4-4	1.000	0	1	1	1.0	1	3	1	0	1	11	11.0	
ILLINOIS STATE	11/11/12		15	0-4	.000	0-3	.000	1-2	.500	0	2	2	1.5	0	1	2	0	0	1	6.0	
MIDDLE TENNESSEE	11/14/12		38	6-13	.462	3-7	.429	11-11	1.000	1	4	5	2.7	1	6	5	0	1	26	12.7	
NORTH CAROLINA	11/18/12	*	39	3-15	.200	3-12	.250	3-4	.750	0	5	5	3.3	4	4	8	0	1	12	12.5	
ROBERT MORRIS	11/20/12	*	31	2-4	.500	2-4	.500	2-2	1.000	1	5	6	3.8	0	5	2	0	1	8	11.6	
at FIU	11/23/12	*	34	5-12	.417	4-9	.444	1-1	1.000	2	3	5	4.0	2	4	3	0	0	15	12.2	
vs WVU	11/25/12	*	33	1-3	.333	0-2	.000	17-17	1.000	0	7	7	4.4	1	3	4	1	0	19	13.1	
at Florida State	11/28/12	*	33	5-7	.714	2-4	.500	1-2	.500	0	1	1	4.0	2	1	6	0	0	13	13.1	
UNI	12/1/12	*	30	2-7	.286	1-4	.250	4-4	1.000	0	3	3	3.9	1	5	3	0	0	9	12.7	
IOWA STATE	12/6/12	*	34	2-7	.286	0-3	.000	6-6	1.000	1	5	6	4.1	1	2	3	0	2	10	12.4	
at Drake	12-16-12	*	31	3-9	.333	0-3	.000	3-3	1.000	2	2	4	4.1	1	7	1	0	0	9	12.1	
MISSOURI STATE	12/19/12	*	21	4-11	.364	3-8	.375	2-3	.667	1	1	2	3.9	0	6	2	0	0	13	12.2	
vs Texas	12/28/12	*	30	7-14	.500	2-7	.286	5-7	.714	0	3	3	3.8	1	1	1	0	0	21	12.8	
at San Diego	12/30/12	*	30	10-20	.500	7-12	.583	6-6	1.000	0	2	2	3.7	1	4	3	0	2	33	14.3	
OHIO STATE	1/3/13	*	39	5-8	.625	0-1	.000	4-4	1.000	0	3	3	3.7	1	3	4	0	0	14	14.3	
MICHIGAN	1/6/13	*	32	2-14	.143	1-9	.111	1-1	1.000	2	3	5	3.8	0	3	2	0	1	6	13.8	
at Wisconsin	01/10/13	*	35	3-10	.300	2-8	.250	2-2	1.000	0	6	6	3.9	0	1	1	0	1	10	13.5	
at Michigan State	01/17/13	*	34	3-16	.188	1-8	.125	4-4	1.000	1	3	4	3.9	0	3	0	0	1	11	13.4	
PURDUE	01/20/13	*	38	4-11	.364	3-5	.600	4-4	1.000	2	7	9	4.2	1	1	0	0	0	15	13.5	
WISCONSIN	1/24/13	*	35	8-10	.800	3-3	1.000	10-11	.909	1	7	8	4.4	1	4	1	0	0	29	14.3	
at Michigan	01/27/13	*	33	4-12	.333	2-9	.222	4-4	1.000	2	3	5	4.4	2	2	4	1	1	14	14.2	
at Illinois	01/31/13	*	34	5-14	.357	2-8	.250	1-2	.500	0	4	4	4.4	3	3	7	0	1	13	14.2	
NORTHWESTERN	2/03/13	*	33	2-6	.333	0-2	.000	8-8	1.000	0	4	4	4.3	0	3	2	0	3	12	14.1	
at Minnesota	02/07/13	*	34	6-22	.273	5-9	.556	4-5	.800	1	4	5	4.4	3	0	2	0	3	21	14.4	
NEBRASKA	02/11/13	*	38	6-14	.429	2-7	.286	2-2	1.000	1	3	4	4.4	1	4	2	1	1	16	14.4	
PENN STATE	2/14/13	*	29	0-5	.000	0-3	.000	2-2	1.000	0	5	5	4.4	3	4	6	0	2	2	14.0	
at Purdue	02/17/13	*	35	1-8	.125	0-5	.000	3-4	.750	0	5	5	4.4	3	6	0	1	1	5	13.6	
at Nebraska	02/24/13	*	29	2-5	.400	0-2	.000	0-0	.000	0	4	4	4.4	2	0	3	0	1	4	13.3	
INDIANA	2/28/13	*	38	4-13	.308	2-10	.200	4-4	1.000	0	3	3	4.3	3	6	2	0	4	14	13.3	
at Northwestern	3/3/13	*	36	2-11	.182	1-4	.250	0-0	.000	1	1	2	4.3	2	5	3	2	1	5	13.0	
vs Northwestern	3/7/13	*	35	4-13	.308	2-9	.222	8-9	.889	0	3	3	4.2	2	2	2	0	1	18	13.2	
Totals			28	1002	114-322	.354	54-181	.298	127-138	.920	19	112	131	4.2	43	102	85	6	30	409	13.2

Games played: 31  
 Minutes/game: 32.3  
 Points/game: 13.2  
 FG Pct: 35.4  
 3FG Pct: 29.8  
 FT Pct: 92.0

Rebounds/game: 4.2  
 Assists/game: 3.3  
 Turnovers/game: 2.7  
 Assist/turnover ratio: 1.2  
 Steals/game: 1.0  
 Blocks/game: 0.2

#### Personal Bests

- Points:** 33 at San Diego (12/30/12)
- Rebounds:** 9, twice, last vs. Purdue (1/20/13)
- FGM:** 11 at Indiana (2/11/10)
- FGA:** 25 vs. Michigan (1/2/11)
- 3-pt FG:** 7 at San Diego (12/30/12)
- 3-pt FGA:** 15 vs. Michigan (1/2/11)
- FTM:** 17 vs. West Virginia (11/25/12)
- FTA:** 17 vs. West Virginia (11/25/12)
- Assists:** 9 vs. Iowa State (12/9/10)
- Steals:** 5 at Bradley (12/17/11)
- Blocks:** 2 at Northwestern (3/3/13)
- Minutes:** 40 vs. Illinois (1/5/12)

#### CAREER STATISTICS

YEAR	G/GS	FG-A	PCT	3-PT	PCT	FT-A	PCT	O-D-REB	AVG	PF-FO	AS	TO	BK	ST	PTS	AVG
Fresh.	34/34	168-406	.414	82-212	.387	83-94	.883	35-101-136	4.0	77-1	99	82	4	30	501	14.7
Soph.	31/31	168-391	.430	70-183	.383	114-132	.864	21-109-130	4.2	60-0	109	91	7	34	520	16.8
Junior	23/23	116-329	.353	45-155	.290	111-125	.888	32-70-102	4.4	45-1	96	70	3	46	388	16.9
Senior	31/28	114-322	.354	54-181	.298	127-138	.920	19-112-131	4.2	43-0	102	85	6	30	409	13.2
<b>TOTALS</b>	<b>119/116</b>	<b>566-1448</b>	<b>.391</b>	<b>251-731</b>	<b>.343</b>	<b>435-489</b>	<b>.890</b>	<b>107-392-499</b>	<b>4.2</b>	<b>225-2</b>	<b>406</b>	<b>328</b>	<b>20</b>	<b>140</b>	<b>1818</b>	<b>15.3</b>





# University of Iowa Women's Basketball

## Updated Iowa Player Bio

### Kali Peschel



# 25

**Guard, 6-1, Freshman**  
**Sauk Centre, Minn.**  
**Sauk Centre HS**

- Five points in win at Drake.
- Recorded five rebounds in collegiate debut vs. NIU.
- Miss Minnesota Basketball finalist.
- Two-time all-state selection.
- Started for her high school team as an eighth grader.
- Only played 11 games as a senior after suffering ACL injury between her junior and senior seasons.

#### Personal Bests

**Points:** 5 at Drake (12/16/12)  
**Rebounds:** 5, twice, last vs. Missouri State (12/19/12)  
**FGM:** 2 at Drake (12/16/12)  
**FGA:** 6 vs. Northern Illinois (11/9/12)  
**3-pt FG:** 1 at Drake (12/16/12)  
**3-pt FGA:** 2, 3x, last vs. Missouri State (12/19/12)  
**FTM:** 2, twice, last at Minnesota (2/7/13)  
**FTA:** 4 vs. Missouri State (12/19/12)  
**Assists:** 2, twice, last vs. Texas (12/28/12)  
**Steals:** 1, 6x, last at Purdue (2/17/13)  
**Blocks:** 1, 4x, last vs. Northwestern (2/3/13)  
**Minutes:** 20 vs. Northwestern (2/3/13)

### 2012-13 Game-by-Game

#25 Peschel, Kali

Opponent	Date	gs	min	Total		3-Pointers		Free throws		Rebounds			pf	a	t/o	blk	stl	pts	avg	
				fg-fga	pct	3fg-fga	pct	ft-fa	pct	off	def	tot								avg
NORTHERN ILLINOIS	11/9/12	18	0-6	.000	0-2	.000	1-2	.500	3	2	5	5.0	3	1	0	0	0	1	1.0	
ILLINOIS STATE	11/11/12	16	0-2	.000	0-1	.000	0-0	.000	0	3	3	4.0	1	0	2	0	0	0	0.5	
MIDDLE TENNESSEE	11/14/12	2	0-0	.000	0-0	.000	0-0	.000	0	1	1	3.0	0	0	0	0	0	0	0.3	
ROBERT MORRIS	11/20/12	5	0-0	.000	0-0	.000	0-0	.000	0	0	0	2.3	2	0	0	0	1	0	0.3	
at FIU	11/23/12	2	0-1	.000	0-0	.000	0-0	.000	2	0	2	2.2	0	0	0	0	0	0	0.2	
at Florida State	11/28/12	3	0-1	.000	0-0	.000	0-0	.000	2	0	2	2.2	0	0	0	0	0	0	0.2	
UNI	12/1/12	18	1-4	.250	0-2	.000	1-2	.500	1	1	2	2.1	3	0	2	1	1	3	0.6	
IOWA STATE	12/6/12	6	0-0	.000	0-0	.000	0-0	.000	0	0	0	1.9	2	0	0	0	0	0	0.5	
at Drake	12/16/12	16	2-3	.667	1-1	1.000	0-0	.000	0	0	0	1.7	4	2	1	1	1	5	1.0	
MISSOURI STATE	12/19/12	19	0-4	.000	0-2	.000	2-4	.500	3	2	5	2.0	4	0	0	0	1	2	1.1	
vs Texas	12/28/12	9	0-0	.000	0-0	.000	0-0	.000	0	0	0	1.8	4	2	0	0	0	0	1.0	
at San Diego	12/30/12	12	0-0	.000	0-0	.000	0-0	.000	1	0	1	1.8	0	0	0	0	0	0	0.9	
OHIO STATE	1/3/13	1	0-1	.000	0-0	.000	0-0	.000	0	0	0	1.6	2	0	1	0	0	0	0.8	
MICHIGAN	1/6/13	3	0-0	.000	0-0	.000	1-2	.500	1	0	1	1.6	0	0	0	0	0	1	0.9	
at Wisconsin	01/10/13	5	0-0	.000	0-0	.000	0-0	.000	0	0	0	1.5	0	0	0	0	0	0	0.8	
at Michigan State	01/17/13	4	0-0	.000	0-0	.000	0-0	.000	0	0	0	1.4	0	0	0	0	0	0	0.8	
PURDUE	01/20/13	7	0-0	.000	0-0	.000	0-0	.000	1	0	1	1.4	1	1	0	1	0	0	0.7	
WISCONSIN	1/24/13	5	0-1	.000	0-1	.000	0-0	.000	0	1	1	1.3	1	0	1	0	0	0	0.7	
at Michigan	01/27/13	9	0-1	.000	0-1	.000	0-0	.000	0	0	0	1.3	0	0	0	0	0	0	0.6	
at Illinois	01/31/13	3	0-0	.000	0-0	.000	0-0	.000	0	0	0	1.2	0	0	0	0	0	0	0.6	
NORTHWESTERN	2/03/13	20	1-1	1.000	0-0	.000	0-0	.000	3	1	4	1.3	0	1	1	1	1	2	0.7	
at Minnesota	02/07/13	8	0-0	.000	0-0	.000	2-2	1.000	0	0	0	1.3	1	1	1	0	0	2	0.7	
at Purdue	02/17/13	1	0-0	.000	0-0	.000	0-0	.000	0	0	0	1.2	0	0	0	0	1	0	0.7	
at Nebraska	02/24/13	1	0-0	.000	0-0	.000	0-0	.000	0	0	0	1.2	0	0	0	0	0	0	0.7	
at Northwestern	3/3/13	1	0-0	.000	0-0	.000	0-0	.000	0	0	0	1.1	0	0	0	0	0	0	0.6	
<b>Totals</b>		0	194	4-25	.160	1-10	.100	7-12	.583	17	11	28	1.1	28	8	9	4	6	16	0.6

Games played: 25  
 Minutes/game: 7.8  
 Points/game: 0.6  
 FG Pct: 16.0  
 3FG Pct: 10.0  
 FT Pct: 58.3

Rebounds/game: 1.1  
 Assists/game: 0.3  
 Turnovers/game: 0.4  
 Assist/turnover ratio: 0.9  
 Steals/game: 0.2  
 Blocks/game: 0.2

#### CAREER STATISTICS

YEAR	G/GS	FG-A	PCT	3-PT	PCT	FT-A	PCT	O-D-REB	AVG	PF-FO	AS	TO	BK	ST	PTS	AVG
Fresh.	25/0	4-25	.160	1-10	.100	7-12	.583	17-11-28	1.1	28-0	8	9	4	6	16	0.6







# University of Iowa Women's Basketball

Updated Iowa Player Bio

## Kathryn Reynolds



# 33

**Guard, 5-7, Sophomore**  
**Cincinnati, Ohio**  
**Mount Notre Dame HS**

- Will miss entire 2012-13 season after suffering an ACL injury in April during offseason workouts.
- Five assists in win over Western Illinois as a freshman.
- Played 12 minutes in first career game, a win over Harvard.

### Personal Bests

**Points:** 4 vs. Drake (12/20/11)  
**Rebounds:** 2 vs. Texas A&M (11/26/11)  
**FGM:** 2 vs. Drake (12/20/11)  
**FGA:** 3, 2x, last vs. Drake (12/20/11)  
**3-pt FG:** ---  
**3-pt FGA:** 1, 7x, last vs. Michigan State (2/12/12)  
**FTM:** 2 vs. Western Illinois (12/9/11)  
**FTA:** 2, 3x, last vs. W. Illinois (12/9/11)  
**Assists:** 5 vs. W. Illinois (12/9/11)  
**Steals:** ---  
**Blocks:** ---  
**Minutes:** 20 vs. W. Illinois (12/9/11)

## 2012-13 Game-by-Game

### CAREER STATISTICS

YEAR	G/GS	FG-A	PCT	3-PT	PCT	FT-A	PCT	O-D-REB	AVG	PF-FO	AS	TO	BK	ST	PTS	AVG
Fresh.	21/0	5-16	.313	0-7	.000	3-4	.750	1-8-9	0.4	6-0	15	11	0	0	13	0.7
Soph.	-	-	-	-	-	-	-	-	-	-	-	-	-	-	-	-
<b>TOTALS</b>	<b>21/0</b>	<b>5-16</b>	<b>.313</b>	<b>0-7</b>	<b>.000</b>	<b>3-4</b>	<b>.750</b>	<b>1-8-9</b>	<b>0.4</b>	<b>6-0</b>	<b>15</b>	<b>11</b>	<b>0</b>	<b>0</b>	<b>13</b>	<b>0.7</b>





# University of Iowa Women's Basketball

## Updated Iowa Player Bio

### Nicole Smith



# 45

**Center, 6-4, Freshman**  
**Rockton, Ill.**  
**Hononegah HS**

- Tallied first career points against Missouri State, finishing with four points.
- Recorded one rebound in collegiate debut vs. NIU.
- Three-time all-state selection.
- Three-time all-conference pick.
- Recorded triple-double in high school with 20 points (10-for-10) 10 rebounds and 10 blocks.
- Played in 26 games as a senior before suffering ACL injury

#### Personal Bests

**Points:** 4 vs. Missouri State (12/19/12)  
**Rebounds:** 1 vs. NIU (11/9/12)  
**FGM:** 1, twice, last vs. Texas (12/28/12)  
**FGA:** 2 vs. NIU (11/9/12)  
**3-pt FG:** ---  
**3-pt FGA:** ---  
**FTM:** 2 vs. Missouri State (12/19/12)  
**FTA:** 2 vs. Missouri State (12/19/12)  
**Assists:** ---  
**Steals:** ---  
**Blocks:** ---  
**Minutes:** 4 vs. Missouri State (12/19/12))

### 2012-13 Game-by-Game

#### #45 Smith, Nicole

Opponent	Date	gs	min	Total		3-Pointers		Free throws		Rebounds			pf	a	t/o	blk	stl	pts	avg
				fg-fga	pct	3fg-fga	pct	ft-fa	pct	off	def	tot							
NORTHERN ILLINOIS	11/9/12	3		0-2	.000	0-0	.000	0-0	.000	0	1	1	1.0	0	0	0	0	0	0.0
ILLINOIS STATE	11/11/12	2		0-0	.000	0-0	.000	0-0	.000	0	0	0	0.5	0	0	0	0	0	0.0
UNI	12/1/12	1		0-0	.000	0-0	.000	0-0	.000	0	0	0	0.3	0	0	0	0	0	0.0
MISSOURI STATE	12/19/12	4		1-1	1.000	0-0	.000	2-2	1.000	0	0	0	0.3	1	0	0	0	0	4 1.0
vs Texas	12/28/12	1		1-1	1.000	0-0	.000	0-0	.000	0	0	0	0.2	0	0	1	0	0	2 1.2
at Wisconsin	01/10/13	1		0-0	.000	0-0	.000	0-0	.000	0	0	0	0.2	1	0	0	0	0	0 1.0
<b>Totals</b>		<b>0</b>	<b>12</b>	<b>2-4</b>	<b>.500</b>	<b>0-0</b>	<b>.000</b>	<b>2-2</b>	<b>1.000</b>	<b>0</b>	<b>1</b>	<b>1</b>	<b>0.2</b>	<b>2</b>	<b>0</b>	<b>1</b>	<b>0</b>	<b>0</b>	<b>6 1.0</b>

Games played: 6  
 Minutes/game: 2.0  
 Points/game: 1.0  
 FG Pct: 50.0  
 FT Pct: 100.0

Rebounds/game: 0.2  
 Turnovers/game: 0.2

#### CAREER STATISTICS

YEAR	G/GS	FG-A	PCT	3-PT	PCT	FT-A	PCT	O-D-REB	AVG	PF-FO	AS	TO	BK	ST	PTS	AVG
Fresh.	6/0	2-4	.500	0-0	.000	2-2	1.000	0-1-1	0.2	2-0	0	1	0	0	6	1.0





# University of Iowa Women's Basketball

## Updated Iowa Player Bio

### Bethany Doolittle



# 51

**Center, 6-4, Sophomore**  
**Oakdale, Minn**  
**Hill-Murray HS**

- 10 points (5-of-10 FGs) in win at Northwestern.
- 13 points, six rebounds and four assists against Penn State.
- Career-high 19 points, including eight-straight points from 5:20-1:45 mark in the second half, to give Iowa the win at Michigan.
- 10 points and seven rebounds in win over Wisconsin.
- 10 points at Michigan State.
- Eight points, five rebounds and six blocks in win over Ohio State.
- 10 rebounds in win at San Diego.
- 10 points in win over Texas.
- First career double-double with 12 points and 12 rebounds in win over Missouri State. 12 rebounds were a career-high. Had double-double at halftime (10 pts, 10 reb).
- 10 points and nine rebounds at Florida State.
- Career-high 17 points, along with six rebounds, in win over West Virginia.
- Eight points, tied a career-high with nine rebounds and blocked five shots in win over Middle Tennessee.
- Career-high six blocks in season-opening win vs. NIU.

### 2012-13 Game-by-Game

#### #51 Doolittle, Bethany

Opponent	Date	gs	min	Total		3-Pointers		Free throws		Rebounds				pf	a	t/o	blk	stl	pts	avg
				fg-fga	pct	3fg-fga	pct	ft-fa	pct	off	def	tot	avg							
NORTHERN ILLINOIS	11/9/12	*	21	1-8	.125	0-0	.000	0-0	.000	0	0	0	0.0	2	0	1	6	0	2	2.0
ILLINOIS STATE	11/11/12	*	25	4-10	.400	0-1	.000	0-0	.000	0	5	5	2.5	1	0	2	2	1	8	5.0
MIDDLE TENNESSEE	11/14/12	*	30	4-7	.571	0-0	.000	0-0	.000	4	5	9	4.7	3	0	4	5	0	8	6.0
NORTH CAROLINA	11/18/12	*	32	1-7	.143	0-0	.000	0-0	.000	2	5	7	5.3	3	1	2	2	2	5.0	
ROBERT MORRIS	11/20/12	*	20	2-9	.222	0-0	.000	0-0	.000	1	4	5	5.2	2	1	1	1	0	4	4.8
at FIU	11/23/12	*	22	3-5	.600	0-0	.000	0-0	.000	0	3	3	4.8	3	0	2	0	0	6	5.0
vs WVU	11/25/12	*	31	7-12	.583	0-0	.000	3-3	1.000	1	5	6	5.0	4	0	2	1	0	17	6.7
at Florida State	11/28/12	*	34	5-9	.556	0-0	.000	0-0	.000	4	5	9	5.5	3	1	2	1	1	10	7.1
UNI	12/1/12	*	26	4-11	.364	0-0	.000	0-0	.000	1	6	7	5.7	2	0	1	0	1	8	7.2
IOWA STATE	12/6/12	*	36	1-8	.125	0-1	.000	0-0	.000	0	4	4	5.5	3	0	1	0	1	2	6.7
at Drake	12-16-12	*	22	4-6	.667	0-0	.000	0-0	.000	1	3	4	5.4	5	0	0	2	1	8	6.8
MISSOURI STATE	12/19/12	*	25	6-8	.750	0-0	.000	0-0	.000	3	9	12	5.9	3	1	0	2	1	12	7.3
vs Texas	12/28/12	*	33	5-8	.625	0-0	.000	0-0	.000	1	4	5	5.8	3	1	1	0	2	10	7.5
at San Diego	12/30/12	*	30	3-6	.500	0-0	.000	0-0	.000	1	9	10	6.1	3	0	2	4	1	6	7.4
OHIO STATE	1/3/13	*	42	4-6	.667	0-0	.000	0-0	.000	2	3	5	6.1	1	2	2	6	3	8	7.4
MICHIGAN	1/6/13	*	25	0-5	.000	0-0	.000	0-0	.000	0	1	1	5.8	4	1	1	0	0	0	6.9
at Wisconsin	01/10/13	*	33	4-9	.444	0-0	.000	0-0	.000	1	3	4	5.6	2	0	2	0	0	8	7.0
at Michigan State	01/17/13	*	36	5-8	.625	0-0	.000	0-0	.000	1	2	3	5.5	2	1	3	2	2	10	7.2
PURDUE	01/20/13	*	32	3-12	.250	0-0	.000	2-4	.500	3	6	9	5.7	1	0	3	3	3	8	7.2
WISCONSIN	1/24/13	*	32	4-7	.571	0-0	.000	2-2	1.000	2	5	7	5.8	3	0	2	3	0	10	7.4
at Michigan	01/27/13	*	37	9-15	.600	0-0	.000	1-1	1.000	3	1	4	5.7	4	0	0	2	1	19	7.9
at Illinois	01/31/13	*	37	2-7	.286	0-0	.000	0-0	.000	0	8	8	5.8	1	0	2	2	0	4	7.7
NORTHWESTERN	2/03/13	*	31	2-12	.167	0-0	.000	0-0	.000	2	7	9	5.9	2	1	1	4	0	4	7.6
at Minnesota	02/07/13	*	28	3-7	.429	0-0	.000	2-2	1.000	0	3	3	5.8	2	0	2	1	3	8	7.6
NEBRASKA	02/11/13	*	16	0-3	.000	0-0	.000	0-0	.000	2	3	5	5.8	3	0	0	1	0	0	7.3
PENN STATE	2/14/13	*	37	5-11	.455	0-0	.000	3-4	.750	3	3	6	5.8	2	4	0	0	1	13	7.5
at Purdue	02/17/13	*	14	1-3	.333	0-0	.000	0-0	.000	0	1	1	5.6	2	1	0	3	0	2	7.3
at Nebraska	02/24/13	*	36	2-7	.286	0-0	.000	0-0	.000	3	5	8	5.7	2	0	2	2	1	4	7.2
INDIANA	2/28/13	*	20	2-3	.667	0-0	.000	0-0	.000	2	3	5	5.7	1	0	0	1	1	4	7.1
at Northwestern	3/3/13	*	26	5-10	.500	0-0	.000	0-0	.000	2	3	5	5.6	2	0	0	0	0	10	7.2
vs Northwestern	3/7/13	*	28	3-8	.375	0-1	.000	4-6	.667	2	0	2	5.5	2	2	2	1	3	10	7.3
Totals			31	897	104-247	.421	0-3	.000	17-22	.773	47	124	171	5.5	76	17	43	57	225	7.3

Games played: 31  
Minutes/game: 28.9  
Points/game: 7.3  
FG Pct: 42.1  
3FG Pct: 0.0  
FT Pct: 77.3

Rebounds/game: 5.5  
Assists/game: 0.5  
Turnovers/game: 1.4  
Assist/turnover ratio: 0.4  
Steals/game: 0.9  
Blocks/game: 1.8

#### Personal Bests

- Points:** 19 at Michigan (1/27/13)
- Rebounds:** 12 vs. Missouri State (12/19/12)
- FGM:** 9 at Michigan (1/27/13)
- FGA:** 15 at Michigan (1/27/13)
- 3-pt FG:** ---
- 3-pt FGA:** 1, 4x, last vs. Northwestern (3/7/13)
- FTM:** 4, twice, last vs. Northwestern (3/7/13)
- FTA:** 6 vs. Northwestern (3/7/13)
- Assists:** 4 vs. Penn State (2/14/13)
- Steals:** 3, 4x, last vs. Northwestern (3/7/13)
- Blocks:** 6, twice, last vs. Ohio State (1/3/13)
- Minutes:** 42 vs. Ohio State (1/3/13)

#### CAREER STATISTICS

YEAR	G/GS	FG-A	PCT	3-PT	PCT	FT-A	PCT	O-D-REB	AVG	PF-FO	AS	TO	BK	ST	PTS	AVG
Fresh.	31/0	46-99	.465	0-1	.000	24-30	.800	13-44-57	1.8	51-0	6	19	19	9	116	3.7
Soph.	31/31	104-247	.421	0-3	.000	17-22	.773	47-124-171	5.5	76-1	17	43	57	29	225	7.3
<b>TOTALS</b>	<b>62/31</b>	<b>150-346</b>	<b>.434</b>	<b>0-4</b>	<b>.000</b>	<b>41-52</b>	<b>.788</b>	<b>60-168-228</b>	<b>3.7</b>	<b>127-1</b>	<b>23</b>	<b>62</b>	<b>76</b>	<b>38</b>	<b>341</b>	<b>5.5</b>





# University of Iowa Women's Basketball

## Updated Iowa Player Bio

### Kayla Timmerman



# 54

**Forward, 6-3, Freshman**  
**Wayzata, Minn.**  
**Wayzata HS**

- Six points and eight rebounds (five of- fensive rebounds) in 13 minutes in win over Missouri State.
- Recorded one point and one rebound in collegiate debut vs. NIU.
- Miss Minnesota Basketball candidate.
- Athena Award nominee.
- Two-time all-state selection.
- Standout in track and field, winning conference championship in shot put and discus and participated in state meet in both events.

#### Personal Bests

**Points:** 6, twice, last at Illinois (1/31/13)  
**Rebounds:** 8 vs. Missouri State (12/19/12)  
**FGM:** 3 at Illinois (1/31/13)  
**FGA:** 6 vs. Wisconsin (1/24/13)  
**3-pt FG:** 1 vs. Ill. State (11/11/12)  
**3-pt FGA:** 1 vs. Ill. State (11/11/12)  
**FTM:** 2, twice, last vs. N'western (2/3/13)  
**FTA:** 4 vs. Missouri State (12/19/12)  
**Assists:** 1, 4x, last at Minnesota (2/7/13)  
**Steals:** 1, twice, last vs. N'western (2/3/13)  
**Blocks:** 2 vs. NIU (11/9/12)  
**Minutes:** 16 vs. Purdue (1/20/13)

### 2012-13 Game-by-Game

#54 Timmerman, Kayla

Opponent	Date	gs	min	Total		3-Pointers		Free throws		Rebounds				pf	a	t/o	blk	stl	pts	avg
				fg-fga	pct	3fg-fga	pct	ft-fa	pct	off	def	tot	avg							
NORTHERN ILLINOIS	11/9/12	10	0-2	.000	0-0	.000	1-2	.500	0	1	1	1.0	0	0	0	2	0	1	1.0	
ILLINOIS STATE	11/11/12	5	2-2	1.000	1-1	1.000	0-2	.000	0	0	0	0.5	0	1	0	1	0	5	3.0	
MIDDLE TENNESSEE	11/14/12	3	0-0	.000	0-0	.000	0-0	.000	0	0	0	0.3	0	0	0	0	0	0	2.0	
NORTH CAROLINA	11/18/12	1	0-0	.000	0-0	.000	0-0	.000	0	0	0	0.3	0	0	0	0	0	0	1.5	
ROBERT MORRIS	11/20/12	7	1-4	.250	0-0	.000	0-0	.000	1	2	3	0.8	1	0	2	0	0	2	1.6	
at FIU	11/23/12	2	0-0	.000	0-0	.000	0-0	.000	0	0	0	0.7	1	0	1	0	0	0	1.3	
vs WVU	11/25/12	4	0-0	.000	0-0	.000	0-0	.000	0	1	1	0.7	1	0	1	0	0	0	1.1	
UNI	12/1/12	1	1-1	1.000	0-0	.000	0-0	.000	0	1	1	0.8	1	0	0	0	0	2	1.3	
MISSOURI STATE	12/19/12	13	2-4	.500	0-1	.000	2-4	.500	5	3	8	1.6	1	0	0	1	0	6	1.8	
vs Texas	12/28/12	2	1-1	1.000	0-0	.000	0-0	.000	0	0	0	1.4	1	0	0	0	0	2	1.8	
MICHIGAN	1/6/13	1	0-0	.000	0-0	.000	0-0	.000	0	0	0	1.3	0	0	0	0	0	0	1.6	
at Wisconsin	01/10/13	2	0-0	.000	0-0	.000	0-0	.000	0	0	0	1.2	1	0	0	0	0	0	1.5	
at Michigan State	01/17/13	0	0-0	.000	0-0	.000	0-0	.000	0	0	0	1.1	1	0	1	0	0	0	1.4	
PURDUE	01/20/13	16	2-3	.667	0-0	.000	0-0	.000	0	2	2	1.1	0	0	0	1	1	4	1.6	
WISCONSIN	1/24/13	15	2-6	.333	0-0	.000	0-0	.000	0	3	3	1.3	2	1	1	1	1	4	1.7	
at Michigan	01/27/13	2	0-0	.000	0-0	.000	0-0	.000	0	0	0	1.2	0	0	0	0	0	0	1.6	
at Illinois	01/31/13	11	3-3	1.000	0-0	.000	0-0	.000	1	3	4	1.4	1	0	2	0	0	6	1.9	
NORTHWESTERN	2/03/13	11	0-4	.000	0-0	.000	2-2	1.000	0	1	1	1.3	0	1	0	1	1	2	1.9	
at Minnesota	02/07/13	2	0-1	.000	0-0	.000	0-0	.000	0	0	0	1.3	1	1	1	0	0	0	1.8	
at Purdue	02/17/13	1	0-1	.000	0-0	.000	0-0	.000	0	0	0	1.2	0	0	0	0	0	0	1.7	
at Nebraska	02/24/13	1	0-0	.000	0-0	.000	0-0	.000	0	0	0	1.1	0	0	0	0	0	0	1.6	
at Northwestern	3/3/13	1	0-0	.000	0-0	.000	0-0	.000	0	0	0	1.1	1	0	0	0	0	0	1.5	
vs Northwestern	3/7/13	2	0-0	.000	0-0	.000	0-0	.000	0	1	1	1.1	0	0	0	0	0	0	1.5	
<b>Totals</b>		0	113	14-32	.438	1-2	.500	5-10	.500	7	18	25	1.1	13	4	9	7	2	34	1.5

Games played: 23  
Minutes/game: 4.9  
Points/game: 1.5  
FG Pct: 43.8  
3FG Pct: 50.0  
FT Pct: 50.0

Rebounds/game: 1.1  
Assists/game: 0.2  
Turnovers/game: 0.4  
Assist/turnover ratio: 0.4  
Steals/game: 0.1  
Blocks/game: 0.3

#### CAREER STATISTICS

YEAR	G/GS	FG-A	PCT	3-PT	PCT	FT-A	PCT	O-D-REB	AVG	PF-FO	AS	TO	BK	ST	PTS	AVG
Fresh.	23/0	14-32	.438	1-2	.500	5-10	.500	7-18-25	1.1	13-0	4	9	7	2	34	1.5





# University of Iowa Women's Basketball

## Game-by-Game Results

Overall: 20-11

Big Ten: 8-8

Home: 11-5

Away: 6-6

Neutral: 3-0

Date	Opponent	Result	Attend.	Top Scorer	Top Rebounder
Nov. 9	Northern Illinois <sup>^</sup>	W, 63-40	4,739	Johnson, Printy (11)	Till (6)
Nov. 11	Illinois State <sup>^</sup>	W, 74-64	2,930	Johnson (24)	Taylor (11)
Nov. 14	Middle Tennessee <sup>^</sup>	W, 69-63 (OT)	1,691	Printy (26)	Doolittle (9)
Nov. 18	North Carolina <sup>^</sup>	L, 64-77	3,073	Johnson (20)	Johnson (11)
Nov. 20	Robert Morris	W, 58-44	3,032	Johnson (19)	Johnson (11)
Nov. 23	at Florida Int.#	L, 65-66	430	Printy (15)	Johnson, Till (6)
Nov. 25	vs. #12 West Virginia#	W, 79-70	387	Johnson, Printy (19)	Logic, Printy, Taylor (7)
Nov. 28	at Florida State <sup>~</sup>	L, 69-83	2,389	Johnson (20)	Doolittle (9)
Dec. 1	Northern Iowa	W, 68-46	6,368	Johnson (19)	Johnson (12)
Dec. 6	#22 Iowa State*	W, 50-42	4,483	Dixon, Taylor (11)	Logic, Taylor (9)
Dec. 16	at Drake	W, 82-65	2,716	Johnson (26)	Johnson (8)
Dec. 19	Missouri State	W, 97-43	4,588	Thomas (15)	Doolittle (12)
Dec. 28	vs. #20 Texas%	W, 86-63	776	Dixon (23)	Logic (15)
Dec. 20	at San Diego%	W, 83-73	543	Printy (33)	Doolittle (10)
Jan. 3	#24 Ohio State	W, 77-71 (OT)	3,850	Taylor (19)	Johnson (12)
Jan. 6	Michigan	L, 64-68	4,644	Dixon (17)	Logic (9)
Jan. 10	at Wisconsin	W, 65-56	3,495	Johnson (23)	Johnson (11)
Jan. 17	at Michigan State	L, 54-65	5,343	Johnson (13)	Johnson (12)
Jan. 20	#11 Purdue	W, 62-46	8,576	Dixon, Printy (15)	Taylor (10)
Jan. 24	Wisconsin	W, 71-60	3,894	Printy (29)	Logic (9)
Jan. 27	at #23 Michigan	W, 63-57	2,607	Doolittle (19)	Johnson (7)
Jan. 31	at Illinois	L, 62-74	1,808	Logic, Printy (13)	Logic (10)
Feb. 3	Northwestern	L, 65-67	4,697	Dixon (21)	Logic (12)
Feb. 7	at Minnesota	L, 60-72	3,528	Printy (21)	Johnson (10)
Feb. 11	Nebraska	L, 75-76	3,937	Johnson (19)	Johnson (10)
Feb. 14	#8 Penn State	L, 69-81	5,783	Johnson (17)	Johnson (11)
Feb. 17	at #18 Purdue	W, 72-52	9,543	Logic (26)	Taylor (11)
Feb. 24	at Nebraska	L, 46-66	7,374	Logic (12)	Johnson (9)
Feb. 28	Indiana	W, 75-70	4,137	Dixon (22)	Johnson (9)
March 3	at Northwestern	W, 62-45	2,325	Dixon (21)	Johnson (9)
March 7	vs. Northwestern&	W, 60-55	---	Johnson, Printy (18)	Logic (11)

<sup>^</sup> - Preseason WNIT

# - FIU Thanksgiving Classic, Miami

<sup>~</sup> - ACC/Big Ten Challenge

\* - Iowa Corn Cy-Hawk Series

% - San Diego Surf 'N Slam Classic, San Diego

& - Big Ten Tournament, Hoffman Estates, Ill.

Attendance Summary	Games	Totals	Average
Home	16	70,413	4,401
Away	12	41,384	3,449
Neutral	2	1,163	582
<b>Totals</b>	<b>30</b>	<b>113,677</b>	<b>3,790</b>





# University of Iowa Women's Basketball

## Game-by-Game Statistics

Team	Score	FG-A	PCT	3-PT. FG	PCT	FT-A	PCT	REB	PF	AS	TO	BLK	ST
Northern Illinois	40	14-48	29.2%	1-9	11.1%	11-19	57.9%	44	19	3	22	2	6
at Iowa	63	23-57	40.4%	6-10	60.0%	11-17	64.7%	34	18	10	10	10	6
Illinois State	64	25-76	32.9%	2-14	14.3%	12-21	57.1%	44	27	6	17	4	15
at Iowa	74	19-54	35.2%	4-12	33.3%	32-41	78.0%	50	18	18	23	10	9
Middle Tennessee	63	22-70	31.4%	7-30	23.3%	12-18	66.7%	46	22	9	20	3	12
at Iowa	69	24-55	43.6%	6-20	30.0%	15-21	71.4%	40	17	22	20	10	6
North Carolina	77	27-66	40.9%	8-22	36.4%	15-27	55.6%	45	18	14	20	4	15
at Iowa	64	25-62	40.3%	5-25	20.0%	9-14	64.3%	43	20	14	25	4	9
Robert Morris	44	15-53	28.3%	6-21	28.6%	8-14	57.1%	34	11	12	16	2	4
at Iowa	58	22-57	38.6%	7-19	36.8%	7-9	77.8%	44	13	18	18	1	6
at Florida International	66	24-65	36.9%	4-15	26.7%	14-17	82.4%	37	16	8	10	3	6
Iowa	65	24-57	42.1%	7-20	35.0%	10-13	76.9%	39	16	16	16	5	1
vs. West Virginia	70	21-72	29.2%	6-28	21.4%	22-29	75.9%	41	35	12	15	1	10
Iowa	79	18-39	46.2%	1-5	20.0%	42-50	84.0%	39	23	12	23	5	6
at Florida State	83	31-63	49.2%	5-10	50.0%	16-22	72.7%	29	10	18	13	4	12
Iowa	69	30-61	49.2%	2-11	18.2%	7-9	77.8%	35	16	13	24	6	6
Northern Iowa	46	12-53	22.6%	8-29	27.6%	14-16	87.5%	31	17	9	11	0	2
at Iowa	68	26-54	48.1%	3-11	27.3%	13-18	72.2%	43	16	17	9	4	5
Iowa State	42	15-57	26.3%	7-34	20.6%	5-5	100.0%	43	20	7	21	1	6
at Iowa	50	15-51	29.4%	4-16	25.0%	16-25	64.0%	41	13	12	15	3	7
at Drake	65	20-51	39.2%	7-18	38.9%	18-24	75.0%	32	12	15	13	1	5
Iowa	82	31-59	52.5%	7-15	46.7%	13-16	81.3%	31	21	23	8	8	5
Missouri State	43	12-58	20.7%	1-18	5.6%	18-31	58.1%	38	28	3	22	1	8
at Iowa	97	36-75	48.0%	10-34	29.4%	15-24	62.5%	60	25	25	16	5	9
vs. Texas	63	21-54	38.9%	6-14	42.9%	15-28	53.6%	36	15	14	16	4	3
Iowa	86	35-67	52.2%	7-21	33.3%	9-12	75.0%	38	20	23	10	2	11
at San Diego	73	30-64	46.9%	3-6	50.0%	10-17	58.8%	34	13	15	16	1	9
Iowa	83	29-53	54.7%	11-18	61.1%	14-17	82.4%	31	15	19	20	8	7
Ohio State	71	27-68	39.7%	6-21	28.6%	11-14	78.6%	33	19	14	17	4	8
at Iowa	77	30-58	51.7%	2-4	50.0%	15-19	78.9%	39	14	17	19	10	12
Michigan	68	24-48	50.0%	10-22	45.5%	10-14	71.4%	35	17	14	16	2	7
at Iowa	64	23-62	37.1%	9-25	36.0%	9-12	75.0%	32	16	17	11	3	8
at Wisconsin	56	18-54	33.3%	9-26	34.6%	11-14	78.6%	25	14	12	11	2	11
Iowa	65	21-55	38.2%	6-17	35.3%	17-18	94.4%	45	13	17	15	2	5
at Michigan State	65	23-61	37.7%	5-19	26.3%	14-15	93.3%	42	10	14	14	3	4
Iowa	54	21-60	35.0%	2-14	14.3%	10-12	83.3%	36	14	9	14	4	7
Purdue	46	21-66	31.8%	3-18	16.7%	1-6	16.7%	44	13	10	18	3	10
at Iowa	62	23-63	36.5%	9-15	60.0%	7-9	77.8%	45	12	16	14	9	9
Wisconsin	60	24-64	37.5%	5-26	19.2%	7-11	63.6%	33	14	12	12	0	9
at Iowa	71	25-51	49.0%	5-12	41.7%	16-18	88.9%	36	15	13	15	6	4
at Michigan	57	22-53	41.5%	4-12	33.3%	9-15	60.0%	29	17	9	11	3	6
Iowa	63	23-50	46.0%	5-20	25.0%	12-14	85.7%	32	19	12	11	4	6
at Illinois	74	25-60	41.7%	11-24	45.8%	13-19	68.4%	31	10	15	19	2	15
Iowa	62	27-59	45.8%	7-19	36.8%	1-2	50.0%	38	17	12	27	5	7
Northwestern	67	27-59	45.8%	5-15	33.3%	8-12	66.7%	37	16	18	16	3	5
at Iowa	65	20-61	32.8%	7-14	50.0%	18-24	75.0%	40	14	12	13	8	12
at Minnesota	72	26-58	44.8%	5-12	41.7%	15-20	75.0%	48	17	14	16	9	5
Iowa	60	18-63	28.6%	7-20	35.0%	17-20	85.0%	34	19	13	13	4	10
Nebraska	76	26-60	43.3%	10-23	43.5%	14-16	87.5%	37	14	21	12	2	4
at Iowa	75	28-64	43.8%	8-24	33.3%	11-15	73.3%	36	14	19	8	6	4
Penn State	81	29-62	46.8%	4-9	44.4%	19-25	76.0%	38	23	10	16	4	12
at Iowa	69	26-57	45.6%	6-15	40.0%	11-19	57.9%	36	20	18	20	1	9
at Purdue	52	22-69	31.9%	5-20	25.0%	3-7	42.9%	39	12	14	15	3	3
Iowa	72	27-54	50.0%	5-16	31.3%	13-15	86.7%	33	11	18	8	10	9
at Nebraska	66	24-59	40.7%	4-16	25.0%	14-18	77.8%	38	9	15	11	2	7
Iowa	46	20-56	35.7%	3-15	20.0%	3-6	50.0%	37	16	7	21	3	7
Indiana	70	26-55	47.3%	13-26	50.0%	5-6	83.3%	34	16	13	21	0	6
at Iowa	75	28-58	48.3%	9-28	32.1%	10-17	58.8%	30	10	20	10	5	11
at Northwestern	45	16-55	29.1%	2-13	15.4%	11-19	57.9%	39	13	10	16	5	4
Iowa	62	25-61	41.0%	7-20	35.0%	5-8	62.5%	42	18	18	14	6	6
vs. Northwestern	55	22-61	36.1%	2-10	20.0%	9-10	90.0%	39	20	17	20	8	14
Iowa	60	20-57	35.1%	2-16	12.5%	18-23	78.3%	41	11	17	16	9	9





# University of Iowa Women's Basketball

## Season & Career Bests

### Season Bests

Player	Points	3-Pointers	Rebounds	Assists	Blocks	Steals
#3 Claire Till	7 at FIU	1, twice	6, twice	1, three times	1, three times	1, three times
#11 Trisha Nesbitt	12 at Drake	2 at Drake	3 vs. Northern Illinois	2 vs. Robert Morris	---	2 vs. North Carolina
#12 Morgan Johnson	26 at Drake	---	12, three times	5 vs. Northern Iowa	5, three times	4 vs. Northwestern
#13 Kathy Thomas	15 vs. Missouri State	2 vs. Missouri State	3, twice	3, three times	1 at Minnesota	2, four times
#21 Melissa Dixon	23 vs. Texas	6 vs. Northwestern	3, six times	3, twice	1 vs. Illinois State	2 vs. MTSU
#22 Samantha Logic	26 at Purdue	2, three times	15 vs. Texas	14 vs. Texas	2 at Drake	4 vs. North Carolina
#23 Theairra Taylor	19 vs. Ohio State	3 vs. Purdue	11, twice	7 vs. Missouri State	5 vs. Northwestern	3, twice
#24 Jaime Printy	33 at San Diego	7 at San Diego	9 vs. Purdue	7 at Drake	2 at Northwestern	4 vs. Indiana
#25 Kali Peschel	5 at Drake	1 at Drake	5, twice	2, twice	1, four times	1, six times
#33 Kathryn Reynolds	---	---	---	---	---	---
#45 Nicole Smith	4 vs. Missouri State	---	1 vs. Northern Illinois	---	---	---
#51 Bethany Doolittle	19 at Michigan	---	12 vs. Missouri State	4 vs. Penn State	6, twice	3, four times
#54 Kayla Timmerman	6, twice	1 vs. Illinois State	8 vs. Missouri State	1, three times	2 vs. Northern Illinois	1, twice

### Career Bests

Player	Points	3-Pointers	Rebounds	Assists	Blocks	Steals
#3 Claire Till	7 at FIU	1, twice	6, twice	1, three times	1, three times	1, three times
#11 Trisha Nesbitt	12 at Drake	2, twice	3, 3 times	4, three times	1, Michigan State '11	3, Minnesota
#12 Morgan Johnson	37 at Bradley	---	16 vs. Illinois	5 vs. Northern Iowa	8, Minnesota, '10	4 vs. Northwestern
#13 Kathy Thomas	15 vs. Missouri State	2 vs. Missouri State	3, twice	3, three times	1 at Minnesota	2, four times
#21 Melissa Dixon	23 vs. Texas	6, twice	4, four times	4 vs. Nebraska	1, four times	3 at Indiana
#22 Samantha Logic	26 at Purdue	3 vs. Drake	18 at Michigan	14 vs. Texas	2, twice	4 vs. North Carolina
#23 Theairra Taylor	19 vs. Ohio State	3 vs. Purdue	11, twice	7 vs. Missouri State	5 vs. Northwestern	4 at Northwestern
#24 Jaime Printy	33 at San Diego	7 at San Diego	9, twice	9, Iowa State, '10	2 at Northwestern	5 at Bradley
#25 Kali Peschel	5 at Drake	1 at Drake	5, twice	2, three times	1, four times	1, six times
#33 Kathryn Reynolds	4 vs. Drake	---	2 vs. Texas A&M	5 vs. Western Illinois	---	---
#45 Nicole Smith	4 vs. Missouri State	---	1 vs. Northern Illinois	---	---	---
#51 Bethany Doolittle	19 at Michigan	---	12 vs. Missouri State	4 vs. Penn State	6, twice	3, four times
#54 Kayla Timmerman	6, twice	1 vs. Illinois State	8 vs. Missouri State	1, three times	2 vs. Northern Illinois	1, twice

**BOLD** - set career best during current season

\* - - tied school single-game and Carver-Hawkeye Arena record





# University of Iowa Women's Basketball

## The Last Time...

### The Last Time a Player . . .

#### **Had 30 or more points**

Iowa -- 33, Jaime Printy, at San Diego, 12/30/12  
Opponent -- 31, Aulani Sinclair, Indiana, 2/28/13

#### **Made at least 80% of her FGA (10 att.)**

Iowa -- .818 (9-11), Morgan Johnson, vs. Nebraska, 2/11/13  
Opponent -- .857 (12-14), Kelsey Budd, Bradley, 12/17/11

#### **Made 100% of her FTA (10 att.)**

Iowa -- 1.000 (11-11), Morgan Johnson, at Wisconsin, 1/10/13  
Opponent -- 1.000 (11-11), Courtney Vandersloot, Gonzaga, 3/19/11

#### **Had 15 or more rebounds**

Iowa -- 15, Samantha Logic, vs. Texas, 12/28/12  
Opponent -- 16, Artemis Spanou, Robert Morris, 11/20/12

#### **Had 10 or more assists**

Iowa -- 10, Samantha Logic, vs. Purdue, 1/20/13  
Opponent -- 10, Brittney McCoy, Minnesota, 2/18/10

#### **Had 5 or more blocks**

Iowa -- 5, Theairra Taylor, vs. Northwestern, 3/7/13  
Opponent -- 5, Ebony Ellis, Northern Illinois, 12/8/07

#### **Had 5 or more steals**

Iowa -- 5, Kelly Krei, at Indiana, 2/5/12  
Opponent -- 5, Adrienne GodBold, Illinois, 1/31/13

### The Last Time A Team . . .

#### **Scored 100 or more points**

Iowa -- 100 vs. Minnesota, 2/12/88  
Opponent -- 101, Iowa State, 12/3/03

#### **Scored 40 or fewer points**

Iowa -- 40, vs. Illinois, 2/10/77  
Opponent -- 40, Northern Illinois, 11/9/12

#### **Won an overtime game**

Iowa -- 77-71, vs. Ohio State, 1/3/13  
Opponent -- 81-78, Kansas State, 12/3/11

#### **Made at least 60% of its FGA (20 att.)**

Iowa -- .632 (36-57), vs. Rider, 11/26/05  
Opponent -- .654 (34-52), Ohio State, 2/12/06

#### **Made at least 50% of its 3-pt. FGA (8 att.)**

Iowa -- .500 (7-14), vs. Northwestern, 2/3/13  
Opponent -- .500 (13-26), Indiana, 2/28/13

#### **Made at least 90% of its FTA (10 att.)**

Iowa -- .944 (17-18), at Wisconsin, 1/10/13  
Opponents -- .900 (9-10), Northwestern, 3/7/13

\* - Carver-Hawkeye Arena record ^ - school record









# University of Iowa Women's Basketball

## Season Highs And Lows/Specialty Statistics

CATEGORY		IOWA	OPPONENTS
<b>Points</b>	High Low	97 vs. Missouri State 46 at Nebraska	83, Florida State 40, Northern Illinois
<b>FG Made</b>	High Low	36 vs. Missouri State 15 vs. Iowa State	31, Florida State 12, two teams
<b>FG Att.</b>	High Low	75 vs. Missouri State 39 vs. West Virginia	76, Illinois State 48, two teams
<b>FG%</b>	High Low	54.7 at San Diego 28.6 at Minnesota	50.0, Michigan 20.7, Missouri State
<b>3FG Made</b>	High Low	11 at San Diego 1 vs. West Virginia	13, Indiana 1, two teams
<b>3FG Att.</b>	High Low	34 vs. Missouri State 4 vs. Ohio State	34, Iowa State 9, two teams
<b>3FG%</b>	High Low	61.1 at San Diego 12.5 vs. Northwestern	50.0, three teams 5.6, Missouri State
<b>FTM</b>	High Low	42 vs. West Virginia 1 at Illinois	22, West Virginia 1, Purdue
<b>FTA</b>	High Low	50 vs. West Virginia 2 at Illinois	31, Missouri State 5, Iowa State
<b>FT% (min. 10)</b>	High Low	94.4 at Wisconsin 57.9 vs. Penn State	93.3, Michigan State 53.6, Texas
<b>Off. Reb.</b>	High Low	21 vs. Missouri State 6 vs. Northern Illinois	23, West Virginia 7, Northwestern
<b>Def. Reb.</b>	High Low	39 vs. Missouri State 16 vs. Michigan	38, Minnesota 15, Florida State
<b>Total Reb.</b>	High Low	60 vs. Missouri State 30 vs. Indiana	48, Minnesota 25, Wisconsin
<b>Assists</b>	High Low	25 vs. Missouri State 7 at Nebraska	21, Nebraska 3, two teams
<b>Steals</b>	High Low	12, twice, last vs. Northwestern 1 at Florida International	15, three teams 1, West Virginia
<b>Blocks</b>	High Low	10, five times, last at Purdue 1, twice, last vs. Penn State	9, Minnesota 0, three teams
<b>Turnovers</b>	High Low	27 at Illinois 8, three times, last at Purdue	22, two teams 10, Florida International
<b>Fouls</b>	High Low	25 vs. Missouri State 10 vs. Indiana	35, West Virginia 9, Nebraska

GAME-BY-GAME SPECIALTY STATS					
Date	Opponent	IA-Opp.	IA-Opp.	IA-Opp.	IA-Opp.
		Pts. Off TO's	Pts. in Paint	2nd Chance	Fast Break
Nov. 9	Northern Illinois	26-6	24-10	4-3	3-2
Nov. 11	Illinois State	18-20	22-24	8-6	18-11
Nov. 14	Middle Tennessee	15-11	24-26	11-12	2-6
Nov. 18	North Carolina	12-22	30-24	6-22	15-14
Nov. 20	Robert Morris	16-12	22-10	11-6	2-2
Nov. 23	Florida International	6-20	24-20	13-15	6-6
Nov. 25	West Virginia	14-20	24-18	11-22	0-4
Dec. 1	Northern Iowa	11-11	34-4	9-5	2-0
Dec. 6	Iowa State	12-12	14-12	10-8	2-4
Dec. 16	Drake	15-5	40-18	11-12	2-4
Dec. 19	Missouri State	28-14	32-18	17-8	4-6
Dec. 28	Texas	24-10	40-26	11-8	9-0
Dec. 30	San Diego	14-22	30-44	8-9	0-2
Jan. 3	Ohio State	19-18	40-34	12-9	4-6
Jan. 6	Michigan	24-4	22-22	10-8	6-0
Jan. 10	Wisconsin	11-18	18-12	7-17	4-2
Jan. 17	Michigan State	12-22	26-30	12-7	2-12
Jan. 20	Purdue	17-9	24-28	12-5	10-8
Jan. 24	Wisconsin	11-13	30-32	12-13	2-2
Jan. 27	Michigan	10-8	18-24	13-10	4-2
Jan. 31	Illinois	21-30	28-20	13-8	4-4
Feb. 3	Northwestern	17-8	20-32	6-5	6-0
Feb. 7	Minnesota	28-9	18-32	4-10	2-11
Feb. 11	Nebraska	8-4	30-22	20-6	4-2
Feb. 14	Penn State	18-10	38-32	19-14	2-8
Feb. 17	Purdue	15-6	36-24	12-21	10-0
Feb. 24	Nebraska	6-17	28-30	4-12	2-4
Feb. 28	Indiana	27-7	18-18	4-8	17-2
March 3	Northwestern	14-12	26-14	10-10	12-0
March 7	Northwestern	17-12	18-28	13-9	9-2

## IOWA AND OPPONENT INDIVIDUAL HIGH PERFORMANCES

CATEGORY	IOWA	OPPONENTS
Points	33 Jaime Printy at San Diego	34 Hill, Ohio State; Banham, Minnesota
Field Goals Made	11 Morgan Johnson at Drake	12 Russell, Ill. State State; Sinclair, Indiana
Field Goals Attempted	22 Jaime Printy at Minnesota	28 Russell, Ill. State; Coley, FIU
3-Point Field Goals Made	7 Jaime Printy at San Diego	7 Aulani Sinclair, Indiana
3-Point Field Goals Attempted	13 Melissa Dixon vs. Indiana	13 Taylor Palmer, West Virginia
Free Throws Made	17 Jaime Printy vs. West Virginia	11 Rachel Banham, Minnesota
Free Throws Attempted	17 Jaime Printy vs. West Virginia	14 Rachel Banham, Minnesota
Offensive Rebounds	8 Morgan Johnson at Wisconsin	11 Ebony Rowe, Middle Tennessee
Defensive Rebounds	11 Theairra Taylor vs. Ill. State	13 Artemis Spanou, Robert Morris
Total Rebounds	15 Samantha Logic vs. Texas	16 Rowe, MTSU; Spanou, RMU
Assists	14 Samantha Logic vs. Texas	8 Four players, last by Lindsey Moore, Nebraska
Steals	4 Logic vs. UNC, Johnson vs. N'western	8 Jamie Russell, Illinois State
Blocks	6 Bethany Doolittle vs. NIU, Ohio State	4 Diamant, N'western; Doulgas, N'western























**2012-13 IOWA WOMEN'S BASKETBALL**  
**Iowa Combined Team Statistics (as of Mar 07, 2013)**  
**All games**



<b>RECORD:</b>	<b>OVERALL</b>	<b>HOME</b>	<b>AWAY</b>	<b>NEUTRAL</b>
ALL GAMES	20-11	11-5	6-6	3-0
CONFERENCE	8-8	4-4	4-4	0-0
NON-CONFERENCE	12-3	7-1	2-2	3-0

#	Player	gp-gs	min	avg	Total		3-Point		F-Throw		Rebounds				pf	dq	a	to	blk	stl	pts	avg
					fg-fga	fg%	3fg-fga	3fg%	ft-fa	ft%	off	def	tot	avg								
12	Johnson, Morgan	31-31	999	32.2	179-338	.530	0-0	.000	108-146	.740	92	143	235	7.6	85	2	33	51	60	38	466	15.0
24	Printy, Jaime	31-28	1002	32.3	114-322	.354	54-181	.298	127-138	.920	19	112	131	4.2	43	0	102	85	6	30	409	13.2
21	Dixon, Melissa	31-3	701	22.6	109-259	.421	71-178	.399	19-26	.731	8	37	45	1.5	61	1	29	34	1	16	308	9.9
22	Logic, Samantha	31-31	1051	33.9	111-232	.478	14-44	.318	47-74	.635	75	127	202	6.5	82	3	204	138	12	56	283	9.1
23	Taylor, Theairra	31-31	794	25.6	96-244	.393	24-73	.329	38-52	.731	30	109	139	4.5	50	1	71	67	25	32	254	8.2
51	Doolittle, Bethany	31-31	897	28.9	104-247	.421	0-3	.000	17-22	.773	47	124	171	5.5	76	1	17	43	57	29	225	7.3
03	Till, Claire	14-0	105	7.5	4-19	.211	2-7	.286	15-22	.682	9	17	26	1.9	11	0	3	9	3	3	25	1.8
13	Thomas, Kathy	29-0	198	6.8	16-43	.372	7-19	.368	12-21	.571	5	22	27	0.9	31	0	17	23	1	11	51	1.8
54	Timmerman, Kayla	23-0	113	4.9	14-32	.438	1-2	.500	5-10	.500	7	18	25	1.1	13	0	4	9	7	2	34	1.5
11	Nesbitt, Trisha	28-0	184	6.6	9-25	.360	5-14	.357	9-12	.750	0	12	12	0.4	22	1	8	8	0	5	32	1.1
45	Smith, Nicole	6-0	12	2.0	2-4	.500	0-0	.000	2-2	1.000	0	1	1	0.2	2	0	0	1	0	0	6	1.0
25	Peschel, Kali	25-0	194	7.8	4-25	.160	1-10	.100	7-12	.583	17	11	28	1.1	28	0	8	9	4	6	16	0.6
Team											56	102	158				9					
Total.....		31	6250		762-1790	.426	179-531	.337	406-537	.756	365	835	1200	38.7	504	9	496	486	176	228	2109	68.0
Opponents.....		31	6250		691-1862	.371	174-580	.300	364-529	.688	425	730	1155	37.3	517	9	377	493	86	243	1920	61.9

<b>TEAM STATISTICS</b>	<b>IOWA</b>	<b>OPP</b>	<b>Date</b>	<b>Opponent</b>	<b>Score</b>	<b>Att.</b>
SCORING	2109	1920	^	11/9/12	NORTHERN ILLINOIS	w 63-40 4739
Points per game	68.0	61.9	^	11/11/12	ILLINOIS STATE	w 74-64 2930
Scoring margin	+6.1	-	^	11/14/12	MIDDLE TENNESSEE	Wot 69-63 1691
FIELD GOALS-ATT	762-1790	691-1862	^	11/18/12	NORTH CAROLINA	L 64-77 3073
Field goal pct	.426	.371		11/20/12	ROBERT MORRIS	w 58-44 3032
3 POINT FG-ATT	179-531	174-580	#	11/23/12	at FIU	L 65-66 430
3-point FG pct	.337	.300	#	11/25/12	vs WVU	w 79-70 387
3-pt FG made per game	5.8	5.6		11/28/12	at Florida State	L 69-83 2389
FREE THROWS-ATT	406-537	364-529		12/1/12	UNI	w 68-46 6368
Free throw pct	.756	.688		12/6/12	IOWA STATE	w 50-42 4483
F-Throws made per game	13.1	11.7		12-16-12	at Drake	w 82-65 2716
REBOUNDS	1200	1155		12/19/12	MISSOURI STATE	w 97-43 4588
Rebounds per game	38.7	37.3	%	12/28/12	vs Texas	w 86-63 776
Rebounding margin	+1.5	-	%	12/30/12	at San Diego	w 83-73 543
ASSISTS	496	377	*	1/3/13	OHIO STATE	Wot 77-71 3850
Assists per game	16.0	12.2	*	1/6/13	MICHIGAN	L 64-68 4644
TURNOVERS	486	493	*	01/10/13	at Wisconsin	w 65-56 3495
Turnovers per game	15.7	15.9	*	01/17/13	at Michigan State	L 54-65 5343
Turnover margin	+0.2	-	*	01/20/13	PURDUE	w 62-46 8576
Assist/turnover ratio	1.0	0.8	*	1/24/13	WISCONSIN	w 71-60 3894
STEALS	228	243	*	01/27/13	at Michigan	w 63-57 2607
Steals per game	7.4	7.8	*	01/31/13	at Illinois	L 62-74 1808
BLOCKS	176	86	*	2/03/13	NORTHWESTERN	L 65-67 4697
Blocks per game	5.7	2.8	*	02/07/13	at Minnesota	L 60-72 3528
ATTENDANCE	70422	43264	*	02/11/13	NEBRASKA	L 75-76 3937
Home games-Avg/Game	16-4401	12-3508	*	2/14/13	PENN STATE	L 69-81 5783
Neutral site-Avg/Game	-	3-388	*	02/17/13	at Purdue	w 72-52 9543
			*	02/24/13	at Nebraska	L 46-66 7374
			*	2/28/13	INDIANA	w 75-70 4137
			*	3/3/13	at Northwestern	w 62-45 2325
				3/7/13	vs Northwestern	w 60-55 0
<b>Score by Periods</b>	<b>1st</b>	<b>2nd</b>	<b>OT</b>	<b>Totals</b>		
Iowa	954	1131	24	2109		
Opponents	885	1023	12	1920		

^ - Preseason WNIT  
# - FIU Thanksgiving Classic; Miami  
% - San Diego Surf 'N Slam Slassic; San Diego  
\* - Conference game



**2012-13 IOWA WOMEN'S BASKETBALL**  
**Iowa Combined Team Statistics (as of Mar 07, 2013)**  
**Conference games**



<b>RECORD:</b>	<b>OVERALL</b>	<b>HOME</b>	<b>AWAY</b>	<b>NEUTRAL</b>
ALL GAMES	8-8	4-4	4-4	0-0
CONFERENCE	8-8	4-4	4-4	0-0
NON-CONFERENCE	0-0	0-0	0-0	0-0

#	Player	gp-gs	min	Total		3-Point		F-Throw		Rebounds				pf	dq	a	to	blk	stl	pts	avg	
				fg-fga	fg%	3fg-fga	3fg%	ft-fa	ft%	off	def	tot	avg									
21	Dixon, Melissa	16-0	398	24.9	69-155	.445	46-107	.430	13-17	.765	7	21	28	1.8	34	1	13	20	0	9	197	12.3
12	Johnson, Morgan	16-16	521	32.6	75-164	.457	0-0	.000	46-62	.742	55	73	128	8.0	47	2	16	20	29	20	196	12.3
24	Printy, Jaime	16-16	552	34.5	57-179	.318	24-93	.258	53-57	.930	11	65	76	4.8	25	0	48	39	5	21	191	11.9
22	Logic, Samantha	16-16	571	35.7	63-122	.516	10-25	.400	29-47	.617	38	69	107	6.7	44	2	102	69	4	27	165	10.3
23	Taylor, Theairra	16-16	419	26.2	58-139	.417	15-39	.385	17-21	.810	15	50	65	4.1	27	1	31	32	11	21	148	9.3
51	Doolittle, Bethany	16-16	482	30.1	51-125	.408	0-0	.000	10-13	.769	26	57	83	5.2	34	0	10	20	30	15	112	7.0
54	Timmerman, Kayla	12-0	63	5.3	7-18	.389	0-0	.000	2-2	1.000	1	9	10	0.8	7	0	3	5	3	2	16	1.3
13	Thomas, Kathy	16-0	90	5.6	4-19	.211	2-10	.200	2-5	.400	0	10	10	0.6	13	0	10	13	1	7	12	0.8
25	Peschel, Kali	13-0	68	5.2	1-4	.250	0-2	.000	3-4	.750	5	2	7	0.5	5	0	3	4	2	2	5	0.4
11	Nesbitt, Trisha	14-0	51	3.6	0-6	.000	0-2	.000	0-0	.000	0	3	3	0.2	4	0	2	2	0	2	0	0.0
45	Smith, Nicole	1-0	1	1.0	0-0	.000	0-0	.000	0-0	.000	0	0	0	0.0	1	0	0	0	0	0	0	0.0
03	Till, Claire	5-0	9	1.8	0-1	.000	0-0	.000	0-0	.000	0	2	2	0.4	1	0	0	1	1	0	0	0.0
Team											29	43	72				8					
Total.....		16	3225		385-932	.413	97-278	.349	175-228	.768	187	404	591	36.9	242	6	238	233	86	126	1042	65.1
Opponents.....		16	3225		380-951	.400	101-302	.334	165-231	.714	199	383	582	36.4	234	0	215	241	47	116	1026	64.1

<b>TEAM STATISTICS</b>	<b>IOWA</b>	<b>OPP</b>	<b>Date</b>	<b>Opponent</b>	<b>Score</b>	<b>Att.</b>
SCORING	1042	1026	* 1/3/13	OHIO STATE	Wot 77-71	3850
Points per game	65.1	64.1	* 1/6/13	MICHIGAN	L 64-68	4644
Scoring margin	+1.0	-	* 01/10/13	at Wisconsin	W 65-56	3495
FIELD GOALS-ATT	385-932	380-951	* 01/17/13	at Michigan State	L 54-65	5343
Field goal pct	.413	.400	* 01/20/13	PURDUE	W 62-46	8576
3 POINT FG-ATT	97-278	101-302	* 1/24/13	WISCONSIN	W 71-60	3894
3-point FG pct	.349	.334	* 01/27/13	at Michigan	W 63-57	2607
3-pt FG made per game	6.1	6.3	* 01/31/13	at Illinois	L 62-74	1808
FREE THROWS-ATT	175-228	165-231	* 2/03/13	NORTHWESTERN	L 65-67	4697
Free throw pct	.768	.714	* 02/07/13	at Minnesota	L 60-72	3528
F-Throws made per game	10.9	10.3	* 02/11/13	NEBRASKA	L 75-76	3937
REBOUNDS	591	582	* 2/14/13	PENN STATE	L 69-81	5783
Rebounds per game	36.9	36.4	* 02/17/13	at Purdue	W 72-52	9543
Rebounding margin	+0.6	-	* 02/24/13	at Nebraska	L 46-66	7374
ASSISTS	238	215	* 2/28/13	INDIANA	W 75-70	4137
Assists per game	14.9	13.4	* 3/3/13	at Northwestern	W 62-45	2325
TURNOVERS	233	241	^ - Preseason WNIT			
Turnovers per game	14.6	15.1	# - FIU Thanksgiving Classic; Miami			
Turnover margin	+0.5	-	% - San Diego Surf 'N Slam Slassic; San Diego			
Assist/turnover ratio	1.0	0.9	* - Conference game			
STEALS	126	116				
Steals per game	7.9	7.3				
BLOCKS	86	47				
Blocks per game	5.4	2.9				
ATTENDANCE	39518	36023				
Home games-Avg/Game	8-4940	8-4503				
Neutral site-Avg/Game	-	0-0				

<b>Score by Periods</b>	<b>1st</b>	<b>2nd</b>	<b>OT</b>	<b>Totals</b>
Iowa	475	553	14	1042
Opponents	477	541	8	1026