

IOWA VOLLEYBALL



FINAL NOTES

Dec. 28, 2012

2012 Schedule

Date	Opponent	Time
	<i>HAWKEYE CHALLENGE</i>	
Aug. 24	Chicago State	W, 3-0
Aug. 24	South Dakota State	W, 3-1
Aug. 25	SEMO	L, 2-3
Aug. 25	Valparaiso	W, 3-1
	<i>GOLDEN GRIZZLY INVITATIONAL</i>	
Aug. 31	vs. Eastern Illinois	W, 3-1
Sept. 1	vs. Toledo	W, 3-1
Sept. 1	at Oakland	L, 2-3
	<i>IOWA STATE CHALLENGE</i>	
Sept. 7	vs. Syracuse	W, 3-2
Sept. 7	at #18 Iowa State	L, 2-3
Sept. 8	vs. Eastern Washington	W, 3-0
	<i>MARQUETTE INVITATIONAL</i>	
Sept. 14	vs. Pacific	L, 1-3
Sept. 14	vs. Milwaukee	W, 3-2
Sept. 15	at Marquette	L, 0-3
Sept. 21	at #23 Ohio State ^	L, 0-3
Sept. 22	at #4 Penn State	L, 1-3
Sept. 28	Michigan ^	L, 0-3
Sept. 29	#24 Michigan State	L, 0-3
Oct. 5	at Indiana	W, 3-1
Oct. 6	at #12 Purdue	W, 3-0
Oct. 12	#10 Minnesota ^	L, 1-3
Oct. 13	Wisconsin ^	L, 2-3
Oct. 17	#4 Nebraska ^*	L, 0-3
Oct. 21	at Northwestern &	L, 0-3
Oct. 24	#1 Penn State &	L, 0-3
Oct. 27	#20 Ohio State	L, 0-3
Nov. 2	at Michigan State	L, 0-3
Nov. 3	at Michigan ^	L, 0-3
Nov. 8	#21 Purdue ^*	L, 0-3
Nov. 10	Indiana	L, 0-3
Nov. 16	at Wisconsin	L, 0-3
Nov. 17	at #14 Minnesota ^	L, 0-3
Nov. 21	at #10 Nebraska	L, 0-3
Nov. 24	Illinois *	L, 0-3

All times listed are Central & - Big Ten Network (HD)
 ^ - BTN.com * - Mediacom (MC22)

Stay Connected



facebook.com/iowavolleyball



@iowavolleyball



youtube.com/uiowavolleyball

Iowa Hawkeyes (10-23, 2-18)

2012 IN THE BOOKS

The University of Iowa volleyball team finished the 2012 season with a 10-23 overall record and 2-18 mark in Big Ten action.

LIVE ACTION ON YOUR TV

Iowa had 11 matches shown live during the 2012 season. Two matches were broadcast live on BTN (at Northwestern -- Oct. 21, Penn State -- Oct. 24) and three were seen live on Mediacom (MC22). Eight matches were shown on BTN.com.

HAWKEYES HONOR STRAUMANN

Iowa honored its lone senior, Allison Straumann, following the conclusion of the last match against Illinois. The Cary, Ill., native appeared in 71 career matches. She was one of three team captains as a senior. Straumann ranked in the top 10 in the Big Ten in services aces, in leagues games, for most of the season.

COACHING MILESTONE

Iowa's match at Michigan State on Nov. 2 marked Sharon Dingman's 700th as a head coach. Her career record stands at 391-316 in 22 seasons.

HAWKEYE SCHEDULE

Iowa hosted the Hawkeye Challenge and made three week-end road trips before beginning its 20-match Big Ten schedule. The entire 33-match schedule included 18 contests against teams that appeared in the 2011 NCAA Tournament and 16 that advanced to the 2012 NCAA Tournament. Iowa played a home-away series with every Big Ten team except Illinois and Northwestern for the second-straight season. The Hawkeyes faced the Illini once (at Carver-Hawkeye Arena, Nov. 24) and the Wildcats once (at Northwestern, Oct. 21).

HOME AND AWAY

Iowa played its first 15 matches away from Iowa City. The Hawkeyes went 3-11 at home, 5-1 in neutral site matches and 2-11 in true road matches.



2012 Big Ten Standings

	Conf.	Overall
#3 Penn State	19-1	33-3
#7 Nebraska	15-5	26-7
#8 Minnesota	15-5	27-8
#22 Ohio State	13-7	23-11
#15 Purdue	12-8	23-11
#16 Michigan State	11-9	25-10
#5 Michigan	11-9	27-12
Illinois	8-12	14-16
Northwestern	5-15	16-15
Wisconsin	5-15	17-16
Indiana	4-16	12-20
IOWA	2-18	10-23

UI Athletic Communications

Patrick Sojka
Assistant Director
Athletic Communications

Office Phone.....(319) 335-9411
Cell.....(319) 325-7932
FAX.....(319) 335-9417
Press Row Number.... (319) 353-3870
E-mail: patrick-sojka@uiowa.edu

Iowa on the Web

Updated statistics, rosters, game notes, schedules and more can be found at the University of Iowa Athletic Department's website. The address is:

hawkeyesports.com

Media Information

PRACTICE ATTENDANCE- All practices are open to the media, and interviews may be conducted 15 minutes prior to or at the completion of practice. However, media must inform Patrick Sojka of their intention to attend practice. The Hawkeyes practice daily at 3 p.m. at Carver-Hawkeye Arena.

PLAYER INTERVIEWS- All player interviews are coordinated through Patrick Sojka of the Iowa Athletic Communications Office. Please contact Patrick (319-335-9411) so that he may set a time for an interview which does not interfere with the student-athlete's academic or practice schedules.

MOVING ON UP

Bethany Yeager became the 14th Hawkeye in program history to surpass 1,000 career digs in Iowa's season-opening sweep of Chicago State. The junior registered a match-high 21 digs in the win. Yeager registered a team-high 20 digs on Oct. 13 against Wisconsin to pass Kari Hamel for fifth all-time in program history with 1,388 in her career. On Oct. 21 at Northwestern, Yeager turned in 11 digs to become the fifth Hawkeye in program history to eclipse 1,400 career digs. The Brenham, Texas, native finished third in the Big Ten digs (4.48/set) and sits fifth in program history with 1,522 career digs. She moved up nine spots on the all-time list during the season.

CHART-TOPPING SEASONS

Sophomore Alex Lovell finished the year with a team-high 382 kills, the most in a single season since Catherine Smale posted 441 in 2005. Junior Bethany Yeager totaled a career-best 533 digs in 2012 -- the most in a season since 2006, when Emily Hiza registered 545.

ACADEMIC ALL-BIG TEN SELECTIONS

Six Hawkeyes -- Grace Burns, Erin Leppek, Alex Lovell, Alli O'Deen, Emily Yanny, Bethany Yeager -- were named Academic All-Big Ten. The six selections are the most for the program since 2009.

IN GOOD COMPANY

Nikki Dailey ranks sixth in career assists (2,561) and finished 10th in league assists (9.28/set) during the regular season. The junior led Iowa in assists in every match this season, finishing with 1,103 total assists.

RETURNING LEADERS PACE THE HAWKEYES

In 2011, Alex Lovell led the team in kills and became Iowa's first freshman since 2005 to surpass 300 kills in a single season, recording 312. Junior Nikki Dailey led the team a year ago in assists (1,152) and service aces (33). Junior Bethany Yeager led Iowa in digs (527) for the second time in as many years. The trio led Iowa in three of the respective categories in 2012. Lovell paced the Hawkeyes with 382 kills and Yeager led the way with 533 digs. Dailey tallied 1,103 assists. Sophomore Alesandra Dietz led Iowa with 25 service aces. Dailey was second with 24.

BIG TEN, BIG TIME

Five of the last seven national championships have been claimed by current members of the Big Ten. Nebraska won the title in 2006 before Penn State captured four straight (2007-10). Illinois finished as the national runner-up to UCLA in 2011. In 2012, Penn State and Michigan both reached the national semifinals of the NCAA Volleyball Championship, marking the third time the Big Ten has had multiple teams among the Final Four and the sixth straight year that at least one squad has played for the right to go to the title match. The Nittany Lions and Wolverines were two of the conference's seven teams in the NCAA Championship, joining Michigan State, Minnesota, Nebraska, Ohio State and Purdue. Seven league teams finished ranked in the top 25 (out of 328 Division I programs). Big Ten teams finished with a combined 114-25 nonconference record.

BIG TEN GOES BIG IN POLLS

The Big Ten is represented by seven teams in the final AVCA top 25 poll, including four in the top 10. The seven teams are the most of any conference. Penn State is No. 3 and Michigan is No. 5. Nebraska sits in seventh and Minnesota in eighth. Purdue (No. 15), Michigan State (No. 16) and Ohio State (No. 22) round out the league rankings.



Head Coach Sharon Dingman



Sharon Dingman was named the eighth coach in the history of the University of Iowa volleyball program on March 21, 2008. In her fifth season at the helm of the volleyball program, she has imposed a winning attitude and established a volleyball culture that has Iowa fans excited about the immediate future.

In 2011, the Hawkeyes used their second of consecutive nationally recognized recruiting classes to continue building a program that will in time ascend up the Big Ten Standings. Four Hawkeye freshmen combined to start 59 matches, and those four freshmen combined with four sophomores to total 62-percent of Iowa's starting lineup. The Hawkeyes' youth flourished in the non-conference season, racing to a 10-3 record and a pair of tournament championships.

In 2010, Iowa's four freshmen combined for 67 starts. The Hawkeyes started their freshman quartet four times, more than any other Big Ten school. Iowa kicked off the season with consecutive tournament championships and made program history by starting the season 3-0 for the second consecutive year. Iowa knocked off No. 16 Michigan in Carver-Hawkeye Arena on Nov. 12 to mark the third time in as many seasons Dingman and the Hawkeyes defeated a top 25 opponent.

In 2009, Dingman helped Iowa match the best start in program history by guiding the Hawkeyes to a 6-0 start. Iowa eventually became the first team in school history to start the season 7-0 on the road. The Hawkeyes captured five conference wins in 2009, raising Dingman's two-year Big Ten win total to 11, the highest two-year stretch for an Iowa volleyball team since 2000-01.

Iowa set season attendance records in each of Dingman's first two seasons as head coach, including averaging a school-record 1,632 fans in 2009, the 23rd highest total in the country. Since 2008, the Hawkeyes have experienced nine of the school's top 10 all-time attendance figures, and 17 of the top 20. On November 11, 2009, the Hawkeyes eclipsed the 3,000 mark for the first time in program history when 3,102 fans saw Iowa host top-ranked Penn State. Four of Iowa's top 10 all-time attendance figures came in 2011, as fans continued to pack Mediacom Court at Carver-Hawkeye Arena in year four of the Dingman era.

Dingman led the Hawkeyes to their most successful campaign in recent memory in her first season at the helm. Iowa's 14 wins in 2008 were tied for the most since 2000, and its six conference victories are the most since 2000. Dingman guided the Hawkeyes to a ninth place finish in the competitive Big Ten Conference, which was the highest finish for a Hawkeye squad since 2000.

Dingman and the Hawkeyes set or snapped many streaks in a successful first season. Iowa won seven-straight matches, tying the fourth-longest winning streak in school history. The Hawkeyes also swept every opponent during the winning streak and won 15-straight sets. That was the longest set-winning streak since 1990. Iowa opened the conference season with wins over No. 18 Wisconsin and Northwestern, marking only the fifth time in school history that a Hawkeye team started 2-0 in Big Ten play. The Hawkeyes also had a winning record inside Carver-Hawkeye Arena for the first time since 1998.

The Hawkeyes also snapped conference losing streaks in Dingman's first season. Iowa defeated Ohio State for the first time in 39 tries, dating back to 1988. That win also broke an 18-match losing skid on the road in Big Ten play. Iowa's upset win over No. 18 Wisconsin snapped a 26-match losing streak against the Badgers, which went back to 1994.

Dingman set a personal milestone at Northwestern on Nov. 14, 2008, when she recorded her 350th career win in Iowa's five-set victory. Her career record stands at 391-316 in 22 seasons as a head coach.

DOUBLE THE FUN

Three Hawkeyes registered a double-double in 2012. Junior Nikki Dailey led the way with 18 double-doubles, eclipsing her team-best total of 14 a season ago. She turned in nine double-doubles in league action. Sophomore Alex Lovell turned in eight and junior Rachael Bedell notched six.

GIANT SLAYERS

The Hawkeyes have defeated a ranked team in four of Dingman's five seasons. Iowa's top 25 victories since 2008 include: vs. No. 18 Wisconsin (3-0, 2008); vs. No. 18 Michigan State (3-0, 2009); vs. No. 16 Michigan (3-1, 2010); at No. 12 Purdue (3-0, 2012). Iowa swept 12th-ranked Purdue on Oct. 6, 3-0, on the road. The victory marked Dingman's first win over a ranked foe on the road. No. 12 Purdue is the highest-ranked team the Hawkeyes have defeated during her tenure and the highest since defeating No. 11 Michigan at home in 2007 (Sept. 28).

LOVELL NAMED BIG TEN PLAYER OF THE WEEK

Alex Lovell was named Big Ten Player of the Week on Oct. 8 for her efforts in Iowa's two road victories. It marked Iowa's first Player of the Week honor since Sept. 18, 2006, when Melanie Meister received the recognition. It was also the Hawkeyes' first weekly honor since Christina Meister was tabbed Defensive Player of the Week on Sept. 7, 2009. The Leonard, Mich., native equaled junior Rachael Bedell with a team-best 37 kills in the two wins. Lovell hit a team-high .297 and added three aces and 14 digs. She turned in 41 points, averaging 5.29 kills per set. At Indiana, she tallied 13 kills, two service aces and eight digs in the four-set win, Iowa's first league victory of the season. In the win over the 12th-ranked Boilermakers, Lovell registered a career-best and match-high 24 kills to go along with an ace and six digs.

A BIG ROAD WEEKEND

The Hawkeyes won at Indiana on Oct. 5, 3-1, and at 12th-ranked Purdue on Oct. 6, 3-0, to earn their first conference wins of the season. The victory in West Lafayette, Ind., marked Iowa's first win at Purdue and first sweep of the Boilermakers since Nov. 10, 2000. It also marked the fourth win over a ranked foe for head coach Sharon Dingman, and her first victory over a ranked team on the road. No. 12 Purdue is the highest-ranked team the Hawkeyes have defeated during her tenure. It also marked the first time Iowa has won two-straight league contests since 2008 and consecutive league road matches since 2005.

HAWKEYE IRONWOMEN

Juniors Bethany Yeager and Nikki Dailey have started every match since the start of the 2011 season. Dailey has not missed a set since last season, while Yeager, an Academic All-Big Ten honoree, has only missed one set in two-plus seasons at Iowa (347-of-348). Yeager, Dailey and Alex Lovell played in every set in 2012.



TEAM CAPTAINS

Senior Allison Straumann and juniors Bethany Yeager and Nikki Dailey were voted team captains for the 2012 season.

ALL-TOURNAMENT HONORS

Five Hawkeyes garnered all-tournament honors during the nonconference slate. Juniors Bethany Yeager and Chante' Thompson were both named to the Hawkeye Challenge All-Tournament Team. Juniors Rachael Bedell and Nikki Dailey, and sophomore Alex Lovell, were named to the Golden Grizzly Invitational All-Tournament Team. Dailey and Lovell were named to the Iowa State Challenge All-Tournament Team. Yeager was named to the all-tournament team at the Marquette Invitational, Iowa's final nonconference event.

HAWKEYES CAPTURE SHARE OF ISU TOURNAMENT TITLE

The Hawkeyes finished 2-1 at the Iowa State Challenge, Sept. 7-8, to earn a share of the tournament title. The Hawkeyes opened the tournament with a 3-2 win over Syracuse. Trailing 2-0 at Iowa State later that night, the Hawkeyes rallied to push the match to five sets. The visitors led the fifth set (4-2) before ultimately falling, 3-2, to the 18th-ranked Cyclones. Iowa defeated Eastern Washington in straight-sets to conclude action. Iowa, Syracuse and host Iowa State all finished with 2-1 records after the Orange defeated the Cyclones in the final match of the Iowa State Challenge, 3-2.

FILLING CARVER-HAWKEYE ARENA

Iowa and Nebraska played in front of a crowd of 1,719 on Oct. 17, at Carver-Hawkeye Arena, the 10th largest in program history. Since head coach Sharon Dingman's arrival in 2008, the Hawkeyes have experienced nine of the school's top 10 all-time attendance figures, and 18 of the top 21. On November 11, 2009, the Hawkeyes eclipsed the 3,000 mark for the first time in program history when 3,102 fans saw Iowa host top-ranked Penn State.

YOU FROM AROUND HERE?

Three Hawkeyes on the 2012 roster hail from the state of Iowa. All three are from Iowa City: sophomores Kari Mueller and Katie Kelley, and redshirt freshman Alli O'Deen. Mueller competed at City High School, while Kelley and O'Deen led West High School to the 2010 state title.

IMPACT NEWCOMERS

The Hawkeyes had six newcomers on the 2012 roster. They include sophomore transfers Alessandra Dietz (Loyola-Marymount, 6-1, MB) and Katie Kelley (Maryland, 5-5, DS), and true freshmen Julianne Blomberg (5-11, DS/OH), Kathleen Dailey (5-11, DS/OH), Erin Radke (6-1, RS) and Anne Yanda (5-11, S). Five newcomers -- Dietz, Kelley, Yanda, Radke, Blomberg -- have seen action in 2012. Dietz started the last 31 contests and played in all 33. She ranked third on the team with 198 kills. Kelley played in 23 matches, with five starts. Blomberg played in 13 matches, including 11 during league play. She started the last six contests. Yanda saw action in 10 matches. Radke competed in 17 matches, with 10 starts, before suffering an ACL injury.

REUNITED

Hawkeye sophomores Alessandra Dietz, Erin Leppke and Alex Lovell hail from the state of Michigan. Dietz and Lovell were high school teammates (2007-10) at Marian High School in Bloomfield Hills, Mich. The two led Marian to three division championships from 2008-10 and a pair of state titles in 2009 and 2010. Dietz and Lovell played club volleyball with sophomore Erin Leppke. The trio led the 17 team to a national title at the 2010 USA Volleyball National Championships and a fifth place finish at the AAU National Championships.

MICHIGAN NATIVES LEAD IOWA IN GREAT LAKES STATE

At Michigan State (Nov. 2), Alex Lovell, a Michigan native, paced Iowa with 12 kills, hitting a career-best .476. Fellow sophomores and Michigan natives Alessandra Dietz and Erin Leppke recorded six and four kills, respectively. Rachael Bedell added seven kills. Junior Nikki Dailey led Iowa with a match-high 28 assists. Classmate Bethany Yeager recorded 14 digs, equaling a match-best. Lovell led Iowa at Michigan (Nov. 3), recording 10 kills.

FOLLOW THE HAWKEYES

Become fans of the official Iowa Volleyball fan page by going to [facebook.com/iowavolleyball](https://www.facebook.com/iowavolleyball) to follow the Hawkeyes on Facebook. Fans can also follow the Black and Gold on Twitter (@IowaVolleyball) and YouTube (youtube.com/iowavolleyball).

2012 Season Bests

KILLS

Team: 69 vs. Southeast Missouri (8/25)
Player: 26, Rachael Bedell at Indiana (10/5)
Opponent: 76, Iowa State (9/7)
Opp. Player: 21, Meghan Bray, Oakland (9/1)

ATTACK PERCENTAGE (min. 12 kills)

Team: .291, at Purdue (10/6)
Player: .529, Chante' Thompson vs. Eastern Illinois (8/31)
Opponent: .471, at Nebraska (11/21)
Opp. Player: .667, Katherine Harms, at Minn. (11/17)

ASSISTS

Team: 67 vs. Southeast Missouri (8/25)
Player: 53, Nikki Dailey vs. Wisconsin (10/13)
Opponent: 70, Oakland (9/1)
Opp. Player: 59, Alison Landwehr, Iowa State (9/7)

SERVICE ACES

Team: 8, three times, last: vs. Wisconsin (10/13)
Player: 3, five times, last: Dietz vs. Wisconsin (10/13)
Opponent: 12, at Michigan State, (11/2)
Opp. Player: 6, Lauren Wicinski, Mich. State (11/2)

DIGS

Team: 97 vs. Southeast Missouri (8/25)
Player: 28, Bethany Yeager vs. Pacific (9/14)
Opponent: 98, Pacific (9/14)
Opp. Player: 30, Alli Kirk, Oakland (9/1)

TOTAL BLOCKS

Team: 13 vs. Toledo (9/1)
Player: 7, twice, last Dietz at Iowa State (9/7)
Opponent: 14, at Penn State (9/22)
Opp. Player: 8, Brooke Frazer, Toledo (9/1)



Iowa's Record When...

Three-Set Match:	3-16
Four-Set Match:.....	5-3
Five-Set Match:.....	2-4
Iowa Wins First Set:	8-2
Opponent Wins First Set:.....	2-21
Iowa Wins Second Set:.....	8-3
Opponent Wins Second Set:.....	2-22
Iowa Wins Third Set:.....	7-2
Opponent Wins Third Set:	4-18
Iowa Wins Fourth Set:	6-3
Opponent Wins Fourth Set:	1-4
Iowa To 8 First in Fifth Set:	2-1
Opponent To 8 First in Fifth Set:.....	0-3
At Home:.....	3-11
On the Road:	2-11
At Neutral Site:.....	5-1
Day Match:	6-4
Night Match:.....	4-19
vs. Ranked Opponents:.....	1-11
Iowa Has More Kills:.....	9-1
Opponent Has More Kills:.....	1-22
Equal Number of Kills:.....	0-0
Iowa Has Higher Hitting %:.....	8-2
Opp. Has Higher Hitting %:	2-21
Iowa Has More Assists:.....	9-1
Opponent Has More Assists:	1-22
Equal Number of Assists:	0-0
Iowa Has More Aces:.....	6-7
Opponent Has More Aces:	3-13
Equal Number of Aces:	1-3
Iowa Has More Digs:.....	6-3
Opponent Has More Digs:.....	2-20
Equal Number of Digs:.....	2-0
Iowa Has More Blocks:.....	5-6
Opponent Has More Blocks:.....	3-15
Equal Number of Blocks:.....	2-2
Wearing White Uniforms:.....	5-12
Wearing Black Uniforms:.....	6-13
In Eastern Time Zone:.....	4-5
In Central Time Zone:.....	6-20
On BTN:	0-2
On BTN.com:.....	0-8
On Mediacom:	0-4
In Iowa:.....	5-12
In Indiana:.....	2-0
In Illinois:.....	0-1
In Minnesota:	0-1
In Michigan:.....	2-3
In Nebraska.....	0-1
In Ohio:.....	0-1
In Pennsylvania:	0-1
In Wisconsin:.....	1-3
On Wednesday:	0-4
On Thursday:.....	0-1
On Friday:.....	6-7
On Saturday:.....	4-12
On Sunday:	0-1

2012 Hawkeye Roster

No.	Name	Ht.	Pos.	Cl.	Hometown/Previous School
1	Nikki Dailey	5-9	S	Jr.	Franklin, Wis. (Franklin)
2	Kari Mueller	5-7	DS	So.	Iowa City, Iowa (City)
3	Erin Radke	6-1	RS	Fr.	Sioux Falls, S.D. (Lincoln)
4	Bethany Yeager	5-7	DS	Jr.	Brenham, Texas (Brenham)
5	Anne Yanda	5-11	S	Fr.	Atlanta, Ga. (Holy Innocents' Episcopal)
6	Alessandra Dietz	6-1	MB	So.	Bloomfield Hills, Mich. (Loyola-Marymount)
7	Alex Lovell	5-11	OH	So.	Leonard, Mich. (Marian)
8	Chante' Thompson	6-3	MB/RS	Jr.	Hurst, Texas (L.D. Bell)
9	Emily Yanny	6-2	MB	So.	New Berlin, Wis. (Eisenhower)
10	Katie Kelley	5-5	DS	So.	Iowa City, Iowa (Maryland)
11	Erin Leppek	6-0	RS/MB	So.	Rochester Hills, Mich. (Rochester)
12	Kathleen Dailey	5-11	DS/OH	Fr.	St. Charles, Ill. (St. Charles East)
14	Alli O'Deen	5-11	OH	RS Fr.	Iowa City, Iowa (West)
15	Julianne Blomberg	5-11	DS/OH	Fr.	Chanhassen, Minn. (Chanhassen)
16	Grace Burns	5-10	DS	Jr.	Geneva, Ill. (Grand Valley State)
22	Alli Straumann	5-11	DS	Sr.	Cary, Ill. (Cary Grove)
32	Rachael Bedell	6-1	RS/OH	Jr.	Plano, Texas (Plano West)

Head Coach: Sharon Dingman (fifth season; 55-104 overall, 16-84 Big Ten)

Assistant Coaches: Jason Allen, Ben Boldt

Volunteer Assistant Coach: Adam Rollman

Director of Volleyball Operations: Angie Boldt

Managers: Michael Runde, Libbie Hillmer

2012 Coaching Staff

Sharon Dingman is in her fifth season as the head Hawkeye. She is joined by assistants **Jason Allen** and **Ben Boldt**.

Allen is in his fifth season as an assistant coach at Iowa. Allen was also promoted to the team's recruiting coordinator following the 2008 season. Allen previously served as an assistant coach and recruiting coordinator at Sam Houston State University prior to serving as the 16U head coach for the Texas Tornados club program in 2007.

Boldt is in his fourth season as an assistant coach at Iowa. Before joining the Hawkeyes, Boldt spent two seasons as an assistant coach at the University of Alabama. Prior to joining Alabama, Boldt served as a staff assistant for five seasons at the University of Nebraska. In his final season, the Cornhuskers finished 33-1 en route to the NCAA Championship.

Angie Boldt is in her fifth season as the Director of Volleyball Operations. She came to Iowa City in 2008 after serving as the Director of Volleyball Operations at Alabama for two seasons.

Adam Rollman is in his first season as a volunteer assistant coach. Rollman previously served as a student assistant at Nebraska Wesleyan in 2011 and a student manager for Nebraska in the spring of 2012.



2012 Hawkeye Roster



#1
Nikki Dailey
S, 5-9, Jr.



#2
Kari Mueller
DS, 5-7, So.



#3
Erin Radke
RS, 6-1, Fr.



#4
Bethany Yeager
L, 5-7, Jr.



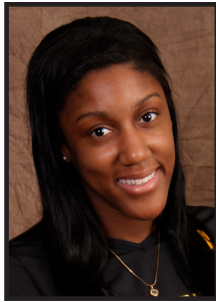
#5
Anne Yanda
S, 5-11, Fr.



#6
Alessandra Dietz
MB, 6-1, So.



#7
Alex Lovell
OH, 5-11, So.



#8
Chante' Thompson
MB, 6-3, Jr.



#9
Emily Yanny
MB, 6-2, Fr.



#10
Katie Kelley
DS, 5-5, So.



#11
Erin Leppke
RS/OH, 6-0, So.



#12
Kathleen Dailey
DS/OH, 5-11, Fr.



#14
Alli O'Deen
OH, 5-11, RS Fr.



#15
Julianne Blomberg
DS/OH, 5-11, Fr.



#16
Grace Burns
DS, 5-10, Jr.



#22
Alli Straumann
DS, 5-11, Sr.



#32
Rachael Bedell
RS/OH, 6-1, Jr.



Sharon Dingman
Head Coach



Jason Allen
Assistant Coach



Ben Boldt
Assistant Coach



Angie Boldt
Director
Volleyball Operations



Adam Rollman
Volunteer
Assistant Coach

PRONUNCIATION GUIDE

Yeager: YAY-ger
Chante': Shawn-TAY
Yanny: YEAH-knee
Straumann: STRAW-man
Bedell: buh-DELL





2012 Iowa Hawkeye Volleyball
Iowa Combined Team Statistics (as of Nov 27, 2012)
All matches



Overall record: 10-23 Conf: 2-18 Home: 3-11 Away: 2-11 Neutral: 5-1

##	Player	sp	Attack				Set		Serve			Dig			Blocking					points		
			k	k/s	e	ta	pct	a	a/s	sa	se	sa/s	re	dig	dig/s	bs	ba	total	blk/s		be	bhe
7	Lovell, Alex	119	382	3.21	163	1176	.186	16	0.13	16	24	0.13	33	243	2.04	7	32	39	0.33	8	0	421.0
32	Bedell, Rachael	114	339	2.97	207	1133	.117	19	0.17	10	32	0.09	25	186	1.63	3	29	32	0.28	4	1	366.5
6	Dietz, Alessandra	113	198	1.75	74	525	.236	16	0.14	25	29	0.22	2	83	0.73	9	72	81	0.72	9	2	268.0
8	Thompson, Chante'	87	171	1.97	78	429	.217	5	0.06	2	7	0.02	0	20	0.23	10	40	50	0.57	8	1	203.0
3	Radke, Erin	59	136	2.31	74	379	.164	0	0.00	1	9	0.02	0	14	0.24	2	29	31	0.53	6	1	153.5
1	Dailey, Nikki	119	63	0.53	24	207	.188	1103	9.27	24	30	0.20	1	315	2.65	2	24	26	0.22	4	2	101.0
11	Leppek, Erin	81	69	0.85	26	239	.180	3	0.04	0	5	0.00	0	21	0.26	7	35	42	0.52	3	0	93.5
9	Yanny, Emily	17	23	1.35	12	66	.167	0	0.00	0	0	0.00	0	1	0.06	2	8	10	0.59	5	0	29.0
15	Blomberg, Julianne	30	23	0.77	26	113	-.027	6	0.20	3	3	0.10	3	38	1.27	1	3	4	0.13	3	1	28.5
22	Straumann, Allison	84	3	0.04	5	26	-.077	13	0.15	12	19	0.14	15	151	1.80	0	1	1	0.01	0	0	15.5
14	O'Deen, Alli	38	11	0.29	7	57	.070	4	0.11	2	8	0.05	4	51	1.34	0	2	2	0.05	1	0	14.0
4	Yeager, Bethany	119	0	0.00	1	3	-.333	84	0.71	11	21	0.09	29	533	4.48	0	0	0	0.00	0	0	11.0
2	Mueller, Kari	48	0	0.00	0	1	.000	6	0.12	6	3	0.12	9	58	1.21	0	0	0	0.00	0	0	6.0
5	Yanda, Anne	22	3	0.14	1	9	.222	71	3.23	1	3	0.05	0	26	1.18	0	1	1	0.05	0	1	4.5
10	Kelley, Katie	54	0	0.00	1	4	-.250	3	0.06	3	5	0.06	8	77	1.43	0	0	0	0.00	0	0	3.0
16	Burns, Grace	9	0	0.00	0	0	.000	3	0.33	1	2	0.11	0	7	0.78	0	0	0	0.00	0	0	1.0
IOWA		119	1421	11.94	702	4370	.165	1352	11.36	117	200	0.98	151	1824	15.33	43	276	181.0	1.52	51	9	1719.0
Opponents		119	1639	13.77	599	4290	.242	1534	12.89	151	195	1.27	117	1923	16.16	48	391	243.5	2.05	55	18	2033.5

Team Statistics	IOWA	OPP	Date	Opponent	Score	Score by set	Att.
ATTACK							
Kills	1421	1639	^Aug 24	CHICAGO STATE	w 3-0	25-19,25-10,25-13	222
Errors	702	599	^Aug 24	SOUTH DAKOTA STATE	w 3-1	27-25,20-25,26-24,25-22	822
Total Attacks	4370	4290	^Aug 25	SOUTHEAST MISSOURI	L 2-3	29-27,23-25,19-25,25-13,13-15	345
Attack Pct	.165	.242	^Aug 25	VALPARAISO	w 3-1	21-25,25-21,25-22,25-16	883
Kills/Set	11.9	13.8	&Aug 31	vs Eastern Illinois	w 3-1	32-30,25-13,24-26,25-20	86
SET							
Assists	1352	1534	&Sep 01	vs Toledo	w 3-1	25-18,14-25,25-22,25-23	102
Assists/Set	11.4	12.9	&Sep 01	at Oakland	L 2-3	16-25,25-16,16-25,22-25,13-15	176
SERVE							
Aces	117	151	%Sep 07	vs Syracuse	w 3-2	25-22,25-20,20-25,25-15,15-11	118
Errors	200	195	%Sep 07	at #18 Iowa State	L 2-3	17-25,13-25,33-31,25-19,9-15	2432
Aces/Set	1.0	1.3	%Sep 08	vs Eastern Washington	w 3-0	25-22,26-24,25-18	1217
SERVE RECEPTIONS							
Errors	151	117	\$Sep 14	vs Pacific	L 1-3	17-25,19-25,26-24,22-25	87
Errors/Set	1.3	1.0	Sep 14	vs Milwaukee	w 3-2	25-23,25-21,12-25,17-25,15-12	448
DEFENSE							
Digs	1824	1923	\$Sep 15	at Marquette	L 0-3	18-25,14-25,18-25	742
Digs/Set	15.3	16.2	*Sep 21	at #23 Ohio State	L 0-3	18-25,20-25,16-25	1740
BLOCKING							
Block Solo	43	48	*Sep 22	at #4 Penn State	L 1-3	20-25,21-25,29-27,14-25	3252
Block Assist	276	391	*Sep 28	MICHIGAN	L 0-3	14-25,21-25,20-25	940
Total Blocks	181.0	243.5	*Sep 29	#24 MICHIGAN STATE	L 0-3	19-25,16-25,22-25	961
Blocks/Set	1.5	2.0	*Oct 05	at Indiana	w 3-1	25-21,25-17,23-25,25-22	686
Block Errors	51	55	*Oct 06	at #12 Purdue	w 3-0	25-23,25-23,25-18	2632
Ball handling errors	9	18	*Oct 12	#10 MINNESOTA	L 1-3	24-26,25-18,15-25,17-25	1217
ATTENDANCE							
Total	13913	26204	*Oct 13	WISCONSIN	L 2-3	21-25,25-14,18-25,25-21,10-15	1117
Dates/Avg Per Date	14/994	13/2016	*Oct 17	#4 NEBRASKA	L 0-3	22-25,14-25,9-25	1719
Neutral site #/Avg	6/343		*Oct 21	at Northwestern	L 0-3	22-25,18-25,15-25	716
Current win streak	0	-	*Oct 24	#1 PENN STATE	L 0-3	15-25,19-25,15-25	1001
Home win streak	0	-	*Oct 27	#20 OHIO STATE	L 0-3	17-25,24-26,12-25	945
			*Nov 02	at Michigan State	L 0-3	20-25,16-25,18-25	2053
			*Nov 03	at Michigan	L 0-3	19-25,10-25,12-25	1421
			*Nov 08	#21 PURDUE	L 0-3	20-25,11-25,21-25	850
			*Nov 10	INDIANA	L 0-3	21-25,23-25,16-25	1401
			*Nov 16	at Wisconsin	L 0-3	19-25,16-25,17-25	2943
			*Nov 17	at #14 Minnesota	L 0-3	13-25,22-25,16-25	3378
			*Nov 21	at #10 Nebraska	L 0-3	12-25,16-25,8-25	4033
			*Nov 24	ILLINOIS	L 0-3	24-26,18-25,21-25	1490

^ Hawkeye Challenge -- Iowa City, Iowa
& Golden Grizzly Invitational -- Rochester, Mich.
% Iowa State Challenge -- Ames, Iowa
\$ Marquette Invitational -- Milwaukee, Wis.

Record in 3-set matches:3-16 • Record in 4-set matches:5-3 • Record in 5-set matches:2-4



2012 Iowa Hawkeye Volleyball
Iowa Combined Team Statistics (as of Nov 27, 2012)
Conference matches



Overall record: 2-18 Conf: 2-18 Home: 0-10 Away: 2-8 Neutral: 0-0

##	Player	sp	Attack				pct	Set		Serve			re	Dig		Blocking					points	
			k	k/s	e	ta		a	a/s	sa	se	sa/s		dig	dig/s	bs	ba	total	blk/s	be		bhe
32	Bedell, Rachael	65	202	3.11	127	650	.115	9	0.14	4	18	0.06	12	93	1.43	2	16	18	0.28	0	0	216.0
7	Lovell, Alex	65	200	3.08	94	623	.170	9	0.14	6	12	0.09	18	120	1.85	1	12	13	0.20	4	0	213.0
6	Dietz, Alessandra	65	112	1.72	44	306	.222	7	0.11	14	19	0.22	1	48	0.74	5	33	38	0.58	5	1	147.5
11	Lepppek, Erin	56	55	0.98	22	181	.182	3	0.05	0	4	0.00	0	11	0.20	7	25	32	0.57	1	0	74.5
8	Thompson, Chante'	36	60	1.67	39	170	.124	2	0.06	0	0	0.00	0	6	0.17	3	12	15	0.42	0	1	69.0
1	Dailey, Nikki	65	32	0.49	12	124	.161	585	9.00	10	17	0.15	1	162	2.49	2	10	12	0.18	2	0	49.0
3	Radke, Erin	13	31	2.38	20	92	.120	0	0.00	0	2	0.00	0	2	0.15	2	5	7	0.54	0	0	35.5
15	Blomberg, Julianne	23	17	0.74	18	76	-.013	4	0.17	3	2	0.13	2	29	1.26	0	3	3	0.13	2	1	21.5
22	Straumann, Allison	60	3	0.05	4	22	-.045	11	0.18	12	16	0.20	10	117	1.95	0	1	1	0.02	0	0	15.5
14	O'Deen, Alli	25	9	0.36	6	49	.061	2	0.08	2	4	0.08	1	38	1.52	0	2	2	0.08	1	0	12.0
4	Yeager, Bethany	65	0	0.00	1	1	-1.000	42	0.65	5	13	0.08	21	256	3.94	0	0	0	0.00	0	0	5.0
2	Mueller, Kari	22	0	0.00	0	0	.000	1	0.05	4	3	0.18	3	18	0.82	0	0	0	0.00	0	0	4.0
5	Yanda, Anne	8	2	0.25	1	8	.125	17	2.12	0	1	0.00	0	5	0.62	0	1	1	0.12	0	1	2.5
16	Burns, Grace	9	0	0.00	0	0	.000	3	0.33	1	2	0.11	0	7	0.78	0	0	0	0.00	0	0	1.0
10	Kelley, Katie	19	0	0.00	0	1	.000	1	0.05	0	2	0.00	4	18	0.95	0	0	0	0.00	0	0	0.0
IOWA		65	723	11.12	388	2303	.145	696	10.71	61	115	0.94	87	930	14.31	22	120	82.0	1.26	15	4	866.0
Opponents		65	956	14.71	285	2264	.296	898	13.82	87	121	1.34	61	1026	15.78	36	229	150.5	2.32	31	9	1193.5

Team Statistics	IOWA	OPP
ATTACK		
Kills	723	956
Errors	388	285
Total Attacks	2303	2264
Attack Pct	.145	.296
Kills/Set	11.1	14.7
SET		
Assists	696	898
Assists/Set	10.7	13.8
SERVE		
Aces	61	87
Errors	115	121
Aces/Set	0.9	1.3
SERVE RECEPTIONS		
Errors	87	61
Errors/Set	1.3	0.9
DEFENSE		
Digs	930	1026
Digs/Set	14.3	15.8
BLOCKING		
Block Solo	22	36
Block Assist	120	229
Total Blocks	82.0	150.5
Blocks/Set	1.3	2.3
Block Errors	15	31
Ball handling errors	4	9
ATTENDANCE		
Total	11641	22854
Dates/Avg Per Date	10/1164	10/2285
Neutral site #/Avg	0/0	-
Current win streak	0	-
Home win streak	0	-

Date	Opponent	Score	Score by set	Att.
*Sep 21	at #23 Ohio State	L 0-3	18-25,20-25,16-25	1740
*Sep 22	at #4 Penn State	L 1-3	20-25,21-25,29-27,14-25	3252
*Sep 28	MICHIGAN	L 0-3	14-25,21-25,20-25	940
*Sep 29	#24 MICHIGAN STATE	L 0-3	19-25,16-25,22-25	961
*Oct 05	at Indiana	w 3-1	25-21,25-17,23-25,25-22	686
*Oct 06	at #12 Purdue	w 3-0	25-23,25-23,25-18	2632
*Oct 12	#10 MINNESOTA	L 1-3	24-26,25-18,15-25,17-25	1217
*Oct 13	WISCONSIN	L 2-3	21-25,25-14,18-25,25-21,10-15	1117
*Oct 17	#4 NEBRASKA	L 0-3	22-25,14-25,9-25	1719
*Oct 21	at Northwestern	L 0-3	22-25,18-25,15-25	716
*Oct 24	#1 PENN STATE	L 0-3	15-25,19-25,15-25	1001
*Oct 27	#20 OHIO STATE	L 0-3	17-25,24-26,12-25	945
*Nov 02	at Michigan State	L 0-3	20-25,16-25,18-25	2053
*Nov 03	at Michigan	L 0-3	19-25,10-25,12-25	1421
*Nov 08	#21 PURDUE	L 0-3	20-25,11-25,21-25	850
*Nov 10	INDIANA	L 0-3	21-25,23-25,16-25	1401
*Nov 16	at Wisconsin	L 0-3	19-25,16-25,17-25	2943
*Nov 17	at #14 Minnesota	L 0-3	13-25,22-25,16-25	3378
*Nov 21	at #10 Nebraska	L 0-3	12-25,16-25,8-25	4033
*Nov 24	ILLINOIS	L 0-3	24-26,18-25,21-25	1490

^ Hawkeye Challenge -- Iowa City, Iowa
 & Golden Grizzly Invitational -- Rochester, Mich.
 % Iowa State Challenge -- Ames, Iowa
 \$ Marquette Invitational -- Milwaukee, Wis.

Record in 3-set matches:1-15 • Record in 4-set matches:1-2 • Record in 5-set matches:0-1



2012 Iowa Hawkeye Volleyball
Iowa Match Results (as of Nov 27, 2012)
All matches



Date	Opponent	Score	Score-by-set	Overall	Conf	Time	Att.
^ Aug 24	CHICAGO STATE	W	3-0 25-19,25-10,25-13	1-0	0-0	1:09	222
^ Aug 24	SOUTH DAKOTA STATE	W	3-1 27-25,20-25,26-24,25-22	2-0	0-0	2:00	822
^ Aug 25	SOUTHEAST MISSOURI	L	2-3 29-27,23-25,19-25,25-13,13-15	2-1	0-0	2:18	345
^ Aug 25	VALPARAISO	W	3-1 21-25,25-21,25-22,25-16	3-1	0-0	2:13	883
& Aug 31	vs Eastern Illinois	W	3-1 32-30,25-13,24-26,25-20	4-1	0-0	1:59	86
& Sep 01	vs Toledo	W	3-1 25-18,14-25,25-22,25-23	5-1	0-0	1:53	102
& Sep 01	at Oakland	L	2-3 25-22,25-16,16-25,22-25,13-15	5-2	0-0	2:15	176
% Sep 07	vs Syracuse	W	3-2 16-25,25-20,20-25,25-15,15-11	6-2	0-0	2:03	118
% Sep 07	at #18 Iowa State	L	2-3 17-25,13-25,33-31,25-19,9-15	6-3	0-0	2:10	2432
% Sep 08	vs Eastern Washington	W	3-0 25-22,26-24,25-18	7-3	0-0	1:40	1217
\$ Sep 14	vs Pacific	L	1-3 17-25,19-25,26-24,22-25	7-4	0-0	1:58	87
\$ Sep 14	vs Milwaukee	W	3-2 25-23,25-21,12-25,17-25,15-12	8-4	0-0	2:15	448
\$ Sep 15	at Marquette	L	0-3 18-25,14-25,18-25	8-5	0-0	1:21	742
* Sep 21	at #23 Ohio State	L	0-3 18-25,20-25,16-25	8-6	0-1	1:12	1740
* Sep 22	at #4 Penn State	L	1-3 20-25,21-25,29-27,14-25	8-7	0-2	1:59	3252
* Sep 28	MICHIGAN	L	0-3 14-25,21-25,20-25	8-8	0-3	1:30	940
* Sep 29	#24 MICHIGAN STATE	L	0-3 19-25,16-25,22-25	8-9	0-4	1:25	961
* Oct 05	at Indiana	W	3-1 25-21,25-17,23-25,25-22	9-9	1-4	1:58	686
* Oct 06	at #12 Purdue	W	3-0 25-23,25-23,25-18	10-9	2-4	1:30	2632
* Oct 12	#10 MINNESOTA	L	1-3 24-26,25-18,15-25,17-25	10-10	2-5	1:55	1217
* Oct 13	WISCONSIN	L	2-3 21-25,25-14,18-25,25-21,10-15	10-11	2-6	2:05	1117
* Oct 17	#4 NEBRASKA	L	0-3 22-25,14-25,9-25	10-12	2-7	1:30	1719
* Oct 21	at Northwestern	L	0-3 22-25,18-25,15-25	10-13	2-8	1:25	716
* Oct 24	#1 PENN STATE	L	0-3 15-25,19-25,15-25	10-14	2-9	1:25	1001
* Oct 27	#20 OHIO STATE	L	0-3 17-25,24-26,12-25	10-15	2-10	1:26	945
* Nov 02	at Michigan State	L	0-3 20-25,16-25,18-25	10-16	2-11	1:20	2053
* Nov 03	at Michigan	L	0-3 19-25,10-25,12-25	10-17	2-12	1:12	1421
* Nov 08	#21 PURDUE	L	0-3 20-25,11-25,21-25	10-18	2-13	1:15	850
* Nov 10	INDIANA	L	0-3 21-25,23-25,16-25	10-19	2-14	1:30	1401
* Nov 16	at Wisconsin	L	0-3 19-25,16-25,17-25	10-20	2-15	1:20	2943
* Nov 17	at #14 Minnesota	L	0-3 13-25,22-25,16-25	10-21	2-16	1:15	3378
* Nov 21	at #10 Nebraska	L	0-3 12-25,16-25,8-25	10-22	2-17	1:15	4033
* Nov 24	ILLINOIS	L	0-3 24-26,18-25,21-25	10-23	2-18	1:40	1490

^ Hawkeye Challenge -- Iowa City, Iowa

& Golden Grizzly Invitational -- Rochester, Mich.

% Iowa State Challenge -- Ames, Iowa

\$ Marquette Invitational -- Milwaukee, Wis.

Team Record	W-L-T	Attend	Dates	Total	Avg.
Overall:	10-23	Total:	33	42175	1278
Conference:	2-18	Home:	14	13913	994
Home:	3-11	Away:	13	26204	2016
Away:	2-11	Neutral:	6	2058	343
Neutral:	5-1				
3 sets:	3-16				
4 sets:	5-3				
5 sets:	2-4				