



# IOWA SOFTBALL

4 Women's College World Series appearances  
16 NCAA Tournament berths



4 Big Ten regular season championships  
2 Big Ten Tournament championships

WEEK 1

FEB. 10, 2016

## 2016 SCHEDULE (0-0)

### TEXAS A&M CORPUS CHRISTI TOURNAMENT (Corpus Christi, Texas)

Feb. 12	vs. Louisville	12:30 p.m.
Feb. 12	at Texas A&M-Corpus Christi	3 p.m.
Feb. 13	vs. Louisville	10 a.m.
Feb. 13	vs. Sam Houston	3 p.m.
Feb. 14	at Texas A&M-Corpus Christi	11:30 a.m.

### ROSEMONT TOURNAMENT (Rosemont, Ill.)

Feb. 19	vs. Eastern Kentucky	2 p.m.
Feb. 19	vs. Loyola	4:30 p.m.
Feb. 20	vs. UIC	2 p.m.
Feb. 20	vs. Green Bay	7 p.m.
Feb. 21	vs. Quinnipiac	11:30 a.m.

### COASTAL CAROLINA TOURNAMENT (Conway, S.C.)

Feb. 26	vs. Georgia Southern	11:15 a.m.
Feb. 26	at Coastal Carolina	1:30 p.m.
Feb. 27	vs. Georgia Southern	9 a.m.
Feb. 27	vs. Bucknell	11:15 a.m.
Feb. 28	at Coastal Carolina	11:15 a.m.

### TULSA TOURNAMENT (Tulsa, Okla.)

March 5	at Tulsa	12 p.m.
March 5	vs. Lamar	2:15 p.m.
March 6	vs. Lamar	10 a.m.
March 6	at Tulsa	2 p.m.

### RAINBOW WAHINE INVITATIONAL (Honolulu, Hawaii)

March 16	vs. Texas	7:30 p.m.
March 16	at Hawaii	10 p.m.
March 17	vs. Texas	7:30 p.m.
March 18	at Hawaii	9 p.m.
March 19	at Hawaii	4 p.m.

March 25	at Indiana *	5 p.m.
March 26	at Indiana *	12 p.m.
March 27	at Indiana *	11 a.m.
March 30	vs. Drake	5:30 p.m.
April 1	vs. Purdue *	5:30 p.m.
April 2	vs. Purdue *	2 p.m.
April 3	vs. Purdue *	1 p.m.
April 6	at Nebraska *	4 p.m.
April 6	at Nebraska *	6 p.m.
April 8	at Northwestern *	4 p.m.
April 9	at Northwestern *	1 p.m.
April 10	at Northwestern *	12 p.m.
April 12	vs. Northern Iowa	5:30 p.m.
April 15	vs. Wisconsin *	5:30 p.m.
April 16	vs. Wisconsin *	2 p.m.
April 17	vs. Wisconsin *	1 p.m.
April 19	vs. Missouri	3 p.m.
April 19	vs. Missouri	5 p.m.
April 20	at Iowa State %	6 p.m.
April 22	vs. Penn State *	1 p.m.
April 23	vs. Penn State *	12 p.m.
April 24	vs. Penn State *	1 p.m.
April 29	at Illinois *	6 p.m.
April 30	at Illinois *	1 p.m.
May 1	at Illinois *	12 p.m.
May 6	vs. Minnesota *	6 p.m.
May 7	vs. Minnesota *	2 p.m.
May 8	vs. Minnesota *	1 p.m.

### BIG TEN TOURNAMENT (University Park, Pa.)

May 12-14 TBD

\* - Big Ten Conference game  
% - Iowa Corn Cy-Hawk Series

**Bold** indicates home contest

All times Central and subject to change.



Louisville Cardinals

(0-0)

Chapman Field -- Corpus Christi, Texas  
Friday, 12:30 p.m. (CT)  
Saturday, 10 a.m. (CT)



Texas A&M-Corpus Christi Islanders

(0-0)

Chapman Field -- Corpus Christi, Texas  
Friday, 3 p.m. (CT)  
Sunday, 11:30 a.m. (CT)



Sam Houston State Bearkats

(0-0)

Chapman Field -- Corpus Christi, Texas  
Saturday, 3 p.m. (CT)

### THIS WEEK

The University of Iowa softball team opens the 2016 season at the Texas A&M Corpus Christi Tournament this weekend. The Hawkeyes open the weekend with a 12:30 p.m. (CT) contest against Louisville on Friday before taking on tournament host Texas A&M Corpus Christi at 3 p.m. Iowa will face Louisville (10 a.m.) and Sam Houston State (3 p.m.) on Saturday, and conclude the weekend with an 11:30 a.m. contest against the Islanders on Sunday.

### FOLLOW THE ACTION

Fans can follow all the action with live stats. Links can be found on the Iowa softball schedule page on [hawkeyesports.com](http://hawkeyesports.com). For in-game updates, follow @IowaSoftball on Twitter and "like" the official page on Facebook, [facebook.com/iowahawkeyessoftball](http://facebook.com/iowahawkeyessoftball).

### WATCH ONLINE

Both of Iowa's contests against Texas A&M Corpus Christi will be streamed online. Links are available on the Iowa softball schedule page on [hawkeyesports.com](http://hawkeyesports.com). The Hawkeyes and Islanders are set to meet Friday at 3 p.m. (CT) and Sunday at 11:30 a.m.

### IN THE RANKINGS - BIG

Five Big Ten teams appear in the *ESPN.com/USA Softball* Collegiate Preseason poll released on Jan. 26. No. 2 Michigan and No. 13 Minnesota are ranked within the top 25, while Northwestern, Nebraska, and Ohio State are all receiving votes.

### TAKING ON THE BEST

- Six of Iowa's 2016 opponents are coming off a 2015 NCAA Tournament appearance.
- Iowa is scheduled to play 14 games against those opponents this season.
- The team's include: Louisville, Texas, Nebraska, Northwestern, Missouri, and Minnesota.

### STARTERS RETURNING

The Hawkeyes return 16 letterwinners, eight starters, and three pitchers from a team that finished 19-40 overall, and 8-15 in the Big Ten last season. Sophomores Allie Wood, Cheyenne Pratt, and Sarah Kurtz, juniors Kaitlyn Mullarkey and Claire Fritsch, redshirt junior Sammi Gyerman, and seniors Holly Hoffman and Erin Erickson each spent time in the starting lineup last season. Redshirt junior Shayla Starkenburg started 38 games in the circle and led the Hawkeyes in every pitching category last season.

## 2015 TEAM LEADERS

### HITTING

Player	avg	gp-gs	ab	r	h	2b	3b	hr	rbi	tb	slg%	bb	hp	so	gdp	ob%	sf	sh	sb-att	po	a	e	fld%
Blank, Megan	.442	59-59	172	36	76	20	3	9	40	129	.750	23	3	12	1	.513	1	1	1-1	95	142	9	.963
Gyerman, Sammi	.326	59-59	181	42	59	11	2	6	36	92	.508	27	4	40	2	.425	0	0	7-7	68	8	5	.938
Mullarkey, Kaitlyn	.261	41-37	92	18	24	5	1	5	15	46	.500	18	11	26	0	.438	0	0	2-2	286	17	4	.987
Hoffman, Holly	.261	50-46	142	12	37	8	0	3	28	54	.380	17	1	23	2	.344	0	0	0-0	199	25	2	.991
Fritsch, Claire	.242	55-51	165	32	40	4	0	0	5	44	.267	18	6	31	1	.339	0	0	3-5	94	113	13	.941

### PITCHING

Kurtz, Sarah	0.00	0-0	1	0	0	0/0	0	0.1	0	0	0	0	0	0	0	.000	0	0	0	0	0	0	0
Starkenburg, Shayla	4.96	17-23	49	38	31	5/0	0	250.0	276	202	177	171	194	31	5	.38	.276	15	31	2	5	12	
Yoways, Ashley	8.97	2-16	27	20	7	0/0	0	107.2	186	154	138	74	31	35	5	.375	.616	4	6	7			
Navarrete, Jillian	36.00	0-1	12	1	0	0/0	0	7.0	32	38	36	18	3	6	0	.604	2	1	0	1	0	0	
Totals	6.73	19-40	59	59	38	5/0	0	365.0	494	394	351	263	228	72	10	.68	.319	23	48	6	12	19	
Opponents	3.93	40-19	59	59	29	12/2	6	379.1	394	239	213	180	351	82	9	.35	.261	31	34	2	3	5	



## QUICK FACTS

### UNIVERSITY OF IOWA INFORMATION

Location: \_\_\_\_\_ Iowa City, Iowa  
 Founded: \_\_\_\_\_ 1847  
 Enrollment: \_\_\_\_\_ 31,387  
 Nickname: \_\_\_\_\_ Hawkeyes  
 Mascot: \_\_\_\_\_ Herky the Hawk  
 Venue: \_\_\_\_\_ Pearl Field/1,500  
 Conference: \_\_\_\_\_ Big Ten  
 School Colors: \_\_\_\_\_ Black and Gold  
 President: \_\_\_\_\_ Bruce Harrelld  
 Director of Athletics: \_\_\_\_\_ Gary Barta  
 Softball Administrator: \_\_\_\_\_ Paula Jantz

### COACHING INFORMATION

Head Coach: \_\_\_\_\_ Marla Looper  
 Alma Mater/Year: \_\_\_\_\_ Florida State/1995  
 Record at Iowa/Years: \_\_\_\_\_ 119-144-1/6  
 Overall Record/Years: \_\_\_\_\_ 119-144-1/6  
 Big Ten Record/Years: \_\_\_\_\_ 50-63/6  
 Assistant Coach: \_\_\_\_\_ Adrianna Baggetta  
 Alma Mater/Year: \_\_\_\_\_ South Carolina/2002  
 Assistant Coach: \_\_\_\_\_ Jake Schumann  
 Alma Mater: \_\_\_\_\_ St. Xavier University  
 Volunteer Assistant Coach: \_\_\_\_\_ Rachel West  
 Alma Mater/Year: \_\_\_\_\_ Iowa/2009  
 Director of Operations: \_\_\_\_\_ Sharon Palma  
 Alma Mater/Year: \_\_\_\_\_ Wright State/2010

### TEAM INFORMATION

2015 Overall Record \_\_\_\_\_ 19-40  
 2015 Big Ten Record/Finish \_\_\_\_\_ 8-15/9th  
 Starters Returning/Lost \_\_\_\_\_ 8/1  
 Pitchers Returning/Lost \_\_\_\_\_ 2/0  
 Letterwinners Returning/Lost \_\_\_\_\_ 16/2  
 Newcomers \_\_\_\_\_ 5  
 Softball Office Phone: \_\_\_\_\_ 319-335-9257

### ATHLETIC COMMUNICATIONS

Softball Contact: \_\_\_\_\_ Brandee Britt  
 Email: \_\_\_\_\_ brandee-britt@uiowa.edu  
 Office Phone: \_\_\_\_\_ 319-335-9411  
 Cell Phone: \_\_\_\_\_ 630-333-2521  
 Office Fax: \_\_\_\_\_ 319-335-9417  
 Press Box Phone: \_\_\_\_\_ 319-335-9296  
 Web Site: \_\_\_\_\_ hawkeyesports.com  
 Twitter: \_\_\_\_\_ @iowasoftball  
 Facebook \_\_\_\_\_ iowahawkeyessoftball



## PRONUNCIATION GUIDE

Adrianna Baggetta \_\_\_\_\_ Adri-aw-na BUH-Get-UH  
 Claire Fritsch \_\_\_\_\_ Frit-sh  
 Sammi Gyerman \_\_\_\_\_ Guy-ur-man  
 Kara Misel \_\_\_\_\_ MY-zle  
 Whitney Repole \_\_\_\_\_ Rep-lee  
 Shayla Starkenburg \_\_\_\_\_ Shea-luh

## HEAD COACH MARLA LOOPER



Marla Looper concluded her fifth season as the head coach for the University of Iowa softball program in 2015. Looper owns a 119-144-1 overall and 50-63 Big Ten Conference record since the 2011 season.

In 2015, Looper led the Hawkeyes to their deepest Big Ten Tournament run since 2008. After earning the No. 10 seed with an 8-15 conference record (19-40 overall), the Hawkeyes overcame a three-run deficit against seventh-seeded Rutgers to win the opening round of the tournament on May 7. The Hawkeyes went on to upset the nationally ranked Gophers with a 2-0 victory, securing Iowa's third victory over a ranked opponent on the season (No. 17 UCF, No. 4 Michigan). After falling behind early in its semifinal game against third-seeded Nebraska, Iowa rallied to come within three runs, but could not complete the comeback as the Huskers notched the 9-6 victory.

Megan Blank earned her fourth-straight first team All-Big Ten honor and was a first team NFCA All-Midwest Region selection after leading the Hawkeyes in batting average, slugging percentage, on base percentage, hits, doubles, triples, home runs, RBIs, and total bases. She was also named to the conference's All-Defensive team. Blank broke or tied five school records in her final season as a Hawkeye, and went on to sign a professional contract in the National Pro Fastpitch (NPF) with the Chicago Bandits.

The Hawkeyes excelled in the classroom in 2015. Three Hawkeyes -- juniors Haley Hansel and Whitney Repole and sophomore Kara Misel -- were named to the spring Academic All-Big Ten team, while Hansel and

freshmen Sarah Kurtz and Cheyenne Pratt were recognized as National Fastpitch Coaches Association All-American Scholar Athletes. Hansel was also named a 2015 Big Ten distinguished scholar.

Looper collected her 100th career victory in the 2014 season finale, when Erin Erickson delivered a walkoff, two-run home run to lift the Hawkeyes past Ohio State, 3-2. On the season, Iowa posted 16 wins -- nine in conference action and three over ranked opponents (16-30-1).

Megan Blank earned her third-straight first team All-Big Ten honor and was a second team NFCA All-Midwest Region selection after leading the Hawkeyes in batting average, slugging percentage, hits, doubles, triples, RBIs and walks. Kayla Massey earned her second career Big Ten Pitcher of the Week nod on March 31 after recording two complete game wins over Wisconsin. Three earned Academic All-Big Ten accolades including Haley Hansel, Whitney Repole and Michelle Zoeller.

Looper led the Hawkeyes to 30 wins in 2013 (30-24) in her third year, marking the most wins for the program since finishing 42-16 in 2009. Iowa posted six wins over ranked opponents.

Three Hawkeyes earned All-Big Ten honors -- Megan Blank was named to the first team, Johnnie Dowling earned second team honors, and Kayla Massey was named to the Big Ten All-Defensive team at pitcher. Blank earned her second-straight first team accolade, becoming the sixth Hawkeye in program history to earn first team honors in each of her first two seasons.

Blank was also named a 2013 NFCA First Team All-Midwest Region selection, earning her second all-region honor in as many seasons. Blank became the sixth Hawkeye in program history to garner all-region honors in each of her first two seasons. In the classroom, a school-record 10 Hawkeyes were named to the 2013 spring Academic All-Big Ten team.

During her second season with the Hawkeyes, Looper led the team to a runner-up finish in the Big Ten -- the program's highest finish since winning the league title in 2003. Iowa dropped two of its first three conference series before winning five straight to close out the season. It was the first time the team had won five straight series since the 2004 season.

Iowa entered the final weekend with a conference title within reach, but it couldn't close the gap with Michigan despite taking 2-of-3 games at Minnesota. The Hawkeyes finished with a 27-26 overall and 16-8 conference record in 2012.

Five players garnered All-Big Ten recognition, including three first team selections. Senior Liz Watkins, sophomore Kayla Massey and freshman Megan Blank earned first team accolades, sophomore Michelle Zoeller was a second team honoree and junior Johnnie Dowling was a third team selection.

Blank also garnered NFCA second team all-region honors during her freshman campaign. She is the ninth Hawkeye to earn first team All-Big Ten and all-region honors during her freshman season.

The Hawkeyes finished second in the Big Ten in pitching (2.31 ERA) and third in fielding (.967). The squad turned 26 double plays during the course of the season to rank sixth nationally in double plays per game (.49).

Looper guided the Hawkeyes to a 27-24 overall and a 9-11 Big Ten record in her first season in Iowa City. The first year head coach led the UI to a pair of six game winning streaks in her opening campaign and a tournament title at the Stetson Classic.

Iowa opened Big Ten Conference play strong, jumping out to an 8-3 record. Among the victories was a 4-2 triumph at No. 1 Michigan. The win, which pushed the overall mark to 26-16, was Iowa's first over a No. 1 ranked opponent since the 2005 season and the first over a ranked foe since 2008.

Looper's Hawkeyes were on the verge of completing a series sweep in Ann Arbor before the Wolverines rallied from a 2-0 deficit in the bottom of the seventh inning to claim the victory and halt Iowa's momentum.

A pair of Hawkeyes earned All-Big Ten recognition at the conclusion of the season. Liz Watkins was tabbed as a second team selection, while Katie Keim earned third team accolades.

Looper took over the reigns of the Iowa program after serving as an assistant coach at the University of Texas for 11 seasons (1999-2010). Looper helped lead the Longhorns to three College World Series appearances (2003, 2005 and 2006) and nine NCAA Tournament berths.

## 2016 IOWA SOFTBALL NUMERICAL ROSTER

No.	Name	Pos.	Class	B-T	Hometown (Last School)
1	Elizabeth Wiegand	P	Jr.	R-R	Moscow Mills, Missouri (UT-Martin)
2	Erin Erickson	OF/1B	Sr.	R-L	Oakland, Calif. (Bishop O'Dowd)
6	Erin Riding	P	Fr.	R-R	McKinney, Texas (McKinney Boyd)
7	Claire Fritsch	IF/OF	Jr.	L-R	Round Rock, Texas (Round Rock)
8	Whitney Repole	OF	Sr.	R-R	San Antonio, Texas (Smithson Valley)
9	Sarah Kurtz	OF/IF	So.	R-R	Herndon, Va. (Herndon)
10	Katy Taylor	SS	So.	L-R	Owasso, Okla. (Labette CC)
11	Mallory Kilian	P/UT	Fr.	R-R	Fort Dodge, Iowa (Fort Dodge)
12	Angela Schmiederer	C	So.	R-R	Prospect Heights, Ill. (John Hersey)
14	Kaitlyn Mullarkey	IF/OF	Jr.	L-L	Park Ridge, Ill. (Main South)
16	Brooke Rozier	C/UT	Fr.	R-R	Jefferson City, Mo. (Jefferson City)
17	Allie Wood	OF	So.	R-R	Cypress, Calif. (Cypress)
19	Jillian Navarrete	P/UT	Sr.	R-R	Carlsbad, N.M. (Butler Community College)
20	Daniella Ibarra	IF	So.	S-R	Emerson, N.J. (Immaculate Heart Academy)
21	Sammi Gyerman	OF	RS Jr.	L-L	San Pedro, Calif. (Palos Verdes)
22	Haley Hansel	OF	Sr.	L-R	Overland Park, Kan. (Blue Valley Southwest)
23	Kara Misel	IF	Jr.	R-R	Solon, Iowa (Solon)
24	Shayla Starkenburg	P	RS Jr.	R-R	Ankeny, Iowa (Ankeny)
27	Cheyenne Pratt	OF	So.	L-R	Festus, Mo. (Festus)
36	Ashley Yoways	IF/P	So.	R-R	Cedar Lake, Ind. (Hanover Central)
44	Daniela Chambers	C	So.	R-R	Irvine, Calif. (Irvine)
55	Holly Hoffman	C	RS Sr.	R-R	Osceola, Ind. (Penn)

**Head Coach:** Marla Looper (Sixth Season)

**Assistant Coach:** Adrianna Baggetta (Sixth Season)

**Assistant Coach:** Jake Schumann (First Season)

**Volunteer Assistant Coach:** Rachel West (First Season)

**Director of Operations:** Sharon Palma (First Season)

**Strength Coach:** Zach Walrod

## NEWCOMERS

- Five student-athletes will make their Hawkeye debuts this spring.
- Junior transfer Elizabeth Wiegand joins the team after spending two seasons with UT Martin. Wiegand appeared in 26 games with 21 starts for the Skyhawks in 2015. She led UT Martin in ERA (2.94), wins (12), appearances (26), starts (21), complete games (16), shutouts (3), innings pitched (135.2), and strikeouts (63) as a sophomore.
- Sophomore transfer Katy Taylor joins the Hawkeyes after spending a season at Labette Community College. Taylor helped the Cardinals to a 38-16 overall record and a Region VI Championship. She led the nation in stolen bases (89) and paced the Cardinals in hits (76), doubles (10), triples (3), walks (21), batting average (.435), and on base percentage (.485).
- Freshmen Erin Riding (pitcher), Mallory Kilian (pitcher/utility), and Brooke Razier (catcher/utility) will all make their Hawkeye debut in 2016.

## STAFF UPDATES

- Jake Schumann joined the Iowa softball staff on Aug. 5, 2015. Schumann will handle the Hawkeye offense. He joins the staff after spending last season as the associate head coach at Ole Miss. He has also served as the head coach at Florida International (2011-14), Texas A&M-Corpus Christi (2007-11), Texas A&M-Kingsville (2003-07), and Carl Albert State College (2001-03).
- Former Hawkeye Rachel West is Iowa's new volunteer assistant coach. West appeared in 202 games for the Hawkeyes from 2005-09. The Burlington, Iowa, native still stands as one of the best base stealers in program history. West swiped 86 bags during her four-year career -- a mark that ranks fourth in program history.
- Sharon Palma is in her first year as the director of operations for the Iowa softball program. The Grand Rapids, Michigan, native came to Iowa after spending the 2014 season as an assistant coach at Ole Miss. A former professional pitcher for the Carolina Diamonds in the National Pro Fastpitch League, Palma has also spent time as an assistant coach at Florida International (2014) and IUPUI (2013), and a volunteer assistant coach at Michigan State (2012).

## HAWKEYES IN 2015

The Hawkeyes posted a 19-40 overall record in 2015. Iowa finished ninth in the Big Ten with an 8-15 mark. Thirteen of Iowa's losses came against ranked opponents.

## SCHEDULE AT A GLANCE

The Hawkeyes compete in five nonconference tournaments before opening Big Ten play. Iowa opens conference action on March 25 at Indiana. The Hawkeyes are scheduled to play 27 games away from home before kicking off action at Pearl Field against Drake on March 30.

## BATTING .750

The Hawkeyes won three of their last four contests in 2015. On May 3, 2015, Iowa concluded its regular season with an 8-6 victory over Northwestern at Pearl Field. Four days later, in the Big Ten Conference Tournament opener, the Hawkeyes knocked off Rutgers, 5-3. That was followed by a 2-0 shutout win over No. 12 Minnesota in the quarterfinals. On May 9, Iowa scored the final three runs during a 9-6 loss to Nebraska in the tournament semifinal.

## SCOUTING LOUISVILLE

- Louisville posted a 30-19 overall record in 2015, and finished fourth in the ACC with a 16-7 mark.
- The Cardinals earned their 12th consecutive NCAA regional appearance in 2015.
- Louisville returns five starters and 12 letterwinners.
- The Hawkeyes own a 5-3 advantage in the all-time series. The Hawkeyes and Cardinals last met for a pair of games in 2013. The Hawkeyes won the first game, 6-2, while the Cardinals edged out a 6-4 victory in game two.

## LOUISVILLE CONNECTIONS

Former Hawkeye student-athlete and assistant coach Stacy May-Johnson is in her second year as an assistant coach for the Cardinals. The 2011 USA Softball Female Athlete of the Year, served as an assistant coach for the Hawkeyes from 2011-14. May-Johnson was a four-year letterwinner at Iowa from 2003-06. The three-time NFCA All-Mideast Region and All-Big Ten selection was named Big Ten Freshman of the Year in 2003 while leading Iowa to the regular season and conference tournament championship.

## 2015 HITTING STREAKS

Name	Longest	Current
Megan Blank	12	4
Sammi Gyerman	6	--
Kaitlyn Mullarkey	5	1
Holly Hoffman	5	3
Sarah Kurtz	4	--
Cheyenne Pratt	4	--
Erin Erickson	4	--
Allie Wood	4	1
Claire Fritsch	4	3
Whitney Repole	4	--
Daniella Ibarra	2	--
Alyssa Navarro	2	--
Angela Schmiederer	1	1
Ashley Yoways	1	--

## 2015 REACHED BASE STREAKS

Name	Longest	Current
Sammi Gyerman	18	5
Megan Blank	12	8
Holly Hoffman	9	3
Kaitlyn Mullarkey	7	6
Cheyenne Pratt	6	1
Whitney Repole	6	1
Claire Fritsch	6	6
Sarah Kurtz	5	1
Allie Wood	5	1
Erin Erickson	4	1
Alyssa Navarro	3	--
Daniella Ibarra	2	--
Angela Schmiederer	2	1
Ashley Yoways	1	--

## 2015 MULTIPLE HIT GAMES

Name	2	3	4	5+	Total
Megan Blank	11	8	-	-	19
Sammi Gyerman	8	6	1	-	15
Holly Hoffman	9	1	-	-	10
Cheyenne Pratt	5	3	-	-	8
Claire Fritsch	5	2	1	-	8
Allie Wood	5	1	-	-	6
Alyssa Navarro	5	-	-	-	5
Whitney Repole	2	2	-	-	4
Kaitlyn Mullarkey	4	-	-	-	4
Erin Erickson	2	-	-	-	2
Angela Schmiederer	2	-	-	-	2
Sarah Kurtz	1	-	-	-	1

## 2015 MULTIPLE RBI GAMES

Name	2	3	4	5+	Total
Megan Blank	7	3	-	-	10
Holly Hoffman	8	2	-	-	10
Sammi Gyerman	4	1	3	1	9
Allie Wood	5	2	-	1	8
Kaitlyn Mullarkey	4	-	-	-	4
Whitney Reople	3	-	-	1	4
Cheyenne Pratt	2	-	-	-	2
Sarah Kurtz	2	-	-	-	2
Angela Schmiederer	1	1	-	-	2
Erin Erickson	1	-	1	-	2
Ashley Yoways	1	-	-	-	1





# IOWA SOFTBALL

4 Women's College World Series appearances  
16 NCAA Tournament berths

4 Big Ten regular season championships  
2 Big Ten Tournament championships

## IOWA'S RECORD WHEN...

1-Run Games	0-0
2-Run Games	0-0
3-Run Games	0-0
4+-Run Games	0-0
Extra Innings	0-0
At Pearl Field	0-0
On the Road	0-0
At Neutral Site	0-0
Day Games	0-0
Night Games	0-0
vs. Lefty starter	0-0
vs. Righty starter	0-0
Iowa Scores First	0-0
Opponent Scores First	0-0
Scoring 2 Runs Or Less	0-0
Scoring 3+ Runs	0-0
Giving Up 2 Runs Or Less	0-0
Giving up 3+ Runs	0-0
Leading After Four Innings	0-0
Leading After Five Innings	0-0
Leading After Six Innings	0-0
Ranked Opponents	0-0
Starkenburg Starts	0-0
Yoways Starts	0-0
Navarrete Starts	0-0
Iowa Hits a Home Run	0-0
Iowa Hits No Home Runs	0-0
Opponent Hits a Home Run	0-0
Opponent Hits No Home Runs	0-0
Iowa Outhits Opponent	0-0
Opponent Outhits Iowa	0-0
Equal Number of Hits	0-0
Iowa Pitchers Record More K's	0-0
Opponent Pitchers Record More K's	0-0
Equal Number of Strikeouts	0-0
Flying To Game	0-0
Busing To Game	0-0
On Big Ten Network	0-0
On Big Ten Plus	0-0
In Central Time Zone	0-0
In Eastern Time Zone	0-0
In Mountain Time Zone	0-0
In Pacific Time Zone	0-0
On Sunday	0-0
On Monday	0-0
On Tuesday	0-0
On Wednesday	0-0
On Thursday	0-0
On Friday	0-0
On Saturday	0-0

### SCOUTING TEXAS A&M CORPUS CHRISTI

- The Islanders posted a 20-28-1 overall record in 2015 and finished sixth in the Southland Conference (15-11).
- Texas A&M Corpus Christi returns five position players, three pitchers, and 10 letterwinners.
- Junior Liz Carter started 29 games and registered a 3.16 ERA for the Islanders in 2015.
- Friday's 3 p.m. contest marks the first meeting between the Hawkeyes and Islanders.
- First-year assistant coach Jake Schumann was the head coach at Texas A&M Corpus Christi from 2008-11.

### SCOUTING SAM HOUSTON STATE

- Sam Houston State recorded a 19-28 overall record in 2015.
- The Bearkats finished ninth in the Southland Conference with a 10-15 mark.
- Sam Houston State returns 10 letterwinners, four starters, and two pitchers from last season.
- The Bearkats own a 3-0 advantage in the all-time series.
- Saturday's contest marks the first meeting between the Hawkeyes and Bearkats since 1993.

### TEXAS NATIVES

Three Hawkeyes will return to their home state this weekend. They include: senior Whitney Repole (San Antonio), junior Claire Fritsch (Round Rock), and freshman Erin Riding (McKinney).

### DEPTH IN THE CIRCLE

The Hawkeyes added much needed depth to their bullpen this offseason. Redshirt junior Shayla Starkenburg (17-23) started 38 games for the Hawkeyes last season, while sophomore Ashley Yoways (2-16) notched 20 starts. They will be joined by senior Jillian Navarrete, junior Elizabeth Wiegand, and freshmen Erin Riding and Mallory Kilian.

### FUNDAMENTALLY SOUND

The Hawkeyes shattered the program record for double plays in a season in 2015. Iowa turned 35 double plays in 59 games last season, besting the previous record of 26 (2003, 2012). Iowa's 35 double plays led the Big Ten and ranked fourth nationally.

### 2015 BIG TEN TOURNAMENT RUN

After earning the No. 10 seed with an 8-15 record in regular season conference play, the Hawkeyes overcame a three-run deficit against seventh-seeded Rutgers in the opening round of the Big Ten Tournament on May 7. Sophomore Kaitlyn Mullarkey hit a two-run blast to tie the contest 3-3 in the sixth, and redshirt sophomore Sammi Gyerman knocked a two-run shot out of the park in the seventh to give the Hawkeyes the lead. It proved to be the game-winner as the Iowa defense shut down the Scarlet Knights from the third inning on to secure the 5-3 win.

The opening round victory gave the Hawkeyes a rematch with the nationally ranked Golden Gophers on May 8. Redshirt junior Holly Hoffman plated two runs with a double in the top of the third to give Iowa the lead. Redshirt sophomore Shayla Starkenburg registered a gem in the circle, holding the Gophers scoreless for just the third time this season. She allowed two hits and struck out four to secure the 2-0 win.

Iowa went on to face third-seeded Nebraska in the tournament semifinals on May 9. The Hawkeyes rallied to come within three runs, but could not complete the comeback as the Huskers notched the 9-6 victory. Iowa's Big Ten Tournament semifinal berth marked its deepest tournament run since 2008.

### HIGHLIGHTING SPORTSMANSHIP

Junior Haley Hansel received the team's Big Ten Sportsmanship Award in 2015. Student-athletes chosen to receive the honor are individuals who have distinguished themselves through sportsmanship and ethical behavior. These student-athletes must also be in good academic standing and have demonstrated good citizenship outside of the sports-competition setting.

### STRIKEOUTS X 3

Shayla Starkenburg more than tripled her strikeout total of 51, registering 194 in 2015. She also significantly raised her strikeouts per appearance average from 2.43 (51 strikeouts in 21 appearances) in 2014 to 3.96 (194 in 49 appearances) in 2015. Starkenburg fanned a career high 11 batters in Iowa's 3-2 10 inning victory over Wisconsin on April 12.



## ACADEMIC EXCELLENCE

- Haley Hansel, Whitney Repole and Kara Misel were named to the spring Academic All-Big Ten team following the 2015 season. All three carry a cumulative grade point average of 3.0 or better.
- Hansel was named a 2015 Big Ten Distinguished Scholar. Recipients must be letterwinners in at least their second academic year and have a minimum GPA of 3.7 or higher.
- Hansel, Sarah Kurtz, and Cheyenne Pratt were recognized as 2014-15 National Fastpitch Coaches Association All-American Scholar Athletes. In order to be eligible for the award, student-athletes must achieve a 3.5 GPA or higher on a 4.0 scale.

## THE DUGOUT

The Hawkeyes re-launched their blog, The Dugout, for the 2016 season. The blog will reach out to fans and provide them with the opportunity to connect with the student-athletes, coaches, and staff who work hard every day to make the Hawkeye softball program a success. The Dugout aims to deliver unique insight into the lives of the Iowa softball team. Each Thursday, The Dugout will feature a different softball student-athlete. To see the latest post, visit [hawkeyesports.com](http://hawkeyesports.com).

## PRACTICE FACILITIES

The Hawkeyes benefited from two new facilities in 2015 -- the indoor Iowa Turf Facility, located at the Hawkeye Tennis and Recreation Complex, and the Jacobson Hitting Facility, located in football's former weight room. The HTRC Iowa Turf Facility has enabled the program to have consistency in team practices, while the Jacobson hitting cages have allowed student-athletes to take extra reps at any time.

## HAWKEYE TRADITION

Iowa has made four Women's College World Series appearances (1995, 1996, 1997, 2001) and played in 16 NCAA Tournaments in school history. The 16 appearances are the second most in Big Ten history, and the four WCWS appearances equal the second most in conference history. The Hawkeyes have won four Big Ten Conference regular season championships (1989, 1997, 2000, 2003) and two Big Ten Tournament titles (2001, 2003). Iowa holds a 1270-793-5 (.616) record in 37 seasons.

## 2015 BIG TEN CONFERENCE STANDINGS

	Big Ten		Overall	
Michigan	21-2	.913	60-8	.913
Minnesota	20-3	.870	49-11	.870
Nebraska	17-6	.736	35-23	.603
Northwestern	14-8	.636	28-23	.549
Illinois	14-9	.609	26-27	.491
Ohio State	12-11	.522	30-22	.577
Rutgers	11-12	.478	29-20	.592
Maryland	9-14	.391	27-27	.500
Penn State	9-14	.391	29-28	.509
<b>Iowa</b>	<b>8-15</b>	<b>.348</b>	<b>19-40</b>	<b>.322</b>
Indiana	7-14	.333	17-39	.304
Purdue	7-14	.333	31-25	.554
Wisconsin	5-17	.227	21-31	.404
Michigan State	4-19	.174	19-36	.345

## ESPN.com/USA Softball Collegiate Top-25 (Preseason - Jan. 26)

1.	Florida (17)	495
2.	Michigan (1)	473
3.	LSU (2)	446
4.	Oregon	428
5.	Alabama	412
6.	Auburn	409
7.	UCLA	368
8.	Oklahoma	352
9.	Tennessee	341
10.	Florida State	311
11.	Louisiana-Lafayette	385
<b>12.</b>	<b>Missouri</b>	<b>258</b>
<b>13.</b>	<b>Minnesota</b>	<b>257</b>
14.	Georgia	223
15.	Arizona	217
16.	Baylor	183
17.	UCF	159
18.	Kentucky	148
19.	Washington	144
20.	Arizona State	106
21.	James Madison	95
22.	California	80
23.	Utah	58
24.	Texas A&M	53
25.	NC State	47

**Receiving Votes:** Notre Dame (42), North Dakota State (16), **Texas (13)**, USC Upstate (11), Virginia Tech (11), Fresno State (8), Hofstra (8), South Alabama (8), Kansas (7), **Northwestern (7)**, North Carolina (4), San Diego State (4), Texas State (4), **Nebraska (3)**, Ohio State (3), Mississippi State (2), South Carolina (1).

Iowa opponents in bold.

## USA Today/NFCA Division I Top-25 (Preseason - Jan. 26)

1.	Florida (26)	800
2.	Michigan (2)	768
3.	LSU (2)	723
4.	Auburn (1)	712
5.	Alabama (1)	661
6.	Oregon	644
7.	UCLA	614
8.	Tennessee	579
9.	Oklahoma	533
10.	Florida State	499
11.	Louisiana-Lafayette	464
12.	Georgia	428
13.	Arizona	407
<b>14.</b>	<b>Minnesota</b>	<b>393</b>
<b>15.</b>	<b>Missouri</b>	<b>313</b>
16.	Baylor	285
17.	UCF	254
18.	Kentucky	242
19.	James Madison	215
20.	Washington	165
21.	California	145
22.	Arizona State	116
23.	North Carolina State	78
24.	Notre Dame	78
25.	South Alabama	71

**Receiving Votes:** Texas A&M (38), North Dakota State (32), Utah (22), Hofstra (14), **Nebraska (13)**, **Texas (12)**, **Northwestern (10)**, Ohio State (6), North Carolina (6), Florida Atlantic (5), Mississippi State (5), USC Upstate (4), UAB (4), Western Kentucky (4), Fresno State (3), Kansas (2), **Louisville (2)**, Pittsburgh (2).

Iowa opponents in bold.

## IOWA vs. RANKED TEAMS IN 2015 (3-13)

Date	Team	Score
2/14	at #1 Florida	L, 0-8 (5 innings)
2/15	at #1 Florida	L, 0-8 (5 innings)
2/20	at #6 Louisiana-Lafayette	L, 3-4
2/27	at #17 UCF	W, 3-2
3/8	vs. #2 Oregon	L, 1-2
3/14	at #6 Oklahoma	L, 3-23 (5 innings)
3/15	at #6 Oklahoma	L, 2-8
3/16	at #6 Oklahoma	L, 0-9 (5 innings)
3/28	at #4 Michigan	L, 0-6
3/28	at #4 Michigan	L, 4-7
3/29	at #4 Michigan	W, 6-4
4/22	at #15 Missouri	L, 2-10
4/25	at #12 Minnesota	L, 0-8
4/25	at #12 Minnesota	L, 0-8
4/25	at #12 Minnesota	L, 0-9
5/8	vs. #12 Minnesota	W, 2-0

## IOWA SOFTBALL BY THE NUMBERS

### 2015 Iowa Team Highs

Longest Winning Streak .....	3-game winning streak
Longest Losing Streak .....	8-game losing streak
Current Streak .....	L1
Largest Margin of Victory .....	12 at Wisconsin (4/10)
Largest Margin of Defeat .....	20 at Oklahoma (3/14)
Most At-Bats .....	41 at Wisconsin (4/12)
Most Runs Scored .....	16 vs. Illinois (4/10)
Most Hits .....	19 at Cal State Fullerton (3/7)
Most RBIs .....	16 vs. Illinois (4/3)
Most Doubles .....	4, 3x, last vs. Nebraska (4/9)
Most Triples .....	2, 2x, last vs. Illinois (4/3)
Most Home Runs .....	3, 2x, last at Tulsa (3/18)
Most Stolen Bases .....	4 vs. Western Illinois (4/2)
Most Strikeouts (pitching) .....	11, 2x, last at Wisconsin (4/12)
Most Errors .....	5 vs. Illinois (4/4)
Most Runs Allowed .....	23 at Oklahoma (3/14)
Most Hits Allowed .....	23 at Oklahoma (3/14)
Most Walks Allowed .....	12, 2x, last vs. Maryland (3/22)

### 2015 Iowa Individual Team Batting Leaders

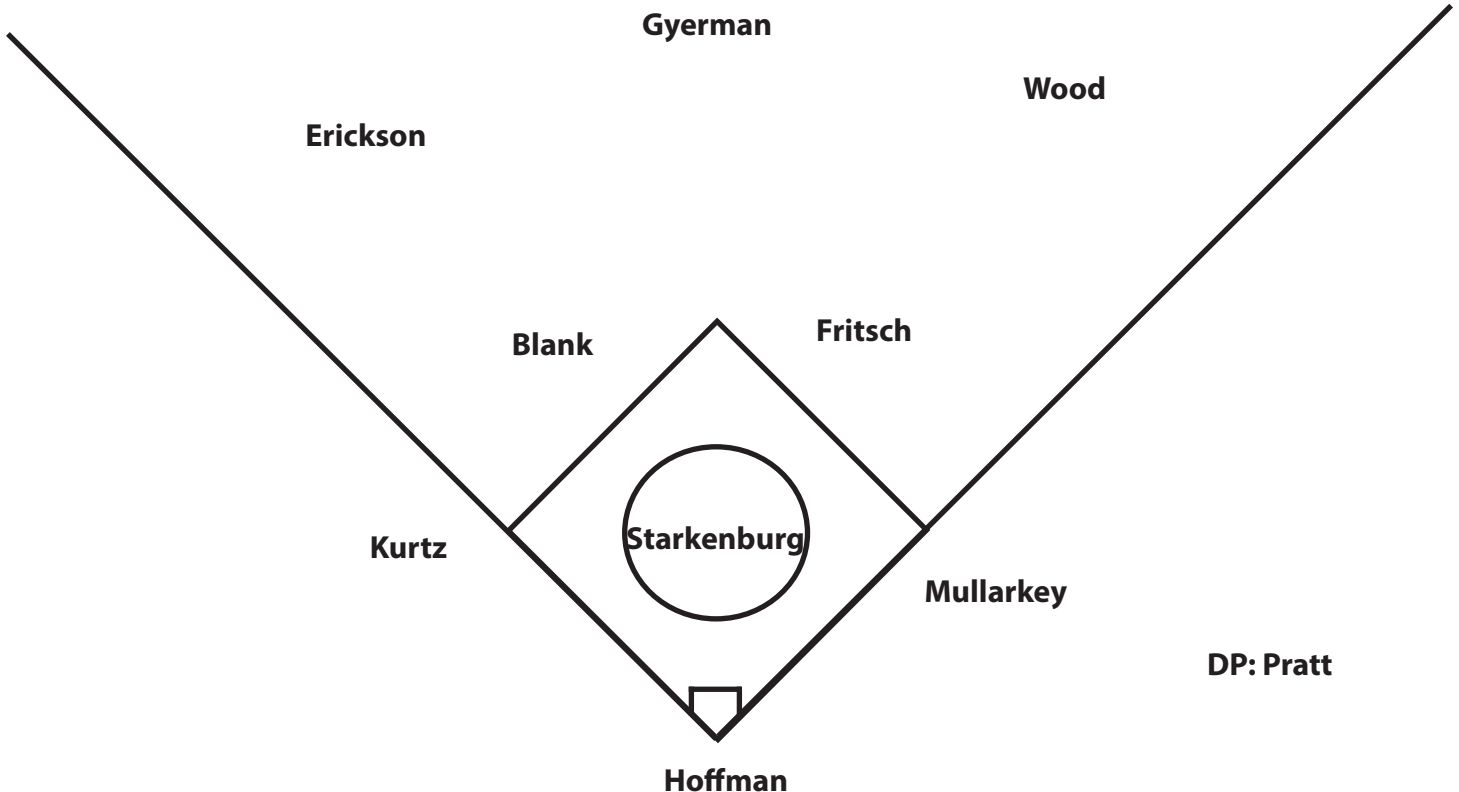
Batting Avg. ....	.442, Megan Blank
Games Played .....	59 (2 players)
Games Started .....	59 (2 players)
At Bats .....	181, Sammi Gyerman
Runs .....	42, Sammi Gyerman

Hits .....	76, Megan Blank
Doubles .....	20, Megan Blank
Triples .....	3, Megan Blank
Home Runs .....	9, Megan Blank
RBIs .....	40, Megan Blank
Total Bases .....	129, Megan Blank
Walks .....	27, Sammi Gyerman
Hit by Pitch .....	11, Kaitlyn Mullarkey
Strikeouts .....	43, Erin Erickson
On-Base Percentage .....	.513, Megan Blank
Sacrifice Flies .....	1, Megan Blank/Angela Schmiederer/Whitney Repole
Sacrifice Hits .....	2, Erin Erickson
Stolen Bases .....	7, Sammi Gyerman
Stolen Base Attempts .....	7, Sammi Gyerman

### 2015 Iowa Individual Pitching Leaders

ERA (7.0 IP min.) .....	4.96, Shayla Starkenburg
Wins .....	17, Shayla Starkenburg
Appearances .....	49, Shayla Starkenburg
Games Started .....	38, Shayla Starkenburg
Complete Games .....	31, Shayla Starkenburg
Shutouts .....	5, Shayla Starkenburg
Saves .....	n/a
Innings Pitched .....	250.0, Shayla Starkenburg
Strikeouts .....	194, Shayla Starkenburg
Opponent Batting Average (7.0 IP min.) .....	.276, Shayla Starkenburg

## 2015 Starting Lineup





**1** WWA  
Elizabeth Wiegand  
Jr. • P • R/R  
Moscow Mills, Mo.



**2** WWA  
Erin Erickson  
Sr. • OF/1B • R/L  
Oakland, Calif.



**6** WWA  
Erin Riding  
Fr. • P • R/R  
McKinney, Texas



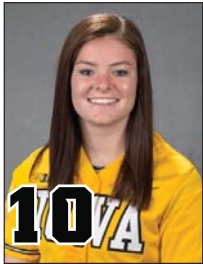
**7** WWA  
Claire Fritsch  
Jr. • IF/OF • L/R  
Round Rock, Texas



**8** WWA  
Whitney Repole  
Sr. • OF • R/R  
San Antonio, Texas



**9** WWA  
Sarah Kurtz  
So. • IF/OF • R/R  
Herndon, Va.



**10** WWA  
Katy Taylor  
So. • SS • L/R  
Owasso, Okla.



**11** WWA  
Mallory Kilian  
Fr. • P/UT • R/R  
Fort Dodge, Iowa



**12** WWA  
Angela Schmiederer  
So. • C • R/R  
Prospect Heights, Ill.



**14** WWA  
Kaitlyn Mullarkey  
Jr. • IF/OF • L/L  
Park Ridge, Ill.



**16** WWA  
Brooke Rozier  
Fr. • C/UT • R/R  
Jefferson City, Mo.



**17** WWA  
Allie Wood  
So. • OF • R/R  
Cypress, Calif.



**19** WWA  
Jillian Navarrete  
Sr. • P/UT • R/R  
Carlsbad, N.M.



**20** WWA  
Daniella Ibarra  
So. • IF • S/R  
Emerson, N.J.



**21** WWA  
Sammi Gyerman  
RS Jr. • OF • L/L  
San Pedro, Calif.



**22** WWA  
Haley Hansel  
Sr. • OF • L/R  
Overland Park, Kan.



**23** WWA  
Kara Misel  
Jr. • IF • R/R  
Solon, Iowa



**24** WWA  
Shayla Starkenburg  
RS Jr. • P • R/R  
Ankeny, Iowa



**27** WWA  
Cheyenne Pratt  
So. • OF • L/R  
Festus, Mo.



**36** WWA  
Ashley Yoways  
So. • IF/P • R/R  
Cedar Lake, Ind.



**44** WWA  
Daniela Chambers  
So. • C • R/R  
Irvine, Calif.



**55** WWA  
Holly Hoffman  
RS Sr. • C • R/R  
Osceola, Ind.



Marla Looper  
Head Coach  
6th Season



Adrianna Baggetta  
Assistant Coach  
6th Season



Jake Schumann  
Assistant Coach  
1st Season



Rachel West  
Volunteer Assistant  
1st Season



Sharon Palma  
Dir. of Operations  
1st Season





# IOWA SOFTBALL

4 Women's College World Series appearances  
16 NCAA Tournament berths

4 Big Ten regular season championships  
2 Big Ten Tournament championships

## 2015 STATS

### 2015 Iowa Softball Overall Statistics for Iowa (as of May 09, 2015) (All games Sorted by Batting avg)

Record: 19-40 Home: 3-10 Away: 9-17 Neutral: 7-13 Big Ten: 8-15

Player	avg	gp-gs	ab	r	h	2b	3b	hr	rbi	tb	slg%	bb	hp	so	gdp	ob%	sf	sh	sb-att	po	a	e	fld%
Blank, Megan	.442	59-59	172	36	76	20	3	9	40	129	.750	23	3	12	1	.513	1	1	1-1	95	142	9	.963
Gyerman, Sammi	.326	59-59	181	42	59	11	2	6	36	92	.508	27	4	40	2	.425	0	0	7-7	68	8	5	.938
Mullarkey, Kaitlyn	.261	41-37	92	18	24	5	1	5	15	46	.500	18	11	26	0	.438	0	0	2-2	286	17	4	.987
Hoffman, Holly	.261	50-46	142	12	37	8	0	3	28	54	.380	17	1	23	2	.344	0	0	0-0	199	25	2	.991
Fritsch, Claire	.242	55-51	165	32	40	4	0	0	5	44	.267	18	6	31	1	.339	0	0	3-5	94	113	13	.941
Pratt, Cheyenne	.239	57-53	163	23	39	4	2	0	7	47	.288	10	1	33	0	.287	0	1	3-3	35	0	1	.972
Repole, Whitney	.224	44-29	85	8	19	6	0	0	16	25	.294	10	3	32	0	.323	1	0	0-1	0	0	0	.000
Ibarra, Daniella	.222	6-2	9	1	2	0	0	0	0	2	.222	0	0	3	0	.222	0	0	0-0	4	4	0	1.000
Schmiederer, Angela	.219	16-15	32	3	7	4	1	1	8	16	.500	3	1	9	0	.297	1	0	0-0	53	3	2	.966
Wood, Allie	.214	56-51	140	14	30	7	0	7	27	58	.414	12	3	37	2	.290	0	0	2-3	21	2	2	.920
Navarro, Alyssa	.207	39-21	87	7	18	5	0	1	10	26	.299	5	1	23	3	.258	0	0	0-0	40	36	4	.950
Yoways, Ashley	.200	3-3	5	0	1	0	0	0	2	1	.200	1	0	1	0	.333	0	1	0-0	5	29	0	1.000
Erickson, Erin	.186	57-53	140	21	26	6	0	2	15	38	.271	17	0	43	0	.274	0	2	0-0	159	10	3	.983
Kurtz, Sarah	.165	55-54	97	15	16	2	0	1	8	21	.216	19	0	37	0	.302	0	0	0-0	31	74	4	.963
Hansel, Haley	.000	21-0	1	7	0	0	0	0	0	0	.000	0	0	1	0	.000	0	0	0-0	0	0	0	.000
Totals	.261	59	1511	239	394	82	9	35	217	599	.396	180	34	351	11	.352	3	5	18-22	1095	514	55	.967
Opponents	.319	59	1550	394	494	72	10	68	373	790	.510	263	48	228	12	.430	12	19	58-71	1137	447	47	.971

### (All games Sorted by Earned run avg)

Player	era	w-l	app	gs	cg	sho	sv	ip	h	r	er	bb	so	2b	3b	hr	b/avg	wp	hp	bk	sfa	sha
Kurtz, Sarah	0.00	0-0	1	0	0	0/0	0	0.1	0	0	0	0	0	0	0	0	.000	0	0	0	0	0
Starkenburger, Shayla	4.96	17-23	49	38	31	5/0	0	250.0	276	202	177	171	194	31	5	38	.276	15	31	2	5	12
Yoways, Ashley	8.97	2-16	27	20	7	0/0	0	107.2	186	154	138	74	31	35	5	25	.375	6	16	4	6	7
Navarrete, Jillian	36.00	0-1	12	1	0	0/0	0	7.0	32	38	36	18	3	6	0	5	.604	2	1	0	1	0
Totals	6.73	19-40	59	59	38	5/0	0	365.0	494	394	351	263	228	72	10	68	.319	23	48	6	12	19
Opponents	3.93	40-19	59	59	29	12/2	6	379.1	394	239	213	180	351	82	9	35	.261	31	34	2	3	5







# IOWA SOFTBALL

4 Women's College World Series appearances  
16 NCAA Tournament berths

4 Big Ten regular season championships  
2 Big Ten Tournament championships

## 2015 BIG TEN STATS

### 2015 Iowa Softball Conference statistics for Iowa (as of May 09, 2015) (Big Ten games only Sorted by Batting avg)

Record: 8-15 Home: 3-8 Away: 5-7 Big Ten: 8-15

Player	avg	gp-gs	ab	r	h	2b	3b	hr	rbi	tb	slg%	bb	hp	so	gdp	ob%	sf	sh	sb-att	po	a	e	fld%		
Blank, Megan	.419	23-23	62	17	26	7	2	5	19	52	.839	18	0	6	1	.543	1	1	0-0	37	53	2	.978		
Schmiederer, Angela	.400	2-1	5	1	2	1	0	1	3	6	1.200	0	0	1	0	.400	0	0	0-0	1	0	1	.500		
Gyerman, Sammi	.366	23-23	71	16	26	5	1	1	18	36	.507	12	3	19	1	.477	0	0	3-3	36	4	2	.952		
Wood, Allie	.280	21-18	50	7	14	4	0	6	20	36	.720	5	2	9	2	.368	0	0	0-0	8	0	0	1.000		
Hoffman, Holly	.258	22-22	66	6	17	4	0	1	15	24	.364	12	0	14	2	.372	0	0	0-0	93	16	0	1.000		
Pratt, Cheyenne	.236	21-17	55	9	13	2	1	0	2	17	.309	4	0	12	0	.288	0	0	1-1	13	0	0	1.000		
Navarro, Alyssa	.233	15-7	30	4	7	1	0	1	3	11	.367	1	0	11	2	.258	0	0	0-0	10	13	2	.920		
Fritsch, Claire	.232	22-20	69	16	16	1	0	0	2	17	.246	8	4	13	1	.346	0	0	1-2	42	51	2	.979		
Erickson, Erin	.230	23-22	61	11	14	4	0	1	4	21	.344	7	0	16	0	.309	0	0	0-0	34	1	0	1.000		
Mullarkey, Kaitlyn	.227	20-19	44	11	10	2	0	2	8	18	.409	13	7	14	0	.469	0	0	1-1	136	7	4	.973		
Repole, Whitney	.216	20-13	37	5	8	2	0	0	7	10	.270	8	2	13	0	.375	1	0	0-0	0	0	0	.000		
Kurtz, Sarah	.140	22-22	43	9	6	0	0	0	4	6	.140	12	0	18	0	.327	0	0	0-0	18	29	2	.959		
-----																									
Hansel, Haley	.000	8-0	0	3	0	0	0	0	0	0	.000	0	0	0	0	.000	0	0	0-0	0	0	0	.000		
Totals	.268	23	593	115	159	33	4	18	105	254	.428	100	18	146	9	.389	2	1	6-7	434	199	17	.974		
Opponents	.342	23	634	176	217	39	7	29	168	357	.563	103	25	85	7	.450	5	4	25-32	444	167	16	.974		

### (Big Ten games only Sorted by Earned run avg)

Player	era	w-l	app	gs	cg	sho	sv	ip	h	r	er	bb	so	2b	3b	hr	b/avg	wp	hp	bk	sfa	sha
Kurtz, Sarah	0.00	0-0	1	0	0	0/0	0	0.1	0	0	0	0	0	0	0	0	.000	0	0	0	0	0
Starkenbug, Shayla	6.09	8-7	18	15	12	1/0	0	92.0	113	84	80	66	70	15	3	16	.298	4	15	2	2	3
Yoways, Ashley	9.49	0-7	11	7	3	0/0	0	48.2	90	74	66	28	14	20	4	11	.391	0	10	3	2	1
Navarrete, Jillian	32.45	0-1	5	1	0	0/0	0	3.2	14	18	17	9	1	4	0	2	.583	1	0	0	1	0
Totals	7.89	8-15	23	23	15	1/0	0	144.2	217	176	163	103	85	39	7	29	.342	5	25	5	5	4
Opponents	4.92	15-8	23	23	12	6/1	2	148.0	159	115	104	100	146	33	4	18	.268	14	18	1	2	1





# IOWA SOFTBALL

4 Women's College World Series appearances  
16 NCAA Tournament berths

4 Big Ten regular season championships  
2 Big Ten Tournament championships

## 2015 RESULTS

### IOWA HAWKEYE SOFTBALL Game Results for Iowa (as of May 21, 2015) (All games)

Date	Opponent	Score	Inns	Overall	Pitcher of record	Attend	Time
Feb 06, 2015	vs Drake	L 0-8	6	0-1-0	0-0-0	Starkenburger (L 0-1)	110 2:20
Feb 06, 2015	at UNI	w 12-4	5	1-1-0	0-0-0	Yoways (W 1-0)	713 2:09
Feb 07, 2015	vs Southern Utah	w 2-0	7	2-1-0	0-0-0	Starkenburger (W 1-1)	120 1:33
Feb 07, 2015	vs North Dakota State	L 1-9	5	2-2-0	0-0-0	Yoways (L 1-1)	136 1:35
Feb 08, 2015	vs Wisconsin-Green Bay	w 6-0	7	3-2-0	0-0-0	Starkenburger (W 2-1)	68 2:03
Feb 14, 2015	at #1 Florida	L 0-8	5	3-3-0	0-0-0	Yoways (L 1-2)	0 1:14
Feb 14, 2015	at NC State	L 5-6	7	3-4-0	0-0-0	Starkenburger (L 2-2)	103 2:00
Feb 15, 2015	at #1 Florida	L 0-8	5	3-5-0	0-0-0	Starkenburger (L 2-3)	0 1:38
Feb 20, 2015	vs Hofstra	L 3-4	7	3-6-0	0-0-0	Yoways (L 1-3)	0 1:54
Feb 20, 2015	at #6 Louisiana	L 3-4	7	3-7-0	0-0-0	Starkenburger (L 2-4)	0 2:17
Feb 21, 2015	vs Hofstra	L 3-9	7	3-8-0	0-0-0	Starkenburger (L 2-5)	0 1:57
Feb 21, 2015	vs Missouri State	L 2-3	(8)	3-9-0	0-0-0	Yoways (L 1-4)	1396 2:11
Feb 22, 2015	vs Missouri State	L 2-6	7	3-10-0	0-0-0	Starkenburger (L 2-6)	0 1:58
Feb. 27, 2015	vs LIU Brooklyn	w 10-2	5	4-10-0	0-0-0	Yoways (W 2-4)	80 1:15
Feb. 27, 2015	at UCF	w 3-2	7	5-10-0	0-0-0	Starkenburger (W 3-6)	185 2:05
Feb. 28, 2015	vs Princeton	L 2-10	5	5-11-0	0-0-0	Yoways (L 2-5)	90 1:22
Mar 01, 2015	vs Florida A&M	w 2-0	7	6-11-0	0-0-0	Starkenburger (W 4-6)	115 1:45
Mar 06, 2015	vs San Jose St.	L 2-11	7	6-12-0	0-0-0	Yoways (L 2-6)	1042 2:03
Mar 06, 2015	vs Fresno State	L 0-9	5	6-13-0	0-0-0	Starkenburger (L 4-7)	250 1:15
Mar 07, 2015	vs San Diego State	L 2-7	7	6-14-0	0-0-0	Starkenburger (L 4-8)	180 1:49
Mar 07, 2015	at Cal St. Fullerton	w 12-11	7	7-14-0	0-0-0	Starkenburger (W 5-8)	2286 2:58
Mar 08, 2015	vs #2 Oregon	L 1-2	7	7-15-0	0-0-0	Starkenburger (L 5-9)	650 2:09
Mar 14, 2015	vs East Carolina	w 5-1	7	8-15-0	0-0-0	Starkenburger (W 6-9)	0 1:51
Mar 14, 2015	at #6 Oklahoma	L 3-23	5	8-16-0	0-0-0	Yoways (L 2-7)	0 2:02
Mar 15, 2015	vs East Carolina	L 2-3	(8)	8-17-0	0-0-0	Yoways (L 2-8)	0 1:59
Mar 15, 2015	at #6 Oklahoma	L 2-8	7	8-18-0	0-0-0	Starkenburger (L 6-10)	1053 2:00
Mar 16, 2015	at #6 Oklahoma	L 0-9	5	8-19-0	0-0-0	Starkenburger (L 6-11)	987 1:21
Mar 17, 2015	at Oklahoma State	L 5-6	7	8-20-0	0-0-0	Starkenburger (L 6-12)	127 2:10
Mar 18, 2015	at Tulsa	w 7-6	7	9-20-0	0-0-0	Starkenburger (W 7-12)	153 2:18
* Mar 20, 2015	MARYLAND	L 14-15	7	9-21-0	0-1-0	Starkenburger (L 7-13)	323 3:02
* Mar 21, 2015	MARYLAND	w 8-4	7	10-21-0	1-1-0	Starkenburger (W 8-13)	393 2:18
* Mar 22, 2015	MARYLAND	L 0-19	5	10-22-0	1-2-0	Starkenburger (L 8-14)	432 2:01
* Mar 25, 2015	NEBRASKA-1	L 2-12	6	10-23-0	1-3-0	Yoways (L 2-9)	- 1:49
* Mar 25, 2015	NEBRASKA-2	L 7-16	7	10-24-0	1-4-0	Navarrete (L 0-1)	294 2:40
* Mar 28, 2015	at #4 Michigan-1	L 0-6	7	10-25-0	1-5-0	Starkenburger (L 8-15)	- 2:02
* Mar 28, 2015	at #4 Michigan-2	L 4-7	7	10-26-0	1-6-0	Yoways (L 2-10)	1136 1:39
* Mar 29, 2015	at #4 Michigan	w 6-4	7	11-26-0	2-6-0	Starkenburger (W 9-15)	967 2:28
April 1 2015	at Drake	L 0-1	7	11-27-0	2-6-0	Starkenburger (L 9-16)	273 1:27
Apr 02, 2015	WESTERN ILLINOIS	L 8-11	7	11-28-0	2-6-0	Yoways (L 2-11)	497 2:22
* Apr 03, 2015	ILLINOIS	w 15-7	5	12-28-0	3-6-0	Starkenburger (W 10-16)	557 1:58
* Apr 04, 2015	ILLINOIS	L 7-15	7	12-29-0	3-7-0	Yoways (L 2-12)	712 2:17
* Apr 05, 2015	ILLINOIS	L 7-12	7	12-30-0	3-8-0	Starkenburger (L 10-17)	458 2:40
* Apr 10, 2015	at Wisconsin	w 16-4	5	13-30-0	4-8-0	Starkenburger (W 11-17)	227 2:10
* Apr 11, 2015	at Wisconsin	L 4-5	7	13-31-0	4-9-0	Yoways (L 2-13)	514 2:20
* Apr 12, 2015	at Wisconsin	w 3-2	(10)	14-31-0	5-9-0	Starkenburger (W 12-17)	736 3h 5
Apr 15, 2015	IOWA STATE	L 4-5	7	14-32-0	5-9-0	Starkenburger (L 12-18)	827 2:19
* Apr 17, 2015	at Purdue	w 2-0	7	15-32-0	6-9-0	Starkenburger (W 13-18)	543 1:52
* Apr 18, 2015	at Purdue-1	L 1-4	7	15-33-0	6-10-0	Yoways (L 2-14)	- 1:44
* Apr 18, 2015	at Purdue-2	w 5-1	7	16-33-0	7-10-0	Starkenburger (W 14-18)	788 2:05
Apr 22, 2015	at #15 Missouri	L 2-10	6	16-34-0	7-10-0	Starkenburger (L 14-19)	485 2:00
* Apr 25, 2015	at #12 Minnesota-1	L 0-8	5	16-35-0	7-11-0	Starkenburger (L 14-20)	689 1:35
* Apr 25, 2015	at #12 Minnesota-2	L 0-8	5	16-36-0	7-12-0	Yoways (L 2-15)	632 1:19
* Apr 26, 2015	at #12 Minnesota	L 0-9	5	16-37-0	7-13-0	Starkenburger (L 14-21)	1149 1:25
* May 01, 2015	NORTHWESTERN	L 0-1	7	16-38-0	7-14-0	Starkenburger (L 14-22)	566 2:08
* May 02, 2015	NORTHWESTERN	L 6-11	7	16-39-0	7-15-0	Yoways (L 2-16)	758 2:19
* May 03, 2015	NORTHWESTERN	w 8-6	7	17-39-0	8-15-0	Starkenburger (W 15-22)	589 2:28
May 07, 2015	vs Rutgers	w 5-3	7	18-39-0	8-15-0	Starkenburger (W 16-22)	940 1:50
May 08, 2015	vs Minnesota	w 2-0	7	19-39-0	8-15-0	Starkenburger (W 17-22)	1345 1:57
May 09, 2015	vs Nebraska	L 6-9	7	19-40-0	8-15-0	Starkenburger (L 17-23)	0 2:45

\* = Conference game  
() extra inning game

