



University of Iowa Women's Basketball

Game #26

February 11, 2012

2011-12 Schedule/Results 15-10 Overall, 7-5 Big Ten

11/12	Harvard#	W, 90-81
11/13	UNLV#	L, 59-69
11/16	Albany	W, 82-60
11/19	at Northern Iowa	W, 78-74
11/25	vs. St. John's%	W, 60-52
11/26	vs. #4 Texas A&M%	L, 58-74
11/30	Virginia Tech\$	W, 58-47
12/3	at Kansas State~	L, 78-81 (OT)
12/7	at Iowa State	L, 54-62
12/9	Western Illinois	W, 98-45
12/17	at Bradley	L, 88-96
12/20	Drake	W, 71-46
12/22	Mississippi Valley State	W, 86-80
12/30	Northwestern	W, 86-55
1/2	at #9 Ohio State	L, 71-84
1/5	Illinois	W, 69-62 (OT)
1/8	#19 Nebraska	L, 72-77
1/15	at #17 Purdue	L, 55-57
1/19	Wisconsin	W, 69-57
1/22	at #21 Penn State	L, 52-68
1/26	at #19 Nebraska	L, 53-60
1/28	#13 Purdue	W, 59-42
2/2	at Wisconsin	W, 85-79 (OT)
2/5	at Indiana	W, 83-64
2/9	Minnesota	W, 75-58
2/12	Michigan State	2 p.m.
2/16	at Michigan	7 p.m.
2/23	at Northwestern	7 p.m.
2/26	Michigan	2 p.m.

-- KCRG-TV 9 Hawkeye Challenge, Iowa City

% -- Junkanoo Jam, Bahamas

\$ -- Big Ten/ACC Challenge

~ -- Big Ten/Big 12 Challenge

Pronunciation Guide

Lisa Bluder	BLUE-dir
Megan Considine	CAHN-sih-dine
Kamille Wahlin	Kah-MEAL Wah-LEEN
Kelly Krei	CRY
Theairra Taylor	thee-AIR-uh

SID Contact: Aaron Blau
E-Mail: aaron-blau@hawkeyesports.com

Office: (319) 335-9268
Cell: (319) 430-5103



Michigan State (15-9, 7-4) vs. Iowa (15-10, 7-5)

Feb. 12, 2012 • 2 p.m.

Iowa City, Iowa • Mediacom Court at Carver-Hawkeye Arena

Radio: AM-600 WMT, AM-1040 WHO

TV: BTN • Webcast: BTN2Go.com • Live Stats: hawkeyesports.com

Series Record: Iowa leads, 33-24



THE SETTING

The University of Iowa women's basketball team hosts the Michigan State Spartans Sunday on Mediacom Court at Carver-Hawkeye Arena. Tip-off is scheduled for 2 p.m.

Tickets are \$9 for adults and \$5 for youth (6-to-18). UI students (with valid student ID) and kids five-and-under are admitted free.

PROMOTIONS

Sunday is Go Red for Women Day at Carver-Hawkeye Arena. Fans are encouraged to wear red in support of heart disease.

Sunday is also Father/Daughter Day. Free youth tickets are available with the purchase of an adult ticket (game day sales only).

ON YOUR TELEVISION

Sunday's game will be televised live on BTN (HD). Kevin Kugler and Lisa Stone will call the action.

AUDIO COVERAGE

Brent Balbinot and Shelley Till will call Sunday's game for the Hawkeye Radio Network. Hawkeye fans can listen to the contest on AM-600 WMT in Cedar Rapids, AM-1040 WHO in Des Moines or on the Hawkeye All-Access page of hawkeyesports.com.

ON YOUR COMPUTER

Sunday's contest can be streamed live on your smart phone, tablet or computer by visiting BTN2Go.com. The service is available for Bright House, Charter, Cox or Time Warner cable subscribers, along with Dish Network and DirecTV satellite subscribers.

Hawkeye fans can also follow the game via live stats (Gametracker). The "GT" link can be accessed under the "Calendar" tab on the front page of hawkeyesports.com or on the women's basketball schedule page.

Tentative Starting Lineup

Iowa Hawkeyes (15-10, 7-5)						
Pos.	No.	Name	Ht.	Yr.	Statistical Summary	
G	2	Kamille Wahlin	5-8	Sr.	12.2 ppg, 3.3 rpg, 3.7 apg, .429 FG%, .863 FT%	
- Scored double figures in 12 of last 13 games, including last seven in a row						
G	21	Melissa Dixon	5-8	Fr.	6.7 ppg, 1.8 rpg, 14.1 minpg, .404 FG%, .821 FT%	
- Her 62 3-point attempts are fourth-most on team, despite missing seven games with knee injury						
G	22	Samantha Logic	5-8	Fr.	8.2 ppg, 6.1 rpg, 3.8 apg, .410 FG%, .732 FT%	
- Needs four assists to break freshmen assist record at Iowa						
F	20	Kelly Krei	6-2	Sr.	6.4 ppg, 6.0 rpg, 1.4 spg, .377 FG%, .880 FT%	
- Averaging seven rebounds per game in conference play						
C	12	Morgan Johnson	6-5	Jr.	14.9 ppg, 6.8 rpg, 2.3 bpg, .551 FG%, .748 FT%	
- Shot 50 percent or better in nine of Iowa's 12 Big Ten games						

Head Coach: Lisa Bluder (Northern Iowa, 1983); 12th Season at Iowa (226-142); 28th Season Overall (582-284)



hawkeyesports.com

Inside the Numbers

	IOWA	MSU
Scoring Average	71.6	66.4
Scoring Defense	65.2	59.5
Scoring Margin	+6.4	+7.0
FG%	.417	.416
FG% Defense	.383	.381
FT%	.800	.655
3-PT FG%	.318	.319
3-PT FG% Defense	.326	.315
Rebound Margin	+2.1	+6.5
Assists Per Game	16.5	13.5
Turnovers Per Game	16.5	17.0
Turnover Margin	-0.2	+0.8
Steals Per Game	7.3	9.8
Blocks Per Game	4.8	3.3

Michigan State vs. Iowa Series History

Iowa trails, 33-24 Last 10 Meetings Listed Below

1/27/11	at Iowa	W, 66-64
1/13/11	at MSU	L, 60-63
3/6/10	at Big Ten Tourney	W, 59-54
2/7/10	at Iowa	W, 77-66
1/29/09	at MSU	L, 56-68
2/7/08	at Iowa	W, 82-64
1/10/07	at MSU	L, 65-73
1/21/07	at MSU	L, 57-67
1/14/07	at Iowa	L, 63-83
3/3/06	at Big Ten Tourney	L, 58-79

How Many Times a Hawkeye Player...

Scored 20 or More Points

Jaime Printy	9
Morgan Johnson	7
Kamille Wahlin	2
Samantha Logic	2

Scored 15 or More Points

Jaime Printy	15
Morgan Johnson	12
Kamille Wahlin	8
Samantha Logic	4
Melissa Dixon	2
Kelly Krei	1

Grabbed 10 or More Rebounds

Morgan Johnson	4
Kelly Krei	3
Samantha Logic	2
Kalli Hansen	1

Grabbed 7 or More Rebounds

Morgan Johnson	12
Kelly Krei	11
Samantha Logic	9
Jaime Printy	1
Kalli Hansen	1
Theairra Taylor	1
Virginia Johnson	1

Dished out 7 or More Assists

Jaime Printy	4
Kamille Wahlin	2

Dished out 5 or More Assists

Jaime Printy	9
Kamille Wahlin	7
Samantha Logic	7
Kelly Krei	1
Kathryn Reynolds	1

Recorded 4 or More Steals

Kelly Krei	1
Jaime Printy	1

Blocked 3 or More Shots

Morgan Johnson	11
Virginia Johnson	1

2011-12 Margin of Victory/Defeat

Points	1	2	3	4	5	6	7	8	9	10-14	15-19	20+
Wins	0	0	0	1	0	2	1	1	1	2	3	4
Losses	0	1	1	0	1	0	1	2	0	2	2	0

IOWA HISTORY

Iowa has played 1,092 games since beginning basketball in 1974. Iowa's overall record is 667-424 (.611). That includes a 336-170 (.664) mark in regular season Big Ten contests and a 320-91 (.779) mark in Carver-Hawkeye Arena.

SCOUTING MICHIGAN STATE

The Michigan State Spartans are 15-9 overall and 7-4 in Big Ten play. Michigan State has won its last three contests, after dropping four-straight.

In its last game, Michigan State defeated Northwestern in East Lansing, 72-58. Four Spartans scored double figures, led by Porsche Poole's 20 points. Lykendra Johnson had 12 points, Taylor Alton had 11 and Kiana Johnson had 10. Michigan State shot 52.2 percent (12-of-23) in the second half to seal the win.

Poole leads the team with 13.2 points per game. Lykendra Johnson is next at 10.4 points and leads the team with 8.9 rebounds per contest.

As a team, Michigan State is shooting 41.6 percent (588-of-1412) from the field, including 31.9 percent (145-of-454) from 3-point distance.

MICHIGAN STATE VS. IOWA NOTES

- Sunday's contest is the 58th meeting between Iowa and Michigan State, with the Hawkeyes leading the all-time series, 33-24. Iowa has won four of the last six meetings. The Hawkeyes are 18-8 in games played in Iowa City.

LAST MEETING

Iowa held on for an exciting, 66-64 victory over No. 10 Michigan State in Iowa City (Jan. 27, 2011).

Iowa held a two-point lead with just over five seconds remaining. Michigan State's Kalisha Keane missed a three-pointer that would have won the game, and Lykendra Johnson missed two-straight layups that would have sent the game to overtime.

Iowa was lights out from the field, shooting 50 percent (24-of-48) from the field, including 46.2 (6-of-13) from beyond the arc. The Hawkeyes out-scored Michigan State, 32-26, in the paint.

Kachine Alexander led the way with 23 points, 11 rebounds and three steals while playing all 40 minutes. Kelly Krei and Jaime Printy each added 11 points, while Kamille Wahlin chipped in eight points, four rebounds and six assists with zero turnovers.

OPPONENTS IN THE RANKINGS

Five Iowa opponents are ranked in the AP or ESPN/USA Today polls: Ohio State (10/10), Nebraska (13/15), Texas A&M (15/14), Purdue (16/19) and Penn State (18/21).

In addition, Kansas State and St. John's are receiving votes.

2011-12 Iowa Hawkeye Roster

No.	Name	Yr.	Ht.	Pos.	Hometown (High School/College)
2	Kamille Wahlin	Sr.	5-8	G	Crookston, Minn. (Crookston)
3	Kalli Hansen	Sr.	5-11	F	Olin, Iowa (Kirkwood CC)
4	Megan Considine	Sr.	5-8	G	Byron, Ill. (Byron)
11	Trisha Nesbitt	Jr.	5-7	G	Ames, Iowa (Ames)
12	Morgan Johnson	Jr.	6-5	C	Platte City, Mo. (Platte County)
20	Kelly Krei	Sr.	6-2	F	Iowa City, Iowa (City)
21	Melissa Dixon	Fr.	5-8	G	Johnsburg, Ill. (Johnsburg)
22	Samantha Logic	Fr.	5-9	G	Racine, Wis. (Racine J.I. Case)
23	Theairra Taylor	RS So.	5-11	G	St. Paul, Minn. (Central)
24	Jaime Printy	Jr.	5-11	G	Marion, Iowa (Linn-Mar)
32	Jade Rogers	So.	6-0	F	Cedar Rapids, Iowa (Kennedy)
33	Kathryn Reynolds	Fr.	5-7	G	Cincinnati, Ohio (Mount Notre Dame)
34	Virginia Johnson	Fr.	6-2	F	Iowa City, Iowa (City)
51	Bethany Doolittle	Fr.	6-4	C	Oakdale, Minn. (Hill-Murray)

Head Coach: Lisa Bluder Associate Head Coach: Jan Jensen

Assistant Coaches: Jenni Fitzgerald and Shannon Gage



2011-12 Team Captains

Iowa captains are seniors Kamille Wahlin, Kelly Krei and Megan Considine

HAWKEYES GROUND GOPHERS

Iowa used a balanced attack to defeat Minnesota, 75-58 (Feb. 9) in Iowa City.

Three Hawkeyes scored double figures, with two players hitting 20 points. Morgan Johnson led the way with 23 points on 9-of-13 shooting. Samantha Logic had 20 points on 7-of-10 shooting and added nine rebounds and six assists. Kamille Wahlin had 19 points, six rebounds and five assists.

Iowa owned the boards against Minnesota, outrebounding the Gophers 43-26, including 14-6 on the offensive glass. The Hawkeyes also tallied 21 assists on 26 made field goals.

JOHNSON NETS 1,000

Junior Morgan Johnson became the 32nd player in school history to score 1,000 career points, hitting the milestone against Minnesota (Feb. 9).

Johnson entered the game needing 19 points to join the elite club and finished with 23. She is the third active Hawkeye to score 1,000 career points (Wahlin and Printy).

MORE MILESTONES FOR WAHLIN

Senior Kamille Wahlin became the first player in Iowa school history to record 400 career assists and 200 made 3-pointers in Iowa's win over Minnesota (Feb. 9).

Wahlin is just the fourth player in school history to collect 400 career assists. She is one of only three players to have 200 career 3-pointers, reaching the mark at Penn State this season (Jan. 22).

LOGIC HEATING UP

Samantha Logic netted a career-high 20 points in Iowa's overtime win at Wisconsin (Feb. 2) and tied the career mark two games later against Minnesota (Feb. 9).

Logic was 7-of-14 from the field and 6-of-8 from the free throw line at Wisconsin, with over 100 fans from her hometown of Racine, Wis. in attendance. She shot 7-of-10 from the field and 5-of-6 from the charity stripe against Minnesota.

STAT SHEET STUFFER

Freshman Samantha Logic has contributed in numerous areas during her first season at Iowa.

- Logic has grabbed at least five rebounds in 18 games, including 13 games with at least three offensive rebounds.
- She has dished out at least four assists in 14 games.
- Logic has scored 10 or more points eight times.

NUMBERS OVER WINNING STREAK

Iowa has recorded some impressive figures over the current four-game winning streak.

- As a team, Iowa is shooting 44.7 percent from the field (114-of-255).
- Iowa is averaging 17.8 assists per game and holds a +6.8 rebounding margin.
- Morgan Johnson is averaging 19.8 points, 8.3 rebounds 2.8 blocks and is shooting 61.1 percent from the field (33-of-54).
- Kamille Wahlin is averaging 17 points and shooting 39.4 percent from 3-point range (13-of-33).
- Samantha Logic is scoring 11.5 points per game and is dishing out 5.5 assists per contest.

Head Coach Lisa Bluder

Lisa Bluder (pronounced BLUE-dir) is in her 12th season as head coach at the University of Iowa and her 28th season as a college head coach. She is a three-time Big Ten and two-time WBCA Regional Coach of the Year.

Bluder, 48, has a career record of 582-284 (.672), including a 226-142 (.614) record at Iowa, a 187-106 (.638) record in 10 seasons (1990-2000) at Drake and a six-year mark (1984-90) of 169-36 (.824) at St. Ambrose.

Bluder is Iowa's second all-time winningest coach and trails only C. Vivian Stringer. She has guided the Hawkeyes to 10 post-season tournaments (8 NCAA, 2 WNIT) and eight upper-division finishes in the Big Ten Conference, including winning a share of the league championship in 2008 and tying for second place in 2009.

In her first season with the Hawkeyes, Bluder transformed a struggling program into a 21-game winner. Iowa finished second in the Big Ten, won the conference tournament and advanced to the second round of the NCAA Tournament. Bluder became Iowa's third coach to be named Big Ten Coach of the Year. She was also honored as the College Coach of the Year by the *Women's Basketball News Service* and was named the WBCA District 6 Coach of the Year. Iowa's 2001-02 squad finished fourth in the Big Ten and advanced to the second round of the NCAA Tournament for the second consecutive year. In 2003, Bluder guided the Hawkeyes to their first-ever WNIT appearance. Iowa, which had nine underclassmen on its roster, advanced to the quarterfinals before falling to Creighton. In 2004-05, Iowa finished 23-10, starting the year 13-0 and was the last Division I undefeated team standing. In 2005-06, Bluder mentored a team plagued by injuries to a fifth-place Big Ten finish and an NCAA Tournament berth.

In her 10 years at Drake, Bluder brought great success and tradition to the Bulldog program and established herself as one of the top coaches in the country. She led Drake to five 20-plus win seasons in her last six years, including five post-season appearances. She guided the Bulldogs to eight Missouri Valley Conference Tournament appearances, reaching the semifinals six times and winning the tournament four times. Bluder was also named the Conference Coach of the Year three times at Drake.

Bluder began her coaching career at St. Ambrose, where she coached six successful seasons, building the Bees into a NAIA powerhouse. During her tenure at St. Ambrose, Bluder guided the Bees to four straight national tournaments, including two consecutive Final Four appearances. The 1990 St. Ambrose team was ranked No. 1 and Bluder was named the NAIA Converse Coach of the Year.

A graduate of Linn-Mar High School in Marion, Iowa, Bluder was a three-year starter at Northern Iowa. She graduated from UNI in 1983 with a bachelor's degree in marketing.



Press Conferences

Below is a list of press conferences for Head Iowa Women's Basketball Coach Lisa Bluder. Press conferences will be held in the Media Room on the first floor of Carver-Hawkeye Arena. Select student-athletes will be available after Coach Bluder addresses the media

Wednesday, February 15 11:15 a.m.

Wednesday, February 22 11:15 a.m.

Tuesday, February 28 11:15 a.m.

Big Ten Coaches Teleconferences

The Big Ten Conference has scheduled a teleconference to preview the Big Ten Tournament. The teleconference will be held Tuesday, Feb. 28

Contact the Big Ten office of the Iowa Athletic Communications Office for the tele-conference and play-back phone numbers. Below is a schedule of coaches.

9:00Felisha Legette-Jack, Indiana

9:08Kevin Borseth, Michigan

9:16Coquese Washington, PSU

9:24Sharon Versyp, Purdue

9:32Joe McKeown, Northwestern

9:40Bobbie Kelsey, Wisconsin

9:48Suzy Merchant, Michigan St.

9:56Jim Foster, Ohio St.

10:04Lisa Bluder, Iowa

10:12Pam Borton, Minnesota

10:20Jollette Law, Illinois

10:28Connie Yori, Nebraska

Satellite Coordinates Information

Below is the information for the 2011-12 University of Iowa winter sports uplinks
Galaxy 19C, Transponder 04 -- 3:30-3:45 (CT)
December 1, 8, 15, 22 - January 5, 12, 19, 26 - February 2, 9, 16, 23- March 1, 8

WAHLIN BECOMING GO-TO PLAYER ON OFFENSE

Senior Kamille Wahlin has become Iowa's main scoring option over the last seven games. Dating back to Iowa's win vs. Wisconsin on Jan. 19, Wahlin is averaging 16.4 points, shooting 44.8 percent from the field (39-of-87) and 38.5 percent from 3-point distance (20-of-52). She has also created shots for her teammates with 3.9 assists per contest.

IOWA GUARDS LIKE TO SHARE

Iowa is the only team to have three players ranked inside the top 15 in assists in the latest Big Ten statistics.

Jaime Printy (sixth - 4.2), Samantha Logic (eighth - 3.8) and Kamille Wahlin (ninth - 3.7) are all ranked.

Iowa leads the Big Ten and ranks 19th in the NCAA in assists per game (16.5) and is third in the Big Ten and 23rd in the NCAA in assist/turnover ratio (1.0).

The Hawkeyes could potentially break the school record for team assists in a season. The record of 468 assists was set in 2003 and 2010. Iowa currently has 412 assists.

IOWA RANKS HIGH IN FREE THROW PERCENTAGE

Iowa is shooting 80 percent (372-of-465) from the free throw line, which leads the Big Ten and ranks fourth in the NCAA.

The Hawkeyes haven't missed more than 10 free throws in any game this year and have attempted at least 10 in all but one contest, including 10 games with 20 or more attempts.

HAWKEYES IN CONFERENCE ONLY STATS

- Iowa leads the Big Ten in assists per game (16.5) and assist/turnover ratio (1.1). The Hawkeyes rank second in field goal defense (.368).
- Morgan Johnson is second in the Big Ten in field goal percentage (.590) and blocks per game (2.4). Kamille Wahlin is second in 3-pointers made per game (2.5).

JOHNSON FROM THE FIELD

Junior Morgan Johnson leads the Big Ten and is 13th in the nation with a 55.1 (145-of-263) field goal percentage.

Johnson has attempted at least 10 shots in 13 of Iowa's 25 games this season. In 10 of those games, Johnson has shot 50 percent or better.

Johnson was 5-of-10 (.500) vs. Harvard, 9-of-13 (.692) at Northern Iowa, 6-of-11 (.545) at Kansas State, 5-10 (.500) at Iowa State, 13-20 (.650) at Bradley, 11-16 (.688) at Ohio State, 5-of-10 (.500) vs. Illinois, 9-of-14 (.643) vs. Nebraska, 12-of-20 (.600) at Wisconsin and 9-of-13 (.692) vs. Minnesota.

WAHLIN AND PRINTY ARE BEST ACTIVE 3-POINT SHOOTERS

Iowa senior Kamille Wahlin and junior Jaime Printy rank first and second among active Big Ten players in career 3-pointers made.

Wahlin's 216 career 3-pointers ranks first, while Printy's 197 rank second. Michigan's Carmen Reynolds is third with 193, Purdue's Brittany Rayburn is fourth with 183, Ohio State's Samantha Prahalis is fifth with 177 and Penn State's Maggie Lucas is sixth with 171.

HAWKEYE 3-POINT SHOOTERS IN ELITE COMPANY

Iowa is the only Big Ten school, and just one of three in the nation, to boast three players inside the top 10 in career 3-point shooting in school history.

Kamille Wahlin (third), Jaime Printy (fourth) and Kelly Krei (seventh) all rank inside the top 10 in career 3-pointers made at Iowa. Only Oral Roberts and Miami (Fla.) have three players inside its respective top 10.



Big Ten Overall Individual Stats (Thru Feb. 9)

Jaime Printy	Rank	Avg.	Kamille Wahlin	Rank	Avg.
Free Throw Percentage	3rd	.888	3-Point Percentage	6th	.380
Scoring	5th	16.9	Assist/Turnover Ratio	7th	1.4
Assists	6th	4.2	3-Pointers Made	8th	2.0
Assist/Turnover Ratio	8th	1.4	Assists	9th	3.7
Steals	8th	2.0	Scoring	21st	12.2
3-Pointers Made	9th	2.0			
Morgan Johnson	Rank	Avg.	Samantha Logic	Rank	Avg.
Field Goal Percentage	1st	.551	Offensive Rebounds	7th	2.5
Blocks	2nd	2.3	Assists	8th	3.8
Rebounding	9th	6.8	Assist/Turnover Ratio	11th	1.1
Scoring	10th	14.9	Rebounding	15th	6.1
Offensive Rebounds	11th	2.3			
Defensive Rebounds	13th	4.5	Kelly Krei	Rank	Avg.
			3-Point Percentage	14th	.337
			Offensive Rebounds	14th	1.8
			Rebounding	17th	6.0

PRINTY AND WAHLIN SCORING NOTES

Junior Jaime Printy became just the 13th player in school history to score 1,300 career points in Iowa's game vs. Nebraska (Jan. 8), and senior Kamille Wahlin joined the 1,300 point club in Iowa's game at Penn State (Jan. 22).

Printy also became just the 10th player in Iowa history to hit the 1,400 point mark in Iowa's win over Purdue (Jan. 28).

Printy cracked the top 10 on Iowa's career scoring list against Wisconsin (Jan. 19). She entered the game needing five points to pass Wendy Ausdemore for 10th place, and she netted 25.

DIXON SHINES IN FIRST CAREER START

Freshman Melissa Dixon recorded her first career start at Indiana (Feb. 5) in place of the injured Jaime Printy and recorded career-highs in nearly every statistical category.

Dixon finished with career bests in points (19), field goals made (7), 3-pointers made and attempted (5-for-10), steals (3) and minutes played (28).

DOUBLE-DOUBLE SQUARED

Junior Morgan Johnson and freshman Samantha Logic each recorded double-doubles in Iowa's win at Wisconsin (Feb. 2). The last time Iowa had two players record a double-double in the same game was Nov. 20, 2010 against Northeastern. Johnson had 22 points and 10 rebounds while Kachine Alexander had 21 points and 12 boards.

Logic's double-double against Wisconsin was the second of her career. She scored 10 points and grabbed 11 rebounds at Northern Iowa (Nov. 19) for her first career double-double.

Logic's first double-double was the first for an Iowa freshman since the 2009-10 season. Morgan Johnson had 16 points and 11 rebounds vs. Purdue (Jan. 31, 2010).

Logic's 20 points, 13 rebounds and eight assists at Wisconsin were all career highs.

Johnson's double-double was the fourth of the season and 11th of her career. Iowa's starting center recorded back-to-back double-doubles for the first time in her career earlier this season. She scored 14 points (5-of-10 FGs) and grabbed a career-high 16 rebounds against Illinois. Johnson followed with 21 points (9-of-14 FGs) and 12 rebounds against Nebraska. Johnson had a double-double at half against the Huskers (10 points and 11 rebounds).

OVERTIME NOTES

Iowa is now 2-1 in overtime this season, defeating Illinois and Wisconsin and falling at Kansas State. The three overtime games in a single season ties the school record (2009-10, 2003-04, 1997-98).

PRINTY SUFFERS TORN ACL

Iowa's leading scorer, Jaime Printy, suffered a torn ACL in her left knee in Iowa's win at Wisconsin (Feb. 2). Printy underwent successful surgery on Feb. 7 and will miss the rest of the 2012 season.

Printy has started every game since her freshman season, totaling 88 starts/games played.

Big Ten Overall Stats (Thru Feb. 9)

Scoring Offense	
1. Ohio State	77.1
4. Iowa	71.6
Scoring Defense	
1. Purdue	56.0
8. Iowa	65.2
Scoring Margin	
1. Ohio State	+15.4
7. Iowa	+6.4
Free Throw Percentage	
1. Iowa	.800
Field Goal Percentage	
1. Ohio State	.472
4. Iowa	.417
Field Goal Percentage Defense	
1. Penn State	.338
7. Iowa	.383
3-Point Field Goals Made	
1. Nebraska	7.5
2. Iowa	6.8
3-Point Field Goal Percentage	
1. Ohio State	.383
6. Iowa	.318
3-Point Field Goal Percentage Defense	
1. Penn State	.264
10. Iowa	.326
Rebounding	
1. Nebraska	43.8
5. Iowa	40.0
Rebounding Allowed	
1. Michigan State	33.4
6. Iowa	37.9
Rebounding Margin	
1. Michigan State	+6.5
5. Iowa	+2.1
Offensive Rebounds	
1. Indiana	16.3
8. Iowa	13.0
Defensive Rebounds	
1. Penn State	29.7
3. Iowa	26.9
Blocked Shots	
1. Purdue	5.5
4. Iowa	4.8
Assists	
1. Iowa	16.5
Steals	
1. Purdue	10.7
11. Iowa	7.3
Turnover Margin	
1. Michigan	+3.7
8. Iowa	-0.2
Assist/Turnover Ratio	
1. Ohio State	1.2
3. Iowa	1.0



Big Ten League Stats (Thru Feb. 9)

Scoring Offense	
1. Ohio State	74.7
4. Iowa	69.1
Scoring Defense	
1. Michigan	60.9
5. Iowa	63.6
Scoring Margin	
1. Penn State	+11.4
4. Iowa	+5.5
Free Throw Percentage	
1. Wisconsin	.772
3. Iowa	.765
Field Goal Percentage	
1. Ohio State	.472
4. Iowa	.413
Field Goal Percentage Defense	
1. Purdue	.360
2. Iowa	.368
3-Point Field Goals Made	
1. Nebraska	7.4
3. Iowa	6.4
3-Point Field Goal Percentage	
1. Ohio State	.430
9. Iowa	.303
3-Point Field Goal Percentage Defense	
1. Penn State	.277
3. Iowa	.301
Rebounding	
1. Penn State	43.2
5. Iowa	40.6
Rebounding Allowed	
1. Michigan State	34.2
7. Iowa	37.9
Rebounding Margin	
1. Penn State	+6.5
4. Iowa	+2.7
Offensive Rebounds	
1. Indiana	15.7
5. Iowa	13.1
Defensive Rebounds	
1. Penn State	28.8
3. Iowa	27.5
Blocked Shots	
1. Ohio State	6.7
5. Iowa	4.5
Assists	
1. Iowa	16.5
Steals	
1. Purdue	11.1
8. Iowa	7.3
Turnover Margin	
1. Michigan	+4.7
7. Iowa	+0.0
Assist/Turnover Ratio	
1. Iowa	1.1

Big Ten League Individual Stats (Thru Feb. 9)

Jaime Printy	Rank	Avg.	Morgan Johnson	Rank	Avg.
Assists	4th	4.6	Field Goal Percentage	2nd	.590
Assist/Turnover Ratio	4th	1.6	Blocks	2nd	2.4
Minutes Played	5th	36.7	Rebounding	4th	8.7
Free Throw Percentage	6th	.852	Offensive Rebounds	4th	2.9
Scoring	7th	16.5	Defensive Rebounds	5th	5.8
Steals	T-7th	2.0	Scoring	9th	15.8
3-Pointers Made	8th	2.1			
Kamille Wahlin	Rank	Avg.	Samantha Logic	Rank	Avg.
3-Pointers Made	2nd	2.5	Assists	6th	4.3
Minutes Played	3rd	37.3	Assist/Turnover Ratio	6th	1.3
Free Throw Percentage	4th	.903	Offensive Rebounds	9th	2.6
Assist/Turnover Ratio	5th	1.5	Rebounding	17th	6.1
Assists	9th	3.8			
3-Pointers Made	9th	.405	Kelly Krei	Rank	Avg.
Scoring	12th	15.2	Minutes Played	6th	35.8
			Offensive Rebounds	11th	2.3
			Rebounding	12th	7.0
			Defensive Rebounds	T-14th	4.8

WAHLIN DELIVERS IN THE CLUTCH

Iowa's game against Illinois (Jan. 5) marked the seventh time in Kamille Wahlin's four-year career that she hit a shot in the final 1:05 of a game or overtime to either tie the game or give the Hawkeyes a lead.

Year	Opponent	Time Remaining	Type of Shot	Result
Sr.	Illinois	10 seconds	3-pointer	Tied game
Sr.	UNI	31 seconds	3-pointer	2 pt. lead
Jr.	Michigan St.	10 seconds	3-pointer	Tied game
Jr.	Drake	50 seconds	2-pointer	2 pt. lead
So.	Michigan St.	1:04	3-pointer	3 pt. lead
So.	Wisconsin	35 seconds in OT	3-pointer	5 pt. lead
So.	Columbia	16 seconds	3-pointer	3 pt. lead

REACHING DOUBLE FIGURES

Iowa's game vs. Minnesota (Feb. 9) marked the 16th time this season that at least three players have scored 10 or more points.

The Hawkeyes had all five starters score double figures against Mississippi Valley State. Four players hit double figures against Northern Iowa, Kansas State, Western Illinois, Northwestern and at Indiana. Three players reached double digits against Harvard, Albany, Ohio State, Illinois, Nebraska, at Purdue, vs. Wisconsin, at Nebraska, at Wisconsin and vs. Minnesota.

MOVING UP CAREER CHARTS

Four Hawkeyes are currently working their way up the career records lists at Iowa.

- Kamille Wahlin ranks third in career 3-pointers made (216), fourth in career assists (401) and 11th in career scoring (1,389). She needs six more 3-pointers to move past Wendy Ausdemore into second place, 12 more assists to move past Kristi Smith for third place and 21 more points to pass Jaime Printy for 10th place.
- Morgan Johnson ranks second in career blocks (213), 15th in career rebounds (595) and 32nd in career scoring (1,004). She needs 23 more blocks to move past Tangela Smith for first place, 20 more rebounds to move past Lynn Kennedy for 14th place and 21 more points to pass Tiffany Gooden for 31st place.
- Jaime Printy ranks fourth in career 3-pointers made (197), 10th in career scoring (1,409) and 12th in career assists (304). She needs 20 more 3-pointers to move past Wahlin for third place, 31 more points to move past Megan Skouby for ninth place and 19 more assists to move past Lisa Anderson for 11th place.
- Kelly Krei ranks seventh in career 3-pointers made (151) and 18th in career rebounds (524). She needs six more 3-pointers to move past Leah Magner into sixth place and four more rebounds to pass Kim Howard for 17th place.



2011-12 Big Ten Standings/Schedule (Thru Feb. 9)

Team	Big Ten	Pct.	Overall	Pct.	Sunday, February 12
Purdue	9-2	.818	19-5	.792	Penn State at Northwestern (BTN)
Penn State	9-3	.750	19-5	.792	
Ohio State	8-3	.727	21-3	.875	Illinois at Indiana (BTN.com)
Nebraska	8-3	.727	19-4	.826	
Michigan State	7-4	.636	15-9	.625	Michigan State at Iowa (BTN)
Michigan	7-5	.583	18-7	.720	Purdue at Ohio State (ESPN2)
Iowa	7-5	.583	15-10	.600	
Minnesota	4-8	.333	12-14	.462	<u>Monday, February 13</u>
Wisconsin	4-8	.333	8-16	.333	Nebraska at Minnesota (BTN)
Northwestern	3-8	.273	13-11	.542	
Illinois	3-9	.250	9-16	.360	
Indiana	0-11	.000	5-19	.208	

LOGIC AND JOHNSON AMONG BEST IN THEIR CLASS

- Morgan Johnson now holds the Iowa record for blocks by a junior with 58. The previous record was 47 by Toni Foster during the 1991-92 season.
- Samantha Logic ranks second in Iowa freshman assists with 96. Jaime Printy holds the record with 99. She is also third in steals with 37 and Johanna Solverson holds the record with 57.

HAWKEYES CONTINUE TREND AGAINST RANKED OPPONENTS

Iowa's win over 13th-ranked Purdue marks the 13th time under Lisa Bluder that the Hawkeyes have defeated a top-15 team.

The Hawkeyes have recorded at least one win against a top-25 team in all but two seasons under Bluder. In eight of those seasons, Iowa has knocked off at least one top-15 opponent.

JOHNSON RECORDS SOLID PLAY VS. TOUGH OPPONENTS

Junior Morgan Johnson averaged 19 points, 9.8 rebounds and 2.8 blocks in Iowa's four games at No. 9 Ohio State, vs. Illinois vs. No. 19 Nebraska and at No. 17 Purdue.

Johnson shot 57.1 percent (32-of-56) from the field and 75 percent (12-of-16) from the charity stripe over the four-game stretch.

JOHNSON NAMED BIG TEN PLAYER OF THE WEEK

Junior Morgan Johnson was named Big Ten Player of the Week after a career night at Bradley (Dec. 17).

Johnson notched career highs in points (37), field goals made (13), free throws made (11) and free throws attempted (12). Her 37 points were also a Renaissance Coliseum record and are the second-most scored by any player in the Big Ten, so far, this season.

Johnson's 37 points were the most for an Iowa center since Megan Skouby netted 33 at Kansas in 2008. Skouby finished the game 10-of-17 from the field and 13-of-14 from the free throw line.

The award was Johnson's first Big Ten Player of the Week honor. She was named Big Ten Freshman of the Week once during her first season at Iowa.

HAWKEYES SET FREE THROW RECORDS

Iowa tied the school and Carver-Hawkeye Arena record for free throw percentage against Wisconsin (Jan. 19).

The Hawkeyes were a perfect 16-of-16 from the charity stripe against the Badgers, marking the fourth time in school history, and just the second time in Carver-Hawkeye Arena, an Iowa team has converted every free throw attempt when shooting at least 10 free throws. Iowa was also a perfect 10-of-10 against UNLV earlier this season.

There have been five times this season a Big Ten team has converted every free throw when shooting at least 10 from the charity stripe, with Iowa having two of those performances.

Iowa also finished 27-of-30 (.900) from the free throw line at Bradley (Dec. 17), which is believed to be a school record for free throw percentage (minimum 30 attempts).

Career Scoring in Iowa History

Rank	No.	Player	Years
8	1455	Kristi Smith	05-09
9	1439	Megan Skouby	05-09
10	1409	Jaime Printy	10-Pr
11	1389	Kamille Wahlin	09-Pr
30	1046	Robin Anderson	80-85
31	1024	Tiffany Gooden	94-98
32	1004	Morgan Johnson	10-Pr

Career 3-Pointers in Iowa History

Rank	No.	Player	Years
1	261	Lindsey Meder	98-02
2	221	Wendy Ausdemore	05-09
3	216	Kamille Wahlin	09-Pr
4	197	Jaime Printy	10-Pr
5	185	Kristi Smith	05-09
6	156	Leah Magner	98-02
7	151	Kelly Krei	09-Pr

Career Blocks in Iowa History

Rank	No.	Player	Years
1	235	Tangela Smith	94-98
2	213	Morgan Johnson	10-Pr

Career Rebounds in Iowa History

Rank	No.	Player	Years
13	615	Kachine Alexander	08-11
14	614	Lynn Kennedy	83-87
15	595	Morgan Johnson	10-Pr
17	536	Kim Howard	78-82
18	533	Kelly Krei	09-Pr

Career Assists in Iowa History

Rank	No.	Player	Years
2	431	Michelle Edwards	84-88
3	412	Kristi Smith	05-09
4	401	Kamille Wahlin	09-Pr
11	322	Lisa Anderson	80-84
12	304	Jaime Printy	10-Pr

Hawkeyes in NCAA Stats (Thru Feb. 9)

Iowa	Rank	Avg.
Free Throw Percentage	4th	80.0
Assists	19th	16.5
Assist/Turnover Ratio	23rd	1.0
3-Pointers Made Per Game	29th	6.8
Scoring Offense	36th	71.6
Blocks	41st	4.8
Field Goal Percentage	60th	41.7
Scoring Margin	85th	+6.4
Jaime Printy	Rank	Avg.
Free Throw Percentage	7th	88.8
Points Per Game	65th	16.9
Morgan Johnson	Rank	Avg.
Field Goal Percentage	13th	55.1
Blocks Per Game	29th	2.3





University of Iowa Women's Basketball

Updated Iowa Player Bio

Kamille Wahlin



2

2011-12 Game-by-Game

Guard, 5-8, Senior
Crookston MN
Crookston HS

- Ranks third in career three-pointers made (216), fourth in career assists (401) and 11th in career scoring (1,389).
- Named team captain.
- 19 points, six rebounds and five assists in win over Minnesota.
- 22 points, four rebounds and six assists in win at Indiana.
- 14 points, four rebounds and four assists in win at Wisconsin.
- 13 points, four rebounds and two assists in win over Purdue.
- 21 points (7-15 FGs, 5-10 3Pt. FGs) at Penn State.
- 13 points, including game-tying three-pointer with 10 seconds remaining to force overtime, in win over Illinois
- 17 points (4-5 3Pt. FGs) at Ohio State.
- 16 points, six rebounds and seven assists in win over Northwestern.
- Hawkeye Challenge all-tournament team selection.
- Hit go-ahead three-pointer with 31 seconds left for win at Northern Iowa.
- 15 points and three assists vs. UNLV.
- Honorable mention All-Big Ten selection by league coaches and media in 2010-11.
- Academic All-Big Ten in 2010-11.

				Total		3-Pointers		Free throws		Rebounds											
Opponent	Date	gs	min	fg-fga	pct	3fg-fga	pct	ft-fa	pct	off	def	tot	avg	pf	a	t/o	blk	stl	pts	avg	
HARVARD	11/12/11	*	22	3-5	.600	2-4	.500	1-2	.500	1	0	1	1.0	3	2	2	0	1	9	9.0	
UNLV	11/13/11	*	38	6-13	.462	3-9	.333	0-0	.000	0	2	2	1.5	0	3	2	0	2	15	12.0	
ALBANY	11/16/11	*	26	3-5	.600	1-3	.333	2-2	1.000	0	4	4	2.3	0	2	3	0	0	9	11.0	
at UNI	11/19/11	*	36	4-12	.333	2-6	.333	0-0	.000	1	3	4	2.8	1	2	3	0	1	10	10.8	
vs St. John's	11/25/11	*	33	2-9	.222	1-8	.125	2-2	1.000	1	4	5	3.2	0	3	4	0	1	7	10.0	
vs Texas A&M	11/26/11	*	23	2-8	.250	1-3	.333	0-0	.000	0	1	1	2.8	2	4	4	0	1	5	9.2	
VIRGINIA TECH	11/30/11	*	30	0-3	.000	0-0	.000	0-0	.000	0	4	4	3.0	3	3	1	0	2	0	7.9	
at Kansas State	12/3/11	*	43	4-6	.667	3-4	.750	2-2	1.000	0	3	3	3.0	2	4	2	1	1	13	8.5	
at Iowa State	12/7/11	*	38	1-6	.167	0-2	.000	3-6	.500	1	4	5	3.2	0	3	4	0	0	5	8.1	
WESTERN ILLINOIS	12/9/11	*	22	6-10	.600	2-4	.500	0-0	.000	1	1	2	3.1	1	5	0	0	0	14	8.7	
at Bradley	12/17/11	*	32	8-13	.615	0-3	.000	2-2	1.000	0	4	4	3.2	3	6	2	0	2	18	9.5	
DRAKE	12/20/11	*	24	1-3	.333	0-1	.000	2-2	1.000	0	0	0	2.9	0	3	2	0	2	4	9.1	
MVSU	12/22/11	*	30	4-10	.400	4-8	.500	2-2	1.000	0	4	4	3.0	1	7	5	0	0	14	9.5	
NORTHWESTERN	12/30/11	*	28	5-11	.455	4-7	.571	2-2	1.000	0	6	6	3.2	0	7	1	0	0	16	9.9	
at Ohio State	01/02/12	*	37	4-9	.444	4-5	.800	5-6	.833	0	3	3	3.2	2	2	4	0	0	17	10.4	
ILLINOIS	1/5/12	*	42	4-14	.286	1-4	.250	4-4	1.000	1	3	4	3.3	0	4	2	0	2	13	10.6	
NEBRASKA	1/8/12	*	38	6-14	.429	0-3	.000	0-0	.000	0	1	1	3.1	1	4	1	0	1	12	10.6	
at Purdue	01/15/12	*	36	4-9	.444	1-3	.333	0-0	.000	1	3	4	3.2	2	2	3	2	0	9	10.6	
WISCONSIN	1/19/12	*	38	4-8	.500	1-4	.250	6-6	1.000	0	4	4	3.2	2	5	6	0	1	15	10.8	
at Penn State	1/22/12	*	37	7-15	.467	5-10	.500	2-2	1.000	0	2	2	3.2	2	1	1	0	0	21	11.3	
at Nebraska	01/26/12	*	39	3-9	.333	1-5	.200	4-4	1.000	0	1	1	3.0	3	4	5	0	1	11	11.3	
PURDUE	1/28/12	*	38	5-13	.385	3-7	.429	0-1	.000	0	4	4	3.1	1	2	3	0	0	13	11.4	
at Wisconsin	02/02/12	*	43	5-13	.385	2-8	.250	2-2	1.000	0	4	4	3.1	0	4	2	0	0	14	11.5	
at Indiana	02/05/12	*	37	9-18	.500	3-9	.333	1-2	.500	0	4	4	3.2	1	6	1	0	2	22	11.9	
MINNESOTA	2/9/12	*	35	6-11	.545	5-9	.556	2-2	1.000	0	6	6	3.3	1	5	2	0	0	19	12.2	
Totals			25	845	106-247	.429	49-129	.380	44-51	.863	7	75	82	3.3	31	93	65	3	20	305	12.2

Games played: 25
Minutes/game: 33.8
Points/game: 12.2
FG Pct: 42.9
3FG Pct: 38.0
FT Pct: 86.3

Rebounds/game: 3.3
Assists/game: 3.7
Turnovers/game: 2.6
Assist/turnover ratio: 1.4
Steals/game: 0.8
Blocks/game: 0.1

Personal Bests

Points: 33 at UNI (11/22/09)
Rebounds: 11 vs. James Madison (11/25/10)
FGM: 11 at UNI (11/22/09)
FGA: 19 at UNI (11/22/09)
3-pt FG: 7 at Penn State (12/28/09)
3-pt FGA: 15 at Penn State (12/28/09)
FTM: 6, twice, last vs. Wisconsin (1/19/12)
FTA: 6, 6X, last vs. Wisconsin (1/19/12)
Assists: 10 vs. Michigan (1/26/09)
Steals: 4 vs. Wisconsin (12/31/09)
Blocks: 2 at Purdue (1/15/12)
Minutes: 43, 3X, last at Wisconsin (2/2/12)

CAREER STATISTICS

YEAR	G/GS	FG-A	PCT	3-PT	PCT	FT-A	PCT	O-D-REB	AVG	PF-FO	AS	TO	BK	ST	PTS	AVG
Fresh.	32/14	90-191	.471	28-68	.412	35-46	.761	19-83-102	3.2	27-0	87	60	1	22	243	7.6
Soph.	33/33	171-416	.411	84-225	.373	43-51	.843	7-109-116	3.5	57-0	104	115	1	31	469	14.2
Junior	31/31	133-345	.386	55-180	.306	51-60	.850	5-98-103	3.3	35-0	117	89	3	23	372	12.0
Senior	25/25	106-247	.429	49-129	.380	44-51	.863	7-75-82	3.3	31-0	93	65	3	20	305	12.2
TOTALS	121/103	500-1199	.417	216-602	.359	173-208	.832	38-365-403	3.3	120-0	401	329	8	96	1389	11.5





University of Iowa Women's Basketball

Updated Iowa Player Bio

Kalli Hansen



3

Forward, 5-11, Senior
Olin, IA
Kirkwood CC

- Missed six games with groin injury. Returned to action against Minnesota, playing three minutes.
- Career-high 10 rebounds at Iowa State.
- Career-high 11 points at Kansas State.
- First collegiate action came against Central Michigan, after missing first four games with back injury.
- Transferred to Iowa after playing two seasons at Kirkwood Community College in Cedar Rapids.
- Helped lead Kirkwood to back-to-back NJCAA regional and national championships while compiling an impressive 75-2 record over the two-year stretch.
- First team All-American and All-Region selection at Kirkwood.

Personal Bests

Points: 11 at Kansas State (12/3/11)
Rebounds: 10 at Iowa State (12/7/11)
FGM: 4 at Kansas State (12/3/11)
FGA: 6, twice, last at Iowa State (12/7/11)
3-pt FG: 2, twice, last at Kansas State (12/3/11)
3-pt FGA: 5 at Iowa State (12/7/11)
FTM: 4 at Minnesota (1/5/11)
FTA: 6 at Minnesota (1/5/11)
Assists: 2, twice, last at Kansas State (12/3/11)
Steals: 2 vs. Illinois (1/5/12)
Blocks: 1, 3X, last vs. Nebraska (1/8/12)
Minutes: 21, twice, last vs. Illinois (1/5/12)

2011-12 Game-by-Game

				Total		3-Pointers		Free throws		Rebounds											
Opponent	Date	gs	min	fg-fga	pct	3fg-fga	pct	ft-fa	pct	off	def	tot	avg	pf	a	t/o	blk	stl	pts	avg	
HARVARD	11/12/11	18	1-2	.500	0-0	.000	2-2	1.000	0	2	2	2.0	0	1	2	1	0	4	4.0		
UNLV	11/13/11	14	0-2	.000	0-1	.000	0-0	.000	0	2	2	2.0	3	2	0	0	0	0	2.0		
ALBANY	11/16/11	8	1-1	1.000	0-0	.000	0-0	.000	1	0	1	1.7	2	1	0	1	0	2	2.0		
at UNI	11/19/11	9	0-2	.000	0-1	.000	0-0	.000	3	0	3	2.0	1	1	0	0	0	0	1.5		
vs St. John's	11/25/11	8	0-1	.000	0-0	.000	0-0	.000	0	1	1	1.8	0	0	0	0	0	0	1.2		
vs Texas A&M	11/26/11	16	2-3	.667	0-1	.000	0-0	.000	0	3	3	2.0	1	0	2	0	0	4	1.7		
VIRGINIA TECH	11/30/11	16	0-3	.000	0-3	.000	0-0	.000	1	5	6	2.6	1	0	0	0	0	0	1.4		
at Kansas State	12/3/11	21	4-6	.667	2-3	.667	1-2	.500	1	5	6	3.0	3	2	0	0	0	11	2.6		
at Iowa State	12/7/11	20	1-6	.167	1-5	.200	2-3	.667	1	9	10	3.8	1	1	1	0	1	5	2.9		
WESTERN ILLINOIS	12/9/11	18	0-2	.000	0-1	.000	0-0	.000	2	0	2	3.6	0	1	3	0	0	0	2.6		
at Bradley	12/17/11	7	0-1	.000	0-0	.000	2-2	1.000	0	1	1	3.4	0	0	1	0	0	2	2.5		
DRAKE	12/20/11	17	2-4	.500	0-2	.000	0-0	.000	2	1	3	3.3	0	1	1	0	0	4	2.7		
MVSU	12/22/11	13	0-3	.000	0-1	.000	0-0	.000	2	0	2	3.2	1	1	0	0	0	0	2.5		
NORTHWESTERN	12/30/11	9	1-1	1.000	1-1	1.000	0-0	.000	0	1	1	3.1	0	1	1	0	0	3	2.5		
at Ohio State	01/02/12	5	0-0	.000	0-0	.000	0-0	.000	0	2	2	3.0	0	0	1	0	0	0	2.3		
ILLINOIS	1/5/12	21	2-4	.500	0-1	.000	1-2	.500	2	2	4	3.1	0	0	0	0	2	5	2.5		
NEBRASKA	1/8/12	13	0-1	.000	0-1	.000	0-0	.000	0	0	0	2.9	0	0	2	1	0	0	2.4		
at Purdue	01/15/12	3	0-1	.000	0-0	.000	0-0	.000	1	0	1	2.8	0	0	0	0	0	0	2.2		
MINNESOTA	2/9/12	3	0-0	.000	0-0	.000	0-0	.000	0	1	1	2.7	0	0	0	0	0	0	2.1		
Totals		0	239	14-43	.326	4-21	.190	8-11	.727	16	35	51	2.7	13	12	14	3	3	40	2.1	

Games played: 19
 Minutes/game: 12.6
 Points/game: 2.1
 FG Pct: 32.6
 3FG Pct: 19.0
 FT Pct: 72.7

Rebounds/game: 2.7
 Assists/game: 0.6
 Turnovers/game: 0.7
 Assist/turnover ratio: 0.9
 Steals/game: 0.2
 Blocks/game: 0.2

CAREER STATISTICS

YEAR	G/GS	FG-A	PCT	3-PT	PCT	FT-A	PCT	O-D-REB	AVG	PF-FO	AS	TO	BK	ST	PTS	AVG
Junior	27/0	21-51	.412	11-29	.379	7-14	.500	17-28-45	1.7	16-0	5	16	2	5	60	2.2
Senior	19/0	14-43	.326	4-21	.190	8-11	.727	16-35-51	2.7	13-0	12	14	3	3	40	2.1
TOTALS	46/0	35-94	.372	15-50	.300	15-25	.600	33-63-96	2.1	29-0	17	30	5	8	100	2.2





University of Iowa Women's Basketball

Updated Iowa Player Bio

Megan Considine

2011-12 Game-by-Game



4

Guard, 5-8, Senior
Byron, IL
Byron HS

- Will miss the entire 2011-12 season after tearing her Achilles in preseason workouts.
- Named team captain.
- Academic All-Big Ten in 2010-11.

Personal Bests

Points: 5 vs. Northeastern (11/20/10)
Rebounds: 4 vs. Southern (11/12/10)
FGM: 2, twice, last vs. Northeastern (11/20/10)
FGA: 6 vs. Bradley (11/16/10)
3-pt FG: 1 vs. Southern (11/12/10)
3-pt FGA: 4 vs. Bradley (11/16/10)
FTM: 3 vs. Penn State (2/6/11)
FTA: 4 vs. Penn State (2/6/11)
Assists: 2 vs. Northeastern (11/20/10)
Steals: 3 vs. Bradley (11/16/10)
Blocks: - - -
Minutes: 21 vs. Bradley (11/16/10)

CAREER STATISTICS

YEAR	G/GS	FG-A	PCT	3-PT	PCT	FT-A	PCT	O-D-REB	AVG	PF-FO	AS	TO	BK	ST	PTS	AVG
Soph.	6/0	0-3	.000	0-2	.000	2-2	1.000	2-1-3	0.5	1-0	1	1	0	0	2	0.3
Junior	18/0	7-26	.269	1-12	.083	7-9	.778	13-5-18	1.0	15-0	10	6	0	5	22	1.2
TOTALS	24/0	7-29	.241	1-14	.071	9-11	.818	15-6-21	0.9	16-0	11	7	0	5	24	1.0





University of Iowa Women's Basketball

Updated Iowa Player Bio

Trisha Nesbitt



11

Guard, 5-7, Junior
Ames, IA
Ames HS

- Saw first action of the season Dec. 20 vs. Drake, recording one rebound and one steal in seven minutes of play.
- Was cleared for action Dec. 17 at Bradley, but did not play.
- Had minor knee surgery Nov. 15 and missed the first 10 games of the season.
- Academic All-Big Ten in 2010-11.
- Saw first action of the season at Minnesota in 2010-11 after missing first 15 games with foot injury.

Personal Bests

Points: 10 vs. Michigan State (3/6/10)
Rebounds: 3 vs. W&M (11/24/09)
FGM: 4 vs. Michigan State (3/6/10)
FGA: 8 at Indiana (2/11/10)
3-pt FG: 2, twice, last vs. MSU (3/6/10)
3-pt FGA: 4, twice, last vs. Stanford (3/22/10)
FTM: 4, twice, last vs. SDSU (12/22/09)
FTA: 5 at UNI (11/22/09)
Assists: 4, 3x, last at Iowa State (12/10/09)
Steals: 3 at Minnesota (1/3/10)
Blocks: - - -
Minutes: 37 at Indiana (2/11/10)

2011-12 Game-by-Game

Opponent	Date	gs	min	Total		3-Pointers		Free throws		Rebounds			pf	a	t/o	blk	stl	pts	avg
				fg-fga	pct	3fg-fga	pct	ft-fa	pct	off	def	tot							
DRAKE	12/20/11	7		0-1	.000	0-1	.000	0-0	.000	0	1	1	1.0	1	0	0	0	1	0.0
MVSU	12/22/11	3		0-1	.000	0-1	.000	0-0	.000	0	0	0	0.5	1	0	1	0	0	0.0
NORTHWESTERN	12/30/11	3		0-0	.000	0-0	.000	0-0	.000	0	0	0	0.3	1	0	0	0	0	0.0
ILLINOIS	1/5/12	2		0-0	.000	0-0	.000	0-0	.000	0	0	0	0.3	0	0	0	0	0	0.0
NEBRASKA	1/8/12	3		0-0	.000	0-0	.000	0-0	.000	0	0	0	0.2	1	0	1	0	0	0.0
at Purdue	01/15/12	2		0-1	.000	0-0	.000	0-0	.000	0	0	0	0.2	0	0	0	0	1	0.0
WISCONSIN	1/19/12	3		0-0	.000	0-0	.000	0-0	.000	0	0	0	0.1	0	1	0	0	0	0.0
at Nebraska	01/26/12	4		0-1	.000	0-1	.000	0-0	.000	0	0	0	0.1	0	0	0	0	0	0.0
PURDUE	1/28/12	3		0-0	.000	0-0	.000	0-0	.000	0	1	1	0.2	0	0	0	0	0	0.0
at Indiana	02/05/12	4		1-1	1.000	0-0	.000	0-0	.000	0	0	0	0.2	2	0	0	0	2	0.2
MINNESOTA	2/9/12	5		0-2	.000	0-2	.000	0-0	.000	0	0	0	0.2	1	2	0	0	1	0.2
Totals		0	39	1-7	.143	0-5	.000	0-0	.000	0	2	2	0.2	7	3	2	0	3	2.0

Games played: 11
 Minutes/game: 3.5
 Points/game: 0.2
 FG Pct: 14.3
 3FG Pct: 0.0

Rebounds/game: 0.2
 Assists/game: 0.3
 Turnovers/game: 0.2
 Assist/turnover ratio: 1.5
 Steals/game: 0.3

CAREER STATISTICS

YEAR	G/GS	FG-A	PCT	3-PT	PCT	FT-A	PCT	O-D-REB	AVG	PF-FO	AS	TO	BK	ST	PTS	AVG
Fresh.	34/1	25-85	.294	9-36	.250	25-31	.806	2-22-24	0.7	46-0	43	42	0	14	84	2.5
Soph.	16/0	3-13	.231	2-6	.333	0-1	.000	0-4-4	0.3	7-0	5	10	0	1	8	0.5
Junior	11/0	1-7	.143	0-5	.000	0-0	.000	0-2-2	0.2	7-0	3	2	0	3	2	0.2
TOTALS	61/1	29-105	.276	11-47	.234	25-32	.781	2-28-30	0.5	60-0	51	54	0	18	94	1.5





University of Iowa Women's Basketball

Updated Iowa Player Bio

Morgan Johnson



12

Center, 6-5, Junior
Platte City, MO
Platte County HS

- Ranks second in career blocks (213), 15th in career rebounds (595) and 32nd in career scoring (1,004).
- 23 points, eight rebounds and three blocks in win over Minnesota.
- Fourth double-double of the season with 27 points and 11 rebounds in win at Wisconsin.
- Third double-double of the season with 17 points and 11 rebounds in win over Purdue.
- Recorded second double-double of the season with 21 points and 12 rebounds against Nebraska.
- Tallied first double-double of the season with 14 points and career-high 16 rebounds, along with five blocks, in win over Illinois.
- 25 points (11-16 FGs) and six rebounds at Ohio State.
- Career-high 37 points (13-20 FGs, 11-12 FTs), along with eight rebounds and four blocks at Bradley. Named Big Ten Player of the Week (Dec. 17) after performance.
- 17 points and six rebounds at Kansas State.
- 23 points and eight rebounds in win over Virginia Tech.
- 23 points and five rebounds and four blocks in win at Northern Iowa.
- 18 points, eight rebounds and three blocks on her 21st birthday against Harvard.
- Academic All-Big Ten in 2010-11.
- Capital One Academic All-District pick in 2010-11.
- Holds school record for blocks by a sophomore (75).

2011-12 Game-by-Game

				Total		3-Pointers		Free throws		Rebounds											
Opponent	Date	gs	min	fg-fga	pct	3fg-fga	pct	ft-fa	pct	off	def	tot	avg	pf	a	t/o	blk	stl	pts	avg	
HARVARD	11/12/11	*	23	5-10	.500	0-0	.000	8-10	.800	1	7	8	8.0	4	2	0	3	1	18	18.0	
UNLV	11/13/11	*	23	0-5	.000	0-0	.000	0-0	.000	0	3	3	5.5	3	0	1	1	0	0	9.0	
ALBANY	11/16/11	*	19	5-9	.556	0-0	.000	2-3	.667	2	4	6	5.7	2	0	1	2	1	12	10.0	
at UNI	11/19/11	*	29	9-13	.692	0-0	.000	5-7	.714	3	2	5	5.5	3	1	2	4	0	23	13.3	
vs St. John's	11/25/11	*	23	3-5	.600	0-0	.000	0-0	.000	1	2	3	5.0	4	0	1	3	0	6	11.8	
vs Texas A&M	11/26/11	*	17	1-4	.250	0-0	.000	2-4	.500	0	4	4	4.8	4	0	2	3	0	4	10.5	
VIRGINIA TECH	11/30/11	*	25	8-21	.381	0-0	.000	7-8	.875	5	3	8	5.3	1	0	3	2	1	23	12.3	
at Kansas State	12/3/11	*	38	6-11	.545	0-0	.000	5-6	.833	3	3	6	5.4	3	2	1	1	1	17	12.9	
at Iowa State	12/7/11	*	32	5-10	.500	0-0	.000	6-6	1.000	2	5	7	5.6	5	1	2	2	0	16	13.2	
WESTERN ILLINOIS	12/9/11	*	8	3-5	.600	0-0	.000	4-5	.800	1	2	3	5.3	1	1	1	1	0	10	12.9	
at Bradley	12/17/11	*	34	13-20	.650	0-0	.000	11-12	.917	4	4	8	5.5	4	0	2	4	1	37	15.1	
DRAKE	12/20/11	*	25	4-8	.500	0-0	.000	0-0	.000	1	1	2	5.3	2	2	2	2	0	8	14.5	
MVSU	12/22/11	*	18	4-8	.500	0-0	.000	2-2	1.000	0	3	3	5.1	5	1	4	1	1	10	14.2	
NORTHWESTERN	12/30/11	*	23	6-8	.750	0-0	.000	2-4	.500	3	6	9	5.4	2	1	2	1	0	14	14.1	
at Ohio State	01/02/12	*	33	11-16	.688	0-0	.000	3-3	1.000	4	2	6	5.4	1	1	0	1	0	25	14.9	
ILLINOIS	1/5/12	*	31	5-10	.500	0-0	.000	4-6	.667	4	12	16	6.1	4	1	1	5	1	14	14.8	
NEBRASKA	1/8/12	*	32	9-14	.643	0-0	.000	3-4	.750	4	8	12	6.4	4	0	3	3	0	21	15.2	
at Purdue	01/15/12	*	32	7-16	.438	0-0	.000	2-3	.667	1	4	5	6.3	3	1	2	2	0	16	15.2	
WISCONSIN	1/19/12	*	29	3-8	.375	0-0	.000	0-0	.000	3	6	9	6.5	1	1	7	4	0	6	14.7	
at Penn State	1/22/12	*	23	3-5	.600	0-0	.000	0-0	.000	2	3	5	6.4	4	0	4	1	1	6	14.3	
at Nebraska	01/26/12	*	22	2-3	.667	0-0	.000	4-4	1.000	3	6	9	6.5	5	1	2	1	0	8	14.0	
PURDUE	1/28/12	*	23	6-7	.857	0-0	.000	5-11	.455	4	7	11	6.7	4	0	2	3	0	17	14.1	
at Wisconsin	02/02/12	*	39	12-20	.600	0-0	.000	3-6	.500	5	6	11	6.9	3	2	6	2	0	27	14.7	
at Indiana	02/05/12	*	24	6-14	.429	0-0	.000	0-0	.000	0	3	3	6.8	2	0	3	3	1	12	14.6	
MINNESOTA	2/9/12	*	23	9-13	.692	0-0	.000	5-7	.714	2	6	8	6.8	3	1	1	3	1	23	14.9	
Totals			25	648	145-263	.551	0-0	.000	83-111	.748	58	112	170	6.8	77	19	55	58	10	373	14.9

Games played: 25
Minutes/game: 25.9
Points/game: 14.9
FG Pct: 55.1
FT Pct: 74.8

Rebounds/game: 6.8
Assists/game: 0.8
Turnovers/game: 2.2
Assist/turnover ratio: 0.3
Steals/game: 0.4
Blocks/game: 2.3

Personal Bests

Points: 37 at Bradley (12/17/11)
Rebounds: 16 vs. Illinois (1/5/12)
FGM: 13 at Bradley (12/17/11)
FGA: 21 vs. Virginia Tech (11/30/11)
3-pt FG: 1 at Iowa State (12/10/09)
3-pt FGA: 2 at Iowa State (12/10/09)
FTM: 11 at Bradley (12/17/11)
FTA: 12 at Bradley (12/17/11)
Assists: 4, twice, last vs. Penn St. (1/14/10)
Steals: 3, 3x, last at Nwwestern (2/13/11)
Blocks: 8 vs. Minnesota (2/18/10)
Minutes: 39 at Wisconsin (2/2/12)

CAREER STATISTICS

YEAR	G/GS	FG-A	PCT	3-PT	PCT	FT-A	PCT	O-D-REB	AVG	PF-FO	AS	TO	BK	ST	PTS	AVG
Fresh.	34/34	124-250	.496	1-4	.250	48-76	.632	78-139-217	6.4	87-2	24	61	79	15	297	8.7
Soph.	31/30	132-276	.478	0-0	.000	70-96	.729	90-118-208	6.7	83-3	25	58	76	21	334	10.8
Junior	25/25	145-263	.551	0-0	.000	83-111	.748	58-112-170	6.8	77-3	19	55	58	10	373	14.9
TOTALS	90/89	401-789	.508	1-4	.250	201-283	.710	226-369-595	6.6	247-8	68	174	213	46	1004	11.2





University of Iowa Women's Basketball

Updated Iowa Player Bio

Kelly Krei



20

Forward, 6-2, Senior
Iowa City, IA
City HS

- Ranks eighth in career three-pointers made (151) and 18th in career rebounds (533).
- Named team captain.
- Collected 10 rebounds at Nebraska.
- Third career double-double with 13 points and 10 rebounds in win over Albany.
- 16 points (4-6 3Pt. FGs) and five rebounds in win over Harvard.
- Academic All-Big Ten in 2010-11.
- Capital One Academic All-District pick in 2010-11.

Personal Bests

Points: 20, 3x, last at Nwstern (2/13/11)
Rebounds: 13 vs. Indiana (2/25/10)
FGM: 7 vs. Ohio State (3/7/10)
FGA: 13, twice, last vs. Ohio St. (3/7/10)
3-pt FG: 5, twice, last vs. Iowa State (12/9/10)
3-pt FGA: 9, twice, last at Gonzaga (3/19/11)
FTM: 9 vs. Northwestern (1/24/10)
FTA: 11 vs. Northwestern (1/24/10)
Assists: 5, vs. Albany (11/16/11)
Steals: 6 vs. Wisconsin (12/31/09)
Blocks: 3, twice, last vs. C. Michigan (11/21/10)
Minutes: 42 at Wisconsin (2/2/12)

2011-12 Game-by-Game

				Total		3-Pointers		Free throws		Rebounds											
Opponent	Date	gs	min	fg-fga	pct	3fg-fga	pct	ft-fa	pct	off	def	tot	avg	pf	a	t/o	blk	stl	pts	avg	
HARVARD	11/12/11	*	32	5-7	.714	4-6	.667	2-2	1.000	3	2	5	5.0	1	0	3	0	1	16	16.0	
UNLV	11/13/11	*	32	3-10	.300	1-5	.200	2-2	1.000	2	2	4	4.5	3	1	0	0	2	9	12.5	
ALBANY	11/16/11	*	32	3-5	.600	3-3	1.000	4-4	1.000	1	9	10	6.3	1	5	2	2	1	13	12.7	
at UNI	11/19/11	*	31	2-6	.333	2-4	.500	0-0	.000	1	2	3	5.5	1	0	1	0	1	6	11.0	
vs St. John's	11/25/11	*	31	3-5	.600	2-4	.500	0-0	.000	2	3	5	5.4	0	2	1	1	2	8	10.4	
vs Texas A&M	11/26/11	*	25	1-3	.333	1-3	.333	0-0	.000	0	1	1	4.7	0	1	3	0	0	3	9.2	
VIRGINIA TECH	11/30/11	*	28	3-8	.375	1-3	.333	1-2	.500	1	6	7	5.0	2	0	0	0	1	8	9.0	
at Kansas State	12/3/11	*	28	1-3	.333	1-3	.333	0-0	.000	0	1	1	4.5	2	0	2	0	1	3	8.3	
at Iowa State	12/7/11	*	26	1-3	.333	1-3	.333	0-0	.000	0	3	3	4.3	4	0	3	0	1	3	7.7	
WESTERN ILLINOIS	12/9/11	*	22	2-5	.400	0-2	.000	0-0	.000	0	8	8	4.7	0	2	4	0	3	4	7.3	
at Bradley	12/17/11	*	33	2-5	.400	1-4	.250	2-3	.667	4	4	8	5.0	0	1	1	0	1	7	7.3	
DRAKE	12/20/11	*	24	3-6	.500	2-5	.400	0-0	.000	0	5	5	5.0	2	0	2	0	2	8	7.3	
MVSU	12/22/11	*	29	5-9	.556	4-7	.571	0-0	.000	5	2	7	5.2	0	3	1	1	1	14	7.8	
NORTHWESTERN	12/30/11	*	31	1-5	.200	1-4	.250	0-0	.000	2	4	6	5.2	0	1	0	0	1	3	7.5	
at Ohio State	01/02/12	*	38	2-4	.500	2-4	.500	2-2	1.000	5	3	8	5.4	2	2	0	1	0	8	7.5	
ILLINOIS	1/5/12	*	39	2-5	.400	0-3	.000	1-2	.500	3	8	11	5.8	1	3	0	1	0	5	7.4	
NEBRASKA	1/8/12	*	32	0-4	.000	0-4	.000	0-0	.000	1	5	6	5.8	2	2	2	0	2	0	6.9	
at Purdue	01/15/12	*	37	2-5	.400	2-5	.400	4-4	1.000	2	3	5	5.7	3	1	0	0	1	10	7.1	
WISCONSIN	1/19/12	*	36	4-5	.800	2-3	.667	0-0	.000	2	3	5	5.7	1	0	0	2	2	10	7.3	
at Penn State	1/22/12	*	37	0-7	.000	0-7	.000	0-0	.000	0	5	5	5.7	3	2	1	0	3	0	6.9	
at Nebraska	01/26/12	*	38	1-8	.125	1-6	.167	0-0	.000	1	9	10	5.9	3	1	2	1	1	3	6.7	
PURDUE	1/28/12	*	27	1-4	.250	1-3	.333	2-2	1.000	1	7	8	6.0	5	1	0	0	0	5	6.6	
at Wisconsin	02/02/12	*	42	1-3	.333	1-3	.333	0-0	.000	4	3	7	6.0	1	1	1	2	2	3	6.5	
at Indiana	02/05/12	*	35	4-7	.571	2-4	.500	0-0	.000	1	3	4	5.9	4	2	0	1	5	10	6.6	
MINNESOTA	2/9/12	*	37	0-6	.000	0-6	.000	2-2	1.000	5	4	9	6.0	2	4	3	0	1	2	6.4	
Totals			25	802	52-138	.377	35-104	.337	22-25	.880	46	105	151	6.0	43	35	32	12	35	161	6.4

Games played: 25
 Minutes/game: 32.1
 Points/game: 6.4
 FG Pct: 37.7
 3FG Pct: 33.7
 FT Pct: 88.0

Rebounds/game: 6.0
 Assists/game: 1.4
 Turnovers/game: 1.3
 Assist/turnover ratio: 1.1
 Steals/game: 1.4
 Blocks/game: 0.5

CAREER STATISTICS

YEAR	G/GS	FG-A	PCT	3-PT	PCT	FT-A	PCT	O-D-REB	AVG	PF-FO	AS	TO	BK	ST	PTS	AVG
Fresh.	27/0	19-54	.352	7-19	.368	30-37	.811	7-55-62	2.3	27-0	11	29	2	6	75	2.8
Soph.	34/33	94-230	.409	55-136	.404	54-72	.750	48-113-161	4.7	74-1	37	63	16	42	297	8.7
Junior	31/31	89-249	.357	54-163	.331	55-76	.724	37-122-159	5.4	50-0	38	39	16	27	287	9.3
Senior	25/25	52-138	.377	35-104	.337	22-25	.880	46-105-151	6.0	43-1	35	32	12	35	161	6.4
TOTALS	117/89	254-671	.379	151-422	.358	161-210	.767	138-395-533	4.6	194-2	121	163	46	110	820	7.0





University of Iowa Women's Basketball

Updated Iowa Player Bio

Melissa Dixon



21

Guard, 5-8, Freshman
Johnsburg, IL
Johnsburg HS

- Suffered torn meniscus at Ohio State (Jan. 2). Missed a total of seven games.
- First career start came at Indiana, registering career-highs in points (19), field goals made (7), 3-pointers made and attempted (5-for-10), steals (3) and minutes (28).
- Returned to action at Wisconsin (Feb. 2) and finished with six points and two assists.
- 10 points and three rebounds in win over Northwestern.
- 15 points and four rebounds in win over Western Illinois.
- 11 points (4-7 FGs, 2-5 3Pt. FGs) and four rebounds at Iowa State.
- Scored six points on 19th birthday in first career game, a win over Harvard.
- Miss Basketball of Illinois Top 10 finalist.
- Three-time team MVP and team captain as a junior and senior.
- 11-time all-state selection, including first team honors by the Associated Press, Illinois Basketball Coaches Association, Chicago Sun-Times, Champaign News Gazette and IBS as a senior.

2011-12 Game-by-Game

Opponent	Date	gs	min	Total		3-Pointers		Free throws		Rebounds				pf	a	t/o	blk	stl	pts	avg
				fg-fga	pct	3fg-fga	pct	ft-fa	pct	off	def	tot	avg							
HARVARD	11/12/11	15	2-5	.400	1-2	.500	1-2	.500	0	1	1	1.0	1	0	0	0	0	6	6.0	
UNLV	11/13/11	7	0-1	.000	0-1	.000	0-0	.000	0	1	1	1.0	1	1	0	0	0	0	3.0	
ALBANY	11/16/11	12	2-5	.400	2-2	1.000	2-2	1.000	0	1	1	1.0	1	1	3	0	0	8	4.7	
at UNI	11/19/11	6	0-0	.000	0-0	.000	1-2	.500	1	0	1	1.0	1	1	1	0	0	1	3.8	
vs St. John's	11/25/11	6	1-2	.500	1-2	.500	0-0	.000	0	0	0	0.8	1	0	0	0	0	3	3.6	
vs Texas A&M	11/26/11	10	0-1	.000	0-1	.000	3-4	.750	1	0	1	0.8	1	0	0	0	0	3	3.5	
VIRGINIA TECH	11/30/11	12	2-3	.667	1-2	.500	0-0	.000	0	1	1	0.9	1	0	0	0	0	5	3.7	
at Kansas State	12/3/11	7	1-3	.333	1-2	.500	0-0	.000	0	0	0	0.8	0	0	1	0	0	3	3.6	
at Iowa State	12/7/11	21	4-7	.571	2-5	.400	1-1	1.000	0	4	4	1.1	2	0	0	0	0	11	4.4	
WESTERN ILLINOIS	12/9/11	18	5-14	.357	4-10	.400	1-1	1.000	3	1	4	1.4	4	0	0	1	0	15	5.5	
at Bradley	12/17/11	20	1-3	.333	1-3	.333	5-6	.833	0	2	2	1.5	5	0	0	0	1	8	5.7	
DRAKE	12/20/11	14	1-7	.143	1-5	.200	5-6	.833	2	1	3	1.6	2	1	1	0	0	8	5.9	
MVSU	12/22/11	13	1-6	.167	1-5	.200	4-4	1.000	2	2	4	1.8	1	0	2	0	0	7	6.0	
NORTHWESTERN	12/30/11	20	4-8	.500	2-4	.500	0-0	.000	3	0	3	1.9	0	1	1	0	1	10	6.3	
at Ohio State	01/02/12	1	0-0	.000	0-0	.000	0-0	.000	0	0	0	1.7	1	0	0	0	0	0	5.9	
at Wisconsin	02/02/12	14	2-4	.500	2-3	.667	0-0	.000	0	0	0	1.6	3	2	1	0	2	6	5.9	
at Indiana	02/05/12	*	28	7-12	.583	5-10	.500	0-0	.000	0	2	2	1.6	2	1	1	0	3	19	6.6
MINNESOTA	2/9/12	*	30	3-8	.375	1-5	.200	0-0	.000	2	2	4	1.8	2	1	5	0	2	7	6.7
Totals		2	254	36-89	.404	25-62	.403	23-28	.821	14	18	32	1.8	29	9	16	1	9	120	6.7

Games played: 18
Minutes/game: 14.1
Points/game: 6.7
FG Pct: 40.4
3FG Pct: 40.3
FT Pct: 82.1

Rebounds/game: 1.8
Assists/game: 0.5
Turnovers/game: 0.9
Assist/turnover ratio: 0.6
Steals/game: 0.5
Blocks/game: 0.1

Personal Bests

Points: 19 at Indiana (2/5/12)
Rebounds: 4, 4x, last vs. Minnesota (2/9/12)
FGM: 7 at Indiana (2/5/12)
FGA: 14 vs. Western Illinois (12/9/11)
3-pt FG: 5 at Indiana (2/5/12)
3-pt FGA: 10, twice, last at Indiana (2/5/12)
FTM: 5, twice, last vs. Drake (12/20/11)
FTA: 6, twice, last vs. Drake (12/20/11)
Assists: 2 at Wisconsin (2/2/12)
Steals: 3 at Indiana (2/5/12)
Blocks: 1 vs. Western Illinois (12/9/11)
Minutes: 30 vs. Minnesota (2/9/12)

CAREER STATISTICS

YEAR	G/GS	FG-A	PCT	3-PT	PCT	FT-A	PCT	O-D-REB	AVG	PF-FO	AS	TO	BK	ST	PTS	AVG
Fresh.	18/2	36-89	.404	25-62	.403	23-28	.821	14-18-32	1.8	29-1	9	16	1	9	120	6.7





University of Iowa Women's Basketball

Updated Iowa Player Bio

Samantha Logic



22

Guard, 5-9, Freshman
Racine, WI
Racine J.I. Case HS

- 20 points, nine rebounds and six assists in win over Minnesota.
- Second double-double of the season with career-highs in points (20), rebounds (13) and assists (8) in win at Wisconsin.
- 10 points, five rebounds and three assists at Nebraska.
- Grabbed eight rebounds and recorded six assists at Purdue.
- Eight points, nine rebounds, four assists and three steals in win over Western Illinois.
- Six points, six rebounds and four assists at Kansas State.
- Junkanoo Jam all-tournament team selection.
- 16 points, nine rebounds and three assists vs. No. 4 Texas A&M.
- First career double-double with 10 points and 11 rebounds in win at Northern Iowa.
- McDonald's High School All-American, WBCA All-American and Parade All-American.
- Associated Press and Gatorade Player of the Year in Wisconsin.
- Ranked as the No. 10 recruit in 2011 class by ESPNHoopGurlz, No. 12 by Blue Star Basketball and No. 14 by the All-Star Girls Report.

2011-12 Game-by-Game

				Total		3-Pointers		Free throws		Rebounds											
Opponent	Date	gs	min	fg-fga	pct	3fg-fga	pct	ft-fa	pct	off	def	tot	avg	pf	a	t/o	blk	stl	pts	avg	
HARVARD	11/12/11	*	30	3-7	.429	0-0	.000	3-4	.750	4	1	5	5.0	3	4	3	0	3	9.0		
UNLV	11/13/11	*	27	2-6	.333	0-1	.000	0-0	.000	1	1	2	3.5	4	4	6	1	2	4	6.5	
ALBANY	11/16/11	*	16	2-4	.500	0-0	.000	2-2	1.000	2	2	4	3.7	4	1	2	0	1	6	6.3	
at UNI	11/19/11	*	29	3-11	.273	0-2	.000	4-4	1.000	4	7	11	5.5	4	4	4	0	2	10	7.3	
vs St. John's	11/25/11	*	22	5-9	.556	1-2	.500	2-4	.500	2	1	3	5.0	4	1	5	0	3	13	8.4	
vs Texas A&M	11/26/11	*	33	7-15	.467	0-1	.000	2-2	1.000	5	4	9	5.7	1	3	5	1	1	16	9.7	
VIRGINIA TECH	11/30/11	*	30	3-7	.429	0-3	.000	2-2	1.000	2	5	7	5.9	2	5	3	0	1	8	9.4	
at Kansas State	12/3/11	*	29	3-7	.429	0-1	.000	0-0	.000	1	5	6	5.9	5	4	6	0	1	6	9.0	
at Iowa State	12/7/11	*	21	1-8	.125	1-2	.500	1-2	.500	3	5	8	6.1	2	3	3	0	1	4	8.4	
WESTERN ILLINOIS	12/9/11	*	24	4-7	.571	0-1	.000	0-2	.000	2	7	9	6.4	0	4	5	0	3	8	8.4	
at Bradley	12/17/11	*	23	2-6	.333	0-0	.000	1-1	1.000	3	2	5	6.3	2	5	4	0	2	5	8.1	
DRAKE	12/20/11	*	21	4-7	.571	3-4	.750	1-1	1.000	1	5	6	6.3	1	4	0	0	2	12	8.4	
MVSU	12/22/11	*	29	5-8	.625	2-2	1.000	3-6	.500	2	3	5	6.2	1	2	1	2	3	15	8.9	
NORTHWESTERN	12/30/11	*	22	2-6	.333	0-1	.000	0-0	.000	3	1	4	6.0	1	3	1	0	0	4	8.6	
at Ohio State	01/02/12	*	32	3-10	.300	0-0	.000	0-0	.000	1	5	6	6.0	3	5	3	1	3	6	8.4	
ILLINOIS	1/5/12	*	28	3-13	.231	0-1	.000	0-0	.000	3	2	5	5.9	3	3	3	1	1	6	8.3	
NEBRASKA	1/8/12	*	26	1-3	.333	0-0	.000	2-2	1.000	3	1	4	5.8	2	3	2	0	1	4	8.0	
at Purdue	01/15/12	*	33	2-8	.250	0-2	.000	1-2	.500	3	5	8	5.9	1	6	4	0	1	5	7.8	
WISCONSIN	1/19/12	*	31	3-6	.500	0-2	.000	0-0	.000	3	2	5	5.9	1	4	3	0	1	6	7.7	
at Penn State	1/22/12	*	34	0-2	.000	0-1	.000	2-3	.667	1	3	4	5.8	2	3	4	0	1	2	7.5	
at Nebraska	01/26/12	*	27	4-6	.667	2-3	.667	0-0	.000	2	3	5	5.8	4	3	4	0	1	10	7.6	
PURDUE	1/28/12	*	20	0-4	.000	0-0	.000	1-2	.500	1	2	3	5.6	2	2	3	0	0	1	7.3	
at Wisconsin	02/02/12	*	37	7-14	.500	0-2	.000	6-8	.750	5	8	13	6.0	2	8	1	1	2	20	7.8	
at Indiana	02/05/12	*	33	1-4	.250	0-0	.000	3-3	1.000	3	4	7	6.0	1	6	3	0	2	5	7.7	
MINNESOTA	2/9/12	*	33	7-10	.700	1-3	.333	5-6	.833	3	6	9	6.1	3	6	8	0	1	20	8.2	
Totals			25	690	77-188	.410	10-34	.294	41-56	.732	63	90	153	6.1	58	96	86	7	39	205	8.2

Games played: 25
Minutes/game: 27.6
Points/game: 8.2
FG Pct: 41.0
3FG Pct: 29.4
FT Pct: 73.2

Rebounds/game: 6.1
Assists/game: 3.8
Turnovers/game: 3.4
Assist/turnover ratio: 1.1
Steals/game: 1.6
Blocks/game: 0.3

Personal Bests

Points: 20, twice, last vs. Minnesota (2/9/12)
Rebounds: 13 at Wisconsin (2/2/12)
FGM: 7, 3X, last vs. Minnesota (2/9/12)
FGA: 15 vs. Texas A&M (11/26/11)
3-pt FG: 3 vs. Drake (12/20/11)
3-pt FGA: 4 vs. Drake (12/20/11)
FTM: 6 at Wisconsin (2/2/12)
FTA: 8 at Wisconsin (2/2/12)
Assists: 8 at Wisconsin (2/2/12)
Steals: 3, 5X, last at Ohio State (1/2/12)
Blocks: 2 vs. Miss. Valley State (12/22/11)
Minutes: 37 at Wisconsin (2/2/12)

CAREER STATISTICS

YEAR	G/GS	FG-A	PCT	3-PT	PCT	FT-A	PCT	O-D-REB	AVG	PF-FO	AS	TO	BK	ST	PTS	AVG
Fresh.	25/25	77-188	.410	10-34	.294	41-56	.732	63-90-153	6.1	58-1	96	86	7	39	205	8.2





University of Iowa Women's Basketball

Updated Iowa Player Bio

Theairra Taylor



23

Guard, 5-11, RS Sophomore
St. Paul, MN
Central HS

- Six points and six rebounds in win over Purdue.
- Six points and eight rebounds in win over Western Illinois.
- Returned to the court in season opener vs. Harvard, playing two minutes.
- Suffered third ACL in a 20-month span during preseason workouts in 2010. Missed a total of 53 games with ACL injuries from 2009 through 2011.

Personal Bests

Points: 16 vs. W&M (11/24/09)
Rebounds: 9 vs. W&M (11/24/09)
FGM: 7 vs. W&M (11/24/09)
FGA: 15 vs. W&M (11/24/09)
3-pt FG: 2 vs. W&M (11/24/09)
3-pt FGA: 5 vs. Boston College (12/2/09)
FTM: 4, 3x, last vs. Columbia (11/28/09)
FTA: 4, 6X, last at Penn State (1/22/12)
Assists: 5 vs. W&M (11/24/09)
Steals: 3, 3X, last vs. Wisconsin (1/19/12)
Blocks: 4, twice, last vs. Mich (12/6/09)
Minutes: 36 vs. W&M (11/24/09)

2011-12 Game-by-Game

Opponent	Date	gs	min	Total		3-Pointers		Free throws		Rebounds			pf	a	t/o	blk	stl	pts	avg
				fg	fga	3fg	3fga	ft	fta	off	def	tot							
HARVARD	11/12/11	2	0-1	.000	0-1	.000	0-0	.000	0-0	0	0	0	0.0	1	2	1	0	0	0.0
UNLV	11/13/11	7	1-1	1.000	0-0	.000	0-0	.000	1	3	4	2.0	2	1	1	0	0	2	1.0
ALBANY	11/16/11	13	2-4	.500	0-0	.000	1-2	.500	0	2	2	2.0	2	2	1	0	0	5	2.3
at UNI	11/19/11	11	0-2	.000	0-1	.000	0-0	.000	1	3	4	2.5	0	2	2	1	0	0	1.8
vs St. John's	11/25/11	18	2-7	.286	0-2	.000	0-0	.000	2	3	5	3.0	1	0	3	0	0	4	2.2
vs Texas A&M	11/26/11	12	2-3	.667	0-0	.000	1-2	.500	1	1	2	2.8	2	0	0	0	0	5	2.7
VIRGINIA TECH	11/30/11	5	0-0	.000	0-0	.000	0-0	.000	1	1	2	2.7	0	0	1	0	0	0	2.3
at Kansas State	12/3/11	12	1-3	.333	0-0	.000	2-2	1.000	0	2	2	2.6	4	1	2	0	0	4	2.5
at Iowa State	12/7/11	10	0-4	.000	0-2	.000	0-0	.000	0	2	2	2.6	1	1	3	2	1	0	2.2
WESTERN ILLINOIS	12/9/11	17	3-4	.750	0-0	.000	0-0	.000	5	3	8	3.1	5	1	1	1	1	6	2.6
at Bradley	12/17/11	6	0-1	.000	0-0	.000	2-2	1.000	0	2	2	3.0	2	1	2	0	0	2	2.5
DRAKE	12/20/11	14	1-4	.250	1-2	.500	0-0	.000	3	3	6	3.3	0	0	1	3	0	3	2.6
MVSU	12/22/11	5	0-1	.000	0-0	.000	0-0	.000	0	1	1	3.1	0	0	1	0	0	0	2.4
NORTHWESTERN	12/30/11	10	1-3	.333	0-1	.000	3-4	.750	1	2	3	3.1	1	1	0	0	0	5	2.6
at Ohio State	01/02/12	8	1-2	.500	0-0	.000	0-0	.000	0	0	0	2.9	3	1	2	0	0	2	2.5
ILLINOIS	1/5/12	11	1-2	.500	0-0	.000	2-2	1.000	1	1	2	2.8	2	0	0	1	1	4	2.6
NEBRASKA	1/8/12	10	2-4	.500	0-1	.000	0-0	.000	1	1	2	2.8	1	1	1	0	1	4	2.7
at Purdue	01/15/12	13	0-2	.000	0-0	.000	0-0	.000	2	1	3	2.8	0	0	2	1	1	0	2.6
WISCONSIN	1/19/12	12	1-2	.500	0-1	.000	0-0	.000	1	4	5	2.9	3	1	5	0	3	2	2.5
at Penn State	1/22/12	10	1-2	.500	0-0	.000	0-4	.000	0	3	3	2.9	2	0	0	0	0	2	2.5
at Nebraska	01/26/12	8	0-3	.000	0-1	.000	1-2	.500	1	1	2	2.9	3	1	1	0	0	1	2.4
PURDUE	1/28/12	21	3-7	.429	0-1	.000	0-0	.000	2	4	6	3.0	4	2	1	0	1	6	2.6
at Wisconsin	02/02/12	6	1-3	.333	0-1	.000	0-0	.000	1	0	1	2.9	0	0	2	0	0	2	2.6
at Indiana	02/05/12	18	2-2	1.000	0-0	.000	1-2	.500	1	3	4	3.0	2	3	0	1	1	5	2.7
MINNESOTA	2/9/12	17	1-5	.200	0-0	.000	0-0	.000	1	1	2	2.9	2	1	0	0	0	2	2.6
Totals		0	276	26-72	.361	1-14	.071	13-22	.591	26	47	73	2.9	43	22	33	10	66	2.6

Games played: 25
 Minutes/game: 11.0
 Points/game: 2.6
 FG Pct: 36.1
 3FG Pct: 7.1
 FT Pct: 59.1

Rebounds/game: 2.9
 Assists/game: 0.9
 Turnovers/game: 1.3
 Assist/turnover ratio: 0.7
 Steals/game: 0.4
 Blocks/game: 0.4

CAREER STATISTICS

YEAR	G/GS	FG-A	PCT	3-PT	PCT	FT-A	PCT	O-D-REB	AVG	PF-FO	AS	TO	BK	ST	PTS	AVG
Fresh.	10/8	29-86	.337	9-26	.346	14-18	.778	15-34-49	4.9	22-1	24	29	10	13	81	8.1
Soph.	25/0	26-72	.361	1-14	.071	13-22	.591	26-47-73	2.9	43-1	22	33	10	10	66	2.6
TOTALS	35/8	55-158	.348	10-40	.250	27-40	.675	41-81-122	3.5	65-2	46	62	20	23	147	4.2





University of Iowa Women's Basketball

Updated Iowa Player Bio

Jaime Printy



24

Guard, 5-11, Junior
Marion, IA
Linn-Mar HS

- Ranks fourth in career three-pointers made (197), 10th in career scoring (1,409) and 12th in career assists (304).
- Suffered torn ACL in left knee in final 30 seconds of overtime at Wisconsin (Feb. 2).
- 25 points, five rebounds, five assists and two steals in win over Wisconsin.
- 27 points, five assists and three steals against Nebraska.
- 20 points, four rebounds and four assists in win over Illinois.
- 20 points, five rebounds, eight assists and three steals in win over Northwestern.
- 25 points, five rebounds and four assists in win over Western Illinois.
- 21 points, six assists and three steals at Kansas State.
- Junkanoo Jam all-tournament team selection.
- Hawkeye Challenge all-tournament team selection.
- 25 points, five rebounds and four assists vs. UNLV.
- 24 points, six rebounds and four assists in win over Harvard.
- One of five players named Preseason All-Big Ten.
- Honorable mention All-American by the Associated Press in 2010-11.
- Second team All-Big Ten selection by league coaches and third team All-Big Ten picks by league media in 2010-11.
- Academic All-Big Ten in 2010-11.

2011-12 Game-by-Game

				Total		3-Pointers		Free throws		Rebounds											
Opponent	Date	gs	min	fg-fga	pct	3fg-fga	pct	ft-fa	pct	off	def	tot	avg	pf	a	t/o	blk	stl	pts	avg	
HARVARD	11/12/11	*	34	9-19	.474	2-6	.333	4-5	.800	1	5	6	6.0	1	4	2	0	0	24	24.0	
UNLV	11/13/11	*	35	7-18	.389	3-10	.300	8-8	1.000	2	3	5	5.5	0	4	6	0	1	25	24.5	
ALBANY	11/16/11	*	36	3-10	.300	1-3	.333	9-9	1.000	1	4	5	5.3	2	8	4	0	2	16	21.7	
at UNI	11/19/11	*	34	6-12	.500	2-5	.400	4-4	1.000	0	7	7	5.8	3	3	2	0	2	18	20.8	
vs St. John's	11/25/11	*	34	4-13	.308	1-7	.143	8-8	1.000	2	3	5	5.6	0	3	3	0	3	17	20.0	
vs Texas A&M	11/26/11	*	28	5-10	.500	2-6	.333	2-3	.667	1	2	3	5.2	3	0	5	0	3	14	19.0	
VIRGINIA TECH	11/30/11	*	29	3-9	.333	0-3	.000	3-4	.750	2	3	5	5.1	0	2	2	1	1	9	17.6	
at Kansas State	12/3/11	*	38	5-15	.333	3-6	.500	8-11	.727	2	0	2	4.8	3	6	2	0	3	21	18.0	
at Iowa State	12/7/11	*	24	3-9	.333	1-3	.333	2-2	1.000	4	0	4	4.7	5	2	5	0	0	9	17.0	
WESTERN ILLINOIS	12/9/11	*	19	8-16	.500	5-8	.625	4-4	1.000	1	4	5	4.7	0	4	0	0	1	25	17.8	
at Bradley	12/17/11	*	36	3-10	.300	1-5	.200	0-0	.000	0	1	1	4.4	4	7	5	0	5	7	16.8	
DRAKE	12/20/11	*	28	6-13	.462	0-6	.000	4-4	1.000	2	2	4	4.3	1	3	2	1	2	16	16.8	
MVSU	12/22/11	*	33	5-18	.278	3-11	.273	9-9	1.000	3	1	4	4.3	0	4	3	0	3	22	17.2	
NORTHWESTERN	12/30/11	*	30	6-16	.375	4-9	.444	4-5	.800	1	4	5	4.4	3	8	3	0	3	20	17.4	
at Ohio State	01/02/12	*	39	3-17	.176	1-6	.167	6-6	1.000	1	4	5	4.4	4	5	4	0	1	13	17.1	
ILLINOIS	1/5/12	*	40	4-17	.235	1-5	.200	11-14	.786	1	3	4	4.4	1	4	3	0	1	20	17.3	
NEBRASKA	1/8/12	*	38	8-18	.444	2-7	.286	9-10	.900	1	1	2	4.2	3	5	0	0	3	27	17.8	
at Purdue	01/15/12	*	36	6-13	.462	3-8	.375	0-1	.000	2	3	5	4.3	3	4	7	0	3	15	17.7	
WISCONSIN	1/19/12	*	35	7-14	.500	2-7	.286	9-9	1.000	1	4	5	4.3	0	5	1	0	2	25	18.1	
at Penn State	1/22/12	*	39	4-20	.200	1-10	.100	4-4	1.000	1	4	5	4.4	1	7	4	0	2	13	17.8	
at Nebraska	01/26/12	*	39	6-19	.316	4-12	.333	1-1	1.000	1	4	5	4.4	3	2	3	0	1	17	17.8	
PURDUE	1/28/12	*	36	2-10	.200	1-5	.200	2-2	1.000	1	4	5	4.4	2	1	4	1	1	7	17.3	
at Wisconsin	02/02/12	*	35	3-13	.231	2-7	.286	0-2	.000	1	4	5	4.4	3	5	0	0	3	8	16.9	
Totals		23	775	116-329	.353	45-155	.290	111-125	.888	32	70	102	4.4	45	96	70	3	46	388	16.9	

Games played: 23
Minutes/game: 33.7
Points/game: 16.9
FG Pct: 35.3
3FG Pct: 29.0
FT Pct: 88.8

Rebounds/game: 4.4
Assists/game: 4.2
Turnovers/game: 3.0
Assist/turnover ratio: 1.4
Steals/game: 2.0
Blocks/game: 0.1

Personal Bests

Points: 32 vs. Illinois (2/24/11)
Rebounds: 9 vs. W&M (11/24/09)
FGM: 11 at Indiana (2/11/10)
FGA: 25 vs. Michigan (1/2/11)
3-pt FG: 5, 3x, last vs. Western Illinois (12/9/11)
3-pt FGA: 15 vs. Michigan (1/2/11)
FTM: 11 vs. Illinois (1/5/12)
FTA: 14 vs. Illinois (1/5/12)
Assists: 9 vs. Iowa State (12/9/10)
Steals: 5 at Bradley (12/17/11)
Blocks: 1, 12X, last vs. Purdue (1/28/12)
Minutes: 40 vs. Illinois (1/5/12)

CAREER STATISTICS

YEAR	G/GS	FG-A	PCT	3-PT	PCT	FT-A	PCT	O-D-REB	AVG	PF-FO	AS	TO	BK	ST	PTS	AVG
Fresh.	34/34	168-406	.414	82-212	.387	83-94	.883	35-101-136	4.0	77-1	99	82	4	30	501	14.7
Soph.	31/31	168-391	.430	70-183	.383	114-132	.864	21-109-130	4.2	60-0	109	91	7	34	520	16.8
Junior	23/23	116-329	.353	45-155	.290	111-125	.888	32-70-102	4.4	45-1	96	70	3	46	388	16.9
TOTALS	88/88	452-1126	.401	197-550	.358	308-351	.877	88-280-368	4.2	182-2	304	243	14	110	1409	16.0





University of Iowa Women's Basketball

Updated Iowa Player Bio

Jade Rogers

2011-12 Game-by-Game



32

Forward, 6-0, Freshman
Cedar Rapids, IA
Kennedy HS

- Will miss the entire 2011-12 season after having season-ending surgery to repair an injured left knee.

Personal Bests

Points: 5, twice, last vs. Indiana (1/16/11)
Rebounds: 5 vs. Central Michigan (11/21/10)
FGM: 2, twice, last vs. Indiana (1/16/11)
FGA: 4 vs. Virginia Tech (11/26/10)
3-pt FG: - - -
3-pt FGA: - - -
FTM: 1, twice, last vs. Indiana (1/16/11)
FTA: 2, twice, last vs. Indiana (1/16/11)
Assists: 1, 3x, last vs. Va. Tech (11/26/10)
Steals: 2 vs. Bradley (11/16/10)
Blocks: 1. 2x, last vs. Minnesota (2/10/11)
Minutes: 11 vs. Virginia Tech (11/26/10)

CAREER STATISTICS

YEAR	G/GS	FG-A	PCT	3-PT	PCT	FT-A	PCT	O-D-REB	AVG	PF-FO	AS	TO	BK	ST	PTS	AVG
Fresh.	13/0	9-22	.409	0-0	.000	3-11	.273	8-14-22	1.7	11-0	4	5	2	5	21	1.6





University of Iowa Women's Basketball

Updated Iowa Player Bio

Kathryn Reynolds



33

Guard, 5-7, Freshman
Cincinnati, OH
Mount Notre Dame HS

- Five assists in win over Western Illinois.
- Played 12 minutes in first career game, a win over Harvard.
- Selected to Ohio-Kentucky All-Star Game as a senior.
- Given Ohio Athletic Association's Archie Griffin Sportsmanship Award as a senior.
- Three-time all-conference selection, including second team honors as a sophomore and first team honors as a senior.

Personal Bests

Points: 4 vs. Drake (12/20/11)
Rebounds: 2 vs. Texas A&M (11/26/11)
FGM: 2 vs. Drake (12/20/11)
FGA: 3, twice, last vs. Drake (12/20/11)
3-pt FG: ---
3-pt FGA: 1, 6x, last at Indiana (2/5/12)
FTM: 2 vs. Western Illinois (12/9/11)
FTA: 2, twice, last vs. Western Illinois (12/9/11)
Assists: 5 vs. Western Illinois (12/9/11)
Steals: ---
Blocks: ---
Minutes: 20 vs. Western Illinois (12/9/11)

2011-12 Game-by-Game

Opponent	Date	gs	min	Total		3-Pointers		Free throws		Rebounds				pf	a	t/o	blk	stl	pts	avg
				fg-fga	pct	3fg-fga	pct	ft-fa	pct	off	def	tot	avg							
HARVARD	11/12/11	12	0-0	.000	0-0	.000	0-0	.000	0-0	0	0	0	0.0	1	1	0	0	0	0	0.0
UNLV	11/13/11	2	0-0	.000	0-0	.000	0-0	.000	0-0	0	0	0	0.0	0	0	0	0	0	0	0.0
ALBANY	11/16/11	16	0-3	.000	0-1	.000	0-0	.000	0-0	0	0	0	0.0	1	2	0	0	0	0	0.0
at UNI	11/19/11	4	0-0	.000	0-0	.000	0-0	.000	0-0	0	0	0	0.0	1	1	2	0	0	0	0.0
vs St. John's	11/25/11	8	1-2	.500	0-1	.000	0-0	.000	0-0	0	1	1	0.2	0	2	0	0	0	2	0.4
vs Texas A&M	11/26/11	13	1-1	1.000	0-0	.000	0-0	.000	0-0	0	2	2	0.5	0	0	3	0	0	2	0.7
VIRGINIA TECH	11/30/11	10	0-1	.000	0-1	.000	1-2	.500	0	1	1	0.6	0	1	1	0	0	1	0.7	
at Kansas State	12/3/11	2	0-0	.000	0-0	.000	0-0	.000	0-0	0	0	0	0.5	0	0	0	0	0	0	0.6
at Iowa State	12/7/11	2	0-1	.000	0-1	.000	0-0	.000	0-0	0	0	0	0.4	0	0	0	0	0	0	0.6
WESTERN ILLINOIS	12/9/11	20	0-0	.000	0-0	.000	2-2	1.000	0	1	1	0.5	1	5	0	0	0	0	2	0.7
at Bradley	12/17/11	3	0-0	.000	0-0	.000	0-0	.000	0-0	0	1	1	0.5	1	0	2	0	0	0	0.6
DRAKE	12/20/11	12	2-3	.667	0-0	.000	0-0	.000	0-0	0	0	0	0.5	1	1	2	0	0	4	0.9
MVSU	12/22/11	7	0-0	.000	0-0	.000	0-0	.000	0-0	1	0	1	0.5	0	1	0	0	0	0	0.8
NORTHWESTERN	12/30/11	7	1-1	1.000	0-0	.000	0-0	.000	0-0	0	0	0	0.5	0	1	0	0	0	2	0.9
WISCONSIN	1/19/12	1	0-0	.000	0-0	.000	0-0	.000	0-0	0	0	0	0.5	0	0	0	0	0	0	0.9
PURDUE	1/28/12	2	0-1	.000	0-1	.000	0-0	.000	0-0	0	1	1	0.5	0	0	0	0	0	0	0.8
at Indiana	02/05/12	3	0-1	.000	0-1	.000	0-0	.000	0-0	0	1	1	0.5	0	0	0	0	0	0	0.8
MINNESOTA	2/9/12	3	0-0	.000	0-0	.000	0-0	.000	0-0	0	0	0	0.5	0	0	1	0	0	0	0.7
Totals		0	127	5-14	.357	0-6	.000	3-4	.750	1	8	9	0.5	6	15	11	0	0	13	0.7

Games played: 18
 Minutes/game: 7.1
 Points/game: 0.7
 FG Pct: 35.7
 3FG Pct: 0.0
 FT Pct: 75.0

Rebounds/game: 0.5
 Assists/game: 0.8
 Turnovers/game: 0.6
 Assist/turnover ratio: 1.4

CAREER STATISTICS

YEAR	G/GS	FG-A	PCT	3-PT	PCT	FT-A	PCT	O-D-REB	AVG	PF-FO	AS	TO	BK	ST	PTS	AVG
Fresh.	18/0	5-14	.357	0-6	.000	3-4	.750	1-8-9	0.5	6-0	15	11	0	0	13	0.7

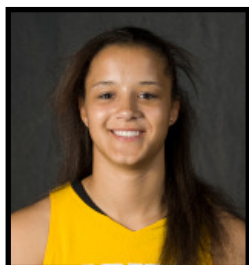




University of Iowa Women's Basketball

Updated Iowa Player Bio

Virginia Johnson



34

Forward, 6-2, Freshman
Iowa City, IA
City HS

- Currently sidelined with concussion symptoms. Missed seven games earlier in the season with a concussion.
- Six points and six rebounds in win over Purdue.
- Eight points, nine rebounds, two assists and four blocks in 18 minutes of play in win over Western Illinois.
- Played two minutes in first career game, a win over Harvard.
- No. 62 ranked recruit in the 2011 class according to ESPNHoopGurlz and the a top 100 recruit by Blue Star Basketball.
- Nine-time all-state selection, including first team honors by both the Iowa Newspaper Association and the Iowa Basketball Coaches Association as a sophomore, junior and senior.
- Three-time first team all-region and all-conference pick.

Personal Bests

Points: 8 vs. Western Illinois (12/9/11)
Rebounds: 9 vs. Western Illinois (12/9/11)
FGM: 4 vs. Western Illinois (12/9/11)
FGA: 8 vs. Western Illinois (12/9/11)
3-pt FG: ---
3-pt FGA: 1 vs. Purdue (1/28/12)
FTM: 3 at Nebraska (1/26/12)
FTA: 4 at Nebraska (1/26/12)
Assists: 2 vs. Western Illinois (12/9/11)
Steals: 1, twice, last at Nebraska (1/26/12)
Blocks: 4 vs. Western Illinois (12/9/11)
Minutes: 18, twice, last vs. Purdue (1/28/12)

2011-12 Game-by-Game

Opponent	Date	gs	min	Total		3-Pointers		Free throws		Rebounds				pf	a	t/o	blk	stl	pts	avg
				fg-fga	pct	3fg-fga	pct	ft-fa	pct	off	def	tot	avg							
HARVARD	11/12/11	2	0-0	.000	0-0	.000	0-0	0-0	.000	0	0	0	0.0	0	0	0	0	0	0	0.0
ALBANY	11/16/11	5	1-1	1.000	0-0	.000	0-0	1-1	1.000	0	1	1	0.5	0	1	0	0	0	3	1.5
vs St. John's	11/25/11	1	0-0	.000	0-0	.000	0-0	0-0	.000	0	0	0	0.3	0	0	0	0	0	0	1.0
vs Texas A&M	11/26/11	6	0-2	.000	0-0	.000	0-0	0-0	.000	0	1	1	0.5	2	0	0	0	0	0	0.8
VIRGINIA TECH	11/30/11	2	0-1	.000	0-0	.000	0-0	0-0	.000	0	0	0	0.4	1	1	0	0	0	0	0.6
WESTERN ILLINOIS	12/9/11	18	4-8	.500	0-0	.000	0-0	0-0	.000	3	6	9	1.8	1	2	0	4	1	8	1.8
at Bradley	12/17/11	2	0-2	.000	0-0	.000	0-0	2-2	1.000	0	0	0	1.6	0	0	0	0	0	2	1.9
WISCONSIN	1/19/12	4	0-0	.000	0-0	.000	0-0	0-0	.000	0	1	1	1.5	0	0	0	0	0	0	1.6
at Penn State	1/22/12	3	0-0	.000	0-0	.000	0-0	0-0	.000	0	1	1	1.4	0	0	0	0	0	0	1.4
at Nebraska	01/26/12	5	0-1	.000	0-0	.000	0-0	3-4	.750	0	2	2	1.5	0	0	1	0	1	3	1.6
PURDUE	1/28/12	18	3-4	.750	0-1	.000	0-2	.000	.000	2	4	6	1.9	1	1	1	2	0	6	2.0
at Wisconsin	02/02/12	3	0-0	.000	0-0	.000	0-0	0-0	.000	0	0	0	1.8	1	1	0	0	0	0	1.8
at Indiana	02/05/12	1	0-0	.000	0-0	.000	0-0	0-0	.000	0	0	0	1.6	1	0	0	0	0	0	1.7
Totals		0	70	8-19	.421	0-1	.000	6-9	.667	5	16	21	1.6	7	6	2	6	2	22	1.7

Games played: 13
 Minutes/game: 5.4
 Points/game: 1.7
 FG Pct: 42.1
 3FG Pct: 0.0
 FT Pct: 66.7

Rebounds/game: 1.6
 Assists/game: 0.5
 Turnovers/game: 0.2
 Assist/turnover ratio: 3.0
 Steals/game: 0.2
 Blocks/game: 0.5

CAREER STATISTICS

YEAR	G/GS	FG-A	PCT	3-PT	PCT	FT-A	PCT	O-D-REB	AVG	PF-FO	AS	TO	BK	ST	PTS	AVG
Fresh.	13/0	8-19	.421	0-1	.000	6-9	.667	5-16-21	1.6	7-0	6	2	6	2	22	1.7





University of Iowa Women's Basketball

Updated Iowa Player Bio

Bethany Doolittle



51

Center, 6-4, Freshman
Oakdale, MN
Hill-Murray HS

- Eight points (4-4 FGs) at Penn State.
- 10 points and six rebounds in just 11 minutes of action off the bench in win at Northern Iowa.
- Four points in 10 minutes of play in first career game, a win over Harvard.
- Miss Minnesota Basketball finalist.
- Four-time all-state selection, including Minnesota Coaches Association and Associated Press first team honors
- Three-time all-conference pick and named conference's Defensive Player of the Year as a senior

Personal Bests

Points: 10 at UNI (11/19/11)
Rebounds: 6 at UNI (11/19/11)
FGM: 4, 5X, last at Indiana (2/5/12)
FGA: 9 vs. Northwestern (12/30/11)
3-pt FG: ---
3-pt FGA: ---
FTM: 2, 7x, last vs. Minnesota (2/9/12)
FTA: 2, 11X, last vs. Minnesota (2/9/12)
Assists: 2 vs. Western Illinois (12/9/11)
Steals: 1, 6X, last vs. Nebraska (1/8/12)
Blocks: 4 vs. Drake (12/20/11)
Minutes: 20 vs. Miss. Valley State (12/22/11)

2011-12 Game-by-Game

		Total				3-Pointers		Free throws		Rebounds										
Opponent	Date	gs	min	fg-fga	pct	3fg-fga	pct	ft-fa	pct	off	def	tot	avg	pf	a	t/o	blk	stl	pts	avg
HARVARD	11/12/11	10	2-3	.667	0-0	.000	0-0	.000	0-0	.000	0	0	0.0	1	0	0	0	0	4	4.0
UNLV	11/13/11	15	2-4	.500	0-0	.000	0-0	.000	0	0	0	0	0.0	2	0	0	1	0	4	4.0
ALBANY	11/16/11	17	4-6	.667	0-0	.000	0-2	.000	1	2	3	1.0	0	0	1	1	0	8	5.3	
at UNI	11/19/11	11	4-5	.800	0-0	.000	2-2	1.000	1	5	6	2.3	1	0	1	1	0	10	6.5	
vs St. John's	11/25/11	16	0-1	.000	0-0	.000	0-0	.000	0	1	1	2.0	3	1	0	1	0	0	5.2	
vs Texas A&M	11/26/11	17	1-4	.250	0-0	.000	0-0	.000	0	2	2	2.0	2	0	1	1	1	2	4.7	
VIRGINIA TECH	11/30/11	13	1-4	.250	0-0	.000	2-2	1.000	2	0	2	2.0	0	1	1	1	1	4	4.6	
at Kansas State	12/3/11	7	0-0	.000	0-0	.000	0-0	.000	0	1	1	1.9	1	0	1	0	0	0	4.0	
at Iowa State	12/7/11	6	0-0	.000	0-0	.000	1-2	.500	0	1	1	1.8	3	0	1	0	0	1	3.7	
WESTERN ILLINOIS	12/9/11	14	3-6	.500	0-0	.000	0-0	.000	1	3	4	2.0	2	2	3	1	0	6	3.9	
at Bradley	12/17/11	4	0-0	.000	0-0	.000	0-0	.000	0	0	0	1.8	3	0	0	0	1	0	3.5	
DRAKE	12/20/11	14	1-3	.333	0-0	.000	2-2	1.000	1	3	4	2.0	2	0	1	4	0	4	3.6	
MVSU	12/22/11	20	1-1	1.000	0-0	.000	2-2	1.000	0	1	1	1.9	2	0	2	1	0	4	3.6	
NORTHWESTERN	12/30/11	17	4-9	.444	0-0	.000	1-2	.500	0	2	2	1.9	3	0	2	1	1	9	4.0	
at Ohio State	01/02/12	7	0-2	.000	0-0	.000	0-0	.000	1	1	2	1.9	1	0	1	0	0	0	3.7	
ILLINOIS	1/5/12	11	0-0	.000	0-0	.000	2-2	1.000	0	0	0	1.8	4	0	0	0	1	1	2	3.6
NEBRASKA	1/8/12	8	2-3	.667	0-0	.000	0-0	.000	0	1	1	1.8	2	1	1	0	1	4	3.6	
at Purdue	01/15/12	8	0-3	.000	0-0	.000	0-0	.000	1	0	1	1.7	2	0	0	0	0	0	3.4	
WISCONSIN	1/19/12	11	2-5	.400	0-0	.000	1-1	1.000	0	0	0	1.6	0	0	0	0	0	5	3.5	
at Penn State	1/22/12	17	4-4	1.000	0-0	.000	0-0	.000	0	2	2	1.7	2	0	1	2	0	8	3.8	
at Nebraska	01/26/12	18	0-2	.000	0-0	.000	0-0	.000	0	2	2	1.7	3	0	2	0	0	0	3.6	
PURDUE	1/28/12	12	1-4	.250	0-0	.000	2-2	1.000	0	3	3	1.7	3	0	0	0	0	4	3.6	
at Wisconsin	02/02/12	6	2-5	.400	0-0	.000	1-2	.500	1	0	1	1.7	0	0	0	0	0	5	3.7	
at Indiana	02/05/12	17	4-8	.500	0-0	.000	0-0	.000	1	3	4	1.8	3	0	0	1	0	8	3.8	
MINNESOTA	2/9/12	14	0-4	.000	0-0	.000	2-2	1.000	1	2	3	1.8	1	1	0	0	0	2	3.8	
Totals		0	310	38-86	.442	0-0	.000	18-23	.783	11	35	46	1.8	46	6	19	17	6	94	3.8

Games played: 25
 Minutes/game: 12.4
 Points/game: 3.8
 FG Pct: 44.2
 FT Pct: 78.3

Rebounds/game: 1.8
 Assists/game: 0.2
 Turnovers/game: 0.8
 Assist/turnover ratio: 0.3
 Steals/game: 0.2
 Blocks/game: 0.7

CAREER STATISTICS

YEAR	G/GS	FG-A	PCT	3-PT	PCT	FT-A	PCT	O-D-REB	AVG	PF-FO	AS	TO	BK	ST	PTS	AVG
Fresh.	25/0	38-86	.442	0-0	.000	18-23	.783	11-35-46	1.8	46-0	6	19	17	6	94	3.8





University of Iowa Women's Basketball

Game-by-Game Results

Overall: 15-10

Big Ten: 7-5

Home: 11-2

Away: 3-7

Neutral: 1-1

Date	Opponent	Result	Attend.	Top Scorer	Top Rebounder
Nov. 12	Harvard*	W, 90-81	2,873	Printy (24)	M. Johnson (8)
Nov. 13	UNLV*	L, 59-69	3,287	Printy (25)	Printy (5)
Nov. 16	Albany	W, 82-60	2,909	Printy (16)	Krei (10)
Nov. 19	at Northern Iowa	W, 78-74	4,077	M. Johnson (23)	Logic (11)
Nov. 25	vs. St. John's#	W, 60-52	258	Printy (17)	Krei, Printy, Taylor, Wahlin (5)
Nov. 26	Texas A&M#	L, 58-74	234	Logic (16)	Logic (9)
Nov. 30	Virginia Tech&	W, 58-47	4,798	M. Johnson (23)	M. Johnson (8)
Dec. 3	at Kansas State\$	L, 78-81 (OT)	3,774	Printy (21)	Hansen, M. Johnson, Logic (6)
Dec. 7	at Iowa State	L, 54-62	12,662	M. Johnson (16)	Hansen (10)
Dec. 9	Western Illinois	W, 98-45	3,514	Printy (25)	V. Johnson, Logic (9)
Dec. 17	at Bradley	L, 88-96	1,506	M. Johnson (37)	M. Johnson, Krei (8)
Dec. 20	Drake	W, 71-46	5,916	Printy (16)	Logic, Taylor (6)
Dec. 22	Mississippi Valley State	W, 86-80	4,235	Printy (22)	Krei (7)
Dec. 30	Northwestern	W, 86-55	4,465	Printy (20)	M. Johnson (9)
Jan. 2	at Ohio State	L, 71-84	3,295	M. Johnson (25)	Krei (8)
Jan. 5	Illinois	W, 69-62 (OT)	3,815	Printy (20)	M. Johnson (16)
Jan. 8	Nebraska	L, 72-77	7,269	Printy (27)	M. Johnson (12)
Jan. 15	at Purdue	L, 55-57	9,208	M. Johnson (16)	Logic (8)
Jan. 19	Wisconsin	W, 69-57	4,610	Printy (25)	M. Johnson (9)
Jan. 22	at Penn State	L, 52-68	4,714	Wahlin (21)	M. Johnson, Krei, Printy (5)
Jan. 26	at Nebraska	L, 53-60	5,214	Printy (17)	Krei (10)
Jan. 28	Purdue	W, 59-42	6,278	M. Johnson (17)	M. Johnson (11)
Feb. 2	at Wisconsin	W, 85-79 (OT)	4,902	M. Johnson (27)	Logic (13)
Feb. 5	at Indiana	W, 83-64	1,838	Wahlin (22)	Logic (7)
Feb. 9	Minnesota	W, 75-58	3,913	M. Johnson (23)	Krei, Logic (9)
Feb. 12	Michigan State				
Feb. 16	at Michigan				
Feb. 23	at Northwestern				
Feb. 26	Michigan				

* - Hawkeye Challenger, Iowa City, IA

- Junkanoo Jam, Bahamas

& - Big Ten/ACC Challenge

\$ - Big Ten/Big 12 Challenge

Attendance Summary	Games	Totals	Average
Home	13	57,882	4,453
Away	10	51,193	5,120
Neutral	2	492	246
Totals	25	109,567	4,383





University of Iowa

Women's Basketball

Game-by-Game Statistics

Team	Score	FG-A	PCT	3-PT. FG	PCT	FT-A	PCT	REB	PF	AS	TO	BLK	ST
Harvard	81	31-69	44.9%	8-20	40.0%	11-17	64.7%	39	20	14	15	5	7
at Iowa	90	30-59	50.8%	9-19	47.4%	21-27	77.8%	35	16	16	14	4	6
UNLV	69	24-59	40.7%	6-17	35.3%	15-21	71.4%	49	13	13	22	2	10
at Iowa	59	21-60	35.0%	7-27	25.9%	10-10	100%	29	18	16	16	3	7
Albany	60	24-69	34.8%	4-18	22.2%	8-17	47.1%	37	23	10	15	4	12
at Iowa	82	26-53	49.1%	7-12	58.3%	23-27	85.2%	42	15	23	17	6	5
at Northern Iowa	74	26-66	39.4%	6-22	27.3%	16-17	94.1%	31	17	12	11	4	11
Iowa	78	28-63	44.4%	6-19	31.6%	16-19	84.2%	48	16	15	18	6	6
vs. St John's	52	21-56	37.5%	1-5	20.0%	9-14	64.3%	40	12	8	20	3	12
Iowa	60	21-54	38.9%	6-26	23.1%	12-14	85.7%	31	13	12	17	5	9
vs. Texas A&M	74	28-64	43.8%	2-5	40.0%	16-24	66.7%	39	18	15	13	2	14
Iowa	58	22-54	40.7%	4-15	26.7%	10-15	66.7%	38	18	8	25	5	6
Virginia Tech	47	18-57	31.6%	3-8	37.5%	8-13	61.5%	38	19	10	15	1	9
at Iowa	58	20-60	33.3%	2-15	13.3%	16-20	80.0%	47	11	13	13	4	7
at Kansas State	81	28-57	49.1%	5-18	27.8%	20-31	64.5%	35	21	18	15	4	10
Iowa	78	25-54	46.3%	10-19	52.6%	18-23	78.3%	32	23	19	17	2	7
at Iowa State	62	22-64	34.4%	7-23	30.4%	11-18	61.1%	38	19	16	12	3	6
Iowa	54	16-54	29.6%	6-23	26.1%	16-22	72.7%	48	23	11	22	4	4
Western Illinois	45	13-66	19.7%	5-20	25.0%	14-20	70.0%	40	14	6	20	1	9
at Iowa	98	38-77	49.4%	11-26	42.3%	11-14	78.6%	57	15	27	17	8	9
at Bradley	96	29-59	49.2%	13-22	59.1%	25-33	75.8%	37	23	14	19	3	13
Iowa	88	29-61	47.5%	3-15	20.0%	27-30	90.0%	32	24	20	19	4	13
Drake	46	20-58	34.5%	2-11	18.2%	4-6	66.7%	38	10	11	22	2	8
at Iowa	71	25-59	42.4%	7-26	26.9%	14-15	93.3%	35	12	15	14	10	9
Miss. Valley State	80	33-56	58.9%	11-19	57.9%	3-10	30.0%	31	19	16	24	1	12
at Iowa	86	25-65	38.5%	14-35	40.0%	22-25	88.0%	38	12	19	20	5	8
Northwestern	55	21-63	33.3%	6-25	24.0%	7-10	70.0%	35	14	11	17	5	2
at Iowa	86	31-68	45.6%	12-27	44.4%	12-17	70.6%	45	11	24	11	2	6
at Ohio State	84	28-59	47.5%	10-15	66.7%	18-23	78.3%	33	13	11	10	4	9
Iowa	71	24-60	40.0%	7-15	46.7%	16-17	94.1%	36	17	16	15	3	4
Illinois	62	26-70	37.1%	3-12	25.0%	7-12	58.3%	45	21	15	16	6	6
at Iowa	69	21-65	32.3%	2-14	14.3%	25-32	78.1%	49	15	15	10	9	9
Nebraska	77	25-51	49.0%	10-19	52.6%	17-25	68.0%	34	15	13	17	0	5
at Iowa	72	28-61	45.9%	2-16	12.5%	14-16	87.5%	28	16	16	13	4	9
at Purdue	57	20-66	30.3%	3-15	20.0%	14-18	77.8%	48	13	9	16	5	8
Iowa	55	21-58	36.2%	6-18	33.3%	7-10	70.0%	38	14	14	18	5	7
Wisconsin	57	22-57	38.6%	10-23	43.5%	3-6	50.0%	19	18	13	17	1	11
at Iowa	69	24-48	50.0%	5-17	29.4%	16-16	100.0%	41	8	17	24	6	9
at Penn State	68	24-71	33.8%	1-7	14.3%	19-24	79.2%	53	15	10	9	2	8
Iowa	52	19-55	34.5%	6-28	21.4%	8-13	61.5%	34	16	13	15	3	7
at Nebraska	60	18-56	32.1%	6-30	20.0%	18-30	60.0%	40	15	9	14	2	11
Iowa	53	16-52	30.8%	8-28	28.6%	13-15	86.7%	41	24	12	20	2	5
Purdue	42	14-60	23.3%	2-14	14.3%	12-20	60.0%	38	22	7	13	1	9
at Iowa	59	21-54	38.9%	5-18	27.8%	12-22	54.5%	54	22	9	16	6	2
at Wisconsin	79	27-64	42.2%	11-31	35.5%	14-16	87.5%	35	17	17	17	5	3
Iowa	85	33-75	44.0%	7-24	29.2%	12-20	60.0%	48	13	23	13	5	9
at Indiana	64	22-63	34.9%	2-14	14.3%	18-23	78.3%	49	10	9	20	4	4
Iowa	83	34-67	50.7%	10-24	41.7%	5-7	71.4%	30	18	18	8	6	14
Minnesota	58	24-57	42.1%	2-14	14.3%	8-12	66.7%	26	17	7	17	0	8
at Iowa	75	26-59	44.1%	7-25	28.0%	16-19	84.2%	43	15	21	20	3	6
Michigan State													
at Iowa													
at Michigan													
Iowa													
at Northwestern													
Iowa													
Michigan													
at Iowa													





University of Iowa Women's Basketball

Season & Career Bests

Season Bests

Player	Points	3-Pointers	Rebounds	Assists	Blocks	Steals
Megan Considine	---	---	---	---	---	---
Melissa Dixon	19 at Indiana	5 at Indiana	4, four times	2 at Wisconsin	1, twice	3 at Indiana
Bethany Doolittle	10 at UNI	---	6 at UNI	2 vs. Western Illinois	4 vs. Drake	1, six times
Kalli Hansen	11 at Kansas State	2 at Kansas State	10 at Iowa State	2, twice	1, three times	2 vs. Illinois
Morgan Johnson	37 at Bradley	---	16 vs. Illinois	2, four times	5 vs. Illinois	1, nine times
Virginia Johnson	8 vs. Western Illinois	---	9 vs. Western Illinois	2 vs. Western Illinois	4 vs. Western Illinois	1, twice
Kelly Krei	16 vs. Harvard	4, twice	11 vs. Illinois	5 vs. Albany	2, three times	5 at Indiana
Samantha Logic	20, twice	3 vs. Drake	13 at Wisconsin	8 at Wisconsin	2 vs. MVSU	3, five times
Trisha Nesbitt	2 at Indiana	---	1, twice	2 vs. Minnesota	---	1, three times
Jaime Printy	27 vs. Nebraska	5 vs. Western Illinois	7 at UNI	8, twice	1, three times	5 at Bradley
Kathryn Reynolds	4 vs. Drake	---	2 vs. Texas A&M	5 vs. Western Illinois	---	---
Jade Rogers	---	---	---	---	---	---
Theairra Taylor	6, twice	1 vs. Drake	8 vs. Western Illinois	3 at Indiana	3 vs. Drake	3 vs. Wisconsin
Kamille Wahlin	22 at Indiana	5, twice	6, twice	7, twice	2 at Purdue	2, six times

Career Bests

Player	Points	3-Pointers	Rebounds	Assists	Blocks	Steals
Megan Considine	5, Northeastern	1 vs. Southern	4 vs. Southern, '10	2 vs. N'eastern	---	3, vs. Bradley
Melissa Dixon	19 at Indiana	5 at Indiana	4, four times	2 at Wisconsin	1, twice	3 at Indiana
Bethany Doolittle	10 at UNI	---	6 at UNI	2 vs. Western Illinois	4 vs. Drake	1, six times
Kalli Hansen	11 at Kansas State	2, twice	10 at Iowa State	2, twice	1, three times	2 vs. Illinois
Morgan Johnson	37 at Bradley	---	16 vs. Illinois	4, twice	8, Minnesota, '10	3, three times
Virginia Johnson	8 vs. Western Illinois	---	9 vs. Western Illinois	2 vs. Western Illinois	4 vs. Western Illinois	1, twice
Kelly Krei	20, three times	5, twice	13, Indiana, '10	5 vs. Albany	3, Michigan '10	6, Wisconsin '10
Samantha Logic	20, twice	3 vs. Drake	13 at Wisconsin	8 at Wisconsin	2 vs. MVSU	3, five times
Trisha Nesbitt	10, Michigan State	2, Columbia	3, William & Mary	4, three times	1, Michigan State '11	3, Minnesota
Jaime Printy	32 vs. Illinois, '11	5, three times	9, William & Mary	9, Iowa State, '10	1, 12 times	5 at Bradley
Kathryn Reynolds	4 vs. Drake	---	2 vs. Texas A&M	5 vs. Western Illinois	---	---
Jade Rogers	5, twice	---	5 vs. Central Michigan	1, three times	1, twice	1 vs. N'eastern
Theairra Taylor	20, William & Mary	3, William & Mary	9, William & Mary	6, Santa Clara	4, Michigan	3, three times
Kamille Wahlin	33, UNI	7, Penn State	11 vs. James Madison	10, Michigan, '09	2 at Purdue	4, Wisconsin '10

BOLD - set career best during current season

* - - tied school single-game and Carver-Hawkeye Arena record





University of Iowa Women's Basketball

The Last Time...

The Last Time a Player . . .

Had 30 or more points

Iowa -- 37, Morgan Johnson, at Bradley, 12/17/11
Opponent -- 30, Samantha Prahalis, Ohio State, 1/2/12

Made at least 80% of her FGA (10 att.)

Iowa -- 1.000 (10-10), Jaime Printy, at Indiana, 2/27/11^
Opponent -- .857 (12-14), Kelsey Budd, Bradley, 12/17/11

Made 100% of her FTA (10 att.)

Iowa -- 1.000 (10-10), Jamie Printy, at Indiana, 2/27/11^
Opponent -- 1.000 (11-11), Courtney Vandersloot, Gonzaga, 3/19/11

Had 15 or more rebounds

Iowa -- 16, Morgan Johnson, vs. Illinois, 1/5/12
Opponent -- 15, Jordan Hooper, Nebraska, 1/26/12

Had 10 or more assists

Iowa -- 10, Kachine Alexander vs. Penn State, 2/1/09
Opponent -- 10, Brittnay McCoy, Minnesota, 2/18/10

Had 5 or more blocks

Iowa -- 5, Morgan Johnson, vs. Illinois, 1/5/12
Opponent -- 5, Ebony Ellis, Northern Illinois, 12/8/07

Had 5 or more steals

Iowa -- 5, Kelly Krei, at Indiana, 2/5/12
Opponent -- 6, Alex Bentley, Penn State, 1/22/12

The Last Time A Team . . .

Scored 100 or more points

Iowa -- 100 vs. Minnesota, 2/12/88
Opponent -- 101, Iowa State, 12/3/03

Scored 40 or fewer points

Iowa -- 40, vs. Illinois, 2/10/77
Opponent -- 40, Iowa State, 12/9/10

Won an overtime game

Iowa -- 85-79, at Wisconsin, 2/2/12
Opponent -- 81-78, Kansas State, 12/3/11

Made at least 60% of its FGA (20 att.)

Iowa -- .632 (36-57), vs. Rider, 11/26/05
Opponent -- .654 (34-52), Ohio State, 2/12/06

Made at least 50% of its 3-pt. FGA (8 att.)

Iowa -- .526 (10-19), at Kansas State, 12/3/11
Opponent -- .526 (10-19), Nebraska, 1/8/12

Made at least 90% of its FTA (10 att.)

Iowa -- 1.000 (16-16), vs. Wisconsin, 1/19/12*^
Opponents -- .941 (16-17), UNI, 11/19/11

* - Carver-Hawkeye Arena record ^ - school record





University of Iowa Women's Basketball

Miscellaneous Records and Statistics

GAME-BY-GAME, POINTS-REBOUNDS-ASSISTS-STEALS

# -- starter		2	3	4	11	12	20	21	22	23	24	32	33	34	51
Date	Opponent	Wahlin	Hansen	Considine	Nesbitt	Johnson	Krei	Dixon	Logic	Taylor	Printy	Rogers	Reynolds	Johnson	Doollittle
11-12-11	Harvard	P-R-A-S	P-R-A-S	P-R-A-S	P-R-A-S	P-R-A-S	P-R-A-S	P-R-A-S	P-R-A-S	P-R-A-S	P-R-A-S	P-R-A-S	P-R-A-S	P-R-A-S	P-R-A-S
11-12-11	Harvard	9-1-2-1#	4-2-1-0	DNP	DNP	18-8-2-1#	16-5-0-1#	6-1-0-0	9-5-4-3#	0-0-2-0	24-6-4-0#	DNP	0-0-1-0	0-0-0-0	4-0-0-0
11-13-11	UNLV	15-2-3-2#	0-2-2-0	DNP	DNP	0-3-0-0#	9-4-1-2#	0-1-1-0	4-2-4-2#	2-4-1-0	25-5-4-1#	DNP	0-0-0-0	DNP	4-0-0-0
11-16-11	Albany	9-4-2-0#	2-1-1-0	DNP	DNP	12-6-0-1#	13-10-5-1#	8-1-1-0	6-4-1-1#	5-2-2-0	16-5-8-2#	DNP	0-0-2-0	3-1-1-0	8-3-0-0
11-19-11	Northern Iowa	10-4-2-1#	0-3-1-0	DNP	DNP	23-5-1-0#	6-3-0-1#	1-1-1-0	10-11-4-2#	0-4-2-0	18-7-3-2#	DNP	0-0-1-0	DNP	10-6-0-0
11-25-11	St. John's	7-5-3-1#	0-1-0-0	DNP	DNP	6-3-0-0#	8-5-2-2#	3-0-0-0	13-3-1-3#	4-5-0-0	17-5-3-3#	DNP	2-1-2-0	0-0-0-0	0-1-1-0
11-26-11	Texas A&M	5-1-4-1#	4-3-0-0	DNP	DNP	4-4-0-0#	3-1-1-0#	3-1-0-0	16-9-3-1#	5-2-0-0	14-3-0-3#	DNP	2-2-0-0	0-1-0-0	2-2-0-1
11-30-11	Virginia Tech	0-4-3-2#	0-6-0-0	DNP	DNP	23-8-0-1#	8-7-0-1#	5-1-0-0	8-7-5-1#	0-2-0-0	9-5-2-1#	DNP	1-1-1-0	0-0-1-0	4-2-1-1
12-3-11	Kansas State	13-3-4-1#	11-6-2-0	DNP	DNP	17-6-2-1#	3-1-0-1#	3-0-0-0	6-6-4-1#	4-2-1-0	21-2-6-3#	DNP	0-0-0-0	DNP	0-1-0-0
12-7-11	Iowa State	5-5-3-0#	5-10-1-1	DNP	DNP	16-7-1-0#	3-3-0-1#	11-4-0-0	4-8-3-1#	0-2-1-1	9-4-2-0#	DNP	0-0-0-0	DNP	1-1-0-0
12-9-11	Western Illinois	14-2-5-0#	0-2-1-0	DNP	DNP	10-3-1-0#	4-8-2-3#	15-4-0-0	8-9-4-3#	6-8-1-1	25-5-4-1#	DNP	2-1-5-0	8-9-2-1	6-4-2-0
12-17-11	Bradley	18-4-6-2#	2-1-0-0	DNP	DNP	37-8-0-1#	7-8-1-1#	8-2-0-1	5-5-5-2#	2-2-1-0	7-1-7-5#	DNP	0-1-0-0	2-0-0-0	0-0-0-1
12-20-11	Drake	4-0-3-2#	4-3-1-0	DNP	0-1-0-1	8-2-2-0#	8-5-0-2#	8-3-1-0	12-6-4-2#	3-6-0-0	16-4-3-2#	DNP	4-0-1-0	DNP	4-4-0-0
12-22-11	MVSU	14-4-7-0#	0-2-1-0	DNP	0-0-0-0	10-3-1-1#	14-7-3-1#	7-4-0-0	15-5-2-3#	0-1-0-0	22-4-4-3#	DNP	0-1-1-0	DNP	4-1-0-0
12-30-11	Northwestern	16-6-7-0#	3-1-1-0	DNP	0-0-0-0	14-9-1-0#	3-6-1-1#	10-3-1-1	4-4-3-0#	5-3-1-0	20-5-8-3#	DNP	2-0-1-0	DNP	9-2-0-1
1-2-12	Ohio State	17-3-2-0#	0-2-0-0	DNP	DNP	25-6-1-0#	8-8-2-0#	0-0-0-0	6-6-5-3#	2-0-1-0	13-5-5-1#	DNP	DNP	DNP	0-2-0-0
1-5-12	Illinois	13-4-4-2#	5-4-0-2	DNP	0-0-0-0	14-16-1-1#	5-11-3-0#	DNP	6-5-3-1#	4-2-0-1	20-4-4-1#	DNP	DNP	DNP	2-0-0-1
1-8-12	Nebraska	12-1-4-1#	0-0-0-0	DNP	0-0-0-0	21-12-0-0#	0-6-2-2#	DNP	4-4-3-1#	4-2-1-1	27-2-5-3#	DNP	DNP	DNP	4-1-1-1
1-15-12	Purdue	9-4-2-0#	0-1-0-0	DNP	0-0-0-1	16-5-1-0#	10-5-1-1#	DNP	5-8-6-1#	0-3-0-1	15-5-4-3#	DNP	DNP	DNP	0-1-0-0
1-19-12	Wisconsin	15-4-5-1#	DNP	DNP	0-0-1-0	6-9-1-0#	10-5-0-2#	DNP	6-5-4-1#	2-5-1-3	25-5-2-2#	DNP	0-0-0-0	0-1-0-0	5-0-0-0
1-22-12	Penn State	21-2-1-0#	DNP	DNP	DNP	6-5-0-1#	0-5-2-3#	DNP	2-4-3-1#	2-3-0-0	13-5-7-2#	DNP	DNP	0-1-0-0	8-2-0-0
1-26-12	Nebraska	11-1-4-1#	DNP	DNP	0-0-0-0	8-9-1-0#	3-10-1-1#	DNP	10-5-3-1#	1-2-1-0	17-5-2-1#	DNP	DNP	3-2-0-1	0-2-0-0
1-28-12	Purdue	13-4-2-0#	DNP	DNP	0-1-0-0	17-11-0-0#	5-8-1-0#	DNP	1-3-2-0#	6-6-2-1	7-5-1-1#	DNP	0-1-0-0	6-6-1-0	4-3-0-0
2-2-12	Wisconsin	14-4-4-0#	DNP	DNP	DNP	27-11-2-0#	3-7-1-2#	6-0-2-2	20-13-8-2#	2-1-0-0	8-5-5-3#	DNP	DNP	0-0-1-0	5-1-0-0
2-5-12	Indiana	22-4-6-2#	DNP	DNP	2-0-0-0	12-3-0-1#	10-4-2-5#	19-2-1-3#	5-7-6-2#	5-4-3-1	DNP	DNP	0-1-0-0	0-0-0-0	8-4-0-0
2-9-12	Minnesota	19-6-5-0#	0-1-0-0	DNP	0-0-2-1	23-8-1-1#	2-9-4-1#	7-4-1-2#	20-9-6-1#	2-2-1-0	DNP	DNP	0-0-0-0	DNP	2-3-1-0

IOWA RECORD WHEN...

OVERALL	BIG TEN	OVERALL	BIG TEN
Playing at home:	11-2	14-8	6-5
Playing on the road:	3-7	0-2	0-0
Playing on a neutral floor:	1-1	1-0	1-0
Leading at the half:	10-5	10-2	4-1
Trailing at the half:	5-4	5-7	3-4
Tied at the half:	0-1	0-1	0-0
Wearing white:	5-1	5-1	4-1
Wearing black:	3-8	9-8	3-4
Wearing gold:	6-1	1-1	0-0
Wearing pink:	1-0	1-2	0-1
Scoring 80 points or more:	7-1	5-5	2-2
Scoring 70-79 points:	3-3	9-3	5-2
Scoring 60-69 points:	3-0	7-2	2-0
Scoring 50-59 points:	2-6	1-4	1-3
Scoring fewer than 50 points:	0-0	0-1	0-1
Allowing 80 points or more:	2-3	1-0	0-0
Allowing 70-79 points:	2-2	1-1	0-0
Allowing 60-69 points:	3-4	5-1	4-1
Allowing 50-59 points:	4-1	3-0	1-0
Allowing fewer than 50 points:	4-0	3-3	1-0
Shooting 50% or better FG:	3-0	0-0	0-0
Shooting less than 50% FG:	12-10	0-1	0-1
Opponent shoots 50% FG or better:	1-0	1-3	1-3
Opponent shoots less than 50% FG:	14-10	0-0	0-0
Iowa has higher FG%:	13-2	0-0	0-0
Opponent has higher FG%:	2-8	1-0	1-0
FG% is equal:	0-0	0-0	0-0
Iowa outrebounds opponent:	12-3	0-0	0-0
Opponent has more rebounds:	3-7	0-0	0-0
Rebounds are equal:	0-0	0-0	0-0
Shoots at least 80% FT:	8-5	2-3	1-0
Shoots less than 80% FT:	7-5	5-2	1-0
Opponent shoots at least 80% FT:	2-0	6-5	1-0
Opponent shoots less than 80% FT:	13-10	1-0	0-0
Iowa shoots more FT:	12-1	6-0	1-0
Opponent shoots more FT:	2-9	1-5	0-0
FT attempts are equal:	1-0	4-3	3-2
Iowa has higher FT%:	11-7	0-1	0-0
Opponent has higher FT%:	4-2	0-0	0-0
FT% is equal:	0-1	6-2	2-1
Shoots at least 40% 3-pt:	6-2	9-8	5-4
Shoots less than 40% 3-pt:	9-8	3-4	1-2
Opponent shoots at least 40% 3-pt:	3-4	12-6	6-3
Opponent shoots less than 40% 3-pt:	10-4	5-6	3-2
Iowa has higher 3-pt%:	5-6	0-0	0-0
Opponent has higher 3-pt%:	0-0		
3-pt% is equal:	0-0		

LATE GAME CLUTCH FREE THROW SHOOTING

In Final Five Minutes of Game

Player	FTM	FTA	Pct.
Kelly Krei	4	4	1.000
Bethany Doolittle	3	3	1.000
Kalli Hansen	2	2	1.000
Kathryn Reynolds	2	2	1.000
Jaime Printy	15	16	.938
Kamille Wahlin	18	20	.900
Melissa Dixon	5	6	.833
Theairra Taylor	3	4	.750
Morgan Johnson	18	25	.720
Samantha Logic	2	4	.500
Kathryn Reynolds	1	2	.500
TOTALS	73	88	.830

In Final Two Minutes of Game

Player	FTM	FTA	Pct.
Kamille Wahlin	14	14	1.000
Jaime Printy	7	7	1.000
Melissa Dixon	2	2	1.000
Bethany Doolittle	2	2	1.000
Kalli Hansen	2	2	1.000
Kelly Krei	2	2	1.000
Virginia Johnson	1	1	1.000
Theairra Taylor	3	4	.750
Morgan Johnson	9	13	.692
Samantha Logic	2	3	.667
TOTALS	44	50	.880

In Final One Minute of Game

Player	FTM	FTA	Pct.
Jaime Printy	6	6	1.000
Kamille Wahlin	6	6	1.000
Morgan Johnson	3	3	1.000
Bethany Doolittle	2	2	1.000
Kalli Hansen	2	2	1.000
Kelly Krei	2	2	1.000
Virginia Johnson	1	1	1.000
Samantha Logic	1	1	1.000
Theairra Taylor	3	4	.750
TOTALS	26	27	.963

In Overtime

Player	FTM	FTA	Pct.
Samantha Logic	4	4	1.000
Morgan Johnson	3	4	.750
Jaime Printy	4	6	.667
Kalli Hansen	1	2	.500
Kelly Krei	1	2	.500
TOTALS	13	18	.722





University of Iowa Women's Basketball

Season Highs And Lows/Specialty Statistics

CATEGORY

Points

High
Low

IOWA

98 vs. Western Illinois
52 at Penn State
38 vs. Western Illinois
16 at Iowa State, Nebraska

OPPONENTS

96 (Bradley)
42 (Purdue)
33 (Miss. Valley State)
13 (Western Illinois)
71 (Penn State)
51 (Nebraska)
.589 (Miss. Valley State)
.197 (Western Illinois)
13 (Bradley)
1 (St. John's, Penn State)
31 (Wisconsin)
5 (St. John's, Texas A&M)
.667 (Ohio State)
.143 (PSU, Purdue, IU, Minn.)
25 (Bradley)
3 (Miss. Valley State, Wisconsin)
33 (Bradley)
6 (Drake, Wisconsin)
.941 (UNI)
.300 (Miss. Valley State)
24 (Purdue)
5 (Miss. Valley State)
33 (Penn State)
13 (Wisconsin)
53 (Penn State)
19 (Wisconsin)
18 (Kansas State)
6 (Western Illinois)
14 (Texas A&M)
2 (Northwestern)
6 (Illinois)
0 (Nebraska, Minnesota)
24 (Miss. Valley State)
9 (Penn State)
23 (Albany, Bradley)
10 (Drake, Indiana)

FG Made

High
Low

FG Att.

High
Low

FG%

High
Low

3FG Made

High
Low

3FG Att.

High
Low

3FG%

High
Low

FTM

High
Low

FTA

High
Low

FT% (min. 10)

High
Low

Off. Reb.

High
Low

Def. Reb.

High
Low

Total Reb.

High
Low

Assists

High
Low

Steals

High
Low

Blocks

High
Low

Turnovers

High
Low

Fouls

High
Low

GAME-BY-GAME SPECIALTY STATS

Date	Opponent	IA-Opp.	Pts. Off	Pts. in	2nd	Fast
			TO's	Paint	Chance	Break
Nov. 12	Harvard	16-17	32-40	15-16	4-4	
Nov. 13	UNLV	18-16	22-30	5-11	6-6	
Nov. 16	Albany	12-12	26-28	17-12	13-4	
Nov. 19	at Northern Iowa	17-20	26-32	16-11	4-6	
Nov. 25	vs. St. John's	22-13	20-34	9-10	4-8	
Nov. 26	vs. Texas A&M	22-25	30-38	11-24	6-6	
Nov. 30	Virginia Tech	12-9	26-22	17-9	5-10	
Dec. 3	at Kansas State	19-16	26-42	17-15	6-2	
Dec. 7	at Iowa State	8-21	14-24	7-6	0-2	
Dec. 9	Western Illinois	21-13	48-10	18-10	12-2	
Dec. 17	at Bradley	28-17	40-24	10-17	13-15	
Dec. 20	Drake	18-9	26-20	13-6	4-4	
Dec. 22	Mississippi Valley State	25-23	20-30	23-6	12-11	
Dec. 30	Northwestern	29-10	18-22	17-9	17-6	
Jan. 2	at Ohio State	11-9	30-24	20-13	7-15	
Jan. 5	Illinois	21-8	32-38	14-15	6-10	
Jan. 8	Nebraska	18-21	36-18	12-13	8-17	
Jan. 15	at Purdue	17-20	28-28	16-14	- - -	
Jan. 19	Wisconsin	19-22	26-16	9-2	7-10	
Jan. 22	at Penn State	7-11	18-32	5-15	2-18	
Jan. 26	at Nebraska	13-20	10-22	11-19	0-2	
Jan. 28	Purdue	8-14	22-20	13-8	0-10	
Feb. 2	at Wisconsin	16-11	36-24	13-8	7-4	
Feb. 5	at Indiana	28-4	36-34	7-16	13-0	
Feb. 9	Minnesota	15-22	22-34	10-4	0-6	
Feb. 12	Michigan State					
Feb. 16	at Michigan					
Feb. 23	at Northwestern					
Feb. 26	Michigan					

IOWA AND OPPONENT INDIVIDUAL HIGH PERFORMANCES

CATEGORY

Points

Field Goals Made

Field Goals Attempted

3-Point Field Goals Made

3-Point Field Goals Attempted

Free Throws Made

Free Throws Attempted

Offensive Rebounds

Defensive Rebounds

Total Rebounds

Assists

Steals

Blocks

IOWA

37 (Morgan Johnson at Bradley)
13 (Morgan Johnson at Bradley)
21 (Morgan Johnson vs. Virginia Tech)
5 (Wahlin, twice, Printy, Dixon, once)
12 (Jaime Printy at Nebraska)
11 (M. Johnson at Bradley, Printy vs. Illinois)
14 (Jaime Printy vs. Illinois)
5 (Krei, 3X, Logic, M. Johnson, twice, Taylor, once)
12 (Morgan Johnson vs. Illinois)
16 (Morgan Johnson vs. Illinois)
8 (Printy vs. Albany, Northwestern, Logic at Wisconsin)
5 (Printy at Bradley, Krei at Indiana)
5 (Morgan Johnson vs. Illinois)

OPPONENTS

31 (Kelsey Budd, Bradley)
12 (Kelsey Budd, Bradley)
25 (Samantha Prahalis, Ohio State)
6 (Morgan Paige, Wisconsin)
12 (Henry, Albany/Oney, UNI)
9 (Carter, Texas A&M/Edwards, Penn State)
11 (Clark, Harv./Tellier, VT/Chambers, K-State)
8 (Nikki Greene, Penn State)
15 (Shenneika Smith, St. John's)
21 (Shenneika Smith, St. John's)
9 (Lindsey Moore, Nebraska)
6 (McKenith, St. John's/Bentley, Penn State)
4 (Cassie Rochel, Wisconsin)





University of Iowa Women's Basketball

Season Box Scores



Official Basketball Box Score -- Game Totals -- Final Statistics
Harvard vs Iowa
11/12/11 7:05 PM at Carver-Hawkeye Arena, Iowa City, IA



Harvard 81 • 0-1

#	Player	Total		3-Ptr		Rebounds		PF	TP	A	TO	Blk	Stl	Min
		FG-FGA	FT-FTA	FG-FGA	FT-FTA	Off	Def							
21	Lippert, Victoria	f	2-7	1-4	0-0	3	4	7	4	5	3	3	0	25
25	Rutzen, Miriam	c	2-4	2-2	0-0	1	2	3	5	6	1	2	1	16
04	Berry, Brogan	g	3-9	1-1	1-1	0	2	2	2	8	1	0	0	35
13	Golen, Emma	g	1-7	1-5	1-2	2	3	5	0	4	0	3	0	34
22	Clark, Christine	g	10-20	1-3	7-11	4	2	6	3	28	3	4	3	35
01	Hagedorn, Elle	g	4-8	1-4	1-1	2	3	5	2	10	1	0	1	23
02	Mullins, Missy	g	5-8	1-1	1-2	1	2	3	3	12	0	1	0	23
12	Louie, Lindsay	g	0-0	0-0	0-0	0	0	0	0	0	0	0	0	0
32	Gordon, Elise	g	4-6	0-0	0-0	4	1	5	1	8	0	1	0	9
Team						2	1	3						
Totals			31-69	8-20	11-17	19	20	39	20	81	14	15	5	7

FG % 1st Half: 15-35 42.9% 2nd half: 16-34 47.1% Game: 31-69 44.9%
3FG % 1st Half: 5-13 38.5% 2nd half: 3-7 42.9% Game: 8-20 40.0%
FT % 1st Half: 5-7 71.4% 2nd half: 6-10 60.0% Game: 11-17 64.7%

Deadball
Rebounds
2

Iowa 90 • 1-0

#	Player	Total		3-Ptr		Rebounds		PF	TP	A	TO	Blk	Stl	Min
		FG-FGA	FT-FTA	FG-FGA	FT-FTA	Off	Def							
20	Krei, Kelly	f	5-7	4-6	2-2	3	2	5	1	16	0	3	0	32
24	Printy, Jaime	f	9-19	2-6	4-5	1	5	6	1	24	4	2	0	34
12	Johnson, Morgan	c	5-10	0-0	8-10	1	7	8	4	18	2	0	3	23
02	Wahlin, Kamille	g	3-5	2-4	1-2	1	0	1	3	9	2	2	0	22
22	Logic, Samantha	g	3-7	0-0	3-4	4	1	5	3	9	4	3	0	30
03	Hansen, Kalli	g	1-2	0-0	2-2	0	2	2	0	4	1	2	1	18
21	Dixon, Melissa	g	2-5	1-2	1-2	0	1	1	1	6	0	0	0	15
23	Taylor, Theairra	g	0-1	0-1	0-0	0	0	0	1	0	2	1	0	2
33	Reynolds, Kathryn	g	0-0	0-0	0-0	0	0	0	0	1	0	0	0	12
34	Johnson, Virginia	g	0-0	0-0	0-0	0	0	0	0	0	0	0	0	2
51	Doolittle, Bethany	g	2-3	0-0	0-0	0	0	0	1	4	0	0	0	10
Team						2	5	7						
Totals			30-59	9-19	21-27	12	23	35	16	90	16	14	4	6

FG % 1st Half: 13-30 43.3% 2nd half: 17-29 58.6% Game: 30-59 50.8%
3FG % 1st Half: 4-8 50.0% 2nd half: 5-11 45.5% Game: 9-19 47.4%
FT % 1st Half: 7-11 63.6% 2nd half: 14-16 87.5% Game: 21-27 77.8%

Deadball
Rebounds
3

Officials: Lisa Mattingly, Tina Napier, Ann Schroeder
Technical fouls: Harvard-None. Iowa-None.
Attendance: 2873
Fouled Out: Harvard #25 1:39 2nd

Score by periods	1st	2nd	Total
Harvard	40	41	81
Iowa	37	53	90



Official Basketball Box Score -- Game Totals -- Final Statistics
UNLV vs Iowa
11/13/11 2:30 PM at Carver-Hawkeye Arena, Iowa City, IA



UNLV 69 • 2-0

#	Player	Total		3-Ptr		Rebounds		PF	TP	A	TO	Blk	Stl	Min
		FG-FGA	FT-FTA	FG-FGA	FT-FTA	Off	Def							
11	SMITH, Jamie	f	4-13	2-4	2-4	7	10	17	2	12	0	3	2	35
51	SANFORD, Lenita	f	2-6	0-0	6-9	3	6	9	2	10	5	4	0	24
03	NZEUKOU, Sandrine	c	4-8	0-0	5-6	0	10	15	2	13	1	2	0	36
30	BELL, Mia	g	1-7	0-2	0-0	1	1	2	2	2	5	3	0	37
45	THOMPSON, Kelli	g	10-19	4-9	2-2	0	2	2	1	26	1	2	0	35
05	STYLES, Markiell	g	3-3	0-0	0-0	1	0	1	3	6	0	4	0	19
22	HAYNES, Rmanii	g	0-0	0-0	0-0	0	0	0	1	0	0	1	0	3
24	CESARZ, Alana	g	0-0	0-0	0-0	0	0	0	0	0	0	0	0	5
42	MILLER, Danielle	g	0-3	0-2	0-0	0	0	0	0	0	1	2	0	6
Team						2	1	3						
Totals			24-59	6-17	15-21	19	30	49	13	69	13	22	2	200

FG % 1st Half: 11-30 36.7% 2nd half: 13-29 44.8% Game: 24-59 40.7%
3FG % 1st Half: 4-9 44.4% 2nd half: 2-8 25.0% Game: 6-17 35.3%
FT % 1st Half: 4-6 66.7% 2nd half: 11-15 73.3% Game: 15-21 71.4%

Deadball
Rebounds
2

Iowa 59 • 1-1

#	Player	Total		3-Ptr		Rebounds		PF	TP	A	TO	Blk	Stl	Min
		FG-FGA	FT-FTA	FG-FGA	FT-FTA	Off	Def							
20	Krei, Kelly	f	3-10	1-5	2-2	2	2	4	3	9	1	0	0	32
24	Printy, Jaime	f	7-18	3-10	8-8	2	3	5	0	25	4	6	0	35
12	Johnson, Morgan	c	0-5	0-0	0-0	0	3	3	3	0	0	1	1	23
02	Wahlin, Kamille	g	6-13	3-9	0-0	0	2	2	0	15	3	2	0	28
22	Logic, Samantha	g	2-6	0-1	0-0	1	1	2	4	4	4	6	1	27
03	Hansen, Kalli	g	0-2	0-1	0-0	0	2	2	3	0	2	0	0	14
21	Dixon, Melissa	g	0-1	0-1	0-0	0	1	1	1	1	0	1	0	7
23	Taylor, Theairra	g	1-1	0-0	0-0	1	3	4	2	2	1	1	0	7
33	Reynolds, Kathryn	g	0-0	0-0	0-0	0	0	0	0	0	0	0	0	2
51	Doolittle, Bethany	g	2-4	0-0	0-0	0	0	0	2	4	0	0	1	15
Team						3	3	6						
Totals			21-60	7-27	10-10	9	20	29	18	59	16	16	3	200

FG % 1st Half: 9-28 32.1% 2nd half: 12-32 37.5% Game: 21-60 35.0%
3FG % 1st Half: 5-12 41.7% 2nd half: 2-15 13.3% Game: 7-27 25.9%
FT % 1st Half: 8-8 100.0% 2nd half: 2-2 100.0% Game: 10-10 100.0%

Deadball
Rebounds
0

Officials: Tina Napier, Lisa Mattingly, Ann Schroeder
Technical fouls: UNLV-None. Iowa-None.
Attendance: 3287

Score by periods	1st	2nd	Total
UNLV	30	39	69
Iowa	31	28	59

Points	In	Off	2nd	Fast	Bench
UNLV	30	16	11	6	6
Iowa	22	18	5	6	6

Last FG - UNLV 2nd-01:26, IOWA 2nd-00:31.
Largest lead - UNLV by 13 1st-08:47, IOWA by 9 2nd-14:47.

Score tied - 3 times.
Lead changed - 7 times.



Official Basketball Box Score -- Game Totals -- Final Statistics
Albany vs Iowa
11/16/11 7:00 PM at Carver-Hawkeye Arena, Iowa City, IA



Albany 60 • 2-1

#	Player	Total		3-Ptr		Rebounds		PF	TP	A	TO	Blk	Stl	Min
		FG-FGA	FT-FTA	FG-FGA	FT-FTA	Off	Def							
11	Forster, Julie	f	6-14	0-0	1-5	6	4	10	4	13	1	3	1	33
21	Williams, Keyana	c	2-2	0-0	0-0	1	1	2	3	4	0	1	0	8
01	Callaway, Cassandra	g	2-11	0-1	1-2	2	1	3	2	5	4	0	2	36
05	Henry, Ebone	g	6-19	3-12	2-3	0	4	4	4	17	1	2	1	27
10	Lowie, Lindsey	g	1-5	1-5	0-0	0	1	1	3	3	0	1	0	17
02	Couch, Cyndra	g	3-4	0-0	0-0	2	1	3	0	6	0	1	0	8
04	Royals, Sarah	g	2-2	0-0	0-1	0	0	0	1	4	0	0	0	14
24	Jones, Adrienne	g	1-9	0-0	3-4	0	1	1	4	5	2	2	1	29
33	Makopondo, Tabitha	g	1-3	0-0	1-2	3	3	6	2	4	2	1	2	28
Team						4	3	7						
Totals			24-69	4-18	8-17	18	19	37	23	60	10	15	4	200

FG % 1st Half: 8-34 23.5% 2nd half: 16-35 45.7% Game: 24-69 34.8%
3FG % 1st Half: 1-8 12.5% 2nd half: 3-10 30.0% Game: 4-18 22.2%
FT % 1st Half: 6-10 60.0% 2nd half: 2-7 28.6% Game: 8-17 47.1%

Deadball
Rebounds
5

Iowa 82 • 2-1

#	Player		Total		3-Ptr		Rebounds		PF	TP	A	TO	Blk	Stl	Min
			FG-FA	FG-FGA	FT-FTA	FT-FTA	Off	Def							
20	Krei, Kelly	f	3-5	3-3	4-4	1	9	10	1	13	5	2	2	1	32
24	Printy, Jaime	f	3-10	1-3	9-9	1	4	5	2	16	8	4	0	2	36
12	Johnson, Morgan	c	5-9	0-0	2-3	2	4	6	2	12	0	1	2	1	19
02	Wahlin, Kamille	g	3-5	1-3	2-2	0	4	4	0	9	2	3	0	0	26
22	Logic, Samantha	g	2-4	0-0	2-2	2	2	4	4	6	1	2	0	1	16
03	Hansen, Kalli	1-1	0-0	0-0	0	1	0	1	2	2	1	0	1	0	8
21	Dixon, Melissa	2-5	2-2	2-2	0	0	1	1	1	8	1	3	0	0	12
23	Taylor, Theairra	2-4	0-0	1-2	0	2	2	2	5	2	1	0	0	0	13
33	Reynolds, Kathryn	0-3	0-1	0-0	0	0	0	0	1	0	2	0	0	0	16
34	Johnson, Virginia	1-1	0-0	1-1	0	1	1	0	3	1	0	0	0	0	5
51	Doolittle, Bethany	4-6	0-0	0-2	1	2	3	0	8	0	1	1	1	0	17
Team						3	2	5							
Totals			26-53	7-12	23-27	11	31	42	15	82	23	17	6	5	200



University of Iowa Women's Basketball

Season Box Scores



Official Basketball Box Score -- Game Totals -- Final Statistics
St. John's vs Iowa
11/25/11 1:00 pm at Freeport, Bahamas



St. John's 52 • 1-3

#	Player	Total		3-Ptr		Rebounds		PF	TP	A	TO	Bk	Stl	Min
		FG	FGA	FT	FTA	Off	Def							
02	THOMPSON, Amber	* 4-10	0-0	0-0	0-0	3	1	4	1	8	0	1	0	18
05	McKENITH, Nadirah	* 3-9	0-0	2-2	0	6	6	3	8	5	5	0	6	31
22	McPHERSON, Eugeneia	* 1-6	0-3	4-4	1	0	1	4	6	1	3	1	3	34
32	JONES, Mallory	* 0-0	0-0	0-0	0	0	0	1	0	0	1	0	0	3
32	SMITH, Sheneika	* 8-17	1-2	1-6	6	15	21	1	18	1	5	1	0	33
12	BROWN, Briana	0-0	0-0	0-0	0	0	0	0	0	0	0	0	0	4
12	BLANDING, Jennifer	1-1	0-0	0-0	2	2	0	2	0	2	0	1	0	2
20	LANGLEY, Keylantra	1-7	0-0	0-0	1	1	2	2	2	0	1	0	1	30
24	NWACHUKWU, Mary	3-5	0-0	2-2	2	2	0	0	8	1	2	1	1	33
34	HARRIS, Tesia	0-1	0-0	0-0	0	0	0	0	0	0	1	0	0	12
Team						1	1	2						
Totals		21-56	1-5	9-14	16	24	40	12	52	8	20	3	12	200

FG % 1st Half: 14-30 46.7% 2nd half: 7-26 26.9% Game: 21-56 37.5% Deadball Rebounds 4
3FG % 1st Half: 1-2 50.0% 2nd half: 0-3 0.0% Game: 1-5 20.0%
FT % 1st Half: 4-4 100.0 2nd half: 5-10 50.0% Game: 9-14 64.3%

Iowa 60 • 4-1

#	Player	Total		3-Ptr		Rebounds		PF	TP	A	TO	Bk	Stl	Min
		FG	FGA	FT	FTA	Off	Def							
02	Wahlin, Kamille	* 2-9	1-8	2-2	1	4	5	0	7	3	4	0	1	33
12	Johnson, Morgan	* 3-5	0-0	0-0	1	2	3	4	6	0	1	3	0	23
20	Krei, Kelly	* 3-5	2-4	0-0	2	3	5	0	8	2	1	1	2	31
22	Logic, Samantha	* 5-9	1-2	2-4	2	1	3	4	13	1	5	0	3	22
24	Printy, Jaime	* 4-13	1-7	8-8	2	3	5	0	17	3	3	0	3	34
03	Hansen, Kalli	0-1	0-0	0-0	0	1	1	0	0	0	0	0	0	8
21	Dixon, Melissa	1-2	1-2	0-0	0	0	0	1	3	0	0	0	0	6
23	Taylor, Theaira	2-7	0-2	0-0	2	3	5	1	4	0	3	0	0	18
33	Reynolds, Kathryn	1-2	0-1	0-0	0	1	1	0	2	2	0	0	0	8
34	Johnson, Virginia	0-0	0-0	0-0	0	0	0	0	0	0	0	0	0	1
51	Doolittle, Bethany	0-1	0-0	0-0	0	1	1	3	0	1	0	1	0	16
Team						1	1	2						
Totals		21-54	6-26	12-14	11	20	31	13	60	12	17	5	9	200

FG % 1st Half: 10-26 38.5% 2nd half: 11-28 39.3% Game: 21-54 38.9% Deadball Rebounds 0
3FG % 1st Half: 2-8 25.0% 2nd half: 4-18 22.2% Game: 6-26 23.1%
FT % 1st Half: 8-8 100.0 2nd half: 4-6 66.7% Game: 12-14 85.7%

Officials: Kathy Lynch, Ed Sidlasky, Maj Forsberg
Technical fouls: St. John's-None. Iowa-None.
Attendance: 258

Score by periods	1st	2nd	Total
St. John's	33	19	52
Iowa	30	30	60

Last FG - STJ 2nd-07:33, IOWA 2nd-00:31.
Largest lead - STJ by 8 2nd-16:00, IOWA by 8 2nd-00:31.

Points	In	Off	2nd	Fast	Bench
STJ	Paint	T/O	Chance	Break	
IOWA	34	13	10	8	12
	22	9	4	9	

Score tied - 8 times.
Lead changed - 6 times.



Official Basketball Box Score -- Game Totals -- Final Statistics
Iowa vs Texas A&M
11/26/11 3:15 pm at Freeport, Bahamas



Iowa 58 • 4-2

#	Player	Total		3-Ptr		Rebounds		PF	TP	A	TO	Bk	Stl	Min
		FG-FGA	FG-FGA	FT-FTA	Off	Def	Tot							
02	Wahlin, Kamille	* 2-8	1-3	0-0	0	1	1	2	5	4	4	0	1	23
12	Johnson, Morgan	* 1-4	0-0	2-4	0	4	4	4	0	2	3	0	0	17
20	Krei, Kelly	* 1-3	1-3	0-0	0	1	1	0	3	1	3	0	0	25
22	Logic, Samantha	* 7-15	0-1	2-2	5	4	9	1	16	3	5	1	1	33
24	Printy, Jaime	* 5-10	2-6	2-3	1	2	3	14	0	5	0	3	28	
03	Hansen, Kalli	2-3	0-1	0-0	0	3	3	1	4	0	2	0	0	17
21	Dixon, Melissa	0-1	0-1	3-4	1	0	1	1	3	0	0	0	0	10
23	Taylor, Theaira	2-3	0-0	1-2	1	1	2	2	5	0	0	0	0	12
33	Reynolds, Kathryn	1-1	0-0	0-0	0	2	2	0	2	0	3	0	0	13
34	Johnson, Virginia	0-2	0-0	0-0	0	1	1	2	0	0	0	0	0	6
51	Doolittle, Bethany	1-4	0-0	0-0	0	2	2	2	0	1	1	1	1	17
Team					5	4	9							
Totals		22-54	4-15	10-15	13	25	38	18	58	8	25	5	6	201

FG % 1st Half: 11-28 39.3% 2nd half: 11-26 42.3% Game: 22-54 40.7% Deadball Rebounds 1
3FG % 1st Half: 3-8 37.5% 2nd half: 1-7 14.3% Game: 4-15 26.7%
FT % 1st Half: 2-2 100.0 2nd half: 8-13 61.5% Game: 10-15 66.7%

Texas A&M 74 • 6-0

#	Player	Total		3-Ptr		Rebounds		PF	TP	A	TO	Bk	Stl	Min
		FG	FGA	FT	FTA	Off	Def							
03	Bone, Kelsey	* 6-8	0-0	0-0	3	2	5	4	12	0	0	0	1	17
04	Carter, Sydney	* 6-16	0-2	9-10	0	2	2	1	21	4	2	0	4	35
20	White, Tyra	* 2-8	0-0	0-0	0	3	3	1	4	0	0	1	1	23
21	Elonu, Adora	* 4-7	0-0	5-7	3	2	5	2	13	1	0	0	2	29
32	Pratcher, Adrienne	* 4-8	0-1	0-0	2	0	2	0	8	4	3	0	4	20
05	Belloch, Kristi	0-1	0-0	0-0	0	0	0	0	0	0	2	0	1	7
10	Standish, Alexia	3-6	2-2	0-0	0	1	1	2	8	2	2	0	0	19
12	Windham, Cierra	2-3	0-0	0-0	1	0	1	2	4	0	0	0	1	9
14	Grant, Kristen	0-0	0-0	0-0	0	1	1	1	0	0	0	0	0	4
15	Scott, Tori	0-0	0-0	0-4	0	0	0	1	0	0	0	0	0	4
23	Mitchell, Rachel	0-0	0-0	2-3	0	1	1	3	2	0	1	0	0	5
25	Collins, Skylar	0-1	0-0	0-0	0	1	1	1	0	2	0	0	0	6
34	Gilbert, Karla	0-5	0-0	0-0	1	4	5	0	0	0	3	1	0	14
40	Assarian, Kelsey	1-1	0-0	0-0	1	1	2	0	2	2	0	0	0	9
Team						5	5	10						
Totals		28-64	2-5	16-24	16	25	39	18	74	15	13	2	14	201

FG % 1st Half: 13-34 38.2% 2nd half: 15-30 50.0% Game: 28-64 43.8% Deadball Rebounds 3
3FG % 1st Half: 1-4 25.0% 2nd half: 1-1 100.0 Game: 2-5 40.0%
FT % 1st Half: 9-12 75.0% 2nd half: 7-12 58.3% Game: 16-24 66.7%

Officials: Maj Forsberg, Sue Blauch, Jesse Dickerson
Technical fouls: Iowa-None. Texas A&M-None.
Attendance: 234

Score by periods	1st	2nd	Total
Iowa	27	31	58
Texas A&M	36	38	74

Points	In	Off	2nd	Fast	Bench
IOWA	Paint	T/O	Chance	Break	
TAMU	38	22	11	6	16
	38	25	24	6	16

Last FG - IOWA 2nd-00:25, TAMU 2nd-02:55.
Largest lead - IOWA by 3 1st-18:12, TAMU by 26 2nd-08:13.

Score tied - 2 times.
Lead changed - 3 times.



Official Basketball Box Score -- Game Totals -- Final Statistics
Virginia Tech vs Iowa
11/30/11 7:00 PM at Carver-Hawkeye Arena, Iowa City, IA



Virginia Tech 47 • 2-5

#	Player	Total		3-Ptr		Rebounds		PF	TP	A	TO	Bk	Stl	Min
		FG	FGA	FT	FTA	Off	Def							
22	Porschia Hadley	c 0-3	0-0	0-0	0	3	3	0	0	0	0	0	0	12
03	Aerial Wilson	g 8-20	1-4	1-2	1	3	4	18	4	2	0	0	40-	
13	Alyssa Fenyn	g 2-7	1-2	0-0	1	5	6	1	5	0	0	0	4	39
22	Larryqua Hall	g 1-3	0-0	0-0	4	4	8	0	2	3	5	0	3	30
31	Monet Teller	g 4-13	1-2	7-11	1	2	3	3	16	2	5	0	2	35
21	Brittini Montgomery	0-1	0-0	0-0	1	2	3	5	0	0	1	0	0	9
32	Taylor Ayers	0-0	0-0	0-0	0	0	0	0	0	0	0	0	0	0+
33	Kelsey Conyers	0-0	0-0	0-0	0	1	1	1	0	1	0	0	0	8
43	Latorri Hines-Allen	3-10	0-0	0-0	1	7	8	2	6	0	2	1	0	27
Team						2	0	2						
Totals		18-57	3-8	8-13	11	27	38	19	47	10	15	1	9	200

FG % 1st Half: 9-30 30.0% 2nd half: 9-27 33.3% Game: 18-57 31.6% Deadball Rebounds 2
3FG % 1st Half: 2-4 50.0% 2nd half: 1-4 25.0% Game: 3-8 37.5%
FT % 1st Half: 3-5 60.0% 2nd half: 5-8 62.5% Game: 8-13 61.5%

Iowa 58 • 5-2

#	Player	Total		3-Ptr		Rebounds		PF	TP	A	TO	Bk	Stl	Min	
		FG	FGA	FT	FTA	Off	Def								
20	Krei, Kelly	f	3-8	1-3	1-2	1	6	7	2	8	0	0	0	1	28
12	Johnson, Morgan	c	8-21	0-0	7-8	5	3	8	1	23	0	3	2	1	25
02	Wahlin, Kamille	g	0-3	0-0	0-0	0	4	4	3	0	3	1	0	2	30
22	Logic, Samantha	g	3-7	0-3	2-2	2	5	7	2	8	5	3	0	1	30
24	Printy, Jaime	g	3-9	0-3	3-4	2	3	5	0	9	2	2	1	1	29
03	Hansen, Kalli		0-3	0-3	0-0	1	5	6	1	0	0	0	0	0	16
21	Dixon, Melissa		2-3	1-2	0-0	0	1	1	1	5	0	0	0	0	12
23	Taylor, Thealira		0-0	0-0	0-0	1	1	2	0	0	0	1	0	0	5
3	Reynolds, Kathryn		0-1	0-1	1-2	0	1	1	0	1	1	1	0	0	10
34	Johnson, Virginia		0-1	0-0	0-0	0	0	1	0	1	0	0	0	0	2
51	Doolittle, Bethany		1-4	0-0	2-2	2	2	2	0	4	1	1	1	1	13
	Team					2	2	4							
	Total		20-60	2-15	16-20	16	31	41	58	13	13	4	7	20	



University of Iowa Women's Basketball

Season Box Scores



Official Basketball Box Score -- Game Totals -- Final Statistics
Iowa vs Iowa State
12-07-11 7:06 p.m. at Hilton Coliseum - Ames, Iowa



Iowa 54 • 5-4

#	Player	Total		3-Ptr		Rebounds			PF	TP	A	TO	Bk	Stl	Min
		FG	FGA	FG	FGA	Off	Def	Tot							
02	Wahlin, Kamille	* 1-6	0-2	3-6	1 4 5	0	5	3	4	0	0	38			
12	Johnson, Morgan	* 5-10	0-0	6-6	2 5 7	5	16	1	2	2	0	32			
20	Krei, Kelly	* 1-3	1-3	0-0	0 3 3	4	3	0	3	0	1	26			
22	Logic, Samantha	* 1-8	1-2	1-2	3 5 8	2	4	3	3	0	1	21			
24	Printy, Jaime	* 3-9	1-3	2-2	4 0 4	5	9	2	5	0	0	24			
03	Hansen, Kalli	1-6	1-5	2-3	1 9 10	1	5	1	1	0	1	20			
21	Dixon, Melissa	4-7	2-5	1-1	0 4 4	2	11	0	0	0	0	21			
23	Taylor, Theairra	0-4	0-2	0-0	0 2 2	1	0	1	3	2	1	10			
33	Reynolds, Kathryn	0-1	0-1	0-0	0 0 0	0	0	0	0	0	0	2			
51	Doolittle, Bethany	0-0	0-0	1-2	0 1 1	3	1	0	1	0	0	6			
Team				0	4 4										
Totals		16-54	6-23	16-22	11 37 48	23	54	11	22	4	4	200			

FG % 1st Half: 9-28 32.1% 2nd half: 7-26 26.9% Game: 16-54 29.6%
3FG % 1st Half: 4-12 33.3% 2nd half: 2-11 18.2% Game: 6-23 26.1%
FT % 1st Half: 5-6 83.3% 2nd half: 11-16 68.8% Game: 16-22 72.7%

Iowa State 62 • 5-2

#	Player	Total		3-Ptr		Rebounds			PF	TP	A	TO	Bk	Stl	Min
		FG	FGA	FG	FGA	Off	Def	Tot							
04	Moody, Nikki	* 3-11	1-4	6-6	0 6 6	4	13	5	4	0	1	31			
05	Christofferson, H.	* 2-6	0-2	4-5	1 4 5	3	8	0	1	1	0	32			
10	Christofferson, Lauren	* 6-12	3-7	0-2	0 3 3	3	15	3	1	0	1	37			
12	Schroll, Jessica	* 1-6	0-1	1-3	0 3 3	0	3	0	1	0	2	29			
33	Poppens, Chelsea	* 5-14	0-0	0-0	5 4 9	4	10	1	2	0	0	25			
22	Williamson, Brynn	4-7	3-6	0-0	0 1 1	0	11	0	1	1	0	16			
23	Cole, Chassidy	0-2	0-1	0-1	0 4 4	2	0	7	0	0	2	20			
55	Prins, Anna	1-6	0-2	0-1	2 2 4	2	2	0	0	1	0	10			
Team				1	2 3	1		2							
Totals		22-64	7-23	11-18	9 29 38	19	62	16	12	3	6	200			

FG % 1st Half: 11-36 30.6% 2nd half: 11-28 39.3% Game: 22-64 34.4%
3FG % 1st Half: 2-11 18.2% 2nd half: 5-12 41.7% Game: 7-23 30.4%
FT % 1st Half: 2-4 50.0% 2nd half: 9-14 64.3% Game: 11-18 61.1%

Officials: Cameron Inouye, Amy Bonner, Jesse Dickerson
Technical fouls: Iowa-None. Iowa State-TEAM.
Attendance: 12662
Fouled Out: Iowa #24 Printy @ 4:50, #12 M. Johnson @ 2:01

Score by periods	1st	2nd	Total
Iowa	27	27	54
Iowa State	26	36	62

Last FG - Iowa 2nd-00:50, ISU 2nd-01:03.
Largest lead - Iowa by 9 1st-02:32, ISU by 13 2nd-01:03.

Score tied - 1 time.
Lead changed - 4 times.



Official Basketball Box Score -- Game Totals -- Final Statistics
Western Illinois vs Iowa
12/9/11 7:00 PM at Carver-Hawkeye Arena, Iowa City, IA



Western Illinois 45 • 3-6

#	Player	Total		3-Ptr		Rebounds			PF	TP	A	TO	Bk	Stl	Min
		FG	FGA	FG	FGA	Off	Def	Tot							
25	SALVATORI, Michele	f 0-9	0-2	3-6	3 3 6	0	3	1	1	0	1	21			
42	EVANS, Rachel	f 0-1	0-0	0-0	0 0 0	0	0	0	0	0	0	6			
40	KELLY, Valencia	g 1-7	0-0	1-2	0 1 1	2	3	2	4	0	3	24			
15	HENRICSON, Rebecca	g 1-2	0-1	0-0	1 2 3	3	2	0	0	0	0	20			
23	PHILLIPS, Karis	g 0-1	0-0	0-0	1 0 1	0	0	0	0	0	0	12			
05	CARROLL, Lindsay	1-7	0-3	4-4	2 1 3	1	6	1	3	0	1	17			
10	JONES, Christina	2-5	1-1	1-2	0 0 0	0	6	0	2	0	2	17			
12	RIEGER, Jackie	4-8	0-1	2-2	2 2 4	1	10	0	2	0	0	19			
21	KONTAUTAITE, Saule	3-10	3-9	0-0	2 2 4	2	9	1	0	1	0	18			
24	WEBB, Sadie	1-7	1-2	1-2	3 2 5	0	4	0	3	0	2	21			
32	DEMBRY, Brittany	0-6	0-1	2-2	1 4 5	1	2	1	3	0	0	10			
33	KUDZIELA, Martyna	0-1	0-0	0-0	0 1 1	0	0	0	1	0	0	7			
44	COATES, Tricia	0-2	0-0	0-0	1 1 2	1	0	0	0	0	0	8			
Team				2	3 5			1							
Totals		13-66	5-20	14-20	18 22 40	14	45	6	20	1	9	200			

FG % 1st Half: 7-33 21.2% 2nd half: 6-33 18.2% Game: 13-66 19.7%
3FG % 1st Half: 2-7 28.6% 2nd half: 3-13 23.1% Game: 5-20 25.0%
FT % 1st Half: 7-12 58.3% 2nd half: 7-8 87.5% Game: 14-20 70.0%

Iowa 98 • 6-4

#	Player	Total		3-Ptr		Rebounds			PF	TP	A	TO	Bk	Stl	Min
		FG	FGA	FG	FGA	Off	Def	Tot							
20	Krei, Kelly	f 2-5	0-0	0-0	0 8 8	0	4	2	4	0	3	22			
12	Johnson, Morgan	c 3-5	0-0	4-5	1 2 3	1	10	1	1	1	0	8			
02	Wahlin, Kamille	g 6-10	2-4	0-0	1 1 2	1	14	5	0	0	0	22			
22	Logic, Samantha	g 4-7	0-1	0-2	2 7 9	0	8	4	5	0	3	24			
24	Printy, Jaime	g 8-16	5-8	4-4	1 4 5	0	25	4	0	0	1	19			
03	Hansen, Kalli	0-2	0-1	0-0	2 0 2	0	1	3	0	0	0	18			
21	Dixon, Melissa	5-14	4-10	1-1	3 1 4	4	15	0	1	0	1	18			
23	Taylor, Theairra	3-4	0-0	0-0	5 3 8	5	6	1	1	1	0	17			
33	Reynolds, Kathryn	0-0	0-0	2-2	0 1 1	1	2	5	0	0	0	20			
34	Johnson, Virginia	4-8	0-0	0-0	3 6 9	1	8	2	0	4	1	18			
51	Doolittle, Bethany	3-6	0-0	0-0	1 3 4	2	6	2	3	1	0	14			
Team				0	2 2										
Totals		38-77	11-26	11-14	19 38 57	15	98	27	17	8	9	200			

FG % 1st Half: 19-40 47.5% 2nd half: 19-37 51.4% Game: 38-77 49.4%
3FG % 1st Half: 6-15 40.0% 2nd half: 5-11 45.5% Game: 11-26 42.3%
FT % 1st Half: 9-12 75.0% 2nd half: 2-2 100.0% Game: 11-14 78.6%

Officials: Beverly Roberts, Sue Blauch, Billy Smith
Technical fouls: Western Illinois-None. Iowa-None.
Attendance: 3514
Fouled Out: #23 IA 3:26 2nd

Score by periods	1st	2nd	Total
Western Illinois	23	22	45
Iowa	53	45	98

Last FG - WWIU 2nd-06:09, Iowa 2nd-01:07.
Largest lead - WWIU None, Iowa by 53 2nd-01:07.

Score tied - 0 times.
Lead changed - 0 times.



Official Basketball Box Score -- Game Totals -- Final Statistics
Iowa vs Bradley
12-17-11 7:05 p.m. at Peoria, Ill. (Renaissance Coliseum)



Iowa 88 • 6-5

#	Player	Total		3-Ptr		Rebounds			PF	TP	A	TO	Bk	Stl	Min
		FG	FGA	FG	FGA	Off	Def	Tot							
20	Krei, Kelly	f 2-5	1-4	2-3	4 4 8	0	7	1	1	0	1	33			
12	Johnson, Morgan	c 13-20	0-0	11-12	4 4 8	4	37	0	2	4	1	34			
02	Wahlin, Kamille	g 8-13	0-3	2-2	0 4 4	3	18	6	2	0	2	32			
22	Logic, Samantha	g 2-6	0-0	1-1	3 2 5	2	5	4	4	0	2	23			
24	Printy, Jaime	g 3-10	1-5	0-0	0 1 1	4	7	5	0	5	36				
03	Hansen, Kalli	0-1	0-0	2-2	0 1 1	0	2	0	1	0	0	7			
21	Dixon, Melissa	1-3	1-3	5-6	0 2 2	5	8	0	0	1	0	20			
23	Taylor, Theairra	0-1	0-0	2-2	0 2 2	2	1	2	0	0	0	6			
33	Reynolds, Kathryn	0-0	0-0	0-0	0 1 1	1	0	2	0	0	0	3			
34	Johnson, Virginia	0-2	0-0	2-2	0 0 0	0	2	0	0	0	0	2			
51	Doolittle, Bethany	0-0	0-0	0-0	0 0 0	3	0	0	0	0	1	4			
Team				0	0 0										
Totals		29-61	3-15	27-30	11 21 32	24	88	20	19	4	13	200			

FG % 1st Half: 11-27 40.7% 2nd half: 18-34 52.9% Game: 29-61 47.5%
3FG % 1st Half: 3-6 50.0% 2nd half: 0-9 0.0% Game: 3-15 20.0%
FT % 1st Half: 9-11 81.8% 2nd half: 18-19 94.7% Game: 27-30 90.0%

Bradley 96 • 8-3

#	Player	Total		3-Ptr		Rebounds			PF	TP	A	TO	Bk	Stl	Min
		FG	FGA	FG	FGA	Off	Def	Tot							
32	Westcott, MacKenzie	f 1-3	0-0	1-2	1 3 4	4	3	1	3	3	2	32			
01	Kassing, Leah	c 2-5	0-0	6-6	5 5 10	4	10	0	1	0	1	23			
00	Butts, Shrona	5-14	3-7	5-7	0 3 3	3	18	4	2	0	2	28			
05	Muegge, Hanna	g 0-2	0-0	0-0	0 0 0	0	0	0	1	0	1	10			
10	Yohn, Katie	g 4-10	2-5	3-6	2 5 7	3	13	6	3	0	2	30			
01	Young, Michelle	0-0	0-0	0-0	0 0 0	0	1	0	0	0	0	3			</



University of Iowa Women's Basketball

Season Box Scores



Official Basketball Box Score -- Game Totals -- Final Statistics
MVSU vs Iowa
12/22/11 5 p.m. at Carver-Hawkeye Arena, Iowa City, Iowa



MVSU 80 • 2-6

#	Player	Total		3-Ptr		Rebounds		PF	TP	A	TO	Blk	Stl	Min
		FG	FGA	FT	FTA	Off	Def							
31	LAKES, Brittney	f	0-1	0-0	0-0	0	3	3	4	0	2	0	1	16
50	YOUNG, Arlivia	c	0-2	0-0	0-0	1	0	1	1	0	0	2	0	13
03	SMITH, Ka'Nesha	g	10-17	2-4	1-4	1	8	9	2	23	6	8	0	39
11	FONDON, De'Kisha	g	4-4	3-3	0-0	0	3	3	4	11	4	2	0	30
20	STALLINGS, Lenise	g	6-9	4-7	2-2	0	2	2	2	18	1	2	0	25
12	KENNEDY, Olivia	g	1-2	1-2	0-0	0	1	1	1	3	1	0	0	12
14	CLEMMONS, Kristina	g	2-4	0-0	0-0	0	2	2	3	4	1	3	0	20
15	JEFFERSON, Davina	g	2-3	1-1	0-0	0	0	0	1	5	1	2	0	11
21	WEATHERS, A'Shanti	g	0-0	0-0	0-0	0	0	0	0	0	0	0	1	2
22	FRANK, Alia	g	8-14	0-2	0-4	3	3	6	1	16	0	4	0	29
23	CLEMMONS, Aspen	g	0-0	0-0	0-0	0	0	0	0	0	1	0	0	3
Team						0	4	4						
Totals			33-56	11-19	3-10	5	26	31	19	80	16	24	1	200

FG % 1st Half: 15-27 55.6% 2nd half: 18-29 62.1% Game: 33-56 58.9%
3FG % 1st Half: 5-9 55.6% 2nd half: 6-10 60.0% Game: 11-19 57.9%
FT % 1st Half: 7-8 87.5% 2nd half: 0-0 0.0% Game: 3-10 30.0%

Iowa 86 • 8-5

#	Player	Total		3-Ptr		Rebounds		PF	TP	A	TO	Blk	Stl	Min
		FG	FGA	FT	FTA	Off	Def							
20	Krei, Kelly	f	5-9	4-7	0-0	5	2	7	0	14	3	1	1	29
12	Johnson, Morgan	c	4-8	0-0	2-2	0	3	3	5	10	1	4	1	18
02	Wahlin, Kamille	g	4-10	4-8	2-2	0	4	4	1	14	7	5	0	30
22	Logic, Samantha	g	5-8	2-2	3-6	2	3	5	1	15	2	1	2	29
24	Printy, Jaime	g	5-18	3-11	9-9	3	1	4	0	22	4	3	0	33
03	Hansen, Kalli	g	0-3	0-1	0-0	2	0	2	1	0	1	0	0	13
11	Nesbitt, Trisha	g	0-1	0-1	0-0	0	0	0	1	0	1	0	0	3
21	Dixon, Melissa	g	1-6	1-5	4-4	2	2	4	1	7	0	2	0	13
23	Taylor, Theairra	g	0-1	0-0	0-0	1	1	1	0	0	1	0	0	5
33	Reynolds, Kathryn	g	0-0	0-0	0-0	1	0	1	0	0	1	0	0	7
51	Doolittle, Bethany	g	1-1	0-0	2-2	0	1	1	2	4	0	2	1	20
Team						1	5	6						
Totals			25-65	14-35	22-25	16	22	38	12	86	19	20	5	200

FG % 1st Half: 18-33 54.5% 2nd half: 7-32 21.9% Game: 25-65 38.5%
3FG % 1st Half: 10-18 55.6% 2nd half: 4-17 23.5% Game: 14-35 40.0%
FT % 1st Half: 7-8 87.5% 2nd half: 15-17 88.2% Game: 22-25 88.0%

Officials: Beverly Roberts, Kevin Pethel, Scott Frueling
Technical fouls: MVSU-None. Iowa-None.

Attendance: 4235
Fouled Out: #12 IA 4:50 2nd

Score by periods	1st	2nd	Total
MVSU	38	42	80
Iowa	53	33	86

Last FG - MVSU 2nd-01:50, Iowa 2nd-02:38.
Largest lead - MVSU by 4 1st-18:30, Iowa by 22 1st-01:17.

Points	In	Off	2nd	Fast	Bench
MVSU	30	20	23	6	11
Iowa	20	25	23	12	11

Score tied - 0 times.
Lead changed - 1 time.



Official Basketball Box Score -- Game Totals -- Final Statistics
Iowa vs Ohio State
01/02/12 12:01 p.m. at Value City Arena (Columbus, Ohio)



Iowa 71 • 9-6, 1-1

#	Player	Total		3-Ptr		Rebounds		PF	TP	A	TO	Blk	Stl	Min
		FG	FGA	FT	FTA	Off	Def							
20	Krei, Kelly	f	2-4	2-4	2-2	5	3	8	2	8	2	0	1	0
12	Johnson, Morgan	c	11-16	0-0	3-3	4	2	6	1	25	1	0	1	33
02	Wahlin, Kamille	g	4-9	4-5	5-6	0	3	3	2	17	2	4	0	37
22	Logic, Samantha	g	3-10	0-0	0-0	1	5	6	3	6	5	3	1	32
24	Printy, Jaime	g	3-17	1-6	6-6	1	4	5	4	13	5	4	0	39
03	Hansen, Kalli	g	0-0	0-0	0-0	0	2	2	0	0	0	1	0	5
21	Dixon, Melissa	g	0-0	0-0	0-0	0	0	0	1	0	0	0	0	1
23	Taylor, Theairra	g	1-2	0-0	0-0	0	0	0	3	2	1	2	0	8
51	Doolittle, Bethany	g	0-2	0-0	0-0	1	1	2	1	0	0	1	0	7
Team						2	2	4						
Totals			24-60	7-15	16-17	14	22	36	17	71	16	15	3	200

FG % 1st Half: 14-29 48.3% 2nd half: 10-31 32.3% Game: 24-60 40.0%
3FG % 1st Half: 5-7 71.4% 2nd half: 2-8 25.0% Game: 7-15 46.7%
FT % 1st Half: 7-8 87.5% 2nd half: 9-9 100.0% Game: 16-17 94.1%

Ohio State 84 • 15-0, 2-0

#	Player	Total		3-Ptr		Rebounds		PF	TP	A	TO	Blk	Stl	Min
		FG	FGA	FT	FTA	Off	Def							
01	Beach, Kalpana	f	0-0	0-0	0-0	0	1	1	1	0	0	0	1	0
33	Adams, Ashley	c	3-5	0-0	2-2	1	5	6	3	8	2	3	1	1
03	Stokes, Amber	g	2-6	0-1	2-4	3	2	5	2	6	0	1	0	2
04	Hill, Taylor	g	9-16	5-7	5-6	0	4	4	1	28	1	1	2	40
21	Prahalis, Samantha	g	11-25	4-6	4-5	2	3	5	3	30	7	2	0	40
12	Kynard, Maleeka	g	0-0	0-0	0-0	0	0	0	0	0	0	0	0	2
15	Dobranic, Aleksandra	g	0-0	0-0	0-0	0	0	0	0	0	0	0	0	1
22	Moore, Darryce	g	2-3	0-0	1-2	1	1	2	1	5	0	1	0	11
23	Ellerbe, Martina	g	0-1	0-0	2-2	1	3	4	1	2	1	1	0	1
31	Ferguson, Raven	g	1-3	1-1	2-2	1	0	1	1	5	0	1	0	8
Team						2	3	5						
Totals			28-59	10-15	18-23	11	22	33	13	84	11	10	4	200

FG % 1st Half: 15-30 50.0% 2nd half: 13-29 44.8% Game: 28-59 47.5%
3FG % 1st Half: 5-7 71.4% 2nd half: 5-8 62.5% Game: 10-15 66.7%
FT % 1st Half: 4-4 100.0% 2nd half: 14-19 73.7% Game: 18-23 78.3%

Officials: Laura Morris, Bryan Enterline, Jesse Dickerson
Technical fouls: Iowa-None. Ohio State-None.

Attendance: 3295

Score by periods	1st	2nd	Total
Iowa	40	31	71
Ohio State	39	45	84

Last FG - Iowa 2nd-02:42, OSU 2nd-02:13.
Largest lead - Iowa by 15 1st-05:19, OSU by 16 2nd-08:36.

Points	In	Off	2nd	Fast	Bench
Iowa	30	11	20	7	2
OSU	24	9	13	15	12

Score tied - 0 times.
Lead changed - 4 times.



Official Basketball Box Score -- Game Totals -- Final Statistics
Northwestern vs Iowa
12/30/11 7:00 at Carver-Hawkeye Arena



Northwestern 55 • 10-4, 0-1

#	Player	Total		3-Ptr		Rebounds		PF	TP	A	TO	Blk	Stl	Min
		FG	FGA	FT	FTA	Off	Def							
04	Hackney, Kendall	f	4-9	2-6	2-2	1	3	4	2	12	1	0	1	35
31	Diamant, Danielle	c	3-10	0-2	1-0	2	4	6	2	6	0	4	0	20
01	Jones, Morgan	g	3-15	1-8	1-2	0	4	4	1	8	3	3	0	33
12	Mocchi, Allison	g	2-3	1-2	0-0	3	2	5	2	0	2	0	2	26
42	Roser, Karly	g	7-13	1-2	0-0	1	1	2	2	14	2	4	0	31
05	Cohen, Alex	g	0-1	0-0	1-2	1	2	3	2	1	0	2	0	10
14	McKeown, Meghan	g	2-5	2-5	0-0	0	1	1	0	6	0	1	0	17
21	Cole, Anna	g	0-1	0-0	0-0	0	0	0	0	0	0	1	1	4
23	Hale, Inesha	g	0-0	0-0	1-2	0	0	0	0	1	0	0	0	6
34	Jones, Taylor	g	0-6	0-0	2-2	4	2	6	3	2	3	2	1	0
Team						3	1	4						
Totals			21-63	6-25	7-10	15	20	35	14	55	11	17	5	200

FG % 1st Half: 10-30 33.3% 2nd half: 11-33 33.3% Game: 21-63 33.3%
3FG % 1st Half: 2-14 14.3% 2nd half: 4-11 36.4% Game: 6-25 24.0%
FT % 1st Half: 0-0 0.0% 2nd half: 7-10 70.0% Game: 7-10 70.0%

Iowa 86 • 9-5, 1-0

		Total	3-Ptr		Rebounds										
#	Player	FG	FGA	FT	FTA	Off	Def	Tot	PF	TP	A	TO	Blk	Stl	Min
20	Krei, Kelly	f	1-5	1-4	0-0	2	4	6	0	3	1	0	0	1	31
12	Johnson, Morgan	c	6-8	0-0	2-4	3	6	9	2	14	1	2	1	0	23
02	Wahlin, Kamille	g	5-11	4-7	2-2	0	6	6	0	16	7	1	0	28	
22	Logic, Samantha	g	2-6	0-1	0-0	3	1	4	1	4	3	1	0	22	
24	Printy, Jaime	g	6-16	4-9	4-5	1	4	5	3	20	8	3	0	30	
03	Hansen, Kalli	g	1-1	1-1	0-0	0	1	1	0	3	1	1	0	9	
11	Nesbitt, Trisha	g	0-0	0-0	0-0	0	0	0	1	0	0	0	0	3	
21	Dixon, Melissa	g	4-8	2-4	0-0	3	0	3	0	10	1	1	0	1	20
23	Taylor, Theairra	g	1-3	0-1	3-4	1	2	3	1	5	1	0	0	0	7
33	Reynolds, Kathryn	g	1-1	0-0	0-0	0	0	0	0	2	1	0	0	0	10
51	Doolittle, Bethany	g	4-9	0-0	1-2	0	2	2	3	9	0	2	1	1	17
Team						4	2	6							

**BIG**

Score tied - 9 times.
Lead changed - 8 times



BIG

Last FG - IOWA 2nd-01:10, PUR 2nd-02:11.
Largest lead - IOWA by 5 2nd-16:16. PUR by 14 1st-07:01

**BIG**

Last FG - WIS 2nd-02:02, IOWA 2nd-01:19.
Largest lead - WIS by 7 1st-03:38, IOWA by 15 2nd-04:24.

**BIG**

Last FG - IOWA 2nd-01:50, PSU 2nd-02:13.
Largest lead - IOWA by 8 1st-04:56, PSU by 16 2nd-00:30.



University of Iowa Women's Basketball

Season Box Scores



Official Basketball Box Score -- Game Totals -- Final Statistics
Iowa vs Nebraska
01/26/12 7:06 p.m. at Bob Devaney Sports Center- Lincoln, Neb.



Iowa 53 • 11-10, 3-5

#	Player	Total		3-Ptr		Rebounds			PF	TP	A TO		Blk	Stl	Min
		FG	FGA	FG	FGA	Off	Def	Tot							
20	Krei, Kelly	f	1-8	1-6	0-0	1	9	10	3	3	1	2	1	1	38
12	Johnson, Morgan	c	2-3	0-0	4-4	3	6	9	5	8	1	2	1	0	22
02	Wahlin, Kamille	g	3-9	1-5	4-4	0	1	1	3	11	4	5	0	1	39
22	Logic, Samantha	g	4-6	2-3	0-0	2	3	5	4	10	3	4	0	1	27
24	Printy, Jaime	g	6-19	4-12	1-1	1	4	5	3	17	2	3	0	1	39
11	Nesbitt, Trisha		0-1	0-1	0-0	0	0	0	0	0	0	0	0	0	4
23	Taylor, Theairra		0-3	0-1	1-2	1	1	2	3	1	1	1	0	0	8
34	Johnson, Virginia		0-1	0-0	3-4	0	2	2	0	3	0	1	0	1	5
51	Doolittle, Bethany		0-2	0-0	0-0	0	2	2	3	0	0	2	0	0	18
Team						3	2	5							
Totals			16-52	8-28	13-15	11	30	41	24	53	12	20	2	5	200

FG % 1st Half: 5-24 20.8% 2nd half: 11-28 39.3% Game: 16-52 30.8%
3FG % 1st Half: 1-11 9.1% 2nd half: 7-17 41.2% Game: 8-28 28.6%
FT % 1st Half: 6-8 75.0% 2nd half: 7-7 100.0% Game: 13-15 86.7%

Nebraska 60 • 17-3, 6-2

#	Player	Total		3-Ptr		Rebounds			PF	TP	A TO		Blk	Stl	Min
		FG	FGA	FG	FGA	Off	Def	Tot							
23	Cady, Emily	f	2-8	0-1	5-10	3	4	7	2	9	2	2	0	2	36
35	Hooper, Jordan	f	7-14	3-6	5-6	5	10	15	1	22	0	0	1	0	32
00	Moore, Lindsey	g	5-13	1-8	4-5	1	4	5	1	15	3	0	0	1	34
03	Sample, Hailie	g	2-4	0-1	0-3	1	3	4	1	4	1	5	1	2	27
05	Burke, Kaitlyn	g	1-6	1-5	0-0	1	1	2	1	3	1	1	0	0	30
10	Williams, Meghan		0-1	0-1	1-2	0	0	0	4	1	0	1	0	0	10
11	Laudermill, Tear'a		0-4	0-3	3-4	0	1	1	2	3	0	1	0	1	12
12	Jeffery, Brandi		1-5	1-4	0-0	1	0	1	1	3	2	0	0	2	12
14	Simon, Katie		0-0	0-0	0-0	0	0	0	1	0	0	0	0	0	1
33	Woodberry, Rebecca		0-1	0-1	0-0	0	0	0	1	0	0	0	0	0	6
Team						3	2	5							
Totals			18-56	6-30	18-30	15	25	40	15	60	9	14	2	11	200

FG % 1st Half: 11-33 33.3% 2nd half: 7-23 30.4% Game: 18-56 32.1%
3FG % 1st Half: 4-18 22.2% 2nd half: 2-12 16.7% Game: 6-30 20.0%
FT % 1st Half: 4-7 57.1% 2nd half: 14-23 60.9% Game: 18-30 60.0%

Officials: Beverly Roberts, Laura Morris, Carol Comaniti
Technical fouls: Iowa-None. Nebraska-None.
Attendance: 5214

Score by periods	1st	2nd	Total
Iowa	17	36	53
Nebraska	30	30	60

Points	In	Off	2nd	Fast	Bench
IOWA	10	13	11	2	4
NEB	22	20	19	0	7

Last FG - IOWA 2nd-04:02, NEB 2nd-01:37.
Largest lead - IOWA by 4 1st-12:16, NEB by 13 1st-00:01.

Score tied - 5 times.
Lead changed - 4 times.



Official Basketball Box Score -- Game Totals -- Final Statistics
Iowa vs Wisconsin
02/02/12 7 p.m. at Kohl Center, Madison, Wis.



Iowa 85 • 13-10, 5-5

#	Player	Total		3-Ptr		Rebounds			PF	TP	A TO		Blk	Stl	Min
		FG	FGA	FG	FGA	Off	Def	Tot							
20	Krei, Kelly	f	1-3	1-3	0-0	4	3	7	1	3	1	1	2	2	42
12	Johnson, Morgan	c	12-20	0-0	3-6	5	6	11	3	27	2	6	2	0	39
02	Wahlin, Kamille	g	5-13	2-8	2-2	0	4	4	0	14	4	2	0	0	43
22	Logic, Samantha	g	7-14	0-2	6-8	5	8	13	2	20	8	1	1	2	37
24	Printy, Jaime	g	3-13	2-7	0-2	1	4	5	3	8	5	0	0	3	35
21	Dixon, Melissa		2-4	2-3	0-0	0	0	0	3	6	2	1	0	2	14
23	Taylor, Theairra		1-3	0-1	0-0	1	0	1	0	2	0	2	0	0	6
34	Johnson, Virginia		0-0	0-0	0-0	0	0	0	1	0	1	0	0	0	3
51	Doolittle, Bethany		2-5	0-0	1-2	1	0	1	0	5	0	0	0	0	6
Team						4	2	6							
Totals			33-75	7-24	12-20	21	27	48	13	85	23	13	5	9	225

FG % 1st Half: 14-33 42.4% 2nd half: 15-35 42.9% OT: 4-7 57.1% Game: 33-75 44.0%
3FG % 1st Half: 5-13 38.5% 2nd half: 2-10 20.0% OT: 0-1 0.0% Game: 7-24 29.2%
FT % 1st Half: 5-6 83.3% 2nd half: 3-8 37.5% OT: 4-6 66.7% Game: 12-20 60.0%

Wisconsin 79 • 8-14, 4-6

#	Player	Total		3-Ptr		Rebounds			PF	TP	A TO		Blk	Stl	Min
		FG	FGA	FG	FGA	Off	Def	Tot							
23	Thomas, Ashley	f	0-2	0-0	0-0	0	3	3	2	0	0	2	0	0	15
24	Stephen, Tiera	f	1-3	0-1	0-0	0	2	2	0	2	4	1	0	0	13
00	Davis, Jade	g	6-10	4-8	0-0	0	5	5	3	16	6	2	0	0	39
02	Wurtz, Taylor	g	8-15	5-9	6-6	0	8	8	1	27	2	4	0	0	41
05	Paige, Morgan	g	5-12	2-6	5-6	0	0	0	3	17	3	5	0	2	42
03	Brown, AnnMarie		2-3	0-1	0-0	1	1	2	2	4	0	0	0	0	9
12	Smith, Lindsay		0-2	0-1	0-0	1	0	1	0	0	0	0	0	0	5
20	Gorman, Lacia		1-5	0-2	1-2	1	0	1	1	3	0	0	0	0	12
35	Gulczynski, Jacki		1-6	0-3	0-0	2	1	3	1	2	0	1	1	0	21
43	Rochel, Cassie		3-6	0-0	2-2	3	4	7	4	8	2	2	4	1	28
Team						2	1	3							
Totals			27-64	11-31	14-16	10	25	35	17	79	17	17	5	3	225

FG % 1st Half: 18-31 58.1% 2nd half: 6-23 26.1% OT: 3-10 30.0% Game: 27-64 42.2%
3FG % 1st Half: 8-11 72.7% 2nd half: 3-14 21.4% OT: 0-0 0.0% Game: 11-31 35.5%
FT % 1st Half: 0-0 0.0% 2nd half: 14-16 87.5% OT: 0-0 0.0% Game: 14-16 87.5%

Officials: Cameron Inouye, Kathleen Lynch, Frank Stortore
Technical fouls: Iowa-None. Wisconsin-None.
Attendance: 4902

Score by periods	1st	2nd	OT	Total
Iowa	38	35	12	85
Wisconsin	44	29	6	79

Points	In	Off	2nd	Fast	Bench
IOWA	36	16	13	7	13
WIS	24	11	8	4	17

Last FG - IOWA OT-01:40, WIS OT-00:01.
Largest lead - IOWA by 8 OT-00:13, WIS by 10 2nd-17:41.

Score tied - 5 times.
Lead changed - 6 times.



Official Basketball Box Score -- Game Totals -- Final Statistics
Purdue vs Iowa
1/28/12 2 p.m. at Carver-Hawkeye Arena - Iowa City, Iowa



Purdue 42 • 18-4, 8-1

#	Player	Total		3-Ptr		Rebounds			PF	TP	A TO		Blk	Stl	Min
		FG	FGA	FG	FGA	Off	Def	Tot							
32	Ostarello, Sam	f	1-6	0-0	1-4	3	5	8	3	3	0	1	0	0	18
40	Jones, Chelsea	c	0-3	0-0	0-0	1	2	3	5	0	2	1	0	1	17
05	Rayburn, Brittany	g	2-11	1-6	5-6	1	4	5	3	10	0	2	0	0	32
15	Moses, Courtney	g	3-12	0-4	1-1	0	2	2	2	7	1	1	0	1	28
22	Houser, Kk	g	3-7	1-2	0-0	0	2	2	4	7	3	3	0	1	19
02	Howard, Antionette		1-10	0-0	0-0	1	3	4	2	2	0	1	0	2	21
04	Thornton, Torrie		0-0	0-0	0-0	0	1	1	0	0	0	0	0	0	2
20	Williams, Dee Dee		0-2	0-0	0-0	1	1	2	0	0	0	1	0	0	15
23	Clemmons, Liza		1-1	0-0	0-1	1	0	1	0	2	1	1	0	0	7
41	Guyton, Alex		3-6	0-0	2-4	0	4	4	3	8	0	1	1	3	22
43	Poston, Chantel		0-2	0-0	3-4	2	1	3	0	3	0	1	0	1	17
54	Woods, Samantha		0-0	0-0	0-0	0	0	0	0	0	0	0	0	0	2
Team						2	1	3							
Totals			14-60	2-14	12-20	12	26	38	22	42	7	13	1	9	200

FG % 1st Half: 6-28 21.4% 2nd half: 8-32 25.0% Game: 14-60 23.3%
3FG % 1st Half: 1-7 14.3% 2nd half: 1-7 14.3% Game: 2-14 14.3%
FT % 1st Half: 8-12 66.7% 2nd half: 4-8 50.0% Game: 12-20 60.0%

Iowa 59 • 12-10, 4-5

#	Player		FG	3-Ptr		Rebounds						A	TO	Blk	Stl	Min
			Total	FGA	FT-FTA	Off	Def	Tot	PF	TP						
20	Krei, Kelly	f	1-4	1-3	2-2	1	7	8	5	5	1	0	0	0	27	
12	Johnson, Morgan	c	6-7	0-0	5-11	4	7	11	4	17	0	2	3	0	23	
02	Wahlin, Kamille	g	5-13	3-7	0-1	0	4	4	1	13	2	3	0	0	38	
22	Logic, Samantha	g	0-4	0-0	1-2	1	2	3	2	1	2	3	0	0	20	
24	Printy, Jaime	g	2-10	1-5	2-2	1	4	5	2	7	1	4	1	1	36	
11	Nesbitt, Trisha		0-0	0-0	0-0	0	1	1	0	0	0	0	0	0	3	
23	Taylor, Theairra		3-7	0-1	0-0	2	4	6	4	6	2	1	0	0	21	
33	Reynolds, Kathryn		0-1	0-1	0-0	0	1	1	0	0	0	0	0	0	2	
34	Johnson, Virginia		3-4	0-1	0-2	2	4	6	1	6	1	1	2	0	18	
51	Doolittle, Bethany		1-4	0-0	2-2	0	3	3	3	4	0	0	0	0	12	
	Team					2	4	6				2				
	Totals		21-54	5-18	12-22	13	41	54	22	59	9	16	6	2	200	



University of Iowa Women's Basketball

Season Box Scores



Official Basketball Box Score -- Game Totals -- Final Statistics
Minnesota vs Iowa
2/9/12 7 p.m. at Carver-Hawkeye Arena, Iowa City, IA



Minnesota 58 • 12-14, 4-8

#	Player		Total		3-Ptr		Rebounds			PF	TP	A	TO	Blk	Stl	Min
			FG-FGA	FG-FGA	FT-FTA	Off	Def	Tot								
05	Kellogg, Kionna	f	1-3	0-0	0-0	2	2	4	4	2	1	3	0	1	29	
25	Loberg, Katie	c	4-9	0-0	2-3	0	3	3	3	10	1	1	0	0	26	
01	Banham, Rachel	g	9-19	0-3	2-4	2	4	6	0	20	1	3	0	1	36	
11	Cotton, Leah	g	2-4	0-1	1-1	1	0	1	3	5	1	3	0	1	11	
30	Buford, Kiara	g	3-9	0-2	2-2	0	5	5	0	8	1	2	0	2	37	
15	Riche, Micaella		1-2	0-0	1-2	0	0	0	1	3	0	2	0	0	10	
21	Noga, Sari		2-8	2-8	0-0	0	2	2	6	0	0	0	0	2	26	
41	Mastey, Brianna		2-3	0-0	0-0	1	4	5	3	4	2	3	0	1	21	
55	Dvorak, Amber		0-0	0-0	0-0	0	0	0	1	0	0	0	0	0	4	
Team						0	0	0								
Totals			24-57	2-14	8-12	6	20	26	17	58	7	17	0	8	200	

FG % 1st Half: 12-33 36.4% 2nd half: 12-24 50.0% Game: 24-57 42.1% Deadball
3FG % 1st Half: 1-8 12.5% 2nd half: 1-6 16.7% Game: 2-14 14.3% Rebounds
FT % 1st Half: 0-1 0.0% 2nd half: 8-11 72.7% Game: 8-12 66.7% 2

Iowa 75 • 15-10, 7-5

Nov 19 - 12, 7, 9																
#	Player		Total	3-Ptr	Rebounds					PF	TP	A	TO	Blk	Stl	Min
			FG-FGA	FG-FGA	FT-FTA	Off	Def	Tot								
20	Krei, Kelly	f	0-6	0-6	2-2	5	4	9	2	2	4	3	0	1	37	
12	Johnson, Morgan	c	9-13	0-0	5-7	2	6	8	3	23	1	1	3	1	23	
02	Wahlin, Kamille	g	6-11	5-9	2-2	0	6	6	1	19	5	2	0	0	35	
21	Dixon, Melissa	g	3-8	1-5	0-0	2	2	4	2	7	1	5	0	2	30	
22	Logic, Samantha	g	7-10	1-3	5-6	3	6	9	3	20	6	8	0	1	33	
03	Hansen, Kalli		0-0	0-0	0-0	0	1	1	0	0	0	0	0	0	3	
11	Nesbitt, Trisha		0-2	0-2	0-0	0	0	0	1	0	2	0	0	1	5	
23	Taylor, Theaira		1-5	0-0	0-0	1	1	2	2	2	1	0	0	0	17	
33	Reynolds, Kathryn		0-0	0-0	0-0	0	0	0	0	0	0	1	0	0	3	
51	Doolittle, Bethany		0-4	0-0	2-2	1	2	3	1	2	1	0	0	0	14	
Team						0	1	1								
Totals			26-59	7-25	16-19	14	29	43	15	75	21	20	3	6	200	

FG % 1st Half: 13-31 41.9% 2nd half: 13-28 46.4% Game: 26-59 44.1% Deadball
3FG % 1st Half: 4-13 30.8% 2nd half: 3-12 25.0% Game: 7-25 28.0% Rebounds
FT % 1st Half: 10-12 83.3% 2nd half: 6-7 85.7% Game: 16-19 84.2% 2

Officials: Barb Smith, Dawn Marsh, Bill Larance
Technical fouls: Minnesota-None. Iowa-None.
Attendance: 3913

Score by periods	1st	2nd	Total
Minnesota	25	33	58
Iowa	40	35	75

Points	In	Off	2nd	Fast
MINN	34	22	4	6
IOWA	22	15	10	0

Last FG - MINN 2nd-00:44, IOWA 2nd-01:27.
Largest lead - MINN None, IOWA by 25 2nd-13:43.

Score tied - 0 times.
Lead changed - 0 times.





2011-12 IOWA WOMEN'S BASKETBALL
Iowa Combined Team Statistics (as of Feb 09, 2012)
All games



RECORD:	OVERALL	HOME	AWAY	NEUTRAL
ALL GAMES	15-10	11-2	3-7	1-1
CONFERENCE	7-5	5-1	2-4	0-0
NON-CONFERENCE	8-5	6-1	1-3	1-1

#	Player	gp-gs	min	avg	Total		3-Point		F-Throw		Rebounds				pf	dq	a	to	blk	stl	pts	avg
					fg-fga	fg%	3fg-fga	3fg%	ft-fa	ft%	off	def	tot	avg								
24	Printy, Jaime	23-23	775	33.7	116-329	.353	45-155	.290	111-125	.888	32	70	102	4.4	45	1	96	70	3	46	388	16.9
12	Johnson, Morgan	25-25	648	25.9	145-263	.551	0-0	.000	83-111	.748	58	112	170	6.8	77	3	19	55	58	10	373	14.9
02	Wahlin, Kamille	25-25	845	33.8	106-247	.429	49-129	.380	44-51	.863	7	75	82	3.3	31	0	93	65	3	20	305	12.2
22	Logic, Samantha	25-25	690	27.6	77-188	.410	10-34	.294	41-56	.732	63	90	153	6.1	58	1	96	86	7	39	205	8.2
21	Dixon, Melissa	18-2	254	14.1	36-89	.404	25-62	.403	23-28	.821	14	18	32	1.8	29	1	9	16	1	9	120	6.7
20	Krei, Kelly	25-25	802	32.1	52-138	.377	35-104	.337	22-25	.880	46	105	151	6.0	43	1	35	32	12	35	161	6.4
51	Doolittle, Bethany	25-0	310	12.4	38-86	.442	0-0	.000	18-23	.783	11	35	46	1.8	46	0	6	19	17	6	94	3.8
23	Taylor, Theairra	25-0	276	11.0	26-72	.361	1-14	.071	13-22	.591	26	47	73	2.9	43	1	22	33	10	10	66	2.6
03	Hansen, Kalli	19-0	239	12.6	14-43	.326	4-21	.190	8-11	.727	16	35	51	2.7	13	0	12	14	3	3	40	2.1
34	Johnson, Virginia	13-0	70	5.4	8-19	.421	0-1	.000	6-9	.667	5	16	21	1.6	7	0	6	2	6	2	22	1.7
33	Reynolds, Kathryn	18-0	127	7.1	5-14	.357	0-6	.000	3-4	.750	1	8	9	0.5	6	0	15	11	0	0	13	0.7
11	Nesbitt, Trisha	11-0	39	3.5	1-7	.143	0-5	.000	0-0	.000	0	2	2	0.2	7	0	3	2	0	3	2	0.2
Team											47	60	107				7					
Total.....		25	5075		624-1495	.417	169-531	.318	372-465	.800	326	673	999	40.0	405	8	412	412	120	183	1789	71.6
Opponents.....		25	5075		588-1537	.383	139-427	.326	315-460	.685	349	598	947	37.9	418	7	296	406	70	217	1630	65.2

TEAM STATISTICS	IOWA	OPP
SCORING	1789	1630
Points per game	71.6	65.2
Scoring margin	+6.4	-
FIELD GOALS-ATT	624-1495	588-1537
Field goal pct	.417	.383
3 POINT FG-ATT	169-531	139-427
3-point FG pct	.318	.326
3-pt FG made per game	6.8	5.6
FREE THROWS-ATT	372-465	315-460
Free throw pct	.800	.685
F-Throws made per game	14.9	12.6
REBOUNDS	999	947
Rebounds per game	40.0	37.9
Rebounding margin	+2.1	-
ASSISTS	412	296
Assists per game	16.5	11.8
TURNOVERS	412	406
Turnovers per game	16.5	16.2
Turnover margin	-0.2	-
Assist/turnover ratio	1.0	0.7
STEALS	183	217
Steals per game	7.3	8.7
BLOCKS	120	70
Blocks per game	4.8	2.8
ATTENDANCE	59089	51682
Home games-Avg/Game	13-4545	10-5119
Neutral site-Avg/Game	-	2-246

Date	Opponent		Score	Att.
^ 11/12/11	HARVARD	W	90-81	3673
^ 11/13/11	UNLV	L	59-69	3287
11/16/11	ALBANY	W	82-60	2909
11/19/11	at UNI	W	78-74	4077
% 11/25/11	vs St. John's	W	60-52	258
% 11/26/11	vs Texas A&M	L	58-74	234
11/30/11	VIRGINIA TECH	W	58-47	4798
12/3/11	at Kansas State	Lot	78-81	3774
12/7/11	at Iowa State	L	54-62	12662
12/9/11	WESTERN ILLINOIS	W	98-45	3614
12/17/11	at Bradley	L	88-96	1506
12/20/11	DRAKE	W	71-46	5916
12/22/11	MVSU	W	86-80	4235
* 12/30/11	NORTHWESTERN	W	86-55	4504
* 01/02/12	at Ohio State	L	71-84	3295
* 1/5/12	ILLINOIS	Wot	69-62	3815
* 1/8/12	NEBRASKA	L	72-77	7537
* 01/15/12	at Purdue	L	55-57	9208
* 1/19/12	WISCONSIN	W	69-57	4610
* 1/22/12	at Penn State	L	52-68	4714
* 01/26/12	at Nebraska	L	53-60	5214
* 1/28/12	PURDUE	W	59-42	6278
* 02/02/12	at Wisconsin	Wot	85-79	4902
* 02/05/12	at Indiana	W	83-64	1838
* 2/9/12	MINNESOTA	W	75-58	3913

^ = Hawkeye Challenge; Iowa City, IA

% = at Junkanoo Jam; Freeport, Bahamas

* = Conference game

Score by Periods	1st	2nd	OT	Totals
Iowa	844	915	30	1789
Opponents	756	854	20	1630



2011-12 IOWA WOMEN'S BASKETBALL
Iowa Combined Team Statistics (as of Feb 09, 2012)
Conference games



RECORD:	OVERALL	HOME	AWAY	NEUTRAL
ALL GAMES	7-5	5-1	2-4	0-0
CONFERENCE	7-5	5-1	2-4	0-0
NON-CONFERENCE	0-0	0-0	0-0	0-0

#	Player	gp-gs	min	avg	Total		3-Point		F-Throw		Rebounds				pf	dq	a	to	blk	stl	pts	avg
					fg-fga	fg%	3fg-fga	3fg%	ft-fa	ft%	off	def	tot	avg								
24	Printy, Jaime	10-10	367	36.7	49-157	.312	21-76	.276	46-54	.852	11	35	46	4.6	23	0	46	29	1	20	165	16.5
12	Johnson, Morgan	12-12	334	27.8	79-134	.590	0-0	.000	31-48	.646	35	69	104	8.7	36	1	9	33	29	4	189	15.8
02	Wahlin, Kamille	12-12	448	37.3	62-144	.431	30-74	.405	28-31	.903	2	41	43	3.6	15	0	46	31	2	7	182	15.2
21	Dixon, Melissa	5-2	93	18.6	16-32	.500	10-22	.455	0-0	.000	5	4	9	1.8	8	0	5	8	0	8	42	8.4
22	Logic, Samantha	12-12	356	29.7	33-86	.384	3-15	.200	20-26	.769	31	42	73	6.1	25	0	52	39	3	14	89	7.4
20	Krei, Kelly	12-12	429	35.8	18-63	.286	12-52	.231	11-12	.917	27	57	84	7.0	27	1	20	9	8	18	59	4.9
51	Doolittle, Bethany	12-0	146	12.2	19-49	.388	0-0	.000	9-11	.818	5	16	21	1.8	24	0	2	7	5	3	47	3.9
23	Taylor, Theairra	12-0	144	12.0	14-37	.378	0-6	.000	7-14	.500	12	21	33	2.8	23	0	11	14	3	8	35	2.9
34	Johnson, Virginia	6-0	34	5.7	3-5	.600	0-1	.000	3-6	.500	2	8	10	1.7	3	0	2	2	2	1	9	1.5
03	Hansen, Kalli	6-0	54	9.0	3-7	.429	1-3	.333	1-2	.500	3	6	9	1.5	0	0	1	4	1	2	8	1.3
33	Reynolds, Kathryn	5-0	16	3.2	1-3	.333	0-2	.000	0-0	.000	0	2	2	0.4	0	0	1	1	0	0	2	0.4
11	Nesbitt, Trisha	9-0	29	3.2	1-5	.200	0-3	.000	0-0	.000	0	1	1	0.1	5	0	3	1	0	2	2	0.2
Team											24	28	52					5				
Total.....		12	2450		298-722	.413	77-254	.303	156-204	.765	157	330	487	40.6	189	2	198	183	54	87	829	69.1
Opponents.....		12	2450		271-737	.368	66-219	.301	155-219	.708	165	290	455	37.9	190	4	133	183	35	84	763	63.6

TEAM STATISTICS	IOWA	OPP
SCORING	829	763
Points per game	69.1	63.6
Scoring margin	+5.5	-
FIELD GOALS-ATT	298-722	271-737
Field goal pct	.413	.368
3 POINT FG-ATT	77-254	66-219
3-point FG pct	.303	.301
3-pt FG made per game	6.4	5.5
FREE THROWS-ATT	156-204	155-219
Free throw pct	.765	.708
F-Throws made per game	13.0	12.9
REBOUNDS	487	455
Rebounds per game	40.6	37.9
Rebounding margin	+2.7	-
ASSISTS	198	133
Assists per game	16.5	11.1
TURNOVERS	183	183
Turnovers per game	15.3	15.3
Turnover margin	+0.0	-
Assist/turnover ratio	1.1	0.7
STEALS	87	84
Steals per game	7.3	7.0
BLOCKS	54	35
Blocks per game	4.5	2.9
ATTENDANCE	30657	29171
Home games-Avg/Game	6-5110	6-4862
Neutral site-Avg/Game	-	0-0

Date	Opponent		Score	Att.
* 12/30/11	NORTHWESTERN	W	86-55	4504
* 01/02/12	at Ohio State	L	71-84	3295
* 1/5/12	ILLINOIS	Wot	69-62	3815
* 1/8/12	NEBRASKA	L	72-77	7537
* 01/15/12	at Purdue	L	55-57	9208
* 1/19/12	WISCONSIN	W	69-57	4610
* 1/22/12	at Penn State	L	52-68	4714
* 01/26/12	at Nebraska	L	53-60	5214
* 1/28/12	PURDUE	W	59-42	6278
* 02/02/12	at Wisconsin	Wot	85-79	4902
* 02/05/12	at Indiana	W	83-64	1838
* 2/9/12	MINNESOTA	W	75-58	3913

^ = Hawkeye Challenge; Iowa City, IA
 % = at Junkanoo Jam; Freeport, Bahamas
 * = Conference game

Score by Periods	1st	2nd	OT	Totals
Iowa	383	420	26	829
Opponents	365	385	13	763