



University of Iowa Women's Basketball

Game #12

December 18, 2012

2012-13 Schedule/Results 8-3 Overall, 0-0 Big Ten

11/9	Northern Illinois^	W, 63-40
11/11	Illinois State^	W, 74-64
11/14	Middle Tennessee^	W, 69-63 (OT)
11/18	North Carolina^	L, 64-77
11/20	Robert Morris	W, 58-44
11/23	at Florida International#	L, 65-66
11/25	vs. #12 West Virginia#	W, 79-70
11/28	at Florida State~	L, 69-83
12/1	Northern Iowa	W, 68-46
12/6	#22 Iowa State*	W, 50-42
12/16	at Drake	W, 82-65
12/19	Missouri State	5:30 p.m.
12/28	vs. Texas%	10 p.m.
12/30	vs. C. Mich./San Diego%	2 or 4 p.m.
1/3	Ohio State	5:30 p.m.
1/6	Michigan	12 p.m.
1/10	at Wisconsin	7:30 p.m.
1/17	at Michigan State	5 p.m.
1/20	Purdue	3 p.m.
1/24	Wisconsin	7 p.m.
1/27	at Michigan	1 p.m.
1/31	at Illinois	7 p.m.
2/3	Northwestern	1 p.m.
2/7	at Minnesota	7:30 p.m.
2/11	Nebraska	6:30 or 7:30 p.m.
2/14	Penn State	7 p.m.
2/17	at Purdue	4 p.m.
2/24	at Nebraska	2 p.m.
2/28	Indiana	TBA
3/3	at Northwestern	TBA

^ -- WNIT

-- FIU Thanksgiving Classic, Miami

~ -- ACC/Big Ten Challenge

* - Iowa Corn Cy-Hawk Series

% -- San Diego Surf 'N Slam Classic, San Diego

Pronunciation Guide

Lisa Bluder.....BLUE-dir

Kali Peschel.....PEH-shull

Theairra Taylor.....thee-AIR-uh

SID Contact: Aaron Blau (@AaronBlau)
E-Mail: aaron-blau@hawkeyesports.com

Office: (319) 335-9268
Cell: (319) 430-5103



Missouri State (6-3) vs. Iowa (8-3)

Dec. 19, 2012 • 5:30 p.m.

Iowa City, Iowa • Mediacom Court at Carver-Hawkeye Arena

Radio: AM-800 KXIC, AM-1360 KMJM, AM-1040 WHO

TV: N/A • Webcast: hawkeyesports.com • Live Stats: hawkeyesports.com

Series Record: Iowa trails, 4-3



THE SETTING

The University of Iowa women's basketball team hosts Missouri State in its final home non-conference game of the 2012-13 regular season. Tip-off is scheduled for 5:30 p.m. on Mediacom Court inside Carver-Hawkeye Arena.

Tickets are \$10 for adults. Youth (18 and under) and UI students are admitted free. Women's ticket holders are invited to stay for the men's game against South Carolina State that follows at 8 p.m. (limited seating available). Men's ticket holders are also invited to come early for the women's game.

AUDIO COVERAGE

Brent Balbinot and Shelley Till will call Wednesday's game for the Hawkeye Radio Network. Hawkeye fans can listen to the contest on AM-800 KXIC in Iowa City, AM-1360 KMJM in Cedar Rapids, AM-1040 WHO in Des Moines or on the Hawkeye All-Access page of hawkeyesports.com.

ON YOUR COMPUTER

Wednesday's contest vs. Missouri State will be streamed live on hawkeyesports.com via the BTN Digital Network. Hawkeye All-Access subscribers can watch live video streams of UI events on the BTN Digital Network at no extra charge.

Hawkeye fans can also follow the game via live stats (Gametracker). The "GT" link can be accessed under the "Calendar" tab on the front page of hawkeyesports.com or on the women's basketball schedule page.

IOWA HISTORY

Iowa has played 1,109 games since beginning basketball in 1974. Iowa's overall record is 679-430 (.612). That includes a 340-170 (.667) mark in regular season Big Ten contests and a 339-92 (.787) mark in Carver-Hawkeye Arena.

Tentative Starting Lineup

Iowa Hawkeyes (8-3)

Pos.	No.	Name	Ht.	Yr.	Statistical Summary
G	22	Samantha Logic	5-8	So.	8.7 ppg, 5.5 rpg, 6.2 apg, .459 FG%, .750 FT% - Dished out 14 assists with just five turnovers over last three contests
G	24	Jaime Printy	5-11	Sr.	12.1 ppg, 4.1 rpg, 3.7 apg, .376 FG%, .946 FT% - Only missed three free throw attempts this season (53-of-56) and made 35 of last 36 attempts
G	23	Theairra Taylor	5-11	Jr.	6.9 ppg, 5.2 rpg, 2.1 apg, .384 FG%, .591 FT% - Averaging 3.7 assists over last three games
F	51	Bethany Doolittle	6-4	So.	6.8 ppg, 5.4 rpg, 1.8 bpg, .391 FG%, .1000 FT% - Shot over 50 percent for fifth time this season in win at Drake (4-of-6)
C	12	Morgan Johnson	6-5	Sr.	18.1 ppg, 7.5 rpg, 2.2 bpg, .561 FG%, .718 FT% - Recorded 15th 20-point game of her career in win at Drake

Head Coach: Lisa Bluder (Northern Iowa, 1983); 13th Season at Iowa (238-147); 29th Season Overall (594-289)



Inside the Numbers

	IOWA	MSU
Scoring Average	67.4	74.3
Scoring Defense	60.0	72.0
Scoring Margin	+7.4	+2.3
FG%	.424	.438
FG% Defense	.335	.387
FT%	.751	.660
3-PT FG%	.317	.339
3-PT FG% Defense	.265	.352
Rebound Margin	+1.2	+7.7
Assists Per Game	15.9	13.9
Turnovers Per Game	17.4	20.2
Turnover Margin	-1.2	-5.2
Steals Per Game	6.0	7.3
Blocks Per Game	6.0	4.2

Missouri State vs. Iowa Series History

Iowa trails, 4-3 Meetings Listed Below

1991-92	at Iowa	L, 60-61 (OT)
1993-94	at Iowa	W, 67-55
1994-95	at MSU	L, 48-60
2000-01	at MSU	L, 87-101
2001-02	at Iowa	W, 84-64
2004-05	at MSU	L, 80-89
2006-07	at Neutral	W, 79-70

How Many Times a Hawkeye Player...

Scored 20 or More Points

Morgan Johnson	5
Jaime Printy	1

Scored 15 or More Points

Morgan Johnson	8
Jaime Printy	3
Bethany Doolittle	1
Samantha Logic	1

Grabbed 10 or More Rebounds

Morgan Johnson	3
Theairra Taylor	1

Grabbed 7 or More Rebounds

Morgan Johnson	5
Bethany Doolittle	4
Theairra Taylor	3
Samantha Logic	3
Jaime Printy	1

Dished out 7 or More Assists

Samantha Logic	6
Jaime Printy	1

Dished out 5 or More Assists

Samantha Logic	7
Jaime Printy	4
Theairra Taylor	2
Morgan Johnson	1

Recorded 4 or More Steals

Samantha Logic	1
----------------	---

Blocked 3 or More Shots

Bethany Doolittle	3
Morgan Johnson	2

2012-13 Margin of Victory/Defeat

Points	1	2	3	4	5	6	7	8	9	10-14	15-19	20+
Wins	0	0	0	0	0	1	0	1	1	3	0	2
Losses	1	0	0	0	0	0	0	0	0	2	0	0

SCOUTING MISSOURI STATE

The Missouri State Lady Bears are 6-3 overall, winning five of their last six games. Missouri State's only loss over the six-game stretch was at Missouri.

Missouri State is the defending Missouri Valley Conference champion and Christiana Shorter was a preseason All-MVC selection.

In their last game, the Lady Bears knocked off Arkansas State, 83-60. Missouri State turned 18 Arkansas State turnovers into 24 points and shot 52.9 percent (9-of-17) from 3-point distance. Kenzie Williams had 15 points, while Hannah Wilkerson and Karly Buer had 14 points. Whitney Edie had seven points and 10 rebounds.

Edie leads the team with 14.7 points and 9.9 rebounds and Shorter is next at 14.6 points and 7.6 rebounds. Williams is averaging 11.7 points, while Wilkerson is at 10.7 points per contest.

As a team, Missouri State is averaging 74.3 points per game and shooting 43.8 percent (243-of-555) from the field, including 33.9 percent (41-of-121) from 3-point distance.

MISSOURI STATE VS. IOWA NOTES

- Iowa trails in the all-time series, 4-3. The Hawkeyes are 2-1 against the Lady Bears in Iowa City. Iowa won the last meeting, 79-70, in the 2006 WBCA Classic in Kansas City.
- Missouri State sophomore NiJay Gaines is from Des Moines and attended Des Moines East High School.
- Iowa assistant coach Shannon Gage was a four-year letterwinner at Missouri State from 1995-98. She was a team captain and helped lead the Lady Bears to MVC championships and NCAA Tournament appearances in 1995, 1996 and 1998.

HAWKEYES COMPLETE STATE SWEEP WITH WIN OVER DRAKE

Iowa claimed the 2012 mythical state championship with an 82-65 win at Drake on Dec. 16. The Hawkeyes used a 22-2 run midway through the first half to seal the win.

The Hawkeyes shot a season-best 52.5 percent (31-of-59) from the field and tallied a season-high 23 assists. Iowa committed a season-low eight turnovers.

Morgan Johnson led the way with 26 points, on 11-of-19 shooting, along with eight rebounds and three blocks. Samantha Logic had 13 points, five rebounds and seven assists. Trisha Nesbitt added 12 points off the bench.

IOWA IN THE RANKINGS

Iowa is receiving votes in the latest Associated Press poll.

Seven Iowa opponents are ranked in the Associated Press and ESPN/USA Today polls: Penn State (11th/10th), Purdue (13th/12th), North Carolina (17th/25th), Texas (20th/23rd), Florida State (23rd/RV), West Virginia (24th/20th) and Ohio State (RV/24th).

In addition, Nebraska, Iowa State, Michigan, Michigan State and Middle Tennessee are receiving votes.

2012-13 Iowa Hawkeye Roster

No.	Name	Yr.	Ht.	Pos.	Hometown (High School/College)
3	Claire Till	Fr.	6-0	G	Dubuque, Iowa (Dubuque Wahlert)
11	Trisha Nesbitt	Sr.	5-7	G	Ames, Iowa (Ames)
12	Morgan Johnson	Sr.	6-5	C	Platte City, Mo. (Platte County)
13	Kathy Thomas	So.	5-6	G	Flint, Mich. (Highland CC, KS)
21	Melissa Dixon	So.	5-8	G	Johnsburg, Ill. (Johnsburg)
22	Samantha Logic	So.	5-9	G	Racine, Wis. (Racine J.I. Case)
23	Theairra Taylor	Jr.	5-11	G	St. Paul, Minn. (Central)
24	Jaime Printy	Sr.	5-11	G	Marion, Iowa (Linn-Mar)
25	Kali Peschel	Fr.	6-1	G	Sauk Centre, Minn. (Sauk Centre)
33	Kathryn Reynolds	So.	5-7	G	Cincinnati, Ohio (Mount Notre Dame)
45	Nicole Smith	Fr.	6-4	C	Rockton, Ill. (Hononegah)
51	Bethany Doolittle	So.	6-4	C	Oakdale, Minn. (Hill-Murray)
54	Kayla Timmerman	Fr.	6-3	F	Wayzata, Minn. (Wayzata)

Head Coach: Lisa Bluder **Associate Head Coach:** Jan Jensen
Assistant Coaches: Jenni Fitzgerald and Shannon Gage



2012-13 Team Captains

Iowa captains are seniors
Jaime Printy, Morgan Johnson and Trisha Nesbitt

IOWA CONTINUES TREND AGAINST RANKED FOES

- Iowa's win over 12th-ranked West Virginia (Nov. 25) marked the 14th time under Lisa Bluder that the Hawkeyes have defeated a top-15 team.
- The Hawkeyes have recorded at least one win against a top-25 team in all but two seasons under Bluder. In nine of those seasons, Iowa has knocked off at least one top-15 opponent.
- West Virginia was the highest ranked opponent the Hawkeyes have defeated since knocking off No. 10 Michigan State (66-64) on Jan. 27, 2011.
- This season marks just the fifth time in school history that Iowa has defeated two ranked nonconference opponents prior to Big Ten play, and the first time since 1995 (No. 12 West Virginia and No. 22 Iowa State). The other years include 1993, 1992 and 1990.

NESBITT COLLECTS CAREER HIGH AGAINST BULLDOGS

Senior Trisha Nesbitt scored a career-high 12 points in Iowa's win at Drake (Dec. 16). Playing roughly 30 minutes from her hometown of Ames, Nesbitt netted two 3-pointers and was a perfect 4-of-4 from the free throw line.

Nesbitt, who has battled injuries throughout her entire career, scored in double figures for just the second time in her four years at Iowa. Nesbitt's first double figure performance came as a freshman against Michigan State in the Big Ten Tournament.

BENCH PRODUCTION

Iowa's bench is outscoring its opponents' bench 171-127, through the first 11 games of the season. Hawkeye substitutes are combining to average 15.5 points per game, while their opposition is averaging just 11.5 points per contest.

Iowa's bench has scored 14 or more points in eight of Iowa's 11 games, including three games with at least 20 points.

IMPROVED DEFENSIVE NUMBERS

- Through 11 games last season, Iowa was giving up an average of 67.4 points. Against a much tougher nonconference schedule in 2012, the Hawkeyes are allowing 60 points, a difference of 7.4 points per game.
- Iowa leads the Big Ten and ranks 14th in the NCAA in blocks per game at 6.0.
- The Hawkeyes are second in the Big Ten and 34th in the NCAA in field goal percentage defense, limiting opponents to a 33.5 field goal percentage.

PRINTY CLOSE TO B1G FREE THROW RECORDS

Jaime Printy currently owns an 88.7 career free throw percentage (361-of-407). Former Hawkeye Wendy Ausdemore holds the Iowa and Big Ten record for career free throw percentage at 89.2 (174-of-195).

Printy is shooting 94.6 percent (53-of-56) for the season. The Big Ten single season record is 92.5 percent (99-of-107) by Indiana's Cyn-di Valentin.

Head Coach Lisa Bluder

Lisa Bluder (pronounced BLUE-dir) is in her 13th season as head coach at the University of Iowa and her 29th season as a college head coach. She is a three-time Big Ten and two-time WBCA Regional Coach of the Year.

Bluder has a career record of 594-289 (.673), including a 238-147 (.618) record at Iowa, a 187-106 (.638) record in 10 seasons (1990-2000) at Drake and a six-year mark (1984-90) of 169-36 (.824) at St. Ambrose.

Bluder is Iowa's second all-time winningest coach and trails only C. Vivian Stringer. She has guided the Hawkeyes to 11 postseason tournaments (9 NCAA, 2 WNIT) and nine upper-division finishes in the Big Ten Conference, including winning a share of the league championship in 2008 and taking home the conference tournament title in 2001.

In her first season with the Hawkeyes, Bluder transformed a struggling program into a 21-game winner. Iowa finished second in the Big Ten, won the conference tournament and advanced to the second round of the NCAA Tournament. Bluder became Iowa's third coach to be named Big Ten Coach of the Year. She was also honored as the College Coach of the Year by the *Women's Basketball News Service* and was named the WBCA District 6 Coach of the Year. Iowa's 2001-02 squad finished fourth in the Big Ten and advanced to the second round of the NCAA Tournament for the second consecutive year. In 2003, Bluder guided the Hawkeyes to their first-ever WNIT appearance. Iowa, which had nine underclassmen on its roster, advanced to the quarterfinals before falling to Creighton. In 2004-05, Iowa finished 23-10, starting the year 13-0 and was the last Division I undefeated team standing. In 2005-06, Bluder mentored a team plagued by injuries to a fifth-place Big Ten finish and an NCAA Tournament berth.

In her 10 years at Drake, Bluder brought great success and tradition to the Bulldog program and established herself as one of the top coaches in the country. She led Drake to five 20-plus win seasons in her last six years, including five post-season appearances. She guided the Bulldogs to eight Missouri Valley Conference Tournament appearances, reaching the semifinals six times and winning the tournament four times. Bluder was also named the Conference Coach of the Year three times at Drake.

Bluder began her coaching career at St. Ambrose, where she coached six successful seasons, building the Bees into a NAIA powerhouse. During her tenure at St. Ambrose, Bluder guided the Bees to four straight national tournaments, including two consecutive Final Four appearances. The 1990 St. Ambrose team was ranked No. 1 and Bluder was named the NAIA Converse Coach of the Year.

A graduate of Linn-Mar High School in Marion, Iowa, Bluder was a three-year starter at Northern Iowa. She graduated from UNI in 1983 with a bachelor's degree in marketing.



Press Conferences

Below is a list of press conferences for Head Iowa Women's Basketball Coach Lisa Bluder. Press conferences will be held in the Media Room on the first floor of Carver-Hawkeye Arena. Select student-athletes will be available before or after Coach Bluder addresses the media.

Friday, December 14.....11:30 a.m.
Wednesday, Jan. 2.....2 p.m.
Wednesday, Jan. 9.....10 a.m.
Tuesday, Jan. 15.....2 p.m.
Wednesday, Jan. 23.....11:30 a.m.
Tuesday, Jan. 29.....11:30 a.m.
Tuesday, Feb. 5.....11:30 a.m.
Wednesday, Feb. 13.....11:30 a.m.
Friday, Feb. 22.....11:30 a.m.
Week of March. 4 (B1G Tourney)..... TBA

Follow the Hawkeyes on Twitter

Iowa Women's Basketball....@IowaWBB
Claire Till.....@clairetill3
Trisha Nesbitt.....@TNesbitt11
Morgan Johnson.....@MoJohnson12
Kathy Thomas.....@datgurlgotgame_
Melissa Dixon.....@MDix21
Theairra Taylor.....@two3KneeTaylor
Jaime Printy.....@jprinty24
Kali Peschel.....@KaliPeschel
Nicole Smith.....@NicoleSmith42
Kayla Timmerman.....@timmykay54
Jan Jensen.....@golowa
Jenni Fitzgerald.....@jlefty21
Abby Emmert.....@abbyemmert

Press Conference FTP Information

Weekly press conference footage will be available to media outlets via www.dropbox.com.
Username: ath-media@uiowa.edu
Password: hawks2012

PRINTY FREE THROW NOTES

- Printy has gone 3-of-3 from the line against Drake, 4-of-4 against Northern Illinois and Northern Iowa, 6-of-6 against Iowa State, 11-of-11 against Middle Tennessee and 17-of-17 against West Virginia.
- Printy converted 21-consecutive free throws between Iowa's game vs. North Carolina and the road contest at Florida State. She has put together a string of at least 20-consecutive made free throws in each year of her career. She converted 27-straight as a freshman and 32-straight as a sophomore and junior. Iowa's record for consecutive free throws made is 33 by Lindsey Meder.

FREE THROW RECORDS FALL AGAINST WEST VIRGINIA

- Jaime Printy is only the third player in Big Ten history to go 17-of-17 from the free throw line, matching the best single game free throw performance in conference history. Wisconsin's Michele Kozelka (1989) and Keisha Anderson (1996) are the only other players in Big Ten history to accomplish the feat.
- Printy's 17 made free throws tied the single game school record and are tied for the second most made free throws in Big Ten history.
- Printy's performance against West Virginia marked the ninth time in school history that an Iowa player has been perfect from the free throw line (minimum 10 attempts). Printy now has three of those marks, with one of those performances coming earlier this year against Middle Tennessee (11-for-11). The other came against Indiana (10-for-10) on Feb. 27, 2011.
- As a team, the Hawkeyes set the Big Ten and school record for made free throws made (42) and set the school record for free throw attempts (50).

JOHNSON SETS BLOCK RECORD

Morgan Johnson became the Iowa career leader in blocks against Florida International (Nov. 23).

Johnson entered the game needing two blocks to break Tangela Smith's career blocks record and she finished with five.

Johnson currently ranks eighth in Big Ten history with 249 blocks.

MILESTONE NOTES

- Jaime Printy is just the third player in school history with 1,500 career points, 400 career rebounds and 300 career assists. Michelle Edwards and Franthea Price are the other two Iowa players to record those career numbers.
- Morgan Johnson is only the second player in school history to collect over 200 blocks, joining Tangela Smith.

STELLAR FROM THE FIELD

Morgan Johnson owns a career field goal percentage of 51.7 percent, converting on 509-of-984 shot attempts.

Johnson has played in 107 career games and attempted 10 or more shots in 45 of those contests. She has shot over 50 percent from the field in 32 of those games.

Johnson had 10 or more shot attempts in eight games as a freshman, making over half of her shots in six of those games. She went over 50 percent in eight of the 13 games she shot at least 10 times as a sophomore and 11-of-15 in those games as a junior.

Johnson has nine games with over 10 shots as a senior, converting at least 50 percent seven times.

LOGIC LIKES TO SHARE

Samantha Logic has collected five or more assists in seven of Iowa's last nine games.

She tied a school record with 12 assists against Middle Tennessee, dished out six against North Carolina, nine against Robert Morris and seven against Florida International, West Virginia and Florida State and had seven at Drake.



Big Ten Overall Individual Stats (thru Dec. 17)

Morgan Johnson	Rank	Avg.	Samantha Logic	Rank	Avg.
Field Goal Percentage	3rd	.561	Assists	3rd	6.2
Blocks	4th	2.2	Steals	T-10th	2.0
Scoring	7th	18.1	Assist/Turnover Ratio	12th	1.3
Rebounding	7th	7.5	Offensive Rebounds	13th	2.3
Offensive Rebounds	8th	2.5			
Defensive Rebounds	T-9th	5.0	Bethany Doolittle	Rank	Avg.
			Blocks	5th	1.8

Jaime Printy	Rank	Avg.
Free Throw Percentage	1st	.946
Assists	11th	3.7
Scoring	21st	12.1
Assist/Turnover Ratio	14th	1.1

Big Ten Overall Stats (thru Dec. 17)

Scoring Offense	
1. Illinois	74.2
8. Iowa	67.4
Scoring Defense	
1. Michigan State	42.7
8. Iowa	60.0
Scoring Margin	
1. Michigan State	+24.9
8. Iowa	+7.4
Free Throw Percentage	
1. Wisconsin	.788
3. Iowa	.751
Field Goal Percentage	
1. Ohio State	.479
6. Iowa	.424
Field Goal Percentage Defense	
1. Michigan State	.301
2. Iowa	.335
3-Point Field Goals Made	
1. Michigan	6.5
10. Iowa	4.7
3-Point Field Goal Percentage	
1. Purdue	.417
8. Iowa	.317
3-Point Field Goal Percentage Defense	
1. Michigan State	.232
3. Iowa	.265
Rebounding	
1. Penn State	44.3
7. Iowa	39.9
Rebounding Allowed	
1. Purdue	29.5
10. Iowa	38.7
Rebounding Margin	
1. Michigan State	+10.5
10. Iowa	+1.2
Offensive Rebounds	
1. Penn State	16.5
9. Iowa	11.4
Defensive Rebounds	
1. Michigan State	29.9
3. Iowa	28.5
Blocked Shots	
1. Iowa	6.0
Assists	
1. Illinois	16.5
4. Iowa	15.9
Steals	
1. Penn State	11.0
11. Iowa	6.0
Turnover Margin	
1. Ohio State	+3.9
9. Iowa	-1.2
Assist/Turnover Ratio	
1. Michigan State	1.3
6. Iowa	0.9

INJURY UPDATE

- Sophomore Kathryn Reynolds will miss the entire 2012-13 season after tearing her left ACL during offseason workouts in April. The injury was the second tear to Reynolds' left ACL. She tore the same ligament six games into her junior season in high school.
- Freshman Claire Till was diagnosed with a stress fracture in her right femur on Nov. 29. She will be sidelined 3-4 weeks.

BLUDER CLOSING IN ON MILESTONE

Head coach Lisa Bluder is just six wins away from career win No. 600. Bluder entered the 2012-13 season as the 26th winningest active coach and the 46th overall winningest coach in NCAA women's basketball history (by victories).

Only 41 coaches in NCAA women's basketball history (all divisions) have reached the 600 career win plateau.

PRECONFERENCE ALL-TOURNAMENT TEAM HONORS

Morgan Johnson was named to the Preseason WNIT all-tournament team, while Jaime Printy was selected to both the Preseason WNIT and FIU Thanksgiving all-tournament teams.

JOHNSON NAMED BIG TEN PLAYER OF THE WEEK

Morgan Johnson was named Big Ten Player of the Week (Nov. 19) for her efforts in the Pre-season WNIT semifinals and championship game.

Johnson averaged 20 points, 9.5 rebounds and shot 76.2 percent (16-of-21) from the floor against two tough opponents in Middle Tennessee and North Carolina.

Johnson started the week with 20 points (8-of-10 FGs), eight rebounds and two blocks in Iowa's overtime win over Middle Tennessee. She followed with another 20-point performance, along with 11 rebounds, against ACC opponent North Carolina, battling 6-6 center Waltiea Rolle in the paint.

The award was Johnson's second weekly honor from the Big Ten in her career. She was named Big Ten Player of the Week last year after scoring 37 points at Bradley.

MOVING UP CAREER CHARTS

- Morgan Johnson is Iowa's all-time blocks leader (249), 11th in career rebounds (713) and 15th in career scoring (1,291). She needs 14 more rebounds to move past Franthea Price for 10th place and 29 more points to past Amy Herrig for 14th place.
- Jaime Printy ranks fourth in career 3-pointers made (213), eighth in career scoring (1,542) and 10th in career assists (345). She needs nine more 3-pointers to move past Wendy Ausdemore for third place, 57 more points to move past Tangela Smith for eighth place and nine more assists to move past Jollette Law for ninth place.



Career Scoring in Iowa History

Rank...	No.....	Player.....	Years
5.....	1742.....	Franthea Price.....	86-90
6.....	1606.....	Toni Foster.....	89-93
7.....	1598.....	Tangela Smith.....	94-98
8.....	1542.....	Jaime Printy.....	10-
13.....	1335.....	Lisa Becker.....	83-87
14.....	1319.....	Amy Herrig.....	95-99
15.....	1291.....	Morgan Johnson.....	10-

Career 3-Pointers in Iowa History

Rank...	No.....	Player.....	Years
1.....	261.....	Lindsey Meder.....	98-02
2.....	231.....	Kamille Wahlin.....	09-Pr.
3.....	221.....	Wendy Ausdemore.....	05-09
4.....	213.....	Jaime Printy.....	10-

Career Blocks in Iowa History

Rank...	No.....	Player.....	Years
1.....	249.....	Morgan Johnson.....	10-Pr
2.....	235.....	Tangela Smith.....	94-98

Career Rebounds in Iowa History

Rank...	No.....	Player.....	Years
7.....	792.....	Krista VandeVenter.....	04-08
8.....	789.....	Amy Herrig.....	95-99
9.....	745.....	Randi Peterson.....	97-01
10.....	726.....	Franthea Price.....	86-90
11.....	713.....	Morgan Johnson.....	10-Pr

Career Assists in Iowa History

Rank...	No.....	Player.....	Years
3.....	427.....	Kamille Wahlin.....	09-12
4.....	412.....	Kristi Smith.....	05-09
5.....	391.....	Johanna Solverson.....	02-05
6.....	387.....	Franthea Price.....	86-90
7.....	367.....	Steph Schueler.....	87-91
8.....	357.....	Nadine Domond.....	94-98
9.....	353.....	Jolette Law.....	86-90
10.....	345.....	Jaime Printy.....	10-Pr

Hawkeyes in NCAA Stats (thru Dec. 16)

Iowa	Rank	Avg.
Blocks	14th	6.0
Free Throw Percentage	32nd	75.1
Assists	34th	15.9
Field Goal Percentage Defense	34th	33.5
Assist/Turnover Ratio	53rd	0.92
Field Goal Percentage	56th	42.4
3-Point Percentage Defense	75th	26.5
Scoring Offense	88th	67.4

Morgan Johnson	Rank	Avg.
Field Goal Percentage	29th	56.1
Blocks Per Game	37th	2.2
Points Per Game	48th	18.1

Jaime Printy	Rank	Avg.
Free Throw Percentage	8th	94.6

Samantha Logic	Rank	Avg.
Assists Per Game	18th	6.2

Bethany Doolittle	Rank	Avg.
Blocks Per Game	69th	1.8

2012-13 Big Ten Standings/Schedule (thru Dec. 17)

Team	Big Ten	Pct.	Overall	Pct.	
Purdue	0-0	.000	10-1	.909	Wednesday, December 19 Missouri State at Iowa (BTN.com) Oregon State at Michigan State
Michigan State	0-0	.000	9-1	.900	Thursday, December 20 Valparaiso at Michigan (BTN) Texas Tech at Michigan State Oral Roberts at Nebraska (BTN.com)
Penn State	0-0	.000	8-2	.818	Friday, December 21 Illinois State at Illinois (BTN.com) Xavier at Indiana (BTN.com) Northern Iowa at Minnesota Southern at Ohio State (BTN.com) IUPUI at Purdue (BTN.com)
Michigan	0-0	.000	9-2	.818	
Minnesota	0-0	.000	9-3	.750	
Nebraska	0-0	.000	8-3	.727	
Iowa	0-0	.000	8-3	.727	
Ohio State	0-0	.000	7-3	.700	
Wisconsin	0-0	.000	7-3	.700	
Indiana	0-0	.000	7-4	.636	
Illinois	0-0	.000	6-4	.600	
Northwestern	0-0	.000	6-4	.600	Saturday, December 22 Mississippi at Northwestern

PRINTY NAMED SENIOR CLASS AWARD NOMINEE

Senior Jaime Printy is one of 30 NCAA Division I women's basketball players to be named a candidate for the 2012 Senior CLASS Award.

An acronym for Celebrating Loyalty and Achievement for Staying in School, the Senior CLASS Award focuses on the total student-athlete and encourages students to use their platform in athletics to make a positive impact as leaders in their communities.

Printy has excelled both on and off the court during her career. The Marion, Iowa, native is one of the most decorated players in Iowa history, earning Big Ten Freshman of the Year honors in 2010, Associated Press Honorable Mention All-America accolades as a sophomore and All-Big Ten recognition as a junior.

Off the court, Printy has been named Capital One Academic All-District, is a member of the Dean's List and is a two-time Academic All-Big Ten selection. She is active in the eastern Iowa community, volunteering with numerous charities, organizations and local elementary schools.

JOHNSON NAMED PRESEASON ALL-BIG TEN

Senior center Morgan Johnson was named Preseason All-Big Ten at the annual Big Ten Media Day in Chicago.

Johnson was one of seven players chosen by the league coaches for the Preseason All-Big Ten team. She was joined on the coaches team by Rachel Banham (Minnesota), Jordan Hooper (Nebraska), Tayler Hill (Ohio State), Courtney Moses (Purdue) and Alex Bentley and Maggie Lucas (Penn State).

The media Preseason All-Big Ten team consisted of Hooper and Lindsey Moore (Nebraska), Hill, Bentley and Lucas.

Johnson was a second team All-Big Ten selection as a junior last season, averaging 14.9 points and 6.6 rebounds. She led the Big Ten and ranked seventh in the NCAA in field goal percentage (54.9). She also ranked second in the Big Ten and 26th in the country in blocks per game (2.3).

This year marks the third consecutive season that a Hawkeye player has been named Preseason All-Big Ten (Kachine Alexander – 2010, Jaime Printy – 2011).

SUCCESS UNDER BLUDER

Last season marked the ninth time in 12 seasons under head coach Lisa Bluder that Iowa has been selected for the NCAA Tournament, including each of the last five seasons. The Hawkeyes have participated in postseason play in all but one season under Bluder (two WNIT appearances).

In addition, Iowa finished with a winning record for the 11th time in 12 seasons under Bluder. Iowa's tie for second place in the Big Ten is also the ninth time, under Bluder, the Hawkeyes recorded an upper-division finish in the conference.

IOWA WOMEN'S BASKETBALL AND SOCIAL MEDIA

The Hawkeye women's basketball has four different social media outlets. Check out the Iowa women's basketball Facebook page or the University of Iowa Athletics Facebook page. Fans can also follow @IowaWBB or @TheIowaHawkeyes on Twitter.

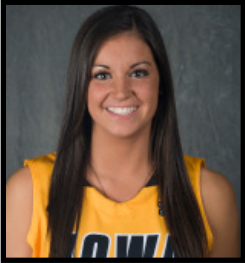




University of Iowa Women's Basketball

Updated Iowa Player Bio

Claire Till



3

Guard, 6-0, Freshman
Dubuque, Iowa
Dubuque Wahlert HS

- Currently sidelined with a stress fracture in right femur.
- Seven points and six rebounds against Florida International.
- Five points and two rebounds in win over Robert Morris.
- Scored three points and recorded six rebounds in collegiate debut vs. NIU.
- Two-time all-state selection.
- Three-time IBCA Select Team member.
- Four-time first team all-conference and all-district pick.
- Underwent three surgeries in high school to repair injured knee.

Personal Bests

Points: 7 at Florida International (11/23/12)
Rebounds: 6, twice, last at FIU (11/23/12)
FGM: 1, 4x, last at FIU (11/23/12)
FGA: 6 at Florida International (11/23/12)
3-pt FG: 1, twice, last vs. RMU (11/20/12)
3-pt FGA: 2, twice, last at FIU (11/23/12)
FTM: 5, twice, last vs. WVU (11/25/12)
FTA: 8 at Florida International (11/23/12)
Assists: 1, twice, last at FSU (11/28/12)
Steals: 1, 3x, last vs. WVU (11/25/12)
Blocks: 1, twice, last at FSU (11/28/12)
Minutes: 18 at Florida International (11/23/12)

2012-13 Game-by-Game

#03 Till, Claire

Opponent	Date	gs	min	Total		3-Pointers		Free throws		Rebounds			pf	a	t/o	blk	stl	pts	avg	
				fg-fga	pct	3fg-fga	pct	ft-fa	pct	off	def	tot								avg
NORTHERN ILLINOIS	11/9/12	11	1-3	.333	1-2	.500	0-2	.000	1	5	6	6.0	3	0	0	1	1	3	3.0	
ILLINOIS STATE	11/11/12	7	1-2	.500	0-0	.000	2-2	1.000	0	3	3	4.5	1	0	2	0	1	4	3.5	
MIDDLE TENNESSEE	11/14/12	8	0-1	.000	0-0	.000	0-0	.000	0	1	1	3.3	2	0	0	0	0	0	2.3	
NORTH CAROLINA	11/18/12	6	0-0	.000	0-0	.000	1-2	.500	0	2	2	3.0	0	1	2	0	0	1	2.0	
ROBERT MORRIS	11/20/12	16	1-2	.500	1-1	1.000	2-2	1.000	0	2	2	2.8	0	0	2	0	0	5	2.6	
at FIU	11/23/12	18	1-6	.167	0-2	.000	5-8	.625	5	1	6	3.3	0	0	0	0	0	7	3.3	
vs WVU	11/25/12	14	0-1	.000	0-0	.000	5-6	.833	2	0	2	3.1	1	0	1	0	1	5	3.6	
at Florida State	11/28/12	12	0-2	.000	0-1	.000	0-0	.000	0	1	1	2.9	2	1	0	1	0	0	3.1	
Totals		0	92	4-17	.235	2-6	.333	15-22	.682	8	15	23	2.9	9	2	7	2	3	25	3.1

Games played: 8
 Minutes/game: 11.5
 Points/game: 3.1
 FG Pct: 23.5
 3FG Pct: 33.3
 FT Pct: 68.2

Rebounds/game: 2.9
 Assists/game: 0.3
 Turnovers/game: 0.9
 Assist/turnover ratio: 0.3
 Steals/game: 0.4
 Blocks/game: 0.3

CAREER STATISTICS

YEAR	G/GS	FG-A	PCT	3-PT	PCT	FT-A	PCT	O-D-REB	AVG	PF-FO	AS	TO	BK	ST	PTS	AVG
Fresh.	8/0	4-17	.235	2-6	.333	15-22	.682	8-15-23	2.9	9-0	2	7	2	3	25	3.1





University of Iowa Women's Basketball

Updated Iowa Player Bio

Trisha Nesbitt



11

Guard, 5-7, Senior
Ames, Iowa
Ames HS

- Career-high 12 points in win at Drake.
- Academic All-Big Ten in 2011-12.
- Had minor knee surgery Nov. 15, 2011 and missed the first 10 games of the season as a junior.
- Saw first action last season Dec. 20 vs. Drake, recording one rebound and one steal in seven minutes of play.

Personal Bests

Points: 12 at Drake (12/16/12)
Rebounds: 3, 2x, last vs. NIU (11/9/12)
FGM: 4 vs. Michigan State (3/6/10)
FGA: 8 at Indiana (2/11/10)
3-pt FG: 2, 3x, last at Drake (12/16/12)
3-pt FGA: 4, 2x, last vs. Stanford (3/22/10)
FTM: 4, 3x, last at Drake (12/16/12)
FTA: 5 at UNI (11/22/09)
Assists: 4, 3x, last at Iowa St. (12/10/09)
Steals: 3 at Minnesota (1/3/10)
Blocks: - - -
Minutes: 37 at Indiana (2/11/10)

2012-13 Game-by-Game

#11 Nesbitt, Trisha

Opponent	Date	gs	min	Total		3-Pointers		Free throws		Rebounds			pf	a	t/o	blk	stl	pts	avg		
				fg-fga	pct	3fg-fga	pct	ft-fa	pct	off	def	tot								avg	
NORTHERN ILLINOIS	11/9/12		18	1-1	1.000	1-1	1.000	0-0	.000	0	3	3	3.0	0	1	2	0	0	3	3.0	
ILLINOIS STATE	11/11/12		15	0-3	.000	0-1	.000	3-4	.750	0	1	1	2.0	3	0	1	0	1	3	3.0	
MIDDLE TENNESSEE	11/14/12		4	1-1	1.000	0-0	.000	0-0	.000	0	0	0	1.3	0	0	0	0	0	2	2.7	
NORTH CAROLINA	11/18/12		5	1-2	.500	0-1	.000	0-0	.000	0	0	0	1.0	0	0	0	0	0	2	2.5	
ROBERT MORRIS	11/20/12		13	0-0	.000	0-0	.000	0-0	.000	0	2	2	1.2	0	2	0	0	0	0	2.0	
at FIU	11/23/12		8	1-2	.500	0-0	.000	0-0	.000	0	1	1	1.2	1	1	0	0	0	2	2.0	
vs WVU	11/25/12		14	1-1	1.000	1-1	1.000	1-2	.500	0	0	0	1.0	2	1	1	0	1	4	2.3	
at Florida State	11/28/12		5	0-0	.000	0-0	.000	0-0	.000	0	0	0	0.9	1	0	0	0	1	0	2.0	
UNI	12/1/12		5	0-0	.000	0-0	.000	0-0	.000	0	0	0	0.8	0	0	0	0	0	0	1.8	
IOWA STATE	12/6/12		6	0-0	.000	0-0	.000	0-0	.000	0	1	1	0.8	1	0	0	0	0	0	1.6	
at Drake	12-16-12		15	3-4	.750	2-3	.667	4-4	1.000	0	0	0	0.7	4	0	1	0	0	12	2.5	
Totals			0	108	8-14	.571	4-7	.571	8-10	.800	0	8	8	0.7	12	5	5	0	3	28	2.5

Games played: 11
 Minutes/game: 9.8
 Points/game: 2.5
 FG Pct: 57.1
 3FG Pct: 57.1
 FT Pct: 80.0

Rebounds/game: 0.7
 Assists/game: 0.5
 Turnovers/game: 0.5
 Assist/turnover ratio: 1.0
 Steals/game: 0.3

CAREER STATISTICS

YEAR	G/GS	FG-A	PCT	3-PT	PCT	FT-A	PCT	O-D-REB	AVG	PF-FO	AS	TO	BK	ST	PTS	AVG
Fresh.	34/1	25-85	.294	9-36	.250	25-31	.806	2-22-24	0.7	46-0	43	42	0	14	84	2.5
Soph.	16/0	3-13	.231	2-6	.333	0-1	.000	0-4-4	0.3	7-0	5	10	0	1	8	0.5
Junior	15/0	1-8	.125	0-6	.000	3-4	.750	1-2-3	0.2	10-0	4	3	0	3	5	0.3
Senior	11/0	8-14	.571	4-7	.571	8-10	.800	0-8-8	0.7	12-0	5	5	0	3	28	2.5
TOTALS	76/1	37-120	.308	15-55	.273	36-46	.783	3-36-39	0.5	75-0	57	60	0	21	125	1.6





University of Iowa Women's Basketball

Updated Iowa Player Bio

Morgan Johnson



12

Center, 6-5, Senior
Platte City, Mo.
Platte County HS

- Iowa career blocks leader (249), 11th in career rebounds (713) and 15th in career scoring (1,291).
- Recorded 15 career double-doubles, including three as a freshman, five as a sophomore, four as a junior and three as a senior.
- 26 points, eight rebounds and three blocks in win at Drake.
- Third double-double of the season with 19 points, 12 rebounds and a career-high five assists in win over Northern Iowa.
- 20 points at Florida State.
- 19 points in win over West Virginia.
- Second double-double of the season with 19 points and 11 rebounds in win over Robert Morris.
- Big Ten Player of the Week (Nov. 19).
- First double-double of the season with 20 points and 11 rebounds vs. N. Carolina.
- 20 points and eight rebounds in win over Middle Tennessee.
- 24 points (12-of-13 FTs) and nine rebounds in win over Illinois State.
- Preseason All-Big Ten selection.

2012-13 Game-by-Game

#12 Johnson, Morgan

Opponent	Date	gs	min	Total		3-Pointers		Free throws		Rebounds			pf	a	t/o	blk	stl	pts	avg		
				fg-fga	pct	3fg-fga	pct	ft-fta	pct	off	def	tot								avg	
NORTHERN ILLINOIS	11/9/12	*	20	4-11	.364	0-0	.000	3-5	.600	1	4	5	5.0	2	0	1	0	1	11	11.0	
ILLINOIS STATE	11/11/12	*	30	6-14	.429	0-0	.000	12-13	.923	4	5	9	7.0	2	2	2	5	1	24	17.5	
MIDDLE TENNESSEE	11/14/12	*	41	8-10	.800	0-0	.000	4-6	.667	2	6	8	7.3	4	1	0	2	0	20	18.3	
NORTH CAROLINA	11/18/12	*	39	8-11	.727	0-0	.000	4-5	.800	3	8	11	8.3	4	1	2	2	2	20	18.8	
ROBERT MORRIS	11/20/12	*	33	8-13	.615	0-0	.000	3-5	.600	5	6	11	8.8	3	0	3	0	0	19	18.8	
at FIU	11/23/12	*	36	6-9	.667	0-0	.000	2-2	1.000	3	3	6	8.3	2	2	3	5	0	14	18.0	
vs WVU	11/25/12	*	30	6-11	.545	0-0	.000	7-11	.636	0	3	3	7.6	3	1	2	2	1	19	18.1	
at Florida State	11/28/12	*	30	8-15	.533	0-0	.000	4-4	1.000	3	1	4	7.1	2	1	2	2	0	20	18.4	
UNI	12/1/12	*	35	6-11	.545	0-0	.000	7-11	.636	4	8	12	7.7	2	5	2	2	2	19	18.4	
IOWA STATE	12/6/12	*	38	3-8	.375	0-0	.000	1-2	.500	1	5	6	7.5	1	2	4	1	1	7	17.3	
at Drake	12-16-12	*	38	11-19	.579	0-0	.000	4-7	.571	2	6	8	7.5	2	0	0	3	2	26	18.1	
Totals			11	370	74-132	.561	0-0	.000	51-71	.718	28	55	83	7.5	27	15	21	24	10	199	18.1

Games played: 11
Minutes/game: 33.6
Points/game: 18.1
FG Pct: 56.1
FT Pct: 71.8

Rebounds/game: 7.5
Assists/game: 1.4
Turnovers/game: 1.9
Assist/turnover ratio: 0.7
Steals/game: 0.9
Blocks/game: 2.2

Personal Bests

Points: 37 at Bradley (12/17/11)
Rebounds: 16 vs. Illinois (1/5/12)
FGM: 13 at Bradley (12/17/11)
FGA: 21 vs. Virginia Tech (11/30/11)
3-pt FG: 1 at Iowa State (12/10/09)
3-pt FGA: 2 at Iowa State (12/10/09)
FTM: 12 vs. Illinois State (11/11/12)
FTA: 13 vs. Illinois State (11/11/12)
Assists: 5 vs. Northern Iowa (12/1/12)
Steals: 3, 3x, last at Nwstern (2/13/11)
Blocks: 8 vs. Minnesota (2/18/10)
Minutes: 41 vs. Middle Tennessee (11/14/12)

CAREER STATISTICS

YEAR	G/GS	FG-A	PCT	3-PT	PCT	FT-A	PCT	O-D-REB	AVG	PF-FO	AS	TO	BK	ST	PTS	AVG
Fresh.	34/34	124-250	.496	1-4	.250	48-76	.632	78-139-217	6.4	87-2	24	61	79	15	297	8.7
Soph.	31/30	132-276	.478	0-0	.000	70-96	.729	90-118-208	6.7	83-3	25	58	76	21	334	10.8
Junior	31/31	179-326	.549	0-0	.000	103-141	.730	67-138-205	6.6	96-4	24	64	70	12	461	14.9
Senior	11/11	74-132	.561	0-0	.000	51-71	.718	28-55-73	7.5	27-0	15	21	24	10	199	18.1
TOTALS	107/106	509-984	.517	1-4	.250	272-384	.708	263-450-713	6.7	293-9	88	204	249	58	1291	12.1





University of Iowa Women's Basketball

Updated Iowa Player Bio

Kathy Thomas



13

Guard, 5-6, Sophomore
Flint, Mich.
Highland CC (Kan.)

- Scored eight points in collegiate debut vs. NIU.
- NJCAA first team All-American at Highlands Community College.
- Jayhawk Conference Player and Freshman of the Year.
- Led Highland Community College to 28-4 overall record, second place finish in Jayhawk Conference and NJCAA Division II District B finals appearance, the most successful season in school history.
- Averaged 13.2 points, 8.9 assists and 9.8 steals as a senior in high school.

Personal Bests

Points: 8 vs. NIU (11/9/12)
Rebounds: 3 vs. Ill. State (11/11/12)
FGM: 3 vs. NIU (11/9/12)
FGA: 4 vs. NIU (11/9/12)
3-pt FG: 1, twice, last at Drake (12/16/12)
3-pt FGA: 1, twice, last at Drake (12/16/12)
FTM: 5 vs. Ill. State (11/11/12)
FTA: 8 vs. Ill. State (11/11/12)
Assists: 3 vs. Ill. State (11/11/12)
Steals: 1 vs. Ill. State (11/11/12)
Blocks: ---
Minutes: 16 vs. Ill. State (11/11/12)

2012-13 Game-by-Game

#13 Thomas, Kathy

Opponent	Date	gs	min	Total		3-Pointers		Free throws		Rebounds			pf	a	t/o	blk	stl	pts	avg	
				fg-fga	pct	3fg-fga	pct	ft-fa	pct	off	def	tot								avg
NORTHERN ILLINOIS	11/9/12	15	3-4	.750	0-0	.000	2-2	1.000	1	1	2	2.0	3	0	1	0	0	8	8.0	
ILLINOIS STATE	11/11/12	16	0-2	.000	0-0	.000	5-8	.625	2	1	3	2.5	3	3	3	0	1	5	6.5	
MIDDLE TENNESSEE	11/14/12	2	0-0	.000	0-0	.000	0-0	.000	0	0	0	1.7	1	0	0	0	0	0	4.3	
NORTH CAROLINA	11/18/12	2	0-0	.000	0-0	.000	0-0	.000	0	0	0	1.3	1	0	0	0	0	0	3.3	
ROBERT MORRIS	11/20/12	10	1-3	.333	1-1	1.000	0-0	.000	0	1	1	1.2	2	1	0	0	0	3	3.2	
at FIU	11/23/12	8	0-0	.000	0-0	.000	0-0	.000	0	0	0	1.0	0	0	0	0	0	0	2.7	
UNI	12/1/12	7	0-1	.000	0-0	.000	0-0	.000	0	2	2	1.1	2	1	0	0	0	0	2.3	
IOWA STATE	12/6/12	6	0-1	.000	0-1	.000	3-4	.750	1	1	2	1.3	1	0	0	0	0	3	2.4	
at Drake	12-16-12	7	1-1	1.000	1-1	1.000	0-0	.000	0	0	1.1	0	0	0	0	0	3	2.4		
Totals		0	73	5-12	.417	2-3	.667	10-14	.714	4	6	10	1.1	13	5	4	0	1	22	2.4

Games played: 9
 Minutes/game: 8.1
 Points/game: 2.4
 FG Pct: 41.7
 3FG Pct: 66.7
 FT Pct: 71.4

Rebounds/game: 1.1
 Assists/game: 0.6
 Turnovers/game: 0.4
 Assist/turnover ratio: 1.3
 Steals/game: 0.1

CAREER STATISTICS

YEAR	G/GS	FG-A	PCT	3-PT	PCT	FT-A	PCT	O-D-REB	AVG	PF-FO	AS	TO	BK	ST	PTS	AVG
Fresh.	9/0	5-12	.417	2-3	.667	10-14	.714	4-6-10	1.1	13-0	5	4	0	1	22	2.4





University of Iowa Women's Basketball

Updated Iowa Player Bio

Melissa Dixon



21

Guard, 5-8, Sophomore
Johnsburg, Ill.
Johnsburg HS

- 11 points in win over Iowa State.
- 12 points against North Carolina.
- Career-high 22 points (8-18 FGs, 6-15 3Pt. FGs) in win over Michigan as a freshman.
- Suffered torn meniscus at Ohio State (Jan. 2, 2012) as a freshman. Missed a total of seven games.
- First career start came at Indiana, registering career-highs in points (19), field goals made (7), 3-pointers made and attempted (5-for-10), steals (3) and minutes (28).

Personal Bests

Points: 22 vs. Michigan (2/26/12)
Rebounds: 4, 4x, last vs. Minnesota (2/9/12)
FGM: 8 vs. Michigan (2/26/12)
FGA: 18 vs. Michigan (2/26/12)
3-pt FG: 6 vs. Michigan (2/26/12)
3-pt FGA: 15 vs. Michigan (2/26/12)
FTM: 5, 2x, last vs. Drake (12/20/11)
FTA: 6, 2x, last vs. Drake (12/20/11)
Assists: 4 vs. Nebraska (3/2/12)
Steals: 3 at Indiana (2/5/12)
Blocks: 1, 3x, last vs. Ill. State (11/11/12)
Minutes: 34, twice, last vs. MTSU (11/14/12)

2012-13 Game-by-Game

#21 Dixon, Melissa

Opponent	Date	gs	min	Total		3-Pointers		Free throws		Rebounds			pf	a	t/o	blk	stl	pts	avg		
				fg-fga	pct	3fg-fga	pct	ft-fa	pct	off	def	tot								avg	
NORTHERN ILLINOIS	11/9/12	*	24	3-4	.750	2-3	.667	0-0	.000	0	2	2	2.0	2	2	1	0	1	8	8.0	
ILLINOIS STATE	11/11/12	*	24	2-3	.667	2-3	.667	2-2	1.000	0	0	0	1.0	4	2	1	1	0	8	8.0	
MIDDLE TENNESSEE	11/14/12	*	34	2-9	.222	2-7	.286	0-1	.000	0	1	1	1.0	2	1	1	0	2	6	7.3	
NORTH CAROLINA	11/18/12		20	5-11	.455	2-8	.250	0-0	.000	0	1	1	1.0	4	0	2	0	0	12	8.5	
ROBERT MORRIS	11/20/12		17	2-8	.250	2-7	.286	0-0	.000	0	2	2	1.2	2	0	3	0	0	6	8.0	
at FIU	11/23/12		19	3-11	.273	2-7	.286	0-0	.000	0	2	2	1.3	2	0	0	0	0	8	8.0	
vs WVU	11/25/12		17	0-2	.000	0-1	.000	0-0	.000	0	0	0	1.1	2	0	1	0	0	0	6.9	
at Florida State	11/28/12		14	1-5	.200	0-3	.000	1-1	1.000	0	0	0	1.0	0	1	0	0	1	3	6.4	
UNI	12/1/12		16	2-4	.500	2-2	1.000	0-0	.000	1	1	2	1.1	2	1	0	0	0	6	6.3	
IOWA STATE	12/6/12		19	4-8	.500	2-5	.400	1-3	.333	0	2	2	1.2	1	1	1	0	1	11	6.8	
at Drake	12-16-12		6	0-3	.000	0-3	.000	0-0	.000	0	0	0	1.1	0	1	0	0	0	0	6.2	
Totals			3	210	24-68	.353	16-49	.327	4-7	.571	1	11	12	1.1	21	9	10	1	5	68	6.2

Games played: 11
 Minutes/game: 19.1
 Points/game: 6.2
 FG Pct: 35.3
 3FG Pct: 32.7
 FT Pct: 57.1

Rebounds/game: 1.1
 Assists/game: 0.8
 Turnovers/game: 0.9
 Assist/turnover ratio: 0.9
 Steals/game: 0.5
 Blocks/game: 0.1

CAREER STATISTICS

YEAR	G/GS	FG-A	PCT	3-PT	PCT	FT-A	PCT	O-D-REB	AVG	PF-FO	AS	TO	BK	ST	PTS	AVG
Fresh.	24/8	50-141	.355	35-98	.357	27-33	.818	17-25-42	1.8	47-1	18	28	2	15	162	6.8
Soph.	11/3	24-68	.353	16-49	.327	4-7	.571	1-11-12	1.1	21-0	9	10	1	5	68	6.2
TOTALS	35/11	74-209	.354	51-147	.347	31-40	.775	18-36-54	1.5	68-1	27	38	3	20	230	6.6





University of Iowa Women's Basketball

Updated Iowa Player Bio

Samantha Logic



22

Guard, 5-9, Sophomore
Racine, Wis.
Racine J.I. Case HS

- Recorded seven career double-doubles, including one triple-double. Six double-doubles are points and rebounds, one is points and assists.
- 13 points, five rebounds and seven assists in win at Drake.
- 15 points, four rebounds and three assists in win over Northern Iowa.
- 14 points, seven rebounds, seven assists and three steals at Florida State.
- Nine points, seven rebounds and seven assists in win over West Virginia.
- 12 points, six rebounds, six assists and four steals against North Carolina.
- Tied school record with 12 assists in win over Middle Tennessee.
- Third team Freshman All-American by Full Court.
- Unanimous selection for Big Ten All-Freshman Team.

Personal Bests

Points: 20, 2x, last vs. Minn. (2/9/12)
Rebounds: 18 at Michigan (2/16/12)
FGM: 7, 6x, last vs. UNI (12/1/12)
FGA: 18 vs. Nebraska (3/2/12)
3-pt FG: 3 vs. Drake (12/20/11)
3-pt FGA: 4, 3x, last at Nwstern (2/23/12)
FTM: 8 at Northwestern (2/23/12)
FTA: 10 at Northwestern (2/23/12)
Assists: 12 vs. Middle Tennessee (11/14/12)
Steals: 4 vs. North Carolina (11/18/12)
Blocks: 2, twice, last at Drake (12/16/12)
Minutes: 40 vs. Middle Tennessee (11/14/12)

2012-13 Game-by-Game

#22 Logic, Samantha

Opponent	Date	gs	min	Total		3-Pointers		Free throws		Rebounds			pf	a	t/o	blk	stl	pts	avg		
				fg-fga	pct	3fg-fga	pct	ft-fa	pct	off	def	tot								avg	
NORTHERN ILLINOIS	11/9/12	*	25	5-8	.625	0-0	.000	0-0	.000	0	3	3	3.0	1	2	2	0	2	10	10.0	
ILLINOIS STATE	11/11/12	*	24	1-6	.167	0-1	.000	4-4	1.000	3	2	5	4.0	2	4	6	1	2	6	8.0	
MIDDLE TENNESSEE	11/14/12	*	40	0-6	.000	0-2	.000	0-1	.000	1	2	3	3.7	2	12	6	1	2	0	5.3	
NORTH CAROLINA	11/18/12	*	31	6-10	.600	0-1	.000	0-0	.000	3	3	6	4.3	2	6	7	0	4	12	7.0	
ROBERT MORRIS	11/20/12	*	28	2-7	.286	0-2	.000	0-0	.000	3	3	6	4.6	1	9	2	0	3	4	6.4	
at FIU	11/23/12	*	32	3-6	.500	1-1	1.000	0-0	.000	3	2	5	4.7	3	7	4	0	1	7	6.5	
vs WVU	11/25/12	*	34	2-6	.333	0-0	.000	5-6	.833	2	5	7	5.0	5	7	9	0	3	9	6.9	
at Florida State	11/28/12	*	36	7-11	.636	0-1	.000	0-0	.000	2	5	7	5.3	4	7	10	0	3	14	7.8	
UNI	12/1/12	*	33	7-9	.778	0-1	.000	1-1	1.000	1	3	4	5.1	3	3	1	1	1	15	8.6	
IOWA STATE	12/6/12	*	28	1-7	.143	1-3	.333	3-6	.500	4	5	9	5.5	3	4	1	1	0	6	8.3	
at Drake	12-16-12	*	35	5-9	.556	1-1	1.000	2-2	1.000	3	2	5	5.5	4	7	3	2	1	13	8.7	
Totals			11	346	39-85	.459	3-13	.231	15-20	.750	25	35	60	5.5	30	68	51	6	22	96	8.7

Games played: 11
 Minutes/game: 31.5
 Points/game: 8.7
 FG Pct: 45.9
 3FG Pct: 23.1
 FT Pct: 75.0

Rebounds/game: 5.5
 Assists/game: 6.2
 Turnovers/game: 4.6
 Assist/turnover ratio: 1.3
 Steals/game: 2.0
 Blocks/game: 0.5

CAREER STATISTICS

YEAR	G/GS	FG-A	PCT	3-PT	PCT	FT-A	PCT	O-D-REB	AVG	PF-FO	AS	TO	BK	ST	PTS	AVG
Fresh.	31/31	109-261	.418	15-49	.306	59-79	.747	87-133-220	7.1	73-1	136	113	7	47	292	9.4
Soph.	11/11	39-85	.459	3-13	.231	15-20	.750	25-35-60	5.5	30-1	68	51	6	22	96	8.7
TOTALS	42/42	148-346	.428	18-62	.290	74-99	.747	112-168-280	6.7	103-2	204	164	13	69	388	9.2





University of Iowa Women's Basketball

Updated Iowa Player Bio

Theairra Taylor



23

Guard, 5-11, Junior
St. Paul, Minn.
Central HS

- Career-high seven assists in win at Drake.
- 11 points and nine rebounds in win over Iowa State. Named CollegeSportsMadness.com's Big Ten Player of the Week for her performance.
- First career double-double with 10 points and 11 rebounds, also tied career high with five assists, in win over Illinois State.
- Season-high 14 points, along with six rebounds and two assists in 26 minutes of play vs. California as a sophomore.
- 10 points and tied a career-high with three steals in win over Michigan State as a sophomore.
- Suffered third ACL in a 20-month span during preseason workouts in 2010. Missed a total of 53 games with ACL injuries from 2009 through 2011.

Personal Bests

Points: 16 vs. W&M (11/24/09)
Rebounds: 11 vs. Ill. State (11/11/12)
FGM: 7 vs. W&M (11/24/09)
FGA: 15 vs. W&M (11/24/09)
3-pt FG: 2, twice, last at Drake (12/16/12)
3-pt FGA: 5 vs. Boston College (12/2/09)
FTM: 4, 5x, last vs. WVU (11/25/12)
FTA: 5 vs. West Virginia (11/25/12)
Assists: 6 at Drake (12/16/12)
Steals: 4 at Northwestern (2/23/12)
Blocks: 4, 3x, last vs. Michigan (12/6/09)
Minutes: 36 vs. W&M (11/24/09)

2012-13 Game-by-Game

#23 Taylor, Theairra

Opponent	Date	gs	min	Total		3-Pointers		Free throws		Rebounds				pf	a	t/o	blk	stl	pts	avg	
				fg-fga	pct	3fg-fga	pct	ft-fa	pct	off	def	tot	avg								
NORTHERN ILLINOIS	11/9/12	*	19	2-4	.500	1-1	1.000	0-0	.000	0	1	1	1.0	1	1	1	1	0	5	5.0	
ILLINOIS STATE	11/11/12	*	21	3-6	.500	1-1	1.000	3-4	.750	0	11	11	6.0	1	5	2	0	2	10	7.5	
MIDDLE TENNESSEE	11/14/12	*	23	3-8	.375	1-4	.250	0-2	.000	1	3	4	5.3	2	2	4	2	1	7	7.3	
NORTH CAROLINA	11/18/12	*	25	1-6	.167	0-3	.000	1-3	.333	1	3	4	5.0	2	1	2	0	0	3	6.3	
ROBERT MORRIS	11/20/12	*	20	3-7	.429	1-4	.250	0-0	.000	0	4	4	4.8	0	0	3	0	1	7	6.4	
at FIU	11/23/12	*	19	2-5	.400	0-1	.000	2-2	1.000	0	3	3	4.5	2	2	2	0	0	6	6.3	
vs WVU	11/25/12	*	23	1-3	.333	0-1	.000	4-5	.800	1	6	7	4.9	4	0	2	1	0	6	6.3	
at Florida State	11/28/12	*	33	4-11	.364	0-2	.000	1-2	.500	2	4	6	5.0	2	1	4	2	0	9	6.6	
UNI	12/1/12	*	28	3-6	.500	0-2	.000	0-0	.000	1	4	5	5.0	0	2	0	0	0	6	6.6	
IOWA STATE	12/6/12	*	27	4-12	.333	1-3	.333	2-4	.500	4	5	9	5.4	0	3	5	1	2	11	7.0	
at Drake	12-16-12	*	30	2-5	.400	2-3	.667	0-0	.000	0	3	3	5.2	1	6	2	0	0	6	6.9	
Totals			11	268	28-73	.384	7-25	.280	13-22	.591	10	47	57	5.2	15	23	27	7	6	76	6.9

Games played: 11
 Minutes/game: 24.4
 Points/game: 6.9
 FG Pct: 38.4
 3FG Pct: 28.0
 FT Pct: 59.1

Rebounds/game: 5.2
 Assists/game: 2.1
 Turnovers/game: 2.5
 Assist/turnover ratio: 0.9
 Steals/game: 0.5
 Blocks/game: 0.6

CAREER STATISTICS

YEAR	G/GS	FG-A	PCT	3-PT	PCT	FT-A	PCT	O-D-REB	AVG	PF-FO	AS	TO	BK	ST	PTS	AVG
Fresh.	10/8	29-86	.337	9-26	.346	14-18	.778	15-34-49	4.9	22-1	24	29	10	13	81	8.1
Soph.	31/0	37-97	.381	2-18	.111	19-29	.655	35-57-92	3.0	53-1	30	47	11	18	95	3.1
Junior	11/11	28-73	.384	7-25	.280	13-22	.591	10-47-57	5.2	15-0	23	27	7	6	76	6.9
TOTALS	52/19	94-256	.367	18-69	.261	46-69	.667	60-138-198	3.8	90-2	77	103	28	37	252	4.8





University of Iowa Women's Basketball

Updated Iowa Player Bio

Jaime Printy



24

Guard, 5-11, Senior
Marion, Iowa
Linn-Mar HS

- Ranks fourth in career three-pointers made (213), eighth in career scoring (1,542) and 10th in career assists (345).
- Senior CLASS Award nominee.
- 19 points (17-of-17 FTs) and seven rebounds in win over West Virginia.
- 12 points, five rebounds and four assists vs. North Carolina, returning to starting lineup for first time since ACL injury as a junior.
- 26 points, including game-tying 3-pointer with 1.6 seconds left in regulation, along with five rebounds and six assists, in win over Middle Tennessee. Also tied school record for FT percentage (11-for-11).
- 11 points and three assists in season-opening win over NIU, recording first action since tearing ACLn left knee in final 30 seconds of overtime at Wisconsin (Feb. 2, 2012).

Personal Bests

Points: 32 vs. Illinois (2/24/11)
Rebounds: 9 vs. W&M (11/24/09)
FGM: 11 at Indiana (2/11/10)
FGA: 25 vs. Michigan (1/2/11)
3-pt FG: 5, 3x, last vs. Western Illinois (12/9/11)
3-pt FGA: 15 vs. Michigan (1/2/11)
FTM: 17 vs. West Virginia (11/25/12)
FTA: 17 vs. West Virginia (11/25/12)
Assists: 9 vs. Iowa State (12/9/10)
Steals: 5 at Bradley (12/17/11)
Blocks: 1, 13x, last vs. WVU (11/26/12)
Minutes: 40 vs. Illinois (1/5/12)

2012-13 Game-by-Game

#24 Printy, Jaime

Opponent	Date	gs	min	Total		3-Pointers		Free throws		Rebounds			pf	a	t/o	blk	stl	pts	avg		
				fg	fga	pct	3fg	3fga	pct	ft	fta	pct								off	def
NORTHERN ILLINOIS	11/9/12		16	3-4	.750	1-1	1.000	4-4	1.000	0	1	1	1.0	1	3	1	0	1	11	11.0	
ILLINOIS STATE	11/11/12		15	0-4	.000	0-3	.000	1-2	.500	0	2	2	1.5	0	1	2	0	0	1	6.0	
MIDDLE TENNESSEE	11/14/12		38	6-13	.462	3-7	.429	11-11	1.000	1	4	5	2.7	1	6	5	0	1	26	12.7	
NORTH CAROLINA	11/18/12	*	39	3-15	.200	3-12	.250	3-4	.750	0	5	5	3.3	4	4	8	0	1	12	12.5	
ROBERT MORRIS	11/20/12	*	31	2-4	.500	2-4	.500	2-2	1.000	1	5	6	3.8	0	5	2	0	1	8	11.6	
at FIU	11/23/12	*	34	5-12	.417	4-9	.444	1-1	1.000	2	3	5	4.0	2	4	3	0	0	15	12.2	
vs WVU	11/25/12	*	33	1-3	.333	0-2	.000	17-17	1.000	0	7	7	4.4	1	3	4	1	0	19	13.1	
at Florida State	11/28/12	*	33	5-7	.714	2-4	.500	1-2	.500	0	1	1	4.0	2	1	6	0	0	13	13.1	
UNI	12/1/12	*	30	2-7	.286	1-4	.250	4-4	1.000	0	3	3	3.9	1	5	3	0	0	9	12.7	
IOWA STATE	12/6/12	*	34	2-7	.286	0-3	.000	6-6	1.000	1	5	6	4.1	1	2	3	0	2	10	12.4	
at Drake	12-16-12	*	31	3-9	.333	0-3	.000	3-3	1.000	2	2	4	4.1	1	7	1	0	0	9	12.1	
Totals			8	334	32-85	.376	16-52	.308	53-56	.946	7	38	45	4.1	14	41	38	1	6	133	12.1

Games played: 11
 Minutes/game: 30.4
 Points/game: 12.1
 FG Pct: 37.6
 3FG Pct: 30.8
 FT Pct: 94.6

Rebounds/game: 4.1
 Assists/game: 3.7
 Turnovers/game: 3.5
 Assist/turnover ratio: 1.1
 Steals/game: 0.5
 Blocks/game: 0.1

CAREER STATISTICS

YEAR	G/GS	FG-A	PCT	3-PT	PCT	FT-A	PCT	O-D-REB	AVG	PF-FO	AS	TO	BK	ST	PTS	AVG
Fresh.	34/34	168-406	.414	82-212	.387	83-94	.883	35-101-136	4.0	77-1	99	82	4	30	501	14.7
Soph.	31/31	168-391	.430	70-183	.383	114-132	.864	21-109-130	4.2	60-0	109	91	7	34	520	16.8
Junior	23/23	116-329	.353	45-155	.290	111-125	.888	32-70-102	4.4	45-1	96	70	3	46	388	16.9
Senior	11/8	32-85	.376	16-52	.308	53-56	.946	7-38-45	4.1	14-0	41	38	1	6	133	12.1
TOTALS	99/96	484-1211	.400	213-602	.354	361-407	.887	95-318-413	4.2	196-2	345	281	15	116	1542	15.6





University of Iowa Women's Basketball

Updated Iowa Player Bio

Kali Peschel



25

Guard, 6-1, Freshman
Sauk Centre, Minn.
Sauk Centre HS

- Five points in win at Drake.
- Recorded five rebounds in collegiate debut vs. NIU.
- Miss Minnesota Basketball finalist.
- Two-time all-state selection.
- Started for her high school team as an eighth grader.
- Only played 11 games as a senior after suffering ACL injury between her junior and senior seasons.

Personal Bests

Points: 5 at Drake (12/16/12)
Rebounds: 5 vs. Northern Illinois (11/9/12)
FGM: 2 at Drake (12/16/12)
FGA: 6 vs. Northern Illinois (11/9/12)
3-pt FG: 1 at Drake (12/16/12)
3-pt FGA: 2, twice, last vs. UNI (12/1/12)
FTM: 1, twice, last vs. UNI (12/1/12)
FTA: 2, twice, last vs. UNI (12/1/12)
Assists: 2 at Drake (12/16/12)
Steals: 1, 3x, last at Drake (12/16/12)
Blocks: 1, twice, last at Drake (12/16/12)
Minutes: 18, twice, last vs. UNI (12/1/12)

2012-13 Game-by-Game

#25 Peschel, Kali

Opponent	Date	gs	min	Total		3-Pointers		Free throws		Rebounds				pf	a	t/o	blk	stl	pts	avg
				fg-fga	pct	3fg-fga	pct	ft-fa	pct	off	def	tot	avg							
NORTHERN ILLINOIS	11/9/12	18	0-6	.000	0-2	.000	1-2	.500	3	2	5	5.0	3	1	0	0	0	1	1.0	
ILLINOIS STATE	11/11/12	16	0-2	.000	0-1	.000	0-0	.000	0	3	3	4.0	1	0	2	0	0	0	0.5	
MIDDLE TENNESSEE	11/14/12	2	0-0	.000	0-0	.000	0-0	.000	0	1	1	3.0	0	0	0	0	0	0	0.3	
ROBERT MORRIS	11/20/12	5	0-0	.000	0-0	.000	0-0	.000	0	0	0	2.3	2	0	0	0	1	0	0.3	
at FIU	11/23/12	2	0-1	.000	0-0	.000	0-0	.000	2	0	2	2.2	0	0	0	0	0	0	0.2	
at Florida State	11/28/12	3	0-1	.000	0-0	.000	0-0	.000	2	0	2	2.2	0	0	0	0	0	0	0.2	
UNI	12/1/12	18	1-4	.250	0-2	.000	1-2	.500	1	1	2	2.1	3	0	2	1	1	3	0.6	
IOWA STATE	12/6/12	6	0-0	.000	0-0	.000	0-0	.000	0	0	0	1.9	2	0	0	0	0	0	0.5	
at Drake	12-16-12	16	2-3	.667	1-1	1.000	0-0	.000	0	0	0	1.7	4	2	1	1	1	5	1.0	
Totals		0	86	3-17	.176	1-6	.167	2-4	.500	8	7	15	1.7	15	3	5	2	3	9	1.0

Games played: 9
 Minutes/game: 9.6
 Points/game: 1.0
 FG Pct: 17.6
 3FG Pct: 16.7
 FT Pct: 50.0

Rebounds/game: 1.7
 Assists/game: 0.3
 Turnovers/game: 0.6
 Assist/turnover ratio: 0.6
 Steals/game: 0.3
 Blocks/game: 0.2

CAREER STATISTICS

YEAR	G/GS	FG-A	PCT	3-PT	PCT	FT-A	PCT	O-D-REB	AVG	PF-FO	AS	TO	BK	ST	PTS	AVG
Fresh.	9/0	3-17	.176	1-6	.167	2-4	.500	8-7-15	1.7	15-0	3	5	2	3	9	1.0





University of Iowa Women's Basketball

Updated Iowa Player Bio

Kathryn Reynolds



33

Guard, 5-7, Sophomore
Cincinnati, Ohio
Mount Notre Dame HS

- Will miss entire 2012-13 season after suffering an ACL injury in April during offseason workouts.
- Five assists in win over Western Illinois as a freshman.
- Played 12 minutes in first career game, a win over Harvard.

Personal Bests

Points: 4 vs. Drake (12/20/11)
Rebounds: 2 vs. Texas A&M (11/26/11)
FGM: 2 vs. Drake (12/20/11)
FGA: 3, 2x, last vs. Drake (12/20/11)
3-pt FG: ---
3-pt FGA: 1, 7x, last vs. Michigan State (2/12/12)
FTM: 2 vs. Western Illinois (12/9/11)
FTA: 2, 3x, last vs. W. Illinois (12/9/11)
Assists: 5 vs. W. Illinois (12/9/11)
Steals: ---
Blocks: ---
Minutes: 20 vs. W. Illinois (12/9/11)

2012-13 Game-by-Game

CAREER STATISTICS

YEAR	G/GS	FG-A	PCT	3-PT	PCT	FT-A	PCT	O-D-REB	AVG	PF-FO	AS	TO	BK	ST	PTS	AVG
Fresh.	21/0	5-16	.313	0-7	.000	3-4	.750	1-8-9	0.4	6-0	15	11	0	0	13	0.7
Soph.																
TOTALS	21/0	5-16	.313	0-7	.000	3-4	.750	1-8-9	0.4	6-0	15	11	0	0	13	0.7





University of Iowa Women's Basketball

Updated Iowa Player Bio

Nicole Smith



45

Center, 6-4, Freshman
Rockton, Ill.
Hononegah HS

- Recorded one rebound in collegiate debut vs. NIU.
- Three-time all-state selection.
- Three-time all-conference pick.
- Recorded triple-double in high school with 20 points (10-for-10) 10 rebounds and 10 blocks.
- Played in 26 games as a senior before suffering ACL injury

Personal Bests

Points: ---
Rebounds: 1 vs. NIU (11/9/12)
FGM: ---
FGA: 2 vs. NIU (11/9/12)
3-pt FG: ---
3-pt FGA: ---
FTM: ---
FTA: ---
Assists: ---
Steals: ---
Blocks: ---
Minutes: 3 vs. NIU (11/9/12)

2012-13 Game-by-Game

#45 Smith, Nicole

Opponent	Date	gs	min	Total		3-Pointers		Free throws		Rebounds			pf	a	t/o	blk	stl	pts	avg
				fg-fga	pct	3fg-fga	pct	ft-fta	pct	off	def	tot							
NORTHERN ILLINOIS	11/9/12	3		0-2	.000	0-0	.000	0-0	.000	0	1	1	1.0	0	0	0	0	0	0.0
ILLINOIS STATE	11/11/12	2		0-0	.000	0-0	.000	0-0	.000	0	0	0	0.5	0	0	0	0	0	0.0
UNI	12/1/12	1		0-0	.000	0-0	.000	0-0	.000	0	0	0	0.3	0	0	0	0	0	0.0
Totals		0	6	0-2	.000	0-0	.000	0-0	.000	0	1	1	0.3	0	0	0	0	0	0.0

Games played: 3
Minutes/game: 2.0
FG Pct: 0.0

Rebounds/game: 0.3

CAREER STATISTICS

YEAR	G/GS	FG-A	PCT	3-PT	PCT	FT-A	PCT	O-D-REB	AVG	PF-FO	AS	TO	BK	ST	PTS	AVG
Fresh.	3/0	0-2	.000	0-0	.000	0-0	.000	0-1-1	0.3	0-0	0	0	0	0	0	0.0





University of Iowa Women's Basketball

Updated Iowa Player Bio

Bethany Doolittle



51

Center, 6-4, Sophomore
Oakdale, Minn
Hill-Murray HS

- 10 points and nine rebounds at Florida State.
- Career-high 17 points, along with six rebounds, in win over West Virginia.
- Eight points, tied a career-high with nine rebounds and blocked five shots in win over Middle Tennessee.
- Career-high six blocks in season-opening win vs. NIU.
- Tied a career-high with 10 points, along with five rebounds, in win over Michigan State as a freshman.
- 10 points and six rebounds in just 11 minutes of action off the bench in win at Northern Iowa as a freshman.

Personal Bests

Points: 17 vs. West Virginia (11/25/12)
Rebounds: 9, twice, last at FSU (11/28/12)
FGM: 7 vs. West Virginia (11/25/12)
FGA: 12 vs. West Virginia (11/25/12)
3-pt FG: ---
3-pt FGA: 1, 3x, last vs. Iowa State (12/6/12)
FTM: 4 vs. Michigan State (2/12/12)
FTA: 5 vs. Michigan State (2/12/12)
Assists: 2 vs. Western Illinois (12/9/11)
Steals: 2, twice, last vs. UNC (11/18/12)
Blocks: 6 vs. NIU (11/9/12)
Minutes: 36 vs. Iowa State (12/6/12)

2012-13 Game-by-Game

#51 Doolittle, Bethany

Opponent	Date	gs	min	Total		3-Pointers		Free throws		Rebounds				pf	a	t/o	blk	stl	pts	avg	
				fg-fga	pct	3fg-fga	pct	ft-fa	pct	off	def	tot	avg								
NORTHERN ILLINOIS	11/9/12	*	21	1-8	.125	0-0	.000	0-0	.000	0	0	0	0.0	2	0	1	6	0	2	2.0	
ILLINOIS STATE	11/11/12	*	25	4-10	.400	0-1	.000	0-0	.000	0	5	5	2.5	1	0	2	2	1	8	5.0	
MIDDLE TENNESSEE	11/14/12	*	30	4-7	.571	0-0	.000	0-0	.000	4	5	9	4.7	3	0	4	5	0	8	6.0	
NORTH CAROLINA	11/18/12	*	32	1-7	.143	0-0	.000	0-0	.000	2	5	7	5.3	3	1	2	2	2	2	5.0	
ROBERT MORRIS	11/20/12	*	20	2-9	.222	0-0	.000	0-0	.000	1	4	5	5.2	2	1	1	1	0	4	4.8	
at FIU	11/23/12	*	22	3-5	.600	0-0	.000	0-0	.000	0	3	3	4.8	3	0	2	0	0	6	5.0	
vs WVU	11/25/12	*	31	7-12	.583	0-0	.000	3-3	1.000	1	5	6	5.0	4	0	2	1	0	17	6.7	
at Florida State	11/28/12	*	34	5-9	.556	0-0	.000	0-0	.000	4	5	9	5.5	3	1	2	1	1	10	7.1	
UNI	12/1/12	*	26	4-11	.364	0-0	.000	0-0	.000	1	6	7	5.7	2	0	1	0	1	8	7.2	
IOWA STATE	12/6/12	*	36	1-8	.125	0-1	.000	0-0	.000	0	4	4	5.5	3	0	1	0	1	2	6.7	
at Drake	12-16-12	*	22	4-6	.667	0-0	.000	0-0	.000	1	3	4	5.4	5	0	0	2	1	8	6.8	
Totals			11	299	36-92	.391	0-2	.000	3-3	1.000	14	45	59	5.4	31	3	18	20	7	75	6.8

Games played: 11
 Minutes/game: 27.2
 Points/game: 6.8
 FG Pct: 39.1
 3FG Pct: 0.0
 FT Pct: 100.0

Rebounds/game: 5.4
 Assists/game: 0.3
 Turnovers/game: 1.6
 Assist/turnover ratio: 0.2
 Steals/game: 0.6
 Blocks/game: 1.8

CAREER STATISTICS

YEAR	G/GS	FG-A	PCT	3-PT	PCT	FT-A	PCT	O-D-REB	AVG	PF-FO	AS	TO	BK	ST	PTS	AVG
Fresh.	31/0	46-99	.465	0-1	.000	24-30	.800	13-44-57	1.8	51-0	6	19	19	9	116	3.7
Soph.	11/11	36-92	.391	0-2	.000	3-3	1.000	14-15-59	5.4	31-1	3	18	20	7	75	6.8
TOTALS	42/11	82-191	.429	0-3	.000	27-33	.818	27-89-116	2.8	82-1	9	37	39	16	191	4.5





University of Iowa Women's Basketball

Updated Iowa Player Bio

Kayla Timmerman



54

2012-13 Game-by-Game

#54 Timmerman, Kayla

Opponent	Date	gs	min	Total		3-Pointers		Free throws		Rebounds				pf	a	t/o	blk	stl	pts	avg
				fg-fga	pct	3fg-fga	pct	ft-fa	pct	off	def	tot	avg							
NORTHERN ILLINOIS	11/9/12	10	0-2	.000	0-0	.000	1-2	.500	0	1	1	1.0	0	0	0	2	0	1	1.0	
ILLINOIS STATE	11/11/12	5	2-2	1.000	1-1	1.000	0-2	.000	0	0	0	0.5	0	1	0	1	0	5	3.0	
MIDDLE TENNESSEE	11/14/12	3	0-0	.000	0-0	.000	0-0	.000	0	0	0	0.3	0	0	0	0	0	0	2.0	
NORTH CAROLINA	11/18/12	1	0-0	.000	0-0	.000	0-0	.000	0	0	0	0.3	0	0	0	0	0	0	1.5	
ROBERT MORRIS	11/20/12	7	1-4	.250	0-0	.000	0-0	.000	1	2	3	0.8	1	0	2	0	0	2	1.6	
at FIU	11/23/12	2	0-0	.000	0-0	.000	0-0	.000	0	0	0	0.7	1	0	1	0	0	0	1.3	
vs WVU	11/25/12	4	0-0	.000	0-0	.000	0-0	.000	0	1	1	0.7	1	0	1	0	0	0	1.1	
UNI	12/1/12	1	1-1	1.000	0-0	.000	0-0	.000	0	1	1	0.8	1	0	0	0	0	2	1.3	
Totals		0	33	4-9	.444	1-1	1.000	1-4	.250	1	5	6	0.8	4	1	4	3	0	10	1.3

Games played: 8
 Minutes/game: 4.1
 Points/game: 1.3
 FG Pct: 44.4
 3FG Pct: 100.0
 FT Pct: 25.0

Rebounds/game: 0.8
 Assists/game: 0.1
 Turnovers/game: 0.5
 Assist/turnover ratio: 0.3
 Blocks/game: 0.4

Forward, 6-3, Freshman

Wayzata, Minn.

Wayzata HS

- Recorded one point and one rebound in collegiate debut vs. NIU.
- Miss Minnesota Basketball candidate.
- Athena Award nominee.
- Two-time all-state selection.
- Standout in track and field, winning conference championship in shot put and discus and participated in state meet in both events.

Personal Bests

- Points:** 5 vs. Ill. State (11/11/12)
- Rebounds:** 3 vs. Robert Morris (11/20/12)
- FGM:** 2 vs. Ill. State
- FGA:** 4 vs. Robert Morris (11/20/12)
- 3-pt FG:** 1 vs. Ill. State (11/11/12)
- 3-pt FGA:** 1 vs. Ill. State (11/11/12)
- FTM:** 1 vs. NIU (11/9/12)
- FTA:** 2, twice, last vs. Ill. State (11/11/12)
- Assists:** 1 vs. Ill. State (11/11/12)
- Steals:** ---
- Blocks:** 2 vs. NIU (11/9/12)
- Minutes:** 10 vs. NIU (11/9/12)

CAREER STATISTICS

YEAR	G/GS	FG-A	PCT	3-PT	PCT	FT-A	PCT	O-D-REB	AVG	PF-FO	AS	TO	BK	ST	PTS	AVG
Fresh.	8/0	4-9	.444	1-1	1.000	1-4	.250	1-5-6	0.8	4-0	1	4	3	0	10	1.3





University of Iowa Women's Basketball

Game-by-Game Results

Overall: 8-3

Big Ten: 0-0

Home: 6-1

Away: 1-2

Neutral: 1-0

Date	Opponent	Result	Attend.	Top Scorer	Top Rebounder
Nov. 9	Northern Illinois [^]	W, 63-40	4,739	Johnson, Printy (11)	Till (6)
Nov. 11	Illinois State [^]	W, 74-64	2,930	Johnson (24)	Taylor (11)
Nov. 14	Middle Tennessee [^]	W, 69-63	1,691	Printy (26)	Doolittle (9)
Nov. 18	North Carolina [^]	L, 64-77	3,073	Johnson (20)	Johnson (11)
Nov. 20	Robert Morris	W, 58-44	3,032	Johnson (19)	Johnson (11)
Nov. 23	at Florida International [#]	L, 65-66	430	Printy (15)	Johnson, Till (6)
Nov. 25	vs. West Virginia [#]	W, 79-70	387	Johnson, Printy (19)	Logic, Printy, Taylor (7)
Nov. 28	at Florida State [~]	L, 69-83	2,389	Johnson (20)	Doolittle (9)
Dec. 1	Northern Iowa	W, 68-46	6,368	Johnson (19)	Johnson (12)
Dec. 6	Iowa State [*]	W, 50-42	4,483	Dixon, Taylor (11)	Logic, Taylor (9)
Dec. 16	at Drake	W, 82-65	2,716	Johnson (26)	Johnson (8)
Dec. 19	Missouri State				
Dec. 28	vs. Texas [%]				
Dec. 20	vs. C. Michigan/San Diego [%]				
Jan. 3	Ohio State				
Jan. 6	Michigan				
Jan. 10	at Wisconsin				
Jan. 17	at Michigan State				
Jan. 20	Purdue				
Jan. 24	Wisconsin				
Jan. 27	at Michigan				
Jan. 31	at Illinois				
Feb. 3	Northwestern				
Feb. 7	at Minnesota				
Feb. 11	Nebraska				
Feb. 14	Penn State				
Feb. 17	at Purdue				
Feb. 24	at Nebraska				
Feb. 28	Indiana				
March 3	at Northwestern				

[^] - Preseason WNIT

[#] - FIU Thanksgiving Classic, Miami

[~] - ACC/Big Ten Challenge

^{*} - Iowa Corn Cy-Hawk Series

[%] - San Diego Surf 'N Slam Classic, San Diego

Attendance Summary	Games	Totals	Average
Home	7	26,307	3,759
Away	3	5,535	1,845
Neutral	1	387	387
Totals	11	32,238	2,931





University of Iowa Women's Basketball

Game-by-Game Statistics

Team	Score	FG-A	PCT	3-PT. FG	PCT	FT-A	PCT	REB	PF	AS	TO	BLK	ST
Northern Illinois	40	14-48	29.2%	1-9	11.1%	11-19	57.9%	44	19	3	22	2	6
at Iowa	63	23-57	40.4%	6-10	60.0%	11-17	64.7%	34	18	10	10	10	6
Illinois State	64	25-76	32.9%	2-14	14.3%	12-21	57.1%	44	27	6	17	4	15
at Iowa	74	19-54	35.2%	4-12	33.3%	32-41	78.0%	50	18	18	23	10	9
Middle Tennessee	63	22-70	31.4%	7-30	23.3%	12-18	66.7%	46	22	9	20	3	12
at Iowa	69	24-55	43.6%	6-20	30.0%	15-21	71.4%	40	17	22	20	10	6
North Carolina	77	27-66	40.9%	8-22	36.4%	15-27	55.6%	45	18	14	20	4	15
at Iowa	64	25-62	40.3%	5-25	20.0%	9-14	64.3%	43	20	14	25	4	9
Robert Morris	44	15-53	28.3%	6-21	28.6%	8-14	57.1%	34	11	12	16	2	4
at Iowa	58	22-57	38.6%	7-19	36.8%	7-9	77.8%	44	13	18	18	1	6
at Florida International	66	24-65	36.9%	4-15	26.7%	14-17	82.4%	37	16	8	10	3	6
Iowa	65	24-57	42.1%	7-20	35.0%	10-13	76.9%	39	16	16	16	5	1
vs. West Virginia	70	21-72	29.2%	6-28	21.4%	22-29	75.9%	41	35	12	15	1	10
Iowa	79	18-39	46.2%	1-5	20.0%	42-50	84.0%	39	23	12	23	5	6
at Florida State	83	31-63	49.2%	5-10	50.0%	16-22	72.7%	29	10	18	13	4	12
Iowa	69	30-61	49.2%	2-11	18.2%	7-9	77.8%	35	16	13	24	6	6
Northern Iowa	46	12-53	22.6%	8-29	27.6%	14-16	87.5%	31	17	9	11	0	2
at Iowa	68	26-54	48.1%	3-11	27.3%	13-18	72.2%	43	16	17	9	4	5
Iowa State	42	15-57	26.3%	7-34	20.6%	5-5	100.0%	43	20	7	21	1	6
at Iowa	50	15-51	29.4%	4-16	25.0%	16-25	64.0%	41	13	12	15	3	7
at Drake	65	20-51	39.2%	7-18	38.9%	18-24	75.0%	32	12	15	13	1	5
Iowa	82	31-59	52.5%	7-15	46.7%	13-16	81.3%	31	21	23	8	8	5





University of Iowa Women's Basketball

Season & Career Bests

Season Bests

Player	Points	3-Pointers	Rebounds	Assists	Blocks	Steals
#3 Claire Till	7 at FIU	1, twice	6, twice	1, twice	1, twice	1, three times
#11 Trisha Nesbitt	12 at Drake	2 at Drake	3 vs. Northern Illinois	2 vs. Robert Morris	---	2 vs. North Carolina
#12 Morgan Johnson	26 at Drake	---	12 vs. Northern Iowa	5 vs. Northern Iowa	5, twice	2, twice
#13 Kathy Thomas	8 vs. Northern Illinois	1, twice	3 vs. Illinois State	3 vs. Illinois State	---	1, twice
#21 Melissa Dixon	12 vs. North Carolina	2, eight times	2, five times	2, twice	1 vs. Illinois State	2 vs. MTSU
#22 Samantha Logic	15 vs. Northern Iowa	1, three times	9 vs. Iowa State	12 vs. MTSU	2 at Drake	4 vs. North Carolina
#23 Theairra Taylor	11 vs. Iowa State	2 at Drake	11 vs. Illinois State	6 at Drake	2, twice	2, twice
#24 Jaime Printy	26 vs. MTSU	4 at FIU	7 vs. West Virginia	7 at Drake	1 vs. West Virginia	2 vs. Iowa State
#25 Kali Peschel	5 at Drake	1 at Drake	5 vs. Northern Illinois	2 at Drake	1, twice	1, three times
#33 Kathryn Reynolds	---	---	---	---	---	---
#45 Nicole Smith	---	---	1 vs. Northern Illinois	---	---	---
#51 Bethany Doolittle	17 vs. West Virginia	---	9, twice	1, three times	6 vs. Northern Illinois	2 vs. North Carolina
#54 Kayla Timmerman	5 vs. Illinois State	1 vs. Illinois State	3 vs. Robert Morris	1 vs. Illinois State	2 vs. Northern Illinois	---

Career Bests

Player	Points	3-Pointers	Rebounds	Assists	Blocks	Steals
#3 Claire Till	7 at FIU	1, twice	6, twice	1, twice	1, twice	1, three times
#11 Trisha Nesbitt	12 at Drake	2, twice	3, 3 times	4, three times	1, Michigan State '11	3, Minnesota
#12 Morgan Johnson	37 at Bradley	---	16 vs. Illinois	5 vs. Northern Iowa	8, Minnesota, '10	3, three times
#13 Kathy Thomas	8 vs. Northern Illinois	1, twice	3 vs. Illinois State	3 vs. Illinois State	---	1, twice
#21 Melissa Dixon	22 vs. Michigan	6 vs. Michigan	4, four times	4 vs. Nebraska	1, four times	3 at Indiana
#22 Samantha Logic	20, twice	3 vs. Drake	18 at Michigan	12 vs. MTSU	2, twice	4 vs. North Carolina
#23 Theairra Taylor	20, William & Mary	2, twice	11 vs. Illinois State	6, twice	4, Michigan	4 at Northwestern
#24 Jaime Printy	32 vs. Illinois, '11	5, three times	9, William & Mary	9, Iowa State, '10	1, 13 times	5 at Bradley
#25 Kali Peschel	5 at Drake	1 at Drake	5 vs. Northern Illinois	2 at Drake	1, twice	1, three times
#33 Kathryn Reynolds	4 vs. Drake	---	2 vs. Texas A&M	5 vs. Western Illinois	---	---
#45 Nicole Smith	---	---	1 vs. Northern Illinois	---	---	---
#51 Bethany Doolittle	17 vs. West Virginia	---	9, twice	2 vs. Western Illinois	6 vs. Northern Illinois	2, twice
#54 Kayla Timmerman	5 vs. Illinois State	1 vs. Illinois State	3 vs. Robert Morris	1 vs. Illinois State	2 vs. Northern Illinois	---

BOLD - set career best during current season

* - - tied school single-game and Carver-Hawkeye Arena record





University of Iowa Women's Basketball

The Last Time...

The Last Time a Player . . .

Had 30 or more points

Iowa -- 37, Morgan Johnson, at Bradley, 12/17/11
Opponent -- 31, Jerica Coley, Florida International, 11/23/12

Made at least 80% of her FGA (10 att.)

Iowa -- .800 (8-10), Morgan Johnson, vs. Middle Tennessee, 11/14/2012
Opponent -- .857 (12-14), Kelsey Budd, Bradley, 12/17/11

Made 100% of her FTA (10 att.)

Iowa -- 1.000 (17-17), Jamie Printy, vs. West Virginia, 11/14/2012[^]
Opponent -- 1.000 (11-11), Courtney Vandersloot, Gonzaga, 3/19/11

Had 15 or more rebounds

Iowa -- 18, Samantha Logic, at Michigan, 2/16/12
Opponent -- 16, Artemis Spanou, Robert Morris, 11/20/2012

Had 10 or more assists

Iowa -- 12, Samantha Logic, vs. Middle Tennessee, 11/14/2012
Opponent -- 10, Brittney McCoy, Minnesota, 2/18/10

Had 5 or more blocks

Iowa -- 5, Morgan Johnson, at Florida International, 11/23/12
Opponent -- 5, Ebony Ellis, Northern Illinois, 12/8/07

Had 5 or more steals

Iowa -- 5, Kelly Krei, at Indiana, 2/5/12
Opponent -- 8, Jamie Russell, Illinois State, 11/11/12

The Last Time A Team . . .

Scored 100 or more points

Iowa -- 100 vs. Minnesota, 2/12/88
Opponent -- 101, Iowa State, 12/3/03

Scored 40 or fewer points

Iowa -- 40, vs. Illinois, 2/10/77
Opponent -- 40, Northern Illinois, 11/9/12

Won an overtime game

Iowa -- 69-63, vs. Middle Tennessee, 11/14/12
Opponent -- 81-78, Kansas State, 12/3/11

Made at least 60% of its FGA (20 att.)

Iowa -- .632 (36-57), vs. Rider, 11/26/05
Opponent -- .654 (34-52), Ohio State, 2/12/06

Made at least 50% of its 3-pt. FGA (8 att.)

Iowa -- .600 (6-10) vs. Northern Illinois, 11/9/12
Opponent -- .500 (5-10), Florida State, 11/28/12

Made at least 90% of its FTA (10 att.)

Iowa -- .900 (9-10), vs. California, 3/18/12
Opponents -- .941 (16-17), UNI, 11/19/11

* - Carver-Hawkeye Arena record ^ - school record





University of Iowa Women's Basketball

Miscellaneous Records and Statistics

GAME-BY-GAME, POINTS-REBOUNDS-ASSISTS-STEALS

# -- starter	3	11	12	13	21	22	23	24	25	33	45	51	54	
Date	Opponent	Till	Nesbitt	Johnson	Thomas	Dixon	Logic	Taylor	Printy	Peschel	Reynolds	Smith	Doolittle	Timmerman
		P-R-A-S	P-R-A-S	P-R-A-S	P-R-A-S	P-R-A-S	P-R-A-S	P-R-A-S	P-R-A-S	P-R-A-S	P-R-A-S	P-R-A-S	P-R-A-S	P-R-A-S
Nov. 9	Northern Illinois	3-6-0-1	3-3-1-0	11-5-0-1#	8-2-0-0	8-2-2-1#	10-3-2-2#	5-1-1-0#	11-1-3-1	1-5-1-0	DNP	0-1-0-0	2-0-0-0#	1-1-0-0
Nov. 11	Illinois State	4-3-0-1	3-1-0-1	24-9-2-1#	5-3-3-1	8-0-2-0#	6-5-4-2#	10-11-5-2#	1-2-1-0	0-3-0-0	DNP	0-0-0-0	8-5-0-1#	5-0-1-0
Nov. 14	Middle Tennessee	0-1-0-0	2-0-0-0	20-8-1-0#	0-0-0-0	6-1-1-2#	0-3-12-2#	7-4-2-1#	26-5-6-1	0-1-0-0	DNP	DNP	8-9-0-0#	0-0-0-0
Nov. 18	North Carolina	1-2-1-0	2-0-0-0	20-11-1-2#	0-0-0-0	12-1-0-0	12-6-6-4#	3-4-1-0#	12-5-4-1#	DNP	DNP	DNP	2-7-1-2#	0-0-0-0
Nov. 20	Robert Morris	5-2-0-0	0-2-2-0	19-11-0-0#	3-1-1-0	6-2-0-0	4-6-9-3#	7-4-0-1#	8-6-5-1#	0-0-0-1	DNP	DNP	4-5-1-0#	2-3-0-0
Nov. 23	Florida International	6-7-0-0	2-1-1-0	14-6-2-0#	0-0-0-0	8-2-0-0	7-5-7-1#	6-3-2-0#	15-5-4-0#	0-2-0-0	DNP	DNP	6-3-0-0#	0-0-0-0
Nov. 25	West Virginia	5-2-0-1	4-0-1-1	19-3-1-1#	DNP	0-0-0-0	9-7-7-3#	6-7-0-0#	19-7-3-0#	DNP	DNP	DNP	17-6-0-0#	0-1-0-0
Nov. 28	Florida State	0-1-1-0	0-0-0-1	20-4-1-0#	DNP	3-0-1-1	14-7-7-3#	9-6-1-0#	13-1-1-0#	0-2-0-0	DNP	DNP	10-9-1-1#	DNP
Dec. 1	Northern Iowa	DNP	0-0-0-0	19-12-5-2#	0-2-1-0	6-2-1-0	15-4-3-1#	6-5-2-0#	9-3-5-0#	3-2-0-1	DNP	0-0-0-0	8-7-0-1#	2-1-0-0
Dec. 6	Iowa State	DNP	0-1-0-0	7-6-2-1#	3-2-0-0	11-2-1-1	6-9-4-0#	11-9-3-2#	10-6-2-2#	0-0-0-0	DNP	DNP	2-4-0-1#	DNP
Dec. 16	Drake	DNP	12-0-0-0	26-8-0-2#	3-0-0-0	0-0-1-0	13-5-7-1#	6-3-6-0#	9-4-7-0#	5-0-2-1	DNP	DNP	8-4-0-1#	DNP

IOWA RECORD WHEN...

Playing at home:.....	6-1	Iowa has more rebounds:.....	3-2
Playing on the road:.....	1-2	Opponent has more rebounds:.....	5-1
Playing on a neutral floor:.....	1-0	Rebounds are equal:.....	0-0
Leading at the half:.....	6-1	Iowa has more assists:.....	7-1
Trailing at the half:.....	2-2	Opponent has more assists:.....	0-1
Tied at the half:.....	0-0	Assists are equal:.....	1-1
Wearing white:.....	2-0	Iowa has fewer turnovers:.....	4-0
Wearing black:.....	2-2	Opponent has fewer turnovers:.....	3-3
Wearing gold:.....	4-1	Turnovers are equal:.....	1-0
Wearing pink:.....	0-0	Iowa has more steals:.....	3-0
Scoring 80+ points:.....	1-0	Opponent has more steals:.....	3-3
Scoring 70-79 points:.....	2-0	Steals are equal:.....	2-0
Scoring 60-69 points:.....	3-3	Playing on Sunday:.....	3-1
Scoring 60 or fewer points:.....	2-0	Playing on Monday:.....	0-0
Allowing 80+ points:.....	0-1	Playing on Tuesday:.....	1-0
Allowing 70-79 points:.....	1-1	Playing on Wednesday:.....	1-1
Allowing 60-69 points:.....	3-1	Playing on Thursday:.....	1-0
Allowing 60 or fewer points:.....	4-0	Playing on Friday:.....	1-1
Shooting at least 50% FG:.....	1-0	Playing on Saturday:.....	1-0
Shooting less than 50% FG:.....	7-3	Playing on BTN:.....	1-0
Shooting at least 80% FT:.....	2-0	Playing on CBS Sports Network:.....	0-1
Shooting less than 80% FT:.....	6-3	Playing on ESPN2:.....	0-0
Shooting at least 40% 3-pt. FG:.....	2-0	Playing on Mediacom:.....	3-0
Shooting less than 40% 3-pt. FG:.....	6-3	Playing on no TV:.....	4-2
Most 1st half points:.....	39, twice	Largest Iowa lead:.....	27 vs. NIU (Nov. 9)
Most 2nd half points:.....	54 vs. West Virginia (Nov. 25)	Largest Iowa deficit:.....	22 vs. UNC (Nov. 18)
Fewest opponent 1st half points:.....	13 vs. NIU (Nov. 9)	Largest halftime lead:.....	31 vs. NIU (Nov. 9)
Fewest opponent 2nd half points:.....	22 vs. UNI (Dec. 1)	Largest halftime deficit:.....	22 vs. UNC (Nov. 18)

LATE GAME CLUTCH FREE THROW SHOOTING

In Final Five Minutes of Game			
Player	FTM	FTA	Pct.
Jaime Printy	18	18	1.000
Morgan Johnson	12	12	1.000
Trisha Nesbitt	4	4	1.000
Samantha Logic	7	10	.700
Claire Till	3	6	.500
Kathy Thomas	2	4	.500
Melissa Dixon	0	1	.000
Kayla Timmerman	0	2	.000
TOTALS	46	57	.807
In Final Two Minutes of Game			
Player	FTM	FTA	Pct.
Jaime Printy	14	14	1.000
Morgan Johnson	6	6	1.000
Trisha Nesbitt	4	4	1.000
Samantha Logic	3	4	.750
Claire Till	1	4	.250
Melissa Dixon	0	1	.000
Kathy Thomas	0	2	.000
TOTALS	28	35	.800
In Final One Minute of Game			
Player	FTM	FTA	Pct.
Jaime Printy	12	12	1.000
Morgan Johnson	2	2	1.000
Trisha Nesbitt	2	2	1.000
Samantha Logic	1	2	.500
Claire Till	1	4	.250
Kathy Thomas	0	2	.000
TOTALS	18	24	.750
In Overtime			
Player	FTM	FTA	Pct.
Jaime Printy	6	6	1.000
Morgan Johnson	0	2	.000
Melissa Dixon	0	1	.000
TOTALS	6	9	.667





University of Iowa Women's Basketball

Season Highs And Lows/Specialty Statistics

CATEGORY		IOWA	OPPONENTS
Points	High Low	82 at Drake 50 vs. Iowa State	83, Florida State 40, Northern Illinois
FG Made	High Low	31 at Drake 15 vs. Iowa State	31, Florida State 12, Northern Iowa
FG Att.	High Low	62 vs. North Carolina 39 vs. West Virginia	76, Illinois State 48, Northern Illinois
FG%	High Low	52.5 at Drake 29.4 vs. Iowa State	49.2, Florida State 22.6, Northern Iowa
3FG Made	High Low	7, three times, last at Drake 1 vs. West Virginia	8, two teams 1, Northern Illinois
3FG Att.	High Low	25 vs. North Carolina 5 vs. West Virginia	34, Iowa State 9, Northern Illinois
3FG%	High Low	60.0 vs. Northern Illinois 18.2 at Florida State	50.0, Florida State 11.1, Northern Illinois
FTM	High Low	42 vs. West Virginia 7, twice, last at Florida State	22, West Virginia 5, Iowa State
FTA	High Low	50 vs. West Virginia 9, twice, last at Florida State	29, West Virginia 5, Iowa State
FT% (min. 10)	High Low	84.0 vs. West Virginia 64.0 vs. Iowa State	87.5, Northern Iowa 55.6, North Carolina
Off. Reb.	High Low	16, twice, last at Florida State 6 vs. Northern Illinois	23, West Virginia 10, two teams
Def. Reb.	High Low	38 vs. Illinois State 19 at Florida State	33, Northern Illinois 15, Florida State
Total Reb.	High Low	50 vs. Illinois State 31 at Drake	46, Middle Tennessee 29, Florida State
Assists	High Low	23 at Drake 10 vs. Northern Illinois	18, Florida State 3, Northern Illinois
Steals	High Low	9, twice, last vs. North Carolina 1 at Florida International	15, two teams 1, West Virginia
Blocks	High Low	10, three times, last vs. Middle Tennessee 1 vs. Robert Morris	4, three teams 0, Northern Iowa
Turnovers	High Low	25 vs. North Carolina 8 at Drake	22, Northern Illinois 10, Florida International
Fouls	High Low	23 vs. West Virginia 13, twice, last vs. Iowa State	35, West Virginia 10, Florida State

GAME-BY-GAME SPECIALTY STATS

Date	Opponent	Pts. Off TO's	Pts. in Paint	2nd Chance	Fast Break
Nov. 9	Northern Illinois	26-6	24-10	4-3	3-2
Nov. 11	Illinois State	18-20	22-24	8-6	18-11
Nov. 14	Middle Tennessee	15-11	24-26	11-12	2-6
Nov. 18	North Carolina	12-22	30-24	6-22	15-14
Nov. 20	Robert Morris	16-12	22-10	11-6	2-2
Nov. 23	Florida International	6-20	24-20	13-15	6-6
Nov. 25	West Virginia	14-20	24-18	11-22	0-4
Dec. 1	Northern Iowa	11-11	34-4	9-5	2-0
Dec. 6	Iowa State	12-12	14-12	10-8	2-4
Dec. 16	Drake	15-5	40-18	11-12	2-4

IOWA AND OPPONENT INDIVIDUAL HIGH PERFORMANCES

CATEGORY	IOWA	OPPONENTS
Points	26 Printy vs. MTSU, Johnson at Drake	31 Jerica Coley, Florida International
Field Goals Made	11 Morgan Johnson at Drake	12 Jamie Russell, Illinois State
Field Goals Attempted	19 Morgan Johnson at Drake	28 Russell, Ill. State; Coley, FIU
3-Point Field Goals Made	4 Jaime Printy at Florida International	6 Kyndal Clark, Drake
3-Point Field Goals Attempted	12 Jaime Printy vs. North Carolina	13 Taylor Palmer, West Virginia
Free Throws Made	17 Jaime Printy vs. West Virginia	10 Morgan Reid, Drake
Free Throws Attempted	17 Jaime Printy vs. West Virginia	12 Morgan Reid, Drake
Offensive Rebounds	5 Johnson vs. RMU, Till at FIU	11 Ebony Rowe, Middle Tennessee
Defensive Rebounds	11 Theairra Taylor vs. Ill. State	13 Artemis Spanou, Robert Morris
Total Rebounds	12 Morgan Johnson vs. Northern Iowa	16 Rowe, MTSU; Spanou, RMU
Assists	12 Samantha Logic vs. Middle Tennessee	7 Alyssa Marschner, Drake
Steals	4 Samantha Logic vs. North Carolina	8 Jamie Russell, Illinois State
Blocks	6 Bethany Doolittle vs. NIU	3 Waltiea Rolle, North Carolina





University of Iowa Women's Basketball

Season Box Scores



Official Basketball Box Score -- Game Totals -- Final Statistics
Northern Illinois vs Iowa
11/9/12 5:30 PM at Carver-Hawkeye Arena, Iowa City, IA

BIG

Northern Illinois 40 • 0-1

#	Player	Total		3-Ptr		Rebounds		PF	TP	A	TO	Blk	Stl	Min	
		FG-FGA	FT-FTA	FG-FGA	FT-FTA	Off	Def								Tot
20	THORP, Jenna	f	1-5	0-1	3-4	2	4	6	2	5	0	1	0	1	26
33	HAYWOOD, Shaakira	c	0-0	0-0	2-2	1	1	2	2	0	2	0	0	0	12
12	PULLIAM, Danny	g	2-4	0-0	0-0	0	2	2	1	4	1	2	0	0	20
14	TAYLOR, Satavia	g	5-15	1-4	1-3	2	9	11	1	12	0	2	0	2	29
02	CORRAL, Amanda	g	2-10	0-3	2-5	0	3	3	4	6	0	8	0	1	29
03	SNEED, Ashley	f	1-4	0-0	0-0	0	3	3	1	2	0	1	0	0	14
05	LINDSTROM, Alexis	f	0-1	0-1	2-2	0	0	0	0	2	0	0	0	1	11
23	BUGG'S, Jada	g	2-5	0-0	1-2	0	2	2	3	5	0	3	0	0	17
30	JOHNSON, Alicia	g	0-1	0-0	0-0	0	3	3	2	0	0	0	0	0	12
31	WITTMAN, Nichole	g	1-1	0-0	0-0	2	0	2	1	2	0	1	0	0	14
28	AUGUSTA, Natecia	g	0-2	0-0	0-1	1	3	4	2	0	0	1	2	1	16
	Team					3	3	6							
	Totals		14-48	1-9	11-19	11	33	44	19	40	3	22	2	6	200

FG % 1st Half: 4-23 17.4% 2nd half: 10-25 40.0% Game: 14-48 29.2% **Deadball**
3FG % 1st Half: 0-7 0.0% 2nd half: 1-2 50.0% Game: 1-9 11.1% **Rebounds**
FT % 1st Half: 5-10 50.0% 2nd half: 6-9 66.7% Game: 11-19 57.9%

Iowa 63 • 1-0

#	Player	Total		3-Ptr		Rebounds		PF	TP	A	TO	Blk	Stl	Min	
		FG-FGA	FT-FTA	FG-FGA	FT-FTA	Off	Def								Tot
51	Doolittle, Bethany	f	1-8	0-0	0-0	0	0	0	2	2	0	1	6	0	21
12	Johnson, Morgan	c	4-11	0-0	3-5	1	4	5	2	11	0	1	0	1	20
21	Dixon, Melissa	g	3-4	2-3	0-0	0	2	2	2	8	2	1	0	1	24
22	Logic, Samantha	g	5-8	0-0	0-0	0	1	1	10	2	2	0	2	25	
23	Taylor, Theairra	g	2-4	1-1	0-0	0	1	1	5	1	1	1	1	19	
03	Till, Claire	g	1-3	1-2	0-2	1	5	6	3	3	0	0	1	11	
11	Nesbitt, Trisha	f	1-1	1-1	0-0	0	3	3	0	3	1	2	0	0	18
13	Thomas, Kathy	f	3-4	0-0	2-2	1	1	2	3	8	0	1	0	0	15
24	Printy, Jaime	g	3-4	1-1	4-4	0	1	1	11	3	1	0	1	16	
25	Peschel, Kali	g	0-6	0-2	1-2	3	2	5	3	1	1	0	0	0	18
45	Smith, Nicole	g	0-2	0-0	0-0	0	1	1	0	0	0	0	0	0	3
54	Timmerman, Kayla	g	0-2	0-0	1-2	0	1	1	0	1	0	0	2	0	10
	Team					0	4	4							
	Totals		23-57	6-10	11-17	6	28	34	18	63	10	10	10	6	200

FG % 1st Half: 15-30 50.0% 2nd half: 8-27 29.6% Game: 23-57 40.4% **Deadball**
3FG % 1st Half: 4-5 80.0% 2nd half: 2-4 50.0% Game: 6-10 60.0% **Rebounds**
FT % 1st Half: 0-1 0.0% 2nd half: 11-16 68.8% Game: 11-17 64.7%

Officials: Ann Schroeder, Scott Fruehling, Dave Rittman
Technical fouls: Northern Illinois-None. Iowa-None.
Attendance: 4739

Score by periods		1st	2nd	Total
Northern Illinois	Iowa	13	27	40
Iowa	Northern Illinois	34	29	63

Last FG - NIJ 02-03:23, IOWA 2nd-02:17.
Largest lead - NIJ None, IOWA by 27 2nd-03:50.
Score tied - 3 times.
Lead changed - 0 times.



Official Basketball Box Score -- Game Totals -- Final Statistics
Illinois State vs Iowa
11/11/12 2:00 PM at Carver-Hawkeye Arena, Iowa City, IA

BIG

Illinois State 64 • 1-1

#	Player	Total		3-Ptr		Rebounds		PF	TP	A	TO	Blk	Stl	Min	
		FG-FGA	FT-FTA	FG-FGA	FT-FTA	Off	Def								Tot
25	SMITH, Janae	f	7-14	0-0	3-6	5	4	9	2	17	1	5	1	31	
01	OLIVER, Maddie	f	0-2	0-0	0-0	1	0	1	4	0	0	0	0	14	
01	JENKINS, Alexis	g	1-2	1-2	0-0	0	0	0	1	3	2	1	0	23	
14	FOLEY, Alexis	g	1-8	1-4	0-0	2	4	6	5	3	0	2	0	27	
23	RUSSELL, Jamie	g	12-28	0-2	6-6	2	10	12	3	30	2	6	1	37	
04	NELSON, Chloe	g	2-9	0-3	2-4	2	1	3	3	6	0	0	0	20	
11	HALL, Stekara	g	0-0	0-0	0-0	0	1	1	2	0	0	0	0	3	
22	SEBERGER, Alison	g	0-0	0-0	0-0	0	0	0	0	0	0	0	0	1	
24	WINGE, Katy	g	1-5	0-3	0-0	0	2	2	0	2	0	1	0	11	
32	CRUMP, Octavia	g	0-6	0-0	1-5	2	2	4	2	1	2	0	1	22	
35	PUNI, Brianna	g	0-1	0-0	0-0	0	1	1	4	0	0	0	0	10	
50	GRACE, Megan	g	1-1	0-0	0-0	0	0	0	1	2	0	0	0	1	
	Team					3	2	5							
	Totals		25-76	2-14	12-21	17	27	44	27	64	6	17	4	15	200

FG % 1st Half: 11-40 27.5% 2nd half: 14-36 38.9% Game: 25-76 32.9% **Deadball**
3FG % 1st Half: 1-6 16.7% 2nd half: 1-8 12.5% Game: 2-14 14.3% **Rebounds**
FT % 1st Half: 0-9 0.0% 2nd half: 6-12 50.0% Game: 12-21 57.1% 5.1

Iowa 74 • 2-0

#	Player	Total		3-Ptr		Rebounds		PF	TP	A	TO	Blk	Stl	Min	
		FG-FGA	FT-FTA	FG-FGA	FT-FTA	Off	Def								Tot
12	Johnson, Morgan	c	6-14	0-0	12-13	4	5	9	2	24	2	2	5	1	30
51	Doolittle, Bethany	c	4-10	0-1	0-0	0	5	5	1	8	0	2	2	1	25
21	Dixon, Melissa	g	2-3	2-3	2-2	0	0	0	4	8	2	1	0	24	
22	Logic, Samantha	g	1-6	0-1	4-4	3	2	5	2	6	4	6	1	24	
23	Taylor, Theairra	g	3-6	1-1	3-4	0	11	11	1	10	5	2	0	21	
03	Till, Claire	g	1-2	0-0	2-2	0	3	3	1	4	0	2	0	1	7
11	Nesbitt, Trisha	g	0-3	0-1	3-4	0	1	1	3	3	0	1	0	1	15
13	Thomas, Kathy	g	0-2	0-0	5-8	2	1	3	3	5	3	3	0	1	16
24	Printy, Jaime	g	0-4	0-3	1-2	0	2	2	0	1	3	2	0	0	15
25	Peschel, Kali	g	0-2	0-1	0-0	0	3	3	1	0	2	0	0	0	16
45	Smith, Nicole	g	0-0	0-0	0-0	0	0	0	0	0	0	0	0	0	2
54	Timmerman, Kayla	g	2-2	1-1	0-2	0	0	0	0	5	1	0	1	0	5
	Team					3	5	8							
	Totals		19-54	4-12	32-41	12	38	50	18	74	18	23	10	9	200

FG % 1st Half: 7-26 26.9% 2nd half: 12-28 42.9% Game: 19-54 35.2% **Deadball**
3FG % 1st Half: 2-7 28.6% 2nd half: 2-5 40.0% Game: 4-12 33.3% **Rebounds**
FT % 1st Half: 2-3 66.7% 2nd half: 9-15 60.0% Game: 32-41 78.0% 4

Officials: Doug Knight, Erika Herriman, Scott Fruehling
Technical fouls: Illinois State-None. Iowa-None.
Attendance: 2930
Fouled Out: #14 ISU 1:02:20

Score by periods		1st	2nd	Total
Illinois State	Iowa	29	35	64
Iowa	Illinois State	39	35	74

Last FG - IOWA 2nd-01:19, IOWA 2nd-01:04
Largest lead - IOWA 32 2nd-03:50
Score tied - 9 times
Lead changed - 0 times



Official Basketball Box Score -- Game Totals -- Final Statistics
Middle Tennessee vs Iowa
11/14/12 7:00 PM at Carver-Hawkeye Arena, Iowa City, IA

BIG

Middle Tennessee 63 • 2-1

#	Player	Total		3-Ptr		Rebounds		PF	TP	A	TO	Blk	Stl	Min	
		FG-FGA	FT-FTA	FG-FGA	FT-FTA	Off	Def								Tot
13	Elie, Icelyn	f	3-11	1-2	1-1	6	8	14	3	8	2	3	1	3	43
21	Rowe, Ebony	c	10-21	0-0	4-6	11	5	16	4	24	3	3	2	4	45
05	Cason, Shanice	g	1-14	1-10	2-5	0	2	2	5	5	1	5	0	0	36
24	Jones, Kortni	g	4-14	3-10	4-4	2	2	4	3	15	3	4	0	1	44
02	Leonard, Laken	g	3-6	2-5	1-2	1	0	1	4	9	0	2	0	1	34
52	Brinkley, Janay	g	0-2	0-2	0-0	0	1	1	2	0	0	0	0	2	10
23	March, Lauren	f	1-1	0-0	0-0	0	1	2	0	2	0	0	0	1	9
32	Warden, Caroline	g	0-1	0-1	0-0	0	0	0	1	0	0	1	0	0	2
42	Stewart, Keke	g	0-0	0-0	0-0	0	0	0	0	0	0	0	0	0	2
	Team					1	5	6							
	Totals		22-70	7-30	12-18	22	24	46	22	63	9	20	3	12	225

FG % 1st Half: 13-34 38.2% 2nd half: 8-31 25.8% OT: 1-5 20.0% Game: 22-70 31.4% **Deadball**
3FG % 1st Half: 5-14 35.7% 2nd half: 2-13 15.4% OT: 0-3 0.0% Game: 7-30 23.3% **Rebounds**
FT % 1st Half: 1-5 20.0% 2nd half: 9-11 81.8% OT: 2-2 100.0% Game: 12-18 66.7% 3

Iowa 69 • 3-0

#	Player	Total		3-Ptr		Rebounds		PF	TP	A	TO	Blk	Stl	Min	
		FG-FGA	FT-FTA	FG-FGA	FT-FTA	Off	Def								Tot
51	Doolittle, Bethany	f	4-7	0-0	0-0	4	5	9	3	8	0	4	5	0	30
12	Johnson, Morgan	c	8-10	0-0	4-6	2	6	8	4	20	1	0	2	0	41
21	Dixon, Melissa	g	2-9	2-7	0-1	0	1	1	2	6	1	1	0	2	34
22	Logic, Samantha	g	0-6	0-2	0-1	1	2	3	2	0	12	6	1	2	40
23	Taylor, Theairra	g	3-8	1-4	0-2	1	3	4	2	7	2	4	2	1	23
03	Till, Claire	g	0-1	0-0	0-0	0	1	1	2	0	0	0	0	0	8
11	Nesbitt, Trisha	f	1-1	0-0	0-0	0	0	0	0	2	0	0	0	0	4
13	Thomas, Kathy	g	0-0	0-0	0-0	0	0	0	1	0	0	0	0	0	2
24	Printy, Jaime	g	6-13	3-7	11-11	1	4	5	1	26	6	5	0	1	38
25	Peschel, Kali	g													



University of Iowa Women's Basketball

Season Box Scores



Official Basketball Box Score -- Game Totals -- Final Statistics
Robert Morris vs Iowa
 11/20/12 7:00 PM at Carver-Hawkeye Arena, Iowa City, IA



Robert Morris 44 • 0-4

##	Player	Total	3-Ptr			Rebounds			PF	TP	A TO	Blk	Stl	Min
			FG-FGA	FG-FGA	FT-FTA	Off	Def	Tot						
15	SPANOU, Artemis	f	2-19	1-9	4-7	3	13	16	3	9	3	8	0	40
42	HARTWELL, Kelly	f	0-1	0-0	1-2	1	1	2	0	1	2	0	0	23
52	GAILITE, Anna	c	5-10	0-0	0-0	2	2	4	4	10	0	1	2	33
10	TATE, Jasmine	g	1-4	0-0	0-1	0	3	3	1	2	5	0	1	27
14	RAVELLI, Ashley	g	3-7	2-4	1-2	1	1	2	0	9	3	1	0	31
12	MATALY, Lou	g	4-10	3-7	2-2	1	1	2	1	13	1	0	0	26
34	KAVASILA, Anna	g	0-0	0-0	0-0	0	0	0	2	0	0	0	0	7
41	JACKSON, Randi	g	0-2	0-1	0-0	0	0	0	0	0	1	1	0	13
	Team					2	3	5						
Totals			15-53	6-21	8-14	10	24	34	11	44	12	16	2	200

FG % 1st Half: 8-25 29.6% 2nd half: 7-26 26.9% Game: 15-53 28.3%
 3FG % 1st Half: 3-10 30.0% 2nd half: 3-11 27.3% Game: 6-21 28.6%
 FT % 1st Half: 1-3 33.3% 2nd half: 7-11 63.6% Game: 8-14 57.1%

Iowa 58 • 4-1

##	Player	Total	3-Ptr			Rebounds			PF	TP	A TO	Blk	Stl	Min
			FG-FGA	FG-FGA	FT-FTA	Off	Def	Tot						
51	Doolittle, Bethany	f	2-9	0-0	0-0	1	4	5	2	4	1	1	0	20
12	Johnson, Morgan	c	8-13	0-0	3-5	5	6	11	3	19	0	3	0	33
22	Logic, Samantha	g	2-7	0-2	0-0	3	3	6	1	4	9	2	0	28
23	Taylor, Theaira	g	3-7	1-4	0-0	0	4	4	0	7	0	3	0	20
24	Printy, Jaime	g	2-4	2-4	2-2	1	5	6	0	8	5	2	0	31
03	Till, Claire	g	1-2	1-1	2-2	0	2	2	0	5	0	2	0	16
11	Nesbitt, Trisha	g	0-0	0-0	0-0	0	2	2	0	2	0	0	0	13
13	Thomas, Kathy	g	1-3	1-1	0-0	0	1	2	3	1	0	0	0	10
21	Dixon, Melissa	g	2-8	2-7	0-0	0	2	2	6	0	3	0	0	17
25	Peschel, Kali	g	0-0	0-0	0-0	0	0	0	2	0	0	0	1	5
54	Timmerman, Kayla	g	1-4	0-0	0-0	1	2	3	1	2	0	2	0	7
	Team					1	1	2						
Totals			22-57	7-19	7-9	12	32	44	13	58	18	18	1	200

FG % 1st Half: 8-25 32.0% 2nd half: 14-32 43.8% Game: 22-57 38.6%
 3FG % 1st Half: 4-10 40.0% 2nd half: 3-9 33.3% Game: 7-19 36.8%
 FT % 1st Half: 3-4 75.0% 2nd half: 4-5 80.0% Game: 7-9 77.8%

Officials: Lisa Mattingly, Brian Hall, Angie Enlund
 Technical fouls: Robert Morris-None. Iowa-None.
 Attendance: 3032

Score by periods			
	1st	2nd	Total
Robert Morris	20	24	44
Iowa	23	35	58

Points					
	In	Off	2nd	Fast	Bench
	Paint	T/O	Chance	Break	
RMU	10	12	6	2	13
IOWA	22	16	11	2	16

Last FG - RMU 2nd-01:52, IOWA 2nd-00:36.
 Largest lead - RMU by 5 1st-12:17, IOWA by 16 2nd-12:41.



Official Basketball Box Score -- Game Totals -- Final Statistics
Iowa vs FIU
 11/23/12 6 p.m. at U.S. Century Bank Arena



Iowa 65 • 4-2

##	Player	Total	3-Ptr			Rebounds			PF	TP	A TO	Blk	Stl	Min
			FG-FGA	FG-FGA	FT-FTA	Off	Def	Tot						
12	Johnson, Morgan	* 6-9	0-0	2-2	3	3	6	2	14	2	3	5	0	36
22	Logic, Samantha	* 3-6	1-1	0-0	3	2	5	3	7	7	4	0	1	32
23	Taylor, Theaira	* 2-5	0-1	2-2	0	3	3	2	6	2	2	0	0	19
24	Printy, Jaime	* 5-12	4-9	1-1	2	3	5	2	15	4	3	0	0	34
51	Doolittle, Bethany	* 3-5	0-0	0-0	0	3	3	3	6	0	2	0	0	22
03	Till, Claire	1-6	0-2	5-8	5	1	6	0	7	0	0	0	0	18
11	Nesbitt, Trisha	1-2	0-0	0-0	0	1	1	1	2	1	2	1	0	8
13	Thomas, Kathy	0-0	0-0	0-0	0	0	0	0	0	0	0	0	0	8
21	Dixon, Melissa	3-11	2-7	0-0	0	2	2	2	8	0	0	0	0	19
25	Peschel, Kali	0-1	0-0	0-0	0	2	2	0	0	0	0	0	0	2
54	Timmerman, Kayla	0-0	0-0	0-0	0	0	0	1	0	1	0	1	0	2
	Team				1	5	6							
Totals			24-57	7-20	10-13	16	23	39	16	65	16	16	5	200

FG % 1st Half: 14-32 43.8% 2nd half: 10-25 40.0% Game: 24-57 42.1%
 3FG % 1st Half: 3-12 25.0% 2nd half: 4-8 50.0% Game: 7-20 35.0%
 FT % 1st Half: 3-3 100.0 2nd half: 7-10 70.0% Game: 10-13 76.9%

FIU 66 • 2-2

##	Player	Total	3-Ptr			Rebounds			PF	TP	A TO	Blk	Stl	Min
			FG-FGA	FG-FGA	FT-FTA	Off	Def	Tot						
03	Labady, Zsafia	* 2-5	1-3	1-1	1	2	3	2	6	0	1	0	1	36
12	Davydova, Marita	* 1-8	0-0	4-4	4	1	5	4	6	0	0	0	0	26
22	Coley, Jerica	* 11-28	3-9	6-7	2	4	6	2	31	4	1	2	37	
23	Mansare, Finda	* 7-14	0-0	3-4	5	3	8	4	17	1	5	1	0	36
24	Miloglav, Carmen	* 2-7	0-2	0-0	3	3	6	1	4	2	2	0	3	37
13	Ashmore, Diamond	1-2	0-0	0-0	1	1	2	2	0	0	0	0	1	13
14	Idom, Kamika	0-1	0-1	0-0	0	1	1	0	0	0	0	0	0	4
25	Durant, Arielle	0-0	0-0	0-0	0	1	1	1	0	0	0	0	0	11
	Team				3	2	5							
Totals			24-65	4-15	14-17	19	18	37	16	66	8	10	3	200

FG % 1st Half: 10-30 33.3% 2nd half: 14-35 40.0% Game: 24-65 36.9%
 3FG % 1st Half: 1-4 25.0% 2nd half: 3-11 27.3% Game: 4-15 26.7%
 FT % 1st Half: 4-4 100.0 2nd half: 10-13 76.9% Game: 14-17 82.4%

Officials: Erica Bradley, Jody Cantrell, Ron Harris
 Technical fouls: Iowa-None. FIU-None.
 Attendance:

Score by periods			
	1st	2nd	Total
Iowa	34	31	65
FIU	25	41	66

Points					
	In	Off	2nd	Fast	Bench
	Paint	T/O	Chance	Break	
IOWA	24	6	13	6	17
IOWA	20	15	6	2	2

Last FG - IOWA 2nd-00:48, FIU 2nd-00:00.
 Largest lead - IOWA by 13 2nd-16:48, FIU by 2 2nd-07:12.



Official Basketball Box Score -- Game Totals -- Final Statistics
WVU vs Iowa
 11/25/12 1 pm at U.S. Century Bank Arena



WVU 70 • 3-2

##	Player	Total	3-Ptr			Rebounds			PF	TP	A TO	Blk	Stl	Min
			FG-FGA	FG-FGA	FT-FTA	Off	Def	Tot						
01	Caldwell, Christal	* 5-16	1-5	6-6	3	1	4	5	17	1	3	0	0	23
02	Palmer, Taylor	* 7-20	5-13	4-4	3	6	9	3	23	2	0	1	1	37
05	Fields, Avere'e	* 2-4	0-0	1-2	3	5	8	2	5	1	2	1	2	23
22	Stepney, Linda	* 3-5	0-0	1-2	1	1	2	5	7	3	1	0	2	26
33	Dunning, Ayana	* 1-4	0-0	1-2	2	1	3	3	0	2	0	0	1	13
03	Bethel, Akilah	0-3	0-0	3-4	2	1	3	0	3	1	1	0	0	8
12	Hampton, Brooke	0-3	0-2	0-0	0	0	0	1	0	3	0	0	0	9
04	Faulk, Darius	0-0	0-0	1-2	0	0	3	1	0	1	0	0	0	5
14	Harlee, Jess	0-1	0-1	0-0	0	1	1	4	0	1	2	0	2	18
21	Simms, Jennie	0-3	0-1	0-0	1	0	1	3	0	0	1	0	0	8
23	Holmes, Bria	1-10	0-6	1-3	1	1	2	0	3	0	1	0	0	10
32	Leary, Crystal	2-3	0-0	4-4	4	1	5	3	8	0	1	0	2	20
	Team				3	0	3							
Totals			21-72	6-28	22-29	23	18	41	35	70	12	15	1	200

FG % 1st Half: 9-33 27.3% 2nd half: 12-39 30.8% Game: 21-72 29.2%
 3FG % 1st Half: 3-13 23.1% 2nd half: 3-15 20.0% Game: 6-28 21.4%
 FT % 1st Half: 11-18 61.1% 2nd half: 11-11 100.0 Game: 22-29 75.9%

Iowa 79 • 5-2

##	Player	Total	3-Ptr			Rebounds			PF	TP	A TO	Blk	Stl	Min
			FG-FGA	FG-FGA	FT-FTA	Off	Def	Tot						
12	Johnson, Morgan	* 6-11	0-0	7-11	0	3	3	3	19	1	2	2	1	30
22	Logic, Samantha	* 2-6	0-0	5-6	2	5	7	5	9	7	9	0	3	34
23	Taylor, Theaira	* 1-3	0-1	4-5	1	6	7	4	6	0	2	1	0	23
24	Printy, Jaime	* 1-3	0-2	17-17	0	7	7	1	19	3	4	1	0	33
51	Doolittle, Bethany	* 7-12	0-0	3-3	3	1	5	6	4	17	0	2	1	31
03	Till, Claire	0-1	0-0	5-6	2	0	2	1	5	0	1	0	1	14
11	Nesbitt, Trisha	1-1	1-1	1-2	0	0	0	2	4	1	1	0	1	14
21	Dixon, Melissa	0-2	0-1	0-0	0	0	0	2	0	0	1	0	0	17
54	Timmerman, Kayla	0-0	0-0	0-0	0	1	1	1	0	0	1	0	0	4
	Team				3	3	6							
Totals			18-39	1-5	42-50	9	30	39	23	79	12	23	5	200

FG % 1st Half: 5-17 29.4% 2nd half: 13-22 59.1% Game: 18-39 46.2%
 3FG % 1st Half: 0-3 0.0% 2nd half: 1-2 50.0% Game: 1-5 20.0%
 FT % 1st Half: 15-20 75.0% 2nd half: 27-30 90.0



University of Iowa Women's Basketball

Season Box Scores



Official Basketball Box Score -- Game Totals -- Final Statistics
UNI vs Iowa
12/1/12 2:30 PM at Carver-Hawkeye Arena, Iowa City, Iowa



UNI 46 • 3-4

#	Player	Total			3-Ptr			Rebounds			PF	TP	A	TO	Blk	Stl	Min
		FG	FGA	FT	FTA	FG	FGA	FT	FTA	Off							
00	Kirschbaum, Amber	f	3-5	0-0	2-2	3	8	11	4	8	0	3	0	1	29		
15	McDowell, Jess	c	3-8	3-8	0-0	1	2	3	2	9	0	1	0	0	30		
10	Jacqui Kalin	g	2-13	1-7	4-4	3	5	8	2	9	4	2	0	0	32		
22	Brown, Brooke	g	3-6	3-5	3-4	0	0	0	12	0	0	0	0	1	19		
23	Donaldson, Brittini	g	1-7	1-5	0-0	0	1	1	0	3	0	1	0	0	24		
05	Sorenson, Amber	0-1	0-0	0-0	0-0	0	0	0	0	0	0	0	0	0	1		
13	Lamar, Sharnae	0-5	0-2	2-2	1	1	2	1	2	3	1	0	0	0	28		
14	Davidson, Stephanie	0-1	0-1	0-0	0	0	0	0	1	0	0	0	0	0	6		
20	Schonhardt, Hannah	0-2	0-1	3-4	0	3	3	3	3	2	2	0	0	0	17		
42	Keitel, Jen	0-5	0-0	0-0	0	1	1	4	0	0	1	0	0	1	14		
	Team				2	0	2										
	Totals		12-53	8-29	14-16	10	21	31	17	46	9	11	0	2	200		

FG % 1st Half: 7-24 29.2% 2nd half: 5-29 17.2% Game: 12-53 22.6% Deadball Rebounds: 0
 3FG % 1st Half: 4-11 36.4% 2nd half: 4-18 22.2% Game: 8-29 27.6%
 FT % 1st Half: 6-6 100.0% 2nd half: 8-10 80.0% Game: 14-16 87.5%

Iowa 68 • 6-3

#	Player	Total			3-Ptr			Rebounds			PF	TP	A	TO	Blk	Stl	Min
		FG	FGA	FT	FTA	FG	FGA	FT	FTA	Off							
51	Doolittle, Bethany	f	4-11	0-0	0-0	1	6	7	2	8	0	1	0	1	26		
12	Johnson, Morgan	c	6-11	0-0	7-11	4	8	12	2	19	5	2	2	2	35		
22	Logic, Samantha	g	7-9	0-1	1-1	1	3	4	3	15	3	1	1	1	33		
23	Taylor, Theaira	g	3-6	0-2	0-0	1	4	5	0	6	2	0	0	0	28		
24	Printy, Jaime	g	2-7	1-4	4-4	0	3	3	1	9	5	3	0	0	30		
11	Nesbitt, Trisha	0-0	0-0	0-0	0	0	0	0	0	0	0	0	0	0	5		
13	Thomas, Kathy	0-1	0-0	0-0	0	2	2	0	0	1	0	0	0	0	7		
21	Dixon, Melissa	2-4	2-2	0-0	1	1	2	2	6	1	0	0	0	0	16		
25	Peschel, Kali	1-4	0-2	1-2	1	1	2	3	3	0	2	1	1	1	18		
45	Smith, Nicole	0-0	0-0	0-0	0	0	0	0	0	0	0	0	0	0	1		
54	Timmerman, Kayla	1-1	0-0	0-0	0	1	1	1	2	0	0	0	0	0	1		
	Team				1	4	5										
	Totals		26-54	3-11	13-18	10	33	43	16	68	17	9	4	5	200		

FG % 1st Half: 11-28 39.3% 2nd half: 15-26 57.7% Game: 26-54 48.1% Deadball Rebounds: 2
 3FG % 1st Half: 2-7 28.6% 2nd half: 1-4 25.0% Game: 3-11 27.3%
 FT % 1st Half: 6-11 54.5% 2nd half: 7-7 100.0% Game: 13-18 72.2%

Officials: Barb Smith, Tim Daley, Bob Enterline
 Technical fouls: UNI-None. Iowa-None.
 Attendance: 6368

Score by periods	1st	2nd	Total
UNI	24	22	46
Iowa	30	38	68

	In	Off	2nd	Fast	Bench
Points	Paint	T/O	Chance	Break	
UNI	4	11	5	0	5
IOWA	34	11	9	2	11

Last FG - UNI 2nd-03:52, IOWA 2nd-00:33.
 Largest lead - UNI by 3 1st-19:31, IOWA by 22 2nd-00:33.

Score tied - 0 times.
 Lead changed - 1 time.



Official Basketball Box Score -- Game Totals -- Final Statistics
Iowa State vs Iowa
12/6/12 7:30 PM at Carver-Hawkeye Arena, Iowa City, IA



Iowa State 42 • 5-1

#	Player	Total			3-Ptr			Rebounds			PF	TP	A	TO	Blk	Stl	Min
		FG	FGA	FT	FTA	FG	FGA	FT	FTA	Off							
05	Christofferson, H.	f	2-8	1-3	5-5	2	11	13	3	10	0	2	0	2	0	40	
42	Zimmerman, Amanda	f	0-2	0-0	0-0	0	0	0	0	0	0	0	0	1	0	6	
05	Prins, Anna	c	4-18	2-10	0-0	5	3	8	3	10	0	3	1	0	39		
03	Bingley, Emiah	g	0-1	0-0	0-0	0	1	1	1	0	0	0	4	0	7		
22	Williamson, Brynn	g	2-6	2-6	0-0	0	2	2	4	6	0	3	0	1	31		
04	Moody, Nikki	5-12	2-7	0-0	2	4	6	2	12	5	6	0	2	36			
15	Blaskowsky, Nicole	2-10	0-8	0-0	2	6	8	5	4	2	2	0	0	3	27		
32	Ellis, Fallon	0-0	0-0	0-0	1	3	4	0	0	0	0	0	0	1	14		
	Team				0	1	1										
	Totals		15-57	7-34	5-5	12	31	43	20	42	7	21	1	6	200		

FG % 1st Half: 7-28 25.0% 2nd half: 8-29 27.6% Game: 15-57 26.3% Deadball Rebounds: 0
 3FG % 1st Half: 3-16 18.8% 2nd half: 4-18 22.2% Game: 7-34 20.6%
 FT % 1st Half: 0-0 0.0% 2nd half: 5-5 100.0% Game: 5-5 100.0%

Iowa 50 • 7-3

#	Player	Total			3-Ptr			Rebounds			PF	TP	A	TO	Blk	Stl	Min
		FG	FGA	FT	FTA	FG	FGA	FT	FTA	Off							
51	Doolittle, Bethany	f	1-8	0-1	0-0	0	4	4	3	2	0	1	0	1	36		
12	Johnson, Morgan	c	3-8	0-0	1-2	1	5	6	1	7	2	4	1	1	38		
22	Logic, Samantha	g	1-7	1-3	3-6	4	5	9	3	6	4	1	1	0	28		
23	Taylor, Theaira	g	4-12	1-3	2-4	4	5	9	0	11	3	5	1	2	27		
24	Printy, Jaime	g	2-7	0-3	6-6	1	5	6	1	10	2	3	0	2	34		
11	Nesbitt, Trisha	0-0	0-0	0-0	0	1	1	1	0	0	0	0	0	0	6		
13	Thomas, Kathy	0-1	0-1	3-4	1	1	2	1	3	0	0	0	0	0	6		
21	Dixon, Melissa	4-8	2-5	1-3	0	2	2	1	11	1	1	0	1	19			
25	Peschel, Kali	0-0	0-0	0-0	0	0	0	0	2	0	0	0	0	0	6		
	Team				0	2	2										
	Totals		15-51	4-16	16-25	11	30	41	13	50	12	15	3	7	200		

FG % 1st Half: 7-26 26.9% 2nd half: 8-25 32.0% Game: 15-51 29.4% Deadball Rebounds: 3
 3FG % 1st Half: 2-8 25.0% 2nd half: 2-8 25.0% Game: 4-16 25.0%
 FT % 1st Half: 4-6 66.7% 2nd half: 12-19 63.2% Game: 16-25 64.0%

Officials: Bob Trammell, Felicia Grinter, Michael Price
 Technical fouls: Iowa State-None. Iowa-None.
 Attendance: 4483
 Fouled out: #15 ISU :29 2nd

Score by periods	1st	2nd	Total
Iowa State	17	25	42
Iowa	20	30	50

	In	Off	2nd	Fast	Bench
Points	Paint	T/O	Chance	Break	
ISU	12	12	8	4	16
IOWA	14	12	10	2	14

Last FG - ISU 2nd-01:41, IOWA 2nd-01:26.
 Largest lead - ISU by 2 2nd-12:20, IOWA by 14 1st-13:58.

Score tied - 3 times.
 Lead changed - 2 times.



Official Basketball Box Score -- Game Totals -- Final Statistics
Iowa vs Drake
12-16-12 2:07 pm at Knapp Center (Des Moines, Iowa)



Iowa 82 • 8-3

#	Player	Total			3-Ptr			Rebounds			PF	TP	A	TO	Blk	Stl	Min
		FG	FGA	FT	FTA	FG	FGA	FT	FTA	Off							
12	Johnson, Morgan	f	11-19	0-0	4-7	2	6	8	2	26	0	0	3	2	38		
51	Doolittle, Bethany	c	4-6	0-0	0-0	1	3	4	5	8	0	0	2	1	22		
22	Logic, Samantha	g	5-9	1-1	2-2	3	2	5	4	13	7	3	2	1	35		
23	Taylor, Theaira	g	2-5	2-3	0-0	0	3	3	1	6	6	2	0	0	30		
24	Printy, Jaime	g	3-9	0-3	3-3	2	2	4	1	9	7	1	0	0	31		
11	Nesbitt, Trisha	3-4	2-3	4-4	0	0	0	4	12	0	1	0	0	15			
13	Thomas, Kathy	1-1	1-1	0-0	0	0	0	0	3	0	0	0	0	7			
21	Dixon, Melissa	0-3	0-3	0-0	0	0	0	0	0	1	0	0	0	6			
25	Peschel, Kali	2-3	1-1	0-0	0	0	0	4	5	2	1	1	1	16			
	Team				2	5	7										
	Totals		31-59	7-15	13-16	10	21	31	21	82	23	8	8	5	200		

FG % 1st Half: 16-30 53.3% 2nd half: 15-29 51.7% Game: 31-59 52.5% Deadball Rebounds: 2
 3FG % 1st Half: 5-11 45.5% 2nd half: 2-4 50.0% Game: 7-15 46.7%
 FT % 1st Half: 2-2 100.0% 2nd half: 11-14 78.6% Game: 13-16 81.3%

Drake 65 • 3-6

#	Player	Total			3-Ptr			Rebounds			PF	TP	A	TO	Blk	Stl	Min
		FG	FGA	FT	FTA	FG	FGA	FT	FTA	Off							
21	Reid, Morgan	f	3-9	0-0	10-12	3	4	7	5	16	1	3	1	0	34		
44	Running, Stephanie	c	3-7	0-0	0-1	0	5	5	1	6	1	1	0	0	22		
01	Grenfell, Carly	g	1-6	0-4	0-0	0	1	1	1	2	2						



2012-13 IOWA WOMEN'S BASKETBALL
Iowa Combined Team Statistics (as of Dec 16, 2012)
All games



RECORD:	OVERALL	HOME	AWAY	NEUTRAL
ALL GAMES	8-3	6-1	1-2	1-0
CONFERENCE	0-0	0-0	0-0	0-0
NON-CONFERENCE	8-3	6-1	1-2	1-0

#	Player	gp-gs	min	avg	Total		3-Point		F-Throw		Rebounds				pf	dq	a	to	blk	stl	pts	avg
					fg-fga	fg%	3fg-fga	3fg%	ft-fa	ft%	off	def	tot	avg								
12	Johnson, Morgan	11-11	370	33.6	74-132	.561	0-0	.000	51-71	.718	28	55	83	7.5	27	0	15	21	24	10	199	18.1
24	Printy, Jaime	11-8	334	30.4	32-85	.376	16-52	.308	53-56	.946	7	38	45	4.1	14	0	41	38	1	6	133	12.1
22	Logic, Samantha	11-11	346	31.5	39-85	.459	3-13	.231	15-20	.750	25	35	60	5.5	30	1	68	51	6	22	96	8.7
23	Taylor, Theairra	11-11	268	24.4	28-73	.384	7-25	.280	13-22	.591	10	47	57	5.2	15	0	23	27	7	6	76	6.9
51	Doolittle, Bethany	11-11	299	27.2	36-92	.391	0-2	.000	3-3	1.000	14	45	59	5.4	31	1	3	18	20	7	75	6.8
21	Dixon, Melissa	11-3	210	19.1	24-68	.353	16-49	.327	4-7	.571	1	11	12	1.1	21	0	9	10	1	5	68	6.2
03	Till, Claire	8-0	92	11.5	4-17	.235	2-6	.333	15-22	.682	8	15	23	2.9	9	0	2	7	2	3	25	3.1
11	Nesbitt, Trisha	11-0	108	9.8	8-14	.571	4-7	.571	8-10	.800	0	8	8	0.7	12	0	5	5	0	3	28	2.5
13	Thomas, Kathy	9-0	73	8.1	5-12	.417	2-3	.667	10-14	.714	4	6	10	1.1	13	0	5	4	0	1	22	2.4
54	Timmerman, Kayla	8-0	33	4.1	4-9	.444	1-1	1.000	1-4	.250	1	5	6	0.8	4	0	1	4	3	0	10	1.3
25	Peschel, Kali	9-0	86	9.6	3-17	.176	1-6	.167	2-4	.500	8	7	15	1.7	15	0	3	5	2	3	9	1.0
45	Smith, Nicole	3-0	6	2.0	0-2	.000	0-0	.000	0-0	.000	0	1	1	0.3	0	0	0	0	0	0	0	0.0
Team											19	41	60									
Total.....		11	2225		257-606	.424	52-164	.317	175-233	.751	125	314	439	39.9	191	2	175	191	66	66	741	67.4
Opponents.....		11	2225		226-674	.335	61-230	.265	147-212	.693	168	258	426	38.7	207	7	113	178	25	93	660	60.0

TEAM STATISTICS	IOWA	OPP	Date	Opponent	Score	Att.
SCORING	741	660	^ 11/9/12	NORTHERN ILLINOIS	w 63-40	4739
Points per game	67.4	60.0	^ 11/11/12	ILLINOIS STATE	w 74-64	2930
Scoring margin	+7.4	-	^ 11/14/12	MIDDLE TENNESSEE	Wot 69-63	1691
FIELD GOALS-ATT	257-606	226-674	^ 11/18/12	NORTH CAROLINA	L 64-77	3073
Field goal pct	.424	.335	11/20/12	ROBERT MORRIS	w 58-44	3032
3 POINT FG-ATT	52-164	61-230	# 11/23/12	at FIU	L 65-66	430
3-point FG pct	.317	.265	# 11/25/12	vs WVU	w 79-70	387
3-pt FG made per game	4.7	5.5	11/28/12	at Florida State	L 69-83	2389
FREE THROWS-ATT	175-233	147-212	12/1/12	UNI	w 68-46	6368
Free throw pct	.751	.693	12/6/12	IOWA STATE	w 50-42	4483
F-Throws made per game	15.9	13.4	12-16-12	at Drake	w 82-65	2716
REBOUNDS	439	426				
Rebounds per game	39.9	38.7	^ - Preseason WNIT			
Rebounding margin	+1.2	-	# - FIU Thanksgiving Classic; Miami			
ASSISTS	175	113	* = Conference game			
Assists per game	15.9	10.3				
TURNOVERS	191	178				
Turnovers per game	17.4	16.2				
Turnover margin	-1.2	-				
Assist/turnover ratio	0.9	0.6				
STEALS	66	93				
Steals per game	6.0	8.5				
BLOCKS	66	25				
Blocks per game	6.0	2.3				
ATTENDANCE	26316	5922				
Home games-Avg/Game	7-3759	3-1845				
Neutral site-Avg/Game	-	1-387				

Score by Periods	1st	2nd	OT	Totals
Iowa	329	402	10	741
Opponents	306	350	4	660